

adf architects datafile

May 2013



Healthcare build & design: Case studies on the psychology of architecture in care

Civic buildings:
Library of Birmingham

Eco Technology
Show Preview

Eco & sustainable
products supplement



coatings, paints, finishes & preservatives • roofing
kitchens & catering equipment • solar shading/canopies

www.adfonline.eu

incorporating

**BUILDING
PROJECTS**



FREEDOM TO CREATE

A breakthrough in
envelope design,
enabling the
execution of
modern, stylish
façades



reader
enquiry
401

eurobond
delivering low risk building solutions

Eurobond Laminates Ltd
Wentloog Corporate Park
Cardiff
CF3 2ER

www.eurobond.co.uk
E: sales@eurobond.co.uk
T: +44 (0)29 20 77 66 77
F: +44 (0)29 20 36 91 61

To find out more go to www.eb-ascent.co.uk



20



26

- 4 Industry News
- 11 Events
- 13 CPD Focus

HEADLINES

- 4 Changes needed to 21st century house design
- 6 The impact of the latest new Planning Reforms
- 9 Exhibition: Moving, Norman Foster on Art

- 20 **City's new library aspires to be a palace of the people**
Birmingham's striking new library opens to the public in the autumn with hopes of becoming a new architectural icon of the UK's second city. Jess Unwin finds out more

- 26 **Building a better life**
Healthcare buildings don't have to be cold utilitarian sheds focused purely on clinical treatment, they can also be designed to instil in patients a sense of psychological wellbeing influenced by concepts such as domesticity, community and religion as two recent projects in London demonstrate. Stephen Cousins reports

- 37 **EXTERNAL FIXTURES: SOLAR SHADING/CANOPIES**

Why canopy systems are ideal at offering shade and protection

Robert Cassidy marketing manager at Canopies UK details various canopy systems and outlines some key points to consider when looking to install one

- 49 **EXTERNAL FIXTURES: ROOFING**

Hot melt rubberised bitumens – optimising the benefits

Trevor Lang, technical manager of Alumasc Waterproofing, explains how to evaluate hot melt systems, and how to ensure the best performance from this robust waterproofing solution

- 59 **INTERIORS: KITCHENS & CATERING EQUIPEMENT**

Specifying stainless steel in kitchens

Stainless steel surfaces and storage are essential for commercial kitchens but what about for use in domestic kitchens? Is design of the former best left to commercial kitchen specialists or should even commercial kitchen elements be specified by architects? What factors influence work surface material choice in domestic kitchens? Martin Tye from GEC Anderson Limited offers his unique insights

- 63 **LANDSCAPING & EXTERNAL WORKS: COATINGS, PAINTS, FINISHES & PRESERVATIVES**

Hot-dip galvanising

Trevor Beech of Wedge Group Galvanizing explains how the galvanising process works and the technology behind it, the common problems associated with products traditionally used to coat galvanized steel, and how a new specially developed paint is set to put these problems firmly in the past

- 14 **British Homes Awards competition**



- 19 **Show Preview**

- 18 **Editor's Focus**
- 24 **Special Report: Civic Buildings**
- 25 **Special Report: Healthcare Build & Design**
- 39 **Eco & Sustainable Products supplement**

- 31 **Groundworks**
- 32 **Structural Elements**
- 32 **External Fixtures**
- 53 **Insulation**
- 54 **Heating, Ventilation & Services**
- 56 **Interiors**
- 62 **Safety & Security**
- 62 **Landscaping & External Works**

- 65 **Classified & Directory**



Cover image: Library of Birmingham, © Jas Sansi
See page 20 for details

Publisher/Editor
Simon Reed

Assistant Editor
Gabrielle Vinyard
gabrielle@netmagmedia.eu

**Editorial &
Production Assistant**
Sarah Meikle

Contributors
Stephen Cousins
Jess Unwin

Sales Director
Lesley Mayo

Advertisement Manager
Anthony Parker
anthony@netmagmedia.eu

Sales Executives
Suzanne Easter
Kim Friend
Steve Smith

Circulation/Reader
Enquiry Service
Jane Spice



netMAGmedia Ltd
Cointronic House
Station Road, Heathfield
East Sussex, TN21 8DF

**Advertising &
Administration**
t 01435 863500
f 01435 863897
info@netmagmedia.eu
www.adfonline.eu

Press Releases
editorial@netmagmedia.eu

Supporter of



Annual subscription costs just £48 for 12 issues, including post and packing. Phone 01435 863500 for details. Individual copies of the publication are available at £5 each inc p & p. All rights reserved

No part of this publication may be reproduced or transmitted in any form or by any means, electronic, mechanical, including photocopying, recording or stored in any information retrieval system without the express prior written consent of the publisher. Although every effort is made to ensure the accuracy and reliability of material published in Architects Datafile, the publisher can accept no responsibility for the claims or opinions made by contributors, manufacturers or advertisers. Editorial contributors to this journal may have made a payment towards the reproduction costs of material used to illustrate their products. The manufacturer of the paper used within our publication is a Chain-of-Custody certified supplier operating within environmental systems certified to both ISO 14001 and EMAS in order to ensure sustainable production. Printed in England

GUIDANCE

Changes needed to 21st century house design

A fundamental review of housing design is needed if the UK is to produce successful low carbon homes of the future, a new guide by the NHBC Foundation advises.

With new homes containing more technology than ever before, the house building industry faces unprecedented challenges to build homes that achieve zero carbon performance while providing a comfortable and healthy indoor environment.

There are concerns that new technology may not be delivering to its full potential and the drive to conserve energy could inadvertently invite other problems such as overheating and poor indoor air quality.

The NHBC Foundation guide *Designing homes for the 21st Century – lessons for low energy design* explores the challenges of designing zero carbon homes and helps identify the processes needed to achieve cost effective and practical design. It finds that current design and procurement practices need to change if these are to be addressed.

The report is the 50th produced by the NHBC Foundation and is the fourth in a series of guides intended

to help house builders and designers understand the issues presented by low-energy homes without proposing a specific model for what a 21st century home might look like.

Neil Smith, group research and innovation manager, NHBC, said: "The challenges we face in designing homes fit for the 21st century are clear. We need homes that achieve zero carbon performance whilst providing a comfortable and healthy indoor environment.

"In recent decades, the design of new homes has adapted to incorporate new features and new technologies through gradual evolution. But there are now questions about whether this is the right approach or whether we need a more fundamental review of housing design.

"This guide is intended to help designers and house builders understand the need for holistic design that does not rely on a 'business as usual approach' with additional technologies bolted on."

For more information and to download the publication, please visit www.nhbcfoundation.org/21stCenturyhomes



Scan the code with your mobile phone using QR code software to view the latest news feed from www.adfonline.eu

COMPETITION



The search is on to find the Top 10 churches built in the United Kingdom since 1953 in a new architecture competition launched by the National Churches Trust, the Ecclesiastical Architects and Surveyors Association and the Twentieth Century Society.

Any new church building or significant extension to an existing building from any Christian denomination in the United Kingdom, which opened for worship after 1 January 1953 and which is still open for worship today can be nominated for the competition. Judges will be looking for creative architecture that imaginatively expresses Christian religious belief and practice.

From the Top 10, a special National Churches Trust Diamond Jubilee Architecture award will be presented to the three places of worship judged to be the best sacred spaces built in the last 60 years at a ceremony to be held at Lambeth Palace in November.

Nominations for churches, chapels or meeting houses to be considered for inclusion in the Top 10 can be made online at <http://bit.ly/111YYrc> or by emailing the name and address of the church, chapel or meeting house to bestchurches@nationalchurchestrust.org before 31 July.

The Top 10 best churches competition is being held to mark the 60th anniversary of the National Churches Trust. Since 1953 the Trust has provided over 12,000 grants and loans worth £85 million to help fund the repair and modernisation of Christian places of worship.

AWARD

rg+p win Civic Award for second year



rg+p has won a prestigious Award for Architecture from The Leicester Civic Society, recognising the firm's impressive development scheme, the Riverside CODE Building on Western Road in the city. It is the second time rg+p has won this award. The judges recognised the practice's professional commitment to creating a building that is a landmark in its own right, achieves all its functional requirements while complementing the existing historic built environment of the city. Phase 1 of the multi-million pound project on behalf of Jamie Lewis Residential was completed in September 2012 and provides 168 units for student accommodation. It is a dramatic, modern structure which sits on the bank of the Old River Soar.

PROJECT: HEALTHCARE

New Royal Liverpool University Hospital design unveiled

The design for the new **Royal Liverpool University Hospital** has been unveiled. Carillion is formally announced as the preferred bidder for the new hospital project. The announcement follows approval of the project by the Department of Health and HM Treasury. The project is expected to reach 'financial close' in January 2014 and work on-site will begin shortly after.

The new hospital will be built next to the current hospital, on the same site, and will open in 2017. Once services transfer into the new Royal, the current Royal will be demolished. Other work will then take place on site, such as landscaping. There will be a green heart created, roughly the size of Chavasse Park, near Liverpool ONE. After that there will be a world class Liverpool BioCampus on the site of the demolished Royal, regenerating the gateway to our city and transforming the area.

Aidan Kehoe, chief executive of the Royal Liverpool and Broadgreen University Hospitals NHS Trust, said: "The Royal is at the very heart of our city and the creation of a world-class, cutting-edge hospital will transform healthcare in Liverpool.

"It means that we can create the Liverpool BioCampus, which will spearhead the transformation of the Knowledge Quarter into a bustling and cosmopolitan hub. It is a unique



opportunity to put the city on the world-stage, along with cities like Boston and Singapore. This is incredibly exciting for the people of the city."

The new hospital will cost about £335 million, of which the Trust, with assistance from the Department of Health, will contribute £124 million. The private sector will raise the remaining funding and it is expected that the European Investment Bank will make a significant contribution to this. The annual payment made to the Trust's private sector partner will be less than 6 per cent of Trust income – one of the lowest in

the NHS. The Trust is also investing £94 million in associated schemes including the multi storey car park, equipment and demolitions.

Helen Jackson, director of strategy and redevelopment, said: "The new hospital has been designed with patients at the very heart. Many rooms will offer spectacular views of the city. There will be lots of natural light, art, colour and it will be much easier for people to find their way round. The whole environment will be much more attractive and welcoming. It is for the people of the city."

news bytes

Visit adf-news.blogspot.co.uk and enter the reference number to view more information

Dame Zaha Hadid, announced as 41st winner of the Veve Clicquot Business Woman Award...
Ref: 78726

Arup designs world's first completely off-grid power supply for stand-alone toll plazas in Zimbabwe...
Ref: 48108

B3 Designers have turned what was a traditional Indian setting into a Soho-urban space with a street food feel...
Ref: 74220

Prestigious independent school has received planning consent for a new purpose-built Music department and extension...
Ref: 97717

WALLTITE® Insulation Fact No. 4

Excellent adhesion to new or existing substrates

WALLTITE can be applied in-situ onto new or existing substrates with minimal preparation. Only applied by FoamMasters Approved Installers to ensure quality.

Find out more... www.walltite.basf.co.uk

BASF
The Chemical Company



WALLTITE

enq.101



PROJECT: CITY

Masterplan for China's woodcarving city, Dongyang

Atkins has completed the masterplan for Dongyang, Zhejiang Province. The masterplan (pictured left) will create a cultural-commercial-tourist destination which reflects the rich local culture of woodcarving and host the workshops of woodcarving Masters and artisans. The masterplan covers a

total area of 876,000 sq m, divided into three interlinked blocks hosting a museum, an exhibition and convention centre, a trading centre, a hotel, offices, apartments and a riverside park.

Lea Xu, design director at Atkins' Shanghai office, said: "Our design is a contemporary interpretation of the

local Chinese culture with the woodcarving theme conveyed throughout the whole project. The clarity and simplicity of the overall layout and the refinement in architecture and space design reflect the subtlety of Chinese culture and make our design stand out."

COMMENT



The impact of the latest new Planning Reforms

"The fundamental idea of the planning system is that property owners should be able to do some things if they want to without asking anyone," said Planning Minister Nick Boles to a recent gathering of property developers. To back up this statement, new planning regulations are set to come into force at the end of May, which will allow more freedom for house extension developments and conversion of offices to residential use. The government hopes these most recent changes will help act as a catalyst for increased demand for construction contractors and service suppliers throughout the UK. What could be the likely impact of these changes?

House extensions

There are in the region of 10,000 new planning applications for private residential work that involve significant construction work (i.e. significant extensions, loft conversions and conservatories) every month across the UK.

The cost of gaining planning approval is estimated to be in the region of £1,200 for a householder application. With the average cost of a house extension at £35,000, any future increase in demand for house extensions must therefore be set in the context of this potential 3 per cent - 4 per cent price cut.

DCLG estimate that these changes will increase (on a like-for-like basis) house extension building by 15-20 per cent by bringing construction work forward and stimulating demand and increasing new extension starts.

Residential conversions

There were just under 3,000 new plans submitted to UK local authorities for residential conversions during the first quarter of 2013 – around 1,000 per month. Approximately three-quarters of these applications propose a single residential unit.

Planning costs associated with residential conversions are on average higher – hence the savings for this category of developments are likely to be proportionately smaller. Even DCLG admit the impact on greater office to residential conversions is likely to be minimal.

So will these changes make a real difference? The strength of the opposition to the plans reveals a widespread opinion

that the impact will be both significant and detrimental. The opposing arguments of the House of Lords were powerful enough for the government to grant all local authorities an opt-out in the loosening of house extension rules. The Federation of Small Businesses were among those who lobbied hard to ensure there would be no relaxation in the regulations regarding office to residential conversions in at least 17 local authorities, so far.

Many commentators are much more circumspect. They point out that the complexity of local regulations mean little difference in costs between permitted development and full planning approval – and hence little impact. They argue that the risk of tearing an extension down will, at least for some time to come, inflate pre-application consulting costs. And ultimately, the power and individuality of local authorities in planning decisions mean that implementation of changes will remain at the mercy of local opinions.

Acting as a balance on both sides are perception and sentiment – which may in fact trump any logical impact analysis. The acute sensitivity to new development creates a background of conservatism and negativity. Revealingly, the government's own consultation on these proposals in November 2012 showed nearly 70 per cent opposed the full commercial proposals and 85 per cent objected to the relaxation of house extension regulations. Despite the negative consultation, the changes have nevertheless been introduced.

The realists within government may privately acknowledge that the actual numbers of new developments directly encouraged by these changes may well be small. However as one more perceived "victory for developers" the changes may contribute to a wider picture of growing confidence. Taken together with more sure-footed statements from some of the UK's leading housebuilders, this further drip feed of measures may well help a more positive overall environment for the UK construction industry.

Paul Graham is managing director of Planning Pipe (www.planningpipe.co.uk), online provider of bespoke construction sales leads and planning updates on new construction projects throughout the UK.

enq. 601

news bytes

Visit adf-news.blogspot.co.uk and enter the reference number to view more information

Student digs refashioned as stylish pied-à-terre...
Ref: 80842







Changi Airport Group appoints project consortium for Terminal 4...
Ref: 25284

IBI Nightingale has demonstrated the importance of 'future-proofing' hospital accommodation...
Ref: 59326

New Barnsley Campus scoops property 'Oscar'...
Ref: 77417

Better Bankside to help develop strategy for stitching together the public spaces in Blackfriars Road...
Ref: 41388

DELIVERING ROOFING EXCELLENCE

-  Photovoltaic Solutions
-  Flat-to-Pitched
-  Green Roofing
-  Built-up Roofing
-  Liquid Roofing
-  Polymer Modified Asphalt

SINTOFOIL TPO Single Ply Roofing Systems

THE **ONLY** ROOFING PARTNER YOU NEED

Sintofoil TPO from Langley delivers performance and reliability that's proven in single ply roofing systems worldwide. Combining the durability of EPDM and workability of PVC, this 100% recyclable, plasticiser free innovation from the industry leaders carries a 30 year BBA guarantee. Add our single source planning, installation and after sales service for complete peace of mind, and Langley is the only partner you'll ever need.

For more information or to request a CPD please call: **01327 704778**
email: sintofoil@langley.co.uk or visit: www.langley.co.uk

reader
enquiry

102

Q. When is a bi-fold door not a bi-fold door?



A. When it's a folding sliding door
(When it has more than two panels)

Why do so called Specialist bi-fold companies sell doors with more than two panels?

Q. If you have three shoes is it still a pair?

Bi-fold door (noun) An interior door (a door that closes off rooms within a building)

Meronyms (parts of "bi-fold door"): flexible joint; hinge
(a joint that holds two parts together so that one can swing relative to the other)

bifold /bɪˈfɒld/ (adjective) 1. Twofold
bi /bi-/ or sometimes before a vowel (prefix) Two, twice, double

The  **Folding Sliding** 
Door Company

The Folding Sliding Door Company, specialist manufacturer of folding sliding doors

Jack of one trade, master of one

reader
enquiry

103

UK +44 (0) 845 644 6630 • USA (214) 234 9112

www.foldingslidingdoors.com • www.foldnslide.net • www.foldingslidingdoors.us

Email: sales@foldingslidingdoors.com

EXHIBITION

Moving, Norman Foster on Art

3 May-15 Sept, Carré d'Art in Nîmes

To mark twenty years since the completion of the Carré d'Art in Nîmes, Norman Foster of Foster + Partners has been invited to curate a special exhibition to celebrate this anniversary – his design won an international competition for the project in 1984. The title of the exhibition is 'Moving' and it brings together 138 works by 66 artists from 14 countries, covering almost a 200 year period from Turner's early nineteenth-century watercolours to contemporary video pieces.

The exhibition's title relates to the theme of movement, both physical and spiritual – works of art that express motion, as encapsulated by Umberto Boccioni's 1913 'Forme uniche della continuità nello spazio', alongside Norman Foster's personal selection of works that move him emotionally. New works have been specially commissioned for the show, including a sound installation by American artist Bill Fontana, a kinetic sculpture entitled 'The Lost Compass' by Olafur Eliasson, a monumental installation by Brazilian artist Nuno Ramos and a sequence of paintings by the German artist Daniel Lergon.

Many artists, individuals, institutions and galleries have lent works of art for 'Moving', including Tate London, Musée d'Art Moderne Saint-Étienne, Centre Pompidou, Paris, the Collection of Christopher Rothko and the Robert and Lisa Sainsbury Collection. The Foster family lives surrounded by art and the curatorial strategy echoes the domestic arrangement of these objects, juxtaposing works from different movements to reveal shared influences and invite new readings.

For more, visit the ADF news blog adf-news.blogspot.co.uk and enter the reference number to view more information. **Ref: 41924**

AWARD



Pringle Brandon Perkins+Will wins BCO London and South East Award for Astellas project

Pringle Brandon Perkins+Will, the London-based interior architect and workspace design and planning specialist, has won the British Council for Offices (BCO), London and South East best 'Fit-out of Workplace' Award for its work with Astellas Pharma Europe Ltd. (APEL), the European Headquarters of Tokyo-based Astellas Pharma Inc. ("Astellas"). The award, presented on 30 April, was given for work at APEL's offices at 2000 Hillswood Drive, Chertsey in Surrey.

The BCO Award highlights excellence in office space design and functionality, acting as a benchmark for best practice in workplaces. Having won the London and South East Award, the project will automatically be entered for the national awards, which take

place in October.

The 100,000 sq ft office plan has been recognised for its outstanding design which has brought back to life a spectacular building set in 39 acres of landscaped grounds, originally designed by Sir Norman Foster.

Linzi Cassels, Principal at Pringle Brandon, said: "We are delighted to see APEL's offices receive one of the most prestigious industry accolades. The offices adopt an agile work style, using a range of alternative work settings to optimise productivity and collaboration, and provide a choice of environments for staff. The design has really supported the culture of the business, creating a connected and communicative working space, and has engendered a sense of pride amongst staff."

PLANNING COMMENT

Simplify the planning system

In common with all recent governments, the Coalition has often declared its ambition to "cut red tape". Yet only modest gains have been achieved, write Keith Boyfield and Inna Ali in *Simplified Planning: the need for sunset clauses*, published on Monday 6 May by the Centre for Policy Studies.

Tim Knox, director of the Centre for Policy Studies comments: "The Coalition is right to have identified the

complexity of the current planning system as a major obstacle to growth. It should learn from the historic success of Milton Keynes and the plans for a new Garden City at Old Hatfield to see how implementing real reform can free up the planning process to the great benefit of both would-be homeowners and the wider economy."

You can download the full report at www.cps.org.uk/publications/reports

news bytes

Visit adf-news.blogspot.co.uk and enter the reference number to view more information

CPMG-designed airport tower crowned 'Project of the Year'...
Ref: 67014

The Design Museum London introduce the 2013 Designers in Residence...
Ref: 85144

Lack of client demand is biggest barrier to adoption of BIM...
Ref: 73061

Best-in-class external wall insulation testing from the BBA...
Ref: 58903

Ryder breathes life into disused Glasgow landmark...
Ref: 91026

Chinese developer seeks best innovations for £20m flagship building in new £6bn eco-city...
Ref: 11201

It takes a machine
this green
to clean laundry
this white



Miele Professional laundry solutions meet the strictest standards of both water and energy efficiency. They're engineered to keep producing perfect results – wash after wash, year after year – which means a low lifetime cost of ownership. With space-saving solutions and simplicity of use, a Miele is right for every specification.

Call **0844 209 8342** or visit
www.miele-professional.co.uk

COMPLIANT
WITH MACHINERY
GUIDELINE
2006/42/EC



WRAS
APPROVED
PRODUCT

reader
enquiry
104

events

AWARDS

OAS Development Awards
14 June, London
www.oasdevelopmentawards.co.uk

Energy Efficiency & Renewables Awards
12 September, Coventry
<http://energyefficiencyexhibitions.co.uk/awards/>

British Homes Awards 2013
18 October, London
www.britishhomesawards.co.uk

CONFERENCES & SEMINARS

London Global Green Leader conference
19 June, London
<http://www.sustainworldwide.com/london-global-green-leader-conference-2013.html>

Healthcare Schools & Secure Environments
3 - 4 July, Harrogate
www.ascentevents.co.uk/hsse-events.php

EXHIBITIONS

Planes, Trains and Drains: London's Booming Infrastructure Business
Until 25 May, London
www.newlondonarchitecture.org/exhibitions

Welcome to the 'Social'
1, 8, 15, 17, 18 June, London
www.architecture.com/WhatsOn

Project Space: Ruins in Reverse
Until 24 June, London
www.tate.org.uk

Designs of the Year 2013
Until 7 July, London
<http://designmuseum.org/exhibitions/>

Chromazone: Colour in Contemporary Architecture
Until 21 July, London
www.vam.ac.uk

Sir Hugh Casson PRA: Making Friends
31 May - 25 August, London
www.royalacademy.org.uk/events

FESTIVALS

Clerkenwell Design Week
21 - 23 May, London
www.clerkenwelldesignweek.com

UP London Festival
Until 26 June, London
<http://uplondon.org/>

City of London Festival
23 June - 26 July, London
www.colf.org

London Design Festival
14 - 22 September, London
www.londondesignfestival.com

FILM

Volume Zero: The Work of Charles Correa
21 June, London
www.architecture.com/WhatsOn
(for more on Charles Correa & the Out of India Season, visit www.architecture.com/WhatsOn/RIBATrustProgramme)

TALKS, LECTURES & DEBATES

Energy Conversations - Mind the Gap
22 May, London
www.buildingcentre.co.uk/events

Architecture on Harman, Harman on Architecture
29 May, London
www.thearchitectureexchange.com/series

The Future of Sustainable Housing
3 June, London
www.bre.co.uk/events

TOURS

Eco Open Houses
15 - 16, 22 - 23 June, Brighton
www.ecoopenhouses.org

Open House London
21 - 22 September, London
www.londonopenhouse.org

TRADE SHOWS

May Design Series: The ARC Show
19 - 21 May, London
www.thearcshow.com

May Design Series: kbb LDN
19 - 21 May, London
www.kbb.co.uk

May Design Series: INTERIORS LDN
19 - 22 May, London
www.interiorsuk.com

May Design Series: DX
19 - 21 May, London
<http://dx-london.com>

Eco Technology Show
14 - 15 June, Brighton
www.ecotechnologyshow.co.uk

The Energy Event
10 - 11 September, Birmingham
www.theenergyevent.com

Energy Efficiency & Renewables Awards
12 September, Coventry
<http://energyefficiencyexhibitions.co.uk/awards/>

100% Design
18 - 21 September, London
www.100percentdesign.co.uk

Timber Expo
24 - 25 September, Birmingham
www.timber-expo.co.uk

Energy Efficiency Exhibitions, incorporating Renewables Roadshow
10 September, Exeter
12 September, Coventry
17 September, Newcastle
19 September, Edinburgh
24 September, Surrey
26 September, Manchester
www.energyefficiencyexhibitions.co.uk
www.renewables-roadshow.co.uk

Healthcare Estates
8 - 9 October, Manchester
www.healthcare-estates.com

Education Estates
26 - 27 November, Manchester
www.educationestates.com

WORKSHOP

Explore & Draw: Transitions & Landings
8 June, London
www.architecture.com/WhatsOn



Design is Timeless

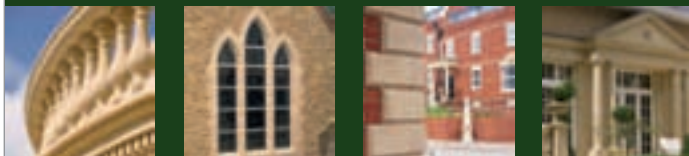
If you need quality and value from your cast stone, Haddonstone's stylish designs set the standard.

From columns, porticos, door and window surrounds to balustrades, planters, fountains, statuary and custom designs.

Visit our comprehensive website or contact us for a copy of our 204 page catalogue.

HADDONSTONE

www.haddonstone.com



THE FORGE HOUSE • EAST HADDON
NORTHAMPTON NN6 8DB

01604 770711 • info@haddonstone.co.uk

NORTHAMPTONSHIRE • COLORADO • NEW JERSEY

enq.105





Bespoke glazing solutions in timber aluminium & composite

Kloeber's advanced glazing solutions are available in bespoke or set sizes, with low U values and double or triple glazing options. View our website for further details of our extensive product range.

■ folding sliding doors	■ windows
■ sliding doors	■ shaped glazed screens
■ french doors	■ entrance doors
■ single doors	■ roof lights



Kloeber's Timber bifold doors and Funkyfront entrance doors are Secured by Design




telephone
01487 740044

info@kloeber.co.uk
www.kloeber.co.uk

enq.106

GALVANIZING

Doesn't have to be grey!

Hot dip galvanizing is well known for its corrosion protection, but there are times when a little colour is required whether for company branding or aesthetic reasons.

The major problem when painting galvanized steel is adhesion. The British Standards Institute has developed a test method for adhesion which is classified as GT0 (BS 3900 part 6 on galvanized steel).

GALVACOAT® can help..

Galvacoat® is two component polyurethane based one coat paint system, which has been specifically designed to give GT0 adhesion on galvanized steel, and it can be provided in all RAL and BS Colours at different levels of gloss.

Galvacoat® is available in the UK through Wedge Group Galvanizing Ltd, for more information please contact:

Chris Woolridge on 01902 630311
email: galvaccoat@wedgegalv.co.uk



@wedgegalv

www.wedge-galv.co.uk

Excellence in Galvanizing



enq.107

continuing professional development

Maintaining and improving professional competence, skills, abilities and knowledge

cpd focus

RESIN BASED SURFACING



Resin Based Surfacing is the title of the popular CPD seminar designed for landscape architects, designers, architects, developers and local government provided by **Addagrip**. The seminar provides information on resin bound, resin bonded and tree pit surface finishes along with details of base build up specifications and SUDS. Addagrip CPD's are available nationwide and run for approximately one hour but can be tailored to suit.

01825 761333
www.addagrip.co.uk

enq. 108

CPD SEMINAR FROM THE LEAD SHEET ASSOCIATION



The Lead Sheet Association provides accredited training and technical advice as well as producing a range of information for specifiers and installers. Its RIBA-approved CPD provides an introduction to manufacturing methods and the technical, life cycle and sustainability characteristics of lead. It also explores the main uses of lead sheet, looking at flashings and weatherings, roofing and cladding and the restoration of old and historic buildings.

01622 872 432
www.leadsheet.co.uk

enq. 112

SPECIFYING FOR NATURAL STONE



The BAL CPD seminar *Specifying For Natural Stone* allows architects' complete confidence when specifying for any natural stone tiling project. It's fully accredited for CPD by RIBA. The 45-minute seminar covers: various types of stone and their characteristics; causes of problems associated with natural stone; avoidance of common installation problems; and the impact of backgrounds and substrates on adhesive and grout specification.

01782 591100
www.bal-adhesives.com/specifiers/cpdSeminars

enq. 109

LRWA CPD SEMINAR



The LRWA (Liquid Roofing and Waterproofing Association) has announced the launch of its RIBA approved CPD, available online for specifiers, architects, and surveyors. "Continuing Professional Development is crucial for anyone working in the construction industry" commented Terry Wain, LRWA technical secretary. The CPD itself should take around 25 minutes to complete and includes information on the history of liquids and the various ways in which the LRWA aims to promote best practice within the industry.

0207 448 3859
www.lrwa.org.uk

enq. 113

TWO CPD SEMINARS FROM BONA



Bona, experts in wooden floor finishes, offer two RIBA approved seminars for architects and other specifiers. The first explains how to specify a finish for a wooden floor to achieve the required surface performance. The requirement may be for an anti-slip surface, very high durability, a natural, low sheen look, or a combination of several aesthetic or technical criteria. Bona's second seminar explains benefits of specifying adhesives as a means of wood floor installation.

01908 525 150
www.bona.com

enq. 110

A GUIDE TO SEALING STONE, PORCELAIN AND OTHER SURFACES



LTP's 40-minute PowerPoint presentation covers the following key topics: 1. A review of materials for new build and restoration, with particular emphasis on limestone and polished porcelain. 2. Basic principles of sealing natural stone. 3. Correct specification for cleaning, sealing and maintenance methods. 4. Health & Safety issues and industry guidelines. 5. An assessment of practical issues and considerations.

01823 666213
www.ltp-online.co.uk

enq. 114

ENABLING OPEN PLAN HOMES WITH AUTOMIST



Open plan homes are popular and make good use of space, but fire safety and building control approval problems have caused many architects to avoid them. Automist from **Plumis** now allows many open plan layouts in flats and three storey houses to comply with building regulations without recourse to a sprinkler system, and is covered by an LABC Registered Detail. *Enabling open plan homes* with Automist explains its design, testing and the route to approval, and discusses possible layouts.

020 7871 3899
www.plumis.co.uk

enq. 111

PUTTING YOU IN CONTROL



Decorative electrical wiring accessories, audio and lighting control manufacturer **Hamilton Litestat** invites architects to take part in its RIBA-approved CPD seminar *Putting You in Control*. The interactive seminar focuses on the environments and uses for lighting controls, applications for lighting systems and an introduction to multi-room audio distribution. The seminar is delivered by Hamilton's experts, who are available to visit workplaces throughout the UK.

01747 860088
www.hamilton-litestat.com

enq. 115



The British Homes Awards challenge architects to design “Britain’s Future Home”

Win the competition and we'll turn your design into reality!



Green House



Santiago



SML Home

Championing design excellence

The British Homes Awards have been pivotal in providing a catalyst for change in the creation of our new homes. The entries for the Home for the Future design competition in 2007 demonstrated that zero carbon housing is not only achievable but can also be aspirational. Voted the competition winner, the Gaunt Francis Architects' designed Green House was built by Barratt Developments as the first Code Level 6 home from a major house builder with the potential for mass production that would qualify for stamp duty exemption.

Building on this successful legacy and drawing inspiration from the classic Georgian and Regency terraces of the 18th and 19th century, the 2011 competition invited architects to challenge conventional thinking and design Tomorrow's Townhouse with interiors that allow occupants to maintain a 21st century lifestyle as they grow older. Santiago, designed by father and son team Alex and Edward King, was voted the winner from a shortlist of five schemes and was one of the three Show Houses within the 2012 Ideal Home Show Village at Earls Court.

Last year's competition – Tomorrow's Smart:Home – challenged architects to design integrated, inter-operable solutions that demonstrate the application of digital monitoring and intelligent control systems in the home. From a shortlist of six exemplary schemes the readers of The Sunday Times voted Pentan Partnership's SML Home as their winning design. This will now be displayed as the unique Show House exhibit at Grand Designs Live Birmingham, presenting tomorrow's technologies and future home systems.

“Britain’s Future Home”

Published last October the Future Homes Commission report “Building the Homes and Communities Britain Needs” recommended that government must ensure that its review of local housing standards sets minimum national standards for space, storage, noise insulation and natural light. It emphasised that these standards are essential for residents' quality of life and should be incorporated into Building Regulations so that they apply to all housing, of all tenures, across the UK.

It also recommended “that in the future, the layout of homes should reflect the growing need for flexibility and adaptability and called for a design competition for a flexible home that meets consumer needs and can be replicated at scale.”

This year's British Homes Awards competition, sponsored by Homebase and in partnership with BRE, The New Homes Marketing Board and Premier Guarantee challenges architects to rethink the design and construction of “affordable” homes, with a focus on the inspirational use of both internal and external space, considering requirements of privacy, light and amenity.

The winning design will present a new model for multiple life-stage living. It should have the flexibility to adapt to

different stages of life – the student house, the family dwelling, a home to grow older in. It will be beautiful, environmentally smart and offer a healthy environment for a population that lives longer and spends more time at home.

It is planned that up to 15 units of the winning design will be built by an award winning developer on an exclusive estate within Britain to stand as an exemplar of best design practice.

The submission should include:

- a first and second stage occupancy scenario for the proposed residents, such as family home that can be converted to homes for students or retirees with minimal intervention
- new ways in which the interior and garden space provide flexibility to allow aesthetic and practical change (stirring the nation out of inertia in style and design inspiration)
- a Life-Cycle Assessment to help identify a new benchmark for modern residential construction against which other developments can be measured
- an assessment of the quality of health and wellbeing for people living in the house, embracing issues such as daylight, air quality and integration of the natural environment
- a Consumption calculation or diagram to illustrate how the house will efficiently use resources e.g. energy, water, and food, or where waste from one process becomes a resource for another e.g. Plastic waste from food packaging becomes a material for manufacturing furniture
- an indication of construction cost
- a demonstration of how the dwelling would work as a volume development of multiple units, either in semi-detached form or as a terrace

The competition design brief can be found at www.britishhomesawards.co.uk/2013/designbrief
Closing date for submissions is June 28th

For further information on the design competition or the Awards please email the Awards director Mike Gazzard Hon FRIBA at mg@britishhomesawards.com or call 01483 225221

Type of house

- An architecturally distinguished detached house: Footprint dimensions: max 80m²
- Maximum height: Three storeys (option to increase space with a room in the roof)
- Maximum size: 250m²
- Parking: inclusion of parking for a standard car (an integral garage is optional but basements are to be excluded from the design submission)

Eligibility

The competition is open to all UK registered architects. Individual or team entries are encouraged and the participation of

recently qualified architects is particularly welcomed. No member or employee of the promoting body nor the assessors nor any partner, associate or employee of them shall be eligible to compete or assist a competitor.

Read all about it!

This August, within the Home section, The Sunday Times will publish an exclusive eight page Awards supplement featuring the shortlisted designs, inviting readers to vote for their favourite scheme.

The competition winner will be announced at the 2013 British Homes Awards luncheon at The London Marriott, Grosvenor Square on Friday 18

October; and the following Sunday all winning and commended schemes will be presented within a 12 page Awards supplement within Home.

enq. 116



EXCLUSIVELY DESIGNED, HAND-CRAFTED GARDEN ROOMS, ORANGERIES, ANNEXES & OUTBUILDINGS

Arboreta™

oak frame living

In harmony with your home

Add the beauty and warmth of oak framing living to your home with a truly bespoke, beautifully crafted design from Arboreta.

- We're one of the UK's leading bespoke oak frame designers
- Arboreta are a family run business with over 20 years experience
- We take care of everything including planning applications, building regulations and structural calculations

- Precision together with attention to detail are our hallmarks
- We combine time-honoured carpentry skills with state-of-the-art technology
- We have an extensive portfolio of ideas and inspiration
- Endorsed by TRADA

For your copy of our 'Oak Frame Living' Ideas brochure or to request a complimentary design consultation, visit www.arboreta-oak.com or call FREEPHONE **0800 288 8333**

Scan to view our mobile website.

FREE BROCHURE

enq. 117

LOFT CENTRE PRODUCTS

DIFFICULT ACCESS PROBLEM?

OUR LADDERS AND HATCHES
ARE THE PERFECT SOLUTION

- ▲ Models to suit all spaces
- ▲ Vertical and ceiling access
- ▲ Electric versions available
- ▲ Fire rated hatches



With over twenty years experience and unrivalled technical expertise, Loft Centre Products has developed an exhaustive range of access ladders and hatches for all commercial applications.

Tel: 0845 676 0704 | Fax: 0845 676 0705
Email: sales@loftcentre.co.uk

www.loftcentre.co.uk

LOFT LADDERS | SPIRAL STAIRS | LOFT STAIRS
SPACE SAVERS | ELECTRIC UNITS | HATCHES

enq.118

COMPETITION

Architectural Awards final call

A final call for entries has been announced for the 2013 European Copper in Architecture Awards 16 – a showcase for architects designing with copper and its alloys to promote their work to an international audience. The final deadline for receipt of entries is 31 May 2013 and full details and entry forms are available at copperconcept.org

Any scale or type of project can be entered, from major landmark buildings to modest installations. Entries must incorporate cladding, roofing, or other architectural elements of copper or copper alloys, but judging criteria will essentially be based around the overall architectural design of the project. Entries will be judged by a selection of architect recipients of previous Awards, including some of the most influential designers in Europe.

The 2013 Awards, presented in partnership with BATIMAT, will be announced at a dedicated event during the international BATIMAT show in Paris with an exhibition of entries throughout the show from 4 to 8 November. Shortlisted and winning projects will be widely promoted to an international audience.

enq. 602



PLANNING

Hackney Council secures protection for commercial space

Vital employment space in Hackney has been protected after Hackney Council secured an exemption from new government rules that would have allowed offices to be turned into homes without planning permission.

The Council was concerned that much of its most important stock of office space in its key employment areas such as Shoreditch, Dalston and Hackney Central would be under threat of conversion to housing, forcing businesses out, leading to unemployment and damage to the local economy.

It was also likely that any homes created as a result would have been high-value private properties that would have done nothing to address the housing need of Hackney's local population.

Hackney Council presented a strong bid to the government to exempt these areas from the proposed change, and led a campaign with local MPs and huge support from local businesses to try to exempt Hackney from the new rules proposed by the Department of Communities and Local Government. Hackney is one of only 17 local authorities to have secured an exemption.

SUBJECT

Keppie and Morrison handover new sustainable school in Orkney

Keppie Design and Morrison Construction have completed and handed over Stromness Primary School in Orkney as part of the Orkney Islands Schools Investment Programme.

Designed by Keppie and built by Morrison Construction, Stromness Primary School will provide modern and sustainable learning facilities for 200 pupils and also includes a 30-pupil nursery and community resource.

The school's appearance is intended to be a contemporary interpretation of the traditional Stromness vernacular and is achieved by arranging a series of gable ends facing towards Hamnavoe. The project team were also able to use locally sourced materials in a nod to the school's roots and to ensure an 'Orkney feel' was created.

The new school, which extends to 2,460 sq m, achieved an Excellent BREEAM rating, accomplished through incorporating renewable energy, natural ventilation, natural daylight, a reduced solar glare, improved bio-diversity and green travel arrangements for staff and pupils. It is located on a brown-field site to the north of Stromness with



outstanding views over Hamnavoe.

Peter Moran, director at Keppie Design, which also provided landscape and interior design services for the project, commented: "One of the main design features of the new facility is the physical linking of the nursery to the primary school and the incorporation of internal breakout spaces that can be utilised by surrounding classrooms, increasing their flexibility.

"We designed the break-out spaces

and activity areas to maximise movement and allow for varying sizes of activities. The teaching clusters, nursery and administrative areas were carefully planned so they can be closed off from the multi-purpose hall, dining and associated facilities to provide an independent community use facility in the evenings.

"Both the project team, and more importantly the school's pupils and staff, were very pleased with the finished result."

"Together we have created an environment where pupils can thrive both inside and outside the classroom"

Ronnie Bruce, Morrison Construction's project director for Orkney Schools



GOING GREEN COMMENT

Grand Design's Kevin McCloud tells CITB: "Construction sees going green as like coming out as gay"

Builders, electricians and plumbers need the right training to win work in the burgeoning eco-friendly construction market – but a "conservative" mindset could be holding them back according to Kevin McCloud, star of TV's Grand Designs.

Speaking exclusively to CITB's Cut the Carbon website at Grand Designs Live at ExCeL in London, the designer and sustainable construction guru said: "I will be blunt about this. The construction industry on the whole is a pretty traditional one where to admit

that you're 'green' is rather like coming out. It's like admitting to being gay. That's a controversial thing to say but I think it's absolutely true. The natural inclination of the industry is conservative."

McCloud called for the construction industry to lay aside reservations and address the green skills gap: "There's a huge demand for sustainable building and the frustrating thing for me, as a developer with my own company, is the problem of finding constructors to work with."

McCloud says CITB is right to urge the industry to take training in energy-saving measures, clean technologies and new materials seriously. Ignoring green is no longer an option – there are commercial opportunities to for those with the right skills in place. McCloud said: "Get out of your comfort zone and learn about complementary disciplines. The more plumbers learn about mechanical ventilation and heat recovery (MVHR), the more electrical engineers learn about solar panels, the better."

news bytes

Visit adf-news.blogspot.co.uk and enter the reference number to view more information

Award winning workplace helps transform Rail Authority's working practices...
Ref: 77170

New heritage legislation brings greater certainty for owners, managers and developers of listed property...
Ref: 99423

Construction Activity Falls in Weather Affected Q1...
Ref: 17167

editor's focus

Victoria Plumb

Victoria Plumb, a leading UK bathroom retailer has been presented with the prestigious retailer of the year award in the home products category at the recent Vendra ECMOD Direct Commerce Awards in London. Against a strong shortlist, the Yorkshire based brand claimed the coveted prize at the national Vendra-ECMOD Awards ceremony, held at Stamford Bridge the home of Chelsea Football Club, and hosted by Sky News anchor Dermot Murnaghan.

enq. 120

The Radiator Factory Ltd

The Radiator Factory Ltd has now launched its 2013 product portfolio. With the emphasis on eco-aluminium radiators and energy prices on the rise, these high output radiators can only help with fuel bills as they typically hold around a fifth of the water content offering the installer and consumer a cost effective alternative to the everyday compact panel radiator, without compromising on heat output. Available online, in store or through the National Merchant partners.

enq. 119



Jeckells the Sailmakers

In recent years Jeckells has been working closely with building professionals and architects. The company has turned its many years' experience in producing three dimensional shapes using all manner of materials and manufacturing techniques, into the shade sail and tensile structure market. The company has successfully worked on a host of projects, including weatherproof tensile structures for schools and restaurants, fixed and furling shade sails for private dwellings and some unusual and high-profile projects.

enq. 121



Continued on page 46...



THE FINEST OAK
FRAMED BUILDINGS
MADE IN ENGLAND

01384 296611
email: info@primeoak.co.uk
www.primeoak.co.uk



Call For Our
NEW Brochure!

GARAGES | GARDEN ROOMS | ORANGERIES | HOME OFFICES | CONSERVATORIES | BARNS | STABLES

enq. 122

Eco Technology Show 2013

The Eco Technology Show is on Friday 14 June (9am-5pm) and Saturday 15 June (10am-5pm) at the Brighton Centre



The Eco Technology Show 2013, the UK's premier event for trade, building owners, occupiers and the general public, places education and networking at the heart of its two-day exhibition (14-15 June). The Friday is for trade, the Saturday is open to the public.

After a successful debut last year, which saw more than 4,000 visitors interact with 115 exhibitors, this year's show has switched to a central Brighton venue with a host of new features.

The Eco Technology Show is a 'must attend' event for anyone interested in the latest eco technologies, energy efficiency and saving money. The energy-packed event showcases low carbon products and services including self-build and renovation, energy, transport and technology, and will unveil the latest eco technology innovations.

The Eco Technology Show has over 100 exhibitors already confirmed and will span three exciting exploration zones encompassing: eco build; renewable energy; office; home; transport; technology; and innovation zones. You will be able to see the latest products, innovations and services in the following zones: Build, Design, Energy, Office & Home Zone; Transport Zone; and Education, Technology and Innovation Zone.

Choose from two days of over 50 free workshops and talks covering commercial property, renewable energy, the Green Deal, domestic energy efficiency and retrofits, plus smarter transport and waste. Through its conference and two-day seminar programme, The Eco Technology Show gives legislative, regulatory and market context to the products and services on offer.

There will be three seminar areas on the Friday covering: Green Deal and domestic energy efficiency retrofits in area 1; Commercial property and renewable energy in area 2; and innovation, smarter transport and waste in area 3. Other workshops include Green and Sustainable Technology by Satish Kumar editor-in-chief of Resurgence & Ecologist magazine and 'Utilise workshop' with Sustainable Business Network, which is a practical, focused course to help your business save money through improving energy and environmental efficiency.

At the 2013 one-day Smart Business Conference, on Friday 14, business & public sector leaders speak about the opportunities for innovation and sustainable growth for future cities & business. The conference is broken up into morning and afternoon sessions. Morning sessions cover government and local authority perspective – 'Future' cities, and afternoon sessions cover Business perspective – the 'net positives' plus export & high growth start-ups.



Confirmed topics include funding for renewable energy (renewable heat incentive, feed-in-tariffs); saving money for developers through sustainable solutions; whole-life costing of housing developments; and re-skilling the supply chain for more energy efficient buildings.

You can choose to attend either of the sessions, or make the most of this valuable experience and stay for the day.

There will be two seminar areas on the Saturday covering Self Build, Household Energy Efficiency & Retrofit, Renewable Energy, Smarter Driving & Waste. Some of the topics include; 'Practical energy saving solutions, how long to payback?' and 'Renewable Energy: what are the latest incentives & how you can benefit'. Saturday's programme will be published at the end of April so keep an eye on the Eco Technology Show website.

One of the new features for this year's show includes the Communications Hub, a series of bookable meetings allowing, for example, developers to talk to suppliers and suppliers to explain their products to developers. Developers can book a meeting with a council officer to discuss, say, how the tender process for building new homes in the city works. You can also book a meeting with the experts at our Advisors Hub or attend a problem solving surgery.

Also happening throughout Brighton and Hove will be the first ever Eco Technology Show Fringe, offering visitors even more eco experiences from partners across the city. This will include Eco Open Houses and The Waste House.

Nicola Gunstone commented: "This year's first Eco Technology Show Fringe will see the show expand right across Brighton and Hove, presenting even more eco experiences to our visitors. Whether it's meeting local eco community groups at People's Day, watching models wearing sustainable materials strut the catwalk at Brighton Fashion Week or touring an eco house for some at home inspiration, this is set to be the largest eco event that London and the South East has ever seen!"

'We are delighted to have such a great line-up speaking at our conference. The UK is in a global race and the ideas that these people will be sharing with our delegates can keep the UK at the forefront of innovative technology ideas.'

Nicola Gunstone,
commercial director

*Tickets and further details can be found on the website www.ecotechnologyshow.co.uk
To register for your free ticket now, go to the website and click REGISTER NOW, then TRADE,
and enter the promotional code ADF01*

City's new library aspires to be a palace of the people



Birmingham's striking new library opens to the public in the autumn with hopes of becoming a new architectural icon of the UK's second city. Jess Unwin finds out more



“Birmingham deserves to be known for more than a road and a shop,” says Terry Perkins, head of project delivery for the new Library of Birmingham.

Come September, when the library opens to the public, Brummies and the rest of the world can judge for themselves if the UK's second city has a new claim to architectural fame to match Spaghetti Junction and the Bull Ring.

Certainly, the key players in creating the new library have high ambitions for how it's perceived. Terry, speaking on behalf of the city's council, says: “We want the Library of Birmingham to have a ‘sense of arrival’ for visitors when they get here, the same as you might when you enter a cathedral.”

Francine Houben, founding partner of Mecanoo, the Dutch architects working on the library, describes it as a “people's palace” and agrees that libraries are the cathedrals of this decade. In fact, speaking at a lecture held in Birmingham she admitted she had drawn inspiration from the city's own St Philip's Cathedral.

Laudable goals but the project has already courted controversy because, of course, the new library replaces an old library – a brutally modern design by John Madin – and some, including Madin himself before his 2012 death, have questioned why the city needs to spend close to £190 million on a new library at all.

Prince Charles's reported remark describing the old Birmingham Central Library as “looking more like a place for burning books, than keeping them” chimes with the thoughts of many of its critics. However, Terry explains the official thinking behind the decision to start again with the city's main library: “The current Central Library on Paradise Circus was built in the 1970s, and its design and state of repair were restricting the city council's ability to deliver a modern library and archive service.

“When it was built there was no provision for services, such as the provision of personal computing, that now form an integral part of a modern library service. There are shortcomings around the disabled access and inadequate levels of public access for the city's internationally important archives, photography and rare printed collections.

“The building lacks space, and flexibility within that space for further development. The building also has a negative image associated with it and a poor-quality internal environment that is uncomfortable for the user.”

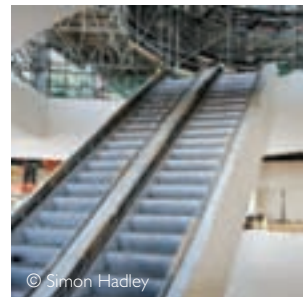
In addition, the plan is to knock down the old Central Library after its replacement opens, releasing the site to make

Continued overleaf...

‘Francine Houben... architect... describes it as a “people's palace” and agrees that libraries are the cathedrals of this decade’



© Jas Sansi



© Simon Hadley

Clockwise from main image: Library of Birmingham view from the railway station; the library from Centenary Square; escalators rise into the rotunda



© Library of Birmingham

With the help of CGI we can see how the library's metal filigree feature will look from the interior (top), and how the library and the REP theatre will light up Centenary Square

way for the redevelopment of Paradise Circus. Terry says this will create "one of the finest commercial development opportunities" anywhere in the UK for the next 10 years.

Exterior building work for the Library of Birmingham – situated between The REP theatre and Baskerville House at Centenary Square – is complete and extensive interior fitting is now underway.

The city centre location makes the site accessible for people from across the city but also presents headaches. With space at a premium there was a need to build up – part of the library is 10 storeys high. This has implications for accessibility, which is one of the key design must-haves of the new structure. The solution has been to install escalators and travelators to take



© Library of Birmingham

'Every building has its own identity of a certain period, I think it's our task to bring all these periods together, from the last century for the next century'

Francine Houben, architect, Mecanoo

people through the building's layers.

Terry explains: "It was of vital importance for the design that user-friendliness was at its heart. The Library of Birmingham will surpass basic accessibility standards. The building is for everyone and the needs of all groups for whom accessibility can be an issue – old, young, disabled – have been borne in mind throughout."

He says that this is why the city council held a competition to appoint an architect, rather than a winning design. "From the start we worked with Mecanoo to look at each issue and create an intelligent and thoughtful design that addressed the needs of the Library and Archive Services and the challenges of the site.

"This partnership approach has extended throughout the construction. For example, the original design concept specified a special steel frame to transfer the weight to the load-bearing columns, but in each part of the process we have opened up areas of the construction to tender.

"A sub-contractor came back with an alternative design which uses post-tensioned concrete slabs and transfer walls which was safer and quicker to construct.

"Our approach throughout has been to be open to ideas and to let the experts tell us how to tackle each problem. It's this open-minded approach that has allowed the Library of Birmingham's construction to be truly innovative throughout."

The highly transparent glass building is wrapped in a delicate metal filigree inspired by the city's rich traditions of craftsmanship and industry. Francine reveals on the new library's website that an important philosophy of Mecanoo is to "try to reflect on where we build, so that you make it together with the client and with the ingredients of the city".

She adds her design was inspired by the energy of Birmingham and she hopes "the adventure of going through the building will draw many more people towards the joy of learning and reading, and even just to simply experience the pleasure of social interaction that a great public space can provide".

The new library has been put together so it is integrated with its neighbour The REP at ground floor and mezzanine levels, an important aspect of the whole project for Francine. She continues: "For me the library is really the social heart of the city. It's not only about books and CDs and the new



media, it's also integrating the theatre into it.

"I hope that with our building we will bring a coherence around Centenary Square. The idea is to put three palazzos next to each other, so you have Baskerville House, which is from the '20s-'30s, then there is The REP, the theatre which is from the '60s, and in-between will be the library. Every building has its own identity of a certain period, I think it's our task to bring all these periods together, from the last century for the next century."

When staying in Birmingham Francine noticed people were walking through the city but not stopping to enjoy the open spaces – to socialise or relax. That's why she felt it was important to bring outside public space to the project as well as striking architecture for both the exterior and interior of the building.

Sustainability is a factor in all major 21st century buildings and achieving BREEAM Excellent status is at the heart of the design for the Library of Birmingham. It incorporates a number of energy-efficient measures, including the on-site combined heat and power (CHP) plant room, which incorporates ground source heat pump (GSHP) technology.

Mixed mode ventilation enables the desired internal environmental conditions to be secured, while still achieving significant energy savings. When the external conditions are favourable, the building operates in natural ventilation mode, reverting back to a mechanical system during peak summer or winter conditions.

Biodiversity features include terraces on levels three and seven being landscaped using native and other species that provide foraging and habitat for local wildlife, and a brown roof will be provided on the top of the library building (level 10). This will provide enhanced breeding and foraging opportunities for birds, including black redstart, and bats, as well as improve connectivity between wildlife habitats within the city centre.

As a public building, survey work with Birmingham citizens identified what people wanted from their new library and the findings informed the design brief for the new building. A Virtual Library of Birmingham – a 3D interactive model of the new library modelled directly from the architect's plans, with the layouts, spaces and navigation around the library – was created to help with the consultation process.

Around three million people a year are expected at the Library of Birmingham (with more using its facilities online). Visitors will be impressed by the stunning overlapping rotundas that comprise several of the building's levels. They'll find the library has a spacious entrance and foyer with mezzanine, the gateway to both the library and The REP, a new flexible studio theatre seating 300 people, a lower ground level with a performance area and children's spaces including Story Steps, four further public levels and two outdoor garden terraces.

A 'golden box' of secure storage will occupy two levels of the building, where archives, photography and rare books will be stored. These include one of the world's largest Shakespeare collections, the Parker Collection of Children's Books and Games, the Early and Fine Printing Collection and the Boulton & Watt archive. The storage area will also be surrounded by high-performance insulation, providing a protective environment that includes a state-of-the-art hypoxic system. However, many of the artefacts will be made accessible to the public for the first time online, and a new gallery will host exhibitions that display parts of the collections.

At the library's summit, a rooftop rotunda will house the Shakespeare Memorial Room, and a panoramic viewing gallery where visitors will be able to enjoy stunning views from one of the highest points in the city. An outdoor amphitheatre in Centenary Square will also provide a performance space.

It seems Birmingham really will have a library that's a cathedral and palace – all rolled into one extraordinary 21st century building.

CGI gives an idea of the overlapping rotundas inside the Library of Birmingham (left), and how the library and the public space in Centenary Square will look

Client
Birmingham City Council
Project/Cost manager
Capita Symonds
Architect
Mecanoo Architecten
Design co-ordinator
Davis Langdon Schumann Smith
Structural engineer
Buro Happold
Main contractor
Carillion

Intelligent membrane has it covered for maritime museum



Cutting edge building membrane technology is helping to preserve a chapter of naval history for future generations. The Mary Rose Museum, based at Portsmouth's Historic Dockyard – a £35 million purpose built structure to house the world-famous Tudor warship – is set to open to the public in spring. With a 450 year-old hull and some 19,000 artifacts from the historic ship to preserve inside the museum, the construction firm, Warings turned to leading protective membrane manufacturer **Industrial Textiles & Plastics Ltd (ITP)**. Working to designs drawn up by Wilkinson Eyre Architects – whose previous credits include the iconic Tyne Millennium Bridge – it was down to Portsmouth-based Warings to deliver the vision of a building styled to resemble a finely crafted, wooden jewellery box with black timber planks, reflecting the structure of the original Mary Rose. Powerlon UV is a range of poly-acrylic and co-polymer breathable membranes engineered to provide long-term protection to buildings. Designed for exposed installations behind wooden façades, Powerlon UV blended seamlessly with the museum's timber cladding to provide exceptional resistance to Ultra Violet degradation and superior durability compared to conventional breather membranes.

01347 825200 www.itpltd.com

enq.123

adf newsletter

Emailed on a fortnightly basis the Architects Datafile newsletter is designed to provide the architect with the latest information on products and services of interest, direct to their inbox. The reader can quickly gather a snapshot of information from 12 carefully selected companies and easily follow links through to further information on the www.adfonline.eu, or go direct to the company's own website. Brochures and videos are also regularly available.

www.adfonline.eu – register now



FRONTIER PITTS

Visit Frontier Pitts new look website
www.frontierpitts.com

The British Manufacturer of Security Gates, Barriers, Blockers, Bollards & Turnstiles

National Building Specification now available on
www.frontierpitts.com

Sliding Gates, Bi-folding Speed Gates, Hinged Gates, Automatic Barrier Road Blockers & Bollards, Manual Equipment & Pedestrian Control, 30-4000mm Axle Tera Range

www.frontierpitts.com 01293 422800

enq.124



contact: Mike Brown

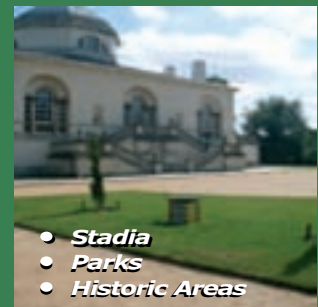
Tel: 020 8551 8363

Email: mbrown@popuppower.co.uk

www.popuppower.co.uk

Safe Silent Secure Power

Electrical power that pops up out of the ground when you need it and hides underground when you don't.



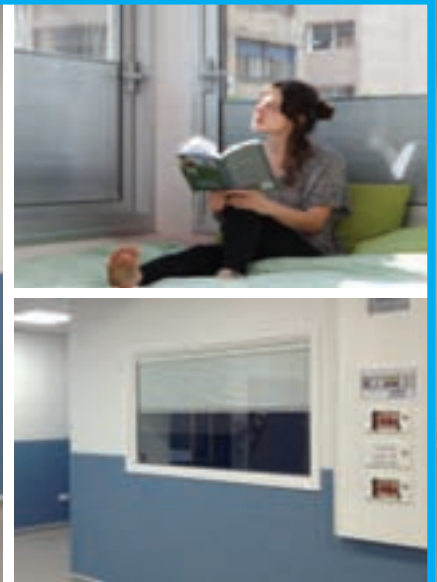
The Chiswick House Project.

Chiswick House having undergone a multi-million pound restoration is ready to safely host a wide range of events that will increase revenue and introduce more people to this historic site. The Pop up Power installations were an important consideration when planning the restoration of this stunning historic area.

www.popuppower.co.uk

enq.125

a versatile and stylish
means of privacy and
observation on a small,
medium or large scale



betweenglassblinds™

t. 020 8500 2200 www.betweenglassblinds.co.uk

enq. 126

Our understanding is your knowledge

Specialist assistive baths for all care environments



Built in Britain



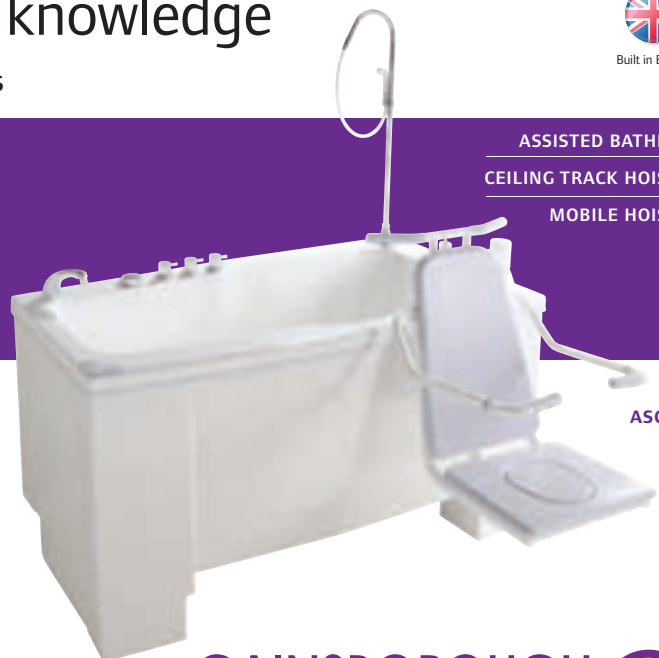
For over 25 years, Gainsborough Specialist Bathing has diligently designed, installed and supported Europe's leading range of specialist assistive baths for all care environments. With an understanding for the requirements of architects, designers and specifiers, Gainsborough hi-lo powered and assistive baths deliver exceptional quality, ergonomics and aesthetics for both users and care providers.

Delivering a duty of care through design.

0800 988 4237

www.gainsboroughbaths.com

Quote: ADF0513



ASSISTED BATHING

CEILING TRACK HOISTS

MOBILE HOISTS

ASCOT

GAINSBOROUGH
Specialist Bathing

enq. 127

Building a better life

Healthcare buildings don't have to be cold utilitarian sheds focused purely on clinical treatment, they can also be designed to instil in patients a sense of psychological wellbeing influenced by concepts such as domesticity, community and religion as two recent projects in London demonstrate. Stephen Cousins reports



The 'industrialised' nature of UK healthcare has often been criticised for dehumanising patients, with the high working pressures put on staff leading to rushed and impersonal treatment and the shifting staff work patterns allowing little opportunity to form meaningful relationships with patients.

This sense of faceless treatment is often exacerbated by the architecture and setup of modern healthcare buildings, such as hospitals, clinics, care homes and hospices, which are frequently built with practical efficiency and cost constraints in mind – a driving factor behind the procurement of most public buildings – but with little regard for the emotional needs of patients.

However some recent healthcare buildings aim to overturn that institutional approach and re-establish a design ethos that takes the patient's psychological needs into account, improving environments by providing access to fresh air, better views, more pleasant colour schemes and sympathetically specified materials.

This approach is backed up by recent research from the British Medical Association, which shows that good hospital design can improve patients' recovery time, exposure to daylight can reduce symptoms of depression, single sex accommodation can help patients feel more private and dignified, and the inclusion of hospital gardens or views out of windows can improve patients' moods as well as reduce blood pressure and stress levels.

These positive principles are expertly expressed in two recent examples of UK healthcare architecture. The North London Hospice day centre, designed by Allford Hall Monaghan Morris (AHMM), aims to subvert the institutional approach to hospice design by creating 'a big version of someone's house' that instills a sense of domestic wellbeing in patients. Meanwhile, the Akerman Health Centre in South London, designed by Henley Halebrown Rorrison (HHbR), draws on principles of community and religion, combining the layout of a gothic cathedral with the suburban feel of a terraced house.

North London Hospice day centre

Architect: Allford Hall Monaghan Morris

Project cost: £1.8 million

Completed: 2012

Client: North London Hospice

Located in an understated suburban neighbourhood in Enfield and looking like a cross between an oversized detached brick house and a cutting edge example of modernist architecture, the North London Hospice day centre manages to walk a fine line between the domestic and the imposing.

North London Hospice is a charity, established in 1984, which aims to provide free-of-charge palliative support for those diagnosed with terminal illnesses living in the local areas of Barnet, Enfield and Haringey.

Inspired by the Maggie's Centre cancer care home concept, the client wanted a bespoke-designed building large enough to handle up to 300 visitors with life-threatening illnesses each month, as well as raise its profile in the community in the hope of boosting donations.

The 750 sq m day centre offers services including creative therapy classes in art and cooking, physiotherapy, bereavement support and basic outpatient care in lieu of visiting a hospital.

A fundamental design aspiration was to create a building that feels like a home rather than an institution, explains Ana Sa, project architect at AHMM: "This is not an over-night in-patients facility where numerous clinical procedures are carried out, but rather a place for carers to drop off their patients for a couple of hours to receive some physiotherapy, or take part in a creative therapy class. We saw no reason why any of that had to take place in an institutional environment. We wanted the building to make patients feel welcome, at home and open to receiving care without it feeling like an onerous activity," she says.

'We wanted the building to make patients feel welcome, at home and open to receiving care without it feeling like an onerous activity'

Ana Sa

As the design evolved, a tension emerged between the need to create large spaces for the high number of visitors and the need for a smaller-scale homely feel. To effectively merge the two together, AHMM looked to combine spaces with different uses to increase the sense of activity and life. For example, the brief had asked for a separate kitchen and dining room, but by combining the kitchen, dining room and a café food could

Continued on page 29...



© Timothy Soar and Allford Hall Monaghan Morris



© Timothy Soar and Allford Hall Monaghan Morris

The all in one kitchen, diner and cafe echoes that in a bustling domestic environment

Door closer gains in health sector



Powermatic concealed door closers from **Samuel Heath** are becoming increasingly popular for new-build and improvement projects throughout the healthcare sector thanks to the many safety and hygiene benefits it offers. Being totally concealed when the door is closed, Powermatic offers few surfaces on which dust and potentially harmful detritus can accumulate. Its low mounting height also reduces the burden on cleaning staff. Where safety is concerned, Powermatic is ideal for anti-ligature and anti-barricade applications in post-natal depression accommodation, psychiatric facilities and secure units. Its concealment also means that it presents very little opportunity for its mechanisms to be vandalised.

0121 766 4200 www.perko-powermatic.co.uk

enq.128

Fibre cement slate specified



Marley Eternit's Thrutone fibre cement slate has been specified for the development of a brand new £46 million mental health inpatient facility, the Redwoods Centre, in Shrewsbury. The fresh facility replaces the old Victorian building at Shelton Hospital and offers 112 single bed en-suite rooms, purpose-

fully designed to move away from the institutional elements of the former hospital. 80 of these modern rooms are across the acute and organic units and a further 32 are in the low secure unit. The development boasts a community feel and includes a range of facilities such as a bank, restaurant and pharmacy.

01283 722588 www.marleyeternit.co.uk/slates

enq.129

Introducing the new Architects and Specifiers Guide for assisted bathing



Gainsborough Specialist Bathing, one of Europe's leading choices for the design, installation and after-sales support of assistive powered baths, has introduced a new Architects and Specifiers Guide – an invaluable resource for architects, designers and specifiers. With 25 years of specialist knowledge, Gainsborough delivers the optimum accessible bathing solution for all building specifiers engaged with projects in residential care homes, acute wards and local authority housing.

The new guide incorporates full technical details regarding its leading range of assistive baths, key benefits and guidance on specifying typical accessible bathroom layouts. This helpful guide incorporates a series of comprehensive and detailed product brochures along with an easy-to-use product selector guide. These are housed in a robust, easy to access slipcase and folder – ideal for quick reference. Each product brochure has been considerably designed so the suitability of each Gainsborough bath to specific care requirements can be clearly identified.

The new Architects and Specifiers Guide can be ordered free of charge and is an essential reference for all architectural practices engaged with long term and acute care building projects.

0800 542 9194 www.gainsboroughbaths.com

enq.130

THE BALUSTRADE & HANDRAIL COMPONENT SPECIALIST



Pro-Railing



Frameless Glass Balustrade



Warmagrip™ (DDA)



Handrail Standards & Adjustarail



Roof Edge Protection



Tube Clamps

Top quality

Keenly priced

From stock

Nationwide

For a competitive quote or for more information;



F.H. BRUNDLE
WHOLESALE DISTRIBUTORS SINCE 1889

Email: sales@brundle.com
Web: www.fhbrundle.co.uk

Tel: 01708 25 35 45
Fax: 01708 25 35 50

enq.131



Bringing IP to the bedhead

IP based system, IPiN has moved nurse call from being evolutionary to being revolutionary!




For more information
Tel: 01483 713400
Email: info@wandsworthgroup.com
www.wandsworthgroup.com



enq.132



© Timothy Soar and Allford Hall Monaghan Morris

be prepared in front of patients in a space akin to that of a bustling home kitchen, and the cooking itself could also become part of creative therapies run by the centre.

Other subtle design features were employed to break up larger clinical spaces and make them appear less imposing. The day care space on the ground floor is subdivided by a timber veneered joinery wall, which subtly shields patients in a communal area from an adjoining rest room and a sluice room for visitors who become gravely unwell while visiting. "The use of the timber wall means patients in the communal area are not visually aware that the clinical rooms are there and so are not negatively influenced by them," says Sa.

The merging of the domestic and the grand is also obvious on the exterior, where brick walls, pitched roofs and gables give the impression of a conventional detached house, but these are juxtaposed against elongated and seeming randomly-positioned windows, a layered façade and the building's large scale.

"We wanted it to fit with the context but also stand out, to

complement the surroundings but not be discrete," says Sa.

As a result, traditional clay house bricks manufactured by Wienerberger were used, but they are light in colour and contrast with the mostly 1930s and 1940s red brick houses nearby.

Two types of windows were installed by supplier Hansen Group, long and narrow picture windows with a full brick reveal, which are designed to look like they have been punched out the front elevation, and openable corner windows with very slim power-coated aluminium frames.

"We tried to create some variety in the façade and played with the arrangement and alignments on the north and easterly elevations a great deal before settling on a solution," says Sa. "It was important to balance the amount of light penetrating into internal spaces with the massing on the outside. The façades look varied but are in fact based on a strict and intricate grid. You don't necessarily pick up on these finer nuances without looking closely," she concludes.

Continued overleaf..

Client representative:

Procore Project
Solutions

Main contractor:

Pavehall

Landscape architect:

BB UK

Quantity surveyor:

Equals Cost
Consultancy

**Structural/
civil engineer:** Elliot
Wood Partnership

Services engineer:

Atelier Ten

CDM coordinator:

Total CDM

Landscape contractor:

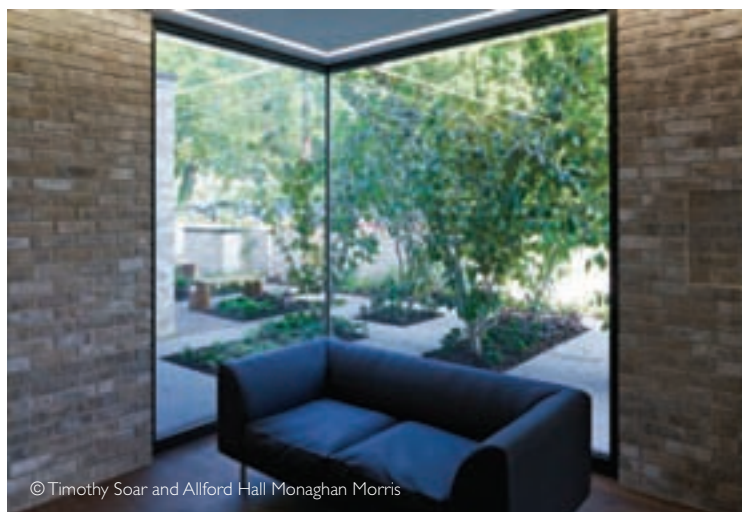
Gavin Jones

Acoustic consultant:

Paul Gillieron Acoustic
Design

Ecological consultant:

John Wenman
Ecological Consultancy



© Timothy Soar and Allford Hall Monaghan Morris



© Timothy Soar and Allford Hall Monaghan Morris

Akerman Health Centre, Stockwell, South London

Architect: Henley Halebrown Rorrison

Project cost: £12.4 million

Completed: 2012

Client: Building Better Health/ Fulcrum, Lambeth PCT



© Ioana Marinescu



© Ioana Marinescu

The deprived and architecturally fragmented streets of Stockwell form the backdrop to the new Akerman Health Centre, which represents a bold attempt by HHbR to create a truly public building, in both layout and external appearance, designed to tie the area back together.

The 5,186 sq m building is the latest of four model health centres designed by the practice, which each aim to fuse functional elements with a sense of civic place and community. Akerman incorporates healthcare services including GP surgeries, dentistry, childrens' and sexual health services, community health services and facilities and a base for district nursing teams, over four 80m-long floors.

Architect Simon Henley's aim was to create a hybrid building that combined the autonomous, inward-looking nature of traditional large-scale hospitals with the more domestic-scale GP practices, which are often set up in converted houses.

The main street façade resembles a terrace – perhaps an attempt to recapture the demolished housing that used to stand on the site – through the strict repetition of fenestration and rows of anodised bronze windows. The uniformity is softened and given texture by the use of roughened brickwork.

The building also draws from religion, its cruciform plan mirroring that of a Gothic cathedral, with a long 'nave' and 'chancel' running north-south along Patmos Road and a pair of transepts, expressed in the east and west-facing elevations. A public lobby is created where these two cross to provide an open route through the building.

The building's floors are arranged simply into three strips of almost monastic cellular rooms separated by two long corridors, with treatment rooms along each elevation and service spaces running along the central spine. Given the high levels of natural daylight, patient privacy concerns have been avoided by locating the majority of the clinical rooms on the first and second floors.

Daylight is also used to great effect in the public lobby through which a grand staircase rises to a top-lit well. The specification of quality finishes such as natural timber doors and window frames, warm coloured corridors and diffuse lighting also serve to remove the sense of being in a clinical unwelcoming environment.

Structural engineer:

Price & Myers

Services engineer: Cundall

Project manager:

Davis Langdon

Landscape architect:

Landscape Projects

Main contractor:

Willmott Dixon

Cladding: Eternit

Ground floor fenestration:

Kawneer

Steel doors:

Armourpost

Upper floor windows: Velfac

Flooring: Forbo

Internal doors:

David Smith Doors

Large capacity platform lift transports beds with ease!

The Axess4All A8000 large capacity platform lift was the ideal solution for the access requirements at Lewis Manning Hospice in Poole. A vertical platform lift was the perfect choice to fit into the existing building, as well as to accommodate the capacity requirements to transport patients in beds, accompanied by the Lewis Manning team.

It was stipulated from the initial enquiry that the lift needed to fit into an existing lift shaft – as Axess4All are experts in installations within existing environments it was business as usual. The flexibility of three size choices meant that the installation could go ahead with ease and minimal disruption.

In addition to this, the A8000's unique features of a 1,000kg weight capacity and choice of the largest size platform measuring 1,405mm in width by 2,480mm in length, provided a flexible access option for the varying needs that visitors to the hospice have.

The main requirement for the lift was to transport a nurse, bed and patient between the ground and first floor. Not only

this, but there needed to be sufficient room for any accompanying equipment, such as drips or other auxiliary devices.

Although the option was available to select glazed shaft panels, the A8000 was being installed within an existing lift shaft, so this wasn't necessary; the standard steel panels, powder coated in white, were selected. These provide a clean and bright appearance, complementing the clean and bright aesthetics of the hospice surroundings.



The features of a glazed door, providing visibility in and out of the lift, automatic lighting and an emergency battery lowering device, ensuring the lift can be lowered to the ground floor and exited with ease during power failure, means that the A8000 large capacity lift has brought many benefits to the fantastic facilities at Lewis Manning Hospice.

enq.133

0844 375 8882
sales@axess4all.com
www.axess4all.com

POROUS PAVERS

SUDS SOURCE CONTROL



TRUCKPAVE™
Heavy duty recycled plastic porous paver

Applications

- Lorry, coach & car parks
- Grass verges & Lay-bys
- Emergency/HGV access routes
- Service yards & Loading areas

Benefits

- Flexible & resistant to cracking
- High compressive strength
- Made from recycled plastics
- Vehicles up to 60t gross weight
- Harmless to plants & animals





Fiberweb Geosynthetics Ltd
Tel: +44 (0) 1621 874200
www.grass-reinforcement.com

* indicates a trade mark of Fiberweb Ltd or a Fiberweb Group company, many of which are registered in a number of countries throughout the world



TERRAM
Geosynthetics you can trust
A fiberweb BUSINESS

enq.134



We Build It Ltd

simple solution sewage systems



The Bio-Pure

- Suitable for homes without access to mains drainage
- Discreet solution to on-site sewage treatment
- 10 models in the range with a capacity up to 50pe
- CE Marked and EN 12566-3 Certified
- Uses the extended aeration method to treat sewage
- 96% efficiency allows a typical 3-5 year emptying interval
- Visually unobtrusive and odourless
- 25 year warranty on GRP & 2 year warranty on the air pump
- Deal direct with the UK Manufacturer

0800 731 9421 www.webuildit-ltd.co.uk

enq.135

Lanes completes first chute reline



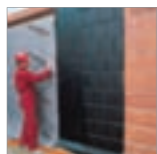
Lanes Group has used its innovative drainage technology to carry out the first ever reline repair of a refuse chute in a residential tower block in England. Its engineers reached for the skies instead of going underground to refurbish two chutes at the 13-storey Devonshire Tower in Sunderland, Tyne and Wear. The technique, pioneered by Lanes' Scottish drainage operation, Castlebrae, is also used to reline drain stacks on listed buildings. Paul Matthews, area development manager

for Lanes for Drains in Tyne and Wear, said: "Relining waste chutes, rather than replacing them, takes less time, is less disruptive, is more cost-effective and creates a robust, long-term repair."

0161 788 2261 www.lanesfordrains.co.uk

enq.136

Taking the pressure



Structures that are earth retaining can be damaged by moisture penetration from the outside or by the water under hydrostatic pressure. To combat this, **Delta Membrane Systems** offers Delta Geo-Drain Quattro. Offering high levels of reliability with thick viscoplastic coatings, Delta Geo-Drain Quattro features a micro-perforated slip film,

which – together with the additional filter cloth – acts as a backup drainage layer behind the dimpled sheet. This ensures any water is safely drained off. The slip film has the added benefit of preventing the transmission of movement to the waterproof coating. Installation is simple and straightforward. Supplied in roll-form, Delta Geo-Drain Quattro is applied to the waterproofed surface without any need for special grade backfill.

enq.138

BREEAM excellent student accommodation



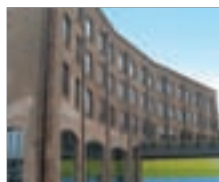
3,000 metres of **Ancon** brick support angle and over 800 Ancon windposts have been supplied to the construction of new student accommodation at the University of Liverpool's Chatham Street campus. The project comprises an east and west block of six and nine storeys respectively and has been designed, by Stride Treglown, to be BREEAM

Excellent. The concrete frame with traditional brick cladding provides the buildings with thermal mass, which will moderate temperature fluctuations and minimise heating and cooling costs during occupancy. The scheme provides a range of dwelling types including single bedrooms, studio flats and two-bed apartments, as well as high specification catering and conferencing facilities.

0114 275 5224 www.ancon.co.uk

enq.137

Helifix in tune with conversion requirements



To meet strict Building Regulations governing its change of use, from a former carpet warehouse to a modern city academy, the Grade II listed Piano Building in Kidderminster required 1,500 linear metres of stainless steel HeliBar from **Helifix** to reinforce and secure brick panels on all elevations.

The contract to undertake the work was won in open tender by Eden Group of Birmingham, an Approved Installer of Helifix's proven repair and reinforcement systems. The fully concealed Helifix system provides non-disruptive masonry reinforcement while still being flexible enough to accommodate normal building movement, leaving a fully restored façade with no visible disturbance.

enq.139



Shopping centre edges ahead with Schlüter

Flooring at a newly refurbished shopping centre in Aberdeen is being kept in first-class condition after top of the range products from **Schlüter-Systems**, supplier of essential tiling protection, were installed there. A major contributor to the local economy and employer in the city, Bon Accord & St Nicholas shopping centre, owned jointly by Land Securities and British Land, recently underwent an £8 million upgrade, which included its tiled floors. Specifying hundreds of movement joints, edging and transition profiles, and decorative tile trims products from Schlüter-Systems, the architects ensured that visitors will enjoy their shopping experience without worrying that the tiling beneath their feet will disappoint. Movement joints from the Schlüter®-DILEX range have provided a perfect solution for secure edge protection and maintenance free solutions for surfaces exposed to continuous traffic such as the shopping centre.

01530 813396 www.schluter.co.uk

enq.140



Ascent™ an advance in wall envelope design

The Ascent™ product portfolio provides the means to create modern stylish façades with one common element, at their heart, a Eurobond non-combustible cored architectural panel system. This unique solution combines ease and speed of installation to create a weathertight building envelope early on in the build programme with unparalleled design flexibility. Rainspan™ sits within this portfolio and is the perfect structural support for Eurobond's wide range of partner façade systems. From metallic, to traditional brick or terracotta tile to engineered timber solutions, Rainspan™ combines aesthetics, functionality and performance to offer the complete façade solution. Installation of all Rainspan™ systems is fast and easy and the long span capability can reduce secondary steelwork requirements and build costs. Rainspan™ also delivers low environmental impact by virtue of a high recycled material content, full recyclability and promotes energy efficiency.

02920 776677 www.eb-ascent.co.uk

enq.141

Copper transformation



Aurubis Architectural's Nordic Green Living copper plays a key role in transforming the redundant central post office building in Gothenburg, Sweden – a listed national monument – into a 500-bedroom landmark hotel. Architects Semrén & Månsson's deceptively simple strategy in designing the Clarion Hotel Post was to close up the gap in the original building's horseshoe-shaped plan with a new intervention.

This comprises of one wing clad in patinated copper, the other slate – both materials used on the old Post Office roof. Where the wings meet, they rise up together as a pair of monolithic forms separated by a vertical sliver of glass. The resulting 13-storey tower creates a new landmark for the city.

01875 812 144 www.aurubis.com/finland/architectural

enq.142

Equitone [natura] façade for Hinguar School



A striking Equitone [natura] fibre cement façade from Marley Eternit has given a distinctive identity to a new primary school building in Shoeburyness, Southend-on-Sea. Pupils and staff have now moved into the new £5.2 million Hinguar Primary School and are benefitting from the tough yet practical fibre cement façade. Equitone [natura] is a through coloured material that allows the texture of the fibres to show through, offering a unique visual appearance. Its crisp, clean lines, combined with a wide choice of colours allow building designers to create dynamic and attractive elevations. Its lightweight yet strong properties helped to reduce overall weight loadings on the podium.

enq.144

NVELOPE keeps student housing watertight



NVELOPE has supplied a new £19 million student housing development in Plymouth with its NV6 system including brackets and NVELOPE carriers to provide secure installation of a façade, which needs to withstand tough weathering conditions. The brief required a modern and innovative

structure which, while being practical and durable, is also capable of withstanding harsh coastal environment. A crucial criterion for the project was that the cladding had to be particularly watertight. Eight thousand NVELOPE NV6 brackets will connect approximately 2,500m² of zinc cladding and 600m² of stainless steel façade, to the substrate, which is composed of 18mm WBP plywood and Kingspan K15 rigid insulation board.

enq.146

Stunning new Apeer-rance



One of the most exciting developments to happen to composite doors in a decade has been launched by Apeer with 12 cutting edge new designs. The Modern Door (MODO) collection from Apeer is a design-led portfolio of contemporary new doors, developed and fully manufactured at Apeer's state-of-the-art produc-

tion facility at Ballymena in Northern Ireland. The launch comes 10 years on from production of the company's first composite doorset in 2003. In the decade since then, Apeer has become widely regarded as the most advanced door entrance system on the market. The new range is being made to the same high spec as all Apeer 70 doors and comes with the usual 10-year structural guarantee.

028 2563 2200 www.appeer.co.uk

enq.147

Product enhancement: Comar 9Pi



Comar 9Pi, high performance framing windows & doors is the company's premium system offering low U-values, integration and functionality. Comar's commitment is to develop this system and provide solutions to meet design demands and building regulations, both now and in the future. As a result of market feedback it has now added another range of Ladder Frame profiles to cater for refurbishment projects. Comar 9Pi

Ladder Frame is now available in 100mm, this increases Comar 9Pi's functionality from the standard 78mm and the high span 120mm options. Dependent on wind-loading Comar 9Pi has been designed to perform, High Ix profiles cater for centres up to 1,500mm x 3,000mm.

0208 685 9685 www.comar-alu.co.uk

enq.143

Creating a New England style development



Marley Eternit fibre cement Cedral Weatherboard has helped to create a New England style development at Valley Park in Rye, Kent. Entire properties as well as a large number of feature walls on the development have been clad in Cedral Weatherboard. Aroncorp, the client for this development, was initially drawn to

Cedral Weatherboard because it provided a visually authentic, low maintenance method of creating the popular New England style of architecture. The team at Aroncorp worked closely with main contractor Jenner (Contractors) Ltd during the material selection process. Jenner had used Cedral Weatherboard on other developments and drew influences from these when presenting suitable materials for Valley Park in Rye.

enq.145

BENENDEN™ – BESPOKE ALUMINIUM WINDOWS FOR DESIGNER PROPERTIES

As featured on
GRAND DESIGNS
Series 5 Episode 22
Channel4.com

- Ultra-slim profile frames
- Single or dual RAL colours
- Into timber or direct to brick or stone
- UK manufactured

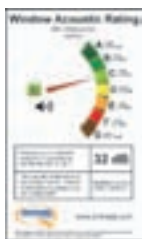
THE HERITAGE WINDOW COMPANY

CONSERVATION BY DESIGN

020 8695 0055 | sales@thwc.co.uk | www.thwc.co.uk
Showrooms at: Sevenoaks ♦ Dorking ♦ Beaconsfield

enq.148

Window Acoustic Rating Label



BM TRADA Certification has launched a new Window Acoustic Rating Label to offer manufacturers of windows a simple method to display the acoustic performance of their products. The BM TRADA Q-Mark Window Acoustic Rating Label clearly outlines the acoustic performance of the window system. The Rating label will be available to manufacturers who have joined the Q-Mark Acoustic Window Scheme and can only be applied to products that meet the stringent requirements of the scheme. Like other Q-Mark

third party certification schemes, the Acoustic Window Manufacturer Scheme requires manufacturers to undertake initial type testing as well as meeting stringent factory production control requirements.

enq.149

New videophones with 2.4 inch LCD screen



The new compact 6000 Series Videophone from Videx Security is designed for use in conjunction with the established VX2200 digital door entry system and has been created to bridge the price gap between audio and video installations. Suitable for one to one installations through to high rise installations making this a good all

round choice for video door entry installations. The videophone, finished in brilliant white, includes a 2.4 inch high definition colour LCD TFT video screen as well as a number of user friendly function buttons. These include two service push buttons, a door open push button, a camera recall push button, a call tone volume switch with mute position and brightness control.

enq.151

GREEN ENERGY WINDOWS

Manufacturers of energy efficient PVCu & aluminium windows, doors, bi-folds & conservatories

100% LEAD FREE

We offer a full range of glazing products made in the heart of the midlands. We are flexible in our approach, whether you require us to supply only or arrange the products to be fitted and finished. We offer quality, energy efficiency, security, a 10-year guarantee and a wide range of styles to complement your home. Visit our website for more information.

0121 565 2239

contactus@greenenergywindows.co.uk

www.greenenergywindows.co.uk



enq.153

Alu-Timber EFT curtain walling



After extensive research and consultation, the next innovation from a market leading timber and aluminium façade supplier, **Alu-Timber**, is now available. Alu-Timber EFT is a 60mm curtain wall system, which offers capped, two sided structural glazing with vertical or horizontal capping, and four sided structural

glazing. Design freedom and solutions to modern environmental issues are a complex requirement. Alu-Timber EFT provides thermally efficient larch timber with time tested aluminium for protection. To maximise spans and centres, a wide range of timber mullions and transoms are available.

020 8685 9685 www.alutimber.co.uk

enq.150

Pier approval for Cultural Centre access



At the end of the world's longest pleasure pier, Southend's new Cultural Centre has opened its doors to the public, offering spectacular water views through its majestic glass façade. **GEZE UK** was commissioned by specialist contractor Drayton

Windows to install a pair of EMD-F operators to

enable access for all to the multi-purpose events space and café. With a nine metre tall fully glazed façade, the entrance is south facing, protected partly from the weather by a dramatic, geometric, overhanging roof. Combining a maintenance-free, high performance motor featuring low-wear characteristics, with state of the art technology, the EMD-F is the most reliable choice. It's sustainable too, with a low energy function.

enq.152



Fastframe UK and Deceuninck give lease of life

In this market two things are important: proactive lead generation to secure contracts and high quality workmanship to ensure total customer satisfaction. A recent contract undertaken for the University of Aberdeen by **Deceuninck** and **Fastframe UK** demonstrates the importance of these factors perfectly. One new commercial marketing initiative – an e-marketing campaign to specific commercial markets – proved particularly fruitful. One lead came from the University of Aberdeen. The job required a contractor who could handle a large scale contract – the first of the two phases of the contract required 270 windows to be replaced, some with folding openers to ensure the safety of residents. Expertise in colour was also needed: coloured PVC panels needed to be installed between the windows to improve aesthetics. Finally, efficiency was essential to minimise disruption to student residents. Deceuninck fabricator Fastframe UK was awarded the contract and the company proved more than capable of completing the job successfully.

01249 816969 www.deceuninck.co.uk

enq.154



Project: West London Residence
Photography: Richard Brine
Graphic Design: Studio Blup

www.kayospruce.com

KAYOSPRUCE LTD 

The leading supplier of high performance materials and accessories for marine and leisure industries



Call us: +44 (0) 1489 581696

KAYOSPRUCE LTD 

enq.156

Shade and Shelter Specialist

**OUTSIDE
STRUCTURE
SOLUTIONS**

Canopies, walkways, terrace covers
smoking shelters and garden gazebos

From the shade and shelter specialists

...for all your Outside Structure needs



www.OutsideStructures.co.uk

enq.157

 **NATIONAL
STRUCTURES**

Designed • Manufactured • Constructed
The COMPLETE design & build service

- Canopies
- Tensile Structures
- Main Buildings
- Glazed Canopies
- Entrance Canopies
- Walkways
- Shade Sails
- Cycle Shelters
- Bespoke Structures



Tel: 01772 799222 **sales@nationalstructures.co.uk**



enq.158

entrance canopies • shade canopies • covered walkways • school canopies

**parkstreet
furnishing**

Canopies and walkways can be used for a variety of different uses to provide protection from the sun and elements and act as functional outdoor spaces:

**Education
Commercial and leisure
Airports
Hospitals**

We offer a fully bespoke service and have an in house design and surveying team to produce high quality canopies designed and manufactured to fit your requirements

Contact us today and find out how you can **transform** a building with **affordable** canopies and walkways

01695 557024 • sales@park-streetfurnishing.co.uk
www.park-streetfurnishing.co.uk

enq.159

Why canopy systems are ideal at offering shade and protection

Robert Cassidy marketing manager at Canopies UK details various canopy systems and outlines some key points to consider when looking to install one

Canopy systems have been around for years and over time the market has grown, both in the structure make-up and in the amount of businesses selling canopies. Canopy systems offer solutions to all kind of problems, whether it is to protect an area from the elements – keeping it dry and safe – or to increase the amount of working/living space a building offers. Depending on the requirement, canopies will be specified either for new builds' or to be retro-fitted onto existing buildings. They may also be free standing.

Canopies are used in all sorts of businesses: schools use them to increase their outdoor learning space; commercial warehouses use them to protect stock and offer cover while unloading and dispatching goods; and residential care homes use them to allow residents to sit outside in the summer.

Canopy structures are also ideal for creating covered walkways, keeping people dry as they move between buildings. A canopy can be installed in most places, as long as the proposed building or area is surveyed and deemed suitable.

Canopy systems can be designed to any specification but for ease and budget restraints there are many off-the-shelf solutions.

Cantilever systems offer improved access with no supports at the free end, ideal for loading bays or schools as there are no pillars or posts to bump into.

The traditional lean-to canopy with supporting posts has improved over the years and is now available with integral gutters and a more streamlined appearance. These have been specified on many installations in the past, but with advancement in products and construction the lean-to may not always be the first choice. Maximum use of space is the main requirement of any customer, keeping the structure to a minimum is a pre-requisite.

One of the latest offerings is a system with an electric or manually controlled louvre roof, which offers weather and shade protection when needed. The system can be opened to allow sunlight in and air to circulate through, a perfect environment for outside dining – ideal for hotels and restaurants.

The structure of a canopy can be made from Glass Reinforced Plastic (GRP), steel, glass, polycarbonate, timber, aluminium and many other materials. More often than not it can be a combination of these that best suits the customer's requirements. One of the most commonly used materials is GRP.

Composite materials have been used since man found that mud could be used to strengthen straw. Since then composite materials have played a part in technological development from bridges to satellites. The first composite material that was used in volume combining the properties of a resin and a reinforcing fibre was in the 1950s with fibreglass, commonly known as



Pictured are examples of how canopies can be used for walkways and car parks, both at schools and commercial businesses

GRP, and the composites industry as we know it was born.

There are significant environmental benefits with choosing sustainable products such as fibreglass. It is much more sustainable than aluminium, steel or timber. The manufacture of fibreglass does not create large smoke clouds or other forms of pollution. GRP products will usually have a service life of more than 50 years and some suggest longevity of 100+ years.

Some canopies are installed purely for aesthetic reasons while others serve a more practical purpose and functionality is the driving force behind the purchase. The question for the customer is 'what do they want to achieve?' If they want a system that is fully weather proof and offers protection all year round, then many of the fabric types would be ruled out.

For fully weather proof products, GRP is at the top of the list and is superb at keeping areas dry, with many offering guttering systems as well as excellent protection from the sun.

When installing canopies consideration should be given to the Euro Codes and making sure they conform to European Standard EN1991-1-3:2003 for wind and snow loading. Businesses should provide engineer calculations and, in the best interest of the client, these calculations should be site specific.

'There are significant environmental benefits with choosing sustainable products such as fibreglass'

Robert Cassidy

RMIG provides elegant solar shading for French château



into the current design.

While the château's individual architecture and external appearance has been preserved throughout the restoration, the interior of the building has been sensitively extended, modified and repurposed for its new role as an events centre and 'mediatheque' library, which revisits one of its former uses.

With the extension of the château's library and the creation of large public areas within the building, the architects incorporated an extensive sunscreen design to help provide shade and ensure thermal gain is reduced and the public areas maintain a comfortable temperature.

RMIG France worked closely with the architects to create, prototype and develop the final perforated and laser cut patterns within the 130m² of decorative solar shading panels, which are secured to the exterior of the building in front of the large windows, which allows natural light to enter due to the 'netting' effect.

Once the final pattern was agreed,

RMIG produced the design using a complex array of 15mm diameter round perforations and special laser cut shapes within 2mm thick 'Corten' alloy steel. The architects chose Corten as it is designed to 'rust' when weathered, which was ideal for the design as it enhanced the aged and historic architecture.

However, although the exterior might appear to look like rust, the oxide produced actually protects the material's substrate from further deterioration and constantly regenerates the protection under further weathering.

"The use of tasteful contemporary design alongside the château's traditional architecture reflects the building's new use as a multi media library for film, visual arts, books and documents," said RMIG's project manager, Sylvain Dandois. "The selection of the material, which quickly weathers to provide an aged patina also adds further character to the historic building as well as providing a practical and elegant solar shading solution."

enq.161

An extensive decorative sunscreen, using precision perforations from RMIG, is forming part of a major refurbishment of a historic château in Saint-Avertin, France, which is being converted into a 'mediatheque' library designed by Tours based architects Dominique Blondel Architecte.

Château de Cagé stands on the site of an original castle built in the 13th Century, which was gradually modified and developed by a succession of owners

01925 839 600
info.uk@rmig.com
www.rmig.com

BUY BRITISH, BUY QUALITY

BUY JECKELLS SHADE SAILS

We've been making sails since 1832, so nobody knows more about quality shade sail design and production. We offer exceptional quality and service at an affordable price.

Call us on 01603 782223 to discuss your shade sail requirements or email shadesails@jeckells.co.uk

Jeckells
THE SAILMAKERS

Hospitality area for Mubadala, Ferrari F1 Team sponsor, at the first ever Abu Dhabi Grand Prix

enq.162

Levolux helps Tesco make savings



Following a multi-million pound investment, Highams Park in north-east London has been transformed, with an exciting new mixed-use development, featuring an attractive Timber Fin Solar Shading solution from **Levolux**. This was required to control solar heat gain through glazed openings, to enhance the external aesthetic of the development and to create a privacy screen for residential units. To complete the installation, Levolux incorporated its Timber Fins into a series of sliding screens fitted to the south-facing elevation of an adjoining terrace of three-storey town houses. Screens were installed at first and second floor levels, across a total of 14 full-height glazed openings. Each Screen, measuring 1.3 metres in width by up to 2.6 metres in height, is suspended from a concealed track.

enq.163

Climate Control Glass receives industry praise



Following its debut at EcoBuild, **ESG Solarchromic™ Climate Control Glass** attracted attention from those looking to minimise solar heat gain during summer months yet maximise it during the winter. With its electronically controllable tint, the glass not only reduces a building's energy consumption, it acts as an increasingly sought-after design feature. Available in manual or automatic control, panels can also be controlled individually or as a multiple panel system. This makes it ideal in any situation where excessive solar heat gain is likely to be an issue – for example, large façades, atria, and glass walkways.

01376 520061 www.essexsafetyglass.co.uk/solarchromic

enq.164



eco & sustainable products supplement



Manchester's new Irish World Heritage Centre has been fitted with cutting edge technology including a Mitsubishi Electric Ecodan® CAHV heat pump. See page 41, enq. 301

Can a heat pump reduce costs and help meet planning legislation?

APPROVED

ecodan
can

The Renewable Solutions Provider
Making a World of Difference

The Code for Sustainable Homes is just one of the challenges that new technologies need to overcome.

The Ecodan air source heat pump helps you to achieve your environmental, legal and economic targets.

To find out more, call 01707 278666
or email heating@meuk.mee.com
www.heating.mitsubishielectric.co.uk

ecodan
Renewable Heating Technology

MITSUBISHI ELECTRIC
LIVING ENVIRONMENTAL SYSTEMS

Air Conditioning | Heating
Ventilation | Controls

enq.301

'The Wilo-Stratos saves energy as early as the planning stage.'

Planning that is quick, easy and future-proof.

Wilo high-efficiency pumps are ErP-compliant. We have the perfect model for every requirement. This makes planning easier and saves you time and money.



ErP
READY
APPLIES TO EUROPEAN DIRECTIVE FOR ENERGY RELATED PRODUCTS

Wilo-Stratos:

- For use in heating, cooling and air-conditioning systems
- Ideal for commercial properties
- Communication-capable for building automation
- Maximum reliability and flexibility
- Available as a single or double pump
- And needless to say: ErP-compliant

T: +44 (0) 1283 523000 F: +44 (0) 1283 523099
E: sales@wilo.co.uk www.wilo.co.uk/consultant

Pioneering for You

wilo

enq.302



Manchester's new Irish World Heritage Centre, celebrating the history and contribution of Irish communities, has been fitted with cutting edge technology including a **Mitsubishi Electric** Ecodan® CAHV heat pump, which provides hot water to the centre's underfloor heating. Ecodan CAHV heat pumps are the modern, carbon efficient way of delivering reliable low cost heating to buildings. Its hermetically-sealed monobloc design is low maintenance and offers space heating and sanitary hot water up to 70°C.

enq.301



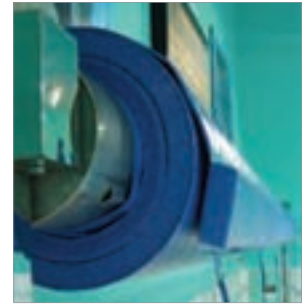
Elderly pumps consume too much energy, meaning that they do not meet the strict efficiency requirements of a new EU regulation under the European ErP (Ecodesign) Directive. Pump specialist **Wilo UK** has a full range of high-efficiency glandless pumps ready to respond to the requirements of the new Directive. The Wilo-Yonos PICO and Wilo-Stratos PICO series for domestic properties and the Wilo-Stratos series for larger properties have been 'ErP-ready' for some time.

enq.302



Whether you wish to install a heating method that is environmentally beneficial, create a focal point for your room, avoid the worry of power cuts, save money on your energy bills, or simply enjoy the pleasure of a brightly burning fire, a **Clearview Stove** could well be the answer. Clearview Stoves are made exclusively in Britain and have become synonymous with quality, reliability and craftsmanship. Their uniquely designed air wash system provides highly efficient combustion.

enq.303



Wet leisure centres continue to invest in swimming pool heat retention covers. As energy prices are increasing, more and more establishments are looking to further minimise their carbon footprint. Cale Sinfeld, **Plastica's** customer services and marketing manager commented: "2012 has proven to be Plastica's busiest year for heat retention cover installations. Strong interest in the last quarter of 2012 indicates that 2013 will continue to see the growth in the popularity of energy saving covers."

enq.321

CLEARVIEW STOVES

Britain's leading manufacturer of clean burning wood stoves

The complete solution for architects & builders

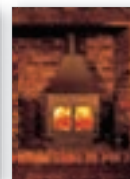


We are the UK's largest dedicated manufacturer of clean burning wood stoves, designing, manufacturing and distributing from our ten acre site in Shropshire.

With installation and product knowledge unequalled in the industry, we can provide all that is necessary for a trouble free installation.

Some of our benefits include:

- Money saving.
- Certified for use in smokeless zones. We were the first ever company to achieve this.
- A heat source that is 70% efficient, most open fires are only 10%.
- Very easy to light and maintain. They burn for long periods unattended and the ashtray only needs to be emptied every two to three weeks.
- You are in control of your fuel supply, no longer dependent on the big energy companies.
- A satisfying and pleasurable way to heat your home.
- Reduced dependence on fossil fuels.
- Thousands of accessories and flue components in stock.



STOCKISTS THROUGHOUT THE UK

www.clearviewstoves.com/adf Brochure Line: 01588 650 123

Dinham House, Ludlow, Shropshire, SY8 1EJ. Tel: 01584 878 100

enq.303

S&A Developments with VEKA



VEKA customer S&A Developments has been busy completing a number of commercial contracts lately, all while promoting the benefits of recycled PVC-U. The Darwen-based company has manufactured 1,000 windows, using VEKA's renowned Infinity recycled profile system, which have been fitted into two different social housing projects in Wigan. S&A Developments has worked with Baas Construction to upgrade the social housing offering on Knowsley Avenue in Wigan. The

intention was to make the properties more energy efficient and VEKA's Infinity profile system was chosen for the replacement of all 500 windows.

01282 716611 www.vekauk.com

enq.304

Vectaire's Elix 1003 is now SAP Q Eligible



The Elix 1003, from Vectaire, is a quiet-running, three speed centrifugal fan designed for installation in walls or ceilings in all domestic wet rooms. It has an energy saving EC motor, which runs continuously at a pre-selectable choice of two lower speeds (depending on whether it is installed in bathroom or kitchen), and allows the user to boost fan capacity when required. The Elix complements the Elegance

1003, an axial fan with all the features of the Elix plus the option of window installation. Both fans are available with timer and humidity control and add to the increasing range of energy efficient, environmentally friendly and economical products with EC motors developed by Vectaire.

enq.305

ATAG looks for growth in Scotland



ATAG Heating, the UK subsidiary of ATAG Verwarming of Holland, one of Europe's leading manufacturers of super high efficiency, low emission boilers, has appointed McCallum Water Heating of Glasgow as their sales agent for Scotland. Founded in 1878, McCallum are one of Scotland's oldest estab-

lished heating appliance manufacturers, distributors and repair specialists. ATAG believe that McCallum are ideally placed to further develop ATAG's market penetration north of the border. "Scotland is a key market where we foresee significant growth for ATAG products," said Phil Bell, managing director, ATAG Heating UK. "McCallum's reputation speaks for itself and we are looking forward to a long and mutually beneficial relationship."

enq.306

Thermally efficient wall tie for 150mm cavities



Ancon has become the first UK wall tie manufacturer to offer a Type 2 stainless steel wire tie for insulated cavities up to 150mm wide. The new 'Staifix RT2 275mm' wall tie has been designed to meet the growing demand for wider insulated wall cavities in multi-storey housing and commercial buildings, as thermal performance requirements continue to increase. It is currently the only Type 2 wire wall tie available for cavity widths between 126mm and 150mm, suitable for buildings up to 15 metres high as standard and taller structures subject to calculation. Ancon's stainless steel wire ties form part of the company's low thermal conductivity product range.

0114 275 5224 www.ancon.co.uk

enq.307



No gravity drainage? ...we have the answer

- Efficient & economical
- Pipework pre-assembled in the chamber
- Ready for installation into the ground
- Supplied with controls for fully automatic operation
- Service agreements available



No more rainy day blues...

Replace up to 46% of your household water usage with rain water, reducing future water bills and your impact on the environment.

Easy everyday use...

A fully automated system for applications including flushing, laundry facilities, garden water & irrigation.

www.ttpumps.com
T: 01630 647200



enq.308

THE ESSENTIAL FLUE & CHIMNEY COLLECTION FOR STOVES



SCHIEDEL ISOKERN DM36 CHIMNEY SYSTEM

Specially designed for wood burning stoves

- Quick & easy to assemble
- Highly insulated

www.schiedel.co.uk/isokern

Part of the MONIER GROUP



enq.309



Schiedel Isokern DM36 chimney system is designed to optimise the performance of smaller output stoves, inserts and cookers that have an internal outlet diameter up to 150mm. The highly insulating properties of the pumice DM system maintains the temperature of the flue gases even in the middle of winter, helping your appliance perform at its optimum level. The prefabricated chimney blocks are lightweight and easy to install. The system is available in larger diameters.

enq.309



The new **T-T Pumps** catalogue is coming very soon! Sign up today to be one of the first to get your hands on T-T's new product catalogue.

Revealing new products in their ranges, the catalogue will also include more detailed product information making selection even easier for you – many products being unique to T-T.

Visit T-T Pumps' website and sign up today.

enq.308



Airflow have been designing and manufacturing ventilation solutions for over 55 years. From a stylish single room extractor fan to Mechanical Ventilation with Heat Recovery systems, for residential dwellings through to large commercial buildings, there is a product to suit virtually any application. Airflow's Airflex Pro whole house air ducting system is also recognised by architects and installers as one of the quickest and most efficient methods of delivering ventilation.

enq.311



Another great device on show at Ecobuild 2013 was the **EcoSink**, by **Ecoservice**, a compact in-sink food disposal device which, unlike traditional disposal units, grinds the waste rather than cutting or shredding it. The EcoSink uses less water and energy than other waste disposal units and its powerful and reliable permanent magnet motor operates more than three times faster than other systems, pulverising even tough raw and cooked food waste in seconds.

enq.310

Is your sink an EcoSink?

EcoSink's powerful waste disposal unit fits under your sink to quickly and quietly grind your food waste into particles, flush it into the waste water system and save it from landfill.

Eco-friendly
Uses less water and energy than other waste disposal units, so it's more environmentally friendly.

Eco-fast
Powerful motor operates more than 3 x faster than other waste disposal units, and pulverises even tough food waste within seconds.

EcoSink
Bladderless, so there is no risk of jamming or clogging your drains.

Phone **01442 270032**
today to find your nearest distributor or visit
www.ecoserviceuk.co.uk

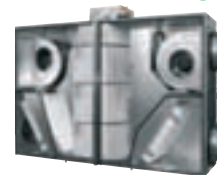
EcoSink
the greener way to dispose of food waste.

EcoSink

enq.310

DUPLEXVENT®

Air Handling with Heat Recovery



**"fresh, clean, warm air...
...and saving energy!"**

Commercial

- Modular air handling units with heat recovery
- Counter flow exchanger with up to 90% heat recovery
- Designed for schools, offices, retail and leisure facilities
- Quiet, effective and efficient
- Fans rotate on-site for ease of installation
- Low energy, EC fan control
- 1,500 m³/hr to 3,500 m³/hr
- BMS controls for 'on-demand' ventilation
- Incorporate into BREEAM assessments

Residential

- Complies with latest Building regulations
- Over 90% heat recovery
- Modular design for cupboards and lofts
- New and self-build
- Designed for houses and apartments
- SAP appendix Q eligible



Call: 01494 560 800

Visit: airflow.com

AIRFLOW®

enq.311

Scolmore leads the way with SMD technology



Having last year launched one of the most efficient replacements for the 60W incandescent with its Energetic SMD LED 11W A60 lamp, Scolmore has continued to develop its SMD technology and latest advancements means the

company is now able to offer new dimmable options. There are now SMD LED dimmable versions of the 60W and 40W replacement lamps and the company promises there are more to come. The new 60W replacement dimmable option offers 806 lumens with a 12W lamp and the 40W replacement dimmable lamp offers 470 lumens with a 7.5W lamp. Scolmore has also added a 4.5W dimmable version of the existing 4W SMD LED – 35W replacement.

01827 63454 www.scolmore.com

enq.312

Denso UK gains ISO 14001:2004



Denso anti-corrosion and sealing specialist products manufacturer, Winn & Coales (Denso) Ltd, are proud to announce that they have now achieved the internationally recognised environmental standard ISO 14001:2004. Obtaining this standard

for their factory and operations base in West Norwood, London is an important step forward for the company and shows their commitment to environmental responsibility. This new environmental standard goes hand in hand with the quality management standard ISO 9001:2008 they have held and maintained for the last 25 years at the London premises and demonstrates the company's aim in constantly improving its day to day operations and customer satisfaction.

020 8670 7511 www.denso.net

enq.313

Permcalc: free permeable pavement designs

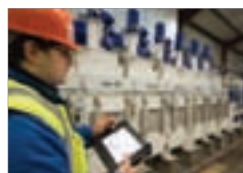


Landscapers, architects and developers can now create accurate, fully costed design suggestions for permeable paving solutions quickly and easily thanks to PermCalc, an innovative free-to-use online tool designed in-house by Brett Landscaping. Accessed via the website www.brettpaving.co.uk/commercial/support_and_services/permeable_paving PermCalc is ideal for any project that requires Sustainable Drainage System (SuDS) and creates authoritative data to enable decision makers to make informed choices about the benefits of permeable paving. PermCalc users are taken through a step-by-step process which is based on the current British Standard guidance for designing permeable pavements.

0845 60 80 570 www.brettpaving.co.uk

enq.314

A&G Group leads in carbon reduction



Acheson & Glover (A&G) Group leaps ahead in the Carbon Reduction Commitment (CRC) 2011-2012 Performance League Table, achieving a new position in the top 5 per cent of companies. The CRC Performance League Table ranks 2,097 of the UK's biggest organisations on their carbon emissions from

energy use. A&G was previously ranked in the top 25 per cent. The leap to the top 5 per cent puts A&G ahead of its major rivals in hard landscaping and precast concrete manufacturing. The latest results from the CRC emphasises A&G's continuous efforts to improve its carbon performance.

0845 601 5207 www.acheson-glover.com

enq.315

Free guide to green roof installation



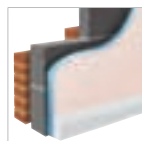
The growers of Enviromat sedum matting have produced a downloadable guide to creating a simple green roof. The document, which is free of charge, explores optimum pitch, loadings and drainage before explaining step by step the build up for a small sedum green roof. There is

also a section on seasonal green roof maintenance. For your free copy, please go to <http://www.enviromat.co.uk/green-roof-installation-guide>

angelal@qlawns.co.uk www.enviromat.co.uk

enq.316

Demand for energy efficient dry lining boards

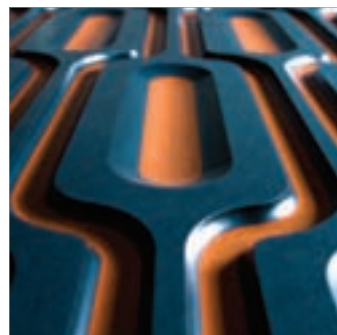


Increasingly stringent thermal performance requirements and rising energy costs have resulted in an increase in demand for Styroliner among contractors, reports Panel Systems, UK manufacturer of dry lining boards. Styroliner, which helps to create warmer rooms and reduce energy consumption, consists of Styrofoam extruded polystyrene,

which is bonded to 9.5mm plasterboard, making it a simple and cost-effective dry lining solution. Styrofoam has a closed-cell structure, which makes it resistant to moisture. Danny Phelan, sales manager at Panel Systems, said: "Styroliner is becoming an increasing popular dry lining board, as it is extremely easy to use and provides long lasting performance. It is widely used by contractors for refurbishments and new builds, where energy efficiency is all important."

enq.317

The evolution of MDF



Timber and panel products distributor James Latham, is now stocking Valchromat, an innovative and award winning material, which offers almost limitless decorative applications. Valchromat is a coloured engineered fibreboard, which is completely unique with the colour running throughout the entire board. This highly effective and impactful result is achieved by adding organic dyes and a specially formulated resin to the wood fibre before pressing. With eight vibrant colours in the range, Valchromat is certain to be popular within the UK shop fitting and furniture manufacturing sectors where bold and impactful colours are part of the specification. Plus, Valchromat has also been approved by the British Standards Association as safe to use in the manufacture of children's toys. Andrew Wright, director of James Latham commented: "We have a history and expertise in bringing new and innovative products to the UK market and Valchromat ticks all the boxes for us. I'm sure it will have a big impact in the UK market, not only within the shop fitting and furniture making sectors but also within hospitality and commercial interiors as well as for exhibitions. In addition to its unique appearance, Valchromat boasts a number of time and cost saving features and benefits; It's easy and quick to finish and the possibilities for use are endless.

0116 257 3415 www.lathamtimber.co.uk

enq.318



Rubb Buildings Ltd was a key player in completing the new indoor training facility for Sunderland Association Football Club. The sports building features Rubb's largest building span width to date at 82.4m. The structure stands 12.5m high and comprises a galvanized steel frame, a white PVC clad roof, a large gutter system and four large vent roof cowls along the apex. The translucent roof allows natural daylight to illuminate the full size indoor 3G football pitch.

enq.319



Joule is a Cheshire-based manufacturer and supplier of hot water cylinders and solar thermal products. As a company, Joule is committed to continual research and development as it sees this as a key to its long-standing success.

Working with the mantra 'manufacturing excellence', Joule aims to produce the best and most efficient products on the market, and has recently placed great emphasis towards the solar thermal sector.

enq.322



Imagine a toilet that has no need for water, sewage systems, miles of plumbing, septic tanks, cess pits and can be put anywhere you can put a conventional WC and even places you can't. There is such a product. **Ecotoilets** offer a dry separating toilet that works on the design of the human body. Urine is directed one way and solids the other, the solids in time produce great compost and the urine, which is sterile, can be used on the compost heap, soaked or drained away. There is no smell, waste or expensive installation.

enq.320



Britmet Tileform Ltd's Brit-Spec is the professional's quick and easy system for producing complete Tactray 90 project specifications and associated information requirements within a few clicks. Brit-Spec generates project specific information across a range of six roofing disciplines. Each one incorporates Tactray 90 as a structural liner. Future developments of Brit-Spec will extend to further roofing options, PV, structural ceilings, vertical cladding, rainscreen and flat to pitched conversions.

enq.323

www.rubb.co.uk

Custom Designs



Working closely with architects to produce imaginative solutions

Rubb's experienced engineers have the skills and expertise to provide architectural solutions to specific site or project challenges.

Over the years Rubb has built close working relationships with architects and practices to deliver innovative, cost effective, custom building solutions which can be quickly designed, manufactured and erected in a wide variety of bespoke sizes, colours and shapes. Contact us for a quote today...

Email: info@rubb.co.uk Tel: +44 191 482 2211

RUBB
BUILDING SYSTEMS

enq.319



EVERYBODY NEEDS ONE
IT'S THE WAY TO GO . . .

- No water - No sewage -
- No smell - No waste -
- Easy to install -

HOW MANY REASONS DO YOU NEED
TO INSTALL AN ECO-TOILET?



Ecotoilets
The Canal Shop
Hillmorton Wharf
Crick Road
Rugby
CV21 4PW

Tel:- 01327 844442
Web:- www.eco-toilets.co.uk
Email:- richard@eco-toilets.co.uk

enq.320

editor's focus

Kingfisher Lighting

An LED-only light fitting for urban lighting, Lunio is designed by Italian lighting manufacturer Arcluce. Its sleek, modern and minimal design is the perfect synthesis combining aesthetic features and shapes. Lunio is highly efficient; the ideal solution for urban settings, pathways, outdoor public and private areas, parks and gardens. Made from die-cast aluminium and finished in subtle anthracite grey, Lunio adds class to any exterior environment. Visit Arcluce at The Arcshow, stand Q52!

enq. 166

Cooke Brothers

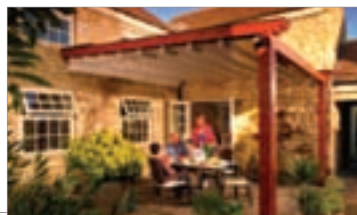
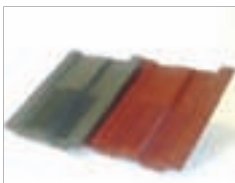
Innovative master hinge maker Cooke Brothers Ltd has reported a growing demand for their unique Interleaf continuous hinge where discerning specifiers require an ultra narrow, unobtrusive gap between door and frame. The new Phoenix Interleaf hinge reduces the gap of a traditional heavy duty continuous hinge from the typical 12mm down to a mere 3mm. Ideally suited for both 44mm and 54mm timber and metal doorsets, the aesthetic lines of the Interleaf hinge completely fills the void between the door and frame, reducing the risk of finger trapping considerably.

enq. 165

Ubbink

Ubbink group manufactures a range of roof ventilation products and offers over 35 years experience in the UK. As part of the Ubbink / Centrotherm group, all of its products are manufactured to the highest standards with one of the largest effective free vent area in the market at present. Specifiers can choose either a hooded or inline unit from a range of profiles, slates and colours to suit either aesthetics or requirements. To complete the range, adaptors are available to connect ducting and pipe work from 100mm-160mm.

enq. 167



Outside Structure Solutions

Outside Structure Solutions specialises in the supply of outdoor canopies including fixed or retractable terrace covers, outside dining areas and walkways. All Outside Structure Solutions' canopies and shelters are top quality and are built to last. The choice is vast and there is a canopy to suit most applications. There is a choice of frame material as well as options for the type of roof. The majority of canopies are available as free-standing as well as wall mounted to one side.

enq. 168



Roof-Pro

Roof-Pro is a leading UK provider of non-penetrative building services supports. It offers a complete design service for consultants, contractors and building owners to ensure a professional and cost-effective installation. The versatility of the products and services means that Roof-Pro can provide a solution to fit the criteria of almost any specification. Specifying a Roof-Pro systems gives you the peace of mind that stability, load management and future roof maintenance has all been taken care of.

enq. 169

National Structures

National Structures is a designer, manufacturer and installer of canopies and walkways. It provides a full in-house professional design and project management team, enabling projects to be undertaken from concept to completion. National Structures' canopies and walkways provide ideal, cost-effective cover for numerous applications including covered areas, walkways, waiting areas and cycle shelters. As a design and build company, National Structures is able to tailor its structures to adapt to site and to the client or architect's specific design requirements.

enq. 170

VMZINC standing seam for youth centre roof



The landmark £4.7 million MyPlace Havering youth centre project, designed by Jacobs Architecture, is one of few buildings in the UK so far to achieve a 'zero carbon' rating. Tasked with meeting such demanding environmental performance they specified a curved, standing seam VMZINC roof in pre-weathered Quartz-Zinc. The shape is reminiscent of a caterpillar

and provides a highly distinctive feature, complementing the exterior timber façade, aggregate cladding panels and exposed beams. The building has also achieved a BREEAM Excellent rating.

01992 822288 www.vmpzinc.co.uk

enq.171

50% increase in colour sales for Freefoam



Freefoam Building Products is pleased to announce that it has recorded a 50 per cent increase in the sales of colour products for the first quarter. Demand for colour roofline products has been strong over the last few years. Freefoam is a leading provider of coloured roofline products offering 10 colours as standard, all with a unique 10-year guarantee. The range is manufactured using the patented Colormax™ technology. Using an advanced master-batching process, a special blend of natural PVC compound is dosed on-line

with specific concentrations of pigment for the required colour. This production process allows us to provide long lasting colourfast products.

01604 591110 www.freefoam.com

enq.172

Steadmans supplies materials for conversion



One-stop-shop building products manufacturer Steadmans has supplied materials for a new project at Purity Brewing Co in Great Alne, Warwickshire. The brewery now benefits from a conversion of a 760 sq m existing disused agricultural building into a micro-brewery, thanks to Redditch-based installer S A Mogg. The building

comprises over 330 linear metres of Steadmans' AS35 120mm insulated panels in Vandyke brown and 130 linear metres of AS30 single sheet side-wall cladding. The company also supplied over 80 linear metres of eaves and ridge fillers. AS35 panels are manufactured in a quality process certified to ISO 9001:2008, using non-ozone depleting technology.

enq.173

New Permo underlay for low pitches



Klober's Permo RS Extreme vapour permeable underlay has been designed to provide ventilation on roofs such as monopitch extensions where existing windows preclude a tile or slate's minimum recommended pitch. Permo RS can be laid at 10° making it ideal for plain tiles, normally laid at 35 - 40°, and has

double, self-adhesive strips, which provide a permanent seal of overlaps and immediate weatherproofing protection. Being stable at high temperatures Permo RS can also be used with in-roof solar panel systems as well as other Klober airtightness tapes and sealants.

01352 706231 www.klober.co.uk

enq.174

No compromises when you install THE ORIGINAL Hambleside Danelaw Dry Fix Valley Trough



- Unique patented design maintains its profile and support to the roof covering whilst adapting to various roof pitches.
- Simple and conventional installation procedure.
- Neat and precise finish with 'close cut' appearance.
- Service life of 35 years backed by a 30 year guarantee.
- Dry Fix removes the risk of mortar failure
- The range is suitable for use with ALL commonly available slates and tiles.



Made in Britain



Hambleside Danelaw
Building Products

For more information call 01327 701910
Visit our new website www.hambleside-danelaw.co.uk

enq.175

USE BITUMEN

AXTER
www.axter.co.uk

enq.176



As featured in 'Grand Designs' Magazine

With vast experience in the commercial and domestic markets, Rooflight Architectural manufacture and supply lantern lights, pitched glazing, and walk-on rooflights to any size or specification. With thin site lines and availability in any colour, we offer a one-stop solution, including technical advice, CAD drawings and nationwide installation.

RAL Mk 6 Lantern Light main features:

- Lightweight structural aluminium
- Sections: minimum frame
- Maximum glass
- Made to measure
- Polyester powder coated ANY RAL or BS Colour. Dual colour available
- Latest high specification glass units: self cleaning option

01670 736124
sales@rooflight.co.uk
www.rooflight.co.uk

enq.177

Are you getting the support you deserve?

- Non penetrative services supports
- Engineered to the roof design
- Fully flexible and prefabricated
- Prevents future decommissioning of services during re-roofing



P.O. Box 505
Kempston
Bedfordshire
MK42 7LQ
Tel: 01234 843 790
Fax: 01234 856 259
Email: info@roof-pro.co.uk
Website: www.roof-pro.co.uk



enq.178

Hot melt rubberised bitumens – optimising the benefits

Trevor Lang, technical manager of Alumasc Waterproofing, explains how to evaluate hot melt systems, and how to ensure the best performance from this robust waterproofing solution

The last 20 years have seen a significant rise in the popularity of hard and soft landscaped podiums, roofs, terraces and balconies integrated into residential and mixed-use developments alike. The challenge for both designer and developer is how to protect your building successfully when you are burying the all-important waterproofing.

Hot melt rubberised bitumen membranes have established a firm hold in this market over the last 25 years, but are all systems truly equal and approved?

What are hot melts?

In accordance with FRA Information note No 31 concerning hot melts and the NHBC Roofing Guidance note 7.1, they are liquid-applied rubberised bitumen membranes applied in two (nominal) 3mm coats, including reinforcement and substantial reinforced bitumen protection sheet/root barrier. They should only be used in buried applications, such as inverted roofs, green roofs, podium areas etc. They are, therefore, used almost exclusively over structural concrete decks.

These products are monolithic in nature, having no overlaps, and bond so tenaciously to the prepared substrate that it is not possible for water to track beneath the membrane should it be damaged in any way. Note that minor damage is self-healing because of the retention of the tacky characteristics of the product throughout its whole lifetime. These properties make hot melts ideal for buried applications.

Good quality hot melts will be the subject of BBA Certification, which confirms that the product will last for the lifetime of the building (no replacement cost within the building's lifecycle), and zero falls installation (no waiting for costly, heavy screed to falls to cure). Some products will additionally carry FM approval, and all must carry European Technical Approval to comply with compulsory CE marking from July 2013.

Top quality hot melts will have excellent resistance to chemical erosion (e.g. acid rain, fertiliser, building washes) through the inclusion of inert clay filler, while inferior products may use cheap filler such as calcium carbonate, having much less resistance. The highest quality products will have a wide workable temperature range, making application at both lower temperatures (ideal for detail work) and higher temperatures (ideal for optimum field area installation) possible.

Ensuring correct application, leak-testing and completion

Ensure that the product is installed by a manufacturer registered contractor employing fully trained operatives and contract managers who will issue frequent site visit reports including



records of both depth and bond tests.

Intermediate and final electronic leak testing must be provided by qualified professionals using certified, calibrated equipment, and should include all upstands and detail work as well as main field areas.

The test method must be appropriate to the project in question and would normally consist of a low-voltage 'wet' electronic leak detection method to the horizontal areas, where the roof surface is wetted during the test in order to create an electrical field, and a high-voltage 'dry' method to upstands and details where wetting is not possible. Areas to be tested must either have been exposed to rainfall or soaking in order for the test to be effective, so the provision of a water point at roof level is therefore beneficial.

The locations of potential water entry pathways are pinpointed by the detection of earthing of the signal and must be marked, repaired, re-tested and certificated as watertight prior to installing the coverings. It is important to note that testing is recommended both immediately after completion of each area, and also again, immediately prior to the application of coverings, if not installed within 24 hours of waterproofing.

Flood testing is not normally recommended other than as an alternative test method on smaller areas such as balconies, or on non-conductive substrates such as plywood, as entry of water through a defect can significantly extend drying out periods.

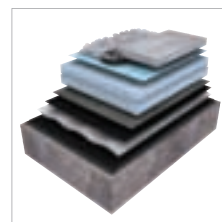
Responsible manufacturers will employ their own leak detection specialists and also attend each test to ensure the validity, completeness and authenticity of results.

In addition to the length of warranty, it is important to consider the levels of indemnity offered, whether the offer is insurance backed, and whether the terms and conditions cover not only product defect, but also workmanship and design.

Establish the credentials and track records of the manufacturer, supplier and contractor and ask yourself – can I completely rely on these organisations to deliver and support this package for the full term of the warranty?

'These products... bond so tenaciously to the prepared substrate that it is not possible for water to track beneath the membrane should it be damaged in any way'

Trevor Lang



Typical hot melt system build-up

enq.179



Alumasc roofing solution for Wapping Lane

Alumasc has provided a complete roofing package for the first major new development in Wapping for over 10 years. Developed by Ballymore, Wapping Lane is an iconic creation, comprising residential, leisure, retail and recreation facilities over five high-rise blocks with a central plaza sitting above an underground car park. Due to the complexity of its design, a range of roofing solutions was required to accommodate varying roof details on the five blocks, balconies, terraces and podium roof area over the car park. Fenland Flat Roofing installed Alumasc's inverted Hydrotech waterproofing system with a biodiverse green roof to levels four, five, six and seven on blocks C and D, with additional biodiverse green roofing and Alumasc's extensive and intensive green roof systems, installed to the main roof areas. All the perimeters had a paving finish. The podium area comprised hard and soft landscaping consisting of an intensive green roof with additional planter areas.

enq.180

adf
website

The Architects Datafile (ADF) website is an online provider of past and present products and news items for the architect or specifier. Adfonline.eu is a one-stop source for all the latest press releases providing any visitor with access to information about products and services that they may require. From the website, you can find links to digital issues that have live links to advertisers' sites, as well as a news blog that offers daily email alerts to keep you as informed as possible..

www.adfonline.eu


Keeping on top of things



At this year's Roofex Show, UK matting manufacturer **Plastic Extruders** exhibited its latest rooftop safety walkway mats – Crossgrip PVC and Crossgrip TPO. Crossgrip PVC is manufactured from 100 per cent PVC and is compatible with EPDM, PVC and modified bitumen roofs, while Crossgrip TPO, the latest product in the Crossgrip range, is manufactured from non-porous thermoplastic polyolefin (TPO) and is also compatible with TPO roofs. Both Crossgrip PVC and Crossgrip TPO are designed as a very safe and easily loose laid solution for rooftops, gantries and high level walkways. They provide a slip resistant surface, while protecting the roof membrane and are designed to be impervious to temperature extremes.

They provide a slip resistant surface, while protecting the roof membrane and are designed to be impervious to temperature extremes.

enq.182

seamline | sustainable roofing systems in STEEL


Pitch Perfect

Seamline from Lindab is a high performance and sustainable standing seam roofing system that has a low carbon footprint, minimal thermal movement, highly resistant to corrosion, is virtually maintenance free - and at the end of its serviceable life, can be fully recycled.

Seamline can be fixed down to a pitch of only 5.7 degrees and can be laid up to 15 meters in one continuous length.

A choice of 15 high build (CFC Free) polyester colours or an Aluzinc finish in a shimmering silver all supported with a Lindab 'peace of mind' 15 year warranty provides the opportunity for Seamline to be confidently specified for use on many types of industrial, commercial, domestic and agricultural buildings.

Lindab Ltd | Building Products Division | Shenstone Trading Estate | Halesowen | West Midlands | B63 3XB
Telephone: +44 121 585 2780 | Facsimile: +44 121 585 2782 | Email: buildingproducts.sales@lindab.co.uk | www.lindab.co.uk


www.lindab.co.uk

enq.183

Are you Designing a Warm Roof?

E B A DFFE FA E A A FÆ F AD A E A A A DÆ EA A A
AFF E Æ D A A E AKA E FADA A FIA E A AA A A AEE EA A
F FIA

&
&

A E
AAA A FAA D A
AAA Æ A
AAA Æ A
AAAE F A F

A EA A F
B A A F
B E AD A A F
A A Æ F
FA EF
A EAA F
FAE E A A A A A FE Æ

NOW AVAILABLE ONLINE!



Lightening the Load

Brit-SpecÆ F A
Æ A FE A A
E A A A A
ED A AEE EA A
F FIA
Æ D A A A
A Æ A A
Æ EAA A FA
D A AÆ A A
Æ E A A A A
A A FE I



A Æ D A A A A A A AÆ A A FA A Æ FA A E A A
B 01295 250998 | 01295 271068 | EÆ F E I I Æ I E I I

B B

B B B

B

enq.184

➤ For construction ventilation and accessories...

think Ubbink!



Slate/tile vents



Terminals



Fascia vents



Flat roof vents



ubbink

• Comprehensive range of roofing products • Top quality - European made • Available through distributors nationwide
For full details, call us now on **01604 433000** or visit **www.ubbink.co.uk**

enq.185

Kemper System protects national treasures



Kemper System's Kemperol V210 has been used to safeguard the roof of National Trust 18th century property Polesden Lacey. When a section of the house's decorative copper and lead eaves guttering began to leak, The National Trust needed to arrange for a repair quickly to prevent any damage to the house or its contents. Imperial

Leadwork was brought in to overlay the perished guttering with Kemper System's Kemperol V210. Once the primer had cured, the installation team applied the Kemperol V210 cold liquid resin. Once cured the Kemperol system forms a seamless, durable and flexible waterproof membrane that cannot delaminate.

01925 44 55 32 www.kempersystem.co.uk

enq.186

The future proof roof from Metrotile



Metrotile is the lightweight, steel roofing solution that is durable enough for any roofing project. Backed by an industry-leading 40-year guarantee, each Metrotile profile weighs up to a seventh of comparable 'traditional' roofing tiles, yet offers stunning aesthetics and unbeatable security against vandalism and weather. Whatever the size

of your roof project, from home conservatories to large multi-campus new build school projects, Metrotile has it covered. For further information, including a free no-obligation estimate, contact Metrotile today.

01249 658514 www.metrotile.co.uk

enq.188

Flat pan – high profile



RigiSystems Ziplok has been used in a flat pan format to create a traditional yet contemporary feel at Addenbrooke's Children's Hospital in Cambridge. Removing the miniribs from the standard Ziplok profiles creates the pleasing aesthetic of the structure. Use of a triple skin, fully supported insulation system ensures that

the roof sheets maintain their shape while also catering for the acoustic and thermal requirements of the building. Penetrations such as wind catchers and rooflights are welded into place to preserve the integrity of the roof while maintaining the clean lines and aesthetic appeal.

01905 750500 www.rigisystems.org

enq.189

Coppa Gutta & Yeoman Rainguard a perfect fit



Yeoman Rainguard has joined forces with Coppa Gutta, one of the UK's leading manufacturers of copper, zinc and stainless steel systems. Yeoman Rainguard director Phil Christopher said: "We pride ourselves on the quality of our products and are delighted to be working with Coppa Gutta whose products are a perfect fit with Rainguard

and complement our aluminum, GRP and cast iron rainwater systems." Alan Gingell, managing director of Coppa Gutta, agrees: "As a British company with 25 years of experience manufacturing metal rainwater systems, we are proud that Yeoman Rainguard has chosen to partner with us to offer an unrivaled product range and customer service."

enq.189

Mustang®
The 'Must have' Gutter System!

The 125mm Mustang Seamless Gutter System.
The only seamless aluminium gutter system to obtain a BBA certificate.

- **Approved Installer Scheme**
Only installed by ARP trained/approved installers
- **Simple installation**
Giving labour cost savings.
- **No joints**
No leaks meaning minimal costly call backs!
- **Longevity**
Aluminium does not corrode.
- **Low Waste**
The gutter is formed to the building - nothing more!
- **Recyclable**
Aluminium is produced from 85% recycled material and can be recycled further.
- **Durability**
It is well suited to our climate. It will not fade, warp, crack or creak.

BBA Approved
Cert. No. 91/2625

Aluminium Roofline Products Ltd
Call today on our sales line 01162 894400 or email us at sales@arp-ltd.com
www.arp-ltd.com, www.mustang-gutters.com

enq.190

Manchester United canteen extension



The first-floor canteen at Manchester United's prestigious Carrington Road training ground HQ has been modernised and significantly extended thanks to a large installation of two Clearline aluminium sliding/folding doors designed and installed by Frameless Glass Curtains Ltd (FGC). The opening served by

each of the FGC door sets is approximately 11.2m wide and 2.9m tall. It is spanned by 18 sliding/folding panels (curtains), each a width of 0.8m. The inner set of doors is single-glazed, while the outer set giving onto the balcony is double-glazed and thermally broken in order to deliver a high level of thermal efficiency.

01732 848088 www.framelessglazing.co.uk

enq.191

Major retailer chooses Aluglaze panels



Sheffield-based architectural panel manufacturer Panel Systems has supplied Aluglaze insulated panels to a major supermarket retailer for a 633,500 sq ft distribution centre in Rochdale. Over 400 light grey Aluglaze panels were supplied to the glazing contractors. Each panel was

made with rigid Styrofoam insulation to achieve a U-value of 1.0 W/m²K in order to enhance the thermal performance of the large distribution centre. Each Aluglaze panel from Panel Systems was manufactured from a face of 1.5mm aluminium sheet vacuum bonded to a Styrofoam core, creating an overall thickness of 28mm, which was fixed directly into the aluminium glazing system. Styrofoam was specified because of its excellent insulation properties.

enq.192

a total solution for architectural glazing



- atriums
- facades
- canopies
- partitions
- rooflights
- balustrade
- conservatories
- walk on floors
- shuffle glazing
- framed glazing
- structural glazing
- frameless glazing



Tel: 01842 816080

sales@glazinginnovations.co.uk
www.glazinginnovations.co.uk

enq.193

Cavi-Mate

Frame Former

**The Ultimate Frame Former
/Locator & Cavity Closer
for all Reveal Types**

CAVI-MATE is a robust Frame Former installation system ideal for the new build market.



- Fully Certificated
- Meets NHBC Standards
- 50 - 300mm Cavity Widths
- Simple to Fit - Saves Site Time
- Robust & Cost Effective
- CFC / HCFC Free
- Fully Fire Tested
- Total Window Former System
- Minimum thermal resistance 0.703 m²k/w



YBS Insulation's pre-formed cavity closer quotation service offers a 48-hour turn around. For a quote please send window schedule, along with the full specification to: sales@ybsinsulation.com

YBS Insulation
HIGH QUALITY PRODUCTS FOR THE BUILDING INDUSTRY

The Craggs Industrial Park, Morven Street,
Creswell, Derbyshire S80 4AJ.
Tel: 0844 99 104 04 www.ybscomposites.com

enq.194

light

space

style



**1ST
FOLDING
SLIDING
DOORS**



- ✓ Top Quality Folding Sliding Doors
- ✓ British, German and Belgium Design
- ✓ Manufacturers for British and Belgium Doors
- ✓ Distributor for Sunflex, Germany
- ✓ Fantastic variety of finishes and colours
- ✓ Virtually maintenance free
- ✓ Unsurpassed security features
- ✓ Full fitting available
- ✓ Free survey and design advice

0208 997 2448

www.1stfoldingslidingdoors.co.uk
CONCERTINA DOORS • FOLDING DOORS • SLIDING DOORS
Unit 26/3 Silicon Business Centre, 26 Wadsworth Road,
Perivale, Greenford, Middlesex UB6 7JZ
Please call to arrange a visit to our Showhouse in Winchester
or showroom in London

enq.195

The Digi-Line electric radiator is relaunched



The all new Digi-Line electric radiator from **Electrorad** is a unique take on the traditional wet UK steel radiator, allowing it to blend in to any home. With a rapid heat up time and individual wireless control, you can fully control the energy used with a pinpoint accurate temperature control of just 0.1 degrees Celsius in each of the four possible timing zones, enough for even the

largest of properties. A 10-year manufacturers guarantee warrants a confidence not found in many sectors, and coupled with a realistic trade price this has prompted more than one social housing provider to update their storage heater filled housing stock with a wise view on longevity.

0844 479 0055 www.electrorad.co.uk

enq.196

Sontay refreshes sensor range



Sontay has updated its GS-CO2-1000 carbon dioxide sensors as part of an on-going series of improvements to its range of control peripheral and measurement devices. The new sensors blend effortlessly with modern design schemes. The GS-CO2-1000 range features a non-dispersive, infrared sensor for measuring carbon dioxide concentrations and utilising microprocessor based electronic. The unique self-

calibration algorithm offers long-term stability and accuracy. They can be fitted with a temperature output alone or a temperature and relative humidity output. By controlling at the optimum level, the sensors ensure there is adequate ventilation while maximising energy savings, making them ideal for commercial buildings, industrial plants, laboratories and public spaces such as schools.

enq.198



Free service for professionals sparks interest

Following the launch of a free service to help architects and specifiers find the right stove or fireplace for their project, **BMF** is reporting a surge of enquiries from the sector. On the success of the service, Ben Freeman, co-owner at **BMF**, commented: "Whether a designer is looking for a large format, balanced flue gas fire, a substantial wood burning stove or a pellet stove that still makes a statement, we have a wealth of knowledge to help them make sure their plans fit the bill. We can ensure you choose a product that suits not only the style of your plans, but also provides the heat output the property requires, heating anything from one room to a whole house. Whether it's a commercial or domestic project, **BMF** can specify and supply fires and stoves from a wide selection of the world's top manufacturers. This includes products suitable for the most eco-friendly of developments, which is important with the government's zero carbon new-build targets." **BMF** can also help design and supply the appropriate flue system, taking into consideration all the necessary regulations and health and safety requirements.

0113 266 0096 www.bmfonline.co.uk

enq.200

New fully concealed air curtain



JS Air Curtains is launching the new Invisair concealed air curtain that provides protection from draughts while being discreetly hidden inside a column or bulkhead. The main body of the unit is fully embedded in the walls or ceiling next to the doorway with the air outlets being the only visible part of the air curtain. The Invisair allows architects and consultants to maintain a minimalistic architectural design to an entrance while still providing

the energy savings and internal comfort air curtains offer. Other concealed air curtains on the market have a fascia plate that is flush to the ceiling and into which the air is drawn and expelled. The Invisair has no such fascia plate and the air is either ducted to the unit or drawn in from a vent or grille.

enq.197

TROX launches new online design tool



TROX has launched Version 2 of its extremely popular design tool – Easy Product Finder – which is faster and easier to use, and includes additional product ranges. Easy Product Finder has become a vital tool in the building services industry, helping system designers and specifiers to identify system components and collate all

the necessary costings and technical material. **TROX** has now announced the arrival of Version 2, which features a new intuitive design concept. This latest generation of the product selection tool enables users to design and configure the workspace in the way that best suits them. In addition, keyboard entries and shortcuts can be set up to enable users to work faster.

enq.199

The Grundfos Conlift gives you a lift



Conlift is a pre-assembled lifting station from **Grundfos Pumps**, which has been specifically developed for condensate removal and operate automatically when condensate enters the collection tank. There are several variants available: Conlift1 and Conlift2, supplied with an integrated

NC/NO contact and cable so that if the overflow switch detects a high water level this can be used to switch off the boiler. Conlift2 also includes an acoustic alarm in case of a high water condition. It also has a selector switch with additional options. This range offers a wide choice of installation options and these compact units can be installed as either floor standing or for wall mounting.

01525 850000 www.grundfos.co.uk

enq.201

Polypipe's new Silavent MVHR unit



As part of their ongoing commitment to developing innovative energy saving ventilation solutions, **Polypipe** has launched the brand new Silavent Green Line HRX2, a highly efficient Mechanical Ventilation Heat Recovery (MVHR) appliance with the highest available heat exchange performance on the SAP Appendix Q register.

Featuring a heat exchange efficiency of up to 95 per cent and a full summer bypass option, the HRX2 offers the homeowner a year round ventilation solution. Designed for use in a wide range of properties, the HRX2 is suitable for installation in a cupboard, utility room or loft. The unit operates by transferring the heat from the waste stale air extracted from kitchens or bathrooms to fresh filtered air drawn in from outside.

enq.202

THE ART OF HEATING



BESPOKE.
CLASSIC.
ELITE.

For Stockists Contact:

T: 0808 129 2224 | E: sales@carron.uk.net | W: www.carron.uk.net

reader
enquiry
203



Aspire Defence uses BWT's AQA Total



01494 838 117
enquiries@bwt-uk.co.uk
www.bwt-uk.co.uk

BWT UK was asked by Aspire Defence to resolve the issue of having to de-scale a hot water system on a quarterly basis in a diner within an Army camp, which is maintained under the MOD's Project Allenby/Connaught.

The hot water system uses two direct fired Andrew water heaters MAXXflo 60/300 installed on an unvented hot water system, fed by a cold water booster set to provide hot water to the kitchen areas. The hot water heaters are installed on a hard water mains system of approximately 360ppm hardness. Every three months, because of the high hardness levels in the mains water, the water heaters needed a full de-scale. This high hardness level also caused reliability problems with the boilers as the scale build-up reduced the heat transfer and the de-scale introduced down time for the units.

In September 2012, BWT UK offered Aspire Defence, its patented technology of an AQA Total. This unit uses nano water technology to change the water characteristics and stop the hardness forming in the heat exchangers as scale, protecting the water boilers and ensuring that they run at their correct efficiencies.

An AQA Total 8400 was installed and a trial period of three

months was set to see whether AQA Total could cope with the taxing conditions that the diner's installation demanded.

Heat differential readings were taken by the manufacturer on the newly de-scaled boilers and the AQA Total was commissioned. Between October and December 2012, readings were again taken on a monthly basis by the water heater manufacturers and BWT, as well as water usage readings for the system. These readings showed that no efficiency had been lost and so no scale had formed in the boilers, and for the first time since the boilers were installed there was no need for a quarterly de-scale. In the three month trial period, over 357m³ of water had been used, that is a potential 129 Kilos of hard water scale that did not build up!

Aspire Defence's estates technical director was impressed: "The AQA Total unit has performed beyond our expectations on a very problematic site, keeping the boilers scale free. Another plus is

that since fitting the AQA Total there have been zero breakdowns on the water heaters."

Aspire Defence's interface manager added: "With continued performance like this, the AQA Total will be an effective scale prevention device to add to all our hot water installations."



enq.204

An exciting and stylish statement from Draks



Draks, the wardrobe and room divider specialist, has added to its impressive range of sliding wardrobe doors with the launch of its new Jericho collection. The Italian-inspired frameless doors are available in a wide palette of gloss, matt or wood grain finishes, which suit any interior scheme. The Jericho collection makes a stylish

statement in any bedroom and is ideal for homes where clean lines count. With their innovative horizontal grooves and discreet recessed handles, the doors are sleek and modern while offering great versatility at an attractive price for specifiers. Flexibility of production allows doors to be made to suit the individual needs of customers and wardrobes can be designed for any space.

enq.206

Revo Group's Shell projects are snag free



Revo Group has been recognised and congratulated by Shell for delivering the company's first forecourt shop site with zero snags. Significantly, Revo was the first of eight main contractors to deliver projects with zero snags for Shell. The work at Shell filling stations involves the installation of a new retail format known as 'Thunderdome'.

Acting as principal contractor, Revo Group has completed extensive work as part of a design and build contract for Shell on over 40 forecourt sites with hundreds more in the pipeline as part of a nationwide programme. Jim Lye of Shell comments: "Revo Group has helped us deliver these facilities in a tight timeframe; to achieve this with zero snags is testament to professionalism."

enq.207

enq.205



SCAN FOR BROCHURE



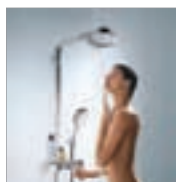
THE RADIATOR FACTORY

WWW.RADIATORFACTORY.NET

FOR ALL TYPES OF DESIGNER
& ECO-ALUMINIUM RADIATORS

TEL: 0116 260 9257

New Raindance Select E300 3jet showerpipe



The innovative Raindance Select collection from **Hansgrohe** offers the choice of spray modes with a simple push button 'select' operation. The new Raindance Select E300 3jet overhead shower (shown here on the showerpipe) features a new third style of spray called RainStream. Rows of cascading shower nozzles project the water in a uniform curtain, which keeps its shape all

the way down to the ground. There are two new designs for the Raindance Select showers: SoftCube, which is square with softened corners, or a timeless cylindrical design. Both combine easily with other styles and are available in a choice of all-chrome or fresh dual colour chrome and white.

01372 465 655 www.hansgrohe.co.uk

enq.208

Teardrop range makes a splash



Solus Ceramics introduces the sophisticated Teardrop range, which is a unique and elegant series of wall tiles inspired by traditional oriental flowing shapes and curved lines. The 'scale-like' tiles are available in six lavish colours including a deep turquoise and a regal red, and can be selected in both a matt and glossy finish. The tiles, which measure 115 x 195mm create dramatic patterns when

laid together resembling the textures of exquisitely woven fabric. To add further design options, complementary joining pieces can be selected in a variety of colours to add even more luxury. Most recently the tiles have been featured in the brand new Hard Rock Café in Barcelona and were backlit to exciting effect.

0121 753 0777 www.solusceramics.com

enq.209

Stylish column casings from Encasement for Salford's Media City



Stylish column casings from **Encasement's** Circa range are being used to conceal structural columns and provide an integrated contemporary finish within the Pie Factory building at the innovative Media City development at Salford Quays. Media City is one of Europe's most dynamic mixed use developments combining workspace, residential and retail, as well as one some of the world's most advanced HD broadcast studios and multi-media and production facilities, which are used extensively by the BBC and ITV. To meet the demands for a contemporary design and high quality finish that integrates with the building's décor, Encasement was chosen by the interior designers to supply and install a series of unique circular column casings, which are finished in durable polar white Formica laminate. Each 750mm diameter column casing stands 3,000mm high and is made up from 16 separate 'quartered' segments, which are secured to the structural column and connected by brushed stainless steel laminate feature joints. Matching brushed stainless steel header and skirting collars have also been installed. Encasement's managing director, Martin Taylor, explained: "Media City is an outstanding development and although we have supplied and installed casing solutions to a diverse range of other prestigious projects, the meticulous finish and attention to detail demanded for these columns is particularly satisfying when they're viewed as an integral part of the finished Pie Factory offices."

enq.210

GET YOUR BATHROOM TRADE ACCOUNT FOR AN EXTRA 10% OFF

 <div style="background-color: #800080; color: white; padding: 5px; transform: rotate(-45deg); display: inline-block;">EXTRA 10% OFF FOR TRADE CUSTOMERS</div>	 <div style="background-color: #800080; color: white; padding: 5px; transform: rotate(-45deg); display: inline-block;">EXTRA 10% OFF FOR TRADE CUSTOMERS</div>	 <div style="background-color: #800080; color: white; padding: 5px; transform: rotate(-45deg); display: inline-block;">EXTRA 10% OFF FOR TRADE CUSTOMERS</div>	 <div style="background-color: #800080; color: white; padding: 5px; transform: rotate(-45deg); display: inline-block;">EXTRA 10% OFF FOR TRADE CUSTOMERS</div>
<p>Ocean toilet & cistern inc. deluxe seat was £349</p> <div style="background-color: #008000; color: white; padding: 5px; display: inline-block;"> TRADE price £74.25 </div>	<p>Matrix basin mixer inc. basin waste was £199</p> <div style="background-color: #008000; color: white; padding: 5px; display: inline-block;"> TRADE price £29.25 </div>	<p>Cambridge square shower bath inc. shower screen was £499</p> <div style="background-color: #008000; color: white; padding: 5px; display: inline-block;"> TRADE price £149.25 </div>	<p>Sienna 55 basin & unit was £199</p> <div style="background-color: #008000; color: white; padding: 5px; display: inline-block;"> TRADE price £66.75 </div>

GO TO VICTORIAPLUMB.COM/TRADE - OR CALL 0844 804 48 54

NEXT DAY DELIVERY AVAILABLE WITH **£20 OFF** FOR TRADE*

Trade account subject to status. Prices shown with 10% trade discount excluding VAT. Please note prices shown on the Victoria Plumb trade website are inclusive of VAT. VAT will be taken up front and is the trade account holders responsibility to claim back. *£20 off delivery applies to 2 man delivery service only.

enq.211

Beko gets FA Cup



As part of the **Beko FA Cup Schools Trophy Tour** (February and March 2013), The FA Cup made a detour to Beko plc's HQ in Watford, creating great excitement among the company. An Official Supporter of The FA Cup, the leading appliance manufacturer has been touring UK schools to bring the presti-

gious competition to a new audience of young football fans and local communities. Beko is a leading appliance brand in the UK and has an extensive portfolio of built-in kitchen appliances for the house building sector.

01923 818 121 www.beko.co.uk

enq.212

Into the Stratus-phere!

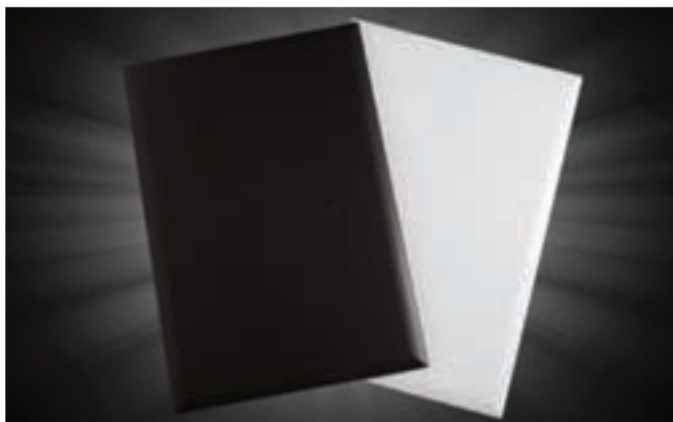


Westin Design has unveiled an upgraded version of its popular Stratus ceiling extraction unit. The re-style encompasses technical and aesthetic aspects of the Stratus and the enhanced features have been developed as a

result of customer feedback. Westin Design is describing the new Stratus as a superior product, but with the same price point as the previous model. The new revamped Stratus has halo LED lights as standard and the perimeter extraction gap is now narrower for an overall sleeker look to the unit. The Stratus' top box has been developed to rotate 180 degrees meaning that the spigot position is moveable from right to left on-site for ease of installation.

01484 421585 www.westindesign.co.uk

enq.214



More matt colours as trend continues

Renolit now offers eight Renolit Alkoren Suedette Matt colours with the addition of Alpine Suedette Matt and Graphite Suedette Matt in to their collection of classic 3D forming foils. Matt as a surface finish, continues to increase in popularity and remains a strong market trend for 2013. The introduction of these new items provides the market with attractive high performing products in a range of commercial colours combined with a superior matt surface. Renolit Alkoren Alpine Suedette Matt 46737 is the brightest white in the collection and sits perfectly in the range alongside Platinum White Suedette Matt to increase customers' choice. Renolit Alkoren Graphite Suedette Matt 46770 is dark anthracite grey matched to the Egger Graphite U961 ST2 product to extend the variety of darker options available.

01670 718222 www.renolit.com/design

enq.216

Trion T-Series given CE mark

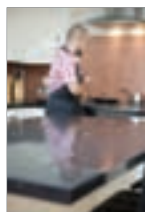


Trion, the air purification specialist for the catering, hotel and restaurant sector, is celebrating after receiving prestigious CE markings for a number of its T-Series models. The T3003, T4004 and T5005 now carry CE markings in recognition that they meet European Union health, safety and environmental requirements.

Contractors and end-users can have confidence that Trion's T-Series range will improve fume and odour removal performance across a greater variety of kitchen exhaust applications. "We are delighted that three models within the T-Series range have achieved CE markings," comments Kevin Bristow, sales director at Trion.

enq.213

Granite doubles the kitchen in TV project



It's tougher than ever for homeowners to move up the property ladder, which has prompted most people to adopt an 'improve not move' mindset, focusing on home improvement instead. Channel 4 series, *Double Your House For Half The Price*, hosted by Sarah Beeny, takes this one stage further, showing viewers how to make the most of property they already own, by extending every which way and maximising their living space. Home makeover expert, **Granite**

Transformations, which makes and installs replacement work surfaces and cabinet doors for kitchens and bathrooms, is at the forefront of the 'improve not move' trend, typically transforming customers' properties in just a day or so.

0800 044 5393 www.granitetransformations.co.uk

enq.215



True scale from Axiom® by Formica Group

Formica Group, a worldwide leader in the decorative laminate market, introduces True Scale, one of the most exciting design additions to its Axiom® kitchen worktop range. Developed by Formica Group, True Scale captures the subtle variations inherent in natural materials such as stone or wood. With no repetition across the full width of the laminate sheet, patterns can be unveiled in their full-size beauty, whether it is on kitchen worktops, breakfast bars or splashbacks. Architects, designers and specifiers can choose from nine Axiom® True Scale decors, which provide a variety of looks and colours to coordinate with any kitchen interior. Black storm, black sequoia, slate sequoia, breccia marrone and breccia pacifica capture the uniqueness of natural stone, the large scale veining and fine detail such as character markings, providing a stunning feature and a focal point for any kitchen.

0191 259 3478 www.axiomworktops.com

enq.217

Specifying stainless steel in kitchens

Stainless steel surfaces and storage are pretty much mandatory for commercial kitchens but what about stainless steel for use in domestic kitchens? Is design of the former best left to commercial kitchen specialists or should even commercial kitchen elements be specified by architects? What factors influence work surface material choice in domestic kitchens? Martin Tye from stainless steel specialists GEC Anderson Limited offers his unique insights and experience to explain

Stainless steel is most commonly associated with commercial kitchens, where the key drivers are principally hygiene and durability but also, to some degree, appearance all tempered with a strong emphasis on economy. Thus, in the realms of commercial kitchen design it is a surprise for other materials to be specified as no suitable alternatives to stainless steel are available.

Precisely the same factors apply to material choice in residential kitchens, though with somewhat different prioritisation. A serious appraisal of requirements in the domestic kitchen often leads the designer to exactly the same choice in work surface material.

Then there are the 'in-between' cases, such as kitchenettes, staff kitchens, communal kitchens, student and shared accommodation not to mention other specialist environments such as medical (consulting rooms, hospital suites, dental surgeries and laboratories), emergency services (police, fire, ambulance), transport, sport, leisure and retail. In many such areas, there may be a distinct requirement for professional, durable, hygienic yet also attractive and professional looking solutions – a hard list to fully satisfy.

Commercial kitchens

Commercial kitchen design and installation is typically dealt with by specialist designers and installers providing turn-key service. This includes all elements, from initial concept and capacity appraisal through to design, supply and installation of all elements, including appliances, services, extraction and stainless steel fabrication.

However, architects and designers are increasingly retaining control of this process through the design and specification of the kitchen, which can often lead to savings in lead times as well as costs due to the standardised options available to them.

Domestic kitchens

What are the key considerations for worktop material choice in the domestic kitchen? Of course durability is important because serious kitchen design requires a material that not only lasts a long time but also that retains its appearance. Design freedom is important, with the ability to specify size, shape, edge profiles, [integrated] sink bowl sizes and positions as well as other provisions such as special tap arrangements and cutouts for appliances such as hobs. It should be hygienic and free of potentially harmful emissions. Ideally, it should be environmentally sustainable and recyclable.

In addition to all of this, it is reassuring to be able to specify



a worktop material that is not a source of worry or concern to the user of the kitchen, for example, placement of hot pans or cutting and chopping directly onto the work surface. All of these factors are then considered and balanced to arrive at a choice.

In-betweener kitchens

Semi-commercial, shared, works and communal kitchens fall into a special category in-between commercial and domestic kitchens. There is often a definite requirement for a hygienic, durable and professional solution but one that may need to have a softer or more domestic appearance. Careful and creative design can provide the most practical yet attractive solution using a combination of stainless steel with other kitchen elements and materials.

In summary, the scope for specifying stainless steel for use in domestic, commercial and semi-commercial kitchens is considerable and this can be a challenging area. However, as with other areas of design, a careful and methodical assessment of client needs and requirements will usually reveal the most suitable solution. The key practical requirements of any serious kitchen design are essentially identical, regardless of whether it is designated for domestic, commercial or semi-commercial use. The difference lies in the weighting or emphasis placed on the key elements of design flexibility, appearance, durability, hygiene and safety. By paying attention to these key requirements it is possible to narrow down choices, leading to a successful specification. At the same time it is essential to be able to specify materials using a sound framework of available options and details. This is something the stainless steel supplier should seek to provide in order to ease the design process and to add certainty for specifiers who are keen to retain control of this often complex and difficult process and to limit unwelcome surprises when materials arrive on-site.

'Key drivers are principally hygiene and durability but also... appearance all tempered with a strong emphasis on economy'

Martin Tye

Examples of stainless steel in kitchens: in a domestic setting (main image and below); and in a commercial kitchen (bottom)



enq.218

Polyflor features in new hospice development



A broad range of **Polyflor** material has been specified and installed throughout Bury Hospice's new £5 million development. Jacqui Comber, chief executive of Bury Hospice commented: "We are delighted with our Polyflor floor coverings; they enhance the environment we were looking to create in our new hospice. The team

at Polyflor were a pleasure to work with and their assistance and advice was invaluable." Polyflor's Forest fx PUR in Rustic Oak was installed in circulation and dining areas, giving a warm and homely feel to the building. Representing the beauty and sophistication of wood, the collection includes authentic reproductions of various wood designs with intricate grains and natural colourways.

0161 767 1111 www.polyflor.com

enq.219

First hygienic wall and ceiling covering



The first range of hygienic wall and ceiling panels to meet stringent European fire safety standards is now available in the UK. **Bepas Hygienic Walls and Ceilings Ltd** has signed an exclusive stock holding deal with US manufacturer **Panolam Industries Inc**, to market its range of Fibreglass Reinforced Plastic (FRP) in the UK. It is the only hygienic cladding material in the UK to achieve B,S2,d0 to EN13501 certification and has been proven to be more fire resistant than traditional

PVC-based panels, giving off significantly less smoke and with lower smoke toxicity. Panolam FRP is widely used in the USA in the food manufacturing industry as well as hospitals, restaurants, fast food outlets, schools and care homes, where public safety and good hygiene are of paramount importance.

enq.221

Yeoman Shield helps protect walls and doors

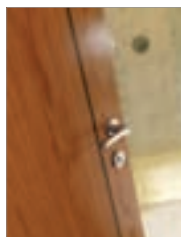


The new improved FalmouthEx from **Yeoman Shield**, UK manufacturer of wall and door protection is the ideal 'fit' to help protect against impact damage. The FalmouthEx has a fine stippled surface, which is ideal for effectively reducing unsightly scratches and abrasions, which inevitably occur in buildings such as

schools, hospitals, cafeterias – anywhere that has to tackle the damage caused by everyday footfall and movement of trolleys and equipment. FalmouthEx can be supplied to match existing Yeoman Shield Rail and Corner Angles. The finish is also available in Yeoman Shield door and wall door protection panels; door edge; frame and architrave; Premier Protection Rail and Handrail and as inserts for a selected range of Yeoman Protection/Handrails.

enq.220

Increased range of FSC® certified doors



'Environmentally conscious' is how James Cadman, **JB Kind**'s managing director, describes the UK's attitude towards the purchase of new doors. With current figures pointing to an expected fourfold increase in the annual sales of FSC certified doors during 2013, JB Kind has increased the number of FSC certified doors by 86 per cent to 79 door designs across 11 ranges. The best news is that JB Kind hasn't made these products cost prohibitive. If you take a look at the price of any of the

FSC certified door designs, you'll see JB Kind's trademark balance of product quality and value for money.

01283 554197 www.jbkind.com

enq.222

TOP QUALITY STAINLESS STEEL

Sinks • Worktops • Storage • Sanitaryware



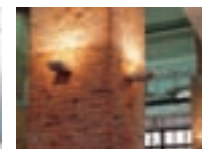
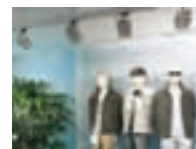
Tel 01442 82 6999
www.gecanderson.co.uk

GEC ANDERSON
the stainless steel specialists

enq.223

MODERN LIGHTING SOLUTIONS

Lighting catalogue with style shots available on request

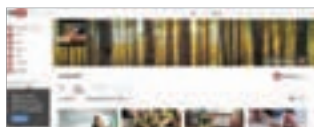


0208 123 7914

www.modernlightingsolutions.co.uk

enq.224

Norbord's impressive YouTube channel



Norbord's informative YouTube channel www.youtube.com/user/norbord01 has been viewed over 200,000 times. A selection of Norbord's videos are listed below. How OSB is made:

<http://www.youtube.com/watch?v=awxhgAMnyTs>

How MDF & chipboard are made:

<http://www.youtube.com/watch?v=-DJypFyptRY>

About Norbord Europe: http://www.youtube.com/watch?v=1UO_A5a25U4

Working with wood panels: http://www.youtube.com/watch?v=E_F7WXiyN-I

Installing a squeak-free floor:

<http://www.youtube.com/watch?v=gOILAdmxEMY>

enq.225

Presenting a new one-stop catalogue



Decorative electrical wiring accessories specialist, and audio and lighting control systems manufacturer **Hamilton Litestat** has launched a new catalogue for architects, designers and specifiers, which is the first of its kind for the company. A4 sized and perfect bound, the catalogue features information on all

Hamilton products in one place for the first time, replacing Hamilton's previous literature, which comprised separate inserts. Each colour-coded chapter contains information on a particular Hamilton range, including wiring accessories collections as well as audio and lighting controls. Details include product images and diagrams, product codes, technical specifications and case studies.

01747 860088 www.hamilton-litestat.com

enq.227

interleaf

flush fitting
continuous hinge




P H O E N I X
C O O K E B R O T H E R S
master hinge makers



01922 740011
www.cookebrothers.co.uk
sales@cookebrothers.co.uk

enq.228

Tiling Contractor of the Year 2013 winner



Congratulations to **N&C Moderna** for being awarded Tile Contractor of the Year 2013 at the prestigious Tile Association awards. N&C Moderna were recognised for being able to offer the complete tiling solution for clients within a wide range of industries, specialising in ceramic, stone, mosaic, porcelain, glass,

geometric and encaustic, heated floors, temporary flooring, wet rooms and more. With their strong market presence, they were acknowledged for being able to offer professional, high quality workmanship, with the ability to undertake any project from large standard domestic installations to carrying out the most intricate and unique commercial applications and design.

enq.226

adf

newsletter

Emailed on a fortnightly basis the Architects Datafile newsletter is designed to provide the architect with the latest information on products and services of interest, direct to their inbox. The reader can quickly gather a snapshot of information from 12 carefully selected companies and easily follow links through to further information on the www.adfonline.eu, or go direct to the company's own website. Brochures and videos are also regularly available.

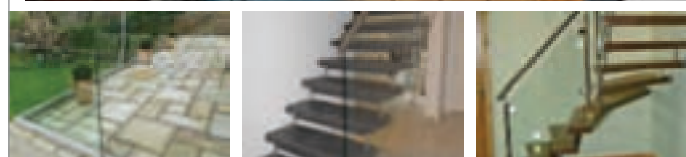


www.adfonline.eu – register now


fivestars



Specialist suppliers of
unique German staircases,
frameless and stainless glass
balustrades



Tel: 01425 611112 Fax: 01425 617773 sales@fivestars.ltd.uk
www.fivestars.ltd.uk

enq.229

Decseal waterproofing for Walsall MSCP



Waterproofing replacement work to a multi storey car park in Walsall's St Matthew's Quarter has been completed using **Stirling Lloyd's** Decseal waterproofing and anti-skid system. Some 5,500m² of the methyl methacrylate resin-based Decseal system has been applied by Stirling Lloyd Construction

to the top deck of the 1,000 space car park. The system applied consisted of primer, membrane and wearing course, with the membrane being reinforced with scrim over the construction joints in the concrete slab. Stirling Lloyd's Decseal system has been designed to cope with the awkward contours, profiles and joints associated with multi storey car parks, decks and ramps.

enq.230

Promat to set bar for passive protection



The 2013 Firex International exhibition will give visitors the opportunity to find out more about the huge range of products and services offered by the UK's leading provider of passive fire protection and high temperature insulation solutions. **Promat UK** will be displaying examples from its comprehensive range of fire protection products and giving an insight into the wide variety of technical support

services it provides. Promat has pioneered the development of products that protect lives and livelihoods for over 50 years. Today, the company offers a comprehensive range of passive fire protection boards, thermal insulation, penetration seals, glazing and spray products.

enq.232



Modular grille system is a versatile performer

Neaco's Techdek modular aluminium grille system is gaining a reputation as one of the most versatile products on the market following its specification for a wide variety of uses in recent years, encompassing everything from solar shading to roof access walkways. A broad range of development projects have variously utilised its unique aluminium open grille profiles in applications such as decking, screening, ventilation, bridge cycle and pedestrian ways, cladding, flooring, staging, balustrade infills and stair treads. Lightweight yet strong and durable, the system has a patented swage-locked construction between bars which enables high structural efficiency. Neaco's national sales manager, Richard Richardson-Derry, comments: "Techdek was conceived primarily as a decking application, but its versatile modular design and the natural attributes of aluminium make it suitable for much broader use. Techdek can adapt to a huge range of angles and unusual curvatures while certain profiles greatly reduce net heat gain of sunlight striking a clear or tinted window."

enq.234

The total solution for tile fixing



The advancement in construction methods, materials and tile technology have put increased demands upon the specifier to recommend the best preparation and fixing products for ceramics, porcelain, mosaics and natural stone tiles to ensure a successful installation. To meet this demand **Norcros** has created a total package solution including technical site visits and NBS M40 specifications, which

supports a comprehensive range of professional products for surface preparation, fixing, grouting and finishing. The full system is covered by the Norcros' lifetime guarantee. Surface preparation products include a rapid repair mortar, new thermal construction boards, Permalayer anti-fracture membrane, acoustic matting and an SBR primer.

enq.231

Premium wood protection from Remmers



Whether skin or wood – protection is important and what counts is the sun protection factor.

Remmers has developed a new product called Long Time Stain UV, which provides considerably better and longer lasting protection from UV-Rays that destroy wood. Whether fences, façades, windows and shutters, doors or garden

furniture, the solvent based, medium solid, translucent coating is designed for universal use on wood outdoors and is a joy to apply. It is drip inhibited and therefore makes overhead work a lot easier. The silk gloss finish repels soil, is easy to maintain and, as the name indicates, the coating protects for a long time.

0845 373 0103 www.remmers.co.uk

enq.233

Recognised again by the Queen's Awards



Three years after achieving its first Queen's Award for Enterprise for International Trade in 2010, London based specialist anti-corrosion, waterproofing and sealing products manufacturer **Winn & Coales International Ltd**, was today again honoured with the same award, recognising its growth in world sales over

the last three years. The new award announced on the Queen's birthday is the result of the combined efforts of the company's UK based staff, subsidiary companies and global network of agents offering proven and cost-effective solutions for corrosion and sealing related problems. Winn & Coales International (established 1883) is celebrating its 130th anniversary this year.

020 8670 7511 www.denso.net

enq.235

adf

news blog

The ADF news blog is accessible from your Mac or PC, laptop, mobile or tablet at any time of day. Its interactive nature allows readers to comment and engage in discussions and social network sharing. The blog links to relevant articles and comment pieces from the national press, so there is no need to go hunting the internet; it's already been gathered and is regularly updated. Following the ADF news blog is now even easier when you subscribe to our daily digest email, a summary of the latest news stories straight to your inbox.

adf-news.blogspot.co.uk

Hot-dip galvanising

Trevor Beech of Wedge Group Galvanizing explains how the galvanising process works and the technology behind it, the common problems associated with products traditionally used to coat galvanized steel, and how a new specially developed paint is set to put these problems firmly in the past

The architecture industry is, like many sectors worldwide, constantly looking for more efficient, effective and commercially viable ways of operating. As a process, galvanising is incredibly flexible, long lasting and environmentally-friendly, and one which can be incorporated into a variety of projects.

In fact, it's the flexibility associated with modern galvanising which has seen it become the finish of choice for projects as diverse as stadia for the 2012 UEFA Championship through to Antony Gormley's most recent sculptures. However, it is also a process that has thrown up a number of practical issues when steel needs to be painted to provide an aesthetically pleasing end result.

Hot-dip galvanising is the process of coating steel with a layer of molten zinc to protect it from corrosion and provide a long-lasting, durable covering. Because it forms a series of zinc alloy layers with the iron in the steel, it is much more robust than other coatings that only bond chemically or mechanically, and it also has the added advantage of fully coating the steel, both inside and out.

The galvanising process starts with cleaning the steel to prepare it, a process that involves the complete removal of light grease, scale and dirt using a variety of techniques. Commonly, the steel is dipped into an alkaline or acidic degreaser and then rinsed before being dipped in a hydrochloric acid rinse at room temperature. The product is then rinsed and dipped in a flux solution, typically made up from zinc ammonium chloride. This final stage removes the last traces of oxide from the surface and coats the product with a thin film of flux. After the steel has dried, it is dipped into molten zinc of temperatures around 450°C, before being immersed in water to cool it, or allowed to cool in air.

When the steel is dipped into the molten zinc, a series of zinc-iron alloy layers are formed. The main thickness of the coating is created at this time, after which the metallurgical reaction slows down, so even if the steel remains in the galvanising bath for a considerable time, it will not form an overly thick protective layer. Typically, items will be dipped for an average of four to five minutes, and when removed, a layer of pure molten zinc will be taken out on top of the alloy. It is this that cools and results in the bright, shiny appearance generally associated with newly galvanised products.

Once steelwork has been galvanised, there may be occasions when colour needs to be added to either complement a company's existing branding, or perhaps to create a greater



visual impact – whether it's steel balconies or gates at housing developments, steel street furniture or large-scale structural metalwork on major building projects. When paint or another coating is applied to galvanised steel the resulting combination is known as a duplex coating and, in addition to aesthetic reasons, may be applied to increase the economic life of a structure or provide additional protection in environments that are particularly aggressive.

The biggest challenge in adding colour to galvanised steel is achieving proper adhesion and most problems start with pre-treatments, poor surface preparation or the wrong of choice of coating system. Standard paints are designed for use on ferrous metals, which often means that when used the paint doesn't bond adequately to the galvanised surface and consequently peels or flakes prematurely.

There are paints available that eliminate the requirement for any special etch primers and give GT0 adhesion for the entire duration of its coating. GT0 is a classification that meets the British Standards method for testing the adhesiveness of paint to steel (BS 3900 Part 6 on Galvanised Steel). This test involves a painted steel surface being cross-cut to leave small squares, which when sticky tape is applied over, will rip the paint from the steel if the bond isn't strong enough – GT0 classification is only achieved in instances where the tape cannot remove any paint from the steel, proving its adhesive qualities.

The benefit of these specially formulated paints is that they

Continued overleaf...

'It's the flexibility associated with modern galvanizing which has seen it become the finish of choice for projects as diverse as stadia for the 2012 UEFA Championship through to Antony Gormley's most recent sculptures'

Trevor Beech



are suitable for all spray systems and brush applications, benefit from UV exposure resistance, and can be painted directly onto freshly galvanised steel via a single coat. Once applied, the effect can last for a minimum of 8-10 years – in many instances, the original colour is retained to within 5 per cent for as long as 20 years.

Galvanising as a process has seen a resurgence in recent decades, due in no small part to its relatively low environmental

burden and the improved economies of scale the process offers. The corrosion protection it provides enables the benefits of steel, including its formability and relatively lightweight to be fully realised, with the added benefit that it can be recycled constantly without significant deterioration. And, with the increasing availability of successful methods of painting galvanised steel, contractors and specifiers are being provided with an even greater element of design freedom.

enq.236

Protecta Kote
DURABLE ANTI-SLIP COATING

Protecta-Kote Anti-Slip Paint
Protectakote and Protectakote UVR are some of the toughest and most flexible Anti Slip paints on the market today. Please note that we recommend using the UVR version for long term external applications which will be fully subjected to the effects of weathering.

Product Uses:

- Bridges, steps, walkways, decks,
- Ramps for wheelchair access,
- Load areas, vehicle linings
- Changing rooms, showers, decking

Features:

- Anti-Slip, impact resistant, non-abrasive, Long lasting
- Tough & Weather resistant,
- Anti-slip, Bonds to most surfaces

Colours: Black, Dark Grey, Red, Blue, Dark Green, UVR Colours: Yellow, White, Red, Green, Olive Green, Blue, Mid-Blue, Cream, Sand, Black, Mid Grey, Light Grey, Nut Brown, Transparent

Sizes: 1 litre, 4 litre packs

For Orders/Information/Stockists
Tel: 0845 430 4030 or go to
www.newventureproducts.co.uk

Trade Enquiries Welcome

Supplied by

NVP
NEW VENTURE PRODUCTS

VISA
MasterCard
VISA
Digital

enq.237

Kingfisher Exterior Lighting

Exclusive UK partners of Italian lighting manufacturers, AEC and Arcluce.

When it comes to design, let Italian vision, style and quality bring your project to life

www.kingfisherlighting.com/aec
www.kingfisherlighting.com/arcluce
01623 415900

Kingfisher
Exterior Lighting

Armonia by AEC
Tresham College, Corby
Installed by Kingfisher Lighting

enq.238

Galvanised coatings of distinction

Powdertech (Corby) Ltd is entering the prestigious Galvanizers Association Galvanizing Awards (GAGA 2012) with two notable projects in the Duplex Category for projects that feature galvanised steel with an organic coating.

"This year is the 20th anniversary of the competition," explained Powdertech sales director, Richard Besant.

"So I think it is about time we stood up to be counted among our peers. We are particularly proud of our work at Gresham Mill in Berkshire, where we coated architectural galvanised metal on the exterior of the carefully restored Victorian façade. At Heron Quays on Canary Wharf the approach was entirely contemporary: we galvanised and powder coated the perimeter balustrade around a pontoon. Entering and attending an awards ceremony like this is inspiring; we appreciate the aesthetic and performance qualities of projects we have worked on and we have the opportunity to admire the work of others in the same field."

The winning projects will be announced at the Awards ceremony on 27 June 2013 at the Royal Aeronautical Society in the West End of London.

The Galvanizers Association is the source of free information and advice about the hot dip galvanising process and the galvanising industry. For further information on Powdertech (Corby) Ltd and the benefits of powder coating please call today.



Heron Quays



01536 400890

richard.b@powdertech.co.uk
www.powdertechcorby.co.uk

enq.239

classified & directory

ACOUSTICS

Inspired Noise Solutions Ltd
 Unit 17, Evans Business Park, North Road,
 Ellesmere Port CH65 1AE
 Tel: 0151 348 8945 Fax: 0151 348 8946
 Mob: 07787 108 480
 Email: info@inspirednoise.com
www.inspirednoise.com

Reader enquiries online at
www.adfonline.eu

BABY CHANGING UNITS

Baby Point Ltd
 Unit 15, Tomo Business Park, Stowmarket,
 Suffolk, IP14 5EP
 Tel: 01449 770607 Fax: 01449 678444
 Email: sales@babypoint.co.uk
www.babypoint.co.uk

Baby Point is an ISO 9001 UK based company specialising in the design and production of commercial baby changing equipment. All products are developed and tested to comply with the European Standard for the design of baby changing equipment BSEN 12221- 1: 2008.

BATHROOMS & SHOWERS



Enq. 501

COLUMN CASINGS

Encasement Ltd
 Peartree Business Centre, Enterprise Way,
 Bretton, Peterborough PE3 8YQ
 Tel: 01733 266 889 Fax: 01733 268 999
 Email: sales@encasement.co.uk
www.encasement.co.uk

Reader enquiries online at
www.adfonline.eu

FIRES & FIREPLACES

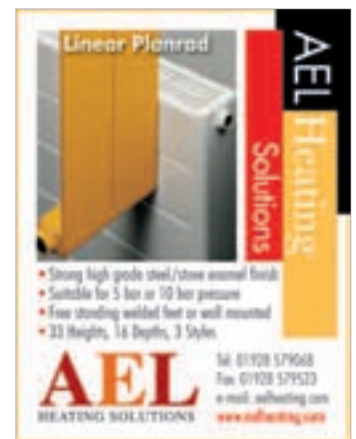
Emsworth Fireplaces
 Station Approach, Emsworth PO10 7PW
 Tel: 01243 373 300
 Email: showroom@stoneandfire.co.uk
www.stoneandfire.co.uk

Reader enquiries online at
www.adfonline.eu
 If you're interested in advertising
 within this section please contact
 the sales team on
01435 863500

Opies Uk Limited
 PO Box 10514, Hatfield Peverel
 Essex, CM3 2WT
 Tel: 01245 468977 Fax: 01245 469499
 Email: opiesuk@googlemail.com
www.john-opie.co.uk

Distributors of Skamolux Vermiculite and Calcium Silicate fireproof insulation & refractory panels to line fireplaces & fireboxes and for the construction of chimneys & fire chambers in New Builds. All non-combustible materials, light weight, easy and quick to work with.

HEATING & VENTILATION



Enq. 502

Reader enquiries online at
www.adfonline.eu
 If you're interested in advertising within this
 section please contact the sales team on
01435 863500

Continued overleaf...

classified & directory

HOME AUTOMATION

AV WOW Limited T/A
Premiere Home Cinema, 43 Wellesley Road
Clacton on sea, Essex, CO15 3PL
Tel: 01255 221 655
Email: info@premierhomecinema.co.uk

www.phcinstall.co.uk

Reader enquiries online at
www.adfonline.eu
If you're interested in advertising
within this section please contact
the sales team on
01435 863500

INSECT SCREENS



INSECT SCREENING
UK'S LARGEST WHOLESALE
TRADE SUPPLIER
Tel: 01603 897 799
Email: sales@flydor.co.uk
www.flydor.co.uk
Please mention Architects DataFile
when responding to the advert

Enq. 503



The Flyscreen Company
• Flyscreen Systems for Windows & Doors
• Insect Mesh for Cladding & Ventilation
Tel: 01454 238288 Fax: 01454 238188
sales@theflyscreen.com www.theflyscreen.com

Enq. 504

Reader enquiries online at
www.adfonline.eu
If you're interested in advertising
within this section please contact
the sales team on
01435 863500

LANDSCAPING & EXTERNAL WORKS

SaIGE Longlife Decking
Vicarage Barns
Lower Quinton, Stratford-upon-Avon
Warwickshire CV37 8SH
Tel: 01789 721 576 Fax: 01789 721 062
Email: info@saigedecking.com
www.saigedecking.com

LIFTS & ESCALATORS



SAXON
Scissor lifts for
all applications
direct from the
manufacturer
SAXON LIFTS LTD
Unit 10, The Enterprise, 100-102, St. Albans Road,
St. Albans, Herts. SG8 5LH
Tel: 01438 755555 Fax: 01438 755556
Email: sales@saxonlifts.co.uk www.saxonlifts.co.uk

Enq. 505

LIGHTING



Lumisphere™
Lighting Solutions
www.lumisphere.co.uk
NEW PRODUCTS NOW AVAILABLE
TEL: +44 (0) 1245 329889

Enq. 506

LIQUID ROOFING & WATERPROOFING

KEMPER SYSTEM LTD
Kemper House, Mill Lane, Winwick Quay
Warrington WA2 8RJ
Tel: 01925 445532
Email: enquiries@kempersystem.co.uk
www.kempersystem.co.uk

Liquid Roofing and Waterproofing Association (LRWA)
Roofing House, 31 Worship Street
London, EC2A 2DY
Tel: 0207 448 3859 Email:
info@lrwa.org.uk
www.lrwa.org.uk

www.adfonline.eu

NATURAL STONE LANDSCAPING PRODUCTS

Natural Paving Products (UK) Ltd
Belton Road, Sandtoft, Doncaster
North Lincolnshire, DN8 5SX
Tel: 0845 072 1150
Email: sales@naturalpaving.co.uk
www.naturalpaving.co.uk

PLANNING SERVICES

AFA Planning Ltd
Creativexchange Business Centre, St. Neots
Cambridgeshire, PE19 1TE

www.afaplanningconsultants.co.uk

AFA Planning Consultants are a national
planning firm that specialise in obtaining
planning permission within: residential,
commercial and agricultural sectors for both
private and commercial clients. Please feel free
to contact us regarding your planning issue.

Reader enquiries online at
www.adfonline.eu

ROOFING & CLADDING

Aluminium Roofline Products
Units 2 Vitruvius Way
Meridian Business Park, Braunstone
Leicester LE19 1WA
Tel: 0116 289 44 00 Fax: 0116 289 44 33
Email: sales@arp-ltd.com
www.arp-ltd.com

SOLAR SHADING (BRISE SOLEIL)

Levolux Limited
1 Forward Drive, Harrow
Middlesex HA3 8NT
Tel: 020 8863 9111 Fax: 020 8863 8760
Email: info@levolux.com
Reg: Levolux Ltd - 1834176
www.levolux.com

SWIMMING POOLS

Pool Cover UK - Swimex Ltd
Box 84, Oundle, PE8 4XA
Tel: 01832 275 333
Freel: 0800 804 8025 Fax: 01832 275 111
Email: sales@poolcover.co.uk
www.poolcover.co.uk

TENSILE FABRIC STRUCTURES

J & J Carter Limited
Unit 2, 34 Walworth Road
Walworth Business Park
Andover, Hampshire, SP10 5LH
Tel: 01264 721 630 Fax: 01264 721 649
Email: sales@jjcarter.com
www.jjcarter.com

THEATRE SUPPLIES

Lancelyn Theatre Supplies
Ferry Hinksey Road, Oxford, OX2 0BY
Tel: 01865 722 468
Mobile: 07889 368503
Email: projects@lancelyn.co.uk
www.lancelyn.co.uk

TILES & TILING

Solus Ceramics
Warwick Road, Sparkhill, Birmingham
Worcestershire, B11 2QX
Tel: 0121 7530777
Email: sales@solusceramics.com
www.solusceramics.com

Reader enquiries online at
www.adfonline.eu
If you're interested in advertising
within this section please contact
the sales team on
01435 863500

TIMBER & JOINERY



OAK BEAMS
IMMENSE STOCKS
WIDE OAK FLOORBOARDS
BRICKS, PIG TILES ETC.
BARN FRAMES, FOR RE-SECTION
ANTIQUE BUILDINGS LTD
Tel: 01483 300477
www.antiquebuildings.com

Enq. 507

Collecta
Unit D Norman Close, Medway Valley Park
Rochester, Kent, ME2 2JU
Tel: 08456 717174
Email: info@collecta.co.uk
www.collecta.co.uk

Courtyard Designs
Hollywall Farm, Stoke Prior,
Leominster, Herefordshire, HR6 0NF
Tel: 01568 760540
Email: enquiries@courtyarddesigns.co.uk
www.courtyarddesigns.co.uk

Reader enquiries online at
www.adfonline.eu

WINDOW CONTROLS



WINDOW OPERATORS
Manual + Electric
New + Repairs
Telex + Clearline + others
For High Level & Awkward
to reach Situations
Contact: Woodland Properties
T/F: 01344-886459

Enq. 508

The sliding and folding door range with all the answers



**BI-FOLD DOOR
FACTORY**

- BIFOLD DOORS
 - SLIDING DOORS
 - WINTER GARDENS
 - CURTAIN WALLING
 - STRUCTURAL GLAZING
 - WINDOWS
- NATIONAL SALES LINE | **08443582227**



INFO@BIFOLDDOORFACTORY.CO.UK | WWW.BIFOLDDOORFACTORY.CO.UK

Green Technology for the Blue Planet
Clean Energy from Solar and Windows

JK WINDOWS MIDDLESEX LTD T/A BIFOLD DOOR FACTORY

reader
enquiry
402

SCHÜCO

YEOMAN SHIELD SET TO BRIGHTEN UP INTERIORS

New from Yeoman Shield - the 20mm Contra Strip.



Available in a palette of 34 colours, the strip can be used with great effect to add a band of colour to the following Yeoman Shield products:

- 125 and 200mm Protection Rail
- Guardian Handrail
- Standard Corner Protection Angle
- Ultra Corner Protection Angle



reader
enquiry
403

Please check out our new website www.yeomanshield.com

Yeoman House,
Whitehall Industrial Estate,
Whitehall Road, Leeds, LS12 5JB
T: 0113 279 5854 F: 0113 231 0406
E: sallyann@yeomanshield.com