

October 2013

# adf architects datafile

Sports & leisure facilities:  
Derby Velodrome

Hotels: BLOC Hotel Gatwick

Education Estates  
show preview

Plus the latest news, events  
and products



external cladding & facades • floors & floor coverings  
disabled products & services • access control & perimeter security

[www.adfonline.eu](http://www.adfonline.eu)

incorporating  
**BUILDING**  
**PROJECTS**



POWDER COATINGS.

## IGP-HWF *superior* 57

Highly weather-resistant super durable polyester powder coating for more colour stability and weathering resistance.

### High performance colour and gloss retention

Design and surface together create added value, which has to be more than temporarily effective.

Highly weather resistant powder coatings from IGP Pulvertechnik AG are among the technologies which provide long-term protection against environmental and climatic influences and which are demonstrably easier to clean.

### Maximum weathering stability

According to the codes of the quality standard associations, one of the most relevant test requirements for highly weather-resistant powder coatings for use in architecture is the three-year open air weather exposure of test samples in Florida (ISO 2810).

IGP-HWF *superior* 57 exceeds the requirements for the three-year exposure time in Florida by another two years and even under extreme conditions preserves its aesthetic appearance.

IGP-HWF *superior* 57 closes the performance gap within our architectural range of polyesters with weather resistant plus.

### Anodised effect powder IGP DURA®*xa* 42

IGP-DURA®*xa* 42 is a deep matt acrylic-copolymer powder, with a velvety finish quality, free from sheen, for high quality architectural and design applications, with 3 years Florida approval.

### Architectural polyester powder IGP DURA®*face* 58

The product range of IGP's standard series is available in a wide variety of qualities, surface types and an extensive colour range. This series is also available with our innovative IGP-DURA®*clean* effect.

All the above architectural powders from IGP cover all your requirements for location, cost, and weathering stability.

Photo captions:

Dashwood House, London (1); Zebra Tower, Warsaw (2).



1

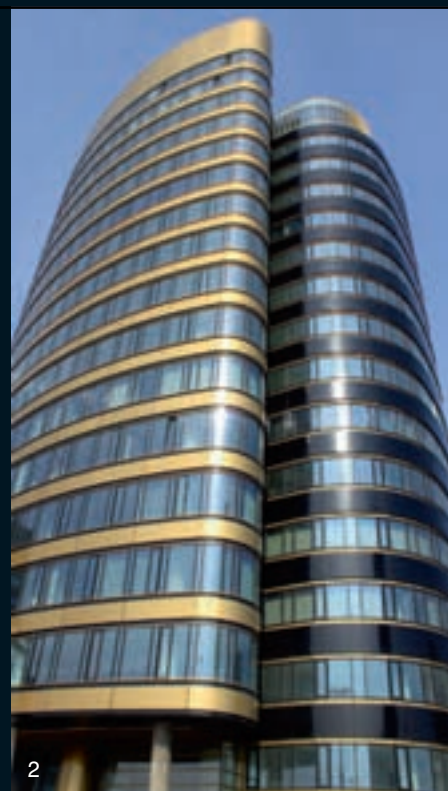
### Contact Gary Ziolkowski for project requests:

IGP UK  
Unit 8, Yate Campus  
10 North Rd, Yate  
GB-Bristol BS37 7PA  
Phone +44 (0)1454 800 020  
gary@igpuk.com  
www.igp.ch

IGP Pulvertechnik AG  
Ringstrasse 30  
9500 Wil  
Switzerland  
www.igp.ch info@igp.ch

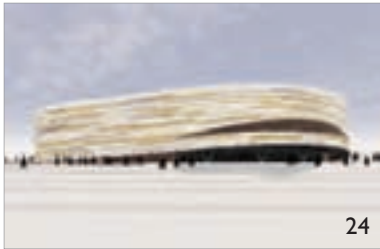
**Swiss quality**

reader  
enquiry  
401

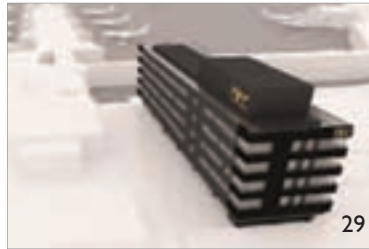


2





24



29

projects

### 24 Racing for success in Derby

Emerging from the 2012 Olympics, the new Derby Velodrome will not only be a significant development for Derby, but part of the legacy we see shaping our renewed and continuing competitive sports culture. Steve Menary reports

### 29 Small chain is big on new ideas for building hotels

For many business travellers, an overnight stay in a cheap hotel is something to be endured rather than enjoyed. Not any more. A drab office block overlooking the runway at Gatwick Airport is about to become the latest example of a design revolution, as Ray Philpott reports

features

### 45 EXTERNAL FIXTURES: EXTERNAL CLADDING & FACADES

#### Well-insulated and perfectly ventilated

William McDowell, business director, UK & Ireland at ROCKPANEL, discusses the benefits of installing rainscreen cladding to achieve a beautiful façade together with efficient insulation giving the building an optimal living environment

### 55 INTERIORS: FLOORS & FLOOR COVERINGS

#### Rubber flooring – The sound investment for buildings

Guy Stanton, Nora UK managing director, discusses the benefits of rubber flooring for a wide range of projects

### 61 DISABLED PRODUCTS & SERVICES

#### Choosing the right door closer to assure accessibility

By Mark Stonelake, technical manager at Samuel Heath

### 63 SAFETY & SECURITY: ACCESS CONTROL & PERIMETER SECURITY

#### Specifying perimeter security equipment

By Sally Osmond, brand and development manager at Frontier Pitts

news & events

- 4 Industry News
- 9 Events
- 15 CPD Focus

### HEADLINES

- 5 Astley Castle wins the RIBA Stirling Prize 2013
- 7 Planning: A futile reform for a pointless outcome
- 13 Reinventing the house of the future



products

- 35 Show Preview
- 20 Editor's Focus
- 16 News & Appointments
- 33 Planning & Design
- 33 Groundworks
- 34 Structural Elements
- 36 External Fixtures
- 46 Insulation
- 47 Heating, Ventilation & Services
- 50 Interiors
- 58 Disabled Products & Services
- 62 Safety & Security
- 64 Landscaping & External Works
- 66 Classified & Directory



Cover image © Rikard Soderstro. Emporia shopping centre in Sweden designed by Wingårdh Arkitektkontor. See page 3 for details

**Publisher/Editor**  
Simon Reed

**Assistant Editor**  
Gabrielle Vinyard  
gabrielle@netmagmedia.eu

**Editorial &  
Production Assistant**  
Sarah Meikle

**Contributors**  
Steve Menary  
Ray Philpott

**Sales Director**  
Lesley Mayo

**Advertisement Manager**  
Anthony Parker  
anthony@netmagmedia.eu

**Sales Executives**  
Suzanne Easter  
Kim Friend  
Steve Smith

**Circulation/Reader  
Enquiry Service**  
Jane Spice



netMAGmedia Ltd  
Cointronic House  
Station Road, Heathfield  
East Sussex, TN21 8DF

**Advertising &  
Administration**  
t 01435 863500  
f 01435 863897  
info@netmagmedia.eu  
www.adfonline.eu

**Press Releases**  
editorial@netmagmedia.eu

Supporter of



Annual subscription costs just £48 for 12 issues, including post and packing. Phone 01435 863500 for details. Individual copies of the publication are available at £5 each inc p & p. All rights reserved

No part of this publication may be reproduced or transmitted in any form or by any means, electronic, mechanical, including photocopying, recording or stored in any information retrieval system without the express prior written consent of the publisher. Although every effort is made to ensure the accuracy and reliability of material published in Architects Datafile, the publisher can accept no responsibility for the claims or opinions made by contributors, manufacturers or advertisers. Editorial contributors to this journal may have made a payment towards the reproduction costs of material used to illustrate their products. The manufacturer of the paper used within our publication is a Chain-of-Custody certified supplier operating within environmental systems certified to both ISO 14001 and EMAS in order to ensure sustainable production. Printed in England



Scan the code with your mobile phone using QR code software to view the latest news from [adf-news.blogspot.co.uk](http://adf-news.blogspot.co.uk)

## 10x10 Drawing the City London, Roger FitzGerald draws Brick Lane

In September world-renowned artists, architects and designers took part in the 10x10 Drawing the City London weekend, helping to raise funds for the UK's leading architectural and construction aid charity, Article 25.

A section of London was divided into a 10x10 grid with each of the 100 squares allocated to a prominent architect, designer or an artist. Entitled 'Where the Bow Bells Chime', after the notion that to be a true East Londoner you must be born within earshot of the Bow Bells in St-Mary-le-Bow church, this year's 10x10 drawing weekend took



in areas such as Hoxton, Shoreditch and the Barbican.

The artwork created is due to go on display to the public from 21-28 November at 1 Granary Square, London. Visitors will then have the opportunity to bid for selected pieces by attending a special charity live auction event on the 28 November.

Roger FitzGerald, chair of ADP, comments: "I have tried to capture Brick Lane, full of colour and life: the restau-

rants and food stalls, multiple signs, adhoc street music, tempting smells, the bustle of people. As well as acrylic paint and black ink, the painting incorporates a collage of discarded menus, bags, cutlery, tickets, labels, the cover and extracts from Monica Ali's book "Brick Lane", and remnants of a palette knife which broke whilst creating the painting – included to represent the sharp edgedness of the place."

enq. 601

### AWARD

## Carrer Avinyó named World Interior of the Year 2013 at international award ceremony

David Kohn Architects' Carrer Avinyo apartment in Barcelona has tonight been crowned the best interior design of 2013 at the **INSIDE: World Festival of Interiors** award ceremony at the Marina Bay Sands Hotel in



Singapore. The winning design was announced after beating 55 other nominations to the prize.

The refurbishment of the apartment in Barcelona's gothic quarter (left) features an open plan living room, bathroom and three bedrooms – two-stacked one above the other with the third joined by an elevated mezzanine level. Kohn has remodelled the space, removing partition walls and harmonising the apartment with the medieval streets beyond, to create a pied-à-terre for his clients, two brothers, who had lived there for some time.

For more about the David Kohn

Architects' Carrer Avinyo apartment as well as the runners up (including the Emporia shopping centre in Malmö, Sweden by Wingardh Arkitektkontor, as seen below and on the cover.)

Visit [adf-news.blogspot.co.uk](http://adf-news.blogspot.co.uk) and enter reference number 39280 to view more information.



## AWARD

## Astley Castle in Warwickshire by Witherford Watson Mann Architects wins the RIBA Stirling Prize 2013 for the best new building of the year

Astley Castle, a groundbreaking modern holiday home inserted into the crumbling walls of an ancient moated castle, in Warwickshire by Witherford Watson Mann Architects has won the coveted **RIBA Stirling Prize 2013** for the best building of the year. Now in its 18th year, the RIBA Stirling Prize is the UK's most prestigious architecture prize. It is the first time that either a house or a conservation project have won the prize.

The presentation of the RIBA Stirling Prize trophy to Witherford Watson Mann Architects took place at a special ceremony this evening (Thursday 26 September) at Central Saint Martins, King's Cross, London.

Astley Castle is a 12th century fortified manor which had been lying in ruins since a fire gutted it in 1978. When the architects came to work on the building it was in a state of collapse and on the Heritage at Risk Register. What has been built is no straightforward restoration, the building had seen additions and revisions carried out in almost every century since Medieval times, so knowing which period to emulate would have been impossible. The architects solution was to stabilise the ruin and create the next layer of the building's history. The result is a highly complex and original new house giving the castle's visitors a truly unique experience.



Speaking tonight, RIBA President Stephen Hodder said: "Astley Castle is an exceptional example of how modern architecture can revive an ancient monument. It is significant because rather than a conventional restoration project, the architects have designed an incredibly powerful contemporary house which is expertly and intricately intertwined with 800 years of history. Every detail has been carefully considered, from a specific brick pattern to the exact angle of a view, resulting in a sensually rich experience for all who visit. This beautiful new building is a real labour of love. It was realised in true collaboration between a visionary client, designer and contractors. I am delighted to present Witherford Watson Mann with the 2013 RIBA Stirling Prize."

This is the first time Witherford Watson Mann has won or been short-listed for the RIBA Stirling Prize. Their previous buildings include the Amnesty International UK headquarters, the



Whitechapel Art Gallery extension in London with Robbrecht en Daem, and Arts Council Manchester.

Anna Keay, director of Landmark Trust, who commissioned Witherford Watson Mann Architects to work on Astley Castle said: "We are absolutely thrilled with what WWM have achieved at Astley Castle. The Landmark Trust found their approach compelling from the moment they first described it, and their commitment to immaculate quality in execution was truly remarkable"

# NEW MIPOLAM

## FUTURE-PROOF FLOORING



### NOW WITH EVERCARE™!

Mipolam is now finished in Evercare™, a revolutionary surface treatment that's setting new standards in stain and chemical resistance, as well as improved non-slip performance. Evercare™ is available on six distinctive Mipolam designs and 120 exciting colour-ways, striking a perfect balance in appearance and performance. Future-proof your interior with Mipolam.

Contact us for the brand new 2013/2014 Collection Catalogue.

Tel: 01926 622 600

Email: [contractuk@gerflor.com](mailto:contractuk@gerflor.com)

Visit: [www.gerflor.co.uk](http://www.gerflor.co.uk)

Follow us on Twitter: [@gerfloruk](https://twitter.com/gerfloruk)



Mipolam Symbioz™, Circle Hospital (Reading).



enq.101



# CE MARKED ROOF AND WALL SYSTEMS<sup>1</sup>



**CE Marks the spot for your peace of mind.**

As of 1st July 2013 it is illegal to sell construction products that are not CE Marked<sup>2</sup>. Not a problem. All components of Elite Systems that can be CE Marked are CE Marked. What's more, our standard profiled sheets manufactured using pre-finished steel from Tata Steel have carried the CE Mark for more than five years.

As well as providing attractive design, lean costs, high performance and minimal environmental impact, Euroclad are now manufacturers of roofing and cladding systems that are CE Marked. So, if you specify, buy or install Elite Systems you can be safe in the knowledge that every component is fully compliant with the latest regulations.



And Elite Systems do not just conform; they lead. A 25 year system guarantee is available and systems can be used to help you achieve a building solution that is CarbonNeutral<sup>®</sup>. Elite is an approved cladding system for Confidex Sustain<sup>®</sup>, exclusively from Tata Steel, using Colorcoat HPS200 Ultra<sup>®</sup> or Colorcoat Prisma<sup>®</sup>. Step up to the CE Mark by choosing Elite Systems.



Wentloog Corporate Park Cardiff CF3 2ER  
T: **029 2079 0722** E: [sales@euroclad.com](mailto:sales@euroclad.com)  
I: [www.euroclad.com](http://www.euroclad.com)

Colorcoat HPS200 Ultra,  
Colorcoat Prisma and Confidex  
Sustain are registered trademarks  
of Tata Steel UK Limited.

<sup>1</sup>Metal roof and wall systems like Elite Systems cannot be CE Marked but every component that makes up an Elite System that is eligible for CE Marking comply with the CE regulations. <sup>2</sup>If they are covered by a Harmonised Standard or ETA.





## A futile reform for a pointless outcome

Paul Graham, MD of cost-effective, bespoke project lead provider Planning Pipe ([www.planningpipe.co.uk](http://www.planningpipe.co.uk))

A year ago at the Tory Party conference in Birmingham, David Cameron hit out at the “yes but no” people. “The ones who say ‘yes, our businesses need to expand, but no we can’t reform planning’.” He pledged to “cut through the bureaucracy”, with a prime ministerial target of “getting the planners off our backs”.

With promises made, a series of reforms were enacted, designed to help stimulate economic activity and encourage construction work at a local level. One notable reform was to allow bigger home extensions – or as politicians put it “to meet the aspirations of families that want to improve a home”.

The proposals were met with a series of responses, mainly negative, from a broad range of the interested parties. The Local Government Association thought it was a “myth” that the planning system was preventing householders from undertaking improvements. Many Tory councils feared this would give the green light to “unsightly and out-of-place development”. However it was the House of Lords’ fears about a surge in neighbour disputes that prompted a watering down of the proposals before they were finally enacted at the end of May this year.

So have the proposals provided a spur for new applications for house extensions? Planning Pipe looked at 44,000 house extensions in the three months before and after the May 30 change across the English regions (where the changes were enacted) and across Wales, Scotland and Northern Ireland (where they were not). The result?

The story of this one reform reveals much about the tensions that surround the UK’s planning system. Stage one started with the principled and understandable desire of the politicians to cut planning red tape and promote an individual’s and a community’s freedom to act and innovate. Who, after all, wants a planning officer “on their back”? Stage two carried the broad support into the specific proposals and then into the constricted box of solutions acceptable to industry and the environmental lobby. Who, after all, wants to blight neighbourhoods and set neighbour against neighbour? The “new relaxed” rules on house extensions that finally emerged therefore balanced the desires of reformers, while respecting the legitimate concerns of communities. In other words, not wholly dissimilar to what was in place before the whole process started.

In the case of this house extension reform, what we have ended up with is a hybrid of two existing permission regimes – the full planning application process and the Lawful Development Certificate (LDC) process. We still have a 49 page Technical Guidance document to explain whether extensions constitute permitted development. If you live in a flat, maisonette, listed building or anywhere in a conservation area, then you are still unaffected anyway.

It is of course true that applicants will save around £170 in

local authority fees and will wait six weeks rather than eight weeks for a decision. You could argue that any saving in time and money in the planning process is worthwhile. However you can also argue that the juice is not really worth the squeeze. The DCLG forecast, as a result of this relaxation, shows that there would be an increase of just 1.7 per cent in the number of house extensions over a 12 month period. So what has actually happened?

Planning Pipe’s analysis shows that in the three months since this reform there has been (due to seasonality) a fall in house extensions across the UK of 9 per cent compared to the three months preceding the reform. Oh dear. That fall has been less in England than in Wales, Scotland and Northern Ireland – which might be interesting – before you then dig deeper and see that in England there is a wide disparity of ups and downs in application numbers across different English regions post reform. Good luck in picking out the 1.7 per cent impact of this reform. In fact the planning statistics are unlikely to tell us anything about the impact of this reform – as the reality is that it brought about very little actual change.

This is either a depressing tale of futile attempts to rail against a bureaucratic planning monster or a revealing insight that the planning system is a self-correcting mechanism, honed over many years, that more or less strikes the right balance between delivering regeneration and protecting the environment. Future attempts at impactful reform that genuinely stimulate the construction industry may better be directed elsewhere.

enq. 602

## news bytes

Visit [adf-news.blogspot.co.uk](http://adf-news.blogspot.co.uk) and enter the reference number to view more information

Investors require a faster and cheaper building process...  
Ref: 29419

The Construction Industry Council (CIC) announces DQI brand refresh – [www.dqi.org.uk](http://www.dqi.org.uk)...  
Ref: 82056

Homelessness is not just for Christmas, it’s an all year round concern...  
Ref: 39854

Falkensteiner opens a new flagship city hotel in Vienna and launches a new premium city hotel concept...  
Ref: 33952

## London’s new performing arts venue

Milton Court, a new state-of-the-art facility for London’s Guildhall School of Music & Drama designed by **David Walker Architects** and RHWL Arts Team – has been completed and opened on 26 September. With a 608-seat concert hall and 223-seat theatre, it will extend the range of performance venues that form part of the City of London’s cultural quarter and offer students of one of the UK’s leading conservatoires larger, professional-standard facilities. The design was conceived by David Walker Architects, initially on behalf of the City of London Corporation. When Heron International won the competition to become the Corporation’s development partner, it appointed RHWL Architects as lead consultant, with David Walker Architects as design architect and RHWL Arts Team as architect and designer for the new Guildhall School of Music & Drama facility.

Visit [adf-news.blogspot.co.uk](http://adf-news.blogspot.co.uk) and enter reference number 71954 to view more information.





# Industry hits the heights on inspirational evening



The most prestigious evening in the industry diary returned to the Ricoh on the 12 September. 800 heavy-hitters enjoyed themselves as host Nick Hewer and comedian Jimmy Carr took to the stage for the **Energy Efficiency & Renewables Awards** supported by NatWest.

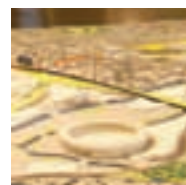
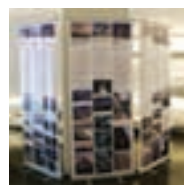
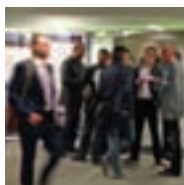
Having established itself in recent years as 'the one to win', scores of successful, shortlisted businesses eagerly anticipated the announcement of the award winners. Winners included John Felgate of Stiebel Eltron who won the Contribution to Energy Efficiency and Wilo's Yonos-Picos, which won the Green Innovation category.

There was a host of awards for people, projects & products, but as always it was installing businesses that took centre stage, with the ultimate accolade, Energy Efficient Installer of the year, sponsored by Plumb Center, going to Glevum Heating from Gloucestershire.

The Energy Efficiency & Renewables Awards 2014 will open for nominations on February 1.

For further information on next years awards email [team@energiseevents.co.uk](mailto:team@energiseevents.co.uk). *The winners in full can be found by visiting the [adf-news.blogspot.co.uk](http://adf-news.blogspot.co.uk) and entering reference number 84353.*

## EVENING NETWORKING EVENT



**21 NOVEMBER 6.30-9.30PM**

**THE BUILDING CENTRE, STORE STREET, LONDON WC1E 7BT**

In association with



- > **NETWORKING WITH INDUSTRY PROFESSIONALS**
- > **TOUR THE BUILDING CENTRE INCLUDING THE PIPERS CENTRAL LONDON MODEL**
- > **BROWSE THE BUILDING PROJECTS GALLERY**
- > **PARTICIPATE IN 2 CPD SEMINARS FROM STELRAD & ARMSTRONG CEILINGS:**



Introduction to concept of serial feed radiators, explaining the differences between standard parallel feed radiators and the serial feed option



Helps specifiers better understand where and how Phase Change Materials (PCMs) can be used to create an energy efficient environment and how they play a role in high-performing sustainable properties

### BOOK NOW

Tickets are priced at **£24.99** each and include access to all of the listed highlights as well as drinks and nibbles. Places are available on a first come, first served basis, so book now to ensure your space. We hope to meet you there! For further details, please contact Lesley Mayo on **07767 116838** or email [lesley@netmagmedia.eu](mailto:lesley@netmagmedia.eu) and for tickets, visit <http://netmagevents.eventbrite.co.uk/>





## events

# Calling all architects – have you got what it takes to be a 2014 SPAB Scholar?

*'The Scholarship exceeded all my expectations. A rare opportunity to meet so many people who have the skills to match their passion for conservative repair'*

2013 Scholar Ross Perkin

The search is on for up to four architects, building surveyors or engineers to become part of the **SPAB (Society for the Protection of Ancient Buildings)** Lethaby Scholarship 2014. This is a training opportunity like no other. After completing the nine-month programme, previous SPAB Scholars have gone on to become experts in their field – some are cathedral architects, some look after palaces, National Trust houses and English Heritage sites.

The Scholarship is open to architects, building surveyors and structural engineers who have completed the college-based part of their courses (e.g. RIBA Parts I & II for architects), ideally with two or three years work experience. The programme is organised and administered by the SPAB and will be of particular career interest to early career professionals with a passion for historic building conservation.

Successful applicants will visit some of the country's most fascinating built heritage projects to deepen their knowledge of historic buildings and explore the challenges surrounding their conservation. SPAB aim to give our Scholars first-hand experience of conservative repair in action; they will be meeting professionals involved in the full range of building management issues, working on site and in workshops and studios throughout the UK.

If shortlisted, all candidates must be willing to attend an interview in London at their own expense. Commitment to the Scholarship is full time, including some weekends, and it is impossible to combine it with any other form of study or employment. Candidates should be aware that there will be long periods spent away from home. The programme runs from 17 March to mid December. There are no course fees as training and administrative costs are borne by the SPAB. Successful candidates will each receive a bursary toward their basic travel and living costs.

SPAB is inviting applications now for the 2014 Lethaby Scholarship. For further information or to obtain an application form, please visit [www.spab.org.uk/education-training/fellowship/](http://www.spab.org.uk/education-training/fellowship/) or email [education@spab.org.uk](mailto:education@spab.org.uk). The closing date for applications is 1 December and interviews are held at 37 Spital Square, London on 23 January 2014.

Visit [adf-news.blogspot.co.uk](http://adf-news.blogspot.co.uk) and enter reference number 94150 to view more information.

## AWARDS

**British Homes Awards 2013**  
18 October, London  
[www.britishhomesawards.co.uk](http://www.britishhomesawards.co.uk)

## EXHIBITIONS

**Serpentine Gallery Pavilion 2013 - Designed by Sou Fujimoto**  
Until 20 October, London  
[http://www.serpentinegallery.org/2013/02/sou\\_fujimoto\\_to\\_design\\_serpentine\\_gallery\\_pavilion\\_2013.html](http://www.serpentinegallery.org/2013/02/sou_fujimoto_to_design_serpentine_gallery_pavilion_2013.html)

**Green Fuse: The Work of Dan Pearson**  
Until 20 October, London  
[www.gardenmuseum.org.uk](http://www.gardenmuseum.org.uk)

**The Future is Here: A New Industrial Revolution**  
Until 29 October, London  
<http://designmuseum.org/exhibitions>

**10x10 Drawing the City London Exhibition**  
Mid-November, London  
[www.10x10london.com](http://www.10x10london.com)

## FESTIVALS

**Festival of Architecture in Norwich & Norfolk**  
10 October - 7 November, Norfolk  
[www.fann.org.uk](http://www.fann.org.uk)

**The International Festival for Business (IFB) 2014**  
June-July 2014, Liverpool  
[www.ifb2014.com](http://www.ifb2014.com)

## FILM

**Visual Acoustics: The modernism of Julius Shulman (2008)**  
22 October, London  
[www.architecture.com/whatson](http://www.architecture.com/whatson)

**Diana Vreeland: The Eye has to Travel (2011)**  
5 November, London  
[www.architecture.com/whatson](http://www.architecture.com/whatson)

## NETWORKING

**netMAGeEvents Evening Networking Event**  
21 November, London  
<http://netmagevents.eventbrite.co.uk/>

## TALKS, LECTURES & DEBATES

**The Artist and Public Sensibility: 1741 to 2013**  
17 October, London  
<http://art.tfl.gov.uk/labyrinth/>

**Saturday Talks: Everything you ever needed to know about...**  
...3D printing and mass customisation,  
19 October  
...CNC routers, 26 October  
London  
<http://designmuseum.org/talks>

**Designers in Residence: Weekend table talks**  
Until 2 November, London  
<http://designmuseum.org/talks>

**The Blue Riband**  
15 November, London  
<http://art.tfl.gov.uk/labyrinth/>

**From the Beast to the Blonde: On Fairy Tales**  
9 December, London  
<http://art.tfl.gov.uk/labyrinth/>

## TOURS

**Open-City Architecture Tours**  
Architecture by Night (photography),  
15 October  
TBC, 19 October  
City Fringes, 26 October  
Architecture on your Bike – Art Deco,  
27 October  
London  
<http://open-city.org.uk/activities>

## TRADE SHOWS

**National Painting & Decorating Show**  
19 - 20 November, Coventry  
[www.paintshow.co.uk](http://www.paintshow.co.uk)

**Education Estates**  
26 - 27 November, Manchester  
[www.educationestates.com](http://www.educationestates.com)

**Retrofit Roadshows**  
Dates left: 5 September, North East  
17 September, Wales  
29 November, London & South East  
[www.retrofit-roadshow.co.uk](http://www.retrofit-roadshow.co.uk)

## WORKSHOPS

**Internal management: Business planning and marketing for architects**  
Dates until 15 October, London  
[www.architecture.com/whatson](http://www.architecture.com/whatson)

**Designing and building it: Passivhaus myths and realities – a 'get you started' active workshop for architects and designers**  
Dates until 5 December, London  
[www.architecture.com/whatson](http://www.architecture.com/whatson)



## kløeber®

### Bespoke glazing solutions in timber aluminium & composite

Kløeber's advanced glazing solutions are available in bespoke or set sizes, with low U values and double or triple glazing options. View our website for further details of our extensive product range.

- folding sliding doors
- sliding doors
- french doors
- single doors
- windows
- shaped glazed screens
- entrance doors
- roof lights

**FunkyFront**  
entrance door systems  
NOW IN ALUMINIUM

Kløeber's Timber bifold doors and FunkyFront entrance doors are Secured by Design

**Why not visit one of our extensive showrooms?**

**telephone 01487 740044**

**info@kloeber.co.uk**  
**www.kloeber.co.uk**

enq.103



## Simplifile

by Normid

simple to file | simple to find | simple to view

### Plan Filing Solutions

01922 740 015  
www.normid.co.uk  
sales@normid.co.uk



enq.104



## S4S ALUMINIUM SYSTEMS

### Infinity

Railings for Million £ Views

Enhance your clients' breath-taking views with our new and innovative 'Infinity' topless railing systems. The 'Infinity' topless railing system offers strength, style and versatility while eliminating the upper and lower rails.

In turn, providing your clients with unobstructed million £ views.

**CALL OUR TEAM NOW ON 0800 068 6363 FOR FURTHER DETAILS**  
**OR EMAIL [sales@infinityrailingsystems.co.uk](mailto:sales@infinityrailingsystems.co.uk)**

**New & innovative topless railing system**

**Economically friendly**

**The ultimate fashion statement for your deck**

**S4SGROUP S4S STAINLESS S4S ALUMINIUM S4S GLASS S4S REINFORCED COMPOSITE**

Address: Unit 10 Birch Lane Business Park  
Birch Lane, Aldridge  
West Midlands, WS9 0NF

Tel: 0800 068 6363  
Email: [sales@infinityrailingsystems.co.uk](mailto:sales@infinityrailingsystems.co.uk)  
Website: [www.infinityrailingsystems.co.uk](http://www.infinityrailingsystems.co.uk)

Find us online - Search 'Infinity Railing'



enq.105



## AWARD

## Restaurant & Bar Design Awards

The Restaurant & Bar Design Awards, now in its fifth year, is one of the most innovative and prestigious events in the hospitality and design world.

Judged by the biggest personalities in the world of design, hospitality and lifestyle; the Awards this year attracted 670 projects from across the globe.

The overall winners out of all category winners were announced in London on the 12 September.

The winner of Best Restaurant is Höst (Denmark) by Norm Architects



and Best Bar went to the Atrium Champagne Bar (London) by Foster and Partners.



Visit [adf-news.blogspot.co.uk](http://adf-news.blogspot.co.uk) and enter reference number 91356 for more information and all winners.

## COMMENT

## Saving history: the importance of preserving Britain's built heritage

Simon Vernon-Harcourt, design and planning director at City & Country, discusses the importance of preserving Britain's historic properties and the expert skills required to ensure quality restoration of such architectural intricacies

Britain has a wealth of institutional historic listed buildings which reflect the history of our communities and public services. Many of these buildings were paid for by wealthy benefactors, and reflect the pinnacle of artistry and craftsmanship of their time. The need to preserve these buildings is significant, but in the context of today's economic climate many of these properties – which are notorious for being difficult to maintain and expensive to run – are at risk of being abandoned and quickly falling into a state of disrepair.

Converting these historic properties for residential use is a solution that ensures that their legacy is preserved. Award-winning restoration specialist City & Country champions this approach and has successfully transformed a number of prestigious sites across the south and south-east of England into fine homes.

The first step to restoring a heritage building is properly understanding it. Architectural historians delve into the building's records to discover the architectural and social history of the building, to identify which features should be

preserved. This enables a scheme to be produced which works with the grain of the building, revealing and enhancing the best elements to create genuinely unique properties that celebrate the architectural quality and history of the building.

Historic restoration and conversion is highly skilled work and the level of detail required in the conversion of these properties can often cause inexperienced developers to run into significant time delays and cost overruns. Budget management is therefore crucial, and completing these projects on time and on cost requires strict control and whole-team co-ordination from the outset.

The range of unique architectural features on any heritage restoration project is broad, including refined timber sash windows, opulent oak panelling, arched honeycomb ceilings and intricate plaster cornices. Restoration of such a range of features requires a technical and practical knowledge of the traditional construction techniques needed to restore them.

For information on City & Country's portfolio, visit the company's website: [www.cityandcountry.co.uk](http://www.cityandcountry.co.uk)

enq. 603

*'The level of detail required in the conversion of these properties can often cause inexperienced developers to run into significant time delays and cost overruns'*

Simon Vernon-Harcourt



The Chapel at The Galleries before and after



# RIBA & CIBSE accredited CPD training from Stelrad Radiators

**Book  
your  
place  
today**

**Radical™**  
The Energy Saving Radiator



CPD training available at The Building Centre, 26 Store Street, London WC1E 7BT on 21st November @ 6.30pm

Learn about the latest developments in radiators with our Radical, Innovative and Eco-friendly Radiator Development CPD training session led by a fully qualified specialist.

**Please call Ian Smith on 07764 623 587 or email [ian.smith@stelrad.com](mailto:ian.smith@stelrad.com) to book your place, or visit [www.stelrad.com](http://www.stelrad.com) for more information about training courses.**

Stelrad is the UK's No.1 radiator manufacturer and Europe's favourite radiator brand.

Follow  
us on:



@stelrad



[facebook.com/stelradlimited](https://facebook.com/stelradlimited)



**Stelrad**  
Europe's favourite radiator

enq.106

EXCLUSIVELY DESIGNED, HAND-CRAFTED GARDEN ROOMS, ORANGERIES, ANNEXES & OUTBUILDINGS

**Arboreta™**  
oak frame living

**In harmony with your home**

Add the beauty and warmth of oak framing living to your home with a truly bespoke, beautifully crafted design from Arboreta.

- We're one of the UK's leading bespoke oak frame designers
- Arboreta are a family run business with over 20 years experience
- We take care of everything including planning applications, building regulations and structural calculations
- Precision together with attention to detail are our hallmarks
- We combine time-honoured carpentry skills with state-of-the-art technology
- We have an extensive portfolio of ideas and inspiration
- Endorsed by TRADA

For your copy of our 'Oak Frame Living' Ideas brochure or to request a complimentary design consultation, visit **[www.arboreta-oak.com](http://www.arboreta-oak.com)** or call FREEPHONE **0800 288 8333**



Scan to view our mobile website.



**FREE  
BROCHURE**

enq.107



## TALKS

## Go behind-the-scenes of some of the UK's best new buildings

Take an exclusive look at some of the best of this year's RIBA award-winning buildings from the East of England. Join the architect for a one-off talk as they reveal the stories behind the building, what inspired them and what it means to have received such a prestigious award.

**The Royal Pavilion, Southend Pier**  
17 October, 6pm for 6.30-7.30 pm  
Centre for Mathematical Sciences,  
Cambridge, CB3 0WA

The Royal Pavilion is an amazing sculptural object that sits at the end of the world's longest Grade II listed pleasure pier. Strikingly modern, it still follows the tradition of Victorian pier architecture, reclaiming the pier as the town's main attraction. Josef Kolar of Sprunt Architects talks about the concept behind the building and how it was brought to life, through their collaboration with leading Scandinavian architects White arkitektur.

**The Discovery Centre, St Albans**  
7 November, 6pm for 6.30-7.30 pm  
Centre for Mathematical Sciences,  
Cambridge, CB3 0WA

Designed as two interconnecting college buildings, this innovative project demonstrates just what can be achieved within a highly restricted budget. The Discovery Centre forms the first phase of a masterplan bringing a sense of focus and coherence to the campus. Hear from architects AHMM about their work with the College.

**Crowbrook, Hertfordshire**  
5 December, 6pm for 6.30-7.30 pm  
Centre for Mathematical Sciences,  
Cambridge, CB3 0WA

Sasha Bhavan of Knox Bhavan presents an illustrated talk on this national RIBA

Award winner, designed for a husband with limited mobility and his wife as a place to live and work. Their home has been justly described by judges as 'a world of its own: a place in which it is easy to spend time without feeling the need to escape'.

Tickets are available at £12 per talk or £6 for students/under 18s. Advance booking essential at [architecture.com/east](http://architecture.com/east)

## TECHNOLOGY &amp; INNOVATION

## Reinventing the house of the future

BRE's pioneering future-focused Integer House, built 15 years ago, has undergone an extensive retrofit and renamed The Smart Home. Through a joint BRE and British Gas project, it has been re-equipped with a host of ultra energy-efficient features and functions, making it super fit for the future.

Using cutting-edge technology, design and building techniques, the innovative retrofit has made the house 50 per cent more energy efficient and halved its carbon emissions, upgrading it from an E to an A/B EPC rating.

An intelligent, whole house living system with occupation sensors for a range of purposes controls the heating, lighting, ventilation, water and security. The latest air source heat pump technology has been integrated to provide heating via app-enabled advanced controls, and improvements have been made to the solar thermal water heating and air tightness.

The house has a new-to-market solar thermal system, and an integrated PV array has been installed into the conservatory glazing to generate most of the home's energy requirements and shade clear glass against excess heat. Innovative 3mm thick insulating plaster has been applied finished in heat-reflective paint to improve thermal performance, while paint with light-reflective particles on the internal walls dramatically increases brightness and reduces lighting needs.

To counteract upper floor overheating, Phase Change Material (PCM) has been incorporated into the upper floor walls. Ducted skirting, reclaimed timber floors and an FSC certified kitchen have

been fitted, and doors and windows have been replaced with the latest uPVC double glazing incorporating recycled uPVC. The very latest Velux windows have been installed, and the front door showcases new generation electronic locking, including a car style remote key.

enq. 604

## PRODUCT IN ACTION

## Northcot Brick features in pioneering art installation



Bricks from Northcot Brick are being used as the centrepiece in the exhibition by Argentinian artist Adrián Villar Rojas at the new Serpentine Sackler Gallery in Kensington Gardens, London. The exhibition, *Today We Reboot The Planet*, which runs until November 10, is the first of a number of cultural events taking place as part of the opening of the newly restored and expanded art gallery.

Northcot Brick has supplied 45,000 facing bricks for an original site-specific art installation, which will see the entire interior floor of the gallery covered in bricks. In this installation, the artist re-imagines the architecture of the Grade II\* listed building, formerly an 1805 ammunition store known as The Magazine, and responds to the original brick vaulted Powder Rooms that sit at the centre of the building.

Renowned for his large-scale sculptures, made in predominantly clay and brick, Villar Rojas draws much of his inspiration from the rawness and immediacy of traditional handmade brickmaking, which takes place on the brick farm in his hometown of Rosario in Argentina.

enq. 605

## news bytes

Visit [adf-news.blogspot.co.uk](http://adf-news.blogspot.co.uk) and enter the reference number to view more information

glh. announces the launch of Clermont: a new global luxury hotel and private residences brand...  
**Ref: 70759**

6A Architects appointed for major new development of MK Gallery in Milton Keynes...  
**Ref: 38701**

Latest release of Building Regulations now cites Eurocodes design standards...  
**Ref: 42637**

Daniel Libeskind presents The Stephen Lawrence 13th Annual Memorial Lecture...  
**Ref: 65461**

# VELUX Flat Roof Commercial

## A new outlook for you

If you're looking for a flexible way to let light and fresh air into a commercial building, VELUX Flat Roof Windows are the perfect solution. They're not only fast and easy to install, but they offer an unparalleled range of features, from electric venting and smoke vents to exit hatches. Learn more at [velux.co.uk/flatroofcommercial](http://velux.co.uk/flatroofcommercial)



### Design your dream architectural break

Win a luxury break to the architectural city of your choice. From the bright lights of Chicago to the historic sights of Berlin, you can choose the location that inspires you. Plus, we have 10 Tria Marker sets to be won.

To find out more about VELUX Flat Roof Commercial and for your chance to design your dream architectural break, visit [velux.co.uk/dreambreak](http://velux.co.uk/dreambreak)

Terms and conditions apply.

reader  
enquiry

108

Hotel Castell dels Hams, Majorca

**VELUX®**



# cpd focus

## continuing professional development

Maintaining and improving professional competence, skills, abilities and knowledge

### CHANGING DESIGN PERCEPTIONS – PROVIDING BUILDING SOLUTIONS



The RIBA-accredited seminar from **Yorkon**, a member of the Portakabin Group, looks at how to get the best out of off-site construction and the latest innovations and technical advancements in modular technology. The interactive Yorkon CPD workshop, which includes a presentation and a question and answer session, can be arranged at a time and venue to suit attendees. All attendees receive a certificate as proof of attendance.

01904 610990  
www.yorkon.info

enq. 109

### LRWA CPD SEMINAR



The LRWA (Liquid Roofing and Waterproofing Association) has announced the launch of its RIBA approved CPD, available online for specifiers, architects, and surveyors. “Continuing Professional Development is crucial for anyone working in the construction industry” commented Terry Wain, LRWA technical secretary. The CPD itself should take around 25 minutes to complete and includes information on the history of liquids and the various ways in which the LRWA aims to promote best practice within the industry.

0207 448 3859  
www.lrwa.org.uk

enq. 113

### DONEC VIVERRA: CRAS CONVALLIS, PURUS AT TRISTIQUE



Manufacturer of fire resistant glazing **Vetrotech Saint Gobain** understands the moral and legal obligation required to ensure the correct specification is met on every project. It introduces a new RIBA approved CPD, a comprehensive overview of the fire glass industry which explains the different types of fire protection, why fire rated glass is required, the different types of fire glass needed and how they work and how to correctly specify fire rated glass.

02476 547 7620  
www.vetrotech.com

enq. 110

### SPECIFYING RETRACTABLE SEATING



Retractable seating is a smart way of maximising space usage, and as such is included in the government’s blue-print design for secondary schools. A specialist product design should be considered at the earliest stages of a project to optimise capacity, space usage and aesthetics. **Audience Systems** has over 30 years’ experience in educational, cultural and sporting environments. Its new CPD seminar covers regulatory issues, wheelchair access, functional and aesthetic options, dimensional constraints and building interface considerations.

01373 865050  
www.audiencesystems.com

enq. 114

### SINGLE PLY ROOFING – AN INNOVATIVE ENVIRONMENTAL SOLUTION



**IKO Single Ply**’s new RIBA-approved CPD presents the polymeric single ply market with the types of systems available, with a focus on the environmental developments in modern single ply membrane technology. It also looks at the innovations in sustainability, responsible manufacturing (ISO4001 & ISO9001), carbon reduction & recycled materials, and the integration of roofing technologies such as thermal and acoustic insulation.

01257 488011  
www.ikogroup.co.uk

enq. 111

### ANCON TECHNICAL SEMINARS NOW CPD APPROVED

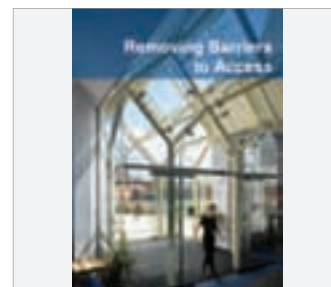


**Ancon**’s latest CPD technical seminars have been approved by the Construction CPD Certification Service, confirming their educational value to architects and engineers. The seminars, *Support and Restraint of Masonry Cladding on Framed Buildings* and *Designing for Joints in Structural Concrete*, cover two technically challenging areas that are critical to efficient, cost-effective building design. They are of value to all technical staff in a practice.

0114 275 5224  
www.ancon.co.uk

enq. 115

### REMOVING BARRIERS TO ACCESS



Approved by RIBA, the seminar from **GEZE UK** offers chartered architects advice for the use and specification of door control devices so that doors do not become obstacles. It has been completely rewritten to incorporate all the recent changes in legislation. Those taking part will receive guidance on all the relevant standards and regulations that apply to manual and automatic doors in relation to accessibility.

01543 443000  
www.geze.co.uk

enq. 112

### SUSTAINABILITY & LOW-MAINTENANCE BENEFITS OF CELLULAR PVC



**Swish Building Products** is a leading supplier of PVC roofline and cladding, including fascias, bargeboards, window boards and trims, internal and external cladding, and rainwater. Accredited with the responsible sourcing certification BES6001 in addition to previously secured certifications ISO9001, ISO14001 and OHSAS18001, Swish holds CPD seminars focusing on sustainability and the low-maintenance benefits of cellular PVC.

01827 317 200  
www.swishbp.co.uk

enq. 116

## BM TRADA sponsors fire safety workshop



BM TRADA is sponsoring a workshop at the Fire Sector Summit on 24 October. The session – Is now the time for a national Fire Safe Register? – will consider methods for ensuring quality, competence and compliance in the design and specification of fire protection for buildings, as well as in the fire safety management of existing buildings. Chaired by Mike Wood, Chair of the Passive Fire Protection Federation, the workshop will explore how the responsibilities placed on building occupiers by the Regulatory Reform (Fire Safety) Order has resulted in a renewed focus on ensuring the competency of all those engaged in delivering safe workplaces.

01494 569750 [www.bmtrada.com/technical](http://www.bmtrada.com/technical)

enq.117

## Hansgrohe tops the UK charts



Hansgrohe now has over 800 WRAS (Water Regulations Advisory Scheme) approved basin mixers, kitchen mixers, concealed and exposed bath and shower mixers – manual and thermostatic, bath fillers, hand showers and individual shut-off valves and diverter controls. This impressive figure is more

than double the number of the next closest bathroom products manufacturer operating in the UK market. When installing any product which carries or delivers water from the main supply it is a legal requirement that it complies with Regulation 4 of the “Water Supply (Water Fittings) Regulations”. WRAS Approval is the best way to demonstrate compliance.

01372 465655 [www.hansgrohe.co.uk](http://www.hansgrohe.co.uk)

enq.118

## Even better coverage



Firestone Building Products are pleased to announce the appointment of Kevin Mosson as Area Sales Manager covering the South of England. Kevin will be responsible for developing new and existing business through liaison with Firestone's Authorised and Licensed Contractors, specifiers and architects. Kevin has

a wealth of experience in the roofing industry having previously managed his own roofing business for 15 years and has worked closely with architects, contractors and merchants. “I am delighted to be joining Firestone, one of the industry's leading manufacturers of single ply roofing membranes and associated products.”

01606 552026 [www.firestonebpc.com](http://www.firestonebpc.com)

enq.119

## Kingspan first insulation to get BES 6001



The ability to demonstrate responsible sourcing back up the supply chain is becoming increasingly important in today's competitive and environmentally aware market. Kingspan Insulation is proud to announce that it is the first insulation manufacturer to be certified to the demanding BES 6001:

Responsible Sourcing of Construction Products standard. All Kooltherm, KoolDuct and Therma insulation products and cavity closers manufactured at Kingspan Insulation's British manufacturing facilities are now certified to BES 6001 ‘Very Good’.

01544 387384 [www.kingspaninsulation.co.uk](http://www.kingspaninsulation.co.uk)

enq.120



# Education Estates

**26-27 November 2013**  
Manchester Central  
[www.educationestates.com](http://www.educationestates.com)

Supporters



bre



nga National Governors' Association



## Improving the UK's education facilities

Education Estates is a new event for all involved in designing, building, maintaining and managing Britain's primary and secondary schools, FE colleges and universities. Comprising a two-day conference and exhibition, both **FREE TO ATTEND**, it's your unique opportunity to:

- Share ideas and experiences with colleagues across the UK education sector
- Gain invaluable insights from leading experts, at no cost to you
- Meet key decision-makers responsible for millions of pounds'-worth of capital spend
- View the latest products and services from almost 100 manufacturers, suppliers and providers

To register for your complimentary conference pass, visit [www.educationestates.com](http://www.educationestates.com)

From the Organisers of:





## Schal ensures no energy is wasted

New government legislation brought in earlier this year requires all public buildings over 500 sq m to have a Display Energy Certificate. Schal Sustainability Group has issued a reminder to building managers to make sure they are up to date and compliant to avoid financial penalties. Schal has been offering its DECs service since 2011 and has successfully implemented assessments for clients ranging from the MoD and Land Registry through to hospitals across the UK. Having previously surveyed 85 sites across Oxford for one client, providing certificates and advisory reports for schools and other local government buildings occupied by Oxfordshire County Council, Schal has subsequently ensured another 176 of the client's smaller buildings now requiring DECs are energy assessed and compliant. This totalled 393 certificates in just a three month period, with Schal detailing how each building could reduce its energy use. This will be a benchmark against which clients will realise real energy reductions.

020 8256 4300 [www.schal.com](http://www.schal.com)

enq.121

## Workable. Reliable. Sustainable.

### HYPERLIME HYDRAULIC LIMES

A sustainable, highly **CO<sub>2</sub> absorbing** drop-in replacement for cement or gypsum binders in mortars, plasters and renders. HyperLime is UK manufactured under **ISO 9001:2008** and **CE marked** so compliant with UK building regulations and major warranty providers.



Even better, HyperLime offers significant **cost savings** over other sustainable binders, mixing easily to give a very workable texture.

Mortar, plaster and render made with HyperLime is water stable and breathable, providing essential structural flexibility.

To find out more visit [hyperlimeco.com](http://hyperlimeco.com) or telephone Limeco on 01833 689 005

**LIMECO**

enq.122

**CRL**  
crlaurence.co.uk

**NEW**

## POST RAILING SYSTEM

**GRADE 316 STAINLESS STEEL**

**ASK FOR  
TECH SALES**



**PROTECT  
IT WITH**

**6K**

For further information visit: [crl6k.co.uk](http://crl6k.co.uk)

**For information call FREE on 00 800 0421 6144**

e: [CRL@crlaurence.co.uk](mailto:CRL@crlaurence.co.uk) f: 00 800 0262 3299 w: [crlaurence.co.uk](http://crlaurence.co.uk)

enq.123

## Case study:

Bishop Edward King Chapel,  
Ripon College, Cuddesdon

Images by Front Elevation



*'The brief from the college included the rather daunting request for "not just a building but a work of art which would touch the spirit"'*



The roof represents the upturned hull of a boat, which fits with Niall McLaughlin Architects' recurring theme 'ship of souls'

It's very rare for any architectural magazine to feature a chapel but having reached the final six in the Stirling prize this is no ordinary building. It will be many years before a project comes along that showcases the levels of design and craftsmanship that have been displayed in abundance here in such a modest structure. The RIBA judges confirmed as such,

*"Exquisite detailing abounds in all six projects, perhaps most potently in the Bishop Edward King Chapel in Oxfordshire whose rich stone façade and timber interior provide some of the best examples of craftsmanship the judges have seen for some time."*

Ripon College is one of the world's leading theological colleges set in leafy Cuddesdon in rural Oxfordshire. The chapel, named after a past principal who went on to become Bishop of Lincoln in 1885, sits very comfortably within expansive grounds surrounded by buildings dating back to the college's foundation in the 1850s.

The brief went out to competition and attracted entries from over 120 architects from all over the world. It says much about the winning design when it was unanimously chosen by the board of judges given the huge number of possibilities. Niall McLaughlin Architects' presentation more than met the brief

from the college which included the rather daunting request for "not just a building but a work of art which would touch the spirit."

Niall McLaughlin Architects' design was inspired by an almost infinite number of sources from Rudolph Schwarz to the recently departed Irish poet, Seamus Heaney. Its elliptical floor plan was influenced by the recurring theme 'ship of souls', which again comes to the fore internally with the roof representing the upturned hull of a boat.

The surrounding buildings are all predominantly natural stone and the original design called for a three-tiered facade with a 'basket weave timber' mid section again representing an old sailing vessel. The original source of stone was no longer available so Harrison Goldman Stone Consultants were engaged to advise on a feasible alternative that would match the existing structures. The most viable option was Clipsham Limestone, which was sourced from **The Stamford Stone Company** quarry just outside Peterborough.

Peter Harrison, past president of the Stone Federation Great Britain explained his findings: "Taking into account the geographic location, frost resistance was a key factor and the Clipsham Limestone was the only stone Harrison Goldman found that had sufficient test data to show it was fit for purpose."

A further slight complication was added by English Heritage who ruled out the basket weave timber by insisting that the whole of the building should be of natural stone in keeping with the surrounding listed buildings on the campus. The rather ingenious option employed by the architects in keeping the 'texture' they were seeking turned out arguably even more stunning than anything the original proposal could have achieved.

After a competitive tender process based on understanding of the project, rather than just cost, Beard Construction were engaged as main contractors. The company's Pre Construction Manager Martin Wareham was under no illusions:

*"We appreciated the detail, precision and quality of finish required and it became clear at the very early stages that the chapel was destined to become a 'portfolio' project."*

With such a high precision project planning and design were always going to be paramount and Beard Construction should be commended for assembling their team at the earliest possible opportunity. Szerelmey Ltd, the Vauxhall based stone contractors



were bought on board as they have over 150 years experience with stone both in design and installation.

Steve Dite, contracts director at Szerelmey went on to confirm their technical input: “Szerelmey worked very closely with the architects on the design of this very complex construction, individually templating all the elliptical stones to ensure the desired accuracy was achieved.”

The foresight also greatly assisted Stamford Stone who had detailed cutting lists, templates and project call-offs well in advance. Steve Green, works manager of Stamford Stone revealed: “Because of the forward planning our quarry team were so far ahead of the game that any replacements or alterations could be made and delivered to site almost instantly.”

With three very distinctive bands within the 11m high chapel, let’s start at base level with a 3.5m high section consisting of hand cut Clipsham Limestone ashlar blocks, which are gently curved with each unique section referenced as to its exact position within the structure. The beauty of this buff coloured Oolitic Jurassic Limestone is immediately apparent, showing the grain within each section giving it both a uniformity of colour and texture while paradoxically allowing each piece to be individually distinctive.

With the middle section now revised it has become the building’s *Pièce de résistance*, the 4m high course of Clipsham Limestone consists of approximately 36,000 individual 250 x 110 x 90mm ‘bricks.’ These have been laid in dogtooth alignment with absolute precision in both the vertical and diagonal planes to create a visually stunning basket weave appearance. While this incredibly eye-catching effect was very technically challenging in itself, the stone installation was further complicated by using a very traditional mortar mix. The architects rightly specified Lime Mortar for its ability to allow micro movement. The high levels of precision required for the dogtooth profile obviously takes longer than a more straightforward bond and the mortar can neither get too hot or too wet during construction. In order to avoid any potential failure of the mixture the Szerelmey teams needed to continually cover and protect the mortar during the whole process.

Tim Allen-Booth, project architect for Niall McLaughlin Architects felt the change from timber to stone actually enhanced the finished project: “We, however, think in the end that this was fortuitous as it is now a better building for being all in stone.”

The final 3.5m tier is again another triumph. A series of ribbon windows described as “a halo of natural stone fins” adorn the upper level whose height corresponds with the surrounding tree canopies. The recessed opening’s design and the existing trees presence allows dappled light to enter the windows with the branches casting dancing shadows upon the light coloured stone. The slender window surrounds are formed by steel framing clad with hand cut Clipsham Natural Limestone sills, fins and copings.

Internally the building is equally stunning with its simplistic style of light coloured Glulam timber, its delicate filigree form seems to replicate the intricacy of the nearby tree crowns and canopies, while still fulfilling their ecclesiastical design mandate.

The interior is so simple that there remains nothing inside to distract you other than perhaps the jaw-dropping workmanship. As previously mentioned, the theme of the interior timber is an upturned hull but it has also been compared to paper chains.

Peter Hogg of Cowley Timberwork explained the sheer amount of work involved with the stained Glulam Timber: “Geometry was managed by close file sharing allowing all of the design team to manage and monitor progress and interfaces throughout the design process, including mock-ups and workshop meetings with proactive interest and visits to our



workshops from the design team all the way up to the client. Installation issues were mitigated by the off-site manufacturing accuracies required and the ability to trial assemble elements of the structure within our workshop. There were over 4,000 man hours of production off-site in the expressed internal frame and the inverted concealed timber panellised roof. The result is an approximate total of 26 cu m of Glulam timber taking over 10 weeks to install on site.”

The building has genuinely touched many people regardless of their religious orientations but the exterior stone is truly stunning and Stamford Stone’s Steve Green summed it up perfectly: “We are very proud of our whole team at Stamford Stone in not only being very effective as a supply chain but also in producing such a high level of precision without resorting to computer generated robots.

*“The unique charm of this building is in its natural products and the use of natural stone but the fact that every piece has been individually fashioned here at our quarry is very satisfying.*

“In fact many of the college’s original buildings from 150 years ago would have been produced in a very similar fashion and that is one reason why this building will blend in with its surroundings and still look as good, perhaps even better, long after we have gone.”

The natural stone ‘bricks’ laid in dogtooth alignment, giving a basket weave appearance



enq.125

# editor's focus

## Holdfire

Swing free door closers are increasingly being used in care homes and sheltered housing but they introduce new risks such as doors slamming involuntarily or purposefully. Carefree Plus is linked to the fire alarm system and leaves the door free and easy to use in normal operation while its anti-slam and anti-drift functions, fixed swing speed and a fully failsafe control protect residents from injury; making Carefree Plus one of the safest systems on the market.

enq. 126

## Gerflor

International vinyl and linoleum flooring specialist Gerflor is launching a new guide to its best-selling ranges to help architects, specifiers, end users and contractors pinpoint the right product for their project. Valid until the end of 2014, the 68-page product book is compact enough to be carried in bags and briefcases. The product book is divided into categories showcasing prestigious brands. As well as technical specifications, pages include the most popular colours and QR links to more information about the full range of designs and colour-ways, NBS specifications, maintenance and installation instructions.

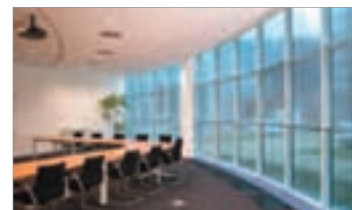
enq. 127



## Hörmann

Hörmann automatic sectional garage doors are one of the first to gain Secured by Design status. The break-in resistance of the insulated and solid timber doors, when combined with the latest operators, has led to this accreditation. Both operators feature a unique mechanical lock. The automatic latching system makes it almost impossible to lever these doors open, and as it is a purely mechanical, it remains fully functional even in the event of a power failure. Precision engineered to be easy to fit, these doors are secure, stylish, space saving and convenient.

enq. 128



## Stoves Online

There can't be many people designing their new home who don't want a real fire to bring that warmth and cosiness into their living room. However with energy efficient, airtight houses a traditional open fire just isn't possible. And that's where the new breed of direct air, wood-burning insert fires comes in. Set into the wall they look contemporary but building it into a fire surround gives you a traditional English fireplace but with all the efficiency and safety of a stove. And for a real open fire you can simply slide the glass up into the wall above.

enq. 129



## Normid

Normid is an ISO 14001 certified, British manufacturer of plan filing products. Its factory is modern and low energy. Materials are sourced from the UK, which means that the environmental carbon cost of a Normid product is kept down. Eco friendly production combined with an environmentally conscientious delivery network means that a Normid system is delivered with the minimum carbon footprint. The PRO wall rack can hold up to 500 drawings on a wall rack that is just 90 x 90mm, saving space. Trading for over 40 years, Normid Simplifile has stayed innovative and progressive.

enq. 130



## De Leeuw

Reflex-Rol is a proven bespoke roller blind system offering state-of-the-art solar heat reflection, solar glare control and thermal insulation. It is a single, non-sealed unit with integrated solar reflector foil and operating system. Reflex-Rol can be trimmed and shaped to fit any square, rectangular, trapezoidal or triangular window design and be installed in a vertical, inclined or horizontal position. The systems can be operated manually, electro-mechanically or electronically offering a top-to-bottom or bottom-to-top drop. A variety of colours are available to match any décor.

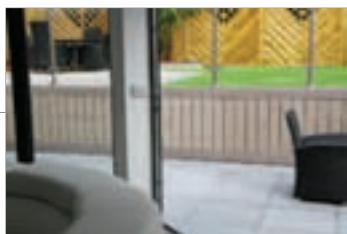
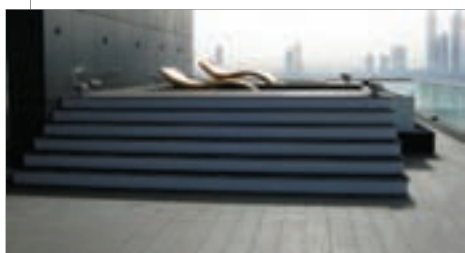
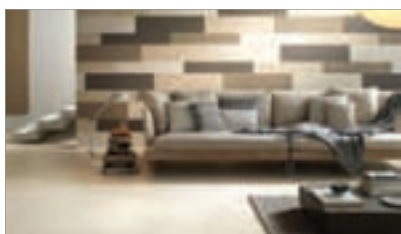
enq. 131



## Dura Composites

Dura Composites delivers first class quality, surpassing customer expectations. Here is an example of where Dura Deck 225 composite decking in charcoal colour was installed at a penthouse apartment in Dubai overlooking the Palm Jumeirah – the customer took the time to write in with his comments: “There were no problems with the supply or the install. From the beginning they were professional and they knew exactly what they were doing, they needed no micro-management, no pushing and no prodding... The quality of their installation was far superior than even I could have expected.”

enq. 132



## Greensquares

Mr Puckey contacted TimberTech as he wanted to improve the quality of his outdoor living space. Initially, he made an enquiry for 15 sq m of TimberTech composite decking. Having discussed his requirements with Greensquares' in-house architect, Mr Puckey ended up transforming his interior and exterior flooring space with a combination of Out 2.0 Porcelain Paving and TimberTech Composite Decking. Read the entire case study and discover how you can specify quality interior and exterior flooring solutions at the Porcelain Paving and TimberTech websites today!

enq. 136

## Direct Supplies

Direct Supplies' latest collection of porcelain, ceramic, marble, granite, quartz and glass tiles feature groundbreaking technologies which define an elegant, sophisticated style, conceived to last over time. Direct Supplies is proud to offer Italian and Spanish tiles, which express the aesthetic culture and stylistic excellence. The tiles come in a large assortment of colours and decorations and use state-of-the-art technologies and raw materials. Most of the tiles are made using the digital design, which offers high definition and precision detail right up to the edge of the tile. Specific tiles are now available in different textures, which can be useful for gardens and patios, as well as indoors.

enq. 133



## Dural

Coloured Movement Joints has been specified on many projects including retail, commercial, transport, education, hotels, sport & leisure, prisons and even the Olympic Village at London 2012. Major car brands have used its movement joints because they create a high-class, seamless finish. CMJ's movement joints have also been used in the workshop areas because of their ability to handle a wide range of loadings and their durability. Not only can CMJ profiles cope with heavy stresses and distribute them evenly between the foundation and floor covering, they can prevent conduction of noise from footfall and other bodies.

enq. 134

## Formica Group

Formica Group, the original inventor of laminate, celebrates 100 years of invention, innovation and design leadership in 2013. Formica Group partnered with world-renowned design consultancy Pentagram to create an engaging 2013 anniversary campaign for its iconic Formica® brand, including the Anniversary Collection featuring 12 new patterns that reflect the Formica® brand and its history, as well as Formica Forever, a commemorative book that captures the company's 100-year evolution through cultural shifts, economic uncertainties, trend exploration and global growth.

enq. 135

## The Flyscreen Company

PVC coated fibreglass insect mesh is lightweight and easy to use, making it ideal for keeping insects out of spaces between external cladding and the main building structure and from soffits and loft spaces; anywhere that requires a free flow of air. The Flyscreen Company stocks bulk mesh sold by the metre or complete rolls, as well as a range of 45-metre rolls in widths from 50mm to 300mm.

enq. 137



**LOFT CENTRE PRODUCTS**

# DIFFICULT ACCESS PROBLEM?

OUR LADDERS AND HATCHES ARE THE PERFECT SOLUTION

- ▲ Models to suit all spaces
- ▲ Vertical and ceiling access
- ▲ Electric versions available
- ▲ Fire rated hatches



With over twenty years experience and unrivalled technical expertise, Loft Centre Products has developed an exhaustive range of access ladders and hatches for all commercial applications.

**Tel: 0845 676 0704 | Fax: 0845 676 0705**  
**Email: sales@loftcentre.co.uk**  
**www.loftcentre.co.uk**

LOFT LADDERS | SPIRAL STAIRS | LOFT STAIRS  
 SPACE SAVERS | ELECTRIC UNITS | HATCHES

enq.138

## Queen's Award for Stirling Lloyd



Stirling Lloyd, manufacturers of the Integritank structural waterproofing system, has been awarded the Queen's Award for Enterprise in recognition of its continued international success. Considered the UK's most prestigious business honour, the Queen's Award is awarded to businesses who show outstanding achievements in their field and has a

specific focus on international trade, innovation and sustainable development. Stirling Lloyd now sells its UK manufactured materials into more than 50 countries worldwide, all of which helped it triumph in the Queen's Award international trade category.

01565 633 111 [www.stirlinglloyd.com](http://www.stirlinglloyd.com)

enq.139

## Vent-Axia's Sentinel Totus2 shortlisted



Vent-Axia's Sentinel Totus2 Demand Energy Recovery Ventilation (D-ERV) system has been shortlisted for this year's HVR Awards. The innovative D-ERV system is a finalist within the 'Commercial Ventilation Product of the Year' category of these prestigious industry awards.

Organised by Heating and Ventilating Review (HVR) magazine, the awards are designed to reward and celebrate the success, innovation and technology within the H&V sector. The Sentinel Totus<sup>2</sup> also boasts reduced sound levels which are achieved through the use of high density acoustic insulation and efficient air paths which lower turbulence, system noise, and reduce the SFP to below 1.8w/l/s.

0844 856 0590 [www.vent-axia.com](http://www.vent-axia.com)

enq.140



## Rainspan part of BREEAM winning team

Cardiff University's Hadyn Ellis Building, has won the Higher Education category of the Building Research Establishment Environmental Assessment Method [BREEAM] Awards, for Wales. Sustainability was a key element of the University's brief to the design team which was set the target of BREEAM 'Excellent'. Eurobond's Rainspan terracotta architectural façade system was specified and its environmental credentials helped to ensure that within the materials section of the BREEAM assessment, the Building was given an excellent chance of achieving a high rating. A BREEAM rating of Excellent was achieved with an outstanding score of 75.38 per cent. Installation of the Rainspan System is fast and easy and the long span capability can reduce secondary steelwork requirements and build costs. Thermal efficiency helps to reduce the carbon footprint and it provides 'as tested' air tightness of less than 1m<sup>3</sup>.hr/m<sup>2</sup> – all helping to deliver outstanding BREEAM rated buildings.

02920 776677 [www.eb-ascent.co.uk](http://www.eb-ascent.co.uk)

enq.141



## Ibstock in pole position for Brick Awards



**Ibstock** is leading the way with shortlisted entries ahead of the Brick Development Association's (BDA) 2013 Brick Awards. A total of 33 Ibstock projects which highlight the aesthetic appeal, versatility and performance of Ibstock's range went through a rigorous judging stage and have been selected for the final shortlist. Ibstock's successful shortlisted projects include housing schemes, public and commercial buildings and refurbishment projects.

They contain a number of outstanding and unusual projects including a new bus station in Stoke city centre, a boathouse in Worcester and even a university campus in Kyoto, Japan. Ibstock received more than a third of all nominations, demonstrating it is first choice for architects and specifiers when it comes to designing award-winning buildings.

enq.142

## Zinc's lasting colour on Members' Pavilion



Ettwein Bridges' design for the £8.2 million upgrading of Lords' Grade II\* listed Members' Pavilion was completed in April 2005. Richardson Roofing undertook construction of a new roof terrace using VMZINC interlocking panel façades and a roll cap roof in Quartz-Zinc\*. The eight years since completion

have shown how effectively the zinc has retained its pre-weathered appearance, proving its suitability for such sensitive refurbishment work. VMZINC façade and roofing systems are available in a dark charcoal ANTHRA-ZINC as well as the subtle PIGMENTO shades of green, blue, red and brown.

01992 822288 [www.vmpzinc.co.uk](http://www.vmpzinc.co.uk)

enq.144



## Academy keeps the faith

A London academy has put its faith in **Tarkett** after the company expanded its range of vibrant sports flooring colours. Tarkett has extended its Omnisports collection by adding 13 new bright and engaging colours to put functional aesthetics back at the heart of sports centre design. One place already benefiting from the expanded colour range is St Michael's and All Angels Academy in Camberwell, London. The academy is a new building that includes a sports hall and gymnasium – fitted with 700 sq m of Omnisports Reference in Sky Blue. Omnisports Reference was selected due to its added 6.5mm transparent vinyl wear layer – ideal for a busy school environment where the floor will experience heavy football every day. The flooring contractor behind installation of the product was Avonline. Contracts manager, Ian Williams, said: "We had used Tarkett Flooring before and were very happy with the product. It has a quality finish and appearance that always pleases the customer and for us it's easy to install."

01622 854040 [www.tarkett.co.uk](http://www.tarkett.co.uk)

enq.146

## Exercising in silence



Torshavn gymnasium in the Faroe Islands is a major addition to the existing municipal stadium. Its design by BBP Architects is very simple but also very flexible and transparent. Gyms are often cold, echoing and not particularly welcoming places.

However, for this project, careful consideration has been given to the function and performance of the room. Instead of being cheerless, it positively encourages activities with its warm colours, tactile materials and comfortable acoustics. To help achieve this, the architects opted to use **Troldtekt** acoustic panels to create a warm and friendly environment. Apart from the ceilings, they are also used on the walls, such as in the main room where a single row of panels have been spray-painted in situ.

enq.143

## Bolton club is a fan of Xpelair



**Xpelair** has supplied its market leading GX12 commercial fan to the Bolton Lads & Girls Club, after the club's old extraction unit was destroyed by a fire on the premises. The club then reached out to the Twitter community to ask about possibility of supplying a fan.

Xpelair saw the request and was able to supply its GX12 fan that was perfect for the venue as it is cheap to run and exceptionally quiet thanks to its pre-balanced sickle impellers that reduce noise ingress. The units are also reversible for consistent volume output and feature variable speeds for greater control. They have been designed with ease of fitting in mind in order to reduce on-site installation time.

enq.145

**Looking for some design inspiration...**

Our Natural Selection of Hard Landscaping Aggregates is the most comprehensive selection currently available in the UK.

**Looking for more specialist products for decorative resin surfacing or polymer flooring...**

We also supply the most extensive selection of dried aggregate granules and sands currently available in the UK.

**see us at**

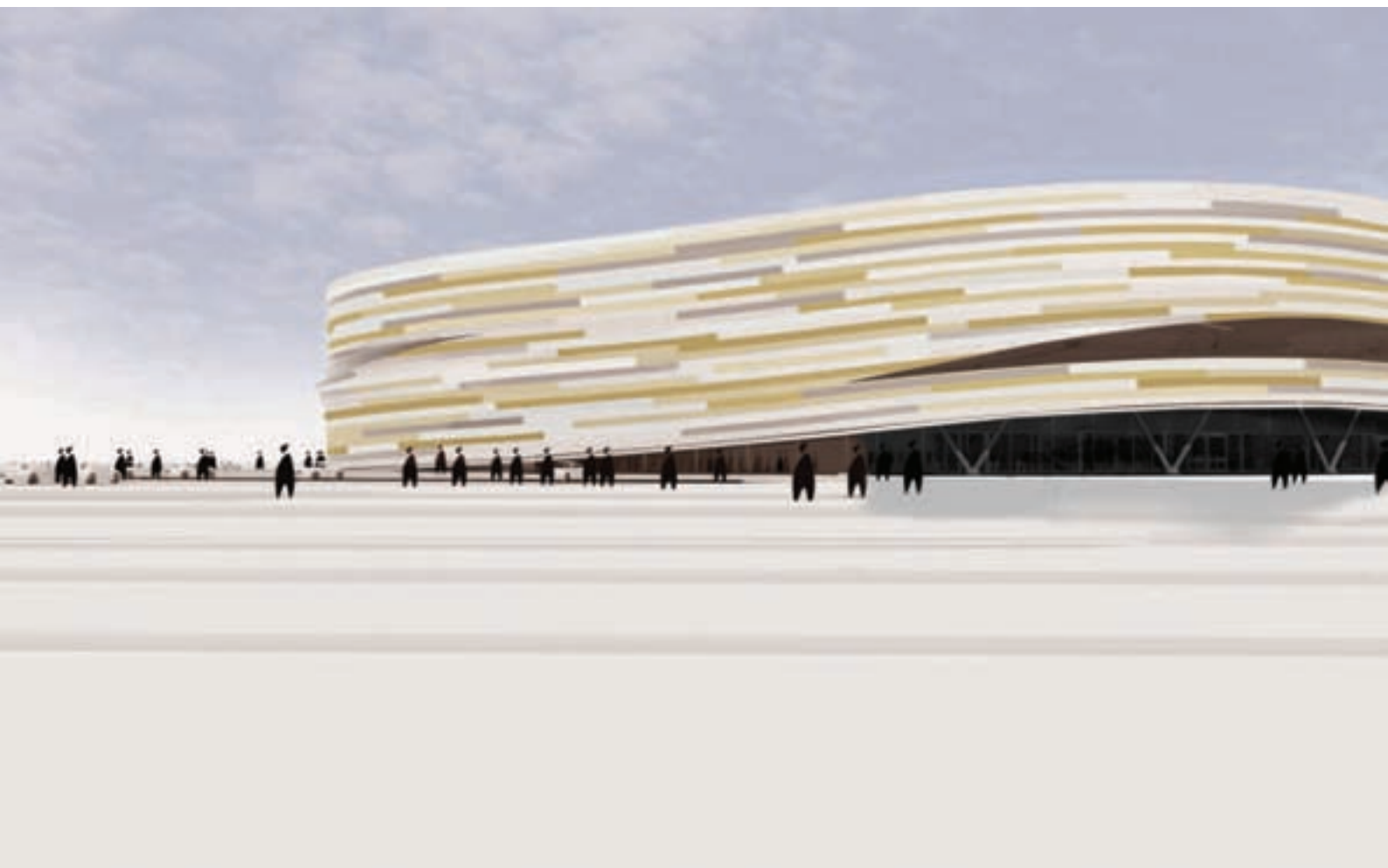
**FutureScape**

**stand 2&3**

**Request a brochure or order complimentary samples**

**T: 01629 636210 F: 01629 636247**

enq.147



# Racing for success in Derby

Emerging from the 2012 Olympics, the new Derby Velodrome will not only be a significant development for Derby, but part of the legacy we see shaping our renewed and continuing competitive sports culture. Steve Menary reports

**F**rom a host of Olympic medals to two successive Tour de France winners, cycling in Britain has never been more popular and successful. To capitalise on the legacy of the last Olympics and the sport's booming popularity, Derby City Council are building a £28 million velodrome.

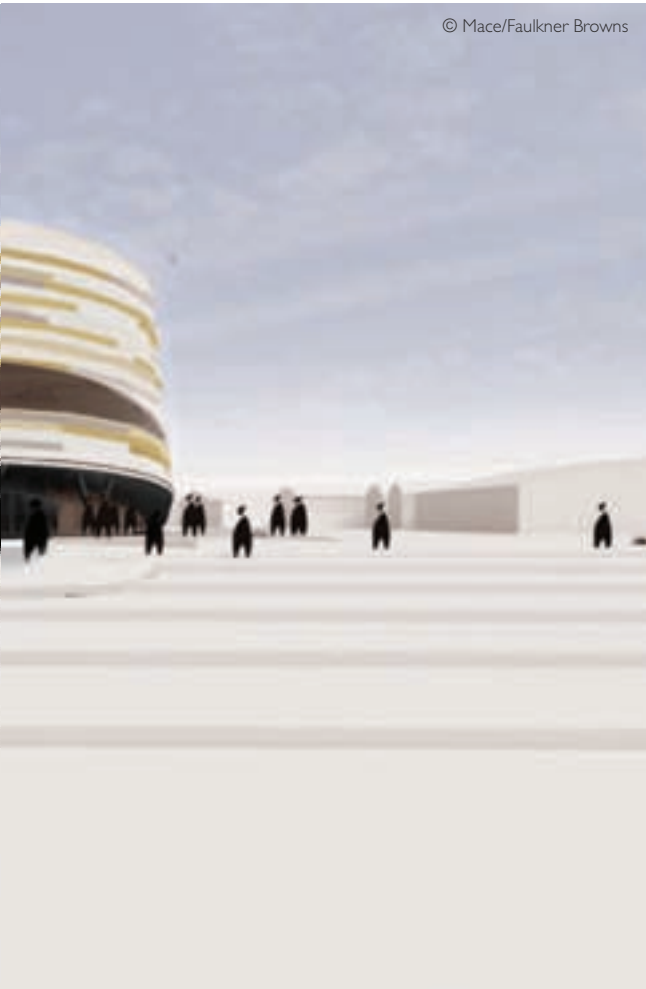
When work began last November, councillor Martin Repton,

the city council's cabinet member for leisure and culture at Derby, described the velodrome as the "most exciting and significant leisure development for the city in the last 40 years."

The scheme has been co-ordinated by Mace, which is the council's choice of project manager leading a design team including Faulkner Brown as lead designer/architect. Working



© Mace/Faulkner Browns



under Mace, Faulkner Brown's role was to develop a design to tender stage.

After a bid from East Midlands-based contractor Bowmer & Kirkland beat rival proposals from BAM Construct, Galliford Try, Interserve and Morgan Sindall to a design and build contract for the velodrome in July last year, Faulkner Brown were novated to the winning contractor, which completed the design and construction.

In terms of function, the brief set by Derby City Council (DCC) was to provide a multi-sports arena to accommodate a dry sports venue, an indoor 250m cycle track, a health and fitness area, and support areas. The arena measures 14,500 sq m. On the first level, there is 7,100 sq m of accommodation. The second level provides 5,600 sq m of space with 1,200 sq m at level three and 600 sq m on level four.

The venue will feature permanent seating for 1,500 spectators

but will be capable of hosting events for up to 5,000 spectators. The arena will also host concerts and cultural events with space for 2,500 seats and 3,500 people standing, giving the venue a range of uses, which Mace says was essential to the council's strategy. "DCC's vision was first and foremost for a multi-sports facility that, by default, would be capable of holding other 'arena' events and therefore creating the correct balance between day-to-day sports use and an event profile fundamental to the success of the project," says a Mace spokesperson.

Before starting work on the project, the city council consulted with more than 30 midlands-based cycling clubs based within a 75-mile radius of Derby, most of which were interested in using the indoor track on a regular basis. The council also consulted with other sports clubs and national governing bodies to assess potential usage, but there will be no anchor tenant with the arena open to a range of cyclists and community groups.

In terms of design, the client's vision was to create a focal public building for Derby and this had to be reflected in the external appearance. The Mace spokesperson adds: "A key driver for the external appearance was the need to create a form which balances the sheer scale of the arena with the need to create a welcoming form for day-to-day use as a public sports facility and cycle track."

"The architect developed numerous forms which attempted to produce a welcoming human scale 'base' to the building which then demarked the entrance whilst balancing the economy of scale and form of the building. The options analysed also explored the form and dominance of the roof, which has developed into a simple and efficient curve.

"The accepted form is a hybrid and simplified thinking of the design options was investigated. The form consists of an extruded square volume with curved corners. It is then 'bent' at its front and back to create lifted sections for the entrance and service area. To achieve the form the roof is curved in one direction down towards the track ends with the crest horizontal. The form is simple and effective though requires a crisp level of detail and material to be successful.

"The form consists of a 'base' area which is recessed to create a human scale pedestrian edge and canopy to the building at ground level, which is also particularly important due to the tightness of the site. Above this sits the main 'upper facade' of the arena.

"To the front the 'lifted' section exposes the full width glazed foyer front which tapers in height downwards with the building form. The upper storey overhangs the entrance area creating a welcoming canopy to the entrance. To the rear the building is lifted to create the service area which will have many access doors and will be predominately louvered. To the lower sides the base will be in a robust material such as brickwork or render.

"The upper volume is expressed as a 'ribbon' of material

*Continued overleaf..*

***'A key driver for the external appearance was the need to create a form which balances the sheer scale of the arena with the need to create a welcoming form for day-to-day use as a public sports facility and cycle track'***

Spokesperson, Mace



© Bowmer &amp; Kirkland

which wraps and spins around the building. The geometry created between the curving profile of the roof and the lifting of the building front and back has been deliberate to create a consistent height to the upper facade. This consistency allows a horizontal strip cladding to be used akin to the boarding of the cycle track. It is intended that the cladding is a metal long strip cladding system with seamed joints applied onto a substrate system.”

The council’s aspirations for the project included achieving a high level of sustainability, including a Very Good rating under the BREEAM system. Initially, the council had hoped to achieve a rating of Excellent but after a period of value engineering this was no longer possible.

For the design and construction team, the biggest challenge has been achieving the fine balance between a venue capable of hosting a range of professional sports without compromising

*‘The installation of the track is a highly skilled operation and there are few companies in the world which do this kind of work’*

Scott Millington, project manager on the job for Bowmer & Kirkland

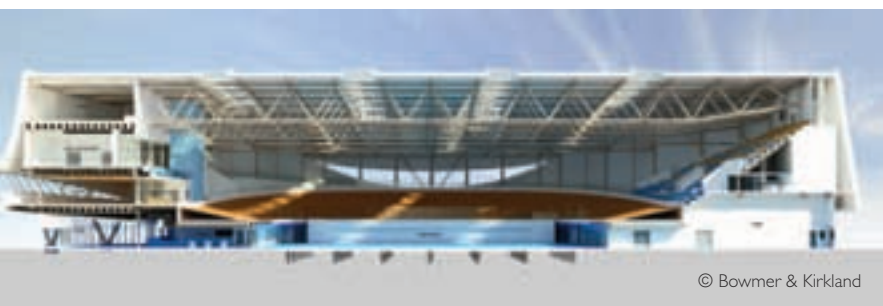
the arena’s ability to host concerts and cultural events with the correct feel.

Scott Millington, project manager on the job for Bowmer & Kirkland, says: “The design, detail and construction of the cycle track is the most technically challenging aspect of the construction phase. Close liaisons with British Cycling, the architect and the specialist track designers has taken place well in advance of construction beginning on site.

“The track needs to be specifically designed, manufactured and installed to the exact requirements of British Cycling and the international cycling body who have very stringent requirements. The installation of the track is a highly skilled operation and there are few companies in the world which do this kind of work. Preparation is the key to this operation as the environment for their install has to be perfect; this required the timing of the installation to be exact.”

More than 1,700 tonnes of steel are being fabricated off-site in Barnsley for use in the project and before starting work Bowmer & Kirkland also sunk 1,303 piles underpin the foundations on the site, which was previously hosted a park and ride facility.

Prior to being used as a park and ride facility, the site had been used for landfill and was initially filled during the 1940s. Subsequent major tipping phases followed from 1961 to 1976 and then again from the late 1980s until the



© Bowmer &amp; Kirkland



© Bowmer &amp; Kirkland





**Project:**  
Derby Velodrome

**Cost:**  
£27.5 million

**Client:**  
Derby City Council

**Architect:**  
Faulkner Brown

**Structural engineer:**  
Arup

**Project manager:**  
Mace

**Cost consultant:**  
Sense

**Mechanical & electrical engineer:**  
Arup

**Acoustic consultant:**  
Arup

**Design & build contractor:**  
Bowmer & Kirkland

**Groundwork subcontractor:**  
McDermott

**Mechanical & electrical sub-contractor:**  
Derry Building Services

**Scaffolding subcontractor:**  
Rilmac

**Steel frame subcontractor:**  
Billington Modern Structures

early 1990s before being converted into a park and ride before the turn of the Millennium.

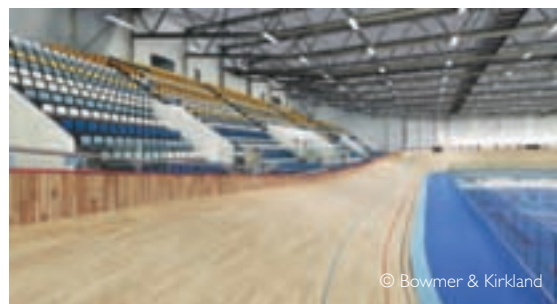
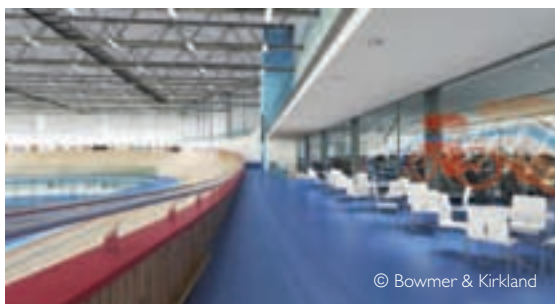
Due to the site's history, Bowmer & Kirkland had to carry out extensive site investigations before beginning work. Mr Millington adds: "We employed an independent consultant to carry out environmental studies and assessments as required for discharge of environmental planning conditions. This was made up of intrusive investigations to determine the quality of the soils within the ground. They then prepared a remediation method statement which we implemented and was passed before construction began on site."

Before Bowmer & Kirkland could begin work on the arena itself, a replacement park and ride facility had to be built. This was completed by March 2013 and opened to the public. After this initial phase, Bowmer & Kirkland took control of the site for the arena and began work on April 2, 2013.

However, as the new arena is being built near the Pride Park, the home of the city's Championship football club, Derby County, on match days half of the existing park and ride is handed back to the football club to help provide more off road parking and keep congestion down within the area.

Bowmer & Kirkland began installing steel work on June 10, 2013 with work on the roof structure ensuing followed by the wall cladding and internal concrete floors. Once this is completed, work on all the internal aspects including the mechanical and electrical work will begin with construction activity expected to peak between November 2013 and March 2014.

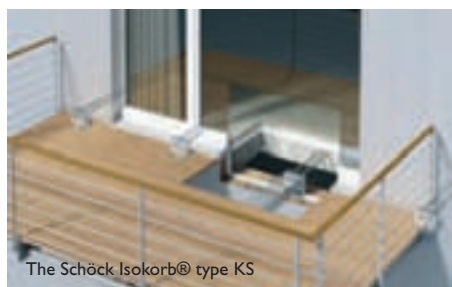
Once complete in late 2014, the project will host a range of other sports including badminton and basketball in the 12 court sports hall but the 250-m velodrome will surely be what the arena becomes most known for, as a physical legacy of the 2012 Olympics but in Derby not London.



## 2012 Olympics allow Schöck to demonstrate its versatility

As the supplier of structural thermal break products to the Aquatics Centre and Olympic Village for the London 2012 Games, Schöck was able to demonstrate the diverse load-bearing thermal insulation solutions offered by the Isokorb range.

In the 11 blocks of the Olympic Village alone there was a huge demand, with around 10,000 thermally broken structural connections to be considered. For podium slabs and pre-cast balcony applications the Isokorb type K, for concrete-to-



The Schöck Isokorb® type KS

concrete connectivity, was used. The type KST, type QP and Schöck SLD dowels combined to meet the requirement for securing the winter garden balconies. Types KS14 and KS20, for steel-to-concrete, provided the solution for connecting the various concrete frames to steel balconies. At ground and first floor levels enormous quantities of type K concrete-to-concrete thermal breaks were required for the large slab sections.

The Aquatics Centre also presented quite a challenge. It is a huge 17,500 capacity building covered by a 3,200 tonne steel roof; and thermal breaks had to provide cantilever connectivity at points around the perimeter of the building at roof level. Because the load cases included both positive and negative moments, and involved a supported steel structure, the configuration was to use two KST-QST22 units per connection, which are variants of the KST steel-to-steel module.

With steel having a relatively high thermal conductivity, total product performance integrity had to be assured at the Aquatics Centre. Schöck

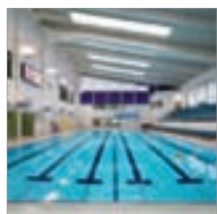


turned to the Oxford Institute for Sustainable Development (OISD) for endorsement. A thermal model was developed and a surface temperature factor (fRsi) analysis carried out. The result was a highly effective 0.82 for the thermal bridge in this case. As a comparison, for residential buildings, the temperature factor requirement is equal to or greater than 0.75. The chlorine content in the atmosphere was a further major consideration and to avoid any possibility of stress-corrosion affecting the KST units, special cap nuts had to be developed for protection.

enq.148

*For your free copy of the extensive Schöck Specifiers Guide and/or the Technical Guide contact the company on 01865 290 890 or visit [www.schoeck.co.uk](http://www.schoeck.co.uk)*

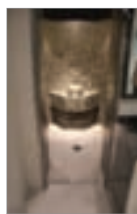
### Sporting daylight



Kalwall® diffused daylighting is playing a major role at Wakefield's new Sun Lane Leisure Centre designed by the NPS Group and winner of the RICS Pro-Yorkshire Winner in Tourism & Leisure award. The centre fulfils both the client's and Wakefield District Council's requirement for a BREEAM Excellent rated building, comprising a large swimming pool and learner pool, health suite, large gymnasium and exercise studio. Kalwall is used for translucent floor to ceiling walls in the centre's gymnasium and at clerestory height over the pool. The light diffusing qualities of the product is ideal for sports halls because it eliminates stark contrasts of light and shadow and creates an ideal playing surface.

enq.149

### Dallmer aids drainage at Newmarket Spa

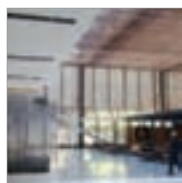


The privately owned Bedford Lodge Hotel in Newmarket, a Victorian property once part of the estate of the sixth Duke of Bedford has recently launched a new Spa. Barnes Construction contacted Dallmer, a company with over 100 years experience in this sphere and sought advice as to which of its extensive range of products would be suitable. Dallmer recommended its floor channel Ceraline Pronto F 600mm with a built in depth of only 129.5mm, which would be suitable for each location in the Spa. The Pronto was extremely simple to install, flanges securing the drain to the floor are grade quartz sand coated onto epoxy glue which gives optimal waterproof adhesion.

01787 248244 [www.dallmer.com](http://www.dallmer.com)

enq.150

### Levolux has it covered in Chicago



Following a £110 million (\$168 million) refurbishment project, Hyatt Regency Chicago hotel, which dates back to 1974, is now regarded as one of the most high-tech hotels in the world, with electronic check-in pods, dynamic lighting and a unique screening solution from Levolux. Levolux was approached to devise a custom screening solution, based on its popular Infiniti Fin system, to support three main objectives. Firstly to raise and maintain comfort levels, secondly to reduce noise transmission and finally to create a clean, contemporary aesthetic. The solution comprised rectangular shaped Fins, applied internally to screen the glazed envelope, filtering direct sunlight as it enters the building. A proportion of these Fins have special acoustic qualities.

enq.151

### Metal Technology hits heights at Olympic Way



Metal Technology has supplied its innovative architectural aluminium products on one of London's tallest buildings. Designed by Hunt Thompson, the new 4 star Park Inn Hotel and 158 apartment building sits at a prominent junction adjacent to Olympic Way. The design called for visual impact and high performance from door, window, curtain walling and Brise Soleil systems. Metal Technology System 9 and 10 single / double-action pivot commercial doors offer both standard and anti-finger trap forms as well as a

fully rebated option with butt hinges. Double and single door leaf options are included in the range.

028 9448 7777 [www.metaltechnology.com](http://www.metaltechnology.com)

enq.152



# Small chain is big on new ideas for building hotels

For many business travellers, an overnight stay in a cheap hotel is something to be endured rather than enjoyed. Not any more. A drab office block overlooking the runway at Gatwick Airport is about to become the latest example of a design revolution, as Ray Philpott reports

A forward-looking British business is using innovative design, smart technology and clever, cost-effective construction techniques to turn the budget hotel concept completely on its head.

BLOC hotels is determined to banish the idea that 'budget' has to mean floor after floor of anodyne, joyless, corporately decorated bedroom units, all too often in a less than ideal location.

In fact, it has been ripping up the hotel industry's rule book and is intent on sweeping away the budget hotel sector's cheap and cheerful image with what it calls "affordable luxury."

This is not just marketing spin either, as a quick glance at the impressive specifications and features of its soon to open Hotel at Gatwick Airport shows.

As standard, rooms feature Armani Roca bathrooms,

Missoni-designed Bolon carpets, Artemide low-energy LED lighting, high-end king-sized mattresses and Italian-tiled wet rooms plus electric blackout blinds and superb sound insulation. The interiors boast top-quality Italian wood-effect laminates, Alcantara fabric finishes throughout and are highly sound-proofed.

Each room's full climate control and other electrical functions are operated by either an integrated tablet computer or through an app downloaded to the customer's own tablet or smart phone. This also gives guests the ability to use their mobile devices as door keys and to stream personal content from them to a large Samsung smart TV.

Yet, a stay in this 245-bedroom hotel, with its luxurious looking black and gold clad exterior, costs the same as a traditional budget hotel chain in the same location.

*Continued overleaf...*

*'The bottom line is that our finished product is much more cost-effective to build in any given location...'*

Colin Graham



BLOC's "affordable luxury" concept has been tried and tested in Birmingham



## A step change

Several key concepts have been pulled together to make this impressive jump in quality possible at this end of the market.

Firstly, the hotel pods are constructed from pre-fabricated, modular metal boxes, which form the rooms. These can either be 'stacked up' and then clad to build a hotel on a piece of land or they can be inserted into an existing building. Cassettes are used between the pods to create roof, floor and corridor spaces. Separate room pods are available to create service-related spaces like storage rooms. Alternatively, for a conversion project like Gatwick, Boxbuild has developed a hybrid of modular and traditional construction, which offers more flexibility in any space. The modular systems means that a huge range of buildings can be converted into a BLOC hotel. Working with architects and planners, roofing and cladding can then be added in any architectural style to suit the area or even within the facade of a listed building.

Secondly, the high-spec interiors of the pods are made from pre-fabricated elements and assembled like a kit on delivery and installed in the building.

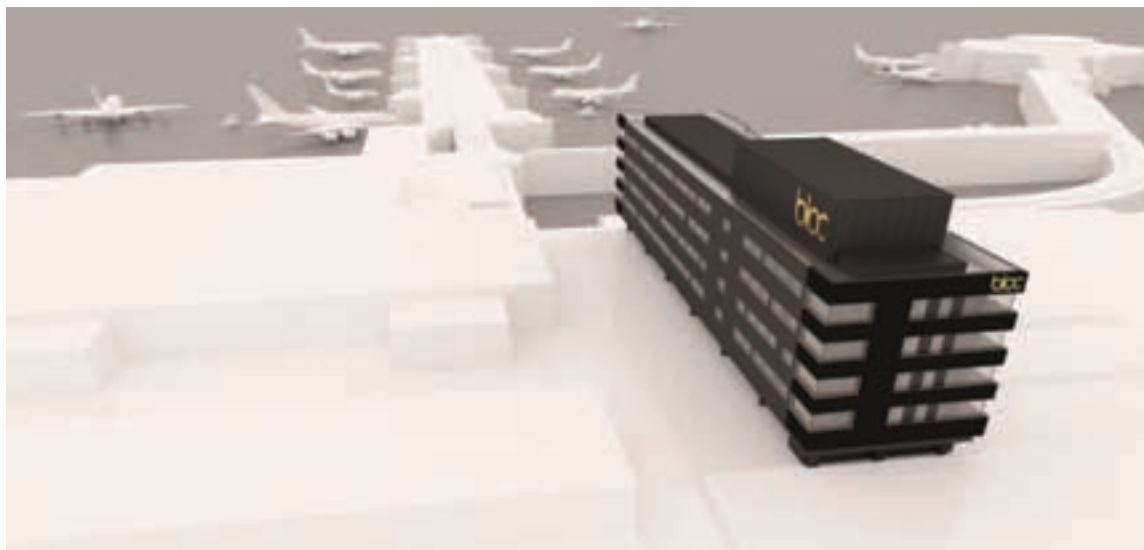
Last but definitely not least, the intelligent design of the rooms and their features means each unit can be rebuilt with a footprint of just 10 sq m and still exude quality and comfort. This makes it possible to create high-density of accommodation at any given location.

"Our groundbreaking approach means we can put up our hotels up to twice as fast as a conventionally constructed hotel at any given location – and we can get more rooms in the same space," explains Colin Graham, pod designer and co-founder of Boxbuild, the company behind BLOC hotels.

"In addition, as finishes are not made on site, we have greater control of cost and quality. The expected longer life expectancy for the high quality fit-out will also reduce maintenance costs. The bottom line is our finished product is much more cost-effective to build in any given location and, therefore, more money can be spent on creating an attractive environment that people really enjoy staying in.

"This all adds up to something never experienced before at this price in the UK."

*'It's a fantastic location for the BLOC concept, but this design presented different challenges to our first project'*



Clockwise from top left: Construction of the original 1960s building; the completed original building; CGI of the new BLOC hotel conversion, showing its prime location at Gatwick's South Terminal



The interior of one of the larger family rooms at Gatwick (top). High-end finishes, fixtures and fittings feature in every room and bathroom (bottom)

## Better by design

The origins of the venture began in 2008 when Colin and colleagues formed a design and build company called Boxbuild, to develop pod construction ideas that had originated in Japan.

A hotel chain asked Boxbuild to create pod hotels at 37 sites in Dubai. When the project floundered due to the emirate's economic woes, Colin and a fellow director decided to adapt the concept for the UK.

They did their homework, commissioning studies to find out exactly what guests wanted from a short stay on a business trip. Findings showed business guests often don't even unpack their bags, which told them they could remove a lot of unnecessary storage space.

"We felt there was market for very high-quality, short stay rooms that give people the very best of what they really do need and leave out what they don't," said Colin. "Who wants a big, soul-less white room whose space you don't make best use of, with a rubbish shower and little TV in the corner.

"Giving our customers a great night's sleep is paramount. What people actually want is a nice compact space with a really great big comfortable bed, superb temperature control in a room that is aesthetically pleasing and feels like you're buying into quality. They want great TV, and great wi-fi and a great shower in the morning. They don't unpack their bags, don't need a wardrobe or a trouser press in the room – business people don't work like that.

"We've removed all the elements we feel are unnecessary – swimming pools, gyms, restaurants, mini-bars and such – so we can focus on delivering five-star quality in the rooms.

"A good analogy is that it's a bit like being in a Mini instead of a large BMW – it's more compact but you're perfectly happy to be driving it because it feels high quality."

In 2010 Boxbuild used this knowledge when it created a new concept, BLOC hotels. In 2011 a 74-room hotel was built on the site of a former petrol station in Birmingham's Jewellery Quarter, a conservation area, to prove the concept for BLOC hotels' design and business model. It went up from start to finish in just 24 weeks.

Colin said: "Birmingham was the prototype and really has proved our concept works well. People rave about the finishes and the hotel has won us a Trip Advisor Excellence Award. Two years on and hotel still looks brand new. So, when an opportunity came up for us to extend the concept to Gatwick Airport, we took it."

*Continued overleaf...*



***'We've developed a new concept called BLOC apart. Its a micro-apartment – a sort of aparthotel..'***

Colin Graham

## Challenges and opportunities

The company has been busy converting the conveniently located, formerly BAA-owned Norfolk House at the airport's South Terminal – a building that literally overlooks the runway and has an entrance a few metres away from the security gates.

"It's a fantastic location for the BLOC concept, but this design presented different challenges to our first project. However, it has actually helped us develop some new opportunities too," Colin explained.

"Basically, we had a framework of columns and concrete platforms to fill with rooms and then finish off with a new exterior facade to the building. The hotel is expected to open around the end of the year."

As a conversion, Gatwick was always going to take longer to complete than Birmingham but airport security processes and its location within the South Terminal has made it slower to get materials in and out of the site. So, construction has taken some 12 months – although Colin is certain a conventional build would take around two years.

"Furthermore, the shape meant that we could not just fill it with our standard-sized rooms, so, we've had to be creative

about filling some of the less conveniently shaped areas and utilised the quirks to develop a number of larger, L-shaped family rooms at the corners of the building with an extra space that can accommodate a double bunk – or a desk.

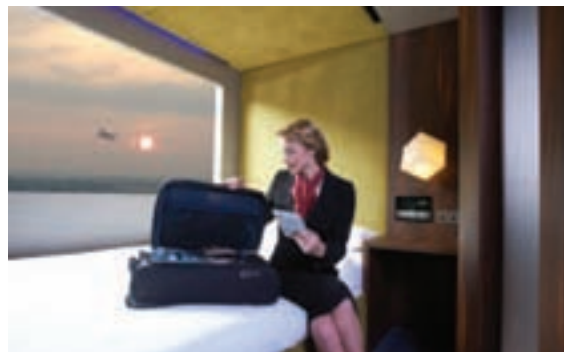
"As a result of the difficulties of access we've fitted the bathrooms as pre-built pods in the usual way but the remaining walls were prefabricated and put up on site. The rooms have the same dimensions and interior fits as a standard pod. Four different modular room finishes have been used in the hotel."

From the outset, a full compliment of consultants were involved at the design stage to ensure the rooms meet and surpass current fire, safety and planning regulations.

Given the location, the sound proofing has to be second to none. You can watch aircraft taking off and landing all day but you won't hear them. Of course, with no opening windows, the climate control systems supplied by BLOC hotels' technology partner Samsung has to be excellent.

The exterior was finished off with grey render facades, black powder-coated metal 'bookends' and coloured metal for the gold detailing.

The fully working walk-in demonstrator for the new BLOC apart concept and standard hotel room at the Milan Design Fair (left) and a standard room at Gatwick (right)



**Interior and exterior design:**  
Boxbuild

**Main contractor:**  
Vinci South

**Structural engineers:**  
Rathbone and Roche

**Pod construction & fit:**  
Boxbuild

**Planning consultants:**  
Vantage Planning

**Safety consultants:**  
BBS Group

## Evolution

At Gatwick there was enough room to create and try out a much larger accommodation style with more facilities.

Colin explained: "We created this different accommodation area to play with the design. From this we've developed a new concept called BLOC apart. It's a micro-apartment – a sort of aparthotel – and once again I've maximised efficiency by reducing space while providing customers with everything they want."

The team built and displayed a fully working example of Bloc Apart at the Milan Design Fair in April. It comprises a lounge, kitchenette, desk, separate full-size bedroom with wardrobe and a bathroom – all within a 20 sq m box.

The company will test out a prototype of 30 Bloc Apart

rooms at the Birmingham site, with build starting in January. The apartments will be served by the same staff but are aimed at business people who want to stay longer in one destination and want a bit more room.

"The application of space in the design works really well – it seems airy, the finish is phenomenal and it feels really expensive," said Colin.

"We're looking into some interesting applications for this design – we've even had enquiries about building them as apartment blocks in New York."

The future certainly looks very promising. It may not be too long before business travellers are staying at a BLOC hotel in the Big Apple.



## Deco-rative finish for iconic hotel



The £10 million refurbishment of the Radisson Blu Hotel Manchester Airport – the North's biggest hotel investment programme – is currently underway and Scolmore Group's wiring accessories have been specified for the newly renovated business class bedrooms. The iconic hotel, which originally opened in 1998,

will be radically transformed over three phases. During the first and largest phase, all 120 of the business class bedrooms and suites have been fitted out with products from Scolmore's Deco decorative metal wiring accessories range. Switches; socket power outlets; control switches; TV, telephone and data sockets.

01827 63454 [www.scolmore.com](http://www.scolmore.com)

enq.153

## Evolution Insurance Solutions Ltd



Do you require a structural warranty/latent defect insurance?

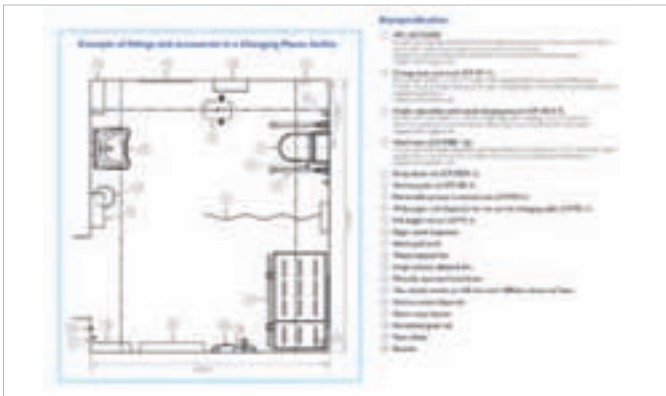
Evolution Insurance Solutions Ltd is one of the UK's leading brokers, a specialist in the 10 year structural warranty market.

Whether you are managing a self-build or a large scale residential or commercial development, you are likely to require a mortgage compliant warranty and site insurance.

Evolution will be happy to source the right insurance product at competitive rates for you or your client. Please contact Ed or Rob on:

01799 512031 [www.buildingwarranties.com](http://www.buildingwarranties.com)

enq.154



## 'Drag and drop' Changing Places

Specification of accessible toilets is now available with just a mouse click through innovations at Clos-o-Mat. As a result, specifiers wanting to include the state-of-the-art toilet facility can simply 'drag and drop' the complete drawing and specification criteria into their plans. Clos-o-Mat has further designed the download so that each item within the layout can be individually moved around the space to suit specific project requirements. The Changing Places download complements those already available on Clos-o-Mat's website, for its Palma Vita and Lima Lift shower toilets. "Specifiers now have a 'one stop shop' for CAD details for disabled toilet facilities in and out of the home," says Robin Tuffley, Clos-o-Mat marketing manager. "The CAD downloads are complimented by a number of relevant white papers, which further give specifiers a quick and easy reference to all appropriate guidelines affecting provision of accessible toilets in public environments, and which are also available for download."

enq.156

## EVENING NETWORKING EVENT

In association with



**21 NOVEMBER 6.30-9.30PM**

THE BUILDING CENTRE, STORE STREET, LONDON WC1E 7BT

- > CPD SEMINARS FROM **Stelrad** & **Armstrong**
- > NETWORKING
- > TOUR THE BUILDING CENTRE
- > BROWSE THE BUILDING PROJECTS GALLERY



### BOOK NOW

Tickets are priced at **£24.99** each and include drinks and nibbles. Places are available on a first come, first served basis, so book now to ensure your space. We hope to meet you there! For further details, please contact Lesley Mayo on **07767 116838** or email [lesley@netmagmedia.eu](mailto:lesley@netmagmedia.eu) and for tickets, visit <http://netmagevents.eventbrite.co.uk/>

## We Build It Ltd

simple solution sewage systems



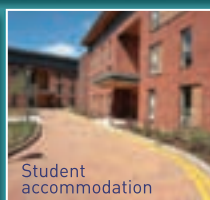
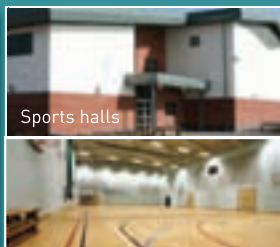
- Suitable for homes without access to mains drainage
- Discreet solution to on-site sewage treatment
- 10 models in the range with a capacity up to 50pe
- CE Marked and EN 12566-3 Certified
- Uses the extended aeration method to treat sewage
- 96% efficiency allows a typical 3-5 year emptying interval
- Visually unobtrusive and odourless
- 25 year warranty on GRP & 2 year warranty on the air pump
- Deal direct with the UK Manufacturer

**0800 731 9421 [www.webuildit-ltd.co.uk](http://www.webuildit-ltd.co.uk)**

enq.157



## Excellence in Precast Concrete Offsite Construction



At Buchan Concrete we have a dedicated team committed to providing **innovative, sustainable solutions** to the education sector for the **growth and development** of future generations.

The benefits of using precast are:

- Cost and speed
- Sustainable - zero carbon options
- Flexible
- Robust
- Secure
- Fire resistant
- Excellent acoustics
- Flood resistant
- Choice of finishes
- Low cost rental options for Classrooms and Sports Halls

Visit us at:  
**Education Estates Exhibition**  
Manchester Central  
26-27 November  
**Stand no. B10**

T: +44 (0)1606 843500  
[www.buchanconcrete.co.uk](http://www.buchanconcrete.co.uk)

enq.158

## Helifix solution for bowed building walls



The recently upgraded BowTie HD, from masonry repair specialist **Helifix**, is the ideal solution to the problem of bulging and unstable building walls. Fully concealed once installed, it rapidly restores structural stabilisation by securing the wall to internal joists or rafters without the need for any unsightly tie bars or pattress plates. The stainless steel BowTie HD, with its registered design, is the market leader in providing bowed walls with lateral restraint. Backed by Helifix's

considerable experience, expertise and technical support, the BowTie HD is fully proven and widely used. Its heavy duty, unique rolled profile with self-cutting end, mechanically connects floor joists or roof timbers.

enq.159

## Performance without compromise



Conservation zones are often seen as a roadblock to the construction of new, more efficient buildings, however a new home in Suffolk has shown that this need not be the case, using the **Kingspan TEK® Building System** to help gain planning permission, without having to compromise on performance or living space. The Kingspan TEK® Building System was specified for the property's walls and roof. Comprising structural insulated panels (SIPs), the System supports a wide range of renders and finishes and was designed, engineered and fabricated specifically for the project by erectors and Kingspan TEK

Delivery Partners, SIPS@Clays LLP.

01544 387384 [www.kingspantek.co.uk](http://www.kingspantek.co.uk)

enq.160



## The choice for style, speed and substance

Specifiers looking to select a high performance car park decking system can get a wealth of information online and in print with new guides from **Flowcrete UK**. A new 'transform and protect' microsite has been developed at <http://www.flowcrete.co.uk/campaigns/transform-protect/transform-protect-campaign/> to give a comprehensive insight into the renowned car park decking system, Deckshield. Flowcrete UK is a pioneer in car park decking, with innovations including the fast-track installation system Deckshield Rapide included in its range of time proven Deckshield systems. Featuring product specifications and case studies, the microsite also includes a downloadable new brochure for Deckshield. The new brochure has also been updated for 2013 and features a car park product selector guide, which gives an 'at a glance' guide to the types of Deckshield suited for different car park environments.

01270 753000 [www.flowcrete.co.uk](http://www.flowcrete.co.uk)

enq.161





# Improving the UK's education facilities

**E**ducation Estates is a new event that focuses on the complex and challenging issues facing those designing, building, maintaining and managing Britain's schools, colleges and universities. With a two-day conference and exhibition, the event will bring together architects, contractors, consultants, LEAs and estates and facilities managers, as well as governors and practitioners from the primary, secondary and tertiary sectors. The best part? It's completely free of charge to attend!

Education Estates takes place on the 26 - 27 November at Manchester Central with two full days of complimentary conference content from 40+ speakers and an exhibition featuring products and services from around 100 manufacturers and suppliers. Conference content will be delivered on the exhibition floor to encourage exhibitors and delegates to focus their discussions on the key issues in the sector.

The strapline for Education Estates is 'Improving the UK's education facilities'; a focus that event organisers Step Exhibitions hope will be adopted by visitors and exhibitors alike during the event. Education Estates Event Director James

*'Some of the key topics being discussed and debated in the conference include funding, BIM, safeguarding, sustainability, energy, design & build, PSBP, classroom design, pupil safety, maintenance and more'*

Lee says: "For the last 11 years Step has organised Healthcare Estates, which is widely considered THE event for the built environment in the healthcare sector and annually sees over 2,500 key personnel attend. A number of our healthcare clients operate within the education sector and have said that there was a big gap in the UK events calendar for an estates and facilities based event in education."

The event benefits this year from the support of key organisations such as National Governors Association, Secured by Design, BRE, Carbon and Energy Fund, Construction Industry Council, Education Construction Network, FASNA (Freedom and Autonomy for Schools – National Association) and the Energy Consortium. These key supporters are contributing to the conference programme and taking part in the exhibition while, most importantly, bringing their members to the event delivering a broad range of expertise in the process.

The Education Estates Conference is a unique forum for professionals from across the education spectrum. The content is arranged in primary, secondary and tertiary streams, providing complete coverage of education facilities issues and practice: you're free to choose sessions from any stream over the two days.

The programme features case studies, exemplar projects and lectures, with speakers drawn from all parts of the education sector, including estates and facilities directors, governors and practitioners. Education Estates welcome colleagues from the NHS and local government, with invaluable experiences and insights that, all involved in education facilities can learn from.

The exhibition will provide a unique opportunity for visitors to meet suppliers, view products, make contacts and find solutions for current and future challenges. The conference will be delivered from theatres across the exhibition floor so there are plenty of opportunities to meet exhibitors and view products between sessions.

One of the key features on the exhibition floor is the project gallery, which features a select group of architects, consultants and contractors who will showcase recent education projects to attendees and demonstrate their expertise. This area is open to all to view and the organisations that are currently confirmed include ADP, Construction Industry Council, Education Construction Network, Morgan Sindall, Stantec and others.

**Keynote speakers and sessions include**



John Nangle (pictured), Crown commercial lead for energy, Cabinet Office with Clive Nattrass, CEO, Carbon and Energy Fund – "Vision for energy improvement across the public sector"



David Yearly, head of play safety, The Royal Society for the Prevention of Accidents – "Security & Safety"



Mike Green, director of capital, Education Funding Agency – "Education Funding Agency update"

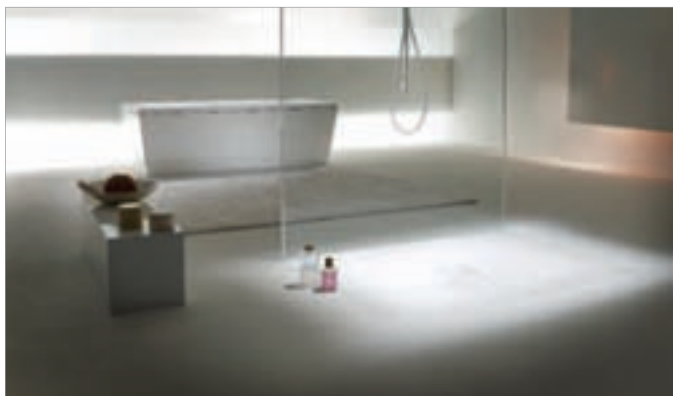
**Look out for**



**SCHOOL CONSTRUCT** from **Buchan Concrete Solutions** provides fast, robust and cost effective solutions for education buildings using innovative factory engineered masonry faced concrete. Flexible learning environments can be created from a single class to whole school develop-



**Places are limited so register now for your complimentary conference and exhibition pass. Visit [www.educationestates.com](http://www.educationestates.com)**



## Kemperol delivers a factory finish

The advanced chemistry of Kemper System's innovative Kemperol V210 cold liquid-applied waterproofing membrane will help ensure efficient manufacture of fluorochemicals and fluoropolymer materials thanks to a roof refurbishment project at AGC Chemicals in Lancashire. The concrete slab roofs on two production site buildings at AGC Chemicals had asphalt surfaces that were widely failing with a potential risk of leaking into the building below. This was evident by patches of blistering. Moreover, the seal around a number of redundant roof lights had also failed so AGC opted to refurbish the roofs as part of a general upgrade to the buildings and Kemperol V210, a cold liquid-applied waterproofing membrane from Kemper System, was chosen as a solution that could be applied quickly with minimum remediation to provide a tough, flexible and long lasting surface.

019 254 45532 [www.kempersystem.co.uk](http://www.kempersystem.co.uk)

enq.163

## Axter at the NBS National BIM library



Axter has created, in partnership with RIBA, a series of Building Information Modelling (BIM) objects enabling design teams to include high performance, robust roofing in their 3D models. BIM is the way forward for building design and implementation, allowing all parties to share a common information pool. With BIM level 2 mandatory on all government projects by 2016, many

designers, specifiers and main contractors are already utilising BIM. Axter BIM objects include their most widely specified systems – WILOTEKT-PLUS® structural waterproofing, ALPAFLORE green roofs, EXCEL warm roof constructions and ECOFLEX single ply.

01473 724056 [www.axter.co.uk](http://www.axter.co.uk)

enq.164

## Reynaers aluminium proves energy efficient



Bright, airy and a need to reduce energy consumption by 40 per cent were the requirements when Reynaers Aluminium was contracted to provide their quality aluminium window and door solutions for the County Hall in Trowbridge. The external courtyard is now covered with a new ETFE

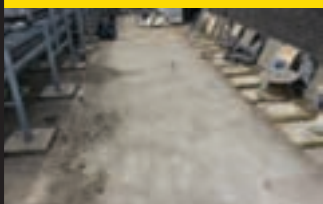
'bubble' roof, creating a vibrant public space between the existing buildings. The remaining sides of the courtyard are opened up to a new public library, dining area, registry services and meeting rooms, utilising Reynaers glazing systems CW60 SC and capped, CW50 capped, Eco windows and doors and the heavy duty Vision 50 ground entrance.

enq.165

## "Flat & Low Pitch Roofs Restored With Minimal Cost & Disruption"

Proven in all extremes, GacoPro, the Liquid Applied, 100% SILICONE Roof Coating is now available throughout the UK.

**Guaranteed to keep water out... even under permanently ponding water**



Asphalt roof on Operating Theatre of Scarborough Hospital Before and after GacoPro (photos courtesy of Dewhurst Industrial Solutions - Lancs)

### GacoPro – The Basic Facts

- 20-year factory warranty
- Minimal disruption/odour
- Saves costly tear-off and landfill
- Reduces summer building cooling costs/saves energy
- 100% Silicone is totally waterproof
- Very competitive per meter material cost
- In many instances, revitalises a flat roof without triggering Part L 1b regulations
- High reflectivity slashes roof damaging surface temperature by up to 85%
- Can be applied over wide temperature range, 0°C up to 46°C
- Two colour application ensures even coverage
- Once applied, allow a two-hour rain-free window and roof is waterproofed
- GacoPro resists growth of moss, algae etc
- Remains flexible in all conditions
- Outperforms Acrylics, Urethanes, & Asphalt coatings
- Qualified insured applicators nationwide

Sticks to most flat roofing substrates such as weathered Felt, Asphalt, Single ply, Steel, Asbestos, Concrete, Fibreglass, Lead etc.

**[www.GacoFlatRoofingSolutions.com](http://www.GacoFlatRoofingSolutions.com)**

Copyright © 2013 Igoe International Ltd Leeds & Dublin. Est. 1978

enq.166



## Below ground waterproofing for new build

Landmarks (UK) Ltd, a Yorkshire based developer, has used Triton waterproofing systems in the construction of a traditional two storey farmhouse. The property sits on a natural gentle slope, so the basement is fully buried to the rear with a raised patio area to the front. The property was built using ICF (insulated concrete formwork) where polystyrene forms are used to contain the wet concrete when casting in-situ concrete walls – and are left in place. The lower slab was made waterproof by the installation of a membrane beneath it and the inclusion of Triton's TT Admix in the mix. TT Admix contains active chemicals that react with fresh concrete to generate a non-soluble crystalline formation that seals the concrete itself against the penetration of water or liquid. Triton's TT Waterstop, a pre-formed water bar which swells up to 350 per cent when in contact with water, was placed into all joints.

01322 318830 [www.tritonsystems.co.uk](http://www.tritonsystems.co.uk)

enq.167



# Creating healthy spaces – signed RENSON®

RENSON® aims to create a healthy, comfortable and energy efficient indoor climate using natural ventilation and sun protection

## Acoustic ventilation solutions

High-performance window ventilators, louvres or the Linius® continuous louver system allow ventilation to your building without any disturbing influence from outside noises. The self-regulating flap ventilator Invisivent®EVO AK is almost invisible from the outside and from the inside you only see the internal tip lever. It offers a maximum airflow of 15.9l/s/m at 2Pa and a sound reduction in open position up to 48dB. RENSON® also offers a complete set of louver panels and acoustic Linius® solutions with noise insulation Rw (C;Ctr) ranging from 6 to 17dB.

## Wind-resistant vertical sun screen with Connect & Go technology

The Fixscreen® 150EVO is a truly wind-resistant and insect proof screen in every position. But there is more to say. Besides the current Softline box design, RENSON® has come up with a new sleek Square design in response to the strong market demand. The discreet bottom rail disappears into the box: completely up to a height of 2,700mm and partially up to a height of 6,000 mm. This Fixscreen® 150EVO is suitable for all surfaces up to 22m².


## Terrace coverings with a bladed roof system

The Camargue® and Algarve® terrace coverings combine an aluminium structure with a roof made of rotatable blades. The water on the blades is drained away. This water drainage also operates when the blades are opened once it has stopped raining. These terrace coverings can be equipped with lights, heating elements and flat panel speakers. By incorporating wind-resistant screens, glass sliding doors or sliding panels, they become extra outdoor spaces that offer protection against sun, wind and rain.




01622 754 123  
[www.rensonuk.net](http://www.rensonuk.net)

enq.168




Specialist metal fabricators  
& consultants

Bespoke Canopy  
in Stainless Steel



Tel: +44 (0)1254 773718  
 Email: [info@m-tec.uk.com](mailto:info@m-tec.uk.com)  
 Web: [www.m-tec.uk.com](http://www.m-tec.uk.com)

a division of  


enq.169

a total solution for architectural glazing



- atriums
- facades
- canopies
- partitions
- rooflights
- balustrade
- conservatories
- walk on floors
- shuffle glazing
- framed glazing
- structural glazing
- frameless glazing



Tel: 01842 816080  
[sales@glazinginnovations.co.uk](mailto:sales@glazinginnovations.co.uk)  
[www.glazinginnovations.co.uk](http://www.glazinginnovations.co.uk)

enq.170

# English Heritage at the Engine House, Swindon – Selectaglaze awarded return ticket



For further information, please contact the marketing department on 01727 837271, email: [enquiries@selectaglaze.co.uk](mailto:enquiries@selectaglaze.co.uk), or visit [www.selectaglaze.co.uk](http://www.selectaglaze.co.uk)

The GWR Central Engine Station in Swindon, built in 1844, was extended with the provision of a three-storey building in the 1870s to provide general office accommodation and airy light-filled drawing offices. In 1903 an additional storey was added in order to provide extra office space. Having ceased operating as an Engine Station this section of the building was acquired by English Heritage in 1992 to house the organisation's extensive archives.

As part of the 1992 interior refurbishment to this Grade II\* Listed building Selectaglaze, a leading designer, manufacture and installer of secondary glazing in the UK, treated windows on the south elevation in order to improve noise insulation from the railway lines.

Recent rationalisation of English Heritage's office space around the UK has resulted in an increased number of the organisation's responsibilities being delivered from The Engine House by over 500 members of staff. This now includes a public access library, dark rooms, photographic conservation laboratories and meeting rooms. To

facilitate these extra areas of responsibility the building required further renovation and conversion works which were put out to Public Tender. This included the requirement for "The thermal upgrading of windows by installation of secondary glazing units and draught proofing of windows" to specifications prepared by Oxley Conservation, an historic buildings consultancy. The successful applicant for the secondary glazing element was, again, Royal Warrant Holder, Selectaglaze.

A total of 100 sash windows of different sizes were treated using the slim profile Series 20 system for smaller windows and the heavy duty Series 90 range for 'monumental' style sash windows, some with curved heads. Low emissivity glass was incorporated throughout to optimise the thermal performance.

Each window was individually measured and a bespoke frame made that fitted precisely to ensure a good seal. The windows arrived fully fabricated and were installed quickly and with minimum disruption to the fully functioning office.

enq.171



Contact us today on **01704 514613** or email [info@goshelters.co.uk](mailto:info@goshelters.co.uk), or you can visit our website [www.garrickoutdoor.org.uk](http://www.garrickoutdoor.org.uk)

enq.172



## Axis open doors at Waitrose

Axis Automatic Entrance Systems has installed a number of doors in the transformed Waitrose Food & Home store in the centre of Bath. Now nearly three times its original size, the 40,000 square foot store offers a host of new features including a customer café. 119 extra jobs have been created with this £10 million investment and Waitrose has expanded to fill the entire Podium Shopping Centre. Axis Automatic Entrance Systems fitted two pairs of swing doors at the main entrance, a pair of bipart sliding doors at the outer entrance, giving access into the car park, and another pair at the inner entrance. The rear of the store was fitted with a pair of bipart sliding doors on the outer entrance but two pairs of swing doors at the inner entrance that leads directly into the Home section of the store. These automatic doors were supplemented by a manual swing door to the café and Axis also supplied a number of roller shutters.

0844 504 6545 [www.axisautomatic.co.uk](http://www.axisautomatic.co.uk)

enq.173





## NorDan's strategy for new build schools

NorDan, one of the UK's leaders in the manufacture and supply of high performance aluminium clad timber windows and composite doors, has launched a "National Strategy for Schools" – offering a full turnkey service on the supply and installation of a door and window package and curtain walling for the Priority Schools Building Programme. NorDan's energy efficient alu-clad timber windows can be supplied with a U-value as low as  $0.7 \text{ w/m}^2\text{k}$ , which helps a construction company achieve the high annual energy consumption targets set by the Priority Schools Building Project. Some contractors are using windows from the N'Tech 1.2 range from NorDan, others are considering windows that achieve a U-value as low as  $0.8 \text{ W/m}^2\text{k}$ . With the independently verified life cycle costing of a window provided by NorDan, construction companies in this sector are recognising that by investing in a lower U-value high performance product, they are achieving massive savings elsewhere in the build programme.

01452 883131 [www.nordan.co.uk](http://www.nordan.co.uk)

enq.174



## THE SLIMMEST AND MOST AUTHENTIC ALUMINIUM SASH WINDOW IN THE UK



- Optional Choice of Astragal Bars
- Only 36mm! Our super slim meeting rail
- Optional high gloss acrylic 'decorative horn'
- Thermally broken profiles. Doc L compliant.
- Choice of 43mm or 90mm deep bottom rail



Modern New Builds



Established for over 50 years

CALL : 01778 347147

FAX : 01778 341363

EMAIL: [sales@clearviewgroup.co.uk](mailto:sales@clearviewgroup.co.uk)

VISIT : [www.clearviewgroup.co.uk](http://www.clearviewgroup.co.uk)

...AS AUTHENTIC AS IT GETS



@AlumathermUK



search Alumatherm



Proudly made in  
Gt Britain  
for over 52 years

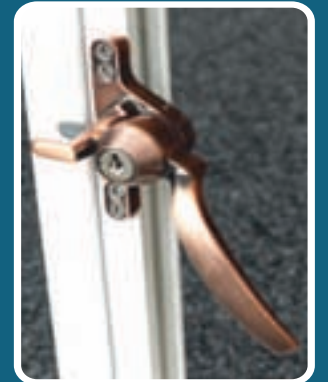
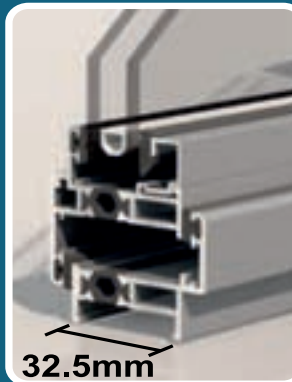


enq.175

## Royale Windows



## The Slimmest Thermally Broken Aluminum Window Available



## Traditional Metal Windows For A Fraction Of The Cost Of Steel



## Secured by Design Using Modern Shootbolt Locking



**DURATION  
WINDOWS**

Aluminium Trade Manufacturer Since 1985

**Call 01268 681612 Today  
Or Visit [duration.co.uk](http://duration.co.uk)**

enq.176



## Cotswold Stays' success with customers



FS Friction Stays from Cotswold Architectural Products have become best-selling lines for hardware distributor Carl F Groupco. Functionality and durability are reported as key reasons for the stays' popularity. Manufacture in both ferretic and high grade corrosion resistant austenitic stainless steel is recognised as significant in adding to the appeal of the range. Commenting

on the popularity of the product, John Mitchell, head of technical support for Carl F Groupco, said: "With each variant available in ferretic or austenitic steel, the Cotswold range offers much more than a standard stay. The austenitic option provides higher grade corrosion resistance which is ideal for use on windows located in coastal areas or in places where high humidity is a factor."

enq.177

## Kayflow launches superdeep guttering



Kayflow, the rainwater, underground and soil systems specialist, has launched a new high strength, high volume guttering system, the SuperDeep 170. It has been designed to handle a much higher flow rate than standard guttering systems. With four of the top five wettest years occurring since the millennium, and data revealing

that the frequency of extreme rainfall in the UK may be increasing, the SuperDeep 170 is raising the benchmark for guttering systems. Recommended for fixing at 600mm intervals, each fascia bracket is able to carry a weight of 125kg; more than enough to handle a gutter full of water, ice and snow.

01827 317 200 [www.kayflow.co.uk](http://www.kayflow.co.uk)

enq.178

## Comar improves performance



With ever-increasing demands on the performance of glazing and opening vents, Comar Architectural Aluminium Systems has developed and rigorously tested its aluminium window systems to meet the very latest performance and specification demands, ensuring their clients have a

future proof solution. The Comar range of solutions, Comar 5P.i and Comar 9P.i High Performance window systems, offers specifiers a comprehensive single source solution that achieves an increased range of window sizes. To achieve this Comar Systems has two profile ranges available: standard and heavy duty.

0208 685 9685 [www.comar-alu.co.uk](http://www.comar-alu.co.uk)

enq.179

adf

news blog

The ADF news blog is accessible from your Mac or PC, laptop, mobile or tablet at any time of day. Its interactive nature allows readers to comment and engage in discussions and social network sharing. The blog links to relevant articles and comment pieces from the national press, so there is no need to go hunting the internet; it's already been gathered and is regularly updated. Following the ADF news blog is now even easier when you subscribe to our daily digest email, a summary of the latest news stories straight to your inbox.

[adf-news.blogspot.co.uk](http://adf-news.blogspot.co.uk)

# Mustang<sup>®</sup>

## -the 'Must have' Gutter System!

### The 125mm Mustang Seamless<sup>®</sup> Gutter System.

### The only seamless aluminium gutter system to obtain a BBA certificate.

- **Approved Installer Scheme**

Only installed by ARP trained/approved installers

- **Simple installation**

Giving labour cost savings.

- **No joints**

No leaks meaning minimal costly call backs!

- **Longevity**

Aluminium does not corrode.

- **Low Waste**

the gutter is formed to the building -nothing more!

- **Durability**

It is well suited to our climate , It will not fade, warp, crack or creak.

- **Recyclability**

Aluminium is produced from 85% recycled material and can be recycled further.



### Aluminium Roofline Products Ltd

Call today on our sales line 01162 894400 or email us at [sales@arp-ltd.com](mailto:sales@arp-ltd.com)  
[www.arp-ltd.com](http://www.arp-ltd.com) , [www.mustang-gutters.com](http://www.mustang-gutters.com)



enq.180

## Hunter Douglas shutter systems helps



The striking Ixia development in London's Shoreditch for Crest Nicholson, with a bespoke **Hunter Douglas** shutter system, has proved an instant hit with buyers. The exterior of the development, designed by architects HGP, features a titanium anodised shutter system installed by Alumet

and allowing residents to make their own adjustments for privacy, light and shade. Phase one on the Ixia scheme saw 244 sliding shutters installed, while phase 2 saw the addition of 100AF fins for vertical privacy control, serving to highlight the benefits of the bespoke systems the company can create thanks to the design flexibility of the innovative system.

01543 275 757 [www.hunterdouglas.co.uk](http://www.hunterdouglas.co.uk)

enq.181

## VEKA UK Group puts education in the frame



The **VEKA UK Group** has unveiled a new brochure dedicated to the education market, detailing the many products and services available to specifiers and decision makers within this sector. The group has a strong, long-standing presence in the education field and this new brochure demonstrates a wealth of experience in designing and specifying for education. Featuring a

detailed introduction to The VEKA UK Group, the document goes on to outline the wide range of VEKA and Halo products suited to education buildings. The group has a huge range of energy-efficient windows, doors and curtain-walling systems, as well as an unrivalled number of support services.

01282 716611 [www.vekauk.com](http://www.vekauk.com)

enq.182

## EVENING NETWORKING EVENT

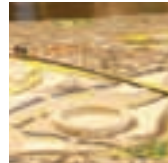
In association with



**21 NOVEMBER 6.30-9.30PM**

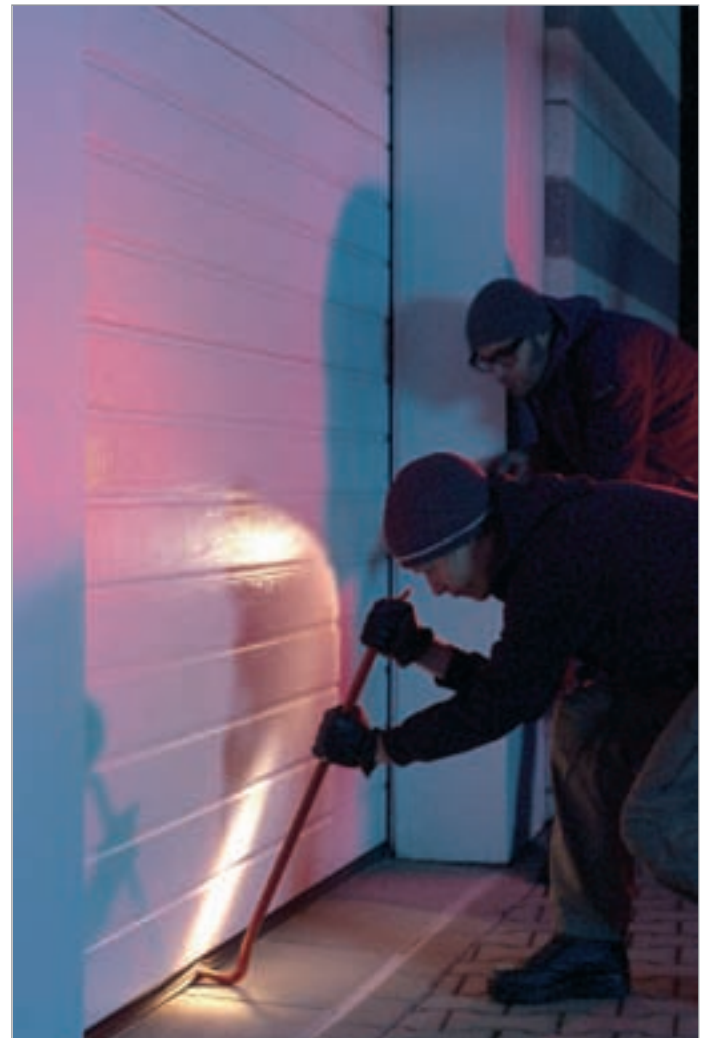
**THE BUILDING CENTRE, STORE STREET, LONDON WC1E 7BT**

- > CPD SEMINARS FROM  & 
- > NETWORKING
- > TOUR THE BUILDING CENTRE
- > BROWSE THE BUILDING PROJECTS GALLERY



### BOOK NOW

Tickets are priced at **£24.99** each and include drinks and nibbles. Places are available on a first come, first served basis, so book now to ensure your space. We hope to meet you there! For further details, please contact Lesley Mayo on **07767 116838** or email [lesley@netmagmedia.eu](mailto:lesley@netmagmedia.eu) and for tickets, visit <http://netmagevents.eventbrite.co.uk/>



## Secured by Design: Sectional Garage Doors\*

- With ProMatic or SupraMatic Series 3 BiSecur operators
- Automatic door locking remains fully functional even in the event of a power failure
- Tested and certified



\* Only available for EPU, LPU and LTH garage doors

**HÖRMANN**  
Garage and Industrial Doors



ref: ADF

enq.183





## Check it out... It's groovy baby!

In the 1960's groovy was the description for anything that was new, attractive and excellent. Today the same can be said for Eurobond Laminates' new range of grooved panels that enables the designer to create the visual expression of multi module panels and still keep the performance and cost benefits of large panels. To deliver this exciting new development Eurobond has developed a new profiling facility. For any given module width of panel a designer can specify single or multiple grooves that simulate a panel joints. The benefits of multi module design, with fewer panels and panel joints, help to provide a significant saving in both labour and material installation costs; as well as increasing overall air-tightness performance of the building wall envelope. Panels can have one central groove, two with equal pitch or specific asymmetric pitches. The 'groove' is available with the premium architectural panel system Europanel S5 and F5 and can be applied to the full range of panel thicknesses and finishes.

02920 776677 [www.eurobond.co.uk](http://www.eurobond.co.uk)

enq.184



## Powerful new Gilgen door operator

Gilgen Door Systems has launched its most powerful and silent running swing door operator yet. The technologically advanced Gilgen FD 20 swing door drive is designed for the automation of new or existing doors up to 250kg and can also automate external doors facing wind loads up to 50MPH. Due to its Swiss build quality and design the FD 20 is ideally suited to tough applications such as hospitals, schools and transport hubs. The versatile FD 20 is 50 per cent more powerful than its predecessor and enables easy, contactless and hygienic access for a wide variety of buildings. Lightweight doors, external doors and even fire rated doors can be automated with ease. Door lintel installations are available with an optional sliding rod mechanism offering greatly improved aesthetics. The powerful electro-mechanical drive on the FD20 is quiet and smooth in operation and intuitive operation is achieved through illuminated program selector buttons.

0800 316 6994 [www.gilgendoorssystems.co.uk](http://www.gilgendoorssystems.co.uk)

enq.185

**Hambleside Danelaw Building Products**

**THINK... natural light**  
**THINK... low carbon**  
**THINK... Hambleside Danelaw**

Increase natural daylight with our CE marked range of inplane GRP rooflights for the metal building envelope. Choose StepSafe Insulator Lo-Carbon rooflights to improve building performance and reduce the carbon footprint.

To find out more, contact us today.  
 Tel: 01327 701920 | E-mail: [marketing@hambleside-danelaw.co.uk](mailto:marketing@hambleside-danelaw.co.uk) | Web: [www.hambleside-danelaw.co.uk](http://www.hambleside-danelaw.co.uk)

BSA approved CPD also available  
*"Rooflight Solutions for the Metal Building Envelope"*

members of  
**ram**

enq.186



## Hospital gets specialist Trespa treatment



Architects Studio Four have worked with **Trespa** on a £6.3 million construction and refurbishment programme at Southamptton General Hospital, specifying an innovative and colourful facade featuring Trespa® Meteor® panels. Trespa is at the forefront of cutting-edge building techniques and

Trespa® Meteor® is a decorative high-pressure compact laminate (HPL) with an integral surface manufactured using Trespa's unique in-house technologies, Electron Beam Curing (EBC). Key to the success of Trespa® Meteor® is its closed surface, which practically eliminates dirt accumulation and keeps the product smooth and easy to clean. It also offers exceptional impact resistance.

01952 290707 [www.trespa.co.uk](http://www.trespa.co.uk)

enq.187

## Laminating history



**Abet Laminati** has opened a museum to celebrate its 50th anniversary. The displays, at the company's Bra factory near Milan, are organised chronologically to take the visitor on a historical tour of laminates in design. The museum, designed by architect Matteo Scalise, comprises 600 sq m and includes over

137 pieces of art which demonstrate the versatility of high pressure laminate. Visitors can study how the results of the dialogue between manufacturer and designer have evolved over time and, as the tour progresses, how they became more imaginative and intricate. It also includes information about Abet Laminati's culture of research, innovative experimentation and creative concepts.

enq.189



## A flowing wave of HI-MACS®

With the construction of the Pan-gyo Residence by the architecture firm, Office 53427, a **HI-MACS®** façade was used for the first time in Korea. Its snow-white walls emerge from a wooden base like a petrified sea wave, with the foam expressed by the perforation of the façade. This new way of shaping the façade and the cubature of a living space, breaks with the way in which residential buildings are traditionally built here, and demonstrates a new and innovative kind of living space design. The house uses three façade materials – wood, brick and HI-MACS® acrylic stone. The client chose the Natural Acrylic Stone because he wanted a house that would be as different as possible from the others. Using HI-MACS® for the first time to build façades in Korea confirmed this desire for individuality.

01892 704074 [www.himacs.eu](http://www.himacs.eu)

enq.191

## Purely academic with Bradite



Cladit exterior finish from **Bradite** is now gracing the exterior of three buildings on the Derby Road Campus of West Nottinghamshire College and Vision West Notts further education college. Water based Cladit from Bradite was specified by contractors DSW Holding Limited for all of the recoating work. The product is a water thinned

polyurethane acrylic finish that according to Dave Woods of DSW offered the best solution in terms of long lasting protection and easy maintenance. "Having used the product for many projects, we know the ability of the Cladit product as far as the quality of application and performance is concerned" he explains.

01248 600315 [info@bradite.com](mailto:info@bradite.com)

enq.188

## Freefoam cladding features on Channel 4



**Freefoam Building Products** is delighted to announce that the new Fortex Clic Cladding was featured on prime time TV show 'Double your house for half the money' with well know TV presenter and property guru Sarah Beeny. Homeowner Ben Barratt came across Freefoam and the Fortex Clic cladding at consumer home improvement show Build It Live and instantly saw the potential for

the exterior of his home extension. The existing 1970's property in Maidstone, Kent featured hanging tiles on the first floor elevation and Ben was looking for a more contemporary replacement that was easy to fit and easy to maintain.

01604 591110 [www.freefoam.com](http://www.freefoam.com)

enq.190

## Cladding Mesh and Insect Mesh



- Sizes from 50mm wide x 45m long
- Install behind timber and ventilated rainscreen cladding systems
  - Stop insects entering air space behind cladding
  - Allows natural ventilation
- Mesh for screening by the metre or roll



01454 238288  
[www.flyscreen.com](http://www.flyscreen.com)  
[sales@flyscreen.com](mailto:sales@flyscreen.com)

enq.192










Pre-painted black featheredge

ThermoWood T&G shiplap cladding

Pre-painted white featheredge

ThermoWood screening

For a free sample, call 0800 849 6339

[www.timber-cladding.co.uk](http://www.timber-cladding.co.uk)

enq.193



energy efficient  
external wall insulation systems  
& decorative render finishes

wetherby insulated render systems

... not just a pretty facade





[www.wbs-ild.co.uk](http://www.wbs-ild.co.uk)

t: 01942 717100 technical hotline: 08458 382380

1 kid glove road | golborne enterprise park | golborne | glt. manchester | wals 3gs



enq.194


# Dura Cladding

## Timber Composite Cladding


+44 (0)1255 423601

[enquiries@duracomposites.com](mailto:enquiries@duracomposites.com)


[www.duracomposites.com](http://www.duracomposites.com)



Up to 25 years  
Warranty




87% Recycled  
Materials



Colour Stable



Quick and Easy  
to Install





Product shown is Type 150 Flush Charcoal



Ideal for new build or refurbishment projects, Dura Cladding looks and feels like timber and its unique formula provides lightweight yet durable cladding that will not splinter, warp, rot or fade throughout its 50 years design life expectancy.

...designed for the future

Industrial Marine Landscaping Architectural

enq.195

# Well-insulated and perfectly ventilated

William McDowell, business director, UK & Ireland at ROCKPANEL, discusses the benefits of installing rainscreen cladding to achieve a beautiful façade together with efficient insulation giving the building an optimal living environment

An ever-growing number of architects are choosing to use a non-combustible, vapour-permeable façade insulation in their projects. Decorative façades in ventilated constructions are increasingly specified by architects who require a product which offers thermal, aesthetic and water resistance benefits to the building. In many sectors the use of rainscreen cladding has been growing for many years. In recent years an increasing number of architects specifying for residential projects have recognised the value that rainscreen systems offer.

The use of rainscreen cladding gives the load-bearing structure of a building optimal protection from weather influences such as sun, rain and moisture. It can also provide additional thermal insulation behind the cladding. The unique feature of a rear ventilated rainscreen is that the thermal protection and the weather protection are separated, making rainscreen systems robust and long lasting. The rainscreen cladding system has a ventilation cavity between the insulation and the façade cladding, which prevents rainwater from penetrating the building while at the same time allowing water vapour to escape from inside. This allows the building to 'breathe' therefore reducing condensation. The installation of an insulated rainscreen cladding system also keeps the building cool in the summer and warm in the winter.

Because of this unique cavity within the rainscreen cladding system, it is possible to install insulation material of any thickness required. Mineral insulating materials of the thermal conductivity groups 035 or 032 are normally used under the cladding to satisfy the requirements of the Energy Savings Regulation.

Installing a ventilated double façade is one of the easiest ways to insulate an existing façade and it can be applied to almost all building façades including those using brick, concrete and zinc, enabling the architect to achieve the design vision with every building façade. After insulation is applied to the existing façade, the building can be aesthetically finished with rainscreen cladding. This flexible approach to the building method offers a number of advantages. The structure can be widened in the future to create additional space and make the installation of extra insulation easy. Cladding the façade with new rainscreen material allows a completely new design to be created while the interior area of the building is unaffected. Rainscreen façade cladding products offer a wide range of renovation options for details such as dwarf façades or the side walls of dormer windows. By using a rear ventilated rainscreen, any further special requirements an architect may have, concerning, for example, fire safety, can also be easily incorporated. In the case of fire protection, the use of a non-combustible stone wool is often used in the cavity to achieve this.



Some rainscreen cladding products are produced from natural and sustainable materials, such as basalt rock, making them durable, weather, temperature and UV-resistant, low-maintenance and ensuring that the colours of the façade remain durably bright for years to come. These products are also a safe and responsible environmental choice for a sustainable construction project. These rainscreen products are often quick and easy to install and maintain, ensuring that the total cost of the building envelope can be reduced. Rainscreen cladding therefore offers the architect the opportunity to create modern cutting edge design while keeping a sharp focus on cost issues and installation times.

Rainscreen cladding can be used in both renovation projects and new buildings. In renovations it can be used to improve the building's energy efficiency, which may be poor in an older building, with high running costs and reduced levels of comfort for users. Rainscreen cladding can also be used in conjunction with energy-saving measures such as roof renovations and insulation. It offers an opportunity to redesign aspects of a building and give it a new lease of life. In new building projects, rainscreen cladding offers an aesthetically attractive material, which can be easily processed and shaped, even curved, to meet the architect's design vision.

For future architectural challenges, a rear ventilated rainscreen system is cost-effective, easy to process and an aesthetically appealing façade cladding, which allows the architect to create beautiful building designs using a product that is environmentally sustainable and energy saving and which provides a quality living and working environment for users.

The 'treehouse school' clad with ROCKPANEL Woods

***'For future architectural challenges, a rear ventilated rainscreen system is cost-effective, easy to process and an aesthetically appealing façade cladding***





## Lathams looks to the future

Accoya® – the modified, highly durable and dimensionally stable certified softwood – is now available from all ten of **James Latham's** nationwide distribution sites. Accoya® wood is a perfect solution for exterior cladding, siding and façades where aesthetics, less frequent maintenance, dimensional stability, durability and insulation value are key factors. Accoya® wood can be used to create simple or complex designs with a choice of coating finishes, delivering typically improved lifetimes. It can be opaque coated or, for those wishing to enjoy the natural look of wood, translucent coated. Plus, with a 50-year guarantee when used externally and 25-years when used in the ground, Accoya's low maintenance requirements add to its 'whole life' cost effectiveness and environmental credentials and this versatility makes it ideal for use in residential, commercial and industrial applications.

0116 257 3415 [www.lathamtimber.co.uk](http://www.lathamtimber.co.uk)

enq.197

## Marley helps make code 4 concept house



**Marley Eternit** has supplied fibre cement Cedral Weatherboard and Rivendale slates for First-Step's Code for Sustainable Homes Level 4 Concept House on Aldersley Road, Wolverhampton. The aim of the project is simple: to create a three bedroom family home that people want to, and can afford to live in, while reducing their carbon footprint. Marley Eternit's Cedral Weatherboard in Dark Oak was specified by TWA Architects. The architects approached Marley Eternit

because they knew fibre cement provided significant low maintenance benefits compared to timber as well as achieving the same BRE (Building Research Establishment) A+ rating for environmental performance.

enq.198

## Next generation insulation



A stylish purpose built development of three houses in Buckingham Road, Leeds is the latest project to benefit from OPTIM-R - an optimum performance Vacuum Insulated Panel (VIP) from **Kingspan Insulation**. With great links to the city centre this exclusive project offers occupants the opportunity

to benefit from city living in a leafy location. The Kingspan OPTIM-R Balcony & Terrace System installed by APP Construction was the product of choice for architects West & Machell, as it ensured an even transition between the indoor and outdoor levels onto the balcony without losing space, while also attaining an impressive U-value of 0.14 W/m²K.

01544 387384 [www.kingspaninsulation.co.uk](http://www.kingspaninsulation.co.uk)

enq.199

# SuperQuilt

## Thin Hybrid Multi-layer Insulation Blanket

Thermal Insulation in a 40mm thin, flexible, multi-layer membrane

Insulation for use in **Roofs, Walls & Floors**



SuperQuilt is Equivalent to 200mm of Glass Wool  
in a two layer Roof Application








**YBS Insulation**  
HIGH QUALITY PRODUCTS FOR THE BUILDING INDUSTRY

The Craggs Industrial Park, Morven Street,  
Creswell, Derbyshire S80 4AJ.

Tel: 0844 99 104 04 [www.ybscomposites.com](http://www.ybscomposites.com)

enq.200



## Copper Gardens

**Aurubis Architectural's** Nordic Blue Living pre-patinated copper provides material continuity for a range of additions that transform a London public space. Architects BDP recently completed a rejuvenation of Brown Hart Gardens, set within a residential area in the heart of Mayfair, immediately adjacent to Oxford Street. The Gardens form an elevated public square above a Grade II listed electricity substation, originally built in 1905. New interventions include a staircase and lift structure, clad in Nordic Blue Living, to meet modern accessibility demands and announce the Gardens' entrance to pedestrians approaching from Oxford Street. The glass box of the café, which unifies outside and inside spaces, is pierced by a copper service structure and planters with concealed lighting are also clad in Nordic Blue Living. Continuing the Gardens' long tradition of water features, a new bronze reflective pool playfully trickles water down the ribbed bronze back added to an original seat, adding movement and sound.

01875 812 144 [www.aurubis.com/finland/architectural](http://www.aurubis.com/finland/architectural)

enq.201

# THE ART OF HEATING



BESPOKE.  
CLASSIC.  
ELITE.

reader  
enquiry  
202

For Stockists Contact:

T: 0808 129 2224 | E: [sales@carron.uk.net](mailto:sales@carron.uk.net) | W: [www.carron.uk.net](http://www.carron.uk.net)





## What is the RHI scheme?

"The government is paying my heating bill for the next 20 years..."



## Has your business qualified?

Contact us today for a FREE no obligation feasibility study and site survey. We will ensure that you have the right information to make THE decision on your future heating and hot water requirements.

26a Virginia Street, Southport, PR8 6RZ

Call 01704 504857 or email [info@bc-energysolutions.co.uk](mailto:info@bc-energysolutions.co.uk)

Visit [www.bc-energysolutions.co.uk](http://www.bc-energysolutions.co.uk)

enq.203

## Yacht challenge sponsored by ATAG Heating



Fine weather, perfect sailing conditions and an excellent turn out by local yacht clubs ensured that the 12th St Wilfrid's Hospice 'Nab' Challenge, sponsored by Chichester-based boiler distributor, ATAG Heating UK and organised by the Inn-Shore Cruising Club, was another resounding success. This popular and unique event has raised over

£160,000 for the Hospice and organisers are confident that this year's event will add thousands more when the final total is calculated. The ATAG Trophy for the individual boat that raised the most money for the charity went to the yacht Merista, skippered by Mark Taylor of the ISCC.

enq.204

## All new Digi-Line electric radiators



The Electrorad Digi-line range has been relaunched with all new electronics and components. They look and heat like regular central heating radiator but with some very clever, state-of-the-art electronics to ensure ultimate control and minimum energy usage. The radiators are filled with a thermal fluid to transfer heat to the

whole surface area. The fluid is heated by 100 per cent efficiency electric elements, controlled by the most advanced thermostat electronics available. Features include: energy saving open window feature; surface temperature control and double panel radiator smart control.

0844 479 0055 [www.electrorad.co.uk](http://www.electrorad.co.uk)

enq.205

# CLEARVIEW STOVES

Britain's leading manufacturer of clean burning wood stoves

The complete solution for architects & builders

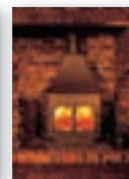


We are the UK's largest dedicated manufacturer of clean burning wood stoves, designing, manufacturing and distributing from our ten acre site in Shropshire.

With installation and product knowledge unequalled in the industry, we can provide all that is necessary for a trouble free installation.

Some of our benefits include:

- Money saving.
- Certified for use in smokeless zones. We were the first ever company to achieve this.
- A heat source that is 70% efficient, most open fires are only 10%.
- Very easy to light and maintain. They burn for long periods unattended and the ashtray only needs to be emptied every two to three weeks.
- You are in control of your fuel supply, no longer dependent on the big energy companies.
- A satisfying and pleasurable way to heat your home.
- Reduced dependence on fossil fuels.
- Thousands of accessories and flue components in stock.



STOCKISTS THROUGHOUT THE UK

[www.clearviewstoves.com/adf](http://www.clearviewstoves.com/adf) Brochure Line: 01588 650 123

Dinham House, Ludlow, Shropshire, SY8 1EJ. Tel: 01584 878 100

enq.206



## TROX chilled beams score top marks



TROX chilled beams and flow rate controllers are ensuring that an impressive new sixth form college in the north east of England achieves the ideal indoor environment for learning without costing the earth. The HVAC products supplied to meet the demanding requirements included TROX

Multi Service Chilled Beams (MSCBs) and variable volume flow rate controllers. The MSCB's are based on the energy-efficient air-water technology of the popular TROX model DID632 active chilled beam. These units are ideally suited to areas with high cooling loads, combining the aerodynamic properties of ceiling diffusers with the energy benefits of load dissipation using water.

enq.207

**adf**
**newsletter**

Emailed on a fortnightly basis the Architects Datafile newsletter is designed to provide the architect with the latest information on products and services of interest, direct to their inbox. The reader can quickly gather a snapshot of information from 12 carefully selected companies and easily follow links through to further information on the [www.adfonline.eu](http://www.adfonline.eu), or go direct to the company's own website. Brochures and videos are also regularly available.

[www.adfonline.eu](http://www.adfonline.eu) – register now



*Stunning and efficient woodburning inset stoves with the option to slide the door open to use like an open fire*

[www.firepowerheating.co.uk](http://www.firepowerheating.co.uk) 0844 332 0155

enq.208

**GET YOUR BATHROOM TRADE ACCOUNT FOR AN EXTRA 10% OFF**

**SIGN UP TODAY!**

<p><b>EXTRA 10% OFF FOR TRADE CUSTOMERS</b></p> <p>Ocean toilet &amp; cistern inc. deluxe seat was £349</p> <p><b>TRADE price £74.25</b></p>	<p><b>EXTRA 10% OFF FOR TRADE CUSTOMERS</b></p> <p>Matrix basin mixer inc. basin waste was £109</p> <p><b>TRADE price £29.25</b></p>	<p><b>EXTRA 10% OFF FOR TRADE CUSTOMERS</b></p> <p>Cambridge square shower bath inc. shower screen was £499</p> <p><b>TRADE price £149.25</b></p>	<p><b>EXTRA 10% OFF FOR TRADE CUSTOMERS</b></p> <p>Sienna 55 basin &amp; unit was £199</p> <p><b>TRADE price £66.75</b></p>
--	--	---	---

**GO TO [VICTORIAPLUMB.COM/TRADE](http://VICTORIAPLUMB.COM/TRADE) ■ OR CALL 0844 804 48 54**

**NEXT DAY DELIVERY AVAILABLE WITH £20 OFF FOR TRADE\***

Trade account subject to status. Prices shown with 10% trade discount excluding VAT. Please note prices shown on the Victoria Plumb trade website are inclusive of VAT. VAT will be taken up front and is the trade account holders responsibility to claim back. \*£20 off delivery applies to 2 man delivery service only.

enq.209



## A discreet flykiller

P+L Systems understands the extensive planning and time that goes into architectural design and how this can be subsequently compromised as a result of unsuitable fixtures and fittings. Old fashioned and unsightly flykillers often spoil the contemporary design of buildings, don't let this happen with your next design project! Why not consider including Aura, an innovative flykiller by Insect-O-Cutor, which unlike traditional flykillers has a discreet design that is perfect for a wide range of front of house applications. Flykillers are required in all areas where food is prepared, consumed, sold or manufactured and so flykillers will be subsequently installed in many of the buildings that you design. To ensure that the flykiller is in keeping with the style of the building, specify Aura as part of your design. The Aura is the ideal decorative flykiller for any bar, restaurant, hotel or office reception area. Stylish and contemporary, the Aura decorative flykiller is an ultra discreet unit offering an elegant, modern aesthetic alongside innovative features.

info@pandlsystems.com [www.insect-o-cutor.co.uk](http://www.insect-o-cutor.co.uk)

enq.210

## Spectrum range offers a world of colour



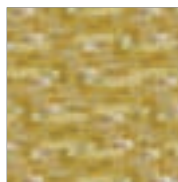
Recently launched at 100% Design, Solus Ceramics introduces the exciting Spectrum range, a series of hand-made encaustic cement tiles. The aptly named range consists of 60 different colours from vibrant blues and greens to pastel pinks and reds. The tiles are available in a very diverse variety of small, square and rectangle shapes and a number of different thick-

nesses. In addition Solus Ceramics can also offer Spectrum in hexagon and octagon options, two of the most on-trend shapes for the coming year. Finally every single colour of the Spectrum range can be used together to create bespoke 200x200mm squares or 200x230mm hexagon designs.

0121 753 0777 [www.solusceramics.com](http://www.solusceramics.com)

enq.211

## All aboard the Trend subway for style



The term 'Subway tile' has been around since 1904, when classic, white ceramic tiles were used to adorn New York subway stations. Just like many design originals, this style is now resurfacing with a twist, Italian tilemaker Trend's new Subway collection offering a variety of fashionable colours and unique pattern choices, bringing Metro chic to the living room, hallway, dining area, bath-

room and kitchen. Produced in the characteristically chunky 3" x 6" (7.5 x 15cm) rectangular format, Trend's Subway introduces the contemporary appeal of hand-crafted glass mosaic and the distinctive note of Italian decorative design, to a much-loved traditional tile.

01892 509690 [www.trend-group.com](http://www.trend-group.com)

enq.212

**Very Important Projects deserve Very Important Protection!**

**Wedge Group Galvanizing**

- ✓ Approved to BS EN ISO 1461:2009 under control of ISO 9001
- ✓ Free Technical Advice
- ✓ Customer Service No.1 Priority
- ✓ 14 plants across the UK
- ✓ Galvanize 1.5mm to 29mm long
- ✓ Collection & Delivery Service

Excellence in Galvanizing  
**WEDGE**

Email: [corrosion@wedgegalv.co.uk](mailto:corrosion@wedgegalv.co.uk)  
Tel: 01902 600704   @wedgegalv   [www.wedgegalv.co.uk](http://www.wedgegalv.co.uk)

**NS5Plus**  
GALVANIZERS  
PROTECT YOUR INVESTMENT

enq.213

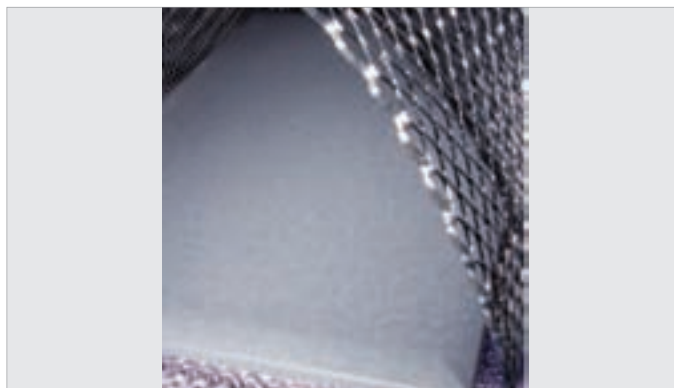
## apollo monza aluminium column radiator



Modern contemporary aluminium column radiator  
Ideal for low temperature renewable systems  
Unique design, half the weight of steel  
Vertical and horizontal in 40 different sizes  
3 days delivery for white  
7 days for colour (46 to choose from)

[www.apolloradiators.co.uk](http://www.apolloradiators.co.uk)

enq.214



## Babylon: Contemporary abstract print

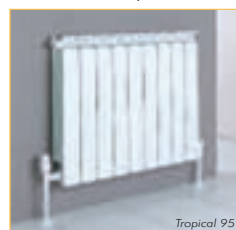
Renolit Cramlington Ltd is pleased to announce the introduction of Babylon a contemporary duo-toned abstract print. Babylon is a modern rune-like design based on historic symbols or lettering. It has a subtle overall non-directional design with a discreet surface texture that creates a subtle textile impression from a distance. Available in two colour variations, non-intrusive Babylon 1 is a bright modern white-grey while Babylon 2 is a green-blue combination which creates a stronger colour statement. This is a unique and interesting design that has potential to be used in a variety of different settings and may be particularly well suited for hotel or retail interiors. It is ideal to create panelling as design feature in bedrooms, bar or reception areas. Renolit is the market leader in 3D thermoforming films. Renolit's surfacing products have been developed to meet the highest standards of design, quality and performance.

01670 718122 [www.renolit.com/design](http://www.renolit.com/design)

enq.215

## Original FARAL Aluminium Radiators, always appreciated, often imitated since 1966

The choice of many Architects and local authorities for over 50 years, Faral radiators provide the highest heat output achievable from one of the most energy efficient low water content aluminium radiators available today.



Longo 80



**AEL**  
HEATING SOLUTIONS

Detailed drawings of AEL radiators and valves in a CAD drawing format that is also compatible with AUTOCAD is available on digital disc or via [www.aelheating.com](http://www.aelheating.com)  
e-mail: [sales@aelheating.com](mailto:sales@aelheating.com) Tel: 01928 579068

Die Cast Aluminium Radiators

AEL

FARAL



White TABW15 thermostatic valve set

© AEL copyright all photographs & CAD drawings

enq.216

**innova**  
DESIGN SOLUTIONS

EDUCATIONAL INTERIORS  
RETAIL INTERIORS  
SOLID SURFACING  
SINGLE SPACES TO FULL BUILDING INTERIORS  
DESIGN, MANUFACTURE AND INSTALLATION

0161 477 5300  
0161 477 1404  
[www.innova-solutions.co.uk](http://www.innova-solutions.co.uk)

enq.217



## Marmox aids conversion in Hackney



Set in Hackney Downs Studios, The Village Green is a brand new shopping and cultural development initially incorporating five local small businesses but with the possibility of further expansion. Two of the conversion problems were the need to build a new mezzanine floor structure above the shops

and to ensure that the interiors of the shopping areas were quiet and intimate. Marmox Heraklith wood wool panels were specified and are a natural product consisting of certified spruce wood, which are produced with respect for the highest ecological, social and ethical standards. Heraklith panels are multipurpose and can be used internally or externally on walls, floors and ceilings.

01634 835290 [www.marmox.co.uk](http://www.marmox.co.uk)

enq.218

## Heradesign Fins by Knauf AMF



Global advertising agency, Bartle Bogle Hegarty (BBH) London HQ has been redesigned and refurbished from a conventional office layout into an inspiring and welcoming open plan studio space designed for creativity. Heradesign Superfine acoustic Fins from Knauf AMF, fitted the brief perfectly and were installed under the existing barrel vaulted roof. The vertically suspended Fins were formed using 25mm thick mineral wool panels wrapped around a solid timber board on both sides. The Fins were suspended in the roof space of the central

studio and are affixed to steel RSJs.

020 8892 3216 [www.amfceilings.co.uk](http://www.amfceilings.co.uk)

enq.220

**SALES  
DESIGN  
INSTALLATION**

Sound & Lighting  
Scenery & Paint  
Curtains & Track  
Make-up & Costume Accessories  
Pyrotechnics & Special Effects

**Lancelyn**  
THEATRE SUPPLIES

Oxford branch: 01865 722468  
Wirral branch: 0151 334 8991  
[www.lancelyn.co.uk](http://www.lancelyn.co.uk)

enq.222

## Impey Showers re-engineers the shower seat



Impey's revolutionary new SlimFold shower seat and bench is stylish, durable, safe and functional. It bears weight of up to 40 stone and has a profile of just 111mm/55mm when folded.

SlimFold comes in 10 colours with an RRP of £175 (plus VAT) and can be fitted from heights of 417mm which ensures safe transfer between standing and sitting or from a wheelchair. There is no maximum height restriction.

01460 256 090 [www.impeyshowers.com/slimfold](http://www.impeyshowers.com/slimfold)

enq.219

## Yeoman Shield provides long-term solution



Yeoman Shield, a UK market leader in wall and door protection has been supplied and installed at The Sutton Academy, Merseyside. Yeoman Shield HessianEx wall panelling, External Corner Angles and FalmouthEx panels (in Lilac) were fitted on the ground and first floor corridors and also in the plaza

and waiting areas. Site manager, Steve Humphreys, explained: "We wanted to stop the need for costly and repetitive re-decoration. Yeoman Shield has provided us with a long term solution and has resulted in many complimentary comments on the improved appearance where Shield products have been installed."

enq.221

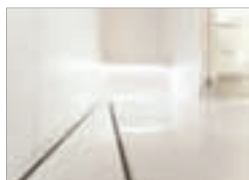
**DOMAIN**

Rimadesio walk-in wardrobe, incorporating the ABACUS dress system and VELARIA sliding door panels. Combining lacquered glass wall panels and thin, rigorously geometric horizontal panels with built-in LED lighting, this design is capable of providing a unit of functionality and mood of choice. ABACUS system illustrated here with white lacquered glass and shelves in lacquered white aluminium. VELARIA sliding panels with aluminium frame with a titanium finish and transparent grey glass. Other colourways and systems available from this innovative manufacturer.

t 01403 784846 e [mail@domainfurniture.info](mailto:mail@domainfurniture.info)  
[www.domainfurniture.info](http://www.domainfurniture.info)

enq.223

## Stunning new stone-infill grill



In the last ten years wetrooms have seen rapid growth in the UK, with the open plan alternative having a major impact on the bathroom layout and design of hotel suites, luxury homes and the residential housing market. CCL Wetrooms has unveiled the latest development in the aesthetics of wetroom drainage – the new

Stone-Infill Grill – a stunning way of creating a continuous stone floor, virtually unbroken by the line of a stainless steel drainage grill. The Stone-Infill grill is suitable for use with natural stone and porcelain tiles, which are simply inserted into the empty Infill Grill, creating a beautiful finishing touch to any wetroom.

0844 327 6002 [www.ccl-wetrooms.co.uk](http://www.ccl-wetrooms.co.uk)

enq.224

## Ellis launches Reflection Gloss White



New from **Ellis Furniture**, Reflection Gloss White features a 22mm lacquered handle-less door and is available across the entire fitted and modular cabinet offer. Shown here, Reflection Gloss White features plenty of on trend curve appeal. A white carcass rather than a contrasting

carcase and a solid surface worktop are recommended if choosing the curved end panel finish. The fitted WC and basin unit perfectly complement the large modular unit to the right of the image. All providing plenty of essential, stylish storage space. Reflection Gloss White also features the semi-recessed Imagine basin with the new Shaphire basin mixer tap.

01484 514 212 [www.ellisfurniture.co.uk](http://www.ellisfurniture.co.uk)

enq.225

## N&C Commercial Washroom Catalogue

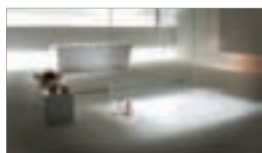


**Nicholls & Clarke** has launched its new complete Commercial Washrooms Collection catalogue packed with over 120 pages of quality products suited to all projects requirements across industry sectors. With a huge choice of products from entry level solutions for projects on a tight budget, to high end solutions the new catalogue caters to anyone involved in commercial wash-

room design and installation. Offering the complete washroom package, the impressive new catalogue consists of hundreds of washroom products that help overcome the fundamental and key issues surrounding commercial washrooms including hygiene, safety, vandal resistance, water conservation plus ease of installation and maintenance.

enq.226

## Kaldewei: Reliable partner for shower floors



At the 4 star Radisson Blu hotel in Hamburg, the hotel management decided to replace all tiled shower areas in the hotel following problems with black spots and leakages. The ideal partner for these renovations was found in **Kaldewei**. The affected rooms in the hotel

were closed and all 252 tiled shower areas are now steadily being replaced. Cleaning and heavy use do not leave even the slightest scratch in the hard, pore-free surface of Kaldewei 3.5mm steel enamel. The surface without tile grout ensures lasting good looks and also improves hygiene properties. Kaldewei offers a reassuring material guarantee of 30 years.

0800 840 9770 [www.kaldewei.co.uk](http://www.kaldewei.co.uk)

enq.227



# Dušo™

## Shower Column

HORNE



# Dušo / dufo / n.

The new Dušo shower column from Horne Engineering is available in 4 colourways.

For comprehensive product information please visit [www.horne.co.uk/Products/dušo](http://www.horne.co.uk/Products/dušo) to take the tour.



DS-A60G (grey)



DS-A60A (aquamarine)



DS-A60Y (yellow)



DS-A60B (black)



tel +44 (0)1505 321455

web [www.horne.co.uk](http://www.horne.co.uk)

enq.228



## LG Hausys flooring from David Clouting



In the UK, **David Clouting Ltd** is LG Hausys largest distributor of surface materials including an innovative range of vinyl floor coverings for a wide range of applications. LG Hausys have heavily invested in technology to create a superb range of vinyl floor coverings designed to work in an array of demanding environments from schools and offices to hospitals and retail outlets.

Whether your requirement is for a floor covering with acoustic properties, design flexibility, safety and good slip resistance, durability, cost effectiveness, wear resistance or ease of installation and removal, the LG Hausys flooring range exclusively available from David Clouting, will meet all your requirements at a cost effective price.

enq.229

## Award winning kneepads save injury & money



An award winning, non-foam based, pocketed safety kneepad which maintains its maximum cushioning effect throughout consecutive or prolonged use, "can help prevent up to six months down time and subsequent loss of earnings through knee injury in the workplace". The claim comes from Cliff Lockyer, CEO of CL-7 Limited,

the Daventry, Northamptonshire based manufacturers of the new, UK designed, 'Redbacks' cushioning kneepads which are winners of the '2012 SATRA Best Innovation in Occupational PPE Award'.

01327 702104 [www.redbackskneepads.co.uk](http://www.redbackskneepads.co.uk)

enq.231

## It's all under Control at Oxford School



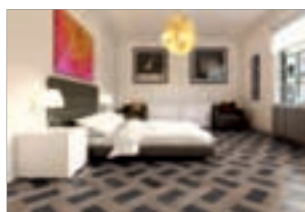
Expona Control, **Polyflor's** groundbreaking new flooring concept has been specified and installed in laboratory areas at the prestigious Rye St Antony School in Oxford. Expona Control is the world's first LVT which offers sustainable slip resistance when wet in accordance with HSE guidelines and is the culmination of Polyflor's expertise and

creativity in the manufacturing. The design focussed 14 colour collection features authentic wood and stone designs and achieves the required slip resistance through the inclusion of aggregate throughout the wear layer.

0161 767 1111 [www.polyflor.com](http://www.polyflor.com)

enq.230

## Win a £10,000 Ted Todd fitted wood floor



**Ted Todd** has launched a design competition to celebrate the launch of their new range "create" – a first of its kind, easy-to-use bespoke design system for anyone wanting to create a fabulous hardwood flooring to suit their projects style.

Like us and enter your design on our Facebook page: [www.facebook.com/teddwoodfloors](http://www.facebook.com/teddwoodfloors) to win the design of your dreams. With over 30,000 possible design combinations designing something to complement your interior has never been easier.

01925 284 363 [www.tedtod.co.uk](http://www.tedtod.co.uk)

enq.232



### Step on Safety

Anti-Slip Flooring & Access Specialists

Marine | Rail | **Construction** | Industry | Leisure

## Are there flaws in your plans?

**Step On Safety Ltd.**  
122 Station Road, Lawford,  
Manningtree, Essex, CO11 2LH

**01206 396 446**  
[construction@steponsafety.co.uk](mailto:construction@steponsafety.co.uk)  
[www.steponsafety.co.uk](http://www.steponsafety.co.uk)

**Anti Slip**

- Industrial Flooring
- Access Ramps
- Walkways
- Stair Tread Covers
- Bridges

**Access Structures**

- Structural Solid Tops
- Non-Slip Plate
- Decking Strips
- Service Riser Flooring
- AHU Platforms



Stair Tread Covers



Service Riser Flooring



Fibreglass Grating

enq.233



## Forbo Eternal vinyl – a key ingredient

Wirral consultancy Crave ID specified Eternal general purpose vinyl from **Forbo** as a key ingredient in the interior design scheme for Salad Bowl, a new healthy-eating fast-food outlet in Liverpool. Used throughout, Eternal Wood in Warm Chestnut and Eternal Palette in bright green Apple have helped to deliver bright and appealing interiors reflecting the 'healthy food on the go' philosophy. The flooring had to withstand high daily footfall and provide an R10 slip resistance rating. It also had to be easy to keep clean and maintain. Both designs benefit from a PUR pearl lacquered finish providing a high level of scuff and chemical resistance. Matt Cole of Salad Bowl said: "We couldn't be happier with the interior design and the flooring in particular has been great, with excellent performance properties and a bright, fresh design. It's also easy to clean, which means we can spend less money on maintenance and more money on providing our customers with high quality food."

enq.234



# Rubber flooring – The sound investment for buildings

Guy Stanton, Nora UK managing director, discusses the benefits of rubber flooring for a wide range of projects

**F**looring plays a key role in the overall aesthetic of the interior and must also endure considerable wear and tear. In the life cycle of a building, only around 20 per cent of the total costs can be attributable to the actual construction, with maintenance costs making up the other 80 per cent. Thus, taking these facts into account, it becomes clear that the chosen flooring must look good and perform well for the long-term in order to be a sound investment. Rubber flooring presents strong credentials for all of these aspects and more.

From infection control in hospitals to chemical-free cleaning and long-life in airports and shopping malls, rubber flooring is hard to beat.

## Quality pays

Floor coverings in public buildings, such as schools and hospitals, not only have to be extremely durable and hard wearing, but must also be resistant to stains and damage, hygienic and easy to clean.

Rubber floor coverings are totally sealed and therefore practically impervious to stains, scratches and other damage. In contrast to linoleum and PVC, rubber coverings do not require a coating. Other resilient floor coverings, however, have to be regularly recoated as soon as the prone surface has been scratched, becomes stained or wears down.

## Simple cleaning with just water

The dense rubber material is less susceptible to dirt and also resistant to surface disinfectants and even brief exposure to solvents, diluted acids and dyes, making it ideal for healthcare facilities with their high hygiene standards. Rubber flooring can be cleaned and polished using just water. This is much cheaper and better for the environment.

## Healthy indoor air

Energy-saving construction methods, which create more sealed buildings, have brought with them huge challenges; they minimise air exchange, making the use of low-emission materials even more important. Rubber floor coverings that carry recognised eco-credentials and meet with the criteria for the protection of health are now a necessity; for example the Blue Angel eco-label for low emissions ensures quality for indoor air hygiene. This is important for all buildings but even more so for environments with more vulnerable occupants, such as nurseries and hospitals.

Free from PVC, plasticisers and halogens, rubber is safer in



Marks & Spencer – Kew

*'Whether to calm or to stimulate, inspire or point the way, the flooring contributes greatly to the interior space'*

the event of a fire as no toxic substances such as hydrogen chloride gas or dioxin can be released by the floor covering.

## Safe and comfortable

In many areas, such as hospitals and schools, it is important that the floor covering is non-slip and safe to walk on. Rubber floor coverings are tested according to DIN 51130, and have been classified as at least R9 according to BGR 18. The high elasticity of rubber flooring significantly relieves strain on the back and the spine.

## Desirable design

Design is considered important for private commercial buildings, where the quality of interior serves to convey a sense of prestige and corporate branding. It is equally important, however, in all built environments. Whether to calm or to stimulate, inspire or point the way, the flooring contributes greatly to the interior space.

Rubber floor coverings are available in a variety of colours to create elegant room designs and an ambience for feeling good. They also come with structured surfaces which add depth or light-reflective granite particles which create subtle sparkle. Rubber flooring allows many designs, including logos, patterns and way-finding, to be cut-out and laid into the material.

## The final word

If you consider the life-cycle costs of a building, maintenance should be high on the list of priorities. By choosing flooring which is exceptionally durable, has a long life warranty, and only requires solution free cleaning, the client is assured a superior quality, healthy and also economical long-term solution.

enq.235

## Beko built-in: the finishing touch



A prime example of design, sustainability, energy efficiency and a high standard of contemporary living combining to make a big impact is Central Park – a complex of 30 two-bedroom and six one-bedroom apartments, near Bournemouth's city centre. A 'natural oasis in the heart of the city', all apartments in this seven-storey building overlook Bournemouth's famous Upper Gardens. Beko's built-in range of kitchen appliances has been specified by SDA Distributors for this prestigious private residential development, built by award-winning Roxan Construction. Having previously worked together, the Beko-SDA-Roxan project partnership made sound commercial, logistical sense.

01923 810801 [www.beko.co.uk](http://www.beko.co.uk)

enq.236

## Polished brass brings the summer sun indoors



The deep golden colours that shine from this plate lighten the room that it sits in; the autumnal warmer of electrical accessories.

Polished Brass is an available finish for any of Focus SB's metal plate designs. This finish can also be applied bespoke designs.

01424 858060 [www.focus-sb.co.uk](http://www.focus-sb.co.uk)

enq.237

<b>KITCHENS</b>	<b>TILES</b>	<b>BATHROOMS</b>				
<b>WORKTOPS &amp; STEPS</b>	<b>WOODEN FLOORING</b>	<b>MARBLE CLADDING</b>				
<b>APPLIANCES</b>	<b>MOSAICS</b>	<b>GRANITE</b>				
<b>3 FLOOR SHOWROOM : CAD DESIGNS , MARBLE &amp; GRANITE FACTORY TEL.: 020 8961 77 00 WWW.DIRECTSUPPLIESLTD.COM</b>						

enq.238

# Stellar

STAINLESS STEEL WORKTOPS

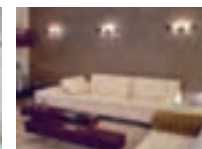
Quality bespoke solutions for the most imaginative designs

Tel: 0113 201 2240  
Web: [www.stellarstainlesssteelworktops.co.uk](http://www.stellarstainlesssteelworktops.co.uk)

enq.239

## MODERN LIGHTING SOLUTIONS

Lighting catalogue with style shots available on request



0208 123 7914

[www.modernlightingsolutions.co.uk](http://www.modernlightingsolutions.co.uk)

enq.240





# Bespoke Movement Joints

Manufactured for your project

VIEW OUR  
NEW WEBSITE  
colouredmovementjoints.co.uk



CMJ Standard Movement Joint



CMJ Coloured Movement Joint

Coloured Movements Joints produce bespoke joints for Hard Flooring, Natural Stone and Slate. We specialise in colour matching our joints to the grout or the floor finish creating a stylish designer look and a seamless finish.



- Colours to match the full RAL range
- Designed and Manufactured to exceed BS5385
- Robust, Durable and can cope with heavy stresses
- Distributes stresses evenly between the foundation and floor covering preventing "lenting" and "popping"
- Prevents the conduction of noise from footfall and other bodies
- Epoxy infill to provide movement accommodation
- Resistant to puncture and has anti-bacterial properties
- Available in Aluminium, Stainless Steel and Brass

reader  
enquiry

241

## Coloured Movement Joints Ltd

Telephone: 01924 360 110 | Email: info@duris.co.uk | Website: www.colouredmovementjoints.co.uk

Unit 6a | Wakefield Business Centre | Derby Dale Road | Wakefield | West Yorkshire | WF2 7AZ



## Coloured Movement Joints Projects and Applications



Retailers



Car Showrooms



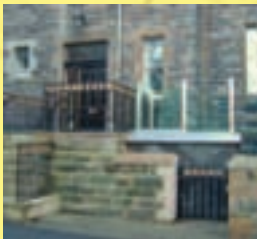
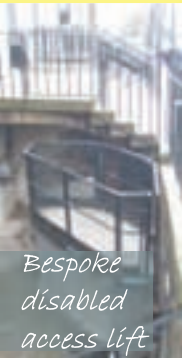
Domestic



Transport



Effective solutions for  
your level change challenge  
whether commercial  
or residential



Contact our dedicated engineers  
for your solution - 01727 860355

**Tecmach Ltd**

[www.tecmach.co.uk](http://www.tecmach.co.uk)  
[sales@tecmach.co.uk](mailto:sales@tecmach.co.uk)

**TECMACH**

enq.242



**Warmagrip™**

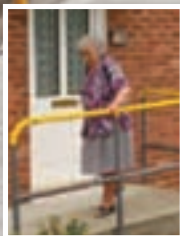


Warmagrip the only true "warm to the touch"  
DDA compliant handrail component system!

DDA ✓

Building  
Regs ✓

Health &  
Safety ✓



Warmagrip is a high quality PVC  
coated steel tube handrail system,  
offering the all important "warm to the touch"  
requirements set down in the  
current Building Regulations.

It's also quick and easy to install with  
internal fittings for a smooth  
continuous handrail. Available in  
grey and highly visible safety yellow.

For a FREE catalogue or more information:

[www.warmagrip.co.uk](http://www.warmagrip.co.uk) @ [marketing@brundle.com](mailto:marketing@brundle.com) 0115 951 2450

enq.243

## Our understanding is your knowledge

Specialist assistive baths for all care environments



For over 25 years, Gainsborough Specialist Bathing has diligently  
designed, installed and supported Europe's leading range of specialist  
assistive baths for all care environments. With an understanding for  
the requirements of architects, designers and specifiers, Gainsborough  
hi-lo powered and assistive baths deliver exceptional quality,  
ergonomics and aesthetics for both users and care providers.

Delivering a duty of care through design.

**0800 988 4237**

[www.gainsboroughbaths.com](http://www.gainsboroughbaths.com)

Quote: ADF1013

riba  
product  
selector

nsiPlus



Manufactured  
in the UK

ASSISTED BATHS

PATIENT HOISTS

SHOWERING  
SOLUTIONS



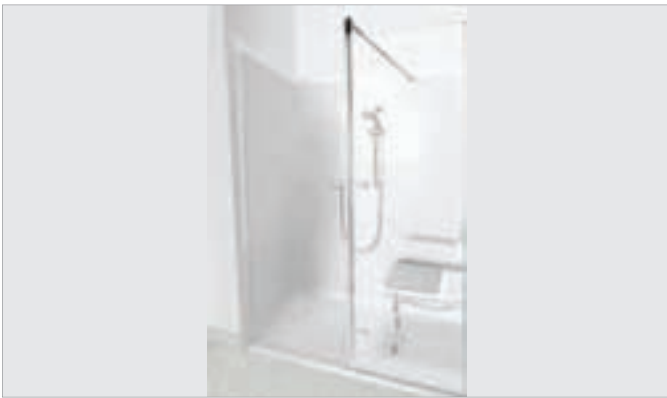
ASCOT

**WRAS**  
APPROVED  
PRODUCT

**GAINSBOROUGH**  
Specialist Bathing



enq.244



## New modular shower units for healthcare

Gainsborough Specialist Bathing has launched a new range of assisted showering solutions. Part of Care in Bathing, Gainsborough has designed, manufactured and installed specialist baths in the UK for over 25 years and these new modular shower units provide architects and building specifiers with several clear advantages. Available in three sizes, these easy access shower modules are supplied with low-level shower tray, decorative wall panels, padded folding seat, fluted grab rail and WRAS compliant shower unit. Ideal for installations in long-term or acute care settings, they are highly durable and exceptionally versatile. This new range incorporates MicroGuard antimicrobial protection technology, which helps to eliminate cross-infection. TMV2/3 or Electric Care showers all deliver thermostatically controlled water and there is a choice of either half-height shower doors or flat glass screen. Gainsborough has a network of skilled fitters offering a complete installation service meaning it can provide end-to-end support.

enq.245

## WHEELCHAIR ACCESSIBLE THRESHOLDS

**ZERO**plus


HEAVY GAUGE ALUMINIUM

VARYING WIDTHS &amp; HEIGHTS

LOW PROFILE

ZERO OFFERS A WIDE RANGE OF ALUMINIUM LOW PROFILE THRESHOLDS SUITABLE FOR WHEELCHAIR ACCESS. THE RANGE OFFERS TWO STANDARD OVERALL HEIGHTS STARTING AT JUST 6.4MM HIGH, AND ALSO VARYING WIDTHS FROM 63MM WIDE TO 203MM WIDE, DEPENDING ON HEIGHT REQUIRED. PRODUCED FROM HEAVY GAUGE ALUMINIUM THEY ARE ABLE TO WITHSTAND WHEELCHAIR ACCESS IN PARTICULAR, AND MOST PATTERNS HAVE GROOVED TOPS TO AID GRIP.

Zero Seal Systems Ltd Units 43-45 Ladford Covert, Seighford, Stafford ST18 9QG United Kingdom  
Tel: +44 (0)1785 282910 E-mail: sales@zeroplus.co.uk

[WWW.ZEROPLUS.CO.UK](http://WWW.ZEROPLUS.CO.UK)

enq.246

# Hamilton

Electrical wiring accessories, audio and lighting controls

## The finer things

### Sheer CFX®

Simple and elegant, flat-plate switches and sockets. The range features Hamilton's patented concealed fixing system for a clean and contemporary finish that looks stylish in any environment.

- Minimalist, modern flat plate
- Six finishes
- Concealed fixing
- Integral gasket - perfect for uneven walls
- Grid and Eurofix options also available

# Hamilton

T: 01747 860088 • E: info@hamilton-litestat.com  
[www.hamilton-litestat.com](http://www.hamilton-litestat.com)

Find us on facebook at:  
[www.facebook.com/hamiltonlitestatuk](http://www.facebook.com/hamiltonlitestatuk)

enq.247





## HOLDFIRE

SELF CLOSING DOOR SOLUTIONS



### CAREFREE PLUS:

A SWING FREE CLOSER WITH SPECIFIC SAFETY FEATURES FOR USE IN CARE HOMES AND SHELTERED HOUSING.

Carefree Plus leaves the door free and easy to use or leave open in normal operation and reverts to being a door closer on the activation of a fire alarm.

Installed in over 200 care homes and the sheltered housing schemes of Bracknell, Basildon, Greenwich and Southwark.

- Anti-slam function - Removes risk of injury
- Anti drift function - Removes risk of wedging
- Meets BS 7273 Cat A operation - The safest possible actuation
- Robust slimline design
- Tested to BS 1155, Certifire approved
- Manufactured in the UK, 10 year guarantee

FOR MORE INFORMATION PLEASE VISIT  
**WWW.HOLDFIRE.COM** OR CALL **0800 111 6104**

enq.248





Assisted Bathrooms



Showering & Changing

0114 269 06 97  
[www.kingkraft.co.uk](http://www.kingkraft.co.uk)



Toileting



Moving & Handling

Kingkraft Ltd have been designing, manufacturing and supplying assisted bathroom equipment for over 27 years

 Like us on Facebook.com/Kingkraft260

enq.249



Steeple Bumpstead CB9 7BN  
T. 01440 731111 [lifts@lyfthaus.com](mailto:lifts@lyfthaus.com)

Residential & commercial lift platform solutions from the industry experts



Loading Bay Lifts



Lightwell Bin Lifts



Car Lifts



DDA Lightwell Lifts

[www.lyfthaus.com](http://www.lyfthaus.com)

enq.250



# Choosing the right door closer to assure accessibility

By Mark Stonelake, technical manager at Samuel Heath

Door closing devices play a vital role in assuring the effectiveness and efficiency of fire doors in a wide variety of buildings, but they can also provide a convenient means of closing doors to assure comfort, energy efficiency and privacy in non-fire door situations, particularly in buildings used by the disabled, elderly or frail. Understanding the special needs of these groups and balancing them against the various Building Regulations and technical performance standards is essential to achieving a successful specification.

From the fire door perspective, various requirements come to bear when selecting the right door closer, including Approved Document B of the Building Regulations, BS EN 1154, which governs the performance of controlled door closing devices and BS EN 1634-1, the fire door testing standard. Since July of this year, door closers that are suitable for use on fire doors must carry the CE mark.

When choosing a door closer that meets the needs of physically challenged people, the choice is restricted and additional regulations need to be taken into consideration.

The Equality Act imposes a duty to ensure that people with disabilities have access to the benefits and facilities that the premises offer. This means that any physical barrier preventing people of differing abilities from accessing services should be removed. Additionally, for educational establishments, the Special Education Needs and Disability Act (SENDA) stipulates similar requirements.

A key area of concern is in ensuring that the forces required to open doors installed on accessible routes are low enough to meet the regulations. In the UK, Approved Document M and BS 8300 stipulate what the opening forces should be. (Think of a wheelchair user trying to push against the door closer over the whole opening arc).

It is important to appreciate that the requirements apply to the entire doorset, i.e. a complete door, in its frame, fitted with necessary hardware. Therefore, hardware can only claim to facilitate compliance.

Bearing in mind that a mechanical door closer returns the energy used to open a door to close it again, the more efficient the closer is, the better it will perform, especially important when given reduced opening forces. Guidance from the Guild of Architectural Ironmongers states that door closers with an efficiency in excess of 65 per cent should be used on 900mm wide fire doors in Document M situations. However, we would always recommend that a manufacturer's claims should be supported by independent torque curve certification.

A useful alternative is a free swing door closer. Connected to the building's 24-volt fire alarm system, the door closer can

function in the same way as a normal door closer or can allow a door to be operated manually and left open as desired once the mechanism has been primed by opening the door to its maximum. When the fire alarm is activated, or there is a power failure, the inactive door closer becomes active, closing automatically at a controlled rate. Such door closers need to meet the requirements of BS EN 1155.

While aesthetics might not be the first thing that comes to mind, health and care professionals are increasingly recognising the value of creating interiors that are less institutionalised in appearance, as they make a valuable contribution towards the well-being of the building's occupants.

Surface mounted door closers, with their obvious mechanical boxes and control arms, are generally deprecated in such situations, with specifiers preferring concealed door closers. Available



as controlled door closers, with steel rods and advanced mechanisms assuring that the door does not slam shut, these devices meet all necessary fire and accessibility requirements. Concealed door closers also offer an advantage as they present very little opportunity for a would-be vandal to damage its mechanisms and render the door useless in case of fire.

In non-fire door situations, slower closing speeds might be desirable to give a person more time to pass through a doorway. Door closers with adjustable closing speed are ideal, and preferably those where the adjustment can be made quickly and easily.

Finding the right door closer to ensure disabled people have unhindered access to buildings can require a fine balancing act between fire and access regulations, as well as the variety of factors that can come into play according to the building's use and occupancy. Being aware of the challenges and requirements involved makes for a more informed decision and will, ultimately, assure the safety and comfort of the building's occupants for years to come.

---

*'When choosing a door closer that meets the needs of physically challenged people, the choice is restricted and additional regulations need to be taken into consideration'*

---

enq.251




**FRONTIER PITTS** The British Manufacturer of Security Gates, Barriers, Blockers, Bollards & Turnstiles

National Building Specification now available on: [www.frontierpitts.com](http://www.frontierpitts.com)

Sliding Gates, Bi-folding Speed Gates, Hinged Gates, Automatic Barrier Road Blockers & Bollards, Manual Equipment & Pedestrian Control, BS: PAS 68 HVM Anti Terra Range

[www.frontierpitts.com](http://www.frontierpitts.com) 01293 422800

enq.252



**Fibaform**  
Manufacturers of GRP buildings and products

Bespoke Ready Built GRP buildings designed to meet your exact requirements

- Full design through to installation service
- Normally delivered and installed same day
- Total flexibility of design

Tel: 01524 60182 Email: [info@fibaform.co.uk](mailto:info@fibaform.co.uk)  
[www.fibaform.co.uk](http://www.fibaform.co.uk)

enq.255

## Multi head upgrade for Fireray 5000



Fire Fighting Enterprises has upgraded its popular Fireray 5000 optical beam smoke detector with separate fire and fault relays for two detector heads attached to a single controller unit. This means that one ground-level unit can control two detector heads but any alarm or fault signal will be located to each

specific head. An event device history log has also been added, and power consumption has been reduced even lower than on the original model. Already excellent at reliably detecting smoke across wide indoor spaces and requiring minimal wiring to protect huge areas, having two detector heads on one controller allows even larger spaces to be covered from a single control unit. In response to customer feedback separate fire/fault relays were added for each detector head.

enq.253

## GHA shows the way



Glasgow Housing Association (GHA) has been able to increase its CO alarm replacement cycle by using Kidde Fyrnetics' TenYCO range – the very first battery carbon monoxide alarms with a full 10-year guarantee covering both alarm and sealed-in lithium battery. The new 10LLCO and its digital display

10LLDCO equivalent anticipate future changes to the European CO alarm product standard with an extra End-of-Life/Fault LED and "ramp up" horn. They also offer "Quick Test" functionality whereby the unit can be tested with carbon monoxide gas spray and react instantly to confirm the presence of carbon monoxide, rather than the normal response times required in BS EN50291.

01753 685096 [www.smoke-alarms.co.uk](http://www.smoke-alarms.co.uk)

enq.254



**FIRE RETARDANT UK**  
FIRE retardant for WOOD

**HR PROF**

- Eco Friendly
- Clear & Odourless
- Water Based
- Non Toxic
- No Solvents
- Apply with brush or spray
- Euro-class B-s1-d0
- Internal or External use
- HR Prof Also tested to BS 476-6 & BS 476 part 7

For more information on our products, contact us or visit our website  
T: 0845 296 9221 E: [sales@fireretardantuk.com](mailto:sales@fireretardantuk.com) W: [www.fireretardantuk.com](http://www.fireretardantuk.com)

enq.256

# Specifying perimeter security equipment

By Sally Osmond, brand and development manager at Frontier Pitts

**T**he ability to bar access to unauthorised vehicles is a fundamental concern for all security and facilities managers wishing to install an effective deterrent to secure their site while maintaining the safety of both their staff and the public.

Many perimeter security companies provide a range of products and the choice can be very daunting to a member of the public. Specification is the key, and the most reputable companies will be able to manufacture bespoke equipment tailor made to your actual site.

Question is, where do you start? Do you install an automatic barrier system, a sliding gate, a road blocker or a rising bollard? Is there an existing fence line or does this need to be installed as part of the system? Or would static bollards be more appropriate as they restrict vehicles while allowing free movement for pedestrians.

Once the actual product has been specified, then there is the question of what accessories do you require to make the automated product safe. On a gate, for example, you need to look at safety edges, safety photocells, audible alarms, flashing beacons, induction loops, signs, etc.

What access control do you want to specify? Is there an existing system on site? If not who will be using it? Staff and members of the public? Or will it mainly be staff with the occasional visitor? If this is the case you also need to look at intercom systems.

The look of the product also needs to be considered to ensure the equipment is aesthetically pleasing and fits in with the rest of the site. All products manufacture bespoke for site can be tailor made to fit in with the sites company branding; from corporate colours, signage etc. This is important as the car parks access control system is likely to be the first experience your visitor has of the company.

All the choices and options may seem very daunting, though help is at hand. Most reputable perimeter security companies will visit site, free of charge and without obligation, to discuss all your requirements with you and provide you with a specification and quotation. For those sites that are yet to be built and are in the hands of the architects, the reputable perimeter security manufacturers will also be able to provide detailed National Building Specifications (NBS Plus), with detailed clauses for the Q40, Q41 and Q50 sections to complete the Architects' Specification.

Now the product is fully specified with the access control system and additional safety devices, the question is who will install and commission the automatic system, and then who will



maintain the system. Remember, you wouldn't buy a car and then not service it every year. Automated access control systems are exactly the same. Be aware that some manufacturers will install a system and that is where their project finishes. The more reputable companies will be BS EN ISO 9001 accredited and design a system to suit your exact needs. After meeting with you on site, a bespoke manufacturer will manufacture the system to your exact specification installed and commissioned using directly employed engineers, who will then return on an annual basis to maintain the barrier, and of course attend to any call outs.

With a decent bespoke perimeter system solution in place with a maintenance contract to give the client peace of mind, a system should last for twenty years. Other 'off the shelf kits' will be lucky to last two.



*'Reputable perimeter security manufacturers will also be able to provide detailed National Building Specifications (NBS Plus), with detailed clauses for the Q40, Q41 and Q50 sections to complete the Architects' Specification'*

enq.257





## Shared surface innovations

The trade association **Interpave** has published a new case study exploring how concrete block paving plays a key role in innovative shared surfaces, characterising an important regeneration project in Edinburgh – integrating hard landscape with architectural design. The Greendykes North project forms part of a 15-year vision to breathe new life into the Craigmillar area of Edinburgh – previously the fourth most deprived area in Scotland. Its master-plan embraces the principles of shared space and the evolution of the ‘woonerf’ or home-zone concept for residential streets. Halcrow landscape architects led the design team to develop the proposals to detailed planning and Road Construction Consent including a road safety audit. The brief was not to design streets but rather three-dimensional spaces responding to the built environment, giving a legible hierarchy. Precast concrete paving plays a key role with its diversity of colours, surface textures, patterns and modular designs used to define areas and reduce speeds without signage.

0116 253 6161 [www.paving.org.uk](http://www.paving.org.uk)

enq.258

## Denso Steelcoat protects Scottish aqueducts



Scottish Water plc has recently completed a £7 million project to upgrade aqueducts conveying water from Loch Katrine to Glasgow. The company says it was the biggest improvement to the aqueducts since they were constructed more than 150 years ago. The main contractors were George Leslie Ltd, with Jacobs being the Consulting Engineers.

Winn & Coales (Denso) Ltd's Steelcoat 400 system was chosen to give long-life protection on the 48in diameter pipes used at three structures which were virtually reconstructed along the aqueduct system. These carry two twin pipeline sections conveying 450 million litres of water per day to 1.3 million people.

02086707511 [www.denso.net](http://www.denso.net)

enq.259

**adf**

## news blog

The ADF news blog is accessible from your Mac or PC, laptop, mobile or tablet at any time of day. Its interactive nature allows readers to comment and engage in discussions and social network sharing. The blog links to relevant articles and comment pieces from the national press, so there is no need to go hunting the internet; it's already been gathered and is regularly updated. Following the ADF news blog is now even easier when you subscribe to our daily digest email, a summary of the latest news stories straight to your inbox.

[adf-news.blogspot.co.uk](http://adf-news.blogspot.co.uk)



If you're looking for sturdy, high-quality, maintenance free outdoor furniture, **MARMAX** have the perfect choice for you!

Our latest product range is bigger and better than ever before and has been designed with today's economic and environmental concerns firmly in mind.

Building on our reputation as the leading manufacturer of 100% recycled plastic outdoor furniture, included within our range are outdoor classrooms, fencing, boardwalk & planters. The products do not rot, corrode or splinter and are made from milk containers.

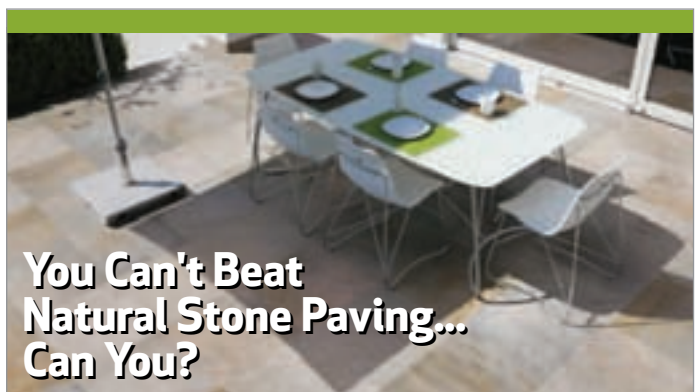


This is only a small selection from our range. Please visit our website or contact us for more information.

Units 9 - 16, Tanfield Lea South Ind Est,  
STANLEY, County Durham DH9 9QX  
T: 01207 283 442 F: 01207 235 164  
[www.marmaxproducts.co.uk](http://www.marmaxproducts.co.uk)



enq.260



**You Can't Beat Natural Stone Paving... Can You?**

**Our Stunning Range of Porcelain Tiles & Paving are Ideal for the British Climate. Why?**

- No maintenance required
- Stain, scratch and slip resistant
- Does not fade
- Frostproof
- Lightweight - ideal for roof terraces, balconies and public areas, for both residential and commercial use
- Beautiful architectural finish
- Easy to self-install without grout
- Combine 1cm tile with 2cm paving slab for a seamless look from internal to external living space
- Available in a range of 7 styles/colours

**out** 2.0

Order your free sample at  
[www.porcelainpaving.co.uk](http://www.porcelainpaving.co.uk)  
or call 029 2037 1584

enq.261

# Tubosider creates giant planters for South Bank

As the UK's number one manufacturer of steel stormwater tanks, drainage pipes and culverts, Tubosider's corrugated steel pipes are put to a wide range of uses, but few like this...

In a striking extension to their more traditional roles in water management, RHS Gold medal winning designer Matthew Childs has installed a range of Tubosider pipes as an integral feature of his latest work – an urban Remix Garden on London's South Bank.

Opened on 11 September, Matthew's garden in the courtyard of the iconic OXO Tower Wharf, right on the Thames, is one of four unique installations for Cityscapes 2013.

Since August, a show garden from this year's RHS Chelsea Flower Show has rematerialised, remixed into four new gardens in the same way as a song might be remixed by different producers.

Materials and plants for his latest project come from the Cloudy Bay Discovery Garden, which won Silver-Gilt at the RHS Chelsea Flower Show



in May. For his remix, Matthew decided to create and plant out large-scale circular beds raised high at different angles.

For the courtyard at OXO Tower Wharf, Matthew continued the water theme from his Hampton Court Palace garden, researching the best culverts to create circular beds.

Tubosider easily cut and shaped its products to requirement, creating a structure of five pipes 2,600 to 1,000mm in diameter. Installing the whole garden took just two days, in time for opening.

"The culverts worked a treat and make magnificent giant planters!" said Matthew.

Conceived by landscape designer Darryl Moore, Cityscapes aims to bring new life to urban parks and garden design through temporary and permanent gardens.

"The feedback has been great," Moore says. "That courtyard is so visible, with commuters, residents and visitors delighted to see plain paving transformed by such a bold and imaginative creation."

A fifth and final Remix Garden will appear at the RHS London Shades of Autumn Show on 22-23 October, before completing its lifecycle with materials ending up in local community garden spaces.

01744 452900

[sales@tubosider.co.uk](mailto:sales@tubosider.co.uk)

[www.tubosider.co.uk](http://www.tubosider.co.uk)

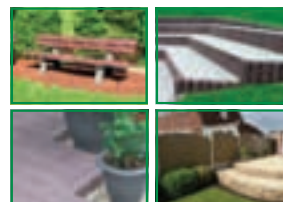
enq.262

**PRECAST**  
**SEXYY**  
**CONCRETE**  
 ALBION ARCHITECTURAL  
 CONCRETE  
[www.albionart.co.uk](http://www.albionart.co.uk)  
[info@albionart.co.uk](mailto:info@albionart.co.uk)  
 01903-815262

enq.263

## Unrivalled Performance !

High performance landscaping and building products that are unmatched by traditional materials.



All of our products are manufactured from recycled waste plastics giving them an unrivalled performance and an unmatched return on investment.

- Recycled & Recyclable
- Does not Rot
- Maintenance Free
- Vandal Resistant
- Crack, Chip, Splinter Resistant
- Strong, Tough & Durable

Ground Reinforcement,  
 Decking, Fencing, Gates,  
 Seats, Benches, Tables,  
 Walkways, Pontoons  
 .....and much more!



[sales@sofpave.com](mailto:sales@sofpave.com)

02380 016100

[www.sofpave.com](http://www.sofpave.com)

enq.264



# classified & directory

## BABY CHANGING UNITS

### Baby Point Ltd

Unit 15, Tomo Business Park, Stowmarket,  
Suffolk, IP14 5EP  
Tel: 01449 770607 Fax: 01449 678444  
Email: sales@babypoint.co.uk

[www.babypoint.co.uk](http://www.babypoint.co.uk)

Baby Point is an ISO 9001 UK based company specialising in the design and production of commercial baby changing equipment. All products are developed and tested to comply with the European Standard for the design of baby changing equipment BSEN 12221-1: 2008.

## BATHROOMS & WASHROOMS

[www.heatedmirrors.co.uk](http://www.heatedmirrors.co.uk)



Enq. 501

## COLUMN CASINGS

### Encasement Ltd

Peartree Business Centre, Enterprise Way,  
Bretton, Peterborough PE3 8YQ  
Tel: 01733 266 889 Fax: 01733 268 999  
Email: sales@encasement.co.uk

[www.encasement.co.uk](http://www.encasement.co.uk)

Reader enquiries online at  
[www.adfonline.eu](http://www.adfonline.eu)

## HEATING & VENTILATION



Create a modern or bygone era look with our range of cast iron radiators. From the stunning Retro Dragon to the timeless Regent, we have a range to suit any space and budget. Recreate original elegance in your own home, by fitting one of our cast iron radiators.

For more than 10 years Classic Radiators has built a high reputation in the industry as a specialist supplier of quality Cast Iron Radiators, Designer Radiators, Finned Tubed Radiators, Trench Heating, Bench Radiators, and Stylish Heated Towel Rails and Radiators.

We pride ourselves on the personal service, quality and advice that only a family-run business can offer.

Enq. 502

## HEATING & VENTILATION



Enq. 503

## INSECT SCREENS



Enq. 504

## LIFTS & ESCALATORS



Enq. 505

Reader enquiries online at  
[www.adfonline.eu](http://www.adfonline.eu)

If you're interested in advertising within this section please contact the sales team on

**01435 863500**

## LIGHTING



Enq. 506

## LIQUID ROOFING & WATERPROOFING

### KEMPER SYSTEM LTD

Kemper House, Mill Lane, Winwick Quay  
Warrington WA2 8RJ  
Tel: 01925 445532  
Email: enquiries@kempersystem.co.uk

[www.kempersystem.co.uk](http://www.kempersystem.co.uk)

## NATURAL STONE LANDSCAPING PRODUCTS

### Natural Paving Products (UK) Ltd

Belton Road, Sandtoft, Doncaster  
North Lincolnshire, DN8 5SX  
Tel: 0845 072 1150  
Email: sales@naturalpaving.co.uk

[www.naturalpaving.co.uk](http://www.naturalpaving.co.uk)

Reader enquiries online at  
[www.adfonline.eu](http://www.adfonline.eu)  
If you're interested in advertising  
**01435 863500**

## SOLAR SHADING (BRISE SOLEIL)

### Levolux Limited

1 Forward Drive, Harrow  
Middlesex HA3 8NT  
Tel: 020 8863 9111 Fax: 020 8863 8760  
Email: info@levolux.com  
Reg: Levolve Ltd - 1834176

[www.levolux.com](http://www.levolux.com)

## THEATRE SUPPLIES

### Lancelyn Theatre Supplies

Ferry Hinksey Road, Oxford, OX2 0BY  
Tel: 01865 722 468  
Mobile: 07889 368503  
Email: projects@lancelyn.co.uk

[www.lancelyn.co.uk](http://www.lancelyn.co.uk)

## TILES & TILING

### Solus Ceramics

Warwick Road, Sparkhill, Birmingham  
Worcestershire, B11 2QX  
Tel: 0121 7530777  
Email: sales@solusceramics.com

[www.solusceramics.com](http://www.solusceramics.com)

## TIMBER & JOINERY



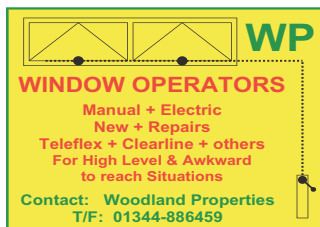
Enq. 507

Reader enquiries online at  
[www.adfonline.eu](http://www.adfonline.eu)

If you're interested in advertising please contact the sales team on

**01435 863500**

## WINDOW CONTROLS



Enq. 508



adf newsletter

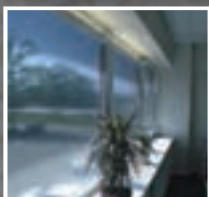
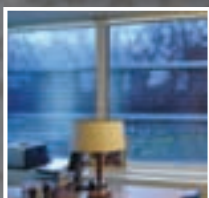
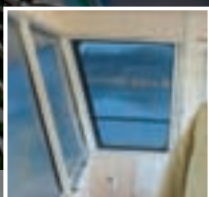
Emailled on a fortnightly basis, the ADF newsletter is designed to provide you with the latest information on products and services of interest, direct to your inbox. Subscribe at [www.adfonline.eu](http://www.adfonline.eu).



digital issue

The ADF digital issue provides all the same content as the print issue with the added advantage of being instantly available whenever and wherever you have access to the internet. Subscribe at [www.adfonline.eu](http://www.adfonline.eu).

EVEN MORE WAYS TO GET THE LATEST INFORMATION FOR ARCHITECTS



### DISCRETE

Variety of colour and material options available allows integration with any decor

### ADAPTABLE

Can be fitted to sloping or unusually shaped windows; upstroking option available for rooflights



## Reflex-Rol

BESPOKE ROLLER BLIND SYSTEMS

# ... more than just a sunblind

**Reflex-Rol is a proven bespoke solar shading system offering state-of-the art solar heat control**

### SOLAR HEAT REFLECTION

Laboratory tests show that Reflex-Rol blinds reflect up to 87% of incoming solar energy\*

### SOLAR GLARE CONTROL

Reflex-Rol blinds use semi transparent metallic polyester foils, giving excellent internal glare control

### THERMAL INSULATION

Reflex-Rol's thermal properties not only keep heat out but also help to keep it in, so saving on heating costs

**Call now for your free brochure**

**Tel: 01989 750704 • [www.reflex-rol.co.uk](http://www.reflex-rol.co.uk)**

De Leeuw Ltd., incorporating Reflex-Rol U.K. and Marnett U.K. are associate members of E3-90

**E3-90**

www.e3-90.com

**BBSA**

BRITISH BLIND & SUNBLIND ASSOCIATION

**Reflex-Rol (UK)**  
Insulating Solar & Glare Control Systems

Reflex-Rol (UK), Ryeford Hall, Ryeford, Ross-on-Wye, Herefordshire HR9 7PU

Tel: 01989 750704 Fax: 01989 750768

Email: [info@reflex-rol.co.uk](mailto:info@reflex-rol.co.uk) Online: [www.reflex-rol.co.uk](http://www.reflex-rol.co.uk)

reader  
enquiry  
**402**



Reflex-Rol is a division of  
De Leeuw Ltd

\* Accredited data reports from Sonnergy of Oxford - copies available on request





# VIVIX®

A FRESH PERSPECTIVE IN ARCHITECTURAL PANELS *by* FORMICA GROUP



## CHANGING THE LANDSCAPE

VIVIX® architectural panels by Formica Group provide an innovative exterior rainscreen cladding solution that redefines the landscape of contemporary construction for both new build and renovation projects.

Durable, practical and sustainable, VIVIX panels are extremely versatile and can be used with a variety of fixing systems, from simple timber battens to proprietary metal systems.

They are highly UV and weather resistant and very easy to maintain and, with a broad choice of colours and patterns, they are ideal for use on all types of buildings.



reader  
enquiry  
403

