

selfbuilder & homemaker

September/October 2013

www.sbhonline.eu

FEATURES IN THIS ISSUE:

Garage Doors
Glass & Glazing
Landscaping & Ground Reinforcement
Stonework & Masonry
SIPs
Fires & Fireplaces Showcase
Home Office & Conservatories Showcase
The National Home Improvement Show Preview

BATHROOMS & KITCHENS SUPPLEMENT





the **underfloor heating** store

affordable luxury

*systems for every
type of floor*

- ✓ Electric heating systems
- ✓ Water heating systems
- ✓ Thermostats
- ✓ Insulation boards
- ✓ Adhesives & levellers

EASY TO INSTALL KITS
FROM

£69.99

*Lifetime
Guarantee*

 **LOWEST PRICES** IN THE UK



SHOWROOM Unit 12, Carnival Park, Basildon SS14 3WN

Reader
Enquiry
401

0800 077 8374

the**underfloorheating**store.com

contents



features

10

WHEN LIFE GIVES YOU LEMONS...

By Sunniva Davies-Rommelveit

42

HOW SECURE IS YOUR GARAGE?

Choosing a garage door for a self-build project can be a daunting challenge. To help you make the right decision, garage door manufacturer Hörmann, offers advice on the options available

45

SOMEWHERE OVER THE RAINBOW

Justin Davies, general manager for The Window Store explains the jargon behind window and door energy ratings and asks whether triple glazing should be a genuine consideration when looking at glazing options

51

WHAT IS RESIN BOUND PAVING?

SureSet clears up the confusion with choosing resin bound paving?

59

HOW TO SAMPLE A CLAY ROOF TILE

John Alderman from Traditional Clay Roof Tiles Ltd has some top tips on how to sample a clay roof tile to get the best results

60

SIMPLY SIPs

Tony Millichap, technical manager, Kingspan Insulation Limited discusses the reasons for choosing SIPs

64

BACK TO OUR ROOTS

The Stone Federation delves into the history of using stonework and masonry within building structures

product round up

Bathrooms & Kitchens Supplement	25 -32
Building Products	18
Doors & Windows	22 -24, 33
Eco & Green Products	41
External Finishes	
& Landscaping	24
Finance & Insurance	24
Fires & Fireplaces Showcase	34 -41
Floors & Flooring	47
Garage Doors	22, 42 -43
Glass & Glazing	44 -46
Groundworks, Drainage &	
Sewage Treatment	47 -48
Heating & Renewable Energy	48 -49
Home Office Showcase	20 -22
Insulation	49
Landscaping &	
Ground Reinforcement	50 -52
Lighting & Electrical	53
News	4 -9, 52
Plant, Tools & Equipment	56
Pools & Spas	57
Rainwater Products	57
Roofing & Cladding	58 -59
Safety & Security	58
SIPs	60 -62
Stairs & Staircases	58
Stone, Stonework & Masonry	63 -65
Timber & Joinery	62
Water & Damp Proofing	63

also in this issue

4

INDUSTRY NEWS

20

HOME OFFICE & CONSERVATORIES SHOWCASE

25

BATHROOMS & KITCHENS SUPPLEMENT

32

EDITOR'S FOCUS

34

FIREPLACE SHOWCASE

55

THE NATIONAL HOME IMPROVEMENT SHOW PREVIEW

66

CLASSIFIED & DIRECTORY



Cover image copyright: Kitstone



Cointronic House,
Station Road, Heathfield,
East Sussex, TN21 8DF

Advertising & administration
Tel: 01435 863500
Fax: 01435 863897
Email: info@netmagmedia.eu
Website: www.sbhonline.eu

Editorial features
Tel: 01435 863500
Fax: 01435 863897
Email: lesley@netmagmedia.eu

Press releases
Email: editorial@netmagmedia.eu

Publisher/editor:
Simon Reed

Sales director:
Lesley Mayo

Assistant editor:
Gabrielle Vinyard

Editorial & production assistant:
Sarah Meikle

Advertisement manager:
Sheehan Moir-Edmonds

Display sales:
Nathan Hunt

Sales executives:
Suzanne Easter
Kim Friend

Circulation/reader enquiry service:
Jane Spice

Contributors:
Sunniva Davies-Rommelvet

Subscription costs just £18 for 6 issues, including post and packing. Phone 01435 863500 for details. Individual copies of the publication are available at £3.25 each inc p&p.

No part of this publication may be reproduced or transmitted in any form or by any means, electronic, mechanical, including photocopying, recording or stored in any information retrieval system without the express prior written consent of the publisher. Although every effort is made to ensure the accuracy and reliability of material published in Selfbuilder & Homemaker, the publisher can accept no responsibility for the claims or opinions made by contributors, manufacturers or advertisers. Editorial contributors to this journal may have made a payment towards the reproduction costs of material used to illustrate their products. The manufacturer of the paper used within our publication is a Chain-of-Custody certified supplier operating within environmental systems certified to both ISO 14001 and EMAS in order to ensure sustainable production. Printed in England



Scan the code with your mobile phone using QR code software to view the latest news from sbh-news.blogspot.co.uk

news

More government support for self-build surge



More people looking to start a building project, including affordable homes for their local community, are to receive support.

Self-build is an important element of the government's housing strategy, and supports action to help new house building firms and get empty and redundant buildings back into productive use.

The measures announced on 17 September 2013 will complement steps the government has already taken to dismantle barriers that hold back self-build projects: limited land availability and reluctance by lenders to provide finance and red tape.

Communities Minister Don Foster announced a series of measures to ensure the self-build market is opened up to those on lower incomes. These include:

Providing new grant funding for community self-builders

For the first time community self-build and community-led affordable housing projects will be able to apply for a share of £65 million from the Affordable Homes Guarantees Programme to build the affordable homes they want in their area.

Working with councils to increase land for self-build plots

New planning practice guidance will be introduced to ensure councils establish the demand for self-build in their area, as well as take steps to help aspiring self-builders. This will include compiling a local register of people who want to build their own homes so they can be given first priority when new brownfield sites become available.

Removing unfair taxes from self-builders

New Council Tax discounts will be introduced for self-build family annexes, removing an unfair council tax penalty surcharge. Meanwhile, genuine self-builders will be exempted from paying inappropriate Section 106 tariffs and the community infrastructure levy, which will cut the cost of self-build by thousands.

Freeing up more redundant public sector land for self-builders

A review of the Homes and Communities Agency's large number of smaller plots will identify those which are not viable for large-scale house building, but are perfect for small housing projects like self-build. More property asset data will be published online and the Community Right to Reclaim Land enhanced so self-builders can request redundant public sector land is released and sold for self-build projects.

news

Incentives will improve household energy efficiency

More than half of small building firms think a requirement by government on homeowners to make energy-efficiency improvements when they extend their home. This would result in more work for their business, as long as any regulation was introduced alongside financial incentives to help pay for the work.

Brian Berry, the chief executive of the Federation of Master Builders (FMB), said:

"Following a thorough consultation with FMB member firms, we believe the government should re-evaluate the need for a consequential improvements regulation, but only alongside a significant financial incentive for energy efficiency. This could take the form of a reduction in VAT on home renovation and repair, variable stamp duty or variable council tax."

Boost the value and enjoyment of your home with these simple measures to increase space

Declan Curran from HomeFix Direct shares his tips on how to expand your home

Whether you're looking to boost the value of your home or want to create an extra room to enjoy, creating some extra space from within the existing house is a great route to go down. HomeFix Direct is a property maintenance and repair company based in London, run by entrepreneur Declan Curran.

Declan suggests that there are four key parts of every house that hold potential for development to unlock extra space and extra value. Which way you chose to develop depends on your budget as well as the hidden potential of the spaces in your home.

Extend upwards

Declan says, "Many people will immediately think of a roof conversion. If you have the potential for an extra bedroom or study in the attic, this is a great way to add around 10 per cent to the value of your home, especially in areas that attracts families. With costs generally starting from £10,000 – £15,000 it can provide a great return on your investment. Make sure you talk to local estate agents about how much value a roof conversion could add on. However, as it's likely that different areas will see fluctuations in added value.

Under the stairs

Somewhere you might not have considered is under the stairs. If you're looking for the perfect place to add in a downstairs

loo, wine rack or just looking for a little extra storage space, a renovation could be the perfect solution. For those in semi-detached or terraced houses, under the stairs can sometimes be the only way to go. Make sure you consider headroom, plumbing and ventilation issues before you consider this option though.

Into the basement

If you don't have enough space to extend upwards, maybe downwards is the best option for you. For those who live in areas with a high value per square foot this could be a great option, especially if you have a pre existing cellar. Cellars can be converted for around £100 per square foot, but if you need space to be dug out this will be

much closer to £300. Prepare to move out your home while the work takes place, but if you are looking to create more space to enjoy for years to come, this can be a great option to explore.

Garage conversion

Of course, if you are looking to expand outwards, then an unused garage might provide the best solution, especially as some surveys claim that 90% of homes with attached garages never put their car into the garage. While using the space to add a new/extend an existing kitchen is likely to be expensive, simply creating an extra room can be achieved from around £15,000."

www.homefix-direct.com

Enq. 601

Government support for self-build homes 'increases consumer choice'

New measures announced by the government to help more people build their own home will increase choice and affordability in the housing market, says the Federation of Master Builders (FMB). The measures, announced by Don Foster, the Communities Minister, at the Liberal Democrat Conference, are designed to encourage take-up in the self-build sector, and include guidance for planning authorities to better identify local demand for self-build, and a review of small sites held by the Homes and Communities Agency to identify more land suitable for small developments and self-build projects.

Brian Berry, the Chief Executive of the FMB, said: "At a time when more and more people are trying to get on to the housing ladder, any attempt to get the self-build market moving is a positive step forward. We know that the self-build sector is an underdeveloped part of the UK housing market,

accounting for only around 10 per cent of all new homes, which compares unfavourably with other European countries such as Germany and Ireland, where the figure is 50 per cent, and Austria, where it is as high as 80 per cent."

Berry continued: "The government's proposed new planning guidance will encourage local authorities to accurately assess the level of demand for self-build in their area, which should in turn lead to local plans making better provision for self-build opportunities, increasing the options available to anyone looking for a new home. Local housebuilders typically champion choice and customer focus, and will be ideally placed to deliver the high-quality custom-built homes many people aspire to live in."

Berry concluded: "Any exemption from paying the Community Infrastructure Levy needs to apply to all small developments, not just self-build projects."

Industry hits the heights on inspirational evening

The most prestigious evening in the industry diary returned to the Ricoh on the 12 September. 800 heavy-hitters enjoyed themselves as host Nick Hewer and comedian Jimmy Carr took to the stage for the Energy Efficiency & Renewables Awards supported by NatWest.

Having established itself in recent years as 'the one to win', scores of successful, shortlisted businesses eagerly anticipated the announcement of the award winners. Winners included John Felgate of Stiebel Eltron who won the Contribution to Energy Efficiency and Wilo's Yonos-Picos, which won the Green Innovation category.

There was a host of awards for people, projects

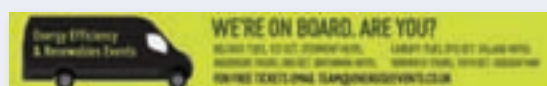


& products, but as always it was installing businesses that took centre stage, with the ultimate accolade, Energy Efficient Installer of the year, sponsored by Plumb Center, going to Glevum Heating from Gloucestershire.

The Energy Efficiency & Renewables Awards 2014 will open for nominations on February 1.

For further information on next years awards email: team@energiseevents.co.uk

Enq. 602



A Lifestyle Choice



The Dawsons wanted to create a modern living space to increase their natural light, as well as being dynamic in design. Due to renovation work, the family home in Solihull had become very spacious upstairs, so the main objective was to bring the downstairs in line, creating a contemporary kitchen with an open-plan living space. The Dawsons moved into their house in 2002 and undertook three projects to achieve the house they wanted; starting with the garage conversion, then the loft renovation and finally in 2012 the Dawsons decided to redesign their kitchen to create an open planned dining area. The Dawsons knew from the onset that they didn't just want a standard open-plan kitchen; they wanted a view and maximum light. "I knew exactly how I wanted it to be, I just needed to find the company that could make it happen," says Penny Dawson.

Penny had already decided

on bifolding doors, after visiting exhibitions and looking through various homes and interior magazines. The key points for her were – panoramic view, bespoke design, aluminium for durability, thermal efficiency and a fixed time scale – and it proved to be the perfect recipe for the Dawsons family home.

The downstairs extension started in May 2012 and was completed in September of that year with the whole extension adding an extra room onto the house. At the Homebuilding & Renovating show in Birmingham, the Dawsons met Origin and were impressed.

"We decided upon aluminium after talking to the experts – we knew it was the most suitable material for bi-fold doors and would stand the test of time. Origin were able to customise our doors, even down to the colour of the hinges, which we wanted to match the door colour", says Penny.

The Dawsons specified a five

door and a four door set for their contemporary kitchen. The two door sets are divided by a narrow brick wall which provides extra support to the roof allowing the Dawsons to incorporate a gable-end glass roof.

The five door set, which opens up the kitchen, was fitted in an aperture of 4,354mm with each door leaf measuring 836mm wide by a standard height of approximately 2,191mm. The four door set, opening up the dining/lounge area, was installed into a 3,434mm aperture with each door measuring approximately 805mm by 2,191mm. The aluminium doors were powder-coated in slate grey to maintain a modern fresh look, but also fade into the background drawing the eye to the garden.

Design accents such as the wooden floors, white walls and the modern kitchen island were dictated by Penny Dawson. "Since the doors went in, it immediately became the family

room and our heating bills have been dramatically reduced as we all congregate in the kitchen so we don't need to heat the whole house.

The new extension has not only increased the value of the house, it has changed the way we live and this is mainly due to the bifolds creating an open-plan living space connecting the garden to the house. The bifolding doors were a luxurious choice, but a life-style choice I would recommend to everyone."

As you enter the kitchen you can't fail to be taken aback by the vast amount of natural light that fills the room, the chic modern design that now connects the modern living area, plus the seamless link between garden and home. The Dawsons have finally achieved a house that's responsive to their needs and, more importantly, a sense of pride in the intelligent and contemporary design.

www.bifoldingdoors.co.uk

Enq. 603



Scan the code with your mobile phone using QR code software to view the latest news from sbh-news.blogspot.co.uk

Events

Grand Designs Live Birmingham NEC
04/10/2013 to 06/10/2013

Based on the Channel 4 TV series, and presented by design guru Kevin McCloud, the event will be packed to the brim with ideas, design and innovation.

Homebuilding & Renovating Show Harrogate

01/11/2013 to 03/11/2013

As the North of England's biggest and dedicated self-build & renovation event, no where else will you find free expert advice, and the right products.

Finish your build in budget. On time. In style.



Get your **FREE** catalogue today!



0808 168 28 28



IronmongeryDirect.com

Reader
Enquiry
101



DOWNLOAD OUR **FREE** APP
FROM YOUR APP STORE



OR TEXT **RBA8** to 62244 FREE!
With name, address and email.

IronmongeryDirect

MASTERS OF OUR TRADE

DOOR FURNITURE • WINDOW & JOINERY HARDWARE • SLIDING DOOR HARDWARE • HINGES • DOOR CLOSERS • FIRE CONTROL • SIGNS • LOCKS
LATCHES & SECURITY • CABINET FURNITURE • SHELVING & STORAGE • BOLTS & STOPS • SEALANTS & ADHESIVES • SCREWS & FIXINGS

LUXURY FOR LIFE

Baufritz is passionate about creating a luxurious living environment that's designed just for you. All our homes use an abundance of high quality, natural materials that are completely free of toxins, creating a harmonious atmosphere that looks beautiful, protects the environment and makes you feel good.

To find out more about Baufritz or to make an appointment, please contact Baufritz in Cambridge: enquiries@baufritz-sh.co.uk 01223 235632

www.baufritz-sh.co.uk

*The Pioneer
of eco-homes*



Reader
Enquiry
102

[View more homes](#)



Gain 70 sq ft of usable space in the home

Research by the Royal Institute of British Architects (RIBA) has found that the average one bedroom flat is the same size as a London Underground tube carriage. While the average home has decreased in size from 1,647 square feet, with four bedrooms in the 1920's, to today's equivalent which has 925 square feet and three bedrooms.

Expert in sliding door hard-

ware Andrew Royle, UK commercial director at P C Henderson, comments; "These statistics certainly indicate that floor space in the home has shrunk however, by being clever with sliding door gear systems can help create desired space, without the costs associated with an extension to the home.

"By using sliding door gear systems floor space is created

in a home in contrast to a swing door which impacts on the room once opened. In a house with ten 3ft internal doors, up to an additional 70sq ft of usable space can be released in the home by eliminating the room needed for it to swing and function."

Pocket doors also offer an innovative solution as they glide neatly into the wall cavity to

provide a modern aesthetic for dividing rooms or for use with en-suite bathrooms and cupboard doors.

The sliding and folding door hardware systems are perfect for saving space, maximising door opening widths, adjusting room sizes and increasing safety by removing an intrusive swing door.

Enq. 604

news

THE BIG GREEN HOME SHOW 2013

Return of Show highlights increasing interest in Eco-living.

With winter round the corner, we will all soon be focused on how best we can save money on household bills and make our homes work more efficiently. Whether you're looking to improve your current home with renewable energy sources or contemplating using sustainable products in a self-build or renovation

project, The Big Green Home Show on 25th-27th October will help to demystify all the jargon and help you decide what's best for you and your home.

Being held at National Self Build and Renovation Centre, conveniently just off the M4 at Junction 16, The Big Green Home Show returns for its fifth year with a packed programme of expert speakers, live demon-

strations, guided tours, real-life experiences and individual, impartial consultations. In addition, specialist panel sessions will discuss the latest products and issues such as grants and funding, and how it could have an impact on your plans.

For those embarking on a self-build, the Centre provides a unique one-stop-shop for advice and inspiration at whatever stage

of your build and with specialist 'eco' products being displayed throughout the Trade Village, such as solar PV panels, insulation or rainwater harvesting, you will be able to closely examine and assess the options available.

Admission to the Show is just £5 per person (under 16s go free); however free tickets are available on www.nsbrc.co.uk quoting code BGHSPRE13.



All in one

Good Food • Hot Water • Warm Home

The heart of your self-build

- Cast iron range cooking with a choice of boiler options
- Superior cooking performance
- Condensing A-rated boilers with over 92% efficiency

For details of your local retailer call 0845 762 6147 or visit rayburn-web.co.uk



Enq. 103



When life gives you lemons...

By Sunniva Davies-Rommetveit

Gary Waller had an urge to leave the hustle and bustle of city life firmly behind him, and jumped at the chance to move out of East London to Stock in Chelmsford, Essex. "I decided to take on a big project like this because I wanted land and a bit of space," he says. However, Gary admits that redeveloping a big plot of land, totaling an impressive 11 acres, was a big challenge. However, his motivation started when he was young, having grown up in a small, post World War II asbestos building. "One of the things that keeps me going is the fear of going back to that sort of lifestyle," he adds.

Gary developed the 3-hold farm on the plot, which is approximately one acre in size. Problems with obtaining planning permission meant that the planning stage was, "quite cumbersome, it took about three months to work through." Having resolved everything on paper, it was time to begin digging. "Once we started the house I got to the more cavalier side of things and built what I knew I'd be allowed to

keep. I was worried that something would go wrong with the planning permission, but I kept on going." The property, called Bishops Farm, was ready over an 18-month timeframe, as Gary explains. "Between the inception of buying the place, the house was ready for habitation within two years. It took about 18 months to build Bishops Farm in the end." Since then, he has been living there happily ever since.

Recalling its grandeur and functionality, Gary explains how the house, which is currently up for sale, is great on so many levels, with a three-bedroom cottage and a granny annex joined to the indoor swimming pool, which then flows through into the adjacent main house. This grandeur also comes with a versatility to suit a number of potential buyers. "It's good for business entertainment, or for a couple that perhaps have older parents who want to live in the cottage. It's good for people who want a babysitter or nanny to stay in the annex and look after their children, and it's great for socialising with friends too," Gary affirms.

There were setbacks during the redevelopment however, especially when trying to gain the necessary planning permission from the local council. Admitting that he fought the council "tooth and nail" to redevelop the plot of land into his dream home, Gary asserts that a big build project is not for the faint-hearted. "I did have a couple of wobbly moments along the way, and times thinking 'what have I done?'"

The advantages of working for himself were immediately noticeable, Gary admits, and not being bound to the office made the building stage go smoothly, despite setbacks. "It was very time-consuming, I couldn't really have done what I did if I'd worked a 9-5 job. The fact that I own a company meant that I was able to pop out at lunchtime to oversee the builders. I have built more houses since then, but this one certainly was a challenge." Gary advises people against biting off more than you can chew, as there are many things that can go wrong when redeveloping a plot of land, and always more time and cost restraints than expected.



ESSEX COUNTRYSIDE DREAM

Spawning from an urge to leave the hustle and bustle of city life behind, Gary Waller tried his hand at self-build in the Essex countryside. As you can see, he was successful



There were setbacks during the redevelopment however, especially when trying to gain the necessary **planning permission** from the local council

– Gary Waller

Continued on page 13...

Make your **Dream** a **Reality**

WITH BI-FOLDING SLIDING DOORS



Available in **ALUMINIUM, TIMBER, ALI-CLAD & PVCu**

Buy direct from the UK's **ONLY** Specialist Manufacturer

Folding sliding doors can be installed in a huge range of situations, in fact folding sliding doors provide you with so much flexibility and choice that the solutions are endless.



25 YEAR GUARANTEE
All our doors are supplied with a no quibble guarantee



ENERGY EFFICIENT
Double glazed, thermally efficient, UK building regulations compliant



SECURITY
Encapsulated running gear, hardened steel locks, internally glazed, UKAS tested



CHILD FRIENDLY
Finger safe gaskets
Easy operation





ENGINEERED
British made, laminated timber, PVC, aluminium or aluminium & timber clad options



The Folding Sliding Door Company

Call: **0845 644 6630**

www.foldingslidingdoors.com eMail: sales@foldingslidingdoors.com

Visit our showroom Mon-Fri 9am-7pm, Saturday by appointment only  
FSD Works, Hopbine Avenue, West Bowling, Bradford, West Yorkshire BD5 8ER

Reader Enquiry
104



The garden was also a **challenge** to have landscaped, and **inspiration** came from buying copies of garden magazines

– Gary Waller

ABOVE: THE EXTERIORS OF THE PROPERTY INCLUDING THE BACK GARDEN

The village of Stock is 500 years old, and the green belt area surrounding it means that it is especially hard to placate everyone involved in building projects, as Gary discovered. "Each place up for development in the green belt zone is very subjective and taken on its own merit," Gary explains. "In some neighbours' cases, they had been denied permission to build, and their attitude was, 'If I can't get permission, why should anyone else be able to?' But you can't think like that in a place as protected as this, sometimes you're not so lucky and other times you are." Having the planning permission to build was one hurdle out of many. For instance, Gary spent £15,000 consulting a town and country planning expert to understand what was

feasible, having had no prior experience of big build projects. This helped him to understand the price and time constraints, as well as to appreciate the considerable challenges ahead.

Deciding to go for a Georgian design, the Wallers gradually began the plot transformation. The interior design was inspired by a mixture of personal taste and happening upon show rooms throughout the planning and building stage. The second master en-suite, however, was bought in Miami after the house had already been built. "We fell in love with the black and white tiling design and decided that, for a change, we'd go for something a bit more different and eclectic." When asked which room is his favourite, Gary immediately replies that

the pool is home to many a fond memory. "We like to watch the rugby in the swimming pool on the flat screen there. We've had a lot of good times in the pool, lots of parties. Then there are the great additions to the house – for example the bars. There is one in the indoor pool, and another in the main house."

The garden was also a challenge to have landscaped, and inspiration came from buying copies of garden magazines and asking garden-fanatic friends for tips. The family now has four gardeners to maintain what was previously wilderness and fields. Gary also made the most of his money by buying products in bulk and at wholesale price. "We bought some box plants that look like small trees at the wholesale price.

Continued on page 15...

BELOW: THE KITCHEN



The National Self Build & Renovation Centre



**NSBRC
FREE
ENTRY**

*The UK's Only Permanent Exhibition Centre For
Self Build, Renovation & Home Improvements*

**Our aim is to
inspire, educate
and provide
impartial advice
for our visitors.**

**With everything
you'll need under
one roof, why go
anywhere else!**

**Making the most
of your visit**

-  Self Build Educational Zone
-  Renovation House Tour
-  Help Desk - FREE technical advice & support
-  Trade Village - showing the latest innovation and technologies
-  Land Finding
-  Financial Planning

**OPEN 6
Days a Week**
Tues - Sun
10:00-17:30



Featuring

The **BIG GREEN** home show

The

**SHOW
ADMISSION
£5 PER PERSON
(UNDER 16'S GO FREE)**

**CLAIM YOUR
FREE TICKETS**

**The Big Green
Home Show is
the UK's biggest
show for anyone
wishing to make
their home
more eco-friendly.**

**Your key to
creating a
greener
home**

Reader
Enquiry
105

-  **NEW SHOW FEATURE**
Live Demonstration
Arena
-  FREE one-to-one's
with eco experts
-  Theatre with
FREE seminars
-  Over 200 exhibitors
-  Real life case studies
-  Guided tours of
life-sized exhibits

**25th-27th
October
2013**

To claim your **FREE** show tickets, simply log on to **www.nsbrc.co.uk** and follow the link to book your tickets. Enter voucher code **SBHMMAG13** together with your details and you can then download a maximum of 4 free tickets. Alternatively, please call **0845 223 4455** and quote **SBHMMAG13** to claim your **FREE** tickets!

For further information and to book your free entry tickets to the centre call ☎ **0845 223 4455** or visit **www.nsbrc.co.uk**
Swindon (M4, Junction 16) The National Self Build & Renovation Centre,
Lydiard Fields, Swindon SN5 8UB

Follow us on





**HIGH POINT
OF THE PROJECT**

"The highest point was getting written confirmation that all the planning regulations had been adhered to and had gone through."



Continued overleaf...

Focus on the **end result**, not on the day-to-day trivialities on the building site. Just imagine the place as a finished item

– Gary Waller

BELOW: WASHROOM AREA



THE LOW POINT WAS

"The low point was being worried about whether we'd be able to succeed, having committed the money to the site. Employing the consultant really helped me through that though."

tioned, as there are a few people who, anyone going to do this, would be well-advised to speak to."

Gary also recommends importing products from abroad to get the best possible prices. Working for an international logistics company was advantageous, allowing Gary to, "cut deals and move products in from overseas –things like carpets, ceiling fans and windows."

Originally they were around £400 each, but we had them for £220 each because we bought so many. I think our suppliers should be men-

His expertise, coupled with invaluable advice from his main builder, meant that they were able to keep prices as low as possible. "The builder I was working with became a good friend, I trusted him and he was very good at sourcing materials," Gary explains. "The furniture was imported from the US, as well as certain electrical products, carpets, tiling and the swimming pool pumps. Swimming pool companies in the UK are about four times the price of building a pool in the US, so I shipped them in using my company's containers," he adds.

With 21 years of building experience, Gary emphasises that people who are considering



ENTERTAINMENT ROOM WITH POOL AND A WELL STOCKED BAR WHERE GARY HAS HOSTED MANY PARTIES. THIS IS THEIR FAVOURITE ROOM

Gary's TOP TIP

Look into importing products and materials from abroad to get the best possible prices. Importing costs are not as high as you might imagine, considering the savings.



Project costs

Overall cost of land: £200,000

Overall cost of project: £1.2 million

Value of property now: £4 million

What was the high point of the project?

"The highest point was getting written confirmation that all the planning regulations had been adhered to and had gone through."

The low point was: "The low point was being worried about whether we'd be able to succeed, having committed the money to the site. Employing the consultant really helped me through that though."

Contacts

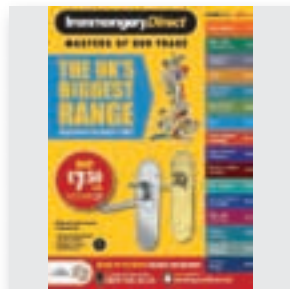
- Builder: CL Plant Ltd
01702 551722
- Floors & Carpets: Epsom Flooring Ltd
0208 949 0453
- Blinds & shutters: Marc Holland & co
Budget Blinds Florida:
001 239 770 3422
- Staircase & fitted bedroom furniture:
Gavin@vertdesign.co.uk
- Furniture: Baers (Naples SW Florida)
www.baers.com
- Property Search:
Bishops Farm, Stock, Essex
www.Rightmove.co.uk
www.Fine&country.co.uk
- Heating: Condensing Boilers Valiant
- Windows: Crosby Joinery/custom made
CL Plant Joinery Division
- Bathrooms: Porcelenosa/Jl Bird designer
BC Ceramics St Albans Herts
- Sundries: Shadrack & Wallace soft
Furnishings Billericay Essex
- Lighting: CL Plant/Wray lighting
Chelsea/Home Depot USA/ Lucent
Lighting Enfield
www.lucent-lighting.com
- Air con: Fujitsu
- Glazing: Billericay Glass

land development or home renovation should be prepared to spend a good deal more than their estimated budgets. "Get ready to pay as much as 10 or 20 per cent more than expected. There are always changes, product prices may rise, others are imported, so that's driven by the rate of exchange. Certainly budget for everything, but expect an uplift on it." Aside from the monetary, more practical side, Gary urges people in the process of developing to picture the finished product – their dream home. "Focus on the end result, not on the day-to-day trivialities on the building site. Just imagine the place as a finished item, as opposed to

despairing at the hole in the ground in front of you. It's all worth it in the end."

Though there were tough moments, Gary asserts that his happiness in Bishops Farm outweighed everything else. "It's very hard to be fighting a battle with the council, in a recession, while trying to sell your last house, while also trying to run a business and having one or two neighbours constantly complaining." Despite this, Gary would jump at the chance to do it again, and is looking forward to letting others experience Bishops Farm. "It's been a real pleasure to live there for all these years, I've loved it."

IronmongeryDirect



Ironmongery Direct is pleased to announce it will be exhibiting at this year's Grand Designs Live exhibition at the NEC Birmingham, 4-6 October 2013. Visitors to the stand, number B411, can pick up Ironmongery Direct's latest free catalogue, packed with over 900 pages of products, plus exclusive vouchers worth £50. Ironmongery Direct has a huge range of door and window hardware ready for next day delivery, with an extensive choice of styles from classic period styles through to modern and contemporary. The event at the NEC will be packed with over 500 exhibitors, across six different sections.

Tel: 0808162 2828 www.ironmongerydirect.com

Enq. 106

Snickers Workwear



What is it that makes Snickers the most popular working clothes among professional tradesmen and women in Europe? Is it the extensive range of different types of garments and accessories? Or is it the broad range of styles, colours and sizes? It's probably the hallmarks that have kept Snickers at the leading edge of workwear innovation for over 30 years – quality, functionality, practicality and style. For those people who want to find out everything about what makes Snickers Workwear the best, this full colour brochure is now available free to discerning professional tradesmen and women. It's a range of working clothes and accessories that graft all year round for you.

Enq. 107

Snickers Workwear



There's one thing that professional tradesmen and women can't do without if they want to get their jobs on-site done properly – healthy hands! They know how difficult it is to work with hands that are chapped and bruised, cut and scratched. Now, there's revolutionary help at hand that are the products of extensive groundwork, research and testing on-sites around Europe – Snickers' new and unique work gloves. Snickers Work Gloves can help you and, while ordinary

poor-fitting gloves can be more of a hindrance than a help, this revolutionary new work gloves range is designed to suit different jobs on-site even down to the finest details in protection, grip and dexterity.

Enq. 108

Connect with Selfbuilder & Homemaker online

Newly launched is the Selfbuilder & Homemaker Pinterest account; a one stop source of inspiration for adding all the elements to your build that make it your home, from essential fixtures to the final decorative touches.

One of the latest social media sensations, Pinterest allows you to browse pinboards, discover new things and get inspiration from people who share your interests, as well as create your own boards so you may organise and share all the beautiful things you find on the web.

[Visit pinterest.com/selfbuildhome/ to follow us!]



Workable. Reliable. Sustainable.

HYPERLIME HYDRAULIC LIMES

A sustainable, highly CO₂ absorbing drop-in replacement for cement or gypsum binders in mortars, plasters and renders. HyperLime is UK manufactured under ISO 9001:2008 and CE marked so compliant with UK building regulations and major warranty providers.



Even better, HyperLime offers significant **cost savings** over other sustainable binders, mixing easily to give a very workable texture.

Mortar, plaster and render made with HyperLime is water stable and breathable, providing essential structural flexibility.

To find out more visit hyperlimeco.com or telephone Limeco on 01833 689 005

LIMECO

Enq. 109

It doesn't cost the earth to move it!

muck-truck®, as the 1st company with this concept, has proven to be a market leader in pedestrian power barrows.

Our products are recognized globally by industries in Rental, construction, landscaping, recreation parks and utility sectors. We offer products that are manufactured to the highest quality.

The MAX Dumper™ provides 46% greater weight-carrying capacity, maintaining the compact features that give our products greater maneuverability and accessibility over other dumpers.

The MAX Dumper™ can carry 800lbs/8cu foot and will climb a 30° slope fully loaded. The machine is fitted with the Honda GXV Commercial grade 5.5hp engine. The Tecumseh drive axle has 4 forward and 1 reverse gears.

Tel : 01566 777140
www.mucktruck.co.uk

Enq. 110

IT'S LANDED! NEW CATALOGUE OUT NOW!



PICK UP YOUR FREE COPY TODAY!

STORES OPEN
7AM MON - FRI
8AM SAT | 10AM SUN

For your nearest store: text 'FIND' to 78777 or visit screwfix.com

Reader
Enquiry
111



SCREWFIX
WHERE THE TRADE BUYS™

CALL 0500 41 41 41 CLICK screwfix.com VISIT 295 Stores

2



1

*Interior inspiration
& outdoor living:*

Home office and conservatories showcase

Combining work and play can often be a daunting idea; finding the perfect balance between a comfortable living space and a personal work area, without creating a second living room can seem like a challenge, but think again...

This month we have a range of office furniture suitable for all your home office needs. From timber outhouses to furniture with a foldaway bed for space saving purposes, Betta Living, Shutters Inc and Oak Designs have a wide range of products to suit your individual home office and conservatory needs.

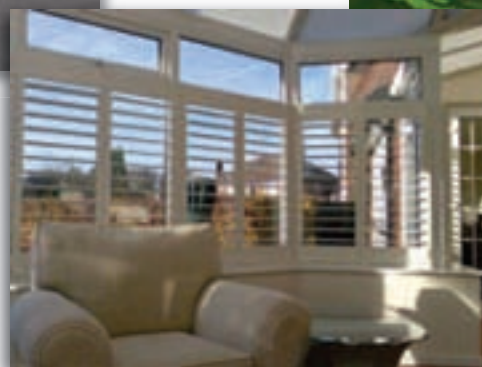
1. Betta Living's Esprit Home Office range is shown here in White mid-sheen and Nocino finishes. **Prices start from £1,814** (excl. survey and fitting and based on a guide layout)

Enq. 112

2. The clean white finish to **Betta Living's** Brilliance Home Office gives a modern and fresh feel. With deep drawers and large cupboards there is ample storage space for files, stationery and other office supplies. Betta Living's Brilliance Home Office is available from **£1,728** (based on a guide layout).

Enq. 113

3 & 4. Apart from looking great, conservatory shutters offer a degree of flexibility simply not possible with most other shading options. Unlike fabric based shading systems, shutters will not rot, sag or age perceptively and are easy to clean. Plantation Shutters from **Shutters Inc** can be used on the sides as well, for long sections they can be mounted on top tracking to slide



3

5





4



away when not in use. Shutters are also used for partitioning and as multi fold internal doors. Quite often the opening to the conservatory may have shutters suspended on a top track. The solid base and louvre top shutters are used extensively for these applications.

Enq. 114

5. An oak frame home office either as part of a garaging complex or as a separate building in your garden, gives you the freedom from commuting, saving you time and money and with the added bonus of increasing the value of your property. If your proposed building is under 30 sq m and at least one metre from an adjacent

building it is unlikely that Building Regulations approval will be needed. **The Oak Designs Co** offers one of the industry's largest selections of standard designs of oak frame outdoor living and garaging buildings.

Enq. 115



Oak Designs Co.
Traditional & Contemporary
OAK FRAMED BUILDINGS

Today's Designs - Tomorrow's Heritage





- Garages
- Home Offices
- Two Storey Buildings
- Workshops
- Porches
- Garden Rooms
- Conservatories
- Pool Houses
- Outdoor Kitchens
- Bespoke Designs

See our website for details of Special Offers. Free Site Survey

Full Design and Planning Service
Complete Build Service

SALES: 01273 400411

www.oakdesigns.org

Enq. 116

Uniform Architectural



Following some 25 years of successful business in Italy and mainland Europe, the composite window specialist Uniform has set up a UK subsidiary Uniform Architectural Ltd in Bristol. The Uniform Architectural Ltd parent company Uniform SpA based in Verona, Italy is a £100 million turnover manufacturer of top quality composite windows. Its range has a much wider range of options than others offer, particularly with regard to the varieties of wood available such as oak, cherry and larch. Nearly half of its 45,000m² premises in Verona is devoted to manufacturing, the company employing 400 people worldwide. Uniform also manufactures high specification curtain walling and brise soleil.

Enq. 117

Garador



Garador has driven down the price of its up and over doors by as much as 40 per cent on selected models. The company recently completed a series of factory upgrades resulting in a much more efficient manufacturing process, and is delighted to be passing these savings on to customers. The 1,600 m² sq extension of Garador's production plant in Yeovil, makes the factory the most modern of its kind in Europe. The investment has provided valuable additional capacity and will help the company to continue providing customers with high-quality, reliable garage doors and mechanisms at an affordable cost.

Tel: 01935 443791 www.garador.co.uk

Enq. 118



Think outside the white plastic box with PVC-U windows from Swish

Swish
WINDOW AND DOOR SYSTEMS

Call 0808 178 3040
www.swishwindows.co.uk

PVC-U windows don't just have to be white and square. Modern PVC-U windows from Swish can be custom-designed to enhance any property.

Available in a wide range of styles, shapes and sizes as well as beautiful colours and wood effects, our energy-efficient windows, doors and conservatories are installed by our nationwide network of expert local installers.

Enq. 119



EUROPE'S NO.1 WINDOW BRAND

TAKE ADVANTAGE OF THIS OFFER AND RECEIVE:

FREE upgrade to triple glazing

- 3rd glass with special SOLAR+ coating for free
- Perfect indoor climate
- More energy efficiency
- Best thermal insulation
- Less heating costs (up to 30%)
- Better sound proofing
- Better living environment
- For almost all Internorm timber/aluminium windows

FREE aluminium cladding

- A multitude of design possibilities
- Protective and weather resistant aluminium cladding on the outside
- No more painting windows
- For almost all Internorm UPVC/aluminium windows

**SPECIAL
OFFER**
1st OCT -
29th NOV 2013

Further information can be found at www.internorm.co.uk



Reader
Enquiry
120

Internorm®

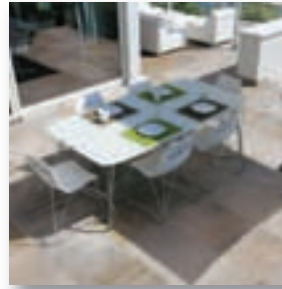
GBS



High performance timber windows and doors from GBS are individually tailored for every style of home. Created by combining highly efficient double glazing in the form of Planitherm Total Plus, Argon gas fill and warm edge Swiss bar, these windows and doors have the very best engineered timber for stability, no twisting, warping, shrinking, swelling, storm or flush casements, high security integral locking systems and a low maintenance, industry developed factory paint system in a colour of your choice. With the traditional skills of our craftsmen GBS produces products that provide lasting efficiency.

Enq. 121

Greensquares



If you're looking to give your next building project a magnificent, modern-looking finish, then porcelain paving is the perfect choice. These gorgeous tiles and paving slabs are made from real Italian porcelain, and they're available for both indoor and outdoor use – no matter what you're in the process of creating, porcelain will slot into your plans very smoothly indeed. Out 2.0 paving is an innovative new product that's tailor-made for outdoor spaces, and Greensquares is the only UK company that stocks them! Each sturdy slab is two centimetres thick, making them far more robust than traditional porcelain products.

Tel: 02920 371584 www.porcelainpaving.co.uk

Enq. 122

Clearview Windows



With a choice of astragal bars, 36mm super slim meeting rail, and choice of 43mm or 90mm deep bottom rail, Clearview Windows is getting you closer to the authentic look preferred by customers and local planners alike. A high gloss acrylic decorative horn is also available.

Clever profile design and bonded glass to the sash gives incredible strength, with a retractable parting bead (UK first) and a 45° Puttline external sash finish. The company's

Alumat therm windows are perfect for modern new builds, commercial projects, care homes and social housing to name a few.

Enq. 123

Evolution Insurance Solution Ltd



Evolution Insurance Solutions Ltd is an Insurance Broker authorised and regulated in the UK by the Financial Services Authority under FSA number 472438.

Evolution Insurance Solutions Ltd is one of the UK's a leading brokers in the 10 Year Structural Warranty market.

If you are undertaking a self build project in the near future then you are likely to require a mortgage compliant warranty and site insurance.

Evolution is a specialist in this market and will source the right product at competitive rates for your project.

Tel: 01799 512 031 www.buildingwarranties.com

Enq. 124

BENENDEN™ – BESPOKE ALUMINIUM WINDOWS FOR DESIGNER PROPERTIES



As featured on
GRAND DESIGNS
Series 5 Episode 22
Channel4.com

- Ultra-slim profile frames
- Single or dual RAL colours
- Into timber or direct to brick or stone
- UK manufactured

THE HERITAGE WINDOW COMPANY

CONSERVATION BY DESIGN

020 8695 0055 | sales@thwc.co.uk | www.thwc.co.uk
Showrooms at: Sevenoaks ♦ Dorking ♦ Beaconsfield

Enq. 125



TanumsFönster - The perfect timber window solution from Sweden

A wall of glass. Combine our pairs of fully glazed french doors with our windows and turn your dream into reality.

Your garden is beautiful all year round so why not allow the changing seasons into your room. Light and airy in summer and so warm and cosy during those cold winter months.

www.tanumsfonster.co.uk
Telephone number 0115 - 93 210 13



Enq. 126

Bathrooms & Kitchens Supplement

LINEAR SHOWER DRAINAGE CHANNEL SYSTEMS

HEIGHT ADJUSTABLE

DURAL

- "Square" grille, polished
- Drainage Channel
- 2nd drainage level
- Sealing liner
- Mounting block
- Drain, 45 mm

The latest generation
with unique advantages

**VARIO LINE
BASIC/COMPLETE SET**

**VARIO LINE
ACCESSORIES**

VARIO LINE EPS

VARIO LINE METAL

Dural is a comprehensive provider of floor-level shower systems, profiles and matting systems for walls and floors

DURAL UK

Unit 6a, Wakefield Business
Centre, Denby Dale Road,
Wakefield, WF2 7AZ
Tel. 01924 360110
info@dural.co.uk
www.duraluk.co.uk

Reader
Enquiry
301



If it was a boxer it would be a super heavyweight.

Talk of weight can be something of a social taboo. However we at Rangemaster are rather proud of our weight. On average we are somewhat heavier than some of our, shall we say, lightweight competitors. That's because our ranges are built from the ground up, from a single sheet of high-grade steel, formed to give maximum rigidity and robustness.

A Rangemaster may well fail at the weigh-in. But rest assured, there are no plans for dieting just yet.

Call 0844 346 0495 or visit rangemaster.co.uk

Reader
Enquiry
302

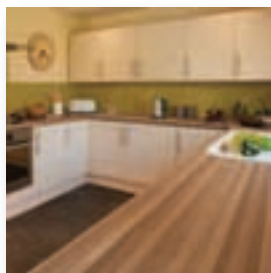


Built from experience



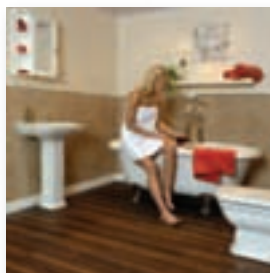
The **Dural** linear shower drainage system range includes the THLINE and the ultra flat BASIC-LINE. The THLINE is installed right alongside the wall for a flush, floor-level shower. This means that there are no details to spoil the overall impression of a level floor and no trip hazards when taking a shower. Installing the drainage channel alongside the wall means the shower floor only needs to have a gradient in one direction meaning there is no need for complex diagonal cuts on tiled or natural stone floors. THLINE consists solely of four components and can be combined to fit any situation. With a variety of sizes, models, covers and drain fittings it can be tailored to the customer's wishes. Large quantities of water can flow away quickly – and all to one side.

Enq. 301



Axiom® by **Formica Group** is a stunning range of worktops, upstands and splashbacks featuring unique designs, partnered with premium surface finishes. Axiom® worktops and accessories allow your dream kitchen to become a reality. All decors in the Axiom® range are available as worktops, breakfast bars and matching upstands. In response to market demand; Axiom® by Formica Group has launched a 3m range in September 2013. A selection of popular Axiom® decors are now available in 3m length, such as Avalon Granite Black, Brushed Concrete and Sherwood Oak in Matte 58; Black Fleck and Sicilian Granite in Crystal and Everest, Jamocha Granite and Serene in Gloss. All Axiom® worktops are manufactured in Newton Aycliffe, County Durham.

Enq. 303



Slash your bathroom refurb budget! When budgeting for a new bathroom, it is easy to be distracted by the cost of a new suite or digital shower, and forget about the labour. BIG mistake! Fitting costs add £'000's to the cost of a new bathroom. multiPANEL waterproof wall panels and twinFLOOR floating vinyl flooring are far quicker to install than traditional wall or floor coverings, and eliminate the possibility of insightfully mould and the need for re-grouting. Visit **Grant Westfield** at Stand F80 at the National Home Improvement Show at London, Olympia, 27-29 Sept for a demo, or visit the website.

Enq. 322



Kitchen specialist, **Kit Stone**, creates bespoke-style kitchens without a designer price tag!

With the average price of a Kit Stone kitchen just £10,000, it offers outstanding value for money.

Hand made from solid wood, utilising the most traditional of techniques, every cabinet is built upon a solid interlocking frame and no chipboard or mdf is used in the construction.

Kit Stone's shaker-style kitchen, the Suffolk epitomises understated elegance with its clean lines and modern feel.

Hand painted in Dove Grey it is available in 27 alternative heritage colours to make your kitchen truly unique.

Enq. 318

FORMICA® FOREVER 100 YEARS



AXIOM® RANGE
LIVE THE DREAM

EVERYONE HAS
A DREAM KITCHEN

Axiom® by Formica Group recently launched its stunning range of worktops, upstands and splashbacks. Featuring unique designs, partnered with premium surface finishes, Axiom® worktops and accessories allow dream kitchens to become a reality. Selected Axiom® decors are now available in a 3 Metre length. Request a 3 Metre Range leaflet for more information

Axiom® Sample Hotline:

0800 376 2976 (UK) 1800 939 266 (ROI)
www.axiomworktops.com

Formica, the Formica anvil device and Axiom are registered trademarks of The Diller Corporation.
© 2013 The Diller Corporation. A Fletcher Building Company

Axiom
by FORMICA GROUP

Enq. 303

Abode



The Abode Matrix GR10 sinks offer designers a unique flexibility – under-mounted with the tap deck exposed, covered or fully inset into the worktop from above. Matrix GR10 sinks are manufactured from advanced acrylic materials – the black material has a metallic granite fleck, adding additional sparkle. The bright white granite sink offers a tough durable and easy clean finish that will co-ordinate perfectly with any kitchen décor. The classically designed Matrix GR10 comes

complete with the unique Abode Orbit waste fittings, overflow, fixing and pipework kits, as standard.

Tel: 01226 283434 www.abode.eu

Enq. 304

Beko



Beko is once again spearheading category innovation with the launch of its new three door fridge freezer model, extending its flexible 'multizone' technology into the 60cm category. In addition to being a standard fridge freezer, the middle door on the appliance cleverly houses a 'multizone' compartment, which allows householders to easily change the temperature between a fridge, freezer, chiller or wine cooler with the simple touch of a button. 'Multizone' technology

provides them maximum flexibility, switching from a fridge to a freezer depending on their requirements.

Tel: 01923 810801 www.beko.co.uk

Enq. 305

Amica



Amica has added a new range of freestanding dishwashers to its line-up of feature-rich home appliances. The new Amica ZMW646BE/WVE 60cm dishwashers are available in a choice of white or black and are A++AA rated for energy, wash and drying performance. Features also include: 14 place settings, start delay up to 24 hours, zone-wash function, six wash programmes, five different temperature selections and the important safety child lock. The new dishwashers consume just 0,93kWh/24 hours on a normal 50°C cycle and use an average of 11 litres of water during the same.

Tel: 01425 461600 www.amica-international.co.uk

Enq. 306

Saniflo



Saniaccess 3 is the perfect macerator for all new domestic installations. Featuring Saniflo noise reduction technology, Saniaccess 3 is designed for use with a single W/C, washbasin, shower and bidet. It is also suitable for light commercial applications including guest houses, small shops and offices. Saniaccess is unique in so far as it has two separate chambers, one for the motor and cutters and one for the pressure switch and electrics. It is designed for easy access should any maintenance be required. In most instances the unit does not need to be disconnected from the toilet for routine checks.

Tel: 020 8842 0033 www.saniflo.co.uk

Enq. 307

Stelrad Radiators



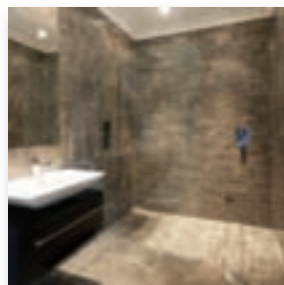
Stelrad Radiators has unveiled two stunning additions to its collection of towel rails. Available now from Stelrad Radiator stockists around the country are the Caliente and Concord towel rails, both high quality exquisite radiators in their own right but now part of the ranges that bear their name. The Caliente was launched at EcoBuild 2012, named in a competition by a customer visiting the show and entering a competition on the Stelrad stand. While the products come as standard in

white, both new products are available in a range of 35 colours making matching and contrasting to colour schemes an exciting additional option.

Tel: 0870 849 8056 www.stelrad.com

Enq. 308

CCL Wetrooms



CCL Wetrooms has just launched a unique Modular Wet-Floor System, allowing any size or shape of wetroom to be quickly and easily created on a timber floor. The key to the system is its design flexibility, allowing a stunning linear drain to be situated in almost any position. The Modular Wet-Floor system is a totally unique concept in wetroom technology, consisting of only three elements: drainage component, tapered board, floor or wall grill. Thanks to the flexible nature of these

components, almost any size of wetroom can be achieved. The components can be trimmed or butted together to create a larger wetroom area.

Tel: 0844 327 6002 www.ccl-wetrooms.co.uk

Enq. 309

Ellis Furniture



New Reflection Gloss White features a 22mm lacquered handle-less door and is available across the entire fitted and modular cabinet offer. Shown here, Reflection Gloss White features plenty of on trend curve appeal. A white carcass rather than a contrasting carcass and a solid surface worktop are recommended if choosing the curved end panel finish. The fitted WC and basin unit perfectly complement the large modular unit to the right of the image. All providing plenty of essential, stylish storage space. The curved corner mirror with 18mm backboard and 4mm unbevelled glass can be hung vertically or horizontally.

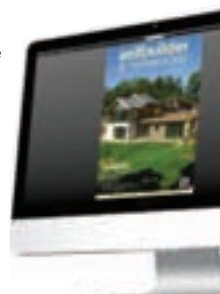
Tel: 01484 514 212 www.ellisfurniture.co.uk

Enq. 310

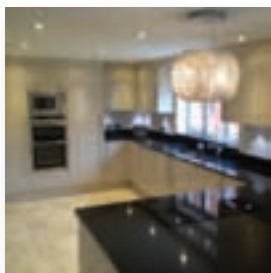
Connect with Selfbuilder & Homemaker online

The digital issue of Selfbuilder & Homemaker provides all the same content as the print issue with the added advantage of being instantly available whenever and wherever you have access to the internet.

In addition to its ease of access, the digital issue of Selfbuilder & Homemaker gives direct links to advertisers, allowing you to visit a potential supplier's website with the simple click of a mouse.



[Visit www.sbhonline.eu to subscribe & find out more!]



Terence Ball Kitchens, a British manufacturer, is displaying its popular French Grey Painted shaker style kitchen on stand K703 in the kitchens section of Grand Designs Live.

A 1,000mm wide Chef's Pantry will form part of the display, together with the revolutionary Pitt cooking system and the latest deep drawers/storage solutions. Over 150 kitchen and open plan living ranges are available from the British family owned and run company that designs, manufactures and installs bespoke products throughout the UK.

A Free design and quotation service is available on receipt of room dimensions and a "wish list" from clients.

Enq. 317

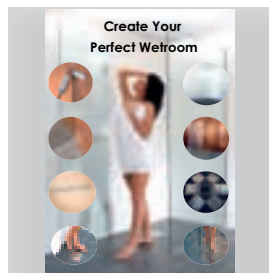


Total Home Environment:

Electrolux Central Vacuums are quiet, quick and easy to use with no heavy kit to lug about, as the main unit is hidden away in a utility room, cupboard or garage.

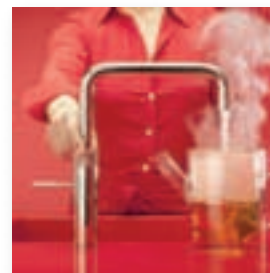
This location ensures that they have more suction power than a portable to remove dustmites, dirt, pollen and pet hair with no recirculation of dust thanks to the permanent self-cleaning GORE-TEX filter. Pipe is routed to wall inlets in the hall or landing where you plug in the hose and vacuum. Using less electricity than a portable they perform effectively for 20 years+ and only need emptying annually. From £628!

Enq. 313



The latest trend in bathroom design is the wetroom. With today's hectic lifestyle more and more people are looking for opportunities to relax and unwind within the comfort of their own homes. Investment in the styling of a bathroom is a popular idea for homeowners making their own private hide away, a style statement. Demand is often driven by women who love the open, fresh, minimal, glossy ambience of a wetroom, which adds value to the home as well as making a stunning focal point. **Wetroom Innovations** offers a huge range of cutting-edge products now with a life-of-tiling warranty. Wetrooms are increasingly popular, with huge latent demand pending the end of the recession. The Wetroom trend continually influences contemporary bathroom design.

Enq. 312



Quooker, the UK's only dedicated 100°C boiling water tap inventor, has launched the stunning new Nordic, a dedicated boiling water tap, available exclusively through Quooker's kitchen dealer network. The Nordic comes in two models, the Nordic square and the Nordic round, each of which is available in either chrome or brushed chrome finish. The new Nordic is packed with Quooker innovations. Each Quooker tap has full height adjustment and 360 degree rotation with both a push-and turn safety handle and a visual signal; a bright LED ring lights up when the tap is touched. Grooves on the handle provide a tactile alert and give extra grip.

Enq. 323



SCAN FOR BROCHURE



THE RADIATOR FACTORY

WWW.RADIATORFACTORY.NET

FOR ALL TYPES OF DESIGNER & ECO-ALUMINIUM RADIATORS

TEL: 0116 260 9257

Enq. 311

wetrooms wetrooms wetrooms wetrooms wetrooms wetrooms wetrooms

MAXXUS
the STRONG one

Wetroom floor former (trays)



The rest bend like bananas

Avoid tile cracking – MAXXUS takes a 470kg load



470kg

9 SIZES – LOW PRICES
Ask for our 44 page Price List

wetrooms made easy
a winning combination

www.wetroominnovations.com 01629 815500

wetrooms wetrooms wetrooms wetrooms wetrooms wetrooms wetrooms

Enq. 312

KITCHENS
WORKTOPS & STEPS
APPLIANCES

TILES
WOODEN FLOORING
MOSAICS

BATHROOMS
MARBLE CLADDING
GRANITE

3 FLOOR SHOWROOM : CAD DESIGNS , MARBLE & GRANITE FACTORY TEL.: 020 8961 77 00 WWW.DIRECTSUPPLIESLTD.COM

Enq. 313



Fabricator - Moblaje Anchelu, Spain, Material - HI-MACS Alpine White

James Latham

Interior designers and architects looking to achieve limitless creativity with their kitchen and bathroom projects – either in a commercial, hospitality or residential environment – are increasingly specifying HI-MACS® solid surface, which is distributed exclusively in the UK and Ireland by James Latham. A highly versatile and extremely durable material, HI-MACS® can be easily machined and thermoformed to almost any 3D-shape imaginable, offering endless design possibilities and creating a surface that is flowing, functional and visually seamless. Even large-area installations have the appearance of a single application and this non-porous, completely smooth surface makes liquid penetration practically impossible, creating the perfect base for germ-free areas. In fact, HI-MACS® has been granted a specialist hygiene certificate, which means it is particularly well suited for use in kitchen and bathroom environments. These exceptional technical features also make HI-MACS® extremely easy to maintain, meaning it will not look tired or deteriorate in terms of its appearance or performance. Supplied in thicknesses of 12mm, 9mm and 6mm, HI-MACS® is available in 98 colours. In addition, the extensive HI-MACS® portfolio now also includes 22 designs of sinks and 13 vanity basins – available in over 60 colours.

Tel: 0116 257 3415 www.lathamtimber.co.uk

Enq. 314

PINELAND FURNITURE LTD – 01299 271143



- 100% solid wood kitchens – no MDF, chipboard or ply
 - Dovetail jointed drawers – mortise and tenon joints for carcasses
 - Free design service, individual, hand drawn plans
 - Non-standard sizes, at no extra cost, to suit your kitchen dimensions
 - Fully assembled units; no annoying flat-pack assembly
 - Straightforward, easy to understand costing: prices include VAT & delivery
 - Knotted, primed and painted units are now available
- Pineland is a privately owned, family company that has been established for over 20 years. We believe in listening to our clients, and our hand drawn plans, reflect our customers desires and opinions. The final design combines well planned functionality, with elegance and beauty, and our clients are often surprised how all this can be achieved at such a reasonable cost.

Visit our website: www.pineland.co.uk Email: enquiries@pineland.co.uk
Or call our offices: CLEOBURY MORTIMER, SHROPSHIRE: 01299 271143
NORTHWICH, CHESHIRE: 01606 41292

Enq. 315

TIME TO CLEAN UP



**AN ELECTROLUX CENTRAL VACUUM GIVES
DECADES OF POWERFUL & SUSTAINABLE CLEANING
100% SUCTION... ALWAYS**

Electrolux
Central Vacuum Systems



**total home
environment**

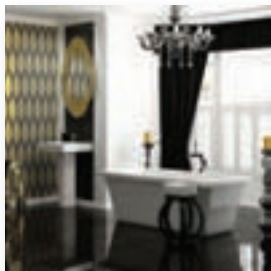
we do more with air...



0845 260 0123

www.totalhome.co.uk

Enq. 316



If you're planning to splash out on a new bathroom – take a look at **Betta Living's** exciting new range.

Spanning the coolest trends for 2013 from coveted curves and minimalist chic to freestanding baths and statement showers it has something for everyone – from modern and sleek designs to traditional sanitary wear for more period and classic styling.

The launch collection includes 11 designs, now available across its 21 stores and nationwide via its in home design consultation service. To view the collection visit the website for more information.

Enq. 324



It isn't easy deciding on a new kitchen. It's such an important decision, the 'heart' of the home, and you want it to be right.

70 per cent of **Pineland** customers are from personal recommendations.

The problem is there are so many options and choices. Ultra-modern might look good now, but will it date?

Fancy mechanisms seem attractive, but will they fall apart in a few months or so?

Pineland uses only solid wood. All drawers are made using dovetail joints.

All carcasses are made with mortise and tenon joints. Re-Painting every 3-5 years makes the kitchen as good as new.

We expect the kitchen to last 20+ years.

Enq. 325



Still not found an LED downlight with real warmth and punch?

Orluna engineers beautiful performance LED downlights in the UK:

- Real warmth – 2,700k
- 50w tungsten halogen equivalent output (independently certified)
- Proven and tested (sold for seven years)

The products are also priced so that they are feasible to use throughout a project. Please see Orluna's full exciting product range on the website.

Enq. 326



AQATA, the UK shower enclosure manufacturer renowned for quality, design and unrivalled customer service, has issued its 'Complete Collection' brochure. Brimming with stunning shower enclosures, showers and accessories, the 208 page brochure provides inspiration along with comprehensive product information and prices, to make choosing the perfect shower solution a simple and enjoyable process. The brochure incorporates Aqata's complete product portfolio including products launched during the last year, around a dozen of which are new additions to the Spectra range. This contemporary, frameless collection of shower enclosures, walk-ins and bath screens is the fastest-growing range within Aqata's portfolio and is set to expand further.

Enq. 327

Terence Ball Kitchens

A name you can trust



- British Made Cabinets (Lifetime Guarantee)
- Exclusive Trade Discounts
- Over 250 Door Ranges to suit all Budgets
- Free Design (Just Email room dimensions)
- Local Installations Throughout the UK

www.terenceballkitchens.co.uk
sales@terenceballkitchens.co.uk
 01984 624640

Enq. 317

KIT STONE

Kitchens with an average price tag of £10,000



Handmade kitchens & interiors, sensibly priced.

LONDON TUNBRIDGE WELLS READING MARLBOROUGH BRISTOL EPSOM
 0207 371 99 97 01892 522321 01189 326060 01672 512155 01173 702453 01372 237020

www.kitstone.co.uk

follow us... [f](#) [t](#)

Enq. 318

editor's focus

1

RUNDUM MEIR

Rundum Meir specialises in high quality, standard and custom made, exterior door systems that can be made from a range of beautiful materials including quality solid timber, copper, aluminium, bronze and glass. In plan the doors can be designed to be curved, straight or even wavy. Using Rundum Meir garage doors gives the specifier flexible layout options with almost any size door available. Rundum exterior door systems have been used on listed buildings, award-winning new build, conceptual architecture, refurbishment projects and a high profile passive house.

Enq. 319



2

SCREWFIX

Screwfix offers a straightforward and transparently-priced retail experience that enables customers to shop 14,000 products over the phone, online, via their mobile or from their local store. From power tools and hand tools to sheds and garden furniture, more than 11,000 products are available to collect from the national network of over 290 stores. The Click & Collect service means customers can buy online and then collect from store.

Enq. 320



3

TT-PUMPS

Sign up today to be one of the first to get your hands on TT's new product catalogue. Revealing new products in their ranges the catalogue will also include more detailed product information making selection even easier for you – many products being unique to TT!

Enq. 321



multiPANEL
the collection
waterproof walls, floors & ceilings

No adhesive required

Completely waterproof

Domestic and commercial grades

*Visit us on Stand F80
at The Home Improvement Show,
27-29 Sept at Olympia*

twinFLOOR®
the floating vinyl floor

Easy to cut and fit

Authentic wood and stone designs

www.multipanel.co.uk t +44 (0)131 337 6262

Enq. 322



LIGHT

SPACE

STYLE



High Quality Folding Sliding Doors British, German & Belgium Design A Fantastic Variety Of Finishes & Colours Virtually maintenance free State-of-the art security features Full fitting available Free survey & design advice

Unit 26/3 Silicon Business Centre 26 Wadsworth Road
Perivale, Greenford Middlesex UB6 7JZ
Tel: 0208 997 2448 Fax: 0208 997 0611

www.1stfoldingslidingdoors.co.uk / foldingslidingdoors@btinternet.com

1ST
FOLDING
SLIDING
DOORS

Enq. 127

Old Manor Cottages

Double Glazed Timber Windows & Doors for the Period look.

By combining tradition with modern techniques in a unique way double glazed windows can now be made to replicate the originals.

Accepted for use in Listed Buildings by many Conservation Officers.

- Selected hardwoods used for all Box Sash, Casement Windows & Doors, with slim Ovolo glazing bars 19mm wide.
- Sealed units fitted with plain 'Warm Edge' spacers matched to window colour.
- U Value now down to 1.6
- Supplied fully factory finished, painted & glazed from the inside for additional security.
- Supplied ready to fit from your drawings or survey.

01462 456033

TURNPIKE LANE - ICKLEFORD - HITCHIN - HERTS - SG5 3UZ
www.oldmanorwindows.co.uk - oldmanorco@aol.com

Enq. 128

Connect with Selfbuilder & Homemaker online by visiting www.facebook.com/sbhmag, pinterest.com/selfbuildhome and twitter.com/SelfbuilderHome to follow us!

selfbuilder & homemaker

f t p

As well as the bi-monthly magazine, Selfbuilder & Homemaker have an increasingly popular online profile to help keep you up to date with all of the latest products, innovations, inspirational ideas and projects. Newly launched is the Selfbuilder & Homemaker Pinterest page; a one stop source of inspiration. Pinterest allows you to browse pinboards, discover new things and get inspiration from people who share your interests, as well as create your own boards so you can organise and share all the beautiful things you find on the web. Subscribing to our Selfbuilder & Homemaker Facebook and Twitter pages enables you to easily keep track of all of the latest products, innovations and inspirational ideas and projects.

HELP CELEBRATE BRITAIN'S DESIGN AND CONSTRUCTION EXCELLENCE AT AN EXCLUSIVE CHRISTMAS PARTY!

Christmas

BEST OF BRITISH CHRISTMAS PARTY

AT THE LONDON MARRIOTT HOTEL GROSVENOR SQUARE

DATE: 12 DECEMBER 2013 TIME: 6.45PM UNTIL MIDNIGHT

DRESS: SMART AND GLAMOROUS COST: £120 PER HEAD PLUS VAT

THE SWINGING LITTLE BIG BAND

NetMAGevents, in association with the British Homes Awards, invite you to see out 2013 in style and celebrate the best of British design with your colleagues from the UK's property industry. Join us at this unique event, with entertainment by The Swinging Little Big Band, and be the very first to see the portfolio of stunning designs submitted for the Sunday Times British Homes Awards competition for Britain's Future Home.

MAKE SURE YOU DONT MISS OUT BY BOOKING TODAY

£120 PER HEAD OR YOUR TABLE OF 10 AT £110 PER HEAD

For further details contact Lesley Mayo on lesley@netmagmedia.eu and for tickets, visit: <http://netmagevents.eventbrite.co.uk/>

fireplace showcase



1 SCHIEDEL

Eco ICID, the twin wall insulated System Chimney specifically designed for stoves, is now available in two finishes: stainless steel and black painted.

The black finish matches the black Prima Smooth connecting flue pipe range, creating an attractive black flue right up to the ceiling.

Eco ICID has easy to install twist lock connections and is available in diameters 125mm, 150mm, 180mm and 200mm.

enq. 130

2 LANDYVENT

The Eccostove is an innovative new concept in woodburning technology using silicon carbide to create energy efficient wood combustion providing whole home heating without plumbing. Eccostove has an 85.3 per cent efficiency rating and still emits 25 per cent of stored heat up to 12 hours after firing (dependant on model). There are four models in the range that will heat anything from a two bedroom property, right through to a five bedroom property, provided doors around the home are left open.

enq. 131



3 JETMASTER

The UK's most efficient inset stove (18i: see HETAS Guide 2013) just became a freestanding stove! The new 18q is a powerful wood and multi-fuel convector stove, styled with a minimal clean line design. All the same 18i features are there: 4.9 kW output, 85 per cent efficient, wood & multi-fuel; Defra approved for wood. The 18q warms your room in two ways: heat radiates directly through the glass as well as convection air projected from around the firebox.

enq. 132



- Solid and reliable stoves, yet easy to control
- The only manufacturer to offer the **Flexifuel** System (patent pending)
- Designed in Britain, Built in Britain...Unashamedly British.

www.aradastoves.com • Axminster • Devon • T: +44 (0)1297 35700



Enq. 133

In this issue of Selfbuilder & Homemaker we look at recent trends in fireplaces to heat your home.

4 JARABOSKY
Jarabosky uses reclaimed oak and jarrah timber, primarily redundant hardwood railway sleepers. The company has been at the forefront of this type of recycling for 25 years. The Oak or Jarrah used to make each and every fire surround is hand picked to its customer requirements from its large range of reclaimed railway sleepers. Why not go for modern chunky designs with clean lines or lots of character, these add a sensational feature to any room or choose quite a simple design thats very effective.

enq. 134



6 DUNSLEY
Clean & clear: Enviro-burn clean combustion with tertiary and airwash air supply means a clear view of the flames. With all the best parts of the Highlander 5 the new Slimline has been developed to fit where space is paramount. It is 28 per cent thinner than the standard Highlander 5 being only 230mm wide. Even with the reduced depth, it can still take large logs up to 280mm long. The outputs are stunning and efficiencies are equal to the standard Highlander 5. The Slimline is available as a single door Solo giving uninterrupted views of the fire area.

enq. 136

5 EUROSTOVE
The new Westfire Uniq 33 wood burning stove from Eurostove is a handsome and sleek design that sits above floor level to give a warm visual aspect of the fire and also project the heat more efficiently into the central airspace of the room. Eurostove say that it's important to choose the positioning of the Uniq 33 to create a focal point and also appreciate the glass side panels with dark glass at the base and clear glass at the top so the flames and illumination can be seen from three aspects.

enq. 135



OAK MANTEL BEAMS
The Original Railway Sleeper Furniture

Jarabosky
Handcrafted from Redundant Hardwood

Beautiful oak fireplace beams, mantel shelves & corbels
Handcrafted to your requirements. Choose the wood, character & finish
From £20.50 per foot. Delivery nationwide
www.jarabosky.co.uk sales@jarabosky.co.uk tel: 01432 311922

Handmade furniture using stunning redundant railway sleepers from around the world

Enq. 137

Jetmaster INSET STOVES

Made in Britain
Five year guarantee
FastBurn Technology

The most efficient inset stoves in the UK (Accred by HETAS under 2012/10 & 60)

Model	Fuel	Output	Efficiency	Notes
14i	Wood & multi-fuel	3.5 kW output	80% efficient	Defra approved, No air supply required
18i	Wood & multi-fuel	4.9 kW output	85% efficient	Defra approved, No air supply required
24i	Wood & multi-fuel ready	7.3 kW output	84% efficient	Defra approved
28i	Wood & multi-fuel ready	10 kW output	77% efficient	
NEW! 60i LOW	Wood only	6.5 kW output	78% efficient	
NEW! 70i LOW	Wood only	8.5 kW output	73% efficiency	

NEW! 60i LOW & 70i LOW WOOD BURNERS
PANORAMIC VIEW OF THE FIRE

012080 629543 www.jetmaster.co.uk 012080 629547 info@jetmaster.co.uk

Enq. 138

fireplace showcase



1 CLEARVIEW STOVES

Whether you wish to create a focal point for your room, save some money on your energy bills, or simply enjoy the pleasure of a brightly burning fire, it is increasingly apparent that there is only one choice for the discerning consumer: Clearview Stoves. For very many years Clearview has become synonymous with quality, reliability and craftsmanship. Their uniquely designed air wash system provides not only highly efficient combustion and excellent controllability but also an exceptionally clear view of your fire.

enq. 139

2 BESPOKE FIREPLACE DESIGNS

BALANCEDFLUEFIREPLACES.CO.UK is a new website launched by Bespoke Fireplace Designs, dedicated exclusively to their range of high efficiency, high output Trimline balanced flue fires. The new website allows you to scroll through the entire Trimline range effortlessly, with links to the various configurations and optional extras. Detailed dimensional sketches and videos allow you to choose the ideal fireplace for your living area, or for further information on the extensive range please do not hesitate to contact Bespoke Fireplace Designs.

enq. 140



3 ARADA

Launched less than a year ago, the overwhelmingly popular EcoburnPlus range of stoves from Arrow now offers even more to catch your attention – a hugely impressive and market leading Net Efficiency of 86.3 per cent. Not only is the EcoburnPlus 4 stove the most efficient stove in the Arrow range, it's the most efficient multi fuel stove in the UK market today. All Arada stoves are designed and built in the heart of the Devon countryside.

enq. 141

Dunsley Heat

Looking forward to winter
knowing you've got it covered

The Yorkshire Stove
Available with Central Heating
and domestic hot water boiler

The Yorkshire Stove is the only multi-fuel stove ever to meet all the U.K. clean burning tests.

For your nearest stockists
T:01484 682635
email: sales@dunsleyheat.co.uk

All Dunsley stoves are manufactured in Great Britain
www.dunsleyheat.co.uk

Enq. 142

Eurostove

the heart of
your home

Eurostove are exclusive UK importers and distributors of WESTFIRE, SAEY and ORANIER woodburners and multifuel stoves. As well as a selection of other quality brands of wood boilers and cookers, Eurostove also manufacture MENDIP stoves.

The range offers a wide choice of distinctive styles from traditional to contemporary to warm the heart of any home. To find out more including your nearest dealer, visit our website or call to speak to an advisor.

01934 750500 | www.eurostove.co.uk

Enq. 143

Firing Imaginations for
over 30 years...



STOVAX | **GAZCO**
Fire Your Imagination

Reader
Enquiry
144



Over 30 years of British design and engineering have gone into creating the UK's most comprehensive range of high quality **wood, solid-fuel, gas** and **electric** stoves & fireplaces.

www.stovax.com • 0844 4141 322

fireplace showcase



1 CVO FIRE

KOKOTO. This wall mounted gas fire is operated by remote or manual control and is 80 per cent energy efficient. A shelf and TV can be installed above if required. These 'high efficiency' (HE) gas fires are designed for installation into any home with a chimney or flue liner system and have a glass front. Ideal for both renovations and new build properties. No ventilation is required. By installing a KOKOTO you can benefit from up to 40 per cent more heat for 60 per cent less cost. Gas is still the cheapest form of fuel.

enq. 145

2 STOVAX

For homeowners who enjoy the ease and convenience of a gas fire, Gazco offers a wealth of highly efficient gas appliances suitable for all styles of home. The Riva2 500 is now available in a new balanced flue version to complement the existing conventional flue model following its successful launch last year. The smallest log effect gas fire in the Gazco range, the Riva2 500 is a desirable choice for many of today's more modestly proportioned rooms as well as being suited to the standard 22" British fireplace opening.

enq. 146



3 3M

Following the success of its current range, the Command Brand from 3M has launched a new selection of colourful damage-free wall hanging solutions. These brightly coloured hooks are a simple and fun way to keep your home tidy while ensuring all your household essentials are always to hand. Available in four fabulous colours and two different sizes, the hooks come with Command Clear Strips. Simple to put up without the need for nails, screws or tacks.

enq. 147



Bespoke Fireplace Designs



For more information on the innovative Fairo ECO-line range of balanced flue gas fires, or request a brochure pack by contacting us by phone: **0845 615 6518** or email:

info@bespokefireplacedesigns.co.uk



@designerfires



facebook.com/bespokefireplacedesigns

Enq. 148



**MORE THAN
JUST A STOVE!**

Heat the house not just the room!



- Makes a huge saving against your gas or oil heating bills.
- Burns wood logs.
- One charge of 10kg logs heats the appliance to full heat, to release that heat for 12 hours after fire has gone out.
- 25% of stored heat still released after 12hrs [model 678].
- No ducting or water connections needed—just leave your doors open to allow heat to circulate (does not overheat the room it stands in).
- Made in England, HETAS approved and DEFRA exempt for inner city installations
- Four models in the range.
- All colour options available.

Email—**sales@landyvent.co.uk**
Call **Landy Vent UK Ltd—01527 857814**
Ask about our smaller **E580** model also!
www.eccostove.com

Enq. 149

CLEARVIEW STOVES

Britain's leading manufacturer of clean burning wood stoves

Clearview Stoves offers the complete solution for homebuilders & renovators

We are the UK's largest dedicated manufacturer of clean burning wood stoves, designing, manufacturing and distributing from our ten acre site in Shropshire.

With installation and product knowledge unequalled in the industry, we can provide all that is necessary for a trouble free installation.

Some of our benefits include:

- Money saving.
- Certified for use in smokeless zones. We were the first ever company to achieve this.
- A heat source that is 70% efficient, most open fires are only 10%.
- Very easy to light and maintain. They burn for long periods unattended and the ashtray only needs to be emptied every two to three weeks.
- You are in control of your fuel supply, no longer dependent on the big energy companies.
- A satisfying and pleasurable way to heat your home.
- Reduced dependence on fossil fuels.
- Thousands of accessories and flue components in stock.



CLEARVIEW STOVES SHOWROOM

Dinham House • Ludlow • Shropshire • SY8 1EJ • Tel: 01584 878 100

Brochure Line: 01588 650 123
www.clearviewstoves.com

Reader
Enquiry
150

Taking care of your chimney liner

The latest in the series of technical tips from the experts at Specflue focuses on the traditional and important theme of the "safe and sound" maintenance of chimney liners and for easy reading is set out as a succinct set of key points:

Life expectancy and warranties

Considering the flue has been correctly installed, it should last the life time of the appliance; which is usually 10-12 years. The conditions of the warranty are taking into consideration the liner has been installed by a competent person, correctly sized and that the flue is properly maintained by only burning the correct approved fuels.

Appliance operation

Do not allow the appliance to slumber overnight, it is recommended to run the appliance at a controlled high fire temperature within each firing for at least 30mins as recommended by manufacturer. Using a thermometer will allow you to monitor flue gas temperatures. It's been proven that slumbering of the appliance is a contributing factor to liner failure.

Fuels

All stoves are used to burn different fuels; make



sure you're only burning the fuels recommended by the stove manufacture/HETAS. Wood-burning produces traces of tarry matter and soot up the inside of the chimney, this can all be reduced by burning well seasoned air-dried wood. Burning 'green' or 'wet' wood is one of the biggest causes of chimney fires.

Warning

Carbon Monoxide has no smell therefore it's considered a silent killer, Carbon Monoxide is

usually emitted from a faulty appliance, blocked chimney or burning incorrect fuels. The chimney should be inspected at least once a year to confirm all components and construction materials are in good condition.

Maintenance

Employ a qualified chimney sweep who will provide a certificate of sweeping instead of using chemical cleaning products. Solid fuel appliances should be swept twice a year. Ideally this process should occur during the middle of the heating season and the end of the season.

Ventilation

Ventilation is required into the room containing the appliance to ensure the combustion is good and to enable correct and efficient working of the appliance and chimney.

0800 9020220

www.specflue.com

Enq. 151

**THE ESSENTIAL
FLUE & CHIMNEY
COLLECTION FOR STOVES**

**45
YEARS
MANUFACTURING
IN THE UK**

Eco ICID
The NEW highly insulated
twin wall flue for stoves

- Easy Twist Lock Connection
- Diameter Range 125-200mm

**Now also
available in
Black Painted
Finish**

www.schiedel.co.uk/rite-vent

Part of the MONIER GROUP

Enq. 152

HIGH EFFICIENCY GAS FIRES

**80% CLASS 1
EFFICIENCY**

GLAMOUR

This New High Efficiency Gas Fire Can be Installed in both
Old and New Properties with a Chimney.
By Installing a Fireplace from the CVO HE Gas Fire Range You
Can Benefit from Twice the Heat for Half the Cost.

THE CVO FIREPLACE RANGE INCLUDES MANY UNIQUE DESIGNS.

01325-301020 : info@cvo.co.uk : WWW.CVO.CO.UK

CVO FIRE

Enq. 153



Euroheat

Wood burning stoves provide a stylish and sustainable way to keep a home warm, and some are covered by the domestic Renewable Heat Incentive (RHI). Biomass solutions provider, Euroheat, has a range of stoves to suit any style of property. Its revolutionary Rika Evo Aqua is one of few stoves that meets the RHI's product criteria, providing room heating and back boiler capabilities.

Other stoves in Euroheat's range, include:

- EFEL: Euroheat's cast-iron offering, which was upgraded last year so it's easier to use with one lever to control both air and fuel.
- IQ: Euroheat's smart range of inserts, perfect for the modern home.
- Wiking: Euroheat's most cost-effective stove range, providing a high-quality, contemporary stove at a low price. New for Winter 2013, all Wiking stoves now feature the patented Autopilot system.
- Rika does dual fuel: Rika's Induo stove offers dual fuel capabilities, perfect for people who want the relaxing, warming feel of a wood stove, yet with the practicality and controllability of wood pellets. Efficiency is key with all of Euroheat's stoves, which reach levels of up to 90 per cent, comparable with SEDBUK A rated boilers and a significant improvement on an open-fire, which peaks at around 40 per cent. RHI aside, in a well-insulated open-plan home, a modern biomass stove can make a real contribution to heating requirements; allowing thermostats to be kept low, thus saving on fuel bills.

Enq. 154



Anglia Fireplaces

An innovative and stylish new range of eco-friendly pellet stoves from Italy has launched in the UK. Eva Calòr offers elegantly designed stoves which are economical and efficient to run, as well as being clean and easy to use.

The range is being offered exclusively by Anglia Fireplaces, one of the UK's largest fire retailers and distributors well known for sourcing the most innovative and environmentally-friendly stoves with outstanding efficiency rates.

Priced from £2,000, there are 39 stoves in the Eva Calòr range, including stunning inset fires to slim and stylish stoves which sit flush against a wall.

There is a wide selection of colours to choose from, including rustic red, black, ivory, rustic amber, honey, cream and aluminium.

All the stoves include a fully programmable electronic control panel. With a yield of over 90 per cent and typical output ranging from 4-27 kW, users can regulate the stoves to come on at set times of the day. There is also a manually recharged mechanical system to ensure that the stoves will automatically stop in case of extreme temperatures.

Tel: 01223 234713 www.fireplaces.co.uk

Enq. 155

ENVIROMAT
Sedum Matting
For small green roofs
and low maintenance landscaping
Installation service available

For a FREE CD ROM on
Green Roofing, please call
0800 061 2653
or visit our web site
www.enviromat.co.uk

Enq. 156

Wykeham Mature Plants
transform your landscape, mature trees, hedges & shrubs

Screening and Instant Hedging

Do you have a client who requires screening for immediate privacy or security?

Wykeham Mature plants grow a range of mature trimmed hedging plants in a range of species to suit most sites and aspects. Our instant hedging offers:

- Immediate screening and privacy
- Immediate security
- Solutions to planning issues
- A range of varieties to suit all pockets and growing situations

After 1 day planting!

The difference between Wykeham instant hedging and plants supplied by other nurseries is clear to see.

Where a hedge or fence of a more usual height just isn't enough, such as where privacy has become a real problem or where there is an unsightly view, there is a range of evergreen or deciduous screening available to provide cover at higher levels.

www.wykehammatureplants.co.uk
01723 862406

Enq. 157



How secure is your garage?

Choosing a garage door for a self-build project can be a daunting challenge. To help you make the right decision, garage door manufacturer Hörmann, offers advice on the options available

When it comes to self-build projects, garage doors tend to be one of the last items to be considered. However, a garage door can represent a significant portion of a home's frontage and with the vast range of alternatives available today, it is worth taking some time to fully consider the options and how they can add real value and appeal to your self-build project. While the obvious purpose for a garage is to provide secure parking for cars, they can be an important addition to any home by providing storage for any number of other valuable items such as bicycles, garden furniture and tools among many other things. It is therefore paramount that a garage door can offer maximum security.

As well as security, thermal insulation and appearance are other important considerations. There are a seemingly unlimited choice of finishes available to help create a desired look, alongside this there is also the option to have matching or complementary garage and entrance door combinations to create a co-ordinated look across the whole façade.

However, the first matter is choosing the type of door, as this will have a strong bearing on the designs available to you. The choices

extend from truly bespoke automatic doors to the entry-level option of steel up-and-over doors.

Traditional up-and-over style doors are the least expensive option; however the levels of security and insulation are lower than with other styles. Up-and-over doors commonly come in two types; the canopy and the retractable. The canopy is so called since approximately one third of the door sticks out from the garage once opened, creating a canopy. A retractable door costs slightly more but slides completely into the garage on tracks suspended from the ceiling and is more reliable in the long run. However, you need to consider how the tracks could restrict access to internal doors and power supplies etc...

If good insulation and maximised security are a high priority, then a sectional garage door may be more suitable, some of which have Police approved, Secured by Design accreditation. These doors are space saving since they only require a minimum amount of interior space and also allow the door to be opened even if a car is parked right up to it. Sectional garage doors open vertically and rise in to tracks inside the garage, so do need some interior space

A garage door can represent a significant portion of a home's frontage so it is worth taking some time to consider the options

albeit at ceiling height. This style of door is the only truly insulated option, so is ideal for integral garages.

For projects where interior space is limited a roller door may present the best option. In essence, roller doors wind around a central drum (hence the name), because of this, as with sectional doors, they can be opened even with a car parked in front of them. The only interior space required is for accommodating the roller barrel. Note when you are looking at your



Take your time and seek expert advice – write down what you need your garage door to do and ask a specialist for the options that they offer

options to ensure that a casing to cover the roller barrel is quoted for as not all manufacturers include this as standard.

A further option is a side sliding door, which is suitable for use where headroom is limited or for projects wishing to make a style statement. Traditionally these doors have either been adapted industrial doors or expensive tailor-made options, now though modern versions are readily available in stylish designs and are far more smooth and quiet when in motion than traditional models.

How you intend to use your garage should have the greatest bearing on the type of door that you choose. For instance, if you have direct, internal access to the garage from the house sectional doors offers the best insulation and security options. If the garage is remote from the house and has no power, manual up-and-over doors may be more suited for your project.

When it comes to styling there are even more choices to make. Doors can be finished in steel, glass reinforced polyester (GRP), timber, or with some bespoke options, the material of your

choice. All manufacturers offer an extensive choice of finishes and styles but for some this is just not enough. Specialist companies offer unique solutions and the opportunity to create your own unique finish.

Take your time and seek expert advice – write down what you need your garage door to do and ask a specialist for the options that they offer. If possible go and have a look at some doors in a showroom, you could be surprised at what you can afford and how much of a difference it can make to your self-build project.

Enq. 158



Hörmann

The break in resistance of Hörmann automatic sectional garage doors has been recognised by the award of Secured by Design status. The accreditation applies to the combination of Hörmann insulated or solid timber sectional doors with the Series 3 ProMatic or SupraMatic operators. The double skinned, insulated EPU and LPU doors both feature solid, CFC free polyurethane insulation that adds strength and rigidity to the door. With the EPU door the insulation is 42mm thick at the section joints and 20mm thick across each panel. For the LPU door this insulation is a constant 42mm thick, leading to even better thermal values. The LTH solid timber doors are offered in a number of styles and buyers also have the option to have their own individual design recreated by Hörmann. These doors can be ordered in either Nordic Pine or Hemlock. The ProMatic and SupraMatic operators which are part of the Secured by Design accreditation both feature a mechanical lock. This unique automatic latching system makes it almost impossible to lever these doors open, and as it is a purely mechanical system, it remains fully functional even in the event of a power failure. A wide range of styles and colours and even bespoke timber designs ensure there are doors to suit any home or project. Additionally matching entrance doors are available including the Hörmann ThermoPro range which also has Secured by Design options.

Tel: 01530 513000 www.securedbydesign.com

Enq. 159

Bespoke Garage Doors

| Solid Timber | Aluminium | Brass | Glass |



Quality - Innovative - Proven since 1968



T: 0151 280 6626 | E: info@rundum.co.uk | W: www.rundumuk.co.uk

Enq. 160

Schueco folding doors. Just opening one tells you all you need to know



When you slide open a Schueco aluminium folding door, you can just feel the quality. Precision rollers ensure effortless, fingertip operation and yet multi-point locking means security is never compromised. Folded back into a neat stack to left or right, inside or outside, the doors – available in a wide selection of colours and finishes – give a huge clear opening of as much as 95%. When closed, they deliver exceptional levels of thermal insulation and weather-tightness, while flooding your home with light. For beautifully finished doors engineered to look good and to last, year after year, there's really only one choice. www.schueco.co.uk





Somewhere over the rainbow

Justin Davies, general manager for The Window Store explains the jargon behind window and door energy ratings and asks whether triple glazing should be a genuine consideration when looking at glazing options

Know your ratings!

August saw the number of signed Green Deal plans rise to 132, up from 36 the previous month. Energy minister, Greg Barker said that the figures showed "genuine consumer interest" in the scheme. So with energy bills creeping ever higher with no end in sight, and a hint towards higher council tax and stamp duty for those living in inefficient and leaky homes, there's no escaping the pressure to make our homes more energy efficient.

Glass and glazing plays a vital role in the efficiency of a property – from windows and doors to conservatories and glass extensions. Many

people will be au fait with the sliding 'rainbow' scale more commonly associated with household appliances. Stating the energy efficiency rating of a product, with the dark green coloured band being A (the best rating) down to dark red, G (the lowest rating and therefore the least energy efficient), what many people don't realise is that this rating is also applicable to both windows and doors.

There are a number of factors to look out for when establishing the environmental performance of a door or window – the energy index and the u-value; these combine with air leakage and in some instances, solar factor, to give

either a window energy rating (WER) or a doorset energy rating (DSER). Remember these ratings relate to the whole unit not just one individual component.

U-values

To understand DSERs and WERs, people must first get to grips with U-values. A U-value is an independently verified measure of heat transfer through a building element, in this instance a door or a window. The lower the U-value the better the material/product performs as a heat insulator, less energy is lost, and the more efficient and economical the unit.

Energy index

The Energy Index ($\text{kWh}/\text{m}^2/\text{year}$) is one of the most important values, as it sets out the amount of energy lost or gained by a window. The value is displayed in terms of kilowatt-hours per square metre of glazing per year. Energy lost is displayed as a negative figure, and energy gained by a positive number. So the higher the number, the greater the energy conserved – and the more money saved on energy bills.

Improved rating with Low E

Significant proportions of glazing can have a dramatic impact on the energy and thermal efficiencies of a property; even something as simple as an entrance door with between 5 per cent and 20 per cent glass. One solution is to install Low E glass instead of standard glazing. Low Emissivity glass, Low E for short, is a more energy efficient glazing alternative. It dramatically reduces heat transfer and reflects interior heat back into a room. Low E glass is also recommended for properties that are north or east facing as a greater proportion of heat loss would be expected.

Continued overleaf...

With energy bills creeping ever higher with no end in sight, and a hint towards higher council tax and stamp duty for those living in inefficient and leaky homes, **there's no escaping the pressure to make our homes more energy efficient**



Triple decker

Triple glazed windows can achieve a U-value of 0.8W/m²K or less and can reduce heat loss by nearly a third more than existing double glazing. Already a popular choice in colder climates like the Sweden and Norway, triple glazing is slowly starting to build momentum in the UK. There are two key factors that could cause interest to be piqued this side of the North Sea – the change in the UK's weather with more extreme, erratic bouts of rainfall, snow and sun, and the continued rise in energy costs.

Exceeding the current 'A' WER, triple glazing achieves 0.8 U-value, well ahead of the equivalent typical double glazed option of 1.5 for an A rated window. This means for the average

homeowner the thermal insulation of triple glazing is currently unrivalled.

Steamy windows

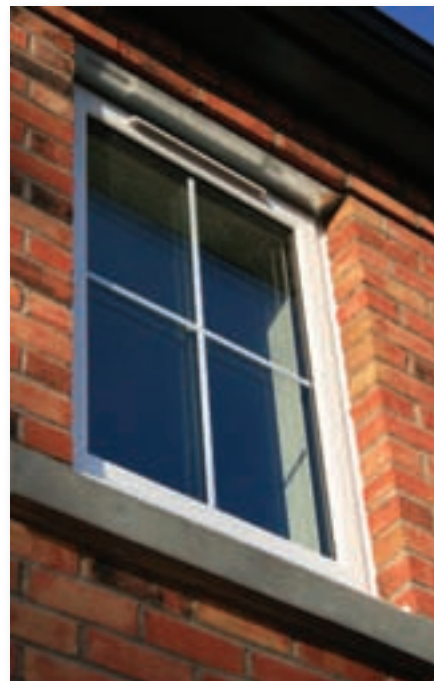
Insulation is currently the easy-win of energy efficiency but by wrapping buildings in insulation and not upgrading the windows to a similar thermal efficiency it is essentially turning the windows into cold spots. At night these cold spots draw heat out of the room and off the residents causing condensation to run down the glass unit. So for an insulated property to perform to its full potential, the thermal performances of the glazing and window frame have to be of a similar standard.

Everyone needs good neighbours

As well as its thermal properties, triple glazing is also known for its sound reduction. The additional pane of glass, combined with the argon gas filling work to boost the acoustic performance of the window, reducing the amount of sound leaking into the property. This is ideal for those living close to roads, railways or in busy locations.

Glass trends

It's hard to watch a home improvement or renovation programme without someone including a glass 'structure' to link the old and the new, or removing the rear face of the existing property or extension and popping in a glazed wall.



With these expanses of glass the thermal performance of the building could potentially be reduced, while also having a detrimental impact on security. Triple glazing would not only offer insulation benefits but the additional pane of glass also gives added security against glass break-ins.

Enq. 162

Glazing Innovations Ltd
6 Barnes Close, Brandon, Suffolk IP27 0HY
Tel: +44 (0) 1842 816080
Fax: +44 (0) 1842 813598
Email: sales@glazinginnovations.co.uk
www.glazinginnovations.co.uk

GLAZING INNOVATIONS

A TOTAL SOLUTION FOR ARCHITECTURAL GLAZING

The team at Glazing Innovations specialise in the design, manufacture and installation of bespoke and modular architectural glazing. We pride ourselves upon the services we offer from pre-contract planning to site completion and subsequent maintenance.

- Atriums • Partitions • Conservatories • Framed Glazing
- Facades • Rooflights • Walk On Floors • Structural Glazing
- Canopies • Balustrade • Shuffle Glazing • Frameless Glazing

Enq. 163

Safe & Secure WITH **CE Marking**

• WINDOWS • DOORS • VERTICAL SLIDER WINDOWS • BI-FOLD & PATIO DOORS

NATIONAL PLASTICS

WOODLINE SOLUTIONS

DRAINAGE SOLUTIONS

GARDEN & OUTDOOR LIVING SOLUTIONS

We deliver across the UK

DECORATIVE SOLUTIONS

GLAZING SOLUTIONS

WORKWEAR & FINISHING SOLUTIONS

ORDER ONLINE OR CALL 0800 011 3503
to find your nearest depot

www.nationalplastics.co.uk

Enq. 164

Flowing Screed and Underfloor Heating Specialists



BEFORE



AFTER

We undertake a wide range of projects, from 20m² to 4000m², including:

- Self Builds/New Builds
- Extensions
- Cellar Conversions
- Barn Conversions
- Conservatories
- Apartment Blocks

If you need just screeding, just underfloor heating or both please contact us for free expert advice.

Over 30 years construction industry experience.

www.selfbuildfloors.co.uk
Tel/Fax: 0114 231 5937

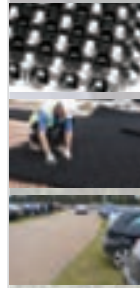
Mob: Simon Wilson: 07967 033375; Bevin Pilling: 07896 598076



SELFBUILD
& COMPANY

Enq. 165

AVOID GETTING IN A SPIN



BODPAVE™ 85

Grass & Gravel porous pavers

Applications

- Grass or Gravel surfaces
- Parking areas
- Emergency/HGV access routes
- Walkways & disabled routes

Benefits

- Up to 400t/m² bearing (Gravel filled)
- Colours: Black, Green & Natural
- 100% recycled (Black & Green only)
- SuDS source control compliant



Fiberweb Geosynthetics Ltd
Tel: +44 (0) 1621 874200
www.grass-reinforcement.com

Fiberweb is a trade mark of Fiberweb Ltd or a Fiberweb Group company. Many of them are registered in a number of countries around the world.

TERRAM
Geosynthetics you can trust
A fiberweb BUSINESS

Enq. 166

No gravity flow for mains drainage?

Please call us - Talk to the specialists!



BASEMENT AND DRAINAGE SYSTEMS



- Pumping Stations
- Treatment Plants
- Waterproofing
- Stormwater
- On-Site Support Services



Tel: 01925 750801

www.drainage-systems-online.co.uk

Enq. 167



Warmup Projects Division

There are many heating solutions available for self-builders to choose from: central heating, bio fuel, air source heating through to underfloor heating, electric and hydronic. To make the right choice you should consider the comfort of the users and the performance of the dwelling simultaneously with the selection of a heating system that will ensure it is comfortable to use, whilst being cost effective to run. Warmup underfloor heating is suitable for every type of self-build project. Warmup Projects Division offers extensive experience when it comes to installing underfloor heating as the primary sole source or secondary heating in key zones, e.g. a bathroom or conservatory. From design through the installation stages, it works in collaboration with self-builders to meet:

- BREEAM coding and SAP Building Regulations assessment calculation models
- Building Regulations, Part L requirements
- Thermal modelling data
- Sustainability targets.

Tel: 0845 345 2288 www.warmup.co.uk

Enq. 168

Johnson & Starley



A new build residential property in Devon has been designed as an eco-friendly dwelling with heating provided through a combination of insulated heat store of 150 cubic metres that supplies the under floor heating, rain-water harvesting, solar hot water tubes and solar PV panels. To provide energy efficient ventilation to the home, Johnson & Starley's Q-Vent HR260 heat recovery system has also been specified. The concept of the house is that it will require no external energy to heat it, ensuring low running costs but with no compromise in total comfort. Some power will be used for cooking and lighting at night. Construction commenced in 2011 and is due for completion later this year.

Enq. 169

Electrorad



The Electrorad Digi-line range has been relaunched with all new electronics and components. They look and heat like regular central heating radiator but with some very clever, state-of-the-art electronics to ensure ultimate control and minimum energy usage. The radiators are filled with a thermal fluid to transfer heat to the whole surface area. The fluid is heated by 100 per cent efficiency electric elements, controlled by the most advanced thermostat electronics available. Features include: energy saving open window feature; surface temperature control and double panel radiator smart control.

Tel: 0844 479 0055 www.electrorad.co.uk

Enq. 170



Sewage and Drainage Pumping Stations

- Efficient and Economical
- Pipework pre-assembled in chamber
- Ready for installation into the ground
- Supplied with controls for fully automatic operation
- Service Agreements available

Rainwater Harvesting Systems

Replace up to **46%** of your household water usage with rain water, reducing future water bills & your impact on the environment.

Easy every day use...

A fully automated system for applications including flushing, laundry facilities, garden water and irrigation.

www.ttpumps.com **T-T** **T: 01630 647200**

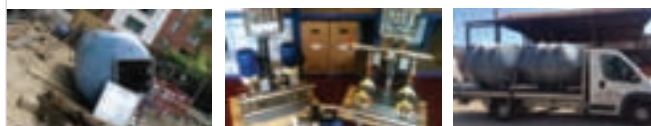


Enq. 171



domestic pump stations

At Total Waste Water Systems (UK) Ltd, our goal is not only to help you with your drainage needs but to make the process easy and problem free for you. We stock, supply and manufacture a wide range of pumping stations for both foul and storm water to suit a variety of budgets and tastes. Let's discuss your ideas! Your free consultation is just a phone call away.



01335 342246
info@totalwastewatersystemsuk.co.uk
www.totalwastewatersystemsuk.co.uk

Enq. 172

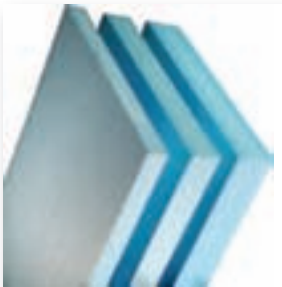
Panel Systems



A desire by homeowners to reduce their fuel bills and make their homes more energy efficient has led to an increase in demand for Styroloft loft boards from Panel Systems. According to the Energy Saving Trust, nearly a quarter of the heat generated within an un-insulated home is lost through the roof. Adding loft insulation is one of the most effective ways of reducing this heat loss. Styroloft is manufactured from birch plywood bonded to both faces of Styrofoam extruded polystyrene insulation. It is available in thicknesses ranging from 18mm to 115mm and at 50mm it provides 15 times greater energy efficiency than standard 18mm chipboard.

Enq. 173

Dow Building Solutions



A new multi-purpose insulation board from Dow Building Solutions is set to bring the advantages of STYROFOAM – excellent strength, moisture resistance and long term durability – to self-builders and smaller building projects. The blue boards have traditionally been used to insulate floors, walls and roofs of major construction projects such as schools, hospitals, retail outlets and cold stores. Now, new STYROFOAM 150-A has been added to the range to make the material more

accessible to those working on smaller projects across the new build, refurbishment and self-build sectors. The multi-purpose boards are designed to help builders achieve U-values required by building regulations.

Enq. 174

Did you know?

By choosing to install a **Full-Fill** solution rather than a Partial Fill solution, you could be saving yourself...



For the Full Facts and to find out just how much you could save visit:

knaufinsulation.co.uk/fullfacts



KINE1700DV-V0712



Full-fill glass mineral wool solutions can be the most cost effective option for external walls in order to achieve compliance with Part L of the Building Regulations.

KNAUF INSULATION
It's time to save energy



with **ECOSE** technology

Enq. 175



Radial Drilling & Renewable Energy Specialist

Eco Friendly Installations are specialists in radial drilling and renewable technology. We offer a wide range of services, all completed in-house, which range from system design to bore hole installation. Please call our offices for more information.

- **Ground & Air Source Heat Pumps**
- **Biomass Boilers**
- **Wood Stoves & Back Boilers**
- **Solar Thermal & PV**

All equipment supplied & installed will be eligible for the RHI Scheme



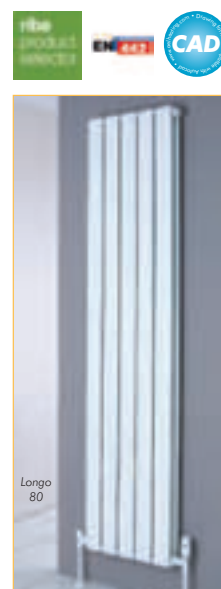
T: 01654 767 572

www.ecofriendlyinstallations.com

Enq. 176

Original FARAL Aluminium Radiators, always appreciated, often imitated since 1966

The choice of many Architects and local authorities for over 50 years, Faral radiators provide the highest heat output achievable from one of the most energy efficient low water content aluminium radiators available today.



Die Cast Aluminium Radiators

AEL

White TABW15 thermostatic valve set



AEL
HEATING SOLUTIONS

Detailed drawings of AEL radiators and valves in a CAD drawing format that is also compatible with AUTOCAD is available on digital disc or via www.aelheating.com e-mail: sales@aelheating.com Tel: 01928 579068

© All copyright of photographs & CAD drawings

Enq. 177

Looking for some design inspiration . . .
Our Natural Selection of Hard Landscaping Aggregates is the most comprehensive selection currently available in the UK.

Looking for more specialist products for decorative resin surfacing or resin flooring. . . We also supply the most extensive selection of dried aggregate granules and sands currently available in the UK.

Request a brochure or order complimentary samples
T: 01629 636210 F: 01629 636247

Enq. 178

Supply & Installation of Plastic Piling

planet 14
landscape and property solutions

BENEFITS

- 100% Recycled Plastic
- Manufactured in the UK
- Maintenance free
- Lighter than Steel, so easier to handle and transport
- Does not rot or rust






USES

- Riverbank Retention
- Fishing Pontoons or Platforms
- Jetties & Marina Construction
- Ground Stabilisation
- Domestic Landscaping Projects
- Flood Defence

t: 01206 272 288 m: 07899 901291 / 07867 520079
www.planet14landscapes.co.uk

Enq. 179

Brilliant edging products for every project

				
EverEdge Classic	EverEdge ProEdge	EverEdge Titan	EverEdge Garden Rings	EverEdge Planters
<p>The permanent way to maintain neat edges for lawns, paths, flower and vegetable beds</p> <ul style="list-style-type: none"> • Flexible 1 metre lengths • Maintenance-free • Will not rust • Just mow over for perfect edges 	<p>The efficient option in flexible steel edging for larger projects</p> <ul style="list-style-type: none"> • 2.5 metre length for quicker installation • Fewer joints for unobtrusive, cleaner edges • Deeper, wider spikes for extra stability • Heavy duty 2.5 mm thick galvanised mild steel will not rust 	<p>When a deeper and more robust edge is required we recommend the Titan system</p> <ul style="list-style-type: none"> • 2.5 metre lengths • 2.5 mm to 6.0 mm thicknesses • Made to order in various depths 	<p>The rings are assembled by securing two simple coach bolts at each overlap to achieve a neat and clean circle to go around trees and shrubs</p> <p>Supplied:</p> <ul style="list-style-type: none"> • 600 mm 2 piece, 900 mm 3 piece, • 75 mm & 125 mm depths • Bespoke rings can be supplied upon request 	<p>These rugged planters can be made to order</p> <ul style="list-style-type: none"> • Cor-Ten (as shown above) • Weathered Steel • Hot Dip Galvanised • Powder Coated

EVEREDGE
THE EDGING COMPANY

Made in Britain
DESIGNED AND MANUFACTURED

Please write, telephone, or visit our website for more information

Enq. 180

What is resin bound paving?

SureSet clears up the confusion with choosing resin bound paving

There is often huge confusion as to the difference between resin bound and resin bonded surfacing, which although similar in name are very different in principle. Both systems do however require a structurally sound substrate such as concrete or tarmac in order to perform their best. Resin bound is by far the more sophisticated system of the two.

The resin bound system is mixed on-site and cold applied, using a high quality clear resin binder to coat the aggregate particles prior to laying. Unlike other methods of resin based surfacing (resin bonded), where a thin layer of resin is applied to the surface and then the aggregate scattered on top (which can then become loose over time and is impermeable), resin and aggregates are thoroughly mixed together prior to laying – ensuring that the aggregate is completely coated and so providing a totally bound surface. Resin bound is then hand laid to a smooth and compact finish offering a number of performance and operational benefits.

Being a flexible surfacing material, resin bound paving is highly resistant to cracking, making it an ideal solution for both new and refurbishment projects. As a result, a resin bound surface is more durable and requires less maintenance – it only needs to be swept or power washed at least twice a year, to avoid the build up of detritus and prevent the growth of moss or algae.

Resin bound paving is a fully permeable paving solution which allows water to freely drain through the surface. Meeting the requirements of Sustainable Urban Drainage Systems (SUDS) standards, this helps to prevent standing water and largely eliminates surface water runoff.



Resin bound paving is a hand trowelled, UV stable and permeable surfacing material. With great design flexibility and an almost unlimited range of colours and materials including natural aggregates, crushed stone, marble and recycled materials, the product is ideal for areas requiring low maintenance and innovative surfaces which will deliver a wide range of benefits:

- Speed of installation – up to one third faster than other materials
- Design flexibility – to create colours, curves, emblems and patterns
- Smooth hardwearing finish – ideal for disabled access, pushchairs and bicycles
- Permeable paving – allows water to permeate through the surface
- Low maintenance – no weeds, standing water, or loose stones
- Environmentally friendly – laying method is a low energy cold applied process
- Durable – typically has a design life of 20-25 years.

Fast and easy to install, quality resin bound surfacing delivers a wide range of aesthetic and performance benefits for a multitude of applications including driveways, pathways, patios, pool surrounds, tree pits, and large commercial areas. Resin bound paving is not only suitable for external use, it can be used internally and look stunning in showrooms, kitchens, bathrooms, shops and offices. With a quality resin bound paving provider, you will be guaranteed:

Beautiful, long-lasting appearance

With a quality resin bound surface, you are guaranteed a beautiful, durable and virtually maintenance free surface that can withstand traffic loads from light pedestrian to vehicular access roads and can easily cope with the stresses of power steering and heavy axle loads. With a large choice of colour and texture options available, it provides great design freedom and flexibility to create stunning surfaces. Resin Bound paving may be used in combination to complement or contrast with most materials, including grass, wooden decking, bricks



Continued overleaf...

and pavers.

Permeable solution

The permeable nature of resin bound paving is that it significantly reduces the problem of standing water and puddling – the resin bound surfacing simply allows water to drain through.

Low maintenance

When installed by skilled craftsmen, a quality resin bound surface will provide many years of high quality performance. Resistant to cracks, oil, UV-light and frost, the integrity of the resin bound surface will remain intact, preventing stones from becoming loose and weeds from

Resistant to cracks,
oil, UV-light and
frost, the integrity
of the **resin bound**
surface will
remain intact

growing through. The surface can be kept clean simply by brushing or power washing.

Sustainable solution

Providing a permeable solution, quality Resin Bound surfaces can contribute significantly to Sustainable Urban Drainage (SUDS).

Flexible design capability

With the endless option of colours and materials that no other paving can match, resin bound surfacing can create stunning visual effects using stencils or metal edging to compliment your project. The results can be sensational as well as hard-wearing.

Enq. 181



COREgravel®
www.coregravel.co.uk
0800 118 2278

COREgravel creates a naturally porous stabilising base into which gravel sits and STAYS!
No sinking, no movement, no problem!
It's easy to lay, inexpensive and very, very effective.

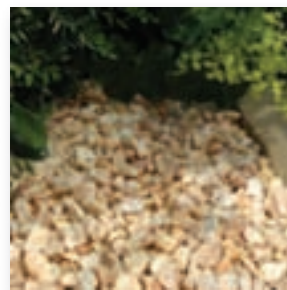
KEEP GRAVEL IN ITS PLACE

COREglow

COREpath

Enq. 182

Long Rake Spar



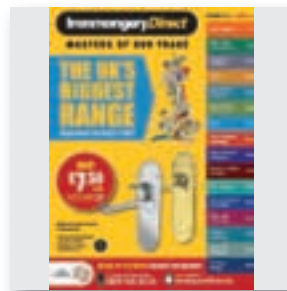
Long Rake Spar continually strives to introduce unique new products to the trade that have a high sell through rate. The sales of its recently launched, uniquely different Flamingo chippings have excelled in this respect, already outselling many established products such as Plum and Blue Slate in both, bulk bags and pre-pack. Following on from this success Long Rake now introduces its 20mm ONYX a further unique, highly decorative chipping. Onyx is available to order in either

bulk bags or pre-pack bags with complimentary samples available by immediate delivery.

Tel: 01629 630133 www.longrakespar.co.uk

Enq. 183

IronmongeryDirect



IronmongeryDirect has launched its latest free catalogue (issue 90) packed full of the biggest range of products kept in stock, ready for next day delivery – as standard. With locked down prices there are major deals to be had including the Briton Satin Chrome Codelock available at only £19.80. Code operated locks provide high performing security for a range of sectors from residential to leisure through to commercial or care homes. The locks, latches and security range is just one section of the

900 page catalogue which features over 14,000 products including a huge range of door furniture, hinges, through to screws & fixings.

Tel: 0808162 2828 www.ironmongerydirect.com

Enq. 184

Define Lighting



Define Lighting Ltd is a company that is recognised for supplying great interior and exterior lighting. The company has an extensive lighting collection for commercial and residential interiors. With over 14 years' experience in the lighting industry, Define Lighting has a wide range of picture lights – bedside wall light. Bathroom & kitchen LED – energy saving – pendant light and plaster paintable wall lights – exterior plus bathroom ceiling and much more. The company also offers professional

advice and some bespoke lighting.

Tel: 01708 780 659 info@definelighting.com

Enq. 185

Connect with Selfbuilder & Homemaker online

Emailed on a monthly basis, the Selfbuilder & Homemaker newsletter is designed to provide you with the latest information on products and services of interest, direct to your inbox.

You can quickly gather a snapshot of information from up to 12 carefully selected companies and easily follow links through to further information, or go direct to the company's own website.

Brochures and videos are also regularly available.



[Visit www.sbhonline.eu to subscribe & find out more!]



Control of:

• lighting • blinds • c.c.t.v. • heating



and with extra integration...

• security • audio & visual
via ipad/iphone/android devices



Vitrum UK (Home Control) Ltd

Call Ivan on 07966 236969

www.vitrum.com

Enq. 186

Hamilton

Perception CFX®



The Clear Choice

Perception CFX features completely concealed fixings and has been designed to blend subtly against the wall, allowing the wall covering to be visible through the crystal clear plate.



Hamilton

T: 01747 860088 • E: info@hamilton-litestat.com

www.hamilton-litestat.com

Find us on Facebook at www.facebook.com/hamiltonlitesatuk

Enq. 187

A HEATING SCHEME WHICH PAYS YOU FOR HEATING YOUR HOME?

- BENEFIT FROM THE NEW RENEWABLE HEAT INCENTIVE
- INSTALL HEAT PUMPS & EARN THOUSANDS OF POUNDS
- GET PAID FOR THE RENEWABLE HEAT YOU GENERATE
- 7 YEAR, GUARANTEED, INDEX-LINKED PAYMENTS
- REDUCE YOUR FUEL BILLS



IT'S THE BEST THING SINCE SLICED BREAD!

INSTALL HEAT PUMPS AND RECEIVE TAX-FREE PAYMENTS FOR 7 YEARS

Simply call **0808 145 2340** quoting ref **SBH10** or visit **www.iceenergy.co.uk** to request a free, no obligation quotation and to secure your payments.



Enq. 188



From the UK's largest
manufacturer of **PVCu**
sliding sash windows.

- Made to measure
- Wide choice of colours & finishes
- B-rated, optional A-rated upgrade
- Nationwide delivery
- Quick & Easy to install
- FREE design online quote facility

from
£167
complete
Price shown excludes
VAT and delivery.



www.quickslide.co.uk

QUICK SLIDE

See us on **Stand C50**, call us on 0844 5610 623 or visit our website to see our complete range of windows & doors.

Enq. 189



Visit The National Home Improvement Show and upgrade the framework of your life

Olympia, London, 27-29 September 2013



experts, no matter the size, scale or stage of your project. Exhibitors will be showcasing their latest products for kitchen and bedroom renovation inspiration through to companies offering to build your home from scratch.

Take your plans to the Ask the Architect area led by self-build design expert, Hugo Tugman, and his company Tugman Architects & Designers. This distinguished team's knowledge of space, structure, lights, materials and texture will ensure that visitors are provided with a bespoke design to fit their individual lifestyle.

This year, the new sponsor of the Interiors and Decorating area is internationally renowned paint brand, Dulux and this company will be hosting an Interior Design Clinic. From urban minimalist living spaces to shabby chic bedrooms, visitors will find a plethora of design hints and tips. Head over for advice on colour schemes, furnishings, lighting and flooring ideas.

If you are keen to go green, The National Home Improvement Show provides visitors with an abundance of information on how to reduce your bills and implement eco savvy products. Oliver Heath, energy saving and renewables expert, will be on hand to answer questions and offer advice on how to create an eco home that is beautiful, healthy, nurturing and an efficient space to live in.

For an in depth consultation, head along to the Ask the Experts area where you can talk directly and individually with one of the 10 dedicated leading home improvement experts. Have all your queries answered in a free 15 minute session and discuss concepts for your home restorations with those in the know equipped with years of first hand experience. This year, the panel of prestigious experts includes: Michael Holmes (Real Homes editor in chief, formerly presenter of 'I Own Britain's Best Home'); Oliver Heath (eco interiors and architecture expert in BBC's Changing Rooms); Julia Kendell (DIY SOS and ITV1's Daybreak); Matt James (Designer and expert on ITV's Love Your Garden); Roger Hunt (renovation expert and co-author of Old House Handbook); Chris Reeves (solicitor specialising in building

Continued overleaf...



The UK's fastest growing home improvement event, The National Home Improvement Show, is returning to Olympia, London from 27-29 September 2013 proudly sponsored by Anglian Home Improvements. The event brings together over 300 exhibitors from across the UK offering unparalleled advice and innovative property enhancing solutions for the serious home improver.

Leading property and renovation experts from Real Homes Magazine such as Michael Holmes, editor-in-chief; Julia Kendell, interior designer; and Oliver Heath, eco and architectural expert, will be on hand to guide and inspire visitors through their home renovation projects with seminars, masterclasses and one-to-one consultations taking place each day at the show. New features for 2013 include the Self-Build zone and the Ask the Architects advice clinic designed to kick start your home improvements.

For the first time, the show will host a Self-Build Zone. Whether you're about to embark on building your own house, remodel your existing property or undertake a major extension, soak up specialist knowledge and DIY tips from Homebuilding and Renovating magazine

contracts and disputes); Jennifer Newton (Jennifer writes consumer finance and property advice features for Real Homes) and Douglas Kent (Expert in period properties, renovations and home improvements).

Undertaking some of the smaller projects yourself is a great way to reduce costs. Stop by the Tricks of the Trade area to soak up DIY doctor Mike Edward's useful tips and get stuck in to save money on your household projects. Mike will be conducting live demonstrations each day at the show, sharing his home-improvement insider secrets to help get you started.

The outstanding Kitchen and Bathroom Inspiration zone brought to you by Kitchen Bedroom & Bathroom magazine will be bigger than ever this year. Discover innovative products, stylish designs, space saving solutions and

much more.

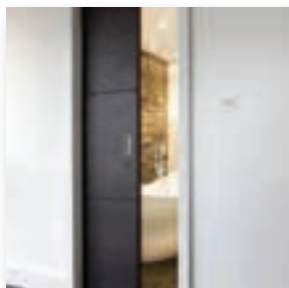
Get motivated by the two Real Homes LIVE! Theatres offering daily in-depth seminars. The experts from Real Homes Magazine and special guests including Julia Kendell and Oliver Heath will be sharing their secrets of successful home improvement projects so you too can make the most of your home. With top tips on adding space and value, energy saving, interiors and gardens, the in-depth sessions will truly inspire.

In addition, free daily seminars and master-classes will be conducted addressing specific problems such as building regulations, planning permission, permitted development rights. The experts will also cover plans for internal decor and eco efficient facilities to enable your projects to run smoothly from start to finish.



For more information on the show, exhibitors, seminar schedules and tickets visit www.improveyourhomeshow.co.uk or call the ticket hotline on 0844 581 0802
Tickets are £12 if booked in advance and £16 on door.

Todd Doors



Todd Doors is able to offer customers a truly bespoke door design service. The company's 'Design Your Door' range means that customers can specify not only size and glazing options, but can select design options from a range of inlays, groove details and veneers to create a truly personal finish. If the veneer colour needs to be matched to a flooring sample, we can do this, and all within six weeks and at a reasonable price. The company's door experts are on hand to offer

advice throughout the process. Contact them via the website or visit at Stand C20 at the National Home Improvement Show.

Tel: 020 8839 3577 www.todd-doors.co.uk

Enq. 190

Hultafors



From Hultafors Tools – the Award-winning hand tools manufacturer. This wrecking bar is only 7.5" long but is a really handy workmate on-site – ideal for getting awkward jobs done in tight corners on-site. Manufactured from high quality steel, it has unique functionality and a modern design with contact surfaces and thin ends that make it easy to use. It's great for pulling out nails, removing wood strips and general handy work. What's more the chisel's well-defined curves also minimise the risk of damage to surfaces.

For more information on the Hultafors' Mini Wrecking Bar, call the Helpline or download a digital brochure from the website.

Enq. 191

FEIN

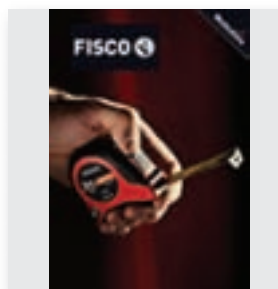


FEIN is introducing 20 new variants of drill/drivers, combi drills and impact machines to its range of cordless tools. The addition coincides with the company expanding its battery platform program, based on batteries with capacities of 4 Ah and 2 Ah with SafetyCell Technology, in 18 V and 14.4 V. FEIN is now offering a wide range of cordless tools for drilling, screwdriving, metalworking, glass removal and oscillating including the FEIN MultiMaster. FEIN has used its expertise in motor construction and electronics – both developed in house by FEIN – alongside the battery technology to guarantee high quality.

Tel: 01327 308730 www.fein-uk.co.uk

Enq. 192

Hultafors



Accurate, precise measuring from the UK's long-standing favourite brand of tapes. There's a whole new level of technology in these new tapes from Fisco – all of them stamped with the 'Hultafors Tools' Hallmarks of quality and reliability. You'll experience a whole new dimension of precision and ease of use in these two new ranges of tapes – born, bred and made in the UK! There's the robust and durable 'PR' short tapes, which have ergonomic, high-impact cases with a rubber coating for optimum grip. What makes them so much different and better than similar products on the market is the high-quality precision mechanism – smooth and silent with an effective brake, lock and an easy-glide, gentle return action.

Enq. 193

Arcus Pools & Enclosures



Prospa Pools make swimming pools for life as well as a lifestyle!

Made from Polypropylene to the size and shape you want, they will last at least 50 years and even have a 20 years warranty!

Supplied as a one piece unit to fit into a prepared hole, or larger pools will have final assembly on-site.

Various step arrangements are available; corner, roman end, lagoon etc.

Tel: 01945 450 170 www.arcenclosures.co.uk

Enq. 194

Yeoman Rainguard



In line with today's market demands, Yeoman Rainguard has expanded its exciting colour range to now include a choice of metallic shades. The metallic colours have proven a popular choice for contemporary design and are available in the Aluminium range while the Vision Range holds a wide range of colours for both Aluminium & GRP systems. Along with offering colours from a standard pallet, Yeoman Rainguard can supply any BS5252 (inc BS4800) colour as well as the RAL colour range.

A colour matching service is also available. Yeoman Rainguard systems also include a stunning choice of Copper, Zinc, Stainless Steel and traditional Cast Iron.

Enq. 195



for your life
for a lifetime



You want to enjoy the health benefits of a swimming pool. But you can't really justify the time and trouble that maintaining a full size pool demands.

The Swimspa by Spa De La Mare is an all year round swimming machine and hydrotherapy massage spa in one, for indoor or outdoor use. Built to exacting standards in the Channel Islands, it is the ultimate low maintenance solution for busy people. Prices start from a refreshing £17,500.

For a brochure please call

01481 701333

www.spadelamare.com

swimspa

Enq. 196



When it comes to choosing Aluminium Gutters & Pipes, it's as simple as **ARP**

There is a large range of gutter profiles including, half round, beaded, beaded deep flow, ogee and box.

Our complimentary range of pipes are available in diameter, square and rectangular profiles with flush joint, swaged or cast collars.

ARP also offer the Mustang Seamless gutter system offering up to 30 metres in one length giving a smooth uninterrupted appearance. The only BBA approved system.

Visit our website for the complete range, or ask for one of our Technical Product Guides www.arp-ltd.com

For more information about our specification service, call today on **0116 289 4400** or email us at **sales@arp-ltd.com**

Enq. 197

TRADITIONAL
CLAY ROOF TILES LTD.

THE GRAND DESIGN LIVE SHOW
Birmingham NEC
4-6 October 2013
STAND 871

10 YEAR GUARANTEE

Genuine Handmade Roof Tiles

Traditional Clay Roof Tiles are a company founded on experience and passion for quality. A longstanding reputation for high quality products, manufacturing expertise and exceptional customer service, makes Traditional Clay Roof Tiles one of the leading manufacturers of beautifully crafted handmade roof tiles available in the UK today.

Tel: 0800 8886633 • Email: sales@traditionalclayrooftiles.co.uk
www.traditionalclayrooftiles.co.uk

Enq. 198

Freefoam Building Products



Freefoam Building Products is delighted to announce that the new Fortex Clic Cladding was featured on prime time TV show *Double your house for half the money* with well know TV presenter and property guru Sarah Beeny. Homeowner Ben Barratt came across Freefoam and the Fortex Clic cladding at consumer home improvement show *Build It Live* and instantly saw the potential for the exterior of his home extension. Fortex Clic cladding has a beautiful woodgrain textured effect and features an ingenious tongue and groove joining system that results in a neat attractive finish without the need for unsightly butt joints.

Tel: 01604 591110 www.freefoam.com

Enq. 199

Safety Platforms



Easy Stair is a temporary staircase which makes life on site much easier by reducing the need to climb up and down ladders prior to the installation of the finished stairs. Where the finished stairs cannot be installed due to the building not being watertight, or it is desirable to leave installation until later in the project to prevent damage, Easy Stair is the perfect solution. Easy Stair is delivered to site fully assembled, it is simply lifted into position secured by two screws and the handrails inserted into either side. The stair unit weighs only 25kg and is available throughout the UK on a next day delivery service.

Tel: 01924 420820 www.safetyplatforms.co.uk

Enq. 200

Stunning light & open timber staircases

View case studies at www.completestairsystems.co.uk
or visit our showroom in Romsey, Hants
01794 522444

COMPLETE STAIR SYSTEMS

Enq. 201

fivestars

Specialist suppliers of
unique German staircases,
frameless and stainless glass
balustrades

Tel: 01425 611112 Fax: 01425 617773 sales@fivestars.ltd.uk
www.fivestars.ltd.uk

Enq. 202



How to sample a **clay roof tile**

John Alderman from Traditional Clay Roof Tiles Ltd has some top tips on how to sample a clay roof tile to get the best results

Many a time a mistake has been made where people will select a roof tile to go on their house after failing to follow the correct sampling procedure.

For example, you may be sent a one tile sample in the post where you then make a decision looking at this one tile inside your home or you have gone to your local builders merchants and selected a tile from their in house display.

Your roof is an important decision as this is a very large percentage of the buildings external material.

You can change the paint color or a floor finish or even a bathroom at a reasonable cost but to change your roof is very expensive.

So here's a guide on how to choose a clay roof tile correctly. This process should be carried out preferably as works starts on your site.

Always ask the manufacturer where the clay for the tiles has been extracted from. If it's from a country that has cold winters it should be fine but clay from a country with a warmer climate all year round may not withstand the English weather.

Always ensure your choice of roof tiles hold the Ceram certification for Frost and Impermeability.

Make sure you ask what guarantee the manufacturer offers. Choosing a roof tile with a long guarantee will give you peace of mind and confidence in your choice of tile.



Step one

Order your samples through our local distributor.

Step two

Set the tiles out on a old wooden pallet or if you don't have a pallet on the ground as detailed below.

Step three

Now leave your tiles in this position for as long as possible. It is important to let the weather get to them as a clay tile has been fired at over 1,000 degrees heat and know no different. When the elements of the weather start to hit them they will start to mature and change colour, bringing out the natural colour of the clay.

Step four

Keep walking past them, looking at them and eventually you will always be drawn to one of the colours, a bit like paint samples on a wall in the house. This may sound surprising but this will happen.

Step five

When your brickwork is up to 4/5ft this is the time to make your decision on the colour you have selected. Call the manufacturer and ask them for some more samples. Then place the pallet against the brickwork that is being constructed and lay the tiles onto the pallet, this then gives you a good idea how the tiles will look against your brickwork when completed.

Step six

Let this sit there again for a few more weeks and then hopefully its decision made and the order can be placed in time for the roofer to fix the tiles.

Choosing a roof tile with a long guarantee will give you **peace of mind** and confidence in your choice of tile

Enq. 203



Simply SIPs

Tony Millichap, technical manager, Kingspan Insulation Limited discusses the reasons for choosing SIPs

Many people dream of building their own home and, whether it is to be a futuristic timber clad construction or a traditional looking brick faced house, the one thing that they all share is the desire for shelter and space, comfort and aesthetics, an individual lifestyle under their very own roof. Structural Insulated Panels, or SIPs, offer a versatile and sustainable method of building a highly energy efficient home that can meet all of these requirements, in a matter of weeks.

SIPs have been used for decades in North America, and are becoming increasingly popular in the UK as a proven way of constructing very airtight and thermally efficient buildings, both for housing and non-domestic projects. SIPs can offer a number of clear benefits over more traditional methods of construction, including speed of installation, high levels of energy efficiency, airtightness and reduced waste. Add to that the flexibility to have pretty much any kind of finish to the exterior, and SIPs look like the ideal product for any self-builder to consider.

What exactly are SIPs?

An example of a typical SIP construction would be two 15 mm OSB3 (Oriented Strand Board) facings with a 112 mm rigid urethane insulation core, providing a thermally efficient, structurally strong, rigid panel. The panels are factory cut to the design of the building, ready to slot together like a giant 3D jigsaw puzzle using special jointing systems that provide very high levels of airtightness.

Installation

Because the panels are pre-cut ready to assemble there is very little onsite waste, the risk of defects is greatly reduced, and installation is extremely simple. Panels can be 1.22 m wide by up to 7.45 m tall, and the single fix installation format reduces construction time, and is less labour intensive. A quality weatherproof envelope can be constructed in considerably less time than if using some traditional methods of construction such as brick and blockwork, and

tasks such as drylining the walls can be carried out at the same time as finishing the roof. Follow on trades also start sooner and can be programmed in without risk of delay, making project completion times more reliable and keeping costs down.

Thermal performance

One of the most important aspects of any home is its thermal performance. SIPs can provide a whole wall U-value no worse than 0.21 W/m².K, and U-values of 0.10 W/m².K or better can easily be achieved with the addition of an insulated lining.

Finished constructions can produce air-leakage rates as low as 1 m³/hour/m² at 50 Pa, keeping the warm air in and cold air out. SIPs can also help to avoid problems which may be associated with other common construction techniques such as air-leakage through poorly sealed sockets or switches, at floor zones through masonry cavity walls, under skirting



SIPs can offer a number of clear benefits over more traditional methods of construction, including speed of installation, **high levels of energy efficiency**, airtightness and reduced waste



boards and through poorly sealed loft hatches and top storey ceiling light fittings.

As well as providing an effective air seal, the jointing arrangements in SIPs mean that the insulation layer is typically interrupted by less repeating studwork than in a timber frame, greatly reducing repeating thermal bridging. For example, in a property constructed with traditional timber frame, the repeating thermal bridges caused by timber studs in the walls and rafters in the roof, means that you could typically expect 15 per cent of the walls and 6 per cent

of the roof to be uninsulated. By comparison, in a property constructed with SIPs, as little as 4 per cent of the walls and 1 per cent of the roof may be uninsulated.

These very high levels of performance mean that the size of any heating systems can be greatly reduced, keeping both capital and running costs down. By cutting energy demand with a 'fabric first approach' SIPs also greatly reduce dependency on expensive renewable technologies, and lend themselves easily to achieving the levels of performance needed to meet the Passivhaus standard, which requires almost zero heating.

MVHR

Because the buildings can be so airtight, good, controlled ventilation is an essential part of the design. By introducing MVHR (Mechanical Ventilation with Heat Recovery), the energy savings can be further enhanced, as heat recovered from the old air being expelled is used to warm the incoming airflow.

Space saver

Where space is at a premium, the highly efficient integral insulation helps to make the most of the available footprint, keeping wall constructions much thinner than traditional methods such as brick and block, without loss of strength or thermal performance. Using SIPs for the whole construction also generates an intrinsic warm roof space, which can easily be designed as

Building with SIPs can help to make sure that projects are kept on track and the '**dream home**' is realised

an additional room, or to provide a safe, dry storage area.

Aesthetics

SIPs can provide all of the structure and the performance that could be required for the building envelope. All that remains then is to complete with whatever finish is desired, whether that is brick, render, timber, stone, tile or metal. The design possibilities are wide and varied.

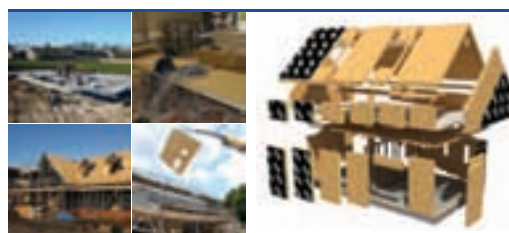
SIPs for self-build

Building your own home can be an exciting prospect. Building with SIPs can help to make sure that projects are kept on track, that the finished building meets the designed performance, and that the 'dream home' is realised, with the added bonus of minimal heating bills.

Enq. 204



The **future** of building design & technology



SIPS@Clays have been building low energy (**virtually NO heat required**) SIPs houses for over 10 years.




Kingspan
TEK
Delivery
Partner

See our website for further information:
www.claysllp.co.uk or call 01756 799498



SIPS
@CLAYS
21st century homes

Enq. 205






◀ SIP design & Manufacture ◀ Full house kits ◀ Extension kits

Sipco have successfully completed over 200 projects to date. We can provide references on our work and welcome potential clients to visit our production facility to discuss their requirements with our technical team.

◀ Contact Information

please visit our website
www.thesipcompany.com
 or alternatively email
info@thesipcompany.com
0844 335 3997



Enq. 206

Often imitated
 Rarely matched
 Never surpassed



20 years of style, security and quality



BESPOKE TIMBER FRAMED BUILDINGS



Garages, Stables, Workshops, Home offices, Holiday lodges, Conservatories,
 Garden barns, Pool houses, Sports pavilions, Clubhouses

Call 01568 760540 or visit www.courtyarddesigns.co.uk

Enq. 207

HELP CELEBRATE BRITAIN'S DESIGN AND CONSTRUCTION EXCELLENCE AT AN EXCLUSIVE CHRISTMAS PARTY!

Christmas

BEST OF BRITISH CHRISTMAS PARTY

AT THE LONDON MARRIOTT HOTEL GROSVENOR SQUARE

DATE: 12 DECEMBER 2013 TIME: 6.45PM UNTIL MIDNIGHT

DRESS: SMART AND GLAMOROUS COST: £120 PER HEAD PLUS VAT

THE SWINGING LITTLE BIG BAND



NetMAGevents, in association with the British Homes Awards, invite you to see out 2013 in style and celebrate the best of British design with your colleagues from the UK's property industry. Join us at this unique event, with entertainment by The Swinging Little Big Band, and be the very first to see the portfolio of stunning designs submitted for the Sunday Times British Homes Awards competition for Britain's Future Home.


MAKE SURE YOU DONT MISS OUT BY BOOKING TODAY

£120 PER HEAD OR YOUR TABLE OF 10 AT £110 PER HEAD

For further details contact Lesley Mayo on lesley@netmagmedia.eu and for tickets, visit: <http://netmagevents.eventbrite.co.uk/>

[Connect with Selfbuilder & Homemaker online by visiting www.facebook.com/sbhmag, pinterest.com/selfbuildhome and twitter.com/SelfbuilderHome to follow us!]

selfbuilder & homemaker



As well as the bi-monthly magazine, Selfbuilder & Homemaker have an increasingly popular online profile to help keep you up to date with all of the latest products, innovations, inspirational ideas and projects. Newly launched is the Selfbuilder & Homemaker Pinterest page; a one stop source of inspiration. Pinterest allows you to browse pinboards, discover new things and get inspiration from people who share your interests, as well as create your own boards so you can organise and share all the beautiful things you find on the web. Subscribing to our Selfbuilder & Homemaker Facebook and Twitter pages enables you to easily keep track of all of the latest products, innovations and inspirational ideas and projects.

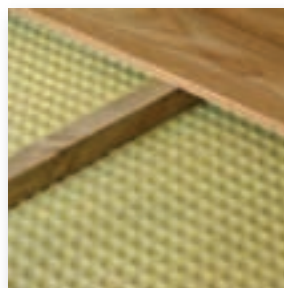
Connect with Selfbuilder & Homemaker online by visiting www.facebook.com/sbhmag, pinterest.com/selfbuildhome and twitter.com/SelfbuilderHome to follow us!

selfbuilder & homemaker



As well as the bi-monthly magazine, Selfbuilder & Homemaker have an increasingly popular online profile to help keep you up to date with all of the latest products, innovations, inspirational ideas and projects. Newly launched is the Selfbuilder & Homemaker Pinterest page; a one stop source of inspiration. Pinterest allows you to browse pinboards, discover new things and get inspiration from people who share your interests, as well as create your own boards so you can organise and share all the beautiful things you find on the web. Subscribing to our Selfbuilder & Homemaker Facebook and Twitter pages enables you to easily keep track of all of the latest products, innovations and inspirational ideas and projects.

Delta Membranes



To combat dampness and eliminate contamination in concrete floor applications, Delta-FM is a high performance high-density polyethylene sheet from Delta Membrane Systems. The low stud profile of just 3mm helps to minimise deviations in floor levels, but still provides an air gap to achieved damp pressure equalisation. A flange strip along one side of the roll allows jointing to be carried out with an overlap, but without affecting the overall height of the installation. Quickly fitted to ensure minimal downtime for installers, Delta-FM ensures the percentage RH levels are isolated in the air gap, and controlled. Delta-FM can be used in new-build, remedial or refurbishment projects for floors and walls.

Enq. 208

Ancon



Ancon has launched a new Cavity Wall Tie Product Selector App in response to the growing use of smart-phones and tablets in the construction industry. The new App, which is available for both iPhone and Android handsets, makes choosing the most appropriate wall tie for any cavity wall construction quick and easy, whether at home, on-site or in the office. App users simply answer a series of simple multiple-choice questions on cavity width, inner leaf construction and building type and height to arrive at their required solution. At the end of the process, users are presented not only with the ideal tie.

Tel: 0114 2755224 www.ancon.co.uk

Enq. 209

Albion Architectural Concrete



Albion Architectural Concrete
Unit C7 Newbrook Works
Pound Lane
Upper Beeding
West Sussex BN14 3JJ

T: 01903 815 363
F: 01903 815 619
info@albionart.co.uk
www.albionart.co.uk



Enq. 210

ARUNDEL STONE SUSSEX LTD.

Cast Stone products from pier caps to porticos

With a large standard range we will be sure to meet your requirement, we also manufacture bespoke items.

Elegance of stone at affordable price



info@arundelstoneltd.co.uk
www.arundelstoneltd.co.uk

62 Aldwick Road, Bognor Regis,
West Sussex, PO21 2PE
Tel: 01243 829151 Fax: 01243 860341

Scan for website

Enq. 211

Back to our roots

The Stone Federation delves into the history of using stonework and masonry within building structures



YORK MINSTER

The crafts of stonework & masonry are some of the earliest trades in civilisations' history and have always played a well-respected part within the natural stone industry. Some of our planet's most impressive structures are stone monuments dating back many hundreds of years. It is the skilled work of expert craftsman, combined with a naturally durable material that means we can still enjoy these monuments today.

In an age where machines now take the place of humans in a multitude of functions, the art of a skilled stonemason is still holding its own. While the impressive technology of modern day stone carving machinery allows for some breathtaking products on a grand scale, the art of a hand carved stone feature has not lost its place within the industry.

Many of the basic tools used by stonework and masonry professionals have endured the test of time, which means the tool belt of a 21st stonemason would not look greatly dissimilar to that of his counterpart many hundreds of years ago. For many homeowners this tradition and heritage gives them an invaluable peace of mind.

Natural Stone has a vast array of applications, each one requiring a different approach to achieve the desired result. It is this bespoke aspect of natural stone that allows the craft of stonemasonry to continue. No two pieces are ever the same, so you can be certain that your property is completely unique. What's more, stone adds value to your property by providing a timeless elegance and a feeling of luxury that is instantly noticeable to any potential buyers.

In an age of pre-cast, generic construction materials and finishes, expertly worked natural stone allows you to add beautifully unique touches to your home. From bespoke natural stone fireplaces through to personalised carvings on your porch, the choice really is yours.

With handcrafted natural stone, you are not just investing in the skills of an expert craftsman, but also in the inherent durability of the material itself. Natural stone is a beautiful, durable natural material, with impressive resistance to the elements as well as the wear and tear of everyday life. You only need look around any of Great Britain's major cities and you will see an array of century's old natural stone buildings, monuments and carvings. As a Homeowner, this is ultimately the aim of any new build or renovation project, to combine practicality and durability with aesthetic appeal.

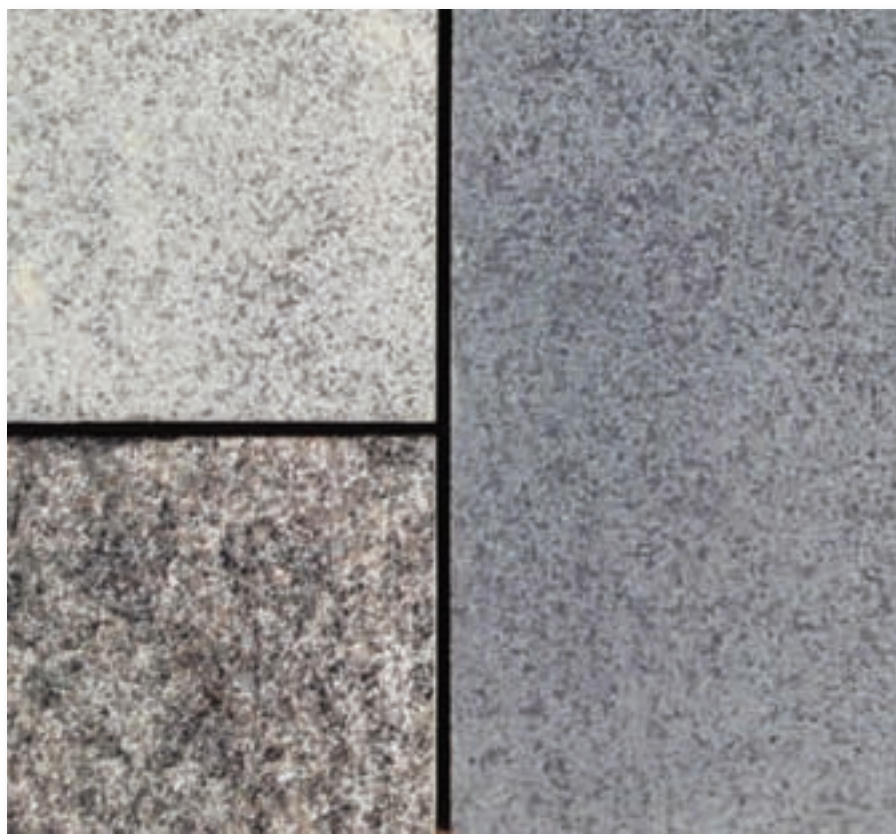
As the Federation for the natural Stone industry, they are involved in various competitions and industry awards, one of which is the UK Masonry Skills Challenge. This year's competition had over 30 young stonemasons from across the United Kingdom enter for their chance to be crowned the best young stonemason. The standard of entries was as high as ever, proving that the crafts of stonework and masonry are as strong as ever.

Stonework & Masonry also received recognition in the 2012 Natural Stone Awards in the Craftsmanship category. Entries ranged from restoration work on parts of York Minster through to a natural stone mosaic at the entrance to Hereford Cathedral.

As the Award judges commented, the masonry work shown in the entries displayed the possibilities that natural stone affords for "highly visually pleasing end results with a practicality fit for purpose."

Unlike some trades, stonework and masonry

Some of our planet's most impressive structures are stone monuments dating back many hundreds of years. It is the **skilled work of expert craftsman**, combined with a naturally durable material that means we can still enjoy these monuments today



to finishes and colours.

Sustainability is undoubtedly the buzz word of the moment, with domestic and commercial builders alike looking to reduce their impact on the environment and ensure a low carbon footprint. Natural stone delivers extremely well, even under the increased pressures put on materials to provide a sustainable solution.

"Natural stone used on construction projects provides a timeless aura of solidity, quality and prestige and mirrors the geological process whereby stone is worked for new build projects and subsequently re-used with time. Natural stone is a "cradle to grave" material."

In the same vein, the desire to 'buy local' as part of an ethical approach to sourcing materials is another concern of the self-builder. You may be surprised to know that there are well over 70 types of natural stone to choose from on your own doorstep. British Stones have an incredible heritage and character, and cover a vast selection of colours and applications. From Portland in the South, Crosland Yorkstone in the North and from Scottish Whin to Mourne Granite in Northern Ireland.

If you are engaging a stone professional such as a stonemason, to help you in your property, it is important that you get them involved early on in order to help you choose the right type of stone for your property. Stone Federation's website provides you with an easy to use tool to help you select the right stone professional for your project whether you are building, renovating or improving.

Enq. 212

does not sit at odds with its modern counterpart, rather, the combination of technology and craftsmanship produces some fantastic results. One example of this is the growing trend within new build projects for the installation of cantilevered staircases. This often involves a combination of three-dimensional modelling alongside the hands-on stonework and craftsmanship. This merger of the old and the new ensures that the skills of stonework and masonry will long enjoy a place within the industry.

You only need to take a brief look through the past winners of the Stone Federation Natural Stone Awards to see how well the character of the owner is illustrated in the choice and application of the stone used. From quiet, understated stones to the more flamboyant use of mixed marbles, natural stone can help ensure your building reflects you from the layout and structure through



ABOVE: MOURNE GRANITE
RIGHT: PORTLAND GROVE WHITBED

Classified

BATHROOMS, SHOWERS & WASHROOMS

Enq. 501

RADIATORS

Enq. 502

Enq. 503

DOORS & WINDOWS

Enq. 505

Enq. 504

FIRES & FIREPLACES

Enq. 506

If you would like to advertise within the Classified & Web Directory pages, call: 01435 863500

Web Directory

ADVICE & INFORMATION

NSRBC (National Self Build & Renovation Centre)
0845 2234455
www.nsrbc.co.uk

ARCHITECTURAL IRONMONGERY

Ironmongery Direct
0808 1682288
www.ironmongerydirect.com

ARCHITECTS

Nicolas Tye Architects
01525 406677
www.nicolastyearchitects.co.uk

Gregory Phillips Architects
02077 243040
www.gregoryphillips.com

BATHROOMS & SHOWERS

Victoriaplumb.com
0844 8044848
www.victoriaplumb.com

Better Bathrooms
0844 4847678
www.betterbathrooms.com

Matki
01454 322888
www.matki.co.uk

BI FOLDING & SLIDING DOORS

Folding Sliding Door Company
0845 6446630
www.foldingslidingdoors.com

Sunfold Systems
01953 423423
www.sunfold.com

Express Bi-Folding Doors
0800 121 4809
www.expressbifoldingdoors.co.uk

Vufold
01625 442 899
www.vufold.co.uk

Solarlux Systems
01707 339970
www.solarlux.co.uk

1st Folding Sliding Doors
02089 972448
www.1stslidingfoldingdoors.co.uk

BUILDING ENVELOPES

Schueco
01908 282111
www.schueco.com

BUILDING PRODUCTS

Fermacell
0870 609 0306
www.fermacell.co.uk

Polypipe
01709 770000
www.polypipe.com

DOORS, WINDOWS & CONSERVATORIES

Kloeber UK
01487 740044
www.kloeber.co.uk

Velfac
01223 897100
www.velfac.co.uk

Urban Front
01494 778787
www.urbanfront.co.uk

Apropos
0800 328 0033
www.apropos-conservatories.com

Jeld-Wen
0845 1222890
www.jeld-wen.co.uk

Idealcombi
01582 869010
www.idealcombi.com

Swish Window & Door Systems
0808 1783040
www.swishwindows.co.uk

Internorm Windows UK
02082 059991
www.internorm.co.uk

Black Millwork Co Inc
01283 511122
www.blackmillwork.co.uk

Vale Garden Houses
01476 564433
www.valegardenhouses.co.uk

FLOORS & FLOORING

Enq. 507

TEMPORARY ACCOMMODATION

Enq. 508

Web Directory

DOORS, WINDOWS & CONSERVATORIES

Olsen Doors & Windows
01777 874510
www.olsenuk.com

Duration Windows
01268 681612
www.duration.co.uk

ecoHaus
01453 837330
www.ecohausinternorm.com

Quickslide
0844 5610623
www.quickslide.co.uk

GARAGE DOORS:
Hormann (UK)
01530 513000
www.hormann.co.uk

ELECTRICAL PRODUCTS

QVS Electrical Wholesale
0800 1976565
www.qvsdirect.com

Panasonic Electric Works UK
01908 231555
www.panasonic-electric-works.co.uk

ELECTRICAL SYSTEMS

Schneider Electric UK
0870 6088608
www.schneider-electric.co.uk

FINANCE & INSURANCE

Buildstore/NSBRC
0845 2234888
www.buildstore.co.uk

Self-Build Zone
0845 2309874
www.selfbuildzone.com

FIREPLACES & STOVES

Clearview Stoves
01584 878100
www.clearviewstoves.com

Charnwood
01983 537777
www.charnwood.com

FIXTURES & FITTINGS

Screwfix Direct
0500 414141
www.screwfix.com

FLOORS & FLOORING

Floors Of Stone
01509 234000
www.floorsofstone.com

FURNITURE

Vitra
01235 750990
www.vitra.com

Herman Miller
0845 2267202
www.hermanmiller.co.uk

FURNITURE

Ekornes (Stressless Furniture)
02074 620440
www.ekornes.co.uk

GLASS & GLAZING

Saint-Gobain Glass UK
01977 666100
uk.saint-gobain-glass.com

Sunparadise UK Ltd
02085 389585
www.sunparadise.co.uk

HEATING & PLUMBING

21st Century Radiator Company
01767 627500
www.21stcenturyradiators.com

Uponor
01455 550355
www.uponor.co.uk

Discounted Heating
0844 5678884
www.discountedheating.co.uk

HEAT PUMPS

Spirit Heat Pumps
0845 4753953
www.spiritsolar.co.uk

ICE Energy
08081 452340
www.iceenergy.co.uk

To advertise in the
Classified & Web Directory
01435 863500

INSULATION

Superfoil Insulation
01636 639 900
www.superfoil.co.uk

Insulation Giant
0844 8922254
www.insulationgiant.co.uk

KITCHENS

Kit Stone
0870 7770099
www.kitstone.co.uk

Poggenpohl UK
01727 738111
www.poggenpohl.com

deVOL Kitchens
01509 261000
www.devolkitchens.co.uk

Pineland Furniture
01299 271143
www.pineland.co.uk

Metris Kitchens
01325 505563
www.metriskitchens.co.uk

Rangemaster (AGA)
0870 7896110
www.agarangemaster.com

LAUNDRY CHUTE SOLUTIONS

GED Chute Solutions
01613 001374
www.laundrychutes.co.uk

LIGHTING & HOME CONTROL SYSTEMS

Vitrum UK
07966 236969
www.vitrum.com

LOFT CONVERSION

Econoloft
0800 269765
www.econoloft.co.uk

PACKAGE BUILD

Baufritz (UK)
01223 235632
www.baufritz.co.uk

Kingspan Potton
01767 676400
www.potton.co.uk

Scandia-Hus
01342 838060
www.scandia-hus.co.uk

Davinci Haus GmbH & Co. KG
02081 3339204
www.davinci-haus.com

Hanse Haus
0845 6589780
www.hanse-haus.co.uk

Flight Homes
01787 222336
www.flyhthomes.co.uk

PLANNING & DESIGN

Design & Materials
0845 4040400
www.designandmaterials.uk.com

PLANT, TOOLS & EQUIPMENT

Brandon Hire
0870 5143391
www.brandontoolhire.co.uk

Machine Mart
0844 8801250
www.machinemart.co.uk

ROOFING & CLADDING

Tata Steel (Corus)
01904 454600
www.tatasteeleurope.com

Greys Artstone
01484 666400
www.greysartstone.co.uk

Hoppings Softwood Products (Q-Clad)
01992 578877
www.timbercladding.co.uk

ROOFLIGHTS

Vision Rooflights
01162 791900
www.visionrooflights.co.uk

SOFTWARE

Eleco
02074 228000
www.eleco.com

House Builder XL
0845 1234065
www.hbxi.co.uk

STAIRS & STAIRCASES

Meer End Staircases & Joinery
01676 534226
www.meer-end.co.uk

STONEMASONRY & MASONRY

Mandarin Stone
01600 715444
www.mandarinstone.com

STRUCTURAL INSULATED PANELS (SIPS)

SIPS Eco panels
01787 378567
www.sipsecopanels.co.uk

TEMPORARY ACCOMMODATION

Caravan Hire UK
01970 626920
www.goldensandscaravans.co.uk

TIMBER & JOINERY

Oakwrights
01432 353353
www.oakwrights.co.uk

Carpenter Oak & Woodland
01225 743089
www.carpenteroakandwoodland.com

Silva Timber Products
01514 953111
www.silvatimber.co.uk

Osmo UK
01296 481220
www.osmouk.com

Neatwood Homes
01981 240860
www.neatwoodhomes.co.uk

Carpenter Oak
01803 732900
www.carpenteroak.com

Maple Timber Frame
01995 679444
www.mapletimberframe.com

Taylor Lane
01432 271912
www.taylor-lane.co.uk

UNDERFLOOR HEATING

Nu-Heat
0800 7311976
www.nuheat.com

Schluter Systems
01530 813396
www.schluter.co.uk

Wunda Group
0800 0832677
www.wundafloorheating.co.uk

Ultimately... the choice is yours!



Ultimate Screwless Wiring accessories

Your home is a reflection of your personality, your tastes and your lifestyle. You decorate each space in tune with your mood and what you do there - a mix of light, bright spaces to play and work in and more subtle, cosy spaces to relax in.

Ultimate, from Schneider Electric, is a family of styles, each with an individual personality, linked by common design themes that harmonise with the tastes and moods throughout your home.

In tune with...

YOUR STYLE | YOUR HOME | YOUR BUSINESS



Learn how to enhance your home. Download our brochure **FREE** today and enter to **WIN** an Apple iPhone 5.

Visit www.SEreply.com Key code **38198p**

Reader
Enquiry
402



Brushed Steel



Schneider
Electric