

selfbuilder & homemaker

November/December 2013

www.sbhonline.eu



FEATURES IN THIS ISSUE:

Cladding & External Fixtures
Doors, Windows & Conservatories
Floors & Flooring
Safety & Security
Self build Finance & Insurance
Timber & Joinery
Kitchens & Appliances Showcase
Stairs & Staircases Showcase
Southern Home Show Preview

HEATING & RENEWABLE ENERGY SUPPLEMENT

CASE STUDY: Zero-carbon, solar home

One of the first zero-carbon homes to draw all its energy from sunlight has been built in Leicestershire. Mark Williams was there at the open day for Selfbuilder & Homemaker.

See page 10





the **underfloor heating** store

affordable luxury

*systems for every
type of floor*

- ✓ Electric heating systems
- ✓ Water heating systems
- ✓ Thermostats
- ✓ Insulation boards
- ✓ Adhesives & levellers

EASY TO INSTALL KITS
FROM

£69.99

*Lifetime
Guarantee*

 **LOWEST PRICES** IN THE UK



SHOWROOM Unit 12, Carnival Park, Basildon SS14 3WN

0800 077 8374

the**underfloorheating**store.com

contents



features

10

CASE STUDY: HERE COMES THE SUN

One of the first zero-carbon homes to draw all its energy from sunlight has been built in Leicestershire, and caught the imagination of the press worldwide. Mark Williams was there at the open day for Selfbuilder & Homemaker to see how it works

30

ZINC... ADDING A TOUCH OF STYLE

By Damon Lusby, sales and marketing manager, VM Zinc UK and Ireland

35

TRIPLE-GLAZING: A DELICATE BALANCING ACT

Triple-glazing is becoming the preferred alternative to double-glazing but is it really worth the switch? By Tony Pell, windows product manager at JELD-WEN

51

GUIDE TO INSURANCE COVER FOR SELF BUILDERS

By Ed Bidwell of Evolution Warranties

54

THE PRACTICAL BENEFITS OF SPECIFYING FLOOR TILES IN YOUR NEW HOME

British ceramic tile's trend manager, Claire O'Brien, discusses the latest looks in flooring and how floor tiles are proving to be extremely popular in new builds thanks to their practicality and long term cost benefits

58

TURNING THE SPOTLIGHT ON HOME SECURITY

Here, Dr Steffan George, development director of the Master Locksmiths Association (MLA) offers security advice to self builders to help them protect their property, possessions and give them valuable peace of mind

63

INSPIRING IDEAS FOR YOUR ROOF

Nick Boulton from the Trussed Rafter Association offers the self builder valuable information on opportunities provided by your new roof when considering trussed rafters

product round up

Bathrooms & Showers	28
Building Products	28
Cladding & External Fixtures.....	29
Coating, Sealants & Paints.....	32
Doors, Windows & Conservatories	32
Eco & Green Products.....	12
Fires & Fireplaces.....	38
Finance & Insurance	51
Floors & Flooring.....	54
Groundworks, Drainage & Sewage Treatment.....	53
Heating & Renewable Energy.....	39
Insulation	12
Interiors & Interior Design	12
Kitchens & Appliances	20
Lighting & Electrical	56
Landscaping & Ground Reinforcement.....	53
News	52
Pools & Spas.....	57
Rainwater Products	56
Roofing	62
Safety & Security.....	58
Stairs & Staircases.....	60
Timber & Joinery	62

also in this issue

4

INDUSTRY NEWS

18

EDITOR'S FOCUS

22

KITCHENS & APPLIANCES SHOWCASE

27

THE SOUTHERN HOME SHOW PREVIEW

39

HEATING & RENEWABLE ENERGY SUPPLEMENT

60

STAIRS & STAIRCASE SHOWCASE

66

CLASSIFIED & DIRECTORY



Cover image courtesy of Mark Williams and Caplin Homes



Cointronic House,
Station Road, Heathfield,
East Sussex, TN21 8DF

Advertising & administration
Tel: 01435 863500
Fax: 01435 863897
Email: info@netmagmedia.eu
Website: www.sbhonline.eu

Editorial features
Tel: 01435 863500
Fax: 01435 863897
Email: lesley@netmagmedia.eu

Press releases
Email: editorial@netmagmedia.eu

Publisher/editor:
Simon Reed

Sales director:
Lesley Mayo

Assistant editor:
Gabrielle Vinyard

Editorial & production assistant:
Michael Pooley

Advertisement manager:
Sheehan Moir-Edmonds

Display sales:
Nathan Hunt

Sales executives:
Suzanne Easter
Kim Friend

Circulation/reader enquiry service:
Jane Spice

Contributors:
Mark Williams

Subscription costs just £18 for 6 issues, including post and packing. Phone 01435 863500 for details. Individual copies of the publication are available at £3.25 each inc p&p.

No part of this publication may be reproduced or transmitted in any form or by any means, electronic, mechanical, including photocopying, recording or stored in any information retrieval system without the express prior written consent of the publisher. Although every effort is made to ensure the accuracy and reliability of material published in Selfbuilder & Homemaker, the publisher can accept no responsibility for the claims or opinions made by contributors, manufacturers or advertisers. Editorial contributors to this journal may have made a payment towards the reproduction costs of material used to illustrate their products. The manufacturer of the paper used within our publication is a Chain-of-Custody certified supplier operating within environmental systems certified to both ISO 14001 and EMAS in order to ensure sustainable production. Printed in England



Scan the code with your mobile phone using QR code software to view the latest news from sbh-news.blogspot.co.uk

Q&A

Q: Is it possible for window glass to add extra benefits to a property, rather than simply offering a view?



A: Craig Dodsworth from Saint-Gobain Glass: "Yes, window glass can really make a difference to how comfortable a home is for its occupants.

"Energy efficient double- and triple-glazing, which can significantly reduce heating bills, has been on the market for some time now. However, homeowners and self-builders alike can now reap even greater benefits for their properties with the latest generation in window glass.

"New ranges have been created entirely with consumers in mind, and allows them to make an informed choice about glazing based on their property's orientation and size, as well as their lifestyle.

"Benefits range from added warmth during the winter, through to UV protection, extra security and increased acoustic comfort. Although all modern double-glazing comes with energy efficiency as standard, glazing is now available which offers additional energy savings by working even harder to lower heating bills and reduce CO₂ emissions, creating a more sustain-

able environment. For the most energy efficient solution, homeowners should opt for triple-glazing.

"To create these benefits, the glass is often laminated or has a special coating applied to the window glass during the manufacturing process. You can even select glass with an easy maintenance option to dramatically reduce the need for manual cleaning of the window glass. The glass stays cleaner for longer and will even remain clear during rainy conditions, providing better visibility.

"By selecting a glass configuration appropriate to their home, self-builders and homeowners can improve their living environment, by creating a perfect combination of comfort, safety and energy efficiency.

"Pricing depends on many variables, including not only the choice of window glass but also the number and size of windows being fitted, as well as the choice of fixtures and frames. Before commencing any work, consult a reputable installer for advice on which window glass is best for the project and for an accurate quote."

Enq. 101

Top tips for self builders and renovators

Whether building from scratch or renovating, embarking on a major building project calls for careful planning. It's estimated that for every 10 people who explore the idea only one realises their vision. To help ensure you have the best chance of being that one in ten, the organisers of The Southern Home Show have some top tips to offer

Setting your budget

Have a definitive budget in mind before you start – and then add 10 per cent as a contingency. Costs have a habit of escalating. Take into account where you will live during the project; while living on site may seem the cheapest option, renting elsewhere may save your sanity.

Look around for the best mortgage

Find out from mortgage providers what they are prepared to offer. With the annual UK Mortgage Market Map from Datamonitor predicting a 141 per cent growth in gross self build lending over the next three years it's likely there will be a range of products on offer. A good place to start is BuildStore – www.buildstore.co.uk

Finding a plot or project

Finding the plot or project for your dream home is a challenge and it pays to do some legwork. Get to know local estate agents, sign up for RightMove alerts, ask around in local pubs and shops and put an ad in the local store or newspaper. Try land finding services such as PlotSearch or Plotfinder (www.plotfinder.net)

The design

The best and cheapest builds are those that take years to plan and only months to build. The early stages of the project are the most crucial so choose the right architect or package-build company that has relevant experience and sympathy for your ideas. Interview, visit and look at examples of their work.

Planning Permission

To get planning permission your design needs to fit in with the landscape, the local building pattern and the local design plan. You may need to do some persuading so meet with the planners at the earliest opportunity and before you commission any drawings. It may be worth contacting a planning consultant if you want to build in a particularly sensitive area.

Material matters

While your architect should advise you and the planners will have their say, you will have to decide which roof tiles, floor coverings, window frames, etc, you want for your house. Look into the cost, quality and availability of materials, and how easy or problematic they are to work with. Do this before the build starts as problems with lead times and availability are major reasons why builds run late.

Quality control

Be on site as much as you can, even if you have appointed your architect or builder as project manager. This keeps the communication flowing and ensures that decisions are made without costly delays. And remember you will always have to compromise somewhere so know in advance what elements you are prepared to sacrifice.

Homework!

Do your homework. Get as much information as possible by researching online and visiting The Southern Home Show.

See page 27 for full details.

news

TrustMark tradesmen can help you weather the storm

After the storm battered Britain yesterday it has led to many properties needing urgent repair work and TrustMark, the government endorsed quality mark for tradesmen, is urging homeowners to only hire reputable tradesmen to restore any damage to their properties.

The gale force winds has caused considerable damage across the country, whether it be fallen trees, blown down fences, damaged roofs or flooded properties caused by the accompanying heavy rainfall. TrustMark tradesmen are on hand to help as we are the only national 'find a trader' scheme that can help homeowners find the right local tradesman.

Stuart Carter, head of marketing at TrustMark said: "Following extreme weather conditions, bogus property repairers often trick people into paying high prices for

unnecessary or shoddy work so I would advise consumers to be extra vigilant and only use reputable tradesmen you know are registered with either TrustMark, which is the only endorsement from government, or a recognised trade association. And never agree to have work done by somebody who turns up uninvited on your doorstep."

Ray Horwood, chief executive of the National Federation of Roofing Contractors, said: "Our advice to property owners who are concerned about the condition of their roof is to contact a reputable roofing contractor for a proper assessment and, if necessary, to obtain at least three quotes for any works."

APL Committee Chairman, Mark Gregory, chairman of the Association of Professional Landscapers added: "Old fences, weakened by rot and decay are easily damaged

or brought down by the high winds so employing a landscaper to do repair work on your garden can often be a bit hit and miss with homeowners facing a lottery of companies who promise to carry out the work. Consumers can feel confident that by employing a TrustMark registered landscaper, the quality of work will remain high at all times and that a professional standard will be met."

TrustMark is the only scheme supported by government, industry and consumer protection groups. It has the support of many partner organisations, including Age UK, Trading Standards Institute and Citizens Advice which are all aiming to raise standards within the industry and provide greater protection for homeowners in their search to find local, quality tradesmen.

Enq. 102



Big Green Home Show attracts new visitors to NSBRC

The recent three-day 'eco-living' Big Green Home Show, which ran in October this year, attracted 51 per cent new visitors to the National Self Build & Renovation Centre in Swindon.

Returning for its fifth year, visitors came from across the length and breadth of the country – as far afield as Lanarkshire, Scotland to Cornwall. Of the 94 per cent of visitors who had a property project, 70 per cent were undertaking a self build or major renovation project with the majority (55 per

cent) specifically looking at eco-friendly heating systems.

Visitors in the 55+ age group accounted for just over 51 per cent, with the largest majority deriving from the Thames Valley & Home Counties - due in part to the Centre's location in Swindon. Although the age group demographic is indicative of those who have disposable incomes, more leisure time, seek a new 'challenge' and perceive self-build as an investment opportunity, these renowned affluent regions inherently do not

offer the scope of land availability and development options compared to the 27 per cent of visitors who are embarking upon self build projects in the South West.

Although the 55+ age group was prominent at the Show, a positive indicator of the interest in eco-living and self-build emanated from the 42 per cent of visitors who were aged 35-54, who were looking to create sustainable and 'future-proof' homes for them and their young families.

The Big Green Home Show's new feature of daily live demonstrations was a key attraction providing the novice and experienced self-builder alike with a useful insight into the latest sustainable construction methods and environmentally-friendly insulation techniques, which complemented the Show's comprehensive programme of seminars, consultations, tours and popular case study theatres.

David Murphy, general manager, National Self Build & Renovation Centre, added: "We are delighted at the success of this year's Big Green Home Show and welcoming so many new visitors to the Centre. The statistics demonstrate the high level of interest in both eco-living and self build and we are encouraged by the many positive comments received by those attending."



Finish your build in budget. On time. In style.



Get your **FREE** catalogue today!



0808 168 28 28



IronmongeryDirect.com

Reader
Enquiry
103

IronmongeryDirect

MASTERS OF OUR TRADE



DOWNLOAD OUR **FREE** APP
FROM YOUR APP STORE



OR TEXT **RBA8** to 62244 FREE!
With name, address and email.

DOOR FURNITURE • WINDOW & JOINERY HARDWARE • SLIDING DOOR HARDWARE • HINGES • DOOR CLOSERS • FIRE CONTROL • SIGNS • LOCKS
LATCHES & SECURITY • CABINET FURNITURE • SHELVING & STORAGE • BOLTS & STOPS • SEALANTS & ADHESIVES • SCREWS & FIXINGS

Make your **Dream** a **Reality**

WITH BI-FOLDING SLIDING DOORS



Available in **ALUMINIUM, TIMBER, ALI-CLAD & PVCu**

Buy direct from the UK's **ONLY** Specialist Manufacturer

Folding sliding doors can be installed in a huge range of situations, in fact folding sliding doors provide you with so much flexibility and choice that the solutions are endless.



25 YEAR GUARANTEE
All our doors are supplied with a no quibble guarantee



ENERGY EFFICIENT
Double glazed, thermally efficient, UK building regulations compliant



SECURITY
Encapsulated running gear, hardened steel locks, internally glazed, UKAS tested



CHILD FRIENDLY
Finger safe gaskets
Easy operation





ENGINEERED
British made, laminated timber, PVC, aluminium or aluminium & timber clad options



The Folding Sliding Door Company

Call: **0845 644 6630**

www.foldingslidingdoors.com eMail: sales@foldingslidingdoors.com

Visit our showroom Mon-Fri 9am-7pm, Saturday by appointment only  
FSD Works, Hopbine Avenue, West Bowling, Bradford, West Yorkshire BD5 8ER

Reader Enquiry
104

Reinventing the house of the future

BRE launches exemplar retrofit project, The Smart Home. The house demonstrates the significant energy savings that can be made through smart technology alongside fabric improvements and occupant empowerment

BRE's pioneering future-focused Integer House, built 15 years ago, has undergone an extensive retrofit and renamed The Smart Home. Through a joint BRE and British Gas project, it has been re-equipped with a host of ultra energy-efficient features and functions.

Using cutting-edge technology, design and building techniques, the innovative retrofit has made the house 50 per cent more energy efficient and halved its carbon emissions, upgrading it from an E to A/B EPC rating.

An intelligent, whole house living system with occupation sensors for a range of purposes controls the heating, lighting, ventilation, water and security. The latest air source heat pump technology has been integrated to provide heating via app-enabled advanced controls, and improvements have been made to the solar thermal water heating and air tightness.



The house has a new-to-market solar thermal system, and an integrated PV array has been installed into the conservatory glazing to generate most of the home's energy requirements and shade clear glass against excess heat. Innovative, 3mm thick insulating plaster has been applied finished in heat-reflective paint to improve thermal performance, while paint with light-reflective particles on the internal walls increases brightness.

Enq. 105

news

A futile reform for a pointless outcome

Paul Graham, MD of cost-effective, bespoke project lead provider **Planning Pipe** (www.planningpipe.co.uk)

A year ago at the Tory Party conference in Birmingham David Cameron hit out at the "yes but no" people: "The ones who say 'yes, our businesses need to expand, but no we can't reform planning'." He pledged to "cut through the bureaucracy", with a prime ministerial target of "getting the planners off our backs".

With promises made, a series of reforms were enacted, designed to help stimulate economic activity and encourage construction work at a local level. One notable reform was to allow bigger home extensions – or as politicians put it "to meet the aspirations of families that want to improve a home". The proposals were met with a series of responses, mainly negative, from a broad range of the interested parties. The Local Government Association thought it was a "myth" that the planning system was preventing householders from undertaking improvements. Many Tory councils feared this would be a green light to "unsightly and out-of-place development". However it was the House of Lords fears about a surge in neighbour disputes that prompted a watering down of the proposals before they were finally enacted at the end of May this year.

So have the proposals provided a spur for new applications for house extensions?

Planning Pipe looked at 44,000 house extensions in the three months before and after the May 30 change across the English regions (where the changes were enacted) and across Wales, Scotland and Northern

Ireland (where they were not).

The result?

The story of this one reform reveals much about the tensions that surround the UK's planning system. Stage one started with the principled and understandable desire of the politicians to cut planning red tape and promote an individual's and a community's freedom to act and innovate. Who, after all, wants a planning officer "on their back"? Stage two carried the broad support into the specific proposals and then into the constricted box of solutions acceptable to industry and the environmental lobby. Who, after all, wants to blight neighbourhoods and set neighbour against neighbour?

The "new, relaxed" rules on house extensions that finally emerged therefore balanced the desires of reformers, while respecting the legitimate concerns of communities. In other words, not wholly dissimilar to what was in place before the whole process started.

In the case of this house extension reform, what we have ended up with is a hybrid of two existing permission regimes – the full planning application process and the Lawful Development Certificate (LDC) process. We still have a 49 page Technical Guidance document to explain whether extensions constitute permitted development. If you live in a flat, maisonette, listed building or anywhere in a conservation area, then you are still unaffected anyway.

It is of course true that applicants will save around £170 in local authority fees and will wait six weeks rather than eight weeks for a decision. You could argue that any saving in

time and money in the planning process is worthwhile. However you can also argue that the juice is not really worth the squeeze. The DCLG forecast, as a result of this relaxation, is that there would be an increase of just 1.7 per cent in the number of house extensions over a 12 month period. So what has actually happened?

Planning Pipe's analysis shows that in the three months since this reform there has been (due to seasonality) a fall in house extensions across the UK of 9 per cent compared to the three months preceding the reform. Oh dear. That fall has been less in England than in Wales, Scotland and Northern Ireland – which might be interesting – before you then dig deeper and see that in England there is a wide disparity of ups and downs in application numbers across different English regions post reform. Good luck in picking out the 1.7 per cent impact of this reform. In fact the planning statistics are unlikely to tell us anything about the impact of this reform because the reality is that it brought about very little actual change.

This is either a depressing tale of futile attempts to rail against a bureaucratic planning monster or a revealing insight that the planning system is a self-correcting mechanism, honed over many years, that more or less strikes

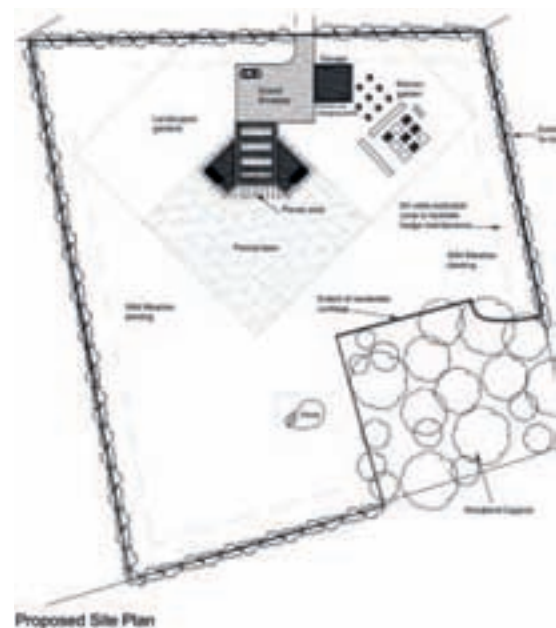
the right balance between delivering regeneration and protecting the environment. Future attempts at impactful reform that genuinely stimulate the construction industry may better be directed elsewhere.

Enq. 106



Here comes the sun

One of the first zero-carbon homes to draw all its energy from sunlight has been built in Leicestershire, and caught the imagination of the press worldwide. Mark Williams was there at the open day for Selfbuilder & Homemaker to see how it works



MAIN PHOTO IS OF THE SOUTH FACING SIDE.
FROM TOP, THE SITE PLAN, GROUND FLOOR
AND FIRST FLOOR PLANS

The principle of ground source heat pumps is widely understood – send icy liquid along pipes below ground and you can collect some free energy to heat a house. But principle and practise are two different things; to install the pipework, you need space for some long, deep trenches, so it is usually only feasible for new builds. Drilling downwards is usually too expensive and, although the soil may remain above the air temperature, it does fall in winter. Prolonged use of heat recovery results in chilling of the soil.

In terms of green energy, solar PV has its downsides too. Most of the energy is available when it's least needed; in summer. Although the feed-in tariff recoups some of this excess in cash, you're at the mercy of government policy when it comes to the cost you recover, as was the case in 2011 when it plummeted by two

thirds per kWh and again in July 2013, when it fell again.

Caplin Homes' Leicestershire solar house – built as a commercially-viable development – is the result of a mixture of these two technologies with a twist. For although the only signs of its 'green' credentials externally is the array of solar panels on its flat roof, beneath its foundations is something which, like the best ideas, is simple yet potentially game-changing.

Caplin Homes is no stranger to the market for energy-efficient homes, having for some years sold pre-engineered Scandinavian timber houses. The solar home is the fifth and easily the most innovative of Caplin's more recent builds. It's a five-bedroom, timber-framed house, which has been designed by a consortium to exceed the government's zero-carbon target for 2016.

Continued on page 13...

ENVIROMAT
Sedum Matting
For small green roofs
and low maintenance landscaping
Installation service available

For a FREE CD ROM on
Green Roofing, please call
0800 061 2653
or visit our web site
www.enviromat.co.uk

Enq. 107

H+H UK



A custom built house has been constructed using H+H Celcon Blocks Standard Grade and Foundation Blocks with traditional mortar. Celcon Blocks were specified primarily because of their inherent thermal qualities and ability to aid in the controlling of room temperature. Aircrete blocks have a low lambda value and provide excellent insulation, therefore helping to reduce heat loss. The external walls were finished with 100mm external wall insulation above DPC and 80mm below. This resulted in a minimum U-value of 0.24W/m²K and a 'B' rating in the Energy Performance Certificate.

Tel: 01732 880 520 www.hhcelcon.co.uk

Enq. 108

Draks



Renowned for innovative wardrobe and room divider solutions, Draks has introduced the ultimate in leather-effect doors in answer to demand from housebuilders, boutique hotels and discerning homeowners. Made in Oxfordshire, the new Woodstock leather-effect door is unique; it is the first time that the eye-catching material has been used for hinged and sliding doors. Available in black, brown, grey and red, the tailor-made door, which can be manufactured in a range of

sizes, combines quality engineering with chic style. PIR LED lighting can be incorporated inside wardrobes and a selection of accessories is available, including tie racks and pull-out baskets.

Enq. 109

Announcement!



+



Caplin Homes

=



The people behind Newform Energy and Caplin Homes are joining forces to establish a new company called The Zero Carbon Solution.

The Zero Carbon Solution will be managed as a separate venture to the parent companies and will provide integrated systems that enable well insulated new builds to operate using the sun as their only energy source.

Newform Energy, suppliers of hybrid renewable energy solutions and Caplin Homes, builders of low energy timber framed houses, worked

together on the Solar House to create the UK's first new build Solar Powered zero carbon house.

Zero carbon buildings are truly sustainable and as such should be looked on favourably by local authority planning departments.

Self builders who need help in making planning applications can obtain a complete service from our partner architectural practice John Cotterill Sustainable Architecture.

Zero Carbon Solution

Tel: 08458 622532 Email: office@zerocarbonsolution.co.uk
Brogdale Farm, Brogdale Road, Faversham, Kent ME13 8XZ

John Cotterill Sustainable Architecture

Tel: 0191 251 0132 Email: john@johncotterill.co.uk
24 Lytham Drive, Whitley Bay, Northumberland NE25 9HZ

Enq. 110



Ground source in detail

Ground source heat pump technology exploits a simple idea; although air temperatures in the UK plummet in a cold winter, below ground the temperature remains quite stable.

The temperature just a metre or two underground is between 6°C and 12°C and fairly consistent, cooling very slowly in winter and warming equally slowly in summer. In a conventional ground source heat system, this is exploited in winter by pumping ice-cold liquid underground – either through coiled pipes in trenches or down deep boreholes – and when it emerges at a higher temperature, recovering the heat it has gathered to heat the home.

The pump itself does, of course, use some energy but the system can regain as much as twice or three times the energy expended in pumping. The system is not without potential problems, one of which is that the ground

being used does begin to cool. The cooler it becomes, the less efficient the system is. In an over-extended system the ground can develop permafrost.

An additional problem with ground source systems is that they either depend on very deep boreholes, which are expensive to drill, or demand huge trenches for the heat-recovery pipework, usually only possible to dig on a large new build site as part of the original groundworks for the building.

Importantly, it is also possible to reverse the principle of ground-source heat pumps and pump heat below the ground. Caplin's new home exploits this by combining the ground-source heat pump with highly efficient solar PVT panels, positioned not only on the roof of the house but with neat solar heat traps on its east and west sides.

In summer, when there is an excess of solar energy available for the home's needs, the excess is fed as heat into the ground, warming the ground significantly. This becomes an energy store. When winter comes and the solar effect is lessened, the ground source heat pump comes into play, recovering the stored heat. This time, instead of the ground being 10°C, it will have reached as much as 20°C, massively improving the efficiency of the heat pump.

That's the principle, now patented. However, the innovation in Caplin's solar home goes way beyond this simplicity, and to such an extent that De Montford University, home of the Institute of Energy and Sustainable Development, has installed remote monitoring equipment throughout the home and will be assessing a full year of its life.

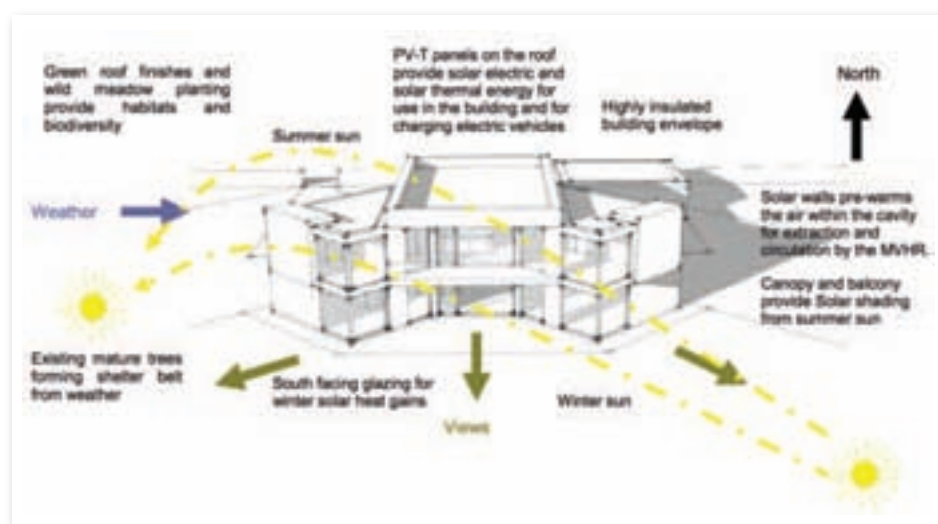
Continued overleaf...

THE ENGINE ROOM AND ILLUSTRATION SHOWING THE BOREHOLES AND THE GROUND SOURCE HEAT SYSTEM





AERIAL VIEW OF THE HOUSE SHOWING SOLAR PV-T PANELS AND SEDUM GREEN ROOF (ABOVE)
AND ILLUSTRATION OF THE WORKINGS OF THE SOLAR HOUSE (BELOW)



To make the most of solar efficiency, the Caplin home has a large expanse of triple-glazed wall facing south



Insulation

Easily the most important factor in achieving energy efficiency is insulation; not only must the model home be heavily shielded with a thermal barrier, it must also be airtight.

To achieve this, Caplin has interpreted John Catterill's timber-framed structure with insulated panels which have a sealed membrane installed using an innovative method devised by Caplin Homes. The exterior is largely larch clad with heat-collecting panels on the east- and west-facing end walls, which help deliver benefits when the fixed solar panels are at their least efficient.

To make the most of solar efficiency, the Caplin home has a large expanse of triple-glazed wall facing south, with the added bonus

of providing the home with excellent views.

Insulation is required for the ground beneath the home, into which heat is pumped all summer. Within the footprint of the house, Caplin has installed PU insulation at the sides and on top of the large mass of the EEB, stemming heat loss to the surrounding ground.

Caplin's Michael Goddard, who has an MA in Natural Science, says the building is so efficient, he expects the ground source system and the heat stored in the Earth Energy Bank (EEB) to be required for just 10 weeks.

The building's roof has a durable structure and is partly covered in a sedum 'green roof.'

THE VERANDA AND THE MAIN HALLWAY



The solar PVT panels

The hybrid solar PVT panels, which have been installed as part of the complete system from Newform Energy, combine solar PV with thermal energy recovery.

The panels have a conventional crystalline PV surface, which has a tubular matrix as a substrate, through which cooled liquid is pumped. The water has two important functions; it collects energy to be fed into the EEB under the home, and it cools the PV cells, which typically achieve 20 per cent better efficiency when cooled.

Additionally, solar PV panels are usually mounted well above the roof line to ensure they get as much cooling from the air as possible. Cooling them with liquid means they can be positioned directly on the flat roof, out of sight, and also makes PVT panels more accessible for

cleaning and service.

Surprisingly, the panels can also be used at night to heat the home. By using the heat pump to send cooled water to them, energy can be collected from background infrared radiation and from the air – with efficiency said to exceed that of air source heat pump systems.

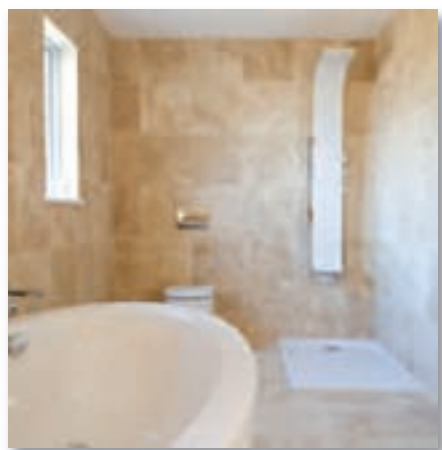
Newform Energy integrates the combined heat pump/heat recovery/solar system with bespoke software and hardware which monitors the exterior conditions, the temperature of the EEB and conditions of the system and home's interior temperature, directing the system's resources to achieve maximum efficiency. Additionally, for the first 12 months of the home's life, De Montford University has installed remote monitoring, which will assess the performance of the house.

Continued overleaf...



THE KITCHEN/DINER

TWO OF THE BATHROOMS IN THE NEW HOUSE



As Selfbuilder & Homemaker went to press, Caplin confirmed it has got firm interest in a build of five terraced homes, in addition to enquiries worldwide for individual homes



The Earth Energy Bank (EEB)

The core innovation is Caplin Homes' patented EEB; an insulated volume of earth contained within the perimeter of the building's footprint, which stores heat.

The system depends on the building plot having around 1.5 metres' depth of earth. The installation begins with groundwork to install the PU insulating layer within the boundaries of the building's foundations. Boreholes, 1.5 metres deep, are dug manually at 1.5-metre intervals across the area and 32mm PE heat exchanger pipes – developed from established geothermal recovery hardware – are sunk into the bores. Then they are backfilled with Bentonite – a slurry of clay and water designed to ensure good thermal contact with the surrounding soil.

The pipes are connected with a matrix of additional pipework, overlaid with sand and covered with a cap of PU insulation. Installation of this part of the system takes just one day.

The liquid-to-liquid heat pump not only extracts heat from the EEB but diverts excess heat into it, once the home's hot water system has reached working temperature. Using an immersion heater, the system can also convert excess electricity generated into heat for the EEB.

What sets the EEB principle apart from more conventional ground source heat systems is not only the principle of using the earth beneath the home as a heat bank, but also because the ground source system is installed within the footprint of the home, this system can be installed relatively cheaply in any home as it doesn't require huge trenches to carry pipework. It could be installed even under terraced, low-cost homes.

As Selfbuilder & Homemaker went to press, Caplin confirmed it has got firm interest in a build of five terraced homes, in addition to enquiries worldwide for individual homes.

What the experts say

Anthony Morgan, managing director, Newform Energy: "We decided on a suite of technologies and developed our own control to unite and control energy flows in the house."

"The data we are gathering is fed back into our modelling to modify our design. In this system, the heat pump only takes over when the solar PVT roof panels are not supplying enough energy. Any surplus they produce goes into the Earth Energy Bank."

"In terms of output, the PVT panels supply an additional 10 per cent to 15 per cent more electrical energy than conventional panels. Another advantage is that the panels can be built into the roof as they do not need to be elevated to cool. We use ImmerSUN monitors to apportion the energy."

"Theoretically, the home could be run off grid although in this form any energy spill goes back into the grid under the Feed-in Tariff."

John Cotterill, architect at Sustainable

Architecture: "The position of the house is important, with a large area of glazing facing south to gather energy. But the home has seasonal shading provided by the overhanging balcony."

"There is 200mm of PU insulation under the floor and 90mm in the walls, with additional multifoil insulation. The roof has 150mm of PU insulation. The house is made airtight with a continuous film. The windows are triple-glazed and argon filled."

"The heat recovery system in the ventilation means only 5 per cent to 10 per cent of the heat in the home is lost and the solar heat panels on the east and west walls can raise the temperature of the ventilated air to 21° Celsius even in sub-zero air temperatures."

"The total floor area occupied by the heating plant in the house is 2 sq m."

Andrew Wright, De Montford University: "Technology that works in Germany does not work here because we do not have the skills in the workforce to install it."

The project's consortium

- Caplin Homes – Builders
- Newform Energy – Energy and control systems
- John Cotterill, Sustainable Architecture – Architect
- De Montford University – Monitoring via the Institute of Energy and Sustainable Development

Suppliers include:

- Green Roof: Sky Garden Ltd
www.sky-garden.co.uk
- Solar Walls: CA Group
www.cagroupltd.co.uk
- Windows: Rangemoor Windows – (Rationnel)
www.rangemoorwindows.co.uk
- Cladding: Palmer Timber
www.palmerlumber.com
- Garage Doors: Chamberlain Doors (Hormann)
www.chamberlaindoors.co.uk

Editor's focus

LIMECO

Limeco is a UK company dedicated to the development and manufacture of HyperLime® hydraulic lime binders as sustainable alternatives to cement and gypsum for the masonry construction industry. Simply mix HyperLime® with aggregate and water to prepare mortars, plasters and renders that are easy to use, highly workable, quick setting, flexible, breathable and absorb lots of atmospheric CO₂ when curing – a typical CO₂ footprint of HyperLime® mortar is 40kg/tonne or up to 80 per cent less emissions than cement/gypsum. HyperLime is cost efficient offering significant savings over other sustainable binders.

Enq. 112

JB KIND

Walnut veneer doors are a current favourite within the world of interior design and JB Kind continue to add designs to their best selling Walnut Flush door range. Sleek and contemporary, the range offers plain flush and grooved styles, as well as new designs which cleverly contrast vertical and horizontal veneers with oak inlays. Supplied complete with a luxury varnish finish, these premium quality doors are offered at an affordable price. Added benefits include FSC® certification and BWF-CERTIFIRE approved fire doors. JB Kind's Bespoke Options service offers alternative door designs and special sizes that can be made to order.

Enq. 111



THE OAK DESIGNS COMPANY

The Oak Designs Company uses the highest quality oak for all of their oak framed buildings, sourced from recognised, sustainable FSC and PEFC certified forests. Added to this is oak's main environmental plus; its natural absorption of CO₂ from the atmosphere. Green oak is undoubtedly the best timber for building because when the oak dries the timber contracts, tightening the joints to give a superbly strong structure. Compared to brick buildings, oak framed structures are considerably quicker to assemble on site and use less water in construction.

Enq. 113



ECO TOILETS

Imagine a toilet that has no need for water, sewage systems, miles of plumbing, septic tanks, cess pits etc and has the freedom to be put anywhere you can put a conventional WC. Well, there is such a product; a dry separating toilet that works on the design of the human body. Urine is directed one way and solids the other. The solids will in time produce marvellous compost and the urine, which is sterile, can be used on the compost heap, soaked or drained away. There is no smell, no waste, and no expensive problems... Simplicity at its best.

Enq. 114



QUOOKER

Quooker has launched the stunning new Nordic, a dedicated boiling water tap, which is available exclusively through Quooker's kitchen dealer network. The Nordic comes in two models; the Nordic square and the Nordic round, each of which is available in either chrome or brushed chrome finish. The new Nordic is packed with Quooker innovations. Each Quooker tap has full height adjustment and 360° rotation with both a push-and turn safety handle and a visual signal.

Enq. 115



Look no further to create a stunning home



- Thousands of innovative products • **FREE** DIY workshops • **FREE** seminars
- Ask A Chartered Architectural Technologist for **FREE** help and advice
- Ask An Architect for **FREE** advice • **FREE** Ask An Interior Designer
- **FREE** show catalogue • **FREE** goody bag • **FREE** parking



IMPROVEMENT



RENOVATION



SELF BUILD



INTERIORS



ENERGY



GARDENS

Call or book online 0871 231 0847 www.southernhideshow.co.uk Offer Code: SHS

*Tickets £8 per person on the door. Calls cost 10p a minute plus Standard network charges.



Mereway Kitchens

Mereway Kitchens is celebrating the very essence of being British with an impressive launch of its new English Revival modern classic collection; a range which features unique iconic furniture pieces, distinctive colour palettes and the very finest in quality British craftsmanship. The award winning English Revival range presents an unrivalled collection of bespoke, hand made in-frame kitchens made from solid wood and hand painted. In-frame kitchen trends are soaring with consumers searching for something special with real individuality. Mereway's new Modern Classic look presents a fresh, exciting new style; a flat slab door with subtle horizontal grain, the removal of cross rails and delicate beading within the solid timber frame which presents an exciting modern twist to in-frame kitchen design. The introduction of painted interiors on cabinets, open end units and open shelving is another exciting concept presented, also available for the current successful in-frame shaker collection. 'Colour ties' presents a fresh approach to colour selection, by suggesting four popular palettes using harmonious colours and a suggested complimentary colour.

Tel: 0800 028 4466 www.merewaykitchens.co.uk

Enq. 116

Granite Transformations



Recent newspaper headlines have highlighted the great home makeover boom, exemplified by property guru Sarah Beeny's series *Double Your House For Half The Money*. Granite Transformations were involved with both makeover projects featured in episode 7, series 2, where two young couples wanted extra living space and dreamed of a beautiful, big kitchen-diner. The dramatic makeovers were made possible with Granite Transformations' granite-like worktops and made-to-measure cabinet doors were truly eye-catching and drew enthusiastic reactions from Sarah and the young couples.

Tel: 0800 044 5393 www.granitetransformations.co.uk

Enq. 117

COMPAC



TREND is an innovative technological quartz worksurface and flooring range from COMPAC, available in four timeless, cool greys designed to complement each other, or look equally stunning by themselves. The collection, COMPAC believe, is ecologically superior in its manufacture and composition to any other quartz worksurface on the market, and has been designed for healthy living. TREND sets the trend by offering the discerning homeowner the opportunity to transform any kitchen

or bathroom into something really quite special. The TREND quartz work-surface comes with a lifetime warranty.

Tel: 0208 564 9377 www.compac.es

Enq. 118

KIT STONE

Kitchens with an average price tag of £10,000



Handmade kitchens & interiors, sensibly priced.

LONDON 0207 371 99 97 TUNBRIDGE WELLS 01892 522321 READING 01189 326060 MARLBOROUGH 01672 512155 BRISTOL 01173 702453 EPSOM 01372 237020

www.kitstone.co.uk

follow us...

Enq. 119

Terence Ball Kitchens

A name you can trust



- British Made Cabinets (Lifetime Guarantee)
- Exclusive Trade Discounts
- Over 250 Door Ranges to suit all Budgets
- Free Design (Just Email room dimensions)
- Local Installations Throughout the UK

www.terenceballkitchens.co.uk
sales@terenceballkitchens.co.uk
 01984 624640

Enq. 120



If it was a boxer it would be a super heavyweight.

Talk of weight can be something of a social taboo. However we at Rangemaster are rather proud of our weight. On average we are somewhat heavier than some of our, shall we say, lightweight competitors. That's because our ranges are built from the ground up, from a single sheet of high-grade steel, formed to give maximum rigidity and robustness.

A Rangemaster may well fail at the weigh-in. But rest assured, there are no plans for dieting just yet.

Call 0844 346 0495 or visit rangemaster.co.uk



Built from experience

Interior inspiration showcase:

Kitchens & appliances

Selfbuilder & Homemaker hope to inspire ideas for your new kitchen with this varied but beautiful collection of furniture and product ideas

1. With open plan living being more desirable than ever, **Terence Ball Kitchens** is well versed in creating the perfect living space for you and your family to socialise, relax, cook and eat together. As the saying goes, "A family that eats together stays together." The kitchen really is the heart of every home. Imagine preparing a meal in the same way as celebrities do on TV while socialising at the same time. Cabinets can be manufactured in any colour and style of door and there are numerous internal storage systems that will help create a well organised kitchen.



1

2. Inspired by European residential trends, Axiom® by **Formica Group's** worktop and accessories range offers traditional stone or woodgrain designs for a classic look with a more contemporary twist. Worktops can be complemented with a splash of bright colour using bold accessories. The Axiom® range offers 24 matching splashbacks; there are also nine complementary splashbacks in bright high gloss plain colours and metallic effects. The Axiom worktops incorporate Formica Group's commitment to sustainable principles and practices.

Enq.122

2



3. This Suffolk full height larder from **Kitstone** (www.kitstone.co.uk) is the modern solution to the pantry. Hand painted in Dove Grey, it not only looks stunning, but is extremely practical, concealing a vast volume of storage space. In the top half, there are four adjustable shelves, above sturdy ash drawer boxes, designed to hold smaller items. Handy spice racks are concealed on the inside of the doors. At the base, there are two large pan drawers, designed to hold heavier items such as pots and pans. The Suffolk larder is available in single, double and curved options.

Enq.123



3

4. For more than 60 years **Rayburn** has led the field in central heating range cookers. The iconic lines, gorgeous colours and solid reliability of the Rayburn have created a design classic. Beneath the stylish exterior lies a highly efficient heating and cooking system that creates mouth-watering dishes, a cosy home and piping hot water just when you need it. The Rayburn's cast-iron ovens use the principle of indirect heat to gently cook food, locking in flavour, moisture and goodness. With solid-fuel models and 'A' efficiency rated gas and oil options, the Rayburn is the ideal choice for those who care for the environment as much as they care about good food and a warm home. And there is a model for every home and every kitchen.

Enq.124

4



5



6



Jones Britain Ltd (www.jonesbritain.co.uk), a specialist in kitchen design, has inspired the Selfbuilder & Homemaker editorial team with one of its latest, more contemporary kitchen designs. Having predominantly been London-based, Jones Britain has opened a beautiful new showroom in the heart of East Sussex, bringing its experience of high-end, quality, creative kitchen solutions to the south. Jones Britain work with manufacturers and suppliers that have been specifically selected for the high-quality furniture and appliances they provide, and this stunning kitchen is a perfect example of innovative design, quality products and flawless installation.

5. Many self builds include smart systems and hidden technology, especially as our living spaces are now very much multi-use due to the our busy lifestyles. This kitchen is obviously a sociable space and the impressive TV Lift is £500 + VAT + installation.

Enq.125

6. One of the most striking features in this kitchen includes the 50mm Glacier White Corian. DuPont™ CORIAN® per linear metre, 600mm deep prices range from £320 – £416 + VAT. This excludes the fabrication of all other elements included in a standard kitchen like sink, drainer grooves, hob cut out, templating and fitting, as these are priced per individual project. Jones Britain only use Quality Network Fabricators, which carry the Dupont Warranty. There are over 50 colours to choose from – plain and patterned.

Enq.126

7. Bespoke Furniture designed and installed by Jones Britain Ltd in oak grey stained veneer and high gloss lacquer with PU burnished finish in sand beige.

Enq.127

Other products and services include:

Miele Pyrolytic Oven £1,128 + VAT

Miele Combination Oven £1,355 + VAT

Miele Coffee Machine £1,745 + VAT

Miele Induction Hob £1,437 + VAT

Leibherr Temperature Controlled Wine Chiller £1,021 + VAT

Elica Ceiling Extractor from £1,640 + VAT

Enq.128

8. Servo Drive for handleless drawers in the Island £454 + VAT + installation, for standard three drawer unit

Enq.129

8



7



AXIOM® RANGE LIVE THE DREAM



EVERYONE HAS A DREAM KITCHEN

Axiom® by Formica Group recently launched its stunning range of worktops, upstands and splashbacks. Featuring unique designs, partnered with premium surface finishes, Axiom® worktops and accessories allow dream kitchens to become a reality.

Axiom® Sample Hotline:
0191 259 3478
www.axiomworktops.com



Axiom
by FORMICA GROUP

Crystal Doors



Crystal Doors' bespoke foil wrapped door, carcass and wall panelling / cladding capability offers the opportunity to create a continuous interior design flow throughout your property. Choose from a multitude of high quality foil finishes (to include wood grains) to create MDF foil wrapped cabinets for kitchen, bathroom and bedroom furniture. Create your own door style and finish with matching or contrasting finishes to door and drawer fronts. Matching end panels to include exciting curves are also possible! The flexibility of Crystal Doors service allows you to produce a design that's in tune with the style of your property.

Tel: 01706 351 010 www.crystaldoors.com

Enq. 131

KBB Replacement Doors



KBB Replacement Doors supplies doors for fitted kitchens, bedrooms or bathrooms from the established Bellissimo range. The Bellissimo brand represents a highly-reputed business which goes back a decade. There is a choice of seven ranges, covering more than 50 styles, and more than 100 colours. If that isn't enough, there is always KBB's unique ColourMatch Service. KBB's industry experience means it can provide expert advice and customer care before, during and

after sales. KBB offers a 10-day delivery service with a 1 hr delivery timeslot along with SMS text updates and confirmations.

Tel: 028 9048 3676 www.kitchenbedroomdoors.com

Enq. 132

PANELAND FURNITURE LTD – 01299 271143



- 100% solid wood kitchens – no MDF, chipboard or ply
- Dovetail jointed drawers – mortise and tenon joints for carcasses
- Free design service, individual, hand drawn plans
- Non-standard sizes, at no extra cost, to suit your kitchen's dimensions
- Fully assembled units; no annoying flat-pack assembly
- Straightforward, easy to understand costing: prices include VAT & delivery
- Knotted, primed and painted units are now available

Pineland is a privately owned, family company that has been established for over 20 years. We believe in listening to our clients, and our hand drawn plans, reflect our customers' desires and opinions. The final design combines well planned functionality, with elegance and beauty, and our clients are often surprised how all this can be achieved at such a reasonable cost.

Visit our website: www.pineland.co.uk Email: enquiries@pineland.co.uk
Or call our offices: CLEOBURY MORTIMER, SHROPSHIRE: 01299 271143
NORTHWICH, CHESHIRE: 01606 41292

Enq. 133



RAYBURN
from AGA

All in one

Good Food • Hot Water • Warm Home

The heart of your self-build

- Cast iron range cooking with a choice of boiler options
- Superior cooking performance
- Condensing A-rated boilers with over 92% efficiency

For details of your local retailer call 0845 762 6147
or visit rayburn-web.co.uk



Enq. 134

Grand Designs World Leaders Luxury Homebuild

Bespoke Glazing PassivHaus



If you're planning a self-build or renovation you need to be sure that your project is in safe hands.

Altitude Aluminium works with Schuco and Reynaers systems and offer a complete, no worry service from design through to installation of Aluminium Windows, Doors, Sliding and Folding systems, Curtain Walling, Balustrades and Balconies.

Altitude Aluminium is ISO 9001, ISO 14001 and BS OHSAS 18001 accredited.

Get in touch with us to discuss your project further.

Call us today on
0800 2888 066

or email your plans to
quote@altitudealuminium.co.uk

Visit our website
www.altitudealuminium.co.uk



Reader
Enquiry
135





Look no further to create a stunning home

Come to the people's palace and bring your ideas, your plans and your dreams. Let us help you create your dream home, whether it's a cosy cottage, a Victorian terrace, a traditional farmhouse, or a high tech contemporary home.

The Southern Home Show really is a must-visit event

DATE
31 January -
2 February 2014
LOCATION
Alexandra Palace,
London
N22 7AY

The show is proudly sponsored by Anglian Home Improvements and is for everyone interested in inspirational design ideas, renovation tips, energy saving solutions and the latest products and services for the home. The Southern Home Show offers a one-stop-shopping opportunity covering all aspects of home improvement, renovation, self-build, interiors, energy efficiency and gardens.

Take part in workshops, attend free seminars, get advice from the experts, book one-to-one consultations, find thousands of products and services and go home with a free goody bag. It doesn't get more comprehensive than this!

The Southern Home Show has teamed up with the professionals and created unique advice areas, giving you the chance to discuss your individual questions with the experts. Come along to the 'Ask the...' stands and speak to architects, project managers, landscape architects, interior designers, building control managers and architectural technologists, all with in-depth expertise and knowledge relevant to London and the South East.

If you're keen to learn a new skill then the DIY workshops should be your first port of call. The workshops are ideal for anyone wanting to learn how to tackle DIY projects around the home as well as learning preventative maintenance skills – which could save you time and money.

For comprehensive information on all workshops, seminars and advice areas, available throughout the show, visit the website www.southernhomeshow.co.uk

Don't miss out on the chance to win £1,000 in cash, courtesy of sponsor Anglian Home Improvements. Make sure you visit Anglian's stand at B30 and register your details in the free prize draw!

The Southern Home Show is on from Friday 31 January to Sunday 2 February at Alexandra Palace, London. Tickets are only £8 per person on the door and children under 16 go free. Your tickets are valid for all three days so you can visit as many times as you like. For more information and advance tickets, visit the website www.southernhomeshow.co.uk



Free tickets for SB&H readers!

We've got 100 pairs of tickets to The Southern Home Show to give away to our readers. To get your free tickets, simply go to www.southernhomeshow.eventbrite.co.uk and type in the code SB.

Impey Showers



Impey's revolutionary new SlimFold shower seat and bench is stylish, durable, safe and functional. It bears weight of up to 40 stone and has a profile of just 111mm/55mm when folded.

SlimFold comes in 10 colours with an RRP of £175 (plus VAT) and can be fitted from heights of 417mm which ensures safe transfer between standing and sitting or from a wheelchair.

There is no maximum height restriction.

Tel: 01460 256 090 www.impeyshowers.com

Enq. 136

Abode



Opulence, a new traditional style bathroom collection from Abode, is a true classic styling with a very modern twist. With smooth curved spouts and voluptuous body design, Opulence will look equally at home in both a contemporary or modern bathroom. The beauty of this range is that it has been manufactured for low pressure usage with an affordable price tag. This collection of beautifully designed, round, chrome finish taps has been created especially for the UK market and forms part of a

new range of bathroom brassware products from Abode, incorporating several styles of taps for use in bathrooms, en suites and cloakrooms.

Tel: 01226 28 34 34 www.abode.eu

Enq. 137

Roman



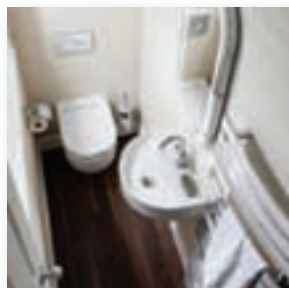
Roman has expanded its newly launched Decem collection, with the addition of a bespoke version of the brochure, which allows for the freedom to create an enclosure to perfectly fill your available space. The Decem collection of enclosures offers the ultimate in showering design. It is a minimalist collection which has been crafted from highest quality components. It offers ease of installation whilst presenting unrivalled water integrity, for a minimalist design. Now with the addition of

this made to measure service, it offers real flexibility for your showering space. A Direct Delivery and Installation service is also available.

Tel: 0845 050 7611 www.roman-showers.com

Enq. 138

Crosswater



Squeezing an extra designer, wall-hung WC and furniture into the smallest space just became a lot easier thanks to the Ultra Slim hidden-in-the-wall WC support frame and cistern from Bauhaus. Ideal for smaller spaces, the depth of the new Bauhaus Ultra Slim is thinner than a normal frame at just 9cm, which means it will fit into the narrowest wall cavities, and reduces how far the pan protrudes into the room. The noise of flushing is quieter as the cistern is in the wall. The unit

carries WRAS approval and provides dual flushing. Ultra Slim is capable of holding 400kg in weight and is easy to install with all fixings supplied.

Tel: 0845 873 8840 www.crosswaterdigital.co.uk

Enq. 139



IT'S THE WAY
TO GO ...

CONTACT US 7 DAYS A WEEK FOR HELP, ADVICE AND
INFORMATION ON THESE INNOVATIVE ECOTOILETS

- No water - No sewage
- No smell - No waste
- Easy to install -

HOW MANY REASONS DO YOU NEED
TO INSTALL AN ECO-TOILET?



Ecotoilets
The Canal Shop
Hillmorton Wharf
Crick Road
Rugby
CV21 4PW



UK Distributor
Tel:- 01327 844442
Web:- www.eco-toilets.co.uk
Email:- richard@eco-toilets.co.uk

Enq. 140

**Workable.
Reliable.
Sustainable.**

HYPERLIME HYDRAULIC LIMES

A sustainable, highly CO₂ absorbing drop-in replacement for cement or gypsum binders in mortars, plasters and renders. HyperLime is UK manufactured under ISO 9001:2008 and CE marked so compliant with UK building regulations and major warranty providers.



Even better, HyperLime offers significant cost savings over other sustainable binders, mixing easily to give a very workable texture. Mortar, plaster and render made with HyperLime is water stable and breathable, providing essential structural flexibility.

To find out more visit hyperlimeco.com or telephone Limeco on 01833 689 005

LIMECO

Enq. 141

Helifix



The recently upgraded BowTie HD, from masonry repair specialist Helifix, is the ideal solution to the problem of bulging and unstable building walls. Fully concealed once installed, it rapidly restores structural stabilisation by securing the wall to internal joists or rafters without the need for any unsightly tie bars or patrix plates. Backed by Helifix's considerable experience, expertise and technical support, the BowTie HD is fully proven and widely used. Its heavy duty, unique rolled profile with self-cutting end mechanically connects floor joists or roof timbers. BowTie HD provides a fast, cost-effective and non-disruptive solution and installation causes minimal disturbance.

Enq. 142

Snickers Workwear



Snickers' high-performance work jackets are well-known for their built-in functionality and practicality to make your workday easier. Designed for maximum freedom of movement and made from highly durable and comfortable materials, they feature dirt-repellent fabrics, cordura reinforcement plus easy-access pockets. The new Craftsman's Rip-Stop jacket is ergonomically designed with pre-bent sleeves. It delivers on-the-job warmth wherever you are on site and, with its water-repellent fabric and cosy lining, this jacket is great value for money. The subtle reflective strips give enhanced visibility and you'll stay warm with the pile-lined collar and smooth quilt lining for optimum insulation.

Enq. 143



James Latham

Accoya®, the modified, highly durable and dimensionally stable certified softwood, is now available from all 10 of James Latham's nationwide distribution sites. Accoya® wood is a perfect solution for exterior cladding, siding and façades where aesthetics, less frequent maintenance, dimensional stability, durability and insulation value are key factors. Accoya® wood can be used to create simple or complex designs with a choice of coating finishes, delivering typically improved lifetimes. It can be opaque coated or, for those wishing to enjoy the natural look of wood, translucent coated. Plus, with a 50-year guarantee when used externally and 25-years when used in the ground, Accoya®'s low maintenance requirements add to its 'whole life' cost effectiveness and environmental credentials. Paul Leach, James Latham's Group Product Sales & Development Manager for Accoya said, "Accoya® wood is fast becoming the material of choice for architects, contractors and joiners for many exterior applications which were once only feasible with non-sustainable material. In addition to cladding, sidings and façades, Accoya® is also ideal for windows, doors and decking. "As well as our established customer base who are now seeing the benefits of Accoya® for cladding and other exterior projects, we've also seen it open up opportunities with new customers as demand for sustainably modified products continues to grow." He added: "Accoya® is a fantastic material for external specification and fits perfectly with our already established range of sustainable products."

Enq. 144

Install beautiful ornate plaster cornices to your home



One of the UK's leading experts in ornamental plasterwork and cornice. We design and manufacture our own complete product range, installing beautiful cornices to properties nationwide.

Find our complete range on display in our fantastic showroom, or contact us for our brochure.



Visit our showroom:
5 Campsie Road, Kirkintilloch

0141 776 1112

www.reproplaster.co.uk



Design • Manufacture • Installation • Repair & Restoration Work

Enq. 145



As we wanted to retain the contrast between timber and metal, [we] opted for a combination of the dark zinc with a light natural timber. The end result is restrained but distinctive.

– Henry Goss of John Pardey Architects

Zinc ...adding a touch of style

By Damon Lusby, sales and marketing manager, VM Zinc UK and Ireland

Despite the enthusiasm of many architects for materials which age by natural weathering, the effect is invariably inconsistent and often disappointing. For those building their own home it is hardly surprising, therefore, that materials which retain their as-built appearance are proving increasingly popular. Pre-weathered colours in which zinc can be supplied are perfect in this respect as they overcome the problem of inconsistent ageing. The metal's credentials in terms of sustainability make a compelling case.

Building a thermally efficient home is near the top of most self builders' list of priorities, and materials which provide the best means of doing so have been showcased at the BRE's Innovations Park since 2005. Designs such as Osborne Homes' Affordable House showed how using zinc for the roof and facade can contribute to thermal efficiency and with the scope the metal provides for complex detailing it places few limitations on the designer. This subsequently prompted Bere Architects to specify zinc in its design of Focus House, winner of the Grand Designs' Best Eco Home Award.

Zinc is suitable for most building styles, even those using traditional materials such as stone and slate. Contrasting vertical and horizontal elements can be employed and matching rain-water goods provide a perfect finish.

Use of zinc has risen dramatically over the past 15 years, with a host of buildings providing evidence of its lasting appearance. The combination of visual distinctiveness and technical performance has undoubtedly brought it to the attention of designers seeking greater design life value and use of materials with low environmental impact. It undoubtedly provides distinctive visual impact in terms of colour with subtle, textured shades of red, green, blue and brown which are unlike those available in any other metal. These patinate naturally in the same way as standard pre-weathered colours and are available for both roofing and façade systems.

One man's desire to live close to the river sparked the imagination of his architect to create a unique space on the banks of the River Loddon near Wargrave. The Moorings (pictured above) is a flat roof dwelling built on columns to allow the river to pass beneath it when in flood. A key design requirement was to retain the building's contemporary appearance, as architect Henry Goss of John Pardey Architects explained: "We were looking to specify a palette of natural building materials and were familiar with zinc's intrinsic benefits, having used it as a facade material before. We find that metals such as aluminium are not as robust, relying as they do on anodised or powder coated finishes. For this project, traditional ageing and



SUITABLE FOR MANY HOUSE STYLES AND PERFECT FOR COMPLEMENTING MORE TRADITIONAL MATERIALS, SUCH AS TIMBER, SHOWN ON THE MOORINGS (OPPOSITE) AND RENDER (ABOVE); ZINC GUTTERING (LEFT)



weathering in the vernacular style was not the aim, as we wanted to retain a modern, show-piece appearance. We liked the colour range and texture of the pre-weathered cladding and, as we wanted to retain the contrast between timber and metal, opted for a combination of the dark zinc with a light natural timber. The end result is restrained but distinctive. Zinc offers very clear benefits in terms of long-term performance, and we could not have achieved what we did using any other metal."

Use of zinc as a rainwater material is a recent

development and provides a practical and cost-effective alternative to cast iron and aluminium. Its coefficient of expansion is extremely small so susceptibility to leaks at joints is correspondingly lower. Gutter lengths are installed with concealed brackets to create a stylish, flowing gutter line while downpipes have sleeve connections and self-locking brackets. A 2-metre length of half-round zinc gutter typically weighing 2.75kg compares to cast iron at over 8kg and with materials supplied in kit form installation is well within the scope of a competent DIYer.

In contrast to such new developments, ornamental zinc roofing features made by traditional methods developed in the 19th century are still available. Whether for a bespoke commission or a more affordable item from a standard range of finials, weather vanes and decorative gutter profiles, the choice is almost limitless. Recent clients for the metal include Harrods and Eton College. All provide scope to achieve the ultimate finishing touch for a home which, in the same way as contemporary zinc systems, will last for decades.

Enq. 146

Cladding Mesh and Insect Mesh



- Sizes from 50mm wide x 45m long
- Install behind timber and ventilated rainscreen cladding systems
- Stop insects entering air space behind cladding
 - Allows natural ventilation
- Mesh for screening by the metre or roll



01454 238288
www.flyscreen.com
sales@flyscreen.com

Enq. 147



Pre-painted black featheredge



Thermowood T&G shiplap cladding



Pre-painted white featheredge



Thermowood screening cladding

For a free sample, call 0800 849 6339

www.timber-cladding.co.uk

Enq. 148

RigiSystems



RigiSystems S-Type profiled cladding has featured heavily on a recent episode of Channel 4's Grand Designs. The owner of Strathaven Airfield commissioned local architects Richard Murphy to design a house to be situated parallel to the runway. The structure is a simple cantilevered steel frame and all the roof and wall cladding is RigiSystems S-Type mill-finished aluminium, a material which resonates with local farm cladding and the adjacent hangars. The big difference, however, is that the new house makes a beautiful design statement and is a stunning example of what can be achieved with this most humble of profiles.

Tel: 01905 750 500 www.rigisystems.org

Enq. 149

Formica



VIVIX® exterior façade panels have been used to clad the Harthill House, a new social housing project in Wolverhampton, UK.

Available in plain colours, patterns and woodgrains, the VIVIX® range offers the possibility to create exclusive looks in a creative and cost efficient way, providing the necessary thermal insulation to bring energy efficiency up to 21st century standards.

VIVIX® panels can be fabricated away from the building for efficiency, but if required they can easily be cut on site into a variety of shapes and sizes to express a whole variety of design concepts.

Enq. 150

Freefoam Building Products



Freefoam Building Products has announced third quarter figures for Fortex® cladding are up by 42 per cent year on year. Fortex® is a range of innovative exterior cladding products that couple the benefits of low maintenance PVC with an authentic embossed wood effect finish. The range is available in a wide range of subtle 'heritage' colours from Pale Gold to Colonial Blue and Storm Grey. Fortex® comes with significant environmental credentials with the BRE's

'Green Guide To Specification' giving PVC cladding an A+ rating when installed with standard components.

Tel: 01604 591 110 www.freefoam.com

Enq. 151

Instarmac Group



Created by Instarmac Group Plc, i-fix allows homeowners to restore their outdoor space themselves or with the help of a professional installer. The unique i-fix Speedy Paving Grout is perfect for grouting new or re-pointing existing paving and saves valuable time thanks to its fast setting time. Paving Sealer has been created specifically with block paving in mind but it can also be used on slabs with sand joints. Patios can also require a patch up job in parts following a particularly

harsh winter or heavy wear and tear so Speedy Concrete is included in the i-fix range to tackle cracked or damaged paths and steps.

Tel: 01827 254 499 www.i-fix.co.uk

Enq. 152



Think outside the white plastic box with PVC-U windows from Swish

PVC-U windows don't just have to be white and square. Modern PVC-U windows from Swish can be custom-designed to enhance any property.

Available in a wide range of styles, shapes and sizes as well as beautiful colours and wood effects, our energy-efficient windows, doors and conservatories are installed by our nationwide network of expert local installers.



Call 0808 178 3040

www.swishwindows.co.uk

Enq. 153



Reynaers at Home

With the UK launch of its Hi-Finity ultra-slim sliding patio doors, Reynaers at Home has made it simple for architects and homeowners to bring to life any contemporary grand design that requires uninterrupted floor-to-ceiling glass. Structurally glazed to keep the aluminium frame to a minimum, these doors are designed for the outer frame to be fitted behind the brickwork. With the resulting floor-to-ceiling glass and only a 35mm aluminium interlock between door panels, the Hi-Finity door delivers stunning aesthetics with no compromise on energy efficiency, weather resistance or security. Underpinned by exceptional engineering expertise, the doors are available with a maximum door height of 3,500mm and a maximum door panel weight up to 500kg. By combining the huge panels in a range of double track and triple track designs, Hi-Finity doors extend design possibilities in terms of size while ensuring smooth operation with even the heaviest of loads. Each door meets industry-leading standards of thermal insulation, weather resistance, noise reduction and security, helping to keep any home cosy, safe and warm.

Tel: 0121 421 9707 www.reynaersathome.co.uk

Enq. 154

INSPIRATIONAL DOORS. Undeniable value.



Be inspired...

order or download our door brochure today

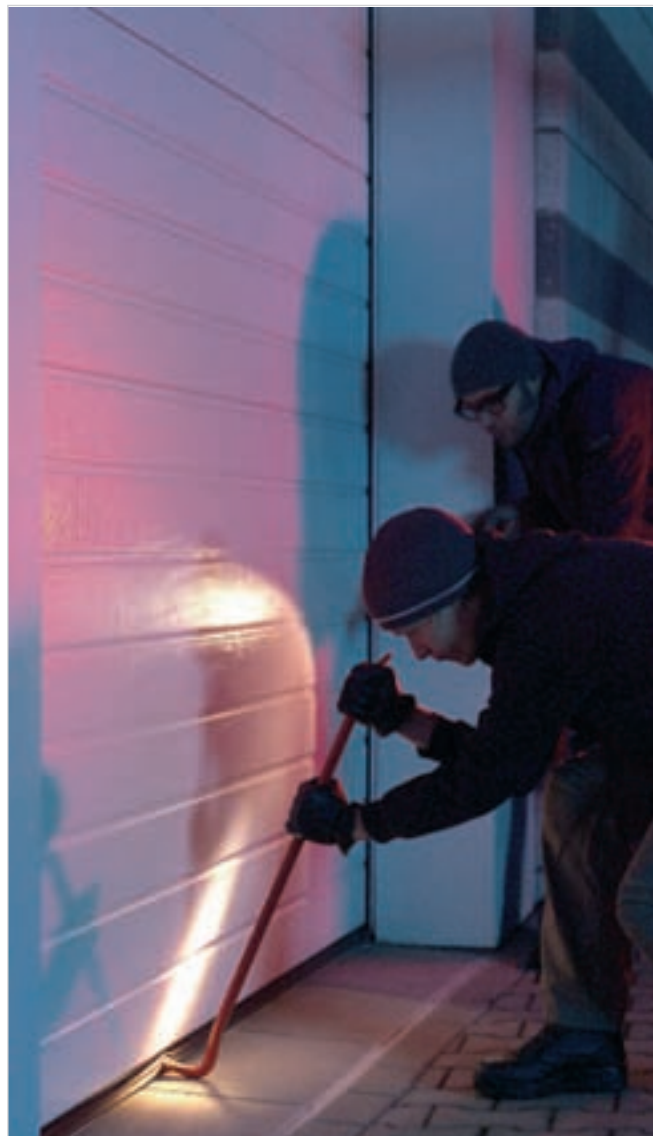
Open the door to our wide range of innovative, contemporary and classic door designs. Visit www.jbkind.com

J/B/Kind
DOORS

T: 01283 554197
www.jbkind.com



Enq. 155



Secured by Design: Sectional Garage Doors*

- With ProMatic or SupraMatic Series 3 BiSecur operators
- Automatic door locking remains fully functional even in the event of a power failure
- Tested and certified



* Only available for EPU, LPU and LTH garage doors

HÖRMANN
Garage and Industrial Doors



ref. SBH

Enq. 156

Old Manor Cottages

Double Glazed Timber Windows & Doors for the Period look.

By combining tradition with modern techniques in a unique way double glazed windows can now be made to replicate the originals.

Accepted for use in Listed Buildings by many Conservation Officers.

- Selected hardwoods used for all Box Sash, Casement Windows & Doors, with slim Ovolo glazing bars 19mm wide.
- Sealed units fitted with plain 'Warm Edge' spacers matched to window colour.
- U Value now down to 1.6
- Supplied fully factory finished, painted & glazed from the inside for additional security.
- Supplied ready to fit from your drawings or survey.

01462 456033

TURNPIKE LANE - ICKLEFORD - HITCHIN - HERTS - SG5 3UZ
www.oldmanorwindows.co.uk - oldmanorco@aol.com

Enq. 157

Connect with Selfbuilder & Homemaker online by visiting www.facebook.com/sbhmag, pinterest.com/selfbuildhome and twitter.com/SelfbuilderHome to follow us!

selfbuilder & homemaker

As well as the bi-monthly magazine, Selfbuilder & Homemaker have an increasingly popular online profile to help keep you up to date with all of the latest products, innovations, inspirational ideas and projects. Newly launched is the Selfbuilder & Homemaker Pinterest page; a one stop source of inspiration. Pinterest allows you to browse pinboards, discover new things and get inspiration from people who share your interests, as well as create your own boards so you can organise and share all the beautiful things you find on the web. Subscribing to our Selfbuilder & Homemaker Facebook and Twitter pages enables you to easily keep track of all of the latest products, innovations and inspirational ideas and projects.



1.0
U-VALUE AS STANDARD

Are you looking for more than low U-values and high quality?

TanumsFönster offer an excellent selection of windows, French doors, sliding doors and entrance doors.

We manufacture an extensive range of superior styles with flexibility and designed security (certified at the highest domestic level EN 1627 available).

With over 60 years of experience in manufacturing doors and windows you can have full confidence in TanumsFönster.

For more information please visit our web site or call us.
www.tanumsfonster.co.uk
 Telephone number 0115 - 93 210 13



Enq. 158

"timber windows made with traditional skills and modern technology"

Introducing the latest in high spec timber windows from GBS

- Made from the best quality treated softwood and hardwoods
- Storm rebated flush fitting casements on friction hinges
- Double glazed with low E Plamitherm glass & Swiss spacer by Saint Gobain
- Whole window value Part L compliant
- Factory paint finished in any RAL or BS colour
- Hi security multipoint locks with a choice of traditional or contemporary style furniture
- Concealed trickle ventilation
- Installation service



0161 456 0501
mail@gbstimmerwindows.co.uk
www.gbstimmerwindows.co.uk



James St, Stockport, Cheshire SK3 9AG



Timber Windows

Enq. 159

Triple-glazing: a delicate balancing act

Triple-glazing is becoming the preferred alternative to double-glazing but is it really worth the switch? By Tony Pell, windows product manager at JELD-WEN

Triple-glazing, which originated in Europe, is currently a hot topic among UK homeowners and it's becoming a popular choice for those looking to improve their property's thermal performance while keeping their energy bills down. Where double-glazed windows were previously seen as a huge advancement from traditional, single pane options, triple-glazed windows, which offer a far lower U-value, have now commandeered the top spot.

However, should we all be switching to triple-glazed windows? When considering the advantages of this option over single pane or double-glazed alternatives, it's important to think about how the window performs in relation to the entire building and, of course, the manufacturing process involved in producing it to start with. We're all trying to be greener but there is some debate that the extra energy used in the construction of the third pane of glass outweighs the thermal performance.

With the UK's climate, it is not currently a requirement to fit triple-glazed windows – many double glazed insulating glass units are available with thermal performance that meet and exceed the regulatory requirements. Indeed, the use of triple-glazed units is, in many ways, down to personal preference and the costs vary depending on your choice of window. The two main options are whether the cavities between the panes are filled with air or gas, usually either argon or krypton. While gas is a more expensive option, the thermal property it offers is, in the case of argon, 30 per cent higher than air. It's worth considering, however, that gas can leak over time, leading to the overall performance of the unit reducing – this could lead to more expense.

Where triple-glazed windows really come into their own is when we focus on thermal properties. It's no coincidence that triple-glazing

Continued on page 37...



Safeddoors



A new How to Video from Safeddoors has been created to assist with installing a composite door. Just under three minutes long, the video gives a step-by-step guide to fitting the new door as well as removing the existing door and frame, coupled with handy hints and tips. It has been designed to answer frequently asked questions and help avoid common mistakes. Keeping it simple, Safeddoors also advises the viewer to check that they have all of the necessary tools to hand before starting the installation, as well as highlighting easy-to-forget factors. For more information and to watch the How to Video please visit the website.

Tel: 01684 595 200 www.safeddoors.co.uk

Enq. 160

VEKA



Long-standing Network VEKA member, and VEKA customer of more than 25 years, Gardinia (West Wales Ltd) has completed a contract to replace the timber windows of a traditional cottage with PVC-U, in the national park conservation area of St Davids. Director David Morris said: "Thanks to VEKA's high spec Vertical Slider with mock sash horns we could achieve the slim sightlines and traditional 'look' of traditional painted timber, with all the modern benefits of PVC-U. We replaced all the windows in the house, front and back, and the owner is delighted with the finished job and happy to recommend us."

Tel: 01282 716 611 www.vekauk.com

Enq. 161



Hörmann

The break in resistance of Hörmann automatic sectional garage doors has been recognised by the award of Secured by Design status.

The accreditation applies to the combination of Hörmann insulated or solid timber sectional doors with the Series 3 BiSecur ProMatic or SupraMatic operators.

The wide choice of designs, colours and finishes means there is no need to compromise between style and security as this range offers both.

The double skinned, insulated EPU and LPU doors both feature solid, CFC free polyurethane insulation that adds strength and rigidity to the door. The LTH solid timber doors are offered in a number of styles and buyers also have the option to have their own individual design recreated by Hörmann.

The ProMatic and SupraMatic operators, which are part of the Secured by Design accreditation, both feature a mechanical lock. This unique automatic latching system makes it almost impossible to lever these doors open and, as it is a purely mechanical system, it remains fully functional even in the event of a power failure.

The wide range of styles and colours and even bespoke timber designs ensure there are doors to suit any home. There are also matching side and front doors including Secured by Design accredited ThermoPro entrance doors.

Enq. 162

BENENDEN™ CONSERVATION

THE UK'S SLIMMEST ALUMINIUM WINDOW



- ❖ Accurately replicate your traditional style windows
- ❖ Fit original timber frames or direct to brick or stone
- ❖ Wide range of styles, colours and accessories
- ❖ Installed by our own craftsmen
- ❖ Full consultation service

THE HERITAGE
WINDOW COMPANY

CONSERVATION BY DESIGN

020 8695 0055 | sales@thwc.co.uk | www.thwc.co.uk

Showrooms at: Sevenoaks ❖ Dorking ❖ Beaconsfield

Enq. 163



LIGHT

SPACE

STYLE



High Quality Folding Sliding Doors • British, German & Belgium Design • A Fantastic Variety Of Finishes & Colours • Virtually maintenance free • State-of-the-art security features • Full fitting available • Free survey & design advice

Unit 26/3 Silicon Business Centre • 26 Wadsworth Road
Perivale, Greenford Middlesex UB6 7JZ
Tel: 0208 997 2448 Fax: 0208 997 0611

www.1stfoldingdoors.co.uk / foldingdoors@btinternet.com

1ST
FOLDING
SLIDING
DOORS

Enq. 164

While double-glazing may be adequate, triple-glazed windows offer a far more comfortable alternative, retaining heat for a longer period, keeping your home cosy and reducing fuel bills

is a particularly popular option in cold climate countries, such as Sweden and Norway. While double-glazing may be adequate, triple-glazed windows offer a far more comfortable alternative, retaining heat for a longer period, keeping your home cosy and reducing fuel bills. The level of glazing needs to match the standard of insulation within the building – if the walls, floor and roof of your property are insulated to a higher standard, inadequate glazing will result in convection and cold spots, reducing your home comfort factor. It's also crucial that the thermal properties of the frame are also considered when looking to reduce the overall U-value performance of a building – factory finished frames offer longer-life guarantees so tend to be the shrewder option.

It's also important to consider how glass units perform throughout the year – there is a huge range of coating specifications on offer that, when used in combination, allow an insulating glass unit to be supplied that enables a complex variety of solar gain, light transmittance,

acoustic and thermal performance properties to be utilised.

For instance, with the increasing use of high performance building materials, over-heating is becoming a problem that has led to greater use of air conditioning in modern homes. The cost to the environment of these cooling devices is greater than heating so the design of buildings in utilising the solar control properties of glass to ensure the most efficient use of the window is not only keeping in heat during winter but also in the height of summer, when minimal solar gain is required reduce the amount of heat transmitted. This can also apply to older properties when replacing windows.

A triple-glazed unit also gives a better acoustic performance than double glazed but it all depends on the unit's construction – cavity bar size, gas fill and coating all need to be considered. If you live in a noisy area, triple-glazing is a good option for minimising noise transference while at the same time maximising thermal performance. As with the most effective



THE CONFIGURATION OF A TRIPLE-GLAZED WINDOW

solar panels, the performance of the insulating glass units reduces over time so it's vital to maintain both the glass and the frame to maximise its performance and extend its lifetime.

As environmental regulations become more stringent, triple-glazing may well represent an effective means of increasing thermal and acoustic performance and reducing fuel costs but the delicate balancing act between choosing the right glazing option and improving the overall U-value performance of a property will always need to be considered.

Enq. 165

urban | front
steel reinforced hardwood
entrance, internal feature and garage doors

e: info@urbanfront.co.uk www.urbanfront.co.uk t: 01494 778787

Enq. 166

TODD DOORS
BEAUTIFUL DOORS SINCE 1952

Door Shown: Iseo K4500 in American White Oak

Beautifully crafted doors for every home

- Over 400 especially selected internal and external door designs.
- Expert advice from our knowledgeable Door Consultants.
- Exclusive products from Europe's leading door manufacturers.
- Brand new professional door finishing and bespoke joinery service.

Click, call or visit us today.

Extensive showrooms in West London, St Albans and Bournemouth
0800 987 8667 www.todd-doors.co.uk

Enq. 167



MORE THAN JUST A STOVE!

Heat the house not just the room!



- ❑ Makes a huge saving against your gas or oil heating bills.
- ❑ Burns wood logs.
- ❑ One charge of 10kg logs heats the appliance to full heat, to release that heat for 12 hours after fire has gone out.
- ❑ 25% of stored heat still released after 12hrs [model 678].
- ❑ No ducting or water connections needed—just leave your doors open to allow heat to circulate (does not overheat the room it stands in).
- ❑ Made in England, HETAS approved and DEFRA exempt for inner city installations
- ❑ Four models in the range.
- ❑ All colour options available.

Email—sales@landyvent.co.uk
Call Landy Vent UK Ltd—01527 857814
Ask about our smaller E580 model also!
www.eccostove.com

Enq. 168

George Woods UK



George Woods UK manufacture a large range of door canopies, all hand made in timber from sustainable forestry. It always holds a large stock of its standard size canopies, which enables it to offer a next day delivery service. A bespoke design service is provided for both timber door canopies and barge boards, which can be crafted from your own design. Beautifully crafted porch canopies are available in soft wood and include an extensive range of barge boards (fascia boards), all of which are manufactured on-site by hand. Having a canopy prolongs the life of your front door, extends time between maintenance and adds value and appeal.

Enq. 169

Connect with Selfbuilder & Homemaker online

Emailed on a monthly basis, the Selfbuilder & Homemaker newsletter is designed to provide you with the latest information on products and services of interest, direct to your inbox.

You can quickly gather a snapshot of information from up to 12 carefully selected companies and easily follow links through to further information, or go direct to the company's own website.

Brochures and videos are also regularly available.

[Visit www.sbhonline.eu to subscribe & find out more!]



www.lotusfires.com

Far from being merely a source of heat, the Lotus range of woodburning stoves and fireplace inserts offer a stylish mode of expression in an exquisite and luxurious design! For more information visit our website or call **01392 474049**

Enq. 170

Heating & Renewable Energy Supplement

SPECFLUE



Renewable
Energy



Dalia Pellet Stove

Our expertise, your reputation.

**Specflue is the UK's sole trade supplier
of MCZ pellet appliances.**

Your business relies on quality, reliability and keeping ahead of the game. Today's ever-increasing demand for environmentally-aware products means it's never been more important to be at the forefront of heating technology.

With an expansive product portfolio including biomass boilers, solar thermal, pellet stoves and thermal stores, we're here to help you give your customers what they need. Technical expertise and extensive product knowledge comes as standard, all backed up by our dedicated solid fuel and renewables training centre.

Recommended by retailers throughout the country, our products comply with the RHI and MCS, and come complete with excellent after-sales servicing and support giving you and your customers complete confidence.



Solar Thermal



Compact 24
Biomass Boiler

Reader
Enquiry
301

MCZ

Renewable Energy Solutions | Flue & Chimney Products | Wood Burning Stoves | Training

0845 337 1652 // www.specflue.com

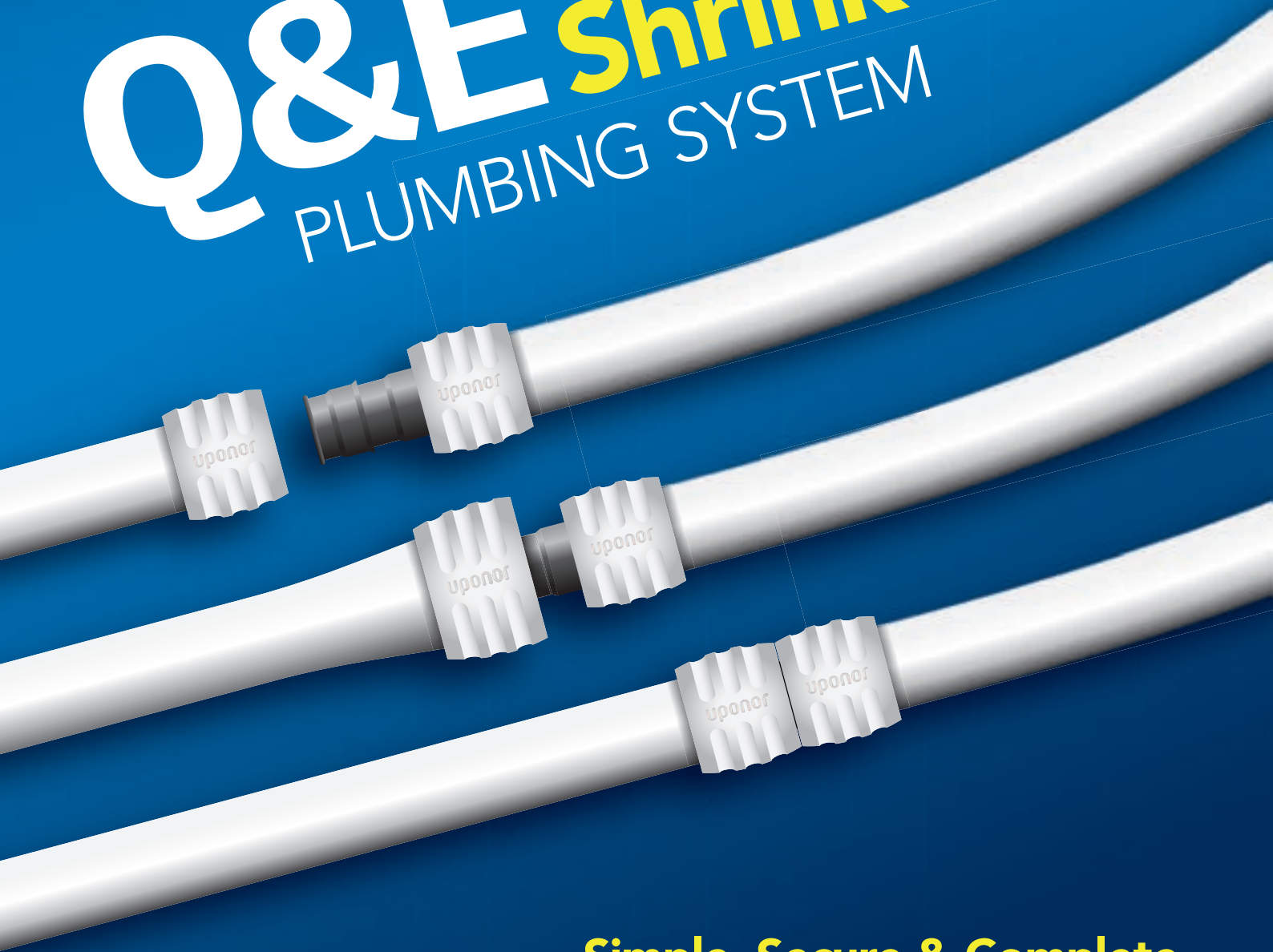
Specflue Ltd 8 Curzon Road Chilton Industrial Estate Sudbury Suffolk CO10 2XW Fax: 0845 13 07 555 Email: sales@specflue.com

**FAST, SECURE,
CONNECTS IN
SECONDS**

uponor

Q&E shrink-Fit™

PLUMBING SYSTEM



**Simple, Secure & Complete.
Adaptable, High Flowing & Hardwearing.**



SuperQuilt, from **YBS Insulation**, is a very flexible, easy to fit, multi-layer insulation that offers tremendous thermal benefits. Thermal testing to EN16012 confirms high core thermal resistance of 1.52m²K/W. Due to the special composition of multi-layers of insulation it effectively deals with all forms of energy transfer (i.e. conduction, convection and radiation). SuperQuilt works most effectively by reflecting infra-red radiation. This means that not only is it effective in winter by reflecting heat back into the building and cold out, but also in summer it is a very effective solar over heating barrier reducing the need for artificial cooling systems, preventing uncomfortable heat build up in the roof. The introduction of a unique method of stitching reduces cold bridging commonly seen with other multi-foil insulation material.

Enq. 334



It still comes as a surprise to many that the energy consumed by small circulating pumps on heating systems can 'guzzle' quite so much electricity. The reality is that the old, uncontrolled pumps that are still operating on millions of domestic and small commercial heating systems are responsible for much higher energy bills, far higher CO₂ emissions and far higher energy usage than is necessary today. By replacing an elderly uncontrolled pump or specifying a high efficiency pump like the **Wilo Yonos-PICO** from new, it's possible to make an annual electricity saving of around £100 which, over an average fifteen year life span of a pump, is responsible for around £1,500 of savings on the electricity bill. It'll pay for itself in two, or at worst, three years.

Enq. 303



The Eccostove, from **Landyvent**, is an innovative new concept in woodburning technology using silicon carbide to create energy efficient wood combustion providing whole home heating without plumbing.

Eccostove has an 85.3 per cent efficiency rating and still emits 25 per cent of stored heat up to 12 hours after firing (dependent on model).

There are four models in the range that will heat anything from a two bedroom property, right through to a five bedroom property, provided doors around the home are left open.

For more information on Eccostove, contact Landyvent.

Enq. 335



KOKOTO, a wall mounted gas fire available from **CVO Fire**, is operated by remote or manual control and is 80 per cent energy efficient. A shelf and TV can be installed above if required.

These 'high efficiency' (HE) gas fires are designed for installation into any home with a chimney or flue liner system and have a glass front.

They are ideal for both renovations and new build properties and no ventilation is required.

By installing a KOKOTO, you can benefit from up to 40 per cent more heat for 60 per cent less cost as gas is still the cheapest form of fuel (70 per cent cheaper than electric or wood).

The CVO range includes many HE gas appliances. Call for details or visit the website.

Enq. 336

Our research has one aim: your success as an installer.

Wilo continuously invests in research and development, always keeping our eyes on one goal: making our products even better and making your everyday work easier. With pumps that are reliable, quick to install and easy to use.



Yonos Pico. Saving energy for you.

- Standard high efficiency pump
- Tool-less electrical connection using the Wilo-connector
- Unique pump venting function.
- And needless to say: ERP compliant

T: +44 (0) 1283 523000
F: +44 (0) 1283 523099
E: sales@wilo.co.uk
www.wilo.co.uk

Pioneering for You

wilo

Enq. 303



Warmup

When it comes to building a new or improving an existing dwelling, one of the most important areas to be specified is good levels of insulation. This will ensure that any heat generated is not lost. There is also a financial implication in terms of return on investment; a well-insulated home will incur low heating costs. Once you have ensured the dwelling is well insulated, the next step is heating. It is vital to take a 'holistic' view. Consider the comfort of the users and the performance of the dwelling simultaneously with the selection of a heating system that will ensure it is comfortable to use, while being cost effective to run. These are key reasons why selfbuilders and homemakers choose Warmup underfloor heating. There are two underfloor heating systems to choose from: electric and hydronic. One of the benefits of underfloor heating is that it is virtually maintenance free. Warmup offers a lifetime warranty and a SafetyNet™ installation guarantee on its underfloor heating systems. Should a system be accidentally damaged during installation, Warmup will replace it free of charge. It also offers full knowledge on how its systems will operate and function along with energy usage and running costs at design stage – this is obtained from its Research Centre and post occupancy monitored housing programme including the BRE (Building Research Establishment) Renewable House.

Tel: 0845 345 2288 www.warmup.co.uk

Enq. 304



Schlüter-Systems

Schlüter-Systems has developed a unique electrical underfloor heating system that eradicates sticky situations, measuring mistakes and self levelling and primer layers. Leaving other conventional systems out in the cold, Schlüter®DITRA-HEATE is the perfect all-in-one integrated solution for use under tiles and natural stone flooring. Ideal for refurbishment and renovation projects thanks to its uncoupling and crack-bridging properties, Schlüter®DITRA-HEATE is unlike anything else available due to its loose heating cables which are fixed down to the uncoupling mat free of tape as a result of its unique studded design. Offering optimum freedom for creating concentrated heating zones, as well as providing uniform spacing without the need for measuring and marking, the new system will dramatically cut installation time by up to 70 per cent. Joachim Backes, managing director at Schlüter-Systems, comments: "Schlüter®DITRA-HEATE makes the installation of underfloor heating simpler and easier than ever before. Its distinct studded look and loose cabling make it an installer's dream system, providing flexibility in size and layout and extensive time saving benefits. Its low assembly height is also ideally suited for renovation projects and it's even suitable for installation over problematic substrates. The end result is an underfloor heating system that really does tick all the boxes whether you're the specifier, installer or the homeowner."

Tel: 01530 813 396 www.schluter.co.uk

Enq. 305

DAN SKAN

THE WOOD BURNER THAT CAN TRULY FIRE THE IMAGINATION...

- Over 40 models in 15 bodywork colours and finishes, including 5 natural stones
- DIBt Tested 100% External Air Supply
- Fully automatic user-friendly operation
- Precision engineered in Denmark
- Is this the best stove in the world? Probably... Dan Skan classic stoves since '72

FREE 90 Page Brochure

Specialist showrooms in Cheshire & Co Down

The Stove Yard

Telephone 01477 533 535

www.thestoveyard.com

Enq. 306

Dunsley Heat

The Highlander 10 Stove with central heating boiler

Highlander 10 - HEAT OUTPUTS: Without boiler min 2kW max 9 to 10kW
With central heating boiler: To room up to 3.9kW, To water up to 10.5kW
 Our extensive **central heating range** also includes multi fuel stoves capable of heating up to **nine** or **ten** radiators as well as domestic hot water.

For your nearest stockist
T:01484 682635 All Dunsley stoves are manufactured in Great Britain
 email: sales@dunsleyheat.co.uk www.dunsleyheat.co.uk

Enq. 307



Dan Skan has been making cutting-edge stoves since 1972 and today they're regarded as amongst the very best in the world.

Dan Skan's latest generation of fully automatic Modern Line stoves and heat storage stoves have been specially created for use in low energy homes and their automatic Ex-Air external air system complies to the strict German DIBt standards.

From the designer's point of view, Dan Skan's highly efficient wood burners also deliver something no other contemporary stove maker does; a huge choice – over 40 different models in 15 body-work colours and finishes, including five natural stones.

Visit **Stove Yard's** website for a free 90 page catalogue.

Enq. 306



Emissions from the Yorkshire stove are so low that it very easily complies with the clean air act. Independent lab tests show efficiencies of over 70 per cent on a whole range of fuels, including wood. This has been achieved on the Yorkshire without using catalyst combusters, which are very expensive to replace and can easily become damaged if coal or impure wood is burnt. Clean-burning is also better.

Today **Dunsley Heat** offer a great deal more than just boilers, it has solutions for every heating requirement.

Dunsley is a British company and is run by people who are dedicated to producing top quality goods, designed to give efficient service for many years.

Enq. 307



Incorporating an efficient under-floor heating system is simpler with **ScreedBoard®** from **Collecta**. The board's low thermal resistance (0.05m²/kW) allows heat to spread evenly throughout the floor and provide occupants with optimal warmth under foot. Suitable for new build, refurbishment and conversion projects **ScreedBoard®** is able to accept various floor finishes including ceramic tiles (once primed), laminate flooring, vinyl and carpet, making it ideal for a multitude of floor applications. Additional benefits include excellent sound proofing performance when installed as an acoustic system, its 20/28mm low profile, interlocking edge detail (no screws) and its ability to be cut with a hand or skill saw. For more information go to **Collecta's** website.

Enq. 310



If you require an automated heating and hot water system, and like to save money and have a real fire, then a **Klover** wood pellet stove is the solution.

Running at more than 90 per cent efficiency, and with the same level of automation as an oil or gas boiler, they are a reliable, low carbon heat source that will effortlessly take care of all your heating and hot water needs.

Whether its a designer model for the living room, a utility model for the garage or a **Smart 120** cooking range for your kitchen, it takes you off the grid and onto automated.

Low cost wood heating is available from **Stoves Online**.

Enq. 333

IBD



A property in Stratford Upon Avon is one of the latest homes to benefit from the expertise of IBD in the field of renewable technologies. A combination of Daikin high temperature Altherma heat pumps, Envirotube underfloor heating and a Polypipe heat recovery system have fully met the needs of owner Steve Gant who has created a modern, highly energy efficient property from a 1940s bungalow. "IBD's experience in the whole package of renewable, heat recovery, heat pumps and underfloor

heating is a major advantage. They can see all the energy saving possibilities and maximise the potential by combining market leading products into one fully integrated, highly efficient installation," says Steve.

Enq. 308

DAB Pumps



Self builders who need to solve the problem of low water pressure in housing now have the option of an all-in-one unit that provides low noise levels, ease of installation and automatic commissioning. The e.sybox uses an ergonomic design and cutting edge technology to bring a 'plumb and play' dimension to installation, saving time and money. It can be fitted vertically or horizontally on its anti-vibration mountings or onto a wall and can be plugged into the mains. Once switched on, the unit automatically commissions, saving time, maintenance and hassle. Features like dry running and frost protection offer added peace of mind. It saves space at around 30% smaller than other systems.

Enq. 309

PART SOLUTION

ULTIMATE FLOORBOARD FOR UNDERFLOOR HEATING & SOUND REDUCTION

ScreedBoard®

- Low thermal resistance, provides energy saving under floor heating
- High acoustic performance*: Airborne 51dB and Impact 55dB**
- Suitable for all floors - Robust detail treatment: E-FT-B & B**
- Only 20/28mm thick
- Interconnecting edge detail - no screws required
- Quick and easy to install - no wet trades
- Accepts ceramic tiles and other floor finishes

*Typical performance of E-FT-B. **When used in combination with FIBRE-therm® resilient mats.

The Only Single Layer Treatment for Timber Floors with a Robust Detail

08456 71-71-74

www.screedboard.co.uk

technical@collecta.co.uk

COLLECTA
INNOVATION IN INSULATION

Enq. 310



BEGETUBE UK
The most efficient heating and hot water system under the sun


If you are serious about building a new house and really keeping the annual hot water and heating costs down visit:
www.begetube.co.uk/renewables

Or come and see us at our **new showroom** in the **Carse Industrial Estate**


Begetube UK Ltd
14 Carsegate Road
Inverness
IV3 8EX

Tel: 01463 246600
Fax: 01463 246624
email: info@begetube.co.uk
www.begetube.co.uk

Enq. 311



SCAN FOR BROCHURE



THE RADIATOR FACTORY
WWW.RADIATORFACTORY.NET

FOR ALL TYPES OF DESIGNER & **ECO-ALUMINIUM** RADIATORS

TEL: 0116 260 9257

Enq. 312



STRATFORD

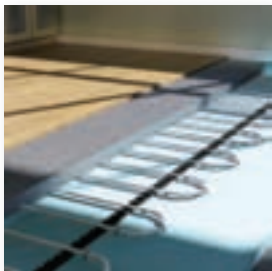


- 50% quicker to raise water to operating temperature
- Now offering a 5 year guarantee
- Designed in Britain, Built in Britain... Unashamedly British.



www.aradastoves.com
T: +44 (0)1297 35700
Axminster • Devon

Enq. 313



Being warm is great. There is pretty much universal agreement on this. So having a heating system in your house is one of the first boxes to tick. Thinking on, it would be prudent to look at the options available, the efficiency of each option and how much money can be saved in the running costs of each system. This bears discussion with knowledgeable people. **Begetube** can help here. With a team of very gifted heating design engineers that can discuss your needs and wants, Begetube can come up with a system ideal for your new property. The company also integrates renewable heating sources, ensuring a super efficient, low running cost heating system.

Enq. 311



Being able to remotely control your heating system is a very useful thing for many people. Maybe you have a second home, or perhaps your work means that you use your house in an unpredictable way?

Wouldn't it be nice to save energy by turning the heating down when the house is not in use, but still be able to walk in to a warm, comfortable home when you arrive?

This is particularly important with underfloor heating, which may take many hours to reheat a property from cold.

Sensible Heat's telephone interface allows remote control of the heating, hot water system and other systems using a standard voice telephone line.

Enq. 332



Arada's Stratford Boiler stoves have recently benefited from having an increase made to their operating pressure, now tested up to 3 Bar. This increase allows the Stratford Boiler stoves to be connected to a much larger variety of central heating systems than was previously possible. All models in the Ecoboiler range still incorporate the boiler stove technologies that Arada has become renowned for, including a thermostat fitted as standard, the ability to produce 50 per cent more heat to water than boiler stoves of similar sizes while raising the water temperature more quickly than comparable stoves. Rest assured, knowing this beautiful stove is not only heating your whole home and hot water but also helping to reduce CO₂ emissions.

Enq. 313



Johnson & Starley's QuanTec gas fired condensing boilers include the HR 28c model with integral passive flue gas heat recovery for additional energy efficiency. The range provides a robust and cost effective solution to domestic heating and hot water delivery with both combi and regular versions.

Many opportunities exist to upgrade older houses and flats where multi-point water heaters are used and where space heating is by electric, solid fuel or partial gas fired space heating.

The installation of an Aquair HIU heating interface unit, linked to a domestic high efficiency combi boiler, has become an efficient and cost effective solution; it saves space and gives substantial savings in CO₂ emissions.

Enq. 314



sustainable solutions under one roof
HEATING / VENTILATION / RENEWABLES



QuanTec - Possibly the most efficient Combi Boiler,In the World!...

- Integral Passive Flue Gas Heat Recovery
- Super Efficient Condensing Boilers
- New 'Cool Door' Technology
- 6 Models Available
- Compact size



Aquair Heat Interface Units, for use with HE Boilers, Heat Pumps & Biomass to deliver Warm Air Heating



www.johnsonandstarley.co.uk

Enq. 314

Grant UK



Grant UK has been designing and manufacturing reliable, high quality, easy to install heating products for more than 35 years. Perhaps best known for its award winning oil fired condensing boilers, Grant UK has expanded its business very successfully into the new world of renewable heating technologies, offering the most efficient air source heat pumps, a sector leading eco efficient solar thermal system as well as the Spira Wood Pellet boilers – all in a range of sizes that would complement virtually any UK residence. The Spira Condensing Wood Pellet boilers deliver efficiencies up to 97.4 per cent

Tel: 01380 736 920 www.grantuk.com

Enq. 315

Infrad



Stylish, good looking and highly efficient space heating that consumes half the energy required to run conventional radiators is now available from Infrad. Founded in May 2012, Infrad offers three product ranges that are new to the UK: Contract, The Curve and Designer. Infrad's products all use radiant heat. "We use the same method as the sun's rays" explains company founder Peter Ferguson. "The energy is emitted in the form of infrared rays which heat only the solid objects they land on including the occupants of the room". This means that, whereas a traditional method of calculating a standard room's requirement for heat is based on 50W m³, with infrared panels only 25W m³ is required.

Enq. 316

Pegler Yorkshire



Following the announcement earlier this year that Pegler Yorkshire has acquired the prestigious Kitemark BS8537 approval for its XPress range of gas and water press fittings, the company is experiencing an increase in sales. Pegler Yorkshire received the approval for its XPress Copper water and gas press fitting ranges in sizes 12, 15, 22 and 28mm for type 1 (water) fittings and 15, 22, and 28mm type 2 (gas) fittings. The BS 8537:2010 certification assures the quality and

value of this product range. Pegler Yorkshire's certification also assures that the XPress fittings are approved for use with copper tubes which meet requirements of BS EN 1057. The range now boasts the esteemed Kitemark.

Enq. 317

Mitsubishi Electric



Mitsubishi Electric has begun operating a new fleet of delivery vehicles to cope with increasing demand for its Ecodan® air source heat pump. Six new Renault trucks join the existing DAF-IF hybrid vehicle. The three 7.5 tonne and three 18 tonne trucks are all decked out in the distinctive Ecodan® branding to help promote the heat pump's energy saving and low carbon credentials. "Now that the government's plans for the domestic Renewable Heat Incentive have been announced, we are seeing a real growth in demand," explains Graham Temple, marketing manager for the company's heating systems division.

Tel: 01707 282 880 www.heating.mitsubishielectric.co.uk

Enq. 318

OPIES UK LTD LIGHTING YOUR FIRE

PREMIUM QUALITY FIREWOOD

KILN DRIED SELECTED WOOD

Skamolex GOLD

VERMICULITE PLAIN & MOULDED PANEL DESIGNS

Skamolex BLUE

CALCIUM SILICATE

Skamolex Gold & Blue insulating & refractory panels. Easily cut with tools to line fireplaces & fireboxes or construction of chimney & fire chambers

www.woodfuels.co.uk | www.john-opie.co.uk

Phone: 01245 468977
opiesuk@googlegmail.com

STOCKS FARM
WALTHAM RD
BOREHAM ESSEX
CM3 3BA

Fax: 01245 469499

Enq. 319

WE RECYCLE HEAT

The more heat we recover, the less you need to generate.

Our heat recovery ventilation units recycle up to 92% of the heat within your home, which is then used to warm the incoming fresh air. We recover even more heat with our heat pump ventilation systems. Simple, effective, healthy.

Call us to find out more.

total home environment

We do more with air...

0845 260 0123

totalhome.co.uk

Enq. 320



Since 1998 **Opies UK Limited** has distributed both Skamolex Blue Calcium Silicate panels and Skamolex Gold Vermiculite panels for Skamol throughout the UK.

Skamolex Blue Calcium Silicate boards are a lightweight, non-combustible material suitable for construction of fire chambers in new builds, fire protection and back up insulation.

Skamolex Gold Vermiculite boards are suitable for lining gas-fires, fireplaces and stoves, plus register plates, heat shields, replacement firebricks, soldering and brazing hearths.

Superior insulating capacity up to 110°C means better combustion and cleaner emissions.

They are ceramic free, non-dusting, non-irritant and odourless, have high mechanical strength and cut easily.

Enq. 319



Imagine living in a home without condensation, draughty trickle-vents or noisy extractor fans. Experience clean fresh air, free from pollen, dust or stale odours. Over 100 per cent of your precious heat energy is recycled back into your home saving you money.

Enjoy sustainable, comfortable heating and gentle cooling of the air – this is the reality of the latest Genvex heat recovery ventilation with integral exhaust-air heat pumps. For complete off-gas heating solutions, air to water heat pumps are also available from **Total Home Environment**.

See them at the National Selfbuild & Renovation Centre in Swindon, J16 off the M4.

Enq. 320



Accounting for more than 55 per cent of the market for external cavity wall insulation, full-fill glass mineral wool can deliver comparable thermal performance as like for like partial fill solutions, such as rigid foam boards, but at a significantly lower cost.

What's more, as full-fill solutions are quick and easy to install with no need for retaining discs, labour costs are similarly reduced.

Knauf Insulation's range of Earthwool DriTherm Cavity Slabs also deliver exceptional environmental performance and are manufactured using the innovative ECOSE® Technology – a revolutionary, bio-based, formaldehyde-free binder technology that is based on rapidly renewable materials, rather than petro-based chemicals.

Enq. 321



One of the UK's most efficient inset stove (18i: see HETAS Guide 2013) just became a free-standing model!

The new 18q, from **Jetmaster**, is a powerful wood and multi-fuel convector stove, styled with a minimal clean line design. All the popular features of the successful 18i are available in the 18q: a 4.9 kW output, 85 per cent fuel efficiency, Defra approved for burning wood in smokeless zones.

An added benefit of the 18q is that it warms your room in two ways: heat gently radiates through the glass as well as convection air is projected from around the firebox.

Available to be installed on a beautiful steel bench designed especially for the 18q, the bench, like the 18q, is engineered in Britain. 18q retails at £1,495 (RRP) + £295 for the bench.

Enq. 322

Did you know?

By choosing to install a **Full-Fill** solution rather than a Partial Fill solution, you could be saving yourself...



For the Full Facts and to find out just how much you could save visit:
knaufinsulation.co.uk/fullfacts



Full-fill glass mineral wool solutions can be the most cost effective option for external walls in order to achieve compliance with Part L of the Building Regulations.



knaufINSULATION
it's time to save energy

with **ECOSE** TECHNOLOGY

Enq. 321

18q

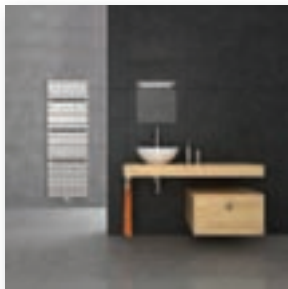
4.9 kW output
85% efficient
Wood & multi fuel
Defra approved
No air supply required

★ Powerful convector stove, styled with a minimal clean line design.

02380 629515 | www.jetmaster.co.uk | 02380 629517 | info@jetmaster.co.uk

Enq. 322

Stelrad Radiators



Stelrad Radiators has unveiled a stunning addition to its collection of towel rails. Available now from Stelrad Radiator stockists, the Concord towel rail, a high quality, exquisite radiator in its own right, is now part of the range that bears its name. The Concord towel rail offers a sleek, flat tube design that adds style and finesse to the décor in the bathroom. While it comes as standard in white, it's available in a range of 35 colours making matching and contrasting to colour schemes an exciting additional option. For more information on the portfolio of towel rail products from Stelrad, visit the website.

Tel: 0870 849 8056 www.stelrad.com

Enq. 323

Xpelair Ventilation Solutions



Xpelair Ventilation Solutions has launched the ConneX range of RF (radio frequency) controls; the ideal command solution that puts users in complete control of their ventilation requirements. The battery-less ConneX controllers can be used with up to 10 units of the same size at a distance of 25 metres, meaning that rather than adjusting units individually, multiple units throughout a home can be adjusted at the touch of a button.

Due to the ease of use, the RF controls have the potential to significantly reduce running costs by enabling the ventilation units to run at a required rate as specified by the user as opposed to running at a constant rate.

Enq. 324

Johnson & Starley



One of the first installations of Johnson & Starley's WarmCair condensing Warm Air Heating system is already demonstrating its energy efficiency and home comfort benefits in a modern residential property in Northampton. For the owners, Mr & Mrs Inwood, the WarmCair represents their third investment in Johnson & Starley Warm Air Heating systems in different properties – testimony in itself to the confidence they have in the technology and the company. "One of the major advantages of warm air heating is the unobtrusive nature of the room outlets," says Marlene Inwood. "They do not take up wall space, [...] go with any decor and they give us great flexibility in the positioning of our [...] furniture."

One of the major advantages of warm air heating is the unobtrusive nature of the room outlets," says Marlene Inwood. "They do not take up wall space, [...] go with any decor and they give us great flexibility in the positioning of our [...] furniture."

Enq. 325

Eurostove



The new Westfire Uniq 33 wood burning stove from Eurostove is a handsome and sleek design that sits above floor level to give a warm visual aspect of the fire and also project the heat more efficiently into the central air-space of the room. Eurostove believe it's important to choose the positioning of the Uniq 33 to create a focal point and also appreciate the glass side panels with dark glass at the base and clear glass at the top so the flames and illumination can be seen from three aspects. Wood burning stoves deliver 80 per cent efficiency.

Tel: 01934 750 500 www.eurostove.co.uk

Enq. 326

SCHIEDEL ABSOLUT



The Advanced Chimney System with an Integrated Insulated Combustion Air Shaft

www.schiedel.co.uk Part of the MONIER GROUP

Enq. 327

Viessmann



Viessmann's recently launched campaign, brought to life on the radio by Tommy Walsh, to increase awareness of weather compensation technology presents it as the answer to keeping up with changeable British weather. The sensor costs just £60 and could have a payback period of less than 12 months as the technology can return additional gas savings over the life of the boiler of up to 15 per cent per annum. The control works with a small outdoor sensor automatically adjusting the boiler to compensate for outdoor temperature changes, leaving residents blissfully unaware of outside temperature changes but still saving on their energy bills.

Tel: 01952 675 000 www.viessmann.co.uk

Enq. 328

Connect with Selfbuilder & Homemaker online

Emailed on a monthly basis, the Selfbuilder & Homemaker newsletter is designed to provide you with the latest information on products and services of interest, direct to your inbox.

You can quickly gather a snapshot of information from up to 12 carefully selected companies and easily follow links through to further information, or go direct to the company's own website.

Brochures and videos are also regularly available.

[Visit www.sbhonline.eu to subscribe & find out more!]



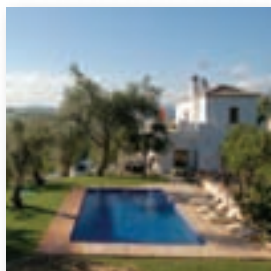


Modern heating technologies place enormous demands on a chimney system. Low flue gas temperatures from energy efficient appliances can lead to condensate forming within the chimney, while chimneys used on solid fuel applications must also be capable of withstanding a chimney fire.

With its GW3 rated ceramic profiled liner, **Schiedel's Absolut** offers condensate resistance even after a soot fire. Thermal performance of the appliance is optimised through the provision of combustion air at the right temperature through the integrated shaft.

Heat transmission between the warm interior and cold exterior of the building is avoided through the use of the thermal chimney block.

Enq. 327



Trying to get mains power to a building can be quite difficult. In some instances, the location of your dwelling can mean getting a mains supply is just not feasible. This was the case for a customer who had built a holiday home in the foothills of Sierra Nevada.

The **Powerguard PS** system installed supplied the home with economical power 24 hours a day. Adding renewable energy, such as a wind turbine or solar panels, to the system reduces the reliance on the generator further.

The customer commented: "The system is very reliable. I have no issues with recommending this system to people who are unable to secure a utility mains connection."

Enq. 329



Now is the time to ensure your warmest winter ever by installing a **Clearview Woodburning Stove**. It can take up to eight weeks from choosing a stove to its installation, so plan ahead and beat the rush.

Clearviews stoves combine stunning styling and exceptional quality. The stoves are designed and manufactured in Shropshire to the highest possible specifications, in a range of sizes to suit most installations.

A Clearview woodburning stove will save you money and bring you great pleasure, lifting your spirits as well as the temperature. Come home to the benefits of a Clearview Stove.

Enq. 330



The recently confirmed launch of the Renewable Heat Incentive (RHI) in the domestic sector is set to revolutionise the way we heat our homes.

Homeowners, landlords & self-builders across Great Britain can qualify for substantial, tax-free, index-linked payments, guaranteed for seven years just for having the foresight to replace their boilers with highly efficient heat pumps. For a limited time there is even additional funding available towards installation.

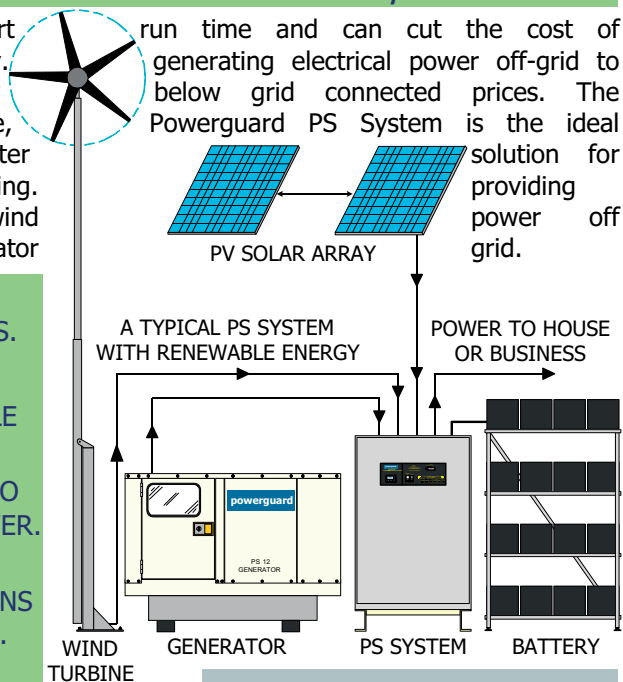
This means you could now be in the unique position to install a system which performs so effectively it could reduce your fuel bills by half and recoup the installation costs.

Shouldn't you find out more? Contact **ICE Energy Technologies**.

Enq. 331

AUTOMATIC AND INTEGRATED OFF-GRID POWER SYSTEMS EFFICIENT AND RELIABLE ELECTRICAL POWER 24/7

The Powerguard PS System operates with any auto-start generator providing power 24/7 in a controlled and efficient way. Typically the generator on a system without renewable energy will run for about 6 hours per day increasing generator life, reducing fuel use and maintenance. The battery via the inverter provides the power to the load when the generator is not running. The illustration shows a PS System with the addition of a wind turbine and PV solar array. Renewable energy will reduce generator



- PRACTICAL COST EFFECTIVE, INTEGRATED AND AUTOMATIC SOLUTIONS FOR OFF-GRID APPLICATIONS.
- CUT COSTS SAVE FUEL AND REDUCE POLLUTION.
- THE PS SYSTEM CONTROLS ENERGY FROM RENEWABLE SOURCES SUCH AS WIND, PV SOLAR AND HYDRO.
- RENEWABLE ENERGY CAN REDUCE RUNNING COSTS TO BELOW THE COST OF BUYING GRID CONNECTED POWER.
- COMBINED HEAT AND POWER VERSIONS FOR HIGH EFFICIENCY AND LOW RUNNING COST IN APPLICATIONS WHERE THE GENERATOR RUNS FOR LONGER PERIODS.
- THE COMPLETE ANSWER TO OFF-GRID APPLICATIONS.

powerguard

POWER IS OUR BUSINESS
SAVING FUEL AN OBSESSION

Call: 01507 600 688
sales@powerguard.co.uk
www.powerguard.co.uk

Enq. 329

CLEARVIEW STOVES

Britain's leading manufacturer of clean burning wood stoves

The complete solution for Selfbuilders and Homemakers



We are the UK's largest dedicated manufacturer of clean burning wood stoves, designing, manufacturing and distributing from our ten acre site in Shropshire.

With installation and product knowledge unequalled in the industry, we can provide all that is necessary for a trouble free installation.

Some of our benefits include:

- Money saving.
- Certified for use in smokeless zones. We were the first ever company to achieve this.
- A heat source that is 70% efficient, most open fires are only 10%.
- Very easy to light and maintain. They burn for long periods unattended and the ashtray only needs to be emptied every two to three weeks.
- You are in control of your fuel supply, no longer dependent on the big energy companies.
- A satisfying and pleasurable way to heat your home.
- Reduced dependence on fossil fuels.
- Thousands of accessories and flue components in stock.



STOCKISTS THROUGHOUT THE UK

www.clearviewstoves.com Brochure Line: 01588 650 123

Dinham House, Ludlow, Shropshire, SY8 1EJ. Tel: 01584 878 100

Enq. 330



A HEATING SCHEME WHICH PAYS YOU FOR HEATING YOUR HOME?

- **BENEFIT FROM THE NEW RENEWABLE HEAT INCENTIVE**
- **INSTALL HEAT PUMPS & EARN THOUSANDS OF POUNDS**
- **GET PAID FOR THE RENEWABLE HEAT YOU GENERATE**
- **7 YEAR, GUARANTEED, INDEX-LINKED PAYMENTS**
- **REDUCE YOUR FUEL BILLS**



IT'S THE BEST THING SINCE SLICED BREAD!

INSTALL HEAT PUMPS AND RECEIVE TAX-FREE PAYMENTS FOR 7 YEARS

Simply call **0808 145 2340** quoting ref **SBH11** or visit www.iceenergy.co.uk to request a free, no obligation quotation and to secure your payments.



Enq. 331

When embarking on a self build project, it is not just design, planning and construction costs that are a challenge. The type of insurance required for the build while under construction and for the years beyond completion is also a daunting prospect. You might be able to save some money on the build costs, but you can't cut corners on the insurance you require. There are a number of different types of insurance that are recommended and below is a guide for self builders on the most common types of insurance.

Site insurance

This is essential for every self builder. This cover is similar to domestic house insurance and contents policy, and covers properties while under construction. It protects against losses caused by fire, flood, delivery vehicles, vandalism and other eventualities that could cost time and money. Most policies will also include tools, plant and site huts/caravans that have been hired and are on site during the project.

Public liability and employers' liability

Public liability is the most important policy you will buy for your project. It covers you in the event that someone wanders on site and gets injured. It is worth noting that you can be liable if someone trespasses on your land and accidentally gets injured. The standard level of cover for each policy is £5 million.

In addition, you may need employers' liability if you are project managing and employing trades directly. You might not be employing the person but there is still a duty of care on your part.

You might be able to save some money on the build costs, but you can't cut corners on the insurance

Income protection

If you are borrowing money for the project then it's worth thinking about the various types of income protection. These may include life assurance and critical illness cover.

Non-negligence cover – JCT 21.2.1 cover

This is particularly important when building a terraced house and digging a basement with neighbours in close proximity and party wall agreements in place.

Continued overleaf...

Guide to insurance cover for self builders

By Ed Bidwell of Evolution Warranties



10-year structural warranty or latent defects insurance

When building your own home, whether 100 per cent cash or borrowing money from a bank or building society, you should buy a structural warranty. This is not only a lender requirement, but also gives you peace of mind in the event of a structural defect. Should you wish to raise some finance or sell the property within 10 years of building it, a future purchaser may insist upon a structural warranty. It is worth noting that purchasing residential warranties after completion is expensive.

On the internet it would appear there are many providers of self build warranty insurance, however, this is not the case. There are only four specialist self build warranty insurers in the market today.

Similarly, there are only a handful of specialist self build mortgage providers in the market and lending criteria continues to be more stringent than it was six years ago. Mortgages are no longer interest only and are dependent on affordability, design, location, and the age and experience of the self builder.

Enq. 171

Case study – Orchard Cottage, Rattlesden

Orchard Cottage in Rattlesden is an example of a self build requiring site insurance, including public liability and 10-year warranty cover. The level of cover of the structural warranty was £300,000 and, although the owners of Orchard Cottage were funding the building works with cash, they were fully aware of the requirement by mortgage lenders if they were to need finance at a future date. Mr Walker, the owner commented: "With two children in their early twenties, it is only a matter of time before we might have to release some money from the house to assist them with deposits on their first homes. The cost of the 10-year warranty was extremely reasonable at the start of the project and certainly a policy I would recommend if you are embarking on a self build. You might be paying with cash, but flexibility and planning for the future is essential!"

In conclusion, when it comes to insurance, do your research, take advice and plan for the future, as your circumstances may change...



ORCHARD COTTAGE IN RATTLEDEN DURING CONSTRUCTION



THE COTTAGE NEARING THE END OF CONSTRUCTION

Tel: 01837 658955
Phone now for **FREE**
expert advice

 **VERSATILE INSURANCE**

Compare!
Self Build Insurance
for the **CHEAPEST** quote!



We compare the market from leading self build and renovation insurance companies.

We insure new builds, renovation projects, empty buildings, let property, residential and commercial, public and employer's liability, contractors all risks, and more!

www.versatileinsurance.co.uk
e: info@versatileinsurance.co.uk t: 01837 658955
Bridge House Okehampton EX20 1DL

Versatile Insurance is a trading name of Versatile Insurance Professionals Limited and is authorised and regulated by the Financial Conduct Authority

Enq. 172

Evolution Insurance Solution Ltd



Evolution Insurance Solutions Ltd is an Insurance Broker authorised and regulated in the UK by the Financial Services Authority under FSA number 472438.

Evolution Insurance Solutions Ltd is one of the UK's leading brokers in the 10 Year Structural Warranty market.

If you are undertaking a self build project in the near future then you are likely to require a mortgage compliant warranty and site insurance.

Evolution is a specialist in this market and will source the right product at competitive rates for your project.

Tel: 01799 512 031 www.buildingwarranties.com

Enq. 173

Dickies



Judi James, a farmer from Littlebredy in Dorchester, has been crowned UK Worker of the Year for 2013 in the competition sponsored by Dickies and Suzuki GB to recognise and reward excellence in the British workforce. Judi claimed a Suzuki Swift as her winner's prize, with highly-commended finalists each awarded £200 in workwear vouchers from Dickies. Dickies is proud to announce that it will again be organising UK Worker of the Year in 2014 as part of its commitment to the

British market and the workers for whom the company provides quality, cost effective workwear.

Tel: 01761 419419 www.dickieseuropa.com

Enq. 174

COREgravel

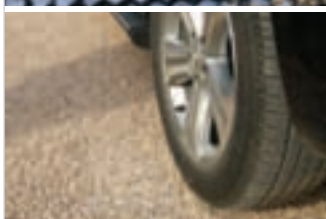
www.coregravel.co.uk
0800 118 2278

COREgravel creates a naturally porous stabilising base into which gravel sits and STAYS!
No sinking, no movement, no problem!
It's easy to lay, inexpensive and very, very effective.

KEEP GRAVEL IN ITS PLACE



COREglow



COREpath

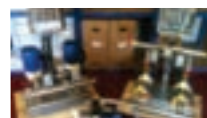


Enq. 175

total

domestic pump stations

At Total Waste Water Systems (UK) Ltd, our goal is not only to help you with your drainage needs but to make the process easy and problem free for you. We stock, supply and manufacture a wide range of pumping stations for both foul and storm water to suit a variety of budgets and tastes. Let's discuss your ideas! Your free consultation is just a phone call away.



01335 342246

info@totalwastewatersystemsuk.co.uk

www.totalwastewatersystemsuk.co.uk

Enq. 176

No gravity flow for mains drainage?

Please call us - Talk to the specialists!



BASEMENT AND
DRAINAGE SYSTEMS



- Pumping Stations
- Treatment Plants
- Waterproofing
- Stormwater
- On-Site Support Services

Tel: 01925 750801

www.drainage-systems-online.co.uk



Enq. 177

The practical benefits of specifying floor tiles in your new home

British Ceramic Tile's trend manager, Claire O'Brien, discusses the latest looks in flooring and how floor tiles are proving to be extremely popular in new builds thanks to their practicality and long term cost benefits

A good foundation

A correctly installed, good quality floor tile will put your new home in good stead for years to come, but preparation is key. Time spent on thorough preparation makes laying a tiled floor much easier and will ensure a better finish. Whatever the subfloor, it needs to be stable and physically capable of bearing the extra weight of the tiles, with sufficient ventilation if the floor is wooden. It also needs to be dry, smooth, stable and free from dirt and grease.

In the kitchen, a flexible adhesive is best to use with floor tiles so that it can move with the tiles should they expand with the heat radiating from a stove or cooker. For bathrooms it's vital that you tile onto a water resistant surface. Sand/cement render, dense concrete or water resistant tile backer board are ideal. If in doubt about the correct adhesive and grout to use, always seek professional advice.

Consideration should be given to the durability, slip resistance and safety of the floor covering. Tiles with a textured or brushed finish offer better slip resistance than those with a polished finish. In the kitchen or bathroom, look for a tile that provides adequate slip-resistance for a safer environment.

New builds also provide a fantastic opportunity to consider underfloor heating. It's perfectly suited to a tiled floor and can also create more valuable wall space by removing the need for radiators.

The choice is endless

Ceramic floor tiles are the easiest material to install, as they are simple to cut and ideal when tiling rooms of varying sizes as you can cut to size. Look out for multi use floor tiles as these can also be used on walls, meaning that if you order too many they may come in handy for your walls later down the line.

Offering the same design aesthetics as natural stone yet just a fraction of the cost, stone-effect ceramic tiles are extremely popular at the moment as they are perfect for every room in the home and extremely hard-wearing. Installation is much quicker with ceramic tiles as they are easier to cut and shape, and being waterproof there is no need for sealing or special maintenance, making them a practical option when it comes to selecting a floor covering.

Available in a range of stone and wood-effects, these types of tiles bring to life the detail and shade variations you come to expect with real stone or wood, but with the added benefits of natural imperfections being removed and a variety of size formats.

Functional, practical and stylish, porcelain tiles are a popular choice as they are hard wearing and require little maintenance. Perfectly suited to busy areas like a kitchen, porcelain tiles are easy to clean, hygienic and can stand the wear and tear of a typical family home. As porcelain is porous, polished porcelain tiles, borders and decors should be sealed before and after fixing to prevent staining. Glazed porcelain in particular is very low maintenance and doesn't require any sealing, just regular cleaning as you would with any type of hard floor.

Ceramic floor tiles are the easiest material to install, as they are simple to cut and ideal when tiling rooms of varying sizes...



CONCRETE FLOOR TILES IN THREE STRIKING SHADES OF GREY FROM LIGHT TO DARK WITH A COORDINATING FEATURE FLOOR TILE

Latest trends

Once a purely functional choice, tiles have become a fashion statement giving other surface alternatives a serious run for their money. No longer confined to just the kitchen or bathroom, we're becoming more adventurous in the use of tiles. Patterned tiles have become a popular choice, as have designs that mix together different styles and sizes to create a bespoke floor covering. Combining different sized tiles together is a great way to zone specific areas and create a striking visual effect.

The floor is increasingly being seen as the 'fifth wall' with patterned floor tiles in both classic and contemporary designs being used to create interesting spaces. New feature floors make a floor less ordinary and are available in a wide range of designs from contemporary parquet and geometric patterns right through to funky, modern images of water, pebbles and grass.

There has also been a growing trend for larger format tiles, which brings a real feeling of space into the home, especially as tiled flooring can easily be carried through from the kitchen to the dining room. The choice really is endless.



BROWN AND CREAM STONE EFFECT TILES FOR A TRADITIONAL LOOK (ABOVE LEFT) AND GREY AND CREAM 3D EFFECT TILES GIVE A MORE CONTEMPORARY FEEL (ABOVE RIGHT)

Enq. 178

Redbacks Kneepads



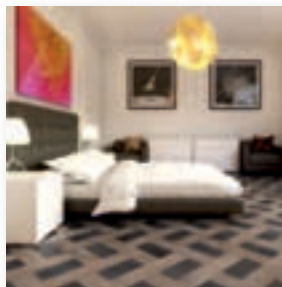
An award winning, non-foam based, pocketed safety kneepad "can help prevent up to six months down time and subsequent loss of earnings through knee injury in the workplace". The claim comes from Cliff Lockyer, CEO of CL-7 Limited, the manufacturers of the 'Redbacks' cushioning kneepads, winners of the '2012 SATRA Best Innovation in Occupational PPE Award'. The kneepads unique 'cushioning technology' distributes body weight evenly, elevating the knees to relieve

back pain and reduce pressure on knee, leg, ankle and foot joints, while minimising the risk of possible injury from sharp or penetrating objects.

Tel: 01327 702 104 www.redbackskneepads.co.uk

Enq. 179

Ted Todd



Ted Todd has launched a design competition to celebrate the launch of its new range 'Create' – a first of its kind, easy-to-use bespoke design system for anyone wanting to create a fabulous hardwood flooring to suit their project's style.

Like Ted Todd's Facebook page at www.facebook.com/tedtoddwood floors and enter your ideas to be in with the chance to win the design of your dreams. With over 30,000

possible design combinations, designing something to complement your interior has never been easier.

Tel: 01925 284 363 www.tedtodd.co.uk

Enq. 180

KITCHENS WORKTOPS & STEPS APPLIANCES	TILES WOODEN FLOORING MOSAICS	BATHROOMS MARBLE CLADDING GRANITE
3 FLOOR SHOWROOM : CAD DESIGNS , MARBLE & GRANITE FACTORY TEL.: 020 8961 77 00 WWW.DIRECTSUPPLIESLTD.COM		

Enq. 181

Define Lighting



Define Lighting Ltd is a company that is recognised for supplying great interior and exterior lighting. The company has an extensive lighting collection for commercial and residential interiors. With over 14 years' experience in the lighting industry, Define Lighting has a wide range of picture lights – bedside wall light. Bathroom & kitchen LED – energy saving – pendant light and plaster paintable wall lights – exterior plus bathroom ceiling and much more. The company also offers professional

advice and some bespoke lighting.

Tel: 01708 780 659 info@definelighting.com

Enq. 182

GPS PE Pipe Systems



A high performance PE pipe suitable for rainwater harvesting, grey water and irrigation applications, Enviro-Line, from GPS PE Pipe Systems, features the distinctive green stripe recommended by the Water Regulations Advisory Scheme (WRAS) and the National Joint Utilities Group (NJUG). It has been launched to help specification of sustainable developments, providing a flexible and durable re-useable water infrastructure that avoids the risk of cross contamination with potable water supplies thanks to its black with green stripe colour coding. Enviro-Line offers all the usual advantages of PE, including a 100 year+ service life and is supplied in a wide range of sizes to suit any installation.

Enq. 183



Bona

Bona is renowned throughout the world as a leading manufacturer of colours and hard wearing finishes for wood floors, including polyurethane lacquers and natural and hard wax oils. These high-performance, low VOC formulations are designed for professional use, with Bona supplying a list of trained and certified wood flooring contractors who can help with installation or the renovation of existing floors including dust free sanding, staining and finishing.

Bona's own technical team are based around the UK and can provide expert advice for your wood flooring project. Information about all its products are available on its website including products for cleaning and maintenance to ensure your new wood floor stays looking as good as new. Bona recommend its Bona Spray Map for regular cleaning around the home, being one of the easiest and quickest ways to keep your wood and other hard surfaces clean. Never be tempted to use a steam cleaner on your wood floor as the heat can damage the wood. For more information and advice, visit Bona's website.

Tel: 01908 525 150 www.bona.com

Enq. 184

Flowing Screed and Underfloor Heating Specialists



BEFORE



AFTER

We undertake a wide range of projects, from 20m² to 4000m², including:

- Self Builds/New Builds
- Extensions
- Cellar Conversions
- Barn Conversions
- Conservatories
- Apartment Blocks

If you need just screeding, just underfloor heating or both please contact us for free expert advice.

Over 30 years construction industry experience.

www.selfbuildfloors.co.uk
Tel/Fax: 0114 231 5937

Mob: Simon Wilson: 07967 033375; Bevin Pilling: 07896 598076



SELFBUILD
& HOMEBUILDING

Enq. 185



Control of:

- lighting • blinds • c.c.t.v. • heating



and with extra integration...

- security • audio & visual
- via ipad/iphone/android devices



Vitrum UK (Home Control) Ltd

Call Ivan on 07966 236969

www.vitrum.com

Enq. 186

Yeoman Rainguard



Yeoman Rainguard has added attractive rain cups and chains to its range of rainwater systems.

Manufactured from copper, one of the few metals that is fully sustainable, the rain cups and chains are proven to be an environmentally friendly, naturally durable, decorative addition to any project.

Yeoman Rainguard copper rain chains and cups are available in a wide range of designs and profiles making them the perfect finishing touch

on any house, conservatory or garden building.

Contact Yeoman Rainguard to obtain a free copy of the new full colour brochure.

Enq. 187

Yeoman Rainguard



Yeoman Rainguard has been fitted to an impressive house (part of which dates back to the 18th century) as part of a major renovation carried out by Wiltshire based A G Builders.

Yeoman Rainguard supplied XL Aluminium 125 x 55mm half round gutter & 75mm diameter downpipe in a special lead grey coloured textured finish.

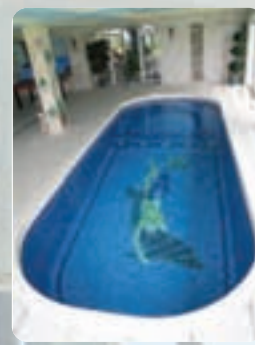
A G Builders' director, Barry Gill, said: "We have used Yeoman Rainguard on many different projects

(including new build and renovation) and have always been satisfied with its products and prices and the service and advice provided by its area sales manager, Tim Hanks."

Enq. 188



for your life
for a lifetime



You want to enjoy the health benefits of a swimming pool. But you can't really justify the time and trouble that maintaining a full size pool demands.

The Swimspa by Spa De La Mare is an all year round swimming machine and hydrotherapy massage spa in one, for indoor or outdoor use. Built to exacting standards in the Channel Islands, it is the ultimate low maintenance solution for busy people. Prices start from a refreshing £17,500.

For a brochure please call

01481 701333

www.spadelamare.com

swimspa

Enq. 189



When it comes to choosing Aluminium Gutters & Pipes, it's as simple as **ARP**

There is a large range of gutter profiles including, half round, beaded, beaded deep flow, ogee and box.

Our complimentary range of pipes are available in diameter, square and rectangular profiles with flush joint, swaged or cast collars.

ARP also offer the Mustang Seamless gutter system offering up to 30 metres in one length giving a smooth uninterrupted appearance. The only BBA approved system.

Visit our website for the complete range, or ask for one of our Technical Product Guides www.arp-ltd.com

For more information about our specification service, call today on **0116 289 4400** or email us at sales@arp-ltd.com

Enq. 190

Turning the spotlight on home security

Years of hard work can go into building your own perfect home – but while you wrestle with structural problems or aesthetic dilemmas, it can be easy for security to take a back seat. However, it's vital to ensure your property is properly secured, as crime can turn your dream home into a nightmare.



DR STEFFAN GEORGE OF THE MLA

Here, Dr Steffan George, development director of the Master Locksmiths Association (MLA) offers security advice to self builders to help them protect their property, possessions and give them valuable peace of mind

'Designing in' security

Security should be considered at the design stage of your project, rather than as an after-thought. Structural features can have a significant impact on security – a flat roof next to a window, for example, can make access easier for burglars. And if you intend to fit CCTV and/or a burglar alarm, you should consider including the cabling in your plans too.

Structural features can have a significant impact on security – a flat roof next to a window, for example, can make access easier for burglars

External security

Review security from the outside in. Take a walk around the perimeter of your home and keep a look out for weak spots – such as gaps in fencing – which may make life easier for burglars. A burglar alarm can provide an effective deterrent, however, it's advisable to have the alarm fitted by a National Security Inspectorate (NSI) and/or a Security Systems and Alarms Inspection Board (SSAIB) certified installer. CCTV can also act as a deterrent too – temporary systems can even be installed to protect your site and help prevent vandalism or loss of building materials.

You can also prevent easy access to the back and sides of your home by installing locked gates, 2-metre minimum height fencing and adding trellis topping, which makes climbing difficult. Security lighting can also be used to illuminate dingy areas of your grounds. If you have outbuildings – or you are using a shed to store materials during the building process – you can increase the level of security by using good quality locks, padlocks and hasps and staples. It's also advisable to use products that have third party accreditation from bodies such as security product testing house Sold Secure, which will ensure they meet high standards. You could have window grilles and bars installed too.

Controlling access

Throughout your building project, many people – such as tradesmen – will have access to your keys, and it can be difficult to keep track of how many copies have been made. Changing your locks once the property is completed is therefore advisable – and you could also consider using a patented system. Patented keys can't be copied without the owner's permission, so their distribution can be effectively controlled, and often such systems can be reconfigured and a new key issued, saving time and money.

For convenience, you might consider having your locks keyed alike so the same key opens multiple doors and locks: this would minimise the number of keys you have lying around.



Securing doors

It can be tempting to fit your own door locks to your property, especially if you've been 'hands on' during your building project. However, if the wrong locks are installed, if they are fitted to a weak door, or if they are not installed properly, they can compromise security – as well as making it difficult to escape in emergency situations and potentially invalidating your insurance too. The lock-fitting process can damage doors if the installation isn't carried out correctly. It's therefore advisable to use a third party accredited professional, such as a Master Locksmiths Association licensed locksmith, to fit your locks, which could save you money in the long run.

In addition, you should ensure that your doors sit correctly in their frames to begin with, and that they meet British Standards – external doors in particular should meet the PAS 24 2012 Enhanced Security Performance Requirements for Doorsets and Windows.

The security of external doors can be boosted with additional bolts to stop lifting or forced entry and it's advisable, if you are installing patio doors, to have their sliding section on the inside and to fit anti-lift blocks.

Protecting your windows

A poorly secured window can provide a point of entry for a would-be thief: you should therefore ensure your windows meet the PAS 24 2012 standard (formerly BS 7950). Glass panels on or around doors, and in ground floor or easily accessible windows, are vulnerable, so it's worth using laminated glass in such areas, as it holds together when shattered.

Again, it's advisable to use a third party accredited professional to fit window locks, to avoid damage to frames, invalidating insurance and creating a security risk.

Use a professional

A professional locksmith who is a member of a recognised trade association, such as the MLA, will be able to aid you in securing your home, from reviewing external security to installing locks or advising on the best systems to use. By consulting an MLA member for advice at the design stage you can ensure appropriate products are specified, ordered and supplied from the outset.

MLA members undergo strict vetting procedures and are able to provide advice based on expert knowledge and experience.

...If the wrong locks are installed, if they are fitted to a weak door, or if they are not installed properly, they can compromise security...

Enq. 191

Stairs & staircases showcase

In this issue of Selfbuilder & Homemaker we look at recent trends in staircases



1 GERMAN STAIRS

Keith Barrett, managing director, German Stairs Limited comments: "Staircases are no longer just a means of getting you from one level to another; they form a major part of the overall design and ambience, creating one of the main focal points in your home. They are a feature and statement – architects and designers are constantly focusing more on staircase designs to achieve the ultimate wow factor". German Stairs works extremely closely with many self builders to help and assist them achieve their visions.

www.germanstairs.co.uk

enq. 192

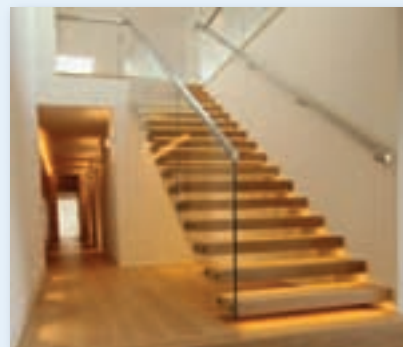
2 STAIRKRAFT

As demand grows for minimalist staircase designs and sleek floating lines, Stairkraft defines a new breed of contemporary staircases. The company offer a bespoke, innovative solution, creating stunning visual impressions for your home.

All staircases are developed to suit your own unique requirements from concept to completion. The limestone, cantilevered feature staircase pictured below has been designed by Stairkraft.

www.stairkraft.co.uk

enq. 193



3 CANAL ARCHITECTURAL

CANAL Architectural create a grand entrance for a Central London penthouse with two floating cantilever staircases leading the way to stunning views.

With a brief to produce high end, contemporary access for the multi-storey penthouse, CANAL used its knowledge and engineering expertise to transform the initial design ideas into the two feature staircases with interior glass balustrade running throughout the apartment.

www.canal.eu.com

enq. 194



Stunning
light & open
timber staircases

View case studies at
www.completestairsystems.co.uk
or visit our showroom in Romsey, Hants
01794 522444

**COMPLETE
STAIR
SYSTEMS**

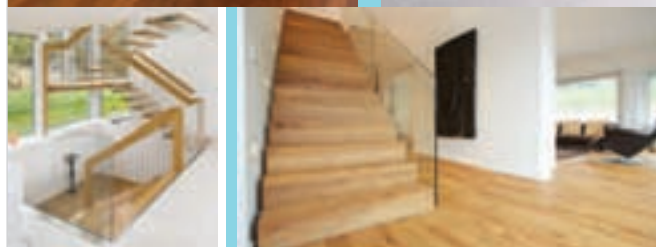
Enq. 195



Specialist suppliers of
unique German staircases,
frameless and stainless glass
balustrades

Tel: 01425 611112 Fax: 01425 617773 sales@fivestars.ltd.uk
www.fivestars.ltd.uk

Enq. 196



German Stairs design, manufacture and install modern and contemporary feature staircases.

German Stairs Ltd.
The Finest Quality German Feature Staircases
 Telephone: 01772 866344
 Mobile: 07725 60 76 48
 info@germanstairs.co.uk
 www.germanstairs.co.uk

Enq. 192

stairkraft
 Creating Innovative Solutions

Exclusive Contemporary Staircases characterised by sleek flawless finishes

Unit 2
 March Street
 Sheffield
 S9 5DQ
 0114 243 0259
 info@stairkraft.co.uk
 www.stairkraft.co.uk

Enq. 193



[Connect with Selfbuilder & Homemaker online by visiting www.facebook.com/sbhmag, pinterest.com/selfbuildhome and twitter.com/SelfbuilderHome to follow us!]

**selfbuilder
 & homemaker**



As well as the bi-monthly magazine, Selfbuilder & Homemaker have an increasingly popular online profile to help keep you up to date with all of the latest products, innovations, inspirational ideas and projects. Newly launched is the Selfbuilder & Homemaker Pinterest page; a one stop source of inspiration. Pinterest allows you to browse pinboards, discover new things and get inspiration from people who share your interests, as well as create your own boards so you can organise and share all the beautiful things you find on the web. Subscribing to our Selfbuilder & Homemaker Facebook and Twitter pages enables you to easily keep track of all of the latest products, innovations and inspirational ideas and projects.

Xtralite Rooflights



Divert daylight into rooms lacking natural light with the new flexible DDS Light Pipe range from Xtralite Rooflights, available in two formats, Rigid and Flexi-tube. The low maintenance environmentally friendly pipes act as a conduit between internal ceilings and external roofs and can be fitted on slate, tile, flat or pitched roofs to divert light indoors. Rigid Tube supplies a larger amount of reflected light, while Flexi-tube is much more adaptable to install. With a consistently high Total

Reflection rate of 98%, the DDS Light Pipe range's durable, mirror-finished polished aluminium tube offers much higher reflection levels than similar products which use multi-layer polymeric film.

Enq. 197

Howarth Timber & Building Supplies



Howarth Timber & Building Supplies is continuing to provide its customers with the most comprehensive service on the market after signing an exclusive agreement with on-site health and safety provider HazardCo. HazardCo provides builders and other contractors with simple and practical packs to effectively deal with health and safety on site. Mark Potter from HazardCo said: "Our goal is to help ensure everyone gets home safely at the end of each and every day and we're confident this agreement with Howarth Timber & Building Supplies will see more builders and contractors protected than ever before."

www.howarth-timber.co.uk www.hazardco.com

Enq. 198

Lime Technology Group



When a Hampshire couple decided to build a new house, their number one priority was that it would impact on the environment as little as possible. Tradical® Hemcrete®, supplied by Hemcrete Projects – part of the Lime Technology Group, was chosen because it is made from hemp shiv and a lime-based binder delivers a negative carbon footprint. It also offers a unique combination of insulation and thermal inertia, properties that combine to create buildings with very stable

internal environments that require very little heating or cooling. Three years on and the happy owners remain very pleased with their choice.

Tel: 01235 434 300 www.limetechnology.co.uk

Enq. 199

Connect with Selfbuilder & Homemaker online

Emailed on a monthly basis, the Selfbuilder & Homemaker newsletter is designed to provide you with the latest information on products and services of interest, direct to your inbox.

You can quickly gather a snapshot of information from up to 12 carefully selected companies and easily follow links through to further information, or go direct to the company's own website.

Brochures and videos are also regularly available.

[Visit www.sbhonline.eu to subscribe & find out more!]





NEATWOOD HOMES LTD

www.neatwoodhomes.co.uk

The Ultimate Choice In Timber Frame Construction

A company with a knowledge base exceeding 40 years of experience in the designing and manufacturing of Timber Frame Packages for the Domestic, Commercial and Leisure markets.

Our Dedicated Team are ready and waiting to help you with your build now !!!

Flexibility, quality and personal attention at all times.

Services :

- At Neatwood Homes Sales office
- Introduction & Guide to building your Dream Home
- Computer Aided Designs (CAD) service available
- Free quotation provided with detailed breakdown of costs
- Supply only or supply & Erect
- Extensive range of products available including PVC External Joinery
- All designs individually certified by a qualified Structural Engineer
- All components supplied to NHBC Requirements
- Delivery Program to suit your Build








Timber Frame Homes & Much Much More

Unit 6, Westwood Industrial Estate, Pontrilas, Herefordshire, HR2 0EL
Tel: 01981 240860 | Fax: 01981 240255 | sales@neatwoodhomes.co.uk

Enq. 200

Inspiring ideas for your roof

Nick Boulton from the Trussed Rafter Association offers the self builder valuable information on opportunities provided by your new roof when considering trussed rafters

[All of the complex design, angle cutting and jointing for a trussed rafter roof are carried out offsite by specially trained staff in a factory environment...]



IMAGE COURTESY OF PASQUILL ROOF TRUSSES

Too many people see the roof of their house as simply an efficient means to keep the weather out. However, perhaps this part of the design should be viewed as a roof full of ideas, providing the opportunity to help deliver some of the goals and ambitions that often underpin self build projects.

Trussed rafters are the ideal product to form part of a self build project. They are individually designed components made from kiln dried, strength graded timber joined together with steel nail plates. They can be used on a wide range of building types including timber frame, masonry and steel frame.

If your goal is to minimise the cost of the project, then, in its most basic form, a trussed rafter roof often provides the most cost effective and easy to erect roofing solution. All of the complex design, angle cutting and jointing for a trussed rafter roof are carried out offsite by specially trained staff in a factory environment, fully supported by third party quality assurance and, if purchased from a TRA member, always underpinned by professional indemnity insurance. While on the topic of minimising cost, what better way to reduce your future energy bills than by maximising the levels of insulation in your new roof? Standard trussed rafters can easily accommodate the level of insulation necessary to meet the current building regulations, but what is more exciting is that with simple changes to the design

Continued overleaf...



[...Getting a specialist involved at an early stage is critical to maximising the potential of your roof. This is especially true when you are looking to reduce your carbon footprint and increase your energy independence...]

of the trussed rafters, the levels of insulation can be significantly increased to match those used in Scandinavia. If you need somewhere to keep the Christmas decorations then the design could also still allow the loft to be boarded out and used for storage.

If your project is more ambitious with the additional goal of maximising the available living space within a given footprint and roof height, then a room in the roof solution may be the answer you are looking for. Specially designed attic trusses provide a framework for the roof, ceiling, walls and floors of this additional living space. For those worried about where the pipes, wires and other services that usually reside in the roof space are going to go, don't worry, there are solutions here too. Usually, there are opportunities to install services within space in the eaves, even when this has been designed for additional cupboard storage. Alternatively, instead of using solid timber sections within the floor space of the attic trussed rafter, the design could incorporate metal web joists. These highly engineered and innovative products have readymade access for services, no matter how complicated the wiring loom or pipe layout. Many metal web joists can even incorporate a full size 100mm soil pipe without the need for cutting, drilling or additional support.

For many self builders the suggestions above are really only the starting point as they have much greater aspirations and ideas. A well designed roof can go much further in helping to meet these challenges. As with many other aspects of the project, getting a specialist

involved at an early stage is critical to maximising the potential of your roof. This is especially true when you are looking to reduce your carbon footprint and increase your energy independence by incorporating renewables such as solar panels for PV or hot water. At the design stage it is quite simple to allow for the extra load and fixing requirements of such equipment even if you plan to install these later on. Such design considerations should also include mechanical ventilation or air handling equipment that will be fitted in the roof space. Planning ahead is also critical; it is no good waiting until the walls are finished before trying to source your roofing solution. Of course, there are many reputable companies that can deliver on very short lead times, but why wait? The sooner you start discussions with your chosen TRA member the sooner you can begin to see the opportunities that are waiting and maximise the potential of your roof.

So what happens when you reach the day where the walls are finished and the project wall planner tells you "roof starts today"? Well the choice is yours. Whether you want design and supply only, supply and fit or supply, fit and finish there are TRA members who can help. In all cases trussed rafters and their associated timbers will be delivered to your exact delivery requirements and in most cases for self builders this will be as a single specialist load. Such deliveries are ready for unloading and immediate installation by your roofing team minimising, as far as possible, the time until your project is dry.



SECTION SHOWING TRUSSED RAFTERS IN PLACE AND SERVICES RUNNING THROUGH THE METAL WEB JOISTS
© MITEK INDUSTRIES

GBS



High performance timber windows and doors from GBS are individually tailored for every style of home. Created by combining highly efficient double glazing in the form of Planitherm Total Plus, Argon gas fill and warm edge Swiss bar, these windows and doors have the very best engineered timber for stability, no twisting, warping, shrinking, swelling, storm or flush casements, high security integral locking systems and a low maintenance, industry developed factory paint system in a colour of your choice. With the traditional skills of our craftsmen GBS produces products that provide lasting efficiency.

Enq. 202

Solo Timber Frame



Solo Timber Frame is a designer, engineer and builder of sustainable timber frame houses.

The company offers three levels of timber frame wall, with U values ranging from 0.15 to 0.22, suited to all budgets and requirements. All the frames are manufactured using FSC certified timber and only taken from well managed and certified forests.

Solo is unique as the only company in the timber frame industry which is a member of the Trading Standards Buy with Confidence Scheme, a list of businesses approved by Trading Standards who provide a reliable and quality service.

Enq. 203

Often imitated
Rarely matched
Never surpassed



20 years of style, security and quality



BESPOKE TIMBER FRAMED BUILDINGS



Garages, Stables, Workshops, Home offices, Holiday lodges, Conservatories, Garden barns, Pool houses, Sports pavilions, Clubhouses

Call 01568 760540 or visit www.courtyarddesigns.co.uk

Enq. 204

STA receives funding boost for skills training

With reports of a skills shortage in construction, the Structural Timber Association (STA) has secured a six figure funding package to support its work in boosting training and skills. Working in partnership with the Construction Industry Training Board (CITB) the STA is providing training for timber erectors and has recently had its Timber Frame Competency Award Scheme for Erectors aligned to the CSCS (Construction Skills Card Scheme) scheme, increasing and recognising skills within construction.

Available to workers employed in the construction of timber buildings, the CSCS scheme offers recognition of a range of skills. With gold, silver and bronze levels, the programme is delivered via a network of partners and approved colleges throughout the UK and will boost much needed skills to help deliver an increasing number of timber construction projects.

Andrew Carpenter, chief executive of the STA, comments on the CITB partnership: "We know timber construction is the way forward for our industry in terms of sustainability, availability of product and speed of build. It is essential, therefore, that we ensure the skillset of our constructors is of the highest quality to support the increasing use of timber products within construction. The STA is proud to be working with the CITB to ensure the range of skills within the industry is as high as possible through our workshops and the CSCS cards. This is only one of many benefits of being an STA member."

One business which has benefited from the STA/CITB training through 2013 is Pury Construction. Vicki Wootton, projects manager, comments: "Being part of the workshops has been invaluable to our business and we have been awarded ISO 9001 as a result which will facilitate growth in our business going forward."

The STA was formerly known as the UK Timber Frame Association (UKTFA) and has rebranded. Membership includes: manufacturers of structural timber products & systems; supply chain members; erectors; and designers. Associate membership is also available to end user clients.

The CITB is a social enterprise, devoted to building competitive advantage for the construction industry and the people who work in it with the aim that: individuals have the skills to compete; companies have a highly skilled workforce; the industry has the skills to meet its clients' needs and future challenges; and the UK has an industry that is world class.



Oak Designs Co.
Traditional & Contemporary
OAK FRAMED BUILDINGS

Today's Designs - Tomorrow's Heritage



- Garages
- Home Offices
- Two Storey Buildings
- Workshops
- Porches

- Garden Rooms
- Conservatories
- Pool Houses
- Outdoor Kitchens
- Bespoke Designs

See our website for details of Special Offers. Free Site Survey

Full Design and Planning Service Complete Build Service

SALES: 01273 400411

Enq. 205

Classified

AIR TIGHTNESS & TESTERS

BSRIA Airtightness Testing

- Fast Response
- Nationwide Service
- Fully Accredited
- ATMA Members
- UK's No. 1
- Competitive Fees

Call Today: 0800 587 1000
airtightness@bsria.co.uk www.bsria.co.uk

Enq. 501

FIRES & FIREPLACES

PINCKNEY GREEN FIREPLACES
 Makers of Fireplaces from Natural Stone

For a Free brochure call
01179 372 555
www.pinckneygreen.co.uk

Enq. 502

RADIATORS

THE RADIATOR FACTORY

New 2013 Brochure Launch.

A Vast Range of Quality Products from Europe's Finest Manufacturers which include Eco-Aluminium, Stainless Steel and of course our renowned Bay Window Radiators.

Available Online or Through our National Merchant Partners for Quick Delivery.

TEL: 0116 260 9257
WWW.RADIATORFACTORY.NET

Enq. 509

BATHROOMS, SHOWERS & WASHROOMS

AFFORDABLE LUXURY
 RELAX IN ONE OF OUR PEGASUS WHIRLPOOL BATHS

01633 244 555

DEEP SOAKING TUBS

Check out our website for unbeatable deals on our Pegasus Whirlpool Bath range!
www.bathroomsexpress.co.uk | 01633 244 555

Enq. 503

DOORS & WINDOWS

SASH WINDOW LOCKS

ROLA

www.sashwindowlock.com
 Tel: 08700 272624 Fax: 020 7935 2779

Enq. 504

GARAGE DOORS:

DISCOUNT GARAGE DOORS Est 1989

Supply Only or Supply and Installation - Nationwide
 Suppliers of: - Hormann, Garador, Cardale, Carteck, Wessex, Cedar Door, Woodrite, Alurall, Glideral

01691 670394
www.discount-garage-doors.co.uk

- Top Brands
- Big Discounts
- Nationwide

Enq. 505

OAK PRODUCTS

OAK BEAMS

IMMENSE STOCKS

WIDE OAK FLOORBOARDS
 BRICK, PIG TILES ETC.
 BARN FENNELS FOR RE-ERECT
ANTIQUE BUILDINGS LTD
 Tel: 01483 200477
www.antiquebuildings.com

Enq. 507

HOME INTERIORS

HEATING & PLUMBING:

agadon
Heat & Design

Special Offer
 25% off Neo and Titan Designer Radiators

0845 4505160
www.agadon.co.uk

Prices from just £99
 Over 3,000 radiators in stock
 Fast delivery from stock
 10 year guarantee on all radiators

Enq. 506

TEMPORARY ACCOMMODATION

Up to 200 used static caravans to view.
 Suitable for temporary accommodation.

From 28'x10' to 30'x12'

Two & three bedrooms.

Some double glazed & central heating.

Open 9.00am - 5.00pm

www.westcoastcaravans.co.uk
 Tel: 01908 878872 Email: westcoastcaravans@bt.com

Enq. 508

Web Directory

ADVICE & INFORMATION

NSRBC (National Self Build & Renovation Centre)
 0845 2234455
www.nsrbc.co.uk

ARCHITECTURAL IRONMONGERY

Ironmongery Direct
 0808 1682288
www.ironmongerydirect.com

ARCHITECTS

Nicolas Tye Architects
 01525 406677
www.nicolastyearchitects.co.uk

Gregory Phillips Architects
 02077 243040
www.gregoryphillips.com

BATHROOMS & SHOWERS

Victoriaplumb.com
 0844 8044848
www.victoriaplumb.com

Better Bathrooms
 0844 4847678
www.betterbathrooms.com

Matki
 01454 322888
www.matki.co.uk

BI FOLDING & SLIDING DOORS

Folding Sliding Door Company
 0845 6446630
www.foldingslidingdoors.com

Sunfold Systems
 01953 423423
www.sunfold.com

Express Bi-Folding Doors
 0800 121 4809
www.expressbifoldingdoors.co.uk

Vufold
 01625 442 899
www.vufold.co.uk

BI FOLDING & SLIDING DOORS

Solarlux Systems
 01707 339970
www.solarlux.co.uk

1st Folding Sliding Doors
 02089 972448
www.1stslidingfoldingdoors.co.uk

BUILDING ENVELOPES

Schueco
 01908 282111
www.schueco.com

BUILDING PRODUCTS

Fermacell
 0870 609 0306
www.fermacell.co.uk

Polypipe
 01709 770000
www.polypipe.com

DOORS, WINDOWS & CONSERVATORIES

Kloeber UK
 01487 740044
www.kloeber.co.uk

Velfac
 01223 897100
www.velfac.co.uk

Urban Front
 01494 778787
www.urbanfront.co.uk

Apropos
 0800 328 0033
www.apropos-conservatories.com

Jeld-Wen
 0845 1222890
www.jeld-wen.co.uk

Web Directory

DOORS, WINDOWS & CONSERVATORIES

Idealcombi
01582 869010
www.idealcombi.com

Swish Window & Door Systems
0808 1783040
www.swishwindows.co.uk

Internorm Windows UK
02082 059991
www.internorm.co.uk

Black Millwork Co Inc
01283 511122
www.blackmillwork.co.uk

Vale Garden Houses
01476 564433
www.valegardenhouses.co.uk

Duration Windows
01268 681612
www.duration.co.uk

GARAGE DOORS:
Hormann (UK)
01530 513000
www.hormann.co.uk

ELECTRICAL PRODUCTS

QVS Electrical Wholesale
0800 1976565
www.qvsdirect.com

Panasonic Electric Works UK
01908 231555
www.panasonic-electric-works.co.uk

ELECTRICAL SYSTEMS

Schneider Electric UK
0870 6088608
www.schneider-electric.co.uk

FINANCE & INSURANCE

Buildstore/NSBRC
0845 2234888
www.buildstore.co.uk

Self-Build Zone
0845 2309874
www.selfbuildzone.com

Versatile Insurance Professionals Ltd
01837 658955
www.versatileinsurance.co.uk

FIREPLACES & STOVES

Clearview Stoves
01584 878100
www.clearviewstoves.com

Charnwood
01983 537777
www.earnwood.com

Opies
01245 468977
www.john-opie.co.uk

FIXTURES & FITTINGS

Screwfix Direct
0500 414141
www.screwfix.com

FLOORS & FLOORING

Floors Of Stone
01509 234000
www.floorsofstone.com

FURNITURE

Vitra
01235 750990
www.vitra.com

Herman Miller
0845 2267202
www.hermanmiller.co.uk

Ekonnes (Stressless Furniture)
02074 620440
www.ekonnes.co.uk

GLASS & GLAZING

Saint-Gobain Glass UK
01977 666100
uk.saint-gobain-glass.com

Sunparadise UK Ltd
02085 389585
www.sunparadise.co.uk

HEATING & PLUMBING

21st Century Radiator Company
01767 627500
www.21stcenturyradiators.com

Uponor
01455 550355
www.uponor.co.uk

Discounted Heating
0844 5678884
www.discountedheating.co.uk

HEAT PUMPS

Spirit Heat Pumps
0845 4753953
www.spiritsolar.co.uk

ICE Energy
08081 452340
www.iceenergy.co.uk

INSULATION

Superfoil Insulation
01636 639 900
www.superfoil.co.uk

Insulation Giant
0844 8922254
www.insulationgiant.co.uk

KITCHENS

Kit Stone
0870 7770099
www.kitstone.co.uk

Poggenpohl UK
01727 738111
www.poggenpohl.com

Pineland Furniture
01299 271143
www.pineland.co.uk

Metris Kitchens
01325 505563
www.metriskitchens.co.uk

LAUNDRY CHUTE SOLUTIONS

GED Chute Solutions
01613 001374
www.laundrychutes.co.uk

LIGHTING & HOME CONTROL SYSTEMS

Vitrum UK
07966 236969
www.vitrum.com

LOFT CONVERSION

Econoloft
0800 269765
www.econoloft.co.uk

PACKAGE BUILD

Baufritz (UK)
01223 235632
www.baufritz.co.uk

Kingspan Potton
01767 676400
www.potton.co.uk

Scandia-Hus
01342 838060
www.scandia-hus.co.uk

Davinci Haus GmbH & Co. KG
02081 3339204
www.davinci-haus.com

Hanse Haus
0845 6589780
www.hanse-haus.co.uk

Flight Homes
01787 222336
www.flighthomes.co.uk

PLANNING & DESIGN

Design & Materials
0845 4040400
www.designandmaterials.uk.com

PLANT, TOOLS & EQUIPMENT

Brandon Hire
0870 5143391
www.brandontoolhire.co.uk

Machine Mart
0844 8801250
www.machinemart.co.uk

ROOFING & CLADDING

Tata Steel (Corus)
01904 454600
www.tatasteeluk.co.uk

Greys Artstone
01484 666400
www.greysartstone.co.uk

Hoppings Softwood Products (Q-Clad)
01992 578877
www.timber-cladding.co.uk

ROOFLIGHTS

Vision Rooflights
01162 791900
www.visionrooflights.co.uk

SOFTWARE

Eleco
02074 228000
www.eleco.com

House Builder XL
0845 1234065
www.hbxl.co.uk

STAIRS & STAIRCASES

Meer End Staircases & Joinery
01676 534226
www.meer-end.co.uk

STONEWORK & MASONRY

Mandarin Stone
01600 715444
www.mandarinstone.com

STRUCTURAL INSULATED PANELS (SIPS)

SIPS Eco panels
01787 378567
www.sipsecopanel.co.uk

TEMPORARY ACCOMMODATION

Caravan Hire UK
01970 626920
www.goldensandscaravans.co.uk

TIMBER & JOINERY

Oakwrights
01432 353353
www.oakwrights.co.uk

Carpenter Oak & Woodland
01225 743089
www.carpenteroakandwoodland.com

Silva Timber Products
01514 953111
www.silvatimber.co.uk

Osmo UK
01296 481220
www.osmouk.com

Neatwood Homes
01981 240860
www.neatwoodhomes.co.uk

Carpenter Oak
01803 732900
www.carpenteroak.com

Maple Timber Frame
01995 679444
www.mapletimberframe.com

Taylor Lane
01432 271912
www.taylor-lane.co.uk

UNDERFLOOR HEATING

Nu-Heat
0800 7311976
www.nuheat.com

Schluter Systems
01530 813396
www.schluter.co.uk

Wunda Group
0800 0832677
www.wundafloorheating.co.uk

Ultimately... the choice is yours!



Ultimate Screwless Wiring accessories

Your home is a reflection of your personality, your tastes and your lifestyle. You decorate each space in tune with your mood and what you do there - a mix of light, bright spaces to play and work in and more subtle, cosy spaces to relax in.

Ultimate, from Schneider Electric, is a family of styles, each with an individual personality, linked by common design themes that harmonise with the tastes and moods throughout your home.

In tune with...


YOUR STYLE | YOUR HOME | YOUR BUSINESS



Learn how to enhance your home. Download our brochure **FREE** today and enter to **WIN** an Apple iPhone 5.

Visit www.SEreply.com Key code **39853p**

Reader
Enquiry
402

Schneider
 **Electric™**



Brushed Steel

