

building construction design

www.buildingconstructiondesign.co.uk

August/September 2014

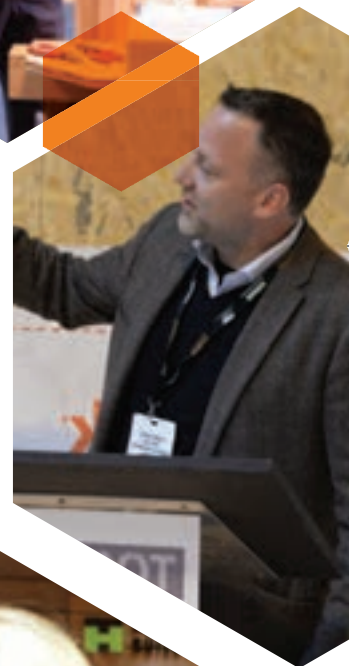
- 03 Appointments & News
- 06 CPD Focus
- 07 Planning & Design
- 08 Building Products
- 08 Structural Elements
- 17 External Envelope (Incl. External Fixtures)
- 28 Insulation
- 30 Heating, Ventilation & Services
- 34 Interiors
- 47 Disabled Products & Services
- 47 Safety & Security
- 48 Landscaping & External Works
- 52 Eco

Cover image: © Schueco
See page 10 for details

THE UK'S NATIONAL TIMBER EVENT

FOR BUILT ENVIRONMENT
PROFESSIONALS LOOKING TO WORK
WITH THE LEADING SUSTAINABLE
BUILDING MATERIAL

TIMBER
EXPO
NEC BIRMINGHAM
07 & 08 OCTOBER 2014
SUSTAINABLE | CONSTRUCTION | INNOVATION



NEW SHOW BROCHURE AVAILABLE AT
WWW.TIMBER-EXPO.CO.UK

FREE VISITOR REGISTRATION:
WWW.TIMBER-EXPO.CO.UK/BOOK

To book exhibition space please contact: Loretta Sales T: +44 (0)7956 173351 E: loretta.sales@timber-expo.co.uk

BBA certification for Triton's watertight concrete system

Triton TT Admix, a concrete admixture manufactured by Triton Systems, has been awarded BBA certification. Designed to provide Type B structural waterproofing as defined in BS 8102 (2009), TT Admix is added to concrete at the time of batching. The active chemicals in TT Admix react with fresh concrete to generate insoluble crystalline growths that seal the concrete against water penetration and protect it against harsh environmental conditions.

When specified with Triton's pre-formed water-stop and expansion products that seal poured, in-situ construction joints, it delivers a complete and permanent watertight concrete construction system. The system is backed up by Triton's technical expertise, site inspection regime and warranty.

This BBA certification means that Triton can

offer architects and other specifying organisations, such as the NHBC and local authorities, a complete range of BBA certified waterproofing systems suitable for use in all types of projects, from domestic basements to multi-level, below ground car parks.

Triton is a RIBA-approved CPD provider and offers a seminar covering the specification of Type B waterproofing systems.

For more information call Triton Systems on 01322 318830, email info@tritonsystems.co.uk or visit tritonsystems.co.uk



Everything for tiling – properly guaranteed



Tilers nationwide can now source everything they need from a single supplier, all covered by a 25 year guarantee, thanks to BAL. A leader in professional tile adhesives and grouts fully guarantees everything bearing its name, including BAL Rapid-Mat, its remarkable new uncoupling solution. This has taken the market by storm, being the UK's first and only uncoupling mat fully guaranteed for 25 years by the supplier.

Dave Stott, winner of last year's TTA Tiler of the Year award, said: "Fixers do not want vague assurances from suppliers. We expect a clear, written guarantee so that we know where we stand with products. BAL is the only manufacturer to offer a straightforward 25 year promise, which it puts on its website for everyone to see."

01782 591100 www.see-it-for-yourself.com

Dickies



Dickies is supporting the first HavAGO Festival which is going to take place at the Forum, in the centre of Norwich on the 18th and 19th August. The event is a celebration of creative skills and a platform for a truly diverse group of artists and craftspeople from around Norfolk to showcase their work together and inspire others to be creative and 'have a go'. There will be more than forty different creative participants showing their work and offering the public a free of charge

opportunity to try their hand. Dickies is donating 12 Dickies painters' bib and brace sets specifically designed for painting and decorating.

Tel: 01761 419419 www.dickiesworkwear.com

Everbuild



It is now mandatory for all sealants covered in the European standard EN 15651 to be CE marked according to their application and properties. This legislation means that it will be illegal to manufacture sealants and sell within the EU without the relevant CE marking. To comply with these new regulations, Sika Everbuild has been working hard to add the required CE panel onto all appropriate packaging and labels as defined by the standard. In addition to this, Declaration of

Performance certificates for all affected products will be available to view on the relevant product pages of the Everbuild website from 1st July 2014.

Tel: 0113 240 3456 www.everbuild.co.uk

FDS appointed to South East London village



The design and installation skills of award-winning fire safety system contractors **Fire Design Solutions (FDS)** have seen it appointed to a unique residential development in Greenwich, London. Working alongside contractor Willmott Dixon, FDS will work on a number of apartment blocks in the Greenwich

Millennium Village community. The FDS team has been tasked with the design, supply and installation of mechanical smoke venting and corridor environmental systems for five of the residential blocks, three of which are 10 storeys high. Gerard Sheridan, Chairman at FDS, said: "Having worked with Willmott Dixon in the past we're delighted to have been appointed to their latest project."

01322 387 411 www.firedesignsolutions.com

Centaur's formulation spurs rapid growth



A successful first year at liquid roofing specialist **Centaur Technologies** has prompted the company to rapidly expand its workforce and appoint a team of experienced industry specialists. Centaur Technologies, which was founded by Jeremy Gorick, the former managing director of Liquid Plastics, and Phil Richardson,

the former marketing and technical director of Liquid Plastics, has recently strengthened its technical and field sales team to provide a nationwide service to the firm's rapidly expanding customer base. Jeremy said: "We didn't set out to be the biggest player in the industry but our ambition is to be the best. We've brought together a team of some of the most talented people in the industry".

01772 453107 www.centaurroofing.co.uk

Riverside residences select Sapphire



Beautiful glass and stainless steel balcony balustrades, manufactured and installed by **Sapphire Balustrades**, are maximising amazing views over the River Thames from apartments in the capital's new Greenwich Wharf development. The

balustrades, custom-designed using Sapphire's Aluma aluminium section balusters (upright posts) with glass infill panels, are installed to balconies in a range of mixed tenure properties, from affordable apartments to luxury penthouses at the top of the seven-storey blocks. The design of the development uses the balcony shape to maximise the angular, sharp appearance.



Designs on OSB

To add a creative twist to this year's campaign, the **JOSB Done** campaign to promote Oriented Strand Board (OSB) has partnered with London based design studio Material Lab to showcase the uses and benefits of OSB to the design and specification community, with various project collaborations planned for the year ahead. Focusing on promoting OSB's appeal in terms of its form and its function, this new partnership will enable the messages of the JOSB Done campaign to reach a broader audience – and one that is increasingly inspired by this versatile engineered wood panel. Material Lab is a vibrant studio on Great Titchfield Street, London, run and funded by leading tile manufacturer Johnson Tiles, with hundreds of different materials on display in exciting and creative ways. Used by architecture and design professionals day in and day out, the studio brings to life different building and interior materials to show their true characteristics – or to present them in a different way entirely. As well as offering 100mm x 100mm OSB samples from the studio's expansive sample wall, Material Lab will also be using OSB in a series of engaging displays that will change as the year goes on, with the aim of bringing to life this engineered wood panel.

www.josbdone.com www.material-lab.co.uk

More than a door



The two great brands of **Leaderflush Shapland** and **Laidlaw Ironmongery** have been brought together to create a new company delivering one great solution. After extensive research with its customers across the industry, the two brands have united to deliver efficien-

cies across the business, ensuring a better service and a spectrum of products to suit all sectors, applications and project types. The plan involves substantial investment in manufacturing and process. Leaderflush Shapland Laidlaw manufactures performance doorsets and supplies architectural ironmongery and is a leading partner providing performance doorsets for the health, education, leisure and commercial sectors. The changes will bring improvements in service and delivery.

01773 530 500 www.leaderflushshapland.co.uk

Ancon confirms CE Marking compliance



From 1st July 2014, the CE Marking of structural steelwork to BS EN 1090 became a legal requirement. Now, any fabricated structural component delivered to site without a CE mark is in breach of the EU Construction Products Regulation. **Ancon** is proud to have offered the Industry a fully CE-compliant range since July 2013 – a full year ahead of the industry deadline. The CE Marking of Ancon's extensive product portfolio, so far in advance of the 2014 deadline,

demonstrates an established understanding of Eurocode design methodology and a long-term commitment to robust manufacturing controls. Ancon encourages the industry to understand the risks, demand the CE Mark and accept no excuses.

0114 275 5224 www.ancon.co.uk

Saniflo launches new trade brochure



Available since the end of June, the new trade brochure from **Saniflo** is designed to make the lives of installers and vendors easier. For the first time, the stunning, easy to use product catalogue features both the domestic and professional range – along with Saniaccess and Sanicondens – in one handy piece of literature. In addition, alongside each product there's a 'why choose this product' section, which clearly indicates how and

when each product is best used, with the aim of simplifying product selection and providing installers with an excellent reference guide. Also featured are some new products, including the Sanifloor, which can be used to create a shower space or wet room almost anywhere, and is already proving to be a huge hit.

020 8842 0033 www.saniflo.co.uk

Schöck performance values verified by OISD



To guarantee the accuracy of its current performance values, **Schöck** has submitted three of its main connectivity solutions – concrete balcony connections (type K), steel balcony connections (type KS14) and steel beam connections (type KST) – for independent evaluation

by the Oxford Institute for Sustainable Development (OISD). The purpose of the investigation was to determine the resultant heat loss, minimum surface temperature and therefore temperature factor (fRSI) to comply with UK Building Regulations Part L. The results from OISD verified the product performance standards claimed by Schöck, with the various solutions exceeding the necessary building regulations. Full test results are available on request from Schöck.

01865 290 890 www.schoeck.co.uk



Surface temperature factor is critical calculation



The surface temperature factor (f_{Rsi}) is critical because the consequences of condensation and mould growth are potentially more serious for building occupiers than local heat loss. If condensation forms near a thermal bridge, it is likely to result in structural integrity problems with absorbent materials such as insulation products or plasterboard – and of greater concern, the occurrence of mould growth. Practically every building contains mould spores

in its fabric which are dormant and completely harmless. However, given the right conditions, these will germinate and become a potential health risk to occupants in the form of asthma and allergies. Please contact **Schock** for more information.

01865 290 890 www.schoeck.co.uk

Synseal wins ECMOD award



Synseal has won the ECMOD Direct Commerce Award 2014 for best B2B business/brand worth £50 million+. The ECMOD (Every Channel Mastered Optimised and Delivered) awards have been established for over 15 years and attract entries from some of Britain's most dynamic and innovative B2B and B2C companies. These annual awards recognise the hard work, flair and commitment of multi-channel businesses. Synseal topped some high quality com-

petition to secure this award accolade and its successful submission was sponsored by Nottingham-based ERP software systems providers Columbus, who provide specialist IT support services to the company.

01623 443200 www.synseal.com

Ventrolla staff achieve new qualifications



Investment in training by period window specialists **Ventrolla** has seen staff achieve qualifications and develop skills ranging from joinery and glazing to safety at work. Ventrolla, based in Harrogate, offers a nationwide bespoke renovation service for timber sliding sash and casement windows as well as for timber doors. Managing Director David Greaves said the company is committed to having a highly skilled and motivated workforce, which will benefit customers as well as the

business and make it an employer of choice. He said: "Our investment in staff training is essential to the business."

0800 0277 454 www.ventrolla.co.uk

Vent-Axia donates ventilation



British ventilation manufacturer **Vent-Axia** is delighted to announce that it has donated ventilation equipment to the innovative Waste House project. The Crawley-based firm was thrilled to supply a Sentinel

Kinetic Plus Mechanical Ventilation with Heat Recovery (MVHR) unit to Britain's first house made almost entirely from thrown-away rubbish. Product Marketing Manager – New Build Residential, Ian Mitchell said: "At Vent-Axia we are delighted to be involved in such a worthwhile project that will act as an exemplum for future sustainable design and construction helping build the houses of the future."

0844 856 0590 www.vent-axia.com

Successful awards to become an annual event



The winners of the first **Schueco** Excellence Awards for Design and Innovation were announced at Tate Britain on Thursday 19th June. As a result of the interest that the Awards have generated among building professionals, Schueco UK has announced that the competition will become a regular annual event. Run in conjunction with

RIBA Journal, the awards celebrate the best in UK building design with special emphasis on the use and installation of Schueco systems and on best construction practice. The awards are open to all architects and specialist contractors in Great Britain and Ireland; eight individual categories ensure that all major sectors of the market are covered. For further details of the Awards, please contact Schueco.

01908 282111 www.schueco.co.uk

Vent-Axia's Lo-Carbon Response wins award



Vent-Axia is celebrating winning Best Brand New Product of the Year in the prestigious Housebuilder Product Awards 2014. Scooping the award for its revolutionary Lo-Carbon Response™ dMEV solution, the Sussex-based company received the accolade at an awards ceremony held at Edgbaston Stadium,

Birmingham. Packed with innovative features, the Response is a near silent, continuous running, constant volume dMEV solution. The SAP Appendix Q listed Response is ideal for both kitchen and bathroom applications. Jenny Smith, marketing services manager said: "We are delighted to have been acknowledged by the housebuilding industry for our pioneering Lo-Carbon Response™."

0844 856 0590 www.vent-axia.com

Saracen boosts forward order book



Saracen Interiors has announced that it has completed almost 75 per cent of its forward order book, covering the remainder of 2014, thanks to new business generated by its Yorkshire office in Wetherby as well as business from existing clients who are making use of the leading office interiors specialist's extended service offering. The Wetherby office opened

its doors earlier this year to accommodate the management of a series of projects in Leeds, York, Derby and Peterborough. Since then, the company has developed further business opportunities in the Yorkshire area and is now in the process of developing its team to meet this requirement.

Vortice celebrates its 60th anniversary



2014 sees the 60th anniversary of **Vortice** Elettrosociali, a leading European ventilation systems manufacturer, with a UK office in Burton on Trent. Since its inception, Vortice has always attributed great importance to aesthetics, maintaining constant collaborations with famous architects

and designers and winning numerous design awards over the years. Today, Vortice is a market leader in the ventilation industry with an extensive range of products designed to ensure air quality and climate comfort: from relatively simple extractor fans to air conditioning units, air purifiers, dehumidifiers, infrared lamps, right up to highly complex heat recovery systems and air handling systems.

01283 492949 www.vortice.ltd.uk



cpd focus

EFFECTIVE DESIGN OF SINGLE PLY ROOF SYSTEMS



Sika-Trocal is pleased to announce the new RIBA-approved CPD entitled *Effective Design of Single Ply Roof Systems*. This CPD presentation aims to assist both specifiers and architects when designing and selecting single ply roofing solutions.

The CPD covers the following topics: Design Considerations – choosing a single ply system and designing to the best practice; Quality Suppliers – getting support and services from single ply manufacturers; Guarantees – possible flexibility and options; Industry and Legislation – information on meeting the correct and relevant standards; Sectors and Build types – the considerations and different methods available; History and Group information – a helpful insight into both Sika-Trocal and the Sika Group.

Sika-Trocal has provided single-ply roofing solutions to specifiers, clients and main-contractors in the UK for over 40 years. Sika-Trocal specialise in single ply roofing solutions that are designed to be installed as quickly and efficiently as possible, ensuring a cost-effective solution every time.

If you are looking for assistance when designing and selecting single ply roofing solutions and require further information on this seminar, please contact Sika-Trocal directly either via phone or email, or visit the company's website.

01707 394444
www.sikatrocal.co.uk

CPD GUIDES FROM MITSUBISHI ELECTRIC



Mitsubishi Electric has released two new CPD-certified guides covering the London Plan and Part L of the Building Regulations, designed to enhance the knowledge of customers and provide a view of the key issues facing the heating industry. The London Plan is a comprehensive vision of London's objectives for its economy, environmental performance, transport and social structure. The Plan sets out an integrated economic, environmental, transport and social framework for the development of the capital to 2031. The CPD guide explains the objectives, the impact, approaches to heating and energy generation and the potential of heat pumps for the plan. It also contains a case study of an application that uses the River Thames to heat its building stock. Part L of the Building Regulations deals with the conservation of fuel and power in domestic and commercial buildings. The legislation covers new-build and refurbishment projects and is a section of the Building Regulations that has been updated regularly since 2002, and in April 2014 the latest version, which is known as Part L (2013), came into force. It runs through the background of Part L, how compliance is shown and the obligation to install low carbon technologies. It then runs through other European legislation that potentially affects the application of heat pumps.

01707 282880
www.mitsubishielectric.co.uk

INTEGRATED SOLUTIONS FOR TILED WETROOMS AND MOVEMENT JOINTS AND UNCOUPLING MEMBRANES FOR TILED COVERINGS



Solutions expert **Schlüter-Systems** has launched two seminars to help architects gain in-depth knowledge on some of its most popular product ranges – and how best to use them.

The Continuing Professional Development (CPD) RIBA accredited seminars, lasting 45 minutes each, have been designed to help participants keep up to date with the latest technologies and best practices to allow them to make informed decisions about which products to request in their specifications. Held at architects' premises, the training sessions are being offered free of charge with the added bonus of lunch included. Schlüter also host events at other locations nationwide with their trusted advisors, with food and drinks provided in a relaxed environment, which provides an ideal opportunity for networking with other architects.

In Schlüter's new *Integrated Solutions for Tiled Wetrooms* seminar, the company's popular waterproofing and wetroom range will be explored and explained. Ian Knifton, head of technical and training, commented: "The session will provide all the information and knowledge needed, from an integrated approach, on the solutions for wetroom installations at design and specification stage, and we hope that by the end of the seminar participants will have gained confidence in specifying

an integrated solution for wetroom installations."

The second seminar available is titled *Movement Joints and Uncoupling Membranes for Tiled Coverings*. Ian explained: "This session will provide information on how to solve problems such as moisture movement in the substrate or drying shrinkage by specifying the appropriate movement joints and uncoupling membranes at the specification phase. Participants will come away from the seminar confident in being able to specify movement joints and uncoupling membranes to counteract stresses and prevent future problems, such as failed sealed connections, cracked tiles and joint, from occurring."

A representative from the RIBA gave their feedback on the seminar, saying: "This is an excellent seminar that is pitched at the right level for architects. It covers the key issue of movement in tiled wall and floor coverings very well and describes the best solutions to some very common problems."

Both seminars include a 15 minute question and answer session and participants will receive a certificate upon completion. Anyone interested in booking a CPD session in these subjects or learning more about the other CPD presentations and services available, please call Schlüter-Systems or visit the website.

01530 813396
www.schluter.co.uk



continuing professional development

Maintaining and improving professional competence, skills, abilities and knowledge

AET FLEXIBLE SPACE CPD SEMINAR PROGRAMME



AET Flexible Space has recently updated its CPD seminar programme to highlight the versatility of floor plenum systems and their application to commercial office environments. By attending, you will have the opportunity to understand more about specialist Under Floor Air Conditioning systems. The CPD sessions lasts 45 minutes to one hour and can be tailored to specific requirements. They can be held at clients office's, or at AET's own demonstration building in West Sussex if preferred.

01342 310400
www.flexiblespace.com

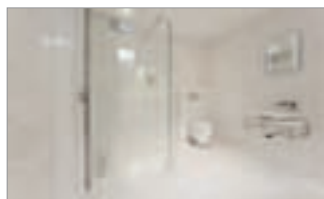
BUILDING ENVELOPE SOLUTIONS IN STAINLESS STEEL



Since the launch of ferritic grades, stainless steel has become competitive against other façade and roofing metals. **Aperam's** CPD *Building envelope solutions in stainless steel* examines its exceptional design life value, grades used in construction, installation techniques, unique benefits and misconceptions about cost. With a wide variety of surface finishes, the design scope which UGINOX stainless steel systems offer has never been greater and at a lower cost per square metre than ever.

01246 571660
www.uginox.com

WETROOM DESIGN & SPECIFICATION



As the popularity of wetrooms continues to grow, **CCL Wetrooms** have developed a *Wetroom Design & Specification* CPD to help guide architects through the process of designing and specifying a watertight wetroom. The technical presentation covers the key considerations of designing and specifying a wetroom, including wetroom design and layout, waterproofing, drainage, floor build up and installation. It also includes a section on how wetrooms can help meet the Lifetime Homes Standard.

0844 327 6002
www.ccl-wetrooms.co.uk

RIBA ASSESSED SEMINARS FROM COMAR



In two RIBA assessed seminars, **Comar** outlines: *Stand & Deliver: A Study of Curtain Walling* – The design of curtain walling, its properties and how it is used by specifiers. It explains the points of H11 in the NBS specification system, and how to make use of it; *Designing Function & Reliability into Entrance* – It explains how user expectation influences door design, and links this with hardware selection, entrance configuration and floor finishes to improve client satisfaction.

0208 685 9685
www.comar-alu.co.uk

Amwell Systems - embracing the need for BIM



In a recent survey by Construction News, culture change was cited as the biggest issue companies faced when implementing BIM. At **Amwell**, the company is constantly focused on embracing change within the industry, making it as easy as possible to specify its wash-room products. With 72 per cent of those surveyed also commenting that it is "imperative to invest in BIM in the next 12 months", the company recognises how important it is to comply with this, and as a manufacturer, offer customers the most comprehensive BIM models possible. Amwell's dedication is such that it employs an in-house team of architects and designers who for the last 12 months have been working tirelessly to produce detailed, user-friendly BIM models.

01763 276200 bim@amwell-systems.com

Bluesky 40 per cent offer on OS MasterMap



Bluesky has launched its new online map shop with a 40 per cent saving on Ordnance Survey MasterMap Topography Layer. The Map Shop (www.blueskymapshop.com) makes it easier to access and purchase the highest resolution, most up to date aerial photography for the whole of

the UK as well as the newly launched National Tree Map, detailed 3D height data and other Ordnance Survey map layers. Visitors can search by place name, postcode or OS coordinate and upload in a variety of file formats.

01530 518 518 www.bluesky-world.com

NW Systems' webcam services offer live bird's eye view of King's Cross development project



NW Systems Group's Streamdays and RemoteManager video streaming and video monitoring and recording services have been selected by one of the UK's most respected property development groups, Argent LLP, to provide live and recorded images as one of London's largest redevelopment projects ramps up. NW Systems has installed three high resolution fixed network cameras and two Pan Tilt Zoom (PTZ) cameras on the top of two buildings within 67 acre redevelopment zone around London King's Cross station. A total of five network cameras have so far been commissioned to provide overhead views of the site and six further cameras are planned. They will witness the redevelopment and construction of more than 50 buildings over the next 10 years.

Images from selected cameras are simultaneously being streamed using NW Systems' Streamdays 2 live streaming service. The results can now be viewed at www.kingscross.co.uk/webcam. The project site is supported by a busy social media communications space on the same site. This website is designed to stimulate engagement and meet the public's interest in this gigantic development.

0151 633 2111 www.streamdays.com

Pentair introduces an industry first



Electrical heat-tracing specialist, **Pentair Thermal Building Solutions**, has launched the industry's first BIM (Building Information Modelling) content for heat-tracing solutions. The comprehensive suite of new tools includes BIM families and the dynamic Raychem Trace-It Revit add-in for winter safety applications and hot water maintenance. With this content, architects, engineers, contractors and building owners can easily incorporate heat-tracing content into their building models to optimise efficiencies and performance. Raychem Trace-It add-in enables users working in Autodesk Revit to design, calculate and specify the company's reliable, high quality heat-tracing solutions directly and quickly within their BIM models.

Evolution Insurance Solution Ltd



Evolution Insurance Solutions Ltd is an Insurance Broker authorised and regulated in the UK by the Financial Services Authority under FSA number 472438.

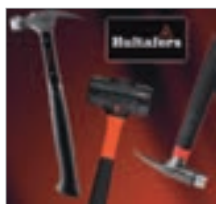
Evolution Insurance Solutions Ltd is one of the UK's leading brokers in the 10 Year Structural Warranty market.

If you are undertaking a self build project in the near future then you are likely to require a mortgage compliant warranty and site insurance.

Evolution is a specialist in this market and will source the right product at competitive rates for your project.

Tel: 01799 512 031 www.buildingwarranties.com

Hammering home the quality



Power and precision are the hallmarks of quality that you'll find in every **Hultafors Tools'** hammer. In this new generation of tools you'll find ball hammers, carpenter's hammers, T-block hammers, electrician's hammers, dead blow hammers and even copper hammers. They're tools that can handle the toughest work, delivering the

best possible levels of performance and safety, whatever the job in hand. Ergonomically designed for ease of use and with a range of sizes and special grip technology, these hammers are perfectly crafted for you, with vibration damping features as well as reduced recoil and even an anti-sparking feature in one of the models.

New Snickers Workwear catalogue



The latest full colour brochure from **Snickers** is now available free to discerning professional tradesmen and women, in print or as a digital edition. It features the world's leading range of working clothes, one that works hard on site all year round for you, whatever the working environment or weather condition. Whatever trade you're in, there's something for you in the Snickers range – work trousers, work jackets, tool vests shirts, underwear, hi-vis, painters,

flame retardant, accessories and tool carriers. Snickers design the right kind of working clothes to keep you working comfortably in the cold and wet weather.

Snickers



Famed for its innovation in working clothes for nearly 40 years, Snickers has won yet another international product design award. The Red Dot Design Award is considered to be one of the world's most prestigious product accolades, renowned as a symbol of innovation and quality. Three styles from Snickers' new work gloves range have been awarded Red Dots – the Specialised Tool, Specialised Impact and Power Grip gloves received the awards for excellence in functionality

and design. Buying Snickers work gloves is unique because you can buy them individually if you need to – which helps when one eventually wears out. You can also mix and match them to suit the way you work.

Dickies new safety footwear range



Dickies, the internationally renowned workwear brand, has introduced 14 new styles of safety footwear and improved a further six styles for 2014. New lines in PU/Rubber Sole have excellent shock

absorption and are heat resistant to 300 degrees, highly slip resistant and have non-clogging sole patterns. Extra comfort is offered with moisture wicking lining and a removable footbed. Dickies have also introduced an ESD trainer for the first time – the Alford trainer – which is suitable for people working in the electronics industry, as ESD footwear provides a safe and controlled method of discharging static electricity that accumulates in your body.

01761 419419 www.dickiesworkwear.com

Airtightness moves outside



A. Proctor Group's Wraptite-SA has been supplied to the recent new development at Drums of Park, Cornhill, Aberdeenshire. The self-adhering Wraptite-SA enabled the membrane to be easily installed onto the walls compared to traditional methods. The self-adhesive qualities meant that savings were made by eliminating the need for flashings and other

sealants around the windows and doors. Wraptite-SA airtight membrane prevents lateral air movement enhancing the buildings thermal performance. It also provides high vapour permeability in a continuously sealed, self-adhered, airtight membrane. In this instance, a result of better than 2.5m³/m²/hr was achieved.

01250 872261 www.proctorgroup.com

Striking refurbishment by Remmers



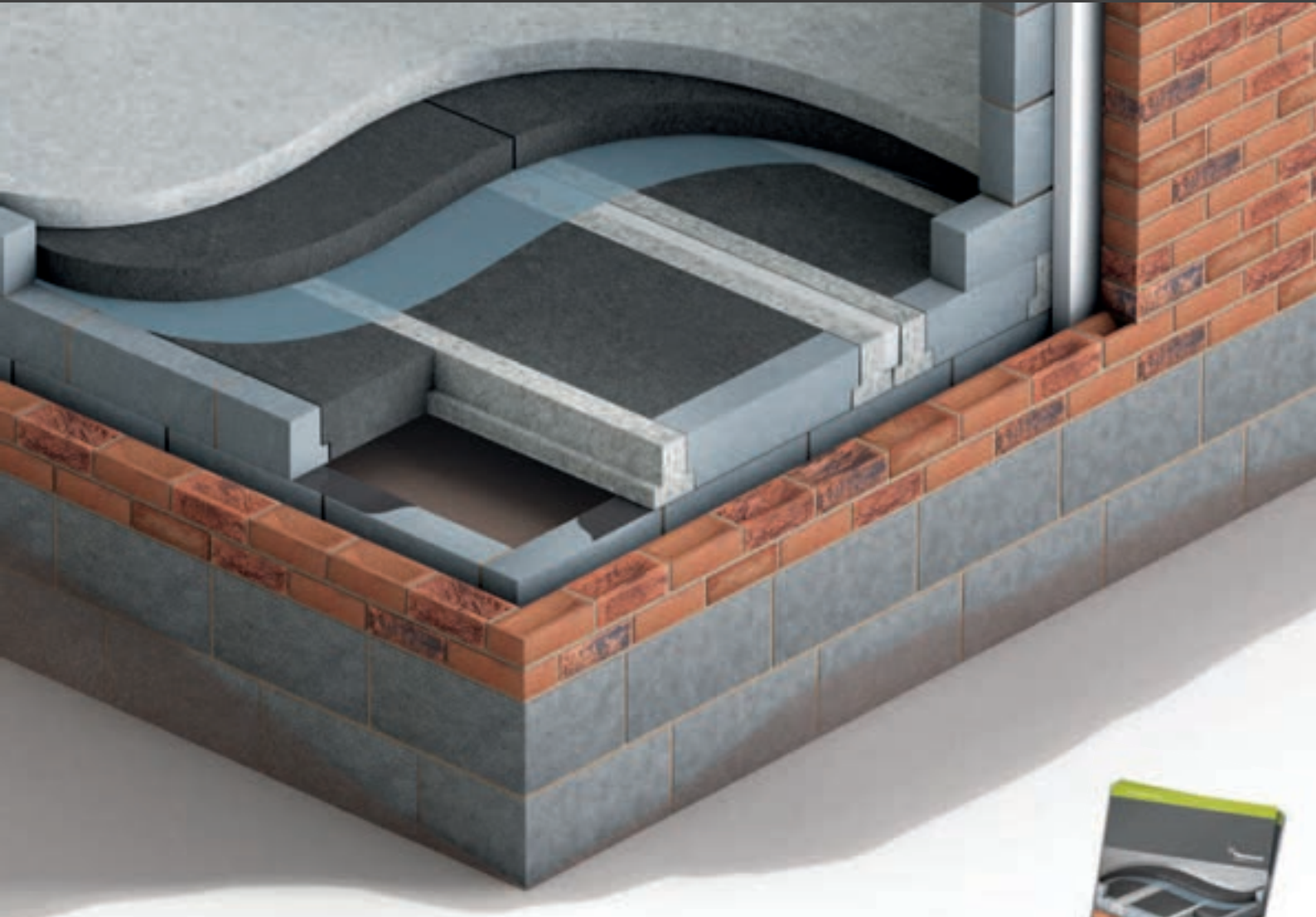
Located in the historic Eyre Square, the focal point of Galway, is Dunnes Stores. The Georgian facade of the building required extensive repair and refurbishment to the render which was suffering with a high degree of cracking. Repairs to the render were carried out using Betofix RM. This advanced cementitious repair

mortar is designed to be easy to use and fast curing, which allows it to be applied and built up in several layers within a short period of time prior to application of the coating system. Finally, to protect the facade from further damage, **Remmers** Elastoflex system was chosen for its excellent crack bridging, anti-carbonation and waterproofing abilities and to give a high degree of finish to the exterior.

0845 373 0103 www.remmers.co.uk

NEW JETFLOOR®

Insulated Ground Floors



THE SYSTEM YOU CAN TRUST

After in-depth discussions with customers and rigorous site trials, we've developed new Jetfloor, which is even better than before.

That's why Jetfloor remains the most trusted and robust solution for insulated ground floors.

New Jetfloor benefits

- **Future-proof** – development of established insulated ground floor system
- **Compliant** – BBA accredited and fully CE marked
- **Cost saving** – reduced excavation and spoil removal
- **Flexible insulation performance** – Psi and 'U' values
- **Improved Psi value** – due to unique Psi-Block®
- **Increased speed of build** – no specialist skills required



Watch our installation video and download the Jetfloor brochure at hansonjetfloor.co.uk



FOR TECHNICAL HELP AND ADVICE PLEASE CALL: 0870 609 7094

JETFLOOR INSULATED GROUND FLOORS – THE MARKET LEADER FOR OVER 30 YEARS

'Barcode architecture' has huge potential



With more architects designing buildings that use natural ventilation rather than expensive, energy-intensive air-conditioning to control the internal environment, the launch of **Schueco's** AWS VV ventilation system is opportune. This product – a narrow, side-hung vent – is not simply a practical response to the need for non-mechanical cooling, it is also a system which presents architects with a whole new layer of design potential through what is sometimes known as 'barcode architecture'. The name derives from the way in which when inserted into a curtain wall or ribbon window, the vents can resemble the vertical lines of barcodes found on product labels the world over. The decorative possibilities of this effect will be warmly welcomed by UK architects.

01908 282111 www.schueco.co.uk

Ancon extends award-winning TeploTie range



Masonry fixings specialist **Ancon** is continuing to lead the market in low thermal conductivity wall ties, with an innovative extension to its award-winning TeploTie range that sees it now suitable for surface fixing to an in-situ masonry leaf or structural frame. The new Teplo-L-Tie comprises a pultruded basalt fibre body set in a resin matrix. This material, with its thermal conductivity of just 0.7W/mK, minimises heat loss across an insulated wall cavity which is an essential consideration in low energy construction. The launch of the new Teplo-L-Tie coincides with further developments in the standard TeploTie range which is now available for an even greater range of cavity widths up to 450mm.

0114 275 5224 www.ancon.co.uk

H+H systems specified in Kent



A prestigious development of five luxury apartments has been constructed to Passivhaus principles using **H+H** aircrete Jumbo Bloks, Foundation Blocks and the H+H Thin-Joint System. Oyster Reach in Whitstable, Kent, was built by Masonry Frame

Systems Ltd. Masonry Frame Systems specified H+H Jumbo Bloks for the internal and external walls primarily because they meet the demands of this Passivhaus construction. H+H aircrete blocks offer an advanced thermal performance which adheres to Passivhaus standards. The Thin-Joint system was chosen for its speed of construction.

01732 880520 www.hhcelcon.co.uk

Xella



SILKA calcium silicate 'big blocks', in sizes up to 1,000 mm x 645 mm, are used for load bearing, non-load bearing and inner leaf cavity walls. Unlike SIPs or blockwork and frame, a two-man team can lay 60m²/day, a single leaf 150mm thick wall providing an acoustic value of 50-55dB compared to 44dB for an unfinished 140mm aircrete block. A 120 minute fire rating compares to SIPs at 30-60, while calcium silicate's thermal mass enables blocks to absorb heat and release it slowly, helping maintain a healthy living environment. Blocks are laid into a thin joint mortar from the building interior, saving on scaffolding costs.

Tel: 0843 290 9080 www.xella.co.uk



Brick Slips, Thin Bricks and Brick Veneer

Matclad Ltd are brick makers that specialise in manufacturing purpose made 20mm thick brick slip facing in the UK.

Matclad Ltd currently offer stock, rustic and genuine handmade brick slip finishes in metric, imperial and roman sizing which are frost resistant (CERAM BS-EN 771:F2) and suitable for external and internal projects.

September will see the launch of extruded, wirecut and feather textured brick slip ranges.

Call us today on **01978 291133**





Refurbishment scheme makes a splash in Cleethorpes

Cleethorpes' 1980s-built leisure centre sits on the seafront in the popular resort town, the building makes the most of views of the shoreline with full height windows that connect the pool areas inside with the sea and the beach outdoors.

After 30 years' use by both the local community and holiday makers, the local authority asset was in need of a facelift and an upgrade, inside and out. After successfully applying for Sport England funding towards the cost of converting the old-style, single-sex changing rooms to a more family-friendly unisex changing village, the centre's operating company, Lincs Inspire, decided to make the most of the required four-month shut down period with a full refurbishment.

Explains Jon Wilcox from NE Lincolnshire

Council: "The roof was a major area of concern because water ingress had already started to dis-colour some of the ceiling tiles in the pool area so it was affecting both the internal environment and showing evidence of failure.

"We needed a system that could be installed quickly without the need for a strip out of the existing roofing materials and could withstand the marine environment, strong winds and high levels of UV that the leisure centre is subject to in its coastal location: Kemper System's Kemperol V210 cold liquid-applied system was ideal."

The roof was first cleaned and prepared, then the Kemperol V210 waterproofing system was applied on top of the existing failed asphalt roof. Applied wet-on-wet in a single process, the Kemperol resin saturates a non-woven polyester



reinforcement fleece and cures to form a seamless, durable, UV stable, monolithic membrane that bonds directly to the substrate.

Contact Kemper System today on **01925 445532** or visit www.kempersystem.co.uk



Tom Clarke MP visits 'centre of excellence'

Bison Manufacturing's 'centre of excellence' for bespoke precast concrete in Uddingston, Scotland, has hosted a special visit from Rt Hon Tom Clarke MP. The factory tour follows Mr Clarke's visit to the new Terminal 2 at Heathrow, where he saw at first hand Bison's £1.15 million work on the UK's newest airport terminal. Bison was responsible for producing more than 40,000 square metres of flooring for the project – equivalent to almost 10 acres and enough to cover around six football pitches. Mr Clarke, whose constituency of Coatbridge, Chryston and Bellshill includes Bison's New Edinburgh Road plant, was keen to gain a deeper understanding of the processes that go into making the company's market leading precast concrete products, which can be found in major projects in a variety of sectors across Scotland and the wider UK. He said: "It's encouraging to see a local manufacturer flourishing, particularly one that has the ability to make the most of opportunities across the UK."

01283 817500 www.bison.co.uk

Sunscreen for your wood

UV Protection Factor 12

Maintains the natural colour of the wood and limits the greying process

- > Prolongs wood lifetime
- > Algae and fungal decay protection
- > Transparent 425 Oak finish and 428 Cedar finish now available



Call or visit the web for stockists.



+44 (0)1296 481 220
www.osmouk.com

osmo

EVERYTHING WE DO IS CONSTRUCTIVE.



WE RECOGNISE THAT AS ARCHITECTS AND DESIGNERS YOU ARE CONSTANTLY LOOKING FOR FLEXIBLE YET PROVEN MATERIALS. THE THINK BRICK CAMPAIGN IS HERE TO ENABLE YOU TO INNOVATE AND INSPIRE IN EQUAL MEASURE.

That's why we believe clay bricks and pavers remain the materials of choice in today's construction market.

- Flexible – from contemporary, award winning constructions such as the Carmelite Monastery to the classic St Pancras entrance; brick provides complete versatility
- Proven – around 1,200 different bricks are produced in the UK alone
- Strong – offering long term durability and sustainability, lasting over 150 years
- Supportive – The Brick Development Association, supported by the brick industry is influential in producing technical documentation designed with you in mind.

Everything we do is constructive for you.
Call us today on 020 7323 7030 email brick@brick.org.uk,
or visit <http://www.brick.org.uk/architect> [@BricksUK](https://twitter.com/BricksUK) #everythingconstructive





ROCKFON refurbish Leeds City College



Leeds City College has opened a new city-centre campus, part of a £14 million new build extension and refurbishment of a Grade II listed building. Being a refurbishment project, the build had a number of challenges. The ceiling contractor turned to **ROCKFON** to provide the acoustic and environmental solutions.

2,000m² of Rockfon Artic were installed in the stores, washrooms and circulation areas. Both Rockfon Artic and Rockfon Alaska ceiling tiles are made of stone wool and offer excellent performance in regards to humidity resistance and fire safety. The tiles provide up to 100 per cent relative humidity and were chosen for the washroom areas because they will not absorb moisture and sag.

0208 222 7457 www.rockfon.co.uk

Bespoke solution for coastal house



The Pavilion at Coldingham Bay in the Scottish Borders is making waves as a modern, sustainable property that seamlessly fits into the surrounding landscape. **Hunter Douglas** has created a solid wood linear open ceiling for The Pavilion in Western Red Cedar, chosen for both

its aesthetic qualities and longevity. The wood has been fire treated and is suitable for internal and external applications. Internally the wood is interspaced with a black non-woven felt to provide some acoustic absorption. Externally Hunter Douglas employed a powder coated black metal infill for durability and to prevent damage from wildlife.

01604 766251 www.hunterdouglas.co.uk

Osmo partners with ESCO Group



Osmo UK, the eco-friendly wood and finishes expert, is pleased to announce that it has formed a new partnership with **ESCO Group**, a specialist in oak wood flooring, to supply high quality wooden flooring which has been pre-finished with Osmo Polyx®-Oil. This new partnership sees two successful and growing companies

join forces to provide end users, design professionals and flooring contractors with improved products and services. **ESCO Group** is known for its customisation of producing high quality flooring to order, while **Osmo UK** is renowned for its top class wood finishes, in particular the Polyx®-Oil range.

UZIN adhesive at Cheltenham Racecourse



Cheltenham Racecourse continually invests in developing and improving its facilities and most recently refurbished the hall of fame and entrance hall in October 2013. Thousands of people walk through the entrance and hall of fame every year so the client required a robust and stylish finish.

Quality installation was paramount so contractor **Floorline** turned to **UZIN** to ensure the installation was durable and completed to the highest of standards. A **WOLFF Turbo Stripper** and **Duro Stripper** as well as **UZIN KE 2560UK** carpet adhesive helped contribute towards the overhaul of the floors at the racecourse. The refurbishment created a vibrant and welcoming atmosphere.

01788 530 080 www.uzin.co.uk

Damp proofing duo qualities recognised



Two of the most popular products in the range from **Delta Membrane Systems** – **MS20** and **MS500** – have once again been awarded British Board of Agrément Certificates. These products have been shown to be fit for purpose with the award of Certificate No. 00/3742. Part of the BBA formal three yearly review, these new certificates include factors relating to compliance

with Building Regulations and additional non-regulatory information where applicable, along with independently verified technical specification, assessment criteria and technical investigations. Design considerations and installation guidance also feature.

NFRC spearheads 'torch-on' safety campaign



In a bid to reduce the number of fires caused by the inappropriate use of gas torches on flat and low slope roofs, the **National Federation of Roofing Contractors (NFRC)** – the UK's largest roofing trade associations – has spearheaded a safety campaign to alert roofing contractors, architects and specifiers to the potential dangers of torch-on membranes and the fact that contractors may not be insured to do the work. Having identified a number of common flat

roofing trouble spots, a 'Responsible Specification Checklist' has been produced that is aimed primarily at contractors and specifiers for use on site. Ray Horwood CBE, chief executive of NFRC said: "Fully endorsed by HSE, the new checklist is already proving popular with contractors."

Five year restoration project is complete with Schlüter



A Grade II listed church has risen from the ashes thanks to the completion of a restoration project that started in 2008 after it was devastated by a fire. With only the shell and the tower intact, **St Nicholas Church** in **Leamington Spa** has undergone a major renovation over the past five years, with high quality products from **Schlüter-Systems** being used to in the process to provide a safe and secure flooring installation. Specified by the architects on the project, **Schlüter®-DILEX-KS** movement profiles, **Schlüter®-SCHIENE** threshold strips and **Schlüter®-DITRA** matting were all used to secure and compliment the church's new stone tile flooring. Ideal for such public buildings, thanks to each products high durability when it comes to heavy pedestrian traffic, Schlüter products work beneath flooring to provide the ultimate in security, while also providing an aesthetically pleasing and discreet appearance on the surface. **Schlüter®-DITRA** is a polyethylene membrane with a grid structure of square cavities, each cut back in a dovetail configuration and an anchoring fleece laminated to its underside. Movement joints from the **Schlüter®-DILEX** range offer secure edge protection and maintenance free solutions for surfaces exposed to continuous pedestrian and vehicular traffic. **Schlüter®-SCHIENE** offers the perfect protection.

01530 813396 www.schluter.co.uk

New F1 floor protection membrane

Protect have introduced a new high performance and multi-purpose coated non-woven membrane designed to provide surface protection to a wide range of floor substrates

The new, yellow, semi-translucent material with integrated lap and sealing tape has a grid printed across the whole surface which promotes simple alignment and installation. The membrane is manufactured from a coated polypropylene non woven spunbond and is 100 per cent recyclable.

Protect F1 will ensure that all floor areas are left clean, dry and entirely protected while works are in progress. The membrane is completely waterproof and resistant to traction and tearing. It's easy to cut and lightweight to handle in 1.5m x 50m rolls and easily brushed/mopped to reduce excessive build up of debris and any associated damage. The integrated lap and seal tapes speed up the installation and provide a seal at the overlap regardless of the conditions on site.

Craig Fyall, director of sales, comments: "Research by the Health and Safety Executive (HSE) has identified over 90 per cent of floor slip accidents in the UK occur on wet floors, mostly on relatively smooth/shiny floors. A minimum pendulum test value (PTV) of 36 or more must be achieved to avoid personal injury claims and ensure a good floor slip resistance obtained on both dry and wet floors. Protect F1 achieves a PTV of 107 dry and 40 wet so achieving never less than a 'low' slip potential."



Protect F1 floor protection membrane is available from roofing, building and timber merchants nationwide or for more details of our products visit our website www.glidevale.com



LEAKING GUTTERS?

ARE YOU LOOKING FOR A
PERMANENT REPAIR?

IF SO CONSIDER

UNIFOLD



THE ONLY PERMANENT SOLUTION
IN THE MARKET PLACE TODAY
GUARANTEED FOR 25 YEARS

Call Us
For Free
Impartial Advice.

01384 252777.

www.gutterliners.com

unifold@ampteam.co.uk





Quietly attaining Olympic quality in roofing



The Copper Box Arena, built at a cost of £44 million as the Handball Arena for the London 2012 Olympic Games, is one of the first Olympic venues to re-open as a community venue for sports. Neighbours will remain undisturbed to the loud activities and support within, as a result of the Protan single ply roof. The roof of the

7,000 seat venue has been created using 8,000m² of Protan SE 1.6mm membrane, mechanically fixed with heavy duty carbon steel fasteners. The membrane is laid on top of 8,000m² of Protan VB250 vapour control membrane, 210mm thick Rockwool insulation and a 0.7mm thick galvanised steel deck.

01925 658001 customercare@protan.co.uk

L-shaped windows for eco-building



FAKRO has supplied L-shaped roof windows to the Green Unit®, a modular, prefabricated, single storey Passivhaus design. FTP U5 non-vented, triple-glazed windows with a U-value of 0.97W/m²K were used with BDR tilt and turn openers in the

wall. Set in a green roof, windows with an easterly aspect have AMZ external awning blinds to offset solar gain. The Green Unit's Jonathan Finnerty commented: "Our carbon neutral requirement meant that procurement was considered in great depth. FAKRO worked with us to achieve what we required and gave us highly valuable advice".

01283 554755 www.fakro.co.uk

Roofshield used for conversion



A. Proctor's Roofshield has been used in the recent conversion of Waterside Maltings in Ditchingham by P J Livesey Group. Roofshield has unique vapour and air permeability characteristics, which allows even the most complex of pitched roofs to breathe – without the need for traditional air

gaps or secondary venting products. The low vapour resistance of 0.065MN/g, combined with high air permeability, reduces the potential for interstitial condensation as far as possible, and does not require the use of a vapour control layer, thus giving a robust and dependable solution that can be specified with confidence.

01250 872261 www.proctorgroup.com

Avant Homes specifies Protan



National housebuilder Avant Homes has selected PVC roofing membrane system manufacturer Protan as a preferred supplier for its new product range of four and five-bedroom houses. All of the flat roofs on the four and five-bedroom homes are covered using the Protan SE 1.2mm single

ply membrane, which is hot air welded at joints and mechanically fixed to the roof. Designed to cope with extreme weather conditions without detriment, the membrane achieves durability for up to 30 years. Protan SE membrane is one element of Protan's comprehensive range of single ply roofing solutions, covered at www.protan.co.uk

01925 658001 customercare@protan.co.uk

Avonside's Scottish presence triples



Expert building envelope contractor Avonside Group Services has opened branches in Aberdeen and Edinburgh. Managing Director Tony Burke says: "These two branches triple our presence in Scotland with our branch in Glasgow – known as Versatile Roofing – and enhance proximity to customers, supporting our stance of being a national subcontractor with a local presence."

Housebuilders specify slating and tiling expertise from Avonside in Glasgow. Aberdeen will serve this sector and further Avonside's success on Framework schemes, while Edinburgh will offer pitched, flat and commercial roofing expertise.

0800 731 5982 www.avonsidegroupservices.co.uk

The making of Abbotswood Park



Marley Eternit's Edgemere slates have been used to help create a distinctive village identity for a mixed use development adjacent to the Warner Bros studio in Leavesden, home to the 'Making of Harry Potter' tour. Steeped in industrial

and film making history, there were strict design parameters to ensure the site would be developed to create a clear sense of identity and mixture of homes. The different roof forms, heights and designs were a key part of creating this identity and Marley Eternit's Edgemere slates were chosen to give a contemporary, yet cost effective, roof covering that could be used to add character to different parts of the development.

01283 722588 www.marleyeternit.co.uk/edgemere

OAK MANTEL BEAMS The Original Railway Sleeper Furniture



Beautiful oak fireplace beams, mantel shelves & corbels
Handcrafted to your requirements. Choose the wood, character & finish
From £20.50 per foot. Delivery nationwide

www.jarabosky.co.uk sales@jarabosky.co.uk tel: 01422 311922



Handmade furniture using stunning redundant railway sleepers from around the world

Style and substance, achieving more than just waterproofing with Soprema

Copper Art - Baptist Church, Essex

Creativity and innovation are reshaping entire industries. The rapidly growing creative economy, and ever increasing demand from UK and EU construction regulations and carbon reduction targets, provide far greater architectural challenges, no matter the project. With so many considerations to be made, the requirement for technologically advanced construction materials is rapidly growing.

One of the many challenges faced in modern construction is the sourcing of materials that are not only fit for purpose in a functional sense, but that also contribute to the design and aesthetics of a structure to allow for greater architectural freedom.

Technological advances in waterproofing membranes have revolutionised design and reduced boundaries that could limit the design of a structure. In response to the growing necessity for waterproofing products that retain the spirit of traditional materials, yet accommodate modern methods of construction and design, Soprema has developed a new and extensive range of hybrid waterproofing systems.

These systems create a seamless barrier to water ingress and penetration, yet also contribute to the aesthetics of a structure, providing specifiers with solutions that rival conventional specifications. With three different waterproofing ranges available: cold applied liquid, synthetic and bituminous, each compatible with the other, Soprema have a waterproofing solution for even the most challenging and complex designs.

As a part of Soprema's innovative offering; its best selling Copper and Silver Art synthetic waterproofing



systems are in more demand than ever, with an increasing number of projects specified, each with their own individual motive and purpose for the Copper and Silver Art systems to be installed.

From Church Cupola to international sports facilities, the creative liberty these products provide while also providing the functionality and beauty of traditional materials is unrivalled.

Further information is available at www.soprema.co.uk or call 08451 948 727 to speak to a specification consultant regarding how these innovative waterproofing systems can benefit your project



Copper Art – Residential property, Huddersfield



Silver Art – Velodrome, Italy



Copper Art – National Outdoor Centre, Northern Ireland



Creating healthy spaces – signed RENSON®

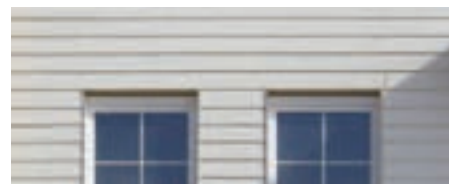
RENSON® aims to create a healthy, comfortable and energy efficient indoor climate using natural ventilation and sun protection. Natural ventilation maintains the good air quality, while the external sun protection controls the solar gains all year round. Take a look at some novelties in ventilation and sun protection

Self-regulating window vent

The Invisivent®^{EVO} HR provides the ideal solution for wind-impacted applications such as high-rise buildings (up to 1200Pa) and apartment buildings on the coast. It contains sound-damping foam that muffles external noises as much as possible. Three possible levels of sound insulation (Basic, High or Ultra) can be reached. In addition, the rain cap, which is mounted as standard, ensures perfect water resistance in even the most extreme conditions. Extra mounting screws and clips guarantee satisfactory stability and sturdiness of the entire window. This self-regulating thermally broken flap ventilator, installed above the window frame, offers a maximum airflow of 15.9 l/s/m at 2Pa and a sound reduction in open position up to 42dB.

Dynamic sun protection

Cilium® is a dynamic sun protection system in aluminium, that can be transformed from a vertical sun protection system in front of a window to a horizontal, open position above a window. This solution limits the overheating of buildings during the warm summer months and minimizes the use of artificial cooling systems. During the cold winter months the low position of the sun allows the warm rays to enter the building under the retracted folding shutters, which limits the use of artificial heating. This Cilium® can be discretely integrated in exterior walls with identical cladding or as a separate element constructed in front of a window. Cilium® is available as standard in two versions: with Sunclips® SE.096 or Sunclips® SE.130 blades.



Contact Renson today on **01622 754123**, email info@rensonuk.net or visit www.rensonuk.net



Are you searching for a long lasting façade solution, that will give you ultimate design flexibility and will fit your budget...?

Yes? Then use Vitrabond!

Well established in the market, Vitrabond is globally recognised by Architects, Builders and Installers as the superior ACM rainscreen cladding panel solution. With large stock levels, vast colour range and continual product development, Vitrabond is readily available to meet your requirements. The composition of Vitrabond is extremely rigid and yet easily formed into many shapes to suit any design requirement.

For more information visit www.vitrabond.com

- More than 60 standard colours • No minimum quantities on standard colours • Robust & durable • Long warranty
- Large stocks • One of the most competitively priced rainscreen solutions in the United Kingdom

For Vitrabond UK, contact Valcan Ltd. Tel: **01278 428 245** E: enquiries@valcan.co.uk



VBH adds Glazpart Link-Vent to range



VBH has added the Glazpart Link-Vent to its selection of ventilators. Available in two sizes, 2500EQA and 5000EQA, the vent meets the requirements of Building Regulations Approved Document F1, and delivers similar performance

to that of much larger vents, meaning more air throughput per mm. The design of Link-Vent's internal opening flap allows the flap to be positioned to reduce draughts by directing air away from the occupants without reducing the air flow. Link-Vent is available in Screw fix or Clip fix variants. As well as the industry-standard white, brown, tan and black colours, it can also be supplied in five printed or foiled wood grain finishes and a host of colours.

01634 263300 www.vbhgb.com

GEZE powers Ripon Cathedral's new entrance



Two years after the construction of Ripon Cathedral's Narthex Entrance has seen nearly 200,000 visitors pass through its automatic glass doors, which feature GEZE UK's Slimdrive SL automatic operators. The brief was to create a welcoming new entrance that would transform the Cathedral, flooding it with light and allowing people to see directly inside. GEZE UK was commissioned to provide door opera-

tors for two single-leaf doors positioned either side of the lobby to complement the new porch's elegant design, yet create a safe automatic entrance for a historic building with a high level of footfall. With its slim design and a drive unit height of just 7cm, the Slimdrive SL automatic sliding operator was the perfect solution.

01543 443000 www.geze.co.uk

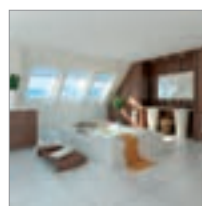
Levolux impresses in Washington



With a growing reputation for offering tailored solar shading and screening solutions on several high profile projects across North America, **Levolux** was approached to help develop a custom solution for the Bainbridge Island Museum of Art. The custom solution comprised 32 bays of single-piece, extruded aluminium Aerofoil Fins, applied externally across a curved, south-facing glazed elevation. The Fins, each

measuring 250mm wide by 50mm thick, are motorised, allowing them to be opened or closed, rotating through 90 degrees. The Fins applied to the Bainbridge Island Museum of Art tackle solar heat gain, but they also help to maximise daylight levels within the museum.

FAKRO PVC roof windows



FAKRO PVC centre pivot and top hung and pivot roof windows, for bathrooms, wetrooms and areas of high humidity, are available in white, pine or golden oak.

Options also include triple-glazed and conservation style windows. With its handle in the base of the sash, the PPP preSelect® can be switched from top hung to centre pivot

opening using a switch in the frame. You can therefore stand in an open window and rotate the sash through 180° to clean the outer pane. Both windows have an installed U-value of 1.4W/m²K, a patented triple seal system and an acoustic value as low as 31dB.

01283 554755 www.fakro.co.uk

SPECIALIST CHIMNEY COWLING

- Static cowls
- Rotating cowls
- Free technical help
- Special sizes

01243 539639

Rotating stealth cowl -

Email: sales@brewercowls.co.uk
www.brewercowls.co.uk



A fresh new look in garage doors

Garage door manufacturer **Garador** has launched a new website and a full range of colourful brochures and support material. In recent years trends have changed and while design is still key, Garador say that aspects such as security, insulation and durability have grown in importance. Managing director Simon Hipgrave explains: "When we talk to our customers, security is often high on their list of priorities, so we developed a range of electric operators and hand transmitters with BiSecur technology, which features bi-directional FM radio signals that use the same 128 bit encryption employed by banks for online banking security. With a range of insulated sectional doors, we also cater to homeowners looking for a greener garage door solution and something that could save homeowners money on energy bills. We are continually investing in new production technology to deliver garage doors that are more reliable and more durable for homeowners. We also understand the choice today can be overwhelming, and that is why we have created new easy to understand brochures, You Tube videos, company website and a blog".

01935 443791 www.garador.co.uk



Handmade bullseye dormers for collection



VMZINC has supplied handmade zinc bullseye dormers for the roof of the Grade II listed Wallace Collection in Paddington. The company's Heritage Division (Ateliers d'Art Français) worked with John O'Connell Architects to design ornamental features for the historic London town

house in order to enhance the roof's classical appearance within conservation area guidelines. In reality, the dormers disguise ventilation outlets and have been used with batten cap roofing in pre-weathered QUARTZ-ZINC® PLUS. This was specified to provide an unobtrusive blend with natural slate, the new roof enabling long overdue work to begin restoring ceilings.

01992 822288 www.vmozinc.co.uk

Gentle giants in harmony with the landscape



The versatility of ROCKPANEL facade cladding made it the ideal choice for 't Zicht' – two eye catching apartment buildings situated in the Netherlands. Designed by ONB Architects, the two buildings were created to be sympathetic to the environment rather than isolated objects, while offering fantastic

views of the landscape. For the design of 't Zicht, the team of architects chose durable facade cladding from ROCKPANEL. The easy workability of the board material made it possible to provide the facade with gnarled panels. Practical as well as beautiful, it was not necessary to protect the board edges, thanks to their weather-resistant nature and high levels of moisture resistance.

01656 863210 www.rockpanel.co.uk

Precision engineering inside and out at college



Woodlands Campus new Engineering and Construction facility at Solihull College incorporates a state of the art specialist centre for multi-craft, bricklaying, painting and decorating, plastering and carpentry, and an expanded motor vehicle training facility. The development is clad

in aluminium Ziplok in a striking white and dark grey combination on both roof and walls, with an unusual 'cranked' roof to wall junction which complements the precise geometric appearance of the buildings. In addition to the Ziplok, the development features RigiSystems Lokfaçade 300 installed horizontally on the gable ends of the building. For more information, please contact RigiSystems.

01905 750500 www.rigisystems.org

New manual sliding door system launched



Schueco UK Ltd is further augmenting its range of glazed, panoramic sliding doors with the introduction of a manual version of its successful Schueco ASS 77 PD.HI system. With ultra-slim sightlines (the interlock stile width is only 30 mm) and a perimeter frame that is entirely concealed within the wall, the

new door provides maximum transparency and virtually uninterrupted external views. The ASS 77 PD.HI can accommodate double- or triple-glazing which, in conjunction with the door's thermally insulated frames, delivers 'U' values as low as 1.1 W/m²K. The glazing is bonded to the door leaf to ensure structural integrity and multi-point locking delivers security to EN 1627 RC2 standard.

01908 282111 www.schueco.co.uk

Sapphire's solution sets new record



Sapphire Balustrades' new offsite balcony solution has enabled an entire residential project's pre-assembled balconies to be installed in a single day. Sapphire used its pioneering development to manufacture 22 complete balcony units, including glass balustrades and

sub-deck, for new apartments in West London. The balconies were manufactured offsite in Sapphire's Reading production facility. With the building prepared, the balconies were transported to site ready for fast track fixing to the façade using the system's connectors. Aimed specifically at the high-rise housebuilding sector, Sapphire says its patent protected system makes it simpler, faster and more cost-effective to provide high quality balconies for residential projects.

'Orangery central' unveiled at Synseal

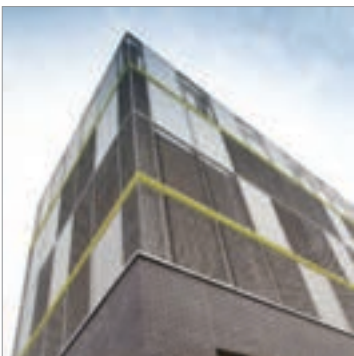


A brand new Synseal showroom located at the company's Huthwaite headquarters is now officially open for customers to view. Synseal's Marketing and Technical Services teams have joined forces to create 'orangery central', conveniently located in the heart of the Midlands.

Five different orangery design solutions are displayed. Customers can come along and literally feel the difference by touching a Celsius performance glass demonstration wall that clearly shows how the specialist Celsius Clear, Celsius One and Celsius Elite glasses dramatically reduce thermal transference and heat loss through the sealed double glass units when compared to standard glass.

01623 443200 www.synseal.com

Berry Systems cladding for new Southwater car park



A key feature of the Southwater Regeneration project in Telford is the construction of a 600 space multi-storey car park with potential for expansion by a further 350 spaces in future years. Associated Architects of Birmingham discussed the cladding requirements with car park specialists Berry Systems at an early stage in the project's development.

This enabled Berry Systems to demonstrate its 'in depth' expertise by designing a cladding system that met the pedestrian loading requirements of BS 6180 and so removed the need for additional pedestrian handrailing on interior faces. The expanded metal mesh cladding was then produced and installed by Berry Systems' own team for contractor Morgan Sindall. The company also installed vehicle safety barriers at the split levels inside the car park from its extensive range of floor and column mounted barrier systems. Installation was completed in April 2014 in good time for the planned August launch event for phase one of this £250 million project.

Berry Systems designs, manufactures and installs car park cladding systems, vehicle safety barriers and complete modular car parks from its base in Bilston, near Wolverhampton. It is part of the Hill and Smith Infrastructure products Group.

01902 491100 www.berrysystems.co.uk

Order by 8pm. Get it Next Day!



For a huge range of stylish door and window hardware at low trade prices, **call today** for your **FREE** catalogue!



UK's Biggest Range



Minimum 5 Year Guarantee



Order by 8pm get it Next Day



Free Returns



0808 168 28 28



IronmongeryDirect.com



DOWNLOAD OUR FREE APP FROM YOUR APP STORE



TEXT **RBA8** to 62244 FREE! With name, address and email for your FREE catalogue.



IronmongeryDirect

MASTERS OF OUR TRADE

DOOR FURNITURE • WINDOW & JOINERY HARDWARE • SLIDING DOOR HARDWARE • HINGES • DOOR CLOSERS • FIRE CONTROL • SIGNS • LOCKS LATCHES & SECURITY • CABINET FURNITURE • SHELVING & STORAGE • BOLTS & STOPS • SEALANTS & ADHESIVES • SCREWS & FIXINGS

HbD

Housebuilder & Developer

LAUNCH ALL NEW WEBSITE FOR 2014



REGISTER ONLINE FOR...

In-print magazine • Digital magazine
Newsletter • Daily digests

www.hbdonline.co.uk

Gilgen entry system with added energy-efficiency <GREEN WINGS>

A new automatic sliding door system from Gilgen Door Systems helps buildings to retain more energy, reduce noise levels and maintain a more comfortable environment.

The Gilgen PSW Green Wings system consists of a state-of-the-art door automation drive, thermally sealed door profiles and insulated glazing that helps to significantly reduce building heat loss.

Ideal for externally facing doors in hospitals, colleges, offices and transport centres, the system reduces utility bills and contributes to the achieve-

ment of BREEAM sustainability standards.

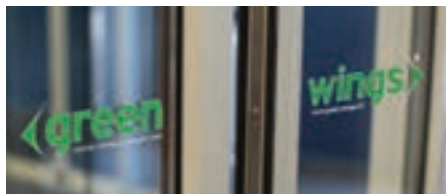
Gilgen PSW has been rigorously tested and certified by ift Rosenheim to provide class leading U-values, air permeability, and wind and rain resistance. The system delivers U-values as low as 1.0 and is designed to provide reliable long term operation, even in the toughest of environments.

The system incorporates a powerful Gilgen SLX door drive unit, which is of modular design and provides extensive functionality. It is powerful enough to operate even heavyweight insulated doors with speed and efficiency. The drive is designed to be easy to install, efficient and incorporates advanced safety features to ensure compliance with EN16005 safety-in-use standards.

Of high quality Swiss design, the system acts and looks like a standard automatic door in normal daily operation, making it suitable for a wide range of applications. Its door profiles and header are



manufactured of high quality components and designed to enhance the look of any building facade. An elegantly designed motion sensor system is built into the header profile for a sleek finish and activates the doors efficiently as persons and objects approach.



For further information call 0800 316 6994 or visit www.gilgendoorsystems.co.uk

K2 Capella's modular options are just the job



Paul of Paul Jackson Conservatories wanted to know what orangery solutions would allow him to present his customer with something innovative. It just so happened that two new upgrade options had been recently introduced to the K2 (a division of Synseal)

Capella orangery: an internal full-height plasterboard soffit, for that true orangery look; and the already popular aluminium fascia and optional decorative pilasters which had been adapted from the best-selling Global Summer to fit onto the K2 hybrid orangery system. The installed Capella measures 6m x 4m and features a brick dwarf wall designed to seamlessly match the Georgian style property. "Our customers were over the moon with the end result," said Paul.

01623 443200 www.synseal.com

Windows brand set to make its mark



SIG Windows is one of the new brands to emerge from the major rebrand and restructure recently introduced by SIG UK Exteriors. Established to help

customers and end users easily identify and connect with its diverse portfolio of brands, products and services, SIG Windows is dedicated to the lucrative and growing market for windows, doors and conservatories. It incorporates Window Fitters Mate, one of the UK's leading independent suppliers of fabricated windows, doors and conservatories – and previously held under the SIG Roofing & Roofline umbrella of brands. Operations Manager Steve Jones said: "We are confident that we can add even greater value to our customer proposition."

01480 466777 www.sigwindows.co.uk

Security Locking System based on Roto NT



The Roto TSH 30 Outward Opening espagnolette is a security locking system, completely integrated in Roto Frank's extensive Roto NT modular system. This enables an enormous diversity of variants to be covered with just a small number of components. And that not only reduces storage costs, it also creates clear competitive advantages. Windows are possible in a broad range of different sizes up to 2,400 mm in order to meet the individual requirements of customers. For more information on this and other Roto Frank products, visit the company's website.

01788 558600 www.roto-frank.com

Synseal



Paul of Paul Jackson Conservatories wanted to know what orangery solutions would allow him to present his customer with something innovative. Two new upgrade options had been recently introduced to the K2 (a division of Synseal) Capella orangery: an internal full-height plasterboard soffit; and the popular aluminium fascia and optional decorative pilasters which had been adapted from the best-selling Global Summer. The installed Capella measures 6m x 4m and features a brick dwarf wall designed to seamlessly match the Georgian style property. "Our customers were over the moon with the end result," said Paul.

Tel: 01623 443200 www.synseal.com



If Carlsberg made buildings...

When Carlsberg UK built an extension to the bottling plant at its brewery in Northampton it wanted the new building to stand out externally as a great building. A major contribution to this aim was made possible by the choice of Rockspan and Europanel stone wool core cladding panels manufactured by Eurobond Laminates.

Yorkshire-based Caddick Construction won the contract to design and build the bottling hall and used a combination of panels in five shades of green – light at ground level to dark at roof level.



'Carlsberg UK wanted the new building to stand out externally as a great building. A major contribution to this aim was made possible by the choice of Rockspan and Europanel stone wool core cladding panels'

The 7,000m² expansion, within the Northampton Waterside Enterprise Zone, enables Carlsberg UK to double its production of brands including Carlsberg, Carlsberg Export, Carlsberg Special Brew, Tuborg, Skol, Holsten and San Miguel beers. The facility can produce a staggering 60,000 bottles of beer per minute – ten million per year. It also has a number of windows built into its side where people passing by can see bottles progressing through the factory.

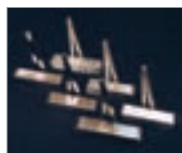
Call Eurobond today on
02920 776677 or visit
www.eurobond.co.uk



Five shades of green Rockspan and Europanel deliver a stunning visual feature to Carlsberg UK bottling plant



GEZE adds a touch of colour to door closers



GEZE UK, a leading manufacturer of door and window control systems, has reported a growing trend for special finishes on covers for overhead door closers. The company's comprehensive range of overhead door closers are all available in a variety of different cover shapes and finishes including traditional silver, RAL, satin stainless

steel, polished stainless steel and EP polished brass as well as special finishes such as bronze, pewter or a variety of different colours. While stainless steel remains the most popular of its standard finishes, bronze, dark bronze and polished finishes are all growing in demand as architects and specifiers look to match the closers with other architectural ironmongery used throughout a project.

01543 443000 www.geze.co.uk

BBA signs up for Timber Expo



In a move that has taken the market by surprise, the **British Board of Agrément (BBA)** has signed up to exhibit at Timber Expo 2014. Held at the NEC on the 7th and 8th of October, Timber Expo is the one of the most important events on the

UK construction calendar dedicated exclusively to timber. The BBA currently undertakes a significant range of testing and certification services on behalf of the Timber Industry and welcomes this opportunity to showcase its offer at this prestigious event. The company has a prime location right at the front of the hall on stand B20.

01923 665300 www.bbacerts.co.uk

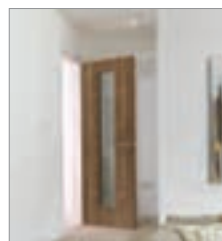
Crittall Windows



Making home improvements such as replacing your windows is one way of adding value to your property. Yet, getting it wrong could wipe thousands of pounds off its market worth. Correctly installing high quality steel windows adds value to the investment you've made in your home – an important consideration when it's time to sell. Whatever your style of house, Crittall has the solution to your replacement window needs. Crittall offers units to restore unique styles back to their former glories, without compromising on quality. It can provide customised square or arched windows to accommodate the sizes and shapes required.

Tel: 01376 530800 www.crittall-windows.co.uk

Contemporary painted doors



JB Kind's ECO COLOURS door range has six new design additions for 2014. This contemporary range of fully finished painted doors offers an incredible price advantage. The range is FSC® certified, with a selection of superb timber effect colours created by state of the art painting technology. Supported by a flexible bespoke options service, alternative design styles and finishes, decorative effects, special sizes, wardrobe

doors and matching frames/architraves can be made to order. FD30 fire doors are available as standard for solid designs and can be ordered for glazed models.

01283 554197 www.jbkind.com

Integrated doorset concept from Leaderflush



Leaderflush Shapland's integrated doorset concept is a comprehensive solution developed to provide architects and contractors with performance doorsets in which every element is fit for purpose and guarantees performance. The integrated performance doorset concept is the next logical step in the development of performance doorsets. By incorporating all of the essential ironmongery, the performance of the doorset can be guaranteed. This includes all

recessed ironmongery and anything that interrupts the seals within the doorset, such as: closers, hinges, flush bolts, locks, flush pulls, electric locks, armoured loops, mag locks, transom closers and floor springs.

01773 530 500 www.leaderflushshapland.co.uk

GEZE turns heads at the Nadler Soho Hotel



What must be one of the most striking facades in the City of Westminster has been created for a boutique hotel in Soho by positioning a bespoke piece of modern art above a stylish revolving door from GEZE UK. At ground level, GEZE UK's three leaf automatic TSA 325 NT revolving door and two pass doors powered by EMD-F automatic swing door operators have been installed to create a sophisticated modern entrance. The attractive automatic TSA

325 NT revolving door is ideal for buildings such as hotels that need to provide guests with an 'always open' entrance, but at the same time need to ensure a pleasant and consistent climate within the building.

01543 443 000 www.geze.co.uk

MACO appeals with fully interactive AR app



2014 FiT Show in Telford on 10-12th June 2014 gave MACO UK another perfect opportunity to showcase its extensive product offering for the UK door and window markets. Using iPads, this provided the perfect tool to demonstrate its fully interactive AR augmented reality app, a show

reveal for MACO UK. The MACO app is free to download from either the Apple store or the Google Play store and takes the user on a detailed journey of a MACO UK specific door lock. Using augmented 3D reality images the user can fully interact – they can twist, turn and explore the lock inside and out, using MACO hotspots to read further information or explode the lock case.

01795 433900 www.macouk.net

Crittall and Ace Hotel, Shoreditch



The façade of the newly created 258-room ACE Hotel London, as well as the interior of the hotel, was conceived to reflect not only the urban character of the area but also the skills, crafts, artistic and cultural influences that imbue Shoreditch with its East End vibe. It was the local metalwork tradition

that led to the appointment of Crittall Windows to furnish a number of the building components, not merely Corporate W20 fixed lights and cold form entrance doors to the ground floor entrance and lobby area but also internal partitioning screens that divide the lobby space from the hotel's bar and restaurant, the Hoi Polloi, and also a florist. The Crittall contract was valued at £115,000.

01376 530800 www.crittall-windows.co.uk



eurobond
delivering low risk building solutions

Retail park is renaissance of Prestatyn, North Wales

The 11-acre Parc Prestatyn Retail Park has been hailed as a renaissance for the town with major tenants including Tesco, M&S, Next, River Island, New Look, Costa and Boots. The new shopping centre is built onto the bottom of the town's high street on the same site where Albert Gubay launched his then revolutionary Kwik Save discount chain in 1959.

The £20 million scheme merged from two previously separate developments and includes a 75,000 sq ft Tesco, petrol filling station and a total of 114,500 sq ft of non-food retail.

'The exterior of the development has a modern, attractive and distinctive look and a major contribution to this was made possible by the choice of Rainspan and Europanel stone wool core cladding panels'



The exterior of the development has a modern, attractive and distinctive look and a major contribution to this was made possible by the choice of Rainspan and Europanel stone wool core cladding panels manufactured by Eurobond Laminates.

The Rainspan panels feature timber and terracotta rain-screens to add visual impact to the buildings. Installation of all Rainspan Systems is fast and easy and the long span capability can reduce secondary steelwork requirements and build costs.

The finish and colours of the Europanel system matches retailer's corporate image and offers high performance together with an aesthetically pleasing finish thanks to its secret fix joint detail. Both Rainspan and Europanel offer low environmental impact and passive fire protection 'built in'.

Client:
Stadium Developments

Architect:
DLA Design

Contractor:
Marshall Construction
West Yorkshire

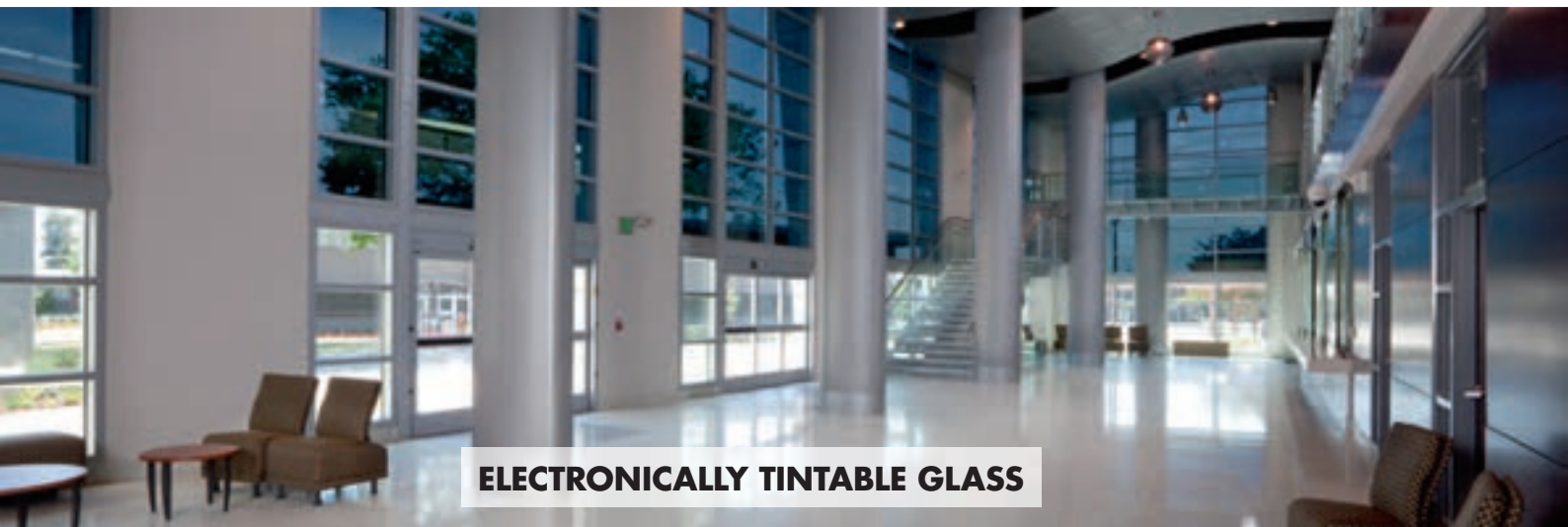
Call Eurobond today on **02920 776677** or visit **www.eurobond.co.uk**



FIRE-RESISTANT GLASS



SECURITY GLASS



ELECTRONICALLY TINTABLE GLASS

HIGH-PERFORMANCE GLASS BY VETROTECH: ELEGANCE, COMFORT AND FUNCTIONALITY COMBINED.

Vetrotech safety and comfort glass offers the ultimate protection for people and property, while providing the aesthetic and multi-comfort qualities you expect from architectural glass. More than 30 years of experience means we are able to deliver solutions for virtually any application, worldwide. Visit www.vetrotech.co.uk to learn more about our factory in Coventry and our comprehensive product range, or call 0247 654 7620.

Vetrotech Saint-Gobain UK distributes SageGlass®, electronically tintable glass for improved comfort and energy efficiency.

Synseal



Synseal are partnering with hardware suppliers Yale Door & Window Solutions to promote the Yale 10 year security guarantee. "The Yale Shootbolt and Encloser window locks are included in our expanding Synseal Hardware product portfolio," said Mark Frain, Synseal's hardware product category manager. "We selected these window locks as they are manufactured to a high quality standard and carry the respected Yale brand which is so well-known with UK

consumers." Paul Atkinson, sales director at Yale said: "Yale is delighted to be partnering with Synseal."

Tel: 01623 443200 www.synseal.com

Timber door canopies by George Woods



George Woods UK manufactures a large range of door canopies, all hand made in timber from sustainable forestry. It always holds a large stock of its standard size canopies, which enables it to offer a next day delivery service. A bespoke design service is provided for both timber door canopies and barge boards, which can be crafted from your own design. Beautifully crafted porch canopies are available in soft wood and include an extensive range of barge boards (fascia boards), all of which are manufactured on-site by hand. Having a canopy prolongs the life of your front door, extends time between maintenance and adds value and appeal.

extensive range of barge boards (fascia boards), all of which are manufactured on-site by hand. Having a canopy prolongs the life of your front door, extends time between maintenance and adds value and appeal.

**THE NEW UPGRADED
SLIM PROFILE ULTRA LOW U-VALUE
STORVIK DOUBLE
AND TRIPLE
GLAZED RANGE**

**Meeting and
Beating the
Challenges of
Higher Standards**

Designed and manufactured by Howarth specifically for the UK market. The range was developed after extensive research into the latest in timber, glazing and weather seal technology to produce a window design, that has driven performance beyond current standards.

**MADE IN THE
UNITED KINGDOM**

For all enquiries
please call:
or you can download
the brochure at:

**HOWARTH
WINDOWS & DOORS**
INNOVATIVE PRODUCTS. SUSTAINABLE SOLUTIONS

01469 535301
www.howarth-timber.co.uk

Online Stockists Of • Fascias • Soffits • Gutters • Cladding



**Low Online
Trade Prices &
10% OFF**



HOMELINE

FloPlast

KLÖBER

- Low Online Trade Prices
- Free Nationwide Delivery
- BBA Approved & Guaranteed

- Free Estimates & Take Off's
- Massive Stock Quantities
(Inc Black, Grey & Irish Oak)



10% OFF for all New customers. Use promotion code (BCD01) at checkout.

Stonehenge goes high TEK®



The largest construction project Stonehenge has seen for several millennia was completed last December with the opening of the prestigious new visitor centre. The building delivers excellent thermal performance thanks, in part, to the **Kingspan TEK** Building System and Kingspan Thermapaper

TT47 LPC/FM. Constructed from high performance structural insulated panels (SIPs), the System can achieve whole wall U-values of 0.21 W/m².K and below. 728 m² of Kingspan Insulation's high performance Thermapaper TT47 LPC/FM was also installed on the roof of both pods by Malone Roofing.

01544 387 384 www.kingspantek.co.uk

Capital performance from Kingspan TEK®



The **Kingspan TEK®** Building System and Cladding Panels have been installed, along with several products from Kingspan Insulation's premium performance Kooltherm K-range, on London's largest Passivhaus development: The Greenhouses in Sulgrave Gardens, comprising of a row of

three-storey terraces (Block A), two five-storey apartment buildings (Blocks B & C) and a further four mews houses with roof terraces (Block D). Kingspan TEK Building System was specified for the external walls of Blocks A and D and Cladding Panels were installed on the concrete frame of Blocks C and D. Both products were designed and pre-cut to the requirements by Kingspan Timber Solutions, ensuring a predictable installation with minimal on-site waste.

01544 387 384 www.kingspantek.co.uk

Bostik Climatherm external wall insulation



The BBA certified **Bostik Climatherm** external wall insulation system offers the quality and performance expected from Bostik, along with a selection of different finishes and a comprehensive training scheme. The system offers important benefits to housing associations, local authorities and other organisations looking to undertake energy efficiency refurbishment projects. It is supplied through a distribution network

with nationwide coverage allowing easy local procurement to offer flexible supply and reduce on-site storage requirements. The comprehensive Bostik Climatherm training scheme allows installers to ensure their staff are fully competent in assessing projects and fitting the system. BBA certification means that it is approved for product performance and customer protection.

Library benefits from Kingspan quality



A prestigious £50 million restoration project to transform the Grade II listed Liverpool Central Library into a world class facility has achieved a BREEAM 'Very Good' rating with the help of **Kingspan Insulation**, featuring more than 3,700 m² of Kingspan Insulation Kooltherm K15 Rainscreen

Board. Ideal for both new build and refurbishment projects, Kingspan Insulation's premium performance Kooltherm K15 Rainscreen Board holds LABC System Approval for use in rainscreen applications. It helps to streamline the Building Control checking and approval process and features a highly insulated core delivering thermal conductivities as low as 0.020 W/m.K.

01544 387384 www.kingspaninsulation.co.uk

Silverstone UTC off to a flyer with Kingspan



Kingspan Tarec®'s premium performance Kooltherm® FM Pipe Insulation has been installed on one of the UK's first University Technical Colleges, Silverstone UTC, helping it to achieve a BREEAM rating of 'Very Good'. Over 4,000 metres of Kingspan Tarec

Kooltherm FM Pipe Insulation were fitted on hot water and heating pipework across the building. To maintain a clean, minimalist interior, the internal pipework was concealed and it was therefore essential to keep the system thicknesses to a minimum. With the lowest thermal conductivity of any commonly used pipework insulation, Kingspan Tarec Kooltherm FM Pipe Insulation allowed this to be achieved without compromising on thermal performance.

01457 890400 www.kingspantarec.com

Thermal upgrade - inside the box



A. Proctor Group's Spacetherm Blanket has been installed in a unique office construction in Dundee, which consists of 37 recycled shipping containers. The first of 10 buildings for 'early stage' creative companies in the heart of Seabraes Yard has 15 lettable office units over three floors. The building has a striking appearance – 36 containers with one turned on its end to form the entrance lobby. Each unit provides comfortable furnished space for up to four people. Spacetherm Blanket, with a thermal conductivity of 0.015 W/mK, offered a flexible yet robust insulation blanket solution for this space-critical application. Its flexibility and ease of use was proven as the insulation material of choice in this application.

01250 872 261 www.proctorgroup.com

Kingspan takes school to the next level

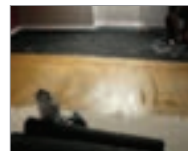


When a rise in the local population forced Caldmore Community Primary School to double its intake of pupils, architects were faced with the challenge of extending the building in the already limited school grounds. **Kingspan OPTIM-R** formed a key part of

the solution, ensuring a smooth transition from the first storey classrooms to an outdoor 'play deck', without compromising either space or thermal performance in the rooms below. The play deck sits on the roof of the lower level corridors and ancillary rooms and to minimise heat loss from these rooms without exceeding the height threshold of the classroom floors, a Kingspan OPTIM-R Roofing System was specified along with tapered Kingspan Styrozone H 350.

01544 387 384 www.kingspaninsulation.co.uk

Impact sound solution



The recent refurbishment and loft conversion at Lairhilllock Lodge required a solution for the floors where impact sound was kept to a minimum. KW Contractors Ltd consulted with SIG Insulation in Aberdeen, who recommended Profloor Ecoroll and Profloor Ecoroll Adhesive, supplied by the **A. Proctor Group**. Profloor Ecoroll provided a cost effective solution to improve the impact sound insulation. Up to 22 dB ΔLw can be achieved by Ecoroll when used with soft covering. Profloor Ecoroll is easy to install, simply roll out and bond to the existing floor surface. It also satisfies the requirements, on a concrete floor, for a bonded resilient floor covering and is an excellent vibration damper.

01250 872261 www.proctorgroup.com

Eurobrick provides external wall insulation solution for homeowners

The owners of this 1930s, three-bedroom detached house experienced all the common problems associated with properties of this age, namely deteriorating external walls, damp penetration, and severe cold and condensation in the winter. The house had no wall insulation and was costly to heat as a large proportion of the heat was escaping.

The owners decided that something had to be done to improve the living conditions of their home and decided to insulate the walls. They looked at different external wall insulation systems and decided to use brick slip cladding rather than insulated render as a brick finish was in keeping with the local area.

Having extensively researched the market, they chose Eurobrick's X-Clad system. Eurobrick is a long established company specialising in brick cladding systems. It was a big decision but the homeowners were comforted by Eurobrick's experience and expertise along with the fact that X-Clad has British Board of Agrément (BBA) certification – a product is only BBA certified following rigorous testing and scrutiny, giving customers peace of mind that it is fit for purpose.

Eurobrick has been selling X-Clad for nearly 25 years and was the first company in the UK to introduce a comprehensively designed brick slip system. Their systems follow a simple concept meaning installation is quick and straightforward. The homeowners in this case, liked the fact that X-Clad could be fixed directly to the outside of their house, causing minimal disruption.

A 75mm thick insulated backer panel was installed to the majority of the property's exterior and due to space restrictions, 50mm thick panel was used on the front elevation. As the porch is an open structure, it didn't require insulation so the thinnest 17mm panel was used here instead.

Eurobrick supplies a wide range of manufactured brick slips and can cut to order for specialist bricks. In this instance the customer chose a Rustic Red Charcoal multi with a detail band of Smooth Anthracite to fit with the surrounding houses.

The insulation has helped to lower the homeowners' energy bills and the new brick slips have transformed the appearance of the aging exterior. The cladding is low maintenance and will look as good in 20 or 30 years as it does now.

Commenting on the results of the building work, homeowner Gemma Moore said: "I am delighted with the whole process. Eurobrick



THE MOORES' HOUSE AFTER THE EXTERIOR WAS UPDATED

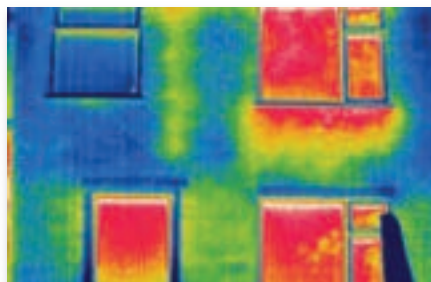
were really helpful and because it's fitted to the outside, we were able to continue living in the house normally.

"There has been a considerably drier atmosphere within the house. Areas of damp, condensation and even my asthma have been so much better since the work was finished.

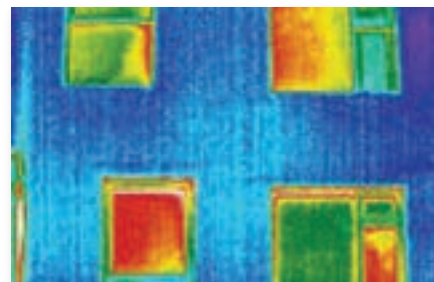
"We have received our first utility bill through since the work was completed and were extremely happy to see around a 30 per cent reduction in energy costs. It really shows that the system works. Following a recent valuation of the house we're also confident that the whole process has added value to the property as it has greatly improved the curb appeal of our home."



BEFORE



HEAT LOSS FROM THE PROPERTY BEFORE INSTALLATION



THERMAL IMAGERY SHOWS A BIG REDUCTION IN HEAT LOSS

For more information on X-Clad and other products from Eurobrick, visit www.eurobrick.co.uk

Schlüter-Systems



An innovative underfloor heating system that promises to cut installation time by up to 70 per cent is now available in complete box sets, to fit all common UK room sizes. Schlüter® DITRA-HEATE is the perfect all-in-one integrated solutions for use under tiles and natural stone flooring. The unique system, with a low assembly height of 5.5mm, comes in nine different box sets of varying sizes, to accommodate all common tiled areas such as bathrooms, en-suites, hallways and

kitchens. The sets contain everything needed for optimal underfloor heating including a thermostat, uncoupling mat and heating cable.

Tel: 01530 813396 www.ditraheat.co.uk

New Mitsubishi Electric heat pump system



Mitsubishi Electric has launched a new Ecodan ground and water source heat pump system which is capable of delivering up to 960kW of renewable heating and water flow temperatures of up to 65°C from a variety of sources, including waste recovered heat. The inverter-driven Ecodan CRHV monobloc heat pump can operate singularly, or be banked together to create a system that can modulate and cascade available units on and off to meet

the load from a building. This level of modulation is unprecedented within the heating industry and with cascade and rotation built in as standard, the Ecodan CRHV system is perfectly suited to a wide range of commercial applications.

01707 278772 www.ecodan.co.uk

Supporting sporting Scotland

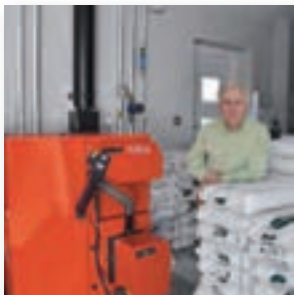


In recent years Grundfos has proven itself all over the world as the pump supplier of choice when it comes to major sporting events. Perhaps this is because of the innovative nature of its product portfolio or the breadth of the range that can answer

virtually any application demand. Grundfos is delighted to be involved in helping to create a little bit of history for Scotland in 2014. 6,500 athletes and officials from 71 countries will converge on Glasgow to participate in the Commonwealth Games. With many years' experience of successfully delivering landmark projects in Scotland, the Grundfos team are proud to be associated with many of the new and existing sports centres as well as a diverse range of supporting venues.

01525 850000 www.grundfos.co.uk

Grant UK



With any new build, how to heat it efficiently and effectively is a designer's high priority, and Grant UK recently provided a winning solution in a fantastic new residence in Grimsby. A large PV array was installed in the garden to provide sufficient power to the property and also take advantage of the Government FIT's incentive (Feed in Tariff). For the heating and hot water a Grant Aerona ASHE 21.5kW heat pump was chosen. This supplied a large buffer tank which in turn fed the

underfloor heating and the hot water cylinder and was all controlled by a Grant Energy Management System.

Tel: 01380 736 920 www.grantuk.com

MelcoBEMS simplifies connectivity and control



Mitsubishi Electric has launched an air conditioning interface that is compatible with the majority of Modbus and BACnet BEMS products. The MelcoBEMS unit works across the full M Series, Mr Slim and City Multi air conditioning ranges to provide full control of up to 50 individual systems and allows the systems to link to third party energy meters. MelcoBEMS

is fully compatible with Cylon; Satchwell; Creston; Invensys; Interactive Homes; North BT; Andover; Siemens; WEMS; Andover Controls; York BMS; Siemens; Priva Building Intelligence; Delta Controls; RDM. In addition to full control, the unit can also monitor indoor daily and monthly kWh when used in conjunction with an EB-50A controller and PAC-YG60MCA pulse meter interface.

01707 282880 www.airconditioning.mitsubishielectric.co.uk

JS launches Essense air curtain



JS Air Curtains is launching Essense, an attractive and economic air curtain suitable for a range of environments, from small shops and restaurants to office buildings and banks. Air curtains seal an entrance with an invisible barrier of air, preventing cold air

entering in the winter and air conditioning escaping in the summer while the door is open. Essense can deliver up to 2,900m³ of air, enabling it to seal doorways up to 2.5m high when mounted above an entrance. Easy to install, the compact unit is finished in white RAL 9010 as standard with other colours available on request. Essense can incorporate water or electric heating elements and is available as an ambient unheated model. It is controlled via a wall-mounted controller with multiple units able to be operated from the same control system.

Hethel excellence extends to ventilation design



The £5.4 million Hethel Advanced Manufacturing & Engineering Centre in Norfolk is using natural ventilation designed and supplied by Gilberts of Blackpool to help air the low carbon building containing 16 workshops with adjoining first floor

office space. Gilberts met the brief by designing over 50 of its WH50 high performance louvres with interface detail for the ground floor, drawing fresh air in at low level, and extracting it at high level via the rooftop penthouse terminals. Its natural ventilation strategy uses a combination of passive stack and cross flow ventilation on the two floors of the building. Boost fans and acoustic splitters ensure air quality without noise transfer is maintained throughout the building.

01253 766911 www.gilbertsblackpool.com

Heat pump air curtain now added to ETL



Mitsubishi Electric's range of Mr Slim heat pump air curtains has now demonstrated the energy saving criteria needed to be included on the Energy Technology List. This enables companies using the air curtains to offset the capital costs against the Enhanced Capital Allowance Scheme – part of the government's programme to manage climate change. The air curtain is available on the Mr Slim and City Multi ranges as

either a recessed or free-standing unit and comes in standard lengths of 1m, 1.5m or 2m, to make the product suitable for almost any front door. They minimise the amount of cold air entering a building, providing a comfortable environment within, and reducing the amount of heating required, lowering energy bills.

01707 282880 www.mitsubishielectric.co.uk

UK firm exceeds green efficiency targets for 2022 – 8 years early!

Situated just outside Birmingham is Landy Vent UK Ltd, another unique success story for British innovation. This small, thriving business may not immediately show up on the radar, but it's a fascinating story of innovation and persistence. The company has been quietly developing a range of special wood-burning stoves. Yes, the market is already saturated with brand names and there's nothing unique about a wood-burning stove. However, the EccoStove is not only unique in its design, but also in the ratio between the stove size and slow release heat output.

The EccoStove uses a unique silicon carbide material mix, which not only stores heat but also releases it evenly throughout a typical four-bedroom house, with only one stove without any need to connect on to the house heating system or the need for fans.

What further sets these stoves apart from the competition is their efficiency. With new efficiency and pollution standards being introduced



to set targets for 2015 and ultimately 2022, the EccoStove already exceeds them.

Landy Vent UK Ltd recently announced that it completed further EU testing for its latest EccoStove models, namely the 678EC and 730EC, which are two of the company's top selling masonry heater and slow heat release, energy efficient wood burning stoves.

They are the first stoves to be constructed using silicon carbide, a combination of the

minerals silicon and carbon, which, when combined, is able to absorb extreme temperatures and then release heat slowly.

The E678 was launched in late 2010 and is a 9.4kw rated wood-burning stove, which Landy Vent says "will typically heat a three-bedroom property on average, providing heat to all parts of the home without the need for pipe work or ducting from the appliance". The E730, a 10kW model, is the latest to be launched last year.

David Ashmore, managing director of Landy Vent UK and designer of the Ecco Stove models explained in more detail the latest round of testing for the two models. He said: "We are delighted to report that both the 678EC and the 730EC have achieved groundbreaking efficiency levels. The carbon to atmosphere and particulates to atmosphere tests done at Kiwa GASTEC at CRE recently show an 88 per cent efficiency and CO emissions of just 0.07 grams per hour."

For further information please email sales@heatstoreltd.co.uk or visit www.eccostove.com

Vectaire's new catalogue



Vectaire's new catalogue details its range of high performance, low energy, economical, residential ventilation units with EC motors. It describes Whole House Heat Recovery Units which control condensation and pollution by providing low level, continuous ventilation in up to seven rooms (installation in lofts, cupboards or ceiling voids) with up to 93 per cent heat exchange efficiency. Also shown is the WHHR Mini DC (for small dwellings, hotel bedrooms, student accommodation etc.) and the slimline Microbox DC, particularly suited for apartment installation. Finally, the Elegance and Elix are dMEVs available for installation into toilets, bathrooms, utility rooms and kitchens.

01494 522333 www.vectaire.co.uk

Eurostove



Launched in Europe at February's Verona exhibition, the Hergom Glance woodburner from Eurostove proved to be a head turner and show stopper in every sense. The innovative design introduces front and side ceramic glass vision panels with a modernistic 'skyscraper' style top and side surround bars. The front of the unit – which can be free standing or wall mounted – has a flush glass finish with a discreet stainless steel handle. It has an efficiency performance of approximately 80 per

cent, thanks to a cast iron double structure and vermiculite-lined firebox. As a modern wood burner design the Glance stands out from the norm.

Tel: 01934 750 500 www.eurostove.co.uk



Stylish Radiators of the Highest Quality

We have radiators to suit cottages, apartments, palaces... in fact anywhere you call home!



Beaumont have been manufacturing cast iron radiators in its foundry for many years, gaining a solid award-winning reputation for excellent quality and service. Working alongside architects, surveyors, builders, plumbers, heating engineers and DIY enthusiasts, Beaumont offer a wealth of knowledge and experience.

Call Beaumont Cast Iron today
on **01788 899100** or visit
www.beaumontcastiron.com



The solution that really adds up

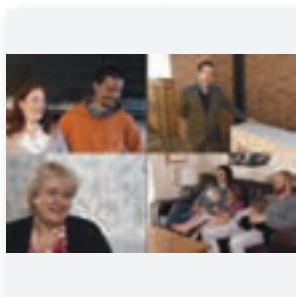


The summer holidays are just around the corner and this means any extra spending money is especially welcome. Grundfos is here to help and until 31st July 2014, each purchase of any model SOLOLIFT2 will earn you £25 Love2Shop vouchers. With just five models covering all kitchen and bathroom application needs, the SOLOLIFT2 range – a powerful, reliable and service friendly macerator range from

Grundfos – will have the solution you need. So whether you need to replace any model of macerator or have a new domestic sanitary application such as a new toilet, shower, or a bathroom or utility room where there are pipework limitations, SOLOLIFT2 can deliver.

01525 850000 www.grundfos.co.uk

Mitsubishi Electric



Mitsubishi Electric has launched a series of testimonial videos which help convey the benefits of Ecodan renewable heating in the words of the people using it on a day-to-day basis. The four videos – part of an on-going series – feature the views and experience of a self-builder couple from Gloucestershire; social housing tenants from the Isle of Wight; the developer of new, executive homes and one of the homeowners, from Hertfordshire.

Graham Temple, marketing manager for the company's heating systems said: "We hope these testimonials will help people understand why they should look at Ecodan."

Tel: 01707 278772 www.ecodan.co.uk

Rapid water heating at Olympic venue



Atlantic Boilers has played its part in the success of the £25 million Lee Valley White water centre, which has opened again to the public after the Olympic Games, by providing the space heating to warm up competitors and spectators alike. Lee Valley Regional Park Authority chose two Atlantic

Multi-Elec Compacte 36kW electric boilers. In a remote location, these reliable, easily serviceable boilers were ideal. Also, flues were not required to puncture the streamline-shape of the roof and spectator terrace of the Facility Building which is a winner of the RIBA East Spirit of Ingenuity Award. In addition, standing losses are less than one third of one per cent of the fuel bill.

0161 621 5960 www.atlanticboilers.com

Air Design supplies AHUs for Forth golf club



At the prestigious Renaissance Club, one of the newest golf courses in Scotland, four innovative air handling units supplied by Air Design are presently recovering heat in the clubhouse. Three of the units were fitted with high efficiency thermal wheels to recover as much heat as possible from the internal

space in order to minimise the heating bills of the private club. AHUs from the Air Design range are technically efficient, combining quality component parts with simplicity of design and construction. The bespoke units provide both heating and cooling for ventilated air and the supplied units incorporate a rotary wheel for heat recovery from the exhausted air.

01384 720460 www.air-design.com

Heat pump selection tool app



Mitsubishi Electric has launched an enhanced version of its popular heat pump selection tool to include calculations for ground or water source applications over 30kW, and extended the platforms available to include the iPhone and Android devices. The simple to use

app offers an easy way for individuals or businesses to see what a heat pump can offer them in terms of reductions in running costs and emissions over gas, oil, LPG and direct electric heating. The app is now available for Android phones and tablets via Google Play, iPhones and iPads via the App Store, as well as continuing on the web.

01707 282880 www.mitsubishielectric.co.uk

Evinox launch app for billing customers

Evinox is delighted to announce the launch of the Evinox Residential Billing Web app, for use with smart phones, tablets and other web enabled devices. Its new Residential Web app allows Evinox billing customers to login to their account anytime, anywhere with internet coverage. This enables them to check current energy credit/debit balance, view latest meter readings, see tariff rate details, payment history and download documents and user guides. Residents can also make payments for energy using a credit or debit card with Evinox's simple and secure online payment facility or set-up a Direct Debit using its online sign up form. The Evinox web app is available to download now, simply visit www.evinoxresidential.co.uk, click on the web app icon at the bottom of the page and follow the instructions on screen. The launch of Evinox's new app coincides with an update to the Evinox Residents website. The customer login area has been redesigned and updated to include lots of new functionality.

info@evinox.co.uk www.evinox.co.uk

Wood heating warms John Lewis spa



The John Lewis Partnership has shown its commitment to wood heating by installing a Euroheat biomass boiler at a new build spa and wellness centre in Snowdonia on the banks of Bala Lake, built specifically as a haven for John Lewis staff to take holidays and short-breaks. The HDG

Compact 50kW wood chip boiler now provides heat and hot water for the spa's swimming pool and underfloor heating systems, alongside the 1,500 litre buffer tank FRA delivery system. The building is eligible to receive £5,500 per year thanks to non-domestic Renewable Heat Incentive (RHI) payments and is estimated to be saving some 27 tonnes in CO₂ when compared to an oil system.

01885 491112 www.euroheat.co.uk



Monodraught Cool-phase helps Ford's retail car showrooms go green

A new Ford retail car showroom and used car sales office, completed in January 2013, is equipped with Monodraught Cool-phase, a low energy cooling, ventilation and heat recovery system.

Cool-phase reduces the running costs of buildings while creating a fresh and healthy indoor environment without the use of compressors or hazardous coolants. The system uses intelligently controlled phase change material (PCM) to actively ventilate and cool buildings, maintaining temperatures within the comfort zone, while radically reducing energy consumption by up to 90 per cent compared to conventional cooling systems.

Commenting for Ford Retail Group, property manager Simon Page says Ford Retail has been examining various methods for reducing its carbon footprint across retail showrooms in the UK, where some of its largest running expenses are energy costs and one of the most significant is the ongoing cost of operating and maintaining mechanical ventilation and comfort cooling systems.



Monodraught was approached by award winning consulting and building services engineers Troup Bywaters & Anders, to provide a design for natural ventilation at the new build project in Runcorn. Following acceptance of the design, Ford proposed a meeting with Monodraught to discuss how the Cool-phase system would work and how it would benefit the Runcorn retail environment. During this meeting Monodraught proposed installing its Cool-phase system in the retail centre's used car sales office, to prove how effective it would be in reducing energy costs for comfort cooling.



In a bid to reduce energy costs, Simon Page had already explored various renewable energy solutions in previous projects, but needed to reassure colleagues that 'going green' was a viable option for dealers during a recession.

Says Page: "While the objective is laudable in green terms, there is also a strong financial business case, particularly as profit margins are tight in the motor industry right now and any opportunity to mitigate our property costs is very welcome."

To find out more visit the website www.monodraught.com

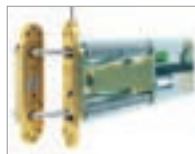
New fireplace and stove insulation solution



At the 2014 Hearth and Home exhibition visitors were given the opportunity to see the new PROMAFOUR® system launched by Promat UK's High Performance Insulation (HPI) division. The company used the exhibition to unveil this new high performance insulation solution for cassette and inset-type fireplaces. The PROMAFOUR system includes various components such as the calcium silicate and cement-based insulation boards, plus joint filler, glue, fixing studs and primer. These components can be combined to create casings against brick or timber walls, and even around free-standing stoves, making the system ideal for both new-build and refurbishment projects.

01344 381350 www.promat.co.uk

Door closer enhances care home safety



Powermatic® Free Swing is the latest controlled, concealed door closer to be introduced by Samuel Heath. The new door closer offers the usual automatic door closing functionality or can allow a door to be operated manually and left open as desired until the door closer is activated by fire alarm or power failure when automatic closing is initiated. The new door closer complies with two harmonised European performance standards, BS EN 1154 (controlled door closing devices) and BS EN 1155 (electrically powered free swing and hold-open devices). The door closer is totally maintenance-free and has been tested to in excess of 500,000 cycles. Its reliability is backed by a manufacturer's 10-year guarantee.

0121 7664200 www.powermatic-freeswing.co.uk



Lakes Bathrooms

Lakes Bathrooms has launched an extensive new range of mirrored shower enclosures, doors and bath panels. The mirrored option is now available on 15 of the products across the company's Classic Collection and its 8mm Coastline Collection. Uniquely, the mirrored effect is available not only on complete panels, but also as an inset panel, which creates a whole new look for the bathroom.

Lakes Bathrooms' mirrored products help to visually expand any room by reflecting light and creating the illusion of space. At the same time, the mirrored element provides privacy for the shower user while letting light through – effectively obscuring the user for discrete showering.

Introducing the new mirrored elements, Sales and Marketing Director, Clive Organ, enthused: "Our new mirrored treatment is an optional effect that is widely available across our product ranges. It offers numerous practical benefits and contemporary style appeal." The optional approach means that designers and consumers can configure to their own preferences, with a choice of side panels, shower doors and bath screens. Prices for the mirrored doors, panels and screens from Lakes Bathrooms start at £246.00 plus VAT. For a brochure detailing all the mirrored products, or more information, please visit the company's website.

Tel: 01684 853870 www.lakesbathrooms.co.uk/products

HIT THE BULLSEYE EVERYTIME!

MAKE GALVANIZING YOUR TARGET

Hot Dip Galvanizing offers you long term corrosion protection and better whole lifecycle costs when compared to other coatings.

Wedge Group Galvanizing offers you:

- ◆ Free technical advice.
- ◆ 14 plants across the UK.
- ◆ We galvanize steel from 1.5mm to 29m long.
- ◆ Quality approved galvanizing to BS EN ISO 1461.

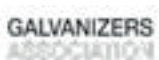
For an information pack

Email: corrosion@wedgervalv.co.uk

Twitter: @wedgervalv

Tel: 01902 600704

www.wedgervalv.co.uk



apollo monza aluminium column radiator



ideal for low temperature renewable systems
ideal for high pressure systems
the latest patented technology
a unique aluminium radiator design
half the weight of steel
82 vertical and horizontal sizes
delivered within 3 working days

www.apolloradiators.co.uk



Creating space with style

Specialist folding partition manufacturers & contract installers of folding doors, partitions and movable walls.

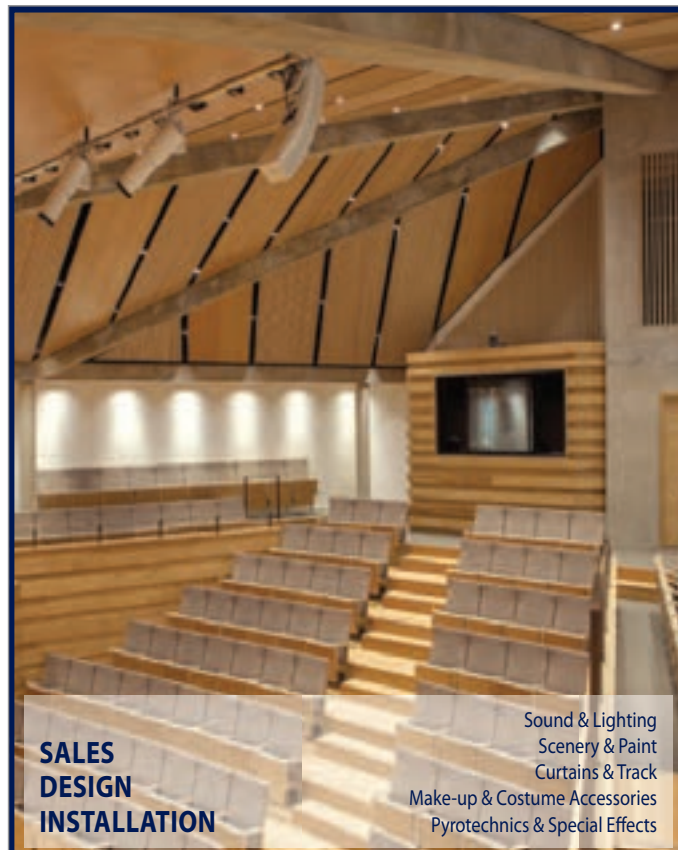
Building Additions have an established reputation for the manufacture, supply and installation of room partitions and movable walls throughout the UK. The skill, knowledge & experience we offer guarantees the right solution to meet the requirement of interior design professionals.



Tel: 01373 454577

Email: sales@buildingadditions.co.uk

www.buildingadditions.co.uk



**SALES
DESIGN
INSTALLATION**

Sound & Lighting
Scenery & Paint
Curtains & Track
Make-up & Costume Accessories
Pyrotechnics & Special Effects

Lancelyn
THEATRE SUPPLIES

Oxford branch: 01865 722468
Wirral branch: 0151 334 8991

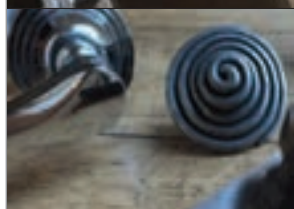
www.lancelyn.co.uk



**BRITISH
IRONMONGERY**



**British Made, Handcrafted Door and Window Furniture
Contemporary, Vintage and Period Ironmongery**



Contact British Ironmongery today on **0845 257 1147**
or visit www.BritishIronmongery.co.uk



Washroom solutions from Lathams

As part of its new range of washroom solutions, **James Latham** is now offering moisture resistant, high performance melamine faced chipboard (MFC) as well as a range of matching compact grade laminate. The moisture resistant MFC incorporates two decorative melamine surfaces which are bonded to both sides of the high density chipboard under high pressure and temperature. They will be offered in 10 decors. Also available, is a selection of matching compact grade laminate in 14 different decors. Compact grade laminate offers the ultimate performance in the most demanding environments. The panels are resistant to impact and have surfaces and cores that are totally impervious to water. Both of these new range additions will be colour co-ordinated with Latham's existing range of high pressure laminates (HPL) and 2mm thick ABS edgings. James Latham's Group Product Champion for Melamine, Paul Morson, commented: "These latest additions, of both moisture resistant MFC and matching compact grade laminate mean that we can now offer a true 'one-stop-shop' washroom solutions package to our customers."

Concrete effect tiles



Synthetic is a brand new range from **Solus Ceramics** that interestingly blends some of the colours found in traditional terracotta tiles with the contemporary textures of cement. The range features six chalky colours including beige, grey and taupe, and is available in six versatile sizes. Synthetic is the perfect marriage

of rustic charm and urban chic. Synthetic is characterised by natural imperfections and beautiful stains which gives any space with a warm, elegant and welcoming atmosphere. The tiles will provide an immediate 'lived in' effect and also possess an incredibly tactile surface. Samples are available on request.

0121 753 0777 www.solusceramics.com

Timbmet's high profile fit-outs



Tekne has built a reputation as one of the UK's leading hospitality, commercial and retail space fitters. Working on projects such as Jamie's Italian, Wagamamma, Selfridges and Tramshed, Tekne only use suppliers who are able to provide the service and product quality required for such high profile,

bespoke projects. For every job specification, stock availability, price and speed of delivery are carefully considered. When it comes to hardwood timber and veneers, **Timbmet** are always on the list. Manager Director Ed Sylvestre sights Timbmet's service, stock availability and accurate pricing as some of the reasons: "They can be relied up to have the stock and offer accurate, competitive prices."

01865 860303 www.timbmet.com



Access all areas with a Premier Loft Ladder

Premier Loft Ladders are the preferred choice of architects and building industry professionals throughout the UK, and leads the way in design, technology, energy efficiency and quality and is recognised as being the foremost supplier of concertina style aluminium and folding or sliding style wooden loft and access ladders.

Prices are extremely competitive, in fact the company will match the price of any like for like product found at a lower price elsewhere!

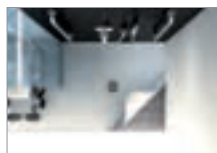
Key reasons to choose PLL:

- * Outstanding quality and value
- * Preferred choice of architects and building industry professionals
- * COLUMBUS Treppen - UK Main Dealer
- * Technical and design advice
- * Commercial and domestic applications
- * Fire resistant trapdoors
- * Vertical access
- * Flat roof access
- * Electrical operation

PREMIER
LOFT LADDERS

For further details, advice and or for a no obligation quote, please contact us on telephone: 0845 9000 195 or email: sales@premierloftladders.com or visit our website at www.premierloftladders.com

wedi Solso takes care of PVC on shower floors



wedi has launched a floor-level shower system developed especially for PVC coverings. wedi Solso is the unrivalled shower floor system for wet areas in hospitals and private and public care home facilities. The wedi Solso comes as a fully integrated sealed drainage unit, which allows the PVC surface to be

easily connected directly to the drainage system and is 100 per cent water-proof. This means that there is no chance of any water flowing backwards and seeping under the PVC. As a result of its incredibly strong stability and ability to bear heavy loads, it is suitable for very high pressure point loads. With 2.5 N/mm², this system enables trouble-free use for wheelchairs and zimmer frames etc.

0161 864 2336 www.wedi.co.uk

CCL Wetrooms



Over the last ten years wetrooms have seen rapid growth in the UK, with the open plan alternative having a major impact on the bathroom layout and design of hotel suites, luxury homes and the residential housing market. CCL Wetrooms has unveiled the latest development in the aesthetics of wet-room drainage – the Stone-Infill Grill – a stunning way of creating a continuous stone floor, virtually unbroken by the line of a stainless steel drainage grill. The Stone-Infill grill is suitable for

use with natural stone and porcelain tiles, which are simply inserted into the empty Infill Grill, creating a beautiful finishing touch to any wetroom.

Tel: 0844 327 6002 www.ccl-wetrooms.co.uk

Weston Homes' chooses RAK Ceramics as new supply partner

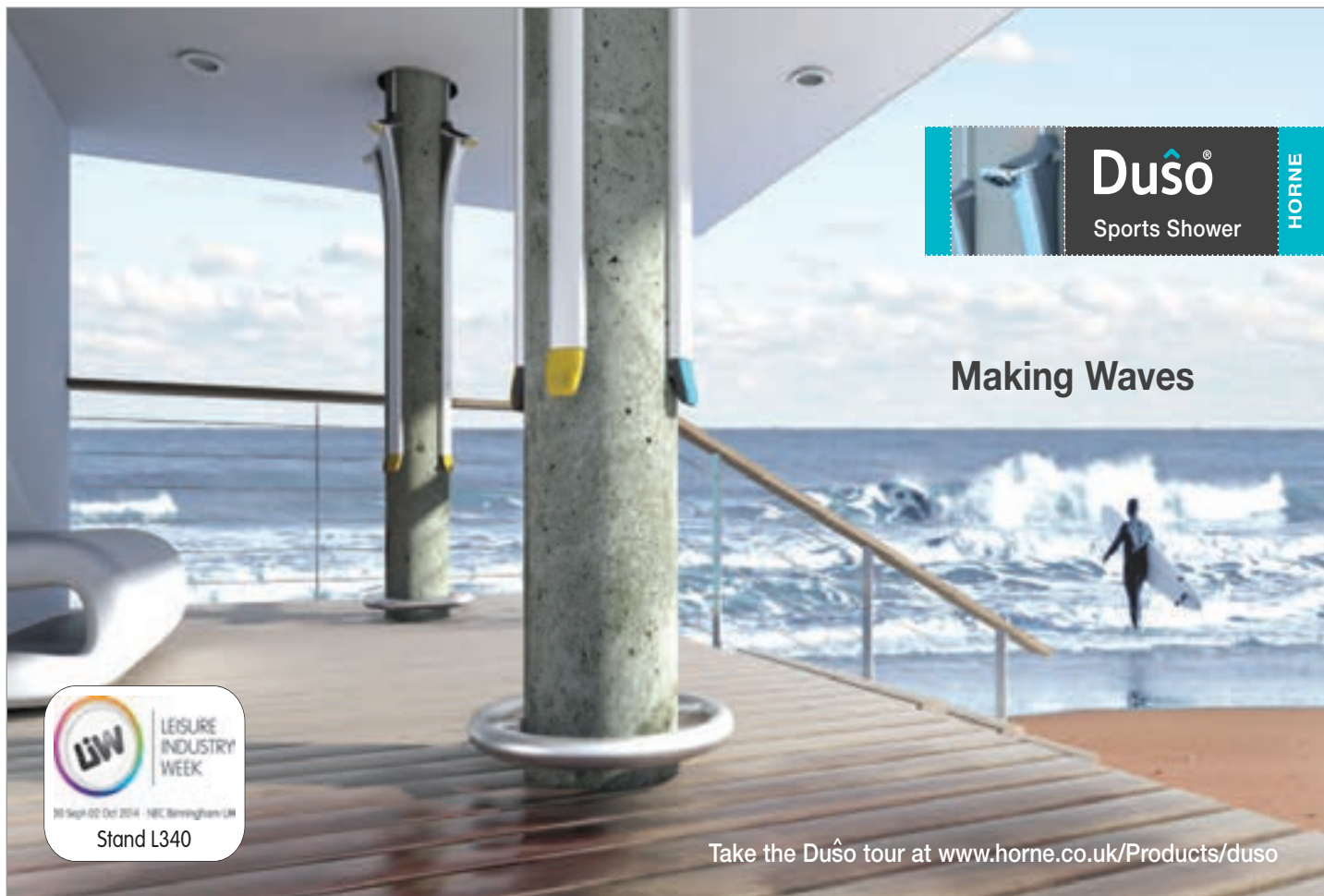


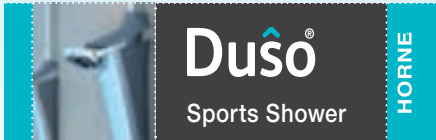
UK property developer Weston Homes Plc has selected RAK as its ceramic supply partner. Chosen for its quality, design choice and competitive price point, RAK's range will be specified at all new Weston Homes' developments. Current projects include Markyate, Napsbury and Hornchurch, where tiles from RAK's Lounge Collection have been installed throughout bathrooms and en-suites, on walls and floors.

Formed in 1987 by Bob Weston, Weston Homes is part of Weston Group Plc. During the current year, an estimated 550 legal completions are anticipated, equating to approximately 14,000m² of installed tiles; the independent firm is undergoing significant expansion, and expects to double its turnover within the next 3-5 years, which will equate to increased ceramic installations.


Bob Weston, CEO at Weston Homes Plc said: "We reviewed around 350 international suppliers before we chose RAK as our supply partner. In selecting RAK, we've been able to demonstrate a sufficient saving which has enabled us to specify ceramics throughout our bathrooms and en-suites, as standard."

01730 237850 www.rakceramics.co.uk





Making Waves



Stand L340

Take the Dušo tour at www.horne.co.uk/Products/duso

Caledonian's 'superloos' save space



Caledonian Bathroom Pods (CBP) have provided bespoke, space saving 'superloos' to Argent's Grade 'A' office space in central Manchester at One St. Peter's Square (OSPS). Some 162 pods, a mix of individual WC, showers and accessible WC facilities, slot in

between the core walls of the structure on each floor level of this 268,000 sq ft building. CBP offer a turnkey, fast installation solution as a full suite of pods can be craned in and positioned in a day to a single floor. The pods' water and energy saving specification contributed to the BREEAM Excellent rating.

01636 821645 www.caledonianbathroompods.com

Kaldewei presents Meisterstücke



Available from June, Kaldewei presents Meisterstücke, a new collection of free-standing baths with seamless enamelled panelling. Using modern technology for deep drawing steel, Kaldewei applies precise handcrafting to create a smooth transition from panelling to bath and

create a flawless finish. The result is a true bathroom masterpiece that is available for three iconic Kaldewei bath models: Conoduo, Asymmetric Duo and Centro Duo Oval. The Meisterstücke Centro Duo Oval (shown) is available in two sizes – 170 x 75 cm and 180 x 80 cm. As an exclusive and separate segment, the new Meisterstücke take on special significance in the Kaldewei range.

01480 498053 www.kaldewei.co.uk

Mapei Kerapoxy CQ



Mapei is renowned for its colourful approach to grout development, inspiring designers worldwide. Kerapoxy CQ – the new, environmentally-friendly, high performance epoxy resin grout – combines Italian designer flair with high performance technologies to create the ultimate in grout solutions. Utilising colour quartz technology significantly increases the grout's colour stability in a wide range of applications, from swimming pools, terraces, commercial and domestic kitchens through showers and wet rooms. It is also an important breakthrough in preventing staining to tile finishes during the wash-off process. The grout is easy to mix, apply and clean off, can be used in joints as narrow as 2mm and, furthermore, emits extremely low levels of VOC, conforming to GEV EMICODE EC1^{plus}, a hugely important factor when measuring indoor air quality. Kerapoxy CQ is suitable for grouting tiles fixed to walls and floors in virtually any internal or external tiling situation. This performance is available in an impressive 21 vibrant colours, 11 of which are unique to Kerapoxy CQ, with many being designed to enhance a project's appearance e.g. ocean blue for swimming pools. In terms of technical performance, it complies with BS EN 13888, being classified as RG.

0121 508 6970 www.mapei.co.uk



ASSISTED BATHS | PATIENT HOISTS | SHOWERING SOLUTIONS

Assisted showering. Solved.

Stylish, easy access wet rooms for healthcare developments

To assist architects and designers with the diverse challenges of specialist bathing specification, Gainsborough has introduced a new range of accessible wet rooms for assisted showering.

- contemporary, ultra modern design
- slip resistant wet deck area with level access
- choice of thermostatically controlled showers
- easy to clean with antimicrobial protection
- integrated soft-touch shower seat and grab rail



Contact us on:

0800 988 4237

info@gainsboroughbaths.com

www.gainsboroughbaths.com

riba
product
selector

NSPlus

GAINSBOROUGH 
Specialist Bathing

Quote: ADF0514

Schlüter-Systems



Schlüter-Systems' extensive range of wet room products offers simplicity, reliability and easy installation. Incorporating the latest innovations for floor-level showers and wet rooms, it provides a fully integrated product suite, including top of the range waterproofing sets, drainage systems, and uncoupling and waterproofing membranes for tiling the walls and floors. Products include the Schlüter®-KERDI-LINE, a linear drain channel system which is perfect for the construction of

floor level showers and offers a particularly low assembly height. Schlüter-Systems has an essential role to play in every professional tiling project.

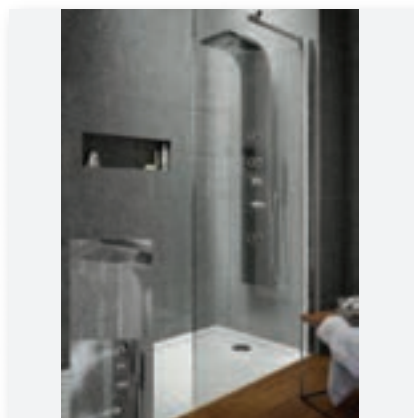
Tel: 01530 813396 www.schluter.co.uk

Aqata new bespoke frameless shower screen



Aqata has launched a new bespoke frameless shower screen, increasing its line-up of made to measure showering solutions for 2014. Characterised by spans of stunning frameless glass, the shower screen offers the ultimate in minimal styling and is ideal for contemporary wet room style interiors. Distinctively frameless, the new shower screen is secured to the wall and ceiling (if required) by high quality polished chrome brackets, removing the need for wall profiles entirely. With the shower area completely opened up to the room, a feeling of light and space is created which enhances even the smallest of spaces.

01455 896 500 www.aqata.co.uk



Hudson Reed

The stylish new Spritz Thermostatic shower panel from Hudson Reed is the ideal way to update your shower. With its brushed stainless steel finish, the Spritz panel will create a modern, dream shower experience in any bathroom and offers anti-scald protection for all the family.

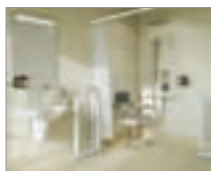
Indulge in the luxury of multi-option showering, with the inset fixed head featuring conventional water spray, plus nine additional nozzles which produce invigorating water jets – great for waking you up in the morning.

If you prefer a more gentle shower experience, simply choose the three body jets which produce a refreshing spritz of water. There's also a useful hand shower option, ideal for rinsing the bath or shower – or washing the dog.

With a 20 year guarantee, the Spritz shower panel offers the quality you expect from Hudson Reed and at just £969 including VAT, it makes luxury showering more affordable.

Tel: 01282 418000 www.hudsonreed.co.uk

Bespoke solutions from On The Level

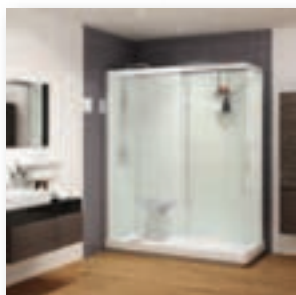


On The Level is the one of the only manufacturers in the UK to produce bespoke solutions for concealed wet floor shower trays in any size or shape. The patented Birch ply underfloor shower formers are easy to install and ideally suited for special needs applications such as care homes, hospitals

and specially adapted domestic bathrooms. On The Level formers are BSI approved for a safe load of more than 60 stone (380kg) and their shallow depth of just 24mm allows them to fit flush into most floor types. Its specialists are happy to explain the product and give technical advice, on site if required, to devise solutions for specific projects.

01252 373202 www.onthelevel.co.uk

Saniflo



Cubicles offer a swift and hassle-free showering solution for any shape or size of bathroom. In most cases, you can have a watertight enclosure complete with the shower, controls and doors fitted in less than two hours. The Kinedo Kinemagic is available as a corner or recessed cubicle. The Kinemagic Corner (pictured) features sleek glass panels with an anodised finish. This high quality, all-in-one cubicle has been designed to fit in the same space as an old bath and has

an integrated thermostatic shower control. The construction of the Kinemagic enables it to be fitted in just one day with no mess, no fuss and no re-tiling.

Tel: 020 8842 0033 www.saniflo.co.uk

MODULAR SHOWERING SOLUTIONS



- 30 YEARS OF INNOVATION
- ISO 9001 ACCREDITED
- LEAK PROOF
- EXTREMELY DURABLE
- HYGIENIC
- EASILY INSTALLED
- 25 YEAR GUARANTEE

Many other standard and bespoke design variations are available

TAPLANES
SHOWERING SOLUTIONS

Telephone 01423 771645 Email admin@taplanes.co.uk www.taplanes.co.uk



Tarkett chosen for Teenage Cancer Trust unit

A pioneering unit for treating teenagers and young adults with cancer has been colourfully fitted out with **Tarkett** flooring. The unit at University Hospital Southampton NHS Foundation Trust was designed to create a space as comfortable as possible. Featuring six en-suite bedrooms, a four bed day unit, social space and support facilities, the bright and engaging décor of the centre was created using a variety of Tarkett flooring. Architect and project leader Mark Maffey from Studio Mode said: "Suddenly finding yourself in hospital can be a disorientating experience, particularly for young people, so for that reason creating a safe and welcoming space was essential." Bright and colourful flooring was chosen for the treatment areas and calmer, wood effect flooring chosen for areas of rest and relaxation. The Tarkett flooring used included iQ Optima in Yellow, Medium Blue and Green, iQ Eminent in Turquoise and Acczent Excellence 80 in Bamboo. Tarkett's iQ range is a hard-wearing, durable floor with a huge spectrum of colours, patterns and effects that allows designers and specifiers the opportunity to get creative in a variety of environments.

01622 854040 www.tarkett.co.uk



Specflue unveils pellet cooker range

Specflue will be launching a new range of pellet cookers to the domestic market this autumn. The Neos Pellet Cooker will be a first for the UK. This is a smarter, more eco friendly addition to the family of range cookers. The appliance can be used to cook all year round and acts as a room heater. One of the models, the Neos 155 PGE, also comes with both pellet and electric ovens, eliminating the need for an additional cooker in your kitchen for use in the summer. The pellet cooker provides all the practical benefits of pellet stoves and boilers. It is controllable, energy efficient and the fuel can be easily stored. It is also competitively priced and can be installed in any home, as long as there is the necessary space for the flue. Initially, there will be two pellet cookers available; the Neos 90P with a ventilated pellet oven only, and the Neos 155 PGE, which, in addition to the two ovens, has the option of gas, electric, ceramic or induction hob.

0800 9020220 www.specflue.com

Delayed door closing by LCN at Windermere Sheltered Housing



In sheltered housing blocks the individual apartment doors will usually be fire doors and so need to have some form of closer fitted. This is also a good idea for conservation of heating and security as well as fire safety but can create difficulties for elderly or infirm residents to open or negotiate, particularly with wheelchairs or Zimmer frames.

To alleviate these problems, South Lakes Housing decided to fit LCN door closers at its Birthwaite sheltered housing and extra care facility in Windermere. LCN door closers are supplied by **Relcross Ltd** and it was able to advise South Lakes on the best specification for their circumstances and the 1461 model, some with delayed action, was chosen.

One of the most attractive features of the LCN 1461, and a key requirement at Birthwaite, is the option for delayed action. This enables the door closing action to be delayed for an adjustable period of time up to a maximum of one minute before resuming normal closing. This allows slow moving traffic to pass through in safety and without disruption.

01380 729600 www.relcross.co.uk

Super Deluxe gives super fine finish



Natural materials have long been a popular choice for stylish interiors and for good reason – but now there is an even better cause to choose an on-trend alternative. Top flooring firm **Tarkett** has launched a new eye-catching wood and tile range called Rhinofloor Super Deluxe. With more than 10 different designer friendly styles, it takes cushioned vinyl flooring into previously unexplored territory. UK marketing manager Steve Urwin said: "Rhinofloor Super Deluxe is a highly-attractive prospect for demanding design schemes due to the combination of on-trend wood and tile designs. With realistic-looking wide planks it offers discerning home-makers, specifiers and architects a high quality product in a style that is in high demand." Available on a roll up to 4m wide, the floor is textured so you can feel the grain. Rhinofloor Super Deluxe is available through nationwide distribution and comes with a 20-year guarantee. Steve said: "We're finding many specifiers are turning to cushioned vinyls to provide a practical, hard-wearing and visually-appealing floor finish that suits even the most demanding of interiors schemes. We're predicting that Rhinofloor Super Deluxe will be a hugely popular product for us, and we think it's an excellent enhancement to our existing ranges."

01622 854 040 www.tarkett.co.uk

Saniflo launches the Sanishower Flat



The new Sanishower Flat from Saniflo is a pumping solution for low-level shower trays of 80mm and over. It is capable of pumping a standard electric or gravity mixer shower and the two

inlets mean a washbasin can be added too. It allows you to install a shower anywhere a water supply can reach, even when there is no gravity drainage available. This means the installation of showers in awkward areas has never been easier. It can pump wastewater up to 3m vertically and 20m horizontally. Sanishower Flat is a two part kit with the Sanishower pump plus gully and waste, which can be installed next to or underneath a shower tray with access for easy maintenance.

020 8842 0033 www.saniflo.co.uk

Law firm judges Heradesign a success



Property law specialist JB Leitch has recently moved into a refurbished four-storey office in the centre of Liverpool, with Knauf's Heradesign specified for the project. The company brief was for a flexible office space which reflected the mature and serious

aspirations of the legal practice. 800 sq m Heradesign ceilings feature in the main reception, meeting rooms, open plan areas and the training, reading and social spaces. Heradesign, with its unique, organic wood-wool woven surface, helps create an inspiring place to work and meet that has a welcoming ambience for staff and visitors. The aesthetics are not the only characteristic that set Heradesign apart; it offers superior acoustics, fire resistance and ease of installation too.

020 8892 3216 www.amfceilings.co.uk

HOLDSWORTH Windows

Introducing our new ultra energy efficient steel window which complies to current building regulations. To suit existing replacement windows or new build.

Specialists in Steel Windows, Doors, Lantern Lights & Leaded Lights

Holdsworth Windows Limited, Darlington Road, Spinton, York YO26 4PW
Telephone: 01904 661863, Facsimile: 01904 661864
Web: www.holdsworthwindows.co.uk • Email: info@holdsworthwindows.co.uk



Making an entrance...
...bespoke revolving doors

first impressions...
...nothing is more elegant than an attractive entrance

the experience...
...beautiful doors



0207-554-8757
sales@bauporte.com
www.bauporte.com

Luxury Homebuild

World Leaders

Grand Designs

PassivHaus
Bespoke Glazing



If you're planning a self-build or renovation you need to be sure that your project is in safe hands.

Altitude Aluminium works with Schuco and Reynaers systems and offer a complete, no worry service from design through to installation of Aluminium Windows, Doors, Sliding and Folding systems, Curtain Walling, Balustrades and Balconies.

Altitude Aluminium is ISO 9001, ISO 14001 and BS OHSAS 18001 accredited.

Get in touch with us to discuss your project further.

Call us today on

0800 2888 066



or email your plans to

quote@altitudealuminium.co.uk

Visit our website

www.altitudealuminium.co.uk



Designer Contracts announces deal



Designer Contracts, one of the UK's largest flooring contractors, has signed an exclusive deal with Bellway Homes to provide floorcoverings for all its new sites in the UK. The deal means that Bellway can access a wide

portfolio of floorcoverings from one source. Designer Contracts MD, Peter Kelsey, said: "We already had an exceptional relationship with the team at Bellway Homes and this only strengthens it further. For the Bellway Group, the deal means that we can provide Bellway divisions with a selection of floorcoverings to suit each site and property type at the most competitive prices."

01246 854577 www.designercontracts.com

Remmers serve up 5 star flooring at hotel



Remmers Floormix DQ system has been installed by Phoenix Specialist Flooring to upgrade the floors and coves to the kitchens of a major hotel chain in the Midlands. The system was laid over the existing quarry tiles using Remmers FAS Primer 100, chosen for its exceptional bond to wet, glazed and difficult surfaces. Due to the nature of the busy hotel kitchen

area, the Floormix DQ system was selected by the client to meet their requirements for a seamless, hard wearing surface that was easy to clean and maintain as well as providing a good level of slip resistance. The installation was carried out over four days as part of a fast track, full kitchen fit-out project.

0845 373 0103 www.remmers.co.uk



Tough vinyl lets designers get creative

A new range of hardwearing homogeneous compact vinyl is offering an unprecedented opportunity to be creative. Launched by flooring experts Tarkett, the Premium Collection features Eclipse Premium and Primo Premium and combines best-in-class performance with an array of appealing designs, making it suitable for a variety of architectural projects. Premium is designed especially for heavy traffic zones where hygiene and slip resistance are critical and is available in three non-directional patterns across 102 colours. Its flexibility allows it to meet the most demanding needs of any project in schools, hospitals, offices, retail environments or public buildings. The range is available in both sheets and tiles. A special PUR reinforcement seals and hardens the surface to make it more resistant to dirt and daily wear and tear, as well as easier to clean and maintain. Multi-coloured welding rods are available for perfect match finishing. Steve Urwin, Tarkett UK marketing manager, said: "It's rare for project designers to have the kind of creative design flexibility that this collection offers at their fingertips."

01622 854 040 www.tarkett.co.uk

Clever new flooring from Gerflor



The international design influences of global vinyl flooring manufacturer Gerflor are evident in its new Texline collection of ready-to-install, loose-lay flooring that couples top class design with cutting edge technology. A showcase of the latest decorative trends in down-to-earth priced flooring for all areas of the home, Texline's attractive wood, mineral and all-over designs are a desirable addition to a new home. Beyond good looks, Texline's clever construction technology provides multiple installation and practical benefits. A patented, Gerflor Fibre technology (GFT) flooring, it is 3mm thick, exceptionally comfortable underfoot and 16db sound insulated. It is also waterproof, R10 slip resistant and its 0.3mm wearlayer has a stain, scratch and indent resistant PureClean™ surface finish. Additionally, low-cost, no-fuss installation is guaranteed by Gerflor's innovative, built-in, GFT textile backing system, together with an interlayer for stability, which permit up to 35 sq m, adhesive-free fitting with minimal subfloor preparation. Texline also ingeniously remains flat and automatically compensates for uneven surfaces, plus it is 90 per cent RH resistant. Compatible with underfloor heating, Texline has a 15 year product guarantee and comes in two, three and four metre widths.

01926 622620 www.gerflor.co.uk

NEACO launch new stanchion designs for balustrade range



NEACO has added to the vast range of modular options available within its Spectrum balustrade range with the introduction of two attractive new stanchion designs.

Combining a stylish contemporary appearance with economical use of materials, the new Shape stanchion's defining feature is ovular shaping which is also applied to the infill clips. The top of the stanchion meets the top handrail with a minimalist stem connector. As well as providing an alternative aesthetic option, the inherent strength of the Shape design allows the stanchion centres to be maximised to help work within budget constraints. Infill options include toughened glass, rails, wire, mesh and perforated panels. The new Quad stanchion provides another alternative to tubular stanchions with a square design which also uses a stem connector to meet the top handrail. Quad is also economical in its use of materials and provides an offset glass infill option in addition to inline toughened glass, rails, wire, mesh and perforated panels.

Available in stainless steel or aluminium, the Spectrum balustrade range comes with a lifetime guarantee.

Solving stock flow in a split-level storeroom



A Stannah Levelmaster low-rise platform goods lift proved the best solution for shifting boxes in the split-level storeroom of the Bromley outlet of Tiger Stores, a leading Danish retail chain offering a wide range of affordable homeware, toys, stationery, toiletries and accessories.

The Levelmaster unites two floors, moving goods over a distance of 1,055mm between ground level delivery and lower ground storage. Finished in durable black baked enamel (RAL 9005) with upper front-facing glass panels for visibility, the step lift brings robust service to a tough stock-handling environment.

Access on the upper level is via a space-saving, half-height, left-hand hinged door, with a double-

hinged swing door at lower ground level. Safety and grip during transit is further ensured via wall-facing, half-height chequer-plate sides and floor.

The Stannah Levelmaster carries a rated load of up to 2,000kg, and the lift is supplied in a self-supporting structure for quick, easy installation with the minimum of builders' work.

The Levelmaster was specified by Robert Walsh, project coordinator of HLP UK, a leading UK multi-disciplinary architectural services company: "We opted for the Stannah Levelmaster as it best suited the site's constraints. The Tiger Store is located within a busy pedestrianised high street with no frontal access for deliveries. Goods arrive through the shopping mall service yard at the rear of the building. The storeroom is split-level from the service yard and the lift had to be able to take palletted loads between two levels, a nominal but important distance when it comes to the management of frequent, heavy, bulky stock."

This is just the latest of eight Stannah lift installations across Tiger's UK stores, currently running at 29 but expanding fast.

Contact Stannah Lifts Ltd on **01264 351922**, email liftsales@stannah.co.uk or visit www.stannahlifts.co.uk for more information


retro touch®
Electrical products

SWITCHES & SOCKETS

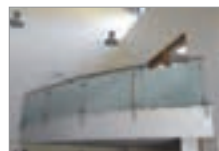
WITH A TOUCH OF GLASS™



T: 01293 279 426

WWW.RETROTOUCH.CO.UK

Hygienic handrails from SG Systems



SG Systems has further enhanced its Sentinel stainless steel and AL 50 aluminium range of handrail and balustrade systems, with the addition of a new handrail coating that has been specifically developed for healthcare and care home environments.

The new finish incorporates SteriTouch, an anti microbial additive which when added to the handrail coating provides an effective barrier against bacteria and hand borne germs such as MRSA, Ecoli and Salmonella. It is this protection that is becoming increasingly demanded by specifiers and facilities managers working within heavily trafficked areas such as hospitals, care homes, medical centres, doctors and dentists surgeries.

01473 240055 www.handrailsuk.co.uk

Altro Whiterock uPVC wall cladding system



Altro Whiterock uPVC wall cladding system assures a hygienic, durable and high performance solution for commercial kitchens, fast food outlets and restaurants, to name just a few of its interior applications. Altro Whiterock is available from IDS's 12 branches nationwide, either over the

counter or with 24-48 hour delivery with total flexibility on delivery quantities from one sheet upwards. With its 2.5mm thick semi-rigid wall cladding system, Altro's hygienic surface is certified to all EU hygiene standards, as well as fire resistance to Class 0 as defined by the Building Regulations when tested to BS476 Part 6. It guarantees a watertight and seamless surface that is stylish and decorative.

08457 298 298 www.idsurfaces.co.uk

Ritec launches ClearShield®



Ritec International, pioneers in 'non-stick' glass is launching its ClearShield Eco-System™ for splashbacks. The ClearShield Eco-System is the incredible and proven way for glass splashbacks to keep their sparkle, remain easy to clean and hygienic. Ordinary glass treated with the ClearShield Eco-System is upgraded to ClearShield Eco-Glass™, resulting in a higher quality. Splashbacks will hold a pristine appearance for longer and will always be easier to clean. In addition, ClearShield Eco-Glass is more hygienic thanks to its anti-microbial properties which meets direct food contact test requirements of the EU.

020 8344 8210 www.ritec.co.uk

New multi room audio system launches



Armour Home, a leading provider of premium products, solutions and services to the specialist hi-fi, home theatre and entertainment market, has announced the launch of its new digital multi room audio system. Systemline 7 (S7) is built into the fabric of the house and offers users

fully integrated access to the widest available range of online music services on the market. It provides high quality audio in up to 24 separate, independent zones, offering fully integrated access to the widest range of network music services and built-in music file storage. The system is operated by the fastest, most comprehensive app in the marketplace. The Net Music app has been developed by Armour and has a simple interface, with 'Home' and 'Now Playing' screens etc.

01279 501111 www.systemline.co.uk

Stair nosing specification tools

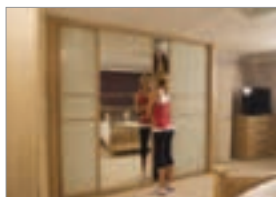


Quantum Flooring, a manufacturer of stair nosings, has created a number of complimentary tools that help the specifier choose the correct profile when finishing off floorcovering edges on stairs. Assistance in selecting the correct stair

nosing can easily be obtained from the handy 'Product Selector' on its website, the bespoke free Quantum Flooring app which can be downloaded from Google Play or iTunes, and the Quantum Flooring A4 Specification Guide – a comprehensive guide to all stair nosing in the range. Quantum Flooring offers over 80 different stair nosing profiles in the standard range and a number of accessories and transition profiles, designed to suit all applications in every market sector.

0161 627 4222 www.quantumflooring.co.uk

Swan Systems Sliding Wardrobe Doors



The unique British Designed and Patented range of Swan Sliding Wardrobes are luxury products at affordable prices. Swan Systems Sliding Wardrobe Doors are available in 15 popular frame colours with 300 different door inserts and now with soft close. Swan Systems supply

house builders with doors, track and interiors as well as matching bedroom furniture. Create a set of sliding wardrobe doors unique for your project, very competitive prices. Stand out from your competition; offer something stylish your customers expect.

01329 843636 www.swansystems.co.uk

LOFT CENTRE PRODUCTS

DIFFICULT ACCESS PROBLEM?

OUR LADDERS AND HATCHES ARE THE PERFECT SOLUTION

- ▲ Models to suit all spaces
- ▲ Vertical and ceiling access
- ▲ Electric versions available
- ▲ Fire rated hatches



With over twenty years experience and unrivalled technical expertise, Loft Centre Products has developed an exhaustive range of access ladders and hatches for all commercial applications.

Tel: 0845 676 0704 | Fax: 0845 676 0705
Email: sales@loftcentre.co.uk

www.loftcentre.co.uk

LOFT LADDERS | SPIRAL STAIRS | LOFT STAIRS
SPACE SAVERS | ELECTRIC UNITS | HATCHES



Residential & commercial

For the home, the office or the public space, few features are as safe and as aesthetically pleasing as the glass balustrade

Residential

We offer a range of durable and competitively priced glass balustrades to the residential sector. We specialise in:

- Framed and frameless balustrades
- Balconies and Juliettes
- Terrace and garden balustrades
- Walk-on glass floors
- Staircase fabrication
- Shower screens
- Splashbacks
- Bespoke balustrade designs

Commercial

We work closely with architects to make the boldest design statements a reality. We can deliver unique designs at competitive prices in a range of materials. We understand the commercial sector and are here to provide high-quality and durable glazed balustrades to your clients to the design you specify.



Call Urban Glass Systems on **0844 335 3779** or email **enquiries@urbanglass.co.uk** for a free consultation

Visit **urbanglass.uk.com** for more information



The next big thing in platform lifts

Platform lifts have been around for some time now with the standard platform size of 1,100mm wide x 1,500mm long, more than capable of accommodating a wheelchair passenger and attendant but when you need to move individual items which are longer than 1,500mm what do you do?

This was the situation at Cardiff University in their chemistry building. The university needed to

move chemistry trolleys safely and easily between the preparation and chemistry labs, which measured 1,650mm long. The standard platform lift was too short in length and the next option was a conventional 13 person passenger lift, which due to the deep pit requirements, could not be provided in the existing building.

After discussion with Axess 4 All, the large capacity A8000 platform lift was suggested, which has all of the benefits of a platform lift with a small recess and no over travel but with a platform length of 2,480mm long.

A space for the A8000 was found in the entrance stairwell and as the platform lift would sit inside the existing ornate stairwell, it was decided that the shaft panels should be glazed to allow as much light as possible though the platform lift and continue with the feeling of space within the stair well. To ensure the platform lift would also fulfil its requirements from a disabled

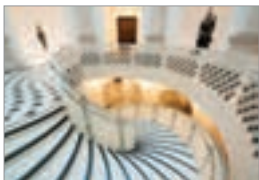


access perspective, the unit was fitted with power operated doors with remote push button which allowed wheelchair users to call the lift and be out of the swing of the power operated doors.

Installation took place over the spring half term break so disruption to the university and students was kept to a minimum with the platform lift being installed, commissioned and handed over within a five day period.

Call Axess 4 All Ltd on 0208 213 3099, email sales@axess4all.com or visit www.axess4all.com

Tate Britain transformed with BAL



BAL adhesives and other products were used extensively at a stunning £45-million redevelopment of Tate Britain, including BAL Thickbase (single-part self-smoothing levelling compound), BAL Prime APD (acrylic primer for walls and floors) and BAL Supercover Rapid Flex (fast-setting flexible adhesive). As a

major addition to the museum's former layout, a large opening through the floor of the main entrance rotunda allowed a new staircase to be inserted. A further 2,000 m² of flooring included a stunning geometric design that extends through the lower level of the museum; the canteen, public areas and lower rotunda.

01782 591100 www.bal-adhesives.co.uk

Promat rises to major refurbishment challenge



The need for proven fire protection for self-supporting mains gas risers which extended up through 21 storeys led to Promat's PROMATECT®-L500 board being selected for a residential refurbishment project in Camden, London. Three multi-storey housing blocks on the Amptill Estate have now been protected by the PROMATECT®-L500 fire protection board, which was used to create a bespoke solution tailored to the individual needs of this project. Promat

devised a fire compartment system for the gas mains, which was constructed from PROMATECT®-L500 boards provided by SIG Technical Insulation Beckton, and installed by Fire Delay Contractors Ltd.

01344 381350 www.promat.co.uk

GATEMASTER gate closers



Renowned for their quality manufacture and reliability, GATEMASTER gate closers from Signet Locks can be fitted to metal and timber gates to ensure controlled and secure closing at all times. Local regulations on self closing gates vary so please check with the local authority before fitting these products. Experience in this field demonstrates that, when used correctly, these closers will reliably close gates for many years. GSB gas strut closers are top quality gate closing struts, ideal for closing gates up to 80kg. There is no need to release gas to reduce the spring force, just simply move the strut along the slots in the brackets to adjust the force exerted. The adjustable brackets also make the installation easy as there is no need to compress the spring when fitting it to the gate. It is ideal for both fitting to new installations and retrofitting to existing gates. APS hydraulic gate closers are hydraulically controlled with a top hinge kit that has been developed using proven technology to provide reliable gate closing. They are vandal resistant and suitable for gates up to 120kg. The robust closer unit is fitted underneath the gate, meaning it is unobtrusive, and this also acts as a load-bearing lower hinge. The kit includes a top hinge assembly which is fully adjustable to enable the gate to be positioned correctly after installation, with no power required.

01243 552066 www.signetlocks.co.uk

Antislip decking specified in London



The new vibrant development at One Church Square, Pimlico in London has a glass roof and rooftop garden to make the most of outside space in a city development. Timber was used with steel across the project to deliver an industrial aesthetic.

Western red cedar cladding was used for the building envelope and John Brash timber decking was chosen to complement the rest of the timber use. JB Antislip Plus, graded to C24, was specified with two anti-slip inserts for a high level of non-slip performance. All decked areas that form part of the fire escape route were fire retardant treated to Euroclass B using a non-leachable exterior fire retardant treatment.

01427 675588 www.johnbrash.co.uk

Promat puts passive protection on display



This year's Firex International exhibition will give visitors an opportunity to find out about the products and services offered by Promat UK. It will be showcasing its comprehensive range on stand R805 and making visitors aware of the wealth of technical expertise and support which it is able to provide. For over 50 years Promat has

pioneered the development of products that range from fire protection boards and penetration seals, through to fire resistant glazing and spray products. These products are designed to comply with modern, stringent fire protection requirements, and coupled with the knowledge and expertise at its disposal this allows Promat to create proven, effective and fully-integrated fire protection solutions.

01344 381350 www.promat.co.uk



SALTO Systems launch XS4 mini website

SALTO Systems has launched a dedicated website for its brand new XS4 Mini access control solution. The website has been designed to provide the ultimate user-friendly experience and allow visitors to discover everything about the new XS4 Mini. It allows customers to access detailed product information on this ground breaking new product. Using the latest technology and augmented reality, the website incorporates a handy 360° viewer allowing you to see a virtual preview of how the XS4 Mini product will look on a door from any angle. Its compact size combined with a modern LED aesthetic also marks a new design language from SALTO that the market will increasingly see in coming months. Designed to take building security to a new level, XS4 Mini enables users to secure and control any door quickly and effectively. Installing XS4 Mini couldn't be simpler, just remove the existing handle set and install, with no complicated retrofit required. More advanced than any other electronic lock on the market, XS4 Mini has been designed to cover security needs today and future needs tomorrow.

01926 811979 www.saltosystems.com/xs4mini

Kin Stone paving offers high-end quality



A&G (Acheson & Glover) has added to its extensive range with the outstanding, contemporary Kin Stone – a new bespoke paving product that will transform commercial and public realm projects. Ideal for creating variable and unique landscape designs due to

its premium finish, Kin Stone can be laid as a single colour or three colour blends. "Available in both grey and sandstone options, Kin Stone offers professional designers the opportunity to specify a high quality paving system that recreates the realistic tones of natural stone," explained Marketing Manager Brian McConnell. "Made from locally quarried aggregates, Kin Stone's surface is formed by blending fine quartz materials, resulting in a truly exceptional paving product."

028 8952 1275 www.acheson-glover.com/kinstone

Brett Landscaping

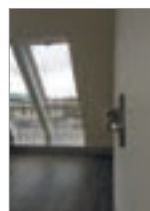


Brett Landscaping has launched a new image gallery to celebrate the award-winning work of its Approved Installers. The gallery – located on the company's Facebook page – showcases real-life installations where homeowners have benefitted from the precision and quality of work of Brett Approved Installers, who are specially accredited by the company. The examples of patio and driveway work – all of which have been winners or runners-up at the annual Brett Approved

Installer Awards – showcase the outstanding results that can be achieved by combining high-quality paving with experienced and dedicated installers.

Tel: 0845 6080570 www.facebook.com/BrettPaving

Automist: the fire suppression solution

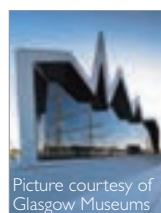


Automist, from Sussex-based Quenchfire, is a smart alternative to traditional sprinkler systems, being more cost effective, easier and quicker to install and suitable for various applications. It typically uses less than 10 per cent of water compared to a sprinkler system, minimising consequential water damage to fixtures, fittings and the fabric of a building. Tested and proven to be effective by BRE Global, it is an extremely low maintenance option, requiring only annual

commissioning to monitor the output pressure. It activates when fire temperatures are detected, using a fine water mist to lower the temperature and the accumulation of toxic gases, creating conditions that allow occupants to vacate safely.

01580 330082 www.quenchfire.co.uk

Promat product portfolio goes on display



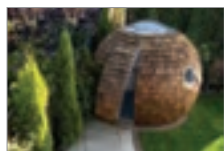
The Riverside Museum, Scotland's Museum of Transport and Travel in Glasgow has installed a combination of Promat passive fire protection products to provide a robust fire protection and means of escape. Promat supplied 400m² of Promat SUPALUX® for the project. Promat SUPALUX is a lightweight and non-combustible building board that offers up to four hours fire resistance for a range of general-purpose building applications. Different sections

of the building's structural steelwork were protected by either Promat TD Board® – an inert mineral fibre board – or by the lightweight, non-combustible Promat VERMICULUX® board, which is made from calcium silicate.

01344 381350 www.promat.co.uk



Coxdome rooflight delivers daylight



A company specialising in serving the growing trend for working from home, is making use of circular **Jet Cox** Coxdome rooflights in order to deliver daylight into its customised spherical-shaped office pods. The Coxdome Circular Rooflight is available in a range of sizes from 600mm – going up in 100mm increments – to 2,200mm diameter. The domes are manufactured from 3mm Polycarbonate and the upstands from Glass Reinforced Plastic (GRP). Glazing is available in Clear, Diffused, Opal, or Cool & Clear. Hinged opening domes are available either manually or electrically operated, while all the ventilation frames are manufactured from extruded white PVC-u sections.

0121 530 4230 www.jet-cox.co.uk

Liquid Weather offers treatment



Liquid Weather is a revolutionary treatment manufactured by Global Merchandise Limited that is suitable for mellowing all types of masonry. The water based, acrylic resin product can be readily applied by brush, sponge, cloth or spray to instantly tone down new brickwork, masonry, concrete, roof tiles or paving to offer an

authentic aged patina. Importantly, Liquid Weather contains no harmful or aggressive chemicals so is safe to use with normal personal protection gear. The coating is highly resistant to the elements and physical abrasion, so will not require re-applying.

01780 766787 www.liquidweather.co.uk

Lighting up the King's Road with KNX

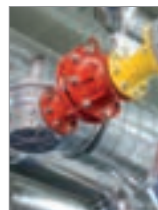


The Sloane Stanley Estate is proactive and always puts the needs of its tenants and residents first. This has been underlined in a lighting project for a parade of retail outlets at 300-348 King's Road where KNX lighting control technology,

developed by KNX Consultants, has been

used as the backbone of a highly innovative facade lighting scheme. The scheme uses a combination of low energy, individually controllable RGB multi-coloured light sources. The lighting can be configured into a variety of eye-catching lighting scenes. Richard Everett, estate manager for Sloane Stanley says: "KNX has proven to be extremely effective for this project."

Quick-drying enamel from Bradite



Fastrac from **Bradite** is a single pack fast drying, high gloss coating based on modified silicone and polyurethane alkyd resins which also contains rust inhibiting pigmentation for extra protection. Surface dry in two hours, its fast drying time combines with a tough flexible finish which is resistant to spillage of mild chemicals, oils and hydrocarbons. Suitable as a one or two coat finish or as a part of a protective system for steel or suitably primed nonferrous metal.

Ideal for use on agricultural, construction and factory equipment. Available in ACE, BS4800, RAL and Silver. A computerised tinting facility give access to over 7,000 colours including BS 4800, 381C, RAL, NCS and ACE colours.

01248 600315 info@bradite.com

benchmark street furniture



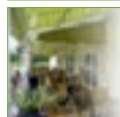
benchmark design limited
cheriton house, barnham lane,
walberton, west sussex, bn18 0az
t: 01243545926 f: 01243545453
email: bench@btinternet.com www.benchmark-ltd.co.uk

Shade and Shelter Specialist

**OUTSIDE
STRUCTURE
SOLUTIONS**

Canopies, walkways, terrace covers
smoking shelters and garden gazebos

From the shade and shelter specialists



...for all your Outside Structure needs



www.OutsideStructures.co.uk

entrance canopies • shade canopies • covered walkways • school canopies

parkstreet furnishing

Canopies and walkways can be used for a variety of different uses to provide protection from the sun and elements and act as functional outdoor spaces:

Education
Commercial and leisure
Airports
Hospitals

We offer a fully bespoke service and have an in house design and surveying team to produce high quality canopies designed and manufactured to fit your requirements

Contact us today and
find out how you can **transform**
a building with **affordable**
canopies and walkways

01695 557024 • sales@park-streetfurnishing.co.uk
www.park-streetfurnishing.co.uk

FIRE protection for WOOD

Classification Reports & Certificates; Pine, Spruce, W Red Cedar
Scottish Larch, Siberian Larch, Oak, Birch and Plywood



HR PROF

- Eco Friendly
- Clear & Odourless
- Water Based
- Non Toxic
- Apply with Brush or Spray
- Euro-Class B-s1-d0
- Internal or External Use
- HR Prof also tested to BS 476-6 & BS 476 part 7



For more information on our products, contact us
T: 01691 791644
E: sales@fireretardantuk.com
www.fireretardantuk.com

FIRE RETARDANT UK

Visit us at
Timber-Expo
Stand C80

WOOD

is... *Beautiful* safe

Let's work together to keep it beautiful & safe

Fully compliant, traceable and maintenance free, **Lonza fire retardant treatments** ensure peace of mind for your timber project - keeping our most sustainable building material safe and still beautiful.

Lonza
Lonza Wood Protection

visit our new fire retardants web site
www.lonzawood.co.uk

The only BBA accredited fire retardant treatment available in the UK.



The only fire retardant treatment accepted by NHBC for exterior cladding.



A warranted waterbased coating system - exclusively for use with NON-COM Exterior.





A greener approach to private/social schemes

Designed by David Wood Architects, the Parkside Quarter scheme is named after the acres of parkland that lies adjacent to it on the Isle of Dogs. The use of green roofs on all three apartment buildings, therefore, connects the residential scheme to its location.

The fact that the green roofs have been specified for both the private sector and social housing elements of the scheme demonstrates that they are no longer the preserve of a certain demographic of people, or a certain type of building, and are now available to all in what was once a working class postcode. It also illustrates how far green roofs have come in terms of entering mainstream speci-

fication: 'eco' schemes are now being used to create a more harmonious built environment, with low maintenance planting and a robust, durable roof build up to maximise service life and encourage local bird and insect life.

The green roofs were installed by roofing contractor Cawston Roofing using Kemperol V210, a cold liquid-applied waterproofing membrane, from Kemper System.

Explains Kevin Cawston from Cawston Roofing: "Kemperol V210 is the ideal base for a new build green roof because not only can it be applied quickly in a single process, saving time and labour, but it is also certified as root resistant, so the planting used in the green roof will not compromise the integrity of the waterproofing."

Stuart Hicks from Kemper System said: "The Kemperol V210 resin saturates the polyester reinforcement fleece and cures to form a tough and

durable, seamless membrane with no laminations. It remains permanently flexible to cope with building movement and has a BBA certified service life in excess of 25 years.

"Ensuring the correct specification is extremely important when it comes to green roofs. Arguably the most important element is the waterproofing as the primary function of the roof is to protect the building.

"The waterproofing system used must be robust enough to last because any leaks in the membrane can be difficult to access or repair once the green roof is established. It must also offer proven root resistance to ensure that the waterproof protection cannot be damaged by planting. Choosing a cold liquid applied waterproofing system, such as Kemperol V210, overcomes the common failures of many roofing systems as there are no seams, laps or joints that can be compromised."

Contact Kemper System today on **01925 445532** or visit **www.kempersystem.co.uk**

LEVATO MONO porcelain paver system

The Levato Mono porcelain paver system is the pinnacle of external raised flooring technology; enabling the specification of lightweight, slip resistant and attractive raised flooring solutions, combining incredible technical properties with uncompromising aesthetics; making them the ideal choice for commercial and domestic use alike.



- 20mm porcelain pavers 40x80 45x90 60x60 75x75 30x120 40x120 60x120
- 'Floating floor' – installation over single ply membranes
- Eternal product - zero maintenance required – offering massive over-life savings
- Highly abrasion and stain resistant
- Highly slip resistant ; R11 and achieved up to +65 wet in the BS pendulum test
- Lightweight – 45kgs per m²
- High load bearing and impact resistance
- Timber & stone effects ; 40+ finishes available
- Ideal for balconies, roof terraces and piazzas, for both commercial & residential use
- Completely non porous
- Fire & frost proof
- Height-adjustable support from 9mm up to 550mm

t: 0845 2700 696 e: info@thedecktileco.co.uk
www.thedecktileco.co.uk



dtc
the deck tile co. ltd.

Versatile Caliza flagstone brings superior finish



A&G (Acheson & Glover) has launched a new highly durable and versatile flagstone to the UK and Ireland markets that ticks all the boxes. Superior sustainability, outstanding quality and premium aesthetics are the cornerstones of Caliza. Featuring premium graded local aggregates, Caliza offers the choice of ground and textured finishes that will enhance any new development.

Ideally suited for high profile commercial and public

realm schemes, Caliza is suitable for pedestrian and occasional heavy vehicle traffic thanks to density enhancers that improve structural integrity. Caliza is available in 50, 65 and 80mm thickness.

028 8952 1275 www.acheson-glover.com

Trief kerbs deliver enhanced safety



Trief vehicle containment kerbs from Brett Landscaping have been specified to provide protection on bridges as part of Manchester's major Metrolink project. The proven quality of Trief – the only product of its type to be independently tested to the BS EN 1317-2 standard for road restraint

systems – was instrumental in Brett Landscaping being chosen for use within Phase 3 of Metrolink, Manchester's light rail system. Selecting a suitable containment kerbing system still required extensive research to find a well-engineered safety kerb that was proven to deliver the required standard of safety – and the unique credentials of Trief made it particularly attractive to the Metrolink team.

0845 6080570 www.brettpaving.co.uk

TimberTech Reliaboard - to the Manor born



Luxurious, stylish and easy to look after – that's Greensquares' TimberTech Reliaboard to a tee and so it was perfect match play when global golf venue, five-star Celtic Manor Resort, sought high quality composite decking to highlight a series of luxury lodges for interna-

tional guests to enjoy. It was a natural fit for the contractors, Lodgico, who chose the natural-looking TimberTech Reliaboard in Cedar to match the lodge's natural timber frames set against the magnificent backdrop of the imposing Usk Valley. "We were really delighted that Lodgico chose TimberTech cedar on the basis of being ahead of the competition for quality, look and easy maintenance," said Jason Cole, managing director of Cardiff-based outdoor living authority Greensquares.

02920 803756 www.greensquares.co.uk

Norbord helps schoolchildren build house



Most school 'make-and-do' projects are conceived on a modest scale and often end up on display in the main foyer. But at Burlington Danes Academy in White City, north London, there is a more ambitious project. They are building a house. While the project is designed to be largely self-financing, several suppliers including Norbord have agreed to supply materials and services free of charge. Norbord's contribution is

around £1,000 worth of its SterlingOSB oriented strand board. Made at the firm's Inverness factory from home-grown wood fibre, SterlingOSB is renowned for its strength, durability, low environmental impact and versatility.

01786 812 921 www.norbord.co.uk

ashtrays • bins • bollards • boot and shoe cleaner • childrens seating
fencing and gates • flower planters • lockers • seating • signage
tree grilles & tree guards • urban bins • wooden seating and tables



parkstreet furnishing

Park Street Furnishing offer a vast range of urban street furniture products for today's street furniture market. They include products manufactured from steel, cast iron, concrete, recycled wood and solid recycled plastic. Perfect for:

Schools and Recreation Grounds

We offer a fully bespoke service and have an in house design and surveying team to produce high quality furniture designed and manufactured to fit your requirements

Contact us today
and find out how you can
transform a space with
affordable street furniture






01695 557024 • sales@park-streetfurnishing.co.uk
www.park-streetfurnishing.co.uk

Quiet efficiency: Xpelair's new range



Xpelair Ventilation Solutions has launched a new highly efficient range of single inline box fans. This builds on the success of Xpelair's customised solutions by incorporating energy efficient technologies and modern control strategies within a standard range of nine models. The XSD EC box fan is one of the most energy efficient models on the market, bettering

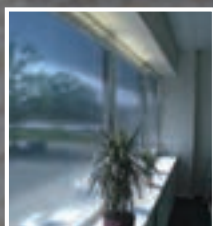
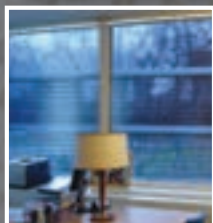
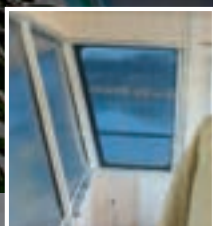
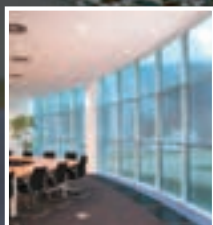
the demands of the stringent ERP 2013/15 directive, which calls for tighter energy reduction targets and a commitment to reduce energy usage. The XSD delivers on both accounts, while future-proofing for further energy reduction requirements over the coming years.

Bee & bug biome storms to success



Nature specialist Wildlife World has been awarded the European Consumers Choice Award 2014 for its Bee & Bug Biome product due to its easy-to-use design and insect friendly qualities. The Bee & Bug Biome provides a habitat for solitary bees, ladybirds and other beneficial lacewing insects and was scored an impressive 9.1 by the independent users that

form the European Consumer Awards judging panel. In a strong commitment to ensure the highest environmental standards are achieved, all wood used in manufacturing is FSC approved, and all paints, stains and sealants are water based to eliminate chemical exposure to the wildlife. Recycled materials replaced plastics and metals.



DISCRETE

Variety of colour and material options available allows integration with any decor

ADAPTABLE

Can be fitted to sloping or unusually shaped windows; upstroking option available for rooflights

Reflex-Rol

BESPOKE ROLLER BLIND SYSTEMS

... more than just a sunblind

Reflex-Rol is a proven bespoke solar shading system offering state-of-the art solar heat control

SOLAR HEAT REFLECTION

Laboratory tests show that Reflex-Rol blinds reflect up to 87% of incoming solar energy*

SOLAR GLARE CONTROL

Reflex-Rol blinds use semi transparent metallic polyester foils, giving excellent internal glare control

THERMAL INSULATION

Reflex-Rol's thermal properties not only keep heat out but also help to keep it in, so saving on heating costs

Call now for your free brochure

Tel: 01989 750704 • www.reflex-rol.co.uk

De Leeuw Ltd., incorporating Reflex-Rol U.K. and Memser U.K. are associate members of ISO-9001

ISO

www.iso-9001.com

BBSA
British Blind & Shutter Association

Reflex-Rol (UK)
Insulating Solar & Glare Control Systems

Reflex-Rol (UK), Ryeford Hall, Ryeford, Ross-on-Wye, Herefordshire HR9 7PU

Tel: 01989 750704 **Fax:** 01989 750768

Email: info@reflex-rol.co.uk **Online:** www.reflex-rol.co.uk



Reflex-Rol is a division of De Leeuw Ltd

* Accredited data reports from Sonnergy of Oxford - copies available on request



ecobuild

SUSTAINABLE DESIGN • CONSTRUCTION • ENERGY

EXCEL LONDON



THE SUSTAINABLE DESIGN, CONSTRUCTION AND ENERGY MARKETPLACE FOR NEW BUILD, REFURB, COMMERCIAL AND DOMESTIC BUILDINGS



CONTACT US TODAY TO BOOK YOUR STAND ON +44 (0)20 7560 4458

WWW.ECOBUILD.CO.UK

44,538 ATTENDEES

100+ CONFERENCE AND
SEMINAR SESSIONS

787 EXHIBITORS

LEAD PARTNER



RESEARCH & INNOVATION PARTNER

bre

LEAD SUPPORTERS



RIBA



the mark of
property
professionalism
worldwide

ORGANISED BY

