

building construction design

www.buildingconstructiondesign.co.uk

October/November 2014



Appointments & News	3
Building Products	8
Planning & Design	9
Structural Elements	13
External Envelope (Incl. External Fixtures)	18
Insulation	34
Heating, Ventilation & Services	35
Interiors	43
Disabled Products & Services	57
Safety & Security	57
Landscaping & External Works	59
Eco	62

Cover image: © Reynaers at Home
See page 30 for details



An elegant solution to an age old problem.

Introducing Dolphin Dispensers' elegant and stylish solution to washroom design, a complete modular system hidden behind mirrored panels. Giving your washroom a stylish and uncluttered finish that until now we could only dream about.

Each modular system has its own set of sensor activated taps, soap dispensers and hand dryers. With a simple and quick release the mirrors lift up using hydraulic pistons to reveal easy access for maintenance and janitorial duties. The modular system promotes a 'plug and play' system, with only a need to provide hot and cold water and an electricity supply.

Dolphin Behind Mirror complete washroom system

Specifications:

- Elegant and clean design, fits into any project
- Easy access for janitorial duties, with hydraulic lifting panels
- Sensor activated taps, soap and hand dryers
- Multi-feed system, LED lighting. 'Plug and Play'



Dolphin Dispensers

2 Haywood Way,
Hastings, TN35 4PL

t: 01424 20 22 24

f: 01424 20 52 00

e: info@dolphindispensers.co.uk

www.dolphindispensers.co.uk



TTA responds to member needs

The Tile Association launched its new website in August in response to research among members which flagged up strong demand for improved online marketing. The new website is part of a suite of online tools which the association has available for the benefit of members. These include social media feeds and the online Tilezine newsletter.

The new association website boasts a new look with intuitive, built-in navigation, a revamped members' directory and a prominent news area. With the latest issue of Tilezine linked from the site, as well as a facility to take out a subscription, the aim is to develop the site as an important news resource for the industry.

Navigation is clearly defined via the four key sales channels for the tiling industry, with separate homepage buttons for architects, installers, homeowners and stockists, each of these leading to



further web pages featuring sector-specific information. Within the relevant sections visitors will find a member directory, technical documentation, details on training and NVQs, a tiling FAQ for installers, DIY tiling guides and much more.

The site features an expanded member services section, which includes a wealth of information for anyone involved in the tiling industry, ranging from technical information to business advice and insurance. There is also information on the facilities offered in the TTA's new Staffordshire headquarters, such as how to hire the building's meeting and conference facilities.

"It emerged strongly in the research that our members view the TTA website as an important marketing tool and that they were looking for further development of the online resources which are available to them," says Ian Kershaw, chairman of the TTA. "We were therefore hoping to achieve a site which features increased usability, an updated image and improved technical functionality. I think we have achieved that, and we have also linked into other online resources, which are among the benefits of TTA membership."

The TTA website can be found at www.tiles.org.uk



Siderval S.p.A

via Chini Battista, 60
23018 Talamona
Sondrio, ITALY
Tel. 0039 0342 674111
Fax. 0039 0342 670400
siderval@siderval.it
www.siderval.it

Siderval S.p.A are producers of special hot extruded profiles in carbon, alloy and stainless steels
The profiles have been used in architecture, bridges and nuclear applications



RALPH J. BATCHELOR LTD
STEEL MILLS' AGENTS

Orleton, Ludlow, Shropshire SY8 4HW U.K.
Tel: 01568 780616 Fax: 01568 780791

Timloc teams up with Hull College



An East Yorkshire building products manufacturer has teamed up with a local college to hold a training event on cavity tray installation. **Timloc** invited students from Hull College, who are undertaking their NVQ Level 3 in Brickwork, to its site in Goole. Here, the company's

technical director, Phil Harvey, demonstrated best practice on the installation of cavity trays. The idea behind the event was to raise awareness of Timloc's products and the benefits of using cavity trays correctly in a build, as well as educating the builders of the future.

01405 765567 www.timloc.co.uk

ATAG Heating sponsors charity yacht race



The 13th St Wilfrid's Hospice 'Nab' Challenge, sponsored by boiler distributors **ATAG Heating UK**, is to be held on Saturday 6 September 2014 and the Inn-Shore Cruising Club, organisers of this popular and unique event, will be aiming to add to the magnificent amount of £162,000 already raised for this worthy charity. As always,

the organisers will be aiming to inspire and encourage as many competitors as possible to take part in this year's challenge and raise as much money as possible for the Hospice. At the forefront of developing the latest heating technology for a more sustainable future, ATAG Heating UK is proud to be supporting this important charity event.

Ariston announce acquisition of ATAG



Ariston Thermo has announced the acquisition of ATAG Verwarming, the Dutch boiler manufacturer represented in the UK by **ATAG Heating**. Founded in 1948, ATAG employs 170 people, with a production plant based at Lichtenwoorde devoted to both domestic and commercial products. In 2013 ATAG generated net revenues of around €53 million, with an EBITDA adjusted of €8.4 million.

Commenting on the acquisition, Phil Bell, managing director of ATAG Heating UK, saw significant advantages for the development of the ATAG brand in this country. He said: "ATAG Heating will be in a strong position to develop its share of one of Europe's largest heating markets."

01243 815770 www.atagheating.co.uk

Joe Rose's new role at Big Foot Systems



Sussex-based firm **Big Foot Systems**, who leads the way in non-penetrative rooftop support solutions, is delighted to announce the appointment of Joe Rose as Technical Marketing Manager. Joe has been with Big Foot for three and a half years and was previously Regional Specification Manager at Big Foot Systems – London & South East. In this role he provided support solutions for plant and associated services on flat roofs working with construction professionals along the supply chain, from architects to contractors. Joe's new role will involve managing all the technical and marketing functions of Big Foot Systems providing solutions for its customers throughout the world.

01323 844 355 www.bigfootsupport.com

A&G announces two new appointments in Great Britain



A&G (Acheson and Glover), a leading manufacturer of premium hard landscaping and precast concrete products, has announced two new appointments in Great Britain. Bev White (pictured top) has joined the company as regional sales manager for Northern England and Susan Reid (pictured bottom) has been appointed to the newly created role of GB project coordinator. Both Bev and Susan have extensive experience and proven track records in the industry. Bev White worked for Aggregate Industries for 11 years in a variety of sales and management roles – including sales office manager for Charcon Hard Landscaping – where she was responsible for managing a team of internal sales representatives and negotiating prices for projects within Great Britain. Bev most recently held the position of business manager at City & Guilds. Susan Reid joins the team at A&G from Aggregate Industries (Charcon Hard Landscaping) where she worked as a major project controller on large projects in the UK from pricing to order stage. A&G Managing Director Stephen Acheson said: "We are delighted to welcome Bev and Susan on board. Their appointments demonstrate the positive direction A&G is taking in becoming better equipped to deliver first class solutions to our wide range of clients."

0121 747 0202 www.acheson-glover.com

Taylor Wimpey choose GAP



UK housebuilder Taylor Wimpey has chosen **GAP** as a supplier of PVC-U building products. The deal will see GAP's extensive distribution network supply Taylor Wimpey sites throughout England, Scotland and Wales with a wide range of Homeline PVC-U building products including fascias, soffits and ancillaries. Nick Dyke, divisional supply chain manager from Taylor Wimpey, said: "Having toured GAP's manufacturing and distribution facilities we were extremely impressed by what we saw. GAP is a company that invests in its products, its service and people, and we are looking forward to working with them over the coming years. In particular, their BBA approved recycled fascia and soffit range called Core will help Taylor Wimpey towards our own environmental goals." Simon Brayshaw, GAP's chief executive, commented on the deal: "Signing a supply agreement for PVC-U fascias and soffits with one of the UK's largest housebuilders is a significant achievement for GAP. We feel by having a customer focussed approach and a strong environmental friendly product offering, we can offer customers large and small an advantage in the market. We look forward to a successful working relationship with Taylor Wimpey in the coming years."

0845 313 10 12 www.gap.uk.com



Europanel features in award winning 'state of the art' R&D complex

Eurobond Laminates Europanel F5 wall panel system is featured in the Harbourside's £6.3 million R&D Village development in Port Talbot that has won the top Regeneration Award at the RICS Wales Awards ceremony in Cardiff. This award celebrates the most inspirational regional initiatives and developments in land, property, construction and the environment.

The three two-storey BREEAM Excellent buildings total 42,000 sq ft and were designed by Cardiff-based, Rio Architects. The buildings are primarily devised to accommodate companies operating within the manufacturing, engineering and material sectors, sharing a state of the art complex to help pioneer research

and development.

The Europanel F5 panel system specified is 200mm thick and finished with TATA Colorcoat Prisma in black and mellow yellow. This combination delivers a striking visual impact and individuality to the design.

The buildings were developed by Deryn Properties, in conjunction with main contractor Sir Robert McAlpine, with Severn Insulation responsible for installing the Europanel F5 wall cladding system. The design team included NYTC Consult Ltd, CD

Gray Associates and Hoare Lea. The project was part financed by the Welsh Government via the European Regional Development Fund and Principality Commercial.



'This combination delivers a striking visual impact and individuality to the design'

Call Eurobond today on **02920 776677** or visit **www.eurobond.co.uk**

Monodraught appoints new managing director

Monodraught is pleased to announce the appointment of Andrew McCubbin as its new managing director, effective from 1 August. He succeeds Steen Hagelskjaer who will become chairman of the board of directors. During the past 20 years Andrew has held a number of senior management roles with Japanese air conditioning manufacturers – most recently at Daikin UK Ltd – and therefore brings with him extensive industry experience in sales, marketing, product development and production.

Commenting on his appointment, Andrew says he is proud to be joining Monodraught at a time when he believes the company is well positioned to expand with its portfolio of products and a demonstrated commitment to customer service.

Looking to the future he says: “We have an

impressive and constantly evolving range of innovative products including our latest generation Cool-phase (www.cool-phase.net) range of cooling and ventilation products. These, coupled with other advanced products from emerging technologies that we will be showcasing soon, will provide the platform for us to achieve significant market expansion. The team is committed to maintaining and developing its excellent reputation for innovation, reliability and quality that Monodraught has earned over the past 40 years.”

He adds that the Monodraught brand is the strongest in the natural ventilation, natural lighting and natural cooling market places and is trusted and valued for its quality and reliability. Surpassing customer expectations is one of its core values and Andrew looks forward to leading Monodraught



during this exciting period of growth.

Monodraught products and services are available throughout the UK and in export markets around the world.

Call Monodraught today on 01494 897700 or visit www.monodraught.com

Vending solutions from Big Phil



Get your food, drink and materials in one place thanks to **Big Phil**. Developed in conjunction with tradesmen, Big Phil is a fantastic new brand that delivers man-sized ‘made-for-trade’ snacks and energy-boosting drinks to keep you fuelled up during the busy working day. Available exclusively through trade outlets nationwide you can fuel up as you collect your materials for the day’s job. Keen to support good causes, Big Phil has joined forces with Help for Heroes to raise money for injured servicemen and women, donating a minimum of 1p from the sale price of each Big Phil product.

alrightmate@bigphil.com www.bigphil.com

GEZE UK appointment makes specifying easier



GEZE UK has strengthened its specification team with the appointment of Richard Richardson-Derry. Richard, who has 20-years’ experience in the construction industry, joins GEZE UK as specification manager for the Midlands and North region. He will be responsible for providing the company’s clients with specification and technical support across its entire product range. Prior to joining GEZE, Richard worked with architects and building contractors on

many notable projects. As well as providing specification support, Richard will deliver GEZE UK’s comprehensive RIBA approved CPD seminar programme to architects in the Midland and North regions.

01543 443 000 www.geze.co.uk

Hambleside Danelaw shines again



Hambleside Danelaw is delighted to have won Silver for its Stepsafe low carbon insulator rooflight at the Green Apple Built Environment Awards, the national campaign that aims to find Britain’s greenest companies. The award for the Stepsafe low carbon insulator rooflight is due to its lower

embodied energy and ability to reduce the energy consumption for both the lighting and heating of a building. It therefore meets the requirements of the Energy Performance Certificate (EPC). Sales Director Ian Weakford said: “We are delighted to receive this award as it recognises our continued commitment to reducing our carbon footprint and producing environmentally friendly products.”

01327 701 900 sales@hambleside-danelaw.co.uk

LABC system approval for Kingspan OPTIM-R



When it comes to thermal performance, **Kingspan OPTIM-R** Systems are right at the top of the pile and as a mark of their quality, they have now been recognised with LABC Registered System status, helping to speed up the Building Control checking and approvals process. To obtain LABC Registered status, Kingspan Insulation supplied testing and performance data for Kingspan

OPTIM-R vacuum insulation panels, Kingspan OPTIM-R flex infill panels and Kingspan OPTIM-R fix panels. This information proved the products meet the requirements of the relevant Approved Documents to the Building Regulations when fitted in any of the six Kingspan OPTIM-R System applications.

01544 387 384 www.optim-r.co.uk



Kingspan guides for Welsh Building Regulations



As part of its on-going commitment to provide customers with the highest level of technical support, **Kingspan Insulation** has produced guides for the new Approved Documents to Part L of the Building Regulations in Wales. The publications make it easy to get up to speed with the latest regulatory requirements for the conservation of fuel and power on domestic and

non-domestic; new build and refurbishment projects. Designed for everyone from architects and developers to installers and end users, the guides provide a concise but comprehensive overview of all aspects of the Approved Documents.

01544 387384

www.kingspaninsulation.co.uk/buildingregulations

Premier Interlink (Waco UK Ltd) hit milestone



Premier Interlink (Waco UK Ltd) is a leading modular building manufacturer in the UK, with more than 55 years' experience in off-site construction – a proven, high quality method of construction in the defence sector. Working with Lend Lease, the integrated property and infrastructure group, Premier

Interlink has achieved a milestone with 50 per cent of Beacon Barracks manufactured this week. The high volumetric approach of offsite construction as practiced by Premier Interlink is perfectly suited to this type of project. The production facilities available offer real benefits to the manufacturing programme, with the option to operate multi shifts to meet programme requirements.

0800 316 0888 www.waco.co.uk

A guide to selecting structural thermal breaks



Manufactured structural thermal breaks are designed to meet a number of criteria and there are many factors to be considered if reliable performance is to be optimised and maintained over a long period of time. Minimising thermal bridges in the building envelope between the interior and exterior structures, also transferring load and maintaining full structural integrity are just a few. **Schöck** has produced some useful 'Guidelines' to help with the selection and use of structural thermal breaks.

01865 290 890 www.schoeck.co.uk

New car park brochure from Stirling Lloyd



Stirling Lloyd has introduced a new 12 page brochure outlining its comprehensive range of car park waterproofing and surfacing solutions, including some of its very latest application developments. Fully illustrated and with comprehensive descriptions of the company's various

waterproofing and wearing course, line marking, colour demarcation and anti-skid systems, the new brochure underlines Stirling Lloyd's extensive experience. It also details Stirling Lloyd's comprehensive technical support, free site surveys and authorised contractor network, all of which ensure a highly professional installation service throughout the car park sector.

01565 633111 www.stirlinglloyd.com

Mapei UK proves hard work drives success



Mapei UK Ltd is proud to have been awarded re-certification of ISO 14001:2004 and the continuation of OHSAS 18001:2007 and ISO 9001:2008 following a second year combined

audit of its integrated management system (IMS). The integrated management system has been an instrumental tool in the continuous drive to constantly improve, enhance and accelerate Mapei UK's performance across all areas of the business, supporting a real holistic approach, which was visible to the external auditors. The audit highlighted several key strengths that were comparable to the commitment of the company, including strength in the introduction of new products. This achievement has been a result of absolute business commitment.

0121 508 6970 www.mapei.co.uk

Profile 22 launches first BIM object



Window, door and curtain walling specialist **Profile 22** has developed its first BIM object, providing 2D and 3D product representations, information and data associated with its fully reversible 70mm window system. In Revit file format, this allows the product to be incorporated into a 3D model and its

associated component database. "With more than half of construction firms now using BIM this is a valuable and important investment for Profile 22," says commercial sales director, Andrew Reid. "In creating BIM Objects we are ensuring that those who specify, fabricate and install our products are well positioned to win and secure government contracts when BIM compliance is required in 2016."

01952 290910 www.profile22.co.uk/commercial

New era at Winnersh IQ Business Park



Signbox has recently completed the first stage of a state-of-the-art signage installation at the landmark Winnersh IQ Business Park in Berkshire, as part of a £100 million redevelopment of the 117,200sq m site. Working in collaboration with brand and marketing consultancy Siren Design, the architectural signs

specialist has implemented a simple yet effective wayfinding scheme that reflects the estate's new modern identity and instils a sense of uniformity, all the while enhancing the aesthetics of the park's landscape. Winnersh IQ Business Park is an 80 acre site that provides office, warehouse and training facilities. The second stage of the installation is ongoing and due for completion in September 2014.

01784 438688 www.signbox.co.uk

National paint show is unmissable



At this year's **National Painting and Decorating Show** almost 100 exhibitors will be displaying a vast array of products and offering great show-only deals. The major paint manufacturers use the event to launch new coatings on to the market, stockists tempt visitors with some fantastic discounts, suppliers pack their stands with a massive selection of tools, ancillaries and workday

essentials – and there's always a sprinkling of never-before-seen items from entrepreneurs at home and abroad. One of the best things about the show is that it's not just a marketplace: there are live demonstrations of finishing techniques and applications going on continuously, and there's always a fun element, too.

020 8645 2433 www.paintshow.co.uk

Architect's Choice voting open at Brick Awards



Architectural students and practicing registered architects are being asked to vote for the shortlisted project which they believe demonstrates the best architectural use of brick. The Architect's Choice Award will be granted to the winning project, presented at the annual Brick Awards, taking place at London's 5 star hotel Marriott Grosvenor Square on 12 November. All shortlisted projects can be viewed on the **Brick Development Association's** website, where a voting interface has been set up. RIBA membership numbers and educational institutional details will be required and voting will close on 27 September. The Awards are one of the top design and construction awards in the country and show just what brick can achieve.

020 7323 7030 www.brick.org.uk

Kingspan Insulation launches new quick guide



Kingspan Insulation is pleased to announce the launch of the 9th edition of its Quick Guide – the 'go to' point of reference for builders, installers, specifiers and end users looking to achieve the highest levels of thermal performance, using the thinnest possible insulation in pitched roof, floor or wall applications. In addition to giving detailed information on Kingspan's Kooltherm and Therma products, which feature Fibre-Free cores, it also introduces the

new optimum performance OPTIM-R range, designed to help achieve the desired U-values in installations where space is limited. The user friendly Quick Guide can be downloaded from Kingspan Insulation's website.

01544 387384 www.kingspaninsulation.co.uk/quickguides

TTA adds member services with new HQ



The Tile Association is boosting the services it is able to offer to its members with the opening this month of a prestigious new HQ building in Stone, Staffordshire. Located in the heartland of the potteries, near where most of the ceramics industry is based, the new 4,000 sq ft facility is easily accessible to the majority of TTA member companies. TTA chairman Ian Kershaw, who has an office in the building, says: "This is a great new resource for our members, where we are combining the running of the secretariat in the same building as a suite of products and services which we believe will be of use to our members. In the future we will develop a full tile training and testing area for use by members, as well as a technical library, including tiling standards and associated information. For the first time this enables us to open up our HQ building for trade events, technical seminars, conferences and other activities for members. I think this shows once again how the TTA is moving up a gear in 2014 and thinking creatively about new member services, adding increased value to TTA membership." Upcoming innovations from the TTA include a new website and it is also expected that the TTA Awards 2015 will be launched in the next month. The Mount is conveniently situated just ten minutes from the M6.

info@tiles.org.uk www.tiles.org.uk

DON'T PUT YOUR NEXT PROJECT ON THE RUSTY TRAIN TO NOWHERE!



Give it first class treatment with WEDGE GALVANIZING

We offer you:

- ✓ Quality approved to BS EN ISO 1461
- ✓ Galvanize steel from 1.5mm to 29m long
- ✓ Supplier approval in Rail/Utilities/Gas & Oil
- ✓ Unrivalled Customer Service
- ✓ 14 plants across the UK
- ✓ Collection & Delivery Service

For an information pack

Email: galvanizing@wedgegalv.co.uk Tel: 01902 600704
www.wedgegalv.co.uk @wedgegalv.co.uk

Excellence in Galvanizing

WEDGE



GALVANIZERS
ASSOCIATION

Head Office:
Stafford Street
Willenhall
West Midlands
WV13 1RZ

NEW LSA REGISTER OF LEADWORKERS



Are you a leadworker who wants to reassure your customers about your level of skills? And also get benefits on industry training and publications?

Or are you a specifier or contractor looking for a good quality, appropriately trained leadworker for your construction project?

To meet both of these needs the LSA has created this new Register to enable craftsmen to be quickly identified and enhance their status and help construction professionals get the right person for the job.

To join the Register or find out more about it visit:

www.leadsheet.co.uk/register



The Lead Sheet Association
The Leadworker Register
is managed by the
Lead Sheet Association



Monodraught Cool-phase is now available as a cloud based BIM object

Cool-phase, the award winning natural cooling, ventilation and heat recovery system from Monodraught, is now available to architects, consultants, specifiers and building contractors through BIMObject.com, a major worldwide source of free-to-use Building Information Modelling (BIM) content.

The Cool-phase BIM objects are data rich and are able to integrate with leading BIM software. The 3D digital representations have been built

with the full product data and technical properties. This enables designers of buildings to create a fresh and healthy indoor environment for their concepts without using compressors or hazardous coolants. At the same time Cool-phase offers a significant reduction in the running costs of the future building and assists with life cycle analysis.

Architects and consultants wanting to reduce the communication time on construction projects between customers and suppliers are now able to download full technical data on the Cool-phase systems directly from the cloud. The BIM objects integrate automatically with their 3D models, allowing Cool-phase systems to be dragged and dropped into their own projects, improving visualisation and highlight items such as fixing points and duct positions.

The key benefit of BIM is to increase productivity within construction. BIM allows centralised storage of data, linking important information between all teams involved in the process.



Dimensional details direct from the manufacturer allow a greater degree of accuracy ensuring close coordination on-site and reducing complications. This can result in reduced lead times and lower overall construction costs.

Monodraught's Technical Director Nick Hopper says the launch of the Cool-phase BIM Objects continues Monodraught's long history of integrating products within Building Simulation and CAD software.



Call Monodraught today on **01494 897700** or visit **www.monodraught.com**

TIMBER EXPO

NEC BIRMINGHAM

07 & 08 OCTOBER 2014

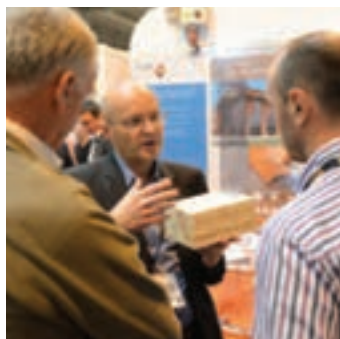
SUSTAINABLE | CONSTRUCTION | INNOVATION

THE UK'S NATIONAL TIMBER EVENT

For built environment professionals
looking to work with the leading
sustainable building material

**REGISTER
FREE TODAY**

WWW.TIMBER-EXPO.CO.UK/BOOK



**BUYERS & SPECIFIERS FORUM REGISTRATION:
WWW.TIMBER-BUYERS.CO.UK**

To book exhibition space please contact:

Loretta Sales T: +44 (0)7956 173351 E: loretta.sales@timber-expo.co.uk



Introducing the new energiSava 250 from EnviroVent

As we aim for a zero carbon future, energy efficiency is top of the list when it comes to new build projects. Thanks to triple glazing, draught proofing, cavity, loft and wall insulation, new homes are built to be as 'air tight' as possible. As a result of this, installing a good ventilation system is crucial, not just for the health of the occupants but to safeguard the property from condensation and mould.

Heat recovery systems are seen as an energy efficient alternative compared to other traditional methods of ventilation. What's more, heat recovery technology has come a long way over the last decade; today MVHR systems have sophisticated features and are seen by many as an extremely practical way to ventilate a home and save energy. Good installation is the key to good performance. It is of paramount importance that heat recovery systems are installed correctly as even the most energy efficient appliance will fail to perform if it has been poorly fitted.

EnviroVent's latest innovation, the energiSava 250, has been developed as an easy, 'one man' installation process, ideal for smaller houses and apartments where space is limited. With right or left hand side reversibility and vertical or horizontal mounting options, this powerful little unit can be installed on the ceiling, wall or floor. The energiSava 250 can even fit within



the space of a standard kitchen cupboard. In addition to this, another intelligent feature is the easy push button commissioning pad which enables the fitter to correctly set the required air-flow rate quickly and effectively.

Achieving up to 91 per cent thermal efficiency, the energiSava 250 is powered by a low energy EC motor and is Energy Savings Trust Best Practice Performance Compliant. To ensure that on warmer days cooler air is delivered into the property, an automatic and integral summer bypass version is available. Manufactured in the UK, the unit is part of EnviroVent's award winning Lifetime Range* and comes with a five year warranty.

For further information visit www.envirovent.com

Evolution Structural Warranties



Can Evolution help with your structural warranties? Evolution Insurance Solutions Ltd is one of the UK's leading brokers in the 10-year structural warranty market.

If you are undertaking a development project in the near future you will require a mortgage compliant warranty. Evolution is a specialist in this market and will source the right product at competitive rates for your project. The company is an insurance

broker authorised and regulated in the UK by the Financial Conduct Authority under FCA number 472438.

Tel: 01799 512 031 www.buildingwarranties.com

Signbox at 100% Design, Stand 0260



At 100% Design 2014, architectural signs specialist **Signbox** will be showcasing workplace signage and graphic solutions that enable interior designers and brand specialists to create functional and appealing working environments. One popular sign application is StepJockey, a near field communication (NFC)

enabled solution that helps businesses to rate their stairs for calorie burning employees to engage with the initiative via their smartphone. Also on show will be AskCody®, a modular digital concept for large buildings where wayfinding and efficiency is important.

01784 438688 www.signbox.co.uk

Aggressive accessories: PUNK, the professional's power tool accessory of choice



On occasions, tradesmen get frustrated with their tools on the job – time is money, but put the new power tool accessory brand **PUNK** in your machine and you'll hit peak performance every time. The highly disruptive PUNK range is designed to give you the edge. From drill bits to jigsaw blades, the 'power' in any power tool is a direct result of the accessories that are used – and as every tradesman knows, the tools you use can make or break a job. The range has been extensively researched in lab tests and on-site trials to ensure the highest quality and performance; every aspect has been developed with the demanding professional tradesman in mind. As part of the full range roll out, six free sample accessories will be launched over six months for tradesmen to 'try-before-they-buy'. The first month sees the launch of PUNK's powerful 'SDS+ Drill Bit', which is available to claim from the PUNK website. Created using the toughest tungsten carbide material, every tip is securely brazed into the drill to prevent breakouts. The upshot is SDS+ drill bits that offer professionals peace of mind to get the job done – regardless of whether they're drilling brickwork, quarystone, masonry or reinforced concrete. PUNK is for the professional with high expectations. There are no gimmicks, it's just great at what it does.

www.punkpower.co.uk



cpd focus

CPD GUIDES FROM MITSUBISHI ELECTRIC



Mitsubishi Electric has released two new CPD-certified guides covering the London Plan and Part L of the Building Regulations, designed to enhance the knowledge of customers and provide a view of the key issues facing the heating industry. The London Plan is a comprehensive vision of London's objectives for its economy, environmental performance, transport and social structure. The Plan sets out an integrated economic, environmental, transport and social framework for the development of the capital to 2031. The CPD guide explains the objectives, the impact, approaches to heating and energy generation and the potential of heat pumps for the plan. It also contains a case study of an application that uses the River Thames to heat its building stock. Part L of the Building Regulations deals with the conservation of fuel and power in domestic and commercial buildings. The legislation covers new-build and refurbishment projects and is a section of the Building Regulations that has been updated regularly since 2002, and in April 2014 the latest version, which is known as Part L (2013), came into force. It runs through the background of Part L, how compliance is shown and the obligation to install low carbon technologies. It then runs through other European legislation that potentially affects the application of heat pumps.

01707 282880
www.mitsubishielectric.co.uk

EFFECTIVE DESIGN OF SINGLE PLY ROOF SYSTEMS



Sika-Trocal is pleased to announce the new RIBA-approved CPD entitled *Effective Design of Single Ply Roof Systems*. This CPD presentation aims to assist both specifiers and architects when designing and selecting single ply roofing solutions.

The CPD covers the following topics: Design Considerations – choosing a single ply system and designing to the best practice; Quality Suppliers – getting support and services from single ply manufacturers; Guarantees – possible flexibility and options; Industry and Legislation – information on meeting the correct and relevant standards; Sectors and Build types – the considerations and different methods available; History and Group information – a helpful insight into both Sika-Trocal and the Sika Group.

Sika-Trocal has provided single-ply roofing solutions to specifiers, clients and main-contractors in the UK for over 40 years. Sika-Trocal specialise in single ply roofing solutions that are designed to be installed as quickly and efficiently as possible, ensuring a cost-effective solution every time.

If you are looking for assistance when designing and selecting single ply roofing solutions and require further information on this seminar, please contact Sika-Trocal directly either via phone or email, or visit the company's website.

01707 394444
www.sikatrocal.co.uk

FOUR NEW CPD SEMINARS FROM SCHLÜTER-SYSTEMS



Underflooring solutions expert Schlüter-Systems is offering architects the chance to keep up to date with the latest in essential tiling protection with the launch of four different CPD seminars. The RIBA-accredited CPD seminars, lasting 45 minutes each, allow individuals to remain up to date with changes in practice so that they can make informed decisions about which products to request in their specifications. Run during lunch breaks from any business premises requested, the training sessions, which cover a diverse range of topics including solutions for tiling balconies, laying underfloor heating and installing wetrooms, are being offered free of charge with lunch included. In Schlüter's *Integrated Solutions for Tiled Wetrooms* seminar, the company's popular waterproofing and wetroom range will be explored and explained. Andrew Curry, Schlüter's Technical and Training Consultant, commented: "The session will provide all the information and knowledge needed, from an integrated approach, on the solutions for wetroom installations at design and specification stage, and we hope that by the end of the seminar participants will have gained confidence in specifying an integrated solution for wet room installations." The second seminar being run is called *Movement Joints*

and *Uncoupling Membranes for Tiled Coverings*. The session will provide information on how to solve problems such as moisture movement in the substrate or drying shrinkage by specifying the appropriate movement joints and uncoupling membranes in specifications. Creating a patio, balcony or terrace that lasts the test of time is the third topic to be explored by Schlüter in its brand new seminar, *Balcony and Terrace Solutions for Tile and Stone Coverings*. The seminar will discuss the importance of using effective modern methods of construction to ensure lasting balcony and terrace installations. It will also explain the importance of waterproofing measures and will look at some of the benefits of the different products currently available on the market. The final seminar being offered by Schlüter will study the benefits of *Modular Underfloor Heating Systems for Ceramic Tiled Floors*. The seminar will explain how these systems help to protect ceramic tile and natural stone floor coverings from cracking, splitting, tenting and debonding and will also explore the theory behind modular screed systems. All seminars include a 15 minute question and answer session and participants will receive a certificate upon completion.

01530 813396
www.schluter.co.uk

continuing professional development

Maintaining and improving professional competence, skills, abilities and knowledge

CPD SEMINAR FROM FDS CONSULT



FDS Consult is offering architects, developers, M&E consultants and contractors the chance to extend their education for free this October. Focusing on fire engineering within the residential and commercial sectors, the CPD seminar will discuss the roles that current legislation and code recommendations play in the creation of fire strategies and show how the use of fire engineering can create the ideal solution for any project. The seminar will be held at the Building Centre, London, on 21st October.

01322 387411

www.fdsconsult.com/cpd-seminar-october-2014-2.html

THE FASCINATING PROPERTIES OF RUBBER FLOOR COVERINGS

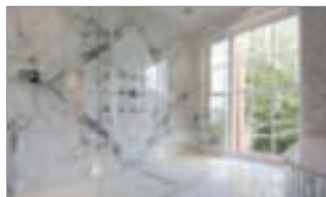


Nora Flooring Systems are offering architects a double-pointed RIBA approved CPD on the 'Fascinating Properties of Rubber Floor Coverings'. This iPad based interactive seminar looks at the technical and aesthetic aspects of specifying resilient floor coverings, the properties of rubber and the quite unique design impact that can be made to any interior.

01788 513 160

www.nora.com/uk

WETROOM DESIGN & SPECIFICATION



As the popularity of wetrooms continues to grow, CCL Wetrooms have developed a *Wetroom Design & Specification* CPD to help guide architects through the process of designing and specifying a watertight wetroom. The technical presentation covers the key considerations of designing and specifying a wetroom, including wetroom design and layout, waterproofing, drainage, floor build up and installation. It also includes a section on how wetrooms can help meet the Lifetime Homes Standard.

0844 327 6002

www.ccl-wetrooms.co.uk

CELLECTA CPD SEMINAR



Eager to increase your knowledge of acoustics, soundproofing insulation and Part E Acoustic Building Regulations? Then look no further than Cellecta's RIBA certified sound proofing insulations CPD. Covering the fundamental characteristics of Part E, and providing guidance on soundproofing all types of new build and refurbishment floors and walls, Cellecta's CPD is an extremely valuable resource for all individuals involved in specification.

0845 671 7174

www.cellecta.co.uk

Sustainable building materials



John Boddy's supply timber frames for sustainable buildings in numbered, pre-bored sections ready for assembly from a plan or drawing. Complete the project with timber cladding. As well as being an attractive construction material, it is environmentally friendly and quick and cheap to install. By using their finger jointed machining

facility you can specify exact sizes up to 6.1m lengths, reducing cost, joinery time and waste. Joinery timber for window and door frames is also available, along with Glulam beams, scantlings, architraves, profiles, skirting and solid and engineered flooring. Available in PEFC and FSC certified timbers, with delivery nationwide.

01423 322370 www.johnboddytimber.co.uk

Sunscreen for your wood



UV Protection Factor 12

Maintains the natural colour of the wood and limits the greying process

- > Prolongs wood lifetime
- > Algae and fungal decay protection
- > Transparent 425 Oak finish and 428 Cedar finish now available



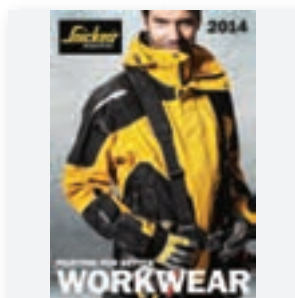
Call or visit the web for stockists.



+44 (0)1296 481 220
www.osmouk.com

osmo

Snickers Workwear



Check out the best gear for Autumn and Winter in the new Snickers Workwear catalogue, featuring a leading range of working clothes, one that works hard on site all year round for you, whatever the working environment or weather condition. In it, you'll find all the latest styles and designs – the ultimate in modern workwear. Whatever trade you are in, there's something for you in the Snickers range: work trousers, work jackets, tool vests shirts, underwear, hi-vis, painters, flame retardant, accessories and tool carriers. Plus the right kind of working clothes to keep you working comfortably in the cold and wet weather. To get the catalogue please visit Snickers' website.

Architectural systems by DML Group

Architectural systems expert DML Group specialises in external aluminium facades, cladding, windows, unitised and curtain walling. The company works with architects and specifiers across a diverse range of schemes and is a preferred supplier for several of the UK's largest main contractors.

Among DML's major schemes are a facade for the Oxford Street entrance of Tottenham Court Road station along with glazing and stainless steel

cladding, part of TfL's £0.5 billion station redevelopment; and bronze shopfronts, glazed rooflights and cladding for the St James' Gateway mixed-use commercial, retail and residential development in London's West End.

The company has also completed a unique artwork project at An t-Eilean (The Island), which involved bronze cladding, doors and balustrades for a walled pavilion garden in the centre of Inverness Campus, a multi-stakeholder, 215-acre business, research and education facility developed by Highlands and Islands Enterprise; and the West Narthex project at Ripon Cathedral, which involved the installation of new glass porches at the west front of the cathedral, which was built over 1,300 years ago.

DML's most recent retail schemes include several new branches of a major bank; two of the country's leading shopping destinations – Trinity Leeds and London Designer Outlet; and a number



of bronze and aluminium facades for the stores of some of the world's leading brands.

DML Group offers a total capability solution from design and build to the manufacture of bespoke shop fronts and curtain walling systems, and a full turn-key provision. The company has extensive involvement in the retail, education, residential and public sectors and works both nationally and internationally.



Contact DML Group on 0113 256 5661 or visit www.dmlgroup.co.uk

Xella



SILKA calcium silicate 'big blocks' of up to 1,000 mm x 645 mm are used for load bearing, non-load bearing and inner leaf cavity walls. Two men can lay 60m² / day from the building interior, saving time and cost of scaffolding. A single leaf 150mm wall provides an acoustic value of 50-55dB compared to 44dB for an unfinished 140mm aircrete block. Blocks provide a 120 minute fire rating compared to SIPS at 30-60 and sufficient thermal mass to absorb heat and release it

slowly, helping maintain a healthy living environment. For more information, please visit the company's website.

Tel: 0843 290 9080 www.xella.co.uk

Ceilings, a means of realising excellent acoustics



The importance of good acoustics is often underestimated and it can be difficult to establish a direct, data-based relation between acoustics and labour productivity. **Hunter Douglas** has placed this topic on the agenda with a new whitepaper. The document presents ceilings as an ideal means of realising optimal acoustics. The whitepaper looks

at four key areas. In healthcare, for instance, good acoustics contribute to better recovery of patients, while in schools they improve students' learning performance. In office spaces, good acoustics improve labour productivity. In public spaces, such as restaurants, noise absorption is also vital.

01604 766251 www.hunterdouglas.co.uk

Heradesign brings peace to Museum



The Imperial War Museum, London, has undergone a £40 million transformation and reopened with impressive exhibition areas including the ground-breaking First World War galleries. Around 3,600 sq m Heradesign ceilings from Knauf AMF are installed in these spaces. The exhibition galleries, spanning four floors, wrap around a visually-striking atrium, which allows natural light to flood in. Heradesign products are manufactured from sustainably sourced wood-wool. The panels are robust and easy to install. For the museum, the panels were mechanically fixed onto the existing concrete substrate and fitted around the many exposed services.

020 8892 3216 www.amfceilings.co.uk

City College, Norwich



A Proctor's Roofshield was used in the refurbishment of City College in Norwich. The benefits provided by the high performance Roofshield membrane were obvious to the roofing contractor, R.B. Watts. Roofshield is an air and vapour permeable, highly water resistant roofing underlay, and has been made to the same specification for nearly 20

years. It has met the evolving demands of the roofing industry to be the first choice of most roofing contractors. The very low vapour resistance of 0.065MN/g, combined with high air permeability, reduces the potential for interstitial condensation as far as possible, and does not require the use of a vapour control layer. This provides a robust and dependable solution that can be specified with confidence.

01250 872261 www.proctorgroup.com



New Power Driver Attachment



Innovative helical fixings manufacturer, **HELIFIX**, has developed a more compact version of its Power Driver Attachment (PDA) used to install its high performance InSkew warm roof batten fixings. The new PDA is a third

shorter than the original design, simplifying InSkew installation, with the added advantage of a lower price tag too. With the shorter PDA fitted to an SDS drill, roofing contractors start closer to the batten providing greater control, making InSkew safer and easier to install. Those contractors who previously opted to use a hand-held installation tool may now decide to upgrade to the new PDA.

020 8735 5200 www.helifix.co.uk

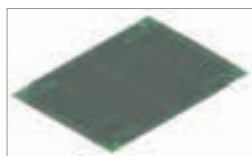
Klober Roll-Fix



Klober's Roll-Fix® Kit is a universal, rollable ventilating dry ridge and hip system, suitable for most concrete and clay ridges. Available in four colours, kits contain 5m of ridge / hip roll, fixing pack, seals, batten straps and hip trays, providing all that is needed for maintenance-free, watertight fixing. Fitting can be done in wet weather and saves time pointing, avoids risk of mortar runs and guarantees freedom from mortar cracking and inconsistent workmanship. The self-adhesive butyl backing provides a permanently strong bond and is highly flexible, making it ideal for use with deeply profiled tiles.

01332 813050 www.klober.co.uk

Optimise efficiency in roof design



A bespoke software service allows designers and installers of flat roofing to optimise efficiency from design to installation. From basic data, **Protan's** Proplan package will produce an autoCAD 2D or 3D visualisation of the proposed roof, detailed specification of materials,

the quotation plus manufacturing and site assembly details. The system embraces detailing such as corners, perimeters and penetrations, providing accurate estimating of the total roof cost and allowing comparison between systems, so the designer and contractor can obtain the most efficient way to build the roof, with optimum logistics, installation and virtually zero on-site wastage.

01925 658001 customercare@protan.co.uk

Panelised room-in-roof system



SIG UK Exteriors is pleased to announce the acquisition of RoofSpace Solutions Limited ('RoofSpace') to form SIG RoofSpace. RoofSpace is a market leading turnkey supplier of the award winning RoofSpace I-Roof, an offsite manufactured panelised room-in-roof system focused on the UK new build residential housing market. The business provides a fully managed package including the design, supply and installation of the RoofSpace I-Roof to UK house builders looking to maximise floor footage by creating loft living space through a room-in-the-roof. Benefits of the system versus traditional construction include cost effectiveness, speed of construction and safety of construction.

01565 633 111 www.stirlinglloyd.com

Sika Sarnafil for Donyngs Leisure Centre



A **Sika Sarnafil** waterproofing roofing system has proved to be the perfect fit for The Donyngs Leisure Centre, Redhill following a major £4.1 million upgrade and refurbishment. The new roof, which entailed overlaying a Trocal installation from 30 years ago now includes 2,000 sq m of Sika Sarnafil waterproofing system. The isolating layer used was

Sika Sarnafil type "T" fleece x 300g/m² with the waterproofing membrane layer being S327-18EL which was mechanically fixed with IF/IG-C 82x40mm membrane pressure plates and SFS BS Stainless Steel self-drilling fixings. All up stands/outer eaves were then covered with preformed Sarnametal closures.

01707 394444 www.sarnafil.co.uk

Apartments bring Integritank to Scotland



An award-winning residential development in Aberdeen is the latest project in Scotland to utilise **Stirling Lloyd's** Integritank waterproofing membrane and Sentinel Saba Expansion Joint. Some 900m² of Integritank has been used to protect the podium deck above the development's underground car park and to waterproof balconies on the luxury two- and three-bedroom apartments at Oakhill Grange. The Sentinel Saba Joint, which can accommodate movement in three planes, was used on the cast-in concrete deck. This latest application, carried out for Dandara Group, again highlighted the robust and rapid cure benefits of Stirling Lloyd's Integritank for podium deck protection.

01565 633 111 www.stirlinglloyd.com

TT Admix specified for major new build construction



Triton has supplied TT Admix, its BBA certified concrete waterproofing system, for a prestigious new build project in West London. The construction comprises a watertight concrete base slab with welded sheet piled walls and a watertight concrete capping beam to provide a Type B integral waterproofing solution to BS8102:2009. On top of the slab is a steel framed structure. TT Admix was specified following discussions between Triton and main contractors, Harringtons Builders Plc, who were impressed by Triton's site inspection regime and the company's ability to cover all aspects of waterproofing. 800 4.1kg bags of TT Admix were supplied, around 120 of which were for the capping beam. The concrete was supplied by Quattro Readymix at a dose of one 4.1kg bag of TT Admix per m³ of concrete. All the construction joints for the watertight concrete slab pours were waterproofed using Triton's standard detail with Triton TT Waterstop held in place with Triton TT Swellseal Mastic. The construction joint between the watertight concrete slab and the sheet piled wall was waterproofed in the same way. Triton produced a number of non-standard drawings for this project to fit the customer's design to show the waterproofing recommendations, including proposals for the sheet piled wall intersection and for the capping beam.

01322 318830 www.tritonsystems.co.uk

KEIM CONCRETE

MINERAL PAINT SOLUTIONS FOR CONCRETE

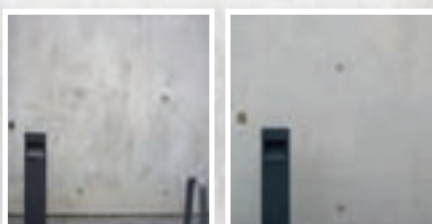
KEIM CONCRETAL LASUR COLOURWASH



HIGHLY PROTECTIVE TRANSLUCENT COATING



RETAINS NATURAL CONCRETE FEEL AND DISGUISES BLEMISHES



ACHIEVES A HIGH QUALITY VISUAL CONCRETE FINISH



info@keimpaints.co.uk
www.keimpaints.co.uk
Tel.01952 231250



Solar solution is storming success

The flat roof on Linn Products' main office building in Glasgow had been left badly damaged by heavy storms, with all existing ballasted solar panels lifted off the roof and destroyed beyond repair. The original single ply waterproofing was overlaid with 2,500m² of Bauder's Thermofol PVC system, which possesses high tensile strength and is resilient to the natural elements. Having installed the waterproofing, Bauder approved contractor W G Walker & Co fitted the SOLfixx system onto the roof using a unique interlocking method that doesn't penetrate the waterproofing or roof deck, preserving the roof's integrity. Any slight movement of the panels from wind uplift is easily tolerated by the SOLfixx system, providing the client with long-term reassurance with regards to their roof's future performance. The PV array consisted of 166 modules set at a 10° angle for optimum energy production, enabling Linn Products to generate at least 38.67 megawatt-hours of solar power and over 20 tonnes of CO₂ savings annually.

01473 257671 www.bauder.co.uk

OAK MANTEL BEAMS

The Original Railway Sleeper Furniture



Beautiful oak fireplace beams, mantel shelves & corbels
Handcrafted to your requirements. Choose the wood, character & finish
From £20.50 per foot. Delivery nationwide

www.jarabosky.co.uk sales@jarabosky.co.uk tel: 01422 311922



Handmade furniture using stunning redundant railway sleepers from around the world

Notes from the Comar design team...

Standard profiles range allows Capped, 2 or 4sided Structural Glazing.

High span profiles keep same box sizes throughout the facade with greater spanning ability.

BIM ready Models.

Comar keep all profiles in stock = market leading delivery.

Highest Ix and Iy values in the industry.

Concealed vent for discrete ventilation.

Facetted options 7.5° convex or concave.

Reassurance: CWC T Tested, Audited and Certified to 3600Pa Sequence B.

comar6EFT

Curtain Walling - Capped, 2sided SG and 4sided SG

Comar Architectural Aluminium Systems have designed additional mullions, transoms and feature cover-caps to Comar 6EFT to launch the most comprehensive 50mm curtain wall system available today. After extensive research with our architectural and fabricator network we are pleased to offer additional high span mullions and transoms with the highest Ix and Iy values in the industry, allowing you to span further or keep the same flush box size throughout glazed areas.

From one range of profiles Comar 6EFT offers capped, 2sided structural glazing with vertical or horizontal capping and 4sided structural glazing. Comar 6EFT 4sided SG offers the slimmest structural glazing joint available today and can be either silicon or EPDM gasket sealed.

For details and downloads, take a look at www.comar-alu.co.uk today.

We are pleased to offer BIM families to our architectural and contractor colleagues, please email projects@parksidegroup.co.uk for further information.

For more information about comar6EFT please contact us:

Tel: **+44(0) 20 8685 9685**

Email: projects@parksidegroup.co.uk

Web: www.comar-alu.co.uk



comar

Rockspan for 'first of its kind' specialist emergency care hospital

Eurobond Laminates has provided Rockspan external wall panels for the new Northumbria Specialist Emergency Care Hospital at Cramlington. This new hospital concept will deal purely with emergencies and life-saving procedures – a first for the UK.

The 200mm thick stone wool core panels are finished in gullwing grey and are a cost effective solution for hospitals offering up to four hours fire resistance and minimal smoke in the event of a fire.

Located on the edge of Cramlington to the north of Newcastle, the hospital will provide a uniquely comprehensive range of emergency care to patients in Northumbria. At the centre of the 29,000 sq m development is a three-storey hub housing laboratories, radiology and operating theatres. The hub is flanked by a series of 'cogs' that house wards on one side, and the entrance and ambulance podiums on the other.

Client: Northumbria Health NHS Trust

Architects: Keppie Design

Main contractor: Lend Lease

Completion: Spring 2015

Value: £70 million



Call Eurobond today on **02920 776677**
or visit **www.eurobond.co.uk**

A photograph of the exterior of the Bauporte building. The building has a modern design with large glass panels and white cylindrical structures. The sun is shining brightly, creating a lens flare effect. The text 'BAUPORTE DOORS UK LTD.' is visible on the glass. To the right of the image, there is promotional text and a QR code.

BAUPORTE
DOORS
UK LTD.

Making an entrance...
...bespoke revolving doors

first impressions...
...nothing is more elegant than an
attractive entrance

the experience...
...beautiful doors

0207-554-8757
sales@bauporte.com
www.bauporte.com



JDP provides sustainable future for new school



Specialist water management company JDP was invited to the New Brimmond Primary School, to advise on the best solution for a large attenuation tank 32m (L) x 4m (W) x 0.5m (D) to minimise the risk to localised flooding and provide an effective method of stormwater retention. The JDP proposal was to use an efficient, purpose designed complete system incorporating GRAF Eco Bloc light-weight modular attenuation crates, geotextile membrane

and fleece for the tank. The Eco Bloc system allows two crate modules to be stacked one inside the other, halving transport costs and CO₂ emissions. The system is designed to have a high rate of infiltration and barrier free inspection.

0800 195 1212 www.jdpipes.co.uk

Hope extends range of performance concretes



Britain's leading independent concrete supplier, **Hope Construction Materials**, has extended its range of high performance mixes to complement its existing array of quality-assured readymix concretes. The performance mixes – including HOPEFast®, HOPEFoam®, HOPE Tough®, HOPEEco®, HOPESeal® and HOPEFibre® – have been designed by Hope's technical team to meet specific construction needs, from high early strength and extra durability to waterproof and lower carbon mixes. All Hope concretes meet the BS8500 standard and are available virtually nationwide. HOPEFast® is designed to achieve rapid strength.

0207 647 6220 www.HopeConstructionMaterials.com

SPECIALIST CHIMNEY COWLING

- Static cowls
- Rotating cowls
- Free technical help
- Special sizes

01243 539639

Rotating stealth cowl -

Email: sales@brewercowls.co.uk
www.brewercowls.co.uk

Prices "SMASHED" On Aluminium Bi-folding Doors SMARTS Visifold 1000 Profile

Price Smash on all of our Aluminium Bi-Fold doors, **challenge us** on price for your quote and we will even give you **10% OFF*** your first door ...**WOW!**



**BI-FOLD DOORS from
£365+VAT per Sash**

PRICE EXAMPLE

PRICE CHALLENGE!
Compare us today.
We will not be beaten on price.

- Premium Aluminium profile by SMARTS
- A choice of RAL colours
- On-site delivery available
- Low Threshold Options
- Quick Turnaround from quote to delivery
- Log online to view our new **EZI Door Quote System**



10% OFF*
your first door now

Find out more!



Call Nigel 01642 610798

Fax 01642 671026

www.madefortrade.co



made for trade

*Offer open to new customers on first order. Not applicable to glazing and delivery charge.



BENETEAU's facade: HI-MACS® become art



Located in Givrand, BENETEAU's headquarters has an original facade designed using HI-MACS® – by LG Hausys – new generation acrylic stone. With thermoformable, multipurpose, ultra-resistant and non-porous properties, HI-MACS proved to be the perfect material for the project.

HI-MACS was also chosen because it helps regulate the facade – which is exposed to large amounts of sunlight – and reduce high levels of energy due to radiation thanks to its perforated material. Its random mesh-like design, from Frédéric Périot, of PAD, represents BENETEAU's logo. HI-MACS is the first solid surface on the market to have been granted European Technical Approval.

01892 704074 www.himacs.eu

Levolux booms in Earls Court



Lillie Square, one of London's largest residential developments currently in progress, is being showcased in an exciting new marketing suite, which is wrapped in a custom screening solution by Levolution. Upper level openings have been blacked-out to create a controlled environment for presenting to prospective tenants. In total Levolution designed, manufactured and installed 140

perforated aluminium panels, arranged vertically across the first, second and third floor levels. Each panel is individually engineered so that when all panels are in place they create an image of Lily flowers that extends across and around the building. This eye-catching aesthetic, which is even more striking when illuminated at night, creates a prominent landmark.

Keylex locks help keep Epsom College students safe



Keylex digital mechanical locks have been supplied by Relcross to Epsom College for a number of years. Some have been fitted to the living quarters for boarding students so that only those living in a particular house have access. An easily changed number code negates the need for issuing keys to everyone with the potential security risk from lost or stolen keys.

Epsom chose the K700 lock which is suited to external doors and gives the flexibility offered by the inclusion of a mortice sash lock or multi-point lock. The mechanism happily copes with many hundreds of operations per day and, being entirely mechanical, requires no electronics or electrical wiring.

Many of the Victorian doors at Epsom College are not rectangular but gothic arch shaped and are thicker than modern doors. This poses few problems for the K700 which can be fitted to many door types including PVCu, aluminium and hollow metal door sections as well as wood.

01380 729600 www.relcross.co.uk

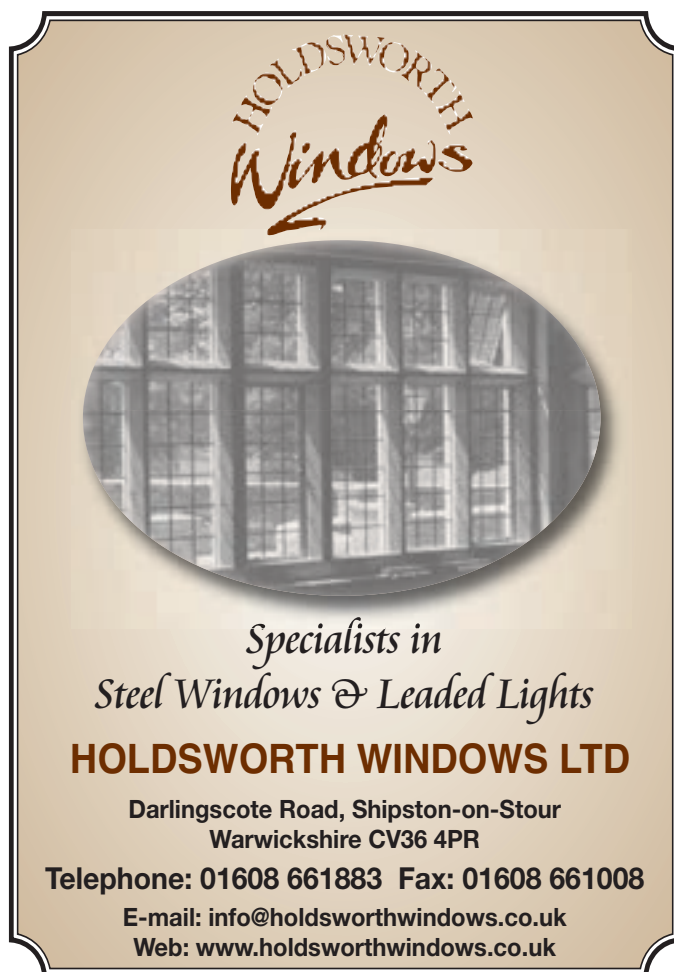


LOG CABIN UK

Together with natural stone it is the only 100% natural material used in building construction

Traditional and contemporary style log buildings
Constructed using renewable and sustainable materials
Compliant with building regulations
A true eco-building suitable for commercial and domestic use

For a brochure or further information contact
Log Cabin UK Limited
Cae Bychan, Bont Goch,
Aberystwyth, SY24 5DP
01970 832328
www.logcabinuk.com



HOLDSWORTH Windows

*Specialists in
Steel Windows & Leaded Lights*

HOLDSWORTH WINDOWS LTD

Darlingscote Road, Shipston-on-Stour
Warwickshire CV36 4PR
Telephone: 01608 661883 Fax: 01608 661008
E-mail: info@holdsworthwindows.co.uk
Web: www.holdsworthwindows.co.uk



Not just a single ply membrane... a complete system for all photo voltaics



RENOLIT's advanced product range offers a unique combination that provides fast solar installation solutions on flat and pitched roofs.

RENOLIT ALKORSOLAR

Unique PVC and aluminium profile for mounting PV modules direct to the waterproofing. Maintains the integrity of the membrane (no penetrations) and eliminates the need for ballast

RENOLIT ALKORSOLAR FRAME

Light-weight aluminium carrier, wind tunnel tested to speeds of up to 200 KM per hour

RENOLIT ALKORBRIGHT

Has the highest membrane reflectivity in the world, improves the efficiency of solar thermal and solar panels. Reduces solar gain.

www.renolit.com/waterproofing-roofing/en/

Technical Support:
01670 718283



Brick Slips, Thin Bricks and Brick Veneer

Matclad Ltd are brick makers that specialise in manufacturing purpose made 20mm thick brick slip facing in the UK.

Matclad Ltd currently offer stock, rustic and genuine handmade brick slip finishes in metric, imperial and roman sizing which are frost resistant (CERAM BS-EN 771:F2) and suitable for external and internal projects.

September will see the launch of extruded, wirecut and feather textured brick slip ranges.

Call us today on **01978 291133**

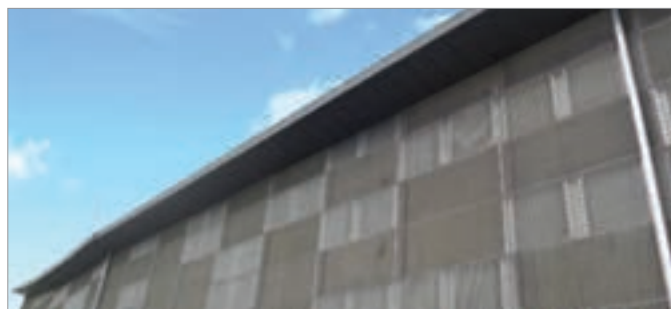




ALM rolled lead focal point for school roof

The Harrow School conservation area contains buildings which are some of the best known in and emblematic of Harrow. One of the most eye-catching is the semi-circular rotunda roof of the Grade II-listed Old Speech Room built in 1819-21. Richardson Roofing used Associated Lead Mills (ALM) code 5, 6 and 8 lead for the complex refurbishment for which ALM also supplied the wood roll substrate. The roof required modification as the rotunda original wood roll layering was in a pattern which used the girth rather than the taper of the lead. With the splash lap facing into the fall of the roof, patterns crossed the fall line 'worming' and causing leaks. The solution was to radiate rolls to natural falls from a raised tier at the pinnacle of the roof using it as a hub to hide roll ends. Segments of king roll and wood rolls had to be lost and in order to offset the problem whereby laps appeared too large, the base of wood rolls was rebated and covered in lead.

01992 444100 www.almhm.co.uk



Aluminium grilles provide extensive cladding

NEACO's Techdek aluminium open grille system is extensively featured as cladding at a £6.3 million development in Finnieston, Glasgow, which provides a new 132/33kV substation on behalf of Scottish Power Energy Networks. Designed by Dane Architectural and built by Miller Construction, the new 1,500sq m facility off Argyle Street is serving as a secure electricity supply for Scottish Power Energy Networks' new development and organic growth within the west of Glasgow. Techdek aluminium cladding covers a large proportion of the substation building, which is approximately 80m in length and 16m in width. Mark Benson of Dane Architectural said: "We wanted an aesthetically pleasing façade and NEACO's product was the most visually impressive and commercially viable choice. The completed installation looks very smart and NEACO's technical support was excellent. They were very flexible in providing a design solution which accommodated the structural demands of the building and we would definitely work with NEACO again in future projects of this type." Techdek is also suitable for decking, access walkways, ventilation, staging, balustrade infills and stair treads.

Natural Light at Home



from **£612** +VAT
Call **0116 2610 710**



Contemporary



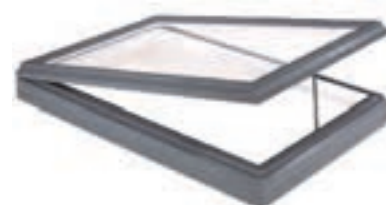
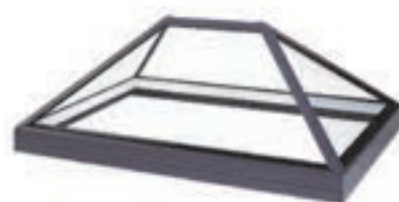
Structurally Bonded

Duplus' range of structurally bonded glass rooflights are available to buy directly from our website or by calling our rooflight sales department on 0116 2610 710. If you prefer you can visit our showroom at our head office in Leicester to browse and purchase our products.

We stock a variety of sizes for off the shelf purchases and can also manufacture bespoke sizes to suit the individual requirements of your project. All products are manufactured and structurally bonded at our Leicester premises. Our rooflights have outstanding thermal performance with U-values as low as 0.9w/m²k

BiM

Models Available



Duplus Architectural Systems Ltd
370 Melton Road
Leicester
LE4 7SL

Email your enquiry to: sales@duplus.co.uk

Go online and see our full range of rooflights

www.duplus.co.uk

or visit our showroom at our Leicester head office

Telephone: 0116 2610 710

Fax: 0116 2610 539

Email: sales@duplus.co.uk

Copyright © Duplus 2014



Acoustic ventilation solutions

As a specialist in natural ventilation **RENSON**® provides window vents that ventilate buildings and meet the acoustic requirements. RENSON Fabrications in Maidstone provides these solutions to the UK construction market. The Invisivent®EVO HR provides the ideal solution for wind-impacted applications such as high-rise buildings (up to 1,200 Pa) and apartment buildings on the coast. It contains acoustic material, that muffles external noises as much as possible (e.g. wind, seagulls, traffic), which increases user comfort. The presence of various types of sound-damping foam in the interior profile provides three possible levels of sound insulation (Basic, High or Ultra). RENSON Sonovent® is a thermally broken acoustic vent which can be installed on glass which has a thickness of either 20, 24, 28 or 32 mm or at transom. This acoustic vent offers a maximum airflow of 26.7 l/m/s at 2 Pa. Equipped with non-combustible mineral wool as noise-damping material, it provides an excellent sound attenuation figure while in open position: up to 56 dB.

01622 754 123 www.rensonuk.net



Balustrade featured in dynamic office design

NEACO's Spectrum stainless steel balustrade has been specified for a £1.7 million development providing state-of-the-art headquarters for TGW Logistics Group in Market Harborough, Leicestershire. Forming part of an extensive mixed-use development at Peaker Park, which also includes retail and care facilities, the office is an impressive piece of contemporary architecture designed by Corporate Architecture and built by S & S Construction. Jason Edwards of Corporate Architecture said: "The building design includes a dynamic display case on the front facade which is both clean and crisp while portraying an innovative approach to modern construction methods. Spectrum stainless steel balustrade is a high-end product very much in keeping with the aesthetic impact of our design. Corporate Architecture have specified various NEACO products on numerous past developments, including their bathroom facilities and the aluminium version of their balustrade, and we know that NEACO's quality and finish is always good."

CONSERVATORY

ROOFS, ORANGERY ROOFS, LANTERNS

PRICE CRASH!

Global Summer Orangery

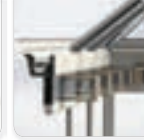


Easy installation of lighting system



Decorative gutter fascia and fitted plaster

Stylish and elegant



Palm tree pods



Internal view

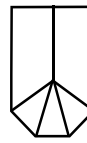
Don't miss that sale on PRICE!
Try a Price Comparison - SAVE £££s

- Very quick turnaround
- 25mm m and 35mm poly
- A ll rafter cappings scribed and pre-cut - ready to fit
- A ll roofs checked sleeved and bubble- wrapped for safe delivery
- F ree delivery to site
- White, Oak, Rosewood, and Mahogany Artisan Colours

Lowest Prices Anywhere*

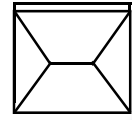
FITS ALL SIDE FRAME SYSTEMS - EASY TO FIT

2.8 x 2.9m Victorian
25mm Opal



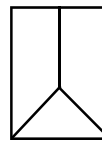
from
£571
ex. VAT

4 x 3m Double Hipped
25mm Opal



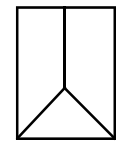
from
£1113
ex. VAT

2.8 x 2.9m Edwardian
25mm Opal



from
£627
ex. VAT

2.8 x 2.9m Edwardian
25mm Blue Active



from
£980
ex. VAT

Log online to view our new EZI Conservatory Roof Quote System



MARKET LEADING ROOF SYSTEM

Find out more!



*We will try to beat any like for like price quoted.
All prices are subject to VAT at the current rate.



made for trade
www.madefortrade.co

**'MORE COMPETITIVE THAN ALL OTHER ROOF SYSTEMS.
SO DON'T ZOOM OFF, GET A PRICE COMPARISON
AND CHECK OUT OUR ULTRA LOW PRICES!'**

Tel: 01642 610799

Fax: 01642 615854

LOG ON TO OUR WEBSITE FOR CURRENT PROMOTIONS!

*In our experience we haven't found anywhere who can beat us on price.

Order by 8pm. Get it Next Day!



For a huge range of stylish door and window hardware at low trade prices, **call today** for your **FREE** catalogue!



UK's Biggest Range



Minimum 5 Year Guarantee



Order by 8pm get it Next Day



Free Returns



0808 168 28 28



IronmongeryDirect.com



DOWNLOAD OUR FREE APP FROM YOUR APP STORE



TEXT **RBA8** to 62244 FREE! With name, address and email for your FREE catalogue.



IronmongeryDirect

MASTERS OF OUR TRADE

DOOR FURNITURE • WINDOW & JOINERY HARDWARE • SLIDING DOOR HARDWARE • HINGES • DOOR CLOSERS • FIRE CONTROL • SIGNS • LOCKS LATCHES & SECURITY • CABINET FURNITURE • SHELVING & STORAGE • BOLTS & STOPS • SEALANTS & ADHESIVES • SCREWS & FIXINGS



Sapphire styles luxury apartments



Beautiful balconies with glass balustrades from **Sapphire** are part of the luxury living experience at The Filaments at Buckhold Road, a new apartment complex in south west London. Sapphire's Crystal frameless structural glass system provides stylish balustrades around projecting steel bal-

conies to 26 apartments by Mount Anvil, a Central London specialist residential property developer. Sapphire was able to incorporate bespoke design details to achieve the architect's unique vision for The Filaments. This included working closely with the contractor to create shadow gaps in the balconies' anodised aluminium cladding which correspond with joints in the glass infill panels.

Historic sign recreated with Sandtex Trade



A historic advertising sign has been recreated at a living museum in County Durham. Herron's Bakery is the latest addition to the collection of historically significant buildings which form part of Beamish, The Living Museum of The North. Eddie Rodger, a sign-writer from Gateshead, was commissioned to take on the project. He said: "I used **Sandtex Trade High Cover Smooth** in terracotta and brown colours for the detailed work, as I knew the mural

needed to last for a long time without re-painting and that after 15 years it would not have lost any of its quality or impact." A water-borne protective finish, Sandtex Trade High Cover Smooth is ideal for most exterior masonry surfaces and exterior grade building boards.

NEACO launch new stanchion designs for balustrade range



NEACO has added to the vast range of modular options available within its Spectrum balustrade range with the introduction of two attractive new stanchion designs.

Combining a stylish contemporary appearance with economical use of materials, the new Shape stanchion's defining feature is ovular shaping which is also applied to the infill clips. The top of the stanchion meets the top handrail with a minimalist stem connector. As well as providing an alternative aesthetic option, the inherent strength of the Shape design allows the stanchion centres to be maximised to help work within budget constraints. Infill options include toughened glass, rails, wire, mesh and perforated panels. The new Quad stanchion provides another alternative to tubular stanchions with a square design which also uses a stem connector to meet the top handrail. Quad is also economical in its use of materials and provides an offset glass infill option in addition to inline toughened glass, rails, wire, mesh and perforated panels.

Available in stainless steel or aluminium, the Spectrum balustrade range comes with a lifetime guarantee.



Are you searching for a long lasting façade solution, that will give you ultimate design flexibility and will fit your budget...?

Yes? Then use Vitrabond!

Well established in the market, Vitrabond is globally recognised by Architects, Builders and Installers as the superior ACM rainscreen cladding panel solution. With large stock levels, vast colour range and continual product development, Vitrabond is readily available to meet your requirements. The composition of Vitrabond is extremely rigid and yet easily formed into many shapes to suit any design requirement.

For more information visit www.vitrabond.com

- More than 60 standard colours • No minimum quantities on standard colours • Robust & durable • Long warranty
- Large stocks • One of the most competitively priced rainscreen solutions in the United Kingdom

For Vitrabond UK, contact Valcan Ltd. Tel: **01278 428 245** E: enquiries@valcan.co.uk

Comar 6EFT curtain walling



“Aluminium offers the unique advantage of easily being extruded and manufactured into almost any custom shape”

Due to demand from its architectural and fabricator clients, Comar Architectural Aluminium Systems is pleased to launch additional new mullions and transoms for its innovative Comar 6EFT Curtain Wall system, with the highest Ix and Iy values available on the market today.

As Comar 6EFT has developed to be the specifier preferred system in the UK, demands for larger transom spans in excess of 3,000mm and unsupported multi-storey mullions are a possibility. Where there are different glazed areas in the same envelope Comar Architectural Aluminium Systems has also extruded high span mullions and transoms in the most popular box sizes, which mean that the same box size can be used throughout the project to ensure that all fixing and plaster lines throughout the facade are continuous.

Today's design complexity, requirements for aesthetics and complex building shapes are key considerations. Aluminium offers the unique advantage of easily being extruded and manufactured into almost any custom shape with ease.

With the current focus on energy efficiency, designs must also take into account 'thermal' criteria and thermal breaks are incorporated. These breaks provide a significant decrease in the thermal conductivity of the curtain walling. The

science of curtain walls now means that aspects such as thermal expansion and contraction, building movement, water diversion and thermal efficiency for cost effective heating, cooling and the lighting of a building are in-built to the system and its design.

To provide a flexible approach to aluminium facade engineering Comar's 6EFT Curtain Walling System utilises European wide design and extrusion expertise with Comar's market leading supply, support and delivery. With its exceptional design flexibility, Comar 6EFT provides high performance solutions for both new build and refurbishment facades. It is a flexible standardised system that provides bespoke solutions. Comar's 6EFT delivers capped curtain walling with 50mm standardised sightlines and includes options for:

- 4sided structural glazing which achieves a cutting edge facade with no visible aluminium sight lines.
- 2sided structural glazing with horizontal or vertical capping, concealed vents where a feature and bespoke finish can be achieved through a variety of cover caps.
- Concealed vents all systems can include side or top hung opening vents
- Facetted glazing options for all systems are available in 7.5° increments, convex and concave.

The system is pressure equalised, mullion drained ensuring water drains freely to the outside.

Comar 6EFT has undergone rigorous tests for the latest BS and EN standards at Taywood Engineering Ltd., with exceptional results: Air Permeability – Class AE 750; Water Tightness – Class RE 750 and Wind Resistance – 2400 Pa, Safety 3600 pa.



Contact Comar on 020 8685 9685 or email projects@parksidegroup.co.uk



Reynaers at Home first in industry to gain Secured by Design status for aluminium sliding patio and bifold doors

Burglary is traditionally one of highest recorded crimes across the country and police forces say this is predominantly due to insufficient security. Tried and tested, high quality security can make a big difference, according to Reynaers at Home.

Reynaers at Home is the only aluminium systems company that has achieved the desirable Secured by Design Police Preferred Specification for both its sliding patio doors and bifold doors. The company boasts three aluminium sliding systems covered by Secured by Design, a police initiative to guide and encourage architects to adopt crime prevention measures.

Reynaers at Home's versatile CP 130 is a lift and slide aluminium patio door that is contemporary in appearance and combines high weather performance

with great aesthetics. Meanwhile, CF 77 is an innovative bifold door and the SL variant benefits from even slimmer sight lines. The CP 155 is a premium sliding patio door that can accommodate a maximum vent weight of 400kg, as well as being available in a high insulation configuration to meet the demands of the most energy efficient buildings.

Exhaustive testing of all three systems via an independent Secured by Design testing house proved that they met all the criteria set out by the highly respected body. Products were tested to PAS 24:2012: Enhanced Security Performance Requirements for Doors and Windows in the UK.

Head of Reynaers at Home Hugh Moss says: "Security, architectural design and energy efficiency are all essential elements in the homes



of today and being the only aluminium systems company that has achieved the highly coveted Secured by Design approval for our sliding and sliding folding systems is really important to us.

"We work closely with organisations like Secured by Design to make sure that our products meet and exceed the latest standards."

Call Reynaers today on 0121 421 9707, email homeuk@reynaers.com or visit www.reynaersathome.co.uk

Crittall Windows



Correctly installing high quality steel windows adds value to the investment you've made in your self-build home – an important consideration when it comes time to sell. British pioneers of steel frame windows over 160 years ago, Crittall Windows, advises it's essential to ensure you install the window brand it says it is – only the original, genuine, make. There are window companies claiming to be providing that, but are not. The slim 'timeless' frames and sightlines, the

graceful elegance offered by steel windows, present a light delicate feel inside and out, giving consistency of design.

Tel: 01376 530800 www.crittall-windows.com

George Woods' timber door canopies



George Woods UK manufactures a large range of door canopies, all hand made in timber from sustainable forestry. It always holds a large stock of its standard size canopies, which enables it to offer a next day delivery service. A bespoke design service is provided for both timber door canopies and barge boards, which can be crafted from your own design. Beautifully crafted porch

canopies are available in soft wood and include an extensive range of barge boards (fascia boards), all of which are manufactured on-site by hand. Having a canopy prolongs the life of your front door, extends time between maintenance and adds value and appeal.

Bringing rainwater harvesting into the 21st century!

Super low energy, 6-8 times less electricity than a standard system.

Water in every eventuality.

Easy installation.

01733 405 111
www.rainwaterharvesting.co.uk

Cost-effective aluminium windows and doors create low energy use buildings

Aluminium systems not only offer top energy efficiency levels, but also add value to a home.

According to 40 per cent of architects, a cost-effective solution for customers looking to sell or wait for a better housing market can be to install larger windows and doors.

When adding a striking extension to a home it's important that homeowners have access to sound advice regarding product choice and are able to find the right solution for their specific build. Among other issues, they should consider the orientation of their new building, as the direction the rooms face might ultimately help determine their use.

North-facing rooms get less sun than any other, and windows with a high Energy Rating will maximise what energy is gained from the sun so it can remain warm throughout the year. Reynaers at Home has a number of aluminium window and door systems that are able to maximise light entry, while at the same time improve thermal efficiency. Its high performance CS 77



HI+ window system has achieved a Window Energy Rating of A+ from the British Fenestration Rating Council (BFRC).

The BFRC's window rating system was introduced to meet the need for simple and accurate certification regarding the thermal performance of window products. Windows are rated on an

A to G scale based on their total energy efficiency, which allows fabricators to quickly and easily choose the most suitable window.

The Reynaers at Home Concept Window System had to achieve a rating index of 10 or above to be awarded the A+ grade (the highest level). The BFRC rating system checks all of the important factors that contribute to the energy efficiency of a window system, including U-value, solar heat gain, air tightness and sightlines.

John McComb, director technical services at Reynaers at Home, said: "Our aluminium windows and doors give energy conscious architects and fabricators the ideal system when creating low energy use buildings. The CS 77 HI+ triple chamber system has the highest levels of insulation, thus preserving as much energy as possible. The system can be installed with either inward or outward opening casements and has integrated gasket seals to ensure superior wind and water tightness. The advanced technology brings the Uf value down to 1.2 W/m²K."

For more information see the website www.reynaersathome.co.uk, email homeuk@reynaers.com or call 0121 421 9707

Crittall in fashion



The link between handmade gentlemen's ties and steel framed windows may not be glaringly obvious but the two share one specific quality. Both are expertly crafted British products and it was this connection that has helped bring the two together in a prestigious building renovation in East London. The choice of Crittall Corporate W20

windows was not a difficult one. The slender frames and consequent increase in glazed area inherent in a Crittall window provided the maximum amount of natural light and so the decision to specify Crittall was not just purely aesthetic but also practical and functional.

01376 530800 www.crittall-windows.co.uk

New outward-opening window from Schueco

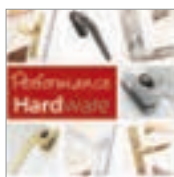


New from Schueco UK Ltd is AWS 70 SC – an insulated, outward-opening window that delivers Schueco 'build quality' at an economical price, providing a perfect solution for new and replacement windows in houses and apartments. With a depth of 70 mm, slim sightlines from 63.5 mm (outer frame/vent) and a choice of five vent profiles offering optimum cost/size/weight options, Schueco

AWS 70 SC is ideal for the fenestration in punched openings, ribbon windows and curtain walling. The system can accommodate double- or triple-glazed units and achieves a typical 'U' value of 1.5 W/m²K with 1.0 W/m²K glazing units, which makes it compliant with Document L.

01908 282111 www.schueco.co.uk

Synseal's new hardware range



Synseal is launching the Performance Hardware range of window and door handles for exclusive use with the company's Legend, Shield and SynerJy 70mm PVC-U systems. The new Performance Hardware range includes inline or cranked espag window handles with 20mm or 40mm pin lengths according to system use and

lever/lever, lever/pad or inline lever/pad door handles, all available in a choice of five finishes: Polished Gold, Polished Chrome, Satin Silver, White and Black. A unique Synseal decorative design with common features between the window and door handles creates a complete and matching suite of products.

01623 443200 www.synseal.com

VEKA UK Group



The VEKA UK Group has unveiled the next coveted product in the Imagine suite. Following the launch of the sought-after Imagine Bi-fold Door, which set new standards in the industry, the team is proud to present the Imagine French Door. Colin Torley, sales and marketing director said: "We showcased the Imagine French Door at the FIT Show and we were pleased at the overwhelming response it received. The system has a seamless, stylish flush finish - which really caught

people's attention. There is no obtrusive central pillar or false mullion, the doors simply close neatly together and lock securely."

Tel: 01282 716611 www.vekauk.com



Tate Solutions provide safe access to retirement home

With 32 apartments and several cottages and bungalows in its complex, when pedestrian access became a serious problem at Beech Court Retirement Home in Solihull, Warwickshire, the residents and their facilities committee called in access control experts Tate Solutions to resolve the unreliable and hazardous condition of their main entrance doors.

Once the Tate engineers had carried out a risk and hazard assessment of the doors, the levels of pedestrian traffic and the environment around the entrance area, the recommendation by Tate was to supply and install automatic doors that fully complied with BS7036 and BSEN16005.

The final specification included Tate EMD operators, because of their ability to be programmed for any situation, their durability and longevity. Activation was via motion radars fitted with external weather shrouds. Both doors were



fitted with on-door safety devices to stop the doors closing and opening on users who may be in the way of the opening/closing cycle of the doors.

As the doors were centre hung and the gap between the frame and doors was approximately 50mm, which would cause a problem with finger/hand entrapment. Safety and injury prevention is paramount, therefore in order to assist

with compliance to BS7036 and BSEN16005 a pivot safe anti-finger trap system was used, which ensures continual safe and virtually maintenance-free operation.

A key switch at a safe working high of 1,500mm was fitted to enable the facilities team to turn the units on and off or put the automatic units into the hold open position, thus allowing the residents to move large, bulky equipment or furniture through the doors safely.

The whole installation was completed in one day causing a minimum amount of disturbance to staff and residents.

Since the installation was completed the positive feedback both from the retirement home management and its residents is one of complete satisfaction, with one resident stating: "It's the first time in three years that I have been able to use the main entrance doors without assistance, from either carers or staff."

Call Tate Solutions today on **01543 501600** or visit www.securefast.co.uk/products/tate-solutions

Victorian arcade returned to former glory



A Victorian arcade has been returned to its former grandeur after a major restoration using expertise from period window specialist, **Ventrolla**. The Grade II listed Arcade Chambers in Keighley, West Yorkshire, underwent extensive repairs including the refurbishment of all 41 windows in its front facade. Ventrolla was called

upon for its knowledge to retain the original sash windows. The windows were renovated with the specialist's patented Sash Removal System (SRS). The unique Ventrolla Perimeter Sealing System (VPSS) was then fitted to combat draughts and reduce external noise. The sash cords were replaced, pulleys serviced and sashes correctly balanced to ensure the smooth and safe operation of the windows.

0800 0277 454 www.ventrolla.co.uk

Imago Lift & Slide fills gap in market



Imago Lift & Slide, the slimmest timber frame lift and slide door hardware system in the market, is now available from **AGB**. The trend for homes with open spaces that let in light, give great views and allow easy access is here to stay. Imago's super-slim design fills a real gap in the

market for companies wanting to offer customers maximum glass area and minimum frame width. The new Imago Lift & Slide timber door system means companies can manufacture a frame visible thickness of just 2cm. Imago is a concept with Italian style at its core.

01279 812958 www.chooseimago.co.uk

Bowater Projects celebrate status



Bowater Projects has had cause for celebration after being awarded Green Deal Installer status. The company, which is part of The VEKA UK Group, achieved the accreditation following a tough confirmation process. Only an authorised Green Deal Installer can install energy-efficiency improvements under the Green Deal finance mechanism, and in order to become an approved Green Deal installer, a company must be a member of the

accreditation body that certified them and must comply with the Green Deal Code of Practice.

0121 749 8250 www.bowaterprojects.com

K2 conservatory roof technical brochure



Synseal has published an authoritative technical brochure detailing its proven and advanced K2 conservatory roof system. The no-nonsense K2 roof brochure presents all the key design features. Cross-section drawings and glazing bar assembly summaries provide a handy technical reference

source. A style guide illustrates the range of popular footprint design options, colour finishes and roof glazing specifications which include Synseal's exclusive Celsius performance glass. A special section also details the very latest Capella modular orangery options, which can be specified to transform a standard K2 conservatory into an aspirational hybrid orangery.

01623 443200 www.synseal.com

Reynaers at Home offers one of the most thermally efficient aluminium window and door systems on the market

Durability and sustainability are two big trends in architecture, and aluminium is one of the most versatile building materials available. It has many benefits, including a high recycled content; long lifespan; low maintenance and high thermal efficiency with new thermal break technology.

Head of Reynaers at Home Hugh Moss says: "According to the latest Reynaers at Home survey, 57 per cent of British architects think that the most popular industry trend today in residential housing is energy efficiency.

"Not only does Reynaers at Home make efforts to reduce its own energy consumption and to reduce its emissions of greenhouse gases; it also contributes to limiting the energy consumption of new and existing homes through the development of energy-efficient windows and doors."

With its CS 104 window and door system,



Reynaers at Home achieves optimum insulation values for aluminium that meets the stringent requirements for Passive House standards.

The high insulation levels of CS 104, down to an Uf value of 0.88 W/m²K, are achieved by the use of a patented insulation technology. Along with a set of specifically developed gaskets, the highest levels of insulation, wind and water

tightness are assured. After insulation, air tightness is the most important factor determining the energy efficiency of a window or door.

Hugh Moss adds: "The low Uf value gives a staggering Uw value as low as 0.77W/m²K, meaning this product sets the benchmark and is one of the most thermally efficient aluminium window and door systems on the market today."

In addition to high insulation values, CS 104 offers extremely high performance when it comes to wind resistance. There are up to five levels of wind load resistance (from one to five) and three deflection classes (A to C), which measure a window or door's structural strength. The higher the number, the better the performance and the CS 104's is the best in class, with the system achieving up to level five for wind load resistance and C for deflection. This makes CS 104 ideal for even the toughest conditions, such as those experienced in coastal areas.

The increased built-in depth of the profiles – the vent is 104mm deep and the frame depth 95mm – contributes furthermore to their strength and stability. This gives architects the design benefits of large, expansive surfaces of triple glazing resulting in innovative, energy-efficient and yet sustainable designs.

Reynaers at Home is a brand dedicated to offering the best architectural glazing products and service to the discerning householder.

For more information call **Reynaers at Home** on 0121 421 9707 email homeuk@reynaers.com or visit www.reynaersathome.co.uk

Online Stockists Of • Fascias • Soffits • Gutters • Cladding



**Low Online
Trade Prices &
10% OFF**



- Low Online Trade Prices
- Free Nationwide Delivery
- BBA Approved & Guaranteed

- Free Estimates & Take Off's
- Massive Stock Quantities
(Inc Black, Grey & Irish Oak)



10% OFF for all New customers. Use promotion code (BCD01) at checkout.



Another winner from Garador

It's an open and shut case! Up & Overs are already Britain's top selling doors. Now, with their fabulous new looks and great options, the



Garador Windsor and Ascot doors are certain to be market leaders in the coming months.

Both doors share a number of top features. They are constructed from high grade galvanised steel finished with a durable powder coat and a rivet free panel for an ultra smooth appearance. Both come in a choice of 18 vibrant new standard colours. Both styles share the same state of the art operational systems with a range of options available such as a retractable gear, factory pre-framed purpose-made; free poly-wrapping on colours, length choices on bottom weatherseal; and additional Lock Kit fitted onto door.

Both are priced very competitively and are easy to install with minimal maintenance.

The main difference between Windsor and Ascot is design. The fresh modern styles incorporate a horizontal panelling for Ascot while



Windsor is vertical; but it's not a big difference – both designs will add a fresh new look to any home.

Call **01935 443709** for more information or check out all the new doors from Garador on their relaunched website at **www.garador.co.uk**

Protect A1 'third-generation' roofing underlay



Protect's, a subsidiary of **Building Product Design**, leading 'third-generation' roofing underlay has been developed specifically to overcome the disadvantages of the traditional Bitumen based Type 1F felts and second generation smooth plastic sheet materials. Protect A1 can be used for all pitched roof constructions (tiled and slated). It is a twin-ply construction of polypropylene non-woven spunbond layer and PP film giving it an excellent nail tear and tensile strength properties. It has an absorbent undersurface which prevents condensation drip-off. The membrane is completely waterproof, UV and heat stable and can be used as a temporary covering for up to three months before the permanent roof covering is laid. It's easy to cut, clean, light to handle and does not generate noise. The embossed dark grey upper surface reduces glare, takes chalk line marking and is unaffected by temperature changes. Director of sales Craig Fyall comments: "Protect A1 is BM TRADA independently certified for all applications having a wind uplift performance of 2.5kPa at 343mm batten spacing enabling unrestricted use in all exposure conditions in the UK and Ireland. Our 'third generation' roofing underlay Protect A1 is available in three roll sizes 1.5m x 30m (45m²) and 1.0m x 45m (45m²) and for smaller jobs 1m x 15m (15m²) to optimise convenience for the roofer."

0161 905 5700 www.protectmembranes.com



Hörmann

A new double leaf, hinged door brings yet another option to the comprehensive range of garage doors from Hörmann. This traditional style is brought right up to date, using the same insulated panels that form Hörmann's class leading sectional doors.

The double skinned insulated panels feature CFC free rigid polyurethane foam sandwiched between steel surfaces. The 42mm thick panels not only offer high levels of insulation but also add to the strength and stability of the doors, contributing to the smooth and quiet movement when in use. The full range of finishes, including the new textured Sandgrain, can be selected with these hinged models. Colour choice is almost unlimited with the Micrograin, Silkgrain and Woodgrain finishes, which can all be selected with the RAL-to-choose option alongside 15 preferred colours. Winchester Oak has been added to the Decograin palette, alongside Golden Oak, Dark Oak, Night Oak, Rosewood and Titan Metallic CH703, adding further choice. All these options can also be provided as side doors with multi-point locking, so that complete uniformity of appearance can be achieved with both the new double leaf and sectional garage doors.

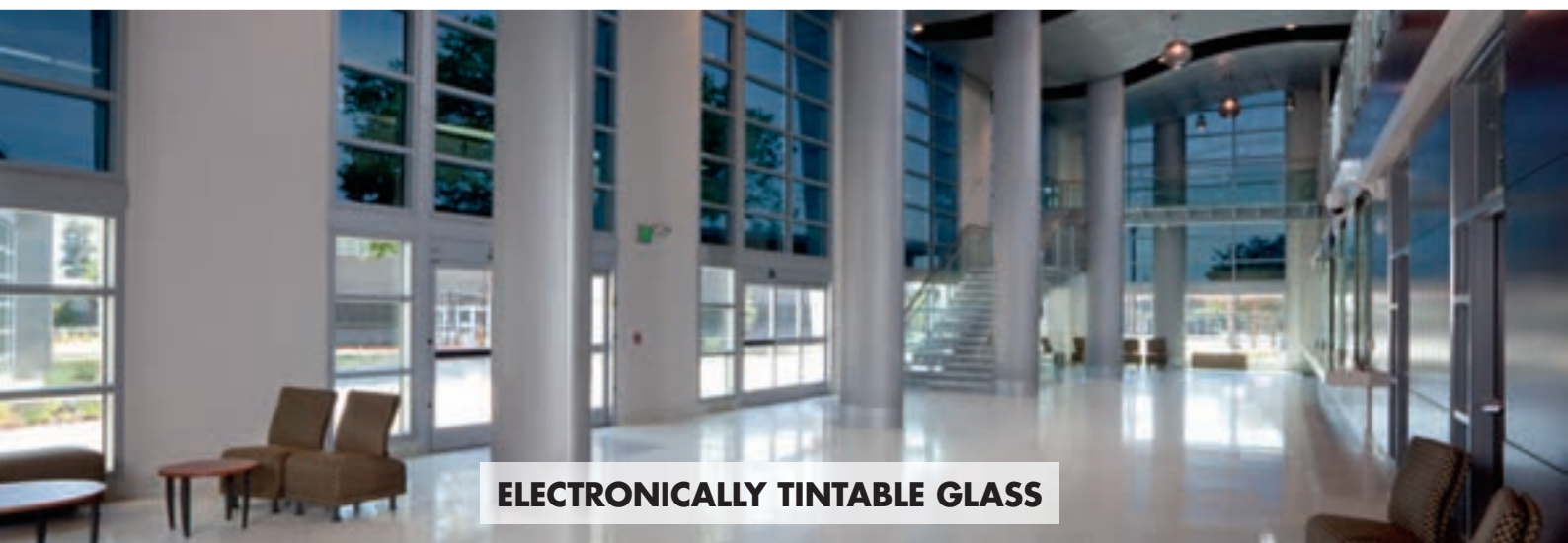
Tel: 01530 513000 www.hormann.co.uk



FIRE-RESISTANT GLASS



SECURITY GLASS



ELECTRONICALLY TINTABLE GLASS

HIGH-PERFORMANCE GLASS BY VETROTECH: ELEGANCE, COMFORT AND FUNCTIONALITY COMBINED.

Vetrotech safety and comfort glass offers the ultimate protection for people and property, while providing the aesthetic and multi-comfort qualities you expect from architectural glass. More than 30 years of experience means we are able to deliver solutions for virtually any application, worldwide. Visit www.vetrotech.co.uk to learn more about our factory in Coventry and our comprehensive product range, or call 0247 654 7620.

Vetrotech Saint-Gobain UK distributes SageGlass®, electronically tintable glass for improved comfort and energy efficiency.



Yeoman Rainguard saves time



When a Leeds home owner added an extension to his 16 year old contemporary detached house, he decided to replace the whole house's failing PVC rainwater system with an XL Aluminium System from **Yeoman Rainguard**. It received measurements and drawings from the builder from which it was able to offer a bespoke system designed to reduce the number of joints resulting in a quicker and easier installation. 125 x 100mm gutter and 75 x 75mm square downpipes in XL Aluminium were fitted to

the sandstone fronted house. Finished in a textured black polyester coating, it gives a classic, stylish finish to the exterior.

0113 279 5854 www.rainguard.co.uk

Sunsquare



UK skylight designer and manufacturer Sunsquare is set to impress visitors of Grand Designs Live Birmingham with its stunning 3x1.5m on-stand Pyramid Skylight. Almost making its debut as the 'eighth wonder of the world' at stand number B680, the length of the on-stand Pyramid Skylight is made from a single pane of glass. Expected to attract a consistent flow of visitors, it marks the launch of the new range of Pyramid Skylights. Pitched from 30 degrees, 15 degrees lower than the

previous model, the product is less intrusive, offering just as much light. It is also available in a single pane up to 1,500mm width and 3,000mm depth.

Tel: 01284 848668 www.sunsquare.co.uk

New full height soffit option for Global Summer



A full height soffit is now available as an internal design option for Synseal's best-selling hybrid orangery, Global Summer, in depths of 300mm and 450mm. Launched in May 2012, Global Summer has proven popular with UK consumers and offers a 'shelf-style' orangery soffit as standard, 300mm in

depth and 140mm in height, to provide a perimeter ceiling detail and house downlights or audio speakers. The new full height soffit solution now delivers the substantial 'built' feel that many homeowners are looking for and is available on Edwardian-style orangeries and conservatories across a range of designed roof pitches varying from 15° to 35°.

01623 443200 www.synseal.com

FAKRO L-shaped windows for project



Bracewell Stirling, one of Scotland's major architectural service providers for social housing, specified **FAKRO** L-shaped combination windows for a 14 flat development in Lower Oakfield Pitlochry. The homes, for Caledonia Housing Association and Perth and Kinross Council, utilise the extended glazing area to maximise availability of natural light. FAKRO windows also provide a bigger overall glazing area by virtue of having their

vent in the frame and operating handle in the base of the sash. Any standard FAKRO roof window can be used, in this case white FTU-V U3, polyurethane-coated pine with a tilt and turn opener in the wall.

01283 554755 sales@fakrogb.com

FAKRO



FAKRO FIT U6 triple-glazed roof windows with a U-value of 0.81W/m²K have been used with FAKRO in-roof solar thermal panels in architect Rob Delius' self-build in the central Bath Conservation Area. The Head of Sustainable Design at Stride Treglown followed Passivhaus principles, specifying a row of six roof windows and six solar thermal panels for the south aspect to maximise solar gain in winter. B12/1 horizontal combination flashing was used in an

integrated roofing approach which included PV tiles and slates, rainwater harvesting, passive stack ventilation and a green roof.

Tel: 01283 554755 www.fakro.co.uk



Sureclad® is awarded BBA certification

For the first time, architects wanting to use some of the largest ceramic granite panels available in their ventilated facade cladding projects can now specify an off-site prefabricated system, designed and manufactured in the UK, that also offers the reassurance of British Board of Agrément (BBA) certification. **Shackerley**, a leading manufacturer and prefabricator of ceramic granite ventilated cladding, is in the unique position of having attained BBA certification for its Sureclad Access and Hang On systems that specifically covers the use of larger format ceramic granite facade panel formats measuring up to 1,200mm x 1,200mm. The Lancashire manufacturer's patented systems have been assessed by the BBA not only for compliance with current Building Regulations but also for meeting all the more demanding guidelines set out by the Centre for Window and Cladding Technology. Shackerley Chief Executive Brian Newell commented: "We've invested heavily in our own bespoke and highly specialised engineering facilities at our ISO 9001 certified factory in Lancashire."

Everbuild Building Products



Sikaflex EBT+ is a flexible solution from Sika Everbuild, combining the properties of an adhesive with a sealant and filler to deliver an all in one product that can be used on most materials including concrete, brick, mortar, wood and metal. Permanently flexible and water resistant, Sikaflex EBT+ can be used both internally and externally combining strong bond, high grab and non-sagging qualities to ensure it will deliver a secure fix to stand the test of time. These exceptional qualities elimi-

nate the need for most mechanical fixings from an adhesive perspective, and due to its flexibility will not de-bond.

Tel: 0113 240 3456 www.everbuild.co.uk

Polypipe's Domus ducting used at marina



Polypipe Ventilation's Domus rigid duct and unique Domus Thermal duct insulation systems are being installed into an exciting new mixed use development in Southampton's marina which aims to provide the city with a world class waterfront destination. Admiral's Quay, Ocean Village features a landmark 26 storey predominantly glass residential tower, supporting 16 and nine storey residential buildings. All of the one, two and three bedroom apartments have very high specification throughout and as an integral part of the ventilation system, feature Polypipe's market leading range of Domus Supertube 125mm rectangular ducting – a highly engineered flat channel ducting system.

Kingspan installed on top academy

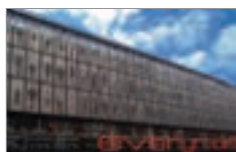


A wide range of products from **Kingspan Insulation's** Kooltherm and Therma ranges have been installed on the RIBA award winning Kingswood Academy in Hull. To insulate the building's metal rainscreen facade, Roofdec Ltd installed over 900sq m of 100mm Kingspan

Kooltherm K15 Rainscreen Board. The product offers premium performance with thermal conductivities as low as 0.020 W/m.K and is LABC System Approved. The brick fascia to the main entrance features multi-storey glazed sections and to minimise the heat loss from around these windows, 75mm Kingspan Kooltherm Cavity Closer was installed.

01544 387384 www.kingspaninsulation.co.uk

Noises off at the Everyman Theatre, Liverpool



The £28 million redevelopment of Liverpool's Everyman Theatre presented something of a challenge to acousticians Gillieron Scott, blending as it did noisy spaces like the theatre's famous wrap-around auditorium with such noise-sensitive features as a recording suite. The decision was

made to specify 900m² of CMS Danskin's Regupol 6010BA acoustic under-screed isolation material, with its potential to provide 42dB of impact sound insulation and 62dB of airborne sound insulation. Just as importantly, with a maximum load bearing capacity of 50kN/m² (5,000kg/m²), Regupol 6010BA is more than capable of coping with the theatre's 100,000 plus footfall each year.

01925 577711 www.cmsdanskin.co.uk

Kingspan's KoolDuct for development



Chester Balmore, the UK's largest residential scheme so far designed to meet the demanding Passivhaus standard, is the latest project to benefit from the premium performance **Kingspan** KoolDuct system. To help achieve the stringent Passivhaus standard, over 1,200 sq m of the

Kingspan KoolDuct system was installed by RDS Projects Ltd throughout the residential units, helping to deliver perfect airflow through the mechanical ventilation and heat recovery system. Kingspan KoolDuct panels have been assigned a 2008 Green Guide Summary Rating of A. The Kingspan KoolDuct System is installed in a single-fix.

01544 387 384 www.kingspaninsulation.co.uk

**THE NEW UPGRADED
SLIM PROFILE ULTRA LOW U-VALUE**

STORVIK DOUBLE AND TRIPLE GLAZED RANGE

**Meeting and
Beating the
Challenges of
Higher Standards**

Designed and manufactured by Howarth specifically for the UK market. The range was developed after extensive research into the latest in timber, glazing and weather seal technology to produce a window design, that has driven performance beyond current standards.

**HOWARTH
WINDOWS & DOORS**

INNOVATIVE PRODUCTS. SUSTAINABLE SOLUTIONS

For all enquiries
please call: **01469 535301**
or you can download
the brochure at: www.howarth-timber.co.uk

selfbuilder & homemaker

**LAUNCH ALL NEW
WEBSITE FOR 2014**



REGISTER ONLINE FOR...

In-print magazine • Digital magazine
Newsletter • Daily digests

www.sbhonline.co.uk



Firing imaginations for over 30 years...



Over 30 years of British design and engineering have gone into creating the UK's most comprehensive range of high quality **woodburning, solid-fuel, gas and electric** stoves and fireplaces.

STOVAX | **GAZCO**
Fire Your Imagination

www.stovax.com

The Queen's Speech: 5p for a plastic bag – but what price for sustainable housing?

Fan manufacturer Elta Fans has expressed concern over the potential watering down of the government's commitment to the building of sustainable housing following the Queen's Speech delivered on 4 June.

Most headlines this year focus on proposals to bring in charges to limit the use of plastic carrier bags. However, detailed changes to the coalition's proposed Infrastructure Bill show the government in a less eco-friendly light.

While many specialists view minimising the environmental impact of UK housing crucial to lowering carbon emissions and reducing growing energy bills, legislation within the bill is now likely to introduce 'allowable solutions'. This is despite such an amendment backtracking on the government's pledge to make all new homes 'zero-carbon' by 2016.

Alan Macklin, technical director of the Elta Group, says: "We recognise the importance of providing market conditions in which UK house builders can address the housing shortage in this country. However, we believe it should not be at the expense of a genuine commitment to a more sustainable approach to housing."

Within larger housing projects, the government is now arguing that it is not always technically viable for builders to mitigate all emissions on-site. Builders will be allowed to fit homes up to Level 4 of the new Code for Sustainable Homes rather than Level 5 – the accepted standard for zero-carbon homes.

Elta Fans remain committed to the sustainability of the environment. Specialising in the design and manufacture of ventilation equipment, Elta Fans engineers are working on a residential



range of fans that combine minimum energy consumption, maximum efficiency and minimal environmental impact. In the BRE (Building Research Establishment) tests, the MORI dMEV unit, one of several new products, outperformed everything on the market. Alan Macklin continues: "Ventilation systems have a vital role to play in ensuring effective indoor air quality. But, performance is also about operating costs and energy efficiency as we seek a more sustainable approach to the built environment."

For more information on Elta Fans, visit www.eltafans.co.uk or call 01384 275800

Handcrafted with passion



A passion for quality. A passion for design. A passion for the environment. Our range of wood burning and multifuel stoves have been handcrafted in the Devon countryside for over 30 years. To find out more about our passion call us today.

WOODWARM STOVES

Tel: 01884 35806 www.woodwarmstoves.co.uk

Metal Developments Ltd, The Workshop, Wheatcroft Farm, Cullompton, Devon EX15 1RA

ECO STOVE

UK patent number GB 2 467 433

New Model EC678 88% Efficient, Low .07 CO to atmosphere



Defra Exempt



- Thermal mass heat storage releases heat slowly throughout the house (not just the room), no ducting needed.
- Stores 25% heat 12 hours after the fire has gone out.
- 88% efficiency.
- One 5kg firebox load of wood heats house for 12 hours.
- Simple two-man assembly using a dry-stack modular method. Stove body made of pre-cast silicon
- British made

Contact us today to learn more about the Ecco stove advantage
Debbie Langley 01527 857814 or sales@landyvent.co.uk

Innovation in
Silicon Carbide



Climate change, hospitals and patient well-being

Dr Chris Iddon of SE Controls comments on hospital overheating from the Climate Change Commission report



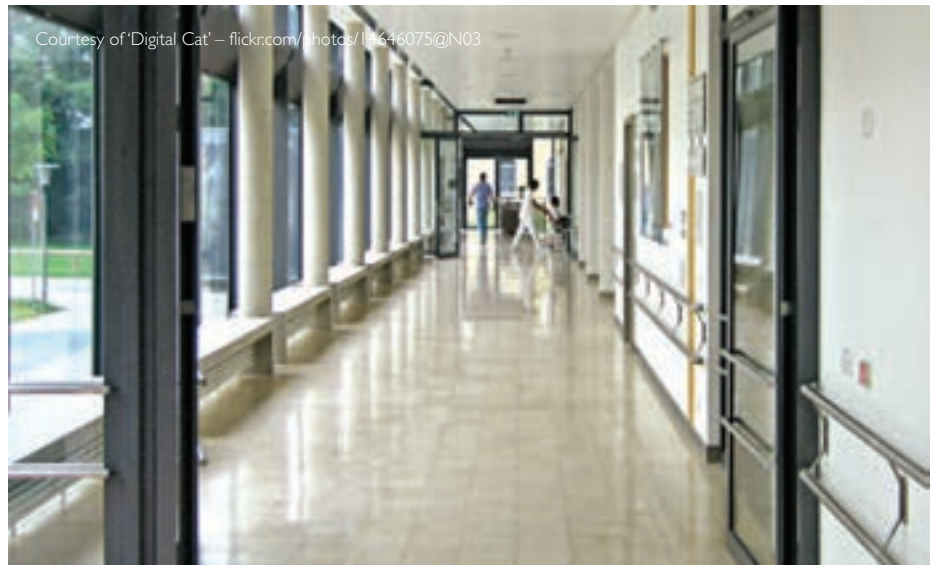
The recently reported issue of climate change causing overheating in hospitals with an associated increase in related deaths not only highlights the risk to patient health from high temperatures and inadequate ventilation, but also questions current thinking on building design.

According to findings from forthcoming research by Cambridge University, headed by Professor Alan Short, around 90 per cent of UK hospital wards are of a design type that makes them susceptible to overheating.

Extracts from the report released by the Climate Change Commission, led by Lord Krebs, indicate that building design and construction are key contributory factors to the overheating and patient health issue. In addition, the commission has already suggested that the retrofitting of air conditioning plants would be uneconomic, so the immediate focus is centred on cost effective and energy efficient measures of addressing the problem, such as natural ventilation.

While hospital overheating can be readily managed with natural ventilation solutions, the additional benefit is that it can also reduce the build up of pathogens, viruses and associated infections by encouraging air movement and 'flushing' stale air from the building. Independent research undertaken by Dr Cath Noakes of Leeds University shows that when windows are closed to reduce heat loss and energy costs, there is an increased risk of infection due to a fourfold increase in air-borne pathogens.

Although air quality in critical health and clinical areas of hospitals needs to be of the highest standard, these principles, in many instances, have been compromised in other parts of hospital design. In pre-operation, recovery and general wards, the opportunity for ventilation is often limited to a 100mm wide strip of open window – a limit governed by essential risk



Courtesy of 'Digital Cat' – flickr.com/photos/11646075@N03

directives to protect patients from harm and provide a safe environment.

However, simple modifications could readily be implemented to the ventilation solution, such as high-level vents or window openings, which would not only maintain patient safety, but also provide adequate ventilation to manage temperatures and improve indoor air quality.

When the lack of cooling is linked to other building design issues, such as south facing glazing, low ceilings, thin walls and the cumulative heat build up from multi-storey structures, there will be an inevitable impact on hospital temperatures.

Temperature data research and analysis that I have undertaken with Professor Kevin Lomas, as part of the wider Cambridge University team led by Professor Short, reveals that in hospital wards across the UK there are a number of key factors influencing overheating risk. The work has not only highlighted the resilience of traditional, heavyweight 'Nightingale wards' to overheating,

but also indicated that solar gain is the key cause of internal temperature increase.

Alongside improved ventilation and increased air movement through carefully planned vents to maintain patient safety, the introduction of measures to limit heat gain, such as the deployment of external shading devices, will help reduce the risk of overheating.

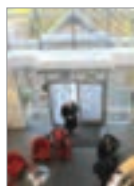
Hospital overheating is a very real issue and this report highlights that most are not only incapable of dealing with a gradual increase in temperatures, but are also likely to be susceptible to heatwaves.

The links between building design practice and how regulations need to evolve to manage overheating and assist infection control are likely to be key outcomes from the research, which will impact all aspects of architecture and construction.

While some retrofitted solutions can provide effective answers to overheating, the time to review building design standards, specifications and regulations is already here.

Contact SE Controls today on 01543 443060, email info@secontrols.com or visit www.secontrols.com

Heat pump air curtain now added to ETL



Mitsubishi Electric's range of Mr Slim heat pump air curtains has now demonstrated the energy saving criteria needed to be included on the Energy Technology List. This enables companies using the air curtains to offset the capital costs against the Enhanced Capital Allowance Scheme – part of the government's programme to manage climate change. The air curtain is available on the Mr Slim and City Multi ranges as

either a recessed or free-standing unit and comes in standard lengths of 1m, 1.5m or 2m, to make the product suitable for almost any front door. They minimise the amount of cold air entering a building, providing a comfortable environment within, and reducing the amount of heating required, lowering energy bills.

01707 282880 www.mitsubishielectric.co.uk

The (not so) humble domestic circulator



Today we would not walk into a shop and look at the identical piece of electrical equipment we had bought some years previously, aware that we could buy a better product. But is the same true of fundamental energy using products that are found in every house

and building, such as the humble domestic circulator? Grundfos is aware that installers will look for an identical pump when it comes to replacement. However, today there are modern energy efficient domestic circulator options available from Grundfos: the UPS2, an efficient replacement for the Grundfos UPS 15-50/60 circulator pumps; the Grundfos ALPHA2L, designed for circulating water in domestic heating systems; and the most advanced, the ALPHA2 circulator.

01525 850000 www.grundfos.co.uk

Gilberts helps deliver first of its kind schooling



Pupils and staff at a new £44 million unique school campus will work in a comfortable environment thanks to the innovative ventilation strategy delivered by Gilberts of Blackpool. Inverclyde Council's 18,000+ sq m Port Glasgow Community Campus is the first of its kind in Scotland, combining

two three-storey High Schools and a single-storey Additional Support Needs (AND) School on one site. The build is expected to achieve a 'very good' rating under BREEAM, largely due to its utilisation of natural ventilation provided under a turnkey package by Gilberts. The ventilation blends seamlessly into the architecture, as a result of the slimline design of Gilberts' louvers.

01253 766911 www.gilbertsblackpool.com

Panasonic launches intelligent control panel



Panasonic has developed a new intelligent LCD remote control panel which integrates all hotel devices, including Panasonic's ECOi VRF system. This new LCD panel from Panasonic is meeting the demand from hoteliers for systems which offer energy savings and also providing

hotel customers with control over the room environment. Panasonic's remote control integrates all key devices in a hotel room to ensure that visitors can operate the various aspects from one panel. The remote control is able to integrate lighting, card reader, blinds, window contact, motion detector and air conditioning. The LCD panel is easy to understand and hotel customers can alter the settings for these different applications.

Specflue

With an average energy efficiency of 91 per cent, compared to 80 per cent for wood stoves, Specflue's range of comfort air pellet stoves is not only energy efficient, but cost effective.

Providing an ideal environmentally-friendly alternative to wood burning appliances, the stoves can be controlled remotely and programmed to come on automatically as and when required, so are perfect for people with busy lives; the perfect combination of convenience and ease-of-use. The comfort air pellet stoves also require very little involvement, with fuel replenishment typically required once a day, as opposed to every couple of hours with a wood burning stove.

Specflue, a leading supplier of flue systems, wood burning stoves and renewable heat products, is fast gaining a reputation as a one-stop shop for all things to do with sustainable heating. Not only does it supply a comprehensive range of products including thermal stores, solar panels, pellet stoves and biomass boilers, it also delivers training courses to enable heating engineers to gain the qualifications they need to upskill and take advantage of the growth in domestic renewable installation work.

Tel: 0800 9020220 www.specflue.com

Euroheat

Do your customers know that investing in biomass is currently a better bet than any fixed rate bank account? Thanks to the domestic RHI, homeowners installing a biomass boiler could secure a tax-free payment of nearly £60,000; a sum that could prove the tool for you to convince the cash-savvy to switch to wood heating. Natural Energy Company Euroheat has calculated that homeowners investing £35,000 in a domestic RHI biomass installation can potentially clock-up a return on investment of £57,645 over a seven year period plus an expected on-going reduction in fuel savings, and a boiler that will last two decades. Simon Holden, co-founder of Euroheat, explains how the figures stack up against a fixed term deposit account: "Bank versus Biomass – it's a no brainer really. By investing £35,000 in a 45kW Euroheat biomass system, payback will be achieved in just over four years with a guaranteed, tax-free government return of £57,645 during the seven years of the RHI scheme. Investing the same £35,000 in a seven-year fixed rate deposit account at 3.5 per cent will see a paltry return of just £1,031, after the adjustment for inflation." While some homeowners are keen to 'go green', many more will be convinced by the investment potential of biomass. In the commercial sector, biomass has been the most deployed technology, providing an indicator of its popularity and financial benefits.

Tel: 01885 491100 www.euroheat.co.uk





Glance offers a fascinating vision of firelight



Launched in Europe at February's Verona exhibition, the Hergom Glance woodburner from Eurostove proved to be a head-turner and showstopper in every sense. The innovative design introduces front and side ceramic glass vision panels with a modernistic 'skyscraper' style top and side surround bars. The front of the unit – which can be free standing or wall mounted – has a flush glass finish with a discreet stainless steel handle. The excellent approximate 80 per cent efficiency performance is through a cast iron double structure and vermiculite-lined firebox. Other features include a single lever primary air control, secondary combustion system, outside air inlet and top or rear flue exit. The Glance has a removable ash pan.

01934 750 500 www.eurostove.co.uk

Heat pump testimonial videos



Mitsubishi Electric has launched a series of testimonial videos which help convey the benefits of Ecodan renewable heating in the words of the people using it on a day-to-day basis. The four videos – part of an on-going series – feature the views and experience of a

self-builder couple from Gloucestershire; social housing tenants from the Isle of Wight; the developer of new, executive homes and one of the homeowners, from Hertfordshire. Graham Temple, marketing manager for the company's heating systems said: "We hope these testimonials will help people understand why they should look at Ecodan."

01707 282880 www.mitsubishielectric.co.uk

Home is where Grundfos is

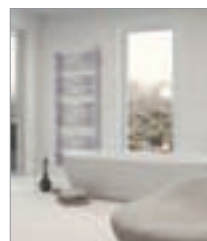


Grundfos offer a comprehensive range of products that will enable you to install the ultimate technology throughout your entire home. Whether this involves macerators, heating, water supply, water boosting, drainage, rainwater harvesting or submersible applications – with Grundfos you can be sure that the solution will

deliver the optimal pump solution. Some of the product range may not be as well known; the Grundfos SP submersible range is a cost effective solution that delivers energy efficient, trouble free operation in applications that require efficient water handling from ground extraction.

01525 850000 www.grundfos.co.uk

JIS Europe at 100% Design 2014



JIS Europe will be displaying its extensive range of stainless steel heated towel rails including the new Steyning range sizes at the 100% Design exhibition at Earls Court from 17 - 20 September on Stand K20. JIS Europe's Sussex range is available in polished or brushed satin finishes. All towel rails are manufactured to exacting standards and JIS Europe offers an extended range of sizes with new models to choose from. All the models are guaranteed for 25 years.

For further information on JIS Europe or any of its products, contact via telephone or visit the company's website.

01444 831200 www.sussexrange.co.uk

The world's first high definition stove is launched



Charlton & Jenrick Ltd has now added a complete new range of high specification multi fuel stoves to its stove portfolio. Known as the Purevision™ HD range, it comprises six models, three freestanding and three inset with stand and log store options available for the freestanding versions and three or four sided trims for the insets. The models are sized as 5kW standard, 5kW wide and 8.5kW nominal output and contain technologically advanced patent pending design features.

Emissions meet EU leading DIN+ levels and already achieve current emission and efficiency proposals for 2022 European Eco-Design standards, which are far tougher than current mandatory norms. DEFRA exemption for wood-burning in a smokeless zone was a formality, with test results up to 97 per cent below permitted levels of visible smoke. These highly efficient stoves produce a clean burning high definition flame that has to be seen to be believed.

Experience real living flames in high definition with Purevision HD.

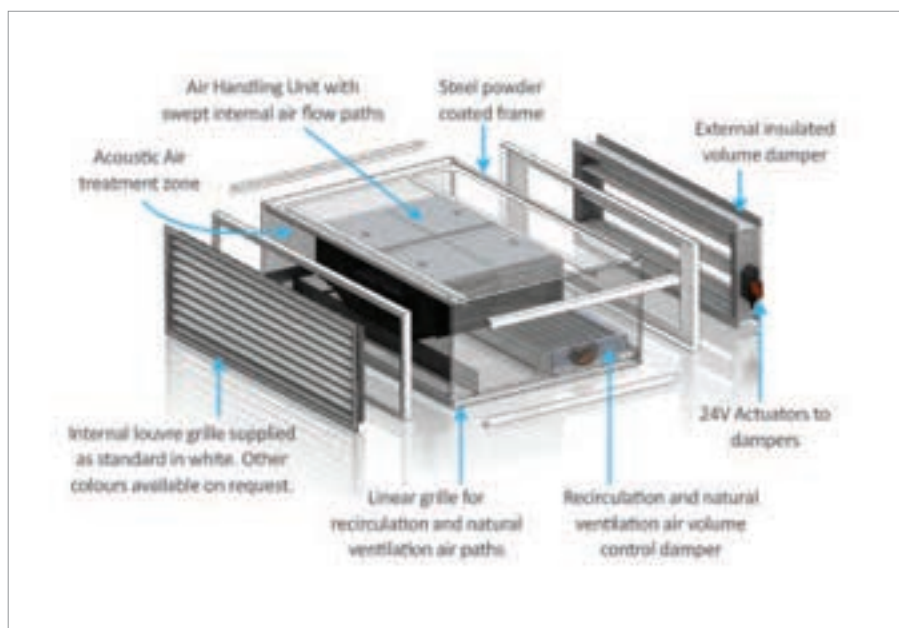
0845 5195 991 www.charltonandjenrick.co.uk

Windhager reports success with first domestic RHI payment received



Launched in April 2014, the government's Renewable Heat Incentive (RHI) scheme for the domestic market has proven to be a big success for homeowner David Taylor from rural Northamptonshire. Mr. Taylor lives in a 300-year-old four-bedroom stone cottage, which was previously heated by an oil fired boiler. He and his wife decided to upgrade and convert to a biomass boiler supplied and installed by MCS registered and Windhager trained installers Plumb-line Plumbing and Heating from Northampton. The chosen boiler was a Windhager BioWIN Exklusiv wood pellet boiler, which provides all the heating and hot water to the property. The property's old and inefficient oil boiler's annual consumption was circa 4,000l costing £2,400 per year. Windhager boilers are 94.4 per cent efficient and fuelled by wood pellets, which are approximately 30 per cent cheaper than oil. Windhager BioWIN range of innovative pellet boilers are compact, durable and built with low maintenance requirements. Fully equipped with a high quality stainless-steel burner, LowDust technology and unique self-cleaning function, these highly efficient boilers provide long-term, hassle-free comfortable heating to all homeowners. The Renewable Heat Incentive scheme is the first scheme of its kind and is designed to give those early adopters a return on their investment of 12 per cent.

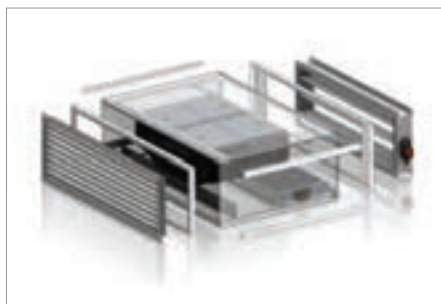
Designed to meet Priority School Building Programme



The Hybrid Thermal Mixing (HTM) system is designed to provide natural ventilation, hybrid ventilation incorporating mixed tempered air for winter periods with the ability to provide secure night time cooling and boosted levels of ventilation during summer. The system works in conjunction with natural ventilation provided by manual or automatic windows and can be used in single sided or cross flow ventilation strategies.

Benefits

- The units can be mounted horizontally above windows or mounted vertically to the sides of rooms and can also be ducted to provide ventilation to deep plan rooms.
- Intelligent and fully automatic control system coupled with a low energy ventilation system which switches between operational modes dependant on season, external/internal temperature conditions and indoor air quality (IAQ).
- Exceptionally low specific fan powers.
- Features an intelligent control system which is supplied as standard with full data logging facility, temperature control and CO₂ control.
- Optional BACnet module: Each unit has the ability to output key performance data to a central BMS to show compliance within PSBP guidelines.



Call Monodraught today on **01494 897700**, email **info@monodraught.com** or visit the website **www.monodraught.com** for more information





New 11.2kW model joins Ecodan line up



Mitsubishi Electric has launched a new 11.2kW Ecodan air source heat pump to join the existing three monobloc models. The line-up for the self-contained outdoor units now boasts a 5kW, 8.5kW, 11.2kW and 14kW to make Ecodan suitable for almost any situation. The new PUHZ-W112VHA model is a single phase, MCS-certified 11.2kW capacity unit that shares the ability to cascade up to six units of the same output, allowing Ecodan systems to

offer a capacity range from 5 through to 84kW. With low maintenance and quiet running as recognised by the Noise Abatement Society, the unit operates with outside temperatures as low as -20°C and also offers a bivalent function.

01707 282880 www.mitsubishielectric.co.uk

Staying calm about noise



With public consultation on new acoustic regulations for schools now closed, specifiers are being reassured about potential changes. BB93 section 1 is going to be superseded by the Acoustic design of Schools: Performance Standard, as driven by the Department for Education. Gilberts of Blackpool says the

Department for Education's proposition is a new document incorporating the BB93 principles both clarifying specific issues and updating the known issues. Gilberts' Senior Technical Manager Roy Jones said: "The overall objective of the performance standards is to ensure that the design and construction of school buildings provide acoustic conditions that enable effective teaching and learning."

01253 766911 info@gilbertsblackpool.com

It's all in a day's work with Schlüter®-DITRA-HEAT-E Underfloor Heating



Cutting installation time by up to 70 per cent, boasting an extremely low assembly height (5.5mm) and providing one unique underfloor heating system all available from a market leading innovative manufacturer – Schlüter-DITRA-HEAT-E has arrived. It leaves other conventional systems out in the cold as the perfect all-in-one integrated solution for use under tiles and natural stone flooring. Ideal for refurbishment and renovation projects thanks to its uncoupling and crack-bridging properties, Schlüter-DITRA-HEAT-E is unlike anything else available due to its loose heating cables which are fixed down to the uncoupling mat free of tape as a result of its unique studded design. It offers optimum freedom for creating concentrated heating zones, as well as providing uniform spacing without the need for measuring and marking. Time-saving benefits include: easy press to lay cable – no tape or glue; no self-levelling layer or primer laying – time saved on application; loose heating cable – greater flexibility; uniform spacing of every three studs – no measurements; integrated and balanced packages – all from one trusted manufacturer; can be tiled immediately – no waiting time. Schlüter-DITRA-HEAT-E is now also available in complete box sets.

01530 813396 www.schluter.co.uk



Warmup unveils new website

Warmup, the world's best-selling underfloor heating brand, have today launched a new design for its website in the UK at www.warmup.co.uk which offers first class cross device user experience. The new design accompanies other changes such as upgraded content including blogs, video, an underfloor heating running cost calculator, example system purchase cost and a product selector. Andrew Stimpson, the Warmup CEO said: "Being able to create the best possible user experience was in the heart of the new website design. The thousands of (homeowners) who communicate directly with us each week through our (33) separate websites around the world will especially benefit from the new tools and content. The fact that we offer hydronic (i.e. water based) and electric systems gives homeowners the unique advantage of sourcing everything from one branded supplier with full technical and research based operational data for each system. A website of this scale and depth of research sets us apart from the competition and further enhances the service and experience we offer to all homeowners around the world through our 20,000 retail and wholesale clients in 56 countries."

0845 034 8270 www.warmup.co.uk

FIRE RETARDANT UK

FIRE retardant for WOOD

HR PROF

- Eco Friendly
- Clear & Odourless
- Water Based
- Non Toxic
- No Solvents
- Apply with Brush or Spray
- Euro-class B-s1-d0
- Internal or External Use
- HR Prof Also tested to BS 476-6 & BS 476 part 7

Classification Reports & Certificates Pine, Spruce, Scottish & Siberian Larch, Western Red Cedar, Oak

T: 01691 791644 E: sales@fireretardantuk.com W: www.fireretardantuk.com



The perfect boiler pipework cover up

Easy to fit pre-formed and pre-finished boiler casings from **Encasement** have been chosen to conceal unattractive boiler pipework in a development of 30 new shared ownership apartments by Axiom Housing Association in Peterborough. Encasement's boiler casings were chosen to not only provide an aesthetic and durable solution to the installation, but also enable a consistent high quality finish to be achieved in every apartment. Manufactured from pre-formed plywood to match the boilers' exact dimensions of 430mm wide by 200mm deep and 495mm overall height, each boiler pipework casing is pre-finished in a white Formica® laminate making them resistant to damage and easy to wipe clean. As the casings are free standing and held in place with a mastic sealant, they are easy to remove and re-fit without damaging them, giving easy access for routine maintenance and safety inspections.

High efficiency small circulating pumps

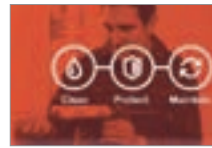


Wilo is celebrating the sale of 28 million small circulators in the past 10 years – which adds up to an impressive amount of energy saved and a lot of smaller electricity bills for homeowners. Here in the UK, the family of Wilo small circulators continues to grow as architects and specifiers look to Wilo to provide

help in energy and emissions reduction activity. Look at the evidence on the company's website or call for more information.

01283 523000 www.wilo.co.uk

Sentinel launch fail-safe water treatment system



To help installers and specifiers get the water treatment process right every time, **Sentinel** has launched a simple yet comprehensive best practice solution. The 'Sentinel System' promotes a three-step water treatment process of 'clean, protect, maintain' designed to ensure lifetime protection of heating and

hot water systems. Every product across the range has been placed into a clean, protect, or maintain category, (according to its overall function within the water treatment process) and each category is represented by a distinct and easily recognisable symbol. The upshot is an all-encompassing solution that helps installers and specifiers to simplify the water treatment process so they can improve it.

01928 588330 www.sentinelprotects.com

ECO STOVE

PATENT PENDING IN EUROPE, CANADA & USA

UK patent number GB 2 467 433

New Model EC678 88% Efficient, Low .07 CO to atmosphere

- Thermal mass heat storage releases heat slowly throughout the house (not just the room), no ducting needed.
- Stores 25% heat 12 hours after the fire has gone out.
- 88% efficiency.
- One 5kg firebox load of wood heats house for 12 hours.
- Simple two-man assembly using a dry-stack modular method. Stove body made of pre-cast silicon
- Designed in the UK and made in the UK.

Defra Exempt

Contact Debbie Langley today to learn more about the Ecco stove advantage on 01527 857814 or sales@landyvent.co.uk. Visit the website www.ecostove.com

Innovation in
Silicon Carbide



Stylish Radiators of the Highest Quality

We have radiators to suit cottages, apartments, palaces... in fact anywhere you call home!



Beaumont have been manufacturing cast iron radiators in its foundry for many years, gaining a solid award-winning reputation for excellent quality and service. Working alongside architects, surveyors, builders, plumbers, heating engineers and DIY enthusiasts, Beaumont offer a wealth of knowledge and experience.

Call Beaumont Cast Iron today on **01788 899100** or visit **www.beaumontcastiron.com**



Grant UK



Grant UK, a leading off-gas heating specialist, has announced the launch of its installer friendly Vortex Mag-One Magnetic Filter, which when fitted, provides protection for all types of central heating systems up to 36kW. Using a simple to install, triple action filtration design, the Vortex Mag-One filters magnetite and non-ferrous debris from central heating systems with a 12000 gauss neodymium magnet. Easy to clean and drain, with a clever design which enables 360° installation,

the product is extremely installer friendly. Features include an installation and servicing date wheel, 28mm isolation valves, manual air bleed and a 500ml dosing capacity.

Vent-Axia shortlisted in Energy Awards



Innovative British ventilation manufacturer Vent-Axia is delighted to announce that its Lo-Carbon EKF Kitchen Box Fan has been shortlisted in the Energy Efficient Product of the Year HVAC&R category at the Energy Awards 2014. This prestigious event, which recognises and rewards companies leading the way in reducing carbon emissions, takes place on 2 December at the London Hilton on Park Lane.

Vent-Axia's cutting-edge Lo-Carbon EKF Kitchen Box Fan is an energy efficient kitchen ventilation solution. Fully compliant for ERP2015, it also meets the new Part L Building Regulation requirements for low Specific Fan Power (SFP).

0844 856 0590 www.vent-axia.com

Beko American-style fridge freezers



Beko has introduced a new collection of premium American-style fridge freezers, designed with cutting-edge technology to help make family life even easier. Headlining the stunning new range from the UK's best-selling refrigeration brand is the Beko EcoSmart non-plumbed water and ice

model ASN541 rated A+ for energy efficiency. Headlining the stunning new range from the UK's best-selling refrigeration brand is the Beko EcoSmart non-plumbed water and ice model ASN541 rated A+ for energy efficiency. RRP ranges from £679 to £999.

0845 600 4904 www.beko.co.uk

The River Gardens – tiled with BAL



An exclusive riverside development in London, by Durkan, has been completed with the use of BAL adhesives throughout. The River Gardens at Royal Greenwich commands spectacular views over London and the Thames, with a range of one, two and three-bedroom apart-

ments on offer. WRS Contracts fixed 600 x 300 multi finish full-body porcelain tiles on both floors and walls. As underfloor heating is used throughout the development, the floors were first levelled with BAL Rapidbase. Both floors and walls were fixed using BAL Supercover Rapidset. The main communal area also has underfloor heating and was prepared for tiling with BAL Rapidbase.

01782 591100 www.bal-adhesives.co.uk

www.apolloradiators.co.uk



monza aluminium column radiator

APOLLO
RADIATORS

MA Granite & Marble Works



We are proud to offer an honest, personal service with 18 years' experience in the design and manufacture of fireplaces with a related range of quality products. We offer a made to measure service so we can create a fireplace to any size. We distribute nationwide and our satisfaction guarantee enables us to offer a level of service many companies aspire to, but few reach.

Call MA today on 01992 558 320 or email info@magranite.co.uk
Visit the website www.magranite.co.uk



switchableTM HD

HIGH DEFINITION PRIVACY GLASS



THE NEXT GENERATION OF SWITCHABLE LCD PRIVACY GLASS

ESG SWITCHABLE HD NEW FEATURES HIGH DEFINITION PANEL CLARITY BLUETOOTH AND WI-FI ENABLED SWITCHING
PLUG AND PLAY WIRING SOLUTION HIGH QUALITY AV PLAYBACK AND LOWER ENERGY CONSUMPTION
ALSO INCLUDES EUROPE'S LARGEST PANEL SIZES 5 YEAR PANEL WARRANTY FULL BSI ACCREDITATION
WET AREA SAFE BESPOKE SIZES AND SHAPES

COMING IN OCTOBER

WWW.ESG.GLASS 0845 3225136



Iconic Thames landmark complemented by slick Schlüter style



Call Schlüter-Systems today on **01530 813396** or visit **www.schluter.co.uk**

An array of Schlüter-Systems products have played a major part in the transformation of one of the Southbank's most impressive buildings into a luxurious riverside hotel. Sea Containers House was originally turned into office space, however, thanks to an investment from Morgan's Hotel Group the former offices became Mondrian Hotel London, with Schlüter-Systems products specified throughout its 360 guest rooms.

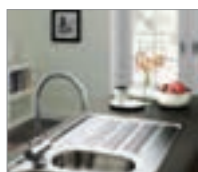
Now open, the hotel has seen Schlüter's innovative products being used within guest shower rooms, with Schlüter®-KERDI-LINE, Schlüter®-QUADEC, Schlüter®-SCHIENE, and Schlüter®-DITRA all used to create an attractive space, while providing the ultimate in protection.

Dave Honey, operations manager at Marmi Ltd, who undertook the installation work, commented on how impressed he was by the Schlüter®-WETROOM range: "Schlüter®-KERDI-LINE is the ideal solution for the hotel's floor level showers, especially as it can suit a range of contemporary designs and has the flexibility of having a range of lengths, connections and grate options.

"The installation itself was straightforward, with no hassle or issues, with the Schlüter®-SCHIENE threshold strips, along with the Schlüter®-QUADEC wall profiles, being used to complete an aesthetically pleasing installation.

"Throughout the whole process we were also very fortunate to receive great support from the Schlüter-Systems technical team with DVD guides and support available throughout the installation."

Franke adds Galileo to Pro Value range



Franke's best-selling Pro-Value collection has been strengthened with the addition of the versatile and keenly-priced new Galileo inset sinks in silk finish stainless steel. The two precision-made reversible monobloc models offer affordable smart practicality for any kitchen workspace, and Galileo's sleek lines

are accentuated by the modish three-strip linear drainer pattern, with front and rear raised ledges providing useful space. Galileo provides access to Franke's renowned quality and design at highly competitive price points, with the single bowl sink priced at only £119 and the 1.5 bowl model offering excellent value for money at £159.

0161 436 6280 www.franke.co.uk

Redbacks' new lightweight kneepad



A new knee pad for pocketed work trousers which incorporates a unique 'direction of force' design that crucially protects the wearer's knees and the rest of the body from the dangers of impact through continuous kneeling, has been introduced by Redbacks Cushioning Limited. 20 per cent lighter than its big selling predecessor,

allowing greater ease of movement and with a thicker grade of spacer fabric giving added comfort, the new kneepads feature a soft and flexible TPE (Thermo Plastic Elastomer) leaf-spring, now with increased durability, which is set within a unique honeycomb matrix.

01327 702104 www.redbackskneepads.co.uk

Abode launch Oriel sink

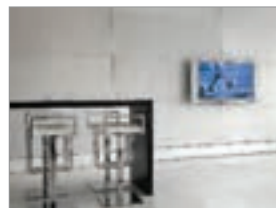


Beautifully designed and produced in advanced acrylic material in three new popular kitchen colours (Black Granite, Frost White Granite and Sable Granite) Abode's Oriel has smooth, organic lines which frame the deep bowl area on this

family of inset sinks which will suit most kitchens. Manufactured in 1.0 and 1.5 bowl models with reversible drainer configurations with tapholes scored on the underside for ease of drilling, Oriel comes complete with standard basket strainer wastes and plumbing pipework included. The sinks come with a 10 year warranty from date of purchase, are manufactured to ISO9001 standards and are all CE marked.

01226 283434 www.abode.eu

Concrete slabs for walls and floors



Framework is an inspiring range of cast-concrete wall and floor coverings that capture the textures, detail, visual patterns and tonal essence of authentic concrete, from Solus Ceramics. Available in a subtle montage of natural shades, Framework can also be selected in a wide variety of surface finishes, from the silky sleek to a pocked porous and

a rustically raw appearance. Framework possesses all of the performance strength of high quality concrete and is durable, offers efficient insulation and is resistant to corrosion and fire. For more information, visit the Solus Ceramics website.

0121 753 0777 www.solusceramics.com

Barwood Products styles fitness centre



Barwood Products continues to transform the look and feel of bathrooms designed for the special needs and less able market. The latest recipient of a Barwoods bathroom is a Yorkshire-based state-of-the-art fitness centre that recently specified the very best equipment for members including new disabled bathroom facilities. Barwood Products was chosen to supply the mandatory DOC M Pack, which featured a stylish blue, white and chrome colour theme with white W.C. and basin; high spec blue toilet seat and coordinating blue grab rails with chrome taps and spatula lever as the finishing touches.

01782 561 814 www.barwoodproducts.com

Hansgrohe expands its Select range



Hansgrohe introduces new additions to its Select range including the ShowerSelect thermostat with integrated shower support; ShowerSelect S concealed thermostats in a new round design, perfect for combining with round hand and overhead showers; and new ShowerSelect manual mixers to complement the existing thermostatic

options and meet the widest range of installation needs. The innovative Select collection from Hansgrohe includes Raindance Select hand showers, overhead showers and showerpipes with ShowerSelect and ShowerTablet thermostatic bath/shower controls all with a simple push button 'select' operation. Intuitive and enjoyable to use for all ages there are no complex electronics.

01372 465655 www.hansgrohe.co.uk

Developer chooses RAK Ceramics



UK property developer **Weston Homes Plc** has selected **RAK** as its ceramic supply partner. Chosen for its quality, design choice and competitive price point, RAK's range will be specified at all new Weston Homes' developments. Current projects include Markyate, Napsbury and Hornchurch, where tiles from RAK's Lounge Collection have been installed throughout bathrooms and en-suites, on walls and floors. Weston Homes

CEO Bob Weston commented: "We reviewed around 350 international suppliers before we chose RAK as our supply partner."

01730 237850 www.rakceramics.co.uk

Style on tap from Hudson Reed

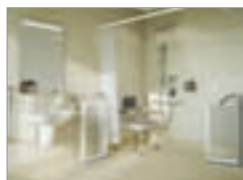


Replacing taps is an effective yet affordable way to update any bathroom, as the right brassware can bring a fresh new feel to even the most tired suite. **Hudson Reed** have launched two stylish new tap ranges to give a new lease of life to the bathroom. Vesper takes minimalist chic to the next level – its slimline spout and easy to operate lever handle will add a contemporary twist. The funky Anson range features a combination of

curved and square aspects for a cool, quirky look – perfect for those who are looking for something out of the ordinary. All Hudson Reed taps offer ceramic disc technology for years of reliable performance.

01282 436934 www.hudsonreedbathrooms.co.uk

On The Level bespoke solutions



On The Level is one of the only manufacturers in the UK to produce bespoke solutions for concealed wet floor shower trays in any size or shape. The patented Birch ply underfloor shower formers are easy to install and ideally suited for special needs applications such as care homes, hospitals and specially adapted domestic bath-

rooms. On The Level formers are BSI approved for a safe load of more than 60 stone (380kg) and their shallow depth of just 24mm allows them to fit flush into most floor types. On The Level specialists are happy to explain the product and give technical advice, on site if required, to devise solutions for specific projects.

01525 373202 www.onthelevel.co.uk

Barwood launches Duo split shower doors

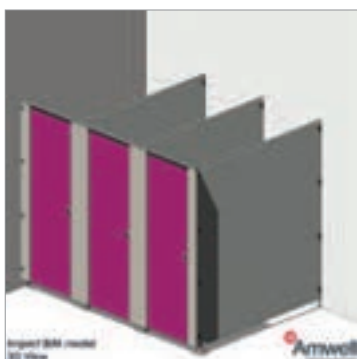


One of the UK's leading designers and manufacturers of high quality inclusive bathroom products, **Barwood Products**, has launched the new Duo shower doors. Duo features split shower doors that can be individually hinged making it very easy to use. The attractive glass doors offer a hassle-free showering solution for all members of the family, whether the user is in a wheelchair, needs the help of a carer, or simply wants an adaptable shower suitable for all. Made from 6mm toughened

safety glass, the Duo door prevents splashing and the handles provide easy manipulation. The Duo is also watertight without silicone.

01782 561 814 www.barwoodproducts.com

Amwell Systems – embracing the need for BIM



In a recent survey by Construction News (CN) "culture change" was cited as the biggest issue companies faced when implementing BIM. **Amwell** is constantly focussed on embracing change within the industry, making it as easy as possible to specify its washroom products. 72 per cent of those surveyed by CN also commented that it is "imperative to invest in BIM in the next 12 months", and Amwell offers its customers the most comprehensive BIM models possible. Its dedication is such that it employs an in-house team of architects and designers, who for the last 12 months have been working to produce detailed, user-friendly BIM models using Revit 2012. Although the launch of Amwell's models couldn't come quickly enough it wanted to make sure they were the best they could be, so it took them on a road test. Project Architect Chong Wong met with Amwell to drop them in to a current project he was working on to see how they fared. Chong expressed that parameters within some manufacturers models can be confusing and not easy to use, but while trialling Amwell's Splash family Chong commented: "When I look at your models I know what I am getting," and that the models were "comprehensive and user friendly". Amwell is fully invested in a concentrated and continued BIM effort involving designing, creating, testing and modifying its families.

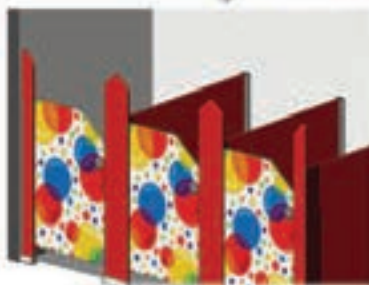
01763 276200 www.amwell-systems.com

BIMfor washrooms by **lb** bushboard

New!



BIM Cubicles



BIM Bespoke Heights



BIM Vanity Units



BIM Ducting

Models adhere to manufacturing parameters

Create your layout

Accurate designs

Change fixtures and fittings

Bushboard's full colour range

Download now

www.bushboard-washrooms.co.uk

LOFT CENTRE PRODUCTS

DIFFICULT ACCESS PROBLEM?

OUR LADDERS AND HATCHES
ARE THE PERFECT SOLUTION

- ▲ Models to suit all spaces
- ▲ Vertical and ceiling access
- ▲ Electric versions available
- ▲ Fire rated hatches



With over twenty years experience and unrivalled technical expertise, Loft Centre Products has developed an exhaustive range of access ladders and hatches for all commercial applications.

Tel: 0845 676 0704 | Fax: 0845 676 0705

Email: sales@loftcentre.co.uk

www.loftcentre.co.uk

LOFT LADDERS | SPIRAL STAIRS | LOFT STAIRS
SPACE SAVERS | ELECTRIC UNITS | HATCHES



The Prince's Foundation
FOR THE BUILT ENVIRONMENT

Supplier of ceramics to the Prince's
Foundation's Natural House



SHAW'S
Since 1897

Shaws of Darwen have been manufacturing robust fireclay commercial sinks for over 100 years. The extensive ranges and sizes of laboratory, shelf, cleaners and traditional Belfast sinks suit every requirement








All enquiries 01254 775111
www.shawsofdarwen.com



**SALES
DESIGN
INSTALLATION**

Sound & Lighting
Scenery & Paint
Curtains & Track
Make-up & Costume Accessories
Pyrotechnics & Special Effects



Lancelyn
THEATRE SUPPLIES

Oxford branch: 01865 722468
Wirral branch: 0151 334 8991
www.lancelyn.co.uk



victoria plumb
TRADE
ACCOUNT

GET YOUR BATHROOM TRADE ACCOUNT
FOR TRADE ONLY PRICES



Autograph toilet
& cistern
exc. toilet seat
retail price £89

TRADE price
£66.75



Matrix basin mixer
retail price £39

TRADE price
£29.25



Boston eco
shower bath LH
inc. shower screen & towel rail
retail price £279.99

TRADE price
£209.99



Sienna 55
basin & unit
retail price £99

TRADE price
£74.25

SIGN UP TODAY! APPLY @ VICTORIAPLUMB.COM/TRADE ■ OR CALL **0844 804 48 54**
NEXT DAY DELIVERY AVAILABLE WITH **£20 OFF FOR TRADE***

Trade account subject to status. Prices shown with 10% trade discount excluding VAT. Please note prices shown on the Victoria Plumb trade website are inclusive of VAT. VAT will be taken up front and is the trade account holders responsibility to claim back. *£20 off delivery applies to 2 man delivery service only

Maxwood Washrooms for Velocity Brooklands



High quality washrooms from **Maxwood**, featuring premium materials such as textured woodgrain laminates, back-painted glass and natural stone, are complementing the 'Grade A' interior specification of a new commercial development within the historic Brooklands motor racing site in Surrey. Maxwood provided

a complete supply and fit washroom package for Velocity Brooklands which provides over 100,000sq ft of prime office accommodation in two connected buildings. Maxwood worked in partnership with the project's main contractor and architect to provide washrooms that delivered high design impact, whilst also being functional and encouraging the respect of users.

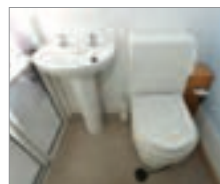
Get swept away with the Galleon shower panel



The Galleon shower panel from **Hudson Reed** makes updating your shower plain sailing. This all-in-one shower solution provides the luxury of multi-function showering in one product – so there's no need to wade through a sea of shower valves, slide rail kits, fixed heads and body jets. With a contemporary brushed stainless steel finish and soft curved design, the Galleon shower features an overhead shower, body jets and handset. It also features thermostatic anti-scald protection for your peace of mind. The Galleon is easy to operate, with one control for the temperature and one control to turn on, off and divert to the different shower options. The panel will retail at just £799.

01282 418000 www.hudsonreed.co.uk

Achieve best value, deliver client satisfaction



Housing providers could achieve better value and deliver greater client satisfaction, simply by adopting a 'one stop shop' approach to some adaptations. Latest figures reveal that the average adaptation costs over £5,000, but for less than half that, the majority of those homes could be suitably adapted, and the adaptation maintained, through the

approach offered by **Clos-o-Mat**. It is the only provider in the sector to offer in-house service and maintenance in addition to installation and commissioning of its equipment. And, as a result, it is finding more and more housing providers choosing its equipment for the long-term savings and peace of mind.

0161 969 1199 www.clos-o-mat.com

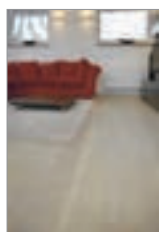
Changing Places in the UK's largest forest



Britain's largest forest park is now achieving optimum accessibility through its new flagship visitor centre. Forestry Commission Scotland has just opened the new, eco-friendly centre at Kिरroughree, the gateway to the Galloway Forest Park. It is the first venue in the area to offer a Changing Places accessible, assisted toilet, supplied by **Clos-o-Mat**, and installed to address outcomes from the Commission's equality analysis, which highlighted the need for more toilet accommodation, including that for disabled people. Larger than conventional, wheelchair-accessible toilets, the toilet also has additional equipment to accommodate the needs of anyone who needs the help of at least one carer to toilet.

0161 969 1199 www.clos-o-mat.com

Not just Harfa floor with Osmo



Following its new partnership with ESCO Group, **Osmo UK**, the eco-friendly wood and finishes expert, is now able to provide its customers with a unique looking and aesthetically pleasing wooden floor. Pre-finished with Osmo Polyx®-Oil, Harfa flooring is the ideal choice for anyone looking for a statement floor. Harfa flooring has been designed with a rough-sawn treatment and has been enhanced with cross-wise cuts that are

grooved in the surface with great care. Harfa can be combined with many different styles and colours, providing endless possibilities. It is finished with Osmo Polyx®-Oil, providing optimum protection to the surface, without detracting from the unique appearance.

Mapei's surface build-up at leisure centre



A high performance 'single build-up' **Mapei** surface system has been installed at West Bromwich's new state-of-the-art leisure centre. Designed and built by Places for People Leisure, the new centre for Sandwell Council includes a 25m pool, learner pool, sports hall fitness suite, dance studios,

adventure play area and cafe. Throughout the extensive project, Mapei systems were specified from the substrate to the finishing materials, in order to provide a warrantable system build-up, with Mapei's Technical Department assisting throughout. The total application included 800 sq m of concrete floor substrate and 2,200 sq m of tile backer board and rendered walls.

0121 508 6970 www.mapei.co.uk


OXFORD
PLANTERS



Specialist manufacturers of British handcrafted internal and external Planters and Furniture.

Available in: Oak, Iroko or Accoya; painted in your choice of colour.

We also offer a bespoke design and build service.

All products are manufactured in the Cotswold's using sustainable timber

For more information e-mail info@oxfordplanters.co.uk or call 01608 683022. All products are manufactured in the Cotswold's using sustainable timber.

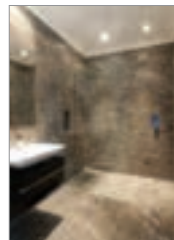
www.oxfordplanters.co.uk

Maxwood washrooms make smart work



Smart new washrooms, superbly styled and manufactured by **Maxwood**, are part of the refurbishment of a landmark office building in London. Outdated washrooms at 30 Gresham Street, the London branch of a leading German bank, have been replaced with elegant flush-fronted cubicles, custom-made from Maxwood's Marante system. Cubicles are complemented by new vanity units in sparkling white quartz and glass panelling, bonded to existing tiled walls for a sleek, modern finish. In addition, Maxwood refurbished several shower areas, provided for the convenience of employees who cycle to work. As part of a complete supply and fit package, Maxwood's installation teams also undertook all washroom plumbing and worked quickly and efficiently.

The height of luxury from CCL Wetrooms



CCL Wetrooms has a range of popular Linear Screed Drains including a wall drain option and a stunning new Stone-Infill Grill. At a market leading height of only 67mm and with BBA certification, the drain ensures that even the highest of water flow rates can be achieved and managed effectively on concrete floors, which are widely used in the construction of modern houses. The drain incorporates a unique waterless trap, which is formed of a spring-loaded mechanism and keeps the trap sealed

when not in use. This ensures that even when the shower is left unused for prolonged periods, the trap cannot dry out.

0844 327 6002 www.ccl-wetrooms.co.uk

Survey shows importance of safety



Supermarkets, hospitals, stations and schools have all featured on a list of places Brits would consider suing should they take a tumble while on the premises. A new survey by safety flooring experts **Tarkett** polled 1,000 people and ties in with the expansion of the company's popular Safetred range. Supermarkets were the top organisation that people would consider suing should they suffer a slip, with 33 per cent of respondents agreeing. To help prevent slips Tarkett is expanding its industry leading Safetred safety range to provide the market with a complete solution for floors and walls. There are two new collections; Safetred Ion and Safetred Aqua. The Safetred Ion collection is available in Linen and Contrast. Linen is available in 14 colours with a woven pattern effect designed to be more homely. Contrast is a decorative, three dimensional, multi flake effect safety floor suitable for entrances and corridors and available in six colours. Tarkett's Safetred Aqua range has an improved specification that includes specially designed top embossing, as well as aluminium oxide particles. It's suitable for barefoot and shod and for use in wet and dry areas, so is ideal for the leisure, healthcare, aged-care and hospitality industry. Both Aqua and Ion are manufactured in the UK and coordinate with Tarkett's range of impact resistant wall coverings and accessories.

01622 854040 www.tarkett.co.uk



Changing Places to come up to scratch

The UK tourism industry needs to 'spend a penny' to become more accessible, according to latest research. A new survey of the top 100 tourist attractions found that 19 per cent had fewer than one disabled toilet/100 visitors, and over half had fewer than two suitable toilets/100 visitors. Robin Tuffley, marketing manager at **Clos-o-Mat** says: "We go to the toilet on average eight times a day, so appropriate toilet facilities are vital for anybody. Changing Places toilets – which mean a carer has the space and equipment to change their loved one rather than do so on the toilet floor – continue to grow in popularity." To help venues improve their accessible toilet provision, Clos-o-Mat has produced white papers – *Provision of Accessible Toilets in the Tourism Industry* and *Considerations & Specification of Changing Places accessible toilets* – that cover all relevant and current legislation and 'good practice' design considerations on accessible toilet provision in tourist attractions. These can be downloaded from the Clos-o-Mat website.

0161 969 1199 www.clos-o-mat.com



Total approach to helping disabled children

Kent County Council has opened three Multi-Agency Specialist Hubs (MASH), offering NHS, social, voluntary and educational services all under one roof. The suites are the first in the country to deliver such a comprehensive range of resources in one place, with the commitment to the users' needs extending through to toilet facilities. As a result, each MASH has had two hygiene rooms installed. These rooms include **Total Hygiene's** Clos-o-Mat Palma 'wash and dry' toilet with optional touch sensitive operating switch. The rooms are based on the Changing Places accessible toilet concept, which are different to standard disabled toilets with extra features and more space for people with profound and multiple learning disabilities and other people with severe disabilities who need the support of at least one carer. The Clos-o-Mat features integral douching and drying, removing the need for the user or carer to wipe clean with toilet tissue.

0161 969 1199 www.clos-o-mat.com

Illuminating products...



The Sirius Collection by Sycamore Lighting.

A unique range of LED Lighting for the kitchen, which features a diffused cover for a smooth appearance, and no visible LED points. The newest additions are our LED illuminated shelves, available in three different styles and all with natural white LED.



Tel: +44 (0) 113 286 6686
sales@sycamorelightingltd.co.uk
www.sycamorelightingltd.co.uk

MODULAR SHOWERING SOLUTIONS



- 30 YEARS OF INNOVATION
- ISO 9001 ACCREDITED
- LEAK PROOF
- EXTREMELY DURABLE
- HYGIENIC
- EASILY INSTALLED
- 25 YEAR GUARANTEE

Many other standard and bespoke design variations are available



TAPPLANES®
 SHOWERING SOLUTIONS

Telephone 01423 771645 Email admin@taplanes.co.uk www.taplanes.co.uk

Making Waves

Take the Dušo tour at www.horne.co.uk/Products/duso

Mapei provides line of defence at IWM London



A Mapei system of flooring products has been specified as part of a redevelopment at IWM London. Part of the Imperial War Museums, the historic museum has been transformed to mark the centenary of the First World War; the design – created by architects Foster + Partners – improves access, circulation, as well as creating new vistas to the park outside. Mapei's high performance cementitious flooring system, Ultratop, was chosen to complement the exhibits and provide a low maintenance floor coupled

with resistance to pedestrian traffic. The system provides an anthracite-toned abrasion-resistant surface, ideally suited to the heavy traffic environments.

0121 508 6970 www.mapei.co.uk

Two shades of grey



Osmo UK continues to expand its offering of internal wood finishes with the introduction of two new colours, Granite Grey and Silk Grey, to its Wood Wax Finish Transparent range. Neutral colours are proving to be a popular choice this year when it comes to wood finishes. Granite Grey and Silk Grey extend the range to 17 different colours, ensuring there is an option for every-

one. Suitable for use on interior flooring, timber cladding and panelling, ceiling profiles, skirting, doors, joinery, furniture and children's toys, the product is a great all-rounder. Osmo Wood Wax Finish Transparent is a satin-matt wood finish which combines all the advantages of oils and waxes, making it resistant to water and dirt and safe for humans, plants and animals.

Gerflor takes large leaps with Tile Giant



When Tile Giant needed a robust vinyl flooring solution, they came to flooring specialist Gerflor. With a 2mm wear layer and 6mm thickness overall, the ultra smart GTI Max Decor can withstand constant footfall, bear the heaviest static loads and easily cope with forklift trucks around the clock. Available in five

stunning colours to give design flexibility, the loose lay interlocking tiles can be laid directly and quickly over problem sub-floors or existing surfaces without interrupting the business. GTI Max Decor is Wear Group standard T with slip resistance on the wet ramp test with oil to DIN51130, rated at R10 and is treated with scratch-resistant PUR+ for easy maintenance and is 100 per cent recyclable.

01926 622600 www.gerflor.co.uk

Welcome to the 1891 collection



The 1891 kitchen collection from Ellis Furniture is available in 23 contemporary colourways, and in two fashionable door designs. The Littendale Shaker design is available in Natural Oak or rich American Walnut. Mondrian uses the same Shaker design and is available in 21 paint colours.

Shown here is the Mondrian range in a mix of Heather (island) and Soft Moss, creating a subtle yet impactful contrast. The Chrome Monmouth Cup Handle complements the classic shaker styling while bringing a modern twist to the kitchen. The RRP for the kitchen including worktops but excluding WOLF appliances is £20,000.

01484 514 212 www.ellisfurniture.co.uk

Specify the right screed to solve substrate stress



The screed layer of a floor is integral to making sure that this aspect of the building looks and performs as intended, which means that installing the right screed for the location is as essential as installing the right floor finish. Developers need to look at several key considerations about the chosen screed and the application method before verifying if the specified solution will meet the long-term needs of the site. Flowcrete UK has built up an extensive amount of experience supplying screed solutions to some of the largest commercial and industrial sites in the country, meaning that it is well placed to advise on the optimum application for a new-build or refurbishment project. The resin flooring specialist's comprehensive selection of floor screeds includes a number of heavy-duty, self-smoothing and environmentally friendly surface underlayments. For sites that want to get the most out of the screed layer, Flowcrete UK can provide its award-winning Isocrete K-Screed solution, which contains a plasticising and accelerating admixture to enhance the system's performance. The K-Screed solution exhibits high strength, excellent moisture control and rapid installation times to provide construction projects with a reliable screed layer that also allows for earlier follow-on work to speed up construction schedules.

01270 753000 www.flowcrete.co.uk

Changing Places to make public transport hubs accessible



Would you like to have to lie on the floor if you needed the toilet? For some this is often the reality, because venues are not properly accessible or inclusive. A recent survey maintains 75 per cent of disabled people experience barriers to using transport. Buses and trains each account for almost 20 per cent of the mode of transport they would like to use more. A survey into The National Station Improvement programme Putting Passengers First found that toilets were the top facility most in need of upgrading at stations, but also that they were the most important priority for improvement. Yet few of the UK's bus and railway stations have a 'bigger and better' accessible (disabled) facility – Clos-o-Mat's Changing Places toilet. Under both the new Building Regulations Approved Document M, and BD8300:2009, a Changing Places toilet is 'desirable' for inclusion in any building to which the public have access. Further, the Accessible Train Station Design for Disabled People Code of Practice states a Changing Places toilet should be included in addition to other accessible WC provision. A minimum 12 sq m, a Changing Places toilet also has, beyond the equipment found in a standard wheelchair-accessible WC, a hoist, adult-sized height adjustable changing bench, and privacy screen.

0161 969 1199 www.clos-o-mat.com

Luxury Homebuild

World Leaders

Grand Designs

PassivHaus Bespoke Glazing

If you're planning a self-build or renovation you need to be sure that your project is in safe hands.

Altitude Aluminium works with Schuco and Reynaers systems and offer a complete, no worry service from design through to installation of Aluminium Windows, Doors, Sliding and Folding systems, Curtain Walling, Balustrades and Balconies.

Altitude Aluminium is ISO 9001, ISO 14001 and BS OHSAS 18001 accredited.

Get in touch with us to discuss your project further.

Call us today on
0800 2888 066

or email your plans to
quote@altitudealuminium.co.uk

Visit our website
www.altitudealuminium.co.uk





When is a floorcovering not just a floorcovering?

When it's from the UK's largest flooring contractor. We've many years' **EXPERIENCE** supplying and installing a huge range of floorcoverings for a variety of different market sectors. We promise **EXCEPTIONAL SERVICE** delivered with **EXCEPTIONAL PRICES** and with a stockholding value of more than £2m we have **CONSISTENT AVAILABILITY** across our key ranges. At each of our **12 REGIONAL DEPOTS** we can accommodate every request from price point driven schemes to high profile projects.

A dedicated team will be in place from enquiry through to installation to give you the **BEST ADVICE AND SERVICE**. We offer free on-site surveys and guidance on health and safety compliance; our staff and fitters are **CSCS REGISTERED** and **CRB CHECKED** as appropriate. What's more, we are committed to keeping everything simple and **HASSLE FREE**. With our own cutting machine and our **OWN TRANSPORT** fleet, we are always in control. We work with organisations of all sizes, forging a close relationship with each one to ensure that **CUSTOMER SATISFACTION** is of the highest order on every contract we undertake.



Find out more
about our
floorcoverings

From ideas to installation WE DO IT ALL.

Designer Contracts

The UK's largest flooring contractor



Scotland 01324 676100 North East 0191 286 1797 North West 01772 705557 Central & Yorkshire 01246 853463 North & West Midlands 0121 359 6083
South & East Midlands 01536 407357 Wales & West of England 01633 279310 London & South East 01277 263450 Thames Valley & West London 01753 577935
Thames Medway & South East London 01959 572313 Southern 02380 275123 South West 01392 823051

National & General Enquiries 01246 854577 Email Enquiries@DesignerContracts.com

www.DesignerContracts.com

CARPET. CARPET TILES. VINYL TILES. VINYL & SAFETY FLOORING. WOOD. LAMINATE.

Cold stores key to Leicester's new city food hall



ISD Direct, a leader in bespoke and off-the-peg walk-in cold and freezer rooms, has completed new chill and freezer room facilities supporting eight artisanal food stalls at Leicester's brand new city centre food hall, the first phase of an overall £9.2 million redevelopment of Leicester city market, due for completion in 2015. Working jointly with specialist contractor Phoenix Retail Services, the cold storage rooms have been designed by ISD Direct to provide highly efficient, easy to clean and easily accessed cold storage for stall holders selling a range of local and regional products, including fish and seafood, fresh meat, poultry and game, to specialist cheese and delicatessen products.

01452 520 649 www.isd-modularcoldrooms.co.uk

Granite Transformations



Kitchen and bathroom makeovers brand Granite Transformations confirms that the 'improve not move' boom continues, with record numbers of householders opting to upgrade where they live, rather than up sticks and move house. According to the latest Lloyds Bank research, over 14 million people have undertaken major work on their property or plan to do so within the next year, to improve or add value to their homes. New kitchens (40 per cent) and bathrooms (30 per

cent) are high on the list of priorities for home owners looking to improve, according to the research.

Tel: 0800 044 5393 www.granitetransformations.co.uk

Encasement goes underground with refurbished Petit Pret store at King's Cross station



To comply with London Underground fire and safety regulations, the refurbishment of Pret a Manger's Petit Pret store at King's Cross station called for the use of non-combustible interior wall linings, which were supplied and installed by Encasement from its Vecta range.

The project was part of Network Rail and London Underground's ongoing process of improving station facilities for passengers throughout the rail network, while ensuring safety standards are maintained at the highest level. The Vecta wall lining range is designed to provide decorative, durable and versatile solutions for interior applications, such as retail and commercial projects where style and practicality are key considerations, while achieving a Class O spread of flame was also a key factor at King's Cross.

Within the Petit Pret store, Vecta aluminium panels were used to fully line the shop interior from floor to ceiling, which also included the installation of the system's fixing rails, as well as edge and door trims together with a 100mm high mirror polished aluminium skirting. To help keep the shop bright in its underground location, the Vecta panels were finished with a white RAL 9010 PPC coating.

HbD

LAUNCH ALL NEW WEBSITE FOR 2014



REGISTER ONLINE FOR... In-print magazine • Digital magazine • Newsletter • Daily digests

www.hbdonline.co.uk

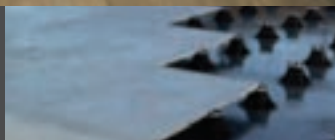
LEVATOMONO porcelain paver system

The Levato Mono porcelain paver system is the pinnacle of external raised flooring technology; enabling the specification of lightweight, slip resistant and attractive raised flooring solutions, combining incredible technical properties with uncompromising aesthetics; making them the ideal choice for commercial and domestic use alike.



- 20mm porcelain pavers 40x80 45x90 60x60 75x75 30x120 40x120 60x120
- 'Floating floor' – installation over single ply membrane and pool surrounds
- Eternal product – zero maintenance required – offering massive over-life savings
- Highly abrasion and stain resistant
- Highly slip resistant ; R11 and achieved up to +65 wet in the BS pendulum test
- Lightweight – 45kgs per m²
- High load bearing and impact resistance
- Timber & stone effects; 40+ finishes available
- Ideal for balconies, roof terraces and piazzas, for both commercial & residential use
- Completely non porous
- Fire & frost proof
- Height-adjustable support from 9mm up to 550mm
- Matching internal tiles

t: 0845 2700 696 e: info@thedecktileco.co.uk
www.thedecktileco.co.uk



dte
the deck tile co. ltd.



Access all areas with a Premier Loft Ladder

Premier Loft Ladders are the preferred choice of architects and building industry professionals throughout the UK, and leads the way in design, technology, energy efficiency and quality and is recognised as being the foremost supplier of concertina style aluminium and folding or sliding style wooden loft and access ladders.

Prices are extremely competitive, in fact the company will match the price of any like for like product found at a lower price elsewhere!

Key reasons to choose PLL:

- * Outstanding quality and value
- * Preferred choice of architects and building industry professionals
- * COLUMBUS Treppen - UK Main Dealer
- * Technical and design advice
- * Commercial and domestic applications
- * Fire resistant trapdoors
- * Vertical access
- * Flat roof access
- * Electrical operation

PREMIER
LOFT LADDERS

For further details, advice and or for a no obligation quote, please contact us on telephone: 0845 9000 195 or email: sales@premierloftladders.com or visit our website at www.premierloftladders.com



A lift solution for Sparkworld

Sparkworld Ltd, based in Martock, Somerset is one of the leading suppliers of white goods and range cookers in the South West, with a showroom open to both public and trade clients. The showroom is split into two distinct areas, both by product and by layout, so when Sparkworld wanted to join the two areas together via an existing staircase, it was down to Axess 4 All to come up with an access solution.

To determine the best solution for the client, Axess 4 All dispatched its sales manager, James White, to Martock to find a solution to Sparkworld's access problems.

The existing staircase was only 1,600mm wide but being the most direct access from the main entrance to the new showroom area, it was a major priority for Sparkworld to ensure access was provided so people with restricted mobility could fully use the new area.

A standard step lift would have taken up too much of the staircase width and with timber stairs

and adjacent walls it was quickly clear that the normal arrangement of a step lift or incline stair lift would not be suitable. James soon came up with a solution that would leave a good clear stair width and leave Sparkworld with virtually no builders' work to do on-site, reducing disruption to an already busy shop.

By utilising the existing area between the timber stairs and the plasterboard wall there would be just sufficient space for Axess 4 All's experienced installation team to floor mount specially extended stanchion posts to support the guide rails of an incline stairlift without affecting the existing timber stairs.

The A1000 incline platform stairlift from Axess 4 All is the company's most compact lift with the smallest closed width of any incline stairlift at only 240mm, which means even when the incline stairlift is folded up and not in use the existing staircase still gives good access.

The A1000 is supplied with clear and easy to use call and park push buttons located at the upper



and lower landings to allow a wheelchair user to operate the stairlift safely and independently. This, combined with the newly developed concealed safety barriers, which now fold behind the platform when not in use, ensures the whole stairlift is even more discreet and compact than before.

Installation was completed at Sparkworld in only six and a half hours.

Call Axess 4 All today on **0844 375 8882**, email sales@axess4all.com or visit www.axess4all.com

Crown Trade tackles university challenge



Crown Trade products have won top marks with a major university challenge completed in time for the start of a new term. The first phase of a massive £97 million redevelopment project at Robert Gordon University's Garthdee Campus in Aberdeen was finished last year. A modern library along with

laboratories, teaching rooms and a refectory have been in full use ever since. Clean Extreme Scrubbable Matt and Eggshell, predominantly in a cool white shade was used for the large scale project. Pastel tones were specified for feature walls and stripes around the site. The Crown Trade products selected were chosen with a focus on achieving an easy maintenance finish that can stand the test of time.

0845 034 1464 www.crownpaintspec.co.uk

Ion Science Tiger used in construction



California-based design-build group, pH Living™, is using an Ion Science Tiger hand held photoionisation (PID) detector to monitor volatile organic compounds (VOCs) during the construction of its bespoke residential and commercial properties for people with chemical sensitivities. This is in line with the new Healthy Home Standard developed by the International Institute for the Building Biology and Ecology (IBE). A robust hand held VOC detector,

Tiger provides a dynamic detection range of 1 parts per billion (ppb) to 20,000 parts per million (ppm), offering the widest measurement range of any other VOC instrument on the market.

01763 208503 www.ionscience.com

Wooden worktops...

...love TopOil

The Ultimate protection for your wooden worktop

- > **Resistant to common stains:**
wine; beer; drinks and fruit juice.
- > Will not crack, peel or blister.
- > Highest coverage of any oil on the market.



Call or visit the web for stockists.



+44 (0)1296 481 220
www.osmouk.com

osmo 

Interleaf hinges from Cooke Brothers

Manchester based Combat Doors, one of the leading specialists in the manufacture and installation of commercial entrance door systems, reports on a recently completed contract for one of the UK's largest housing associations in Tameside, Greater Manchester.

The £250,000+ contract involved Combat in replacing worn out access points throughout Tameside with bespoke high performance communal aluminium entrance door systems. This highly skilled work required specialist hinges to meet the exacting specifications of the contract. On recommendation by leading systems company Kestrel Aluminium, Combat contacted master hinge makers Cooke Brothers for a solution.

After considering the wide choice of hinge options in the company's Phoenix hinge range, the product that fully met the contract specifications

was the Interleaf Stainless Steel Continuous hinge.

Designed to provide an ultra-narrow, unobtrusive sightline between the door and frame, the new Phoenix Interleaf hinge reduces the typical gap created by a traditional heavy duty continuous hinge from 12mm down to a mere 3mm, while the aesthetical lines of the Interleaf hinge completely fill the void between the door and frame, reducing the risk of finger trapping considerably. The new CE marked Interleaf hinges incorporate the Phoenix high performance, maintenance free polymer bearings and have been successfully tested to BSEN 1935: Grade 14 (160kg) and are CERTIFIRE approved for use on fire doors.

Mike Ankers, director of Combat Doors, said: "We were impressed with the design and quality of the Interleaf hinges and the product certainly proved to be the perfect solution."



Contact Cooke Brothers today on
01922 740001 or visit the website
www.cookebrothers.co.uk



NEW THE NEW LSD ALL-TERRAIN TRESTLE



The **LSD All-Terrain Trestles** are the **ONLY** trestles specifically designed for use indoors and outdoors and on ground that is seriously uneven and includes the unique **LSD Staging Board with integral handrails** and locking clamps.



- ◆ The four trestle legs are adjustable over 600mm (2ft) in increments of 3mm (1/8")
- ◆ 125mm (5") articulated feet
- ◆ Working platform height from 300mm (12") to 2400mm (8ft)
- ◆ Large 3m (10ft) Staging Board
- ◆ Safe working load of 270kg
- ◆ Folds flat for storage
- ◆ Complies with BS 2037 Class 1

Sage Green Heat Ltd, Stream Farm, Chiddingfold, Lewes
East Sussex BN8 6HG T: 01825 872256 F: 01825 872510
info@laddersafetydevices.co.uk



www.laddersafetydevices.co.uk



Quality and innovative locks

Gatesecure is a manufacturer of quality and innovative locks and hardware for gates, distributed by Signet Locks. With its experienced technical team and excellent service it can provide you with a product to secure your gate in any situation.

Gatesecure's range of bolt-on gate locks are a convenient method for securing a gate. Select Pro bolt-on locks are easily installed to new fabrications or existing gates. The four options, each with varied locking actions means there is a lock to suit every situation. The unique deadlock can be used to hold a gate closed and moves 30mm with one turn of a key. The keylatch holds the gate shut and requires the key to open every time. The latch provides a professional finish to every gate and is opened using handles. The latch deadlock allows the gate to be latched shut and the bolt can then be deadlocked for maximum security.

www.signetlocks.co.uk **sales@signetlocks.co.uk**



KingspanTarec® launch Kooltherm® FireSleeve



Limiting the spread of smoke and fire is a key consideration for any building owner. To ensure maximum protection, **Kingspan Tarec** has now unveiled the **Kingspan Tarec Kooltherm FireSleeve**, a slim solution which expands to several times its normal size in the event of fire, helping to seal service penetrations and can reinstate the original fire rating of a building element. The Kooltherm FireSleeve comprises an intumescent layer inside a stainless steel facing and is sealed at both ends with compressible rings. The product achieves a two hour fire integrity rating to BS EN 1366 and is particularly suited for use on fire rated constructions where inadequately sealed building service penetrations can act as a channel for smoke and flames.

01457 890400 www.kingspantarec.com

Clear the decks for new brochure



Arbordeck, the complete decking systems manufacturer and the only UK distributor of the innovative US Trex Transcend and Contours composite systems, has launched a comprehensive new brochure for 2014, combining practical

advice and inspirational ideas. Showcasing Arbordeck's extensive range of DeckMark™ approved timber decking products and accessories, including its extended range of enhanced grip deck boards which provide improved safety even when wet, the new brochure is packed with imagery illustrating Arbordeck products in various situations. The brochure also features information about Arbordeck's new Pinterest pages and its easy-to-follow 'How To' videos.



© 2013 McConnells and Brett Landscaping

Faith in bus boarding Kassel kerb continues

Major public transport improvements have served to underline the confidence of Brighton and Hove City Council in the quality of **Brett Landscaping's** market leading Kassel bus boarding kerb. The Brett solution has been installed as part of an ongoing programme now in its 15th year, which has improved road infrastructure in the city to support progressive efforts to make public transport efficient and accessible for all. The Lewes Road project, at 3.6 miles, represents the council's biggest single installation of Kassel and will service this vital route along Brighton's academic corridor. Kassel kerbs have been considered must-have materials by the council. The council has now installed Kassel kerbing to enhance passenger access to and from bus services along many of its key routes. Interest from other parties has already been expressed in the new bus stop designs, which use Kassel to create the stop from the road inward, with a cycle lane behind. This gives an appearance of the bus stop as a 'floating island' within the road, and is said to improve both passenger safety and travel efficiency.

0845 6080570 www.brettpaving.co.uk



Best 4 Garden



Upgrade fence and railings

- Get the beautiful award winning heavy duty planters, with drainage collectors
- Greenbo and XL greenbo, 8 colours available

Root Barriers

- Protect foundations from tree roots with root barrier control bamboo plants from spreading with rhizome barriers

Save hundreds of hours | Safe cost effective solution

- Save many hours year after year and enjoy neat lawn edges
- Most cost effective solution, safe long lasting strimmer proof & mow over
- Ideal for lawns, aggregates, synthetic lawns, terraces and raised beds
- 3 colours, range of heights, strength and length



www.best4garden.co.uk | 01630 647532

LONG RAKE SPAR CO LTD
Suppliers of Specialist Decorative Aggregates since 1967

Self Binding Gold Path

Polar White 8-11, 20 mm

RHS Hampton Show Resin Bonded Pathway

Long Rake Spar are the leading suppliers of decorative and surfacing aggregates in the UK.

Our Extensive Range Is Ideal For:

- Resin Bound and Bonded Systems
- Landscaping Projects
- Environmentally Sensitive Areas
- Distribution through building merchants and centres

Call: 01629 636 210 Fax: 01629 636 247

Visit www.longrakespar.co.uk Email: sales@longrakespar.co.uk

High capacity drainage for new Gateshead Riverside Bus Depot

The new £8.5 million Gateshead Riverside Bus Depot at Dunston is the centre piece of the Go Ahead Group's two-year £30 million investment in Go North East bus network. Located on a brown field site formerly occupied by the Dunston power station, the new facility covers 5.75 hectares.

The 326 sq m (3,500 sq ft) Gateshead Riverside Bus Depot building is a servicing and fuelling centre used by over 160 Go North East buses, 24 hours per day and seven days per week. All 145 buses can be washed and refuelled on-site overnight. Located off Mandela Way on the South bank of the River Tyne, the new depot building is surrounded by a concrete parking area for buses and staff cars, so effective surface water drainage was a major consideration for designers Portland



Consulting Engineers Limited to ensure efficient all-weather operation.

Hauraton supplied 800m of its RECYFIX® HICAP® 300, high capacity drainage channels. They were installed in seven runs by ground worker Joyce Drainage Limited, to remove surface

water so allowing the depot to remain open even under severe storm conditions. The large capacity of the HICAP® runs meant a drain area of up to 10,000 sq m was achieved with just one gully outlet. The RECYFIX® HICAP® 300 channel runs installed at the depot accept a water volume of 137,120 l. The scheme greatly reduced excavation costs and the length of underground pipe-work required. Each 1m channel unit weighed only 23.4kg, so they were easily manipulated into their final position on-site.

Factory fitted with 14mm slotted ductile iron inlets, the channels comply with a loading class of F900 so can easily take the weight of a double-decker bus. Importantly, once installed the complete system is highly resilient to the twisting forces imposed by bus wheels.

For more information on the case study go to www.hauraton.co.uk

benchmark street furniture



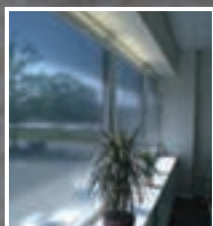
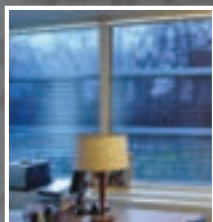
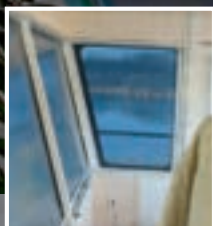
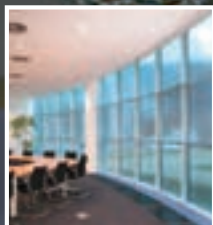
benchmark design limited
cheriton house, barnham lane,
walberton, west sussex, bn18 0az
t: 01243545926 f: 01243545453
email: bench@btinternet.com www.benchmark-ltd.co.uk



Olympic wall tile mural wins top honour

The team responsible for creating two vast and complex wall tile murals in the Queen Elizabeth Olympic Park, London, has just won a top honour for its outstanding achievement. The esteemed Worshipful Company of Tylers and Bricklayers, which names just a single project every three years as the winner of its Triennial Award for Wall and Floor Tiling, presented the Award to UK tile manufacturer and co-ordinator of the project Craven Dunnill Jackfield. The Award recognises the outstanding skills of the team involved, including artist Clare Woods, tile manufacturer and project co-ordinator Craven Dunnill Jackfield, and tiling contractor Miller Druck International Stone Ltd. Over 30,000 ceramic tiles were supplied by Craven Dunnill Jackfield; many involved new decorating techniques, developed specifically for the commission. Craven Dunnill Jackfield is a specialist UK manufacturer. Since the completion of the Olympic Park wall tile murals, the company has expanded its mural capacity and undertakes contemporary styled wall tile murals both in the UK and overseas.

01952 884124 www.cravendunnill-jackfield.co.uk



DISCRETE

Variety of colour and material options available allows integration with any decor

ADAPTABLE

Can be fitted to sloping or unusually shaped windows; upstroking option available for rooflights



Reflex-Rol

BESPOKE ROLLER BLIND SYSTEMS

... more than just a sunblind

**Reflex-Rol is a proven bespoke
solar shading system offering
state-of-the art solar heat control**

SOLAR HEAT REFLECTION

Laboratory tests show that Reflex-Rol blinds reflect up to 87% of incoming solar energy*

SOLAR GLARE CONTROL

Reflex-Rol blinds use semi transparent metallic polyester foils, giving excellent internal glare control

THERMAL INSULATION

Reflex-Rol's thermal properties not only keep heat out but also help to keep it in, so saving on heating costs

Call now for your free brochure

Tel: 01989 750704 • www.reflex-rol.co.uk

De Leeuw Ltd., incorporating
Reflex-Rol U.K. and Marmat U.K.
are associate members of ESE-SEI

ESE-SEI

www.e-sei.com

BBSA
BUILDING & SERVICES ASSOCIATION

Reflex-Rol (UK)
Insulating Solar & Glare Control Systems

Reflex-Rol (UK), Ryeford Hall, Ryeford, Ross-on-Wye, Herefordshire HR9 7PU
Tel: 01989 750704 Fax: 01989 750768

Email: info@reflex-rol.co.uk Online: www.reflex-rol.co.uk



Reflex-Rol is a division of
De Leeuw Ltd

* Accredited data reports from Sonnergy of Oxford - copies available on request



ecobuild

SUSTAINABLE DESIGN • CONSTRUCTION • ENERGY

EXCEL LONDON



THE SUSTAINABLE DESIGN, CONSTRUCTION AND ENERGY MARKETPLACE FOR NEW BUILD, REFURB, COMMERCIAL AND DOMESTIC BUILDINGS



CONTACT US TODAY TO BOOK YOUR STAND ON +44 (0)20 7560 4458

WWW.ECOBUILD.CO.UK

44,538 ATTENDEES

100+ CONFERENCE AND
SEMINAR SESSIONS

787 EXHIBITORS

LEAD PARTNER



RESEARCH & INNOVATION PARTNER

bre

LEAD SUPPORTERS



RIBA



the mark of
property
professionalism
worldwide

ORGANISED BY

