

# adf architects datafile

November 2014

Chester Balmore  
Passivhaus social housing  
development, Camden

Knowlhill office development,  
Milton Keynes

Friars Walk shopping  
centre, Newport

Heating & Renewable  
Energy supplement



[www.architectsdatafile.co.uk](http://www.architectsdatafile.co.uk)

glass & glazing  
bathrooms & washrooms • insulation  
flood control

incorporating  
**BUILDING  
PROJECTS**



# CRITTALL STEEL WINDOWS



reader  
enquiry  
401

The Boots D10 Building, Nottingham. Architect: Sir Owen Williams

# TIMELESS



CRITTALL®

[www.crittall-windows.com](http://www.crittall-windows.com)

BRIAN · JAMES

# adf contents november 2014



18



23



27

projects

## 18 Passive position

'Passivhaus' is a standard for insulating buildings to such high levels that energy bills fall to a fraction of their normal cost. A development in North London is among trailblazers for this technique in the social sector. Mark Smulian reports

## 23 Friars Walk, Newport

Leslie Jones Architecture is on-site delivering Friars Walk, which will form a major part of the ongoing transformation of Newport City Centre and the surrounding area, representing a £250 million investment into Newport. Brian Tracey, director of the firm, outlines the designs for the scheme

## 27 Knowlhill development, Milton Keynes

Karl Myhill, consultant at Woods Hardwick and the build constructor Parkway Construction MK explain what factors were implemented in the construction of the final two office buildings they designed as part of the Knowlhill development in Milton Keynes

features

## 29 GROUNDWORKS: FLOOD CONTROL

### Flood protection

Mary Dhonau, chairman of the Property Care Association's Flood Protection Group, explains the two main types of mitigation measure available for properties at risk of floodwater ingress

## 47 EXTERNAL ENVELOPE: GLASS & GLAZING

### The growing trend of folding-sliding doors

Andrew Royle, UK commercial director at P C Henderson looks at the growing trend of folding-sliding doors (FSDs) and what factors to consider when specifying these

## 53 INSULATION

### The cocktail party effect: Speech intelligibility and room acoustics

By Martin Rawlins, sales & marketing manager at RPG Europe

## 57 INTERIORS: BATHROOMS & WASHROOMS

### What do your washrooms say about your building?

There are many parts of a building that really emphasise what an establishment is all about. Experts at Amwell offer their advice on how to specify quality washrooms that say the right thing about your building and the company based there

news & events

- 4 Industry News
- 8 Events
- 14 CPD Focus
- 31 Heating & Renewable Energy Supplement

## HEADLINES

- 4 Surface Design Awards finalists announced
- 5 Benoy wins international design competition
- 13 Farrells design for Crewe HS2 Superhub
- 16 Editor's Focus
- 15 Appointments & news
- 15 Planning & design
- 29 Groundworks
- 41 Structural elements
- 41 External envelope (incl. external fixtures)
- 50 Insulation
- 54 Interiors
- 64 Disabled products & services
- 65 Safety & security
- 65 Landscaping & external works
- 66 Classified & directory

products



Cover image: Chester  
Baltimore development,  
© Jim Stephenson  
See page 18 for details



**Publisher/Editor**  
Simon Reed

**Deputy Editor**  
Gabrielle Vinyard  
gabrielle@netmagmedia.eu

**Editorial &  
Production Assistants**  
Roseanne Field,  
Kate Holman &  
Mikey Pooley

**Contributors**  
Mark Smulian

**Sales Director**  
Lesley Mayo

**Advertisement Manager**  
Anthony Parker  
anthony@netmagmedia.eu

**Sales Executives**  
Suzanne Easter  
Ian Fletcher  
Kim Friend  
Steve Smith

**Circulation/Reader  
Enquiry Service**



Jane Spice  
netMAGmedia Ltd  
Cointronic House  
Station Road, Heathfield  
East Sussex, TN21 8DF

**Advertising &  
Administration**  
t 01435 863500  
f 01435 863897  
info@netmagmedia.eu  
www.architectsdatafile.co.uk

**Press Releases**  
editorial@netmagmedia.eu



Annual subscription costs just £48 for 12 issues, including post and packing. Phone 01435 863500 for details. Individual copies of the publication are available at £5 each inc p & p. All rights reserved

No part of this publication may be reproduced or transmitted in any form or by any means, electronic, mechanical, including photocopying, recording or stored in any information retrieval system without the express prior written consent of the publisher. Although every effort is made to ensure the accuracy and reliability of material published in Architects Datafile, the publisher can accept no responsibility for the claims or opinions made by contributors, manufacturers or advertisers. Editorial contributors to this journal may have made a payment towards the reproduction costs of material used to illustrate their products. The manufacturer of the paper used within our publication is a Chain-of-Custody certified supplier operating within environmental systems certified to both ISO 14001 and EMAS in order to ensure sustainable production. Printed in England



Scan the code with your mobile phone using QR code software to view the latest news from [www.architectsdatafile.co.uk](http://www.architectsdatafile.co.uk)

## The Everyman Theatre wins 2014 RIBA Stirling Prize

The new Everyman Theatre in Liverpool by Haworth Tompkins has won the coveted RIBA Stirling Prize 2014 for the best building of the year. Now in its 19th year, the RIBA Stirling Prize is the UK's most prestigious architecture prize.

The presentation of the RIBA Stirling Prize trophy to Haworth Tompkins took place at a special ceremony on Thursday 16 October at the Royal Institute of British Architects in London.

The old Everyman Theatre in Liverpool opened in 1964 in the shell of a nineteenth century chapel on one of Liverpool's main streets. Although a much-loved institution, the building itself was in a state of disrepair. The decision to pull the theatre down and replace it with a new one has been a nine-year project for the architects Haworth Tompkins. They have expertly met a difficult challenge: that of creating an entirely new and sustainable building, whilst retaining and revitalising the best-loved features of

its predecessor. The architects were tasked with ensuring that the soul of the old Everyman, one of informality and community ownership – the 'theatre of the people' – was carried into the new building. The result is a new building with a striking exterior and elegant interior, all with exceptional attention to detail and sustainability credentials.

This is the first time Haworth Tompkins has won the RIBA Stirling Prize. They were previously shortlisted in 2007 for London's Young Vic theatre. The Everyman is their first new-build theatre, amongst a portfolio of over a dozen theatres from the Royal Court in 2000 to the recent temporary 'Shed' outside the National Theatre. Their other projects include a secondary school in Birmingham and Coin Street Community Centre in London. The practice is currently working on a regeneration project in Canning Town and a housing development in Stratford, East London.

### AWARD

## Surface Design Awards finalists announced

35 projects from around the world have been shortlisted for the prestigious 2015 Surface Design Awards.

The Surface Design Awards recognise examples of progressive design and the use of innovative surfaces in projects both in the UK and internationally. This year 40 per cent of the finalists are projects from outside the UK covering 11 different countries. The highly respected Awards launched in 2013 have grown both in stature and number of entries. Surface Design Awards 2015 saw an unprecedented number of entries, totalling over 180 – an increase of 62 per cent from 2014.

The panel of judges had the difficult task of selecting the finalists in each category, each of which was filled with distinctive and exciting projects from across the globe.

The winner of each category along with the winner of the Supreme Award, which in the judge's opinion stands out for its excellence, will be announced at a presentation held at Surface Design Show 2015 on Thursday 12 February at the Business Design Centre, London.

Keep up to date with news on the awards with @surfacedthinking #SDAwards.

### DOCUMENTARY

## The anatomy of a building: "Sancaklar Mosque"

Architecture and design media practice SGMStudio has filmed a short documentary on EAA – Emre Arolat Architects' Sancaklar Mosque. The film, which follows the construction of the building from frame to finish on every step of the way, premiered at Architecture Week Prague.

SGMStudio team narrates the building's architectural emphasis on "the tension between the natural and the artificial" via motion picture – a fairly unusual medium among the usual representations of architecture – and adopts the seasonal changes witnessed by the construction process as the back bone of the story. Sancaklar Mosque is a building that stands out as one of the rare examples of modern architecture among Turkey's Islamic places of worship. SGMStudio's "Sancaklar Mosque" premiered at Architecture Week Prague and was on display until 12 October as part of EAA's exhibition. Concurrently, the film will be available online.



## COMPETITION

# Benoy wins International Design Competition for Greenland GIC

Benoy, the award-winning firm of Masterplanners, Architects, Interior and Graphic Designers, has won the International Design Competition for Greenland Group's high-profile mixed-use development, Greenland GIC, in Chengdu's city centre.

Shortlisted and eventually announced the winner, Benoy has been appointed the full scope as masterplanner and architect for the ambitious scheme which will combine five residential towers, three commercial towers, serviced apartments, hotel, retail podium and outdoor pedestrian shopping street.

Greenland Group recently purchased six separate plots of land to form the 86,000 sq m site in Chengdu on which the development will be built. Located at the intersection of the Second Ring Road and Kehua Middle Road, the scheme will form a significant addition to Western China's important economic centre.

Benoy's winning design for the Greenland GIC site ultimately dealt best with the brief's challenging issue of utilising a restricted central park on the site.

Richard Tang, divisional director and design leader, explained: "Our concept overturned the planning parameters and

questioned the restrictive use of the parkland. The park is the critical fulcrum for the project which helps to balance all the different elements of the program."

"Instead of allowing the brief to restrict our creativity, we sought to create a commercial value which would far exceed the nature of the park as a standalone entity. The masterplan and architectural design eventually evolved to become an epic narrative about crafting a modern city lifestyle for Chengdu's new urban elite."

The development will cover a GFA of 512,000 sq m of which 332,000 sq m will be commercially used and 180,000 sq m will make up the residential portion. The high-density development will integrate advanced practices for architectural and commercial design as it combines to deliver an impressive mixed-activity hub.

Benoy's studios in Shanghai and London collaborated together on the winning scheme which has proved to be synonymous with the firm's design style as Benoy draws on its global resources. Representing Benoy from London, Chairman Graham Cartledge CBE was in Chengdu for the October 24 project tour and signing of the letter of intent with the Deputy General Manager of Greenland Southwest Region, Mr Yang Lei.

*'Benoy has been appointed the full scope as masterplanner and architect for the ambitious scheme which will combine five residential towers, three commercial towers, serviced apartments, hotel, retail podium and outdoor pedestrian shopping street'*



## TARASAFE™ Ultra H<sub>2</sub>O



Introducing the **new** slip resistant safety flooring from Gerflor

A revolutionary new flooring for wet and dry, barefoot and shod applications giving comfort and durability.



Ask for a free sample or product card today



01926 622600



contractuk@gerflor.com



www.gerflor.co.uk

Follow us on Twitter @Gerfloruk



Enhanced slip resistant safety vinyl flooring with a raised emboss design



Excellent barefoot comfort and is tested and rated to ≥36 in wet conditions



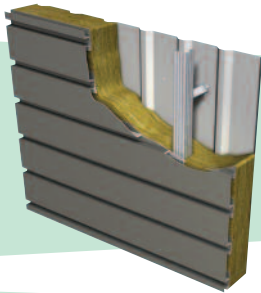
Offers an extremely high level of slip resistance underfoot for shoes and boots

**Gerflor**  
the flooring group

# Always moving forward

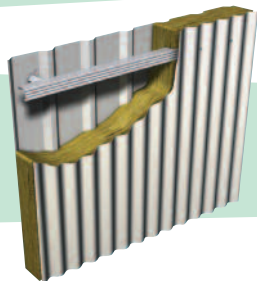


**Our two most recent innovations are the new Opus panel and sinusoidal profiled sheet.**



Opus is the new plank panel that is available as part of an Elite system, a LINEAR Rainscreen and a LINEAR Rainspan system, as well as being ideal for use as a soffit plank.

Investment in state-of-the-art manufacturing machinery enables us to provide the increasingly popular sinusoidal profile on a short lead time and at a competitive price.



**EUROCLAD**  
*Drawn on our experience*

Wentloog Corporate Park Cardiff CF3 2ER  
**029 2079 0722 · [www.euroclad.com](http://www.euroclad.com)**

[@eurocladuk](https://twitter.com/eurocladuk)

 **confindex**

Colorcoat HPS200 Ultra, Colorcoat Prisma and Confindex are registered trademarks of Tata Steel UK Limited.

reader  
enquiry  
**102**



**We know you don't stay ahead by standing still. To keep moving forward we're always innovating; whether through new product development, process improvement or service enhancement.**

Innovation provides you with roofing and cladding solutions that are as ground-breaking as they are practical and as valuable as they are cost-effective. Put simply we innovate to provide products that are relevant and useful to you.

Some of our recent product innovations include Vieo, Opus, sinusoidal cladding, integrated solar panels, transpired solar collectors, and a more efficient stainless steel halter for standing seam roofs.

A culture of innovation is present throughout our supply chain, with Elite Systems using only Colorcoat HPS200 Ultra® and Colorcoat Prisma® from Tata Steel. These Colorcoat® products come with the Confindex® Guarantee offering extended cover for up to 40 years on Colorcoat HPS200 Ultra® and up to 30 years on Colorcoat Prisma®. Colorcoat® products are certified to BES6001 Responsible Sourcing standard.





## AWARD

## Sandcrawler wins 2014 American Institute of Architects NWPR Design Award

Sandcrawler, the new regional headquarters for Lucasfilm Singapore owned by Lucas Real Estate Singapore and designed by Andrew Bromberg of Aedas, was one of the three projects, out of 115 submissions, that received an Honor Award in the 2014 American Institute of Architects (AIA) Northwest and Pacific Region (NWPR) Design Awards. The jury liked the confidence of the project: single, bold, exuberant but executed with control, and described it as 'a powerful parti with lots of architectural pyrotechnics'.

Located on plot CX2-1, this sleek, elevated office building is impressively streamlined. Its horseshoe form arose as a logical outcome of the masterplanning restrictions which dictated the roof height and slope as well as the amount of required elevation on each face. These requirements were overlaid with client's needs, including large floorplates and lifting the building off of the ground to afford some privacy and security to the sensitive work being performed inside. The maximum depths of office space to natural light shaped the floors into a 'V'

plan overlooking the lush courtyard enclosed and below. The open courtyard landscaped in a natural, overgrown

manner creates a great civic space and gives a strong civic dimension not normally associated with corporate offices.



*'Single, bold, exuberant but executed with control, and described as a powerful parti with lots of architectural pyrotechnics'*

### news bytes

Visit the website [www.architectsdatafile.co.uk](http://www.architectsdatafile.co.uk) and enter the reference number for more information

ReardonSmith  
Architects designs  
Corbin and King's first  
hotel, The Beaumont...  
Ref: 60070

Grant Associates  
unveils landscape  
designs for Capitol  
Singapore...  
Ref: 41039

Planning approval  
for new £22 million  
hospital...  
Ref: 31083

Mayor publishes guid-  
ance to make London  
most accessible city in  
the world  
Ref: 18052

## Do you have an award-winning roof?

Entries are now being accepted for the UK Roofing Awards 2015. The awards recognise and reward outstanding standards of workmanship and safety among competent roofing companies. They are open to roofing companies who are members of one of the supporting trade associations, including the National Federation of Roofing Contractors. Submissions from manufacturers, architects and specifiers are also welcome.

The Awards are comprised of 13 categories covering all the major

roofing disciplines from single ply to heritage. Over the years the judges have faced the tough challenge of selecting the winners from some outstanding projects from private dwellings to castles and the 2014 Awards featured the Heathrow Terminal 2a to a jetty in the middle of the Thames.

If you have a roofing project that has been completed, or is set to be between 1 December 2013 and 31 December 2014, download and complete an entry form today; be recognised for



your outstanding work and secure a competitive edge over your peers. The awards are free to enter and you are not limited to one submission.

For more information regarding the awards and to download the entry forms go to [www.nfrc.co.uk](http://www.nfrc.co.uk)

# events

## AWARDS

**European Hotel Design Awards**  
25 November, London  
[www.europeanhoteldesignawards.com](http://www.europeanhoteldesignawards.com)

## CONFERENCES & SEMINARS

**Resilience 14**  
26 November, London  
[www.resilience14.com](http://www.resilience14.com)

**RIBA Conservation Course**  
4 – 12 December, London  
[www.architecture.com/whatson](http://www.architecture.com/whatson)

**Integrating Building Services in Historic Buildings: Developing Harmony or Creating Contradiction**  
4 December, Cambridge  
[www.architecture.com/whatson](http://www.architecture.com/whatson)

**Architecture for an Ageing Population**  
18 February 2015, Nottingham  
[www.architecture.com/whatson](http://www.architecture.com/whatson)

**Greener Buildings: Common Sense, Innovation and Things to Avoid**  
19 February 2015, Cambridge  
[www.architecture.com/whatson](http://www.architecture.com/whatson)

## EXHIBITIONS

**Constructing Worlds: Photography and Architecture in the Modern Age**  
25 September - 11 January 2015, London  
[www.architecture.com/whatson](http://www.architecture.com/whatson)

**Sleep 2014**  
26 – 27 November, London  
[www.thesleepevent.com](http://www.thesleepevent.com)

**Futures in the Making**  
Until 28 November, London  
[www.architecturefoundation.org.uk/programme](http://www.architecturefoundation.org.uk/programme)

**Ordinary Beauty: The Photography of Edwin Smith**  
Until 6 December, London  
[www.architecture.com/whatson](http://www.architecture.com/whatson)

**Architecture on Film: One Way Boogie Woogie / 27 Years Later**  
10 December, London  
[www.architecturefoundation.org.uk/programme](http://www.architecturefoundation.org.uk/programme)

**Shape My City: Ideas for a youth-friendly city**  
Until 23 December, Bristol  
[www.architecture.com/whatson](http://www.architecture.com/whatson)

**Mackintosh Architecture**  
Until 4 January 2015, Glasgow  
[www.gla.ac.uk/hunterian/visit/exhibitions/](http://www.gla.ac.uk/hunterian/visit/exhibitions/)  
*(Click through to Exhibition Schedule)*

**Constructing Worlds: Photography And Architecture in the Modern Age**  
25 September - 11 January 2015, London  
[www.architecture.com/whatson](http://www.architecture.com/whatson)

**100 Buildings 100 Years**  
Until 1 February 2015, London  
[www.royalacademy.org.uk/page/architecture](http://www.royalacademy.org.uk/page/architecture)

**Surface Design Show**  
10 - 12 February 2015, London  
[www surfacedesignshow.com](http://www surfacedesignshow.com)

**The Modern Lens: International Photography and the Tate collection**  
Until 10 May 2015, St Ives  
[www.tate.org.uk/stives](http://www.tate.org.uk/stives)

## FESTIVALS

**Bridge150 Festival**  
Until 9 December, Bristol  
[www.architecturecentre.co.uk/events-bridge150](http://www.architecturecentre.co.uk/events-bridge150)

## TALKS, LECTURES & DEBATES

**Architecture and photography in post-war Britain**  
November 27, London  
[www.architecture.com/whatson](http://www.architecture.com/whatson)

**Invention And Advocacy In Housing**  
November 27, Newcastle  
[www.architecture.com/whatson](http://www.architecture.com/whatson)

**The Englishness of English Architecture**  
2 December, London  
[www.architecture.com/whatson](http://www.architecture.com/whatson)

**CDM Regulations: Tools and Expert Advice for Architects and Designers**  
3 December, Reading  
[www.architecture.com/whatson](http://www.architecture.com/whatson)

**CDM 2015: Practical Application for Architects**  
21 January 2015, Nottingham  
[www.architecture.com/whatson](http://www.architecture.com/whatson)

**Planning Law Update**  
22 April 2015, Nottingham  
[www.architecture.com/whatson](http://www.architecture.com/whatson)

## TOURS

**Great British Buildings: Waverley School, Birmingham**  
26 November, Birmingham  
[www.architecture.com/whatson](http://www.architecture.com/whatson)

**Great British Buildings: The Wilson, Cheltenham Museum & Art Gallery**  
3 December, Cheltenham  
[www.architecture.com/whatson](http://www.architecture.com/whatson)

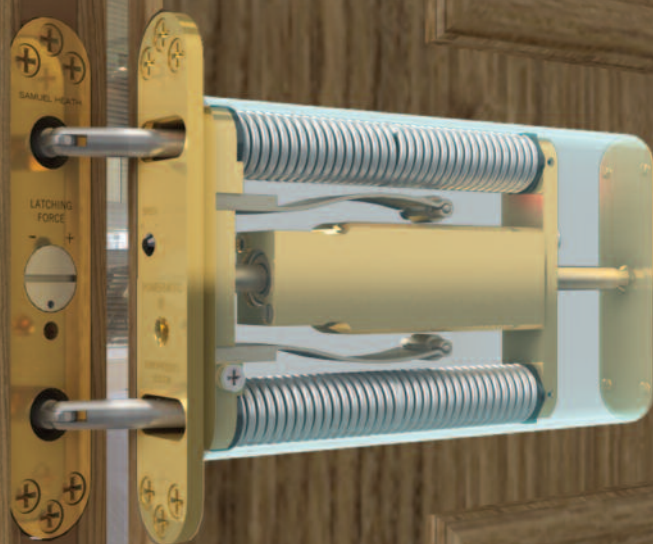
**Realising the Value of Character**  
January 25 2015, Derby  
[www.architecture.com/whatson](http://www.architecture.com/whatson)

**How Historic Buildings Work**  
5 March 2015, Lincoln  
[www.architecture.com/whatson](http://www.architecture.com/whatson)



# POWERMATIC®

Concealment when you want it  
Performance where you need it



Designed and manufactured in the UK, Powermatic controlled, concealed door closers deliver exceptional performance as well as a host of benefits that surface-mounted closers cannot match:-

- Superior aesthetics
- Reduced risk of vandalism
- Suitability for anti-ligature applications
- Compliance with relevant fire performance standards for one-hour and half-hour fire doors
- Enable doors to meet accessibility requirements
- Perfect for hotels, healthcare, education, care homes, sheltered accommodation, commercial and many other situations.
- Available in standard and Free Swing models

Visit our new website: [concealeddoorclosers.com](http://concealeddoorclosers.com)

Tel 0121 766 4200 [info@samuel-heath.com](mailto:info@samuel-heath.com) [concealeddoorclosers.com](http://concealeddoorclosers.com)

**SAMUEL HEATH**  
since 1820

# Make your **Dream** a **Reality**

WITH BI-FOLDING SLIDING DOORS



Available in **ALUMINIUM, TIMBER, ALI-CLAD & PVCu**

## Buy direct from the UK's **ONLY** Specialist Manufacturer

Folding sliding doors can be installed in a huge range of situations, in fact folding sliding doors provide you with so much flexibility and choice that the solutions are endless.



reader  
enquiry  
103



**25 YEAR GUARANTEE**  
All our doors are supplied  
with a no quibble guarantee



**ENERGY EFFICIENT**  
Double glazed, thermally  
efficient, UK building  
regulations compliant



**SECURITY**  
Encapsulated running gear,  
hardened steel locks,  
internally glazed, UKAS tested



**CHILD FRIENDLY**  
Finger safe gaskets  
Easy operation





**ENGINEERED**  
British made, laminated timber,  
PVC, aluminium or aluminium  
& timber clad options



The  **Folding Sliding**  
**Door Company**

Call: **0845 644 6630**

[www.foldingslidingdoors.com](http://www.foldingslidingdoors.com) eMail: [sales@foldingslidingdoors.com](mailto:sales@foldingslidingdoors.com)

Visit our showroom Mon-Fri 9am-7pm, Saturday by appointment only    
FSD Works, Hopbine Avenue, West Bowling, Bradford, West Yorkshire BD5 8ER



## BOOK

## Magma Sketchbook: Architecture

*Magma Sketchbook: Architecture* by Phineas Harper and published by Laurence King in January 2015 is a sketchbook for the 21st century, specially designed for those working as architects as well as architectural students.

*Magma Sketchbook: Architecture* includes 120 blank and gridded pages and printed scale rulers (both metric and imperial), plus 16 pages of useful information on architectural styles, drawing types, circulation, room layouts, furniture and fittings, structural elements and sustainability. Artists have always relied on their sketchbooks and continue to do so today, even in the age of Macs, digital cameras and computer generated imagery. This new line of sketchbooks addresses the needs of contemporary practitioners in the arts: illustrators, designers, art directors, fashion designers, filmmakers and anyone within the creative industries. Helpful and user-friendly, these sketchbooks tread that fine line between giving users practical tools and information while not interfering with their creative freedom. They are also made entirely out of eco-friendly materials.

## 100 Buildings 100 Years

100 British buildings is celebrating the brilliant and diverse architecture of the last 100 years. This selection of 100 buildings has been nominated by C20 Society members and supporters to showcase the broad variety of architectural talent in Britain from 1914 to 2014. They include many well-known buildings – Royal Festival Hall, the Hepworth Gallery, Preston Bus Station, Battersea Power Station, the Barbican Estate and the London Aquatics Centre – but also some that are not. The purpose has been to gather together some favourites to create a diverse group that demonstrate how fantastic and varied the architecture of the last 100 years has been. The nominations of the buildings are written by noted experts and enthusiasts in the field of architecture, heritage and design, including Gavin Stamp, Elaine Harwood, Alan Powers, Owen Hatherley, Oliver Wainwright and Rowan Moore. Essays on the Inter-war Decades, Post-war Architecture and Postmodernism give context to the buildings featured. The C20 Society protects outstanding architecture and design dating from 1914 onwards, so now has over 100 years of buildings under its protection. Its remit has always been to protect the best of all types and styles of architecture and design from neo-Georgian to Art Deco, Modern Movement to prefab, and its campaigns now extend to brutalist and postmodern buildings.

*'This selection of 100 buildings has been nominated by C20 Society members and supporters to showcase the broad variety of architectural talent in Britain'*



CREOGLASS DESIGN

BOSCH

PREMIUM COLLECTION -DEEP SILVER

0800 021 4807 [www.creoglass.co.uk](http://www.creoglass.co.uk)

Showroom - Flexspace - Gate 3 - Greenhill Crescent - Watford - WD18 8PH

enq.104



From balustrades, columns and porticos to pier caps, window surrounds and custom designs – our high specification cast stone designs provide affordable elegance to any project.

Browse our unrivalled collection **online** or **call** to request a catalogue.



**HADDONSTONE**

**haddonstone.com**  
**01604 770711**

enq.105

## 30 years of FIRA gold



An accreditation which signifies excellence in furniture products and installation is celebrating 30 years since its initial launch. **FIRA Gold Certification** was first launched in 1984 for kitchen units, following demand from manufacturers for a quality mark for furniture tested to industry standards. The scheme expanded to cover installation services in the early 90's, then office and bedroom furniture in 2002. Today, most major kitchen retailers and manufacturers hold FIRA Gold, as well as many independents. Most recently, Broadstock achieved Installation Certification for workplace, educational and catering furniture and Chaucer Furniture Logistics for contract furniture.

01438 777700 [www.fira.co.uk](http://www.fira.co.uk)

enq.106

## GEZE UK puts road safety in the driving seat



With commercial vehicle drivers experiencing 50 per cent more accidents than other road users **GEZE UK** is gearing up to put road safety at the top of its agenda. As a leading manufacturer of door and window control systems, GEZE is working with Zurich to undertake a company-wide assessment of the risks its drivers face.

Over the coming months, drivers will need to read the driver handbook *Your Route to Safer Driving*, which contains safety tips and information about what to do in an emergency. They will then complete online modules and the results analysed. This will give GEZE a thorough understanding of the actual risks faced by its workforce, allowing it to direct resources to where they are needed most.

01543 443000 [www.geze.co.uk](http://www.geze.co.uk)

enq.107

View our new website  
[www.popuppower.co.uk](http://www.popuppower.co.uk)

Retractable Service Unit at Chelsea Football Club

**Our projects include installations for:**

- Markets
- Heritage
- Parks
- Town Centres
- Universities
- Sports Stadiums

**Pop Up Power Supplies**

Safe, secure, silent power: retractable utility points supplying electricity, water and air to public places

**Pop Up Power Supplies Ltd**

Telephone 020 8551 8363  
Fax 020 8220 8838  
Email [info@popuppower.co.uk](mailto:info@popuppower.co.uk)  
Web [www.popuppower.co.uk](http://www.popuppower.co.uk)

**POP UP POWER**  
RETRACTABLE SERVICE UNIT

**There when you need them, hidden when you don't...**

enq.108



## RENEWABLE HEATING

## Farrells design for Crewe HS2 Superhub

Farrells, the architect planners behind some of the world's largest high speed railway stations including Beijing and Guangzhou, have unveiled their design proposals for the new HS2 Superhub at Crewe which Sir David Higgins is set to announce 28th October.

The design integrates HS2, West Coast and local services on one level with easy interchange between them, bringing together classic rail and high speed services together at a new multi-modal station, giving comprehensive 'cross platform' access to the north west's rail network.

The connectivity provided by the Superhub is expected to transform the growth potential of the North West and North Midlands, and is a stepping stone to delivering the Government's vision of a fully energised and networked Northern Powerhouse economy.

Farrells, working with Cheshire East Council, have prepared a masterplan for the new HS2 superhub station and for 'High Growth City', the council's vision for a constellation new city driven by the superhub at its heart.

The plans draw upon Farrells experience at high speed rail stations in China, particularly Beijing South, opened in 2008. The huge mega-station has the capacity for 30,000 passengers per hour or 241m per year. Guangzhou South designed by Farrells is an even larger station at the other end of China's high speed rail network.

Infrastructure partner at Farrells, Neil Bennett said: "I applaud Sir David Higgins recommendation for what we have described as a HS2 Superhub station at Crewe. Building on lessons learnt from our high speed stations in China, we have developed a design for the station which puts the passenger experience at its heart, with easy interchange between HS2 and regular rail services on one level. The Super Hub is not only a win for truly networked transport connectivity across the north west, but also for the power of integrated infrastructure to drive growth and regeneration across the northern powerhouse cities."



## As flexible as your imagination

Designed and manufactured in Sweden, a Gartec Platform Lift is the most aesthetically and technically advanced available today.

Commercial Lifts and Home Lifts



Look out for our new RIBA Certified iCPD, delivered at your own offices – now booking!



Call 01296 397100 or visit [www.gartec.com](http://www.gartec.com)

**GARTEC**  
An Aritco Group company

Leading the Platform Lift Industry

# cpd focus

## SELECTING EFFECTIVE AND SECURE FLAT ROOF SYSTEMS



Sika Sarnafil is pleased to announce the new RIBA approved CPD for Sika Sarnafil entitled *Selecting Effective and Secure Flat Roof Systems*. This CPD introduces the key components for a successful and effective roof system, covering design, materials and workmanship. An outline of additional areas included is below:

- typical application areas
- key factors in roof design and product selection
- key standards and guidelines
- sustainability
- typical challenges
- quality assurance
- history and group information

For over 50 years Sika Sarnafil has provided high quality single ply roofing solutions, backed by decades of expertise and market leading guarantees. Sika Sarnafil's exemplary commitment to training is widely recognised in the roofing industry, and this commitment extends to the Continual Professional Development of construction professionals. The company's range of RIBA accredited CPD seminars support specifiers, contractors and clients' understanding of the issues surrounding the specification of single ply roofing. If you are looking for assistance for selecting an effective and secure flat roof system and require further information on this seminar please contact Sika Sarnafil.

01707 394444  
sarnafilroofing@uk.sika.com

enq. 110

## DECANTING WITHOUT COMPROMISE



Portakabin Hire, a leading interim modular building specialist in the UK, has launched a new CPD programme *Decanting without Compromise*, to help architects, contractors, facilities managers, and other construction professionals procure and specify accommodation for short-term use. The free, hour-long interactive seminar can be organised at a time and venue to suit attendees and a certificate of attendance will be provided, helping to maintain professional accreditations.

0845 401 0010  
www.portakabin.co.uk/cpd

enq. 111

## GREENING THE GREY



Scotscape is pleased to announce its CPD *Greening the Grey*, which aims to assist both specifiers and architects when designing and selecting living wall systems. It covers the benefits of living wall systems, good design, installation and maintenance, and the specialist irrigation required to achieve a successful living wall. Scotscape has developed a Fabric Living Wall System with integrated insulation, allowing specifiers to quantify the thermal benefits and energy efficiencies that this system brings.

020 8254 5000  
gordons@scotscape.net

enq. 112

## FOUR NEW CPD SEMINARS FROM SCHLÜTER-SYSTEMS



Underflooring solutions expert Schlüter-Systems is offering architects the chance to keep up to date with the latest in essential tiling protection with the launch of four different CPD seminars. The RIBA-accredited CPD seminars, lasting 45 minutes each, allow individuals to remain up to date with changes in practice so that they can make informed decisions about which products to request in their specifications. Run during lunch breaks from any business premises requested, the training sessions, which cover a diverse range of topics including solutions for tiling balconies, laying underfloor heating and installing wetrooms, are being offered free of charge with lunch included. In Schlüter's *Integrated Solutions for Tiled Wetrooms* seminar, the company's popular waterproofing and wetroom range will be explored and explained. Andrew Curry, Schlüter's Technical and Training Consultant, commented: "The session will provide all the information and knowledge needed, from an integrated approach, on the solutions for wetroom installations at design and specification stage, and we hope that by the end of the seminar participants will have gained confidence in specifying an integrated solution for wet room installations." The second seminar being run is called *Movement Joints*

and *Uncoupling Membranes for Tiled Coverings*. The session will provide information on how to solve problems such as moisture movement in the substrate or drying shrinkage by specifying the appropriate movement joints and uncoupling membranes in specifications. Creating a patio, balcony or terrace that lasts the test of time is the third topic to be explored by Schlüter in its brand new seminar, *Balcony and Terrace Solutions for Tile and Stone Coverings*. The seminar will discuss the importance of using effective modern methods of construction to ensure lasting balcony and terrace installations. It will also explain the importance of waterproofing measures and will look at some of the benefits of the different products currently available on the market. The final seminar being offered by Schlüter will study the benefits of *Modular Underfloor Heating Systems for Ceramic Tiled Floors*. The seminar will explain how these systems help to protect ceramic tile and natural stone floor coverings from cracking, splitting, tenting and debonding and will also explore the theory behind modular screed systems. All seminars include a 15 minute question and answer session and participants will receive a certificate upon completion.

01530 813396  
www.schluter.co.uk

enq. 113



## continuing professional development

Maintaining and improving professional competence, skills, abilities and knowledge

### RIBA CERTIFIED CPD: PLATFORM LIFTS – WHO NEEDS THEM?



This is one of the most fun and immersive CPDs you will find as Gartec bring a virtual reality lift experience to your offices. Gartec's RIBA Certified CPD provides expert knowledge of lifting platforms. It covers: what is a lifting platform, regulations and responsibilities, common applications, and lifting platform uses and benefits.

01296 397100  
[www.gartec.com/cpd](http://www.gartec.com/cpd)

enq. 114

### LRWA CPD SEMINAR



The LRWA (Liquid Roofing and Waterproofing Association) has announced the launch of its RIBA approved CPD, available online for specifiers, architects, and surveyors. "Continuing Professional Development is crucial for anyone working in the construction industry," commented Terry Wain, LRWA technical secretary. The CPD should take around 25 minutes to complete and includes information on the history of liquids and the various ways in which LRWA aims to promote best practice within the industry.

0207 448 3859  
[www.lrwa.org.uk](http://www.lrwa.org.uk)

enq. 115

### FAST-TRACK, LARGE FORMAT WALL SYSTEMS



The CPD provides an in-depth analysis for designers on building with large format calcium silicate wall systems in fast-track construction. It assesses the relative merits of SIPS and block/steel frame construction and explains daily build rates, time savings and manner of construction, which, with Xella Big Block, is undertaken from within the building. The presentation also provides information on the composition, sustainability and environmental impact of such products.

0843 290 9080  
[www.xella.co.uk](http://www.xella.co.uk)

enq. 116

### URBAN FRONT ANNOUNCES NEW WORKSHOP TOUR



Urban Front has announced its Workshop Tour, launching early next year. The workshop tour will run for just over an hour and incorporate the following learning outcomes: A good understanding of how a contemporary hardwood door is manufactured; a better understanding of the types of hardwood and their benefits; a good ability to interpret CADs used for manufacture; a better ability to specify doors correctly; and an understanding of the various issues related to making doors.

01494 778787  
[www.urbanfront.co.uk](http://www.urbanfront.co.uk)

enq. 117

## Pro-Mec wins Green Gateway Award



Leading M&E contractor Pro-Mec UK Ltd has received an award from Mitsubishi Electric for its work with national retailer Iceland Frozen Foods – in the second year of the company's Green Gateway Awards. The awards have been created by Mitsubishi Electric so that it can recognise the important contribution of its partners in encouraging energy efficiency in the built environment. "Pro-Mec has demonstrated the true value of partnership between a supplier and its customers," explained Martin Fahey, sustainable solutions manager for Mitsubishi Electric, who presented Pro-Mec with the award at the company's recent partner conference, held at the historic Old Trafford Cricket club.

01707 282880 [www.mitsubishielectric.co.uk](http://www.mitsubishielectric.co.uk)

enq. 118

## Design wall-to-slab joints simply with Ancon



New software from Ancon simplifies the design of its award-winning KSN Anchor rebar continuity system in wall-to-slab construction joints, providing safer, faster concrete connections on-site. Ancon KSN Anchors, voted Best Product in Show when launched at the 2013 Concrete Show, replace re-bend continuity boxes that require bars to be straightened by the physical force of site workers and where pull out bar length is restricted by the box dimensions. Instead, internally-threaded KSN Anchors are simply cast into the wall ready to accept virtually any length of Bartec parallel threaded rebar, easily accommodating the longer EC2 lap lengths and creating fast, safe, high performance connections.

0114 275 5224 [www.ancon.co.uk](http://www.ancon.co.uk)

enq. 119

## Gebrik System awarded BBA certificate



Aquarian Cladding Systems Ltd has announced that the wide range of applications of its Gebrik Insulating Brick Cladding System has been recognised by the British Board of Agrément (BBA) with the inclusion of an additional product sheet within its existing BBA certificate 07/4403. The new product sheet covers the use of the innovative brick cladding system onto lightweight steel frame systems (SFS), timber frame and structural insulated panel (SIP) systems up to a height of 18m, and for use on SFS over 18m in accordance with the recent successful BR135: Annex B fire test, carried out at the Building Research Establishment (BRE). This is in addition to the certification for use onto clay and concrete masonry buildings, which has been held for over 10 years. The system was subject to rigorous evaluation by the BBA across a range of factors, including thermal performance, strength and stability, behaviour in relation to fire, the risk of condensation and durability. The certificate confirms that when correctly installed, used and maintained, Gebrik satisfies or contributes to satisfying the relevant requirements of the Building Regulations (in England, Northern Ireland, Scotland and Wales), the CDM Regulations (2007) and the NHBC Standards (2014).

0844 334 0077 [www.aquariancladding.co.uk](http://www.aquariancladding.co.uk)

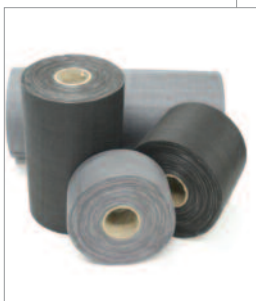
enq. 120

# editor's focus

## Burnham Environmental Services

The Biodigester 'T' range caters for 6-42 people and larger Biodigesters are available for up to 2,000 people. All Biodigesters are suitable for variable loading. The 'T' range Biodigester has been tested to EN12566 Pt 3 and has a CE mark. The limited maintenance required, infrequent emptying intervals and the 'odour free' totally aerobic process impress owners. The Biodigester range is backed over 40 years' experience. Full details may be obtained from Burnham Environmental Services Ltd.

enq. 121



## Holdfire

Carefree Plus from Holdfire is the ultimate in door closing safety for care homes and sheltered housing schemes. The technology completely surpasses DDA requirements by leaving the door free and easy to operate in normal conditions, applying a closing pressure only when the fire alarms activate. Unlike any other available system, Carefree Plus specifically includes anti-slam and anti-drift technologies to maximise the safety of residents and minimise the risk of injury introduced by conventional swing-free systems. Certified to BS1155 and conforms to BS7273-4 Cat A, the highest possible standard for door release devices.

enq. 125

## The Flyscreen Company

PVC coated fibreglass Insect Mesh is lightweight and easy to use, making it ideal for keeping insects out of spaces between external cladding and the main building structure and from soffits and loft spaces; anywhere that requires a free flow of air. The Flyscreen Company stocks bulk mesh sold by the metre or complete rolls, as well as a range of 45-metre rolls in widths from 50mm to 300mm in both black and grey.

enq. 122

## Vexbox

Vexbox is for use with single and twin electrical accessory boxes. It is a single template which can be formed into 12 different types of extension box. Varying from 5-35mm of extension, Vexbox has been designed for use where walls have been dry-lined and the cut outs for the accessory boxes have been put in the wrong place or the boxes are at the incorrect depth. It is also suitable for refurbishment works where boxes have been set too deeply into walls, leaving no edge for the plasterer to work to.

enq. 123

## Demon Designs

Building and Construction Review presented its Architectural Glazing Company of the Year to Demon Designs. The company specialises in the supplying and fitting of bespoke glass solutions, including staircases and balustrades, shop fronts, glass floors, glass roofs and aluminium curtain walling. Dominic Meakins, founder of Demon Designs, commented: "We offer the widest possible range of colour for back painted glass and splashbacks, making the process as seamless as possible from order to completion. We use toughened glass in all splashbacks near a heat..."

enq. 124

## Purus

Purus Limited, a manufacturer of quality Swedish drainage products for domestic, commercial and industrial environments, is proud to now have a number of its floor gullies and linear channels featured on BIMobject. These include the BBA certified Minimax 50, which is one of the world's shallowest wetroom gullies incorporating a NOOD no-odour water trap; and the Purusline Living linear channel for domestic and commercial projects. The new BIM program for 3D modelling allows a smooth procurement and specification process from the early stages to project management.

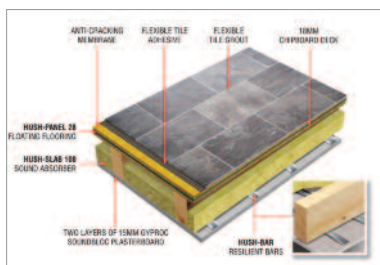
enq. 126



## Greentherm

The Icynene Insulation System is a soft, flexible, breathable, foam insulation and air barrier system. Sprayed as a liquid Icynene expands to 100 times its initial volume in seconds. Icynene's unique formulation sets it apart from other insulation products offering many advantages over traditional insulation materials and more modern alternatives. While all materials of equal thermal resistance perform identically under laboratory conditions the same is not true in real life. Icynene contains no HFCs, CFCs HFA or HCFCs.

enq. 127



## Hush Acoustics

Movement in a floor system can cause tile grout and adhesive to crack. In extreme cases tiles can tent, pop out and break up. Hush Acoustics works with partners to form systems to prevent these problems. The company use anti-crack membranes, movement joints, flexible adhesives and grouts in conjunction with its own acoustic flooring systems. Hush provide NBS specifications as they detail its preferred solution to installing tiled floor finishes with Hush Floating Flooring. For more information on Hush Acoustics' range of products please contact our technical team.

enq. 128

## Creoglass

Creoglass specialise in the manufacturing and installation of bespoke designed splashbacks. Its wide variety of exclusive designs are produced on glass that is heat resistant up to 400°, toughened and made to measure. Its designs can be used for a multitude of purposes from splashbacks to glass worktops, cladding and external shop fronts. The glass can be mounted with screws or silicone and its lead time is 10-20 working days from placing the order. Creoglass offers a full measure and fit service, or can produce the glass for you on a supply only basis.

enq. 129

## Aico - making sheltered housing safer



Aico, a UK market leader in domestic mains powered Fire and Carbon Monoxide (CO) detection, has developed an innovative product to solve a safety issue facing people in sheltered housing and other vulnerable people that use Telecare/Warden Call Systems. Telecare/Warden are important tools to let people live independ-

ently in a safe environment – but in most situations they are not connected with the Smoke and CO alarms in the property. The new Ei414 Fire/CO Alarm Interface provides a dedicated connection between Aico Smoke and CO alarms and Telecare/Warden Call Systems, enabling an emergency signal to be transmitted directly to that system if fire or CO is detected.

enq. 130

## news bytes

Visit the website [www.architectsdatafile.co.uk](http://www.architectsdatafile.co.uk) and enter the reference number for more information

Established science park credentials ensure Ryder lands major Thames Valley project...

Ref: 47129

Tube extension to Battersea approved...

Ref: 99406

Stormy Castle in Wales is Britain's Best New Home - Riba Manser Medal 2014...

Ref: 78114

New Covent Garden Market redevelopment approved...

Ref: 43978

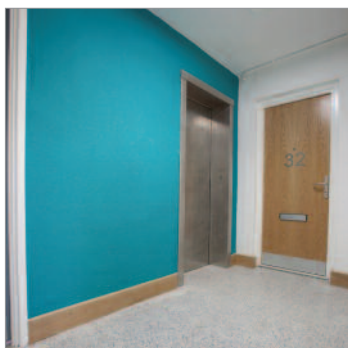
Alchemi Group gains planning consent for £20+ million residential conversion of Grade-II listed hotel...

Ref: 43107

New book presents the winner of the Finlandia Prize for Architecture...

Ref: 35033

## Discover future proof flooring at Homes 2014



Affordable housing has always been a hot topic, but it is currently one of the most frequently debated political issues – as seen by the Conservative Party's promise to build 100,000 starter homes after the election, Labour's Help to Build scheme and the Lib Dem's recent social housing plan. It is up to housing professionals to turn these national residential needs into a reality and events such as the HOMES show (at London's Olympia from the 26 - 27 November) are a valuable focal point to discuss today's housing landscape, what needs to be done and what tools there are to make this happen. At the HOMES show Flowcrete UK will be showcasing its high performance range of floor and wall coatings that have been tailored to the meet the aesthetic and functional demands of social housing developments. The resin flooring specialists understand that repair and maintenance expenditure represents a significant proportion of the annual budget for social housing developments – a budget that can rarely afford unforeseen costs for repairs or refurbishments. Not only have these systems been designed to withstand factors such as inclement weather and general wear for an extended period of time, but the fast-curing formulation of the floors means that they also minimise disruption to occupants.

01270 753000 [www.flowcrete.co.uk](http://www.flowcrete.co.uk)

enq. 131



© Andy Matthews Photography

# Passive position

'Passivhaus' is a standard for insulating buildings to such high levels that energy bills fall to a fraction of their normal cost. A development in North London is among trailblazers for this technique in the social sector. Mark Smulian reports

*'The solution it found was to use the Passivhaus method, which is making a small but growing impact among social landlords'*

When the London Borough of Camden decided to demolish some sub-standard housing and replace it with new build, it had an opportunity to experiment. It was looking not only for good value for its housebuilding programme but also for a way to help tenants beat fuel poverty by providing homes that could be heated efficiently and cheaply. The solution it found was to use the Passivhaus method, which is making a small but growing impact among social landlords.

Passivhaus originated in Germany and according to the Passivhaus Trust, which promotes the concept in the UK, "thermal comfort can be achieved solely by post-heating or post-cooling the fresh air flow required for a good indoor air quality, without the need for additional recirculation of air".

This demands very high levels of insulation, high performance windows with insulated frames, an airtight building fabric, 'thermal bridge free' construction and a mechanical ventilation system with highly efficient heat recovery.

Passivhaus was first used to build homes in Darmstadt, Germany in 1991 and its originators now claim some 30,000 have been built worldwide, including a research station in Antarctica.

The institute claims that feedback to date shows homes built to its standards are delivering on the aim of a 75 per cent reduction in space heating requirements.

Confusion can arise between Passivhaus and the Code for Sustainable Homes and BREEAM ratings. According to the Building Research Establishment: "In reality the distinction





- Access to front door from street level
- Landscape communal gardens
- Split level and increased room volume
- Flexible living
- Maximising daylight

© Rick Mather Architects



is quite simple: Passivhaus is a specific energy performance standard that delivers very high levels of energy efficiency, while the Code and BREEAM are overarching sustainability assessment ratings which address a large number of environmental issues.

“These standards are by no means mutually exclusive; sub sections within these sustainability standards account for Energy and Carbon Dioxide emissions, which are the most heavily weighted and most difficult to achieve.”

There is also a relaxed Passivhaus standard for retrofits called EnerPHit.

Passivhaus may sound as though it involves some very complex techniques to achieve such standards, but the reality is the Camden project was a fairly straightforward piece of building work, says Ivan Christmas, the council’s senior development manager.

The £10 million Chester Balmore project, which takes its name from the nearby junction of Chester and Balmore Streets in Highgate, was the first to be developed for new housing by Camden in more than 20 years and is among the largest UK housing developments to achieve the Passivhaus standard.

Chester Balmore is characterised by stacked maisonettes, maximising the number of dwellings with access to their front doors from the street. Built at a density equivalent to 220 units per hectare, the development comprises 53 new homes, of which 23 units are for council rent, four for shared ownership

and 26 for market sale.

The council takes fuel poverty seriously, so it wanted the development to help it to combat this problem. Christmas explains: “More and more people are finding it unaffordable to keep their home warm as fuel prices rise faster than incomes. “This is having a major effect on the health of the very young and the elderly, in particular.

“For those on fixed incomes, like many council tenants, the issue is becoming critical. People in fuel poverty spend more than 10 per cent of their income on energy for heating, lighting, and cooking in their homes.”

Camden’s planning policy includes provisions to ensure that new homes are energy efficient, though it does not directly refer to Passivhaus. Christmas explains: “At Chester Balmore a heated towel rail in the bathrooms is the only means of conventional heating. This means we not only save the capital cost of providing central heating plant but also the costs of maintenance, too.

“Passivhaus buildings achieve a 75 per cent reduction in space heating requirements, by super insulating the building fabric and making it exceptionally airtight. “For example, we have 250mm insulation in the walls at Chester Balmore, which are almost half a metre thick and windows are triple glazed.”

In the temperate UK climate, ‘mechanical ventilation with heat recovery’ needs to be installed to satisfy the performance requirements of the Passivhaus standard. This is done to

*Continued overleaf...*

**Passivhaus buildings achieve a 75 per cent reduction in space heating requirements, by super insulating the building fabric and making it exceptionally airtight**

*'The heat exchanger is designed so that the exhaust air warms the incoming outside air, before it finally leaves the building, but the two air streams do not mix, maintaining high standards of fresh air supply throughout the home'*



© Jim Stephenson

provide sufficient fresh air, avoid draughts and discomfort and to reduce energy demand. Without heat recovery, ventilation would lead to unnecessary energy demand and can cause thermal discomfort, Christmas says.

Instead, fresh air is drawn in through a heat exchanger, past the stale air being extracted from the building.

The heat exchanger is designed so that the exhaust air warms the incoming outside air, before it finally leaves the building, but the two air streams do not mix, maintaining high standards of fresh air supply throughout the home.

Two low energy fans are used to circulate the fresh air

throughout the homes, one to supply and one to extract.

"The fans only consume a fraction of the energy that the system manages to 'harvest' from the stale air," Christmas says. "Measurements have shown that they can save more than 10 times the amount of energy that they use."

If the basic idea of Passivhaus is simple and the construction techniques not terribly unusual, its arrival in Camden was still enough to scare off a large percentage of the housebuilding industry, a possibly shortsighted move given that Passivhaus is growing in use in the social sector.

Chester Balmore originally had 26 homes and 1,000 sq m of





*'The fans only consume a fraction of the energy that the system manages to 'harvest' from the stale air'*

Ivan Christmas,  
senior development manager,  
London Borough of Camden

retail space, much of it empty. The homes, dated from the 1970s, were built with asbestos sheeting and had very little insulation, so the council concluded no worthwhile refurbishment could take place and they should be demolished. That left a site with old foundations to either dig out or design new ones around, but nothing particularly unusual except for a slope from north east to south west, which influenced the design.

Christmas recalls: "Using Passivhaus for the first time meant we tendered the project as both a conventional Code for Sustainable Homes Level 4 one and as Passivhaus, and decided to see what we got.

"Three of the four bids put in quite a high risks margin for Passivhaus and so we chose Willmott Dixon, which did not. They are founders of the Passivhaus Trust and like us wanted a demonstration project having never done anything of this size.

"There were very few other examples around; this has been the biggest UK project to date though I think it will shortly be overtaken. We were breaking new ground with it. It doesn't require different techniques just greater attention to detail in the building process."

Camden originally sought a builder with a track record in  
*Continued overleaf...*



© Jim Stephenson

**Client and planning authority:** London Borough of Camden

**Architects:** Rick Mather (for Camden) and Architype (for contractor)

**Main contractor:** Willmott Dixon

**Mechanical and electrical engineering:** Mott MacDonald

**Windows supplier:** Internorm

**Structural engineers:** EngineersHRW

**Lead agent:** McBains Cooper



© LB of Camden

## Outline specification of the Passivhaus standard

Energy performance targets and air changes per hour:

- Specific Heating Demand  $\leq 15 \text{ kWh/m}^2 \cdot \text{yr}$
- Specific Cooling Demand  $\leq 15 \text{ kWh/m}^2 \cdot \text{yr}$
- Specific Heating Load  $\leq 10 \text{ W/m}^2$
- Specific Primary Energy Demand  $\leq 120 \text{ kWh/m}^2 \cdot \text{Yr}$
- Air Changes Per Hour  $\leq 0.6 @ n50$

Source: [www.passivhaus.org.uk](http://www.passivhaus.org.uk)

*‘There were very few other examples around; this has been the biggest UK project to date though I think it will shortly be overtaken. We were breaking new ground with it. It doesn’t require different techniques just greater attention to detail in the building process.’*

Ivan Christmas, senior development manager, London Borough of Camden

Passivhaus, but found no firm yet possessed this in the UK.

“Building with Passivhaus is just a question of supervision, doing the right thing and getting the right contractor who can then organise a lot of subcontractors and supervise them,” Christmas continues. “It’s the greater supervision that is the issue rather than the techniques, it’s still traditional construction.”

The structure is reinforced concrete in situ with a traditional brick and block structure but the cavity in the wall is 250mm wide and filled with polystyrene, and with resin to stop it slipping. Being built to Passivhaus standards, the blocks have a parge layer, like a cement render, to make them airtight.

At the heart of the site is a central garden that some flats give off while others are on three surrounding roads. The maisonettes interlock in different configurations to make maximum use of the site.

One issue that arose was the education of the flats’ occupants in how to live the Passivhaus way. They were given guidance and a video, but some things are counter-intuitive.

“We knew it would stay warm in winter, but keeping cool in summer was more of an issue,” says Christmas. “It’s best not to open your window and let hot air in during the day, for example; you open the windows at night.”

Scientists from University College London are monitoring the performance of Chester Balmore to see if it meets Passivhaus standards. Christmas is confident it will. “I think this is going to become mainstream,” he says.



# Friars Walk, Newport

Leslie Jones Architecture is on-site delivering Friars Walk, which will form a major part of the ongoing transformation of Newport City Centre and the surrounding area, representing a £250 million investment into Newport. Brian Tracey, director of the firm, outlines the designs for the scheme



As one of the fastest growing cities in Wales, Newport is undergoing a comprehensive programme of regeneration, led by significant investment in the city from both the council and private investors. The overall aim of Newport's 2020 vision is to create a programme of citywide regeneration schemes that will reinforce Newport as the pre-eminent commercial centre in South East Wales on a local, national and international scale.

Leslie Jones Architecture was employed by Queensberry Real Estate to design and deliver the masterplan for the city's new retail and leisure offering due to its extensive experience in retail-led urban regeneration schemes, which includes Southside in Wandsworth and Eldon Square in Newcastle.

Friars Walk aims to bring retail back into the city centre providing modern retailing space alongside the more traditional city centre. It lies between the River Usk and Newport's existing retail core and has therefore been purposefully designed to reconnect a disjointed part of the cityscape and create a

cohesive, attractive and accessible urban realm.

Friars Walk will reshape the city landscape of Newport by creating a 390,000 sq ft centre with 35 retail units anchored by a three-level Debenhams department store, a Cineworld multiplex cinema and 13 restaurants. There will also be a new 350-space car park, bus station and interchange.

To ensure a smooth flow of footfall throughout the scheme and create a rational layout, Leslie Jones' team of expert designers created an integrated network of covered streets. This also caters to Wales' infamous weather by providing shelter to shoppers in an all-weather destination. Differences in street levels have been resolved by a new three-storey, 90,000 sq ft Debenhams to the north, which will encourage pedestrian activity. In addition, it has designed double-height shop fronts to meet the demands of today's sophisticated retailers.

Leslie Jones took inspiration from the surrounding Welsh landscape and Newport's historic architecture for the design, incorporating slate to the podium level supplied by Taylor

*Continued overleaf...*

*'Leslie Jones took inspiration from the surrounding Welsh landscape and Newport's historic architecture for the design, incorporating slate to the podium level'*



**Slate:**  
Taylor Maxwell

**Zinc vertical cladding:**  
Euroclad Vieozinc

**ETFE roof:**  
Novum

**Low level bricks:**  
Wienerberger

**GRC:**  
GB Architectural

**Render:**  
Sto

**Cladding:**  
Metclad / Kingspan

**Glazing:**  
Dudleys

**Cinema roof:**  
Kalzip

**Granite / York stone paving:**  
Marshall's

Maxwell and 5,800 tons of steel for the frame. The retail and leisure blocks will be clad in a variety of textures and materials, including aluminium cladding and opaque glass panels supplied by Kingspan along with zinc vertical cladding supplied by Euroclad Vieozinc. Brickwork to street level facades and malls features the Hectic Black brick by Wienerberger and GRC supplied by GB Architectural. The malls are completed with a roof covering of ETFE roof by Novum.

The scheme, which will open in autumn 2015, is already 60 per cent let and has attracted high profile names to Newport such as New Look. Other retailers including Topshop and Next are also returning to the city, having abandoned it in a period of retail decline. Topshop will take a 21,000 sq ft unit, three times the size of its previous store, demonstrating the success of Friars Walk and the wider regeneration plans in Newport. All retailers will benefit from the growing catchment, which is set to almost double from 226,000 to 442,000 on completion of Friars Walk, bringing people back into the city centre.

The masterplan also includes a series of public spaces to create a new sense of place for the scheme. These will be laid out around the new Cineworld and riverside leisure core, which will feature new restaurant occupiers including Prezzo, Nandos,



Cosmo, Frankie & Benny's and Chiquito. These restaurants will also likely draw crowds from the nearby rugby and football stadium at Rodney Parade who will be able to access the operators via a new footbridge over the River Usk.

The resulting scheme will be both functional and aspirational, securing Friars Walk's place at the heart of the ongoing regeneration of Newport and re-establishing its position as a regional retail centre.



# Hauraton surface water drainage system installed at new automotive showrooms and servicing centre

Developed by CJ Automotive Group, the £9.5 million Lightcliffe automotive dealership showroom complex and servicing centre is the first in Wales to have all the Volkswagen Group car and commercial vehicle brands; Volkswagen, Audi, Skoda and Seat on one site.

Nearly 700m of Hauraton RECYFIX® PLUS 100 Type 010 surface water drainage channels, factory fitted with ductile iron HEELSAFE 6mm slot grating to loading Class D400 were installed at the new VW Group dealership at the Point, Llandudno Junction, Wales.

Each RECYFIX® PLUS channel component is moulded from 100 per cent recycled polypropylene (PP) with galvanised steel pressings permanently fitted along the exposed top edges. Channels



supplied to the VW site were factory fitted with 6mm slot HEELSAFE ductile iron gratings. The gratings on both channels and access points being treated with a corrosion resistant coating (KTL). This treatment is absorbed by the ductile iron,

allowing Hauraton to give a lifetime guarantee against rusting, alleviating any concerns raised by consulting engineers Rolton Group.

The main contractor Watkin Jones Group commenced work on this project in 2013, handing over the finished prestigious complex in May 2014. The new showrooms aim to provide 200 new job opportunities to the Llandudno area.

Ian Burton, the Hauraton project engineer was please that ground workers found the RECYFIX® PLUS easy to install: "With each one metre channel assembly only weighing 10.9kg, one man could lift and position each unit during the installation phase."

enq.132

01582 501 380  
www.hauraton.co.uk

## Quality driven by Remmers



Established in 2004 and formally known as Blackhorse Car Sales, Lex Autolease Car Select in Oldbury has over 500 cars displayed in their executive used car showroom. The existing old liquid polymer screed floor surfaces were badly cracked and damaged and needed a refreshing upgrade to a high

gloss, smooth finish to better withstand the frequent and abrasive movements of the cars. Capeland Industrial Flooring took on the challenge, which involved levelling and finishing the existing flooring with a slightly flexible floor topping that complemented the high end motor car sales. Remmers Epoxyflex PH SL was chosen for its ability to provide additional protection from reflective cracking.

0845 373 0103 www.remmers.co.uk

enq.134

## news bytes

Visit the website [www.architectsdatafile.co.uk](http://www.architectsdatafile.co.uk) and enter the reference number for more information

International design contest jumpthegap launches with inspiring talk...  
Ref: 95740

Opportunity to view and comment on oak park's new health and wellbeing campus...  
Ref: 62312

Nine-month mosaic project unveiled by Russell Brand in Hackney park...  
Ref: 89320

House No 7 in Scotland wins the 2014 Stephen Lawrence Prize...  
Ref: 66811

Brazilian bookstore named world's best retail design of 2014 against stiff competition from Harrods...  
Ref: 66098

World leader in retail environments appointed to Woods Bagot's Global Studio...  
Ref: 42204



## Comar completes new build for Tesco

Comar Architectural Aluminium Systems completed a new build for Tesco in Castle Acre Road in Swaffham, Norfolk, with its approved fabricator PAGE Group Peterborough Ltd. The store was opened ahead of schedule by the local mayor and will create around 150 new jobs. This new build supermarket had the full support of the local community who campaigned for its opening. Comar 6EFT stick build curtain walling was specified for this project. Comar 6EFT provides a capped curtain walling solution and offers architects the opportunity to maximise large glazed areas as it has the slimmest sightlines available making it the perfect choice for the glazed facade of this Tesco store. For the opening vents, Comar 5P.i ECO casement windows were specified. Polyamide Insulated (Pi) window and door systems provide exceptional thermal performance in a market where energy efficient designs and meeting the demands of the latest building regulations are paramount.

0208 685 9685 www.comar-alu.co.uk

enq.135

# Europanel is part of innovative show home and office



***‘Europanel F5 is Eurobond Laminates premium architectural panel system [...] suited to either horizontal or vertical installation’***

**E**urobond Laminates’ Europanel F5 panel system features on an innovative new building that is a combination of show home and office for Taylor Wimpey. This comes as part of the unveiling of Taylor Wimpey’s new landmark housing development at Chobham Manor on the Queen Elizabeth Olympic Park.

The marketing suite was completed in less than eight

weeks, and with no need for foundations. The use of panel cladding ensures that the building performs like its traditional equivalent offering similar heat and sound insulation, but remaining reusable.

The designer, Octink, is a specialist in marketing suites and it appointed Suitebox to develop the structure and external envelope. Suitebox is a new division of ES Global, a recognised market leader in reusable temporary structures and staging – including the London 2012 Water Polo Arena at Stratford. It proposed its innovative component-based system developed for demountable buildings. The system employs existing building components – external cladding panels, roofing and glazing, which are designed to fit the modular frame – all of which have been developed and adapted for rapid deployment and relocation.

The Europanel F5 panel system used is 200mm thick and finished with TATA Colorcoat HPS200 Ultra® Sargasso. This combination delivers a striking visual impact and individuality to the design. Europanel F5 is Eurobond Laminates premium architectural panel system, available with an architecturally flat profile and suited to either horizontal or vertical installation. It has a high density non-combustible stone wool core to further enhance fire performance, structural and acoustic properties.

Europanel offers one hour fire resistance for both insulation and integrity acoustic performance, low environmental impact and at end of the building’s life it is wholly recyclable into new product.

02920 776677

[www.eurobond.co.uk](http://www.eurobond.co.uk)

enq.136





# Woods Hardwick, Knowlhill development, Milton Keynes

Karl Myhill, consultant at Woods Hardwick and the build constructor Parkway Construction MK explain what factors were implemented in the construction of the final two office buildings they designed as part of the Knowlhill development in Milton Keynes

According to the Office for National Statistics, the UK population is predicted to grow by 4.3 million from 2012–2022. This trend will be reflected in the increasing workforce as well as buildings to accommodate new offices. Such non-domestic buildings are taking on more requirements than ever before to cater for the for the variety of business needs; companies are looking for a future proof workspace that responds not only to present demands but is also able to accommodate future use and provides a comfortable and energy efficient working environment.

Whether it is lower operational costs, better health or increased productivity, we expect our buildings to do more, with energy efficiency and occupant comfort being the main drivers.

This project will conclude the office park development from an earlier planning approval obtained by Woods Hardwick for the AW James Ltd development, with the smaller of the two buildings, Heron House, due to be completed by November this year and the larger of the two buildings, Bewick House, ready for occupation by May 2015.

## Occupant comfort

Occupant comfort plays a key role in productivity. The built environment affects comfort through temperature, indoor air quality, lighting, acoustics, physical space, and humidity. Research shows that the green design attributes of buildings and indoor environments can improve worker productivity and occupant health and wellbeing, resulting in bottom line benefits for businesses.

As reported by the British Council for Offices (BCO), with 90 per cent of typical company expenditure being spent on staff compared to one per cent that is spent on energy and water bills, improving productivity just by one per cent swamps utility costs. This is echoed in the World Green Building Council's (WGBC) Business Case for Green Building, which shows a change in attitude realising that not only occupant comfort, but also 'green' building can help influence productivity through their considered designs and measured performances.

Both office buildings are being constructed to a BREEAM Very Good standard. BREEAM takes in to consideration many different aspects of the construction process, from early client consultation, efficient and sustainable design through to post

*Continued overleaf...*



Both CGIs show Heron House

*'Research shows that the green design attributes of buildings and indoor environments can improve worker productivity and occupant health and wellbeing'*



Top CGIs show Berwick House, the bottom is of Heron House

**Groundworkers:** Smith Construction  
**Bricklayers:** Brian Foster Brickwork  
**Drylining and ceilings:** Yorkleigh Contracts  
**Electricians:** Mandek  
**Plumbers:** ST Holford  
**Air conditioning and ventilation:** Adcock  
**Decorators:** Metcalf  
**Tiling:** Cladding Components  
**Roof cladding and steel frame:** Midland Erection  
**Window:** ADP  
**Raised access floor:** Carrino Flooring  
**Carpenters:** Flintframe  
**Solar panels:** Solartech  
**IPS:** Total Laminates  
**Spiral Stairs:** Crescents  
**Lift:** Schindler  
**Handrailing:** B&M Fabrications

construction activities of monitoring the building's performance to ensure that the end users are aware of how the building should be run and function.

Woods Hardwick's design ensures that each building has great emphasis placed on passive design, with building orientation, passive solar shading, fabric insulation and fabric air tightness being priorities in order to create an a comfortable environment to work from.

Both offices' occupants will benefit from the generous glazing areas which will provide natural daylight, creating a pleasant working space; at the same time lighting loads are reduced – a significant contributor to the buildings' energy use. Furthermore, Heron House will also offer the advantage of the dramatic views of the Teardrop Lakes.

## Energy efficiency

The Knowhill development has had extensive value engineering carried out – the roofing system has changed from a composite panel to a built up system which offers the same look and insulation properties for a significant saving. The internal cores in both units have been designed to maximise the net lettable office space but still provides open circulation spaces and toilet areas that are desirable for a high quality office environment. Through this process the client has had the benefit of cost savings for reduced construction costs, along with an increase in rental income.

In both buildings the most efficient variable refrigerant flow (VRF) heat recovery air conditioning systems have been utilised along with heat recovery ventilation units, providing significantly more units of heating/cooling for every unit of energy input into the system.

High efficiency LED light fittings are being used throughout



all areas. LED light fittings are extremely efficient, providing a high light output for a relatively small power input. This, coupled with the long life expectancy of the fittings and lamps, will reduce maintenance and replacement costs, and suitable lighting controls (automatic, no user input required) offering a very cost effective solution.

Also installed was a roof mounted photovoltaic array, a renewable low carbon technology providing power that will be utilised by the building with any surplus energy generated returned to the grid.

Low water use fittings are being used throughout the buildings with water flow restrictors used on fittings, and automated systems which can detect leaks (via the combined use of water meters and control panels) and shut off the water when the toilet spaces are not in use through automatic solenoid valves.

A site waste management plan has been produced to ensure recycling is maximised and a significant proportion of site waste (approximately 85 per cent) is diverted from landfill. The landscaping scheme has been developed in line with ecologist's recommendations to ensure a good mix of native, wildlife attracting species are used in the landscape planting.

The main objective of a building design is to provide occupants with a comfortable working environment in order to increase productivity. Thermal comfort, indoor air quality, acoustic quality and lighting, as well as flexible interior design, are very important to attract and retain talent. The way the building as a whole performs is crucial; not only to comply with current legislation, but also in terms of value, with the demand of more sustainable and high-performance buildings.





# Flood protection

Mary Dhonau, chairman of the Property Care Association's Flood Protection Group, explains the two main types of mitigation measure available for properties at risk of floodwater ingress



**F**ive million people live with the threat of being flooded from rivers and the sea, with 200,000 of those considered to be at very high risk. As yet there is no definitive number for those who are also at risk of flooding from flash floods caused by surface water exceeding the capacity of urban drainage systems. The two main types of mitigation measure available are explained below:

## 1. Flood resistance

This refers to products and specialist building materials designed to prevent floodwater from entering the property.

Kitemarked versions of many devices are available, having undergone rigorous testing procedures. Examples of resistance products include permanently fitted devices such as flood-proof doors and windows (which seal upon locking); self-closing airbricks; and anti-backflow valves, which can be fitted to sewage pipes and washing machine outlets. There are also products such as brickwork sealants and mortar sealants on the market (though these are not to be confused with 'damp-proof' products which do a very different job). Measures that can be deployed temporarily are also available, many of which also bear the kitemark. These include a wide variety of door boards (including extra wide types for patio doors and garage door protection); airbrick covers; and free-standing barriers capable of keeping floodwater at some distance from the property. Traditional sandbags are not recommended, however, being both cumbersome and largely ineffective (unless used 'army-style', in huge quantities and incorporating an impermeable membrane). Modern absorbent bags that don't contain sand are available, which are not only easier to store and deploy, but also waterproof and, in some cases, capable of being cleaned and re-used. The Property Care Association (PCA) has a list of competent and accredited flood protection manufacturers and fitters who are members of the flood protection group within the association. The PCA are able to offer one stop shop advice on flood protection related queries.

There are limits to this approach, however: where flooding is likely to affect a building over an extended time period; or if the flood depth is likely to exceed 900mm, then water should be permitted to enter, in order to equalise the pressure on both sides of the walls and avert serious structural damage. In such cases, an alternative approach is needed.

## 2. Flood resilience

Resilience involves adapting a property to minimise the damage that floodwater can do. Following a flood, a clean-up will be needed but not major drying or refurbishment, while the building's structural integrity is maintained.

Examples include moving electrical sockets, boilers and service meters above the maximum expected flood level; installing tiled floors over a concrete floor (rather than carpets and/or laminate flooring) or using wood such as oak, which is more resilient to floodwater. Modern fitted kitchens are typically constructed from chipboard/MDF panels which disintegrate after inundation, but these can be replaced with stainless steel, plastic carcasses, or solid wood units, while white goods can be raised on suitable height plinths. Ordinary plaster can be replaced with lime-based plaster or cement render. Research has shown that, where measures such as these are undertaken as part of a post-flood restoration programme, they can be highly cost-effective: many PCA members have the necessary skills to be able to undertake resilient measures to a property.

"While resilient repairs were found to be more expensive than traditional methods (average 34 per cent higher) they were found to significantly reduce the repair costs assuming a subsequent flood were to take place. Resilient flood mitigation measures [...] will help in limiting the cost of repairs up to as much as 73 per cent for properties with a 20 per cent annual chance of flooding [...] the up-front investment would be recovered following a single subsequent flood event." Joseph, Proverbs, Lamond and Wassell, (2011) An analysis of the costs of resilient reinstatement of flood affected properties: A case study of the 2009 flood event in Cockermouth, Structural Survey, Vol. 29 Iss: 4, pp.279-293

Finally, in some locations a number of property-owners may be able to take joint action to protect their homes and businesses with more wide-ranging measures.

Examples would include permanently installed demountable barriers; automatically activated flood gates; and free-standing barriers of various types (again, kitemarked versions are available). Small scale telemetry systems can also be designed to provide direct warnings to properties not covered by the Floodline Warnings Direct scheme.

The PCA has a list of competent and accredited flood protection manufacturers and fitters who are members of the flood protection group within the association. It's able to offer one stop shop advice on flood protection related queries. Please visit [www.property-care.org](http://www.property-care.org)

Floodwalls can be incorporated into garden landscaping, for example, and more information on this kind of approach is available here: <http://evidence.environment-agency.gov.uk/FCERM/en/FluvialDesignGuide.aspx>

For more information on kitemarked products please visit the British Standards Institute website: <http://www1.kitemark.com/cms/listing/guide/flood-protection-products>

More detailed information on all aspects of flood protection can be found here: [http://www.knowyourfloodrisk.co.uk/sites/default/files/FloodGuide\\_ForHomeowners.pdf](http://www.knowyourfloodrisk.co.uk/sites/default/files/FloodGuide_ForHomeowners.pdf)

enq.137

## news bytes

Visit the website [www.architectsdatafile.co.uk](http://www.architectsdatafile.co.uk) and enter the reference number for more information

Education Estates:  
The definitive event for the  
Design and Construction of  
Education Facilities...  
Ref: 31901

Major retrospective on Hong Kong  
Architecture opens in London...  
Ref: 25849

Basements guidance  
document launched...  
Ref: 76393

Bryonn Architecture bring a step  
change in urban design concepts...  
Ref: 40329

Striking new entrance canopies on  
track for St Enoch Subway  
Station...  
Ref: 62004

New range of rainwater harvesting  
solutions from Polypipe...  
Ref: 53333

University dramatically improves  
its heating efficiency...  
Ref: 72380

Top prizes for new church  
architecture...  
Ref: 33635

WRBC Development's 52 Lime  
Street development achieves a  
BREEAM first...  
Ref: 53244

The Liveable City –  
A Danish-British dialogue  
in Manchester...  
Ref: 38087

NHBC foundations app  
launched to help reduce  
annual £9million claims...  
Ref: 59946

Now open to the public: The Meg  
(Musée d'ethnographie de  
Genève)...  
Ref: 44558



**BIODIGESTER** EST. 1987  
sewage systems for the modern world

## SEWAGE TREATMENT PLANTS FOR PROPERTIES WITHOUT MAINS DRAINAGE

- Simple process
- Simple installation
- Economical maintenance
- Tested to EN 12566 - Part 3

**NEW 'T9' FOR 9 PERSONS**

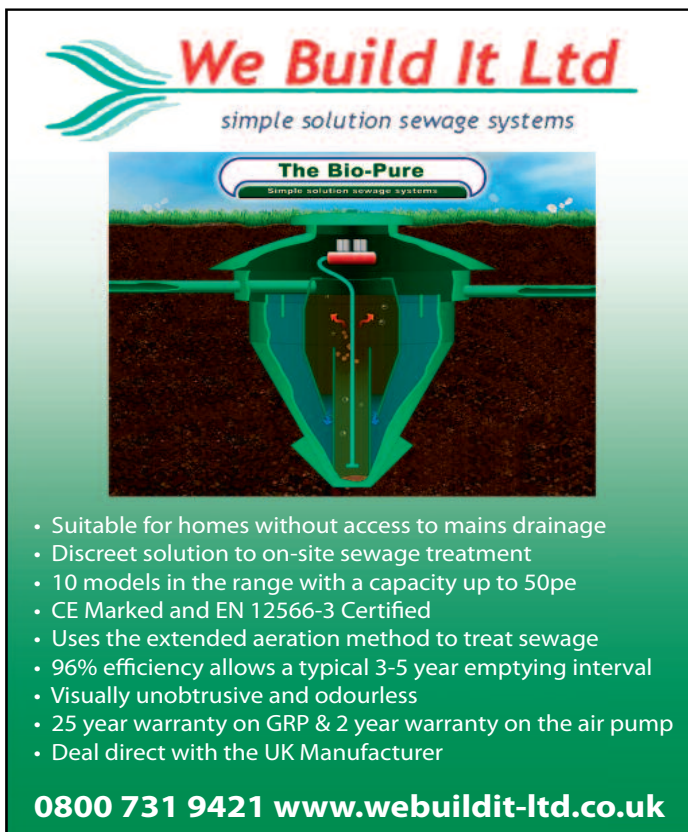
**'T6'**

**AIR BLOWERS AND SPARES**

**RAINWATER HARVESTING**

Tel: 01278 786104  
Fax: 01278 793380  
Email: [sales@biodigester.com](mailto:sales@biodigester.com)  
**[www.biodigester.com](http://www.biodigester.com)**  
Burnham Environmental Services Ltd.

enq. 138



**We Build It Ltd**  
simple solution sewage systems

**The Bio-Pure**  
Simple solution sewage systems

- Suitable for homes without access to mains drainage
- Discreet solution to on-site sewage treatment
- 10 models in the range with a capacity up to 50pe
- CE Marked and EN 12566-3 Certified
- Uses the extended aeration method to treat sewage
- 96% efficiency allows a typical 3-5 year emptying interval
- Visually unobtrusive and odourless
- 25 year warranty on GRP & 2 year warranty on the air pump
- Deal direct with the UK Manufacturer

**0800 731 9421 [www.webuildit-ltd.co.uk](http://www.webuildit-ltd.co.uk)**

enq. 139



**T-T Clear Solutions...**

**T-T Pumping Stations**

- Providing Pumping Stations for a range of projects
- Adoptable
- Non adoptable
- Bespoke and larger schemes
- Overground and underground
- Package Pumping Stations
- Environmentally friendly solutions: The RainCycle

**hydro**

A comprehensive range of fixed and variable speed multiple clean water booster sets

- Maintains and regulates flow and water pressure
- Transfer and pressure boosting of hot and cold water systems
- Fitted with mechanical pressure switches or control panel depending on application

**[www.ttpumps.com](http://www.ttpumps.com) Tel: 01630 647200**

enq. 140



# adf Heating & Renewable Energy supplement

November 2014

## DISC HEAT™

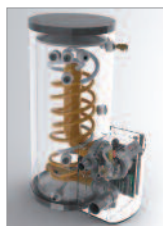


reader  
enquiry  
301

01902 457575 | sales@ecolec.co.uk | www.ecolec.co.uk

**ecolec**<sup>®</sup>  
Wireless Heating Systems

## New water heater at leisure centre



Atlantic Boilers has completed another successful super-condensing water heater installation at Whitworth Leisure Centre, Rochdale. The leisure centre has two swimming pools and a fully equipped fitness suite requiring constant shower demand for hot water. The hot water requirement had been met by two cylinders and 18kW input by four electric immersion heaters, but after a boost in visitors and rising energy prices, it was resolved upon to install an ATLANTIC E-Condense 450l/55kW water

heater with serpentine flue, producing 920 litres per hour of water at 60°C with a consistent super efficiency of 97 per cent GCV (107 per cent NCV).

0161 621 5960 [www.atlanticboilers.com](http://www.atlanticboilers.com)

enq.302

## Keep warm this winter with a Euroheat stove



One of the leading biomass solutions providers, Euroheat, is urging installers and end-users to consider the modern wood burning stove as a real contributor to fuel bill reduction this winter. With its newest range from HWAM boasting one of the most impressive energy efficiency credentials on

the UK market, no more should the wood burner be viewed as a 'rustic' way to heat a room. Comparable with a SEDBUK A rated boiler, HWAM's impressive claim to fame comes from the fact that its newest stoves include Lambda controls, which modulate air flow as wood's composition changes during combustion, and are more commonly found in a biomass boiler.

01885 491112 [www.euroheat.co.uk](http://www.euroheat.co.uk)

enq.303

## Making better use of space



The AET Flexible Space system is a duct-free approach to air conditioning which can offer a number of savings throughout the construction process. Users of such systems have reported total construction cost savings by up to 7 per cent, reduced energy consumption by up to 30 per cent,

and the ability to reduce building height or maximise the available lettable space by reducing or completely eliminating the ceiling void and adding more floors within the same height of construction. The whole plenum under the building's raised access floor becomes the 'duct', with each floor of the building divided into zones depending on the potential use and occupancy density of the area.

01342 310400 [www.flexiblespace.com](http://www.flexiblespace.com)

enq.304

## Validity assured ventilation



The trend towards bespoke designs of air movement equipment is being given greater validity with a major investment by air distribution specialist Gilberts of Blackpool, one of the leading manufacturers in air movement and natural ventilation technology. The company has unveiled a new

air movement test centre, officially opened by the new chief executive of the Federation of Environmental Trade Associations, Russell Beattie. Built at its new Stanley House manufacturing plant the centre, Gilberts believes, is one of the best air distribution test laboratories in the country and the only one of its kind.

01253 766911 [www.gilbertsblackpool.com](http://www.gilbertsblackpool.com)

enq.305

## VRF system has world-first heat exchanger



Mitsubishi Electric has announced the ultimate in commercial heating and cooling for UK businesses with the launch of the City Multi YLM VRF (Variable Refrigerant Flow) range of air conditioners. The R410A system includes a unique flat tube aluminium micro-

channel heat exchanger which the company believes is a pivotal step change in providing more effective and efficient heat transfer. Protected with a special zinc coating, the exchanger is ideal for the UK's temperate climate. The use of aluminium has called for a complete redesign of refrigerant distribution and heat exchange which ensures optimum performance in real UK applications.

01707 282880 [www.mitsubishielectric.co.uk](http://www.mitsubishielectric.co.uk)

enq.306

## Etherea heat pump provides top performance



Panasonic's new Etherea QKE heat pump range achieves an impressive SCOP of 4.80 -> A++ and SEER of 7.60 -> A++. This class-leading highly energy-efficient system provides

healthy air quality, comfort and reliability. Etherea heat pumps offer outstanding seasonal efficiency to provide optimum heating and cooling all year round. Thanks to their innovative inverter system, the new QKE range delivers energy savings of up to 38 per cent. With original Panasonic Inverter technology and a high performance compressor, this heat pump provides top-class operating efficiency. The Etherea XE-QKE (silver) is available in 2.2kW, 2.8kW, 3.2kW and 5.0kW, and the E-QKE (white) version in eight models.

enq.307

## The world's first high definition stove is launched



Charlton & Jenrick Ltd has now added a complete new range of high specification multi fuel stoves to its stove portfolio. Known as the Purevision™ HD range, it comprises six models, three freestanding and three inset with stand and log store options available for the freestanding versions and three or four sided trims for the insets. The models are sized as 5kW standard, 5kW wide and 8.5kW nominal output and contain technologically advanced patent pending design features.

Emissions meet EU leading DIN+ levels and already achieve current emission and efficiency proposals for 2022 European Eco-Design standards, which are far tougher than current mandatory norms. DEFRA exemption for wood-burning in a smokeless zone was a formality, with test results up to 97 per cent below permitted levels of visible smoke. These highly efficient stoves produce a clean burning high definition flame that has to be seen to be believed.

Experience real living flames in high definition with Purevision HD.

0845 5195 991 [www.charltonandjenrick.co.uk](http://www.charltonandjenrick.co.uk)

enq.308



# Fire safety and comfort cooling from SE Controls for new London apartment development

**N**otting Hill Housing Group's 108-home development at Micawber Street in Hackney is using an innovative smoke control system from SE Controls to not only provide smoke-free escape routes in the event of a fire, but also ensure that day-to-day temperatures in communal areas and corridors are kept at comfortable levels for residents.

Initially, the six-storey building was designed with a mechanical ventilation system and a separate dedicated environmental shaft to help cool the building and address the overheating effect caused as a by-product of routing heating distribution pipework in building voids to optimise space.

SE Controls was invited to evaluate this system by conducting a thermal modelling analysis on the building and worked closely with the design team

and contractor Ardmore Construction, to engineer a combined smoke control and environmental solution. Based on SE Controls' SHEVTEC® system, which utilises the building's existing smoke shafts for natural ventilation, significant thermal performance improvements were achieved along with major cost savings on the project.

This was achieved by the use of 0.5m<sup>2</sup> permanently open louvres at roof level and within the stairwell, while also utilising the automatic smoke dampers on each floor to vent heat into the smoke shaft. Dedicated smoke ventilation roof vents were also installed, which automatically over-ride the natural ventilation system in the event of a fire.

01543 443060  
www.secontrols.com

enq.309



*Stylish Radiators of the Highest Quality*

**We have radiators to suit cottages, apartments, palaces... in fact anywhere you call home!**



Beaumont have been manufacturing cast iron radiators in its foundry for many years, gaining a solid award-winning reputation for excellent quality and service. Working alongside architects, surveyors, builders, plumbers, heating engineers and DIY enthusiasts, Beaumont offer a wealth of knowledge and experience.

Call Beaumont Cast Iron today  
on **01788 899100** or visit  
**www.beaumontcastiron.com**



enq.310



**WWW.CASTRADS.COM**  
**0161 439 9350**  
**info@castrads.com**

enq.311



Brewer Chimney Cows take pride in its work and believe in offering a superior quality of product across its entire range.

Brewer manufactures its cowl in its own factory and source materials from trusted suppliers, helping to guarantee that customers will be satisfied.

The company offers a variety of products ranging from the ever popular birdguard model to anti-downdraught cowl and bespoke units.

enq.329



Follow the footsteps of some of the most renowned and historic buildings across the UK; Hambleden Manor, Claridge's Hotel London and Cambridge University to name a few. Built to last a lifetime, Castrads cast iron radiators are the heating supplier of choice for some of the world's leading Mechanical Engineers. Traditional or contemporary, with over 60 different models and more than 65 finishes, Castrads will always have the right style and finish.

enq.311



As a dry screed flooring system, the award winning ScreedBoard® from Collecta removes the drying times associated with wet screeds. Dry properties allow floor finishes to be introduced immediately and for developments to be completed sooner. On ground floors they can help achieve optimum underfloor heating conditions for occupants. On upper floors they can be used as a combined heating and sound proofing solution.

enq.330



Ecolec has been providing its core range of radiant panel electric heaters since 1995 and has built up a major niche market with multiple repeat sales. So it should come as no great surprise that Ecolec is launching two new products, with wider appeal and significant commercial possibilities that maintain the company's reputation for producing the 'out of the ordinary'. Disc Heat™ offers any number of suspended circular ceiling radiators, and it's a quick response method of heating.

enq.301

## NEW Natural Ventilation catalogue available

Request your copy at [sales@grille.co.uk](mailto:sales@grille.co.uk) or visit the Resource Centre for all our catalogue downloads at

## grille.co.uk

in either PDF or flipbook format

**T. 01457 861 538 | F. 01457 866 010**  
Woolley Bridge Road | Hadfield | Glossop | Derbyshire | SK13 1AB

\*Part of a controlled natural ventilation unit. GDL is a manufacturer of air distribution systems. Intelivent and Intelshade only refers to the control packages available on our natural ventilation and solar shading systems within our renewable energy range. The systems can be purchased from us with or without the controls package.

enq.312

# ECCO STOVE

PATENT PENDING IN EUROPE, CANADA & USA

UK patent number GB 2 467

New Model EC678 88% Efficient, Low 0.07 CO to atmosphere

**\*Thermal mass heat storage releases heat slowly throughout the house (not just the room), no ducting needed.**

**\*Stores 25% heat 12 hours after the fire has gone out.**

**\*88% efficiency.**

**\*One 5kg firebox load of wood heats house for 12 hours.**

**\*Simple two-man assembly using a dry-stack modular method. Stove body made of pre-cast silicon.**

Defra Exempt

Contact us today to learn more about the Ecco stove advantage  
Debbie Langley 01527 857814 or [info@eccostove.com](mailto:info@eccostove.com) [www.eccostove.com](http://www.eccostove.com)

Innovation in Silicon Carbide

enq.313



## RWC is bringing back ISIS: the original & best



Long established as an industry leader in flow control solutions, **Reliance Water Controls (RWC)** have joined forces with Effebi to bring the original and best ISIS Ball Valves back to the UK market. With a reputation for quality and high performance, the ISIS range was a natural addition to the RWC product family, offering

five different product types, with both lever and t-handle options and in sizes ½"–2" FBSP and 15mm–54mm Compression. Cast in dezincification resistant (DZR) brass, in full bore, pressure rated to PN40 and with a multitude of additional features, ISIS can be used in even the most aggressive of water installations, which is why they are loved by installers and specifiers alike.

01386 712400 [www.rwc.co.uk](http://www.rwc.co.uk)

enq.314

## Vortice launches QBK fan



Vortice has launched its heralded QBK range of ultra quiet ventilation fans suitable for both commercial and industrial applications. Each of the range of six fans is compact, can be used in false ceilings, can be ducted and is designed for continuous running. Traditionally commercial fans can be noisy, so the development of QBK has taken

particular note of the requirements for quiet running. This product is ideal for use in libraries, performance venues and retail applications; its construction allows for easy inspection and maintenance but most importantly has lots of noise insulation built in. The QBK can be operated with electronic controllers.

01283 492949 [www.vortice.ltd.uk](http://www.vortice.ltd.uk)

enq.315

**adf**  
architectsdatafile

## LAUNCH ALL NEW WEBSITE FOR 2014



**REGISTER ONLINE FOR...**

In-print magazine • Digital magazine  
Newsletter • Daily digests



[www.architectsdatafile.co.uk](http://www.architectsdatafile.co.uk)

# NOVA

## Ideal for Biomass



**SFL**  
flues & chimneys  
**Solutions For Life**

NOVA® is a true multi fuel, multi application twin wall insulated chimney system, suitable for wood chip & wood pellet biomass and gas/oil(28sec) condensing appliances

NOVA® features speedy twist-lock installation and a 15 year warranty



  
100% British  
Manufacturing

[www.sflchimneys.com](http://www.sflchimneys.com)

enq.316



## Specflue's silver Carbon Charter Award

Specflue, a leading supplier of renewable heat products, has achieved silver level accreditation under Suffolk County Council's Carbon Charter scheme. The Carbon Charter provides public recognition for Suffolk-based businesses that are working to monitor and reduce their carbon emissions. Silver is awarded to companies that are making significant progress in reducing their carbon footprint and implementing best practice measures for managing and reducing their energy use. Phil Lowe, head of sales & marketing at Specflue, said: "We take active measures to reduce energy consumption at work and we're pleased our efforts have been recognised." In a letter confirming the accreditation, Ned Harrison, low carbon economy officer within the council's Creating the Greenest County team, said: "The panel felt that Specflue hit all of the required targets in order to meet the silver level of accreditation. Its approach is well balanced across all sectors of the business and we were impressed with the company's bonus scheme, which has helped to reduce fuel consumption. Specflue also has well thought-out plans for further actions." The silver Carbon Charter adds to Specflue's existing environmental credentials, which includes an ISO 14001 Environmental Management System accreditation.

0800 902 0220 [www.specflue.com](http://www.specflue.com)

enq.317



Landy Vent UK Ltd has completed formal EU testing for two of its Ecco Stove models, the EC678 and EC730, which achieved ground-breaking efficiency; carbon to atmosphere and particulates to atmosphere achieved up to 88 per cent efficiency and CO of 0.07. The heat storage benefits have not been affected, making it the first in UK design and manufacture for slow heat release appliances. The range now has four stoves to suit all houses and tastes.

enq.313



The fabulous Mallorca freestanding wood burning fireplace from Eurostove is a feature addition to any modern home interior – especially with an open plan layout. Manufactured by Hergom, the Mallorca is one of their latest design innovations, using both steel and glass to create a contemporary masterpiece. This stove has a 360° glass surface so it becomes a focal point for any position in the living area and is perfect if centrally positioned.

enq.331



## University dramatically improve heat efficiency

After years of contaminant build up, poor functionality and system blockage in two of the University of Wolverhampton's key buildings, it is reaping the rewards of an installation of Spirotech products; recording an impressive 5-6 per cent energy saving as a direct result of the air and dirt and pressurisation and degassing units being installed. In 2011, the university embarked on a multi million pound investment in a new state of the art Combined Heat and Power (CHP) system in attempts to slash annual energy costs, make sizable carbon reduction savings and future-proof its energy network – it is now saving 1,000 tonnes of carbon a year compared to the previous systems. Spirotech, a global leader in total heating and cooling system protection and water treatment, was specified and it quickly proved its worth: heavy contaminant was removed, the minimal build-up now takes just minutes to clear and the system is now virtually air free.

0208 451 3344 [www.spirotech.co.uk](http://www.spirotech.co.uk)

enq.318



## Horstmann plays it cool at Bath brewery

An unusual application of a Horstmann motorised central heating zone valve in an in-house brewery is ensuring the ale lovers of Bath are enjoying their favourite tipple is brewed to perfection. The James Street Brewery situated in the famous Bath Brew House public house is a six-barrel micron brewery which is fully on show in the Brew House and which supplies beer to both the venue as well as its sister pub in Bath 'The Cork'. The mash tun, liquor tank and copper are located on the ground floor with the three large fermenting vessels located on the floor above in the glass fronted Tank Room. It is here that the three Horstmann ZonePlus Z series motorised valves are located, each controlling volumes of cooling water flowing around the jacket of the fermenting tank to ensure precise temperature control of the fermenting beers is maintained. The valves featured are Horstmann Z322 mid position diverter valves that are part of the redesigned Horstmann ZonePlus range. They feature a Hansen Class F synchron motor, industry standard fittings and wiring and an easily replaced 'clip on' actuator. A brass body and thermoplastic motor cover ensure long life in the warm yet damp environment of the tank room.

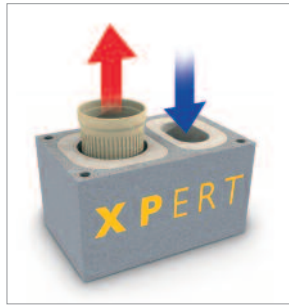
enq.319





The freestanding Formoso bath is a stunning piece that will look grand in any bathroom. It is made of high quality natural stone with a minimalist feel. Due to the narrow rim on the bath the internal space is bigger than most. It comes with a 10-year guarantee and is available in two sizes with an integrated overflow, either 1,690 x 800mm wide, priced at £1,749 inc VAT, or the Formoso Piccolo comes in a size of 1,500 x 750mm wide, priced at £1,469 inc VAT. Contact the Radiator & Bathroom Gallery.

enq.320



Designed for the new generation of air-tight homes, Schiedel Absolut XPert is the first Passivhaus certified chimney system worldwide. Air tightness is built into the system. Suitable for use on all fuel types, with its GW3 rated ceramic profiled liner, it offers condensate resistance even after a soot fire. Thermal performance of the appliance is optimised through the provision of combustion air at the right temperature through the integrated insulated shaft.

enq.321



SFL Chimneys' NOVA® is a highly versatile chimney system, offering a single solution for virtually all of today's domestic combustion requirements. Whether being used to serve a solid fuel stove, vent the latest high efficiency condensing appliances or biomass wood chip/pellet stove, NOVA® is the product of choice. It is built to last and is designed with a rapid fit, multi-barbed twist lock jointing system for ease of installation. It looks stunning in bright stainless steel.

enq.316



Speedheat understands that every underfloor heating installation is different, which is why specialist engineers design and install a solution for every customer, whether for primary heating or for a single cold spot. It can be incorporated with underfloor insulation and soundproofing, designed to fit unusually shaped rooms, retrofits and renovations and has been proved safe under almost every floor covering including wood, laminate, carpet, rugs, vinyl and natural stone.

enq.326

**the Radiator & Bathroom gallery**  
www.theradiatorgallery.com

- London Showrooms
- Over 180 Radiators On Display
- Specialist & Expert Advice
- Suppliers Of Top Brands Including Bisque, Vogue & Hotech
- Exclusive Designs
- Bathroom Brands Include Pelipal, Vitra, Burlington And Many More
- Free No Obligation Quotations
- Full Technical Support
- Price Match Guarantee



Tel. 0208 944 2001 or 0800 055 6450  
sales@theradiatorgallery.com  
www.theradiatorgallery.com  
Showroom: 621 Garratt Lane,  
Wandsworth, London SW18 4SX.

Free bathroom  
planning service  
available

enq.320

**Absolut XPert**  
System Chimney

**SCHIEDEL**  
ISOKERN®

Designed for the  
new generation  
of air-tight  
homes

1st Passivhaus certified System  
No Thermal Bridges  
Integrated combustion air shaft  
30 year functional guarantee



Air-tight homes and modern heating technologies place enormous demands on a chimney system. For example, energy efficient systems with low flue gas temperatures can lead to condensation. With its integrated and insulated combustion air shaft, Absolut XPert from Schiedel is the ideal system to avoid damage to the fabric of the building due to condensate, while achieving maximum efficiency and warmth. Its profiled liner also makes it capable of withstanding chimney fires and corrosion. Easy to install and Biomass compatible its the Absolut XPert solution for stress free heating. To find out more about Absolut XPert, visit us at [www.schiedel.co.uk](http://www.schiedel.co.uk)

CE EN 13063-1/2/3

Part of the BRAAS MONIER BUILDING GROUP

enq.321



With gas and oil prices increasing year on year, what better than to offer your purchasers a truly energy efficient home, that will kill bills? Obviously you can insulate the building fabric up to the hilt, then **Total Home** can install air source heat pumps for 350 per cent efficient heating and can provide heat recovery ventilation, to ensure that the VOC's in the house get expelled, but the heat stays in. The heat loss calculations find the best combination of systems for homes.

enq.327



In response to the requirement for a lower cost, but still high quality, high efficiency small circulating pump, **Wilo UK** has launched the Wilo-Yonos MAXO series, alongside the Stratos range of large, medium and small circulator pumps in the UK. It's a functional and effective but less comprehensive version of the Wilo-Yonos PICO which has been warmly received by the UK heating and plumbing sector. Stock is now available from merchants for these ranges.

enq.328



**Zehnder**, a leading manufacturer of indoor climate solutions has updated its RIBA and CIBSE approved Radiant Heating and Cooling CPD as part of its on-going commitment to train and inform the Architectural, Engineering and Construction Industry. The CPD seminar explains the principles of radiant heating and cooling, how they affect comfort levels for building occupants, and examines the usage and installation benefits of radiant technology.

enq.332



Two young one-horned Indian male rhinos in Edinburgh Zoo are now enjoying renewable heating for their swimming pool with the installation of four Ecodan air source heat pumps to heat their indoor pool. The zoo previously had an older, less-efficient gas boiler. Working with **Mitsubishi Electric**, the zoo is now the proud owners of an Ecodan renewable air source heat pump system, which will help reduce both running costs and emissions by around 30 per cent.

enq.333

## Wilo small circulators



**Wilo** is celebrating the sale of 28 million small circulators in the past 10 years, which adds up to an impressive amount of energy saved and a lot of smaller energy bills for householders and tenants.

Here in the UK, the family of Wilo small circulators continues to grow as housebuilders, specifiers and installers look to Wilo to help provide energy savings and reliable small pumps.

Take a closer look on the company's website for more information.

01283 523000 [www.wilo.co.uk](http://www.wilo.co.uk)

enq.322

## Twenty-year warranties on boilers



**Wood Energy** is introducing five new service and maintenance plans for its installations. In a first for the industry, the company are offering 20-year boiler warranties. Wood Energy's boilers already come with free five-year body and electrics warranties. Under the new maintenance schemes, this can be extended to up to 20 years, depending on boiler type and application to match the period that payments can be made under the commercial Renewable Heat Incentive scheme. Top priority among the new service and

maintenance packages is the Platinum contract, designed for businesses where any loss of heat could be considered crucial for safe continuation of operations.

0845 070 7338 [www.woodenergy.co.uk](http://www.woodenergy.co.uk)

enq.323

## Have control of your building's performance



The efficiency of a heating and hot water system is paramount to the energy compliance of a building. Specifiers, contractors and local authorities are turning to the latest technology to address this issue. **Pegler Yorkshire** has developed an energy management solution that simplifies the emerging technology and delivers results. Its energy efficient solutions for centralised boiler plants include HIUs from the Meibes range. An HIU offers many benefits over decentralised systems such as improved energy efficiency, improvement to SAP ratings,

no gas installation throughout the building, ease of access to heating plant for maintenance and a simple integrated solution of low carbon and renewable heat sources, making it easier for planning consent.

enq.324

## news bytes

Visit [www.architectsdatafile.co.uk](http://www.architectsdatafile.co.uk) and enter the reference number for more information

Keep warm this winter with the UK's most energy efficient stove...

Ref: 28814

Radiating heat... and bright new ideas...

Ref: 76186

Ariston announces the acquisition of ATAG Heating...

Ref: 82348

Panasonic new Etherea heat pump provides top class performance...

Ref: 44674

New super-condensing water heater for leisure centre...

Ref: 23964

Aico pledges its support for gas safety week...

Ref: 57013



# THE ART OF HEATING



BESPOKE.  
CLASSIC.  
ELITE.

The Liberty 2 Column, Hand Burnished

reader  
enquiry  
325

For Stockists Contact:

T: 0808 129 2224 | E: [sales@carron.uk.net](mailto:sales@carron.uk.net) | W: [www.carron.uk.net](http://www.carron.uk.net)

The comfortable solution for warmth where you want it, when you want it... guaranteed

- ◆ efficient
- ◆ controllable
- ◆ professionally installed
- ◆ nationwide suppliers
- ◆ ideal for conversions & retrofits



electrical underfloor heating by  
**SPEEDHEAT**  
comfort from the ground up

Speedheat UK  
Iona House, Stratford Road,  
Wicken, Milton Keynes, MK19 6DF  
tel: 01908 562211 email: info@speedheat.co.uk  
www.speedheat.co.uk



enq.326

**SAMSUNG** Eco Heating System  
AIR-SOURCE HEAT PUMP

**we give away free heat...**



What do YOU want from your heating system?

- ✓ I want to save money on my heating bill
- ✓ I want to have less CO<sub>2</sub> emissions
- ✓ I want to get money back with the RHI
- ✓ I want something that's 350% efficient

Call us to find out more.

RHI  
eligible

We do more with air...  
heat pumps | central vacuums  
heat recovery heat pump ventilation

IAECB RECC NACSBA

**total home**  
environment

0345 260 0123 [www.totalhome.co.uk](http://www.totalhome.co.uk)

enq.327



Just scan the code and  
walk into the world of Wilo

Pioneering for You

**wilo**

**“Finding solutions instead of searching for them. This saves time.”**

The new Wilo-Stratos, Wilo-Stratos GIGA and Wilo-CronoLine-IL-E for building automation are already compatible with all communication system worlds thanks to the IF-Module. Do you want to know how you can exploit future potential for efficiency in the building technology of today? **Wilo makes it easy!**

T:01283 523000 E:sales@wilo.co.uk



**Wilo-Stratos, the diverse one:**

- Can be used in heating, cooling and air-conditioning systems from -10 °C to +110 °C
- Maximum efficiency thanks to ECM technology
- Front operation makes for easy access to the terminal room and a position-independent display for variable installation positions
- Simple installation and commissioning thanks to “red-button technology”
- Communication-capable for building automation in all system environments thanks to retrofittable interface modules

enq.328



# Something rather different under a grass roof

Having seated you under a grass dome to enjoy locally sourced food and a different menu each month you would expect the new M5 Gloucester Services motorway service station to have come up with something interesting for the interior finish. Indeed it has. Powdertech (Corby) Ltd has used its latest roughwood finish coating (PWF) to enhance the natural tones and textures on the glazed facade to the front and rear of the main food hall and seating area.

Built to merge into the landscape with its grass domed roof and with a lake to sit beside, Gloucester Services is a refreshing departure from traditional service stations and a truly uplifting break from motorway monotony.

The building features Cotswold stone walls with oak posts and oak cross beams inside giving the rural and homely feel of an old barn. The mullion and transom cappings for the glazed facade, the

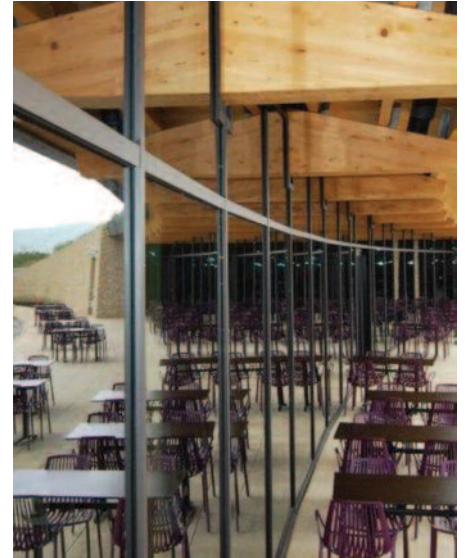
door frames and soffit panels are metal, coated by Powdertech (Corby) Ltd in the company's latest wood finish (PWF), Roughwood.

"We have developed Roughwood as an extension of the PWF range, incorporating new shades and importantly a rougher texture, echoing the feel as well as the appearance of wood," explained Powdertech Sales Director, Richard Besant. "Our brief was that the Westmorland Family wanted the natural look to pervade throughout the entire area. PWF Roughwood, in the shade 'purple heart' based on the tree of that name, complements the oak beams perfectly. By combining the strength and versatility of metal with PWF Roughwood there is no jarring effect of introducing metal into a natural looking interior. The coating has very good abrasion resistance and is low maintenance."

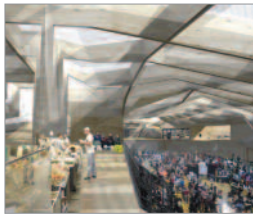
01536 400890

[www.powdertechcorby.co.uk](http://www.powdertechcorby.co.uk)

enq.141



## Hunter Douglas invests in the future



Hunter Douglas has extended its partnership with Rotterdam's Archiprix Foundation for another six years. Archiprix International organises a biannual event at which promising young architects from all over the world are invited to present their graduation projects – over 300 universities have submitted entries. An independent international jury offers the best

proposals at the Hunter Douglas Awards. Thus young talent is offered a platform on which to inspire in the fields of urban design and (landscape) architecture. For more information, please go to [www.archiprix.org](http://www.archiprix.org).

01604 766251 [www.hunterdouglas.co.uk](http://www.hunterdouglas.co.uk)

enq.142

## Low odour with no compromises



The next generation of liquid applied roof membranes has been launched by Sika Liquid Plastics. Decothane Ultra is a low odour non-disruptive roofing solution that achieves more than 80 per cent reduction in odour strength five minutes after application and greater than 95 per cent reduction after just one hour against a similar one-component

competitor. These results were established by independent testing. Decothane Ultra utilises a range of new novel curing agents. This new chemistry offers a versatile platform from which to formulate extremely low solvent content and low odour liquid applied membranes for a wide range of applications.

01772 259781 [www.decothaneultra.co.uk](http://www.decothaneultra.co.uk)

enq.143

## Timbmet's panels – a summer hit



Timbmet's reliability, consistency and quality products makes it the perfect panel product supplier for special installations. When they were asked by AEG to create spectacular set designs for the inaugural BarclayCard British Summer Time Hyde Park, their in-house design team set to work designing the

facades which would be constructed using plywood panels. The decision was made to use Timbmet's Wisa Spruce Plywood for its lightweight and dimensional stability. It machines well in the workshop and creates less dust and chemicals than other far eastern panels. Ideal for structural and load bearing applications, it is PEFC certified and held in stock in a range of thicknesses from 9-24mm.

01865 860303 [www.timbmet.com](http://www.timbmet.com)

enq.144

## Construction training on YouTube



ITW Construction Products (ITW CP, formerly ITW Industry) are beginning to release instructional installation animations to maintain correct use of Cullen builders' metalwork on-site. The scheme answers requests from the industry for product installation instructions that anyone can follow on-site, regardless of language spoken.

Videos are bite sized at under a minute long to get builders up to speed as quickly as possible. All have been completed in-house by ITW CP's Cullen Technical and graphic design teams working in close collaboration for upmost technical accuracy. To view the animations, visit [www.youtube.com/ITWIndustry](http://www.youtube.com/ITWIndustry).

0800 652 9260 [www.itwcp.co.uk](http://www.itwcp.co.uk)

enq.145



**Tobermore**  
WORLD CLASS PAVING & WALLING

Stressing over the brick shortage?  
Our facing bricks are **in stock & available**

lansdowne  
tumbled

kingston  
smooth

[www.tobermore.co.uk](http://www.tobermore.co.uk) | 0844 800 5736 | [f](#) [t](#) [i](#)

enq.146

## Elegant colour-changing metal facade



Perforated and embossed aluminium panels supplied by RMIG have given the new cube-formed building of the regional archives of Marne in Reims unique and elegant facades and interiors. The world's largest perforation company supplied 3,000 sq m of aluminium panels with stunning,

multifaceted finishes that decorate the exterior and interior facades, ceilings and walls of this iconic cultural venue. The architects chose perforated and embossed panels in 2mm powder coated aluminium from the RMIG City Emotion programme for both the interior and exterior, forming a strong, functional and stylish design statement. For more information visit [www.city-emotion.com](http://www.city-emotion.com).

01925 839 600 [www.rmig.com](http://www.rmig.com)

enq.147

## Reynaers takes to the water



An extensive range of systems have been supplied by Reynaers Aluminium to a prestigious riverside apartment, office and retail development in Greenwich. The architectural aluminium systems were specified and installed at the Paynes & Borthwick site, which comprises five blocks and a tower, with heights varying

from three to 18 storeys. The project, fronting onto the River Thames, includes 257 highly specified apartments, as well as 14,000 sq ft of commercial office and retail space. CW 50 curtain walling was supplied by Reynaers, which the company says provides unlimited creative and installation flexibility, while also allowing the maximum amount of light into a building.

enq.148



## Gilgen automatic door operator now fire door approved

An automatic swing door operator from Gilgen Door Systems has become one of the first of its kind to be independently tested and approved for use on fire doors. The Gilgen FD 20 swing door operator fitted with safety sensors recently passed stringent fire safety tests carried out through Exova Warringtonfire, one of the world's leading fire safety and resistance testing specialists. The tests examined the resistance of the operator when fitted to fire doors exposed to extreme fire and heat up to 1,000°C. Following successful tests the FD 20 was approved for use on timber fire door sets providing up to two hours protection and metal fire door sets providing up to one hour protection.

0800 316 6994 [www.gilgendoorssystems.co.uk](http://www.gilgendoorssystems.co.uk)

enq.149



# Healthy residential Concept®

**R**educing carbon and saving energy are the major points of discussion when talking about new builds or renovation. However; we also have to think about the creation of a healthy and comfortable living environment for the owners and occupants. Consideration is needed as to how to create good indoor air quality (IAQ), a comfortable temperature and controlled daylight in the house to create a better living environment.

RENSON® wants to help you in finding those solutions. By combining ventilation and sun protection with other desirable solutions into a Healthy Residential Concept®, RENSON is able to provide complete solutions for a healthy and comfortable 'home'.

When designing, building or renovating a property, the inclusion of increased insulation and better air tightness has knock-on effects to the property. You need to consider the risk of increased condensation, moisture and poor indoor air quality, all of which will affect your health.



Basic ventilation guarantees an adequate indoor air quality. DCV will constantly monitor and adjust the ventilation rates as per the changes in indoor air quality. When the contaminated air is extracted, a natural airflow through the window vents will ensure the supply of fresh air. Intensive ventilation uses natural airflow, whether during the day-time or overnight to cool down a building and its air content.

Further energy can be saved by maximising the use of daylight in the building. That is why we can observe an increase in the glass surface of the buildings. However increased glass areas combined with tighter airtightness leads to higher inner temperatures along with the issues of glare and possible disturbing light reflections. The most efficient sun protection system stops the sunrays before they pass through the glass and enter the house and therefore minimises overheating.

enq.150

01622 754123 [www.rensonuk.net](http://www.rensonuk.net)

## MP visits IKO's Chesterfield factory



North-East Derbyshire MP Natascha Engel visited the IKO factory recently with a view to learning more about the roofing and waterproofing systems manufactured there. IKO makes a significant contribution to the UK's manufacturing business within the construction sector with a UK turnover of £70 million in 2013, which included exports of £5 million. On the factory tour Natascha learnt

about the product ranges manufactured in Chesterfield, the environmental aspects of the factory with its zero carbon policy as well as the supply chain route to market. She also visited IKO's training academy.

01257 488011 [www.ikogroup.co.uk](http://www.ikogroup.co.uk)

enq.151

## Levolux gets into the groove in Liverpool



A new £8.5 million multi-storey car park in Liverpool recently scooped the prestigious Best New Car Park award, in recognition of its groundbreaking design and first-class finish, including a custom external screening solution, courtesy of Levolux. The multi-storey car park (MSCP) development, for the Royal Liverpool University Hospital (RLUH), represents the first phase of a £429 million regeneration project which is due for completion in 2017.

Designed by IBI Nightingale, the car park accommodates 706 parking spaces, arranged over seven levels. The development also accommodates a staff office, a reception area and showering facilities for cyclists.

enq.152

## Stainless steel balustrade meets luxury specification in the Lakes



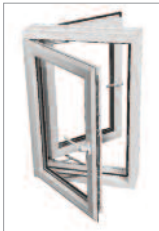
A development of luxury apartments in the scenic surroundings of the Lake District has used NEACO's Spectrum stainless steel balustrades and balconies to provide a suitably high aesthetic.

Incorporating tinted glass panel infills, Spectrum is extensively featured on bespoke Juliet balconies and balcony terraces in keeping with the properties' luxury specification, which includes locally sourced materials, underfloor heating, level access shower rooms and walk-in wardrobes as standard.

Alan Green, managing director at NEACO, said: "Our stainless balustrade has attracted a number of recent specifications at high-end residential developments designed for the luxury market. The product's defining quality is a superior aesthetic achieved with hand finished, satin polished components and clean, sharp intersection lines created by true unidirectional polishing. The visual appeal of our stainless steel balustrade is matched by high performance qualities which are true of every product in the Spectrum range – namely its modular design versatility, durability and fast, low-energy construction which requires no welding or hot works."

enq.153

## Time to make a noise about acoustics



Mark Barsby, head of technical at the VEKA UK Group, explains more about noise reduction ratings and how the company is ahead of the curve again: "Heathrow's potential third runway and 'Boris Island' are stories that have been all over the news. While additional airport capacity may well be required in future to support the UK economy, the current political battleground is being fought on the impact that noise pollution from an airport expansion would have on those affected and their long-term health. In 2012, the

VEKA UK Group launched Halo's TwinSash as among the most thermally-efficient products available on the market anywhere..."

01282 716611 [www.vekauk.com](http://www.vekauk.com)

enq.154

## A study in harmonious design



Bass Library at Yale University, Connecticut, USA, a state of the art transformation of the prestigious institution's existing Cross Campus library, has been announced winner of The Crittall Prize 2014. The Crittall Prize aims to recognise the best application of Crittall steel fenestration in the USA, a market where the British based company,

with a history of over 160 years, is a dominant player. Designed by HBRA Architects of Chicago, The Anne T. and Robert M. Bass Library is located beneath Yale University's Cross Campus and is a multi-million dollar renovation and reconfiguration of the existing facility.

01376 530800 [www.crittall-windows.co.uk](http://www.crittall-windows.co.uk)

enq.156

## Ventrolla renovation at university building



A neo-classical, Grade II listed building from 1919 has been given expert help to retain its front facade by period window specialist Ventrolla. The Samuel Alexander building, part of the University of Manchester's Language Centre, is located on a prominent site in Oxford Road and includes a

library, multimedia suite and study area. Part of a wider £14 million refurbishment project on most of the university buildings, the building now has newly renovated, single-glazed sliding sash and Venetian windows in keeping with its heritage. The £220,000 project assigned to Ventrolla involved more than 300 windows being restored to their former glory and was completed in April 2014.

0800 027 7454 [www.ventrolla.co.uk](http://www.ventrolla.co.uk)

enq.155

## Abloy expands SMARTair range



Security expert Abloy UK has launched a new SMARTair Knob Cylinder that features a double reader, joining Abloy's ever-expanding range of keyless locking solutions. The new cylinder requires the use of an RFID card to enter and exit, and is compatible with current SMARTair reading technologies such

as iCLASS, MIFARE, Skidata and DESFire. SMARTair is an electronic handle set or escutcheon that provides complete standalone single door control operating as an electronic master key system. Installation is easy, and can be incorporated into any new or existing SMARTair system. As with all SMARTair cylinders, it can be retrofit and requires little electrical experience.

enq.157

## Introducing ARP's Rainfall Calculator -Available shortly for use with your PC or Tablet



As one of the UK's market leaders in Rainwater Systems ARP recognise the importance of working in partnership with specifiers to ensure that the most effective aluminium roofline and rainwater drainage solution is provided.

Our service levels are second to none and with the launch of our new rainfall calculator we are empowering you to produce drainage calculations tailored to your particular project quickly and efficiently.

Our network of experienced external Sales Managers or our friendly in house sales team can support you with a small amount of training to obtain the information required or on the installation of this free and easy to use application.

Please contact us now on [marketing@arp-ltd.com](mailto:marketing@arp-ltd.com) to register your interest in the FREE Rainfall Calculator and we will forward download links from our website when they are available shortly.

**Aluminium Roofline Products Ltd**  
Call our sales line 01162 894400 or email us at [sales@arp-ltd.com](mailto:sales@arp-ltd.com)  
[www.arp-ltd.com](http://www.arp-ltd.com), [www.mustang-gutters.com](http://www.mustang-gutters.com)



enq.158



## Shetland projects completed by NorDan



The new extension to Happyhansel Primary School in Shetland has pre-finished timber windows and doors from **NorDan**, the Norwegian external joinery experts. The building was designed by architects Redman Sutherland and commissioned by the Shetland Islands Council. The extension

provides offices for the secretary and the head teacher, a library and teaching space for a visiting tutor. These spaces are built around a new covered entrance lobby with a glazed roof which lets light into the existing canteen and a new cloakroom area, with a covered waiting area for parents. NorDan supplied aluminium clad timber windows from the NTech range and inward opening glazed door sets.

01452 883131 [www.nordan.co.uk](http://www.nordan.co.uk)

enq.159

## Integra installation success

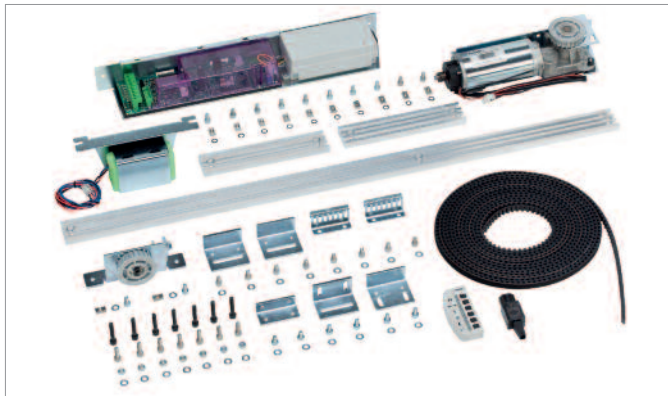


The success of **Synseal's** Orangery Collection keeps on growing, with installations taking place throughout the UK. One of the latest examples is the installation of an Integra parapet wall style orangery in Lancashire. The choice of the Integra orangery design was driven by a desire from the homeowner to have an installation that would

most closely achieve the look and feel of a fully brick-built extension, while still benefiting from the extra light that comes from having an overhead glass roof. The Integra is unique in today's marketplace in that the concealed lantern roof is designed to fit neatly behind the parapet wall for a traditional look.

01623 446207 [www.synseal.com](http://www.synseal.com)

enq.160



## The new retrofit kit from FAAC

The new A140 RKU Retrofit Kit from FAAC is the most economical sliding door retrofit kit on the market. It is simple to install and it is capable of retrofitting almost every commercial sliding door operator, including; Besam, Dorma, Ditec, GEZE, Gilgen, Horton, Manusa, Record, Stanley and Tormax. The RKU Retrofit Kit makes it possible to upgrade an existing sliding door installation to meet the new EN16005 Standard (when used with the appropriate Activation and Safety devices), regardless of the existing brand or model, and without altering any of the entrances architectural features. By carrying this one retrofit kit, engineers will have the capability of replacing most sliding door systems, provided the head section is at least 100mm in height. It reduces installation time as existing doors stay where they are on-site. The kit is very easy to set up and install, with programming made easy through intuitive individual settings.

01256 318100 [www.faac.co.uk](http://www.faac.co.uk)

enq.162



## Extra security for dark winter days

**Garador's** popular Salisbury garage door is now available with Secured by Design accreditation (SBD). Garador were the first to introduce doors with SBD, a standard set by the Police to deter break-ins and theft. The Salisbury joins the Horizon and Carlton styles in Garador's Guardian range of SBD steel up and over doors. They have all been engineered to a new level of strength and security including additional high security back brace protection, reinforced locking systems and a unique anti-snap, anti-drill cylinder to prevent entry even after attack. They are available in a choice of vibrant colours and specifications.

01935 443791 [www.garador.co.uk](http://www.garador.co.uk)

enq.161

## Canopies UK the countrys leading supplier and manufacturer of outdoor canopy systems.



### Outdoor covered solutions.

- Full product specification available.
- Tested for wind and snow loading.
- Design, manufacture, supply and install nationwide.
- All canopies conform to European standards EN1991-1-3 : 2003.
- Outdoor canopies to maximise any outdoor space.

**canopies uk**

Call: **01254 777002** Ext: 221  
Email: **karen@canopiesuk.co.uk**  
Web: **www.canopiesuk.co.uk**

enq.163



walk on  
Flushglaze  
rooflight

01379 658300  
sales@glazingvision.co.uk  
www.glazingvision.co.uk

**GLAZING  
VISION**

enq.164



**Bauporte**  
DOORS  
UK LTD.

Transparent  
hotel entrance

Full glass façade with  
bespoke draft preventing  
TALL revolving door

Read the complete special:  
bauporte.com/projects/room-mate/



Bauporte Doors Ltd. | +44 (0)207 55 48 757 | sales@bauporte.com | www.bauporte.com

enq.165



# The growing trend of folding-sliding doors

Andrew Royle, UK commercial director at P C Henderson looks at the growing trend of folding-sliding doors (FSDs) and what factors to consider when specifying these

When considering exterior doors and extensions, the use of sliding hardware for timber framed glass doors is ideal to suit the growing trend for the indoor/outdoor experience. Exterior FSDs are seeing a surge in popularity as they can create a transition from indoor to outdoor space, bringing the outside in. During warm weather, the doors can be completely opened to allow light, air and access to outside whereas in the winter the glass array offers much needed natural light and an open feel.

When specifying external door systems, design and security are two of the most important factors to consider but it's easy to compromise one for the other. To maximise on the indoor/outdoor experience, there are some design styles to consider before specifying either folding doors or sliding doors. Folding doors, when fully open, will only use up a small fraction of room, opening up a continuous flow between the indoor and outdoor spaces. Exterior folding doors can help realise an architect's vision, but due to the opening size and considering the multiple points to secure, there is a need to ensure that the gear system provided has the high performance of a secure solution, together with the look and feel desired by the client. Sliding doors, on the other hand, have the benefit of having individual door panels that can be considerably larger than folding door panels so on larger openings fewer panels are needed. When closed, it results in more glass and less frame producing excellent sight lines.

Another consideration is the ease of operation, specifically how the doors open, slide and close. One clever innovation utilises a twinbolt locking mechanism that allows folding doors to be locked internally at the top and bottom of the door by turning one handle 90 degrees. Offering two points of discreet security, this system, unlike many others on the market, requires minimal routing and additional adjustment to the supplied components. This mechanism is designed to maintain a system's security and weather resistance while offering additional benefits of working with other mechanisms such as a high quality thumbturn.

Folding and sliding door components and designs are evolving to match the growing interior/exterior trend, while also realising the architectural visualisation. With this in mind, specifying hardware that meets high security standards will add peace of mind and safety to occupiers and the property, meeting both aesthetic and functional requirements. To this end, it is important that exterior folding door hardware is subject to rig-



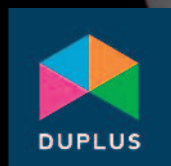
orous performance testing standards such as the UK's PAS 24 and Europe's EN1627. Both ensure that a product has a secure system which offers security of the highest standard, giving certified systems recognition that they meet the requirements to be classified as burglar resistant. Security accreditations should also be coupled with corrosion resistant qualities with the extremes of the British weather being taken into account. Hardware components should be made from 316 marine grade stainless steel to ensure a high level of corrosion resistance.

Finally, Secured by Design (SBD), the official UK Police flagship initiative supporting the principles of 'designing out crime', ensures external doors fit both practical safety requirements as well as creating the desired sleek aesthetic. Owned by the Association of Chief Police Officers (ACPO), SBD focuses on crime prevention of homes and commercial premises and promotes the use of security standards for a wide range of applications and products. The principles have been proven to achieve a reduction of crime risk by up to 75 per cent. Their objective is to reduce burglary and crime in the UK through physical security and processes. Products carrying the Secured by Design certification have been rigorously tested to withstand forced entry.

*'Folding and sliding door components and designs are evolving to match the growing interior/exterior trend, while also realising the architectural visualisation'*

enq. 166

## Contemporary rooflights



[www.duplus.co.uk](http://www.duplus.co.uk)

[sales@duplus.co.uk](mailto:sales@duplus.co.uk)

0116 261 0710

370, Melton Road, Leicester. LE4 7SL

Fixed rooflights from £612 + Vat.

Lantern rooflights from only £1025 + Vat

Structurally bonded rooflights also available in  
fixed rooflights / opening rooflights / pyramid rooflights

enq.167



## ARCHITECTURAL GLASS

Shopfronts

Balustrades

Automatic doors

Splashbacks

Complete design & build service

Please contact us for details

01903 733206

[www.demon-designs.co.uk](http://www.demon-designs.co.uk)

enq.168



## Kommerling's new liquid composite for glass



**Kommerling**, a leader in the development and manufacture of high quality sealants and adhesives for the glazing market, is launching the latest addition to its range; **Ködiguard Conservation**. This specialist colourless liquid composite is specifically designed for applications where the highest reduction of UV light transmission across the full UV light spectrum is required without effecting quality of naturally transmitted light, perfect for protecting historic textiles. Ködiguard Conservation is a versatile multi-component, curing product which has been designed to safely laminate temperature sensitive, symmetric, tempered, flat and curved glass substrates.

01895 465600 [www.kommerlinguk.com](http://www.kommerlinguk.com)

enq.169

## Roof lights making the most of natural light



**Broombank** is a RIBA award winning new build designed by **SOUP architects**, by the River Alde, Suffolk. As part of the architects' vision to incorporate as much outdoor space as possible, **Glazing Vision** was delighted to supply a range of bespoke roof lights to make the most of this natural source of light. The central feature they supplied was a bespoke 'Eaves' Flushglaze roof light. This was positioned within the stairwell, enabling light to flood into a

typically dark, enclosed space using both horizontal and vertical sections of glass. The glass on the central feature roof light appears to disappear into the building fabric, forming a seamless integration between the glass and building envelope.

01379 353741 [www.glazingvision.co.uk](http://www.glazingvision.co.uk)

enq.170



## Nationwide Windows provides all-important space at Brooke school

Public sector door and window supplier **Nationwide Windows** is delighted to have helped **Brooke School** in Rugby increase its wheelchair storage space with the provision of a lean-to conservatory. What's more, the school was so pleased with the end result that it has been deemed too nice to use for storage, and so will soon benefit the children as an additional area filled with natural light in which to learn. Daryl Cashmore, operations director at Nationwide Windows explains: "When Brooke School called and asked for a quote to manufacture and fit the lean-to conservatory, it soon became clear that the cost would exceed the budget they had in place. Having taken a look around the school, it really opened our eyes to the great work they do there and we decided to use the existing budget to provide the aluminium entrances at either end of the lean-to, and contribute everything else free of charge." Louisa Wallace, finance assistant at Brooke School adds: "We're so pleased with the new conservatory at the school."

01788 569 228 [www.nationwidewindows.co.uk](http://www.nationwidewindows.co.uk)

enq.171

Call us today on **0800 2888 066**  
or email your plans to **quote@altitudealuminium.co.uk**  
Visit our website **www.altitudealuminium.co.uk**

**Bespoke Glazing**  
**PassivHaus**

**Grand Designs**  
**World Leaders**  
**Luxury Homebuild**



We have a wealth of experience in working with architects on residential through to larger commercial applications. Altitude Aluminium works with Schuco and Reynaers systems and offer a complete, no worry service from design through to installation of Aluminium Windows, Doors, Sliding and Folding systems, Curtain Walling, Balustrades and Balconies. Altitude Aluminium is ISO 9001, ISO 14001 and BS OHSAS 18001 accredited. Get in touch with us to discuss your project further.



enq.172

## Get long term thermal insulation



Heat can escape from buildings through windows, doors and wall break through points, wasting energy and reducing efficiency. Thermofoam is a new, highly flexible PU expanding foam from Everbuild, specially formulated to absorb movement, giving an air tight seal to reduce heat loss and in turn improve energy efficiency in buildings. It has been tested to the latest standard and is not only air permeability tested to EN12114:200-03 but also acoustic rated to EN ISO 717-1 up to 64Db, temperature resistant (-40 to 80°C) and finally fire rated to ISO 13501 Class E. Thermofoam's powerful bond strength and flexibility gives excellent long term thermal and acoustic insulation.

0113 240 3456 [www.everbuild.co.uk](http://www.everbuild.co.uk)

enq.173

## Kingspan makes barn enerphit for purpose



Sjölander da Cruz Architects have used the Kingspan Unidek Aero® Roofing System and Kingspan TEK® Cladding Panel to help breathe new life into a run-down, asbestos clad barn, creating a stunning architectural studio which meets the exacting requirements of the Passivhaus EnerPHit standard. The

repurposed barn is now almost unrecognisable from its former use as an engineering workshop. The original asbestos cladding was stripped back and Kingspan TEK® delivery partners Lowfield Timber Frames designed and installed the Kingspan Unidek Aero® Roofing System and Kingspan TEK® Cladding Panel.

01544 387384 [www.kingspantek.co.uk](http://www.kingspantek.co.uk)

enq.175

## Kingspan installed on research facility



Leading scientific instrumentation firm Waters Corporation has opened a new state-of-the-art mass spectrometry headquarters in Wilmslow, featuring over 20,000 sq m of high and premium performance products from Kingspan Insulation. To insulate the building's facade, 120mm Kingspan Kooltherm K15

Rainscreen Board was specified. The premium performance product, which was the first ever insulation board for use in rainscreen cladding applications to achieve LABC System Approval, is suitable for use with a wide range of rainscreen systems. It offers a thermal conductivity as low as 0.020 W/m.K.

01544 387384 [www.kingspaninsulation.co.uk](http://www.kingspaninsulation.co.uk)

enq.174

## Knauf Marmorit integrates into Knauf UK



The sales and operational activities of render and external wall insulation (EWI) systems manufacturer Knauf Marmorit (UK) GmbH in the UK and Ireland have been integrated into the business of its sister company Knauf UK. The move has been instigated to give the established Marmorit brand increased resources to support its ambitious growth plans. The business is now trading under the Knauf UK banner, with the Marmorit brand

integrated into the company's business development division alongside a number of complementary products, including Knauf facade systems.

01795 416061 [www.knauf.co.uk/marmorit](http://www.knauf.co.uk/marmorit)

enq.176



**INSPIRED NOISE SOLUTIONS**  
Specialists in Noise Control Systems

**Noise Control Systems**

Inspired Noise Solutions offer a full range of noise and vibration control products made to specification to give a complete solution for any acoustical project.

**Application**

Projects include schools, offices, restaurants, bars, theatres, sports halls and public spaces.

0151 632 3428  
sales@inspirednoise.com  
[www.inspirednoise.com](http://www.inspirednoise.com)

enq.177

## ICYNENE

THE EVOLUTION OF INSULATION

tel: 01229716039  
mob: 07851854860  
info@uksprayfoam.co.uk  
[www.uksprayfoam.co.uk](http://www.uksprayfoam.co.uk)

## THE FIRST NAME IN SPRAY FOAM INSULATION



The Icynene Insulation System is a series of soft, flexible spray foam insulation products that delivers up to 50% greater energy savings when compared to other insulation products. Icynene is perfect for loft insulation, cavity wall insulation, drylining insulation, sound insulation and more.

Icynene is the only foam on the market successfully tested and certified for applications directly to the underside of breathable and non breathable roof membranes and felts and recently received BBA certification for this application. Icynene absorbs the lowest amount of moisture and has the highest level of vapour resistivity of any soft foam on the market.



enq.178



## Thermoblock offers the right formula



The construction of an advanced new testing facility for motor sport engines in Wales features the use of **Marmox Thermoblocks** at ground floor level, specified in order to help comply with the latest edition of Part L to the building regulations. The Sports Engine Testing Facility at the University of South Wales Pontypridd is being

built by Willmott Dixon Construction Limited working as main contractor. While the 1,000 sq m, two-storey structure utilises a steel frame, the exterior walls are being raised in cavity blockwork with the Marmox Thermoblocks in two different thicknesses subtending both the inner and outer leaf.

01634 835290 [www.marmox.co.uk](http://www.marmox.co.uk)

enq.179

## Walltite Insulation makes for a grand design



Walltite spray-foam insulation from **BASF** has mastered effective insulation to walls and roof of a house built from shipping containers. And not just any house, but a beautiful design icon featured on TV's *Grand Designs*. Described by presenter Kevin McCloud as both "paranormal goo" and

"the right solution", Walltite was the only practical way to provide insulation to the corrugated metal walls without causing a condensation issue. It is a closed cell polyurethane spray foam sprayed directly onto the surface, so it can accommodate any shape or unevenness in the wall – it follows the contours of the metal walls of the containers that form the basis of the stunning contemporary house.

01773 601 166 [www.walltite.basf.co.uk](http://www.walltite.basf.co.uk)

enq.180

**NEW BUILD**  
HOTELS HOUSES REFURBISHMENT  
ROBUST DETAILS  
PCT APARTMENTS  
STUDENT ACCOMMODATION

**NEED SOUND PROOFING?**

**CELLECTA**  
INNOVATION IN INSULATION

The UK's No.1 For Acoustic Treatments  
08456 71-71-74 [www.cellecta.co.uk](http://www.cellecta.co.uk) [technical@cellecta.co.uk](mailto:technical@cellecta.co.uk)

Part E SOLUTIONS

enq.181

## Kingspan Tarec helps Dunlop settle in



Dunlop Systems and Components recently moved from its historic Holbrook Lane site to a new 60,000 sq ft, state-of-the-art manufacturing facility at nearby Prologis Park, Coventry, which is benefitting from **Kingspan Tarec**'s premium performance **Kooltherm**® FM Pipe Insulation.

Situated on a 5-acre site, this new facility has achieved an EPC 'A' 21 rating and BREEAM 2011 Very Good accreditation. One thousand linear metres of Kingspan Tarec® Kooltherm® FM Pipe Insulation were installed on the heating and domestic services pipework and on the supply vent ductwork across the building by M&E contractors P&R Morson.

01457 890400 [www.kingspantarec.com](http://www.kingspantarec.com)

enq.182

## Experts in domestic sound insulation



Intrusive sounds that travel through party walls and separating floor structures are a major concern for most inhabitants of buildings. In lighter weight constructions, where noise is a more common problem, any reduction is welcomed – especially in multi storey occupancy. Higher standards

are also now expected especially in conversions (where testing is mandatory) and must be designed to minimise the risk from neighbouring noise sources. **Isomass Ltd** is an expert in the field of domestic sound insulation within dwellings that is necessary to comply with both the building regulations and to satisfy the increased demand for a quieter living environment.

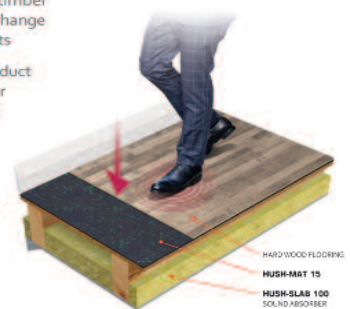
enq.183

## WANT TO SPECIFY WOODEN FLOOR FINISHES INTO MULTI OCCUPANCY BUILDINGS?

### HUSH MAT 15

#### Timber Structure - Hard Wood Flooring Finish

- An acoustic solution to isolate timber floor finishes in refurbishment, change of use or new build developments
- Specially designed underlay product to sit directly under timber floor finishes to reduce impact noise
- Reduces impact sound between floors
- Ideal solution when replacing carpet with a timber floor finish



#### HUSH ACOUSTICS

Head Office L20 BQU  
London Office N6 5UG  
Yorkshire Office WF2 7AS

[WWW.HUSHACOUSTICS.COM](http://WWW.HUSHACOUSTICS.COM)

T 01519 332 026

E [info@hushacoustics.co.uk](mailto:info@hushacoustics.co.uk)



enq.184



## Aesthetically sound

### Soundtect acoustic panels for walls and ceilings

Innovative designs providing acoustic solutions for education, offices, commercial, hospitality, leisure and domestic applications. Using recycled materials for their panels, Soundtect™ has managed to camouflage acoustic function with imagination and produce panels with a finely tuned balance of reverberation control and sound absorption.



0845 548 0518 admin@soundtect.com www.soundtect.com

enq.185

## ECOSORBA LTD

Acoustic Panels manufactured to reduce reverberation in accordance with revised BB93.

Wall Panels • Ceiling Panels • Baffles



[www.ecosorba.co.uk](http://www.ecosorba.co.uk)

Contact us for more information

Tel: 0800 331 7923 Email: [info@ecosorba.co.uk](mailto:info@ecosorba.co.uk)

enq.186



Building Regs compliant  
sound proofing for  
conversions and new build



Sound proofing upgrades  
for separating walls and  
floors

for practical wall & floor acoustic solutions

**Tel: 0845 838 3399**

e: [info@isomass.co.uk](mailto:info@isomass.co.uk)  
w: [www.isomass.co.uk](http://www.isomass.co.uk)

enq.187



# The cocktail party effect: Speech intelligibility and room acoustics

By Martin Rawlins, sales & marketing manager at RPG Europe

**W**e've all been to restaurants or events where the acoustics are so poor that you need to raise your voice in order to be heard. To make matters worse, when everybody else in the room is doing the same, the noise levels quickly get out of hand. We know that this type of environment can make conversation very difficult and uncomfortable for anybody, let alone sufferers of tinnitus or hearing loss.

Of course this problem is not limited to dining spaces. For obvious reasons, speech intelligibility is critical in classrooms and learning spaces, which led to the development of the BB93 guidelines for the acoustic design of schools. And increasingly, modern homes are being designed with a proliferation of hard surfaces and high ceilings, but with less of a regard for acoustics. This brings the problem of poor acoustics and long reverberation times into many households.

Preventing sound from being reflected against hard surfaces is the key to creating rooms that are acoustically functional. Carpeted floors or rugs, soft furnishings and curtains all help, but sometimes are not sufficient, or are just not used in the interior décor.

In this case, the traditional approach, seen in many recording studios, restaurants and schools, is to use fabric wrapped panels which contain an absorbent core material. These can be hung on walls and ceilings and are available in a wide range of sizes and finishes. They can even become artworks, abstract images, or larger than life photos with digital printing.

The total area of panels will determine how much the reverberation time (the time it takes for sound to die out) is reduced. Usually it is difficult to over-treat a room, but a general rule of thumb is to cover 25 per cent of the total room area (including the walls, floor and ceiling).

Generally speaking, for speech applications, a 50mm thick panel is sufficient (absorbing effectively down to about 150Hz), whereas for music that has more bass content 100mm panels will control the lower frequencies. Where the budget is smaller or LF performance is not so critical a 25mm thick absorber will still cut down on reverberation, improving speech intelligibility.

Aesthetically, many people are able to incorporate such panels into a domestic or commercial environment by matching fabric colours closely to the décor, by deliberately making them stand out as feature pieces or a combination of both. However, there are also many rooms where a panel type solution is not desired and an invisible solution is preferred.



Image courtesy of Clipso, manufacturer of stretch walls and ceilings

Project: IBC Innovation Factory – Denmark  
Architect: Schmidt Hammer Lassen Architects  
Installer: Ralbo Aps  
Manufacturer: Clipso Stretch Ceilings and Walls

There are a small number of stretch walls and ceiling solutions on the market that can meet these demands. Ideally a durable, highly engineered fabric should be sought, with acoustic transparency provided by micro perforations. This allows sound to pass through the fabric into an acoustically absorbent backing material. This gives the same performance as a fabric wrapped panel, but with the advantages of a wall to wall appearance, and corresponding increased surface area of absorption.

Stretch fabric walls and ceilings like this are generally tensioned within a discreet frame that is installed around the perimeter of the existing wall or ceiling. Installation is very fast, creating minimal disruption and mess. Services such as lights or smoke alarms can easily be accommodated, as can corners, curves and so on.

Philip Nash suffers tinnitus and hyperacusis, and being particularly sensitive to noise, recently decided to have an acoustically absorbent stretch ceiling installed in the dining room at his home. I asked Philip to explain why he did this and what effect it has had.

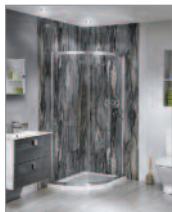
“Supper parties – for most people the biggest worry is what to cook and which wine to serve. However, for me it would be how long would I be able to last before the noise became too much and knowing the ringing in my ears would rise and be worse for days.

“Since taking the decision to install the absorbing surface in the ceiling, supper parties have become enjoyable again. The noise level does not increase as people can hear each other and don't need to raise their voices. Our friends have been amazed by the effectiveness of the installation. The downside is I can now clearly hear my wife talking about me at the other end of the table... her downside too!”

enq.188

**‘Preventing sound from being reflected against hard surfaces is the key to creating rooms that are acoustically functional. Carpeted floors or rugs, soft furnishings and curtains all help, but sometimes are not sufficient, or are just not used in the interior décor’**

## Bushboard Nuance laminate wallpanels

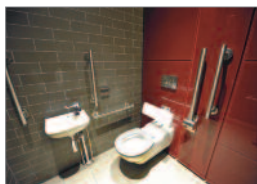


Bushboard's Nuance range of bathroom laminate wall panels are lightweight to handle and easy to install, ensuring a 100 per cent water-impervious surface that also earns top marks for looks. Premium quality granite and stone designs are available, creating luxurious looks that today's customers want but at a very reasonable cost. Unlike any other brand on the market, Nuance panels can be jointed and finished without any extrusions, creating a seamless and visually superior look. Two of the five panel sizes available include a slim post-formed edge that can be used to create a neat finishing solution as pictured on this corner shower cubicle in Dolce Vita True Scale design.

01933 232 272 [www.bushboard.co.uk](http://www.bushboard.co.uk)

enq.189

## Minimalist washrooms maximise remodelling



The minimalist styling of Maxwood's elegant Mystiq toilet cubicle system is maximising the 'grade A' remodelling of town centre offices in the heart of the Thames Valley. Fully refurbished to meet modern business needs, Twenty Kingston Road offers around 43,000 sq ft of superior commercial space in Staines-upon-Thames. The four-storey building's striking design detailing, bespoke features and stylish finishes are reflected in Maxwood's complete supply and fit package of executive male and female WCs, showers and lockers for each floor. Featuring a full height, flush-fronted design, the toilet cubicle system provided a true value solution for the project, without compromising

enq.191

## Kemmlit specified for high flyers lounge



German airline Lufthansa opened its own business class lounge at London Heathrow's new £2.5 billion Terminal 2 recently. The lounge, which has a view of the airport apron, is at 1,600 sq m, the largest Lufthansa lounge facility outside Germany. It includes: comfort zones; working areas; a bistro; hospitality desk; and seating for

over 200 passengers. In keeping with the high specification of the lounge, architects K2 specified Kemmlit's Primo F cubicle system finished in Graphite Grey for the toilets facilities. Primo is a very durable, smooth-surfaced cubicle system with doors and walls consisting of a 30mm thick composite construction, bonded on both sides with 3mm thick HPL solid core panels.

enq.190

## news bytes

Visit the website [www.architectsdatafile.co.uk](http://www.architectsdatafile.co.uk) and enter the reference number for more information

A Work of Art –  
HEXATHERM Insulation...  
Ref: 57013

First class washrooms for Transport  
Museum, Covent Garden, London...  
Ref: 98457

Get long term thermal insulation  
with Everbuild Thermofoam...  
Ref: 97427

Painting and decorating show  
highlights best of British...  
Ref: 35481

Vibrant interior reflects fresh flavour  
of Wahaca's Mexican restaurants...  
Ref: 42109

An ultra addition to the January  
Furniture Show...  
Ref: 42855

## Fine acoustic panel solutions, supplied and fitted.



### Why choose RPG Europe?

- Highest quality bespoke manufacturing
- Friendly technical advice & consultation
- Innovative products, competitively priced
- Huge range of solutions, from fabric wrapped panels to timber products and stretch fabric ceilings & walls
- Supply and installation from one company
- Fulfil your design without compromise

### Suppliers to:

- Education
- Arts & Entertainment
- Residential
- Commercial



Call: 01303 230944 [www.rpgeurope.com](http://www.rpgeurope.com)

The Sound of Innovation

enq.192

## [www.apolloradiators.co.uk](http://www.apolloradiators.co.uk)



### monza aluminium column radiator

Ideal for low temperature renewable systems

Ideal for high pressure systems

The latest patented european technology

A unique aluminium radiator design

Half the weight of steel

82 vertical and horizontal sizes

Delivered within 3 working days

[info@apolloradiators.co.uk](mailto:info@apolloradiators.co.uk)

enq.193



## Simple solution makes a difference



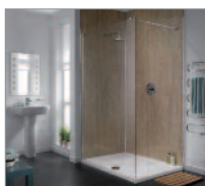
En suite wetrooms in a new £6.9 million, state-of-the-art dementia care home feature a space saving solution from **Pressalit Care** that help residents maintain their privacy for washing and showering, while ensuring close eye contact with their carers. The concept of a folding support arm with half-length curtain fitted alongside the bath or shower was first proposed to owners NorseCare

by experts at Stirling University as part of their collaboration on the new Lydia Eva Court. Barron and Smith Architects, part of the NPS Group, who designed the home, approached Pressalit Care to fulfil the solution for the en suite wet rooms at the new 88-bedroom care home.

0844 880 6950 [www.pressalit.com](http://www.pressalit.com)

enq.194

## Rustic Travertine offers stone look



Rustic Travertine, one of the most recent additions to **Showerwall's** waterproof laminate wall panelling system, reflects the latest trend for stones and granites in neutral colours in bathroom interiors without the price tag, providing an alternative to tiles. It mirrors the look of real stone but as a laminate panel is light-weight to handle, easy to cut and install. Where real

stone requires ongoing maintenance to keep it sealed, Rustic Travertine does not need retreating and can be cleaned with normal bathroom products. It is also vastly cheaper than real stone. It is one of six new design additions, extending the Showerwall range to 39 laminate designs in total.

0845 604 7334 [www.showerwall.co.uk](http://www.showerwall.co.uk)

enq.195

## Saniflo breathes new life into old watermill



Derelict for over 60 years, an old watermill in Middleton on Tees, County Durham, has a new lease of life thanks to a range of **Saniflo** pumps and macerators including a Sanicubic pumping station, two Sanipro units and a Sanitop macerator. Built in 1813, a house was added 50 years later and this was inhabited until 15 years ago.

The challenge was to incorporate bathrooms. With no existing toilets in the original mill and the toilets sited on lower and upper floors, with no gravity drainage, a pumping solution was required on both levels. The buildings have since been entered in to the LABC Conversion Award for Regional Building Excellence.

020 8842 0033 [www.saniflo.co.uk](http://www.saniflo.co.uk)

enq.196

## Accessible guidance



With the growing trend towards domestic bathroom adaptation, new guidance is aiming to help get it right. *Design Guidance & Considerations for a Domestic Accessible Toilet/Wetroom* has been produced and published by **Clos-o-Mat**. The white paper, available to download for free, gives advice to ensure that all

aspects affecting the functionality and practicality of a bathroom adaptation are duly considered and implemented where appropriate and practical. Robin Tuffley, Clos-o-Mat marketing manager explains: "Bathrooms are the most common form of home adaptation. Some half a million households without but in need of adaptation said they needed either a special toilet seat or aid to use the toilet."

0161 969 1199 [www.clos-o-mat.com](http://www.clos-o-mat.com)

enq.197

**BIMfor  
washrooms**  
by **bushboard**

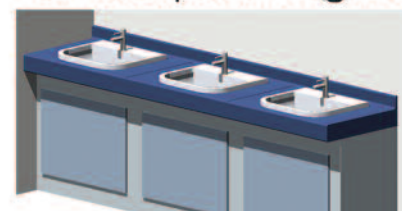
New!



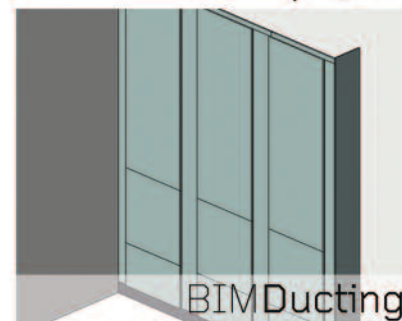
BIMCubicles



BIMBespokeHeights



BIMVanityUnits



BIMDucting

Models adhere to manufacturing parameters  
Create your layout  
Accurate designs  
Change fixtures and fittings  
Bushboard's full colour range

Download now  
[www.bushboard-washrooms.co.uk](http://www.bushboard-washrooms.co.uk)

enq.198



Supplier of ceramics to the Prince's  
Foundation's Natural House



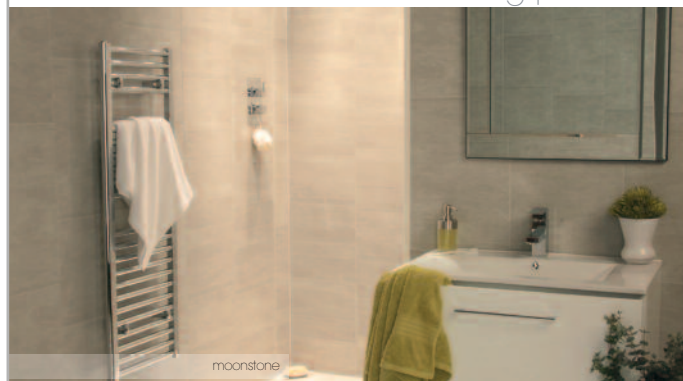
Shaws of Darwen have been manufacturing robust fireclay commercial sinks for over 100 years. The extensive ranges and sizes of laboratory, shelf, cleaners and traditional Belfast sinks suit every requirement



All enquiries 01254 775111  
[www.shawsofdarwen.com](http://www.shawsofdarwen.com)

enq.199

Marborex™  
decorative  
wall and ceiling panels



versatile designs  
easy to install

Swish Building Products

t: (01827) 317200 f: (01827) 317201  
e: [info@marborexpanels.co.uk](mailto:info@marborexpanels.co.uk)

[www.marborexpanels.co.uk](http://www.marborexpanels.co.uk)

enq.200

## Assisted bathing. Solved.

Specialist assistive baths for all healthcare developments



For almost 30 years, Gainsborough Specialist Bathing has diligently designed, installed and supported Europe's leading range of specialist assistive baths for all care environments. With an understanding for architect, designer and specifier needs, Gainsborough hi-lo powered baths deliver exceptional quality, comfort and safety for both users and care providers.

Delivering a duty of care through design.

0800 988 4237

[info@gainsboroughbaths.com](mailto:info@gainsboroughbaths.com) [www.gainsboroughbaths.com](http://www.gainsboroughbaths.com)

Quote: ADF1114



ASSISTED BATHS  
PATIENT HOISTS  
SHOWERING  
SOLUTIONS



MALVERN

**GAINSBOROUGH**  
Specialist Bathing



enq.201



# What do your washrooms say about your building?

There are many parts of a building that really emphasise what an establishment is all about. Experts at Amwell offer their advice on how to specify quality washrooms that say the right thing about your building and the company based there

**T**ake the front doors for example; these are not only the physical entrance to a building but also the mind's first impression. And following this there are a series of first impressions that the user is left with. The entrance hall, is it light and airy? Or is it dark and stuffy? The reception desk, is it a cool slab of contemporary marble or is it dated 60s mahogany? The lift, is it spacious and clad with gleaming mirrors? Or is it a dark recess that once you're inside is on a one stop mission to some uncertain fate?

Forgive the hyperbole, the point is all these things have an impact on the user and tells them a story, not only about the quality of the building but also the quality of the companies that work there.

The washrooms also play a big part in this.

When a building is brand new and ready to entice potential tenants, aside from the reception area and the lift, the only finished and furnished space is the washroom. Therefore that space needs to tell a story of quality, distinction and perfection. Think about when you visit the toilets in a restaurant. If the cubicles are tatty and the vanity area is not clean enough to put your shoes on let alone your handbag or wallet, it gives you a bad feeling about the hygiene standards in the kitchen. The same principle applies when visiting the washrooms in an office building. You want to be greeted by clean lines and contemporary colours. You want to feel smooth locking mechanisms and powerful hand dryers. You want to know that you are somewhere that has been designed and built with passion and pride embedded in every inch of the building – if you feel this just from visiting the washroom, just think what it will feel like to actually work in a place like that.

So, how do you ensure a building creates this atmosphere and user experience? Firstly you need to choose a washroom manufacturer that can offer you choice. You need to know that whatever product range you choose, quality is at the heart of the brand. Washroom cubicles can be manufactured from an array of materials from melamine-faced chipboard to glass and even solid surface. Like most big decisions these days the final choice is often dictated by budget, but by no means should compromise the finished design.

A washroom manufacturer should be able to offer an establishment consistent quality throughout. There are key questions



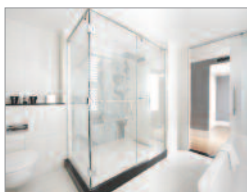
you should be asking your chosen supplier that will ensure you specify products that continue to look immaculate for years to come. What is the density of your core-board? How are your pilasters fixed to your partitions? What are the fixtures and fittings made from? How long has your system been on the market? What is its track record? When I am inside your cubicle, what fixtures and fittings will be visible? How is your cubicle fixed to the floor? What is my minimum ceiling clearance for this cubicle system? What guarantee am I being offered? The list goes on.

A washroom supplier should be able to give you detailed answers on all these questions, and fast. The manufacturer you deal with should recognise that they not only need to offer the best in terms of product quality and design but also the best in terms of customer service. Speed, accuracy and care; these three things bundled together with premium products determine the quality of the finished washroom. A washroom should ultimately say to people 'this is a building of quality and stature'. It should evoke a sense of pride in the people that work there and look after itself for years to come because it has been crafted out of years of industry knowledge and experience.

*'A washroom should ultimately say to people 'this is a building of quality and stature'. It should evoke a sense of pride in the people that work there and look after itself for years to come'*

enq.202

## Malmaison – Boutique Hotel, London



The Boutique Hotel required the installation of wetrooms into their guest ensembles. **Wetrooms UK** recommended a Modular Wet-Floor system for each bathroom at Malmaison – the perfect solution for timber floors as it allows any size or shape of wet room to be created quickly on a timber floor, while enabling the drain to be situated in almost any position within the

bathroom. Following the installation of the tapered board with built in two way falls, a waterless drainage trap and contemporary stainless steel grill were fitted, capable of coping with flow rates of up to 29 litres per minute.

0845 045 6001 [www.wetroomsuk.co.uk](http://www.wetroomsuk.co.uk)

enq.203

## New shower range from MX



**MX Group** has unveiled its latest offering to the bathroom sector, an impressive new range of thermostatic mixer shower valves offering its usual combination of incredible quality, great looking product, excellent warranties and keen pricing. There are 22 showering choices in the Atmos and Options ranges with most Atmos options complying with TMV2 regulations. Full details of the new ranges can be found at the excellent MX web site, by calling or emailing [sales@mx-group.com](mailto:sales@mx-group.com) and asking for a brochure.

01684 293311 [www.mx-group.com](http://www.mx-group.com)

enq.204

## Proof of wetroom success



Particularly suitable for use in the creation of wetrooms, the Aquatecnic Aquaproof system is available from **Delta Membrane Systems**. Developed specifically to prevent water leakage from tiled areas including wetrooms, shower areas, bathrooms and kitchens, Aquaproof is compatible with a wide range of substrates.

These include ply sheeting, shower tray formers, plasterboard, MDF, cementitious screed and the most commonly available waterproof construction boards. Aquaproof creates a fully tanked room preventing damage to walls and floors, and ensuring there is no leakage into adjacent rooms.

01992 523523 [www.deltamembranes.com](http://www.deltamembranes.com)

enq.205

## Formica launch improved washroom range



**Formica Group** addresses the demand for design versatility and bespoke interior schemes in the washroom sector with the launch of the extended Formica® Washroom Collection. A comprehensive resource of materials and decors, the collection features a strong palette including 25 new decors, and introduces Younique® by Formica Group, a custom laminate service which allows architects, designers and fabricators to create a truly bespoke look. Offering a combination of Formica® High Pressure Laminate (HPL) and

Formica® Compact, the Formica Washroom Collection offers a solution for all application areas and performance levels.

0191 259 3512 [www.formica.com](http://www.formica.com)

enq.206

## World renowned hotel gets the Schlüter-Systems treatment

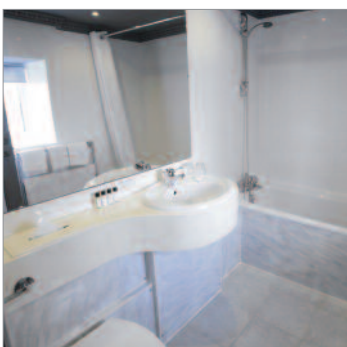


One of London's most exclusive and luxurious hotels has used **Schlüter-Systems** products as part of its grand refurbishment. The Lanesborough Hotel in Hyde Park Corner is in the process of extensive renovations which are being carried out by the late world renowned interior designer Alberto Pinto. The new designs will enhance all 93 guest bedrooms and bathrooms as well as all public areas and will honour the building's architectural heritage as one of London's most revered Regency landmarks. Under flooring solutions expert Schlüter has played its part in the major refurb by providing a host of products to the project including unique tile substrate Schlüter-KERDI-BOARD. The lightweight but extremely strong product offers the perfect solution for creating bonded waterproofing assemblies for tile coverings and can also be used as a structural panel. KERDI-BOARD is 100 per cent waterproof, cement free, lightweight and completely even and flat, making it the ideal substrate for tiling. As well as being waterproof, temperature resistant and vapour retardant, the product is also thermally insulating, quick and easy to install and contains no cement or fibreglass making it eco-friendly, while its fleece webbing allows for easy anchoring in thin-bed mortar. The new and improved guest rooms also boast a second-to-none underfloor heating system.

01530 813396 [www.schluter.co.uk](http://www.schluter.co.uk)

enq.207

## Geopanel, ideal solution for hotel refurbishment



The St James Hotel in central Nottingham has recently undergone a dramatic facelift and now features **Freefoam** Geopanel panelling in each bathroom. Owner Peter Johal has spent the last 12 months overseeing an extensive redecoration and refurbishment programme of the 87-bedroom hotel creating a contemporary, modern space right in the heart of the city. With such a large project cost effective measures were essential to ensure the refurbishment stayed on budget. Each bathroom needed modernising and while the existing tiles and plumbing configuration were satisfactory the fittings and bath panels needed replacing. The Geopanel 5mm panels in Pastel Grey and Black Marble were the ideal solution for the bath panels, creating a sleek, coordinating look with the added benefit of allowing easy access to pipework to quickly and simply fix any plumbing issues. The Geopanel interior decorative panelling system includes both a standard 250mm panel for walls and ceilings and a 1m wide panel, perfect for showers. The high gloss tongue and groove PVC panels are available in contemporary and traditional shades with matching finishing trims in white or silver to ensure a clean professional finish. The 100 per cent waterproof PVC core makes Geopanel ideal for both domestic and commercial environments.

01604 591110 [www.freefoam.com](http://www.freefoam.com)

enq.208





---

SANICUBIC. NO DRAIN? NO PAIN.

---

reader  
enquiry

209

**When gravity isn't on your side, you need dependable pumping power.** Our heavy-duty Sanicubic lifting station has two high performance motors for absolute reliability and is designed, tested and manufactured by Saniflo to pump black water waste away from multiple WC's and appliances up to 11m vertically and 100m horizontally. *Think Saniflo and think of the possibilities.*

**SANIFLO®**  
PLUMBING THE POSSIBILITIES

# PURUS

**Purus Limited** - high quality Swedish drainage solutions to meet all requirements and specifications, from domestic wetrooms to commercial and industrial projects

## Recently launched: a range of BIMObjects!

Now available at [www.purusgroup.com](http://www.purusgroup.com) for the Minimax 50, Minimax Two Part & Mini Brage floor gullies and the Purusline Living linear channel



**Purus Limited** | Suite 6, Arena Park | Scarcroft | Leeds | LS17 9BF  
New website now live at [www.purusgroup.com](http://www.purusgroup.com)  
Tel: 0113 289 3172 | Fax: 0113 289 3778 | E-mail: [info@purusgroup.com](mailto:info@purusgroup.com)

enq.210

## Hansgrohe gets EcoSmart in Oxford



Hansgrohe EcoSmart products were specified exclusively for a ground breaking eco efficient home renovation project in Oxford. The Talis E basin mixer provides modern looks and good performance despite a flow rate of just 3.5 litres per minute. The hand shower Crometta 85 Green

delivers 6 l/min; is operated by a concealed thermostatic control to ensure a constant safe temperature, and diverts to the Exafill bath filler. The shower room houses the Croma 220 overhead shower; delivering a generous downpour but with an EcoSmart flow rate of 9 l/min. The hand shower is the Raindance Select S120 hand shower with three spray functions, also delivering 9 l/min.

01372 465655 [www.hansgrohe.co.uk](http://www.hansgrohe.co.uk)

enq.211

## Let there be light whatever the hour



Geberit has introduced a new addition to its best-selling Monolith sanitary module, the Geberit Monolith Plus. Featuring the same sleek, elegant glass frontage as the original model, this not only conceals all plumbing, but also integrates a wealth of technology to raise the comfort levels in the contemporary bathroom. Available in a choice of

white or black glass, the elegant sanitary module has a discreet and indirect ComfortLight, providing a warm glow behind the module, automatically activated as the user approaches. It also features an integrated odour extraction unit, filling the space with clean, fresh air even in bathrooms with minimal ventilation.

0800 077 8365 [www.geberit.co.uk](http://www.geberit.co.uk)

enq.212

BIM Models  
now available

HORNE

Bi-modal showering from HORNE

...takes the detachable handset, hose and flow actuator...

...for assisted showering mode via automatic flow diverter.

Under-utilised showers waste space, time, water and money. Install a Horne bi-modal shower panel to increase usage. Free up space and reduce maintenance time spent flushing water down the drain. For unassisted showering, the water flows via the fixed vandal and ligature resistant shower head, and via the handset and hose for assisted showering. Available with ligature resistant (pictured) or moulded lever controls to cater for different user needs. Includes integral TRV3 Scheme Approved TSV1-3 thermostatic shower valve

Visit [www.horne.co.uk/Products/Shower-Panels/](http://www.horne.co.uk/Products/Shower-Panels/) for a complete tour of the range.

**Horne Engineering Ltd**, PO Box 7, Rankine Street, Johnstone, PA5 8BD  
Tel: 01505 321455 Email: [sales@horne.co.uk](mailto:sales@horne.co.uk)

[www.horne.co.uk](http://www.horne.co.uk)

enq.213



## news bytes

Visit the website [www.architectsdatafile.co.uk](http://www.architectsdatafile.co.uk) and enter the reference number for more information

Discover future proof flooring at Homes 2014...  
Ref: 39132

Residential Care home bedroom doors: Closers, Hold-open or Swing free?...  
Ref: 50945

Detail in Contemporary Staircase Design, Paul Barton...  
Ref: 31083

B3 Designers create the interiors for new restaurant Greenwich Kitchen...  
Ref: 50595

Stannah – gifting their 20th Microlift to a worthy cause...  
Ref: 18052

Office of future and a cinema inspired by past are among winners of premier international interior design awards...  
Ref: 41039

## Stadium choose Franke Washroom Systems



Northern Ireland's Ravenhill Stadium in Belfast, has benefitted from several redevelopments in recent years, the most recent being a £16 million investment in three new stands. Andy Dukelow, managing director of Franke Sissons, also known as Franke Washroom Systems: "Ravenhill has a long and compelling Rugby history. We are very proud to have been selected to provide washrooms in this stunning facility." Franke Washroom Systems, working in partnership with Harvey Group and Beggs & Partners of Belfast, supplied stainless steel urinals and washtroughs for the washrooms in Aquinas, Memorial and Grand stands.

[ws-marketing.gb@franke.com](mailto:ws-marketing.gb@franke.com) [www.franke.com](http://www.franke.com)

enq.214

# A New Collection of Thermostatic Mixer Showers

**Stylish looks and attractively priced**  
**High performance TMV2 approvals where applicable**  
**Up to 5 year guaranteed products**

**The MX Group\*** Tewkesbury, Gloucestershire GL20 8JF. Tel: 01684 293311 [sales@mx-group.com](mailto:sales@mx-group.com)

## Atmos Options

**EASY FIT KIT**

[www.mx-group.com](http://www.mx-group.com)

\*Meriton Cross Limited Trading as The MX Group

enq.215

## MODULAR SHOWERING SOLUTIONS

- LEAK FREE
- DESIGN BUILD
- ZERO MAINTENANCE
- DURABLE & RELIABLE
- RECYCLABLE
- QUICK & EASY TO INSTALL
- ISO 9001 REGISTERED
- ISO 14001 REGISTERED
- 25 YEAR GUARANTEE

**TAPLANES®**  
SHOWERING SOLUTIONS

Telephone 01423 771645 • Email [admin@taplanes.co.uk](mailto:admin@taplanes.co.uk) • [www.taplanes.co.uk](http://www.taplanes.co.uk)

enq.216

wetrooms

wetrooms

wetrooms

wetrooms

wetrooms

wetrooms

wetrooms

## LINKE LINE

**A cost-effective, time-saving channel drain for large scale projects**

- Made in England.
- Purus NOOD gulley 36–72 lit/min.
- Rigid, heavy 1.5mm stainless (700mm unit weighs 2.5kg.)
- Timber joist or concrete.
- Next day delivery singles or quantity.

**Purus outlet/gulleys**

|          |       |
|----------|-------|
| 36 Litre | 52mm  |
| 72 Litre | 105mm |
| 72 Litre | 105mm |
| 92 Litre | 105mm |

**A winning combination of top quality and amazing affordability**

[www.wetroominnovations.com](http://www.wetroominnovations.com) **01629 815500**

wetrooms

wetrooms

wetrooms

wetrooms

wetrooms

wetrooms

wetrooms

enq.217

## Cut above the rest for Gerflor



Sally Salon Services, one of the UK and Ireland's largest professional hair and beauty suppliers, has opened its new flagship store of the north in Leeds. International flooring specialist **Gerflor** was chosen to supply the Luxury Vinyl Tile and Plank (LVT) products, where functionality and design

are fused together providing the ultimate flooring solution. Downstairs in the Sally Salon Services store the Insight Mineral tile Parker Station was chosen for its technical performance as it is highly resistant to medium to high footfall and commercial traffic (European class 33/42). It comes in a large palette of mineral designs to suit all interior styles.

01926 622600 [www.gerflor.co.uk](http://www.gerflor.co.uk)

enq.218

## Mapei helps with green spec at the Crystal



A Mapei subfloor and tile installation system has been specified at the Crystal – Siemens' iconic sustainability centre located in East London's Royal Docks. Designed by Wilkinson Eyre Architects and Pringle Brandon Perkins+Will, the glass-clad structure is one of the world's greenest buildings, achieving BREEAM Outstanding and Platinum LEED accreditation. Mapei contributed to the eco-specification and included Mapei Topcem screed and low VOC adhesives and grout – Keraquick, Keraflex and

Ultracolor Plus. Corinthian Ceramics installed Domus porcelain and stone wall and floor tiles using Mapei products, for main contractor ISG.

0121 508 6970 [www.mapei.co.uk](http://www.mapei.co.uk)

enq.219

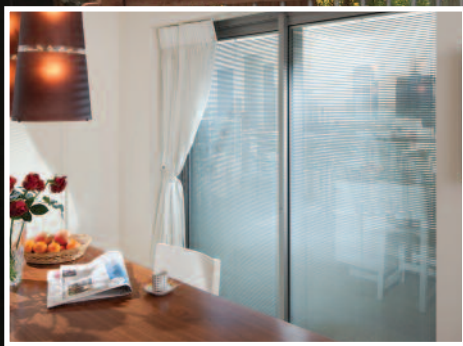
## Encasement helps Tesco present a fresh face at Birmingham store



Decorative aluminium and stainless steel column casings together with an extensive horizontal bulkhead are providing shoppers with a welcoming entrance to the Tesco Extra store, which forms part of a £40 million retail redevelopment at Birmingham's Swan Centre in Yardley. Constructed by Bowmer & Kirkland, the Tesco store and 21 additional retail units provide around 170,000 sq.ft of retail space, with the mixed use regeneration scheme also including the refurbishment of an adjacent residential block. To meet Tesco's requirements for an attractive frontage to both the store entrance and multiple check-out exits, which run the entire length of the 100 metre long enclosed mall, **Encasement** supplied and installed a high level bulkhead as well as eleven square column casings from its 'Forma' metal range. Encasement's 600mm square column casings are finished in two different colour schemes to help shoppers clearly identify the entrance and exits. Close to the entrance, three of the casings are finished in a bright red, to match Tesco's corporate colours incorporating two textured 150mm wide stainless steel strips at the base and mid level. The remaining eight casings, adjacent to the array of checkout tills, are split 50/50, with the top half manufactured from aluminium coated in a PPC finish with the lower portion using durable Rimex stainless steel incorporating a textured 'linen' pattern to provide maximum protection from damage in this busy retail environment.

enq.220

# No Strings Attached Totally cordless system



## Magnetic & Motorised integral blinds



# between glass blinds™



t. 020 8500 2200 [www.betweenglassblinds.co.uk](http://www.betweenglassblinds.co.uk)



enq.221



## Spectacular stone effect tiles



Inspired by different types of stone, Rocking is a truly different and unique tile range from Solus Ceramics that breaks the notion that a tile range should only represent one theme or reference a single particular design aesthetic. Instead of offering just one interpretation of stoneware, Rocking offers a diverse selection of stone effect choices within its collection

including slate, granite and limestone finishes. This abundant diversity of choice provides architects and designers with the opportunity to create unbelievable project designs with a relatively simple and compact palette of tile colours.

0121 753 0777 [www.solusceramics.com](http://www.solusceramics.com)

enq.222

## The right environment at Hereward College



Hereward College, Coventry, is a general further education college that provides day and residential places to disabled and non-disabled students, including those with cognitive, physical and sensory impairments. KNX intelligent building technology has been implemented as the platform for the

environmental controls that help students to access the facilities and services that the college provides. These systems provide an easy, independent means of operating various appliances, from TVs and hi fi equipment to other items within a student's immediate environment including doors, windows, curtains/blinds, lighting, and room temperature.

enq.223



## Take the hi-line with internal doors

Specifiers looking for real veneered doors that embody the natural beauty of wood, while at the same time providing a truly consistent grain and colour, should look to the new Hi-Line range from Vicaima. The Hi-Line range offers plenty of scope for design with fully finished doors manufactured in a choice of Crown Line, with its pronounced grain pattern in Oak and Walnut FSC certified veneers, through to Straight Line (SL), where as the name suggests a more regular grain configuration is presented. SL can be supplied in a full spectrum of veneer options, from the dark and luxurious ebony to the bright hues of Ash. For the more adventurous in taste, Hi-Line offers even more flexibility to make your chosen design stand out from the crowd. Both vertical and horizontal grain patterns are available throughout the range, and with Cross Directional Veneer (CDV) SL you can either choose a single veneer colour, or mix and match.

01793 532333 [www.vicaima.com](http://www.vicaima.com)

enq.224



## WEDGE GROUP GALVANIZING

*Your Galvanizing Partner*

- Quality approved Galvanizing • Technical support and advice
- See the process in action and take your CPD
- 14 plants across the UK offer you a national service
- We galvanize steel from 1.6mm to 29m long

Excellence in Galvanizing

**WEDGE**

E: [galvanizing@wedgagalv.co.uk](mailto:galvanizing@wedgagalv.co.uk)  
T: 01902 600704 [www.wedgagalv.co.uk](http://www.wedgagalv.co.uk)  
@wedgagalv



**GALVANIZERS  
ASSOCIATION**

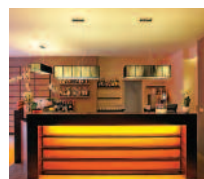


Head Office: Stafford Street,  
Willenhall, West Midlands, WV13 1RZ

enq.225

## MODERN LIGHTING SOLUTIONS

more than light



Lighting catalogue with style shots available on request

0208 123 7914 [modernlightingsolutions.co.uk](http://modernlightingsolutions.co.uk)

enq.226

# Let the only limitations be your imagination



Platform lifts have been installed in the UK for over 20 years and in that time they have developed into a flexible and viable alternative to conventional passenger lifts. Constant pressure landing and platform buttons have now been replaced with automatic call buttons on the

landings and with the addition of a three sided cabin with ceiling and light, the open style platform/cabin push buttons can also be made one touch control, allowing the platform lift to run automatically.

The range of internal and external finishes available has moved on from the first platform lifts, with square cut steel hand rails replaced with smooth, curved anodized aluminium hand rails. External finishes have moved away from the standard glass and steel shaft panels and are now available in a mind-blowing array of alternative finishes.

At the forefront of this development in quality finishes to platform lifts are the Cibes Lift Group and Axxess 4 All, based in the UK. As the UK subsidiary of the Cibes Lift Group, Axxess 4 All can offer a range of frosted or tinted glazed shaft panels along with the option to powder coat steel shaft panels in any RAL colour.

As the drive system has also been refined over time, Axxess 4 All is now pleased to offer glazed, frosted or tinted shaft panels to the mechanism

side of the platform lift, meaning the unit can now be fully glazed on all four sides. With a range of full height landing doors available in powder coated steel, anodized aluminium, stainless steel and even a fully glazed one-hour fire rated, the number of variations available in the product is no longer limited to the standard product range.

The only limitation to the product is now only your imagination.

enq.227

0844 375 8882 [www.axsess4all.com](http://www.axsess4all.com)



## Zip pioneers radical new design for instant boiling and chilled filtered water



Zip has been one of the leaders in the filtered boiling and chilled water market since it launched its iconic HydroTap filtered boiling model in 2000. Now, pushing this growing sector even further, it has launched the most advanced drinking water appliance to date, the HydroTap G4. Designed to deliver even greater performance, the latest evolution of the instant boiling and chilled filtered water system has been repackaged into the smallest footprint to make it the perfect choice for commercial and residential applications. HydroTap G4 maintains its stylish and sophisticated finish, however, the all new under-sink 'command centre' has undergone a great deal of development to give greater efficiency and more superior control. The WRAS approved G4 cuts standby operating power substantially, when compared to other systems of similar delivery performance. This saving is due to the G4's improved power saving technology and increases in energy efficiency through enhanced thermal insulation. Zip's Powerpulse® technology also maintains the boiling water to within 0.2°C of set temperature to reduce the amount of energy required to heat water from standby. The G4 offers a sculptured chrome tap with a red boiling water lever and blue chilled water lever. All G4 taps also feature a safety button to eliminate accidental use.

08456 005 005 [www.zipheaters.co.uk](http://www.zipheaters.co.uk)

enq.228

## Blues Kitchen in Shoreditch revives tradition of faience fronted bars



The Blues Kitchen Shoreditch has recently opened, complete with a vast, four square, Victorian-inspired, ceramic tiled fronted bar. UK specialist tile company Craven Dunnill Jackfield was responsible for the project, from design to hand-manufacturing the tiles and then factory-mounting the tiles onto panels for rapid installation on-site. The tiled bar front is in keeping with the historical tradition which dates to the 1880s. It is opulent and rich in style, with a central motif that features a mythical lion's head, embellished with swags and fruit. The deeply textured relief tiles are made using hand carved plaster moulds and decorated using metal oxide glazes which craze upon firing to create an authentic aged effect. Special moulded external corner fittings were designed and made to allow the highly decorative and ornate patterning to flow seamlessly around the external corner of the bar front. In order to meet the planned opening schedule, the Craven Dunnill Jackfield team explored options to reduce the installation time and overcome issues associated with fixing heavy ceramic tiles to a vertical surface. The solution was to supply pre-tiled modules that were assembled on-site and grouted in situ for a purely professional finish.

01952 884124 [www.cravendunnill-jackfield.co.uk](http://www.cravendunnill-jackfield.co.uk)

enq.229



## Signet innovative gate locks



Signet are a distributor of quality and innovative locks and hardware for gates. With their experienced technical team and excellent service they can provide you with a product to secure your gate in any situation. The range of bolt-on gate locks are a convenient method for securing a gate. Select Pro bolt-on locks are easily installed to new fabrications or existing gates. The four options, each with varied locking actions means there is a lock to suit every situation:

- Deadlock – use the key to secure the gate, deadbolt moves 30mm
- Key latch – holds the gate shut and requires the key to open every time
- Latch – convenient method of holding a gate closed and gives a professional finish to any gate
- Latch deadlock – professional and stylish gatelock, turn the key to extend the deadbolt 30mm into the gate post for maximum security.

For more information on Select Pro please visit our website.

01243 552066 [www.signetlocks.co.uk](http://www.signetlocks.co.uk)

enq.230

## New BM TRADA video demonstrates the fire testing process



BM TRADA has updated its free video explaining the fire resistance testing process for passive fire protection products such as fire-resisting doorsets and fire penetration seals.

Aimed primarily at companies who are developing and manufacturing fire protection products, the updated video, *Fire Resistance Testing Explained*, takes the viewer through the entire fire testing process from specimen design and how to devise a fire test programme, to obtaining third party certification.

Using a live fire doorset test as an example, the video shows how products are prepared for testing and the range of measurements that are taken during the test. The film highlights typical failure criteria and explains the test evidence required to prove the performance of typical passive fire protection products. The video runs for approximately 20 minutes.

01494 569750 [www.bmtrada.com/technical](http://www.bmtrada.com/technical)

enq.231

**SAiGE**  
Longlife Decking

**Decking**

**PROVIDERS OF PREMIUM,  
ENVIRONMENTALLY SOURCED,  
COMPOSITE DECKING.**

CHARCOAL OAK LIGHT GREY REDWOOD

COMMERCIAL GARDEN MARINE

**WWW.SAIGEDECKING.COM**

SAiGE Longlife Decking Ltd. | [info@saigedocking.com](mailto:info@saigedocking.com)

enq.232

**FRONTIER  
PITTS**

**IWA 14 Impact Tested  
Terra 180° Swing Gate**

Successfully impact tested  
stopping 7.2t @ 30mph  
Lightweight, Bi-directional HVM Swing Gate  
Sleek Design, manually operated  
Secure widths up to 6m  
Shallow foundations up to 350mm

**IFSEC's  
SECURITY & FIRE  
EXCELLENCE  
AWARDS 2014  
FINALIST**

Also available Sliding & Hinged Gates, Automatic Barriers, Road Blockers & Bollards,  
Manual Equipment & Pedestrian Control, BS1 PAS 68 HVM Anti Terra Range

[www.frontierpitts.com](http://www.frontierpitts.com) 01293 422800

enq.233



## TD supports for timber decking

The safe, easy and fast way to construct timber decking on structural decks.

- Lifts decking off the deck thereby protecting the membrane beneath
- Extends the life of timber by avoiding contact with standing water
- The fall of the deck is taken out by the adjustable legs so timber does not need to be cut to angles.

Address:  
Unit 16 Capital  
Business Centre,  
22 Carlton Road,  
South Croydon  
CR2 0BS

Call Wallbarn today on **0208 916 2222**,  
email [sales@wallbarn.com](mailto:sales@wallbarn.com) or visit  
[www.wallbarn.com](http://www.wallbarn.com) for more information

enq.234

## Nomow complete 1st Primary Spaces project



Nomow is delighted to announce successful completion of its first Primary Spaces play area at Curledge Street Academy. Working with Wicksteed Leisure to transform the schools previously dull, grey, concrete play area, Nomow have been able to provide a bright, multi use area suitable for use all year round. Funding for the project

is part of Sport England's £18 million National Lottery funded Primary School Facilities Fund, which is helping more schools to provide outdoor multi-activity play areas across the country. Artificial grass has been approved as an alternative to Polymeric/Wet Pour for use in PS1, PS2, PS3 and PS4 Primary Play Spaces.

0800 587 0380 [www.nomow.co.uk](http://www.nomow.co.uk)

enq.235

## New JB Antislip Plus® timber boardwalk



The collaboration of Sustrans (a charity supporting the use of walking, cycling and public transport) with Cheshire West, Chester Council and Flintshire County Council, has seen the completion of improved cycle routes from North Wales to the Wirral Way.

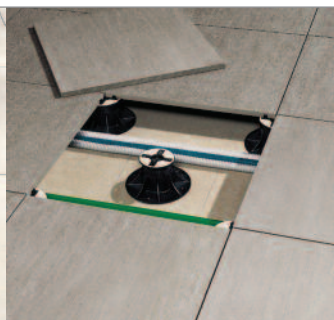
The cycle path provides an important link between Cheshire Flintshire and the Wirral, connecting the Wirral and National Cycle Network route between England and Wales. JB Antislip Plus®, with a smooth profile, was chosen for the 3m wide cyclepath that crosses the marsh at Burton on a raised wooden boardwalk.

01427 613858 [www.johnbrash.co.uk](http://www.johnbrash.co.uk)

enq.236

## LEVATOMONO porcelain paver system

The Levato Mono porcelain paver system is the pinnacle of external raised flooring technology; enabling the specification of lightweight, slip resistant and attractive raised flooring solutions, combining incredible technical properties with uncompromising aesthetics; making them the ideal choice for commercial and domestic use alike.



- 20mm porcelain pavers 40x80 45x90 60x60 75x75 30x120 40x120 60x120
- 'Floating floor' – installation over single ply membrane and pool surrounds
- Eternal product – zero maintenance required – offering massive over-life savings
- Highly abrasion and stain resistant
- Highly slip resistant ; R11 and achieved up to +65 wet in the BS pendulum test
- Lightweight – 45kgs per m<sup>2</sup>
- High load bearing and impact resistance
- Timber & stone effects; 40+ finishes available
- Ideal for balconies, roof terraces and piazzas, for both commercial & residential use
- Completely non porous
- Fire & frost proof
- Height-adjustable support from 9mm up to 550mm
- Matching internal tiles

t: 0845 2700 696 e: [info@thedecktileco.co.uk](mailto:info@thedecktileco.co.uk)  
[www.thedecktileco.co.uk](http://www.thedecktileco.co.uk)



enq.237



# classified & directory

## BABY CHANGING UNITS

**Baby Point Ltd**  
Unit 15, Tomo Business Park, Stowmarket,  
Suffolk, IP14 5EP  
Tel: 01449 770607 Fax: 01449 678444  
Email: sales@babypoint.co.uk  
[www.babypoint.co.uk](http://www.babypoint.co.uk)

Baby Point is an ISO 9001 UK based company specialising in the design and production of commercial baby changing equipment. All products are developed and tested to comply with the European Standard for the design of baby changing equipment BSEN 12221- 1: 2008.

## BATHROOMS & WASHROOMS

**Ophardt Product (UK) Ltd**  
18 Shaftesbury Street South  
Derby DE3 8YH  
Tel: 01332 297666

[www.heatedmirrors.co.uk](http://www.heatedmirrors.co.uk)



**Satana Int Ltd (01935) 891888**  
we also design bespoke  
Steam-Free Mirrors

Enq. 501

## COLUMN CASINGS

**Encasement Ltd**  
Peartree Business Centre, Enterprise Way,  
Bretton, Peterborough PE3 8YQ  
Tel: 01733 266 889 Fax: 01733 268 999  
Email: sales@encasement.co.uk  
[www.encasement.co.uk](http://www.encasement.co.uk)

## DOORS & WINDOWS

**Timber Door Canopies**  
*by George Woods*



**Tel: 01363 884218**  
[www.timberdoorcanopies.co.uk](http://www.timberdoorcanopies.co.uk)

Enq. 502

If you're interested in advertising within this section please contact the sales team on

**01435 863500**

## HEATING & VENTILATION

**OPIES UK LTD**  
LIGHTING YOUR FIRE

PREMIUM QUALITY FIREWOOD

Vermiculite and Calcium Silicate fireproof, insulating and refractory panels for woodburning stoves and fireplaces


**Skamolex GOLD Skamolex BLUE**

**01245 468 977**  
[www.john-opie.co.uk](http://www.john-opie.co.uk)

Enq. 503

## INSECT SCREENS

**The Flyscreen Company**



- Flyscreen Systems for Windows & Doors
- Insect Mesh for Cladding & Ventilation

Tel: 01454 238288 Fax: 01454 238988  
sales@flyscreen.com [www.flyscreen.com](http://www.flyscreen.com)

Enq. 504

## INTERIORS – DOORS


**Vicaima Ltd**  
Drakes Way Business Centre, Marlowe Avenue, Greenbridge Industrial Estate, Swindon, Wiltshire, SN3 3JF  
Tel: 01793 532 333 Fax: 01793 530 193  
Email: info@vicaima.com  
[www.vicaima.com](http://www.vicaima.com)

## INTERIORS – OFFICE SEATING

**Mesh Office Seating (UK Ltd)**  
Riverbank Mill, 2 Stoneygate Road Newmilns, East Ayrshire KA16 9BN  
Email: info@officechairs.co.uk  
[www.officechairs.co.uk](http://www.officechairs.co.uk)

## LIFTS & ESCALATORS

**SAXON**



Scissor lifts for all applications direct from the manufacturer

**SAXON LIFTS LTD**  
Grand Union Works,  
Whilton Locks, Northamptonshire, NN11 2TH  
Tel: +44 (0) 1527 863555 Fax: +44 (0) 1527 863607  
Email: mail@saxonlifts.com Website: [www.saxonlifts.com](http://www.saxonlifts.com)

Enq. 505

## LIGHTING

**Lumisphere™**  
**Lighting Solutions**  
[www.lumisphere.co.uk](http://www.lumisphere.co.uk)



NEW PRODUCTS NOW AVAILABLE  
TEL: +44 (0) 1245 329999

Enq. 506

## ROOFING

**Liquid Roofing and Waterproofing Association (LRWA)**  
Roofing House, 31 Worship Street London, EC2A 2DY  
Tel: 0207 448 3859 Email: info@lrwa.org.uk  
[www.lrwa.org.uk](http://www.lrwa.org.uk)

## SOLAR SHADING (BRISE SOLEIL)

**Levolux Limited**  
1 Forward Drive, Harrow Middlesex HA3 8NT  
Tel: 020 8863 9111 Fax: 020 8863 8760  
Email: info@levolux.com  
Reg: Levolux Ltd – 1834176  
[www.levolux.com](http://www.levolux.com)

## TILES & TILING

**Solus Ceramics**  
Warwick Road, Sparkhill, Birmingham Worcestershire, B11 2QX  
Tel: 0121 7530777  
Email: sales@solusceramics.com  
[www.solusceramics.com](http://www.solusceramics.com)

## TIMBER & JOINERY

**OAK BEAMS**

IMMENSE STOCKS

WIDE OAK FLOORBOARDS  
BRICKS, PEG TILES ETC,  
BARN FRAMES, FOR RE-ERECTION

**ANTIQUE BUILDINGS LTD**  
Tel: 01483 200477  
[www.antiquebuildings.com](http://www.antiquebuildings.com)

Enq. 507

## WINDOW CONTROLS

**WP**



**WINDOW OPERATORS**

Manual + Electric  
New + Repairs  
Teleflex + Clearline + others  
For High Level & Awkward to reach Situations

Contact: **Woodland Properties**  
T/F: 01344-886459

Enq. 508



## Website

The ADF website is an online provider of past and present products and news items for the architect or specifier. [www.architectsdatafile.co.uk](http://www.architectsdatafile.co.uk) is a one-stop source for all the latest press releases providing any visitor with access to information about products and services that they may require for their project as well as news relevant to architectural developments.



## Newsletter

Emailed on a fortnightly basis, the ADF newsletter is designed to provide you with the latest information on products and services of interest, direct to your inbox. You can quickly gather a snapshot of information from up to 12 carefully selected companies and easily follow links through to further information on [www.architectsdatafile.co.uk](http://www.architectsdatafile.co.uk), or go directly to the company's own website. Brochures and videos are also regularly available. Go to the ADF website to subscribe.



## Digital issue

The ADF digital issue provides all the same content as the print issue with the added advantage of being instantly available whenever and wherever you have access to the internet. In addition to its ease of access, the ADF digital issue gives direct links to advertisers, allowing you to visit a potential supplier's website with the click of a mouse. Go to the ADF website to subscribe.

EVEN MORE WAYS TO GET THE LATEST INFORMATION FOR ARCHITECTS... EVEN MORE WAYS TO GET THE LATEST INFORMATION FOR ARCHITECTS... EVEN MORE WAYS TO GET THE LATEST INFORMATION FOR ARCHITECTS...

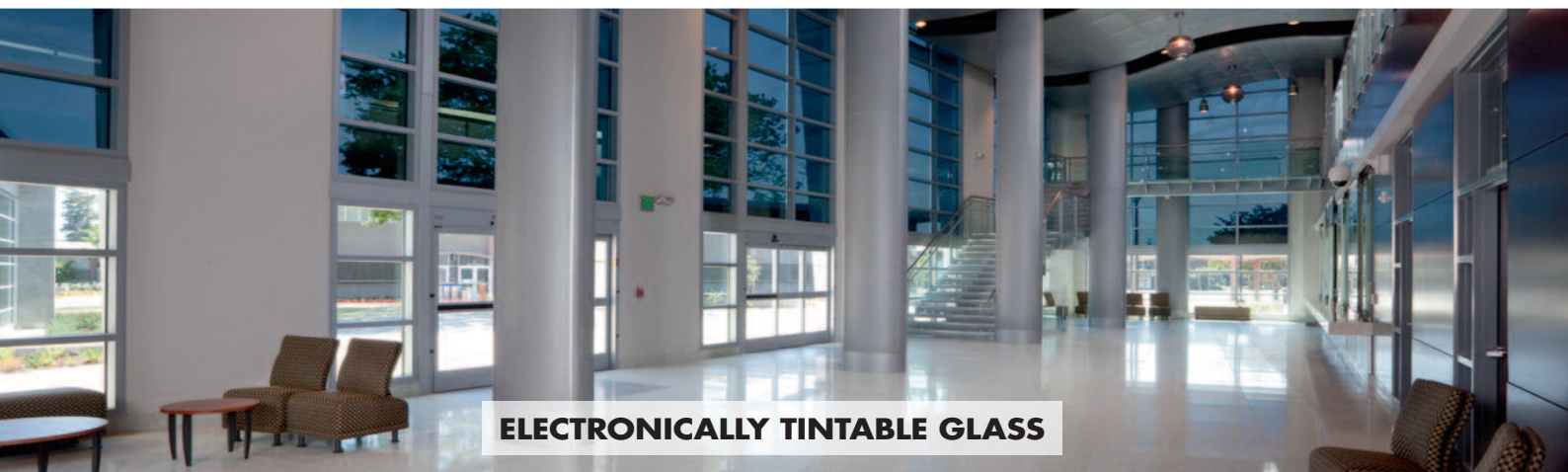




**FIRE-RESISTANT GLASS**



**SECURITY GLASS**



**ELECTRONICALLY TINTABLE GLASS**

## **HIGH-PERFORMANCE GLASS BY VETROTECH: ELEGANCE, COMFORT AND FUNCTIONALITY COMBINED.**

Vetrotech safety and comfort glass offers the ultimate protection for people and property, while providing the aesthetic and multi-comfort qualities you expect from architectural glass. More than 30 years of experience means we are able to deliver solutions for virtually any application, worldwide. Visit [www.vetrotech.co.uk](http://www.vetrotech.co.uk) to learn more about our factory in Coventry and our comprehensive product range, or call 0247 654 7620.

Vetrotech Saint-Gobain UK distributes SageGlass®, electronically tintable glass for improved comfort and energy efficiency.