

# selfbuilder & homemaker

November/December 2014

[www.sbhonline.co.uk](http://www.sbhonline.co.uk)

## FEATURES IN THIS ISSUE:

Cladding & Facades  
Doors, Windows & Conservatories  
Floors & Floor Coverings  
Selfbuild Finance & Insurance  
Timber & Joinery  
Southern Home Show Preview  
Kitchens & Appliances Showcase  
Stairs, Balustrades & Balconies Showcase

HEATING & RENEWABLE ENERGY SUPPLEMENT





the **underfloor heating** store



Reader  
Enquiry  
**401**

☒ UNDERFLOOR HEATING

☒ AIR SOURCE HEAT PUMPS

☒ SOLAR PV SYSTEMS

☒ EASY TO INSTALL KITS

☒ UK'S LOWEST PRICES

☒ WET ROOMS

*Save on bills & make money by the energy you generate!*

### WATER UNDERFLOOR HEATING



from  
**£409.99** INC VAT

### SOLAR PV PANEL SYSTEMS



**INCLUDES  
INSTALLATION**

subject to site survey



from  
**£2249.99** INC VAT

### AIR SOURCE HEAT PUMPS



from  
**£2299.99** INC VAT

*Everything you need under one roof!* Discounts available when you buy online, enter this code at checkout: **HBDISCOUNT**

 as **SEEN** on TV...

**sky**

**BBC**

**DIY SOS**

**4 THE HOME SHOW**

[www.theunderfloorheatingstore.com](http://www.theunderfloorheatingstore.com)

call today and quote this Ad for discounts

**0844 800 3396**



**FREE NEXT DAY  
DELIVERY**

# contents



18

## features

18

### BUILDING THE ULTIMATE MAN CAVE

Heather Dixon looks at how professional property developer Charlie Walker took on the design and development of his own dream house

42

### A THOROUGHLY EXTRAORDINARY WEATHERBOARD

Self-builders strive to create homes that are distinct and appealing, while not ending up with a structure that looks out of place in its surroundings. Marley Eternit looks at why fibre cement weatherboarding is able to retain a timeless appeal, while adding a modern twist to create a contemporary home

46

### STEEL YOURSELF...

John Pyatt, managing director of Crittall Windows, highlights the benefits and considerations when installing steel windows as part of your self-build project

55

### TRENDY TILES

British Ceramic Tile's Head of Design Claire O'Brien discusses the latest trends in flooring as well as what is set to be extremely popular for new builds in 2015

59

### SLAYING THE SITE INSURANCE MYTH

Simon Middleton, director for insurance and warranty specialist Self-Build Zone, provides us with the top 10 site insurance misconceptions

64

### CASH IN THE ATTIC

Jonathan Fellingham, managing director of Donaldson Timber Engineering (DTE), looks at how engineered timber solutions can meet the growing demand for creating 'room-in-the-roof'

## product round up

Appointments & News .....	40
Bathrooms & Wetrooms.....	40 -41
Building Products & Services.....	41
Cladding & Facades.....	42 -43
Doors, Windows & Conservatories.....	44 -53
Finance & Insurance.....	57 -59
Floors & Floor Coverings.....	53 -57
Garage Doors .....	49 -52
Glass & Glazing.....	58
Groundworks & Sewage Treatment.....	58
Kitchens & Appliances.....	14 -17
Landscaping & External Finishes.....	60
Plant, Tools & Equipment.....	58
Pools & Spas.....	58
Rainwater & Greywater Products .....	60
Roofing .....	60
Stairs, Balustrades & Balconies.....	61 -63
Timber & Joinery.....	63 -65

## also in this issue

4

### INDUSTRY NEWS

14

### KITCHENS & APPLIANCES INTERIORS SHOWCASE

26

### EDITOR'S FOCUS

27

### HEATING & RENEWABLE ENERGY SUPPLEMENT

39

### SOUTHERN HOME SHOW PREVIEW

61

### STAIRS, BALUSTRADES & BALCONIES SHOWCASE

66

### CLASSIFIED & DIRECTORY





Cover image © Formica Group.  
See page 16 for more.



Cointronic House, Station Road,  
Heathfield, East Sussex, TN21 8DF

#### Advertising & administration

Tel: 01435 863500  
Fax: 01435 863897  
Email: [info@netmagmedia.eu](mailto:info@netmagmedia.eu)  
Website: [www.sbhonline.co.uk](http://www.sbhonline.co.uk)

#### Editorial features

Tel: 01435 863500  
Fax: 01435 863897  
Email: [lesley@netmagmedia.eu](mailto:lesley@netmagmedia.eu)

#### Press releases

Email: [editorial@netmagmedia.eu](mailto:editorial@netmagmedia.eu)

#### Publisher:

Simon Reed

#### Sales director:

Lesley Mayo

#### News editor:

David Mote

#### Contributor:

Heather Dixon

#### Deputy editor:

Gabrielle Vinyard

#### Editorial & production assistant:

Roseanne Field, Kate Holman &  
Mikey Pooley

#### Senior sales executive:

Sheehan Moir-Edmonds

#### Display sales:

Liam Cornford & Nathan Hunt

#### Sales executives:

Suzanne Easter & Kim Friend

#### Circulation/reader enquiry service:

Jane Spice

Subscription costs just £18 for 6 issues, including post and packing. Phone 01435 863500 for details. Individual copies of the publication are available at £3.25 each inc p&p.

No part of this publication may be reproduced or transmitted in any form or by any means, electronic, mechanical, including photocopying, recording or stored in any information retrieval system without the express prior written consent of the publisher. Although every effort is made to ensure the accuracy and reliability of material published in Selfbuilder & Homemaker, the publisher can accept no responsibility for the claims or opinions made by contributors, manufacturers or advertisers. Editorial contributors to this journal may have made a payment towards the reproduction costs of material used to illustrate their products. The manufacturer of the paper used within our publication is a Chain-of-Custody certified supplier operating within environmental systems certified to both ISO 14001 and EMAS in order to ensure sustainable production. Printed in England



## editor's letter



It may be a little early to look back at 2014 but it certainly seems to have been the year political parties recognised the real benefits self- and custom-build projects can bring to the housing sector.

With the number of folk who want to build their own home increasing, but the number of those actually doing it decreasing, something had to be done to support self-build. So it is timely that the Lyons Housing Review recognised how self- and custom-build can help increase the number of homes built and the government introduced plans to test drive their Right to Build initiative.

The new year looks like it will be very interesting for the whole housing sector but before then, on behalf of all the Selfbuilder & Homemaker team, I would like to wish all our self-build readers festive season greetings and a constructive, custom-build 2015.

## Self-build property planning applications fall to six year low

Figures released by Barbour ABI have revealed that UK-wide self-build planning applications in 2014 have decreased by 28 per cent compared to 2008.

Barbour ABI, the chosen provider of the government's Construction and Infrastructure Pipeline, shows that 16,792 self-build planning applications were submitted in the first three quarters of 2008, which has steadily declined year on year to 12,159 in 2014.

The new data from Barbour ABI highlights that self-build applications are down across all regions within the United Kingdom when comparing 2008 to 2014, with the two worst affected areas being the Midlands and East Anglia, down 35 per cent and Wales, down a staggering 62 per cent.

Commenting on the findings of the data, Michael Dall, lead economist at Barbour ABI, explained: "Given the economic conditions in the UK over the past six years it is perhaps unsurprising that the appetite to build your own home has diminished. However, there are currently six million people in Britain who would like to commission their own house according to the National Self Build Association.

"This interest clearly lends credence to the various policies announced by the government and by the opposition Lyons Review to help increase self-build in the future. Our figures today show that while the policy environment is favourable the figures for actual building continue to decline."

## Governement launches zero carbon homes: small sites exemption consultation

The government's desire that all new homes built in England by 2016 will be 'zero carbon' could have a serious impact on smaller homebuilders.

Recognising that achieving the zero carbon standard will be particularly challenging for small builders the government has suggested that smaller housing sites in England should not face the total cost burden

of delivering zero carbon homes.

To seek views on this proposal and explore how this proposed exemption might work the DCLG has launched the 'Next steps to zero carbon homes: small sites exemption' consultation exercise.

The consultation will close on 7 January 2015 and can be accessed online at [www.surveymonkey.com/s/VNPQRB8](http://www.surveymonkey.com/s/VNPQRB8)



# Government identifies eleven areas across the country to benefit from the new government-backed self-build opportunity

The Housing Minister, Brandon Lewis, has announced 11 areas across the country that will benefit from the latest government-backed opportunity to help aspiring custom or self-builders get their projects off the ground.

The 11 identified areas will also test the government's Right to Build initiative to help increase the size of the custom and self-build sector. The 11 areas will establish and maintain a register of prospective custom and self-builders and identify sites on which those on the register can build their homes. These areas will become the first to offer local people the right to design and build their own home.

Launching the initiative the Housing Minister explained: "We're determined to help anyone who aspires to own their own home – whether that's buying on the open market through schemes like our Help to Buy, or to build. That's why these 11 areas across the country will be the first to offer a new Right to Build, one of a range of measures we're taking to ensure anyone who wants to build their own home has the opportunity and help they need to do so."

"This is one of a range of measures we're taking to help aspiring homeowners, but also to get Britain building – and thanks to our efforts, housebuilding levels are at their highest since 2007 and rising."

The announcement aligns with proposals included in MP for South Norfolk, Richard Bacon's Private Member's Bill, which would place a duty on local councils to keep a

register of individuals who have expressed an interest in finding land for their self-build projects.

This first wave of announced areas will form part of a consultation on Right to Build, which will help determine if this initiative should be extended across the country later this year.

The Housing Minister confirmed that these 11 areas would be at the forefront of the government's efforts to help those looking to build their own homes turn their dreams into reality.

The areas identified by the Minister will establish the new register and Right to Build for their residents immediately, and will each receive a share of a £550,000 implementation fund. The 11 areas are:

- Cherwell District Council, which will receive £90,000 and are committed to deliver 2,000 custom-build homes over the next 10 years
- South Cambridgeshire District Council, which will receive £50,000 and will bring forward at least 100 plots of land for custom builders and to begin selling land from January 2015
- Teignbridge District Council, which will receive £100,000 and will be implementing a ground breaking '5 per cent self-build' policy in their newly adopted Local Plan so 5 per cent of all new homes in the area are delivered by custom and self-builders
- Shropshire Council, which will receive

£10,200 to bring forward 6 hectares of land for self-builders by linking with Stoke Council and local social landlords to find suitable plots

- Oldham Metropolitan Borough Council, which will receive £15,000 to begin bringing land forward for sale in autumn 2014 by using formerly-developed council-owned land to support aspiring self-builders in the area
- West Lindsey District Council, which will receive £5,000 to make self-build plots available on previously-developed public sector land in the area
- Exmoor and Dartmoor National Park Authorities, which will receive £28,000 to explore how local self-builders can be helped while protecting the countryside
- Pendle Borough Council, which will receive £46,000 to deliver self-build plots in the area and explore how this could be used to further deliver affordable homes
- Sheffield City Council, which will receive just under £100,000 to further deliver over 800 self-build sites, and look to support groups planning their own custom builds
- South Norfolk District Council, which will receive £25,000 to work with Saffron Housing Association in the area to deliver 40-60 custom build plots
- Stoke-on-Trent City Council, which will bring forward 72 hectares of land for local self-builders in the area

## A quick guide to Right to Build and other government self-build initiatives

guide

As part of a range of initiatives designed to keep homebuilding at the heart of the government's long-term economic plan, Ministers want to support people who aspire to design and build their own homes.

Right to Build is one initiative that aims to help more people to create their own home and where possible bump start new communities. Potential custom or self-builders will be able to register their interest with their council, who will then be required to offer suitable serviced plots that are for sale at market value.

It is planned that this will not be a free-

for-all. All self and custom homebuilders will have to go through the normal planning application process. However, it is hoped that the register will open up the opportunity to self-builders beyond simply those who can afford iconic 'grand designs' and allow even more people to realise their self-build ambitions.

Right to Build is one of a range of measures the government has introduced to help aspiring custom and self-builders.

Others include:

- A £150 million investment to bring delivery of up to 10,000 serviced

plots – shovel-ready sites where a developer can be hired to build a home

- Making custom builders exempt from paying the community infrastructure levy
- Introducing a new £30 million Custom Build Homes Fund, which makes available repayable finance for larger multi-unit projects and grant funding for community self-builders
- Planning guidance, which makes clear that councils should help custom-builders and establish demand in their area

## Finding land has never been quicker and easier: re-launch of new plot finding website [www.plotsearch.co.uk](http://www.plotsearch.co.uk)

Finding the right plot of land at the right time and at the right price has always been one of the biggest hurdles to self-build, but with the launch of a new, improved PlotSearch the frustrations associated with plot-finding are now greatly reduced.

As the UK's longest established online land finding resource with over 80,000 subscribers and 8,500 live plots starting from as little as £5,000, PlotSearch has been redesigned to meet the growing interest in self-build and the need for current, relevant plot details on-demand.

Now, for as little as £20 for a three-month search plan, subscribers will have unlimited search functions for self-build, renovation and conversion opportunities across the United Kingdom; and for those wishing to purchase a plot specifically to build their own home, PlotSearch is the only portal that lists plots with genuine planning permissions in place.

Giving subscribers a faster and more comprehensive one-stop self build portal, with plots published quicker than before from over 11,000 sources, plus tailored information on services such as finance and insurance to build and construction, the new PlotSearch site offers:

- Mobile and tablet functionality – as the only mobile responsive land-finding resource in the UK, PlotSearch is perfect for subscribers on the move
- Free search and alert – simply register for free to receive PlotAlert emails of any new plots in your chosen area, save selected plots and be notified of any saved searches that are no longer

available. For PlotSearch subscribers, access is given to all details such as location, maps, price, planning, services and vendor information

- New expert advice and tools – everything you need to know about building your own home, including build calculator, land size examples, measurement convertor and a range of informative, expert factsheets
- New Bing map search – having selected your chosen county, the specific area of the available plot will be highlighted for greater insight of locality and infrastructure
- County guides – providing local information, such as contact details for the Council Planning offices, tourist information, local news and schools directory
- Local supporting services – keen to promote sustainability, PlotSearch now features highly localised, geo-targeted information showcasing useful local companies and services
- Free plot advertising – for those with a plot, renovation or conversion opportunity to sell, PlotSearch allows free posting of details
- News – keep up to date with the latest self build news that could affect your project through this dedicated newsfeed or follow PlotSearch on Facebook or Twitter @PlotSearch1

For those self-builders who are unable to find a suitable plot of land in their chosen area, PlotSearch also presents a viable



alternative with the Custom Build Register. With custom-build schemes becoming widely available across the country, and with the recent appointment of 11 'Vanguard' councils to deliver custom build schemes, it offers self-builders the opportunity to do as much or as little as they desire but with the convenience of a fully serviced plot complete with planning permissions. Simply register your interest and favoured locality on [www.custombuildregister.co.uk](http://www.custombuildregister.co.uk).

While the majority of search specifications are for singular plots for individual dwellings, if community living is something that appeals, the PlotShare Initiative also allows subscribers to team up with other self-builders to purchase larger sites with planning for up to four homes.

David Mitchell, PlotSearch manager adds: "We are delighted that PlotSearch has helped over 100,000 find a plot or building opportunity since its initial launch in 2000. Now, with improved functionality on the site, we aim to support thousands more in their quest to build the home of their dreams, whether it's self-build, custom build or by taking on a renovation project."

## Self-build on a shoe string

A London-based team has won the top prize in the annual Self-Build on a Shoestring competition, sponsored by British Gas and announced at Grand Designs Live Birmingham. Its entry, called SHELL, provides a professionally built, highly insulated timber framed 'envelope' that individual self-builders can adapt and complete themselves.

The winning team included architect Levitt Bernstein, housing provider Circle Housing and a recently formed self-build community group, Naked House, which is currently trying to progress plans to collectively build their own homes using the SHELL system.

One of the leading features of the design was its flexibility. A single person apartment can easily be extended so that it can accommodate two people, or a couple can bolt on a simple extension if they need extra bedrooms for a growing family.

The basic SHELL is made using structurally insulated timber panels that are manufactured in a factory and then bolted together on-site by a main contractor. This basic waterproof structure also has all the utilities installed, and the SHELL can be 'lived in' while the self-builders finish off the interiors.

Once the SHELL has been built the homeowners complete their apartments to their preferred layout and design. They will fit the internal walls, and install the bathrooms and kitchens. In the plans, owners will also be responsible for the decorating and other elements of the work.

The Levitt Bernstein, Circle Housing, Naked House team calculate that the average construction cost of each home built, according to this plan, would be just £70,076 (not including the cost of the land).

The Self-Build on a Shoestring judges included Grand Designs presenter and self-build champion Kevin McCloud and the chair of the All Party Parliamentary Committee on self-/custom-build – Richard Bacon MP.

Kevin McCloud, who also presented the awards, said: "I was very taken by the way this solution delivered the best of all worlds. The basic structure was professionally built to a good standard, so that the families could then finish off the homes to their own designs and tastes. The design was also very clever in that it allowed people to almost seamlessly add or subtract extensions – so the development could adapt to match the needs of the people who lived there."

# Order by 8pm. Get it Next Day!



For a huge range of stylish door and window hardware at low trade prices, **call today** for your **FREE** catalogue!



**UK's Biggest Range**



**Minimum 5 Year Guarantee**



**Order by 8pm get it Next Day**



**Free Returns**



Reader Enquiry  
**101**



**0808 168 28 28**



**IronmongeryDirect.com**



**DOWNLOAD OUR FREE APP FROM YOUR APP STORE**



TEXT **RBAB** to 62244 FREE! With name, address and email for your FREE catalogue.

**IronmongeryDirect**

**MASTERS OF OUR TRADE**

DOOR FURNITURE • WINDOW & JOINERY HARDWARE • SLIDING DOOR HARDWARE • HINGES • DOOR CLOSERS • FIRE CONTROL • SIGNS • LOCKS LATCHES & SECURITY • CABINET FURNITURE • SHELVING & STORAGE • BOLTS & STOPS • SEALANTS & ADHESIVES • SCREWS & FIXINGS



# TOOLSTATION

Reader  
Enquiry  
**102**

## HOT OFFER

Save  
up to  
**10%**



### Panel Radiators

See Page 334

#### HEATING

5W LED Fire Rated  
Downlighter 330lm  
**NOW ONLY  
£9.58**  
WAS £11.99  
Code: 72256



Save  
**20%**

#### LIGHTING

**HUNDREDS  
OF PRICE CUTS  
INSIDE...**



Save  
over  
**5%**

16oz One Piece  
Claw Hammer  
**NOW ONLY  
£7.78**  
WAS £8.64  
Code: 91324

#### HAND TOOLS

Wallrock Thermal  
Liner 10m x 75cm  
**NOW ONLY  
£39.98**  
WAS £46.99  
Code: 43007

wallrock  
thermal liner



Save  
over  
**10%**

#### PAINTING & DECORATING

HAVE YOU SEEN >  
**OUR NEW WEBSITE?**



TRY IT NOW AT  
[toolstation.com](http://toolstation.com)



**NEW  
CATALOGUE  
OUT NOW!**

Prices valid until 29th December 2014

## WINTER BONANZA

**You could win a Ford Ranger!**

**Plus over 150 other prizes to help you power through this winter!**

To enter, visit your nearest Toolstation branch, enter online at [www.toolstation.com/bonanza](http://www.toolstation.com/bonanza) or visit our Toolstation UK Facebook page. Closing date 5th January 2015.

See online for full terms and conditions.



Supplied by Edwards Ford of Salisbury



SBH/1114

Call FREE

**0808 100 7211**

Mobile Friendly: 0330 333 3303

Drop in

**170+ Branches**

Find your nearest @ [toolstation.com](http://toolstation.com)

Visit

**toolstation.com**

Follow toolstation UK on:

11,000+ STOCK PRODUCTS LOW TRADE PRICES FREE DELIVERY ON ORDERS OVER £10 OPEN TO ALL, 7 DAYS A WEEK

# Interest in the self-build market booms at recent London Homebuilding & Renovating Show, Olympia

The recent London Homebuilding & Renovating Show saw a significant increase in visitors looking to self-build or plan a sizable renovation on their existing home, reflecting a growing confidence in the market.

The show, which took place from 26-28 September at Olympia, London, put 300 companies predominantly from the self-build and renovation markets in front of 17,000 visitors over the course of the three day event and provided the latest advice on all aspects of building and renovating a home.

Nick Noble, joint managing director of Centaur Home Interest Media, said: "There is a growing need for detailed technical self-build and DIY advice among the public and the show delivers this at every level. Increasingly, as confidence has returned to the property market, self-builders and renovators are allocating larger budgets for their projects, often opting to construct or remodel a home to cater for their preferences rather than buying a new property."

Visitors interested in heating and ventilation products increased from just over 34 per cent to 68 per cent and those wishing to learn about foundations and basement interests increased by around 12 per cent.

Over 38 per cent of visitors attended



the building costs, budgets and finance seminar making it the most popular subject, closely followed by 32 per cent of customers who attended tutorials about planning permission.

A well attended highlight of the show was the Homebuilding & Renovating Theatre, an area where visitors were able to attend seminars on topics ranging from adding an extension, creating a loft conversion, redesigning the inside of a house and building a home from scratch. Other favourites were the Kitchen & Bathroom Inspiration Zone and the Home Improvement Theatre.

The show saw a 50 per cent increase in the number of visitors with £100,000 plus budget spend and a 19 per cent decrease among those who had under £50,000 compared to 2013's exhibition.

Next year's show will be held at ExCel London (25-27 September 2015) due to the increased size of the exhibition and the vibrancy of the property market in the South East of London. There are six other events held throughout the country each year. For more information on the upcoming exhibitions, visit the website:

[www.homebuildingshow.co.uk](http://www.homebuildingshow.co.uk)

## The Hempcrete Book by Stanwix and Sparrow

*The Hempcrete Book* is the comprehensive, practical new book about building with hempcrete: a natural building material made from the chopped woody stem of the hemp plant (hemp "shivs") and a lime-based binder. It is a non-loadbearing, sustainable, 'breathable' (vapour-permeable) and insulating material that can be used to form walls, floor slabs, ceilings and roof insulation in both new builds and restoration projects.

Will Stanwix and Alex Sparrow first started working with hempcrete in 2009, when information and guidance on the new material was scarce. As they became industry experts on hempcrete they decided to write the book that they had needed

when they were first starting out: a practical how-to manual providing essential guidance and information, including case studies from finished hempcrete buildings and extensive design notes. It isn't a book just for builders, designers and architects – it is invaluable for the countless professionals who will come across hempcrete during any building project, including planning officials, building regulations officers, building conservation officers and surveyors. Hempcrete offers several key benefits:

- It is a better than carbon-zero building material
- It has exceptional thermal performance
- It creates 'breathable' (vapour-permeable) buildings

- It is a cost-effective building material for commercial and self-builders
- It can be used in new-builds and in restorations, including heritage buildings

*The Hempcrete Book* also looks at:

- The history of hemp
- Hemp and the law

Order now to get an exclusive 30 per cent discount and free UK delivery on *The Hempcrete Book* using voucher code SBH1415. Offer valid 21 November 2014 to 16 January 2015.  
[www.greenbooks.co.uk/hempcrete](http://www.greenbooks.co.uk/hempcrete)



# Make your **Dream** a **Reality**

WITH BI-FOLDING SLIDING DOORS



Available in **ALUMINIUM, TIMBER, ALI-CLAD & PVCu**

## Buy direct from the UK's **ONLY** Specialist Manufacturer

Folding sliding doors can be installed in a huge range of situations, in fact folding sliding doors provide you with so much flexibility and choice that the solutions are endless.



**25 YEAR GUARANTEE**  
All our doors are supplied with a no quibble guarantee



**ENERGY EFFICIENT**  
Double glazed, thermally efficient, UK building regulations compliant



**SECURITY**  
Encapsulated running gear, hardened steel locks, internally glazed, UKAS tested



**CHILD FRIENDLY**  
Finger safe gaskets  
Easy operation



**ENGINEERED**  
British made, laminated timber, PVC, aluminium or aluminium & timber clad options



**The Folding Sliding Door Company**

Call: **0845 644 6630**

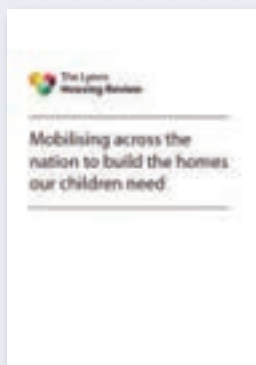
[www.foldingslidingdoors.com](http://www.foldingslidingdoors.com) eMail: [sales@foldingslidingdoors.com](mailto:sales@foldingslidingdoors.com)

Visit our showroom Mon-Fri 9am-7pm, Saturday by appointment only [YouTube](#) [f](#)  
FSD Works, Hopbine Avenue, West Bowling, Bradford, West Yorkshire BD5 8ER

Reader Enquiry  
**103**



# The Lyons Housing Review embraces the need for increased self-build



The recently published Lyons Housing review, an independent review of the housing market by Sir Michael Lyons and sponsored by the Labour Party, has recognised the importance of self- and custom-build to the new homes and wider housing sector.

The review identified advantages for planning at community level for housing supply and suggests that at the neighbourhood level a more fine grained approach to allocating small sites can be taken. This should

be based on local knowledge and smaller sites identified, allocated and brought forward. The review believes that not only does this give communities greater control over development, it can support resurgence of development by small building firms and support self-build and co-operative ventures.

It also suggests that creative solutions are also needed to provide greater choice and incentives for potential older, downsizing self- and custom-builders. An expanded role for self-build or self-commissioned housing should also be encouraged and could have strong appeal to those looking to downsize by creating the opportunity to design a home to suit their lifestyle and aspirations.

## Translating demand into new homes

Sir Michael Lyons and his review team also believes that another way to translate housing demand into new homes, without relying on conventional volume housebuilders, is by harnessing the increasingly local movement for self-built and custom-built homes.

Both models of development were highlighted in evidence to the review, particularly from the National Custom and Self Build Association and the custom-build developers Igloo and HAB.

Both self- and custom-build are common in several European jurisdictions including France, Germany and the Netherlands. According to the evidence provided, the Netherlands has seen some 4,000 homes commissioned or built by residents in the last 10 years.

However, in the UK self- and custom-build sectors remain nascent, despite efforts to encourage their growth by government and although

the National Planning Policy Framework requires councils to consider and plan for demand for self- and custom-build, it was evident to the review that a number of other barriers, to both self- and custom-build, exist.

## Barriers to self-build

Unsurprisingly the review was told that the most significant barrier to self- and custom-build in the UK, by some margin, is the cost of acquiring land. According to the NaSCBA, 48 per cent of would-be self- and custom-builders have a budget of £200,000 or less, which is simply not enough to cover both construction costs and site acquisition in areas of highest housing demand such as London and the South East.

It is suggested that the government's efforts to date have focused on reducing planning barriers and reducing costs at the margin (for example through a £30 million lending fund).

Again hardly surprisingly, the review believes what the self- and custom-build sectors need to boost them is significant access to affordable land.

As part of his self-build conclusions Sir Michael stated that: "We believe that there is some scope for self- and custom-building to increase over time its prevalence in the UK to the sort of levels seen in European countries. It has been argued in evidence to the review that the potential is there for it to make a contribution of a further 10,000 or 20,000 units each year and these estimates do not seem implausible.

"For this to happen, however, there are three preconditions. First, land must be brought forward in plans for self- and custom-building in a way that allows for the kind of broad outline permissions usual in the Dutch and German models to be granted. This should be a consideration for local authorities in acting as master developer on assembled sites. Secondly, land needs to be made affordable upfront; this argues strongly for self- and custom-build to be made a priority use for publicly owned land where land can be invested in shared ownership and the recognition of social value can be more easily adopted. A more active role for local authorities in land assembly and facilitating partnership and the Housing Growth Areas and New Homes Corporations proposed by the review will have an important role to play in enabling non-traditional developers and custom builders to join the market by increasing the provision of sites not being provided by other developers."

## Oak-Framed Buildings – revised edition



Delve into the ancient craft of oak framing and uncover the striking design of traditional timber framing with Rupert Newman's

newly revised book *Oak-Framed Buildings*, published by the Guild of Master Craftsmen.

With nearly 30 years of experience in the specialised trade, Newman explains his

craft to laymen and architects alike in this comprehensive and richly detailed book on building modern green-oak-framed buildings.

Focusing on the British technique of oak-framed construction, *Oak-Framed Buildings* sheds light on the historical technique that is rapidly gaining popularity in the UK and US. Showcasing the structural possibilities for oak-framed design, Newman brings craftsmanship and style to the forefront of every traditionally framed building. The possibilities

of self-build projects are extensive with this inspirational and fascinating guide to the ancient building technique.

*Oak-Framed Buildings* presents a collection of design lead projects with striking impact, explained with photographs and three-dimensional drawings. Become inspired by the beautiful frames and architectural designs on every page, reviving this stunning traditional form of architecture. RRP £24.99.

# The Boardwalk House



Winner of the Sunday Times British Homes Awards EcoHaus design category, the Boardwalk House is a modern lakeside home.

Beating seven other shortlisted finalists in an online vote, the home has been created by the design team from NPS Leeds, with Barron and Smith Architects, part of the NPS Group, acting as certified Passivhaus consultants.

Boardwalk House will present a new model for lifestyle living, being both environmentally smart and providing a healthy environment for the occupants.

## Contemporary design

The home's contemporary design promotes communal, outdoor living with its large glass windows breaking down the visual barrier between outside and in, and as an added bonus slide back to access generous sun decks.

The living areas are on the first floor boardwalk with the sun deck positioned to maximise sunlight and take full advantage of the views of the water, wildlife and shore line. The cantilever of the deck also creates a greater connection with the environment and the opportunity to interact with the water or simply sit and enjoy the views.

The 'floating' property's decked first floor boardwalk also includes planting areas next to the kitchen for growing vegetables and herbs. At this level, the boardwalk also continues to the back of the house, providing shelter for a boat, cars and bikes, along with provision for charging electric vehicles.

The lower level jetty gives direct access to the water with a mooring point and the large rear wall operates as a thermal store and wind break to the deck, but leaves a gap for natural light to reflect into the living areas.

The house is designed with south east facing windows arranged to capture winter sun, but not overheat in the summer, and the private areas are arranged to the lower level with three double bedrooms. The study on the upper level can be used as a guest room. Smaller windows to the lower level rooms provide daylight, ventilation and views.

## A true EcoHaus

As an EcoHaus, the dwelling's primary objective is to interact with and respect its immediate and wider environment.

The dwelling is naturally ventilated and the heat in the air is collected and used for winter heating. The staircase protrudes

above the roof catching prevailing winds and drawing warm air from the dwelling into the stair core and then out of the roof vents.

A heat exchanger takes the heat from the air and transfers it to cool rainwater, which is collected from the decks and roofs and stored below ground. The water is then used for underfloor heating.

During the summer the stair core will give ventilation to cool the rooms during the day and can be supplemented with the large areas of opening windows.

Rainwater collection and re-use reduces the demand for mains water, supplements the underfloor heating is also used for flushing toilets.

## From drawing board to waterside location

The unique design aims to give the home's owner all they need to live comfortably and energy efficiently, whilst ensuring they enjoy the local and help wider environment.

The concept will now become a reality with the Boardwalk House set to be built at one of the waterside sites owned by the Habitat First Group in 2015.

# A striking change

A family in Chorlton are now living in the home of their dreams after their dated 1920s bungalow was given a stunning, modern redesign by Raynes Architecture. The brief was to create something that is fully accessible to all, without diminishing a feeling of style and space.

The Manchester firm is led by multi-award winning RIBA chartered architect Lisa Raynes and takes a personal approach to design, using two-way dialogue with clients. For the owners of The Quoins, the reconfiguration was not only a way of invigorating their home and making it accessible, but also of future proofing the building. The final design achieves this through subtle detailing and a layout which fluidly incorporates a lift and wet rooms.

The new work extends the footprint of the house, provides an en suite wet room facility to the ground floor bedroom and separate toilet and utility rooms. Widened doorways make access between rooms a breeze while under-floor heating ensures a high quality and uncluttered finish.

To the rear, the house opens out into a spacious, mixed-use area combining a family room, dining area and kitchen. Bifold and French doors flood the space with natural light to create a warm and welcoming environment.

The previously gloomy upper floor rooms have also been illuminated through the intelligent use of roof lights and large windows. The central lift provides access to the landing area, leading to two extended bedrooms and a large bathroom. The en suite master bedroom now includes a walk-in dressing room and opens out effortlessly onto a generous balcony.

Outside, white render, blue facing brick and slate tiles combine in a minimalist facade which gives the house an eye-catching, modern finish. To make maximum use of the building's south-east facing roof area photovoltaic roof panels have also been installed.

The homeowner Sylvia Forshaw said: "The refurbishment has really lifted our spirits and we are extremely happy to be moved in. We were able to have open and frank discussions with Raynes Architecture throughout the design



process and the results are fabulous. The downstairs rooms now feel much more spacious and I have been able to move back into the master bedroom upstairs. It's almost like being on holiday all the time."

Enq. 104

For more information see the website [www.raynesarchitecture.co.uk](http://www.raynesarchitecture.co.uk), email [lisa@raynesarchitecture.co.uk](mailto:lisa@raynesarchitecture.co.uk) or call 07989 744 336



RAYBURN  
from AGA

## All in one

Good Food • Hot Water • Warm Home

### The heart of your self-build

- Cast iron range cooking with a choice of boiler options
- Superior cooking performance
- Condensing A-rated boilers with over 92% efficiency

For details of your local retailer call 0845 762 6147 or visit [rayburn-web.co.uk](http://rayburn-web.co.uk)



Enq. 105



# Interior inspiration: Kitchens & appliances showcase

Selfbuilder & Homemaker hope to inspire your new kitchen with this varied but beautiful collection of furniture and product ideas



1. Kitchens Upon Thames designs, supplies and fits the very best of handleless kitchens. Practical features and numerous colours and finishes are available to complement any build with ash or lacquered rails. The company also manufacture handmade, in-frame painted kitchens which are available rigid, primed and ready for painting on-site. All can be co-ordinated with Silestone worktops and Miele appliances. Initial free estimate from brief can be given from architects plans.

[www.kitchensuponthames.co.uk](http://www.kitchensuponthames.co.uk)

**Enq. 106**

2. Kitchens International's colours span a range from the muted beige, greys and mochas to increasingly teals, blues, mustards, ochre and even gold and copper, especially in mirrored. Finishes are trending a combination of gloss and 'bling' finishes to natural timber, geometric patterns and rough textures such as concrete.

[www.kitchensinternational.co.uk](http://www.kitchensinternational.co.uk)

**Enq. 107**

2



3. The new Caple CAFF206 models boast a range of features, including the super cool and super freeze functions, which enable food to last longer as it will reach the desired temperature far more quickly and therefore be stored in optimum conditions. The CAFF206 is available in two finishes: CAFF206SS stainless steel, costing from around £1,422 and CAFF206BK black, costing from £1,375. Both models measure W922mm by H1,751mm x D751mm.

[www.caple.co.uk](http://www.caple.co.uk)

**Enq. 108**

3

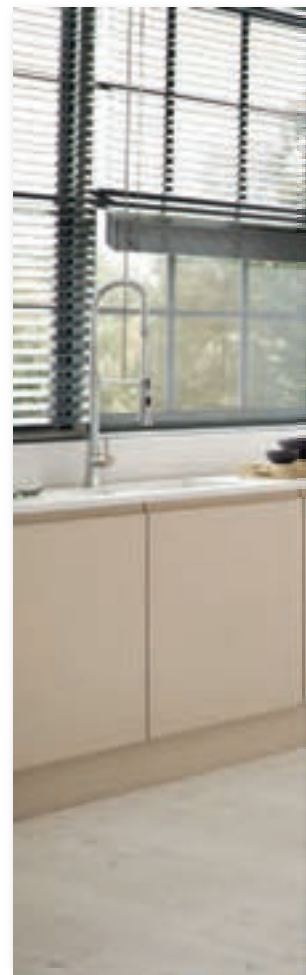


4. The new collection of handleless woodgrain finishes from Trend Interiors is perfect for creating a designer but relaxed look. The five new woodgrain colours are soft and stylish, encompassing this season's must have Stone and Sand along with Pearl, Palm Wood and Coral White. Sand and Cashmere Matt are combined in this kitchen to create a clean, smooth design that oozes class and style. Prices for a complete kitchen start from around £7,000.

[www.trendinteriors.co.uk](http://www.trendinteriors.co.uk)

**Enq. 109**

4



1



5



5. Kitchen specialist Kit Stone creates bespoke-style kitchens without a designer price tag. Handmade from solid wood using traditional carpentry techniques, no chipboard or MDF is used in the construction. With the average price of a kitchen just £15,000, Kit Stone offer outstanding value for money.

[www.kitstone.co.uk](http://www.kitstone.co.uk)

**Enq. 110**

6



6. Zip has led the way in the boiling and chilled filtered water market since launching its iconic HydroTap in 2000. Zip has now launched the world's most advanced single-source drinking water tap, the HydroTap G4, which dispenses boiling, chilled and sparkling filtered water, instantly. The G4 is supported with a fully populated BIM library.

[www.zipheaters.co.uk](http://www.zipheaters.co.uk)

**Enq. 111**

8



7

7. Iconic British company Dualit is introducing a 24 Carat Gold Plated Toaster into its Classic collection. The four-slice toaster is available now priced at £1,000 from Selfridges. The deluxe toaster is starring in Selfridges' Christmas window display. Added benefits include a defrost and bagel function, concealed crumb tray for easy cleaning, high lift mechanism to remove smaller items and mechanical timer to control the browning process.

[www.dualit.com](http://www.dualit.com)

**Enq. 112**

8. The heart of the design of La Cornue stoves is still founder Albert Dupuy's original patented 'vaulted oven', loved by chefs and serious cooks alike for its unique properties. The CornuChef 90 is available in 30 colours with brushed brass or polished chrome and stainless steel trim; custom colours are also available to special order. Colours shown above from top to bottom: Aquamarine, Aubergine, Terracotta, Navy Blue. Prices start from £9,530.

[www.lacornue.com](http://www.lacornue.com)

**Enq. 113**



## Max-Top



Kitchen worktop specialists Max-Top have seen sales of its monochrome Max-Top Quartz surfaces soar, revealing they now account for over 70 per cent of sales. Five out of the 10 Max-Top Quartz finishes cater for the monochrome trend with Black Onyx and Diamond White the two best sellers to date. Stephen Moss, managing director of Max-Top comments: "Since launching in July, we have seen sales of Max-Top Quartz grow steadily, however our monochrome finishes in particular seem to have really taken off [...] this timeless colour scheme is more popular than ever, which our sales figures reflect!"

**Tel: 0161 224 0333** [www.maxtopquartz.co.uk](http://www.maxtopquartz.co.uk)

Enq. 114

## Granite Transformations



When interior designer Linda Barker wanted to replace the reclaimed slate worktop in her South London home with 'something bullet proof', she called in Granite Transformations, realising that they would be the perfect makeover solution with all her makeover know-how. To reface her slate worktops, without adding much extra weight or depth, Linda opted for Granite Transformations' Nero Galaxy finish. Linda's worktop was fabricated off site, with apertures pre-cut for the sink and tap units, and the job was carried out in less than a day, with no ripping out, no dust or debris, and no household disruption.

**Tel: 0800 044 5393** [www.granitetransformations.co.uk](http://www.granitetransformations.co.uk)

Enq. 115

## Formica Group



Developed in response to market trends, the Axiom® by Formica Group range of worktops, splashbacks and upstands offers a durable and cost effective, quality solution that is easy to install and maintain. Axiom® upstands are available to match all 60 Axiom® worktop decors. While the latest Axiom® range offers 24 matching splashbacks, there are also nine complementary splashbacks in high-gloss bright colours, metallic and glass effects. Formica Group is proud to

announce its continued dedication to British manufacturing by aligning itself to the re-launched Made in Britain campaign.

**Tel: 0191 259 3478** [www.axiomworktops.com](http://www.axiomworktops.com)

Enq. 116

## KBB Replacement Doors



The new Bellissimo Pisa handleless matt woodgrain range offers an incredibly authentic rustic timber finish with the grain fashionably horizontal. It is available exclusively from KBB Replacement Doors. There are five woodgrain colours: white; bleached stone; beige; light walnut; and grey drift. With 65 sizes plus panels and accessories, including a 300mm x 300mm convex curve, the new range offers the flexibility to create bespoke kitchens in any situation.

**Tel: 028 9048 3676** [www.kitchenbedroomdoors.com](http://www.kitchenbedroomdoors.com)

Enq. 117

## KIT STONE



NOT JUST KITCHENS... BOOK A FREE INITIAL DESIGN CONSULTATION



*Handmade kitchens, bathrooms & interiors, sensibly priced*

LONDON 0207 371 99 97 TUNBRIDGE WELLS 01892 522321 READING 01189 326060 MARLBOROUGH 01672 512155 BRISTOL 01173 702453 EPSOM 01372 237020

[www.kitstone.co.uk](http://www.kitstone.co.uk)

follow us...

Enq. 118

## PANELAND FURNITURE LTD – 01299 271143



- 100% solid wood kitchens – no MDF, chipboard or ply
- Dovetail jointed drawers – mortise and tenon joints for carcasses
- Free design service, individual, hand drawn plans
- Non-standard sizes, at no extra cost, to suit your kitchen's dimensions
- Fully assembled units; no annoying flat-pack assembly
- Straightforward, easy to understand costing: prices include VAT & delivery
- Knotted, primed and painted units are now available

Pineland is a privately owned, family company that has been established for over 20 years. We believe in listening to our clients, and our hand drawn plans, reflect our customers' desires and opinions. The final design combines well planned functionality, with elegance and beauty, and our clients are often surprised how all this can be achieved at such a reasonable cost.

Visit our website: [www.pineland.co.uk](http://www.pineland.co.uk) Email: [enquiries@pineland.co.uk](mailto:enquiries@pineland.co.uk)  
Or call our offices: CLEOBURY MORTIMER, SHROPSHIRE: 01299 271143  
NORTHWICH, CHESHIRE: 01606 41292

Enq. 119





### Zip Heaters

Zip has been a leader in the filtered boiling and chilled water market since it launched its iconic HydroTap filtered boiling model in 2000. Now, pushing this growing sector even further, Zip has launched the most advanced drinking water appliance on the market to date, the HydroTap G4. Designed to deliver even greater performance, the latest evolution of the instant boiling and chilled filtered water system has been repackaged into the smallest footprint on the market to make it the perfect choice for commercial and residential applications. The new HydroTap G4 maintains its stylish and sophisticated finish, however, the all new under sink 'command centre' has undergone a great deal of development to give greater efficiency and more superior control. The WRAS approved G4 cuts standby operating power substantially when compared to other systems of similar delivery performance. This saving is due to the G4's improved power saving technology and increases in energy efficiency through enhanced thermal insulation. Zip's Powerpulse® technology also maintains the boiling water to within 0.2°C of set temperature to reduce the amount of energy required to heat water from standby.

Tel: 08456 005 005 [www.zipheaters.co.uk](http://www.zipheaters.co.uk)

Enq. 120

## selfbuilder & homemaker LAUNCH ALL NEW WEBSITE FOR 2014



### REGISTER ONLINE FOR...

In-print magazine • Digital magazine  
Newsletter • Daily digests

[www.sbhonline.co.uk](http://www.sbhonline.co.uk)



AS SEEN  
AT



## Love your kitchen as much as we love ours

- the widest range available anywhere
- 25 Years of specialist knowledge
- designed by women for women\*
- less money – more kitchen

\* men are more than welcome

## Kitchens Upon Thames

Kitchens Upon Thames

24 Thames Street

Sunbury TW16 6AF

01932 754 903

[kate@kitchensuponthames.co.uk](mailto:kate@kitchensuponthames.co.uk)



Enq. 121

# Building the ultimate man cave





## Heather Dixon looks at how professional property developer Charlie Walker took on the design and development of his own dream house



Former Taekwondo world champion Charlie Walker wanted to include a few 'extras' in his self-built house near Keighley, West Yorkshire – not least a fully kitted out home gym. The martial arts expert spends hours pumping iron to competitive levels to counter the stress of running his own property development business, so when he designed and built a three-bedroom home for himself, a basement gym was a must-have.

Second on his wish-list was a games room, complete with a mini bar.

"It's a bit of a man-pad," says Charlie. "I was creating this house for me, to suit my particular lifestyle, so I didn't hold back. I was also keen to have a black gloss kitchen and a hot tub in the garden."

But when Charlie bought the half-acre garden plot for just £50,000 through his business Beck House Developments, his initial plans were to build a house to sell.

The plot was created from the lower section of a steep garden belonging to a large Victorian hillside property, overlooking a sweeping valley on the outskirts of Keighley. Charlie liked the views, its location and the heavily wooded land so much that rather than build to sell, he decided to build the house for himself.

I was creating this house for me, to suit my particular lifestyle, so I didn't hold back  
– Charlie Walker

He already had planning permission for a basic four-bedroom detached house on the site, but once he made the decision to make it personal he redesigned the whole property. Instead of four bedrooms, there would be three bedrooms and a spacious, flexible ground floor living space.

"The basement currently contains a gym, shower room and a games room, but I wanted it to have potential for other uses," says Charlie. "There is enough room and services for a kitchen, so the basement floor could become a

*Continued on page 21...*





# ecobuild

SUSTAINABLE DESIGN · CONSTRUCTION · ENERGY

03-05 MARCH 2015 · EXCEL LONDON



## DISCOVER THE FUTURE OF CONSTRUCTION AND ENERGY

800+ exhibitors showcasing the largest range  
of sustainable construction products in the world

Over 100 conference and seminar sessions,  
drop in advice clinics and live product demonstrations

Dozens of new and innovative features

**REGISTER FOR YOUR FREE TICKET AT [WWW.ECOBUILD.CO.UK](http://WWW.ECOBUILD.CO.UK)**

LEAD PARTNER



GOVERNMENT  
PARTNER



RESEARCH &  
INNOVATION PARTNER



LEAD SUPPORTERS



the mark of  
property  
professionalism  
worldwide



CHARITY PARTNER







#### HIGH POINT:

"I really enjoyed landscaping the site after the house was built and seeing how it all pulled together as a whole. I like the fact that I've got a house and garden which was designed exactly to suit my lifestyle, but which is flexible enough to suit anyone who might want to move here in the future."

CHARLIE SAYS HE "DIDN'T HOLD BACK" – EVERY ROOM IN THE HOUSE WAS DECORATED TO SUIT HIS TASTES

granny flat or a teenager's den. I was keen to create spaces that could be multi-functional."

The site includes 26 trees with protection orders on them so Charlie had to make sure they would not be affected by the build – including an unusual five-stem holly tree right in the middle of the land.

Charlie off-set the house so that most of the garden – with the protected trees – remained to the left of it, leaving him a band of land to the right of the house for a decked terrace, hot tub and boundary planting.

The build began with the excavation of the site. It was estimated that around 300 tons of soil would have to be moved off-site to create the base for the foundations, but the calculation was way off the mark.

"In the end we had to remove 1,600 tons," says Charlie. "There was a conveyor belt of five wide-load wagons taking away the soil and it cost £20,000 just to dig out the area for the foundations, clear the site and get the footings in. It was a bit of stinger. That first phase took a

month from start to finish."

The logistics of the site were also challenging. There is a figure of eight drive around the neighbouring houses and Charlie had to ensure that there was access for local residents at all times. "I was in touch with the neighbours at each stage to make sure they were happy," says Charlie. "After all, I was going to be living next to them – I didn't want to cause any upsets. When there are lorries coming and going and a big crane on-site you have to consider the impact they might have on other people"

Charlie wanted the back of the house to be set right against the sheer side of the hill, so the area was dug out as far back as possible and a retaining wall built in a U-shape to form the back of the property.

The wall is about 45ft wide to the back and extended into walls at right angles that form the basement area. They are built of three-skin concrete reinforced with steel bars, and tanked to make them waterproof.

I always build to the highest spec, but when you manage your own build you can fine tune things as you go along and stay in control of every aspect of the process

– Charlie Walker

*Continued on page 23...*



# Now is the time to create a stunning home!

ALEXANDRA PALACE, LONDON • 30<sup>TH</sup> JANUARY - 1<sup>ST</sup> FEBRUARY 2015



**BOOK NOW  
FOR HALF PRICE  
TICKETS!\***

OFFER CODE: SHS

- Thousands of innovative products • **FREE** DIY workshops • **FREE** seminars
- Ask An Architect for **FREE** help and advice • **FREE** Dulux Design Service Drop in Clinic
- **FREE** show catalogue • **FREE** goody bag • **FREE** parking



IMPROVEMENT



RENOVATION



SELF BUILD



INTERIORS



ENERGY



GARDENS

[www.southernhomeshow.co.uk](http://www.southernhomeshow.co.uk) • Offer Code: SHS

\* £8 per adult on the door. Children under 16 go free. Open 10am to 4pm (Sat 5pm).



CHARLIE WAS KEEN FOR THE HOUSE TO HAVE A BLACK GLOSS KITCHEN



CHARLIE DESCRIBES THE HOUSE AS "A BIT OF A MAN-PAD" BUT IT WAS CAREFULLY DESIGNED WITH FLEXIBILITY IN MIND



Once the foundations and retaining walls were built, the remainder of the house was built with a timber frame, built in sections off-site and craned into place within the space of a week.

"In hindsight it was probably the most difficult way to build the house," says Charlie. "The tolerance between the concrete and timber was around 5mm, which allowed virtually no room for error. It would have been much more practical to build the house entirely of timber, or entirely of masonry, rather than a combination of the two."

*Continued overleaf...*

The plot was created from the lower section of a steep garden belonging to a large Victorian hillside property, overlooking a sweeping valley on the outskirts of Keighley. Charlie liked the views, its location and the heavily wooded land so much that rather than build to sell, he decided to build the house for himself



THE SITE WAS LANDSCAPED TO CREATE A SEAMLESS LINK BETWEEN THE GROUND FLOOR AND THE GARDEN



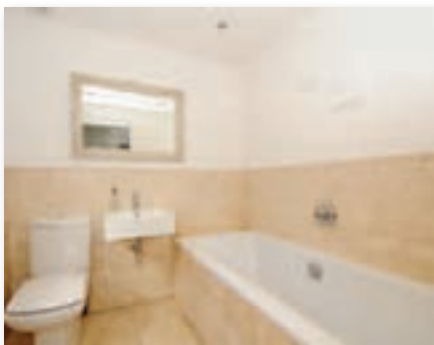
## LOW POINT:

"I was quite shocked to realise that the excavation was a much bigger project than we anticipated. Instead of 300 tons of soil we had to move nearly five times that and it cost £20,000 just for that part of the build, so it wasn't a particularly good start"



THE GARDEN FEATURES A DECKED TERRACE, HOT TUB AND BOUNDARY PLANTING

THE TILES USED IN THE BATHROOM COUPLED WITH UNDERFLOOR HEATING CREATED A HIGH-END, LUXURIOUS SPACE



But the foundations and timber frame were both built with such laser-levelled accuracy that they slotted perfectly together. The 2,000 sq ft house started to take shape so quickly once the timber frame was up that the remainder of the build was relatively trouble-free. The exterior walls were built in stone and block render, the slate roof built and tied into the blockwork, then the doors and mock sash windows installed. Underfloor heating was laid in the basement and ground floors with conventional radiators on the top floor. First and second fixes included all the kitchen and bathroom fittings, along with tiled walls and floors, and Merbau flooring in the key living areas.

"I designed the kitchen in my mind two years before I ever decided to build this house, so I

knew exactly what I wanted," says Charlie. "I designed everything from start to finish – including the décor. I managed and sourced everything and my regular team of builders and craftsmen built the property. I am very demanding but I lead from the front. I love the whole process of creating something from nothing, but I know how I want things done and I won't cut corners. I suppose that can make me difficult to work for but I think I am firm, but fair. I don't expect anything from others that I wouldn't expect from myself."

Which is why Charlie landscaped the site himself, levelling the soil to create a seamless link between the ground floor and the garden, and installing 440 retaining posts – each 8ft – using a rubber mallet. A local farmer supplied



## Suppliers – contact list

Design and project management:  
Beck House Developments  
01535 604032  
[www.beckhousedevelopments.co.uk](http://www.beckhousedevelopments.co.uk)

Hire equipment:  
Speedy Hire  
0845 600 4509  
[www.speedyhire.plc.uk](http://www.speedyhire.plc.uk)

Timber frame:  
Cartledge  
01507 617799  
[www.cartledge-timberframe.com](http://www.cartledge-timberframe.com)

Stone:  
Bingley Stone  
01535 273813  
[www.bingleystone.com](http://www.bingleystone.com)

Paint, stain and hardware:  
Merritt and Fryers  
01756 792485  
[www.merrittandfryers.co.uk](http://www.merrittandfryers.co.uk)

Windows and doors, staircases, flooring:  
Magnet  
020 7486 8711  
[www.magnet.co.uk](http://www.magnet.co.uk)

Kitchen:  
Howdens  
020 7498 9023  
[www.howdens.com](http://www.howdens.com)

Building material:  
Naylor Myers  
[www.myersgroup.co.uk/nm](http://www.myersgroup.co.uk/nm)

Heads, cills and jarms:  
M and G Stone  
01535 600528  
[www.mandgstone.co.uk](http://www.mandgstone.co.uk)

Bath, showers, myson underfloor heating and all plumbing supplies:  
Plumb Centre  
020 7231 9878  
[www.plumbcenter.co.uk](http://www.plumbcenter.co.uk)

All lighting:  
Oldfield Lighting  
01756 799155  
[www.oldfieldslv.co.uk](http://www.oldfieldslv.co.uk)

Carpets:  
Carpet Gallery  
023 8022 7595  
[carpetgalleryonline.co.uk](http://carpetgalleryonline.co.uk)

All tiles:  
Super Ceramics  
01535 600777  
[www.superceramics.co.uk](http://www.superceramics.co.uk)

Decking:  
Airedale Tree Surgeons  
01535 657263

Hot tub:  
American hot tubs  
[www.americanspas.co.uk](http://www.americanspas.co.uk)

stone which he also used to build retaining walls and garden features. Charlie installed 100 sq m of decking on both sides to create structured terraces and finished with turf and planting. The entire project took 14 months, although Charlie moved into the house a year after building work began.

Excluding land and furniture, the build cost around £150,000. £50,000 of this went into landscaping, £18,000 on the timber frame, £10,000 on windows and doors, £27,000 on electrics and plumbing – including bathroom fittings and underfloor heating – and £10,000 on the kitchen. The remainder accounted for building materials and labour. The current value is £375,000. Charlie believes he saved thousands of pounds by doing so much of it himself.

"I spend most of my time designing and building houses for other people so to create a home specifically to my own tastes and needs was really exciting," says Charlie. "The more time and input you can invest in a self-build, the more you can save. I always build to the highest spec, but when you manage your own build you can fine tune things as you go along and stay in control of every aspect of the process. For me it's a great house to live in."

But Charlie is moving on. He and his girlfriend are planning to move to Italy to run a vineyard, although Charlie will still keep his development business up and running.

"There will be plenty of opportunities to renovate properties in Italy," he says, "but the first one I do will be our own."

### Project summary

Gross internal floor area: 2,000 sq ft

Form of contract or procurement:  
Selfbuild

Overall cost of land: £50,000

Total construction cost: £150,000

Value of property now: £375,000



# editor's focus

1

## THERMAHOOD LTD

These days, we not only expect our home to offer a pleasant living environment, but it should also not be too moist and not too dry. A fresh breeze may be appreciated out in the open, but not in your own cosy living room. Thermahood Ltd has identified a weak point in the build-up of the insulation to houses in Britain and Ireland. As a result it has developed a product – Thermahood – to solve the problems that have been created by leaving these areas untreated. Leaving gaps in loft insulation reduces the effectiveness of the insulation that is in place by up to 50 per cent. Building regulators have identified this also, regulations now state that loft insulation must be continuous and airtightness measures are taken.

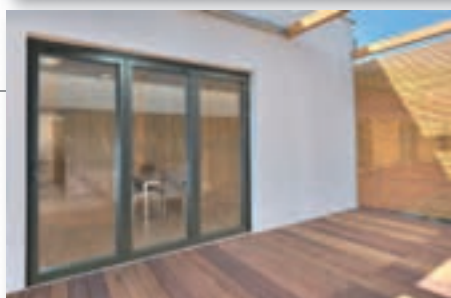
**Enq. 123**

2

## HL PLASTICS

The bi-fold door does something which no other door can claim to have achieved; enables a seamless transition between the home and garden to create a holistic living experience. With its latest technical advancements including bottom rolling doors rather than being hung from the top in the more traditional manner, the Linar ModLock™ bi-folding door is smoother and more stable in operation. Capable of being installed into the widest openings to open up an entire wall, the new ModLock™ bi-folding door, with its PVCu and aluminium composition, gives homeowners the opportunity to have the slim sightlines, low threshold options, an unlimited range of colour options and outstanding thermal efficiency.

**Enq. 124**



3

## SOFTUB UK

Stylish and understated design, tactile materials and subtle earth colours create an elegant look, turning a Softub spa into a beautiful focal point and a garden feature in its own right. Bespoke rattan and hardwood surrounds and accessories are available to complement the spa, to add storage and additional seating and to give the installation even more visual impact. Extremely durable, high performing and lightweight materials make this hot tub truly portable and user friendly, allowing even those with small spaces, roof terraces or difficult access to their home or garden to create their own hot tub oasis without the need for costly alterations, equipment or cranes.

**Enq. 125**



6

## TODD DOORS

Todd Doors has recently launched a brand new Essentials Range which offers top quality doors at unbeatable prices, and which comes complete with a price match guarantee. The Essentials Range is a well-designed selection of traditional and contemporary door styles in a broad range of sizes, including glazed and fire door options. Todd Doors is a family run business and is one of the UK's largest independent timber door and ironmongery specialists. With three extensive showrooms (located in West London, St Albans and Bournemouth), a comprehensive and well-designed website and expert staff, Todd Doors is the destination for all your timber door and ironmongery requirements.

**Enq. 128**

4

## DURATION WINDOWS

Duration Windows is pleased to announce the availability of its revolutionary 'Emperor Concealed' Aluminium Bifold Doors. Featuring no visible hinges and super-flush fitting handles these doors are sure to impress with their clean looks, high performance and low maintenance. Exceptional security is provided by shootbolts and multi-point locking, backed up with a Kite-marked superior locking cylinder. Stainless wheels and track ensure ease of operation and minimal maintenance for years to come. Find out more by calling Duration Windows or visit the company's website where you can price bi-folds online.

**Enq. 126**

5

## JB KIND

Exclusive to JB Kind Doors, the eye catching 'Mistral' door design has been developed with the self-builder in mind. Without compromising on quality, JB Kind has sourced a new construction technique that gives the Oak Mistral an incredible price advantage. Based on the fashion for flush groove designs, the Mistral's distinctive pattern gives a three panelled effect. Available in Walnut, Oak and White primed, these exceptional doors represent incredible quality and value. FD30 fire doors, glazed designs, metric sizes and bespoke options are all available. Request or download a copy of JB Kind's current Door Collection brochure online.

**Enq. 127**



november/december 2014

# Heating & Renewable Energy Supplement

Watch  
owners' videos  
on our website



*The Woodburning Stove... perfected*

## Come home to a Clearview Christmas

British designed and built, a Clearview Stove is that rare thing, a product that truly lives up to its name and reputation. Our stoves are such a pleasure to use, they not only lift the temperature but they lift your spirits as well.

### CLEARVIEW STOVES

Britain's leading manufacturer of  
clean burning wood stoves

STOCKISTS THROUGHOUT THE UK

Brochure Line: 01588 650 123 [www.clearviewstoves.com](http://www.clearviewstoves.com)

Reader  
Enquiry  
**301**

# DESIGNED AND BUILT TO LAST A LIFETIME



With stoves to suit every lifestyle and setting, we make it easy to put a warm glow at the heart of the home. You may already know the names Villager, Aarrow and Stratford. They have been popular stoves for many years, and now they are united by the Arada badge.

For reliability and service you can trust, contact us today on **01297 35700**

[aradastoves.com](http://aradastoves.com)

Enq. 302



## LOWER ENERGY BILLS & GUARANTEED INCOME IN THREE SIMPLE STEPS

You could receive thousands of pounds over 7 years just for heating your home with a heat pump instead of a boiler.



### Step 1

Ice Energy will design, supply and install a heat pump to replace your existing heating system and save you money. We'll also register the installation and help you apply for generous payments via the government's new **Renewable Heat Incentive**.



### Step 2

Pick up the phone to place your order and secure tax-free, index-linked payments direct to your bank account, lower energy bills and security of supply.



### Step 3

Sit back, relax and wait for your payments!

To find out more call **0808 145 2340** or visit **[www.iceenergy.co.uk](http://www.iceenergy.co.uk)**



Enq. 303





Whether you wish to install a heating method that is environmentally beneficial, create a focal point for your room, avoid the worry of power cuts, save money on your energy bills, or simply enjoy the pleasure of a brightly burning fire, a **Clearview Stove** could well be the answer.

Clearview Stoves are made exclusively in Britain and have become synonymous with quality, reliability and craftsmanship.

Their uniquely designed air wash system provides not only highly efficient combustion and excellent controllability but also an exceptionally clear view of your fire.

Enq. 301



While sleek and sophisticated with clean-cut lines and a space-saving integrated log store, **Arada's** new I400F provides the real wow factor with its choice of colour combinations to suit any home décor.

This DEFRA exempt contemporary stove gives you the option of burning wood or solid fuel in the UK's Smoke Control Areas, while being super-efficient with its convector jacket for increased heat distribution.

With a large viewing glass, simple air controls and pre-heated airwash system for sparkling glass, the i400F is the ultimate heating companion. Handcrafted in Devon, this British-built beauty comes with Arada's industry leading lifetime guarantee.

Enq. 302



Investing in a heat pump for your property this winter can not only provide you with reliable, cost-effective heating, it can also provide regular, tax-free income for the next seven years.

The Renewable Heat Incentive (RHI) is a government-backed scheme similar to the Feed-in-Tariff for PV and will reward you for installing air or ground source heat pumps in your home.

So instead of installing a boiler which provides no income once fitted and leaves you at the mercy of the energy companies, shouldn't you be installing a heat pump which is more cost-effective to run and returns an income?

Visit **Ice Energy's** website for more information.

Enq. 303



The Sirius 600 Inset is designed and manufactured in the UK, from **Capital Fireplaces**. This inset stove will fit comfortably in any home; with its sleek and contemporary design it can loan itself to both a modern or traditional home. The choice and options are yours to be creative.

The installation couldn't be simpler, top exit flue 125mm, measuring width 600mm x height 325mm (excluding trim), which is ideal for most UK chimney sizes. It has a large picture window and inbuilt airwash system for cleaner glass.

Efficiency is 76 per cent DEFRA approved and comes with a lifetime guarantee. The image shows 600 Inset Sirius stove with panoramic steel trim and granite hearth.

Enq. 304



**capital**  
fireplaces

Specialist suppliers of  
exquisite Fireplaces, Stoves,  
Fires & Fireplace Accessories

For our latest brochures or to find your  
nearest stockist visit our website:

**[www.capitalfireplaces.co.uk](http://www.capitalfireplaces.co.uk)**

Enq. 304



## Panasonic



Panasonic's range of Aquarea Heat Pump Systems are renowned for their efficiency, creating significant cost savings. Now self-builders can benefit from a new, market-leading, seven-year warranty on parts and labour when installed by one of Panasonic's qualified PRO partners. Recent financial incentives by the government, including the Renewable Heat Incentive (RHI), have made it easier for self-builders to consider renewable heat technologies, moving away from traditional, expensive systems such as LPG, oil or direct electric. With smart control and extremely high efficiency, Panasonic's Aquarea range can offer a solution to homes of any size or heating requirement.

Enq. 305

## Polypipe Ventilation



Polypipe Ventilation has announced that its Domus Radial semi-rigid duct systems have been third party proven to maximise whole-house ventilation system performance, especially when used with Mechanical Ventilation with Heat Recovery (MVHR) in larger properties. Tested by the BRE for inclusion within the Product Characteristics Database, Domus Radial was not only found to be equivalent to traditional rigid ducting in smaller builds but exceeded the performance in properties with four or more wet rooms or kitchens. Domus Radial offers customers less air leakage, increased air flow, easier installation and commissioning, as well as elimination of room to room cross talk and a reduction in air noise.

Enq. 306



## Specflue

Specflue is launching a new biomass range cooker to the domestic market.

Manufactured by J. Corradi and solely distributed by Specflue in the UK, the Neos Pellet Cooker is a smarter, more eco friendly addition to the family of range cookers currently available. The appliance can be used to cook all year round and acts as a room heater. One of the models, the Neos 155 PGE, also comes with both pellet and electric ovens, eliminating the need for an additional cooker in your kitchen for use in the summer.

The cooker provides all the practical benefits of biomass stoves and boilers. It is controllable, energy efficient and the fuel can be easily stored. It is also competitively priced and can be installed in any home, as long as there is the necessary space for the flue.

Initially, there will be two models available; the Neos 90P with a ventilated pellet oven only, and the Neos 155 PGE, which, in addition to the two ovens, has the option of gas, electric, ceramic or induction hob.

Tel: 0800 902 0220 [www.specflue.com](http://www.specflue.com)

Enq. 307

## Absolut XPERT System Chimney

**SCHIEDEL**  
ISOKERN®

Designed for the  
new generation  
of air-tight  
homes

1st Passivhaus certified System  
No Thermal Bridges  
Integrated combustion air shaft  
30 year functional guarantee



Air-tight homes and modern heating technologies place enormous demands on a chimney system. For example, energy efficient systems with low flue gas temperatures can lead to condensation. With its integrated and insulated combustion air shaft, Absolut XPERT from Schiedel is the ideal system to avoid damage to the fabric of the building due to condensate, while achieving maximum efficiency and warmth. Its profiled liner also makes it capable of withstanding chimney fires and corrosion. Easy to install and Biomass compatible it's the Absolut XPERT solution for stress free heating. To find out more about Absolut XPERT, visit us at [www.schiedel.co.uk](http://www.schiedel.co.uk)

CE EN 13063-1/2/3

Part of the BRAAS MONIER BUILDING GROUP

Enq. 308

## Dunsley Heat

### The Highlander 8 Solo

#### Burning Efficiencies

- burning wood logs 77.8%
- burning ancit 74.9%



CE APPROVED  
HETAS APPROVED

For your nearest stoves stockist  
T: 01484 682635  
[www.dunsleyheat.co.uk](http://www.dunsleyheat.co.uk)



All Dunsley stoves  
are manufactured  
in Great Britain

Enq. 309



Modern heating technologies place enormous demands on a chimney system. Designed for the new generation of airtight homes, **Schiedel Absolut XPert** is the first Passivhaus certified chimney system worldwide. Airtightness is built into the system. Suitable for use on all fuel types, with its GW3 rated ceramic profiled liner, Absolut XPert offers condensate resistance even after a soot fire. Thermal performance of the appliance is optimised through the provision of combustion air at the right temperature through the integrated insulated shaft. Heat transmission between the warm interior and cold exterior of the building is avoided through the use of the thermal chimney blocks.

Enq. 308



Constructed from 4 and 10mm steel and cast iron, the **Highlander 5 Enviro-burn**, from **Dunsley Heat** incorporates both a rear and top flue outlets. The firebox is lined at the sides, back and top with extra high density 'refractory boards' and comes in a black metallic finish.

Outputs: burning wood logs 4.9kW; burning ancit 5.0kW.

Burning efficiencies: burning wood logs 78.9 per cent; burning ancit 74.8 per cent.

Hearth temperatures: burning wood logs – long leg 56°C - short leg 64°C; burning ancit – long leg 68°C - short leg 132°C.

There are a full range of Highlander models from.

Enq. 309



Warm up with **gr8fires.co.uk**, a leading online retailer of wood burning and multifuel stoves starting from £199 and gas and electric fires from £99.

With over 500 five star reviews on products and customer service, **gr8fires.co.uk** is the go to online retailer for fire surrounds and stoves for your home.

Finance options are available with unbeatable prices and free delivery.

Please visit the website for further information on all the products available in the retailers range and more.

Use code SH2015 to receive 10 per cent off any multifuel Mazona stoves.

Enq. 322



Heating your home has never looked this good. **Adina Heating** is proud to be the exclusive UK distributor of Spartherm fireplace inserts.

Renowned across the world for exceptional product quality and truly exquisite design, it's German engineering at its best.

Offering a vast range of shapes and styles – even bespoke designs – Spartherm can meet almost any demand.

The fireplace air inlets can be automatically regulated so all you need to do is add fuel.

Please contact Adina Heating to find your local dealer or for more information on the Spartherm fireplace inserts.

Enq. 315

The Renewable Solutions Provider  
Making a World of Difference

## Need to reduce sky high fuel bills?

...ecodan can

Our market leading Ecodan air source heat pumps are perfect for areas where there is no gas, providing domestic heating and hot water for much less than Oil, LPG or Direct Electric. Recognised as a renewable technology, Ecodan is **MCS approved** and now qualifies for the **Domestic Renewable Heat Incentive**, making it even more viable.

To find out how Ecodan can lower running costs and cut carbon emissions, and for more information on the RHI:

Call **01707 278666**  
email **heating@meuk.mee.com**  
or visit **heating.mitsubishielectric.co.uk**



Air Conditioning | Heating  
Ventilation | Controls



Enq. 310

## Eurostove



The fabulous Mallorca free-standing wood burning fireplace from Eurostove is a feature addition to any modern home interior – especially with an open plan layout. Manufactured by the renowned Spanish company Hergom, the Mallorca is one of its latest design innovations, using both steel and glass to create a contemporary masterpiece. This stove has a 360° glass surface so it becomes a focal point for any position in the living area and is perfect if centrally positioned in a strategic position between two living areas like a kitchen leading into a dining area. The sliding glass is smoothly opened by rotating the fireplace base

Tel: 01934 750500 [www.eurostove.co.uk](http://www.eurostove.co.uk)

Enq. 311

## Euroheat



Euroheat is urging installers and end-users to consider the modern wood burning stove as a real contributor to fuel bill reduction this winter. With its newest range from HWAM boasting some of the most impressive energy efficiency credentials on the UK market, no more should the wood burner be viewed as a 'rustic' way to heat a room. Comparable with a SEDBUK A rated boiler, HWAM's impressive claim to fame comes from the fact that its newest stoves include Lambda controls, which modulate air flow as wood's composition changes during combustion, and are more commonly found in a biomass boiler.

Tel: 01885 491112 [www.euroheat.co.uk](http://www.euroheat.co.uk)

Enq. 312

## Mitsubishi Electric



A former WW2 pilot and self-confessed 'gadget man' has shown the way to a sustainable future with the installation of a hybrid Ecodan Air Source Heat Pump (ASHP) to work alongside his existing boiler. Mr Durward of Newick, Lewes, chose the Ecodan to reduce the heating bills and with the installation of an 8.5kW Ecodan monobloc ASHP and packaged hydrobox they will also qualify for payments from the Renewable Heat Incentive. Designed specifically with a bivalent function for use in conjunction with conventional boilers, the hydrobox is pre-plumbed and wired for faster installation.

Tel: 01707 282880 [www.mitsubishielectric.co.uk](http://www.mitsubishielectric.co.uk)

Enq. 313

## JG Speedfit



JG Speedfit has announced the official market launch of its new underfloor heating controls range – JG Aura. JG Aura allows for a more flexible and efficient remote regulation of any underfloor and central heating system, as well as individual radiator control. The system provides the capability of controlling multiple zones, enabling the homeowner to set heating time and temperature within each individual room resulting in considerable energy savings. JG Aura consists of two ranges – a hard-wired 230V system alongside the flagship wireless internet enabled range that can be controlled from anywhere in the world.

Tel: 01895 425333 [www.speedfitUFH.co.uk](http://www.speedfitUFH.co.uk)

Enq. 314



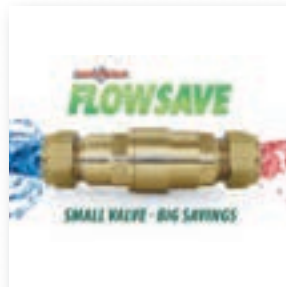

**Sensational style**  
with first class **combustion technology**



**Adina Heating Products**  
Unit C, Fairview Buildings  
Heage Road Ind. Estate, Ripley, DE5 3GH  
T: 01773 571 330 F: 01773 367 989  
E: [sales@adinaheating.co.uk](mailto:sales@adinaheating.co.uk)  
[www.adinaheating.co.uk](http://www.adinaheating.co.uk)

Enq. 315

## Guardian



Guardian has launched FlowSave, a small thermostatic valve designed to limit the flow of water from taps and showers until the correct outlet temperature has been reached. In addition to saving money on bills, FlowSave improves energy efficiency. A typical household will save up to 315kg of CO<sub>2</sub>, £70 in gas charges, 50,000 litres of water and 20 hours waiting for hot water per annum. As an energy saving product, FlowSave, and its installation, is subject to reduced VAT.

FlowSave takes just a few minutes to install by a qualified installer and the heating system doesn't even need to be shut down during installation.

Tel: 0161 820 1230 [www.guardian-solutions.net](http://www.guardian-solutions.net)

Enq. 316

## Connect with Selfbuilder & Homemaker online

Emailed on a monthly basis, the Selfbuilder & Homemaker newsletter is designed to provide you with the latest information on products and services of interest, direct to your inbox.

You can quickly gather a snapshot of information from up to 12 carefully selected companies and easily follow links through to further information, or go direct to the company's own website.

Brochures and videos are also regularly available.

[ Visit [www.sbhonline.co.uk](http://www.sbhonline.co.uk) to subscribe & find out more! ]







While the flagship design of the Focus Fire range, available in the UK from **Diligence International**, is the iconic Gyrofocus – original inspiration came with the Antefocus. This was the very first design from Dominique Imbert, the man behind Focus, who created it for his own art studio in 1967, and lead him on to the successive Gyrofocus, and was the springboard for all the other fires in the collection. Particularly suitable for areas where space may be limited, or where there is a desire to create a feature wall. Style wise, it is as fresh today as it ever was – bringing a sophisticated look to any type of room, contemporary or rustic, traditional or modern. The fire boasts an impressive 1.9m fire bed ideal for those longer logs.

Enq. 327



Smoke Control Areas were introduced by the Clean Air Acts of 1956 and 1968 to tackle the growing pollution derived from domestic and industry emissions following the Industrial Revolution. Local authorities only allowed heating appliances such as stoves and fires which demonstrated particularly clean burning combustion in many large towns and cities. If you live in a Smoke Control Area, you are only allowed to burn authorised fuels (not wood) in a non-exempt appliance. With the benefits of burning wood, many urban homeowners are looking to install a dedicated wood burning appliance to their homes. The **Stovax** Heating Group has a diverse range of stoves and fires suitable for use in Smoke Control Areas.

Enq. 325



With gas and oil prices increasing year on year, what could be better than building yourself a truly energy efficient home that kills bills?

You can insulate the building really well, then **Total Home Environment** can install an air source heat pump for 350 per cent efficient heating. But with an airtight home, how do you get fresh air in without losing heat?

Total Home Environment can provide a whole house heat recovery ventilation system, to ensure that the VOC's inside get expelled, but the heat stays in. Total Home Environment can complete room-by-room heat loss calculations to work out the best combination of systems for your home.

Enq. 324



The Radiator & Bathroom Gallery showrooms in Wandsworth & South Woodford are relaunching the new Hotech range of Italian designer radiators. It is the talking point of the heating industry.

The Bernini G@ut radiator, designed by Luca Bolognese, is shown in a gold leaf finish adding a contemporary look to any modern and stylish home. It is available in one size in any RAL colour or special leaf finishes in either copper, gold or silver.

Another radiator in their range is the Figliol Prodigio – an amazing design adding style to a contemporary bathroom. This is manufactured in aluminium and available in many finishes.

Enq. 323



SCAN FOR BROCHURE



**THE RADIATOR FACTORY**

WWW.RADIATORFACTORY.NET

FOR ALL TYPES OF DESIGNER & ECO-ALUMINIUM RADIATORS

TEL: 0116 260 9257

Enq. 317

Working towards a cleaner, healthier environment!



**built environment technology ltd**

www.thebuiltenvironment.co.uk

**Wholehouse Heat Recovery Ventilation Systems**

Designed around low carbon technology to meet the Code for Sustainable Homes and comply with the requirements of The Building Regulations 2010:Part F

- \* Site Surveys
- \* Design Service
- \* Supply and Site Support
- \* Commissioning and Certification
- \* Full turnkey option





Tel: 01304 215 575    info@thebuiltenvironment.co.uk  
Priory Gate Road    Dover    CT17 9SA

Enq. 318

## Stelrad



Stelrad has launched Stelrad Vita.

The Stelrad Vita series features entry level Vita Value, through the Vita Compact, the Vita Eco for those wanting an energy saving option, Vita Deco for those wanting a designer radiator look, to Vita Plan – a flat faced, smooth fronted design and finally the designer look, Vita Ultra – with bespoke colour finishes available.

Prices start from as little as £14.63 for the Vita Value, which compares favourably with any other radiators you can buy. Full details of the new Vita Series can be found on the website.

**Tel: 0870 849 8056** [www.stelrad.com](http://www.stelrad.com)

Enq. 319

## Schlüter



Schlüter-Systems' innovative wet rooms range has been used in a new housing project which will see 15 brand new homes built at the site of a former quarry. Set on the fringes of Guildford, Chantry Quarry will offer villa-style, four-bedroom houses with high quality en suite bathrooms – and thanks to Schlüter the ongoing protection and maintenance of these bathrooms is assured. Chosen for its easy assembly and great results the Schlüter® WETROOMS collection provides a fully integrated under flooring product suite which includes top of the range waterproofing sets, drainage systems and uncoupling and waterproofing membranes.

**Tel: 01530 813396** [www.schluter.co.uk](http://www.schluter.co.uk)

Enq. 320



## Charlton and Jenrick Ltd

Charlton and Jenrick Ltd has now added a complete new range of high specification multi fuel stoves to its stove portfolio. Known as the Purevision™ HD range, it comprises six models, three freestanding and three inset with stand and log store options available for the freestanding versions and three or four sided trims for the insets. The models are sized as 5kW standard, 5kW Wide and 8.5kW nominal output and contain technologically advanced patent pending design features.

Emissions meet EU leading DIN+ levels and already achieve current emission and efficiency proposals for 2022 European Eco-Design standards, which are far tougher than current mandatory norms.

DEFRA exemption for wood-burning in a smokeless zone was a formality, with test results up to 97 per cent below permitted levels of visible smoke. These highly efficient stoves produce a clean burning high definition flame that has to be seen to be believed.

Experience real living flames in high definition with Purevision HD.

**Tel: 0845 5195 991** [www.charltonandjenrick.co.uk](http://www.charltonandjenrick.co.uk)

Enq. 321



THORMA Rodano



Kansas Cream Enamel

**gr8fires**  
.co.uk

Stoves starting  
from £199



Seattle Matt Black



Kansas Matt Black

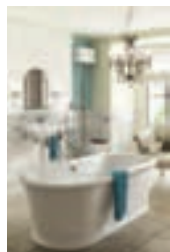
[www.gr8fires.co.uk](http://www.gr8fires.co.uk)  
Use code SH2015 for 10% off Mazona stoves

Enq. 322





- London Showrooms
- Over 180 Radiators On Display
- Specialist & Expert Advice
- Suppliers Of Top Brands Including Bisque, Vogue & Hotech
- Exclusive Designs
- Bathroom Brands Include Pelipal, Vitra, Burlington And Many More
- Free No Obligation Quotations
- Full Technical Support
- Price Match Guarantee



Tel. 0208 944 2001 or 0800 055 6450  
 sales@theradiatorgallery.com  
[www.theradiatorgallery.com](http://www.theradiatorgallery.com)  
 Showroom: 621 Garratt Lane,  
 Wandsworth, London SW18 4SX.

Free bathroom  
 planning service  
 available

Enq. 323

We do more with air...

AIR SOURCE HEAT PUMPS | AIR-WATER HEAT PUMPS  
**CENTRAL VACUUM SYSTEMS**

We specialise in helping  
 self-builders and renovators  
 achieve the best possible home  
 environment, in the most energy  
 efficient and cost effective way.

**HEAT RECOVERY VENTILATION**  
**HEAT RECOVERY HEAT PUMP VENTILATION**  
 AIR SOURCE HEAT PUMPS | AIR-WATER HEAT PUMPS

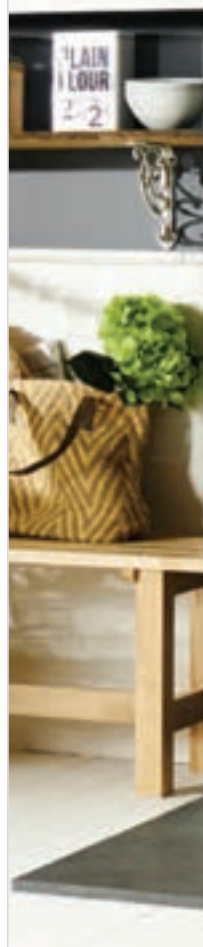
As seen on Channel 4's  
 Building the Dream - Series 2



0345 260 0123 totalhome.co.uk

Enq. 324

## The Norwegian Experience...



For over 30 years Nordpeis' woodburning stoves and fires have  
 incorporated our Norwegian design and technical expertise to  
 ensure guaranteed warmth in one of Europe's coldest climates

[www.nordpeis.co.uk](http://www.nordpeis.co.uk)

Enq. 325

# Mitsubishi Electric reshapes air source heat pump market



Mitsubishi Electric has launched the next generation of its market-leading Ecodan air source heat pump range with a host of new initiatives that increases heat up efficiency by 17 per cent, makes remote monitoring easier to access, thereby aiding applications to government initiatives, and also introduces a whole new way of heating a cylinder.

The developments include the UK's first use of a plate heat exchanger in a domestic cylinder and patented Scale-Stop technology to remove the risk of limescale build-up.

The launch comes as the Domestic Renewable Heat Incentive (RHI) moves from its legacy stage into supporting new market growth, with the company developing the advanced range to answer the growing need for renewable heating in the UK.

"This is our fifth generation of heat pump solutions and we have looked at just about every aspect so that we can maximise efficiency and ease both installation and operation," explains Max Halliwell, product marketing manager for the domestic Ecodan range. "We are proud to have been first to market with several initiatives in heat pumps and this new generation continues that trend by putting Ecodan streets ahead of any other system."

Ecodan was the first inverter-driven air source

heat pump in the UK to receive MCS (Micro Certification Scheme) certification and the first UK-manufactured unit to receive the prestigious Eco Label. It is also the only air source heat pump that has received the Noise Abatement Society's Quiet Mark and the first to offer intelligent room sensing as standard.

Mitsubishi Electric has invested heavily in R&D facilities at its UK manufacturing plant in Livingston to focus on the experience of the homeowner, simplifying the installation for the contractor, and making maintenance and monitoring even easier: "We have set out to develop an incredibly sophisticated machine with a simple front end," adds Halliwell.

The next generation – the FTC5 range, which is available from January 2015 – includes a complete new range of new cylinders which focus on improvements in heat loss performance; hot water recovery efficiency and time; and ease of installation and use.

All 10 of the new cylinders dispense with the traditional internal coil method of water heating and instead use an external plate heat exchanger which increases hot water heat up efficiency by 17 per cent over previous models.

"We think that this will grab the headlines because it challenges the traditional ways of heating a cylinder, but equally important to us is the introduction of remote energy monitoring





which will now be installed on every Ecodan that leaves the factory," explains Halliwell. "We see this as a key way of demonstrating the effectiveness of heat pumps moving forward and helping homeowners qualify for incentive payments."

The FTC5 range offers three different options for homeowners: the standard level which is pre-installed at the factory, offering remote energy monitoring using partial estimation of energy use; level two which includes the addition of an electric meter; and level three which adds a metering and monitoring service package (MMSP) heat meter, enabling homeowners to receive an additional RHI payment of £230 per year for seven years.

"We believe that this is one of the strongest ways of demonstrating our faith in the possibilities for the heat pump market," adds Halliwell. "The ability to monitor and measure energy consumption is not only key to government incentives but will also become increasingly important as energy prices continue to rise."

"Adding this facility will allow homeowners to measure and maximise system efficiency and minimise run costs."

Plate heat exchangers use forced convection to heat the water cylinder, rather than the natural convection of a coil and this increases the Delta

T, meaning that the water heats up more quickly and recovers temperature quicker when some hot water is used.

However, many parts of the UK suffer from limescale in the water supply and plate heat exchangers are more likely to scale up and drop in performance, which is where the patented Scale-Stop technology from Mitsubishi Electric comes into its own.

The system promotes the precipitation of scale inside the trap rather than on the plate in the heat exchanger and maintains the high performance for over 10 years, even in hard water areas.

"We have solved the problem of limescale for plate heat exchangers with this technology," explains Halliwell.

Other initiatives included in the launch include a patented cold inlet diffuser for all of the Pre-plumbed cylinders, which ensures reduced mixing of cold inlet water with stratified hot water. This device sits within the center of tank, reducing the velocity of the cold water entering tank and reducing the smoother acceptance of the new cold water within the cylinder.

A new titanium immersion heater also sets a new standard for operational life – even in the hardest or most aggressive water conditions. Titanium's strength, weight and smooth finish



enables it to withstand extreme stress, fluctuating temperatures and corrosive environments.

"We expect the heat pump market to continue to grow steadily through a combination of the RHI and in answer to the increasing costs of oil and LPG," explains John Kellett, general manager of the company's heating systems. "We have prepared this new range to ensure that Ecodan is ready to answer that growing need."

Enq. 326

For more information contact Mitsubishi Electric on 01707 282880 or visit [www.mitsubishielectric.co.uk](http://www.mitsubishielectric.co.uk)

## selfbuilder & homemaker LAUNCH ALL NEW WEBSITE FOR 2014



**REGISTER ONLINE FOR...** In-print magazine • Digital magazine • Newsletter • Daily digests  
[www.sbhonline.co.uk](http://www.sbhonline.co.uk)



Focus fires from **Diligence International** are more than just functional ... they are a stylish focal point for any room.

The sleek lines of the new Slimfocus (above), or the stunning curves of the Magmafocus (right), are just two examples from an extensive collection that offers a fire to suit all interior designs.

Reader  
Enquiry  
**327**

**Diligence International Ltd.**  
Dart Mills, Buckfastleigh, Devon TQ11 0NF  
Tel: 01364 644790  
[www.diligenceinternational.com](http://www.diligenceinternational.com)







# The ideal show to help create your dream home

Head to the Southern Home Show from 30 January to 1 February to find the ideal products and services to create your dream home – all under one roof



The Southern Home Show returns for its second year at Alexandra Palace in January and it's perfect timing for homeowners. With a boom in the property market, a 9 per cent increase in values over 2014 and prices hitting record highs in October, it really is a great time to enhance, renovate, extend or even build your own home.

One of the biggest barriers to creating the perfect home can be finding the right products or services. Not any more! The Southern Home Show is bringing them right to your door. Whether you are considering an extension, a renovation, a new build or a home improvement project, the Southern Home Show offers one of the most comprehensive one-stop shopping opportunities. The Show covers all aspects of interior design, home improvement, self-build, finance, renovation, energy efficiency and gardens.

Taking place over three days, you can take part in workshops, attend free seminars, find thousands of products and services and get a wealth of free advice and information from the experts. Also this year, The Southern Tool Show is joining the Southern Home Show, so whatever power tool, hand tool or building equipment you're looking for, you'll find it there.

Don't forget to bring your plans, drawings or even a list of your ideas. The show has teamed up with the professionals and created unique Advice Areas, giving you the chance to discuss your individual questions with the experts. Come along to the 'Ask the' stands and speak to

architects, project managers, landscape architects and building control managers, all with in-depth expertise and knowledge relevant to London and the South East.

Bring the whole family and learn new skills at the DIY School Workshops and Kids Can Do It Workshops, or attend the Dulux Design Clinic and the Interior Design Clinic for advice on colour, style and decorating trends.

The Southern Home Show is on from Friday 30 January to Sunday 1 February 2015 in The Great Hall at Alexandra Palace, London. Tickets are only £8 per person on the door and children under 16 go free. Your tickets are valid for all three days so you can visit as many times as you like.



For more information and advance tickets, visit the website:

[www.southernhomeshow.co.uk](http://www.southernhomeshow.co.uk)

We look forward to seeing you there

## Tudor Roof Tiles



Tudor Roof Tiles Co Ltd, one of Britain's foremost independent handmade clay roof tile manufacturers, has won the prestigious 2014 Build It Award in the category of Best Roofing Product. The company received this accolade for its historically authentic range of handmade peg and plain clay tiles, which add value to new build projects as well as complementing older styled or period properties in conservation areas. Made from the finest English clay, these traditional sand faced clay tiles have a time weathered appearance with subtle variations in shape, camber and colour, which mirror the individualistic look of the antique tiles.

Tel: 01797 320202 [www.tudorrooftiles.co.uk](http://www.tudorrooftiles.co.uk)

Enq. 129

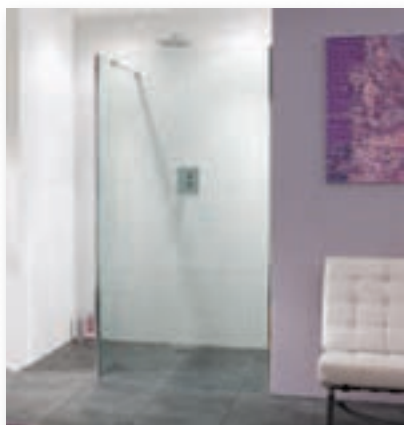
## Saniflo



Derelict for over 60 years, an old watermill in Middleton on Tees, County Durham, has a new lease of life thanks to a range of Saniflo pumps and macerators including a Sanicubic pumping station, two Sanipro units and a Sanitop macerator. Built in 1813, a house was added 50 years later and this was inhabited until 15 years ago. The challenge was to incorporate bathrooms. With no existing toilets in the original mill and the toilets sited on lower and upper floors, with no gravity drainage, a pumping solution was required on both levels. The buildings have since been entered in to the LABC Conversion Award for Regional Building Excellence.

Tel: 020 8842 0033 [www.saniflo.co.uk](http://www.saniflo.co.uk)

Enq. 130



## Lakes Bathrooms

Shower enclosure specialist Lakes Bathrooms has launched two new 10mm designs as part of its runaway hit, the Coastline Collection. The most popular designs in its walk-in range, the Cannes and Nice, are now available in original 8mm and heavier thickness 10mm glass. As with the whole of the Coastline Collection, the look for the new 10mm designs is confident, sleek, minimalist and contemporary. The profiles are silicon-free to support the clean lines and Lakes Bathrooms' stay clean coating, AllClear®, is applied as standard to both sides of the glass. Cannes is a simple screen that comes in five sizes from 750 to 1,200mm wide, plus an optional side panel from 700 to 1,000mm wide. Nice spans from 900 to 1,200mm, with a bypass panel of 200 to 320mm.

Managing Director Robin Craddock said: "We know that buyers expect top quality. We aim to deliver not only luxury, designer style and quality, but at an affordable price." The 2m high screens are designed to fit with low profile tray mounting or in a wet room environment and work in alcove, corner or straight wall-mounted situations. Retail prices for the 10mm walk-in styles in the Coastline Collection start from £349 plus VAT.

Enq. 131

Southern Home Show  
stand no G2

**We are specialists in:**

- High Definition CCTV
- Intruder Alarm Installation
- External Alarm Systems
- Access Control Systems
- Locks
- Safes

RSL Security
 @RSL\_security

Let us protect your home and family

For more information call us on

0208 920 4969

www.rslocksmiths.co.uk

Enq. 132

[www.softubuk.com](http://www.softubuk.com)   [info@softubuk.com](mailto:info@softubuk.com)   01904 643212

## Softub UK – Stylish and understated designs

- Tactile materials and subtle earth colours create an elegant look
- Bespoke rattan and hardwood surrounds and accessories are available to compliment the spa, to add storage and additional seating
- Extremely durable, high performing and lightweight materials
- Practical design features make this hot tub truly portable and user friendly
- Unrivalled in energy efficiency, keeping running costs to a minimum using a fraction of the energy consumed by other brands – so energy efficient that it can even be powered by solar panels!

Softub UK, Pocklington Ind Estate,  
Lancaster Road, Pocklington,  
York, YO42 1NR

Enq. 133



## Redring



When it comes to choosing a shower, an electric shower offers a flexible, and highly efficient solution requiring only a cold-water feed and a power supply. Redring offers the ideal choice through its Xpressions range, which has models to suit all needs. As well as being a flexible solution the Xpressions, Xpressions Plus and Xpressions Premier ranges all offer quick and simple fittings thanks to multiple water and electrical entry points. The Xpressions and Xpressions Plus models are available in 7.2, 8.5 and 9.5kW power options and are easy to operate with a rotary temperature and flow control and an independent push start/stop button.

**Tel: 0844 372 7750** [www.redring.co.uk](http://www.redring.co.uk)

Enq. 134

## MX Group



MX Group has unveiled its latest offering to the bathroom sector, an impressive new range of thermostatic mixer shower valves offering its usual combination of incredible quality, a great looking product, excellent warranties and keen pricing.

There are 22 showering choices in the Atmos and Options ranges with most Atmos options complying with TMV2 regulations.

Full details of the new ranges can be found at the excellent MX website.

**Tel: 01684 293311** [www.mx-group.com](http://www.mx-group.com)

Enq. 136

## Dickies



The Dickies range of Redhawk Superwork and action trousers are ideal for everyday industrial use. They are extremely smart and hardwearing, helping the workforce to stand out from the crowd. They offer multipockets including a top pocket on the flap, kneepad bottom loading velcro fastening, a rule pocket on the front, back patch pockets, stud fastening on left side, hammer loop and reinforced back pockets. New to the Redhawk range for 2014 Dickies introduced a

new chino trouser in the popular Redhawk 260gsm poly/cotton fabric: with no exposed metal it is suitable for the automotive industry.

**Tel: 01761 419419** [www.dickieseurope.com](http://www.dickieseurope.com)

Enq. 138

## Connect with Selfbuilder & Homemaker online

Emailed on a monthly basis, the Selfbuilder & Homemaker newsletter is designed to provide you with the latest information on products and services of interest, direct to your inbox.

You can quickly gather a snapshot of information from up to 12 carefully selected companies and easily follow links through to further information, or go direct to the company's own website.

Brochures and videos are also regularly available.

[ Visit [www.sbhonline.co.uk](http://www.sbhonline.co.uk) to subscribe & find out more! ]



## Delta Membrane Systems



Particularly suitable for use in the creation of wetrooms, the Aquatecnic Aquaproof system is available from Delta Membrane Systems. Developed specifically to prevent water leakage from tiled areas including wetrooms, shower areas, bathrooms and kitchens, Aquaproof is compatible with a wide range of substrates. These include ply sheeting, shower tray formers, plasterboard, MDF, cementitious screed and the most commonly available water-proof construction boards. Aquaproof creates a fully tanked room preventing damage to walls and floors, and ensuring there is no leakage into adjacent rooms.

**Tel: 01992 523523** [www.deltamembranes.com](http://www.deltamembranes.com)

Enq. 135

## Big Phil



Get your food, drink and materials in one place thanks to Big Phil. Developed in conjunction with tradesmen, Big Phil is a fantastic new brand that delivers man-sized 'made-for-trade' snacks and energy-boosting drinks to keep you fuelled up during the busy working day. Available exclusively through trade outlets nationwide you can fuel up as you collect your materials for the day's job. Keen to support good causes, Big Phil has joined forces with Help for Heroes to raise money for injured servicemen and women, donating a minimum of 1p from the sale price of each Big Phil product.

**Email: [alrightmate@bigphil.com](mailto:alrightmate@bigphil.com)** [www.bigphil.com](http://www.bigphil.com)

Enq. 137

## PUNK



The PUNK range packs a punch, helping tradesmen tackle any job, no matter how tough. The 'power' in any power tool is a direct result of the accessories that are used – as every tradesman knows, the tools used on-site can make or break a job – and keeping those accessories on-hand and protected is essential where time is money. The PUNK cases launched this month are the ultimate protection for all power tool accessories. The PUNK case is a hard-wearing and compact holder with a unique interchangeable system for multiple storage options. The case is for the demanding tradesman that wants to stand out.

[www.punkpower.co.uk](http://www.punkpower.co.uk)

Enq. 139

## Snickers



Renowned for superior working jacket technology, Snickers is upgrading its new Soft Shell Jacket and Winter Vest for tradesmen and women. They are well designed with a selection of sizes and colours, plus they deliver good value for money and fulfil every basic need while working on-site. With a stretchable, breathable and water-repellant polyester fabric, the jackets have a soft, warm fleece inner layer to ward off the autumn chills. The revolutionary ergonomic design in the jacket's pre-bent sleeves enables you to count on plenty of comfort and freedom of movement whatever you are doing. They're packed with functionality including plenty of pockets both inside and out plus reflective strips.

Enq. 140

# A thoroughly extraordinary weatherboard

Self-builders strive to create homes that are distinct and appealing, while not ending up with a structure that looks out of place in its surroundings. Marley

Eternit looks at why fibre cement weatherboarding is able to retain a timeless appeal, while adding a modern twist to create a contemporary home



Fibre cement has for some time been recognised as a durable, low maintenance and rot free facade solution. Indeed, self-builders are reluctant to use anything else because of the ongoing maintenance issues associated with some other materials.

One of the most effective uses of fibre cement has been weatherboard cladding, a facade solution that has retained an enduring appeal with homebuilders for centuries. Fibre cements' ability to replicate the attractive, decorative qualities of timber, while avoiding the ongoing maintenance issues, has led to its popularity.

## Historical weatherboard

In terms of historical buildings, oak and elm were the predominant timbers used for weatherboard until the mid 1800s. The advent of less durable, imported softwood in the 19th century resulted in a need to protect the timber from the element. At around the same time, widespread use of town-gas meant that black-coloured coal tar, a natural protector of timber, became the obvious solution.

As a result many buildings fitted with weatherboard adopted a distinctive black appearance. Even now, planning departments often require that new buildings should have black weatherboard to retain the vernacular architecture. The reality, of course, is that the use of black coal tar was a relatively recent development – only with the advent of the town-gas in the 19th century – prior to this the boards were either left untreated or limed washed.

Where lime was used, the addition of pigments allowed the creation of a range of appealing red ochre and bluish hues, which means that pre-19th century weatherboard was much more brightly coloured. Manufacturers of modern fibre cement weatherboard products have responded to this by offering a range of soft colours that reflect what these 'traditional' weatherboard buildings would have looked like. Black was not the only colour.

With lime washed buildings, white was also





a popular choice and this remains so with many self-builders today. A recent example of where this was used to dramatic effect was a run-down 1960s home on the West Sussex coast. The owner transformed the exterior appearance with fibre cement weatherboard, to create a contemporary Hamptons-style beach house.

Fibre cement weatherboard was chosen because its subtle textured surface gives the visual appearance of timber yet requires no ongoing maintenance. Modern fibre cement weatherboard such as this can have an installed life expectancy of 50 years and unlike timber does not warp or shrink over time.

Caroline, the owner of the property, said: "We could see that timber weatherboard would have been an issue this close to the sea. It would have required more regular maintenance than is practical – and with the fibre cement product you don't even need to paint it because it is supplied in a wide choice of great colours."

Fibre cement weatherboard is equally as popular with self-builders who are refurbishing more

traditional properties, such as a historic 194-year-old, Grade II listed windmill in Kent. The visual appearance of the weatherboard helped create a sympathetic restoration of the building, which has once again become a picturesque landmark in the small town of Sheerness, located on the Isle of Sheppey.

Caleb, the owner, said: "We used fibre cement weatherboard because it was a cost-effective alternative to timber, and is also insect proof, which increases its longevity and protects the structure from pest damage, such as woodworm. It looks great, too, and has recaptured the original look of the windmill beautifully."

## Fit 'n' forget

Fibre cement weatherboard can be cut, screwed, nailed or glued just like timber, so there is no need for specialist installation skills. This is an important consideration for self-builders looking to take on certain aspects of the project themselves to keep within budget.

In terms of design there are many options available with fibre cement, from the traditional shiplap configuration through to more contemporary vertical boards. The boards can either be overlapped, fitted flush or left with a shadow gap – either way it provides the building with the benefits of a rear ventilated cavity, while creating a design that is up to date.

Fibre cement weatherboard protects buildings against harsh weather conditions by allowing air to continually circulate up through the rear-

There are many options available with fibre cement, from the traditional shiplap configuration through to more contemporary vertical boards

ventilated cavity, keeping the main structure dry. Preventing rain or moisture reaching the exterior wall of the building protects it from the damaging effects of this continual wetting and drying action.

As self-builders embrace the challenge of creating visually pleasing homes that offer long term low maintenance, more are opting for fibre cement weatherboard. The fact that the material retains a link with historical buildings, which tended to be all self-build, yet provides modern performance and maintenance benefits, means that the material has taken the ordinary weatherboard and made it into something quite extraordinary.

Enq. 141

# Heritage

## Roofline • Rainwater • Cladding

Long lasting, sustainable PVC systems for exposed and inaccessible locations.



- Responsibly sourced and manufactured
- Maximum CSH points for new build
- Minimum lifetime costs for refurbishment

[www.swishbp.co.uk](http://www.swishbp.co.uk)

**Swish**  
BUILDING PRODUCTS

Enq. 142



Pre-painted black featheredge



Thermowood pine claddings



Pre-painted white featheredge



Treated pine claddings

For a free sample, call 0800 849 6339

Buy online:

[www.timber-cladding.co.uk](http://www.timber-cladding.co.uk)

Enq. 143



# WE DO MORE TO TRANSFORM YOUR SPACE.

bi-folds | sliding doors | roofs | windows | glass rooms

Choose Express for the widest range of bespoke aluminium folding and sliding doors, windows and roofing systems. Manufactured by us, our market leading collection is the best that is made in UK.

And because we manage the entire process, from the initial survey through to installation, we confidently offer comprehensive warranties. Whatever your vision, we do more so you can truly express yourself.

visit [expressbifolds.co.uk](http://expressbifolds.co.uk)  
or call us on 0800 121 4809

Showrooms in: Leeds | Glasgow | Redhill | Romford



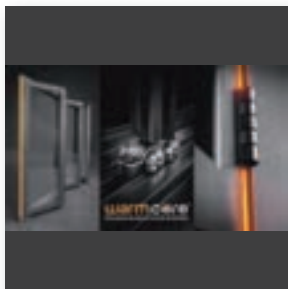
“ For me, Express do the best products at the best price, so I used them on every single Home Show project and then ended up using them on my own house. I have never gone anywhere else for bi-fold doors. ”  
George Clarke, TV presenter and Architect

Reader  
Enquiry  
144

express   
bi-folding doors enjoy the bright life.



## Synseal



Synseal is proud to introduce WarmCore, an innovative aluminium folding sliding door system which incorporates a radically different product design approach to create a new high performance fenestration framing solution: 'warm aluminium'. Designed from scratch starting with a clean sheet of paper, every single component has been concept sketched, detail designed, prototyped, tooled, trial installed and rigorously tested by Synseal's market-leading R&D

team. WarmCore is a high quality aluminium bi-fold door solution with peerless thermal performance to ensure end-user comfort, all year round.

Tel: 01623 443200 [www.synseal.com](http://www.synseal.com)

Enq. 145

## Solarlux



Solarlux was the proud sponsor of the UK & International Restaurant & Bar Design Awards 2014. Now in its sixth year, the awards ceremony took place on September 25 at the Old Truman Brewery in London, where several cutting edge design firms transformed the building into a spectacular event space for the hospitality design awards function. Facing international flair and fierce competition, Les Haras Brasserie in Strasbourg – designed by Jouin Manku – and FEI, a bar based within

W Hotel in Guanzhou – designed by A.N.D. – were the overall winners of the 2014 Restaurant & Bar Design Awards.

Tel: 01707 339 970 [www.solarlux.co.uk](http://www.solarlux.co.uk)

Enq. 146



## P C Henderson

P C Henderson's sliding and folding door hardware can offer vital added privacy and flexible layouts to improve inter-generational homes. With a record amount of grown-up children living at home and a rise in two or three family generations living under one roof, the National House Building Council (NHBC) predicts houses will be built and adapted to suit the surge of 'co-homers'. With expensive care for the elderly and children, and many struggling to get on the property ladder, families are pooling their funds to afford much larger homes and share the space. The Ideal Home Show census learnt that four per cent of the population, 728,000 people, now live in homes with two other generations – a higher rate than in the Victorian era. According to the Halifax monthly price index, house prices have risen by £17,261 in the last year. In addition, a report from the Post Office shows the average house size has halved by 700 sq ft in the last century, further showing the challenge to find affordable living space. By using sliding door gear systems, floor space is created in a home in contrast to a swing door which impacts on the room once opened.

Tel: 0191 377 0701 [www.pchenderson.com](http://www.pchenderson.com)

Enq. 147

## Prices "SMASHED" On Aluminium Bi-folding Doors

Price Smash on all of our market-leading Aluminium Bi-Fold doors, **challenge us** on price for your quote and we will even give you **10% OFF\*** your first door ...**WOW!**



**Aluminium  
BI-FOLD DOORS from  
£365+VAT per Sash**

PRICE EXAMPLE

**PRICE  
CHALLENGE!**  
Compare us today.  
We will not be  
beaten on price.

- Premium Aluminium profile
- A choice of RAL colours
- On-site delivery available
- Low Threshold Options
- Quick Turnaround from quote to delivery
- Log online to view our new **EZI Door Quote System**



**10% OFF\***  
your first  
door now

Find out more!



**Call Nigel 01642 610798**

**Fax 01642 671026**

**[www.madefortrade.co](http://www.madefortrade.co)**



made for trade

\*Offer open to new customers on first order. Not applicable to glazing and delivery charge.

Enq. 148

# Steel yourself...

John Pyatt, managing director of Crittall Windows, highlights the benefits and considerations when installing steel windows as part of your self-build project



Correctly installing high quality steel windows adds value to the investment you've made in your self-build home – an important consideration when it comes time to sell. But, do your homework before making a final purchasing decision regarding which brand, style, and importantly, which material to choose.

Install the window brand it says it is – only the original, genuine, make. There are window companies claiming to be providing that, but are not.

British-made often look better and last longer.

Most likely your self-build project is the biggest investment you will ever make. It's crucial you protect that investment – and save on costly energy bills – by choosing high quality, well-designed stylish steel windows.

There's an extensive choice of steel windows (and doors) suiting every style of home, enabling you to personalise its appearance and bring it to life. Reputable window installers will know which aspects of the Building Regulations are applicable to your property.

## Steel yourself

Window frames come in many materials, styles and colours. But, it's just not worth spoiling the look of a property and affecting its value for the sake of a cheap installation. It's important the windows you specify match the overall style of the property.

Steel windows cannot be replicated by aluminium, timber or plastic, because steel is an inherently strong material – far more than wood and three times stronger than aluminium – enabling a window's frame to be more slender in appearance than alternatives. This gives larger expanses of glass with minimal sightlines for a wider, clearer view, maximising daylight in the home.



Well-engineered, simple and practical in design, maintenance-free, durable, cost and energy-efficient, residential steel windows have long faithfully served the housing market. The modern, high quality window features high performance double glazing, keeping heat in during cold winters and summer heat and noise outside for year-round comfort.

With the 'retro look' very much 'in', steel windows are increasingly popular – the slim 'timeless' frames and sight-lines and the graceful elegance present a light delicate feel inside and out, giving consistency of design. A welcome sense of airiness and space is created.

## Right up your street

You may want to echo the Art Deco style of the 1930s – one of the most distinctive house styles; homes and buildings from this period were fitted with steel windows.

Or you can achieve a contemporary twist

There's an extensive choice of steel windows and doors suiting every style of home, enabling you to personalise its appearance and bring it to life



through curved double glazed window units available from manufacturers and distributors to re-create this unique style to its former glory.

Or give your planned property an attractive contemporary modern look with a traditional feel. Steel windows are ideal for that minimalist look, modernist styling – slim frames, large expanses of glass – and homes and buildings constructed with stone or brick window spaces.

Consider customised square or arched windows to accommodate the sizes and shapes required. Non-standard sizes can be custom-made.

The benefits of steel windows are unsurpassed and as steel is 100 per cent recyclable, no other window material comes close for life cycle and minimum maintenance. To prevent chilly draughts and costly heat loss, consider opening windows (and doors) featuring built-in weather-stripping, plus those that are hot-dipped galvanised deliver complete protection against rust and corrosion.

Steel windows also last longer – for 60 years or more. Even before the arrival of ultra modern, high performance polyester powder coatings, steel windows installed in the 1920s and 1930s lasted over 50 years.

Enq. 149

## Steel windows – your questions answered...

### Are steel windows costly?

Quality-made galvanised, steel windows are most durable. Very competitively priced, they are economical to maintain long-term. Polyester powder coated steel windows do not require redecoration for 15-20 years. Price comparisons and cost-in-use statistics indicate galvanised finish and white Duralife polyester powder coated steel windows provide excellent value for money.

### I want steel windows – where do I go?

Carefully research your steel windows supplier – manufacturer or distributor. Only choose those from a reputable, well-established firm.

### Will steel windows go rusty?

No. Modern steel windows are hot-dip galvanised (totally immersed in molten zinc). They are permanently sealed against corrosion and not warp or rust. Galvanised frames can even be left unpainted – saving money – as the layers of zinc and alloy resist corrosive action.

### Are steel windows maintenance-free?

Polyester powder coated steel windows mean initial site painting is not required, remaining maintenance-free for 15-20 years.

### Aren't steel windows draughty?

No – they're not. High quality, well-made, opening steel windows are weather-stripped for efficient draught proofing, offering excellent weather performance.

### Can I have double-glazing?

Absolutely – installation of double-glazing is recommended. All steel windows can be double-glazed. They offer energy-saving thermal efficiency and effective acoustic insulation.

### Are steel windows environmentally friendly?

Yes. Made from a totally recyclable natural material, they are among the most environmentally friendly windows available. Unlike PVCu, they do not emit toxic gases when burnt. Modern manufacturing processes help conserve energy and minimise toxic effluents. With a 60+ year life spans, steel windows are a cost-efficient use of natural raw materials.

### Are steel windows secure?

Inherent strength of steel means they can more effectively defeat attacks by burglars/vandals than other window types.



# DURATION WINDOWS

Aluminium Trade Manufacturer Since 1985



## Aluminium Bi-folding Doors



## As Seen On Channel 4



## Trade Manufacturer Established 1985

**Contact Us Today:**  
**01268 681612**  
**[duration.co.uk](http://duration.co.uk)**

Enq. 150



If there's one product more than any other which has helped self-builders to bridge the gap between indoor and outdoor living as they design their dream homes it's the bi-folding door.

- Vast swathes of natural light to give your home a contemporary feel
- Family friendly for everyday use
- Available in just about every colour of the rainbow
- Thermal efficient and guaranteed to reduce energy costs
- Robust in use and secure in operation

Liniair bi-folding doors provide a cost-effective solution for self-builders and are available through a network of approved suppliers and installers

For more information call us on 01332 883900  
or email [sales@liniar.co.uk](mailto:sales@liniar.co.uk)

Reader  
Enquiry  
**151**



[www.liniair.co.uk/sbhm](http://www.liniair.co.uk/sbhm)





## George Woods UK



George Woods UK manufactures a large range of door canopies, all hand made in timber from sustainable forestry. The company always holds a large stock of its standard size canopies, which enables it to offer a next day delivery service. A bespoke design service is provided for both timber door canopies and barge boards, which can be crafted from your own design. Beautifully crafted porch canopies are available in soft wood and include an extensive range of barge boards (fascia boards), all of which are manufactured on-site by hand. Having a canopy prolongs the life of your front door, extends time between maintenance and adds value and appeal.

Enq. 152

## Synseal



The success of Synseal's Orangery Collection keeps on growing. One of the latest examples of this success is the installation of an Integra parapet wall style orangery in Lancashire. The choice of the Integra orangery design was driven by a desire from the homeowner to have an installation that would most closely achieve the look and feel of a fully brick-built extension, while still benefiting from the extra light that comes from having an overhead glass roof. The Integra is unique in today's marketplace in that the concealed lantern roof is designed to fit neatly behind the parapet wall for a very traditional orangery look.

Tel: 01623 443200 [www.synseal.com](http://www.synseal.com)

Enq. 153



## Garador

Garador's great looking Chatsworth PVC up & over door has been launched well in time for winter storms. Along with Garador's already popular PVC up & over Sherborne style, both doors offer exceptional low maintenance and long durability. Built around a galvanised steel box section chassis, both doors have been engineered to offer the ultimate impact resistance against life's everyday knocks, wear and tear. With their non-rusting properties they are also ideal for coastal properties, where they will withstand even the toughest weather conditions. Along with their strength, the Chatsworth and Sherborne doors both offer great looks. Designed with an ultra crisp, fully finished PVC plastic door panel, they are the perfect match for existing white PVC doors and windows. The choice of design has been achieved through elegant vacuum formed panels that offer a fresh clean look that will appeal to both modern and traditional homeowners. Both doors are available in canopy or retractable models and are also available with a retractable plus gear option which is perfect for anyone wanting extra drive-through width.

Tel: 01935 443791 [www.garador.co.uk](http://www.garador.co.uk)

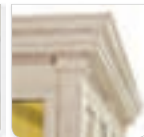
Enq. 154

# CONSERVATORY ROOFS, ORANGERY ROOFS, LANTERNS PRICE CRASH!

### Global Summer Orangery



Easy installation of lighting system



Decorative gutter fascia and fluted pilasters

### Stylish and elegant



Pinnet post



Internal view

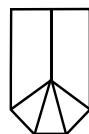
## Don't miss that sale on PRICE! Try a Price Comparison - SAVE £££s

- Very quick turnaround
- 25mm and 35mm poly
- All rafter cappings scribed and pre-cut - ready to fit
- All roofs checked sleaved and bubble-wrapped for safe delivery
- Free delivery to site
- White, Oak, Rosewood, and Mahogany Artisan Colours

**15%  
OFF**  
your first roof  
*Lowest prices  
anywhere \**

### FITS ALL SIDE FRAME SYSTEMS - EASY TO FIT

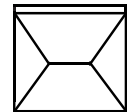
#### 2.8 x 2.9m Victorian 25mm Opal



Red sticker price includes 15% new customer discount

from  
**£496**  
ex. VAT

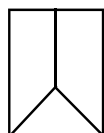
#### 4 x 3m Double Hipped 25mm Opal



Red sticker price includes 15% new customer discount

from  
**£938**  
ex. VAT

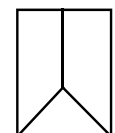
#### 2.8 x 2.9m Edwardian 25mm Opal



Red sticker price includes 15% new customer discount

from  
**£534**  
ex. VAT

#### 2.8 x 2.9m Edwardian 25mm Blue Active



Red sticker price includes 15% new customer discount

from  
**£922**  
ex. VAT

### Log online to view our new EZI Conservatory Roof Quote System

\*We will try to beat any like for like price quoted.  
All prices are subject to VAT at the current rate.



Find out more!



made for trade  
[www.madefortrade.co](http://www.madefortrade.co)

**'MORE COMPETITIVE THAN ALL OTHER ROOF SYSTEMS.  
SO DON'T ZOOM OFF, GET A PRICE COMPARISON  
AND CHECK OUT OUR ULTRA LOW PRICES!!'**

Tel: **01642 610799**

Fax: **01642 615854**

**LOG ON TO OUR WEBSITE FOR CURRENT PROMOTIONS!**

\*In our experience we haven't found anywhere who can beat us on price.

Enq. 155

# REAL WOOD VENEER DOORS THE NATURAL CHOICE



If you like the natural beauty of real wood, you'll love our new range of veneer doors. Crafted from real wood veneer with a sound reducing solid core, these stylish doors will shrug off the wear and tear of family life, yet remain beautiful in any setting.

Available in a variety of sizes, and with 30 or 60 minute fire door options, they're quick and easy to fit and are supplied fully finished. All you need to do is apply a stain or varnish to the edges and you're done, leaving you free to enjoy other things. Choose from White Oak Fusion, Walnut Fusion, White Oak Inlay or the exotic looking Zebrano to match up to your other home furnishings and create a truly unique home.



You can also view our veneer video at [www.youtube.com/user/JELDWENUK](http://www.youtube.com/user/JELDWENUK) or scan the QR code to find out more.

Reader  
Enquiry  
**156**

For further information, to view our full range or order your latest catalogue visit [www.jeld-wen.co.uk](http://www.jeld-wen.co.uk) or call **0845 122 2891**



## Synseal



Synseal's fabricated range of Evolve Bi-fold doors has been enhanced with the addition of new anodised aluminium tracks and Artisan woodgrain foil colour finishes. Previously available in a choice of solid White PVC-U and Golden Oak and Cherrywood woodgrain foil colours, the Evolve Bi-fold range now boasts new Woodgrain White, Woodgrain Brilliant White, Cream, Irish Oak, Chartwell Green and Grey foil finishes selected from Synseal's Artisan woodgrain collection.

These additional Artisan colours are available for use in conjunction with newly-introduced aluminium tracks in anodised Silver or Gold finish.

Tel: 01623 443200 [www.synseal.com](http://www.synseal.com)

Enq. 157

## Made For Trade



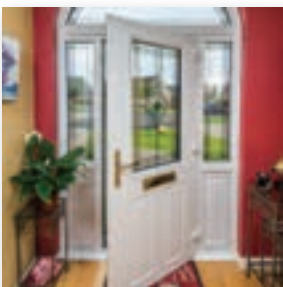
Made For Trade has announced a brochure of its best-selling aluminium bi-fold doors and conservatory roof kits. They hope it will help introduce companies to their products and key employees they will deal with.

Director Bradley Gaunt said: "The brochure will give current and potential customers a better understanding of what we provide as well as an insight into how the company works."

Tel: 01642 612204  
[www.aanco.co.uk](http://www.aanco.co.uk)

Enq. 158

## Apeer



Officially recognised as Energy A Rated, Apeer composite doors feature a high density polyurethane core which offers a higher level of strength and insulation compared to traditional doors. A double rebate system – a 'lip' on the vertical edge where the door meets the frame – adds additional draught protection by creating an internal secondary seal. Its toughened, triple glazed window panels are also highly insulated and come complete with a Q Seal warm edge Super

Spacer system, which significantly improves long-term durability, energy efficiency, condensation resistance and sound transmission.

Tel: 02825 632200 [www.appeer.co.uk](http://www.appeer.co.uk)

Enq. 159

## Synseal



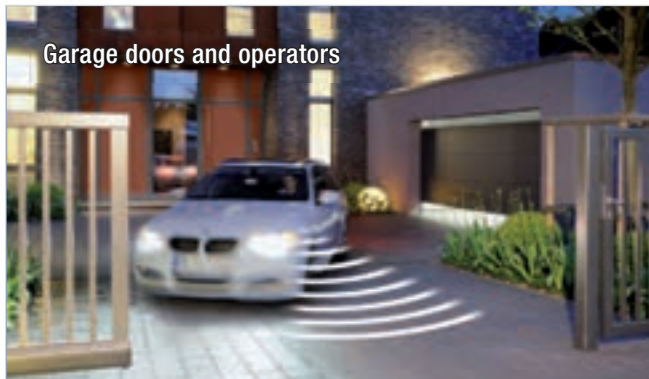
Synseal has published a new technical brochure which summarises all available product designs in the company's extensive Orangery Collection. Crammed with isometric cut-throughs and dimensioned section drawings to deliver hard facts detailing the different orangery solutions with no sales waffle, this Orangery Collection technical brochure was designed to support Synseal's programme of orangery installation workshops for fabricator partners and Synseal

Registered Installers (SRIs) in Autumn '14. These orangery workshops have proven so popular that an extra date has been added to meet demand.

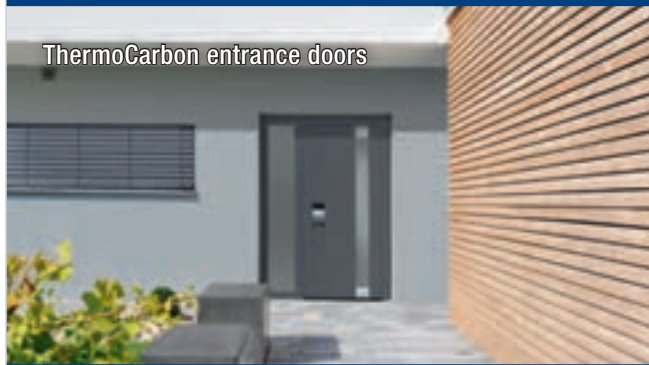
Tel: 01623 443200 [www.synseal.com](http://www.synseal.com)

Enq. 160

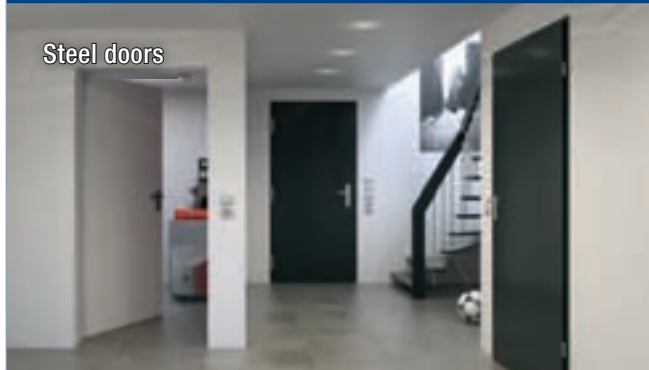
## Garage doors and operators



## ThermoCarbon entrance doors



## Steel doors



## Europe's largest door programme

- Europe's no. 1 with more than 75 years of experience in the door construction business
- NEW: ThermoCarbon with maximum thermal insulation of up to 0.47 W/(m<sup>2</sup>·K)
- Steel doors with thermal break for optimal thermal insulation

[www.hormann.co.uk](http://www.hormann.co.uk)

**HÖRMANN**  
Garage and Industrial Doors



Enq. 161

# Panoramic views just got better from Reynaers at Home

Reynaers at Home has introduced new variants of its Hi-Finity sliding patio doors in response to increased demand for the innovative product.

With a minimised visible frame of just 35mm for a maximised panoramic view, the Reynaers at Home Hi-Finity slim frame doors offer the ultimate in contemporary design and cutting-edge performance.

Elegant Hi-Finity aluminium doors are now available with double and triple glazing and ensure optimum performance, safety, and comfort. What's more, the Hi-Finity sliding system with triple glazing has achieved the Minergie® sustainability label – a quality indicator for high insulation systems. The Minergie component label for windows and doors requires a  $U_w$  value (installed) of  $\leq 1.0W/m^2K$ . The Minergie-P® label corresponds to the internationally-known



Passivhaus standard and requires a  $U_w$  value of  $\leq 0.8W/m^2K$ .

Head of Reynaers at Home Hugh Moss said: "The use of structural glazing technology allows Hi-Finity doors to push the boundaries in terms of size and these doors can achieve an industry-

leading height of 3.5m. It is now also possible to combine two Hi-Finity doors on adjoining walls using one of a new range of innovative corner solutions. They allow architects to create a wall of glass to let panoramic views flood into homes and – thanks to the unique design of the multi-wheel carriages – even the heaviest of these doors will glide open and closed with minimal effort."

All Hi-Finity doors incorporate a state-of-the-art electronic locking system concealed in the outer frame and operate via a wall-mounted button or a remote control. Combined with a burglar-resistant design, it makes the sliding patio doors some of the most secure available.

To support the use in luxury high-rise apartments, Reynaers at Home has also developed a project specific bespoke solution by integrating a glass balustrade.

Enq. 162

For more information see the website [www.reynaersathome.co.uk](http://www.reynaersathome.co.uk), email [homeuk@reynaers.com](mailto:homeuk@reynaers.com) or call 0121 421 9707



## Relax... Everything's fine!

Beautiful, energy-efficient and secure, **Swish windows and doors** are designed, built and installed with care.

They're the **perfect choice** for people who've got other things to be worrying about.

Home Swish Home

call **0808 178 3040** or visit [www.swishwindows.co.uk](http://www.swishwindows.co.uk)

**Swish.**  
WINDOW AND DOOR SYSTEMS

Enq. 163





LIGHT SPACE STYLE



High Quality Folding Sliding Doors • British, German & Belgium Design • A Fantastic Variety Of Finishes & Colours • Virtually maintenance free • State-of-the art security features • Full fitting available • Free survey & design advice

Unit 26/3 Silicon Business Centre • 26 Wadsworth Road  
Perivale, Greenford Middlesex UB6 7JZ  
Tel: 0208 997 2448 Fax: 0208 997 0611

[www.1stfoldingslidingdoors.co.uk](http://www.1stfoldingslidingdoors.co.uk) / [foldingslidingdoors@btinternet.com](mailto:foldingslidingdoors@btinternet.com)

**1ST FOLDING SLIDING DOORS**

Enq. 164



**PRICE MATCH GUARANTEE**

**ESSENTIALS**  
engineered value by TODD DOORS

A range of superior quality doors from "Door Experts" at unbelievable prices.

Click, call or visit us today.

BEAUTIFUL QUALITY DOORS FROM JUST  
**£69.99**

Iseo C4514 with clear bevelled glass.  
Supplied deluxe white primed. RRP from £134.10

**TODD DOORS**  
DESIGN • FIT • SERVICE



Showrooms in West London, St Albans and Bournemouth.

[www.todd-doors.co.uk](http://www.todd-doors.co.uk) **T: 0800 987 8667**

Enq. 165

Inspirational **Door Designs**

order or download your copy of the JB Kind door brochure today

**JB Kind DOORS**

INSPIRATIONAL DOORS. Undeniable value.

Open the door to our wide range of innovative, contemporary and classic door designs. Visit [www.jbkind.com](http://www.jbkind.com)

**T: 01283 554197**  
[www.jbkind.com](http://www.jbkind.com)

Enq. 166

Wood floors?

Complete treatment in a day

Polyx Oil Rapid provides a professional finish in double quick time.

- > Extremely quick drying.
- > TWO coats in a day.
- > Polyx Oil for wood, cork and OSB floors.
- > Highest coverage of any oil on the market.
- > Satin or matt finish.



Call or visit the web for stockists.



+44 (0)1296 481 220  
[www.osmouk.com](http://www.osmouk.com)

**osmo**

Enq. 167



**SELFBUILD**  
& CONTRACT FLOORS LTD

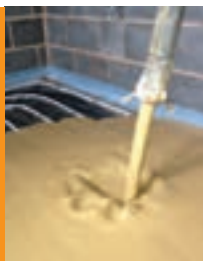


## Underfloor Heating & Flowing Screed On-time Right-first-time

We specialise in a wide range of projects including:

- Self Builds
- Barn Conversions
- New Builds
- Extensions
- Renovation Projects
- Basement Conversions

Visit: [www.selfbuildfloors.co.uk](http://www.selfbuildfloors.co.uk)  
Email: [info@selfbuildfloors.co.uk](mailto:info@selfbuildfloors.co.uk)  
Phone: 0114 231 5937



Enq. 168

## Redbacks



A new kneepad for pocketed work trousers which incorporates a unique 'direction of force' design that crucially protects the wearer's knees and the rest of the body from the potential dangers of impact through continuous kneeling, has been introduced by Redbacks Cushioning Limited. Around 20 per cent lighter than its big selling predecessor, it allows greater ease of movement and with a thicker grade of spacer fabric, giving added comfort, the new kneepads feature a soft and flexible TPE (Thermo Plastic Elastomer) leaf-spring, now with increased durability, which is set within a unique honeycomb matrix.

Tel: 01327 702104 [www.redbackskneepads.co.uk](http://www.redbackskneepads.co.uk)

Enq. 169

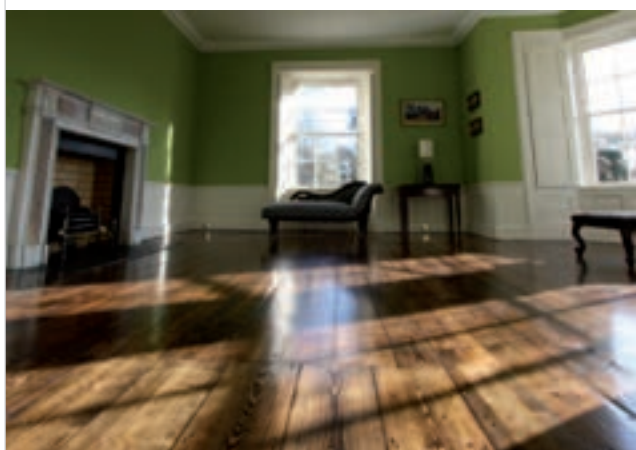
## Connect with Selfbuilder & Homemaker online

Emailed on a monthly basis, the Selfbuilder & Homemaker newsletter is designed to provide you with the latest information on products and services of interest, direct to your inbox.

You can quickly gather a snapshot of information from up to 12 carefully selected companies and easily follow links through to further information, or go direct to the company's own website.

Brochures and videos are also regularly available.

[ Visit [www.sbhonline.co.uk](http://www.sbhonline.co.uk) to subscribe & find out more! ]



## Need help with your wooden floor?

For new installations or renovations – speak to your local Bona Certified Contractor!

At Bona we are passionate about wood floors. Our range of oils and lacquers have been used worldwide for nearly a century to protect and finish beautiful wood surfaces.

To help you prolong the life of your floor, we've trained a network of wood floor specialists in the use of our dust-free sanding system and high performance coatings.

Call us on 01908 525 150 or use the 'Find your contractor' tool on our website at [bona.com](http://bona.com) to find your local wood floor specialist.

Bona Limited  
Tel 01908 525 150  
[info.uk@bona.com](mailto:info.uk@bona.com)

[bona.com](http://bona.com)

**Bona**  
Passion for wood floors



Enq. 170



# Trendy tiles

British Ceramic Tile's Head of Design Claire O'Brien discusses the latest trends in flooring as well as what is set to be extremely popular for new builds in 2015

Whether your new build is more contemporary or traditional, there are a wide range of colours, textures and finishes within flooring that will add impact to any room in the home.

## Why choose tiles

When embarking on a self-build project, one of the most important decisions to be made is what materials to use. Self-builders want a cost effective option without compromising on design or quality of the finished product.

Over the course of the last few years, ceramic tiles have firmly cemented their place as a go to product when choosing flooring for a home. Not only are they cost effective, but very easy to clean – all they require is a simple wipe with a damp cloth. Ceramic tiles can also be used with underfloor heating, giving that warm feeling under foot as they are a great conductor of heat.

Another benefit is the wide range of colours and patterns that are available today due to innovations in printing and manufacturing techniques, as well as the range of sizes – from traditional 30x30cm to larger format tiles that help recreate the open plan living look. Tiles are also very durable and will last for many years once they have been installed correctly, particularly useful in busy family homes.

## Types of tiles

From ceramic tiles – which are easy to install and work well with underfloor heating – to porcelain that is incredibly hard-wearing and suited to high traffic areas, flooring options have their advantages and disadvantages. Ceramic tiles are the easiest material to install, and are simple to cut, making it easier when you have rooms that vary in size.

Stone and wood effect ceramic tiles are extremely popular at the moment, offering the same design and effects as the real thing, but often able to be purchased at a fraction of the cost. What's more, ceramic tiles don't require any special sealing or maintenance so installation costs remain low. They also make a practical option when selecting a floor covering as they are hard-wearing with no on-going maintenance required.

## Latest trends

Flooring is now much more of a design statement, with homeowners reflecting their personality on smaller rooms in the home, while often



choosing calmer, more timeless options for larger areas. Homeowners are becoming more adventurous in the use of tiles, no longer confining them to the kitchen and bathroom, but bringing them into other rooms within the home such as living areas and hallways.

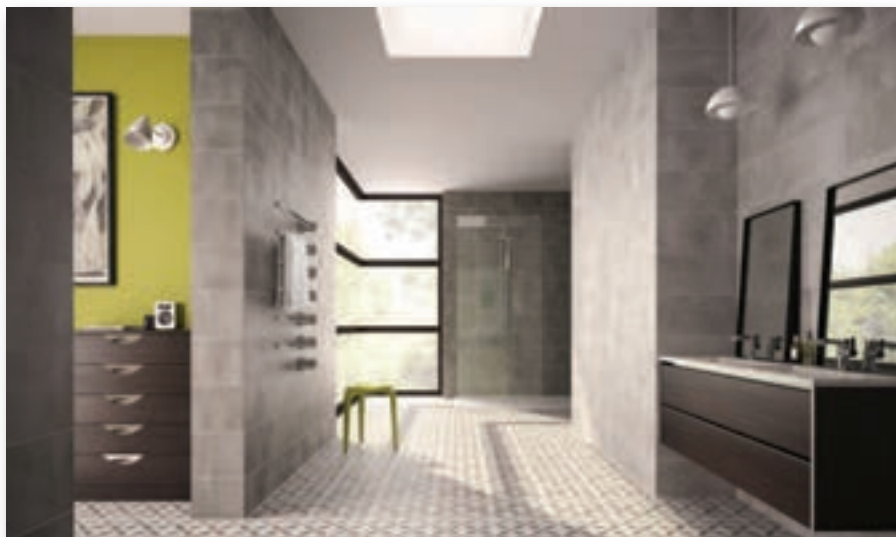
With the floor increasingly being seen as the 'fifth wall', patterned floor tiles in classic and

contemporary designs are being used to create a real wow factor. If you make the floor the centre stage, it's a good idea to keep walls neutral to maximise the impact of the flooring.

Offering the same design aesthetics as natural stone yet just a fraction of the cost, stone-effect ceramic tiles are extremely popular at the moment as they are perfect for every room in

*Continued overleaf...*

Over the course of the last few years, ceramic tiles have firmly cemented their place as a go to product when choosing flooring



the home and extremely hard-wearing. The beauty of these tiles is that you can carry them from the wall to the floor and from room to room. Not only suited to bathrooms, this style of tile can be brought to living areas too, giving new builds a unique, contemporary look.

## Colours of 2015

Colours tend to change each year in terms of popularity, but some remain universally popular. For example, radiant orchid was the Pantone colour of the year for 2014, and is set to dominate 2015 again, along with crushed grape and an array of other colours.

## True blue

Blue is still big for 2015. From dark indigo shades through to washed out coastal inspired blue hues.

## Guilty pleasure

Metallic colour palettes are strong for 2015. Colours range from burnished gold, beaten copper and worn pewter. They are understated, aged and distressed rather than brash and new.

## Shades of grey

Grey is still a huge influence on interior design schemes. The difference from last year is the shade of grey is now cooler and multiple tones are used together to create a layering effect. It is a strong foundation for adding colour flashes and contrasting highlights.

## Mid century

This is a combination of colours which were prevalent in the 1950s, but all with a muted slightly greyed off feel. Colours include; char- treuse, burnt orange, grey, warm brown, teal green and petrol blue.

## Design predictions for 2015

Smaller formats and different shapes are set to take the interior world by storm next year. From hexagons and tapered planks through to interlocking shapes, the possibilities are endless.

Textured tiles will be key, whether that's through the look of them i.e. wood and grass effect, or the feel of the material. Not only does it give floors personality, they can add definition and texture to a room while also having the added benefit of bouncing light around the room, making a space feel bigger than it actually is.

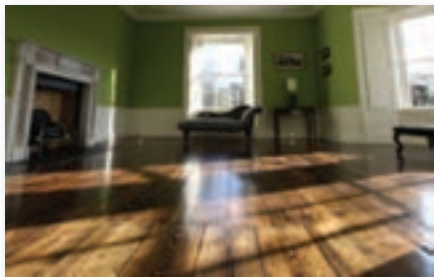
Warm wood is a key theme that will be seen in the home throughout 2015, bringing a sense of the outdoors in, while adding warmth.

Tiles capturing the essence of the Victorian period will carry on through to next year, with very intricate patterns and geometric styles, bringing a characterful, antique look to new builds.

Enq. 171







AN ORIGINAL FLOOR IN A PERIOD HOME RENOVATED WITH BONA COLOURS AND LACQUER

# Let's get passionate about wood floors

By Alec Stacey, Technical Manager, Bona Limited

You may be considering a wood floor for your new build project, or maybe you are faced with renovating an existing floor as part of a major property refurbishment. Bona has been making finishes for wood floors for nearly a century and its network of expert wood floor specialists will be able to help you.

An important first choice is whether to finish the surface with an oil or a lacquer (varnish). Both offer great benefits in terms of durability and aesthetics, but it's also important to consider how the floor is going to be used. Today, the trend is for a natural, matt look and most modern

lacquers are available in semi-matt or very matt finishes. Floors finished with lacquers are very easy to clean and maintain too. The most important thing is regular sweeping to remove dust and grit which can scratch the surface. When marks appear or for the occasional all over clean, Bona's Spray Mop, which applies minimal liquid to the surface, is the most effective tool to use. Bona would never recommend using a steam mop on a wooden floor.

An oiled surface tends to look more natural and our new oil system includes special optional colour treatments which can be used to achieve

some really sensational effects. An oiled floor does, however, require the application of a maintenance oil – probably every other year depending upon the floor's use – to properly protect the surface.

It's also easier to repair localised damage to an oiled surface, whereas if parts of a lacquered floor become damaged the whole surface has to be re-sanded and re-sealed.

You can speak to an expert at the start of the floor selection process – Bona's certified contractors are listed on its website, or call and let Bona guide you to the right person for your project.

Call Bona today on 01908 525 150 or visit [www.bona.com](http://www.bona.com)

Enq. 172



## Are you **really** covered?

A build or conversion project is a big investment - so you need to make sure it's adequately covered. Identifying the risks you face and who is actually responsible for the works in progress is absolutely crucial, because if a loss occurs you might not be in a position financially to rectify the damage and your contractor might not be either!

Just relying on a Public Liability cover isn't always going to provide you with the protection you really need and if you are exercising control of the works on site you will have responsibility under work place health and safety law to consider as well.

Getting the right insurance advice is essential, we understand the risks you face - so give us a call.



**Insurance &  
Structural Warranty**

[www.selfbuildzone.com](http://www.selfbuildzone.com) 0845 230 9874

**Whatever type of home you're creating, we've got it covered.**

Self-Build Zone is a trading style of Sennocke International Insurance Services Limited who are authorised and regulated by the Financial Conduct Authority.

Enq. 173



for your life  
for a lifetime



You want to enjoy the health benefits of a swimming pool. But you can't really justify the time and trouble that maintaining a full size pool demands.

The Swimspa by Spa De La Mare is an all year round swimming machine and hydrotherapy massage spa in one, for indoor or outdoor use. Built to exacting standards in the Channel Islands, it is the ultimate low maintenance solution for busy people. Prices start from a refreshing £17,500.

For a brochure please call

**01481 701333**

[www.spadelamare.com](http://www.spadelamare.com)



**swimspa**

Enq. 174

## Evolution Structural Warranties



Can Evolution help with your structural warranties? Evolution Insurance Solutions Ltd is one of the UK's leading brokers in the 10-year structural warranty market.

If you are undertaking a development project in the near future you will require a mortgage compliant warranty. Evolution is a specialist in this market and will source the right product at competitive rates for your project. The company is an insurance broker authorised and regulated in the UK by the Financial Conduct Authority under FCA number 472438.

**Tel: 01799 512 031** [www.buildingwarranties.com](http://www.buildingwarranties.com)

Enq. 175

## Hultafors Tools



Real craftsmanship has its roots in history and tradition. So, with nearly 300 years of design and manufacturing behind the brand, it's fair to say that Hultafors Tools are one of the world's leading brands of handtools for ergonomics, precision quality, power and durability. Hultafors can provide you with just about anything you need for measuring, levelling and marking; striking, cutting and chopping; even prying and wrecking. So these really are tools that can handle tough applications, last for ages and feel right when you're working on-site. This really is a comprehensive product range of specialist equipment for just about any trade you can name.

Enq. 176

a total solution for architectural glazing



- atriums
- facades
- canopies
- partitions
- rooflights
- balustrade
- conservatories
- walk on floors
- shuffle glazing
- framed glazing
- structural glazing
- frameless glazing



**Tel: 01842 816080**

[sales@glazinginnovations.co.uk](mailto:sales@glazinginnovations.co.uk)  
[www.glazinginnovations.co.uk](http://www.glazinginnovations.co.uk)

Enq. 177

**We Build It Ltd**  
simple solution sewage systems



- Suitable for homes without access to mains drainage
- Discreet solution to on-site sewage treatment
- 10 models in the range with a capacity up to 50pe
- CE Marked and EN 12566-3 Certified
- Uses the extended aeration method to treat sewage
- 96% efficiency allows a typical 3-5 year emptying interval
- Visually unobtrusive and odourless
- 25 year warranty on GRP & 2 year warranty on the air pump
- Deal direct with the UK Manufacturer

**01746 781782** [www.webuildit-ltd.co.uk](http://www.webuildit-ltd.co.uk)

Enq. 178



# Slaying the site insurance myth

Simon Middleton, director for insurance and warranty specialist Self-Build Zone, provides us with the top 10 site insurance misconceptions



Compared to, say, choosing a building system, insurance is probably one of the duller products out there and one that certainly isn't going to be initially high on your radar. However, it's only when you have been targeted by an arsonist, or been on the end of a serious theft that you can truly appreciate just how important site insurance can be.

Most site insurance provides all the key elements of risk control in one straightforward package. It should be taken out from the moment you exchange contracts on your plot, where you have a Public Liability exposure, and then continue to cover the plant on site, workers, materials and the works in progress right up to the point you move in. Site insurance is usually based on the professional reinstatement cost and runs for 12, 18 or 24 months, or until the project is completed.

There are many misconceptions surrounding it, often fuelled by a lack of understanding, leading many people to assume they simply don't require it. In order, here are the top 10 misconceptions.

## 1. Surely the builder's insurance covers me?

They may say they are 'fully insured' and in reality probably believe it themselves, but the chances are they actually only have some Public Liability which covers them in the event they cause damage or injury to a third party following a negligent act, something you would have to prove.

What Public Liability doesn't cover is issues like storm damage, theft of materials, and theft of plant, arson, or foreseen liability – essentially all the things you really do need covered.

## 2. I'm going to use my home insurance to cover it

Home insurance definitely doesn't cover building projects and specifically excludes alteration, renovation and extension as well as unoccupied properties. This was aptly explained in the

BBC's *Rip Off Britain* programme in January 2013 where a couple's build project was totally destroyed by fire and the home insurer refused the claim. Think about it – you'll carry on paying the mortgage on a home that no longer exists.

## 3. The plant hire company always insures their equipment

The person signing the hire contract is invariably responsible for repairing damaged plant or replacing it if it is lost or stolen while on hire. You are also responsible for the continuing hire charges until it is replaced.

If you are hiring a crane and operator, you will be responsible and even a small crane can cost several hundred thousand pounds to replace. Plant, tools and equipment can all be included on a site insurance policy.

## 4. If I choose to insure for a lower value, it will save me money

You should insure for a value representative of a professional contractor clearing the site and rebuilding your project from scratch. If the insurer identifies you have underinsured they will reduce the claim proportionately.

## 5. If the builder damages my neighbour's foundations, they are covered

This is a huge pitfall – if you are working close to your neighbour's foundations and weaken them, that damage won't be covered by Public Liability and you will need to make special arrangements with your site insurance provider to get adequate protection in place.

## 6. I can't be held responsible if my builder slips off the scaffold or a ladder

The Health & Safety Executive has produced clear guidance for self-builders so if you are managing or exercising control over the project you automatically carry responsibility and could end up being prosecuted and fined.

A worker who is paralysed could be looking at receiving compensation running to millions of pounds to cover full time care etc. This is why you get Employer's & Public Liability on most site insurance policies.

Most site insurance provides all the key elements of risk control in one straightforward package

## 7. I'm not going to bother with site insurance until I'm some way through the build

This is a short sighted approach and if anything will end up costing more money – even if there is only three months to go, the insurance provider will charge you a premium based on the reinstatement cost from the point you started work.

## 8. The utility companies only charge a small fee for repairing damaged cables

Emergency utility repair bills can be thousands of pounds – it's not just electricity, think about gas and fibre optic cables!

## 9. Surely my insurance will automatically renew?

Site insurance provides project based cover and is not annually renewable, so if you run out of cover you will need to arrange an extension – you will not be offered a renewal. Equally, if you finish early you will not be entitled to a refund.

## 10. I think you get cover on a new for old basis...

Clearly if an element of the property has to be rebuilt it will be built new, however plant tools and equipment are insured on an indemnity basis so a three-year-old digger will be settled at the replacement value of a three-year-old digger and will not be replaced as new.

In reality everyone's circumstances and projects are going to be different which is why it's really important you seek expert advice from a specialist site insurance provider before embarking on your build – it can literally save you thousands.

Enq. 179

## selfbuilder & homemaker LAUNCH ALL NEW WEBSITE FOR 2014



### REGISTER ONLINE FOR...

In-print magazine • Digital magazine  
Newsletter • Daily digests  
[www.sbhonline.co.uk](http://www.sbhonline.co.uk)

### Freefoam



Freefoam has announced a significant increase in the number of installations registered for its 50-year lifetime guarantee. Figures are up by 13 per cent overall year on year, with some areas of the UK seeing an increase of an incredible 45 per cent. Freefoam achieved another first in 2012 with the introduction of the first ever 50 years lifetime guarantee on white PVC-U and PVC-UE roofline, rainwater and cladding products. In the last 18 months this development has helped

Freefoam stockists and registered installers gain a significant competitive advantage in today's challenging market.

Tel: 01604 591110 [www.freefoam.com](http://www.freefoam.com)

Enq. 180

### Optigreen



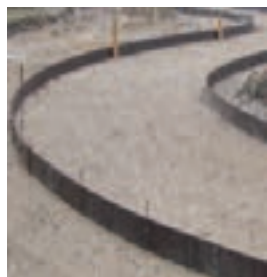
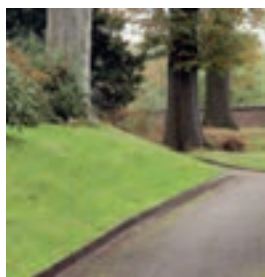
What works on large projects is also possible on a small roof area, such as your garage, carport or garden building – Roof Greening! The great thing is, small extensive green roofs can also be installed by you, the homeowner. [www.green-roof-online.co.uk](http://www.green-roof-online.co.uk) is the Green Roof Online shop set up by Green Roof specialist Optigreen Ltd. With a few clicks you can read through the important facts about green roofs and their benefits for your building, get installation instructions

and gain inspiration through a range of completed projects. Then simply order the materials for your Green Roof online – quick and easy!

Tel: 0203 5899 400 [www.green-roof-online.co.uk](http://www.green-roof-online.co.uk)

Enq. 181

## Brilliant edging products for every project



#### EverEdge Classic

The permanent way to maintain neat edges for lawns, paths, flower and vegetable beds

- Flexible 1 metre lengths
- Maintenance-free
- Will not rust
- Just mow over for perfect edges



#### EverEdge ProEdge

The efficient option in flexible steel edging for larger projects

- 2.5 metre length for quicker installation
- Fewer joints for unobtrusive, cleaner edges
- Deeper, wider spikes for extra stability
- Heavy duty 2.5 mm thick galvanised mild steel will not rust



#### EverEdge Titan

When a deeper and more robust edge is required we recommend the Titan system

- 2.5 metre lengths
- 2.5 mm to 6.0 mm thicknesses
- Made to order in various depths



#### EverEdge Garden Rings

The rings are assembled by securing two simple coach bolts at each overlap to achieve a neat and clean circle to go around trees and shrubs

- Supplied:
- 600 mm 2 piece, 900 mm 3 piece,
  - 75 mm & 125 mm depths
  - Bespoke rings can be supplied upon request



#### EverEdge Planters

These rugged planters can be made to order

- Cor-Ten (as shown above)
- Weathered Steel
- Hot Dip Galvanised
- Powder Coated



Made in  
Britain  
DESIGNED  
AND  
DESIGNED



Please write, telephone, or visit our website for more information

Follow us on Twitter @EverEdgeUK

EverEdge, PO Box 9, Stroud, Gloucestershire GL6 8HA Tel: 01453 731717 Ordering online is available at [www.everedge.co.uk](http://www.everedge.co.uk)

Enq. 182



# Stairs, balustrades & balconies

## 1 FLIGHT DESIGN

Flight Design specialises in the design and installation of architectural features such as staircases, balustrade, mezzanine floors and furniture. The company undertakes work for both residential and commercial projects, working with architects, interior designers and private clients. Flight works with a wide range of materials, and looks to stretch the boundaries of both materials and design to produce fascinating structures. Every installation is bespoke and carefully built in its workshop to your spec.

[www.flightdesign.co.uk](http://www.flightdesign.co.uk)

Enq. 183



## 3 CANAL ENGINEERING

One of the main features within a property, that often gets neglected, but when given attention can transform a house, is the staircase. CANAL Architectural has a London showroom displaying bespoke staircases, balustrade and handrail systems incorporating a variety of materials and backed with an extensive range of material samples. CANAL produce unique architectural work in residential and commercial properties.

[www.canal.eu.com/architectural-showroom.asp](http://www.canal.eu.com/architectural-showroom.asp)

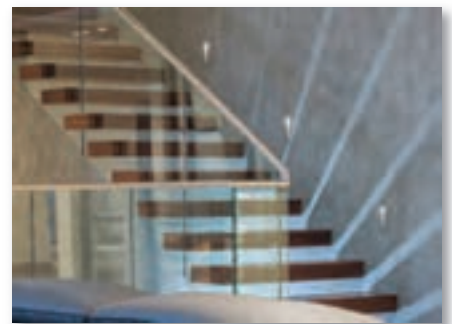
Enq. 185

## 2 BRITISH SPIRALS & CASTINGS

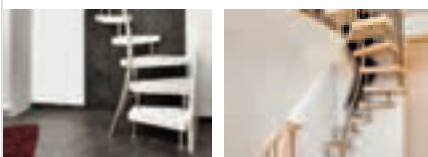
British Spirals & Castings is the new face of Cottage Craft Spirals, Tilley's London Castings and Milton Aluminium Castings. This family business has been designing and manufacturing bespoke spiral stairs and a wide range of made to measure ancillary products, straight staircases and balconies since 1980. Working with a wide range of materials, every specification is unique and crafted beautifully here in the UK to suit you, your home and your lifestyle.

[www.britishsc.co.uk](http://www.britishsc.co.uk)

Enq. 184



specialist suppliers of  
high quality  
german made  
telephone box  
staircases  
as small as 1m<sup>2</sup> ideal for  
loft conversions



Tel: 01425 611112 Fax: 01425 617773 [sales@fivestars.ltd.uk](mailto:sales@fivestars.ltd.uk)

[www.fivestars.ltd.uk](http://www.fivestars.ltd.uk)

Enq. 186

## FLIGHT DESIGN

STAIRCASES | BALUSTRADE | ARCHITECTURAL FEATURES



[WWW.FLIGHTDESIGN.CO.UK](http://WWW.FLIGHTDESIGN.CO.UK)

13A CHAPMAN ROAD, LONDON, E9 5DW  
020 8980 1000

Enq. 187

# Stairs, balustrades & balconies



## 5 GERMAN STAIRS

Keith Barrett, managing director, German Stairs Limited comments: "Staircases are no longer just a means of getting you from one level to another; they form a major part of the overall design and ambience, creating one of the main focal points in your home. They are a feature and statement – architects and designers are constantly focusing more on staircase designs to achieve the ultimate wow factor". German Stairs works extremely closely with many self-builders to help and assist them.

[www.germanstairs.co.uk](http://www.germanstairs.co.uk)

Enq. 189



## 4 DELTA BALUSTRADES

Established in 1984, 2014 marks the 30th anniversary for British-run, family owned balustrade manufacturer, Delta Balustrades. Today, the company has more than 35 employees and has been involved with the design and installation of balustrades and handrails to thousands of UK building projects. The Sandbach-based manufacturer prides itself on being a market leader in the building products sector and has supplied balustrade systems to some high profile building projects.

[www.deltabalustrades.com](http://www.deltabalustrades.com)

Enq. 188



## 6 STAIRKRAFT

As demand grows for minimalist staircase designs and sleek floating lines, Stairkraft defines a new breed of contemporary staircases. The company offer a bespoke, innovative solution, creating stunning visual impressions for your home. All staircases are developed to suit your own unique requirements from concept to completion. The limestone, cantilevered feature staircase pictured below has been designed by Stairkraft.

[www.stairkraft.co.uk](http://www.stairkraft.co.uk)

Enq. 190



Stunning  
light & open  
timber staircases

View case studies at  
[www.completestairsystems.co.uk](http://www.completestairsystems.co.uk)  
or visit our showroom in Romsey, Hants  
01794 522444

COMPLETE  
**STAIR**  
SYSTEMS

Enq. 191

**selfbuilder & homemaker**

**LAUNCH ALL NEW  
WEBSITE FOR 2014**



**REGISTER ONLINE FOR...**

In-print magazine • Digital magazine  
Newsletter • Daily digests

[www.sbhonline.co.uk](http://www.sbhonline.co.uk)



# It's time to come together

Cottage Craft Spirals has been rebranded as British Spirals and Castings following the decision to merge the three existing brands of Cottage Craft Spirals, Tilley's London Castings and Milton Aluminium Castings.

Established in 1980, the family run business has built up an enviable reputation for designing and producing truly bespoke and unique staircases, balconies and railings.

Richard Harding, managing director of British Spirals and Castings commented: "We are delighted to introduce the new brand to our existing and prospective customers. We took the decision to merge the three individual brands to present a more cohesive offering, while still being able to provide the personal and bespoke service we have always delivered.

"Despite our strong growth, British Spirals and Castings firmly remains a family business, with my daughter Antonia and son Ben working as part of the management team."

As part of the rebrand British Spirals and Castings has launched a brand new website,

[www.britishsc.co.uk](http://www.britishsc.co.uk), where customers can find detailed information on all the products and ranges available.

Cottage Craft Spirals originally started with only one design (the Victorian) and one diameter. Today there are three cast spiral designs, traditional, art deco and contemporary, 13 different diameters and an ability to make straight and kited staircases. A range of solid wooden spiral, straight and kited staircases are also made within the business.

Over the years a showroom was opened in London Tilley's London Castings, which supplied a core market in the South East with London style cast stairs, railings and gates, as well as carrying out bespoke restorations of stair balustrades.

In 2009, Milton Aluminium Castings, a foundry in the West Midlands was added to the portfolio. This ensured that the staircase products would continue to be British made and quality controlled from start to finish. Milton Aluminium Castings also produces quality castings for the auto, aerospace and engineering industries.



Enq. 192

For further information contact British Spirals and Castings on 01663 750716, email [sales@britishsc.co.uk](mailto:sales@britishsc.co.uk) or visit [www.britishsc.co.uk](http://www.britishsc.co.uk)

## Connect with Selfbuilder & Homemaker online

Emailed on a monthly basis, the Selfbuilder & Homemaker newsletter is designed to provide you with the latest information on products and services of interest, direct to your inbox.

You can quickly gather a snapshot of information from up to 12 carefully selected companies and easily follow links through to further information, or go direct to the company's own website.

Brochures and videos are also regularly available.

[ Visit [www.sbsonline.co.uk](http://www.sbsonline.co.uk) to subscribe & find out more! ]



## Osmo UK



Osmo UK's eco-friendly wood finishes have been used to protect and enhance a selection of handmade bedroom furniture. Fine furniture and cabinet maker SBT Design was contracted to design and create two bedside cabinets and a large dresser. In solid and veneered Walnut. To ensure optimum protection, a range of Osmo wood finishing products were specified. SBT Design treated the wood with Osmo Cherry #3137 Wood Wax Finish Transparent. The satin-matt wood finish combines all the advantages of oils and waxes in one unique product, provides a great protective base and gives the wood a rich warm colouring. Osmo Polyx-Oil 3032 Clear was applied on top.

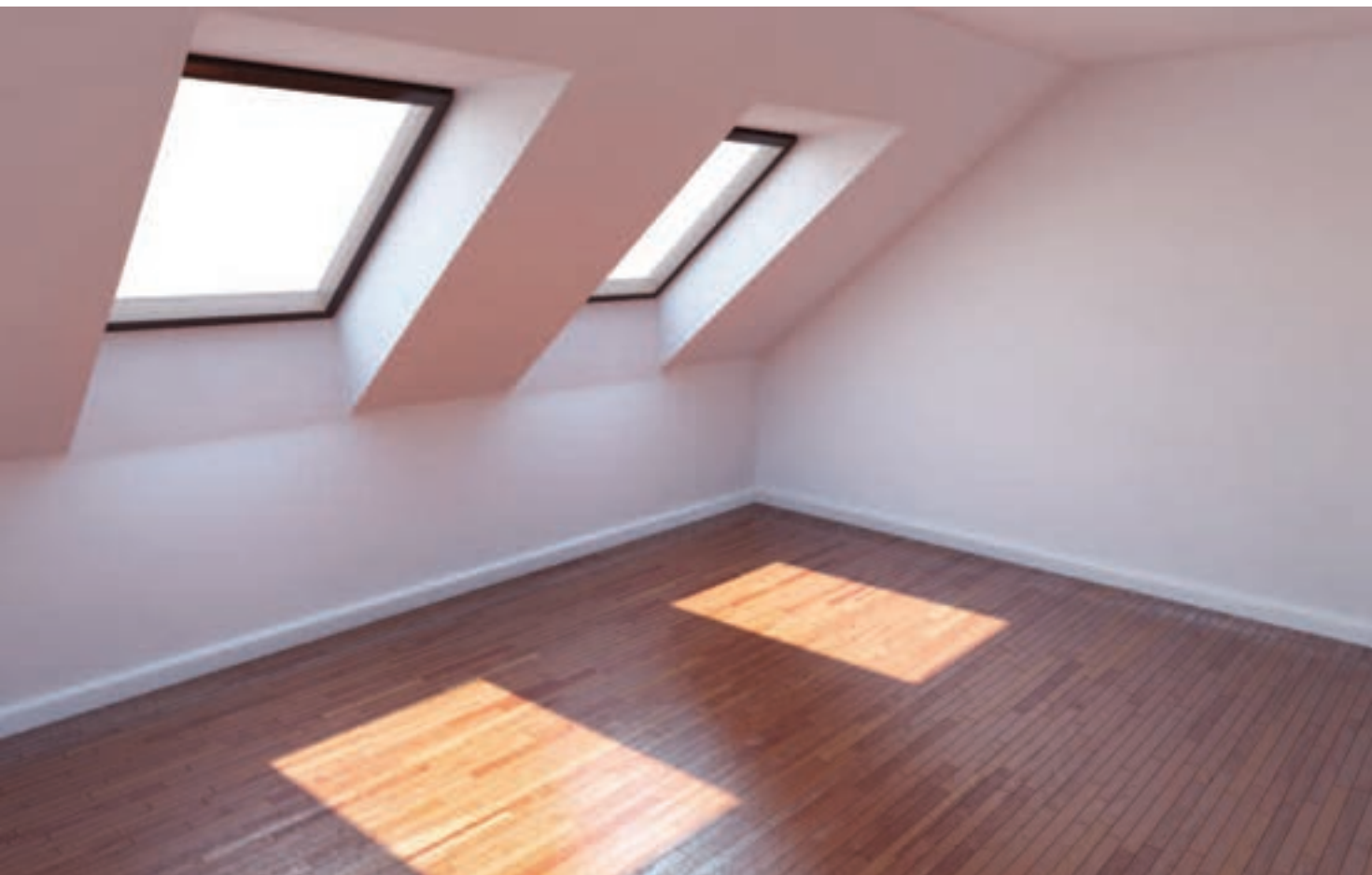
Enq. 193



## James Latham

James Latham is now offering the Rolls-Royce of Eucalyptus through all eight of its timber depots, with the arrival of Grandis 690+, a WoodEx Engineered Grandis. Delivering a number of benefits to customers; namely sustainability, natural durability, ease of use and continuity of supply, Grandis 690+ (a reference to its impressive density scoring against other products available on the market) is 100 per cent FSC plantation grown from an area of 220,000 hectares and produced exclusively from a single species. Fully compliant with EUTR legislation and verified by TRADA, Grandis 690+ has been extensively tested at the Federal University of Paraná in Brazil where it scored highly against stringent criteria including strength and durability (achieving 2 - 3; durable to moderately durable) as well as density, (690 - 750 kg/m<sup>3</sup> @12 per cent M/c - the same species in other parts of the world has only achieved 595 kg/m<sup>3</sup>), making it particularly suitable for joinery and structural use. Plus, it has also been assessed for one-hour fire test requirements. It boasts an impressive natural durability, resisting infestation from insects, therefore greatly reducing the chance of bore holes etc. as well as maintaining its aesthetic properties. Paul Leach, group product sales and development manager for WoodEx and Accoya at James Latham explained: "With Grandis 690+, the timber is allowed to grow more naturally and reach full maturity of approximately 28 years, hence the extra density. It really is an impressive timber and one which ticks all the boxes, both for ourselves but also for our customers..."

Enq. 194



# Cash in the attic

Jonathan Fellingham, managing director of Donaldson Timber Engineering (DTE), looks at how engineered timber solutions can meet the growing demand for creating 'room-in-the-roof'

As the price of land remains expensive, one of the most frequent enquiries received from people building or extending their own home is how they can add more room into the roof – whether for extra storage, more living space, or just to keep their options open for future expansion. The answer to this question is incredibly simple; by utilising attic roof trusses.

Timber roof trusses are by far the most common method of constructing a pitched roof – and the industry has seen a significant rise in

interest in attic roof trusses in particular over the last 12 months. In fact, around 40 per cent of all trussed rafters now produced are attic trusses, as they are the most economical solution to adding rooms to a home. They increase the habitable area by as much as 40 per cent at little extra cost to the overall roof.

Attic trusses span over 8m without internal load bearing walls, supporting approximately 60 per cent more load than a standard truss of the same size and pitch. As there is no triangulation in attic style trusses, the top and bottom

chords are increased in size, allowing them to handle the increased load required for usable floor space.

The flexibility of these components is undoubtedly what sets them apart from other methods of construction in this area. Thanks to modern design software, a trussed rafter can be designed for virtually any roof shape. Unlike modern panel systems which are more suited for narrower, gable fronted construction, attic trusses can accommodate larger, complex roof plans. Taking the proposed building's data and statistics, the roof is designed by computer to exact specification, creating bespoke trusses for a wide variety of shapes and sizes. This has provided fresh opportunities for those self-builders who previously thought adding extra roof space may be beyond reach.

For most projects, attic trusses can provide clear span between the front and rear walls, which avoids the need for load bearing walls

Around 40 per cent of all trussed rafters now produced are attic trusses, as they are the most economical solution to adding rooms to a home



and foundations on lower storeys. However, if load bearing walls already exist or can be added easily, they can provide additional support to the trusses. In order to be most effective, the room space should be placed within the centre 20 per cent of the truss span and near the mid-span of the truss, which allows for greater room sizes.

One of the biggest advantages of using attic trusses to create room in the roof is the speed of build, as the trusses are factory-built and delivered to site ready for swift erection. Roofing a house using attic trusses can be up to five times faster than using a cut roof method. Plus, as the trusses are manufactured off-site in a controlled environment, high quality is guaranteed. In terms of transporting the trusses from factory to site, an overall truss height of 4m is generally accepted as easy to transport. If the height of the truss must be greater than 4m, it can be constructed in two parts and simply joined on site.

The increased speed of build offers not only reduced labour costs, but also creates a weathertight shell around the build area faster. And, because a complete structure is available sooner, roof finishes, plaster board and floorboarding can be installed immediately, further reducing build time and costs on site.

There is also scope to incorporate further benefits to the attic truss system. By combining the trusses with another engineered wood component, open web joists (Posi joists), electrical and plumbing service are easily accommodated or modified, which gives the homeowner the ability



to easily change internal wall positions along with plugs, sockets and radiators at any point in the future. Attic trusses can be supplied with an open web joist bottom chord, which allows services to be run through the floor joists without the need for costly cutting and drilling, and also give the option to incorporate modern ventilation and heat recycling systems.

Leaving the option for room-in-the-roof is a valuable solution and one that ensures a lasting legacy for new houses. For a little extra initial outlay, the option of more room in the roof adds extra value to the building. Its practicality, flexibility and ease of installation make it an attractive prospect and one that will only continue to grow in popularity.

Enq. 195

**OAK MANTEL BEAMS**  
The Original Railway Sleeper Furniture



**Jarabosky**  
Handcrafted oak fireplace beams, mantel shelves & corbels  
Handcrafted to your requirements. Choose the wood, character & finish  
From £20.50 per foot. Delivery nationwide  
www.jarabosky.co.uk sales@jarabosky.co.uk tel: 01422 311922



Handmade furniture using stunning redundant railway sleepers from around the world

Enq. 196

**THE ACORN RANGE**  
over 480 designs  
Oak Designs Co. Free planning drawings with every order on our Acorn Range\*

**Oak Frame garages Ideal for Self Assembly or by our Expert Team**  
\*(subject to conditions)



**£3600\***  
(List price £4168 + VAT)

**STAR BUY**

**The Grayshott - Offer expires 31/12**



- Traditional Oak frame garages
- Choose from over 480 Designs
- Assembly pack
- Full build available
- Planning Service
- Optional extras

Try our 'Quick Quote' on our new website

\* Prices include oak posts, eave & tie beams, braces, softwood soleplates studwork, rafters, weatherboarding, saddle stones, 1 pr. softwood doors. Excludes groundworks, bricks, roofing, assembly, delivery & VAT.

**Contact our Sales Team on 01273 400411**

Enq. 197

# Classified

EVEN MORE WAYS TO GET THE LATEST INFORMATION FOR SELFBUILDERS! EVEN MORE WAYS TO GET THE LATEST INFORMATION FOR SELFBUILDERS!



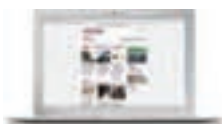
## www.sbhonline.co.uk

The Selfbuilder & Homemaker website is an online provider of past and present products and news items for the selfbuilder. Regularly updated with hundreds of press releases sbhonline.co.uk is a one-stop source for all the latest press releases providing you with access to information about products and services you require for your project as well as self-build relevant news and case studies.



## Digital Issue

The digital issue of Selfbuilder & Homemaker provides all the same content as the print issue with the added advantage of being instantly available whenever and wherever you have access to the internet. In addition to its ease of access the digital issue of Selfbuilder & Homemaker gives direct links to advertisers, allowing you to visit a potential supplier's website with the simple click of a mouse. Subscribe at [www.sbhonline.co.uk](http://www.sbhonline.co.uk)



## SBH Newsletter

Emailed on a fortnightly basis, the Selfbuilder & Homemaker newsletter is designed to provide you with the latest information on products and services of interest, direct to your inbox. You can quickly gather a snapshot of information from up to 12 carefully selected companies and easily follow links through to further information on [www.sbhonline.co.uk](http://www.sbhonline.co.uk), or go direct to the company's own website. Brochures and videos are also regularly available. Subscribe at [www.sbhonline.co.uk](http://www.sbhonline.co.uk)

## BATHROOMS, SHOWERS & WASHROOMS

**AFFORDABLE LUXURY**

Range of the new technology

All Pegasus Showers™ whistled to make our bath time one of the most enjoyable, relaxing, stress-free experiences.

Pegasus H2 Pegasus has been developed using the vast knowledge of our Marketing Division (20 years experience within the industry). It is the most efficient & hygienic whistled shower available.

Each & every whistled bath we make here at Pegasus Whistled Baths is designed & expertly hand made by our skilled, experienced craftsmen.

**4G**

Whistled Baths & Showers

Whistled Baths & Showers

Whistled Baths & Showers

Whistled Baths & Showers

Relax in one of our Pegasus Showers™ whistled baths

**PEGASUS**

Whistled Baths

Enq. 501

## OAK PRODUCTS

**OAK BEAMS**

IMMENSE STOCKS

Wide Oak Floorboards  
Bridges, Peg Tiles etc.  
Bath Frames, For Reception

**ANTIQUE BUILDINGS LTD**

Tel: 01493 200477

[www.anticuebuildings.com](http://www.anticuebuildings.com)

Enq. 507

To advertise  
in the  
Classified &  
Web Directory  
please call  
**01435  
863500**

## AIR TIGHTNESS & TESTERS

**BUILDING REGULATION COMPLIANCE TESTING**

Part E: Sound Insulation  
Part F: Ventilation  
Part L: Air Tightness

**BSRIA**

Compliance

- Fast Response
- Nationwide Service
- Fully Accredited
- ATTMA Members
- UK's No. 1
- Competitive Fees

**Call Today: 0800 587 1000**

Quote Ref: BS001 to receive a discount

[compliance@bsria.co.uk](mailto:compliance@bsria.co.uk) [www.bsria.co.uk](http://www.bsria.co.uk)

Enq. 502

## HEATING, VENTILATION & SERVICES

Radiator specialists

**AEL**

Heating Solutions

HEATING SOLUTIONS

Tel: 01928 579068  
Fax: 01928 579523  
e-mail: [sales@aelfheating.com](mailto:sales@aelfheating.com)  
[www.aelfheating.com](http://www.aelfheating.com)

Enq. 506

## TEMPORARY ACCOMMODATION

3

Whistled Baths & Showers

Whistled Baths & Showers

Up to 200 used static caravans to view.  
Suitable for temporary accommodation.

From 28'x10' to 38'x12'

Ten & three bedrooms

Some double glazed / central heating

Open 7 days a week

[www.whistledbaths.co.uk](http://www.whistledbaths.co.uk)

Tel: 01928 579523 Email: [sales@whistledbaths.co.uk](mailto:sales@whistledbaths.co.uk)

Enq. 508

## DOORS & WINDOWS

**SASH WINDOW LOCKS**

**ROLA**

[www.sashwindowlock.com](http://www.sashwindowlock.com)

TEL: 0844 482 20 34 FAX 01708 768 825

Enq. 503

## FIRES & FIREPLACES

**OPIES UK LTD** LIGHTING YOUR FIRE

Skamolox Gold & Blue insulating & refractory panels. Easily cut with tools to line fireplaces & fireboxes or construction of chimney & fire chambers

[www.woodfuels.co.uk](http://www.woodfuels.co.uk)  
[www.john-opie.co.uk](http://www.john-opie.co.uk)

Tel: 01245 468977 Fax: 01245 469499  
[opiesuk@googlemail.com](mailto:opiesuk@googlemail.com)  
Stocks Farm, Waltham Rd, Boreham, Essex CM3 3BA

Enq. 504

## GROUND INVESTIGATION

**MINI • SOIL • SURVEYS**

**www.minisoils.co.uk**

Cost effective ground investigations for housing projects

**INVESTIGATE DON'T SPECULATE**

Nationwide service from five area offices

For free advice & quotations

Tel: 0161 980 0044 Email: [info@minisoils.co.uk](mailto:info@minisoils.co.uk)

Enq. 505

## RADIATORS

**THE RADIATOR FACTORY**

New 2014 Brochure Launch.

A Vast Range of Quality Products from Europe's Finest Manufacturers which include Eco-Aluminium, Stainless Steel and of course our renowned Bay Window Radiators.

Available Online or Through our National Merchant Partners for Quick Delivery.

TEL: 0116 260 9257  
[WWW.RADIATORFACTORY.NET](http://WWW.RADIATORFACTORY.NET)

Enq. 509

If you'd like to advertise, please call:  
**01435 863500**



# Web Directory

## ADVICE & INFORMATION

NSBRC (National Self Build & Renovation Centre)  
0845 2234455  
www.nsbrc.co.uk

## ARCHITECTURAL IRONMONGERY

Ironmongery Direct  
0808 1682288  
www.ironmongerydirect.com

## BATHROOMS & SHOWERS

Victoriaplumb.com  
0844 8044848  
www.victoriaplumb.com

Better Bathrooms  
0844 4847678  
www.betterbathrooms.com

Matki  
01454 322888  
www.matki.co.uk

## BI FOLDING & SLIDING DOORS

Folding Sliding Door Company  
0845 6446630  
www.folding-slidingdoors.com

Sunfold Systems  
01953 423423  
www.sunfold.com

Express Bi-Folding Doors  
0800 121 4809  
www.expressbifoldingdoors.co.uk

1st Folding Sliding Doors  
02089 972448  
www.1stslidingfoldingdoors.co.uk

## DOORS, WINDOWS & CONSERVATORIES

Made for Trade  
0844 335 1226  
www.madefortrade.co

Kloeber UK  
01487 740044  
www.kloeber.co.uk

Velfac  
01223 897100  
www.velfac.co.uk

Swish Window and Door Systems  
0808 178 3040  
www.swishwindows.co.uk

Apropos  
0800 328 0033  
www.apropos-conservatories.com

Jeld-Wen  
0845 1222890  
www.jeld-wen.co.uk

Internorm Windows UK  
02082 059991  
www.internorm.co.uk

## FASCIAS & SOFFITS

FasciaExpert.co.uk  
01254 918005  
www.fasciaexpert.co.uk

## FIRES & FIREPLACES

Opies  
01245 468977  
www.john-opie.co.uk

## FLOORS & FLOORING

Floors Of Stone  
01509 234000  
www.floorsofstone.com

## FURNITURE

Vitra  
01235 750990  
www.vitra.com

Herman Miller  
0845 2267202  
www.hermanmiller.co.uk

## GLASS & GLAZING

Saint-Gobain Glass UK  
01977 666100  
uk.saint-gobain-glass.com

## GREEN ROOFS

Optigreen Ltd  
0203 5899 400  
www.green-roofonline.co.uk

## HEATING & PLUMBING

Uponor  
01455 550355  
www.uponor.co.uk

## HEAT PUMPS

Spirit Heat Pumps  
0845 4753953  
www.spiritsolar.co.uk

ICE Energy  
08081 452340  
www.iceenergy.co.uk

## INSULATION

Superfoil Insulation  
01636 639 900  
www.superfoil.co.uk

Insulation Giant  
0844 8922254  
www.insulationgiant.co.uk

## KITCHENS

Kit Stone  
0870 7770099  
www.kitstone.co.uk

Poggenpohl UK  
01727 738111  
www.poggenpohl.com

Metris Kitchens  
01325 505563  
www.metriskitchens.co.uk

## LAUNDRY CHUTE SOLUTIONS

GED Chute Solutions  
01613 001374  
www.laundrychutes.co.uk

## LIGHTING & HOME CONTROL SYSTEMS

Vitrum UK  
07966 236969  
www.vitrumuk.co.uk

## LOFT CONVERSION

Econoloft  
0800 269765  
www.econoloft.co.uk

## PACKAGE BUILD

Baufritz (UK)  
01223 235632  
www.baufritz.co.uk

Kingspan Potton  
01767 676400  
www.potton.co.uk

Scandia-Hus  
01342 838060  
www.scandia-hus.co.uk

Davinci Haus GmbH & Co. KG  
02081 3339204  
www.davinci-haus.com

Hanse Haus  
0845 6589780  
www.hanse-haus.co.uk

Flight Homes  
01787 222336  
www.flighthomes.co.uk

## PLANT, TOOLS & EQUIPMENT

Brandon Hire  
0870 5143391  
www.brandontoolhire.co.uk

Machine Mart  
0844 8801250  
www.machinemart.co.uk

## PUMPING STATIONS

J T Pumps  
0844 414 5800  
www.jtpumps.co.uk

## ROOFING & CLADDING

Tata Steel (Corus)  
01904 454600  
www.tatasteel-europe.com

Greys Artstone  
01484 666400  
www.greysartstone.co.uk

Hoppings Softwood Products (Q-Clad)  
01992 578877  
www.timber-cladding.co.uk

## ROOFLIGHTS

Vision Rooflights  
01162 791900  
www.visionrooflights.co.uk

## SOFTWARE

Eleco  
02074 228000  
www.eleco.com

House Builder XL  
0845 1234065  
www.hbxi.co.uk

## STAIRS & STAIRCASES

Meer End Staircases & Joinery  
01676 534226  
www.meer-end.co.uk

## STONEWORK & MASONRY

Mandarin Stone  
01600 715444  
www.mandarinstone.com

## STRUCTURAL INSULATED PANELS (SIPS)

SIPS Eco panels  
01787 378567  
www.sipsecopanel.co.uk

## TEMPORARY ACCOMMODATION

Caravan Hire UK  
01970 626920  
www.goldensandscaravans.co.uk

## TIMBER & JOINERY

Oakwrights  
01432 353353  
www.oakwrights.co.uk

Carpenter Oak & Woodland  
01225 743089  
www.carpenteroakandwoodland.com

Silva Timber Products  
01514 953111  
www.silvatimber.co.uk

Osmo UK  
01296 481220  
www.osmouk.com

Neatwood Homes  
01981 240860  
www.neatwoodhomes.co.uk

Carpenter Oak  
01803 732900  
www.carpenteroak.com

Maple Timber Frame  
01995 679444  
www.mapletimberframe.com

Taylor Lane  
01432 271912  
www.taylor-lane.co.uk

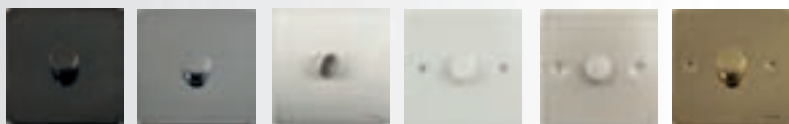
## UNDERFLOOR HEATING

Nu-Heat  
0800 7311976  
www.nuheat.com

Schluter Systems  
01530 813396  
www.schluter.co.uk

Wunda Group  
0800 0832677  
www.wundafloorheating.co.uk

# Introducing our Ultimate LED dimming solution



Set the lights to reflect your mood,  
choose the finish to reflect your home.

Our LED dimmers provide the perfect scene, whatever the mood.

- Trailing edge dimming capability.
- Compatible with tungsten filament, mains & low voltage halogen and dimmable LED lamps.
- Rated at 5-100W (1 & 2 gang) and 5-75W (3 & 4 gang).
- Rigorously tested with leading manufacturers of dimmable LED lamps, such as Philips and Osram.



#### QUALITY | COMPATIBILITY | RELIABILITY

The Ultimate LED Dimmers from Schneider Electric offer a stylish and robustly tested dimming solution to suit every lighting design.



**Learn how to add the  
finishing touch to your home!**

Watch our LED Dimmer video, and enter our draw  
to win a Samsung Galaxy Note 3!  
Visit [www.SEreply.com](http://www.SEreply.com) keycode 50848p

Reader  
Enquiry  
**402**

**Schneider**  
Electric™