



# building construction design

[www.buildingconstructiondesign.co.uk](http://www.buildingconstructiondesign.co.uk)

December/January 2015

Appointments & News	3
Planning & Design	10
Building Products	10
Groundworks	11
Structural Elements	11
External Envelope (Incl. External Fixtures)	14
Insulation	32
Heating, Ventilation & Services	33
Interiors	41
Disabled Products & Services	56
Safety & Security	56
Landscaping & External Works	60
Eco	62

Cover image: © Rigi Systems  
See page 17 for details





# ecobuild

SUSTAINABLE DESIGN · CONSTRUCTION · ENERGY

03-05 MARCH 2015 · EXCEL LONDON



# DISCOVER THE FUTURE OF CONSTRUCTION AND ENERGY

800+ exhibitors showcasing the largest range  
of sustainable construction products in the world

Over 100 conference and seminar sessions,  
drop in advice clinics and live product demonstrations

Dozens of new and innovative features

**REGISTER FOR YOUR FREE TICKET AT [WWW.ECOBUILD.CO.UK](http://WWW.ECOBUILD.CO.UK)**

LEAD PARTNER



GOVERNMENT  
PARTNER



RESEARCH &  
INNOVATION PARTNER



LEAD SUPPORTERS



the mark of  
property  
professionalism  
worldwide



CHARITY PARTNER



CONSTRUCTING  
A FUTURE FOR  
HOMELESS PEOPLE

## Gerflor acquisition of Connor Sport Court



International flooring specialist **Gerflor** has announced its acquisition of US company, Connor Sport Court International, in a move that will expand the company's global market reach and sports product range portfolio. This acquisition brings together three world-class sports brands; Connor, Sport Court and Taraflex all under one

flagship group. The two companies' combined resources will enhance their ability to offer more innovative solutions and improved services to their customers on a worldwide scale. Both CEO's have acknowledged that this move capitalizes on each company's strengths for the benefit of both businesses and customers alike.

01926 622600 [www.gerflor.co.uk](http://www.gerflor.co.uk)

## From design to completion with ITW



**ITW Construction Products**, a leading manufacturer of fixing, fastening and drilling systems for wood, steel and concrete applications and ITW Industry, specialists in software, components, fasteners and equipment for timber construction, are pleased to announce that from September 2014 they will function as one combined business, under the name of ITW Construction Products.

The newly consolidated ITW Construction Products business will comprise primarily of their five key sub-brands: Alpine and Gang-Nail, Cullen, Paslode, and Spit. The ITW Construction Products brands offer customers a full range of products and services to see build projects through from design to completion.

0800 652 9260 [www.itwcp.co.uk](http://www.itwcp.co.uk)

## Metrotile enjoy 30% annual growth



A leading lightweight roof tile firm, **Metrotile UK**, has enjoyed more than 30 per cent sales growth on last year, having just sold its millionth tile of 2014.

Providing a variety of tiles for commercial and domestic premises, the company is forecasting sales of 1.16 million tiles this

year, turning over record figures of £7.1 million with net profits expected to reach £679,000. September's sales of over 120,000 tiles gave the Chippenham-based firm, which employs 17 staff, its best ever month. A significant contributor to the performance is major rise in the sale of tiles for conservatories, 25 per cent of the firm's growth.

01249 658514 [www.metrotile.co.uk](http://www.metrotile.co.uk)

## ACS wins recognition for business case for R22



Specialist supplier **Air Conditioning Solutions (UK) Ltd (ACS)** has received industry recognition for its pioneering work with the Connells Group on R22 replacement, by securing the Retail Project of the Year Award at the RAC Cooling Industry Awards 2014. The company was rewarded for its commitment to helping its customers tackle the replacement of old R22 equipment in a planned phase out. In the case of the Connells Group, the estate had a real mix of

equipment from all the major air conditioning manufacturers, due to the historic development and expansion of the group.

01707 282880 [www.mitsubishielectric.co.uk](http://www.mitsubishielectric.co.uk)

## RigiSystems to market CENTRIA products



**RigiSystems** has signed an agreement to market **CENTRIA** products throughout the UK, Europe and the Middle East. Based in the USA, CENTRIA now also manufactures in other parts of the world and in its 100 year history has grown to become a world leader in exterior metal architectural systems. Products include its

Dimension Series insulated composite architectural wall system and its unique Versacote metal coating system (marketed in the rest of the world as Versacor).

01905 750500 [www.rigisystems.org](http://www.rigisystems.org)

## Saniflo's new regional field sales manager



**Saniflo UK** has welcomed KBB industry specialist Martyn Andreoli to the post of southern regional field sales manager. Martyn, who is responsible for a team of four, joined the market leader for macerators and pumps in May and has since set about getting to grips with the Saniflo culture, products and customers. Martyn's KBB career includes sales positions with top brands Wilo, Thomas Dudley, Cemex and Marshalls. Martyn comments: "Saniflo is a perfect fit with my career and

expertise. I understand the challenges and privileges of being a market leader and a European manufacturer."

020 8842 0033 [www.saniflo.co.uk](http://www.saniflo.co.uk)

## Vent-Axia wins at prestigious awards



British ventilation manufacturer **Vent-Axia** is celebrating winning Product of the Year at the prestigious Housebuilder Awards 2014. Scooping the award for its revolutionary Lo-Carbon Response™ (dMEV) solution, the Sussex-based company received

the accolade in London at a glittering ceremony held at the Tower Hotel near Tower Bridge. This announcement follows hot on the heels of the Lo-Carbon Response™ winning the Best Brand New Product Award at the Housebuilder Product Awards 2014 in July.

0844 856 0590 [www.vent-axia.com](http://www.vent-axia.com)

## Signbox scoops gong at British Sign Awards



**Signbox** received a double recognition at the inaugural BSGA British Sign Awards, picking up the 'The Innovation Award 2014' and receiving a nomination for 'Wide Format Project of The Year 2014'. These accolades demonstrate the breadth and diversity of the signage specialist's products and services. Signbox won The Innovation Award

for its pioneering stair-climbing programme with StepJockey, an exciting health initiative that uses Signbox Smart Signs with NFC (Near Field Communications) in the workplace. The company's work on the office fit-out of investment firm Invesco, was 'highly commended' in the Wide Format Project of Year category.

01784 438688 [www.signbox.co.uk](http://www.signbox.co.uk)



## Tile Association sponsorship campaign for 2015



The TTA is releasing its exciting sponsorship opportunities for the 2015 TTA Awards. To be held at St Johns Hotel, Solihull, on 18 April, the Awards will be the tile industry's most prestigious event of the year. They will recognise the brightest and

best individuals, the most innovative new products and the sector's best and most interesting projects on a glittering awards night attended by the crème de la crème of the industry. A range of high-impact, value-for-money sponsorship packages are available, presenting a superb opportunity for companies operating within the tiling industry to raise their profiles in front of the industry's top decision makers.

0300 265 8453 [www.tiles.org.uk](http://www.tiles.org.uk)

## Lo-Carbon Response shortlisted



Vent-Axia is celebrating reaching the final shortlist in the prestigious Electrical Industry Awards 2014, which celebrates and rewards companies leading the way in the UK electrical sector. The company's award-winning Lo-Carbon Response™ is a finalist in the Innovative Residential /

Domestic Product of the Year category. The

Lo-Carbon Response™ is a near silent, continuous running, constant volume dMEV solution. Designed for both new build and the social housing sector, the SAP Appendix Q listed Response is ideal for both kitchen and bathroom applications.

0844 856 0590 [www.vent-axia.com](http://www.vent-axia.com)

## GEZE UK puts road safety in the driving seat



With commercial vehicle drivers experiencing 50 per cent more accidents than other road users GEZE UK is gearing up to put road safety at the top of its agenda. As a leading manufacturer of door and window control systems, GEZE is working with Zurich to undertake a company-wide assessment of the risks its drivers face.

Over the coming months, drivers will need to read the driver handbook *Your Route to Safer Driving*, which contains safety tips and information about what to do in an emergency. They will then complete online modules and the results analysed. This will give GEZE a thorough understanding of the actual risks faced by its workforce, allowing it to direct resources to where they are needed most.

01543 443000 [www.geze.co.uk](http://www.geze.co.uk)

## Pro-Mec wins Green Gateway Award



Leading M&E contractor Pro-Mec UK Ltd has received an award from Mitsubishi Electric for its work with national retailer Iceland Frozen Foods – in the second year of the company's Green Gateway Awards. The awards have been created by Mitsubishi

Electric so that it can recognise the important contribution of its partners in encouraging energy efficiency in the built environment. "Pro-Mec has demonstrated the true value of partnership between a supplier and its customers," explained Martin Fahey, sustainable solutions manager for Mitsubishi Electric, who presented Pro-Mec with the award at the company's recent partner conference, held at the historic Old Trafford Cricket club.

01707 282880 [www.mitsubishielectric.co.uk](http://www.mitsubishielectric.co.uk)

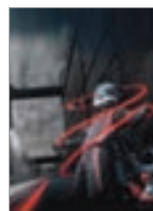
## Condair – the new name for JS Humidifiers



From the 15 October JS Humidifiers is rebranding to Condair plc. Since becoming a Member of the Condair Group in 2011, JS Humidifiers has been offering the Condair range to its customers as well as developing and manufacturing Condair products. Tim

Scott, head of sales at Condair plc, comments: "Since JS' acquisition by Condair in 2011 we have become an active and valued part of the group, and enjoyed getting to know our partners, who all share our passion for humidification. We feel the time is now right for us to take on the global brand of Condair to allow us to streamline our local and international operations as well as communicate our role within the wider organisation."

## Pentair launches global contest



Pentair's Thermal Building Solutions, one of the leading providers of electrical heat-tracing systems, has launched the Pole Position contest to celebrate the 40-year anniversary of its Raychem self-regulating technology. Inspired by the first Formula E electric racing championship, the global initiative invites customers, installers, distributors, employees and the general public to participate in an online contest with a chance to win a number of exciting prizes including: racing

red iPods; Formula E tickets; and a free London FE event package for two. First introduced by Raychem in 1974, the company's revolutionary parallel polymeric self-regulating heat-tracing technology led to the development of a wide range of innovative solutions for the commercial and residential sector.

## Gebrik System awarded BBA certificate



Aquarian Cladding Systems Ltd has announced that the wide range of applications of its Gebrik Insulating Brick Cladding System has been recognised by the British Board of Agrément (BBA) with the inclusion of an additional product sheet within its existing BBA certificate 07/4403. The new product sheet covers the use of the innovative brick cladding system onto lightweight steel frame systems (SFS), timber frame and structural insulated panel (SIP) systems up to a height of 18m, and for use on SFS over 18m in accordance with the recent successful BR135: Annex B fire test, carried out at the Building Research Establishment (BRE). This is in addition to the certification for use onto clay and concrete masonry buildings, which has been held for over 10 years. The system was subject to rigorous evaluation by the BBA across a range of factors, including thermal performance, strength and stability, behaviour in relation to fire, the risk of condensation and durability. The certificate confirms that when correctly installed, used and maintained, Gebrik satisfies or contributes to satisfying the relevant requirements of the Building Regulations (in England, Northern Ireland, Scotland and Wales), the CDM Regulations (2007) and the NHBC Standards (2014).

0844 334 0077 [www.aquariancladding.co.uk](http://www.aquariancladding.co.uk)



# Not just a single ply membrane... a complete system for all photovoltaics.



**RENOLIT's advanced product range offers a unique combination that provides increased solar efficiency and simple installation on flat and pitched roofs.**

#### **RENOLIT ALKORBRIGHT**

Brilliant white, lacquered single ply membrane. Has the highest reflectivity in the world. Improves the efficiency of solar thermal and PV panels. Significantly reduces solar gain and heat build-up across the roof surface.

#### **RENOLIT ALKORSOLAR**

Unique PVC and aluminium profile for mounting PV modules direct to the waterproofing. It maintains the integrity of the membrane (no penetrations) and reduces additional weight upon the roof.

Technical Support: 01670 718283



*Rely on it.*



# When is a floorcovering not just a floorcovering?

When it's from the UK's largest flooring contractor. We've many years' **EXPERIENCE** supplying and installing a huge range of floorcoverings for a variety of different market sectors. We promise **EXCEPTIONAL SERVICE** delivered with **EXCEPTIONAL PRICES** and with a stockholding value of more than £2m we have **CONSISTENT AVAILABILITY** across our key ranges. At each of our **12 REGIONAL DEPOTS** we can accommodate every request from price point driven schemes to high profile projects.

A dedicated team will be in place from enquiry through to installation to give you the **BEST ADVICE AND SERVICE**. We offer free on-site surveys and guidance on health and safety compliance; our staff and fitters are **CSCS REGISTERED** and **CRB CHECKED** as appropriate. What's more, we are committed to keeping everything simple and **HASSLE FREE**. With our own cutting machine and our **OWN TRANSPORT** fleet, we are always in control. We work with organisations of all sizes, forging a close relationship with each one to ensure that **CUSTOMER SATISFACTION** is of the highest order on every contract we undertake.



Find out more  
about our  
floorcoverings

**From ideas to installation WE DO IT ALL.**

## *Designer Contracts*

**The UK's largest flooring contractor**

Scotland 01324 676100 North East 0191 286 1797 North West 01772 705557 Central & Yorkshire 01246 853463 North & West Midlands 0121 359 6083  
South & East Midlands 01536 407357 Wales & West of England 01633 279310 London & South East 01277 263450 Thames Valley & West London 01753 577935  
Thames Medway & South East London 01959 572313 Southern 02380 275123 South West 01392 823051  
National & General Enquiries 01246 854577 Email [Enquiries@DesignerContracts.com](mailto:Enquiries@DesignerContracts.com)

**[www.DesignerContracts.com](http://www.DesignerContracts.com)**

**CARPET. CARPET TILES. VINYL TILES. VINYL & SAFETY FLOORING. WOOD. LAMINATE.**







# cpd focus

continuing professional development

Maintaining and improving professional competence, skills, abilities and knowledge

## PROTECTING VALUE WITH QUALITY SINGLE PLY MEMBRANE



Specifiers can learn how to maximise value with single ply membrane through participation in a CPD from **Protan**. The RIBA certified CPD *Protecting Value with Quality Single Ply Membrane* gives supported technical detail to enable designers to optimise value throughout the design and build process, to achieve a structure that uses material that will perform on all levels.

01925 658001  
www.protan.co.uk

## CELLECTA CPD SEMINAR



Eager to increase your knowledge of acoustics, soundproofing insulation and Part E Acoustic Building Regulations? Then look no further than **Cellecta's** RIBA certified sound proofing insulations CPD. Covering the fundamental characteristics of Part E, and providing guidance on soundproofing all types of new build and refurbishment floors and walls, Cellecta's CPD is an extremely valuable resource for all individuals involved in specification.

0845 671 7174  
www.cellecta.co.uk

## SELECTING EFFECTIVE AND SECURE FLAT ROOF SYSTEMS



**Sika Sarnafil** is pleased to announce the new RIBA approved CPD for Sika Sarnafil entitled *Selecting Effective and Secure Flat Roof Systems*. This CPD introduces the key components for a successful and effective roof system, covering design, materials and workmanship. An outline of additional areas included is below:

- typical application areas
- key factors in roof design and product selection
- key standards and guidelines
- sustainability
- typical challenges
- quality assurance
- history and group information

For over 50 years Sika Sarnafil has provided high quality single ply roofing solutions, backed by decades of expertise and market leading guarantees. Sika Sarnafil's exemplary commitment to training is widely recognised in the roofing industry, and this commitment extends to the Continual Professional Development of construction professionals. The company's range of RIBA accredited CPD seminars support specifiers, contractors and clients' understanding of the issues surrounding the specification of single ply roofing. If you are looking for assistance for selecting an effective and secure flat roof system and require further information on this seminar please contact Sika Sarnafil.

01707 394444  
sarnafilroofing@uk.sika.com

## FOUR NEW CPD SEMINARS FROM SCHLÜTER-SYSTEMS



Underflooring solutions expert **Schlüter-Systems** is offering architects the chance to keep up to date with the latest in essential tiling protection with the launch of four different CPD seminars. The RIBA-accredited CPD seminars, lasting 45 minutes each, allow individuals to remain up to date with changes in practice so that they can make informed decisions about which products to request in their specifications. Run during lunch breaks from any business premises requested, the training sessions, which cover a diverse range of topics including solutions for tiling balconies, laying underfloor heating and installing wetrooms, are being offered free of charge with lunch included. In Schlüter's *Integrated Solutions for Tiled Wetrooms* seminar, the company's popular waterproofing and wetroom range will be explored and explained. Andrew Curry, Schlüter's Technical and Training Consultant, commented: "The session will provide all the information and knowledge needed, from an integrated approach, on the solutions for wetroom installations at design and specification stage, and we hope that by the end of the seminar participants will have gained confidence in specifying an integrated solution for wet room installations." The second seminar being run is called *Movement Joints*

and *Uncoupling Membranes for Tiled Coverings*. The session will provide information on how to solve problems such as moisture movement in the substrate or drying shrinkage by specifying the appropriate movement joints and uncoupling membranes in specifications. Creating a patio, balcony or terrace that lasts the test of time is the third topic to be explored by Schlüter in its brand new seminar, *Balcony and Terrace Solutions for Tile and Stone Coverings*. The seminar will discuss the importance of using effective modern methods of construction to ensure lasting balcony and terrace installations. It will also explain the importance of waterproofing measures and will look at some of the benefits of the different products currently available on the market. The final seminar being offered by Schlüter will study the benefits of *Modular Underfloor Heating Systems for Ceramic Tiled Floors*. The seminar will explain how these systems help to protect ceramic tile and natural stone floor coverings from cracking, splitting, tenting and debonding and will also explore the theory behind modular screed systems. All seminars include a 15 minute question and answer session and participants will receive a certificate upon completion.

01530 813396  
www.schluter.co.uk



## A&G creates new specification team

A&G (Acheson & Glover) has announced the formation of a new specification team to look after its GB and Irish markets. Led by Brian Mulgrew (left), the new team will focus on working closely with architects and specifiers first hand to learn about their specific requirements and present solutions via A&G's innovative hard landscaping products. Along with Brian, his team comprises specification managers Phil Crichton (middle) and Jim Fanning (right) – who both have many years of industry experience. Jim is responsible for Ireland, South Wales and South East England, while Phil covers the rest of Great Britain. However, they will work closely as a team to make the company's specification process more efficient. "The new specification team has streamlined the operation across the group," explained Brian Mulgrew. "We have a structured strategy and the team has a clear focus on what we want to achieve – and that is to understand exactly what architects and specifiers require and to educate them about our products and how they can provide design solutions."

0845 601 5207 [www.acheson-glover.com](http://www.acheson-glover.com)

View our new website  
[www.popuppower.co.uk](http://www.popuppower.co.uk)

Retractable Service Unit at Chelsea Football Club

Our projects include installations for:

- Markets
- Heritage
- Parks
- Town Centres
- Universities
- Sports Stadiums

## Pop Up Power Supplies

Safe, secure, silent power: retractable utility points supplying electricity, water and air to public places

**Pop Up Power Supplies Ltd**

Telephone: 020 8551 8363  
 Fax: 020 8320 8838  
 Email: [info@popuppower.co.uk](mailto:info@popuppower.co.uk)  
 Web: [www.popuppower.co.uk](http://www.popuppower.co.uk)

POP UP POWER

There when you need them, Hidden when you don't.

## Design wall-to-slab joints simply with Ancon



New software from Ancon simplifies the design of its award-winning KSN Anchor rebar continuity system in wall-to-slab construction joints, providing safer, faster concrete connections on-site. Ancon KSN Anchors, voted Best Product in Show when launched at the 2013 Concrete Show, replace re-bend continuity boxes that require bars to be straightened by the physical force of site workers and where pull out bar length is restricted by the box dimensions. Instead, internally-threaded KSN Anchors are simply cast into the wall ready to accept virtually any length of Bartec parallel threaded rebar, easily accommodating the longer EC2 lap lengths and creating fast, safe, high performance connections.

0114 275 5224 [www.ancon.co.uk](http://www.ancon.co.uk)

## Evolution Structural Warranties



Can Evolution help with your structural warranties? Evolution Insurance Solutions Ltd is one of the UK's leading brokers in the 10-year structural warranty market.

If you are undertaking a development project in the near future you will require a mortgage compliant warranty. Evolution is a specialist in this market and will source the right product at competitive rates for your project. The company is an insurance

broker authorised and regulated in the UK by the Financial Conduct Authority under FCA number 472438.

Tel: 01799 512 031 [www.buildingwarranties.com](http://www.buildingwarranties.com)



## Housebuilders and Contractors Construction Insurance Scheme

- Exclusive site based Liability and Contractors All Risks Insurance Scheme approved by the HBF
- Bespoke industry relevant wordings with cover enhancements
- In-house specialist Construction team
- Free interactive access to our Risk Solutions website



Scheme Policies Underwritten by 'A' Rated Insurers



For further information visit [www.mpwbrokers.com](http://www.mpwbrokers.com)



Contact our Construction team directly at [info@mpwbrokers.com](mailto:info@mpwbrokers.com)



7/8 Tolhurst Court, Turkey Mill, Ashford Road, Maidstone, Kent ME14 5SF



Tel: 01622 683913



Authorised and regulated by the Financial Conduct Authority



# A striking change

A family in Chorlton are now living in the home of their dreams after their dated 1920s bungalow was given a stunning, modern redesign by Raynes Architecture. The brief was to create something that is fully accessible to all, without diminishing a feeling of style and space.

The Manchester firm is led by multi-award winning RIBA chartered architect Lisa Raynes and takes a personal approach to design, using two-way dialogue with clients. For the owners of The Quoins, the reconfiguration was not only a way of invigorating their home and making it accessible, but also of future proofing the building. The final design achieves this through subtle detailing and a layout which fluidly incorporates a lift and wet rooms.

The new work extends the footprint of the house, provides an en suite wet room facility to the ground floor bedroom and separate toilet and utility rooms. Widened doorways make access between rooms a breeze while under-floor heating ensures a high quality and uncluttered finish.

To the rear, the house opens out into a spacious, mixed-use area combining a family room, dining area and kitchen. Bifold and French doors flood the space with natural light to create a warm and welcoming environment.

The previously gloomy upper floor rooms have also been illuminated through the intelligent use of roof lights and large windows. The central lift provides access to the landing area, leading to two extended bedrooms and a large bathroom. The en suite master bedroom now includes a walk-in dressing room and opens out effortlessly onto a generous balcony.

Outside, white render, blue facing brick and slate tiles combine in a minimalist facade which gives the house an eye-catching, modern finish. To make maximum use of the building's south-east facing roof area photovoltaic roof panels have also been installed.

The homeowner Sylvia Forshaw said: "The refurbishment has really lifted our spirits and we are extremely happy to be moved in. We were able to have open and frank discussions with Raynes Architecture throughout the design



process and the results are fabulous. The downstairs rooms now feel much more spacious and I have been able to move back into the master bedroom upstairs. It's almost like being on holiday all the time."

For more information see the website [www.raynesarchitecture.co.uk](http://www.raynesarchitecture.co.uk), email [lisa@raynesarchitecture.co.uk](mailto:lisa@raynesarchitecture.co.uk) or call 07989 744 336

## Dura Cladding

### Timber Composite Cladding

+44 (0)1255 423601  
enquiries@duracomposites.com  
[www.duracomposites.com](http://www.duracomposites.com)

25  
YEAR  
Warranty

87% Recycled  
Materials

Colour Stable

Quick and Easy  
to Install

Cedar Dura  
Cladding

Charcoal Dura  
Cladding

Pale Grey Dura  
Cladding

Black Barn  
Dura Cladding

Ideal for new build or refurbishment projects, Dura Cladding looks and feels like timber and its unique formula provides lightweight yet durable cladding that will not splinter, warp, rot or fade throughout its 50 years design life expectancy.

...designed for the future

Industrial Rail Marine Landscaping Architectural



dura<sup>TM</sup>  
composites

# Eurobond launches BIM library

**E**urobond Laminates has launched BIM files for its range of stone wool core internal and external wall and ceiling composite panels.

*'It includes material colours and COBie datasheet parameters and the designer is supported by a wide range of construction details.'*

The files are available in a number of file formats to help ensure that the majority of BIM users can benefit from using them.



The new BIM files – which include those for Europanel, Rockspan and Firemaster – are available via the company's new website or by contacting Eurobond Laminates Technical Service team.

**Contact Eurobond on 02920 776677 or visit [www.eurobond.co.uk](http://www.eurobond.co.uk)**



## BIM all zipped up for HydroTap

Zip, a world leader in instant boiling water systems, has set new standards in the industry by becoming the first company within its sector to launch a fully populated Building Information Models (BIM) library for its WRAS approved HydroTap G4 product. Designed to change how buildings, infrastructure and utilities are planned, designed, built, and managed, BIM files offer an intelligent model-based system to provide one master source of information to architects. This includes a building's spatial dimensions, spatial relationships, light analysis, geographic information, quantities and properties of building components (for example, manufacturers' details) and costs. Developed in-house by Zip's technical experts, the Zip BIM library comes to the market ahead of the UK government's 2016 BIM mandate for centrally procured public sector construction projects.

08456 005 005 [www.zipheaters.co.uk](http://www.zipheaters.co.uk)

## Stixall Rapid 30



Stixall Rapid 30 is a new two component hybrid polymer adhesive from Everbuild with ultra-quick curing properties – setting hard in just 30 minutes. Curing by chemical reaction, Stixall Rapid 30 is ideal for bonding two non-porous substrates, living up to the Stixall name by bonding most common substrates. The instant grab properties make it ideal for use general bonding in the building industry and sealing floor and wall joints with moderate movement

requirements, and the most demanding of applications including bonding in car body, coach and container assembly.

0113 240 3456 [www.everbuild.co.uk](http://www.everbuild.co.uk)

## Dickies



The Dickies range of Redhawk Superwork and action trousers are ideal for everyday industrial use. They are extremely smart and hardwearing, helping the workforce to stand out from the crowd. They offer multipockets including a top pocket on the flap, kneepad bottom loading velcro fastening, a rule pocket on the front, back patch pockets, stud fastening on left side, hammer loop and reinforced back pockets. New to the Redhawk range for 2014 Dickies introduced a

new chino trouser in the popular Redhawk 260gsm poly/cotton fabric: with no exposed metal it is suitable for the automotive industry.

Tel: 01761 419419 [www.dickieseuropa.com](http://www.dickieseuropa.com)





## Sika MaxMix Mortar Plasticiser



Everbuild's Sika MaxMix Concentrated Mortar Plasticiser is a liquid air entraining agent for brick laying mortars, renders, pointing and screeds. Designed to give improved workability and durability where required, Sika MaxMix Mortar Plasticiser provides long term resistance to freeze/thaw cycles and minimises cracking. Compact and easy to use, it comes in a bottle with its very own dosing device clearly marked with millilitre increments, simply squeeze the bottle to release as much admixture as required (5ml per 25kg of cement).

0113 240 3456 [www.everbuild.co.uk](http://www.everbuild.co.uk)

## Get to grips with Hultafors' tools



With nearly 300 years of design and manufacturing behind the brand, it is fair to say that **Hultafors** tools are some of the world's leading handtools for ergonomics, precision quality, power and durability. Hultafors can provide you with just about anything you need for measuring, leveling and marking;

striking, cutting and chopping; even prying and wrecking. So these really are tools that can handle tough applications, last for ages and feel right when you're working on-site. The unique range of craftsman's knives and chisels are designed to combine maximum sharpness with hard-wearing durability.

## The craftsman's favourite



Renowned for superior working jacket technology, **Snickers** is upgrading its new soft shell jacket and winter vest for professional tradesmen and women. They are well designed with a selection of sizes and colours, plus they deliver extremely good value for money and fulfil every basic need

while working on-site. With a stretchable, breathable and water-repellant polyester fabric, the jackets have a soft, warm fleece inner layer to ward off the autumn chills. The revolutionary ergonomic design in the jacket's pre-bent sleeves enables you to count on comfort and freedom of movement whatever you're doing at work.

## Dubai Tram project



The **A. Proctor Group** have supplied approximately 30,000 sq m of Profoil 861 to Arabian Profiles for phase 1 of the Dubai Tram project. Completed on 1 November 2014, the first phase is from Al Sufouh to the Marina. Profoil 861 is a heavyweight, reinforced vapour control layer with an aluminium foil core to give a high water vapour resistance. The woven extruded polypropylene

multifilament scrim reinforcement gives good resistance to tears and punctures. The aluminium foil is protected on both faces by polyethylene for corrosive situations, such as chlorine in swimming pools.

01250 872261 [www.proctorgroup.com](http://www.proctorgroup.com)



## Brick industry supports young bricklayers

In a bid to boost the country's number of budding brickies, the **Brick Development Association (BDA)** is taking its #LOVEBRICK roadshow to a number of colleges around the country. The BDA is working with the Association of Brickwork Contractors (ABC) to drive the study of bricklaying forward and increase the number of skilled bricklayers in the construction industry. This initiative, supported with funding from the Construction Skills Training Board (CITB), aims to raise the awareness and knowledge of brickwork and the important contribution it makes. Titled #LOVEBRICK, the initiative will be delivered via workshops and presentations by the BDA, brick manufacturers and brickwork contractors. Students will have access to specifically written technical guides, presentations and demonstrations, as well as communication through social media.

020 7323 7030 [www.brick.org.uk](http://www.brick.org.uk)



EST. 1987

## SEWAGE TREATMENT PLANTS FOR PROPERTIES WITHOUT MAINS DRAINAGE

- Simple process
- Simple installation
- Economical maintenance
- Tested to EN 12566 - Part 3

NEW 'T9' FOR 9 PERSONS

### AIR BLOWERS AND SPARES

### RAINWATER HARVESTING

Tel: 01278 786104

Fax: 01278 793380

Email: [sales@biodigester.com](mailto:sales@biodigester.com)

[www.biodigester.com](http://www.biodigester.com)

Burnham Environmental Services Ltd.



# Innovation in lifting from Hird

Challenging new building designs need new facade construction techniques. That is why equipment supplied by Hird, such as the Winlet glazing robot, is in such strong demand.

Mini crane, glazing installation and powered access specialist Hird is an authorised UK and



Ireland dealer for Winlet glazing robots, which one client has called 'the biggest step forward in glass installation in 10 years'.

The Danish glazing robot, available for hire or sale, is compact, light and easy to move. It can lift, carry and place – with absolute precision – glass sheets or any other non-porous panels up to 600kg, even overhead.

Hird Director John Wilding said: "Winlet has proven to increase production by 50 per cent on a range of sites, including high-rise towers in London. As well as being faster, it's safer and uses smaller installation teams."

The Winlet is just one powerful range of machines offered by Hird. The company is a UK leader in hiring mini cranes, including Valla pick and carry cranes and UNIC spider cranes, both ideal for building facade construction.

Hird also has an unrivalled selection of vacuum lifters for hire, for flat or curved sheets, and loads



up to 2,000kg – plus a full range of powered access machines. "We aim to be a one-stop-shop for lifting, anywhere in UK," says Wilding.

0203 174 0658 [www.hird.co.uk](http://www.hird.co.uk)



## DESIGNED TO ACHIEVE

Rubb's experienced engineers have the skills and expertise to provide architectural fabric building solutions to specific site or project challenges.

Over the years Rubb has built close working relationships with architects and practices to deliver innovative, cost effective, custom building solutions which can be quickly designed, manufactured and erected in a wide variety of bespoke sizes, colours and shapes.

Contact us for a quote today...

Email: [info@rubb.co.uk](mailto:info@rubb.co.uk) | Tel: +44 191 482 2211 | [www.rubbuk.com](http://www.rubbuk.com)

  
Building Systems

excellence in engineering





## Hunter Douglas invests in the future

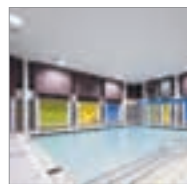


Hunter Douglas has extended its partnership with Rotterdam's Archiprix Foundation for another six years. Archiprix International organises a biannual event at which promising young architects from all over the world are invited to present their graduation projects – over 300 universities have submitted entries. An independent international jury offers the best

proposals at the Hunter Douglas Awards. Thus young talent is offered a platform on which to inspire in the fields of urban design and (landscape) architecture. For more information, please go to [www.archiprix.org](http://www.archiprix.org).

01604 766251 [www.hunterdouglas.co.uk](http://www.hunterdouglas.co.uk)

## Knauf AMF ceiling installation goes swimmingly



The Knauf AMF Aquatec ceiling system has been installed in a new pool hall at Leytonstone Leisure Centre, London. The refurbished centre is part of an ongoing £24.5 million regeneration programme. The hall is equipped with a 25m main pool and a teaching pool. Architects AFLS+P specified the Aquatec ceiling system to meet the demanding requirements for the

public pool. The ceiling has to withstand a tough combination of extreme humidity, a range of temperatures, water, and exposure to the corrosive atmosphere caused by chlorine. AFLS+P are impressed with the ceiling and have specified Aquatec for a number of projects including three more large leisure centres.

020 8892 3216 [www.amfceilings.co.uk](http://www.amfceilings.co.uk)

## SikaMur – the ABC of DPC

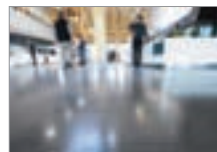


Rising damp is a problem that affects buildings each year, particularly older houses where the original damp proof course has been damaged over time. The Everbuild SikaMur® damp proofing system is the effective three-step solution against rising damp, consisting of specially

selected limestone aggregates, cements and air entraining additives. The system contains three parts, SikaMur® InjectoCream-100, SikaMur® Dry and SikaMur® Finish all of which are moisture vapour permeable, allowing the wall to dry out and prevent efflorescence damage, improve thermal properties and protect against condensation.

0113 240 3456 [www.everbuild.co.uk](http://www.everbuild.co.uk)

## Fila protects surfaces at greenest service station



Two Fila floor protection systems have been chosen to protect floor surfaces at Gloucester Services, a new family-run motorway services dedicated to local food, farming and its community. Located near the Cotswolds, on the northbound M5, the £40 million development is a joint venture between

a local charity – Gloucester Gateway Trust – and Westmorland Limited. It was delivered by AFL Architects and includes local stone and timber lighting designs and an arched wildflower seeded roof. All flooring works, including the application of FILAFOB and eco-award winning Fila Cleaner were carried out by Polished Concrete Designs, for Buckingham Group Contracting Ltd.

01584 877286 [www.filasolutions.com](http://www.filasolutions.com)

## SCHOTT restoration glasses



International technology group SCHOTT offers a wide variety of architectural glasses for use in restoring old architectural monuments. The many different glasses are manufactured using the traditional Fourcault process and made to resemble window glass from various eras. Thanks to its differentiated range of materials, the company supplies glasses that meet the requirements of monument preservationists, building owners and building users. The range includes not only machine drawn

restoration glasses, but also several high-quality architectural glasses and coated glasses such as anti-reflective AMIRAN® and MIROGARD® glass.

01785 223166 [www.schott.com/uk](http://www.schott.com/uk)

## Do you have an award-winning roof?



Entries are now being accepted for the UK Roofing Awards 2015. The awards recognise and reward outstanding standards of workmanship and safety among competent roofing companies. They are open to roofing companies who are members of one of the supporting trade associations, including the National Federation of Roofing Contractors.

Submissions from manufacturers, architects and specifiers are also welcome. The awards are comprised of 13 categories covering all the major roofing disciplines from single ply to heritage. The awards are free to enter and you are not limited to one submission.

020 7638 7663 [www.nfrc.co.uk](http://www.nfrc.co.uk)

## Construction training on YouTube



ITW Construction Products (ITW CP, formerly ITW Industry) are beginning to release instructional installation animations to maintain correct use of Cullen builders' metalwork on-site. The scheme answers requests from the industry for product installation instructions that anyone can follow on-site, regardless of language spoken.

Videos are bite sized at under a minute long to get builders up to speed as quickly as possible. All have been completed in-house by ITW CP's Cullen Technical and graphic design teams working in close collaboration for upmost technical accuracy. To view the animations, visit [www.youtube.com/ITWIndustry](http://www.youtube.com/ITWIndustry).

0800 652 9260 [www.itwcp.co.uk](http://www.itwcp.co.uk)

## Low odour with no compromises



The next generation of liquid applied roof membranes has been launched by Sika Liquid Plastics. Decothane Ultra is a low odour non-disruptive roofing solution that achieves more than 80 per cent reduction in odour strength five minutes after application and greater than 95 per cent reduction after just one hour against a similar one-component

competitor. These results were established by independent testing. Decothane Ultra utilises a range of new novel curing agents. This new chemistry offers a versatile platform from which to formulate extremely low solvent content and low odour liquid applied membranes for a wide range of applications.

01772 259781 [www.decothaneultra.co.uk](http://www.decothaneultra.co.uk)

# Something rather different under a grass roof

Having seated you under a grass dome to enjoy locally sourced food and a different menu each month you would expect the new M5 Gloucester Services motorway service station to have come up with something interesting for the interior finish. Indeed it has. Powdertech (Corby) Ltd has used its latest roughwood finish coating (PWF) to enhance the natural tones and textures on the glazed facade to the front and rear of the main food hall and seating area.

Built to merge into the landscape with its grass domed roof and with a lake to sit beside, Gloucester Services is a refreshing departure from traditional service stations and a truly uplifting break from motorway monotony.

The building features Cotswold stone walls with oak posts and oak cross beams inside giving the rural and homely feel of an old barn. The mullion and transom cappings for the glazed facade, the

door frames and soffit panels are metal, coated by Powdertech (Corby) Ltd in the company's latest wood finish (PWF), Roughwood.

"We have developed Roughwood as an extension of the PWF range, incorporating new shades and importantly a rougher texture, echoing the feel as well as the appearance of wood," explained Powdertech Sales Director, Richard Besant. "Our brief was that the Westmorland Family wanted the natural look to pervade throughout the entire area. PWF Roughwood, in the shade 'purple heart' based on the tree of that name, complements the oak beams perfectly. By combining the strength and versatility of metal with PWF Roughwood there is no jarring effect of introducing metal into a natural looking interior. The coating has very good abrasion resistance and is low maintenance."

01536 400890

[www.powdertechcorby.co.uk](http://www.powdertechcorby.co.uk)



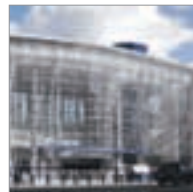
## Reynaers takes to the water



An extensive range of systems have been supplied by Reynaers Aluminium to a prestigious riverside apartment, office and retail development in Greenwich. The architectural aluminium systems were specified and installed at the Paynes & Borthwick site, which comprises five blocks and a tower, with heights varying

from three to 18 storeys. The project, fronting onto the River Thames, includes 257 highly specified apartments, as well as 14,000 sq ft of commercial office and retail space. CW 50 curtain walling was supplied by Reynaers, which the company says provides unlimited creative and installation flexibility, while also allowing the maximum amount of light into a building.

## Levolux minds the gaps at Blackfriars



London's Blackfriars Station has been transformed as part of Network Rail's Thameslink Programme. As part of this, the station now boasts a new northern entrance, which is equipped with an external solar shading solution from Levolux. The station, which first opened in 1886, has been expanded to increase capacity and as a result becomes the first mainline station to span the River Thames. In addition to a new station on the south bank, a new combined entrance was also created on the north bank, allowing easy access to National Rail and London Underground services. The newly renovated Blackfriars station has been acclaimed as a considerable achievement, with more than 44,000 passengers a day that now pass through the station.

## State-of-the-art materials help turn award-winning design into reality



Glasgow's The Gorbals is being taken into the 21st century as part of a major, award-winning regeneration, and is using technologically-advanced materials to deliver modern performance as well as design.

At the heart of the regenerations is the creation of over 1,000 new homes at Richmond Park, a development by housebuilder Bett Homes, which includes construction of six-storey blocks each with 17 x two-bedroom apartments. To achieve a contemporary look at Richmond Park, Bett Homes has chosen to use some 450 sq m of Protan SE1.2mm single ply membrane on each of the blocks with 'flat' roofs. Hot-air welded at the joints and mechanically fixed in place by roofing contractor JMS, the Protan membrane is detailed with omega profiles to give the impression of a metal standing seam roof. Designed to cope with extreme weather conditions without detriment, Protan SE membrane achieves durability for at least 30 years. In addition, air leakage is controlled in line with the latest Building Regulations. Protan SE membrane is one element of Protan's comprehensive range of single ply roofing solutions, all designed to protect value for specifier and contractor.

01925 658001 [www.protan.co.uk](http://www.protan.co.uk)





# Healthy residential Concept<sup>®</sup>

Reducing carbon and saving energy are the major points of discussion when talking about new builds or renovation. However; we also have to think about the creation of a healthy and comfortable living environment for the owners and occupants. Consideration is needed as to how to create good indoor air quality (IAQ), a comfortable temperature and controlled daylight in the house to create a better living environment.

RENSON<sup>®</sup> wants to help you in finding those solutions. By combining ventilation and sun protection with other desirable solutions into a Healthy Residential Concept<sup>®</sup>, RENSON is able to provide complete solutions for a healthy and comfortable 'home'.

When designing, building or renovating a property, the inclusion of increased insulation and better air tightness has knock-on effects to the property. You need to consider the risk of increased condensation, moisture and poor indoor air quality, all of which will affect your health.



Basic ventilation guarantees an adequate indoor air quality. DCV will constantly monitor and adjust the ventilation rates as per the changes in indoor air quality. When the contaminated air is extracted, a natural airflow through the window vents will ensure the supply of fresh air. Intensive ventilation uses natural airflow, whether during the day-time or overnight to cool down a building and its air content.

Further energy can be saved by maximising the use of daylight in the building. That is why we can observe an increase in the glass surface of the buildings. However increased glass areas combined with tighter airtightness leads to higher inner temperatures along with the issues of glare and possible disturbing light reflections. The most efficient sun protection system stops the sunrays before they pass through the glass and enter the house and therefore minimises overheating.

01622 754123 [www.rensonuk.net](http://www.rensonuk.net)

## Airtightness – bridging the gap



The upgrade conversion of a 1964 brick and timber dwelling built by Mowlem (Scotland) Ltd involved an attic conversion, ground floor front and side extension, as well as a full height extension to the rear. On the front and side extensions, Goodburn

Baillie (Architecture & Building) Ltd put Wraprite-SA from the A. Proctor Group Ltd to the test. Refurbishments can be complicated projects, with timelines and project plans easily diverted by working with old and new, so it made sense to plan in safeguards against delays and the inevitable British weather. Wraprite-SA combines important properties of vapour permeability and airtightness in one affordable self-adhering membrane.

01250 872 261 [www.proctorgroup.com](http://www.proctorgroup.com)

## Rebrand for Airtec



Airtec Stone and Airtec Glass ventilated rainscreen facade systems have been rebranded under the Lithodecor banner. The Airtec systems have been manufactured by Lithodecor for over 20 years and marketed alongside alsecco's insulated facade systems. The rebranding to Lithodecor allows for the specific technical and design aspects of the systems to be highlighted more clearly and give more impetus to this innovative, specialist stand-alone range.

The Lithodecor team offers full technical and design support from inception to installation and is able to support you with relevant information such as detail drawings in dwg and pdf format, data sheets and approval certificates.

01785 818998 [www.lithodecor.co.uk](http://www.lithodecor.co.uk)

**SPECIALIST CHIMNEY COWLING**

- Static cowls
- Rotating cowls
- Free technical help
- Special sizes

01243 539639

Rotating stealth cowl

Email: [sales@brewercowls.co.uk](mailto:sales@brewercowls.co.uk)  
[www.brewercowls.co.uk](http://www.brewercowls.co.uk)

# Order by 8pm. Get it Next Day!



For a huge range of stylish door and window hardware at low trade prices, **call today** for your **FREE** catalogue!



**UK's Biggest Range**



**Minimum 5 Year Guarantee**



**Order by 8pm get it Next Day**



**Free Returns**



**0808 168 28 28**



**IronmongeryDirect.com**



**DOWNLOAD OUR FREE APP FROM YOUR APP STORE**



**IronmongeryDirect**

**MASTERS OF OUR TRADE**

DOOR FURNITURE • WINDOW & JOINERY HARDWARE • SLIDING DOOR HARDWARE • HINGES • DOOR CLOSERS • FIRE CONTROL • SIGNS • LOCKS LATCHES & SECURITY • CABINET FURNITURE • SHELVING & STORAGE • BOLTS & STOPS • SEALANTS & ADHESIVES • SCREWS & FIXINGS

TEXT **RBAB** to 62244 FREE! With name, address and email for your FREE catalogue.





## Dubai Tram Project



The A. Proctor Group have supplied approximately 30,000m<sup>2</sup> of Profoil 861 to Arabian Profiles for phase 1 of the Dubai Tram project. Due for completion on 1st November 2014, the first phase is from Al Sufouh to the Marina. Profoil 861 is a heavyweight reinforced vapour control layer with an aluminium foil core to give

a high water vapour resistance. The woven extruded polypropylene multifilament scrim reinforcement gives good resistance to tears and punctures. The aluminium foil is protected on both faces by polyethylene for corrosive situations, such as chlorine in swimming pools.

01250 872261 [www.proctorgroup.com](http://www.proctorgroup.com)

## RigiSystems facade the new face of Greenwich



Around 10,000 sq m of RigiSystems CladScreen facade system have now been installed on block one of London's prestigious new Greenwich Square development. While utilising the CladScreen system, most of the panels were custom engineered in order to fit in with the

architect's vision for this unique development in London's heartland. Greenwich Square sits on the vacant brownfield site of the former Greenwich District Hospital. The new scheme contributes towards the ongoing regeneration of the area by providing new homes, a public destination and a community hub.

01905 750500 [www.rigisystems.org](http://www.rigisystems.org)

## Balcony balustrades by Sapphire



Faceted glass balcony balustrades, manufactured and installed by Sapphire, have been chosen to enhance the unique visual spectacle of Baltimore Tower, London's latest landmark for luxury living. Each apartment in the 46-storey building has its own private balcony which varies in size as the apartment levels rise, while the outer balcony 'ring' shifts and steps slightly to create the tower's distinctive flowing twist. The centre apartment core also 'rotates' at levels 8, 22 and

29. The project's challenging specification, requiring in excess of 1,000 tonnes of glass for the balcony balustrade and glass floors, is a showcase for Sapphire's intelligent engineered solutions completion.

## Elegant colour-changing metal facade



Perforated and embossed aluminium panels supplied by RMIG have given the new cube-formed building of the regional archives of Marne in Reims unique and elegant facades and interiors. The world's largest perforation company supplied 3,000 sq m of aluminium panels with stunning,

multifaceted finishes that decorate the exterior and interior facades, ceilings and walls of this iconic cultural venue. The architects chose perforated and embossed panels in 2mm powder coated aluminium from the RMIG City Emotion programme for both the interior and exterior, forming a strong, functional and stylish design statement. For more information visit [www.city-emotion.com](http://www.city-emotion.com).

01925 839 600 [www.rmig.com](http://www.rmig.com)

building  
construction  
design

# LAUNCH ALL NEW WEBSITE FOR 2014



REGISTER ONLINE FOR... Digital magazine • Newsletter • Daily digests

[www.buildingconstructiondesign.co.uk](http://www.buildingconstructiondesign.co.uk)

# Another winner from Garador

It's an open and shut case! Up & overs are already Britain's top selling garage doors. Now, with their fabulous new looks and great options, the new Garador Windsor and Ascot doors are certain to be the market leaders in the coming months.

Both doors share a number of top features. They are constructed from high grade galvanised steel finished with a durable powder coat and a rivet free panel for an ultra smooth appearance. Both come in a choice of 18 vibrant new standard colours. Both styles share the same state of the art operational systems with a range of options available such as a retractable gear, factory pre-framed purpose-made; free poly-wrapping on colours, length choices on bottom weatherseal; and additional Lock Kit fitted onto door.

Both are priced very competitively and are easy to install with minimal maintenance. The main difference between Windsor and Ascot is design. The fresh modern styles incorporate a horizontal panelling for Ascot while

Windsor is vertical; but it's not a big difference – both designs will add a fresh new look to any home.

Look out too for Garador's just launched three new textures for its steel sectional doors.

Its traditional silkgrain has been relaunched with an ultra smooth surface thanks to the latest in material and paint technology, plus a brand new sandgrain textured finish and timber



effect finishes have also been introduced. The sandgrain offers a slightly coarser surface while the steel timber effect texture gives a genuine soft wooden surface feel.

All three designs offer great new looks as well as a very different feel.

**Call 01935 443709 for more information or check out all the new doors from Garador on its relaunched website at [www.garador.co.uk](http://www.garador.co.uk)**

HOLDSWORTH  
*Windows*



*Specialists in  
Steel Windows & Leaded Lights*

**HOLDSWORTH WINDOWS LTD**

Darlingscote Road, Shipston-on-Stour  
Warwickshire CV36 4PR

Telephone: 01608 661883 Fax: 01608 661008

E-mail: [info@holdsworthwindows.co.uk](mailto:info@holdsworthwindows.co.uk)

Web: [www.holdsworthwindows.co.uk](http://www.holdsworthwindows.co.uk)

## Kirk ThermalWall Insulated Facade



215 WALL BLOCK

Kirk ThermalWall is a revolutionary insulation backed walling system (UK patent application no:1406463.8), suitable for installation onto a wide variety of building facade types, including both new build and retro-fit applications. Kirk ThermalWall is designed to significantly increase building energy performance and, if

used with natural stone facing panels, will also substantially improve building appearance and lifespan. It is lightweight, easy to install and available in a wide range of material types, colours and textures, for residential, office, industrial, education, healthcare, leisure, public sector and tourism building projects. For more information please email [martin@kirknaturalstone.com](mailto:martin@kirknaturalstone.com).

01888 511399 [www.kirknaturalstone.com](http://www.kirknaturalstone.com)

## Metalline ahead with high quality solutions



Metalline has become one of the market leading manufacturers for the supply of high quality anodised aluminium insulated panels, pressings, soffits and rainscreen facades. With architects and designers increasingly looking for distinctive and high quality finishes, Metalline's close working relationship with United Anodisers and the use of superior

grade J57S aluminium sheet has helped it create a prestigious solution. Available in a full range of Anolok finishes specifiers are now able to enhance the aesthetic look and feel of a building's facade in a choice of colours.

01543 456 930 [www.metalline.co.uk](http://www.metalline.co.uk)





## Berry Barriers helps hospital parking capacity

Like many hospitals, Derriford in Plymouth has to match ever increasing numbers of patients, visitors and staff with limited parking availability. The new 627-space, multi-storey car park on the North West Quadrant will go a long way towards easing the situation for the daily 8,000 footfall to the hospital. The eco-friendly design features green walls with climbing plants on the two lowest levels, steel lattice work on the next two and timber latticework on levels 5 and 6. Advice was sought from barrier specialists **Berry Systems** who recommended their RB1X spring steel buffers that 'give' in a collision to absorb impact forces and minimise damage to the barrier, vehicle and car park deck. After impact the barrier returns to its original position to provide ongoing protection. Berry Beam rails were used to give a more refined appearance than the traditional Armco W section.

01902 491100 [www.berrysystems.co.uk](http://www.berrysystems.co.uk)



## A range of sliding panels called Loggia®

In reply to the growing demand for aesthetic, multifunctional facade elements, **RENSON®** offers a range of sliding panels called Loggia®. These systems open a wide range of possibilities as a sun shading system, visual screen or fence, but also for intensive ventilation, daylight control or partial shading. The Loggia® sliding panels consist of a solid aluminium frame, fitted with aluminium blades. Depending on the desired enclosure and the required see-through visibility, the blades can be positioned at different inclinations and with different blade pitches. Equipping the Loggia® type LG.130 with manually moving blades, the system not only allows the panel to be moved into the desired position, but the blades can also be rotated into their ideal position, according to the position of the sun and the desired level of shading. These sliding panels can also be delivered with integrated wind tight screens (LoggiaScreen4Fix) or wooden blades (Loggiawood®).

01622 754123 [www.rensonuk.net](http://www.rensonuk.net)

## Prices "SMASHED" On Aluminium Bi-folding Doors

Price Smash on all of our market-leading Aluminium Bi-Fold doors, **challenge us** on price for your quote and we will even give you **10% OFF\*** your first door ...**WOW!**



**Aluminium  
BI-FOLD DOORS from  
£365+VAT per Sash**

PRICE EXAMPLE

**PRICE  
CHALLENGE!**  
Compare us today.  
We will not be  
beaten on price.

- Premium Aluminium profile
- A choice of RAL colours
- On-site delivery available
- Low Threshold Options
- Quick Turnaround from quote to delivery
- Log online to view our new EZI Door Quote System



**10% OFF\***  
your first  
door now

Find out more!



**Call Nigel 01642 610798**

**Fax 01642 671026**

**[www.madefortrade.co](http://www.madefortrade.co)**



made for trade

\*Offer open to new customers on first order. Not applicable to glazing and delivery charge.



## Europanel is part of innovative show home and office



***‘Europanel F5 is Eurobond Laminates premium architectural panel system [...] suited to either horizontal or vertical installation’***

**E**urobond Laminates’ Europanel F5 panel system features on an innovative new building that is a combination of show home and office for Taylor Wimpey. This comes as part of the unveiling of Taylor Wimpey’s new landmark housing development at Chobham Manor on the Queen Elizabeth Olympic Park.

The marketing suite was completed in less than eight

weeks, and with no need for foundations. The use of panel cladding ensures that the building performs like its traditional equivalent offering similar heat and sound insulation, but remaining reusable.

The designer, Octink, is a specialist in marketing suites and it appointed Suitebox to develop the structure and external envelope. Suitebox is a new division of ES Global, a recognised market leader in reusable temporary structures and staging – including the London 2012 Water Polo Arena at Stratford. It proposed its innovative component-based system developed for demountable buildings. The system employs existing building components – external cladding panels, roofing and glazing, which are designed to fit the modular frame – all of which have been developed and adapted for rapid deployment and relocation.

The Europanel F5 panel system used is 200mm thick and finished with TATA Colorcoat HPS200 Ultra® Sargasso. This combination delivers a striking visual impact and individuality to the design. Europanel F5 is Eurobond Laminates premium architectural panel system, available with an architecturally flat profile and suited to either horizontal or vertical installation. It has a high density non-combustible stone wool core to further enhance fire performance, structural and acoustic properties.

Europanel offers one hour fire resistance for both insulation and integrity acoustic performance, low environmental impact and at end of the building’s life it is wholly recyclable into new product.

02920 776677

[www.eurobond.co.uk](http://www.eurobond.co.uk)







## Garador

Garador's great looking Chatsworth PVC up & over door has been launched well in time for winter storms. Along with Garador's already popular PVC up & over Sherborne style, both doors offer exceptional low maintenance and long durability. Built around a galvanised steel box section chassis, both doors have been engineered to offer the ultimate impact resistance against life's everyday knocks, wear and tear. With their non-rusting properties they are also ideal for coastal properties, where they will withstand even the toughest weather conditions. Along with their strength, the Chatsworth and Sherborne doors both offer great looks. Designed with an ultra crisp, fully finished PVC plastic door panel, they are the perfect match for existing white PVC doors and windows. The choice of design has been achieved through elegant vacuum formed panels that offer a fresh clean look that will appeal to both modern and traditional homeowners. Both doors are available in canopy or retractable models and are also available with a retractable plus gear option which is perfect for anyone wanting extra drive-through width.

Tel: 01935 443791 [www.garador.co.uk](http://www.garador.co.uk)



## Gilgen automatic door operator now fire door approved

An automatic swing door operator from Gilgen Door Systems has become one of the first of its kind to be independently tested and approved for use on fire doors. The Gilgen FD 20 swing door operator fitted with safety sensors recently passed stringent fire safety tests carried out through Exova Warringtonfire, one of the world's leading fire safety and resistance testing specialists. The tests examined the resistance of the operator when fitted to fire doors exposed to extreme fire and heat up to 1,000°C. Following successful tests the FD 20 was approved for use on timber fire door sets providing up to two hours protection and metal fire door sets providing up to one hour protection.

0800 316 6994 [www.gilgendoorssystems.co.uk](http://www.gilgendoorssystems.co.uk)

# CONSERVATORY ROOFS, ORANGERY ROOFS, LANTERNS PRICE CRASH!

### Global Summer Orangery



Easy installation of lighting system



Decorative gutter fascia and fitted plaster

### Stylish and elegant



Palmnet pods



Internal view

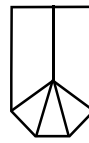
## Don't miss that sale on PRICE! Try a Price Comparison - SAVE £££s

- Very quick turnaround
- 25mm and 35mm poly
- All rafter cappings scribed and pre-cut - ready to fit
- All roofs checked sleaved and bubble-wrapped for safe delivery
- Free delivery to site
- White, Oak, Rosewood, and Mahogany Artisan Colours

**15% OFF**  
your first roof  
*Lowest prices anywhere \**

### FITS ALL SIDE FRAME SYSTEMS - EASY TO FIT

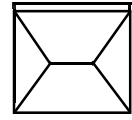
#### 2.8 x 2.9m Victorian 25mm Opal



Red sticker price includes 15% new customer discount

from **£496**  
ex. VAT

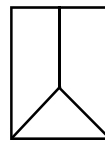
#### 4 x 3m Double Hipped 25mm Opal



Red sticker price includes 15% new customer discount

from **£938**  
ex. VAT

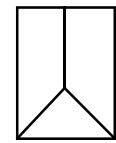
#### 2.8 x 2.9m Edwardian 25mm Opal



Red sticker price includes 15% new customer discount

from **£534**  
ex. VAT

#### 2.8 x 2.9m Edwardian 25mm Blue Active



Red sticker price includes 15% new customer discount

from **£922**  
ex. VAT

### Log online to view our new EZI Conservatory Roof Quote System

\*We will try to beat any like for like price quoted.  
All prices are subject to VAT at the current rate.



Find out more!



made for trade  
[www.madefortrade.co](http://www.madefortrade.co)

**'MORE COMPETITIVE THAN ALL OTHER ROOF SYSTEMS.  
SO DON'T ZOOM OFF, GET A PRICE COMPARISON  
AND CHECK OUT OUR ULTRA LOW PRICES!'**

Tel: **01642 610799**

Fax: **01642 615854**

**LOG ON TO OUR WEBSITE FOR CURRENT PROMOTIONS!**

\*In our experience we haven't found anywhere who can beat us on price.



**FIRE-RESISTANT GLASS**



**SECURITY GLASS**



**ELECTRONICALLY TINTABLE GLASS**

**HIGH-PERFORMANCE GLASS BY VETROTECH:  
ELEGANCE, COMFORT AND FUNCTIONALITY COMBINED.**

Vetrotech safety and comfort glass offers the ultimate protection for people and property, while providing the aesthetic and multi-comfort qualities you expect from architectural glass. More than 30 years of experience means we are able to deliver solutions for virtually any application, worldwide. Visit [www.vetrotech.co.uk](http://www.vetrotech.co.uk) to learn more about our factory in Coventry and our comprehensive product range, or call 0247 654 7620.

Vetrotech Saint-Gobain UK distributes SageGlass®, electronically tintable glass for improved comfort and energy efficiency.





# Panoramic views just got better from Reynaers at Home

Reynaers at Home has introduced new variants of its Hi-Finity sliding patio doors in response to increased demand for the innovative product.

With a minimised visible frame of just 35mm for a maximised panoramic view, the Reynaers at Home Hi-Finity slim frame doors offer the ultimate in contemporary design and cutting-edge performance.

Elegant Hi-Finity aluminium doors are now available with double and triple glazing and ensure optimum performance, safety, and comfort. What's more, the Hi-Finity sliding system with triple glazing has achieved the Minergie® sustainability label – a quality indicator for high insulation systems. The Minergie component label for windows and doors requires a  $U_w$  value (installed) of  $\leq 1.0W/m^2K$ . The Minergie-P® label corresponds to the internationally-known



Passivhaus standard and requires a  $U_w$  value of  $\leq 0.8W/m^2K$ .

Head of Reynaers at Home Hugh Moss said: "The use of structural glazing technology allows Hi-Finity doors to push the boundaries in terms of size and these doors can achieve an industry-

leading height of 3.5m. It is now also possible to combine two Hi-Finity doors on adjoining walls using one of a new range of innovative corner solutions. They allow architects to create a wall of glass to let panoramic views flood into homes and – thanks to the unique design of the multi-wheel carriages – even the heaviest of these doors will glide open and closed with minimal effort."

All Hi-Finity doors incorporate a state-of-the-art electronic locking system concealed in the outer frame and operate via a wall-mounted button or a remote control. Combined with a burglar-resistant design, it makes the sliding patio doors some of the most secure available.

To support the use in luxury high-rise apartments, Reynaers at Home has also developed a project specific bespoke solution by integrating a glass balustrade.

For more information see the website [www.reynaersathome.co.uk](http://www.reynaersathome.co.uk), email [homeuk@reynaers.com](mailto:homeuk@reynaers.com) or call 0121 421 9707

## New brochure showcases Metalline's range



One of the UK's leading fabricators of architectural metalwork, **Metalline**, has unveiled a new full colour brochure showcasing its innovative and bespoke solutions. The company has built a reputation for outstanding quality and service and the brochure highlights the growing portfolio of flagship projects now featuring Metalline's architectural solutions. The range of products featured includes Feature Beam, a highly adaptable metal pressing which will enhance the appearance of any

building facade. The new brochure also features technical information on Metalline's anodised products, rainscreen and insulated panels, fascia and soffits.

01543 456 930 [www.metalline.co.uk](http://www.metalline.co.uk)

## Cembrit clads sustainable homes



**Cembrit** Metro cladding has been installed on a mixed-use development in the heart of Camden, London, to provide a decorative finish to complement the surrounding brickwork. Approximately 500 sq m of Stockholm cladding has contributed to the building achieving an accredited sustainability status. London-based

architect Allford Hall Monaghan Morris (AHMM) specified Cembrit's Metro cladding with the design plan of the brickwork 'peeling back' at the corners of the envelope, revealing a contrasting palette of glazing and cladding. Drylining and facades specialist Conneely Group installed the cladding onto the new build project and found the material particularly easy to handle.

## Stainless steel balustrade meets luxury specification in the Lakes



A development of luxury apartments in the scenic surroundings of the Lake District has used NEACO's Spectrum stainless steel balustrades and balconies to provide a suitably high aesthetic.

Incorporating tinted glass panel infills, Spectrum is extensively featured on bespoke Juliet balconies and balcony terraces in keeping with the properties' luxury specification, which includes locally sourced materials, underfloor heating, level access shower rooms and walk-in wardrobes as standard.

Alan Green, managing director at NEACO, said: "Our stainless balustrade has attracted a number of recent specifications at high-end residential developments designed for the luxury market. The product's defining quality is a superior aesthetic achieved with hand finished, satin polished components and clean, sharp intersection lines created by true unidirectional polishing. The visual appeal of our stainless steel balustrade is matched by high performance qualities which are true of every product in the Spectrum range – namely its modular design versatility, durability and fast, low-energy construction which requires no welding or hot works."

# King's College school bowled over



**S**ixth form students at King's College Wimbledon are guaranteed a dry start to the new term, both in the classroom and the cricket pavilion thanks to Kemperol from liquid waterproofing specialists Kemper System.

Following installation of the liquid water-

proofing system on the sixth form centre, the client was so pleased with the result that they also specified it for the cricket pavilion.

The sixth form roof structure itself was in good condition, but the ageing felt roof was beginning to break up.

If the roof had been fully stripped and re-felted, then a considerable amount of air handling equipment on the roof would have had to be removed. By choosing Kemperol, the equipment was raised to allow the waterproofing system to be installed and lowered once cured. There were also numerous skylights that were more easily incorporated into the seamless membrane with the liquid system.

Paul Brown from roofing contractors Avant-Garde Roofing, who laid the Kemperol, pointed out that insurance was also a key issue: "It can be very difficult for some felt roofing contractors to get insurance on these types of roofs because of the fire risk associated with the torches," he said:

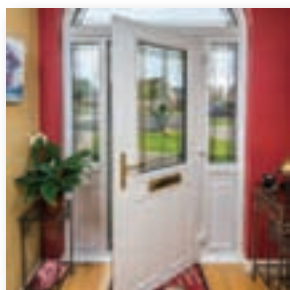
"Kemper System is cold applied so there is no fire risk whatsoever."

The client was also very happy with the final result: "I was expecting the project to take several weeks, but in the end it took less than a month," said Jason Sprague, King's College head of maintenance. "Avant-Garde and Kemper did such an excellent job that we asked them to reroof the cricket pavilion, which had started to leak."

It would have been too expensive to replace the pavilion's asphalt balcony roof entirely. Therefore, taking into account the good work already carried out on the sixth form roof, the client chose Kemperol with rubber matting on top of that for extra protection against the cricket shoe studs. Kemperol completely saturates a non-woven reinforcement fleece and cures to form a seamless, monolithic membrane that is tough, flexible and bonds permanently to the substrate – in this case the old asphalt roof.

**Contact Kemper System on 01925 445532 or visit [www.kempersystem.co.uk](http://www.kempersystem.co.uk)**

## Apeer



Officially recognised as Energy A Rated, Apeer composite doors feature a high density polyurethane core which offers a higher level of strength and insulation compared to traditional doors. A double rebate system – a 'lip' on the vertical edge where the door meets the frame – adds additional draught protection by creating an internal secondary seal. Its toughened, triple glazed window panels are also highly insulated and come complete with a Q Seal warm edge Super

Spacer system, which significantly improves long-term durability, energy efficiency, condensation resistance and sound transmission.

**Tel: 02825 632200 [www.appeer.co.uk](http://www.appeer.co.uk)**

## A window at the seat of learning



As part of the extensive remodelling and improving of schools across the London Borough of Islington, Reynaers aluminium systems have been installed throughout Islington Arts and Media School in a multi-million pound scheme that has turned the school into a vibrant, modern learning facility.

Bold sweeps of Reynaers CW 50 curtain wall feature on both the new main entrance and the expansive new facilities, adding large expanses of glazed areas that bring natural light right into the heart of the school. Strategically located runs of Reynaers Brie Soleil offer sun screening, minimizing the effect of solar gain and glare, while allowing the ingress of daylight.

## Synseal acquires LB Plastics & Manse Masterdor



Synseal has acquired the trade and operating assets of the Litchfield Group's UK window & trade extrusion and door businesses, trading as LB Plastics Ltd and Manse Masterdor Ltd, for an undisclosed sum. Based at Nether Heage, Derbyshire, LB Plastics pioneered the use of PVC-U windows for the British market back in the 1970s and the company has been synonymous with high

performance thermoplastics for the UK building industry ever since. Operating production facilities registered to ISO.14001, LB Plastics predominantly supplies lead-free extruded PVC-U products to approved fabricators and installers, along with custom-designed extrusions to other building component suppliers.

**01623 443200 [www.synseal.com](http://www.synseal.com)**

## Kladfix supports student housing



Kladfix, a rainscreen cladding support system specialist, has supplied KX01 fittings for a new development on Sefton Street, Liverpool. The £15 million student accommodation consists of 135 new halls for the University of Liverpool and is situated in the heart of the city centre, overlooking the Queen's Dock. To provide a unique exterior, four different

types of rainscreen cladding have been specified; zinc, terracotta, engineered stone and granite. Indbuild, the industrial building company installed Kladfix's KX01 cladding support system for this project. "The KX01 system worked extremely well with all the different types of cladding and was easily installed," commented Dave Kirby, managing director of Indbuild Limited.





# Reynaers at Home helps to drive Passivhaus delivery in the UK

Leading provider of aluminium architectural glazing systems Reynaers at Home has highlighted architects' concerns surrounding sustainability and energy efficiency in residential housing.

Head of Reynaers at Home Hugh Moss said: "In our architects' survey, 57 per cent of British architects said the most popular industry trend today in residential housing was energy efficiency. When asked what most homes were missing, some 13 per cent responded with the issue of sustainability."

Both of these topics are addressed with the CS range of aluminium windows from Reynaers at Home, which offer some of the best technical performances of an aluminium system available on the market today. There is even a solution



suitable for Passivhaus' stringent standards, which were introduced to reduce the energy demands of buildings.

Reynaers at Home's CS 104 door, with insulating panel, has been certified as a Passivhaus

component. As well as the necessary thermal calculation, the CS 104 has gone through a series of stringent tests before becoming the first aluminium door to gain this certification. With an insulation value  $U_d$  of  $0.75 \text{ W/m}^2\text{K}$ , the CS 104 achieved an insulation value of  $0.80 \text{ W/m}^2\text{K}$  on the installed element. Its air tightness achieved a class 4 in all tested climates, over and above the requirement of Passivhaus.

The company's CW 50-HI curtain wall system is also certified suitable for Passivhaus application. This certification requires an overall insulation value of max.  $0.7 \text{ W/m}^2\text{K}$  using glass with  $U_g$   $0.7 \text{ W/m}^2\text{K}$  and a panel with  $U_p$  of  $0.25 \text{ W/m}^2\text{K}$ . With the CW 50-HI profiles, the curtain wall system achieved the overall insulation value of  $0.66 \text{ W/m}^2\text{K}$ .

**Contact Reynaers at Home on 0121 421 9707 or visit [www.reynaersathome.co.uk](http://www.reynaersathome.co.uk)**

## Contemporary rooflights



[www.duplus.co.uk](http://www.duplus.co.uk)  
[sales@duplus.co.uk](mailto:sales@duplus.co.uk)

0116 261 0710

370, Melton Road, Leicester. LE4 7SL

Fixed rooflights from £612 + Vat.  
 Lantern rooflights from only £1025 + Vat

Structurally bonded rooflights also available in  
 fixed rooflights / opening rooflights / pyramid rooflights



## Time to make a noise about acoustics



Mark Barsby, head of technical at the **VEKA UK Group**, explains more about noise reduction ratings and how the company is ahead of the curve again: "Heathrow's potential third runway and 'Boris Island' are stories that have been all over the news. While additional airport capacity may well be required in future to support the UK economy, the current political battleground is being fought on the impact that noise pollution from an airport expansion would have on those affected and their long-term health. In 2012, the

VEKA UK Group launched Halo's TwinSash as among the most thermally-efficient products available on the market anywhere..."

01282 716611 [www.vekauk.com](http://www.vekauk.com)

## Synseal



Synseal has published a new technical brochure which summarises all available product designs in the company's extensive Orangery Collection. Cramped with isometric cutthroughs and dimensioned section drawings to deliver hard facts detailing the different orangery solutions with no sales waffle, this Orangery Collection technical brochure was designed to support Synseal's programme of orangery installation workshops for fabricator partners and Synseal

Registered Installers (SRIs) in Autumn '14. These orangery workshops have proven so popular that an extra date has been added to meet demand.

Tel: 01623 443200 [www.synseal.com](http://www.synseal.com)

## Ventrolla renovation at university building



A neo-classical, Grade II listed building from 1919 has been given expert help to retain its front facade by period window specialist **Ventrolla**. The Samuel Alexander building, part of the University of Manchester's Language Centre, is located on a prominent site in Oxford Road and includes a

library, multimedia suite and study area. Part of a wider £14 million refurbishment project on most of the university buildings, the building now has newly renovated, single-glazed sliding sash and Venetian windows in keeping with its heritage. The £220,000 project assigned to Ventrolla involved more than 300 windows being restored to their former glory and was completed in April 2014.

0800 027 7454 [www.ventrolla.co.uk](http://www.ventrolla.co.uk)

## MODO is the business



Apeer's MODO collection, distinguished by its now much copied stainless steel glazing trims, offers a number of benefits that set it apart from cheaper alternatives. Its 2mm flush trims, featured on both sides, are structurally bonded and screwfixed into the door rather than simply glued to the external skin, forming part of the glazing cassette and creating a much stronger bond. The range is also made to the same high spec as all Apeer 70 doors with formidable levels of security, an

Energy A rating and Kitemarked cylinders. MODO also comes with Apeer's usual 10-year structural guarantee and a choice of colours.

028 2563 2200 [www.apcer.co.uk](http://www.apcer.co.uk)

## Online Stockists Of • Fascias • Soffits • Gutters • Cladding



**Low Online  
Trade Prices &  
10% OFF**



- Low Online Trade Prices
- Free Nationwide Delivery
- BBA Approved & Guaranteed

- Free Estimates & Take Off's
- Massive Stock Quantities  
(Inc Black, Grey & Irish Oak)



**10% OFF for all New customers. Use promotion code (BCD01) at checkout.**





# Residential projects on the rise for T R Freeman

Commercial roofing specialist T R Freeman Limited is currently enjoying a surge in contract wins, together worth in excess of £750,000, for new build residential projects which blend modern roofing systems with traditional architectural metals to add features to the properties being constructed. The schemes are all situated around central and greater London, and are a mix of private and social housing provision:



- **174-178 Courtauld Road, Hillrise, Islington** – Four, five-storey apartment blocks which are part of the Joinery development in the north-west of the borough. Matt black ANTHRAC-ZINC cladding to fifth floor dormer windows and inset terraces on a single block, and FalZinc cladding to the third and fourth floors, pitched roof and substrate areas on the other three blocks. Main contractor: United House Limited. Client: Family Mosaic.
- **Blackwall Lane, Greenwich** – A five-storey apartment block and three, three-storey town-house terraces on Phase 2 of The Peltons (left), a redevelopment of three run down sites. To the apartment block – IKO bio-diverse growing substrate on hot melt waterproofing to the flat roof areas, and Aurubis Nordic Brown Light copper cladding with standing seams to the top floor. To the townhouses – Soprema Light Grey single ply membrane to flat and ancillary roof areas, Marley Thrutone Fibre Cement Slate to

the mansard roofs, and lead flashings to the windows. Main contractor: Galliford Try. Client: Kitewood Estates Ltd and Peabody.

- **Alderwick Drive, Hounslow** – A standalone, residential, L-shaped apartment block consisting of 20 new homes. VMZinc Pigmento Brown cladding and associated cappings to the top most, fourth floor. Main contractor: Bugler Construction. Client: Shepherds Bush Housing Group.
- **Unity Place, Sutherland Road, Walthamstow** – A development close to Blackhorse Road tube station which will provide 80 homes in several, three storey apartment blocks. QUARTZ-ZINC roofing and cladding to 10 uppermost skylight rooms which crown the apartment tops. Main contractor: Kier Construction-Eastern. Client: Christian Action HA and Islington & Shoreditch HA.

01223 715810 [www.trfreeman.co.uk](http://www.trfreeman.co.uk)



## Extra security for dark winter days

Garador's popular Salisbury garage door is now available with Secured by Design accreditation (SBD). Garador were the first to introduce doors with SBD, a standard set by the Police to deter break-ins and theft. The Salisbury joins the Horizon and Carlton styles in Garador's Guardian range of SBD steel up and over doors. They have all been engineered to a new level of strength and security including additional high security back brace protection, reinforced locking systems and a unique anti-snap, anti-drill cylinder to prevent entry even after attack. They are available in a choice of vibrant colours and specifications.

01935 443791 [www.garador.co.uk](http://www.garador.co.uk)



## Record year for Freefoam Guarantees

Freefoam announce a significant increase in the number of installations registered for its 50-year lifetime guarantee. Figures are up by 13 per cent overall year on year, with some areas of the UK seeing an increase of 45 per cent. Freefoam achieved another first in 2012 with the introduction of the first ever 50-year lifetime guarantee on white PVC-U and PVC-UE roofline, rainwater and cladding products. In the last 18 months this development has helped Freefoam stockists and registered installers gain a significant competitive advantage in today's challenging market. Installers are using the benefits of this extended warranty to engage with consumers and subsequently convert leads into orders with Freefoam seeing the number of guarantee registrations rising steadily year on year. Jason Large of Simply Roofline in Peterborough explained: "We've been registered installers of Freefoam products since 2007. We use the benefits of the lifetime guarantee extensively in our sales pitch, it makes a great selling tool..."

01604 591110 [www.freefoam.com](http://www.freefoam.com)

# Klassickolors®

## Distinctive Roofing & Cladding with the Cool Roof Concept

Klassickolors provide a long life finish for all roofing and cladding projects.

The coating is formulated with the 'cool roof' concept and uses pigments with enhanced solar reflectance and emittance, to reduce the energy needed to cool the building.



For further information visit  
**[www.follansbee.co.uk](http://www.follansbee.co.uk)**  
or call **0114-236 8122**

*Lifetime roofing metals*

## George Woods' timber door canopies



George Woods UK manufactures a large range of door canopies, all hand made in timber from sustainable forestry. The company always holds a large stock of its standard size canopies, which enables it to offer a next day delivery service. A bespoke design service is provided for both timber door canopies and barge boards, which can be crafted from your design. Beautifully

crafted porch canopies are available in soft wood and include an extensive range of barge boards (fascia boards), all of which are manufactured on-site by hand. Having a canopy prolongs the life of the front door, extends time between maintenance and adds value.

## Kommerling's new liquid composite for glass



Kommerling, a leader in the development and manufacture of high quality sealants and adhesives for the glazing market, is launching the latest addition to its range; Ködiguard Conservation. This specialist colourless liquid composite is specifically designed for

applications where the highest reduction of UV light transmission across the full UV light spectrum is required without effecting quality of naturally transmitted light, perfect for protecting historic textiles. Ködiguard Conservation is a versatile multi-component, curing product which has been designed to safely laminate temperature sensitive, symmetric, tempered, flat and curved glass substrates.

01895 465600 [www.kommerlinguk.com](http://www.kommerlinguk.com)

## Yeoman chosen for luxury homes



Yeoman Rainguard Rainwater Systems provided the perfect finishing touch for a high specification development in Wetherby by developers Mulbrand Ltd. XL Aluminium gutters are designed to be joined using an internal push fix joint

clip which does not require any mechanical fixings, saving time with on-site installation. Yeoman Rainguard XL Aluminium 125 x 100mm MOG gutters were chosen along with 75mm round downpipes in an Anthracite Grey colour. Plain Cast Aluminium Hoppers were also installed on some of the properties.

0113 279 5854 [www.rainguard.co.uk](http://www.rainguard.co.uk)

## Synseal



Synseal's fabricated range of Evolve Bi-fold doors has been enhanced with the addition of new anodised aluminium tracks and Artisan woodgrain foil colour finishes. Previously available in a choice of solid White PVC-U and Golden Oak and Cherrywood woodgrain foil colours, the Evolve Bi-fold range now boasts new Woodgrain White, Woodgrain Brilliant White, Cream, Irish Oak, Chartwell Green and Grey foil finishes selected from Synseal's Artisan woodgrain collection.

These additional Artisan colours are available for use in conjunction with newly-introduced aluminium tracks in anodised Silver or Gold finish.

Tel: 01623 443200 [www.synseal.com](http://www.synseal.com)





## Synseal's WarmCore delivers true innovation



Synseal is proud to introduce WarmCore, an innovative aluminium folding sliding door system which incorporates a radically different product design approach to create a high performance fenestration framing solution: warm aluminium. Designed from scratch, every

single component has been concept sketched, detail designed, prototyped, tooled, trial installed and rigorously tested by Synseal's market-leading R&D team. WarmCore is a high quality aluminium, bi-fold door solution with peerless thermal performance to ensure end-user comfort, all year round.

01623 446207 [www.synseal.com](http://www.synseal.com)

## Sika suits iconic Liverpool building



A Sika Liquid Plastics waterproofing system has proved to be the perfect fit for one of Liverpool's most historic office buildings, the Cotton Exchange. Registered Sika Liquid Plastics contractor and national concrete repairer Grade 2 Specialist Structural Repairs, based in the North

West, were specified for the job after the company applied to go on a liquid plastics contractor scheme. Part of the process Grade 2 had undertaken was to put three projects forward, the Cotton Exchange being one of them. Grade 2 were briefed to carry out isolated concrete repairs to wall areas along with restorations to all the decoration works to the exterior of the property.

01772 259781 [www.liquidplastics.co.uk](http://www.liquidplastics.co.uk)

## Nationwide Windows to sponsor Tenant of the Year 2015



One of the leading social housing door and window suppliers Nationwide Windows is delighted to announce that it has agreed to sponsor the Tenant of the Year category at the inaugural Building Communities in the East Midlands Awards (BCEMA) 2015. Hosted by Efficiency East Midlands (EEM), the BCEMA event is a showcase for the professionalism, excellence and innovation at the heart of the region's construction community. The award ceremony will take place on Friday 6 February 2015 at the East Midlands Conference Centre, Nottingham. Nationwide Windows' Commercial Director Adrian Pavey says of the sponsorship: "We work on tens of thousands of homes within the social housing sector every year and feel strongly that our ultimate customers are the tenants and local communities in which we work, so it's great that we'll be able to give them something extra and present the award to the deserving winner on the night." Pete Smith, managing director at EEM adds: "It's great to have support from companies such as Nationwide Windows for the inaugural awards, and we want to make sure there's a big 'wow-factor'. These awards will reward the best practice and service in the East Midlands, and they are going to be big, bold and fun. We hope the event will be the first of many..."

01788 569 228 [www.nationwidewindows.co.uk](http://www.nationwidewindows.co.uk)



## Nationwide Windows provides all-important space at Brooke school

Public sector door and window supplier Nationwide Windows is delighted to have helped Brooke School in Rugby increase its wheelchair storage space with the provision of a lean-to conservatory. What's more, the school was so pleased with the end result that it has been deemed too nice to use for storage, and so will soon benefit the children as an additional area filled with natural light in which to learn. Daryl Cashmore, operations director at Nationwide Windows explains: "When Brooke School called and asked for a quote to manufacture and fit the lean-to conservatory, it soon became clear that the cost would exceed the budget they had in place. Having taken a look around the school, it really opened our eyes to the great work they do there and we decided to use the existing budget to provide the aluminium entrances at either end of the lean-to, and contribute everything else free of charge." Louisa Wallace, finance assistant at Brooke School adds: "We're so pleased with the new conservatory at the school."

01788 569 228 [www.nationwidewindows.co.uk](http://www.nationwidewindows.co.uk)

## OAK MANTEL BEAMS

The Original Railway Sleeper Furniture



Beautiful oak fireplace beams, mantel shelves & corbels  
Handcrafted to your requirements. Choose the wood, character & finish  
From £20.50 per foot. Delivery nationwide

[www.jarabosky.co.uk](http://www.jarabosky.co.uk) [sales@jarabosky.co.uk](mailto:sales@jarabosky.co.uk) tel: 01422 311922



Handmade furniture using stunning redundant railway sleepers from around the world



## Freefoam used for dormer feature

Prestigious housebuilder Shanly Homes has used **Freefoam** fascia on a new development at Helios Court, Maidenhead. The exclusive apartment block features a double fascia dormer detail using Freefoam roofline products to create an attractive stepped effect beneath the flat dormer roof. With developers looking for more sophisticated and original features, Freefoam products offer the flexibility and opportunity to create bespoke installations without compromising on functionality or aesthetics. Freefoam 150mm Full Replacement Square Leg Fascia Board is supplied for both levels and cut on-site to 100mm for the lower section. General Purpose Board is used for one level and Vented General Purpose Board for the other level, to provide ventilation. Each dormer is also constructed to slope slightly from front to back, where rainwater discharges into a secret gutter and then onto the main roof.

01604 591110 [www.freefoam.com](http://www.freefoam.com)

## George Woods UK



George Woods UK manufactures a large range of door canopies, all hand made in timber from sustainable forestry. The company always holds a large stock of its standard size canopies, which enables it to offer a next day delivery service. A bespoke design service is provided for both timber door canopies and barge boards, which can be crafted from your own design. Beautifully crafted porch canopies are available in soft wood and include an extensive range

of barge boards (fascia boards), all of which are manufactured on-site by hand. Having a canopy prolongs the life of your front door, extends time between maintenance and adds value and appeal.

## Maintenance free cedar shingle solution



**John Brash** Cedar Shingles were specified for the new Center Parcs Village, Woburn Forest, by David Gallimore at Holder Mathias Architects. He previously specified John Brash Western Red Cedar Shingles at Whinfell Forest, in Cumbria, and was very pleased with the look, both on first installation

and as the product gently weathered on-site. He felt that shingles provided a 'soft, friendly material'. Another factor in the specification of the western red cedar shingles is that it would provide a low maintenance solution that wouldn't need any further treatment. JB Shingles No. 1 Grade Blue Label is the premium quality shingle without defect. It must be 100 per cent clear, edge grain and heartwood.

01427 613858 [www.johnbrash.co.uk/shingles-shakes](http://www.johnbrash.co.uk/shingles-shakes)



# Think Roofs, Think **NFRC**

**ALL THE GUIDANCE AND PROTECTION YOU NEED UNDER ONE ROOF**

**VISIT [WWW.NFRC.CO.UK](http://WWW.NFRC.CO.UK) OR CALL 020 7638 7663**

**Follow us on Twitter @TheNFRC**





## Integra installation success



The success of Synseal's Orangery Collection keeps on growing, with installations taking place throughout the UK. One of the latest examples is the installation of an Integra parapet wall style orangery in Lancashire. The choice of the Integra orangery design was driven by a desire from the homeowner to have an installation that would

most closely achieve the look and feel of a fully brick-built extension, while still benefiting from the extra light that comes from having an overhead glass roof. The Integra is unique in today's marketplace in that the concealed lantern roof is designed to fit neatly behind the parapet wall for a traditional look.

01623 446207 [www.synseal.com](http://www.synseal.com)

## LRWA launches e-learning training module



The introduction of new products into the liquid roofing market has meant that there is a considerable choice of materials to be applied to various roof types and details. As a leading industry body, the LRWA recognised the potential gap in skills. With this in mind, the LRWA are proud to announce the launch of

its e-learning training module, designed to educate LRWA members and roofing contractors on how to expertly install liquid waterproofing systems. They worked closely with manufacturer members to develop a training module that covered all aspects of liquid roofing, but with a particular emphasis on the technical and practical aspects of using the differing chemistries within the industry.

0207 448 3859 [www.lrwa.org.uk](http://www.lrwa.org.uk)

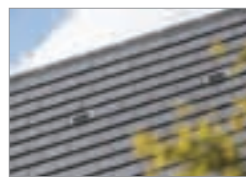
## Osmo UK



Osmo UK's eco-friendly wood finishes have been used to protect and enhance a selection of handmade bedroom furniture. Fine furniture and cabinet maker SBT Design was contracted to design and create two bedside cabinets and a large dresser in solid and veneered Walnut. To ensure optimum protection, a range of Osmo wood finishing products were specified. SBT Design treated the wood with Osmo Cherry #3137 Wood Wax Finish Transparent. The

satin-matt wood finish combines all the advantages of oils and waxes in one unique product, provides a great protective base and gives the wood a rich warm colouring. Osmo Polyx-Oil 3032 Clear was applied on top.

## Slate lookalike proves popular



A new concrete interlocking tile that closely replicates the aesthetics of natural slate has surpassed its own manufacturer's sales expectations, with demand increasing on housing developments throughout the country since its launch last year. Hopkins

Homes is one of a growing number of housebuilders using Marley Eternit's Riven Edgemere, recently specifying the slates for its Lark Place development. With the site set near the picturesque town of Soham, the Riven Edgemere offers a natural slate roof finish to the variety of stylish houses and apartments on-site.

01283 722588 [www.marleyeternit.co.uk](http://www.marleyeternit.co.uk)

**THE NEW UPGRADED  
SLIM PROFILE ULTRA LOW U-VALUE**

## STORVIK DOUBLE AND TRIPLE GLAZED RANGE

**Meeting and  
Beating the  
Challenges of  
Higher Standards**

Designed and manufactured by Howarth specifically for the UK market. The range was developed after extensive research into the latest in timber, glazing and weather seal technology to produce a window design, that has driven performance beyond current standards.

**HOWARTH**  
WINDOWS & DOORS  
INNOVATIVE PRODUCTS. SUSTAINABLE SOLUTIONS

For all enquiries  
please call:  
or you can download  
the brochure at:

01469 535301

[www.howarth-timber.co.uk](http://www.howarth-timber.co.uk)



*Stylish Radiators of the Highest Quality*

**We have radiators to suit cottages, apartments, palaces... in fact anywhere you call home!**



Beaumont have been manufacturing cast iron radiators in its foundry for many years, gaining a solid award-winning reputation for excellent quality and service. Working alongside architects, surveyors, builders, plumbers, heating engineers and DIY enthusiasts, Beaumont offer a wealth of knowledge and experience.

Call Beaumont Cast Iron today  
on **01788 899100** or visit  
[www.beaumontcastiron.com](http://www.beaumontcastiron.com)



# Former Malt House in Lichfield receives ScreedBoard Soundproofing

The award winning ScreedBoard 28 has recently been installed into 25 prestige loft-style apartments in Lichfield. The development's historical heritage is what makes it such a fascinating project, the grade II listed building was a former Malt House dating back to 1874.

There are a range of different apartments available from one- and two-bedroom, to three-bedroom duplexes and luxury penthouses. The Malt House's charming character has been retained through many original features being incorporated into the apartments, such as exposed girders, timber and brickwork.

The iconic development is just a short walk away from Lichfield's city centre and boasts panoramic views, perfectly capturing the city's famous three-spired medieval cathedral and stunning surrounding countryside.


## Excellent impact and airborne acoustic performance

The ultimate floorboard ScreedBoard 28 was chosen for this high spec development due to its excellent impact and airborne acoustic performance. ScreedBoard 28 is the ultimate single layer acoustic overlay treatment, featuring interlocking edges for installation convenience. Its high density and unique resilient layer provides unrivalled acoustic performance.

ScreedBoard has recently been recognised in the HouseBuilder product awards and took home the winners award for best internal/interior product.

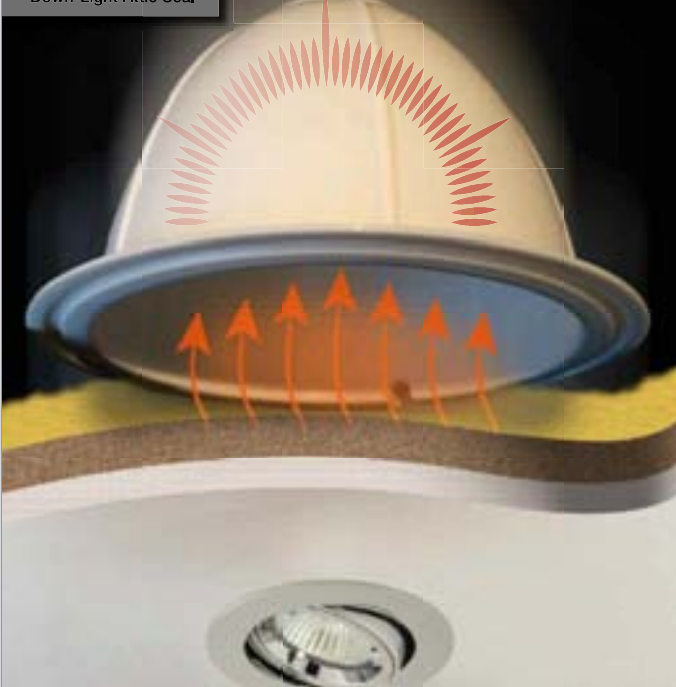


For more information about ScreedBoard contact Collecta's technical advisors on 08456 71 71 74, email [technical@collecta.co.uk](mailto:technical@collecta.co.uk) or visit the website [www.collecta.co.uk](http://www.collecta.co.uk)



**Thermahood**  
Down-Light Attic Seal

0845 521 3058  
[www.thermahood.com](http://www.thermahood.com)



**Fit more insulation, improve heat retention & stop draughts...**

The Thermahood Downlight Attic Seal provides an airtight seal, allowing for the continuity of loft insulation. It's unique design ensures an effective moisture barrier is maintained, therefore overcoming any risk of condensation as a result of water vapour transmission into cold attic voids.

**WANT TO SPECIFY WOODEN FLOOR FINISHES INTO MULTI OCCUPANCY BUILDINGS?**

## HUSH MAT 15

**Timber Structure - Hard Wood Flooring Finish**

- An acoustic solution to isolate timber floor finishes in refurbishment, change of use or new build developments
- Specially designed underlay product to sit directly under timber floor finishes to reduce impact noise
- Reduces impact sound between floors
- Ideal solution when replacing carpet with a timber floor finish



**HUSH ACOUSTICS**  
Head Office: L20 8QU  
London Office: N6 5UG  
Widshire Office: W92 7AS

[WWW.HUSHACOUSTICS.COM](http://WWW.HUSHACOUSTICS.COM)  
T 01519 332 026  
E [info@hushacoustics.co.uk](mailto:info@hushacoustics.co.uk)

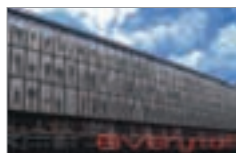


**HUSH ACOUSTICS**  
Sound Management Products and Services





## Noises off at the Everyman Theatre, Liverpool



The £28 million redevelopment of Liverpool's Everyman Theatre presented something of a challenge to acousticians Gillieron Scott, blending noisy spaces like the theatre's famous wraparound auditorium with such noise-sensitive features as a recording suite. The decision was made to specify

900 sq m of CMS Danskin's Regupol 6010BA acoustic under-screed isolation material, with its potential to provide 42dB of impact sound insulation and 62dB of airborne sound insulation. Just as importantly, with a maximum load bearing capacity of 50kN/m<sup>2</sup> (5,000kg/m<sup>2</sup>), Regupol 6010BA is more than capable of coping with the theatre's 100,000 plus footfall each year.

01925 577711 [www.cmsdanskin.co.uk](http://www.cmsdanskin.co.uk)

## Kingspan installed on research facility



Leading scientific instrumentation firm Waters Corporation has opened a new state-of-the-art mass spectrometry headquarters in Wilmslow, featuring over 20,000 sq m of high and premium performance products from Kingspan Insulation. To insulate the building's facade, 120mm Kingspan Kooltherm K15

Rainscreen Board was specified. The premium performance product, which was the first ever insulation board for use in rainscreen cladding applications to achieve LABC System Approval, is suitable for use with a wide range of rainscreen systems. It offers a thermal conductivity as low as 0.020 W/m.K.

01544 387384 [www.kingspaninsulation.co.uk](http://www.kingspaninsulation.co.uk)

## Kingspan makes barn enerphit for purpose



Sjölander da Cruz Architects have used the Kingspan Unidek Aero® Roofing System and Kingspan TEK® Cladding Panel to help breathe new life into a run-down, asbestos clad barn, creating a stunning architectural studio which meets the exacting requirements of the Passivhaus EnerPHit standard. The

repurposed barn is now almost unrecognisable from its former use as an engineering workshop. The original asbestos cladding was stripped back and Kingspan TEK® delivery partners Lowfield Timber Frames designed and installed the Kingspan Unidek Aero® Roofing System and Kingspan TEK® Cladding Panel.

01544 387384 [www.kingspantek.co.uk](http://www.kingspantek.co.uk)

## Kingspan OPTIM-R the product of choice



The Kingspan OPTIM-R Roofing System and Kingspan Thermataper TT47 LPC/FM have been installed at Meadowfields Extra Care Housing Scheme in Thirsk, North Yorkshire, helping to deliver optimum thermal performance and the required tapered fall, with a minimal build-up.

Kingspan OPTIM-R panels use vacuum insulation technology, which allows them to achieve an aged thermal conductivity of 0.007 W/mK. Kingspan OPTIM-R panels hold LABC Registered System approval, and can help to minimise the Building Control checks and approvals process when installed to Kingspan's recommendations, saving both time and money.

01544 387384 [www.optim-r.co.uk](http://www.optim-r.co.uk)

## Get long term thermal insulation



Heat can escape from buildings through windows, doors and wall break through points, wasting energy and reducing efficiency. Thermoflex is a new, highly flexible PU expanding foam from Everbuild, specially formulated to absorb movement, giving an air tight seal to reduce heat loss and in turn improve energy efficiency in buildings. It has been tested to the latest standard and is not only air permeability tested to EN12114:200-03 but also acoustic rated to EN ISO 717-1 up to 64Db, temperature resistant (-40 to 80°C)

and finally fire rated to ISO 13501 Class E. Thermoflex's powerful bond strength and flexibility gives excellent long term thermal and acoustic insulation.

0113 240 3456 [www.everbuild.co.uk](http://www.everbuild.co.uk)

## Kingspan Tarec helps Dunlop settle in



Dunlop Systems and Components recently moved from its historic Holbrook Lane site to a new 60,000 sq ft, state-of-the-art manufacturing facility at nearby Prologis Park, Coventry, which is benefitting from Kingspan Tarec's premium performance Kooltherm® FM Pipe Insulation.

Situated on a 5-acre site, this new facility has achieved an EPC 'A' 21 rating and BREEAM 2011 Very Good accreditation. One thousand linear metres of Kingspan Tarec® Kooltherm® FM Pipe Insulation were installed on the on the heating and domestic services pipework and on the supply vent ductwork across the building by M&E contractors P&R Morson.

01457 890400 [www.kingspantarec.com](http://www.kingspantarec.com)

## PIRfect new online U-value calculations



Recticel Insulation has launched a new online U-value calculator. An instant tool designed to assist architects and specifiers when calculating the required insulation thickness, thermal performance and product solution, it is available on the Recticel website. It's simple and easy to use.

Commercial Director Kevin Bohea said: "Users will be able to calculate a building's performance values, such as its thermal efficiency, to help meet building regulations [...] It is a time saver for industry professionals wanting to create projects that are fit for purpose and comply with regulatory frameworks." The U-value calculator is the latest addition to Recticel's PIRfect online support offering.

01782 590 407 [www.recticelinsulation.co.uk](http://www.recticelinsulation.co.uk)

## Wilo small circulators



Wilo is celebrating the sale of 28 million small circulators in the past 10 years, which adds up to an impressive amount of energy saved and a lot of smaller energy bills for householders and tenants.

Here in the UK, the family of Wilo small circulators continues to grow as housebuilders, specifiers and installers look to Wilo to help provide energy savings and reliable small pumps.

Take a closer look on the company's website for more information.

01283 523000 [www.wilo.co.uk](http://www.wilo.co.uk)

# Fire safety and comfort cooling from SE Controls for new London apartment development

Notting Hill Housing Group's 108-home development at Micawber Street in Hackney is using an innovative smoke control system from SE Controls to not only provide smoke-free escape routes in the event of a fire, but also ensure that day-to-day temperatures in communal areas and corridors are kept at comfortable levels for residents.

Initially, the six-storey building was designed with a mechanical ventilation system and a separate dedicated environmental shaft to help cool the building and address the overheating effect caused as a by-product of routing heating distribution pipework in building voids to optimise space.

SE Controls was invited to evaluate this system by conducting a thermal modelling analysis on the building and worked closely with the design team

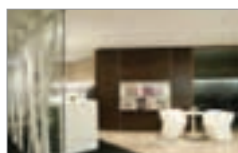
and contractor Ardmore Construction, to engineer a combined smoke control and environmental solution. Based on SE Controls' SHEVTEC® system, which utilises the building's existing smoke shafts for natural ventilation, significant thermal performance improvements were achieved along with major cost savings on the project.

This was achieved by the use of 0.5m<sup>2</sup> permanently open louvres at roof level and within the stairwell, while also utilising the automatic smoke dampers on each floor to vent heat into the smoke shaft. Dedicated smoke ventilation roof vents were also installed, which automatically over-ride the natural ventilation system in the event of a fire.

01543 443060  
www.secontrols.com



## Making better use of space



The AET Flexible Space system is a duct-free approach to air conditioning which can offer a number of savings throughout the construction process. Users of such systems have reported total construction cost savings by up to 7 per cent, reduced energy consumption by up to 30 per cent,

and the ability to reduce building height or maximise the available lettable space by reducing or completely eliminating the ceiling void and adding more floors within the same height of construction. The whole plenum under the building's raised access floor becomes the 'duct', with each floor of the building divided into zones depending on the potential use and occupancy density of the area.

01342 310400 www.flexiblespace.com

## Validity assured ventilation

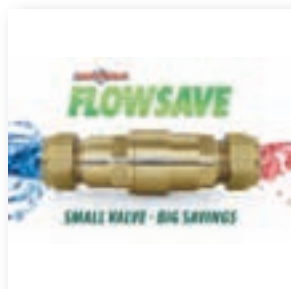


The trend towards bespoke designs of air movement equipment is being given greater validity with a major investment by air distribution specialist **Gilberts of Blackpool**, one of the leading manufacturers in air movement and natural ventilation technology. The company has unveiled a new

air movement test centre, officially opened by the new chief executive of the Federation of Environmental Trade Associations, Russell Beattie. Built at its new Stanley House manufacturing plant the centre, Gilberts believes, is one of the best air distribution test laboratories in the country and the only one of its kind.

01253 766911 www.gilbertsblackpool.com

## Guardian



Guardian has launched FlowSave, a small thermostatic valve designed to limit the flow of water from taps and showers until the correct outlet temperature has been reached. In addition to saving money on bills, FlowSave improves energy efficiency. A typical household will save up to 315kg of CO<sub>2</sub>, £70 in gas charges, 50,000 litres of water and 20 hours waiting for hot water per annum. As an energy saving product, FlowSave, and its installation, is subject to reduced VAT.

FlowSave takes just a few minutes to install by a qualified installer and the heating system doesn't even need to be shut down during installation.

Tel: 0161 820 1230 www.guardian-solutions.net

## Mitsubishi Electric



A former WW2 pilot and self-confessed 'gadget man' has shown the way to a sustainable future with the installation of a hybrid Ecodan Air Source Heat Pump (ASHP) to work alongside his existing boiler. Mr Durward of Newick, Lewes, chose the Ecodan to reduce the heating bills and with the installation of an 8.5kW Ecodan monobloc ASHP and packaged hydrobox they will also qualify for payments from the Renewable Heat Incentive. Designed

specifically with a bivalent function for use in conjunction with conventional boilers, the hydrobox is pre-plumbed and wired for faster installation.

Tel: 01707 282880 www.mitsubishielectric.co.uk





Focus fires from **Diligence International** are more than just functional ... they are a stylish focal point for any room.

The sleek lines of the new Slimfocus (above), or the stunning curves of the Magmafocus (right), are just two examples from an extensive collection that offers a fire to suit all interior designs.



Diligence International Ltd.  
Dart Mills, Buckfastleigh, Devon TQ11 0NF  
Tel: 01364 644790  
[www.diligenceinternational.com](http://www.diligenceinternational.com)

**building  
construction  
design**

# LAUNCH ALL NEW WEBSITE FOR 2014



**REGISTER ONLINE FOR...**

Digital magazine  
Newsletter • Daily digests

**[www.buildingconstructiondesign.co.uk](http://www.buildingconstructiondesign.co.uk)**





## University dramatically improve heat efficiency

After years of contaminant build up, poor functionality and system blockage in two of the University of Wolverhampton's key buildings, it is reaping the rewards of an installation of **Spirotech** products; recording an impressive 5-6 per cent energy saving as a direct result of the air and dirt and pressurisation and degassing units being installed. In 2011, the university embarked on a multi million pound investment in a new state of the art Combined Heat and Power (CHP) system in attempts to slash annual energy costs, make sizable carbon reduction savings and future-proof its energy network – it is now saving 1,000 tonnes of carbon a year compared to the previous systems. Spirotech, a global leader in total heating and cooling system protection and water treatment, was specified and it quickly proved its worth: heavy contaminant was removed, the minimal build-up now takes just minutes to clear and the system is now virtually air free.

0208 451 3344 [www.spirotech.co.uk](http://www.spirotech.co.uk)



## It's all in a day's work with Schlüter®-DITRA-HEAT-E underfloor heating

Cutting installation time by up to 70 per cent, boasting an extremely low assembly height (5.5mm) and providing one unique underfloor heating system all available from a market leading innovative manufacturer - **Schlüter®-DITRA-HEAT-E** - has arrived. Schlüter®-DITRA-HEAT-E leaves other conventional systems out in the cold as the perfect all-in-one integrated solution for use under tiles and natural stone flooring. Ideal for refurbishment and renovation projects thanks to its uncoupling and crack-bridging properties, Schlüter®-DITRA-HEAT-E is unlike anything else available due to its loose heating cables which are fixed down to the uncoupling mat free of tape as a result of its unique studded design. Offering optimum freedom for creating concentrated heating zones, as well as providing uniform spacing without the need for measuring and marking, the new system will dramatically cut installation time by up to 70 per cent.

01530 813396 [www.schluter.co.uk](http://www.schluter.co.uk)

## The Norwegian Experience...



# Nordpeis

For over 30 years Nordpeis' woodburning stoves and fires have incorporated our Norwegian design and technical expertise to ensure guaranteed warmth in one of Europe's coldest climates

[www.nordpeis.co.uk](http://www.nordpeis.co.uk)

## TROX UK investment in prestigious office



TROX UK's investment in manufacturing technology and R & D helped the company secure and deliver a prestigious £2.3 million order for the Co-operative Group's head office. One Angel Square in Manchester is a landmark commercial building delivered by BAM as main

contractor. Reflecting the Co-operative Group's commitment to environmental sustainability, it was awarded the highest ever BREEAM Outstanding score of 95.16 per cent. The building is expected to operate with at least an 80 per cent reduction in carbon emissions, and a 50 per cent reduction in energy consumption. TROX HVAC systems have been installed on all 14 storeys of offices as well as for the basement car park of the new head office.

## Underfloor air con for new build in Ghana



One Airport Square is a 20,000 sq m mixed-use development currently under construction in the growing commercial district of Airport City in the Ghanaian capital Accra. To supplement the natural ventilation within the building, an AET Flexible Space underfloor air conditioning system

provides cooling to the class A office areas. The air is introduced into the space via a fan terminal or 'fantile' unit, which has the added benefit of individual personal control of airflow and temperature via the integrated Fatronic controller, and this building is served by more than 900 standard TU4 fantile units. It is the first building in Ghana to feature underfloor air conditioning.

01342 310400 [www.flexiblespace.com](http://www.flexiblespace.com)

## Panasonic



Panasonic's range of Aquarea Heat Pump Systems are renowned for their efficiency, creating significant cost savings. Now self-builders can benefit from a new, market-leading, seven-year warranty on parts and labour when installed by one of Panasonic's qualified PRO partners. Recent financial incentives by the government, including the Renewable Heat Incentive (RHI), have made it easier for self-builders to consider renewable heat technologies, moving away from

traditional, expensive systems such as LPG, oil or direct electric. With smart control and extremely high efficiency, Panasonic's Aquarea range can offer a solution to homes of any size or heating requirement.

## VRF system has world-first heat exchanger



Mitsubishi Electric has announced the ultimate in commercial heating and cooling for UK businesses with the launch of the City Multi YLM VRF (Variable Refrigerant Flow) range of air conditioners. The R410A system includes a unique flat tube aluminium micro-

channel heat exchanger which the company believes is a pivotal step change in providing more effective and efficient heat transfer. Protected with a special zinc coating, the exchanger is ideal for the UK's temperate climate. The use of aluminium has called for a complete redesign of refrigerant distribution and heat exchange which ensures optimum performance in real UK applications.

01707 282880 [www.mitsubishielectric.co.uk](http://www.mitsubishielectric.co.uk)

## The world's first high definition stove is launched



Charlton & Jenrick Ltd has now added a complete new range of high specification multi fuel stoves to its stove portfolio. Known as the Purevision™ HD range, it comprises six models, three freestanding and three inset with stand and log store options available for the freestanding versions and three or four sided trims for the insets. The models are sized as 5kW standard, 5kW wide and 8.5kW nominal output and contain technologically advanced patent pending design features.

Emissions meet EU leading DIN+ levels and already achieve current emission and efficiency proposals for 2022 European Eco-Design standards, which are far tougher than current mandatory norms. DEFRA exemption for wood-burning in a smokeless zone was a formality, with test results up to 97 per cent below permitted levels of visible smoke. These highly efficient stoves produce a clean burning high definition flame that has to be seen to be believed.

Experience real living flames in high definition with Purevision HD.

0845 5195 991 [www.charltonandjenrick.co.uk](http://www.charltonandjenrick.co.uk)

## Evinox Energy chilled water meter kit



Perfect for installations that include a communal chilled water system, the new **Evinox Energy** chilled water meter kit includes all the equipment required to facilitate commissioning, balancing, and flow control of the chilled water circuit, as well as the accurate measurement of energy consumption. The integrated flushing by-pass allows the chilled water primary circuit to be cleansed and flushed by simply moving the blue lever valve to the off position and the blue T bar lever across the pipe and the apartment circuit. This ensures the pressure independent control valve (PICV) and meter are protected from the cleansing process of the primaries. The PICV provides flow regulation of the chilled water circuit within the apartment and differential pressure control of the chilled water circuit ensuring that only differential pressure control of the main primary pump set is required. The PICV also features its own binder points for the commissioning engineer to use when required and the in built isolation valve has an integral strainer. The kit includes a MID approved meter head, which is supplied with a wall mounting bracket that enables the meter head to be installed in a position where it can be read easily, normally below the ceiling level.

01372 722277 [www.evinox.co.uk](http://www.evinox.co.uk)



# THE ART OF HEATING

*Carron*

BESPOKE.  
CLASSIC.  
ELITE.

The Tuscany, Hand Burnished

For Stockists Contact:

T: 0808 129 2224 | E: [sales@carron.uk.net](mailto:sales@carron.uk.net) | W: [www.carron.uk.net](http://www.carron.uk.net)



## Metro 100XT gas fires with tablet app

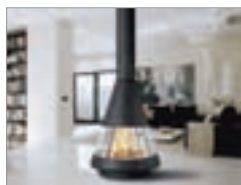


DRU Fires has a reputation as a designer and producer of ultra-contemporary and high technology fireplace products. It has announced improvements to its popular Metro100XT series of 'letterbox' gas fires in time for the autumn. The Metro 100XT selection of glass-fronted,

contemporary gas fires, that can be installed in homes with or without a conventional chimney, can be controlled by the exclusive DRU Eco Wave app for tablets and smartphones. With Eco Wave, the fire has its own IP address that is recognised by the home Wi-Fi network. The Eco Wave App can control up to five separate gas fires around the home.

0161 793 8700 [www.drufire.co.uk](http://www.drufire.co.uk)

## Eurostove home heating a spectacular feature



The fabulous Mallorca free-standing, wood burning fireplace from Eurostove is a feature addition to any modern home interior – especially with an open plan layout. Manufactured by the renowned Spanish company Hergom, the Mallorca is one of its latest design innovations, using both steel and glass to create a contemporary masterpiece. This stove has a 360° glass surface so it becomes a focal point for any position in the living area and is perfect if centrally positioned or located in a strategic position between two living areas like a kitchen leading into a dining area. The sliding glass is smoothly opened by rotating the fireplace base.

01934 750 500 [www.eurostove.co.uk](http://www.eurostove.co.uk)

## Etherea heat pump provides top performance



Panasonic's new Etherea QKE heat pump range achieves an impressive SCOP of 4.80 -> A++ and SEER of 7.60 -> A++. This class-leading highly energy-efficient system provides healthy air quality, comfort and reliability. Etherea heat pumps offer outstanding seasonal efficiency to provide optimum heating and cooling all year round. Thanks to their innovative inverter system, the new QKE range delivers energy savings of up to 38 per cent. With original Panasonic Inverter technology and a high performance compressor, this heat pump provides top-class operating efficiency. The Etherea XE-QKE (silver) is available in 2.2kW, 2.8kW, 3.2kW and 5.0kW, and the E-QKE (white) version in eight models.

Many homeowners are looking at ways to utilise renewable energy to power and heat their homes, be it a heat pump or solar panels. Panasonic has recently been involved in a unique residential property where both solutions have been installed and are working together to provide maximum energy savings. The homeowners invested the help of Nexus Building Solutions for a complete refurbishment and extension. Specifying 4kW Panasonic 250W HIC panels to accompany Panasonic's 6kW T-CAP Monobloc Aquarea heat pump, Nexus Building Solutions has helped the property to benefit from extremely energy-efficient and cost-effective underfloor heating throughout the house.

## Panasonic delivers energy efficiency



Many homeowners are looking at ways to utilise renewable energy to power and heat their homes, be it a heat pump or solar panels. Panasonic has recently been involved in a unique residential property where both solutions have been installed and are working together to provide maximum energy savings. The homeowners invested the help of Nexus Building Solutions for a complete refurbishment and extension. Specifying 4kW Panasonic 250W HIC panels to accompany Panasonic's 6kW T-CAP Monobloc Aquarea heat pump, Nexus Building Solutions has helped the property to benefit from extremely energy-efficient and cost-effective underfloor heating throughout the house.

Many homeowners are looking at ways to utilise renewable energy to power and heat their homes, be it a heat pump or solar panels. Panasonic has recently been involved in a unique residential property where both solutions have been installed and are working together to provide maximum energy savings. The homeowners invested the help of Nexus Building Solutions for a complete refurbishment and extension. Specifying 4kW Panasonic 250W HIC panels to accompany Panasonic's 6kW T-CAP Monobloc Aquarea heat pump, Nexus Building Solutions has helped the property to benefit from extremely energy-efficient and cost-effective underfloor heating throughout the house.

[www.apolloradiators.co.uk](http://www.apolloradiators.co.uk)



monza aluminium column radiator

**APOLLO**  
RADIATORS

# ECO STOVE

UK patent number GB 2 467

**New Model EC678 88% Efficient, Low CO to atmosphere**

\*Thermal mass heat storage releases heat slowly throughout the house (not just the room), no ducting needed.

\*Stores 25% heat 12 hours after the fire has gone out.

\*88% efficiency.

\*One 5kg firebox load of wood heats house for 12 hours.

\*Simple two-man assembly using a dry-stack modular method. Stove body made of pre-cast silicon.

CE

Defra Exempt

80 GREEN

Contact us today to learn more about the Ecco stove advantage  
Debbie Langley 01527 857814 or [info@eccostove.com](mailto:info@eccostove.com) [www.eccostove.com](http://www.eccostove.com)

Innovation in  
Silicon Carbide





## Twenty-year warranties on boilers



Wood Energy is introducing five new service and maintenance plans for its installations. In a first for the industry, the company are offering 20-year boiler warranties. Wood Energy's boilers already come with free five-year body and electrics warranties. Under the new maintenance schemes, this can be extended to up to 20 years, depending on boiler type and application to match the period that payments can be made under the commercial Renewable Heat Incentive scheme. Top priority among the new service and

maintenance packages is the Platinum contract, designed for businesses where any loss of heat could be considered crucial for safe continuation of operations.

0845 070 7338 [www.woodenergy.com](http://www.woodenergy.com)

## New water heater at leisure centre



Atlantic Boilers has completed another successful super-condensing water heater installation at Whitworth Leisure Centre, Rochdale. The leisure centre has two swimming pools and a fully equipped fitness suite requiring constant shower demand for hot water. The hot water requirement had been met by two cylinders and 18kW input by four electric immersion heaters, but after a boost in visitors and rising energy prices, it was resolved upon to install an ATLANTIC E-Condense 450l/55kW water

heater with serpentine flue, producing 920 litres per hour of water at 60°C with a consistent super efficiency of 97 per cent GCV (107 per cent NCV).

0161 621 5960 [www.atlanticboilers.com](http://www.atlanticboilers.com)

## New 11.2kW model joins Ecodan



Mitsubishi Electric has launched a new 11.2kW Ecodan air source heat pump to join the existing three monobloc models. The line-up for the self-contained outdoor units now boasts a 5kW, 8.5kW, 11.2kW and 14kW to make Ecodan suitable for almost any situation. The new PUHZ-W112VHA model is a single phase, MCS-certified 11.2kW capacity unit that shares the ability to cascade up to six units

of the same output, allowing Ecodan systems to offer a capacity range from 5 through to 84kW.

01707 282880 [www.mitsubishielectric.co.uk](http://www.mitsubishielectric.co.uk)

## RWC is bringing back ISIS: the original & best



Long established as an industry leader in flow control solutions, Reliance Water Controls (RWC) have joined forces with Effebi to bring the original and best ISIS Ball Valves back to the UK market. With a reputation for quality and high performance, the ISIS range was a natural addition to the RWC product family, offering

five different product types, with both lever and t-handle options and in sizes ½"–2" FBSP and 15mm–54mm Compression. Cast in dezincification resistant (DZR) brass, in full bore, pressure rated to PN40 and with a multitude of additional features, ISIS can be used in even the most aggressive of water installations, which is why they are loved by installers and specifiers alike.

01386 712400 [www.rwc.co.uk](http://www.rwc.co.uk)



## Vortice HRUs at Gleneagles railway station

Vortice heat recovery units have been used for the refurbishment of the Gleneagles railway station in time for the 2014 Ryder Cup which took place from 23-28 September. Vortice NRG heat recovery units were specified by Glasgow-based consultants SVM and were installed by contractor Kentallen. This is the first major refurbishment of Gleneagles station since 1919. While retaining its historical features, the station will be brought up to date, part of which is specifying the latest in energy efficient ventilation systems by Vortice. Gary Kerr from SVM said: "We were impressed with the breadth of heat recovery technology offered by Vortice and chose the NRG commercial heat recovery units as they were ideal for the project at Gleneagles." This is not the first premium golf-related contract for Vortice, in 2012 the company supplied Rory McIlroy's home club, the Holywood Golf Club in North Belfast, with heat recovery units for its changing rooms.

01283 492949 [www.vortice.ltd.uk](http://www.vortice.ltd.uk)



## Vicaima make an entrance with first European Peninsula Hotel

Interior door specialist Vicaima was selected to provide joinery solutions for the Peninsula Paris Hotel, which is the first hotel of the HSH Group (Hong Kong and Shanghai Hotels) in Europe. Exclusively designed for this project, the brief included doors, frames, skirting boards, panels and technical shafts, with tailor made detailing. The luxurious Peninsula Paris Hotel has 200 rooms and 34 suites, and was opened in August. Built close to the Arc de Triomphe, this important 19th century building has been given a meticulous renovation, blending old world charm with modern innovation to outstanding effect. In order to exceed the expectations of this hotel, Vicaima products were subjected to audits and monitoring of the project, which was carried out through constant inspections, both during production and during product installation.

01793 532333 [www.vicaima.com](http://www.vicaima.com)

## Knauf takes care at Lister Hospital



Lister Hospital, Stevenage, has undergone a £150 million redevelopment of its entire site including building extensions and the refurbishment of many of its existing facilities. AD Architects' Jim Haigh selected **Knauf AMF Ceilings** to help deliver on cleanliness, hygiene, aesthetics and acoustics.

Thermatex Alpha and Thermatex Aquatec ceilings were fitted in most of the new buildings including the Ward Block, Emergency department, and other service areas. The Knauf AMF ceilings comply with the government's Health Technical Memorandum (HTM) which provides best practice guidance on the design and planning of new health care buildings and the extension of existing facilities.

020 8892 3216 [www.amfceilings.co.uk](http://www.amfceilings.co.uk)

## Spectacular stone effect tiles



Inspired by different types of stone, Rocking is a truly different and unique tile range from **Solus Ceramics** that breaks the notion that a tile range should only represent one theme or reference a single particular design aesthetic. Instead of offering just one interpretation of stoneware, Rocking offers a diverse selection of stone effect choices within its collection

including slate, granite and limestone finishes. This abundant diversity of choice provides architects and designers with the opportunity to create unbelievable project designs with a relatively simple and compact palette of tile colours.

0121 753 0777 [www.solusceramics.com](http://www.solusceramics.com)

## Abode Bliss bathroom brassware



The smooth and easy to operate Bliss range of bathroom brassware from **Abode** has been designed and created, especially for the UK market. There are two styles of basin mixers in the Bliss portfolio along with a deck mounted bath filler, bath/shower mixer, thermostatic deck

mounted three hole bath set, four hole bath/shower mixer and bidet mixer, all of which form the wide range of products which has a strong, yet versatile design and is available in chrome finish only.

01226 283434 [www.abode.eu](http://www.abode.eu)

## Legrand launches new steel perimeter range

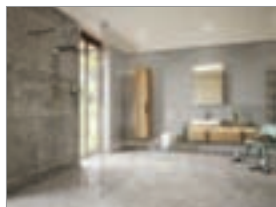


Cable management specialist, **Legrand**, has launched a new steel perimeter trunking system, offering a robust alternative to PVC. Ideal for high traffic and public environments such as schools, colleges and hospitals, the new range has

been developed with Legrand's innovative design know-how to provide tamper-resistant security for cables and accessories with no visible screws post installation. The screwless finish also ensures a smoother edge and neater installation. Simple to install, the trunking uses a specially designed universal snapper clip to enable quick and easy configuration of compartments on-site.

0870 608 9000 [www.legrand.co.uk](http://www.legrand.co.uk)

## The perfect shower space for life



The bathroom is a key area of a lifetime home and **On the Level** has years of experience in the design and manufacture of wet rooms with easy, barrier-free, level access. A wet room is, by its very nature, suitable for all ages and abilities as it can offer wide, safe access and also wheelchair access.

On The Level's patented Birch ply wet room formers easily take the weight of a wheelchair and the company offers numerous accessories to create a comfortable wet room for those with reduced mobility. A wet room can be practical, luxurious, minimal and functional.

01525 373202 [www.onthelevel.co.uk](http://www.onthelevel.co.uk)

## Barwood Products luxury wavy grab rails



**Barwood Products**, a leading manufacturer and supplier of quality bathroom products for the less-abled and special needs market, has launched a new addition to its luxury grab rail portfolio. The new 'wave' rails are manufactured from polished stainless steel and feature

a mirror finish for the ultimate glossy look. There are three sizes, 366mm, 479mm and 600mm each with 32mm diameter and featuring concealed fixings for a seamless installation. They have been designed to add a touch of glamour and luxury to bathrooms for the less-abled.

01782 561 814 [www.barwoodproducts.com](http://www.barwoodproducts.com)

## Encasement helps Tesco present a fresh face at Birmingham store



Decorative aluminium and stainless steel column casings together with an extensive horizontal bulkhead are providing shoppers with a welcoming entrance to the Tesco Extra store, which forms part of a £40 million retail redevelopment at Birmingham's Swan Centre in Yardley. Constructed by Bowmer & Kirkland, the Tesco store and 21 additional retail units provide around 170,000 sq.ft of retail space, with the mixed use regeneration scheme also including the refurbishment of an adjacent residential block. To meet Tesco's requirements for an attractive frontage to both the store entrance and multiple check-out exits, which run the entire length of the 100 metre long enclosed mall, **Encasement** supplied and installed a high level bulkhead as well as eleven square column casings from its 'Forma' metal range. Encasement's 600mm square column casings are finished in two different colour schemes to help shoppers clearly identify the entrance and exits. Close to the entrance, three of the casings are finished in a bright red, to match Tesco's corporate colours incorporating two textured 150mm wide stainless steel strips at the base and mid level. The remaining eight casings, adjacent to the array of checkout tills, are split 50/50, with the top half manufactured from aluminium coated in a PPC finish with the lower portion using durable Rimex stainless steel incorporating a textured 'linen' pattern to provide maximum protection from damage in this busy retail environment.



Luxury Homebuild

World Leaders

# Grand Designs

## PassivHaus Bespoke Glazing

If you're planning a self-build or renovation you need to be sure that your project is in safe hands.

Altitude Aluminium works with Schuco and Reynaers systems and offer a complete, no worry service from design through to installation of Aluminium Windows, Doors, Sliding and Folding systems, Curtain Walling, Balustrades and Balconies.

Altitude Aluminium is ISO 9001, ISO 14001 and BS OHSAS 18001 accredited.

Get in touch with us to discuss your project further.

Call us today on  
**0800 2888 066**

or email your plans to  
**[quote@altitudealuminium.co.uk](mailto:quote@altitudealuminium.co.uk)**

Visit our website  
**[www.altitudealuminium.co.uk](http://www.altitudealuminium.co.uk)**







- London Showrooms
- Over 180 Radiators On Display
- Specialist & Expert Advice
- Suppliers Of Top Brands Including Bisque, Vogue & Hotech
- Exclusive Designs
- Bathroom Brands Include Pelipal, Vitra, Burlington And Many More
- Free No Obligation Quotations
- Full Technical Support
- Price Match Guarantee



Tel. 0208 944 2001 or 0800 055 6450  
 sales@theradiatorgallery.com  
[www.theradiatorgallery.com](http://www.theradiatorgallery.com)  
 Showroom: 621 Garratt Lane,  
 Wandsworth, London SW18 4SX.

Free bathroom  
 planning service  
 available

# PURUS

**Purus Limited** - high quality Swedish drainage solutions to meet all requirements and specifications, from domestic wetrooms to commercial and industrial projects

## Recently launched: a range of BIMObjects!

Now available at [www.purusgroup.com](http://www.purusgroup.com) for the Minimax 50, Minimax Two Part & Mini Brage floor gullies and the Purusline Living linear channel



### Mini Series Floor Gullies




**Minimax 50**

- 76mm high - making the Minimax 50 the world's shallowest wetroom gully incorporating a NOOD no-odour water trap
- BBA Certified
- Flow rate 48 l/min
- Featured on BIM

BBA Certification, BIMObjects, DWGs and more at [www.purusgroup.com](http://www.purusgroup.com)

**Purus Limited** | Suite 6, Arena Park | Scarcroft | Leeds | LS17 9BF  
 New website now live at [www.purusgroup.com](http://www.purusgroup.com)  
 Tel: 0113 289 3172 | Fax: 0113 289 3778 | E-mail: [info@purusgroup.com](mailto:info@purusgroup.com)



# Taking you to the next level...

**Premier Loft Ladders** are the preferred choice of architects and building industry professionals throughout the UK, and their range of COLUMBUS Treppen stairways leads the way in engineering quality, design, technology and energy efficiency, making Premier the foremost supplier of concertina style aluminium and folding or sliding style wooden loft and access ladders. Our stairways have a wide range of options including flat roof access, fire resistant trapdoors, electrical operation (concertina stairway) and vertical access.

For further details contact us on: **0845 9000 195 / 01394 214413**

### Key reasons to choose PLL:

- Outstanding quality and value
- Preferred choice of architects and building industry professionals
- COLUMBUS Treppen - UK Main Dealer
- Technical and design advice
- Commercial and domestic applications
- Fire resistant trapdoors
- Vertical access
- Flat roof access
- Electrical operation



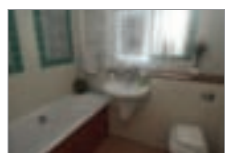
Tel: 0845 9000 195 / 01394 214413  
 Email: [sales@premierloftladders.com](mailto:sales@premierloftladders.com)  
 Web: [www.premierloftladders.com](http://www.premierloftladders.com)







## Hansgrohe gets EcoSmart in Oxford



Hansgrohe EcoSmart products were specified exclusively for a ground breaking eco efficient home renovation project in Oxford. The Talis E basin mixer provides modern looks and good performance despite a flow rate of just 3.5 litres per minute. The hand shower Crometta 85 Green

delivers 6 l/min; is operated by a concealed thermostatic control to ensure a constant safe temperature, and diverts to the Exafill bath filler. The shower room houses the Croma 220 overhead shower; delivering a generous downpour but with an EcoSmart flow rate of 9 l/min. The hand shower is the Raindance Select S120 hand shower with three spray functions, also delivering 9 l/min.

01372 465655 [www.hansgrohe.co.uk](http://www.hansgrohe.co.uk)

## Let there be light whatever the hour



Geberit has introduced a new addition to its best-selling Monolith sanitary module, the Geberit Monolith Plus. Featuring the same sleek, elegant glass frontage as the original model, this not only conceals all plumbing, but also integrates a wealth of technology to raise the comfort levels in the contemporary bathroom. Available in a choice of

white or black glass, the elegant sanitary module has a discreet and indirect ComfortLight, providing a warm glow behind the module, automatically activated as the user approaches. It also features an integrated odour extraction unit, filling the space with clean, fresh air even in bathrooms with minimal ventilation.

0800 077 8365 [www.geberit.co.uk](http://www.geberit.co.uk)

## On The Level



On The Level is one of the only manufacturers in the UK to produce bespoke solutions for concealed wet floor shower trays in any size or shape. The patented Birch ply underfloor shower formers are easy to install and ideally suited for special needs applications such as care homes, hospitals and specially adapted domestic bath-

rooms. On The Level formers are BSI approved for a safe load of more than 60 stone (380kg) and their shallow depth of just 24mm allows them to fit flush into most floor types. On The Level specialists are happy to explain the product and give technical advice, on-site if required, to devise solutions for specific projects.

01525 373202 [www.onthelevel.co.uk](http://www.onthelevel.co.uk)

## Saniflo launches new Traymatic

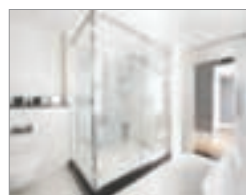


Saniflo has launched a new version of its popular Traymatic, a low profile shower tray. Now available with anti-slip flooring, ramps, a round waste, plus an optional shower seat and measuring just 5.3cm high, the new Traymatic is suitable for more applications than ever before. Perfect for domestic and commercial settings, Traymatic is supplied with either an internal or external pump, which sits above floor level. This means there is no need to either

excavate the floor, which saves lots of time and mess, or raise the tray up, which keeps this low level tray low. It will discharge in 2.2cm pipework a distance of 2.5 metres vertically and 20 metres horizontally (or a lesser combination of the two).

020 8842 0033 [www.saniflo.co.uk](http://www.saniflo.co.uk)

## Malmaison – Boutique Hotel, London



The Boutique Hotel required the installation of wetrooms into their guest ensuites. Wetrooms UK recommended a Modular Wet-Floor system for each bathroom at Malmaison – the perfect solution for timber floors as it allows any size or shape of wet room to be created quickly on a timber floor, while enabling the drain to be situated in almost any position within the

bathroom. Following the installation of the tapered board with built in two way falls, a waterless drainage trap and contemporary stainless steel grill were fitted, capable of coping with flow rates of up to 29 litres per minute.

0845 045 6001 [www.wetroomsuk.co.uk](http://www.wetroomsuk.co.uk)

## Bushboard Nuance laminate wallpanels



Bushboard's Nuance range of bathroom laminate wall panels are lightweight to handle and easy to install, ensuring a 100 per cent water-impervious surface that also earns top marks for looks. Premium quality granite and stone designs are available, creating luxurious looks that today's customers want but at a very reasonable cost. Unlike any other brand on the market, Nuance panels can be jointed and finished without any extrusions, creating a seamless

and visually superior look. Two of the five panel sizes available include a slim post-formed edge that can be used to create a neat finishing solution as pictured on this corner shower cubicle in Dolce Vita True Scale design.

01933 232 272 [www.bushboard.co.uk](http://www.bushboard.co.uk)

## Saniflo breathes new life into old watermill

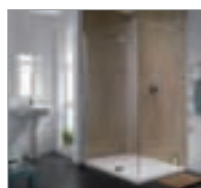


Derelict for over 60 years, an old watermill in Middleton on Tees, County Durham, has a new lease of life thanks to a range of Saniflo pumps and macerators including a Sanicubic pumping station, two Sanipro units and a Sanitop macerator. Built in 1813, a house was added 50 years later and this was inhabited until 15 years ago.

The challenge was to incorporate bathrooms. With no existing toilets in the original mill and the toilets sited on lower and upper floors, with no gravity drainage, a pumping solution was required on both levels. The buildings have since been entered in to the LABC Conversion Award for Regional Building Excellence.

020 8842 0033 [www.saniflo.co.uk](http://www.saniflo.co.uk)

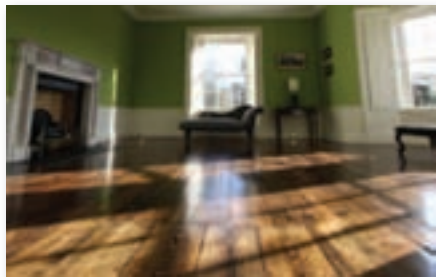
## Rustic Travertine offers stone look



Rustic Travertine, one of the most recent additions to Showerwall's waterproof laminate wall panelling system, reflects the latest trend for stones and granites in neutral colours in bathroom interiors without the price tag, providing an alternative to tiles. It mirrors the look of real stone but as a laminate panel is light-

weight to handle, easy to cut and install. Where real stone requires ongoing maintenance to keep it sealed, Rustic Travertine does not need retreating and can be cleaned with normal bathroom products. It is also vastly cheaper than real stone. It is one of six new design additions, extending the Showerwall range to 39 laminate designs in total.

0845 604 7334 [www.showerwall.co.uk](http://www.showerwall.co.uk)



AN ORIGINAL FLOOR IN A PERIOD HOME RENOVATED WITH BONA COLOURS AND LACQUER

# Let's get passionate about wood floors

By Alec Stacey, Technical Manager, Bona Limited

You may be considering a wood floor for your new build project, or maybe you are faced with renovating an existing floor as part of a major property refurbishment. Bona has been making finishes for wood floors for nearly a century and its network of expert wood floor specialists will be able to help you.

An important first choice is whether to finish the surface with an oil or a lacquer (varnish). Both offer great benefits in terms of durability and aesthetics, but it's also important to consider how the floor is going to be used. Today, the trend is for a natural, matt look and most modern

lacquers are available in semi-matt or very matt finishes. Floors finished with lacquers are very easy to clean and maintain too. The most important thing is regular sweeping to remove dust and grit which can scratch the surface. When marks appear or for the occasional all over clean, Bona's Spray Mop, which applies minimal liquid to the surface, is the most effective tool to use. Bona would never recommend using a steam mop on a wooden floor.

An oiled surface tends to look more natural and our new oil system includes special optional colour treatments which can be used to achieve

some really sensational effects. An oiled floor does, however, require the application of a maintenance oil – probably every other year depending upon the floor's use – to properly protect the surface.

It's also easier to repair localised damage to an oiled surface, whereas if parts of a lacquered floor become damaged the whole surface has to be re-sanded and re-sealed.

You can speak to an expert at the start of the floor selection process – Bona's certified contractors are listed on its website, or call and let Bona guide you to the right person for your project.

Call Bona today on 01908 525 150 or visit [www.bona.com](http://www.bona.com)

## World renowned hotel gets the Schlüter-Systems treatment



One of London's most exclusive and luxurious hotels has used **Schlüter-Systems** products as part of its grand refurbishment. The Lanesborough Hotel in Hyde Park Corner is in the process of extensive renovations which are being carried out by the late world renowned interior designer Alberto Pinto. The new designs will enhance all 93 guest bedrooms and bathrooms as well as all public areas and will honour the building's architectural heritage as one of London's most revered Regency landmarks. Under flooring solutions expert Schlüter has played its part in the major refurb by providing a host of products to the project including unique tile substrate Schlüter-KERDI-BOARD. The lightweight but extremely strong product offers the perfect solution for creating bonded waterproofing assemblies for tile coverings and can also be used as a structural panel. KERDI-BOARD is 100 per cent waterproof, cement free, lightweight and completely even and flat, making it the ideal substrate for tiling. As well as being waterproof, temperature resistant and vapour retardant, the product is also thermally insulating, quick and easy to install and contains no cement or fibreglass making it eco-friendly, while its fleece webbing allows for easy anchoring in thin-bed mortar. The new and improved guest rooms also boast a second-to-none underfloor heating system.

01530 813396 [www.schluter.co.uk](http://www.schluter.co.uk)

## Geopanel, ideal solution for hotel refurbishment



The St James Hotel in central Nottingham has recently undergone a dramatic facelift and now features **Freefoam** Geopanel panelling in each bathroom. Owner Peter Johal has spent the last 12 months overseeing an extensive redecoration and refurbishment programme of the 87-bedroom hotel creating a contemporary, modern space right in the heart of the city. With such a large project cost effective measures were essential to ensure the refurbishment stayed on budget. Each bathroom needed modernising and while the existing tiles and plumbing configuration were satisfactory the fittings and bath panels needed replacing. The Geopanel 5mm panels in Pastel Grey and Black Marble were the ideal solution for the bath panels, creating a sleek, coordinating look with the added benefit of allowing easy access to pipework to quickly and simply fix any plumbing issues. The Geopanel interior decorative panelling system includes both a standard 250mm panel for walls and ceilings and a 1m wide panel, perfect for showers. The high gloss tongue and groove PVC panels are available in contemporary and traditional shades with matching finishing trims in white or silver to ensure a clean professional finish. The 100 per cent waterproof PVC core makes Geopanel ideal for both domestic and commercial environments.

01604 591110 [www.freefoam.com](http://www.freefoam.com)



**building  
construction  
design**

# LAUNCH ALL NEW WEBSITE FOR 2014



**REGISTER ONLINE FOR...**

Digital magazine  
Newsletter • Daily digests

**[www.buildingconstructiondesign.co.uk](http://www.buildingconstructiondesign.co.uk)**

## The ideal showering solution



**Coram Showerpods** and Martin Grant Homes have worked together on a wide variety of developments, most recently at Kingsfield Park in Aylesbury where Coram has supplied 200 of its Alcove Showerpods for installation into a selection of high specification, two- to five-bedroom family homes. Coram Showerpods offer the ideal showering solution for residential developments, refurbishments and use in the hospitality and leisure sectors. They have been supplied to the Ministry of Defence and are also NATO approved.

0115 940 0644 [www.coramshowerpods.co.uk](http://www.coramshowerpods.co.uk)

## Lifetime bathrooms from On The Level



A wet room is the ultimate solution if you are creating a lifetime bathroom for people to use and enjoy even when their mobility decreases. **On The Level** offers tailor-made, complete wet rooms for easy level access which can be adapted for the elderly and less able with added safety features such as non-slip sheet vinyl flooring, grab rail and seat. On The Level has been designing and manufacturing patented Birch ply underfloor trays for wet rooms for 15 years and can design and manufacture a bespoke underfloor tray. The company create complete unique level access wet rooms for care homes, private residences, hotels and hospitals.

01525 373202 [www.onthelevel.co.uk](http://www.onthelevel.co.uk)

## Stadium choose Franke Washroom Systems



Northern Ireland's Ravenhill Stadium in Belfast, has benefitted from several redevelopments in recent years, the most recent being a £16 million investment in three new stands. Andy Dukelow, managing director of **Franke Sissons**, also known as Franke Washroom Systems: "Ravenhill has a

long and compelling Rugby history. We are very proud to have been selected to provide washrooms in this stunning facility." Franke Washroom Systems, working in partnership with Harvey Group and Beggs & Partners of Belfast, supplied stainless steel urinals and washtroughs for the washrooms in Aquinas, Memorial and Grand stands.

ws-marketing.gb@franke.com [www.franke.com](http://www.franke.com)

## Purus



**Purus Limited**, a manufacturer of quality Swedish drainage products for domestic, commercial and industrial environments, is proud to now have a number of its floor gullies and linear channels featured on BIMobject. These include the BBA certified Minimax 50, which is one of the world's shallowest wetroom gullies incorporating a NOOD no-odour water trap; and the

Purusline Living linear channel for domestic and commercial projects. The new BIM program for 3D modelling allows a smooth procurement and specification process from the early stages to project management.

## Kaldewei's new free-standing baths



**Kaldewei** presents Meisterstücke, a new collection of free-standing baths with seamless enamelled panelling. Kaldewei's uniquely formulated 3.5mm steel enamel has long since been synonymous with perfectly designed quality baths, shower trays and enamelled shower surfaces. Building on its success, the premium manufacturer has extended its bath

portfolio by a new generation of masterpieces. Its bath icons Conoduo, Asymmetric Duo and Centro Duo Oval are crafted through state-of-the-art manufacturing into masterpieces with enamelled panelling, creating a smooth transition from panel to bath for a flawless finish.

01480 498053 [www.kaldewei.co.uk](http://www.kaldewei.co.uk)

## New shower range from MX



**MX Group** has unveiled its latest offering to the bathroom sector, an impressive new range of thermostatic mixer shower valves offering its usual combination of incredible quality, great looking product, excellent warranties and keen pricing. There are 22 showering choices in the Atmos and Options ranges with most Atmos options complying with TMV2 regulations. Full details of the new ranges can be found at the excellent MX web site, by calling or emailing [sales@mx-group.com](mailto:sales@mx-group.com) and asking for a brochure.

01684 293311 [www.mx-group.com](http://www.mx-group.com)

## Accessible guidance



With the growing trend towards domestic bathroom adaptation, new guidance is aiming to help get it right. *Design Guidance & Considerations for a Domestic Accessible Toilet/Wetroom* has been produced and published by **Clos-o-Mat**. The white paper, available to download for free, gives advice to ensure that all

aspects affecting the functionality and practicality of a bathroom adaptation are duly considered and implemented where appropriate and practical. Robin Tuffley, Clos-o-Mat marketing manager explains: "Bathrooms are the most common form of home adaptation. Some half a million households without but in need of adaptation said they needed either a special toilet seat or aid to use the toilet."

0161 969 1199 [www.clos-o-mat.com](http://www.clos-o-mat.com)

## The new Bathroom Switch



Feature bathroom lighting is becoming more desirable, but until now the choices of switching have been severely limited. **Sensorbility** has therefore developed the new Bathroom Switch controller, with dimmer and timer variants, allowing bathroom designers

far more flexibility when it comes to lighting design and operation within bathrooms. The variations of the new controller include simple on/off switching, ramp-up dimming, ramp-down switch-off and time delay switch-off. It can be wired to the company's Bathroom Switch Sensor Pads, which can be placed behind most materials such as ceramic tiles, wood, plastic, glass, and even metals.



## Kemmlit specified for high flyers lounge



German airline Lufthansa opened its own business class lounge at London Heathrow's new £2.5 billion Terminal 2 recently. The lounge, which has a view of the airport apron, is at 1,600 sq m, the largest Lufthansa lounge facility outside Germany. It includes: comfort zones; working areas; a bistro; hospitality desk; and seating for

over 200 passengers. In keeping with the high specification of the lounge, architects K2 specified **Kemmlit's** Primo F cubicle system finished in Graphite Grey for the toilets facilities. Primo is a very durable, smooth-surfaced cubicle system with doors and walls consisting of a 30mm thick composite construction, bonded on both sides with 3mm thick HPL solid core panels.

## Maxwood supplies superloo solutions



**Maxwood** has developed space-saving superloo solutions for new and refurbished commercial building projects. Single units, complete with a toilet pan and washbasin for use by either gender, can be designed and manufactured by Maxwood to meet individual project requirements. Small in size but big in design, the innovative super-

loo range includes vanity suites with pan and basin combined in one linear unit, which also conceals unsightly pipework. A choice of compact basin with a small, removable base and concealed drain hole are also available for a clean, minimalist look that makes the most of limited interior space.

## Lakes Bathrooms launches 10mm shower screens



Shower enclosure specialist **Lakes Bathrooms** has launched two new 10mm designs as part of its runaway hit, the Coastline Collection. The most popular designs in its walk-in range, the Cannes and Nice, are now available in original 8mm and heavier thickness 10mm glass. As with the whole of the Coastline Collection, the look for the new 10mm designs is confident, sleek, minimalist and contemporary. The profiles are silicon-free to support the clean lines and Lakes Bathrooms' stay clean coating, AllClear®, is applied as standard to both sides of the glass.

Cannes is a simple screen that comes in five sizes, from 750 to 1,200mm wide, plus an optional side panel from 700mm to 1,000mm wide. Nice spans from 900mm to 1,200mm, with a bypass panel of 200mm to 320mm.

Managing Director Robin Craddock said: "We know that buyers expect top quality. We aim to deliver not only luxury, designer style and quality, but at an affordable price."

The 2m high screens are designed to fit with low profile tray mounting or in a wet room environment and work in alcove, corner or straight wall-mounted situations. Retail prices for the 10mm walk-in styles in the Coastline Collection start from £349 plus VAT.

## VICTORIA PLUMB TILES EXCLUSIVE OFFER!

BRING US A COMPETITOR'S  
QUOTE ON COMPARABLE  
TILES AND

**WE'LL BEAT IT BY 10%**

CALL OUR TRADE TEAM TO REQUEST  
A LOWER PRICE

**0844 804 48 54**

 [victoriaplumb.com/trade](http://victoriaplumb.com/trade)



## COBA Flooring – a safer choice



As well as supplier of entrance matting systems, **COBA Flooring** is fast becoming a prominent name in the supply of GRP sheets, stair treads and stair nosing within the COBAGriP collection. COBAGriP is a range of anti-slip flooring products meeting DDA requirements for use on walkways and stairs. This type of product is regularly used for enhancing safety underfoot within public transport buildings. UV stabilised, making them suitable for indoor and outdoor use, heavy-duty COBAGriP products have a silicon carbide 'gritted' top surface which provides excellent slip resistance. COBAGriP products are manufactured from flame-retardant materials.

Within the range are two types of GRP sheet, standard and light. Standard has an overall product height of 5mm whereas light is 2.4mm high. Sheets are available in black, grey and yellow. There are also COBAGriP GRP Stair Treads (covering the complete stair) with contrast coloured nosing available in four lengths, and COBAGriP GRP Stair Nosing in yellow, in four lengths. COBA Flooring manufactures and supplies an extensive collection of flooring products, including aluminium, PVC and carpet entrance systems, as well as vinyl floor tiles.

0116 240 1161 [www.cobaflooring.com](http://www.cobaflooring.com)

## Flowfresh the favourite floor for Australian flagship hospital



The \$2 billion Fiona Stanley Hospital had an ultra hygienic **Flowcrete** floor installed that meets its ethos of utilising state-of-the-art technology to provide a world-class medical facility. The 783-bed tertiary hospital is the largest construction project ever undertaken by the state government. Throughout the project, pioneering construction ideas have been embraced alongside advanced scientific, technological and medical innovations to ensure that patients and the medical community have access to a wide range of clinical, research and education services. As part of this commitment to meeting world-leading standards, 1,120 sq m of the innovative antimicrobial floor Flowfresh SR was installed in the patient catering facility. This solution was chosen to ensure a sanitary environment that would minimise the risk from harmful contaminants. Flowfresh includes the antimicrobial agent Polygiene®, which actively assists on-site cleaning regimes by inhibiting the growth of up to 99.9 per cent of bacteria on its surface. The managing director of Flowcrete Australia, Sean Tinsley, said: "Flowfresh is the ideal solution for locations such as this thanks to its ability to retain a smooth, hard wearing finish, which is not only easy to clean but which works to eliminate unwanted and potentially harmful pathogens before the cleaning routine even starts."

01270 753000 [www.flowcrete.co.uk](http://www.flowcrete.co.uk)



**Designer Oak Flooring**

... the perfect finish for any room

- > Esco engineered oak flooring
- > Eight colour options
- > Varied surfaces available - aged, wire brushed and Harfa rough sawn effect
- > Pre-finished with Osmo Polyx-Oil

Call or visit the web for a brochure.  
**+44 (0)1296 481 220**  
[www.osmouk.com](http://www.osmouk.com)





**KIT STONE**

NOT JUST KITCHENS... BOOK A FREE INITIAL DESIGN CONSULTATION

*Handmade kitchens, bathrooms & interiors, sensibly priced*

LONDON 0207 371 99 97 TUNBRIDGE WELLS 01892 522321 READING 01189 326060 MARLBOROUGH 01672 512155 BRISTOL 01173 702453 EPSOM 01372 237020

[www.kitstone.co.uk](http://www.kitstone.co.uk)

follow us...  



# It's time to come together

Cottage Craft Spirals has been rebranded as British Spirals and Castings following the decision to merge the three existing brands of Cottage Craft Spirals, Tilley's London Castings and Milton Aluminium Castings.

Established in 1980, the family run business has built up an enviable reputation for designing and producing truly bespoke and unique staircases, balconies and railings.

Richard Harding, managing director of British Spirals and Castings commented: "We are delighted to introduce the new brand to our existing and prospective customers. We took the decision to merge the three individual brands to present a more cohesive offering, while still being able to provide the personal and bespoke service we have always delivered."

"Despite our strong growth, British Spirals and Castings firmly remains a family business, with my daughter Antonia and son Ben working as part of the management team."

As part of the rebrand British Spirals and Castings has launched a brand new website,

[www.britishsc.co.uk](http://www.britishsc.co.uk), where customers can find detailed information on all the products and ranges available.

Cottage Craft Spirals originally started with only one design (the Victorian) and one diameter. Today there are three cast spiral designs, traditional, art deco and contemporary, 13 different diameters and an ability to make straight and kited staircases. A range of solid wooden spiral, straight and kited staircases are also made within the business.

Over the years a showroom was opened in London Tilley's London Castings, which supplied a core market in the South East with London style cast stairs, railings and gates, as well as carrying out bespoke restorations of stair balustrades.

In 2009, Milton Aluminium Castings, a foundry in the West Midlands was added to the portfolio. This ensured that the staircase products would continue to be British made and quality controlled from start to finish. Milton Aluminium Castings also produces quality castings for the auto, aerospace and engineering industries.



For further information contact British Spirals and Castings on 01663 750716, email [sales@britishsc.co.uk](mailto:sales@britishsc.co.uk) or visit [www.britishsc.co.uk](http://www.britishsc.co.uk)



**BIM Models  
now available**

**HORNE**

**Bi-modal showering from HORNE**





The ligature resistant connector...



...takes the detachable handset, hose and flow actuator...



...for assisted showering mode via automatic flow diverter.

Under-utilised showers waste space, time, water and money. Install a Horne bi-modal shower panel to increase usage. Free up space and reduce maintenance time spent flushing water down the drain. For unassisted showering, the water flows via the fixed vandal and ligature resistant shower head, and via the handset and hose for assisted showering. Available with ligature resistant (pictured) or moulded lever controls to cater for different user needs. Includes integral THERMOMIX Shower Head and THERMOMIX Shower Valve.

Visit [www.horne.co.uk/Products/Shower-Panels/](http://www.horne.co.uk/Products/Shower-Panels/) for a complete tour of the range.

Horne Engineering Ltd, PO Box 7, Rankine Street, Johnstone, PA5 8BD  
Tel: 01505 321455 Email: [sales@horne.co.uk](mailto:sales@horne.co.uk)

[www.horne.co.uk](http://www.horne.co.uk)





## Quality driven by Remmers



Established in 2004 and formally known as Blackhorse Car Sales, Lex Autolease Car Select in Oldbury has over 500 cars displayed in their executive used car showroom. The existing old liquid polymer screed floor surfaces were badly cracked and damaged and needed a refreshing upgrade to a high

gloss, smooth finish to better withstand the frequent and abrasive movements of the cars. Capeland Industrial Flooring took on the challenge, which involved levelling and finishing the existing flooring with a slightly flexible floor topping that complemented the high end motor car sales. **Remmers** Epoxyflex PH SL was chosen for its ability to provide additional protection from reflective cracking.

0845 373 0103 [www.remmers.co.uk](http://www.remmers.co.uk)

## 'Powerful' product mix for hospital



**Marshall-Tufflex's** triple product mix of all-curved Odyssey trunking, DDA-compliant blue accessory boxes and freestanding Powerpoles proved to be a powerful team for the £500,000 refurbishment of the James Paget University Hospital in Great Yarmouth. The

hospital, which provides acute care services and trains medical students, required a combination of cable management solutions for an upgrade to its Pathology Department. The CAT 6 compliant PVC-U system is renowned for its good-looking curved profile, which makes it impossible to clutter and easy to clean – imperative in healthcare environments.

01424 856600 [www.marshall-tufflex.com](http://www.marshall-tufflex.com)



## The sensuality of the surface

**RENOLIT** launch four popular selling solid colours with a tactile linear wood structure emboss, Veralinga, as the trend towards painted wood continues to grow. All four products have been added to the RENOLIT stock range. The desire is always for greater detail, more realistic designs, more brilliant colours and a more authentic surface. Increasingly the surface has become as important as the colour or design itself to the overall finished style, and these textures enhance the overall finished effect by adding style, design and feeling. Modern hardwoods need the right partner to be able to reveal their full effect while solid colours with a strong textured surface serve as the stage for the latest furniture trend and have the appearance of painted solid wood. The extraordinarily natural look and authentic feel of the linear and deeply structured Veralinga will really impress.

01670 718222 [www.renolit.com/design](http://www.renolit.com/design)

## Beko American-style fridge freezers



**Beko** has introduced a new collection of premium American-style fridge freezers, designed with cutting-edge technology to help make family life even easier. Headlining the stunning new range from the UK's best-selling refrigeration brand is the Beko

EcoSmart non-plumbed water and ice

model ASN541 rated A+ for energy efficiency. Headlining the stunning new range from the UK's best-selling refrigeration brand is the Beko EcoSmart non-plumbed water and ice model ASN541 rated A+ for energy efficiency. RRP ranges from £679 to £999.

0845 600 4904 [www.beko.co.uk](http://www.beko.co.uk)

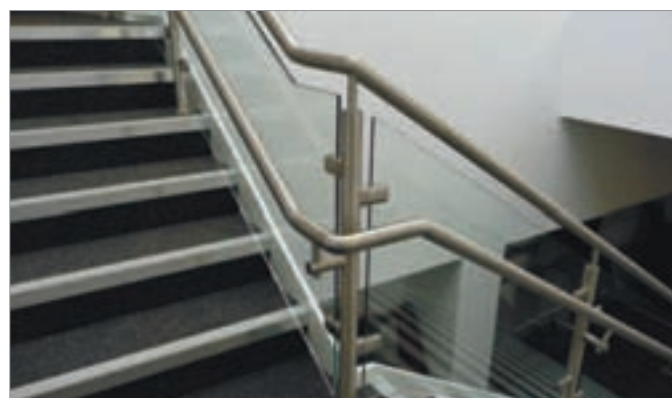
## Max-Top



Kitchen worktop specialists **Max-Top** have seen sales of its monochrome Max-Top Quartz surfaces soar, revealing they now account for over 70 per cent of sales. Five out of the 10 Max-Top Quartz finishes cater for the monochrome trend with Black Onyx and Diamond White the two best sellers to date. Stephen Moss, managing director of Max-Top comments: "Since launching in July, we have seen sales of Max-Top Quartz grow steadily, however our monochrome finishes in

particular seem to have really taken off [...] this timeless colour scheme is more popular than ever, which our sales figures reflect!"

Tel: 0161 224 0333 [www.maxtopquartz.co.uk](http://www.maxtopquartz.co.uk)



## NEACO meet college specification demands

**NEACO's** expertise in the education sector was put to good use for a demanding specification at Hymers College in Kingston-upon-Hull, where the company's Spectrum balustrade was extensively installed within a new state-of-the-art music facility. Built by Hobson & Porter, the £1.6 million scheme includes practice rooms, teaching space and a recital hall sized to accommodate a full orchestra. The stainless steel and powder coated aluminium versions of Spectrum were chosen with glass panel infills to two stairwells. A spokesman for Hobson & Porter said: "NEACO's design, product and manufacturing service are superb. Projects like this are subject to tight build schedules to minimise disruption to the college's activities, so we needed a fast manufacturing turnaround and installation which NEACO provided in time for the start of a new academic year. NEACO provided comprehensive technical support with site survey, design and installation."



## Minimalist washrooms maximise remodelling



The minimalist styling of Maxwood's elegant Mystiq toilet cubicle system is maximising the 'grade A' remodelling of town centre offices in the heart of the Thames Valley. Fully refurbished to meet modern business needs, Twenty Kingston Road offers around 43,000 sq ft of superior commercial space in Staines-upon-Thames.

The four-storey building's striking design detailing, bespoke features and stylish finishes are reflected in Maxwood's complete supply and fit package of executive male and female WCs, showers and lockers for each floor. Featuring a full height, flush-fronted design, the toilet cubicle system provided a true value solution for the project, without compromising

## Redbacks

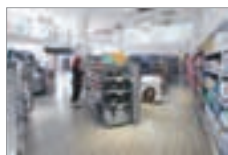


A new kneepad for pocketed work trousers which incorporates a unique 'direction of force' design that crucially protects the wearer's knees and the rest of the body from the potential dangers of impact through continuous kneeling, has been introduced by Redbacks Cushioning Limited. Around 20 per cent lighter than its big selling predecessor, it allows greater ease of movement and with a thicker grade of spacer fabric, giving added comfort, the new kneepads feature a soft and

flexible TPE (Thermo Plastic Elastomer) leaf-spring, now with increased durability, which is set within a unique honeycomb matrix.

Tel: 01327 702104 [www.redbackskneepads.co.uk](http://www.redbackskneepads.co.uk)

## Cut above the rest for Gerflor



Sally Salon Services, one of the UK and Ireland's largest professional hair and beauty suppliers, has opened its new flagship store of the north in Leeds. International flooring specialist Gerflor was chosen to supply the Luxury Vinyl Tile and Plank (LVT) products, where functionality and design

are fused together providing the ultimate flooring solution. Downstairs in the Sally Salon Services store the Insight Mineral tile Parker Station was chosen for its technical performance as it is highly resistant to medium to high footfall and commercial traffic (European class 33/42). It comes in a large palette of mineral designs to suit all interior styles.

01926 622600 [www.gerflor.co.uk](http://www.gerflor.co.uk)

## Mapei helps with green spec at the Crystal



A Mapei subfloor and tile installation system has been specified at the Crystal – Siemens' iconic sustainability centre located in East London's Royal Docks. Designed by Wilkinson Eyre Architects and Pringle Brandon Perkins+Will, the glass-clad structure is one of the world's greenest buildings, achieving BREEAM Outstanding and Platinum LEED accreditation. Mapei contributed to the eco-specification and included Mapei Topcem screed and low VOC adhesives and grout – Keraquick, Keraflex and

Ultracolor Plus. Corinthian Ceramics installed Domus porcelain and stone wall and floor tiles using Mapei products, for main contractor ISG.

0121 508 6970 [www.mapei.co.uk](http://www.mapei.co.uk)

New!

# BIM for washrooms

by bushboard

### BIMCubicles

### BIMBespokeHeights

### BIMVanityUnits

### BIMDucting

Models adhere to manufacturing parameters

Create your layout

Accurate designs

Change fixtures and fittings

Bushboard's full colour range

Download now

[www.bushboard-washrooms.co.uk](http://www.bushboard-washrooms.co.uk)

## Cost efficient lighting control system



Scolmore Group's new FLOW Lighting Management System is one of the most cost-efficient lighting control systems currently available. The comprehensive range of new and existing FLOW products is

designed to help electricians create more complex lighting installations quickly, easily and safely. Unique to this system is the switching configuration capability, which provides complete flexibility and allows quick connection, configuration and re-configuration of circuits using a simple 'plug and play' concept. Built-in selectable configurations will save significant time in the planning and fitting stages of a project, leading to reduced labour requirements and cost savings.

01827 63454 [www.scolmore.com](http://www.scolmore.com)

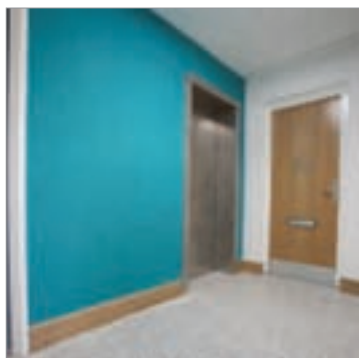
## Boss Design unveils complementary seating



Echoing the transition that is currently taking place in the work place, moving from traditional ways of working to environments that support and promote flexibility and nomadic working patterns, leading British designer and manufacturer, **Boss Design**, announces the launch of Peek and Boo. Peek and Boo are available as one-piece or two-piece units that can be used

independently to create private spaces in open plan environments, or alongside each other to enhance collaborative working. With a swivel base and felt pads, this duo of excellence boasts luxury and contemporary styling. They are ideally suited to the prevailing workspace and a wide range of locations.

## Discover future proof flooring at Homes 2014



Affordable housing has always been a hot topic, but it is currently one of the most frequently debated political issues – as seen by the Conservative Party's promise to build 100,000 starter homes after the election, Labour's Help to Build scheme and the Lib Dem's recent social housing plan. It is up to housing professionals to turn these national residential needs into a reality and events such as the HOMES show (at London's Olympia from the 26 - 27 November) are a valuable focal point to discuss today's housing landscape, what needs to be done and what tools there are to make this happen. At the HOMES show **Flowcrete UK** will be showcasing its high performance range of floor and wall coatings that have been tailored to the meet the aesthetic and functional demands of social housing developments. The resin flooring specialists understand that repair and maintenance expenditure represents a significant proportion of the annual budget for social housing developments – a budget that can rarely afford unforeseen costs for repairs or refurbishments. Not only have these systems been designed to withstand factors such as inclement weather and general wear for an extended period of time, but the fast-curing formulation of the floors means that they also minimise disruption to occupants.

01270 753000 [www.flowcrete.co.uk](http://www.flowcrete.co.uk)

## Zip pioneers radical new design for instant boiling and chilled filtered water



**Zip** has been one of the leaders in the filtered boiling and chilled water market since it launched its iconic HydroTap filtered boiling model in 2000. Now, pushing this growing sector even further, it has launched the most advanced drinking water appliance to date, the HydroTap G4. Designed to deliver even greater performance, the latest evolution of the instant boiling and chilled filtered water system has been repackaged into the smallest footprint to make it the perfect choice for commercial and residential applications. HydroTap G4 maintains its stylish and sophisticated finish, however, the all new under-sink 'command centre' has undergone a great deal of development to give greater efficiency and more superior control. The WRAS approved G4 cuts standby operating power substantially, when compared to other systems of similar delivery performance. This saving is due to the G4's improved power saving technology and increases in energy efficiency through enhanced thermal insulation. Zip's Powerpulse® technology also maintains the boiling water to within 0.2°C of set temperature to reduce the amount of energy required to heat water from standby. The G4 offers a sculptured chrome tap with a red boiling water lever and blue chilled water lever. All G4 taps also feature a safety button to eliminate accidental use.

08456 005 005 [www.zipheaters.co.uk](http://www.zipheaters.co.uk)

## Blues Kitchen in Shoreditch revives tradition of faience fronted bars



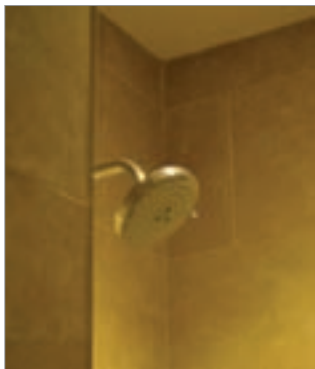
The Blues Kitchen Shoreditch has recently opened, complete with a vast, four square, Victorian-inspired, ceramic tiled fronted bar. UK specialist tile company **Craven Dunnill Jackfield** was responsible for the project, from design to hand-manufacturing the tiles and then factory-mounting the tiles onto panels for rapid installation on-site. The tiled bar front is in keeping with the historical tradition which dates to the 1880s. It is opulent and rich in style, with a central motif that features a mythical lion's head, embellished with swags and fruit. The deeply textured relief tiles are made using hand carved plaster moulds and decorated using metal oxide glazes which craze upon firing to create an authentic aged effect. Special moulded external corner fittings were designed and made to allow the highly decorative and ornate patterning to flow seamlessly around the external corner of the bar front. In order to meet the planned opening schedule, the Craven Dunnill Jackfield team explored options to reduce the installation time and overcome issues associated with fixing heavy ceramic tiles to a vertical surface. The solution was to supply pre-tiled modules that were assembled on-site and grouted in situ for a purely professional finish.

01952 884124 [www.cravendunnill-jackfield.co.uk](http://www.cravendunnill-jackfield.co.uk)





## Impey installs luxury wetroom into a lift shaft at period property



**Impey Showers**, a leading wetroom specialist, has completed a unique wetroom installation at Forde Abbey, a Grade I listed building and heritage attraction in Dorset. Impey has dispelled the myth that contemporary design solutions for modern lifestyles cannot be incorporated into older properties by installing one of its wetrooms in an almost impossible location; a disused lift shaft in a 900-year-old house. Current Forde Abbey Steward Alice Kennard had found leaking bathroom products to be one of her major concerns and problem areas affecting the extremely valuable decorative plaster ceilings. A new wetroom was created within the space of a disused lift shaft using a number of Impey's innovative, leak-free wetroom solutions. Firstly, Impey's Waterguard was chosen for this project to tank the wet-floor area because it guarantees a leak free solution, which is crucial in a setting like Forde Abbey where original features and antique ceilings would be impossible to replace if damaged. Once the Waterguard is applied, the fleece membrane, which features a one-sided, self-adhesive, butyl rubber backing, does not need any curing time, which means tiles can be laid straight away. Waterguard also comes with pre-formed corners making the process straight-forward and time-efficient.

01460 256080 [www.impeyshowers.com](http://www.impeyshowers.com)

## Exciting new development gets the full Schlüter wetrooms package



**Schlüter-Systems'** innovative wet rooms range has been used in an exciting new housing project which will see 15 brand new homes built at the site of a former quarry. Set on the fringes of central Guildford, Chantry Quarry, which is being built by Latchmere Properties Ltd, will offer villa-style, four-bedroom houses for sale complete with high quality en suite bathrooms – and thanks to Schlüter the ongoing protection and maintenance of these bathrooms is assured. Chosen for its easy assembly and great results the Schlüter®-WETROOMs collection provides a fully integrated under flooring product suite which includes top of the range waterproofing sets, drainage systems and uncoupling and waterproofing membranes for tiling walls and floors. The Chantry Quarry bathrooms boast an array of Schlüter products specified for their durable qualities and waterproofing protection. Schlüter®-KERDI-LINE has played an important role, as its linear drain channel system offers a particularly low assembly height and has helped give the bathrooms a seamless wet room style finish, along with pre-sloped shower base Schlüter®-KERDI-SHOWER. Schlüter®-DITRA 25 matting, the original uncoupling and waterproofing matting for tile coverings has also been used.

01530 813396 [www.schluter.co.uk](http://www.schluter.co.uk)



## Need help with your wooden floor?

For new installations or renovations – speak to your local Bona Certified Contractor!

At Bona we are passionate about wood floors. Our range of oils and lacquers have been used worldwide for nearly a century to protect and finish beautiful wood surfaces.

To help you prolong the life of your floor, we've trained a network of wood floor specialists in the use of our dust-free sanding system and high performance coatings.

Call us on 01908 525 150 or use the 'Find your contractor' tool on our website at [bona.com](http://bona.com) to find your local wood floor specialist.

Bona Limited  
Tel 01908 525 150  
[info.uk@bona.com](mailto:info.uk@bona.com)

[bona.com](http://bona.com)

**Bona**<sup>®</sup>  
Passion for wood floors



# The landscape of the washroom is changing – for good

**W**ashwall by Grant Westfield provides a complete solution for the vanity area, including the supporting structure. The new and unique system eliminates the need to specify and fit sanitaryware, brassware, mirrors, wall panel systems, and electrics individually, and replaces it with one modular vanity system which integrates all of these elements.

Every detail has been considered in the design of washwall to ensure maximum efficiency in installation and operation, simple but discreet access to services and consumables via side-hinged lockable mirror doors, and a streamlined experience for the user.

Not only does washwall provide a wide array of attractive vanity solutions, it is also an extremely economic system, saving up to 75 per cent on installation time and between 60-70 per cent on water and energy consumption.

Washwall comes in four main basin formats,



providing over 100 standard configurations, targeting a wide range of applications;

- Continuous – Complete with a continuous, angled basin shelf fabricated from durable, easy to clean solid surface material, with slotted waste to avoid blockage.
- Recessed – A compact, recessed version of the Continuous washwall for in-cubicle applications, or to create space efficient, in-line solutions.
- Vanity Counter – For the prestigious washroom, offering vanity tops in granite or marble with top-mounted or under-mounted ceramic bowls, and solid surface tops with seamlessly integrated bowls.
- Separate Basin – Offering wall-mounted, ceramic basins, constructed with the same, robust service wall as the entire washwall range.

0131 337 6262

[www.grantwestfield.co.uk/mywashwall](http://www.grantwestfield.co.uk/mywashwall)

## Upholstered seating offers contemporary edge



Lyndon Design's recent collaboration with leading British designer, Peter Emrys-Roberts of ERA, has resulted in an upholstered seating collection named Romba. Featuring a modern rectilinear design, this collection is accentuated by colourful upholstered blocks and provides a contemporary and striking seating solution. Exploiting a vocabulary of simple

forms and materials, Romba provides the specifier with tremendous scope and choice. Featuring armchair and sofa options, the collection may be arranged into a variety of asymmetrical and symmetrical compositions to suit each particular scheme. Romba facilitates the controlled addition of colour or accent fabrics to the ends of its bolsters, conveniently the same shape as cushions.

## Promat set to repeat Fire Day success



Promat UK will host its fourth Fire Day at Ascot Race Course, where construction professionals will be given the opportunity to gather and discuss the fire safety issues faced by the industry. The event 'Making your project our business', will take place on Wednesday 12

November where a number of prominent figures from both the construction and fire safety industries will give presentations on topics including steel protection, the use of glass in architectural design, and the role of social media in the construction market. It will give attendees the chance to assess the current state of the market, examine areas for improvement and find ways to progress.

01344 381350 [www.promat.co.uk](http://www.promat.co.uk)

## Helping achieve social model of disability



Removing the barriers that restrict independence for disabled people is made easier, at least in the bathroom, through options available from Clos-o-Mat. The company's Palma Vita looks like, and can be used as, a conventional toilet, but has additional, integrated facilities which wash and dry the user instead of them wiping with paper. Its

delivery of a consistent, efficient process gives greater cleanliness for all users, regardless of impairment, and can eliminate the need for carer assistance. Thus The Palma Vita gives choice, independence and control for the disabled user – all key elements of the social model of disability.

0161 969 1199 [www.clos-o-mat.com](http://www.clos-o-mat.com)

## Fire safety meets design with ROCKPANEL®



Reducing the risk from fire is an increasingly important issue in the building industry. The new advanced features of the FS-Xtra grade from ROCKPANEL bring a fresh dimension to facade cladding design; combining high levels of fire safety with the broadest range of aesthetic finishes and RAL colours available on the market from a single manufacturer. Established

for their durability, versatility and variety, the standard Durable and Xtreme ROCKPANEL boards achieve European fire classification B-s2, d0 (in accordance with EN 13501-2). The low maintenance, optimum performance grade boards are available in the Rockclad, Chameleon, Woods and Metallics ranges.

01656 863210 [www.rockpanel.co.uk](http://www.rockpanel.co.uk)





# External platform lift – A3000

An extensive two year restoration programme is underway to restore and develop the Lion Salt Works site in Marston, to become a heritage visitor attraction centre. The work being undertaken is to restore the original salt works site to become a safe environment for visitors to view how the salt works has operated through time.

The aim of the restoration work is to retain the appearance of a working Victorian salt works, while maintaining a safe and accessible environment for visitors of all abilities. Three A3000 Hydraulic Platform Lifts were installed in three separate locations around the salt works site. The fact the A3000 is manufactured from stainless steel, which is then powder coated, made the A3000 a better choice for the salt works than other platform lifts manufactured from standard mild steel.

The first installation was an internal location in one of the pan houses. The pan houses are lightly constructed timber sheds covering the pans. They date back hundreds of years and had fallen into a state of significant disrepair. The A3000 is easy to



install with minimal disruption so was the perfect choice for installation into an existing building. The requirement was for the lift to accommodate two stops with a travel distance of just over 2m.

As space was not a major issue for this location the full size wheelchair passenger and attendant platform size of 1,100mm wide x 1,400mm long was chosen to give the best possible access to both wheelchair users but also parents with buggies and people with walking frames.

This installation was mirrored in the stove house, which is a slightly more substantial brick building but still an original building of the salt works undergoing restoration. The A3000 Short Rise Vertical Platform Lift incorporates a glazed, full height door at the lower level and a half height gate at the upper level, ensuring that passengers can enjoy a safe, secure and smooth ride.

The third installation at the salt works was to install an A3000 at an external location at the Red Lion Inn, which is to be the main part of the visitor centre, housing displays and also the management offices. The lift was given a smaller platform size, 900mm wide x 1,400mm long, due to existing site restrictions but still giving a good level of access to wheelchair users and those who find taking the stairs to the first floor difficult.

**Contact Axess4All on  
0116 2744040 or visit  
[www.axess4all.com](http://www.axess4all.com)**

## HOLD FIRE

SELF CLOSING DOOR SOLUTIONS

### CAREFREE PLUS:

A SWING FREE CLOSER WITH SPECIFIC SAFETY FEATURES FOR USE IN CARE HOMES AND SHELTERED HOUSING.

Carefree Plus leaves the door free and easy to use or leave open in normal operation and reverts to being a door closer on the activation of a fire alarm. Installed in over 200 care homes and the sheltered housing schemes of Bracknell, Basildon, Greenwich and Southwark.

- Anti-slam function - Removes risk of injury
- Anti drift function - Removes risk of wedging
- Meets BS 7273 Cat A operation - The safest possible actuation
- Robust slimline design
- Tested to BS 1155, Certifire approved
- Manufactured in the UK, 10 year guarantee



FOR MORE INFORMATION PLEASE VISIT **WWW.HOLDFIRE.COM** OR CALL **0800 111 6104**

## Liverpool Heart and Chest Hospital improve access with Axis



The ongoing refurbishment programme at the Liverpool Heart and Chest Hospital identified a set of emergency exit doors on the Holly Suite Cardiac Day Care Unit being regularly used as a delivery point for supplies and exit for waste materials. The doors were not automated, which made it difficult to move trolleys through the doorway and left them prone to damage.

Discussions with **Axis Automatic Entrance Systems** of Northampton led to the replacement of the old doors with a set of half glazed aluminium doors automated with Axis ax85 Universal swing door operators. These allow push button operation to open the doors from the inside of the building with a delayed action setting allowing ample time for users to pass through the doorway before they automatically close to maintain security and fire protection. From the outside door operation is initiated by a magnetic card reader which restricts access to authorised users.

The name ax85 comes from the 85mm height dimension of the unit making it one of the neatest systems on the market. The ax85 is approved as a hold-open system for fire protection barriers and can be used with various fire-protection profile systems.

0844 504 6525 [www.axisautomatic.com](http://www.axisautomatic.com)

## New BM TRADA video demonstrates the fire testing process



BM TRADA has updated its free video explaining the fire resistance testing process for passive fire protection products such as fire-resisting doorsets and fire penetration seals.

Aimed primarily at companies who are developing and manufacturing fire protection products, the updated video, *Fire Resistance Testing Explained*, takes the viewer through the entire fire testing process from specimen design and how to devise a fire test programme, to obtaining third party certification.

Using a live fire doorset test as an example, the video shows how products are prepared for testing and the range of measurements that are taken during the test. The film highlights typical failure criteria and explains the test evidence required to prove the performance of typical passive fire protection products. The video runs for approximately 20 minutes.

01494 569750 [www.bmtrada.com/technical](http://www.bmtrada.com/technical)



**FRONTIER PITTS**  
The Automatic Security Gate Experts

July/Winter Gate Lessons  
Sliding Gates available up to 35m wide  
Raising Speed Gates available up to 12m wide  
Hinged Gates available up to 20m wide

**GATE SAFETY WEEK**  
13-19 Oct 2014  
[www.gatesafetyweek.org.uk](http://www.gatesafetyweek.org.uk)  
DHF  
Specialist Gate Design

Also available Automatic Barriers, Road Blockers & Bollards,  
Manual Equipment & Pedestrian Controls. B&B 0193 441141 Auto-Terra Range  
[www.frontierpitts.com](http://www.frontierpitts.com) 01293 422800



## Latham's fire retardant plywood

**James Latham** is now offering LuminFirePro – a new fire retardant plywood Euro Class B – s1, d0 – through all nine of its nationwide panel depots. LuminFirePro panels are pressure impregnated with a humidity resistant, high temperature fire retardant chemical formulation based on Osmose FirePRO technology, which is then air or kiln dried to ensure these properties are maintained. This process creates a product which enhances safety in applications where fire protection is the first priority by offering improved flame spread reduction to Euro Class B – s1, d0 as well as decreased smoke development. The panels have been tested to BS EN 13501-1:2007 + A1:2009 fire classification of construction products and building elements achieving class B – s1, d0 as well as being certified for structural use according to EN 13986 under CE2+ system to guarantee full compliance with the Construction Product Regulation. Plus, products treated with Osmose FirePRO have been approved by London Underground for use in construction.



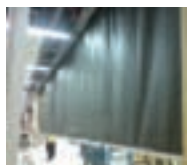


## ARMOURPOST LIMITED

Grilla shutter  
& steel doors



Insulated fire shutters



Steel doors

Armourpost specialises in the supply, delivery and installation of all types of rolling shutters, fire shutters, insulated fire shutters, insulated shutters, glazed shutters, smoke and fire curtains, steel doors, folding shutters, retractable security grilles, sectional doors, high speed doors, static bollards, telescopic bollards and security cabinets. For advice on your project, call us now on:

0191 478 7878 | [mark.spoors@armourpost.com](mailto:mark.spoors@armourpost.com) | [www.armourpost.com](http://www.armourpost.com)

## FIRERETARDANTUK

### FIRE retardant for WOOD

## HR PROF

- Eco Friendly
- Clear & Odourless
- Water Based
- Non Toxic
- No Solvents
- Apply with Brush or Spray
- Euro-class B-s1-d0
- Internal or External Use
- HR Prof Also tested to BS 476-6 & BS 476 part 7

Classification Reports & Certificates Pine, Spruce, Scottish & Siberian Larch, Western Red Cedar, Oak

T: 01691 791644 E: [sales@fireretardantuk.com](mailto:sales@fireretardantuk.com) W: [www.fireretardantuk.com](http://www.fireretardantuk.com)



## World first!

The world's first fire resistant revolving door has been custom made, designed and developed by Bauporte Doors Ltd.

Read the complete special:  
[www.bauporte.com/fire](http://www.bauporte.com/fire)



Bauporte Doors Ltd. | +44 (0)207 55 48 757 | [sales@bauporte.com](mailto:sales@bauporte.com) | [www.bauporte.com](http://www.bauporte.com)

## NoCO boiler offers better protection



The latest addition to **Sprue Safety Products'** expanding range of home safety solutions will offer an added level of protection against potentially lethal carbon monoxide (CO). Each year, dozens of people die or are injured as a result of carbon monoxide poisoning, but these incidents are

avoidable if appliances are regularly checked by registered engineers and working CO alarms located correctly to warn occupants of the gas' presence before it reaches dangerous levels. The noCO system provides the highest level of protection against carbon monoxide. In the event of a carbon monoxide leak, it will shut down the gas boiler.

02477 717700 [www.sprue.com](http://www.sprue.com)

## Schueco benefit from industry upturn



According to one of the leading aluminium systems suppliers **Schueco UK Ltd.**, the continuing upturn in activity in the UK building industry – particularly in respect of commercial properties – has led to an increasing demand for all types of Schueco UK fire-protection products. One of the few companies in the UK with a truly comprehensive range of fire-protection systems for facades, doors and windows, Schueco is constantly refining its offering to

ensure that, whatever the application, it can offer a complete solution at a competitive price. To complement its fire products, Schueco UK runs specialist training courses at its Milton Keynes HQ.

01908 282111 [www.schueco.co.uk](http://www.schueco.co.uk)

## Permeable car park 'avoids the gap'



With a focus on bringing permeable paving to one of its latest projects in Yorkshire, award-winning civil and structural engineering practice **BSP Consulting** has praised **Brett Landscaping** for its ingenious solution to the installation of a permeably paved car park within a new retail development. Brett Landscaping, a specialist in the manufacture and supply of permeable hard landscaping solutions, provided the necessary technical expertise to ensure that such a solution was possible. The car park, which services a new 28,000 sq ft 'eco-store,' has been laid using a combination of Brett permeable Beta Flow and Omega Pencil Edge. The design fulfils the environmental advantage of reducing the impact of flooding by providing a proven Sustainable Drainage System (SuDS), while providing a reduced chamfer paving block which enables shopping trolleys to glide over the surface with minimal wheel 'chatter'. The use of Beta Flow allows surface water to pass between each block and into the purpose designed sub-base beneath. This helps to reduce the risk of on-site flooding or overflow to neighbouring urban development. However, it was the recent addition of Beta Flow to the Brett permeable paving range which has helped to reduce the potential irritation to customers and trolley operatives while manoeuvring trolleys around the car park.

0845 608 0570 [www.brettpaving.co.uk](http://www.brettpaving.co.uk)



**Sustainable Drainage Centre**  
SuDS products and design solutions

## Sustainable Drainage Centre Ltd can offer you a comprehensive design service for a wide variety of Sustainable Drainage Systems (SuDS)

Services include design of:

- Soakaways
- Permeable Driveways and Pavements
- Balancing Ponds, Detention Basins and Lagoons
- Swales and Reed beds
- Rain Gardens
- Attenuation Tanks, Oversized Pipes and Box Culverts
- Flow Control Specification

We also carry out the following:

- topographical land surveys
- discharge of drainage, hydrological, hydrogeological and other SuDS related planning conditions
- full horizontal and vertical road design, including specification and construction details for private drives, APC spec drives and adoptable roads
- contours, site engineering and external works design
- detailed microdrainage calculations to demonstrate compliance with required storm return periods

01530 830150

[info@sustainabledrainagecentre.co.uk](mailto:info@sustainabledrainagecentre.co.uk)

[www.sustainabledrainagecentre.co.uk](http://www.sustainabledrainagecentre.co.uk)





# Hauraton systems installed at Whiteley Shopping Centre

The Whiteley Shopping Centre in Fareham, Hampshire, has over 29,700 sq m of retail and leisure space. Planned around a town square, it incorporates many landscaped areas and numerous pieces of public art. The £64 million shopping centre was jointly development and is now owned by British Land Company PLC and Universities Superannuation Scheme.

With the extensive use of natural materials, an effective drainage scheme and the incorporation of many energy efficient and sustainable features, the Whiteley Shopping Centre has achieved a BREEAM Excellent rating.

Conceived by architects Corstorphine+Wright as an open townscape, the shopping centre was built on levelled land that originally slopped down towards an existing car park and fuel station. With

extensive paved, concreted, resin bonded aggregate and asphalted areas, surface water drainage was an important consideration in the general landscaping of the site.

Aesthetic demands meant the surface water drainage for the paved square and its radiating pedestrian walkways had to be as unobtrusive as possible yet fully meet the drainage requirement. This was achieved by installing over 700m of Hauraton RECYFIX® STANDARD 100 slotted channels fitted with symmetrical stainless steel covers. Once installed, this system provides an unobtrusive, narrow line of slots in the pavement surface.

The coloured resin bonded aggregate surface used for parking bays behind the shops is drained by a RECYFIX® PRO 100 channel run fitted with



FIBRETEC® Class C250 HEELSAFE gratings. RECYFIX® PRO 200 channels fitted with G-TEC ductile iron Class D400 gratings were installed across the pedestrian access route to the bays. RECYFIX® PLUS 100 channels with 6mm slot ductile iron Class D400 gratings were installed to drain rainwater away from the sides of buildings.

**Contact Hauraton today on 01582 501380 or visit [www.hauraton.co.uk](http://www.hauraton.co.uk)**

## LEVATOMONO

### porcelain paver system

The Levato Mono porcelain paver system is the pinnacle of external raised flooring technology; enabling the specification of lightweight, slip resistant and attractive raised flooring solutions, combining incredible technical properties with uncompromising aesthetics; making them the ideal choice for commercial and domestic use alike.



- 20mm porcelain pavers 40x80 45x90 60x60 75x75 30x120 40x120 60x120
- 'Floating floor' – installation over single ply membrane and pool surrounds
- Eternal product – zero maintenance required – offering massive over-life savings
- Highly abrasion and stain resistant
- Highly slip resistant ; R11 and achieved up to +65 wet in the BS pendulum test
- Lightweight – 45kgs per m<sup>2</sup>
- High load bearing and impact resistance
- Timber & stone effects; 40+ finishes available
- Ideal for balconies, roof terraces and piazzas, for both commercial & residential use
- Completely non porous
- Fire & frost proof
- Height-adjustable support from 9mm up to 550mm
- Matching internal tiles

t: 0845 2700 696 e: [info@thedecktileco.co.uk](mailto:info@thedecktileco.co.uk)  
[www.thedecktileco.co.uk](http://www.thedecktileco.co.uk)

**dtc**  
 the deck tile co. ltd.

## Decseal provides police protection in Leeds



A new £34 million car park built as part of West Yorkshire Police's new divisional headquarters in Leeds has been protected using **Stirling Lloyd's** dual function Decseal waterproofing and anti-skid system. Some 4,182 sq m of the advanced resin-based Decseal system has been

applied throughout the decks of the two-storey car park, which, with almost 400 spaces, provides parking for the force's operational vehicles as well as for staff and visitors. Proven in numerous car park applications, the fully reinforced Decseal system incorporates a tough, waterproofing membrane with no vulnerable joints.

01565 633111 [www.stirlinglloyd.com](http://www.stirlinglloyd.com)

## Kill bills with Total Home Environment



With gas and oil prices increasing year on year, what could be better than to offer your purchasers a truly energy efficient home that will kill bills? Obviously you can insulate the building fabric up to the hilt, and then **Total Home Environment (T.H.E)** can install air source heat pumps for 350 per cent efficient heating and can provide heat recovery ventilation – to ensure that the VOC's in the house get expelled, but the heat

stays in. T.H.E can complete room-by-room heat loss calculations to work out the best combination of systems for the homes you build. For more information, visit T.H.E's website.

## Grasscrete often a flood defender



Today's wide choice of grass paving systems means that specifiers need to be more informed when selecting a product. With more than 40 years' industry experience, **Grass Concrete Ltd** has a long established history of installations from the smallest urban drainage to the largest flood defence system both in the UK and internationally.

Grasscrete is uniquely placed to work closely with engineers and architects to recommend appropriate systems as well as advise where there is an inappropriate use of a particular system.

Given the demands for sustainable urban drainage, grass reinforced systems can permeate at up to 90 per cent the rate of natural grass; a safe lag time can be achieved. Lag time is beneficial in the prevention of flooding and can be extended by introducing an underlying drainage blanket across the full extent of the paved area.

For urban areas grass paving systems have an increasing role to play in the development and sustainability of harmonised urban landscapes.

Talk to the experts to consider your options, whether that is in situ concrete, precast concrete or plastic systems.

01924 379 443 [www.grasscrete.com](http://www.grasscrete.com)



# addagrip<sup>TM</sup>

Manufacturers and suppliers of quality resin surfacing systems

## Resin Bound Porous Surfacing

Attractive • Hard wearing • Seamless  
Contemporary • Low maintenance  
SuDs compliant

Perfect for Car Parks, Access Roads,  
Driveways, Swimming Pool Surrounds,  
Courtyards, Paths and Patios.

For more information visit our website  
[www.addagrip.co.uk](http://www.addagrip.co.uk)

or contact us Tel: 01825 761333  
email: [sales@addagrip.co.uk](mailto:sales@addagrip.co.uk)



[www.addagrip.co.uk](http://www.addagrip.co.uk)

A member of the **TERRACO** Group



# Hauraton surface water drainage system installed at new automotive showrooms and servicing centre

Developed by CJ Automotive Group, the £9.5 million Lightcliffe automotive dealership showroom complex and servicing centre is the first in Wales to have all the Volkswagen Group car and commercial vehicle brands; Volkswagen, Audi, Skoda and Seat on one site.

Nearly 700m of Hauraton RECYFIX® PLUS 100 Type 010 surface water drainage channels, factory fitted with ductile iron HEELSAFE 6mm slot grating to loading Class D400 were installed at the new VW Group dealership at the Point, Llandudno Junction, Wales.

Each RECYFIX® PLUS channel component is moulded from 100 per cent recycled polypropylene (PP) with galvanised steel pressings permanently fitted along the exposed top edges. Channels



supplied to the VW site were factory fitted with 6mm slot HEELSAFE ductile iron gratings. The gratings on both channels and access points being treated with a corrosion resistant coating (KTL). This treatment is absorbed by the ductile iron,

allowing Hauraton to give a lifetime guarantee against rusting, alleviating any concerns raised by consulting engineers Rolton Group.

The main contractor Watkin Jones Group commenced work on this project in 2013, handing over the finished prestigious complex in May 2014. The new showrooms aim to provide 200 new job opportunities to the Llandudno area.

Ian Burton, the Hauraton project engineer was pleased that ground workers found the RECYFIX® PLUS easy to install: "With each one metre channel assembly only weighing 10.9kg, one man could lift and position each unit during the installation phase."

01582 501 380  
www.hauraton.co.uk

www.buildingconstructiondesign.co.uk

## LAUNCH ALL NEW WEBSITE FOR 2014



### REGISTER ONLINE FOR...

Digital magazine  
Newsletter • Daily digests

www.buildingconstructiondesign.co.uk

## 'ENERGY EFFICIENCY' the number 1 thing that modern homebuyers want\*

we recycle  
heat and...



we generate  
it for free!

Our heat recovery ventilation units recycle up to 92% of the heat within a well insulated home. We recover even more heat with our heat pump ventilation systems. Should we also mention that they can be reversed to provide cooling, something else that is a must in a newbuild?\*

Source: \*lamudi.com \*\*yoursmarthome.co.uk

We do more with air...

total home  
environment

like totalhomeenviro link total-home-environment-ltd  
0345 260 0123 follow @TotalHomeEnviro www.totalhome.co.uk



## THE NEW FOCUS SB SMOOTHIE®

### The first truly flush-mounted electrical accessory

The Focus SB Smoothie® is a new and exciting wall mounting system that gives a truly flush-mounted electrical plate. Its specially engineered mesh provides a firm key for plaster, a faceplate is then painted or wallpapered to match the surrounding wall so that the plates almost disappear. Call us today for further details.

