

selfbuilder & homemaker

March/April 2015

www.sbhonline.co.uk

FEATURES IN THIS ISSUE:

Bathrooms & Wetrooms
Fires & Fireplaces
Roofing (Inc. Green Roofs)
Water & Damp Proofing
Timber & Joinery Showcase
Dining Rooms Interior Showcase
Grand Designs Live Show Preview

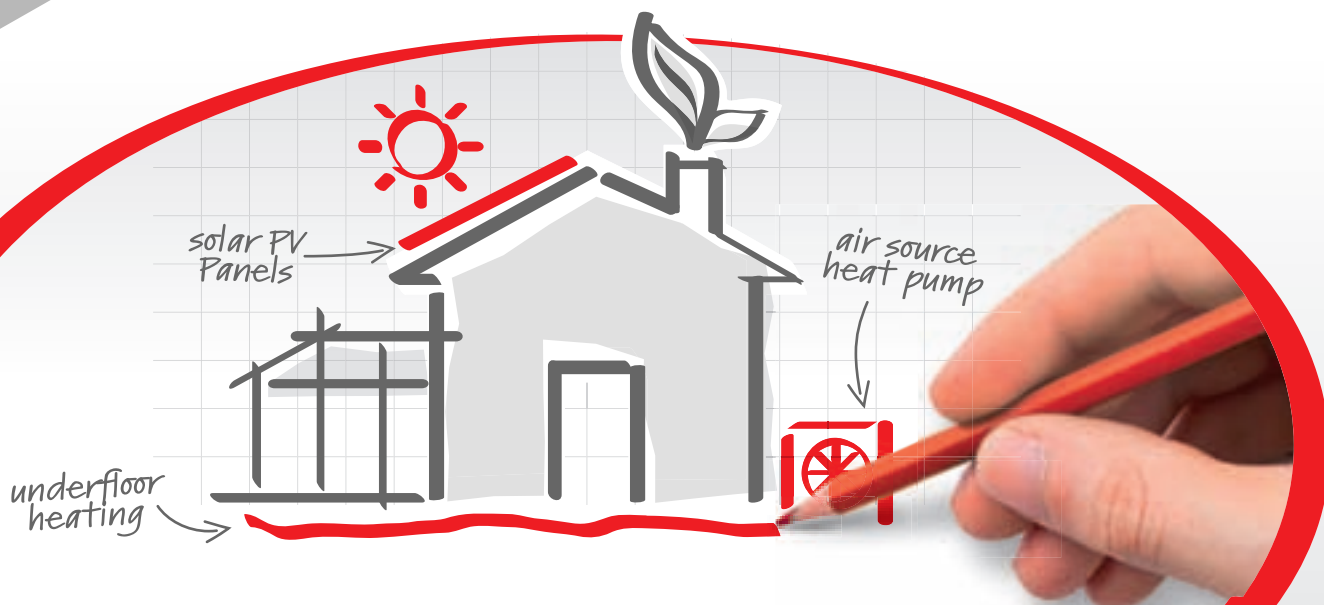
ECO & SUSTAINABLE PRODUCTS SHOWCASE



PLANNING • DESIGN • CONSTRUCTION • INTERIORS



the **underfloor heating** store



affordable luxury for your dream home!

- ✓ UNDERFLOOR HEATING
- ✓ ADHESIVES & LEVELLERS

- ✓ SOLAR PV SYSTEMS
- ✓ AIR SOURCE HEAT PUMPS

- ✓ THERMOSTATS
- ✓ WET ROOM KITS

...it's what's underneath that counts!

prowarm™
WATER UNDERFLOOR HEATING



from **£409.99**
INC VAT

SOLAX
SOLAR PV KITS



INSTALLATION AVAILABLE
subject to site survey

from **£1999.99**
INC VAT

SAMSUNG
AIR SOURCE HEAT PUMPS



from **£2299.99**
INC VAT

Everything you need under one roof! Discounts available when you buy online, enter this code at checkout: **HBDISCOUNT**

as SEEN on TV...



www.theunderfloorheatingstore.com

call today and quote this Ad for discounts

0845 868 6910



FREE NEXT DAY DELIVERY

march/april 2015

contents

18



features

18

BITTEN BY THE SELF-BUILD BUG – JASON'S JOURNEY

Jason had already completed a self-build project for his family in 2001 but strict regulations meant the house ended up not being the one he wanted to create. However, a few years later Jason spotted a plot of land and he couldn't resist trying his hand at self-build once again

38

TIME TO PAMPER AND RELAX

Often neglected, the bathroom should be a place of relaxation. Hurlingham – The Bath Company helps to make it special once again

51

WOOD WORKS

Lynda Taylor, managing director of Diligence International discusses the benefits of burning logs

57

A PRACTICAL AND BEAUTIFUL LIVING SURFACE

Installing luxury wood flooring gives an opportunity to create a unique character, style and add warmth to a space. It can last a lifetime and increase the property value and saleability of a project as Director of Ultra-Interior Ltd, Darren Beech, explains

64

GREEN ROOFING – NOT JUST A FANCY LAWN

Green roofs, a planting scheme established on a roof, structure or wall, can bring not only great aesthetic qualities to a building but a host of environmental, social and economic benefits as well. It's also not just the reserve of large scale projects such as the Olympic Park that can benefit from installing green roofs, but the domestic house too, as the NFRC explains

72

THE POTENTIAL FOR ADDITIONAL USEABLE SPACE COULD LIE BENEATH YOUR FEET

Basement & Drainage Systems explains the key points to dealing with water and damp proofing

product round up

Appointments & News	33
Grand Designs Show Preview.....	34 - 37
Bathrooms & Wetrooms	40 - 41
Building Products & Services	41 - 42
Doors, Windows &	
Conservatories	42 - 49
Drainage & Plumbing	49
Eco & Sustainable Products	28 - 33
Finance & Insurance	49
Fires & Fireplaces	50 - 56
Floors & Floor Coverings	56 - 58
Glass & Glazing	59
Heating & Renewable Energy	59 - 60
Insulation	60
Kitchens & Appliances	60 - 62
Landscaping & External Finishes ..	62 - 63
Lighting & Electrical	63
Pools & Spas	63
Roofing (Inc. Green Roofs)	64 - 66
Stairs, Balustrades & Balconies ..	66 - 67
Timber & Joinery	68 - 71
Water & Damp Proofing	72 - 73

also in this issue

4

INDUSTRY NEWS

16

DINING ROOMS INTERIORS SHOWCASE

28

ECO & SUSTAINABLE PRODUCTS SHOWCASE

35

GRAND DESIGNS LIVE SHOW PREVIEW

46

EDITOR'S FOCUS

69

TIMBER & JOINERY SHOWCASE

74

CLASSIFIED & DIRECTORY



Cointronic House, Station Road,
Heathfield, East Sussex, TN21 8DF

Advertising & administration

Tel: 01435 863500
Fax: 01435 863897
Email: info@netmagmedia.eu
Website: www.sbhonline.co.uk

Editorial features

Tel: 01435 863500
Fax: 01435 863897
Email: lesley@netmagmedia.eu

Press releases

Email: editorial@netmagmedia.eu

Managing Director:

Simon Reed

Sales director/Publisher:

Lesley Mayo

News editor:

David Mote

Editorial & production assistants:

Shelley Collyer & Roseanne Field

Senior sales executive:

Sheehan Moir-Edmonds

Display sales:

Nathan Hunt

Sales executives:

Suzanne Easter & Kim Friend

Circulation/reader enquiry service:

Jane Spice



Cover image of the self-build case study © SIG360 Technical Centre. See pages 18 - 27 for more.

Subscription costs just £18 for 6 issues, including post and packing. Phone 01435 863500 for details. Individual copies of the publication are available at £3.25 each inc p&p.

No part of this publication may be reproduced or transmitted in any form or by any means, electronic, mechanical, including photocopying, recording or stored in any information retrieval system without the express prior written consent of the publisher. Although every effort is made to ensure the accuracy and reliability of material published in Selfbuilder & Homemaker, the publisher can accept no responsibility for the claims or opinions made by contributors, manufacturers or advertisers. Editorial contributors to this journal may have made a payment towards the reproduction costs of material used to illustrate their products. The manufacturer of the paper used within our publication is a Chain-of-Custody certified supplier operating within environmental systems certified to both ISO 14001 and EMAS in order to ensure sustainable production. Printed in England



editor's letter



This issue of SbH sees us 'bringing home the bacon'. Twice - in fact. The good news is that the 'Build and Custom Housebuilding Bill', sponsored by Richard Bacon MP, has cleared the first hurdle of its journey through The House of Lords and is on its way to be rubber stamped as an Act of Parliament.

It is also heartening to see that even London recognises the long-term benefits of self-build with Gareth Bacon, the Conservative regeneration and budget spokesman on the London Assembly, nailing his colours to the Capital's need to allocate disused land for small developers.

And small is also best when it comes to Labour's pre election pledges, with Emma Reynolds promising small and medium sized homebuilders a fairer crack of the whip when it comes to allocating smaller sites - if they win the election that is.

Self and Custom Build is finally on the stage. It will be interesting to see what part it is allowed to play in creating the homes the UK so desperately needs.

Self-Build and Custom Housebuilding Bill close to Royal Assent

In the last issue of *Selfbuilder & Homemaker* we reported that the Self-Build and Custom Housebuilding Bill, sponsored by Richard Bacon MP had cleared the first hurdle of its journey through the House of Lords. The Bill has now been approved a third reading by the House of Lords.

This means the Bill, which will be the first legislative step in the government's Right to Build initiative, only requires the rubber-stamping of Royal Assent before becoming an Act of Parliament.

Rightly pleased that his private members bill passage has been so successful

Richard Bacon said: "Although many people in the UK would like to build their own home or commission a builder to construct exactly what they want, building your own home is still seen a difficult option which is the preserve of a small minority who are either extremely affluent or highly eccentric. This is what needs to change.

"My Bill will help us reach the point where choosing to build your own home - or to have someone build a home for you that fully meets with your personal choices as a customer - is a completely normal and routine part of the housing market."

Grand Designs Live London
2 - 10 May, London
www.granddesignslive.com

Eco Technology Show
11 - 12 June, Brighton
www.ecotechnologyshow.co.uk

Northern Home Show
3 - 5 July, Manchester
www.northernhomeshow.co.uk

Western Home Show
11 - 13 September, Malvern
www.westernhomeshow.co.uk

100% Design
23 - 26 September, London
www.100percentdesign.co.uk

London Homebuilding & Renovating & Home Improvement Show
25 - 27 September, London
london.homebuildingshow.co.uk

Amount of land sold by the government surpasses the original commitment



Eric Pickles

The Communities Secretary Eric Pickles has announced that enough unused public sector land has been released to build over 103,000 new homes, some of which it is hoped will be self-/custom-built properties.

The amount of land sold by the government surpasses the original commitment set by the Prime Minister, and is expected to increase.

The government is now calling on councils and developers to help turn this 'new' land into housing as soon as possible. It is also urging local authorities to follow the government's example and sell their redundant sites and buildings.

Explaining how this initiative forms part of government thinking, Eric Pickles said: "Housebuilding is at the heart of the government's long-term economic plan. That's why, rather than leaving surplus public sector land idle, we are putting it to good use by releasing it to build new homes across the country.

"This is part of wider efforts that have got

Britain building again, leading to the delivery of 700,000 new homes since the end of 2009. I now want to see councils following Whitehall's example and explore what they can do to release land and deliver new homes and savings for local taxpayers."

The amount of land sold by the government surpasses the original commitment set in June 2011 and there are plans to release land with capacity for 150,000 homes between 2015 and 2020.

The Housing Minister, Brandon Lewis added: "Housing starts are at their highest annual total since 2007, but it's clear we need to maintain this momentum and build the homes communities want and need. That's why for the last four years we've pulled out all the stops to release formerly-used surplus public sector land for housebuilding – meaning we have now exceeded our own target."

The land released to date comprises of 899 sites across England, and includes:

- Ministry of Defence – enough land for 38,661 homes, released ahead of schedule
- Homes and Communities Agency – enough land for 18,307 homes
- Department of Health and NHS – enough land for 13,039 homes
- Department for Environment, Food and Rural Affairs – enough land for 11,675 homes
- London Legacy Development Corporation – enough land for 6,321 homes
- Department for Transport – enough land for 4,653 homes
- Public Corporations, such as Crown Estates – enough land for 4,113 homes
- Greater London Authority – enough land for 2,652 homes
- Ministry of Justice – enough land for 1,804 homes
- Other smaller departments – enough land for 1,967 homes

comment

Self-build – a Capital idea

By Gareth Bacon, the Conservative regeneration and budget spokesman on the London Assembly

It is a fact that the majority of housebuilding in this country, for first-time buyers or otherwise, is delivered by large developers. This is not in itself a bad thing, but it does indicate that housing strategies leave little room for those who want to build their own home. In London, 70 per cent of new market homes were built by just 23 developers last year.

As larger developers are often unwilling to release more than 100 homes per site to the market per year, a market dominated by large developers poses a direct risk to the level of housing supply. Additionally, incentivising self-build would both improve consumer choice and increase local employment.

Self-build is not an impractical or starry-eyed idea that is great in theory but undeliverable in practice. Self-build figures from Europe demonstrate that such a step-change is possible and highlight just how far behind Britain is in comparison. It is estimated that only ten per cent of new homes in the UK are self-built compared to 30 per cent in the Netherlands, around 50 per cent in France and Belgium, 60 per cent in Germany and 80 per cent in Austria.

Clearly, we have some catching up to do. There are, however, two key problems

facing prospective self-builders in London: the availability of small plots for development and the costs of purchasing land in the Capital.

The report 'Gap in the Market', recently recommended that disused public sector land, like that formerly used for old laundries, garages and store sheds, should be released for self-build development. This report estimates that as many as 15,000 homes could be built on this land.

This would tackle the issue of finding suitable land. If disused public land was to be made available to smaller developers and self-builders this would significantly increase the supply of homes, thus ensuring that many Londoners can build and own their own homes. This is particularly relevant to London, where house prices are so high in relation to wages. Indeed evidence suggests that a self-build unit could be completed for as little as £50,000.

Then there is the question of land values.

The Mayor of London, Boris Johnson, has for the first time announced the creation of a self-build pilot scheme for London. This scheme, which has initial funding of £5m, will seek to increase development on infill and disused public sector land.



Gareth Bacon

Current estimates suggest that 150 self-build homes could be built using this fund, which would be a meaningful shot in the arm for London's burgeoning self-build market. Additionally, the funding will mostly be used for land acquisition and building costs, ensuring that the scheme helps to remove the second barrier to self-builders.

London needs approximately 50,000 new units every year just to match demand. Given this, there is every reason to support the emergence of a self-build sector in the Capital to supplement larger developments. Mayor of London Boris Johnson, supported by the Conservatives on the London Assembly, are leading the way in supporting potential self-builders.

NEW CATALOGUE!

GET YOUR
FREE
COPY TODAY



ORDER BY 7PM MON-FRI OR 4PM SAT & SUN
FOR NEXT DAY DELIVERY TO HOME OR SITE
NOW DELIVERING SUNDAYS!

Reader
Enquiry
101

SCREWFIX



CALL FREE
0500 41 41 41

Mobile friendly
03330 112 112



CLICK
SCREWFIX.COM



OPEN 7 DAYS
7AM - 8PM WEEKDAYS

Shell homes for 'self-finishers'

Boutique developer and executive committee member of the National Association of Self-builders, Inhabit, hopes to be able to offer new homeowners 'self-finish' property shells. Supported by The Mayor of London's Custom Build Fund, which is providing the majority of the loan required to deliver the scheme, the unique homes have been designed to allow occupiers to finish their homes inside as they wish. This should make the homes better value, more sustainable and designed internally to meet the specific needs of their owner.

Currently at the public consultation and planning stage the Blenheim Grove project will be five terraced, custom-build shells on a site once occupied by five Victorian homes and only minutes from Peckham Rye station in London.

Designed by Poulson Middlehurst Architects the scheme borrows elements from local Georgian terraced houses but creates a modern facade with a series of bays and sunken terraces. Internally the homes embrace the award winning Solidspace split level design system, which provides living space ranging from 1,837 to 992 sq ft.

All homes have been designed with roof terraces, a study area and the two larger properties also have a private rear courtyard.

The buildings will be constructed to create a structurally secure and weather tight shell, which will include internal floors, stairs and structural load bearing walls. The windows



and external doors are also fitted, and all the homes will be sold with a structural warranty.

Purchasers will take over the property as a shell and then finish their home following their own internal design needs. The new homeowner can fit out their home to satisfy their bespoke specification at the speed their personal time and budget can support.

Inhabit Business Development Manager,

Olivia Horner, explained: "By offering these options we believe buyers get better value than buying a Victorian house in the area, gutting and rebuilding it. Self-finish means they will pay less stamp duty, they won't have to pay any VAT on the finishing and they will live in a brand new home, which embraces cutting edge design and enjoys real thermal efficiency."

Political leaders commit to sustainability agenda at Ecobuild

Over 40,000 built environment professionals gathered last week at Ecobuild; the world's market place for green building and witnessed UK political leaders pledge investment for growth across the sector.

Over 800 leading companies across the sustainable design, construction and energy sectors showcased thousands of innovative products and solutions, signifying that the sector is once again experiencing vibrant growth.

Climate Change Secretary Edward Davey MP pledged a £300 million cash injection as part of a new Fuel Poverty Strategy. Davey made the pledge as the Lib Dems made a manifesto pledge to spend more than £2 billion a year on a "green homes revolution".

Keynote speaker Lord John Prescott called for cross-party and global unification to

tackle the issue of Britain's extreme weather.

Prescott said: "Sustainability is the new industrialisation and the 'big key' to a better type of economy that doesn't poison the world." He joined the debate to deliberate whether there is a need for a national environmental resilience plan. He said: "Three leaders agreeing [on climate change strategy] give us a good chance."

Acting as a catalyst for change to sustainability policy and practice ahead of the general election, Ecobuild also hosted a cross-party political debate, as Davey joined Green Party leader Natalie Bennett to tackle the future for low-carbon electricity.

Ecobuild also hosted a new feature in partnership with retail giant M&S. The Big Innovation Pitch saw 40 companies whittled down to just a few who pitched to M&S and its expert judging panel live in the

Ecobuild Arena. Winners Endo Enterprises, creators of Endothermic; a central heating additive independently proven to save 15 per cent on heating bills, will now explore with M&S the possibility of applying its solution to the retailer's estate.

Alison Jackson, Group Director of Sustainability & Construction, Ecobuild said: "Ecobuild acts as a true barometer for the sustainable built environment sector. Hosting more architects, contractors, specifiers than any other event, we believe Ecobuild 2015 has firmly cemented the event's position as the sustainable design and energy marketplace for new build, refer, commercial and domestic buildings. This year's Ecobuild was the most vibrant to date, borne out by significantly higher rebooking levels than last year".

Charles Church support government's self-build initiative

Charles Church North East is championing custom build and has allocated a quarter of its Newcastle Great Park development as self-build plots, which are being sold to buyers wanting to build their own home.

Last year Charles Church welcomed the then planning minister Nick Boles' announcement that the government recognised self-build as an affordable way for people to create their perfect home.

Mr Boles' comments were the start of government's Right to Build initiative, which provides a £150million fund to help kick-start self-build across the country.

Charles Church North East, deputy managing director, John Eynon, explained: "We believe there is a growing demand for people to build their own homes, not just as a cost-effective way of owning their own home but as a means of living in their dream home."

"Self build can appeal to a wide cross-section of people including youngsters priced out of the first-time buyers' market, people wanting a family home that is not just perfect for toddlers but for teenagers as well, and couples wanting to retire to the home of their dreams."

The development's self-build plots come in five different sizes with all the essential work carried out. This includes providing road access, foul and surface water drainage and utilities including water, gas, electricity and telecommunications.

John concluded: "People have the freedom to design and construct their own home, which can be up to three storeys high, while still working within a design framework. And while the framework encourages high quality architectural design and protects the visual amenity of the site, it won't inhibit their innovation and individuality."

"The 39 serviced self-build plots are the result of an inspiring initiative by Newcastle City Council. It seems we are leading the way up north when it comes to individuality and meeting people's desires to create the perfect home."



first-time buyers

First-time buyers given first step to a brand new home

Cherwell District Council are helping first-time buyers, who are happy to finish off their home, get a foot on the property ladder. By undertaking some of the final build work themselves, residents will receive a discount on their share of the new home's price.

Potential homeowners who are interested in finishing off their own homes can register an interest in one of the Council's award-winning Build! Projects.

Cherwell's lead member for housing, Cllr Debbie Pickford, explained: "The Build! project is all about turning redundant brownfield sites into affordable housing opportunities for our residents. We know buying a house can be expensive, especially for first-time buyers, so we want to make the dream of buying a home a reality again. By undertaking some of the work themselves, residents not only have the incentive of a cash discount but they get the added benefit of being able to finish and decorate their home to their own

individual tastes.

"Whether it's through shared ownership or outright sale, we have plenty of options available to help get that all important first foot on the property ladder. What's more, we offer training to help people complete their homes to a top standard, which will provide them with valuable DIY and home improvement skills for life."

Cherwell currently has renovation and new build projects taking place across the district, with the majority of homes available in Banbury and Bicester.

In Banbury, 16 homes will be built at the site of the Orchard Lodge Care Home next to Banbury Police Station. The homes will be a mixture of two and three-bedroom houses available on a shared ownership basis.

In Bicester, the first shells have already been completed at Newton Close where 21 two and three-bedroom homes are being marketed on a shared ownership basis.

At each of the developments homes will be completed to a shell standard, at which point the new owners can complete the work. The amount of work will vary at each site and will range from decoration and the installation of kitchens and bathrooms to finishing the entire unit's interior. This work could include completing internal walls and staircases to installing all of the heating, plumbing and electrics.

Everyone who is approved for a home will be offered the opportunity to undertake a training course with ACE Training in Kidlington, which will teach participants the skills they need to undertake the final works.

In recognition of their unique housing projects Cherwell's housing, regeneration and development team were presented with the award for the Best Council for Self/Custom Builders at the annual Build It awards in Swindon.

Order by 8pm. Get it Next Day!



For a huge range of stylish door and window hardware at low trade prices, **call today** for your **FREE** catalogue!



UK's Biggest Range



Minimum 5 Year Guarantee



Order by 8pm get it Next Day



Free Returns



0808 168 28 28

IronmongeryDirect.com



CHECK OUT OUR MOBILE WEBSITE



Text: ZY8168Z to 80800 FREE
followed by your name, address and email.

Reader Enquiry
102



IronmongeryDirect

MASTERS OF OUR TRADE

DOOR FURNITURE • WINDOW & JOINERY HARDWARE • SLIDING DOOR HARDWARE • HINGES • DOOR CLOSERS • FIRE CONTROL • SIGNS • LOCKS LATCHES & SECURITY • CABINET FURNITURE • SHELVING & STORAGE • BOLTS & STOPS • SEALANTS & ADHESIVES • SCREWS & FIXINGS

Why not **kick start your DREAMS**
... it may be easier than you think!

Bi-fold doors
available in:
aluminium, hardwood
timber, aluminium/timber,
PVCu, glass/aluminium,
glass/timber &
glass/glass

QUALITY BESPOKE BI-FOLD DOORS DIRECT FROM THE UK'S ONLY SPECIALIST MANUFACTURER

Not sure who to turn to? How long it takes or what you require!

Look no further, we survey, manufacture and install

All covered by FENSA registration in less than three weeks.

Showrooms: The Folding Sliding Door Company, Bradford BD5 8ER.

The National Self Build and Renovation Centre (Stand TV 91)

Lydiard Fields, Great Western Way, Swindon, Wiltshire SN5 8UB.

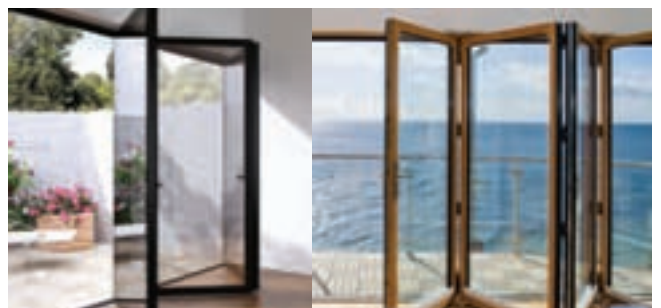


Reader
Enquiry
103

0845 644 6630

www.foldingslidingdoors.com

sales@foldingslidingdoors.com



The  **Folding Sliding**
Door Company

Self Build Live... bringing self-build to life this spring

Self Build Live will include a series of unique events tracking the build of Potton's all-new Passivhaus show house. Work will commence this spring at the Potton Self Build Show Centre in St Neots, Cambridgeshire where four show homes already reside on the site. Events open to the public will allow 'access-all-areas' to a live build project, giving self builders an opportunity to visit the site at various stages throughout the build and see the new show house come to life.

Potton were given the go-ahead from the planners for the contemporary new show home which is the UK's first-ever Passivhaus show home. The new addition to Potton's show centre will contrast the Gransden show home which is a very traditional property from Potton's heritage range.

Potton Marketing Manager, Fae Perkins said: "We are really excited to launch Self Build Live as it's the first event of its kind. We offer various events and courses through our Self Build Academy® but this event is unique

in that it allows aspiring self builders to re-visit at each stage, allowing them to truly experience how a self build would come together. We will intentionally slow the build programme down over a 12-month period to allow visitors the opportunity to access the project from groundworks through to finishing touches in regard to interior design.

"We have some top brands contributing to the build so the events will offer education across a vast range of topics, from energy efficiency to kitchen design. We hope to see as many people as possible joining us at Self Build Live events, as our mission at the academy is to educate and inspire the next generation of self builders."

For invites and information relating to Self Build Live please register at: www.selfbuildacademy.co.uk/live

Potton also run various other courses, seminars and workshops throughout the year to benefit self-builders. On 24 April, *An introduction to an energy efficient self build with*

Potton will be held at Green Dragon Rare Breeds & Eco Farm in Buckinghamshire, in-situ of a Potton Barn. It's designed for those who need a helping hand with where to start with a self-build, covering how to find a plot of land, finance and designing a home.

Another option is a course to help with the design and construction of an energy efficient home, held on 9 May at the Potton Self Build Centre. It will cover topics such as considering the site and planning, the envelope and thermal mass, heating and insulation.

Potton also holds a series of four courses as part of its Self Build Academy®. These courses run repeatedly throughout the year and are designed for those looking to build a timber frame home. The series covers the whole process of a self-build, from the beginning stages right up to the completion.

For more information on the above courses (including booking details) and a full list of upcoming events and seminars, please visit: www.selfbuildacademy.co.uk/courses-events

www.ecotechnologyshow.co.uk

"The premier event for sustainable energy, build, transport, innovation and resource efficiency"

Choose from over 70 Keynotes, Panels and Talks providing practical ideas for visitors covering legislation, funding, incentives and major discussion points on energy management, build, water and waste, transport, technology & resource efficiency

Over 140 exhibitors form the show floor, which include providers of energy management, build & retrofit, transport, technology & resource efficiency services & solutions

The Communications Hub where you can get a quick answer to questions from an expert

The Eco Technology Show provides the perfect opportunity for the public sector, business owners, managers and trade to meet the experts and find the products & services they need to deliver genuine long term benefits to their business, city & community



ETS 2015

ECO TECHNOLOGY SHOW

11th - 12th JUNE 2015

THE AMEX STADIUM, BRIGHTON, UK

[REGISTER NOW FOR YOUR FREE TICKET AT WWW.ECOTECHNOLOGYSHOW.CO.UK](http://www.ecotechnologyshow.co.uk)



AN INSPIRATIONAL EVENT ON A **GRAND SCALE**

GRAND DESIGNS **LIVE** LONDON

2 – 10 MAY • EXCEL



INTERIORS
TECHNOLOGY
KITCHENS
BATHROOMS
GARDENS
VILLAGE
BUILD



2 – 10 MAY 2015 • EXCEL LONDON

SAVE 50%
2 TICKETS FOR £20

QUOTE **SBH20**

CALL OR BOOK ONLINE

0844 854 1348

www.granddesignslive.com

Sponsors



Headline sponsor



*T&Cs £1.70 transaction fee applies, must be booked by 24/04/2015, Saving based on door rate, valid for anyday. Standard admission tickets only.
Organised by Media 10 Ltd. Grand Designs is a trademark of FremantleMedia Limited. Licensed by FremantleMedia Limited. www.fremantlemedia.com

£5 million pledged for self-builders

Brian Kilroy, Business Development Manager, BLP Insurance, welcomes the Mayor of London's announcement to pledge £5 million of funding for self-builders' construction costs in London and says that local authorities need to lend a helping hand:

The whole industry – builders, tradesmen, materials manufacturers and suppliers – should be grabbing the horns of this and getting behind it as an initiative to bolster much-needed growth across the whole construction industry. If managed well, it could go a long way to helping the sector get moving again.

We applaud any initiative that makes it easier for aspiring self-home builders to fulfil their ambitions. The recession put many people off making such a large investment of time and money in their home and with many lenders shying away from the self-build market access to funding was hard to come by. However, on its own, a £5 million pledge is not enough and more needs to be done by the wider lending community to help fund and drive this crit-

ical sector but also by Local Authorities, who hold the planning strings, to make sure self-builders get the support they need to contribute to the house-building market.

This additional funding should give aspiring self-builders a foot on the ladder and help those who would otherwise struggle to save for a deposit as well as affording construction costs. It is a step in the right direction and if it takes off, we would like to see more funding pledged across the country to allow others access.

Local authorities need to lend a helping hand

Local Authorities now have a duty to step up their game and if they play it right, they can use it as an effective strategy to help hit their housing targets. We've seen some movement in the Private Rented Sector, but Local Authorities also need to recognise private developers and the burgeoning self-build and custom build markets.

Self-build has gained more government support in the last year and local authorities have started to get behind the market by relaxing planning rules and regulations to some degree. This is a good start, but we desperately need measures that are more tangible to help us to see more projects coming to fruition.

Building your own home is a big project to undertake but the rewards can greatly outweigh the hoops that homeowners need to jump through to make it happen. Self-building provides the opportunity to build the perfect home to suit your lifestyle and put your own stamp on something and help is at hand to guide you through the process.

A recent survey conducted by BLP Insurance found that 55 per cent of homeowners would be keen to undertake a self-build project, a five per cent increase since 2013. 57 per cent of those homeowners who would consider building their own home blamed lack of available funding as the biggest thing stopping them from getting started.

Government fund to support thousands more custom builders

The government and Housing and Planning Minister, Brandon Lewis, continue to support custom builders with a multi-million pound fund to help custom build projects get off the ground.

The minister announced that the next phase of a £150 million fund is now open to bidders. It will create up to 10,000 so-called 'serviced plots' – land prepared for housebuilding, and connected to utilities such as gas and water, so builders can go straight in and build.

The average self-build takes two years – but those using serviced plots can cut this by up to a year.

Mr Lewis said that more people want to build their own home and today's move will help further unlock the "massive potential" the custom build industry has to expand.

Housebuilding is an important part of the government's long-term economic plan, with custom build a key part of that.

The custom and self build industry currently accounts for around 10,000 new

homes every year – but the government is backing industry-led efforts to double that by 2020.

The £150 million fund is open to small builders and community groups as short-term loans to help get the land ready for housebuilding. The land can then be sold as individual plots to people looking to build their own home.

Mr Lewis said he was determined to ensure as many people as possible could fulfil their custom-build ambitions.

news

government

Political parties set out plans for smaller housebuilders

The Labour party plans to help smaller housebuilders by launching a "Help to Build" scheme if elected in May.

Speaking at a pre-election debate, organised by the Federation of Master Builders, the shadow housing minister Emma Reynolds revealed that Labour would introduce an initiative for SMEs, which would allow them access to lower cost bank lending, backed by Treasury guarantees.

Reynolds announced the initiative alongside

other measures that Labour would introduce to assist smaller housebuilders. These include encouraging local authorities to allocate smaller sites, and introducing fast-track planning for schemes of less than ten units.

Speaking just before the debate, the housing minister Brandon Lewis also said that housing was at the centre of the Conservative party's economic plan. He emphasised the need to change commonly held perceptions of the housebuilding industry to encourage

young people into the sector. He said: "Housebuilding has a muddy boots image, but it's a modern, forward thinking industry. We need to attract the next generation."

Commenting on Custom Build plans he suggested new initiatives: "Could hold huge business potential for smaller housebuilders. I'm optimistic for the future of the housing market and all types of housing. But we've not yet completed the job. Housing will be part of our long term economic plan."



Eco Technology Show: your one stop ideas shop

Self-builders have a great track record for trying out new and emerging low carbon technologies, and with architects, contractors and suppliers queuing up to declare their credentials and work with you, you are spoilt for choice. Standards and regulations are driving ever-faster change, and even the Treasury seems to be falling over itself to try and help you with incentives.

The future is bright for them, but many prospective self-builders find themselves confused by the choices they are presented with. The key to getting it right is to never to lose track of your dream or forget why you started out along his path in the first place, advises Nicola Gunstone, who launched the Eco Technology Show four years ago. She is now busily preparing for the 2015 event which will be completely free to visit at Brighton's Amex Stadium on 11-12 June.

"Every self builder I talk to at our shows tells me that this is something they have always wanted to do. They want to demonstrate sustainability works but, above all, that they want to create something beautiful," she said.

Once you have a basic concept for a functional and beautiful place that you will enjoy looking at and living in, then there is plenty of scope to make sure it is truly sustainable.

No matter how far along the road your project is, The Eco Technology Show provides a one stop shop for practical ideas you need to bring it to life.

Exhibitors will be happy to take the time to explain how their products will add value, and a packed programme of free seminars will cover technology and legislation. "From integrated energy control to water-saving tap adaptors, we've got it all covered," says Nicola. This year will also see a new Innovation Zone; a showcase of ideas from new businesses, many exhibiting their ideas for the very first time to keep you ahead of the curve.

The Show and seminars are free to attend. Register for fast track entry by visiting the website.

www.ecotechnologyshow.co.uk

Enq. 104



Eco-friendly homes performing better than the average home

Two years on from the completion of the innovative Cross Street development in the centre of Gainsborough, a series of results has been published demonstrating the true difference that eco-friendly features make to residents' household bills.

Properties at Cross Street were the first built to Code level 5 in the West Lindsey District and were designed using 'fabric first' principles to improve the Fabric Energy Efficiency. The collaboration between Longhurst Group, L&H Homes, West Lindsey District Council, construction firm Robert Woodhead and Innovate UK, resulted not only in an exceptional scheme providing sustainable homes for residents but also a range of findings that can be utilised when building eco-friendly homes in the future.

Extensive research conducted by the project team looked at various factors, such as energy usage and residents' lifestyles to understand how energy efficient properties perform over time. Their findings show that eco-friendly features bring massive savings for residents with 65 per cent reduction in heat demand, 70 per cent and 30 per cent

reduction in gas and electricity bills respectively and 20 per cent reduction in water consumption compared to an average home in the UK.

One of the main findings of the project group was that educating residents about benefits of the systems installed in their homes was key to the success and as residents became more aware of how and when they are using energy compared to their neighbours, an improvement in energy use has been noticed.

Positive results recorded by the project team have been echoed by residents, one of them commented: "The Solar Panels do help with the electricity and the water harvester is good too. As far as I am aware, my bills are cheaper than my family and friends." Another resident added: "Heating works well and warms quickly, although we haven't had much need for it."

Craig Pygall, construction director from Robert Woodhead Ltd said: "We are delighted that the scheme has performed so well, it will help tackle the growing issue of fuel poverty by providing simple but highly energy efficient homes."



Mike Hardy, L&H Homes managing director, commented: "L&H Homes are committed to tackling fuel poverty and I'm really pleased that our residents can benefit from high quality sustainable homes delivered as a part of this innovative project."

Andy Patchitt, development and new business manager at Longhurst Group added: "The Fabric First approach has proved to be really successful, we knew we wanted to build homes to help tenants live for less so started thinking about how to achieve that through the buildings themselves rather than relying on the over-provision of technology. The monitoring project has shown fantastic results that will hopefully influence construction choices on other sustainable projects across the UK."



RAYBURN
from **AGA**

All in one

Good Food • Hot Water • Warm Home

The heart of your self-build

- Cast iron range cooking with a choice of boiler options
- Superior cooking performance
- Condensing A-rated boilers with over 92% efficiency

For details of your local retailer call **0845 762 6147**
or visit **rayburn-web.co.uk**



Enq. 105

Interior inspiration:

Dining rooms showcase

Whether you're choosing furniture for your new dining room or restyling, be inspired by our choice of the latest innovations in dining room furniture and accessories to suit traditional homes or modern living.

1. The Octa dining table by Bartoli design derives its name from the Greek word 'Octo', meaning eight, and the number of legs supporting the tabletop. Pictured is the glass round topped version but there's also a rectangular and extending version within the range. Available in three sizes; 140cm, 160cm and 180cm wide. Choices for the table top include transparent glass, acid treated black glass and acid treated extra light glass. The steel base/legs can be matt lacquered in anthracite grey or white, black nickel or chrome. From £2,160. The Filly Up dining chairs are fully upholstered and offered in a variety of fabrics, eco leather or beautifully soft Capri leather, available in many colours. Prices start from £415 each.

www.gomodern.co.uk

Enq. 106

1



2. Whether you live in a traditional barn or a contemporary apartment, the No Footsie Antler dining table from Portwood Studio is guaranteed to make a statement. Made from a number of beautifully interwoven red deer antlers, topped with a toughened glass top. Each one of our antler tables is hand-made to order, in a family-owned workshop in Scotland, using only shed antlers, which means no animals are hurt in the process. The table is priced at £5,257. For more information visit the website.

www.portwoodstudio.com

Enq. 107

2



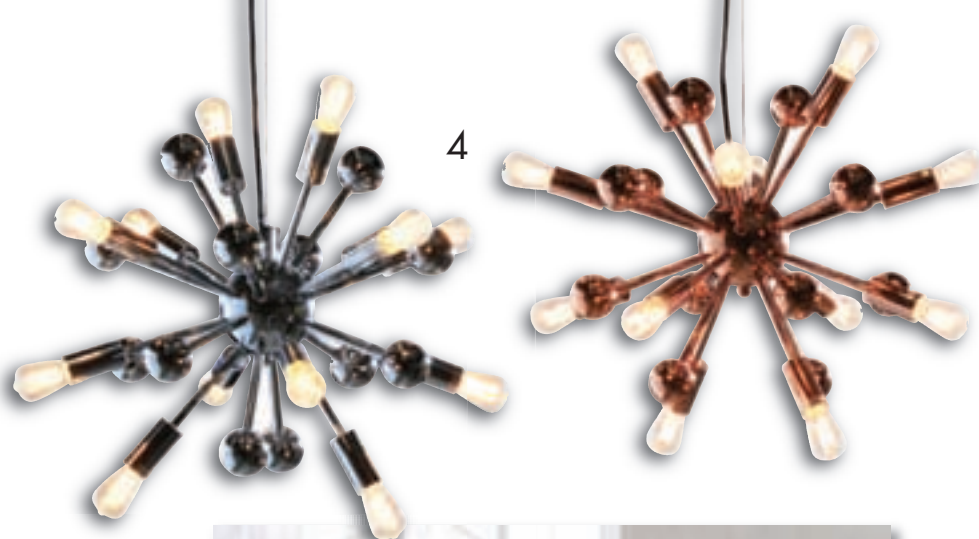
3. The Natural Wood Glass Cabinet from Melody Maison is a stunning piece of furniture made from solid wood with natural finish. The doors of the cabinet have a Gothic style arch making a striking feature to the glass. This cabinet would make a lovely addition to a Kitchen, Dining Room or Living Room and would match up to many styles of furniture as a feature piece. Inside the cabinet has four shelves giving plenty of surface space for your displays or for practical storage. Colour: Grey Washed Finish: Distressed height 154cm x width 37cm x length 90cm, priced at £417.95.

www.MelodyMaison.co.uk

Enq. 108

3





4

4. This twelve bulb chandelier brilliantly combines a strikingly dynamic design with beautifully sleek contemporary finishes. A perfect sphere hangs suspended at the centre and from it cylindrical rods extend seemingly with force in every direction. Some finish with a shiny spherical replica of the centre and others extend further and brandish the luminous flare of a naked bulb. This quite simple arrangement creates a stunning three dimensional design with an appealing tension. The cool polished chrome and rosy polished copper finishes work perfectly with the space age feel and make this a classic retro design for any modern abode. Both are priced at £195.

www.chandeliersandmirrors.co.uk

Enq. 109

5



5. Introduce pure simplicity to the home as Heal's furniture is presented in a range of white and muted shades for spring/summer 2015. As part of Heal's Elegant Purist collection fusing quality materials and understated design, the STUA lau white stained ash dining table (from £1,695), designed by Jesús Gasca, features cleanly crafted joints and an uninterrupted, beautifully curved profile. With an ash veneer top and solid ash legs, the table makes a modern focal point for any dining area and can be teamed with the STUA laclasica white stained ash chair (from £325).

www.heals.co.uk

Enq. 110



6. Add a touch of glamour to your dining room with these sets of wine and champagne glasses from designer brand, LSA International. These individually hand-painted, elegant glasses bring a touch of vintage elegance to any table, and are also perfect for industrial style interiors, which are characterised by their use of metallic tones. Gold, copper and silver all influence these delightful shades. A set of four wine glasses costs £28, while a set of four champagne glasses costs £29.

www.redcandy.co.uk

Enq. 111



6





Bitten by the self-build bug – Jason's journey

Jason had already completed a self-build project for his family in 2001 but strict regulations meant the house ended up not being the one he wanted to create. However, a few years later Jason spotted a plot of land and he couldn't resist trying his hand at self-build once again

Continued on page 21...



SELFBUILD
& CONTRACT FLOORS LTD



We specialise in a wide range of projects including:

- Self Builds
- New Builds
- Renovation Projects
- Barn Conversions
- Extensions
- Basement Conversions

Visit: www.selfbuildfloors.co.uk
Email: info@selfbuildfloors.co.uk
Phone: 0114 231 5937



Enq. 112

LED...
It's what we do.

FUTURE LIGHTING

As featured in the
Jason Scotter
Case Study

Save up to 90% on your lighting bills
Amazing warranties on all products
Instant light
An LED for any application

0203 475 4422
www.futurelightingled.co.uk
info@futurelightingled.co.uk

Enq. 113



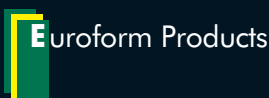
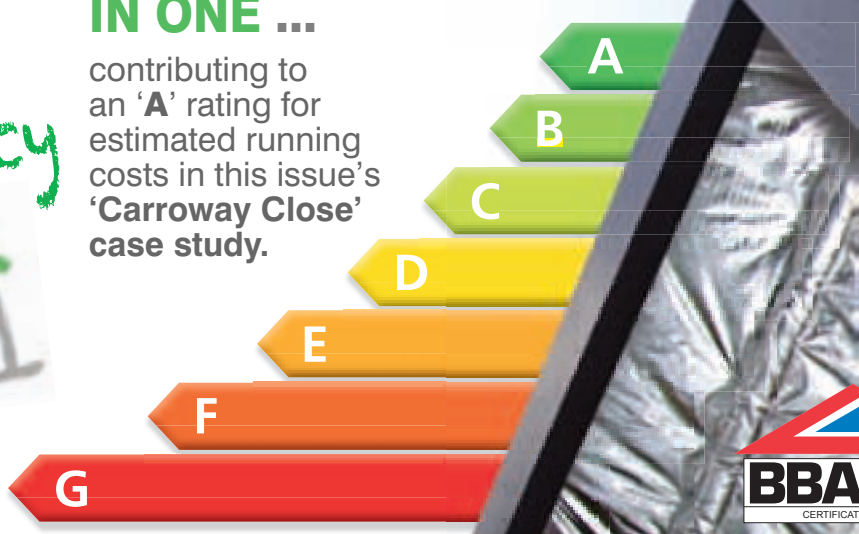
THERMAL INSULANT, AIR LEAKAGE BARRIER & VAPOUR BARRIER IN ONE ...

contributing to
an 'A' rating for
estimated running
costs in this issue's
'Carroway Close'
case study.

Energy
Efficiency



This advert is a general guide and specific technical advice is recommended before proceeding with any transaction. Full technical information available on 01925 860999.



Unit 2 Lyncastle Road, Warrington, Cheshire WA4 4SN
www.euroform.co.uk info@euroform.co.uk

01925 860999

Enq. 114



© SIG360 Technical Centre

Jason Scotter is no novice when it comes to self-build having already built a house for his family back in 2001. However, it had to comply with planning restrictions and was never the home he wanted to create. Then when taking his son to a friend's house, in Bridlington's Carroway Close, he was shown a potential plot of land and was bitten once again by the self-build bug.

There were only a few hurdles to jump, which included having to buy a plot of land, a bungalow, a house and a part of a neighbouring garden, create an access road, remove 23 sycamore trees, win over both local residents and a skeptical, tree loving Council Planning Board.

All this while raising his three sons as a single parent and working full time in a demanding job.

But being a durable soul Jason set off on a journey that would see him buying both parts of the land, renovating the bungalow and moving his mum in, moving his family into the house next to the building plot, adapting the original new build design, moving two garages, removing 23 trees, 1,000 tonnes of soil and moving 200 tons of chalk, planting 10 trees and then creating an attractive, A-rated Energy Performance Certificated (EPC) family home.

Green ambitions

Jason had always wanted to make high levels of energy efficiency a key feature of his self-built home and this was reinforced after a visit to the National Homebuilding & Renovating Show at the Birmingham NEC. It made complete sense to him to invest in materials and technologies upfront that would help to keep energy bills down in the long run. That thinking influenced the building's design from the outset.

Having worked with SIG Insulation on a previous house building project he was impressed by their assistance and the 'one stop self-build product shop' service they offered. Jason explained: "After contacting SIG again and explaining what I was hoping to achieve with the new house, I discovered that they have the SIG360 Technical Centre."

The centre specialises in providing guidance on the most effective combination of products and technologies to attain a high-energy efficiency rating. Working closely with Jason, SIG developed the specification, supplied most of the materials and coordinated the SAP calculation.

With SIG onboard Jason could turn his attention to the land assembly and build preparation. Meetings with the council confirmed how

Jason had always wanted to make high levels of energy efficiency a key feature of his self-built home. It made complete sense to him to invest in materials and technologies upfront that would help to keep energy bills down in the long run

Continued on page 23...

The SIG360 Technical Centre

Your Partners in Energy Efficient Residential Building

SIG360 Technical Centre is SIG Insulation's specialist team of energy efficiency and building experts that will help you to reduce the cost of your build and navigate the regulations to meet the standards required. Our unrivalled technical expertise draws on over 50 years of insulation distribution to provide expert support and services throughout the entire project.

Support and services include:

- As designed SAP
- As built SAP
- Energy Performance Certificate
- U value calculation
- Condensation Risk Analysis
- Thermal modelling

Reader
Enquiry
115

To find out more please
call: **0844 443 0059**
email: **sig360@sigplc.co.uk**
or visit: **www.sig360.co.uk**

 @SIG_360

access would be achieved and the tree issue resolved. The almost derelict bungalow was purchased, renovated and Jason's Mum moved in. The house also had to be worked on before Jason and his boys could move into it.

To provide access to the site two garages were demolished and then rebuilt behind the existing buildings.

Although local residents were originally in favour of the new home, a one-man campaign led to Jason making significant changes to the original design. The new design, which now included a 7.5m x 5m two-storey extension, was submitted to the Beverley Planning Committee and after having to go through a review at a planning meeting, much to Jason's relief, it was passed unanimously.

The build begins

Having bought all the land for £55,000, access to the site was established and the trees removed. However, the next challenge was to remove an estimated 1,000 tonnes of soil to allow for the home's basement and foundations. Enter a close friend. Richard Corner from Corner Groundwork's had all the right equipment and brought in his 360 degree DUCK that removed

Continued on page 25...

THE HOUSE HAS AN MVHR SYSTEM WHICH FILTERS MOISTURE OUT OF WARM AIR FROM THE WET AREAS OF THE HOUSE, SUCH AS THE BATHROOMS AND GYM



© SIG360 Technical Centre

Having bought all the land for £55,000, access to the site was established and the trees removed. However, the next challenge was to remove an estimated 1,000 tonnes of soil to allow for the home's basement and foundations

© SIG360 Technical Centre

ENERGY SAVING TECHNOLOGIES THROUGHOUT THE HOUSE INCLUDE OVER 200 LED DOWN LIGHTS AND 45M OF COLOUR CHANGING STRIP LIGHTS



Need to take the heat out of planning legislation?

Ecodan air source heat pumps provide a proven, energy efficient and renewable way of heating UK homes all year round.

Ecodan can achieve level 4 of the Code for Sustainable Homes and even higher when used in conjunction with other improvements.

- New cylinder range with improved efficiency
- Now includes energy monitoring as standard
- MCS Approved and qualifies for RHI

Find out how Ecodan can help you realise your environmental, legal and economic targets:

Call **01707 278666**

email heating@meuk.mee.com

or visit heating.mitsubishielectric.co.uk



Air Conditioning | Heating
Ventilation | Controls



Enq. 116

YORKSHIRE TIMBER ENGINEERING

Quality and Precision

Using Yorkshire Timber Engineering reduces the time required to complete the internal shell by up to 50% compared to traditional brick and block methods of construction. Off site manufacture using Yorkshire Timber Engineering enables a fixed supply price for the Timber Frame Kit

- Our Timber Frame System can be erected in virtually all weathers and temperatures thereby providing great time control and certainty.
- The Timber Frame shell of your building whether it is a single story house or a six story apartment block will be quickly and efficiently erected by your approved team.
- Manufactured in our purpose built factory, Yorkshire Timber Engineering provide a high quality, defect free internal shell that meets the highest of customer expectations.
- The Yorkshire Timber Engineering Timber Frame system meets all thermal and acoustic requirements, outperforming traditional brick and block.
- All of our wood comes from managed forests and Timber Frame construction has the lowest CO₂ cost of any commercially available building material.



01482 861213

info@yorkshiretimbereng.co.uk

www.yorkshiretimbereng.co.uk

Enq. 117

The A-rated energy efficient windows, which include a 7.4m sliding patio door, were specially ordered. Designed to provide both added privacy and solar gain the window glass was tinted in the factory before being installed into the bespoke, black UPVC frames

THE HOME'S WINDOWS ARE TINTED TO GIVE JASON AND HIS FAMILY ADDED PRIVACY AND BENEFIT FROM SOLAR GAIN



© SIG360 Technical Centre

the soil in just under two days. Using W.Clifford Watts 8 wheelers, a further 200 tons of chalk was piled in the garden for later use, and another friend then used the soil to create a soil-banked arena on their property.

From the start of the project Jason worked on the site and personally assisted with the tanking and creation of the basement area. This was an essential part of the project as the weight of the roof trusses required widening the foundation slabs around pillar areas and the slabs had to be tied to the basement walls.

The 330m², three-storey, four-bedroom house was then built around a specialist timber frame supplied by Yorkshire Timber Engineering from Beeford in East Yorkshire.

Fabric first

The SIG Technical Centre 'fabric-first' approach to the project meant optimising the thermal performance of the building fabric before considering the benefits gained from renewable technologies. After working with Jason to specify the most appropriate materials for the project SIG supplied insulation products to site in one delivery. This included, loft insulation, timber rafter roll, pitched roof board and Euroform Gen-X insulation.

The Euroform Gen-X thin foil insulation was used to create a vapour barrier in the building envelope and all joints were sealed to ensure the building was airtight. Once construction of

the house was complete an air pressure test found that the completed property's energy efficiency rating was 93, placing it within the top 'A' band for predicted running costs.

The A-rated energy efficient windows, which include a 7.4m sliding patio door, were specially ordered. Designed to provide both added privacy and solar gain the window glass was tinted in the factory before being installed into the bespoke, black UPVC frames.

Due to the high performance insulation and high specification windows, Jason did not have to install any heating on the first floor of the property. The upper floor is warmed by rising heat from downstairs, which is trapped by the insulation and supported by solar gain.

Continued overleaf...



© SIG360 Technical Centre

JASON SHOWS HOW THE COLOUR CHANGING STRIP LIGHTS WORK



© SIG360 Technical Centre

THE AIR SOURCE HEAT PUMP FEEDS INTO THE HOT WATER AND UNDERFLOOR HEATING SYSTEM



[Moving through the high specification gym, sunbed area and games room you will find an exact copy of Dr Who's blue TARDIS police box door. On the other side of the door is not a time machine, but you will enjoy all the comforts of a nine-seat cinema room]

JASON BOUGHT MANY OF HIS KITCHEN AND BATHROOM FITTINGS FROM EBAY



© SIG360 Technical Centre

A home of the future

On the roof Jason has installed a 6kW photovoltaic system to convert solar energy into electricity and in the garden is an air source heat pump supplied by Ice Energy, which is part of SIG. This feeds into the hot water system and underfloor heating system, which lies below the 110m² of cream marble flooring.

The house also has a Mechanical Ventilation Heat Recovery (MVHR) system to protect against moisture. This system filters the moisture out of warm air in the wet areas of the house, such as the bathrooms and gym, and feeds it back into the rooms after being filtered and fresh air added.

Other energy saving technologies throughout the house include over 200 LED down lights, 45m of colour changing strip lights and a hot water tap in place of a kettle. The heating, lighting, MVHR, CCTV and plug socket systems can be also be controlled from Jason's phone.

The landscaped garden is also home to a rainwater harvesting system, which collects rainwater in a 5,000 litre storage tank and pumps it up into a tank in the building's loft. This system feeds all four toilets and the washing machine. It only takes water from the mains supply when there has not been enough rainfall to maintain the system.

A home with its own TARDIS

In June 2014, 13 months after the build work started, Jason moved in to the finished home and his favourite part of the property can be found in the basement. Moving through the high specification gym, sunbed area and games room you will find an exact copy of Dr Who's blue TARDIS police box door. On the other side of the door is not a time machine, but you will enjoy all the comforts of a nine-seat cinema room.

And what about the fella that led the one-man campaign to stop the build? He now thinks Jason building his home and moving in was the best thing that ever happened to the neighbourhood.



THE BATHROOMS ARE ULTRA MODERN AND ARE ALL FINISHED TO A HIGH SPECIFICATION

© SIG360 Technical Centre

Suppliers – contact list

Roof trusses: R Agar Associates Ltd
01947 811186

Timber Frame: Yorkshire Timber Engineering Ltd
01262 481511

Underfloor heating: Robbins Systems
01424 851135

Air source heat pump supplier: Ice Energy
01865 884973

Lighting: Future Lighting Wholesale Ltd
0203 475 5522

Floor screed: Selfbuild & Contract Floors Ltd
0114 231 5937

Tanking slurry: KA Building Products
www.kabuildingproducts.co.uk

Architects: R. Peter Belt & Associates (John Ingle)
01262 605965

Basement drawings (for steel base and block walls below ground): Richard Agar Associates
01947 660619

Air Source Heat Pump: Mitsubishi Electric
www.mitsubishielectric.co.uk

SIG plc
www.sigplc.com

Project summary

Gross internal floor area: 330m²

Form of contract or procurement:
Self-build

Overall cost of land: £55,000

Total construction cost: £295,000

Value of property now: £600,000

Eco & Sustainable Products Showcase

In this issue we look at recent trends in eco and sustainable products



Arada's Stratford Ecoboiler range provides a highly-efficient, economic and sustainable alternative to traditional heating systems, producing 50 per cent more heat to water than comparable stoves and raising water temperature far quicker than the average boiler stove. Handcrafted in Arada's purpose built factory in Devon, the Ecoboiler's large fire door glass, soft curved lines, discreet thermostatic control and three bar operating pressure, makes it the ultimate heating companion.

Enq. 118



Investing in a heat pump from Ice Energy Technology can not only provide you with reliable, cost-effective heating, it can also provide regular, tax-free income for the next seven years. The Renewable Heat Incentive (RHI) will reward you for installing air or ground source heat pumps in your home. You can also benefit from a free underfloor heating system of up to 40 square metres in size with every heat pump order placed so there's never been a better time to invest in heat pumps for your home.

Enq. 119



The Johnson & Starley Aquair HIU can be used with a wide range of heat sources. Installing an Aquair linked to a suitable heat source is an efficient and cost effective solution, and as no DAH1 certificate is required, installers can replace a warm air heater with a combi boiler and Aquair HIU combination, saving space and giving substantial benefits. Aquair comes with a wire mesh air filter as standard although this can be upgraded with a 'cleanflow' electronic filtration option.

Enq. 120



Landy Vent's Ecco Stove releases heat slowly through energy efficient heating; it creates consistent warmth for your entire home. With up to 88 per cent efficiency and just 0.07 per cent carbon production, the Ecco Stove is the ultimate alternative to a traditional wood burning stove. Masonry heaters provide an innovative and robust option to oil and gas central heating systems. With a range of shapes and colour finishes available, the Ecco Stove will be an asset for the future of your home.

Enq. 121


Electrolux
 Central Vacuum Systems

**They said goodbye to the bag.
We said goodbye to the vacuum...**



light
powerful
empty annually
20+ year life


quiet
no maintenance
install in any age home


**total home
environment**




We do more with air...
 heat pumps | central vacuums
 heat recovery heat pump ventilation

0345 260 0123
Follow @TotalHomeEnviro
Like totalhomeenviro
totalhome.co.uk

Enq. 122



With over 145 years of industry knowledge, Long Rake Spar are the UK's largest suppliers of decorative aggregates. Visit our website to find your local stockists.

01629 636 210
www.longrakespar.co.uk

Enq. 123

FREE UNDERFLOOR HEATING FROM ICE ENERGY!

Planning your self-build or extension this year? Then why not have your underfloor on Ice?



This year, with every new ground or air source heat pump order, we will supply a free underfloor heating kit which can cover up to 40m² absolutely free of charge!

By contacting us now you can secure your heat pump and underfloor order and take delivery at a time which suits your project. What's more you'll be using the most efficient distribution system for your heat pump for greater savings and ensuring you have the freedom to design your home your way.

Call our friendly and experienced advisors on **0808 145 2340**
to find out more.

Reader
Enquiry
124

ICE ENERGY

TECHNOLOGIES

www.iceenergy.co.uk

Eco & Sustainable Products Showcase



With an ever increasing demand for greener solutions in the construction industry, **Long Rake Spar** provide an extensive range of SUDS compliant aggregates suited to resin bound surfacing. Resin bound systems are recognised as being SUDS compliant as they deliver a product that creates an open texture, allowing water to penetrate through the exterior surface. Long Rake Spar also offer a range of recycled decorative aggregates to provide landscapers and contractors a greener alternative.

Enq. 125



SAiGE Longlife Composite Decking is made from 95 per cent recycled products – 50 per cent recycled wood fibres and 45 per cent recycled plastic bottles. It is a long lasting alternative to traditional timber decking with a 10 year warranty and expected life of over 20 years, and it looks good too. SAiGE Decking is available in a choice of four colours (Charcoal pictured) and hollow and solid boards for residential and commercial use. SAiGE is a supplier to the Trade with attractive prices.

Enq. 126



Electrolux Central Vacuums are quiet, quick and easy to use with no heavy kit to lug about as the main unit is hidden away in a utility room, cupboard or garage. With more suction power to remove dustmites, dirt, pollen and pet hair, and with no recirculation of dust thanks to the permanent self-cleaning GORETEX filter. Pipe is routed to wall inlets in the hall or landing where you plug in the hose and vacuum. Using less electricity they perform effectively for 20 years+ and only need emptying annually.


Enq. 127




We Build It Ltd is one of the UK's largest manufacturers of domestic sewage treatment plants, offering straightforward advice. It focuses on high quality, affordable products. All We Build It's products can also be used after an existing septic tank to enable the effluent to be discharged directly to a water causeway, if your existing soakaway has failed. All of its sewage treatment plants come with easy to follow installation and service manuals, as well as free telephone assistance by specialist installers.

Enq. 128

DESIGNED AND BUILT TO LAST A LIFETIME





arada
— stoves —

With stoves to suit every lifestyle and setting, we make it easy to put a warm glow at the heart of the home. You may already know the names Villager, Aarrow and Stratford. They have been popular stoves for many years, and now they are united by the Arada badge.

For reliability and service you can trust, contact us today on **01297 35700** aradastoves.com

Enq. 129

Eco & Sustainable Products Showcase



Imagine a toilet that has no need for water, sewage systems, miles of plumbing, septic tanks, cess pits and has the freedom to be put anywhere. Well, there is such a product from **EcoToilets**, a dry separating toilet. Urine is directed one way and solids the other, the solids will in time produce marvellous compost and the urine, which is sterile, can be used on the compost heap or, soaked or drained away. There is no smell, no waste, and no expensive problems... Simplicity at its best.

Enq. 130



Trying to get mains power to a building can be difficult. In some instances, the location can mean getting a mains supply is just not feasible. This was the case for a customer who built a property at Lake Ullswater. The **Powerguard PS** system installed supplied the property with economical power 24 hours a day; the generator runs for less than four hours per day. Adding renewable energy, including a wind turbine or solar panels, to the system further reduces the reliance on the generator.

Enq. 131



Modern heating technologies place enormous demands on a chimney system. Designed for the new generation of air-tight homes, **Schiedel Absolut XPert** is the first Passivhaus certified chimney system worldwide. Suitable for use on all fuel types, with its GW3 rated ceramic profiled liner, Absolut XPert offers condensate resistance even after a soot fire. Thermal performance is optimised through the provision of combustion air at the right temperature through the integrated insulated shaft.

Enq. 132



Zero Carbon Solution provides an affordable out-of-the-box energy system for domestic new-builds and low-rise commercial developments. Made up of three core technologies, hybrid PV-T solar collectors, a patented inter-seasonal energy store and a heat pump, the system can meet a building's full heating and hot water requirements all year round, using only solar power. Following the successful installation of the system into pilot project, the Solar House, it gained international recognition.

Enq. 133



**sustainable solutions
under one roof**

HEATING / VENTILATION / RENEWABLES

The **Aquair** is an amazingly versatile Heat Interface Unit.

Compatible with Combi boilers, Biomass, Central Heating Plants and much more.

Quiet, efficient, quick and easy to install, with (No DAH1) required and perfect for warm air replacements, extension, new builds, holiday lets, flats and retrofit properties.

**An incredible all-rounder
for your heating needs.**

**Johnson
& Starley**

Call us to see which solution is right for your customers.
01604 762881 www.johnsonandstarley.co.uk


**The revolutionary Aquair Heat Interface Unit from
Johnson & Starley**



Aquair 10-11

Enq. 134

We Build It Ltd
simple solution sewage systems




The Bio-Pure

- Suitable for homes without access to mains drainage
- Discreet solution to on-site sewage treatment
- 10 models in the range with a capacity up to 50pe
- CE Marked and EN 12566-3 Certified
- Uses the extended aeration method to treat sewage
- 96% efficiency allows a typical 3-5 year emptying interval
- Visually unobtrusive and odourless
- 25 year warranty on GRP & 2 year warranty on the air pump
- Deal direct with the UK Manufacturer


01746 781782 www.webuildit-ltd.co.uk

Enq. 135



SAiGE
Longlife Decking



SAiGE Longlife Decking Ltd are suppliers of environmentally sourced composite decking. Low maintenance, splinter free and anti-slip are just some of its key features. Please contact a member of the SAiGE Team for more information.



LIGHT GREY REDWOOD CHARCOAL OAK

visit us online at
WWW.SAIGEDECKING.COM
or call 01789 721 576

SAiGE Longlife Decking Ltd. | info@saigedecking.com

Enq. 136

**KEEP CALM
AND
KEEP YOUR GRAVEL IN ITS PLACE**



Gravel is one of the most attractive, economical and versatile surfaces on earth. But without help, it's inclined to move around, creating ridges and ending up where it shouldn't.

CALL US TODAY
SUPPLY & INSTALL OR SUPPLY ONLY

COREdrive

CORE drive is the solution. It creates a naturally porous stabilising base into which the gravel sits - and STAYS! It's easy to lay, inexpensive and very, very effective.

CORE drive gravel stabiliser can be laid as a retro fit to existing tired looking driveways, with minimal preparation required.



CORE Landscape Products

0800 118 22 78
www.corelp.co.uk



Enq. 137



EnviroMAT
SEDUM ROOF SYSTEM - ALL IN ONE

Easy to install and maintain green sedum roof system

For a free copy of our new brochure please phone or email
01842 880027
sales@qlawns.co.uk



Enq. 138

Clever biomass for the home



Natural energy company, Euroheat has unveiled a new range of high performance pellet boilers for domestic properties, which qualify for tariff payments under the government's Domestic Renewable Heat Incentive (RHII). The PNA Thermocomfort features four models ranging from 15kW to 30kW, designed for maximum efficiency and minimal user maintenance. There is a choice of pellet storage systems including a 170 litre hopper located on the side of the

boiler, to a variety of different bulk storage solutions featuring either vacuum or auger transfers.

Tel: 01885 491100 www.euroheat.co.uk

Enq. 139

British Spirals & Castings makes its mark



British Spirals & Castings, a family run producer of bespoke staircases, balconies and railings is flying the flag for British quality-compliance, by becoming one of the first spiral stair manufacturers to achieve the CE Mark for its products. In achieving the CE (or Conformité Européenne) Mark, Derbyshire based British Spirals & Castings (BS&C) has put itself on the top rung, providing assurance that its manufacturing process meets the highest European standards. The

accreditation is a declaration by a manufacturer that its product meets EU safety, environmental and health protection requirements.

Tel: 01663 750716 www.britishsc.co.uk

Enq. 140

Grant UK happy to help *DIY SOS: The Big Build*



A family struck by major health problems has been given a life-changing boost from the popular BBC One television programme *DIY SOS: The Big Build*, presented by Nick Knowles – with a helping hand from Grant UK. Grant UK supplied *DIY SOS: The Big Build* with a Pro Kitchen/Utility boiler from its Vortex range and the Grant Solar Thermal system – both crucial to heating the building and providing comfort for the Liversidge family in Rise. Using the Grant Solar Thermal system,

the Liversidges will not only reduce their oil bills but their carbon footprint too. The solar collectors should typically save up to 70 per cent on annual hot water heating costs.

Enq. 141

The new Cullen brochure is here



ITW Construction Products (formerly ITW Industry) has published its new *Cullen Timber Engineered Connectors* brochure for 2015. Continuing its ITW "Product Line Simplification" strategy which was strongly evident in the previous issue, ITW CP has endeavoured to further streamline and enhance its comprehensive connector range, making Cullen products even simpler to specify and pick. The brochure's most notable product update follows R&D with the subsequent introduction

of the new MHIC hanger with internal flanges, to replace the IFI and HIFI joist hangers. The MHIC is suitable for use where fixing space is tight.

Tel: 01592 771132 www.itw-industry.com

Enq. 142

Vent-Axia welcomes new air quality research



Vent-Axia, a leader in low carbon ventilation, has welcomed new research which highlights issues with indoor air quality in UK homes.

According to a new YouGov consumer survey, conducted on behalf of BEAMA, over half of respondents had experienced mould or condensation in their homes.

Added to this, a new independent study by Prism & Waverton Analytics, backs up this research showing that a large number of homes are

experiencing, or are at risk of aggravated health problems due to poor indoor air quality.

Tel: 0844 856 0590 www.vent-axia.com

Enq. 143

Systemair – an international ventilation company



Systemair was founded in 1974 in Sweden and has grown into one of the leading ventilation companies in 40 countries around the world. Here in the UK the company has 30 years experience with its brand Villavent and from its offices in Oxfordshire, it provides the complete service of design, supply, installation, service and aftercare. Whether you are building your dream home, renovating or developing a number of houses, Systemair's specialist team will help you select the best

system for your project from its comprehensive range, including heat recovery, central extraction, air conditioning and swimming pool ventilation. For more information visit the company's website.

Enq. 144

Freefoam scheduling service delivers results



Freefoam Building Products reports that its scheduling service is achieving real results for Freefoam customers. Over the last 12 months the service has generated significant business with an impressive 62 per cent of schedules resulting in orders. 2014 saw a new member of staff joining the team, Tish Redmond. Promoted from within Freefoam, Tish manages the whole process providing an accurate product specification and quantity breakdown from drawings for all elements of the roofline product range including fascia, soffit, rainwater and cladding materials. With a quick ten day turn round it's a service that an increasing number of customers are finding extremely valuable to their businesses. General Building Plastics use the service on a regular basis. Alan Sutherland, managing director, explained: "We've submitted plans from various contractors and been very pleased with the results. We get a quick turn round with a full breakdown emailed back to us with all the components itemised. Accurate specification means customers can be confident they are ordering exactly what they need, eliminating wastage and saving money."

Tel: 01604 591110 www.freefoam.com

Enq. 145

LUXURY FOR LIFE

Baufritz is passionate about creating a luxurious living environment that's designed just for you. All our homes use an abundance of high quality, natural materials that are completely free of toxins, creating a harmonious atmosphere that looks beautiful, protects the environment and makes you feel good.

*The Pioneer
of eco-homes*



BAUFRITZ

Der Ökohaus-Pionier seit 1896



www.baufritz-sh.co.uk

Find out more about Baufritz and contact our UK office:
enquiries@baufritz-sh.co.uk | 01223 235632

Reader
Enquiry
146

> Visit us on
GRAND DESIGNS LIVE 2015 in London
2 - 10 May 2015 | Stand No. B188

The UK's leading contemporary home show

Grand Designs Live returns to London's ExCeL this May

The UK's leading contemporary home show, Grand Designs Live, sponsored by Anglian Home Improvements, returns to the London ExCeL by popular demand for its 11th year running from the 2 - 10 May 2015. As the ultimate destination for home owners and self-builders, exhibitors will showcase the industry's most innovative ideas and products across the nine day show, offering visitors the chance to plan, buy, build and furnish a house all under one roof.

The following show sections have been confirmed for Grand Designs Live London 2015: Grand Build, Grand Interiors, Grand Kitchens, Grand Bathrooms, Grand Village, Grand Technology and Grand Gardens

In addition, Grand Designs Live London can reveal the following show highlights:

- Ask An Expert, sponsored by Express Bi-folding Doors, promises to offer aspiring developers, and those undertaking a home improvement, build or renovation venture, specialist advice to assist with getting their own Grand Designs project underway
- For the eco-conscious visitor, Kevin McCloud's Green Heroes will showcase show ambassador Kevin McCloud's hand-picked selection of the most impressive eco-innovations and technologies; aiming to improve housing and our way of living
- 'The Green House' - Grand Technology, new for 2015, the Green House is an interactive walk-through experience, showing the latest innovative gadgets and eco technology, as well as lighting designs and systems for the home
- The Grand Designs Eco Trail will feature highlights of those exhibitors that have eco or sustainable build products, making it easier for visitors with an interest in eco-friendly innovations to seamlessly navigate through the show to discover the products that matter to them
- The Grand Kitchens feature, sponsored by Miele, will boast a unique interactive cookery demonstration stage, a kitchen design seminar stage, a private consultation area for visitors to receive expert advice on their kitchen projects as well as a display of the



winning kitchen design finalists. Visitors are also given the opportunity to see celebrity guests take on the 'Celebrity Cook Along'

- A new Grand Kitchens feature this year is the Miele Live Kitchen Seminar Stage, which will host a busy schedule of kitchen design talks. These are set to include kitchen design, technology in the kitchen, trends and materials, colour and much more
- The Garden Design Competition - is set to run at the London show for the third time in the Grand Gardens section, sponsored by Hydrex. The competition will see entrants submit a garden design based on

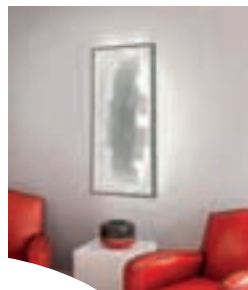
Continued overleaf...

'Encouraging Wildlife in your garden'. The competition gives an opportunity for garden designers and landscapers who are interested in boosting their profile to showcase their skills and their designs at the show

- The Grand Village promises to showcase best-in-class innovation as seen on Channel 4: 'Grand Designs', featuring eco homes by Natural Building Live and Easy Domes, each demonstrating unique sustainable building techniques, and offering hands-on activities for visitors
- The Grand Theatre, sponsored by Airflow, will host a 'Meet the Grand Designer' seminar each day of the show, featuring a celebrity host alongside a couple or family from the recent Grand Designs series, talking through the challenges of their build project. The Theatre will also feature topical debates and talks as well as addressing local planning and building issues with a range of experts and guest speakers including: Kevin McCloud, George Clarke, Wayne Hemingway, Dan Hopwood, Sophie Robinson, Charlie Luxton, Lucy Hedges, Jo Hamilton and James Alexander Sinclair
- This year Grand Interiors will feature the Grand Designs Live Interiors Theatre, which will host a series of talks regarding home decorating, and interiors roomsets, for home inspiration



Book in advance order your tickets online at www.granddesignslive.com or call the booking hotline on 0844 854 1348



the Radiator
& Bathroom gallery
www.theradiatorgallery.com



Tel: 0208 530 7555

Showroom
140 Hermon Hill
South Woodford
London E18 1QH



email: sales@theradiatorgallery.com
Fax: 0208 530 8844 Freephone: 0800 055 6450

Tel: 0208 944 2001

Showroom
621 Garratt Lane
Wandsworth
London SW18 4SX

Enq. 147

BENENDEN™ - BESPOKE ALUMINIUM WINDOWS
FOR PERIOD & DESIGNER PROPERTIES

SEE US AT
GRAND DESIGNS LIVE
LONDON
2 - 10 MAY - 2024
STAND B318

- Ultra-slim profile frames
- Into timber or direct to brick or stone
- Single or dual RAL colours

THE HERITAGE WINDOW COMPANY
CONSERVATION BY DESIGN

020 8712 5261 | sales@thwc.co.uk | www.thwc.co.uk

Showrooms at: Sevenoaks • Dorking • Beaconsfield

FENSA CE TRUST MARK edgcos

Enq. 148

Three ways to transform your living space



THISTLE MAGNETIC PLASTER

With an innovative formula that attracts magnets, you can turn any wall in any room into a fun, interactive display area.



LIFESTYLE WALL

A new wall solution to replace standard plasterboard. With a dense, reinforced core

5

5

1



SOUND SOLUTIONS

Silent Floor is one of our systems that delivers substantially enhanced levels of sound

5

5

your sound requirements.

Improve your home and your lifestyle with our exciting Rooms Made For You range. Designed in close consultation with homeowners, our choice of innovative walls and floors will transform any living space. To find out more about our Rooms Made For You range or for inspiration on how you can transform your living space visit roomsmadeforyou.co.uk

Grand Designs Live
stand no B295

Reader
Enquiry
149

Time to pamper and relax

Often neglected, the bathroom should be a place of relaxation. Hurlingham – The Bath Company helps to make it special once again

Designing a bathroom for any property requires careful consideration; there is a huge choice of décor, furniture and lighting to mention a few and from different styles from traditional to contemporary – finding the right one can be a challenge. While budget is a major consideration when designing a bathroom, also take into account the usage, comfort and the users – will it be family bathroom or a spa like haven from the world... Achieving the right balance is a difficulty faced by many.

These days, the bathroom is no longer just a place to bathe or go through your nightly or even daily routine, but a room in which to pamper and relax. As a significant amount of time is spent in the bathroom, it must offer a level of luxury and comfort in addition to being functional. It is perhaps no surprise that the bathroom is the second biggest area of home expenditure after the kitchen. A great bathroom can add so much value to your life and of course the potential value of your home.

The bath is, historically, the centrepiece of the bathroom. And now with trends pointing to a want for less ordinary furniture, bespoke pieces or feature pieces, isn't it time we do the same in the bathroom?

Cast iron baths – a resurgence...

Long thought of as brutish and inelegant, the cast iron bath is changing in the public perception; showing its worth as a magnificent, practical and of course efficient long lasting bath material.





Make a lavish statement by choosing hand-applied gold leaf, or sumptuous genuine leather finish for true British craftsmanship

From the classic roll top bath, to beautifully sculpted claw feet, cast iron baths come in a variations of design. Whether original or reproduction, these baths can usually be painted in a range of colours, allowing them to blend with décor, or bring a statement splash of colour into the classic black and white bathrooms.

For a more modern look, bateau-style baths have a sleeker silhouette while retaining their charm. Similar in shape to cast iron baths, copper and brass baths are also making a comeback. Almost a piece of sculpture, these baths look stunning when highly polished and are a real statement piece. Also remember that comfort is as important as style when it comes to baths. If you like a relaxing soak, ensuring you have a comfortable bath tub is crucial whatever its style, so don't be afraid to try before you buy.

Bespoke tailoring and freedom of design

If the longevity and strength of a traditional cast iron baths appeals, but you would prefer a more up to date or even bespoke look, it is now

possible to have baths tailored to suit your exact taste or requirements.

Make a lavish statement by choosing hand-applied gold leaf, or sumptuous genuine leather finish for true British craftsmanship. Yes, genuine leather or fabric can clad baths, so the sky really is the limit in terms of creativity – don't worry the fabric or leather does come waterproofed

Unlike modern baths or showers, which are usually positioned against a wall or in a corner, freestanding fixtures allow greater flexibility for bathroom layout.

A freestanding bath can be much more central to the bathroom if that takes your fancy and of course no space is wasted by boxing it in, nor are there any restrictions when it comes to choosing the location of taps, with pipe stands and mixers available to suit and sizing or style requirements.

Efficiency and longevity

A common misconception of cast iron, copper and brass baths, is that it will absorb heat from the warm water or is a poor conductor...

Cast iron, copper and brass baths actually have excellent thermal properties and retain and

emit heat for longer than its steel and acrylic counterparts. In fact, far more heat is lost into the air above as is the case with any bath of any material.

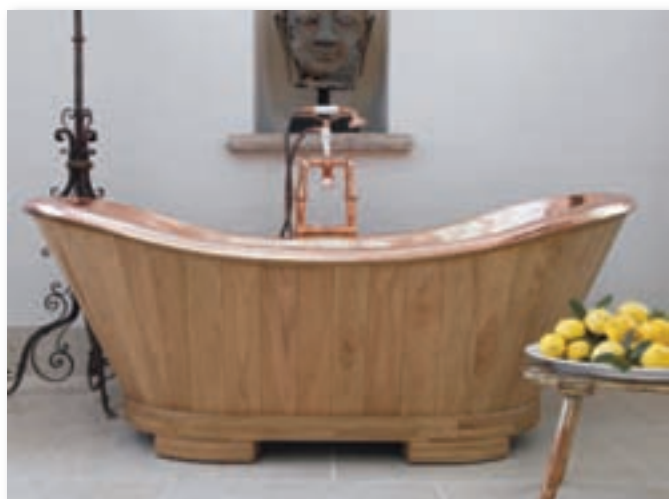
Cast iron is also extremely durable, and cannot be dented or warped, although more expensive than a resin or steel baths they are a much longer lasting product and, therefore, much more prudent investment.

Traditional cast iron baths should have a true vitreous enamel finish to the interior. Vitreous Enamel is a highly resistant and strong substance made by fusing powdered glass at extremely high temperatures to a surface (usually metal). The maintenance of vitreous enamel is very minimal, as it is hard, chemically resistant, scratch resistant, and cannot burn, also in contrast to most paints it does not fade under sunlight.

Freestanding baths, be they modern or even period designs are the obvious choice for a sensational bathroom.

Instantly speaking of luxury and elegance there are the perfect centrepiece for any bathroom.

Enq. 150



Saniflo unveils the new Kinemagic models

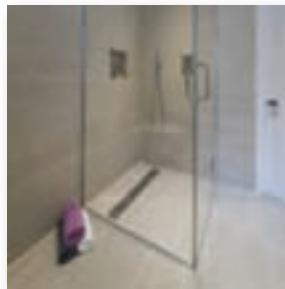


Saniflo has extended its range of Kinemagic shower cubicles giving customers a more comprehensive range. Perfect for less able people, Serenity fits in the same space as a bath, features integrated thermostatic shower control, a fold-down seat, anti-slip flooring and secure grab bars. Design features sleek glass panels, an anodised finish, cool-touch thermostatic shower and two options for height of overhead rain shower. Style is a glass cubicle that can be customised to suit an individual's home. With an anti-slip shower tray, secure grab bar and optional fold-down seat Style can be fitted with any shower valve.

Tel: 0208 842 0033 www.saniflo.co.uk

Enq. 151

On The Level – Complete Wet Floors



A Complete Wet Floor from **On The Level** is a made-to-measure interlocking flooring system incorporating a bespoke showering area with a choice of waste position. The flooring system is designed, constructed and delivered ready for a quick and easy installation, saving labour time on site, plus it can be designed to function as a template to take internal walls. The complete floor can be cut and trimmed easily on site if any minor adjustments need to be made. Suitable for new build projects and refurbishments and available with a square grating, linear grating or vinyl sheet flooring finish for a level access wet room.

Tel: 01525 373202 www.onthelevel.co.uk

Enq. 152



JIS Hickstead towel rail raises the bar for elegance and performance

With its distinctive pattern perhaps taking inspiration from one of the more imposing fences at the famous show-jumping venue, the Hickstead heated towel rail from **JIS Europe's** Sussex collection is suited to both top end residential and many commercial applications. The Hickstead's six arms are square, but are fashioned from the same highly durable grade of stainless steel and as with the rest of the Sussex collection, the Hickstead is available in central heating, dual fuel or electric only options. The open sided rails with their twin carrier pillars are intended to facilitate either left or right sided installation. However, architects, interior designers and property owners who might prefer to choose the electric only version should be aware that these are supplied in right arm format as standard, with the left arm needing to be specifically ordered. Depending on the heat source used, the Hickstead offers an output of 378 Watts or 1291 BTU, so can provide occupant comfort when sited in a properly insulated bath or shower room, as well as keeping towels warm and dry. Overall the Hickstead measures 1,010mm in height by 500mm wide, while the half dozen arms are evenly spaced on the uprights; giving it a stylish as well as functional form. Whether the towel rail is plumbed into a home's main central heating system or it is powered by electricity for all or part of the year, the Hickstead's clean lines, high build quality and excellent performance characteristics ensure it will suit many types of property and decor. Meanwhile purchasers of this prestigious product also benefit from a 25 year guarantee.

Enq. 153



Saving water is easy thanks to innovative bathroom technology

Bathroom accessories specialist **Croydex** is offering the latest water-saving technology with its Aqua Air range of overhead showers and handsets. The range, which is included in the Water Label, has been introduced to meet increasing demand for water-saving products and harnesses the power of air to deliver an invigorating yet water efficient shower sensation.

"Our Aqua Air range of showering products work by drawing in air and blending it with the water flow – making each droplet bigger and softer," says Peter Pegden, Product and Procurement Director. "It is an ingenious design, making uninspiring and expensive showers a thing of the past. Our variety of shower heads included in the Aqua Air range not only cut costs on utility bills, but gives the wonderful sensation of showering in the rain," adds Peter.

Aqua Air works by using air force to enhance the system's spray power to ensure a high quality showering experience with lower water consumption. This new technology promises savings of up to 50 per cent water reduction compared to normal showers.

The Aqua Air range is included in the Water Label scheme which rates products by the number of litres per minute they use. The collection features 14 designs, each finished in chrome or white. Options include the impressive Aspley Ultra Flat overhead showerhead and the Carter 3 function hand shower. For more information call Croydex or visit the company's website.

Enq. 154

A New Collection of Thermostatic Mixer Showers



- Stylish looks and attractively priced
- High performance TMV2 approvals where applicable
- Up to 5 year guaranteed products

The MX Group, Tewkesbury, Gloucestershire GL20 8JF. Tel: 01684 293311 sales@mx-group.com

Atmos Options



www.mx-group.com

*Mantle Cross Limited Trading as The MX Group

Enq. 155

Improve your experience at the touch of a button



Hansgrohe has set a new benchmark with its innovative Croma Select range. Now for the first time, the Croma collection features Select technology – making it easy to switch between spray modes at the touch of a button. Easy handling and attractive design ensure a more comfortable and pleasurable experience in any bathroom. The Croma Select family consists of hand showers, overhead showers and showerpipes. Showerheads are available with a choice of spray modes, and in round or square. All products have a two-toned finish with a white spray disc and a shiny chrome casing and an ergonomic handle.

Tel: 01372 465655 www.hansgrohe.co.uk

Enq. 156

New Expression shower tray from MX



A leading UK shower tray manufacturer, **MX Group** is seeing huge interest in its 'Expressions' range – designed to provide the maximum showering area, incorporating a discreet, hidden waste system, yet the trays drain via a standard shower waste.

As with all the MX product ranges, it's quick and easy to install and is available in a range of popular shapes and sizes, making it an extremely attractive, yet highly practical shower tray design for the bathroom.

For more information visit MX Group's website or give the company a call.

Tel: 01684 293311 www.mx-group.com

Enq. 157



Another UK success story!

Our athletes have been superb in recent years. We have the top golfer in the world. British actors come away with accolades galore. And the cache of products manufactured in the UK cannot be underestimated. The words Made in the UK or British Made stand for quality, reliability, value for money and style. So **demista™** heated mirror pads have proven to be the first choice for both contract and domestic markets. Steamed up mirrors are annoying. You step out of the bath or shower and prepare to shave or do your make up... trying to peer through a fog. So is there an alternative?

The easy and permanent solution is to install demista™ heated mirror pads. Problem solved simply and inexpensively. The pads come in a variety of sizes, and can be used in multiples if large areas need to be covered. demista™ heated mirror pads can also be made to order in special sizes. Fitting is easy. Just fix the self-adhesive pad to the back of the mirror and connect to the lighting circuit so that the mirror is warmed when the lights are on. The pads are manufactured in the UK and have proven quality after over 22 years in the market world wide. demista™ is the innovator of steam free mirrors and the first heated mirror pads sold in the UK. They are the first choice for builders, developers and specifiers for luxury apartments, hotels, leisure centres, new home developments and refurbishment projects both at home and abroad.

Enq. 158



GPML Construction is a leading provider of building and maintenance solutions to customers in London and across the South East.

Established in 1990, the company has a long track record in meeting the demands of projects with varying size and scope for extensions, loft conversions, new builds, basements and refurbishments.

A proven, flexible service means that the company can help develop a project from conception to completion.

Our Promise

1. Clear, transparent pricing, no hidden costs. Price based on drawing specifications
2. Planned and accurate project timescales based on comprehensive programme of works
3. Payment schedules laid out from project outset
4. All labour backed by a standard 5 year guarantee and materials by relevant project guarantees.
5. Ongoing updates and project process reporting, including weekly and ad-hoc meetings

Call today on **0800 046 0266**
email info@gpmlconstruction.co.uk
or visit www.gpmlconstruction.co.uk

Enq. 159

After the flood

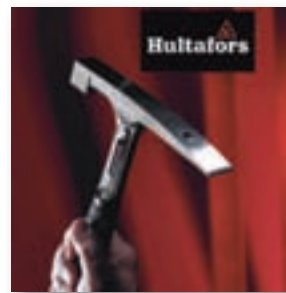


In recent years, flooding has become a major issue within the UK with thousands of homes being damaged by rising waters. Sikagard® Flood Sanitiser from **Everbuild** is a concentrated sanitiser and disinfectant containing a highly potent biocide system which is very effective for use in the sanitation of properties that have been subjected to flood damage. Sikagard® Flood Sanitiser has been specially formulated for the control of a broad range of bacteria including hepatitis B, salmonella, campylobacter, listeria, MRSA and many other viral infections, all of which can be carried in flood water.

Tel: 0113 240 3456 www.everbuild.co.uk

Enq. 160

Hultafors anti-vibration bricklayer's hammer



Hultafors hammer out leading edge tool technology yet again. Typical of Hultafors' quality, this is a well-balanced bricklayer's hammer with a narrow straight chisel, nail puller and Hultafors' unique ergonomic handle with an end stop. It has a continuous steel body forged into a single piece, combined with a tempered striking surface and chisel, the hammer is extremely durable. There's also a urethane plug in the head, that reduces vibration when striking objects. But perhaps what gives the TB 600 Bricklayer's Hammer such great hammering properties is that it is so well balanced, making it easier to break masonry. All in all it's a tool you should consider getting to grips with.

Enq. 161

Quilted jacket – ideal for work and pleasure!



Snickers' Quilted Jacket – ideal for work and pleasure. Whether you want fashion or functionality – check out Snickers work jackets. Famous for the outstanding functionality in its range of jackets, Snickers is now adding fashion to the unrivalled hallmarks of quality that are embedded throughout its range of modern working clothes. Snickers' jackets are ideal for those professional tradesmen and women who want everyday comfort and to dress smartly both in and out of work.

The new Quilted Jacket is warm, cosy and made from a water repellent fabric lined with 'high-loft' lightweight padding for superior comfort and insulation in chilly and windy weather.

Enq. 162

Scruffs 3D expert floor laying trouser



Workwear brand **Scruffs** is launching a new 3D Expert Floor Laying Trouser from the 2015 catalogue. Designed especially for floor layers; the trouser is made from a hardwearing polycotton fabric. They include bottom loading, longer length knee pad inserts, with an adjustable design to help keep the knee pad secure with added EVA foam padding above the knee to provide even more protection and comfort. The 3D Expert Floor Laying Trouser has a convenient Cordura knife pocket, a four way stretch panel for ease of movement, reinforced self fabric gusset and an adjustable waistband that is triple stitched to support stress areas.

sales@scruffs.com www.scruffs.com

Enq. 163

www.arborwinsys.co.uk



Improve your outlook with **ARBOR** sliding and folding timber doors. Manufactured to order in European Oak and durable hardwoods.

1385 Park Avenue,
Aztec West Bristol BS32 4RX

Tel: 01454 270039
Fax: 01454 270049
email: sales@arborwinsys.co.uk



Enq. 164

1ST FOLDING SLIDING DOORS LTD
www.1stfoldingslidingdoors.co.uk



- High Quality Folding Sliding Doors
- British, German & Belgium Designed
- A Fantastic Variety of Finishes & Colours

- Virtually Maintenance Free
- State-of-the-Art Security Features
- Full Fitting Available
- Free Survey & Design Advice

LIGHT SPACE STYLE



Unit 26/3 Silicon Business Centre
26 Wadsworth Road
Perivale, Greenford
Middlesex UB6 7JZ

1ST FOLDING SLIDING DOORS

Tel: 0208 997 2448
Fax: 0208 997 0611
email: foldingslidingdoors@btinternet.com

Enq. 165

ThermoPro steel entrance door



When the Build Matters the Doors are Hörmann

- Widest range of garage and entrance doors in the UK
- Precision German engineering
- Excellent security and outstanding reliability
- Large selection of designs to match every home

**Homebuilding
& Renovating Show**
NEC, BIRMINGHAM | **STAND**
26-29 MARCH 2015 | **D 117**

Reader
Enquiry
166

HÖRMANN
Garage and Industrial Doors





Form and function in perfect harmony

Great design is not just about looking good, it's about performance too. Windows and façades that are perfectly watertight; secure entrance doors; sliding, folding and panoramic doors that open and close effortlessly. Schueco UK's range of aluminium residential systems has what your home needs. Superior quality, unmistakable style. Unbeatable levels of thermal and acoustic insulation. The Schueco Contemporary Living Collection: where everything works in perfect harmony. www.schueco.co.uk

Reader
Enquiry
167

SCHÜCO

Steel windows show their colours



The retro look of steel windows is very much 'in', but do they have to be grey or white – what are the colour options? Steel windows specialist **Crittall** says there's now a wide spectrum of colours available – you can even colour-match interiors too... For the 'hot' colours for 2015, the 'catwalk' and interior design experts are predicting retro influences – olive greens, oranges, a touch of turquoise (1960s). Bright pastels in bold combinations with grey – from the Eighties, Mediterranean blues with white. But, what works best for you in your home? You may love tranquil pastel shades (baby blues, mauves, creams) or go for vibrant statement colours (scarlets, indigos, mustard yellows, deep purples, rich pinks) or on the cooler, softer, side of the colour spectrum naturals – also on-trend this season. These days, you can colour-match almost everything in the home – décor, furnishings, appliances – even your window frames – inside and out. With the 'retro look' now very much the vogue, steel windows are enjoying a big resurgence in popularity in homes – from 'two up/two downs' to luxury minimalist apartments.

Tel: 01376 530800 www.crittall-windows.com

Enq. 168

Secure leadership from Garador



Garador is continuing its leadership in high security garage doors. Its pioneering Guardian range of steel up & over doors has once again passed full SBD (Secured by Design) certification, plus the stylish new Salisbury has now been added to the existing range. With Horizon, Carlton and now Salisbury in the Guardian range of SBD accredited garage doors and with a full choice of 18 colours as standard, these great looking high security doors are the perfect solution for many buildings and customer requirements. Each door is carefully engineered to offer greater security with lock body protection, extra high security bracing, and a unique anti-snap cylinder. All three designs come with a number of options with canopy gear; retractable gear options and pre-fitted steel frames for a quick and easy installation. Look out too for Garador's exciting Bisecur remote hand transmitters in a new dramatic matt black finish. These new look stylish remotes feature an elegant shape and are based on ground breaking Bisecur technology and high frequency encryption signals for added security.

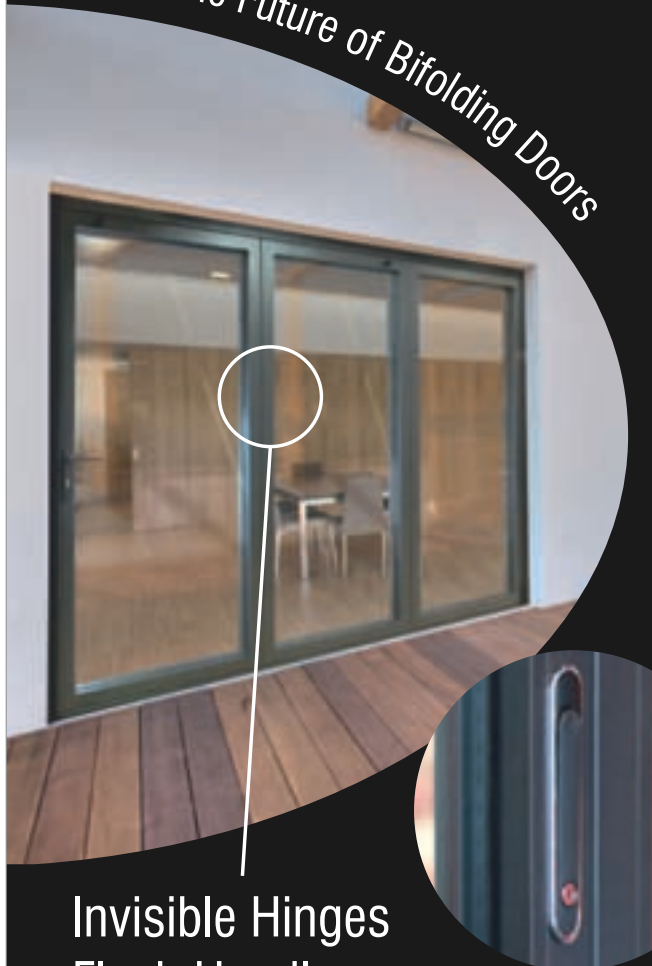
Tel: 01935 443793 www.garador.co.uk

Enq. 169

Emperor Concealed

Innovative Bifold Doors

The Future of Bifolding Doors



Invisible Hinges
Flush Handles
Clean Lines

Price Online: duration.co.uk
Call Us: 01268 681612



DURATION
WINDOWS

Aluminium Trade Manufacturer Since 1985

Enq. 170

editor's focus

1

GPML CONSTRUCTION

GPML Construction is a leading provider of building and maintenance solutions to customers in London and across the South East. Established in 1990, the company has a long track record in meeting the demands of projects with varying size and scope for extensions, loft conversions and new builds. A proven, flexible service means that the company can help develop a project from conception to completion.

Enq. 171



2

IRONMONGERYDIRECT

IronmongeryDirect has introduced fence hardware to its range for the first time, in preparation for the summer months. 35 new fence hardware products have been added to IronmongeryDirect's existing range of over 14,000 products to cater for people who are looking to prepare their gardens for the warmer months ahead. The new products include clips such as the Fence Panel Clip, brackets such as the Arris Rail Fence Bracket and accessories for fence posts such as post spikes, extenders and post tops. The company decided to expand its range after conducting recent consumer research which showed a rise in customer demand for these types of products.

Enq. 172



3

POUJOLAT UK

Poujolat UK's Thermoinox TI and ZI chimney system is "the only HETAS listed metal twin wall chimney that is soot fire tested using a solid fire stop in the room of the appliance in domestic houses" which, the company says, makes it an "ideal internal metal chimney solution for houses built post 2008 (Airtight)". During testing of the Thermoinox TI and ZI, the soot fire test took the cooling air for the enclosure shaft down from the roof space and avoided taking air flow from the living room and this was sufficient to achieve a distance to combustible materials of 50mm.

Enq. 173

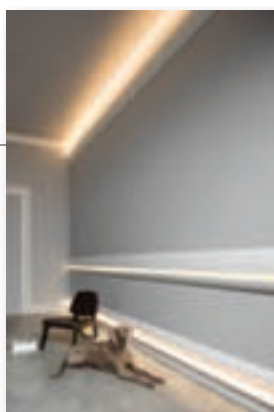


4

DAVUKA

ORAC n.v has just released its new 2015 brochure *Reflecting Your Imagination*, highlighting the new range of architectural mouldings available through its UK distributor Davuka GRP Ltd. Encompassing everything from simple coving patterns to huge elaborate designs, including flexible cornice and skirting boards, ceiling roses, and wall feature designs by the internationally famed Ulf Moritz, there are hundreds of products designed for easy DIY installation. With a focus on up (or down) lighting cornice which has become a tremendously popular (and surprisingly effective) way of lighting a room, there are plenty of imaginative ideas to help you easily enhance any room.

Enq. 174



5

J&S HOUSE OF DESIGN

J&S House of Design is a specialist supplier to the self-build and renovation markets. It designs, supplies, delivers and installs high quality kitchen, bedroom and bathroom solutions for every room in your home. With kitchens from the UK and Germany, bedrooms from Italy and bathrooms sourced from Europe's leading manufacturers, J&S House of Design will add style and presence to any home. With over 30 years' experience in the fitted furniture industry the company knows it can add the wow factor to any home.

Enq. 175

6

THE RADIATOR & BATHROOM GALLERY

The Radiator & Bathroom Gallery showrooms in Wandsworth and South Woodford are relaunching the new Hotech range of Italian designer radiators available now in electric or water versions and a few designs with back lighting to set the mood in any interior. It is the talking point of the heating industry. The Bernini G@ut radiator designed by Luca Bolognese is shown in a gold leaf finish adding a contemporary look to any modern and stylish home. It is available in one size in any RAL colour or special leaf finishes in either copper, gold or silver. Many of its new designs incorporate towel pegs or bars to be used in bathrooms.

Enq. 176

Is your supplier letting you down?

Now **2** week
lead time*

From only
£365
per leaf

Aluminium Bi-Fold Doors & Patio Doors

Lowest Prices Anywhere

Get a price
comparison
now!



- Over 99% of orders on time & complete
- Quick quote turnaround
- Very competitive glass options
- Available in any colour, alongside stock colours; White, Black, Grey, Grey on White

Tel: 01642 610798 Fax: 01642 671026



/madefortrade



@madefortrade1

Reader
Enquiry
177



made for trade
www.madefortrade.co

* Lead times based on standard colour range



LOVE YOUR SPACE

Make your home a place for life and a space for living. Our bespoke aluminium products are precision engineered in Britain. From survey, to installation and aftercare, we provide exactly the kind of service that you would expect from the original and leading manufacturer in the UK.

Reader
Enquiry
178

express 
bi-folding doors

Create a space for happier living
call 0800 121 4809
go to expressbifolds.co.uk

Showrooms in Glasgow, Leeds, Redhill & Romford

BI-FOLDS | SLIDING DOORS | ROOFS | WINDOWS | GLASS ROOMS

 **MADE
IN GREAT
BRITAIN**

Pocket door systems



Space saving pocket door solutions that bring contemporary style to your home.

JB Kind Doors now supply pocket framing systems to suit their wide range of contemporary and classic door designs.

Easy to install, JB Kind's rigid framing system is fitted in half the time of other brands and is available for single and double door situations.

For more information please visit the JB Kind's website.

Tel: 01283 554197 www.jbkind.com

Enq. 179

NBB Booster Box



The solution to low mains water pressure issues in residential buildings has been developed as a complete, compact modular package thanks to leading pump manufacturer **DAB Pumps**. Known as the NBB Booster Box, it pressurises potable water in residential applications and can be set up and installed in a variety of ways to suit the needs of the building and its occupants. Its installer friendly, modular components include a WRAS approved 280 litre tank, choices of a

submersible or surface mounted pump, both of which can be fixed speed or more energy efficient variable speed pumps. The range also includes a twin pump duty standby option and a tank extension kit.

Enq. 180

selfbuilder & homemaker



REGISTER ONLINE FOR...

In-print magazine • Digital magazine
Newsletter • Daily digests

www.sbhone.co.uk

Are you **really** covered?

A build or conversion project is a big investment - so you need to make sure it's adequately covered. Identifying the risks you face and who is actually responsible for the works in progress is absolutely crucial, because if a loss occurs you might not be in a position financially to rectify the damage and your contractor might not be either!

Just relying on a Public Liability cover isn't always going to provide you with the protection you really need and if you are exercising control of the works on site you will have responsibility under work place health and safety law to consider as well.

Getting the right insurance advice is essential, we understand the risks you face - so give us a call.



**Insurance &
Structural Warranty**

www.selfbuildzone.com 0845 230 9874

Whatever type of home you're creating, we've got it covered.

Self-Build Zone is a trading style of Sennocke International Insurance Services Limited who are authorised and regulated by the Financial Conduct Authority.

Enq. 181



By appointment to The Royal Danish Court

morsø



ME & MY MORSØ...

“My Morsø isn't just stunning, it is DEFRA listed as smoke exempt. So even though I'm in a smoke controlled area – it doesn't stop me enjoying all the warmth and beauty of a crackling real wood fire. And what could be more natural than that?”

MORSØ 7400-SERIES, 160 YEARS LATER
AND WE'RE STILL LEADING THE WAY

Reader
Enquiry
182



VISIT & LIKE OUR FACEBOOK PAGE TO FIND OUT MORE ABOUT NEW
PRODUCTS AND OFFERS AT: [FACEBOOK.COM/MORSOUK](https://www.facebook.com/morsouk) [MORSO.CO.UK](https://www.morso.co.uk)



CDR 169

MAKING LIFE WARMER SINCE 1853

Wood works

Lynda Taylor, managing director of Diligence International discusses the benefits of burning logs



[The oldest fuel known to man is often forgotten about – yet it has the ability to be replenished]

One are the days of the relentless use of fossil fuels with little or no concern as to their lifespan. Over recent decades we have become more aware that coal, oil and natural gas are limited resources, and we will soon no longer be able to enjoy their benefits.

Scientists have been working on solutions to the growing problem, with the result being nuclear power and the recently lauded harvesting of shale gas, or 'fracking' as it is more commonly known. Both of these are struggling to win favour with 'the man on the street', because of their potentially calamitous risks, however small.

However, the oldest fuel known to man is often forgotten about – yet it has the ability to be replenished. Timber grows, is harvested, and new trees planted to keep the cycle going – a system that has worked for centuries.

To give the impression that you simply chop a tree down, cut it up, and burn it, is a little over simplistic. The type of timber affects the burning process and heat output. It is important to remember that logs should be dry – the drier the better.

With fresh or damp logs the heat output is reduced, as energy is wasted burning off the

water. The other problem with freshly cut wood is that it creates smoke, making the fire and the flue dirty, therefore increasing the need and frequency of cleaning and maintenance.

Effective drying, or seasoning, of the timber is therefore essential for the efficient use of log-burning fires and stoves. Logs can be purchased pre-dried, but for those who forage in the local

Continued on page 53...



Charlton & Jenrick^{LTD}

Best of British fires, fireplaces & stoves



INFINITY 880FL BALMORAL SUITE
with Slate Liners

British design
and engineering
at their best



*A range of traditional and contemporary fires, fireplaces and stoves,
designed in Great Britain - exclusively from Charlton & Jenrick.*

Reader
Enquiry
183

for more information please visit: www.charltonandjenrick.co.uk

0845 5195 991 sales@charltonandjenrick.co.uk

Charlton & Jenrick brands: PUREVISION

fireline

INFINITY

PARAGON
A World of heat you can rely on

MATCHLESS
PERFORMANCE FIRES

Katell

woods for wind-falls, or have their own supply, then the seasoning of wood is relatively straightforward... if a little time consuming.

Wood is best stored in a dry place for at least one year, and preferably two. Leaving the sides exposed to air and wind will speed up the drying process, and chopping the wood down to size before storing will also help it dry quicker.

One further benefit of burning logs is that CO₂ emissions are much lower when compared to coal, bringing greater environmental credentials into the equation.

There is something of the caveman about us when it comes to tending a fire – we seem to know what to do (or we like to think we do) to get the best from a fire. However, there is a little more science involved as primary air is necessary for the bed of the fire. As the logs are heated they release flammable gases which is ignited and fed by the secondary stream of air reaching the fire.

Wood burning fires are low maintenance... not 'maintenance free'. For safety's sake, chimneys need cleaning at least once a year, twice if the fire is used frequently; some even recommend cleaning up to four times a year. Blocked chimneys can create deadly carbon monoxide – emphasising the need for effective and regular cleaning.

Much of this is also dictated by what is burnt. Burning 'rubbish' – old pallets, wet wood from the garden, soft woods, anything that falls down in a storm – will put deposits into the chimney.



Well-seasoned timber such as ash, beech or oak will be far more beneficial. Hardwoods are better than softwoods – they take longer to burn,

with the resultant savings in quantity needed and storage demands.

Some package deals will include a moisture meter to test the wood. No logs should be burnt until they have less than 20 per cent moisture – yet logs with over 45 per cent moisture have been thrown on the fire.

Even starting the fire needs some thought. Lighting old newspapers that have been rolled up tight is not a good idea. Use dry kindling with fire lighters and let the fire get hot before adding your logs.

Of course, the decision to purchase and install a log fire is not one simply made on running costs. The aesthetics may be just as important, if not more so. With the realisation that real fires can be more than just a 'hole in the wall', and that contemporary designs combined with high efficiency are re-defining the 'focal point' of a room, then it can be seen that wood burning fires are a serious contender.

Makeover programmes on the TV have given the public fresh ideas on what makes a beautiful interior, and log-burning fires are certainly high on the list of 'wants'. They are more than just a source of heat, they are a key part of the interior decor.

Home owners are looking for far more than a source of heat – they want to make a statement about themselves and the interior of their homes, and to enjoy the benefits of a real fire that cannot always be measured – that feeling inside.

Feeling warm from a log burning fire is not just a physical thing. It is also an emotion. There is more than one glow from a log fire in full blaze.



Enq. 184

New stove size estimator App



Want a wood burning stove in your room but not sure what kW size stove you require? The new Stoveright App from **Charlton & Jenrick** can help. The free to purchase App will calculate your room's heat requirement before choosing your ideal size of Fireline or Purevision stove. Peter Mintoft, director and chief designer of Charlton and Jenrick brands of stoves comments: "the question we most commonly get asked is what size stove do I require for my room? This App was designed to

make it an easy process for anyone considering purchasing a wood burning stove". More details on the App and the ranges of stoves can be found on the company's website at www.charltonandjenrick.co.uk.

Enq. 185

New in the DG Fires range



DG Fires is the brand name for the wood burning stoves and fires produced by DRU, one of Europe's leading manufacturers of contemporary fires and fireplaces. Recently launched under the DG brand is a new collection of wood fire inserts with built-in ventilators, providing fan-assisted convection to boost the performance of the fires. The new Instyle and Prostyle V models are designed to be installed into an existing brick chimney or connected to a steel flue. In addition to the radiant heat generated by the burning logs, the home owner can activate the ventilator in order to heat up the room more quickly and enhance the comfort of the fire.

Enq. 186



Let pellet make your life easier

When self-building with sustainable energy in mind, using the most up to-date heating technologies such as the air pellet stove can provide a 21st century alternative, to the traditional wood burner or pellet stove wet radiator system.

The range of MCZ comfort air pellet stoves from **Specflue** are not only cost effective, but offer 91 per cent energy efficiency. The stoves can be controlled remotely and programmed to come on automatically as and when required, so are perfect for people with busy lives; the perfect combination of convenience and ease-of-use. They also require very little involvement, with fuel replenishment typically required once a day, as opposed to every couple of hours with a wood burning stove.

Specflue, a leading supplier of flue systems, wood burning stoves and renewable heat products, is fast gaining a reputation as a one-stop shop for all things to do with sustainable heating. It supplies a comprehensive range of products including thermal stores, solar panels, pellet stoves and biomass boilers and provide the all important training, technical and maintenance support to ensure heating engineers are properly qualified and equipped with the skills to install appliances correctly.

Tel: 0800 902 0220 www.specflue.com

Enq. 187



Specialist suppliers of exquisite Fireplaces, Stoves, Fires & Fireplace Accessories



Capital Fireplaces Ltd – A leading TRADE supplier to the central & southern counties in the UK | www.capitalfireplaces.co.uk | Tel 01462 813138



Enq. 188

Pumice

System Chimneys & Liners

SCHIEDEL
ISOKERN®

ISOKERN®
25TH
ANNIVERSARY
1989-2014

Naturally better

Made from volcanic pumice
A natural insulator
Lightweight
Easy to install

Isokern is made from natural pumice sourced from the Hekla Volcano in Iceland. Lightweight, simple to install and highly resistant to temperature change, Isokern reduces the possibility of cracking and structural damage due to expansion.

25 years. Why not see what it could do for your next project?
To find out more about Isokern visit us at www.schiedel.co.uk

CE EN 1856-2 TUV 0036 CPD 90219 001

Part of the BRAAS MONIER BUILDING GROUP

Enq. 189

ECO STOVE

UK patent number GB 2 467 433

New Model EC678 88% Efficient, Low .07 CO to atmosphere



- Thermal mass heat storage releases heat slowly throughout the house (not just the room), no ducting needed.
- Stores 25% heat 12 hours after the fire has gone out.
- 88% efficiency.
- One 5kg firebox load of wood heats house for 12 hours.
- Simple two-man assembly using a dry-stack modular method. Stove body made of pre-cast silicon
- Designed in the UK and made in the UK.



**Defra
Exempt**

Contact us today to learn more about the Ecco stove advantage
Donna Dean 01527 857814 or sales@eccostove.com www.eccostove.com

*Innovation in
Silicon Carbide*

Enq. 190

The chimney of choice for Quality & Safety

Your chimney for life
**cheminées
Poujoulat**
No.1 IN EUROPE FOR CHIMNEY SYSTEMS

Terminal options to suit every style and environment

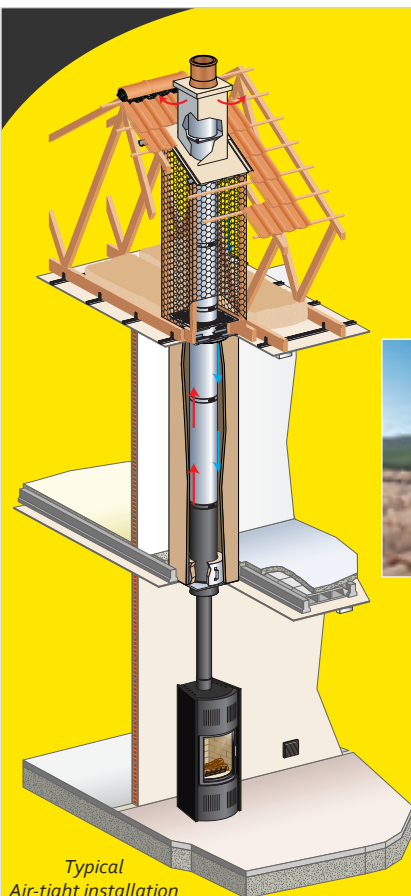


Systems for new and refurbished

For further information call our dedicated technical team

Tel: 01483 461 700

E-mail: sales@poujoulat.co.uk



Typical
Air-tight installation

Enq. 191

TTA announces new technical seminars in May



The Tile Association will be holding new technical seminars from May 2015 to help professionals gain a deeper understanding of specialist areas of tiling. The seminars will be held at regular intervals at TTA headquarters in Stone, Staffordshire, and are in partnership with CITB. The first event takes place on Wednesday 6 May, with a morning seminar on 'Tiling to Heated Floors' and, following lunch, another seminar on 'Tiling to Calcium Sulphate Screeds'. The seminars which

are based on the TTA's invaluable technical documents in these areas will be delivered by Brian Newell and Colin Stanyard.

info@tiles.org.uk www.tiles.org.uk

Enq. 192

Lightweight kneepad from Redbacks



A knee pad for pocketed work trousers which incorporates a unique 'direction of force' design that crucially protects the wearer's knees and the rest of the body from the potential dangers of impact through continuous kneeling, has been introduced by Redbacks Cushioning Ltd. 20 per cent lighter than its big selling predecessor, allowing greater ease of movement and with a thicker grade of spacer fabric giving added comfort, the new kneepads feature a soft and flexible

TPE (Thermo Plastic Elastomer) leaf-spring, now with increased durability, which is set within a unique honeycomb matrix.

Tel: 01327 702104 www.redbackscushioning.com

Enq. 193

Dunsley Heat

**ALL NEW Highlander 5
Enviro-burn Solo Slimline Pedestal**

HEAT OUTPUTS 5kW

Burning Efficiencies	Hearth Temps	HETAS
burning wood logs 79.3%	Burning wood logs 32.4°C	
burning ancit 75.5%	Burning ancit 44.5°C	

The Solo range is only available through our network of stockist

T:01484 682635 All Dunsley stoves are manufactured in Great Britain

email: sales@dunsleyheat.co.uk www.dunsleyheat.co.uk

Enq. 194

**selfbuilder
& homemaker**

REGISTER ONLINE FOR...

In-print magazine • Digital magazine
Newsletter • Daily digests

www.sbhonline.co.uk

NU-FLAME
High Efficiency Gas Fires

- Convenient & Clean Burning
- Up to 5.2kW Output
- Low Running Costs
- Total and Instant Control

View our stunning range at
www.nu-flame.co.uk
T : 020 8254 6802

Up to 90% Efficiency

Enq. 195

A practical and beautiful living surface

Installing luxury wood flooring gives an opportunity to create a unique character, style and add warmth to a space. It can last a lifetime and increase the property value and saleability of a project as Director of Ultra-Interior Ltd, Darren Beech, explains

Wood flooring continues to be an extremely popular choice of flooring material with an ever-increasing range available to the consumer. Choosing the right wood floor will provide both a practical and beautiful living surface which will enhance any home and complement any decor or style, whether it be a contemporary new build project or a remodel of a traditional property.

With endless possibilities of styles, textures, and colours of wood flooring to choose from where should you start when embarking on such a decision? After all, the flooring areas are usually the biggest single surface covered in one material, making it a key design feature, so establishing which is right for your lifestyle and the design aesthetics of the project is crucial.

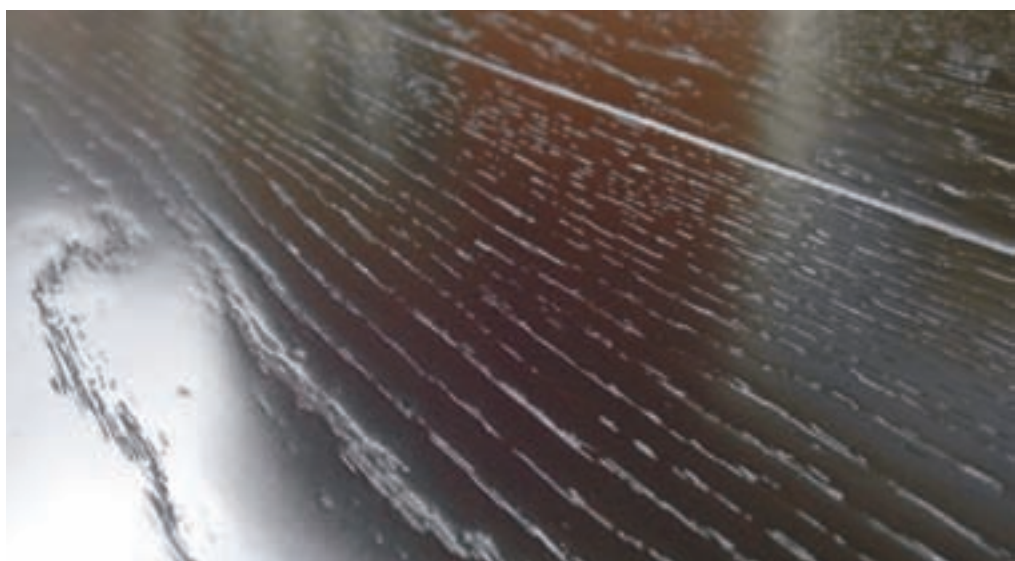
Quality wood flooring is available in two main formats – engineered or solid. Engineered flooring is nowadays the preferred floorboard construction – this simply means the floorboard is made up of several thin layers of solid wood bonded together with the grain running in a different direction to the adjacent layer – this gives superior stability and is ideal for installations with underfloor heating systems.

Solid flooring is the more traditional choice and is simply a single thick layer of the wood usually around 20mm thick. Specialist suppliers will be able to offer wood flooring in both engineered and solid formats.

Various grades of wood flooring are usually available, for example, Character grade, Rustic grade and Prime grade. These grades are an indication of the level and type of features to expect, such as knots. Different grades can help achieve either a traditional or contemporary look and feel.

Samples are a great way of getting a general feel for the tone and texture of a product and can be useful when comparing different options. They can be used as a guide, as the wood floor is produced from a number of individual trees and by their nature will have a range of natural tone variation and distinguishing features.

There are three factors that may help establish a preferred wood floor design – species, size and finish.



Species

A dark and rich tone species such as Walnut flooring makes a real statement. Ash and Maple flooring will give a naturally light feel to a room. There are a number of other species to choose from but Oak remains a firm favourite for homeowners looking for a durable and timeless option. The elegance and versatility of a beautiful Oak floor means it is suitable for continuing throughout the floor areas which can help achieve a natural flow from room to room.

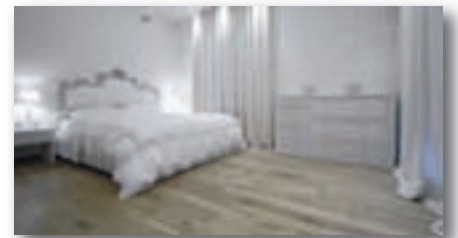
With the variations of Oak type and its finishing capabilities the different looks that can be achieved with textures and colours are almost limitless. For instance, a French Oak has a good balance of grain pattern and knots, its mellow tones have a smokiness that accentuates its character. English Pippy Oak has its own unique character with clusters of delicate small twig knots that really catch your eye. English Burr Oak is the ultimate in unusual grain where the epicormik twig growths are trapped in the grain as the tree grows – usually difficult to source in quantity and therefore ideal to use as smaller feature sections or in a piece of furniture to complement any Oak floor.

Size

A plank of wide and long dimensions can look impressive and the best of the tree's character can be seen in bigger planks great for showing off a large space. Advances in machining techniques mean that even engineered

Continued overleaf...

Wood flooring continues to be an extremely popular choice of flooring material with an ever-increasing range available to the consumer



floorboards can be produced in huge 340mm widths and beyond. Wide boards of 200mm – 300mm are more commonly chosen and with a specialist finish they create a very bespoke floor option.

The use of mixed width boards can add interest to the room and offer a more traditional feel as does a parquet floor – a geometric mosaic of wooden blocks used to create decorative designs and although a traditional style they are now also manufactured in a modern engineered format if required.

Finishes

A wood floor requires a finish of oil or lacquer, designed to protect the wood and enhance its beauty. Many individual colours and textures are being used to create finishes to suit all tastes.

Coloured finishes have been around for a while and while whites and greys still have a big influence on wood floors and interiors, tones of lavender and ivory complementing a heavy brushed texture are set to make their impact over

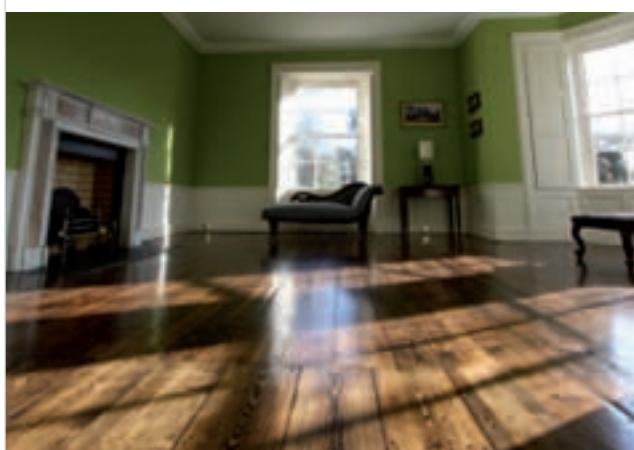
the coming season, while the more metallic tones of bronze and silver greys or even black certainly have their place where a more dramatic influence is desired.

Achieving a high quality finish depends on selecting and applying the correct materials, choose a finish that will give the desired appearance but also be able to stand up to the rigours of particular environments such as the kitchen where the finish will need to be able to handle spillages and regular cleaning. Lacquers are proving an ever popular choice for high use area as they are hardwearing and require no ongoing maintenance.

Choosing a specialist supplier who is knowledgeable and passionate about all aspects of its products and services will ensure you receive the appropriate information and guidance along the way, including advice on all the technical aspects of installing a wooden floor.

With wood flooring always admired and never going out of fashion it holds many benefits for any new build or refurbishment project. It is natural, warm to the touch, and is a renewable source which helps the environment.

Enq. 196



Need help with your wooden floor?

For new installations or renovations – speak to your local Bona Certified Contractor!



At Bona we are passionate about wood floors. Our range of oils and lacquers have been used worldwide for nearly a century to protect and finish beautiful wood surfaces.

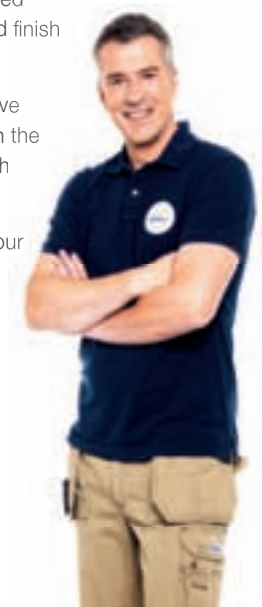
To help you prolong the life of your floor, we've trained a network of wood floor specialists in the use of our dust-free sanding system and high performance coatings.

Call us on 01908 525 150 or use the 'Find your contractor' tool on our website at bona.com to find your local wood floor specialist.

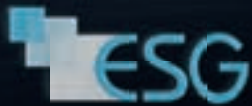
Bona Limited
Tel 01908 525 150
info.uk@bona.com

bona.com

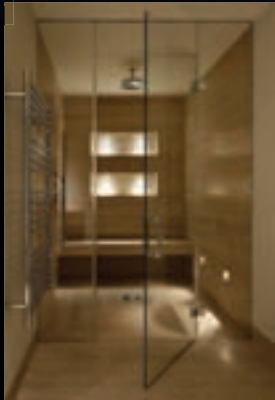
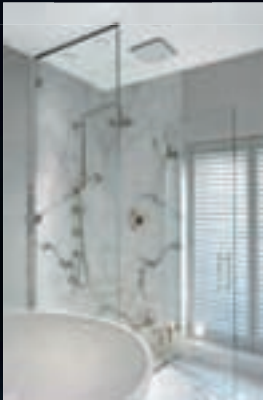
Bona
Passion for wood floors



Enq. 197



Total Glass Solutions



Bathroom and wet room solutions

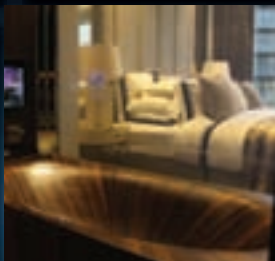
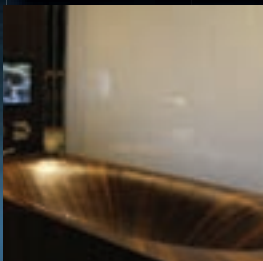
Ideal for shower doors, cubicles and screens

Bespoke shapes and sizes

Switchable LCD privacy glass options

Decorative sandblasting and printed laminated interlayers

BSI approved



www.esg.glass

0845 1548379

Enq. 198



SOLAR SLATE IS CHANGING THE FACE OF SOLAR PV

Our planning-friendly range of technologies provide solar power from an innovative roof covering that blends seamlessly with traditional slate.

- No planning headaches unrivalled track record in gaining Planning Approval
- No complaints from the neighbours
- No unsightly solar panels
- Energy cost security
- Earn from your investment

For the first time, it's possible to take advantage of solar power without compromise. Unhook from the fossil-fuelled lifestyle and make a real reduction in your carbon footprint. As a technology, ours is unlike anything else that's available.

It truly takes roof integrated solar PV to a new dimension.

Even homes in historic or conservation areas can now tap into an endless supply of free, clean energy, with the added long-term financial benefit of guaranteed payments from the government's Feed-In Tariffs.

British-designed and owned supported by European manufacture, all of our products are guaranteed from a company with a wealth of experience and a wide install base.

We know that every project is a journey. We are able to support our customers every step of the way, from supply and design through to installation and warranty.

SOLAR SLATE

Start your journey today.

T: 01454 627 841

E: info@solarslate-ltd.com

W: www.solarslate-ltd.com

Come and visit our permanent display at the National Self Build & Renovation Centre, Swindon

Enq. 199

Johnson & Starley introduce five year guarantee



Johnson & Starley is now offering a free five year parts and labour guarantee on its QuanTec HR28C combi boiler with Integral Passive Flue Gas Heat Recovery (PFGHR) from February 2015. The QuanTec HR28C has been hugely popular thanks to its ultra-high efficiency, reliability and ease of installation, and also due to it being the only boiler on the market that includes the Passive Flue Gas Heat Recovery within a standard sized boiler cabinet. There is no ugly 'add on' or extended height to the boiler making new installations and replacements much easier and simpler.

Tel: 01604 762881 www.johnsonandstarley.co.uk

Enq. 200

Take full control of your heating with myComfort

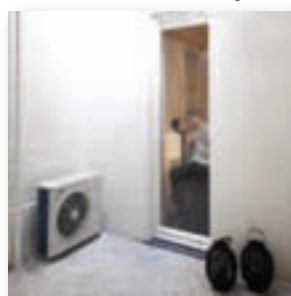


Forgot to turn your heating controls on before leaving for work, or want to come home to a warm cosy house after a long vacation or a cold winter's day? Introducing myComfort from Windhager, an innovative remote heating control mobile app for all of the Windhager biomass range of boilers, which launched at Ecobuild. myComfort allows every homeowner to quickly and simply control their individual heating systems every day from any recognised smartphone or tablet.

The app can be retro-fitted to all Windhager boilers with MES plus controls and requires a fixed LAN cable to the householder's router. Whether at home or abroad, the heating system is always under control.

Enq. 201

Air-to-water heat pump



Color and renewables specialist Daikin have launched an air-to-water heat pump with condensing combi Color gas boiler, fuelled by LPG. The Daikin hybrid system automatically selects most cost-effective option to ensure the lowest running costs – either using the heat pump or boiler. This provides maximum efficiency for homeowners who don't have access to mains gas. The system offers the best of both worlds – optimising energy efficiency and delivering completely reliable and controllable heating and hot water. Not only will you save money on your heating bills, you'll also be eligible to receive Renewable Heat incentives. Visit the Color website for more information.

able and controllable heating and hot water. Not only will you save money on your heating bills, you'll also be eligible to receive Renewable Heat incentives. Visit the Color website for more information.

Enq. 202

A boiler for all, thanks to launch of 050-W combi



Viessmann is making reliable boilers, with high quality materials and parts, available to more UK customers with the launch of the Vitodens 050-W. The gas fired condensing combi boiler extends the Vitodens range and targets the average UK home and budget. The most affordable Viessmann available, the Vitodens 050-W's highlights include its compact design and quiet operation. It is an ideal replacement for outdated boilers in flats, apartments and smaller homes.

The Vitodens 050-W has been engineered to offer homeowners lower spare part costs by ensuring that components can be replaced individually.

Tel: 01952 675000 www.viessmann.co.uk

Enq. 203

PANELAND FURNITURE LTD – 01299 271143



- 100% solid wood kitchens – no MDF, chipboard or ply
- Dovetail jointed drawers – mortise and tenon joints for carcasses
- Free design service, individual, hand drawn plans
- Non-standard sizes, at no extra cost, to suit your kitchens dimensions
- Fully assembled units; no annoying flat-pack assembly
- Straightforward, easy to understand costing: prices include VAT & delivery
- Knotted, primed and painted units are now available

Pineland is a privately owned, family company that has been established for over 20 years. We believe in listening to our clients, and our hand drawn plans, reflect our customers desires and opinions. The final design combines well planned functionality, with elegance and beauty, and our clients are often surprised how all this can be achieved at such a reasonable cost.

Visit our website: www.pineland.co.uk Email: enquiries@pineland.co.uk
Or call our offices: CLEOBURY MORTIMER, SHROPSHIRE: 01299 271143
NORTHWICH, CHESHIRE: 01606 41292

Enq. 204

Eco-friendly insulation block and beam system



TETRIS is the eco-friendly, super strong structural flooring alternative to concrete block and beam floors ideal for houses and new build developments from Celecta. Providing outstanding thermal and structural performance, TETRIS is also a Green Guide A+ rated system. In addition to super low U-values and excellent thermal performance, TETRIS's lightweight properties make it quick and easy to install. The new TETRIS insulation block and beam brochure is now available. The

brochure enables self-builders to specify and build an eco-friendly TETRIS insulation block and beam floor with confidence.

Tel: 08456 717174 www.celecta.co.uk

Enq. 205

Add a touch of the Caribbean to your kitchen



Following the successful launch of the Araya bathroom brassware range – from Pegler Yorkshire – comes a brand new addition in the form of a stylish kitchen tap. The design led 'Araya' range shares its name with, and is inspired by, the dramatic landscapes of a Caribbean peninsula. Its full bodied pillar is emphasised by its curvaceous lines which flow effortlessly into an easy to operate lever handle, evoking images of the undulating shoreline. The eight-piece Araya collection offers sleek contours and minimalistic styling that will have endless appeal to design conscious consumers. Araya products also function as well as they look with simple and are supported by a 10-year guarantee.

Enq. 206



*Delivering more than you
thought possible for every
room in your home*

Reader
Enquiry
207

Investing in your home is daunting

maximising an investment.



Jim Susan
Jim and Susan
&



www.oxfordplanters.co.uk



The Finest in British Outdoor Joinery

Designers and manufacturers of hardwood Planters and garden furnishings

Email:- info@oxfordplanters.co.uk

or

call:- 01608 683022

Other services include a bespoke joinery service
for all interior & exterior design

All products manufactured in the Cotswolds using sustainable timber

Enq. 208

Shaws classic Waterside sink



The handcrafted Waterside 800 from **Shaws of Darwen**, a large single bowl fireclay sink with a classic curved bow front will look stunning in any style of kitchen. The sink has a central 3½" waste outlet for use with a basket strainer or waste disposer, is available in white or biscuit finishes and is 40mm deeper than the smaller 600mm model. Each sink is proudly stamped with the signature of its maker and bears the Shaws logo which equates to a traditional quality built

sink to 'world-class' manufacturing standards. To view the complete range of sinks, taps and accessories visit the website.

Tel: 01254 775111 www.shawsofdarwen.com

Enq. 209

Smeg extends Symphony range



Smeg has extended its popular Symphony collection with the new SY931 dual fuel three-cavity range cooker with induction hob. Finished in striking stainless steel or black gloss, it features the contemporary and distinctive square aesthetic that the Symphony cooker collection has become renowned for, and co-ordinates seamlessly with a wide range of Smeg products. The main oven has nine functions, including Circulaire with upper & lower element, which offers a

similar result to rotisserie and allows food to be cooked quickly and effectively. It has a digital electronic clock/programmer, air cooling system for added safety, four cooking levels and closed door grilling.

Enq. 210



**TERRACE & PATIO
PAVING**



BALCONY
BBQ AREA
GARDEN
COURTYARD
TERRACE
PAVING
DRIVEWAY
PATIO

20MM PORCELAIN PAVING



THE STONE & CERAMIC WAREHOUSE
81 - 85 STERLING ROAD, CHISWICK,
LONDON, W3 8DJ

020 8993 5545

WWW.SACWPAVING.CO.UK

Enq. 211

The Point Master Tool

Fast & accurate mortar replacement

Paving slabs
7 joints in 25 seconds

(See the video on our website)

Brick Pointing
up to 10m² / hour

Simple to use
Robust design
For regular mortars

Call us on:
0845 1160284

£19.95
+p&p*

*Dispatched Same Day (Std p&p is £3.95)
Point Master (UK) Ltd, Oliver House, Station Road,
Great Chesterford, Saffron Walden, Essex CB10 1NF

Watch our extensive demo video @

www.pointmaster.co.uk

Pro Pack
£35
incl p&p

Enq. 212

Products Designed to
Light Up Your
Imagination



Davuka GRP Ltd
For Inspired Lighting & Mouldings
www.davuka.co.uk info@davuka.co.uk
020 8660 2854

Enq. 213

 for your life
for a lifetime




You want to enjoy the health benefits of a swimming pool. But you can't really justify the time and trouble that maintaining a full size pool demands.

The Swimspa by Spa De La Mare is an all year round swimming machine and hydrotherapy massage spa in one, for indoor or outdoor use. Built to exacting standards in the Channel Islands, it is the ultimate low maintenance solution for busy people. Prices start from a refreshing £17,500.








For a brochure please call
01481 701333
www.spadelamare.com



Enq. 214

Brilliant edging products for every project



				
EverEdge Classic	EverEdge ProEdge	EverEdge Titan	EverEdge Garden Rings	EverEdge Planters
<p>The permanent way to maintain neat edges for lawns, paths, flower and vegetable beds</p> <ul style="list-style-type: none"> • Flexible 1 metre lengths • Maintenance-free • Will not rust • Just mow over for perfect edges <p> Made in Britain DESIGNED AND DESIGNED</p>	<p>The efficient option in flexible steel edging for larger projects</p> <ul style="list-style-type: none"> • 2.5 metre length for quicker installation • Fewer joints for unobtrusive, cleaner edges • Deeper, wider spikes for extra stability • Heavy duty 2.5 mm thick galvanised mild steel will not rust 	<p>When a deeper and more robust edge is required we recommend the Titan system</p> <ul style="list-style-type: none"> • 2.5 metre lengths • 2.5 mm to 6.0 mm thicknesses • Made to order in various depths <p> EVEREDGE THE EDGING COMPANY</p>	<p>The rings are assembled by securing two simple coach bolts at each overlap to achieve a neat and clean circle to go around trees and shrubs</p> <p>Supplied:</p> <ul style="list-style-type: none"> • 600 mm 2 piece, 900 mm 3 piece, • 75 mm & 125 mm depths • Bespoke rings can be supplied upon request 	<p>These rugged planters can be made to order</p> <ul style="list-style-type: none"> • Cor-Ten (as shown above) • Weathered Steel • Hot Dip Galvanised • Powder Coated

Please write, telephone, or visit our website for more information

Follow us on Twitter @EverEdgeUK

EverEdge, PO Box 9, Stroud, Gloucestershire GL6 8HA Tel: 01453 731717 Ordering online is available at www.everedge.co.uk

Enq. 215

Green roofing – not just a fancy lawn

Green roofs, a planting scheme established on a roof, structure or wall, can bring not only great aesthetic qualities to a building but a host of environmental, social and economic benefits as well. It's also not just the reserve of large scale projects such as the Olympic Park that can benefit from installing green roofs, but the domestic house in the UK too, as the NFRC explains



Green roofs can provide important refuge for wildlife and reduce surface run off, helping to minimise flash floods following intense periods of rainfall

growing medium that is low in nutrients. Irrigation is not normally required once the green roof has established.

- Semi-intensive
Typically requiring a deeper level of substrate, a wider range of plants can be included such as shrubs and woody plants. Irrigation and maintenance requirements are dependent on the plants chosen.
- Intensive
Often referred to as a roof garden that provides similar benefits to a small park or domestic garden. Designed predominately for recreational use, intensive roofs often require a higher level of maintenance and irrigation.
- Biodiverse
Designed specifically to create a habitat that will attract a particular plant species, insects and birds by replicating their natural habitat. This type includes a brown roof, which is a low-vegetated version. The growing medium is purposely selected to allow plant species to inhabit the roof over time.

So what about the benefits?

Green roofs can provide important refuge for wildlife and reduce surface run off, helping to minimise flash floods following intense periods of rainfall. They have been shown to reduce the need for air conditioning in the summer and offer a degree of additional insulation in the winter. The lives of waterproofing membranes beneath green roofs are extended, plus sound insulation and air quality are improved. Of course, in order to gain any of these benefits, and to continually do so, there are a number of factors that need to be borne in mind before a project begins.

Ask yourself what is it that you want from the green roof – is it for increased leisure space, encouraging more wildlife to the garden, or simply to do your bit for the environment? Whatever the reason is, there will be a suitable green roof.

Green roof types

There are in numerous types of green roof each with its own requirements and functions, though they can broadly be broken down into Intensive or Extensive systems:

- Extensive
A light-weight, low-maintenance roof system, typically with sedums or other hardy plant species planted into a substrate/



© Optigreen

Specification

Once you have decided what it is that you want from your green roof, and the type of green roof it will be, it will be down to creating the right specification. With self-building, it would be worth speaking to your project manager or lead contractor to get advice. As with solar panels, anything where additional load is being placed on the roof structure needs to be checked prior to installation and, where necessary, strengthened.

Waterproofing

Waterproofing also needs to be looked at closely, whether its new build or refurbishment. This layer is by far the most important element of the roof; green roof or otherwise. It is this layer that ensures the integrity of the building. If you are looking to install a green roof on an existing roof, then it must be confirmed as being sound. Whilst a green roof can increase the life of the waterproofing it won't be able to if there are underlying problems. If the layer needs to be replaced, or if it's for a new build, it is advisable to speak to the supplier or the manufacturer to make certain that the product is suitable for green roofs.

Installation

Installing a green roof system is completely different to the installation of landscapes over natural ground. Ideally only people who have



© Jeff Sorrell



© BBS

been trained in the installations of green roofs should undertake this task. However, if contractors who are untrained in green roof installation do attempt to install one, they should take particular care working at height and not to damage the waterproof membrane, among other considerations.

There are increasing numbers of contractors who have received specialist training in green roof installation and care from organisations such as GRO (The Green Roof Organisation) and BALI (British Association of Landscape Industries).

Maintenance

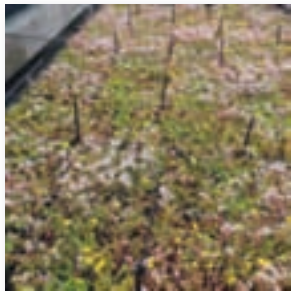
As with the rest of your home, the maintenance of the green roof must not be overlooked. As

with a garden, the green roof (depending on the type installed) will likely require irrigation, plant management and fertilising in order to prevent the living roof from dying or being overrun by weeds and so forth. The level and type of maintenance must be factored in during the design stages, as well as who will do it and what safe access will need to be provided. There are other factors that need to be considered but an experienced installer will provide you with the support and guidance you need when choosing the right roof for your project.

There is a UK specific code of best practice for green roofing which is available to download for free from www.greenroofcode.co.uk or from the members of the Green Roof Organisation (GRO), further details of which can be found at www.nfrc.co.uk

Enq. 216

Wallbarn M-Tray – the easiest instant green roof



All the preparation has been done – installation could not be simpler. The sedum and wildflower plants are pre-grown into portable tray units, clicked together to form a seamless green roof.

All required drainage and filtration elements are contained in the trays meaning installation is faster, uniform, less messy and a one-person job. It can be taken up at any time in the future.

M-tray is ready to go...and ready to grow.

Tel: 0208 916 2222 www.wallbarn.com

Enq. 217

Klober 20k tile and slate vent for MHVR



The 20k tile and slate vent from Klober not only enables far fewer vents to be used on a roof but fulfils the need for the bigger aperture required for MHVR.

The external air intake and extract ducts from an MHVR unit connected to small tile vents without sufficient free area create excessive air resistance and noise. Tile and slate vent options can be fitted with a 150mm adaptor, the latter being suitable for natural and man-made slates. Both have been designed for universal use. For more information, visit the website or call Klober directly.

Tel: 01332 813050 www.klober.co.uk

Enq. 218

FAKRO's 10 tips on how to select a roof window



With the gap between manufacturers increasing, FAKRO's new brochure *10 tips on how to select a roof window* helps builders and roofers choose which designs are likely to suit interior styles and budgets. Over 80 per cent of the market is still accounted for by the standard centre pivot window, yet the choice of design, size, glazing and accessories continues to grow. There is also considerable variation in thermal performance, FAKRO having the only quadruple-glazed window which has

achieved Passivhaus certification. The company also manufactures bespoke products to meet specific project requirements.

Tel: 01283 554755 www.fakro.co.uk

Enq. 219

More than just a staircase



British Spirals & Castings has helped create a stunning feature staircase during the refurbishment of a Victorian period home in Market Harborough. Bryan Drew decided to include a three storey spiral staircase as part of the extensive refurbishment of his property, which also included creating an open plan kitchen, dining and living area with an Orangery added to the rear. The traditional Victorian Cast staircase consists of three flights of stairs linking the cellar, kitchen, guest bedrooms on first floor and the loft, with 3 balusters per tread. This staircase is the first from British Spirals & Castings to feature a brass handrail.

Tel: 01663 750716 www.britishsc.co.uk

Enq. 220





Think Roofs, Think NFRC

ALL THE GUIDANCE AND PROTECTION YOU NEED UNDER ONE ROOF

VISIT WWW.NFRC.CO.UK OR CALL 020 7638 7663

Follow us on Twitter @TheNFRC

Enq. 221

Stunning
light & open
timber staircases



View case studies at
www.completestairsystems.co.uk
or visit our showroom in Romsey, Hants
01794 522444

**COMPLETE
STAIR
SYSTEMS**

Enq. 222

FLIGHT DESIGN
STAIRCASES | BALUSTRADE | ARCHITECTURAL FEATURES



WWW.FLIGHTDESIGN.CO.UK
13A CHAPMAN ROAD, LONDON, E9 5DW
020 8980 1000

Enq. 223

selfbuilder & homemaker



REGISTER ONLINE FOR... In-print magazine • Digital magazine • Newsletter • Daily digests
www.sbhonline.co.uk



Pre-painted black featheredge



Thermowood pine claddings



Pre-painted white featheredge



Treated pine claddings

For a free sample, call 0800 849 6339

Buy online:

www.timber-cladding.co.uk

Enq. 224

Together with natural stone it is the only 100% natural material used in building construction

LOG CABIN UK

Traditional and contemporary style log buildings
Constructed using renewable and sustainable materials
Compliant with building regulations
A true eco-building suitable for commercial and domestic use

For a brochure or further information contact
Log Cabin UK Limited
Cae Bychan, Bont Goch
Aberystwyth, SY24 5DP
01970 832328
www.logcabinuk.com

Enq. 225

THE ACORN RANGE
over 480 designs
Free planning drawings with every order on our Acorn Range*

Oak Designs Co.

Oak Frame garages Ideal for Self Assembly or by our Expert Team

£4900*
(List price £5169 + VAT)

STAR BUY

The Piltdown - Offer expires 31/6

www.oakdesigns.org

- Traditional Oak frame garages
- Choose from over 480 Designs
- Assembly pack
- Full build available
- Planning Service
- Free Site Survey*

Try our 'Quick Quote' on our new website

* Prices include oak posts, eave & tie beams, braces, softwood soleplates studwork, rafters, weatherboarding, saddle stones, 1 pr. softwood doors. Excludes groundworks, bricks, roofing, assembly, delivery & VAT.

Contact our Sales Team on 01273 400411

Enq. 226

Sunscreen for your wood

UV Protection Factor 12

Maintains the natural colour of the wood and limits the greying process

- > Prolongs wood lifetime
- > Algae and fungal decay protection
- > Transparent 425 Oak finish and 428 Cedar finish now available

Call or visit the web for stockists.

www.osmouk.com

+44 (0)1296 481 220

osmo

Enq. 227

Timber & Joinery Showcase

In this issue we look at recent trends in timber and joinery



1 With a heritage stretching back to 1904, **Vastern Timber** is one of the UK's largest British hardwood sawmills, specialising in cutting and manufacturing native grown timbers and providing a professional service to architects, builders, joiners, furniture makers and timber framers.

www.vastern.co.uk

Enq. 228



2 Specialists in the design and installation of architectural features such as staircases, balustrade, mezzanine floors and furniture. **Flight Design** undertake both residential and commercial projects. Every installation is bespoke, and carefully built in our workshop to your specifications.

www.flightdesign.co.uk

Enq. 229



3 Designers, engineers and builders of sustainable timber frames houses for self-builders, **Solo Timber Frames** offer three timber frame walls suited to all budgets and requirements. Solo is unique as the only company in the timber frame industry who is a member of the Trading Standards' Buy with Confidence Scheme.

www.solotimberframe.co.uk

Enq. 230



4 Established in 1988 **Kingsland Timer Design** offers the perfect timber frame solution for self-builders. Kingsland Timber can complete your new home to the level of finish you require, allowing you to undertake as much or as little of the build as you wish. Free advice and no hard sell.

www.kingsland.uk.com

Enq. 231



5 **Log Cabin UK** specialises in the design and construction of contemporary styled log buildings. Many people regard real wood as the best building material in the world. While ensuring its clients are satisfied by the aesthetics of their log cabin, its underlying ethos is one of quality and sustainability.

www.logcabinuk.com

Enq. 232



6 The **Oak Design Co.**'s **PILTDOWN** two bay oak framed garage with logstore and doors is on a special offer and is ideal for self assembly or by its expert team of carpenters. The Acorn range offers over 480 standard designs and represents great value while not compromising on quality.

www.oakdesigns.org

Enq. 233



7 **Gripsure's** **GripsureHome** is a non slip, low maintenance timber deck board that creates an outdoor living space that will look great in any garden. The decking boards feature two anti-slip inserts for an excellent slip resistant finish, and grooves to aid with drainage – resulting in a fabulous but safe deck.

www.gripsure.co.uk

Enq. 234



8 **Hoppings' Q-Clad Featheredge** is now available finished with a unique pigmented water based coating, called **Q-Shades**. The result is assured long term preservative performance of its treated timbers with a durable and easy to maintain colour coating that allows the natural beauty of wood grain to show through.

www.hoppings.co.uk

Enq. 235

James Latham now offering Engineered Grandis

James Latham is now offering the Rolls-Royce of Eucalyptus through all eight of its timber depots, with the arrival of Grandis 690+, a WoodEx Engineered Grandis

Delivering a number of benefits to customers; namely sustainability, natural durability, ease of use and continuity of supply, Grandis 690+ (a reference to its impressive density scoring against other products available on the market) is 100 per cent FSC plantation grown from an area of 220,000 hectares and produced exclusively from a single species.

Fully compliant with EUTR legislation and verified by TRADA, Grandis 690+ has been extensively tested at the Federal University of Paraná in Brazil where it scored highly against stringent criteria including strength and durability (achieving 2-3; durable to moderately durable) as well as density, (690 - 750 kg/m³ @12 per cent M/c – the same species in other parts of the world has only achieved 595 k/g/m³), making it particularly suitable for joinery and structural use. Plus, it has also been assessed for

one-hour fire test requirements.

It also boasts an impressive natural durability, resisting infestation from insects, therefore greatly reducing the chance of bore holes etc., as well as maintaining its aesthetic properties.

Group Product Sales and Development Manager for WoodEx and Accoya at James Latham, Paul Leach, explained: "With Grandis 690+, the timber is allowed to grow more naturally and reach full maturity of approximately 28 years, hence the extra density.

"It really is an impressive timber and one which ticks all the boxes, both for ourselves but also for our customers. As well as meeting all the legal and sustainable requirements, it's a high-grade, knot free, clear and uniform timber which is also extremely easy to machine, making it the perfect choice for the joinery, furniture making and construction sectors."

Grandis 690+ is exclusively available through James Latham, directly from stock in clear faced lengths of 2.0m – 3.0m and in finger-jointed lengths of 5.9m as well as in various widths and thicknesses.



Visit www.lathamtimber.co.uk or call 0116 257 3415

Enq. 236



Vastern Timber

Suppliers of British grown timber products

As one of Britain's largest hardwood sawmills, we offer a range of sustainable timber products including:

- Structural oak beams
- Oak, sweet chestnut & cedar cladding
- Solid English hardwood flooring
- Naturally durable timber decking

Please visit our website for the full range.

Vastern Timber
 Wootton Bassett
 Wiltshire
 T 01793 853 281
 E sales@vastern.co.uk
 Studley, Wiltshire
 T 01249 813 173
vastern.co.uk

Enq. 237



kingsland
timber design

flexible and affordable modular timber frame dwellings
"the perfect choice for self builders"

design - manufacture - build

also pavilions, leisure buildings,
garages, offices & outbuildings

standard and bespoke service.
 traditional and contemporary designs
 tel: 01568 708 206

www.kingsland.uk.com

Enq. 238

Add protection and colour outside with Osmo



After a harsh winter, garden wood needs a pick me up that will protect and revive it. Osmo UK, the eco-friendly wood finishes expert, provides a solution that not only rejuvenates the wood, but leaves it protected against the ever changing weather conditions. Osmo Country Colour is an opaque, satin-matt wood finish that is suitable for use on exterior fencing, cladding, garden furniture and sheds. The deep rich colour hides the grain and colour of the wood but ensures that the wood's natural feel and texture is maintained. Country Colour is ideal for renewing previously stained, weathered or discoloured wood surfaces, giving wooden surfaces protection and beauty for many years.

Enq. 239

Timeless Timber product offering for summer 2015



Timeless Timber, BSW Timber's leading outdoor brand, is building on the success of its fencing and landscaping products by introducing a new range of garden buildings. Designed to make outdoor space an extension of the home, the new range includes sheds, log stores, gazebos, pergolas, garages and car ports. The stand-out product is the Timeless Timber shed range, available in five designs: Georgian; Gothic; Contemporary; Pod and Post and beam.

Intended to take centre stage in a garden, the sheds have a choice of contemporary finishes are strong, weather resistant, secure and easily erected.

Enq. 240

Often imitated
Rarely matched
Never surpassed



20 years of style, security and quality



BESPOKE TIMBER FRAMED BUILDINGS



Garages, Stables, Workshops, Home offices, Holiday lodges, Conservatories, Garden barns, Pool houses, Sports pavilions, Clubhouses

Call 01568 760540 or visit www.courtyarddesigns.co.uk

Enq. 241



Design and Planning



Watertight Frame Erection



2nd Fix Items Supplied



And a Whole Lot More...



Solo Timber Frame 01892 771354
info@solotimberframe.co.uk
www.solotimberframe.co.uk

Enq. 242



www.gripsure.co.uk

+44 (0)1726844616 info@gripsure.co.uk

Enq. 243

The potential for additional useable space could lie beneath your feet

Basement & Drainage Systems explains the key points to dealing with water and damp proofing



This saturation causes an effect known as hydrostatic pressure which builds up until the water finds a way of being released to ease the pressure – it will then seek the path of least resistance to make its entry into the building structure. Typically, the weakest point tends to be at the floor or wall junction.

Fortunately, today, there are reliable products and comprehensive installation procedures that can help to manage the problems of hydrostatic pressure such that any basement structure can be fully waterproofed to create a dry and damp-free useable space.

The first decision to be made generally concerns the question, “who is going to install the waterproofing system?” Options here are:

- Employ a basement waterproofing specialist to do the whole job
- Buy the necessary products and employ the services of a local tradesman to install the whole system
- Buy the necessary products and carry out the full install – perhaps with some on-site professional guidance
- Buy the necessary products and employ the services of a local tradesman as necessary

The second decision may then be to decide which specialist to employ. A key factor for consideration is the provable reliability of the specialist and the products to be used. Things you should look for are testimonials from satisfied customers (it is strongly recommended that you call at least two). Alternatively, if your decision is to opt for more practical involvement by yourself, look for a professional who can provide comprehensive support in terms of installation instructions, and a supplier who has products suitable for use by a professional. Beware of using inferior products which could cause poor

When it comes to exciting new home projects, ambitious self-builders should take the opportunity to consider the potential for increasing useable space without increasing the footprint of their dream property. How? Well, including a below ground basement in their plans could add considerable value to the property as well as added space for such things as a utility room, home office or even a kids play area. However, it is important for you to be aware that any part of a building that is below ground level does have the potential to suffer from water ingress and damp which could render the space more of a nuisance than a valuable asset. Raise your expectations of creating additional useable space while minimising the spending and time risks in creating a wet, damp unusable room.

Most people know by experience that water has a canny way of getting into areas where it can cause damage to a property when there is any weakness in the material or structure. Yes, water is a force to be reckoned with.

However, both new and old build properties with basements can be fully protected from water and damp problems with the greatest confidence but there are a number of key points which need to be understood and planned for when deciding to proceed. Penetration of the basement walls and floor by water is a readily solvable problem.

Without trying to make the subject complicated or worrying it is important to recognise that water penetration into a below ground structure occurs more often than not when the soil surrounding the property becomes saturated with water after prolonged periods of rainfall.

Raise your expectations of creating additional useable space while minimising the spending and time risks in creating a wet, damp unusable room

waterproofing performance simply because you will want to have absolute confidence that the useable space you have created will remain usable space over time.

The proven approach is to use a system that involves cavity drain membrane, interior drainage channel and a sump pump unit. These are products used by all credible specialists and so will do a great job for anyone who wants to take the self-purchase approach. Please be aware that many specialists have been known to push for a full conversion (that is to say, full conversion or nothing) whereas the immediate priority is to ensure the basement is fully and reliably waterproofed. The decision as to how to use the space can be deferred should time or finances dictate.

In a full waterproof system, a submersible pump will have been installed to transfer collected water from the internal drainage system to a suitable discharge point at ground level. This pump will be the only moving or mechanical component so pay careful attention to product selection. Beware of any recommendation which includes a low cost pump because pump failure is a common cause of basement flooding even after the installation of all required components. Ideally, choose a sump pump system that includes at least two pumps. Points for consideration are:

- A second pump is really a must have to back up the primary pump should a single pump failure occur or excessively high water flow happens, perhaps during



periods of heavy rainfall

- The ideal approach is to install a sump pump system that incorporates two mains (electrical) pumps plus a battery backup pump. A triple pump unit will provide the greatest security for avoidance of basement flooding no matter the circumstances
- Use a pump that comes with a three year warranty because this implies

product reliability.

Finally, highly recommended is the adoption of an annual service of the system which includes system flushing and proper pump maintenance. Consider the sump pump system as having similar demands as your car which needs regular planned service to ensure continued performance and reliability.

Enq. 244

JTPumps Domestic & Commercial

- Sewage pumping stations
- Basement pumping stations
- Pumps

We provide complete job ready products for areas where gravity flow is not available

Whatever your pumping requirements are JTPumps can supply you it all at affordable prices. We hold in stock and supply packaged pumping stations, to suit all applications whether it is sewage pumping stations, basement pumping stations or submersible pumps. We carry a large stock of plastic pipe and fittings, ensuring that we are able to provide you with everything you require.

Unsure what you need just telephone us today for help

JTPumps.co.uk
0844 414 5800
Mobiles Call 0161 671 7498
Domestic and Commercial



Enq. 245

Classified

EVEN MORE WAYS TO GET THE LATEST INFORMATION FOR SELFBUILDERS!



www.sbhonline.co.uk

The Selfbuilder & Homemaker website is an online provider of past and present products and news items for the selfbuilder. Regularly updated with hundreds of press releases sbhonline.co.uk is a one-stop source for all the latest press releases providing you with access to information about products and services you require for your project as well as self-build relevant news and case studies.



Digital Issue

The digital issue of Selfbuilder & Homemaker provides all the same content as the print issue with the added advantage of being instantly available whenever and wherever you have access to the internet. In addition to its ease of access the digital issue of Selfbuilder & Homemaker gives direct links to advertisers, allowing you to visit a potential supplier's website with the simple click of a mouse. Subscribe at www.sbhonline.co.uk



SBH Newsletter

Emailed on a fortnightly basis, the Selfbuilder & Homemaker newsletter is designed to provide you with the latest information on products and services of interest, direct to your inbox. You can quickly gather a snapshot of information from up to 12 carefully selected companies and easily follow links through to further information on www.sbhonline.co.uk, or go direct to the company's own website. Brochures and videos are also regularly available. Subscribe at www.sbhonline.co.uk

BATHROOMS, SHOWERS & WASHROOMS

PEGASUS WHIRLPOOL BATHS



BESPOKE! Not all Whirlpool Baths are made the same...

01633 244555 :: info@pegasuswhirlpoolbaths.co.uk
www.pegasuswhirlpoolbaths.co.uk

Enq. 501

AIR TIGHTNESS & TESTERS

BUILDING REGULATION COMPLIANCE TESTING
Part E: Sound Insulation
Part F: Ventilation
Part L: Air Tightness

BSRIA Compliance

- Fast Response
- Fully Accredited
- UK's No. 1
- Nationwide Service
- ATTMA Members
- Competitive Fees

Call Today: 0800 587 1000
Quote Ref: BS001 to receive a discount

compliance@bsria.co.uk www.bsria.co.uk

Enq. 502

HEATING, VENTILATION & SERVICES

Radiator specialists

AEL Heating Solutions

HEATING SOLUTIONS
Tel: 01928 579068
Fax: 01928 579523
e-mail: sales@aelheating.com
www.aelheating.com

Enq. 505

DOORS & WINDOWS

SASH WINDOW LOCKS

ROLA

www.sashwindowlock.com
TEL: 0844 482 20 34 FAX 01708 768 825

Enq. 503

To advertise
in the
Classified &
Web Directory
please call
**01435
863500**

GROUND INVESTIGATION

MINI • SOIL • SURVEYS

www.minisoils.co.uk

Cost effective ground investigations
for housing projects

INVESTIGATE DON'T SPECULATE

Nationwide service from five area offices
For free advice & quotations
Tel: 0161 980 0044 Email: info@minisoils.co.uk

Enq. 504

OAK PRODUCTS

OAK BEAMS

IMMENSE STOCKS
Wide Oak Floorboards
Birks, Peg Tiles etc.
Barn Frames for selection
ANTIQUE BUILDINGS LTD
Tel: 01483 300477
www.anticuebuildings.com

Enq. 506

To advertise
in the
Classified &
Web Directory
please call
**01435
863500**

TEMPORARY ACCOMMODATION

Up to 200 used static caravans to view.
Suitable for temporary accommodation.

From 28'x12'
to 38'x12'

Two & three
bedrooms.

Some double
glazed & central
heating.

Open 7 days
a week.

www.westcoastcaravans.co.uk
Tel: 01206 578572 Email: enquiries@wcc.co.uk

Enq. 507

If you'd like to advertise, please call:
01435 863500

Web Directory

ADVICE & INFORMATION

NSBRC (National Self Build &
Renovation Centre)
0845 2234455
www.nsbrc.co.uk

ARCHITECTURAL IRONMONGERY

Ironmongery Direct
0808 1682288
www.ironmongerydirect.com

BASEMENTS

Abtech Basement Systems
0870 801 0800
www.abtechbasements.co.uk

BATHROOMS & SHOWERS

Victoriaplumb.com
0844 8044848
www.victoriaplumb.com

Better Bathrooms
0844 4847678
www.betterbathrooms.com

Matki
01454 322888
www.matki.co.uk

Hansgrohe
01372 465 655
www.hansgrohe.co.uk

Web Directory

BI FOLDING & SLIDING DOORS

Folding Sliding Door Company
0845 6446630
www.foldingslidingdoors.com

Sunfold Systems
01953 423423
www.sunfold.com

Express Bi-Folding Doors
0800 121 4809
www.expressbifoldingdoors.co.uk

1st Folding Sliding Doors
02089 972448
www.1stslidingfoldingdoors.co.uk

DOORS, WINDOWS & CONSERVATORIES

Made for Trade
0844 335 1226
www.madefortrade.co

Kloeber UK
01487 740044
www.kloeber.co.uk

Velfac
01223 897100
www.velfac.co.uk

Swish Window and Door Systems
0808 178 3040
www.swishwindows.co.uk

Apropos
0800 328 0033
www.apropos-conservatories.com

Jeld-Wen
0845 1222890
www.jeld-wen.co.uk

Internorm Windows UK
02082 059991
www.internorm.co.uk

FASCIAS & SOFFITS

FasciaExpert.co.uk
01254 918005
www.fasciaexpert.co.uk

FIRES & FIREPLACES

SpecFlue
0800 902 0220
www.specflue.com

Opies
01245 468977
www.john-opie.co.uk

FLOORS & FLOORING

Floors Of Stone
01509 234000
www.floorsofstone.com

Bona
01908 525 150
www.bona.com

FURNITURE

Vitra
01235 750990
www.vitra.com

Herman Miller
0845 2267202
www.hermanmiller.co.uk

GARAGE DOORS

Hormann (UK)
01530 513000
www.hormann.co.uk

Discount Garage Doors
01691 670394
www.discountgarage-doors.co.uk

GLASS & GLAZING

Saint-Gobain Glass UK
01977 666100
uk.saint-gobain-glass.com

GREEN ROOFS

Optigreen Ltd
0203 5899 400
www.green-roof-online.co.uk

HEATING & PLUMBING

Uponor
01455 550355
www.uponor.co.uk

21st Centry Radiator Company
01767 627500
www.21stcentryradiators.com

Discounted Heating
0844567 8884
www.discountedheating.co.uk

HEAT PUMPS

Spirit Heat Pumps
0845 4753953
www.spiritsolar.co.uk

ICE Energy
08081 452340
www.iceenergy.co.uk

INSULATION

Superfoil Insulation
01636 639 900
www.superfoil.co.uk

Insulation Giant
0844 8922254
www.insulationgiant.co.uk

KITCHENS & APPLIANCES

Kit Stone
0870 7770099
www.kitstone.co.uk

Poggenpohl UK
01727 738111
www.poggenpohl.com

Shaws of Darwen
01254 775111
www.shawsofdarwen.com

LAUNDRY CHUTE SOLUTIONS

GED Chute Solutions
01613 001374
www.laundrychutes.co.uk

LIGHTING & HOME CONTROL SYSTEMS

Vitrum UK
07966 236969
www.vitrumuk.co.uk

LOFT CONVERSION

Econoloft
0800 269765
www.econoloft.co.uk

PACKAGE BUILD

Baufritz (UK)
01223 235632
www.baufritz.co.uk

Kingspan Potton
01767 676400
www.potton.co.uk

Scandia-Hus
01342 838060
www.scandia-hus.co.uk

Davinci Haus GmbH & Co. KG
02081 3339204
www.davinci-haus.com

Hanse Haus
0845 6589780
www.hanse-haus.co.uk

Flight Homes
01787 222336
www.flighthomes.co.uk

PLANT, TOOLS & EQUIPMENT

Brandon Hire
0870 5143391
www.brandontoolhire.co.uk

Machine Mart
0844 8801250
www.machinemart.co.uk

PUMPING STATIONS

J T Pumps
0844 414 5800
www.jtpumps.co.uk

ROOFING & CLADDING

Tata Steel (Corus)
01904 454600
www.tatasteeleurope.com

Greys Artstone
01484 666400
www.greysartstone.co.uk

Hoppings Softwood Products (Q-Clad)
01992 578877
www.timber-cladding.co.uk

ROOFLIGHTS

Vision Rooflights
01162 791900
www.visionrooflights.co.uk

SOFTWARE

Eleco
02074 228000
www.eleco.com

House Builder XL
0845 1234065
www.hbxxl.co.uk

STAIRS & STAIRCASES

Meer End Staircases & Joinery
01676 534226
www.meer-end.co.uk

STONEWORK & MASONRY

Mandarin Stone
01600 715444
www.mandarinstone.com

STRUCTURAL INSULATED PANELS (SIPS)

SIPS Eco panels
01787 378567
www.sipsecopanel.co.uk

TEMPORARY ACCOMMODATION

Caravan Hire UK
01970 626920
www.goldensands-caravans.co.uk

TIMBER & JOINERY

Oakwrights
01432 353353
www.oakwrights.co.uk

Carpenter Oak & Woodland
01225 743089
www.carpenteroakandwoodland.com

Silva Timber Products
01514 953111
www.silvatimber.co.uk

Osmo UK
01296 481220
www.osmouk.com

Neatwood Homes
01981 240860
www.neatwoodhomes.co.uk

Carpenter Oak
01803 732900
www.carpenteroak.com

Maple Timber Frame
01995 679444
www.mapletimberframe.com

Taylor Lane
01432 271912
www.taylor-lane.co.uk

UNDERFLOOR HEATING

Nu-Heat
0800 7311976
www.nuheat.com

Schluter Systems
01530 813396
www.schluter.co.uk

Wunda Group
0800 0832677
www.wundafloorheating.co.uk

Fall in love with Lisse.



With curves in all the right places

The smooth, modern lines of the new Lisse white moulded range by Schneider Electric offer an understated elegance to compliment today's interiors. Every attention to detail has been paid to its design and construction, built to make your installation faster, smoother, simpler...

Find out more about our latest EZRewards promotion in store...




Additional range features:

LED Dimmers, USB chargers, grid plates, wide rocker switches, media plate and control switches with optional LED indication.



View our interactive product tool and
find out more about our latest promotion!
Visit www.SEreply.com keycode **52939p**

Reader
Enquiry
402

Schneider
 **Electric™**