

# building construction design

[www.buildingconstructiondesign.co.uk](http://www.buildingconstructiondesign.co.uk)

April/May 2015

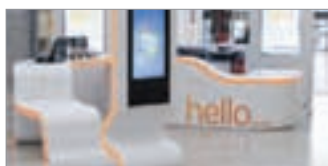
Appointments & News	02
Building Products	04
Structural Elements	14
Interiors	16
Exteriors	29

Cover image: © Kemper Systems  
See page 14 for details

# cpd focus

continuing professional development  
Maintaining and improving professional competence, skills, abilities and knowledge

## SOLID SURFACES - FOR INTERIOR AND EXTERNAL ARCHITECTURE



**CD (UK)** - The seminar is structured as follows: Development of Solid Surface from 1960's to present day; Raw materials, adhesives and composition; Solid Surface characteristics and benefits; Manufacture: Sheet, Matrix sheet and shape product; Comparison of Solid Surface characteristics; From production to fabrication process; Properties of Solid Surface; Architectural and Design possibilities; Current applications (visuals); Environmental considerations; Support, warranty and service infrastructure.  
**0113 201 2240**  
[www.cdukltd.co.uk](http://www.cdukltd.co.uk)

## DIFFERENT SHADES OF GREEN – DELIVERING PAINT SUSTAINABILITY



**Crown Paints** is launching its first ever sustainability CPD *Different Shades of Green – Delivering Paint Sustainability* at Ecobuild 2015. The seminar will be delivered by Crown Paints' CPD accredited presenter, David Spicer. The presentation pays particular focus on paint and coatings and will look at BREEAM, issues with standardisation, products helping to extend maintenance cycles, carbon footprinting, the integrated approach to sustainability and corporate social responsibility.

**0845 034 1464**  
[www.crownpaintspec.co.uk](http://www.crownpaintspec.co.uk)

## ROOFING SYSTEMS: REDUCING AND MANAGING RISK



For the past 50 years, **Sika Liquid Plastics** has been one of the UK's leading manufacturer of liquid applied waterproofing systems. During that time, the company has developed an enviable range of waterproofing membranes and roofing systems for the weatherproof protection of roofs and balconies. Sika Liquid Plastics is proud to announce, that it has used this expertise and knowledge, to create a new CPD titled: *Roofing Systems: Reducing and Managing Risk*. The CPD aims to assist architects and specifiers when designing and selecting roofing solutions that:

- Provide levels of required performance and guarantees
  - Meet current and predicted legislative requirements
  - Reduce the risk of litigation and associated consequences
- The Presentation details the typical challenges and risks that a client would expect from a roofing system.

The Sika Liquid Plastics CPD is officially RIBA approved. The CPD seminars can be carried out at a time and a place convenient for you and your team.

**01772 259781**  
[liquidplastics@uk.sika.com](mailto:liquidplastics@uk.sika.com)

## URBAN FRONT NEW WORKSHOP TOUR 2015



*The Workshop Tour* from **Urban Front** will run for just over an hour and incorporate the following Learning Outcomes: A good understanding of how a contemporary hardwood door is manufactured; a better understanding of the types of hardwood and their benefits; a good ability to interpret CADs used for manufacture; a better ability to specify doors correctly; an understanding of the various issues related to making doors. The company also runs regular CPD's on specifying Hardwood Timber doorsets.

**01494 778787**  
[www.urbanfront.co.uk](http://www.urbanfront.co.uk)

## THE USE OF GLAZED SCREENS TO CONTROL THE SPREAD OF SMOKE & FIRE IN BUILDINGS



**Aluprof UK**, is now offering specifiers a RIBA approved CPD. "The Use of Glazed Screens to Control the Spread of Smoke & Fire in Buildings". The CPD aims to offer guidance in the correct specification and installation of high performance fire screens. 'Building fire facts' offer the delegates some insight as to what it is like when a building fire takes hold. The 45 minute CPD is available across the UK and presentations are undertaken by Aluprof technical staff.

**0161 941 4005**  
[www.aluprof.eu](http://www.aluprof.eu)

## WETROOM DESIGN & SPECIFICATION



As the popularity of Wetrooms continues to grow, **CCL Wetrooms** has developed a *Wetroom Design & Specification* CPD to help guide Architects through the process of designing and specifying a watertight Wetroom. The technical presentation covers the key considerations of designing and specifying a wetroom, including design & layout, waterproofing, drainage, floor build up and installation. It also includes a section on how Wet rooms can help meet the Lifetime Homes Standard.

**0844 327 6002**  
[www.ccl-wetrooms.co.uk](http://www.ccl-wetrooms.co.uk)

## GREENING THE GREY



**Scotscape** is pleased to announce its CPD *Greening the Grey*, which aims to assist both specifiers and architects when designing and selecting living wall systems. It covers the benefits of living wall systems, good design, installation and maintenance, and the specialist irrigation required to achieve a successful living wall. Scotscape has developed a Fabric Living Wall System with integrated insulation, allowing specifiers to quantify the thermal benefits and energy efficiencies that this system brings.

**020 8254 5000**  
[gordons@scotscape.net](mailto:gordons@scotscape.net)





## Designer Contracts strengthen team



**Designer Contracts** – one of the UK's largest flooring contractors – has announced a raft of promotions and new appointments to support its continued success. Jason Doyle, who has worked for the company for eight years, takes on the role of area manager covering the North East, following his success as senior contracts manager. The company has fully staffed offices and warehousing in 12 regions across the UK.

As well as flooring, the company supplies curtain, blind, furniture and lighting packs and has a full show home interior design service.

01246 854577 [www.designercontracts.com](http://www.designercontracts.com)

## The Ecademy clicks with installers



The new **Grundfos Ecademy** recently re-launched and is bigger and better than ever. This UK branch is proving to be very popular with a wide range of installers, heating engineers and merchant counter staff. The internet based training and information platform now offers the opportunity for interested parties to learn

more about a wide range of topics including pump theory as well as different pump designs and technologies. You can also find out more about energy friendly and cost saving pump solutions. Whatever is selected, each topic is divided in bite sized sessions.

01525 850000 [www.grundfos.co.uk/ecademy](http://www.grundfos.co.uk/ecademy)

## Helifix new responsive website



**Helifix** has re-launched its website to make it fully accessible to the fast growing number of visitors accessing the site via a smartphone or tablet device. The website now features an innovative responsive design, meaning that the layout and

format automatically resizes and shifts to provide optimised viewing, irrespective of the screen size and definition used. Helifix website users are now guaranteed the same user friendly experience and high quality content every time they visit, whether at work on a desktop, at home on a tablet or on-site via their smartphone. The website gives round-the-clock access to the Helifix range.

## 10-10-10 for GEZE UK



Just a year after its parent company celebrated its 150th successful year, **GEZE UK**, one of the UK's leading manufacturer of door and window control systems, is itself celebrating a hat trick of anniversaries. Ten of the company's staff have received 10 years' long service awards in the 10th anniversary year of

its Lichfield headquarters. GEZE first opened a UK base in 1988 to co-ordinate the distribution of its manual door closers. This was followed by a facility in Tamworth in 1998 to supply and install automatic door systems. In 2003, the decision was made to bring the two operations together under one roof.

01543 443000 [www.geze.co.uk](http://www.geze.co.uk)

## Metrotile Lightweight Steel Roofing



**Metrotile Lightweight Steel Roofing** is the durable, secure and sustainable roofing solution. Backed by an industry-leading 40 year weatherproof guarantee, Metrotile is as suitable for a large school building project as it is for the smallest home extension or garage. Weighing just one seventh

of so-called traditional roof materials such as slate or clay, Metrotile roofing takes traditional aesthetic cues and applies them a product that outperforms standard roof tiles.

01249 658514 [www.metrotile.co.uk](http://www.metrotile.co.uk)

## Kingspan sets the standard for energy efficiency



**Kingspan Insulation** is pleased to announce that its manufacturing facility in Pembridge, Herefordshire has now been certified to energy management standard ISO 50001. Kingspan Group voluntarily discloses its environmental performance and carbon emissions via the Carbon Disclosure Project (CDP)

and Kingspan Insulation also carries out annual comprehensive reviews of energy usage at the site. Clear improvement plans are identified for the introduction of new staff training, energy reduction measures and renewable energy generation technologies at the site. Kingspan Insulation is set to roll out ISO 50001 across all of its manufacturing sites over the next few years.

01544 387384 [www.kingspaninsulation.co.uk](http://www.kingspaninsulation.co.uk)

## Schueco announces new Excellence Awards



Leading sustainable building envelope specialist **Schueco UK** has announced that, in conjunction with *RIBA Journal*, it is again running the Schueco Excellence Awards for Design and Innovation. The 2015 Awards will be presented at a special lunchtime event to be held in June at the Saatchi Gallery in Chelsea and the winning and commended entries will be published in a special supplement accompanying the July issue of *RIBA Journal*. Launched in 2014 to celebrate the very best

in UK building design, the Schueco Excellence Awards have nine separate categories covering more or less every sector of the industry. The only stipulation for entry is that the building submitted should include at least one Schueco system.

01908 282111 [www.schueco.co.uk](http://www.schueco.co.uk)

## Export boost for Thermaset



Export orders from Norway and Spain have boosted business for Tamworth based **Thermaset Limited**, one of the UK's best known companies for the formulation and manufacture of powder coatings. Hot on the heels of an announcement of plans to invest three quarters of a million pounds in plant and production machinery next year (2015) and a doubling of production capacity, the overseas

orders are a timely boost to the Staffordshire company. Traditionally, powder coating has not been regarded as a prime export-oriented market, but Thermaset's success in supplying powder for projects in Spain (Madrid) and Norway indicate the company's intentions of moving more actively into export markets.

01827 55777 [www.thermaset.co.uk](http://www.thermaset.co.uk)

## New TTA technical seminars in May



The Tile Association will be holding new technical seminars from May 2015 to help professionals in the industry gain a deeper understanding of specialist areas of tiling. The seminars will be held at regular intervals at TTA headquarters in Stone, Staffordshire, and are in partnership with CITB. The first event takes place on

Wednesday 6 May, with a morning seminar on 'Tiling to Heated Floors' and, following lunch, another seminar on 'Tiling to Calcium Sulphate Screeds'. Places are strictly limited to 30 for each event and operate by advance booking. There's a small charge for the day covering administration, lunch and handouts – at £35 per person for members and £45 for non-members.

support@tile.org.uk [www.tiles.org.uk](http://www.tiles.org.uk)

## Redbacks shell strapped kneepads



Redbacks Cushioning Ltd, the manufacturers of the World's only 'leaf-spring', non-foam or gel kneepads has introduced a new shell strapped product as an alternative to its big selling version for pocketed work trousers. The hard face is a semi-transparent, penetration resistant, protective shell which has a flat spot to

prevent rocking or instability with smooth sides to allow for ease of movement without causing the kneepad to shift or dislodge. Low profile 'hook & loop' fastenings which are resistant to dust and particle build-up fix the waterproof-coated nylon hinged-top and calf straps.

01327 702104 [www.redbackscushioning.com](http://www.redbackscushioning.com)

## Freefoam scheduling service delivers results



Freefoam Building Products report that its scheduling service is achieving real results for Freefoam customers. Over the last 12 months the service has generated an impressive 62 per cent of schedules resulting in orders. 2014 saw a new member of staff joining the team, Tish Redmond. Promoted from within Freefoam Tish manages the whole process providing an accurate product specification and quantity breakdown from drawings for all elements of the roofline product range including fascia, soffit, rainwater and cladding materials. With a 10 day turn round it's a service that an increasing number of customers are finding extremely valuable to their businesses. General Building Plastics, with branches throughout the Midlands, use the service Alan Sutherland, managing director, explained: "We've submitted plans from various contractors and been very pleased with the results, winning 70 per cent of schedules. We get a quick turn round with a full breakdown emailed back to us with all the components itemised. Accurate specification means that our customers can be confident they are ordering exactly what they need, eliminating wastage and saving money. We are a growing business so the service saves us time and is helping to secure valuable new business."

01604 591110 [www.freefoam.com](http://www.freefoam.com).



**Power  
Data  
Audio Visual**

**electropatent international limited**

Solutions for cable management services

Phone: **020 8867 3500** Web: [www.electropatent.co.uk](http://www.electropatent.co.uk)  
30 / 32 Blyth Road Hayes, Middlesex, UB3 1BY





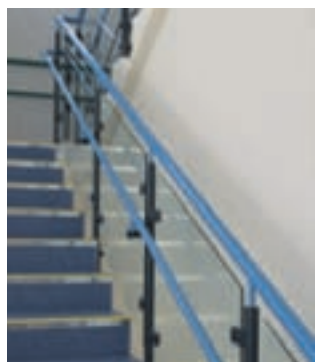


balustrade in a class of its own...

the Spectrum range from neaco



choice



colour



safety



durability



**T** 01653 695721  
**W** [www.neaco.co.uk](http://www.neaco.co.uk)  
**E** [sales@neaco.co.uk](mailto:sales@neaco.co.uk)



neaco

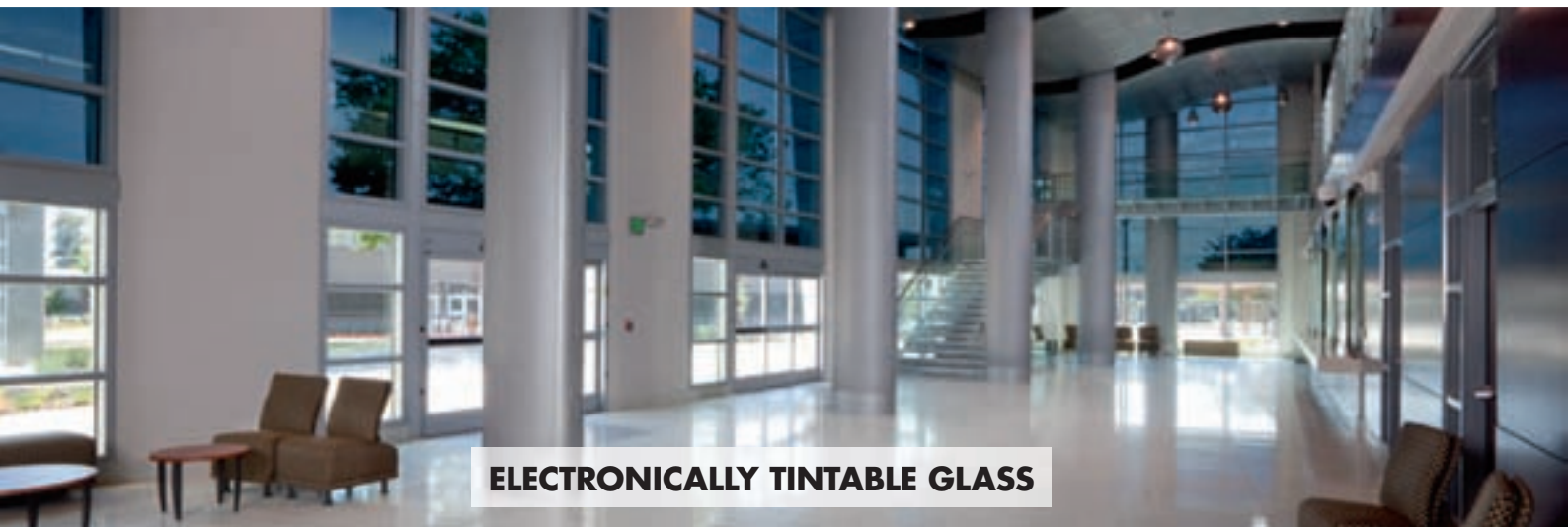
norton engineering alloys co ltd



**FIRE-RESISTANT GLASS**



**SECURITY GLASS**



**ELECTRONICALLY TINTABLE GLASS**

## **HIGH-PERFORMANCE GLASS BY VETROTECH: ELEGANCE, COMFORT AND FUNCTIONALITY COMBINED.**

Vetrotech safety and comfort glass offers the ultimate protection for people and property, while providing the aesthetic and multi-comfort qualities you expect from architectural glass. More than 30 years of experience means we are able to deliver solutions for virtually any application, worldwide. Visit [www.vetrotech.co.uk](http://www.vetrotech.co.uk) to learn more about our factory in Coventry and our comprehensive product range, or call 0247 654 7620.

Vetrotech Saint-Gobain UK distributes SageGlass®, electronically tintable glass for improved comfort and energy efficiency.



## Snickers XTR Shield



Snickers have 40 years' experience of designing and manufacturing market-leading working clothes for professional tradesmen and women. That's why every new product it launches continues to raise the bar on standards of functionality and quality. The pioneering XTR Shield jackets, trousers and kneepads are super-light working clothes that act as a lightweight protective shield around your body, allowing you to move seamlessly between indoor and outdoor work. With advanced technology

fabrics, these clothes deliver great comfort and limitless functionality. For superior protection all day, every day, all year round!

## Crown Paints puts colour on-trend



Crown Paints has revealed its renowned Colour Influences programme, which sets out the on-trend hues for specifiers next season. Three palettes have been unveiled which work across the Crown Trade, Sadolin and Sandtex Trade brands. Freedom of Expression, Playtime and Organic Discovery have each been developed by the Crown Paints' Influences Panel, a team of creative experts

who have produced the palettes using a wide-variety of trends. Designed to give specifiers inspiration for projects across public spaces, commercial and retail environments, the palettes can be viewed in the Spring/Summer 2015 trends brochure.

0845 034 1464 [www.crownpaintspec.co.uk](http://www.crownpaintspec.co.uk)

## New online humidifier selector



Condair, formerly known as JS Humidifiers, has launched an innovative new website, [www.condair.co.uk](http://www.condair.co.uk), with features including an online product selector tool and psychrometric calculator. The online product selector guides users wanting to select a humidifier through a series of multiple choice questions.

As the user progresses through the selection criteria, a shortlist of humidification systems is presented and refined, depending on the user's requirements, until an ideal humidifier or shortlist of products is suggested for the project. The product selector takes into account many factors such as available energy supplies, budget, type of application and desired level of energy consumption.

## Crown Paints social housing sector guide



Crown Paints has produced a comprehensive guide to help specifiers get the best from colour for housing projects. The *Housing Colour Book* pulls together a wide-range of guidance, ideas and inspiration to make selecting shades easy and effective.

With a highly visual focus, the 56-page guide includes a range of useful features including a comprehensive colour library, which showcases a variety of palettes in different roomsets. Information on choosing colour schemes to support visually impaired people, as well as people with dementia, is also included. The guide is available for free download at Crown Paints' Specification website [www.crownpaintspec.co.uk/literature](http://www.crownpaintspec.co.uk/literature)

0845 034 1464 [www.crownpaintspec.co.uk](http://www.crownpaintspec.co.uk)



## Evinox energy packaged plant is perfect fit

Evinox Energy are working with Bowmite Electrical & Mechanical on a new mixed use development in Walthamstow that features a communal heating system serving 80 dwellings. Unity Place is located in the Blackhorse Lane regeneration area of Walthamstow. Evinox engineers provided design support and liaison with Bowmite Electrical & Mechanical and CHP suppliers to provide an energy efficient and cost effective solution for the LTHW system. The bespoke pre-fabricated skid for the central plant was designed and supplied, tailored to the project requirements and limited plant room space. This new scheme benefits from the installation of ModuSat FS heat interface units with integrated hot water tanks in each apartment, and a prefabricated skid for the central plant, which feeds the communal heating system. The prefabricated plant room skid includes Evinox ADI CD boilers, which provide a total output of 460kW, and feature excellent seasonal efficiency performance and extremely ecological combustion with impressive class 5 NOx figures of < 10ppm and CO around 47ppm.

01372 722277 [www.evinoxenergy.co.uk](http://www.evinoxenergy.co.uk)

# PURUS

## MINI SERIES FLOOR GULLIES



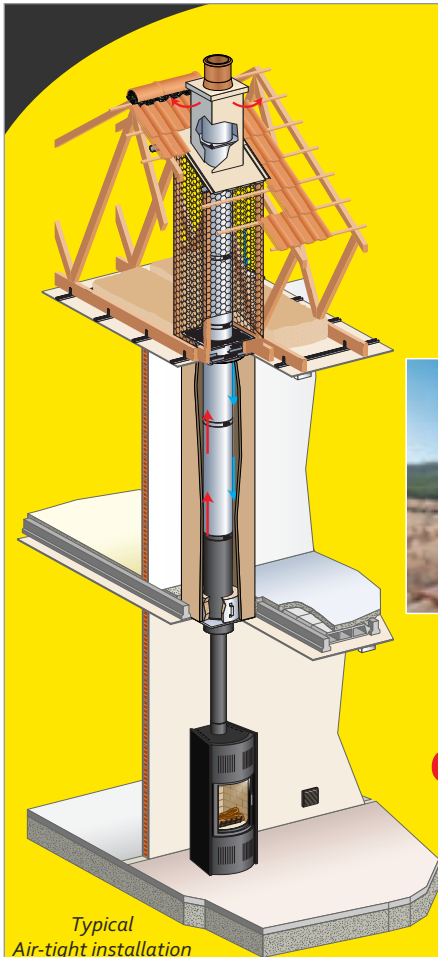
Mini Brage 50

- Suitable for tiled and vinyl flooring
- The Purus Minimax 50 is just 76mm high including falls
- NOOD no-odour water trap acts as a one-way valve and prevents any foul air escaping
- BBA Certified
- Flow rate 48 l/min
- Featured on BIMObject



Minimax 50

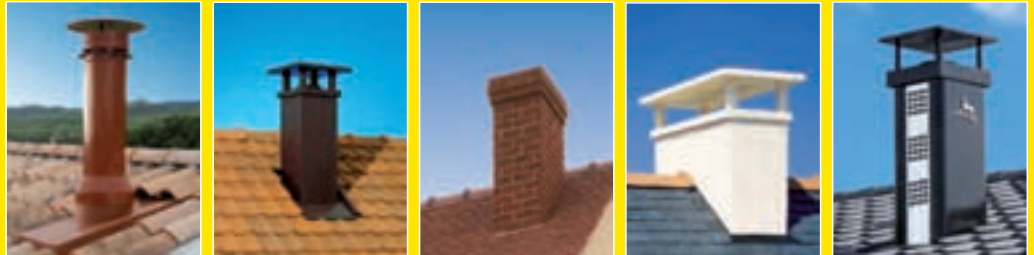
**Purus Limited** | Suite 6, Arena Park | Scarcroft | Leeds | LS17 9BF  
 New website now live at [www.purusgroup.com](http://www.purusgroup.com)  
 Tel: 0113 289 3172 | Fax: 0113 289 3778 | E-mail: [info@purusgroup.com](mailto:info@purusgroup.com)



## The chimney of choice for Quality & Safety



Terminal options to suit every style and environment



Systems for new and refurbished  
**energy efficient air-tight houses**

For further information call our dedicated technical team

Tel: 01483 461 700

E-mail: [sales@poujoulat.co.uk](mailto:sales@poujoulat.co.uk)

## GRP door & window canopies from Canopies UK

Canopies UK manufacture and supply high quality GRP door and window canopies, for planned maintenance, redevelopment and regeneration works.

We have supplied more than 30,000 canopies throughout the UK to housing associations, contractors, house builders and local authorities.

With a standard range of popular canopy designs, a bespoke manufacturing facility and installation service if required, Canopies UK offer the complete solution.

- ✓ Free site visit
- ✓ CAD drawings
- ✓ Specification sheets
- ✓ Full fixing kits
- ✓ Delivery nationwide
- ✓ Installation if required

**canopies uk**



**[www.canopiesuk.co.uk](http://www.canopiesuk.co.uk)**

Email: [greg@canopiesuk.co.uk](mailto:greg@canopiesuk.co.uk)

For a quote call Greg now on:

**01254 867 894** Ext: 222



## Vent-Axia shortlisted for award

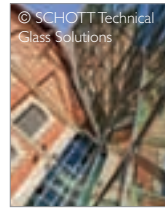


Leading British ventilation manufacturer **Vent-Axia** is proud to announce that it has been shortlisted for a prestigious Heating and Ventilation News Award 2015. The Sussex-based company has been recognised in the Building Services Project of the Year category for the

Waste House project at the University of Brighton that features a Sentinel Kinetic Plus Mechanical Ventilation with Heat Recovery (MVHR) system, which Vent-Axia donated and installed. The MVHR system offers whole house heat recovery combining supply and extract ventilation in one unit.

0844 856 0590 [www.vent-axia.com](http://www.vent-axia.com)

## Relieve the pressure with PYRAN® S



Helmut Kugelman, Head of Sales at **SCHOTT** in Jena says: "Several acclaimed building projects in Europe recently installed fire resistant glazing based on PYRAN® S specialty glass. Thanks to the high quality of materials, architects and planners can use it in a variety of ways without having to compromise on functionality or aesthetics." SCHOTT, an expert for fire resistant glass with more than 20 years of experience, continues to

improve its products. Just recently, SCHOTT introduced its PYRAN® S specialty glass to the market in XXL format (1,800 mm x 3,600 mm) in the class E 30. It is considered to be the largest sheet format in its class in Germany.

01785 223166 [www.schott.com/uk](http://www.schott.com/uk)

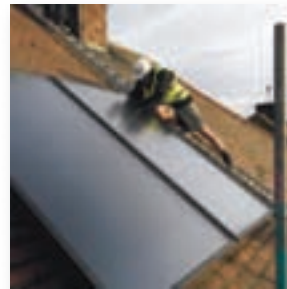
## Snickers' new Quilted Jacket



Whether you want fashion or functionality, check out **Snickers** Work Jackets. Famous for the outstanding functionality in its range of jackets, Snickers is now adding fashion to the unrivalled hallmarks of quality that are embedded throughout its range of modern working clothes. Snickers' jackets are ideal for professional tradesmen and

women who want everyday comfort and to dress smartly both in and out of work. The new Quilted Jacket is warm, cosy and made from a water repellent fabric lined with 'high-loft' lightweight padding for superior comfort and insulation in chilly and windy weather.

## Grant UK happy to help *DIY SOS: The Big Build*



A family struck by major health problems has been given a life-changing boost from the popular BBC One television programme *DIY SOS: The Big Build*, presented by Nick Knowles – with a helping hand from **Grant UK**. Grant UK supplied *DIY SOS: The Big Build* with a Pro Kitchen/Utility boiler from its Vortex range and the Grant Solar Thermal system – both crucial to heating the building and providing comfort for the Liversidge family in Rise.

Using the Grant Solar Thermal system, the Liversidges will not only reduce their oil bills but their carbon footprint too. The solar collectors should typically save up to 70 per cent on annual hot water heating costs.



## STONE GROUP INTRODUCE A NEW RANGE OF ANCILLARY, STONE AND PAVING PRODUCTS FOR 2015

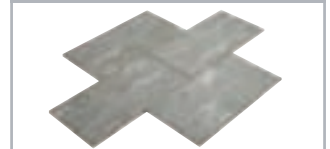
Slab Cutting Guide



Aluminium Edging



Emperor Porcelain Paving- Nero Santiago



Tiger Gneiss - Feature Stone



Tiger Gneiss - Aggregate



Emperor Porcelain Paving - Oak



Emperor Porcelain Paving - Maroquee



Emperor Porcelain Paving - Solnhofen



Yellow Granite Coping Stone



Black Basalt Coping Stone



Silver Grey Granite Edging Stone



Black Basalt Edging Stone



### Showrooms Nationwide

London East 01708 867237 London West 01895 422411 Midlands 01773 769916 Scotland 01324 841321 Ireland 02882 258457

[enquiries@ced.ltd.uk](mailto:enquiries@ced.ltd.uk) [ced.ltd.uk](http://ced.ltd.uk)



Come and see us at Build It Live Stand C12

## Air-to-water heat pump



Calor and renewables specialist Daikin have launched an air-to-water heat pump with condensing combi Calor gas boiler, fuelled by LPG. The Daikin hybrid system automatically selects most cost-effective option to ensure the lowest running costs – either using the heat pump or boiler. This provides maximum efficiency for homeowners who don't have access to mains gas. The system offers the best of both worlds – optimising energy efficiency and delivering completely reliable and controllable heating and hot water. Not only will you save money on your heating bills, you'll also be eligible to receive Renewable Heat incentives. Visit the Calor website for more information.

## Lightweight kneepad from Redbacks



A knee pad for pocketed work trousers which incorporates a unique 'direction of force' design that crucially protects the wearer's knees and the rest of the body from the potential dangers of impact through continuous kneeling, has been introduced by Redbacks Cushioning Ltd. 20 per cent lighter than its big selling predecessor, allowing greater ease of movement and with a thicker grade of spacer fabric giving added comfort, the new kneepads feature a soft and flexible

TPE (Thermo Plastic Elastomer) leaf-spring, now with increased durability, which is set within a unique honeycomb matrix.

Tel: 01327 702104 [www.redbackscushioning.com](http://www.redbackscushioning.com)

## Eco-friendly insulation block and beam system



TETRIS is the eco-friendly, super strong structural flooring alternative to concrete block and beam floors ideal for houses and new build developments from **Cellecta**. Providing outstanding thermal and structural performance, TETRIS is also a Green Guide A+ rated system. In addition to super low U-values and excellent thermal performance, TETRIS's lightweight properties make it quick and easy to install. The new TETRIS insulation block and beam brochure is now available. The

brochure enables self-builders to specify and build an eco-friendly TETRIS insulation block and beam floor with confidence.

Tel: 08456 717174 [www.cellecta.co.uk](http://www.cellecta.co.uk)

## St Modwen & WDS call on Panasonic



Panasonic was called upon by Woodhouse Environmental Services Ltd to provide equipment for call centre giant WDS, to retrofit its busy offices with an energy-efficient heating, ventilating and air conditioning (HVAC) system. Working against strict time and space constraints, Panasonic's VRF systems coupled

with large ducted and wall mounted indoor units were specified for a quick, simple and energy efficient installation. Specifying Panasonic's VRF unit made for an all-round easy-to-use system, while its clever, innovative integrated technologies meant wasted energy was avoided and significant savings could be made on the building's annual energy bills.

## JTPumps Domestic & Commercial

- Sewage pumping stations
- Basement pumping stations
- Pumps

Whatever your pumping requirements are JTPumps can supply you both domestic and commercial. We hold in stock and supply packaged pumping stations, to suit all applications whether it is sewage pumping stations or basement dewatering products. We also carry a large stock of plastic pipe, fittings, ensuring that we are able to provide you with everything you require.

Call us today



[JTPumps.co.uk](http://JTPumps.co.uk)  
0844 414 5800  
Sewage and Basement Pumping Stations  
Domestic and Commercial



## Essential Insulation guide now available

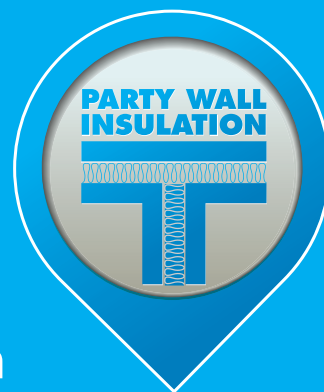
The 2015 HEXATHERM Thermal Insulation Brochure is now available from **Cellecta**. HEXATHERM is a proven range of insulation boards engineered for domestic, commercial and industrial applications featuring BM TRADA Q Mark certification. Benefits of the range include high compressive strength, low water absorption and excellent life-long thermal performance, making them ideal for floors, roofs, basements and swimming pools. Available in a multitude of thicknesses (20 - 160mm) and strength grades (250 - 700kPa), HEXATHERM boards can meet exact project requirements. Featuring essential construction details, product information and technical guidance the HEXATHERM technical handbook represents an essential guide for architects, specifiers and developers to identify suitable thermal solutions for their construction requirements. To receive a copy of the new HEXATHERM insulation brochure or to discuss existing and upcoming projects, visit the website or contact Cellecta's technical team.

0845 671 7174 [www.cellecta.co.uk](http://www.cellecta.co.uk)



# SUPAFIL®

## PARTY WALL



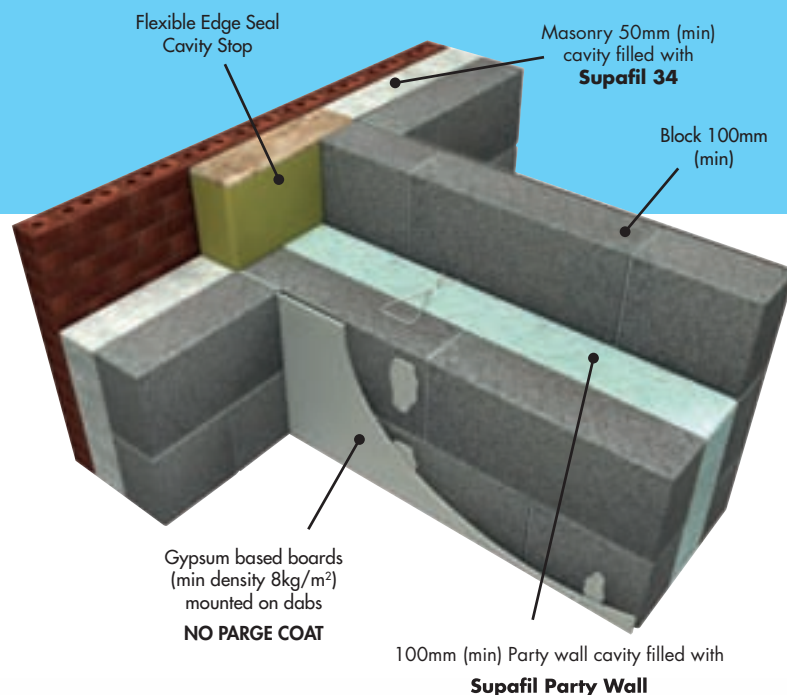
## The Party Wall Full Fill Blown Solution

### ROBUST DETAIL E-WM-28™

Masonry, Light weight aggregate block work, min. 100mm cavity

- E-WM-28 is the first unique Supafil party wall blown wool Robust Detail solution
- Contributes to a zero effective U-value when compiling SAP calculations
- Efficient and quick installation by approved technicians
- Dry installation process
- No product storage on site
- No parge coat required
- Fully fills the cavity
- Unique "Supafil Party Wall" blue colouration so you know you have the right material for the right performance.
- No requirement for pre-completion acoustic testing

For full information on E-WM-28 visit Robust Details website  
<http://www.robustdetails.com/TheHandbook/RobustDetail/E-WM-28>



QUICK



CLEAN



SUSTAINABLE



COST EFFECTIVE



Download a QR reader for free from your App Store and then scan the QR for more information.

Technical Support Team

**TEL: 01744 766 666**

[technical.uk@knaufinsulation.co.uk](mailto:technical.uk@knaufinsulation.co.uk)

**[www.knaufinsulation.co.uk](http://www.knaufinsulation.co.uk)**

**KNAUF**INSULATION  
*it's time to save energy*

## From Gothic to Glorious



Osmo UK's eco-friendly UV-Protection-Oil has been used to safeguard, restore and rejuvenate a Gothic Revival porch at an 18th Century listed property in Cambridgeshire. Andrew and Mark Hoskins, antique restoration specialists, brought it back to life and reinstated it to its former glory, using Osmo's UV-Protection-Oil to not only protect the wood, but also to

enhance its natural beauty. It is common knowledge that weather can have a damaging effect on wood. Whether it is the wood cracking and peeling, or fading to grey as a result of the harmful effect of the sun, or being susceptible to algae and fungal decay from exposure to water and winter weather conditions, the wood requires an effective protection layer.

## Scruffs 3D expert floor laying trouser



Workwear brand **Scruffs** is launching a new 3D Expert Floor Laying Trouser from the 2015 catalogue. Designed especially for floor layers, the trouser is made from a hardwearing polycotton fabric. They include bottom loading, longer length knee pad inserts, with an adjustable design to help keep the knee pad secure with added EVA foam padding above the knee to provide even more protection and comfort. The 3D Expert Floor

Laying Trouser has a convenient Cordura knife pocket, a 4 way stretch panel for ease of movement, reinforced self fabric gusset and an adjustable waistband that is triple stitched to support stress areas.

[sales@scruffs.com](mailto:sales@scruffs.com) [www.scruffs.com](http://www.scruffs.com)

## Complete potable pressure solution



The solution to low mains water pressure issues in residential buildings has been developed as a complete, compact modular package thanks to leading pump manufacturer **DAB Pumps**. Known as the NBB Booster Box, it pressurizes potable water in residential applications and can be set up and installed in a variety of ways to suit the needs of the building and its occupants. Its installer friendly, modular components include a WRAS approved 280 litre tank, choices of a

submersible or surface mounted pump, both of which can be fixed speed or more energy efficient variable speed pumps. The range also includes a twin pump duty standby option and a tank extension kit.

## New X-Glass LED Media Facades



**AET Flexible Space**, specialist provider of under floor air conditioning systems has secured the exclusive distribution rights for the X-Glass LED product range in the UK and Europe. AET works with leading architects and developers and this product adds another dimension to the Flexible Space offering. With X-Glass technology, users

can create stunning visual media displays for digital signage, advertising and promotion in store front displays, restaurants, exhibitions, concerts and all branding opportunities. The products are ultra lightweight yet durable and displays can be constructed from standard size units or custom design.

01342 310400 [www.flexiblespace.com](http://www.flexiblespace.com)

## Finance for Builders £50-£400,000

- ✓ New Build and property conversions
- ✓ Barns, Farms and chapel conversions
- ✓ Up to 100% of build Costs
- ✓ Whole of England and Wales
- ✓ Semi commercial considered
- ✓ Interest roll up on most cases
- ✓ Complex deals catered for
- ✓ Fast, flexible finance



**Call our  
helpline  
now:**

**0161 273 5188**

[www.bishopsgatefunding.com](http://www.bishopsgatefunding.com)

BISHOPSGATE

## KLOVER

The Smart 120 wood pellet cooker. Central heating, cooking and domestic hot water, all from one appliance



With exceptional build quality and stunning design, Klover offer the widest range of MCS accredited pellet stoves in the country. From utility boilers, inserts, combination wood and pellet stoves and pellet cookers to a full range of elegant in-house boiler models, all eligible for the RHI grant.

[www.firepowerheating.co.uk](http://www.firepowerheating.co.uk)

0844 3320155



# The SIG360 Technical Centre

## Your Partners in Energy Efficient Residential Building

SIG360 Technical Centre is SIG Insulation's specialist team of energy efficiency and building experts that will help you to reduce the cost of your build and navigate the regulations to meet the standards required. Our unrivalled technical expertise draws on over 50 years of insulation distribution to provide expert support and services throughout the entire project.

### Support and services include:

- As designed SAP
- As built SAP
- Energy Performance Certificate
- U value calculation
- Condensation Risk Analysis
- Thermal modelling

To find out more please  
call: **0844 443 0059**  
email: **[sig360@sigplc.co.uk](mailto:sig360@sigplc.co.uk)**  
or visit: **[www.sig360.co.uk](http://www.sig360.co.uk)**

 **@SIG\_360**

# Town hall to keep heritage intact

With its Portland Stone facade and its classical architecture, Barnsley Town Hall is one of South Yorkshire's most distinctive landmarks and best loved buildings.

When Barnsley Council commissioned a project to refurbish the roof as part of a programme of improvements to the building, Kemper System not only had to ensure that the roof was upgraded successfully without any disruption to council services but also had to complete the scheme without any impact on the rest of the building.

Explains Victoria Ramwell, technical sales representative of Kemper System: "The project involved installation of a new warm roof system to enhance the thermal performance of the building as well as providing a new waterproofing surface."

"The town hall remained occupied throughout the programme and the building not only involved challenges in terms of the roof build up and complexity but also has delicate features that we had to protect during the works, affecting the way

in which the programme was designed."

To address these challenges, the Stratex warm roof system with Kemperol 2K-PUR liquid waterproofing membrane was specified by Kemper System. Kemperol 2K-PUR is solvent-free and odourless; ideal for use on occupied buildings where the odours from solvent based or so called low-odour products can be disruptive. Kemperol is also cold applied and therefore can be installed without hot works or the fire risk associated with them.

The existing roof build up consisted of asphalt, followed by a screed and a further layer of asphalt. Barnsley Council were keen to reduce the weight on the roof and so the top two layers had to be removed before installing the new roof.

The remaining asphalt surface varied in condition and a new vapour control layer had to be installed over large areas of the roof surface before installation of Kemper System's Kempertherm insulation board.

019 254 45532 [www.kempersystem.co.uk](http://www.kempersystem.co.uk)

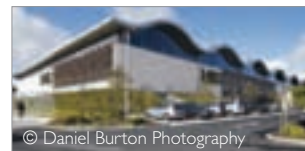


## Everyman Theatre 3-year redevelopment

It took three years to redevelop the Everyman Theatre in Liverpool. But the results have been spectacular as a much-cherished but ultimately flawed building was transformed into the highly accessible, environmentally-friendly and versatile modern building which was recently honoured with the prestigious RIBA Stirling Prize. Keeping those links alive while the theatre was under construction was not an easy task. However, thanks to a smart initiative by the Everyman, with the collaboration of live webcam service provider Streamdays, closing the doors on the public did not mean shutting them out of the transformation. A network camera was installed and configured by the Streamdays team in time to provide HD quality images from the start of demolition work until after the final re-opening in March 2014. The live webcam enabled visitors to the theatre's website to stay up-to-date as it moved through six different pre-set positions.

0151 633 2111 [www.streamdays.com](http://www.streamdays.com)

## Kingspan Tarec® installed on flagship M&S



© Daniel Burton Photography

Kingspan Tarec® Kooltherm® FM Pipe Insulation was installed as part one of the most sustainable and sophisticated retail spaces in the country, Marks & Spencer Cheshire Oaks. Building services formed a central part of the building's low carbon

design and with the premium placed on aesthetics as well as energy performance; Kingspan Tarec® Kooltherm® FM pipe insulation was the natural choice. The next generation pipework insulation offers superior thermal performance, keeping pipe thickness to a minimum. It was installed on hot and cold water services throughout the building and to the fan coil units in the main food hall.

01457 890400 [www.kingspantarec.com](http://www.kingspantarec.com)

## Grand design cliff hanger for Kingspan



Situated just metres from a crumbling cliff face; Cefn Castell is definitely not your average three bedroom house but for owners Kay and Rob Hodgson, the spectacular location was everything they'd been looking for. The stunning property has been featured on the latest series of *Grand Designs*

and includes a number of Kingspan Insulation products on the roof, floor and walls. Kingspan Insulation's premium performance Kingspan Kooltherm K3 Floorboards and Kingspan Kooltherm K8 Cavity Boards were installed on the ground floor and exterior walls respectively, with Kingspan Thermapaper TT47 LPC/FM fitted on the property's large flat roofs.

01544 387384 [www.kingspaninsulation.co.uk](http://www.kingspaninsulation.co.uk)





# Wallbarn launches new products

Wallbarn is launching two new products at Ecobuild this year.

**Aquaten Plus™** is a brand new ultra hydrophilic fabric for use in SuDS, green roofing, landscaping and rainwater attenuation. Its unique molecular make-up means it will store and hold a huge amount of water. Instead of swelling when it becomes saturated, the **Aquaten Plus™** fabric turns gel-like. The water is drawn out later as the surrounding soil dries out. **Aquaten Plus™** is ideal for stormwater management.



Aquaten Plus™

Suspended over horizontal structural surfaces, **Aquaten Plus™** will absorb the initial deluge, slowing down the time that the rainfall reaches the drains, taking a significant amount of water out of that drainage system and reducing flash flooding on hard surfaces. The captured rainwater evaporates into the atmosphere over time.

**Unsure where the deck falls? Wallbarn has the perfect solution: 7mm rubber pads and ASP EXTRA**

Suspended paving pedestals just got more adjustable. The height range of Wallbarn paving and decking systems has extended again. It announces the new 7mm rubber pad for paving and decking. This tough, flexible rubber disc was designed for areas with very low height thresholds, such as refurbishment and overlay projects. Drainage channels on the upper side ensure proper drainage. Detachable headpieces for paving or decking are inserted into the centre of the pad for perfect alignment.



7mm rubber pads for paving and decking

The EXTRA range is for adjustable pedestals. Available as ASP or TD supports, installers now have a height range from 85mm up to 380mm using only three separate units, taking the headache out of measuring falls on the roof. Ask for ASP EXTRA 85-135mm, ASP EXTRA 125-215mm and ASP EXTRA 210-380mm.

Visit Wallbarn on stand number S6124.  
0208 916 2222 [www.wallbarn.com](http://www.wallbarn.com)

## Antique texture



Arbour Mews, an exclusive housing development built on the edge of one of Britain's largest town parks, the 164-acre Harlow Town Park, has used **Marley Eternit's** Acme Double Camber clay plain tiles in

Antique to create textured roofs that reflect the vernacular architecture and also meet conservation requirements. Acme Double Camber clay plain tiles are unique because they have both a longitudinal and latitudinal camber, giving designers the opportunity to create highly textured roofscapes with accentuated light and shade. This design potential was an important factor in the specification.

01283 722588 [www.marleyeternit.co.uk](http://www.marleyeternit.co.uk)

## Manor's MSCP testimony to Stirling Lloyd



The Manor's MSCP in Newcastle upon Tyne continues to demonstrate the importance of effective protection 25 years on from its initial refurbishment, thanks to specialists **Stirling Lloyd**. Built in the 1970s, this six storey, 583 space reinforced concrete structure was last

refurbished in 1989. Manor's became one of Stirling Lloyd's earliest car park projects when the council specified three of its products; Metaset repair material, Decseal Waterproofing & Wearing Course and Safetrack HW skid resistant surfacing to protect some 20,000m<sup>2</sup> of car park decks and, 25 years later, the systems remain well bonded to the deck and continue to perform extremely well.

01565 633 111 [www.stirlinglloyd.com](http://www.stirlinglloyd.com)

[www.buildingconstructiondesign.co.uk](http://www.buildingconstructiondesign.co.uk)



**REGISTER ONLINE FOR...**

Digital magazine  
Newsletter • Daily digests

[www.buildingconstructiondesign.co.uk](http://www.buildingconstructiondesign.co.uk)

## Kooltherm® FM – the premier choice



Kingspan Tarec® has always focused on providing specifiers, mechanical engineers and contractors with highest level of technical support, allowing them to get maximum benefit from the premium performance of its Kooltherm® FM Complete Pipe

Insulation System. Now the company is going one step further with the introduction of the new Kooltherm® FM Premier and Premier Plus Services, delivering clear advice and guidance at every stage in a project, from the initial specification, to site visits and certification. Kingspan Tarec® Kooltherm® FM Pipe Insulation is available as a freely downloadable BIM object from [www.kingspantarec.com](http://www.kingspantarec.com) or the BIM Store website.

01457 890400 [www.kingspantarec.com](http://www.kingspantarec.com)

## Wallbarn M-Tray



All the preparation has been done – installation could not be simpler. The sedum and wildflower plants are pre-grown into portable tray units, clicked together to form a seamless green roof. All required drainage and filtration elements are contained in the trays meaning installation is faster, uniform, less messy and a one-person job. It can be taken up at any time in the future. M-tray from **Wallbarn** is ready to go... and ready to grow.

0208 916 2222 [www.wallbarn.com](http://www.wallbarn.com)

## Type B concrete waterproofing - A new online resource



Triton's new 'Type B' waterproofing website has been designed as the perfect resource for specifiers of watertight concrete structures. Triton supplies a complete range of products for structural waterproofing but this new site focuses purely on the company's BBA approved watertight concrete system that conforms to BS 8102 (2009).

Used primarily in the construction of basements, underground car parks, swimming pools and lift pits etc, the system comprises a unique chemical admix, products for sealing construction joints and products to make repairs.

There are direct links on the site from individual product sections to technical data sheets, detail drawings and case studies on Triton's main website. The enquiry form lands directly on the desk of technical staff who can help you with your project. Triton offers full system support, including liaison with the concrete batching plant, mix design, construction joint detailing, site monitoring as well as concrete repair systems and a warranty when required.

01322 318830 [www.typpbwaterproofing.co.uk](http://www.typpbwaterproofing.co.uk)

## apollo monza aluminium column radiator



modern contemporary aluminium column radiator  
ideal for low temperature renewable systems  
unique design, half the weight of steel  
vertical and horizontal in 82 different sizes  
3 days delivery for white  
7 days for colour (choose from 46 colours)

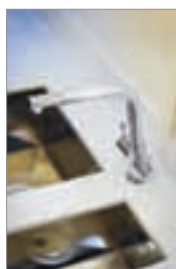
[www.apolloradiators.co.uk](http://www.apolloradiators.co.uk)

## Expanded range of colour options for Yorkon



Yorkon has expanded the range of colours and design possibilities for buildings using its off-site solutions, giving architects and contractors even greater aesthetic flexibility. The latest building system available for Yorkon projects has been engineered to remove the need for external columns, creating seamless, flush facades. The palette of colours for the steel envelope has also been expanded from 20 to 55, giving architects and designers genuine creative freedom without having to specify secondary cladding. The modular buildings can be finished in a wider range of colours to complement or contrast with adjacent schemes – or multiple shades and colours can be specified for a single facade to create a lively, vibrant and impactful exterior.

## Abode Estimo



The **Estimo** monobloc mixertap is an elegantly styled tap in perfect proportions and features a slight angled gradient to the overall frame with a soft style tubular spout design. Flat shaped handles give ease of use to this design-led tap, which is available in both chrome and brushed nickel finishes. Estimo is guaranteed to be a winner – with an affordable price tag. Abode taps are guaranteed for five years from date of purchase and are all designed in accordance with European Water Regulations and are manufactured to WRAS or other applicable European standards.

01226 283434 [www.abode.eu](http://www.abode.eu)



# High performance building solutions



RESIDENTIAL

EDUCATION

COMMERCIAL

LEISURE

HEALTHCARE

DEFENCE



Anglo European School, Essex



Premier Inn, Ipswich



Center Parcs, Woburn Forest



Hanham Hall, Bristol



William Street Quarter, Barking



Hayes, Middlesex



Oaks Day Nursery, University of Kent



Avante, Maidstone

- Structural frame and highly insulated fabric in one rapid build system
- Advanced Timber Frame, Structural Insulated Panels, Cross Laminated Timber and Hybrid Solutions for all building types
- Sustainable MMC Construction with full Chain of Custody and low embodied energy
- Enables cost effective high performance building envelopes with excellent air-tightness and minimal thermal bridging
- Confidence of 50 year track record and highly successful Kingspan group

Download the case studies at  
[kingspantimbersolutions.co.uk/info](http://kingspantimbersolutions.co.uk/info)



**Kingspan Timber Solutions Limited**  
Eltisley Road, Great Gransden, Bedfordshire SG19 3AR, UK



T: +44 (0) 1767 676400 | F: +44 (0) 1767 676444 | E: [info@kingspantimbersolutions.com](mailto:info@kingspantimbersolutions.com) | [www.kingspantimbersolutions.co.uk](http://www.kingspantimbersolutions.co.uk)



Is your supplier letting you down?



# Conservatory Roofs

Lowest Prices Anywhere

**15%  
OFF**  
YOUR FIRST  
ROOF\*

3m x 2m  
Lean-To  
25mm Opal



**£315**  
+vat

2.5m x 1.5m  
Lantern  
Active Blue Glass



**£828**  
+vat

2.8m x 2.9m  
Edwardian  
Active Blue Glass



**£921**  
+vat

Get a price  
comparison  
now!

global  
conservatory roof



- Quick quote turnaround
- Very competitive roof glass



**Tel: 01642 610799 Fax: 01642 615854**



/madefortrade



@madefortrade1

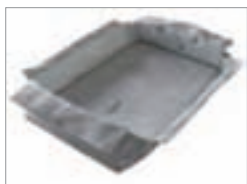
**made for trade**  
www.madefortrade.co

\* Offer is only available to new customers and excludes glass units  
Stickered prices include 15% new customer discount.





## Acoustic fire hoods for loudspeakers



In the build up to the Integrated Systems Europe (ISE) exhibition in Amsterdam, Invisible loud-speaker experts **Amina Technologies Ltd** would like to remind AV professionals that as well as launching an all new speaker range and high performance subwoofer, the company will be displaying its range of acoustic fire hoods that

complement its speakers and installation back boxes. Made specifically to Amina's specification by UK based fire hood specialist **Hoody™**, three models are available: Firehood200, Firehood300 and Firehood345. Amina's acoustic fire hoods are designed to provide 60 minutes' fire protection and are tested to BS EN 1363-1.

01480 354390 [www.amina.co.uk](http://www.amina.co.uk)

## AMA from COMPAC



**COMPAC** has launched the new **AMA Collection** – an innovative quartz work surface which takes its design heritage from the diverse wonders found in America's great natural parks. The three colours in the collection, White AMA, Black AMA and

Brown AMA evoke the textures and patterns created by the powerful rivers that run through the mountains, forests and plains which have such a profound influence on their natural surroundings. With a unique, rich veined design, strong in character yet sensuous as nature intended, each one of the AMA Collection has a perfect polished finish which is easy to clean and maintain and will provide the kitchen with light, harmony and a natural peace.

## Series A sinks steal the show

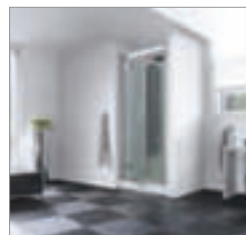


The new Series A sinks, from **GEC Anderson**, are available in no less than 17 stock sizes and combinations and are suitable for inset, undermount and flushmount fixing. With their distinctive 15mm corner

radius and 20mm flat flange, Series A sinks are sleek and contemporary and are of the absolute highest quality, in terms of materials and workmanship. Sizes range from 18 to 70cm in single, double and combination formats. All models are available from stock and represent excellent value for money. Now there is no need to compromise.

01442 826999 [www.gecanderson.co.uk](http://www.gecanderson.co.uk)

## Saniflo unveils new Kinedo website

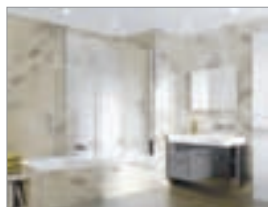


**Saniflo** has unveiled a new website for its popular range of Kinedo shower cubicles. Available at [www.kinedo.co.uk](http://www.kinedo.co.uk), the easy to navigate website includes information about the new Kineprime and the new Kinemagic designs of Serenity, Style and Design. Other features of the website include a new testimonial section, which shows recent

case studies for Kinedo, installation manuals and a section which compares the time to install a Kinedo cubicle versus the time to install a shower enclosure with tray and tiles.

0208 842 0033 [www.saniflo.co.uk](http://www.saniflo.co.uk)

## New 2015 luxury shower brochure

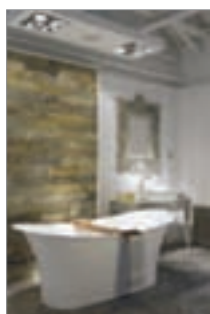


Containing a host of innovative and exciting new additions, the 2015 Luxury Shower Enclosures brochure incorporates **Aqata's** entire product portfolio of shower enclosures, screens, walk-ins, thermostatic showers and quality shower trays in a clear and user friendly format. Fresh

additions for 2015 include three new bath screens to Aqata's frameless Spectra range, providing a multitude of space saving design solutions for over bath showering. From March ClearShield ECO-GLASS™ protection will be standard on all Aqata shower enclosures and screens.

01455 896 500 [www.aqata.co.uk](http://www.aqata.co.uk)

## Systemline S7 at Victoria + Albert Baths



New multi-room audio system **Systemline S7** has been installed in a high-profile showroom at the Design Centre Chelsea Harbour. S7, which is discreetly built into the fabric of a building, was primarily targeted at domestic settings, but in this case it was chosen for the substantial new showroom of high-end bathware manufacturer Victoria + Albert Baths. The location in the Design Centre makes it a highly visible showcase, being an international destination for interior designers. For more information visit the website.

01279 501111 [www.systemline.co.uk](http://www.systemline.co.uk)



## Changing places at International Gateway

Commitment to improving customer journeys is being taken 'above and beyond' at East Midlands Airport, with a complete refurbishment of its Changing Places toilet. The airport is now one of just a handful of Britain's 60 airports that is as accessible to all as possible, with the upgrading of its Changing Places toilet for people who need the help of a carer for personal hygiene. The purpose-built facility gives more space – 12 sq m – than a conventional wheelchair-accessible toilet, to accommodate the user and their carer, and has additional equipment. This includes a hoist and mobile, adult-sized changing bench, supplied and installed by **Clos-o-Mat**, one of the country's top providers of specialist toilet facilities for the disabled and elderly. Clos-o-Mat has used its expertise in the field to produce a white paper on Changing Places toilet provision in general, and specifically the transport sector, both of which are available for download – alongside technical specifications, typical layouts and 2D and 3D CAD drawings – on its website.

0161 969 1199 [www.clos-o-mat.com](http://www.clos-o-mat.com)

## MODULAR SHOWERING SOLUTIONS



- LEAK FREE
- DESIGN BUILD
- ZERO MAINTENANCE
- DURABLE & RELIABLE
- RECYCLABLE
- QUICK & EASY TO INSTALL
- ISO 9001 REGISTERED
- ISO 14001 REGISTERED
- 25 YEAR GUARANTEE

**TAPLANES®**  
SHOWERING SOLUTIONS

Telephone 01423 771645 • Email [admin@taplanes.co.uk](mailto:admin@taplanes.co.uk) • [www.taplanes.co.uk](http://www.taplanes.co.uk)

## Unique modular wet-floor system



The unique Modular Wet-Floor System from CCL Wetrooms, one of the UK's leading wet room specialist, allows any size or shape of wet room to be quickly and easily created on a timber floor. The key to the system is its design flexibility,

allowing a stunning linear drain to be situated in almost any position within the shower area. The Modular Wet-Floor system has been particularly well received by housebuilders and developers, as the system allows a wet room to be easily created on a timber floor, with a Linear Drain situated in almost any position.

0844 327 6002 [www.ccl-wetrooms.co.uk](http://www.ccl-wetrooms.co.uk)

## Hansgrohe launches Axor Citterio E



Designed by Italian architect and designer, Antonio Citterio, the new Axor collection of bathroom fittings from Hansgrohe exude elegance, high quality and worth. Axor Citterio E is characterised by a balanced contrast of smooth shapes, clean lines and precious surfaces and offers exceptional ease of use. Soft and slender mixer handles characterise the entire collection's design,

as in the single lever mixer with its modern and upright joystick handle, or in the 3-hole mixers with their classic cross-handles. All 37 products share a visually appealing and harmonious look that complements a variety of styles, from art nouveau to modern urban.

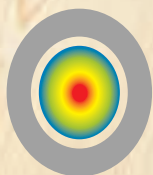
01372 465655 [www.hansgrohe.co.uk](http://www.hansgrohe.co.uk)

# Think Fabric First

AIRTIGHTNESS



THERMAL PERFORMANCE



ENERGY EFFICIENCY



SPEED OF CONSTRUCTION



Building using **Val-U-Therm®** our high thermal performance, airtight, closed panel timber frame systems for floors, walls & roofs minimises the requirement for micro renewable technologies by embracing 'Fabric First' principles.



**Let Scotframe  
thermally engineer  
a solution for you.**

**scotframe**  
timber frame | engineering

Cumbernauld	01236 861200
Inverurie	01467 624440
Dundee	01382 561772
Inverness	01463 717328
Mid Sussex	01273 5662861
Paignton	01803 267680

[www.scotframetimberengineering.co.uk](http://www.scotframetimberengineering.co.uk)





## Creating space with style

Specialist folding partition manufacturers & contract installers of folding doors, partitions and movable walls.

Building Additions have an established reputation for the manufacture, supply and installation of room partitions and movable walls throughout the UK. The skill, knowledge & experience we offer guarantees the right solution to meet the requirement of interior design professionals.

**Building**  
Additions

Tel: 01373 454577

Email: [sales@buildingadditions.co.uk](mailto:sales@buildingadditions.co.uk)

[www.buildingadditions.co.uk](http://www.buildingadditions.co.uk)

# AIR EXPERTS

60 years since its launch, Vortice is still European market leader, providing energy efficient ventilation

## Vortice offers:

- Initial free of charge consultation service
- Sales and technical assistance from design, install and after sales support
- Advice from industry experts
- Fully trained sales department
- BPEC Training course at the UK head office
- Area Business Manager network throughout the UK

**01283 492949**

[sales@vortice.ltd.uk](mailto:sales@vortice.ltd.uk)

[www.vortice.ltd.uk](http://www.vortice.ltd.uk)



## Need help with your wooden floor?

For new installations or renovations – speak to your local Bona Certified Contractor!

At Bona we are passionate about wood floors. Our range of oils and lacquers have been used worldwide for nearly a century to protect and finish beautiful wood surfaces.

To help you prolong the life of your floor, we've trained a network of wood floor specialists in the use of our dust-free sanding system and high performance coatings.

Call us on 01908 525 150 or use the 'Find your contractor' tool on our website at [bona.com](http://bona.com) to find your local wood floor specialist.

Bona Limited  
Tel 01908 525 150  
[info.uk@bona.com](mailto:info.uk@bona.com)

[bona.com](http://bona.com)

**Bona**  
Passion for wood floors





## A new solution to an age old problem

**Save time, water, energy, soap, space and money with Alavo – the new name for Dolphin Dispensers' successful behind mirror modular system.**

Our radical new modular system, is the perfect blend of style and substance and is the complete solution where projects require excellent BREEAM, LEED or SKA ratings.

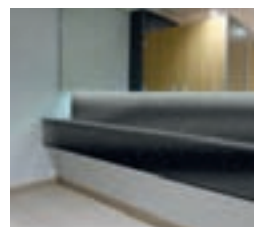
For architects, contractors, cleaning and facilities teams, Alavo's plug and play design minimises time spent designing, installing and servicing the washroom area.

For washroom users Alavo features fully integrated infrared sensor taps and foam soap systems, and high speed low energy hand dryers so that they can wash, soap and dry in one position using the latest technology.

### Alavo – the complete washroom system

#### Specifications:

- Elegant and clean design, fits into any project
- Easy access for janitorial duties, with hydraulic lifting panels
- Sensor activated taps, soap and hand dryers
- Multi-feed system, LED lighting. 'Plug and Play'



washrooms worth experiencing



**Dolphin Dispensers**  
Southpoint, Compass Park,  
Bodiam, Robertsbridge TN32 5BS  
t: 01424 20 22 24 f: 01424 20 52 00  
e: [info@dolphindispensers.co.uk](mailto:info@dolphindispensers.co.uk)  
[www.dolphindispensers.co.uk](http://www.dolphindispensers.co.uk)

## Demand for bespoke seating solutions soars



The need to stand out from the crowd and to provide that luxury wow factor has created an unprecedented growth in demand for bespoke seating solutions, according to the leading hand-crafted upholstery manufacturer, Lyndon Design. The company's bespoke seating solutions are featured throughout leading hotels and restaurants around the globe. These specifications clearly demonstrate the product design and manufacturing capabilities for which Lyndon Design is renowned. All of Lyndon Design's bespoke upholstery is supported by a complete consultative service. The company regularly turns its upholstery design and manufacturing skill set to a number of other made-to-order options.

## Unique modular wet-floor system



The Modular Wet-Floor system from CCL Wetrooms is a totally unique concept in wet room technology, consisting of only three elements: Drainage Component, Tapered Board, Floor or Wall Grill. Thanks to the flexible nature of these components, almost any size of wet room can be achieved. The Drainage Component and Tapered Boards can be used in a combination of ways to create either a one way or two way fall, with the drain positioned in the floor or up against the wall. The components can be trimmed or butted together to create a larger wet room area, making the Modular Wet-Floor system both simple to configure and quick and easy to install.

0844 327 6002 [www.ccl-wetrooms.co.uk](http://www.ccl-wetrooms.co.uk)

## Grundfos SOLOLIFT2 a cut above



The SOLOLIFT2 range of macerators from Grundfos are a cut above the rest in delivering leading edge technology. Not only does the family comprise of just 5 models but, through the flexibility of their design, their adaptability and performance, they provide the solution to handling wastewater for any combination of WC, bidet, sink, bath, shower and washing machine. So whether the application demands an extra bathroom, a basement installation, or is for extra facilities in hotels; or perhaps where facilities are needed for the elderly or the disabled – Grundfos SOLOLIFT2 macerator range have the answer.

01525 850000 [www.grundfos.co.uk](http://www.grundfos.co.uk)

## On The Level – bespoke wetrooms



Ideas soon turn into reality with imaginative planning and a bespoke wet floor design from a specialist like On The Level. With 30 years experience, On The Level is a manufacturer of concealed wet floor formers and can produce bespoke solutions in any size or shape. The formers are precision engineered in 24mm birch ply which means that they are extremely strong, but light and easy to handle and can be readily shaped on site and screwed into position. They are an essential part of the wetroom because they dictate the gradient of the tiled floor in the shower area and it is this gradient that allows the water to drain away quickly - avoiding pools of water sitting on the tiles.

01525 373202 [www.onthelevel.co.uk](http://www.onthelevel.co.uk)



# Grade II Listed 'Elephant House'



**E**lephant House, built in 1890-1901, was a bottle store for Camden Brewery. William Bradford, the leading architect of the time used highly ornamental stonework to create an elephant's head, which was the branding of one of the brewery's famous pale ales. This can still be seen today above the main entrance way and why it is known as 'Elephant House'.

Due to the special architectural interest of this Victorian Building, it was granted Grade II Listing in 2009.

In 2013 Hawkins/Brown was commissioned to draw up plans to change the use of the building to accommodate offices. In such an old building, with the addition of the heritage listing, the project needed to be carefully considered ensuring a sustainable, comfortable and safe working environment was created.

The original single glazed windows presented a problem; they were unable to be replaced, they

were draughty and did little to combat noise from the busy roads outside. Bespoke designed secondary glazing was the solution to achieving high levels of noise attenuation and thermal insulation, as well as being regularly used on listed buildings and those in conservation areas.

A total of eight windows were treated with two different styles of openings from the Selectaglaze heritage range. A single hinged panel with a curved head was used in most of the openings, which mimics the original and allows access to the primary window. The discreet frames along with flush hinges and flush locks created a flawless look and achieved the desired benefits, without compromising the beauty of the original windows.

Established in 1966 Selectaglaze are the secondary glazing specialists. With an array of options, they find the best suited window to meet the client's needs.

01727 837 271 [www.selectaglaze.co.uk](http://www.selectaglaze.co.uk)



## Signbox introduces the Matt Design range



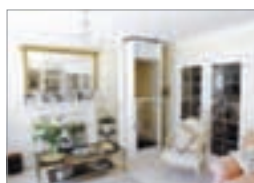
Signbox has announced an exclusive new collection of pictogram wayfinding signs. The Matt Design range uses Perspex® Naturals, a new palette of acrylics inspired by the simple beauty of nature. Available in eight colours that will satisfy both contemporary and traditional interiors, the innovative collection is designed to suit all applications. Developed from

leading colour trends research, Perspex® Naturals

simulate the earthy tones and velvety texture of natural stone. The Matt Design range uses these exciting materials and then adds attractive and informative new pictogram designs to create a refreshingly new wayfinding signage series.

01784 438688 [www.signbox.co.uk](http://www.signbox.co.uk)

## The only way is up with a Stiltz lift



Home lifts specialist Stiltz's range of domestic lifts are totally unique as they do not require hydraulics and plug straight into the wall using a normal 13 amp power socket. Assembled at the company's headquarters in Wokingham, Berkshire, the Stiltz Lift is powered by an electric motor system that sits out of view on

top of the lift. These innovative home lifts do not need to be fixed to walls as the lift travels via dual rails that are positioned in the floor creating a completely self-supporting structure. This means the domestic lift can be installed practically anywhere in the home with a distinct advantage over its hydraulic counterparts.

0844 870 9087 [www.stiltz.co.uk](http://www.stiltz.co.uk)

## New thermostatic shower ranges



One of the leading bathroom and shower manufacturers, **MX Group**, has unveiled an impressive new range of thermostatic mixer shower valves offering its usual combination of incredible quality, great looking product, excellent warranties and keen pricing. There are 22 showering choices in the Atmos and Options ranges with most Atmos options complying with

TMV2 regulations. Full details of the new ranges can be found on the excellent MX website.

01684 293311 [www.mx-group.com](http://www.mx-group.com)

## Domus Tiles introduces Fila surface care



Domus Tiles has introduced a range of Fila surface care products throughout its showrooms. The award-winning range offers care and maintenance solutions for all surfaces – from porcelain to natural stone – with products including cleaners, sealers and trouble-shooting treatments. The new complementary Fila range

will span each stage of surface care and maintenance, for all Domus finishes. Initial wash products will include Fila Deterdek and FILACLEANER, whilst protectors will include LEED-approved, solvent-free impregnator, FILAMP90 Eco Plus. A variety of deep cleaning treatments will also be available.

0208 481 9500 [www.domustiles.co.uk](http://www.domustiles.co.uk)

# THE ART OF HEATING



BESPOKE.  
CLASSIC.  
ELITE.

The Eton, Hand Burnished

For Stockists Contact:

T: 0808 129 2224 | E: [sales@carron.uk.net](mailto:sales@carron.uk.net) | W: [www.carron.uk.net](http://www.carron.uk.net)



# Wet room wonders from Schlüter-Systems

Schlüter-Systems' extensive range of wet room products offers simplicity, reliability and easy installation within the home.

Incorporating the very latest innovations for floor-level showers and wet rooms, Schlüter-Systems provides a fully integrated product suite, including top of the range waterproofing sets, drainage systems, and uncoupling and waterproofing membranes for tiling the walls and floors.

Products including Schlüter®-KERDI-LINE are linear drain channel systems which are perfect for the construction of floor level showers and offer a particularly low assembly height (below). The Schlüter®-KERDI-SHOWER range (right) are pre-sloped shower bases making tiling straightforward and there are a number of different sizes and dimensions available, providing an ideal substrate for an excellent finish with tile or natural stone.

Other products in the range include the Schlüter®-KERDI-SHOWER-TB which has been specifically designed for timber substrate environments and the Schlüter®-KERDI-DRAIN (pictured bottom left), which is a square floor drain system with designer grate options. Schlüter®-WETROOM range also boast all-in-one wet room kits, including all the necessary components to provide guaranteed waterproofing solution for walls and floors.

Carl Stokes, divisional manager at Schlüter-Systems, commented: "The installation of a wet room within the home has never been so easy or more accessible. We have received great feedback from tilers using our kits and the fact that we've witnessed such an increase in demand for our wet room range really speaks volumes about the popularity of not just the packs but the products within our wet room range."

"The kits are not only an installers dream but with the Schlüter®-KERDI-DRAIN and Schlüter®-KERDI-LINE the designers and home owners can tailor make the decision on if they wish to make the drainage channel a feature with the



*'The fact that we've witnessed such an increase in demand for our wet room range really speaks volumes about the popularity of not just the packs but the products...'*

Carl Stokes, divisional manager at Schlüter-Systems

Installing a wetroom with Schlüter®-KERDI-SHOWER or Schlüter®-KERDI-LINE can create a more attractive space, does not have to be a set size or shape and offers an ideal substrate for an excellent finish with tile or natural stone

designer grates or for it to blend into the design using the frameless grates."

With over 10,000 products in its range, Schlüter-Systems has an essential role to play in every professional tiling project. To find out how they can help you to create more beautiful and longer lasting installations, please telephone 01530 813396 or visit the website at [www.schluter.co.uk](http://www.schluter.co.uk)



With Schlüter®-KERDI-DRAIN and Schlüter®-KERDI-LINE, designers and homeowners can decide whether they want to make the drainage channel a feature by opting for designer grates or allow it to blend into the design with frameless grates



Schlüter®-KERDI-LINE stands out not just because of its beautiful appearance but also its ease of installation; it's also available in a range of sizes

 **The Prince's Foundation**  
FOR THE BUILT ENVIRONMENT

**Supplier of ceramics to the Prince's Foundation's Natural House**

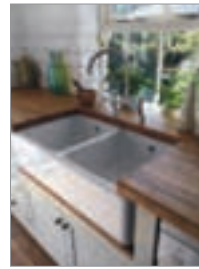


Shaws of Darwen have been manufacturing robust fireclay commercial sinks for over 100 years. The extensive ranges and sizes of laboratory, shelf, cleaners and traditional Belfast sinks suit every requirement



**All enquiries 01254 775111**  
[www.shawsofdarwen.com](http://www.shawsofdarwen.com)

## Shaws' classic double bowl sink



For a typically traditional style kitchen the Shaws' fireclay Classic double bowl sink comes with a central dividing wall and is available in both white and biscuit finishes. Each bowl has central 3½" waste outlets for basket strainer or waste disposer and traditional style round overflows. Available in two sizes, 800 and 1000, these distinctive heavyweight, English made double bowl sinks require bespoke cabinetry due to their weight.

Visit the Shaws of Darwen website to view the complete range of sinks and complementary taps.

**01254 775111** [www.shawsofdarwen.com](http://www.shawsofdarwen.com)

## Shaws classic 800 waterside sink



The heavyweight Waterside 800 ceramic fireclay kitchen sink, made in England by Shaws of Darwen, is a large single bowl with classic curved bow front which looks stunning in any style of kitchen, country chic or city slick. It comes complete with central 3½" waste outlet for basket strainer or waste disposer and is available in white and biscuit finishes. The Classic Waterside

sink is available throughout the UK.

Visit the company's website to view its complete range of sinks, taps and accessories.

**01254 775111** [www.shawsofdarwen.com](http://www.shawsofdarwen.com)



**TODD DOORS**  
BEAUTIFUL DOORS  
SINCE 1952

**Inspirational doors for every home**

**ESSENTIALS**  **CHARLES TODD**

**0208 839 3577**  
[todd-doors.co.uk](http://todd-doors.co.uk)  
[developerteam@todd-doors.co.uk](mailto:developerteam@todd-doors.co.uk)



## JB Kind's 2015 collection



Whether it's an innovative, contemporary or classic door design you are after, you will be able to find it in **JB Kind's** new 2015 brochure. With 37 new additions and more than 200 door styles, JB Kind's superb quality products and undeniable value ensures you will be able to find something to suit your project and budget. Don't forget, if it's individually

tailored doors you require, JB Kind can also create affordable bespoke solutions. Fully accredited FD30 fire doors and FSC® chain of custody certified products are all available.

01283 554197 [www.jbkind.com](http://www.jbkind.com)

## Achieving an enduring all-white aesthetic



The new Mondéco Arctic range of hard wearing white floors has been launched by **Flowcrete UK** to provide the designers of commercial spaces with crisp and gleaming surfaces that evoke an elegant, luxurious ambience. Featuring three new colours, Alaska, Glacier and Polar, these seamless epoxy resin terrazzo systems combine a white

binder with a blend of light coloured aggregates, mirror glass and metallic particles to create stylised white surfaces with subtly differing patterns. The superior UV light resistance of these floors helps large-scale commercial locations to retain a seamless, visually appealing finish for an extended period of time

01270 753000 [www.flowcrete.co.uk](http://www.flowcrete.co.uk)



## Another UK success story!

Our athletes have been superb in recent years. We have the top golfer in the world. British actors come away with accolades galore. And the cache of products manufactured in the UK cannot be underestimated. The words Made in the UK or British Made stand for quality, reliability, value for money and style. So **demista™** heated mirror pads have proven to be the first choice for both contract and domestic markets. Steamed up mirrors are annoying. You step out of the bath or shower and prepare to shave or do your make up... trying to peer through a fog. So is there an alternative?

The easy and permanent solution is to install **demista™** heated mirror pads. Problem solved simply and inexpensively. The pads come in a variety of sizes, and can be used in multiples if large areas need to be covered. **demista™** heated mirror pads can also be made to order in special sizes. Fitting is easy. Just fix the self-adhesive pad to the back of the mirror and connect to the lighting circuit so that the mirror is warmed when the lights are on. The pads are manufactured in the UK and have proven quality after over 22 years in the market world wide. **demista™** is the innovator of steam free mirrors and the first heated mirror pads sold in the UK. They are the first choice for builders, developers and specifiers for luxury apartments, hotels, leisure centres, new home developments and refurbishment projects both at home and abroad.



## Taking you to the next level...

**Premier Loft Ladders** are the preferred choice of architects and building industry professionals throughout the UK, and their range of **COLUMBUS Treppen** stairways leads the way in engineering quality, design, technology and energy efficiency, making Premier the foremost supplier of concertina style aluminium and folding or sliding style wooden loft and access ladders. Our stairways have a wide range of options including flat roof access, fire resistant trapdoors, electrical operation (concertina stairway) and vertical access.

For further details contact us on: **0845 9000 195 / 01394 214413**

### Key reasons to choose PLL:

- Outstanding quality and value
- Preferred choice of architects and building industry professionals
- **COLUMBUS Treppen** - UK Main Dealer
- Technical and design advice
- Commercial and domestic applications
- Fire resistant trapdoors
- Vertical access
- Flat roof access
- Electrical operation

**PREMIER**  
LOFT LADDERS

Tel: 0845 9000 195 / 01394 214413  
Email: [sales@premierloftladders.com](mailto:sales@premierloftladders.com)  
Web: [www.premierloftladders.com](http://www.premierloftladders.com)

**Constructionline**  
A Constructionline member

**NSPPlus**

**f**

# Is your sink an EcoSink?



EcoSink's powerful waste disposal unit fits under your sink to quickly and quietly grind your food waste into particles, flush it into the waste water system and save it from landfill.

**Eco-friendly**  
Uses less water and energy than other waste disposal units, so it's more environmentally friendly.

**Eco-fast**  
Powerful motor operates more than 3 x faster than other waste disposal units, and pulverises even tough food waste within seconds.

**EcoSink**  
Bladeless, so there is no risk of jamming or clogging your drain.

Phone  
**01442 270032**  
today to find your nearest distributor or visit  
[www.ecoserviceuk.co.uk](http://www.ecoserviceuk.co.uk)

**ecobuild**  
stand no 1303

**EcoSink**  
the greener way to dispose of food waste.

**EcoSink**

## Kemmlit's cubicle systems a firm favourite



As part of the £45 million development of Cheltenham Racecourse which includes a five and a half storey high grandstand, the renovated and extended See You Then bar was one of the first parts of the racecourse to reopen. For the bars' refurbished washroom facilities,

Kemmlit's Cronus and Apex Cubicle Systems were specified by the Racecourse project management team. Cronus is a fully framed and versatile cubicle system that can be used for dry or wet areas. Cronus is a fully framed and versatile cubicle system that can be used for dry or wet areas. The panels are made from 13mm solid grade laminate (SGL) with a special overlay to protect them against abrasion, wear and scratches - making them the ideal solution for this type of demanding environment.

## nora flooring systems



Over 300m<sup>2</sup> of nora's *noraplan uni* floor covering has been installed in SAP's UK office. SAP and architects HLW International wanted a plain rubber tile with a good colour choice that was durable and easy to maintain. Rubber flooring from nora systems was the ideal choice and therefore was installed in various areas, including the striking design feature behind the reception desk on the ground floor, the technology suite, the meeting room's reception and foyer areas. With its plain colours, smooth surface and excellent environmental properties, *noraplan uni* fits the criteria easily.

01788 513 160 [www.nora.com/uk](http://www.nora.com/uk)

# HORNE

BIM Models now available

## Bi-modal showering from HORNE






The ligature resistant connector...  
...takes the detachable handset, hose and flow actuator...  
...for assisted showering mode via automatic flow diverter.

Under-utilised showers waste space, time, water and money. Install a Horne bi-modal shower panel to increase usage. Free up space and reduce maintenance time spent flushing water down the drain. For unassisted showering, the water flows via the fixed vandal and ligature resistant shower head, and via the handset and hose for assisted showering. Available with ligature resistant (pictured) or moulded lever controls to cater for different user needs. Includes integral 1905 Shower Approved 7001-2 Chromed Brass Shower valve.

Visit [www.horne.co.uk/Products/Shower-Panels/](http://www.horne.co.uk/Products/Shower-Panels/) for a complete tour of the range.

Horne Engineering Ltd, PO Box 7, Rankine Street, Johnstone, PA5 8BD  
Tel: 01505 321455 Email: [sales@horne.co.uk](mailto:sales@horne.co.uk)

[www.horne.co.uk](http://www.horne.co.uk)







# Innova creates perfectly tailored labs for Bellerbys College

Education interiors specialist Innova Design Solutions have created inspiring science labs with the wow factor for international students at Bellerbys College.

Part of the Study Group, Bellerbys operates across eight campuses and prepares over 1,250 international students for university entry every year. In keeping with Study Group's transformation scheme, Bellerbys wanted to reformat its science facilities to reflect changes in teaching and learning styles, and was looking for stylish, state of the art labs and prep rooms.

Working to a timescale of just a few weeks, Innova provided a full contract management service to guarantee work on each of the six laboratories ran smoothly.

End-user involvement was central to the design process: with the input of teaching staff Innova created a unique layout and colour scheme in each lab, giving teachers the freedom

to tailor the learning environment to their preferred teaching styles.

From peninsular to curved centre floor layouts to curved centre floor layouts, all the labs were designed so every student faced the front with significant space for practical and theory classes.

The curved centre floor units with a radial design offered teachers greater control of the learning environment, with short lines of communication to ensure students remain focused. The installation of sinks in centre floor units optimised the space to support the practical emphasis of science courses at Bellerbys.

To maximise space for chemicals, books and equipment, perimeter and under bench storage was incorporated alongside racks for gratnell trays. Further space was provided with the creation of mechanically ventilated chemical stores on each floor of the building, where shelving and lockable storage enabled technicians to keep equipment



well-organised and at hand for experiments.

A mixture of Trespa, Formica compact grade laminate and CDF (Kronoswiss), an eco-friendly compact grade density board was chosen to ensure work surfaces were attractive, durable and easy to maintain.

The results are colourful, creative learning spaces which stimulate students and are set to be a showcase for Bellerbys to attract overseas students.

0161 477 5300 [www.innova-solutions.co.uk](http://www.innova-solutions.co.uk)

## TPS increases Moleanos Limestone stock



Following the success of its Moleanos Limestone range, Trade Price Stone has reacted to trade demand and increased stock levels for 2015. The Portuguese Moleanos Limestone is available in tile and paver format – in a range of sizes, colours and surface finishes. It provides a durable flooring option

for internal and external applications and is suitable for commercial and domestic projects. All finishes are provided with a full CE mark data sheet and are available from extensive stock, for standard or next day delivery upon request. Trade Price Stone's tiles and pavers are offered alongside a comprehensive range of consumables, including adhesives, grouts, sealants and maintenance products.

01283 734990 [www.tradepricestoneltd.co.uk](http://www.tradepricestoneltd.co.uk)

## Levolux gets stuck in for Henkel



A new 36,000 sq ft office development for Henkel, a global leader in brands and technologies, is bringing together its UK workforce in Hemel Hempstead, into a more comfortable, energy efficient building, which is equipped with an external Solar Shading solution from Levolux. The solution comprised a combination of 400mm and 300mm wide Aerofoil Fins, engineered from extruded aluminium. All Fins

are secured to an external steel frame which extends vertically across south-facing elevations and horizontally to form a canopy above the main entrance at roof level. All steelwork and aluminium components are treated with a durable, light grey powder coating for long lasting good looks.

**Specialising  
exclusively in  
permeable resin  
bound paving**

**SureSet**  
Permeable Paving

**Add a stylish finishing touch with SureSet**

**The ideal alternative to tarmac, gravel  
and paving stones**



**See SureSet  
at Ecobuild  
3-5 March  
Stand S4104  
Hall S4**

**SureSet permeable resin bound paving...**

- Is SuDS compliant - allows water to drain straight through
- Is available nationwide
- Has a 15 year guarantee against: loose stone; cracking; colour change; oil damage; frost damage; UV degradation and workmanship
- Is available in a huge range of colours and textures
- Stays looking as new - no weeds or puddles

T: 0800 612 6041 E: [contact@sureset.co.uk](mailto:contact@sureset.co.uk) W: [sureset.co.uk](http://sureset.co.uk)

# Lightweight steel roofing popular for conservatories



The conservatory: a staple of the modern British home that is traditionally regarded as a summertime space. During the winter however, conservatories can be regarded as the room where heat escapes causing home energy bills to rise - not ideal in a world where annual price increases have become expected

**T**his insulation issue stems from the frame of the conservatory being unable to support a full roof installation, with the weight from traditional roof tiles such as slate or clay causing problems for both the foundations and the structure.

Metrotile Lightweight Steel Roofing weighs up to one seventh of slate or clay tiles and, as such, has seen a surge in popularity within the conservatory industry on both new build and refurbishment projects. Taking aesthetic cues from so-called traditional roofing materials, yet applying them to a truly modern material, Metrotile is a durable, sustainable and highly secure roofing solution that offers far greater benefits than you would expect from a single roof tile. Thanks to the weight reduction offered, battens and a full layer of insulation underlay can be installed, turning the conservatory into a space that retains heat all year round.

Add a forty year weatherproof guarantee plus a full range of accessories including Velux windows into the mix and you can see why Metrotile is specified by UK conservatory manufacturers and a premier choice for UK contractors to use for conservatory renovations.

Peter Evans, Partner for roofing contractors AP Roofing, has worked on a number of Metrotile conservatory roof installations: "Whenever we refurbish a conservatory in this manner, we always get a great response from customers. They always tell us that they can use the conservatory all year, because it's warmer in the winter and cooler in the summer. The reduction in utility bills is also a popular outcome".

The light weight of each Metrotile profile ensures other benefits too, including the ability of a rapid installation. Lower weight means more tiles can be moved at one time, yet once installed a Metrotile roof offers unmatched protection against vandalism and the elements; as Metrotile is an international product, it has been cyclone tested in Japan and wind tested in California. Security is not a concern with a Metrotile roof. If you are interested in utilising Metrotile Lightweight Roofing for your building project, visit the company's website.

[www.metrotile.co.uk](http://www.metrotile.co.uk)  
01249 658514




---

*'Metrotile Lightweight Steel Roofing weighs up to one seventh of slate or clay tiles and, as such, has seen a surge in popularity within the conservatory industry on both new build and refurbishment projects'*

---



# building construction design



**REGISTER ONLINE FOR...**

Digital magazine  
Newsletter • Daily digests

**[www.buildingconstructiondesign.co.uk](http://www.buildingconstructiondesign.co.uk)**



View our  
website

[www.popuppower.co.uk](http://www.popuppower.co.uk)

Retractable Service Unit  
at Chiswick House

Our projects include  
installations for:

- Markets
- Heritage
- Parks
- Town Centres
- Universities
- Sports Stadiums

## Pop Up Power® Supplies

Safe, secure, silent power: retractable  
utility points supplying electricity,  
water and air to public places

### Pop Up Power® Supplies Ltd

Telephone 020 8227 0208

Email [info@popuppower.co.uk](mailto:info@popuppower.co.uk)

Web [www.popuppower.co.uk](http://www.popuppower.co.uk)

There when you need them, **hidden** when you don't...



## Looking for the untreated look?

Untreated Wood

Polyx-Oil Effect Raw

Polyx-Oil Effect Raw could be your answer

- > Keeps the **NATURAL** look of the wood!
- > Hardwearing, water and dirt-resistant
- > Perfect for light-coloured wood species.
- > Highest coverage of any oil on the market
- > Clear, raw finish



Call or visit  
the web for  
stockists.



+44 (0)1296 481 220  
[www.osmouk.com](http://www.osmouk.com)

**osmo**

## BUY **BRITISH**, BUY **QUALITY**, BUY **Jeckells** SHADE SAILS

01603  
782223

[shadesails@  
jeckells.co.uk](mailto:shadesails@jeckells.co.uk)

We design and manufacture Shade and Weatherproof Sails in commercial and domestic environments. Our forte is engineering solutions that not only look good but will also stand the test of time in unpredictable outdoor environments.

All our Shade Sails are individually designed with colour, shape and size to suit your particular requirements. Architecturally stunning. We use either Stainless Steel or Timber posts depending upon the environment. Our Shade Sails are easily fitted and removed. A full design and installation service is available.

For more details please call **01603 782223** or email [shadesails@jeckells.co.uk](mailto:shadesails@jeckells.co.uk)



**Jeckells**   
THE SAILMAKERS





## The Abloy Door launched



Security expert **Abloy UK** has launched the Abloy Door, a complete door-set that features a lock, lever, cylinder, and panic option, and is LPS 1175 SR2 certified by the Loss Prevention Council Board (LPCB). The Abloy Door boasts an EL160 Mechanical Lock Case with automatic deadlocking, Lever Handle Set, Protec2 Euro Profile Cylinder, and Panic Bar. Products certified to the LPCB's LPS 1175 SR2 standard

provide three minutes of resistance to determined attack by an opportunist burglar using a range of techniques including those that involve creation of noise. To help architects and specifiers, Abloy has created a *Security Doors Technical Information and Specifications guide*.

## USE Architects breathe new life into Hackney



USE Architects has transformed Mentmore Terrace in London's Hackney with a new residential building featuring an innovative facade with panels made from DuPont™ Corian® hi-tech surface supplied by CD(UK). The panels that form the facade were fabricated and fitted by specialists Urbana Exteriores from Spain,

and have been installed using a Kiel fixing system to a Hilti frame. The structure also benefits from the installation of DuPont™ Tyvek® UV Facade, a version of the renowned advanced breather membrane, created to allow greater design freedom, reliable protection and enhanced energy performance for open-jointed facades.

0113 201 2240 [www.cdukltd.co.uk](http://www.cdukltd.co.uk)

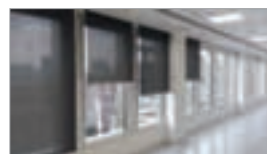
## 'The Poppies' benefit from Zeeland



Zeeland fibre cement slates from **Cembrit** have been installed on an interesting development in Kent, which sees the natural appearance of the slate complement the external weatherboard and brick finish. Built by Hillreed Homes, the two-, three-, four- and five-

bedroom properties form part of 'The Poppies', a housing community in Kings Hill, West Malling. Kent-based contractors, Russell and Russell Roofing specified blue/black Zeeland slates to provide an attractive finish to the residential properties. Zeeland slates are manufactured to the highest European standards.

## Imaginative Faber Blinds solution for office



Redeveloped offices at 71 Victoria Street, London, by developers Bouygues feature innovative systems from **Faber Blinds**. Steve Marks, senior national contracts manager for Faber Blinds, said: "We installed our EOS 5-11 manual chain operated roller blind system

using a pre-specified screen fabric nominated by the architect," said Steve. "We were able to manufacture the blinds a little wider than usual. The late addition of the motorised roof light was also potentially a problem, but the flexibility of the control via an RTS switch system that we could give with the Faber 1800 Fabric Tension System, helped overcome that."

01604 766251 [www.faberblinds.co.uk](http://www.faberblinds.co.uk)

## Series A sinks steal the show



The new Series A sinks, from **GEC Anderson**, are available in no less than 17 stock sizes and combinations and are suitable for inset, undermount and flushmount fixing. With their distinctive 15mm corner

radius and 20mm flat flange, Series A sinks are sleek and contemporary and are of the absolute highest quality, in terms of materials and workmanship. Sizes range from 18 to 70cm in single, double and combination formats. All models are available from stock and represent excellent value for money. Now there is no need to compromise.

01442 826999 [www.gecanderson.co.uk](http://www.gecanderson.co.uk)

## Brand new TS Collection brochure



Tradesmith, one of the South East's leading trade fabricators of windows, doors and conservatories is marking 22 years in business by rewarding its loyal customers with a brand new retail brochure for homeowners. The glossy catalogue displays the range of products that make up Tradesmith's TS

Collection brand, fabricated using the renowned **Halo** profile from the VEKA UK Group. As a Halo approved fabricator, Tradesmith produces frames for a host of installers, ensuring its homeowner clients receive top quality products that deliver the excellent thermal, noise reduction and security performance expected of a VEKA UK Group company.

01282 716611 [www.halo-uk.com](http://www.halo-uk.com)

## RMIG energy preserving building facade



Precision perforated aluminium panels from **RMIG** have been used to create a dynamic facade and solar shading system at Denmark's first low-energy university. Sensors attached to each of the 1,600 screens measure outdoor light and heat levels and transmit the data to a small motor. This

automatically adjusts the screens to ensure that those using the building experience a dynamic change of light during the day and can enjoy a comfortable indoor climate in the rooms along the facade. The screens also feature a bespoke perforation pattern that works with their opening angle of 30 degrees to give the optimal balance of light and energy in and out of the building.

01925 839 600 [www.rmig.com](http://www.rmig.com)

## New SL Rainwater Systems



**Yeoman Rainguard** has launched its new SL Aluminium Rainwater Systems to the builders merchants and construction markets. Manufactured from 2mm thick aluminium, the new SL gutters and downpipes offer a wealth of advantages to the builder

including longevity, ease of fitting and style. Finished in a polyester powder coating, SL Aluminium system is long lasting and robust, which once installed will not require any repair, replacement, repainting or maintenance. This all adds up to being the perfect choice when sustainability is being considered

0113 279 5854 [www.rainguard.co.uk](http://www.rainguard.co.uk)

# FIRE RETARDANT UK

## FIRE retardant for WOOD

### HR PROF

- Eco Friendly
- Clear & Odourless
- Water Based
- Non Toxic
- No Solvents
- Apply with Brush or Spray
- Euro-class B-s1-d0
- Internal or External Use
- HR Prof Also tested to BS 476-6 & BS 476 part 7

Classification Reports & Certificates Pine, Spruce, Scottish & Siberian Larch, Western Red Cedar, Oak

0800 7833 228 | sales@fireretardantuk.com | www.fireretardantuk.com

## Levolux catches the eye in Manchester



The Former Royal Eye Hospital in Manchester has been dramatically transformed into a new biomedical centre of excellence, with a decorative, bright red, perforated screening and solar shading solution, courtesy of **Levolux**. Levolux worked collaboratively with the architect and the client to design a custom external screening solution that not only shades the building's glazed openings, but also creates a bold

visual statement. The solution comprises perforated, extruded aluminium screening panels, set against a series of integrated walkways, all secured back to the curtain walling system using Levolux's Trinita Bracket. Levolux also installed its 950 XL Screening Louvres around two roof plant areas.

## Levolux hangs out at Highams Park



A mixed-use development at Highams Park in north-east London now boasts a collection of contemporary apartments and terraced houses, all fitted with custom sliding timber screening panels, courtesy of **Levolux**. Levolux engineered the sliding screening panels from Western Red Cedar timber, complementing the

timber fins it installed across the Tesco superstore's entrance and on several other residential buildings. The panels are fitted externally and perform three very useful functions for residents. Principally they create an effective and attractive privacy screen, by obscuring views into each apartment. In addition, they also allow variable shading of glazed openings to control solar heat gain and help to maximise daylight levels throughout each apartment.



SOAKIT self assembly  
soakaway system from £45



Pre-wrapped  
soakaway crates from £60



**Sustainable Drainage Centre**  
SUDS products and design solutions

**Sustainable Drainage Centre Ltd supply a range of soakaway products as well as offering a comprehensive design service for a wide variety of Sustainable Drainage Systems (SuDS)**

Services include design of:

- Soakaways
- Permeable Driveways and Pavements
- Balancing Ponds, Detention Basins and Lagoons
- Swales and Reed beds
- Rain Gardens
- Attenuation Tanks, Oversized Pipes and Box Culverts
- Flow Control Specification

We also carry out the following:

- topographical land surveys
- discharge of drainage, hydrological, hydrogeological and other SuDS related planning conditions
- full horizontal and vertical road design, including specification and construction details for private drives, APC spec drives and adoptable roads
- contours, site engineering and external works design
- detailed microdrainage calculations to demonstrate compliance with required storm return periods

01530 515253

[info@sustainabledrainagecentre.co.uk](mailto:info@sustainabledrainagecentre.co.uk)

[www.sustainabledrainagecentre.co.uk](http://www.sustainabledrainagecentre.co.uk)



# PIR FECT DESIGN.

**Not every brand of PIR thermal insulation board is the same.**

It's fair to say that at Recticel we aim to manufacture the highest quality insulation boards, getting as close to perfection as is physically possible. With a super-flat board with an excellent surface finish, high compression strength and precision cut straight edges, our product is ideally suited to the requirements of the construction industry. It's as close to perfect as we can make it.



## LOOKING FOR PIRFECTION? DESIGN WITH RECTICEL INSULATION

Find out why Recticel should be your preferred choice:  
[www.recticelinsulation.co.uk](http://www.recticelinsulation.co.uk) or call 0800 0854079

**INSULATION FOR FLAT ROOFS | PITCHED ROOFS | WALLS | FLOORS**



**INSULATION EXCELLENCE**

## Window specialists have solution



The owner of a 1901 stone terrace house can now remove and repaint her windows herself thanks to a successful renovation project by timber sash window specialists **Ventrolla**. Harrogate resident Jan Warhurst was fed up that every time she got the decorators in they painted over the sashes and got them stuck. With over 30 years experience, Ventrolla offers a tailored range of period window solutions. Their unique service includes draught-proofing with the Ventrolla Perimeter Sealing System (VPSS) and fitting replacement double-glazed sashes that incorporate the patented Sash Removal System (SRS) for easy painting and future maintenance.

0800 0277 454 [www.ventrolla.co.uk](http://www.ventrolla.co.uk)

## NVELOPE clads BREEAM excellent office



NVELOPE, the rainscreen cladding specialist has supplied its NV1 system to a recently built BREEAM Excellent rated office in Aberdeen. The vertical cladding support system has been applied to the five storey bespoke building, supporting approximately 3000 square metres of granite cladding.

Derek Morgan, of GLASS SOLUTIONS said "We have worked with NVELOPE on previous projects and not only do the systems look great, but you get extremely good value for money." Manufactured in the UK and developed using the highest specification alloys, NVELOPE products and systems are ideal for supporting a wide variety of facade materials.

## Historic doors automated with invisible Tormax operators



As part of a £3 million restoration at Hexham Abbey, **TORMAX** was contracted to install three advanced iMotion underfloor swing-door operators, successfully automating key entrances without affecting the aesthetics of the interior. Designed in-house, iMotion 1401 operators represent one of the most cutting-edge solutions on the market today, combining exceptional reliability with minimum maintenance. Housed in a steel box located within the floor, invisible iMotion 1401 door drives have been installed in buildings of historic importance worldwide. TORMAX worked with Glass Design Solutions and architects Purcell to automate a traditional external entrance, as well as two full-glass internal doors. "It was essential that the newly renovated areas could be easily accessed by all members of the public," comments Toni Bush, Education and Community Officer at Hexham Abbey. "However, we also wanted to preserve the historic features of each doorway. Underfloor operators was the ideal solution, allowing clear access whilst keeping pedestrian foot-traffic moving smoothly at busy times." TORMAX iMotion operators are unique in that the powerful synchronous motors do not have any abrading parts to cause friction wear, such as brushes or gears. This cuts maintenance down to absolute minimum and makes installation under the floor a practical reality.

## LEVATOMONO porcelain paver system

The Levato Mono porcelain paver system is the pinnacle of external raised flooring technology; enabling the specification of lightweight, slip resistant and attractive raised flooring solutions, combining incredible technical properties with uncompromising aesthetics; making them the ideal choice for commercial and domestic use alike.



- 20mm porcelain pavers 40x80 45x90 60x60 75x75 30x120 40x120 60x120
- 'Floating floor' – installation over single ply membrane and pool surrounds
- Eternal product – zero maintenance required – offering massive over-life savings
- Highly abrasion and stain resistant
- Highly slip resistant ; R11 and achieved up to +65 wet in the BS pendulum test
- Lightweight – 45kgs per m<sup>2</sup>
- High load bearing and impact resistance
- Timber & stone effects; 40+ finishes available
- Ideal for balconies, roof terraces and piazzas, for both commercial & residential use
- Completely non porous
- Fire & frost proof
- Height-adjustable support from 9mm up to 550mm
- Matching internal tiles

t: 0845 2700 696 e: [info@thedecktileco.co.uk](mailto:info@thedecktileco.co.uk)  
[www.thedecktileco.co.uk](http://www.thedecktileco.co.uk)

**dte**  
the deck tile co. ltd.



# Order by 8pm. Get it Next Day!



For a huge range of stylish door and window hardware at low trade prices, **call today** for your **FREE** catalogue!



**UK's Biggest Range**



**Minimum 5 Year Guarantee**



**Order by 8pm get it Next Day**



**Free Returns**



**0808 168 28 28**

**IronmongeryDirect.com**



**CHECK OUT OUR  
MOBILE WEBSITE**



**Text: ZY8168Z to 80800 FREE**  
followed by your name, address and email.



**IronmongeryDirect**

**MASTERS OF OUR TRADE**

**DOOR FURNITURE • WINDOW & JOINERY HARDWARE • SLIDING DOOR HARDWARE • HINGES • DOOR CLOSERS • FIRE CONTROL • SIGNS • LOCKS  
LATCHES & SECURITY • CABINET FURNITURE • SHELVING & STORAGE • BOLTS & STOPS • SEALANTS & ADHESIVES • SCREWS & FIXINGS**

# building construction design



**REGISTER ONLINE FOR...**

Digital magazine  
Newsletter • Daily digests

**[www.buildingconstructiondesign.co.uk](http://www.buildingconstructiondesign.co.uk)**