

May 2015

adf architects datafile

Hospital design special
report

Imagination House,
Hertfordshire

Vision London Show Preview

London Build Show Preview

Eco Technology Show
Preview

Eco & sustainable product
showcase

Plus the latest news,
events and products



www.architectsdatafile.co.uk

roofing
interior doors • disabled products & services
canopies & external shading

incorporating
**BUILDING
PROJECTS**

ON THE PLUS SIDE

Achieve 0.18 U-value with PIR insulation
in a 100mm cavity without changing the
way you work. **Introducing EUROWALL +**

- ▲ Meets 2013 Part L Building Regulations U-value of 0.18W/m²K for 100mm cavity walls
- ▲ Compact design allows space for easier outer leaf brickwork installation
- ▲ Tongue and groove design improves thermal performance, moisture resistance and airtightness
- ▲ New facing technology resists alkali attack
- ▲ Easy-to-use cutting guides for straightforward installation

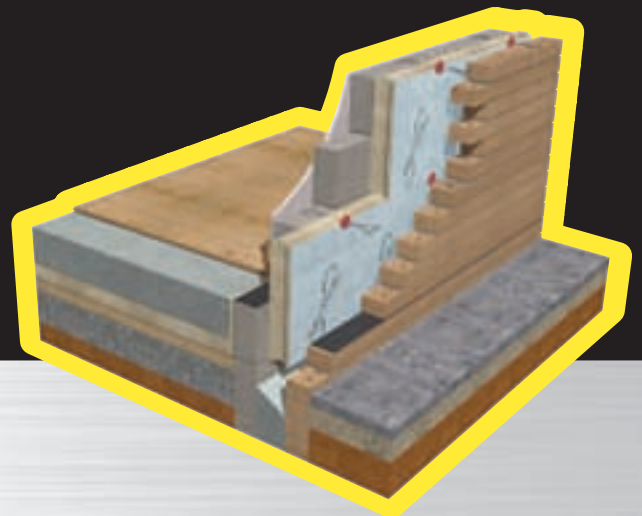


EUROWALL + It's all positive.

EUROWALL® +

Find out why **EUROWALL +** should be your
PIRfect choice of cavity wall insulation board.

recticelinsulation.co.uk/eurowallplus
or call 0800 0854079



adf contents may 2015



projects

- 29** **Exciting the imagination**
An unremarkable piece of canal-side industrial estate in a leafy Hertfordshire has been transformed into a showcase office complex for one of the UK's most innovative companies, writes Ray Philpott

- 37** **DfMA – healthy injection for hospital design?**
The advanced off-site manufacturing system, Design for Manufacture and Assembly, was used to build the Cheesegrater in London and is now helping deliver the next generation of UK hospitals faster, safer, and to higher levels of design quality than ever before. Stephen Cousins reports

features

65 **STRUCTURAL ELEMENTS: ROOFING**

Sowing the seeds of a successful green roof specification

Stuart Hicks, marketing manager of Kemper System, considers the elements of a green roof specification that can lead to success or failure

77 **INTERIORS: INTERIOR DOORS**

Tips from the timber experts – JELD-WEN

Internal doors are often a forgotten feature in specifying building materials, but the look and quality of this functional finishing touch can make a huge difference to the end result of a project. Chris Miller at JELD-WEN discusses

83 **DISABLED PRODUCTS & SERVICES**

Specifying the lift within your project

Crispin Satchell, head of sales for Gartec Limited, sheds light on some of the main considerations when specifying the lift for your project and dispels some of the most commonly held misconceptions regarding the suitability of platform lifts

87 **LANDSCAPING & EXTERNAL WORKS: CANOPIES & EXTERNAL SHADING**

Fall in love with outdoor spaces, whatever the weather

Andrew Murray, MD of AUTOPA Limited discusses why you should add a canopy into your next design

news & events

- 4** Industry News
5 Events
25 CPD Focus

HEADLINES

- 8** A flight path of light, sculpture and history
15 Malmö Live represents a new cultural 'city in the city'
18 Crossrail Place opens at Canary Wharf

- 26** Editor's Focus
49 Vision Show Preview
53 London Build Show Preview
55 Eco Technology Show Preview
57 Eco & Sustainable Products Showcase

products

- 60** Planning & design
60 Groundworks
60 Structural elements
67 External envelope (incl. external fixtures)
71 Insulation
72 Heating, ventilation & services
74 Interiors
82 Disabled products & services
84 Safety & security
86 Landscaping & external works
91 Classified & directory



Cover image: Malmö Live
Photographer: Adam Mørk
© schmidt hammer lassen
See page 15 for details

Publisher/Editor
Simon Reed

**Editorial &
Production Assistants**
Sue Benson
Mikey Pooley

Contributors
Ray Phillpott
Stephen Cousins

Sales Director
Lesley Mayo

Advertisement Manager
Anthony Parker
anthony@netmagmedia.eu

Sales Executives
Suzanne Easter
Ian Fletcher
Kim Friend
Steve Smith

**Circulation/Reader
Enquiry Service**
Jane Spice
netMAGmedia Ltd
Cointronic House
Station Road, Heathfield
East Sussex, TN21 8DF



**Advertising &
Administration**
t 01435 863500
f 01435 863897
info@netmagmedia.eu
www.architectsdatafile.co.uk

Press Releases
editorial@netmagmedia.eu



Annual subscription costs just £48 for 12 issues, including post and packing. Phone 01435 863500 for details. Individual copies of the publication are available at £5 each inc p & p. All rights reserved

No part of this publication may be reproduced or transmitted in any form or by any means, electronic, mechanical, including photocopying, recording or stored in any information retrieval system without the express prior written consent of the publisher. Although every effort is made to ensure the accuracy and reliability of material published in Architects Datafile, the publisher can accept no responsibility for the claims or opinions made by contributors, manufacturers or advertisers. Editorial contributors to this journal may have made a payment towards the reproduction costs of material used to illustrate their products. The manufacturer of the paper used within our publication is a Chain-of-Custody certified supplier operating within environmental systems certified to both ISO 14001 and EMAS in order to ensure sustainable production. Printed in England

London's past, present and future mapped out by new interactive model unveiled by NLA

New London Architecture (NLA) has unveiled a new interactive model of London in the NLA galleries at The Building Centre just off Tottenham Court Road. Measuring 12.5 metres in length, the New London Model will provide a focal point for Londoners and tourists alike to learn about the history and future development of the capital.

NLA, London's foremost independent forum and think-tank on the built environment, marks its 10th anniversary this year with a comprehensive series of exhibitions, research projects, events and tours exploring the capital's development. At the centre of the 2015 programme is the launch of the New London Model. The model replaces its predecessor, first unveiled at the organisation's inception a decade ago, the day after the announcement that London had won the Olympic bid.

Built by Pipers with data supplied by Ordnance Survey, the 1:2000 scale model covers more than 85 sq km of London, 19 Boroughs and approximately 170,000 buildings, including 34km of the Thames with its corresponding 21 bridges. It extends from King's Cross in the north to Peckham in the south and the Royal Docks in the east to Old Oak Common in the west.

A sophisticated projection and lighting system allows buildings and major infrastructure projects to be digitally animated across the surface of the model. Controlled by touchscreens, visitors are able to call up detailed information and key facts on London's newest buildings and future projects that will help to define the capital. The model is the city's only physical manifestation of how London will look and progress as new buildings and developments are given the go-ahead.

A series of five bespoke interactive films, integrated with live projections, bring the story of London's past and future physical development to life. The series documents the



history and development of London; the impact of the London Plan; the future of infrastructure in the capital; the rise of tall buildings and the ongoing influence of the Great Estates as a sustainable model of development. New films are set to be commissioned to coincide with NLA's ongoing programme of Insight Study research pieces.

The future development of the city is represented with the location of the 263 tall buildings planned or under construction in London mapped across the model. Visitors are also able to track the route and impact of new transport links, such as HS2 and Crossrail 1 and 2 on central London and the outer boroughs.

The New London Model will offer an ever-evolving display, allowing visitors to see how the city will adapt and change, creating a newly improved centre of discussion for London. Regular architectural walking tours of eight central London neighbourhoods – taking place on the second Saturday and last Wednesday of each month – will further reveal how the capital's buildings and streetscapes are changing.

ICONIC BUILDING

The David Attenborough Building

The Arup Building – the brutalist icon designed by Arup Associates for the University of Cambridge – has been given a new name some 40 years after it opened. The building, currently being re-invented as a centre for research into habitat conservation and biodiversity by Nicholas Hare Architects, will now be known as the David Attenborough Building. The project will facilitate collaboration in research and practice between the University of Cambridge, the Cambridge

Conservation Initiative – a cluster of leading conservation organisations – and the Museum of Zoology. The refurbishment uses an innovative approach to measuring sustainability and will demonstrate how it is possible to enrich and conserve biodiversity even in the heart of a city.

A 20m skeleton of a finback whale will float above the entrance to the Museum inviting a new audience to explore the outstanding collections that have until now been primarily an academic resource. Carol Lelliott, Partner at Nicholas Hare Architects, said: "It is fantastic that the building will have such an inspiring new name to launch its new future. I can think of no one more appropriate to personify the nature and ambition of this complex project."

EDUCATION

University of Sheffield's ambitious masterplan gets go-ahead

Landscape architects Grant Associates are to develop and deliver phase one of the public realm for The University of Sheffield, which is set to revolutionise the University's campus, open it up to the public and link it firmly with the city centre.

The ambitious Campus masterplan designed by Grant Associates in collaboration with architects, Feilden Clegg Bradley Studios, sets out The University of Sheffield's pioneering plans over the next 10-15 years to create a unified, sustainable and green campus. The aim is to enhance the environment for students, staff, visitors and the wider community, and integrate the University seamlessly with the rest of the city.

Highlights of Grant Associates design include:

New green spaces

New green spaces bringing wildlife and nature into the campus include Arts Tower Court, a beautiful landscaped courtyard with water feature, trees, lawn, cafe and plenty of places to sit, think, chat and relax. This area will link to Weston Park via a garden terrace. University Square, a vibrant green space, will sit at the heart of the campus as a central meeting space, while St George's Green will be enhanced with trees, meadow and hedgerow planting.

Improvements for pedestrians and cyclists

One of the biggest issues facing pedestrians and cyclists is the need to cross major roads to get around the University. Two new crossings will be added to Western Bank with a further improved crossing on Upper Hanover Street and increased safety measures at Brook Hill Roundabout. Leavygreave Road will be closed to cars providing shared space for pedestrians and cyclists.



Two new bike hubs will provide more than 500 secure spaces, with shower and changing facilities to support and encourage sustainable travel.

Improvements to key landmarks and new landmarks added

A number of landmarks in and around the University campus will benefit from innovative transformations including the Arts Tower, St George's Church, Western Bank and Leavygreave Road. There are also longer term proposals for new buildings including a new state-of-the-art Science facility and an impressive Social Sciences building bringing together many subject areas under one roof.

Keith French, director, Grant Associates said: "From the outset the Sheffield University Masterplan has been underpinned by a landscape-led approach. We've set out to transform the public realm – creating a thread of streets, squares, gardens and spaces that will help to link together the east and west campus, and to improve the University experience for students, staff and visitors. It will also help the University become better integrated with the city, and to create a distinctive University Quarter."

New corporate HQ for Wintech

Wintech's growth and recognition as an international Centre of Excellence for the specialist discipline of Facade Engineering Consultancy has driven the need to relocate to larger offices to facilitate the company's continuing commitment to the construction industry. Company Chairman, Chris Macey, said: "Wintech's new offices represent a significant investment for not only the business but also for the people in the company and the area in general. We look forward to

being able to continue the consolidation of our business in international markets".

The new premises benefit from close links to the motorway and rail networks, facilitating easy access to London and the major cities, and are located in the semi-rural environment of Pendeford.

The directors have been careful to select a location where staff can not only enjoy the surrounding green belt area in leisure time, as well as a new gymnasium within the building, but also the proximity of the office in relation to the surrounding Staffordshire and Shropshire countryside while still being within easy distance of the main city centres in the area.

events

AWARDS

British Homes Awards

16 October, London
britishhomesawards.co.uk

Brick Awards

18 November, London
www.brick.org.uk/brick-awards

FESTIVALS

London Festival of Architecture

01 - 30 June, London
www.londonfestivalofarchitecture.org

London Design Festival

19 - 27 September, London
www.londondesignfestival.com

TOURS

Open House London

19 - 20 September, London
www.openhouselondon.org.uk

TRADE SHOWS

Vision London

2 - 3 June, London
www.visionlondon.com

Eco Technology Show

11 - 12 June, Brighton
www.ecotechnologyshow.co.uk

FIREX / IFSEC International

16 - 18 June, London
www.ifsec.co.uk

London Build 2015

18 - 19 June, London
www.londonbuildexpo.com

Decorex

20 - 23 September, London
www.decorex.com

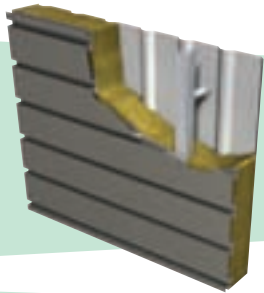
100% Design

23 - 26 September, London
www.100percentdesign.co.uk

Always moving forward

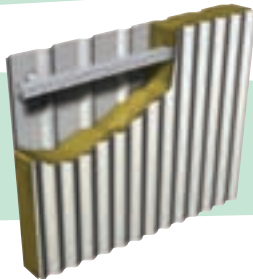


Our two most recent innovations are the new Opus panel and sinusoidal profiled sheet.



Opus is the new plank panel that is available as part of an Elite system, a LINEAR Rainscreen and a LINEAR Rainspan system, as well as being ideal for use as a soffit plank.

Investment in state-of-the-art manufacturing machinery enables us to provide the increasingly popular sinusoidal profile on a short lead time and at a competitive price.



EUROCLAD

Drawn on our experience

Wentloog Corporate Park Cardiff CF3 2ER

029 2079 0722 · www.euroclad.com

[@eurocladuk](https://twitter.com/eurocladuk)

 **confidex**

Colorcoat HPS200 Ultra, Colorcoat Prisma and Confidex are registered trademarks of Tata Steel UK Limited.

reader
enquiry
101



We know you don't stay ahead by standing still. To keep moving forward we're always innovating; whether through new product development, process improvement or service enhancement.

Innovation provides you with roofing and cladding solutions that are as ground-breaking as they are practical and as valuable as they are cost-effective. Put simply we innovate to provide products that are relevant and useful to you.

Some of our recent product innovations include Vieo, Opus, sinusoidal cladding, integrated solar panels, transpired solar collectors, and a more efficient stainless steel halter for standing seam roofs.

A culture of innovation is present throughout our supply chain, with Elite Systems using only Colorcoat HPS200 Ultra® and Colorcoat Prisma® from Tata Steel. These Colorcoat® products come with the Confidex® Guarantee offering extended cover for up to 40 years on Colorcoat HPS200 Ultra® and up to 30 years on Colorcoat Prisma®. Colorcoat® products are certified to BES6001 Responsible Sourcing standard.



TRANSFORMATION

The traditional library is transformed into a 21st century cultural and community centre in civic project for Ireland

The dlr LexIcon – located in Dún Laoghaire, Ireland – is a physical manifestation of how libraries must change to meet the needs of the public in the 21st century. The building, set to formally launch on 17 April 2015, plays an extended role within the local community; the requirements of educational and cultural events have shaped the design of the spaces inside and out. This library, the result of an RIAI international competition held in 2007, offers a mix of intimate and expansive public rooms, places to congregate, or to sit quietly with a book and enjoy the view.

Architects, Carr Cotter Naessens' design creates a new public space that will transform the heart of Dún Laoghaire, leading visitors in a natural progression from the seafront up to the town. When viewed across the water, the building is a true landmark, it's monumental window dramatically rising up towards the harbour, providing breathtaking views from inside.

The newly created public park contains a terraced water feature and bamboo garden with a cafe that allows users and passersby to enjoy the landscaped spaces and the view out to the sea. A grand staircase leads up to the library and cultural space at the higher level, hosting a range of different functions.

Internally, the library is presented as a 'living room', bathed in natural light from the window facing the sea. this communal space will house the most social elements of the building where groups can meet or individuals can read or access the internet. The library will also house separate reading rooms, a junior library, an auditorium, a cafe, an art gallery, a history department with study spaces, as well as staff facilities. The material of the building is spare, a voluminous concrete shell, into which are inserted oak linings for books and sound modulation.



'dlr LexIcon is by far the most significant piece of public infrastructure in Dún Laoghaire for over 100 years'

Chief Executive of Dún Laoghaire-Rathdown County Council
Philomena Poole

Architect Louise Cotter said: "It has been an absolute privilege to work on this project and to realise the vision of Dún Laoghaire-Rathdown County Council. This challenging project has offered us the opportunity to work on a number of different scales. This building and park is a truly public space with a very particular spatial sequence and material aesthetic. We look forward to seeing the spaces evolve as they become inhabited and people make it their own."

County Librarian Mairead Owens said: "The LexIcon will embrace the modern concept of what a library should be – a key community space where all are welcome. When people walk through the door I hope they get a sense of 'wow', it's a stunning public space and quite extraordinary. The LexIcon will be a key component in the delivery of the cultural programme in Dún Laoghaire-Rathdown. It will be a vibrant centre of learning and creativity for all those who live, work in and visit the County."

Chief Executive of Dún Laoghaire-Rathdown County Council Philomena Poole said: "dlr LexIcon is by far the most significant piece of public infrastructure in Dún Laoghaire for over 100 years and is the single biggest investment by the Council in a civic amenity. The decision to invest in the facility is consistent with the Council's primary objective which is to deliver high quality services and infrastructure, which contribute to a better social, physical, economic and cultural environment for all who live in, work in and visit the County."

Dun Laoghaire was transformed in the early 19th century by a number of ambitious infrastructure projects. Since that time, most development in the town has been commercial or residential. Dlr LexIcon represents the first significant piece of civic infrastructure in the town since 1900.



LIGHTING DESIGN CONCEPT



A flight path of light, sculpture and history

Paul Nulty Lighting Design (PNLD) has developed a lighting design concept titled “Flock of Birds,” bringing art and light to Crawley Mall Shopping Centre and creating a grand sculpture within the impressive space. Paying homage to the Old English translation of the Crawley name, “clearing frequented by crows,” and acknowledging the centre’s proximity to Gatwick, PNLD wanted the sculpture to portray the theme of flight.

Flock of Birds captures the form and elegance of airborne birds using colour-changing LEDs that pulse a wash of vibrancy up and down the sculpture, giving different, glowing intensity throughout the day and across the seasons.

At 125m long, the permeable sculpture draws the eye through the length and breadth of the flight path that meanders through the void, creating depth and filling the large volume without overpowering the space. The sculpture carries and influences mood with its waves of vibrant and soft colours but surpasses the human eye’s capabilities with 16 million permeations of colour across 400 individual LED birds.

AWARD

Framing ceremony at Maggie’s celebrates start of construction

Maggie’s, the charity that provides free practical, emotional and social support for people with cancer and their family and friends, today celebrated the start of construction work for a new Centre built within the grounds of The Christie NHS Foundation Trust in Manchester. The Centre, designed by Lord Norman Foster and Foster + Partners, will be the charity’s largest to date and is expected to receive visits from 60,000 people a year from across Greater Manchester once established.

Lord Foster said: “I have first-hand experience of the distress of a cancer diagnosis and understand how important Maggie’s Centres are as a retreat offering sanctuary and support. Our aim in Manchester, the city of my youth, is to create a building that is welcoming, friendly and without any of the institutional references of a hospital or health centre – a light-filled, homely space where people can gather, talk or simply reflect. That is why throughout the building there is a focus on natural light, greenery and views; with a greenhouse to provide fresh flowers, and an emphasis on the therapeutic qualities of nature and the outdoors. The timber frame, which is being installed today,

As shoppers step into the centre, the linear form of the sculpture feels welcoming as it undulates above drawing them through the space and emphasising permeability. PNLD wanted to create rhythm and a sense of playfulness but a concept that was strong enough to determine itself as a sculpture in its own right.

A challenge for PNLD was to deliver an experience and turn the centre into a destination without creating a distraction from the retail brands inside the shopping mall. The concept also had to be low energy and deliver low maintenance costs. To achieve this, PNLD used 30 watt LEDs; as a result, the sculpture requires only the same amount of energy as 10 kettles and can last up to 100,000 hours, or approximately seven years, 24 hours a day.

Paul Nulty, head of practice, said: “The challenge was to create an innovative and bespoke experience and influence mood through the complexity of a light sculpture on a large scale, but to do this with low energy output and maintenance in mind.

The concept needed to have relevance and Crawley, as a clearing for birds, provided a perfect opportunity to design something dramatic and with meaning. Visitors should feel the energy of Flock of Birds as they walk through, but the sculpture is also delicate enough not to detract from surrounding brands and distract them from what they are there to do.”

helps to connect the building with the surrounding greenery – externally, this structure will be partially planted with vines, making the architecture appear to dissolve into the gardens.”

To mark the occasion Laura Lee, Maggie’s Chief Executive, Roger Spencer, chief executive at The Christie and principal donors to the new Centre, unveiled a 20 foot high timber frame which will form the main structure of the Centre at The Christie. A time capsule was also buried on site containing personal mementos from donors and supporters to the Centre and a sketch from Foster + Partners.

Laura Lee, Maggie’s chief executive said: “I’m delighted that construction of Maggie’s at The Christie has been able to start in earnest, bringing us one step closer to the Centre opening its doors. My sincere thanks go to everyone who has supported Maggie’s and made our Centre at The Christie a reality.”



© Aaron Hargreaves,
Foster + Partners

Acoustic Panels

Soundsorba manufacture and supply a wide range of acoustic panels for reducing sound in buildings.

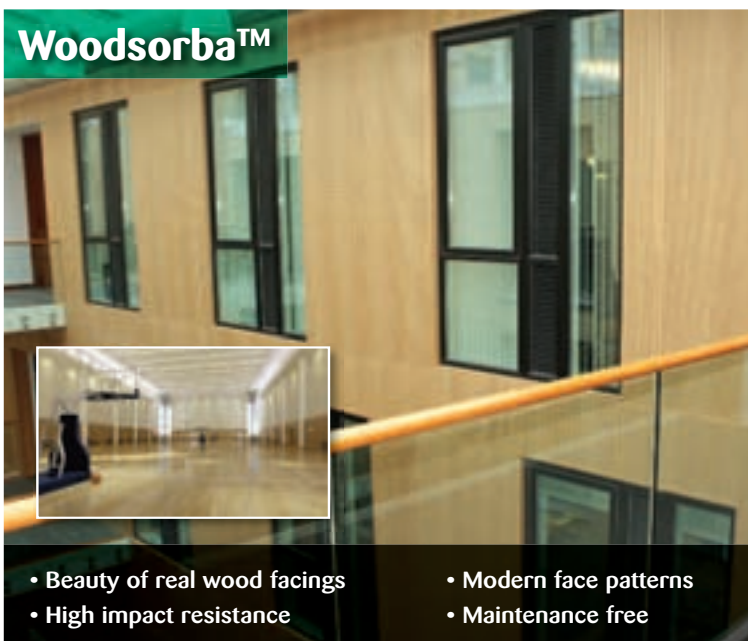
www.soundsorba.com

Wallsorba™



- Wide range of modern vibrant colours
- Soft fabric facings
- Custom sizes can be manufactured
- Class A performance

Woodsorba™



- Beauty of real wood facings
- Modern face patterns
- High impact resistance
- Maintenance free

Wavesorba™



- Futuristic shape
- Lightweight
- Soothing wave pattern
- High acoustic performance

Cloudsorba™



- Wider range of different shapes available
- High acoustic rating
- Suitable for a wide range of building interiors

Soundsorba's highly skilled and experienced acoustic engineers will be pleased to help with any application of our acoustic products for your project.

Please contact us by calling **01494 536888** or emailing info@soundsorba.com for any questions you may have.

SOUNDSORBA®
ACOUSTIC PRODUCTS

TEL: +44 (0)1494 536888
FAX: +44 (0)1494 536818
EMAIL: info@soundsorba.com

SOUNDSORBA LIMITED, 27-29
DESBOROUGH STREET, HIGH
WYCOMBE, BUCKS HP11 2LZ, UK

CRITTALL STEEL WINDOWS



The Hoover Building, Weybridge, West London. Architect: Wallis, Gilbert and Partners

TIMELESS



CRITTALL

reader
enquiry
103

www.crittall-windows.com

BRIAN JAMES

PROPERTY

Skanska sells office property in Malmö, Sweden, for SEK 330 M



'The property is the first in Europe to have received LEED certification on Platinum level for existing buildings'

Skanska has signed a contract with SPP Fastigheter regarding transfer of the office property Österport 7 in Malmö. The deal is implemented as a corporate transaction where the purchase price is based on an underlying property value of SEK 330 M. The transaction is booked in the second quarter of 2015 and with property access May 4, 2015.

The property is the first in Europe to have received LEED certification

on Platinum level for existing buildings and Österport won Sweden Green Building Award in the category for existing buildings in 2012. The building is also environmentally certified according to EU Green Building and won Scandinavian Green Roof Association's first prize in 2011 for its roof gardens.

Skanska Commercial Development Nordic initiates and develops property

projects in offices, logistics, business premises and commercial buildings. The company's operations are concentrated in the three metropolitan regions in Sweden, the Copenhagen region in Denmark, the Oslo region in Norway, as well as Helsinki in Finland. The development of logistics and volume retail properties is conducted in strategic locations in Sweden, Denmark and Finland.

ISG secures £multi-million project at KPMG

ISG has negotiated its latest project with leading global professional services firm, KPMG, commencing a £multi-million project to fit out the firm's new office in Leeds. The scheme is the continuation of a successful relationship, which last year saw ISG conclude the fit out of KPMG's new office in Manchester and in 2011 resulted in a prestigious BCO Best Corporate Workplace award for ISG's delivery of the firm's headquarters in London's Canary Wharf.

Occupying the entire One Sovereign Square office building in Leeds city centre, ISG will deliver high-specification accommodation across four floors – totalling around 60,000 sq ft of space. The landmark new building is part of the wider regeneration of the Sovereign Street area of the city.

Targeting an Excellent BREEAM environmental performance rating, the office fit out includes an efficient chilled beam cooling system, state-of-the-art LED lighting throughout and an advanced building management system.

At ground floor level, ISG will create an impressive reception area and cafe, a flexible presentation space and training facility. The majority open plan office accommodation across the first and second floors provides high-quality, flexible working space for staff. The third floor hosts front of house areas for clients, with a high-end reception area and meeting rooms, as well as an outdoor terraced area overlooking the landscaped courtyard below. The scheme is scheduled for completion in late summer.



- Used on flat or curved top segmented glass awnings
- Fabricated from 304 alloy stainless steel
316 stainless steel available by special order
- Available in brushed or polished stainless
- Requires 13.52mm thick toughened laminated glass



For information call FREE on 00 800 0421 6144

e: CRL@crlaurence.co.uk f: 00 800 0262 3299 w: crlaurence.co.uk

Glass not included. Wall Mounted Bracket includes 2x Arm Fittings, Swivel or Fixed upon request.

enq.104

VISION

THE FUTURE OF THE BUILT ENVIRONMENT

2-3 JUNE 2015 - OLYMPIA LONDON

THE EVENT FOR ARCHITECTS,
SPECIFIERS, CLIENTS
AND SUPPLIERS.

WWW.VISIONLONDON.COM/REGISTRATION @VISIONLDN



**REGISTER FOR YOUR FREE PASS TODAY
AT [WWW.VISIONLONDON.COM/](http://WWW.VISIONLONDON.COM/REGISTRATION)
REGISTRATION AND ACCESS:**

- Cutting Edge Exhibitors
- Over 120 Seminar Sessions
- Interactive Show Features
- Practical Workshops
- CPD Programme
- Networking Receptions



SCAN ME
for your FREE
visitor pass

Supported by:



Sponsors:



enq.105

OFFICE DEVELOPMENT

FORE starts highly-sustainable London office development

FORE Partnership, the pan-European real estate investment club for family offices and private investors, has begun development of a highly-sustainable, speculative office project by the River Thames in central London.

VIEW 58 will provide 47,000 sq ft of Grade-A office space at 58 Victoria Embankment on the north bank of the Thames in Midtown, and is being delivered with development partner Kier Property. The development has been sensitively designed by architects TP Bennett to retain the historic feel of the facade, while providing a contemporary, highly-functional office environment behind it. Each floor opens into a central atrium and has exposed lifts and walkways.

Sustainability is central to VIEW 58. FORE and Kier have adopted green

construction practices – incorporating technologies not seen before in the UK – and are actively engaging with the local community. On the roof they will install 22 KW in solar photovoltaics that generate power from both the top and underside of the panels, which is the first use of this technology in the UK. During demolition, 99 per cent of waste was diverted from landfills and was recycled. The building is also designed to exceed BREEAM's 'Excellent' sustainability rating.

Basil Demeroutis, Managing Partner of FORE Partnership, commented: "The building has been designed with a highly-sustainable ethos, underpinning a Grade-A specification. Not only does this future proof the building, but it also cuts the operating costs for tenants by almost a third."



Phil Sutton, Associate Director at Kier Property, commented: "The building is expected to reach practical completion in the second quarter of 2016. The location, in the heart of London, is fantastic, and VIEW 58 has iconic views of the River Thames from every floor – including of course the three roof terraces."

Letting agents for VIEW 58 are Savills and Ingleby Trice.

Grant Associates design a Forest of Imagination in Bath

Landscape architects Grant Associates have designed The Forest of Imagination to transform Bath's historic Queens Square into a temporary fantastical landscape and outdoor gallery for a four-day contemporary arts event in May 2015.

The Forest of Imagination design includes:

The Forest enclosure featuring mixed forest saplings, understorey grasses and a willow tunnel running across the middle. Playing with space the mini forest will be made giant by the tiny world created within it of small creatures, dwellings and birds with an art installation by artist Edwina Bridgeman.

The Forest Pole enclosure created by Charley Brentnall will work round a complete circle to create a self-supporting enclosure.

The Bamboo enclosure, designed by Feilden Clegg Bradley Studios, is a 14.4m x 12m space screened with vertical bamboo canes. Musical devices are attached to the poles for interaction with the visitors. Performances and activities will take place at the centre of the enclosure.

A gigantic magic white rabbit 6.5m in height will be inflated and pop up in different locations in the Forest throughout the four-day event.

Andrew Grant, Director, Grant Associates, said: "The Forest of

Imagination reinvents Queen Square as an artistic, playful world where the creative spirit of the city has fun with this familiar Georgian landscape. It's a wake up call to let everyone know Bath did not stop evolving 200 years ago."



news bytes

Visit the website
www.architectsdatafile.co.uk
and enter the reference
number for more information

London Festival of
Architecture 2015
Programme launches
with leading
international events...
Ref: 90531

Durability in
Construction:
Rebuilding Traditions
in 21st Century
Architecture...
Ref: 31170

Long life protection of decks and cladding



Sioo are leaders in wood protection using silicon technology to provide a highly effective proven system to protect wood of all types. It gives long life, a beautiful natural surface and is friendly to people and the environment.

Safe, Natural and Sustainable

Sioo Wood Protection AB
Tel: +44 (0)1325 350453
E: sioouk@icloud.com
www.sioo.co.uk

Sioo
WOOD
PROTECTION

CITY IN THE CITY

Malmö Live represents a new cultural 'city in the city'

2 May 2015 marked the opening of Malmö Live, the new cultural centre in Malmö, Sweden. In 2010, schmidt hammer lassen architects in a team with Skanska, Nordic Choice Hotels Akustikon and SLA won a competition to design the 54,000m² concert, congress and hotel complex. The masterplan also includes 27,000m² for housing and commercial use.

Malmö Live is an open, expressive, dynamic building offering numerous activities within its architecture. The point of departure for the building's design is the modern Scandinavian architectural tradition, which focuses on clear, functional organisation and an accessible, open ground floor layout. The building will become a focal point and landmark in Malmö, offering a setting in which the spirit of the city and its diversity and intimacy receive an architectonic expression.

"The idea was to create a 'house of the city' incorporating the architectonic expressions of Malmö to develop a building that will contribute to existing urban life," says Kristian Ahlmark, Senior Partner at schmidt hammer lassen architects. He adds, "The context inspired our choice of materials and colours as well as the various sizes of the building's areas, yet the building design itself points to the future."

Malmö Live is situated on Universitetsholmen in Malmö. The building consists of cubic areas that are twisted and given different sizes to match the directions and heights of buildings in the surrounding city. The facades are designed with a homogeneous expression to make the composition appear as one architectonic sculpture.

The main entrance is found at the northern part of the building, which has a classic loggia motif facing the plaza in front. From the south, visitors enter the building directly from the promenade running along the canal. The different functions of the building are organised as separate elements to

resemble a small city. The lobby becomes the street, which runs through the entire ground floor and ties everything together. Like medieval cities, which had curved, narrow streets organised around plazas and squares, the lobby is designed to form small gathering places and recesses where visitors can stop, sit and enjoy the view of the canal and the park.

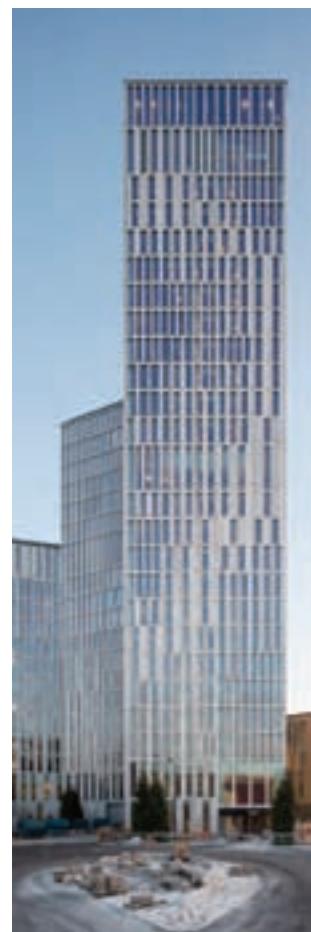
"We have broken the building mass down into smaller entities that interact with the context. The clearly defined volumes also create a hierarchy in the way in which the building is perceived. The exterior expression uses the city's scale and its colour and materiality as a starting point. Here, qualitative and differentiated spaces are created around the building in conjunction with the surrounding buildings. These spaces include a common space for skating or watching football on a big screen, a green park path, a new promenade along the canal to the south and two large wooden decks that connect the water and the building," says Kristian Ahlmark.

Inside, three volumes hold a large symphony hall, a flexible hall and a conference hall, which are clearly defined elements that, through their mutual composition, set the tone for the musicality of the building. The three building masses have an almost-urban scale that supports the idea of 'a city within the city'. The interior is simple, consisting of rough black concrete, stone, wood and brass. The street life outside is drawn directly inside to support the open nature of the building.

In the concert hall, the mood changes. The hall is an intimate space outfitted in oak and brass.

The official opening of the Concert Hall will be held on 26–28 August 2015.

On 4 June 2015, the new outdoor areas within Malmö Live will be inaugurated.



Your chance to win a framed print of an iconic Crittall project

Here's your chance to win a framed print of one of the two unique images that are being used in Crittall Windows' 2015 advertising campaign. They capture all of the style and flair that came to symbolise the architectural legacy of the 1930's. Each of the two was especially commissioned by Crittall from well-known artist Brian James to show projects where the company's steel windows were used over 70 years ago – the 1930 Boots D10 Building in Nottingham and the Hoover Building, Perivale, built in 1938. Subsequently, Crittall was specified to provide its replica high performance modern day counterparts for the refurbishment of each of the buildings. Entry is simple. All you have to do is send your name, position, company name and email address to sue@netmagmedia.eu. First twenty names

drawn out of the hat by Simon Reed, editor of ADF will be sent framed copies of one of the two illustrations shown here (a full page version of The Hoover Building appears on page 10 of this issue). Closing date for entries is 1st July. Email your entry now to sue@netmagmedia.eu

As flexible as your imagination

Designed and manufactured in Sweden, a Gartec Platform Lift is the most aesthetically and technically advanced available today.

Commercial Lifts
and Home Lifts



Look out
for our new
RIBA Certified iCPD,
delivered at your own
offices – now booking!



Call 01296 397100 or visit
www.gartec.com

GARTEC

An Aritco Group company

Leading the Platform Lift Industry

HOSPITAL CONCEPT

Concept design for new children's hospital is unveiled



On 30 April, Dublin, Minister Leo Varadkar, together with the NPHDB Project Director, John Pollock and Eilish Hardiman, CEO of the Children's Hospital Group shared images of the proposed external design of the new children's hospital with a group of children and young people who have been providing input, advice and feedback on the new hospital and its services. Members of the Youth Advisory Council met with Minister Leo Varadkar and the project directors at the Office of the Ombudsman for Children as part of its regular series of engagement sessions on the planned new hospital.

The proposed design, which incorporates the two satellite hospitals planned for Tallaght and Blanchardstown, delivers on the ambition to build one of the finest children's hospitals which will positively impact the lives of children on the island for generations. The sharing of the image with stakeholder groups today marks a significant milestone in the new children's hospital project.

The distinctive oval shape and therapeutic gardens on the roof and surrounding the hospital respond to the brief shared with the design team last autumn. The overarching objective for the project is to provide the best infrastructure for paediatric services and gives the new children's hospital a memorable quality that captures the imagination of children and young people with a unique sense of place. It will also provide the best facilities to support the staff of the three existing children's hospitals to continue to deliver excellent care.

Minister Varadkar said: "This is the largest health infrastructure project in the history of the State. But it's only when you see a model or an artist's impression that you realise just how much work has gone into the project, and I want to commend the Development Board for reaching this stage. We will all be really proud of this iconic Hospital when it's built."

Eilish Hardiman, CEO, Children's Hospital Group said: "Our design brief was deliberately challenging. It is critical that our ambitions from the outset are for the highest possible design standards as our children and young people deserve nothing less. I believe that the hospital design, together with that of the two satellite centres will support enhanced clinical outcomes for children and young people in Ireland.

John Pollock, Project Director, NPHDB said: "Today marks a significant milestone in the project. The external design is advancing and we are finalising the internal layout. We are currently engaged in continuous consultation with employees of the existing hospitals, with residents, with patient advocacy groups and with family representatives. They are giving us significant input, feedback and advice. We are well on the way to delivering on the vision of creating one of the finest children's hospitals in the world and are delighted to share the image broadly today."

enq.107

NEW APPOINTMENT

Architecture practice unveils plans for future succes

An award winning architecture firm that was established 23 years ago in Leeds has appointed a new Managing Director.

Chris Austin, who has been an integral part of the Brewster Bye team for 22 years, is taking over the role from founding partner Keith Brewster. Keith will take up a new position as a consultant in the business and continue to support the board of directors as well as overseeing a wide range of projects in the residential and community sectors.

Chris will work alongside fellow directors and shareholders Mark Henderson and Nathan Wilkinson to continue growing the firm, which is based in Headingley and employs 23 staff. Chris says: "It's a privilege to accept this new role and I will be continuing to work closely with Keith and the rest of the team to grow our business. It's a very exciting time for us as the improving economy presents a wide range of opportunities across all sectors, with both new and existing clients."

The firm is working on the luxury residential conversion of St. Leonard's Place in York for Rushbond PLC, the redevelopment of the Leeds Girls High School site in Headingley for Stonebridge Homes and three regeneration sites in Doncaster



of over 300 houses for Muse Developments. Other clients include The Abbeyfield Society where Brewster Bye is responsible for the £10.5million extra care and dementia care housing scheme in Bingley and Leeds and Yorkshire Housing Association's residential apartment development at Hanover Square in Leeds.

FREE SITE SURVEY NATIONWIDE
50 YEAR ACCOYA WARRANTY

MONTPELIER

GARDEN ROOMS • ORANGERIES • WINDOWS • BI-FOLDS

Garden Rooms, Orangeries, Windows & Bi-Folds

Call: 01384 279933 - Email: info@montpelierjoinery.com - Visit: www.montpelierjoinery.com

From the makers of

STUNNING NEW ROOF GARDEN

Crossrail Place opens at Canary Wharf

'The distinctive seven storey structure, whose design mimics the old clippers that would once docked at Canary Wharf, is over 300m long'



The first retail and public realm space to be created as part of the Crossrail network opened on 1 May 2015 at Canary Wharf. Crossrail Place is a major new leisure destination that sits within the same Foster + Partners structure that contains Canary Wharf Crossrail station.

The distinctive seven storey structure, whose design mimics the old clippers that would once docked at Canary Wharf, is over 300m long. Crossrail Place contains 10,000 sq m of retail and leisure space as well as a 4,160 sq m public garden. The station concourse and platforms occupy the bottom two levels and won't open until 2018, with the four upper levels above contain the leisure offering. The uppermost level contains a new public space for London in the form of an exotic roof garden designed to celebrate Canary Wharf's maritime heritage.

There are 14 individual units at Canary Wharf, many of which have external terraces and all are let to occupiers. Around half of the new operators opened on 1 May, with the rest opening in phases over the coming months. Canary Wharf Group has secured a diverse range of tenants,

including recognised brand names, boutique chains and independents. For a number of the key occupiers, such as Psyche London, Everyman Cinemas and The Big Easy, Crossrail Place has been chosen to be their first location in east London.

Speaking about the opening of Crossrail Place, Camille Waxer, chief administration officer at Canary Wharf Group commented: "Canary Wharf is a diverse and vibrant place and we're always getting demand for more retail and leisure. The opening of Crossrail Place with brands including Everyman Cinema, Sports Bar & Grill and Bespoke Cycle, will cater for the demands of our consumers, including those working on the Estate and from the local community. It's very important for us to offer a varied experience to our loyal customers and we look forward to welcoming them at the new Crossrail Place development."

Andreas Karlsson, managing director, Sticks'n'Sushi UK Ltd commented: "Crossrail Place is a landmark scheme which has given Sticks'n'Sushi the opportunity to showcase our restaurant offering of high quality sushi, yakitori

sticks and cocktail bar to the workers on the Canary Wharf Estate and those in the local area. For the first time in the UK, we will also introduce the Danish side to our restaurant's dual heritage with a Japanese and Nordic breakfast offering from 7.00am weekdays."

In addition to the retail and leisure offer, one of the key features of Crossrail Place is a cleverly designed roof garden which references both the history and geography of Canary Wharf. Crossrail Place is located in the water of the North Dock at Canary Wharf and is reached via a long access ramp from the south. The ramp, which bisects the structure, sits almost exactly on the Meridian line. This has influenced the types of plants and shrubs in the roof garden, which are exotic species originating from places where the ships that docked at Canary Wharf returned from. The plants are arranged in such a way that those from the Western hemisphere are planted on that side of the Meridian line, with those from the Eastern hemisphere on the opposite side.

Crossrail Place opened to the public on 1 May 2015, with the roof garden accessible until nightfall.



The University of Huddersfield granted planning approval for proposed new building

The £27.5 million building will provide a new home for the University's Law School and the School of Music, Humanities and Media.

The new structure will link into the University's new Student Central building, which was completed in 2014, at a cost of £22.5 million and officially opened by HRH The Princess Royal in January.

The proposed new building, which was approved unanimously at the Kirklees Council Planning Applications meeting yesterday, will provide 7,500 sq m of space and will be six stories high.

The iconic structure will provide new teaching space, including large, tiered lecture theatres when completed in September 2016. It will



be built to meet BREEAM Excellent sustainability ratings, thus ensuring its green credentials. BREEAM is regarded as the world's foremost environmental assessment method and rating system for buildings.

The University's Director of Estates of Facilities Colin Blair, who attended the planning meeting, told councillors that the plans demonstrate "the commitment the University has to continuing the development of the campus".

Fire Retardants

Independently tested fire retardant performance for interior and exterior timber



Working in partnership with

PTG Treatments

FirePRO & Fire-X

08000 886 032

info@ptgtreatments.co.uk

Crown Timber

Frameguard

01285 646000

crown@crown-timber.co.uk



UK...get set to take centre stage at the World Architecture Festival 2015

The global architecture and design community's most influential awards programme



The World Architecture Festival (WAF) is calling for award entries from architects and related design and development professionals throughout the UK.

WAF provides not only the chance to win a global architectural accolade, but also opens the door to international media coverage, peer and client recognition, and the potential for exciting new commissions all over the world.

Architects in the UK are invited to follow in the footsteps of last year's award-winning practices and showcase their talent on a global stage. The quality and calibre of which provided exceptional and highly animated content for three days of live judging critiques – culminating in UK architectural practice Rogers Stirk Harbour + Partners and ARUP Associates, winning the 2014 Experimental Future Projects Award for Skyfarm. Others included Chobham Academy by Allford Hall Monaghan Morris, winner of the Completed Buildings Schools category and McDowell + Benedetti's Scale Lane Bridge, Kingston-Upon-Hull for Transport.

Skyfarm, an innovative concept design proposal for a vertical farm was created in conjunction with the Expo Milan 2015. The scheme facilitates the cultivation of crops in multi-storey structures within high-density city areas. The concept includes wind turbines and photovoltaic panels together with both hydroponic and aquaponic systems.

A futuristic scheme, which resonated highly with the WAF Super Jury, Skyfarm represents “a thorough, believable and

beautiful project,” which could provide a viable solution to food production directly in city areas using natural energy with a carbon zero footprint.

This year's World Architecture Awards will once again be hosted in Singapore at Suntec City from the 2 – 6 November 2015 – AECOM's impressive steel-framed Convention and Exhibition Centre. The World Architecture Festival Gala Awards Dinner will take place on the evening of Friday 6 November where category winners will compete for the ultimate accolades of World Building of the Year and Future Project of the Year 2015, which have the power to transform careers, promoting practices to a global audience.

Commenting on this year's Awards, WAF Programme Director Paul Finch said: “This is an exciting time for the Awards, with no predictions possible about this year's result. Since our launch in 2008 we've had entries from over 70 countries around the world, and award winning schemes of every shape, size and type. Every year we find new talent competing with established names, and that is a big part of the attraction of the event, not just for entrants, but for delegates too.”

With its debut this year, WAF London will be the first satellite regional event, exhibiting all of the shortlisted entries along with a three-day talks programme, will take place at the University of Westminster from 24 – 27 June as part of the London Festival of Architecture.

news bytes

Visit the website
www.architectsdatafile.co.uk
and enter the reference
number for more information

Clerkenwell Design
Week 2015 celebrates
design and creativity
with special projects
and installations...

Ref: 20252

Celebrating new design
in historic contexts...

Ref: 76510

LEVATO MONO porcelain paver system

As specified at Wokingham Medical Centre, Berkshire
Barbara Wells Architects

The Levato Mono porcelain paver system is the pinnacle of external raised flooring technology; enabling the specification of lightweight, slip resistant and attractive raised flooring solutions, combining incredible technical properties with uncompromising aesthetics; making them the ideal choice for commercial and domestic use alike.

- 20mm porcelain pavers 40x80 45x90 60x60 75x75 30x120 40x120 60x120
- "Floating floor" – installation over single ply membranes
- Eternal product - zero maintenance required – offering massive over-life savings
- Highly abrasion and stain resistant
- Highly slip resistant : R11 and achieved up to +65 wet in the BS pendulum test
- Lightweight – 45kgs per m2
- High load bearing and impact resistance
- Timber & stone effects : 40+ finishes available
- Ideal for balconies, roof terraces and piazzas, for both commercial & residential use
- Completely non porous
- Fire & frost proof
- Height adjustable support from 9mm up to 550mm

t: 0845 2700 698 e: info@thedecktileco.co.uk
www.thedecktileco.co.uk



enq.110



THE FINEST OAK FRAMED BUILDINGS
MADE IN ENGLAND



Call For Our
New 2015 Brochure!



01384 296611 | email: info@primeoak.co.uk | www.primeoak.co.uk

GARAGES | GARDEN ROOMS | ORANGERIES | HOME OFFICES | CONSERVATORIES | BARNs | STABLES

enq.111

'The overall shape and building organisation was inspired by the nautilus shell, one of the purest geometric forms found in nature'



INTERNATIONAL MUSEUM

Perkins+Will completes new Shanghai Natural History Museum

The much anticipated Shanghai Natural History Museum, designed by Perkins+Will's Global Design Director Ralph Johnson, has opened in Shanghai. The 44,517 sq m (479,180 sq ft) museum offers visitors the opportunity to explore the natural world through the display of more than 10,000 artefacts from all seven continents. The building includes exhibit spaces, a 4D theatre, an outdoor exhibit garden, and a 30-meter tall atrium that welcomes visitors with an abundance of natural light filtered through a striking glass wall inspired by the cellular structure of plants and animals.

Perkins+Will was selected following an international design competition that included entries from some of the world's best known architects. The overall shape and building organisation was inspired by the nautilus shell, one of the purest geometric forms found in nature. Natural elements are depicted across the building's facades including the central cell wall representing the cellular structure of plants and animals, the east living wall signifying earth's vegetation, and the northern stone wall suggesting shifting tectonic plates and canyon walls eroded by rivers.

Johnson said: "The use of cultural references found in traditional Chinese gardens was key to the design. Through its integration with the site, the building represents the harmony of human and nature and is an abstraction of the basic elements of Chinese art and design."

It is a bioclimatic building in that it responds to the sun by using an intelligent building skin that maximises daylight and minimises solar gain. The oval courtyard pond provides evaporative cooling, while the temperature of the building is regulated with a geothermal system that uses energy from the earth for heating and cooling. Rain water is collected from the vegetated roof and stored in the pond along with recycled grey water. All of the energy features of the museum are part of exhibits which explain the story of the museum.

Managing Director for Perkins+Will's Shanghai office James Lu, said: "For people who grew up in Shanghai, the old nature museum has a special place in their memories. Likewise, there is much excitement surrounding the opening of the new museum, which will have a similar place in the hearts of both residents and tourists alike. The museum will bring a renewed experience of natural history to this city for generations to come. We are honoured to have served as the architect."

For more than three decades, Perkins+Will has designed dynamic projects across China. The firm's 40-person office in Shanghai services a wide range of clients, and operates within all of Perkins+Will's practice areas.

The museum is in the Jing An District, in the centre of downtown Shanghai, and within the Jing An Sculpture Park. The building replaces the original Natural History Museum and improves the museum's ability to exhibit its collection with 20 times more exhibition space.

LANDMARK LONDON PROJECT

Benoy helps landmark project win planning consent

Benoy, the acclaimed global studio of Architects, Masterplanners, Interior and Graphic Designers, is excited to announce that Silvertown, the 25ha, mixed-used development located in the Royal Docks area of East London, has been granted planning consent.

Benoy is delighted to be working with The Silvertown Partnership and to be part of the revival of this historical area of London. The regeneration of this somewhat neglected district will further economic investment in the city.

The project will see the return of trade to the Royal Docks, an area with a rich history of imports and exports; activities which traditionally fuelled the British economy. Once known as the 'warehouse of the world', at the height of its success the Docks employed over 100,000 people, and the new plans for Silvertown aim to recreate this sense of industry for the modern age with the brightest ideas and most creative businesses.

Working alongside Masterplanners Fletcher P and Landscape Architects West 8, Benoy is the Lead Designer of two significant plots within the development and is responsible for Concept and Planning Services. In addition, Benoy's Graphic Design Team is creating the identity for the central brand space, the very heart, of this new destination. The vision for this area is key to attracting exciting, world famous brands and so generating and securing the desired level of commercial interest in the project as a whole.

London is a tourist capital drawing 17 million visitors a year, and Benoy's designs aim to create a centre for entertainment, leisure and culture and so establish Silvertown as a new icon for East London. Enjoying a waterside location on the south side of the Royal Victoria Docks, opposite ExCeL, Silvertown will unite civic and commercial components to provide residents and visitors with a truly unique, 24/7 experience.

Silvertown Partnership Chief Executive Simon Webster said: "This part of London is now destined to be a creative hub for our Capital, offering a new, easily accessible location for innovative businesses, as well as housing for Londoners and amazing new brand experiences to attract visitors from the UK and abroad."

David Ellis, Benoy Director and Head of the London Studio said: "We are thrilled to receive Newham Council's consent to move forward with the Silvertown project. Our designs, as well as architectural strategy, will contribute to Silvertown's reach beyond London, enticing those from all over the world to visit – and return to – this great city."

Tom Cartledge, Global Operations Director at Benoy, said of the firm's involvement on this important London destination: "Projects such as Silvertown represent the next generation of design and here at Benoy we believe that we lead the way in the creation of such forward-thinking developments."

'Benoy's designs aim to create a centre for entertainment, leisure and culture and so establish Silvertown as a new icon for East London'

MicroPro

Looks different because it is different

A new environmental benchmark for timber preservatives

KOPPERS
www.kopperspc.eu



AWARDS

The world's best public library to be awarded prize

The Danish Agency for Culture again awards the prize for world's best public library in collaboration with Systematic.

Applications are once again open for the prize for world's best public library. And, in 2015, the Danish Agency for Culture will again have the honour of handing out the "Public Library of the Year Award" – this year, with a new sponsor: the IT firm Systematic, which is donating \$US 5,000.

The prize is given to a library somewhere in the world that has been newly constructed or designed for a building that has not previously been used as a library and which meets the criteria for the Model Programme for Public Libraries. This means that the library must take digital developments and local

culture into consideration. The library must welcome a diversity of population groups with an open and functional architectural expression in balance with its surroundings and a creative use of IT to improve user experiences.

The architecture prize was launched in 2014 as a part of the Model Programme for Public Libraries for the Danish Agency for Culture. The prize was awarded for the first time at the annual meeting of The International Federation of Library Associations and Institutions (IFLA) in Lyon, France – that time, with the architectural firm of schmidt hammer lassen architects as sponsor. The prize will be awarded again in 2015 at the IFLA's annual meeting in cooperation with the IFLA's Public

Library Section. This time, the meeting will be held in Cape Town, South Africa.

Candidates for the "Systematic – Public Library of the Year Award" may apply as of 15 April 2015, and the deadline for applications is 15 June 2015.

The library must be a new public library. This means that it must have been completed during the period 1 January 2013 through 15 June 2015. The definition of a new library in this connection is a library that has been newly built from scratch, or a library that has been set up in premises that have not previously existed as a library.

For more information, please visit: www.architectsdatafile.co.uk and enter reference number 98474.



Hoxton Hall returned to its former glory

A major £2.5million restoration project has been completed at Hackney's historic Hoxton Hall. Partly funded by the Heritage Lottery Fund, the work has returned the Grade II* listed Victorian Music Hall to its former glory. As part of the masterplan by Foster Wilson Architects for the building's phased development, the sensitive repair and conservation works have resulted in a unique performance and events space for the local community.

Contractor Fairhurst Ward Abbotts (FWA) was appointed to carry out the 11 month project, which was completed while Hoxton Hall remained open as a 'Young Hackney' Hub, focusing on the creative industries. The specialist work included opening up the top balcony for the first time in 45 years, increasing capacity by over 200 per cent, refurbishing the entrance area, soundproofing the basement music room, and installing improved mechanical and electrical services.

Matt Dauncey, director at FWA said: "Hoxton Hall has served the community for over 150 years, and although it was still in use, needed to be restored, repaired and modernised to secure its future.

"Instead of replacing historic features, we've returned many of them to the way they were in the 19th century, including the balcony railings, ironwork and floorboards. In the main hall, we have also recreated Victorian sun burners

that draw the hot air out of the hall.

"Ensuring that the local community can continue to use this fantastic and much valued building has been particularly rewarding and will ensure that people of all ages can benefit from more modern facilities and surroundings."

Edmund Wilson, partner at Foster Wilson Architects, said: "Hoxton Hall is one of Britain's few surviving Victorian music halls. Working with contractors Fairhurst Ward Abbotts and specialist consultants to realise these plans, we have uncovered the building's rich history and the result is a beautifully restored theatre space fit for modern use."

Hayley White, former group director at Hoxton Hall added: "With the support of many funders and a lot of hard work from the architects, design team, contractors, staff and board, the project has done much more than repair the Music Hall and adjoining rooms. We have modernised, conserved, preserved, restored and made it more accessible, all while keeping true to the history of the Music Hall.

"Hoxton Hall is a unique and very special building, and we look forward to welcoming many Londoners through the doors in the coming months and indeed years."

The improvements at Hoxton Hall were designed by Foster Wilson Architects following consultations with local community groups, youth forums and residents.

cpd focus

continuing professional development

Maintaining and improving professional competence, skills, abilities and knowledge

DESIGN AND SPECIFICATION OF WESTERN RED CEDAR SHINGLES



This CPD from **John Brash** is suitable for architects and specifiers. The CPD presentation covers: An introduction to shingles and shakes; Legal and ethical procurement (including EU timber regs); Using shingles to help meet low carbon targets; Performance (including durability, treatment, life cycle analysis); Standard details Blue label certification – why is it important?; Installation and maintenance.

01427 613858
www.johnbrash.co.uk

enq. 113

GREENING THE GREY



Scotscape is pleased to announce its CPD *Greening the Grey*, which aims to assist both specifiers and architects when designing and selecting living wall systems. It covers the benefits of living wall systems, good design, installation and maintenance, and the specialist irrigation required to achieve a successful living wall. Scotscape has developed a Fabric Living Wall System with integrated insulation, allowing specifiers to quantify the thermal benefits and energy efficiencies that this system brings.

020 8254 5000
gordons@scotscape.net

enq. 114

SELECTING EFFECTIVE AND SECURE FLAT ROOF SYSTEMS



Sika Sarnafil is pleased to announce the new RIBA approved CPD for Sika Sarnafil entitled *Selecting Effective and Secure Flat Roof Systems*. This CPD introduces the key components for a successful and effective roof system, covering design, materials and workmanship. An outline of additional areas included is below:

- typical application areas
- key factors in roof design and product selection
- key standards and guidelines
- sustainability
- typical challenges
- quality assurance
- history and group information

For over 50 years Sika Sarnafil has provided high quality single ply roofing solutions, backed by decades of expertise and market leading guarantees. Sika Sarnafil's exemplary commitment to training is widely recognised in the roofing industry, and this commitment extends to the Continual Professional Development of construction professionals. The company's range of RIBA accredited CPD seminars support specifiers, contractors and clients' understanding of the issues surrounding the specification of single ply roofing. If you are looking for assistance for selecting an effective and secure flat roof system and require further information on this seminar please contact Sika Sarnafil.

01707 394444
sarnafilroofing@uk.sika.com

enq. 115

WHY WRAS



Hansgrohe has a new RIBA approved core curriculum CPD about WRAS (Water Regulations Advisory Scheme) called '*Why WRAS*'. Content discusses the importance of compliance to ensure successful project specifications and explores the risk of non-compliance which can have far reaching implications across all the stakeholders. The Regulations apply to all commercial buildings such as hotels, large housing projects and offices.

01372 465655
www.hansgrohe.co.uk

enq. 116

SOLID SURFACES CPD SEMINAR



The seminar from **CD UK** is structured as follows: Development of Solid Surface from 1960's to present day; Raw materials, adhesives and composition; Solid Surface characteristics and benefits; Manufacture: Sheet, Matrix sheet and shape product; Comparison of Solid Surface characteristics; From production to fabrication process; Properties of Solid Surface; Architectural and Design possibilities; Current applications (visuals); Environmental considerations; Support, warranty and service infrastructure

0113 201 2240
www.cdukltd.co.uk

enq. 117

INTRODUCTION TO UNITISED CURTAIN WALLING



There is a new CPD certified module available on the **Reynaers Aluminium** website accessible to anyone seeking to develop their knowledge and skills. Entitled: *Introduction to Unitised curtain walling*, the module presents a comprehensive and extremely clear guide to the façade system and includes a series of questions that have been compiled to test the knowledge gained in order to qualify for CPD credits. Successful completion of the module gives 60 minutes of CPD credits.

0121 421 1999
www.reynaers.co.uk

enq. 118

ACCESS ALL AREAS



The new CPD from **Bilco**, *Access All Areas* covers the full range of access products from roof access hatches to floor doors and also looks at the use of smoke vents, ladders and safety products. It looks at the most appropriate solutions for access requirements and examines what considerations should be made when specifying these for a project.

01284 701696
bilcouk@bilco.com

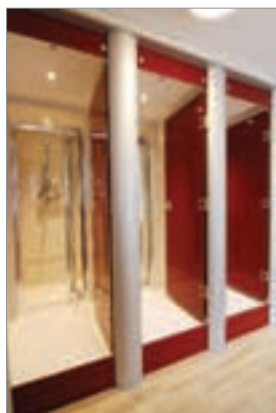
enq. 119

editor's focus

AFT Ltd

Groundshield is the new generation of insulated raft foundations now available in the UK via AFT Ltd. Incorporating long life EPS, proven over many years here and abroad, the system combines quick and easy to install shuttering with high compressive strength, low lambda, water resistant insulation, to provide an outstanding foundation for any building. Due to the unique way in which the footings and slab can be poured in one operation the time from start to pour is the quickest way to create a fully insulated floor foundation.

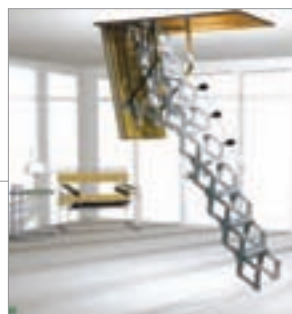
enq. 120



Taplanes

Taplanes Ltd provide pre-fabricated solutions to a variety of end users throughout the UK and Ireland. Taplanes pre-formed shower enclosures overcome the inherent problems associated with conventional bathroom areas. Durability and speed of installation, together with a guaranteed 'leak proof' construction, ensures Taplanes are the preferred choice within the accommodation sector. All Taplanes products are fully recyclable and come with a 25 year guarantee as standard.

enq. 123



Premier Loft Ladders

The Supreme stairway with electrical operation from Premier Loft Ladders are bespoke units made to suit the Customer's specifications, though minimum opening hatch opening lengths and widths apply which are subject to the floor to ceiling height. The standard Supreme (there are several options available including steel fire resistant trapdoors etc) is supplied as a ready to fit unit, comprising of a concertina stairway manufactured from high strength die-cast aluminium alloy components contained within, and attached to, a laminated wood hatchbox and insulated trapdoor. The trapdoor has a white finish to the underside.

enq. 124

Dolphin Dispensers

Dolphin Dispensers are now offering matching soap dispensers to their sensor taps in most of their range – both in counter mounted & panel mounted versions. These can be battery or mains powered and come with a chrome or a satin chrome stainless steel finish – the opportunities are enormous in public washrooms, airports, fitness centres, shopping centres, prestigious office blocks.

enq. 121

Gainsborough

Three Ascot hi-lo baths and three Windsor baths, both with powered transfer seats, have been installed at the new sixty-six bed Mistley Manor care home in Essex. As previously featured in ADE, Mistley Manor is a high specification, luxury care home and is the flagship development of the Stour Valley Care Group. Gainsborough was identified as the preferred assisted bathing specialist for this new-build project as its products deliver proven levels of performance and reliability. Gainsborough also provided complete project support from concept to completion which included detailed site surveys, 3D bathroom designs, installation, commissioning and carer training.

enq. 122

ZinCo

As a pioneer in all matters relating to roof greening with an experience of more than 40 years in the green roof business, the name ZinCo is synonymous with permanently-reliable green roofs – providing systems to suit all roof and design requirements. Whether it's a flat roof or a pitched roof, ZinCo systems can be used to create landscapes on rooftops with a pitch from 0° up to 35°. In addition to extensive green roof systems, ZinCo supply tested and proven build-up solutions for intensive green roofs that enable you to avail of the entire range of hard and soft landscape design options that are also available at ground level.

enq. 125

ABG

Market leading geosynthetics manufacturer ABG is positioning itself at the forefront of innovative SuDS design. Using its background in water management in regulated markets its has developed a number of new systems to assist in meeting SuDS requirements outlined in planning. Bluroof is a system designed to store storm water within the roof area and has already being installed a number of key projects. Sudspave and Truckcell offer porous paving surfaces capable of carrying a wide load variety of traffic with a grass or gravel finish.

enq. 126



Envirotec

Envirotec Bathing's Shower Units are marine grade, made out of the same material as ocean going yachts. Their composition of GRP and timber makes them strong, durable and built to last a lifetime. The cherry on top; an Isophthalic gel coat that sets so hard that mould and grime can't even cling to it, making these shower units virtually maintenance free and beautiful for life. Envirotec understands that design combined with practicality is important for those concerned with creating bathrooms. To cater for this, the range is designed to suit modern, contemporary bathrooms. For inspiration, visit the website.

enq. 127

Samuel Heath

Powermatic controlled, concealed door closers offer the performance and reliability demanded by modern building projects, while delivering the lower opening forces essential to meeting the requirements of the Equality Act. Key to Powermatic's ability to assure ease of access is its exceptional operating efficiency, which far exceeds the recommendations of Approved Document M and BS EN 1154 and means that it can enable a door to meet the opening force requirements of Approved Document M of the Building Regulations (Access and use of buildings) and BS 8300. Precision engineering and consistent manufacturing quality ensure that this performance is maintained throughout Powermatic's working life.

enq. 128

New Specification Engineer role at Schöck



Chirag Patel has been appointed to the newly created position of Specification Engineer at Schöck. In this role, designed to enhance the already extensive technical team support available, Chirag will provide technical guidance and assistance to specifiers, structural engineers and other users in the design principles and most effective use of Schöck structural thermal break elements. This is through a

combination of direct contact and use of the advanced software available from the company. In addition to providing expert advice, Chirag will offer lecturing and training sessions, including advanced CPD seminars, with the purpose of ensuring safe in-house project design for a wide variety of users.

01865 290 890 www.schoeck.co.uk

enq. 285

Architects Datafile website



The Architects Datafile (ADF) website is an online provider of past and present products and news items for the architect or specifier. architectsdatafile.co.uk is a one-stop source for all the latest press releases providing any visitor with access to information about products and services that they may require. From the website, you can find links to digital issues that have live links to advertisers' sites, as well as daily email alerts to keep you as informed as possible.

www.architectsdatafile.co.uk

FIRE RETARDANT UK

FIRE retardant for WOOD

HR PROF

- Eco Friendly
- Clear & Odourless
- Water Based
- Non Toxic
- No Solvents
- Apply with Brush or Spray
- Euro-class B-s1-d0
- Internal or External Use
- HR Prof Also tested to BS 476-6 & BS 476 part 7

Classification Reports & Certificates Pine, Spruce, Scottish & Siberian Larch, Western Red Cedar, Oak

☎ 0800 7833 228 ✉ sales@fireretardantuk.com 🌐 www.fireretardantuk.com

enq. 286

HM The Queen honours Ancon



Three years after receiving the prestigious Queen's Award for Innovation, Ancon's outstanding business performance has been recognised again in 2015 with a second Queen's Award, this time in the International Trade category. The Queen's Awards for Enterprise are presented annually by HM The Queen for exceptional business achievements in International Trade, Innovation and

Sustainable Development. Ancon impressed the Awards advisory committee with its clearly defined long term strategy to drive international sales growth, focussed on developing structural concrete fixings which meet local requirements, backed by market-specific communications, product approvals and distribution channels.

0114 275 5224 www.ancon.co.uk

enq.129

GEZE continues global expansion



With more than 30 subsidiaries serving 100 countries GEZE is supporting its worldwide growth with the appointment of a dedicated global account manager. Karen Sum, who is based at GEZE UK's HQ in Staffordshire, will work with both the UK operation and GEZE GmbH in Germany to promote the company as a window and door

technology solutions partner for large multinational organisations. In her new role, Karen will co-ordinate international projects from the provision of bespoke solutions through to developing service contracts and trading agreements to be handled both centrally and locally by the company's subsidiaries.

01543 443000 www.geze.co.uk

enq.131

Vent-Axia is a Business Superbrand



Vent-Axia, a market leading British ventilation manufacturer, is delighted to announce that it has been ranked as a UK Business (B2B) Superbrand for 2015. The award follows robust independent research commissioned by The Centre for Brand Analysis (TCBA), which identifies the UK's Superbrands in an annual league table.

From the thousands of brands initially identified this year, just over 1,200 brands were shortlisted. This shortlist was then scored by two separate groups of voters. The best performing brands, including Vent-Axia, were awarded Business-to-Business Superbrand status. As a Superbrand, Vent-Axia is considered to have established the finest reputation in its field.

0844 856 0590 www.vent-axia.com

enq.133

BAL Rapid-Mat wins accolade for innovation



BAL Rapid-Mat, the revolutionary new uncoupling solution, has been voted by industry experts as "Best Innovation" at The Tile Association Awards 2015. One of the most significant innovations in the uncoupling mat market for more than 15 years, the BAL Rapid-Mat is a new solution to accommodate lateral

movement for tile installations encountered by fixers, contractors and specifiers. What's more, BAL Rapid-Mat is the only uncoupling system on the market that is fully guaranteed for 25 years by the suppliers. Designed in conjunction with fixers, contractors and installers, BAL Rapid-Mat is designed for problematic floors, such as those that may be subject to lateral movement stresses.

01782 591100 www.bal-adhesives.com

enq.135

GEZE's new specification sales manager



GEZE UK continues to demonstrate its commitment to supporting customers with the further expansion of its specification team. The company has appointed Robert Workman, who has worked in the construction industry for nearly 40 years, as Specification Sales Manager for London and the South East. In his new role, Robert will

draw on his extensive experience to provide specification sales and technical support to architects and specifiers across all GEZE's ranges. He will also be responsible for generating new business, and delivering both product training and the company's popular RIBA-approved CPD Seminars.

01543 443000 www.geze.co.uk

enq.130

OPTIM-R achieves BDA certification



The ground-breaking thermal performance of the Kingspan OPTIM-R panel has now been independently verified as it became the first vacuum insulation panel to be granted a BDA Agrément*. The demanding certification ensures the product is fit for purpose and is recognised by professional bodies such as the NHBC and LABC. This can help to fast-track procedures and

approvals, saving both time and cost for all involved. With a proven aged design value thermal conductivity, the certificate confirms that Kingspan OPTIM-R panel can far out perform the next best insulation product. It also contains installation guidance, R-values and typical details for all OPTIM-R applications.

01544 387384 www.optim-r.co.uk

enq.132

GEZE reinforces its foundations with training!



More than 20 members of staff from GEZE UK are undertaking the newly launched 'Foundation in Hardware' qualification from the Guild of Architectural Ironmongers (GAI). The qualification is designed to provide an insight into many of the aspects of architectural hardware, including hinges, closers, locks and furniture for those people

who don't 'live and breathe architectural ironmongery during their day to day job'. GEZE has signed up to the scheme in order to give staff including internal sales teams, marketing personnel and service coordinators an understanding of the wider architectural ironmongery market outside of their own product range.

01543 443000 www.geze.co.uk

enq.134

Haddonstone's new catalogue is available now



Haddonstone has launched a new 216 page catalogue containing the world's most comprehensive collection of fine architectural stonework and landscape ornaments. The catalogue has been divided into colour coded sections for ease of use. The 'Latest Designs' section highlights recent collaborations with leading architects and designers from around the world, including Robert A.M. Stern, Adam Architecture and Octagon Developments.

Haddonstone has all styles covered; from architectural components true in spirit to the orders of classical architecture to traditional styles and contemporary schemes. To request a new 216 page catalogue visit the website.

01604 770711 www.haddonstone.com

enq.136



Exciting the imagination

An unremarkable piece of canal-side industrial estate in a leafy Hertfordshire has been transformed into a showcase office complex for one of the UK's most innovative companies, writes Ray Philpott

When a world-leading technology business decides to build a new headquarters, the architecture naturally has to reflect the creativity and originality of the brand.

But delivering an eye-catching, hi-tech design that also works in a semi-rural, part-residential waterside location with a run-down canal spur cutting through it is a pretty tall order by anybody's standards.

That was the challenge London-based practice EPR Architects faced when it was engaged to create a new business campus in Hertfordshire for Imagination Technologies, the British-based research and development and licensing company.

Imagination Technologies designs and licenses the computer chip technology found in some of the world's most famous brands – including Sony and Intel – and also owns

Continued overleaf...



iconic audio equipment brand Pure, renowned for its innovative, state-of-the-art digital radios.

The company purchased an adjacent metal fabrication factory site in 2010 with the initial intention of constructing one new building and leaving two existing 1980s buildings in situ at Home Park industrial estate at Kings Langley.

During the design of Imagination House, EPR began speaking with Imagination Technologies about the opportunities around creating a site-wide masterplan that would transform an uninspiring piece of industrial estate into an impressive office campus alongside the historic Grand Union canal.

The architects devised a visionary three-phase master plan, comprising three distinct buildings for a smart new office campus, embracing the natural, water-filled features around it and turning them into a central asset.

This autumn, the vision will be finally realised when the third and last phase of the development is completed and the campus fully opens to more than 1,000 employees.

The company has additionally constructed a purpose-built data centre in Hemel Hempstead, also designed by EPR.

A phased build

The first building to open on the campus in November 2012 was Imagination House, the company's flagship office, incorporating a cafeteria and a pleasantly landscaped outdoor relaxation and amenity area that strengthens the relationship between the building and the canal. The amenity area is there for everyday use but also provides a great space for entertaining clients, office events and formal gatherings.

Phase two, known as Concept House sits on the other side

Pictured above:
This illustration clearly shows the drop in levels across the site.

Pictured below:
An aerial view of the development showing Concept House (left), Phase 3 (centre) and the first building to be completed, Imagination House (right)





‘These upright features help to control thermal gain in largely glazed offices and add some architectural interest’

Matthew Collyer
EPR Associate Director

of the spur in a triangular piece of land between the main canal and the spur, and is home to the company’s Pure Division. Containing a mixture of office space for over 200 people and specialist research facilities, it was opened in March last year.

Phase three provides additional office space for more than 400 employees along with some discrete car parking.

All three buildings sit directly alongside the canal spur, with the sweeping, curved water-facing facades of Imagination House and the gentler curves of Concept House hugging the waterway, contrasting with the straight facade of the phase three office.

Prior to the development, the spur – or ‘canal race’ – was an unloved industrial relic, part of an old paper mill that closed around 1980.

Always envisaged as an intrinsic part of the development, the spur’s been dramatically improved through clearing and a sympathetic of mixture of hard landscaping and planting to soften the water’s edge and enhance the external environment for employees and visitors. These changes also help to maintain and improve the area’s water-based ecology, building on the benefits of a natural flow created by a weir where the water flows down into a culvert running under Homewood Park.

While each campus building differs markedly in form and has its own reception, externally there is a strong sense of continuity in terms of materials and colour. All are clad in silver Alucobond, a metal-tray rain screen attached via Metsec to the concrete frame of the building. The long, glass facades of each building are punctuated by rows of striking vertical fins made of perforated metal.

“These upright features help to control thermal gain in largely glazed offices and add some architectural interest, creating a nice rhythm along what are relatively long stretches of glass,” says EPR Associate Director Matthew Collyer.

“They also bring together a nice complement of colours, with the blueness of the low-iron glass, the mid-grey verticals and the silver cladding.”

Challenging location

The campus location presented some significant challenges for the architects, being very close to light industrial units, offices, a range of residential housing and permanently occupied houseboats on the Grand Union itself.

Collyer says: “Imagination Technologies wants to be a good neighbour and to create a high-quality development that’s sympathetic to the surroundings. In response to its immediate environment, the campus has to be low-profile and is limited to three storeys high, while embracing natural assets like the canal and making them the focus for the development.

“The western facade of Concept House backs onto the main canal and although there are screening trees and planting, we kept that side of the building largely solid so that houseboat owners didn’t feel overlooked. To add visual interest and break the building up we gave that facade three sweeping, staggered curves.

“The buildings have been constructed using a post-tensioned concrete slab system enabling us to keep structural floor depths relatively slender and squeeze the building

Continued overleaf...

Above: Soft landscaping turns the canal spur into an attractive feature, with Concept House pictured on the left and Imagination House on the right

project bytes

Visit the website
www.architectsdatafile.co.uk
and enter the reference
number for more information

**BAM hands over NHS
Tayside new CAHMS
care unit...**
Ref: 19137

**GRAHAM
Construction chosen as
main contractor for
two Scottish hospital
projects...**
Ref: 31077

A view of the eye-catching bridge, as it crosses over the landscaped canal spur towards the curved facade of Concept House





down to meet the low-profile aspect of the brief, while maintaining generous floor-to-ceiling heights in the office areas.”

However there is a substantial amount of plant equipment on the roof of each building. Collyer adds: “Being low buildings, we really didn’t want the plant visible, so the metal cladding flows up as a natural continuation of the facades forming a pitched parapet that, from ground level, hides unsightly equipment and softens up the roofline of the buildings.”

Showcase features

Phase 1 primarily consists of two floors of office space sitting over the single-storey, highly transparent, lower ground floor with the cafeteria and amenities, which has strong a sense of openness.

EPR also utilised the one-storey level drop across the site to advantage by creating a floor below the entrance level of phase 1 for the cafeteria, amenities and services. A large atrium floods light down over an impressive feature staircase linking the mid-floor reception area with the offices above and the catering facilities and amenities on the lower level.

“We wanted the prominent light and airy atmosphere to encourage people to use the vertical circulation space and create a buzz, rather than take the perhaps more traditional approach of tucking all the stairways out of site,” says Collyer.

“We used high quality materials, including glass treads and balustrades to maximise light penetration and elegantly detailed stainless steel handrails. We worked hard with the sub-contractor, AW Jeffries, to get that right.”

A similar atrium and feature stairwell will also be present in Phase 3, where the significant drop in ground level was exploited once again to create a discrete, car park below ground level, primarily for staff.

Phase 2 placed different demands on the team. In addition to office space for more than 200 people it includes spaces used for testing Pure products including an anechoic chamber – which effectively prevents reflection of sounds – and laboratories. There is no atrium.

Collyer says: “Many functions carried out in this building simply don’t exist in Phases 1 or 3, so it was a technical challenge which meant working very closely with the mechanical and electrical engineer, Scotch Partners, to make sure we got these aspects right.

Bridging the gap

With the campus divided in two by water, a bridge linking all the three phases together is a practical necessity, but also provides an opportunity to make a statement.

EPR’s idea was to build a bridge with a glass and steel
Continued overleaf..

Architects:

EPR Architects

Main contractor:

Miller Construction
(phases 1 and 2)
Bowmer and Kirkland
(phase 3)

Structural engineer:

Evolve

Mechanical and electrical engineer:

Aecom (phase 1) and
Scotch Partners (phases
2 and 3)

Planning consultants:

Indigo Planning

Landscape architect:

Neil Tully Associates

Project management:

Pat Gill Consultants

Cladding

sub-contractor:

Alumet

Cladding

manufacturer:

Alucobond

Secondary framing:

Metsec

Glazing:

Saint-Gobain

Feature stair:

A W Jeffries

Right, the feature staircase in Imagination House and, below, the cafeteria



balustrade on the side facing the campus and a timber balustrade on the Grand Union-facing side reflecting the softer natural aspects of the waterway. The bridge, pre-fabricated off-site, is finished with a composite decking system while subtle lighting gives it an attractive glow at night.

“The bridge acts as a centre piece for the landscaping and mediates between the two differing environments – natural and architectural,” explains Collyer. “We had a lot of fun with the design, which has quite complex geometry because it’s gently curved in plan, referencing the geometry of the buildings, and the surface is cambered. We collaborated extensively with the structural engineer and landscape architect to get it right and ensure the initial design concepts weren’t lost.

“During the design of the footbridge we liaised closely with the Environment Agency to ensure that it was of adequate height above the water. If it were too low it could potentially cause flooding in certain conditions.”

Environmental considerations are important to Imagination Technologies. The first phases have already been awarded BREEAM Excellent status. Employees are encouraged to use public transport, walk or cycle to work. Rows of photovoltaic panels sit on the roofing along with solar thermal panels on top of Imagination House to help provide hot water for the cafeteria.

Collyer says: “Ultimately, our objective has always been to create an office campus that reflects Imagination Technologies as a company and creates an environment that’s pleasant to work in, but also works well within its surroundings.

“When phase three opens this year we will have realised that goal.”



‘Green’ natural ventilation from SE Controls for Kings Cross

The London Borough of Camden’s new multi-storey office and leisure complex within the 67 acre King’s Cross Central development, is using a highly energy efficient natural ventilation system from SE Controls to maintain a comfortable indoor environment while contributing to the building’s BREEAM outstanding rating.

Located at Five Pancras Square, the 14-storey building not only provides 150,000 sq.ft of floor space but also incorporates a leisure centre, swimming pool, public library and cafe.

By using a combination of active and passive design features to obtain very low carbon emissions, such as low glazing ratios and energy efficient ventilation, the building achieves the highest standards of environmental sustainability

for a major office building and is on course to reach the highest ever BREEAM score.

To maintain precise energy efficient control over the building’s indoor air quality and maintain a comfortable working environment, SE Controls supplied, installed and commissioned a natural ventilation system that fully automates and controls the opening of windows on the North and South elevations, as well as the main atrium space.

Within the North atrium, SE Controls also installed 12 SECO N 24 40 twin chain actuators and a 30 Amp PSU panel, incorporating a maintenance key-switch and linked to the BMS, to provide additional control over ventilation, indoor air quality and building energy efficiency.

01543 443060 www.secontrols.com

enq.137



Iconic washrooms created for London Bridge



Washroom Washroom’s new Iconica Collection has been used to stunning effect on a landmark office building on London’s iconic Southbank. Recently refurbished in a project led by Aros Architects with Kgb Managed Services as the main contractor, the common areas including wash-

rooms and lobbies were all brought up to Grade A standard. Washroom worked closely with the architectural team to refurbish both the male and female washrooms on level five of the building in a project worth £40,000. Opting to use materials not traditionally associated with washrooms and incorporating bespoke design elements from Washroom’s Iconica Collection was the ideal way to create a space which reflected the high specification of the building.

enq.138

Jack does an inside job at the Beeb offices



Jack Aluminium’s excellent U-value performance curtain walling and PAS 24 thermal TD68 Jack Door are widely specified for the exterior of buildings, but their slim line frame and easy assembly, ‘clip in plate and ladder’ system has brought them inside for refurbishment at former BBC broadcasting offices. Jack Aluminium’s

excellent U-value performance curtain walling and PAS 24 thermal TD68 Jack Door are widely specified for the exterior of buildings, but their slim line frame and easy assembly, ‘clip in plate and ladder’ system has brought them inside for refurbishment at former BBC broadcasting offices.

024 7646 7449 www.jackaluminium.co.uk

enq.139

adf architects
datafile



REGISTER ONLINE FOR...

In-print magazine • Digital magazine
Newsletter • Daily digests

www.architectsdatafile.co.uk



Offices of distinction

Falling within the Royal Borough of Chelsea and Kensington, Sloane Street is internationally recognised as one of London's best addresses, famed for its luxury stores, chic shopping and rarefied property market.

Under the stewardship of the Cadogan Estate, Charles "Sloane" 1st Earl Cadogan, sold a development lease to architect and builder Henry Holland – perhaps better known as the son-in-law of "Capability Brown". Holland laid out the street plan for the area encompassing Sloane Street, Sloane Square and Hans Place – to be known for half a century as "Hans Town".

In the early 1800's Jane Austin moved to No. 64 Sloane Street to be with her brother and literary agent, Henry. It was here that she wrote "Sense and Sensibility". This magnificent six storey property, along with its neighbour No.65 has been refurbished, and now provides office accommodation to the very highest modern standards.

Selectaglaze Secondary Glazing was chosen as an ideal solution to provide high levels of acoustic

and thermal insulation, leading to a more comfortable and peaceful environment. Selectaglaze's very wide product range allowed sympathetic designs for a variety of window styles, including gently curving bays and arched headed frames.

A total of 95 windows were treated mostly with hinged and sliding systems, all with a white powder painted finish to match the interior décor. Toughened safety glass with a low emissivity coating provides very high insulation levels. All frames are bespoke manufactured and individually site measured to ensure the closest fit and optimum sealing.

Founded in 1966, Royal Warrant holder Selectaglaze is a specialist in the application of secondary glazing within buildings of all styles. Products are fully tested and assessed for performance and twice yearly quality audits are conducted through the company's ISO 9001 accreditation and LPCB. An extensive range of literature and guidance notes covering acoustics,



thermal performance and added security is available together with a technical advisory service and a RIBA approved CPD Seminar.

01727 837271 www.selectaglaze.co.uk enq.140



Tessera Diffusion carpet tiles from Forbo

The latest addition to Forbo's carpet tile portfolio builds on the continuing trend of softening geometric structures.

Tessera Diffusion marks a progressive move away from more angular shapes, and incorporates a beautiful prism pattern that plays with light and shade resulting in a fascinating oblique design that's ideal for contemporary office environments.

There are 16 colours reflecting a tonal movement with an urban edge. Muted and natural shades, ranging from intensely dark to very pale, inject character whilst responding to the commercial demand for warmer, neutral hues and lighter LRV's in workspaces.

enq.141



Karndean designflooring leads marketplace

One of the UK's market leaders in Luxury Vinyl Flooring, Karndean Designflooring, has seen record demand for its new Opus Enhance range within the healthcare sector. Responding to calls from architects and designers for unprecedented slip resistance, Opus Enhance achieves a result of 40 plus in the Pendulum Wet Test. Ideal for use in a variety of healthcare settings, the enhancement to the PU coating allows for added grip without compromising on aesthetics. The collection features the most popular designs from Karndean's commercial Opus range. The 6 planks and 2 large format tiles ensure a good spread of different colour palettes. From the striking black washed, wood grain effect of Carbo, to the weathered wood appearance of Magna, these on-trend designs will add a contemporary twist to any project. The two stone effect tiles, Urbus with its stormy mix of light and mid grey tones and the warm earthy tone of Terra, make for a versatile backdrop. Fully HSE compliant, Opus Enhance offers the same intricate detail as the successful Opus range with all the planks achieving an R12 rating.

01386 820 100 www.karndean.com

enq.142



Pictured:
Underside of e6 plank

DfMA – healthy injection for hospital design?

The advanced off-site manufacturing system, Design for Manufacture and Assembly, was used to build the Cheesegrater in London and is now helping deliver the next generation of UK hospitals faster, safer, and to higher levels of design quality than ever before. Stephen Cousins reports

Main contractor Laing O'Rourke has pumped over £100 million into its proprietary off-site fabrication technology Design for Manufacture and Assembly (DfMA), which has been used to build a range of high profile projects, such as the £340 million Leadenhall Building in the City of London, also known as the "Cheesegrater", Crossrail's Custom House overground rail station, and projects for Hong Kong's Mass Transit Railway.

Less well known are the pioneering healthcare projects currently being delivered using DfMA, much faster, safer, and

to a higher level of quality, than traditional construction methods. These include the £160 million Cancer Centre at Guy's Hospital, designed by architects Rogers, Stirk, Harbour + Partners, where over 50 per cent of the structure is being delivered using DfMA. And Liverpool's £237 million Alder Hey in the Park children's hospital, designed by BDP, which when handed over in June, is set to become the fastest hospital ever built in the UK, constructed in just two years.

DfMA was launched in 2009 and initially focused on pre-fabricating precast concrete components, such as columns,

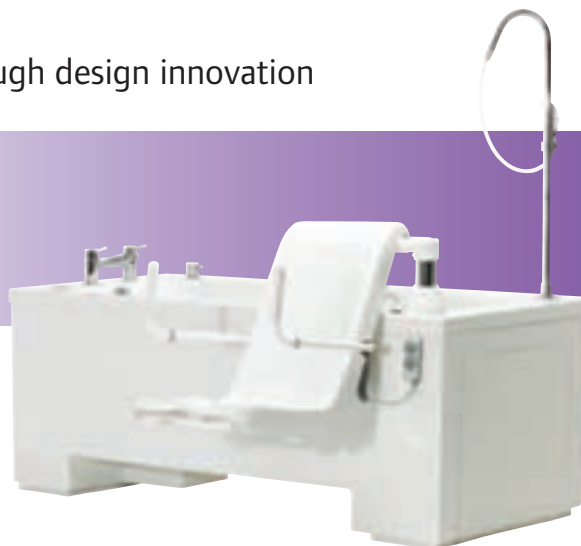
Continued on page 39....

Kent 2 hi-lo bath

Raising care standards through design innovation



- Designed for intensive use in care homes and hospitals
- Hi-lo facility with powered seat transfer
- TMV3 controls, 150kg safe lifting weight and integrated shower system



KENT 2

WRAS
APPROVED
PRODUCT

riba
product
selector

NSFPlus

0800 988 4237

info@gainsboroughbaths.com www.gainsboroughbaths.com

GAINSBOROUGH
Specialist Bathing



ASSISTED BATHS PATIENT HOISTS SHOWERING SOLUTIONS

Quote: ADF0515

enq.143

YEOMAN SHIELD... WHEN YOUR DOORS NEED EMERGENCY TREATMENT



Yeoman Shield Wall and Door Protection - cuts out the need for repetitive and costly re-decoration.

Visit our website www.yeomanshield.com



All Yeoman Shield materials/products are sourced and manufactured in the United Kingdom.



**YEOMAN
SHIELD**
WALL & DOOR PROTECTION

Yeoman House, Whitehall Industrial Estate,
Whitehall Road, Leeds, LS12 5JB
T: 0113 279 5854 F: 0113 231 0406
E: sallyann@yeomanshield.com

enq.144



'DfMA has eliminated the need for scaffolding, it has also definitely improved quality. It is all about making the construction site more efficient, secure and cost efficient'

Leonardo Pelleriti, RSHP

beams and floor plates, but it now includes a range of solutions from fully glazed, sealed and serviced components to modularised M&E systems and facade treatments, all digitally designed in BIM. In 2012 the contractor made DfMA its core delivery methodology and now aims to embed the technology into projects at the earliest design stage.

The system offers several benefits to hospital projects: hospital construction programmes are typically very long and DfMA can help to speed delivery. Laing O'Rourke often targets a 30 per cent improvement on programme with over 70 per cent of the structure delivered using DfMA. Hospitals incorporate an array of complex services including data communications, clinical and security equipment, and combining them into modules in a factory helps improve services coordination, quality and reliability.

Leonardo Pelleriti, associate and site architect for the New Cancer Centre at Guy's at RSHP told ADF: "At Guy's Cancer Centre, the main advantages have been around speed of construction and health and safety, particularly on steel work,

using prefabricated modules means you don't have people doing connections at height. On this building, DfMA has eliminated the need for scaffolding, it has also definitely improved quality. It is all about making the construction site more efficient, secure and cost efficient."

DfMA is typically introduced into hospital design during the bid stages of projects. Laing O'Rourke works in collaboration with design partners, such as BDP, NBBJ and RSHP, to identify how the technology can add value, considering various performance criteria and the geometric constraints.

Alder Hey in the Park, a design & build PFI, for client North Staffordshire NHS Trust, was planned to incorporate DfMA from the outset. The hospital is like no other hospital in Europe, located at the centre of a Children's Health Park designed to improve patient health and wellbeing, it will also features much larger theatres and patient bedrooms than previous schemes.

The three main sections of the building reach out like fingers into the parkland, the facades were delivered to site in

Continued on page 41....



By Appointment to
Her Majesty The Queen
Manufacturer and Supplier
of Secondary Glazing
Selectaglaze Ltd.

selectaglaze
Secondary Glazing Specialists

Helping to make your Hospital...

Warmer Quieter Safer



- Superb environmental control in sterile environments
- Certified level of security for "At Risk" areas
- Most effective method of sound proofing
- Exemplary thermal retention and draught insulation

T: 01727 837271

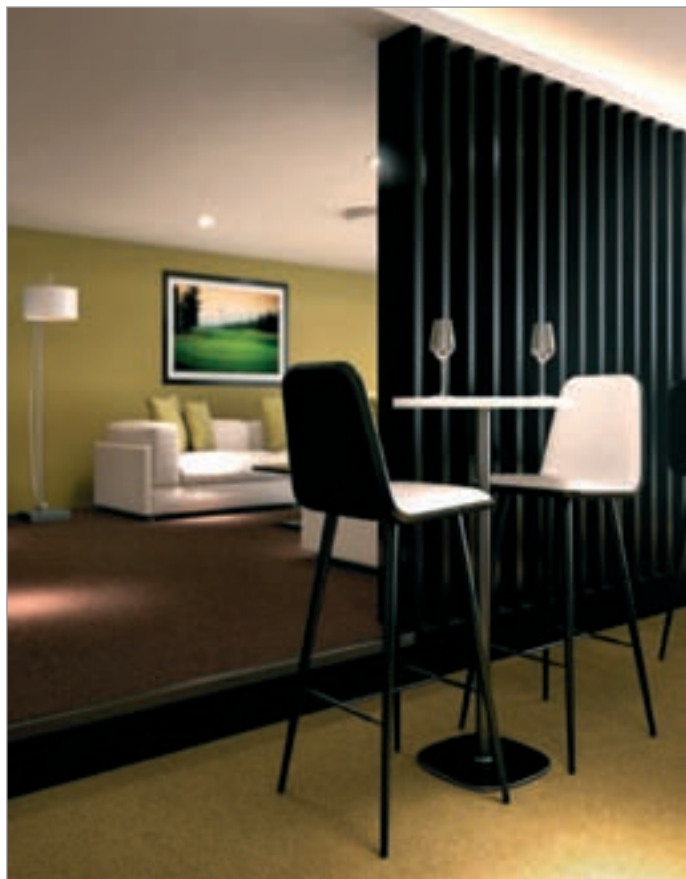
E: enquiries@selectaglaze.co.uk
www.selectaglaze.co.uk



@selectaglaze



enq. 145



ECONOMIX

Innovative
**Carpet
Solutions**

ECONOMIX, superior styling for
demanding environments.

www.danfloor-economix.co.uk

0333 014 3132
info@danfloor.co.uk

danfloor
An Ulster Group Company

enq. 146



large bay-sized panels, of up to 20 tonnes each, pre-installed with windows, cladding, insulation and internal plaster boarding. Once delivered, the panels were simply lifted into position by tower crane to quickly create a sealed and weather-tight structure. This approach removed the need for men working at height (panels were fixed from inside building so no scaffolding was required on the job) and the need for large numbers of follow on trades.

“We’re including the same elements you would find in any hospital, but taking processes off-site and automating them in a factory environment,” said Stuart McArthur, health sector leader at Laing O’Rourke. “Hospital guidance includes strict Health Technical Memoranda and Health Building Note requirements for infection control in terms of how buildings are put together, so the key innovation has been finding ways to deliver them in a more productive, efficient and quality controlled way.”

The maximum size of DfMA components is limited by a combination of structural requirements and ease of transport on the British road network. Alder Hey in the Park was

designed with a finished floor to floor height of 3.74m, based on the maximum panel size that could be produced, which meant services had to be cleverly designed to fit inside thin ceiling voids. The lower levels of the building are more heavily serviced, incorporating accident and emergency, critical care and surgery departments, so a two-panel system was devised comprising a 3.74m panel stitched to a 0.76m panel to create the deeper floor-to-floor levels required.

“When this project was designed, DfMA had never been used in healthcare to such a great extent before,” said Ged Couser, architect director and healthcare leader at BDP. “All the wet and dry M&E services were prefabricated in the factory [by Crown House Technologies, Laing O’Rourke’s in-house building services unit], delivered in five to ten metre-long modules and plugged together on site, which massively speeded up the process.”

The Cancer Centre at Guy’s Hospital is an ambitious 14-storey building designed to bring together the majority of the hospital’s cancer care and research estate under one roof. It comprises a number of stacked ‘care villages’, each one relating

Continued overleaf...

Pictured: Crown House Technologies MEP module





to a particular patient need, such as chemotherapy, radiotherapy or the one-stop clinic, and with its own distinct identity. Breaking the building up into two-, three- or four-storey chunks is intended to introduce a human scale, making orientation easier. Each village centres on a 'square', a non clinical space including a planted external balcony and informal seating and relaxation areas for patients.

Most of the building's structural and non-structural elements are being fabricated off-site, including the main structural external shear walls, known as "twin walls", which are delivered to site pre-installed with insulation and precast concrete with a high quality concrete finish.

Engineering Excellence Group, Laing O'Rourke's in-house team of experts set up to innovate new construction methodologies, developed several structures for the hospital including the E6 floor slab, which comes to site pre-installed with reinforcement, requiring no in situ concrete pours. In addition, a 12-storey steel frame plant tower, located on the back of building, is being assembled in sections off-site pre-installed with all the services.

The finished building will feature a large amount of exposed concrete, making pre-cast the ideal solution for a quality finish. "This building is comparable to "Lego" construction and the innovation was in resolving very complex structural concrete details at the joints between different components," said Leonardo Pelleriti at RSHP.

Off-site modular construction has been criticised in the past for limiting the creative options available to architects. But recent hospital projects completed using DfMA challenge the traditional notion that pre-fabrication must stand for bland repetition and monotony.

Alderhey in the Park is geometrically very complex, featuring numerous curved walls and flowing green roofs that cascade down toward the park like waves on a beach.

BDP wanted the building to appear as if it had emerged from the ground and designed the facades to mimic the rock strata that can be seen in the train tunnels when entering Liverpool Lime Street station. To create this effect, Explore Industrial Park, Laing O'Rourke's manufacturing facility in Steetley, Nottinghamshire, used just three different concrete moulds, set in different orientations to create 1,200 different panels in four shades of sandstone red. Only 18 facade panels across the entire project are identical.

"BDP found it a hugely enjoyable process looking at the differences of texture that can be achieved with a limited number of moulds, and how spinning or flipping them, you get what appears to be a random pattern, but retain the efficiency of a repeating design," says McArthur at Laing O'Rourke. "The architects we work with are not interested in people trying to constrain their creativity, they want hospital buildings to have

Continued overleaf...

'This building is comparable to 'Lego' construction and the innovation was in resolving very complex structural concrete details at the joints between different components'

Leonardo Pelleriti, RSHP

Pictured: Aerial of Guy's Hospital, December 2014

**BUILDING
PROJECTS**

Pictured top:
Panels were simply lifted into
position by tower crane to
quickly create a sealed and
weather-tight structure

Pictured bottom:
Alder Hey, Liverpool



a civic presence and a feel of quality in the way the facades relate to the environment.”

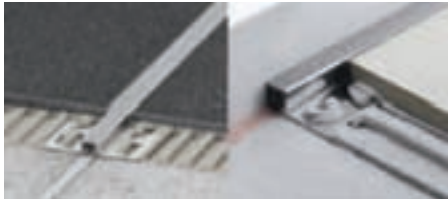
Similarly, at the New Cancer Centre at Guy’s Hospital, DfMA prefabrication helped RSHP create cut backs and external terraces that bring in light and allow people to sit outside, which also helped articulate the building and make it less institutional from an architectural perspective.

Many of the DfMA innovations introduced at Guy’s and Alder Hey hospitals will be taken on a stage further on future healthcare projects awarded to Laing O’Rourke and its consortium partners.

“We’re currently developing designs for the 19,000 sq m Clatterbridge Cancer Centre in Liverpool, due to start on site in June 2016,” said McArthur. “This will include extensive DfMA, but developing the technology and moving it on. The urban site is driving us more towards a completely unitized approach, to avoid disruption on the roads and complete construction within the two-year timeframe. In addition, we plan to use Smartwall, Laing O’Rourke’s fully prefabricated internal partition wall solution, for the first time on a UK hospital.”

In addition, DfMA will be implemented on a £270 million acute district general hospital for NHS Dumfries and Galloway. High Wood Health, a consortium that includes Laing O’Rourke and design partners Ryder Architects and NBBJ, was awarded the construction contract in March this year.

New products for the DITRA-HEAT range



Schlüter®-DITRA-HEAT has become popular with specifiers, installers and homeowners as the perfect all-in-one integrated solution for use under tiles and natural stone flooring.

The product provides time saving benefits when it comes to both installation and heat reaction time and its overall assembly uses less material therefore resulting in a lower overall height. Schlüter®-DITRA-HEAT does all of this as well as provide 5 other key features, uncoupling, crack bridging, CE marked waterproofing, vapour pressure equalisation and load distribution; ensuring tile and stone coverings stay crack-free and as good as the day they were installed.

Its unique studded uncoupling membrane and loose cabling make it an installer's dream, providing variation in size and layout plus extensive time saving benefits; whilst its low assembly height, of just 5.5mm, makes it versatile enough to suit any project including renovation, refurbishment and new build – it's even suitable for installation over problematic substrates.

And now the system benefits from even more flexibility thanks to a new feature rich touchscreen digital thermostat launched this year which allows the end user to have control over individual room temperatures.

The digital thermostat Schlüter®-DITRA-HEAT-E-R includes full touchscreen technology and provides two floor sensors, with the option of air temperature, ensuring climate control is balanced at all times and at only 5.5 x 5.5cm, blends easily into its environment. The thermostat comes ready to run straight from the box.

Also new for 2015 is the innovative Schlüter®-DITRA-HEAT-E-WS which provides electric heating within walls, offering a discrete, safer and

more practical alternative to traditional towel rails and radiators.

Available in complete box sets and suitable for use under tile or stone, the system is designed and balanced for easy and discrete installation. Using low surface temperature technology it outputs at 136 or 200w per square metre, ensuring comfortable and safe heating with the added benefit of CE marked waterproofing, uncoupling and crack bridging within a single 5.5mm layer.

Under wall heating can be combined with underfloor heating and together ensures greater heating outputs for large areas, as well as providing cleaner and more open plan living spaces. Furthermore, the matting and heating cable can be installed within a shower wall area for increased comfort and warmth as well as faster drying times.

For smaller rooms Schlüter®-DITRA-HEAT can act as the primary heating source, allowing users to maximise the limited space available and make the room feel larger and more comfortable to inhabit.

01530 813396 www.schluter.co.uk

enq.147

To design an award winning medical tap, we had to get our hands dirty.

To ensure that the Optitherm promotes best hygiene practice, we did our homework thoroughly.

We studied the regulations and carefully considered practical usage. The result is a highly specialised tap that promotes good hand hygiene compliance through reliability, safe water delivery and lever operation.

01505 321 455
www.horne.co.uk/optitherm

OB
 BUILDING BETTER HEALTHCARE
 AWARDS
 Best Interiors Product

OPTITHERM®
 The optimum in safety and control

HORNE

enq.148

Safety and comfort for Brent Council



When Brent Council in Greater London sought to fit out an extra care home facility in the Wembley area with suitable flooring, they wanted to ensure that the safety and comfort of the care home residents would be top of the bill. The overall project

would need some 400m² of new flooring throughout en-suites, shower rooms & assisted bathrooms. So, safety would be paramount in deciding which product to specify as the requirement would be for both wet and dry area. Contractor, Chelmer Group Ltd opted for Gerflor's Tarasafe™ Ultra H₂O vinyl safety flooring. Tarasafe™ Ultra H₂O is a popular choice for any applications where slip resistance needs to be maintained.

01926 622600 www.gerflor.co.uk

enq.149

On the Level – level access wet rooms



For those of us who have mobility issues, the bathroom is a place where expert design can help us to be as independent as possible. On The Level has 30 years experience in the design and manufacture of wet rooms with easy, safe barrier-free level access. Many architects, surveyors, occupational therapists, local

authorities and nursing homes are now familiar with On The Level's tried and tested approach to creating bespoke level access shower areas. The experts at On The Level are always happy to explain the product and give technical advice, on site if required, to help problem solve and devise solutions for specific projects. Contact the company for a chat about your unique project.

01525 373202 www.onthelevel.co.uk

enq.151



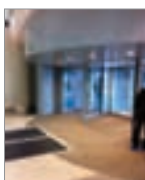
Changing Places in the healthcare industry

Hospitals are failing to provide proper facilities for thousands of out-patients and visitors, yet that could be transformed simply by installing appropriate toilets. One in 284 people in the UK need a Changing Places toilet. Yet of the UK's 2,300 hospitals, fewer than 15 have the 'bigger and better' accessible (disabled) facility. To help estates and facilities managers easily understand the need, the requirement and the criteria, Clos-o-Mat, one of the UK's leading disabled toileting solutions provider, has published a white paper: Provision of Changing Places Accessible Toilets in the Healthcare/Hospitals Industry. Available for download from the company's website www.clos-o-mat.com, the white paper covers the rationale behind a Changing Places toilet, quantifies the need to provide such a facility in healthcare establishments, and covers legislative and 'good practice' guidelines. Since the Changing Places concept was developed, over 500 have been installed across the UK, with Clos-o-Mat being the leading supplier.

0161 969 1199 www.clos-o-mat.com

enq.153

Meeting the needs of General Hospital



Southern General Hospital, which serves for the South-West of Glasgow, has chosen to work closely with Boon Edam to offer their patients, staff and visitors to the hospital a welcoming and reassuring entry to their hospital. By installing a bespoke Duotour revolving door with integrated curved corridors, the entrance to the hospital not only looks aesthetically pleasing but also serves as a multi-functional

entrance to the prestigious building. Users of the hospital are now able to flow more quickly and smoothly through this mobility hotspot. This project is totally unique as the overall structure and door arrangement was specifically designed by the company's design teams both in the UK and The Netherlands.

01233 505 900 www.boonedam.co.uk

enq.150

Rodeca helps Peterborough make recovery



Translucent cladding from Rodeca is featuring on Peterborough's new recycling plant. Work is drawing to a close on the installation of some 1,200m² of Rodeca's translucent cladding panels as part of Phase 1 of the £76 million Peterborough ERF (Energy Recovery Facility) project. The PC3550-10 Rodeca polycarbonate panels, at 50mm thick and 495mm wide and in

the duo-colours Kristall and Petrol, are being installed on all three phases of the two-year build by KGM Roofing for main contractor Interserve. They are capable of delivering U-values as low as 0.80 to 0.89 w/m²k.

01268 531466 www.rodeca.co.uk

enq.152

Writing is on the wall for unhygienic surfaces



The hygienic surface concept embodies the key criteria and recommendations that facilities managers need to consider when designing, installing and maintaining a sanitised environment. The walls play an important role in this concept, as getting this area of the site right will help to minimise contamination risks and ensure an unsoiled, functional and fit-for-purpose setting. To provide developers and facilities managers with a wall coating that meets these criteria, Flowcrete UK has developed Peran WW, a water based hygienic sealer that can be applied within clean room environments to provide a coloured gloss finish.

01270 753000 www.flowcrete.co.uk

enq.154

Wilo gets 20 20 Vision



Wilo will be making its debut at Vision in 2015 at Olympia. Wilo increasingly works closely with architects, designers and specifiers, and will be introducing visitors to its wide range of pumps and pumping systems solutions. In particular it will be showing its sector leading

Wilo-Stratos GIGA and the latest version of its Wilo-Stratos products, along with the support products it makes available to make selection of Wilo pumps simple. Visit the Wilo stand or the company's website for more information.

01283 523000 www.wilo.co.uk

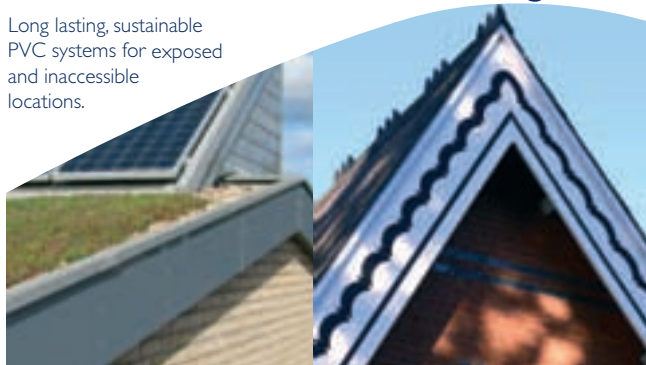
vision stand no NPZ

enq.155

Contemporary and Heritage

Roofline • Rainwater • Cladding

Long lasting, sustainable
PVC systems for exposed
and inaccessible
locations.



- Responsibly sourced and manufactured
- Maximum CSH points for new build
- Minimum lifetime costs for refurbishment

www.swishbp.co.uk

Swish
BUILDING PRODUCTS

Exhibiting at

VISION
THE FUTURE OF THE BUILT ENVIRONMENT

2-3 JUNE 2015
OLYMPIA
LONDON

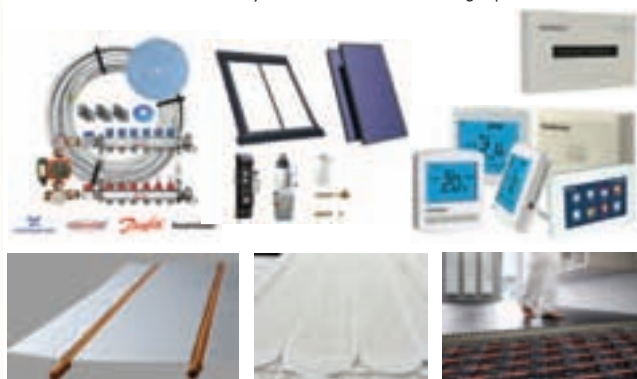
Visit us at stand No.12 - Register for FREE

enq.156



MADE IN BRITAIN QUALITY & SERVICE ALWAYS

Underfloor Heating Kits • Retrofit Underfloor Heating
Solar Kits & Cylinders • Push Fit Plumbing Pipe



Visit us at stand 24a

01302 727 182

PLEASE CONTACT US TO DISCUSS YOUR REQUIREMENTS

also available at www.ufhi.co.uk
specialists in all your heating & plumbing needs
Dorset 01912 644 880
LONDON 0203 610 0000

enq.157



Leak Free Shower Enclosures, Beautiful for Life

- Completely Leak Free
- Beautiful
- Strong
- Durable
- Simple and quick to install
- Virtually maintenance free
- No tiles

- No grout
- No silicone inside the unit
- No Leaks!

Visit us at Vision London, 2-3 June 2015 at London Olympia
where we'll also be giving a seminar on the benefits of
modern composites.

Call our sales line today on **01204 389 824** or email info@envirotecbathing.com

Visit the website for more information www.envirotecbathing.com

Envirotec
BATHING

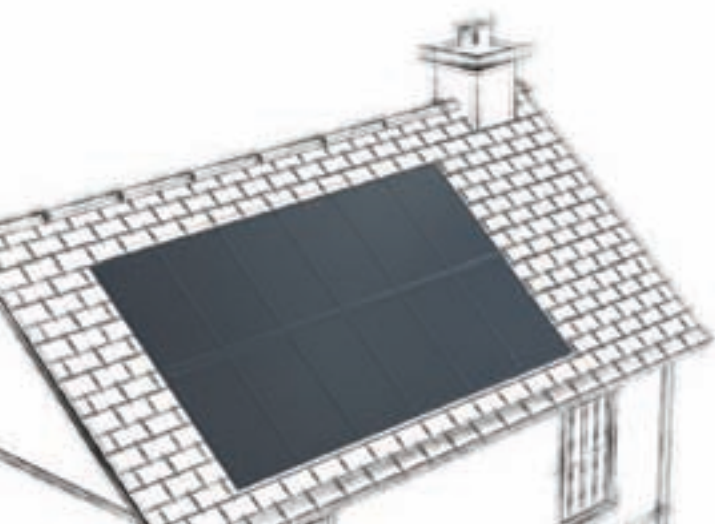


Made in Britain

vision stand no 104

enq.158

THE SOLAR SYSTEM YOU'VE BEEN WAITING FOR



SunStation.

vision stand no 80

Profit from great-looking solar.

Discover the revolutionary solar system that seamlessly fits into the roof for the same cost as on-roof solar.

Visit gosunstation.com to see for yourself.

 Brought to you by
solarcentury

reader
enquiry
159



SunStation

Vision London: Architecture under a new light



Not to be missed, Vision London is an important new event for architects, taking place at London's Olympia in June

Showing the latest building products and technology for design, interiors, art and architecture, Vision London opens for the very first time, heralding 'everything innovation' at London's Olympia, June 2 and 3. You can witness first hand the raft of products and solutions on show covering the wider range of building, development and legislative topics in house building. The show is specifically for architects, accordingly unleashing new products and services from its heart.

Vision London will bring communities together to discuss, debate and showcase the latest innovations and developments in architecture, design and the built environment. It boasts a wealth of new and valuable features including highly informative and worthwhile seminars, workshops and RIBA accredited CPD sessions for architects. The comprehensive speaker programme features some 100 influential industry figures covering a range of topics under the four main themes of Future Materials & Systems, Technology, Innovation in Architecture & Design and Building for Health & Wellness.

Some seminar highlights for architects include New London Architecture's "What is London made of" powered by Pecha Kucha, a series of 20 minute presentations on the new materials that are improving the efficiency, responsiveness and design of London's buildings. The Design Council will also be running a session on "Active by Design" which explores the causes and

consequences of the epidemic of inactivity, what city leaders can do to make physical activity integral to urban life, and examples of active design from around the world. And don't miss the RIAI's panel discussion on "Future Materials in Irish Design" with leading Irish architects Angela Brady, Pol Gallagher, Niall McLaughlin and Architecture Ireland Editor Dr Sandra O'Connell.

"Vision London will showcase the very latest innovations materials, products and technologies but importantly it will also enable a wide cross-section of the construction community to discuss and debate how we can create the future built environments in which we will all live and work," says Vision Director, Michael Costain. "The high level of interest we're experiencing in Vision London demonstrates that no other event in the UK provides this focus and we look forward to delivering an educational, inspiring and thought provoking two days."

Features that make the difference...

Packed with innovation, the New Product Zone is dedicated to single, innovative products from a range of companies for the architectural, specification and client audience. The feature provides the opportunity to get up close and personal with the most advanced solutions across the built environment.

Where:
Olympia London

When:
2-3 June



Look out for...



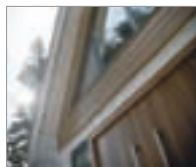
Acoustic GRG (stand 23a) are a specialist UK manufacturer of acoustic products for architectural use, including slatted and perforated acoustic timber, fabric wrapped panels and bespoke designs. Acoustic GRG offer support to architects and designers to get the best use from their products, allowing them to specify RPG with confidence.

enq.275



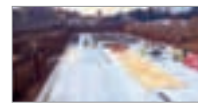
Frontier Pitts (stand NPZ) manufactures Security Gates, Automatic Barriers, Roadblockers, Bollards, Pedestrian Control Gates & Turnstiles, and the Anti Terra Hostile Vehicle Mitigation (HVM) range which has been successfully IWA14 & PAS68 impact tested. Frontier Pitts provide a range of services including design, site surveys, manufacture, installation and maintenance.

enq.276



Swish Building Products will be exhibiting at Vision showcasing their full range of products and focusing on how they can be used on different styles of properties. The low maintenance, longevity and functionality of PVC building products in various applications will be on display on stand 12.

enq.277



Newton Waterproofing Systems is launching its innovative new waterproofing membrane HydroBond at Vision London 2015. The revolutionary self-healing properties of this Type A external waterproofing barrier have already been proven, with over 50,000m² installed across the UK and Europe. Visit us in the New Product Zone on stand NPZ10.

enq.278



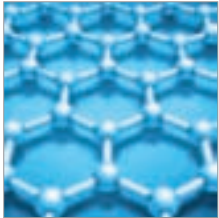
UFH1 (Stand 24a) is a specialist in all aspects of underfloor heating. The company design, distribute and install underfloor heating for all projects; one room kits, up to schools, nursing homes, places of worship etc. It's equipment is of the highest quality and yet the best value for money in the UK. The company can cater for new build projects as well as retrofit systems.

enq.279



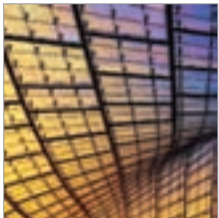
The dedicated Technology Zone specifically features architectural, engineering and design software, as well as building information modelling solutions. Up to date solutions in 3D printing alongside the latest in augmented reality are on show, complementing the show's revelatory Technology Talks.

Entrepreneurs and small businesses drive innovation and new product development. Start-Up Central within Vision London specifically showcases new businesses and their products, services and solutions to high profile architects, specifiers and clients.



The European Copper in Architecture Awards demonstrate exemplary and innovative uses of copper in contemporary design, providing wider exposure of the best in architectural projects around Europe. At Vision London, shortlisted 2015 competition entries are on display and you can even vote for your choice of winner of the Public Choice Award at www.copperconcept.org.

Check out leading RIAI Irish architects' built and unbuilt projects within the UK at the RIAI exhibition within Vision London, organised by the institution's London Forum. The display highlights the variety and size of buildings from homes to universities celebrating the Year of Irish Design 2015 - an Irish Government initiative promoting Irish design worldwide. Running alongside the exhibition will be "7 Hands - Inspiring Crafts from West Cork", showcasing designs in materials from



bog oak, metal, clay ceramics and glass to greenwood chairs.

As well as highlighting copper, concrete, steel and aluminium samples and providing innovative examples of timber and more traditional materials such as stone and straw, the Future Materials focal feature is set to inspire and challenge thinking in developing the future of the built environment.

Future Housing is a zone tackling current housing issues, displaying solutions from offsite manufacturing to space saving buildings, alongside projects and works from emerging architects. Future Housing within Vision London looks to solve current housing problems across cities and rural environments.

With Health & Wellness at its heart, Vision London also tackles how thoughtful architecture and design, and a joined up approach to the built environment can create healthy spaces, healthy buildings and ultimately lead to a healthier society. Wellbeing of the working population is key in helping to create a more productive economic environment for employers up and down the country.

Register now for Vision London at: www.visionlondon.com/registration. Entry to the event and the full programme of seminars is free of charge if you register in advance. You can also check out the full seminar programme on the Vision London website.

vision stand no NPZ

FRONTIER PITTS

VISION 3-8 JUNE 2015
CENTRAL LONDON

REGISTER YOUR INTEREST TODAY

Sliding Gates, Hinged Gates, Bi-folding Gates, Automatic Barriers,
Road Blockers, Bollards, Pedestrian Control Gates & Turnstiles.
The IWA14 & PAS 68 Impact Tested Terra Range

www.frontierpitts.com 01293 422800

enq.160

vision london stand no 23a

For fine acoustic surfaces, supplied and fitted, look no further.

Project: Winchester College Music Building Architects: BHM

Products: RPG Absorber suspended ceiling panels (pictured) FlutterFree acoustic timber to foyer ceiling, bespoke curved canopies, 1600mm diameter acoustic discs & RPG Harmonix diffusers in FRG.

Call: **01303 230944** www.rpg-europe.com

RPG The Sound of Innovation

RPG Europe is a trading name of Acoustic GRG Products Ltd.

enq.161



Leading the way in Structural Waterproofing

Newton Waterproofing Systems' new 403 HydroBond is a revolutionary Type A barrier waterproofing membrane which uses contemporary materials and technologies to provide a unique combination of qualities:

- Full mechanical bonding to concrete
- Self-healing properties
- Ease of application
- Flexibility to withstand movement

BDA Certificated and NHBC Approved, HydroBond can be used on any below ground or earth retained structure from domestic basements to the largest civil engineering projects.

vision stand no NPZ10

Over 50,000m²
of HydroBond
successfully installed
throughout Europe

Complete Waterproofing Solutions for Commercial and Residential Structures

Newton is the UK's leading designer and supplier of complete structural waterproofing and damp proofing solutions for all types of domestic, commercial and civil engineering projects both new and existing.

Protecting Buildings Since 1848

T: 01732 360 095

W: www.newtonwaterproofing.co.uk

E: info@newtonwaterproofing.co.uk

reader
enquiry
162

JN
NEWTON
WATERPROOFING

HIGH QUALITY WINDOWS AND DOORS

SCANDINAVIAN DESIGN SINCE 1954

We have developed and manufactured windows and doors since 1954 and today our product range covers almost any imaginable need or architectural style.

Visit our website rationel.co.uk or give us a call on 01869 248181

ns

london build stand no B34



rationel
WINDOWS & DOORS



DOMUS
(timber)



ALDUS
(timber/aluminium)



enq.163



Multimesh UK

making wirework for you

london build stand no H14



+44 (0)1744 820 666
enquiries@multimesh.co.uk
www.multimesh.co.uk

For building contractors and metal suppliers, the vast range of stainless steel welded mesh panels, gratings and guards we stock here at Multimesh – plus our efficiency in delivery – makes us a first choice supply partner.

For architects, surveyors and structural engineers, it's our ability to create customised designs – with quality and innovation built in, which makes Multimesh their first choice supplier.




enq.164

Focusing on the construction boom at London Build 2015



London Build 2015 is the leading new construction exhibition to focus on the construction boom in London and the South of England. The event will take place at the O2 London, accommodating in excess of 200 international exhibitors and thousands of quality attendees showcasing the latest projects, developments, and investment opportunities in and around the Capital



Both days of the show will see over 50 top level speakers from across the industry and local government, discussing the latest strategies & project forecasts through presentations and interactive panel discussions as well as 36 hours of CPD accredited training workshops.

The first day of London Build is shaping up to be a truly spectacular affair. The conference venue will be opened by Jamie Ratcliff from the Greater London Authority who will be speaking about the construction boom and opportunities that are coming up and ongoing in the Capital.

Following on from that Peter Shipley will be speaking about the need for the Thames Tideway Tunnel as part of the programme which will also see Nigel Hardy from TfL speak about the Road Modernisation Plan, and some outstanding panel discussions which will be announced closer to the time.

As day one of London Build 2015 draws to a close, attention switches towards the London Construction Awards, hosted at Indigo at the O2. The Awards will be recognising achievements by those that have played a defining role in delivering exceptional quality, innovation and service; and in driving the London construction industry forwards.

The evening also features a Gala Dinner, exclusive presentations from industry leaders, a wide-array of live entertainment, and comedy-sets from celebrity acts, including the superb Jimmy Carr.

Not all things are made equal, but day two of London Build will be just as good as the first.

As our exhibitors and many attendees return from a sparkling evening of awards and entertainment, the London Build conference kicks into overdrive. Simon Wright from Crossrail will be speaking about building Crossrail, Balfour Beatty's Head

of Sustainability, Dr Paul Toyne, will then be speaking about the role of construction in delivering legacy projects. The final afternoon of London Build will see conference sessions continuing with a presentation from Richard Griffiths, the director of policy and communications at the UK Green Building Council.

The conference sessions will be complimented over the 2 days by a number of CPD accredited training workshops, situated across 3 workshop venues within the exhibition. These workshops will be presented by special guests and regulars of the CPD roadshow circuit, including RIBA, BRE Global, Tata Steel, CompeteFor, BSRIA, Supply Chain Academy and many more.

The event is officially supported by the London Chamber of Commerce and Industry (LCCI). As part of this partnership the LCCI will be moderating two panel discussions at London Build 2015 on the topics of skills shortages and regeneration. LCCI Chief Executive, Colin Stanbridge will be moderating both sessions, which will feature Richard Threlfall, KPMG, and Debbie Akehurst, Land Securities as panellists with several more to be announced.

Stanbridge said: "LCCI are delighted to be officially supporting London Build 2015. We are very aware of both the successes and issues in the property and construction sector, particularly the looming skills gap, which was revealed in our recent report with KPMG – Skills to Build. As London's most representative business organisation, with members large and small, we have a policy agenda underpinned by research reports, quarterly surveys and member committees and housing, infrastructure, land supply and building in the capital are an important part of that agenda."

In addition to the LCCI, the Royal Institute of British Architects (RIBA), Royal Institute of Chartered Surveyors (RICS) and Chartered Association of Building Engineers (CABE) are supporting London Build 2015 as lead event partners, providing fantastic support as well as getting involved in the conference, workshops and awards.

London Build 2015 will be a great event for the whole industry, and really does have something for everyone. Best of all the conferences, training workshops and exhibition are completely free to attend, so sign up today at www.londonbuild-expo.com to ensure you don't miss out!

Look out for



Reverberation noise is especially common in a building where there are hard surfaces. Sound waves bounce and reverberate against hard walls, floors and ceilings creating noisy environments. The solution is to add absorption to the areas that have reverberation noise issues. **Hush Acoustics Absorber Panels** for ceilings and walls will help to resolve the problem. Find out more by visiting stand C14.

enq.280



With over 30 years' experience and 30,000 state-of-the-art square feet at Multimesh's disposal there's nothing it does not know about wire – and, thanks to its combination of cutting-edge technology with time-honoured craftsmanship, there's literally nothing it can't make. So let **Multimesh (stand H14)** make wirework for you.

enq.281



Rational Windows (UK) (Stand B34)

Rational manufacture energy saving timber and aluminium clad timber windows and doors of premium quality in terms of both comfort and security. The company developed and manufactured windows and doors since 1954 and today our product range covers almost any imaginable need or architectural style.

enq.282

HUSH ACOUSTICS

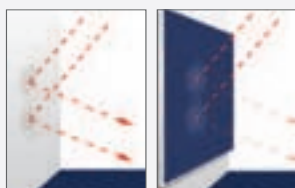
ACOUSTIC SOLUTIONS
FOR REVERBERATION
NOISE CONTROL

Reverberation problems can affect many types of buildings, both new and old. In educational establishments, excessive background noise can adversely affect productivity levels. In hospital wards reverberated noise can cause discomfort among patients.

The solution -
Hush Absorber Range

- Eliminates echoes and sound reverberation
- Available in a range of stylish finishes
- Class A and Class C Absorber Panels using specially formulated acoustic foam
- Ideal for schools, hospitals and other public areas
- Other absorbing products such as notice boards, desk dividers and baffles are available

See us at
London Build 2015
Stand C14



HUSH ACOUSTICS

TEL: 0151 933 2026

EMAIL: info@hushacoustics.co.uk

www.hushacoustics.co.uk

44 Canal Street, Bootle, Liverpool L20 8QU
Offices also based in London and Yorkshire

@hushacoustics
 hushuk.acoustics

HUSH ACOUSTICS
Acoustic Material Manufacturers

london build stand no C14

enq.165

Marmox sets out its stall at London Build



On show during next month's construction exhibition at the O2 Arena will be a comprehensive selection of the products manufactured by Marmox. Marmox can be found on stand D84 which will be manned by the company's technical sales staff. They will be ready to demonstrate the benefits of its

advanced insulation products, substrate boards and waterproofing systems, as well as to offer advice on visitors' individual project requirements. Amongst the products available from Marmox are its widely specified Multiboard which can be used as part of a Fabric First approach to constructing exterior envelopes, as well as in wet areas; and SoundBoard with its enhanced acoustic performance.

01634 835290 www.marmox.co.uk

london build stand no D84

enq.166

New generation of GRAFT products



Visitors to London Build will be able to get their first look at the new, distinct packaging for the award winning GRAFT range and see the recently launched GRAFT Product Assistance app on Polyseam's stand, No D18. Polyseam, the company behind the range, has responded to customer feed back and in addition to refining the product has simplified the selection process with the packaging. Orlando Salina, marketing manager explained more: "The range is now packaged in distinctive colour coded tubes, each bearing clear icons to assist with product selection and showing key attributes. We will also be demonstrating and encouraging people to download the new GRAFT Product Assistant app." Visit www.polyseam.co.uk for more.

01484 421036 www.graft.co.uk

london build stand no D18

enq.167



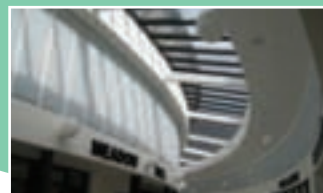
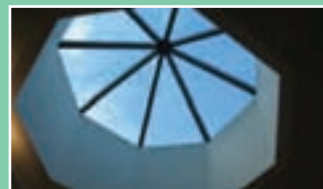
Whitesales
Rooflights & more...

High quality rooflights that are clearly the right solution

london build stand no A72



With over 20 years' experience in the manufacture and distribution of rooflights, Whitesales can provide the right product for any application. Our innovative, environmentally-friendly rooflights are thoughtfully designed to last the test of time...



01483 271371
design@whitesales.co.uk
www.whitesales.co.uk

enq.168

Your One Stop for the Big Ideas in Sustainability at the Eco Technology Show



How do you tell the difference between greenwash and a really good idea that's going to add long-term value to a project and not blow the budget? In an ideal world you'd have the opportunity to speak to the thinkers, the doers and the makers all under one roof: and that's just what is on offer in Brighton next month



Where:
**Amex Stadium,
Brighton**

When:
11-12 June

Brighton's Eco Technology Show is a completely free two-day exhibition and conference spread across three seminar areas, five meeting rooms and a communications and networking hub.

The event, now in its fourth year, attracts interest from leaders in industry and government departments, who make up an impressive panel of expert speakers and panel leaders. Setting the scene with keynote speeches will be Andy Lewry, principal consultant at the Sustainable Energy Team, BRE, and Lord Rupert Redesdale, founder of the Energy Managers' Association.

As well as seminar areas and a show floor packed with 120 exhibitors, this year's event also hosts an Innovation Zone where some of the newest low carbon products and solutions are to be exhibited for the first time. Examples include the Waterblade adaptor which will drastically reduce the water flow through taps, flexible solar panels and a robot that gets into tight spaces to insulate properties.

Other highlights for Architects include over 70 free seminars and open forums including:

- **How to achieve an affordable Code 5 home:** Learn from Nicola Thomas, director at Arch Angels Architects on how to build a home that meets stringent environmental performance criteria can be made affordable
- **Achieving part L and beyond in the face of regulatory uncertainty:** Martin Russell of RICS explains how to comply with regulations when it comes to the conservation of fuel and power
- **Retrofitting domestic properties:** Hear from speakers of the Low Carbon Trust and learn about the 'Kwik Fit' approach to domestic retrofit from Energy Express MD Philip Strong
- **How to engage home owners and buyers more:** Phillip Sellwood, Energy Saving Trust CEO, on his firm's research into consumer attitudes to renewables and energy efficiency

Look out for



This toilet needs no water, sewage outlet, or plumbing, and can be put anywhere. It's a dry separating toilet mimicking the human body. Urine goes one way and solids the other. The solids, produce compost, urine, can be used on the compost heap, soaked or drained away. There is no smell and no expensive problems.... Simplicity at its best. Visit EcoToilets at stand E29.

enq.283

- **Renewable heat – the solutions:** Find out how the Government's Renewable Heat Incentive scheme pays households for renewable energy they generate from Patrick Allcorn of the Domestic RHI
- **Your Energy Sussex, making energy work for residents and businesses:** Learn how YES is developing a pipeline of energy projects in liaison with businesses & community organisations across Sussex. Colin James, director of Place, West Sussex County Council

Electric vehicles (EVs) will be promoted by actor, comic and writer Robert Llewellyn. He played the mechanoid Kryten in the hit sitcom *Red Dwarf* but is now perhaps known for his role as presenter of *Scrapheap Challenge* and as an EV evangelist. His presentation on electric vehicles and community car clubs



© Arch Angels

is sure to be particularly popular, as will the opportunities to look over the latest electric vehicles from Brighton Mitsubishi and Chandlers Brighton BMW.

All of the talks at the Show are free and there is no need to book, but you may find it worthwhile to visit the show's website so you can plan your day. If you pre-register, you'll also be assured of fast track entry on the day.

Eco Technology Show Director Nicola Gunstone says: "It's an exciting time to be part of the profession that can turn the rhetoric into reality; and the Eco Technology Show is the ideal learning and networking opportunity for the new generation of architects."

Please register now for your VIP entry and more at: www.ecotechnologyshow.co.uk.



eco tech show stand no E29



THINK TOILET

THINK DIFFERENTLY



CUT OUT THAT WATER WASTAGE AND INCREASE YOUR SUSTAINABILITY CODE TO 5+

FIT A DRY TOILET, SAVE THOUSANDS OF ££££'S, NO SMELLS, NO WASTE ENVIRONMENTALLY CLEVER & USER FRIENDLY

CALL :01327 844442

www.eco-toilets.co.uk

enq.169

adf architects datafile



REGISTER ONLINE FOR...

In-print magazine • Digital magazine
Newsletter • Daily digests



www.architectsdatafile.co.uk

Eco & Sustainable Products Showcase

In this issue we look at recent trends in eco and sustainable products



Schiedel Chimney Systems Ltd. proudly presents its new range of animations to guide your installation. The first segment in its range is the Pumice Chimney System Designed for Wood Burning Stoves. The Schiedel Isokern DM36 chimney system has been designed to optimise the performance of smaller output stoves & inserts, which have an internal outlet diameter up to 150mm. The DM chimney system is also available in larger diameters.

enq.171



Traditional timber decking can be become very slippery – Gripsure manufactures the widest range of non-slip timber decking in the UK. With a fantastic choice of profiles and finishes in both softwoods and hardwoods. Use Gripsure to find the decking that's right for your project, to compliment your design. Gripsure's boards achieve outstanding slip resistant results when tested under BS7976. Gripsure only uses FSC timber sourced from sustainable forests.

enq.170



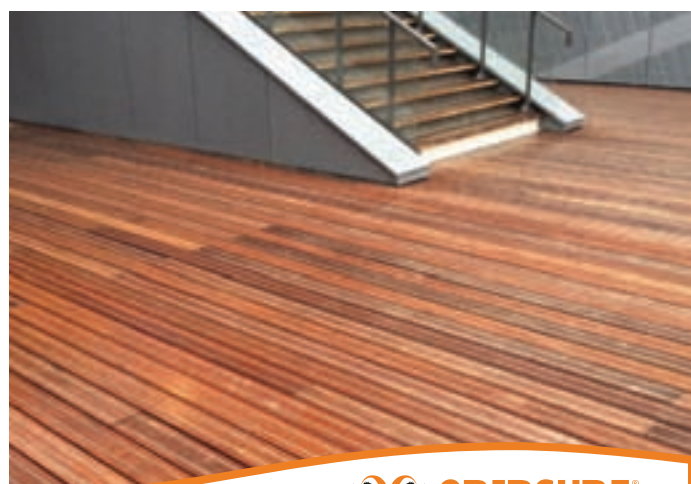
Carron is pleased to announce an increased efficiency when producing it's cast iron radiators. Coupled with proven results in using othe company's radiators with ground source heating and the natural longevity that comes from using a robust and ultra-strong material like cast iron, efficiency is high on the agenda at Carron.

enq.176



The Biodigester 'T' range caters for 6-42 people and larger Biodigesters are available for up to 2,000 people. The 'T' range Biodigester has been tested to EN12566 Pt 3 and has a CE Mark. Owners are impressed by the limited maintenance required, infrequent emptying intervals and the 'Odour Free' aerobic process. Full details may be obtained from Burnham.

enq.175



The UK's leading supplier of non-slip decking

We produce a wide range of non-slip timber decking in both soft and hardwoods, suitable for residential or commercial projects.

You can find us on RIBA Product Selector.

www.gripsure.co.uk

[@GripsureUK](https://twitter.com/GripsureUK)

+44 (0)1726 844616

info@gripsure.co.uk

enq.170

Absolut XPERT System Chimney



Designed for the
new generation
of air-tight
homes

1st Passivhaus certified System
No Thermal Bridges
Integrated combustion air shaft
30 year functional guarantee



Air-tight homes and modern heating technologies place enormous demands on a chimney system. For example, energy efficient systems with low flue gas temperatures can lead to condensation. With its integrated and insulated combustion air shaft, Absolut XPERT from Schiedel is the ideal system to avoid damage to the fabric of the building due to condensate, while achieving maximum efficiency and warmth. Its profiled liner also makes it capable of withstanding chimney fires and corrosion. Easy to install and Biomass compatible its the Absolut XPERT solution for stress free heating. To find out more about Absolut XPERT, visit us at www.schiedel.co.uk

CE EN 13063-1/2/3

Part of the BRAAS MONIER BUILDING GROUP

enq.171

Gypsum fibreboard EPD unveiled by Fermacell



Specialist building panel manufacturer **Fermacell** has revealed that its gypsum fibreboards have been awarded an Environmental Product Declaration (EPD). The certification (EPD-XEL-2009411-D) follows an independent* life cycle assessment that reviewed raw material extraction and energy generation, raw material transport and the actual production of coated gypsum fibreboards including packaging and disposal. The Fermacell boards were evaluated for renewable and non-renewable primary energy and the potential for global warming, acidification, eutrophication, as well as for photochemical ozone creation and ozone depletion.

*By Institut Bauen und Umwelt e.V.

enq.172

Euroheat plays vital role in new handbook

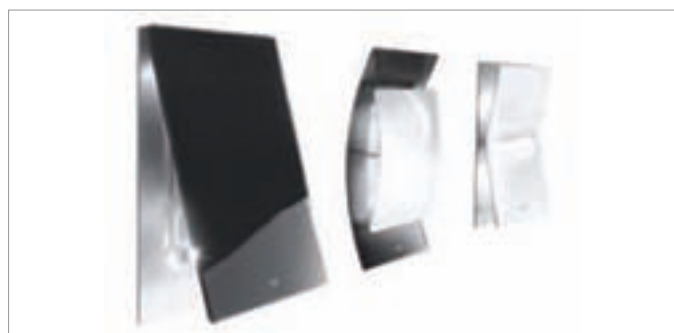


Installers and property owners alike can now learn more about domestic renewable energy in a new easy-to-follow manual, *The Renewable Energy Home Handbook*, which was written in close collaboration with natural energy provider, **Euroheat**. Available now, the manual could prove a valuable sales tool for renewable installers looking to encourage customers to make the switch to 'green' energy, detailing the pros and cons of renewable energy products;

from biomass and solar pv to wind turbines and insulation. *The Renewable Energy Home Handbook* is published by Veloce Publishing, priced at £24.99, and is available from all good on and offline bookshops.

01885 491112 www.euroheat.co.uk

enq.173



Sweeter smelling warm air from Specflue

As an addition to its range of air pellet stoves, **Specflue** is now offering the first design diffusers. Supplied as part of the MCZ Comfort Air® range, the diffusers are fitted to air distribution outlets and offer a true design piece. They can be integrated into any air-vented system and their exclusive light and aromatherapy functions make them unique to the market. Comfort Air® can effectively carry the warm air into other rooms up to a distance of eight metres. Unlike traditional systems, in which the jets must be positioned at the top, the diffusers allow the jets to be freely positioned, giving architectural and aesthetic advantages. A tank located inside the diffuser contains water that vaporises when the hot air exits the system, ensuring balanced humidification of the room. Fragrances and essences can be added to the tank for a pleasant aromatherapy effect. The extractor on the back of the hot air exit diffuser allows the heat produced by the stove to dissipate rapidly and uniformly, giving a 30 per cent increase in the heat released compared to traditional systems, ultimately providing energy savings to the householder.

0800 9020220 www.specflue.com

enq.174

adf architects
datafile



REGISTER ONLINE FOR...

In-print magazine • Digital magazine
Newsletter • Daily digests



www.architectsdatafile.co.uk

SEWAGE TREATMENT PLANTS FOR PROPERTIES WITHOUT MAINS DRAINAGE

- Simple process
- Simple installation
- Economical maintenance
- Odour FREE Operation

AIR BLOWERS AND SPARES

RAINWATER HARVESTING

Tel: 01278 786104
Fax: 01278 793380
Email: sales@biodigester.com
www.biodigester.com
Burnham Environmental Services Ltd.

Populations 6 to 2,000

enq.175

THE ART OF HEATING



BESPOKE.
CLASSIC.
ELITE.


The Sleeping Swan, Hand Polished

reader
enquiry
176

For Stockists Contact:

T: 0808 129 2224 | E: sales@carron.uk.net | W: www.carron.uk.net





We Build It Ltd
simple solution sewage systems

The Bio-Pure

- Suitable for homes without access to mains drainage
- Discreet solution to on-site sewage treatment
- 10 models in the range with a capacity up to 50pe
- CE Marked and EN 12566-3 Certified
- Uses the extended aeration method to treat sewage
- 96% efficiency allows a typical 3-5 year emptying interval
- Visually unobtrusive and odourless
- 25 year warranty on GRP & 2 year warranty on the air pump
- Deal direct with the UK Manufacturer

0800 731 9421 www.webuildit-ltd.co.uk

enq.177

SIGA Slate celebrates 10 years with giveaway



Both roofing contractors and architects submitted an array of their work in response to the SIGA Slate twitter competition #loveSIGAslate. Deemed a great success, the judging panel, consisting of esteemed industry experts, selected entries that best depicted the aesthetic beauty and longevity of roofing slate across the UK. The winners of this competition all helping to celebrate the 10 year Anniversary of SIGA Natural Slate are: 1st Place winner of a slate experience trip to Spain, for 3 days, for 2 people – Neil Wilkinson Roofing in Teeside and Durham; 2nd Place winner of a 16GB iPad Air – G Baker Roofing in Maidstone and 3rd Place winner of £50 Capital Bonds Vouchers – Hereward Roofing in Peterborough.

enq.178

Saniflo's Professional Range Solutions diagram



With a growing trend for multi functional commercial buildings creating a demand for clever plumbing solutions, the experts at **Saniflo** have designed a new graphic illustrating how the Saniflo professional range meets the need for robust products in demanding situations. The diagram shows drainage solutions for a four storey commercial building with gym, offices, a cafe, WC facilities and showers and suggests a combination of Saniflo pumps and macerators to be used to guarantee heavy, continuous use anywhere a water supply can reach. The Professional Range Solutions graphic is available from Saniflo stockists across the country.

020 8842 0033 www.saniflo.co.uk

enq.179

adf architects datafile



REGISTER ONLINE FOR... In-print magazine • Digital magazine • Newsletter • Daily digests

www.architectsdatafile.co.uk

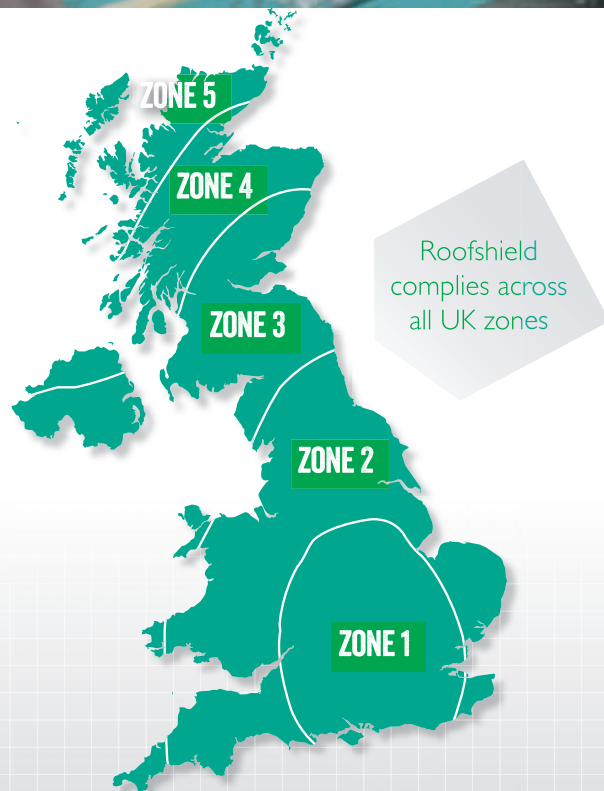
BS5534 COMPLIANT



Roofshield is the highest performing breathable roofing membrane on the market and, following **independent testing**, complies across all of the UK wind zones as defined in the new BS5534.

The new Code of Practice introduces a single test for the measurement of the wind uplift resistance of underlays, which all testing bodies will follow to allow for greater transparency and consistency.

ROOFSHIELD
MEETS THE CODE OF PRACTICE
FOR ALL UK PITCHED ROOFS
Specify with complete confidence



5 [out of 5]
Number of UK zones
Roofshield can
be used*

£2.55
Extra savings to be made
per SQ. Metre compared to
competitor products.



No tape required
in any zones

*On tiled roofs in wind zones 4 and 5 (up to a batten gauge of 345mm) an 11mm counter batten is to be used on top of the underlay prior to the installation of the tile battens. This batten is not required when using timber sarking boards as per Scottish practice.

For more information please visit:

www.proctorgroup.com/roofshield | contact@proctorgroup.com

reader
enquiry
180

proctor
GROUP LTD

This year's UK Roofing Awards finalists



With less than a fortnight to go until the NFRC UK Roofing Awards 2015, which will be celebrating its 10th Anniversary, people can now find out more about this year's finalists projects. Since the Awards began in 2006 the range of projects that have reached the finalists stage has been

broad – from hotels to fairy tale castles and modern architectural wonders to listed properties; the list goes on. This year is no exception. To download your free copy of the pre-awards supplement or for more information on the UK Roofing Awards head to the dedicated website.

020 7638 7663 www.nfrc.co.uk/roofing-awards-2015

enq.181

SIGA 32 – Approved alternative to Welsh slate



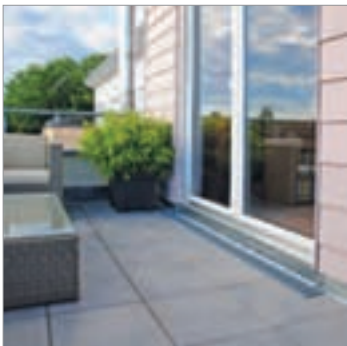
SIGA Slate was carefully selected for the renovation of Hounds Road, a private residential property in Chipping Sodbury. The roofing renovation took place on an old stone farmhouse and storage building, and was carried out by Cains building services Ltd of Kingswood, Bristol. In

total, approximately 4,200 500x250 slates were laid over a 210m² area. SIGA's take off service was utilised to assist with quantities and ensure accuracy. Due to the type of building being renovated, longevity of the slate used was an essential prerequisite in the decision making process. SIGA 32 provided this, with its warranty of 75 years, backed by SIG, a FTSE250 company, and its T1S1A1 rating.

01480 466777 www.sigaslate.co.uk

enq.182

Your flat roof deserves the BauderVIP treatment



Flat roof manufacturer **Bauder** launched its state-of-the-art Vacuum Insulation Panel (VIP) at this year's Ecobuild in March, as part of the show's Big Innovation Showcase. Designed to provide high thermal performance in areas with limited height, Bauder VIP is ideally suited for terrace and balcony applications. The Bauder insulation panels are certified under a European Technical Approval and can be used in conjunction with other Bauder insulation boards to enhance U-values. On a dense concrete deck with a suspended ceiling, Bauder VIP needs to be just 60mm thick to achieve a U-value of 0.18W/m²K compared with 120mm for a PIR equivalent, meaning a staggering 50 per cent reduction in thickness. The exceptional insulating properties achieved by Bauder VIP is due to its high performance vacuum silica core. This silica is encased by a multi-layer composite aluminium foil, then the air is removed from the silica to create a vacuum where only radiation can pass through it. The insulated panel is protected on the underside with a 3mm thick rubber granulate mat and on the upper surface with 17mm Bauder PIR insulation. Unlike any other vacuum insulated panel in the market both protective layers are bonded to the vacuum core to provide one complete encapsulated panel, making it incredibly quick, easy and cost-effective to install.

01473 257671 www.bauder.co.uk

enq.183

bluroof

ABG **bluroof** is the latest thinking in roof design. It utilises the roof area for stormwater storage required as part of a SuDS design.

Storing stormwater within the roof offers many advantages:

- No land take for SuDS landscaping
- No excavation for SuDS underground stormwater storage tanks
- Reduced roof detailing and penetrations

To discuss how bluroof could work on your project contact our dedicated **bluroof** team.

t 01484 354826 **w** www.abgltd.com

creative
geosynthetic
engineering

enq.184

New clay roof tile for heritage properties



Tudor Roof Tile Co Ltd, one of Britain's foremost independent handmade clay roof tile manufacturers, has introduced a mellow earth tone into its standard range of peg and plain tiles. Known as 'Weathered Earth', this subtle shade has a depth, which is ideally suited to restoration and heritage

styled projects as it helps re-create the mature and time-worn appearance of clay tiles that have naturally darkened with age. The Weathered Earth tone can also add distinction and individuality to traditional roofs, particularly when used alongside Tudor's existing natural colours which include: Medium Antique, Dark Antique, Red Antique, Sussex Brown, Sussex Red and Jubilee.

01797 320202 www.tudorrooftiles.co.uk

enq.185

Klober air-open underlay for performance



With a water vapour resistance of 0.03 MN/sg, **Klober Permo**® air is approved by the NHBC for use without supporting high level ventilation. The BBA-certified, air-open underlay has consistently proved to be the most breathable membrane available and prevents formation of condensation in the roof space during a building's critical drying

out period. Permo air has also been independently tested for wind uplift by the BRE which found it to be suitable for use up to Zone 5 on the recently introduced BS5534 wind speed map (with laps taped or battened in zones 4 and 5).

01332 813050 www.klober.co.uk

enq.186

New age roofing technology from Oakland



Traditional flat roofs have long been the bane of the building industry. Bespoke building and refurbishment company, **Oakland Projects**, has introduced a new concept in flat roofing. Paul Sundborg, Operations Director of Oakland Projects, explained. "We have been installing super light yet extremely strong fibreglass flat

roof structures that are so reliable and leak free that we can also fit them with attractive skylights providing an extra ambience to an otherwise plain roof setting. Fibreglass roofs can be quickly and cleanly installed by our experienced fitters in much less time than traditional but old fashioned felters."

www.oaklandprojects.co.uk info@oaklandprojects.co.uk

enq.187

VMZINC roof for Cambridge Uni project



A VMZINC standing seam roof in QUARTZ-ZINC® has been installed on the £6.8 million Ash Court student accommodation project at Girton College Cambridge. The new development, designed by Allies & Morrison, is an extension to the existing Grade II-listed college buildings and comprises 50 en suite bedrooms, a fitness centre and an indoor swimming pool. Passivhaus principles were followed in the energy-efficient design following ambitious environmental targets set by the college. Use of triple-glazed windows, heat recovery ventilation systems, photovoltaics, ground source heat pumps and an upgraded heating system resulted in RIBA Special Sustainability and Green Apple awards.

01992 822288 www.vmzinc.co.uk

enq.188

Hunter Douglas showcases innovation



A key element of the multi-million pound regeneration project at the Daedalus airfield in Hampshire is CEMAST Fareham - Centre for Engineering and Manufacturing Advanced Skills – for Fareham College. The state-of-the-art centre, designed by architects Perkins Ogden, features 670m² of the

Hunter Douglas solid wood linear open ceiling system in fire treated Siberian Larch. This has been installed by contractor Broadsword Projects in three different widths - 70mm, 92mm and 114mm. A further 455m² solid wood linear open system in Siberian Larch, fully treated for external application, was also installed under the striking canopy that welcomes visitors to CEMAST.

01604 766251 www.hunterdouglas.co.uk

enq.189

Architects Datafile website



The Architects Datafile (ADF) website is an online provider of past and present products and news items for the architect or specifier. architectsdatafile.co.uk is a one-stop source for all the latest press releases providing any visitor with access to information about products and services that they may require. From the website, you can find links to digital issues that have live links to advertisers' sites, as well as daily email alerts to keep you as informed as possible.

www.architectsdatafile.co.uk



AND THE WINNER COULD BE....YOU?

THE CLOSING DATE FOR ENTRIES
IS FRIDAY 12TH JUNE 2015

THE AWARDS TAKE PLACE AT HILTON
PARK LANE, LONDON ON WEDNESDAY
18TH NOVEMBER 2015

APPLY ONLINE AT:

<http://www.brick.org.uk/online-entry-form/>

OR DOWNLOAD THE 2015 ENTRY FORM AT:

<http://www.brick.org.uk/2015-download-entry-form/>



www.brick.org.uk



enq.190

Proven System Solutions for Landscaped Roofs



ZinCo Green Roof Systems Ltd.

office@zinco-greenroof.co.uk · T: 01223 853843

www.zinco-greenroof.co.uk



Life on Roofs

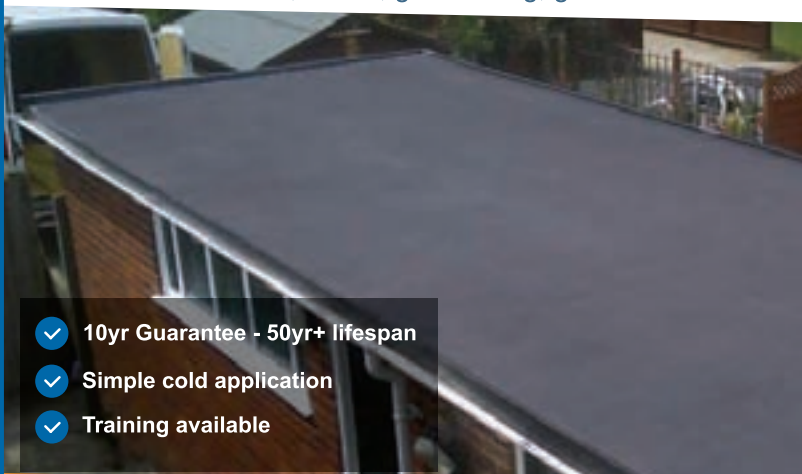
enq.191

We know the trade

Quality EPDM Rubber Roofing

Suitable for flat roofs, sheds, gutter lining, green roofs and more!

Cut-to-size
service now
available



*Receive FREE DELIVERY on orders over £25 in England & Wales

- ✓ 10yr Guarantee - 50yr+ lifespan
- ✓ Simple cold application
- ✓ Training available



Call or visit your local depot today!

0800 0113503

nationalplastics.co.uk



NATIONAL PLASTICS

enq.192



Sowing the seeds of a successful green roof specification

Stuart Hicks, marketing manager of Kemper System, considers the elements of a green roof specification that can lead to success or failure

The drive towards more sustainable buildings has led to an evolution of green roofs from specialist eco-feature to much more mainstream specification. Whether the green roof is specified to help a building blend in to rural or semi-rural surroundings, to enhance bio-diversity or to gain BREEAM points, it can be a striking addition to a building that matures to enhance the structure's character over time.

However, the success or failure of a green roof depends on an effective specification that considers not only the structure itself but the location, orientation, shading and climate of the site. Only by working with waterproofing and green roof specialists that can offer a proven roofing system along with the required level of horticultural expertise can the specifier be confident of a viable long-term result.

Design stage

While it may appear that planting can be decided at a later stage, in fact it is important that these decisions are considered at the design stage as the roof build-up impacts on the planting possibilities. For example, wildflower meadows are a popular choice for large expanses of roof surface, but they need plenty

of moisture, which means designing the roof to accommodate the load and a greater depth of reservoir core and necessary growing medium required to keep the green roof healthy. Conversely, alpine planting needs much less water to thrive, which influences the load bearing capabilities required from the roof.

Green roofs can also be incorporated in to a project as part of a SUDS design. Water stored to irrigate the green roof reduces the potential impact of new and existing developments with respect to surface water drainage discharges. Again, considering the planting at an early stage means that the specifier is in a much more informed position to understand the level of water that will need to be stored or released from the roof.

Watertight

The effectiveness of the waterproofing membrane used to create a watertight barrier between the roof substrate and the green roof system is the most critically important element of the specification. The membrane should be flexible enough to cope

Continued overleaf..



with any post build 'settlement', tough and durable enough to cope with the load bearing requirements of the planting medium and have a sufficiently long service life to make the green roof viable.

A common green roof design would typically consist of an inverted warm roof build up, applying the waterproofing system to the roof substrate, followed by the insulation, and then the green roof elements. This can add an extra layer of protection for the waterproofing membrane as it is cushioned underneath the insulation. Certain waterproofing systems can be applied

either below the insulation or above as in the case of a conventional warm roof. This is because these systems are FLL certified as root resistant so there is no risk of root damage to the integrity of the waterproofing membrane, even as plants mature and their root size increases. Ideally a monolithic system should be used as there will be no seams, laps or joints that roots could attack and penetrate.

Consulting the membrane supplier for technical support can help determine the right specification in this regard.

Location, location, location

In terms of specification of the green roof planting itself, client preferences and aesthetics have a role to play, but a key consideration should always be the location and prevailing climatic conditions as these govern the amount of light, heat, shade and moisture the roof will receive. The influence of surrounding buildings, which can also affect shading levels and exposure to winds also need to be taken into account. These factors should be assessed in combination to determine the viability of different types of planting.

Of course, no matter how carefully considered the planting specification, without proper maintenance post installation the green roof will not thrive. Establishing a maintenance plan and provision for the associated costs need to be factored in at the design stage for the aesthetics and benefits of the green roof to last long term.

enq.193

Counting on Köster



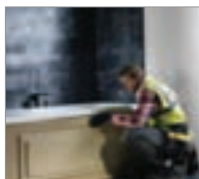
Easy application to the most complex of architectural details is promised with Köster 21 – a two-component, solvent-free, multiple use crack bridging waterproofing coating from **Delta Membrane Systems**. This elastic, crack-bridging waterproofing material offers excellent adhesion to dry and moist substrates and – being liquid applied – it creates a seamless coating around difficult or

complicated detailing. Other benefits include resistance to occasional foot traffic, aging, hydrolysis, frost and salt. It also seals against synthetic oils and aliphatic hydrocarbons with high boiling points.

01992 523523 www.deltamembranes.com

enq.194

Save money by using Caberwood MDF Pro



Used extensively throughout the building industry for many years, Caberwood MDF Pro from **Norbord** is a premium grade MDF with a uniform density across the board. It is ideal for creating light joinery applications and is one of the best, most cost-efficient moisture-retardant boards on the market today. The product, has been designed to be easy to saw, drill,

shape and rout without splintering or chipping. It is also designed to look good; it's ideal for most high quality paint and surface finishes including the application of paper foils and veneers. In addition, Caberwood's high quality fibres and internal bond strength mean that the product boasts superior screw and fastener compared to other types of panel product.

enq.195

Are you looking for an alternative to lead?



The theft of lead from roofs and other structures is a growing threat to the heritage of the UK's historic and public buildings. The only true solution to this problem is the replacement of lead with another material that is much less likely to be subject to criminal damage or theft. Unfortunately, many roofing systems fall short of the mark in terms of either appearance or performance. There is one though that meets most, if not all, of the criteria: **Topseal's** GRP (Glass Reinforced Plastic) roofing system. Topseal has developed a GRP based simulated lead system that looks authentic and can be specified to complement the colour of existing lead work complete with (seamless) rolled joint detailing. The versatility of the Topseal system ensures that it will fit into almost any style from traditional listed structures to public buildings and modern schools. It has been successfully installed on these types of projects previously and now meets the needs for a modern alternative to lead. Topseal is a BBA certified GRP roofing system with a materials and workmanship guarantee for up to 30 years. The system has been safely installed onto millions of square metres of roofs around the UK by Topseal's national network of approved installers since 1992. It's all possible with Topseal.

08000 831 094 www.topseal.co.uk

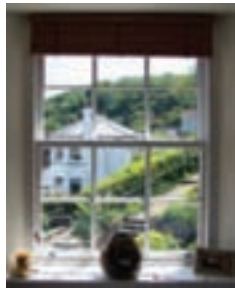
enq.196

WWW.TIMBER -WINDOWS -DIRECT.UK

A TRADE DIVISION OF KM-JOINERY

MANUFACTURERS OF TIMBER

- SASH WINDOWS •
- CASEMENT WINDOWS •
- DOORS •
- BIFOLD DOORS •



- ALL TRADE WELCOME •
- WINDOW INSTALLERS •
- BUILDING CONTRACTORS •
- ARCHITECTS • DEVELOPERS •
- DIRECT TRADE SUPPLY •
- NATIONWIDE DELIVERY •



ALL TRADE ENQUIRIES TEL:

0800 7076954

E-MAIL: sales@timber-windows-direct.uk

enq.197



NEW

7mm thick rubber pads for paving & decking

Wallbarn launches new ultra-thin rubber pads. These are ideal for refurbishment work where existing height thresholds are tight.

- Avoid the need to take up old waterproofing and paving
- Simply overlay the surface
- Specially designed upper surface allows free drainage, avoids puddling
- Hard wearing, flexible rubber ensures protection of waterproofing membrane
- Suspend paving flags or timber joists onto surface for fast, easy installation
- Attractive finishes possible without mess
- Significantly labour saving

Address:
Unit 16 Capital
Business Centre,
22 Carlton Road,
South Croydon
CR2 0BS

Call Wallbarn today on **0208 916 2222**,
email sales@wallbarn.com or visit
www.wallbarn.com for more information

enq.198

The ultimate in durable roofing systems



TOPSEAL



Topseal Features:

- The Ultimate GRP flat roofing system with up to 30 years product & workmanship guarantee
- Suitable for almost any application from domestic extensions and porches to large scale one-off projects, walkways and balconies
- Only installed by fully trained and Topseal approved installation teams
- BBA Approved, Fire Retardant and completely UV resistant
- ISO9001, ISO14001, Generic BRE Green Guide A/A+ rating
- Wide range of colours and finishes available
- Full specification support

Call us to
arrange your
free CPD
Seminar



For further information on the Topseal System call:

08000 831094

enquiries@topseal.co.uk

www.topseal.co.uk

enq.199



Argent Alu: invisible integration of doors

Thanks to the invisible door frame argenta® invisidoor® DL of Argent Alu, a part of the RENSON Group, the door closes perfectly in line with the wall, without any door frame nor hinge being visible. This argenta® invisidoor® DL is standard supplied with a magnetic lock, a seal around the frame absorbing door closing impact and the invisible adjustable hinges type argenta® invisible neo.

The argenta® invisible neo, made of zamak, is available in 3 versions. The compact S-5-version is suitable for doors with a minimal width of 35 mm and a weight up to 80kg, while the M-6-version is made for doors with a width of minimum 40 mm and a weight up to 100kg. In order to meet the requirements of the market, Argent Alu also developed the L-7-version, which is ideal for doors with a minimal width of 50 mm and a weight up to 150kg.



It doesn't matter in which direction the door opens, the argenta® invisible neo is always suitable. Furthermore, there are no screws visible, which allows a clean integration. The Easy-Hook® system allows installation and setting by a single person. After installation, the height, width and depth are easily adjusted (3 dimensionally) without having to dismantle the door or the hinge.

01622 754 123 www.rensonuk.net

enq.200

WEDGE GROUP GALVANIZING Your Galvanizing Partner

- Quality approved Galvanizing • Technical support and advice
- See the process in action and take your CPD
- 14 plants across the UK offer you a national service
- We galvanize steel from 1.6mm to 29m long

Excellence in Galvanizing

WEDGE

E: galvanizing@wedgagalv.co.uk
T: 01902 600704 www.wedgagalv.co.uk
@wedgagalv



**GALVANIZERS
ASSOCIATION**



Head Office: Stafford Street,
Willenhall, West Midlands, WV13 1RZ

enq.201

BENENDEN™ CONSERVATION

Bespoke Aluminium Windows for Period Properties

As featured on
**GRAND
DESIGNS**
Series 5 Episode 22
Channel4.com

- Ultra-slim profile frames
- Into timber or direct to brick or stone
- Single or dual RAL colours

THE HERITAGE WINDOW COMPANY

CONSERVATION BY DESIGN

020 8495 0055 | sales@thwc.co.uk | www.thwc.co.uk
Showrooms at: Sevenoaks • Dorking • Beaconsfield

enq.202

Reynaers at Home gains Secured by Design for innovative slim framed window system



The latest addition to the Reynaers at Home range of highly energy-efficient windows has gained accreditation from Secured by Design – the police initiative to reduce crime through design.

Reynaers at Home's innovative third generation three-chamber CS 38-SL Tilt Turn Vent is the latest product to achieve the desirable Secured by Design 'Police Preferred Specification'.

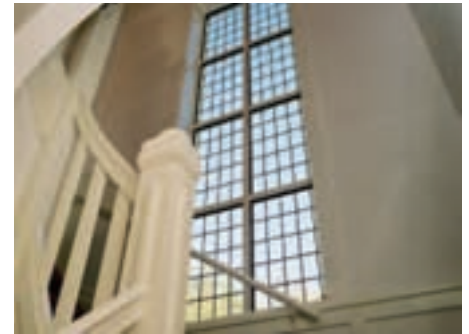
The thermally insulated system has been created for inward and outward opening windows and doors and combines elegance, strength, energy efficiency and ease of production with its unique slimline steel look and high insulation values.

Its minimalistic exterior contours offer an ideal solution for new buildings as well as for the replacement of steel framed windows and window-doors without losing the original design.

As well as the extensive range of window products that are accredited by Secured by Design, Reynaers at Home is also one of the first aluminium systems companies that has achieved the Secured by Design status for both its sliding patio doors and bifold doors.

Secured by Design is a crime prevention initiative operated by the Police Services of the United Kingdom, which aims to utilise design principles and products in the built environment that reduce the risk of crime. Additional products covered by the award include Reynaers' versatile CP 130, a lift and slide aluminium patio door that is contemporary in appearance and combines high weather performance with great aesthetics and CF 77, which is an innovative bi-fold door, the SL variant of which has incredibly slim sight lines.

Richard Childs, Managing Director at Secured



by Design, said: "The Secured by Design initiative aims to focus on crime prevention and reducing the fear of crime – and Reynaers has really got on board to promote security standards within the window and door industry."

0121 421 9707 www.reynaersathome.co.uk

enq.203

ShorguardTM

HOSPITALS • POWER • PUBLIC BUILDINGS • SCHOOLS • SHOPPING CENTRES

SG4 FREESTANDING GUARDRAIL SYSTEM

- Unique patented lifting shoe
- Safe, secure and cost effective flat roof edge protection

Please visit our website or call Whelan Plant:

Tel: 01959 571788 **Fax:** 01959 571068

Email: info@shorguard.co.uk

www.shorguard.co.uk



SG4



UNIQUE LIFTING SHOE

SG1

SG2

SG3

SG4

PERMANENT

TEMPORARY

SHORGUARD EDGE PROTECTION SYSTEMS



enq.204

Senior's Hybrid system for York Park & Ride



Window and curtain walling solutions from **Senior Architectural System's** innovative Hybrid range have proved to be just the ticket for use on a new Park & Ride scheme in York. Senior's Hybrid Series 3 curtain walling and Hybrid Series 1 windows have been used as part of the creation of the two new terminal

buildings at Poppleton Bar and Askham Bar. The innovative construction of Senior's Hybrid range, which combines the durability of aluminium externally with the environmental benefits of timber internally, made it the ideal choice for use on the striking timber clad buildings and has helped contribute to the project's overall BREEAM rating of 'very good'.

enq.205

Schueco facade system offers design freedom



The launch of **Schueco UK Ltd's** Parametric Facade System offers architects a new level of dynamic design freedom. For the first time ever, geometrically complicated 3D facades can be designed as straightforward system solutions whose cost can be calculated with the certainty of a series product. Like all Schueco systems, the Parametric Facade is highly insulated, with Uf values up to 0.5 W/m²K, and surface elements that can be transparent or opaque. Sunlight and shading, guided views and daylight optimisation can all be employed as active design factors. The system can also accommodate BIPV panels for solar energy generation. The system received an Honourable Mention in the Red Dot Awards: Product Design 2015.

01908 282111 www.schueco.co.uk

enq.206

REHAU Nordic Design Plus replicates timber



REHAU's highly efficient, flush fitting Nordic Design Plus window system is designed for two quite distinct market sectors – contemporary new build and traditional timber replacement. It proved the perfect choice recently for a homeowner in Gloucestershire, who was renovating his poorly

insulated cottage by adding an innovative brick faced slip system to the exterior. With a double brick build and no cavity wall, the cottage was difficult and expensive to heat, so the solution devised was to insulate it on the outside with high performance insulation and then face the whole of the front of the building with a slip system which gives the appearance of a traditional brick build.

01989 762600 www.rehau.co.uk

enq.207

Evolve VS even more authentic for projects



Synseal's popular Evolve VS sliding sash has been improved with the addition of a new deep bottom rail design option, to provide an even greater degree of authenticity for heritage and conservation project applications. Standard Evolve vertical sliding sash windows feature a slimline bottom rail 60mm in height to maximise glass area and daylight, however a 100mm deep bottom rail has previously been available as a special manufacturing option by combining two extrusions. Now a new ovolo deep bottom rail created from a single extrusion, 100mm deep, is readily available to cater for projects that require authentic timber-mimicking PVC-U sliding sash windows, with the added benefit of improved visual aesthetic appeal.

01623 443200 www.synseal.com

enq.208

Synseal launches the high performance Celsius solid roof



Synseal is proud to introduce Celsius solid roof – a new and innovative system that employs a structural framework of timber components with environmentally-friendly Envirotile external roof tiles and cappings to create a truly warm solid roof construction, with no possibility of cold bridging. At the heart of the system are thermally-efficient structural insulated panels (SIPs), enabling Celsius solid roof to achieve a pitched roof U-value of 0.18 W/m²K for compliance in England and Wales. The U-value of 0.15 W/m²K for compliance in Scotland is achieved by fitting insulated plasterboard to line and finish the solid roof interior. Synseal Envirotile external roofing components are injection moulded to Synseal's exact specifications from 100 per cent recycled polypropylene. Precision manufactured and lightweight, each single Envirotile has a low profile chamfered front-leading edge with an aesthetically pleasing riven finish, is 12mm in thickness, weighs just 610 grams and is extremely simple to fix yet performs exceptionally, securely locking into adjacent tiles without any need for battening to form a quick-fitting and fully integrated roof covering. A single mechanical fixing point at the head in addition to the innovative interlocking design ensures that Synseal Envirotiles fit securely and easily, ready to withstand wind and weather.

01623 443200 www.synseal.com

enq.209

NorDan windows and doors supplied to Butlins Minehead with McGoff and Byrne

NorDan has completed a contract with privately owned, multi award winning contractors McGoff & Byrne building 117 lakeside chalets with 2, 3 and 4 bedrooms, for holiday business Butlins at Westlake Village Minehead. Says Phil Hulse, regional director at NorDan, "We won this contract because we totally understood the requirements of this contract from specification of the right window and door products to the logistics of ordering and supply to the build schedule. This project required precision products with a long life cycle, low maintenance requirements, easily accessible spare parts, and the logistics to match. The whole project was completed within 54 weeks, hats off to a magnificent contractor." David McGoff, Group Commercial Director at McGoff & Byrne said: "What was important to us and our client was a supplier who understood the challenges of the project and offered advice and support through production and installation. NorDan's timber window and doors products are designed to suit all weathers, including this seaside location providing high quality timber engineered window frames, with a proven long life cycle. The robustness of the engineering and the back up support from NorDan for spare parts in the unlikely event of maintenance requirements was important."

01452 883131 www.nordan.co.uk

enq.210

Levolux brings colour to Bournemouth



The completion of a new multi-storey car park in Madeira Road, Bournemouth, which features a colourful external screening solution from **Levolux**, marks the start of a £40 million regeneration project for the area. The external facade required special treatment to soften the visual impact of the concrete structure on the environment. To deliver this element of the scheme, Levolux was invited to

develop a custom screening solution that obscures views of unsightly structures and vehicles, while creating an attractive architectural feature. The solution comprised Levolux's unique Infiniti Fin system, incorporating 400mm wide aerofoil-shaped Fins, arranged vertically.

enq.211

OPTIM-R installed on student accommodation



Bath Spa University's newest student accommodation is on course for a BREEAM 'Excellent' rating thanks in part to the top class thermal performance of **Kingspan OPTIM-R** vacuum insulation panels. The Kingspan OPTIM-R panels provided the solution for a difficult area on the parapet between the pitched roof sides and on the sloping gable end parapets. With

extremely limited available space, Church Lukas were able to specify just 20 mm thick Kingspan OPTIM-R panels to achieve to required level of thermal performance. Kingspan TEK Cladding Panels were also installed on the project by Lowfield Timber Frames, forming the pitched sides of the house roofs.

01544 387 384 www.optim-r.co.uk

enq.213

Kingspan TEK® brings comfort to Hampshire



Building the home of their dreams was a breeze for the Burdon family after they used the **Kingspan TEK® Building System** to form the walls and barrel roof of their new Dutch barn styled house. The Kingspan TEK® Building System comprises high performance SIPs which allow buildings to easily achieve U-values of 0.16

W/m²K and below, while the OSB3 facing and unique jointing system keeps air loss to a minimum. For New House, Kingspan TEK® delivery partners Glosford Timber Solutions designed and factory cut the Kingspan TEK® Building System panels to the project's specific requirements, including the feature barrel roof.

01544 387384 www.kingspantek.co.uk

enq.212

Kingspan School is outstanding in every way



Over 1150m² of premium and high performance insulation products from **Kingspan Insulation** have helped Coleg Cymunedol Y Dderwen Comprehensive School in Bridgend to become the first BREEAM 'Outstanding' rated high school of its kind in the UK. Limiting heat loss was a key

requirement in the design and to insulate the rainscreen sections of the building façade, 817m² of Kingspan Kooltherm K15 Rainscreen Board was specified. The product provides outstanding levels of thermal performance with thermal conductivities as low as 0.020 W/m.K. To insulate the roof space of the school, a further 368m² Kingspan Thermaroom TR26 LPC/FM was installed.

01544 387 384 www.kingspaninsulation.co.uk

enq.214

SuperFOIL Insulation

The Past

The Future

WHICH WILL YOU CHOOSE?

SuperFOIL SF40

01636 639 800 www.superfoil.co.uk

Goulder Developments Ltd, SuperFOIL, BHF, Mar Street, Norwich, Norfolk, NR23 5UH

enq.215

Ecodan prepares for the toughest challenge yet



Mitsubishi Electric has sponsored All Beans No Monkeys, a team of four men who will row the Atlantic later this year when they take part in the Tallisker Whisky Atlantic Challenge. Deemed to be one of the toughest races on earth, the Tallisker Whisky Atlantic Challenge will see the crew row

4,800km across the world's second largest ocean from La Gomera in the Canary Islands to Antigua in the Caribbean. James Timbs-Harrison, crew member and Mitsubishi Electric Heating Product Manager says: "If you take into account the fact that only 500 people have ever rowed across the Atlantic but over 4,000 have climbed Everest then you can begin to see how tough this challenge really is."

01707 282880 www.ecodan.co.uk

enq.216

Under floor air conditioning for Centrica



Under floor air conditioning proved to be a flexible and modular approach for heating and cooling the Aberdeen headquarters of one of the UK's leading oil and gas companies, Centrica Energy. AET Flexible Space was specified by consultant KJ Tait to provide comfort cooling for Centrica in the upper three floors of building, with the ability to

easily adapt and reconfigure to future changes being a key factor. The AET Flexible Space system utilises the plenum beneath a raised floor as the ventilation duct, eliminating the need for ceiling based duct work and making it easy and economical to adapt services to changes in the workplace.

01342 310400 www.flexiblespace.com

enq.217

www.apolloradiators.co.uk



monza aluminium column radiator

Ideal for low temperature renewable systems
Ideal for high pressure systems
The latest patented european technology
A unique aluminium radiator design
Half the weight of steel
82 vertical and horizontal sizes
Delivered within 3 working days

enq.218

Pro-Mec donation goes to life-saving charity



Leading M&E Contractor, Pro-Mec UK Ltd has recently donated £1,000 to the Midlands Air Ambulance Charity after receiving an award for its pioneering environmental work as part of Mitsubishi Electric's 'Green Gateway Awards'. The Awards were created by Mitsubishi Electric to recognise the important contribution of its partners

in encouraging energy efficiency in the built environment and, in addition to a trophy the winner receives the donation to a charity of their choice. "Deciding on Midlands Air Ambulance Charity was easy for me as so many of us travel the motorways and these guys are there to help if things go drastically wrong", explained Pro-Mec's Martin Chetter. "These guys are unsung heroes."

www.mitsubishielectric.co.uk www.promecuk.com

enq.219

Slim pickings



Since its launch at the end of last year, the Slimfocus from Diligence International has proved to be popular in both modern and traditional settings. This simple but stunning tubular design is the latest addition to the Focus range from Diligence International, and its slim

look has found interest with Architects and end users as it sits comfortably in any type of decor. Available in pivoting and non-pivoting options, suspended or floor standing, the Slimfocus measures just 324mm diameter so it has the ability to quietly blend with its surroundings, while – at the same time – providing a stylish focal point for any room. This fire offers an impressive 6kW output.

01364 644790 www.diligenceinternational.com

enq.220



High Efficiency Gas Fires

- Convenient & Clean Burning
- Up to 5.2kW Heat Output
- Low Running Costs
- Total and Instant Control



View our stunning range at

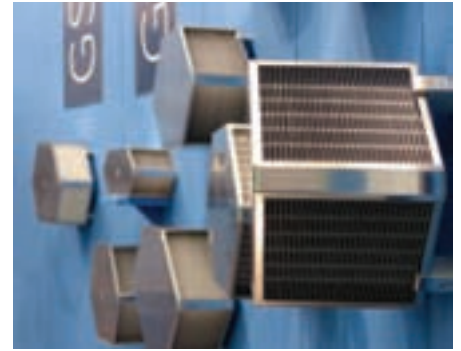
www.nu-flame.co.uk T : 020 8254 6802



Up to
90%
Efficiency

enq.221

TEC UK bring pioneering air to air heat exchangers to the UK market



Thermal Energy Components (TEC UK Ltd), a division of Klingenburg GmbH, have launched a range of pioneering, German precision built Counterflow Plate Heat

Exchangers that recover up to 90per cent (by rigorous calculations) of existing room heat or cold air.

Offering optimal efficiency wherever installed, the range of ten standard size Klingenburg heat exchangers offer the widest range on the market, making them perfect for any ventilation system – from small apartments to office complexes, stables to swimming pools and refrigerated stores to warehouses. The possibilities are practically endless.

Andrew Patch, Country Manager – UK & Ireland, TEC UK Ltd, said, “Broadly speaking, counterflow exchangers are used wherever a circulation of air is undesirable. Since, in this design, the airstreams are wholly separated.”

“Our high quality standards apply to

Counterflow Plate Heat Exchangers as with all our products. Our customers appreciate their high stability and precision design and manufacture. They are hard-wearing and easy to clean even in a dishwasher,” said Patch.

Klingenburg’s special manufacturing processes put them at the forefront of technology when it comes to hygiene. The airflow plates in the exchanger are joined by a special paste that spreads out during the drying process. This ‘adhesive diffusion’ ensures optimal airway.

For more information, please contact TEC UK’s UK distribution centre.

01460 247 111 www.tecukltd.co.uk

enq.222



Zehnder Zmart Flex.
Flexible connecting
system, flexible
application.

■ **Adaptable for any situation:**

Patented 360° flexible tubes mean that one system fits all scenarios

■ **Environmentally responsible:**

Environmental impact is 25 % lower and carbon footprint is 8 % lower than for standard radiators

■ **Aesthetically pleasing:** Classic, simple design of radiator which hides its connections

For more information visit:

www.zmart.zehnder.co.uk

T: 01276 605 800

E: enquiries@zehnder.co.uk

always
around you

zehnder

Come and visit us on Stand 88' at Vision exhibition.

enq.223

Architects Datafile website



The Architects Datafile (ADF) website is an online provider of past and present products and news items for the architect or specifier. architectsdatafile.co.uk is a one-stop source for all the latest press releases providing any visitor with access to information about products and services that they may require. From the website, you can find links to digital issues that have live links to advertisers' sites, as well as daily email alerts to keep you as informed as possible.

www.architectsdatafile.co.uk

Cubicles find a good home



High Pressure Laminate from **Abet Laminati** has been used to clad the cubicles of the new headquarters of East End Homes in central London. Fabricated by specialist washroom and cubicle manufacturer Decra Ltd, the 616 Walnut Sabec finish has created a warm, executive and luxurious feel to the washrooms. Manufactured in 0.9mm thickness and in large 3,050mm x 1,300mm sheets sizes, the Legni News range of woodgrain effects is a popular choice for surfacing. With around 100 different wood

species patterns available in the Legni and Legni News collections, designers have an impressive range to choose from including complementing shades and tones which facilitate subtle contrasts and design.

enq.225

Maxwood Washrooms launches showroom



Maxwood Washrooms' new Central London Showroom is now open and will be among the venues taking part in this year's Clerkenwell Design Week from 19-21 May 2015. It is the perfect place for architects and designers to find inspiration for styles, materials, and layouts for commercial

washroom projects. Located in Clerkenwell, the new showroom offers a chance to view full-size washroom mock-ups, including project-specific details designed and manufactured by Maxwood to bespoke specifications. As well as impressive washroom product displays, the showroom can host technical workshops and demonstrations and offers fully equipped meeting facilities where project teams can work in close collaboration with Maxwood.

enq.224

Linden Homes chooses wedi for wet room



wedi systems UK has been chosen by Linden Homes to provide a total wet room solution service for one of their latest developments at Century Gate, Beckenham, Kent. The development consists of a range of detached family homes for which wedi worked alongside Linden Homes from initial wet room design, to complete installation guidance and support ensuring the ideal wet room solution to meet the developer's needs. wedi also ensured that the contractors were supported and trained with their own NCFE backed installation program.

0161 864 2336 www.wedi.co.uk

enq.226

Sylan

Wood. It warms our collective soul like no other material on Earth.

All our Sylan washroom veneers are selected and matched to perfection. So much so, that on a long run of flush-fronted cubicles, you'd think you were looking at a tree some eight metres wide.

Proof that we don't mess with nature, we work beautifully with it.

For more information about Sylan Veneers
01763 276200 | contact@amwell-systems.com | www.amwell-systems.com

detail

enq.227

The **Magrini** family is now complete...

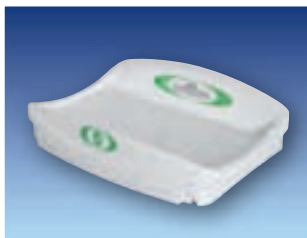
- ✓ New, contoured contemporary design
- ✓ Unique hinge construction eliminates finger traps
- ✓ Choice of colour to suit any project
- ✓ Extra deep sides increase safety and eliminate the need for straps
- ✓ Withstands static loads in excess of 100Kgs
- ✓ Hygienic, easy-clean surface



MH42 Horizontal Baby Changing Unit



MV64 Vertical Baby Changing Unit



MT80 Countertop Baby Changing Unit



MC75 Stainless Steel Baby Changing Unit

Fully Compliant with
BS EN 12221: 2008 ✓

MH42 Horizontal
Baby Changing Unit



...with the arrival of the **MT80** Countertop Baby Changing Unit

- ✓ Durable, solid moulding
- ✓ No surface fixing screws
- ✓ Hygienic finish with easy maintenance
- ✓ Extra deep barriers eliminate any need for straps reducing maintenance and inspection costs
- ✓ Easy-fit system for fast installation



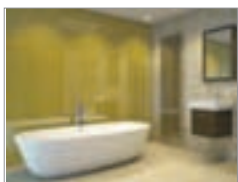
MT80 Countertop
Baby Changing Unit

reader
enquiry

228



Two stunning new colours of Lustrolite®



Lustrolite® acrylic high gloss wall panelling, from **Abacus Manufacturing Group**, is now available in nine vibrant colours. The latest additions to the Lustrolite® portfolio are Forest – a bright green and Safari – a subtle khaki. These new colours have been introduced into the already popular range which comprises Arctic, Glacier, Blue Atoll,

Rouge, Mocha, Titan and Carbon. Lustrolite® looks the same as glass panelling but is an advanced multi-layer acrylic that weighs less than a third of a traditional glass sheet and has 20 times the impact strength. It is highly scratch and wear resistant due to its unique hard coated surface and has a ten-year guarantee. It is resistant to harsh chemicals and is easy to clean.

enq.229

Steel windows bring industrial style



Keen to extend their house in Wandsworth, South West London, to create a large, light filled family kitchen and dining area opening directly onto the garden, Simon and Marissa Pilkington used a screen of steel windows and doors to provide a strong industrial aesthetic. To manufacture and

install the windows, they chose **Steel Window Association** member, Steel Window Service and Supplies. To fabricate the windows and doors, Steel Window Service and Supplies used W20 sections which offer narrow profiles and good sightlines. These were hot dip galvanised and were then finished in a factory applied polyester powder coating in RAL 7021 black/grey matt.

0844 249 1355 www.steel-window-association.co.uk

enq.231

Mapei introduces additional colours



Mapei is pleased to announce the introduction of seven additional colours to its best-selling grout range, Ultracolor Plus. Low in VOC and certified in compliance with the strictest international standards, Mapei's Ultracolor Plus coloured grout is suitable for most types of floor and wall tiled finishes including: ceramic and porcelain tiles and mosaics – both natural and agglomerate stone and glass and mosaics – both

internally and externally. Already available in 27 shades (now 31 shades), Mapei's versatile, multi-purpose grout Ultracolor Plus benefits from BioBlock® anti mould and DropEffect® water repellent technologies, to assist in the prevention of mould and reduce surface water absorption, to provide a long lasting aesthetic finish.

0121 508 6970 www.mapei.co.uk

enq.233

Vicaima make it snappy with new doors App



Deciding which interior door design or finish best suits a particular space just got easier, with the launch of a new mobile application from one of the UK's leading interior door manufacturer's **Vicaima**. *My Vicaima* uses readily available Smartphone and tablet camera technology to capture and create a stunning visualization tailored made for the room it's to be used in. The launch of *My Vicaima* brings to the UK interiors specification market, one of the most innovative apps specifically designed for use with internal doors. Aimed at everyone from Interior designers to enthusiastic home owners it combines easy to use tools with unique and exclusive features that allows users to provide a customised visual to suit an individual project or customer. Through the use of *My Vicaima* it is possible to take pictures of the space where you plan to install a door and then interactively test which Vicaima model or finish best suits the desired décor or ambience you are trying to create, with plenty of scope for individual choice. All the Vicaima products listed are clearly identified with model name, collection and finish and with a simple link to the Vicaima website more information is available if desired. It's the perfect tool for a quick, easy to use and mobile way to test your ideas and share them with others.

01793 532333 www.vicaima.com

enq.235

Successful doors hinge on HOPPE



HOPPE UK can offer a wide range of Arrone architectural hinges which can be specified with confidence for high traffic, heavy duty applications, including fire doors. The phosphor bronze bearing and concealed bearing architectural hinges are manufactured to the highest standards and are fully CE marked for the optimum performance and maintenance-free peace of mind. Arrone architectural hinges are often found in schools, hospitals and

commercial buildings with consistent and considerable traffic and where safety and heavy duty performance is a must. However there is no compromise on aesthetic as ARRONE architectural hinges will keep their good looks for many years.

01902 484 400 www.hoppe.co.uk

enq.230

DuPont™ Corian® shapes the future



CD UK has supplied DuPont™ Corian® for a striking contemporary design in the reception area of award winning office building 1 Bickerstaffe Square, the heart of Blackpool's £220m regeneration project, Talbot Gateway. The 25 acre

site around Blackpool North railway station comprises more than 1 million sq ft of mixed-use development with Bickerstaffe Square the iconic centrepiece of the scheme. Designed by Muse Developments and fabricated by Delta Laminates, the unique installation, created from Corian® shapes, uses Glacier White Corian® for the reception counters and wall and ceiling features on a full Corian® background. Random patterning and LED lighting add to the dramatic effect, creating a stunning impact on entrance to the showcase building.

enq.232

Invisible innovation from Aspex



Aspex, one of the UK's leading door and ironmongery companies, has launched the Novista Riser door range, which are designed to 'disappear' within the wall construction. The Novista Riser doorset includes a steel doorframe, which is supplied pre-cut and mitred for easy assembly on site and which, when fitted, is totally concealed

within either a stud or block wall rendering the door virtually invisible, when closed, as there are no obtrusive architraves. Novista Riser doorsets are available as double or singles with either a three or a four-sided frame. Novista Riser doorsets are ideal for use in hotels, commercial office buildings and apartments.

0116 278 3506 www.aspex-uk.co.uk

enq.234

Internal doors – tips from the timber experts – JELD-WEN

Internal doors are often a forgotten feature in specifying building materials, but the look and quality of this functional finishing touch can make a huge difference to the end result of a project. Chris Miller, doors product manager at JELD-WEN discusses

The huge range of internal doors in today's market means that regardless of the budget and scale of build there's a suitable product for every project. In addition to being functional and compliant, timber doors are more frequently being used to provide a stylish finish to a property, while still offering superior performance.

Benefits of timber

Architects have long realised the style potential of opting for timber doors throughout a project. Timber not only looks great – as we preserve the wood's natural appearance throughout the construction process, but it also offers fantastic energy-saving credentials and long-term value too. Quality timber products offer enhanced durability and reduced maintenance, which makes them an ideal choice for achieving a desired look or specific design.

Style with substance

Investing in timber internal doors can provide a stylish finish to any building and the trend for oak doors is continuing. Oak doors enjoy aesthetic appeal and come in both finished and unfinished formats, lending themselves to paint, stain or varnish.

Veneer doors are another example of how internal doors can add value to any project. Long-known for durability and a non-scratch finish, real wood veneer doors are available with different core options including heavyweight, meaning they are extremely versatile, as well as offering enhanced insulation and are excellent for reducing sound transmission.

Glazed doors offer an alternative way to bring light into rooms and create different effects. Glazed Internal folding sliding doors enable light to pass between rooms and provide a great space-saving solution that adds distinctive character. Internal folding sliding doors enable one room to transform into two, giving the option to fully open the doors or to use a single door leaf for day-to-day access between rooms. By opting for a room fold system that has no bottom track or guide, seamless room to room flooring is created.

Opting for doorsets can also really enhance a project. Designed to make installation quicker and easier, doorsets are

Continued overleaf...



'Fire safety has had a reputation in the past for compromising aesthetics in order to maximise safety'



'Fire doors are a crucial part of the passive fire protection'



supplied as a finished unit, meaning that minimal amount of adjustment or alignment is required during installation. Produced using state-of-the-art machinery, a cleaner, sharper finish is achieved with uniform lock and hinge positions, without any of the tell-tale marks of hanging by hand.

Door hardware – getting the basics right

When specifying door ironmongery, there are five essential elements to consider: hanging, operating, closing, locking and protecting the door. For each element there are various

ironmongery options that benefit both design and installation. Chrome is an ever-popular hardware choice, as it can be used on doors and windows to instantly create a co-ordinated look throughout the property.

Fire doors save lives

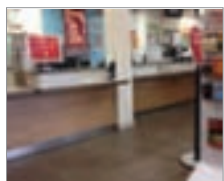
With so much focus on style, it's crucial that properties are compliant with the latest fire regulations too. Fire doors are a crucial part of the passive fire protection for every commercial, public and multiple occupancy buildings and in some instances for domestic properties.

Fire doors are designed to save lives and minimise property damage by reducing the rate at which fire spreads through a building, but it is the correct fitting and fireproof fixings that are crucial in making sure that they are reliable. Fire doors are available in a range of ratings to indicate their level of fire resistance. FD30 doors represent the minimum rating, providing 30 minutes fire resistance, with higher specification FD60 60 minute fire doors available, which offer additional time and further protection.

Fire safety has had a reputation in the past for compromising aesthetics in order to maximise safety - a myth which we've been working hard to dispel. As fire doors are typically thicker than standard doors, trade professionals are often forced to replace both the door and the door frame, adding to the complexity and cost of the project.

enq.236

3M delivers first class results



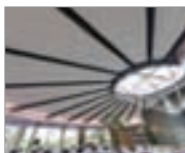
Innovatively crafted, decorative surface finishes from 3M have been used to refresh service counters as part of a Post Office Network Transformation Project involving 6,500 main and local category outlets. An estimated 5,000 metres of easy to apply and highly durable DI-NOC Architectural Finishes have been installed by leading corporate signage

specialist Sign 2000, to refurbish all of the service counters at these sites rather than having to meet the high cost of replacement, thereby enabling savings to be made by the Post Office. DI-NOC offers additional benefits including the ease with which the films can be applied and purposely removed as required.

0800 121 4739 www.3M.co.uk/innovativefinishes

enq.237

Stretch Ceilings extend SIG Interiors' portfolio

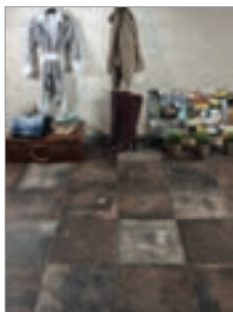


Renowned for supplying innovative solutions for high-concept interior design, **SIG Interiors** – a leading UK specialist supplier of fit-out products to the construction industry – has introduced stretch ceilings to its expansive product portfolio. This latest development follows an exclusive partnership with award winning

company, Stretch Ceilings Ltd, who supplies high profile venues across the world. Available throughout the 27 SIG Interiors branches across the UK, the introduction of stretch ceilings will now enable customers to transform their interior design projects; bringing fun, imagination and drama to their schemes. The same system can also be used for wall coverings, light diffusers, floating panels, and endlessly creative shapes, including curves, domes and vaults.

enq.238

A gritty, urban tile range



A cosmopolitan range inspired by post-industrial urban environments, Groundwork, from **Solus Ceramics**, is a gritty and evocative product that provides a bold aesthetic with a huge amount of character. The five colour options available are predominantly dominated by dark and moody core tones, but also feature a variety of warm highlights and splashes of rusty speckles. Suited to both commercial and residential projects. For more information, please contact Solus Ceramics, or visit the company's website.

0121 753 0777 www.solusceramics.com

enq.239

Updated and enhanced acoustic baffle systems



SAS International has launched an updated range of standard (System 500) and waveform (System 510) acoustic baffle systems, continuing the latest series of product innovations. With standardised module sizes and carrier profiles, the systems offer more installation

options, and enable continuous runs. Ideal for acoustic treatment in open, exposed interiors and thermal mass cooling, the systems are not only high performing but offer a visually engaging design. System 500 and System 510 allow for a different ceiling aesthetic in comparison to a traditional suspended ceiling. Dual-sided perforations deliver excellent acoustic performance (0.85 α_w , NRC 0.9), especially in noisy surroundings, such as airports, where additional absorption is required.

0118 929 0900 www.sasintgroup.com

enq.240



A cloistered life for Keylex at cathedral

Following the latest phase in the implementation of the current master plan for Wells cathedral, it was decided to make a small store room available to the volunteers who run the information desk and the guided tours. This room opens directly onto the cloisters and is accessed via a large medieval door. It was impractical to issue keys to all the volunteers but some of the doors in the recent new development already used digital door locks to grant access to those in possession of the relevant door code and these were all working very well. So Jez Fry, the cathedral's Clerk of Works, referred back to the specification for these locks and found them to be Keylex K500 models in dark bronze and lever operated both sides. Keylex locks are supplied in the UK by Devizes based **Relcross Ltd**, specifiers and distributors of high performance heavy duty door hardware. Jez readily found their e-commerce site at www.keylex.co.uk which clearly lays out all the options available regarding finishes, door thicknesses and accessories.

01380 729600 www.relcross.co.uk

enq.241

Bespoke Oak Flooring

... the perfect finish for any room

- > Esco engineered oak flooring
- > Eight colour options
- > Varied surfaces available - aged, wire brushed and Harfa rough sawn effect
- > Pre-finished with Osmo Polyx-Oil

Call or visit the web for a brochure.
+44 (0)1296 481 220
www.osmouk.com

enq.242

FUTURE-PROOF FLOORING FOR EVERY SECTOR

Education
HEALTH & CARE
 Housing
 Offices
 Sport & Leisure
 Retail
 Industry

HYGIENIC

The Mipolam ranges come with Evercare™, a revolutionary surface treatment that's setting new standards in stain and chemical resistance, ideal for demanding healthcare environments

CONTACT US NOW FOR YOUR FREE SAMPLES

☎ 01926 622600
 @ contractuk@gerflor.com
 🌐 www.gerflor.co.uk
 🐦 @gerfloruk

enq.243

SimpLay loose lay tiles for Vodafone store



Polyflor's Simplicon loose lay vinyl floor tiles helped add the finishing touches to a refurbished Vodafone store. Suitable for retail and commercial environments, Simplicon tiles and planks have been developed for loose lay installation without the use of adhesive, so they can be fitted quickly with minimal downtime

required. The Simplicon collection of loose lay tiles features eight authentic wood plank designs, six natural stone tile effects and two weave pattern tiles. The Rich Walnut 2504 shade chosen for this Vodafone store perfectly complements the brand's signature red and white colour scheme.

0161 767 1111 www.polyflor.com

enq.244

Mapei's Keracolor SF available in 5kg



Mapei has introduced five new colours to its super-fine cementitious grout, suitable for grout joint widths from 1-4mm. Keracolor SF is a low VOC product available in six shades and it can be used with a wide range of surface finishes, including ceramic, porcelain, natural stone, glass and marble mosaics – both internally and externally. Its super-fine composition makes it suitable for grouting metallic mosaics. Keracolor SF is certified GEV Ecodecode EC1R

Plus for very low emissions of volatile organic compounds. It is available in 5kg bags – in single units or boxes of four – and can be mixed with Mapei Fugolastic for application to improve grout performance.

0121 508 6970 www.mapei.co.uk

enq.245

Industrial food processing floor solution by Remmers



A new industrial flooring system has been installed to the 2000m² extension at C&G Foods manufacturing plant in Longford, Ireland.

Remmers Crete SL was applied in combination with Remmers PUR Color Top 2KM seal coat to provide a colour stable finish and a subsequent seal coat of Remmers PUR Aqua Top 2KM SG, with the inclusion of a polymer bead to provide an R11 level of slip resistance with a silk gloss floor finish. The system was installed by specialist flooring contractor Larsen Contracts who worked closely with the main contractor, Gem Construction to allow the installation of the floor whilst other fitting out activities were also being carried out, optimising the overall program.

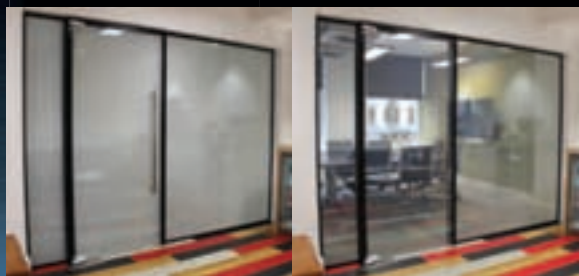
This carefully designed system is ideally suited to areas subjected to medium to heavy duty use for industrial floors within food processing facilities. Remmers Crete SL is a water dispersed polyurethane resin system which is applied as a self-levelling 2-3mm thick system. The seal coats provided colour stability, slip resistance and a silk gloss finish to the applied floor. The installed system provides excellent durability, abrasion resistance, impact and chemical attack.

0845 373 0103 www.remmers.co.uk

enq.246



The UK's Total Glass solution



ESG Partitioning

Bespoke partition solutions

Available features:

- Acoustic Deadening
- Fire Resistance
- ESG Switchable™ LCD Privacy Glass
- Bespoke switchable logo options
- Full BSI approval

www.esg.glass

01376 520061

enq.247

New TALEXX Premium LED driver



Tridonic's new PREMIUM TALEXX driver series has been designed to keep pace with rapid developments in LED technology and offers an extremely high degree of flexibility. It features the new digital ready2mains interface which uses the existing mains

cable for data transfer. Different casing versions and output classes with application-optimised operating ranges make the LED Drivers ideal for a wide range of professional LED solutions. Thanks to ready2mains it is now easy to configure control gear with manually settable output current and integrate it in existing test equipment. Simple integration in automated workflows results in huge potential cost savings in the production of LED luminaires.

01256 374319 www.tridonic.com

enq.248

Polysafe Verona PUR flooring gets approval



Polyflor's Polysafe Verona PUR safety flooring was installed to create a new training area with sustainable wet slip resistance for dogs and their handlers at the recently refurbished Guide Dogs for the Blind Training School in Woodford Green. Around 450m² of Polysafe Verona PUR sheet vinyl flooring in the vibrant Blue Lagoon 5206 shade was installed

in the school's training and demonstration area to create a safe working area for handlers and dogs when going through their regular training routines. The flooring's high design appeal with built-in safety also led to the range being specified and fitted to front of house corridors, stairways and canteen areas at the facility.

0161 767 1111 www.polyflor.com

enq.249

MODERN LIGHTING SOLUTIONS

more than light



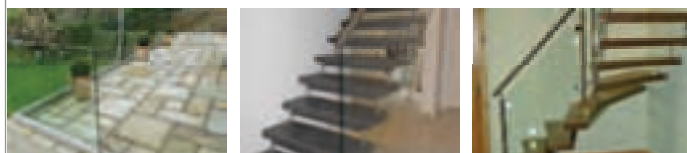
Lighting catalogue with style shots available on request

0208 123 7914 modernlightingsolutions.co.uk

enq.250



Specialist suppliers of
unique German staircases,
frameless and stainless glass
balustrades



Tel: 01425 611112 Fax: 01425 617773 sales@fivestars.ltd.uk
www.fivestars.ltd.uk

enq.251

Stylish and Functional
When closed the AEL Warmrack radiators are a luxury towel warmer in an individual refined design and when opened each becomes a capacious and functional drying rack which has proven a very stylish and effective way of warming towels, drying clothes while also heating your bathroom.



AEL
warmrack
Heated Towel Rail & Rack Systems

EN 442

AEL
HEATING SOLUTIONS

For price and availability please contact your local Plumbers Merchant. Contact AEL for technical advice:
e-mail: sales@aelheating.com Tel: 01928 579668
www.aelheating.com

enq.252

Need help specifying a platform lift?

Gartec is the industry leader and runs regular CPD seminars and technical workshops to help specifiers like you. We are happy to assist with any questions you may have. Contact Gartec today.



Call 01296 397100
or visit www.gartec.com

GARTEC
An Aritco Group company

Leading the Platform Lift Industry

Gartec
show you
how...

enq.253

WHEELCHAIR ACCESS PRODUCTS

ZERO*plus*



AT ZERO SEAL SYSTEMS WE OFFER A WIDE RANGE OF THRESHOLD PRODUCTS, DEVELOPED FOR WHEELCHAIR ACCESS. THESE INCLUDE A RANGE OF 6.4MM HIGH FLAT THRESHOLDS IN VARYING WIDTHS, A UNIQUE SHOWER THRESHOLD WHICH IS AVAILABLE IN TWO HEIGHTS AND A RANGE OF MODULAR RAMPS THAT CAN BE USED IN A VARIETY OF APPLICATIONS. ALL PRODUCTS ARE HELD IN STOCK AND AVAILABLE IMMEDIATELY. PLEASE CALL US FOR FURTHER INFORMATION OR VISIT OUR WEBSITE.

WHEELCHAIR SHOWER THRESHOLDS

6.4MM FLAT THRESHOLDS

MODULAR RAMPS

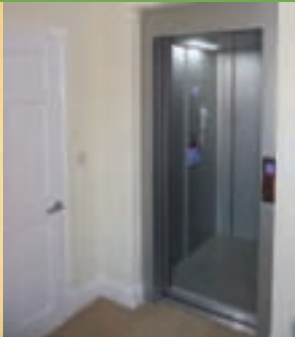
Zero Seal Systems Ltd
Units 43 - 45 Ladford Covert, Seighford, Stafford, ST18 9QG, United Kingdom
Tel : +44 (0)1785 282910 E-mail : sales@zeroplus.co.uk

WWW.ZEROPLUS.CO.UK



enq.254

Lifts for Houses – the quality site for Home Lifts



At Access & Platform Lifts Ltd we supply and install all types of lifts for the home, public buildings and offices. A platform lift can now look and feel like a high quality lift. Give us a call today for a quotation on our next generation of platform lifts to get the lift you deserve



Access & Platform Lifts Ltd

209 Carlton Road, Workshop,
Nottinghamshire, S81 7HN

www.accessandplatformlifts.co.uk
www.liftsforhouses.co.uk
www.residentiallift.co.uk
01909 486704 / 0203 189704

enq.255

Specifying the lift within your project

When is a platform lift appropriate? Crispin Satchell, Head of Sales for Gartec Limited, sheds light on some of the main considerations when specifying the lift for your project and dispels some of the most commonly held misconceptions regarding the suitability of platform lifts

Vertical lifting platforms (platform lifts) are very often pigeon-holed into the disability category. While it is true to say that specifying a platform lift will help building owners to comply with the Equality Act, modern platform lift technology has extended their use for the non-disabled where a conventional passenger lift cannot be accommodated on the basis of available space or budget, or where a more sustainable alternative to a conventional lift is sought.

In selecting the appropriate lifting device care should be taken to ensure it is fit for purpose. A vertical platform lift can be specified for existing buildings or new builds or for developments with particular constraints such as listed buildings. The case for using a platform lift should then be argued in the Access Statement. Platform lifts are appropriate for installation internally or externally, for travel up to around 13 metres or serving two to three floors. For maximum flexibility look for a supplier who can offer platform lifts certified for the carriage of goods as well as passengers.

The total cost including installation for a platform lift works out to around 50 per cent cheaper than a conventional passenger lift. As the lift is mainly built off-site and supplied in its own self-supporting shaft enclosure, no structural shaft, no machine room, no deep pit and no lifting beam are needed for installation, thus only minimal on-site building work is required.

In listed buildings, tight stairwells and where headroom is limited, a platform lift is an ideal solution. For commercial applications a typical platform size is 1100 x 1480 mm. Many suppliers have a range of different platform sizes starting from 805 x 580mm, with a headroom requirement of only 2240mm for a full height door. Half height doors can also be specified for the upper landing if travel is no more than 3 metres, all subject to complying with the Building Regulations Part M. An experienced supplier will help you navigate any compliance issues.

As the name suggests a platform lift would normally have an open platform, but fully enclosed cabin lifts are now readily available based on exactly the same footprint as the open style options. Most open platforms address the main safety issue by

Continued overleaf...



In listed buildings, tight stairwells and where headroom is limited, a platform lift is an ideal solution'



having sensors around the edges which eliminate the possibility of anything getting trapped. Fully enclosed cabin lifts, however, offer all the advantages of a platform lift with the feel of a conventional lift. This enhanced sense of safety makes them an ideal choice for educational and retail environments.

With sustainability becoming increasingly important in the design and construction of new buildings, a platform lift supplied with its own shaft, i.e. constructed off-site in a controlled factory environment, is far more environmentally-friendly than traditional on-site lift construction for which a concrete shaft must be poured. In addition, off-site construction, allows better waste management, as waste is separated for recycling inline. Amongst the platform lifts on

the market, better sustainability is provided by units based on the screw and nut drive system, thanks to their low power consumption and low maintenance needs. Specifying a system that has the facility to go in to a 'stand-by' mode is considerably more energy-efficient, using virtually no energy when idle.

As home owners and developers show consideration for the high numbers of the population now reaching retirement age, platform lifts are increasingly being specified for domestic dwellings. Inevitably, the prevalence of disability rises with age so those who would benefit from having a home lift is set to increase. 11.4 million people in the UK currently struggle with mobility and stamina/breathing/fatigue issues**. For the first time in history, largely due to the Baby Boomers (born 1946-1964), there are 11 million people aged 65 or over in the UK*. The proportion of people aged 65+ is projected to rise from 17.7 per cent currently, to 23.5 per cent by 2034, and by 2086, one in three people in the UK will be over 60*.

All in all, the platform lift provides a flexible access solution for many applications and is also quick and inexpensive to install. Seek professional, technical advice from a reputable supplier who holds EN81-41 accreditation and they will advise you on the suitability of products and meeting any necessary regulations.

Sources: *Factsheet: Later Life in the United Kingdom, published monthly by AgeUK, April 2015, **Disability in the United Kingdom 2014 Facts and figures, from the Papworth Trust, 2015.

enq.256



Warmagrip™



Warmagrip the only true "warm to the touch" DDA compliant handrail component system!

DDA

Building Regs

Health & Safety







Warmagrip is a high quality PVC coated steel tube handrail system, offering the all important "warm to the touch" requirements set down in the current Building Regulations.

It's also quick and easy to install with internal fittings for a smooth continuous handrail. Available in grey and highly visible safety yellow.

For a FREE catalogue or more information:

 www.warmagrip.co.uk
 marketing@brundle.com
 0115 951 2450

enq.257

Urmet welcomes new London showroom



Urmet is pleased to announce the opening of a new showroom display situated at The Building Centre, central London. This convenient new location is open from Monday to Saturday, all year round, excluding bank holidays. The aim is to enable a wide range of potential users, from architects and developers to security consultants and installers – in fact anyone involved in the door-entry sector – to see Urmet's market-leading products for themselves. Visitors to the product display are requested to report to reception, from where they will be escorted to the lower ground floor area 'L9', where Urmet's products are on permanent display. To arrange a meeting at this new showroom, email marketing@urmet.co.uk.

01376 556 010 www.urmet.co.uk

enq.258

Barwood launch new comfort height WC's



Two new contemporary toilet sets with matching basins have been launched by inclusive bathroom specialist, **Barwood Products**, for domestic customers and care home residents. 'Project' is a rimless luxury WC set designed for the home. With a comfort height of 455mm to the top of the pan and a long projection of 625mm the WC pan is perfect for safe and comfortable use for less able or aged customers. The modern stylish pan is supplied as standard with a slow close seat,

WRAS approved cistern fittings and dual 6/3 litre flush. Complementing the WC is the matching 'Project' single tap hole, 55cm basin complete with overflow. The basin can be specified with a full or semi pedestal.

01782 561 814 www.barwoodproducts.com

enq.259



Anti-slip tray



Thermostatic control



Overhead rain shower



All it takes to transform a bathroom is a little Kinemagic.

The stunning Kinemagic shower cubicle fits perfectly into the same space as a bath. Its innovative design requires no silicone or re-tiling, meaning it can be installed in just a day.* The 'Cristal Plus' glass panels can be configured for a right or left-handed installation and are completed by a high quality grab rail and folding seat, creating the ultimate safe shower experience.

For more information or to request a brochure visit kinedo.co.uk.

reader
enquiry
260



Designed by the experts at

SANIFLO

*It is possible to fit a Kinemagic in just one day with two people. However, this is subject to site situations and the competency of your installer.

Eco-friendly high security



Security expert **Abloy** has launched a range of electric locking solutions that feature new low energy technology, blending high security with eco-friendliness in the same lock. The energy saving technology is available with all Abloy handle-controlled locks, and the new low-energy variants can be identified by the use of the letter 'L' within the name of the

product, for example the EL480L and EL560L. In instances where the energy consumption of a building needs to be reduced, electric locks are an ideal solution to help increase energy efficiency. Door magnets have traditionally been the standard choice for access control points in commercial buildings, but Low Energy Electric Locks are actually a more energy efficient solution.

enq.261

Nittan at FIREX International - Stand G165



Nittan Europe will be exhibiting its comprehensive range of analogue addressable fire safety products at this year's FIREX International. Key products in Nittan's ranges will be displayed, including Evolution detectors featuring patented, award winning Dual Optical technology plus a number of new products will be revealed at the

show. The devices will be exhibited in a refreshing and approachable way to allow visitors to interact directly with them to see the quality build. Nittan's premium fire system, the Evolution range will take pride of place on Nittan's stand. Evolution combines truly exceptional and reliable fire detection with a very high degree of protection against unwanted false alarms.

enq.263

C-TEC on trend at Matalan's new headquarters



Built on the former Petrolite site at Knowsley Industrial Park, the state-of-the-art Head Office of the clothing and retail giant comprises fully serviced office space, storage and distribution facilities and extensive car parking. Four SigTEL disabled refuge controllers have been installed to ensure two-way communication in an emergency between

building management and people located in the refuge areas and an 800 Series call controller provides emergency call facilities in the accessible toilets to alert staff if an alarm is activated inside one of the toilet areas. One of C-TEC's EP203 automatic extinguisher fire panels has also been installed in the server room.

01942 322744 www.c-tec.co.uk

enq.262

Thoughts turn to outdoors entertaining



The best way to achieve a quality timber deck is to use **Wallbarn** timber tiles. Manufactured from South American hardwood, these square tiles are suspended over structural deck using ASP pedestals. This gives adequate drainage under the decking, avoiding slip hazards and puddling.

The installation is super-fast and easy, decks are laid twice as fast as with long planks. The ASP pedestals adjust in height to ensure the upper surface is flat and level. Stunning finishes are achieved.

0208 916 2222 www.wallbarn.com

enq.264

entrance canopies • shade canopies • covered walkways • school canopies



parkstreet
furnishing

Canopies and walkways can be used for a variety of different uses to provide protection from the sun and elements and act as functional outdoor spaces:

**Education
Commercial and leisure
Airports
Hospitals**

We offer a fully bespoke service and have an in house design and surveying team to produce high quality canopies designed and manufactured to fit your requirements

Contact us today and find out how you can **transform** a building with **affordable** canopies and walkways

01695 557024 • sales@park-streetfurnishing.co.uk
www.park-streetfurnishing.co.uk

enq.265

**BUY BRITISH, BUY QUALITY,
BUY Jeckells SHADE SAILS**



We design and manufacture Shade and Weatherproof Sails in commercial and domestic environments. Our forte is engineering solutions that not only look good but will also stand the test of time in unpredictable outdoor environments.

All our Shade Sails are individually designed with colour, shape and size to suit your particular requirements. Architecturally stunning. We use either Stainless Steel or Timber posts depending upon the environment. Our Shade Sails are easily fitted and removed. A full design and installation service is available.

Jeckells 
THE SAILMAKERS

For more details please call **01603 782223** or email shadesails@jeckells.co.uk

enq.266

Fall in love with outdoor spaces, whatever the weather

The addition of a external canopy or shelter can help transform an open space into a flexible multi-use space while also enhancing the design of the building. Andrew Murray, MD of AUTOPA Limited discusses why you should add a canopy into your next design



'By partially covering a play area with canopies pupils are able to make the most of their break times whatever the weather'

Schools are reaping the benefits of installing canopies on site

In the summer months outdoor areas are packed. However, for the remainder of the year, these areas often lie dormant. With space at an ever increasing premium, a logical solution is to adapt these outdoor spaces to create a usable area, whatever the weather.

An easy way to transform your outdoor spaces is through the addition of a canopy or shelter. Shelters can be manufactured to suit any size of site, and for almost every use. From entry canopies to outdoor play areas and dining areas, the possibilities are endless.

Why should you add a canopy into your next design?

1. Flexibility

Flexibility is key to a canopy's success. Although the basic structure of a canopy or shelter is always the same (legs and a roof), that is where the similarity stops. External canopies and

additional structures can be designed to suit a wide range of architectural styles both traditional and contemporary. All shelters tend to fall into one of four general styles, these are:

- **Lean-to Canopy**

The lean-to canopy is the simplest shelter design and it uses the existing building for structural support. With only two supporting legs, this style is perfect for the smaller or tighter site. Although this is a simple design, it is imperative that the existing structure is strong enough to support the additional weight

- **Wall mounted Canopy**

Small and light, wall mounted canopies are wholly supported by the existing structure. A popular example of a wall mounted canopy is a door canopy which are designed to protect visitors opening and exiting the door from the worst of the British weather

Continued overleaf..

Top Left: Cantilevered canopies are perfect for the smaller site

Top right: When installing a canopy at a school it is recommended to use round legs on the outside of the shelter to avoid injury should a child run into them



• Free Standing Canopy

A free standing canopy is the most popular and most versatile canopy style. Being free standing these canopies are able to support their own weight and therefore be located either adjacent to an existing building or separately as required

• Cantilevered Canopy

Anchored at one end only, a cantilevered canopy is a free standing canopy with one row of legs rather than two. This style of canopy is perfect for where space is at a premium or where the ground conditions are unsuitable for a free standing canopy. These are also ideal for nursery sites as they reduce the risk of a child tripping whilst playing in the shelter

2. Multi-use

As mentioned earlier, canopies can be used for a variety of applications. Walkways can be used to join buildings together and create a sense of cohesion in a project, whereas a large free standing canopy could be used to create a covered outdoor dining area.

Since the implementation of the smoking ban in 2007, the leisure industry has been leading the charge making the most of their pub gardens. Adding shelters, and in some cases heating,

to pub gardens has enabled these businesses to adapt and respond to their customer's needs.

As well as the leisure industry, schools and education establishments are also reaping the benefits from installing canopies. By partially covering a play area with canopies pupils are able to make the most of their break times whatever the weather.

When installing in a school area, the age of the pupils and the intended use of the structure must be taken into consideration during the design process. For example, round legs on the outside of the structure, rather than square, reduces the risk of injury should a child run into the canopy. While round legs are preferable on the outside, square legs are better suited for the side that joins onto the existing building. This allows the legs to sit flush against the building, reducing the risk of little fingers getting trapped between the structures

3. Enhance a design

Lastly adding a canopy or external shelter will enhance any design. A well used outdoor area will make a building more appealing and inviting for regular building users and visitors alike. Whichever sector you are working on, it is time to reclaim our outside areas and bring them into the heart of the design.

Right: Adding a canopy can enhance a building's appearance. Here is the little Ripley Day Nursery before the canopy

Far Right: The nursery after the canopy installation



enq.267

clovis canopies **we cover it!**

Clovis Canopies design, manufacture and install a wide range of shelter structures including entrance canopies, outdoor play-shade structures and covered walkway canopies.






CONTACT US FOR A FREE QUOTATION OR SITE VISIT
 Call **01622 873900** email **sales@clovis-canopies.co.uk**
 or visit our website **www.clovis-canopies.co.uk**

Branbridges Road, East Peckham, TONBRIDGE Kent TN12 5HH

enq.268

SAiGE
 Longlife Decking



SAiGE are providers of environmentally sourced long life composite decking to the trade.
 We pride ourselves on quality decking at affordable prices.



LIGHT GREY **REDWOOD** **CHARCOAL** **OAK**




visit us online at
WWW.SAIGEDCKING.COM
 or call 01789 721 576

SAiGE Longlife Decking Ltd. | info@saigedcking.com

enq.269

Tobermore
 WORLD CLASS PAVING & WALLING



VISION
 THE FUTURE OF THE BUILT ENVIRONMENT
 come visit us at stand **101**

LONDON BUILD 2018
 come visit us at stand **E53**



Fusion | Silver, Mid Grey & Graphite
 University of Lincoln

www.tobermore.co.uk | 0844 800 5736 |   

 Block Paving	 Kerbs, Edging & Channels
 Permeable Paving	 Walling & Masonry
 Paving Flags	 Retaining Walls
 Steps	 Eco Paving & Walling

enq.270

Marshalls brings street furniture brands together

Marshalls, the leading UK hard landscaping manufacturer, has announced that it will be bringing together all of its street furniture products and specialist businesses into a singular brand offering.

Having been a part of the brand for 10 years, leading street furniture, lighting and signage manufacturer Woodhouse, has now become fully integrated into the Marshalls street furniture portfolio.

Now, it is delighted to announce these bespoke product solutions will be brought together with the rest of its street furniture portfolio into its single Marshalls brand – helping clients to create an extraordinary, cohesive style with ease.

All of the things you love about Woodhouse will remain, but with a number of added benefits. The company will still have the same philosophy for quality and design, but with the wider selection of products and extra technical support that the

Marshalls brand brings. As an element of the Marshalls brand, Woodhouse will become its bespoke street furniture solutions offering. As such, Woodhouse Bespoke Product Solutions will be perfect for bringing your creative concepts and ideas to life.

Marshalls, best known for hard landscaping products, has been a leading supplier of street furniture for nearly 35 years.

Jaz Vilku, Managing Director of Marshalls Street Furniture, said: “This is a really exciting time for us and will bring a range of benefits for our customers. The same philosophy for quality and design that Woodhouse has become renowned for will remain, however there will be a wider selection of products available and the extra technical support that the Marshalls brand brings. Woodhouse has worked on some of the most iconic schemes worldwide and has become a trusted expert in the creation of exceptional



bespoke product solutions, so harnessing their expertise and focussing on this area makes perfect sense. We believe that this move will enhance the customer experience as they will no longer have to correspond with two separate contacts – ongoing there is a single contact number for all sales enquiries, a single quotation and a single account for all accounts paperwork and correspondence – making our clients lives a lot easier.”

All of the products and content from the Woodhouse website has been migrated across to the Marshalls website. It will continue to publish and share the great social content that clients enjoyed through the Woodhouse website, however this will now be published through Marshalls new ‘Creating Better’ knowledge blog where a broader range of subjects will be covered.

0370 990 7504 info@marshalls.co.uk

enq.271

benchmark street furniture

contemporary design | bespoke solutions



find out more at
www.benchmark-ltd.co.uk

call us on
01243 545926

enq.272

Brett Landscaping showcases paving range



Customising key information to better meet the requirements of specific commercial customers, **Brett Landscaping** has launched two new brochure formats, designed to meet the specific needs of civil engineers as well as landscape architects and designers respectively. Specialist Kerbs & Permeable Paving

which is aimed at the highway engineer covers the more technical products such as Trief containment kerbs, Kassel bus access kerbs and permeable paving. Inspiring Paving & Kerbs targets the landscape architect and specifier audience, who are far more interested in product aesthetics and design attributes, accesses the extensive range of commercial block, flag and housebuilder paving products.

0845 608 0570 www.brettpaving.co.uk

enq.273

Hauraton BIM family now online



The most specified **Hauraton** surface drainage channels are now available as Building Information Modelling (BIM) objects for free download via www.fastrackbim.co.uk. The new BIM family includes **FASERFIX**® KS

channels, **RECYFIX**® Standard, Pro, Plus and Slotted channels. A full range of Hauraton Computer Aided Design (CAD) drawings are also available on the website. In addition, utilising the latest responsive technology software, a fully integrated Drainage Projects website featuring interesting Hauraton UK case studies can be accessed via smartphones and tablets.

01582 501380 www.hauraton.co.uk

enq.274

classified & directory

ADHESIVES

BAL
Tel: 01782 591100
www.bal-adhesives.co.uk

ADVICE & INFORMATION

NHBC (National House Building Council)
Tel: 0800 035 6422
www.nhbc.co.uk

BABY CHANGING UNITS

Baby Point Ltd
Tel: 01449 770607
www.babypoint.co.uk

BATHROOMS & WASHROOMS

Ophardt Product (UK) Ltd
Tel: 01332 297666
www.ophardt.com



Enq. 501

CAD & PRINTERS

Standing Stone
Tel: 01661 886653
www.standing-stone.co.uk

COATINGS, SEALANTS & PAINTS

Barrettine Group
Tel: 01179 600060
www.barrettine.co.uk

COLUMN CASINGS

Encasement Ltd
Tel: 01733 266 889
www.encasement.co.uk

COMMERCIAL SHOWERS

Horne Engineering Ltd
Tel: 01505 321455
www.horne.co.uk

DOORS & WINDOWS

Origin Frames Ltd
Tel: 0808 271 4761
www.origin-global.com

DOORS & WINDOWS

Timber Door Canopies
by George Woods



Tel: 01363 884218
www.timberdoorcanopies.co.uk

Enq. 502

DRAINAGE & VENTILATION

Sita Bauelemente
Tel: +49 2522 8340 0
www.sita-bauelemente.de

FIRES & FIREPLACES

Specflue Ltd
Tel: 0800 90 20 220
www.specflue.com

FLOOD & WATER MANAGEMENT

CPLC Water
Tel: 01249 750709
www.floodandwatermanagement.co.uk

FLOORS & FLOORING

Flowcrete UK Ltd
Email: ukweb@flowcrete.com
www.flowcrete.co.uk

GROUNDWORKS

We Build It
Tel: 0800 731 9421
www.webuildit-ltd.co.uk

LANDSCAPING & EXTERNAL WORKS

Clearstone Paving Ltd
Tel: 01273 358177
www.clearstonepaving.co.uk

GroundSure Ltd
Tel: 0800 028 0000
www.groundsure.com

HEATING & VENTILATION

OPIES UK LTD
LIGHTING YOUR FIRE

PREMIUM QUALITY FIREWOOD

Vermiculite and Calcium Silicate fireproof, insulating and refractory panels for woodburning stoves and fireplaces

Skamolex GOLD **Skamolex BLUE**

01245 468 977
www.john-opie.co.uk

Enq. 503

NATURAL STONE

Stone Federation Great Britain
Tel: 01303 856123
www.stonefed.org.uk

POLYCARBONATE DOUBLE GLAZING

Polycarbonate Double Glazed Sealed Units

* Unbreakable
* Energy Saving



OptiGlaze Tel: 05603 497775

www.polycarbonateglazingsolutions.co.uk

Enq. 504

RADIATORS

THE RADIATOR FACTORY

New 2015 Brochure Launch.

A Vast Range of Quality Products from Europe's Finest Manufacturers which include Eco-Aluminium, Stainless Steel and of course our renowned Bay Window Radiators.

Available Online or Through our National Merchant Partners for Quick Delivery.

TEL: 0116 260 9257
WWW.RADIATORFACTORY.NET

Enq. 505

PUMPING STATIONS

J T Pumps
Tel: 0844 414 5800
www.jtpumps.co.uk

ROOFING

Liquid Roofing and Waterproofing Association (LRWA)
Tel: 0207 448 3859
www.lrwa.org.uk

National Federation of Roofing Contractors (NFRCA)
Tel: 020 7638 7663
www.nfrca.co.uk

Topseal Systems Ltd
Tel: 08000 831 094
www.topseal.co.uk

SOLAR SHADING (BRISE SOLEIL)

Levolux Limited
Tel: 020 8863 9111
www.levolux.com

STAIRS & BALUSTRADES

Railing London Ltd
Tel: 0208 566 6750
www.railinglondon.com

STREET FURNITURE

Contentur UK Ltd
Tel: 01282 604400
www.contentur.com

TILES & TILING

Solus Ceramics
Tel: 0121 7530777
www.solusceramics.com

TIMBER & JOINERY

OAK BEAMS

IMMENSE STOCKS

Wide Oak Floorboards
Bricks, Pig Tiles etc.
Barn Frames for Re-Erection

ANTIQUE BUILDINGS LTD
Tel: 01483 200477
www.antiquebuildings.com

Enq. 506

WINDOW CONTROLS

WP WINDOW OPERATORS

Manual • Electric
New • Repairs

Teleflex • Concession • Advice
For High Level & Awkward
to Reach Situations

WP Window Controls
T/F: 01344 486488
www.wpproducts.co.uk

Enq. 507

LOFT CENTRE PRODUCTS

FREE ADVICE AVAILABLE

We can help to
specify the correct
product for your
access problem or
provide a bespoke
solution

TELEPHONE
0845 676 0704

REACH NEW HEIGHTS

Access Product
Solutions for the
Construction Industry

- ▲ Models to suit all spaces
- ▲ Vertical and ceiling access
- ▲ Electric versions available
- ▲ Fire rated hatches

LADDERS & HATCHES



LOFT STAIRS



ELECTRIC UNITS



SPACE SAVERS



SPIRAL STAIRS



LOFT
CENTRE
PRODUCTS

LEADING
THE WAY UP

T: 0845 676 0704 | E: sales@loftcentre.co.uk

www.loftcentre.co.uk

reader
enquiry
402