

June 2015

adf architects datafile

The retail revolution

University of Leicester's
new Centre for Medicine

Plus the latest news,
events and products



www.architectsdatafile.co.uk

bricks & lintels • doors, windows & conservatories
bathrooms & washrooms • external surfacing & paving

incorporating
**BUILDING
PROJECTS**

Create with VELUX®

For over 70 years, VELUX has been the byword for innovation in roof windows. Our modular design approach and online tools help you to create stunning commercial projects. Explore the possibilities at velux.co.uk/architects

reader
enquiry

401

ARCHITECT:
Arkitema Architects
Siemens Headquarters,
Ballerup, Denmark

Bringing light to life

VELUX®

adf contents june 2015



projects

27 The retail revolution

A tectonic shift has overtaken the retail construction sector over the past five years as retailers have responded to the challenges of persistently weak consumer spending and changes to how and where people shop. Stephen Cousins asks "where is it heading next?"

35 What the doctors ordered

Mark Smulian takes a look at the University of Leicester's new Centre for Medicine, which will be the UK's largest non-residential Passivhaus project to date

features

45 STRUCTURAL ELEMENTS: BRICKS & LINTELS

Brick is back

Brick is one of the most ancient and familiar building materials known to man, its strength, character and flexibility of use continue to attract architects working on innovative contemporary buildings. Brick Development Association reports

51 EXTERNAL ENVELOPE: DOORS, WINDOWS & CONSERVATORIES

Specifying external sliding doors

As sliding doors become increasingly sophisticated, specification also becomes more complex. Andy Trewick, VELFAC direct sales manager, comments

65 INTERIORS: BATHROOMS & WASHROOMS

Choosing an integrated wetroom approach

An integrated approach, where products are designed to work together, should be high on a specifier's list when deciding which products to use in a wetroom or shower installation. By Ian Knifton of Schlüter

71 LANDSCAPING & EXTERNAL WORKS: EXTERNAL SURFACING & PAVING

Just add water

New Government planning requirements for SuDS incorporating techniques such as concrete block permeable paving came into force this April, amidst a growing realisation that they can deliver far more than just drainage as a key part of urban design. Interpave's Chris Hodson explains

news & events

- 4 Industry News
- 5 Events
- 24 CPD Focus

HEADLINES

- 7 North East architects submits designs for landmark Mongolia project
- 8 Royal seal of approval for Ryder's police HQ
- 13 UK Roofing Awards 2015 winners revealed

23 Editor's Focus

products

- 26 Planning & design
- 42 Groundworks
- 43 Structural elements
- 49 External envelope (incl. external fixtures)
- 56 Insulation
- 57 Heating, ventilation & services
- 58 Interiors
- 70 Safety & security
- 71 Landscaping & external works
- 75 Classified & directory



Cover image:
Durham Police headquarters
© Kristen McCluskie
See page 8 for details

Joint Publisher/Editor
Simon Reed

Advertisement Manager/
Joint Publisher
Anthony Parker
anthony@netmagmedia.eu

Editorial &
Production Assistants
Sue Benson
Mikey Pooley

Contributors
Stephen Cousins
Mark Smulian

Sales Director
Lesley Mayo

Sales Executives
Suzanne Easter
Ian Fletcher
Kim Friend
Steve Smith

Circulation/Reader
Enquiry Service
Jane Spice
netMAGmedia Ltd
Cointronic House
Station Road, Heathfield
East Sussex, TN21 8DF



Advertising &
Administration
t 01435 863500
f 01435 863897
info@netmagmedia.eu
www.architectsdatafile.co.uk

Press Releases
editorial@netmagmedia.eu



Annual subscription costs just £48 for 12 issues, including post and packing. Phone 01435 863500 for details. Individual copies of the publication are available at £5 each inc p & p. All rights reserved

No part of this publication may be reproduced or transmitted in any form or by any means, electronic, mechanical, including photocopying, recording or stored in any information retrieval system without the express prior written consent of the publisher. Although every effort is made to ensure the accuracy and reliability of material published in Architects Datafile, the publisher can accept no responsibility for the claims or opinions made by contributors, manufacturers or advertisers. Editorial contributors to this journal may have made a payment towards the reproduction costs of material used to illustrate their products. The manufacturer of the paper used within our publication is a Chain-of-Custody certified supplier operating within environmental systems certified to both ISO 14001 and EMAS in order to ensure sustainable production. Printed in England

RETAIL AWARD

Chapman Taylor scheme Trinity Leeds wins Design Award at international retail awards



The International Council for Shopping Centres (ICSC) has awarded Trinity Leeds the 2015 Best-of-the-Best Design Award at the annual Recon conference in Las Vegas.

The Chapman Taylor scheme for Land Securities opened its doors in March 2013 bringing a contemporary shopping destination to the heart of Leeds city centre. It was awarded the highest accolade for design at ICSC's Annual VIVA (Vision, Innovation, Value, Achievement) "Best-of-the-Best" convention, which recognises the most outstanding examples of shopping centre marketing, design and development, sustainability, and community service worldwide.

Trinity Leeds, named after the adjacent 18th Century Holy Trinity Church has already won the architectural practice many design awards for being a revolutionary new type of retail destination and still continues to set the benchmark for market-leading and modern shopping centres, both in the UK and internationally.

Chapman Taylor UK completely modernised and integrated three of Leeds' busiest shopping streets into an all year round late night venue for fashion, food and film. Trinity is a naturally

ventilated scheme composed of buildings linked by a series of open air arcaded streets and public spaces along with an iconic domed roof with a series of self-supporting glazed grid-shells rising 100ft above street level.

In addition to creating a modern shopping experience, almost 25 per cent of space has been dedicated to food and leisure, including the creation of a rooftop dining terrace, cocktail bar, pub / restaurants and a 27,000 sq. ft., four screen art-house cinema. Most revolutionary of all has been the creation of 'Trinity Kitchen', the UK's first authentic indoor street food venue, where food vans are lifted up to the first floor by a hydraulic lift. An extensive public arts programme is also integrated, with the architectural design accommodating several sculptures by renowned artists.

Chapman Taylor Director, Adrian Griffiths commented: "We are thrilled that Trinity Leeds has won this global recognition. We carefully designed and delivered a well thought out retail and leisure destination that fits well within its urban context and it is a great achievement for it to be considered the world's best designed retail location."

Discovering London's landscape on foot

This year, the Landscape Institute curates 10 landscape walks for the London Festival of Architecture (LFA: 1-30 June 2015). Taking place on Wednesday and Thursday evenings in June the walks explore London's varied and eclectic mix of spaces and landscapes and are tied in with the New London Architecture exhibition Public London.

From the old, new and proposed architecture, side streets

and public spaces of East London, the beauty of paving, railings and bollards in Southwark to London's major transformed landscapes like the Queen Elizabeth Olympic Park, Clapham Old Town and Nine Elms the walks are inspired by this year's LFA theme 'work in progress'.

For more information go to www.architectsdatafile.co.uk and enter reference number 61252.

EDUCATION

Cassidy + Ashton brings new pre-school facility to university campus



Architectural and planning consultancy, Cassidy + Ashton, has secured planning permission for a new 80-place nursery building that began construction on site at the University of Cumbria's Lancaster campus in May.

Cassidy + Ashton designed the single storey, 325m² timber-frame facility as a replacement for the existing 56-place nursery on the campus, which is currently operating out of a pre-fabricated building.

The scheme will see the nursery create 30 new places for children aged between two and four years and move to a much more prominent location on campus in a purpose-built, permanent structure.

It is being co-funded by Lancashire County Council and the existing childcare provider and nursery manager, Mrs Philippa Perks. It will offer a contemporary learning environment accommodating up to 40 children aged two years along with up to 40 children aged three/four.

Facilities will include play/learning areas, sensory rooms and children's toilet/change facilities along with secure outdoor play areas. The building will also include staff toilet and change facilities, admin areas, a kitchen and a staff room.

Garstang-based timber frame specialist, Lawrence Taylor Construction, will be responsible for building the new facility, which is due for completion in October 2015. The building will feature timber and smooth render panel cladding along with areas of sandstone to complement the surrounding built environment. The design also incorporates a flat roof and grey PVC windows.

Frank McCabe, senior chartered architectural technologist at Cassidy + Ashton, said: "The scheme's prominent location called for a building with a high standard of finish within the agreed budgetary constraints. We also ensured that the new facility offers a practical layout and robust specification to meet the needs of the end user.

"We were able to leverage our experience of previous pre-school schemes, which includes The Rainbow Nursery at Preston East Children's Centre, and apply our value-driven approach to buildability to the project, working closely with the client and Lawrence Taylor Construction to design a scheme that addresses the planning requirements of the location and the practical needs of the nursery provider."

Oasys looks to slay architects 'time vampire' with Mail Manager 6.1

UK based software developer, Oasys, will be demonstrating the latest version of Mail Manager their popular email management tool designed to save architect's valuable time and resources through a more efficient administration system.

Typically, workers in knowledge based roles, spend at least one whole day a week checking and replying to emails¹. Offering a fast return on a remarkably small investment, Mail Manager 6.1 is designed to support collaborative team and

project working, by cleverly cataloguing subjects and removing message duplications.

Users are prompted to file emails to shared folders based on smart algorithms. This includes both sent and received items so that members of a wider organisational group can see how conversations with a particular client or individual have developed, providing a real knowledge base for staff.

¹McKinsey: *the social economy*

events

AWARDS

British Homes Awards

16 October, London
britishhomesawards.co.uk

Brick Awards

18 November, London
www.brick.org.uk/brick-awards

FESTIVALS

London Festival of Architecture

01 - 30 June, London
www.londonfestivalofarchitecture.org

London Design Festival

19 - 27 September, London
www.londondesignfestival.com

TOURS

Open House London

19 - 20 September, London
www.openhouselondon.org.uk

TRADE SHOWS

Decorex

20 - 23 September, London
www.decorex.com

100% Design

23 - 26 September, London
www.100percentdesign.co.uk

UK Construction Week

6 - 11 October 2015, Birmingham
www.ukconstructionweek.com

Healthcare Estates

20 - 21 October 2015, Manchester
www.healthcare-estates.com

Greenbuild Expo

10 - 11 November 2015, Manchester
www.greenbuildexpo.co.uk

Geberit CleanLine shower channel

■ GEBERIT

Simply smart.

With its brushed stainless steel finish, the new Geberit CleanLine shower channel is smart in appearance and functionality. The channel can be cut down to size during installation to perfectly fit your design and features an innovative comb insert for easy cleaning. Simply clean - simply beautiful

→ www.geberit.co.uk/cleanlinechannel

reader
enquiry

101

INTERNATIONAL LANDMARK PROJECT

North East architects submits designs for landmark Mongolia project

A North East architects firm is in the running to design a landmark £200 million entertainment, residential and commercial centre in Mongolia. Gradon Architecture is one of three firms – and the only UK practice – selected to submit plans for a vast scale, innovative regeneration project that will transform a disused site in the country's capital Ulan Bator.

Gradon, which is based in Gateshead, made history earlier this year by becoming the first British practice to set up in Mongolia, opening a studio in Ulan Bator in January and taking on three new Mongolian staff as part of the expansion.

The architect's plans for the prestigious development, known as the Four Seasons, include residential apartments, vibrant public spaces, a hotel, shopping mall, leisure centre, skating rink and waterpark as well as conference centre, office space and medical hub.

With Mongolia one of the world's most polluted countries, sustainable solutions are at the core of Gradon's designs.

The development proposals feature 'bioclimatic' design, which sees existing natural vegetation incorporated into the building's exterior to create vertical gardens. These gardens serve to create habitat for wildlife as well as to offer protection to the building from Mongolia's harsh and varied climate.

Graham McDarby, design director at Gradon Architecture, said: "It is an exciting time to be designing architecture in Mongolia, with cities such as Ulan Bator undergoing rapid transformation. Gradon Architecture is at the forefront of this positive change – helping to improve standards and implement green solutions that will make a huge impact.

"We're delighted to be down to the last three architects in the running for such a prestigious and iconic development. With bases in the UK and Mongolia we are in the unique positioning of being able to bring both local knowledge and the expertise of UK design and sustainability solutions to the project.



"The Four Seasons development will be a vibrant space that has the potential to be the jewel in the crown of Ulan Bator, redefining the future growth and sustainability of the city."

Gradon's Mongolia venture is the first overseas office for the fast-growing practice, which increased its international business from zero to 25 per cent of the company's total turnover in the last two years. Expansion into Northern Ireland is planned for later this year.

The Four Seasons is the latest of a number of design projects in the country for Gradon, including energy efficient homes and commercial projects. In April the practice was appointed to work on the Tugulduur Shopping Centre, a £20 million retail and residential complex in Ulan Bator.

news bytes

Visit the website
www.architectsdatafile.co.uk
and enter the reference
number for more information

Eco World Ballymore's
London City Island
launches its
next phase...
Ref: 34177

WSP | Parsons
Brinckerhoff wins
Canary Wharf's
Ten Bank Street
project role...
Ref: 22089

A solution to London's work space shortage

Work is about to begin on London's first 'Tree Office' in the heart of Hackney's Tech City to provide a unique co-working space for businesses and the wider community.

Built around a tree trunk in Hoxton Square, the construction of the first 'Tree Office' began on 18 May, offering a unique space for businesses and community groups to rent that will generate income for improvements to Hackney's parks and green spaces. Seating six to eight people working on laptops, or holding meetings, the weather

proof structure will provide views out across the square and up into the tree's canopy, and has been designed to be as transparent as possible. The Tree Office is being delivered by Hackney Council, Groundwork London and Arts Admin as part of the Park Hack project. The 'Tree Office' has been created by artist Natalie Jeremijenko in collaboration with artists Shuster + Moseley, architects Tate Harmer and consulting architects Gensler.

NEW POLICE HEADQUARTERS



Royal seal of approval for Ryder's police HQ

Durham Police's new £14m Ryder designed headquarters was officially opened by Her Royal Highness, The Princess Royal.

The new offices house around 600 people under one roof ranging from call handlers and dispatchers to other central services including the force's executive team, finance, human resource, and information technology departments.

Having unveiled a commemorative plaque in the atrium the Princess said: "I remember your previous building and I am sure that this one is considered to be a huge improvement on that."

The former building, due to be demolished, was constructed in the 1960s and was outdated and had become a drain on resources, costing significant amounts to maintain.

Chief Constable Mike Barton said: "Instead of spending on utilities and repairs we can now spend on cops. As a result of moving here we have got 17 additional cops on the streets."

The Building Management System is able to analyse internal and external environmental conditions, making millimetre adjustments to the window openings across the whole facade to provide optimum conditions to the workplace.

Richard Wise, Ryder partner, said: "The Royal opening of the headquarters acknowledges its importance not only to the community but also the environment in terms of its innovative environmental management system and the way it so sensitively sits in this UNESCO World Heritage site."

Actor Martin Shaw also visited the headquarters during filming of the new series of *Inspector George Gently*, adding to its plaudits. He said: "I was immediately struck by how well it sits in the landscape. It has clearly been designed with a great deal of conscious and respectful thought. The energy design is equally conscious, with environmentally friendly methods used throughout. It's a remarkable achievement, and Durham can be both proud and reassured by the quality of their police service."

Acquisition of 25 & 28 Easton Street, London, WC1

Workspace Group PLC ("Workspace"), London's leading provider of space for new and growing companies, is pleased to announce the exchange of contracts for the acquisition of 25 & 28 Easton Street, WC1 for £16.55million.

The property is well located in Clerkenwell close to Exmouth Market and complements the company's existing cluster of buildings in this popular Midtown area. The converted warehouse style offices with net internal area of 21,000 sq ft comprises of basement, ground and three upper floors with the potential for extension in due course.

The building is being acquired from the existing owner and occupier, Amnesty International ('Amnesty'), at a capital value of £794 per sq. ft. It will be reconfigured and

let as a business centre at the conclusion of a short two year leaseback to Amnesty at a rent of only £10 per sq. ft.

Jamie Hopkins, Chief Executive Officer of Workspace commented: "I am delighted to announce the purchase of 25 & 28 Easton Street which further bolsters our presence in Clerkenwell, an area we know very well and soon to benefit from the opening of the Cross Rail Station in Farringdon.

This acquisition is in line with our strategy of selectively expanding our footprint in key areas of London, where we see strong demand from new and growing companies, and demonstrates our ability to continue to find sites where we can add value to the portfolio."

THE SOLAR SYSTEM YOU'VE BEEN WAITING FOR



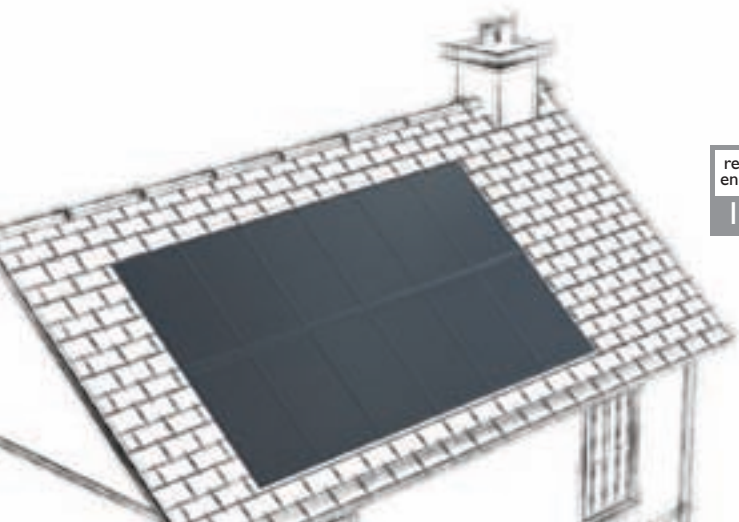
SunStation. Profit from great-looking solar.

Discover the revolutionary solar system that seamlessly fits into the roof for the same cost as on-roof solar.

Visit gosunstation.com to see for yourself.

reader
enquiry

102



 Brought to you by
solarcentury



SunStation

“The choice of *Brick* used for the *LSE Project* was critical to its success. The compressive *strength*, choice of colour and mixture made *brick* the obvious choice.”



Mike Walsh –
*Managing Director of Swift
Brickwork Contractors Ltd,
contractor to the LSE Building*

Contractors know a good thing when they see it. That's why they make brick their choice in their construction project.

Brick. See the material difference.

Call us today on 020 7323 7030 email brick@brick.org.uk
or visit www.brick.org.uk [@BricksUK](https://twitter.com/BricksUK) #everythingconstructive

reader
enquiry
103

BRICK
DEVELOPMENT
ASSOCIATION

LANDMARK TOWER CONSTRUCTION

Bouygues construction is chosen to build Manhattan Loft Gardens, its first tower in London



The London property developer, Manhattan Loft Corporation, has selected Bouygues UK, the British subsidiary of Bouygues Construction, for the construction of Manhattan Loft Gardens, a 143-metre landmark tower in Stratford, East London. The project represents a gross development value (GDV) of £250 million (approx. €340 million).

Harry Handelsman, founder and CEO of Manhattan Loft Corporation, said: "Our appointment of Bouygues, with its vast international knowledge and experience of high-rise luxury developments, will add to our already top class project team."

Manhattan Loft Gardens will continue the Olympic legacy by becoming Europe's most exciting residential/hotel tower, thus confirming Stratford as one of the emerging prime residential, commercial and cultural hubs of London."

Madani Sow, Deputy CEO of Bouygues Bâtiment International, added: "Manhattan Loft Gardens, developed by Harry Handelsman, will give its future residents a unique experience of London. Bouygues UK teams will be fully committed to turning this innovative vision into reality. Technical prowess and architectural quality will combine to produce a building that will be greatly appreciated by its future users."

Manhattan Loft Gardens will be located next to Stratford International

Station and High Speed 1, the Channel Tunnel rail link. It will play a key role in the regeneration of the area. Designed by architects Skidmore, Owings & Merrill (SOM), the 42-storey tower will include 248 apartments above a 150-room hotel, a spa, a triple-height lobby and two restaurants.

The unique structure of this building features two cantilevers which support three sky gardens giving unobstructed views across London. Manhattan Loft Gardens offers a new take on London garden squares and creates an environment suited to neighbourhood life and the development of urban biodiversity.

The works began earlier this year, and are due to be completed in spring 2018.

The start of this new construction site underlines Bouygues Construction's dynamic profile on the British market. Operating in the United Kingdom for around 20 years, the Group has progressively grown its businesses in the sectors of property development (Bouygues Development), building (Bouygues UK), civil works (Bouygues Travaux Publics) and energy and services (Bouygues Energies & Services). Bouygues Construction manages numerous projects in the UK, with property development, design-build and operation contracts that involve large local institutions as well as projects in the housing, education, healthcare, street lighting and infrastructure sectors.



Machines of mass potential.

Keeps customer loos running like clockwork.

No stopping, from first to last orders in the Café Bar.

Multiple showers in the gym? No sweat.

Can cook up a storm in any kitchen.

Gets to work in the office.



Because Saniflo works where convention doesn't, our powerful new Sanicubic® XL lifting station can help you take on any commercial project and win. With up to 5 inlets, a 120 litre tank volume and 40m³/hour of pumping power, it's got incredible potential. *Just think of the possibilities.* Visit **saniflo.co.uk**

reader
enquiry
104

SANIFLO[®]
PLUMBING THE POSSIBILITIES

UK Roofing Awards 2015 winners revealed

The winners of the tenth UK Roofing Awards were announced at a ceremony hosted by BBC's Louise Minchin and NFRC CEO Ray Horwood at the Hilton London Metropole on 15 May 2015.

The winners are:

Double-lap Slating: Bolton Roofing Contractors, Eyre Crescent, Edinburgh – Cromar Building Products

Double-lap Tiling: Karl Terry Roofing Contractors, New Place, Banstead – John Brash, Keymer Tiles, Klobber, Calder, Rooflight company

Single-lap Tiling and Slating: Marley Contract Services, Scotia Homes, Aberdeen – Sandtoft,

Heritage Roofing: Jordan Heritage Roofing, Penmaen Cottage, Snowdonia National Park – Natural Building Centre, Norman & Underwood

Fully Supported Metal Roofing: Norman & Underwood, Northumberland Observatory, Cambridge

Roof Sheeting: KGM Roofing, Babraham Campus, Cambridgeshire – Kalzip, CA Building Products, Sika Sarnafil, SFS Intec

Vertical Cladding/ Rainscreen: Lakesmere Limited, National Graphene Institute, Manchester – Eurobond, Rockwool International

Reinforced Bitumen Membrane: M&J Group, Neo-Natal Unit, Hammersmith Hospital – IKO

Single Ply Roofing: Briggs Amasco, Joseph Black Building, Kings Campus, Edinburgh – Sika Sarnafil

Liquid Roofing and Waterproofing: Icopal (with Mitie Tile Roofing), Terminal 3 – Heathrow Airport – Icopal

Sustainable Roofs (Shingles & Shakes): Clarke Roofing Southern, Wadhurst Church Spire, East Sussex – John Brash

Sustainable Roofs (Green, Vegetated Roofs): Organic Roofs, Boathouse, Avon Tyrrell, Hampshire – Hertalan

This was an extra special year for the UK Roofing Awards as it was also the tenth anniversary since it all began in 2006. To mark the occasion two companies received recognition of their roofing excellence throughout the 10 year period and were presented with an Outstanding Achievement in Roofing Award. The two companies show the complete diversity of skills in the industry, working at different ends of the roofing spectrum; the awards went to Lakesmere Limited and Karl Terry Roofing Contractors Ltd.

For more information on the event and a winners list, please visit www.architectsdatafile.co.uk and enter reference number 52775.

INNOVATIVE THINKING

Arup's 'cocoon' reads your mood and displays in light



A new installation has been unveiled at Arup's head office in the UK, No.8 Fitzroy Street. The "Sentiment Cocoon" is an interactive installation designed by architect Moritz Behrens & lighting designer Konstantinos Mavromichalis. The installation seeks to capture people's sentiments that is depicted through LED lights and is the 2015 winner of Arup's annual competition to highlight new talent and innovative thinking within designers and emerging architectural practices.

Based on a stage on the ground floor at No.8 Fitzroy Street, the Cocoon has been partly constructed by a robot, affectionately called "Einstein". The complete installation stands at 20 metres high.

Each day, Arup employees can share their sentiments via one of the dashboards that are installed on each of the five office floors, using an individual swipe card. A sophisticated algorithm will feed participants' feelings through the dashboard and these will be digitally projected into a light field created by LEDs that forms the spine of the cocoon.

This year, the theme for the competition was "Designing for People", with the installation design required to reflect the need for occupants to be placed at the heart of a design brief, creating efficient and comfortable environments whereby people are not only productive yet also inspired, motivated, healthy and happy.

The Sentiment Cocoon is yet another example of the increasing proliferation of media architectural interfaces mediating human behaviour with architecture. Arup is committed to design and finding ways to stimulate innovation and creativity through playful experimentation. No.8@arup seeks to illustrate how collaboration amongst designers, across all sectors and disciplines can lead to an exploration of new technologies and techniques which influence how we design buildings. These social applications will ultimately lead to responsive, adaptable and clever buildings that serve human wellbeing.



From balustrades, columns and porticos to pier caps, window surrounds and custom designs – our high specification cast stone designs provide affordable elegance to any project.

Browse our unrivalled collection **online** or **call** to request a catalogue.



HADDONSTONE

haddonstone.com
01604 770711

enq.105

As flexible as your imagination

Designed and manufactured in Sweden, a Gartec Platform Lift is the most aesthetically and technically advanced available today.

Commercial Lifts
and Home Lifts



Look out
for our new
RIBA Certified iCPD,
delivered at your own
offices – now booking!



Call 01296 397100 or visit
www.gartec.com

GARTEC

An Aritco Group company

Leading the Platform Lift Industry

enq.106

PURPOSE BUILT OFFICE

Riverside offices reach completion, promising an estimated 70 per cent cut in carbon emissions

Riverside Offices, a purpose built office development in Lowestoft which brings together shared public sector services for Suffolk County Council (SCC) and Waveney District Council (WDC) is now completed.

The project enables both Councils to demonstrate efficiency and sustainability in providing rationalised offices, improved and consolidated public

services, case conferencing and the rationalisation of training, conference, meeting and council chamber and assembly meeting facilities.

The building, designed by LSI Architects (www.lsiarchitects.co.uk), is a landmark building in Lowestoft and is designed around passive design principles, using elements of Passivhaus standards and techniques to reduce the energy consumption and carbon footprint of the building.

An integrated landscape scheme combining parking facilities for vehicles, motorcycles and cycles will be provided in a sustainable setting.

Both local authorities say the move will reduce the overall cost to taxpayers by up to £3 million over 10 years.

The three storey building, constructed by Kier, features conference room facilities and public cafe on the ground floor, with workstation areas on the upper floors.

The new building will reduce energy and maintenance costs for the two councils and is part of a wider £13.6 million accommodation programme which includes a redeveloped Marina Customer Service Centre in the heart of Lowestoft.

It is estimated that the entire programme will cut the councils' carbon

emissions in the town by up to 70 per cent.

Colin Law, leader of Waveney District Council, said: "We are absolutely delighted that we will shortly be moving in to Riverside as part of a programme that has delivered a vital new building on time and on budget.

LSI Architects, said: "The building form grew directly from the layout and the relationship of the office wings either side of a central atrium. Externally materials have been chosen for their robustness against the weather and corrosive marine atmosphere. The double height space is accentuated externally with a two storey brickwork corner feature, which addresses the main approach to the building.

The upper levels have insulated rainscreen cladding, with horizontal bands of high performance double glazed windows, and are interspersed with coloured insulated cladding panels which enliven the facade. Projecting vertical coloured shading fins reduce solar gain and provide articulation to the elevations. The central atrium is glazed at each end to provide a welcoming and airy entrance space, combined with a projecting high level canopy for solar shading."

'The building form grew directly from the layout and the relationship of the office wings either side of a central atrium'

LSI Architects



RGP Architects spearhead regeneration



RGP Architects were delighted to welcome the Mayor of Barnstaple, Mrs Val Elkins, to officially open their new iconic offices at Victoria Street on Wednesday 20th May.

These premises were formerly the old Driving Test Centre, but with creative vision RGP have invested in the regeneration of this building, turning it into an aesthetically pleasing and desirable space in which to work.

Said Nigel Gale, managing director: "It is gratifying to see that already this re-utilisation of a redundant former Council building is instigating regeneration in this part of Barnstaple."

A number of other close-by buildings are also intended to be

refurbished and altered into more productive uses. RGP Architects' steady growth and continued strength comes from the depth of knowledge of the team and the vast experience in industry sectors, including Local Authorities, Housing Developers, Housing Associations, Commercial, Industrial, Retail, Private Individuals, Local Communities and Groups, Medical and Social Services, Leisure, Recreation, Tourism and Education.

URBAN RENEWAL

Breathable and sustainable part of an urban renewal dynamic

The area of Istanbul between Mecidiyeköy and Zincirlikuyu is one of the key centres in terms of transportation facilities, and so has become popular with companies. This is an area which became run-down over time, but is now being renewed as part of an urban renewal dynamic.

The Rönesans Mecidiyeköy Office building was established in view of this development potential.

The plot of land stands on the main transportation axis linking Büyükdere Caddesi and the Profilo Shopping Centre in Mecidiyeköy. It stands on Cemal Sahir and Raşit Rıza streets, between which there is a difference of around 9 metres in height.

The land measures approximately 4,000 sqm and the design is for a geometric block that is 5.5 metres in height at the entrance level (+0.00) and 18.5 metres at the lower level. In accordance with building regulations, the mass was emptied and united with balconies, eaves and other architectural additions.

Since building restrictions offer little room for alternatives to a mass, making it difficult to allow for natural air conditioning and lighting, openings were created in the main mass beneath the +5.50 level, so creating an inner courtyard-garden space that was enriched by projections from the main mass. These projections provide social areas for users within the scope of diverse spatial uses.

The building programme consists of offices, commercial areas, carpark and technical spaces, which have been arranged according to a fairly simple layout. Apart from the commercial spaces on Cemal Sahir Sokağı, all the above-ground areas were planned as offices, with carpark and technical spaces below ground. There is pedestrian access from all the streets surrounding the building, and carpark/logistics access from Raşit Rıza Sokağı.

The Rönesans Mecidiyeköy Office has been certificated as LEED Gold with the features of maximum air and daylight, local materials, contributions to urban levels and more.

Architecture Visionaries



Architecture Visionaries by Richard Weston and to be published by Laurence King in August 2015 presents the story of 20th-century architecture through the fascinating personal stories and significant works that have shaped the field.

Arranged in a broadly chronological order, Architecture Visionaries reveals

the impact that 75 of the world's most influential architects have had on the development of our built environment. Key dates are listed in career timelines, allowing us to understand how their masterpieces directly influenced the world around us.

With insightful text and stunning visual examples, this is an ideal introduction to the great names of 20th century architecture. Key works include Gaudi's Sagrada Familia, Adolf Loos's Müller House in Prague, Behnisch's Munich Olympic Park and Norman Foster's Hongkong and Shanghai Bank. Contemporary work such as Daniel Libeskind's design for the Jewish Museum in Berlin, is also included, as well as Santiago Calatrava's ingenious Turning Torso apartment tower in Sweden, which resembles a vast spinal column.

Individually selected by architecture expert Richard Weston, these 75 architects have been chosen for their

pioneering work and for the diversity that they have introduced to field. This book is the perfect introduction to architecture for students and a source of inspiration for established practitioners.

Also available in the 'Visionaries' series:

Fashion Visionaries (ISBN 978 1 78067 578 7)

Graphic Design Visionaries (ISBN 978 1 78067 484 1)

Photography Visionaries (ISBN 978 1 78067 475 9)

An architect, landscape designer and author, Richard Weston is a Professor at the Welsh School of Architecture, Cardiff University. Previous books include the monograph Alvar Aalto and the definitive monograph on the Danish architect Jørn Utzon. His other books include Materials, Form and Architecture (2003) and 100 Ideas that Changed Architecture (2011).

news bytes

Visit the website www.architectsdatafile.co.uk and enter the reference number for more information

Abbey Sands scheme re-animates Torquay's waterfront...

Ref: 34022

Investcorp Building for Oxford University's Middle East Centre at St Antony's College...

Ref: 76263

Another retail unit goes at Atria Edinburgh...

Ref: 86226

AXESS4ALL The perfect lift every time



The New A6000 – A cabin platform lift with all of the benefits of a platform lift but the feel and style of a traditional fully enclosed lift due to the conventional lift sliding landing and cabin doors.

☎ 0844 3758882

✉ SALES@AXESS4ALL.COM

🌐 WWW.AXESS4ALL.COM



enq.107



01384 296611 | email: info@primeoak.co.uk | www.primeoak.co.uk

GARAGES | GARDEN ROOMS | ORANGERIES | HOME OFFICES | CONSERVATORIES | BARNs | STABLES

enq.108

COMPANY EXPANSION

Full house at Glasgow's Spectrum building

Glasgow's Spectrum building is at capacity after an American insurance giant agreed a long-term lease on the remaining office space.

Arthur J Gallagher (AJG) has taken the 9,440 sq ft fourth floor in a deal conducted by JLL and Ryden on behalf of Orchard Street Investment Management. Gerald Eve acted for AJG.

The company signed a ten-year lease at £18 per sq ft to extend their presence at the 55 Blythswood Street site.

They already occupy the 9,100 sq ft seventh floor following

their 2013 purchase of Giles Insurance. AJG has also opted to extend their lease on that space.

Colin McGhee, JLL, said: "The Spectrum Building recently underwent an extensive refurbishment which has significantly raised its profile as an attractive city centre location.

"For AJG to not only extend their existing lease but to take an additional floor underlines the outstanding credentials of this office space."

Sven Macaulay, Gerald Eve, said: "My clients had various options open to them in Glasgow and beyond but the combination of the quality of the accommodation, its location and the attractive terms on offer led them to make what was at the end of the day a relatively easy decision to expand their presence at Spectrum."

Last year, Spectrum welcomed leading recruitment firm Hays, who moved into the 9,255 sq ft first floor. Other tenants include fidélité credit management and Mortgages PLC.

The accommodation benefits from a striking entrance reception, floor to ceiling glazed walling, exceptional natural daylight and dedicated archive storage areas.

Spectrum also offers easy access to the M8 motorway and is within walking distance of both Glasgow Central and Queen Street train stations. There are a number of nearby amenities.



Nine Elms on the South Bank celebrates its architecture credentials with London Festival of Architecture 2015 Programme

Nine Elms on the South Bank is hosting a series of events throughout June as part of London Festival of Architecture 2015 (LFA), which takes place from 1-30 June.

As one of the largest regeneration projects underway in Europe, the area perfectly encapsulates this year's Festival theme of 'work in progress'. With over 30 schemes either in planning or under construction, Nine Elms' regeneration will deliver a striking, modern addition to London's South Bank. New homes, tube stations, public parks, town centres, offices, hotels (and potentially a new pedestrian and cycle bridge) are all certain to play a part in the creation of central London's newest district.

Some of the world's leading architects and designers, including Rafael Viñoly, Frank Gehry, Rogers Stirk Harbour + Partners, Sir Terry Farrell, Allies and Morrison, Kieran Timberlake, Kohn Pedersen Fox and Fosters + Partners, are reshaping the entire district on a scale seldom seen in an established world city.

Building on the success of Nine Elms' 2014 LFA Programme, this year's programme will look to reflect the area's heritage and industrial past which influence the area's vision and future, incorporating existing architectural icons such as Battersea Power Station and much loved gems like the Tea House Theatre and Brunswick House.

The programme of events will showcase the rapid pace of transformation across this former industrial area, which include: a horticultural spa experience, walking tours which will trace the area's transformation; an evening reception and panel discussion at LASSCO's Brunswick House will explore the challenges of creating a 'sense of place'; an exhibition on the Mezzanine of the UK's largest flower market will showcase the 74 longlisted designs and technical drawings for the Nine Elms Pimlico bridge design competition and an architecturally-themed pub quiz on Battersea Barge in partnership with Londonist will test the minds of building boffins.

news bytes

Visit the website
www.architectsdatafile.co.uk
and enter the reference
number for more information

Barnshaws deliver
curve appeal
to Manchester
Victoria station...
Ref: 69083

Dover waterfront
regeneration sets sail...
Ref: 87161

LK2 projects
shortlisted at
regional awards...
Ref: 99981

SCOTTISH DESIGN AWARD

Atkins' refurbishment of Glasgow Central Station wins Scottish Design Award for re-use of a listed building

Atkins' refurbishment of Glasgow Central Station, a Grade A listed building, won the re-use of a listed building award at this year's Scottish Design Awards.

The award recognises the work of Atkins' multi-disciplinary team that helped Glasgow Central Station undergo a dramatic transformation to improve its appearance and facilities ahead of the 2014 Commonwealth Games. Working closely with Network Rail, the Glasgow-based team created a design to improve the quality of experience of the 38 million people who pass through the station each year.

Atkins' team of architects, structural, mechanical and electrical engineers worked to a tight timeframe to transform the station's main entrances from

Union Street, the low level station and the main concourse washrooms in time for the Games. Their design pays homage to the station's original environment by introducing tall, delicate archway structures and large format gates which feature ornate metal work echoing times gone by.

Logan Doak, Atkins' project architect, said: "Our team helped to breathe new life into Glasgow Central Station's tired environment while safeguarding its rich history. There was an over reliance on complex signage within the station and there was a desire to simplify the passenger journey and communicate important gateways from a distance through material and form. Although significant in scale, the new arch and gateways are elegantly proportioned and

delicately perforated, and laser cut steel plates help belie their structural weight."

The station, named Station of the Year in 2015 by the European Rail Congress and in 2014 by the National Rail Awards, is the largest in Glasgow and the tenth busiest railway station in Britain. The original station was built by Scottish engineer Sir William Arrol, who was also responsible for Scotland's iconic Forth and Tay Bridges and London's Tower Bridge, and first opened on 1 August 1879.

As part of the city's improvements ahead of the Commonwealth Games, Atkins also worked on upgrades to Glasgow's Dalmarnock Station, which won a Scottish Design Award for Best Proposed Project in 2012 and a Glasgow Institute of Architecture prize.



Skills shortage in Architecture sector one of the biggest challenges facing new government

One of the biggest challenges facing the new administration is the impending skills shortage fuelled by the country reaching record levels of employment.

A major headache for fast growing companies in the architecture sector, who are some of the country's top wealth creators, is access to a pool of skilled talent. These companies are responsible for some of the highest levels of job creation in the British economy, but to maintain the heightened momentum of growth, they need to be able to source and recruit the right talent.

Paul Statham, CEO of one of the

UK's fastest growing businesses Condeco Software says: "More and more global companies are looking to invest in their work places to attract the very best talent, and help them stay ahead of their competitors and continue to grow. The more sophisticated businesses are also taking advantage of state of the art technology which enhances productivity and ultimately has a positive impact on employee retention."

"Employees in the UK architecture sector work amongst the longest hours in Europe and spend an average of 40-42 hours per week in the office. A company's office space has a direct

impact on the morale and productivity of its employees, but can also create an empowering work culture and help attract potential recruits."

Companies are increasingly looking to invest in their workplaces with technology to help keep up with the developments of their competitors. Prospective recruits are looking further than salary and job perks to the very design of the office, as they will be spending most of their time there.

Paul Statham concludes: "Companies should be looking to match the needs and desires of this current generation of workers, in order to stand out from their competitors."

AWARD WINNING SCHOOL

'As well as being an architectural triumph, we believe it makes a clear and strategic statement about the future of education'

Headteacher Richard Fenwick

Fitzjames Teaching and Learning Centre Hazlegrove School, UK Feilden Fowles

The Fitzjames Teaching and Learning Centre at Hazlegrove School in Somerset by London-based architects Feilden Fowles has won an RIBA South West Award 2015 and the RIBA South West Client of the Year Award 2015. The jury commented that the 'building is a testament to the fact that the client-architect relationship was extremely capable of delivering stunning architectural solutions that inspire and enhance the users' experience'.

Hazlegrove is an Independent Day and Boarding Preparatory School for pupils aged two and a half to 13 years. The school occupies a 17th century Grade II listed house and is set in 200 acres of parkland. The Fitzjames Teaching and Learning Centre, which officially opened this academic year, embodies the school's ambition to instil a love of learning, enquiry intellectual rigour, by providing flexible teaching and learning spaces in an innovative arrangement to encourage independent learning. Located at the end of two key axes in the school campus, the brick building and surrounding external courtyard creates a new academic hub at the heart of the school's Grade II listed campus.

The design is informed by the research work of educational theorist Bart McGettrick, who was consulted early on in the design process shortly after Feilden Fowles's appointment in 2012. This led to the exploration of ecclesiastical and monastic typologies, which are widely accepted as successful spatial models for education. The result is classrooms and break out



spaces designed around a large central resource space, in which students can work in small groups and use resources outside the classroom context whilst being passively supervised. The flexible spatial configuration, degree of visual transparency and acoustic control combine to ensure a successful balance between more traditional classroom environments and the open resource space.

At the Centre's inauguration, Headteacher Richard Fenwick said: "As well as being an architectural and constructional triumph, we believe it makes a clear and strategic statement about the future of education. Its semi-open-plan design allows pupils to learn with an increasing amount of independence, breaking out of the classroom and utilising the technological resources that they have, literally at their fingertips. This will enable them to become equipped for the future as confident, independent and inter-dependent learners."

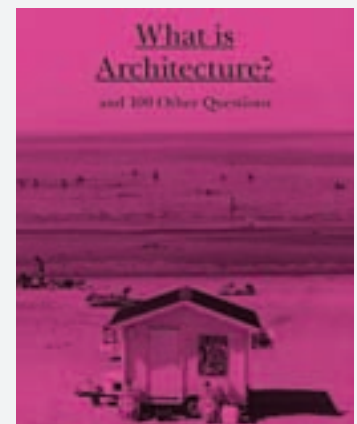
What is Architecture? and 100 other questions

What is Architecture? by Rasmus Waern and Gert Wingårdh and to be published by Laurence King in August 2015 explores the theory of architecture in 101 questions. www.laurenceking.com

What is Architecture? is an entertaining and informative book that will take you on a beguiling tour through the history and philosophy of architecture. By answering 101 questions, Rasmus Waern and Gert Wingårdh cover a wide range of issues on the practice and theory of architecture. Historical questions, such as 'Who was the first architect?' and 'Are all churches architecture?' are

included, as well as questions relating to contemporary activity, such as 'Have computers changed architecture?' or 'How small can a home be?'. There are also many intriguing and thought-provoking questions, such as 'Why do architects want to paint the world white?' and 'Is Dubai a city?'. For each of the questions, the authors provide a brief, one-line answer and then a more extended discussion.

Aimed at both general readers as well as those in the field, this book will make a perfect purchase or gift for anyone interested in architecture. Rasmus Waern is a Swedish architect, historian and critic who lectures all



over the world and contributes to numerous books and magazines. He was editor of the Swedish architectural magazine *Arkitektur* and now works as the in-house writer and critic at the architectural practice Gert Wingårdh.

SPORTS CENTRE REFURBISHMENT

J.P. Morgan Media Centre at Lord's to receive £4 million refurbishment

Marylebone Cricket Club (MCC) has announced plans for a £4 million refurbishment of the award-winning J.P. Morgan Media Centre at Lord's. Work will take place over the course of the next two winters, and the significantly enhanced and improved media facility will be unveiled in time for the 2017 season. The Stirling prize-winning building will receive its first makeover since its opening in 1999, with wide-ranging changes set to take place.

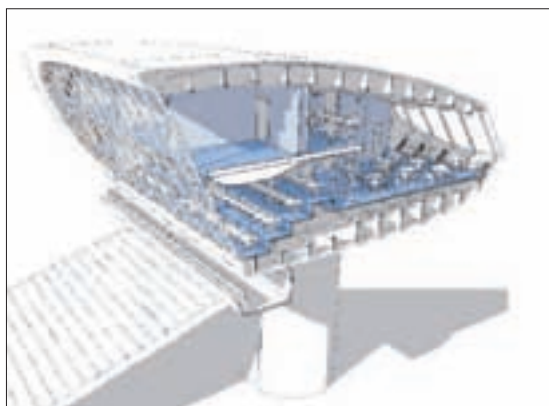
The J.P. Morgan Media Centre will be improved with the provision of ten permanent TV and radio broadcast boxes – one less than at present but of increased size and flexibility.

The Writers' Area will increase in size from 120 to 144 spaces, while facilities for photographers will also be upgraded, with an additional five spaces (30 in total) available in an expanded area on the mezzanine level of the building. The existing bar will be relocated to a larger facility serving the dining area, which will in turn provide more usable dining space in which to accommodate the higher demand from the increased number of users.

The two existing lifts will be replaced and modernised, as will the heating and ventilation systems used throughout the

building. Fixtures, fittings and ICT systems will receive a significant overhaul, with the Club also ensuring accessibility improvements are made.

The outside of the building will be unchanged and, subject to planning approval, the gantry beneath the shell will be extended in width and brought forward to improve the vertical line of sight for television cameras.



AWARD WINNER

Conlon wins RICS Award for high flying Blackburn Wing Project

Conlon Construction's £6 million Blackburn Wing scheme at the Grade II-listed Bowcliffe Hall in Wetherby has won the Tourism & Leisure Project of the Year accolade at the RICS (Royal Institute of Chartered Surveyors) Pro-Yorkshire Awards (held 15 May 2015).

The accolade follows the scheme's success in winning a RIBA (Royal Institute of British Architects) 2015 Yorkshire Award in April, following completion of the project by the Conlon team last October.

Designed by the Harris Partnership for the Bayford Group, the Blackburn Wing is a striking aeroplane wing-shaped conference centre named after a former resident of Bowcliffe Hall, aviation pioneer Robert Blackburn, who was the first Yorkshireman to design and build a powered aeroplane.

A stunning copper-clad treehouse, the Blackburn Wing accommodates up to 140 conference delegates in a structure that both reflects the stately home's aviation heritage and respects its woodland setting.

Conlon constructed the building in an area of ancient woodland, painstakingly erecting the conference centre in a natural clearing and working with an arboriculturist to ensure that there

was no disruption to the trees either above or below ground.

Conlon installed a layer of crushed stone to the site followed by a geotextile lattice before using a lightweight piling rig and erecting 18 galvanised steel legs to replicate the appearance of a biplane wing.

The development also features a glass facade and a copper roof that will blend in with its natural surrounding as a verdigris patina develops over time.

Neil Conlon, divisional director at Conlon Construction Yorkshire, said: "We're delighted that the scheme has once again been recognised by this prestigious RICS Award, which will take pride of place in our expanding trophy cabinet."



LONDON TRANSFORMATION

New London Architecture announces the 10 most exciting public spaces set to transform London



Walthamstow Wetlands

As part of their latest exhibition, Public London: 10 Years of Transforming Spaces, New London Architecture (NLA) has uncovered a host of new places and spaces that people will be able to enjoy across the capital, from elevated walkways, public squares and even swimming in the Thames. As part of this study the NLA has worked with designers, politicians and developers to unveil the 10 most exciting public spaces for Londoners to look forward to.

As the 263 towers set to grace the London skyline captured public imagination last year (a statistic also revealed by NLA), the think-tank organisation has now turned its attention to the changing look of the capital's great outdoors as Londoners embrace al fresco living.

Projects such as the Thames Baths will provide the outdoor swimming community with new and well-managed zones in which to make a splash. London Wall Place will allow visitors to explore some of the city's oldest landmarks from above in landscaped areas in the urban heart of the City, while huge traffic islands such as Elephant & Castle and Tottenham Court Road will be transformed into thriving centres of pedestrian activity. And for those seeking the quiet life, the Walthamstow Wetlands project will demonstrate how a bit of good design can go a long way towards creating an urban nature reserve.

With an ever-increasing population, London is feeling the squeeze where we live and work but the NLA insists that we must not forget the spaces we use to relax and move through the city.

Peter Murray, Chairman of New London Architecture said: "As London grows we are seeing the development of areas of increased density, so it is vital that we have high quality open space where people can relax, meet and exercise. The ten new spaces provide an example of the sorts of places that will enhance new and existing parts of the capital."

The following projects have been selected by the NLA to demonstrate the most exciting, thought-provoking and forward-thinking projects that will transform the capital and set an international standard of 21st Century living.

Public London: 10 Years of Transforming Spaces is running until 11th July and includes its own public space installation, Never Mind the Bollards. This installation demonstrates how small spaces within our city can be transformed into vibrant areas of public activity. A few benches and a little landscaping go a long way to improve the urban habitat.

With over 145 years experience as the UK's leading decorative aggregate supplier ...

... we believe that our exclusive product range, flexible customer service and expert support ...

... make us the ideal partner for landscapers, contractors and specifiers. Ring our team for local stockists ...

LONG RAKE SPAR
Specialist Decorative Aggregates

T: 01629 636 210
F: 01629 636 247
longrakespar.co.uk

Dedicated Sales Team
Comprehensive website
Leading Product Development

Logos: NBS, SCD, BALI, and various social media icons.

enq_109



Centre Point Public Square/St Giles Circus

editor's focus

Ketley Brick Company

At the uber hip Ace Hotel in trendy Shoreditch, a dreary, blocky business hotel was transformed using a combination of Ketley's Staffordshire Blue brick slips, solid bricks and specials to clad the ground-floor walls and reconnect the building with the Shoreditch streetscape. Ketley's blue brick, together with great craftsmanship, gave the building an "uber-cool" feel and created a sleek and modern look which won a prestigious Brick Award last November for Best Refurbishment and Renovation. Ketley's brick slips are a highly durable, sustainable and cost effective cladding solution to create authentic brick facades for both external and internal applications.

enq. 110



Clearstone Paving Ltd

Grade I listed Baddesley Clinton has been transformed with Clearstone's resin bound paving. The courtyard at this 16th century Warwickshire home had suffered badly from the scraping of diners' chairs. The sloping site also collected water. Clearstone installed Spice Barley resin bound to a depth of 18mm. The colour enhances the mellowed red brick courtyard and the porosity of resin bound allows water to return to the water table. SUDS compliant, Clearstone resin bound met the requirements of the National Trust, Warwickshire County and is accessible to all visitors.

enq. 113

Gerflor

International vinyl flooring and interiors specialist Gerflor has refreshed its popular LVT Creation & Insight ranges and has also re-branded these collections. Designed for medium traffic areas for light commercial use at one end of the spectrum is the LVT Creation 55 range and for the heaviest footfall at the other end is the Creation 70 range. Gerflor has taken a bold step in re-branding and re-organising its LVT range, producing some stunningly attractive new colours, designs, effects and formats. For Creation 70, four new designs are now available and Creation 55 has been re-designed for Dry Back products to be able to fully Integrate into the new designs

enq. 111



ET Clay Products

ET Clay Products is one of the largest specialist facing brick suppliers in the UK. ET Clay assists architects and specifiers from conception to completion and provides advice and technical support on an unrivalled range of bricks and facade products from both the UK and Europe. For more information, please visit ET Clay's website or call the company.

enq. 112



MUNA UK Limited

M-PAVE Permeable Paving Grid is the new recycled plastic sustainable drainage system (SUDS) compliant solution using a patent pending design to avoid breakage problems on installation. M-Pave is manufactured from 100 per cent recycled polyolefins and provides a light-weight ground reinforcement system for grass and gravel installation. M-Pave is a high performance, durable and virtually maintenance free solution for use with grass or gravel Stabilisation.

enq. 115

Robert Pearson & Company Ltd

New high risk shatterproof all-in-one integrated basin and backplate with anti-ligature spouts have successfully been supplied by Robert Pearson & Company Ltd to some of The Priory Hospital Group's accommodation for high risk mental health patients. The integral spouts can be controlled by your choice of anti-ligature no-touch sensors or anti-ligature electronic touchpad switches to provide safe and easy to use water supply on demand. An optional water "lock-out" facility is also available to prevent abuse or flooding by the end user. There is also a full range of high risk shatterproof sanitary to include WC pans and bath backplates, all of which are ligature resistant, along with anti-ligature basin spouts for your own basins if preferred.

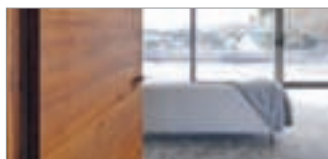
enq. 114

cpd focus

continuing professional development

Maintaining and improving professional competence, skills, abilities and knowledge

URBAN FRONT NEW WORKSHOP TOUR 2015



The Workshop Tour from **Urban Front** will run for just over an hour and incorporate the following Learning Outcomes:

A good understanding of how a contemporary hardwood door is manufactured; a better understanding of the types of hardwood and their benefits; a good ability to interpret CADs used for manufacture; a better ability to specify doors correctly; an understanding of the various issues related to making doors. The company also runs regular CPD's on specifying Hardwood Timber doorsets.

01494 778787
www.urbanfront.co.uk

enq. 116

SOLID SURFACES CPD SEMINAR



CD (UK) Ltd, the exclusive UK distributors of **Corian®** – Seminar structured as follows: Development of Solid Surface from 1960's to present day; Raw materials, adhesives and composition; Solid Surface characteristics and benefits; Manufacture: Sheet, Matrix sheet and shape product; Comparison of characteristics; From production to fabrication process; Properties of Solid Surface; Architectural and Design possibilities; Current applications; Environmental considerations; Support, warranty and service infrastructure.

0113 201 2240
www.cdukltd.co.uk

enq. 119

ROOFING SYSTEMS: REDUCING AND MANAGING RISK



For the past 50 years, **Sika Liquid Plastics** has been one of the UK's leading manufacturer of liquid applied waterproofing systems. During that time, the company has developed an enviable range of waterproofing membranes and roofing systems for the weatherproof protection of roofs and balconies. Sika Liquid Plastics is proud to announce, that it has used this expertise and knowledge, to create a new CPD titled: **Roofing Systems: Reducing and Managing Risk**. The CPD aims to assist architects and specifiers when designing and selecting roofing solutions that:

- Provide levels of required performance and guarantees
 - Meet current and predicted legislative requirements
 - Reduce the risk of litigation and associated consequences
- The Presentation details the typical challenges and risks that a client would expect from a roofing system.

The Sika Liquid Plastics CPD is officially RIBA approved. The CPD seminars can be carried out at a time and a place convenient for you and your team.

01772 259781
liquidplastics@uk.sika.com

enq. 120

SPECIFYING SEAMLESS RESIN TERRAZZO CPD SEMINAR



Architects looking learn more about the science and beauty of terrazzo flooring can contact **Flowcrete UK** now to book their place on this informative and beneficial educational opportunity. The fascinating new seminar provides an in depth background into the traditional history of terrazzo, from all the way back in 9000BC when lime and clay based terrazzo was used in Neolithic structures, right through to the present day.

01270 758702
www.flowcrete.co.uk

enq. 117

GRP ROOF FLASHINGS AND VALLEY TROUGHS



The RIBA approved CPD seminar from **Hambleside Danelaw Building Products** covers the use of replacement pre-formed GRP flashings components at the valleys, abutments and verges of slated and tiles pitched roofs. It specifically addresses: The performance characteristics of GRP; An investigation into the practical issues arising from the use of conventional materials and construction methods; Reviews of good and bad solutions; An introduction to mortar-free 'Dry-Fix' applications.

023 9235 4900
www.hambleside-danelaw.co.uk/news/cpd-seminars

enq. 121

ENERGY SAVINGS OPPORTUNITY SCHEME

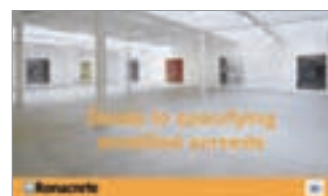


Organisations facing the compulsory requirements of the Energy Savings Opportunity Scheme by the end of this year will be interested to hear of a free, CPD-certified guide from **Mitsubishi Electric**. It looks at the scheme which is a mandatory energy assessment mechanism for large companies in the UK. Businesses which qualify for ESOS must carry out assessments every four years, with the first to be completed by the end of 2015.

library.mitsubishielectric.co.uk/pdf/book/Energy_Savings_Opportunity_Scheme_CPD_Guide

enq. 118

GUIDE TO SPECIFYING MODIFIED SCREEDS



This RIBA certified seminar from **Ronacrete** offers guidance on how to specify modified screeds successfully. It looks at the types of screeds available and the design considerations and installation methods that can affect your decisions on screed. Core Curriculum subjects include: Designing and building it: design, construction, technology and engineering; Compliance: the legal, regulatory and statutory framework; Knowledge level: general awareness.

01279 638700
www.ronacrete.co.uk

enq. 122

Tall Buildings Fire Safety Conference



Booking is now open for the 3rd International Tall Buildings Fire Safety Conference, which takes place at the University of Greenwich, London on 8-10 July 2015. Featuring three full days of presentations from a range of international speakers, the event is ideal for anyone responsible for the protection of people, property and assets in tall buildings. The first two days will focus on four key themes, including: Management of fire safety; Fire detection & alarm; Fire escape & evacuation; Fire containment & compartmentation. While, on the final day, delegates will have the opportunity to develop their knowledge in one of three vital areas: Business continuity & resilience; Security & terrorism events; or Firefighting.

0203 4780 678 www.tallbuildingfiresafety.com

enq.123

New marketing director at Stirling Lloyd



Stirling Lloyd, manufacturers of the Integritank structural waterproofing system, has appointed Anne Tattersall as its new marketing director as it looks to refresh marketing strategy and continue sales growth. Anne joins from AkzoNobel where she worked for 12 years, the last three as marketing director for professional brands. Anne was responsible for driving significant growth in Dulux Trade, a leading professional paint brand in the commercial specification, contractor and domestic professional decorator markets. Anne said: "I'm delighted to be joining a business which already has an excellent track record and industry reputation but, through exciting product development and new market opportunities, still has enormous growth potential."

01565 633 111 www.stirlinglloyd.com

enq.124

Fire Design Solutions launches all-new website



Award-winning smoke ventilation contractor, Fire Design Solutions (FDS), has launched its all-new website, making it even easier for developers, architects, consultants and contractors to find out about the benefits of including bespoke fire safety systems in their next project. Featuring an updated, easy to navigate design, the responsive site is optimised for viewing on tablets, phones and desktop computers, meeting the demands of the increasing number of visitors using these devices. Compatible with all major browsers, the website includes information on FDS' wide range of fire safety systems including mechanical smoke ventilation and corridor environmental systems, residential sprinkler systems and the company's innovative open protocol FireSmart control system. For a more in-depth look at particular systems, video content is also available, providing detailed descriptions and high quality footage, demonstrating the equipment in operation. Whether an FDS project is in the residential, commercial, leisure or mixed-use sectors, details of the systems installed and the benefits that they offer are featured on the site's updated 'projects' section, giving visitors real-world examples of the significant advantages that fire engineered solutions can offer.

01322 387 411 www.firedesignsolutions.com

enq.125

adf architects
datafile



REGISTER ONLINE FOR...

In-print magazine • Digital magazine
Newsletter • Daily digests



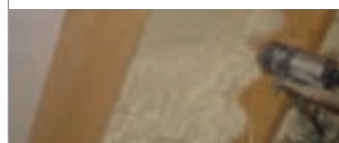
www.architectsdatafile.co.uk

CPD Course: Control of Air Leakage - Referencing
Part L of the Building Regulations by
Icynene Spray Foam Insulation System

“

The objective of this seminar is to offer a brief update on recent developments in building science, with an emphasis on airtightness in buildings and its importance for energy savings and moisture vapour transmission. The author's Canadian perspective also provides a look at how these issues are handled elsewhere

”



Greentherm Solutions Ltd

Contact us today on 01229 716039, email sales@icynene.co.uk
or visit www.icynene.co.uk to find out more

enq.126

New SAS International website



SAS International's new website aims to change preconceptions associated with manufacturer information available online, providing highly engaging, personalised user experience that can adapt to any mobile device. The new website acts as the

company's digital flagship information hub, and based on feedback from hundreds of registered users, delivers technical, educational and design-led content. The new website offers intuitive navigation, significantly increased technical information materials, CAD and architectural downloads, interactive content and industry thought leadership insights to answer users' demand.

0118 929 0900 www.sasint.co.uk

enq.127

New specification sales recruit joins Gerflor



Experienced technical sales professional Jason Williams is Gerflor's new Specification & Sales Representative covering the south west central area of the UK. Jason is one of the global vinyl flooring manufacturer's newest recruits, as he joins in a period of investment in people, products, services and a long-term business strategy to drive all areas of its business forward. Jason's successful career in sales and

specification environments made him a natural candidate for the position in which he is responsible for developing contract flooring sales in the M4 corridor region. Jason said: "I am looking forward to coupling my experience in building long-term customer relationships with Gerflor's high quality products."

01926 622 600 www.gerflor.co.uk

enq.129

Product manufacturers to face scrutiny



As part of its SIG Assured scheme, a set of quality guarantees, compliance and legislation monitoring designed to provide customers with complete peace of mind when buying products from the company, SIG Distribution is utilising a super sleuth trained in the art of stealthy stock takes and compliance crosschecking. Emma Dixon-Child, a key member of the SIG Assured Team,

will be on the front line of customer protection after undertaking the position of Construction Industry Detective (CID). Emma will be responsible for stringently investigating manufacturers' claims into areas like product provenance and ensuring that all relevant legislation is adhered to – ensuring SIG's customers – and indeed, their customers – only ever receive fully approved products.

01274 696974 sigassured@sigplc.com

enq.131

Tile Association awards



This year the city of Solihull hosted the Crystal 15th anniversary celebration of The Tile Awards. This is the event when The Tile Association celebrates all that is best in tiling – people, products and projects. The day was once again hosted by TV celebrity Emma

Jesson and was attended by most of the leading companies in the industry – manufacturers, contractors, distributors. In all, there were 74 finalists in 18 categories. Speaking about the event, TTA Chairman Ian Kershaw says: "I'm delighted that once again the annual TTA Awards have been a great success, and I'd like to congratulate all those who were finalists this year."

info@tiles.org.uk www.tiles.org.uk

enq.133

BAL strengthens specification support team



Building Adhesives Ltd, a market-leading manufacturer of tile adhesives, grouts, sealants and ancillary products, has continued to strengthen its specification support team with the appointment of William McLachlan as Business Development Manager. William will work with architects, designers and specifiers in the London area supporting them on M40/M20 specification, providing project support and delivering RIBA-accredited CPDs.

He said: "I am delighted to have joined the market-leaders in tiling products in what is period of growth in the industry – especially in the specification sector."

01782 591100 www.bal-adhesives.com

enq.128

Supporting the best of Scottish Architecture



A leading door and window control system manufacturer, GEZE UK has reinforced its commitment to supporting the very best of Scottish Architecture by sponsoring the RIAS/RIBA Awards for Scotland 2015 Dinner for the second time. The Awards seek to recognise architectural achievement in Scotland and winners were announced at a glittering awards banquet at The Balmoral Hotel, Edinburgh on Wednesday 17th June. Speaking about the awards, Andy Howland, sales director of GEZE UK said: "The strength of the projects in this year's awards demonstrates just how much talent there is in Scotland and reinforces the country's position as a centre of innovative architecture."

01543 443000 www.geze.co.uk

enq.130

Crown Paints launches BIM objects



Crown Paints has added Building Information Modelling (BIM) to its suite of services for specifiers. The new service can be accessed via a link from Crown Paints' Specification website or by visiting the paint manufacturer's profile on the well-recognised National BIM Library

(www.nationalbimlibrary.com/crown_paints). BIM Objects have been added, to enable users to integrate Crown Paints' products into a digital model. Usman Akhtar, Specification Sector Support Manager at Crown Paints, said: "The introduction of BIM objects reflects our commitment to bringing technological innovation to the specification process."

0845 034 1464 www.crownpaintspec.co.uk

enq.132

Yeoman Shield joins the NBS revolution



Yeoman Shield's core group of wall and door protection products have been authored for Building Information Modelling and are now held in the NBS National BIM Library website. "With BIM becoming the prevalent way of ensuring your products are specified for Government projects by 2016 along with the significant amount of projects we carry out within the public sector, we thought it good practice to establish ourselves within the BIM modelling giving our products greater visibility to specifiers." Explained Yeoman Shield's Sales Director, Stuart Russell. "We hope that BIM will serve to expand our already buoyant business in the public sector market and we look forward to increasing the Yeoman Shield BIM products as necessary."

0113 279 5854 www.yeomanshield.com

enq.134



Pictured:
Wrens Architecture's
Market Place Bolton scheme

The retail revolution

A tectonic shift has overtaken the retail construction sector over the past five years as retailers have responded to the challenges of persistently weak consumer spending and changes to how and where people shop. Stephen Cousins asks “where is it heading next?”

Consumer confidence is returning to the retail sector, sales are on the rise and a plethora of schemes are either coming to site or proposed, ranging from major city centre developments, to regional shopping centre conversions, convenience stores, and warehousing for online retailers.

The latest market analysis from Glenigan shows that, although the underlying value of project starts slipped back 8 per cent in 2014, the number of projects starting on site increased, with refurbishment and fit-out projects accounting for a rising proportion of work in the sector.

James Cons, managing director at Leslie Jones Architecture told ADF: “The recent focus of the market has been on improving existing assets. Examples are the Southside Wandsworth and the Intu Watford extensions. This is also particularly the case for secondary stock, which has not been

looked at throughout the recession and the time has come for landlords to bring them back to life.”

The shopping centre investment market completed an impressive 14 deals worth a total £828.9 million during the first quarter of 2015, according to a report from real estate firm Savills, with a “staggering” 31 schemes currently available for sale with asking prices totalling approximately £1,284 million.

Architect BDP is involved in four major UK shopping centre developments, each with £200+ million build contracts, Westgate in central Oxford, the Northern Retail Quarter in Bracknell, Buchanan Galleries in Glasgow and St James Quarter in Edinburgh. Its head of retail, Peter Coleman, told ADF: “The whole picture is very positive, where just two to three years ago things were very tentative. There’s a lot more confidence from developers, all the jobs we

Continued overleaf...

Pictured:
Bracknell redevelopment
retail scheme, masterplanned
by BDP



had shelved from 2007 onwards have restarted, the majority of developments were either bought by new owners, or are with the original owner who has decided to pick up the project and run with it again.”

Cyber Wars

Consumers’ preference for seeking out bargains online has led to a transformation of traditional shopping habits, with retailers now trying to cater to internet and store sales, and offering experiences not possible in the virtual world.

The hassle of having to be at home to receive online deliveries is driving interest in Click and Collect services, and many landlords and shopping centre owners are making that provision for tenants.

The £14 million Bolton Market Place shopping centre redevelopment, designed by Wren Architecture and currently on site, will feature a dedicated 15 minute Click and Collect area on the street where shoppers can pull up in a car and collect their purchases, rather than have to park in the multi-storey car park. Click and Collect lockers, with bespoke graphics, are also now being installed in shopping centres where products bought online can be picked up 24/7 using a unique unlocking code.

There is also a trend for large retailers, such as Nike, or Apple, to use physical stores as brand showcases for their full range of products, where customers can go to examine and choose what they want before buying it either in store or online.

“There’s a general trend for larger stores so retailers can provide customers with a larger range of products for people to select from. There’s an economy of bigger stores, as it doesn’t need more staff to run,” said BDP’s Coleman.

The concept of multi-channel selling, and offering customers every selling option simultaneously, is now the norm as retailers aim to communicate and facilitate a better service, aware that if they don’t consumers will look for it elsewhere.

In the face of booming online sales, shopping centres are having to work harder to elevate their status as destinations by offering more leisure and food and beverage outlets, which in turn increases consumer “dwell time” and volumes shifted off floorplates.

“That is one reason why a number of schemes are now cinema-led redevelopments, on the back of a cinema you can attract a certain amount of restaurants,” said Philip Wren, director of Wren Architecture. “More landlords now looking at the A3 Use Class [restaurants and cafes], rather than A1 [shops], you can’t have a dining experience online.”

Developers are having to work schemes much harder to increase their commercial value and make potential investments stack up. There’s pressure to make sure that every possible space is let, many look at opportunities for installing kiosks in malls, or advertising opportunities on walls. Ad companies like JCDecaux can earn considerable sums, even the same annual income as a shop, by placing a large digital screen on a strategically positioned wall.

project bytes

Visit the website
www.architectsdatafile.co.uk
and enter the reference
number for more information

**Green light for new
£2 million retail
park in Preston with
Aldi store...**
Ref: 76669

**Launch of Crossrail
Place Retail and
Roof Garden,
Canary Wharf...**
Ref: 70138



Pictured:
Wrens Architecture's
Market Place Bolton scheme

"Consumers are demanding a greater variety of retail and leisure in centres to take them offline. As a result, Landlords need to be flexible and change the way they have traditionally perceived space and leasing – they have to think creatively in their asset management strategies," said Leslie Jones' James Cons.

Retro Revamp

The success of large shopping centres in major regional cities, such as Cabot Circus in Bristol or The Trafford Centre in Manchester, has played a continuing role in the demise of smaller second or third tier retail schemes in nearby regional towns. Many of them, built in the 1970s and 80s, lack the large floor plates and double height spaces needed to house restaurants or larger retail units to attract the modern shopper.

"Compared to 10 years ago, smaller shopping centres' purpose has been supplanted by larger schemes," said Philip Wren of Wren Architecture. "For example, Manchester's expansion has been at cost of surrounding towns and suburbs, including Wigan, Warrington, Bury, and Bolton, which are all suffering because people are driving to Manchester for their shopping and entertainment."

Wren is currently working to deliver a contemporary update to Bolton's Market Place shopping centre, a typical 1980s scheme recently bought out of administration by developer-investor Moorgarth, backed by South African retail billionaire Christo Wiese. The project involves the removal of car parking decks to create space for a cinema, and the

refurbishment of 19th Century vaults underneath an old market hall to create 20,000 sq ft of space for restaurants.

"The plan is to regenerate the centre of Bolton by extending the scheme's working day, bringing in a new customer base and broadening its appeal," added Wren.

The impact of competition from internet sales and large shopping centres has also left high streets struggling to win the hearts and minds of consumers and investors. It has led to an increase in vacant properties and more lower rent uses, such as charities or betting shops, a switch in focus to convenience shopping, aimed at local residents and businesses, and conversion of properties into housing.

"The problem is that radical change in towns is often quite difficult because there are multiple ownerships, and unless everyone buys in to change it won't go ahead," said BDP's Coleman. "Many developers, funders and institutions are more attracted to comprehensive developments, where they can implement the controlling things that make a difference." This might include the ability to creating the right mix of spaces and building services for tenants, as well as amenities for the public.

Nevertheless, novel approaches to high street regeneration have emerged, such as the Box Park pop-up mall concept in Shoreditch where a series of stacked sea containers provide short term lets for independent traders, fashion brands and cafes. A similar scheme opened in Brixton in May and a new Box Park is planned as part of the regeneration of Croydon city centre.

Continued overleaf...

‘Many developers, funders and institutions are more attracted to comprehensive developments’

Peter Coleman,
BDP Architects



The Future

Consumer confidence and retail sales may be on the rise, but the sector continues to face challenging structural changes that are expected to some extent to limit support for construction activity going forward.

A 2014 survey of retail CEOs carried out by professional services firm PwC revealed that 91 per cent said they were “concerned” about shifts in consumer behaviour, while 28 per cent saying they were “extremely” concerned.

One clear reaction to this unease is the recent retrenchment of the UK’s top four supermarkets, until recently a major

source of retail construction activity, which have scaled back investment in large newbuild stores to focus on the convenience market and upgrading existing stock.

Construction inflation is another potential obstacle to development – currently as high as 7 per cent for building materials – which is putting pressure on scheme appraisals, rents are not moving ahead as aggressively as construction costs, which acts as a barrier to progressing with much needed development.

“However, there are opportunities to be had for new developments and regeneration projects throughout the UK – particularly in areas where public and private sector finance

project bytes

Visit the website
www.architectsdatafile.co.uk
 and enter the reference
 number for more information

Another retail
 unit goes at
 Atria Edinburgh...
 Ref: 86226

Breathing Buildings'
 natural ventilation
 technology plays key
 role in UK's first zero
 energy retail building
 for Costa...
 Ref: 27766



Pictured: Recent Trinity Leeds
 complex interior

can add real value to local assets. One example is Friars Walk in Newport, where the combined backing of Newport City Council and Queensberry Real Estate has unlocked development of a significant retail and leisure scheme to revitalise the town centre," said Leslie Jones' James Cons.

The advance of technology and online looks set to continue to reshape the shopping experience. The PwC survey found that 80 per cent of retail CEOs ranked "technological advances" as one of the global trends that will transform their businesses most over the next five years. This view is supported by the fact that 41 per cent of global shoppers bought products through tablets in 2014, compared to 28 per

cent in 2012, and 43 per cent through smartphones.

This brave new world will be underpinned by new and disruptive technologies, such as 'Beacon' technology, which enables retailers to connect with customers directly via their smartphones offering, for example, promotional offers. Provided the consumer gives their consent, this will enable retailers to tailor marketing approaches to very specific customer groups, or specific individuals, to learn how much a certain customer spends on an average visit to a store and what exactly they are buying. So shopping is not dead, it's evolving, providing exciting new opportunities to transform and reshape architecture in the urban realm.

Vecta wall linings give the perfect finish at London South Bank University



More than 150 sq m of Vecta aluminium wall lining and a feature bulkhead have been manufactured and installed by Encasement as part of the £multi-million creation of London South Bank University's (LSBU) award winning Student Centre. Hawkins\Brown architects, transformed an undercroft car park and first floor refectory space into a bright and vibrant hub, which brings together all of LSBU's non-academic, social and pastoral support services for students while also forming a new main entrance into the campus from Southwark's Borough Road.

The dramatic transformation of the building's interior is supported with the use of Encasement's precision Vecta wall lining, bulkhead and interior finishing solution within the foyer, office areas and main staircase. In addition to the 15 metre long feature bulkhead, Encasement also manufactured and supplied extensive stairwell and associated aluminium cladding, which incorporates complex geometries and a recessed handrail pocket within the design.

As the specification demanded that the wall lining used concealed fixings and all joints should be virtually invisible, Encasement measured and hand made each of more than 300 separate 3mm thick aluminium panels, each of which was different, to ensure that they fitted perfectly on site.

enq.135

New distribution centre to benefit from highest Tensar Greenslope® in the UK

Tensar International, a leader in ground stabilisation and soil-reinforcement technology, has designed and provided products for the creation of a 15m high slope on the site of a new retail distribution warehouse in Crick, Northamptonshire. Appointed to the project by site contractors Buckingham Group Contracting, Tensar delivered its TensarTech® GreenSlope® Earth Retaining System for the highest single lift slope that the company has designed in the UK. Located near junction 18 of the M1, the site is home to global membership warehouse club Costco's new purpose-built distribution centre. Designed to match the ground level of the site's boundaries and act as a screen to retain the area's scenic appearance, the green-faced slope stands three times taller than average, with a total area of 3,700m². By building to this height the Tensar design maximises the use of site-won fill, eliminating the need to remove excavated material from the construction area, reducing on-site traffic and lowering project costs. Carrying out the works, subcontractor Crosskeys Structures installed the GreenSlope® system, which consists of a stable, reinforced soil mass made up of site-won fill supported by horizontal layers of Tensar's uniaxial geogrids. The slope also features durable steel mesh facing units, linked at the face to the geogrids using high efficiency Tensar bodkins.

01254 262431 www.tensar.co.uk/Applications/Tag/Earth-Retaining-Walls-and-Slopes



enq.136



Specialists in the design, installation and maintenance of living walls nationwide. Our unique, insulated, fabric living wall system is light-weight, affordable and durable.

To find out more book our living wall CPD now.

www.scotscapelivingwalls.net • 020 8254 5000

enq.137

Sturdy shopfittings with Caberwood



Relied upon extensively throughout the building industry for many years, Caberwood MDF Pro from Norbord is a premium grade MDF with a uniform density across the board. It is ideal for creating bespoke, versatile shopfittings for any space and is a great, cost-effective alternative to moisture-resistant

alternatives in terms of strength. Suitable for straightforward machine and surface finishing, and available in six standard sizes, it offers all the benefits of timber without the natural defects. It is also designed to look good and is ideal for most high quality paint and surface finishes including the application of paper foils and veneers to suit individual tastes.

enq.138

LED based solutions help deliver savings



The installation of approximately 400 Tridonic LED lights in the multi-story car park at Bournemouth International Centre has delivered significant savings in its first 12 months. The project to replace the original fluorescent lights was undertaken by Littledown. Steve Reid of Littledown said: "The biggest challenge with this project was that the

car-park needed to remain open throughout the three month refit but with careful planning we were able to keep disruption to a minimum. The existing fluorescent gear trays were replaced with Tridonic's LED Boards and approximately 400 LCAI drivers. [...] We expect a significant reduction in the number of lamp replacements and all the fittings carry the standard five year Tridonic warranty."

01256 374319 www.tridonic.com

enq.139

HI-MACS® develops BIM objects



Fabrication: FI Srl, Italy
Material: HI-MACS®, Ivory White
© Valter Baldan

Distributed exclusively in the UK and Ireland by James Latham, HI-MACS® is now offering its entire range of products for CAD systems, Sketchup, Archicad and Revit for download from the BIMObjects Portal ensuring architects, designers and specifiers achieve future compliance with all projects.

HI MACS® solid surface offers ultimate flexibility in terms of 3D forming as well as incomparable durability for almost limitless applications including external wall cladding, facades, counter tops, wet rooms, wall panelling and furniture.

One of the major attractions of HI-MACS® is the extensive choice of colours on offer - there are almost 100 in the portfolio - enabling the widest possible scope for original design, allowing users to achieve inspirational and distinctive creations.

Steve Robinson, James Latham's General Manager for HI-MACS® commented, "BIM is changing the way buildings are designed, built and operated both internally and externally and this will make it quicker and easier for architects and

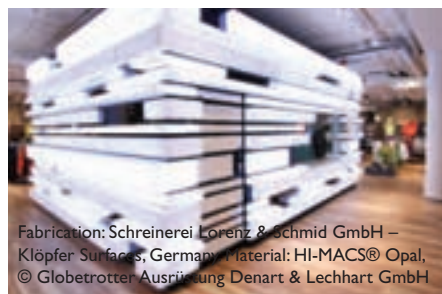
designers to incorporate HI-MACS® into their projects."

He added, "As requests for BIM models on tender documents continues to grow, and they become mandatory for publicly funded projects in 2016, this trend is only set to increase so we wanted to make sure we were ahead of the curve."

BIM Objects for all HI-MACS® sheets, shapes and colours are available now for download from the following link: bimobject.com/product/?manufacturer=himacs

0116 257 3415 www.himacsuk.co.uk

enq.140



Fabrication: Schreinerei Lorenz & Schmid GmbH – Klöpfer Surfaces, Germany. Material: HI-MACS® Opal, © Globetrotter Ausrüstung Denart & Lechhart GmbH

ISD completes 150th installation for Morrisons



ISD Solutions, a leader in composite panel cold store construction, has completed its 150th cold store for Morrisons supermarkets at the M local store on Barnwood Road in Gloucester. ISD Solutions' Retail division provides complete design, manufacture and installation services for each

cold store facility and in Gloucester, installed a dual temperature storage compartment measuring 6.00m by 3.35m that provides walk in food storage for temperature sensitive produce with sufficient storage capacity between deliveries. Each cold store is designed to provide thermally efficient, food safe storage with temperatures down to minus 20 degrees, with easy clean finishes.

01452 520 649 www.isd-solutions.co.uk

enq.141

Top marks for Metalline at Academy



Metalline has received top marks for the external facade of the Kensington Aldridge Academy in North Kensington, officially opened in January 2015 by the Duchess of Cambridge. Designed by architects Studio E, the BREEAM Excellent rated building features over 2,000 panels in varying lengths and depths up to 4,500mm and 800mm respectively, finished in four different RAL colours. The company also supplied a range of ventilated Bird's Beak style

panels, pressings, copings and cills that further added to the overall aesthetic of the building's facade. Metalline's Ultima insulated panels are extremely versatile and possess excellent acoustic, thermal and fire performance ratings.

01543 456 930 www.metalline.co.uk

enq.142

Automatic Rising Barriers
with boom lengths up to 10m

**FRONTIER
PITTS**

Also available Sliding Gates, Hinged Gates, Bi-folding Gates,
Road Blockers, Bollards
Manual Equipment & Pedestrian Control Gates & Turnstiles

www.frontierpitts.com 01293 422800

enq.143

Metal Technology sheds light on Anglia Ruskin



A range of sustainable architectural aluminium glazing solutions from **Metal Technology** has been used by multi-award winning Richard Murphy Architects and main contractor RG Carter on the first phase of the Anglia Ruskin University building project on Young Street in Cambridge. For the south elevation, System 17 High Rise Curtain Walling offered a diverse range of profiles that provided structural integrity, weather performance and thermal enhancement. System 23 Louvres were used to combine a pleasing aesthetic appearance with natural ventilation, light control and the prevention of water ingress. Finally, access was provided through a range of Metal Technology System 5-20D Hi+ Thermally Enhanced Doors.

028 9448 7777 www.metaltechnology.com

enq.144

Contour help to remember 'The Few'



The National Memorial to 'The Few' in Kent, occupies a special place in the hearts and minds of all those who have visited this moving site. The Wing is the Battle of Britain Memorial Trust's new building at this site. The building was designed by Folkestone architectural practice Godden

Allen Lawn. **Contour** were then specified as the manufacturer tasked to develop a series of innovative solutions to overcome some arduous design challenges. The technical aspect of the manufacture and supply for the Wing Building would be daunting for most companies, but not for Contour. All the column casings were manufactured, including those with 5 degree angled tops, in-house by Contour using the company's technical expertise combined with its CAD facilities.

01952 290 498 www.contourcasings.co.uk

enq.145

Flotex creates fresh feeling in sixth form centre



When the time came to replace worn carpet tiles in the sixth form common room and study room at Blessed William Howard Catholic High School in Stafford, **Forbo's** Flotex Colour floor coverings in a modular format proved the ideal refurbishment solution.

A product that could cope with heavy footfall, walked in dirt and food and drink spillages was needed, and Forbo's hybrid flooring was selected for its durability, washable characteristics and stylish aesthetics. Flotex Colour Metro in Ocean Blue was installed in both rooms providing a clean, bright and fresh environment for the students. Thanks to its unique construction – 70 million fibres per m² – Flotex delivers the warmth and comfort associated with carpet, combined with the practical elements of resilient flooring. It has the prestigious Seal of Approval from Allergy UK as it does not harbour allergens and therefore contributes to a healthier indoor environment. It also benefits from Sanitized*, an anti-microbial treatment that offers constant protection against bacteria. Additionally, Flotex is 100 per cent waterproof and, unlike other textile floor coverings, can be washed right down to the base of the flock.

0844 882 3928 www.forbo-flooring.co.uk/flotex

enq.146

ENVIROMAT
Green Roof Services

Call us for:

- CPD accredited training
- Green Roof Installation
Domestic or Commercial
- Sedum Mat Supply
UK Grown to high specification

01842 880026
www.enviromat.co.uk/green-roof-services
angelal@qlawns.co.uk

enq.147

GRASS, GROUND & GRAVEL REINFORCEMENT

PP40 POROUS PAVER

**PERMEABLE / POROUS SOLUTIONS FOR
CAR PARKS • ACCESS ROUTES • DRIVEWAYS**

GR14 GRASS REINFORCEMENT MESH

T: 01376 503869
WWW.SURE-GROUND.COM

suregreen

enq.148



© Associated Architects

What the doctors ordered

Mark Smulian takes a look at the University of Leicester's new Centre for Medicine, which will be the UK's largest non-residential Passivhaus project to date

Fitting the people and equipment from three departments into a single structure on a constrained site might challenge any construction and design team, but that is what has been going on at the University of Leicester for the past two years.

Not only that, this will be the largest non-residential Passivhaus project in the UK, possibly in Europe, and as a pioneer of its kind will be used to set criteria for future projects that wish to meet this standard.

Leicester expects to open its new £42m medical school this autumn, replacing one that was built in 1975 and later extended with two additional structures.

The new 12,863 sq m Centre for Medicine will be adjacent to the old one and staff have taken the opportunity to redesign how some aspects of their courses are taught with, for example, lecture theatres equipped to show students 'live' consultations and medical procedures.

When he first saw the site, Jon Chadwick, of Associated
Continued overleaf..

Architects, found some challenging limits to how he could build.

On one side a main road separates the site from the main university campus; on the second side another road runs between it and the old medical school – which is not life-expired as a building and will be converted for other academic uses – and a school on the other two sides.

There was also a protected view up to a war memorial designed by Sir Edwin Lutyens with which to contend.

“This was certainly a constrained site and I think the fact that the building was going to be a demonstration project for a large scale Passivhaus approach was helpful in securing planning permission,” Chadwick says.

Passivhaus is an energy performance standard originated in Germany based on excellent thermal performance and exceptional airtightness.

A definition used by the BRE states: “A Passivhaus is a building, for which thermal comfort can be achieved solely by post-heating or post-cooling of the fresh air mass, which is required to achieve sufficient indoor air quality conditions – without the need for additional recirculation of air.”

Chadwick’s design uses a ground and first floor that cover the whole site, but which then rise to three separate towers of three, five and six floors.

This was both because of the demands of Passivhaus and because of the university’s requirements for its accommodation – a combination of large lecture theatres, laboratories and offices for academic staff.

Chadwick explains: “We chose the three towers design because of the need to get natural light in and have glazed areas that would help to heat the building, so having three towers gives more surface area.

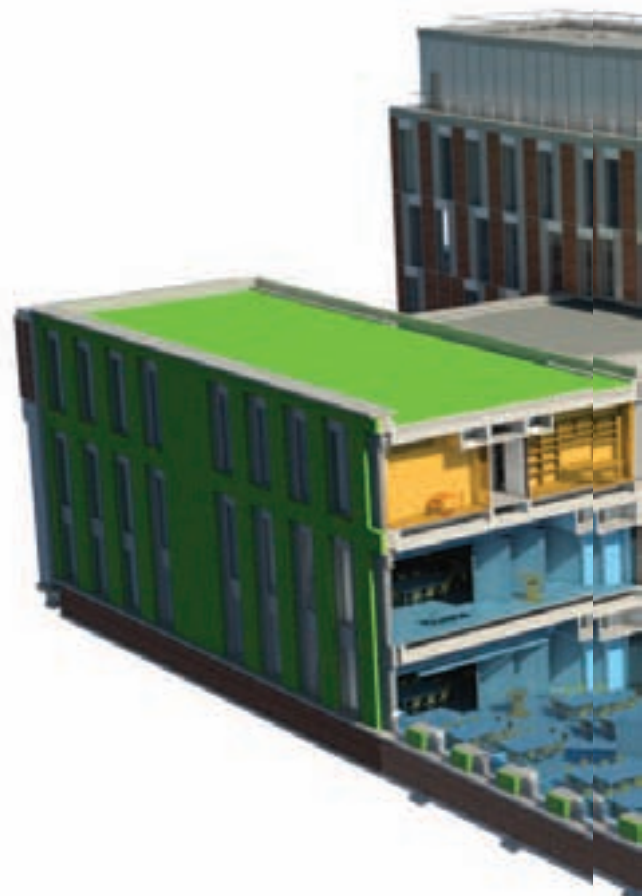
“It made sense to have the large lecture theatres on the lower floors so the building becomes more private as you go up in height.

“There are also some research programmes that are doing things that are acoustically or thermally sensitive, for example, so you do not want those near to where there are large numbers of people. The towers give the upper floors a different feel.”

Some of the academic offices are private and complement large collaborative and shared use areas, though could be converted to open plan were the Centre for Medicine for some reason to change its working methods in future.

Everything in the design had to flow from the requirement to meet Passivhaus standards, but even so, Chadwick says: “From an aesthetic point of view we did not want the architecture to be a slave to the environmental performance.

“Fortunately, Passivhaus is quite flexible and if you’d decide from day one how you are going to build a building then you



project bytes

Visit the website
www.architectsdatafile.co.uk
and enter the reference
number for more information

Bartlett Summer
Show 2015: UK's
leading architecture
school hotly
anticipated show to
be opened by
Carne Pinós...
Ref: 51204

University of Wales
Trinity St David –
preferred bidder for
new construction
training initiative...
Ref: 64259

can do other things that will still produce the right u-values.

“Most criteria on Passivhaus apply to all buildings, so you go for the minimum u-value you can and the best energy performance and air tightness.”

One issue to resolve was that a Passivhaus structure would normally not have much glazing on its colder northern elevation, but the university did not want any staff to have minimally glazed offices so the glazing was used and had to be compensated elsewhere in the design.



© Associated Architects

'We chose the three towers design because of the need to get natural light in and have glazed areas that would help to heat the building, so having three towers gives more surface area'

Jon Chadwick,
Associated Architects

Passivhaus techniques require a heat exchanger, and normally one would try to place this under a car park or some other space not also being used for building work.

The tight configuration of the Centre for Medicine made this impossible and so the heat exchanger went under the building itself.

"It meant that piling and underground drainage had to be fitted around it, which made for a technical 3D puzzle for the design," Chadwick says.

Making all this work required close co-operation with main contractor Willmott Dixon, whose principal surveyor Grant Henderson explains the workings of the heat exchanger.

"There is no gas in the building, energy comes from the heat exchanger basement plant room from which there are 1.6 Kms of pipes for the heating system," he says.

"The heat exchanger keeps air at 14 degrees underground, which is an effect of what the earth does, so it only needs to be heated up further to 20 degrees inside the building.

Continued overleaf...

‘Other features used to reduce the building’s energy consumption include ‘intelligent lifts’ that permit access only to floors authorised to cardholders’



© Associated Architects

“Since there is nothing to compare it to, the data from here will go to the Passivhaus Foundation and form the criteria for future large projects.”

The Centre for Medicine is built on a post-tensioned concrete frame with columns rising the height of the building with the ground and first floor elevations being traditional brick and block construction.

Passivhaus requirements mean there is 300mm of insulation, an unusual degree of thickness, and that even stretches into the ground so that the piles are insulated.

Mechanical and electrical installations are under the floors but insulation running right down columns below the visible floor level to limit any inflow of any cold air.

“It’s to reduce air penetration, as we seek one cubic metre an hour of air penetration, which is very onerous,” Henderson says.

The windows do open, “but it will be a management issue to ensure they are closed after use”, he says.

Other features used to reduce the building’s energy consumption include ‘intelligent lifts’ that permit access only to floors authorised to cardholders, and so do not make unnecessary journeys, a brise soleil and external blinds that will descend automatically when specific levels of heat are reached, to avoid the need for mechanical cooling in the rooms concerned.

There are low-energy LED lights throughout the building and windows will be triple-glazed.

Radiators can be set according to the heat condition in different parts of the building so, for example, those in the eastern side of the Centre for Medicine could be working on a cool day but not those to the west.

There is a hot melt roof, which on the lowest tower at the rear is capped by a green roof that descends to a green wall.

The other two towers have ‘brown’ roofs, on which soil is used to create a natural habitat for wildlife.

Leicester is seeking a BREEAM ‘excellent’ status for the Centre for Medicine, and while proud of its design the most important thing about it is of course its potential for training and innovations in medical science.

Explaining why the new building was needed, and in particular the facility to ‘beam’ medical consultations and procedure into lecture theatres, Professor Nick London, head of the medical school, says: “It is becoming increasingly difficult for all students to see patients with the full range of diseases they need to see during their training.

“By streaming the consultations live in the lecture theatre, our students will receive a much more vibrant educational experience that will replicate real-life practice.”

The new building provides space for the co-location of the university’s medical education, health sciences and psychology

Continued on page 40...

POWERMATIC®

Concealment when you want it
Performance where you need it



Designed and manufactured in the UK, Powermatic controlled, concealed door closers deliver exceptional performance as well as a host of benefits that surface-mounted closers cannot match:-

- Superior aesthetics
- Reduced risk of vandalism
- Suitability for anti-ligature applications
- Compliance with relevant fire performance standards for one-hour and half-hour fire doors
- Enable doors to meet accessibility requirements
- Perfect for hotels, healthcare, education, care homes, sheltered accommodation, commercial and many other situations.
- Available in standard and Free Swing models

Visit our new website: concealeddoorclosers.com

Tel 0121 766 4200 info@samuel-heath.com concealeddoorclosers.com

SAMUEL HEATH
since 1820

'Leicester is seeking a BREEAM 'excellent' status for the Centre for Medicine'



departments and in which they can advance applied research in particular into the prevention, detection and treatment of major chronic diseases, including kidney disease, stroke, diabetes and chronic respiratory illness.

As Henderson says: "This is an interesting project because of the scale of the Passivhaus measures being used, which will guide others in future.

"But it's also good to be working on a medical centre whose work will benefit all of us in years to come."



Project details

Architect: Associated Architects
Main contractor: Willmott Dixon
M&E contractor: NG Bailey
Concrete frame: Metropolitan Developer
Curtain wall: Advance Glass Facades
Brickwork: Keith Walton brickwork
Groundworks: Tim Bates Plant Hire
Glazed screens: Moda
Hot melt roof: Briggs Amasco
Partitioning: L Reynolds
Paintwork: Sharpline
Floors: Kingspan
Ceilings: Globe Contract Interiors
Carpentry: CS Mansfield
Floors: Active Flooring
Structural engineer: Rambolls
Passivhaus consultant: Warm
Acoustic consultant: Sharps Redmore
Facade materials: Schuco
Insulation materials: SIG
Facade consultant: Wintech
Client: University of Leicester
Planning authority: Leicester City Council

Kährs sports system specified by Reflex



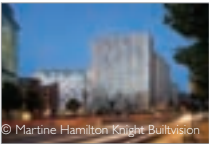
Kährs Maple-FSC Multisport flooring has been installed at Queen Ethelburga's College, in York. The total installation spanned over 3,000m² and incorporated the College's new Sports Facility, multi-purpose gym and sports hall. Kährs Maple Multisport was installed onto Reflex rubber

granulate cradles and tru-batten understructure throughout the area. The 22mm sports floor is crafted from FSC Maple and has a durable satin lacquer pre-finish. A multi-layered construction gives additional environmental and performance benefits, whilst the floor's finish promotes easy maintenance. Kährs' Multisport floors are available in Maple, Beech and Oak FSC.

023 9245 3045 www.kahrs.com

enq.150

Kingspan TEK® – a global success



© Martine Hamilton Knight Builtvision

Students at Nottingham Trent University and Nottingham Trent International College are living in new, purpose built surroundings at Global Point, a new 15 storey student residence insulated with the **Kingspan TEK®** Cladding Panel. To ensure the accommodation was completed in time for the new

academic year, while also achieving a high level of thermal performance, the 142 mm thick Kingspan TEK® Cladding Panel was specified for the walls. The structural insulated panel features a highly insulated core sandwiched between two layers of OSB/3. As a result, it can easily achieve U-values of 0.20 W/m².K and below, whilst its unique jointing system keeps unnecessary air loss to a minimum.

01544 387 384 www.kingspantek.co.uk

enq.151



Serene library for school thanks to Karndean

Pupils and staff at Invicta Grammar School, Kent are enjoying a newly built serene library thanks to their **Karndean** floor. Karndean Designflooring recommended its Art Select Blond Oak parquet effect flooring for its warmth and texture coupled with its durability. The unique grains, knots and the realistic embosses create a beautiful and realistic floor that is also practical; the perfect backdrop for a busy school environment. After considering the many possible laying patterns, Invicta Grammar School opted for a traditional herringbone design with the beautiful handcrafted planks complemented by a brick lay border and a tramline to frame the space. "As you can imagine, the library is the heart of the school, where we encourage learning in a variety of ways. It is therefore vital that this space feels welcoming and warm and our Karndean floor has helped us to achieve this," commented Mary Harris, ICT manager, Invicta Grammar School. She said: "We recognised the benefits of Karndean and as a team chose luxury vinyl flooring over natural products for its ease of maintenance. The authentic look of the floor has left many of our students fascinated by the fact it is not real wood!"

01386 820 100 www.karndean.co.uk

enq.152



**FUTURE-PROOF FLOORING
FOR EVERY SECTOR**

Education
Health & Care
Housing
Offices
Sport & Leisure
Retail
Industry

COMFORTS

Taraflex™ floors look great, perform against the toughest opposition and protect users from potential injury.

CONTACT US NOW FOR YOUR FREE SAMPLES

☎ 01926 622600
@ contractuk@gerflor.com
www.gerflor.co.uk
🐦 @gerfloruk

Gerflor
theflooringgroup

enq.153

Kemmlit specified for state-of-the-art facility



Dulwich College, founded in 1619, is an independent school in southeast London. This historic collage recently opened phase 1 of a multi-million pound, 4,400m² Science Building named the 'Laboratory'. In keeping

with the sustainability and high specification requirements of the building's construction materials, Grimshaw requested Kemmlit to supply and install 200 bespoke lockers faced with a cherry wood veneer, the wood carcasses having a matching cherry wood finish over melamine faced MDF board. A number of the lockers were supplied with glass fronts to house exhibits including some from Shackleton's expeditions. Kemmlit also supplied the slatted ventilation elements which were also faced in cherry wood.

enq.154

Jeckells 'branch out' into educational shade sails



Jeckells the Sailmakers has recently installed a very unusual shade sail at the Holly Lodge Centre in Richmond Park to help educate children about the great outdoors. The brainchild of Stewart Perkes at the centre, Jeckells created a giant

leaf from green nylon sewn into mesh to give the impression of the leaf floating in the air. The mesh was attached to four surrounding trees with special non-invasive Velcro 'tree gaiters'. The icing on the cake is 'Hannah' the caterpillar, who appears to have chewed a hole in the leaf for added authenticity!

01603 782223 www.jeckells.co.uk

enq.155

Going to the toilet broadens college appeal...



A London college focused on providing excellence and an environment where students can maximise their potential is now able to open its doors more inclusively – by investment in a toilet. Supplied and installed by Clos-o-Mat, on the ground floor of the College's main reception building by the learning

resource centre, the hygiene room delivers more space than a conventional wheelchair-accessible toilet, and additional equipment. The room includes a changing bench, height-adjustable washbasin, hoist and Clos-o-Mat Palma Vita automatic wash and dry toilet with touch-sensitive operating switch. The Palma Vita has in-built douching and drying.

0161 969 1199 www.clos-o-mat.com

enq.156

Expona Flow flooring adds impact



Expona Flow PUR sheet vinyl flooring from Polyflor was chosen by Broad Oak Primary School in Didsbury, Manchester, as a hard wearing flooring option that would smarten up their dining area and give years of performance in this high traffic area. The eye catching

Reclaimed Chevron 9830 design from the Expona Flow PUR range was installed by Manchester based Barratt & Hughes flooring contractors in the school's canteen area. Launched earlier this year, the Expona Flow collection of heavy commercial sheet vinyl flooring features 50 wood, stone and abstract designs in a 2 metre wide sheet format with a 2mm gauge and a 0.7mm wear layer.

0161 767 1111 www.polyflor.com

enq.157

We Build It Ltd

simple solution sewage systems

The Bio-Pure

- Suitable for homes without access to mains drainage
- Discreet solution to on-site sewage treatment
- 10 models in the range with a capacity up to 50pe
- CE Marked and EN 12566-3 Certified
- Uses the extended aeration method to treat sewage
- 96% efficiency allows a typical 3-5 year emptying interval
- Visually unobtrusive and odourless
- 25 year warranty on GRP & 2 year warranty on the air pump
- Deal direct with the UK Manufacturer

0800 731 9421 www.webuildit-ltd.co.uk

enq.158



Hauraton website now features Education Sector projects

Hauraton's popular website, www.drainage-projects.co.uk currently features Education Sector case studies and other interesting projects where Hauraton drainage channels have been installed. Utilising the latest software, the website can be viewed on all digital devices using responsive technology – i.e. the new website automatically resize fonts and images so they can be easily read on iPhone, iPad, Mac computers, Android phones, tablets and Windows computers via the internet. The website also incorporates a Customer Support portal and links to Twitter, Facebook, YouTube and Hauraton's product website.

01582 501380 www.hauraton.co.uk

enq.159

No compromises with Upofloor Zero



New Upofloor Zero contract sheet flooring offers a tough, resistant surface that is completely eco and user-friendly. Made from an innovation material called Enomer®, the flooring contains 'zero' PVC, chlorine, plasticizers, phthalates, halogens and heavy metals, promoting healthy indoor air. It is ideal for public spaces with high safety requirements, including schools and nursery environments. Upofloor Zero features a mineral-based construction and has an anti-static, ionomer-reinforced surface treatment. In high traffic environments, it offers excellent durability and flexibility, and it is exceptionally resistant to scratching, staining, bacteria and chemicals.

02392 453045 www.upofloor.com

enq.160

New handmade clay tile launched



Marley Eternit has launched a new range of premium handmade clay plain tiles to help create standout roof designs for high quality housing developments and sensitive refurbishments. The Canterbury range provides a genuine handmade appearance that specifiers are

looking for in today's market. The traditional hand making process used to create the range brings random undulations and variations that give each tile a unique appearance and character. The tiles are available in three rich colours with soft edges, fully formed nibs and a sandfaced texture which is synonymous with the hand making process. Canterbury handmade clay plain tiles are made from Etruria Marl which is widely accepted as the finest clay for strength and durability.

01283 722588 www.marleyeternit.co.uk/handmade

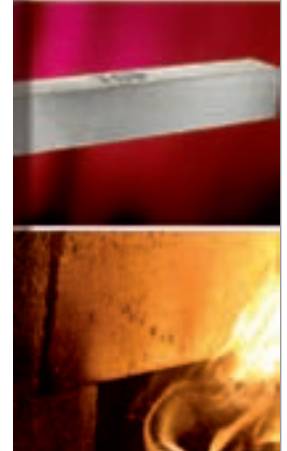
enq.161

NAYLOR
CONCRETE

Made in the UK
Excellent Construction Products

The Naylor Ultra Fire range of prestressed concrete lintels offer enhanced fire resistance of up to 90 minutes on 100mm wide units and 240 minutes on 140mm wide and 215mm wide units. The lintels have a smooth finish ideally suited to paint grade or exposed situations and the prestressed method of manufacture gives high load carrying capacities.

**The Naylor
Ultra Fire
Range**



email: lintels@naylor.co.uk web: www.naylor.co.uk



NAYLOR LINTELS, Whaley Road,
Barugh Green, Barnsley, South Yorkshire S75 1HT

Tel:
**01924
267286**

enq.162

HUGE INSULATION BENEFITS WITH

groundshield

Main System Benefits:

- Up to 30% cost saving compared to a traditional foundation.
- Solution to achieving code levels 5 & 6 in the Code for Sustainable Homes.
- Ideal for passive housing market.
- Fast installation times. 3-4 days from hardcore to pour.
- No screed needed when installing our UFH

Established in Sweden. Offices & facilities in the UK. You can call us anytime for free help on your project:

Dinting Vale Business Park,
Glossop, Derbyshire

Contact Us:

Email: info@aftlimited.co.uk
Tel: 01457 863083

Find out more:

www.aftlimited.co.uk

enq.163



THERMAL PERFORMANCE:

Outstanding thermal performance with U Values < 0.10 W/m²K

LIFETIME PERFORMANCE: Expanded polystyrene will perform to 100% of it's original capability beyond the lifetime of the building

VERSATILITY: Ideal for commercial and residential buildings in timber, masonry, ICF and steel constructions

ROBUST CONSTRUCTION: Solves the problem of linear thermal bridging. PSI values < 0.01 W/m²K can be achieved

AID TO SITE SAFETY: No deep trenches required reducing health and safety risks, plus time spent shuttering

ZERO ODP

LOW GWP

BOVINGDON

BRICKS

When appearance really matters



Genuine handmade and machine made facings, in Metric (machine and handmade) and a range of Imperial (Handmade) sizes. We also manufacture a full range of standard and non standard specials, as well as arches to match our range. We also have a specialist cut and bond department, alongside our special range

Ley Hill Road, Bovingdon, Hertfordshire, HP3 0NW

T: 01442 833176 F: 01442 834539

E: info@bovingdonbricks.co.uk W: www.bovingdonbricks.co.uk

enq.164

KETLEY BRICK

Bricks, Slips and Pavers



Brick Slips and Quarry Tiles from Ketley Brick



Ketley's new ranges of quarry tiles and brick slips give architects the opportunity to incorporate the beauty and surface qualities of true clay fired colour into a wide variety of interior and exterior spaces.



www.ketley-brick.co.uk

Tel 01384 78361 Fax 01384 74553



enq.165



COLEFORD
BRICK & TILE

GENUINE HANDMADE

*'Providing traditional values
for today's environment'*

- FULL RANGE OF IMPERIALS
- BESPOKE SPECIAL SHAPES
- PRECAST FACINGS & SPECIALS
- SEGMENTED & GAUGED ARCHES
- PAVERS & FLOORTILES

The Royal Forest of Dean Brickworks, Cinderford
Gloucestershire. GL14 3JJ

Tel: 01594 822160 Fax: 01594 826655

www.colefordbrick.co.uk

enq.166

Brick is back

Brick is one of the most ancient and familiar building materials known to man, its strength, character and flexibility of use continue to attract architects working on innovative contemporary buildings. Brick Development Association reports

The use of bricks, especially within modern architecture has perhaps been overlooked as traditional and uninspiring allowing competing materials to emerge into the market place. For some they conjure up images of architecturally unimaginative buildings, but today, many forward looking architects praise the use of the humble brick.

Today architects increasingly recognise that bricks have extremely positive qualities. As compact, modular building blocks, bricks offer limitless flexibility to architects who want to design distinctively sculptural, textured or patterned buildings. Brick works extremely well with other building materials and with a wide range of colours and varying textures offers many alternative styles, from rustic farmhouses to contemporary city apartment buildings. On versatility and pure aesthetics, few rivals come close. Coupled with choices on laying patterns, mortar colours and joint finishes, brick can be used to leave a distinctive and extraordinary impression on the landscape.

It is the overwhelming preference for brick in domestic architecture that accounts for its ubiquity in our living environments. Time after time polls reveal the housebuyer's preference for brick but we can also see evidence of its use for the positive advancement of urban design.

A few finely considered new school buildings, for example, have seen architects using brick decoratively and to great effect. The Chetham School of Music designed by Stephenson Bell architects is a great example of an innovative use of brick in a modern structure. The original idea for the brick was to give the building a common denominator of the local vernacular spanning from Roman times to the modern day.

From this seed, long thin bricks have highlighted the flexibility of bricks to be made into many different shaped modules to enhance buildings in a way that is exclusive to brick products. Chetham School of Music's new development is an exemplary example of how the new long thin shaped combined with the unique character and variation of a York Handmade brick can make for a thoroughly vibrant design.

Another example of innovation in architecture using bricks is without doubt the Saw Swee Student Centre at the LSE London designed by O'Donnell and Tuomey, winner of the 2014 Brick Awards, runner up of The RIBA Stirling Prize and nominated for 2015 Design Awards. This gloriously ambitious building with its sharp edges and irregular geometric facets manages to make a striking visual statement while still merging comfortably with the medieval streetscape and period buildings that surround it.

Continued overleaf...



Saw Swee Hock Student Centre

'Brick works extremely well with other building materials and with a wide range of colours and varying textures offers many alternative styles'

Developments in technology are allowing architects to use brick in new and inventive ways, while still harkening back to traditional craft methods. Patterned facades, soaring arches and sturdy walls are all features of brick that make it a versatile and beautiful.

David Patterson of Make Architects adds: "The humble brick is having a quiet revival, particularly here at Make, as its sense of performance, of durability, of tradition cannot be beaten."

He further states that brick is continuing to increase its profile and the UK is seeing excellent brick buildings taking shape. It has been surprising and very refreshing to see how brick is being used softly and innovatively as well as being robust. Its versatility makes brick an ideal material to be creative and in particular allows young architects to express modern concepts while retaining a link to the historic British vernacular. Its additional safety credentials – as a fire retardant material with inherent strength – allows architects to focus on the designs without having to worry that they are compromising on safety.

Indeed, Bricks are fireproof, termite resistant and very energy efficient. This may even reduce your household expenses through the years while providing a safe place to live. Brick is also a very stable building material too. It requires little or no maintenance at all. Good quality bricks that have been carefully



fired and hardened will not chip or wear for several decades, if ever.

If a single material can successfully realise ground-breaking contemporary design, deliver durable performance and even contribute to social cohesion, it is any wonder that brick remains the first choice for building design?

enq.167

Northcot Brick supplies Pret A Manger



Northcot's unique blend of reclaimed looking bricks has become a distinctive interior design feature of the international sandwich chain Pret A Manger. The Cotswold based manufacturer now manufactures approximately 100,000 bricks a year for Pret A Manger, which are then cut into brick slips by independent builders' merchant

John A Stephens. "Although we originally tried to source genuine second hand reclaim bricks, we found that the best way to guarantee the consistency of quality, texture and colour across every batch was to find a manufacturer, who could make new bricks with all the natural characteristics, folds and variations of second hand reclaims," said Jeremy Daniel, Sales Director at John A Stephens.

01386 700551 www.northcotbrick.co.uk

enq.168



New brick slips added to Eurobrick's ranges

Leading stockists of brick slips, Eurobrick, has recently introduced new colours to its brick slip ranges. The Britannia Range is an extensive collection of kiln fired, extruded brick slips. The slips are manufactured in standard UK sizes, typically 15mm thick. Pistol corner brick slips are also available. New additions to the Britannia Range include Rustic Charcoal 697, a dark brown, multi-shaded brick with a rustic texture, and Smooth White R100 with a clean, crisp line which will appeal to those seeking a contemporary finish. Extruded brick slips are a competitively priced alternative to traditional bricks and are not as prone to the supply pressures currently being experienced by many brick manufacturers. New to the Classic Range are EBS Heritage Red, which replaces the very popular Restoration Red Rustica that was sadly discontinued, and 2 new buff colours; EBS Greenwich blend and EBS Historic London which have been tumbled to create the style of reclaimed brick but with the reliability of being newly manufactured.

0117 971 7117 eurobrick.co.uk

enq.170

Ancon updates popular wall tie brochure



Stainless steel fixings specialist Ancon Building Products has updated its popular Wall Ties & Restraint Fixings brochure with a new range of CE marked acoustic wall ties. Unlike standard wall ties that create a solid connection through which sound waves can travel, these new high performance products feature an

acoustic isolation element that minimises the transfer of airborne noise and vibration. Typical applications include music rooms, cinemas, nightclubs, recording studios, laboratories, industrial units and mixed-use developments, where there is a requirement to isolate one part of the building from another. The literature can be downloaded from www.ancon.co.uk or is available in hard copy on request.

0114 2755224 www.ancon.co.uk

enq.169

Hadley launches a new purlin and side rail system

Structural engineers and fabricators will be able to enjoy significant system weight savings thanks to the launch of a new purlin and side rail system, with improved supporting software.

Developed by the Hadley Group in response to customer demand, the new UltraZED™2 delivers on average weight savings of between six and 13 per cent compared to other market leading systems.

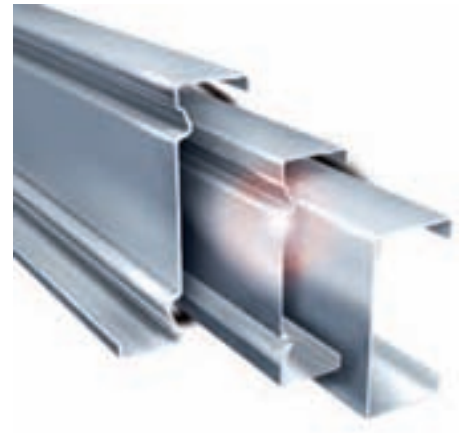
The UltraZED™2 purlin, UltraBEAM™2 side rails and all components in the range have been completely redesigned and tested extensively. The result is a new purlin profile that is both lighter and stronger than competitor systems. It has a generous 70mm flat fixing face, enhancing both sheeting installation and air permeability performance.

Available in both single and double span systems, the section range has been expanded to fill design criteria cases where solutions were not

available. There are now 59 UltraZED™2 sections manufactured from high strength S450 steel. These range from a section depth of 145mm to 305mm enabling engineers to design for spans up to 13 metres. The products offer considerable improvements to the load capacities across the full range of systems which include sleeveless double span, sleeved and Heavy End Bay systems.

Hadley's advanced Design Suite™PRO software has also been completely redesigned to support the new purlin range, making choosing the right gauge and depth option for the job both quick and easy. With contemporary user interfaces the software is designed to be completely intuitive and can be used with the minimum of training.

It features SCI Assessed section properties and system capabilities considered in accordance with Eurocode BS EN 1993 1-3, (current BS version incorporated). The integral module utilises BreVe.3 for calculating wind loadings and features



an extended range of Internal Pressure coefficients as well as a bi-directional wind wizard. The wizard assesses wind speed from 12 directions in just six steps, and allows for custom labelling of each face of the building under consideration for quick and easy identification of correct loads. All elements of the building can be incorporated in a stored project database, which can be configured to the user's output and reporting requirements in Microsoft Word or .pdf formats.

0121 555 1340 www.hadleygroup.com

enq.171

WE NEVER LOSE SIGHT OF YOUR VISION

www.etbricks.co.uk

sales@etbricks.co.uk

01708 200 304



enq.172

Type C waterproofing – a new online resource



Triton's new 'Type C' waterproofing website has been designed as a resource for specifiers of structural waterproofing systems. Triton supplies a complete range of systems for structural waterproofing but this new site focuses on the company's BBA approved cavity drained membrane systems – defined as 'Type C waterproofing' in BS 8102 2009. Cavity drain membranes work on the principle of allowing water to continue to penetrate a structure but control it in the air gap and divert it to a suitable drainage point. Once the membrane has been fitted, wall surfaces can be dry lined or plastered directly. Floors can be screeded or a floating dry board system installed. The membranes are suitable for use in new build, existing basement conversions or retrofit projects and are quick and easy to install. Minimal surface preparation is required making them ideal for heritage buildings and in conservation projects. typecwaterproofing.co.uk also refers to the ancillary products required to complete a Type C system including sumps, pumps and drainage components and anti-lime coatings to protect cavity drained systems from 'free lime' blockages. Direct links from individual product sections on the site take you to technical data sheets, detail drawings, BIM objects and NBS clauses hosted on Triton's main website.

01322 318830 www.typecwaterproofing.co.uk

enq.173

Bison Secures 13th Retirement Project with Churchill in 14/15 Financial Year

Bison Manufacturing has been appointed by Churchill Retirement Living to manufacture and install a number of its market leading precast concrete units for use in one of the developer's latest projects in Truro, Cornwall. Marking Bison's 13th venture with the retirement property specialist in the 2014/2015 financial year, the order will see the delivery of 3,820m² of flooring units and 22 stair flights to the site. When complete, the development will provide one and two bedroom apartments which feature fully fitted kitchens, CCTV security entry system and communal facilities including an Owners' Lounge, Guest Suite and landscaped gardens. Manufactured to exacting standards, the precast units will provide a number of benefits during both construction and the property's ongoing use. The patented mechanically inserted lifting hooks both enhance the efficiency of on-site installation and provide health & safety benefits to the site installation team. Once installed, the precast flooring will form immediate working platforms for follow-on trades, while the precast stairs will give safe, instant access between the buildings' floors and will provide the development with a fire resistant escape route. Building commenced late in 2014 with Bison's deliveries of precast beginning in April 2015. The project is scheduled to complete in May 2016

01283 817500 www.bison.co.uk



enq.174

**Often imitated
Rarely matched
Never surpassed**

20 years of style, security and quality



BESPOKE TIMBER FRAMED BUILDINGS

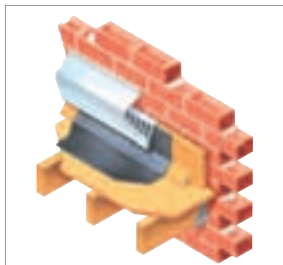


Garages, Stables, Workshops, Home Offices, Holiday Lodges, Conservatories,
Garden Barns, Pool Houses, Sports Pavilions, Clubhouses.

Call 01568 760540 or visit www.courtyarddesigns.co.uk

enq.175

Building Regulations when tackling flat roofs

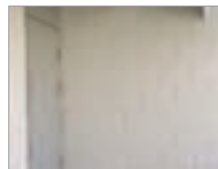


Where a cold roof is the selected or default construction (warm roof conversion impossible) there is an accompanying need to cross ventilate as well as ensuring any link with an external cavity wall is protected against damp ingress. The Type RAV-FL flat roof ventilator from Cavity Trays of Yeovil provides a protected airflow route via which air can enter the wall/roof intersection. A preformed cavitray at

higher level protects and over-flashes the assembly. Type RAV-FL and Type E – a compliant combination from Cavity Trays.

enq.176

Silka blocks in prestigious refurbishment



AHMM have specified Silka chamfered calcium silicate blocks, from Xella, for the internal refurbishment of 207 Old Street in the City of London. Unlike any other block available in the UK, Silka blocks are fairfaced on both sides and have a chamfer. Use of a thin joint mortar system enhances the chamfer's aesthetic effect while

exceptional smoothness enables them to be left fairfaced or painted. With high dimensional stability, they can be used for load bearing, non-load bearing and inner leaf cavity walls, high thermal mass absorbing heat and releasing it slowly to help maintain a comfortable environment.

0843 290 9080 www.xella.co.uk

enq.177

Kemperol protects Liverpool's Royal Liver Building



With Cunard, one of Liverpool's greatest companies, celebrating its 175th anniversary this year, it was time to refurbish the distinctive cupolas to part of Liverpool's UNESCO designated World Heritage Maritime Mercantile City Royal Liver Building, a Grade I listed iconic waterfront landmark, in time for a celebratory flotilla. Kemper System's 1K-PUR cold liquid-applied waterproofing system was selected to complete the challenging scheme.

The cupolas are of concrete construction and have been protected by various waterproofing systems over the years but water ingress was becoming an issue and in some areas the concrete was failing and had to be repaired to return the surface to its original domed shape. Roofing contractor, K Pendlebury & Sons Ltd were appointed by main contractor Quadriga Ltd, specialist restoration contractors, to carry out the challenging task of working at height on the roofs

in an exposed waterfront location.

Comments Neilan Symondson from Pendlebury: "We selected the Kemperol 1K-PUR system following trials carried out prior to commencing the project to ascertain the best approach to delivering the project with the level of finish required by the building's management company, CBRE, and English Heritage while managing time constraints of the project". The challenging weather conditions of the building's waterfront location and the need to identify a system that was suitable for the varying surfaces on and around the cupolas also influenced the specification. The method of fleece application and ease of use of the Kemperol system was ideally suited to meeting these criteria on a scheme that involved working up to 14 storeys high.

The installation team began the restoration of each cupola by repairing each concrete structure using Kemper System's primer mixed with quartz

sand to make a mortar that could be used to build up the eroded areas.

For the larger cupolas, the scheme also involved scroll features and termination details and the installation team also painstakingly applied the system around the solid granite mini scroll features that surround each of the smaller cupolas.

CBRE's Simon Hepple adds: "In terms of surface area, the Royal Liver Building scheme was not large but it was extremely challenging and required both a specialist approach and careful product selection. Kemper System's Kemperol 1K-PUR was ideal for this unusual project."

enquiries@kempersystem.co.uk
www.kempersystem.co.uk

enq.178

Lumi sheds new light on windows



A first in its field, the radically styled new Lumi collection from Apeer is set to bring the seamless sophistication of iconic glass structure to the residential housing market. The design-led range of frameless windows, doors, entrance glazing, French doors and a bi-fold door system was launched at Grand Designs. Offering a frame-free, 'wall of light profile' the triple glazed Lumi collection is

distinguished by its fused ceramic colour border. This is available in eight different exterior colours and eight further interior finishes. Lumi itself has been in development for more than two-and-a-half years and represents an investment of nearly a million pounds for the company.

028 2563 2200 www.apcer.co.uk

enq.179



Battle of Britain Visitor Centre

The Battle of Britain Memorial, located at Capel-le-Ferne in Kent, is a monument to aircrew that flew in the infamous Battle of Britain in 1940. A new addition to the memorial site is a £3.5 million state-of-the-art visitor centre called 'The Wing', which has been designed to replicate the shape of RJ Mitchell's iconic spitfire wing with its distinctive uplift. Vital to the success of this new building was its flat roof, which is highly visible and plays an integral part in creating The Wing's overall appearance. The building consists of three main roof areas, with one central core roof separating the adjoining two wing shaped sections, totaling over 700m² in all. Bauder's anthracite coloured Thermofol single ply membrane was specified for the waterproofing because it is long lasting, visually appealing and allows for no physical penetrations of the roof. The system build-up also included Bauder's 160mm PIR insulation for superior thermal performance, ensuring the roof achieved the required 0.16 U-Value.

01473 257671 www.bauder.co.uk

enq.181

Midroc chose VIVIX® facade panels



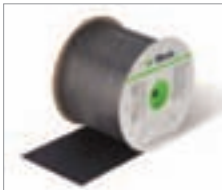
Contractor Midroc chose VIVIX® exterior facade panels from Formica Group to clad the outside of the residential building Bohus, in Malmö, Sweden. Altogether nearly 3,000 square meters of the lightweight and impact-resistant facade material was fitted. Midroc has used VIVIX facade panels before. For them, customisation and material properties were decisive factors in the choice of cladding material. For this project, Midroc

commissioned panels at the exact dimensions, but the panels can also be easily cut to the desired dimensions in the workplace.

0191 259 3100 www.formica.com

enq.180

Intelligent membranes vs EPDM



Pictured is illbruck's ME501

Interfaces where windows require sealing to the building structure demand innovative, clever solutions in order to comply with more onerous Building Regulations. The choice of material is important in terms of vapour control and when an inner and outer layer is involved, it is essential to consider the relative vapour permeabilities to allow moisture to travel from inside to out. **tremco**

illbruck's ME501 Duo Window Membrane HD has BBA-accreditation which proves its suitability for use in typical interface details. The product has been tested to DIN EN1026 (airtightness) & DIN EN1027 (weather tightness) and is included in the illbruck i3 system with BBA-accreditation.

enq.182

New medical centre is better by design



A range of products supplied by leading fenestration design and manufacturer **Senior Architectural Systems** and installed by CS Aluminium Windows Ltd has helped to give a healthy new look to a purpose built Primary Care Resource Centre in Buckley, north-east Wales. Designed by architects Austin

Smith Lord, a focal point of the new medical centre is the large atrium waiting room and reception area. Here, Senior's SCW+ aluminium curtain walling system has been used to create a welcoming entrance for patients by providing copious amounts of natural light and stunning views across the common. The successful delivery of the scheme has helped strengthen Senior's established 20-year relationship with installer CS Aluminium Windows.

enq.184

George Woods' timber door canopies



George Woods UK manufactures a large range of door canopies, all hand made in timber from sustainable forestry. The company always holds a large stock of its standard size canopies, which enables it to offer a next day delivery service. A bespoke design service is provided for both timber door canopies and barge boards, which can be crafted from your design. Beautifully crafted porch canopies are available in soft wood

and include an extensive range of barge boards (fascia boards), all of which are manufactured on-site by hand. Having a canopy prolongs the life of the front door, extends time between maintenance and adds value.

enq.183

Levolux shapes up at Mabledon Place



A transformed 1970's office block at One Mabledon Place in central London has been reborn as 'The Halo Building', with the addition of a distinctive roof screening solution, from **Levolux**. Located on one of London's busiest high streets and designed to achieve a BREEAM 'excellent' rating by Bennetts Associates, the project demanded meticulous planning and

a collaborative approach, particularly when it came to delivering the highly visible roof screening solution. Levolum was chosen to, supply and install a custom screening solution, comprising vertical mesh panels, topped by extruded aluminium Aerofoil Fins, arranged into horizontal panels.

enq.185



WEDGE GROUP GALVANIZING Your Galvanizing Partner

- Quality approved Galvanizing • Technical support and advice
- See the process in action and take your CPD
- 14 plants across the UK offer you a national service
- We galvanize steel from 1.6mm to 29m long

Excellence in Galvanizing

WEDGE

E: galvanizing@wedgagalv.co.uk
T: 01902 600704 www.wedgagalv.co.uk
@wedgagalv



**GALVANIZERS
ASSOCIATION**



Head Office: Stafford Street,
Willenhall, West Midlands, WV13 1RZ

enq.186



Bespoke glazing solutions in timber aluminium & composite

Kloeber's advanced glazing solutions are available in bespoke or set sizes, with exceptional insulating values, multi-point locking and low maintenance finishes. View our website for further details of our extensive product range with solutions for all self builders and home improvers.

- folding sliding doors
- sliding doors
- french doors
- single doors
- windows
- shaped glazed screens
- entrance doors
- roof lights



Kloeber's
timber
bifold
doors and FunkyFront
entrance doors are
Secured by Design.

Visit our showrooms in London, Cambridgeshire
and Buckinghamshire, see website for details

01487 740044 info@kloeber.co.uk www.kloeber.co.uk

enq.187



Specifying external sliding doors

Latest developments in window technology have radically improved the design, performance, and security of fully-glazed external sliding doors for residential use. However, as sliding doors become increasingly sophisticated, specification also becomes more complex. Andy Trewick, VELFAC direct sales manager, comments

Site suitability

To create the large opening required by many sliding door designs, the structure above the door must not transfer any weight or load onto the door when installed. Although most wall types provide adequate fixing grounds, given the area of glazing involved take advice on the type and number of fixings required for the door being installed. A solid base is also crucial, as unstable grounds can lead to issues with door alignment and operation, prompting repeated adjustment post-installation. Load and other calculations must also ensure minimal glass deflection, as excessive movement under environmental loadings can be disconcerting for occupants.

Threshold options

Different door systems feature different threshold or bottom track options. A flush track allows a step-free passage through the door but requires a pocket sunk into the structure for the track, and provision made for water drainage on and below the external floor level. In exposed locations, flush track options can be vulnerable to driven rain and high winds.

An alternative is to fit the lower sliding gear in a profile or cill member which sits on top of the structure; this provides a more robust weather solution and is also easier to install. Doors featuring 'step and slide' designs (when the door moves inward or outward before sliding across) offer even greater protection as the door usually 'clamps' onto gaskets and weatherseals, rather than depending on simple brush seals.

Choosing the ideal design

Three main designs dominate the market – sliding, bi-parting (two panes sliding apart to create a large opening without any central obstruction), and concertina folding. Sliding and bi-parting designs are ideal for most domestic installations, especially those where space is limited (such as a balcony) as very little space is required to house the door when open; folding door designs need adequate room to allow the panes to flex and fold, and to store when open.

Sliding doors are available in a variety of frame constructions including composite aluminium / wood frames, which give property owners greater flexibility when specifying internal and external frame finishes.

Continued overleaf..

'Sliding and bi-parting designs are ideal for most domestic installations, especially those where space is limited'

'If the door opens onto a balcony or steps, then childproof locks may be required'

Improved energy efficiency

The greatly improved energy performance of modern window design means that an external sliding door should no longer be a source of heat loss. However, a slim frame design further improves energy performance as most heat is lost through the window frame, with different framing materials and profile designs having different thermal conductivity values. Slimmer profiles constructed from low conductivity materials are now available to meet increasingly demanding Building Regulations.

Low energy glass coatings can also significantly reduce excessive solar gain and improve energy conservation in winter, minimising 'cold spots' and enabling full use of floorspace near glazing.

To further improve energy efficiency Building Regulations require increasing levels of air tightness – but this shouldn't compromise ventilation. Trickle vents fitted into the frame eliminate the need to house ventilators in additional profiles as these add more framing, reduce daylight levels and increase thermal losses.

Security and safety

Traditionally considered a weak point in household security, the best sliding doors now feature espagnolette locking mechanisms, locking handles, internal glazing beads (to prevent external glass removal) and anti-lift devices. If the door

opens onto a balcony or steps, then childproof locks may be required, while glass thickness must also be suitable for the desired door size, and must break safely in order to meet Building Regulations.

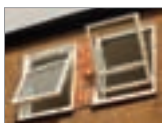
Do your research

Sliding doors are a valuable addition to a property but are also a significant investment. When specifying, look for well-made, solid construction, a smooth and efficient sliding mechanism, and a design that can be adapted to specific performance requirements. Maintenance should also be considered – tracking systems should be easy to keep clean and sliding mechanisms protected from the weather, while frame and finish should not need a comprehensive maintenance routine to ensure long lasting performance.

enq.188



Sheerframe ensures window cleaning in safety



Sheerframe 8000 Top Reversible windows from Synseal fully reverse for ease of cleaning in total safety from inside the building. This specialist Top Reversible window design features a purpose-designed Sheerturn hinge and is ideal for domestic applications including escape windows as well

as medium and high rise dwellings and office or hotel accommodation. A range of transoms and mullions provide additional multi-light and stick construction curtain walling configurations to complement this user-friendly window design and deliver effective fenestration solutions for commercial buildings. Sheerframe 8000 Top Reversible windows are part of an enhanced thermal performance range which offers the widest range of fixed and opening light combinations.

01623 443200 www.synseal.com

enq.189

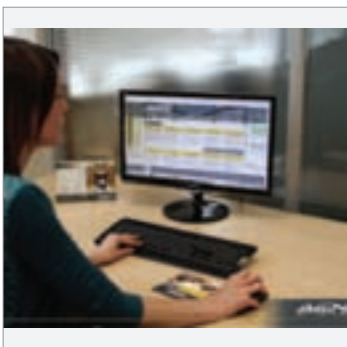
SWA member wins Gold award



Steel Window Association member, Steel Window Services and Supplies Ltd, has been awarded a Gold award for health and safety performance at the London 2015 SHE (Safety and Health Expo) Awards. BAM Construction presented 11 health and safety awards and four environmental awards to businesses and their best performing subcontractors at the ceremony in London earlier this month. For further information on the Steel Window Association, please visit the company's website.

enq.190

Gilgen launches Automatic Door Resource Library



An automatic door resource library designed to help architects during the specification process has been launched by Gilgen Door Systems. Available free on CD or DVD the library contains NBS specifications, technical drawings, test certificates and detailed information across Gilgen's extensive range of automatic pedestrian door systems. A professionally designed user interface enables architects to easily navigate across different types of door systems helping to identify the right solution for any project. CAD drawings and detailed product files are immediately available without the need to locate and download them online. Roger Massey, Marketing Manager at Gilgen Door Systems explains: "Whilst technical information and drawings are available to download from our website, we wanted to help architects locate the right door system for their projects and save time downloading files. The CD has all the technical data conceivably required, fully supported through our national specification hotline." The specification hotline is manned by a team of highly experienced automatic door specialists who guide architects through the specification process, answer questions and ensure any proposed solution is fit for purpose and meets safety regulations. To request a free copy of the automatic door resource library, please contact Gilgen.

0800 316 6994 www.gilgendoorssystems.co.uk

enq.191

GLASSOLUTIONS wins Cambridge Research Centre contract



An insulated glass facade with computer-controlled integrated louvre-blinds has been installed for the first time in the UK at the new £6 million Bennett Building at the Babraham Research Campus in Cambridge. UK glass and glazing specialist **GLASSOLUTIONS** won the £800,000 glazing contract for the new energy efficient bio-incubator centre that houses both laboratory and office facilities and is specifically designed to accommodate growing companies. The DLS ECKLITE SC system is manufactured by GLASSOLUTIONS' sister company Eckelt in Austria and integrates an electrically operated louvre within the cavity providing efficient solar and glare control. The louvres and other integral parts are thereby permanently protected against weathering and are maintenance free. The thermal insulation of 0.6 W/m²K fulfils all requirements for passive house architecture. Schueco FW60 curtain walling and neat detailing allowed toggle glazing and silicone sealing of insulated aluminium panels and single glazed glass spandrel panels as well as the glass units containing the automated blinds. The glazing contract also included an 80 sq m glass spiral staircase, which forms an emergency escape route within the flagship building, which is located at the entrance to the prestigious site.

0247 654 7400 www.glassolutions.co.uk

enq.192

Elegant Ash Exterior Foil

Four new RENOLIT EXOFOL MX exterior grade solid colours are launched, combined with a new stunningly realistic Elegant Ash surface finish. The embossed design has a detailed woodgrain textured surface with a matt finish to replicate an extremely realistic painted wood look. Available in four neutral tones, two match contemporary RAL colours and two are established modern powder coat shades, they meet the increasingly popular trend for greys. The new decorative foils will suit a wide range of architectural styles and brick colours. RENOLIT EXOFOL MX Elegant Ash colours are offered with a guarantee of up to 10 years and are available ex-stock. RENOLIT EXOFOL MX classic exterior films are a tried and tested two-layer PVC and acrylic laminate, which have enhanced all kinds of profiles in a rich variety of colours and decors for decades and which feature RENOLIT's unique Solar Shield Technology (SST). SST acts as a protective shield for the entire component, reduces heat build-up in the profile and slows down the ageing process to prolong the life of the construction component. To request a RENOLIT EXOFOL Elegant Ash colour swatch and further information about RENOLIT EXOFOL Exterior films with Solar Shield Technology please contact **RENOLIT Cramlington Ltd.**

01670 718222 www.renolit.com/exterior



enq.193



L-R: Phil Warren Sales Director; Jimmy Greenhoff and Terry Conroy opening the new Designer Range Showrooms.

Listers launch Architectural "Designer Range"

Diversity is the key to success and changing with the market place is critical to ensuring company progression. **Lister Trade Frames** of Stoke on Trent have certainly taken heed of the changing trends by launching its new brand, Designer Range. Phil Warren, sales director for Listers said: "Designer Range is our new niche brand of high-end products aimed at Architects and new-builders. It provides exceptional products and is a truly outstanding brand." Designer Range offers a complete service from consultation, surveying to product specification all the way through to installation. In order to fully highlight the wonders of Designer Range, Listers have built a purpose designed showroom at their base in Fenton. Designer Range was officially launched over two nights in May to local Architects, business owners and dignitaries. Cutting the ribbon were two local football legends from the 1972 League Cup winning Stoke City team, Jimmy Greenhoff and Terry Conroy. It was a fantastic couple of nights and the Designer Range was met with enthusiasm and general excitement. Listers have once again shown that standing still is never an option and that diversity is key to success.

01782 391900 www.listertf.co.uk

enq.194

**WWW.TIMBER
-WINDOWS
-DIRECT.UK**
A TRADE DIVISION OF KM-JOINERY

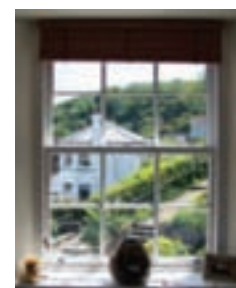
MANUFACTURERS OF TIMBER

- SASH WINDOWS •
- CASEMENT WINDOWS •
- DOORS •
- BIFOLD DOORS •



ALL TRADE ENQUIRIES TEL:
0800 7076954

E-MAIL: sales@timber-windows-direct.uk



- ALL TRADE WELCOME •
- WINDOW INSTALLERS •
- BUILDING CONTRACTORS •
- ARCHITECTS • DEVELOPERS •
- DIRECT TRADE SUPPLY •
- NATIONWIDE DELIVERY •



enq.195



Copper conflagration

Visitors approaching Żory in Poland are greeted by a dramatic, copper exhibition pavilion in the form of dancing flames – referencing the city's historical links with fire and its Festival of Fire that continues to this day. The sculptural design of the new pavilion, by architects OVO Grabcewscy Architekci (www.ovo-grabczewscy.pl), was inspired by an irregularly shaped building area resulting from below-ground infrastructure and other constraints on its prominent site. Three independent walls, each clad in crisply detailed strips of Aurubis' Nordic Standard copper, interact to create the 'fire', separated by fully glazed entrances. Copper also covers several internal wall surfaces, alongside exposed concrete. In addition to the Nordic Standard copper used on the Museum of Fire, other Aurubis Architectural surfaces include Nordic Green and Nordic Blue factory-applied patinas, pre-oxidised Nordic Brown and various copper alloys.

01875 812 144 www.aurubis.com/finland/architectural

enq.196

GEZE UK issues new product guide



GEZE UK has launched a product guide to make it even easier for architects, architectural ironmongers and specifiers to find the information they need. The 2015 Product Guide has been reordered to categorise the company's range of door closers, window control systems, sliding door fittings, smoke and heat extraction systems into sections, so that information is easy to find at a glance. And new for 2015 will be the OL Line range

of controls for high level windows which will be launched next month. With detailed information to help specifiers and architectural ironmongers select the most effective product, the illustrated technical guide replaces the contents of GEZE UK's existing stylish binder and is available electronically or as hard copy.

01543 443015 www.geze.co.uk

enq.197

BMW rolls out new factory and showroom



A County Durham-based Halo Approved Fabricator and Installer, BMW Windows is marking its 30th year in business with a move to new, larger premises. Its current executive team – John and Debbie Jefferson and their sons, John and Andrew commented: It's not

often that you come across a double glazing company celebrating its 30th year in business. We're proud to have reached this milestone – testament to our hard work, determination and commitment to supplying systems of the highest quality. Our association with Halo and The VEKA UK Group in general stands us in good stead with customers, who realise that we only work with the best. A family fun day on 30th May 2015 saw the launch of BMW's new showroom

01282 716611 www.vekauk.com

enq.198



**ARE YOU LOOKING FOR
A COST EFFECTIVE BUT
PERMANENT REPAIR
FOR LEAKING GUTTERS!**

IF SO CONSIDER

AMPTeam's NEW

ECO LINER SYSTEM

**Call Us
For Free
Impartial Advice.
01384 252777.**

**www.gutterliners.com
unifold@ampteam.co.uk**

**Designed to be an alternative to
coatings and roll out plastic liners,
it's quick & easy to install with a 10
year materials guarantee.**



enq.199

GEZE unveils OL Line natural ventilation system



Opening and closing high level windows and roof lights will be a breeze thanks to the launch of a new natural ventilation system from **GEZE UK**. The new OL Line manual window control system has been designed specifically for commercial and public buildings, including schools, and thanks to its modular design, can easily be retrofitted. The OL Line provides an easy and reliable control system for even the most hard to reach of windows.

A manual opener is fitted to the opening vent which is linked via lengths of conduit and cable to a wall mounted operator. The conduit can easily be bent around obstructions allowing the handle to be placed within easy reach.

01543 443000 www.geze.co.uk

enq.200

Slim Sightline Interleaf hinges



Master Hinge Makers **Cooke Brothers Ltd** has reported a growing demand for the new and innovative Interleaf Continuous Hinges, particularly where the enclosure or doorset design requires an ultra-narrow unobtrusive sightline between the door and frame. The new Phoenix Interleaf hinge reduces the typical gap created by a traditional heavy duty continuous hinge from 12mm down to a mere 3mm. Ideally suited for 44mm and 54mm timber and metal doorsets, the

aesthetical lines of the Interleaf hinge completely fills the void between the door and frame, reducing the risk of finger trapping considerably. The CE marked hinges have been successfully tested to BS EN 1935: Grade 14 (160kg).

01922 740011 www.cookebrothers.co.uk

enq.201

M-Tray sedum green roofs from Wallbarn



A single storey extension in Cambridgeshire is another great example of the simplicity and beauty of the M-Tray sedum green roof system on offer from **Wallbarn**, in conjunction with the SIG group. The project had been waterproofed by AJ Canning and was overlaid with the sedum M-Tray pre-grown modules. Loose laid geotextile separation membrane was placed directly onto the waterproofing

membrane and the M-Tray modules, which had been grown in the Wallbarn nurseries for over 12 months, were installed onto the geotextile and clicked together using the easy connection fittings. M-Trays are the fastest, cleanest and simple way to construct green roofs. They are available in a 2-3 day service.

0208 916 2222 www.wallbarn.com

enq.202

World-leading centre features AluK facade



University of Wales Trinity Saint David in Swansea has invested £15 million into the refurbishment, restoration and extension of the Grade II listed former Central Library building to create the new Institute for Sustainable Design. Devised by Powell Dobson Architects, the development incorporates a stunning twin wall facade featuring **AluK** curtain walling systems, complementing and adding a new

dimension to the original design. The modern, double skin facade extension provides additional 657m², and incorporates a new reception entrance off Alexandra Road, workshops, teaching spaces as well as design studios. The original circular reading room has been restored and made available as a public venue.

01633 81 04 40 www.aluk.co.uk

enq.203

Freefoam Launch New Style Double Shiplap Cladding



Freefoam, a leading manufacturer of a wide range of innovative products for the building industry in Ireland, the UK and Mainland Europe, has made a valuable addition to its popular cladding range and launched Fortex Pro, a new style double shiplap board.

The new product features an increased width of 333mm and thickness of 9mm creating a stronger board through improved profile design and offers greater coverage at 1.665 sq m per board with a quick and easy calculation for specification purposes. Colour choice is important for any exterior building product and as colour specialists Freefoam have now added four new colours to this product range, Misty Grey, Cement Grey, Slate Grey and Cappuccino, making a total of ten. The combination of all these new features and the addition of superior colourfastness and weatherability properties using advanced skin technology makes Fortex Pro the perfect choice for all building professionals.

The Fortex[®] cladding range includes a double shiplap plank format 300mm wide, a weatherboard style at 170mm wide both with an attractive embossed textured wood effect finish and a 250mm wide board with an authentic render finish.

01604 591110 www.freefoam.com

enq.204

Topseal HD System for balconies, walkways and stairs

Topseal has designed the Topseal HD system which can be used for roofing but is also ideal for balconies, external walkways and stairs, as it incorporates additional reinforcement, which ensures the roof is completely safe for foot traffic. As well as the increased strength, the Topseal HD system can come with a coated aggregate or anti-slip finish. The anti-slip finish is ideal for foot traffic applications, as it provides a much safer surface to walk on. If you are expecting a high level of use don't worry, as the system is designed to be durable and long lasting. Enjoy peace of mind with a 25-year workmanship and materials guarantee and also enjoy the option of an additional insolvency guarantee. Topseal's network of approved installers cover the UK and between them have installed a number of balconies and walkways using the Topseal HD system including balconies on local authority housing blocks to balconies and walkways on brand new domestic dwellings. You can also rest assured that the Topseal systems are of a very high quality and the Topseal HD System is BBA certified, completely UV resistant and fire retardant. Talk to Topseal direct by calling the company to find out more about the Topseal HD system and other roofing options.

08000 831 094 www.topseal.co.uk



enq.205

Comar 5P.i Advanced Window System



Integration is the key factor which underpins the latest new product launch from **Comar Architectural Aluminium Systems**. The Comar 9P.i Framing system offers fast-track semi unitised construction for floor to ceiling glazing, allowing tilt/turn or casement windows to hang direct from the Comar 9P.i Frame as well as rebated doors. With the addition of thermal foam and triple glazing Comar 9P.i offers U-values down to 0.77, creating a future proof solution for their architectural, contractor and fabricator partners. The company has incorporated the technology from their Comar 9P.i system into the Comar 5P.i window range, and is launching the Comar 5P.i Advanced Casement and Tilt/Turn window system.

0208 685 9685 www.comar-alu.co.uk

enq.206

Steel window colour choice



A leading steel window manufacturer, **Crittall**, is promoting the wide spectrum of colours finishes available across its product range. Crittall Duralife epoxy-free polyester powder coatings are available in a range of 46 standard colours. Dual colour is also available. The Standard colour range is matt finished while Gloss is also available. Other RAL, BS, NBS or custom colours are available to order. Powder coatings are applied to galvanised steel and aluminium substrates. 'in-house' under Crittall's ISO 9001:2008 Quality Management System and ISO 14001:2004 Environmental Management System. Duralife polyester powder coatings are compliant with BS EN 13438, BS EN 12206 and BS 6497.

01376 530800 www.crittall-windows.co.uk

enq.208

Outstanding performance for Grade II* Theatre



Nottingham Playhouse is a Grade II* Listed theatre. It has English Heritage importance, and is an iconic landmark, with hundreds of productions, events and exhibitions taking place throughout the year. The challenge for Gleeds Building Surveying Ltd was to reduce the

Playhouse's energy bills by making the 1960s building significantly more energy efficient – without damaging or altering the building appearance and without disrupting theatre operations. The innovative facade design included the use of A. Proctor's Spacetherm® blanket. 15mm Spacetherm® Blanket was used between the Glazing and Board to improve thermal performance of the building.

01250 872261 www.proctorgroup.com

enq.207

Kingspan OPTIM-R slims down terrace



The **Kingspan OPTIM-R** Balcony & Terrace System and Kingspan Thermarof TR27 LPC/FM have been installed as part of a roof terrace retrofit on a house near Cheltenham, helping to minimise heat loss while maintaining the existing floor level. The 84m² terrace sits directly above the main reception room and had begun to leak in several places. As part of the retrofit, the terrace was stripped back to the existing plywood deck and BPN Architects used the opportunity to raise the thermal performance of the roof above the Building Regulation requirements. With an aged thermal conductivity of 0.007 W/m·K, Kingspan OPTIM-R panels can provide an ultra-thin solution for hard to insulate areas.

01544 387 384 www.optim-r.co.uk

enq.209

10 YEARS
IN THE
MAKING
2009-2019

urban | front®

oversized doors now available
steel reinforced natural hardwood doors | entrance doors | internal feature doors | garage doors
passive house certified doors | made and designed in UK
urbanfront.co.uk | 01494 778787

enq.210

For fine acoustic surfaces, supplied and fitted, look no further.

Project: Winchester College Music Building Architects: BHM

Products: RPG Absorber suspended ceiling panels (pictured) FlutterFree acoustic timber to foyer ceiling, bespoke curved canopies, 1600mm diameter acoustic discs & RPG Harmonix diffusers in FRG.

Call: 01303 230944 www.rpg-europe.com

R P G

RPG Europe is a trading name of Acoustic GRG Products Ltd. The Sound of Innovation

enq.211

Air Conditioning for Korea Expressway HQ



The Korea Expressway Corporation is a large company with over 4,500 employees and is responsible for construction and maintenance of expressways in South Korea. In 2013, AET Flexible Space received the order through its Korean distributor Shinsung Engineering for Under Floor Air Conditioning equipment for its new 30,000m²

headquarters building. AET Flexible Space equipment was specified for a total of 24,000m² over 19 floors sized 1,200m² each floor and located in the tower part of the new build construction. The under floor system was specified by the client due to its height saving capabilities, flexibility and speed of construction.

01342 310400 www.flexiblespace.com

enq.212

Pentair provides solution to De Vere Gardens



Pentair's Thermal Buildings Solutions has recently provided Phoenix Electrical with 15km of Raychem T2Red self-regulating floor heating cable to provide heating in apartments and lobby areas at De Vere Gardens, a development of 97 luxury apartments in the heart of Kensington. 4.5km of Raychem FS frost protection cable was also provided to protect exposed

pipework in the basement. Installed by Jointing Technologies, the T2Red system was specified for its self-regulating energy efficiency properties as well as its ability protecting the wooden floors from damage. The FS cable system specified for exposed pipework in the basement protects it from freezing and in turn protects the plant supplying the building with hot water and heating.

enq.213

www.apolloradiators.co.uk



monza aluminium column radiator

Ideal for low temperature renewable systems

Ideal for high pressure systems

The latest patented european technology

A unique aluminium radiator design

Half the weight of steel

82 vertical and horizontal sizes

Delivered within 3 working days

enq.214

SuperFOIL Insulation

The Past

The Future

WHICH WILL YOU CHOOSE?

SuperFOIL SF40

01636 639 800 www.superfoil.co.uk

Goulder Developments Ltd, SuperFOIL BHF, Main Street, Norwich, Norfolk, Norfolk, NR23 8UH

enq.215

Distributing quality, delivering local support



AkzoNobel is a leading global paints and coatings company and a major producer of specialty chemicals. From its UK base in Blackburn Lancashire, AkzoNobel Wood Coatings maintains a steady and reliable supply stream to its appointed distribution network. AkzoNobel Wood Coatings

have created a superb UK-wide network of distributors enabling customers to order and purchase products. This ensures that the market is fully served with every aspect of coatings for factory finished timber constructions. In real terms connections are built between distributor, contractors and supply chain partners to ensure the end customer receives the optimum level of support.

01254 687950 www.sikkens-wood-coatings.co.uk

enq.216

Steel protection solutions from Envirograf®



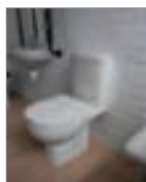
The Envirograf® steel protection coatings can be applied over existing paint or in situation where fire protection has been forgotten after removal of any loose particles and washing down. The range can also be applied over any primer and include an

assortment of top coatings, also offering solution to aluminium for fire protection. For areas of high humidity such as swimming pool areas or external areas, a chlorinated rubber coating can be applied (this can be clear or coloured to suit, as shown in the picture). Envirograf® take pride in offering an advantageous solution to steel coating that can ensure application over any previously coated surfaces, without the need of stripping existing paints, saving labour and revenue costs.

01304 84255 www.envirograf.com

enq.218

Barwood Products launch comfort height WC's



Barwood Products has launched two new contemporary toilet sets with matching basins for domestic customers and care home residents. 'Project' is a rimless luxury WC set designed for the home. With a comfort height of 455mm to the top of the pan and a long projection of 625mm the W.C., it is perfect for less able or aged customers who live and wish to remain in their own home. Featuring a slow close seat,

WRAS approved cistern fittings and dual 6/3 litre flush. The 'Avenida' is an attractive and well-priced entry level W.C. that also provides a comfort height of 425mm to the top of the pan, 625mm projection and soft close seat. The cistern fittings are also WRAS approved and feature a dual flush of 6/3 litres.

01782 561 814 www.barwoodproducts.com

enq.217

Mirrored 3D wall of colour at Clerkenwell



Johnson Tiles unveiled a spectacular reflective 3D wall of colour, transforming the entrance to the Design Factory area throughout Clerkenwell Design Week 2015. With mirrors cleverly placed behind rows of tiles emerging from the wall, it produced an array of reflections, evolving shades and playful visual effects,

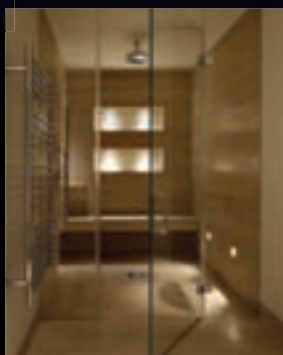
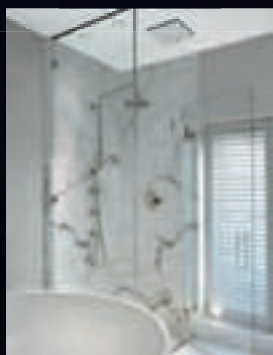
interacting with passers-by and the surrounding buildings. It was inspired by rows of dominoes and created with more than 6,000 tiles from the iconic British-made Prismatics range, each set into hundreds of rows of protruding 'blades'. Clerkenwell Design Week also saw the Staffordshire-based manufacturer showcase its extensive product portfolio, as well as previewing forthcoming designs.

028 2563 2200 www.johnson-tiles.com

enq.219



Total Glass Solutions



Bathroom and wet room solutions

- Ideal for shower doors, cubicles and screens
- Bespoke shapes and sizes
- Switchable LCD privacy glass options
- Decorative sandblasting and printed laminated interlayers
- BSI approved

www.esg.glass

01376 520061

enq.220

THE ART OF HEATING



BESPOKE. CLASSIC. ELITE.

The Orleans, Highlight Polished

For Stockists Contact:

T: 0808 129 2224 | E: sales@carron.uk.net | W: www.carron.uk.net

reader
enquiry
221



Trench Heating

Gunning Trench Heating is the best way of providing a heating system in front of full glazed walls, combating cold downdraughts and condensation. It is a discreet and effective solution for extensions, conservatories or environments where wall radiators would be in the way or unsightly.

Tubular Radiators

Gunning Tubular Radiators are compact low level heating units combining high output with an unusual but modern appearance. This ingenious design is ideal for use anywhere wall space is limited such as extensions and conservatories. Comes in 5 lengths.

GUNNING HEATING PRODUCTS
 Tel: 01268 545154 Fax: 01268 545154
 Email: sales@gunningheating.co.uk
www.gunningheating.co.uk
 Unit 12A, Durham Road, Ladbroke, Bedford, Essex, SS15 6PH

enq.222



SCAN FOR BROCHURE



THE RADIATOR FACTORY
WWW.RADIATORFACTORY.NET

FOR ALL TYPES OF DESIGNER & ECO-ALUMINIUM RADIATORS

TEL: 0116 260 9257

enq.223

We've a massive range of
Decorative Cladding

NATIONAL PLASTICS



It's a great alternative to tiles
Quick & easy to install
Wipe clean & stain resistant

 Call or visit your local depot today

0800 0113503

We know the trade
nationalplastics.co.uk 

enq.224

Individuality and comfort for the bathroom



The new ME by Starck collection puts the spotlight on individuality. Created by the French designer, Philippe Starck, this unique collection satisfies the desire for pure aesthetics and focuses on the essentials. With its minimalist design, it places the person and their sense of style at the centre of the bathroom. Working perfectly in all interiors, it allows a vast choice of individual

designs. Washbasins, toilets, baths, urinals, shower trays and accessories all form part of this unique collection. For stockists, please contact **Duravit**.

0845 500 7787 www.duravit.co.uk

enq.225

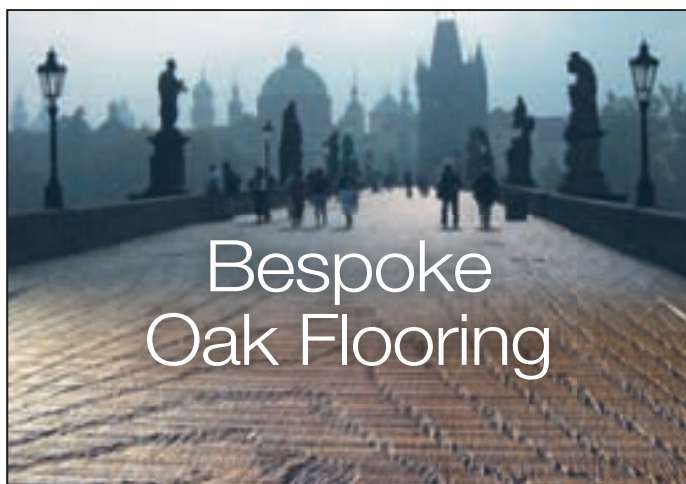
MX thermostatic mixer shower ranges success



MX Group's impressive range of thermostatic mixer shower valves offer its usual combination of incredible quality, great looking product, excellent warranties and keen pricing. So confident is MX of the quality of its new Thermostatic Mixer Showers, that it offers a three or five year guarantee on its Atmos range of valves. There are 22 showering choices in the Atmos and Options ranges with most Atmos options complying with TMV2 regulations. Full details of the new ranges can be found at the excellent MX web site.

01684 293311 www.mx-group.com

enq.226



Bespoke Oak Flooring

... the perfect finish for any room

- > Esco engineered oak flooring
- > Eight colour options
- > Varied surfaces available - aged, wire brushed and Harfa rough sawn effect
- > Pre-finished with Osmo Polyx-Oil

Call or visit the web for a brochure.

+44 (0)1296 481 220

www.osmouk.com



osmo[®]

enq.227

t: 01424 20 22 24
www.dolphindispensers.co.uk



New supermodels take centre stage

Ultra slim hand dryer systems with a slender 94mm recess depth and trim 10mm projection.

Slim and stylish the BC27 hand dryer system is perfect for any washroom, especially where space is at a premium.

- **Velocity Eco Slimline Recessed Hand Dryer** – high speed, energy efficient hand dryer with infra-red sensor and stainless steel fascia
- **Recessed Paper Towel Dispenser** – contemporary, slimline unit with stainless steel front
- **Slimline Recessed Bin** – 24L capacity with stainless steel front

The BC27 range – strong on style, easy on space.

Products from the BC27 range can be used individually, or configured in different combinations to maximise use of available space.



For more details about our hand dryers see:
www.dolphindispensers.co.uk

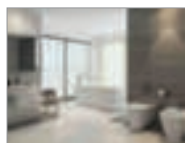
washrooms worth experiencing



Dolphin Dispensers
Southpoint, Compass Park
Bodiam, Robertsbridge TN32 5BS
t: 01424 20 22 24
f: 01424 20 52 00
e: info@dolphindispensers.co.uk
www.dolphindispensers.co.uk

enq.228

RAK launches Italian-styled Harmony range



RAK Ceramics has launched its new Harmony bathroom range. Harmony offers a luxurious, Italian-designed range of sanitary ware and basins, complemented with stylish matching furniture. All of the products share a simplistic but stunning look; the curved lines of the sanitary ware and the furniture's sleek

design features – including push/release drawers and ambient lighting – work in total 'harmony,' providing a stunning bathroom design at an affordable price. The matching white furniture has high gloss painted drawer fronts with complementary wood finish side panels. Built-in ambient strip lighting creates subtle night-time illumination and a beautiful finishing touch to the chic collection.

01730 237850 www.rakceramics.co.uk

enq.229

Pressalit Care introduces BIM



Pressalit Care has introduced BIM (Building Information Modelling) for its complete range of accessible bathroom solutions. Andrew Lowndes, UK sales manager said: "Designing an accessible bathroom means taking into account elements such as space requirements, turning areas for wheelchairs and the typical bathroom manoeuvres

around the washbasin, toilet or shower, and whether the bathroom is multi-user. Pressalit Care includes the use of BIM in its RIBA approved CPD (continual professional development) seminar, Best Practice in Accessible Bathroom Design. This seminar forms part of the RIBA core curriculum under 'design for accessibility'. BIM models for Pressalit Care are available on the company's website.

uk@pressalit.com www.pressalit.com

enq.231

MODULAR SHOWERING SOLUTIONS



- LEAK FREE
- DESIGN BUILD
- ZERO MAINTENANCE
- DURABLE & RELIABLE
- RECYCLABLE
- QUICK & EASY TO INSTALL
- ISO 9001 REGISTERED
- ISO 14001 REGISTERED
- 25 YEAR GUARANTEE



TAPLANES®
SHOWERING SOLUTIONS

Telephone 01423 771645 • Email admin@taplanes.co.uk • www.taplanes.co.uk

enq.233

Value and style at London's Chancery Lane

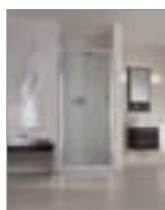


Executive washrooms, custom-designed and manufactured by Maxwood, are adding value and style to a distinctive commercial redevelopment on London's Chancery Lane. The supply and fit package for the prestigious project combines the clean lines of Maxwood's flush-fronted Maranté cubicle system and counter-top wash basins with the natural beauty

of mosaic glass tiling and Caithness slate vanity tops. The completed building provides approximately 100,000 sq ft of contemporary workspace, including male, female and disabled access washrooms by Maxwood to six floors and basement area. Doors to the Maranté toilet cubicles are faced with a fashionable 'Lati Silk' dark grey real wood veneer, complemented by Maxwood's stainless steel hardware range featuring concealed fixings and fall-to-close hinges.

enq.230

New Spectra SP462 from Aqata



Aqata's new Spectra SP462 Double Door Recess option features hinged inward opening doors allowing easy access to the shower. It offers a simple yet practical solution for compact bathrooms, allowing maximum showering space outside the shower area whilst providing ample showering room inside. Forming part of the company's contemporary frameless Spectra range of shower enclosures and screens, the new model is characterized by

spans of 8mm toughened clear glass. Its polished chrome finish profiles are fully adjustable allowing the two ergonomically designed doors to close effortlessly onto discreet clear door seals, creating an effective and secure water barrier.

01455 896 500 www.aqata.co.uk

enq.232

Sanicubic XL provides the solution for gym



The Saniflo Sanicubic XL is proving successful at the Educo Gym in Pearse Street, Dublin. To replace its existing pump, the busy gym used a Sanicubic XL due to its capacity to pump of 40m³/hour of black wastewater from multiple appliances. The pump services 2 WCs, 6

showers and 4 basins from the basement car park. It has a 120 litre tank capacity ensuring it functions efficiently when connected to several wastewater sources at a time. It incorporates pioneering vortex technology, which powerfully discharges waste through 80 or 100mm discharge pipes with 2x2kW pumps. Easy and inexpensive to install the unit simply stands on the ground avoiding the need for costly excavations. It is IP68 rated giving it protection against submersion in water.

0208 842 0033 www.saniflo.ie

enq.234

Aiming to set new standards in accessible toilets



JD Wetherspoon, already a champion in its provision of accessible toilets, is setting new standards by becoming the first major national pub chain to open a Changing Places. The 'all-singing, all-dancing' assisted accessible toilet – supplied and installed by

Clos-o-Mat – is in Wetherspoon's new 'The Velvet Coaster' pub, on Blackpool Promenade. The £6.5 million pub has been built a showcase for the brand, which has already won national awards for its conventional and accessible toilets. The Changing Places toilet is conveniently located on the ground. The facility delivers continuity of design for Wetherspoon toilets, whilst having the room and layout for the hoist, height-adjustable changing bench and privacy screen.

0161 969 1199 www.clos-o-mat.com

enq.235

The **Magrini** family is now complete...

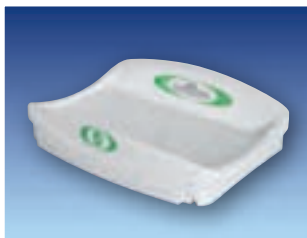
- ✓ New, contoured contemporary design
- ✓ Unique hinge construction eliminates finger traps
- ✓ Choice of colour to suit any project
- ✓ Extra deep sides increase safety and eliminate the need for straps
- ✓ Withstands static loads in excess of 100Kgs
- ✓ Hygienic, easy-clean surface



MH42 Horizontal Baby Changing Unit



MV64 Vertical Baby Changing Unit



MT80 Countertop Baby Changing Unit



MC75 Stainless Steel Baby Changing Unit

Fully Compliant with
BS EN 12221: 2008 ✓

MH42 Horizontal
Baby Changing Unit



...with the arrival of the **MT80** Countertop Baby Changing Unit

- ✓ Durable, solid moulding
- ✓ No surface fixing screws
- ✓ Hygienic finish with easy maintenance
- ✓ Extra deep barriers eliminate any need for straps reducing maintenance and inspection costs
- ✓ Easy-fit system for fast installation

MT80 Countertop
Baby Changing Unit



reader
enquiry
236



Is your washroom flushing money away?

Sensazone can help

Introducing Sensazone – an easy to install, all in-one solution to reduce water wastage and energy bills.

Occupancy is constantly monitored by PIR sensors intelligently linked to the water and power supplies. This ensures the full range of washroom utility services are available on demand but automatically shut down when the washroom is not in use.

Solenoid valves control the water consumption of taps, urinals and WCs

Sensor ensures lights function only when required by occupancy and ambient light levels

Power shut-off prevents ventilation system over-run

Call us now on +44 (0) 118 969 1611 or email sales@cistermiser.co.uk for more information about Sensazone or any of our products

CISTERMISER
— WATER MANAGEMENT AT ITS BEST —



www.cistermiser.co.uk

enq.237

The Prince's Foundation
FOR THE BUILT ENVIRONMENT

Supplier of ceramics to the Prince's
Foundation's Natural House



Shaws of Darwen have been manufacturing robust fireclay commercial sinks for over 100 years. The extensive ranges and sizes of laboratory, shelf, cleaners and traditional Belfast sinks suit every requirement

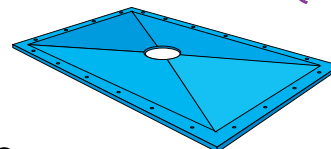


All enquiries 01254 775111
www.shawsofdarwen.com

enq.238

wetrooms wetrooms wetrooms wetrooms wetrooms wetrooms wetrooms

MAXXUS
the STRONG one
Wetroom floor former (trays)



The rest bend like bananas

Avoid tile cracking – MAXXUS takes a 470kg load

470kg

9 SIZES – LOW PRICES
Ask for our 44 page Price List

wetrooms made easy
a winning combination

www.wetroominnovations.com 01629 815500

wetrooms wetrooms wetrooms wetrooms wetrooms wetrooms wetrooms wetrooms wetrooms wetrooms

enq.239

Choosing an integrated wetroom approach

An integrated approach, where products are designed to work together, should be high on a specifier's list when deciding which products to use in a wetroom or shower installation. By Ian Knifton, head of technical and training at Schlüter



Compatibility is an important design consideration as, if products are being supplied by different manufacturers it begs the question, who will take responsibility if an installation fails?

For peace of mind when it comes to project management and long term success, possible time and cost savings as well as versatile design options, we recommend specifiers choose wisely and opt for an integrated system approach. Where each component has been designed to work with the other, providing maximum assurance of waterproofing of seals along with drains and drainage performance, ensuring water goes only where intended.

Wetrooms continue to be popular amongst owners, clients, designers and architects. A wetroom is a modern, watertight solution with an easy access shower area that is simple to clean and offers minimalistic or feature-rich design elements. They are an excellent choice for those with mobility difficulties and because they aren't bound by the spatial restrictions of traditional shower design, or pre-formed units, they open up a world of design possibilities, really adding to the wow factor of a property.

When specifying a wetroom for your project consideration should be given to tile finishes and textures – it's always

advisable to specify tiles with high slip resistance. Furthermore, falls in the floor gradient should be between 1 in 80 and 1 in 35 to ensure water can drain away efficiently.

Another fundamental design consideration is moisture management. Poor moisture management can cause leaks leading to damage in the surrounding structure and the potential for mould growth. Systems that don't evacuate water properly can be problematic so it's important that specifiers opt for waterproof and not just water resistant materials. Common waterproofing methods include using waterproof backerboards or waterproofing membranes.

When waterproofing a wall where rigid boards for backing tiles are required there is a choice between using water-resistant and waterproof ones. Water-resistant tile backerboards require an additional waterproofing membrane, either liquid applied or a sheet membrane, prior to tiling as by their very nature they absorb water into the cementitious face. Waterproof backerboards however, have built-in waterproofing properties, and don't absorb water, won't require additional waterproofing and only require the board joints to be sealed with a waterproofing sealing tape and suitable sealant adhesive.

To ensure peace of mind for a fully watertight installation a waterproof membrane should also be used on the floor. A high

Continued overleaf...

'Another key aspect to address when designing a shower and wetrooms is making sure that a suitable drainage system is in place'

level of moisture in a wetroom environment can lead to substrate movement, which if not accommodated in the design can result in tile failures.

Using a waterproof uncoupling membrane layer prevents stresses from the substrate being transferred to the tiled surface, it also neutralises vapour pressure by allowing any moisture in the substrate to evaporate.

Another key aspect to address when designing a shower and wetrooms is making sure that a suitable drainage system is in place. The flow rate of a shower and how many litres of water it releases should be analysed to ensure the drain can remove the amount of water effectively, otherwise pools of water could occur at best and at worst the end user could be left with a flooded room. Therefore, the drainage rate must be greater or equal to the water flow rate from the shower head.

There are two types of drainage system to choose from – the linear system and the point-drain system. A linear drain provides contemporary design possibilities in a barrier free wetroom. Whilst grate and cover options tend to provide a more sleek and modern feel and offer the freedom to place the drain wherever you want and need it.

Although not essential, underfloor heating is also highly recommended for use in bathrooms, shower and wetrooms. Not only do they add a touch of luxury to your project, the added heat will help dry out a room much quicker, making sure that any water quickly disappears therefore limiting the



potential for mould. Additionally they remove the need for radiators and open the room up to greater design options along with providing added safety in environments where children, elderly or the infirm are concerned.

Electrical underfloor heating is not only available under floors but some systems can also be installed within walls, offering a discrete, safer and more practical alternative to traditional towel rails and radiators. Furthermore, installing electrical heating within a shower wall will provide increased comfort and warmth for the end user as well as faster drying times.

To stay up to date with wetroom technology and best practice, specifiers are advised to attend regular training events so that they can make informed decisions about which products to request.

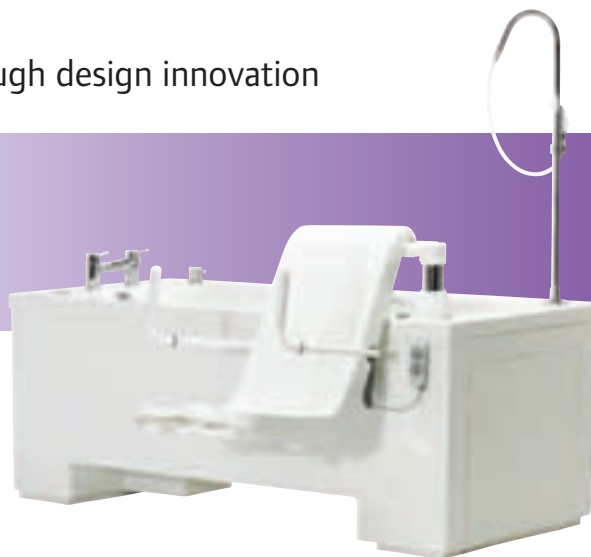
enq.240

Kent 2 hi-lo bath

Raising care standards through design innovation



- Designed for intensive use in care homes and hospitals
- Hi-lo facility with powered seat transfer
- TMV3 controls, 150kg safe lifting weight and integrated shower system



WRAS
APPROVED
PRODUCT

riba
product
selector

NSPlus

KENT 2

0800 988 4237

info@gainsboroughbaths.com www.gainsboroughbaths.com

GAINSBOROUGH
Specialist Bathing



ASSISTED BATHS PATIENT HOISTS SHOWERING SOLUTIONS

Quote: ADF0615

enq.241

ShowerSelect feature high quality glass surface



White glass and gleaming metal emphasize the clear design language of the latest 'Select' shower products from **Hansgrohe**. A high-quality glass surface, elegant design and intuitive operation make Hansgrohe's new concealed ShowerSelect thermostats an attractive addition to any bathroom.

Their timeless and clear design blends well with modern architectural trends and the white glass surface fits harmoniously into every bathroom environment. The ShowerSelect thermostats can be combined with Hansgrohe's existing product portfolio and the new Rainmaker Select showerheads. Hansgrohe developed the controls with its longstanding design partner Phoenix Design.

01372 465655 www.hansgrohe.co.uk

enq.242

wedi provides waterproof wet room solution



wedi systems UK has provided a total system solution in CE backed waterproof wet rooms for an impressive new development of apartments at London Square Bermondsey Village for award winning developer London Square. The wedi 65mm thick, fully integrated trap, Fundo Plano system provided the

ideal solution for the floor build up from the concrete slab. The tray thickness fitted alongside wedi building boards ensured that the requirement of a floor level shower was still achieved. The end result was a comprehensive CE backed waterproof system designed specifically to the site requirements and providing total peace of mind assurance in performance for the developer and contractor.

0161 864 2336 www.wedi.co.uk

enq.243



New Glasgow Hospitals rigged for thermal disinfection

Scotland's largest hospital, South Glasgow University Hospital and Glasgow's Royal Hospital for Sick Children opened in early May. By June's end, the transfer of patients, staff and equipment from four ageing hospitals across the city should be complete. Estates staff can then settle into a regime of planned cleaning and maintenance to keep the hospitals looking new and infection free. **Horne Engineering Ltd** has supplied over 2,500 Optitherm clinical taps into the project, installed over hand-wash basins, sluice troughs and theatre scrub troughs. A significant feature that contributed to selection of the Optitherm by NHS Greater Glasgow and Clyde is its modular design, which allows for an easy, phased installation that spreads cost but also simplifies routine maintenance – conducted in the workshop, rather than in patient areas. With over 1,100 single rooms in the adult hospital this means minimal intrusion for patients and reduced disruption for healthcare workers by avoiding down-time of hand-wash stations.

01505 321455 www.horne.co.uk

enq.245

Stylish and Functional
When closed the AEL Warmrack radiators are a luxury towel warmer in an individual refined design and when opened each becomes a capacious and functional drying rack which has proven a very stylish and effective way of warming towels, drying clothes while also heating your bathroom.

AEL
warmrack
Heated Towel Rail & Rack Systems

ribra product selector

EN 442

AEL
HEATING SOLUTIONS

For price and availability please contact your local Plumbers Merchant. Contact AEL for technical advice:
e-mail: sales@aelfheating.com Tel: 01928 579068
www.aelfheating.com

enq.244

Robert Pearson & Company Ltd.
Water Saving Automatic Washroom Products

01985 850954
www.robertpearson.co.uk

enq.246



Industrial food processing floor solution

A new industrial flooring system has been installed to the 2,000m² extension at C&D Foods manufacturing plant in Longford, Ireland. **Remmers Crete SL** was applied in combination with Remmers PUR Color Top 2KM seal coat to provide a colour stable finish and a subsequent seal coat of Remmers PUR Aqua Top 2KM SG, with the inclusion of a polymer bead to provide an R11 level of slip resistance with a silk gloss floor finish. The system was installed by specialist flooring contractor Larsen Contracts who worked closely with the main contractor, Gem Construction to allow the installation of the floor while other fitting out activities were also being carried out, optimising the overall program. This carefully designed system is ideally suited to areas subjected to medium to heavy duty use for industrial floors within food processing facilities. Remmers Crete SL is a water dispersed polyurethane resin system which is applied as a self-levelling 2-3mm thick system. The seal coats provided colour stability, slip resistance and a silk gloss finish to the applied floor. The installed system provides excellent durability, abrasion resistance, impact and chemical attack.

0845 373 0103 www.remmers.co.uk

enq.247

MODERN LIGHTING SOLUTIONS

more than light



Lighting catalogue with style shots available on request

0208 123 7914 modernlightingsolutions.co.uk

enq.250

Milbank steps up with its Kallisto division



Milbank Concrete Products, one of the UK's leading manufacturers of high quality pre-cast concrete products, is pleased to announce the launch of a new dedicated division for its bespoke spiral and helical stairs under the brand name of Kallisto. Milbank has been creating precast concrete spiral stairs since 2011 and has been commissioned for staircase installations in some of the most prestigious

property developments in the UK. The company's commitment to the new division goes well beyond just branding. The company has invested in a world class Construx stair mould – believed to be the only one in the UK. The mould, along with Milbank's palletised formwork and precast shuttering system, ensures the staircase finish is of the highest quality.

enq.248

Polyflor flooring in award winning care home



A combination of Polyflor's high design luxury vinyl tiles and high performance safety flooring were used to help create a bright and welcoming atmosphere throughout Anya Court care home in Rugby recently. 1,300m² of Polyflor flooring was installed by Galaxy Flooring to provide homely, stimulating and safe

environments for residents. Jacqueline Farguson, design manager at Hallmark Care Homes, designed the home and specified Polyflor throughout. Jacqueline commented: "It was vital for us to avoid a clinical look by creating a safe but homely environment. We are continually impressed with the range of attractive and fit for purpose flooring options available from Polyflor."

0161 767 1111 www.polyflor.com

enq.249

Pioneers of anti-slip stair-nosings



A premium quality, bespoke manufacturer of internal and external stair nosings and inserts, which have been environmentally and economically designed to meet all expectations

Aluminium profiles filled with Carborundum to provide an extremely tough tread with anti-slip properties second to none in all conditions.

Safetytread are experts in solving tricky and unique issues, leaving you with a safer environment.

altread

glotread

intread

definer

alite

Contact Safety Tread today on **01202 625596** or visit **www.safety-tread.co.uk**

enq.251

Polyflor launches Designatex for the home



Polyflor is proud to announce the launch of its latest range of beautifully designed and hard wearing flooring developed specifically for the home, the Designatex collection of textile backed luxury sheet vinyl flooring. The stylish yet practical Designatex vinyl flooring range includes 12 wood effect and 6 stone effect designs to enhance any room in the home. To complement both traditional and modern interiors, the wood collection features a variety of wood species and layouts including

three classic parquet designs. These wood designs accurately replicate the warmth, grain detail and natural textures of real wood planks for an authentic finish.

0161 767 1111 www.polyflor.com

enq.252

Introducing the new Infinity 780BF



Charlton & Jenrick is very pleased to announce the introduction of the stunning 780BF to the existing Infinity range of fires. The 780BF has a beautiful and extremely realistic flame picture, which will both compliment and enhance any living space. With a modest input of 3.4kW, and an impressive output of 2.7kW, the 780BF is

both wonderful to look at and economical to maintain, with a generous 87 per cent efficiency. The large ceramic glass viewing area of the Infinity 780BF is the same size as the 780FL, which means the new fire is compatible with the fireplace package designs already available including the Edgemoor & Rembrandt suites. RRP for the Infinity 780BF is from £2,315.

enq.253

Vicaima staining makes its mark at Fulham Riverside



A major development for Barratt London alongside the River Thames in South West London has been fitted with doors, panelling and skirting from the Vicaima range of stained Oak veneers. The development comprises one, two, three, four, five and six- bedroom luxury apartments, penthouses and townhouses. Specialist Joinery fit-out Contractors Atlantic Contracts, worked with the Vicaima Special Projects team from conception through to installation, thus ensuring the exacting needs of the project were fulfilled. For the private apartments, the fit out called for fire and security entrance doors with a complex matching wall panel. This was also carried through to the communal lobby areas and lift surrounds. The finish chosen was a Vicaima white washed Oak stain, which was supplied as part of the Portaro SBD door assembly, together with matching panels and skirting. The social housing was no less luxurious and saw the fitting of a Vicaima Walnut veneered entrance door as part of the every popular Vicaima Secure by Design Easi-Fit primed frame kit. All apartment interiors benefited from the clean lines of Vicaima white lacquered door, for a smooth fully finished final touch. Vicaima offer an extensive range of design options, with fire, acoustic and security performance for luxury housing and modern apartment living space.

01793 532333 www.vicaima.com

enq.254

Taking you to the next level...

Premier Loft Ladders are the preferred choice of architects and building industry professionals throughout the UK, and their range of COLUMBUS Treppen stairways leads the way in engineering quality, design, technology and energy efficiency, making Premier the foremost supplier of concertina style aluminium and folding or sliding style wooden loft and access ladders. Our stairways have a wide range of options including flat roof access, fire resistant trapdoors, electrical operation (concertina stairway) and vertical access.

For further details contact us on: **0845 9000 195 / 01394 214413**

Key reasons to choose PLL:

- Outstanding quality and value
- Preferred choice of architects and building industry professionals
- COLUMBUS Treppen - UK Main Dealer
- Technical and design advice
- Commercial and domestic applications
- Fire resistant trapdoors
- Vertical access
- Flat roof access
- Electrical operation

PREMIER
LOFT LADDERS

Tel: 0845 9000 195 / 01394 214413
Email: sales@premierloftladders.com
Web: www.premierloftladders.com

enq.255

Why have only one staircase?



An attractive detached house dating back to the 18th Century, situated on the edge of this historic village of Hurley-on-Thames is one of the latest properties in the UK to benefit from a truly bespoke staircase from **British Spirals & Castings**; in fact not just one staircase but four! Richard Harding of British Spirals & Castings

commented: "They [the homeowners] were lovely people to work with who had some fantastic ideas about what they wanted, and with our experience and ability to create something truly unique we created four different staircases for them; The main stairs, a squarial leading to the master bedroom, a second spiral leading to the home office and finally a straight stairs down to the basement."

01663 750 716 www.britishsc.co.uk

enq.256

New energy-saving smoke & heat alarms



Low energy consumption is high on the agenda for the new Firex® range of smoke and heat alarms, from **Kidde Fyrnetics**, alongside a host of other advanced features ideally suited to all types of housing. For many years, Firex® has proved itself as a popular range of cost-effective hard-wired, interconnectable alarms, satisfying

Building Regulations and British Standards requirements. The latest generation of Firex® optical and ionisation smoke alarms, and heat alarms – available from mid-June 2015 – now offers Standard, Long Life and Rechargeable battery back-up versions of each sensing technology, giving nine options in all.

01753 766392 www.kiddesafetysystem.co.uk

enq.258

Ice Age



Ice Concrete, part of the New York Collection of quartz worksurfaces from **COMPAC**, is one of four new stunning quartz colours recently launched by the company. Inspired by America's New York loft culture, creating a fusion between architecture, design and functionality,

the New York Collection offers a totally new quartz worksurface that explores an industrial and urban aesthetic which will revolutionise how we think about worksurfaces. Silky, soft and sensuous to the touch, Ice Concrete, Beige Concrete, Dark Concrete and Beige Zement will electrify and awaken the senses offering the discerning client an opportunity to create contemporary surfaces that reflects the style and excitement of loft living in the 'Big Apple'.

enq.257

Castel debuts audio video intercom at IFSEC



Castel has released its first IP audio video intercom monitor designed for small to medium-sized offices and service industry buildings. Castel has released its first IP audio video intercom monitor designed for small to medium-sized offices and service industry buildings.

The XE-Monitor uses a single network cable for managing audio, video and data, as well as for the power supply via PoE. The build quality of the TFT screen optimises the image clarity from colour digital video cameras within XELLIP audio-video entry stations on the exterior of the building. The XE-Monitor can be desk or wall-mounted and will typically be used in reception areas or in the control room at larger sites.

01376 556010 www.castel.co.uk

enq.259

SECURE YOUR SITE IN STYLE WITH A LITTLE HELP FROM AUTOPA

Find out more at:
www.autopa.co.uk

Email: info@autopa.co.uk Tel: +44 (0)1788 550556 Web: www.autopa.co.uk

enq.260



Pictured: Concrete block permeable paving used extensively, with other SuDS techniques, at Proctor & Matthews' Abode housing, Cambridge - Winner of the Housing Design Awards 2014. Photo © Simon Bunn

Just add water

New Government planning requirements for sustainable drainage systems (SuDS) incorporating techniques such as concrete block permeable paving came into force this April, amidst a growing realisation that they can deliver far more than just drainage as a key part of urban design. Consultant to Interpave Chris Hodson explains

An additional policy now sits alongside the National Planning Policy Framework (NPPF), spelling out “the Government’s expectation ... that sustainable drainage systems will be provided in new developments wherever this is appropriate”. This measure must be applied by local planning authorities (LPAs) in England through local policies and plans, as well as application decisions on ‘major developments’ of 10 or more dwellings and equivalent non-residential or mixed developments.

Defining SuDS

Under the new arrangements LPAs must satisfy themselves of minimum operational standards and ensure that maintenance is provided for the lifetime of the development using planning conditions or other obligations such as Section 106 agreements. SuDS designs must also be ‘economically proportionate’ in terms of operation and maintenance. New Government guidance, in the form of ‘Non-statutory Technical Standards for SuDS’, was published in March, albeit with a minimal level of information, and the NPPF Planning Practice Guidance now defines SuDS as: “Sustainable drainage systems ... designed to control surface water run off close to where it falls and mimic natural drainage as closely as possible.

They provide opportunities to:

- Reduce the causes and impacts of flooding
- Remove pollutants from urban run-off at source
- Combine water management with green space with benefits for amenity, recreation and wildlife.”

However, guidance for LPAs and designers, on various aspects of SuDS is already available from a number of sources, including the 2013 Code of Practice BS85823. The Code seeks to integrate SuDS with urban design in delivering amenity and community value as well as enhancing landscape and townscape character, and stresses the importance of linking surface water management and development planning. Interpave will also continue to develop its guidelines on all aspects of using concrete block permeable paving – a key SuDS technique – in urban design.

Designers take the lead

This is a clarion call for architects, master-planners and landscape designers to take the lead in developing multi-functional SuDS as an integral part of place shaping. As the RIBA’s 2014 report Building a Better Britain points out: “For too long, we have been designing water out of our towns and cities when we should have been designing it in...”. Now is the

Continued overleaf...

Pictured: Proctor & Matthews' Abode housing, Cambridge - Winner of the Housing Design Awards 2014. Photo © Simon Bunn

time for a closer understanding of, and engagement with SuDS by designers and planners. With good design as a priority, drainage engineering becomes simply a supporting function, not an end in itself.

Conceptually, a SuDS scheme comprises a 'management train' of interconnected features, each combining water storage, pollution removal and amenity benefits. SuDS replicate the natural drainage from a site before development. But that is not to say that all SuDS features have to be vegetated or that urban projects need to take on a rural character with lower housing densities.

Concrete block permeable paving is uniquely placed to help meet these requirements. In terms of urban design, the growing choice of concrete block permeable paving products available from manufacturers – with numerous shapes, styles, finishes and colours – allows real design freedom. At the same time, it can provide completely level, well-drained, firm and slip-resistance 'accessible' surfaces without the need for cross-falls, channels, gulleys or other interruptions. Rainwater 'ponding' is eliminated, reducing the risk of ice forming on the surface and preventing splashing from standing water.

Gradual flow of clean water

But the real strength of concrete block permeable paving is an ability to remove water-borne pollution offering the important – and often missed – opportunity of a gradual



flow of clean water that can be exploited to enhance landscape design and biodiversity. With concrete block permeable paving, SuDS offer imaginative designers opportunities, rather than technical problems to be solved. Taking a holistic approach, designers should embrace SuDS as one of the central design considerations from the very start of their projects, exploring innovative solutions that form an integral part of urban design.

enq.261

Sutton War Memorial respectfully restored



The expertise of **Brett Landscaping** in natural stone was instrumental in helping to restore a historical touchstone in time for the WWI centenary commemorations in November 2014. Brett Landscaping worked with NPS Group to recondition a 93 year old war memorial in Sutton-on-Hull village located in the

West Riding of Yorkshire, in advance of the local community's remembrance activities. The structure was able to receive a significant amount of renovation, both to improve the stone plaque and ensure better access for a large proportion of visitors with mobility needs. The project was completed in advance of the memorial service conducted in Sutton-on-Hull on the 9th of November 2014.

0845 6080570 www.brettpaving.co.uk

enq.262

Long Rake Spar acquires new dock and storage



Decorative aggregate supplier **Long Rake Spar** has acquired a new dock and storage facility site in Rye, East Sussex. The new 20 acre location offers unparalleled logistical efficiency, giving customers in the South East and London the opportunity to source products from a local site, decreasing the cost and carbon footprint of their supply chain. Achieving economic and environmental sustainability when supplying customers in the south of England has always been a challenge for the company, with the majority their best-selling products requiring transport to and from the main site in Derbyshire. Once developed, the site will greatly increase Long Rake Spar's stock holding facilities enabling the company to respond more rapidly to customer demands.

01629 630133 www.longrakespar.co.uk

enq.263

Introducing Truckcell®

ABG Truckcell® is a heavy-duty plastic paver designed to create suds compliant porous paving with the structural performance to carry HGV traffic.

Truck parks | Loading Areas | Access and haul roads | Spillways

abg creative
geosynthetic
engineering

t 01484 852096

www.abgltd.com

enq.264

M-Pave

The Permeable Paving Solution





M-Pave Permeable Paving Grid is the new recycled plastic sustainable drainage system (SUDS) compliant solution using a patent pending design to avoid breakage problems on installation. M-Pave is manufactured from 100% recycled polyolefin's and provides a lightweight ground reinforcement system for grass and gravel installation. M-Pave is a high performance, durable and virtually maintenance free solution for use with grass or gravel stabilisation.

Call for a free quote on 0191 213 2488
email Sales@munauk.com or visit the website www.munauk.co.uk



enq.265




Clearstone® resin bound permeable surfacing
restores courtyard for Grade1 listed **National Trust** Baddesley Clinton

Clearstone®
permeable surfacing

For surveys, quotes and technical advice, call **01273 358177**
clearstonepaving.co.uk











enq.266



Tobermore
WORLD CLASS PAVING & WALLING

Sienna & Sienna Duo | Silver
Heathrow Terminal 2, London

www.tobermore.co.uk | 0844 800 5736 |   

 Block Paving	 Kerbs, Edging & Channels
 Permeable Paving	 Walling & Masonry
 Paving Flags	 Retaining Walls
 Steps	 Eco Paving & Walling

enq.267

Earthwood Easyclean- Lustrous and Luxuriant

enq.268

One of the UK's largest composite decking ranges welcomes new recruit TimberTech Earthwood EasyClean, the very latest in domestic and commercial maintenance-free decking.

Earthwood Easyclean's unique, impenetrable cap makes it the ideal solution for homeowners, landscapers, leisure businesses and garden designers seeking to maximise good looks and minimise maintenance.

Earthwood Easyclean, and its top of the range sister product Earthwood Easyclean Legacy, from Greensquares, the UK's outdoor living experts, repel the ravages of the British weather and the rigours of a hectic domestic life. A super-resilient wood and polymer mix, topped off by a sleek, uncompromising polymer cap, makes it easy to clean as well as easy on the eye.

You can say goodbye to annual sanding, scrubbing, sealing, painting and staining. Earthwood Easyclean, part of the TimberTech composite decking family, is colour fast, splinter free and won't split, warp, bend, crack or fade.



It's slip resistant. It carries the reassurance of a 25-year limited warranty for residential and ten years for commercial applications.

Earthwood Easyclean comes in Brown Oak and Silver Maple shades and the Legacy option in Mocha, Pecan and Tigerwood. These stylish,

elegant high-density hardwood and polymer boards reflect all of the colour grading and shading contained within natural timber boards but with none of the traditional fuss. Feel the difference. Order a free sample of Earthwood Easyclean: 029 2037 1584 www.timbertechuk.co.uk

OWATROL
The Professional's Choice

Solid Colour Stain
All-in-one wood treatment that lasts for years, no peeling, no flaking!

Ideal Solution for...
Decking, Cladding,
Sheds, Garden Furniture,
Fencing and more!

Available in
52 Colours

15 YEAR
Guarantee

13 years on buildings (vertical surfaces) and 5 years on decks.

www.owatrol-direct.co.uk **01923 219122**

enq.269



Inspired by coal

Greystone from Solus Ceramics is an evocative range that features a choice of two deep and rich grey shades. Speckled with a liberal dusting of shadowing lowlights and bright highlights, the tiles in this range provide a modern and chic mood.

Inspired by natural stone mixed with the deep, matt textures of raw coal – the range delivers a natural, mountain aesthetic.

Greystone features one of the best anti slip ratings available for a tile, perfect for use outdoors.

For more information on these products, please contact Solus Ceramics.

0121 753 0777 www.solusceramics.com

enq.270

classified & directory

ADHESIVES

BAL
Tel: 01782 591100
www.bal-adhesives.co.uk

ADVICE & INFORMATION

NHBC (National House Building Council)
Tel: 0800 035 6422
www.nhbc.co.uk

BABY CHANGING UNITS

Baby Point Ltd
Tel: 01449 770607
www.babypoint.co.uk

BATHROOMS & WASHROOMS

Ophardt Product (UK) Ltd
Tel: 01332 297666
www.ophardt.com



Enq. 501

CAD & PRINTERS

Standing Stone
Tel: 01661 886653
www.standing-stone.co.uk

COATINGS, SEALANTS & PAINTS

Barrettine Group
Tel: 01179 600060
www.barrettine.co.uk

COLUMN CASINGS

Encasement Ltd
Tel: 01733 266 889
www.encasement.co.uk

COMMERCIAL SHOWERS

Horne Engineering Ltd
Tel: 01505 321455
www.horne.co.uk

DOORS & WINDOWS

Origin Frames Ltd
Tel: 0808 271 4761
www.origin-global.com

DOORS & WINDOWS

Timber Door Canopies
by George Woods



Tel: 01363 884218
www.timberdoorcanopies.co.uk

Enq. 502

DRAINAGE & VENTILATION

Sita Bauelemente
Tel: +49 2522 8340 0
www.sita-bauelemente.de

FIRES & FIREPLACES

Specflue Ltd
Tel: 0800 90 20 220
www.specflue.com

FLOOD & WATER MANAGEMENT

CPLC Water
Tel: 01249 750709
www.floodandwatermanagement.co.uk

FLOORS & FLOORING

Flowcrete UK Ltd
Email: ukweb@flowcrete.com
www.flowcrete.co.uk

GROUNDWORKS

We Build It
Tel: 0800 731 9421
www.webuildit-ltd.co.uk

LANDSCAPING & EXTERNAL WORKS

Clearstone Paving Ltd
Tel: 01273 358177
www.clearstonepaving.co.uk

GroundSure Ltd
Tel: 0800 028 0000
www.groundsure.com

HEATING & VENTILATION

OPIES UK LTD
LIGHTING YOUR FIRE

PREMIUM QUALITY FIREWOOD

Vermiculite and Calcium Silicate fireproof, insulating and refractory panels for woodburning stoves and fireplaces

Skamolex GOLD **Skamolex BLUE**

01245 468 977
www.john-opie.co.uk

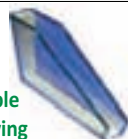
Enq. 503

NATURAL STONE

Stone Federation Great Britain
Tel: 01303 856123
www.stonefed.org.uk

POLYCARBONATE DOUBLE GLAZING

Polycarbonate Double Glazed Sealed Units
* Unbreakable
* Energy Saving



OptiGlaze Tel: 05603 497775
www.polycarbonateglazingsolutions.co.uk

Enq. 504

RADIATORS

THE RADIATOR FACTORY

New 2015 Brochure Launch.

A Vast Range of Quality Products from Europe's Finest Manufacturers which include Eco-Aluminium, Stainless Steel and of course our renowned Bay Window Radiators.

Available Online or Through our National Merchant Partners for Quick Delivery.

TEL: 0116 260 9257
WWW.RADIATORFACTORY.NET

Enq. 505

PUMPING STATIONS

J T Pumps
Tel: 0844 414 5800
www.jtpumps.co.uk

ROOFING

Liquid Roofing and Waterproofing Association (LRWA)
Tel: 0207 448 3859
www.lrwa.org.uk

National Federation of Roofing Contractors (NFRCA)
Tel: 020 7638 7663
www.nfrca.co.uk

Topseal Systems Ltd
Tel: 08000 831 094
www.topseal.co.uk

SOLAR SHADING (BRISE SOLEIL)

Levolux Limited
Tel: 020 8863 9111
www.levolux.com

STAIRS & BALUSTRADES

Railing London Ltd
Tel: 0208 566 6750
www.railinglondon.com

STREET FURNITURE

Contentur UK Ltd
Tel: 01282 604400
www.contentur.com

TILES & TILING

Solus Ceramics
Tel: 0121 7530777
www.solusceramics.com

TIMBER & JOINERY

OAK BEAMS

IMMENSE STOCKS

Wide Oak Floorboards
Bricks, Pig Tiles etc.
Barn Frames for re-creation

ANTIQUE BUILDINGS LTD
Tel: 01483 200477
www.antiquebuildings.com

Enq. 506

WINDOW CONTROLS

WP WINDOW OPERATORS

Manual • Electric
New • Repairs

Teleflex • Concession • Advice
For High Level & Awkward
to Reach Situations

WP Window Controls
T/F: 01344 486488
www.wpproducts.co.uk

Enq. 507

PALM

Introducing our breathtakingly beautiful “Palm” design in Nero Sangemeni limestone from our hand carved range



ORVI offers a unique range of high quality innovative natural stone products for floor and wall coverings



FLOORING



HAND CARVED



INLAY



MOSAICS

t: 0845 5678 700 e: sales@orvi.co.uk www.orvi.co.uk