

building construction design

www.buildingconstructiondesign.co.uk

June/July 2015

- 2 Appointments & News
- 8 Building Products
- 15 Structural Elements
- 18 Interiors
- 25 Exteriors

Think smart, supply Origin



Bi-fold Doors and Windows...

...and win more orders with our unrivalled dealer support package.

Origin is the UK's leading specialist in aluminium folding sliding doors and windows, and thanks to our national press and TV advertising, we are also one of the industry's fastest growing brands. As an Origin supplier, your business can enjoy significant benefits:

- Huge consumer demands through national advertising support
- 24hr lead-times
- Tailor-made, aluminium bi-fold doors and windows
- UK based customer services and support
- Unmatched quality products
- Designed and manufactured in the UK



Join in our success by calling us today on **0808 168 5816**, e-mail info@origin-global.com or visit www.origin-global.com for specifications & quotes.

See more of our photography on our Twitter & Facebook pages



Firestone host annual Commercial Kick-Off



Firestone Building Products hosted its annual Commercial Kick-Off event in Brussels last month. The event saw 20 of Firestone's Commercial Contractors being invited over to Brussels. On the Monday evening there was a meal hosted by the Brussels Managing Director at a local Belgium restaurant. On the Tuesday the Firestone Contractors, visiting the head offices in Zaventum, started the day with a tour of the recently refurbished offices followed by a presentation by Commercial Manager John McMullan, outlining this year's campaign "Drive It". To emphasise the campaign the contractors (pictured) were treated to an evening of Karting which was won by Licensed Contractor, Jeff Goodwin of Goodwin Roofing Limited.

GEZE reinforces its foundations with training!



More than 20 members of staff from GEZE UK are undertaking the newly launched 'Foundation in Hardware' qualification from the Guild of Architectural Ironmongers (GAI). The qualification is designed to provide an insight into many of the aspects of architectural hardware, including hinges, closers, locks and furniture for those people

who don't 'live and breathe architectural ironmongery during their day to day job'. GEZE has signed up to the scheme in order to give staff including internal sales teams, marketing personnel and service coordinators an understanding of the wider architectural ironmongery market outside of their own product range.

01543 443000 www.geze.co.uk

Elementary my dear... "SIMONSWERK"



The TRITECH solid brass hinge from SIMONSWERK has been used on the entrance door to the home of the Sherlock Holmes museum. The museum has over 100,000 visitors pass through the doors each year, which over time had worn out the existing hinges on the door. The TRITECH solid brass hinge was specified as the ideal solution due to its unique concealed bearing and suitability for heavy traffic doors. Opened in 1990 the museum gives visitors the chance to sit in Sherlock Holmes' fireside armchair and enter his bedroom adjoining the study with Doctor Watson's room on the second floor. According to the stories written by Sir Arthur Conan Doyle, Sherlock Holmes and Doctor Watson lived in the Victorian lodging house at the world's most famous address, 221b Baker Street, from 1881-1904. The TRITECH solid brass hinges incorporate a 25-year performance guarantee, high performance, maintenance free concealed bearings and a weight carrying capacity of 160kg – Grade 14. TRITECH hinges are available with CE marked and 60- or 30-minute fire rated options. The comprehensive range of finishes now includes a corrosion resistant PVD finish ideal for entrance doors which have to withstand the many varied effects of weather. SIMONSWERK is one of Europe's leading hinge manufacturers with a history spanning over 125 years.

0121 5222 848 www.simonswerk.co.uk

Fire Retardants

Independently tested fire retardant performance
for interior and exterior timber



Working in partnership with

PTG Treatments

FirePRO & Fire-X

08000 886 032

info@ptgtreatments.co.uk

Crown Timber

Frameguard

01285 646000

crown@crown-timber.co.uk



FM 01724



FM 36409



To design an award winning medical tap, we had to get our hands dirty.

To ensure that the Optitherm promotes best hygiene practice, we did our homework thoroughly.

We studied the regulations and carefully considered practical usage. The result is a highly specialised tap that promotes good hand hygiene compliance through reliability, safe water delivery and lever operation.

01505 321 455

www.horne.co.uk/optitherm



Best Interiors Product



OPTITHERM®
The optimum in safety and control

HORNE

LEVATO MONO porcelain paver system

As specified at Wokingham Medical Centre, Berkshire
Barbara Weiss Architects

The Levato Mono porcelain paver system is the pinnacle of external raised flooring technology, enabling the specification of lightweight, slip resistant and attractive raised flooring solutions, combining incredible technical properties with uncompromising aesthetics, making them the ideal choice for commercial and domestic use alike.

- 20mm porcelain pavers 40x60 45x90 60x60 75x75 30x120 40x120 60x120
- 'Floating floor' - installation over single ply membranes
- Eternal product - zero maintenance required - offering massive life savings
- Highly abrasion and stain resistant
- Highly slip resistant; R11 and achieved up to +65 wet in the BS pendulum test
- Lightweight - 45kgs per m²
- High load bearing and impact resistance
- Timber & stone effects: 40+ finishes available
- Ideal for balconies, roof terraces and piazzas, for both commercial & residential use
- Completely non porous
- Fire & frost proof
- Height-adjustable support from 9mm up to 660mm



t: 0845 2700 696 e: info@thedecktileco.co.uk
www.thedecktileco.co.uk



**building
construction
design**



REGISTER ONLINE FOR...

Digital magazine

Newsletter • Daily digests

www.buildingconstructiondesign.co.uk

MicroPro

Looks different because it is different

**A new environmental
benchmark for timber
preservatives**

KOPPERS
www.kopperspc.eu



Is your supplier letting you down?

Now **2 week**
lead time*

From only
£365
per leaf*

Aluminium Bi-Fold Doors & Patio Doors

Lowest Prices Anywhere

smart
architectural aluminium

**SITE
DELIVERY
AVAILABLE**

- Over 99% of orders on time & complete
- Quick quote turnaround
- Very competitive glass options
- Available in any colour, alongside stock colours; White, Black, Grey, Grey on White

Get a price
comparison
now!

Tel: 01642 610798 Fax: 01642 671026



/madefortrade



@madefortrade1



* Lead times based on standard colour range
* Price applies to bi-fold doors per leaf only.

made for trade
www.madefortrade.co

Vortice supplies ventilation to Liberty Place



Liberty Place is a flagship development by David Wilson Homes in Warrington, Cheshire, comprising one and two bedroomed apartments aimed at first time buyers and downsizers. Vortice was approached to assist in the design and specification of energy efficient ventilation systems for this prestigious development and worked alongside Warrington's Thomson Electrical to train their team in best practice for these heat recovery unit installations. The result has been excellent, with optimum system design followed by installation

and commissioning excellence; this development is ideally placed to achieve the very best results and provide healthy, fresh air for its occupants.

01283 492949 www.vortice.ltd.uk



SIPs house 'riding' on Marmox ThermoBlock

A regional developer is making use of the Marmox ThermoBlock structural insulation for the first time as part of a bespoke SIPs construction for a client in the East Riding of Yorkshire. RM Developments concentrates on building eco-friendly, mainly residential properties for individual clients using modern methods of construction with very high insulation standards and featuring renewable energy technologies including heat pumps and PV panels. ThermoBlock is increasingly being used by specifiers to tackle thermal linear losses at both the ground floor and upper level junctions. Its composite construction does this by surrounding micro-columns of concrete with high performance insulation to create a horizontal barrier to heat loss. Using the 'default value' in Building Regulations incurs a heavy penalty under SAP which is why specifiers are routinely adopting Approved Construction Details (ACD) or Enhanced Construction Details (ECD). Significantly switching from an ACD to using ThermoBlock can reduce carbon losses by some 90 per cent: offering a very rapid pay-back on using the product. A 9 N/mm strength version of ThermoBlock is being introduced in addition to the existing 6.5 N/mm product in order to support higher loads in multi-storey structures.

Dickies work trousers



Dickies trousers are known worldwide for durability and style. From cargo trousers to combat trousers the range available is vast and varied. Dickies have been making men's work trousers for over 90 years and know how to manufacture the best. Employing the latest developments in fabric technology and manufacturing techniques, Dickies' high performance

workwear is suited for even the harshest working environments. New trousers for 2015 include the Eisenhower with a mix of premium fabrics rip stop and cordura and clever design of pocket details.

01761 419419 www.dickiesworkwear.com

HOPEFlow used for significant Staffordshire military homes build



Hope Construction Materials, has completed the supply of 12,500m³ of concrete for the build of more than 300 new military homes. The project, which launched in August, saw 346 new homes built, with Hope providing the concrete slab flooring for each home, using their HOPEFlow high-performance, self-compacting concretes, to ensure that the build was completed to a stringent timescale. Around 1,000 troops will be housed on the Beaconside site, as part of the £51m 'super garrison' development funded by the Ministry of Defence. Typically a build of this size would take between three and four years, however to be able to accommodate troops returning from Germany, it needs to be completed in just 11 months. As such the HOPEFlow performance products were used in a bid to minimise cost and project duration, laying 20 slabs (and homes) per week as opposed to an average of four. By doing so groundwork subcontractor Chasetown were able to save time and money, pouring the slabs without the need of power floating, with slab construction time reduced by nearly 75 per cent. Throughout the build Hope supplied a total of 2,500m³ of HOPEFlow concrete and 10,000m³ of conventional concrete, with conventional concrete used to build the footings, drainage, curbing and road access.

0207 647 6228 www.hopeconstructionmaterials.com

Timóleon saves 18th century barn from the sledge-hammers



Property programmes such as Grand Designs or Restoration Man frequently show scenes of building owners or their contractors taking sledgehammers to demolish the internal walls and floors of old properties. Imagine the feelings of the family in Cambridgeshire, who were told that their immaculately restored, Grade II listed home had to be virtually gutted due to a problem with the heating system. Thankfully, the owners decided to seek another opinion. Although Pure Plumbing and Heating of Cambridge company's director, Steve Dunn, was of the same opinion that the existing underfloor heating system needed to be replaced, he had also got past experience of the underfloor heating range manufactured by Timóleon and believed the manufacturer's systems offered a far more convenient as well as a considerably more economic alternative. As a result, the owners of the barn did not have to watch the place being ripped apart. The carpet fitters took up the existing carpets and suspended the rolls from the ornate trusses which divide the tall living space. Then with the 8 x 2 inch joists exposed the engineers were able to insert insulation batts between them ready to begin installation of Timóleon's ToronFloor system. As a key element to the Timóleon's Underfloor Heating Products range, ToronFloor presents a rapidly laid and versatile approach to fitting pipework.

www.apolloradiators.co.uk



monza aluminium column radiator

Ideal for low temperature renewable systems
Ideal for high pressure systems
The latest patented european technology
A unique aluminium radiator design
Half the weight of steel
82 vertical and horizontal sizes
Delivered within 3 working days



EST. 1987

SEWAGE TREATMENT PLANTS FOR PROPERTIES WITHOUT MAINS DRAINAGE

- Simple process
- Simple installation
- Economical maintenance
- Odour FREE Operation

Populations 6 to 2,000

AIR BLOWERS AND SPARES

RAINWATER HARVESTING

Tel: 01278 786104
Fax: 01278 793380
Email: sales@biodigester.com
www.biodigester.com
Burnham Environmental Services Ltd.





Let's make an entrance

We specialise in highly insulated, low maintenance aluminium entrance doors

Choose from a stunning range of styles, from ultra-modern to traditional designs that far exceed current thermal and security requirements. Unlike timber doors, ours are guaranteed not to warp, bow or expand and so avoiding costly call backs.



New for 2015 - The Entre' range ONLY £1495 +VAT



Introducing our NEW Entre' range for doors for the cost conscious buyer. Offering style and performance with a price point designed to offer exceptional value for money. The specification has been carefully selected to maximise savings and this has allowed us to fix a price of just **£1,495.00 + VAT** contact us or see our website for more information.



RKDOORSYSTEMS

Call **01872 222300**

Email info@rkdoorsystems.co.uk

Design your door at www.rkdoorsystems.co.uk

‘Green’ natural ventilation from SE Controls for Kings Cross

The London Borough of Camden’s new multi-storey office and leisure complex within the 67 acre King’s Cross Central development, is using a highly energy efficient natural ventilation system from SE Controls to maintain a comfortable indoor environment while contributing to the building’s BREEAM outstanding rating.

Located at Five Pancras Square, the 14-storey building not only provides 150,000 sq.ft of floor space but also incorporates a leisure centre, swimming pool, public library and cafe.

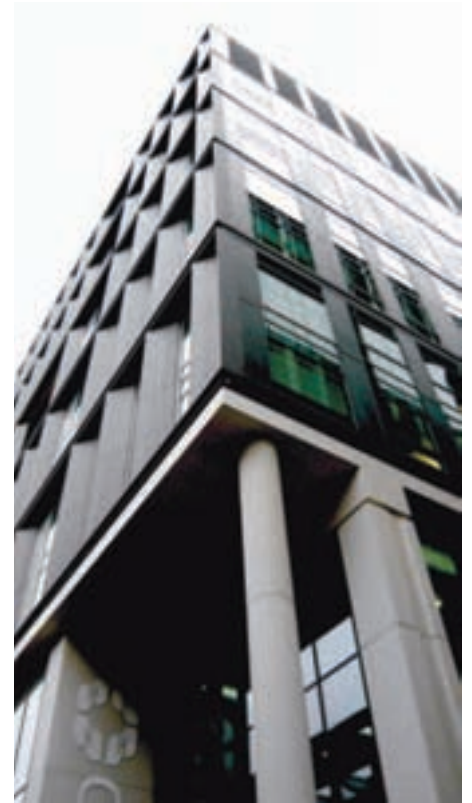
By using a combination of active and passive design features to obtain very low carbon emissions, such as low glazing ratios and energy efficient ventilation, the building achieves the highest standards of environmental sustainability

for a major office building and is on course to reach the highest ever BREEAM score.

To maintain precise energy efficient control over the building’s indoor air quality and maintain a comfortable working environment, SE Controls supplied, installed and commissioned a natural ventilation system that fully automates and controls the opening of windows on the North and South elevations, as well as the main atrium space.

Within the North atrium, SE Controls also installed 12 SECO N 24 40 twin chain actuators and a 30 Amp PSU panel, incorporating a maintenance key-switch and linked to the BMS, to provide additional control over ventilation, indoor air quality and building energy efficiency.

01543 443060 www.secontrols.com



Lifts for Houses – the quality site for Home Lifts

Any
 Floor
 With
 Ease

Any
 Floor
 With
 Ease
 Ease

At Access & Platform Lifts Ltd we supply and install all types of lifts for the home, public buildings and offices. A platform lift can now look and feel like a high quality lift. Give us a call today for a quotation on our next generation of platform lifts to get the lift you deserve

Access & Platform Lifts Ltd

209 Carlton Road, Workshop,
Nottinghamshire, S81 7HN

www.accessandplatformlifts.co.uk
www.liftsforhouses.co.uk
www.residentiallift.co.uk
 01909 486704 / 0203 189704



HUSH ACOUSTICS
ACOUSTIC SOLUTIONS FOR REVERBERATION NOISE CONTROL

Reverberation problems can affect many types of buildings, both new and old. In educational establishments, excessive background noise can adversely affect productivity levels. In hospital wards reverberated noise can cause discomfort among patients.

The solution - Hush Absorber Range

- Eliminates echoes and sound reverberation
- Available in a range of stylish finishes
- Class A and Class C Absorber Panels using specially formulated acoustic foam
- Ideal for schools, hospitals and other public areas
- Other absorbing products such as notice boards, desk dividers and baffles are available

See us at London Build 2015 Stand C14

HUSH ACOUSTICS
 TEL: 0151 333 3030
 EMAIL: info@hushacoustics.co.uk
www.hushacoustics.co.uk
 44 Canal Street, Bootle, Liverpool L20 8QU
 Offices also located in London and Yorkshire

Facebook: [hushacoustics](#) Twitter: [hushacoustics](#)

HUSH ACOUSTICS
 Acoustic Material Manufacturers




clovis
canopies

we cover it!

Clovis Canopies design, manufacture and install a wide range of shelter structures including entrance canopies, outdoor play-shade structures and covered walkway canopies.



CONTACT US FOR A FREE QUOTATION OR SITE VISIT

Call **01622 873900** email sales@clovis-canopies.co.uk or visit our website www.clovis-canopies.co.uk

Branbridges Road, East Peckham, TONBRIDGE Kent TN12 5HH

350
SAINT-GOBAIN

No smoke, no risk, no panic

At Vetrotech, extraordinary is ordinary. We provide uncompromising fire-resistant glass solutions to assure everyone's safety – coupled with solar, acoustic and privacy control options to assure everyone's comfort.

For more information about our full range of FIRE products, visit www.vetrotech.com/fire



vetrotech.uk
 +44 247 654 76 20

vetrotech
 SAINT-GOBAIN



HUSH ACOUSTICS

WANT TO SPECIFY WOODEN FLOOR FINISHES INTO MULTI OCCUPANCY BUILDINGS?

HUSH MAT 15

Timber Structure - Hard Wood Flooring Finish

- An acoustic solution to isolate timber floor finishes in new build, change of use and refurbishment developments
- Specially designed underlay product to sit directly under timber floor finishes to reduce impact noise
- Reduces impact sound between floors
- Ideal solution when replacing carpet with a timber floor finish



See us at
London Build 2015
Stand C14



HUSH ACOUSTICS

TEL: 0151 933 2026

EMAIL: info@hushacoustics.co.uk

www.hushacoustics.co.uk

44 Canal Street, Bootle, Liverpool L20 8QU

Offices also based in London and Yorkshire

@hushacoustics hushuk.acoustics



HUSH ACOUSTICS
Acoustic Material Manufacturers



**VARME Cable, VARME Mat
and VARME Film**

**Underfloor heating and
warming solutions
for all floors**

VARME the Professional Choice

- Full technical support and design service available
- Maintenance free heating systems

Floor Heating Systems Ltd. Fairway Court, Wigwam Lane,
Hucknall, NG15 7TA www.varme.co.uk
Tel: 1159 834259 Fax: 1159 632317



introducing our beam and block flooring system

fpmccann.co.uk/flooring

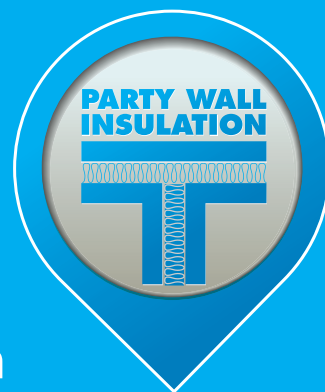
FP McCann's beam & block system can be quickly installed to form a suspended floor providing a flat, insulated solid base to build from. Additionally, it helps to eliminate problems associated with soil heave and shrinkage and offers excellent sound proofing, acoustic performance and fire resistance properties.

150mm & 225mm deep t-beam available
Currently 1 to 2 week lead in period
EPS system options available
All designs to EC2

For sales enquiries, contact the Flooring Sales Team
on 01335 361269 email flooring@fpmccann.co.uk

SUPAFIL®

PARTY WALL



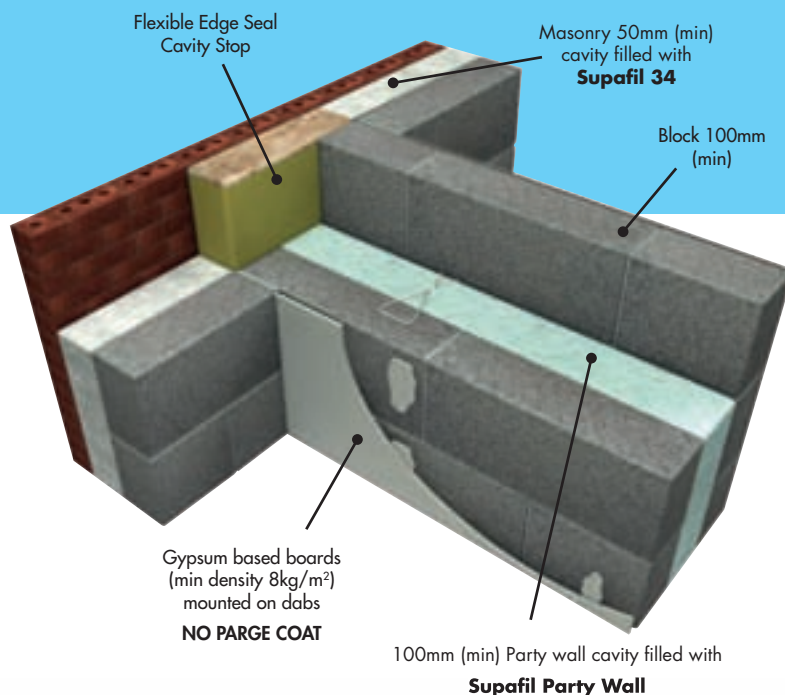
The Party Wall Full Fill Blown Solution

ROBUST DETAIL E-WM-28™

Masonry, Light weight aggregate block work, min. 100mm cavity

- E-WM-28 is the first unique Supafil party wall blown wool Robust Detail solution
- Contributes to a zero effective U-value when compiling SAP calculations
- Efficient and quick installation by approved technicians
- Dry installation process
- No product storage on site
- No parge coat required
- Fully fills the cavity
- Unique "Supafil Party Wall" blue colouration so you know you have the right material for the right performance.
- No requirement for pre-completion acoustic testing

For full information on E-WM-28 visit Robust Details website
<http://www.robustdetails.com/TheHandbook/RobustDetail/E-WM-28>



QUICK



CLEAN



SUSTAINABLE



COST EFFECTIVE

Download a QR reader for free from your App Store and then scan the QR for more information.



Technical Support Team

TEL: 01744 766 666

technical.uk@knaufinsulation.co.uk

www.knaufinsulation.co.uk

KNAUFINSULATION
it's time to save energy

Superior wood protection



Images courtesy of Andrew & Mark Hoskins

Maintains the natural colour of the wood and limits the greying process

- > Prolongs wood lifetime
- > Algae and fungal decay protection
- > Transparent 425 Oak finish, 420 Clear and 428 Cedar finish now available



Call or visit the web for stockists.



+44 (0)1296 481 220
www.osmouk.com

osmo

HbD Housebuilder & Developer



REGISTER ONLINE FOR...

In-print magazine • Digital magazine
Newsletter • Daily digests

www.hbdonline.co.uk

ELECTRIC BOILERS COMPANY

London's First Electric Combi Boiler
The Electric Boilers Company, Priory House, Marsh Road, Alperton Lane, Wembley HA8 1ES
Tel: 0208 998 2024 Contact us: info@electricboilerscompany.com



Depth 300mm

Elektra - BP
Instant combi + cylinder

- Gives heating and instantaneous hot water 13lt/min at 65°
- Fully double insulated
- Eco & comfort mode



Depth 300mm

Elektra - C
Instant combi boiler

- Gives heating & instantaneous hot water 8lt/min at 40-50°c
- Fully insulated
- Eco & comfort mode



Depth 300mm

Elektra - N
System boiler

- All components built in
- Fully insulated

- ✗ CARBON MONOXIDE
- ✗ FLUE
- ✗ CONDENSATE
- ✗ SERVICING
- ✗ GAS SAFE CERTIFICATE

Visit our showroom in Wembley for free tutorials and free training



Follow us
[@electric_boiler](https://twitter.com/electric_boiler)

For more information please visit our website www.electricboilerscompany.com



Portakabin Group hands over research facility



The Portakabin Group has handed over a highly sustainable, state-of-the-art research facility, constructed using a Yorkon off-site solution, for the new International Institute for Nanocomposites Manufacturing at WMG at the University of Warwick – the first institute of its kind in the world. The off-site approach radically reduced the programme time to just 14 weeks on

site, which is several months less than originally envisaged. Portakabin provided a full service for this scheme including design and construction, module manufacture, fitting out, landscaping and car parking. The Portakabin Group's Yorkon off-site building solutions offer unrivalled aesthetic flexibility.

Portakabin Hire cranes final modules



Portakabin Hire, one of the UK's leading supplier of interim building solutions, has completed the first phase of construction of a major project to expand ward and theatre accommodation for orthopaedic services at Royal Stoke University Hospital. The £13.5 million contract – the largest

in Portakabin Hire's 52-year history – is for the provision of a complex 4,200sqm, two-storey building. The scheme will be completed in less than four months to increase capacity at the hospital, to the benefit of patient care. 124 steel-framed modules have now been craned into position in a complex operation which involved a 350-tonne crane on a highly restricted site immediately adjacent to fully occupied wards and close to a busy road.

adf architects datafile



REGISTER ONLINE FOR...

In-print magazine • Digital magazine
Newsletter • Daily digests

www.architectsdatafile.co.uk

Platon sealed system supplied for iconic fire brigade building conversion



Triton has supplied 3,000m² of Platon P8 cavity drain membrane to waterproof several basements at the iconic West Midlands Fire Brigade building at Lancaster Circus in Birmingham. The BBA certified membrane forms part of a 'Type C' system (as

defined in BS 8102: 2009) to the area, which is being converted to residential accommodation for 463 students from Aston University.

The system is being installed by Triton Approved Contractors, Protectahome, working for Watkin Jones Construction. Cavity drain membranes work by allowing any water ingress to continue to enter the building through the walls, but then controlling it and diverting it down to the Aqua Channel perimeter drainage conduit. In this project, the conduit diverts the water to one of 10 sumps, each housing a Triton Aqua Pump Pro Pump kit (each comprising mains powered and battery back up pumps.)

Moisture had been penetrating into parts of the basement for several years through the wall/floor joint and various cracks in the original floor slab. Although large floor areas have been excavated to allow for greater head height and replaced with new floor slabs, many of the original floors have



been left in situ. As the Platon system allows moisture to enter the structure there is no hydrostatic pressure on existing floor slabs and no need to replace them.

Triton's team has worked closely with the architect, main contractor and specialist basement contractor from design inception through to overseeing installation and testing of the system.

Further technical information about Triton's complete range of Platon cavity drain membranes is available on the website

01322 318830 www.tritonsystems.co.uk



RECYFIX® GREEN grass reinforcement

The Hauraton RECYFIX® GREEN STANDARD surface reinforcement grid system was used extensively in the grassed pathways, where a high footfall was expected, and the grassed areas surrounding Banovallum School, Horncastle. The system helped to prevent erosion and improve surface drainage. Once installed, the RECYFIX® GREEN modules were discreet, yet provided a permanent surface reinforcement to the grassed areas with a loading capacity of 200 tonne/m². The pathways and area to be grassed were excavated, covered with a granular sub-base, a layer of sharp sand applied and then rolled. The RECYFIX® GREEN modules were then secured on top of the rolled surface and their apertures filled with top soil which was compacted then grass seeded. The grass was left to grow over several weeks before access was allowed. Colin Taff, Hauraton's Project Engineer comments "The RECYFIX® GREEN modules can also be specified for grassed areas with occasional vehicular usage such as car parking spaces also bridleways, roof terraces, urban green spaces, around trees and lawns.

01582 501 380 www.drainage-projects.co.uk



Trouble free parking at Tondy Primary School

Parking for school buses and cars can be a problem outside many rural schools but not at Tondy Primary School near Bridgend, South Wales. An extensive asphalted parking area has been created next to the school with surface water drainage channels supplied by Hauraton Limited. 150 metres of FASERFIX® KS 100 channels fitted with Class E600 ductile iron gratings were installed by Churngold Construction Limited in the school bus drop-off area with a further 50 metres of RECYFIX® PLUS 100 Class D400 channels in the adjacent car park. All the gratings had 6mm HEELSAFE slots. Hauraton FASERFIX® channels are manufactured from the company's Fibre Reinforced concrete while the RECYFIX® channels are made from tough, 100 per cent recycled polypropylene (PP) Both channels have galvanised steel reinforcement housings that take the gratings. For the full case study go to www.drainage-projects.co.uk.

01582 501380 www.hauraton.co.uk

Notes from the Comar design team...

Standard profiles range allows Capped, 2 or 4sided Structural Glazing.

High span profiles keep same box sizes throughout the facade with greater spanning ability.

BIM ready Models.

Comar keep all profiles in stock = market leading delivery.

Highest Ix and Iy values in the industry.

Concealed vent for discrete ventilation.

Facetted options 7.5° convex or concave.

Reassurance: CWCT Tested, Audited and Certified to 3600Pa Sequence B.

comar6EFT

Curtain Walling - Capped, 2sided SG and 4sided SG

Comar Architectural Aluminium Systems have designed additional mullions, transoms and feature cover-caps to Comar 6EFT to launch the most comprehensive 50mm curtain wall system available today. After extensive research with our architectural and fabricator network we are pleased to offer additional high span mullions and transoms with the highest Ix and Iy values in the industry, allowing you to span further or keep the same flush box size throughout glazed areas.

From one range of profiles Comar 6EFT offers capped, 2sided structural glazing with vertical or horizontal capping and 4sided structural glazing. Comar 6EFT 4sided SG offers the slimmest structural glazing joint available today and can be either silicon or EPDM gasket sealed.

For details and downloads, take a look at www.comar-alu.co.uk today.

We are pleased to offer BIM families to our architectural and contractor colleagues, please email projects@parksidegroup.co.uk for further information.

For more information about comar6EFT please contact us:

Tel: **+44(0) 20 8685 9685**

Email: **projects@parksidegroup.co.uk**

Web: **www.comar-alu.co.uk**



comar



Bishops House Children's Centre – Made warmer, quieter and cleaner by Selectaglaze Secondary Glazing

Nestled next to the normally tranquil Kennington Park, and surrounded by other beautiful listed buildings lies Bishops House Children's Centre. Originally intended for the Bishop of Rochester and built in 1895, he wanted it to be passed on to the community and used by the local children.

In 2004 his wish was fulfilled with it becoming a dedicated children's centre and since then has transformed to an Early Years Centre. The central

chapel of this Grade II Listed impressive Georgian style building has now been converted to the reception for the Early Years Centre.

However in spring 2015 the Northern line extension works are to begin in earnest, which will disrupt the environment of the nursery until at least 2020 when it is due to open. The current single glazed windows offer minimal acoustic protection and any ill-fitting frames also allow dirt and dust into the building.

In order to maintain a quiet, clean and comfortable environment for the users of the nursery, Selectaglaze was tasked with providing a solution using its bespoke secondary glazing systems as a result of similar works completed on the Crossrail scheme.

A fully independent tailor made window system set 100mm or more from the existing window achieves a noise reduction of 43-45dB and high performance frame seals both limit airborne sound

and trap the dirt and dust.

With the property being Grade II Listed, secondary glazing is a great solution as it is a reversible adaptation. Selectaglaze produced sympathetic designs for listed building consent using sliding and fixed systems with locks to ensure permanent protection.

Selectaglaze are a leading specialist in secondary glazing, established in 1966 and granted the Royal Warrant in 2004. Selectaglaze has an extensive range of products to suit all projects from listed properties to new build. The company offers a wide range of tested products covering acoustic and thermal performance as well as protection against intruder and blast mitigation. A free technical advisory service is offered and a RIBA approved CPD is available to Architects and Designers.

email: enquiries@selectaglaze.co.uk

01727 837271 www.selectaglaze.co.uk



Stylish and sustainable entrance flooring

Nuway, Forbo's market leading high performance rigid entrance flooring system now boasts a more design-orientated approach and new sustainable options. Nuway Tuftguard Classic and Design collections benefit from two new scraper bar options. 'Black Anodised' provides a contemporary matt black aesthetic compared to standard aluminium bars, whilst the robust, reliable and environmentally friendly 'Bamboo' option sits perfectly with interior wood finishes and other floor coverings, providing a truly unique entrance. In addition, Forbo's Nuway Grid and Connect single-sided systems feature a new rubber Ultragrip insert providing increased slip resistance, particularly in multi-directional entrances.

0844 822 3928 www.forbo-flooring.co.uk/nuway



Encasement covers up at McCarthy & Stone

A stylish assisted living development by McCarthy & Stone is using 16 'Forma' aluminium column casings and a bespoke bulkhead from Encasement, to conceal exterior structural steelwork and enhance the aesthetics of the apartment block's extensive four-storey front elevation. McCarthy & Stone's Lady Susan Court development includes 60 one and two bedroom assisted living apartments for the over 70s, while also providing round the clock care for owners. Manufactured and installed by Encasement, the column casings and aluminium bulkhead are integral features of the development's exterior design. While the column casings are equally spaced along building's front elevation, the 30 metre long bulkhead is located above them and spans the entire length of the building. Ranging in height from 2000mm up to 3000mm, the Forma casings are manufactured from 3mm thick aluminium in diameters of 425mm and 450mm and are finished with an RAL 7047 PPC coating, which is also used on bulkhead.

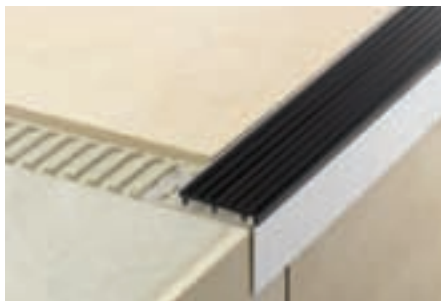
Derby Velodrome gets a high quality finish thanks to Schlüter-Systems

Flooring expert Schlüter-Systems has provided the perfect finishing touch to the eagerly awaited, brand new Derby Velodrome.

Schlüter-Systems' finishing profiles, Schlüter*-TREP-B, have been used in the arena's foyer. Suitable for use in areas subjected to heavy pedestrian traffic, the stair nosing profiles are designed to protect tiled stair edges and offer a visible, slip-resistant surface which is durable, safe and visually appealing.

Nigel Tye, of Faulkner Browns Architects, who specified the product, commented: "I chose this type of profile for its robust edge detailing which offers ideal protection for ceramic stairs. I also opted for yellow inserts to coordinate with the arena's attractive colour scheme, which is based on the Olympic colours.

"We always specify Schlüter's profile products when we require robust detailing which will



suit public areas and provide a high-quality appearance."

The state-of-the-art facility, which has already been described as 'one of the most stunning sports venues in the country' is set to open in early 2015. The cycle track stretches to 250 metres while the track infield is the size of 12 badminton courts and will host other sports including badminton, basketball, netball, wheelchair basketball,

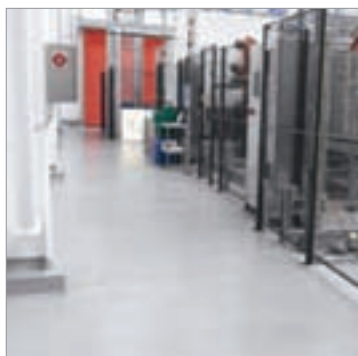
volleyball, martial arts, table tennis and trampolining. There will also be a 150-station gym, as well as group exercise studios and a cafe. The arena will also be able to transform into a music venue.

Carl Stokes, Head of Marketing and Customer Service, commented, "We are very proud that our product was chosen to help this innovative new arena realise its vision and become a truly unique venue equipped to welcome thousands of visitors through its doors."

Schlüter*-TREP-SE/-S/-B profiles feature a trapezoid-perforated anchoring leg made of stainless steel or aluminium, which is secured in the mortar bond coat beneath the tile and supports a slip-resistant thermoplastic rubber wear surface. The tread surface of Schlüter*-TREP-SE/-S/-B is available in a variety of colours and can be replaced in case of damage or wear.

01530 813396 www.schluter.co.uk

Industrial food processing floor solution by Remmers



A new industrial flooring system has been installed to the 2000m² extension at C&G Foods manufacturing plant in Longford, Ireland.

Remmers Crete SL was applied in combination with Remmers PUR Color Top 2KM seal coat to provide a colour stable finish and a subsequent seal coat of Remmers PUR Aqua Top 2KM SG, with the inclusion of a polymer bead to provide an R11 level of slip resistance with a silk gloss floor finish. The system was installed by specialist flooring contractor Larsen Contracts who worked closely with the main contractor, Gem Construction to allow the installation of the floor whilst other fitting out activities were also being carried out, optimising the overall program.

This carefully designed system is ideally suited to areas subjected to medium to heavy duty use for industrial floors within food processing facilities. Remmers Crete SL is a water dispersed polyurethane resin system which is applied as a self-levelling 2-3mm thick system. The seal coats provided colour stability, slip resistance and a silk gloss finish to the applied floor. The installed system provides excellent durability, abrasion resistance, impact and chemical attack.

0845 373 0103 www.remmers.co.uk



Another UK success story!

Our athletes have been superb in recent years. We have the top golfer in the world. British actors come away with accolades galore. And the cache of products manufactured in the UK cannot be underestimated. The words Made in the UK or British Made stand for quality, reliability, value for money and style. So demista™ heated mirror pads have proven to be the first choice for both contract and domestic markets. Steamed up mirrors are annoying. You step out of the bath or shower and prepare to shave or do your make up... trying to peer through a fog. So is there an alternative?

The easy and permanent solution is to install demista™ heated mirror pads. Problem solved simply and inexpensively. The pads come in a variety of sizes, and can be used in multiples if large areas need to be covered. demista™ heated mirror pads can also be made to order in special sizes. Fitting is easy. Just fix the self-adhesive pad to the back of the mirror and connect to the lighting circuit so that the mirror is warmed when the lights are on. The pads are manufactured in the UK and have proven quality after over 22 years in the market world wide. demista™ is the innovator of steam free mirrors and the first heated mirror pads sold in the UK. They are the first choice for builders, developers and specifiers for luxury apartments, hotels, leisure centres, new home developments and refurbishment projects both at home and abroad.

Exciting new development gets the full Schlüter®-WETROOMS package

Schlüter-Systems' innovative wetrooms range has been used in an exciting new housing project which will see 15 brand new homes built at the site of a former quarry.

Chantry Quarry will offer villa-style four-bedroom houses for sale complete with high quality en-suite bathrooms – and thanks to Schlüter the ongoing protection and maintenance of these bathrooms is assured.

Chosen for its easy assembly and great results the Schlüter®-WETROOMS collection provide a fully integrated product suite which includes top of the range waterproofing sets, drainage systems and uncoupling and waterproofing membranes for tiling walls and floors.

The Chantry Quarry bathrooms boast an array of Schlüter products. Schlüter®-KERDI-LINE has played an important role, as its linear drain channel system offers a particularly low assembly height and has helped give the bathrooms a seamless style finish, along with pre-sloped shower base Schlüter®-KERDI-SHOWER.

Schlüter's popular product Schlüter®-DITRA

25 matting, the original uncoupling and waterproofing matting for tile coverings has also been used underneath the bathrooms ceramic tiles. Perfect for bathroom installations, the matting neutralises tensions between substrate and surface, with the added benefit of interconnected air channels which help moisture to evaporate.

Project Architect Tim Lane, of Paul Brookes Architects Ltd, commented: "The great thing about the Schlüter®-WETROOMS range is that it comes in all-in-one wetroom kits which include all the components you need to provide waterproofing solutions for walls and floors. We found them very simple to use and easy to install and they have provided a great overall finish."

Other products to be used in the build included Schlüter®-KERDI-BOARD a unique multifunctional tile substrate for wall areas which can also be used to create bonded waterproofing assemblies with tile coverings. The product is 100 per cent waterproof, lightweight and completely even and flat making it the perfect substrate for tiling.



Visit the website www.schluter.co.uk or call 01530 813396

Designer Oak Flooring

... the perfect finish for any room

- > Esco engineered oak flooring
- > Eight colour options
- > Varied surfaces available - aged, wire brushed and Harfa rough sawn effect
- > Pre-finished with Osmo Polyx-Oil

Call or visit the web for a brochure.

+44 (0)1296 481 220

www.osmouk.com



osmo[®]

AIR EXPERTS

60 years since its launch, Vortice is still European market leader, providing energy efficient ventilation

Vortice offers:

- Initial free of charge consultation service
- Sales and technical assistance from design, install and after sales support
- Advice from industry experts
- Fully trained sales department
- BPEC Training course at the UK head office
- Area Business Manager network throughout the UK

01283 492949

sales@vortice.ltd.uk

www.vortice.ltd.uk



James Latham now offering Engineered Grandis

James Latham is now offering the Rolls-Royce of Eucalyptus through all eight of its timber depots, with the arrival of Grandis 690+, a WoodEx Engineered Grandis

Delivering a number of benefits to customers; namely sustainability, natural durability, ease of use and continuity of supply, Grandis 690+ (a reference to its impressive density scoring against other products available on the market) is 100 per cent FSC plantation grown from an area of 220,000 hectares and produced exclusively from a single species.

Fully compliant with EUTR legislation and verified by TRADA, Grandis 690+ has been extensively tested at the Federal University of Paraná in Brazil where it scored highly against stringent criteria including strength and durability (achieving 2-3; durable to moderately durable) as well as density, (690 - 750 kg/m³ @12 per cent M/c – the same species in other parts of the world has only achieved 595 k/g/m³), making it particularly suitable for joinery and structural use. Plus, it has also been assessed for

one-hour fire test requirements.

It also boasts an impressive natural durability, resisting infestation from insects, therefore greatly reducing the chance of bore holes etc., as well as maintaining its aesthetic properties.

Group Product Sales and Development Manager for WoodEx and Accoya at James Latham, Paul Leach, explained: "With Grandis 690+, the timber is allowed to grow more naturally and reach full maturity of approximately 28 years, hence the extra density.

"It really is an impressive timber and one which ticks all the boxes, both for ourselves but also for our customers. As well as meeting all the legal and sustainable requirements, it's a high-grade, knot free, clear and uniform timber which is also extremely easy to machine, making it the perfect choice for the joinery, furniture making and construction sectors."

Grandis 690+ is exclusively available through James Latham, directly from stock in clear faced lengths of 2.0m – 3.0m and in finger-jointed lengths of 5.9m as well as in various widths and thicknesses.



Visit www.lathamtimber.co.uk or call 0116 257 3415

Iconic washrooms created for London Bridge



Washroom Washroom's new Iconica Collection has been used to stunning effect on a landmark office building on London's iconic Southbank. Recently refurbished in a project led by Aros Architects with Kgb Managed Services as the main contractor, the common areas including wash-

rooms and lobbies were all brought up to Grade A standard. Washroom worked closely with the architectural team to refurbish both the male and female washrooms on level five of the building in a project worth £40,000. Opting to use materials not traditionally associated with washrooms and incorporating bespoke design elements from Washroom's Iconica Collection was the ideal way to create a space which reflected the high specification of the building.

Linden Homes chooses wedi for wet room



wedi systems UK has been chosen by Linden Homes to provide a total wet room solution service for one of their latest developments at Century Gate, Beckenham, Kent. The development consists of a range of detached family homes for which wedi worked alongside Linden Homes from initial wet room design, to complete installation guidance and support ensuring the ideal wet room solution to meet the developer's needs. wedi also ensured that the contractors were supported and trained with their own NCFE backed installation program.

0161 864 2336 www.wedi.co.uk



Tessera Diffusion carpet tiles from Forbo

The latest addition to Forbo's carpet tile portfolio builds on the continuing trend of softening geometric structures.

Tessera Diffusion marks a progressive move away from more angular shapes, and incorporates a beautiful prism pattern that plays with light and shade resulting in a fascinating oblique design that's ideal for contemporary office environments.

There are 16 colours reflecting a tonal movement with an urban edge. Muted and natural shades, ranging from intensely dark to very pale, inject character whilst responding to the commercial demand for warmer, neutral hues and lighter LRV's in workspaces.

THE ART OF HEATING



BESPOKE.
CLASSIC.
ELITE.

The Sleeping Swan, Hand Polished

For Stockists Contact:

T: 0808 129 2224 | E: sales@carron.uk.net | W: www.carron.uk.net

New products for the DITRA-HEAT range



Schlüter®-DITRA-HEAT has become popular with specifiers, installers and homeowners as the perfect all-in-one integrated solution for use under tiles and natural stone flooring.

The product provides time saving benefits when it comes to both installation and heat reaction time and its overall assembly uses less material therefore resulting in a lower overall height. Schlüter®-DITRA-HEAT does all of this as well as provide 5 other key features, uncoupling, crack bridging, CE marked waterproofing, vapour pressure equalisation and load distribution; ensuring tile and stone coverings stay crack-free and as good as the day they were installed.

Its unique studded uncoupling membrane and loose cabling make it an installer's dream, providing variation in size and layout plus extensive time saving benefits; whilst its low assembly height, of just 5.5mm, makes it versatile enough to suit any project including renovation, refurbishment and new build – it's even suitable for installation over problematic substrates.

And now the system benefits from even more flexibility thanks to a new feature rich touchscreen digital thermostat launched this year which allows the end user to have control over individual room temperatures.

The digital thermostat Schlüter®-DITRA-HEAT-E-R includes full touchscreen technology and provides two floor sensors, with the option of air temperature, ensuring climate control is balanced at all times and at only 5.5 x 5.5cm, blends easily into its environment. The thermostat comes ready to run straight from the box.

Also new for 2015 is the innovative Schlüter®-DITRA-HEAT-E-WS which provides electric heating within walls, offering a discrete, safer and

more practical alternative to traditional towel rails and radiators.

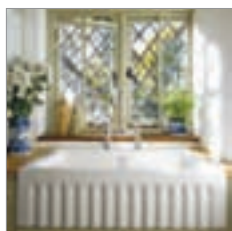
Available in complete box sets and suitable for use under tile or stone, the system is designed and balanced for easy and discrete installation. Using low surface temperature technology it outputs at 136 or 200w per square metre, ensuring comfortable and safe heating with the added benefit of CE marked waterproofing, uncoupling and crack bridging within a single 5.5mm layer.

Under wall heating can be combined with underfloor heating and together ensures greater heating outputs for large areas, as well as providing cleaner and more open plan living spaces. Furthermore, the matting and heating cable can be installed within a shower wall area for increased comfort and warmth as well as faster drying times.

For smaller rooms Schlüter®-DITRA-HEAT can act as the primary heating source, allowing users to maximise the limited space available and make the room feel larger and more comfortable to inhabit.

01530 813396 www.schluter.co.uk

Shaws of Darwen Bowland

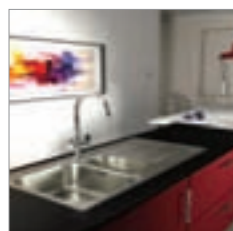


Inspired design and superb craftsmanship are combined to produce this British made Shaws of Darwen traditional ceramic fireclay Bowland sink which has a distinctive fluted front. Available in both white and biscuit finishes the Bowland has a central 3½" waste outlet suitable for basket strainer or waste disposer. This Bowland 600 sink is compact so can be

fitted into smaller kitchens in new or renovated properties. There is also an 800 size sink for larger areas. Visit the company's website to see the complete range of ceramic fireclay sinks and taps available.

01254 775111 www.shawsofdarwen.com

Abode Connekt Flushfit sink

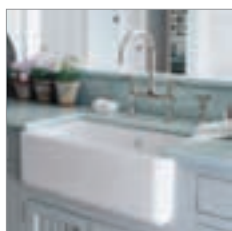


The latest Abode innovation is Connekt Flushfit, an ultra slim flush fit or inset sink range. With its ultra-thin edge detailing, it delivers a sleek contemporary look to any chosen worktop. The bowl sinks are produced in premium grade stainless steel. Connekt Flushfit can be fitted at the same surface level as the worktop by inseting or alternatively fitted conventionally as an

inset with stylish low-profile edges. Connect Flushfit comes complete with the unique Abode Orbit waste and all plumbing pipework required, plus a pre-fitted seal strip around the underside edge.

01226 283434 www.abode.eu

Classic Butler 1000 sink



Look out for this British made, Classic Butler 1000mm sink from Shaws of Darwen. The heavyweight, deep Victorian style sink features a round overflow on the sink wall and is perfect for new build or refurbishment projects in contemporary styled kitchens. The sink features a 3½" waste outlet and is manufactured with a durable glaze

designed for years of usage. Due to the weight of the Classic Butler, Shaws recommend that bespoke cabinetry is in place prior to installation of the sink.

01254 775111 www.shawsofdarwen.com

Shaws classic Waterside sink



The handcrafted Waterside 800 from Shaws of Darwen, a large single bowl fireclay sink with a classic curved bow front will look stunning in any style of kitchen. The sink has a central 3½" waste outlet for use with a basket strainer or waste disposer, is available in white or biscuit finishes and is 40mm deeper than the smaller 600mm model. Each sink is proudly stamped with the signature of its maker and bears the Shaws logo which equates to a traditional quality built sink to 'world-class' manufacturing standards. To view the complete range of sinks, taps and accessories visit the website.

Tel: 01254 775111 www.shawsofdarwen.com



HOUSE of DESIGN
Kitchens - Bedrooms - Bathrooms



*Delivering more than you
thought possible for every
room in your home*

Investing in your home is daunting emotionally and financially, you want to get it right first time whether creating a home for your family or maximising an investment.

We will inspire and educate you to realise and exceed your own expectations, maximising your budget with our 30 years' design expertise and specialist knowledge.

Looking forward to working with you

Jim Susan

Jim and Susan
J&S House of Design

Reynaers at Home develops new Hi-Finity options

New variants of the latest product from Reynaers at Home – the Hi-Finity slim frame doors, are proving to be a popular choice for fabricators already this year.

There are now two options to buy the Hi-Finity system – either purchased as a system for fabricators to manufacture or already manufactured by Reynaers.

Thanks to an ultra slim design, Hi-Finity's stunning slim frame sliding doors have an impressive minimised visible interlock of just 35mm, to give maximised panoramic views, as well as offering the ultimate in contemporary design and cutting-edge performance.

The Hi-Finity sliding door has been cleverly designed so that the outer frame can be concealed behind the surrounding wall, making wall-to-wall and floor-to-ceiling glass a possibility in any home.

It is now also possible to have Hi-Finity doors perpendicular to each other on adjacent walls. They can either meet in the corner with two fixed panes of glass or with two opening door leaves

meeting at the corner without a fixed corner post. When both doors are open, the ceiling above appears to defy gravity, creating a stunning architectural feature.

The new variants of Hi-Finity aluminium doors are now available with double and triple glazing and ensure optimum performance, safety, and comfort. The triple glazing system has achieved the Minergie® sustainability label – a quality indicator for high insulation systems.

Head of Marketing at Reynaers Hugh Moss said: "We've seen an uplift in enquiries since these new features were launched.

"Our corner solutions mean that fabricators can provide a wall of glass to let panoramic views flood into homes and the unique design of the multi-wheel carriages means that even the heaviest of these doors will glide open and closed with minimal effort."

Reynaers at Home is a premium brand dedicated to offering the very best architectural glazing products. For more information visit the company's website.



Visit www.reynaersathome.co.uk or call 0121 421 9707



A cloistered life for Keylex at cathedral

Following the latest phase in the implementation of the current master plan for Wells cathedral, it was decided to make a small store room available to the volunteers who run the information desk and the guided tours. This room opens directly onto the cloisters and is accessed via a large medieval door. It was impractical to issue keys to all the volunteers but some of the doors in the recent new development already used digital door locks to grant access to those in possession of the relevant door code and these were all working very well. So Jez Fry, the cathedral's Clerk of Works, referred back to the specification for these locks and found them to be Keylex K500 models in dark bronze and lever operated both sides. Keylex locks are supplied in the UK by Devizes based **Relcross Ltd**, specifiers and distributors of high performance heavy duty door hardware. Jez readily found their e-commerce site at www.keylex.co.uk which clearly lays out all the options available regarding finishes, door thicknesses and accessories.

01380 729600 www.relcross.co.uk



UK Roofing Awards 2015 shortlist

The call for entries for the NFRC's 10th UK Roofing Awards went out in September 2014 and closed in January of this year and, at the end of February, a panel of judges whittled down entries from across the UK to 48 finalists across 12 categories. On 15 May 2015, at the Hilton Metropole in London, the winners will be announced. NFRC wish this year's finalists the very best of luck. All the short-listed projects, sponsors and more information on the Awards can be found on the website. The finalist categories are: Double-Lap Slating; Liquid Roofing & Waterproofing; Single Ply Roofing; Fully Supported Metal Roofing; Roof Sheeting; Vertical Cladding; Heritage Roofing; Double-lap Tiling; Sustainable Roofs (Green, vegetated roofs); Single-lap Tiling and Slating; Sustainable Roofs (Shingles & Shakes); Reinforced Bitumen Membrane.

020 7448 3187 www.nfrc.co.uk/roofing-awards-2015

Spike in sales spells success for Reynaers at Home

Increased interest from architects about the benefits of aluminium windows and doors has resulted in a very successful year for Reynaers at Home.

Reynaers at Home has exceeded its sales targets and has doubled turnover over the past year. Since launching in 2012, 14 showrooms have been opened across England and Wales and the leading architectural glazing company has won numerous awards for its eye-catching website and controversial adverts.

Head of Marketing at Reynaers Hugh Moss said: "The unique properties of aluminium means that more and more architects are turning to the metal when looking to design homes that are long-lasting and robust.

"Aluminium's lack of expansion, high durability and 100 per cent recyclability, without any loss of quality, has established its reputation as the go to 'green' metal. Its remarkable strength,

anti-corrosion and low maintenance characteristics make it the ultimate construction material for an industry that is constantly searching for lighter, stronger and greener alternatives."

Reynaers at Home's latest product, Hi-Finity slim frame doors, has proved particularly popular thanks to its ultra slim design. Its impressive minimised visible interlock of just 35mm gives maximised panoramic views, which offer the ultimate in contemporary design and cutting-edge performance.

The new variants of Hi-Finity aluminium doors are now available with double and triple glazing and ensure optimum performance, safety, and comfort. The triple glazing system has achieved the Minergie® sustainability label – a quality indicator for high insulation systems. The Minergie® component label for windows and doors requires a Uw value (installed) of $\leq 1.0 \text{ W/m}^2\text{K}$.

It is now also possible to combine two Hi-Finity



© DMOA

doors on adjoining walls using one of a new range of innovative corner solutions. These allow architects to create a wall of glass to let panoramic views flood into homes and – thanks to the unique design of the multi-wheel carriages – even the heaviest of these doors will glide open and closed with minimal effort.

0121 421 9707 www.reynaersathome.co.uk



conren
surfacing solutions



Resin Bound	Resin Bonded	Slurry Seal	Play Surfacing
Surfacing solutions for external applications			
01978 661 991 www.conren.com info@conren.com			



View our new website
www.popuppowersupplies.co.uk

Retractable Service Unit at Chelsea Football Club

Our projects include installations for:

- Markets
- Heritage
- Parks
- Town Centres
- Universities
- Sports Stadiums

Pop Up Power Supplies

Safe, secure, silent power: retractable utility points supplying electricity, water and air to public places

Pop Up Power Supplies Ltd

Telephone: 020 6551 8363
 Fax: 020 8320 8838
 Email: info@popuppowersupplies.co.uk
 Web: www.popuppowersupplies.co.uk

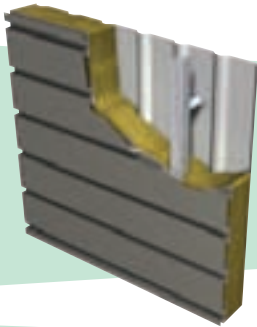
POP UP POWER
Electricity, water and air

There when you need them, hidden when you don't.

Always moving forward

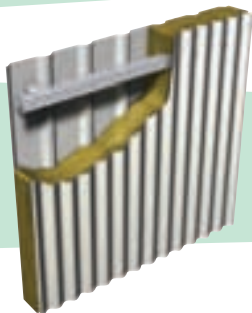


Our two most recent innovations are the new Opus panel and sinusoidal profiled sheet.



Opus is the new plank panel that is available as part of an Elite system, a LINEAR Rainscreen and a LINEAR Rainspan system, as well as being ideal for use as a soffit plank.

Investment in state-of-the-art manufacturing machinery enables us to provide the increasingly popular sinusoidal profile on a short lead time and at a competitive price.



EUROCLAD

Drawn on our experience

Wentloog Corporate Park Cardiff CF3 2ER

029 2079 0722 · www.euroclad.com

[@eurocladuk](https://twitter.com/eurocladuk)

 **confidex**

Colorcoat HPS200 Ultra, Colorcoat Prisma and Confidex are registered trademarks of Tata Steel UK Limited.



We know you don't stay ahead by standing still. To keep moving forward we're always innovating; whether through new product development, process improvement or service enhancement.

Innovation provides you with roofing and cladding solutions that are as ground-breaking as they are practical and as valuable as they are cost-effective. Put simply we innovate to provide products that are relevant and useful to you.

Some of our recent product innovations include Vieo, Opus, sinusoidal cladding, integrated solar panels, transpired solar collectors, and a more efficient stainless steel halter for standing seam roofs.

A culture of innovation is present throughout our supply chain, with Elite Systems using only Colorcoat HPS200 Ultra® and Colorcoat Prisma® from Tata Steel. These Colorcoat® products come with the Confidex® Guarantee offering extended cover for up to 40 years on Colorcoat HPS200 Ultra® and up to 30 years on Colorcoat Prisma®. Colorcoat® products are certified to BES6001 Responsible Sourcing standard.



Kemperol V210 gives great performance at Odyssey Arena

The likes of One Direction and The Who may be confident of a warm welcome when they play Belfast's Odyssey Arena this year, but even they stand no chance of razing the roof thanks to a roof refurbishment using **Kemper System's Kemperol V210**. Carried out by roofing contractor, GBS Roofing Ltd, the refurbishment involves repairs to the joints on the roof of the 10,800 capacity stadium, which plays hosts to a wide range of sporting events and exhibitions as well as providing a venue for the world's pop and rock royalty. Originally opened in 2000 as a millennium project, the arena has a domed metal roof, constructed in 'cake slice' sections, and the original membrane used to waterproof the ridges that connect each slice was starting to fail. With its BBA-accredited 25-year service life, Kemperol V210 was specified as a long-term replacement. The size, height and steep curve of the roof surface



meant that the GBS team had to gain rope access to the roof and a safety line was erected. The installation team began by thoroughly cleaning each joint and removing any loose material before applying Kemper System's 'D' Primer. Once the primer had cured, the Kemperol V210 resin was applied onto each joint. The resin saturates a reinforcement fleece and cures to form a tough, durable membrane that is UV stable and permanently elastic. Explains Barry Mairs from GBS

Roofing, "The size, height and design of the roof mean that it is very difficult to access for repairs and refurbishment so it was very important for us to select a waterproofing membrane that will provide a long service life." Because of the access and safety considerations it was quite a painstaking process but the Kemperol V210 system meant that we could focus on completing each individual joint in a single process, one at a time."

019 254 45532 www.kempersystem.co.uk



neaco gets five-star review

neaco received a rave review from an extremely satisfied client in Scarborough, where they supplied Spectrum aluminium balustrade for a luxury residential development. Spectrum was chosen in a black powder coated finish with toughened glass infills for terrace areas enjoying spectacular panoramic views across the East Coast of Yorkshire. Client Craig Holgate commented: "I have very strict standards and a keen eye for quality control. I don't praise lightly but neaco went above and beyond my expectations – they provided five-star treatment throughout, from sales consultation and cost outline to surveying, design and installation. Everything worked perfectly and I'm delighted with the results." neaco's UK Business Development Manager, Peter Melia, said: "Craig's comments are very gratifying to hear and Spectrum continues to demonstrate its many qualities in residential development." Spectrum is also available in stainless steel or an aluminium/stainless steel combination.

BUY **BRITISH**, BUY **QUALITY**,
BUY **Jeckells** SHADE SAILS



We design and manufacture Shade and Weatherproof Sails in commercial and domestic environments. Our forte is engineering solutions that not only look good but will also stand the test of time in unpredictable outdoor environments.

All our Shade Sails are individually designed with colour, shape and size to suit your particular requirements. Architecturally stunning. We use either Stainless Steel or Timber posts depending upon the environment. Our Shade Sails are easily fitted and removed. A full design and installation service is available.

Jeckells 
THE SAILMAKERS

For more details please call **01603 782223** or
email shadesails@jeckells.co.uk



Argent Alu: invisible integration of doors



Thanks to the invisible door frame argenta® invisidoor® DL of Argent Alu, a part of the RENSON Group, the door closes perfectly in line with the wall, without any door frame nor hinge being visible. This argenta® invisidoor® DL is standard supplied with a magnetic lock, a seal around the frame absorbing door closing impact and the invisible adjustable hinges type argenta® invisible neo.

The argenta® invisible neo, made of zamak, is available in 3 versions. The compact S-5-version is suitable for doors with a minimal width of 35 mm and a weight up to 80kg, while the M-6-version is made for doors with a width of minimum 40 mm and a weight up to 100kg. In order to meet the requirements of the market, Argent Alu also developed the L-7-version, which is ideal for doors with a minimal width of 50 mm and a weight up to 150kg.

It doesn't matter in which direction the door opens, the argenta® invisible neo is always suitable. Furthermore, there are no screws visible, which allows a clean integration. The Easy-Hook® system allows installation and setting by a single person. After installation, the height, width and depth are easily adjusted (3 dimensionally) without having to dismantle the door or the hinge.

01622 754 123 www.rensonuk.net



London to Athens with Freeflow!



Freefoam Building Products has just released figures to show that if all the guttering sold in 2014 was laid end to end it would reach from London to Athens. These figures highlight that an increasing number of construction professionals are realising the benefits of the Freeflow brand. For many fitters a rainwater system is out of sight so out of mind – until it goes wrong and many will assume that rainwater systems are a commodity with one brand being very much like another. That can be a costly mistake. Freefoam's rainwater range, Freeflow, offers clever solutions to common issues giving fitters considerable benefits with the added choice both PVC and Cast Iron effect finishes. Co-extruded gutter with a white interior to minimise heat absorption and reduce expansion, highly visible red advanced long-life compressible seals which create flexible water-tight joints, and gutters and downpipes covered with protective film to survive transit and storage. All features that make Freeflow the ultimate fit and forget product that can be relied on to perform year after year. The Freeflow rainwater system is available in a range of four colours and a variety of systems. A Cast Iron effect system was added last year.

01604 591110 www.freefoam.com

Parex render systems accredited for worst UK weather



Key insulated systems in the **Parex** renders and facades range now have a "belt & braces" guarantee that they will stand up to the worst of the British climate. The well-proven systems have now received Zone 4 "very severe wind-driven rain index rating" with LABC and Premier Guarantee for application onto a wide range of substrates and system build constructions.

Zone 4 is the yardstick for systems used in the most exposed areas of the UK subject to extremes in howling gales and wind-driven rain.

Parex is the only render manufacturer accredited to the Zone 4 rating with the backing of LABC and Premier Guarantee. PAREXTHERM Render Systems covered by the accreditation are the Mineral External Wall Insulation (EWI), Acrylic EWI, Marbri Dash EWI and also the PAREXTHERM and PAREXDIRECT render systems onto Siniat Render Board, Aqua Board and Weather Defence Board.

Zone 4 covers areas along the western seaboard likely to experience the most severe weather conditions in the UK and includes the South West, West Wales, North West, Cumbria and Scotland. Parex render systems were used for the refurbishment of the facade of apartments at Sandside, Cumbria.

Emperor Concealed

Innovative Bifold Doors

The Future of Bifolding Doors



Flush Handles

Clean Lines

Invisible Patented Hinges

Price Online: duration.co.uk

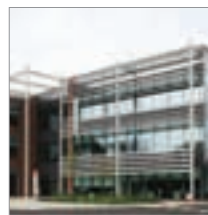
Call Us: 01268 681612



DURATION
WINDOWS

Aluminium Trade Manufacturer Since 1985

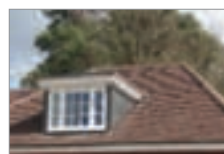
Levolux gets stuck in for Henkel



A new 36,000 sq ft office development for Henkel, a global leader in brands and technologies, is bringing together its UK workforce in Hemel Hempstead, into a more comfortable, energy efficient building, which is equipped with an external Solar Shading solution from **Levolux**. The solution comprised a combination of 400mm and 300mm wide Aerofoil Fins, engineered from extruded aluminium. All Fins

are secured to an external steel frame which extends vertically across south-facing elevations and horizontally to form a canopy above the main entrance at roof level. All steelwork and aluminium components are treated with a durable, light grey powder coating for long lasting good looks.

New clay roof tile for heritage properties



Tudor Roof Tile Co Ltd, one of Britain's foremost independent handmade clay roof tile manufacturers, has introduced a mellow earth tone into its standard range of peg and plain tiles. Known as 'Weathered Earth', this subtle shade has a depth, which is ideally suited to restoration and heritage

styled projects as it helps re-create the mature and time-worn appearance of clay tiles that have naturally darkened with age. The Weathered Earth tone can also add distinction and individuality to traditional roofs, particularly when used alongside Tudor's existing natural colours which include: Medium Antique, Dark Antique, Red Antique, Sussex Brown, Sussex Red and Jubilee.

01797 320202 www.tudorrooftiles.co.uk

Levolux leads the way at UEA



As part of a £58 million investment in its residential campus, the University of East Anglia has unveiled its new Crome Court development, featuring a striking solar shading solution from **Levolux**. As one of the UK's leading solar shading specialist, Levolux was invited to contribute to the scheme by developing a comprehensive solar shading solution. The solution comprised a colourful array of Glass Fins, along with

Aerofoil Fins and Ventilation Louvres to screen a roof plant area. Glass Fins offer an attractive form of solar control and can be configured to perform a number of secondary functions, such as integrating PV solar panels or introducing subtle colours into a building's facade.





REGISTER ONLINE FOR...

Digital magazine
Newsletter • Daily digests

www.buildingconstructiondesign.co.uk

Reynaers at Home gains Secured by Design for innovative slim framed window system

The latest addition to the Reynaers at Home range of highly energy-efficient windows has gained accreditation from Secured by Design – the police initiative to reduce crime through design.

Reynaers at Home's innovative third generation three-chamber CS 38-SL Tilt Turn Vent is the latest product to achieve the desirable Secured by Design 'Police Preferred Specification'.

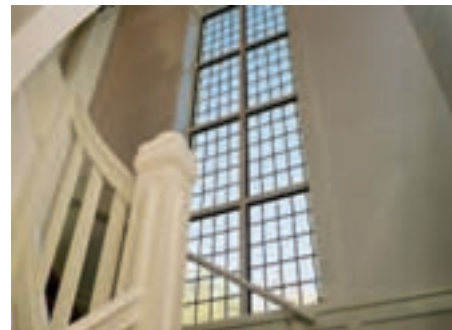
The thermally insulated system has been created for inward and outward opening windows and doors and combines elegance, strength, energy efficiency and ease of production with its unique slimline steel look and high insulation values.

Its minimalistic exterior contours offer an ideal solution for new buildings as well as for the replacement of steel framed windows and window-doors without losing the original design.

As well as the extensive range of window products that are accredited by Secured by Design, Reynaers at Home is also one of the first aluminium systems companies that has achieved the Secured by Design status for both its sliding patio doors and bifold doors.

Secured by Design is a crime prevention initiative operated by the Police Services of the United Kingdom, which aims to utilise design principles and products in the built environment that reduce the risk of crime. Additional products covered by the award include Reynaers' versatile CP 130, a lift and slide aluminium patio door that is contemporary in appearance and combines high weather performance with great aesthetics and CF 77, which is an innovative bi-fold door, the SL variant of which has incredibly slim sight lines.

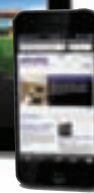
Richard Childs, Managing Director at Secured



by Design, said: "The Secured by Design initiative aims to focus on crime prevention and reducing the fear of crime – and Reynaers has really got on board to promote security standards within the window and door industry."

0121 421 9707 www.reynaersathome.co.uk

selfbuilder & homemaker



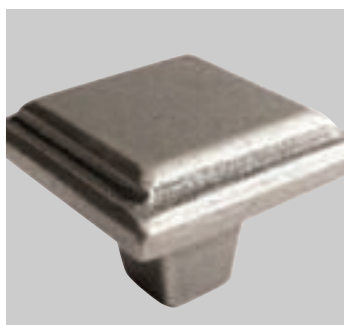
REGISTER ONLINE FOR... In-print magazine • Digital magazine • Newsletter • Daily digests
www.sbhonline.co.uk

IronmongeryDirect

MASTERS OF OUR TRADE

A RANGE TO INSPIRE. A SERVICE TO ADMIRE.

From contemporary to traditional, you'll find the right look with the
UK's Biggest Range of Ironmongery all available the **NEXT DAY**.



Call **0808 168 28 28** or go online to get your **FREE CATALOGUE**

Text: ZY8168Z to 80800
for **FREE!** Followed by your
name, address and email.



ORDER BY 8PM
GET IT NEXT DAY



FREE DELIVERY
OVER £45*



FREE RETURNS
WITHIN 30 DAYS



MINIMUM
5 YEAR GUARANTEE



LOCKED DOWN
PRICES

CHECK OUT
OUR MOBILE
WEBSITE



CALL 7am-8pm 7 days a week
0808 168 28 28



ONLINE Shop 24/7!

IronmongeryDirect.com

*Ex VAT

FIND US ON ►

