

building construction design

www.buildingconstructiondesign.co.uk

august/september 2015

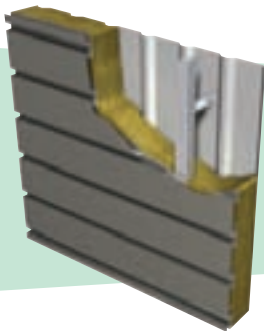
- 2 Appointments & News
- 7 Building Products
- 11 Structural Elements
- 13 Interiors
- 23 Exteriors

Cover image
See page 31 for details

Always moving forward

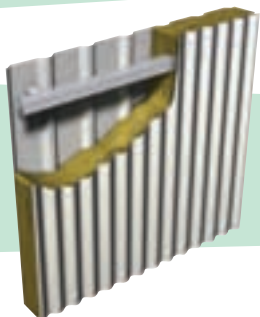


Our two most recent innovations are the new Opus panel and sinusoidal profiled sheet.



Opus is the new plank panel that is available as part of an Elite system, a LINEAR Rainscreen and a LINEAR Rainspan system, as well as being ideal for use as a soffit plank.

Investment in state-of-the-art manufacturing machinery enables us to provide the increasingly popular sinusoidal profile on a short lead time and at a competitive price.



EUROCLAD
Drawn on our experience

Wentloog Corporate Park Cardiff CF3 2ER
02922 010101 · www.euroclad.com
@eurocladuk

 **confidex**

Colorcoat HPS200 Ultra, Colorcoat Prisma and Confidex are registered trademarks of Tata Steel UK Limited.



We know you don't stay ahead by standing still. To keep moving forward we're always innovating; whether through new product development, process improvement or service enhancement.

Innovation provides you with roofing and cladding solutions that are as ground-breaking as they are practical and as valuable as they are cost-effective. Put simply we innovate to provide products that are relevant and useful to you.

Some of our recent product innovations include Vieo, Opus, sinusoidal cladding, integrated solar panels, transpired solar collectors, and a more efficient stainless steel halter for standing seam roofs.

A culture of innovation is present throughout our supply chain, with Elite Systems using only Colorcoat HPS200 Ultra® and Colorcoat Prisma® from Tata Steel. These Colorcoat® products come with the Confidex® Guarantee offering extended cover for up to 40 years on Colorcoat HPS200 Ultra® and up to 30 years on Colorcoat Prisma®. Colorcoat® products are certified to BES6001 Responsible Sourcing standard.



SE Controls gets switched on with Bristol's Electricity House contract

A key contract to provide an advanced smoke ventilation system to Crest Nicholson Homes' redevelopment of Bristol's iconic Electricity House building, has been awarded to a leading smoke and natural ventilation systems company, SE Controls.

Originally designed by acclaimed architect Sir Giles Gilbert Scott in the 1930s, the six-storey Grade II listed building is being converted into 85 luxury city centre apartments, while ensuring that many of the original design features are reinstated to enhance its art deco style.

Electricity House's main atrium is at the heart of the SE Controls solution, as the smoke ventilation system is designed to vent smoke from the atrium in the event of a fire to ensure escape routes are kept clear.

To achieve this, SE Controls is designing, installing and commissioning the system, which comprises 37 SHEVTEC® automatically controlled louvres that are manufactured and

tested in accordance with BS EN 12101: 2. The SHEVTEC® louvres also incorporate 'fall protection' to increase safety, as well as using IP rated external motors, which are essential to allow easy access for future maintenance.

In addition, 21 low level air inlet louvres and linear door actuators also form part of the system, all of which are controlled by a series of OS2 control panels with integral battery back up and fully compliant with the relevant sections of the BS EN 12010 standard.

Martin Oates, SE Controls' Commercial Director, commented: "Electricity House is a landmark building designed by a giant of British architecture, so we're naturally delighted to be involved in the project and look forward to its completion, which is scheduled for later this year."

He added: "Smoke control and fire safety is not only a core part of our business, but also an area we're very actively involved with via organisations



such as the Smoke Control Association, FIRAS and British Standards, to ensure that design, manufacturing, installation and maintenance standards are constantly being maintained. Although this is important for the industry, the real benefit is for residents who rely on systems for failsafe performance, if a fire should occur."

01543 443060 www.secontrols.com

HAMMILL PARK

Near Sandwich, Kent

Create your own Grand Design

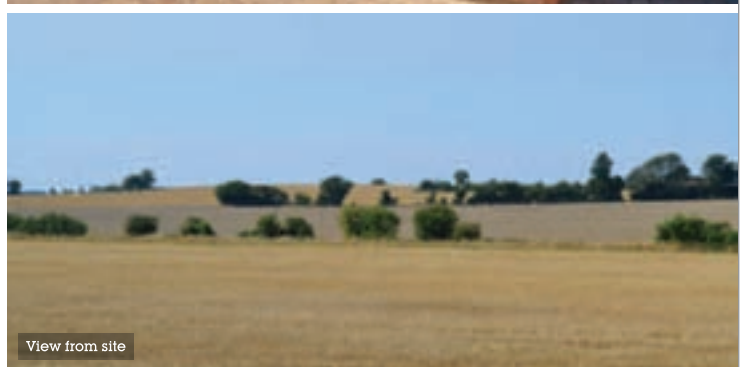
A rare opportunity to acquire stunning self build plots in a great rural location between Canterbury and Sandwich. Plots start at £225,000 for 0.2 acres to create a 2,500sq.ft house.



www.quinn-estates.com
T. 01227 831 212
E. quinnestates@quinn-estates.com



Example of a house built by Quinn Estates



View from site

ALUCOBOND®

FAÇADE FASCINATION.



Canary Wharf Crossrail Link Bridge, London | ALUCOBOND® white | Architect: Foster + Partners | Fabricator: Booth Muirie | © Richard Gooding



3A Composites GmbH
Sales Manager UK / IE
Richard Geater
+44 75 84 68 02 62
richard.geater@3AComposites.com

3A Composites GmbH
Specification Manager UK / IE
Paul Herbert
+ 44 75 84 68 02 63
paul.herbert@3AComposites.com



www.alucobond.com



With over 145 years experience as the UK's leading decorative aggregate supplier ...

... we believe that our exclusive product range, flexible customer service and expert support ...

... make us the ideal partner for landscapers, contractors and specifiers. Ring our team for local stockists ...

LONG RAKE SPAR
Specialist Decorative Aggregates
T: 01629 636 210
F: 01629 636 247
longrakespar.co.uk

✓ Dedicated Sales Team
✓ Comprehensive website
✓ Leading Product Development

Logos: RS, NIBBS, SCD, BALI



Stone Federation Great Britain is the official trade association for the natural stone industry and your source point for all things stone.

To order your free copy of The Natural Stone Source Book: A Specifiers' Guide, go to www.bit.ly/SourceBook

E: enquiries@stonefed.org.uk
W: www.stonefed.org.uk
T: 01303 856123

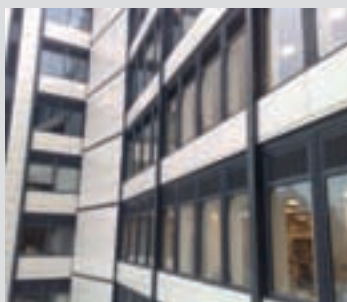


@StoneFederation



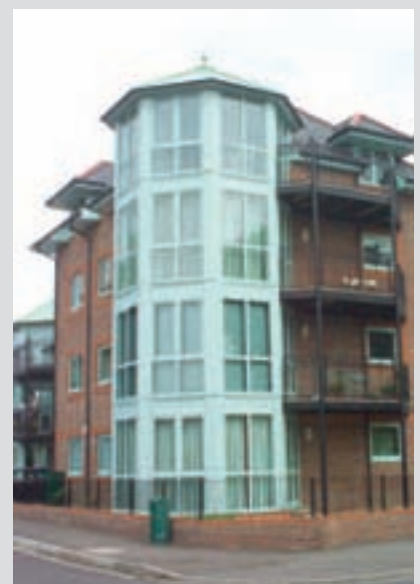
“Quality suppliers & colour coaters of PVCu windows, doors & conservatories”

- Also supply rooflines, rainwater & cladding in any colour
- RAL colour, BS colours available as well as a colour matching service



With over 20 years' experience we pride ourselves on the quality of our service which is backed with a 100% 'no quibble' guarantee of satisfaction

Our clients tell us that we are simply the best at what we do and offer the finest quality production with total reliability, delivered on time, every time



01924 454 856 www.kolorseal.co.uk

Create with VELUX®

For over 70 years, VELUX has been the byword for innovation in roof windows. Our modular design approach and online tools help you to create stunning commercial projects. Explore the possibilities at velux.co.uk/architects

ARCHITECT:
Arkitema Architects.
Siemens Headquarters,
Ballerup, Denmark

Bringing light to life

VELUX®

Guaranteed performance. Now save yourself...



**For the Full Facts and to
find out just how much
you could save visit:**

knaufinsulation.co.uk/fullfacts



KINE1372ADV - V0315



Full-fill glass mineral
wool solutions can be
the most cost effective
option for external walls
in order to achieve
compliance with
Building Regulations.



KNAUFINSULATION
it's time to save energy

with **ECOSE**[®]
TECHNOLOGY

Plumis Automist facilitates conversion of Art Deco houses



Plumis Automist has been used to provide an innovative fire safety solution for the conversion of a stunning collection of Art Deco houses in Twickenham, midway between the River Thames and Twickenham stadium. The architects, ABA Group of Sunbury on Thames, were keen to preserve the period features while achieving the contemporary design they envisaged. The 8 2-bedroom apartments all comprised a large, open plan reception room opening onto a kitchen and 2 big double bedrooms. There was no separate lobby to protect the escape route.

ABA Group Ltd were aware that Twickenham Borough Building Control officers would object to the layout unless a means could be found to provide fire protection but they were very anxious that the solution did not compromise the high-specification design of the apartments. They discovered Automist while searching for a solution online and called in Bracknell-based Vapourmist, the accredited installers for the system who readily specified units to provide complete protection from the risk of fire throughout the apartments.

Automist gave ABA Group a number of active fire protection options to protect the escape routes and aid evacuation for a fraction of the cost of a traditional sprinkler system. Patrick Amos, ABA's director was pleased with Vapourmist's recommendation: "Automist gave us complete design flexibility and was simple to install as it could be connected to the domestic water supply. Because it requires much less water than traditional

sprinklers, there are great practical advantages in the event of a fire because run off would be minimised and the high-specification fixtures and fittings would not be in danger of being drenched as would be the case with sprinklers. We will definitely consider the use of Automist in similar designs in the future."

020 7871 3899 www.plumis.co.uk





Whole House Ventilation with Heat Recovery...



Manufactured in the UK



- Virtually silent operation
- Low energy DC electric motors
- Range of control options
- Acoustically insulated ducting
- Filter reduces effects of respiratory allergies
- Reduces heating bills
- Can promote conditions for improved health
- Easy to install for DIYer or professional alike
- Conforms to Building regulations
- Full installation service available

Rega's unique WhisperFlow® technology ensures that even when operating at full 'Boost' mode (usually during the morning bathroom rush hour!) the system remains whisper quiet - unobtrusively and effectively venting stale, damp air, replacing it with air that's been gently warmed and filtered.

Low energy DC fans, insulated ducting and a high efficiency heat exchanger also

Send your plans for a FREE ventilation design and a competitive quotation

...for a fresher, healthier, home

ensure that power usage and energy losses are kept to an absolute minimum.

RegaVent systems are designed and built here in the UK, to our own stringent quality assured standards, you can be sure that your RegaVent system will give you the optimum balance of a technical specification that's exactly right for the UK climate, coupled with low energy consumption - for lower heating bills!

Rega Ventilation Limited
21/22 Eldon Way, Biggleswade,
Beds SG18 8NH fax: 01767 600487 email: sales@rega-uk.com

Call us on **01767 600499** or visit
www.regavent.co.uk



Grimshaw benefits from Union Square for AEC Professionals



Grimshaw is an internationally renowned architectural practice with offices in London, Melbourne, Sydney and New York. Employing 350 people worldwide, the company has an extensive portfolio of prestigious schemes including the Eden Project, Zurich Airport and Southern Cross Station in Melbourne. Grimshaw offers architecture, planning and industrial design services.

An increase in workload brought about an explosion in the growth of project information, presenting a host of issues associated with information management and collaboration. Duplicated and disparate data spread across multiple systems, high maintenance costs for existing databases and difficulty sharing

information across offices on four continents were all affecting the practice's competitiveness.

The search was for an industry standard, web-based and customisable system that would serve as both an intranet and extranet, which led Grimshaw to Union Square for AEC Professionals.

Union Square offers an integrated approach to the management of documents, projects, contacts and enquiries. Designed specifically for AEC professionals, the system provides transparency of practice operations and improves management control across all activities. Amongst the cross functional team appointed to select the new system there was a unanimous decision that Union Square was the best option for Grimshaw. Once the core system was up and running Grimshaw focused on other areas where Union Square could address inefficiencies. A major benefit has been the issuing of drawings and controlled documents.

This has led to improved efficiency on every



project and means that transmittal notes and drawing registers can be created automatically, establishing a standard workflow process for this key activity. Grimshaw introduced the email vault, as well as the timesheets and leave management function which linked to the practice's finance system.

The key benefits Grimshaw has realised since implementing Union Square have been: saved time; saved money; improved accuracy; enabled compliance and centralised core business functions.

enquiries@unionsquaresoftware.com
unionsquaresoftware.com

SE Controls stages a safe performance at Buxton Opera House



A new high duty smoke ventilation extraction system from SE Controls has been installed at Buxton Opera House as a key part of fire safety system upgrades at the theatre to meet current fire regulations and improve safety for the audience, cast and musicians. Although a number of alternative solutions were considered within the risk assessment, some of which involved using the existing haystack lantern light over the stage, the decision to adopt the mechanical smoke ventilation system from SE Controls ensured that the required smoke extraction rates could be readily achieved without major modifications to the historic building. The SE Controls' system involved the installation and commissioning of a high capacity 1,000mm diameter duplex fan set, for duty and stand-by operation, together with an automatic roof louvre, fan system ductwork and a dedicated control panel including all the necessary fire rated cabling. In the event of a fire, the theatre's fire and smoke detection system automatically signals the opening of the roof mounted louvre and the operation of the high capacity mechanical smoke ventilation system, which is capable of extracting 8 m³/sec. Due to the building's Grade II status, the design, location and installation of the system had to be handled sensitively by SE Controls to ensure the interior and external impact was minimised.

Type C waterproofing – a new online resource



Triton's new 'Type C' waterproofing website has been designed as a resource for specifiers of structural waterproofing systems. Triton supplies a complete range of systems for structural waterproofing but this new site focuses on the company's BBA approved cavity drained membrane systems – defined as 'Type C waterproofing' in BS 8102 2009. Cavity drain membranes work on the principle of allowing water to continue to penetrate a structure but control it in the air gap and divert it to a suitable drainage point. Once the membrane has been fitted, wall surfaces can be dry lined or plastered directly. Floors can be screeded or a floating dry board system installed. The membranes are suitable for use in new build, existing basement conversions or retrofit projects and are quick and easy to install. Minimal surface preparation is required making them ideal for heritage buildings and in conservation projects. typecwaterproofing.co.uk also refers to the ancillary products required to complete a Type C system including sumps, pumps and drainage components and anti-lime coatings to protect cavity drained systems from 'free lime' blockages. Direct links from individual product sections on the site take you to technical data sheets, detail drawings, BIM objects and NBS clauses hosted on Triton's main website.

01322 318830 www.typecwaterproofing.co.uk

Homing in on a centralised future



Story Homes select Union Square Software to help build for the future

Story Homes is a housebuilder renowned for creating outstanding new homes across Northern England and Scotland. Having identified an opportunity for significant growth over the next five years, Story Homes have selected Union Square Software as the solution to support them in this journey. By using a centralised platform, data is never entered more than once reducing administration time dramatically.

With 25 years of experience, Story Homes' work is built to exacting standards and in desirable locations while always being underpinned by the concepts of design, sustainability, community and regeneration. From modest beginnings to becoming a major housebuilder in the industry, the aspirations of the company have led to substantial organic and structural growth. This continued philosophy led them to look for a new system which has the capacity to manage and support this change, as

well as the impending future developments for Story Homes.

Chief Executive Officer, Steve Errington was the key driver for this change in document management software. He said: "The key criteria when looking for a new system included; functionality, scalability, market penetration, implementation support and finally cost. Union Square scored strongly on all counts and we were particularly impressed with the rich functionality of their offering and the ability to expand the services deployed post the initial implementation to complement our organisations growth."

The fact that Union Square for Construction has established itself in the Construction industry helped Story Homes in its decision to invest. The concept of standardising the organisational processes across the business was very important to Steve and is a feature that Union Square not only supports but enforces. By reducing the time wasted on tedious tasks and ensuring the



regulation of procedures, members of staff are able to commit as much time as possible to the tasks that they thrive in without restricting them.

"Union Square has helped many organisations support their continual growth and expansion. We are very excited to work with Story homes to facilitate their development over the coming years," said Richard Vincent, Managing Director at Union Square Software.

For further information visit the website.

0115 985 0055

www.unionsquaresoftware.com

SIMONSWERK RIBA approved CPD



SIMONSWERK's RIBA approved CPD will provide Architects with the technical knowledge for specifying the correct hinge for the right application. The presentation offers guidance on Door Specification, Legislation, Building Regulations, Fire & Safety in use, CE marking – MANDEC and

the Equality Act. SIMONSWERK's range include the outstanding fully concealed TECTUS system and the increasingly popular TRITECH solid brass hinge with concealed bearings and load capacity to 160kg.

0121 522 2848 www.simonswerk.co.uk

Workwear gets shorty



Workwear brand Scruffs is making it easy for you to keep your cool this summer, with the launch of the new multi-functional, lightweight Scruffs Trade Shorts. Made from performance materials and loaded with functional features, the durable and lightweight cargo-style shorts, are designed to be smart enough for business and strong enough for work. The Scruffs Trade Shorts are durable and lightweight work shorts with tough reinforcements for durability in stress areas. Designed

for the busy tradesmen on the go, they include easy to access cargo pocket, phone pocket, rule pocket and tuck away holster pockets.

sales@scruffs.com www.scruffs.com

built environment technology **3**

www.thebuiltenvironment.co.uk

Wholehouse Heat Recovery Ventilation Systems

Designed around low carbon technology to meet the **Code for Sustainable Homes** and comply with the requirements of **The Building Regulations 2010:Part F**

- * Site Surveys
- * Design Service
- * Supply and Site Support
- * Commissioning and Certification
- * Full turnkey option

TECHNICAL **SCHEME** **100%**

TECHNICAL **SCHEME** **100%**

Tel: 01304 215575 info@thebuiltenvironment.co.uk

Priority Gate Road Dover CT17 9SA



Sunscreen for your wood

UV Protection Factor 12

Maintains the natural colour of the wood and limits the greying process

- > Prolongs wood lifetime
- > Algae and fungal decay protection
- > Transparent 425 Oak finish and 428 Cedar finish now available



Call or visit
the web for
stockists.

+44 (0)1296 481 220
www.osmouk.com



osmo[®]

Northcot Brick supplies Pret A Manger

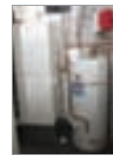


Northcot's unique blend of reclaimed looking bricks has become a distinctive interior design feature of the international sandwich chain Pret A Manger. The Cotswold based manufacturer now manufactures approximately 100,000 bricks a year for Pret A Manger, which are then cut into brick slips by independent builders' merchant

John A Stephens. "Although we originally tried to source genuine second hand reclaim bricks, we found that the best way to guarantee the consistency of quality, texture and colour across every batch was to find a manufacturer, who could make new bricks with all the natural characteristics, folds and variations of second hand reclaims," said Jeremy Daniel, Sales Director at John A Stephens.

01386 700551 www.northcotbrick.co.uk

Johnson & Starley solution for renovation



Johnson & Starley's WarmCair warm air heating, Aquastar hot water storage and Home 'n Dry ventilation technology have been combined to maximum effect in Mr & Mrs Fisher's spectacularly renovated historic apartment in Penarth. Originally, electric underfloor heating had been installed to heat the apartment, but it had soon become apparent that this was inadequate to provide

sufficient heating for the living space with its very high ceilings. The solution was the installation of a Johnson & Starley WarmCair C20DW high efficiency combined warm air condensing heater with domestic hot water. Although the underfloor heating has been retained, it is no longer required. Only the fully Building Regulations Part L compliant, the WarmCair C20DW is now used.

01604 762 881 www.johnsonandstarley.co.uk



Custom designed fabric aircraft hangars

Rubb's experienced engineers have the skills and expertise to provide architectural fabric building solutions for aviation operations or other transport initiatives.

Over the years Rubb has built close working relationships with architects and practices to deliver innovative, cost effective, custom building solutions, which can be quickly designed, manufactured and erected in a wide variety of bespoke sizes, colours and shapes.

Contact us for a quote today...

Email: info@rubb.co.uk | Tel: +44 191 482 2211 | www.rubbuk.com



Building Systems

excellence in engineering



Schöck meets high load cantilever walkway challenge

Kidwells Estate at Maidenhead, is undergoing major regeneration involving seven new blocks, which are part timber clad and vary from three to six storeys of structural concrete frame. Long cantilever walkways service multiple flats and the unusual design demands of these walkways presented a technical challenge for Schöck, who supplied the structural thermal breaks.

Schöck faced an unusual technical challenge concerning the cantilever walkways as the design required as much natural light as possible. To meet this demand, extensive light wells are introduced at regular intervals along the length of the galleries – effectively a series of elongated spaces, separating the walkways from the building for large sections. So there are far fewer structural connection points between the walkways and the building than would normally be anticipated.

The walkways are cantilever concrete construction into internal reinforced concrete frame. The Schöck structural thermal breaks had to resist a much greater shear load than would be the case with a more conventional design.

Schöck resolved the various performance issues



by designing in its type HPC Isokorb. It is a product utilised only if horizontal, tension and compression forces are present in the design – and it is necessary to integrate the type QP90+QP90 Isokorb as well, for linear or point connection to support high shear loads. The result was a completely secure thermally insulated load-bearing connection at all the restricted, but key structural points.

The Schöck Isokorb range provides BBA Certification, LABC Registration and meets full compliance with the relevant UK building regulations.

01865 290 890
www.schoeck.co.uk

WE NEVER LOSE SIGHT OF YOUR VISION

www.etbricks.co.uk

sales@etbricks.co.uk

01708 200 304

ET Clay Products Ltd

t: 01424 20 22 24
www.dolphindispensers.co.uk



New supermodels take centre stage

Ultra slim hand dryer systems with a slender 94mm recess depth and trim 10mm projection.

Slim and stylish the BC27 hand dryer system is perfect for any washroom, especially where space is at a premium.

- **Velocity Eco Slimline Recessed Hand Dryer** – high speed, energy efficient hand dryer with infra-red sensor and stainless steel fascia
- **Recessed Paper Towel Dispenser** – contemporary, slimline unit with stainless steel front
- **Slimline Recessed Bin** – 24L capacity with stainless steel front

The BC27 range – strong on style, easy on space.

Products from the BC27 range can be used individually, or configured in different combinations to maximise use of available space.



For more details about our hand dryers see:
www.dolphindispensers.co.uk

washrooms worth experiencing



Dolphin Dispensers
Southpoint, Compass Park
Bodiam, Robertsbridge TN32 5BS
t: 01424 20 22 24
f: 01424 20 52 00
e: info@dolphindispensers.co.uk
www.dolphindispensers.co.uk

www.apolloradiators.co.uk



monza aluminium column radiator

Ideal for low temperature renewable systems
Ideal for high pressure systems
The latest patented european technology
A unique aluminium radiator design
Half the weight of steel
82 vertical and horizontal sizes
Delivered within 3 working days

www.buildingconstructiondesign.co.uk



REGISTER ONLINE FOR...

Digital magazine
Newsletter • Daily digests

www.buildingconstructiondesign.co.uk

Karndean Designflooring gives an extra touch of luxury at The O2

As part of major refurbishment plans to upgrade existing VIP suites, The O2, London, looked to add an extra touch of luxury by replacing existing laminate flooring with Karndean Designflooring.

The multi-entertainment venue, which hosts some of the world's biggest events, chose the opulent grain and knot details of Art Select,

Morning Oak and Auburn Oak Parquet. The O2 chose to have the individual parquet planks laid in a traditional herringbone design.

"VIP isn't just on the ticket, it's in the experience" commented Simon Carter, fabric manager at The O2. "Therefore we had to ensure that the quality of the refurbishment speaks for itself.

"Having previously specified Karndean in our O2 Lounge, we know the floor will maintain its 'wow' factor for years to come."

The O2 used complimentary carpet tiles against Karndean, in a bid to create a lavish statement.

Simon added: "Our brief was simple: luxury. Therefore it was vital that we chose a premium product to fit with our high specification. Karndean has helped us achieve this, with the golden design of Morning Oak and the rich texture of Auburn Oak creating a really sumptuous feel. We have achieved a visually amazing space full of



glamour, in keeping with the experience we promise our VIP guests."

So pleased with the feedback from the 64 revamped boxes, The O2 are now planning to install Karndean in the 32 remaining suites.

01386 820 100 www.karndean.com



Taking you to the next level...

Premier Loft Ladders are the preferred choice of architects and building industry professionals throughout the UK, and their range of COLUMBUS Treppen stairways leads the way in engineering quality, design, technology and energy efficiency, making Premier the foremost supplier of concertina style aluminium and folding or sliding style wooden loft and access ladders. Our stairways have a wide range of options including flat roof access, fire resistant trapdoors, electrical operation (concertina stairway) and vertical access.

For further details contact us on: **0845 9000 195 / 01394 214413**

Key reasons to choose PLL:

- Outstanding quality and value
- Preferred choice of architects and building industry professionals
- COLUMBUS Treppen - UK Main Dealer
- Technical and design advice
- Commercial and domestic applications
- Fire resistant trapdoors
- Vertical access
- Flat roof access
- Electrical operation

PREMIER
LOFT LADDERS

Tel: 0845 9000 195 / 01394 214413
Email: sales@premierloftladders.com
Web: www.premierloftladders.com

Constructionline

nsPlus



Stannah Passenger Lifts – since 1867

For almost 150 years, Stannah has been in the business of lifts. Today its comprehensive standard passenger lift ranges offer solutions for 4-33 persons in all types of low to medium rise buildings, while its bespoke lifts cater for the unusual. Its aim is to provide you with a vertical lift that is Part M and EN81-70 compliant, fit for purpose, safe and quality engineered.

Maxilift 2.0 - Stannah hydraulic passenger lift range

With 6 - 14 person capability and travel up to 15 metres, these lifts are ideal for low/medium rise and medium use. Maxilift passenger lifts offer simple, cost-effective solutions that provide reliability, safety and choice – in equal measures.

Their versatility is ably illustrated in a series of 2015 installations in Wales for Pembrokeshire

Housing as Property & Compliance Officer Aled Roberts confirms: “We have specified Stannah lift products before and were happy to do so again with these new developments. The Maxilifts represent excellent value for money with the added reassurance of a well-known brand and the comprehensive support service that goes with this.”

In Paterchurch Court, Pembroke Dock, an 8-person Maxilift brings access over four floors to 26 apartments. Likewise, in Acorn Heights, Tenby, a similar lift brings access to 16 apartments ranged over three floors. And in Marychurch Court, Haverfordwest, a 6-person Maxilift unites three floors and 30 apartments.

All three sites had existing lifts, which Stannah decommissioned and safely removed, prior to placing new lifts into the existing shafts. On each site Stannah ensured builder's work was kept to a minimum by configuring the new lift car to suit the existing shaft and landing entrances. For easy site access, half-length lift guides were specified on each installation.

For each passenger lift, Stannah's on-site project managers liaised with third parties for the installation of a Tunstell Warden Call unit, an internal building communication system often used in residential care properties, allowing two-way conversation with the lift.

Xtralift 2.0 - Stannah traction passenger lift range

With 6 - 33 person capability and travel up to 40 metres, these lifts are ideal for busy environments. They carry more people, a little faster and a little higher and are ideal for projects with special requirements. A super-efficient high performance gear-less traction drive ensures a smooth ride with low noise, energy use and running costs perfectly suited for increased usage and higher travels.

Five Stannah Xtralift 2.0 passenger lifts are playing a key access role in Phase 3 of the award-winning regeneration of Packington Estate in the London Borough of Islington.

This £130-million, 8-year project to replace 538 structurally defective flats with 791 energy-efficient houses and flats, with the addition of community is a nationally recognised triumph of integrated, uplifting, urban community living.

The three simplex control and two duplex control passenger lifts are traction driven at a speed



of 1.0 m/s in wall-mounted shafts measuring 1650W x 1835D. The lift car interiors are finished in satin stainless steel or silver-grey vinyl skinplate, with silver rear wall mirrors, handrails and black-studded, non-slip PVC floors. Optional extras include vandal-resistant reinforced cars, heavy-duty doors, tamper-proof LED ceiling lights and autodiallers.

Stannah has also supplied and installed passenger lifts in Phases I and 2 of this redevelopment, with four further lifts scheduled to be installed during Phase 4, totalling 16 lifts over the first four phases.

All new Stannah passenger lifts are covered by a comprehensive aftercare service from locally based Stannah lift engineers who are part of a nationwide network providing comprehensive lift servicing and support.

01264 339090
www.stannahlifts.co.uk
liftsales@stannah.co.uk



VORT HR350 AVEL

Heat Recovery Unit with 100% Summer Bypass

NEW

- EST Best Practice - SAP Appendix Q eligible
- Low Noise – ensures quiet operation in the home
- Fresh air is 100% fully filtered which helps to maintain good indoor air quality even in bypass mode
- Easy Installation & Maintenance – Lightweight construction and removable hinged access door
- Controllability – wired LCD electronic controller which displays unit status
- Easy accessible G3 filters
- Integrated frost protection
- Ideal for student accommodation



01283 492949

sales@vortice.ltd.uk
www.vortice.ltd.uk



MODULAR SHOWERING SOLUTIONS



- LEAK FREE
- DESIGN BUILD
- ZERO MAINTENANCE
- DURABLE & RELIABLE
- RECYCLABLE
- QUICK & EASY TO INSTALL
- ISO 9001 REGISTERED
- ISO 14001 REGISTERED
- 25 YEAR GUARANTEE

TAPPLANES®
SHOWERING SOLUTIONS

Telephone 01423 771645 • Email admin@taplanes.co.uk • www.taplanes.co.uk

Making Waves

Take the Dušo tour at www.horne.co.uk/Products/duso



Schlüter-Systems hits a six at cricket stadium hotel

The designers of a new four star hotel at the Ageas Bowl Cricket Stadium have selected Schlüter-Systems, a market leader in essential tiling protection, to waterproof and reduce sound transmission in the bathrooms of all 171 guest rooms.

The Hilton at The Ageas Bowl, Southampton, home of Hampshire County Cricket, opened in the spring of 2015 and will cater for thousands of guests every year, meaning its new facilities had to be of the highest quality and durability.

Schlüter®-DITRA-SOUND offers superior sound insulation, significantly reducing the sound transmission to adjoining rooms, making it an ideal product for hotels. Additionally the Schlüter®-DITRA range of mattings and membranes are designed to waterproof and protect tiled installations from lateral movement, cracked substrates and water penetration, the range also includes the unique underfloor heating system Schlüter®-DITRA-HEAT.

EPR Architects' Nick Rayner, one of the team who designed the Hilton at The Ageas Bowl, said: "Schlüter-Systems is one of a select few companies

which can provide the type of solutions for tile and stone needed for a premier establishment such as a new Hilton Hotel."

"The diversity of their product and application ranges and vital consultant services give architects a host of support and advice that can be trusted when designing a large project such as this – from an architect's point of view you have more freedom to create what you want."

Schlüter®-DITRA-SOUND is a bonded impact sound insulation for tile coverings, made of a heavy polyethylene mat, which has an anchoring fleece laminated on both sides to bond with the tile adhesive.

The impact sound reduction of 13 dB achieved by Schlüter®-DITRA-SOUND means as part of the assembly, it can contribute towards a 50 per cent reduction in airborne sound.

Carl Stokes, Head of Marketing and Customer Service at Schlüter-Systems, said; "The Hilton at The Ageas Bowl is a prestigious new hotel in a grand setting, and we're delighted that our products were specified and designed into the project; ensuring everyone from client, architect

to hotel guest can sleep tight knowing Schlüter®-DITRA-SOUND is performing as expected."

As well as providing acoustic reduction solution in all guest bathrooms, Schlüter®-DITRA-SOUND has also been used in the appropriate staff welfare and disabled access facilities, totalling more than 1'300 m2 of Schlüter®-DITRA-SOUND throughout the hotel.

Boasting stunning architecture and stylish design, the Hilton at The Ageas Bowl is incorporated into The Ageas Bowl Cricket Stadium, which plays host to England Internationals against the world's greatest cricket teams, and also functions as a music venue, and has hosted arena-scale shows by acts including Oasis and The Who. The hotel has recently started taking bookings.

With over 10,000 products in its range, Schlüter-Systems have an essential role to play in every professional tiling product. To find out how it can help you to create more beautiful and longer-lasting installations call or visit the website

01530 813396 www.schluter.co.uk

THE ART OF HEATING



BESPOKE.
CLASSIC.
ELITE.

The Tuscany, Bespoke Colour

For Stockists Contact:

T: 0808 129 2224 | E: sales@carron.uk.net | W: www.carron.uk.net



Polyflor launches Designatex for the home



Polyflor is proud to announce the launch of its latest range of beautifully designed and hard wearing flooring developed specifically for the home, the Designatex collection of textile backed luxury sheet vinyl flooring. The stylish yet practical Designatex vinyl flooring range includes 12 wood effect and 6 stone effect designs to enhance any room in the home. To complement both traditional and modern interiors, the wood collection features a variety of wood species and layouts including

three classic parquet designs. These wood designs accurately replicate the warmth, grain detail and natural textures of real wood planks for an authentic finish.

0161 767 1111 www.polyflor.com

Distinctly Abode Zero sink



The Abode Zero ultra-modern sink design offers functionality in abundance with stylish deep large bowls across the range. Zero sinks are manufactured from advanced granite style composite material and have a metallic granite fleck in the material to add additional sparkle to your kitchen. Available in white and black colourways, there are four sinks in both

colours in the collection, 1.0 bowl with drainer, 1.0 bowl with double drainer, 1.5 bowl without drainer, 1.5 bowl with drainer, plus a selection of optional accessories are available.

Tel: 01226 283434 www.abode.eu

Abode Connekt Flushfit sink

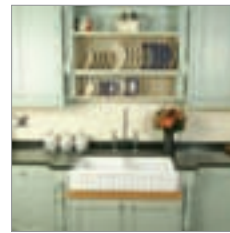


The latest Abode innovation is Connekt Flushfit, an ultra slim flush fit or inset sink range. With its ultra-thin edge detailing, it delivers a sleek contemporary look to any chosen worktop. There are 1.0 and 1.5 bowl sinks produced in premium 18/10 grade stainless steel. Connekt Flushfit can be fitted at the same surface level as the worktop by inseting or alternatively fitted

conventionally as an inset with stylish low-profile edges. Connect Flushfit comes complete with the unique Abode Orbit waste and all plumbing pipework required for installation.

01226 283434 www.abode.eu

Shaws of Darwen Ribchester



This spacious 'English made' Ribchester sink from the Shaws of Darwen Original Collection is a large heavyweight, double bowl sink with distinctive fluted front and central dividing wall with a 3-hole overflow in each sink, plus standard 3½" waste outlets for basket strainer or waste disposer. The Ribchester is available in white and biscuit finishes with a long

lasting, durable glaze. Visit the Shaws of Darwen website for more information and to view the company's full range of kitchen sinks, complementary tap designs and accessories.

01254 775111 www.shawsofdarwen.com

Flotex creates fresh feeling in sixth form centre



When the time came to replace worn carpet tiles in the sixth form common room and study room at Blessed William Howard Catholic High School in Stafford, Forbo's Flotex Colour floor coverings in a modular format proved the ideal refurbishment solution.

A product that could cope with heavy footfall, walked in dirt and food and drink spillages was needed, and Forbo's hybrid flooring was selected for its durability, washable characteristics and stylish aesthetics. Flotex Colour Metro in Ocean Blue was installed in both rooms providing a clean, bright and fresh environment for the students. Thanks to its unique construction – 70 million fibres per m² – Flotex delivers the warmth and comfort associated with carpet, combined with the practical elements of resilient flooring. It has the prestigious Seal of Approval from Allergy UK as it does not harbour allergens and therefore contributes to a healthier indoor environment. It also benefits from Sanitized*, an anti-microbial treatment that offers constant protection against bacteria. Additionally, Flotex is 100 per cent waterproof and, unlike other textile floor coverings, can be washed right down to the base of the flock.

0844 882 3928 www.forbo-flooring.co.uk/flotex

Vecta wall linings give the perfect finish at London South Bank University



More than 150 sq m of Vecta aluminium wall lining and a feature bulkhead have been manufactured and installed by Encasement as part of the £multi-million creation of London South Bank University's (LSBU) award winning Student Centre. Hawkins\Brown architects, transformed an undercroft car park and first floor refectory space into a bright and vibrant hub, which brings together all of LSBU's non-academic, social and pastoral support services for students while also forming a new main entrance into the campus from Southwark's Borough Road.

The dramatic transformation of the building's interior is supported with the use of Encasement's precision Vecta wall lining, bulkhead and interior finishing solution within the foyer, office areas and main staircase. In addition to the 15 metre long feature bulkhead, Encasement also manufactured and supplied extensive stairwell and associated aluminium cladding, which incorporates complex geometries and a recessed handrail pocket within the design.

As the specification demanded that the wall lining used concealed fixings and all joints should be virtually invisible, Encasement measured and hand made each of more than 300 separate 3mm thick aluminium panels, each of which was different, to ensure that they fitted perfectly on site.

ISD completes 150th installation for Morrisons



ISD Solutions, a leader in composite panel cold store construction, has completed its 150th cold store for Morrisons supermarkets at the M local store on Barnwood Road in Gloucester. ISD Solutions' Retail division provides complete design, manufacture and installation services for each cold store facility and in Gloucester, installed a dual temperature storage compartment measuring 6.00m by 3.35m that provides walk in food storage for temperature sensitive produce with sufficient storage capacity between deliveries. Each cold store is designed to provide thermally efficient, food safe storage with temperatures down to minus 20 degrees, with easy clean finishes.

01452 520 649 www.isd-solutions.co.uk

Belthorn from Shaws of Darwen



The Belthorn from Shaws of Darwen is a British made, fireclay ceramic sink which can be inset or undermounted.

It features the Shaws logo on the inside of the sink, has a central 3½" waste outlet for basket strainer or waste disposal and is manufactured without an overflow.

The sink works perfectly with granite, marble or wooden work surfaces.

Visit the Shaws of Darwen website to see the complete range of sinks, taps and accessories available.

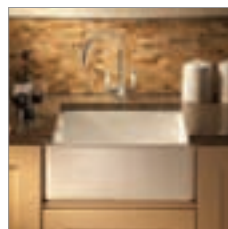
Tel: 01254 775111 www.shawsofdarwen.com



Setcrete™ sets the pace with 2K Pro

Setcrete's 2K Pro levelling compound has been used to rapidly create a smooth and durable surface for the installation of new floorcoverings at a kitchen refurbishment in Solihull, Birmingham. Thanks to the unique capabilities of Setcrete's 2K Pro levelling compound, contractors were able to complete the entire job in a single day. Normally, before a levelling compound could be installed, this adhesive residue would have to be removed by mechanical means, such as shot blasting, which can be time consuming and difficult. Setcrete's 2K Pro has been specifically designed for use over adhesive residues. By using the purposefully designed product, contractors were able to avoid having to remove the residue before levelling the subfloor, saving a great deal of time and effort. Setcrete's rapid setting 2K Pro can achieve a walk-on time of just 60 minutes and new floorcoverings can be installed in as little as four hours. The fast drying, two component compound can be applied to a range of properly prepared sub-floors, including concrete, sand/cement screeds, terrazzo, granolithic paving, ceramic tiles, and it can be applied directly onto Setcrete Rapid Set DPM. One contractor who carried out the refurbishment work said: "I will definitely be using this product again. Not only did we not have to spend time getting rid of the adhesive residue, but the newly levelled subfloor was walk-on hard in an hour, meaning we could get on with the rest of the job in no time." Setcrete 2K Pro floor levelling compound, available from merchant distributors nationwide, is sold as a 20kg bag and 5 litre bottle package.

Shaws of Darwen Pennine



Pennine, a traditional Shaws of Darwen 'British made' fireclay Belfast sink. A deep Victorian model with integrated weir overflow and standard 3½" waste outlet with unique overflow adaptor for waste disposer or basket strainer. The sink is suitable for many styles of homes and refurbishment projects and can be used in kitchens or utility rooms. Available in

White and Biscuit finishes with a durable glaze, basket strainers in Chrome, Brushed Nickel, Gold and Antique Bronze complete with ceramic indices topped with the Shaws logo, finish off the 'look'.

01254 775111 www.shawsofdarwen.com

building
construction
design



Products Designed to
Light Up Your
Imagination

Davuka GRP Ltd

For Inspired Lighting & Mouldings

www.davuka.co.uk info@davuka.co.uk
020 8660 2854

REGISTER ONLINE FOR...

Digital magazine
Newsletter • Daily digests

www.buildingconstructiondesign.co.uk

Wet room wonders from Schlüter-Systems

Schlüter-Systems extensive range of wet room products offers simplicity, reliability and easy installation within the home.

Incorporating the very latest innovations for floor-level showers and wet rooms, Schlüter-Systems provides a fully integrated product suite, including top of the range waterproofing sets, drainage systems, and uncoupling and waterproofing membranes for tiling the walls and floors.

Products including Schlüter®-KERDI-LINE are linear drain channel systems which are perfect for

the construction of floor level showers and offer a particularly low assembly height. The Schlüter®-KERDI-SHOWER range are pre-sloped shower bases making tiling straightforward and there are a number of different sizes and dimensions available, providing an ideal substrate for an excellent finish with tile or natural stone.

Other products in the range include the Schlüter®-KERDI-SHOWER-TB which has been specifically designed for timber substrate environments and the Schlüter®-KERDI-DRAIN which is a square floor drain system with designer grate options. Schlüter®-WETROOM range also boast all-in-one wet room kits, including all the necessary components to provide guaranteed waterproofing solution for walls and floors.

Carl Stokes, divisional manager at Schlüter-Systems, comments, "The installation of a wet room within the home has never been so easy or more accessible. We have received great feedback from tilers using our kits and the fact that we've witnessed such an increase in demand for our wet room range really speaks volumes about the



popularity of not just the packs but the products within our wet room range."

"The kits are not only an installers dream but with the Schlüter®-KERDI-DRAIN and Schlüter®-KERDI-LINE the designers and home owners can tailor make the decision on if they wish to make the drainage channel a feature with the designer grates or for it to blend into the design using the frameless grates."

01530 813396 www.schluter.co.uk



**building
construction
design**



REGISTER ONLINE FOR...

Digital magazine

Newsletter • Daily digests

www.buildingconstructiondesign.co.uk



HOUSE of DESIGN
Kitchens - Bedrooms - Bathrooms



*Delivering more than you
thought possible for every
room in your home*

Investing in your home is daunting emotionally and financially, you want to get it right first time whether creating a home for your family or maximising an investment.

We will inspire and educate you to realise and exceed your own expectations, maximising your budget with our 30 years' design expertise and specialist knowledge.

Looking forward to working with you

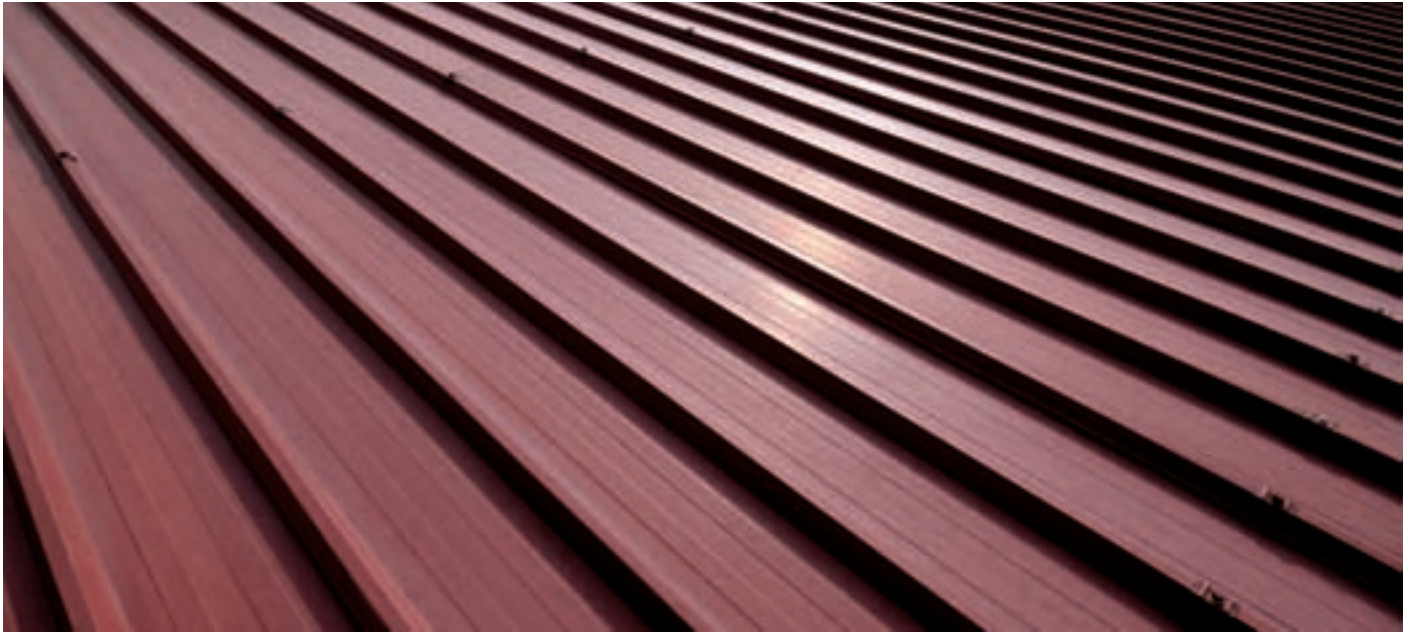
Jim Susan

Jim and Susan
J&S House of Design

01865 596768

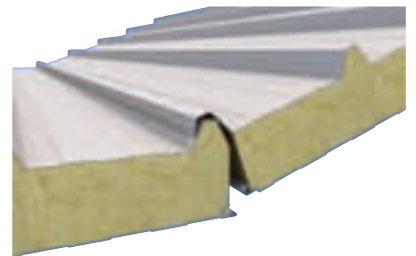
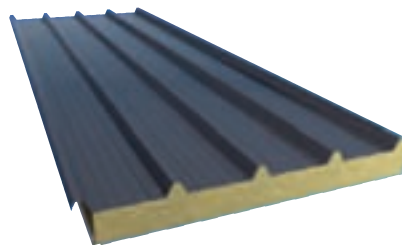
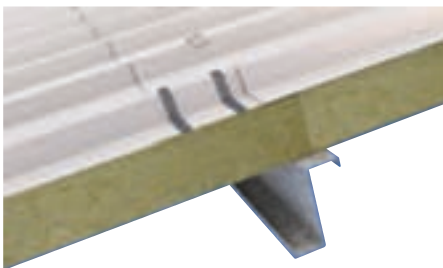
www.jshouseofdesign.co.uk





Roofspan

Eurobond launches Roofspan, a new non-combustible stone wool core, trapezoidal composite roof panel



Combining functionality and superior fire and acoustic performance, Roofspan delivers a low risk total building solution that is cost effective with a low environmental impact. Developed as a roofing solution for high risk buildings and manufactured with a non-combustible stone wool core, Roofspan gives superior reaction and resistance to fire, certified to LPCB standards.

Roofspan offers significant advantages over conventional site assembled systems including fast single fix installation, reliable thermal performance and low air leakage, exceeding building control guidelines. The roof panel is quick and easy to install, and the wide spaced trapezoidal steel external skin provides optimum performance for water drainage, strength and walkability.

The Eurobond NRG® option is available across the Roofspan range and is particularly suitable for buildings where the underside of the roof is exposed. It uses a special internal steel face that maximises daylight and reduces the requirement for artificial lighting. The result is lower light energy bills for the life of the building, a reduction in the carbon footprint and a positive contribution to material credits in a BREEAM assessment. NRG® is a passive energy saving product and the benefits are expected to last the life of the building in normal and unpolluted environments.

The stone wool core of Roofspan panels has a high content of recycled material and this helps to minimise the environmental impact of construction, reducing carbon emissions by diverting materials from landfill and limiting the

depletion of finite natural resources. At the end of a building's life Eurobond Roofspan composite panels offer a 'Cradle to Cradle' approach to recycling where materials are recycled in a closed loop. This maximises material value whilst minimising the damage to ecosystems – products are used, recycled and reused again without losing any material quality.

Incorporating aesthetics, functionality and performance Roofspan is manufactured from Colorcoat HPS200 Ultra® and Colorcoat Prisma® pre-finished steel by Tata Steel, complete with the Tata Steel Confidex® Guarantee, providing peace of mind for up to 40 years upon registration.

02920 77 66 77
www.eurobond.co.uk

Kemperol protects Liverpool's Royal Liver Building

With Cunard, one of Liverpool's greatest companies, celebrating its 175th anniversary this year, it was time to refurbish the distinctive cupolas to part of Liverpool's UNESCO designated World Heritage Maritime Mercantile City Royal Liver Building, a Grade I listed iconic waterfront landmark, in time for a celebratory flotilla. Kemper System's 1K-PUR cold liquid-applied waterproofing system was selected to complete the challenging scheme.

The cupolas are of concrete construction and have been protected by various waterproofing systems over the years but water ingress was becoming an issue and in some areas the concrete was failing and had to be repaired to return the surface to its original domed shape. Roofing contractor, K Pendlebury & Sons Ltd were appointed by main contractor Quadriga Ltd, specialist restoration contractors, to carry out the challenging task of working at height on the roofs

in an exposed waterfront location.

Comments Neilan Symondson from Pendlebury: "We selected the Kemperol 1K-PUR system following trials carried out prior to commencing the project to ascertain the best approach to delivering the project with the level of finish required by the building's management company, CBRE, and English Heritage while managing time constraints of the project". The challenging weather conditions of the building's waterfront location and the need to identify a system that was suitable for the varying surfaces on and around the cupolas also influenced the specification. The method of fleece application and ease of use of the Kemperol system was ideally suited to meeting these criteria on a scheme that involved working up to 14 storeys high.

The installation team began the restoration of each cupola by repairing each concrete structure using Kemper System's primer mixed with quartz



sand to make a mortar that could be used to build up the eroded areas.

For the larger cupolas, the scheme also involved scroll features and termination details and the installation team also painstakingly applied the system around the solid granite mini scroll features that surround each of the smaller cupolas.

CBRE's Simon Hepple adds: "In terms of surface area, the Royal Liver Building scheme was not large but it was extremely challenging and required both a specialist approach and careful product selection. Kemper System's Kemperol 1K-PUR was ideal for this unusual project."

enquiries@kempersystem.co.uk
www.kempersystem.co.uk



**Resin
Bound**

**Resin
Bonded**

**Slurry
Seal**

**Play
Surfacing**

Surfacing solutions for external applications

01978 661 991

www.conren.com info@conren.com



Battle of Britain Visitor Centre

The Battle of Britain Memorial, located at Capel-le-Ferne in Kent, is a monument to aircrew that flew in the infamous Battle of Britain in 1940. A new addition to the memorial site is a £3.5 million state-of-the-art visitor centre called 'The Wing', which has been designed to replicate the shape of RJ Mitchell's iconic spitfire wing with its distinctive uplift. Vital to the success of this new building was its flat roof, which is highly visible and plays an integral part in creating The Wing's overall appearance. The building consists of three main roof areas, with one central core roof separating the adjoining two wing shaped sections, totaling over 700m² in all. Bauder's anthracite coloured Thermofol single ply membrane was specified for the waterproofing because it is long lasting, visually appealing and allows for no physical penetrations of the roof. The system build-up also included Bauder's 160mm PIR insulation for superior thermal performance, ensuring the roof achieved the required 0.16 U-Value.

01473 257671 www.bauder.co.uk

Leisure facility nominated for award thanks to Metrotile UK

A lightweight steel roof installed by Metrotile UK on a leisure facility in Wiltshire contributed to a sustainable project which has been nominated for a regional award.

The new building on the PGL campus in Liddington near Swindon has been nominated for the South West LABC Building Excellence Awards 2015, thanks to its sustainability credentials which include the Metrotile roof.

PGL, which is based in Ross-on-Wye and operates 22 activity centres in the UK, France and Spain took over the site in Liddington five years ago and recently began working on a brand new guest accommodation block that would be known as Ridgeway.

The new timber frame building, which can accommodate 392 guests across 116 rooms, took

just 28 weeks to install the building from the ground up, including a rapid roof installation that utilised the Metrotile Bond profile in charcoal.

Metrotile UK was also able to supply custom fittings so that a retrofit photovoltaic system could be installed.

In addition, PGL has used Metrotile products at Liddington on two staff accommodation blocks, once again timber frame and utilising a thermal energy system to provide hot water to the 108 staff members that they house.

Tomy Thompson, Regional Property Manager for PGL, said: "For us, the benefits of lightweight steel roofing are the speed of construction but also the lack of forward maintenance. Bearing in mind that this is a leisure facility, because of the way the tiles are installed there is no prospect of damage causing loose tiles or slates.

"It's a great product and we hope to work

with Metrotile UK again in the future. We are pleased that the facility has received due recognition with the award nomination."

01249 658514 www.metrotile.co.uk



Baker Street building transformed by Bauder green roof



82 Baker Street located in the Marylebone district of Westminster in London is a commercial building that has recently undergone an extensive amount of renovation work. Central to the new developments was the refurbishment of the building's flat roof, which included the creation of a green roof terrace area with impressive views across the West End. The original flat roof covering had surpassed its life expectancy and begun experiencing water ingress so urgently needed attention. The original waterproofing on the main roof areas was removed before being replaced with Bauder's premium reinforced bitumen system, which included a highly efficient tapered insulation for superior thermal performance and improved drainage falls, ensuring the roof achieved the required average 0.16 U-value. On the new ballasted terrace roof area, located on the building's 5th floor, 400m² of Bauder's bituminous green roof system was installed with wildflower blanket around the roof perimeter delivering an instant carpet of vegetation. Despite the challenges faced throughout the project all roofing works were completed on time and to budget, providing the client with an innovative refurbished roof that boasts extraordinary environmental credentials. This project is an exceptional example of how modern roofing technology can help rejuvenate an historical site.

01473 257671 www.bauder.co.uk

Moduglass Quartet illuminate manuscripts at Enfield Library



Extensive refurbishment and redevelopment work at a library in the London Borough of Enfield has included the installation of four large, high performance rooflights from the Jet Cox range. The phased two-year programme of works centred on the Palmers Green library building is being led by Enfield's Library and Museum Services department and is on course to be completed this autumn; with significant improvements being promised for users. These include a more comfortable and better lit interior environment to which the Jet Cox Moduglass rooflights will make a significant contribution. The remodelled library building will be spread over two floors with new children's, teenage and community spaces. The set of four, five-section Moduglass rooflights have been manufactured and supplied to the main contractor, Borrás Construction Limited, ready for installation onto the prepared deck. The Moduglass Range is available with the choice of two, three, four or five compartment assemblies, which are conventionally located on top of the manufacturer's RO16 insulated upstands. In fact the Moduglass range is compatible with virtually any type of roofing membrane including single ply, hot melt, GRP and lead, copper or zinc. The quartet supplied for the Palmers Green project was all finished in white, although other RAL colours are available to order. The Moduglass units are covered by the company's 10 year guarantee.

Award-winning Knowledge Centre combines sustainability with striking design

This striking building, which was opened this year in the centre of the Flemish city of Roeselare and features several bespoke Reynaers' systems, has already won a host of awards.

The Knowledge Centre Arhus – meaning 'open house' – is a public information forum and meeting place. It houses the city's library and archive, as well as teaching facilities and meeting rooms, offices and social spaces.

Designed by architects BURO II & ARCH+I, the building makes extensive use of Reynaers' CW 50 curtain wall system, in both its standard form and with complex bespoke solutions, in order to accommodate the extensive use of glass on the project. The facade incorporates hundreds of diagonal sections as a stylish feature of the building's design.

Three different types of glass make up the facade with clear and green glass and a third white glass panel positioned approximately 12cm further forward. This gives a sense of greater depth to the curtain wall, which covers an area of 2,700m².

Head of Marketing at Reynaers Hugh Moss said: "The Knowledge Centre has won a number of awards, including the Benelux Aluminium Award, for its exceptionally sustainable renovation, and the Joinery Award, thanks to excellent execution and exceptional technical challenges."

"We're very proud that both our products and technical team have helped to contribute to this award-winning building."

The facade's complexity meant that the fabricators on the project – De Witte Aluminiumconstructies NV – worked in collaboration with Reynaers on the development

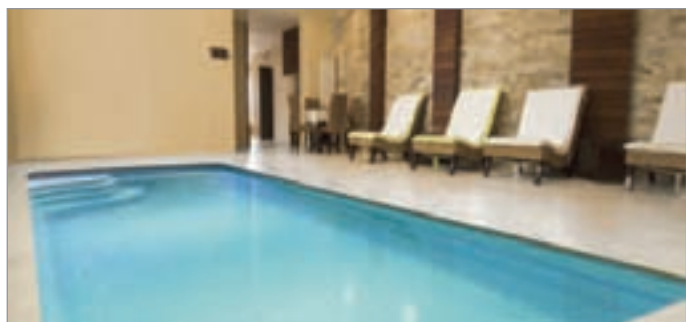


of bespoke solutions to achieve the desired effect. These included T-shaped face caps for the enamelled white glass, special mounting brackets and flat face caps for the CW 50 transoms.

As the facade featured several complex junctions, critical for effectively draining water, the fabricators produced a mock-up of part of the curtain wall on the building, in which all of the diagonal details and glass types were included.

Reynaers high insulation doors and windows CS 86-HI and CS 86-HI/HV were also included on the project, to complement the building's external envelope, along with sliding systems CP 155.

0121 421 1999 www.reynaers.co.uk



Leisure & Exercise Pools Award winning fibreglass pools

- One-piece reinforced fibreglass construction
- Simpler and lower cost solution in comparison to concrete and liner pools
- Could be part or fully mosaic tiled
- Over 40 years manufacturing history
- Choice of over 50+ models
- Pool sizes from 4m-11m



www.bakewellpools.co.uk
Tel: 01865 735205

**Bakewell
POOLS**

BUY BRITISH, BUY QUALITY, BUY **Jeckells** SHADE SAILS



We design and manufacture Shade and Weatherproof Sails in commercial and domestic environments. Our forte is engineering solutions that not only look good but will also stand the test of time in unpredictable outdoor environments.

All our Shade Sails are individually designed with colour, shape and size to suit your particular requirements. Architecturally stunning. We use either Stainless Steel or Timber posts depending upon the environment. Our Shade Sails are easily fitted and removed. A full design and installation service is available.

Jeckells 
THE SAILMAKERS

For more details please call **01603 782223** or
email shadesails@jeckells.co.uk

Emperor Concealed

Innovative Bifold Doors

The Future of Bifolding Doors



Flush Handles

Clean Lines

Invisible Patented Hinges

Price Online: duration.co.uk

Call Us: 01268 681612



DURATION
WINDOWS

Aluminium Trade Manufacturer Since 1985

Levolux shapes up at Mabledon Place



A transformed 1970's office block at One Mabledon Place in central London has been reborn as 'The Halo Building', with the addition of a distinctive roof screening solution, from **Levolux**. Located on one of London's busiest high streets and designed to achieve a BREEAM 'excellent' rating by Bennetts Associates, the project demanded meticulous planning and

a collaborative approach, particularly when it came to delivering the highly visible roof screening solution. Levolux was chosen to, supply and install a custom screening solution, comprising vertical mesh panels, topped by extruded aluminium Aerofoil Fins, arranged into horizontal panels.

Northcot Brick launches new yellow handmades



Northcot Brick has launched a new range of classic yellow bricks as part of its well-established handmade range. The three new blends: Woodstock Weathered, Wellacre Antique and Marlborough Mellow add variation to the rich warm reds and orange hues often associated with the historic brickworks. Handmade using traditional bench mould methods and burnt in a coal-fired kiln, these distinctive yellow bricks offer subtle variations in tone and texture and a

character designed to complement the architecture of the south and south east of England.

Tel: 01386 700551 www.northcotbrick.co.uk



NorDan chosen by award winning architects

Mazarin House is a block of 6 two-bedroom flats in Woodford which achieves energy performance of Level 4 of the Code for Sustainable Homes. **NorDan's** timber sliding doorsets feature in the main living spaces of this novel design by award winning Arboreal Architects at Bethnal Green London. Architect Tom Raymont from Arboreal says: "We chose NorDan products for our building because of the excellent thermal performance using only double glazed units. The timber frames reduce their carbon footprint. We emphasised the natural beauty of wood, by choosing the clear lacquer finish for the interior of the frames. The external factory fitted aluminium cladding was anodised to a bespoke colour to match our designs." NorDan was founded in Norway in 1926 by the Rasmussen family. It's still a family business today run by the third generation. NorDan has six regional project offices in the UK to be close to the customer.

01452 883131 www.nordan.co.uk

Kemperol protects Liverpool's Royal Liver Building



With Cunard, one of Liverpool's greatest companies, celebrating its 175th anniversary this year, it was time to refurbish the distinctive cupolas to part of Liverpool's UNESCO designated World Heritage Maritime Mercantile City Royal Liver Building, a Grade I listed iconic waterfront landmark, in time for a celebratory flotilla. Kemper System's 1K-PUR cold liquid-applied waterproofing system was selected to complete the challenging scheme.

The cupolas are of concrete construction and have been protected by various waterproofing systems over the years but water ingress was becoming an issue and in some areas the concrete was failing and had to be repaired to return the surface to its original domed shape. Roofing contractor, K Pendlebury & Sons Ltd were appointed by main contractor Quadriga Ltd, specialist restoration contractors, to carry out the challenging task of working at height on the roofs

in an exposed waterfront location.

Comments Neilan Symondson from Pendlebury: "We selected the Kemperol 1K-PUR system following trials carried out prior to commencing the project to ascertain the best approach to delivering the project with the level of finish required by the building's management company, CBRE, and English Heritage while managing time constraints of the project". The challenging weather conditions of the building's waterfront location and the need to identify a system that was suitable for the varying surfaces on and around the cupolas also influenced the specification. The method of fleece application and ease of use of the Kemperol system was ideally suited to meeting these criteria on a scheme that involved working up to 14 storeys high.

The installation team began the restoration of each cupola by repairing each concrete structure using Kemper System's primer mixed with quartz

sand to make a mortar that could be used to build up the eroded areas.

For the larger cupolas, the scheme also involved scroll features and termination details and the installation team also painstakingly applied the system around the solid granite mini scroll features that surround each of the smaller cupolas.

CBRE's Simon Hepple adds: "In terms of surface area, the Royal Liver Building scheme was not large but it was extremely challenging and required both a specialist approach and careful product selection. Kemper System's Kemperol 1K-PUR was ideal for this unusual project."

enquiries@kempersystem.co.uk
www.kempersystem.co.uk

FIRE RETARDANT UK

FIRE retardant for **WOOD**

HR PROF

- Eco Friendly
- Clear & Odourless
- Water Based
- Non Toxic
- No Solvents
- Apply with Brush or Spray
- Euro-class B-s1-d0
- Internal or External Use
- HR Prof Also tested to BS 476-6 & BS 476 part 7

Classification Reports & Certificates Pine, Spruce, Scottish & Siberian Larch, Western Red Cedar, Oak

T: 0800 7833 228 E: sales@fireretardantuk.com W: www.fireretardantuk.com

WEDGE GROUP GALVANIZING

Your Galvanizing Partner

- Quality approved Galvanizing • Technical support and advice
- See the process in action and take your CPD
- 14 plants across the UK offer you a national service
- We galvanize steel from 1.6mm to 29m long

Excellence in Galvanizing

E: galvanizing@wedgalv.co.uk
T: 01902 600704 www.wedgalv.co.uk
@wedgalv

WEDGE

ISO 9001 FM 00282 GALVANIZERS ASSOCIATION riba product selector

Head Office: Stafford Street, Willenhall, West Midlands, WV13 1RZ

Reynaers at Home helps to design out crime ahead of October deadline

Reynaers at Home is leading the way with its long-standing 'Secured by Design' accreditation across a range of its aluminium windows and doors. The systems company has planned well ahead of the forthcoming deadline, which requires all new builds to be PAS 24:2012 compliant.

In 2014, the government announced the October 2015 timeframe to deliver a simplified system for setting standards in the design and construction of new homes.

Reynaers at Home has one of the broadest ranges of window, door and sliding doors systems that have achieved the desirable Secured by Design 'Police Preferred Specification', ensuring that these products fall within the requirements of the British Standard Publication PAS 24:2012. Reynaers' CS 86-HI, for example, is a multi-chamber system for windows and doors that combines aesthetic design, optimal stability and high thermal comfort. Due to the insulating skeleton strips, CS 86-HI+ achieves Uf-values down to 1.0 W/m²K making this a highly energy

efficient system. Flexible expansion strips in the door vents ensure stability in all conditions.

The system provides inside opening windows and inside and outside opening flush doors (up to 3 meters). CS 86-HI doors offer different types of floor connections to meet acoustic, thermal and water requirements. Both doors and windows within the CS 86 range have been accredited so homeowners can be safe in the knowledge that Reynaers at Home's architectural glazing products not only offer beautiful designs, but also top security.

Technical Director at Reynaers John McComb said: "The government has given security of new homes serious consideration within building regulations, with the publication of Approved Document Q.

"Our products have been specifically designed to offer an extremely high level of security for homeowners and we're really proud that our highly-secure systems meet the requirements of the strict Secured by Design criteria."

01214219707 www.reynaersathome.co.uk



Levolux helps Suffolk go green



A bold new 'Energy from Waste' facility in Great Blakenham, Suffolk is having a surprisingly positive impact on the Suffolk landscape, thanks to an Aerofoil Fin screening solution from **Levolux**. The custom solution comprises aerofoil-shaped louvers each measuring 500mm wide by 50mm thick, applied across each of the building's four elevations. The extruded

aluminium Louvres are set at a pitch of 750mm, assembled into panels using aluminium side-plates. The louvred panels, with free spans of up to 3.6 metres, combine to cover almost 4500 square metres of the external facade. All aluminium components, including the aerofoil-shaped louvers, are finished in an attractive and durable light blue powder coating.

Energy saving refurbishment with Remmers



The listed 19th Century former Schoolhouse overlooking the Dublin mountains was renovated and extended to create a new energy efficient residential family home. So that the exterior facade of the existing property was not altered in any way,

internal insulation was installed to the interior of the stone walls of the original house. Due to the build up of condensation behind conventional insulation when applied to single leaf construction, it became apparent that a "breathable insulation system" would be required. **Remmers IQ Therm** was chosen as it has the highest level of insulation for given thickness of breathable systems. The original U-value of the wall was approx 3.3W/m²K and was improved to 0.33W/m²K.

01293 594010 www.remmers.co.uk

Balcony demand reaches new high



neaco is experiencing a major growth of business within the residential sector following the specification of its Clearview balcony systems in a wide range of apartment projects. The rejuvenation of the UK's property market and the house-building industry has seen a surge in demand for neaco's contemporary glass-fronted balconies designed for high aesthetic value, easy installation and durability.

neaco's UK Business Development Manager, Peter Melia, said: "Demand for our balconies reached a peak almost ten years ago, prior to the downturn in the economy and the housing market, but the recovery of the residential sector has seen demand return to an even higher level in 2015. Most of the demand is being attracted from the luxury end of the market with high-specification apartments which require superior kerb appeal. The stylish contemporary aesthetic of our Juliet and walk-on balconies is an ideal match for this type of development. Their eco-friendly construction, with minimal waste and no energy-consuming hot works required for installation, is also a key feature in a sector which values sustainability."



Lathams' latest cladding gets TRADA approval



Accoya®LathamCLAD – the modified, highly durable and dimensionally stable certified timber cladding – is now available from all eight of James Latham's timber depots.

Created from sustainably sourced wood and completely non-toxic, Accoya®LathamCLAD is a revolution in wood technology. And with the

15mm profile having recently received TRADA approval for use as an external cladding product, Accoya®LathamCLAD is a perfect solution for exterior cladding, siding and facades where the wider board offers numerous features and benefits including enhanced aesthetics, less frequent maintenance, dimensional stability, durability and improved insulation values.

Suitable for horizontal or vertical installation, Accoya®LathamCLAD can be used to create simple or complex designs. And with a choice of factory coating finishes, it can be opaque coated or, for those wishing to enjoy the natural look of wood, translucent coated.

Plus, with a 50-year guarantee when used externally, Accoya®LathamCLAD's low maintenance requirements add to its 'whole life' cost effectiveness and environmental credentials and this versatility makes it ideal for use in residential, commercial and industrial applications.

Paul Leach, James Latham's group product sales & development manager for Accoya said: "When it comes to cladding, Accoya®LathamCLAD ticks all the boxes and is the perfect solution for many exterior applications which were once only feasible with non-sustainable material. Use of the wider cladding boards is allowed by the improved dimensional stability, plus cladding joints do not open, tolerances remain tight and twist is prevented. In addition, the wood's natural appearance is retained for longer, thanks to the superior resistance to the effects of UV exposure."

He added, "Accoya®LathamCLAD is a fantastic material for external specification and fits perfectly with our already established range of sustainable products."

In addition to cladding, sidings and facades, Accoya® wood is also ideal for windows, doors and decking.

0116 257 3415 www.lathamtimber.co.uk

Freefoam Launch New Style Double Shiplap Cladding



Freefoam, a leading manufacturer of a wide range of innovative products for the building industry in Ireland, the UK and Mainland Europe, has made a valuable addition to its popular cladding range and launched Fortex Pro, a new style double shiplap board.

The new product features an increased width of 333mm and thickness of 9mm creating a stronger board through improved profile design and offers greater coverage at 1.665 sq m per board with a quick and easy calculation for specification purposes. Colour choice is important for any exterior building product and as colour specialists Freefoam have now added four new colours to this product range, Misty Grey, Cement Grey, Slate Grey and Cappuccino, making a total of ten. The combination of all these new features and the addition of superior colourfastness and weatherability properties using advanced skin technology makes Fortex Pro the perfect choice for all building professionals.

The Fortex® cladding range includes a double shiplap plank format 300mm wide, a weatherboard style at 170mm wide both with an attractive embossed textured wood effect finish and a 250mm wide board with an authentic render finish.

01604 591110 www.freefoam.com

Elegant Ash Exterior Foil

Four new RENOLIT EXOFOL MX exterior grade solid colours are launched, combined with a new stunningly realistic Elegant Ash surface finish. The embossed design has a detailed woodgrain textured surface with a matt finish to replicate an extremely realistic painted wood look. Available in four neutral tones, two match contemporary RAL colours and two are established modern powder coat shades, they meet the increasingly popular trend for greys. The new decorative foils will suit a wide range of architectural styles and brick colours. RENOLIT EXOFOL MX Elegant Ash colours are offered with a guarantee of up to 10 years and are available ex-stock. RENOLIT EXOFOL MX classic exterior films are a tried and tested two-layer PVC and acrylic laminate, which have enhanced all kinds of profiles in a rich variety of colours and decors for decades and which feature RENOLIT's unique Solar Shield Technology (SST). SST acts as a protective shield for the entire component, reduces heat build-up in the profile and slows down the ageing process to prolong the life of the construction component. To request a RENOLIT EXOFOL Elegant Ash colour swatch and further information about RENOLIT EXOFOL Exterior films with Solar Shield Technology please contact **RENOLIT Cramlington Ltd.**

01670 718222 www.renolit.com/exterior



Earthwood Easyclean

One of the UK's largest composite decking ranges welcomes new recruit TimberTech Earthwood EasyClean, the very latest in domestic and commercial maintenance-free decking.

Earthwood Easyclean's unique, impenetrable cap makes it the ideal solution for homeowners, landscapers, leisure businesses and garden designers seeking to maximise good looks and minimise maintenance.

Earthwood Easyclean, and its top of the range sister product Earthwood Easyclean Legacy, from Greensquares, the UK's outdoor living experts, repel the ravages of the British weather and the rigours of a hectic domestic life. A super-resilient wood and polymer mix, topped off by a sleek, uncompromising polymer cap, makes it easy to clean as well as easy on the eye.

You can say goodbye to annual sanding, scrubbing, sealing, painting and staining. Earthwood Easyclean, part of the TimberTech composite decking family, is colour fast, splinter free and won't split, warp, bend, crack or fade. It's slip resistant. It carries the reassurance of a 25-year limited warranty for residential and ten years for commercial applications.

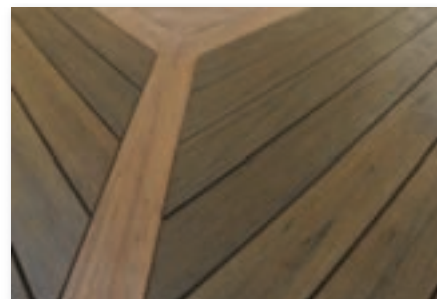
Earthwood Easyclean comes in Brown Oak



and Silver Maple shades and the Legacy option in Mocha, Pecan and Tigerwood. These stylish, elegant high-density hardwood and polymer boards reflect all of the colour grading and shading contained within natural timber boards but with none of the traditional fuss.

Feel the difference. Order a free sample of Earthwood Easyclean from the website. TimberTech- Less Work. More Life.

029 2037 1584
www.timbertechuk.co.uk



Levolux brings colour to Bournemouth



The completion of a new multi-storey car park in Madeira Road, Bournemouth, which features a colourful external screening solution from Levolution, marks the start of a £40 million regeneration project for the area. The external facade required special treatment to soften the visual impact of the concrete structure on the environment. To deliver this element of the scheme, Levolution was invited to

develop a custom screening solution that obscures views of unsightly structures and vehicles, while creating an attractive architectural feature. The solution comprised Levolution's unique Infiniti Fin system, incorporating 400mm wide aerofoil-shaped Fins, arranged vertically.

Energy saving refurbishment with Remmers



The listed 19th Century former Schoolhouse overlooking the Dublin mountains was renovated and extended to create a new energy efficient residential family home. So that the exterior facade of the existing property was not altered in any way,

internal insulation was installed to the interior of the stone walls of the original house. Due to the build up of condensation behind conventional insulation when applied to single leaf construction, it became apparent that a "breathable insulation system" would be required. Remmers IQ Therm was chosen as it has the highest level of insulation for given thickness of breathable systems. The original U-value of the wall was approx 3.3W/m²K and was improved to 0.33W/m²K.

01293 594010 www.remmers.co.uk

www.buildingconstructiondesign.co.uk



REGISTER ONLINE FOR...

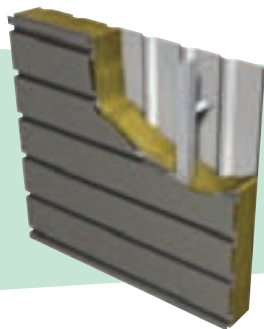
Digital magazine
Newsletter • Daily digests

www.buildingconstructiondesign.co.uk

Always moving forward



Our two most recent innovations are the new Opus panel and sinusoidal profiled sheet.



Opus is the new plank panel that is available as part of an Elite system, a LINEAR Rainscreen and a LINEAR Rainspan system, as well as being ideal for use as a soffit plank.

Investment in state-of-the-art manufacturing machinery enables us to provide the increasingly popular sinusoidal profile on a short lead time and at a competitive price.



EUROCLAD
Drawn on our experience

Wentloog Corporate Park Cardiff CF3 2ER
02922 010101 · www.euroclad.com

 @eurocladuk

 **confidex**

Colorcoat HPS200 Ultra, Colorcoat Prisma and Confidex are registered trademarks of Tata Steel UK Limited.



We know you don't stay ahead by standing still. To keep moving forward we're always innovating; whether through new product development, process improvement or service enhancement.

Innovation provides you with roofing and cladding solutions that are as ground-breaking as they are practical and as valuable as they are cost-effective. Put simply we innovate to provide products that are relevant and useful to you.

Some of our recent product innovations include Vieo, Opus, sinusoidal cladding, integrated solar panels, transpired solar collectors, and a more efficient stainless steel halter for standing seam roofs.

A culture of innovation is present throughout our supply chain, with Elite Systems using only Colorcoat HPS200 Ultra® and Colorcoat Prisma® from Tata Steel. These Colorcoat® products come with the Confidex® Guarantee offering extended cover for up to 40 years on Colorcoat HPS200 Ultra® and up to 30 years on Colorcoat Prisma®. Colorcoat® products are certified to BES6001 Responsible Sourcing standard.



Schöck and Hollowcore innovation benefits Stoke Extra Care scheme

A PFI Extra Care complex near Stoke-on-Trent, is another project benefitting from the use of innovative off-site manufacturing. It combines Isokorb structural thermal break units from Schöck with the Hollowcore system. Holdcroft Fields at Abbey Hulton, provides 175 self-contained one and two bedroomed apartments, with extensive communal facilities, for people over 55. Designed to meet BREEAM Excellent standards, there are two linked three-storey blocks and many of the apartments feature spacious balconies; so the prevention of thermal bridging is a critical consideration.

Quite apart from heat loss, condensation can lead to structural integrity problems and may even encourage mould growth, which has serious medical implications. One of the most effective countermeasures on the market is the Schöck Isokorb structural thermal break. It dramatically reduces thermal energy loss in connective areas and



enables inner surface area temperatures to remain well in excess of those likely to cause condensation.

It is the Isokorb type KS14, for concrete-to-steel connectivity, that is being installed in conjunction with the Hollowcore floor system. The precasters breaking out selected cores and cast reinforcement bars in their works. The thermal breaks are then fixed to a template, which match the broken out Hollowcore, complete modules are supplied to

site, dropped into position and the broken out Hollowcore filled with in-situ concrete.

The Hollowcore has full length voids, with a huge weight saving over floor slabs of equal thickness or strength. So there are efficiencies in transportation and material costs – and with slab sizes typically 1.2m wide by 7.5m long, they are faster to install and provide an immediate working platform for following trades.

The Isokorb type KS14 has verifiable performance values, providing BBA Certification and LABC Registration, as well as comfortably exceeding the requirements of BRE IP1/06 and Part L of the Building Regulations. The temperature factor used to indicate condensation risk (fRSI), must be greater than, or equal to, 0.75 for residential buildings and this is comfortably met by incorporating the Isokorb.

01865 290 890 www.schoeck.co.uk



Balcony demand reaches new high

neaco is experiencing a major growth of business within the residential sector following the specification of its Clearview balcony systems in a wide range of apartment projects. The rejuvenation of the UK's property market and the house-building industry has seen a surge in demand for neaco's contemporary glass-fronted balconies designed for high aesthetic value, easy installation and durability. neaco's UK Business Development Manager, Peter Melia, said: "Demand for our balconies reached a peak almost ten years ago, prior to the downturn in the economy and the housing market, but the recovery of the residential sector has seen demand return to an even higher level in 2015. Most of the demand is being attracted from the luxury end of the market with high-specification apartments which require superior kerb appeal. The stylish contemporary aesthetic of our Juliet and walk-on balconies is an ideal match for this type of development. Their eco-friendly construction, with minimal waste and no energy-consuming hot works required for installation, is also a key feature in a sector which values sustainability."

Portakabin Hire helps meet demand for schools



Portakabin Hire, a leading UK supplier of interim modular buildings, is seeing unprecedented demand for primary and secondary teaching accommodation. In just three years, there has been a growth of more than 170 per cent in the Division's education

business across the UK. Following the success of a project at Westgate School in Winchester, Hampshire County Council has awarded three new contracts to Portakabin Hire to provide additional primary school places from September 2015 for short-term use, while permanent teaching accommodation is constructed. By providing classrooms of the very highest standards and with a design life of at least 60 years, buildings from Portakabin Hire help to ensure that there is no compromise on the quality of the learning environment.

building
construction
design



REGISTER ONLINE FOR...

Digital magazine
Newsletter • Daily digests

www.buildingconstructiondesign.co.uk

Bespoke system helps create stunning home

Bespoke sliding doors from Reynaers at Home have helped to create a luxurious Spanish villa, effortlessly combining state-of-the-art performance with arresting aesthetics.

Casa Las Palmeras was designed by architect Valentín de Madariaga and his fabricator partner Grupo Moncada. They used a total of 18 sets of sliding patio doors throughout the home, to create a smooth transition from interior to exterior. The sliding doors, specially designed by Reynaers based on the Hi-Finity system, were chosen thanks to their incredibly slim sight lines and fully automated mechanism, allowing the homeowner to open and close the doors at the push of a button.

José Miguel Moncada of Grupo Moncada says: "These specially designed doors are 5.9m high and weigh 285kg. The pace of construction forced us to finish in record time; the entire project was completed in nine months."

The Hi-Finity sliding elements installed by Grupo Moncada had the tracks set deeply into the floor at specific points, with the top and side



profiles integrated into the walls. The only thing that remained visible was the meeting section of the minimalistic profiles. The sliding door has been cleverly designed so that the outer frame can be concealed behind the surrounding wall, making wall-to-wall and floor-to-ceiling glass a possibility in any home.

Marketing Manager at Reynaers Rebecca Cope says: "This project was very much a

bespoke solution, but the unique design means that even the heaviest of these doors will glide open and closed with minimal effort."

Reynaers at Home is a premium brand dedicated to offering the very best architectural glazing products and service to the discerning householder and self-builder.

0121 421 9707
www.reynaersathome.co.uk



Hauraton website now features Education Sector projects

Hauraton's popular website, www.drainage-projects.co.uk currently features Education Sector case studies and other interesting projects where Hauraton drainage channels have been installed. Utilising the latest software, the website can be viewed on all digital devices using responsive technology – i.e. the new website automatically resize fonts and images so they can be easily read on iPhone, iPad, Mac computers, Android phones, tablets and Windows computers via the internet. The website also incorporates a Customer Support portal and links to Twitter, Facebook, YouTube and Hauraton's product website.

01582 501380 www.hauraton.co.uk

Energy saving refurbishment with Remmers



The listed 19th Century former Schoolhouse overlooking the Dublin mountains was renovated and extended to create a new energy efficient residential family home. So that the exterior facade of the existing property was not altered in any way,

internal insulation was installed to the interior of the stone walls of the original house. Due to the build up of condensation behind conventional insulation when applied to single leaf construction, it became apparent that a "breathable insulation system" would be required. Remmers IQ Therm was chosen as it has the highest level of insulation for given thickness of breathable systems. The original U-value of the wall was approx 3.3W/m²K and was improved to 0.33W/m²K.

01293 594010 www.remmers.co.uk

Levolux helps Suffolk go green



A bold new 'Energy from Waste' facility in Great Blakenham, Suffolk is having a surprisingly positive impact on the Suffolk landscape, thanks to an Aerofoil Fin screening solution from Levolux. The custom solution comprises aerofoil-shaped louvres each measuring 500mm wide by 50mm thick, applied across each of the building's four elevations. The extruded

aluminium Louvres are set at a pitch of 750mm, assembled into panels using aluminium side-plates. The louvre panels, with free spans of up to 3.6 metres, combine to cover almost 4500 square metres of the external facade. All aluminium components, including the aerofoil-shaped louvres, are finished in an attractive and durable light blue powder coating.

Is your supplier letting you down?

Now **2 week**
lead time*

From only
£365
per leaf*

Aluminium Bi-Fold Doors & Patio Doors

Lowest Prices Anywhere

smart
architectural aluminium



- Over 99% of orders on time & complete
- Quick quote turnaround
- Very competitive glass options
- Available in any colour, alongside stock colours; White, Black, Grey, Grey on White

Get a price
comparison
now!

Tel: 01642 610798 Fax: 01642 671026



/madefortrade



@madefortrade1



* Lead times based on standard colour range
* Price applies to bi-fold doors per leaf only.

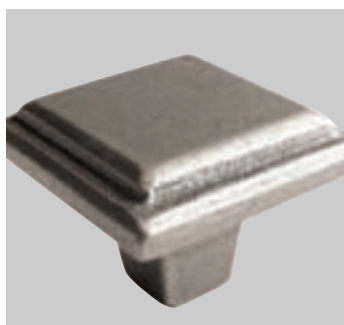
made for trade
www.madefortrade.co

IronmongeryDirect

MASTERS OF OUR TRADE

A RANGE TO INSPIRE. A SERVICE TO ADMIRE.

From contemporary to traditional, you'll find the right look with the
UK's Biggest Range of Ironmongery all available the **NEXT DAY**.



Call **0808 168 28 28** or go online to get your **FREE CATALOGUE**

Text: ZY8168Z to 80800
for **FREE!** Followed by your
name, address and email.

 **ORDER BY 8PM**
GET IT NEXT DAY

 **FREE DELIVERY**
OVER £45*

 **FREE RETURNS**
WITHIN 30 DAYS

 **MINIMUM**
5 YEAR GUARANTEE

 **LOCKED DOWN**
PRICES

CHECK OUT
OUR MOBILE
WEBSITE



CALL 7am-8pm 7 days a week
0808 168 28 28

 **ONLINE Shop 24/7!**
IronmongeryDirect.com

*Ex VAT

FIND US ON ►  