



adf architects datafile

November 2015

Features in this issue

Flood Control
Glass & Glazing
Bathrooms & Washrooms
Acoustic Insulation

Sleep show preview

Special report

Public Transport Facilities
Commercial Offices

Heating & renewable energy
supplement

News

Design inspired by University
research scoops major prize

Dominion Office Building, Russia

Visit ArchitEx 2015

www.architectsdatafile.co.uk



Create with VELUX®

For over 70 years, VELUX has been the byword for innovation in roof windows. Our modular design approach and online tools help you to create stunning commercial projects. Explore the possibilities at velux.co.uk/architects

VELUX BIM Objects

Quick, Easy
and Accurate

ARCHITECT:
Arkitema Architects.
Siemens Headquarters,
Ballerup, Denmark

Bringing light to life

reader
enquiry
401

VELUX®

adf november 2015

incorporating Building Projects Magazine

contents



www.architectsdatafile.co.uk



25



31

projects

25 New look for New Street

Birmingham's most important railway station has swapped 1960s brutalism for light-filled fluidity, as Ray Philpott discovers

31 Work and play central to Shoreditch office success

Studio RHE moves onto bigger projects with an innovative new design for an old office building in Shoreditch, writes Steve Menary

features

49 GROUNDWORKS: FLOOD CONTROL

Home Defence force: effective flood defence measures explained

How architects can keep the planning authorities happy and homeowners reassured, by adopting simple, cost effective mitigation measures to both new builds or as 'retrofits' to existing properties, explains Frank Kelly, leading flood design engineer the founder of Flood Angel

59 EXTERNAL ENVELOPE: GLASS & GLAZING

Blending fire safety with aesthetics

Steve Bond at Pilkington United Kingdom Limited, explores how developments in glazing are enabling businesses to meet fire safety regulations without compromising on design or energy performance

65 INSULATION

Acoustic solutions

Robert Crampton MD of Hush Acoustics comments on the challenges faced when providing acoustics solutions for different types of projects

71 INTERIORS: BATHROOMS & WASHROOMS

Just another day at the office

Trevor Bowers, director at Washroom Washroom, which has carried out a number of high profile office washroom projects in recent years, discusses the key trends which have helped shape today's office washroom

news & events

- 4 Industry News
- 5 Events
- 19 CPD Focus

HEADLINES

- 4 Burntwood School wins 2015 RIBA Stirling Prize
- 8 Start for world-class Remembrance Centre
- 12 Design inspired by University research scoops major prize

- 20 Editor's Focus
- 37 Sleep 2015 Show Preview
- 39 Heating & renewable energy supplement

products

- 22 Appointments & news
- 24 Planning & design
- 49 Groundworks
- 52 Structural elements
- 54 External envelope (incl. external fixtures)
- 64 Insulation
- 67 Interiors
- 80 Safety & security
- 81 Landscaping & external works
- 82 Disabled products & services

- 83 Classified & directory



Cover image:
Dominion Office Building,
Moscow, Russia
© Hufon+Crow
See page 7

Joint Publisher/Editor
Simon Reed

**Advertisement Manager/
Joint Publisher**
Anthony Parker
anthony@netmagmedia.eu

**Editorial &
Production Assistants**
Sue Benson
Mikey Pooley

Contributors
Steve Menary
Ray Philpott

Sales Director
Lesley Mayo

Sales Executives
Suzanne Easter
Ian Fletcher
Kim Friend
Steve Smith

**Circulation/Reader
Enquiry Service**
Jane Spice



netMAGmedia Ltd
Cointronic House
Station Road, Heathfield
East Sussex, TN21 8DF

**Advertising &
Administration**
t 01435 863500
f 01435 863897
info@netmagmedia.eu
www.architectsdatafile.co.uk

Press Releases
editorial@netmagmedia.eu

Supporter of



Annual subscription costs just £48 for 12 issues, including post and packing. Phone 01435 863500 for details. Individual copies of the publication are available at £5 each inc p & p. All rights reserved

No part of this publication may be reproduced or transmitted in any form or by any means, electronic, mechanical, including photocopying, recording or stored in any information retrieval system without the express prior written consent of the publisher. Although every effort is made to ensure the accuracy and reliability of material published in Architects Datafile, the publisher can accept no responsibility for the claims or opinions made by contributors, manufacturers or advertisers. Editorial contributors to this journal may have made a payment towards the reproduction costs of material used to illustrate their products. The manufacturer of the paper used within our publication is a Chain-of-Custody certified supplier operating within environmental systems certified to both ISO 14001 and EMAS in order to ensure sustainable production. Printed in England

Burntwood School wins 2015 RIBA Stirling Prize

Burntwood School, a large comprehensive girls' school in Wandsworth, London by Allford Hall Monaghan Morris (AHMM) has won the coveted RIBA Stirling Prize 2015 for the UK's best new building. Now in its 20th year, the RIBA Stirling Prize, sponsored by Almacantar, is the UK's most prestigious architecture prize.

AHMM's transformation of Burntwood School reimagines a 1950's modernist secondary school campus for 2,000 girls and 200 staff. The architects created six new faculty buildings and two large cultural buildings linking original buildings by renowned 1950s/1960s architect Sir Leslie Martin. Every building is full of light and air with double height spaces at the end of each corridor to increase natural daylight and create well-framed views. It offers a range of teaching spaces from conventional classrooms to interactive open spaces. Already a very sculptural building, AHMM worked closely with an artist to use large, colourful murals throughout the buildings – cleverly combining signposting with modern art.



© Timothy Soar

The full story is in the Architects Datafile November – Design for education & student accommodation supplement enclosed with this issue.

BRITISH CONSTRUCTION INDUSTRY AWARDS 2015

Manchester's National Graphene Institute is crowned Major Building Project of the Year

One of Manchester's newest buildings – the National Graphene Institute (NGI) – has been crowned the Major Building Project of the Year at the British Construction Industry Awards 2015. Remarkably, it also won the BIM Project Application Award.

The £61 million building was built by BAM Construction – the contractor behind the Manchester City Football Academy and now behind No 1 Spinningfields. NGI was designed by Jestico and Whiles, engineered by Ramboll, with EC Harris as consultants.

The Institute is dedicated to the study, research and development of the one atom thick substance that is 200 times stronger than steel. It is the strongest, thinnest and most conductive material ever measured. Located in the heart of the University of Manchester campus, the Institute is five stories high with clean rooms for nanotechnology research, and housing extremely sensitive and sophisticated equipment.

Tony Grindrod, construction director, BAM Construction, said: "The exceptional quality of the Institute is a credit to the team that designed and built it. The potential for graphene's impact on our everyday lives is immense and at BAM we are delighted to have led the construction of a state-of-the-art



centre where cutting edge research will take place here in Manchester."

The NGI fought off strong competition from six other shortlisted schemes including the Weston Library for Oxford University, Five Pancras Square at Kings Cross and the Brooks Building for Manchester Metropolitan University.

Judges described it as "the perfect balance of strong engineering design and architecture."

EVENT

Visit ArchitEx 2015



Held in Liverpool, ArchitEx aims to bring the architecture community together through an engaging conference programme and innovations in the product development field.

Whether you wish to exhibit at architex to sell your products and services, or establish new business contacts and relationships, the exhibition is an opportunity to visit and meet potential suppliers and partners in the industry, networking with peers and gaining a valuable insight into the developments within the industry.

The conference is a chance to discuss and debate the hot topics in UK architecture and building design. ArchitEx 2015 offers something for everyone.

The exhibition

For exhibitors, ArchitEx 2015 will provide significant sales and business development opportunities whilst also offering an outstanding networking platform. An anticipated 1,500 architecture and building design professionals will be in attendance, including professionals such as; architects, specifiers, building designers, technologists, surveyors and engineers; commercial, industrial and residential property developers; town, city and county councils, local planning authorities, town and city planners; construction companies, builders and contractors and products and services industry suppliers.

The conference

The two-day, free to attend conference programme, with 24 industry leading speakers, will become the leading annual forum for the UK architecture and building design industry. It will bring delegates together with many of the industry's key organisations and

people, including winners of the RIBA Stirling Prize for Architecture, and will address the issues, legislation and many key successes in recent, current and future planning, architecture and building design projects.

Max Steinberg CBE, chief executive of Liverpool vision will open the conference programme followed by speakers such as Mick Goode, Chair of RIBA North West, Gavin Elliott, director of architecture at BDP Manchester studio and Chris Blythe, chief executive of the Chartered Institute of Building. Max will open the conference programme followed by Mick Goode who will deliver a talk on 'Designing the Northern powerhouse'. Gavin Elliott is on hand to discuss the creation of outstanding places for people, something, which is of vital importance in our over subscribed cities and towns. Chris Blythe will offer up his thoughts on how leadership and innovation go hand in hand, employing techniques and giving advice on the business aspects of running successful architecture studios. A fantastic new addition to the conference programme is Paul Monaghan, director, Allford Hall Monaghan Morris, the 2015 RIBA Stirling Prize Winners for Burntwood School. The entire speaker line up has been devised to offer a variety of insights into the hottest topics in debate in the industry at the moment.

Networking

During ArchitEx there is a free to attend, complimentary two hour champagne drinks reception and networking evening on 1 December 5pm – 7pm, with hundreds of industry colleagues in attendance. ArchitEx 2015 is your opportunity to join the UK's leading architecture and building design event.



events

AWARDS

Brick Awards

18 November, London

www.brick.org.uk/brick-awards

SEMINARS

Building pathology and historic buildings

18 November, Nottingham

www.architecture.com/WhatsOn

Architectural Technology: Design Futures - Reflecting and Projecting Symposium

11 December, London

www.ciat.org.uk

TALKS

RIBA Stirling Prize 2015 – Meet the winner

01 December, London

www.architecture.com/WhatsOn

TRADE SHOWS

Sleep

25 – 26 November, London

www.thesleepevent.com

ArchitEx

01 – 02 December, Liverpool

www.architex2015.co.uk

Architect@Work

27 – 28 January 2016, London

www.architect-at-work.co.uk

Surface Design Show

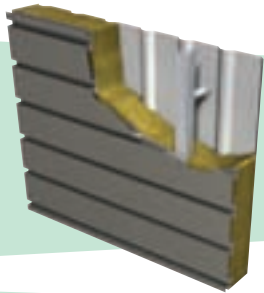
09 – 11 February 2016, London

www surfacedesignshow.com

Always moving forward

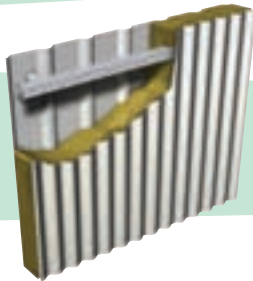


Our two most recent innovations are the new Opus panel and sinusoidal profiled sheet.



Opus is the new plank panel that is available as part of an Elite system, a LINEAR Rainscreen and a LINEAR Rainspan system, as well as being ideal for use as a soffit plank.

Investment in state-of-the-art manufacturing machinery enables us to provide the increasingly popular sinusoidal profile on a short lead time and at a competitive price.



EUROCLAD

Drawn on our experience

Wentloog Corporate Park Cardiff CF3 2ER

02922 010101 · www.euroclad.com

[@eurocladuk](https://twitter.com/eurocladuk)

 **confidex**

Colorcoat HPS200 Ultra, Colorcoat Prisma and Confidex are registered trademarks of Tata Steel UK Limited.

reader
enquiry
101



We know you don't stay ahead by standing still. To keep moving forward we're always innovating; whether through new product development, process improvement or service enhancement.

Innovation provides you with roofing and cladding solutions that are as ground-breaking as they are practical and as valuable as they are cost-effective. Put simply we innovate to provide products that are relevant and useful to you.

Some of our recent product innovations include Vieo, Opus, sinusoidal cladding, integrated solar panels, transpired solar collectors, and a more efficient stainless steel halter for standing seam roofs.

A culture of innovation is present throughout our supply chain, with Elite Systems using only Colorcoat HPS200 Ultra® and Colorcoat Prisma® from Tata Steel. These Colorcoat® products come with the Confidex® Guarantee offering extended cover for up to 40 years on Colorcoat HPS200 Ultra® and up to 30 years on Colorcoat Prisma®. Colorcoat® products are certified to BES6001 Responsible Sourcing standard.



PROJECT

Dominion Office Building, Moscow, Russia

In Moscow's Sharikopodshipnikovskaya Street, next to tram and trolleybus stops and near Dubrovka Station on the Lyublinskaya Line of the Moscow Metro, the Dominion Office Building is among the first of the new projects to be built for the growing creative and IT sectors in this primarily industrial and residential district in the southeast of the city.

Conceived as a series of vertically stacked plates off-set at each level with connecting curved elements, a central atrium rises through all levels to bring natural light into the centre of the building. Balconies at each level project into the atrium and correspond to the displacement of the outer envelope and a series of staircases interconnect through this central space.

With the ground floor restaurant linking the atrium to the outdoor terrace and Sharikopodshipnikovskaya Street beyond, and coffee/snack areas and relaxation zones on the balconies, the atrium becomes a shared space over many levels that encourages interaction between the employees of the companies within the building. This integration also encourages collaboration between companies of different services and disciplines. Many IT and creative industry start-up companies regard this collective research culture as vital for progress and development, and the design of the Dominion Office Building reinforces this concept with open connectivity throughout the building.

The office spaces are arranged within a system of standard rectilinear bays to offer many different possibilities for small, expanding or large companies. Located on the periphery of the atrium and housing the lifts, fire-escapes, washrooms and service shafts, the service cores provide a degree of privacy to the separate office spaces, with gaps in-between these cores giving some transparency and allowing light to penetrate the into the office areas from the central shared atrium space.



This service core ring around the atrium, together with an additional bay of columns close to the outer envelope of the building, provides the structure. The off-set floor-plates are balanced between

the opposite sides of the building. In some zones, columns are removed and replaced with transfer beams to increase the uninterrupted floor space for larger tenants or public programmes



news bytes

Visit the website
www.architectsdatafile.co.uk
and enter the reference
number for more information

ISG secures major
Cheshire Fire
Station deal...
Ref: 91822

Benoys expands
services...
Ref: 17803

RIBA and Draisci
Studio bring a
splash of colour...
Ref: 67413

Bouygues UK
R&D support...
Ref: 21820

Student Award
winners announced...
Ref: 39930

AWARD WINNING PROJECT

'The masterplan will include three 5-Star hotels, four boutique hotels, a leisure and marina village and a 40,000m² extension to the existing marina'



Benoy's Soma Bay wins at Cityscape Egypt

Benoy, the international studio of Architects, Masterplanners, Interior and Graphic Designers, is proud to announce its project, Soma Bay, is a winner at Cityscape Egypt 2015.

The annual awards dinner took place at the Four Seasons Hotel Cairo and highlighted the best designs from across Egypt, including Soma Bay as the Top Community, Culture and Tourism Project.

Working with Abu Soma Development Company (ASDC), Benoy has been appointed to design the 110ha extension of the masterplan, which will include three 5-Star hotels, four boutique hotels, a leisure and marina village and a 40,000m² extension to the existing marina. This stunning masterplan will create an international quality destination with a wealth of resort Residential including luxury and branded villas, hybrid villas and apartments.

Soma Bay, sitting on the Red Sea, will provide a year round appeal with a mix of amenities and recreational activities. The overall concept is divided into three unique resort zones with

distinctive hotels providing an escape for everyone. Located 500km from Cairo, Soma Bay is an oasis for locals as well as global leisure seekers. The comprehensive resort, located on its namesake peninsula, allows for escape and exploration. A perfect backdrop for water sports, outlets and kite centres all revolving around a stylish marina.

Soma Bay was designed for an array of tastes, affording a unique holiday for all. For those who have grown tired of bustling cities, it will provide a simple place for adventure with sandy beaches that slope gently into the water and sea views from raised tree covered dunes near the coast.

John Dawes, Benoy director and project leader, said: "It is a true honour to have won this award and receive recognition for Soma Bay. The Team's hard work on this great project will raise not only our Middle East and North Africa regional portfolio but our global offer as well."

ASDC launched Soma Bay at Cityscape Egypt this week, a three-day event at the Cairo International Convention Centre.

PLANNING AWARDED

Start for world-class Remembrance Centre

Glenn Howells Architects' sensitive and contemporary Remembrance Centre has been awarded planning, and construction specialist Stepnell has now begun work, in a dramatic next step to enhance the visitor experience at the National Memorial Arboretum in Staffordshire.

The National Memorial Arboretum, part of The Royal British Legion, is the UK's only year-round centre of remembrance and is home to 30,000 maturing trees and over 300 memorials, set over 150 acres of woodland areas, grassland, and riverside habitats. It is a spiritually uplifting place that honours the fallen and recognises the service, suffering and sacrifice of both the Armed Forces and civil services.

Glenn Howells Architects' new Remembrance Centre expands upon and incorporates an existing timber visitor centre, which will be retained, refurbished and extended on three sides by Stepnell during a year-long £15.7 million programme. The new building will increase the capacity of the National Memorial Arboretum from 300,000 visitors to 500,000 per annum and will house a rotunda 'drum' style visitor experience space, an interpretation exhibition, retail space and a satellite cafe and learning centre.

The new Remembrance Centre will join an existing collection of striking architecture, comprising the Millennium Chapel and the Armed Forces Memorial – the latter commemorating those service men and women who have been killed on duty or as a result of terrorism from the end of the Second World War to the present day.

A timber colonnade unites the original visitor centre with the new building and carries visitors through from the entrance of the Remembrance Centre. The materials mediate the two structures and provide a legible visitor link leading through into a dramatic rotunda space.

The new building's limestone facade references the Portland stone of the nearby Armed Forces Memorial, while a timber portico and slatted timber cloister wrap around the centre, bringing warmth and order to the exterior and complementing the dignified stone. The timber also forms a bond with the weathered wood of the existing visitor centre and Millennium Chapel. A shared central courtyard space – designed by landscape architects Fira – nestles within the cloisters. Named 'Heroes' Square', it is a partially covered and hard-landscaped formal square for set-piece ceremonies. The rigidity of the square is softened by trees and natural planting, which also creates quiet pocket spaces for contemplation. This public central space forms a transitional route between the buildings and the arboretum beyond.

The existing visitor centre will enjoy a number of enhancements including an upgraded restaurant with a heightened ceiling to provide a light and airy dining space that takes in views over the landscape and Heroes' Square.

The new Remembrance Centre forms the northern point of the National Memorial Arboretum complex, with the existing visitor centre to the west, chapel to the east, and the magnificent arboretum to the south.

Nobody likes gaps!

Are you one of the **97%** of installers to fit a roof window without a proprietary thermal collar?



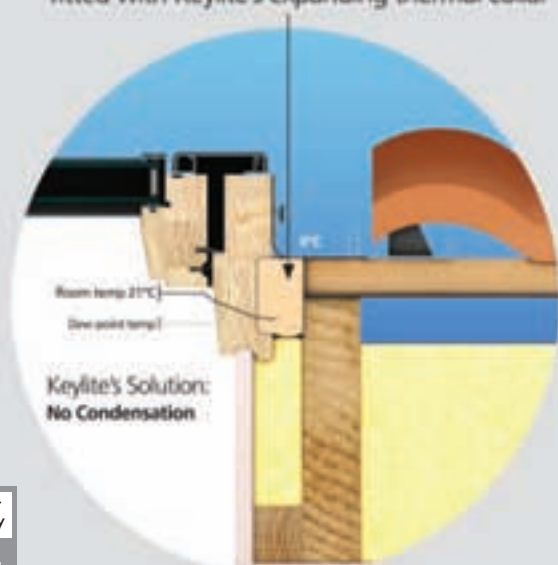
The Gap

fitted without a thermal collar



No Gap

fitted with Keylite's expanding thermal collar



reader
enquiry
102

Install Keylite, the only roof window guaranteed to fill the gap

news bytes

Visit the website
www.architectsdatafile.co.uk
and enter the reference
number for more information

Oxford Preservation
Trust 2015 Award...
Ref: 33677

Newest world heritage
site bathed in fog...
Ref: 88019

World's best building
announced...
Ref: 84508

Hobbit House on the
market...
Ref: 15796

BRITAIN'S 'WORST' STATION REOPENED

Manchester Victoria opened after £44 million upgrade

A train station once labelled Britain's worst was formally reopened on Tuesday 6 October following a £44 million facelift.

As well as maintaining Manchester Victoria's heritage gems, its upgrade by Network Rail involved building a vast new roof made from the same material used at the Eden Project, giving train passengers and station users a light, spacious environment, including new shops and cafes, to enjoy.

The modernisation of the station, carried out while it remained operational, is part of a £1 billion+ investment programme to boost rail capacity and connectivity together with the speed and frequency of services across the north of England.

Transport for Greater Manchester and Network Rail have worked to incorporate the expansion of the Metrolink tram network at Manchester Victoria into the redeveloped station, which now has four new tram platforms and three new tracks.

Transport Secretary Patrick McLoughlin unveiled a plaque declaring the new station open at a ceremony beside Soldiers' Gate, which local service personnel passed through before heading off to fight in World War One, some never to return.

Mr McLoughlin said: "I want to congratulate everyone involved in this remarkable project. It's fantastic to see Manchester Victoria once again a station fit for the city. It's now a symbol of opportunity, not neglect, and proof that this one nation government is building the Northern Powerhouse."

At the ceremony Martin Frobisher, route MD for Network Rail, formally handed the station back to Alex Hynes, MD of Northern Rail, the train company which manages its day-to-day running.

Manchester Victoria, which first opened in January 1844, was labelled Britain's "worst station" in the Department for Transport's 2009 report 'Better Stations'.

Mark Carne, chief executive of Network Rail, said: "Six years ago it was dubbed Britain's worst station – today it must surely be among the country's best.

"For far too long people travelling in and out of Manchester



Manchester Victoria station Platform 1 & 2

Victoria had to make do with a tired and dark station. The contrast today is remarkable. Manchester Victoria station is modern, clean and flooded with natural light; a station this great city so badly needs. It is a key part of our £1 billion programme to modernise the railway for the whole of the north of England."

Alex Hynes, managing director for Northern Rail, said: "Victoria feels like a brand new station to us and it's a fantastic testament to a successful working partnership between ourselves, Network Rail and the City of Manchester.

"It's a light, bright and contemporary station for our modern day customer and we're delighted with the results of the redevelopment. Manchester is an increasingly important city in the North and now it has the station it so rightly deserves."

Sir Richard Leese, leader of Manchester City Council and Greater Manchester Combined Authority (GMCA) lead on strategic rail, said: "Transport is the lifeblood of a thriving city and between now and 2017 our city centre will see more than £1 billion invested in new projects, the kind of investment not seen for generations.

"We are committed to making travel easier and better, ensuring better connections between our towns and cities and providing seamless travel right across the north of England.

NEW FERRY SERVICE PROGRAM

Skanska to expand New York City ferry service program

Skanska has signed a contract with New York City Economic Development Corporation to build ten new ferry landings and upgrade three ferry landings as part of New York City's new Citywide Ferry

Service Program.

The contract is worth \$45 million, about SEK 380 million, and will be included in the order bookings for Skanska USA Building for the third quarter of 2015.

Construction will begin in spring 2016 and substantial completion is expected in summer 2018. For more information on the project, please visit www.architectsdatafile.co.uk and enter reference number 49272.



Call For Our
New Brochure!



THE FINEST OAK FRAMED BUILDINGS
MADE IN ENGLAND



01384 296611 info@primeoak.co.uk www.primeoak.co.uk

GARAGES | GARDEN ROOMS | ORANGERIES | HOME OFFICES
CONSERVATORIES | BARNs | STABLES

reader
enquiry

103

Design inspired by University research scoops major prize



The UK's contribution to this year's World Expo in Milan – which drew on the work of a Nottingham Trent University scientist – has won a major prize at the prestigious international event.

Giant aluminium lattice sculpture, 'the Hive', was awarded the international jury prize for best design and relevance to the overall Expo theme 'feeding the planet, energy for life'. The award was judged by the Italian Association of Architects, along with Italian national construction and landscape bodies.

The Pavilion – inspired by the role of the honeybee in our food-chain – was created by Nottingham Trent University fine art graduate and artist Wolfgang Buttress. The design aims to highlight the importance of honeybees in food production and prompt the visitor to reflect on sustainability issues.

The Hive is the centrepiece of the 'UK Pavilion' commissioned by UK Trade & Investment (UKTI). The installation provides an immersive experience for visitors, drawing upon and showcasing groundbreaking work by Nottingham Trent University scientist Dr Martin Bencsik in monitoring the health of bee colonies.

The jury said of the design: "It is indeed among those that have best interpreted the theme, attracting visitors in the morning and at night thanks to an interesting play of light that reproduces a beehive constantly monitored by Nottingham Trent University. The big hive is like a large sculpture designed to be easily mountable and removable, which can then be transferred elsewhere once Expo finished."

'The Hive', forming the focal point of the UK pavilion site, is a 14 metre cube aluminium lattice structure based on an abstract re-interpretation of honeycomb. Visitors enter into a spherical void, carved from the centre of the sculpture. 'Visitors to the UK Pavilion queue in an orchard and then stroll through a wildflower meadow, making their way towards, and finally entering, 'the Hive'. As well as highlighting the role of pollinators in the food chain, the concept aims to encapsulate some of the qualities the UK brings to the global food challenge.

Countries across the globe have showcased their creativity and innovation as part of the World Expo, which ended on October 31. Countries have taken part in a global conversation on the issue of how to feed the planet, as the world's population increases to nine billion by 2050. Nations have embraced technology, innovation, culture, traditions and creativity and how they relate to food and diet.

ISG wins £29 million London office development

ISG has been awarded a £29 million two-stage, design and build project to deliver a new, highly-sustainable commercial office development in the City of London for Baldwin House Ltd – a wholly owned subsidiary of McKay Securities PLC. The scheme involves the demolition of an existing building in the heart of the capital's banking district, and the delivery of 58,000 sq ft (NIA) of high-specification Cat A office accommodation.

The logistically and technically complex project sees ISG systematically demolish the existing eight-storey office building on Lombard Street. The perimeter basement walls will be supported as ISG carries out piling work ahead of the construction of the new 12-storey steel frame structure – which comprises two basement levels and 10 above ground floors.

The new building significantly expands the available volume of lettable office space through the addition of two upper storeys and the extension of the footprint of the former building onto Lombard Street. The column free office accommodation has been carefully designed to maximise the potential of the enlarged floorplates and provide the greatest flexibility for tenants.

The building will feature a spacious double-height atrium, with a light well extending to the sixth floor, housing a specially-commissioned original artwork. The contemporary and high-quality design of the building incorporates curtain walling and stone cladding elements to its façade and at floors seven and nine, the building steps back creating attractive terraced areas. The offices will be completed to BREEAM Excellent environmental standards, through the use of high-performance building materials and the installation of efficient mechanical and electrical services.

Stuart Deverill, ISG's Southern regional managing director, commented: "Our early stage involvement, through the two-stage procurement process, has proved instrumental in identifying programme efficiencies, as well as establishing and resolving key buildability issues. This approach is ideally suited to challenging projects where our wealth of experience and ability to rigorously interrogate the design brief facilitates innovation, paving the way for successful delivery."



FREE SITE SURVEY NATIONWIDE
50 YEAR ACCOYA WARRANTY

MONTPELIER

GARDEN ROOMS • ORANGERIES • WINDOWS • BI-FOLDS



reader
enquiry
104

Garden Rooms, Orangeries, Windows & Bi-Folds

Call: 01384 279933 - Email: info@montpelierjoinery.com - Visit: www.montpelierjoinery.com

From the makers of



New London Architecture and the Mayor of London select 10 winning ideas to help solve the housing crisis

New London Architecture, the capital's built environment think-tank, has today revealed the 10 ideas that have been selected from an international ideas competition to help solve the London housing shortage. From living in shared homes to living on the water, building on top of public buildings and creating a megacity in the suburbs, the 10 ideas provide a radical rethinking of current housing delivery models.

The ideas will be presented to the Greater London Authority who will study their feasibility as options for the future of the London housing market. 100 of the entries to the competition are on display in the New Ideas for Housing exhibition at the NLA Gallery in central London.

With over 200 submissions from over 20 countries, the 10 finalists present a wide array of thought-provoking ideas that could change the way we live. Baca Architects has proposed using the untapped resource of the capital's canal network as the solution and want to transform 'generation rent' into 'generation float'. The practice calculates that some 7,500 new homes could be quickly created in a mere 6-12 months and would provide young Londoners with a realistic option for getting a foot on the property ladder.

WSP|Parson Brinckerhoff has looked into a very different type of underused resource – the rooftops of the capital's public buildings. By delivering housing on top of existing public buildings such as hospitals, schools and libraries the research suggests that a total of 630,000 new homes could be delivered – far outnumbering the current need for 440,000 additional units.

As many of the submitters looked to the future, David Knoll looked to the past for his submission. Investing in London's Future from its Past draws on the well-known leasehold system. It proposes separating the cost of housing from the cost of land in order to make it more affordable to build and buy new homes.

Pitman Tozer, LB Enfield and Naked House have combined to put the power back in the hands of the homeowner. By delivering stripped-back, shell-like structures they would be able to deliver cost effective housing efficiently, and would enable homeowners to customise and adapt the layout of their houses in order to fit their needs. Renowned architectural practice dRMM also used the concept of a shell and core structure, encouraging self-building among homeowners. In this case construction costs would be reduced by 40 per cent as internal fit-outs would no longer be needed.

Intimate Infrastructures by Natasha Reid Design provides an exploration into the east London area of Poplar. The scheme aims to combine existing buildings and infrastructure with new structures and public realm to create thriving dense areas of shared space and properties.



One of the most dramatic proposals that would enable the capital to deliver the vast amount of homes needed is the idea of a MegaCity by GL Hearn. The plan looks to maximise the potential of land supply across 'Edge Land' – between the inner London Green Belt to the M25.

The suburbs provided the inspiration for many of the submissions and Supurbia by HTA Design demonstrates how the outer London regions can be better adapted. The scheme proposes redeveloping local high streets to create an improved community focal point while homeowners would be allowed to release equity in their land for the development of new housing stock.

The Active Transport Accessibility Level believe the answer for solving the housing crisis lies in the transport network and making a number of areas in outer London more accessible, while Patrick J.A Massey CZWG believe the answer lies in improving and filling-in the gaps that already exist in our streets.

These 10 concepts along with the other 90 schemes that were shortlisted as part of the competition, will form the core of the New Ideas for Housing exhibition, supported by a showcase of the most innovative housing schemes already underway, and a new video display on the NLA's interactive model of London.

Richard Blakeway, deputy mayor for housing, land and property said: "We asked for innovative and ambitious ideas, and we were certainly not disappointed. The range and sheer number of well-considered and imaginative entries was truly impressive. Some ideas were eye-catchingly radical – such as a floating neighbourhood transforming sites on the Thames. Others were simple yet brilliant – such as redefining the index of public transport accessibility (PTAL).

Without a doubt, the entries showcase some exciting ways to challenge the traditional approach to house building and we look forward to pursuing the ideas set out by winning entries in discussions here at City Hall."

Peter Murray, Chairman, NLA said: "The way we are delivering new homes today just isn't working. London is only able to build half the number it needs each year. This competition shows how a bit of creativity, entrepreneurship and new thinking can help to fill that gap."



ArchitEx2015

The UK Architecture & Building Design Exhibition & Conference
 Tuesday 1st – Wednesday 2nd December 2015 St George's Hall, Liverpool

Register now www.architex2015.com

Free-to-attend, 2 day exhibition, 24 speaker conference programme and complimentary 2 hour champagne drinks reception & networking evening

- Architects, Specifiers, Building Designers, Technologists, Surveyors & Engineers
 - Commercial, Industrial & Residential Property Developers
- Town, City & County Councils, Local Planning Authorities, Town & City Planners
 - Construction Companies, Builders & Contractors
 - Products & Services Industry Suppliers



BOOK



Designing TWA for the first time tells the entire story of TWA terminal at JFK. It documents its architecture in terms of conflict between flight operations, design and public relations. It also

investigates how the building remained an icon of jet-propelled aviation while never properly serving its purpose for just that industry.

This new book features a wealth of images showing the TWA Flight Center in all its beauty, alongside many documents and plans. The concise text offers much detail, reaching far beyond previous publications on one of the world's best-known buildings.

When Eero Saarinen's Flight Center for Trans World Airlines (TWA) opened at New York's JFK International Airport

Kornel Ringli's *Designing TWA*

Available now

in 1962 it was a sensation. It represented a significant change in architectural thinking, allowing TWA to polish its image by means of a building, clearly distinguishing it from other airlines. Saarinen's striking design got much publicity throughout its operational life until closure in 2001. It was regarded an emblem of the jet-age, yet it never really suited its operational requirements. When the new B747 Jumbo Jet arrived in 1970, it already proved outdated and inefficient for the number of passengers using it.

BOOK

Emanuel Christ, Christoph Gantenbein and Victoria Easton's *Typology 2*

Available now

Typology 2 follows up on the preceding and successful *Typology*, published in 2012. Emanuel Christ and Christoph Gantenbein together with their teaching staff and students at ETH Zurich expanded their research on building typology to four more metropolises, again in Europe, Latin America, and Asia: Paris, Delhi, São Paulo, and Athens.

180 buildings were analysed over the past two years to find inspiration and models that can be adapted for the local context of any given city. Each example is documented with an image, site and floor plans, axonometric projection, key data, and a brief description. An introduction and four essays on the interaction between various protagonists

and in particular the effect of governing local building regulation again show the potential for contemporary urban architecture. The result is again a rich sourcebook of great practical value for students, lecturers and practitioners of architecture.

Emanuel Christ, born 1970, graduated from ETH Zurich in 1998 and is one of the principals of Basel-based Christ & Gantenbein Architects. He has also been an assistant professor for architecture at ETH Zurich since 2010. Christoph Gantenbein, born 1971, took his degree in architecture at ETH Zurich in 1998 and is one of the principals of Basel-based Christ & Gantenbein Architects. He has also been an assistant professor for architecture at



ETH Zurich since 2010. Victoria Easton, born 1981, graduated in architecture from ETH Zurich and works as a research associate with Christ & Gantenbein Architects in Basel and at the Chair of Emanuel Christ and Christoph Gantenbein at ETH Zurich since 2010. Includes essays by Anupam Bansal, Emanuel Christ, Victoria Easton, Christoph Gantenbein, André Lortie, Thomas Maloutas, Nadia Samekh.

As flexible as your imagination

Designed and manufactured in Sweden, a Gartec Platform Lift is the most aesthetically and technically advanced available today.

Commercial Lifts
and Home Lifts



Look out
for our new
RIBA Certified iCPD,
delivered at your own
offices – now booking!



Call 01296 397100 or visit
www.gartec.com

GARTEC
An Aritco Group company

Leading the Platform Lift Industry

enq.105

NEW Compact-X Sliding Door System

CRL COMPACT-X is a compact sliding solution for frameless glass panels, combining latest technology with an attractive minimalist design. The system is quick and easy to install with double soft close.

- Narrow minimum door width of 635mm
- Suitable for ceiling, glass, and wall mounted applications.
- Vertical adjustment
- 70kg weight limit
- Available in Brushed Nickel and Satin Anodised finishes
- Suitable for glass panels of 8mm, 8.76mm, 10mm, and 10.76mm in thickness,
- Available in 2 and 3 metre kits, and 3m kit with fixed panel
- Option to install Bi Parting doors by purchasing extra set of clamps.

Get your
copy



TESTED TO 100,000 CYCLES
IN ACCORDANCE WITH EUROPEAN
PERFORMANCE STANDARDS
EN1527 / EN1670

CRL
crlaurence.co.uk

CALL FREE ON

00 800 0421 6144

enq.106



From balustrades, columns and porticos to pier caps, window surrounds and custom designs – our high specification cast stone designs provide affordable elegance to any project.

Browse our unrivalled collection **online** or **call** to request a catalogue.



HADDONSTONE

haddonstone.com
01604 770711

enq.107

ICYNENE

THE EVOLUTION OF INSULATION

tel: 01229716039
mob: 07851854860
info@uksprayfoam.co.uk
www.uksprayfoam.co.uk

THE FIRST NAME IN SPRAY FOAM INSULATION



The Icynene Insulation System is a series of soft, flexible spray foam insulation products that delivers up to 50% greater energy savings when compared to other insulation products. Icynene is perfect for loft insulation, cavity wall insulation, drylining insulation, sound insulation and more.

Icynene has been successfully tested and certified for applications directly to the underside of breathable and non breathable roof membranes and felts and recently received BBA certification for this application. Icynene absorbs the lowest amount of moisture and has the highest level of vapour resistivity of any soft foam on the market.



enq.108

adf architects datafile



REGISTER ONLINE FOR...

In-print magazine • Digital magazine
Newsletter • Daily digests



www.architectsdatafile.co.uk

cpd focus

continuing professional development

Maintaining and improving professional competence, skills, abilities and knowledge

JAMES LATHAM OFFERS TWO RIBA APPROVED CPDS



James Latham offers two CPD seminars. Both been developed in conjunction with the RIBA and offer a unique opportunity for all construction and design professionals to gain up-to-date knowledge and enhance personal proficiency as well as earn CPD points from the UK's largest independent distributor of sheet material and timber products. The performance door blanks CPD focuses on five key learning aims and addresses the concept and significance of performance door blanks. The Acrylic Based Solid Surface CPD seminar provides a greater understanding of this versatile material

0116 257 3415
marketing@lathams.co.uk
enq. 109

DIFFERENT SHADES OF GREEN – DELIVERING PAINT SUSTAINABILITY



Crown Paints is delivering its popular CPD, 'Different Shades of Green – Delivering Paint Sustainability', at Scotland's dedicated new construction expo next month. The seminar, which was launched this year at Ecobuild, will be delivered by Crown Paints' CPD accredited presenter, David Spicer. The Scotland Build Expo takes place at the SECC in Glasgow on 25 and 26 November 2015, with the Crown Paints CPD on 26 at 12:20pm. Anyone can register to attend the CPD by contacting Crown Paints Specification Services.

0330 0240310
info@crownpaintspec.co.uk
enq. 110

FREE CPD GUIDE TO ENERGY LABELLING REGULATIONS



Mitsubishi Electric has produced a free, CPD-accredited guide to the new Energy Related Products Directive or ErP (2009/125/EC), which is a key part of the European Union's drive to encourage consumers to use more energy efficient products. The ErP Directive, which came into force at the end of September, now means that commercial and residential heating products will need to display an energy label, so that consumers can quickly understand the energy efficiency of the products they purchase. A similar market transformation strategy has already proved highly successful with consumer goods such as fridges and freezers, where it is now very rare to find anything below an A rated product available on the high street.

The Directive is a two-part strategy. Firstly, the ErP requires manufacturers to produce energy-using products that meet stringent minimum performance standards. And secondly, these products must be clearly labelled using a standard methodology so that consumers can quickly understand the energy efficiency of the products they purchase. The CPD Guide covers both main parts of the ErP: the EcoDesign regulations and the Energy Labelling regulations. The guide explains how the labelling is designed to help businesses and homeowners understand the benefits of each technology and focuses on the importance of ErP in relation to legislation such as the Renewable Heat Incentive (RHI).

01707 282880
www.library.mitsubishielectric.co.uk
enq. 111

SPECIFYING MOVEMENT JOINTS AND UNCOUPLING MEMBRANES FOR TILED COVERINGS



Substrates for tile and stone expand and contract with changes in temperature and moisture. The CPD seminar on specifying movement joints and uncoupling membranes, brought to you by **Schlüter-Systems**, highlights how stresses from drying shrinkage, deflection and moisture movement in the substrate can be solved through specifying appropriate movements joints and uncoupling membranes. The benefits of this CPD directly address:

- What are movement joints and why should we use them?
- Where to locate movement joints and how to specify the right ones for specific applications?
- What's uncoupling and what are the features of modern uncoupling membranes?
- The multi functions of modern uncoupling membranes.
- Where should they be used and what is the best practice for installation?
- Other factors to consider for specification such as costs and environmental issues.

Movement Joints – Explained

The CPD seminar covers all the different types of movement joint and their application, including:

- Wall Expansion Joints – best practice and British Standards

- Floor Movement joints – best practice and British Standards
- Heated floor movement joints
- Problems and solutions for corners and connections
- Problems and solutions for intermediate movement joints

Uncoupling membranes – Multiple Functions

The CPD seminar covers how different types of bonded uncoupling membranes are designed for different intended applications:

- Uncoupling
- Crack bridging
- Load distribution
- Waterproofing
- Vapour pressure equalisation

There are four CPD seminars in the Schlüter-Systems series:

- Integrated Solutions for Wetrooms with Tile and Stone Coverings
- Modular Underfloor Heating Systems for Tile and Stone Coverings
- Movement Joints and Uncoupling Membranes for Tile and Stone Coverings
- Balcony and Terrace Solutions for Tile and Stone Coverings

Contact the company to book a CPD Seminar, or visit the training section of its website.

01530 813396
www.schluter.co.uk
enq. 112

editor's focus

1. REMMERS

Multi-Tight 2K is a new, flexible, mineral based waterproofing product which has all the performance properties of older technology polymer-modified thick bitumen emulsions, whilst being "bitumen free". Using unique rubber granulate filler technology Multi-Tight 2K has a crack-bridging capacity which is five times more effective than standard flexible mineral-based waterproofing systems. The versatility of the product allows it to be used to waterproof below ground externally and internally offering excellent resistance to ground or water pressure as well as frost and salts. It is very quick and easy to apply by trowel or spray application, has fantastic levels of adhesion to most substrates including old bitumen and dries very quickly in less than 18 hours.

enq. 113



2. KEYLITE ROOF WINDOWS LTD

All manufacturers recommend that roof windows should be installed into an oversized opening in the roof. This results in a 20mm uninsulated "gap" around the perimeter of the window.

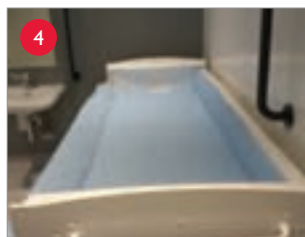
Keylite's Expanding Thermal Collar is a unique integrated solution, combating this cold bridging effect and reducing heat loss. Keylite is the only roof window with a built-in device which completely closes the gap between the roof and the window frame, for better thermal performance. All at no extra cost.

enq. 114

3. HUSH ACOUSTICS

Reverberation noise is common in a building where there are hard surfaces. Sound waves bounce and reverberate against hard walls, floors and ceilings creating noisy environments. The solution is to add absorption to the areas that have reverberation noise issues. Hush Acoustics Absorber Panels for Ceilings and Walls will help to resolve the problem. Step one is to arrange a Hush Acoustics site visit to carry out a survey, calculate the reverberation issue then calculate the amount of absorption needed. Guidance on the installation of acoustic solutions is also a service that Hush offer. Hush Acoustics provide a consultancy service outlining practical, economical and environmentally friendly ways to minimize noise levels within all environments.

enq. 115



4. KINGKRAFT

Woodlark's Campsite chose Kingkraft's versatile Mobile Shower Changer for their new shower block because it can be used for both showering and changing. It is height adjustable making low-level transfer safe and easy but also helping parents/carers avoid back strain. It also offers an option for twin opening sides to provide a wider changing area and more access.

Kingkraft is a leading manufacturer of bathing, showering and changing equipment and have been for over 30 years. The company can assist with bathroom adaptations including domestic, school hygiene rooms and changing places.

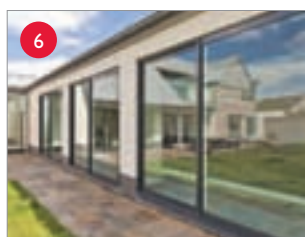
enq. 116

5. TANUMS

Tanums has been producing high performance wood windows and doors since 1949 with triple glazing since the 1970s.

Tanums standard U-value is 0.9W/m²K, and also carries the stringent Swedish 'P' mark class C for severe exposure locations and buildings over eight storeys. Its extensive range included top turn, fully reversible window; side hung, outward opening windows and French doors; inward opening windows and French doors, and sliding doors.

enq. 117



6. KLOEBER

Kloeber has recently added a Euroslide range of lift & slide sliding doors to its range. Offering the same high performance features as its bespoke aluminium sliding doors but in set sizes with a reduced number of options giving a more budget conscious price. Matt Higgs, sales director and co-owner of Kloeber said: "We remain very aware that the self builder and home improver quite rightly don't wish to compromise on quality, style and efficiency when choosing their doors and windows for their own Grand Design. With our new range of Euroslide lift & slide aluminium sliding doors we have focussed on maximising the cost effectiveness for our customers whilst keeping the same high standards as our bespoke range."

enq. 118

Advocate's Close in Edinburgh wins Project of the Year at London Grand Final

RICS has named the Advocate's Close project in Edinburgh as the national Project of the Year at the RICS Awards 2015 Grand Final held at the Dorchester Hotel in London.

The RICS Awards celebrate the most inspirational initiatives and developments in land, property, construction and the environment from across the UK. Broadcast journalist Sian Williams, hosted the lunchtime event at the Dorchester, which was attended by 400 guests from across the construction and built environment industries. Awards were also presented in the categories of building conservation, community benefit, design through innovation, regeneration and infrastructure. All entrants had won their respective categories in the regional RICS Awards held across the UK earlier in the year.

Advocate's Close occupies an historical site within the heart of Edinburgh's Old Town. The development which was delivered by Thomas & Adamson surveyors and Morgan McDonnell

Architecture Ltd for the Chris Stewart Group, successfully created a vibrant new quarter within a previously run down and unloved part of the city. Having rehabilitated the existing buildings on the site, the team were also commended for being extremely sensitive when inserting more contemporary additions to the location – this helping to breathe a new lease of life into what is a World Heritage site.

Guy Morgan, Director at Morgan McDonnell, said: "We are honoured to have been recognised for our work on the Advocate's Close development. To have won an Award from such a prestigious organisation like RICS is a really great achievement for all involved in the project. We want to continue our award-winning work in the built environment sector, and hope that this win will inspire other professionals in the industry to reach the very highest standards in their own work and benefit the local communities they serve."

Chairman of the RICS judging panel, David Tuffin FRICS, said: "Careful conservation, coupled with sensitive interventions and a clever use of new material and finishes, has produced an imaginative mixed use scheme, including a new hotel, 50 serviced apartments with views over the city, offices, restaurants, cafés and bars combining to produce a commercially sustainable and elegant addition to the Old Town. An exceptional regeneration, Advocate's Close is a very worthy winner of the 2015 RICS Awards – Project of the Year."

Lynn Robinson, RICS Regional Director South, commented: "The Advocate's Close development is a shining example of how a once neglected part of a city can be truly transformed for the better of the surrounding community. Not only has this part of the city been restored in relation to its historic buildings and architecture, it's been brought right up-to-date with contemporary additions."



Trench Heating

Gunning Trench Heating is the best way of providing a heating system in front of full glazed walls, combating cold downdraughts and condensation. It is a discreet and effective solution for extensions, conservatories or environments where wall radiators would be in the way or unsightly.

Tubular Radiators

Gunning Tubular Radiators are compact low level heating units combining high output with an unusual but modern appearance. This ingenious design is ideal for use anywhere wall space is limited such as extensions and conservatories. Comes in 5 lengths.

GUNNING HEATING PRODUCTS
Tel: 01268 545154 Fax: 01268 545154
Email: sales@gunningheating.co.uk
www.gunningheating.co.uk
Unit 12A, Durham Road, Laidon, Basildon, Essex, SS15 6PH

enq.119



QA Luvanto Luxury Vinyl Flooring

- Looks like real wood and stone flooring
- Very hardwearing
- Low ongoing maintenance required

Visit QA at Stand B9 and see the complete flooring solution

QA Flooring Solutions Ltd
T: 0151 495 3434 E: sales@qaflooringsolutions.com
W: www.qaflooringsolutions.com

enq.252

Lyndon Design scores top marks



A leading manufacturer of handcrafted and upholstered seating solutions, **Lyndon Design**, has scored top marks for sustainability; having recently been awarded full membership of FISP – the revered Furniture Industry Sustainability Programme. This prestigious accreditation was awarded to the company following a comprehensive audit. As well as complying with various environmental and social and economic criteria, together with environmental and health and safety legislation, Lyndon Design has documented and implemented an environmental policy statement. Managing Director at Lyndon Design, Tim Armitt said: “We are delighted to have been accredited with FISP.”

enq.120

Assure goes from strength to strength



Network VEKA meets all the requirements of the new international standard for operators of competent persons schemes. Assure Windows and Doors is the UKAS-accredited, official competent persons scheme authorised by the Department for Communities and Local Government (DCLG) and operated by Network VEKA. Technical and Compliance Manager Austin Greene explains: “The Assure team are proud to consistently maintain exceptional standards and were pleased to hear from UKAS that the organisation has successfully completed the transition to the new international standard, with which all competent persons scheme operators must comply. This means we are now officially certified to ISO 17065: 2012.”

01282 473170 www.networkveka.co.uk

enq.121

Peabody social housing lets in maximum light



An urban social housing project in Whitechapel London, which provides “comfort and happiness” for its residents, was a finalist in the 2015 RIBA Stirling architecture prize. The RIBA Stirling Award, is the UK’s most prestigious architecture prize, and is awarded to the architects of the building which has made the biggest contribution to the evolution of architecture in the past year. High performance aluminium clad timber windows from **NorDan UK Ltd**, a market leader for timber windows in social housing, contribute to the buildings air tightness, helping to keep heating bills to a minimum. Scandinavian timber and alu clad timber windows from NorDan, are proved to have a very long life cycle and contribute to the buildings Code for Sustainable Homes Level 4. The new block reflects the massing and characteristics of the existing estate blocks. Deep, white reveals around windows and balconies contrast with the brick facade and provide sufficient space for planters on the cills. The balconies are positioned within the building envelope, so as to retain a flat brick facade in keeping with the existing blocks. These balconies have openings on two sides to allow a maximum amount of daylight into the living rooms through their NorDan sliding patio doors.

01452 883131 www.nordan.co.uk

enq.122

Network VEKA members shortlisted



Three different **Network VEKA** members have been shortlisted for categories in this year’s G Awards. Hampshire-based **KJM Windows**

and Conservatories has been nominated for Installer of the Year, while Rodda & Hocking and Thistle Windows and Conservatories will be among those battling it out for the Conservatory Installer of the Year title. “We’re pleased to see a number of our members shortlisted for G15 awards,” commented Colin Torley, sales and marketing director of The VEKA UK Group. “We know that every single member company upholds exceptional standards, all the time! So, it’s nice to see this commitment to quality recognised.”

01282 473170 www.networkveka.co.uk

enq.123

Second Queen’s Award presentation for Ancon



Just three years after its first Queen’s Award for Enterprise presentation in 2012, **Ancon Building Products** officially received its second award on Thursday 15th October at a special ceremony at its manufacturing site in Deeside, North Wales.

The 2015 Award, for International Trade, recognises Ancon’s outstanding success in growing sales across new and existing export markets. It follows the company’s previous Queen’s Award for Enterprise in Innovation for its ground-breaking Lockable Dowel, a system that has since revolutionised post-tensioned concrete construction. The prestigious award, the highest accolade that any UK business can achieve for export growth.

0114 275 5224 www.ancon.co.uk

enq.124

Architects Datafile website



The Architects Datafile (ADF) website is an online provider of past and present products and news items for the architect or specifier. architectsdatafile.co.uk is a one-stop source for all the latest press releases providing any visitor with access to information about products and services that they may require. From the website, you can find links to digital issues that have live links to advertisers’ sites, as well as daily email alerts to keep you as informed as possible.

www.architectsdatafile.co.uk

New Scottish Standards Guides



On the 1st October the updated Section 6 (energy) of the Scottish Building Standards came into force, bringing with it significantly tightened carbon emission targets. To help simplify the process of achieving compliance, **Kingspan Insulation** has released two new guides, covering domestic and non-domestic buildings. The guides can be freely downloaded from Kingspan Insulation’s website.

They offer a comprehensive review of the revised requirements within Section 6 (energy), explaining how to demonstrate and evidence compliance, and providing an overview of the notional building specifications for new buildings.

01544 387 384 www.kingspaninsulation.co.uk/buildingregs

enq.125

Mapei's new extended quality control laboratory is fully open

Mapei is pleased to announce the opening of its newly extended and modernised Quality Control Laboratory. This expansion makes the Mapei UK QC Laboratory the largest of the European subsidiaries, and is testament to the group's continued commitment to quality, testing and improvement.

The Laboratory will facilitate extra equipment and new test methods to support the increase of business demand and growth. The 60m² extension (from the original 100m²) has been planned, designed and carried out over the last 18 months, and includes two new state-of-the-art conditioning units along with a complete facelift of the Laboratory including new floors, ceilings, lighting, sinks, extra benches as well as new testing equipment.

The first step of the Laboratory extension involved the removal of the current central wall to

incorporate the unconditioned room, adjacent to the main Laboratory, to increase the conditioned area from 100m² to 160m². The improved space will be dedicated to testing activities in an efficient way and also provide more room for additional machinery to be added.

This Laboratory is fully opened and will allow an increase of R&D activity and testing demands as required by the market and increase the range of Mapei products in the UK construction industry.

Mapei strive to minimise its carbon footprint to help work towards a 'greener' future with its extensive investment (5% of group turnover per annum) in R&D into the development of solvent-free and low emissions products. In addition, these standards comply with local and government policies.

0121 508 6970 www.mapei.co.uk



enq.126

FIT Show a systemfest



More than a dozen PVC-U and aluminium systems producers are showing at **The FIT Show** when it opens on April 12th, 13th and 14th next year, the biggest gathering of such companies for a decade. With many of the industry's established stalwarts exhibiting, there are also one or two newer names joining

the throng and all are claiming something new on offer, including brand new systems. However, all are keeping their big items under wraps for the time being. Companies exhibiting so far include: Deceuninck; Duraflex; Eclectic; Eurocell; Ikon; Liniar; Profile 22; Rehau; Selecta; Spectus; Swish; Synseal; and VEKA.

0845 0945 077 www.fitshow.co.uk

enq.127

Priya is new PatioMaster brand manager



PatioMaster, one of the UK's best-known names in sliding patio doors, has named Priya Bains as its new brand manager. Priya joins at the time when PatioMaster, part of the Epwin Group, is looking to develop and strengthen its fabricator network across Britain and Ireland, including its lead generation resource and trade and consumer marketing support, as well as seeking new ways to help dealers build sales. She said of her appointment: "I am very excited about

taking on the challenge of helping to develop the network of PatioMaster dealers. My main priority will be to build a close communication loop and stable support system for them and I am looking forward very much to working with them all."

0808 178 3370 www.patiomaster.co.uk

enq.128

Silva Timber Products unveils new showroom



Silva Timber Products has invested a five-figure sum in a new showroom to exhibit its growing range of products at the headquarters in Widnes, Cheshire. It features dozens of products displayed in a gallery format, a 50-inch TV screen for educational videos, computers to make it

easier for customers to place orders and browse Silva's website, and books containing case studies and images showing how the firm's products are used. Silva staff are on hand to provide expert design and technical advice, and product samples are available to take away.

0151 495 3111 www.silvatimber.co.uk

enq.129

Signbox wins at BSGA Sign Awards



Visual communications specialist **Signbox** has won the 'Illuminated Sign of the Year Award' at this year's BSGA Awards, which took place on Tuesday 13 October at the state of the art East Midlands Conference Centre in Nottingham. The award was for Signbox's comprehensive signage project at UBM's new headquarters in Central London. The project saw

Signbox work closely with project designers and architects to create an office environment that reflected the professionalism and reputation of the global media brand. The company's work for Paternoster House was highly commended in the 'Interior Signage of the Year' category.

01784 438 688 www.signbox.co.uk

enq.130



Optigreen Ltd launch its new website

From drawings, data sheets and technical literature to reference images of successful green roof installations – everything you want to find out about professional roof greening is just a click away when browsing **Optigreen's** updated website. The main function of www.optigreen.co.uk remains to provide comprehensive information and data about the company's cutting-edge products and system solutions for specifiers and building owners. You'll find links to CAD drawings, data sheets, seed lists and references for each system solution and most of the material can be downloaded instantly. Important products can now even be viewed as 360° graphics, allowing users to picture the functions and advantages of the products more clearly. Optigreen have also included their partner contractors and cooperating businesses which install and maintain green roofs nationwide. A media library with videos and a collection of successful reference projects, including images and project details, round up the new web presence.

0203 5899 400 www.optigreen.co.uk

enq.131

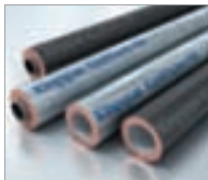
BIM objects for cladding systems now available



NVELOPE, a market leader in rainscreen cladding support systems, has launched BIM (Building Information Modelling) objects for its cladding support systems. Designed to assist project teams working in the BIM format, the new objects ensure greater specification detail and accuracy. NVELOPE's NV1, NV2, NV3, NV4, NV5, NV6 and NV7 cladding support systems are now available as BIM objects to help architects and specifiers in the design process. NVELOPE's BIM objects contain detailed dimensions, product specifications and other key details, along with high quality 3D images to add into virtual models and simulated building designs. They can be found on the NBS National BIM Library and are available in IFC and Revit formats and downloaded and integrated into any BIM software.

enq.132

BDA Agreement® for Kingspan pipe insulation



Following extensive testing by Kiwa Group, the **Kingspan Kooltherm® FM Pipe Insulation System** has been granted BDA Agreement® BAP 15-036/01/C. The independent certification gives peace of mind to installers and specifiers, confirming that the product will perform as expected when installed according to certificate guidelines. The document is also recognised by the NHBC and LABC and can help to streamline procedures and approvals. The BDA Agreement® covers the Kingspan Kooltherm® FM Pipe Insulation System manufactured using continuous or slotted board production processes, with aluminium foil or theatre black vapour barrier jackets.

01544 388 601 www.kingspanindustrialinsulation.com

enq.133



LEVATO MONO porcelain paver system

The Levato Mono porcelain paver system is the pinnacle of external raised flooring technology; enabling the specification of lightweight, slip resistant and attractive raised flooring solutions, combining incredible technical properties with uncompromising aesthetics; making them the ideal choice for commercial and domestic use alike.



t: 0845 2700 696 e: info@thedecktileco.co.uk
www.thedecktileco.co.uk

- 20mm porcelain pavers 40x80 45x90 60x60 75x75 30x120 40x120 60x120
- 'Floating floor' – installation over single ply membranes
- Eternal product - zero maintenance required – offering massive over-life savings
- Highly abrasion and stain resistant
- Highly slip resistant ; R11 and achieved up to +65 wet in the BS pendulum test
- Lightweight – 45kgs per m²
- High load bearing and impact resistance
- Timber & stone effects ; 40+ finishes available
- Ideal for balconies, roof terraces and piazzas, for both commercial & residential use
- Completely non porous
- Fire & frost proof
- Height-adjustable support from 9mm up to 550mm

dtec
the deck tile co. ltd.

enq.134



New look for New Street

After a five-year redevelopment, Birmingham's most important railway station has swapped 1960s brutalism for light-filled fluidity, as Ray Philpott discovers

Birmingham New Street station has been transformed with some spectacular new architectural features. Externally, the nondescript, grey concrete, pebble dashed exterior of the old 1960s building, which included the former Pallasades shopping centre, is now clad in a sinuous, gleaming stainless steel skin around the whole perimeter.

Piercing that shining exterior are three clearly defined entrances, each sitting underneath a long eye-like feature filled with media screens.

Inside, a huge atrium, resting on elegant, white, wishbone-shaped support structures bathes the huge station concourse in light giving the building a cathedral-like presence.

For the first time since the original Victorian station was demolished and replaced by a widely unloved and grim

concrete shopping and transport complex in 1967, it's possible to see the station as a building in its own right. This important transport hub, for so long mostly hidden underground and largely invisible at street level, now has a strong presence in the city.

The Pallasades has been replaced by the bright, new Grand Central shopping centre, boasting 77 retail outlets with an eye-catching 250,000ft² John Lewis department store as it's crowd-drawing centre piece.

Rather than sitting directly over the station concourse like its light-blocking predecessor, Grand Central's glazed, attractive shop fronts sit on the perimeter of the station concourse. The station itself contains a further 35 retail units.

Continued overleaf..

Pictured:
The new, light-filled atrium
above the concourse
is the dominant internal
design feature



‘New Street has a very strong architectural concept based on movement and reflection of movement’

Carol Stitchman, head of design, Network Rail

The 12 station platforms remain at their original level but are now far better lit and are finished in light-coloured cladding materials rather than concrete to create a more airy feel. They have been decluttered of unnecessary structures, and benefit from vastly improved access to and from the concourse.

Capacity issues

The need for £750 million refurbishment became apparent in 2000 when Network Rail realised the station was clearly not going to be able to handle ever-increasing passenger numbers. The 1960s station was built to handle 60,000 people a day, now the station has a potential capacity of 315,000. The New Street Gateway project is funded by Network Rail, Birmingham City Council, Centro, the Department for Transport and the Department for Business Innovation and Skills.

The concept design for the overall project was carried out by architects AZPML, while Atkins was responsible for the internal design of the station and Haskolls for the interior design and architecture of Grand Central.

“It had to be a facade that was purely designed from the outside,” AZPML co-founder Alejandro Zaera-Polo told *The Guardian* recently. “We couldn’t use the inside of the building as a driver for the design, so we decided to make it an embodiment of the flows that go through it. Information, trains, people, clouds – everything that moves is somehow embedded into the facade.”

Network Rail’s Head of Design, Carol Stitchman, adds: “New Street has a very strong architectural concept based on movement and reflection of movement.

“The external facade is rain screen with mirror-like cladding made from individually shaped pieces of stainless steel. This reflects people as they move underneath it, the sky and, on both the eastern and western elevations, even the movement of trains going in and out of the station.”

Flowing design

The sense of flow continues inside with the curves of the atrium. Wishbone-shaped steel trusses, 1.5m to 2.5m deep, support the domed areas of the roof – spanning some 40m across the concourse.

The atrium roof does not contain glass but a translucent plastic material, ETFE. This has been fritted so that, while people can see out from inside, from the outside it appears an opaque silver, helping to reduce excessive solar gain.

“ETFE is being used a lot in major railway buildings now, such as Manchester Piccadilly and Manchester Victoria,” explains Stitchman. “It has the advantage of being extremely light and durable, it doesn’t need lots of metalwork and framing to support it compared to glass, and it can be used for much greater expanses in roofs.

The steel spans are clad with light-coloured, industrial fabric stretched over them and the whole atrium is up-lit with a light-wash coming from ground level.



The Stephenson Street entrance



An aerial view of the station



Detailing on the lower ceilings conveys a sense of movement



The station has become a destination in its own right

Quick facts

Opened September 2015

5,550 stainless steel cladding plates used

15 new lifts fitted

36 escalators in operation

Atrium area equal to football pitch

Concourse 5 times larger than London Euston's

Train arrives/departs every 37 seconds

Able to handle up to 315,000 passengers a day

“Originally a solid cladding for these elements was proposed, but with the structure showing movement of up to 125mm, this might have cracked or required lots of unattractive, visible movement joints,” says Stitchman. “Fabric moves with the structure, is easier to maintain and has enabled us to remain faithful to the original intent of the design.”

Engineering feat

This striking central core of the station was only made possible by literally ‘hollowing out’ thousands of tonnes of concrete from the centre of the old structure – a major engineering feat.

Building the atrium required cutting out large sections of the old shopping centre’s floor and ceiling to create the space where it would eventually sit. This involved installing the atrium framework, before carefully removing the original concrete elements to create the desired internal space. This could potentially destabilise the building and required careful collaboration between demolition contractor Coleman, main contractor Mace and Atkins.

Atkins Engineering Director, Stephen Ashton, explains: “Structurally, the original building comprised nine reinforced concrete ‘frames’ with a central frame sited directly under the atrium. The steel arch trusses forming the atrium roof structure span this removed central section, and sit directly over existing columns. Roof loads are transferred to the columns via bearings, enabling the atrium roof to move in response to applied loads. The trusses are tied together with a steel ring beam around the atrium, creating a stable but flexible roof

structure. Because we were removing huge internal loads and adding external loads with the cladding and support framework, demolition and construction sequences had to be designed very carefully. We weren’t 100 per cent sure how the building would move, so we set up a global monitoring system with sensors at key points of the building to ensure its integrity wasn’t compromised.”

He adds: “During demolition we successfully removed more than 6,000 tonnes of concrete, including continuous reinforced beams and pads, without encountering any significant problems. We’re proud the station was able to continue running during the demolition process.”

Immediately below the atrium is another interesting feature. A glass light-well surrounded by wave-styled paving has been installed in the floor of the concourse, creating the effect of a pebble dropped into a pond and enabling daylight to reach part of the platform area below.

Circulation and flow

While the new architecture undoubtedly raises the station’s profile, for Network Rail it also plays a practical role in the practical day-to-day operation of New Street – ensuring it’s able to comfortably handle the 170,000 people currently using it every day. Stitchman says: “Externally, New Street now reads as one building and internally we have also tried to make it read as one building. Before, there was no dialogue between the shopping centre and the station, now there is – the atrium brings them together.

Continued overleaf..

Project details

Client:

Network Rail

Concept architects:

AZPML

Project Architect:

Atkins

Principal

contractor:

Mace

Structural engineer

for atrium and

external skin:

AKTII

Structural and

M&E engineers:

Atkins

Interior design:

Haskoll

Client:

Network Rail

Demolition

contractor:

Coleman

Quantity surveyor:

Faithful & Gould

Lighting consultant:

Atkins and Hoare

Lea



The exterior stainless steel cladding gives the building a sense of fluidity and movement

“Since the redesign the flow of people around the station has improved, not least because we have increased the number of access points from the concourse to the platforms from two to five. The access points – comprising stairs, escalators and lifts – are all conveniently placed in the centre of the platform lengths.”

A number of airline-style ‘lounges’ have been created, where passengers can sit and wait for their trains in comfort once they have gone through the ticket barriers. These provide information about rail services, toilet facilities and cafes.

“The idea,” says Stitchman, “is that people no longer feel obliged to hang around waiting for trains on the platforms as before, and indeed, we’ve removed the waiting rooms on the platforms.”

“Each lounge caters for different types of journeys being made – local, intercity or regional – and are clearly colour-coded with vinyls. Curved design elements in the lower parts of the ceiling are designed to subliminally steer people where they need to be,” says Stitchman.

On the concourse, security glass balustrades on stairs, escalators and on the walkways give people a clear view across the whole football pitch-sized concourse to improve wayfinding.

Sustainability

A lot of thought has gone into the sustainability of the building design, which is on course for a BREEAM Very Good rating. The building utilises LED lighting throughout

and the main concourse area is also naturally ventilated to reduce energy consumption.

A Combined heat and Power (CHP) unit that generates electricity and heat from gas has been installed and linked to the Birmingham District Energy Scheme. Excess heat produced by the plant will be pumped to offices and buildings around the station, including John Lewis, potentially cutting carbon emissions by up to 3,000 tonnes annually.

The station has a rainwater harvesting system that will supply 60 per cent of the water for toilet flushing and also boasts a 4m-high by 80m-long ‘green wall’ on the Moor Street pedestrian link on the station’s east side. With some 25 different species of plants growing on it, this interesting feature serves to welcome people while hiding a long, dark retaining wall.

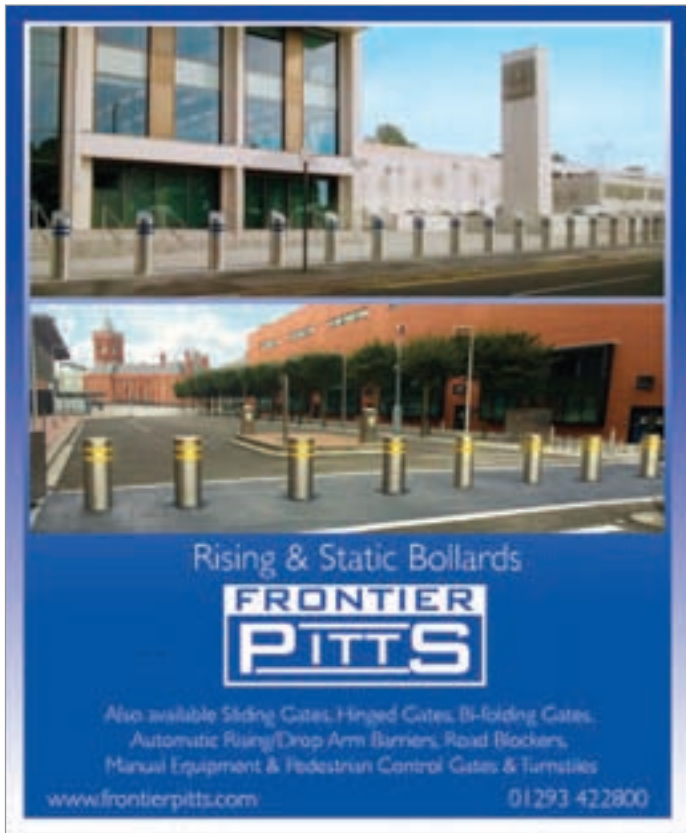
Rejuvenation

“The station was a low-rise, uninspiring building in the middle of Birmingham that had no real legibility,” says Stitchman.

“Now its becoming a destination in its own right – there’s already evidence that people are travelling by train purely to shop here.”

She adds: “The southern side of central Birmingham has not, so far, enjoyed the recent regeneration that other areas of the city have.

“We believe New Street will change all that.”



Rising & Static Bollards

**FRONTIER
PITTS**

Also available Sliding Gates, Hinged Gates, BI-folding Gates,
Automatic Rising/Drop Arm Barriers, Road Blockers,
Manual Equipment & Pedestrian Control Gates & Turnstiles

www.frontierpitts.com 01293 422800

enq.135



Specialists in the design, installation and maintenance of living walls and green roofs nationwide. Contact our specialist teams for expert guidance on our systems.

**To find out more book our Living Wall or
Green Roof CPD now.**

www.scotscapelivingwalls.net • 020 8254 5000

enq.138

A stylish entrance in Soho



CD UK has supplied DuPont™ Corian® to the reception area of a multi-let office building in Soho, London. Fabricator Clarke Rendall worked to a design that required ultimate flexibility for a seamless monolithic 4.1m thermoformed reception desk in 'Glacier White' Corian®, featuring

conical end profiles, 2.2m acute angled return and a sculpted counter top with integral storage and data communications points. Additional seating in the reception area comprised two 2m bespoke tapered kidney shaped sofa units also finished in thermoformed 'Glacier White' Corian® with conical profiles. Technical support from CD UK was crucial to the success of the project.

0113 201 2240 www.cdukltd.co.uk

enq.136

Aperam shingles for Borders rail link



Aperam UGINOX® TOP has been installed as shingles to provide a durable matt facade on the new Galashiels Transport Interchange. Forming part of the highest profile rail restoration project in Scotland since Beeching, the 'statement building' is the tourism entry point to the Scottish Borders for bus, rail and road. Stainless steel was specified for

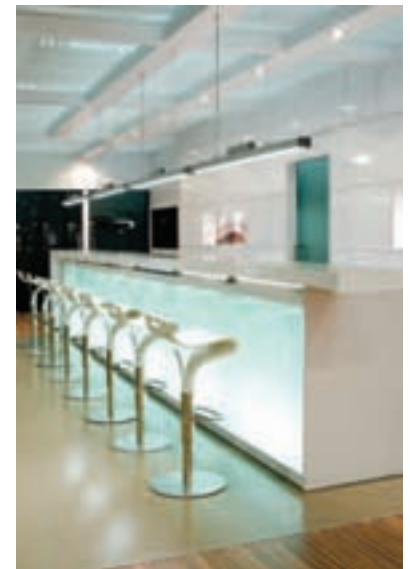
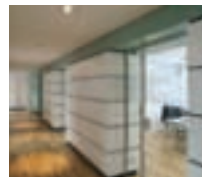
its lasting appearance and sustainability, in preference to aluminium due to its lower installed cost. Considered the most sustainable of the hard metals, it does not oxidise or cause problems with run off, is easy to work and has very low maintenance requirements.

01246 571660 www.uginox.com

enq.137

MODERN LIGHTING SOLUTIONS

more than light



Lighting catalogue with style shots available on request

0208 123 7914 modernlighting.co.uk

enq.139

What drives me the most?

Creative freedom!

Our strongest drive: GEZE Powerturn

Universal Design – made in Germany: At only 7cm high the Powerturn swing door drive opens even large, heavy doors with leaf widths of up to 1,600 mm or leaf weights of up to 600 kg. GEZE's powerful model is also the perfect solution for fire protection doors up to 300 kg. It provides optimum creative freedom for planners and architects and at the same time, access for all. Due to its unique Smart swing function, even the manual opening and closing is child's play.

www.powerturn.geze.com



reader
enquiry
140

GEZE

BEWEGUNG MIT SYSTEM



Work and play central to Shoreditch office success

Studio RHE moves onto bigger projects with an innovative new design for an old office building in Shoreditch, writes Steve Menary

The regeneration of the increasingly trendy Shoreditch area of east London has been a contentious issue. Home to trendy media professionals and aspirants, the area was expertly satirised a decade ago in the Channel 4 sitcom *Nathan Barley* and recently saw street protests, but regeneration continues apace.

The show's writers Charlie Brooker and Chris Morris did not anticipate a cycle-in office with space for yoga and basketball but that is just what Studio RHE has produced in a vibrant new design in the Alphabeta Building that has certainly proved a winner for client Resolution Property.

The £48 million development is a retrofit of three buildings on the intersection between Shoreditch and the City of London. The existing buildings were originally built on the site between 1910 and 1930 and then in the 1980s consolidated into what became known as Triton Court.

Resolution Property wanted a complete refurbishment, including a rooftop extension that would increase the net internal area by 17 per cent and create 22,300 square metres (240,000 square foot) of accommodation. What Resolution did not want was another version of the typical City of London office format.

Continued overleaf..



'The company set out to try and redefine the concept of the workplace with a design that includes extensive shared work and social space'

"Resolution were aware that the market is changing and the demand is changing and they are progressive enough to make that shift," says Dickon Hayward, who was project architect for Studio RHE on the Alphabeta scheme.

Studio RHE had a track record of innovative office designs, but only on a much smaller scale. This, however, was what attracted Resolution.

Mr Hayward adds: "It's about those ideas becoming mainstream. That's why we became involved. We are not in the business of doing large scale projects and that's why Resolution came in for us because they wanted something different. They wanted to look to the hospitality industry and to end users. To get the best staff, employers need to do more than offer a good wage."

Studio RHE's team was led by Project Director, Richard Hywel Evans, with support from other members of the group's staff, including Tomos Owen, Joe Bamber, Thida Roberts, Tom Foster and Ben Nemeny.

In its sales document aimed at attracting new tenants, Resolution says that at the heart of the design is the "belief that the best working practice stems from interaction, play and chance encounter as well as quiet concentration. Alphabeta rejects traditional notions of the controlled office and instead, offers an adaptable space designed for the enjoyment of a creative and empowered workforce."

Studio RHE's design was aimed at offering a dynamic and adaptable workplace to try and attract not just financial sector

clients but also the media and technology companies that are flocking to a site that is near the tech start-up zone known as Silicon Roundabout.

The company set out to try and redefine the concept of the workplace with a design that includes extensive shared work and social space based around the nine-storey, 750 square metre glazed atrium, which Studio RHE wants to be the "dynamic, social heart" of the new Alphabeta building.

"The existing buildings lent themselves to large communal areas," says Mr Hayward, who references the idea of communal, work/leisure space at the heart of Sir Norman Foster's design for the Willis Building in Ipswich.

Built between 1970 and 1975 as the headquarters for insurance group Willis Faber and Dumas (now known as Willis Group), this design was a landmark in the high-tech architectural style. The building included a swimming pool at the heart of the building, although this has subsequently been covered up to create more space – though not filled in as in 1991 the Willis Building became the youngest building to get a Grade I listing.

Studio RHE is not expecting a listing for Alphabeta, but has still come up with an innovative design that mixes work and play without coming in at a high cost to Resolution.

Mr Haywards says: "The communal spaces are finished to a high standard but the approach was never to be a high budget fit-out. A lot of the surface is exposed. They were never going to create a high end product. People like the exposed



brickwork and steel and it kept the budget down.”

By July 2013, Studio RHE had come up with an innovative design that met with the client’s aspiration and Galliford Try, the main contractor recruited by Resolution, had started on site.

At ground floor level, the design includes a five metre long ‘kitchen’ table, a panelled library area, a cafe and a basketball court to encourage mixing by employees. A curved reception desk morphs into a high bar and wraps around a timber and bronze clad staircase to lower ground level.

All of the fittings and furniture specified for the Alphabeta building are contemporary and were manufactured by ISM Designs.

Contemporary features in the specification include an atrium cafe with a bar counter featuring a Compac quartz worktop from MKW Surfaces, which was commissioned to supply an oversized six metre long bar counter.

The front of the bar is clad with the same Compac Quartz Gray Zement in a glaze finish, which is intended to combine the strength and look of concrete with a soft feel at touch on a matt finish. This bar also features a glass panel on each side.

Colourminium worked on the facade and after detailed surveying and rationalisation used a European window system to meet the brief that was then extended to fulfil the vision of the design.

The aim was to give a uniform exterior that enhanced the perception of just one building. The existing exterior offered

up complexities including curved heads to existing openings, round windows and obscure structural limitations within the clock tower.

The design included a further floor at roof level added using a steel frame clad in curtain walling and stone cladding, which helped create the extra level of office space desired by Resolution to boost the size of the accommodation..

The materials specified for the atrium include mild steel sheets, concrete resin and purple iridescent steel on the walkway. Other finishes include ceramic tile, back painted glass and charred timber create further visual variety.

On the upper levels of the atrium, glazed east and west elevations include six cantilevered meeting rooms that project out by three metres. The north elevation is clad in vertical planks with double-height frameless glass openings, while the south elevation is clad in untreated mild steel sheets with horizontally oriented openings.

The innovative cycle ramp is visible from the atrium through a glazed screen to further animate this central space and links street level to the lower ground floor. At this level, Alphabeta features storage for 250 bikes plus adjacent changing rooms and lockers.

In the commercial space, layers of previous fit-outs were unearthed and structural work undertaken to bring in more light and open up more space.

Mr Hayward says: “The old ceilings were ridiculously low, often in front of windows, and the floors were up and down. It

Continued overleaf...





was a complete warren and we did some structural alterations to create more space. It was almost like an archaeological job and there were layers and layers of fit-out from the last 90 years. As we exposed those, we got more light.”

Alterations also included reworking the compartmentalised floor plates, while new servicing has either been centralised into service spines finished in white perforated steel or left exposed with a galvanized steel finish.

Previous roof level extensions had clashed with the historic roofline but have now been replaced with more sensitive rooftop office accommodation, while terraces provide additional shared spaces with views across the capital and two original, previously inaccessible towers have been opened up to create meeting spaces.

The project also included new access from Worship Street to create an alternative Shoreditch entrance to the Finsbury Square, which is a gateway to the financial district of the capital.

A tight inner city site offered challenges for the construction team, but Galliford Try after two years on site work was completed on the project in September 2015 and around 2,200 people are expected to use the building.

Now complete, Alphabeta provides a gross internal area of 347,523 square foot and net internal area of 239,710 square foot and proved a big success. “It was fully let before we completed,” says Mr Hayward. “All the tenants bought into the idea.”

So successful, in fact, that in July 2015 – two months before completion – Alphabeta succeeded in selling the building for £280 million to Sinarmas Land, which bore out the company’s approach.

Project details

Project: Alphabeta

Location: London

Construction value: £48 million

Client: Resolution Property

Lead architect: Studio RHE

Planning consultant: Montagu Evans

Quantity surveyor: Quartz Project Services

Interiors: Studio RHE

Structural engineer: Furness Partnership

Mechanical & electrical engineer: URS

Main contractor: Galliford Try

Cafe fit-out: ISM

Facades: Colourminium

Flooring: Kingspan Access Flooring

Kitchens: Symphony Group

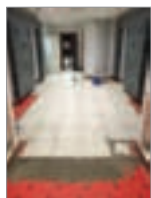
Lift: Otis

Mechanical & electrical: Balfour Beatty

Painting & decorating: KM McLoughlin Decorating

Scaffolding: Rotor

BAL specified for office complex refurb



Major tiling work at West One, a high spec office complex in Leeds, has been completed with extensive use of **BAL** adhesives, grouts and ancillary tiling products. Work was carried out to replace approximately 50m² of carpet tiles with stunning 450mm x 450mm beige Porcelain tiles in a first floor lift lobby. To provide a stable substrate and prevent against future cracking and de-bonding of the tiles, Elite Tiling made extensive use of BAL's innovative and award winning BAL Rapid Mat uncoupling system which was fixed with BAL Rapidset Flexible (grey) tile adhesive. All tiling was set in BAL Rapidset Flexible (grey) tile adhesive before the whole area was grouted with BAL Micromax2 Smoke.

01782 591100 www.bal-adhesives.com

enq.141

Unique panel solution for Winnersh Triangle

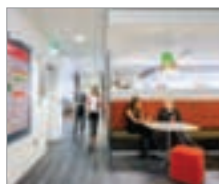


An innovative new insulated composite panel from **Panel Systems** has been specified on a new multi-occupancy office block as part of the prestigious Winnersh Triangle, an 85 acre office and industrial business space in Wokingham, Reading. Glassolutions, a leading provider of glass and glazing solutions to the architectural, door and window and construction industry, approached Panel Systems to help meet the very specific requirements of this

demanding project. Panel Systems created a bespoke composite panel comprising laminated toughened glass which was bonded directly to a polysiocyanurate core insulation material with a 0.7mm coated steel balancer face for added rigidity and to protect the integrity of the glass.

enq.143

SAS System 320 cost-effective ceiling solution



SAS International is introducing System 320, an acoustic tile, lay-in suspended ceiling system without a traditional supporting grid. This feature realises significant cost and time benefits compared to the additional installation and material costs associated with grid systems. Intended for use in corridor or plasterboard surround applications, the

system tiles can be provided in dimensions to suit most building modules, allowing for greater flexibility. Ideal for commercial office and residential sectors, System 320 satisfies acoustic demands set out in the Building Regulations, Approved Document E. Contact SAS to find out about the variety of finishes.

0118 929 0900 sasint.co.uk

enq.142

Airtightness wrapped up at office



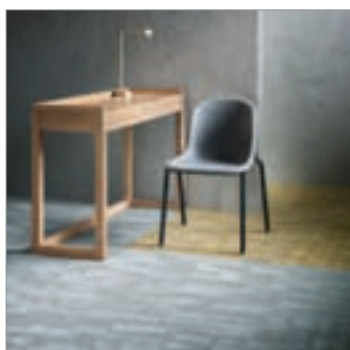
The **Wraptite** system supplied by the **A. Proctor Group**, has been installed to provide an effective vapour permeable rainscreen underlay for the new Aberdeen headquarters of an international oil company. Wraptite is a low-resistance vapour permeable air barrier wall underlay which is durable, flexible and lightweight,

allowing for easy installation. The system comprises Wraptite plus Wraptite Tape which is applied around joints, openings and penetrations to complete a total air tightness solution. The system provides a simple and robust method of achieving low air leakage rates, and is particularly effective when installed in situ as is typical with large scale rainscreen construction.

01250 872261 www.proctorgroup.com

enq.144

Tantalising designs with Forbo's Tessera Alignment



Forbo has refreshed its Tessera Alignment carpet tile collection with a new contemporary colour palette, providing specifiers with the ability to create truly individual floor designs.

Alignment's multi-height loops provide a distinctive bold, directional theme which is tempered by the introduction of intersecting random blocks of rich cut pile. The result is a highly effective broadloom appearance and a unique linear style.

The collection now encompasses 24 colourways, ranging from urban neutrals to fresh aquas, and includes 8 new highlight colours which can produce striking designs when installed alongside the dark nucleus colourway.

Manufactured with over 50 per cent recycled content by weight, Alignment meets the SKA rating criteria for M12 soft floor coverings for offices.

enq.145



TECTUS®
the completely concealed
hinge system

- › high load values up to 300 kg
- › maintenance-free slide bearing technology
- › three-dimensional adjustability
- › opening angle 180°
- › wide variety of finishes



SIMONSWERK



SIMONSWERK UK LTD.
Burcot Works, Tipton
West Midlands, UK
Tel: +44 121 522 2848
Fax: +44 121 557 7042
www.simonswerk.co.uk

enq.146



Innovative ideas and inspiration for hotel design at Sleep 2015

Europe's most important annual destination for the hotel architecture, design and development community celebrates its 10th edition when Sleep returns to London's Business Design Centre on 24 and 25 November



Highlights over the two days will include a series of design installations by top creative names that will explore new territories in hotel design, products from international brands and bespoke artisans selected for their quality, diversity and innovation – and a conference programme featuring insightful speakers gathered to debate the big issues facing the industry today.

Sleep creates new ground in hotel design with Convergence

For the first time at Sleep, a series of installations and conference presentations will examine the opportunities presented by shared spaces within modern hotels. As hospitality lifestyle brands surge in popularity, lobby and bedroom concepts are melding work, relaxation and play. Challenging the norms in spatial use are three leading architecture and design studios which will investigate how combining apparently contradictory influences can result in bold innovation.

Multidisciplinary practice Il Prisma Group, which has pioneered a revolution in attitude towards how we use interior space with its mission to “redefine habits”, will create the ‘Social Harbour’ – a refuge for ‘new nomads’, digital travellers and smart workers – a place to express individuality as well as seek

like-minded tribes. The Manser Practice, in association with Elegant Clutter, has created a thought-provoking and playful concept that will contemplate the meaning of convergence in terms of the coming together of opposites to produce something new and unexpected. And, with improved mobile connectivity and flexibility resulting in the rise of the ‘frictionless office’, international architecture and design practice Perkins+Will is combining its hospitality experience with workplace consultancy and fit-out experience to identify and exploit the potential opportunities of this development for the hotel market. Visitors can gain further insight from the designers on day two of the Sleep Conference when they each present the thinking behind their proposals followed by discussion with moderator Guy Dittrich.

Sleep Set design competition

The hugely popular Sleep Set built-room competition promises captivating spaces by five international design teams each creating a guestroom inspired by ‘Wonder Tale’, a brief which draws on the essence of fairy tales and folklore from around the world. Areen Hospitality, THE STUDIO at Harrods, Heath Design Ltd, Anita Rosato Interior Design and Shaun Clarkson ID are exploring the reaches of their imaginations to create rooms that will engage and nurture the guest in new ways. The sets will be judged by three leading figures from the world of hotel architecture and design – Katy Ghahremani of MAKE Architects, Stylt Trampoli's Erik Nissen Johansen and Javier Hortal of Mandarin Oriental – with the winning team announced at a networking reception on the first evening of Sleep.

Sleep Bar

Sleep Bar (in association with Sleeper), the go-to destination for networking and socialising at the event, will also harness the power of storytelling through fairy tales. International hospitality design specialists Conran+Partners will bring their expertise to perform the magic as this year's designers. Excited

Continued overleaf..

'Every year Sleep handpicks a collection of both new and returning exhibitors to ensure visitors are treated to design innovations that will provide the "wow" factor'

by the limitless possibilities for interpretation with this theme, the team has drawn upon Alice's Adventures in Wonderland, Lewis Carroll's timeless tale which celebrates its 150th anniversary this year, and aims to create layers of theatricality with unmistakable glamour.

Exhibition

Every year Sleep handpicks a collection of both new and returning exhibitors to ensure visitors are treated to design innovations that will provide the "wow" factor and competitive edge in their projects. Established manufacturers and bespoke artisans from across the globe will be revealing their latest collections including: Morgan Furniture, Laufen, Timorous Beasties, Dornbracht, LEDS C4, Ingo Maurer, Contardi Lighting, Coco Wolf, Mineheart, Harlequin, Johnson Tiles, Dare Studio - and GROHE, Sleep's Founder Partner which will showcase a variety of their newest designs as well as host the VIP lounge.

Conference

A big draw for visitors, the free-to-attend Sleep Conference has a reputation for content that confronts the key issues, and continues to attract celebrated industry names from the UK, Europe and beyond. The 2015 programme combines topical panel discussions with celebrity keynotes such as award-

winning creative duo Meyer Davis from New York and Martin Brudnizki, known for his recent re-design of the Ivy restaurant in London. Making its debut is Sleep Essentials, rapid tutorials offering designers the chance to get ideas for their future projects from top consultants – from lighting and landscaping through to art and spa. Design Dream Team sees a dynamic panel comprised of directors from top hospitality design studios draw upon their encyclopaedic knowledge to debate how to make design pay. Never shy of tackling the controversial topics, the conference will discuss whether hotel designers even have a role at all in a digital world where "everyone is a designer now", with Michael Struck, founder and CEO of Ruby Hotels, Maria Vafiadis, founder of hospitality interior architecture studio MKV Design, and Rose Etherington, former editor of Dezeen and now founder of clippings.com contributing their viewpoints.

Sleep is on 24th and 25th November with a late opening until 8pm on Tuesday 24th. To find out more and for registration please visit www.thesleepevent.com and follow @sleepevent on Twitter

Are you working on any interesting projects?



© Hufton+Crow
Dominion Office Building, Russia
See page 7

We are continually looking to source unique, newsworthy content for both the Architects Datafile magazine and website

If you have any projects that you feel would be applicable then please send them to architecture@netmagmedia.eu

If you are not already registered to receive your free copy of Architects datafile you can register online

www.architectsdatafile.co.uk

Sleeping with Gerflor!

sleep event stand no G42



Running for two days, the Sleep Event in November represents the very best in hotel design excellence, with an exhibition of the finest international product suppliers showcasing their best products. This year will see International flooring and interiors specialist Gerflor showcasing its stunning

new range of Luxury Vinyl Tiles and Plank (LVT) products. The company will also be providing a snapshot of its brand new, leading-edge safety flooring Taralay Impression Control, together with its highly credible SPM door, wall and corner protection systems which includes Decotrend. See all the latest LVT, SPM and Safety Flooring products from Gerflor on Stand No. G42.

01926 622600 www.gerflor.co.uk

enq.147

adf website

The Architects Datafile (ADF) website is an online provider of past and present products and news items for the architect or specifier. architectsdatafile.co.uk is a one-stop source for all the latest press releases providing any visitor with access to information about products and services that they may require. From the website, you can find links to digital issues that have live links to advertisers' sites, as well as daily email alerts to keep you as informed as possible.

www.architectsdatafile.co.uk



RADIANCE THE SMART CHOICE FOR THE SMART HOME

Radiance Dynamic Electric Heaters

- High Performance Heating Oil
- 100% Energy Efficient
- Manual 24/7 fully Programmable Timer
- Digital Thermostat accurate to +/- 0.20 degrees
- EHC SmartHome Wi-Fi Ready option available
- Tamperproof Facility
- On/Off Switch on the side of the Heater
- Easy and Quick Installation
- Includes standard UK 13 Amp plug and wall mounting brackets
- Silent in Operation
- Feet or castors available as optional extras
- Safety cut out system to prevent overheating
- 100% recyclable Aluminium Body
- All Radiators 100mm in depth
- 4 outputs from 750watt to 1500watt
- Guarantee: 10 years on Aluminium Body and 2 years on Electronics



I'm a Wi-Fi ready hAPPy chAPPy

- Home Page Menu
- Consumption Limiter Menu
- Power & Temperature Statistics Menu
- Individual Heater Devices Menu
- Weather Forecast Menu

 User Videos available



SmartHome Wi-Fi Control APP

ehc
the electric heating company

reader
enquiry
301



Research by the National Institute for Health and Welfare indicates that exposure to indoor pollutants is linked to reduced life expectancy and disease. It suggests that changes to the way homes are ventilated could reduce the overall burden of disease caused by air pollution. Whole House Mechanical Ventilation Systems with Heat Recovery together with pollen and carbon particle filtration offer potential solutions. Contact **Built Environment Technology** for more info.

enq.316



Schiedel's IGNIS PROTECT is the new CE approved wall pass thru' system used for SW connecting flue pipes up to the temperature class T450 and DW stainless steel System Chimneys up to temperature class T600. The features of this product has helped it win the Flueing and Ventilation Product of the year at the Hearth & Home exhibition 2015. Ignis Protect is suitable for SW and DW connecting flue pipes passing through interior or exterior walls.

enq.305



The very latest collection of **Consort Claudgen's** designer panel convector heaters offer so much more with its cleverly designed features. The white and stainless steel panel heaters now have strengthened grilles to increase durability. The wall mounting system features new snap-on bracket which allows easy installation and mounting on/off for cleaning and decorating. This slimline and energy saving range makes a perfect choice for both commercial and domestic use.

enq.325



For over 20 years **Nu-Flame** has brought together the widest range of both open fronted and glass fronted fires, combining the very best of British innovation, design and engineering.

With Nu-Flame you are guaranteed quality and efficiency; let it help you turn your house into a home. Nu-Flame has invested heavily in its own research and development facility at its state of the art factory in Surrey.

enq.313



The chimney of choice for Quality & Safety

Terminal options to suit every style and environment







Systems for new and refurbished energy efficient air-tight houses

For further information call our dedicated technical team

Tel: 01483 461 700
E-mail: sales@poujoulat.co.uk

Your chimney for life

cheminées Poujoulat

No.1 IN EUROPE FOR CHIMNEY SYSTEMS

Typical
Air-tight installation

enq.302

fireline™

THE NEXT GENERATION OF
FIRELINE STOVES ARE HERE



If you would like any further information please speak to your Sales Manager directly or call the Sales Office on 0845 5195 991

Charlton & Jenrick^{LTD}

Best of British fires, fireplaces & stoves

www.charltonandjenrick.co.uk

reader
enquiry
303



Poujoulat UK's Therminox TI and ZI chimney system is "the only HETAS listed metal twin wall chimney that is soot fire tested using a solid fire stop in the room of the appliance in domestic houses". It makes it an "ideal internal metal chimney solution for houses built post 2008 (Airtight)". During testing of the Therminox TI and ZI, the soot fire test took the cooling air for the enclosure shaft down from the roof space and avoided taking air flow from the living room.

enq.302



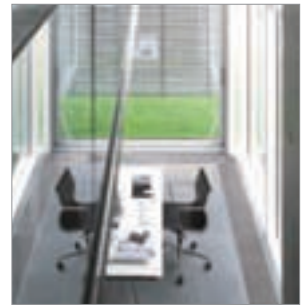
A new development called **Grey Towers Village** in Nunthorpe will feature **Vortice's** Leto fans in its three, four and five bedroom houses. The Vort Leto is an energy efficient centralised mechanical extract unit suitable for kitchen plus three wet rooms and is SAP Appendix Q listed. Roy Brown, Vortice Area Business Manager said: "Quite apart from its energy efficiency, the customer was particularly pleased with the quiet running of the Leto."

enq.324



Wilo has announced it is celebrating the sale of 28 million small circulators in the past ten years. Wilo's high efficiency small pumps – in particular the Wilo-Yonos PICO – have made a huge impact in the UK heating and air conditioning sector over the past two and a half years, since the arrival of the ErP legislation in January of 2013. Wilo's series of glandless pumps – Wilo-Yonos PICO, Wilo-Stratos PICO and Wilo-Stratos – are seeing increasing popularity across the board.

enq.306



Zehnder, a leading indoor climate solutions manufacturer has unveiled its improved high performing and aesthetically pleasing trench heater – the Zehnder Terraline. Suitable for a wide range of applications – from small residential sized projects, through medium-sized offices and showrooms to large commercial buildings – the Zehnder Terraline is made to measure and provides an elegant alternative where freestanding radiators cannot be used.

enq.319

NEW Architectural Systems catalogue now available



T. 01457 861 538 | F. 01457 866 010
Request your copy at info@gdl-architectural.co.uk
or visit the Resource Centre for all our catalogue downloads

gdl-architectural.co.uk
in either PDF or flipbook format

enq.304

Absolut XPERT System Chimney



Designed for the
new generation
of air-tight
homes

1st Passivhaus certified System
No Thermal Bridges
Integrated combustion air shaft
30 year functional guarantee



Air-tight homes and modern heating technologies place enormous demands on a chimney system. For example, energy efficient systems with low flue gas temperatures can lead to condensation. With its integrated and insulated combustion air shaft, Absolut XPERT from Schiedel is the ideal system to avoid damage to the fabric of the building due to condensate, while achieving maximum efficiency and warmth. Its profiled liner also makes it capable of withstanding chimney fires and corrosion. Easy to install and Biomass compatible its the Absolut XPERT solution for stress free heating.
To find out more about Absolut XPERT, visit us at www.schiedel.co.uk

CE EN 13063-1/2/3

Part of the BRAAS MONIER BUILDING GROUP

enq.305



GDL secured the contract to design, manufacture and install 16 Intelivent Solarstore Natural Ventilation Units at the £18 million iconic state of the art sports facility in Middlesbrough. The units sustainably ventilate the halls using solar power to increase the ventilation rate by over 75 per cent. GDL also designed and supplied the Brise Soleil System to the main entrance of the sports facility. The deep bladed system provides shading to the glazed wall of the building.

enq.304



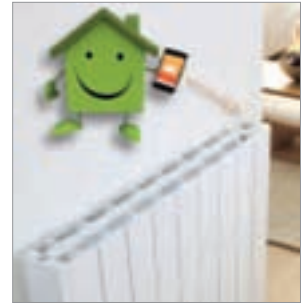
Charlton & Jenrick is pleased to announce the introduction of the P9 to the Paragon P Series of gas fires. The P9 is the largest offering in the range and with a visible glass size of 690mm x 690mm is perfectly proportioned to fill a wide range of fire surrounds to dramatic effect. It is designed to fit into the majority of stone and marble fireplaces to create the perfect suite feature to suit any room from the traditional to the ultra modern.

enq.303



NOVA is a truly multifunctional twin-wall flue system from SFL Flues & Chimneys. Suitable for multi-fuel stoves, gas and oil condensing appliances and biomass installations, NOVA offers a high-quality long lasting solution. It carries a 2-hour fire rating and 15-year warranty. Now available in a high-quality black, powder-coated factory finish, NOVA offers an aesthetically pleasing flue solution for any heating project. Why not make a feature of it?

enq.317



The Radiance Dynamic Heater from The Electric Heating Company is designed to meet the heating demands of the modern home with designer styling. For ease of operation the easy-to-use digital programmable thermostat is located at the top of the heater. Simply connect to the Internet within your property using a Smartphone, Tablet or PC and you will be able to open your EHC SmartHome APP to control your heating 24/7.

enq.301

**You've got enough
on your hands.
You can
trust Wilo.**



The Wilo-Yonos MAXO range combines power and simplicity with pioneering high-efficiency motor technology. Add the Wilo-Plug for easy, no-fuss installation. You can trust Wilo.

- + LED display for delivery head & fault codes
- + Control range from 0.5m set delivery head
- + Maximum efficiency thanks to ECM technology
- + Collective fault signal ensures system availability

For more information visit www.wilo.co.uk
or call 01283 523000

Pioneering for You

wilo

enq.306

Going with the flow



Until now, those who were looking for an ultra efficient home had to sacrifice one thing – a wood burner. However, **Diligence International** has now announced what is thought to be a 'World first' – the Slimfocus log fire which features a counter-flow heat exchanger.

Working in collaboration with flue manufacturer Poujoulat, the Efficiency flue has been further developed to give a counter-flow heat exchanger on the Slimfocus range. The flue allows the combustion air intake and the smoke exhaust to be combined in the same flue. Outside air is drawn in at the top of the flue, and this warms up on route to the firebox, optimising the performance of the fireplace which is 2 to 6kW, with an efficiency of 85 per cent.

01364 644790 www.diligenceinternational.com

enq.307

Frese completes work on Chiswick Park



Frese has supplied a series of energy efficient valves for the heating and ventilating system of the £80m Building 7 at Chiswick Park in record time. Frese supplied 1060 of its Modula Compact units complete with Metering Station and solder union couplings for the fan coil heating and cooling systems in the

building. The use of the solder union couplings was to facilitate easy installation utilizing the fan coil unit tail pipes. The pressure independent flow and temperature control valves ensure precise control in the heating and cooling system and can lead to up to a 50 per cent saving on the energy a circulating pump consumes and also lead to a major reduction on energy bills for a building.

01704 896012 info@frese.co.uk

enq.308

Stay cosy with the new Somerton II stove



There's nothing quite like coming home to the warmth of a wood burning stove – it's the perfect antidote to the arctic winds outside and will easily create a cosy centrepiece for the whole family to enjoy. This winter, the new Somerton II tall from the **Mendip** range at Eurostove offers everything you need for lazy weekends at home and toasty nights in. Standing at 137cm tall, the 7kW stove has a central fire door with stainless

steel door trims and heat storage blocks that provide a more even heat distribution while also allowing the stove to dispense heat slowly, hours after the fire has died out. Mendip Stoves specialise in wood burning heaters and stoves made from the finest materials to deliver maximum heat output with outstanding performance.

01934 750500 www.mendipstoves.co.uk

enq.309

Fusing efficient ventilation



Effective, compliant ventilation of multi-occupancy rooms is simplified with an innovative concept from **Gilberts of Blackpool**. The air movement specialist's Mistral Fusion (MFS) Terminal delivers optimum internal air control for less than £5.00/room/annum. The initial single-sided through-structure unit provides a one box, stand-alone solution, requiring no additional

ductwork or plant. The Mistral MFS is, says Gilberts, the first in a new series that revolutionises energy-efficient ventilation in non-domestic buildings. Gilberts' Sales Director Ian Rogers says: "In one unit, it ticks all the boxes in terms of natural ventilation criteria in multi-occupancy rooms such as classrooms."

01253 766911 info@gilbertsblackpool.com

enq.310

Automatic drop down grille helps maintenance



Mitsubishi Electric has introduced a replacement grille for air conditioning units, which automatically lowers the grille on any ceiling up to four metres high. This means filters can be cleaned by non-skilled workers to reduce maintenance costs and improves health and safety by removing the need for ladders

or towers. The PLP-6BAJ grille is easy to fit as a replacement for any of Mitsubishi Electric's PLA, or standard size PLFY models of 4 way blow cassettes. The grille can be controlled from a PAR31 controller or the remote control that comes with the grille. The grille is available immediately.

01707 282880

www.livingenvironmentalsystems.mitsubishielectric.co.uk

enq.311

New 50l buffer tank from Panasonic



Panasonic's brand new 50L buffer tank is now available and is ideal as a volume extension vessel or low-loss header tank, maximising the effectiveness of Aquarea heat pump applications in properties large or small. Buffer tanks are used with air source heat pumps to increase volume, provide storage and to prevent short cycling of the heat pump, and therefore deliver a more efficient system to the user. This new

addition to the Aquarea range is cost and energy-efficient, and requires little to no maintenance once installed within a property. With Automated Air Vent (AAV) capabilities, the new Aquarea 50L buffer tank will maximise the efficiency and effectiveness of current heating applications. This small tank is wall mounted and therefore perfect for properties where space is tight.

enq.312



High Efficiency Gas Fires

- Convenient & Clean Burning
- Up to 5.2kW Heat Output
- Low Running Costs
- Total and Instant Control



View our stunning range at

www.nu-flame.co.uk T : 020 8254 6802



Up to
90%
Efficiency

enq.313

OMNIE offers total controllability



A key consideration in achieving genuine energy efficiency and fuel savings from high performance renewable technologies is having the correct controls, which is why Timoleon's holistic OMNIE range encompasses a comprehensive selection of control units. The entry level sees programmable room thermostats as well as simple dial thermostats (requiring the use of a separate programmer), which are intended to be used solely with underfloor heating. Both are flush mounted and modern in appearance. Viewed as the logical choice for consumers seeking to cut bills and enhance comfort levels, OMNIE achieves its true potential through the use of Network controls.

01392 363605 www.omnie.co.uk

enq.314

"True" wall hung electric combination boilers



Electric Boilers Company has introduced a new range of "true" wall hung electric combination boilers. These boilers work exactly like Gas combi boilers. By eliminating gas we remove carbon monoxide and condensate production. Yearly Servicing and Gas safe certificates are also no longer needed. Many of the components such as exhaust fans, gas valves, pressure switches, electrodes, burners etc are made redundant and as a result true savings and safety for homeowners is achieved. Future of home heating and hot water is

Electric energy. Please visit the company's showroom in Wembley for full demonstration of working boilers.

enq.315

built environment technology ltd
www.thebuiltenvironment.co.uk

Mechanical Ventilation with Heat Recovery
Designed around low carbon technology to comply with The Building Regulations 2010: Part F and The Passivhaus Standard

- * Site Surveys
- * Design Services
- * Supply and Site Support
- * Commissioning and Certification
- * Annual Service and Maintenance
- * Full Turnkey Option

AIRFLOW **Vent-Axia**
Titon **REHAU** **zehnder**

Tel: 01304 215575
info@thebuiltenvironment.co.uk
Priory Gate Road, Besser, Kent, CT27 8LQ

enq.316

NOVA[®]

BLACK

A Superior Finish...



...For Superior Installations



flues & chimneys
Solutions For Life

Black powdercoated factory finish available for internal and external applications

100% Made
in the UK



For more info, visit our website:

www.sflchimneys.com

enq.317

Heating solutions from Tec UK

Counterflow Plate Heat Exchangers

In efficiency terms Klingenburg Counterflow Plate Heat Exchangers are world champions, recovering up to 90 per cent (by rigorous calculations) of existing room heat or cold. This makes them perfect for any ventilation system – from small apartments to office complexes, farm stables to swimming pools and refrigerated stores to warehouses. The possibilities are practically endless.

Broadly speaking, counterflow exchangers are used wherever a circulation of air is undesirable, since in this design the airstreams are wholly separated.

Tec UK a division of Klingenburg GmbH offer ten standard sizes of countflow exchangers in aluminium - the widest range around, from the hand-sized GS 16 for the smallest spaces and shallow suspended ceilings to the generously proportioned GS 110.



Condensing Gas Heating Modules

Apfen heat exchanger designed by the Apfen Group have developed PCH/new heating modules for installation in air handling and roof-top units. PCH module is built with environment-friendly, totally recyclable materials, such as stainless steel and aluminium.

The heat produced using PCH module's "clean combustion" is earth-friendly and convenient.

A microprocessor-based device controls continuous modulation of thermal power output and adjusts it to heat requirements. When modulation of heat output is enabled, an advanced regulating device installed on the main burner monitors and adjusts flow rates of combustion air and gas.

New Gas Modules PCH/new present an extended power range which goes from 5 kW to 400 kW. This result is achieved thanks to the possibility to assemble standard modules in parallel configuration.



01460 247111 uk.klingenburg.de

enq.318



Clean Air

Fresh Air

Cooling

Heating

Zehnder Terraline – Discreet and Stylish

Zehnder Terraline trench heaters provide an ideal heating solution for modern building premises, large reception areas or meeting rooms. These in-built floor radiators, offer a responsive and aesthetically pleasing option when positioned in front of floor to ceiling windows and glass fronted buildings.

Available in a wide range of lengths, shapes and grille finishes to accommodate all building designs, Zehnder Terraline can also be used in conjunction with other heating systems.

Access and download the Zehnder Terraline Technical Planning document at:

www.zehnder.co.uk

T: 01276 605 800

E: enquiries@zehnder.co.uk

always
around you

zehnder

enq.319

Air conditioning for user satisfaction



AET Flexible Space underfloor air conditioning systems offer fully functional indoor environmental control; with integrated controllers available for all units and full connectivity with house BMS using the latest flexvisor monitoring software. Underfloor systems are commonly used in office environments, utilising the plenum beneath a raised floor as the

ventilation zone. Fully conditioned air is fed into the plenum by zonal downflow units (CAM), and then supplied into the workspace via fan terminal units (fantile). The AET controls overcome dissatisfaction with workspace air temperatures by providing user adjustment both locally and remotely.

01342 310400 www.flexiblespace.com

enq.320

Introducing the new Infinity 480BF



Charlton and Jenrick is pleased to announce the launch of the Infinity 480BF to expand the adaptable range of rear vented balanced flue gas fires it now offers. The size of the 480BF means that it will fit into the majority of fireplace designs available for sale in the UK and offers improved aesthetics over traditional 16" inch fires. The 480BF achieves an extremely impressive net efficiency of 86 per cent from an economically modest 2.6kW input. The fire offers a great flame picture and exceptional warmth in the room. The ceramic glass viewing area of the Infinity 480BF is the same size as the 480FL, which means the new fire is compatible with the Infinity fireplace package designs already available, including the ever popular Beckford & Stokesay suites.

The 480BF achieves an extremely impressive net efficiency of 86 per cent from an economically modest 2.6kW input. The fire offers a great flame picture and exceptional warmth in the room. The ceramic glass viewing area of the Infinity 480BF is the same size as the 480FL, which means the new fire is compatible with the Infinity fireplace package designs already available, including the ever popular Beckford & Stokesay suites.

enq.321

adf architects
datafile



REGISTER ONLINE FOR...

In-print magazine • Digital magazine
Newsletter • Daily digests



www.architectsdatafile.co.uk

ELECTRIC BOILERS COMPANY

London's First Electric Combi Boiler

The Electric Boilers Company, Priory House, Marsh Road, Alpertons Lane, Wembley HA9 1ES
Tel: 0208 998 2024 Contact us: info@electricboilerscompany.com



Elektra - BP
Instant combi + cylinder

- Gives heating and instantaneous hot water 13lt/min at 65°
- Fully double insulated
- Eco & comfort mode



Elektra - C
Instant combi boiler

- Gives heating & instantaneous hot water 8lt/min at 40-50°C
- Fully insulated



Elektra - N
System boiler

- All components built in
- Fully insulated

- ✗ CARBON MONOXIDE
- ✗ FLUE
- ✗ CONDENSATE
- ✗ SERVICING
- ✗ GAS SAFE CERTIFICATE

Visit our showroom in Wembley for free tutorials and free training

Follow us
[@electric_boiler](https://twitter.com/electric_boiler)

For more information please visit our website www.electricboilerscompany.com

enq.322

Natural ventilation from SE Controls for award winning Hong Kong Science Park

Phases 3a and 3b of the extensive Hong Kong Science Park development, which won the Grand Award at the international 'Green Building Awards' in November 2014, are using more than 2000 window actuators from SE Controls to manage indoor air quality and provide natural ventilation to both of the new buildings.

Designed by architects, Simon Kwan & Associates and constructed by main contractor, Gammon Construction, the new buildings were conceived to be carbon neutral over their lifetime. To meet this goal a range of sustainable technologies and innovative energy saving solutions are incorporated, including a low energy hybrid natural ventilation system, where air conditioning is provided on a 'pay for use' basis to help reduce energy consumption.

As the 8 storey buildings use extensive glazed facades, they orientate north-south to minimise

solar gain and windows are automated using 1000 SE Controls' SECO N 24 40 compact single chain actuators on each building, which are linked to the BMS and control the single sided, double opening natural ventilation system.

By using double opening window units with high and low apertures incorporated in the design, warm air is vented through the top and cooler fresh air enters through the lower vent, which provides adequate ventilation to a room depth of 2.5 times the height of the window opening.

Manual opening of the windows is also incorporated into every floor, so that individual units can be opened or closed by the buildings' occupants, when external weather conditions permit, to provide good indoor air quality and thermal comfort.

01543 443060 www.secontrols.com



enq.323

VORT HR350 AVEL

Heat Recovery Unit with 100% Summer Bypass

NEW

- EST Best Practice - SAP Appendix Q eligible
- Low Noise – ensures quiet operation in the home
- Fresh air is 100% fully filtered which helps to maintain good indoor air quality even in bypass mode
- Easy Installation & Maintenance – Lightweight construction and removable hinged access door
- Controllability – wired LCD electronic controller which displays unit status
- Easy accessible G3 filters
- Integrated frost protection
- Ideal for student accommodation



01283 492949

sales@vortice.ltd.uk
www.vortice.ltd.uk



enq.324



panelconvectorheaters

Ideal for

hotels offices & homes







strengthenedgrilles
newwall-mountingsystem
slimlinestainlesssteel&white



Consort Equipment Products Limited

t: +44 (0)1646 692172 • f: +44 (0)1646 695195

enquiries@consortepl.com

www.consortepl.com

enq.325

Home Defence force: effective flood defence measures explained

How architects can keep the planning authorities happy and homeowners reassured, by adopting simple, cost effective mitigation measures to both new builds or as 'retrofits' to existing properties, explains Frank Kelly, leading flood design engineer the founder of Flood Angel



After experiencing relatively low levels of flooding last winter, it would be easy to dismiss the devastation of 2103/14 floods as a one off event but the reality is very different. Around 5.3 million homes in the UK are at risk of flooding and the average annual cost to the economy is over £1.4 billion. Yet awareness of flood risk among both homeowners and developers is poor and there is little, if any, understanding of the range of defence measures available on the market to help protect properties.

As a nation, we're currently counting the cost of introducing retrospective flood protection to homes, businesses and communities. As building land becomes scarcer and the demand for new homes grows, developers are turning to flood plains as a viable alternative. As a consequence, planning authorities are increasingly demanding a 'flood risk assessment' as a mandatory requirement of new planning applications.

Regulations

Fire protection has quite rightly been a fundamental part of building regulations for many years. In more recent years environmental sustainability and energy efficiency have been added to the list for priority consideration. As an industry we are pushing for flood protection to be given the same status as these other fundamental regulatory requirements.

Architects, developers and construction companies who appreciate the importance their attention to the risk of flooding will have on their ability to secure planning approval

on projects, are already considering mitigation solutions in the early planning stages of their building and infrastructure projects.

Evidence shows that by incorporating defence solutions as early as possible in the process, developers can be assured of both long-term protection at a fraction of the cost of post-build installation and, of course, that all-important planning consent.

Modern solutions

The incorporation of solutions to protect the perimeter of a development site is a popular option with developers. Technology, such as automatic flood barriers, which can be deployed with no human intervention, has been successfully introduced to riverside residential developments in both Cornwall and London.

Flood defence can be equally successful on an individual property basis. Although for many, the very term flood defence still conjures up images of sandbags or makeshift wooded boards desperately trying to stem the flow of muddy flood water, the reality is very different.

There is a large range of defence products designed to provide holistic flood protection across all areas of water ingress into a property.

Reactive products

Products that offer 'reactive' door, brick and sewage protection are a cost effective, easy to install choice. Designed for individual properties, barriers and walls provide effective door defence, while airbrick covers and toilet bungs are both easily deployable in the event of a flood.

Barriers are constructed of highly durable GRP set within lightweight aluminium frames making them easy to install and store. These are specifically designed and manufactured for each doorway of a property and come in a range of fixing options, including non-intrusive inset fixings or aesthetically sympathetic wall-mounted powder-coated rails, enabling the homeowner to choose the best finish for their decor.

Defender walls can be deployed to provide protection for longer spans including garage doors, driveways and patio/French doors. Utilising a simple post and socket

Continued overleaf...

'Planning authorities are increasingly demanding a 'flood risk assessment' as a mandatory requirement of new planning applications'

installation system, a wall is a cost effective and popular choice in developments where bi-folding and curtains walls are a dominant design feature.

Passive products, active defence

Effective as these reactive products are, by far the most appealing solutions are 'passive' defence products that activate automatically in the event of a flood.

Although flood doors may look like standard door at first glance, they are highly engineered flood products featuring specially designed seals and a vertical/horizontal locking system developed in conjunction with specialist lock manufacturers. Doors are manufactured from either white or oak effect uPVC or from a hard wearing composite material that's available in a wide range of colours.

Bricks and backflow

But doorways are only one route of water ingress into a property. In excess of 5000 litres of flood water an hour can enter a property through a standard airbrick alone. The simple replacement of a standard brick with an anti-flood airbrick, in which an internal flap automatically closes in the event of flooding, is a highly efficient and cost effective solution.

And while all flooding is distressing, the damage caused by sewage backflow is always particularly difficult for the



homeowner. The simple addition of a non-return valve to a property's sewage system will ensure that in the event of a flood, an automatic 'shut off' flap activates to stop sewage flowing back into a property.

And finally

As the old wives would say "an ounce of prevention is better than a pound of cure". By researching just a few of the mitigation measures available on the market, installers and homeowners will have a clearer idea of how easy it is to protect a property. Vigilance is essential. Installers should be appropriately qualified to fit products; products should always be Kitemark certified and; should only be supplied by a reputable flood defence specialist.

enq.148

TT FLOOD DEFENCE, PREVENTION AND EMERGENCY DEWATERING SOLUTIONS





- Submersible de-watering pumps
- Package Pumping Stations
- Anti-flood valves
- Associated controls



Tel: 01630 647200 www.ttpumps.com

enq.149



EST. 1987

SEWAGE TREATMENT PLANTS FOR PROPERTIES WITHOUT MAINS DRAINAGE

- Simple process
- Simple installation
- Economical maintenance
- Odour FREE Operation

**Populations
6 to 2,000**

AIR BLOWERS
AND SPARES

RAINWATER
HARVESTING



Tel: 01278 786104
 Fax: 01278 793380
 Email: sales@biodigester.com
www.biodigester.com
 Burnham Environmental Services Ltd.

CE

enq.150



We Build It Ltd
simple solution sewage systems

The Bio-Pure

- Suitable for homes without access to mains drainage
- Discreet solution to on-site sewage treatment
- 10 models in the range with a capacity up to 50pe
- CE Marked and EN 12566-3 Certified
- Uses the extended aeration method to treat sewage
- 96% efficiency allows a typical 3-5 year emptying interval
- Visually unobtrusive and odourless
- 25 year warranty on GRP & 2 year warranty on the air pump
- Deal direct with the UK Manufacturer

0800 731 9421 www.webuildit-ltd.co.uk

enq.151

Versatile Hydro-Brake® agile expands options



Hydro International is launching the Hydro-Brake® Agile flow control, marking a significant new opportunity for highly-efficient surface water attenuation with the lowest-possible flood storage volumes to meet stringent planning and Sustainable Drainage Systems (SuDS) requirements. The Hydro-

Brake® Agile meets stringent stipulations for surface water discharge rates and can be engineered to achieve the lowest-possible flood storage. It can therefore help developers meet strict planning requirements and ensure acceptance by adopting authorities, while reducing land take and construction costs.

01275 337937 www.hydro-int.com

enq.152

Wood grill ceiling adds detail to development



A £6 million business development in Northumberland has been enhanced with a high quality grill ceiling, thanks to the experts at global architectural products company **Hunter Douglas**. Hunter Douglas was commissioned to design and supply 223m² of wood grill for a demountable ceiling

at Blyth Workspace, a modern serviced office space for businesses. Designed by Robin Parsons of Xsite Architecture, the ceiling is made from Magma fire-treated African Ayous and was supplied in module 4-70-15-45, reflecting the Scandinavian cues used in the internal shopfitting, as well as provide a finish that could continue seamlessly from the external soffit through to the internal ceiling.

01604 766251 www.hunterdouglas.co.uk

enq.153



Sustainable Drainage Centre

SUDS products and design solutions

Do you require expert assistance with drainage specific planning conditions?

We provide design assistance for:

Residential developments • Commercial projects
Industrial developments • Self-build clients
Architects • Local Authorities
Full UK coverage



Tel: 01530 515253 | Email: enquiries@sudscentre.co.uk | Web: www.sudscentre.co.uk
Unit 11, Riverside Court, Westminster Industrial Estate, Measham, Swadlincote, DE12 7DS

enq.154

Norfolk arcade resurrected after storm destruction with new Self Adhered roof

The devastating storm surge that hit the east coast two years ago damaged many properties up and down the country. Dunes Amusements in Cromer, Norfolk, was one of the businesses destroyed by the surge and worked with Norfolk Pro Build, Gray and Jarrett and Sika Sarnafil to repair the damage in order to open to the public once again.

Completed at the end of summer 2014, the project was one of the first in the country to use Sika Sarnafil's new Self Adhered roofing membrane. Chosen because of its ability to withstand tough weather conditions, an important consideration when specifying products for buildings by the sea, the membrane also offered the added advantage of speedy installation time.

Dune Amusements, owned by Triangle Amusements, was completely ripped apart by the tide, owing to its prominent position on the sea front. All 60 arcade machines, popular with families, were destroyed and only the shell of the



building remained. As it was in such a bad state, a total refurbishment was needed from the ground up.

Lisa Lillig, Commercial Manager at Norfolk Pro Build explained: "The front curved protrusion of the arcade was completely washed away in the floods. We had to strip it all back to the steel frame, put a new concrete floor in and then re-build the external shell and roof around the steel frame, before finishing internally ready for the client to reopen."

Gray and Jarrett undertook the roofing portion

of the project, firstly removing the existing strawboard decking down to the steel frame and replacing with a steel corrugated deck. Applying a Sarnavap 500E as the vapour control layer, followed by new insulation, they then installed the Sika Sarnafil Self Adhered Membrane, G410-15EL FSA in light grey.

Matt Gray, from Gray and Jarrett, was impressed with the performance of the Self Adhered product. He explained: "The installation was very fast, thanks to the innovative peel and stick method, we had the new membrane down in no time."

The membrane gave a smooth, sleek finish to the roof – a specification requirement of architects, Canham Consulting, as people would be looking down on the roof from the town above. With its complete rebuild and facelift, Dunes Amusements could open its doors once again, to entertain tourists and local people alike.

01707 394444 www.sarnafil.co.uk

enq.155



Composite Insulated Panel Manufacturer

Cold Stores || Clean Rooms || External Roofing || External Cladding || SIPs

HPT EXTERNAL

HPT External panels reduce the need for secondary supports enabling a reduction in structural steelwork and cost. An ideal solution for :

- **Retail**
- **Commercial Buildings**
- **Volumetric Off-site Builds**
- **Schools**
- **Leisure Buildings**
- **Healthcare Facilities**

Lightweight with exceptional inherent strength, our External panels are capable of 'single spanning' horizontally up to 8m.

Other product ranges include: **HPT CONTROL** || **HPT CLEAN** || **HPT CARRIER**



enq.156

Bison provides concrete to holiday park



One of the UK's leading precast concrete manufacturers, **Bison Manufacturing**, has been called to assist in the creation of a new entertainment facility in a leading Devonshire holiday park. Having been appointed by G1 Construction Consultants, Bison will provide Woolacombe Bay Holiday Village in North Devon with 960m² of its 150mm deep hollowcore floor units for the park's new leisure and entertainment facility, which will include an indoor pool, all-day café bar, arcade and a craft workshop. The concrete units will be installed by Lancaster Trading & Developments (LTD). This will be the second project Bison, G1 construction and LTD have worked on together at Woolacombe Bay, after completing a similar build for the company's neighbouring sister holiday park in 2013. Rudi Lancaster, the managing director at Lancaster Trading & Developments Ltd, the park's in-house construction company, said: "As the holiday and leisure industry is seasonal, it is important to ensure the majority of the work on site is carried out during the winter months while Woolacombe Bay is closed." Bison's sales and commercial manager, Mike Nelson, added: "Manufacturing our concrete offsite in factory controlled conditions prevent any delays that may be caused by low temperatures, which can severely delay wet concrete's drying time."

01283 817500 www.bison.co.uk

enq.157

Vandersanden supplies bricks for London's Hallsville Quarter

Belgian brick and pavers manufacturer, **Vandersanden Group**, has supplied the facing bricks used to construct phase one of London's Hallsville Quarter in East London. For the initial phase of this significant project, 420,000 Drayton cream, crease textured, unicoloured soft yellow bricks were used for the external walls of the development. Hallsville Quarter is a key part of Newham Council's £3.7 billion Canning Town and Custom House Regeneration Programme. Set to be completed over five phases, Hallsville Quarter is one of London's largest regeneration schemes, including 1,100 mixed tenure housing units and more than 323,000 sq ft of leisure and retail space. Marco Solberg, Vandersanden Export Area Manager commented: "This is a major and prestigious job and we are proud to be a part of it. The design and build nature of the construction meant that we had to devise a solution for the walls that suited every purpose in a number of different locations, and the Drayton Cream bricks were the ideal choice. We also had the added advantage of being able to supply the bricks immediately via our exclusive UK distributor, Hoskins Brick [...]. With two production sites in Belgium and two in the Netherlands, Vandersanden has become one of the largest brick-producing businesses in Europe and we have the ability to upscale production as needed."

+32 89 510 140 www.vandersandengroup.co.uk



enq.158

COMPLETE WATERPROOFING SYSTEMS FOR NEW AND EXISTING STRUCTURES



T: 01732 360 095

W: www.newtonwaterproofing.co.uk

Protecting buildings since 1848

JN **NEWTON**
WATERPROOFING

enq.159

The ultimate in durable roofing systems

TOPSEAL




Topseal Features:

- The Ultimate GRP flat roofing system with up to 30 years product & workmanship guarantee
- Suitable for almost any application from domestic extensions and porches to large scale one-off projects, walkways and balconies
- Only installed by fully trained and Topseal approved installation teams
- BBA Approved, Fire Retardant and completely UV resistant
- ISO9001, ISO14001, Generic BRE Green Guide A/A+ rating
- Wide range of colours and finishes available
- Full specification support

Call us to arrange your free CPD Seminar

For further information on the Topseal System call:

08000 831094

enquiries@topseal.co.uk www.topseal.co.uk

enq.160

A new line in roofline



After two years of admiring The FIT Show as visitors, Kestrel has booked its place as an exhibitor at the April 2016 event, creating a new exhibitor category in the process. "When we were discussing our options with the FIT Show management, we told them that they didn't have a suitable category for us," explained Kestrel's Southern Divisional Manager Darren Dow. Therefore, UPVC Roofline is a brand new category of one, which represents the broadening appeal of the show, according to Darren: "The FIT Show is clearly the place for Kestrel to be exhibiting". The show takes place at The International Centre Telford on the 12th, 13th and 14th April 2016.

0845 0945 077 www.fitshow.co.uk/stand-packages

enq.161

Cembrit to invest in natural slate



Cembrit is pleased to announce the creation of a dedicated natural slates division to offer the UK's specifiers and slaters greater choice of top end material for prestigious roofing contracts. The philosophy will be to enhance the existing range with additional high quality slates. The new brands will offer reliable, long term availability. This will be supported by dedicated personnel and focused marketing. As a start of the investment and long term commitment to Natural Slate, the group has decided to dedicate a specific person to this product group, Sales Director, Rob Wallace. Marketing Manager Ged Ferris said: "This marks the beginning of a new phase in Cembrit's commitment to natural slate. Cembrit will be making substantial investments in this environmentally attractive material."

enq.162

Senior extends PURE range with new doors



Following on from the success of its thermally advanced PURE window system, Senior Architectural Systems is once again set to break the mould with the launch of its innovative new PURE door range. Offering some of the lowest U-values on the UK market, Senior's latest product innovation was well received when it was previewed at The Build Show in October 2015 and interest is only expected to increase in the run up to the official launch of the new PURE door system in early 2016. The new patent-pending PURE range features the pioneering use of an enhanced thermal barrier manufactured from expanded polyurethane foam (PUR). PURE doors can make a substantial improvement to the overall carbon footprint of a building which in turn can lead to a reduction in energy bills.

enq.163

Levolux delivers a 'super' seven



Levolux has delivered one of its largest and most challenging Solar Shading solutions for Chiswick Park's Building 7 in West London. The impressive 12-storey building, which provides 334,000 sq feet of Grade 'A' office accommodation, represents the final piece of the Chiswick Park masterplan, which was conceived back in 1999. In line with other, recently completed buildings on the site, Rogers Stirk Harbour + Partners designed Building 7 to achieve a BREEAM rating of 'excellent' by adopting the very latest building technology, including a fully automated Solar Shading solution from Levolution. The solution comprises motorised external 'Super Louvres', which are linked to an intelligent control system, along with internal Venetian Blinds and Roller Blinds.

enq.164

RENSON louvre panels for student accommodations in London

A good air quality is crucial for students to keep the focus during studying, in the end achieving better results. Therefore, all 419 student rooms of the project Paul St. East (Shoreditch, London) of full building envelope contractor FK Construction feature their own ventilation unit. The duct of the system is connected to a specially developed RENSON louvre panel solution on top of every window in the building.

For this application in 12-24 Paul Street, the project team of RENSON Fabrications Ltd. developed a special solution, which combines a glazed-in louvre panel type 414 with a 150 mm thick insulation panel to the rear with duct plenum. For accurate connection of the ventilation duct, the insulation panel was equipped with a duct opening during assembly for on-site connection. When no duct needs to be connected, the insulating back panel was installed fully closed, providing the required thermal resistance.



"We were looking for a specific solution for this application and RENSON Fabrication Ltd. was able to develop and manufacture a customised solution for us," says Sean Keenan at FK Construction. "By integrating these glazed-in louvre panels with special insulation on every window of a building, we could not only take care of ventilation and thermal resistance, but also add an additional architectural dimension to the facade of the building."

UK-based manufacturer RENSON Fabrications Ltd., with a production facility in Maidstone, develops and manufactures a wide

range of products and systems, including window ventilators, louvres and continuous louvre systems. The company provides standard as well as customised solutions to the construction market. "We offer architects, specifiers, developers, fabricators and installers a wide range of innovative systems, taking into account not only the ventilation and/or sun protection features, but also other aspects, such as thermal resistance and acoustic performance," says Patrick Vandenbogaerde at RENSON. "For various applications in the UK, the project team of RENSON has been developing special ventilation solutions with louvre panels, combined with options, such as dampers or an insulation panel on the rear. By integrating e.g. glazed-in louvre panels with special details, architects and installers take care of the necessary supply of fresh air, adding an architectural accent to the building."

01622 754123 www.rensonuk.net

enq.165

UGINOX stainless steel roofs and facades



A traditional standing seam system using Aperam UGINOX Patina K44 stainless steel has been used on the £7 million Fort William Gaelic medium primary school in Caol. The metal extends from the roof into walls on buildings. UGINOX Patina is a 'terne-coated'

ferritic stainless steel with an electro-tinned coating on both sides. It offers greater price stability than austenitic grades without compromising the metal's corrosion resistance or suitability for aggressive environments and compact non-vented specifications. The finish weathers to the matt grey appearance of lead but a low coefficient of expansion enables it to be used in longer tray lengths.

01246 571660 www.uginox.com

enq.166

Bradstowe House vision comes to life



State-of-the-art products from Metal Technology have been instrumental in delivering aesthetic and building performance objectives in a new build mixed-use development in Harrow. Bradstowe House combines 177 luxury apartments including communal state of the art gym with ground floor retail and office space. Metal Technology's System

17 capped high rise curtain walling was central to creating the building's modern finish of lightweight glass panels and rainscreen cladding, without compromising performance or efficiency. Its high performance, thermally enhanced System 5-35Hi+ tilt-and-turn windows and System 5-20DHi+ doors were also used.

0289 448 7777 www.metaltechnology.com

enq.167

WEDGE GROUP GALVANIZING

Your Galvanizing Partner

- Quality approved Galvanizing
- Technical support and advice
- See the process in action and take your CPD
- 14 plants across the UK offer you a national service
- We galvanize steel from 1.6mm to 29m long

Excellence in Galvanizing

WEDGE

E: galvanizing@wedgegalv.co.uk
T: 01902 600704 www.wedgegalv.co.uk
@wedgegalv

ISO 9001
FIM 00002

GALVANIZERS ASSOCIATION

riba
product
selector

Head Office: Stafford Street,
Willenhall, West Midlands, WV13 1RZ

enq.168

Replacement aluminium windows for period and new homes



The Conservation Range

- Single or dual RAL colours
- A-rated* energy efficiency
- Fit into timber or direct to stone
- UK manufactured

THE HERITAGE
WINDOW COMPANY

For expert advice call **0800 731 4294**
www.thwc.co.uk

Showrooms at: Sevenoaks Dorking Beaconsfield Loughton



*An "A" rated product or certain "U" value is subject to DGU performance and type of specialist sealant or glass and gas used.

enq.169

Passivhaus Scheme - Exeter City Council



Gale & Snowden Architects specified alsecco's Basic 1 external wall insulation system for the construction of 14 Passivhaus units in Exeter. The project won the Domestic New Build category in the recent INCA (Insulated Render and Cladding Association) Awards, recognising excellence in design and innovation. The

Basic 1 system for this particular project incorporated 250mm of grey expanded polystyrene above the DPC and 250mm extruded polystyrene below the DPC and was installed to the exterior of the medium density blockwork construction. A Silitect top coat was used to complete the installation and finished in three shades of red on some properties and cream on the others.

01785 818998 www.alsecco.co.uk

enq.170

Balcony screens and gates brought back to life



In 2006, the Woodward Place development of 23 social housing units in Manchester was designed to combine urban style with conventional build techniques. But with the balconies and gates showing signs of failure less than 10 years later – the new architects turned to the proven performance, Class 1 durability and stability of Medite Tricoya Extreme and Accoya® wood from Coillte during a full scale refurbishment. Project architects IGL and window specialists PDS specified Medite Tricoya Extreme

engineered wood panels for the stylish balcony screens, Accoya wood for the rails, and a combination of both products for a number of entrance gates.

01322 424900 www.medite-europe.com

enq.171



Aluminium

- Bifold Doors
-
- Sliding Doors
-
- French Doors
-
- Patio Doors
-
- Rooflights
-
- Roof Lanterns
-
- Flat Rooflights
-
- Skylights



t. 0330 999 4414 e. info@4seasononline.co.uk w. www.4seasononline.co.uk

enq.172

Swish launches new marketing materials



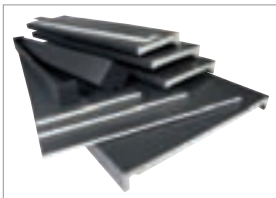
Swish Windows & Doors, a most widely recognised consumer-facing brand on the market, has launched a comprehensive suite of marketing materials that reinforces its number one position. Designed to help

retail companies sell in today's increasingly competitive environment, the marketing package has been in development for several months, and forms part of a wider strategy by Swish to offer its customers the best industry support available today. Gerald Allen, Swish Windows & Doors' marketing manager, explained: "We have long been recognised for the high level of support we offer our customers, but this is substantially more than we have ever offered before".

01952 283331 www.swishbp.co.uk

enq.173

New Foiled Gale Grey range



Swish Building Products has extended its new Foiled Gale Grey range to include fascia and soffit in addition to cladding, architraves and window trims which complement the growing demand for contemporary grey woodgrain UPVC windows. Swish Gale Grey is a perfect match for RAL number 7016 (Renolit 7016 05-116700) which is

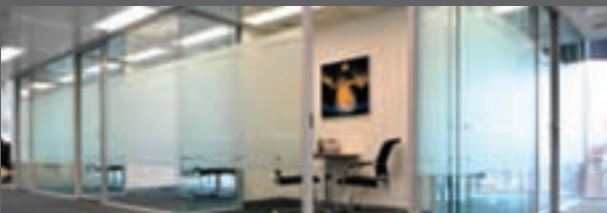
often referred to in the industry as Anthracite Grey. Also available in the foiled range are Irish Oak, Mahogany, Rosewood, Light Oak, Cream, White and Black. All foiled products are available with a 10 year product guarantee.

01827 317 200 www.swishbp.co.uk

enq.174

MFE GLASS PARTITIONING

Glass Partitioning Specialists



MFE Glass Partitioning specialise in a range of partitioning solutions. We specialise in the supply and installation of 30 minute and 60 minute fire rated glass and our acoustic glass is perfect for board rooms, executive office suites and meeting rooms as well as general office use.

Ask us to quote for your next project.

01206 760111 www.glasspartitioning-mfe.co.uk

enq.175



RCi SHOW 2016
sponsored by **Jabite**
INTELLIGENT INSULATION
ROOFING CLADDING & INSULATION




**REGISTER FOR YOUR
FREE TICKETS
TO THE UK'S ONLY
DEDICATED ROOFING,
CLADDING AND
INSULATION EXHIBITION:
WWW.RCISHOW.CO.UK**

- FREE LUNCH**
COURTESY OF 
- FREE ENTRY**
- FREE PARKING**
- FREE COFFEE/
BACON ROLL**
- RIBA APPROVED
CPD'S**
- LATEST
PRODUCTS**
- INCREASE
YOUR PROFITS**
- INTERACTIVE
DEMO ZONE**
- LIVE DEBATES**
- CITB DROP-IN
CLINIC**
- OVER 130
EXHIBITORS**

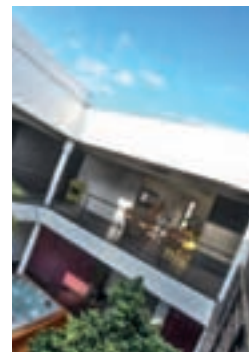
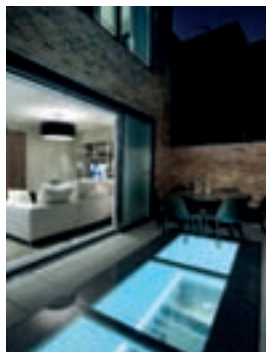



PROUD PARTNERS 
Sandtoft / Wienerberger

enq.176

GLAZINGVISION

visionary rooflights



Technical experts in the design, manufacture and supply of precision engineered, architectural glass roof lights for residential and commercial buildings since 1994.

01379 353 723 | glazingvision.co.uk/ad

Fixed | Hinged | Pyramid | Sliding | Box | Smoke Vent | Bespoke Roof Lights

enq.177



ARCHITECTURAL GLASS

Bespoke stairs & balustrades
Splashbacks & worktops
Glass floors & roof lights
Complete glass solutions

Please contact us for details
01903 733206
www.demon-designs.co.uk

enq.178

Blending fire safety with aesthetics

Steve Bond, customer support manager, fire products, at Pilkington United Kingdom Limited, explores how developments in glazing are enabling businesses to meet fire safety regulations without compromising on design or energy performance

Arguably the first consideration for architects, before aesthetics or even functionality, is to provide a safe environment for a building's occupants and its contents.

When it comes to protecting a property against fire, design plays a crucial role, ensuring that a blaze is not able to spread but is instead contained in a single area, limiting damage while allowing safe egress for occupants and entry for emergency services personnel. Achieving this means placing fire-resistant physical barriers throughout a building, and especially around exit and entry routes.

This can create a challenge for the architect as solid physical barriers can conflict with contemporary building design, which often favours light, airy spaces characterised by clear lines of sight to give a sense of openness.

Glass is the obvious material to achieve these aesthetic aims because it offers a barrier to the elements while still allowing light to flood into interior spaces and uninterrupted views to be had both outwards and inwards.

Unlike products of the past, today's fire-resistant glazing is completely transparent with attractive aesthetic qualities. Modern fire-resistant glass can also have added performance properties such as thermal efficiency, acoustic insulation and solar control. This has led to a rise in demand for fire-resistant products among architects looking to achieve their aesthetic goals without compromising on design.

Understanding legislation

Building regulations give guidance on the levels of fire resistance needed in certain applications, but, it is vital that the appropriate level of protection is provided in accordance with the detailed fire strategy of the respective building.

The strategy is devised by the designated 'responsible person' and will consider factors such as ensuring there is a clear exit route for people in the event of a fire, as well as more obvious matters such as providing separation between different areas within a property to contain the spread of a fire.

The 'responsible person' assumes liability (Regulatory Reform (Fire Safety) Order 2005), and while they may not be a fire safety expert, they will take responsibility for consulting with relevant professionals to ensure that a robust and reliable strategy is in place for every eventuality.



Developments in fire-resistant glazing

In the event of a fire, modern glazing systems can play a fundamental role in the protection of people and property.

Innovation and investment across the glazing industry has seen an increase in the use of intumescent interlayers, which provide increased integrity and insulation. When heated, the intumescent layer turns opaque and expands to form a barrier to hot gases and flames, as well as insulating from the heat of the fire. If installed as curtain walling, internal doors or fire screens, it is possible for fire-resistant glass to provide complete protection against heat transfer for up to three hours, depending on the specification of the fire-resistant product.

Even floor-to-ceiling glass screens can provide this kind of protection, meaning they effectively serve the same purpose as a brick wall, so there is no longer any need to visually screen off areas to protect them in case of fire.

Continued overleaf...

More basic systems offer less protection, but are able to maintain their transparency when exposed to fire, which helps people trying to escape. It can also help the emergency services see through doors and internal divisions without having to expose themselves to potential danger.

No need to compromise

Placing the focus on safety doesn't mean designers have to cut corners when it comes to aesthetics or energy efficiency. Historically, wired glass was predominantly used as fire-resistant glazing due to its ability to meet fire safety requirements. Although the glass still represents good value, it can limit the scope for designers and architects. Modern fire-resistant glass is incredibly versatile, however, and has removed the need for design compromise.

It's not just aesthetics that fire-resistant glazing is having an impact on. The option to add combinations of the latest low-emissivity and solar control coatings with the fire-resistant glass means designers are able to produce fire-safe buildings, while delivering excellent energy performance.

Low-emissivity glass helps reduce the amount of heat lost through windows and can also allow more heat energy from the sun in through the glass. This so-called passive solar gain provides additional energy free of charge. Solar control coatings, minimise solar heat gain and helps to control

glare, decreasing the need for air conditioning and ultimately reducing the running cost of a building.

An ideal combination

An ongoing commitment to research and development has seen significant developments in fire-resistant glass. The innovation in the glass industry means we are all able to benefit from lighter, brighter, more energy efficient spaces, while also benefitting from the confidence that, should a fire break out, safety is uncompromised.



enq.179



Architectural Glass Solutions





The UK's leading manufacturer of architectural glass products

- Partitions
- Balustrades
- Facades
- Stairs
- Canopes

Tailor made to our customers requirements:

Toughened, Laminated, Heat Soaking, CNC Cutting, Heat Strengthening, Back Painting, Screen Printing, Full Digital Printing.



www.esg.glass

01376 520061

enq.180

VBH goes Jigless with Roto Designo 2



Hardware specialist **VBH** has added NT Designo 2 to its range. Designo 2 is the latest concealed hinge 'Tilt before Turn' tilt and turn hardware system from the respected German manufacturer Roto-Frank, and replaces the NT R, or Royal, system. Most of VBH's customers who have been using Royal have now upgraded to Designo 2 and

VBH reports that the transition has been smooth. This has been helped by the fact that the main differences between the two systems are in the top and bottom hinge components. All the main 'locking' components are unaffected by the change so disruption to fabricators has been kept to an absolute minimum. Designo 2's hinges carry a sash weight of 100Kg as standard.

01634 263300 www.vbhgb.com

enq.181

30 years of success for Ashford Commercial



2015 sees long-standing **VEKA** customer, Ashford Commercial celebrate an impressive 30 years in business. The company has a sterling reputation for providing exceptional quality products and services for the commercial, social housing and education sectors, to name just a few industries. Keith Lawrence, co-partner said: "With our experience of manufacturing and the support of long-standing suppliers, especially The VEKA UK Group, we offer a comprehensive product range that complies with customer specifications. We are able to respond to customer needs and provide a flexible and focused service. It's our commitment to quality and customer satisfaction that has seen us survive the difficult years and flourish."

01282 716611 www.vekauk.com

enq.182

New facade from Schueco



New from **Schueco UK** is the FWS 60 CV concealed vent facade, a state-of-the-art aluminium system for floor-to-ceiling ribbon windows where it is not possible to distinguish from the outside which vents open and which vents are fixed. This revolutionary innovation, which also has the added benefit of maximising light transmission through the facade, is achieved by merging

the vent with the load-bearing structure. Even from inside, the only indications of an opening unit are a flat slimline shadow gap and the presence of the window handle. Moreover, to ensure safety in use, an almost invisible all-glass Juliet balcony can be integrated into the areas which have opening vents.

01908 282111 www.schueco.co.uk

enq.183

Synseal's new Evolve range of sash windows



If you are looking to upgrade old and draughty wooden sash windows, take a look at the new heritage range of Evolve sliding sash windows from **Synseal**. Combining excellent thermal retention with beautiful design and high levels of security, the Evolve range is a fantastic choice for homeowners seeking the very best vertical slider solution for their property. Evolve

windows are constructed using PVC-U. This ensures superior thermal retention properties with an A window energy rating as standard, excellent weathering performance over time and very low maintenance for the end user, without losing the charming visual characteristics of a traditional timber sash window.

01623 443200 www.synseal.com

enq.184

Fire Glass

UK



SPECIALISTS IN

FIRE RATED GLASS & GLAZING

Fire Glass are the leading supplier of speciality glass including all types of fire rated, wired, safety, silvered, laminated and acoustic glass.

SEE the difference:

- ✓ Competitive prices
- ✓ Five local branches throughout the UK
- ✓ Technical experts on hand to help with your project
- ✓ Well stocked facilities
- ✓ No minimum order
- ✓ No delivery charge
- ✓ No set order day

FOR ADVICE ON YOUR NEXT PROJECT CALL:

0121 521 2180

info@fireglassuk.com

LOCAL BRANCHES

UK

Head Office
0121 521 2180

NORTH

Manchester
0161 728 8080

EAST

Derby
01773 712 920

SOUTH

Colchester
01206 222 090

SCOTLAND

Edinburgh
0131 526 4141

INSTALLATION

Birmingham
0121 521 2180

www.fireglassuk.com

enq.185

Hueck Aluminium Systems gets involved in £3.7 billion redevelopment project in London



Supplier of aluminium building systems, **Hueck**, has helped deliver 165 new homes within Europe's largest regeneration scheme. Hueck's high-performance Lambda 77 L windows and doors were extensively specified in the second phase of the £180 million Rathbone Market project, part of the £3.7 billion Canning Town and Custom House Regeneration Programme, within the Thames Gateway. Working with the London-based architecture firm, CZWG Architects, the facade manager, and the acoustic consultant, Hueck has provided an excellent solution for the specific requirements of the project with its Lambda 77mm L inward and outward opening doors and casement windows in different configurations. Handles height on windows is below 900mm from finished floor level, in line with the lifetime homes requirements, which support the changing needs of individuals and families at different stages of life. Due to its location, in close proximity to the busy A13 road, Aurora raised a few challenges in terms of effective noise reduction, as Leon Friend, project development director at Hueck, explains: "The noise pollution from the nearby transport artery has created the need for extra sound protection. We met the architects' demanding acoustic requirements within the commercial aspirations of the project with our Lambda 77 L windows."

01217 671344 www.hueck.com

enq.186

Flat roof manufacturer Bauder launches new website

Bauder, one of Europe's leading manufacturers of flat roof waterproofing solutions, has officially launched its new website. The refreshed site delivers an engaging and interactive user experience with regards to content, structure, navigation and resources available for download. Key features include: design guides, installation videos, CPD seminar overviews and a Technical Centre that offers free CAD drawings, specifications, product and system certifications and maintenance advice. The easy to navigate site showcases the company's full range of flat roof, green roof, and photovoltaic solutions in a comprehensive product and system library that includes Bauder's new combined PV and green roof offering Bauder BioSOLAR. The online library ensures that users always have access to the latest technical data and product information, helping them fully understand Bauder's complete range of waterproofing systems. Also included on the site is all of the company's technical literature, CAD detail drawings and design guides that are packed full of valuable information for designing, specifying and installing flat roofs. To coincide with the website redesign Bauder has also launched a blog and new social media channels on Twitter, LinkedIn and Google+ that will enable the company to deliver the latest news, views and industry information.

0845 271 8800 www.bauder.co.uk



enq.187

**IT'S ~~NOT~~
EASY BEING
GREEN**



**NEW
SL Range**


When you've specified quality material throughout your project, why stop at your rainwater system?

The **NEW SL range**, gives you all the quality of **aluminium** with it's lightweight, corrosion resistant and low maintenance properties without blowing the budget.

And of course it's 100% recyclable!

Easy Fix. Available in 100mm and 75mm Dia. Pipe and 125 x 100mm MOG or 125 x 75mm HR gutters.




**YEOMAN
RAINGUARD**
RAINWATER SYSTEMS

www.rainguard.co.uk

For more information
call 0113 279 5854 or email
sallyann@rainguard.co.uk

enq.188

klöeber



Bespoke glazing solutions in timber aluminium & composite

Kloeber's advanced glazing solutions are available in bespoke or set sizes, with exceptional insulating values, multi-point locking and low maintenance finishes. View our website for further details of our extensive product range with solutions for all self builders and home improvers.

- folding sliding doors
- sliding doors
- french doors
- single doors
- windows
- shaped glazed screens
- entrance doors
- roof lights



Kloeber's
timber
bifold
doors and FunkyFront
entrance doors are
Secured by Design.

Visit our showrooms in London, Cambridgeshire
and Buckinghamshire, see website for details

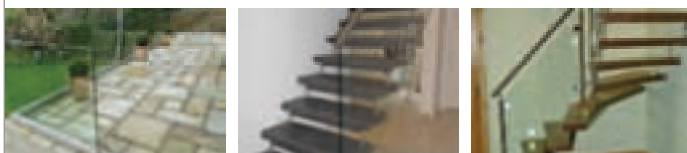
01487 740044 info@kloeber.co.uk www.kloeber.co.uk

enq.189

fivestars



Specialist suppliers of
unique German staircases,
frameless and stainless glass
balustrades



Tel: 01425 611112 Fax: 01425 617773 sales@fivestars.ltd.uk
www.fivestars.ltd.uk

enq.190

Fire Glass

UK



FAST DELIVERY

FIVE LOCAL BRANCHES NATIONWIDE



UK

Head Office: 0121 521 2180

NORTH

Manchester: 0161 728 8080

EAST

Derby: 01773 712 920

SOUTH

Colchester: 01206 222 090

SCOTLAND

Edinburgh: 0131 526 4141

INSTALLATION

Birmingham: 0121 521 2180



GET A QUOTE TODAY!

0121 521 2180 or info@fireglassuk.com
www.fireglassuk.com

SPECIALISTS IN FIRE RATED GLASS AND GLAZING

enq.191



SuperPhon®
Acoustic Panels and Baffles

THE SOUND ABSORPTION SOLUTION FOR THE WORLD'S FIFTH BIGGEST MUSIC VENUE.
HAS BEEN USED IN HUNDREDS OF SCHOOLS ACROSS THE UK

Hosting such ear-pounding bands as Slipknot, Korn and Nine-Inch Nails, the **SSE Hydro, Glasgow** required a robust sound absorption solution capable of coping with serious decibels and dangerous frequencies.

CMS Danskin's SuperPhon was that solution.

IT'S MORE THAN QUALIFIED TO TACKLE EVEN THE MOST CHAOTIC CLASSROOM

- Provides up to Class 'A' soundproofing performance
- 88 fabric colours
- Full technical and on-site support

Book our Sound Absorption RIBA Core Curriculum CPD

CMSDANSKIN
ACOUSTICS

FREEPHONE: 08000 787 027
info@cmsdanskin.co.uk www.cmsdanskin.co.uk

This advert is a general guide and specific technical advice is recommended before proceeding with any transaction. Full technical information available on Freephone 08000 787 027.

enq.192



CMS windows provide Fyne views to retreat

A luxury west coast of Scotland retreat has opened a new spa and leisure complex featuring windows, doors and curtain walling manufactured and installed by CMS Window Systems. The £10 million development by Portavadie Estates includes a 16-metre indoor pool, outdoor spa pools, two Scandinavian saunas, fully equipped gymnasium and spa, cafe and the largest heated outdoor infinity pool in Scotland. The glazing specification by CMS ensures the new facilities enjoy stunning floor to ceiling views across Loch Fyne and beyond to the Isle of Arran, bringing nature right into the facility and flooding the building with light. CMS manufactured and installed all the thermally enhanced curtain walling and windows for the building envelope – these were created using a combination of the advanced SCW+ system, Senior Hybrid Systems and the SPW600 system. The project is typical of the high quality contracts that CMS undertakes across the UK.

01324 841398 www.cmswindows.com

enq.193



Fine acoustic surfaces, supplied and fitted.

Project: Winchester College Music Building Architects: BHM

Products: RPG Absorbor suspended ceiling panels (shown); FlutterFree acoustic timber to foyer ceiling; bespoke curved canopies; 1600mm diameter acoustic discs & RPG Harmonix diffusers in FRG (shown on wall).

Call: 01303 230944 www.rpgEurope.com

RPG
RPG Europe is a trading name of Acoustic GRG Products Ltd.
The Sound of Innovation

enq.194

Acoustic solutions

Robert Crampton MD of Hush Acoustics comments on the challenges faced when providing acoustics solutions for different types of projects

Before you can learn how to reduce sound transmission between floors, it is important to understand what the problem is and what type of noise you are suffering from. Whether you're trying to sleep in your apartment or you are concentrating at work, noise travelling between floors from above and below is a common problem. These noises are commonly known as airborne and impact noises.

In residential development, UK Building Regulations requires that both these noise types are controlled. Practical guidance to meet with Building Regulation requirements is given within Approved Document E. Creating the correct specification is imperative to ensure compliance with document E. All products and specifications must be set out correctly from the outset. If the specification is not correct then it is impossible to comply. The four principle sound control methods are Mass, Isolation, Airtightness and Absorbent Material. These principle sound control methods must be applied to ensure compliance.

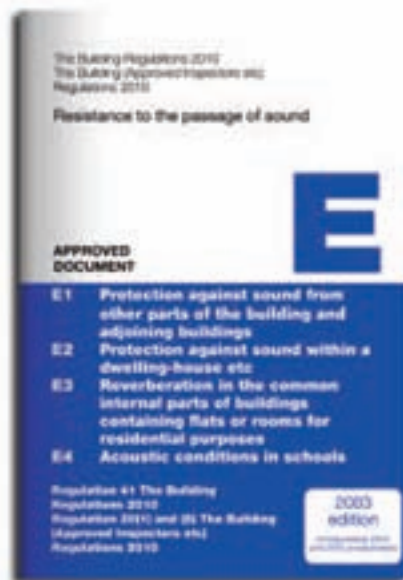
Airborne/structureborne noise is a range of sound sources that travel through air particles or connected materials. This is normally known as general sound transmission and includes things such as music from a neighbour's stereo, a film being played through a television, or a vacuum cleaner for example.

Impact noise is simply the noise that is generated when something comes into contact with something else. The most common problem that relates to impact transmission is footstep noise issues through a floor.

Sound travels directly and indirectly through a floor structure. Direct sound transmission is when sound travels directly through the construction and is simply reduced by treating the problem area. Indirect sound transmission or Flanking transmission is caused by noise travelling through a floor construction by any other connections. Flanking transmission on floors is commonly found through connecting walls or areas created for running services.

Robert Crampton MD of Hush Acoustics comments on the challenges they face when providing acoustics solutions for different types of projects;

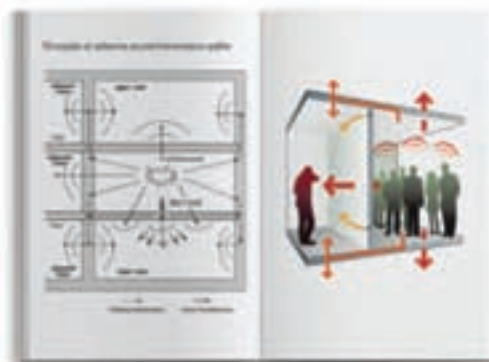
"Before we begin advising on a project in the Residential Sector we always check to see if the project will need to carry out a sound test. This is compulsory for all new build developments or material change of use developments. This is needed to prove compliance with the UK Building Regulations. The only time you may not need to do a sound test is when the development is a new build development that has been designed to Robust Details or if it is a refurbishment of an existing residential unit.



'Industrial noise pollution is a serious problem that can lead to a costly reduction in performance by employees'

Sound proofing healthcare premises offers some unique challenges due to large expanses of hard surfaces. Tiled walls, hard floors are good for hygienic purposes but also reflect sound waves and increase ambient noise. Patients confidentiality, privacy and rest can be compromised if sound reduction is not taken care of. There are products that can be placed onto conventional surfaces within healthcare environments to reduce noise however with the many hard surfaces it is often necessary to treat the floors and the ceilings.

Continued overleaf...





Good acoustics in an educational environment is essential so that the teacher can keep the attention of the pupils and the pupils can hear the teacher. All acoustic performance levels are detailed in the Building Bulletin 93 (BB93). This outlines the necessary acoustic regulatory levels for educational environments. The main areas of concern include: indoor ambient noise levels in unoccupied spaces, airborne sound

insulation between spaces, airborne sound insulation between circulation spaces and other spaces used by students, impact sound insulation of floors, reverberation in teaching and study spaces, sound absorption in corridors, entrance halls and stairwells, speech intelligibility in open-plan spaces.

Industrial noise pollution is a serious problem that can lead to a costly reduction in performance by employees, increased absenteeism, distraction, stress and health issues. Soundproofing significantly reduces noise levels creating a safer working environment for employees and reduces noise pollution for nearby residents and businesses.

The leisure sector (Pubs, Nightclubs, Restaurants, Cinemas etc) generates a high level of noise and commonly these businesses are located in highly populated areas. In the UK there are a number of regulations which require businesses to undertake noise management precautions to avoid affecting poor health and quality of life to neighbours. Aside from this it makes good business sense for leisure / entertainment business to be a quite neighbour should the owner want to apply for a licence to extend opening hours. The applicant is more likely to get a sympathetic hearing from the local planning committee if relations with neighbours are already good.

Whatever the sector and whatever the acoustic problem, 99 per cent it is impossible to achieve any of the UK Building Regulations using a singular product – an overall system is needed to ensure compliance.

enq.195

Super**FOIL** Insulation

The Past

The Future

WHICH WILL YOU CHOOSE?

Super**FOIL** **SF40**

01636 639 900 www.superfoil.co.uk

Boulder Developments Ltd, SuperFOIL, BHF, Mar Street, Norwich, Norfolk, NR23 5UJ

enq.196

London apartments rise with Kingspan

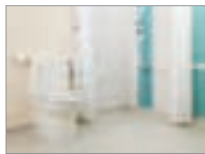


Kingspan Insulation's Kooltherm K15 Rainscreen Board has been installed as part of a new, multi-million pound development in North London, providing 222 new affordable dwellings along with commercial space and a new primary school. The high quality development includes 100 shared ownership homes within a 22 storey tower, called Rivers Apartments, and a further 122 intermediate rent apartments spread across three blocks of between 5 and 9 storeys. All four blocks feature a concrete frame with rainscreen cladding to the tower and a mixture of brick and rainscreen cladding to the lower blocks, and to ensure excellent building fabric performance, KSS Design specified Kingspan Kooltherm K15 Rainscreen Board.

01544 387 384 www.kingspaninsulation.co.uk

enq.197

Extra care in helping people be independent



East Sussex County Council is demonstrating a forward-thinking approach to delivering optimum independence and best value in supported living at its new project in Eastbourne. The Council and partner Saxon Weald have designed and built 508 Seaside, with support services delivered by Sanctuary

Supported Living, to provide 18 supported living apartments for affordable rent. Four of these now include Clos-o-Mat Palma Vita wash and dry toilets in the wetrooms. Looking like, and capable of being used as, a conventional WC, the Palma Vita has in-built washing and drying. Users achieve improved hygiene, as the douching and drying is automatic and set to specific levels.

0161 969 1199 www.clos-o-mat.com

enq.199

Hunter Douglas TechStyle® Islands



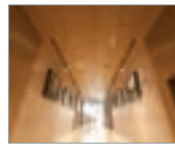
Hunter Douglas has launched a new, lightweight ceiling system that provides superior sound absorption for spaces in buildings with long reverberation times. Developed in response to the need for an affordable, simple and flexible solution for acoustic problems in existing buildings, TechStyle® Islands are strong yet

incredibly lightweight. Comprising polyester and glass fibre tiles attached to U-shaped aluminium extrusion profiles, this innovative, easy-to-install product has an open structure and each weighs no more than 3.3 kg/m² – about 25 per cent less than alternatives. The islands are made of fully recyclable natural materials, do not release any volatile substances, and conform to EN 13501-1.

01604 766251 www.hunterdouglas.co.uk

enq.198

The art of refurbishment



Revitalise feature walls, corridors, bedrooms, meeting rooms, bars or restaurants by using Interior Film from David Clouting. Interior Film is a self-adhesive, decorative film, manufactured by LG Hausys, that can be applied to almost any room surface including wood, metal, plaster board, plastics and melamine. This enables

walls, doors, furniture, skirting and architrave to be attractively and quickly transformed with minimum disruption and at low cost. Offering excellent flexibility and adhesion, Interior Film provides the perfect finish, even to curved or complex shapes. It's easy to clean and maintain and is available in a range of designs and finishes. Interior Film which is now available to view on the BIMSTORE website is CE Certificated so can be specified with confidence.

enq.200

HUSH ACOUSTICS

ACOUSTIC SOLUTIONS FOR REVERBERATION NOISE CONTROL

Reverberation problems can affect many types of buildings, both new and old. In educational establishments, excessive background noise can adversely affect productivity levels. In hospital wards reverberated noise can cause discomfort among patients.

The solution - Hush Absorber Range

- Eliminates echoes and sound reverberation
- Available in a range of stylish finishes
- Class A and Class C Absorber Panels using specially formulated acoustic foam
- Ideal for schools, hospitals and other public areas
- Other absorbing products such as notice boards, desk dividers and baffles are available

HUSH ACOUSTICS
TEL: 0151 933 2026
EMAIL: info@hushacoustics.co.uk
www.hushacoustics.co.uk
44 Canal Street, Bootle, Liverpool L20 8GU
Offices also based in London and Yorkshire
@hushacoustics hushuk.acoustics

HUSH ACOUSTICS
Sound Insulation Products and Systems

enq.201

Handcrafted Heavy-Duty

Fireclay Sinks

AVAILABLE FROM STOCK

Shaws of Darwen have been manufacturing robust fireclay commercial sinks for over 100 years. The extensive ranges and sizes of laboratory, shelf, cleaner's and traditional Belfast sinks suit every requirement.

BELFAST SINKS

CLEANER'S SINKS

LABORATORY SINKS

SHELF SINKS

View our full range of quality sinks at www.shawsofdarwen.com or call 01254 775111 to confirm your commercial sink order.

Shaws of Darwen, Waterside, Darwen, Lancashire BB3 3NX
Tel: 01254 775111 Fax: 01254 873462
www.shawsofdarwen.com

enq.202

Prevent wetroom failures with Schlüter®



Schlüter-Systems provide an integrated wetroom solution, guaranteed by one manufacturer with the added reassurance of a CE Marked guarantee and one point of contact for the client. Ultimately, an integrated system solution, with products that are designed to work together, should be the specifier's first

choice when selecting products to use in shower areas and wetrooms. Learn the benefits and requirements for specifying an integrated wetroom solution from our wetroom CPD Seminar. To book a CPD seminar please call Schlüter or visit their website. For priority bookings quote ADFWR11.

01530 813396 www.schluter.co.uk

enq.203

Axor interactive shower control element



Axor, the designer brand from Hansgrohe, presents Axor One the newly launched first all-in-one interactive shower control element – a masterpiece of intuition, a confident, and yet unobtrusive statement in the shower. Easy and intuitive to use, it is based on conscious interaction: multiple shower outlets can be

activated separately or all at once by tapping the control paddles with the finger, the back of the hand, or even the elbow. Generously proportioned, but fascinatingly clean, it is a focal point for the senses – a haven of tranquillity in tomorrow's shower space.

01372 465655 www.hansgrohe.co.uk

enq.205

A true 'one stop shop' for shower products



Over the past few years, MX has taken significant strides forward to become a true 'one stop shop' for everything showering. The UK's leading shower tray manufacturer, it now offers a wide range of electric QI – Quick Installation – showers, an impressive range of thermostatic mixer showers and valves, a selection of shower enclosures, the widest range of shower accessories – from showerheads, to riser rails and hoses and

most recently the addition of brassware ranges – taps and mixers. Visit the new web site at or call to get your own copy of the MX Collection catalogue.

01684293311 www.mx-group.com

enq.207

New Stonetto shower tray from Duravit



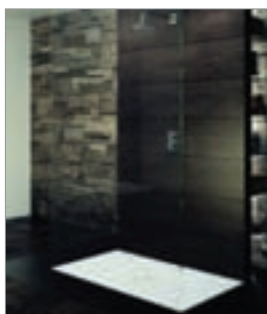
The new Stonetto shower tray from Duravit has been made using DuraSolid Q – an innovative 'stone' material with the look and feel of stone. Duravit has brought this natural wonder to the bathroom by collaborating with the designer trio EOOS. Thanks to its non-slip properties, DuraSolid Q offers class B slip-resistance without any additional coating, ensuring safe showering. Stonetto is available in the typical stone colours White, Beige and Anthracite, with tiny speckles that reinforce the natural appearance. Stonetto

is available in the typical stone colours White, Beige and Anthracite, with tiny speckles that reinforce the natural appearance. For stockists contact Duravit.

0845 500 7787 www.duravit.co.uk

enq.204

Scona: new sizes of floor-level shower surface



Made of Kaldewei 3.5mm steel enamel, the Scona floor-level shower surface offers a modern design with superior material quality and a highly attractive price to performance ratio. Now available in 44 sizes, from 75 x 80 cm through to 100 x 180 cm, Scona is a flexible solution for different spatial requirements, featuring a central circular waste set within the perfectly square or rectangular surface. For stockist information contact Kaldewei.

01480 498053 www.kaldewei.co.uk

enq.206

Beautiful arabesque tiles



Interlace, from Solus Ceramics is a brand new tile range that truly defies expectations and brings a new perspective to wall coverings. A shape unlike any other, Interlace is inspired by traditional Moroccan tiles and decorative motifs. Available in a number of neutral shades, and a standout vibrant red, the tiles in this range can be used to create elegant, natural designs. Beautifully curved, the interestingly shaped tiles perfectly interlock when they are laid together and create a stunningly eye-catching pattern. Colours can be used independently or in any combination of shades, giving almost unlimited possibilities to the user.

0121 753 0777 www.solusceramics.com

enq.208

West End wet rooms benefit from elegance of Dallmer drainage channels



A high specification refurbishment and extension project at a residential property in a desirable area of West London has included installation of linear shower drains selected from the extensive range of Dallmer Limited. The project on the home in Lansdowne Road was carried out by J&Z Construction Ltd under the supervision of the company's own architects. Two stylish shower spaces were created: one designed as a wet room while the other featured a two metre high glass wall set into a floor channel, with a rain head over. J&Z Construction's interior designers chose products from the Dallmer range to ensure water was removed unobtrusively but effectively from the floor. Dallmer supplied two of its Ceraline-W-800 mm floor channels with Ceraline Custom cover plates. In both cases the floor drains, with their adjustable ball joint outlet connection, have a flow capacity of at least 48 litres/minute, were installed along the base of the back wall to the showering area, with the client's preferred floor finish fitting seamlessly around and into the elegantly engineered channel sections. The height adjustable floor channels feature sound absorbing leveling legs and the drain body has an easily removeable trap. Like the cover plates, they are manufactured from 304 grade stainless steel and they incorporate a sand-coated flange for the secure bonding of under tile waterproofing membranes.

enq.209

The **Magrini** family is now complete...

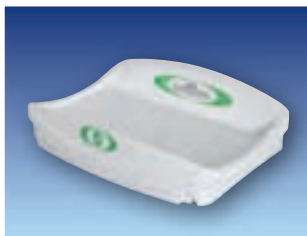
- ✓ New, contoured contemporary design
- ✓ Unique hinge construction eliminates finger traps
- ✓ Choice of colour to suit any project
- ✓ Extra deep sides increase safety and eliminate the need for straps
- ✓ Withstands static loads in excess of 100Kgs
- ✓ Hygienic, easy-clean surface



MH42 Horizontal Baby Changing Unit



MV64 Vertical Baby Changing Unit



MT80 Countertop Baby Changing Unit



MC75 Stainless Steel Baby Changing Unit

Fully Compliant with
BS EN 12221: 2008 ✓

MH42 Horizontal
Baby Changing Unit



...with the arrival of the **MT80** Countertop Baby Changing Unit

- ✓ Durable, solid moulding
- ✓ No surface fixing screws
- ✓ Hygienic finish with easy maintenance
- ✓ Extra deep barriers eliminate any need for straps reducing maintenance and inspection costs
- ✓ Easy-fit system for fast installation



reader
enquiry
210

MT80 Countertop
Baby Changing Unit



MODULAR SHOWERING SOLUTIONS



- LEAK FREE
- DESIGN BUILD
- ZERO MAINTENANCE
- DURABLE & RELIABLE
- RECYCLABLE
- QUICK & EASY TO INSTALL
- ISO 9001 REGISTERED
- ISO 14001 REGISTERED
- 25 YEAR GUARANTEE

TAPLANES®
SHOWERING SOLUTIONS

Telephone 01423 771645 • Email admin@taplanes.co.uk • www.taplanes.co.uk

enq.211

www.apolloradiators.co.uk



monza aluminium column radiator

Ideal for low temperature renewable systems
 Ideal for high pressure systems
 The latest patented european technology
 A unique aluminium radiator design
 Half the weight of steel
 82 vertical and horizontal sizes
 Delivered within 3 working days

enq.212

Stylish & practical **bathroom solutions**

Kingkraft are a leading manufacturer of bathing, showering and changing equipment and have been for over 30 years. We can assist with bathroom adaptations including domestic, school hygiene rooms and changing places.

- Over 30 years experience in the assisted bathing market
- Manufactures bathing, showering and changing equipment
- Provides free demonstrations and site visits
- We design, supply and install
- Maintains equipment once installed
- Provides free CPD seminars

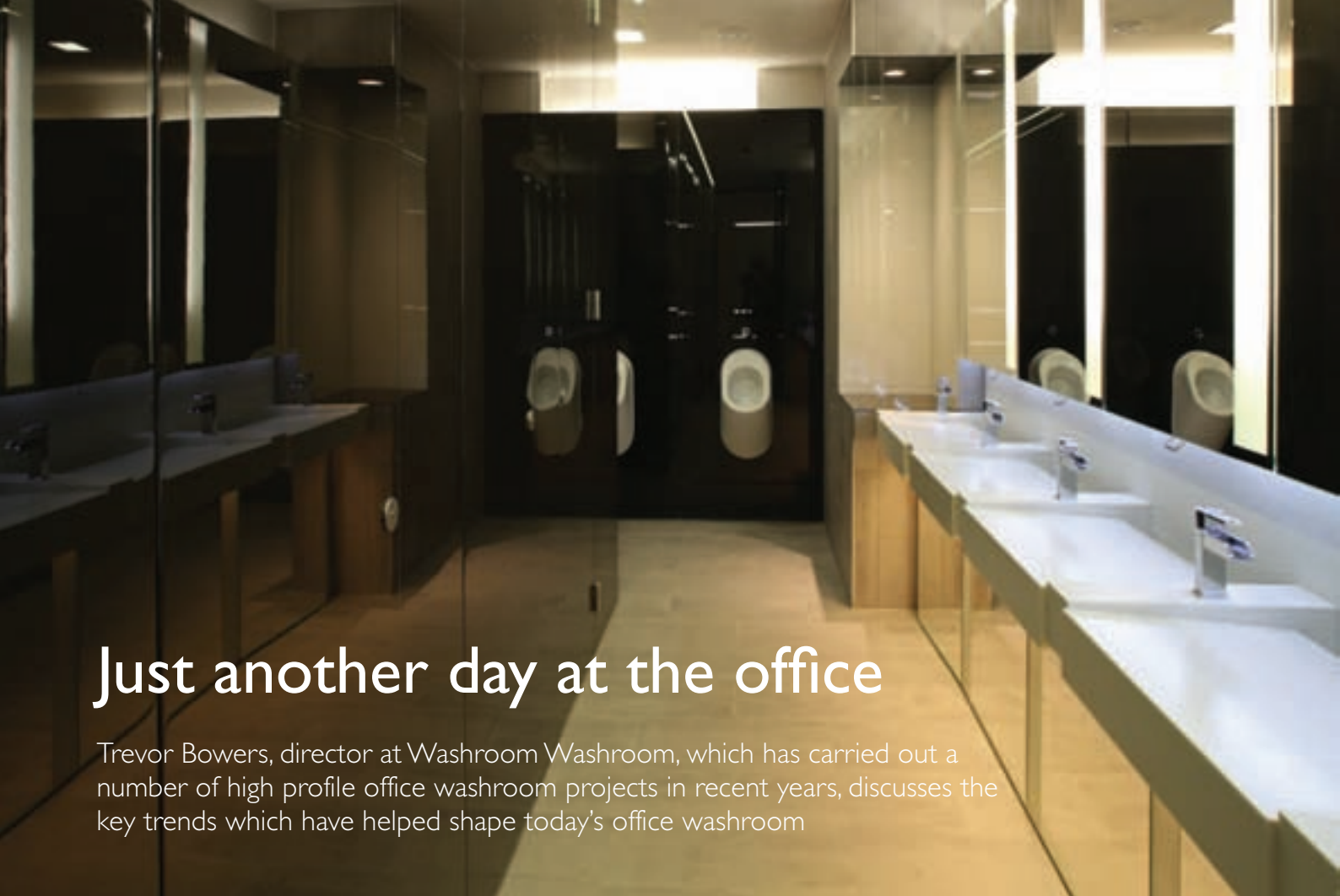
Call us today on **0114 2690697** or email info@kingkraft.co.uk
 Visit the website for more information www.kingkraft.co.uk



Kingkraft
 TAILOR-MADE FOR ASSISTED LIVING



enq.213



Just another day at the office

Trevor Bowers, director at Washroom Washroom, which has carried out a number of high profile office washroom projects in recent years, discusses the key trends which have helped shape today's office washroom

Far from seeing the death of the office following predictions that most people would by now be working remotely from home, it remains resolutely popular with new offices springing up at an incredible rate to meet demand. In recent years offices have evolved to meet the changing needs of office workers and providing exceptional quality facilities, including washrooms, is fast becoming the norm.

Washrooms are often used as a benchmark by which to judge the rest of a building and can say a lot about a company. Providing high quality facilities and ensuring washrooms are finished to an exceptional standard will therefore reflect well on the rest of the building and at the same time, can help companies to attract and retain the very best staff. So it comes as little surprise that one of the overarching trends of recent years is the movement towards high specification materials and finishes to create washrooms to cater for office workers who expect gym quality washrooms at work.

Unusual materials and finishes such as glass, anodised aluminium, stainless and textured steel, cast acrylic, Corian, granite, marble and unique wood veneers can all help to create a high specification look and feel more reminiscent of a luxury leisure sector project than an office. Additionally, innovative finishes such as Page Lacquer (pictured above), which allows future wear and tear to be easily repaired and re-polished in situ, and Fenix NTM, which has a tough acrylic resin surface and

boasts anti-bacterial properties as well as being resistant to scratches, abrasion and mould, are becoming more readily available and are an ideal way to create the perfect balance between aesthetics and durability.

Natural stone vanities such as Silestone, which is manufactured from natural Quartz, and solid surface materials such as Staron, LG Hi Macs and Corian are all ideal for specification within the office sector. Available in a wide range of attractive colours and textures, while also easy to clean and durable enough to withstand the rigours of a high traffic environment, they enable clients to create completely bespoke washroom space that is as hardwearing as it is aesthetically pleasing.

The need to provide gym quality facilities doesn't stop at washrooms. As the office has evolved, elements which were once deemed luxury such as showers and changing areas are now seen as standard as the number of people regularly cycling or walking to work has increased and offices which fail to provide such facilities can be viewed as old-fashioned or out-dated. Installing spacious lockers, designed to comfortably accommodate a suit, in addition to using high specification materials and finishes architects can create a facility which would not be out of place in a private gym or leisure club.

As part of the move towards more individual, bespoke washroom designs, colour is increasingly important and thanks to advances in technology, it can now be incorporated

Continued overleaf..

'Washrooms are often used as a benchmark by which to judge the rest of a building and can say a lot about a company'

Trevor Bowers, director at Washroom Washroom



throughout the washroom area, as a key part of the design, on cubicle doors, duct panelling systems and splashbacks, as well as vanities. Colour can be used to effectively carry corporate branding throughout the building, creating a cohesive design and unique space.

Another emerging trend within the commercial and particularly office sector, is the installation of so called 'superloos'. These self-contained unisex cubicles with WC, vanity and hand drying facilities included, are an ideal way to maximise available space and can be installed as an alternative to traditional washroom layouts.

Balancing practical requirements with aesthetic properties is the key to great office washroom design. Future maintenance, whether planned or reactive, should be considered at the very outset to ensure that washrooms continue to make an excellent impression on visitors. Installing an integrated duct panel system ensures that any maintenance can be carried out much more quickly and efficiently with less disruption to end users. Such systems can also be designed to co-ordinate with and complement the rest of the washroom design to create a smooth attractive finish.

In addition to considering the need for future maintenance, clients are demanding washrooms that are as efficient and hygienic as possible, but this needn't come at the expense of aesthetics. Integrated modular consumable systems, which have been developed to fit neatly behind a mirror, are a popular

choice. Designed to save water and soap, they are also easy to maintain and refill, saving energy, time and money, while the use of infrared taps ensures washrooms are kept hygienic.

The trend for high specification washrooms within the office sector has been especially noticeable in and around London, which has recently been named one of the top cities in the world to work. With new offices opening up all the time, investing in office washroom facilities to bring them up to the high standard expected by visitors is vital to ensure offices remain let and therefore profitable.



A 'superloo' with colourful glass duct panelling

enq.214

AVOID THIS!



ELIMINATE SLIPPERY FLOORS!

SLIPSTOP

- Eliminate slip-accidents at a fraction of the cost of any reliable alternative
- Fast, once only application
- Guaranteed 5 years
- Effective even when wet or greasy
- Instant slip-resistance, no shutdown of your facilities

SLIPSTOP (European) Ltd.
P.O Box 7404, Coalville LE67 4ZS ENGLAND
Tel.: 01530 813 500, Fax: 01530 813 400
Email: slipstop@slipstop.co.uk Website: <http://www.slipstop.com>

enq.215

Gloucester opens its Gateway to Mapei's eco products at Britain's greenest services



A Mapei decorative floor system has been installed at Gloucester Services Southbound, which is an environmentally-friendly service station on the edge of the Cotswolds. The main building is constructed from local stone and timber, and features an arched grass-covered roof set to receive BREEAM excellent rating. Three individual Mapei products were specified, alongside porcelain tiles and vinyl sheeting, throughout a 1,324m² area.

Gloucester Services Southbound is the second

phase to the Gloucester Services Northbound known as 'Britain's greenest motorway services'. This joint project was delivered by Gloucestershire Gateway Trust and Westmorland Limited (Westmorland Family are also behind Tebay Services in Cumbria). The charity, Gloucestershire Gateway Trust, has already generated income from its Northbound service station and will further generate income and support for nearby target communities and charity partners in Gloucestershire and Stonehouse. The site includes extensive landscaping along with electrical vehicle charging stations and capacity to switch to bio-fuel pumps. A farm-shop also features at the site, stocked with local produce, in place of fast food outlets.

Within the main building, around 1,800m² of screed containing Mapei's Topcem fast-drying hydraulic binder was laid over insulation and underfloor heating. The screed was then overlaid



with Mapei's Primer SN to provide a key for Mapei's Ultratop in anthracite, a decorative coloured flooring system designed to give a polished concrete appearance. The petrol station was also completed using Mapei's Ultratop system, again in Anthracite.

Gloucester Services Southbound opened its doors to the public in May 2015, is located on the M5 Southbound – between junctions 11a and 12.

0121 508 6970 www.mapei.co.uk

eng.216



BIM Models
now available

HORNE

Bi-modal showering from HORNE





The ligature resistant connector...



...takes the detachable handset,
hose and flow actuator...



...for assisted showering mode
via automatic flow diverter.

Under-utilised showers waste space, time, water and money. Install a Horne bi-modal shower panel to increase usage. Free up space and reduce maintenance time spent flushing water down the drain. For unassisted showering, the water flows via the fixed vandal and ligature resistant shower head, and via the handset and hose for assisted showering. Available with ligature resistant (pictured) or moulded lever controls to cater for different user needs.

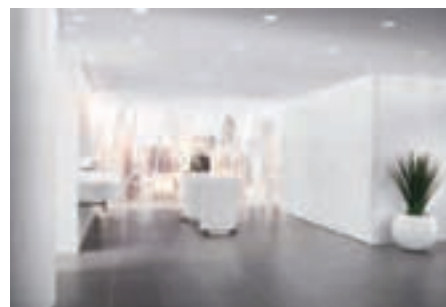
Visit www.horne.co.uk/Products/Shower-Panels/ for a complete tour of the range.

Horne Engineering Ltd. PO Box 7, Rankine Street, Johnstone, PA5 8BD
Tel: 01505 321455 Email: sales@horne.co.uk

www.horne.co.uk



enq.217



True quality never shouts

There are many things in life worth making a noise about: your team's big win; being reunited with a long lost friend; watching your favourite band. Yet there are others that deserve the simplicity of silence, preferring to earn its appreciation without making a sound. A Sytan washroom is one of those.

Take our pivot hinge. Here we ensure the heavy-weight door has two rock-solid anchor points – one in the headrail and the other on the foot of the pilaster. Hidden completely from view inside the headrail, our adjustable spring and damper capsule

controls the speed of the door and closes it beautifully. At ground level, an unseen stainless steel bearing raceway smoothly glides the door to a soft and silent close.

A rounded heel detail on the door ensures a totally flush line, with no visible hinge in the closed position. Just as discreet, the headrail can be fixed to within 10mm of the ceiling – so privacy is never compromised.

That attention to detail, that sense of luxury, doesn't stop on the outside of Sytan – it continues past the door as well. Our fixings are completely

invisible, hidden within seamless joints that will not rattle and will not move about. You'll never know they're there, but they will support the whole system; strong yet silent.

All these components are tested to a minimum of 100,000 cycles before they're approved. It's a dedication to getting the details not just right, but perfect, that means a silent, unrushed feeling every time. And that speaks volumes about Sytan.

01763 276200 www.amwell-systems.com

enq.218

AXESS4ALL The perfect lift every time



The New A6000 – A cabin platform lift with all of the benefits of a platform lift but the feel and style of a traditional fully enclosed lift due to the conventional lift sliding landing and cabin doors.

☎ 0844 3758882

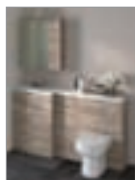
✉ SALES@AXESS4ALL.COM

🌐 WWW.AXESS4ALL.COM



enq.219

The perfect combination



The new Medley range from **Balterley Furniture** offers a unique space-saving storage solution for the smaller bathroom. This selection of slimline and L-shaped polymarble basins complement the vanity and WC units, giving you the flexibility to add additional storage in even the smallest bathroom. With a choice of countertops and cabinets, you can tailor your chosen look. The Medley range is available in 4 stylish finishes:

classic gloss white or gloss oyster or Driftwood and Hacienda Black for those who prefer a more natural finish. Choose doors with or without handles to achieve a unique style. Make the most of your space with combinations in 1,100, 1,200 and 1,500mm sizes and a choice of straight, left hand or right hand configurations.

01282 418012 www.balterleybathroomfurniture.co.uk

enq.220

Slick styling with RAK Origin 62



RAK Ceramics' new Origin 62 sanitaryware offers premium design and quality at a new price level. The new market model features a sleek contemporary format, which has been designed to meet the huge demand for affordable, yet stylish sanitaryware. The range includes a close coupled and back to wall WC, which feature a soft close seat and quick release button for easy cleaning. Both Origin 62 WC's share a compact design so are ideal for small cloakrooms and en-suites, as well as larger

bathrooms, in residential and commercial environments. Three matching basins are also included within the range, in a full pedestal and semi-recessed design.

01730 237850 www.rakceramics.co.uk

enq.221



Cosmetic surgery for Northwick Park Hospital car park

An extensive expansion and upgrade programme at Northwick Park Hospital in Harrow, Middlesex to provide improved facilities for patients also includes new car parking facilities, which is using 28 Forma aluminium column casings to conceal structural steelwork. As part of the overall upgrading and expansion plans, the hospital's car park has also undergone a 'facelift', with better car parking and greater capacity along with improved lighting and access. An integral aspect of the improvements has been to conceal the car park's structural columns with Forma column casings, which were supplied and installed by **Encasement**. The square and rectangular Forma column casings measure from 500mm x 500mm up to 500mm x 820mm and stand 4600mm high. Even though aluminium is weather resistant, each casing has a grey BS18B25 PPC coating to provide additional protection while creating a more aesthetic finish.

enq.222



The preferred choice

Premier Loft Ladders are the preferred choice of architects and building industry professionals throughout the UK, and their range of COLUMBUS Treppen stairways leads the way in engineering quality, design, technology and energy efficiency, making Premier the foremost supplier of concertina style aluminium and folding or sliding style wooden loft and access ladders. Our stairways have a wide range of options including flat roof access, fire resistant trapdoors, electrical operation (concertina stairway) and vertical access.

BIM modelling for the Supreme stairway is now live on Bimstore

bimstore.co.uk

Contact us on:
0845 9000 195
01394 214413

E: sales@premierloftladders.com
W: www.premierloftladders.com

Key reasons to choose PLL:

- Outstanding quality & value
- Preferred choice of architects and building industry professionals
- COLUMBUS Treppen - UK Main Dealer
- Technical & design advice
- Electrical operation
- Commercial & domestic applications
- Fire resistant trapdoors
- Vertical access
- Flat roof access



enq.223



Door selection made easy with Vicaima

Choosing the right interior door can often seem like a daunting task, especially when there is so much to consider. Performance, fire certification, dimensions, assembly options, budget and of course the ever important creative design all play a key role in the decision making process. Now **Vicaima** makes the job so much easier with the publication of its new Interior Door Selector brochure. Full of inspired interior door designs, Vicaima's new priced brochure really does offer something for everyone. Available both in printed format and for download via their website, this 50 page booklet sets out product ranges in a clear and concise format. Each section includes quality colour imagery to illustrate the range design potential, together with easy to reference individual door pictures to ensure the chosen door is right for you. As you would expect from such a leading interior door specialist, a comprehensive choice of constructional core options from lightweight hollow core to 1 hour fire rated doors are offered for most ranges, with each one being available in both imperial and metric sizes.

01793 532333 www.vicaima.com

enq.224

Rockfon launches its whitest ceiling tile ever



After years of research and testing with architects and installers, **ROCKFON**® has developed its smoothest, whitest ceiling tile ever: **ROCKFON**® Blanka™. A perfectly white ceiling is what architects want, but has been difficult to attain without sacrificing other crucial technical properties – until now. **ROCKFON**® Blanka™ delivers all the unique stone wool performance

characteristics you would expect from **ROCKFON**® including outstanding acoustic performance and fire safety properties. **ROCKFON**® Blanka™ tiles are produced from up to 42 per cent recycled materials, are fully recyclable and come with a 15 year warranty to ensure building owners a long product lifecycle.

0800 389 0314 www.rockfon.co.uk

enq.225

Heradesign creates peace and serenity



Emsworth Baptist Church has a new building on the edge of conservation area in Hampshire. The church has a modern, minimalist interior with flexible, multi-function spaces. Haverstock, designers and architects of the project, specified Heradesign ceilings from **Knauf AMF** throughout the building to help fulfil two criteria, as they explained: "Creating a simple design for the

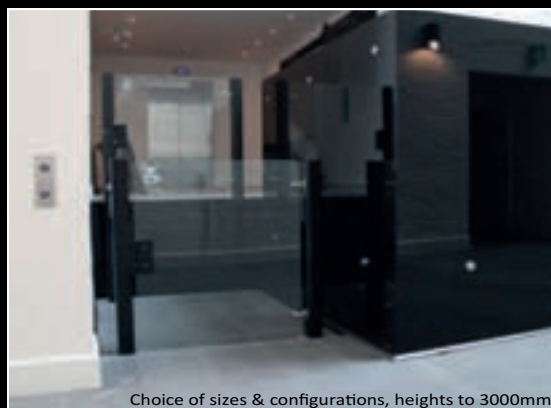
church interior was one of our main objectives. The Heradesign panels work in harmony with the finished look we wanted. They also help to control the reverberation times in the open areas." Heradesign ceiling panels are manufactured from wood-wool, sourced from PEFC and FSC certified forests.

020 8892 3216 www.amfceilings.co.uk/heradesign

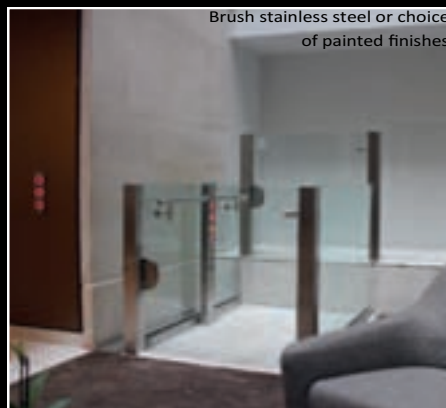
enq.226

mylyft
the art of elevation

A premium wheelchair access platform lift range designed to compliment the built environment and support your creative vision.



Choice of sizes & configurations, heights to 3000mm



Brush stainless steel or choice of painted finishes



premium platform lifts

Contemporary styled access for all. Architecturally inspired, refined, discrete and beautifully engineered. A statement fashioned in steel and glass. Standard and bespoke designs intended for prestige locations worldwide.

mylyft by Lyfthaus Limited, Steeple Bumpstead, England, CB9 7BN T. 01440 731111 lifts@lyfthaus.com www.mylyft.com

enq.227



STUNNING **OUTLOOK**

Modern, minimalist first class design provides maximum transparency with outstanding safety. Easy Glass®, Q-railing's glass balustrade systems, are fully modular enabling components to be interchanged in endless combinations. Installation is simple and fast.

170 metres of Easy Glass Pro were installed in Museum Vlaardingen, the Netherlands. The uninterrupted transparency enables visitors to have maximum and clear views of the exhibits. For further information, to request a visit or to arrange a CPD presentation, please call: 01782 711 676 / 0800 781 4245 or email to sales@q-railing.co.uk.



reader
enquiry
228



Steel windows and doors bring life to church



Highly commended in the 'Best Change of Use of an Existing Building or Conversion' category of the LABC awards, Hope Church Islington St David owes some of its success to the 33 windows and doors manufactured and installed by **Steel Window Association** member, REA Metal Windows. These had to work aesthetically while meeting a diversity of other requirements; including fire protection and thermal performance. The products used included those from REA's

FireBREAK and REAframe ranges. All the windows and doors were polyester powder coated in black. This finish was complemented by a wide variety of stainless steel fittings, including bespoke door handles, which add to the contemporary feel inside the building.

enq.229

Great doors for great homes



Specialist door manufacturer, **Ahmarra Door Solutions**, has relaunched the Artisan Panel Door Collection to include stunning designs from their latest projects. Artisan panel doors have already featured in some of the most prestigious residential developments in the UK. The new range has been designed specifically for architects, developers and interior designers working in the luxury residential sector and offers even more choice. Proud to fly the flag for British craftsmanship, the Artisan Panel Door Collection

offers the very best quality in terms of design and materials. To view the new brochure, please visit Ahmarra's website or call their sales team.

02392 389076 www.ahmarra.co.uk

enq.231

Polyflor flooring helps create stylish cafe



High design and high performance Expona Design luxury vinyl tiles from commercial and residential vinyl flooring manufacturer **Polyflor** were used to create a modern bistro at the Belong Warrington care village in Cheshire recently. Wood effect Expona Design luxury vinyl tiles in Light Elm were installed in the bistro, reception area, corridors and

also in the village exercise studio. This grey toned wood design features authentic swirled grain detail and a textured surface emboss for added realism. Natural material effects are popular flooring choices for care environments as they are familiar and help create a homely rather than clinical look.

0161 767 111 www.polyflor.com

enq.230

Fresh shades of Polysafe Wood fx flooring



Polyflor is pleased to announce the relaunch of its popular Polysafe Wood fx PUR sheet vinyl safety flooring, with the addition of brand new high clarity wood effect designs. Building on the established success of the classic designs within Polyflor's Wood fx range, a new series of six on-trend wood styles have been introduced, some featuring a wider plank format for more contemporary look. The fresh additions to the enlarged

collection are Oiled Oak, Sun Bleached Oak, Roasted Limed Ash, Tropical Pine, Aged Oak and Nero Oak. Providing sustainable wet slip resistance in busy, public areas, Wood fx is suitable for heavy commercial areas.

0161 767 1111 www.polyflor.com

enq.232



Simply Beautiful...

Glass Writing Boards from Casca

Call us on
0845 519 4995



enq.233

Affinity2⁵⁵ – Heavy commercial LVT



Polyflor is pleased to announce the launch of its innovative Affinity2⁵⁵ range of high design, heavy commercial luxury vinyl tiles which have been created to work in perfect harmony with vinyl sheet flooring ranges. Featuring an eclectic mix of 16 authentically reproduced wood plank designs, the 2mm gauge Affinity2⁵⁵ collection offers straightforward installation alongside 2mm vinyl sheet

flooring, providing a beautifully seamless flooring solution that flows throughout any commercial installation. Affinity2⁵⁵ luxury vinyl tiles blend effortlessly with Polyflor's 2mm gauge heterogeneous, homogeneous and safety flooring ranges, such as Expona Flow PUR, Pearlazzo PUR and Polysafe Verona PUR.

0161 767 1111 www.polyflor.com

enq.234

Sika ComfortFloor® achieves an A+ rating



Sika ComfortFloor® systems, SikaFloor® PS23 and PS24, have become the first resin flooring systems to achieve a manufacturer-specific BRE Green Guide Ratings – attaining an A+ the highest rating available. As part of a comprehensive evaluation process, a BRE representative visited Sika's two manufacturing

sites in Deventer, Netherlands and Stuttgart, Germany to verify the information provided by Sika. After completing detailed assessments and data analysis, BRE attributed Sika ComfortFloor with the highest possible Green Guide rating – a first for the resin flooring industry.

0800 112 3863 www.sikaflooring.co.uk

enq.236

More reach out for OSMO's Moravia flooring



Since summer 2014, Osmo UK has been proudly partnered with European oak flooring specialists, ESCO. Providing a selection of ESCO flooring pre-finished with Osmo Polyx[®]-Oil, one of the most popular styles is Moravia. The combination of the rustic oak and the specific brushing treatment used makes the wood's knots and cracks appear deeper in the board, creating a stunning and unique texture. Moravia is available in eight light to dark shades. For more information, please visit the company's website.

enq.235

Polyflor flooring creates uplifting environment



1,700m² of Polyflor's vinyl flooring was recently used to create a fresh and spacious environment at Cwmgelli Lodge care facility in Blackwood, Wales, a flagship facility designed to positively meet the needs of younger people who have been diagnosed with dementia or cognitive impairment. Wood effect Forest fx PUR sheet vinyl in American Oak

was installed throughout the Lodge's communal areas, circulation spaces, cafe and dining areas as well as bedrooms by Floor Furnishings Ltd of Cardiff. Polysafe Standard PUR safety flooring was also installed to provide sustainable wet slip resistance for residents in en suite bathrooms.

0161 767 1111 www.polyflor.com

enq.237

The Bathroom Switch

Say NO to bathroom Pull-cords

Sensors can be fitted behind most materials to suit your particular décor!

SENSORBILITY
Bringing sense to Lighting ...

Touch a tile to Switch or Dim lighting etc. within bathroom Zones !!

www.sensor.co.uk
Tel: 01548 511498 ~ Fax: 01548 511393

enq.238

syncbox
tv & power point system

www.syncbox.co.uk
+44 (0)1622 888801

enq.239

Paxton's Net2 Access Control provides the next generation in building security

enq.240

Paxton, a UK market leader of electronic IP access control and door entry equipment has over 30 years' experience in the security industry. The company's flagship access control system, Net2 offers a secure, convenient, flexible and cost effective solution to control who has access to a building and when. Net2 offers centralised administration and control of sites ranging from one to hundreds of doors, and thousands of users.

The company has recently announced a CIBSE accredited CPD training programme aimed at building specifiers, architects and consultants. Entitled 'Networked Access Control', the free one hour training supports building services engineers and construction company engineers with how to specify access control in their projects.

Paxton's CPD training ensures all aspects of an access control system are reviewed with careful consideration to energy saving and



cost effectiveness, as well as integration requirements and options, plus how to overcome potential challenges.

Working with mechanical and electrical contractors, architects, system integrators and other organisations, Paxton's new commercial team ensures complete understanding of access control solutions and how it can help businesses. The team will educate and uncover opportunities to get Paxton products written into future design specifications.

Anthony Searle, commercial manager says:

"The CPD programme, Networked Access Control, is suitable for anyone who is working with clients specifying security systems to building projects. We want access control to be considered at the very beginning of any building project, and not as an afterthought. We've been visiting specifiers and consultants across the UK since March and the feedback has been great, many attendees leave feeling more confident in discussing access control with clients, being able to talk more confidently about what their solution offers them.

This is just one of the many things the commercial team at Paxton has to offer specifiers and consultants. We also provide all the necessary help in the preparation of tender specification documents in the form of a 'Consultants and Specifiers Resource' and we'll even do the work for them!"

01273 811011 www.paxtonspecifier.co.uk

Fire Design Solutions to provide smoke ventilation systems for East London regeneration project

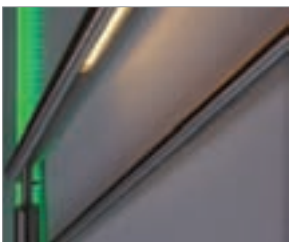


Following a recent appointment by Galliard Construction Limited, award-winning smoke ventilation contractor **Fire Design Solutions (FDS)** will provide a number of its innovative systems for the residential element of an exclusive new London development. Located on Caxton Street North in East London's Canning Town district, the Royal Gateway project will consist of five contemporary apartment buildings, featuring floor-to-ceiling windows, balconies and open living spaces. The development will also host a large commercial space offering nearly 27,000 square feet of affordable rental spaces. Over the coming months FDS will supply, install and commission mechanical smoke ventilation systems for the residential blocks in order to meet the required fire safety standards, while corridor environmental systems will be used to mitigate heat in the buildings' common corridors in day to day operating conditions. The FDS team has also been called upon to provide car park smoke ventilation systems, maximising safety for the development's future occupants. Speaking on FDS' appointment, Robin Hawkins, construction director at Galliard Construction said: "By working with the team at FDS we've been able to ensure that the Royal Gateway development will be provided with the most appropriate smoke ventilation solution."

01322 387411 www.firedesignsolutions.com

enq.242

neaco launches balustrade with LED lighting

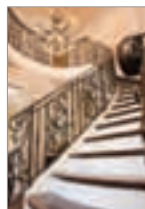


neaco have introduced an exciting new design option for their Spectrum range of balustrade and balconies with the launch of rails featuring integral LED under-lighting. neaco's UK Business Development Manager, Peter Melia, said: "The LED under-lighting is another impressive example of the superior architectural aesthetic which characterises our

innovative balustrade, balcony and structural glass range. This new option adds an atmospheric touch to design schemes and I'm sure that it will be a popular specification across a variety of projects."

enq.243

Kallisto takes service to another level



As spiral staircases go through a renaissance and architects and developers alike identify the benefits in new builds, Kallisto, the pre-cast concrete spiral and helical staircase division of **Milbank Concrete Products**, offers customers an exclusive full service, tailored to suit the individual needs of domestic and commercial developments. Each individual pre-cast concrete staircase by Kallisto is individually designed, manufactured and installed to meet the specific requirements of that project, while remaining highly – often surprisingly – affordable. Fabricated off-site and delivered in one piece directly to the property, delivery is scheduled, enabling the build to move forward, smoothly and cost effectively, with minimum disruption on site.

enq.244

Cuilcagh Boardwalk – Northern Ireland



Cuilcagh Mountain Park in County Fermanagh is a “Wetland of International Importance” as designated by the Ramsar Convention as well as being a Special Area of Conservation (SAC), an Area of Special Scientific Interest (ASSI) and a Natura 2000 site. So when the next stage of development for this area was planned, one of the longest wooden boardwalks in the world, it was vital that timber used would be of the highest quality and an environmentally sound choice.

Local Company R.T.D. Crawford Ltd were ideally suited to supply the MicroPro treated timber with the new MicroShades brown colour additive to fulfil the specification for this 1.6km boardwalk, as they are the only producer of MicroPro treated timber in Ireland. Robert Allen, General Manager, at RTD Crawford stated: “The MicroPro treated timber process is the only timber treatment that is certified as an Environmentally Preferable Product based on Life Cycle Assessment studies. MicroPro is the preferred timber treatment to be used in environmentally sensitive areas.”

“This path is solely to protect the habitat. It has taken thousands of years to develop this naturally. The area is botanically rich with a very diverse range of species of birds, plants and insects” says Richard Watson, Manager of the Marble Arch Caves Global Geopark, which is located near the

entrance of the new boardwalk. “This is another chapter in the development of the area which continues to bring thousands of visitors to the area to enjoy the outdoor environment which is particularly special in terms of landscape features.

The design of the MicroPro treated timber boardwalk means that it sits or “floats” above the terrain leaving it undisturbed. The new treated timber boardwalk protects the rare blanket bog from erosion caused by walkers. MicroPro treated timber was used throughout the project to protect the boardwalk from difficult weather conditions and to protect the sensitive environment of the park.

The boardwalk provides visitors with breathtaking views of the area with the most impressive site being Lough Atona, a lake nestled at the foot of the mountain which was carved out by a glacier during the last ice age approximately 13,000 years ago.

R.T.D. Crawford Ltd is located on a 44 acre site in the heart of Lisbellaw in Co. Fermanagh. The site is home to a modern timber milling facility, producing planned timber for all end uses. The company despatches timber throughout Ireland on a daily basis.

01628 486644 www.kopperspc.eu

enq.245



Rise and fall table at the heart of the home



When a dining table needs wheelchair access from all sides, Indivo from Pressalit Care helps keep the kitchen at the heart of the home. The free standing, rise and fall table frame from Indivo brings much needed flexibility to an accessible kitchen or dining room, enabling all members of

the family to eat together in comfort. The stable and secure free-standing table frame, accompanied by a table top of choice, benefits from the Indivo lifter mechanism that is also used for rise and fall wall-mounted work surfaces and wall cupboards to create a fully accessible and flexible kitchen. For use with most standard types of worktop and wall cupboard, Indivo lifters are easy to install.

uk@pressalit.com www.pressalit.com

enq.246

Sadolin's new Beautiflex™ finish for wood



Offering a new dimension in superior wood care, Sadolin Beautiflex™ delivers a beautiful, flexible finish with long term protection in a wide spectrum of opaque shades. Ideal for all new, bare or previously coated exterior wood, including decking, this solvent opaque woodstain can be applied in colder temperatures, enabling wood protection projects to take place outside

the typical outdoor season. Superior flexibility is achieved through a formulation which features alkyd resin technology, giving Sadolin Beautiflex™ the assurance of up to 7 years protection. Colour is also a key component of the new range with 3 ready mixed colours and 42 tinted shades available for variety of choice.

0330 0240310 www.sadolin.co.uk

enq.248



NEW

A15 drainage channel

- HDPE channel with galvanised steel grating
- Locking clips for easy access to channel
- No screw holes, no rusting
- Easy-to-connect slots at each end for long runs
- Connecting bracket underneath for drainpipes
- Easy to cut for angles / end of runs

Address:
Unit 16 Capital
Business Centre,
22 Carlton Road,
South Croydon
CR2 0BS

Call Wallbarn today on **0208 916 2222**,
email sales@wallbarn.com or visit
www.wallbarn.com

enq.250

Center Parcs success for AkzoNobel



In December 2004, Center Parcs announced it had identified a location for a fifth UK site at Woburn Forest, Bedfordshire. This high profile project would need to partner with outstanding suppliers and professionals to deliver a stunning venue. Blackburn-based AkzoNobel

would feature very heavily in the final phase of the project. West Port Timber Window and Door Technology were awarded the contract to provide the new holiday Village with 4,000 timber windows and 2000 doors. West Port needed the assistance of AkzoNobel to help fulfil the high demands of the project. The coatings solution for this project rested on the expertise of AkzoNobel in supplying two of its popular products which would meet this specification perfectly.

01254 687950 www.sikkens-wood-coatings.co.uk

enq.247

Brett Landscaping assist Hayes development



A retail development in Hayes, West London has had its striking public access area and car park design fulfilled using a combination of high quality paving products, manufactured and supplied by Brett Landscaping. To fulfil the hard landscaping design, a combination of paving materials from Brett Landscaping,

including Piatto in Dark Granite, Silver Granite and Yellow Granite, have been successfully installed. The result achieves the aesthetic that terra firma was looking for, while keeping to a tight budget and not compromising on quality. The design incorporated technical elements, such as the integration of surface drainage and slot drains all with a minimal requirement for stone cutting.

0845 6080570 www.brettpaving.co.uk

enq.249



Solihull Borough Council invest £500,000 in regeneration of Hurst Lane Place

Solihull Borough Council invested £500,000 in the regeneration of Hurst Lane Place, located on Chester Road in Castle Bromwich. The area is now complete with a fabulous new landscape from Tobermore, consisting of Fusion paving in sparkling Silver, Mid Grey and Graphite, which was installed by Kelbec Civils Ltd. Tobermore's Fusion paving was the perfect hard landscaping choice for the project as it creates a striking, contemporary look. Emulating traditional natural granite with its premium exposed granite aggregates, Fusion's wide range of modular sizes and 12 vibrant colour options offer amazing versatility. The variety of sizes and colours available allow the creation of eye-catching visual effects through the clever use of laying patterns. Fusion is an eco-friendly product as it has excellent carbon footprint ratings approved by the Carbon Trust, is B-rated in the BREEAM guide and is produced with locally sourced materials.

0844 800 5736 www.tobermore.co.uk

enq.251

classified & directory

ADHESIVES

BAL
Tel: 01782 591100
www.bal-adhesives.co.uk

BATHROOMS & WASHROOMS



Enq. 501

CAD & PRINTERS

Standing Stone
Tel: 01661 886653
www.standing-stone.co.uk

CLADDING



Enq. 502

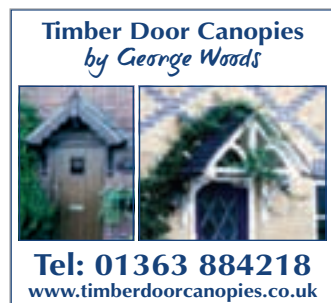
COLUMN CASINGS

Encasement Ltd
Tel: 01733 266 889
www.encasement.co.uk

COMMERCIAL SHOWERS

Horne Engineering Ltd
Tel: 01505 321455
www.horne.co.uk

DOORS & WINDOWS



Enq. 503

DOORS & WINDOWS

Origin Frames Ltd
Tel: 0808 271 4761
www.origin-global.com

FIRES & FIREPLACES

Specflue Ltd
Tel: 0800 90 20 220
www.specflue.com

GROUNDWORKS

We Build It
Tel: 0800 731 9421
www.webuildit-ltd.co.uk

HEATING & VENTILATION



Enq. 504

INSULATED PANELS



Enq. 505

LIGHTING



Enq. 506

PUMPING STATIONS

J T Pumps
Tel: 0844 414 5800
www.jtpumps.co.uk

TILES & TILING

Solus Ceramics
Tel: 0121 7530777
www.solusceramics.com

RADIATORS



ROOFING

**Liquid Roofing and Waterproofing
Association (LRWA)**
Tel: 0207 448 3859
www.lrwa.org.uk

**National Federation of Roofing
Contractors (NFRCA)**
Tel: 020 7638 7663
www.nfrc.co.uk

Topseal Systems Ltd
Tel: 08000 831 094
www.topseal.co.uk

Enq. 508

SOLAR SHADING (BRISE SOLEIL)

Levolux Limited
Tel: 020 8863 9111
www.levolux.com

STAIRS & BALUSTRADES

Railing London Ltd
Tel: 0208 566 6750
www.railinglondon.com

SKIRTING



Enq. 507

TIMBER & JOINERY



Enq. 509

WINDOW CONTROLS



Enq. 510

Reader enquiries online at

www.architectsdatafile.co.uk

If you're interested in
advertising within this section
please contact the sales team on

01435 863500

**HIGH GRADE SOLID STOCK
TIMBER FLANGES AVAILABLE FROM 145
DESIGNED AND TREATMENT TO CLASS 2 TO 450MM
MANUFACTURED IN THE UK CONDITIONS DEPTH
NON-STANDARD LENGTHS AVAILABLE**

**SPECIFY
JJI-JOISTS
AND WE'LL
GIVE YOU
AN I-FULL.**

FULLY BIM COMPATIBLE FREE DESIGN SOFTWARE

**HIGH LEVEL I-JOIST OF TECHNICAL
ENGINEERING CHOICE FIELD
SUPPORT FOR ON-SITE TRADES FORCE
QUALITY MEANS PERFORMANCE AND ACCURACY
ONLY UK I-JOISTS VERIFIED TO PAS2050 FOR ACCURATE CARBON NUMBERS
EASY TO NAIL AND SCREW
ONLY UK I-JOISTS WITH FSC OR PEFC CERTIFICATION**

You can rely on JJI-Joists to succeed—whatever the challenge, because JJI-Joists are jam packed with features to make your life easier, and the job quicker. We are the most popular I-Joist in the UK and the I-joist most specified by architects and engineers. So, whether designing or building, choose JJI-Joists with confidence. You'll find there's so much more to them than meets the eye.

WEB: www.jamesjones.co.uk/ewp EMAIL: jjj-joists@jamesjones.co.uk

reader
enquiry
402



**James Jones
& SONS LIMITED**
TIMBER SYSTEMS DIVISION