



adf architects datafile

December 2015

Features in this issue

Timber
Doors & Windows
Office & Contract Furniture
Disabled Products and Services

RCI Show Preview

Special report

Cultural Buildings
Hotels

Products of the Year
Showcase

News

The Brick Awards 2015:
And the winner is...

UK Roofing Awards 2016:
Recognising great roofing

www.architectsdatafile.co.uk



CARVALO

Architectural Oak Frames

Taking Oak Framing to a new world...

At Carvalo we design and manufacture Oak Frames that work.
Contact us today for a free consultation to find out more and
win a free bottle of wine.

reader
enquiry
401



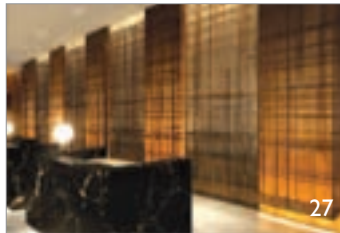
Oak Frame manufacturers employing the latest
technology to deliver frames of
unparalleled quality and design.

www.carvalo.co.uk | info@carvalo.co.uk
01244 564145





20



27

projects

20 Let us play

A redundant Bedford church has been converted to a theatre that serves both a school and the local community. Mark Smulian reports

27 Hilton's industrial inspiration

London's grimy industrial past was the unlikely inspiration behind the £48 million Hilton London Bankside hotel. Stephen Cousins reports

features

45 STRUCTURAL ELEMENTS: TIMBER

Specifying timber for your project's exterior

Nick Taylor, managing director at Silva Timber discusses what to consider when specifying timber products including species, sustainability and finishing

53 EXTERNAL ENVELOPE: DOORS & WINDOWS

Making an entrance better by design

We speak to Kaz Spiewakowski, managing director of GEZE UK, about whether aesthetics and function are mutually exclusive when it comes to making an entrance

65 INTERIORS: OFFICE & CONTRACT FURNITURE

A revolution in office seating set to advance workplace wellbeing

Mark Barrell, Design Director at The Boss Design Group, advises architects and specifiers of a pioneering breakthrough that is creating a revolution in office seating and is set to advance wellbeing in the workplace

69 DISABLED PRODUCTS & SERVICES

Inclusive building design under the spotlight

By Kelvin Grimes, project manager for 'away from home' assisted accessible toilets at Clos-o-Mat

news & events

- 4 Industry News
- 5 Events
- 16 CPD Focus

HEADLINES

- 4 UK's best new house – Rothschild's Flint House crowned 2015 RIBA House of the Year
- 7 Australian fragmented hotel lobby announced as World Interior of the Year 2015
- 12 Architecture student wins SPAB's Philip Webb architectural award 2015

products

- 18 Editor's Product Focus
- 32 RCI Show Preview
- 37 Products of the Year Showcase
- 19 Appointments & news
- 38 Groundworks
- 41 Planning & design
- 41 Structural elements
- 48 External envelope (incl. external fixtures)
- 59 Insulation
- 60 Heating, ventilation & services
- 62 Interiors
- 69 Disabled products & services
- 71 Safety & security
- 72 Landscaping & external works

75 Classified & directory



Cover image:
© schmidt hammer lassen
architects.
Photographer:
Hufton + Crow
See page 15

Joint Publisher/Editor
Simon Reed

Advertisement Manager/
Joint Publisher
Anthony Parker
anthony@netmagmedia.eu

Editorial &
Production Assistants
Sue Benson
Mikey Pooley

Contributors
Stephen Cousins
Mark Smulian

Sales Director
Lesley Mayo

Sales Executives
Suzanne Easter
Ian Fletcher
Kim Friend
Steve Smith

Circulation/Reader
Enquiry Service
Jane Spice



netMAGmedia Ltd
Cointronic House
Station Road, Heathfield
East Sussex, TN21 8DF

Advertising &
Administration
t 01435 863500
f 01435 863897
info@netmagmedia.eu
www.architectsdatafile.co.uk

Press Releases
editorial@netmagmedia.eu



Annual subscription costs just £48 for 12 issues, including post and packing. Phone 01435 863500 for details. Individual copies of the publication are available at £5 each inc p & p. All rights reserved

No part of this publication may be reproduced or transmitted in any form or by any means, electronic, mechanical, including photocopying, recording or stored in any information retrieval system without the express prior written consent of the publisher. Although every effort is made to ensure the accuracy and reliability of material published in Architects Datafile, the publisher can accept no responsibility for the claims or opinions made by contributors, manufacturers or advertisers. Editorial contributors to this journal may have made a payment towards the reproduction costs of material used to illustrate their products. The manufacturer of the paper used within our publication is a Chain-of-Custody certified supplier operating within environmental systems certified to both ISO 14001 and EMAS in order to ensure sustainable production. Printed in England

RIBA HOUSE OF THE YEAR

UK's best new house – Rothschild's Flint House crowned 2015 RIBA House of the Year

The Royal Institute of British Architects (RIBA) was delighted to announce, on the evening of the 25 November, Flint House as the winner of the coveted 2015 RIBA House of the Year award, sponsored by specialist insurer, Hiscox. The annual award was created in 2001 to celebrate excellence in housing design.

Flint House, designed by architects Skene Catling De La Pena, was announced as the winner during a special four part TV series for Channel 4, *Grand Designs: House of the Year*. The series featured homes long-listed and short-listed for the prestigious annual award.

Described by judges as a marvel of geological evolution and construction, Flint House is a celebration of location, material and architectural design at its best. Set in the flint-layered fields of the Rothschild's estate at Waddesdon Manor in Buckinghamshire, the building rises from the ground as dark, fashioned flint and slowly changes in construction and texture until its refined white chalk blocks disappear into the sky.

While defined by its flint construction, the project is home to an intriguing and intelligent mixed application of rooftops, terraces and recesses that combine to deliver a stunning piece of liveable, provoking,



Photo: James Morris

modern architecture that marries into the earthly yet beautiful countryside.

The Mill, a contemporary holiday home in the Scottish Borders, was announced as the final project shortlisted for the 2015 RIBA House of the Year. The full shortlist for the 2015 RIBA House of the Year award is:

- Flint House, Buckinghamshire by Skene Catling De La Pena
- Kew House, London by Piercy & Company
- Levring House, London by Jamie Fobert Architects
- Maghera, County Down by McGonigle McGrath
- (The) Mill, Scottish Borders by WT Architecture

- Sussex House, West Sussex by Wilkinson King Architects
- Vaulted House, London by vPPR Architects

RIBA President Jane Duncan said: "The shortlist for the RIBA's House of the Year represents a remarkable diversity of architectural skills and outcomes. I am delighted that Skene Catling De La Pena's Flint House for Lord Rothschild has won this year's prize. Although superbly original and unique, it continues a fine tradition of RIBA award-winning houses that provide exemplars for others: architects, clients and developers. Congratulations to all involved."

Newest world heritage site bathed in fog and sun

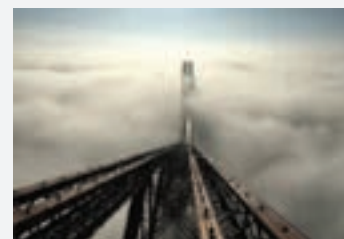
Network Rail Chairman Peter Hendy was given a rare treat during a recent visit to Scotland, when he visited the UK's newest world heritage site, The Forth Bridge.

Despite the base of the bridge being shrouded in a familiar north sea haar, Sir Peter himself managed to take pictures from the bridge and its viewing platform at the top of the Fife Tower in North Queensferry where the view was exceptional. The top of the 110m high bridge was bathed in bright

sunshine, providing rare views of the upper sections of the bridge emerging from the fog.

Mr Hendy said: "The sight was absolutely breathtaking."

Network Rail is currently developing designs for a potential visitor centre at the Forth Bridge, with a visitor hoist planned at the north end and a bridge walk proposed from South Queensferry. The project team expect to make designs available for public consultation early next year



prior to seeking planning permission.

To view more pictures of the project, please visit www.architectsdatafile.co.uk and enter reference number 88019.

PLANNING

The Monument Building

How do you introduce a new, state-of-the-art office high-rise into an historic listed area in the heart of London? This is the challenge that faced the teams in charge of bringing The Monument Building to life. By Michael Heywood, senior structural engineer at Arup

A stone's throw away from the historic Monument to The Great Fire of London, the new nine-story modern office building is set to replace three outdated commercial buildings with 85,000 sq ft of Grade A, BREEAM 'Excellent' rated, office space. For the last three years the Arup team has worked closely with MAKE and Skanska, to deliver the building, engineering the structural, geotechnical, building services, facade and fire and acoustics design aspects. The result is an exemplar of best practice analysis and design techniques, implemented in a truly multi-disciplinary 3D BIM environment.

The project is unique in a number of ways. First and foremost, The Monument Building sits within a tightly constrained site in The City of London, with complex interfaces with adjacent buildings and infrastructure. Immediately adjacent to the building's basement sits the District & Circle Line platforms of Monument London Underground Station, with the Docklands Light Railway tunnels running deep underneath. Above ground, the plot is flanked by the Grade II listed building, 2A Eastcheap, and the Grade I Listed Monument. These factors presented engineers on the project with some complex challenges.

To meet these, the team developed a strategy to sensitively demolish the existing building and construct the new concrete basement, core walls and steel frame – without causing any damage or excessive movement to its



neighbours. The design also benefitted from Arup's early stage collaboration with the steel and concrete subcontractors, Severfield and Morrisroe, which was tailored to suit preferred fabrication and construction techniques.

Original designs for the building's basement presented a deep pile solution, but after careful consideration, the structural team decided to deviate from this, instead opting for a shallow raft foundation. This new approach used the existing basement structure as a permanent formwork, avoiding significant demolition and excavation as a result. This was a more cost-effective option, shortened the construction programme by at least four months

and reduced health and safety risks.

Further cost and space savings were made with the help of Arup's fire engineering team, who successfully negotiated a single fire escape stair with the City of London. A first for a building of its kind, this solution helped to secure the financial viability of the project by releasing valuable floor area back into the office space.

Without a doubt, The Monument Building presented a complex challenge for design, engineering and construction teams. Nevertheless, through working collaboratively across disciplines, teams are on the verge of realising a highly sensitive design, respectful of its heritage setting.

events

CONFERENCES

Tackling Energy Demand and Management to Achieve Real Reduction in Non-Domestic Buildings

10 February 2016, London
www.ashden.org/conference/2016-arup

LECTURES

Royal Gold Medal 2016 – Lectures and masterclasses

01 – 02 February 2016, London
www.architecture.com/WhatsOn

SEMINARS

Architectural Technology: Design Futures – Reflecting and Projecting Symposium

11 December, London
www.ciat.org.uk

Knowledge, information and data: Practicing architecture in the digital age

21 January 2016, Birmingham
www.architecture.com/WhatsOn

TRADE SHOWS

Architect@Work

27 – 28 January 2016, London
www.architect-at-work.co.uk

Surface Design Show

09 – 11 February 2016, London
www surfacedesignshow.com

kbb

06 – 09 March 2016, Birmingham
www.kbb.co.uk

Ecobuild

08 – 10 March 2016, London
www.ecobuild.co.uk

Long life protection of decks and cladding



Sioo are leaders in wood protection using silicon technology to provide a highly effective proven system to protect wood of all types. It gives long life, a beautiful natural surface and is friendly to people and the environment.

Safe, Natural and Sustainable

reader
enquiry
101

Sioo Wood Protection AB
Tel: +44 (0)1325 350453
E: sioouk@icloud.com
www.sioo.co.uk

Sioo
WOOD
PROTECTION

AWARDS

The Brick Awards 2015 And the winner is...

Now into its 39th year, The Brick Awards is the longest, most well established design awards in the UK.

The categories are open to Architects, House Builders, Brick Contractors, Brick Manufacturers, Owners and Developers, each celebrating design excellence and innovation using brick.

The annual awards ceremony, a key landmark in the brick industry's calendar was back again and bigger than ever. During a ceremony in central London this week the winners were unveiled.

Manchester's Whitworth Gallery was the clear Supreme winner at this year's Brick Awards, as well as the winner of the Best Public and Education Building.

Extraordinary architectural quality both in its internal and external spatial arrangements, attention to detail and workmanship. The proportions of the

external spaces are immensely effective and give a calmness and richness. The relationship to its surroundings is clear in the historic Whitworth building and its landscape setting, park and new courtyards. This building has tremendous architectural quality and its use of brick as an ornamental narrative device as well as a robust skin is exceptional.

The level of finesse in the brick detailing coursing jointing and patterning demonstrates a resurgent craft approach to building that is worthy of celebration across the whole construction industry.

Simon Hay, CEO for the Brick Development Association, said: "The Brick Awards is one of Britain's most respected design competitions. With the construction industry in a phase of growth and optimism, we are delighted to have received so many excellent entries



demonstrating just what brick can achieve within the Built Environment."

In addition to the Supreme Award, there were 14 category awards, each showing excellence in different aspects of design and construction. You can see images and find full details of the project teams on the BDA's website.

For the full list of awards please visit www.architectdatafile.co.uk and enter reference number 66273.

news bytes

Visit the website
www.architectdatafile.co.uk
and enter the reference
number for more information

WSP|Parsons
Brinckerhoff and
schlaich bergemann
partner working on
Stamford Bridge
stadium...
Ref: 34290

Innovative Tetris
House concept ...
Ref: 78084

Plans to transform
Leeds Station...
Ref: 19586

Women in
Architecture
announces new Prize...
Ref: 17321

WORLD INTERIOR OF THE YEAR 2015

Australian fragmented hotel lobby announced as World Interior of the Year 2015

Hotel Hotel, a contemporary hotel in Canberra, Australia, has been named as the World Interior of the Year for 2015. The project by March Studio has beaten over 100 nominees across nine categories to be named the best global interior of the last twelve months. The winner was presented with the esteemed accolade at a gala dinner at the INSIDE – World Festival of Interiors in the world famous Marina Bay Sands in Singapore.

The judges described the project as a "masterful integration of different spaces into a seamless and delightful interior". The judges felt that the thoughtful and innovative design creating a 'Bilbao effect' that has helped to rejuvenate the area.

Designed by March Studio, the signature design of the new hotel is a fragmented lobby entrance, which

provides a unique identity for the building. A series of fractured timber pieces line the walls and furniture to create a tunnelling effect that leads guests from the reception through to the main areas of the hotel.

At the centre of the hotel lies a grand staircase that services the two floors of accommodation and creates a focal point at the end of the fragmented entrance. A bar is also located on the ground floor and features openings punched through the concrete walls to create views to the central courtyard.

The repurposing of the timber in the lobby grabbed the judges' attention for what they described as a "poetic use of leftover materials powerful but not overwhelming" result.

March Studio are now the fourth winner of the prize and will return to



INSIDE Festival in 2016 to act as a judge for next year's awards; previous winners include Joyce Wang and David Kohn.

INSIDE – World Festival of Interiors coincides with the World Festival of Architecture and together they form the largest celebration of contemporary architecture and design in the world. 2015 marked the last year that the festival will be staged in Singapore and next year it will return to Europe to take place in Berlin, Germany.



Our range of standard and bespoke canopies and walkways are the ideal solution for maximising any external environment.

We have over 50 years' of experience in creating innovative structural solutions from schools to retail parks and beyond.

Working directly with clients, architects, contractors and specifiers, we are completely flexible in design and can add value to the whole or part of the life-cycle of your project.

Canopies, walkways and
sustainable buildings designed
around you.

01243 55 44 55
www.fordingbridge.co.uk
info@fordingbridge.co.uk

reader
enquiry
102

FORDINGBRIDGE
inspiring • sustainable • design • build

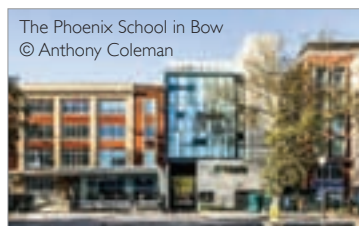
TWO NEW REFURBISHED SCHOOLS

Up on the roof: Tower Hamlets school takes learning to new heights

Architects Patel Taylor has revamped two schools on nearby sites in Bow for the London Borough of Tower Hamlets. Both the Central Foundation Girls' School and the Phoenix School were originally housed in listed structures but they have been refurbished and significantly upgraded with new buildings and improved access.

The Phoenix School supports 150 pupils with special educational needs aged from 6-18. Its existing Grade 2* Listed building dates from 1952 and the new building acts as the main entrance as well as housing classrooms, a performing arts space, classrooms and social spaces for the older pupils as well as a roof garden for vocational training. The existing school in the centre of the site was refurbished to house a library and Design & Technology classroom. It was imperative that all parts of the school became accessible and the new building has step-free access to all areas, including the basement and roof terrace. 95 per cent of the whole building is now step-free for pupils and staff, with the exception of maintenance and plant areas.

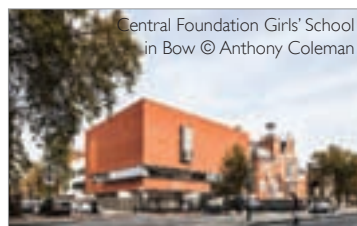
The school is clad in a whitish brick and coloured curtain walling, providing a dynamic and distinctive presence for the school on Bow Road. Its stepped profile ties the new building to its



The Phoenix School in Bow
© Anthony Coleman

neighbours in height and a new lobby defines the entrance at ground level. Since completion, Patel Taylor have been commissioned to provide further designs for a ground floor staff room and roof level retractable canopy as part of the roof garden.

At a larger scale, the Central Foundation Girls' School looks after 1,400 Secondary students. The main part of the scheme involved a two-phase construction of a science block incorporating a new school entrance, dining hall, auditorium, science classrooms and roof level playground. The second part of the scheme relocates the sixth-form teaching facilities from a remote outdated building into the remodelled 1930s building close to the main school. It incorporates a dramatic new entrance, library, teaching spaces, sixth-form common room and a roof garden. Lastly, existing buildings were remodelled and refreshed as part of a general school upgrade.



Central Foundation Girls' School
in Bow © Anthony Coleman

A minimalist brick cube protrudes from the corner of the site and connects to the older building by a strip of curtain walling that houses a dramatic new stairway. The reddish hue of the bricks and the white render match the colour palette of the neighbouring brick and limestone listed building. The school grounds connecting the buildings have been extensively landscaped.

Andrew Taylor, director of Patel Taylor said: "We are proud to have radically transformed these two schools that serve the community in a host of different ways. Design plays such an important role in education and these schools are now better equipped to shape the futures of their students in the 21st Century."

Patel Taylor were appointed by Bouygues UK as architects to work on delivery of London Borough of these schools as part of Tower Hamlets BSF school building programme.

Kier wins £29.5m contract to build Plymouth's tallest building

Kier has been awarded a £29.5m contract to design & construct what will be Plymouth's tallest building – a 22-storey student accommodation scheme for new client Threesixty Developments Limited. At 78m high, Beckley Court on Cobourg Street will dwarf the city's current tallest building, the 14-storey Civic Centre.

The project will provide 507 beds across 164,935sq ft of accommodation. It will feature a mix of cluster flats, studios and two-bedroom flats with commercial space provided on the lower ground and ground floors, and there will also be a management suite, reception area, common rooms and laundry.

Anthony Irving, Kier Construction managing director for the south-west and Wales, commented: "This landmark project, which will be one of the tallest buildings in the south-west, is a significant win for our Devon and Cornwall. The scheme is expected to complete in time for the first students to move in for September 2017."

AWARD

UK Roofing Awards 2016

Recognising great roofing

'The Awards have come to acknowledge the exacting standards of specialist heritage craftsmanship to projects utilising the latest materials and state of the art technology'

Roofing Contractors to architects are being encouraged to enter projects for the annual UK Roofing Awards, which celebrates the very best in roofing.

Since they began in 2005, the Awards have come to acknowledge the exacting standards of specialist heritage craftsmanship to projects utilising the latest materials and state of the art technology. Some of the projects are recognisable and very much a part of the UK landscape, such as London Victoria Station and Belfast City Hall.

It should be noted that entries do not have to be considered cultural or heritage icons to be entered, even the smallest of



domestic properties have gone on to win accolades and praise. After all, the UK Roofing Awards recognises and rewards outstanding standards of workmanship and safety, two things that are essential for any project, no matter what the size or scale.

So, if you have worked on a roofing project this year, either at the design stage

or undertaking the practical work, and you know that it deserves greater recognition, then you should enter the 2016 UK Roofing Awards.

It's free to enter and applications are now made through the easy-to-use online form that allows you to save your progress till you're happy to submit. What's more, companies are not limited to how many projects that can be entered.

Entries are being accepted now through to 15th January 2016. For more information about the awards, top tips for submissions, and more head to www.roofingawards.co.uk.

news bytes

Visit the website
www.architectsdatafile.co.uk
and enter the reference
number for more information

Atkins reveals designs
for redevelopment...
Ref: 88716

Farrells vision for
Northern Gateway
HS2 hub...
Ref: 36716

Remaking of West
London High Street...
Ref: 22493

Refurb Project is
Kids Play...
Ref: 28097

Work set to begin on
Tinsley Chord...
Ref: 35119

Premier Inn moves into Wembley Park and Farnborough

Premier Inn ramps up expansion plans in the South East, and Leslie Jones Architecture has designed the hotel chain's newest sites in Wembley Park and Farnborough.

A 312-room Premier Inn to be located at the heart of the 87-acre Wembley Park regeneration site has now been submitted for planning.

The new hotel will encourage more tourists to stay in Wembley Park when visiting the world famous stadium and support the steadily rising volume of visitors to the area each year. The design solutions presented will ensure the hotel's architecture will reflect the evolving image of Wembley.

Bride Hall is developing the second site in Farnborough town centre,



which it will lease to Premier Inn. Construction of the new 80 room hotel, designed by Leslie Jones, is now

on site following a contractor being appointed and will include a 200-cover Beefeater Restaurant at ground floor.



Call For Our
New Brochure!



THE FINEST OAK FRAMED BUILDINGS
MADE IN ENGLAND



01384 296611 info@primeoak.co.uk www.primeoak.co.uk

GARAGES | GARDEN ROOMS | ORANGERIES | HOME OFFICES
CONSERVATORIES | BARNs | STABLES

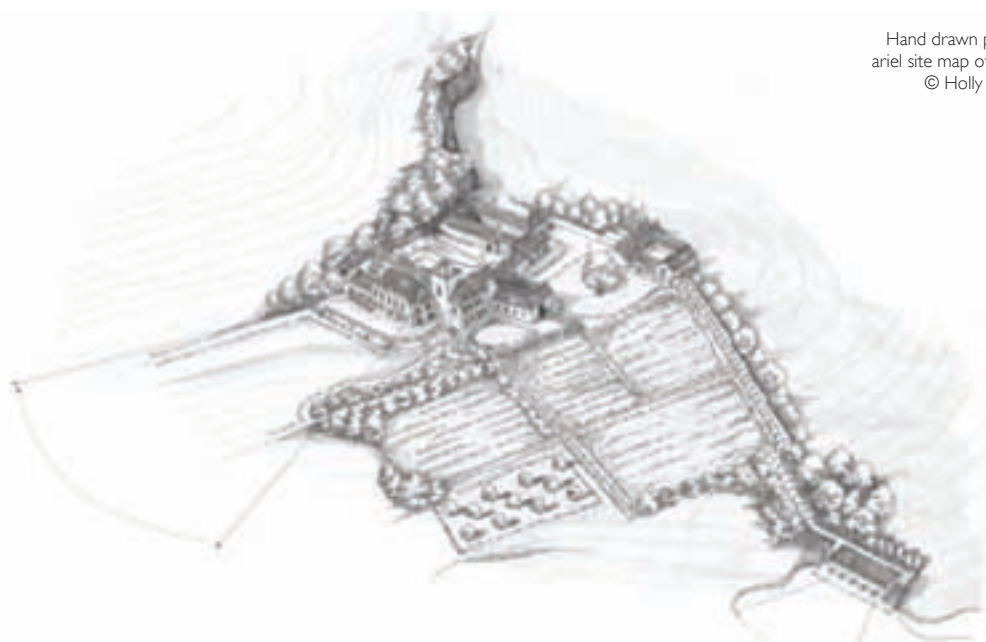
AWARD

'I feel that conservation is an integral part of any architectural project that involves existing historic buildings'

Holly Spilsbury, winner of the SPAB Philip Webb architectural award 2015



Architecture student wins SPAB's Philip Webb architectural award 2015



Hand drawn proposed ariel site map of Standen
© Holly Spilsbury

A visually stunning and carefully considered scheme for the Philip Webb-designed Standen in East Grinstead is the judges' choice for the 2015 Philip Webb Award.

The winning entry of the SPAB's (Society for the Protection of Ancient Buildings) Philip Webb Award 2015 is a beautifully executed and highly appropriate proposal for the stableyard and barn at Grade I- listed Standen in East Grinstead by Holly Spilsbury, a Manchester School of Architecture Masters student.

Each year, SPAB's Philip Webb Award encourages and celebrates new design in the context of historic buildings. The award was re-launched in 2015 to mark the centenary of the death of SPAB co-founder Philip Webb. The SPAB's Philip Webb Centenary partnership with the National Trust enabled it to offer the stableyard and barn cafe at Webb's iconic country house, Standen, as a live case study on which entrants could base their scheme if they wished. Entrants could also create a scheme based on a site of their own choosing.

This year's judging panel was led by Kevin McCloud. Other judges were Philip Barnes (National Trust, Standen), Elizabeth Hopkirk (Building Design, Assistant Editor), Robert Richmond (independent designer) and Martin Stancliffe (Purcell, architect). All entries were assessed anonymously against the published judging criteria.

Kevin McCloud said: "The judging process was hard and it took us all a very long day to deliberate; not just who the winner was, but how we wanted to divide up the prizes. It was an

exhilarating experience and we have a worthy winner for 2015."

The judges were won over by Holly's mature and subtle response to the site and to the National Trust's brief. Holly demonstrated a real appreciation of the unique character of Standen. The judges were impressed by the effective way Holly's scheme balanced careful conservation and modest enhancement of the existing stableyard and barn with diversification, creating a new gallery and workshop building that enriches the visitor's journey around Standen.

Holly will receive this year's Philip Webb Award certificate and a prize of £1,500. She said: "I feel that conservation is an integral part of any architectural project that involves existing historic buildings. I spent the initial stages of this project understanding the history of the site, from a farm to Webb's design for the Beale family, to its transition as a National Trust house today. Once I understood the building's design and the site's social history I could begin looking at incorporating new designs. The judges involved in this competition represent a really high caliber of professionals working within the conservation field, so it is an immense privilege to receive their recognition. To have my work included in the V&A Museum as part of the Philip Webb exhibition makes me extremely proud."

Holly's winning entry will be on display at the V&A as part of their Philip Webb Centenary exhibition which runs until 1 May 2016.

FREE SITE SURVEY NATIONWIDE
50 YEAR ACCOYA WARRANTY

MONTPELIER

GARDEN ROOMS • ORANGERIES • WINDOWS • BI-FOLDS



reader
enquiry
104

Garden Rooms, Orangeries, Windows & Bi-Folds

Call: 01384 279933 - Email: info@montpelierjoinery.com - Visit: www.montpelierjoinery.com

From the makers of



international focus

Visit the website www.architectsdatafile.co.uk and enter the reference number for more information



MANDURAH FORUM, AUSTRALIA
BENOY

In Western Australia's second largest city, Benoy will be working on the redevelopment and extension of Mandurah Forum. Benoy is delivering its design expertise to the malls and public areas. The concept design draws inspiration from the geography of the surrounding Mandurah area and the relaxed coastal lifestyle; celebrating the city's location with the seaside to the West and hills to the East. The concept will help to create a different character for each of the zones and provide a balanced retail experience.

Ref: 57555



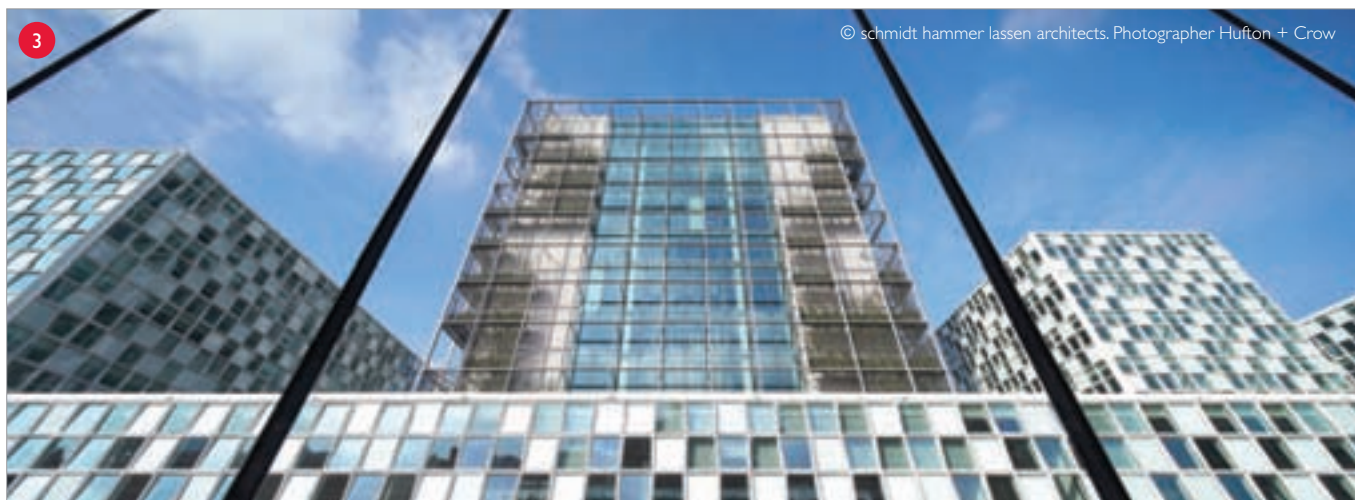
NEW HERLEV HOSPITAL, DENMARK
NCC

NCC has been commissioned by the Capital Region of Denmark to participate in the construction of New Herlev Hospital, northwest of Copenhagen. NCC will be responsible for concrete, steel and earth and groundworks. The order is worth SEK 350 million. The extension will be built from digital models. The developer works consistently with digitization, enabling all parties involved to make use of digital models. The extension of Herlev Hospital includes a women and children's centre and an emergency hospital. There will also be a regional sterilization center and an extension of the hospital's service building.

Ref: 12240

exploring architecture

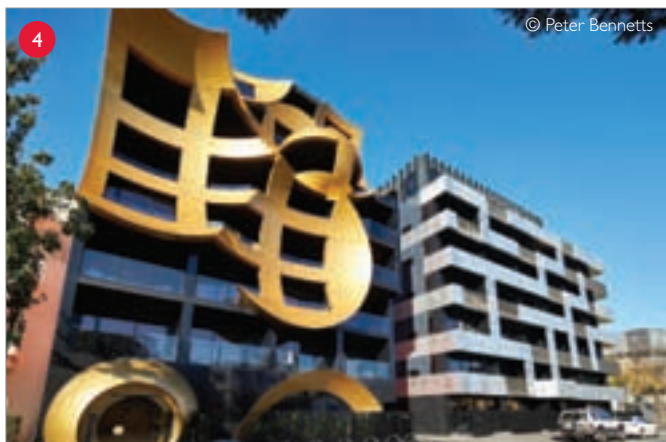
featuring the latest projects from around the world



THE INTERNATIONAL CRIMINAL COURT, NETHERLANDS
SCHMIDT HAMMER LASSEN ARCHITECTS

The International Criminal Court (ICC), designed by schmidt hammer lassen architects, has been formally handed-over its new permanent premises in the Hague, Netherlands. ICC President Silvia Fernández de Gurmendi received a symbolic key from the Courtys construction consortium. The Court will move into its new 54,000m² home this month. The building is designed as a sculptural abstraction, like a piece of land art, a composition of six volumes, firmly anchored to the site and rising from the surrounding dune landscape. The tallest of the volumes is the Court Tower. The architectural idea is to continue the cultivated parterre gardens from the ground floor level as a greenery cladding on the Court Tower. The new headquarters for the ICC is targeting a BREEAM Excellent certification.

Ref: 23950



ORBIS MELBOURNE, AUSTRALIA
ARM ARCHITECTURE

ARM Architecture's Orbis is a new apartment building in inner-suburban South Melbourne. Its golden composite facade looks as if giant spheres have been pressed into it to create huge convex curves with jutting corners between them. A gold ball, sticking out of the fifth floor, creates two levels of bulging balconies with multi-directional views. Viewed from the street, the building's silhouette seems to rise and curl and dart. The entrance is through an almost spherical tunnel of polished metal that produces startling and wonderful reflections as you pass through.

Ref: 98291



520 WEST 28TH, NEW YORK, UNITED STATES
ZAHA HADID ARCHITECTS

Zaha Hadid's compelling design takes a sculptural approach instead of New York's traditionally rectangular residential landscape with Hadid's unique design sensibility infused throughout the residences of 520 West 28th. The building's organic curves and chevron patterns on the outside create generous outdoor spaces and enhance the privacy between residences, simultaneously merging and separating the interior and exterior. Each residence will also feature a distinct Zaha Hadid sculptural element that creates dramatic feature walls while integrating closets and concealed-hinge doors.

Ref: 91234

cpd focus

NEW CPD GUIDE TO CHILLER TECHNOLOGIES



Mitsubishi Electric has launched the latest in its free CPD-Accredited industry guides with a focus on Chiller technologies and role they can play in helping reduce both energy consumption and running costs in today's buildings.

Legislation such as the F-Gas regulations are forcing many businesses to spend time assessing their cooling systems and rising energy costs also find building owners looking for more energy efficient ways of heating and cooling their premises.

"We've prepared this guide as part of a series that looks to enhance the knowledge of anyone responsible for keeping buildings a pleasant place to live, work and play in," explains Jason Tinsley, product manager for Central Plant.

The free, independently written guide looks at the key issues facing the industry today and the increasing importance of legislation such as the revision of Part L, as well as regulations like Energy Performance Certificates (EPCs) and the new Energy Saving Opportunities Scheme (ESOS). These are designed to drive greater energy efficiencies in buildings and across businesses as a whole.

A downloadable pdf version is available at the company's dedicated digital library.

01707 282880
www.library.mitsubishielectric.co.uk

enq. 105

NETWORKED ACCESS CONTROL



Paxton, one of the UK market leaders of electronic IP access control and door entry equipment, has announced a CIBSE accredited CPD training programme, 'Networked Access Control'. Aimed at building specifiers, architects and consultants, the free one hour training has been set up to support building services engineers and construction company engineers with how to specify access control in their projects. It ensures all aspects of an access control system are reviewed with careful consideration to energy saving and cost effectiveness, as well as integration requirements and options, plus how to overcome potential challenges.

01273 811011
www.paxtonspecifier.co.uk
enq. 106

MAXIMISING AIRTIGHTNESS IN ROOF CONSTRUCTION

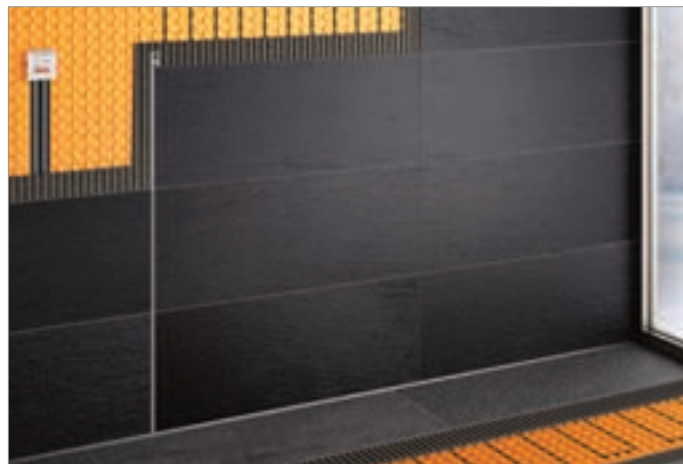


Klober's updated CPD presentation 'Maximising airtightness in roof construction' examines implications of changes to Building Regulations and the discontinuation of the Code for Sustainable Homes. It covers variations in Wales, Scotland and Ireland, SAP analysis, implications of specific rates of air permeability and the effects of roofing airtightness accessories, improvements to fabric insulation and other energy efficiency measures. To book a presentation or obtain literature

01332 813050
www.klober.co.uk

enq. 107

SPECIFYING MODULAR SCREED TECHNOLOGY WITH UNDERFLOOR HEATING



This Schlüter-Systems RIBA accredited CPD Seminar on modular screed technology and underfloor heating examines the potential problems associated with traditional underfloor heating systems and explains how the modern systems tackle these problems. The latest generation of products are designed to make the installation of underfloor heating systems easier, quicker and more cost effective. We look at: the way in which they work; the functions they offer; the types of application they can be used in; and we also consider best practice for their installation.

Overview of the CPD Seminar Agenda

- Underfloor heating: benefits and development
- Traditional underfloor heating systems: pitfalls
- Modern technology: modular screed systems
- Function and use
- Best practice on installation
- Project references
- Under tile heating – integrated membrane systems
- Summary

Problems associated with traditional built up systems

This CPD seminar provides an overview of the below problems, and how to specify to avoid them:

- Different expansion rates
- Lack of movement allowance
- Cracks and debonding in the

- surface covering
- Prolonged installation
- Slow to respond to temperature changes
- Curling and shrinkage

It's important to try to avoid as many of these pitfalls as possible because problems, whatever their nature, end up costing both time and money.

The modern approach solves many of the above problems, this is because it addresses the construction aspects, physics and heating technology all in one go.

Specification benefits of modern technology: Modular screed systems

- An integrated system – An integrated system is usually produced by a single supplier so responsibility is clearly defined for architects, specifiers, contractors and end users.
- Accountable guarantee for the whole assembly – In choosing a supplier look at the guarantees available and at a very minimum insist on a guarantee for the whole assembly even though the screed, adhesive, tiles or stone might not be the supplier's own.

Contact Schlüter-Systems to book a CPD Seminar. For priority bookings please quote ADFUFH12.

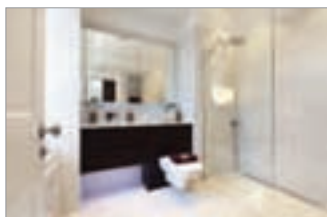
01530 813396
www.schluter.co.uk

enq. 108

continuing professional development

Maintaining and improving professional competence, skills, abilities and knowledge

WETROOM DESIGN AND SPECIFICATION

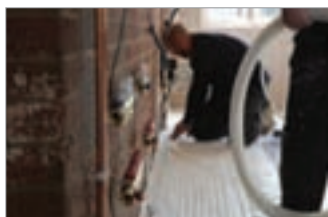


The popular Wetroom Design & Specification CPD from **CCL Wetrooms**, guides Architects through the process of designing and specifying a watertight wetroom. The free, 45 minute technical presentation can be organised at a time to suit the practice and covers the key considerations of designing and specifying a wetroom. This includes wetroom design & layout, waterproofing, drainage, floor build up and installation. A section on how wetrooms can help meet the Lifetime Homes Standard is also covered.

0844 327 6002
www.ccl-wetrooms.co.uk

enq. 109

INTRODUCTION TO UNDERFLOOR HEATING



Underfloor heating manufacturer **Warmup Plc**, is proud to be a RIBA and CIBSE accredited provider of CPD training in underfloor heating. Entitled 'Introduction to Underfloor Heating', the Warmup CPD module covers: When to specify either Hydronic or Electric underfloor heating; which type system will best meet individual requirements; the importance of research, zoning and controls. RIBA & CIBSE Core Curriculum areas: Designing and construction, Technology, and Engineering. Knowledge level: General Awareness

0845 034 8270
www.warmup.co.uk/cpd-seminar

enq. 110

CELLECTA CPD SEMINAR



Cellecta has announced that it has strengthened its RIBA CPD Providers Network offering through the addition of a face-to-face Soundproofing CPD to partner the online CPD currently available. Cellecta's RIBA Assessed CPD Material is a must for architectural and specification practices. CPD attendees will enhance their knowledge of the soundproofing demands of different floor constructions including, timber, steel and concrete and the products and solutions available to help overcome them.

0845 671 7174
www.cellecta.co.uk

enq. 111

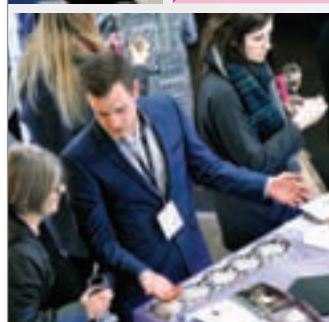
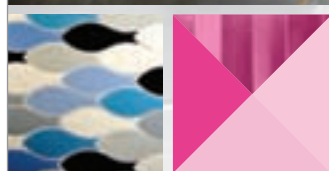
INSPIRATION BY DESIGN



Inspiration by Design has been launched by **Trespa**, the manufacturer and supplier of high performance panels for exterior cladding and decorative facades. The new seminar examines how building physics such as heat and moisture transfer, thermal bridging and heat conductivity can impact on traditional construction methods. It explores how more energy efficient and sustainable buildings can be created through the use of ventilated rainscreen cladding on a physical and visual level.

0808 2340268
info.uk@trespa.com

enq. 112



SURFACE DESIGN SHOW

**BUSINESS DESIGN CENTRE
 LONDON – 9-11 FEB 2016**

The home of innovative surfaces
 for architects and designers

Incorporating:

**SURFACE
 DESIGN
 AWARDS**

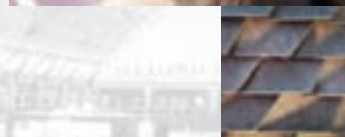


**LIGHT
 SCHOOL**

#SDS16 @surfacedesignshow

www surfacedesignshow.com/architectsdatafile

REGISTER NOW

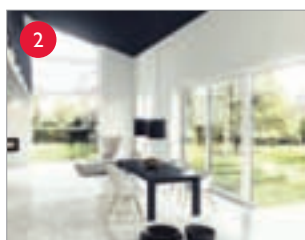
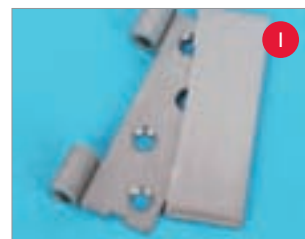


editor's product focus

1. COOKE BROTHERS LTD

Master hinge makers Cooke Brothers now offer a choice of cover plated options in their popular range of 7700 series of 304 and 316 grade stainless steel, fully concealed bearing, high performance architectural hinges. The positively located stainless steel cover plate has been specifically designed to enhance the overall aesthetic appearance of the doorset, while improving the hygienic impact of the hinge by acting as an effective barrier against the potential build up of dust and dirt typically associated with visible screw heads. The highly specified 7700 range of fully concealed bearing hinges are CE marked, Certifire approved and tested to BS EN 1935, grade 14.

enq. 113



2. RATIONEL WINDOWS

Rationel manufacture energy saving timber and timber composite windows and doors of premium quality in terms of both comfort and security. In addition to the natural beauty of the timber, wood windows and doors have a very long service life, are sustainable and easy to clean and maintain.

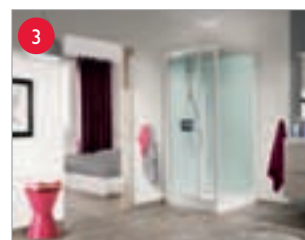
Rationel is also one of the leading Scandinavian suppliers of windows and doors for low-energy and Passivhaus buildings. Due to Rationel's extensive range of windows and doors, it is easy to find the products that meet your demands.

enq. 114

3. SANIFLO

The latest addition to the range of Kinedo shower cubicles from Saniflo is the Kineprime Glass model which features new, sleek interior glass panels. The attractive white-framed cubicle combines glass interior and exterior panels and joins the extensive range of Kineprime models with plastic interiors that have proved immensely popular in social housing, universities, colleges and worker accommodation. It comes complete with an integrated shower tray and thermostatic shower valve. Super quick and easy to install and available in a number of sizes and configurations – including corner, recessed and quadrant – this is a highly adaptable, attractive self-contained cubicle.

enq. 115



4. HORNE ENGINEERING

Horne Engineering's commercial shower range includes pre-plumbed panels specialised for elderly, extra and dementia care as well as disability access: DocM and DDA/Equalities Act compliance.

A high performance, healthcare rated, thermostatic shower valve is included and robust fittings are specifically designed for improved contrast/visibility and easy operation while the riser rail can double as a supportive grab-bar.

A bimodal option – available with lever or ligature resistant controls – adds versatility; catering for users with varying assistance or supervision needs. A wall-mounted riser rail can also be specified.

enq. 116

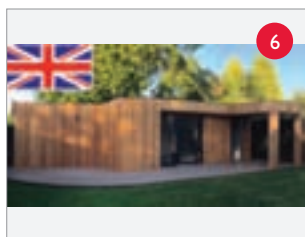
5. LEADON TIMBER FRAME

With the company's attention to detail and quality throughout, Leadon Timber Frame has never been busier. The company is currently manufacturing and erecting through Northern Ireland, England and Scotland at different levels of the market.

From your high specification self build dwelling, town houses, apartments, nursing homes and hotels, Leadon Timber Frame is striving forward creating new skilled labour opportunities on-site and positions in its factory.

Leadon Timber Frame would be more than happy to have the opportunity to quote on new projects. For more information please visit the company's website.

enq. 117



6. IWOOD TIMBER LTD

This year has seen a huge growth in the demand for British-grown timbers by architects and specifiers. Buying British timber supports our economy, continues traditional building techniques and has a much lower carbon footprint than importing foreign timbers.

iWood Timber Ltd are specialists in sourcing and supplying responsibly harvested home-grown timbers and the company's year on year growth is in no small part due to the increased appeal of domestic timbers.

Many British timbers are available to price up and buy on its website.

enq. 118

Kallisto at ARCHITECT@WORK 2016



Kallisto, the pre-cast concrete spiral and helical division of **Milbank Concrete Products**, is delighted to announce it has been selected by a judging panel of architects and interior designers, to exhibit at the prestigious ARCHITECT@WORK exhibition, 27 and 28 of January 2016 at Olympia London National Hall, Stand 12. On hand to offer advice on how to achieve stunning, durable pre-cast spiral and helical stair case solutions, visitors to the stand can learn more about how each individual pre-cast staircase by Kallisto is individually designed, manufactured and installed to meet the specific requirements of each unique development. Kallisto prides itself on working closely with architects, engineers and designers.

enq.119

Countdown begins for 2016 TTA Awards



The 2016 TTA Awards will be held on Saturday 14 May. The prestigious Awards, this year with a Brazilian Samba theme, will recognise the cream of the industry's people, projects and products across 18 categories. Sponsorship packages will again provide a perfect opportunity for companies to give their brand pride of place at the industry event of the year.

Packages include a large number of benefits, including complementary tickets, numerous Awards night branding opportunities, extensive post-event PR and the chance to present an award at the event. Awards entries are open at the dedicated 2016 TTA Awards website – with a closing date of 31st December. For more information contact **The Tile Association**.

info@tiles.org.uk www.ttaawards.com

enq.120

AWMS appoints Business Development Director



Since its launch in July, **Alumasc Water Management Solutions (AWMS)** has been growing rapidly, and now welcomes Michael White as business development director to the team. Michael's background, specialising in water management, is perfect for the role with AWMS. He worked as Consulting Engineer within the construction and water industries for 11 years, on the Yorkshire Water supply security programme following the drought of 1995, and has experience in technology marketing in automotive, logistics and the construction sector. "We're really pleased to have Michael on-board with us," says Steve Durdant-Hollamby, managing director of AWMS. "He is responsible for expanding our already-strong customer base, and his knowledge in the water management and construction industry brings an unrivalled breadth and experience to this role." Michael White adds: "It's really exciting to join the AWMS team. I'm looking forward to helping build AWMS and implementing its strategy of providing customers with a fully integrated solution in water management." AWMS is the first joined-up brand in the industry to bring together four trusted brands in water management. Skyline, Alumasc Rainwater, Harmer and Gatic are all big names in their own right, respected for innovation, quality and outstanding support.

0808 100 2008 www.alumascwms.co.uk

enq.121



SIMONSWERK at ARCHITECT@WORK

Hinge manufacturer **SIMONSWERK** will be exhibiting for the first time at ARCHITECT@WORK Olympia London on 27-28 January 2016. This internationally successful salon concept is exclusively aimed at architects, interior designers and specifiers. SIMONSWERK, on Stand No. 26, will be showcasing the latest developments to its comprehensive hinge portfolio and visitors will be able to view the company's full range of hinge applications and also take advantage of one-to-one demonstrations of the SIMONSWERK online advanced PRODUCTSELECTOR information system. Demonstrations will include the award winning TECTUS completely concealed hinge system, TECTUS "Energy" option with integrated permanent power transfer and the increasingly popular CE marked TRITECH fire rated solid brass hinge with concealed bearings, 25 year performance guarantee and seven designer finials.

0121 5222 848 www.simonswerk.co.uk

enq.122

Simplifile
by Normid

simple to file | simple to find | simple to view

Plan Filing Solutions

01922 740 015
www.normid.co.uk
sales@normid.co.uk

enq.123



© Philip Vile

Let us play

A redundant Bedford church has been converted to a theatre that serves both a school and the local community. Mark Smulian reports

Church building was widespread in more pious ages than our own and nowadays the number standing can exceed the needs of worshippers, leaving some fine local landmarks redundant.

Many become residential conversions, but in Bedford St Luke's Moravian Church has become a theatre for both Bedford School and the public.

Named the Quarry Theatre after a school benefactor, the redundant listed church and adjacent minister's house now provide a 200-300 seat galleried courtyard theatre, and a smaller studio theatre together with a bar, foyer, dressing rooms and office space. Architect Tim Foster, of Foster Wilson Architects, has a lengthy track record in theatre work.

At Bedford he found the church and minister's house were the survivors of what had been a small settlement built by the Moravian sect.

The school adjoins one side of the buildings and a busy road the other, meaning that two main entrances were needed.

Foster says: "We were appointed through a competitive process in 2009 when the school had acquired the redundant church and saw the opportunity to create a theatre that would also serve the community."

The church was listed at Grade 2 but it was obvious that some extensive adaptations would be needed, and this required considerable historical research by the architects to establish what features were original.



© Philip Vile



© Philip Vile

'The church was listed at Grade 2 but it was obvious that some extensive adaptations would be needed'

It turned out a chapel had been built in the mid-18th century, superseded by a larger church in the mid-19th century that was in turn later modified to add a vestry, a chancel to house the organ and later a church hall.

"The challenge was how to adapt it," Foster says. "There is often a misunderstanding about listing where people think it means you cannot change anything, but you can if you do it in an appropriate way.

"One of the arguments for conversion of this kind is that you are giving a building a beneficial use, so if done sympathetically the authorities will often allow some change."

In consultation with the local conservation officer and Historic England, the church was changed quite significantly, including the insertion of a steel frame structure inside the main space, but most of the original windows and decorations were retained as was the original gallery and organ screen, although the organ's working parts had been previously lost.

Foster explains: "The house, church and vestry were not larger enough to accommodate the brief.

"Also, it was to be used partly for teaching and partly as public theatre so that imposed various demands.

"The need for front doors from the town and the school was one of the planning issues we had to solve."

It was decided not to alter the exterior facing the town. The church had two principal doors either side so Foster decided to use one of these, situated roughly in the centre of the combined frontage of the church and minister's house as the theatre's main entrance from Bedford.

"One of the difficulties was a stone staircase sitting inside that lobby, one of two symmetrical ones that provided access to the gallery, which meant access through the building to the vestry would have been only about 800mm wide, so one of the more controversial things we had to get permission for was to remove one staircase to increase that to two metres, which is still not terribly wide."

A further issue was that a 1970s church hall was attached to the old vestry which completely blocked rear views of what Foster calls "the rather pleasant 18th century elevations of minister's house".

Old engravings were found in the course of researching the heritage statement that showed views from minister's house to the church gardens at the school side "so we argued that the church hall, which had been converted to classrooms, should be demolished to open up view of minister's house and allow a new entrance from the school side to vestry."

The minister's house appeared to have three small bedrooms

Continued overleaf...



upstairs, unsuited to any of the theatre's purposes, but again historical research came to the rescue when drawings were found that showed this was the original congregation meeting room and had been subdivided later, "so on that basis we made an argument to take old rooms out and go back to the original, which gave us an ideal room for the studio theatre for teaching and rehearsals", Foster says.

Stairs and a lift have been installed to take patrons from the vestry foyer up to the studio and audience gallery level.

Foster says his design "evolved around the form of the existing chancel so we have this radiating space that allows you to see the chancel above it with a wall of glass that looks out over the garden other side".

The design allows actors to get through the back of the

stage area to appear from the opposite side from the dressing rooms without being seen by the audience, "an essential principle of theatre design", Foster says.

This foyer is markedly different to the original church and minister's house but Foster says: "An extension to a listed building need not be a pastiche, it can be a modern addition if its appropriate in scale and materials.

"It wraps around the existing building and uses good quality materials, a zinc roof and Bedfordshire Gault brick at base and glazing and timber in between, so you can still read the original building above it."

Within the main theatre space the original balcony was kept, though with seating re-tiered to improve views of the stage, and the steel frame was inserted sitting inside the



© Philip Vile

original structure. There are two levels of side galleries, the lower one for the audience and the upper for lighting and other technical equipment with a technical control room above the balcony supported on the steel frame,

Lighting bars and suspension bars are above the stage on winches and a tension wired grid allows technicians to walk above the audience to access equipment without the risk of falling as it takes up the entire width of the space.

“Safe access to lighting is important particularly in schools where students are learning technical theatre and the grid is like a floor,” Foster says.

Plant is housed in the roof void above this upper tier, a tricky operation that required it all to be threaded through the original timber trusses.

There are three banks of movable seating that may be retracted to give a large flat area for teaching or non-performance events.

Unlike most theatres, the stage is not raised but flat with the audience in the tiered seats.

It’s plainly impossible for a conversion such as this to meet modern sustainability standards but Foster says the old church’s performance has been improved.

A theatre needs to be protected from intrusive external noise and since the Quarry is on a busy street the original church windows were kept but their acoustic performance improved by secondary glazing.

The building uses low energy lighting and where possible insulation levels have been improved.

Continued overleaf..



For example, the roof had to be replaced as the slates were time expired and the opportunity was taken to heavily insulate it.

The original floor was discarded “as we found it was sitting on very little” Foster says.

A concrete floor was installed to allow for a greater thickness of insulation and above that a semi-sprung timber floor of plywood on rubber strips “because it’s not good to act or dance on concrete”.

Foster say local conservation officers were “very supportive as they recognised that to convert a church into a theatre that retains it as single space was a much more appropriate than other things that might have happened to it like conversion to residential units.

“There were a number of things that needed permission and we did have to remove certain items from the church like pews and the pulpit.

“From the town side the building is virtually unchanged though it has been cleaned lightly, as there is great danger with conservation that you over-clean something and spoil it.”

Stippled glass has been removed from the front to make the interior visible but unlike most theatres the Quarry does

not have its name up in lights, nor those of productions and performers.

Its name appears in a wrought iron arch at the entrance and notice board next to it advertises productions.

What its 18th century non-conformist founders would have made of a theatre in their buildings is a matter for conjecture but a worthwhile use has been found for a historically interesting building.

Project details

Client: Bedford School

Architect: Foster Wilson Architects

Main contractor: SDC Builders

Project manager and quantity surveyor:
Ainsley & Partners

Structural engineer: Price & Myers

Services engineer: Ernest Griffiths

Theatre consultant: Theatreplan

Acoustician: Gillieron Scott Acoustic Design

Planning authority: Bedford Borough Council

Sika Trocal delivers five star roofing solution



Single ply roofing membranes are extremely versatile and ideal for virtually any flat roofing project, offering speed of installation and a huge reduction in costs. At the Park Plaza Riverbank in Central London, the installation of high performance **Sika-Trocal** Type S and Type SGMA membranes will ensure the hotel's multi-million pound extension and reconfiguration is completed on time and to the highest standard. As well as being one of the most rapid

and economic systems to install, it allowed the installation team to achieve exceptional waterproofing and durability – approved by the British Board of Agrément (BBA) to have a life expectancy, in their opinion, of in excess of 35 years.

01707 394444 www.sikatrocal.co.uk

enq.124

Hidden benefits for hotel interiors



Powermatic door closers from **Samuel Heath** deliver outstanding performance in fire resistance and accessibility, but it is their concealment that brings a host of benefits for hotel projects, making them the specifiers choice for hotel interiors. Fitting neatly between the door and frame, Powermatic door closers are totally concealed when the door is closed, ensuring that nothing interferes with the appearance of the

door and interior. They also help to create a more homely, less functional, or institutionalised, ambience within the room. These benefits have seen Powermatic used by the world's leading designers on impressive hotel projects across the globe.

0121 766 4200 www.concealeddoorclosers.com

enq.125

Textured Lugano paving from Brett Landscaping gives premium image to hotel



The clean, modern lines of Lugano flag paving from **Brett Landscaping** have helped to bring a suitably impressive flavour to the exterior landscaping at a new hotel, part of the Ageas Bowl Cricket Stadium in Southampton. The prestigious development is a major investment on the South Coast, built by Southampton Developments for Ageas Bowl owner and Hampshire County Cricket Club chairman Rob Bransgrove. With ambitions to become an Ashes Test Match ground by 2019, it is critical that the site achieves the right aesthetic appearance. This is equally true for the hotel, whose entrance needed to match the opulence of the world-famous hotel brand as well as complementing the wider area encompassed by the Bowl. It was with these factors in mind that Brett Landscaping was specified by the landscape architect, Isabeau Meyer-Graft of Johns Associates, following extensive research. "I looked at various suppliers and Brett offered the right product, in terms of sizes and finishes and price," she explains. The chosen product was the Lugano flag paving range, whose textured surface and colour helps to create a cool, contemporary looking urban space around the hotel entrance. With a high level of slip resistance as well as exceptional durability, Lugano also meets the functional requirements in an area with a high volume of pedestrian traffic.

0845 6080570 www.brett paving.co.uk

enq.126

Howe Green's access covers give power to The Sainsbury Exhibitions Gallery

Architects chose UK manufacturer **Howe Green** to provide a unique access cover solution for The Sainsbury Exhibitions Gallery at The World Conservation and Exhibitions Centre (WCEC). RSHP required a reliable access cover solution for the interior scheme to provide a series of service points at regular intervals throughout the gallery's 1,100sqm floor area. With aesthetics and performance of equal importance, Howe Green designed and manufactured a circular access cover in 316-grade stainless steel. The bespoke cover offered a stylish and discreet solution, capable of withstanding a 40kn load. Each box section had built-in cable access and voice/data plug-in points and slotted steel lids were made for when in use. The access covers also accepted coloured polished concrete inserts made to match the surrounding Ed Lazenby floor and provide an uninterrupted floor finish when required. The new gallery opened with an exhibition devoted to the Vikings (supported by BP) and hosted the Ming exhibition. With Howe Green's reliable and high quality access cover solutions installed, this exceptional new facility, along with its historic expositions, will be reliably served by 21st century building services. For more information visit the company website.



01920 463230 www.howegreen.com

enq.127

Sika Sarnafil specified for roof refurb at two of London's biggest tourist attractions



The National Gallery and the Science Museum – two of London's major and iconic visitor attractions – have benefitted from a planned roof maintenance programme, using **Sika Sarnafil** membranes and specialist contractor, Delomac Roofing. Working with the National Gallery since 1995, a programme of roof replacement and thermal upgrading has seen in excess of 12,000m² of Sika Sarnafil membranes installed, together with insulation, roof lights and walkways in a series of over 30 completed projects – including the complete Sainsbury Wing in 2008. Working closely with the client and architect, specifications have been delivered using the Sika Sarnafil Partner Supply Chain to ensure watertight and long lasting protection to the priceless works of art on display. At the Science Museum, ageing and poorly insulated roof coverings were targeted for upgrade and replacement in a series of tender awards, all successfully won by Delomac and Sika Sarnafil. At both sites, environmental and whole life cost considerations were key in material specification – with a target to reduce energy use. Equally, the lightweight membranes and considered planned specifications allowed system overlays with an entirely flame-free cold application, ensuring minimal internal disturbance to visitor experience.

01707 358500 www.sarnafil.co.uk

enq.128

Ham Yard Hotel still offers a peaceful night's sleep with Selectaglaze

Located in a lively part of London, lies the stunning Ham Yard Hotel. Centred around a pedestrian thoroughfare connecting Great Windmill Street and Denman Street, Ham Yard Hotel has everything guests could want on its doorstep from buzzing bars to quirky shops.

Built on a plot that has been vacant for years, the site has had a creative past. Unfortunately during the Second World War the site saw serious damage through bombings and the area was never redeveloped.

Finally permission was granted for Firmdale Hotels to redevelop the area. They went on to create 91 individually designed hotel bedrooms and 24 apartments, along with a 1950s style bowling alley, theatre and restaurant. However, building a hotel in an area with such vibrant night life does come with its drawbacks.

Although new double glazed windows were

installed throughout the hotel, the corner of the hotel still had trouble with external noise. Firmdale Hotels approached Selectaglaze to help deliver a solution with their bespoke secondary glazing. The introduction of secondary glazing is one of the most effective solutions for combating outside noise, and a reduction of 45dB is achievable when there is a gap of at least 100mm.

Three different unit styles were used, combined with acoustic laminated glass which absorbs the outside noise levels, to assist in creating a more peaceful and relaxing environment.

A total of 37 openings were treated with the secondary glazing.

As testament to the detailed planning throughout the design and build phases, Firmdale's efforts were rewarded with the Hotel gaining a BREEAM Excellent rating.

Selectaglaze is a leading specialist in the design, manufacture and installation of secondary glazed



units. Established in 1966 and granted the Royal Warrant in 2004, it has a wealth of experience, working closely with clients on all different building styles.

01727 837271 www.selectaglaze.co.uk

enq.129



LEVATO MONO porcelain paver system

The Levato Mono porcelain paver system is the pinnacle of external raised flooring technology; enabling the specification of lightweight, slip resistant and attractive raised flooring solutions, combining incredible technical properties with uncompromising aesthetics; making them the ideal choice for commercial and domestic use alike.



t: 0845 2700 696 e: info@thedecktileco.co.uk
www.thedecktileco.co.uk

- 20mm porcelain pavers 40x80 45x90 60x60 75x75 30x120 40x120 60x120
- 'Floating floor' – installation over single ply membranes
- Eternal product - zero maintenance required – offering massive over-life savings
- Highly abrasion and stain resistant
- Highly slip resistant ; R11 and achieved up to +65 wet in the BS pendulum test
- Lightweight – 45kgs per m²
- High load bearing and impact resistance
- Timber & stone effects ; 40+ finishes available
- Ideal for balconies, roof terraces and piazzas, for both commercial & residential use
- Completely non porous
- Fire & frost proof
- Height-adjustable support from 9mm up to 550mm

dte
the deck tile co. ltd.

enq.130



Hilton's industrial inspiration

London's grimy industrial past was the unlikely inspiration behind the £48 million Hilton London Bankside hotel, which conjures up an understated refinement from a palette of robust and exposed materials. Stephen Cousins reports

Take a stroll along the riverfront at Bankside, in central London, and you'll be greeted by a leafy pedestrianised boulevard, classy cultural attractions, and a plethora of shops, restaurants and cafes, all designed to draw in throngs of tourists that visit the area every day. It's a world away from the dirty and noisy industrial environment that existed on the site some 80 years ago, when the area was characterised by large warehouses, factories, docks and wharves.

That rich industrial heritage may have all but gone, but it's memory lives on, somewhat surprisingly, in the form of the 5 star, 292 bedroom, Hilton London Bankside hotel, designed by Dexter Moren Associates (DMA).

Hilton's first hotel in central London since 2006, located just a few hundred metres south of Tate Modern, at the junction of Great Suffolk Street and Farnham Place, aims to combine the quality associated with a luxury brand with references to the site's industrial past and its urban location.

The building's facades are clad in a light-coloured brick, in keeping with the traditional local London stock, and a tough engineered bronze coloured aluminium. The same palette of exposed materials is employed in the interiors, designed by DMA in partnership with Twenty2Degrees Design, notably in the 'Distillery Bar', where reclaimed finishes, patina-effect metals and a barrel shaped, mirrored panel coffer, evoke the

Continued overleaf..



'spirit' of the Stephenson & Harwood Distillery that occupied part of the site during the 1800s. The entrance to the bar features an impressive Penny Wall made up of penny coins dating back to the 1860s, referencing a large banknote processing warehouse that more recently occupied the site.

The industrial/urban concept marks an important departure for Hilton, embodying a context-specific, designed ethos, rather than a more generic, one-size-fits-all approach often associated with high end hotels. Dexter Moren, Director at DMA, comments: "There is a layering of meaning behind all aspects of the design, specific to the location and its heritage. This reflects the fact that hotel brands are moving away from being 'cookie cutter' experiences, where no matter where you stay in the world the hotel looks the same. The aim is to give guests the sense that they are in a different location when they wake up in the morning, which is good news for designers because it means we can be a bit more creative in our thinking."

The Hilton London Bankside project dates back to 2008, when planning permission was submitted for three buildings, a budget hotel, an apartment hotel and a separate conference facility. The project went through several design iterations until the client, Synergy Hotels, saw the process of

gentrification and investment overtaking Bankside and chose instead to build a large single building, centred around a 292-bed five star hotel, and including a range of high end facilities.

The hotel's entrance is located on the main route of the "Design Trail", a key pedestrian route linking Union Street, Great Suffolk Street and Holland Street, formed following the opening of Southwark Underground station, on the Jubilee Line, and Tate Modern.

"Ten years ago, people would not have dreamed of putting a five star hotel south of the Thames, it was the territory of the Travelodge or the Premier Inn," said Moren. "Now it is becoming very lively, particularly around Shakespeare's Globe Theatre, Tate Modern and Borough Market, there are lots of top class offices and very high class residential." The move wasn't a step in the dark for DMA, which previously designed the five star Shangri-La hotel in the Shard by London Bridge, opened in 2014.

Hilton London Bankside is a 20,509m² building (gross internal area) including a ground floor bar, the Distillery, the OXBO Bankside restaurant, an executive lounge, plus basement banqueting and event spaces. The latter accommodate a 570m² ballroom, eight meeting rooms, a



'It's memory lives on, somewhat surprisingly, in the form of the 5 star, 292 bedroom, Hilton London Bankside hotel'



boardroom and associated break-out and pre-function spaces. A leisure suite contains a 65m² gym and 17m-long swimming pool with changing facilities.

Planning limitations on the building's height and rights of light, related to existing and proposed neighbouring buildings, led to the creation of two distinct building volumes, one low, one tall, linked by a volumetric glazed entrance and inner lightwells.

The external facades of the two blocks are built up in shifting layers, of London stock brick, glass and bronze coloured aluminium, intended to convey a sense of

contemporary refinement and quality, while nodding towards industrial heritage and the local urban context.

The tallest block adjoins a neighbouring residential development and stands on a base layer of glazing, with bronze aluminium above, topped by a brickwork framework containing glass and bronze panels. The lower block features a glass internal layer, encased by a continuous limestone cloak. These two masses are bound by a delicate ribbon of glass that encircles the building at ground level, rising up between them to form the hotel entrance on Great Suffolk Street, and a dedicated Ballroom entrance on Bear Lane, to the rear.

Continued overleaf...

'A five star hotel can combine high end aspirations with the character and culture of a local context'



Concerns that the bronze cladding might appear more shiny and 'bling' than industrially-inspired are unfounded, said Moren: "The bronze is quite dull and light in colour and, if you look at the local context, our facades fit in naturally with the local materials, we just elevated them a bit by introducing the metal. One person called the building brutalist, which is completely inappropriate. We wanted to create a unified building that doesn't fight with its neighbours."

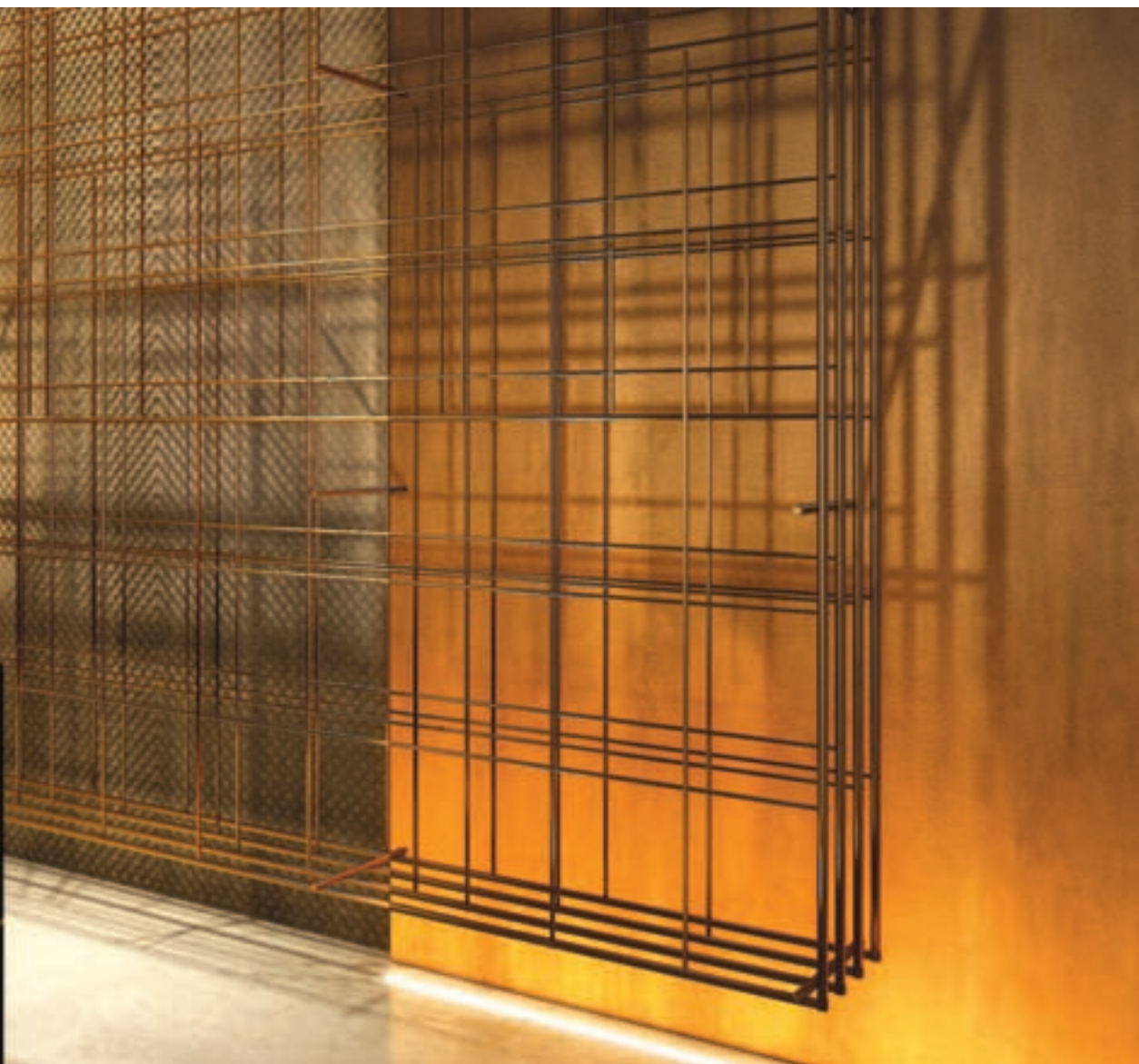
Cramming the numerous hotel functions and facilities into a tight site was a tough exercise in space optimization for DMA. The two blocks of hotel rooms are offset and connect at each end to form a rough doughnut shape with a light-filled atrium at the centre. The rooms in the middle cantilever out into the atrium to exploit the natural light, and the space extends down into the ground, creating space for a

massive column free lower level basement conference centre and a ballroom on the floor above, able to accommodate 500 - 700 people.

"The ballroom has a balcony area and, much like the Grosvenor House Hotel, an undercroft extending off it, which theoretically makes it possible to fit 1,000 people in," said Moren.

"The base of the atrium has a skylight, designed to bring natural light into the executive lounge, below, positioned just off the lobby."

The ground floor hotel restaurant and bar will benefit from an ongoing project to pedestrianize the adjacent Price's Street, creating a new tree-lined piazza. It's one of several improvements being implemented by the Bankside Urban Forest initiative to maximise the quality of public realm and



open space in SE1 by introducing as much greenery as possible.

The developer of Hilton London Bankside, Splendid Hospitality Group, set aside funds from the project to improve the landscaping around the building, including the new trees and planting on Price's Street, plus the installation of high quality yorkstone paving, cycle stands and a new lighting scheme along Great Suffolk Street and Bear Lane. Disabled access to the rear of the neighbouring grade II* listed Kirkaldy Testing Museum is also provided.

"Price's Street is a little street that didn't really lead anywhere, so it made logical sense to pedestrianize it and add some vegetation," said Moran. "The general public can access the bar and restaurant without having to book into the hotel, which should give the venues a life of their own." The move is typical of many new developments in London aiming to

maximise income by incorporating multiple uses.

Hilton's industrial/urban aesthetic finds inventive expression in the building interiors. In the OXBO restaurant, exposed metal screens, bare brickwork and reprocessed tube station tiles, are juxtaposed with rich fabric furnishings inspired by William Morris and a colour scheme of green, mustard yellows and browns, to create a relaxing, yet stimulating dining experience. In the lobby an artwork inspired by reinforced concrete is positioned behind the reception desk. And, in a lighthearted touch, artwork in the hotel guestrooms makes reference to a cheeky urban fox, whose footprints were found in screeds during construction. It is touches like this that prove that a five star hotel can retain its high end aspirations whilst acknowledging the less refined and more immediate character of the local context.

Project details

Client:

Synergy Hotels

developer:

Splendid Hospitality Group

Architect:

Dexter Moren Associates

Interior designer:

Dexter Moren Associates/Twenty2 Degrees Design

Structural engineer:

Walsh Group

MEP engineer,

including

sustainability:

Ashmount Consulting Engineers

Planning

consultant:

Savills

Client's project

manager:

Arcacia Consulting

Cost consultant:

Greenways

Contractor:

IGP Management (construction managers)

Public areas

fit-out:

EESmith

Bedroom fit-out:

LEMA Mobili (Italy)

Landscape

architects:

Hyland Edgar Driver

External works

contractor:

Maylim

Principal

subcontractors:

ROC (Electrical), Coolex (Plumbing), Maximum Services(HVAC)



RCM
BUILDING BOARDS & FACADES

Image by kind permission of Willmore Iles Architects

LAUNCHING
TILCOR
DAFA

An extensive range of through wall solutions from RCM.

We are pleased to be launching two new additions to our product portfolio at RCI from manufacturers DAFA and Tilcor.

www.buildingboards.co.uk Stand E9

Vwall™ CEMBOARD™ Multipurpose™ Renderflex™ supertech™

enq.131



EXPERTS IN METALS FOR CONSTRUCTION

VISIT US AT THE RCI SHOW 2016 - STAND H7 - TO SEE OUR NEW METAL CLADDING SOLUTIONS

MidlandLead
Construction

www.midlandlead.co.uk

Follow us:     

enq.132

WE'RE AT THE RCI SHOW 2016, JAN 27-28TH, STAND K6 - come along and find out more...



MODULO



SCALEO

**An innovative fixing system. An impressive facade...
The perfect combination.**

Modulo
Create the most dependable, distinctive facades with this versatile, cost effective fastening system.

Scaleo
Then bring your vision to life with ease. Prefabricated Scaleo panels are ideal for creating robust, modern facades, and are so simple to install, thanks to a straightforward mounting system!

Find out more:
paul.hughes@fundermax.biz
07852 867472
www.fundermax.at/en

FUNDERMAX®
for people who create

enq.133



UK's top roofing show returns to Ricoh Arena

Do you want to see the latest products from the leading companies in the roofing, cladding and insulation sectors? Hear about the key issues affecting your sector? or Pick the brains of the leading experts? Well you can do all this and much more at the RCI Show 2016

The Ricoh Arena, Coventry, opens its doors for the RCI Show 2016 on 27 & 28 January 2016. The second installment of the UK's number one show for the roofing, cladding and insulation sectors has brought together over 130 exhibitors including a great mix of manufacturers, suppliers, leading trade associations and governing bodies, all ready to show their latest products and offerings, plus provide guidance and advice on all the key issues. This year a number of technical experts and leading industry experts will be on hand to explain how visitors can save money and time on site; highlight the latest product developments, plus answer the key questions visitors may have on business, industry and product-related issues.



Leading players on show

Whether you are looking to see where your sector is headed or perhaps to diversify into new areas, the RCI Show 2016 has representation from the pitched, flat, liquid, single ply and green roofing sectors, plus metal cladding, fixing & fasteners and insulation manufacturers and suppliers, as well as all the latest PPE and safety equipment providers; basically if your business is the building envelope, we've brought together the leading players all under one roof.

Top demos and seminars

The RCI Show 2016 will see the popular demo zones return, but bigger and better with ten manufacturers from various disciplines giving practical demonstrations of their latest offerings and enabling visitors to get up close and ask the experts. Perhaps you'll find the product that will add something different to your business in 2016? Each day within one of the seminar theatres we will be hosting a debate on some of the key issues affecting our industry. A panel chaired by Ray Horwood,

Continued overleaf...

Look out for...

Associated Lead Mills (ALM) is one of the UK's largest distributors of zinc, copper and stainless steel under the brand ALM HM. It also stocks all tools, soldering equipment, accessories and specialist insulation. ALM belongs to the 2im group, a leading recycler of vehicle batteries from which it converts 96 per cent from waste into reusable products, including lead for roofing, cladding and flashing. Visit stand G11.



enq.134

Midland Lead Construction, is proud to present its new range of metal cladding solutions at the RCI Show 2016, stand H7. Come and see the company's customised cladding range, available in zinc, copper, aluminium, lead and architectural Alucobond and discuss your specific project requirements with the experts in metal for construction.



enq.135

At the forefront of industry research and development, RCM constantly strive to innovate and develop its range of building boards and facades. New for 2016 and being showcased at the RCI Event, stand E9 – RCM's enhanced range to include Tilcor and DAFA products. Visit the company's website to find out more.



enq.136

The RCI Show is on 27th and 28th January at the Ricoh Arena, Coventry. To find out more and for registration please visit: www.rcishow.co.uk

former chief executive of the NFRC, including roofing consultant and RCI Technical Note author Keith Roberts, the Construction Product Association's Peter Capelhorn and Gary Wilburn of HPW Architects, will provide a lively debate on the key topics of how as an industry we can reduce call-backs on projects, and the importance of substituting with care when it comes to specification. These are issues that impact on projects throughout the UK, so make sure you don't miss out.

As the issue of skills shortages and concerns around training continue to affect construction, the RCI Show has teamed up with CITB to explain what companies in our industry can do to find and develop skilled workers.

The Ricoh Arena is easily accessible by car or train from both the north and south, and there is plenty of free parking at the

venue. All visitors are also entitled to a free coffee and bacon roll on arrival courtesy of RCI Show Partner SIG Roofing, plus Brett Martin has proved there is such a thing as a free lunch by providing visitors with just that between the hours of 12.00pm and 2.30pm!

This is just a small snippet of what you can expect to see at the RCI Show 2016, and we will release further information in the coming months including our finalised speaker programme for the two Seminar Theatres.

The UK now has a dedicated annual, national exhibition to support the roofing, cladding and insulation sectors, so don't miss out on this opportunity to see, touch and hear about what's current, plus the future of the roofing, cladding and insulation sectors. The RCI Show 2016 really is the route to your success!

Look out for...

SAFETYWORKS & Solutions, stand H5 are one of the UK's leading 'safety at height' experts, providing a range of fall protection systems & access solutions designed for the building industry, consultants, architects, surveyors & contractors. As a supplier of both passive & reactive systems, they offer impartial advice as to the most suitable & cost efficient means to ensure that safe access in & around buildings is achieved.



enq.137

FunderMax on stand K6, is continuing to challenge convention and perception, with the introduction of a revolutionary new facade which has put paid to compromise. m.look offers a whole new level of expression. Blending exceptional style and superior fire performance, this unique facade offers ultimate protection – with a fire classification of A2-s1, d0 according to EN 13501-1, giving greater peace of mind and design freedom.



enq.138



Safetyworks & Solutions
for a safer working environment

Tel: 01487 841400
www.safetyworksandsolutions.co.uk

HANDRAILS LIFELINES WALKWAYS FALL GUARDS FLEXIDECK DEMARKATION LADDERS STEELWORK

Handrails

Suitable for roof perimeters or the designation of access ways for both retrofit and new build projects. Available galvanised finished or powder coated

- Easyguard Handrail system – permanent freestanding handrail and fixed systems
- Bespoke systems also available



Walkways & Steelwork

Flexideck Walkway system is a combination of GRP and polyethylene that provides safe access for foot traffic on fragile roofs. Access ladders, gantries, fire escapes etc.



Lifelines

Uniline horizontal and vertical wire-based fall restraint and fall arrest lifeline systems. Provides secure, hands-free access over high-level areas where solid barriers cannot be achieved. Lifelines are waterproof, chemical resistant and available in orange, black or grey.



enq.139



ALM
A POSITIVE PARTNERSHIP

2iM

sales@associatedlead.co.uk
associatedlead.co.uk

01992 444 100

Ask about TopHat



**Leading distributors of
Zinc, Copper, Stainless steel,
Aluminium and Envirolead**

rci show stand no G11

ALM HM
A POSITIVE PARTNERSHIP

reader
enquiry
140

01992 801 927

Think
Copper

Think
Zinc

Think
Stainless





Composite Insulated Panel Manufacturer

External Roofing || External Cladding || Cold Stores || Clean Rooms

HPT EXTERNAL

Applications include:

- **Retail Buildings**
- **Leisure Centres**
- **Volumetric Off-Site Builds**

Lightweight with exceptional inherent strength and capable of 'single spanning' horizontally up to 8m, HPT External reduce the need for secondary supports enabling a reduction in structural steelwork and cost.

Other product ranges include:

HPT CONTROL || **HPT CLEAN** || **HPT CARRIER**



www.hpt-panels.com

Tel: 0151 426 7171 **Email:** enquiries@hpt-panels.com



enq.141

Alu FX Patina from ALM



Alu FX Patina from ALM fills a gap in the metal facade and roofing markets by providing aluminium with a 'high end aesthetic on a low budget'. Oxidised, brushed and textured black, grey and bronze finishes replicate the appearance of pre-weathered zinc, Oxid copper, oxidised steel, bronze and anodised aluminium, all at up to 60 per cent lighter weight and 50-75 per cent lower cost. Alu FX Patina is lead, chrome and isophorone-free and can be used for all standard roof installations. With a Class A1 Fire

Classification (EN13501-1), life expectancy is up to 60 years. For samples, email sales@associatedlead.co.uk or call ALM.

07000 256467 www.almhm.co.uk

enq.142

rci show stand no G11

Architects Datafile website



The Architects Datafile (ADF) website is an online provider of past and present products and news items for the architect or specifier. architectsdatafile.co.uk is a one-stop source for all the latest press releases providing any visitor with access to information about products and services that they may require. From the website, you can find links to digital issues that have live links to advertisers' sites, as well as daily email alerts to keep you as informed as possible.

www.architectsdatafile.co.uk



THE ROOFING AWARDS 2016

rci show stand no G13

Think **Roofs**, Think **NFRC**

ALL THE **GUIDANCE AND PROTECTION** YOU NEED UNDER ONE ROOF

VISIT WWW.NFRC.CO.UK OR CALL 020 7638 7663

Follow us on Twitter @TheNFRC

enq.143

Products of the Year Showcase

In this issue we take a look at some of the years leading products



Architectural Bronze Casements make bespoke, handmade bronze windows, doors and screens. Bronze is an exciting and traditional alternative to the steel and aluminium windows generally available. Made from architectural bronze which is strong, long lasting and visually appealing, bronze casements offer fine sightlines, thermal efficiency and low maintenance characteristics. They are usually incorporated within stone, brick or timber openings.

enq. 144



Ruskin Air Management's Airolution service provides complete natural ventilation solutions for commercial buildings including system design, supply of equipment, controls, installation and commissioning. Airolution is different to anything currently available on the market because every component of the system is tested together to ensure the final system meets the design brief and aspirations of the building owner and operator.

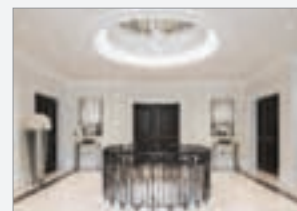
enq. 151



Rainwater can be used for any non-potable application including toilets, washing machines and any outside use. As demand increases it makes sense to include rainwater to supply for a long term sustainable solution.

Rainwater Harvesting Ltd designs and manufactures mains backup control systems in the UK specifically to meet UK regulations. Both direct Back Up in a Box and the award winning gravity fed Rain Director are WRAS approved.

enq. 145



Specialist door manufacturer, **Ahmarra Door Solutions** has relaunched the Artisan Panel Door Collection to include stunning designs from its latest projects. Artisan panel doors have already featured in some of the most prestigious residential developments in the UK. Proud to fly the flag for British craftsmanship, the Artisan Panel Door Collection offers the very best quality in terms of design and materials. To view the new brochure, visit the company's website.

enq. 146

BRONZE WINDOWS, DOORS & SCREENS



architectural
BRONZE CASEMENTS

0845 6000 660

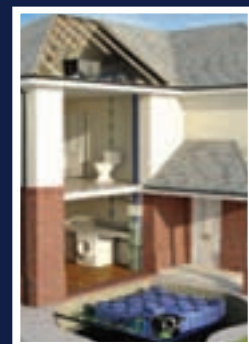
www.bronzecasements.com

enq. 144



Combining the Benefits of Rainwater Harvesting with Controlled Attenuation

- Rainwater Harvesting System designed with integrated SUDS.
- Water for toilets, washing machines or any non-potable application.
- Prevents localised flooding & controls the release of rainwater to manage downstream events.
- Calculated for critical storm durations.



Tomorrows Water Solution Today

01733 405 111

www.rainwaterharvesting.co.uk

enq. 145



ARTISAN
PANEL DOOR COLLECTION

MADE TO ORDER BY
ahmarra

View our new brochure online at:
www.ahmarra.co.uk

enq.146

You deserve great looking products



For over 20 years Nu-Flame has brought together the widest range of both open fronted and glass fronted fires, combining the very best of British innovation, design and engineering. With Nu-Flame you are guaranteed quality and efficiency; let it help you turn your house into a home.

Nu-Flame has invested heavily in its own research and development facility at its state of the art factory in Surrey.

enq.147

Waterproofing simplified with Multi-Tight 2K



Remmers Multi-Tight 2K is a new, flexible, mineral-based waterproofing product which has all the performance properties of older technology polymer-modified thick bitumen emulsions, while being "bitumen free". Using unique rubber granulate filler technology, Multi-Tight 2K has a crack-bridging capacity which is five times more effective than

standard flexible mineral-based waterproofing systems. It is very quick and easy to apply by trowel or spray application, has fantastic levels of adhesion to most substrates including old bitumen and dries very quickly.

01293 594 010 www.remmers.co.uk

enq.149

The original is still the best from Interflow



The original FRANK puddle flange was developed and patented over 30 years ago; it seals up to 10 bars pressure and is still regarded as an industry leader. This sealing system is adopted in millions of buildings and structures all over the world and the FRANK range is available from **Interflow**. FRANK puddle flanges are suitable for all standard pipes in steel, plastic, stoneware, concrete and cast iron from d20 to d3200.

It is an extremely flexible product available in a range of versions and is the easy-to-install, perfect solution for any application – the cost-effective alternative to conventional sealing systems.

01952 510050 www.interflow.co.uk

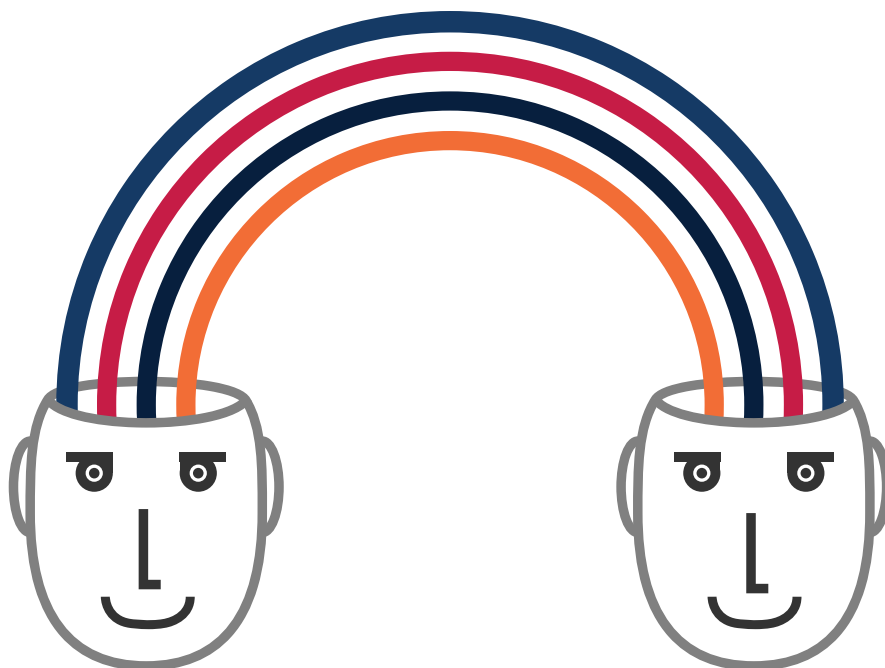
enq.150

Architects Datafile website



The Architects Datafile (ADF) website is an online provider of past and present products and news items for the architect or specifier. architectsdatafile.co.uk is a one-stop source for all the latest press releases providing any visitor with access to information about products and services that they may require. From the website, you can find links to digital issues that have live links to advertisers' sites, as well as daily email alerts to keep you as informed as possible.

www.architectsdatafile.co.uk



2 HEADS ARE BETTER THAN 1. USE OURS, IT'S FREE.

Airolution^o

Natural Ventilation Systems

We know that you, as architects, have got very little time. We also know that when we put our heads together the results of shared and joined up thinking can be very beneficial.

We're here to help you.

Setting you off in the right direction when it comes to the movement of Natural Air. You could say we like to empower you with the knowledge, to select the right system for the right application. Coming together is a beginning, staying together is progress, and working together is success.

Airolution. Air flow made easy.

For more information please visit www.airolutionuk.co.uk and take a look at our System Selector.



**DOWNLOAD THE AIROLUTION
APP TO FIND OUT WHICH
SYSTEM BEST SUITS YOU.**



reader
enquiry

151



High Efficiency Gas Fires

- Convenient & Clean Burning
- Up to 5.2kW Heat Output
- Low Running Costs
- Total and Instant Control

View our stunning range at
www.nu-flame.co.uk T : 020 8254 6802



Up to
90%
Efficiency

enq.152

adf website

The Architects Datafile (ADF) website is an online provider of past and present products and news items for the architect or specifier. architectsdatafile.co.uk is a one-stop source for all the latest press releases providing any visitor with access to information about products and services that they may require. From the website, you can find links to digital issues that have live links to advertisers' sites, as well as daily email alerts to keep you as informed as possible.

www.architectsdatafile.co.uk





We Build It Ltd
simple solution sewage systems



The Bio-Pure

- Suitable for homes without access to mains drainage
- Discreet solution to on-site sewage treatment
- 10 models in the range with a capacity up to 50pe
- CE Marked and EN 12566-3 Certified
- Uses the extended aeration method to treat sewage
- 96% efficiency allows a typical 3-5 year emptying interval
- Visually unobtrusive and odourless
- 25 year warranty on GRP & 2 year warranty on the air pump
- Deal direct with the UK Manufacturer

0800 731 9421 www.webuildit-ltd.co.uk

enq.153



CONTENTUR

UNDERGROUND REFUSE SYSTEMS



Find out why every town and city should have them

It's time to get SMART with waste disposal

Contact Contentur today at enquiries@contentur.com or visit the website for more information

www.contentur.co.uk



enq.154

Canaletto tower balconies incorporate Schöck Isokorb



The Canaletto residential tower at 257 City Road in London is 31-storeys with 190 luxury one, two and three bedroom apartments built to the standards of Code 4 Sustainable Homes Level 4. The tower is concrete frame and has a curving facade of metal and glass that breaks the volume into a series of three-to-four storey clusters, each containing grouped balcony terraces. The balconies are steel construction connected to the concrete frame and as always

with cantilever construction elements, one of the early design considerations was the prevention of thermal bridging.

Thermal bridge heat losses are responsible for an increasing percentage of overall building heat loss, due to airtightness and fabric U-values being improved in UK Building Regulations. Thermal modelling calculations show that for multi-residential projects such as large apartment blocks, thermal bridges could account for 20-30 per cent of thermal losses, with balcony connections being a major contributor if effective thermal isolation is not incorporated.¹

The Isokorb range of thermal break elements from Schöck is designed to combat thermal bridging and for the high specification Canaletto project the Isokorb type KS20 offers the ideal solution. This concrete-to-steel connectivity module sits between the outer and inner structural connection points and blocks the outflow of heat

through the use of high quality polystyrene insulation foam. There are tension and shear stainless steel bars passing through it, which take the forces between the building frame and the balconies, enabling a thermally insulated, load bearing connection to be made.

The Isokorb range provides a huge selection of solutions for concrete-to-concrete and steel-to-steel, as well as concrete-to-steel – and the entire range offers the security of BBA Certification and LABC Registration. It also comfortably exceeds the requirements of BRE IP1/06 and Part L of the Building Regulations where the temperature factor used to indicate condensation and mould growth risk (fRSI) must be greater than, or equal to, 0.75 for residential buildings.

¹ For your free copy of the new Thermal Bridging Guide and / or the Schöck Specifiers Guide – contact the company.

01865 290 890 www.schoeck.co.uk

enq.155



CRL selected for Clanmil housing projects

Structural defects insurer CRL is to provide the warranties for a number of construction projects with a combined value of around £31 million. Won through a competitive tender process, CRL has been chosen by the Clanmil Housing Group to provide ten year structural warranties for more than 300 social homes to be built across Northern Ireland – with a total construction value of circa £31.2 million. The contract will see CRL provide its industry-leading ten year structural defects insurance to ten separate Clanmil developments which are being built as part of Clanmil's ambitious growth programme. Richard Livingston, president of sales, CRL, said: "We are thrilled to be working with Clanmil, and in wider terms to be playing our part in the upturn in the construction industry. This is a significant appointment for CRL and testimony to our continual growth in this market. We also hope that by placing this cover with us, Clanmil can have confidence in us to deliver the highest levels of service and an industry-leading product that will ensure the success of these important developments."

0800 772 3200 www.c-r-l.com

enq.156



Bison precast selected for retirement village

Bison Manufacturing's market-leading precast concrete units has been specified for the construction of a brand new building in the heart of a Surrey retirement living development. As part of the works, an all new building – named Elmbridge Manor – is being created at the centre of the development, and will see the installation of 2,782m² of Bison's 150, 200, 250 and 260mm deep Hollowcore floor units, as well as four precast staircases. Selected for their reduced deadweight and maximised structural efficiency, the Hollowcore units also offer improved sound resistance over alternative materials, helping to maximise comfort for the building's residents. Mike Nelson, sales and commercial manager at Bison said: "We are extremely pleased to have been chosen to provide our units for the Elmbridge Manor project. Having worked with Castleoak in the past, we understand their commitment to high quality and efficiency, and we are focused on helping Castleoak deliver those standards." Paul Mannings, project director at Castleoak added: "Thanks to Bison's off-site manufacturing processes they are able to provide us with consistently high-quality units which complement the high standards of our retirement living construction projects."

01283 817500 www.bison.co.uk

enq.157

BEAUTY: NOT JUST SKIN DEEP



Canjaere Classic Natural

Timber Cladding

Your building will not only look beautiful externally but will remain in excellent condition for up to 10 years* due to our Timber Cladding range being pre-treated and offering comprehensive warranties.

The right choice helps you achieve your unique design through a selection of wood, texture, colours & profiles.

In an environmentally conscious world all of our products are PEFC or FSC certified and increasing the timber content of a building can dramatically reduce its carbon footprint.

Two great ranges to choose from - painted or natural.

Key Features

Two ranges ■ Natural look ■ Extensive warranties ■ Low maintenance ■ Durable



CANJAERE



For more information on Timber Cladding please visit:
www.proctorgroup.com | +44 (0) 1250 872261

*conditions apply



SterlingOSB is the star of the show



A young couple struggling to get on the property ladder was not the only star of George Clarke's *Amazing Spaces* TV show and subsequent national media coverage. Norbord's SterlingOSB topped the bill in the story of the house that "scrap" built. Christian Montez and Kyra Powell

(www.ourtinyhome.co.uk) built a two-storey cabin from recycled materials – for just £1,480. Built in just nine weeks, the cabin's compact structure – 8 x 16 x 12 ft – is made from Norbord's SterlingOSB. Christian explains "This cabin gives us a chance to save for a deposit. It's a nice space and it gives us somewhere to relax after a long day at work, without the worry of bills or rent." Norbord's SterlingOSB is made in Scotland from home-grown timber.

enq.159

Growing demand for engineered timber



Growing demand for engineered timber products continues to generate new sales opportunities for suppliers, says **Timbmet**. More customers are converting to engineered timber, the company says, as they recognise the benefits of engineered over sawn timber

for applications where the use of wood was previously unsuitable. In recent projects, two Yorkshire-based Timbmet customers – Biker Group (pictured) and Patchett Homes – demonstrate the accelerating trend towards engineered timber and the growing popularity of Timbmet's engineered timber portfolio. For information on the projects and more, please visit the company's website.

01865 860303 www.timbmet.com

enq.161

Bloor Homes chooses Classic seaside finish



Bloor Homes has opted for Canjaere Classic as the external finish for its latest project, an exclusive development of 3, 4 and 5 bedroom houses in the seaside town of Lyme Regis, Dorset. The client selected the oil treatment supplied by the **A. Proctor Group** in Brown to protect and enhance timber cladding on the properties. The Canjaere Classic range preserves the

beauty and resilience of natural wood by increasing its water resistance and stability. The treatment which comprises a mixture of mineral and vegetable oils protects the timber by inhibiting moisture pick-up. Bloor Homes is benefitting from the peace of mind that the project will look good for years to come.

01250 872261 www.proctorgroup.com

enq.160

Wood grill ceiling adds detail to development



A £6 million business development in Northumberland has been enhanced with a high quality grill ceiling, thanks to the experts at global architectural products company **Hunter Douglas**. Hunter Douglas was commissioned to design and supply 223m² of wood grill for a demountable ceiling

at Blyth Workspace, a modern serviced office space for businesses. Designed by Robin Parsons of Xsite Architecture, the ceiling is made from Magma fire-treated African Ayous and was supplied in module 4-70-15-45, reflecting the Scandinavian cues used in the internal shopfitting, as well as provide a finish that could continue seamlessly from the external soffit through to the internal ceiling.

01604 766251 www.hunterdouglas.co.uk

enq.162

British Western Red Cedar Cladding

iWood Timber Ltd are the reliable supplier of **British Western Red Cedar Cladding** to the UK, as well as specialising in British Larch, British Douglas Fir and European Oak. Our website gives you competitive pricing on a range of products and you can order securely online.

British Western Red Cedar is generally more knotty and faster grown than Canadian Western Red Cedar, but performance and durability are similar.

British Western Red Cedar has the advantage of lower cost and has a far lower carbon footprint.

See iwood.co.uk for instant pricing

The mark of responsible forestry

Guaranteed Quality Timber

www.iwood.co.uk

Call 01889 597 281

For expert advice and telephone ordering

iWood Timber Ltd, Hixon, Staffordshire

enq.163



reader
enquiry
164

J Julius Bahn
OAK BUILDINGS

Garden rooms • Orangeries • Garages • Conservatories
03444 171 400 • sales@juliusbahn.co.uk • www.juliusbahn.co.uk

New 2016 Brochure Out Now

Made in England

Specifying timber for your project's exterior

Nick Taylor, managing director at Silva Timber discusses what to consider when specifying timber products including species, sustainability and finishing

Wood is nature's most versatile and unique material. The fact that it has been used in building for hundreds, even thousands of years is perhaps not surprising when you consider some of its impressive attributes. Wood is strong, durable, long lasting, restorable, recyclable, renewable and of course, attractive. The fact that no two pieces of wood are the same only adds to its appeal. With its myriad of grain patterns, characteristics and colour tones, wood is a beautiful material that cannot be replicated by man-made products. If installed and finished correctly, wood can last externally for decades without being replaced. It has one of the most efficient life cost cycles in the construction industry.

Being 100 per cent natural and highly versatile, wood is guaranteed to provide a stunning finish to any commercial or residential project.

What species should I use?

There are many different wood species on the market, so it's worth considering firstly what the timber will be used for; decking, cladding, fencing etc, then how you want your project to look and feel. There are some beautiful wood species out there for a range of uses, including:

Western Red Cedar: Most commonly used for cladding, decking, fencing and roofing. A beautiful softwood which is resistant to both insects and rot and is extremely lightweight and durable. It is ideally suited to exterior and interior use and can be used for a range of applications. Over time it ages to a stunning silvery grey but also takes wood stain exceptionally well, making it easy to achieve your desired look.

Siberian Larch: Another naturally durable softwood most commonly used for cladding purposes due to its excellent durability, high density and lifespan not to mention its aesthetic appeal.

If using a tropical hardwood it's worth considering a lesser-known species too. High commercial demand for certain wood species has put pressure on available stocks. In some cases to preserve biodiversity, countries around the world have banned the trade of certain species, while other species are difficult to source or prohibitively expensive. There are hundreds of species in the world that offer similar aesthetic appeal and performance to traditionally harvested species. The cost of these species is relatively low because they are under used and abundant.

Mandioqueira is a perfect example of a lesser known timber species that is ideal for exterior applications. This naturally



To find out more about lesser-known species visit: www.fsc-uk.org/lesser-known-timber-species

decay resistant tropical hardwood species offers excellent performance being dimensionally stable and highly durable. It's very attractive too with unique colours coming through, including pinkish brown to red brown, sometimes olive brown tones.

Lesser-known tropical species offer three distinct advantages:

- They can often substitute better-known species in terms of performance and aesthetics whilst being more cost effective.
- The many different species of wood available with rich, truly exotic colours and textures provide new design opportunities for your project.
- The use of lesser-known timbers can alleviate pressure on well-known timber species and increase the economic viability of sustainable forest management.

How do I make sure my timber is sustainably sourced?

Using lesser-known species is also a great way to support the environment, by utilising a range of timbers we can ensure that species are not exhausted and put under threat of extinction. The CITES list (the Convention on International Trade in Endangered Species of Wild Fauna and Flora) is a great resource and offers a way to check if a species is endangered before you complete your purchase.

There are several things to look out for when purchasing timber. Awareness of FSC (Forest Stewardship Council) and PEFC (Programme for the Endorsement of Forest Certification) has risen over the last decade and most timber suppliers will be able to offer certified timber.

Continued overleaf..

'Being 100 per cent natural and highly versatile, wood is guaranteed to provide a stunning finish to any commercial or residential project'



How do I protect the timber?

Protecting timber with a suitable finish is an important but often overlooked step.

Traditional exterior finishes form a film over the wood to seal out moisture; however this type of finish is prone to failure if the film fails or becomes damaged and allows water to penetrate. Once water gets behind the film it can cause the finish to crack, peel and flake and the only remedy is to strip off the failed finish and start again – an extremely time consuming and costly process.

Many traditional solvent-based finishes also contain VOC's (Volatile Organic Compounds), which continually emit chemicals that can have long-term health effects for years after application. To reduce the VOC levels in their products some manufacturers have switched to water based finishes.

You can have the best of oil based and water based finishes with a water-bourne alkyd based finish; which contains no VOC's and is environmentally friendly. It works by using water to carry modified natural oils and resins deep into the wood's cell structure. The water then evaporates allowing the finish to bond directly with the wood substrate enabling the wood to breath whilst forming a tough, durable barrier that won't crack, peel or blister. If the timber is well maintained it will grow old gracefully and will not discolour.

When deciding on a stain it's important to understand the characteristics of the timber species it is being applied to. The

effect of the stain will vary depending on texture, grain, colour and porosity so always check the colour on samples of the timber being used. There are various staining options; natural and translucent tones, which let the beauty of the wood shine through or saturated and ultra saturated tones that provide a more solid colour appearance to the timber.

The key to an excellent finish is preparation; always ensure that the timber is clean and dry and begin by sanding the surface with an orbital sander using 60 grit sandpaper. Sanding the timber thoroughly removes mill glaze and creates an even surface and a slight texture that allows the stain/finish to penetrate the wood, providing an even, consistent and long-lasting finish. Studies have proven that sanding can extend the life of a finish by up to 3 times compared to an unsanded surface.

enq.165



Sunscreen for your wood

UV Protection Factor 12

Maintains the natural colour of the wood and limits the greying process

- > Prolongs wood lifetime
- > Algae and fungal decay protection
- > Transparent 425 Oak finish and 428 Cedar finish now available

Call or visit the web for stockists.

+44 (0)1296 481 220
www.osmouk.com

enq.166

Q-Clad pre-painted, fine sawn, featheredge (rebated) timber cladding. Available in white or black. PEFC certified

Q-Deck Multi-purpose Screening lath. An easy way to create great looking privacy garden screening and deck balustrading.

Q-Deck decking comes in a wide variety of styles and finishes. Choose from: hardwood, softwood, anti-slip, thermowood and wood plastic composite.

Buy online via www.qualitydecking.co.uk
Tel: (0800) 849 6339 (Mon-Fri 9-5pm)

enq.167

FIRE RETARDANT UK
FIRE retardant for WOOD

HR PROF

- Eco Friendly
- Clear & Odourless
- Water Based
- Non Toxic
- No Solvents
- Apply with Brush or Spray
- Euro-class B-s1-d0
- Internal or External Use
- HR Prof Also tested to BS 476-6 & BS 476 part 7

Classification Reports & Certificates Pine, Spruce, Scottish & Siberian Larch, Western Red Cedar, Oak

0800 7833 228 | sales@fireretardantuk.com | www.fireretardantuk.com



enq.168

GRIPSURE
keeps you on your feet

The UK's leading supplier of non-slip timber decking.

- Wide range of profiles
- Softwoods & hardwoods
- Aggregate & rubber infills
- 15 year in service life
- Sustainably sourced timber
- Nationwide delivery
- Bespoke cutting service
- Custom profiles available

View Gripsure's product range on RIBA Product Selector.

+44 (0)1726 844616 | info@gripsure.co.uk
www.gripsure.co.uk | @GripsureUK



enq.169

LEADON
TIMBERFRAME

ARCHITECTURAL TIMBERFRAME SPECIALISTS
Manufacturers of Quality Timber Frame Buildings

Wood Web Joists • SIP Panels
Open & Closed Panel Construction

Can you Afford not to use Leadon TimberFrame

Tel: 028 8675 1521
www.leadontimberframe.com
email: info@leadontimberframe.com

79 Dunnamore Road, Cookstown BT80 9NX



Logos: TRADA, SAFETY, Quality Timber Frame, Delivery Partner

enq.170

New guide to Polytec 50 curtain walling



In response to growing market demand for its CWCT approved and Passivhaus certified **REHAU** Polytec 50 composite curtain walling system, **REHAU** has produced a new brochure for specifiers and architects.

The 16 page guide is packed with technical details about the system and lots of stylish case studies showing successful installations in a range of contemporary commercial applications. Polytec 50 is **REHAU**'s alternative to conventional aluminium curtain walling. It offers superior strength and better thermal performance, thanks to a system which combines the structural capabilities of steel reinforcement, the design and finish of aluminium on the exterior and the warmth and low maintenance benefit of PVC-U on the interior.

01989 762600 www.rehau.co.uk

enq.171

Denso products for new Borders Railway



Winn & Coales (Denso) Ltd's Densoband and Denso Tape were among the products used in the construction of the new Borders Railway Line. During the construction of the project **Winn & Coales** supplied the UK-wide building and civil engineering company **Farrans Construction** with 150mm wide Denso Tape to protect pipeline

joints in ten different water diversions. Densoband was supplied to provide a flexible watertight seal between the asphalt and the tactile paving slabs on the platforms of four of the new stations. Densoband is a preformed sealing strip which is widely used for sealing joints between asphalt to asphalt, concrete.

020 8670 7511 www.denso.net

enq.173

Making light work of brick soffits



Creating flawless brick-faced soffits and lintels has now become much simpler and quicker, thanks to a new lightweight stainless steel based system developed by two industry-leading companies – brick support specialist **Ancon Building Products** and **Ibstock Kevington** – national manufacturers of

brickwork and masonry special shapes and prefabricated components. The new Nexus® system combines a specially developed **Ibstock Kevington** lightweight brick-faced steel unit with **Ancon's** tried and tested MDC stainless steel bracket angle support system. The new system offers considerable benefits over traditional cast concrete alternatives – cutting weight by more than half.

0114 2755224 www.ancon.co.uk/Nexus

enq.175

Customised cladding from Osmo



Wood cladding is a highly sought after material for external coverings. **Osmo UK**, the wood and finishes expert, offers a quality wood cladding range, which provides a natural and attractive finish to a property. **Osmo's** range of ready to install, custom made external cladding can be tailored to each individual's desire and offers a choice of profiles, wood species, colours and the finish. The finish protects

the cladding from weathering so that it does not crack, flake, peel or blister. For more information please visit the **Osmo** website.

enq.176

Aluprof enhances Broadgate food experiences



One of the newest food experiences in London can be found at Broadgate Circle near to Liverpool Street Station. The construction makes extensive use of natural limestone with aluminium windows and doors supplied by **Aluprof** and installed by **Linder Facades**. All aluminium profiles and pressings have

been naturally anodised in C34 Bronze, which complements the natural limestone while offering a sustainable and very resilient finish. **Aluprof** systems specified on the project included the MB-SR50N curtain wall system with its distinctive rounded profile design and the main entrance door system MB-86 with a hidden leaf assembly offering clean lines into the curtain wall system.

0161 941 4005 www.aluprof.eu

enq.172

Wood plastic composite deck board advice



The Timber Decking and Cladding Association (TDCA) is urging specifiers and users of wood plastic composite deck boards (also known as wood polymer composite, WPC or composite) to do their research before committing to a product. Equally installation in strict compliance with supplier guidance is a must. The

concern stems from a number of poor performance issues reported to the association which appear to be limited to a particular type of hollow form WPC boards. Installation errors were a feature in many cases although product quality issues remain in question. The TDCA offers advice on how to build a durable timber substructure for wood plastic composite deck boards on its website.

01977 558147 www.tdca.org.uk/publications

enq.174



Topseal HD system

Topseal has designed the Topseal HD system which can be used for roofing but is also ideal for balconies, external walkways and stairs, as it incorporates additional reinforcement, which ensures the roof is completely safe for foot traffic. As well as the increased strength, the Topseal HD system can come with a coated aggregate or anti-slip finish. The anti-slip finish is ideal for foot traffic applications, as it provides a much safer surface to walk on. If you are expecting a high level of use don't worry, as the system is designed to be durable and long lasting. Enjoy peace of mind with a 25-year workmanship and materials guarantee and also enjoy the option of an additional insolvency guarantee. Networks of **Topseal** approved installers cover the UK and between them have installed a number of balconies and walkways using the Topseal HD system including balconies on local authority housing blocks to balconies and walkways on brand new domestic dwellings.

08000 831 094 www.topseal.co.uk

enq.177

Why not **kick start your DREAMS**
... it may be easier than you think!

Bi-fold doors
available in:
aluminium, hardwood
timber, aluminium/timber,
PVCu, glass/aluminium,
glass/timber &
glass/glass

QUALITY BESPOKE BI-FOLD DOORS DIRECT FROM THE UK'S ONLY SPECIALIST MANUFACTURER

Not sure who to turn to? How long it takes or what you require!

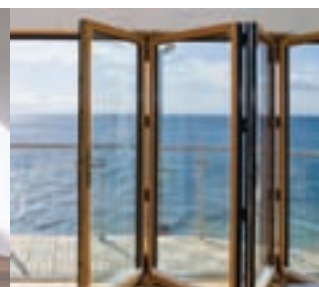
Look no further, we survey, manufacture and install

All covered by FENSA registration in less than three weeks.

Showrooms: The Folding Sliding Door Company, Bradford BD5 8ER.

The National Self Build and Renovation Centre (Stand TV 91)

Lydiard Fields, Great Western Way, Swindon, Wiltshire SN5 8UB.



reader
enquiry
178

0845 644 6630

www.foldingslidingdoors.com

sales@foldingslidingdoors.com



The  Folding Sliding
Door Company

Reynaers sleek SL 38 Series: ultra-slim profiles with improved energy efficiency



Reynaers' unique aluminium window and door system CS 38 has benefited from an upgrade – and the new Slim Line 38 series offers better performance than ever before.

SL 38 and SL 38-HI are now available and offer

ultra slim profiles and improved market-leading energy efficiency.

The highly thermally-insulated Slim Line 38 has the look and feel of steel with the performance of aluminium. It combines elegant design, stability and ease of production and is the perfect solution for both new-build constructions and the replacement of steel-framed windows and doors. It respects the original design but offers a vast improvement on thermal insulation.

The minimalistic frame is reinforced by an invisible drainage system, avoiding the use of drainage caps on the exterior of windows and doors. SL 38 is available in three unique design variants – Classic, Cubic and Ferro – and its slim lines allow for an abundance of light.

SL 38 features a highly insulated three-chamber system with ultra-slim profiles for increased thermal characteristics. The solution is available in fixed, turn, and turn-tilt variations with Uw values

of 1.4 W/m²K or greater depending on the configuration. The system is suitable for both double and triple glazing with a glass thickness of up to 55mm without losing the ultra-slim look.

For optimum end user comfort, the SL 38 product also offers excellent weather performance with air tightness of Class 4 (600Pa) and water tightness Class 9A (600Pa).

A special modification to the design also means the system is available with hidden hinges.

Marketing Manager at Reynaers Rebecca Cope said: "The SL 38 is a really versatile product. It is perfectly suited for the retention of existing structures, allowing our customers to preserve a vintage look, or for renovation projects where steel frames have to be replaced. However, its high performance properties combined with a sleek new look make it a good choice for new builds too."

0121 421 1999 www.reynaers.co.uk

enq.179

HIGH QUALITY WINDOWS AND DOORS

SCANDINAVIAN DESIGN SINCE 1954

We have developed and manufactured windows and doors since 1954 and today our product range covers almost any imaginable need or architectural style.

Visit our website rationel.co.uk or give us a call on **01869 248181**

ns



enq.180

Our Lady & St Josephs Catholic Primary



Comar Architectural Aluminium Systems; completed a new build 2 form entry Catholic Primary School in Poplar, East London. Formed out of a merger of two schools the bright and eye catching design uses brick to match the surrounding area and is wrapped with shards of colour in the form of Brise Soleil. Achieving a BREEAM rating of excellent the school has been shortlisted for a 2015 'Construction Award'. Comar SP.i. Top/ Side Hung and Fixed Light thermally efficient polyamide insulated windows were specified. These aluminium windows offer outstanding weather performance and reduce heat loss through the trademark Pi thermal break ensuring low U-values so energy bills are minimised.

0208 685 9685 www.comar-alu.co.uk

enq.181

First PAS 24 low-threshold French door



Tradesmith, a leading South East window, door and conservatory manufacturer and Halo Approved Fabricator has become one of the industry's first companies to achieve the coveted PAS 24 security standard on a low-threshold French door. Tradesmith Managing Director, Mark Hutchinson explained:

"We're thrilled that Tradesmith has become the first fabricator to achieve PAS 24 on a low-threshold French door using The VEKA UK Group's Halo profile. "What Tradesmith has achieved is no mean feat", commented Colin Torley, sales and marketing director of The VEKA UK Group. "To achieve PAS 24 certification is a challenge in itself, let alone with a low-threshold French Door.

01282 716611 www.vekauk.com

enq.182

Smart refurbishment solution for village hall



Situated at the heart of the picturesque village of Silver End, Essex, an art deco village hall has been completely renovated, the project including the installation of new Alitherm Heritage windows from **Smart Architectural Aluminium**. Smart's Alitherm Heritage range has now been installed to

recreate the original 1920s window style using an aluminium system, while at the same time delivering improved thermal performance. Supplied in a polyester powder-coated aged-white finish for this refurbishment, Alitherm Heritage has proven to be an energy efficient alternative to steel windows in a range of projects across the UK, where like-for-like replacements are required for heritage schemes.

01934 876 100 www.smartsystems.co.uk

enq.183

Metal Technology in Ronald McDonald House



System 4-35Hi+ Parallel Opening Vents (POV) Windows are among a suite of **Metal Technology** products installed in Ronald McDonald House, Glasgow. Part of Metal Technology's THERMAL range, the System 4-35Hi+ POV window achieves high levels

of thermal performance by utilising specially designed polyamide thermal break profiles, thermal gaskets and foam profiles. The parallel opening vents offer a unique feature that, when open, allows air to penetrate around its entire perimeter, facilitating highly efficient ventilation and increasing air flow by almost double to that from a standard top hung casement window.

028 9448 7777 www.metaltechnology.com

enq.184

Cover Plate Hinges

PHOENIX

Simple clip on covers

master hinge makers
COOKE BROTHERS
01922 740011
cookebrothers.co.uk
sales@cookebrothers.co.uk

enq.185




Tanum offer an excellent selection of windows, French doors, sliding doors and entrance doors.

For more information please visit our web site or call us.
www.tanumsfonster.co.uk
 Telephone number 0115 - 93 210 13





enq.186



www.rooflight.co.uk
T: 0191 273 7738
F: 01670 738080
sales@rooflight.co.uk

standard and bespoke architectural
 rooflights and roof glazing




With many years of experience in the commercial and domestic markets, Rooflight Architectural can manufacture and supply, lantern lights, pitched glazing and walk-on rooflights to any size or specification. We offer technical advice, CAD drawings and nationwide installation.

- Any size
- Any colour
- Many glazing options
- Electric or manual vents
- Structural aluminium sections



enq.188

urban | front[®]

oversized doors now available
urbanfront.co.uk | 01494 778787




10 YEARS IN THE MAKING
 2005-2015




steel reinforced
 hardwood doors
 entrance doors
 internal
 feature doors
 garage doors
 passive house
 certified doors
 made and
 designed in UK

enq.187

SPECIALIST ARCHITECTURAL
 HARDWARE SUPPLIERS
 TO THE DOOR
 OPENINGS INDUSTRY





AT ZERO WE CAN CATER FOR ALL YOUR DOOR HARDWARE REQUIREMENTS; IN FACT WE SUPPLY EVERYTHING EXCEPT THE DOOR! INCLUDING AMONGST OTHERS; ZERO DOOR SEALS, ANEMOSTAT VISION FRAMES, SLIMPORT PORT HOLES, FBLs FIRE RATED LOUVRES, FINPROTECT FINGER PROTECTION, FRICTION STAYS, FLUSH BOLTS AND MANY OTHER ITEMS OF DOOR HARDWARE. PLEASE CONTACT US FOR A COPY OF OUR 228 PAGE PRODUCT CATALOGUE.

Zero Seal Systems Ltd
 Units 43 - 45 Ladford Covert, Seighford, Stafford, ST18 9QG, United Kingdom
 Tel : +44 (0)1785 282910 E-mail : sales@zeroplus.co.uk
WWW.ZEROPLUS.CO.UK



enq.189

Making an entrance better by design

The debate of form and function has long been raging in architecture. Here we speak to Kaz Spiewakowski, managing director of GEZE UK, about whether aesthetics and function are mutually exclusive when it comes to making an entrance

Entrances and doors perform a functional role in architecture. They allow people to move seamlessly from one part of a building to another; help maintain an even temperature and form part of natural ventilation systems; aid accessibility; and contribute to safety and security.

At the same time, the aesthetics of architecture should never 'stop at the door'. An entrance sets the tone for a building's interior; blends seamlessly with the design and wider materials; and makes an impact.

Glass remains one of the most popular materials in modern architecture. Its elegance allows for contemporary minimalist design, where vast expanses stretch along the line of sight. An entrance should therefore be designed with the overall style in mind. Get it right and the results are stunning; get it wrong and it can ruin everything the architect strove to create.

Careful consideration should be given to operators from the very outset. Where automatic sliding operators are used, they are usually mounted on the transom, but can be bolted directly onto glass when desired. In some specifications there are glass systems that allow the profile and fittings to be integrated invisibly between the panes so there are no bulky or visible elements on the surface.

Lobbies are often used to enhance a building's sustainability, but while performing a vital function, it doesn't mean they have to be boring. Circular or elliptical automatic entrances look visually stunning and maximise space, and staggered entrances allow large numbers of people to flow through the entrance at any one time, while still minimising heat loss.

Where traditional elegance is required, revolving doors, both manual and automatic, remain a popular choice. They provide a high degree of insulation against the elements, saving energy and ensuring a pleasant, uniform climate within. However, pass doors may also be needed for accessibility.

In the retail sector, businesses in shopping centres want to create large expansive entrances suitable for high traffic areas. Glass sliding walls provide the perfect solution. By day, they can be opened fully, allowing the public to enter or can be partially opened to divide space and direct shoppers around certain routes. By night, they are fully lockable giving utmost security.

By contrast, in buildings where space is limited but maximum accessibility is required, folding doors can be used because they don't require the space on either side of the entrance like sliding doors, or the depth in the corridor needed for hinged swing doors.

Of course, not every building is a new build. When refurbishing a property that is listed or of historical significance,



aesthetics are perhaps more important than ever. Care should be made to preserve and respect historical features, while ensuring doors and entrances meet the full demands of modern life.

In many cases this is achieved through subtlety of design. Automatic operators have reduced significantly in size and the slimmest drive on the market is just 7cm tall, meaning it can easily be incorporated within a facade.

Another alternative is to use an underfloor operator (UFO) which is fitted beneath the floor ensuring the operators do not detract from the overall design. UFOs are housed within a sealed stainless steel enclosure mounted below finished floor level.

Although not specifically aimed at doors, the Equality Act 2010 requires service providers to make reasonable adjustments

Continued overleaf..

Beaufort House –
A large modern entrance for
high traffic areas

Pictured right:
Chestnut Grange entrance
designed for aesthetics
and accessibility

Far right: Britannia House,
Finsbury Circus - a lobby
providing traditional elegance



to overcome barriers experienced by disabled people. Automation is a powerful tool in both functionality and aesthetics. It allows very large and heavy doors to be opened with ease, aids accessibility and allows large numbers of people to enter or exit a building 'en masse'.

Internally, different closers may be required for different parts of building – for security, swipe cards may be required to restrict access, fire doors on escape routes, manual closers in some areas and automatics in others. Some manufacturers design their closers so they have a consistent style across the range, while

different cover shapes and finishes can be specified to match closers with other architectural ironmongery used throughout a project. Patch fittings have also evolved to be stylish, unobtrusive and to suit various thicknesses of toughened glass.

Of course, as the MD of a door control system manufacturer, I will always consider doors the most important – and beautiful – element of a building! However, architects and specifiers need to look at the bigger picture and working with manufacturers will ensure they select the right door control technology to achieve their aesthetic vision.

enq.190

RENOLIT EXOFOL App for iPad launched – One app, all colours, all woodgrains



The new RENOLIT EXOFOL app for iPads is the easy way to discover the world of RENOLIT EXOFOL exterior films, a range that offers the largest selection of colours and woodgrains worldwide. Easy, fast and practical to use. With the RENOLIT EXOFOL app it is simple to configure your own style of window by combining different window options with any colour or woodgrain design. This enables the user to visualise their specific window projects particularly vividly, with very little effort. Just let your imagination start and have fun trying! Available in English and German the app includes an animated Quick Start Guide, and 'forward' and 'backwards' buttons to make using the configuration tool straightforward. Effortless to use with your fingertips, simply select the required range tab (Metallics, Woodgrains, or Colours) and spin the wheel of samples until the desired swatch extends out. Then drag and drop it on to the window profile section. You can further select the window style, rotate between inside or outside perspective, and change the wall colour. Save your window design to favourites, compare different configurations, then email a copy or link to sample ordering (requires Wi-Fi connection). To download the RENOLIT EXOFOL app for free from the app store search for RENOLIT EXOFOL or follow the link from the website.

01670 718122 www.renolit.com/exterior

enq.191

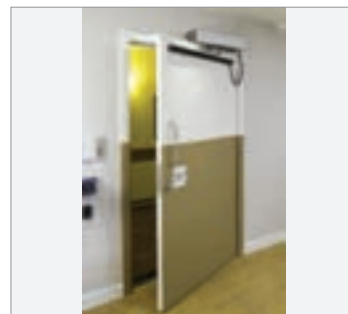
Relcross open more doors

The Leonard Cheshire home at Greenacres in Sutton Coldfield has just installed their 20th Relcross REL 1000 automatic door operator. The door closers have all been installed over a number of years by Rowsman Ltd and supplied by Relcross via BM Architectural Ironmongers.

The 1000 series is an electrically powered low-energy swing door operator. It provides easy access for people with disabilities, the elderly or the frail and is designed for doors where automated opening is available by default for all users. Opening and closing speeds are adjustable and the microprocessor controller ensures reliability.

The latest installation is for a resident's room and is operated by a wheelchair mounted proximity sensor or wall mounted push buttons. There is also a key override. The REL 1000 operator is wired to the home's fire alarm system and automatically closes the door after a timed delay in the event of an alarm. This state-of-the-art system is suitable for medium to low traffic interior and exterior doors. Standard features include a switchable "push and go" facility for automation without additional activation devices.

01380 729600 www.relcross.co.uk



enq.192

Opening the door to a bygone era at Fortnum & Mason

Boon Edam was delighted to be chosen as the main supplier for the bespoke entrance to the new 'bygone era' style restaurant at Fortnum & Mason based in London.

Due to its old fashioned glamour and vintage beauty, the designers of this new restaurant wanted to create a lasting impression right from the start by incorporating an authentic looking entrance to this chic new eatery.

As experts in the field of entrance design, Boon Edam were chosen by the restaurant designers to design, manufacture and install a traditional-style entry way which would also be fitting for the modern world. The bespoke revolving door was entirely hand made out of timber with a power assisted drive and an additional collapsible door set added to allow for the passing of bulky items and larger items of luggage.

This prestigious door design was chosen by the designer for many reasons. Due to its prominent position in Piccadilly, London, the architects

were tasked with creating a statement entrance piece which would also ooze a quintessential look and feel which would, in turn, blend in with the overall quintessentially English theme of the department store.

As a world leader in entry design, the client opted to work with Boon Edam Ltd whose reputation is synonymous with reliability and quality.

Having initially discussed their needs and expectations and by providing examples of previous timber based revolving doors, Boon Edam were able to easily supply the client with a design they were after.

Putting the client at the forefront of this project, Boon Edam ensured that all communication was thorough throughout the entire design and manufacture stages of this project and that clear communication was continued right through to completion.

David Healy, area project manager at Boon Edam Ltd said "From start to finish, liaising closely



with the client and the architect, the Fortnum & Mason bespoke revolving door progressed efficiently throughout the design, manufacture and installation process. In my view, the uniqueness of this door comes down to it being manufactured from Oak in order to compliment the look of the new restaurant and to help retain its functionality required in its day-to-day use".

01233 505 900 www.boonedam.co.uk

enq.193

Nordan Windows for Girls College on Skye



The £2.5 million "IaIn Noble Centre" was officially opened in October, at the Sabhal Mor Ostaig Gaelic College on Skye, with windows supplied by NorDan UK Ltd. "NorDan's aluminium clad timber windows are our windows of choice, and especially for extremely exposed locations such as

this education facility on Skye," says Alan Dickson of Rural Design Architects. He continues, "NorDan's range of Scandinavian windows can cope with storms, wind and rain and the aluminium cladding ensures the minimum requirement for maintenance making them ideal for a project like this one. Their back up service, when it's rarely required, is second to none."

01452 883131 www.nordan.co.uk

enq.194

VBH Stocks Maco Multi-Matic Tilt & Turn



Hardware specialist VBH now stocks Multi-Matic, the latest tilt and turn system from Maco. Multi-Matic is available in both surface fit and 'Invisible' concealed hinge versions, and in standard and PAS24 security configurations. PAS24 kits

feature IS (Intelligent Security) mushroom roller cams, which are adjustable for compression and height. The revolving action of the cam means that operation is very smooth even on security windows that include many locking points. Features include Klix-fix clips that hold the hardware into the Eurogroove prior to fixing and a 'crop & punch' connection system where cutting to size is required. Multi-Matic features in VBH's Maco Tilt & Turn Hardware Systems catalogue

01634 263300 www.vbhgb.com

enq.195



Bespoke glazing solutions in timber aluminium & composite

Kloeber's advanced glazing solutions are available in bespoke or set sizes, with exceptional insulating values, multi-point locking and low maintenance finishes. View our website for further details of our extensive product range with solutions for all self builders and home improvers.

- folding sliding doors
- sliding doors
- french doors
- single doors
- windows
- shaped glazed screens
- entrance doors
- roof lights



Kloeber's timber bifold doors and FunkyFront entrance doors are Secured by Design.

Visit our showrooms in London, Cambridgeshire and Buckinghamshire, see website for details

01487 740044 info@kloeber.co.uk www.kloeber.co.uk

enq.196

A fresh appearance for Jan Palfijn Hospital

The Jan Palfijn Hospital in Ghent went through a thorough transformation. The hospital was stripped down to its concrete structure and subsequently rebuilt with an entirely new layout and altered view. The Temporary Association Boeckx-Arch&Teco-Bontinck signed the master plan and coordinated this tremendous project. The architects not only dedicated a lot of attention to the building's appearance, they also focused on guaranteeing a healthy indoor climate. RENSON®'s brise soleil with aluminium blades and windproof screens grant precise control over the incoming sunlight, preventing overheating.



The Jan Palfijn Hospital received a brand new facade. The only part of it that was preserved was the base, which is constructed out of Belgian blue limestone. The contractor stripped the building down to the concrete structure and applied a new layer of insulation. This included a watertight foil and white facade cladding made from painted aluminium cassettes, bringing a sense of unity to the different blocks with its flowing lines.

Efficient sun protection

All existing windows were replaced with new systems that feature thermally broken window profiles and suitable glazing. To limit the incoming solar heat in the rooms, the construction profiles opted for RENSON®'s louvers with aluminium blades type Icarus. Because these louvers are affixed above the windows, they do not disturb the outside view. Additionally, these systems provide a good source of shade when the sun is high during summer months. In winter months – when the sun is low – they allow the permeation of pleasant solar warmth, limiting energy use by heating systems.



These louvers and protruding sills surround the entire building and accentuate the horizontal line of the facade concept.

Other locations in the building were equipped with windproof screens such as the Fixscreen Mono AK or the Fixvent Mono AK. These combine a window ventilator that guarantees a constant supply of fresh air with a windproof fabric sun protection. Both systems are equipped with a state of the art guidance system with zipper principle, allowing it to withstand wind speeds up to 130 km/h.

01622 754 123 www.rensonuk.net

enq.197



Brio's quick on the draw with new lock

Brio, a leading door hardware manufacturer, has launched a new lock option for its exterior folding Weatherfold 4s system. Brio's new 286 Dual Point Lock is suitable for Brio's robust exterior folding system Weatherfold 4s system with timber or aluminium panels. It is also suitable for single hinge panels and French doors. David Newton, head of Brio UK says: "The 286 Dual Point Lock has been developed as an optional alternative to using flush bolts on panels. Aesthetically it's pleasing on the eye, as well as being easier to operate, as there is no bending down or reaching up to lock or unlock the door which is the downside of flush bolts. This makes it very friendly with regards to disabled access." In common with other Brio products apart from looking stylish, these systems are built to last. Brio offers an unbeatable 10-year warranty on all Weatherfold 4s hardware.

0191 229 1224 www.briouk.com

enq.198

Close The Door retail campaign sponsor



The Close The Door campaign has named GEZE UK, which manufactures door and window control systems, as the exclusive sponsor representing the automatic door industry. The nationwide campaign aims to persuade retailers to save energy and create a better environment for staff and shoppers by reversing their open door policies. GEZE is the only door control company to support the campaign, which was launched following a winter walk by founder Jeannie Dawkins, who became concerned after seeing how hot air from the open shop doorways was melting the ice on the street. To date more than 500 shops have signed up to the campaign from major high street names.

01543 443000 www.geze.co.uk

enq.199

Enhanced choice of panels for range of doors



Customers of Schueco UK can now choose products from leading German door panel specialist, Adeco, a longtime supplier to Schueco customers in other European countries. This option will give UK clients a greatly improved choice of stylish, high-end design options for Schueco entrance doors. Constructed from the highest quality aluminium, Adeco's comprehensive product portfolio includes modern, contemporary designs as well as more traditional styles, meaning that they can supply an infill door panel to bring visual distinction to any type of property. Schueco doors fitted with Adeco panels take all standard Schueco fittings including handles, hinges and locks.

01908 282111 www.schueco.co.uk

enq.200

Synseal Group supports BBC DIY SOS



Synseal group companies Masterdor Ltd and Sheerframe Ltd have helped Nick Knowles and the BBC *DIY SOS* team to transform properties in Manchester and create high quality homes suitable for British war veterans and local community residents. Masterdor Ltd was delighted to supply 15 composite residential doors with Sheerframe outer frames on the project and supplier partners Select Engineering Asia, UAP Hardware and Distinction Doors also contributed associated door components free of charge. Sheerframe Ltd provided PVC-U extrusions for energy-efficient windows in the 66 homes.

01623 443200 www.synseal.com

enq.201

Architectural glass for executive homes



One of the UK's leading specialist suppliers of architectural glass elements and associated fittings, D R Services works with a wide range of clients and advises on the most appropriate products to achieve practical and elegant solutions for both domestic and commercial projects. Doors supplied by D R

Services in 10mm black frosted glass, and fitted with a bold chrome handle, provide a sleek and reflective entrance to a steam room and shower. Striking low-iron glass screens framed in mirror polished 316 stainless steel were also supplied to separate a gym and pool area from an entertainment room. The screens incorporate a full height 2.5m sliding door, while the low-iron glass provides very high light transmission and is practically colourless.

enq.202



Hot stuff from Garador

Garador's newly launched FrontGuard Plus range of entrance doors is an exciting new solution for modern builds. Along with eye-catching looks, the FrontGuard Plus range is all about outstanding thermal performance and substantial energy saving. Garador's FrontGuard Plus doors are available in Modern and Contemporary ranges, both designed to complement more progressive and forward thinking building projects. Each FrontGuard Plus door features durable, water-proof rubber seals on all four sides. The door leaf is filled with 65mm thick high-density polyurethane foam, providing fantastic thermal efficiency with overall U-Values down to 0.81 W/m²k. The door is constructed around a sturdy aluminium frame, which has a thermal break and insulating polyurethane foam built into the frame to further minimise heat loss and eliminate thermal bridges. All FrontGuard Plus doors are available in a choice of colours and wood effect finishes. To find out more about Garador's FrontGuard Plus Doors together with its full range of garage doors, call or visit the company website.

01935 443709 www.garador.co.uk

enq.203

rci SHOW 2016
sponsored by **Jabite**
ROOFING CLADDING & INSULATION

THE ROUTE TO YOUR SUCCESS

REGISTER FOR YOUR FREE TICKETS TO THE UK'S ONLY DEDICATED ROOFING, CLADDING AND INSULATION EXHIBITION: WWW.RCISHOW.CO.UK

FREE LUNCH COURTESY OF

FREE ENTRY

FREE PARKING

FREE COFFEE/BACON ROLL

RIBA APPROVED CPD'S

LATEST PRODUCTS

INCREASE YOUR PROFITS

INTERACTIVE DEMO ZONE

LIVE DEBATES

CITB DROP-IN CLINIC

OVER 130 EXHIBITORS

PROUD PARTNERS SIG ROOFING
Sandtoft / Wienerberger

enq.204

Guardian Glass UK driving energy efficiency



Guardian Industries' Glass Group has invested more than £4 million to develop and implement a customised Waste Heat Recovery System (WHRS) at its Goole glass manufacturing plant. The company embarked on the WHRS project at the start of this year at the East Yorkshire plant. The new system will provide

half the electrical energy needed to operate Guardian's full float line, which in turn will reduce its dependency on the grid and effectively reduce its CO₂ emissions by some 6,000 tons per year. In terms of environmental impact, that's the equivalent of taking nearly 2,200 cars off the road.

specifications@guardian.com www.guardianglass.co.uk

enq.205

Cembrit's B5 – traditional yet contemporary



Cembrit's B5 corrugated sheeting has been chosen as part of a unique design project to transform an old builder's yard in East Dulwich into a contemporary family home. The Yard is an innovative property which has been designed to the Passivhaus standard. The home uses B5 corrugated sheet as its

outer skin. Traditionally used in non-residential applications, B5 is making inroads in the residential environment as fashions in architecture change. Fibre cement has several advantages over metal sheeting, such as it being rust resistant and not noisy in the rain. Cembrit B5 provided a perfectly scaled corrugated sheet for the roof and walls of The Yard, displaying a more modern and deeper profile than the typical 3 inch profile corrugated sheeting.

enq.206

Rooflight remains a stunning feature ten years on



This eloquent penthouse suite is situated amongst the white stucco Georgian houses of Knightsbridge, London. Part of the design brief was to provide an open air dining space from within the confines of the building, with the option to close this off and make the room beneath completely weather tight. Maintaining high levels of natural daylight was also an important factor, so the clients turned to architectural rooflight specialists **Glazing Vision** to come up with a solution. As the layout of the flat roof above also featured a substantial length of fixed glazing to be installed very close to the proposed location of the rooflight, options were limited in terms of available space in which to safely install the product. Glazing Vision have a wealth of experience with this type of project and recommended a bespoke design; this allowed a 100 per cent clear opening by retracting two glass sections independently in a sliding stacking arrangement. Originally installed in 2004, the positive impact this rooflight has on the building becomes apparent as soon as you see it. Over 10 years later, open or closed, this bespoke rooflight continues to provide a stunning focal point to complement the lavish project. To find out more about design considerations for your project, please contact Glazing Vision or visit the company's website.

01379 353 741 www.glazingvision.co.uk/contact/request-cpd/

enq.207

Queen Mary University Library collecting solar energy

The library roof at the Queen Mary University of London (QMUL) had surpassed its natural life expectancy and been experiencing considerable water ingress, requiring urgent remedial work to prevent disruption to students. In order to determine the most appropriate remedial solution the 2,000m² roof area was surveyed by flat roof specialists **Bauder**, who proposed stripping the existing roof covering down to the structural metal deck and replacing it with a high quality and long lasting bituminous system. The client also decided to use this opportunity to make a positive and visible contribution to the university's carbon reduction programme through the addition of energy producing solar panels. The main library roof and three connecting tank rooms were all waterproofed with Bauder's premium bituminous system, BTRS, which is capable of withstanding permanently sited loads of up to 2000Kg/m² and has a life expectancy in excess of 40 years. The system build-up included a highly efficient 120mm PIR FA-TE insulation for superior thermal performance, achieving the required 0.18 U-value. Tapered insulation was also used around the perimeter of one of the tank room roofs to effectively provide drainage falls without having to incorporate them into the structure.

01473 257671 www.bauder.co.uk



enq.208

Cosmetic surgery for Northwick Park Hospital car park



An extensive expansion and upgrade programme at Northwick Park Hospital in Harrow, Middlesex to provide improved facilities for patients also includes new car parking facilities, which is using 28 Forma aluminium column casings to conceal structural steelwork.

Operated by London North West Healthcare NHS Trust, patients at Northwick Park are benefitting from wide ranging improvements including new operating theatres and vascular surgery imaging together with a new £21million A&E department, which replaces the existing facilities at Central Middlesex Hospital.

As part of the overall upgrading and expansion plans, the hospital's car park has also undergone a 'facelift', with better car parking and greater capacity along with improved lighting and access. An integral aspect of the improvements has been to conceal the car park's structural columns with Forma column casings, which were supplied and installed by **Encasement**.

The square and rectangular Forma column casings measure from 500mm x 500mm up to 500mm x 820mm and stand 4600mm high. Even though aluminium is weather resistant, each casing has a grey BS18B25 PPC coating to provide additional protection while creating a more aesthetic finish.

enq.209

ICYNENE

THE EVOLUTION OF INSULATION

tel: 01229716039
mob: 07851854860
info@uksprayfoam.co.uk
www.uksprayfoam.co.uk

THE FIRST NAME IN SPRAY FOAM INSULATION



The Icynene Insulation System is a series of soft, flexible spray foam insulation products that delivers up to 50% greater energy savings when compared to other insulation products. Icynene is perfect for loft insulation, cavity wall insulation, drylining insulation, sound insulation and more.

Icynene has been successfully tested and certified for applications directly to the underside of breathable and non breathable roof membranes and felts and recently received BBA certification for this application. Icynene absorbs the lowest amount of moisture and has the highest level of vapour resistivity of any soft foam on the market.



enq.210



Fine acoustic surfaces,
supplied and fitted.

Project: Winchester College Music Building

Architects: BHM

Products: RPG Absorbor suspended ceiling panels (shown); FlutterFree acoustic timber to foyer ceiling; bespoke curved canopies; 1600mm diameter acoustic discs & RPG Harmonix diffusers in FRG (shown on wall).

Call: 01303 230944 www.rpgemurope.com

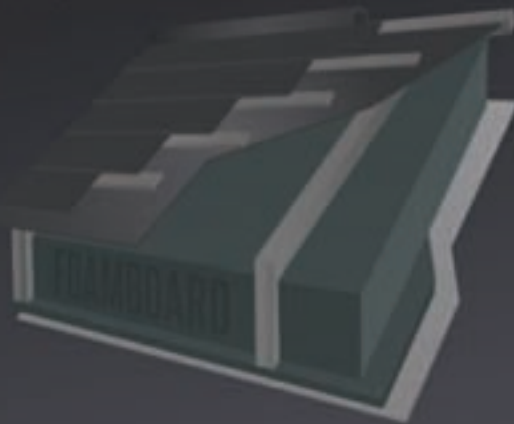


RPG Europe is a trading name of Acoustic GRG Products Ltd.

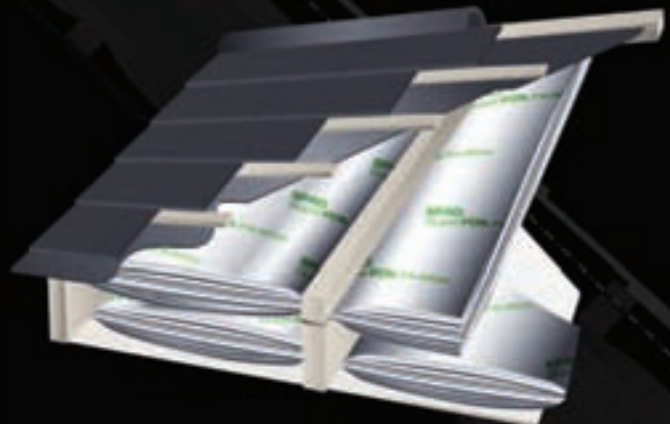
enq.211

SuperFOIL Insulation

The Past



The Future



WHICH WILL YOU CHOOSE?

SuperFOIL SF40

01636 639 800

www.superfoil.co.uk

Boiler Developments Ltd, SuperFOIL BHF, Main Street, Norwich, Newmarket, Suffolk, NG23 8UH

enq.212

Reducing the cost of home heating






The Simple Biomass Heating Solution
From

ECO STOVE™
wraps your fireplace in warmth

- Heat through the home with 7-10kg of wood logs.
- No Ducting Plumbing or Electrics required.
- Retains heat for up to 12 hours after the fire has gone out.
- Payback on cost of stove can be as little as 4 years in fuel savings.

01527 857814
www.eccostove.com sales@eccostove.com

enq.213

Kingspan OPTIM-R on flagship care complex

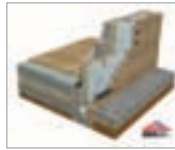


The Kingspan OPTIM-R Balcony & Terrace System is helping to keep outdoor areas accessible and rooms below warm at a new sheltered housing development in Salford. In order to allow easy access to three outdoor roof balconies, DK-Architects specified the Kingspan OPTIM-R Balcony & Terrace System. The Kingspan OPTIM-R panel's sealed microporous vacuum core allows them to achieve an aged thermal conductivity of just 0.007 W/m.K, up to five times better than other commonly available insulation products. Two layers of 30 mm thick Kingspan OPTIM-R was laid on the balcony along with Kingspan OPTIM-R flex infill strips of a matching thickness.

01544 387 384 www.kingspaninsulation.co.uk/optim-r

enq.214

Recticel's Eurowall+ secures BBA certification



Compact cavity wall insulation from Recticel Insulation which achieves a U-value of 0.18 W/m²K in new-build constructions has won BBA approval. The accreditation (02/3908) is for Recticel's premium PIR Eurowall+ product which was launched in the spring to help architects and specifiers meet current Building

Regulations without them having to amending existing designs. A U-value of 0.18 W/m²K can be achieved using 90mm Eurowall+ within a 100mm cavity, meeting the requirements of Part L1A England 2013 and Part L1A Wales 2014, meaning that existing designs can be retained to avoid reducing room sizes which could make the properties less attractive to prospective buyers.

01782 590 407 www.recticelinsulation.co.uk

enq.215

ELECTRIC BOILERS COMPANY

660mm



Depth 300mm

Elektra - BP
Instant combi + cylinder

- Gives heating and instantaneous hot water 13lt/min at 65°
- Fully double insulated
- Eco & comfort mode

London's First Electric Combi Boiler

The Electric Boilers Company, Priory House, Marsh Road, Alpertons Lane, Wembley HA9 1ES
Tel: 0208 898 2024 Contact us: info@electricboilerscompany.com

400mm



Depth 300mm

Elektra - C
Instant combi boiler

- Gives heating & instantaneous hot water 8lt/min at 40-50°c
- Fully insulated

400mm



Depth 300mm

Elektra - N
System boiler

- All components built in
- Fully insulated

- ✗ CARBON MONOXIDE
- ✗ FLUE
- ✗ CONDENSATE
- ✗ SERVICING
- ✗ GAS SAFE CERTIFICATE

Visit our showroom in Wembley for free tutorials and free training

Follow us @electric_boiler

For more information please visit our website www.electricboilerscompany.com

enq.216

Energy efficient cooling for students



Underfloor systems utilise the plenum beneath a raised floor as the ventilation zone removing the need for most, if not all, ceiling based ducting or pipework. Commonly found in office environments, there has recently been an increase in use in academic facilities, such as the recently installed system at the Silberrad Centre at the University of Essex, by **AET Flexible Space**. With AET Flexible Space systems, fully conditioned air is fed into the plenum by zonal downflow units (CAM), which is then introduced into the space via floor recessed fan terminal units or Fantiles, which are easily relocated with the 600 x 600 mm raised floor tiles and also feature integrated controllers allowing users to personally adjust temperature and fan speed settings.

01342 310400 www.flexiblespace.com

enq.217

Tropical South East Asia recreated in Cheshire



Included in Chester Zoo's new £40 million Islands project at 60,000m² is the Monsoon Forest. The 31,050m³ house is the largest indoor zoo exhibit in the UK. In line with the zoo's aim of enabling visitors, vegetation and animals to be immersed in habitats as close as possible to nature, British air movement specialist **Gilberts of Blackpool** was commissioned to devise a solution to ventilate the exhibit interior. Gilberts engineered a system whereby 400mm diameter aluminium jet nozzle diffusers have been mounted in galvanised plenum boxes in turn connected to underfloor BMS ductwork. Each nozzle can be independently angled, to gently stir the air upwards towards the roof, which is itself high enough to allow a free-flight aviary.

01253 766911 info@gilbertsblackpool.com

enq.218

Flexseal flanges are going to the zoo

Puddle flanges from one of the UK's leading coupling manufacturer, **Flexseal**, have played their part in the engineering solution in the expansion of world-class attraction, Islands at Chester Zoo. Crown House Technologies Limited, the services arm of the project's contractor Laing O'Rourke, first specified the puddle flanges within the ventilation system for the Indonesian jungle house – the centrepiece of the project, Monsoon Forest. They were so impressed that they further specified the same product within the water system of the new animal pools. Crown House Technologies Limited were commissioned to construct a complex technical package across the new area, including irrigation pipework, venting ducts, borehole water supply and treated water piping. The ventilation system consists of a 2.5m x 2m concrete duct which encircles the building. Large spigots act as chimneys and extend from the main duct into outlets in the animal enclosures. The air is extracted through vertical concrete shafts, treated in a plant room and recirculated. Each spigot consists of a single piece, especially constructed by external mains specialists Sant's Fabrications to direct the air flow correctly. They are then installed into a pre-fabricated hole in the concrete duct and encased in concrete.

01226 340888 www.flexseal.co.uk



enq.219



Zehnder Terraline – Discreet and Stylish

Zehnder Terraline trench heaters provide an ideal heating solution for modern building premises, large reception areas or meeting rooms. These in-built floor radiators, offer a responsive and aesthetically pleasing option when positioned in front of floor to ceiling windows and glass fronted buildings.

Available in a wide range of lengths, shapes and grille finishes to accommodate all building designs, Zehnder Terraline can also be used in conjunction with other heating systems.

Access and download the Zehnder Terraline Technical Planning document at:
www.zehnder.co.uk

T: 01276 605 800

E: enquiries@zehnder.co.uk

always
around you

zehnder

enq.220



A new solution to an age old problem



Save time, water, energy, soap, space and money with Alavo – the new name for Dolphin Dispensers' successful behind mirror modular system.

Our radical new modular system, is the perfect blend of style and substance and is the complete solution where projects require excellent BREEAM, LEED or SKA ratings.

For architects, contractors, cleaning and facilities teams, Alavo's plug and play design minimises time spent designing, installing and servicing the washroom area.

For washroom users Alavo features fully integrated infrared sensor taps and foam soap systems, and high speed low energy hand dryers so that they can wash, soap and dry in one position using the latest technology.

Alavo – the complete washroom system

Specifications:

- Elegant and clean design, fits into any project
- Easy access for janitorial duties, with hydraulic lifting panels
- Sensor activated taps, soap and hand dryers
- Multi-feed system, LED lighting. 'Plug and Play'

ALAVO
mirror system

More details about Alavo see:
www.dolphinalavo.com

washrooms worth experiencing



Dolphin Dispensers
Southpoint, Compass Park, Bodiam,
Robertsbridge TN32 5BS
t: 01424 20 22 24
f: 01424 20 52 00
e: info@dolphindispensers.co.uk
www.dolphindispensers.co.uk

enq.221

Johnson and Starley's Quantec boiler range



With some 2.5 million households in the UK not connected to mains gas and many using liquid petroleum gas (LPG) to heat their homes, **Johnson & Starley** has introduced the Quantec 28kW LPG combination condensing boiler. It offers exceptional efficiency in LPG consumption with its integral Passive Flue Gas Heat Recovery (PFGHR) function, which enables the production of domestic hot water to condense as

well as the heating with savings up to 26 per cent. All this in a case the size of a standard combi boiler. In addition to permanent housing, this new Quantec boiler is ideal for use by off-grid owners of holiday homes and residential park accommodation as well as owners of smaller commercial premises.

01604 762 881 www.johnsonandstarley.co.uk

enq.222

New Airbloc ACV air curtains add style



HVAC specialist **Nortek Global HVAC** has introduced a new range of air curtains for applications where the aesthetic appearance of the system is particularly important to the end user and/or space above the door is limited. The Airbloc ACV Series minimises heat loss through open doors and is designed for use in exclusive shops, headquarters office buildings, hotel lobbies, golf clubs, conference centres and large glass-fronted structures. The three models in the range have a heating capacity of 16.2kW to 34.6kW and deliver a

powerful airflow (up to 5,100m³/hour), yet are quiet to operate. They are suitable for mounting vertically either side of the door opening, where the doors are a maximum height of 2,000mm, 2,500mm or 3,000mm.

enq.223

Handcrafted Heavy-Duty Fireclay Sinks

AVAILABLE FROM STOCK

Shaws of Darwen have been manufacturing robust fireclay commercial sinks for over 100 years. The extensive ranges and sizes of laboratory, shelf, cleaner's and traditional Belfast sinks suit every requirement.



BELFAST SINKS



CLEANER'S SINKS



LABORATORY SINKS



SHELF SINKS

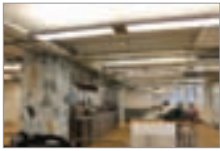
View our full range of quality sinks at www.shawsofdarwen.com
or call 01254 775111 to confirm your commercial sink order.



Shaws of Darwen, Waterside, Darwen, Lancashire B83 3NX
Tel: 01254 775111 Fax: 01254 873462
www.shawsofdarwen.com

enq.224

Iconic Heal's building kitted out



The Heal's Building on London's Tottenham Court Road has long been a home of innovation and high quality design. This creative spirit lives on in the newly refurbished building, with a cutting edge heating and cooling system from Panasonic that provides a comfortable environment for the staff of

companies such as Netflix and Deliveroo. Panasonic heat recovery and heat pump condensing units lead the market in their ease of installation and maintenance, which were key factors on this project as the units were to be installed on the roof of the building where space was limited. The ECOi VRF system also puts energy efficiency at the forefront, operating with a COP 4.63 while able to offer heating and cooling simultaneously at high performance.

enq.225

Introducing BAL Micromax2: Anthracite



BAL, a market-leader in tiling solutions, has introduced a new Anthracite shade to extend its Micromax2 range of super-fine, flexible wall and floor grouts. The new Anthracite shade is available in 2.5kg, 5kg and 10kg bags and is also supported with the launch of a colour matched silicone sealant. BAL Micromax2 was developed with fixers and contractors across the country to create the ultimate grout for tiling; a grout that

meets every demand of a tiler and their customers. BAL Micromax2 comes with built-in Microban® protection to stop the growth of bacteria and unsightly black mould, to further ensure that perfect results last the lifetime of your tiles.

01782 591100 www.bal-adhesives.com/home/bal-grouts

enq.226

www.apolloradiators.co.uk



monza aluminium column radiator

Ideal for low temperature renewable systems
Ideal for high pressure systems
The latest patented european technology
A unique aluminium radiator design
Half the weight of steel
82 vertical and horizontal sizes
Delivered within 3 working days

enq.227



The preferred choice



Premier Loft Ladders are the preferred choice of architects and building industry professionals throughout the UK, and their range of COLUMBUS Treppen stairways leads the way in engineering quality, design, technology and energy efficiency, making Premier the foremost supplier of concertina style aluminium and folding or sliding style wooden loft and access ladders. Our stairways have a wide range of options including flat roof access, fire resistant trapdoors, electrical operation (concertina stairway) and vertical access.

BIM modelling for the Supreme stairway and the Elite stairway is live on Bimstore.

bimstore.co.uk

Contact us on:
0845 9000 195
01394 214413

E: sales@premierloftladders.com
W: www.premierloftladders.com





Key reasons to choose PELL:

- Outstanding quality & value
- Preferred choice of architects and building industry professionals
- COLUMBUS Treppen - UK Main Dealer
- Technical & design advice
- Electrical operation
- Commercial & domestic applications
- Fire resistant trapdoors
- Vertical access
- Flat roof access



enq.228

Lightweight STAINLESS STEEL DRAINAGE *for* *hotels & Leisure*



Aspen stainless steel drain channels, covers, outlets and gullies are;

- British engineered
- Installed throughout the UK & abroad
- Sealed with a lifetime guarantee

Buy online with full technical product data available or contact Aspen directly; aspen@canalengineering.co.uk



By Canal Engineering Limited
+44 (0)115 986 6321
www.aspen.gb.com

enq.229



Mapei UK helps shopping centre refurbishment

A complete system of Mapei products has been installed in the Monaghan Shopping Centre, North East of Ireland. Mapei's Ultraplan Renovation Screed, Epojet, Eporip, Planicrete, Topcem, Eco Prim T, Primer G, Keraquick, Latex Plus, Mapetex, Ultracolor Plus and Mapesil AC provided a series of systems to prepare the substrate, refurbish the existing floor and install Pamesa Ikam ADZ tiles. Mapei was asked to provide a system of products for the refurbishment of the shopping centre due to movement in the substrate resulting in cracking and de-bonding of the existing porcelain tiles. The products included three main systems of Mapei products being used to repair the substrate and install new tiling on the 1,400m² of retail and leisure space. The first system specified was to replace areas of screed. This system of repair included Epojet, Eporip, Planicrete and Topcem. Cracks in the existing screed were repaired using Eporip and Epojet. The second system installed was used to smooth the total area to a tolerance of SR1 for the installation of large format porcelain tiles. The third system was used to complete the installation of the Pamesa Ikam ADZ tiles.

0121 508 6970 www.mapei.co.uk

enq.230



Pioneers of anti-slip stair-nosings



A premium quality, bespoke manufacturer of internal and external stair nosings and inserts, which have been environmentally and economically designed to meet all expectations



Aluminium profiles filled with Carborundum to provide an extremely tough tread with anti-slip properties second to none in all conditions.



Safetytread are experts in solving tricky and unique issues, leaving you with a safer environment.

altread

glotread

intread

definer

alite



Contact Safety Tread today on **01202 625596** or visit **www.safety-tread.co.uk**

enq.231

A revolution in office seating set to advance workplace wellbeing

Mark Barrell, design director at The Boss Design Group, advises architects and specifiers of a pioneering breakthrough that is creating a revolution in office seating and is set to advance wellbeing in the workplace



'Employee wellbeing is now a key consideration when specifying office and contract furniture'

Office and contract furniture form a fundamental part of workplace design, and task seating is a crucial part of the specification process. Just as the workplace trend for informal, collaborative and soft-seating furniture continues, the partnership between the desk and task chair remains steadfast. As long as technology ties us to a keyboard and screen, the task chair remains a staple of the office environment. They not only support employee performance, they are vital to our health and wellbeing, as quite simply; when we feel well, we work well.

Given that employees are the engines that keep companies growing, adapting, improving and innovating, employee wellbeing is now a key consideration when specifying office and contract furniture. Professional training, regular workstation assessments and the ready availability of occupational health consultations are now all established services throughout most big businesses, and this approach is underpinned by a more thorough and inclusive furniture procurement strategy.

Over the years, it has been broadly acknowledged that specifying more sophisticated task chairs with a greater number of manual adjustments will improve the ergonomic quality of the workplace and support the wellbeing of employees. To this end, office chair manufacturers throughout Europe have spent the last thirty years developing task chairs of greater complexity and increased ranges of adjustability in an attempt to provide a better fit for a larger percentage of users.

However, figures published by the Health and Safety Executive (HSE) – comparing the years 2001/02 and 2013/14 – show that, whilst the adjustability of office task chairs and the associated training have consistently improved over the last twenty years, the number of employees suffering from back, neck and shoulder complaints caused by sitting and postural-related issues has continued to rise.

In an effort to understand these issues and with user-fit in mind, research has been carried out that focused mainly on the backrest and armrests of the chair – as these are two critical elements determining user fit. The research concluded that 79 per cent of the people observed are not getting adequate support from the backrest of their chair because of poor posture, and over 90 per cent keep their backrest in a locked position, which prevents the dynamic movement necessary for the wellbeing of the spine. It was also discovered that 89 per cent of people do not use the armrests of their chair in the recommended manner.

From an anthropometric perspective, good quality task chairs from credible manufacturers, which come laden with manual adjustments, can confidently claim to accommodate or fit over 95 per cent of the population. However, no matter how sophisticated office chairs become, no matter how many manual adjustments a chair provides, and no matter how great a dimensional range these adjustments achieve, it appears that they are simply doing little to improve the way that people sit.

Continued overleaf...



A task chair will only 'fit' correctly if users have the necessary knowledge on how to adjust it, and if they make the effort to set it up correctly.

Therefore, the gauntlet was laid down to design a chair that would 'follow the person', given that the person 'won't follow the chair'. This challenge led to the birth of a new generation of flexible task chairs that present an engineering and visual triumph and offer a perfect harmony of simplicity, quality, comfort and ease of use. These chairs provide dynamic support through fluid movement, and more importantly, they do not require user adjustment, multiple components, complex assembly or even training. Also, they have the potential for employers to make substantial savings in time and money by reducing the burden of both training and absenteeism due to back and neck strain.

Essentially, they use the natural flexibility of a single ribbon of material and combine a pivot point and flexible polymer shell to mimic a traditional 2:1 synchronised mechanism. This helps deliver improved levels of support, without the need for user adjustment, and makes them visually unique with an incredibly slim and refined shape that complements the human form.

As well as being suitable for workstations, the chair's unique and eye-catching design also lends itself to meeting and touchdown areas too. At last, there is now a task chair that may be specified throughout multiple areas of the office and which is more relevant to today's flexible working environments. With improved ergonomics and support, and with no complex assembly and training costs, this revolution in office seating looks set to truly advance wellbeing for all.

enq.232



Simply Beautiful...

Glass Writing Boards from Casca

Call us on
0845 519 4995



enq.233

Lyndon Design extends Albany collection



Lyndon Design – a leading manufacturer of upholstered handcrafted seating and furniture for commercial interiors – has introduced a new dining chair to its popular Albany collection. Albany is already a popular choice with interior designers and specifiers looking for a versatile seating and furniture solution, without sacrificing comfort and aesthetics. This latest addition helps further ease the specification process by successfully

satisfying the requirements of diverse interior specifications with one single collection. Measuring 620 x 620 x 850mm with a seat height of 470mm, the Albany dining chair is available in European Oak as standard, but may also be specified in walnut or beech if required.

enq.234

Ceiling for University of Strathclyde



Hunter Douglas's reputation for undertaking major projects in showstopping buildings was further consolidated when it was commissioned to create a ceiling for an £89 million state-of-the-art technology and research centre at the University of Strathclyde.

Hunter Douglas supplied 836m² of solid wood grill ceiling in 3-130-20-98 module. Made from American White Oak, it was treated in Hunter Douglas's Magma Firestop treatment to meet European Fireclass B-S2-D0 and the stringent Scottish fire regulations. The main challenge was the integration of lights and mechanical services into the ceiling system. It was designed so that lights and services disappeared behind the slatted ceiling.

01604 766251 www.hunterdouglas.co.uk

enq.236

All eyes on Expona flooring at Vision Express



Luxury vinyl tiles from **Polyflor's** hardwearing and design-led Expona range were chosen by high street opticians Vision Express to create a fresh and contemporary look for its new store in Hertfordshire.

Two designs from the Expona Commercial PUR collection were chosen. A mix of wood and stone effect designs were used on the shop floor, with a large square of the Warm Grey Concrete design placed in the middle of the room, surrounded with the Grey Limed Oak wood effect shade. This grey oak design was also fitted throughout the eye testing suites at the back of the store. Ian Thomas, store development manager at Vision Express said: "We're delighted with the modern and stylish look that's been achieved."

0161 767 1111 www.polyflor.com

enq.235

Polyflor gives rugby club a winning new look



High design and hard-wearing vinyl flooring from UK manufacturer **Polyflor** was used to create a brand new bar area for fans to socialise in at the home of Cardiff Blues rugby club, Cardiff Arms Park. A mix of wood and stone effect designs from the Forest fx PUR sheet vinyl flooring collection and Expona Design PUR luxury vinyl tile range

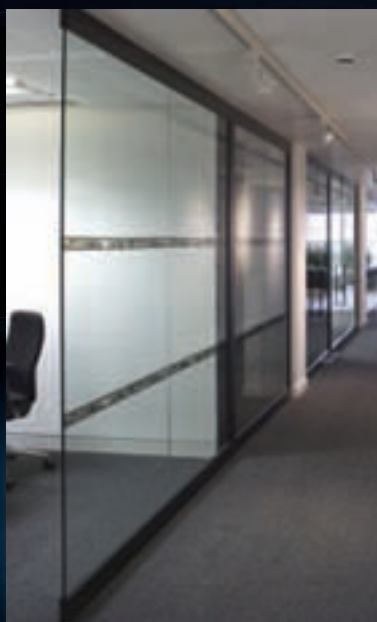
were both used in this updated cafe bar area at the stadium. Forest fx flooring in Rustic Oak and Expona Design tiles in Atlantic Slate were selected to complement the traditional bar area and rugby union themed decor in the suite. The Forest fx sheet vinyl range is available in 14 authentic wood effect designs.

0161 767 1111 www.polyflor.com

enq.237



The UK's Total Glass solution



ESG Partitioning

Bespoke partition solutions

Available features:

- Acoustic Deadening
- Fire Resistance
- ESG Switchable™ LCD Privacy Glass
- Bespoke switchable logo options
- Full BSI approval

www.esg.glass

01376 520061

enq.238

Hospital gets dementia-friendly makeover



Polyflor's wood effect Forest fx PUR vinyl flooring was chosen by Croydon Health Services NHS Trust to create a welcoming dementia-friendly care zone in two reconfigured wards at Croydon University Hospital.

The mid-tone wood flooring design from the Forest fx collection was chosen to contrast appropriately with furniture and wall surfaces, creating a refreshed look that could contribute to less stress and agitation for patients on the ward. Jeff Moore, project manager at Croydon University Hospital said: "The flooring is a homely, easy to clean solution and the perfect complement to our bright dementia friendly care zone." Polyflor's Forest fx flooring contains recycled material and is 100 per cent recyclable via the Recofloor scheme.

0161 767 1111 www.polyflor.com

enq.239

New entrance matting's a hit with Harlequins

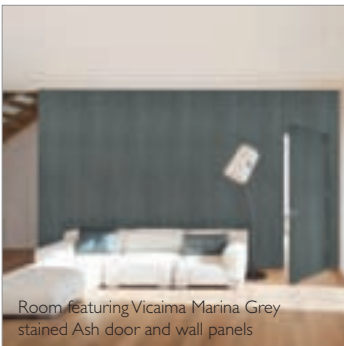


Visitors to the DHL Stand Reception of the Twickenham Stoop, the home of the Harlequins, has been given an exciting new entrance area makeover thanks to Diamond fibre-bonded carpet manufacturer Heckmondwike FB.

The club, which plays in the Aviva Premiership, was recommended Heckmondwike FB's entrance matting in order to reinforce its unique branding as soon as supporters and visitors enter the reception area. Heckmondwike FB incorporated Harlequin's branding into the robust Diamond range combined with the yellow and red logo of DHL, the club's Principal Partner. Diamond is a very popular entrance area solution, featuring a distinctive cobbled effect surface, is extremely hard-wearing and will not ravel or fray.

enq.240

Experience a new look in veneers with Vicaima Stained Doors



Room featuring Vicaima Marina Grey stained Ash door and wall panels

Real wood veneer, with its natural grain configuration is loved by all and adds beauty and sophistication to interiors the world over. Sometimes however, mother-nature needs a little help to stretch colour combinations and allow designers to explore new trends and original ideas for interior decor. Now with the new Vicaima stained veneer range all that and more is possible. Available in 6 new and contemporary shades, Vicaima Stained doors combine a high performance stain finish with a real crown cut Ash veneer base. The tonal spectrum in this latest range includes everything from Pastel Cream to Deep Brown offering plenty of choice and is supplied with a lacquered finish to complete the look. Vicaima is also able to supply matching frames, architraves, wall panels and even skirting for a coordinated apartment, hotel or commercial project should the scheme demand. Vicaima Stained are made on a to order basis and are available in a full range of performance options including; FD30 and FD 60 Fire rated, Security; including SBD entrance systems and acoustic solutions. Configuration possibilities make specification easy, with glazed options, pairs, over height dimensions, mobility widths and completely matching door and frame kits and sets, to ensure that individual requirements can be appropriately satisfied.

01793 532333 www.vicaima.com

enq.241

Sika donates colourful flooring system



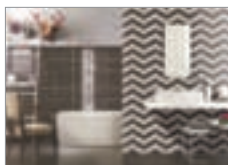
Sika has donated its ComfortFloor® Pro to provide a high-quality and attractive flooring system to support the treatment of children with disabilities at the new charity-funded Rainbow House facility in Lancashire. Consisting of a soft polyurethane resin combined with a rubber

crumb matting which gives added cushioning underfoot, ComfortFloor® Pro from Sika proved ideal for the children and staff at Rainbow House. The system's chemical composition and texture absorbs impact and offers the perfect surface for intensive therapy work taking place at the facility, while also providing a high degree of comfort for the children.

0800 112 3863 www.sikaflooring.co.uk

enq.243

Herringbone style tiles to top the tile trends



Solus Ceramics has launched a brand new and exclusive range of wall tiles that are set to be one of the top trends in the architectural and interior design industry for 2016. The company's new Geometry range feature stunning herringbone style patterns that open up endless design possibilities. The chevron shaped tiles fit together effort-

lessly and easily, allowing architects and designers to create an array of cutting edge and exciting creations, from dynamic and chic geometric stripes to scintillating zig zags. Available in an exquisite palette made up of seven core colours, from beiges, browns and greys, the range is available in both silk and satin finish.

0121 753 0777 www.solusceramics.com

enq.244



enq.242

Inclusive building design under the spotlight

By Kelvin Grimes, project manager for 'away from home' assisted accessible toilets at Clos-o-Mat

As a result of developments in the past couple of months alone, architects need to be even more aware of accessibility and inclusivity in their design of buildings to which the public have access, be it new build or refurbishments.

The House of Lords Select Committee on the Equality Act 2010 & Disability has just closed a call for evidence on gaps and adjustments needed in the legislation, and specifically itemised accessibility of buildings as part of the remit; that Committee report is due by the end of March 2016. AA evidence was called for, accessibility campaigners reminded building designers and operators that, under the Equality Act, 'reasonable' adjustment should be made to the built environment where a disabled person would otherwise be at a 'substantial' disadvantage, and those steps should be taken BEFORE a situation arose: in their mind, having to lay a disabled child or adult on the floor to undertake personal hygiene because appropriate toilet facilities were not available, amounted to a 'substantial' disadvantage.

Almost simultaneously, the Premier League announced all its clubs were to achieve compliance with the Accessible Stadia Guide by 2017. Supplementary guidance has just been published on the Guide, including amenity & access seating, Changing Places toilets, sensory barriers, and the need for access audits and plans.

There is a tangible reason why accessibility is becoming a 'hot topic': we have 11 million registered disabled people in the UK – almost 1:5 of the population, and as we live longer, that figure is only going to increase.

Research shows that 3 in 4 people reported they have moved away from spending in supermarkets, restaurants due to a lack of disability awareness – that lost business equates to £1.8 billion – and evidence further indicates that people make a conscious decision not to visit somewhere if they believe they will not find suitable toilets there.

So it is almost all buildings to which the public have access that need to address accessibility, as well as the big venues. And accessibility encompasses a huge ambit – from physically getting in and out, where to sit, and how to enjoy the facilities while there, including eating, drinking, and going to the toilet.

We all go to the loo, on average eight times a day, so the chances are if you're away from home, you will need the toilet.

Many supposedly accessible/Document M compliant facilities actually do not meet the needs of the users – assuming



Pictured: Morrisons Telford and its washroom facilities

they can even get in there to start with! Wheelchairs need more space, not just in the cubicle, but the corridor outside, to move up to the door, away from the door while it is opened, and then through the door. Most disabled people are NOT wheelchair users, but have issues such as balance, strength, mobility. If that door is on a weighted closer, maybe for fire regulations, even getting it open long enough to get inside can be an experience!

Inside, there may be the equipment, but the layout may be wrong. The WC may be hard against the wall, limiting transfer. Pull cords are often tied up and 'out of the way', defeating their purpose: to the extent that in itself has become a social media campaign (Ewans Guide). The basin may be set too high.

In an ideal world, all accessible toilets in town and shopping centres, tourist attractions, public buildings, would include

Continued overleaf...

Pictured: A Wetherspoons in Blackpool with its washroom facilities



conventional Document M wheelchair-accessible facilities, and the newer counterpart Changing Places. Indeed, under the latest Document M, and BS8300:2009, Changing Places toilets are 'desirable' in buildings to which numbers of the public have access. In our experience, the majority of the 700+ now open across the UK are being incorporated into the venues people go to for a special day out; they need as much to be added in town centres and places where people would visit on a regular basis – cafes, restaurants, shopping centres. It is those locations that able people take for granted, that are inaccessible to people who need Changing Places.

Changing Places give more space – a minimum 12m² – and more equipment, particularly a hoist and adult-sized

changing bench. Thus people who need the help of a carer to toilet have appropriate facilities.

But to be a truly accessible, inclusive society, we need to think beyond visible disability. Approximately 20 million people in the UK have bladder and bowel problems, with almost 2 million suffering from urinary and faecal incontinence. So again, access to toilets when away from home, is important.

Inclusion of a wash/dry toilet in a conventional, accessible or assisted accessible (Changing Places) cubicle addresses that health issue, ensuring the person is discreetly and properly clean if they have had an 'accident'. It extends beyond accessibility for disabled people though: it delivers compliance with Islamic hygiene considerations too, so further enhances inclusion.

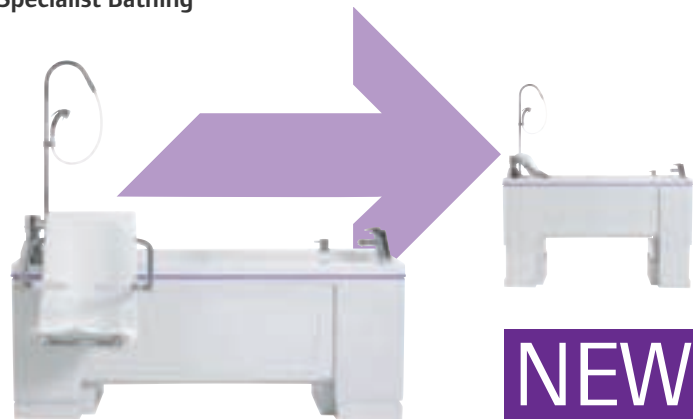
enq.245

GENTONA HI-LO BATH WITH POWERED SEAT

From the latest range of baths from Gainsborough Specialist Bathing

- Energy-efficient to reduce on-going operational costs
- Fully height-adjustable to ensure a safe, comfortable working height
- Powered traverse seat to effortlessly transfer bathers in/out of the bath
- Autofill, transfer chair and sensory options to offer maximum versatility

The new specialist baths from Gainsborough – safeguarding future care.



NEW

Quote: ADP1215



0800 988 4237
www.gainsboroughbaths.com

GAINSBOROUGH 
Specialist Bathing

enq.246

Yeoman Shield launch new handrail products

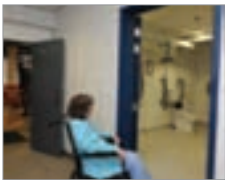
Already the manufacturer, supplier and installer of a comprehensive range of wall and door protection products, **Yeoman Shield** has expanded its range of Guardian Handrails. Incorporating the original and improved Guardian Handrail this new group of rails will also include the Guardian 50mm dia. Handrail, available in either a PVCu, Stainless Steel or Timber option and the Guardian Twin Handrail which has both an upper support rail coupled to a lower protection rail in one complete system. Yeoman Shield's Sales Director, Stuart Russell commented: "We are aware that our standard wall and door protection packages very often go hand in hand with the requirement of a handrail system. We want to be able to simplify things for our clients when specifying and procuring this group of materials and be in a position to offer them a complete and comprehensive package. It was for this reason that we have developed the New Guardian Handrails to complement our core market of wall and door protection products." Suitable for Healthcare, Education, Leisure and Industrial environments Guardian Handrails have been available since November. To request more information on these new handrail products, please visit the company's website.

0113 279 5854 www.yeomanshield.com/new-handrails



enq.247

Lift business



Service providers can simultaneously elevate their offering and improve safety for carers and their charges. **Clos-o-Mat**, already established as one of Britain's leading supplier of accessible washrooms for the thousands of people who need the help of a carer, now has a range of easy-to-use lifting/transfer equipment to optimise their safety and dignity. As

importantly, all the equipment is available with full technical back-up, and service & maintenance support. Clos-o-Mat's ceiling track (X/Y) hoists can carry up to 200kg (31 stone), and can, at the push of a button, be moved to wherever needed in the room, precisely positioning the person where the carer requires.

0161 969 1199 www.clos-o-mat.com

enq.278

Abloy launches revolutionary BLE key



Security expert **Abloy UK** has launched a new Bluetooth Low Energy (BLE) Key for use with its PROTEC2 CLIQ® system, which is set to revolutionise the flexibility, time-saving and ease of use of remote access control by bringing it into the mobile era. PROTEC2 CLIQ® allows for the remote management of disparate or large electronic master-keyed sites at any time, from anywhere in the world.

The system provides comprehensive audit trails on locks and padlocks and the ability to invalidate lost or stolen keys, thereby assuring tight key management at all times. The BLE PROTEC2 CLIQ® system has recently been named as a Golden Winner in the Access Control category at the 2015 Merlion Awards, hosted at the Security & Safety Asia show.

enq.249

New waterproof call points and push buttons



Safety Technology International (Europe) is pleased to announce the latest waterproof edition to its successful range of call points and push buttons. Highly versatile, this new range combines unique design, quality and value. Quick and easy to install, there are three types available. The Waterproof ReSet Call Point mimics the feel of breaking glass while offering the user the benefits

and safety advantages of a glass-free operating element. The Waterproof Push Button is available as a momentary push-and-release or a push-key to reset for those applications where repeat activation must be controlled. All are specially designed to withstand harsh environments, indoor/outdoor.

01527 520999 www.sti-europe.com

enq.250

To the manor born!



A prestigious new residential care home in the heart of the Essex countryside is being protected by **C-TEC's** new 4-loop ZFP addressable fire alarm panel and its popular Quantec addressable call system. Mistleay Manor in Manningtree is a privately-run luxury

care home offering pioneering specialist dementia care, respite stays and retreat packages. Safety is essential in such an establishment and C-TEC's ZFP 4-loop touchscreen-controlled panel connects to over 300 fire detectors, sounders, VADs and interface units to provide the utmost protection for residents. Third-party certified to EN54 parts 2 and 4, C-TEC's revolutionary ZFP fire panel can be configured to suit any application.

enq.251

Rising & Static Bollards

FRONTIER PITTS

Also available Sliding Gates, Hinged Gates, Bi-folding Gates, Automatic Rising/Drop Arm Barriers, Road Blockers, Manual Equipment & Pedestrian Control Gates & Turnstiles

www.frontierpitts.com 01293 422800

enq.252



OWATROL CONTROLS UK *The Professional's Choice*

Paint on Anything!

Owatrol Deco is a **multi-surface primer & finish in one** with built in **Rust Inhibitor**

- ✓ Applicable to **all surfaces**
- ✓ **Prime, protect and finish** in one
- ✓ Available in a **range of colours**
- ✓ Suitable for **interior and exterior use**

www.owatroldirect.co.uk **01923 219122**

enq.253



Recycled Plastic Building Materials

Eliminate the cost of maintenance and replacement.

Ideal for gates, fencing, cladding, decking, gallows brackets, battens, studding, fascias and soffits, fishing pegs, groynes, sheds, boardwalks, benching, and ground reinforcement.

- Water, frost, mould and insect proof
- Will not rot, warp, crack or splinter
- Vandal resistant
- Graffiti easily removed with WD40
- UV protected against fading
- Huge reduction in whole life costs
- 100% Recycled and recyclable

KEDEL

BRITISH RECYCLED PLASTIC PRODUCTS **01282 861325**
sales@kedel.co.uk www.kedeltrade.co.uk

enq.254



Paxton

Smart, Integrated Security Solutions from Paxton

- **Leading**
Market leaders, 30 years experience
- **Scalable**
Access control and building intelligence systems for a variety of sites
- **Integrated**
IP ready solutions integrating with CCTV, door entry, intruder & fire alarms
- **Straightforward**
Simple to specify and easy to use solutions
- **Efficient**
Manage electrical utilities and control lifts, saving energy and money
- **Supported**
Free design & specification help and advice

www.paxtonspecifier.co.uk | 01273 811011

Paxton protects Manchester United Football Club, Michelin, Foyles Bookstore and many more

Sign Up For Our Free CIBSE Approved CPD Programme

enq.255

Bespoke steel canopy for Edwards Vacuum Engineering



A combination of cantilevered, gullwing and barrel vault canopy designs for the engineering giant, Edwards Vacuum, the global specialist engineering company required a bespoke structure for people transferring between parking facilities and its two main office buildings. The canopy structure also needed to provide cover for motorcycle and bicycle parking.

Functionality often drives a canopy projects design brief, with an eye for inspirational designs, Fordingbridge strive to keep creativity and innovation at the heart of every structure and the company love architects that do too. In working with RDjW Architects collaboratively, Fordingbridge were able to match their concept aspirations with their design, manufacturing and installation capabilities, to specify an 80m steel walkway that combined a range of structural designs. The engineered solution also ensured an installation speed which fit perfectly within programme.

The steel structure connotes precision, performance and technical appearance and facilitates the cantilevered, gullwing and barrel vault designs. A sense of flow is created through the three different design features, which are incorporated individually into the 80m long structure. Toughened laminated glazed panels

occupy the spaces between the posts and are etched with the company's livery.

A lightweight and robust triple walled polycarbonate sheet with high light transmission is utilised as the roofing solution, offering high impact resistance and long-term weather durability. When day turns to night, architectural lighting positioned on each post increases safety and shows off the striking form and materials of the design.

The structure, along with its aluminium guttering a rainwater pipes, is finished in a polyester powder coating contributing to a 25 year complete structure guarantee.

01243 55 44 55 www.fordingbridge.co.uk

'The Fordingbridge canopy proved to be a successful solution to providing sheltered distribution around the site – the practical design solution fitted very well with our initial concept'

Trevor Tilley, RDjW Architects



enq.256



Trouble free parking at Tondy Primary School

Parking for school buses and cars can be a problem outside many rural schools but not at Tondy Primary School near Bridgend, South Wales. An extensive asphalted parking area has been created next to the school with surface water drainage channels supplied by **Hauraton Limited**. 150 metres of FASERFIX® KS 100 Fibre Reinforced Concrete channels fitted with Class E600 ductile iron gratings were installed by Churngold Construction Limited in the school bus drop-off area with a further 50 metres of RECYFIX® PLUS 100 Class D400 channels in the adjacent car park. RECYFIX® channels are made from tough, 100 per cent recycled polypropylene (PP) Both channels have galvanised steel reinforcement housings that take the gratings. All the gratings had 6mm HEELSAFE slots. For the full case study visit the website.

01582 501380 www.drainage-projects.co.uk

enq.257

The beauty of natural Cotswold stone
from
Veizey's

Suppliers of Natural Building Stone, Sawn Ashlar, Roof Tiles, Architectural & Ornamental Masonry, Flooring & Fire Surrounds.
Veizey's quarry, Avening Rd, Tetbury, GL8 8JT
t: 01666 504689 e: info@stonesuppliescotswolds.co.uk
STONE SUPPLIES

enq.258

adf architects datafile



REGISTER ONLINE FOR... In-print magazine • Digital magazine • Newsletter • Daily digests
www.architectsdatafile.co.uk

classified & directory

ADVICE & INFORMATION

NHBC
(National Housebuilding Council)
Tel: 0800 035 6422
www.nhbc.co.uk

ADHESIVES

BAL
Tel: 01782 591100
www.bal-adhesives.co.uk

BALCONIES

Balco Balcony Systems
Tel: 0203 687 1020
www.balco.uk

BATHROOMS & WASHROOMS



Enq. 501

BIOMASS STOVES & BOILERS



Enq. 502

CAD & PRINTERS

Standing Stone
Tel: 01661 886653
www.standing-stone.co.uk

COATINGS, SEALANTS & PAINTS

Barrettine Group
Tel: 01179 600060
www.barrettine.co.uk

Enquire online at
www.architectsdatafile.co.uk

COLUMN CASINGS

Encasement Ltd
Tel: 01733 266 889
www.encasement.co.uk

COMMERCIAL SHOWERS

Horne Engineering Ltd
Tel: 01505 321455
www.horne.co.uk

DOORS & WINDOWS

Timber Door Canopies
by George Woods

Tel: 01363 884218
www.timberdoorcanopies.co.uk

Enq. 503

Origin Frames Ltd
Tel: 0808 271 4761
www.origin-global.com

ENVIRONMENTAL REPORTS

GeoSmart Information
Tel: 01743 276 150
www.geosmartinfo.co.uk

FIRES & FIREPLACES

Specflue Ltd
Tel: 0800 90 20 220
www.specflue.com

FLOORS & FLOORING

Flowcrete UK Ltd
Email: ukweb@flowcrete.com
www.flowcrete.co.uk

GROUNDWORKS

We Build It
Tel: 0800 731 9421
www.webuildit-ltd.co.uk

KITCHENS

Aga Twyford
(Trading as Twyford Cookers)
Tel: 01568 611124
www.twyford-cookers.com

HEATING & VENTILATION



Enq. 504

INSULATION

Recticel Insulation Products
Tel: 01782 590470
www.recticelinsulation.co.uk

INSULATED PANELS

HPT HEMSEC PANEL TECHNOLOGIES

- Cold Stores
- External Roofing
- External Cladding
- Clean Rooms
- SIPs

Tel: 0151 426 7171
www.hpt-panels.com

Enq. 505

Reader enquiries online at
www.architectsdatafile.co.uk

If you're interested in
advertising within this section
please contact the sales team on

01435 863500

PUMPING STATIONS

J T Pumps
Tel: 0844 414 5800
www.jtpumps.co.uk

RAINWATER SYSTEMS

Rainclear Systems Ltd
Tel: 0800 644 44 26
www.rainclear.co.uk

ROOFING

Liquid Roofing and Waterproofing Association (LRWA)
Tel: 0207 448 3859
www.lrwa.org.uk

National Federation of Roofing Contractors (NFRC)
Tel: 020 7638 7663
www.nfrc.co.uk

Topseal Systems Ltd
Tel: 08000 831 094
www.topseal.co.uk

Traditional Clay Roof Tiles
Tel: 08008 886 633
www.traditionalclayrooftiles.co.uk

SOLAR SHADING (BRISÉ SOLEIL)

Levolux Limited
Tel: 020 8863 9111
www.levolux.com

STAIRS & BALUSTRADES

Railing London Ltd
Tel: 0208 566 6750
www.railinglondon.com

TILES & TILING

Solus Ceramics
Tel: 0121 7530777
www.solusceramics.com

TIMBER & JOINERY

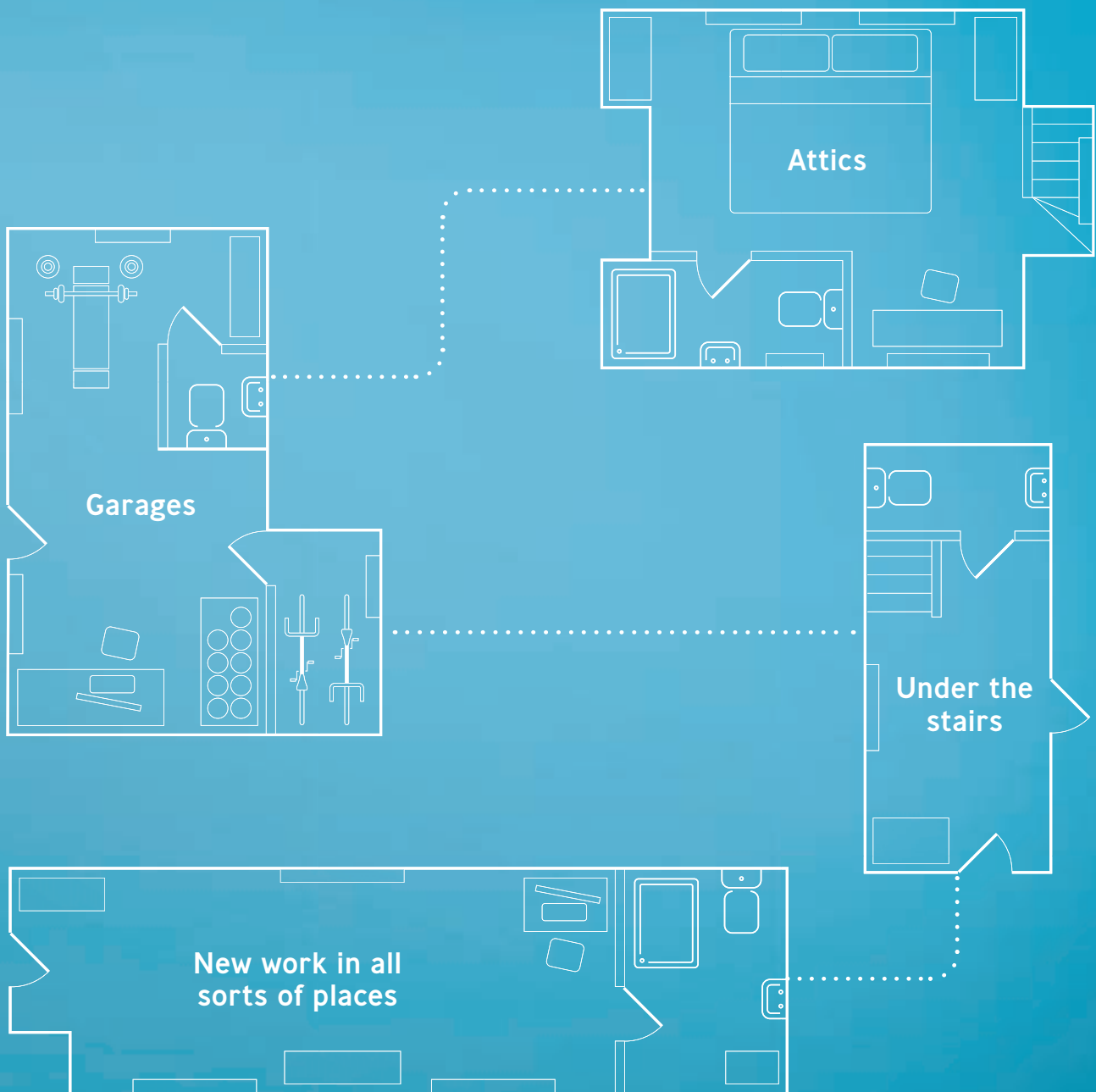


Enq. 506

WINDOW CONTROLS



Enq. 507



Saniflo works where convention doesn't.
Don't rip up your plans if there's no drain nearby.
Draw on your imagination and *think of the possibilities.*
Visit saniflo.co.uk

reader
enquiry
402

SANIFLO®
PLUMBING THE POSSIBILITIES