

A photograph of a modern building's interior, featuring a large, multi-level atrium with glass railings and concrete pillars. The space is brightly lit, with light reflecting off the polished floor. The architecture is clean and contemporary, with a focus on open space and natural light.

building construction design

www.buildingconstructiondesign.co.uk

June/July 2016

Appointments & News	02
Building Products	07
Interiors	12
Exteriors	13

Techdek grilles, decking and walkways

Eco-friendly, maintenance-free and easy-to-install, neaco's Techdek aluminium open grilles are ideal for numerous architectural uses, including decking, cladding, solar shading, roof access walkways and pedestrian/cycle paths.



neaco

norton engineering alloys co ltd

balustrade | balconies | **flooring** | grilles | bathing

www.neaco.co.uk



SE Controls feels the power with Bristol's Electricity House development

Electricity House, Crest Nicholson Homes' stylish city centre apartment development in Bristol is using an advanced smoke ventilation system from leading smoke and natural ventilation specialist, SE Controls, to help keep residents safe if a fire should occur.

Originally designed by acclaimed architect Sir Giles Gilbert Scott in the 1930s, the six-storey Grade II listed building has been converted into 85 luxury apartments, while ensuring that many of the original design features are retained or reinstated to enhance its art deco style.

The building's main atrium is at the heart of the SE Controls solution, as the smoke ventilation system is designed to vent smoke from the atrium in the event of a fire to ensure escape routes are kept clear.

To achieve this, SE Controls designed, installed and commissioned the system, which comprises 37 SHEVTEC® automatically controlled louvres,

which are manufactured and tested in accordance with BS EN 12101: 2. The SHEVTEC® louvres also incorporate 'fall protection' to increase safety, as well as using IP rated external motors, which are essential to allow easy access for future maintenance.

A further 21 low level air inlet louvres and linear door actuators also form part of the system, all of which are controlled by a series of OS2 control panels with integral battery back up and fully compliant with the relevant sections of the BS EN 12101 standard.

SE Controls' Business Development Manager, Stuart Coote, commented: "Electricity House is a landmark building designed by an iconic British architect, so we're delighted to have played a part in this project.

"Smoke control and fire safety is not only a core part of our business, but also an area we're very actively involved with via organisations such as the



Smoke Control Association, FIRAS and British Standards, to ensure that design, manufacturing, installation and maintenance standards are constantly being maintained. Although this is important for the industry, the real benefit is for residents who rely on our systems for failsafe performance, if a fire should occur."

01543 443060 www.secontrols.com

IronmongeryDirect

MASTERS OF OUR TRADE

ORDER BY 8PM GET IT NEXT DAY!



**CALL 0808 168 28 28
OR GO ONLINE TO GET
YOUR FREE CATALOGUE**

**15,000
PRODUCTS
IN STOCK
FOR NEXT DAY
DELIVERY**



**UK'S BIGGEST
RANGE IN STOCK**

**FREE DELIVERY
OVER £45***

**FREE RETURNS
WITHIN 30 DAYS**

**MINIMUM
5 YEAR
GUARANTEE**

**LOW
TRADE
PRICES**

DOWNLOAD OUR FREE APP

App Store Google play

*Ex VAT

CALL 7am-8pm 7 days a week

0808 168 28 28

ONLINE Shop 24/7!

IronmongeryDirect.com

FIND US ON





Hallmark Lakeview Care Home in Lightwater, Surrey - Expona Commercial PUR flooring in Light Classic Oak

Experts in Dementia Care Flooring

Polyflor's stylish and high design flooring has been used extensively by Hallmark Care Homes to develop dementia-friendly spaces at flagship homes in Warwickshire, Suffolk and East Sussex. Over 1000m² of Polyflor flooring was installed in each home to provide stimulating and safe environments for residents to live and socialise in.

"We are continually impressed with the array of dementia-friendly flooring ranges available from Polyflor which means we can use their products throughout our care homes to add to the positive ambience"

Jacqueline Farguson, Design Manager at Hallmark Care Homes

- ◀ For your free copy of our new Specialist Care brochure, developed with the University of Salford, please contact us on the below details.



Free of charge samples from

samples»direct

»» +44 (0)161 767 2551

POLYFLOR LTD. PO BOX 3 RADCLIFFE NEW RD WHITEFIELD MANCHESTER M45 7NR
TEL: 0161 767 1122 FAX: 0161 767 1128 E-MAIL: INFO@POLYFLOR.COM WWW.POLYFLOR.COM





Bristol Airport's new roof terrace

Levato Mono porcelain paver system has recently been installed on the new roof terrace at Bristol Airport East Terminal extension.

Circa 400m² of the system was specified in order to conquer a number of challenges; covering EPDM membrane laid with multiple falls; to hide services and drainage gulleys but still have accessibility for future maintenance; cutting around the numerous stainless steel posts and glazed partition with accuracy for the shroud detail.

The finish the Architect specified was Tekno-timber Dark oak – offering the Client an attractive, flexible and well designed raised flooring solution and with incredible technical properties; R11 slip rating; lightweight at just 45kgs per m²; Non porous surface and 1000kgs loading per 600x600x20mm paver to name but a few of the benefits. Our Self-levelling head/height adjustable pedestals were used on this project to facilitate a speedy installation and enabling the installers to adjust the pedestal heights to millimetre accuracy, thus creating a perfectly level deck.

Available in 40+ colours and finishes in both ultra-realistic timber and stone effect, by combining 3D printing and mould making technology to reproduce identical copies of natural materials and with up to 30 prints available for each paver range. Once laid, the eye is unable to discern any replicated pattern allowing for a completely natural looking surface. Recently specified for external dining areas at London Zoo, LIDL HQ Northfleet and the new Portico Terrace at Theatre Royal Drury Lane – where Levato Mono sandstone effect paver ranges were considered so similar to natural sandstone material that it was sanctioned for use on a Grade I listed building by English Heritage.



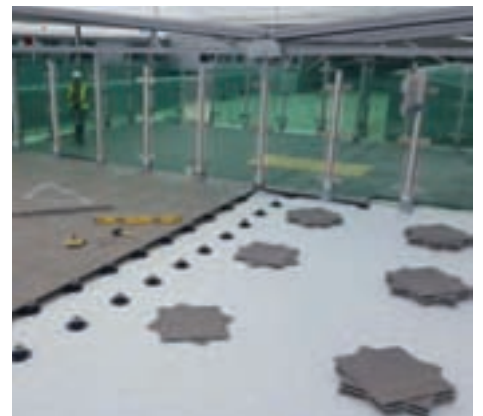
Used in conjunction with height adjustable fixed head or self-levelling pedestals or fixed height paver support pads, the Levato Mono system makes it possible to create perfectly level surfaces over uneven sub-surfaces. Ideal for installation over all waterproof membranes our support systems cover height ranges from 9mm to 550mm and incorporate a patented self-levellingss-lope correction facility with the convenience of height adjustment after the pavers are installed.

Levato Mono porcelain paver system benefits at a glance...

- 'Floating floor' – installation over single ply membranes.
- Eternal product – zero maintenance required, offering massive over-life savings.

- Highly abrasion and stain resistant.
- Highly slip resistant; R11 and achieved up to +65 wet in the BS pendulum test.
- Lightweight – 45kgs per m².
- High load bearing and impact resistance.
- Timber & stone effects; 40+ finishes available.
- Ideal for balconies, roof terraces and piazzas, for both commercial and residential use.
- Completely non porous.
- Fire & frost proof.
- Height adjustable supports to raise surface from 9mm up to 550mm.

0118 391 4120 www.thedektileco.co.uk



Nationwide Windows & Doors continues to impress with CCS

Leading new build and public sector door and window partner **Nationwide Windows & Doors** is pleased to once again represent the industry, in conjunction with Nottingham City Homes, with a Bronze award at the Considerate Constructors Scheme's National Site Awards 2016. Daryl Cashmore, Operations Director at Nationwide Windows explains: "The Considerate Constructors Scheme's National Site Awards are presented to construction sites of all sizes which are recognized to have raised the bar in considerate construction. Together with Nottingham City Homes, we were incredibly proud to be rewarded by CCS. That this is the fifth time we have been commended by the scheme makes the achievement special to us, in particular as one of only a few window companies to do so. The site was proven to have shown the highest levels of consideration towards the public, its workforce and the environment through adhering to the Scheme's five-point Code of Considerate Practice: Care about Appearance, Respect the Community, Protect the Environment, Secure everyone's Safety, Value their Workforce, and it was commented within the report that the site 'was a credit to Nationwide Windows & Doors and to the site team'. We have worked closely with Nottingham City Homes for several years now from our dedicated depot in the area, so for us, this award is a fantastic demonstration of our ability to seamlessly integrate within a customer's community."

01788 569 228 www.nationwidewindows.co.uk



THE SPECIFIER'S GUIDE

to ceramic tiles
and calibrated
natural stone

www.specifiersguide.co.uk

Go online and subscribe to get your FREE copy

The Specifier's Guide to Ceramic Tiles and Calibrated Natural Stone offers architects, interior designers and other construction professionals a comprehensive guide to the technical and aesthetic properties of ceramic and natural stone tiles.

Details THAT MAKE THE *difference...*



A few well chosen fixtures and fittings can transform a run of the mill room into one that oozes *style*

FRELAN
HARDWARE

ALL FRELAN HARDWARE AVAILABLE ONLINE FROM WWW.MOREHANDLES.CO.UK

10% OFF
with code
NET10

more than just handles!

TEL: 01228 516 516 • www.morehandles.co.uk

more
HANDLES

Thinking outside the box

With the constant pressure on public sector budgets, Encasement's Managing Director, Martin Taylor, believes local authorities should investigate modern and more cost effective methods of concealing boiler pipe work.

As energy efficient heating system upgrade programmes in social housing is important to reduce emissions and energy consumption, there is also a need to ensure that the updated system is not only safe, but also looks good.

However, just by deciding on which method to use when boxing in heating system and boiler pipework, LAs and HAs can save thousands of pounds on their annual repair, maintenance and improvement budget.

Removing cost and saving budget

By saving time or removing cost from key stages in the pipe casing process, then this will have a positive effect on reducing the overall budget required to achieve the end result.

Essentially, savings can be made in each of the following four sections:

- Manufacture – How is the boxing made?
- Materials – What materials are used in their manufacture?
- Methods – How is the boxing installed and secured?
- Maintenance – How easily can the boxing be removed and replaced?

Manufacture

The traditional and still widely used approach for concealing pipework, is for boxing to be fabricated on site using wood or MDF with nails, screws or adhesive, followed with painting.

Inevitably, this is a time intensive and costly solution.

The Encasement solution is much simpler, quicker and cost effective. Manufactured from pre-formed plywood to exact boiler dimensions and pre-finished with durable melamine or laminate, there's no fabrication or painting required, which provides a consistent finish and saves even more time.

As a result, typical cost savings of around £20 can be made on every casing installed, which equates to a budget reduction of £10,000 on every 500 properties.

Materials

Often the materials used to manufacture pipe boxing and boiler casings aren't a major consideration, yet they should be, as there is a need to comply with the sustainable procurement policies that many local authorities now have in place.

Encasement has already addressed the issue. Only FSC® certified timber is used in the manufacture of our boxing and boiler casings. Encasement are also the UK's only manufacturer and supplier of pre-formed plywood boxing and casings that holds a Forest Stewardship Council FSC® 'Chain of Custody' certification.

Methods

Typically, where site made casings are used, the heating engineer will move on to the next flat once the boiler installation is done, leaving the



fabrication and fitting of site made pipe casings to a joiner. As two trades and different skills are required, this inevitably adds time and cost.

By using a pre-formed boiler casing, which has already been supplied to the correct dimensions, there's no need for fabrication and the freestanding casing just slides into place underneath the boiler, which can be done by a heating engineer.

Maintenance

The 'whole life' cost for site made casings escalates significantly, when routine maintenance visits are factored in to the equation, as they're usually damaged or destroyed during their removal. This necessitates their replacement or re-manufacture, as well as re-fitting, all of which, increases budget.

In contrast, pre-formed casings are self-supporting, allowing them to be easily removed and replaced in seconds, dramatically reducing the time maintenance engineers need to be on site, and the corresponding cost.

Case closed!

When evaluating pre-formed boiler pipe casings against site made alternatives, the comparative fitting costs alone should ensure that the decision to use pre-formed casings is an easy one to make. Yet, when the FSC® compliance and maintenance aspects are also factored in, it becomes, to quote one of Encasement's customers, "...a no-brainer".



01733 266 889
www.encasement.co.uk



dtc
the deck tile co. ltd.

LEVATO MONO porcelain paver system

The Levato Mono porcelain paver system is the pinnacle of external raised flooring technology; enabling the specification of lightweight, slip resistant and attractive raised flooring solutions, combining incredible technical properties with uncompromising aesthetics; making them the ideal choice for commercial and domestic use alike.

- 20mm porcelain pavers 40x80 45x90 60x60 75x75 30x120 40x120 60x120
- 'Floating floor' – installation over single ply membranes
- Eternal product – zero maintenance required – offering massive over-life savings
- Highly abrasion and stain resistant
- Highly slip resistant ; R11 and achieved up to +65 wet in the BS pendulum test
- Lightweight – 45kgs per m²
- High load bearing and impact resistance
- Timber & stone effects; 40+ finishes available
- Ideal for balconies, roof terraces and piazzas, for both commercial and residential use
- Completely non porous
- Fire & frost proof
- Height-adjustable supports from 9mm up to 550mm

www.thedecktileco.co.uk

t: 0845 2700 696 e: info@thedecktileco.co.uk

New STEICO *durelisdek* boosts floor deck performance with triple protection

Following a consultation and trial period market leading I Joist supplier STEICO have introduced a complimentary decking product which offers the very best on site protection for the timber floor and allows builders and developers to source the complete floor system from a single source.

STEICO *durelisdek* features triple protection avoiding excessive swelling of the board substrate even in the most hostile of situations on site.

(1) The Durelis board from Unilin Panels is a higher surface density P5 particle board with unique "Top Surface" technology making it far less prone to moisture related swelling and thermal expansion.

(2) The top surface has an additional wax sealer applied which adds further protection and allows the finished floor to be cleaned easily for a pristine finish on handover.

(3) A final proven slip resistant and durable blue peel off layer together with a customised fixing kit protects the floor for the exposed construction period.

(4) STEICO *durelisdek* is also available with a permanent waterproof acrylic surface sealer in place of a peel off layer which offers a similar level of protection speeds up the build process and avoids waste going to land fill.

Andy Moore, STEICO UK Managing Director (Sales) says: "For quite a time we have been concerned about the level of onsite deterioration on decking used externally with I Joist systems. Excessive swelling and movement of the decking following temporary exposure to the elements can lead to noisy squeaky floors, compromised acoustic integrity and in worst cases a loss of structural performance. Having to sand swollen joints and cut in



additional expansion gaps is sadly an all too often necessity and adds additional costs for the builder. We have worked hard with our partners Price & Pierce (Unilin Panels) to develop this new triple protected enhanced floor deck which builds in real durability and performance without adding significantly to cost. STEICO *durelisdek* offers suppliers, users and developers peace of mind and the chance to purchase the complete floor system from one source with best in class performance assured."

To arrange a site trial or for further information on this exciting new decking product or for any other STEICO products, visit the company website or call them directly.

01727 515120

www.steico.co.uk



Precast Flooring Solutions

MC
fpmccann

FP McCann offers an extensive range of flooring solutions to the industrial, commercial and domestic markets.

Our range of flooring solutions include:

Beam & Block / Poly Flooring

Hollowcore Flooring

Stairs & Landings

Ground Beams

www.fpmccann.co.uk/flooring

01335 361269 | sales@fpmccann.co.uk



The ideal eco-rooflight for self-build projects

The Em-Dome ECO cuts running costs, increases daylight and enhances quality of life.

The more daylight you let in, the happier and more uplifting the living space. Our ECO range maximises natural light and provides the best thermal and acoustic performance in the UK.

- ✓ More natural light lifts mood, reduces stress and makes people happier and healthier
- ✓ Less money wasted on heating and lighting – U-Values as low as 0.90 W/m²K mean impressive heat retention
- ✓ Free comfort cooling – choose passive ventilation or controllable rotating vents
- ✓ Optional roof access & fire escape – manual or electrically-operated hinged opening
- ✓ Optional Em-Curb ECO upstand speeds up installation to save you money
- ✓ High security & impact resistance protects you and your property

Four glazing levels help you balance budget with long-term benefits: 6-walled 16mm multiwall, 4-walled 10mm multiwall, quad skin and triple skin.

Find out more at www.whitesales.co.uk/em-dome-eco-rooflights
and get free advice: 01483 271371 or sales@whitesales.co.uk



Whitesales
Rooflights & more...



Well fixed for fastenings

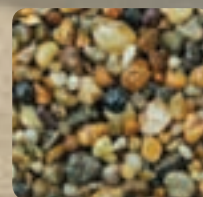
A leading construction connector manufacturer **Simpson Strong-Tie** has released an all new 'Nails and Screws' brochure for Spring 2016. Featuring a host of new products, the Nails and Screws edition consists of four sections: structural screws, corrosion resistant fastenings, Quik Drive collated screw systems and fastenings for use with construction connectors. As the range has been fully tested and CE marked, the brochure also includes mechanical properties as well as loading and performance information. Simpson Strong-Tie Sales Director, Jon Head explains: 'We've significantly boosted our nails and screws portfolio to provide for just about every building application from steel frame construction to drywall installation. Our Nails and Screws brochure is packed with solutions to make life easier for building designers and installers alike – whether they work with timber, steel or concrete.' The brochure is available on request from the company website.

01827 155600 www.strongtie.co.uk



Resin Bound Surfaces

beautiful permeable paths
driveways and courtyards
from Clearstone®



Clearstone® manufacture and install their own system using high quality UV stable resins and give a 10 year guarantee

Clearstone®
resin bound
permeable surfacing
specialists

For surveys, quotes and technical advice, call
01273 358177 clearstonepaving.co.uk



The beauty of natural Cotswold stone
from
Veizey's

Suppliers of Natural Building Stone, Sawn Ashlar,
Roof Tiles, Architectural & Ornamental Masonry,
Flooring & Fire Surrounds.
Veizey's quarry, Avening Rd, Tetbury, GL8 8JT
t: 01666 504689 e: info@stonesuppliescotswolds.co.uk

STONE SUPPLIES
COTSWOLDS

PAREX

We're in the Zone!

PAREX
Render Systems

Now hold Zone 4
Very Severe
Wind Driven
Rain Rating with
LABC and Premier
Guarantee.

**Parex Renders and EWI Systems
- Performance Guaranteed!!**

Tel: 01827 711755
Email: enquiries@parex.co.uk
www.parex.co.uk

LABC **premier**
guarantee

PAREX GROUP
Building Envelope Systems

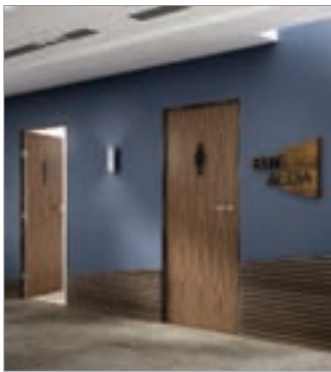
New barrier coating combats water & contamination



PAREX has launched a new surface treatment which provides a highly protective “lotus leaf effect” breathable, weather-resistant coating to protect against water, mould, mildew, and other forms of environmental staining. Environmentally-safe Paraguard is a water-based hydrophobic coating free of volatile organic compounds (VOC's) which penetrates render, masonry and timber surfaces to protect facades, creating an invisible barrier to repel water and provide lasting, permanent resistance to contaminants. Rain water falling on treated surfaces forms globules and then rolls off without penetrating the substrate, effectively “washing off” any other pollutants. Once Paraguard is applied, treated surfaces can be cleaned without affecting the performance of the coating. Paraguard does not change the surface appearance, is non-film forming and is both UV and weather resistant. A clear liquid, it can be simply applied by brush, roller or airless spray gun. Its qualities enable buildings to breathe while preventing rain or water penetration, yet allowing any moisture within the fabric of a building to migrate to the exterior. The coating is suitable for both horizontal and vertical applications on new construction, retrofit and refurbished surfaces.

01827 711755 www.parex.co.uk

PORTFOLIO Collection from Premdor, the Classic range



The exciting, new innovative PORTFOLIO collection of internal doors from **Premdor** consists of four themed ranges, comprising of Natural, Exotic, Contemporary and Classic. All are made in the UK using sustainable natural veneers engineered in Italy and all utilise Premdor's cutting-edge Veneer Match technology presenting real veneers with consistent grain and colour. Within the Classic range may be found Oak, Walnut, Ash and Durador, all crafted from the finest materials and each produced to the highest standard of immaculate finish. By combining rich, attention grabbing shades with timeless graining the collection will add sophistication to any interior decorative finish. The Oak Vertical door and the White Oak Two Stile model demonstrate the unique Premdor Veneer Match technology, as does Walnut Vertical and Walnut Two Stile both presenting a bold, rich, contemporary look. To complete the Classic range comes elegant Ash vertical and trend proof Durador with it's simple clean grain pattern. The Classic collection is complemented by a stylish range of modern glazing designs, 30 and 60 minute fire door models, all supplied with PEFC chain of custody as standard. To see more of the PORTFOLIO collection, request a catalogue from Premdor.

0844 209 0008 www.premdor.co.uk/portfolio

FireAngel®

Life Saving Innovations



CO Alarms

CO-9XT-FF

- 7 year battery
- Triple LED display
- Auto self diagnostic check

£13.25

CO-9X-10T-FF

- 10 year life and warranty
- Advanced diagnostics
- Fast fit bracket

£16.95

Smoke Alarm

ST622

- 10 year battery
- Thermoptek™ technology provides response to all fire types
- Features 'sleep-easy'
- Toaster proof

£10.99

Heat Alarm

HT-630T

- 10 year battery

£15.99



ABGO

Tel: 01902 790900 - sales@abgo.co.uk - www.abgo.co.uk

All prices are exclusive of V.A.T. Prices correct at time of printing but may be withdrawn at anytime. E. & O.E.



Tessera Layout and Outline

Forbo Flooring Systems has launched a new low-level loop Tessera carpet tile collection, consisting of two ranges: Layout and Outline. With the directional design and 32 light-to-dark colourways of Layout and the eight organic linear designs in the Outline range, specifiers can create striking floor schemes to enhance a variety of workspaces. These new solution-dyed carpet tiles have a chunky texture that delivers a tactile and contemporary vibe. They provide a perfect flooring solution for commercial offices, having BREEAM ratings of A and A+ and meeting the SKA rating for M12 soft floor coverings for the office scheme.



Wave of Green on Waitrose Roof

The new £14 million Waitrose superstore located in Bagshot, Surrey has been designed with the environment in mind; featuring a continuous sea of green vegetation on its large wave shaped roof that helps replace the green space lost to the building's footprint and minimise its overall impact on the surrounding landscape. The client wanted this new build development to serve as a benchmark for sustainability for the local area and this was achieved through the installation of over 4,800m² of Bauder's high quality, low maintenance sedum blanket, which is highly visible even at ground level. Prior to the project commencing plans were shared with the local community at public exhibitions to gather feedback, which was extremely positive and in full support of the development. The new roof features Bauder's premium root resistant bituminous waterproofing system, which includes a highly efficient 120mm FA-TE insulation to satisfy building regulations. An irrigation system was also installed to ensure the plants have sufficient levels of water to flourish throughout the year.

0845 271 8800 www.bauder.co.uk

www.apolloradiators.co.uk



monza aluminium column radiator

Ideal for low temperature renewable systems
Ideal for high pressure systems
The latest patented european technology
A unique aluminium radiator design
Half the weight of steel
82 vertical and horizontal sizes
Delivered within 3 working days

SLIMPORT ROUND METAL VISION FRAMES

ZEROplus



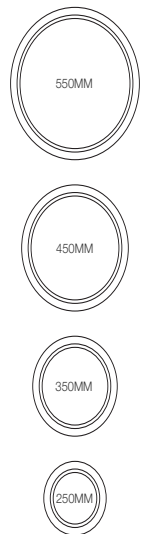
- AVAILABLE IN 4 SIZES - 250, 350, 450, 550MM
- AVAILABLE IN 4 DOOR THICKNESSES - 40, 44, 50, 54MM
- MANUFACTURED FROM MILD STEEL AND STAINLESS STEEL
- FULLY FIRE TESTED TO SUIT TIMBER DOORS AND STEEL DOORS
- CONCEALED FIXING ONE SIDE
- AVAILABLE AS A FULL KIT WITH GLASS AND GLAZING TAPE

SLIMPORT CIRCULAR VISION FRAMES WITH THEIR CLEAN LINES ENHANCE THE APPEARANCE OF ANY DOOR.

THIS FLUSH FITTING DESIGN IS AVAILABLE IN STAINLESS STEEL, OR ZINC PLATED MILD STEEL READY FOR COLOUR COATING.

NOW PRACTICAL VISION REQUIREMENTS NEED NOT COMPROMISE AESTHETICS. SLIMPORT VISION FRAMES WITH THEIR UNIQUE CONCEALED FIXING DESIGN ARE THE ANSWER. IDEAL FOR LUXURY OFFICE SUITES, CORRIDOR DOORS, CLASSROOMS, RESTAURANTS ETC.

RECTANGULAR AND CUSTOM SHAPE VISION FRAMES, ALSO AVAILABLE.



Zero Seal Systems Ltd
Units 43 - 45 Ladford Covert, Seighford, Stafford, ST18 9QG, United Kingdom
Tel : +44 (0)1785 282910 E-mail : sales@zeroplus.co.uk

WWW.ZEROPLUS.CO.UK



BUY **BRITISH**, BUY **QUALITY**, BUY **Jeckells** SHADE SAILS

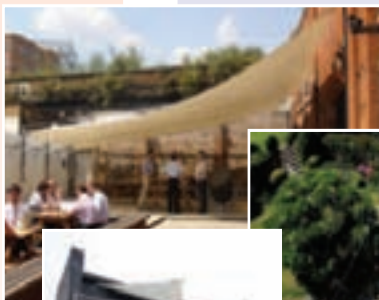
01603
782223

shadesails@
jeckells.co.uk

We design and manufacture Shade and Weatherproof Sails in commercial and domestic environments. Our forte is engineering solutions that not only look good but will also stand the test of time in unpredictable outdoor environments.

All our Shade Sails are individually designed with colour, shape and size to suit your particular requirements. Architecturally stunning. We use either Stainless Steel or Timber posts depending upon the environment. Our Shade Sails are easily fitted and removed. A full design and installation service is available.

For more details please call **01603 782223** or email **shadesails@jeckells.co.uk**



Jeckells 
THE SAILMAKERS

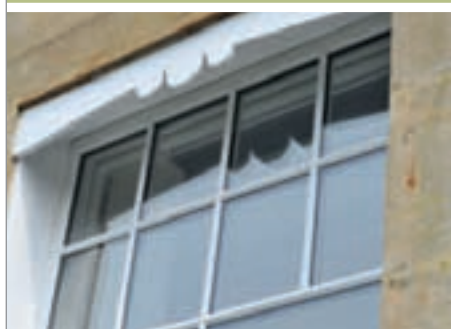


THE SASH
WINDOW
WORKSHOP

THE FINEST TIMBER WINDOWS AND DOORS

PROVIDING TAILOR MADE SOLUTIONS FOR YOUR PROJECT

- Suitable for Conservation Areas and Listed Buildings
- Supply Only, Supply and Install, Repair and Refurbish



We have worked on various prestigious projects, including: St James' Palace, The Admiralty Buildings, Clandon Park, The Grove Hotel, and Oxford Wildlife Trust.



01344 868 668

www.sashwindow.com



Get inspired by Healthy Residential Comfort®

Renson is innovation with a clear vision: ensuring the occupant's health and comfort, while taking energy efficiency and the added value of aesthetics into consideration. How can you optimise your design aesthetically and functionally? Thanks to the combination of ventilation, nightcooling, sun shading and outdoor solutions, Renson is creating healthy and comfortable living and working spaces, while energy consumption is reduced to a minimum.

The continuous supply of fresh air and the extraction of contaminated air through a demand-driven ventilation system enables people to breathe healthy air at all times. First, it is important to extract polluted air from rooms and ensure it is replaced with fresh air. As people themselves are not able to detect changes in air quality or too high concentrations of CO₂ or VOC's, it is important that the ventilation level can be automatically adapted. Through integrated, intelligent sensors in a central demand-controlled ventilation unit, the ventilation will only go to a higher extraction level

in those rooms where higher ventilation levels are required. This automatic adaptation saves 30 to 50 per cent of energy as compared with a permanent ventilation flow.

Ventilative cooling, also known as 'nightcooling', is the principle where cooler outside air is used to naturally cool down the house. Large natural air flows are conducted into the house via louvres. Outside sun control guarantees comfort at 3 levels: thermal, visual and aesthetic comfort.

Exterior window blinds allow the warmth of the sun to enter when required, but prevent unnecessary cooling costs on warmer days. Large glass panels are frequently chosen in contemporary architecture, while excessive sunlight can cause overheating, disruptive reflections on screens and discoloration of the furniture and decor. An efficient outdoor sunscreen – sun control blades for the frame, brise-soleil above the window, sliding panels or wind-resistant screens – enables the occupants to enjoy the sun at any time of the day. The systems stop the sun rays from heating the



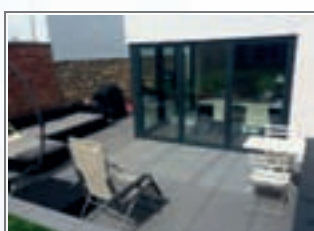
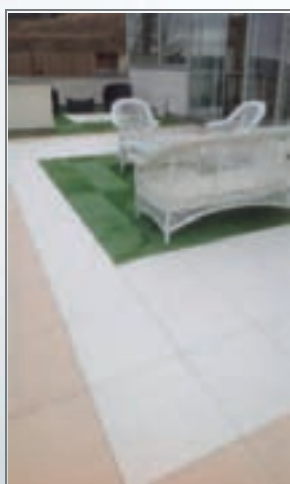
interior, without disturbing the garden view.

Aluminium blades provide striking facades with straight continuous lines. The ventilation and sun-screen systems are hardly noticeable from the inside, while invisible door systems ensure that closed doors and walls appear as one, without any disruptive frames and hinges.

01622 754 123 www.rensonuk.net

Extra 20

Porcelain Stoneware



Luxury Outdoor Paving Manufactured & Tested For Outdoor Applications

Low Maintenance – High Quality – Excellent Slip Resistance

Available in 600 x 600mm, 750 x 750mm & 600 x 1200mm

Free Samples Available On Request

Castle Composites Ltd
01555 870003
www.castleporcelain.co.uk



LONG RAKE SPAR
Specialist Decorative Aggregates

Most Extensive Range of Decorative
Aggregates available in the UK

Call us to locate your nearest stockist on:
Tel: 01629 636210 or [email:sales@longrakespar.co.uk](mailto:sales@longrakespar.co.uk)



Tobermore deliver striking finish for new business quarter in Leatherhead

Tobermore world class products have been used to create the striking landscape at The Square, an exciting new business quarter in Leatherhead, Surrey. The Square was designed by HLM Architects and comprises four impressive office buildings ranging in size from 10,010 sq. ft. to 31,568 sq. ft. and totalling 68,851 sq. ft.

The Square is the first speculative development in the South East to achieve an EPC A rating. Managed by Workman with Tolent Construction appointed as main contractor, the buildings have been constructed with energy efficient design features and the latest technologies to minimise running costs.

The landscaping has been designed to reduce the impact of car parking on the external environment with the creation of an avenue connecting the main entrance to a central amenity space, produced with Tobermore's Manhattan plank paving. This has formed a focal point at the centre of the project.

Manhattan is a linear paving product that can be used to create unique landscape designs due to the long, slender product shape and the granite aggregate surface layer that produces a sparkling finish, similar to natural granite.

A mixed length Manhattan design was specified for The Square in a stunning random colour pattern consisting of Silver, Mid Grey and Graphite. The contemporary look created with this Manhattan design reflects the style of the modern new business quarter perfectly.

The scheme also benefits from the provision of 269 car parking spaces that have been formed with Tobermore's Sienna Duo block paving in the rich colour of Sandstone. Like Manhattan, Sienna Duo features a beautiful granite aggregate surface layer.

Tobermore's Shannon Duo block paving in the warm, blended tones of Heather has been incorporated on the walkways surrounding the four office buildings. Shannon Duo is designed with a smooth



surface finish, ideal for pedestrian use and wheeled traffic such as wheelchairs and office deliveries.

0844 800 5736 www.tobermore.co.uk

The healing power of good architecture

This 194 patient psychiatric hospital in Slagelse, Denmark is characterised by innovation and a desire to construct a first class complex which supports patient care and recovery. Some of the most influential elements in any hospital are obviously the ceilings because so many bed-ridden people spend so much time looking at them. Consequently, **Troldtekt** ceiling panels in natural wood colour, with integral LED light fittings, have been used throughout, reducing noise and ensuring pleasant acoustics as well as a healthy indoor climate. Simplicity pervades the new complex, coupled with the recognition that good social architecture is based on classic ingredients such as light and shade, materials, colours and green landscape elements. For example and particularly dramatic is the central core with its large spiral staircases and the very large skylight which plunges daylight from the fourth floor to the ground. Danish manufactured Troldtekt acoustic tiles are specified throughout the UK and Europe and can be delivered as either FSC or PEFC certified panels. They are manufactured using 100 per cent natural wood fibres and their benefits are high sound absorption, high durability, natural breathability, low cost life cycle performance and sustainability. They are used to improve acoustics in many different projects, such as schools, leisure centres, pools, commercial and public buildings.



New RECYFIX® MONOTEC drains car park at the new Travelodge Western Super Mare



Hauraton Ltd introduced the RECYFIX® MONOTEC, their new high capacity channel system in January, with the new Western Super Mare Travelodge being the first installation of the system in the UK.

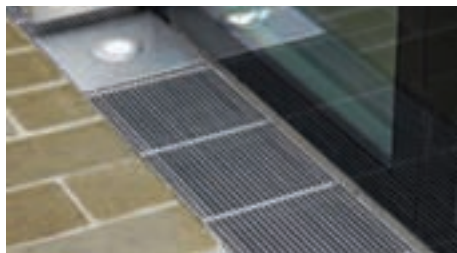
The MONOTEC channels installed in the Travelodge's 47 space main car park have a nominal grating width of 100mm, with an overall height of 380mm and are suitable for a loading category of up to Class D400. The channels provide a cross-section of 355.5cm² and have a high attenuation volume.

The RECYFIX® MONOTEC's one metre long channel component is of a sturdy monolithic design where the HEELSAFE grating and the tongue and groove linking system are integral to the channel moulding. The whole unit is made of tough, virtually unbreakable polypropylene (PP) formulated to be very resistant to daily temperature fluctuations from frost conditions to strong sunlight, including the Ultra Violet (UV) spectrum. PP is naturally resistant to de-icing salt. Complying with the requirements of EN 1433, the PP is given its UV resistance by adding just sufficient carbon black as a stabiliser so that the structural strength of the material is unaffected and a consistent appearance is maintained.

01582 501380 www.hauraton.co.uk



Hauraton customised drainage solutions



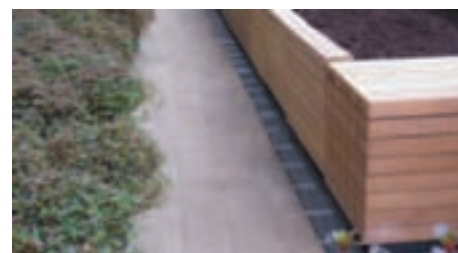
Hauraton manufacture a vast selection of surface water drainage channels for civil and landscaping applications that cover all loading categories from Class A15 to F900 and storage volumes up to 443.0 litres per metre. Their FASERFIX® channel components are cast from the company's Fibre Reinforced Concrete (FRC) whilst the RECYFIX® channels are moulded from 100 per cent recycled polypropylene (PP). Both of these channels are available with a wide range of slot or mesh gratings made from ductile iron, galvanised steel, stainless steel or FIBRETEC®, a composite reinforced material (PA-GF) developed

specifically by Hauraton.

Although Hauraton's FASERFIX® and RECYFIX® stock ranges cover most application, architects, architectural technicians and engineers need not be constrained by the components offered. The company can provide customised solutions that achieve reliable drainage, and where necessary, provide designs that blend in with the desired aesthetic effect demanded.

Where a customised solution would provide the answer, Hauraton Area Project Managers will document the designer's specific requirements at an early stage of the pre-planning phase. A specialist team will then engineer the channel scheme taking into account the aesthetic appearance of the channel run as well as its functional requirements.

Tim Connolly, managing director of Hauraton Limited says, "Solving the many and diverse surface water drainage requirements requires in-depth knowledge, considerable expertise and comprehensive experience. Hauraton's technical office personnel and Area Project Managers have



this technical and product-specific knowledge. If a specifier requires anything out of the ordinary with regard to functionality or design, we can support their individual requirements, from project-specific tender text, through to production, delivery and installation. For further information about customised drainage solutions, customers can request a copy of our digital 48 page catalogue. Technical information including sizing and installation details for Hauraton stock ranges is available digitally on www.hauraton.co.uk and for case studies go to www.drainageprojects.co.uk."

01582 501380 www.hauraton.co.uk



A door closer for any weather

Stockport based Bamford Doors were approached by a public sector client to solve a problem they were having at a small housing development with residents of mixed age and ability. If the existing door closer was set so that all the residents could easily open the door, it was not then strong enough to close and properly latch the door in windy conditions. Using its extensive experience of the door closer market, Bamford quickly decided that the LCN 4111 Smoothee®, which is supplied by Relcross in the UK, was the ideal product for this installation. It's also a product the company has used many times before and so it had confidence in both its performance and durability. It has been tested to over 10 million cycles and was designed specifically for institutional and other rugged high traffic applications. Bamford installed a complete new door set and an LCN 411. Now all the residents can open the door in all weather conditions confident that it will latch correctly behind them. For further information on LCN door closers, call Relcross or visit the company website.

01380 729600 www.relcross.co.uk



Nationwide makes Step change for charity

Leading public sector and new build door and window supplier Nationwide Windows & Doors is extremely proud to have been involved in the renovation work at specialist centre for children with motor disorders, Steps – work which has now been completed, to the benefit of both children and staff. Nationwide's journey with Steps began last year at the inaugural BCEMA Awards – hosted by Efficiency East Midlands (EEM) – where the company revealed its intention to supply and fit new windows worth £10,000. The old, single glazed, steel frame windows have now been completely replaced with fully efficient double glazed PVC-U models, with work completing just after Christmas, in time for a celebratory party, featuring children's favourite, Mr Tumble. Adrian Pavey, Commercial Director at Nationwide Windows concludes: "It's well documented that old windows can have a detrimental effect on the health and wellbeing of a building's occupants, even down to how they feel about themselves, so it was an easy decision to do our bit to help this remarkable local charity."

01788 569 228 www.nationwidewindows.co.uk



A World of Beauty, Quality & Exceptional Design

- 90mm and 140mm Injected panels
- Very Low U-Values we are reaching 0.11 W/m²K in our wall panels
- Green Guide A/A+ sustainability and environmental credentials
- Quality control checks at all stages of production
- Can negate the need for conventional 'central' heating
- Low air permeability, helping with air tests
- Suitable for all types of architecture
- Reduces overall production time
- Available for walls, roofs and floors
- Not restrictive on building designs
- Compliance with latest planning requirements
- Excellent acoustic performance



FLITCRAFT ECOBUILD

Tarnacre Hall Business Park, Tarnacre Lane,
St Michaels, PR3 0SZ

Tel: 01995 679444 • Fax: 01995 679769

Email: info@flitcraftecobuild.co.uk

Website: www.flitcraftecobuild.co.uk



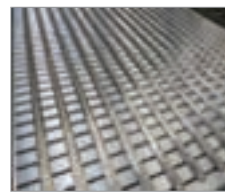
New catalogue for Freefoam



Freefoam announce the launch of a brand new Product Catalogue. The new version contains the complete range of Freefoam products including PVC-U and PVC-UE fascia, soffit, rainwater systems, exterior cladding, interior panelling and decking. With over 2000 product items a clear concise catalogue is essential for Freefoam stockists to promote the range and its A5 compact format is ideal for building professionals roofline fitters and roofers to keep a copy handy with all the product information they need. Designed to showcase the entire Freefoam range the catalogue is divided in to product categories with specific colour coding to make finding ranges quick and easy.

01604 591110 www.freefoam.com

Decking modified to assist visually impaired



neaco provided a bespoke modification to its Techdek aluminium decking system as part of a bridge specification at the Grand Canal Dock development project in Dublin. Using the renowned design versatility of the company's technical team and state-of-the-art precision engineering facilities at its Malton factory, neaco developed a unique grille surface which features tactile strips to alert visually impaired pedestrians when they are nearing a step. Providing a high architectural aesthetic, Techdek is extremely versatile and can be used in many other applications, including staging, modesty screens, solar shading, maintenance galleries and roof access walkways.

Part Q compliance with no compromise



VELFAC composite windows, external doors and patio doors deliver the safety performance required by the new Part Q regulations, without compromising the contemporary, slim aluminium /wood frame. The VELFAC system also meets the exacting standards of UK Police flagship initiative Secured by Design (SBD), adding further value to any residential or housebuilding project. To satisfy Part Q, the VELFAC system can resist damage inflicted by burglars using common tools such as crowbars.

01223 897100 www.velfac.co.uk

CMS helps Council hit milestone

Leading Scottish designer, manufacturer and installer of high performance windows and doors, CMS Window Systems, has helped Fife Council hit a significant milestone in its Affordable Housing Programme with their collaboration to deliver windows and doors for 31 new build homes in Orebank Terrace, Thornton. Working in partnership with local architect firm Sinclair Watts, CMS' wealth of experience in the social housing sector saw it awarded the contract for the manufacture and installation of A-rated PVCu windows plus supply and fit high-performance composite doors for Orebank Terrace.



01324 841398 www.cmswindows.com

HbD

Housebuilder & Developer



REGISTER ONLINE FOR...

In-print magazine • Digital magazine
Newsletter • Daily digests

www.hbdonline.co.uk

adf architects datafile



REGISTER ONLINE FOR...

In-print magazine • Digital magazine
Newsletter • Daily digests

www.architectsdatafile.co.uk



Emperor Concealed

Innovative Bifold Doors

Patented Concealed Hinges



Invisible Hinges
Flush Handles
Weather Rated Low Threshold



DURATION WINDOWS

Aluminium Trade Manufacturer Since 1985

T: 01268 681612 W: duration.co.uk

building construction design



REGISTER ONLINE FOR...

Digital magazine
Newsletter • Daily digests

www.buildingconstructiondesign.co.uk