



adf architects datafile

August 2016

Features in this issue

Rainwater harvesting
Roof glazing & rooflights
Lighting & electrical
Stonework

100% design show preview

Special report

Soho House's brasserie Cafe Monico
Hughenden Gardens Retirement Village

Supplement

Bathrooms, washrooms, kitchens &
catering equipment

News

Stirling Prize shortlist has an
educational focus
Housing projects win big at
New London Awards 2016

www.architectsdatafile.co.uk



**“THE FINEST TRADITIONAL
HANDMADE, WIRECUT & PRESSED BRICKS
FOR RESTORATION, RENOVATION AND NEW BUILD”**



IMPERIAL BRICKS • METRIC BRICKS • PAVERS • SPECIALS • BRICK SLIPS • BRICK MATCHING • BESPOKE BLENDS

REGIONAL FOCUS

The leading supplier of handmade bricks with specialist products to match traditional brickwork across the UK for size, colour and texture

BRICK MATCHING EXPERTISE


A highly personalised service to assist architects and specifiers with selecting the right product for each project

TAILOR-MADE SOLUTIONS

Custom blending of ranges and bespoke weathering to achieve the perfect finish

t 01952 750 816

e sales@imperialbricks.co.uk

 [@Imperial_Bricks](https://twitter.com/Imperial_Bricks)  [company/imperial-bricks](https://www.linkedin.com/company/imperial-bricks)  [ImperialHandmadeBricks](https://www.facebook.com/ImperialHandmadeBricks)

www.imperialbricks.co.uk

reader
enquiry
401

riba
product
selector



IMPERIAL
handmade bricks



projects

35

Round midnight

Michael Willoughby ventures into Soho House's new eatery to discover how its in-house design team worked against the clock to turn a former dance club into a cosy Art Deco retreat with a Jazz Age feel.

40

A model for a brighter sort of retirement living

A new and more socially-inclusive form of retirement living is being designed and built in High Wycombe, writes Steve Menary.

features

53

GROUNDWORKS: RAINWATER HARVESTING

Storm-proof rainwater harvesting

Combining rainwater harvesting with Sustainable urban Drainage Systems (SuDS) can provide architects with an efficient, space-saving water management solution fit for the future. Kevin Reed of Graf UK explains how this can be achieved.

59

EXTERNAL ENVELOPE: ROOF GLAZING & ROOFLIGHTS

Keeping on top of security risks

Security is always a hot topic, but with new tighter Building Regulations for windows it is at the top of the agenda for architects looking to specify rooflights as well as manufacturers. ADF reports.

71

INTERIORS: LIGHTING & ELECTRICAL

Shedding light on innovation

Simon Shenton from lighting supplier Luceco describes how LED technology has permanently disrupted what was a stagnant market offering prescribed solutions for each sector, to provide the dominant solution for the future.

79

LANDSCAPING & EXTERNAL WORKS: STONework

Cast stonework – an ideal solution for restoration projects

Conservation and architectural drivers are leading to an increased use of cast stone as a substitute for quarried stone. Simon Scott of Haddonstone compares the materials options for specifiers.

news & events

4

Industry News, Views & Insights

5

Events

22

CPD Focus

24

International Focus

HEADLINES

6

Housing projects win big at New London Awards 2016

7

Major mixed use scheme in Victoria tops out

18

UK with most shortlisted projects in WAF Awards



27

100% Design show preview

47

Bathrooms, washrooms, kitchens & catering equipment supplement

products

31

Appointments & news

53

Groundworks

55

Structural elements

56

External envelope (incl. external fixtures)

68

Insulation

70

Heating, ventilation & services

71

Interiors

76

Safety & security

76

Landscaping & external works

83

Classified & directory

Managing EditorJames Parker
james@netmagmedia.eu**Advertisement Manager/
Joint Publisher**
Anthony Parker**Production Assistants**Mikey Pooley
Shelley Collyer
Rob Duncan
Kim Musson**Editorial Assistants**Roseanne Field
Jack Wooler
Teodora Lyubomirova**Editorial Coordinator**

Sue Benson

ContributorsNorman Hayden
Steve Menary
Michael Willoughby**Sales Director**

Lesley Mayo

Sales ExecutivesSuzanne Easter
Ian Fletcher
Kim Friend
Steve Smith**Circulation/Reader****Enquiry Service**

Jane Spice

Managing Director

Simon Reed

netMAGmedia Ltd
Cointronic House
Station Road, Heathfield
East Sussex, TN21 8DF**Advertising &
Administration**t 01435 863500
f 01435 863897
info@netmagmedia.eu
www.architectsdatafile.co.uk**Press Releases**

editorial@netmagmedia.eu

Supporter of



Annual subscription costs just £48 for 12 issues, including post and packing. Phone 01435 863500 for details. Individual copies of the publication are available at £5 each inc p & p. All rights reserved

No part of this publication may be reproduced or transmitted in any form or by any means, electronic, mechanical, including photocopying, recording or stored in any information retrieval system without the express prior written consent of the publisher. Although every effort is made to ensure the accuracy and reliability of material published in Architects Datafile, the publisher can accept no responsibility for the claims or opinions made by contributors, manufacturers or advertisers. Editorial contributors to this journal may have made a payment towards the reproduction costs of material used to illustrate their products. The manufacturer of the paper used within our publication is a Chain-of-Custody certified supplier operating within environmental systems certified to both ISO 14001 and EMAS in order to ensure sustainable production.

Printed in England

From the Editor



With the Rio Olympics having recently opened, for better or worse in Brazil's case, it's natural to look back at the largely resounding success which was London's 2012 Games. In the midst of a terrible recession, the UK pulled out all the stops and managed to achieve a truly unifying experience (even if that unity has slightly been undermined by more recent events).

In architectural terms, 2012 was also something of a watershed – it marked one of the first major events where statement architecture was explicitly modulated to a more humble shape, to fit sustainability aims. This meant that many structures were designed to be completely demountable, as opposed to lasting landmarks.

The most obvious example was the stadium, designed by Populous, which was particularly unpretentious compared with its predecessor, the stunning Bird's Nest in Beijing. Simple and functional, its design “embraced the temporary” in the architects' words, and reduced materials and labour required to construct it where possible. This went as far as sinking the structure in the ground creating a natural bowl seating 25,000 and thereby reducing the scale of its above-ground structure. The design's exposing of the structure in a straightforward way had a refreshing honesty.

The laudable sustainability ambitions were doubtless backed by a squad of enthusiastically frugal QS' in Lord Coe's team, but the resulting “reduce, reuse and recycle” design offered up an example of a less grandiose public leisure building for the future. Providing a no-nonsense, lightweight and flexible backdrop for events is a reasonable goal, particularly

given the fickle nature of their ongoing use. (Although the Bird's Nest is fantastic). The design of the London 2012 stadium's ‘legacy’ (to use one of this century's most overused clichés) equipped it with the potential to be demounted from a 60,000 seater venue to a 25,000 seater for smaller events as required. However as might have been predicted in such an overstuffed city, the demand for a big, shiny, new venue from certain quarters was always going to be intense.

As we go to press on ADF, West Ham is about to move into the stadium which saw Usain, Mo and Jess all displaying so much genuine sporting endeavour. No doubt Hammers fans will enjoy what they might consider similar achievements there in future, but the building (including A new football-friendly roof) represents something of a failure of ambition given that what was a flexible public building is now going to permanently house a single ‘private’ function.

What will be the lasting result of Rio's new constructions, which have cost the country so much in lives as well as money? Legacy is all about politics and money in the end, rather than buildings. However the buildings that are left behind (where it's deemed politically correct to be able to actually talk about them) can also provided a lasting reminder of what is possible, and perhaps where flexibility meets pragmatism.

No matter how enticingly ‘pop-up’ or ‘pop-down’ we make future buildings, they are only as flexible as the mindsets of those who run them.

James Parker



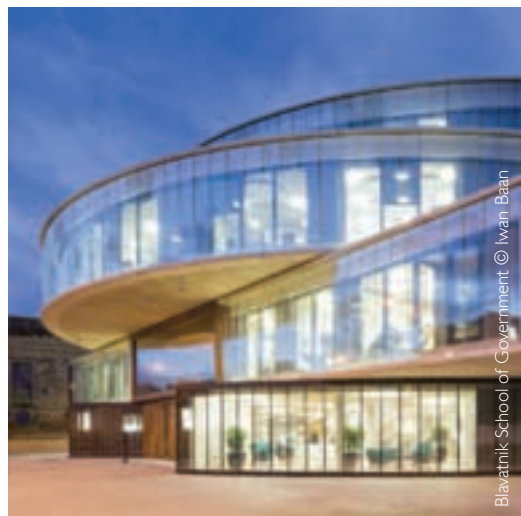
On the cover...

Cover shows Messner Mountain Museum, Coronos, South Tyrol, Italy, designed by Zaha Hadid Architects
© **Hufton+Crow**

For more information, go to page 18.

PRIZE SHORTLIST

2016 Stirling Prize shortlist puts the focus on education and Oxford



Blavatnik School of Government © Iwan Baan



Outhouse Gloucestershire © Charles Hosea

The contenders for the 2016 Stirling Prize for the UK's best new building were announced recently, with three out of the six buildings shortlisted by the RIBA coming from the education sector.

The UK's leading architecture prize's shortlist also sees Oxford University receiving two nominations for the first time. Projects at the university in the running for the prize, which will be awarded in October, are Herzog & de Meuron's Blavatnik School of Government (pictured above left), and Weston Library, by WilkinsonEyre.

The other education projects on the shortlist is City of Glasgow College, Riverside Campus designed jointly by Michael Laird Architects and Reiach and Hall Architects. Completing the list are Newport Street Gallery in south London by Caruso St John Architects, Outhouse Gloucestershire by Loyn & Co Architects and Trafalgar Place, Elephant and Castle, London by dRMM Architects.

RIBA President Jane Duncan commented on the quality represented by the shortlist: "It reflects everything that is great about UK architecture – a blend of experimental, artistic vision and a commitment to changing people's lives for the better."

The restoration of the internationally renowned Bodleian's Weston Library in Oxford by Wilkinson Eyre included the transformation of Giles Gilbert Scott Grade II listed building by the addition of a bold new glazed mezzanine. Herzog & de Meuron has created a "a radical new landmark" in Oxford University's conversation area, said the RIBA, featuring a succession of wide twisting staircases, offset balconies and communal spaces.

Both Herzog & de Meuron and Wilkinson Eyre are previous winners, the former for the Laban Dance Centre in south London (2003) and the latter for Magna Centre, Rotherham (2001) and Gateshead Millennium Bridge (2002).

Also on the shortlist, Trafalgar Place is the first fruit of the wholesale redevelopment of Elephant and Castle's 1970s Heygate Estate. dRMM Architects' flagship development of 235 high density, high-quality homes features extensive landscaping to "bring a sense of tranquillity to a very urban location." The RIBA also celebrated its "clever use of brickwork, giving the new buildings an identity of their own and referencing neighbouring buildings."

Outhouse (pictured above right and designed by first-time shortlisted firm Loyn & Co) is the first private house to feature on the RIBA Stirling Prize shortlist in 15 years – the previous contender being The Lawns by Smerin Architects in 2001. A concrete house on the Welsh borders designed for a couple of retired artists, Outhouse "delights with unexpected spaces, some underground, with a field as its roof," said the RIBA.

The design of City of Glasgow College's Riverside Campus by Michael Laird Architects (shortlisted for the first time) and Reiach and Hall Architects is "anchored by two generous civic spaces, a cloistered garden and grand hall," said the RIBA. In Vauxhall, London, Newport Street Gallery saw Caruso St John Architects converting three Victorian workshops to create new gallery spaces.

The winner of the RIBA Stirling Prize will be announced on Thursday, 6 October.

events

CONFERENCES & SEMINARS

Zero Carbon Design Conference
08 – 09 September, Birmingham
www.zerocarbonbuildings.world

Historic Stonework
13 September 2016, Oxford
www.architecture.com/WhatsOn

Breathing Buildings
28 September 2016, Oxford
www.architecture.com/whatson

FESTIVALS

London Design Festival
17 - 25 September 2015, London
www.londondesignfestival.com

TOURS

Open House London
17 - 18 September 2015 London
www.openhouselondon.org.uk

TRADE SHOWS

100% Design
21 - 24 September 2016, London
www.100percentdesign.co.uk

Restaurant Design Show
27 - 28 September 2016, London
www.restaurantdesignshow.co.uk

Timber Expo
18 - 20 October 2016, Birmingham
www.ukconstructionweek.com

AWARDS

Camden hostel brings Peter Barber Architects the win at New London Awards 2016

A homeless hostel and a pop-up housing scheme have scooped top prizes at this year's instalment of the New London Awards.

Peter Barber Architects' almshouse-inspired flats, Holmes Road Studios in Camden (pictured) was created as a new homeless hostel for the Borough, and named the Overall Winner. The project will house 59 people and provide a courtyard garden with training and counselling facilities.

The practice also won the Conservation & Retrofit award for Mount Pleasant Studios and received a commendation for its Employment Academy scheme in the Education category.

Mayor of London Sadiq Khan reaffirmed his commitment to housing by awarding The Mayor's Prize to a temporary housing scheme in Lewisham. Rogers Stirk Harbour + Partners' PLACE/Ladywell creates 24 demountable homes on brownfield land which can be moved to a different location.

Homebuilding was also high on the agenda as Berkeley Group chairman Tony Pidgley claimed the New Londoner of the Year Award after his companies built around 40,000 London homes over the last two decades.

Eastenders' aspirations for a bridge in the area were echoed in The People's Choice award handed to reForm Architects and Elliott Wood's Rotherhithe Bridge design.

The Ashden Prize for sustainable projects was awarded to the highly energy-efficient New Studio at Wimbledon College of Art by Penoyre & Prasad.

Peter Murray, Chairman of New London Architecture said: "It is no surprise that our key awards have gone to housing, the



lack of which remains at the top of the list of issues that face the Mayor.

He added: "Peter Barber's homes for the homeless have a dignity, delight and economy that celebrates the social purpose of great architecture; Tony Pidgley has delivered huge numbers of homes at a time when the rest of the industry has struggled to meet targets, while Rogers Stirk Harbour + Partners have been at the forefront of developing modern methods of construction to provide truly affordable homes for Londoners.

"We hope that the best innovative thinking by London's pool of talented designers, developers and constructors can be harnessed by Sadiq Khan and his deputy mayor for housing to deliver the new homes the capital so desperately needs."

Marks Barfield's skinny 360-degree view of Brighton & Hove opens

The 162 m-high British Airways i360, designed by David Marks and Julia Barfield of Marks Barfield Architects, opened to the public on Brighton's seafront on 4 August and has been hailed as the world's slimmest tower.

The "first vertical cable car" which has a height to width ratio of more than 40:1 will take groups of up to 200 visitors to a height of 138 metres in a glass viewing pod. Marks and Barfield are best known as the practice that conceived and designed the London Eye and have applied similar innovation to British Airways i360. The pod uses energy recapture technology as it descends to generate almost half of the electricity required to power its ascent.

Architect David Marks said: "British Airways i360 is the result of a fantastic example of European cooperation. The team includes many key individuals and firms we worked



with on the London Eye and it has been our privilege over the past 12 years to see it turned into a reality."

CENTRAL LONDON REFURB

“Playful” mixed use scheme in Victoria tops out



The revamp of a nine-storey building at 25 Wilton Road, a prominent central London site, has topped out. The scheme designed by MAX Architects is located directly opposite Victoria Station and will provide a mix of 14 flats for private rent along with over 9,000 m² of office and retail spaces.

Max Titchmarsh of MAX Architects, commented: “This scheme brings a tired, existing building back to life and, thanks

to a progressive client who backed our vision for the site, adds personality, character, colour and a playful counterpoint to the often faceless office offering.”

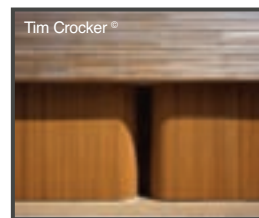
According to the London-based practice, the design of the office spaces stems from a successful collaboration between the client, Royal London Asset Management, and the architects. “The delivering a working environment that will stand out from the traditional CAT

A office fit-out.”

Designed with a raised floor and suspended ceiling grid, the floorplates exploit the benefits of open plan and exposed ceilings by pushing much of the infrastructure to a perimeter racetrack and exposing large areas of column-free flexible space with 3.3m floor to ceiling heights. The scheme is being built by Kier Construction and will complete in spring 2017.

Bespoke Garage Doors

Commercial | Domestic | Listed & Heritage | Special Projects



Tim Crocker ©

T: 0151 280 6626
E: info@rundum.co.uk
W: www.rundum.co.uk



TIMBER EXPO

NEC BIRMINGHAM
18-20 OCTOBER 2016
SUSTAINABLE | CONSTRUCTION | INNOVATION

THE UK'S ONLY TIMBER EVENT

Register for your **free ticket**
timber-expo.co.uk

9
SHOWS

Includes:
FREE access
to 9 shows
during UKCW

PART OF
UK CONSTRUCTION
WEEK | 2016



EXPANSION

Geffrye Museum £15m expansion gets the nod



View of cafe in refurbished former pub on Cremer Street

© Wright & Wright Architects Ltd

A £15m development which will improve and expand the Geffrye Museum has been approved by the London Borough of Hackney.

The scheme, called Unlocking the Geffrye, is designed by Wright & Wright Architects to create more spaces open up existing areas previously unseen by the public in the museum's 100 year history.

The plans also feature updating the 18th century almshouse buildings and adding new museum facilities.

David Dewing, director of the

museum, said: "Developing the museum will ensure our buildings and gardens are safeguarded for future generations and many more people will be able to enjoy the Geffrye. With planning secured, we can now really step up our fundraising campaign to make our vision a reality."

The project will open up 70 per cent of the museum's buildings to the public, compared to the 30 per cent currently used. New spaces added within the existing building will increase the museum's

capacity, allowing it to welcome 50 per cent more visitors per year.

Improvements include a new gallery in the main building to display more museum collections, two multi-purpose teaching and events areas in the period gardens, an improved access to the museum via an entrance opposite Hoxton station, and a passage to the period gardens from the central reception.

A cafe on the ground floor of a former pub on the corner of the site will also be restored and extended.

Give your homes a smarter edge

Luxury homeowners demand smart homes. Our award-winning team can integrate the latest AV, lighting and security systems into your projects at the design stage.

Find out more at www.cyberhomes.co.uk/working-with-architects



CEDIA
MEMBER



0333 344 3718
hello@cyberhomes.co.uk
www.cyberhomes.co.uk



Home automation • Lighting control systems • Multi-room audio and video • Home cinema design and installation
CCTV and security • Wired and wireless networks • Occupancy simulation • Climate control

RESIDENTIAL SCHEME

First look at Manchester's new residential village



Details of two residential communities in Manchester's new St. John's neighbourhood have been revealed by developer Allied London.

South Village and St. John's Place Tower, known as 'Village and Sky', will create a village-inspired community in Manchester's city centre.

Designed by Geraghty Taylor Architects, the project was inspired by Manchester's creative scene and wanted to put people back at the heart of design.

Michael Ingall, chief executive, Allied London commented: "St. John's will be Manchester's first residential neighbourhood, and a new Manchester experience. We want to create a lifestyle where living means more than just bricks and mortar, and we want to do it well."

He continued: "Geraghty Taylor

Architects was briefed to create contemporary warehouse living for South Village based on classic industrial heritage. By contrast, St. John's Place Tower has a different feel – that of classic, modern architecture and design, reminiscent of the first towers in Chicago and New York."

Geraghty Taylor Architects was commissioned to create the interior design brand for the two projects, while Simpson Haugh and Partners designed the masterplan.

Brendan Geraghty, director and co-founder of the London-based firm of architects, explained: "We work from the premise of Brand before Building. That means we want to fully understand our client's brand and create or develop the story behind any project we approach.

Architecture is not just about bricks and mortar; it is about facilitating communities, lives and neighbourhoods and creating the brand and culture to support that."

David Drews, St. John's head of design, said that the idea behind the two building projects was to create "two individual personalities."

He explained further: "South Village is about craft and honesty. Expect polished concrete floors, oversized terraces and exposed brick. The Tower is inspired by mid-century classic design and features bespoke kitchens, marble finish walls and unparalleled views of Manchester."

Homes at South Village and St. John's Place Tower will launch to the public in September 2016.

THE SPECIFIER'S
GUIDE | to ceramic tiles
and calibrated
natural stone

www.specifiersguide.co.uk

Go online and subscribe to get your FREE copy

The Specifier's Guide to Ceramic Tiles and Calibrated Natural Stone offers architects, interior designers and other construction professionals a comprehensive guide to the technical and aesthetic properties of ceramic and natural stone tiles.

This is Frank Lloyd Wright

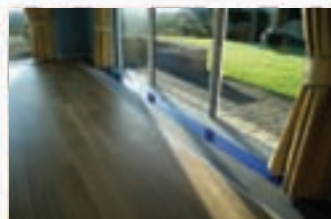
Ian Volner, published August 2016

This is Frank Lloyd Wright brings the projects and persona of the world-famous architect into vivid focus through witty narrative and beautiful illustrations.

The book describes Frank Lloyd Wright's eventful life giving readers an up-close look at his progress from difficult childhood to early success, mid-life setbacks and on to late-life comeback.

Fifty illustrations document the important events in his life alongside photographs of Wright's most iconic buildings including Fallingwater and New York's Guggenheim Museum.

The book is the first architectural title in Laurence King Publishing's 'This is' series. This is Frank Lloyd Wright by Ian Volner and Michael Kirkham is available in August 2016.



Trench Heating

Gunning Trench Heating is the best way of providing a heating system in front of full glazed walls, combating cold downdraughts and condensation. It is a discreet and effective solution for extensions, conservatories or environments where wall radiators would be in the way or unsightly.

Finned Heating Elements

Gunning Copper & Aluminium Finned coils are great for heat transfer. Used in trench heating, fixed under window boards or boxed in behind radiator covers this heat exchanger is cheaper and an ideal replacement for heavy steel tube. Elements come in four sizes with lengths made to measure.



GUNNING HEATING PRODUCTS
Tel: 01268 545154 Fax: 01268 545154
Email: sales@gunningheating.co.uk
www.gunningheating.co.uk

Unit 12A, Durham Road, London, Bealton, Essex, SS15 6PH

enq.104



THE FINEST OAK FRAMED BUILDINGS
MADE IN ENGLAND



01384 296611 | email: info@primeoak.co.uk | www.primeoak.co.uk

GARAGES | GARDEN ROOMS | ORANGERIES | HOME OFFICES | CONSERVATORIES | BARNs | STABLES

enq.105

site lines

Martin Townsend, director of sustainability at BRE Global, looks at the importance of building standards which reflect local needs across the globe, in order to share best practice and drive change.

'There is a need to consolidate and simplify the ratings 'toolbox' to improve understanding and take-up, but experience and quality must not be lost'

Martin Townsend, director of sustainability at BRE Global



There is a rapidly growing appetite for rating methodologies that can be used to demonstrate the environmental performance of our activities, ranging from personal carbon footprinting tools to complex sustainability assessments and standards of components, buildings and entire cities.

There are also rapidly growing demands to demonstrate sustainability in many aspects of the built environment, which result in a flood of claims and counter-claims together with the development of more and more standards, guidance and rating methods. While much of this work is well founded and helpful in moving the agenda forward, the plethora of approaches introduces confusion and conflict in the marketplace and a lack of consistency in priorities and direction. This acts as a barrier to take-up and therefore to meeting the objectives that these initiatives set out to achieve.

It must be recognised that the construction industry is diverse and has many, often conflicting, commercial and policy objectives that can disrupt or divert the drive to greater overall sustainability.

Organisations are increasingly using the sustainability label to promote their products in an ill-informed market with varying degrees of rigour and robustness. In this debate, no other country has the spread of focused initiatives in place which the UK does. The drive to overcome the deficiencies that undoubtedly exist in these methodologies must not result in a loss of this hard-earned experience, knowledge or commercial position.

There is a need to consolidate and, where possible, simplify the 'toolbox' to improve understanding and take-up, but experience and quality must not be lost. Neither must there be a 'dumbing down' of targets or a loss of the focused message for different stakeholders.

An evolving standard

Over its 25 year existence BREEAM has become the de facto rating method for building performance. During that time it has quietly driven change, perhaps without us even knowing it, is now used in more than 70 countries and has an 80 per cent market share in Europe.

With this international growth stemming from a relatively short history, the BREEAM International scheme for new buildings was launched in 2008 and the first International certificate was issued to the European Investment Bank in Luxembourg. The first existing building outside the UK was

certified in 2010 and in 2013 saw the launch of BREEAM In-Use International, which allows clients with International property portfolios to assess their assets globally.

The standard's 25 years of change included the endorsement of the 1993 launch of the Forest Stewardship Council (FSC) and numerous other responsible sourcing schemes since then. We continue to work with the materials sector and are developing a means of differentiating between responsible sourcing schemes, on the basis of their scope and rigour through the supply chain. This differentiation will add value to both designers and specifiers, supporting their decision making and ultimately leading to a more sustainable built environment.

Change to lead

Consideration of the importance of the health and wellbeing of occupants has been on the increase in the design and operation of buildings since the first BREEAM scheme launched in 1990. The original scheme was split into three parts, with an Indoor Effects section focusing on the impacts of buildings on welfare of occupants. It recognised that people typically spend 90% or more of their time in buildings so better environmental conditions can have a significant impact on their wellbeing.

To this end, the UK construction industry needs to continue to take the lead in sustainable building and find a way of delivering cost-effective and comfortable zero carbon buildings. It is best achieved by taking a strategic overview of the requirements for a sustainable built environment, feeding this back into the development of existing leading tools that are operating in the UK.

Working to create and strengthen links, metrics and promotion of sustainability labels and guidance would have a dramatic effect both in terms of accessibility and in contributing to the development of policy and industry strategies.

The international dimension is paramount in taking this forward. Many client organisations, not to mention players in the construction and property sectors, do not restrict their operations to the UK or even European contexts. Increased international benchmarking and mapping of standards are vital. Drivers and needs vary considerably between climates, regulatory frameworks and, indeed, social and cultural priorities, and so there is an acute need for a flexible and ever-evolving sustainability rating system such as BREEAM that can be adapted for use throughout the world.

Ben Ainslie HQ achieves BREEAM Excellent rating

The new Portsmouth HQ of the Land Rover Ben Ainslie America's Cup sailing team has been awarded BREEAM Excellent, achieving the second highest rating for sustainability.

The 74,000 ft² Land Rover BAR building in Camber Dock was designed by HGP Architects and built by Allied Developments. Part-funded by a £6.5m government grant, sustainability was

“embedded from the outset” and 98 per cent of all demolition, excavation and construction waste was diverted from landfill. In addition all of the demolition concrete was reused in the foundations as secondary materials.

BIM technology enabled the design team to undertake life cycle analysis of the design choices while providing informed options for in-use performance monitoring. A bespoke building management system monitors 15 different points including energy and water consumption as well as renewable energy generation and waste.

More than 400 solar panels cover the available roof space while natural ventilation is achieved through the central atrium. Rainwater harvesting has led to a 25 per cent improvement in water efficiency over existing UK building regulation standards. In addition, the building's fabric wrap provides a heat-saving air cushion of approximately 5°C and controls the amount of sunlight that enters the building, reducing



energy used for cooling and carbon emissions.

Matthew Williams, director, HGP Architects commented: “Using modern methods of construction – and with technologies incorporated into the design to seek carbon neutral credentials – Ben Ainslie and his team have sought to commission a team home of cascading layers linked together through a central light well that connects everyone to the heart of the team, and the boat.”



MONTPELIER
GARDEN ROOMS • ORANGERIES • REPLACEMENT WINDOWS

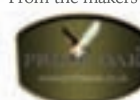
THE FINEST QUALITY TIMBER WINDOWS
50 YEAR TIMBER WARRANTY
FREE SITE SURVEY NATIONWIDE




The Finest Quality Replacement Timber Windows

Call: 01384 279933 - Email: info@montpelierjoinery.com - Visit: www.montpelierjoinery.com

From the makers of



ask the architect

Norman Hayden poses the questions to David Padoa of Design International.

'I do not believe in architectural firms that carry the name of a single individual. This is the opposite to my ethos of listening to others'

David Padoa, CEO of Design International



Why did you become an architect?

It was almost by accident. I decided to enrol at the Architecture University in the Polytechnic of Milan after a brief conversation with a girlfriend from senior high school who was upset due to her father forbidding her to enrol at the University. His argument was that architects could not find a decent job in Italy and she would have had a limited career. I always wanted to work abroad and travel. Something felt right and challenging about becoming an architect: it was a vast platform to fulfil my curiosity, creativity and travel ambitions and eventually modify places that people visit and experience.

What do you like about it most?

The human factor. To me, a good architect is a person that is mainly capable of listening, also what is not explicitly said. I work principally in the hospitality, leisure and retail architectural sector and I like to create stories that our visitors or guests love to experience. Architecture transforms both places and lives; it can create employment opportunities and regenerate communities and the environment. Architecture is guided by vision and imagination as well as financial and technical knowledge. It serves a plurality of purposes – this is what I like the most.

What is your proudest achievement and why?

Building up a working environment based on trust, creativity and passion. In our firm we have more than 120 talented individuals of over 30 nationalities and yet engage between each other like members of the same family. From a professional point of view, the greatest moment was the opening event of Morocco Mall in Casablanca in December 2011. The owner projected onto a large video wall, behind Jennifer Lopez performing, the video interviews of all the key people that contributed to the project. I was part of it, as its architect, and my immediate family and business partners were there. When my daughters and wife looked at me, I felt a profound moment of pride.

What's your current biggest challenge?

We love working on challenging projects, both in competitive markets and new territories for clients that share the same passion to experiment, innovate and also care for the environment. With projects in over 20 countries at any given time, the biggest challenge is to stay focussed and deliver a service that exceeds our own expectations. Quality needs time, and time seems to be always the most critical currency we are trading in.

JIG

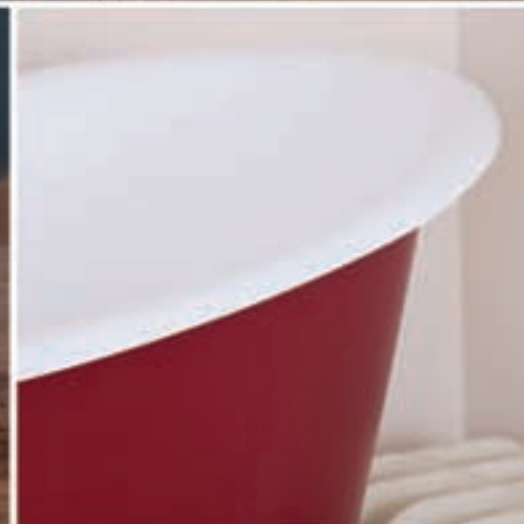
BATHS



The Normandy
Copper Exterior & Nickel Interior



reader
enquiry
107



Recently opened: Il Centro shopping centre, Milan



What single change/innovation would make an architect's job simpler?

Reduce the approval time process and procedures to gain planning and building permits.

What is your favourite medium?

Hand sketches. I still believe that it is the fastest and sexiest way to express an idea.

What can we learn from foreign architects?

Every architect in my firm comes from a different country and a different background. We need to learn to embrace their culture without the loss of our own identity. Many non-Italian architects work in large teams whereas Italian architects tend to succeed as individuals. I do not believe in architectural firms that carry the name of a single individual. This is the opposite to my ethos of listening to others.

What will the next big thing in the industry be?

The combination of physical space with virtual engagement. The aim is identical: enhancing experiences and comfort.

How do you see an architect's role changing?

Architects shall learn again how to make their design approachable to people and become less self-celebrating. Each individual is unique, so are buildings that last. Functions and different lifestyles must be integrated. More and more often we are designing shopping experiences that resemble hospitality and working environments that mimic homes. Everything is sustainable. Ultimately the environment, our habits as visitors as well as our clients as investors receive an added value.

Are there limits to the part technology can play?


There are only benefits. Technology amplifies boundaries as opposed to architecture that is all about defining physical limits.

What are your hopes for the next 12 months?

That the banking system stabilises. That Mr Trump does not win power in the US, and that passion to improve our built environment is felt as a fantastic opportunity by the local governments. I also hope, as a group, that we will grow slowly and steadily.

Cleopatra Mall, Cairo, Egypt





When we say low-profile. We mean low-profile.

Installation as low as 3° and a casement height of only 98mm to minimise protrusion from the roofline and to enhance the aesthetics of your project.

The Plateau Rooflight. More elegant
detailing than any other flat rooflight.

Find out more **01993 833108**
www.therooflightcompany.co.uk

the
Rooflight
Company

reader
enquiry
108

Rooflight dimensions 1525mm x 925mm
#GOLARGE discreetly

AWARDS

UK firms have most shortlisted projects in World Architecture Festival Awards

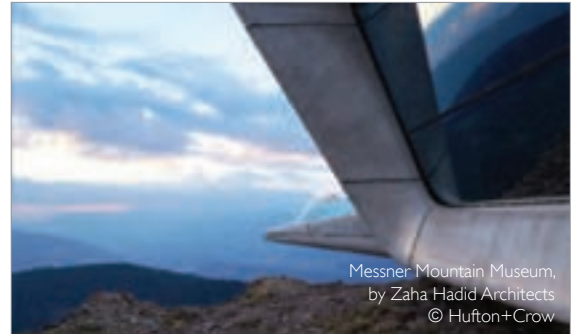
UK architects have the highest number of projects on this year's World Architecture Festival (WAF) Awards 2016 shortlist.

A futuristic London tube station, a 'Happiness Centre' in Bhutan, a miniature library in the Philippines and a former Stalinist expo centre turned urban farm are among the array of projects chosen. The 343-strong shortlist features entries from 42 different nations with projects based across 58 countries.

Paul Finch, programme director of the World Architecture Festival, commented on this year's crop: "This is a very exciting year for us, with a record entry and a very high overall standard. We look forward to meeting the shortlisted architects in Berlin in November."

Major UK practises in contention for the prizes include Foster + Partners, Zaha Hadid Architects, Rogers Stirk Harbour and Allford Hall Monaghan Morris.

The international practices in the shortlist include Ingenhoven Architects (Germany), Coop Himmelb(l)au (Austria), Nikken Sekkei (Japan), Turenscape (China) and Studio Milou (France), as well as Sanjay Puri Architects (India), WOW Architects (Singapore), Nabil Gholam Architects (Lebanon), Neri & Hu Design and Research Office (China), Cox Rayner and Francis-Jones Morehen Thorp (Australia) and BIG-Bjarke Ingels Group (Denmark).



The architectural practices behind each project will battle it out in live judging sessions to be held at the festival in Berlin, 16-18 November.

The 32 winning projects will then compete for the ultimate accolades of 'World Building of the Year' and 'Future Project of the Year'.

This year's judging panel will feature Ole Scheeren of The Interlace, Louisa Hutton of Sauerbruch Hutton, Christoph Ingenhoven of Ingenhoven Architects and David Chipperfield of David Chipperfield Architects.

news bytes

Visit the website
www.architectsdatafile.co.uk
and enter the reference
number for more information

UK construction
contracts at
fastest pace...
Ref: 31030

Timber structure tests
new boundaries...
Ref: 99462

Landscape architects
mark 40th
anniversary...
Ref: 28668

RIBA sets out
challenges and
opportunities ...
Ref: 18752

John McAslan +
Partners to design
Western Europe's
largest mosque...
Ref: 78434

International design competition opened to architects for the first time

Leading roof window manufacturer Fakro is opening its international design competition to architectural students for the first time.

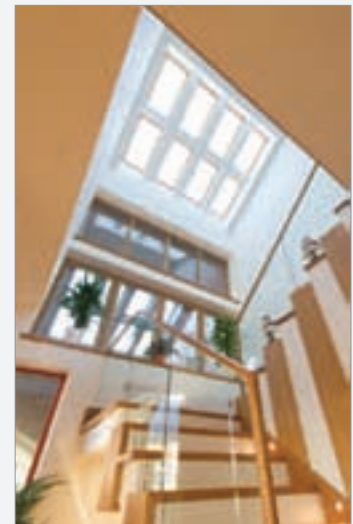
Entitled 'Space for New Visions' in 2016, the competitions run by the company require practising architects to produce a concept for the renovation of a public building, and architectural students entering will now be tasked with designing a residential project.

The competitions now attract entries from throughout the world. Entrants have to demonstrate innovative use of Fakro products in their submissions; evidence must be provided of "design practicality, energy-efficiency and sustainability."

The winning architect will receive 5,000 Euros, the runner up 3,000 and third place 2,000. The two student projects judged the best will receive an AutoCad Revit licence and a visit to Fakro Poland.

Closing date for entries is 12 September and more information can be found at www.fakro.com

A major global developer and manufacturer of roof windows, Fakro holds over 100 patents. In addition to wooden pivot windows it also produces PVC pivot windows with raised axis of rotation, top hung, pivot and balcony windows, as well as "super energy efficient" windows and products designed for flat roofs.





SOAKER SINGLES

- ♦ LOW PITCH SOAKER
1 per slate
- ♦ ANY SLATE ROOF
for all manmade and
natural slates
- ♦ WEATHERPROOF
weather protection

INDIVIDUAL SOAKER FOR SLATES

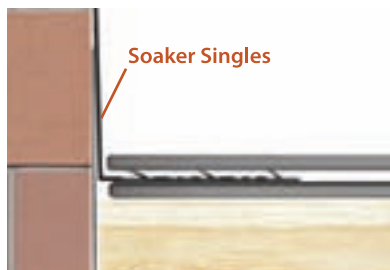
LOW PITCH ROOFING SYSTEM

any slates as low as
12°

High performance soaker systems for slates



reader
enquiry
109



A complete range of slate roofing ancillaries

www.permavent.co.uk

practice profile

Norman Hayden calls on architect Chapman Taylor which has been on an international journey, starting at Scotland Yard.

The Metropolitan Police headquarters at New Scotland Yard, central London is one of the most recognisable buildings in the country.

With its famous triangular revolving sign, it is a daily sight for Londoners and tourists as well as a landmark watched by millions of TV viewers across the world when a major crime story breaks.

This project was awarded to the three founding partners of architectural firm Chapman Taylor – Bob Chapman, John Taylor and Jane Durham – in 1959 as a first commission on an unprecedented scale, and one that prompted them to form the architectural practice.

From a planning perspective, the project achieved acclaim for the successful placing of rectangular office buildings into the challenging triangular site on Victoria Street, Westminster.

New Scotland Yard has marked the start of a journey for the firm, which has since then become a global leader in the design of creative and successful places and spaces.

Early years

In its early years, Chapman Taylor developed a reputation for designing many prestigious office and residential developments in Central London, as well as working on the masterplanning of some major London estates.



Urban regeneration: Princesshay, Exeter



Altstadtquartier Büchel, Aachen, Germany

In the 1970s, Chapman Taylor was at the forefront of the dramatic expansion of the retail sector in the UK and designed the majority of the shopping centres built at the time.

In the early 1990s, it commenced its growth internationally and opened its first design studios in mainland Europe.

Recent years have seen greater international expansion encompassing projects and offices across Europe, Asia, Central and South America and the Middle East.

The company boasts a multi-national team of architects, interior designers and graphic designers, who specialise mainly in retail, mixed use, residential, office, hospitality and transportation work. The UK and international concept design teams are also based in London and its design portfolio includes some of the UK's largest and most complex design-and-build developments.

Continued growth

Chapman Taylor made a strategic decision to widen its reach in the UK by opening regional offices in Bristol and Manchester so that work could be planned and delivered by local staff that can understand the regional conditions. For example, Manchester staff handled the multi-million pound Media City UK in Salford, while the Bristol team looked after projects throughout the southwest.

Today, Chapman Taylor has global staff of 450, of which 175 operate in the UK (110 in London, 45 in Manchester and 20 in Bristol) with a fee split of 35 per cent UK and 65 per cent international.

At the Paddington headquarters in London, two of the four equity partners, Adrian Griffiths and Chris Lanksbury, discuss the firm's remarkable journey.



'We want to give both the client and the community something that will be respected'

Chris Lanksbury,
Chapman Taylor

Pushing the boundaries

Adrian joined the company in 1986 and became a partner in 1996. He oversees the UK projects – typically complex, mixed-use, masterplan schemes. Adrian insists: “I consider myself both an architect and an urban designer and it’s my passion to blend both of those skills.”

Looking at the UK scene, Adrian says: “Historically, we are lucky to have had some clients who have been prepared to push the boundaries.” He sees the Princesshay project in Exeter – as a good example of a well-integrated mixed-use scheme that also demonstrates Chapman Taylor’s ability to collaborate with other architects.

Chris arrived in 1979 and for the past 20 years been building the international business, which includes eight wholly-owned companies across Europe. He is still involved in concept design, despite travelling widely, in a bid to spot growth possibilities. Chris says: “A key aspect of my job is to tie together the various offices – which are conceived and delivered in individual countries – into one Group business.”

Surveying the international portfolio, he adds: “Every country has its own culture and they are all very different. This brings a great variety to our work. We very much respect the environment of where we work in its context.”

Typifying the work, Chris feels, is the Techpark in Balzano, north Italy – a highly ecological project and part of an industrial heritage. In addition, he points to larger schemes in China, such as the Global100 Theme Park, and the Altstadtquartier development in Aachen, Germany.

What do they think is Chapman Taylor’s distinct qualities? “We don’t have a fixed architecture style,” explains Adrian. “It is part of Chapman Taylor culture to encourage our staff to work to the best of their skills. Ultimately, we are architects who work for commercial clients whose buildings have to work for them financially.”

Chris adds: “We don’t go to projects with preconceptions. We work with the client to create the buildings. In Britain, we have had a leading edge on urban regeneration and how to create an integrated mix of uses. We believe it has improved

our city centres. We want to give the client and the community something that will be valued. We want to be respected by the client for the product we produce right across the board. I would say that this is like a traditional architectural role in a modern world.”

Challenges

In terms of the challenges today, Adrian highlights two things. “Firstly, projects are so much bigger today. When you are doing a huge masterplan in one go, getting some natural variety into it is very important. Secondly, on the economic front, there has been a slight stagnation in the market, which has not fully recovered from the global recession in 2008, and this may continue. Being competitive in such a market is challenging.”

However, Chris strikes a positive note in the end. “Although we are not masters of the economic framework, architects have always worked in a fluctuating business environment. I am generally positive, particularly as we are now seeing more quality in buildings from concept through to construction.”

It seems that, like the Scotland Yard triangle, Chapman Taylor will continue to revolve on the world stage for many years to come.



(L-R) Adrian Griffiths and Chris Lanksbury

Chapman Taylor fact file

- Company founded in 1959
- 450 staff in 90 countries
- 19 regional centres
- Operating on six continents
- Urban regeneration specialists
- ‘Designer of the Year’ at the Retail and Leisure Awards

cpd focus

COMPACT ROOF USING CELLULAR GLASS INSULATION



BBA certificates for the **VMZINC** 'Compact roof using cellular glass insulation' and 'Structural roof using PIR or mineral board insulation' have been updated and extended. The compact roof utilises Foamglas® cellular glass insulation to prevent the passage of water vapour and is therefore ideal for buildings with a high vapour drive such as swimming pools. Both systems are installed without mechanical fixings penetrating the insulation, thus greatly reducing scope for thermal bridging. VMZINC remains the only zinc manufacturer to have such accreditation and can additionally offer a BRE Green Guide A+ rating for the structural roof system.

01992 822288
www.vmpzinc.co.uk
enq. 110

STEP ON IT!



Quantum Flooring Solutions' CPD looks at the guidelines for the specification of a safe stairway. The presentation deals with the subject of how to make commercial stairways safe and meet with all current building regulation guidelines. The CPD presentation includes: What stair nosings are designed to achieve and how to select the right one; Key Legislation and Industry Standards; How recent BRE and Equality Act (Formerly DDA) guidelines affect specifications; Environmental and Health and Safety considerations; Examples of best practice. The seminar lasts 45-60 minutes including time for a Q and A session. All seminars are part of the RIBA core curriculum syllabus and earn double CPD points for those attending the seminars.

0161 627 4222
www.quantumflooring.co.uk
enq. 111

UNDERSTANDING U.K BUILDING REGULATIONS RELATING TO RESIDENTIAL VENTILATION AND VENTILATION WITH HEAT RECOVERY



This CPD from **Airflow Developments**, specialists in air movement for over 60 years discusses the reasons why we need to improve indoor air quality in residential buildings and the Building Regulations that need to be adhered to for delivery of an effective, compliant ventilation strategy.

The course will cover the following topics:

- Building Regulations and how they apply to the specification of a ventilation system
- Understanding Compliance Guides and their place in the specification process
- Good, better, best – From a simple extractor fan How Mechanical Ventilation with heat recovery can provide the complete ventilation solution
- A system is only as good as the ducting installation – The do's and don'ts of installing a system
- Sign off by Building Control is mandatory – How to comply

Advise clients on the aspects of a poor indoor environment that can effect occupant health and degrade the fabric of a building. Explain the principle of operation of a Mechanical Ventilation with heat recovery system and where it will provide the most suitable ventilation solution. Fully understand that proper attention must be paid to the correct installation of ducting and the consequences in energy loss and fan performance when it is not. An overview of how to commission a fan system so that 'Installed Performance' standards are met and Building Control will sign off the project.

01494 525252
www.airflow.com
enq. 112

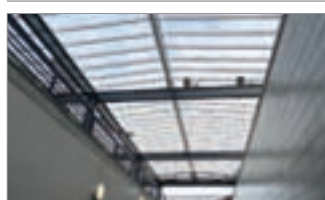
ENGINEERING SUSTAINABLE DHWS IN MODERN BUILDING DESIGN



The latest Raychem seminar from **Pentair** has been awarded CIBSE accreditation. The seminar offers comprehensive information about the history of DHWS, its technology and what is driving it. It also discusses how the code has evolved, what is required by modern designs and gives case study examples to exemplify the energy and efficiency benefits that can be achieved with single pipe solutions in conjunction with heat pump technology. The new CPD also includes important information on the new hot water standard, BS8558.

0800 969 013
www.pentairthermal.com
enq. 113

SPECIFYING OVERHEAD GLAZING



Twinflix's CPD seminar will be of interest to those who specify overhead glazing, including roof lights, canopies or walkways, in factories, railway stations and depots, factories or hospitals. Enabling specifiers to make more informed decisions about the products used in overhead glazing situations, by having a better understanding of the different products available in the marketplace. Topics include the benefits of multiwall and solid polycarbonate compared with traditional glazing, quick to fit roof glazing panels, roof light fragility and Document L2 in relation to roof glazing.

01925 811311
www.twinflix.co.uk
enq. 114

LEANING, SEALING AND MAINTAINING PORCELAIN AND CERAMICS



In response to industry demand, **Fila**, a global, eco-focused company specialising in surface care products for marble, natural stone, porcelain, terracotta and wood has launched a new RIBA-approved CPD seminar. The new seminar, entitled 'Cleaning, Sealing and Maintaining Porcelain and Ceramics' will examine the impact of maintenance regimes and solutions used.

The new CPD seminar will also discuss how surface care specifications can be adjusted to maximise aesthetics and performance. Seminars will have a standard 30-minute duration, plus questions and answers, and will be available throughout the UK.

With a strong practical focus, Fila's seminar will examine the various cleaning stages – from initial builder's clean to ongoing maintenance. It will discuss the various issues that can arise, as a result of adopting an incorrect regime or using unsuitable products.

Sealers will also be discussed – with advice on which tiles actually require protection, as well as comparisons of water-based and solvent products, and various pH levels. Associated health and safety, sustainability, and lifecycle issues will also be explored, with tile samples available throughout the presentation, to illustrate the areas discussed.

To find out more about the new seminar, please contact Lisa Breakspear at Fila UK via telephone, email or alternatively visit the company website.

01584 877286
www.filasolutions.com
enq. 115

continuing professional development

Maintaining and improving professional competence, skills, abilities and knowledge

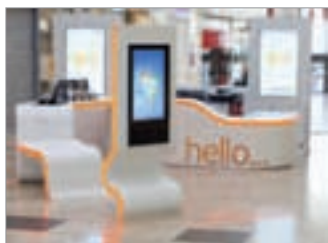
LEARN HOW AND WHY TO SPECIFY FLAT GLASS ROOFLIGHTS



Do you have a requirement for Flat Glass Rooflights on an upcoming project? Maybe you are keen to learn more about the benefits of specifying these products? Either way, **Roofglaze** can help you with extensive experience in the design, manufacture, supply and installation of high-end rooflights and skylights. Their newly-improved CPD seminar, 'Contemporary Rooflight Solutions: A Specifier's Guide to Flat Glass Rooflights', is fully RIBA-approved and available now for presentation at your offices.

01480 474 797
www.roofglaze.co.uk
 enq. 116

SOLID SURFACES CPD SEMINAR



CD (UK) Ltd, the exclusive UK distributors of Corian® – Seminar structured as follows: Development of Solid Surface from 1960s to present day; Raw materials, adhesives and composition; Solid Surface characteristics and benefits; Manufacture: Sheet, Matrix sheet and shape product; Comparison of characteristics; From production to fabrication process; Properties of Solid Surface; Architectural and Design possibilities; Current applications; Environmental considerations; Support, warranty and service infrastructure.

0113 201 2240
www.cdukltd.co.uk
 enq. 117

TWO NEW RIBA ASSESSED CPD SEMINARS FROM COMAR



In two RIBA assessed seminars, **Comar** outlines:
'Stand & Deliver: a Study of curtain Walling' – the design of curtain walling, it's properties and how it is used by specifiers. This seminar aims to offer an understanding of the points of Hill in the NBS specification system, and how best to make use of it.
'Designing functions & reliability into entrances' – the issues that influence the function of main entrance design and technology. This seminar aims to offer an understanding of how user expectation influences door design and links this with hardware selection, entrance configuration and floor finishes.

020 685 9685
www.comar-alu.co.uk
 enq. 118

NEW GUIDE TO MINIMUM ENERGY EFFICIENCY STANDARDS (MEES)



Mitsubishi Electric has produced a free, CPD-accredited guide to the Minimum Energy Efficiency Standards (MEES) which will come into force from April 2018. From that date it will be illegal to lease out a building with an EPC (Energy Performance Certificate) rating of Band F or G. The CPD Guide examines MEES in-depth, including what types of building are most likely to be affected and what exemptions may currently apply.

01707 282880
library.mitsubishielectric.co.uk
 enq. 119

Leading architects among 2016 Wood Awards shortlist

Twenty of Britain's best designs in wood have been featured on this year's Wood Awards shortlist, including buildings by leading architects.

Projects include St Clare's College in Oxford, a mid-century house retrofit and studio extension in Wiltshire, a timber replacement for a 1930s bungalow in the New Forest, an artwork made of over 10,000 tree species in Bristol and a plywood exhibit seen at last year's Timber Expo.

Leading architects included in Education & Public category include Foster + Partners, for Maggie's cancer care centre at the Robert Parfett Building in Manchester, Sarah Wigglesworth Architects for Mellor Primary School in Stockport and Hodder + Partners for St Clare's College. Feilden Clegg Bradley Studios was shortlisted for Stanbrook Abbey in Wass, Yorkshire, as well as Ptolemy Dean Architects for the conservation and repair of a barn in Harmondsworth, Middlesex.

In the Commercial and Leisure category, Allford Hall Monaghan Morris was nominated for Alconbury Weald Club in Huntingdon, and Glenn Howells Architects for Gloucester Services and Stihl's Treetop Walkway also in Gloucestershire. Meanwhile drMM was shortlisted for Sky's Health & Fitness Centre in Osterley, and Burd Haward Architects for Welcome Centre in Mottisfont, Hampshire.

In the Interiors category Dow Jones Architects received a nomination for Christ Church Crypt in Spitalfields, and in the Houses category, Coppin Dockray, Sanei Hopkins Architects and Strom Architects were all picked out for excellent design in homes constructed using timber.

The shortlisted projects will be showcased at 100% Design – 21-24 September at London Olympia – and the winners will be revealed at a ceremony on 22 November. Established in 1971, the Wood Awards aim to recognise,



St. Clare's, Oxford by Hodder + Partners

encourage and promote outstanding design, craftsmanship and installation using wood, and the panel of judges is led by architect Michael Morrison of Purcell.

Past winners of the Arnold Laver Gold Award Winners including David Morley Architects for The Hurlingham Club Outdoor Pool, Adam Richards Architects for Ditchling Museum of Art + Craft and, most recently, Niall McLaughlin Architects for The Fishing Hut, constructed on a Hampshire lake.

international focus

Visit the website www.architectsdatafile.co.uk and enter the reference number for more information



AL BASSAM ELEMENTARY SCHOOL, SAUDI ARABIA
BOND BRYAN

The Al Bassam Elementary School in Dammam has been designed by Bond Bryan Architects, led by the firm's international team based in the Middle East and London. The school represents a great step forward in creating quality learning environments in the challenging and harsh climate of the Eastern Province of the Kingdom of Saudi Arabia. Working closely with Al Bassam Group during the design process, the key criterion of creating quality internal space with good quality light was the foundation of the design. This led to placing the teaching space around a central top-lit atrium space.

Ref: 27329



FLINDERS UNIVERSITY, AUSTRALIA
HASSELL

The redevelopment of a former car manufacturing plant in Adelaide's southern suburbs into an innovation hub for high value industries has dominated the Australian Institute of Architects' 2016 South Australian Architecture Awards. HASSELL's Flinders University Building has been awarded The Dr John Mayfield Award for Educational Architecture. The building comprises a six-storey, 18,000 m² main building featuring state-of-the-art laboratories, equipment and teaching facilities and a single storey 2,000 m² 'Pod' featuring heavy engineering workshops and laboratories.

Ref: 50847

exploring architecture

showcasing the latest projects from around the world



SLUSSEN MASTERPLAN, SWEDEN
FOSTER + PARTNERS

The construction of the New Slussen in Stockholm is one of Sweden's largest urban transformation projects. It was won by Foster + Partners, following an international competition, and is being designed in collaboration with the City of Stockholm. Following extensive public consultation, the SEK12bn project will create a dynamic urban quarter, responding to its historic context and transforming the city centre. According to the architects, "A series of new public spaces, including an accessible quayside, pedestrian and cycle routes seamlessly embolden the vital connectivity between the hip urban quarter of Södermalm and the closely packed 18th Century buildings of Gamla stan, transforming the once major traffic junction into the City's new meeting place."

Ref: 82957



NESTLÉ OPEN HOUSE, SWITZERLAND
TINKER IMAGINEERS

Nestlé has opened its doors to the public in Vevey, on Lake Geneva. Utrecht-based design bureau Tinker Imagineers was commissioned to design Nest, an "interactive family experience" in a former industrial building renovated by Swiss Concept Consult Architectes with a steel and glass roof construction. Tinker Imagineers designed a large "floating, organic world made up of white, flowing forms" as an eye-catching feature in the central atrium piazza, plus a life-size 'tree' composed of more than 1200 flowers which have been hand made from various product packages.

Ref: 70962



ROYAL CARIBBEAN CRUISES TERMINAL, MIAMI, USA
BROADWAY MALYAN

Broadway Malyan has been appointed by Royal Caribbean Cruises Ltd. to design its new \$100m cruise terminal in Miami. The proposed 'gateway to Miami' will see the creation of a new icon on the waterfront and serve the largest cruise ships in the world. The terminal has been nicknamed the 'Crown of Miami' because of its shape, which evokes the points of a crown when viewed from the water. From the eastern or western approaches the building communicates an 'M' for Miami, and when viewing the terminal side-on a sense of waves rising or ships passing is revealed.

Ref: 77880



Let's get creative

100% design stand no E493



reader
enquiry
120

Call 0121 753 0777

Email sales@solusceramics.com

Visit www.solusceramics.com



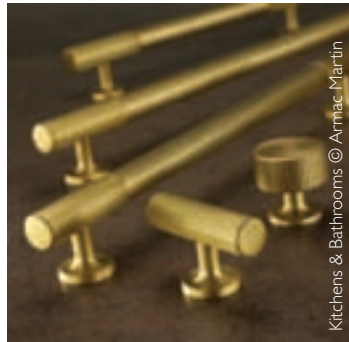
Unleash your imagination with Patchwork, a new hexagonal tile range from Solus Ceramics. Patchwork is available in five fabric inspired base colours and a huge collection of on-trend patterned décors and is ideal for a wide variety of applications including restaurants, bars and inspiring homes. Mix any of the tiles together to create your own unique layout.

The experience of good design

100% Design, the UK's largest trade show dedicated to design, is this year partnering with the Design Museum to provide an engaging experience for all visitors.



Interiors © Mineheart



Kitchens & Bathrooms © Armac Martin



Emerging Brands © Monica Correia Design



Workplace © Framax



Build & Design © CORA PARQUET

The UK's largest design trade show, 100% Design, returns to Olympia London from 21-24 September. The show forms the commercial heart of London Design Festival, featuring leading national and international exhibitors offering visitors ideas and inspiration for domestic, workplace and other sectors within the built environment.

Attracting over 26,000 professional visitors (with a spending power exceeding £3.4bn according to the organisers), this year is the 22nd edition of the show. The event has a particular focus on providing a platform for emerging brands.

Supporting 100% Design's focus on high quality design, this year's theme 'Experience' will be explored across the show through specially commissioned installations, immersive experiences and sensory experiments. Visitors will be able to physically engage with the latest product innovations, as well as establish new business relationships and network with design professionals.

'Talks with 100% Design' will be curated by the Design Museum as part of its 'on loan' campaign which includes activity in the area around Olympia in the run up to the museum's opening in Kensington on 24 November 2016. Focusing on quality and depth, the talks will see thought leaders

from across the industry delivering "agenda-setting keynotes alongside panel discussions exploring trends in contemporary practice as well as the future of design." The programme of talks will be presented in a specially-commissioned auditorium, designed by Miska Miller-Lovegrove; a separate programme focusing on professional development will be presented in the Olympia Forum.

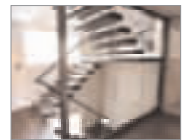
New for 2016, a cinema area at 100% Design will showcase products, designers and studios as well as provide "reflective, intellectual engagement with current and historical design agendas," explain the organisers.

Making its debut at London Design Festival 2016 is LuxuryMade, a new show dedicated to contemporary decorative interiors. It will be staged alongside 100% Design close to the site of the new Design Museum.

The show features five industry sections, presenting leading international and domestic brands alongside key emerging names in contemporary design. 100% Design has been curated by the organisers to provide what it claims is "an unrivalled business experience for architects, interior designers and other design and construction specialists." On page 28 is a run down of must-see highlights from each section.

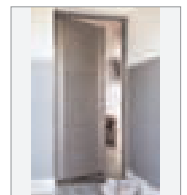
100%design
21-24 September 2016
OLYMPIA London

Look out for...



CANAL Architectural (Stand E259) will be presenting a range of new bespoke staircases, balustrades and handrails, which incorporate various contemporary materials such as glass, stainless steel, timber, antique bronze patina, painted mild steel and more. Visit CANAL upstairs in Olympia on stand E259 to meet the team and discuss your latest residential or commercial project.

enq.121



Todd Doors (Stand E852) is the UK's leading supplier of quality timber doors. All doors are manufactured using the very best timber components from around the world and are sourced from sustainable and well managed forests. With a fully bespoke service available and Door Experts on hand, Todd Doors has a style and door to suit any home or project.

enq.122

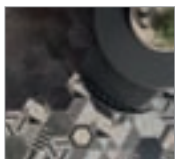
100%design
23-24 September 2016
OLYMPIA London

Look out for...



The Phoenix Range from Cooke Brothers (Stand E228) is an innovative balustrading and handrail solution undergoing testing to all relevant European standards and Building Regulations. Because it is an entirely modular system, the Phoenix Balustrading range allows complete design flexibility. With myriad tube and infill panel options to create the "wow factor", it can be adapted and bespoke manufactured to suit any plan and design scheme.

enq. 123

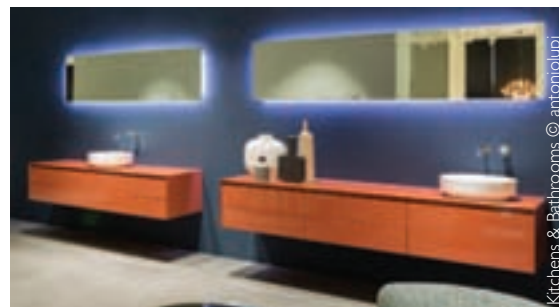


Solus Ceramics (Stand E493) a leading supplier of innovative and inspiring architectural wall and floor tiles, will be exhibiting its latest trendsetting tile ranges at this year's 100% Design show at Olympia London. Visitors to the stand will be able to explore modern and innovative tile shapes and designs that mimic and take inspiration from timber and marble through to carbon fibre and quartzite.

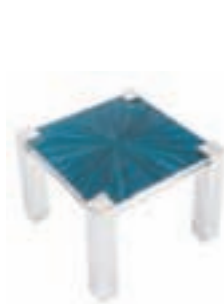
enq. 124



Build & Design © Sky-Frame



Kitchens & Bathrooms © antoniolupi



Emerging Brands © Lux-Ellence



Interiors © Axel Veit



Workplace © Johanson

Interiors

The longest running of 100% Design's five sections, Interiors presents leading international brands exhibiting everything from furniture and lighting to fabrics and accessories.

New exhibitors for 2016 include German furniture specialists, veteran glass-makers, and a lighting and furniture studio. A new showcase within Interiors, Design London, will take centre stage at the show, next to the Central Bar. Consisting of a carefully edited group of less than 15 brands, Design London will spotlight the very best in design manufacturing, with each company chosen to complement one another and as contributors to London's reputation as design capital of the world.

Workplace

100% Design's Workplace section is claimed to be the only one of its kind in the UK. Reflecting the growing appreciation for workplace design worldwide, the section presents the ways in which the world's most innovative companies are using design thinking to improve the experience and productivity of the workplace.

The best in commercial design will be on show, with seating, desking, electronic innovations, acoustic panels, storage systems, lighting and flooring all represented. New exhibitors for 2016 include commercial furniture brands and workplace acoustics experts.

Kitchens & Bathrooms

This section brings together high-end manufacturers and exhibitors responding to the demand from the hospitality and interior design trade, demonstrating quality innovation across components, materials, equipment and effective use of space.

Exhibitors in Kitchens & Bathrooms include leading ceramics manufacturers, bathroom fittings specialists, bathroom design companies, natural stone experts and even a boat outfitter. Exhibitors debuting this year sit alongside long-established firms who have enjoyed many successful appearances.

Design & Build

The largest section at 100% Design, Design & Build features a materials showcase, technology and home automation, as well as a curated architectural lighting showcase; 'The Darkroom'. Visitors will experience the materiality of the show through a bespoke installation showcasing innovation in material technologies.

Exhibitors include wooden flooring companies, including some making their first appearance at 100% Design, as well as glazing suppliers, and surface designers. Other exhibitors on show include bespoke flooring designers and hand-crafted light switch manufacturers.

Emerging Brands

Emerging Brands is 100% Design's dedicated platform committed to uncovering the best and freshest ideas from tomorrow's new talent. Firms celebrating their first year in business will be joined by startups using 100% Design as their European launch pad.

Exhibitors include furniture and soft furnishings designers, interior print designers, glass and vinyl illustrators, and lifestyle brands.

For more information on 100% Design please visit 100percentdesign.co.uk



Distinctive designs for unique homes

100%design[®]

21-24 September 2016
Olympia London
See us at Stand **E852**

reader
enquiry
125

0203 772 5443
TODD-DOORS.CO.UK

Visit our stores in West London, St Albans,
High Wycombe and Bournemouth

**TODD
DOORS**
BEAUTIFUL DOORS
SINCE 1952



ARTISAN
PANEL DOOR COLLECTION

MADE TO ORDER BY
ahmarra

View our new brochure online at:
www.ahmarra.co.uk

enq.126

SIMONSWERK
HINGE TECHNOLOGY

TECTUS® THE COMPLETELY CONCEALED HINGE SYSTEM



TECTUS®

- › high load values up to 300 kg
- › maintenance-free slide bearing technology
- › three-dimensional adjustability
- › opening angle 180°
- › wide variety of finishes

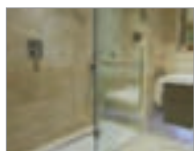


t: +44 121 522 2848
e: sales@simonswerk.co.uk
www.simonswerk.co.uk

Visit us at
100%design®
Olympia London
21-24th September
Stand E664

enq.127

Lustrolite & Elements Wetrooms

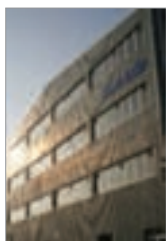


Showing at 100% Design, London in September: Lustrolite acrylic high gloss wall panelling, available from **Abacus Manufacturing Group**, can be used to excite new designs or update old kitchen splashbacks, showers and bathroom walls. It is an advanced multi-layer acrylic that weighs less than a third of a traditional glass sheet and has 20 times the impact strength. Elements Wetrooms is a range of easy to install, tileable wet floor systems for domestic and commercial applications, also made by Abacus Manufacturing Group. The waterproof structural foam boasts high insulation properties and high compressive strength and added benefits include lightweight, easy-to-handle structure which is easy to cut, fire retardant and made to help reduce the carbon footprint.

100% design stand no K572

enq.128

Prestigious Royal Warrant is renewed



Sussex-based British fan manufacturer **Vent-Axia** is delighted to announce that its prestigious Royal Warrant has been renewed. Vent-Axia was originally granted the warrant by HM the Queen in 1985. The company is now celebrating having held this high status honour for over 30 years. Royal Warrants are a mark of recognition to people or companies who have regularly supplied goods or services for at least five years to HM The Queen; HRH The Duke of Edinburgh; HRH The Prince of Wales, or their respective Households. Vent-Axia's is also celebrating its 80th birthday this year. Since 1936 Vent-Axia has set the standard for ventilation.

0844 856 0590 www.vent-axia.com

enq.130

C-TEC launches new interactive website



Cleverly-designed, easy-to-navigate and created with the user in mind, c-tec.com is packed with in-depth information on virtually every product in C-TEC's rapidly expanding portfolio of world-class UK manufactured life-safety systems. Fully responsive so it can be used on mobile phones as well as computers, the site also features up-to-the-minute company news, product releases, an exhibition diary and an interactive staff contact section. Currently celebrating its 35th Anniversary as a leading UK manufacturer of world-class life-safety systems including fire alarm control panels, fire detectors, call systems, disabled refuge and hearing loops, C-TEC has recently expanded its magnificent 100,000sq. ft. Challenge Way headquarters to include a new state-of-the-art manufacturing facility, training rooms, restaurant and staff canteen.

enq.129

Video puts Crown Trade's in the picture



Crown Trade has produced a new video to help specifiers looking for inspiration for projects with a classic or historic theme. The video builds on Crown Trade's new style guide, which brings together shades from the two collections into one 14-page booklet. The Crown Trade Historic

Colours Collection is a selection of 120 shades influenced by eight distinctive architectural and design styles. Some of the shades can also be selected in the flame retardant coating, Crown Trade Timonox. A more recent introduction is the Crown Trade Classic Collection – a selection of 30 beautiful, timeless shades in classic neutral colours.

0845 389 9583 www.crowntrade.co.uk

enq.131

DX 30 3-D

A new three-way adjustable concealed hinge

- Sleek, minimalist design for flush doors
- Three-way adjustable concealed hinge
- Load capacity - 40kg
- Easy, accurate installation
- Manufactured from solid steel components
- Perfect for heavy duty, high traffic usage.

PIVOTA® *B|a|S|y|s*

Come and see us to find out more information at

100%design®

21-24 September
Olympia London
Stand E226

PHOENIX

COOKE BROTHERS

01922 740011

sales@cookebrothers.co.uk

www.cookebrothers.co.uk

Door closed

Door open 90°

Door open 180°

enq.132

Win a trip to Dubai with Polypipe Terrain



Three lucky couples are being given the chance to win a trip of a lifetime to Dubai courtesy of Polypipe in conjunction with its new 'Tall Buildings' campaign. **Polypipe Terrain** is offering flights, accommodation, food, drink and entertainment in the fast growing resort of Dubai, home to the Burj Khalifa tower, the tallest building in the

world. The competition is open to architects, specifiers, contractors and installers, and to be in with a chance of winning the trip, entrants are required to visit the website and answer the following question: "The Burj Khalifa in Dubai is currently the tallest building in the world – but how high is it?" The competition will run until December 2016, with the winner announced in January 2017.

01622 795200 www.polypipe.com/tallbuildings

enq.133

New Specification Sales Manager for Nullifire

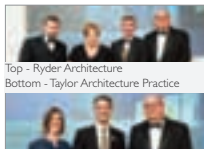


Andy Brown has been appointed as Specification Sales Manager (South) working within the Nullifire Sales Division of **tremco illbruck**. Andy comes to tremco illbruck with an extensive knowledge of coatings systems and excellent experience of specifying to major architects on projects in the UK and globally and for key accounts. Nullifire is at the forefront of smart passive fire protection; for over 40 years, Nullifire has been a market leader in

intumescent and fire stopping solutions. Andy comments, "I am delighted to be working with a market leader such as Nullifire and am looking forward to continuing, and developing, the great work." For further information on tremco illbruck, please visit the company website.

enq.135

Celebrating 100 years of scottish architecture



Top - Ryder Architecture
Bottom - Taylor Architecture Practice

GEZE UK was delighted to sponsor the Royal Incorporation of Architects in Scotland (RIAS) Centenary Awards Dinner, in Glasgow, and to present one of the awards which recognised a host of architectural achievements in Scotland. There was a 23-strong shortlist vying for 11 awards which high-

lighted an eclectic range of projects. Andy Howland, sales director for GEZE UK, presented awards to the joint winners in the category for Commercial/Industrial, Taylor Architecture Practice and Michael Laird Architects/Reiach and Hall Architects. It was the third year running that GEZE UK has been one of the key sponsors for the event.

01543 443000 www.geze.co.uk

enq.134

DECC pays visit to Wetherby project



Representatives from the Department of Energy and Climate Change (DECC), along with local MPs, local councils and energy companies have visited a site in Gosport, Hampshire to find out how ECO and Green Deal Communities funding has benefitted the local communities. DECC recently visited the third phase

of the project, which has seen 14 blocks of flats fitted with external wall insulation from **Wetherby**, delivering warmer homes and reducing heating bills. With no gas grid in the area, all homes are solely fed by electricity and with up to 40 per cent of their heat being lost through the walls. The application of Wetherby's EWI system, has helped residents see their annual fuel bills halved.

01942 729527 www.wbs-ltd.co.uk

enq.136

Balustrade Innovations
Introducing Phoenix Balustrading, a new innovative range of high quality stainless steel modular balustrade and handrail components, supports and rails.

PHOENIX
PHOENIX BALUSTRADING

01922 740011
sales@phoenixbalustrading.co.uk
www.phoenixbalustrading.co.uk

Come and see us to find out more information at
100%design
21-24 September
Olympia London
Stand E228

enq.137

Schueco's revamp of network centre



Building envelope specialist, **Schueco UK Ltd**, has announced that the refurbishment of the Network Centre in Milton Keynes is now complete. The revamp – designed to improve the Centre's facilities even further for architects, main contractors, Schueco network partners – represents a major capital investment for the company. New exhibits have been installed, the most significant being the Parametric facade that was constructed for the BAU Exhibition in 2015. Visitors will also find that the systems on display have been rearranged and that new products have been added. Of particular interest are two new facade systems, Schueco FWS 60 CV and FWS 35 PD, both of which demonstrate significant innovations in design and functionality.

01908 282111 www.schueco.co.uk

enq.138

Natural Paving drives up stone standards



Passionate about offering the very best products to market, **Natural Paving Products** has developed a new and improved series of stone standards that have been endorsed by independent stone expert David Richardson. Providing key information at a glance through a simple visual grading system, the stone standard has been applied to all of the company's sandstone flagstones and block paving in its 2016 brochure.

The standards are based on CE testing results and show performance across three key areas: water absorption, flexural strength and frost resistance. The standards are based on CE testing results and show performance across three key areas.

0845 072 1150 www.naturalpaving.co.uk

enq.140



New, improved and accessible on the move!

Remmers UK Ltd has given their website a fresh new look and the fluent, responsive design means that it can now also be viewed on both desktop and mobile devices easily. The new site enables all visitors access to a wide range of detailed information quickly and efficiently. Highlights include Remmers product catalogues, technical data sheets, in-house and NBS specification guides, colour charts, literature and system specific project references along with a host of other helpful product and system information. The website also has an up-to-date news section and integrated social media links to Remmers Twitter, Facebook and Linked-In pages. For more information, visit the website or contact the company directly.

01293 594010 www.remmers.co.uk

enq.142

Turning Japanese with Formica Group



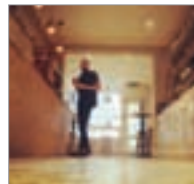
Tokyo Sushi is the oldest Japanese restaurant located in Barcelona, Spain. With a history spanning 36 years, the decision was made to combine traditional Japanese style with a modern vanguard. KOBFUJI Architects specified **Formica Group's** Terril with Matte 58 finish to clad the 10m long wall behind the sushi bar. Terril was used to

create an interpretation of the classic kimono stripe pattern from the Edo era – capturing the Japanese heritage integral to the restaurant's identity. Ideal for the hospitality environment, Formica® laminate offers on-trend designs and practical features such as durability, hygienic properties and ease of maintenance.

0191 259 3512 www.formica.com

enq.139

Guat's up! – the place to be for SterlingOSB



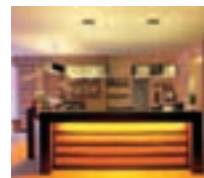
Norbord's SterlingOSB is fast becoming the material of choice for retail outlets, restaurants and cafes. One of the latest establishment to use SterlingOSB as an interior design element is Guat's Up!, a trendy Cafe Bar in Guildhall. Guat's up! is the latest venture from Butterworth & Son. SterlingOSB has been used throughout the entire interior from the walls and

worktops to the bathrooms and floors. Norbord is one of the world's leading manufacturers of engineered wood-based panel products. All products are FSC-certified and used extensively in the construction, DIY and furniture sectors. Norbord's brands are well known and are commonly specified by architects, national housebuilders and specifiers.

enq.141

MODERN LIGHTING SOLUTIONS

more than light



Lighting catalogue with style shots available on request

0208 123 7914 modernlightingsolutions.co.uk

enq.143

Multidirectional hardware specified in Madrid



When renovating the De Maria restaurant in Madrid, local refurbishment experts, House Mobil Decoración, took full advantage of P C Henderson's Multidirectional hardware. The project brief demanded a cost effective, flexible and adaptable solution to effectively divide the restaurant floor area, creating two zones within the large space. In the hospitality sector, venues can use P C Henderson's Flexirol Multidirectional hardware to provide customers with unique experiences. When specified alongside insulated leaves to create a moving wall, the system could be used to temper external noise from other parts of the venue to form intimate and secluded areas which are ideal for private events.

0191 377 0701 www.pchenderson.com

enq.144

City Multi helps out underneath the arches



The Herb Garden, an artisan pizza restaurant under railway arches in central Newcastle, has solved the problem of summer overheating with the installation of a heat recovery VRF air conditioning system from Mitsubishi Electric. A single City Multi outdoor unit has been installed in an empty space to the rear of the building and this can send simultaneous

heating and cooling to the indoor units installed throughout the restaurant to maximise the efficiency of the whole system. PAR-31 hard-wired controllers were used for three control zones. These are aesthetically pleasing, intuitive to use and offer energy saving functions along with a programmable time schedule.

01707 282880 www.mitsubishielectric.co.uk

enq.145

Acoustic ceiling pops up in world famous restaurant



The design of the Noma Pop-up Restaurant at Barangaroo near Sydney in Australia was most unusual – unusual because it was designed to operate only 10 weeks, just like another temporary Japanese one which popped-up for a short time in Tokyo. The idea of the restaurant was to interpret Noma's bespoke culinary creations and gave them a unique Australian identity. References to elements of the Australian landscape, as well as Rene's in-depth investigation and sourcing of natural Australian ingredients, also provided the foundation for the underlying design theme of Land and Water. Materially, Land was interpreted by the use of rammed earth, charred/charcoal surfaces and dark colour selections, deep within the restaurant. The notion of Water was suggested in the control of natural light and shadows, glass surfaces and spatial volume expressed on the frontages of the restaurant. References to Noma Copenhagen and the Danish origins of the restaurant and its Chef were subtly incorporated in the restaurant design. In this context, the review of materials and furnishings included only a limited number of selected Danish sourced options, chosen for their outstanding quality, performance and aesthetics. For example, the dining furniture was designed by Carl Hansen while the ceilings were lined with acoustic panels from Troldekt, widely specified in Denmark and worldwide to reduce noise and create a quiet and peaceful environment.

enq.146



Stancold

CREATING TEMPERATURE CONTROLLED
HYGIENIC & FIRE RATED
ENVIRONMENTS SINCE 1946

WE DESIGN & INSTALL

- Coldrooms
- Walk-in chillers & freezers
- Food Production Areas
- Hygienic partitioning
- Firewalls



Get in touch with our team
for specialist advice and a competitive quotation

CALL: 0117 316 7000 OR EMAIL: [INFO@STANCOLD.CO.UK](mailto:info@stancold.co.uk)

[WWW.STANCOLD.CO.UK](http://www.stancold.co.uk)





enq.147



Round midnight

Michael Willoughby ventures into Soho House's new eatery to discover how its in-house design team worked against the clock to turn a former dance club into a cosy Art Deco retreat with a Jazz Age feel.

One of London's most sophisticated new dining rooms, Soho House's brasserie Cafe Monico, is, at least in part, a work of improvisatory élan. Mere weeks before construction commenced, the leading hospitality group's in-house design and construction team were still reworking plans for the Shaftesbury Avenue property's ground floor to fit in new customer washrooms, kitchen and off-duty staff area. The colours of the panelling, the bespoke furniture and the location of the staircase were also chosen onsite.

From the first concept meetings with the landlord (theatre impresario Cameron Mackintosh) in June 2015, the firm worked against the clock to ensure Cafe Monico was open for business 10 months later, in April 2016.

"In an ideal world, everything would have been done before," says Soho House design director, James Waterworth. "But we wanted to gut the building and see how things would sit on site."

Waterworth's team comprises 60 interior and architectural



Inspiration was taken from the name of an 1870s Soho restaurant which had been run by two Italian brothers'

professionals but also a construction team, so there's no delay in implementing design ideas.

"We have a certain way of working," explains the design director. "We work alongside them, right next door to them. There is a lot of back and forth. All this means that it would take a long time for an external design company to get their heads around it." He adds: "There is not a huge amount of time to have things signed off".

Such time constraints are a result of Soho House & Co's frenetic recent activity: Waterworth reckons about 20 other projects are currently underway, but there's a reason why Cafe Monico, sitting cosily in the heart of the West End, is special. "It's the first stand-alone brand we have created in a while," he says.

Soho heritage

After setting up the Soho House brand, soon the darling of the global metropolitan smart set, the company founder wanted to create a classic European brasserie. Founded in London in 1995 as a private members' club for people in the creative industries, Soho House & Co has since opened clubs across

Europe and North America, as well as restaurants, cinemas, workspaces, spas and bedrooms. Cafe Monico is the group's latest venture.

When the designer tells you the former occupant of the property was another club, you automatically think 'fine dining,' but that's surprisingly far from the truth.

"It was a proper dance club," Waterworth says. "It was pretty grimy." So the place needed a narrative to give it character and integrity. "We wanted to make the place feel like it had been there for 70 years," explains the designer.

Inspiration was taken from the name of an 1870s restaurant which had been run by two Italian brothers. Soho House researched the menu of the old place and discovered the brothers used recipes sourced from across the continent. The now-defunct brasserie also catered for theatre goers.

To broaden the search, the team looked at European examples from the same era, focusing on Paris, Vienna and Milan, and was inspired by art deco references. This type of hard modernism is classy, but not always that cosy. To soften



the space, the Cafe Monico designers added textured fabrics.

As a result of the pan-European influences, not least the food, the feel of the space is a French-Italian mix. The eatery is split into two areas, one on the ground floor, the other in the mezzanine. The Soho House team re-designed the ground and first floors and expanded the mezzanine.

Creating a timeless feel

The key idea for the brasserie was to allow theatre goers to pop in for a pre-show meal in a less formal environment. The quicker pace at street-level is underlined with hexagonal tiles, and the open kitchen keeps the pace going.

Diners who want to take their time will feel at home upstairs: the level features a softer floor of reclaimed wood in a geometric pattern while a 3 metre antique glass and brass chandelier dominates the centre.

Green leather banquettes designed by Waterworth's colleagues and created by the in-house joiner are placed throughout, and the lighting was also designed by Soho House.

The main highlight however is the staircase. Waterworth muses: "It really holds the atmosphere, it's the hub of the space leading to the mezzanine where you can see what's going on, and there's a particularly good view of the open kitchen."

While the staircase structure it replaced may have had its merits, it was in the wrong place, eating into the room. The mezzanine structure was extended to create the new opening, and tie in the mezzanine to the facade as it was re-clad.

Harder to create was a sense of instant longevity to the place, an attempt to achieve this has been made through art. A skilled painter was hired to create a patina on the ceiling with individual brush strokes. "It's like trompe l'oeil with a huge amount of detail involved," explains Waterworth. "One of the tricks is to put more paintwork in the corners to create depth."

The structural works had the added benefit of creating more storage space. The design director adds: "We wanted to make sure the kitchen was of a sufficient size with enough cupboards and surfaces. At the same time, we think it's important that staff have a decent sized area in which to relax."

"Finally," he adds, "the bathrooms need to be big." The space

A 3 metre antique glass and brass chandelier dominates the space



The design tackled the challenge of providing “instant longevity”

constraints meant a compromise had to be made if all elements were to fit in.

“Luckily, the ceilings in the building are large,” Waterworth continues, “so we were able to store the less-used kitchen items higher up and create more space for the other areas.”

Teamwork is key

The building’s facade was also vital to the look and feel of the Cafe, with improvements and additions to signage, the inclusion of planters and pavers within the site boundary. Planning was most critical for the facade design, where the

whole frontage had to be re-integrated into the overall building design.

A swift planning process was required with such a limited time frame, and Soho House’s previous experience working alongside Westminster Council gave the firm a key advantage. “We know how they work,” confirms Waterworth. “It was mostly making sure it was keeping with what they had in mind and that the facade remained in keeping with the rest of the building.”

Thanks to some inspired improvisation, the cafe’s Jazz Age feel was successfully realised – the team has achieved a very smooth result.

Significant access-control advancements



SmartSecure, an electronic door locking and smart access control brand launched by **Carl F Groupco**, incorporates state-of-the-art technology which provides strong security and safety features. With aesthetic, practical and technical benefits, the solution is designed to have widespread appeal for architectural, construction and building management professionals across wide-ranging installations including housing associations, the growing retirement-living sector and care homes. 'SmartConnect easy' is an optional access control package using a smartphone: this intelligent WLAN-based system is a significant USP that provides keyless operation and monitoring. Sensor monitoring of door leaf and bolt position ensures complete peace of mind.

01733 393330 www.carlfgroupco.co.uk

enq.148

Lifting quality of complex needs care



Short break and respite care for people with complex needs is being lifted to new heights. Catalyst Choices, a social enterprise company has in partnership with the Council, extended and refurbished its Woodleigh residential care home to provide bespoke short breaks and residential care for people with learning difficulties. A key element

of the new facility is a fully accessible bathroom – complete with a Lima Lift height adjustable wash/dry toilet from **Clos-O-Mat**. Clos-o-Mat wash/dry toilets have in-built douching and drying, the whole process is automatic, and triggered simply by remaining seated and triggering the flush process.

0161 969 1199 www.clos-o-mat.com

enq.149

Door closers enhance care homes



In addition to meeting all relevant fire and accessibility requirements, Powermatic door closers from **Samuel Heath** offer care and nursing homes a number of advantages over standard, surface mounted door closers thanks to the fact that they are totally concealed when the door is closed. Concealment ensures that the appearance of doors and interiors is not spoiled by the unsightly control arms and boxes that are a feature of ordinary door closers, helping to create a more homely, less institutionalised environment. Of particular interest to the care and nursing home sectors will be Powermatic Free Swing which possesses all of the performance and operational benefits of the standard version, but also allows doors to be operated normally, with no added resistance to access, and left open as desired. Free Swing is connected to the building's low voltage fire alarm system. A simple setting procedure allows the door to remain in manual operation until the fire alarm is activated, or there is a power failure, when the inactive door closer becomes active and the door is closed automatically at a controlled rate. Powermatic is available in two versions; standard and Free Swing. They are maintenance-free and have been tested to in excess of 500,000 closing cycles. Their reliability is backed by a manufacturer's 10-year guarantee.

0121 766 4200 www.concealeddoorclosers.com

enq.150

BUY BRITISH, BUY QUALITY, BUY **Jeckells** SHADE SAILS



We design and manufacture Shade and Weatherproof Sails in commercial and domestic environments. Our forte is engineering solutions that not only look good but will also stand the test of time in unpredictable outdoor environments.

All our Shade Sails are individually designed with colour, shape and size to suit your particular requirements. Architecturally stunning. We use either Stainless Steel or Timber posts depending upon the environment. Our Shade Sails are easily fitted and removed. A full design and installation service is available.

Jeckells 
THE SAILMAKERS

For more details please call **01603 782223** or
email shadesails@jeckells.co.uk

enq.151

Numbers you can trust

All too often advertisers accept publisher's statements on their performance. Our ABC Certificate shows we have been independently audited and gives added credibility to support our claim.

Justify your marketing spend and get the exposure you've been promised. As you can see from our ABC Certificate our circulation is 15,000 for every issue.

See it, believe it, trust it.

To advertise, call 01435 863500
or email advertising@netmagmedia.eu



For more information visit www.abc.org.uk
or email info@abc.org.uk

adf architects datafile



A model for a brighter sort of retirement living

A new and more socially-inclusive form of retirement living is being designed and built in High Wycombe, writes Steve Menary.

Retirement housing was once acerbically described in the hit 1980s comedy-drama, *Auf Wiedersehen Pet* as “A little box before the littlest box of all.”

Since those days however, retirement housing has moved on substantially. Standard downsizing options still proliferate but increasingly residential villages are being created that offer a range of units and tenures.

The Extra Care Charitable Trust (ECCT) is a developer which has been amongst the pioneers of this type of

mixed-living retirement housing, which offers not just a range of living options and healthcare support but also provides a social life for residents.

Unlike some of the private companies that are increasingly moving into the development of retirement villages, the ECCT is a registered charity, but one with scale. The trust operates 14 retirement villages and 17 smaller housing schemes across the Midlands and the North and has more in the pipeline.



'Prospective buyers only need to be aged 55 or over to buy one of the 260 one and two-bedroom apartments'

The architects' design concept for Hughenden Gardens Retirement Village "focuses on community and social inclusion"

Moving south

Until recently, the south of England was almost another country to ECCT but that is changing with the development of the Hughenden Gardens Retirement Village at High Wycombe in Buckinghamshire.

The retirement village is being built on a six-hectare former industrial site, which used to be home to a Broomwade and Compare factory making air compressors, and groundworks contractor McAuliffe carried out extensive remediation before the main building work could start on site with 800 continuous flight augur piles sunk.

The village itself is being designed by Nicol Thomas and built by Galliford Try Partnerships. Both companies have a long track record with ECCT. Nicol Thomas is designing two more retirement villages in the pipeline in Bedford and Bristol, while the Hughenden Gardens Retirement Village will be the eighth project that Galliford Try have worked on for the trust.

Initially, the company's building division worked for ECCT but with the social housing element an increasingly vital part of projects, the partnerships division first came on board in a joint venture before the partnerships division began taking on projects alone.

Galliford Try also has a track record of providing accommodation in High Wycombe, albeit for a much younger market. Directly behind the retirement scheme is the

Hughenden Park Student Village, which Galliford Try's building division built for Buckinghamshire New University in two phases, starting in 2009.

The second phase opened in 2014 and added 180 new ensuite bedrooms to the 234 built in the first stage. While the standard of accommodation provided for the students will be very different to that in the retirement village, both share similar design features.

Kensington Taylor designed the student accommodation, which features a green roof. Nicol Thomas opted for the same feature for the retirement village, with sedum specified.

Modern retirement living

Nicol Thomas were initially brought on board the project by the client, before being novated by Galliford Try Partnerships after the contractor agreed a design and build contract with ECCT. The practice's design eschews old ideas of retirement housing for a more modern feel right from the core.

Nicol Thomas director Wendy Griffin explains: "The design concept focuses on community and social inclusion. The village centre is somewhere for residents to meet and make new friends, or engage in new skills and hobbies. This is located at the entrance into the scheme at ground level, so encouraging residents and friends to travel through it as they walk to their apartment.

"The site area is circa six acres and so this, combined with



(L) The project will feature a sedum roof

(R) The Retirement Village is being built on a six acre former industrial site in High Wycombe
© Steve Menary



the unit numbers resulted in the multi-storey design solution. To break down the perceived building mass, blocks of differing heights were designed with the taller blocks located towards the back of the site.

She describes the approach to materials: “They are traditional but used in a contemporary arrangement. This allows the building to connect to its context whilst also creating a distinct identity. A lot of natural lighting and ventilation is used to articulate the interior and contributes to a light and airy feel.”

The bulk of the building is a reinforced in situ concrete frame with a small central steel frame with curtain walling specified for most of the public areas and metal features including balconies with aluminium windows.

“There’s brickwork, a huge amount of rendering and curtain walling to the open areas, which is mostly used to get light into the building,” says Tony Butcher, project manager on the scheme for Galliford Try Partnerships.

The curtain walling is being manufactured and installed by West Midlands-based specialist APiC, while MQM is manufacturing and installing the balconies. Both have been specified by Nicol Thomas not just to increase light but produce a more contemporary feel.

Butcher adds: “The idea is that the colours will all coordinate. The curtain walling makea the building look more modern and the steelwork is effectively an architectural feature.

“A key feature of the design is that there are a lot of balconies and external doors; a lot of outside space is being created. ECCT wanted quite a modern-looking building – they didn’t want a traditional retirement home.”

Building composition

The project is being built in eight alphabetically named blocks ranging from four to seven storeys in height.

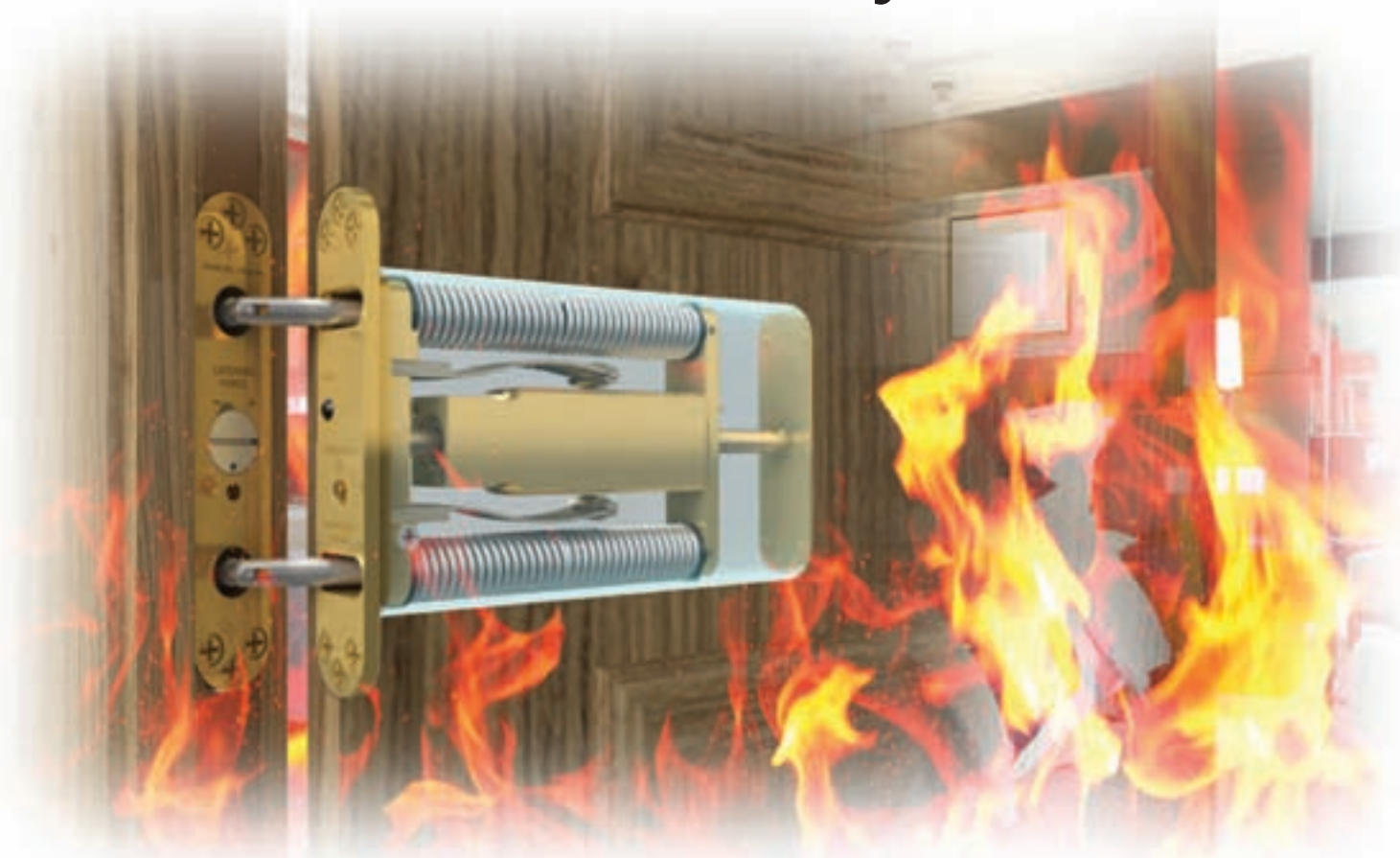
The two main blocks to either side of the plot are open either to the light or elements with one featuring a glass roof and the other opened up completely. The glazed section has been christened the Winter Garden.

In the centre of the village is a large communal atrium, for which Nicol Thomas specified a steel frame. “This was due to the span required, as it’s a big open area with an atrium,” explains Butcher. Inside this atrium at the heart of the project is a village centre, featuring a range of facilities including a shop, bistro and bar, residents’ lounge, hair salon, fitness suite and games room. The area forms a key part of ECCT’s plans to create a community.

Care will be available for residents with dementia or complex mental issues, but prospective buyers only need to be aged 55 or over to buy one of the 260 one and two-bedroom apartments. Expected residents include many people of retirement age who are able to lead a more active life, including plenty of car owners. There are no garages, but there will be 165 car parking spaces.

POWERMATIC®

Concealment when you want it
Performance where you need it



Designed and manufactured in the UK, Powermatic controlled, concealed door closers deliver exceptional performance as well as a host of benefits that surface-mounted closers cannot match:-

- Superior aesthetics
- Reduced risk of vandalism
- Suitability for anti-ligature applications
- Compliance with relevant fire performance standards for one-hour and half-hour fire doors
- Enable doors to meet accessibility requirements
- Perfect for hotels, healthcare, education, care homes, sheltered accommodation, commercial and many other situations.
- Available in standard and Free Swing models

Visit our new website: concealeddoorclosers.com

Tel 0121 766 4200 info@samuel-heath.com concealeddoorclosers.com

SAMUEL HEATH
since 1820

Project details

Project:
Hughenden Gardens
Retirement Village

Location:
High Wycombe

Cost:
£45m

Client:
Extra Care
Charitable Trust

Architect:
Nicol Thomas

Structural engineer:
Dominic Frampton
Partnership

**Mechanical &
electrical consultant:**
Dominic Frampton
Partnership

**Design &
build contractor:**
Galliford Try
Partnerships

**Curtain walling
& balconies:**
APiC

**M&E
sub-contractor:**
Regal



Design with care in mind

Internally, six different door types are being specified to help differentiate between different floors and give the interior a more exclusive look. “When you get out of the lift, you want to know you are on the right floor; it’s about street identity,” explains Butcher, who adds that while kitchen designs are still being decided, these may differ from previous ECCT projects.

He adds: “ECCT is entering a new market and will have done their market research, but you are in an area where people want more for their money.”

Externally, Nicol Thomas has specified large amounts of block paving and a sustainable urban drainage system but the most complex part of the design to build out from Galliford Try Partnership’s perspective has been the services.

Mr Butcher explains: “There’s an awful lot of services all run from one plant; there are warden calls and front doors accessed by key cards. There’s a lot of input from the services.”

The first stage due for completion is Section A, which includes the marketing suite and must be ready by February 2017, with the entire scheme due to complete March 2018.

The bigger picture

The scheme is part of a wider regeneration project known as the Hughenden Quarter, which features a number of other projects.

These include a £17m 70-bed care home for the Royal Star & Garter charity designed by Scurr and being built by Stepnell and a 97-unit private residential scheme by Careys New Homes. The regeneration will also open up the amenity of the nearby Hughenden stream to the public. This project is part of Wycombe District Council’s ‘Return of the River’ proposals to return the town’s stream and rivers back into being part of the town’s life and landscape.

This transformation of what was once an industrial wasteland will aim to seamlessly blend the city centre with the nearby Hughenden Manor for the more than 700 people expected to move into the three residential projects, including the retirement village.

Some elements of industry will remain in the area, but a retaining wall will screen these from the retirement village to provide a more intimate feel for this new community in High Wycombe.

How to design an **efficient laundry** in a **Care Home**

Miele Professional are running a series of **CPD seminars** covering:

- Regulations involved in the care home environment
- Care home requirements that may impact on design
- Guidance on the room size and layout
- Environmentally friendly solutions



For more information or to book a seminar for your company visit:
miele-professional.co.uk/informationcentre/cpd

or get in touch on



cpd@miele.co.uk



01235 233491



@MieleProf



SE Controls keep residents safe at Derby's Sunnyfield Extra Care development

Derby's Sunnyfield development of 70 self-contained 'Extra Care' flats for people over 60 is using a combined smoke and hybrid natural ventilations system from leading specialist, SE Controls, to help keep residents safe in the event of a fire while also providing fresh air to corridors and communal spaces.

Developed by Housing & Care 21 in partnership with Derby City Council and the Homes and Communities Agency, Sunnyfield enables older people to live independently, but with the added support of an 'Extra Care' approach which enables residents to access a range of on-site services and amenities, as well as social events.

The 70 flats are located over three stories plus a lower ground level with access provided by stairwells, lift shafts and a corridor network. SE Controls upgraded the smoke ventilation equipment with an environmental ventilation system,



which is fully automated and provides day to fresh air ventilation to the communal corridors. The system also keeps these areas clear of smoke in the event of a fire when triggered by the network of SHEVTEC controllers and temperature sensors.

While the primary function is to provide essential smoke ventilation, the system's versatile design enables it to be configured as a natural

ventilation solution to provide a supply of fresh air to corridors and communal spaces.

This not only allows comfortable temperatures to be maintained and avoid the possibility of overheating during summer months, but also removes stale air from the building to create a better environment.

Throughout the development, the extensive SE Controls system uses an array of sensors, control panels, roof vents and ventilation louvres, located in each corridor, as well as the four stairwells and glazed atrium areas, to ensure that smoke control and fire safety is maintained at all times for residents and staff, should a fire occur.

Further information on SE Controls' products, solutions and projects can be obtained by visiting the website or contacting the company directly.

01543 443060 www.secontrols.com

enq.154

The Horne shower panels are ideal for hospitals, dementia care, extra care and home care adaptations

- Safe, accurate thermostatic control
- Visual contrast between components aids sight
- Specialised levers - easy to turn and helpfully marked
- Minimal effort required to adjust riser handset holder
- Robust riser bar doubles as supportive grab bar
- Very quick and easy to install, clean and maintain

Safe, comfortable, inclusive showering from Horne

tel : +44 (0)1505 321 455
web: www.horne.co.uk

care shower panel

HORNE

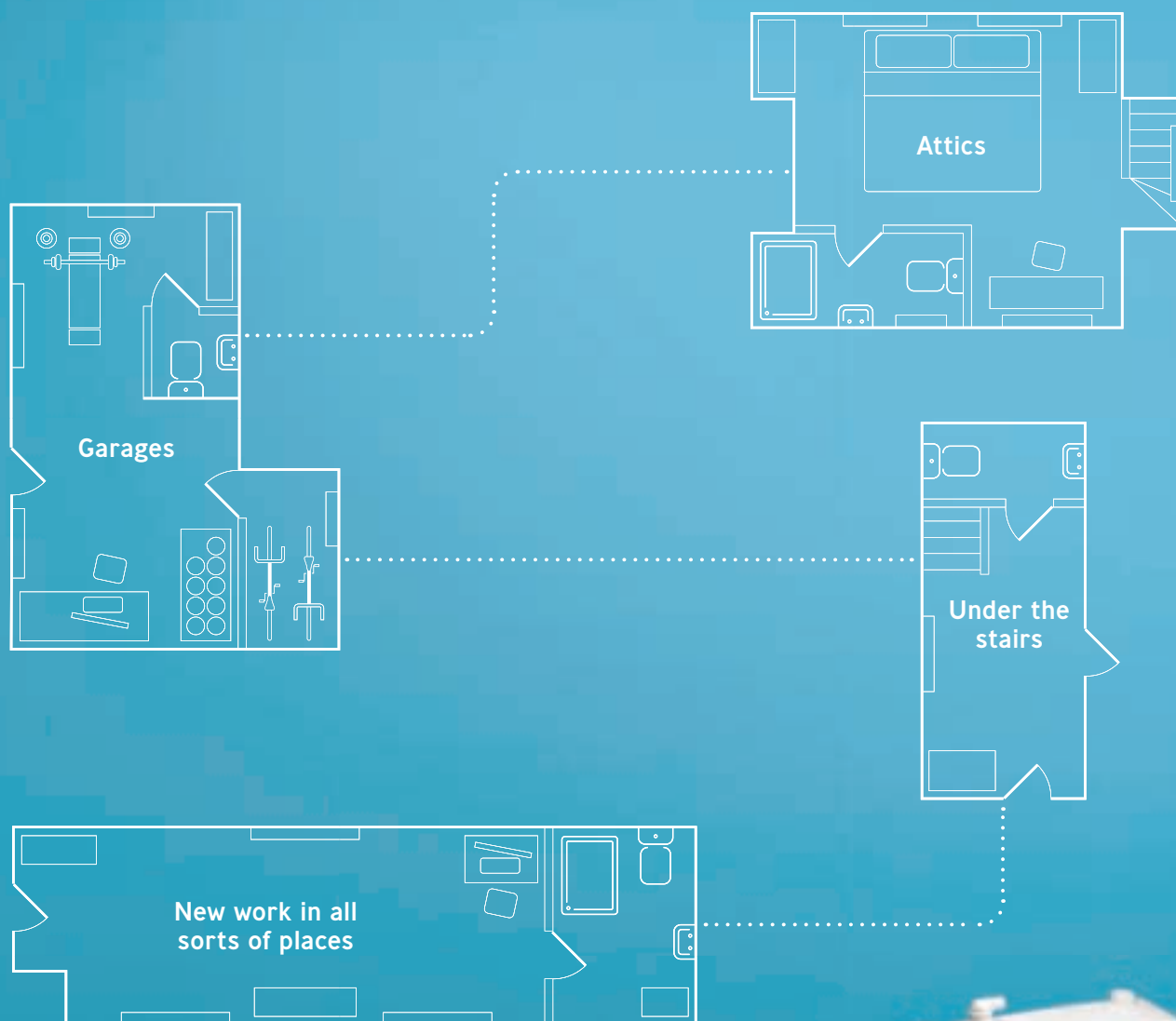
WRAS
APPROVED PRODUCT

enq.155

adf

bathrooms, washrooms, kitchens & catering equipment supplement

August 2016



Saniflo works where convention doesn't.
Don't rip up your plans if there's no drain nearby.
Draw on your imagination and *think of the possibilities*.
Visit **saniflo.co.uk**

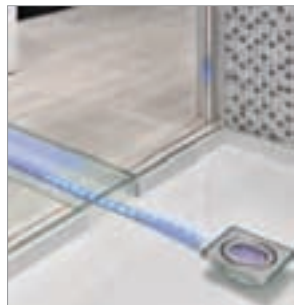
reader
enquiry
302

SANIFLO®
PLUMBING THE POSSIBILITIES



Shaws launch the new Classic Whitehall 600 Butler sink specifically manufactured for use with laminate worktops. The unique styled Whitehall is a deep, generous sink created for those wanting a fireclay farmhouse style sink which works perfectly with laminate worktops. This clever design gives a Classic Butler appearance from the front and protects the cut edges of the laminate from water by using a subtle lip on all exposed sides. The Classic Whitehall sink has stylish slim side walls for a contemporary appearance and a durable glaze.

enq.301



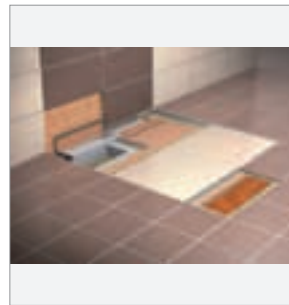
The Sanifloor shower pump was launched by Saniflo to cater for shower areas where floor drainage is required but space underneath is limited, such as wetrooms that feature tiling or vinyl flooring or showers with super slim shower trays. It features a high flow rate of 25l, so that it can be used with powerful 'rain shower' heads and has a dual action feature that sucks waste up from the gully and pumps waste water away up to 3m vertically and 30m horizontally.

enq.302



The Grande, a £100m flagship office development in Aberdeen has state-of-the-art water and energy management systems installed in all its washrooms. The 36 Cistermiser Sensazones use infrared sensors to control energy output, water supply, lighting and ventilation, providing complete management control while maintaining safe, hygienic environments. Sensazones also offer a recognised contribution towards an 'excellent' BREEAM rating.

enq.303



The most important element of wetrooms is waterproofing. Schlüter-Systems offers a CE Marked waterproofing solution with all the tools you need to create barrier-free, floor-level showers guaranteed by one manufacturer. The Schlüter-Systems CPD seminar, 'Integrated Solutions for Wetrooms with Tile and Stone Coverings', can be held at your offices and looks at the requirements of waterproofing and how an integrated system offers complete peace of mind.

enq.304

www.apolloradiators.co.uk


monza aluminium column radiator

Ideal for low temperature renewable systems
Ideal for high pressure systems
The latest patented european technology
A unique aluminium radiator design
Half the weight of steel
82 vertical and horizontal sizes
Delivered within 3 working days

enq.305

MODULAR SHOWERING SOLUTIONS



- PREFABRICATED BATHROOM PODS
- PREFABRICATED SHOWER CUBICLES
- ISO 9001 & 14001 ACCREDITED
- TOTALLY LEAK PROOF
- RELIABLE
- SUSTAINABLE
- FULLY RECYCLABLE
- SIMPLE TO INSTALL
- 25 YEAR GUARANTEE
- MADE IN YORKSHIRE



t. 01423 771645
e. admin@taplanes.co.uk
www.taplanes.co.uk

TAPLANES
SHOWERING SOLUTIONS

enq.306

CPD acoustics training for architects



With acoustics being a crucial element of a building's design, the RIBA-approved Geberit CPD training module now also has CIBSE seal of approval, making it an even more important addition to an architect's CV. CIBSE promotes the career of building services engineers in a number of ways, such as approving work-based training programmes, including the Geberit CPD 'Embedding acoustics into design'. Providing a technical insight and definition of 'noise' and its causes, the CPD covers current British Standards relating to limiting bathroom sound. The CPD also gives insight into Geberit's thorough approach to noise reduction which starts with good design and ends with appropriate product choices and correct installation techniques.

enq.307

Kaldewei extends Meisterstücke Collection



Models with two and three-sided panelling for wall and corner installation. Following the successful market launch of the Meisterstücke Collection – freestanding bathtubs with fully enamelled panelling, Kaldewei has extended the range with models for corner and wall installation. The Meisterstück Centro Duo and Meisterstück

Conoduo bathtubs are now available in variants with two and three-sided fully enamelled panelling. They are exceptionally easy to install as the bath waste fitting is pre-installed by the factory, and a base or pedestal is not necessary. For more information please contact the company directly or visit the website.

01480 498053 www.kaldewei.co.uk

enq.308

C-TEC launches new interactive website



Cleverly-designed, easy-to-navigate and created with the user in mind, c-tec.com is packed with in-depth information on virtually every product in C-TEC's rapidly expanding portfolio of world-class UK manufactured

life-safety systems. Fully responsive so it can be used on mobile phones as well as computers, the site also features up-to-the-minute company news, product releases, an exhibition diary and an interactive staff contact section. Currently celebrating its 35th Anniversary as a leading UK manufacturer of world-class life-safety systems including fire alarm control panels, fire detectors, call systems, disabled refuge and hearing loops, C-TEC has recently expanded its magnificent 100,000sq. ft. Challenge Way headquarters to include a new state-of-the-art manufacturing facility, training rooms, restaurant and staff canteen.

enq.309

Go to restore dignity



"Would you want your wife or husband (or child) to be wiping your bottom every time you needed to go to the loo?" This kind of anecdotal evidence improves that one area that impacts on a person's dignity, feeling of independence and wellbeing, be it cared for or carer, is going to the toilet and having to deal with subsequent cleanliness. Dignity can be

restored, and hygiene for all involved improved, by replacing the conventional WC with a wash & dry toilet, Palma Vita by Clos-O-Mat. Its built-in douching and drying means it is also, in one unit, a bidet and drier, eliminating any need for manual cleansing, or hand/body contact.

0161 969 1199 www.clos-o-mat.com

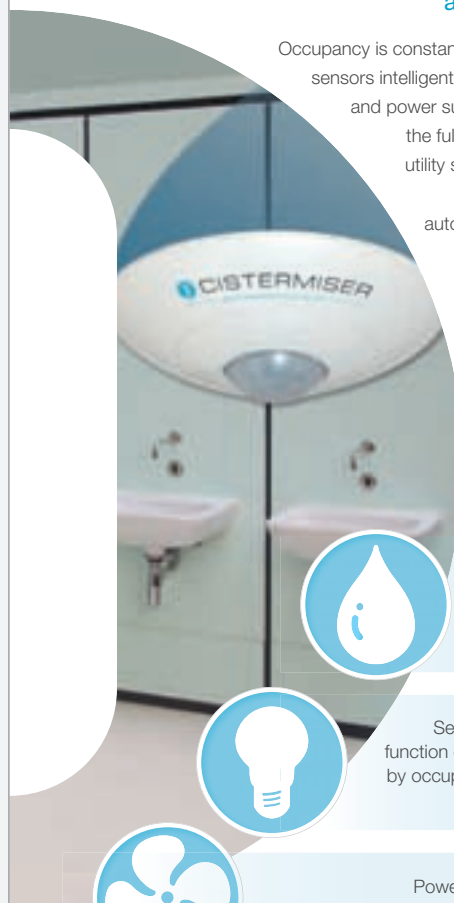
enq.310

Is your washroom flushing money away?

Sensazone can help

Introducing Sensazone – an easy to install, all in-one solution to reduce water wastage and energy bills.

Occupancy is constantly monitored by PIR sensors intelligently linked to the water and power supplies. This ensures the full range of washroom utility services are available on demand but automatically shut down when the washroom is not in use.



Solenoid valves control the water consumption of taps, urinals and WCs



Sensor ensures lights function only when required by occupancy and ambient light levels



Power shut-off prevents ventilation system over-run

Call us now on +44 (0) 118 969 1611 or email sales@cistermiser.co.uk for more information about Sensazone or any of our products

CISTERMISER

WATER MANAGEMENT AT ITS BEST



www.cistermiser.co.uk

enq.303

Silence installed.

Noise reduction in sanitary installations.

Book your approved
Acoustic CPD
with Geberit today.

reader
enquiry
311

**KNOW
HOW**
INSTALLED



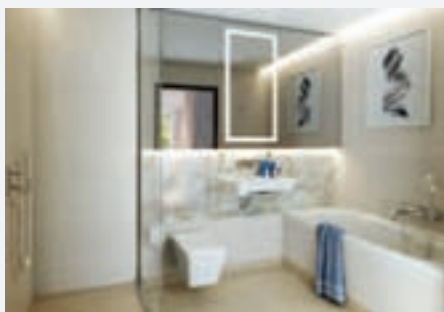
Geberit's reliable and innovative sanitary and piping systems provide the ultimate solution for better acoustics. We cover the complete solution, from supply through to sanitary and drainage, to ensure that everyone gets a good night's sleep whenever water passes through the building. For acoustically optimised sanitary installations, find out more from the experts. → www.geberit.co.uk/silence

→ www.geberit.co.uk/cpd

Mapei products specified to create a distinctly British feel in luxury London apartments

Mapei's products have been specified to help represent the epitome of sophisticated city living in a London-based apartment redevelopment. Mapei products were distributed by Boyden Tiles, Croydon with the project being led by WB Simpsons.

67 Tufton Street is tucked away, down an elegant street in one of London's most prestigious quarters. The 22,000 sq. foot building, previously used for office space, has been converted into a residential building. The stylish development comprises of 19 spacious, luxurious apartments and three duplex penthouses just a stone's throw away from the Houses of Parliament. Keraquick and Latex Plus were used on approx. 340m² of flooring to lay the Domus porcelain 600 x 600 tiles in all the main and ensuite bathrooms plus all of



the balconies within the apartment block. Keraquick, which carries an EC1 rating, was specified alongside Latex Plus for their high performance, fast setting attributes and enhanced adhesion, allowing the porcelain tiles to be laid quickly.

800m² of wall tiling was fixed using Mapei's Ultralite S2 – a high performance, lightweight cementitious adhesive with very low emissions of volatile organic compounds. The adhesive, specifically developed for large size tiles to be laid on large surfaces without back buttering, was used to bond Domus Tiles 3m x 1m 'Kerlite Slim' porcelain tiles to the walls of the apartments luxury bathrooms and ensembles.

Mapei's Topcem, from the Fast Track Ready range, was specified as a screed for an area of 120m² onto external balconies. The quick setting screed allowed the installation of Domus Tiles 200 x 800mm 'Wood Sense' porcelain tiles just 24 hours after application.

0121 508 6970 www.mapei.co.uk

enq.312

Bathroom furniture with additional storage



Following the success of the floor-standing models in the L-Cube furniture series, design-conscious customers can now benefit from floor-standing options in the additional series of Vero, X-Large and Happy D.2 from Duravit. Wall-mounted or with two or four legs on the ground is not only a question of taste when selecting suitable bathroom furniture: wall-mounted models have a visible lightness and offer plenty of space so that cleaning the floor becomes easier. By contrast the floor

standing models offer more storage capacity at the bottom of the units than their wall-mounted counterparts and elegantly integrate into any bathroom scheme.

0845 500 7787 www.duravit.co.uk

enq.313

Versatile Sanifloor is useful in many situations



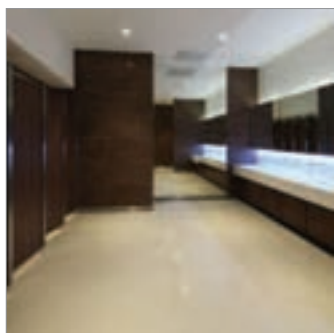
The Sanifloor shower pump was launched by Saniflo to cater for shower areas where floor drainage is required but space underneath is limited, such as wet-rooms that feature tiling or vinyl flooring or showers with super slim shower trays. It has a choice of waste designs, as well as a range of other benefits, that allows great flexibility and this has proved to be a big draw

for customers with the pumps being sold into a multitude of applications. The pump features a high flow rate of 25l, so that it can be used with powerful 'rain shower' heads and has a dual action feature that sucks waste up from the gully and pumps waste water away up to 3m vertically and 30m horizontally.

020 8842 0033 www.saniflo.co.uk

enq.314

Shopping centre washrooms sport new look



Washroom has played a key role in upgrading the washrooms at a busy shopping centre in Northampton. The Weston Favell shopping centre, which is home to one of the largest Tesco stores in the country as well as more than 70 shops and restaurants, attracts thousands of visitors each week. Originally built in the 1970s, the centre was in need of a full refurbishment and HFM Architects took on the project, giving the centre a vibrant new look with new brand style and signage throughout. Working closely with both HFM Architects and main contractor Base Build Services, Washroom delivered a modern washroom area, including disabled toilets and baby change facilities, all designed to match the new bright and contemporary centre. Key to the success of the washroom design is the installation of the new Alavo integrated consumable unit from Dolphin Dispensers which features subtle colour changing LEDs as well as concealed soap and hand dryers. Combined with bespoke sloping Corian troughs, the Alavo system adds to the high specification finish yet will withstand the rigours of a high traffic environment and significantly reduces the client's cleaning burden, making it ideal for a busy shopping centre. Washroom installed its Senza cubicles in solid grade laminate (SGL) finished with an attractive walnut veneer to complement the contemporary style.

enq.315

New Kinedo website from Saniflo



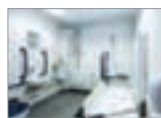
Saniflo UK has launched a new website showcasing its brand of luxury Kinedo shower cubicles making it easier than ever before for trade customers and consumers to choose a cubicle from the wide range available and bringing the website

up to date with the recently published new Kinedo brochure. The website now displays all product codes and sizes and also features all the current installation guides. The website also provides links to dates for Saniflo's current roadshow, where the products are being showcased and demonstrated to installers, merchants and consumers. These will be updated throughout the summer.

020 8842 0033 www.kinedo.co.uk

enq.316

Toilet accessibility double discrimination...



New research by the Papworth Trust highlights that 17 per cent of disabled people complained that accessing bathroom facilities when away from home created a barrier, because of location, layout and size, and it was one of the top 10 issues they face. The solution is provision of

either a Space to Change or Changing Places toilet. Clos-o-Mat is the only British company that can, in-house, not only provide all the equipment for each, but deliver full project management of an install, and subsequent service and maintenance of the fixtures. It is now recognised as the 'go to' single source for efficient, fully-compliant creation and ongoing management of an 'away from home' assisted accessible toilet, be it Space to Change or Changing Places.

0161 969 1199 www.clos-o-mat.com

enq.317

The Shower Tray – Evolved by JT



Leading UK shower tray manufacturer, JT, has launched a new addition to its award winning range. Evolved by JT is a first in the market that fuses both tray and wet room concepts. At 25mm deep, Evolved by JT has been designed to incorporate the simplicity of installing a shower tray with the

stunning look of a modern wet room. Over nearly three decades, JT has led product design in the shower industry, from the first tray on legs to the launch of the revolutionary JT40 and market-leading JTFusion, the low profile tray that took the market by storm. This next generation product features a leading edge waste solution.

0113 201 5090 www.just-trays.com

enq.318

So much more than worktop makeovers



In a recent home improvement project, Granite Transformations has showcased examples of its extended range of makeover materials, whilst displaying the current trend toward white and off-white decorative surfaces. The kitchen of a detached rural Lancashire

home, now features stylishly refaced worktops, high gloss cabinet doors, sparkling glass mosaic splashbacks and modern appliances and fittings, in place of the previously dark and dated look. Upstairs in the bathroom, the elegant makeover is repeated with seamless, waterproof wall cladding, designer mosaic inserts, large non-porous floor tiles, metallic his'n'her basins, a large shower unit, modern bath and sanitaryware, refacing and replacing more traditional decor.

0800 044 5393 www.granitetransformations.co.uk

enq.319

Crometta: combining efficiency and design



The latest Hansgrohe Crometta range has been developed in collaboration with long standing partner Phoenix Design. Specially created for the entry-level segment, it combines water efficiency, sustainable technologies and premium design at an attractive price. The new Crometta range is showcased at The Water Studio, Clerkenwell, London. With project expertise and

support central to the studio's offering, the Hansgrohe Project Team is on hand to offer invaluable advice on issues like water regulations (WRAS) and can demonstrate how to save money by using resources more efficiently and selecting quality products with long lifecycles that deliver genuine value.

01372 465 655 www.hansgrohe.co.uk

enq.320

Shower 'one stop shop' from MX



MX Group's impressive 'one stop shop' range of shower and bathroom products continues to be welcomed by specifiers looking for high quality, reliable products for existing homes and new developments up and down the country.

The MX Thermostatic Care QI and Care 2 QI electric shower ranges are fully BEAB Care and RNIB Approved making them ideal for people who require more showering assistance and who have additional safety requirements.

For a catalogue or for more information, visit the website.

01684 293311 www.mx-group.com

enq.321

Handcrafted Heavy-Duty Fireclay Sinks

AVAILABLE FROM STOCK

Shaws of Darwen have been manufacturing robust fireclay commercial sinks for over 100 years. The extensive ranges and sizes of laboratory, shelf, cleaner's and traditional Belfast sinks suit every requirement.







View our full range of quality sinks at www.shawsofdarwen.com or call 01254 775111 to confirm your commercial sink order.



Shaws of Darwen, Waterside, Darwen, Lancashire BB3 3NX
Tel: 01254 775111 Fax: 01254 873462
www.shawsofdarwen.com

enq.301

Storm-proof rainwater harvesting

Combining rainwater harvesting with sustainable urban drainage systems (SuDS) enables architects to provide an efficient, space-saving water management solution that's resilient against the future. Kevin Reed of Graf UK explains how.

The effects of climate change are making headlines almost daily – often in relation to serious flooding, which is becoming increasingly commonplace in the UK. On the flipside, the threat of droughts is also a growing concern for the future. This has created the need for effective water management solutions that can handle both weather extremes. In response to this, rainwater harvesting (RWH) systems that can be combined with stormwater management to create an effective, dual-capability solution (often using just one tank) are emerging as market frontrunners.

These systems reduce pressure on the potable mains supply by collecting water for reuse elsewhere when rainfall levels are low. This makes both environmental and economic sense, particularly given that a third of domestic water doesn't need to be drinking water quality and instead is used for flushing toilets, washing clothes and cars, and watering gardens. Combined systems also deliver effective, controlled protection against floods when rainfall levels are at their highest – providing valuable peace of mind when it's needed most.

Against this backdrop, there is clear and growing commercial opportunity for architects and specifiers in the sector. However, to maximise this, it's crucial that they familiarise themselves with the latest developments in this evolving market.

Joining forces

Alongside the changing climate, one of the key factors driving demand for combinable RWH and stormwater management is the fact that all new developments are now legally required to assess their flood risk, and incorporate SuDS to minimise it. While RWH cannot replace an entire SuDS system, when combined with a stormwater management solution, you essentially get two systems in one – making both more cost-effective. With this in mind, architects who can advise customers on how to bolster their RWH tanks to include stormwater management capabilities are putting themselves at a competitive advantage. So what do these architects need to know?

There are two methods of stormwater management: attenuation (where water is retained and then slowly discharged into the surface water drainage system or water courses) and infiltration (where water is gradually released back into natural groundwater reserves). However, due to the clay-heavy soil in many areas of the country not being suitable for infiltration, attenuation is the most common approach in the UK.



Attenuation can usually be incorporated into the same tank as the RWH system, allowing for a one-tank solution – while infiltration generally requires a separate system. An overview of the best options for different applications are listed in the following paragraphs.

RWH system with a tunnel system for storm water filtration

Small-scale attenuation

With individual domestic properties, it is possible to opt for an oversized RWH tank that also incorporates attenuation. This tank is designed with an outlet which is placed high enough to provide enough water for reuse in the bottom of the tank, but low enough to ensure sufficient space for surplus water to collect at the top (see picture).

In the event of storms, the surplus is then released at a controlled rate, and is distributed over a much longer period – reducing pressure on the surface water drains and water courses. The submersible pump at the bottom of the tank feeds the remainder of the water either directly to the point of use (in the

RWH system placed low enough to collect surplus stormwater



case of a direct RWH system), or to a header tank (in the case of an indirect RWH system).

Large-scale attenuation

For large-scale projects, such as housing developments or commercial premises, tanks can be designed from modular cells (such as Graf UK's EcoBloc systems), covered in an LLDPE-welded geomembrane. This prevents any water from escaping from the system unchecked. The outflow rate is regulated to allow the water above the outlet to be discharged into the sewage system in a controlled manner, while the water below the outlet, at the bottom of the tank, is retained for reuse.

Infiltration

In parts of the country which have the right type of soil (i.e. not clay or rock-based), stormwater infiltration can be effectively incorporated into a RWH system. This is done by adding a crate-style soakaway or a tunnel system (pictured), which is sized according to the infiltration rate of the soil. This method is suitable for both domestic and commercial applications.

A range of RIBA-approved CPDs on the design and operation of RWH and stormwater management systems are available. These cover in great detail a variety of topics including legislation, sizing and combining RWH systems with stormwater solutions – and are a useful resource for further learning.

Harvesting the benefits

The case for combining RWH with SuDS to safeguard against unpredictable weather conditions – all while meeting official flood prevention criteria in the process – has never been stronger. Architects and specifiers who want to offer their customers holistic, future-proof water management solutions should equip themselves with a good knowledge of the products on offer today, to be in the best position to reap the rewards for years to come.

enq.156

BIODIGESTER EST. 1987
sewage systems for the modern world

SEWAGE TREATMENT PLANTS FOR PROPERTIES WITHOUT MAINS DRAINAGE

- Simple Installation
- Economical Maintenance
- Environmentally Friendly
- Odour FREE Operation

Populations 6 to 2,000

AIR BLOWERS AND SPARES

RAINWATER HARVESTING

CE

Tel: 01278 786104
Fax: 01278 793380
Email: sales@biodigester.com
www.biodigester.com
Burnham Environmental Services Ltd

enq.157

Think Rainwater Harvesting Think ENDURATANK

Did you know?

The average roof collects about 85,000 litres of rain a year.

Water is precious. Save it.

From homes and gardens to large industrial sites, our rainwater harvesting systems can be tailored to meet any requirement.

ENDURATANK
Part of the ENDURANAXX Family

01778 338240
www.enduratank.co.uk

enq.158

Burnham Biodigester 'T' range



The Biodigester 'T' range from **Burnham Environmental Services Ltd** caters for 6-42 people and larger Biodigesters are available for up to 2000 people. All Biodigesters are suitable for variable loading. The 'T' range Biodigester has been tested to EN12566 Pt 3 and has a CE Mark. Owners are impressed by the limited maintenance

required, infrequent emptying intervals and the 'Odour Free' totally aerobic process. The Biodigester range is backed over 40 years experience and full details may be obtained from Burnham Environmental Services Ltd via post, telephone, email or can be found on the website.

enq.159

Saving water across the UK and beyond



Endurataank, part of the **Enduramaxx** family, is helping to save water across the UK and beyond. Rainwater is free and by harvesting this resource for our own use we not only provide ourselves with an independent water supply during drought conditions or times of regional water restrictions, but also supplement the mains supply, thus saving money. Designed to provide

storage for our Rainwater Harvesting System our range consisting of 26 above ground tanks allows for up to 30,000 litres of rainwater to be harvested, conserved and recycled at your convenience for many purposes where either mains water is not required or not available.

enq.160

Genuine team hits the road



To further support its customers, **Simpson Strong-Tie** has expanded the activities of its nationwide merchandising team, which includes Danny Cawthra, who is responsible for the Midlands.

The team has also been kitted out with all new vans, complete with Simpson Strong-Tie livery. Marketing Manager Chris Sanders explains: "we have the largest team of merchandisers in our sector and between them they cover over half a million miles each year, visiting our distributors to provide sales and promotional support. We saw this a great opportunity to push our "Genuine" promise, however it also means our guys on the road are even better equipped to help keep our customers stores ship shape".

The move to outfit the merchandising fleet follows the launch of Simpson Strong-Tie's "Genuine" campaign, the objective of which is to convey the fact that there is much more to manufacturing a steel connector – Chris continues: "we want to speak about customer service, quality and innovation".

01827 155600 www.strongtie.co.uk

enq.161

We Build It Ltd

simple solution sewage systems

The Bio-Pure

- Suitable for homes without access to mains drainage
- Discreet solution to on-site sewage treatment
- 10 models in the range with a capacity up to 50pe
- CE Marked and EN 12566-3 Certified
- Uses the extended aeration method to treat sewage
- 96% efficiency allows a typical 3-5 year emptying interval
- Visually unobtrusive and odourless
- 25 year warranty on GRP & 2 year warranty on the air pump
- Deal direct with the UK Manufacturer

0800 731 9421 www.webuildit-ltd.co.uk

enq.162

Profloor gives a lift to flats conversion



The **A. Proctor Group**, renowned for providing high quality, innovative solutions for the construction industry has supplied its Profloor Levelling System to help with the conversion of a Grade II listed building in Reigate to residential flats. The Linden Court development in Lesbourne Road will provide 38 new

homes. Developed to allow a level finished floor to be installed on a cambered, stepped, or uneven sub-floor, Profloor Levelling System is typically used on structural concrete floors where the differences in level are too great. The floor is levelled by inserting packers in each levelling base to adjust the level of the timber battens, and create a level finished floor, with no need for wet trades in the process.

01250 872261 www.proctorgroup.com

enq.163

Numbers you can trust

All too often advertisers accept publisher's statements on their performance. Our ABC Certificate shows we have been independently audited and gives added credibility to support our claim.

Justify your marketing spend and get the exposure you've been promised. As you can see from our ABC Certificate our circulation is 15,000 for every issue.

See it, believe it, trust it.

To advertise, call 01435 863500
or email advertising@netmagmedia.eu



For more information visit www.abc.org.uk
or email info@abc.org.uk



Blackpool Pleasure Beach is thrilled

Two of the popular rides at Blackpool Pleasure Beach have been upgraded to ensure they continue to thrill families of visitors for another generation thanks to Kemper System's Kemperol V210 liquid waterproofing membrane.

Opened in 2000 at a cost of £15 million, indoor log flume 'Valhalla' is one of the 120-year-old Pleasure Beach's most popular rides, offering visitors a thrilling Viking-themed journey. The external façade features a 'waterfall' that dispenses 12,000 gallons of water per minute, splashing the covered waiting area below. It was this area of the ride that was upgraded with an overlay of Kemperol V210, a cold liquid applied waterproofing system that bonds directly to the substrate and forms a reinforced monolithic membrane that cannot delaminate and offers a BBA-accredited service life of 25 years.

Comments Blackpool Pleasure Beach's Construction Manager, Tim Currey: "The volume of water constantly pouring on the queue shelter



roof for Valhalla is far in excess of what any roof would normally have to deal with, so it needed a robust waterproofing membrane with no vulnerable seams and no risk of water penetration.

The Kemperol V210 cold liquid resin system was applied by roofing contractor, Castle Roofing,

in a single wet-on-wet process, applying resin immediately followed by a flexible reinforcement fleece and then more resin to ensure complete saturation of the fleece before the membrane was allowed to cure.

The same system was used to overlay the roof of the theme park's Alice in Wonderland family ride, which was originally constructed in the 1950s and was suffering water ingress in some areas. Here, Castle Roofing cut out sections of the existing felt roof where it had split, filling these areas with a repair mortar made of Kemper System's D Primer and quartz sand, before installing the Kemperol V210 system as an overlay.

Tim adds: "The Kemperol V210 enabled the contractor to work on small sections of roof at a time and manage the programme around the operational demands of the business, while providing a robust, durable and flexible waterproofing solution."

01925 445532 www.kempersystem.co.uk

enq.164

The most lasting and effective connection - the best! Best being unsurpassed.

COXDOME Flat Glass

UNDERSTANDING THE IMPORTANCE OF DAYLIGHT

Offers ultra-clear, frame profile
 Strengthened outer pane with ceramic edge
 Thermally broken aluminium with invisible fixing screws
 U Value of 1.00W/m²K as per EN10977
 Sound reduction of 35dB as per EN10977
 Highest classification (7B) for impact resistance as per EN12201

An exceptional range of glass rooflight solutions

Pyramid Glasslight Dome Glass

COXDOME **JET**

Tel: 0121 530 4230 sales@jet-cox.co.uk jet-cox.co.uk

enq.165



FAKRO rooflights add contemporary style

When upgrading thermally inefficient rooflights, FAKRO's new DRC and DRF options offer a choice of flat or domed profiles. All have a contemporary style, utilise a multi-chamber PVC sash and frame and come in sizes designed to match those being replaced. The triple-glazed DRF DU6 has a window U-value of 0.74W/m²K while the DRC-C P2, which offers added burglary resistance through use of a laminated internal pane, is only slightly less impressive at 0.88. For smoke evacuation, the DSF DU6 and DSC-C P2 open automatically to a height of 50cm through activation of motors on each side of the frame.

01283 554755 www.fakro.co.uk

enq.166

Impressive Center Parc's roof refurb completed with zero guest disruption

With capacity for almost 4000 guests, keeping the central area of Center Parc Longleat Forest open was key to the refurbishment of its impressive Subtropical Swimming Paradise. A massive challenge for Delomac Roofing, the project to renew the roof with a Sika Sarnafil membrane was accomplished with two years of meticulous planning and 30 months of onsite construction.

Originally completed in 1994, the Subtropical Swimming Paradise roof and glazed rain-screen systems were in need of refurbishment. The new roof installation was planned in close discussion with the Sika Sarnafil and Delomac supply chain, developing the specification to address all the client's strict performance, environmental and aesthetic requirements.

An innovative temporary terraced platform was designed and installed, suspended underneath the main structure by cables and lattice beam scaffold



units. Work was carried out over 16 separate sections – ensuring the structure was not compromised by uneven load distribution. This stepped, terraced temporary roof was then covered with plywood and completely weathered by Delomac with a Sarnafil membrane.

With the temporary roof in place, existing glazing and coverings could be safely removed, maintaining water-tightness with guests enjoying the facilities below. Scheduled over more than

two years, this way of working resulted in a dry building envelope.

Comprehensive vapour barrier measures were used on the pool side of the building to ensure the high humidity chlorinated environment was contained. Robust SFS sealant and Sarnafil metal-lined vapour barrier detailing at all Glulam beams and fascia interfaces ensured no risk of condensation.

Sarnafil membrane and accessories were used for all the coverings, and again overall specification development was tailored to suit the varying build-ups; new, overlay, bonded and mechanically fastened. An increased thickness membrane was manufactured in one single batch to ensure colour consistency. Sika added further value with an impressive 17 visits to the site by the Applications Team to advice and support.

01707 394444 www.sarnafil.co.uk

enq.167

Signbox given the 'blue light' for rebuild



Visual communications specialist **Signbox** has completed an architectural signage project for the London Fire Brigade as part of a private finance initiative (PFI) rolled out across the capital to provide a more flexible, efficient and effective fire and rescue service for London. Nine stations in

total have been rebuilt, including Mitcham, Old Kent Road, Orpington and Plaistow, Dagenham, Dockhead, Leyton, Purley and Shadwell. HTA Architects, approached Signbox on the back of recommendation from Kier Construction, to deliver a comprehensive and robust signage package that demanded quality materials and installation to ensure it was manufactured for longevity.

01784 438688 www.signbox.co.uk

enq.168



Colour up for summer

Get the deepest colour possible for a garage door thanks to **Garador's** choice of premium coloured options on steel Up & Over garage doors. Garador's powder coating process at its manufacturing plant in Yeovil incorporates the latest electrostatic techniques to produce the most vibrant and resilient colours in its ever popular Up & Over garage doors. The range of available colours is now exceptional. Take this summer's favourite new shade for instance; soft and subtle grey is a new top seller. But with Garador, you don't just choose grey... you can choose from stone grey perhaps, or light grey, aluminium, window grey, anthracite grey... a range of fabulous shades to ensure customers can get exactly the colour they envisage. Whichever door you choose, and whatever colour you select, you can be sure your Garador garage door will keep its colour and finish in all weathers and easily cleaned and maintained.

01935 443709 www.garador.co.uk

enq.170

Automated doors hit the right note



Liverpool Philharmonic Hall is an Art Deco wonder. So, when it came to a £14.5 million refurbishment, it was vital to fuse functionality with sensitivity within the Grade II* listed building. Improved accessibility needed to be incorporated and the remotely located control box was concealed within the Art Deco fittings. The

solution was found in **GEZE UK's** TSA 160 UFO automatic under floor operator for swing doors. The TSA 160 UFO not only powers the heavy doors with ease but has the added bonus of being virtually silent in operation – making them ideal for a building renowned for its acoustic properties.

01543 4443000 www.geze.co.uk

enq.169



Custom skylights for architectural design integrity

Em-Glaze bespoke delivers industry-leading performance while staying true to the architect's vision.

At Whitesales, we know environmental considerations can mean watering down designs, or tainting perfect lines with obtrusive rooflights. With Em-Glaze bespoke, there's no need to compromise.

- ✓ Unspoilt building design – slimline, low-profile aluminium frames
- ✓ Healthier spaces – up to 78% natural daylight transmission
- ✓ Almost limitless shapes and sizes – choose flat glazed, monopitch, ridgetlight, lantern light, gable end, hip end and more
- ✓ Outstanding thermal performance – U-Values as low as 0.99 W/m²K
- ✓ Comfort cooling – choose passive ventilation or controllable rotating vents
- ✓ Optional roof access & fire escape – manual or electrically-operated hinged opening

Multiple glazing options available, solar control and easy clean features, plus frames in any standard RAL colour.

Discover more at www.whitesales.co.uk/bespoke-glass-rooflights or contact us: 01483 271371 or design@whitesales.co.uk

reader
enquiry
171



Whitesales®
Rooflights & more...

Keeping on top of security risks

Security is always a hot topic, but with new tighter Building Regulations for windows it is at the top of the agenda for architects looking to specify rooflights as well as for manufacturers. ADF reports.



With new Part Q requirements making security an even hotter topic for architects currently, rooflight manufacturers are being asked to back up their marketing statements with accreditations that meet increasingly stringent regulations.

Approved Document Q is a recent addition to the Building Regulations which is tightening the focus on security performance of doors and windows. The new regulation states that easily accessible rooflights within 2 m vertically of an accessible level, balcony or flat or sloping roof, or within 3.5 m of ground level, must comply with British Standard PAS 24:2012.

Rooflights, depending on their type and position on a building, can be vulnerable to attack from intruders as a point of entry. British Standard PAS 24:2012 requires easily accessible rooflights to be sufficiently robust and fitted with appropriate hardware in order to withstand a physical attack.

Secured by Design

As well as regulations and standards, another key driver is Secured by Design, a national police initiative established for over 20 years and designed to help support the Government's

crime prevention programme in homes across the UK. The scheme, which is owned and run by the Association of Chief Police Officers (ACPO), aims to 'design out' crime through the use of high quality, innovative products and processes. Research into the scheme's effectiveness has shown a 75 per cent reduction in crime in new build properties.

Considering effectiveness of security is essential when selecting rooflights in vulnerable positions on a building or in areas with particularly high crime rates. Products endorsed by Secured by Design must be tested and certified by a UKAS-approved body. Rooflights which adhere to the Secured by Design standard LPS 1175 Issue 7:2010 (as well as other standards) are accepted as compliant within PAS 24:2012.

This Part Q compliant test standard is a specification for testing and classifying the burglary resistance of building components, strong-points and security enclosures and offers a high level of security protection.

When specifying a rooflight that meets Secured by Design status, there are many different factors that should be considered, such as the value of goods or information with the building, how the loss of these items would affect the business

Secured by Design
rooflights are required to
go through rigorous testing



or the home in which the rooflights are installed.

Secured by Design rooflights that meet the SR2 accreditation have been subject to testing using hand tools such as hammers and chisels for a period of up to 15 minutes. Those that are SR3-accredited have been tested to withstand up to 20 minutes of attack from battery operated power tools as well as the hand tools used in the SR2 testing.

Historic preservation

In 2010 the Rooflight Company manufactured 10 Secured by Design rooflights for The Keep, a new-build research centre in Falmer, east Sussex that holds important historical documentation. By combining the security rooflights with a glazing which shields the documents from harmful sunlight,

the files contained in the centre will be safe for many years to come.

Due to the vulnerable nature of the content held within the building, the architect wanted to specify rooflights which would provide maximum security to the building. Kier, the main contractor on the project, comments further: "We worked with the manufacturer for over two years on this project and they were able to meet the specific brief of high security rooflights required. They offered a rooflight solution which matched the particularly demanding security level that was needed for the building."

Secure banking

More recently, an order worth in excess of £100,000 has been dispatched to a European bank. A total of 33 Secured by Design rooflights were specified in order to satisfy the requirement for a high level of security for what is a highly sensitive building, and rooflights compliant to the LPS 1172 Issue 7 SR2 level of security were required.

Commercial director of the Rooflight Company Kester Harvey comments: "Thanks to our investment in R&D we are able to provide a unique level of reassurance to our clients. With a long track record of providing roof windows in Europe and further afield, we can meet the needs of clients where design excellence and quality are of paramount importance."

enq.172

Berkeley window



A window type created initially to replace existing 1920s and 1930s steel windows is equally as acceptable for high-end new build as it is for restoration projects. The newly developed Berkeley from **Crittall Windows** provides the architect and designer with minimum sightlines, maximum daylight and fine detail. Where predominantly single pane leaded glass fenestration is to be replaced and upgraded the Berkeley offers an entirely new series of hot rolled profiles in a window where a solid steel chamfer replicates exterior putty. Hot-dip galvanized for durability, and in-house Duralife® polyester powder coated for exceptional performance and minimal maintenance, the Berkeley window is available in a wide variety of sizes and configurations to suit any building where strength and security combined with slim and elegant frames are required. It is a high performance product with a unique articulated frame and sash, accepting glazing up to 18mm. Double integral EPDM weatherstripping is incorporated and sound attenuation for single glass is 20-28 dB, and double glass 28-30dB (approximate values averaged over a frequency range of 100 to 3150Hz). High-end residential, institutional and commercial applications will be typical outlets for the Berkeley and a recently completed central London project exemplifies one such use.

01376 530800 www.crittall-windows.co.uk

enq.173

Better together – making ventilation a breeze



Two of the leading names in door and window architecture – **GEZE UK** and **Kawneer** – have joined forces to launch a superior ventilating window. Kawneer's high thermal performance AA720 parallel opening window combines with GEZE's award-winning Slimchain window drive to produce a window system which is suitable in any sector, be it residential, healthcare, education, commercial, retail or leisure. The combination of attributes provides ventilation around the entire window perimeter without detriment to safety and security while achieving U-values of 1.5 W/m²K for a CEN sized window with a warm edge spacer, offering exceptional levels of natural ventilation and air exchange. The new and innovative CE Marked assisted-opening system has been fully tested to the PAS 24:2012 enhanced security performance standard as well as BS 6375 Part 1 (weather) and Part 2 (strength). The new system for new-build and refurbishment projects offers more versatile design options than other solutions as Slimchain can be used on windows up to 400kg – a significant weight handling advantage over competitor products. Its intelligent electronics allow continuously adjustable drive strokes and individual speeds. The AA720 + Slimchain window is backed with full support from Kawneer's and GEZE's technical, estimating and design teams as well as the reassurance of extensive testing of a totally integrated assisted opening system.

01543 443000 www.geze.co.uk

enq.174



Jewers Doors speeds response

Jewers Doors put the finishing touches to the new £15 million Ambulance and Fire Services Resource Centre (AFSRC) at Wrexham with the installation of 14 pairs of Swift fast-acting, bi-fold doors. The new AFSR Centre accommodates eight fire appliance vehicles and six ambulances. Fire and ambulance vehicles need to exit rapidly when under 'blue light' emergency response conditions, and the FAAC 560 drive units fitted to the Swift doors ensure they take less than seven seconds automatically fully open. In the event of power failure, each door can be instantly and effortlessly opened manually via low-level disengage handles to prevent delays. Leading edges of the doors are fitted with full height pressure sensitive edges. FAAC's XP 20 D photocells fitted to the inside and outside create a safe area around the door to greatly reduce the risk of an impact ever occurring.

01256 318100 www.faac.co.uk

enq.175

Klober launches over-rafter insulation boards



Klober's Permo[®] therm is a tongue and groove insulation board with integrated reflective underlay and self-adhesive edge strips to seal laps. Suitable for new build or refurbishment, it has LABC approval but unlike square-edged boards does not provide an air leakage path. Permo therm is installed over rafters and not only provides added height within

the roof space but removes the need for separate underlay installation. Boards can be laid in either direction with no ventilation of the batten/counter-batten cavity needed other than where impervious or tight-fitting roof coverings are used. From an environmental perspective Permo therm is also CFC and HCFC-free.

01332 813 050 www.klober.co.uk

enq.176

VMZINC – BBA certificates for warm roofs



The BBA certificate for the VMZINC 'Structural roof using PIR or mineral board insulation' has been extended. The system is fixed to the deck with special screws and clips supplied by VMZINC and can be used on roofs with a pitch from 3° to 60°. Suitable for steel or plywood decks, it is ideal for buildings with humidity classes between one to four (dwellings

with high occupancy, sport halls, etc). VMZINC remains the only zinc manufacturer to have such accreditation and can additionally offer a BRE Green Guide rating of up to A+. For more information visit their website.

01992 822288 www.vmzinc.co.uk

enq.177



THE UK'S ONLY CHOICE

FOR SPECIALIST GLASS

- ✓ Fire Rated Glass
- ✓ Acoustic Glass
- ✓ Insulated Glass
- ✓ Laminated Glass
- ✓ Toughened Glass
- ✓ Glass for Partitions
- ✓ Wired Glass
- ✓ IGU's for Composite Doors
- ✓ Heritage Units
- ✓ Mirrors (Silvered Glass)
- ✓ Installation Services
- ✓ Five Branches Nationwide
- ✓ Fast Delivery Service
- ✓ Well Stocked Facilities



0121 521 2180
info@fireglassuk.com

SPECIALISTS IN
FIRE RATED GLASS
AND GLAZING

Fire Glass

UK

LOCAL BRANCHES

UK

0121 521 2180

NORTH

0161 728 8080

EAST

01773 712 920

SOUTH

01206 222 090

SCOTLAND

0131 526 4141

INSTALLATION

0121 521 2180

www.fireglassuk.com

enq.178

M-TRAY® is ideal to use in conjunction with rooflights on flat roofs



Wallbarn M-TRAY® is ideal to use in conjunction with rooflights on flat roofs. The sedum plants are low growing with light root structures. This means they are unlikely to interfere with the edges or seals of the rooflights and will not grow up to the extent that they block out the light.

As the M-Tray® modules are only 100mm deep, there is no need to construct large upstands to hold the glazing. It is, however, advisable to install a border of stones around the rooflights to maintain a clear separation from the edges of them. It also gives a clean, tidy finish to the area.

All the growing, filtration and drainage elements are included in the system so it is a simple and fast process to install a seamless, fully established green roof.

The vegetation is grown in the M-TRAY® units for a minimum six months to ensure strong,

well established, healthy plants with solid root structures. This means less shock or bedding-in time and less risk of wind uplift or erosion in the crucial time period after installation.

The sedum in M-Tray® modules is succulent so when growth such as flowers die back, they tend to rot away rather than leave stalks. This reduces fire risk but also alleviates risk of interference to light over the long term.

The system is also future-proof. Unlike with roll-out systems. By being modular, M-Tray® if any of the vegetation needs to be removed or changed, or if the deck beneath ever needs to be examined, one tray can easily be lifted without major disruption.

Wallbarn's new M-Tray® is designed and manufactured in Britain.

0208 916 2222 www.wallbarn.com



enq.179

Reynaers provides facades for impressive Manchester development

Manchester's newest independent film hub and visual arts centre has an impressive facade using curtain wall products from Reynaers.

The external cladding and roofing work on Home, found on the city's First Street, was carried out by Prater. This was made possible due to funding from the European Union for a joint venture between Ask Developments and Manchester City Council.

Overall, a total of 51 units of Reynaers' curtain walling product CW 50 were installed, as well as Reynaers' CS 68 aluminium windows.

Reynaers was consulted about the design of the facade in the prefabrication stages to help ensure the system allowed for building movement and live loads.

Rebecca Cope, Marketing Manager at Reynaers,

said: "Lead architect Ernst ter Horst's brief was to make the building of the highest quality and present itself as warm and welcoming. He was inspired by ideas of filling the building with life and the playful interaction with daylight.

"Our curtain walling system Concept Wall 50 offered unlimited design freedom and maximum transparency for this build."

Netherlands-based architects Mecanoo International wanted to ensure there was a strong connection between inside and out. Home also needed a strong identity, so it developed a dramatic cantilevering prow to mark the front entrance to the building and shelter an external cafe terrace. The building's triangular shape combined with soft, curved corners sets it apart from the adjacent developments, with its elevations articulated to protect against solar gain.



Ian McHale, project manager at Prater said: "We chose Reynaers because of the vast experience it has with bespoke high-end, complex commercial projects, as well as the team's outstanding product knowledge and expertise."

0121 421 1999 www.reynaers.co.uk

enq.180

Long-standing construction firm Sisk nominates Hueck UK as preferred supplier

The UK arm of international construction contractor John Sisk & Son, part of the family-run SISK Group, has chosen aluminium building systems specialist, Hueck UK, as preferred supplier for future projects.

The development follows a very successful collaboration between the two companies at the recently completed Rathbone Market regeneration scheme, which has seen the creation of more than 650 new homes, alongside community areas and retail spaces.

Ange Francis, Facade Manager at John Sisk & Son, said: "We were involved in the Rathbone Market project right from the early stages and worked with Hueck to deliver the high performances and look that the client and architect wanted, while firmly controlling the costs.

"Hueck's design capabilities, their extremely wide and versatile collection of products, and their



expert approach to the architect's design and contractor's implementation have all contributed to the successful completion of Rathbone Market, and the subsequent announcement of an even closer collaboration with John Sisk & Son on future projects," added Ange.

A preferred supplier status is becoming increasingly important, as an earlier and tighter project collaboration between architects,

contractors and building envelope specialists is now deemed necessary in order to ensure effective cost control while meeting the desired performances and requirements.

Leon Friend, Hueck UK Project Development Director, said: "There were strict requirements for effective noise reduction as the project is situated close to the busy A13 road. We used our Lambda 77 L inward and outward opening windows and doors, boasting a sound insulation level of 46 dB, to deliver excellent comfort for the end-user."

With similar trading histories, John Sisk & Son and Hueck UK have been supplying high levels of construction and engineering expertise for over 155 years and 200 years respectively, driven by the same objectives – quality, innovation and professionalism.

0121 7671344 www.hueck.com

enq.181

Aluprof on prestigious North West project



One New Bailey is a new office development in Salford on the north bank of the River Irwell, situated next to Spinningfields and close the Lowry Hotel. The development is part of New Bailey, a new business and leisure hub within the growing area of Salford Central and offers 125,000 sq ft of prime commercial space. Aluprof's 'cap-less' curtain wall system, the advanced MB-SR50N EFEKT was used on all elevations of the new build and the fabrication and installation of the curtain wall was undertaken by CSI, Commercial Systems International, of Humberside. One New Bailey, was developed by English Cities Fund (ECf), working closely with Salford Council and is funded and is owned by Legal & General. The building was designed by Aedas RHWL architects, who also are responsible for the masterplan of the area. With large, regular and efficient floor-plates, averaging over 17,000 sq ft (net), designed specifically for flexibility and to facilitate split tenancies, the One New Bailey development has achieved a Grade A, BREEAM 'Excellent' rating. Leading international law firm Freshfields Bruckhaus Deringer has announced that it will be leasing 80,000 sq ft within the building as the long term base for its Global Centre. The highly anticipated Menagerie restaurant will occupy one of the ground floor units, making this a truly mixed use scheme.

0161 941 4005 www.aluprof.eu

enq.182

SMART door from NorDan – at the forefront of technology



NorDan, one of Europe's largest manufacturers of high quality Scandinavian timber windows and doors, has unveiled its SMART door technology for the first time in the UK. SMART Door, is a completely new product. Developed from NorDan's top of the range composite door range, with first class thermal properties, stability second to none, and security to keep you feeling safe at nights. The robust security layers of rust proof steel sheets also contribute to the stability of the door, ensuring it doesn't warp or bend in hot weather or in a damp British winter. These external doorsets protect against driving rain and winter winds. New for 2016, is the additional of a high tech locking system which enables you to open the door from a distance using mobile telephony. This door of the future has no key, but has every other security aspect you would expect. It can be locked using a key fob, or from your mobile phone app. The NorDan SMART door alerts your mobile phone when someone 'rings' at your front door. You will be able to 'see' who is there, talk to the caller, and let the caller into your home, remotely from your phone, wherever you are. The new SMART technology in the door will also help you turn on and off the burglar alarm system. A camera can record who was at the door, log calls, and let you talk to whoever is at the door at home or away.

01452 883131 www.nordan.co.uk

enq.183

Understanding the difference between 'non-fragile' and 'walkable' GRP rooflights

John Godley, Technical Manager for Hambleside Danelaw defines non-fragility

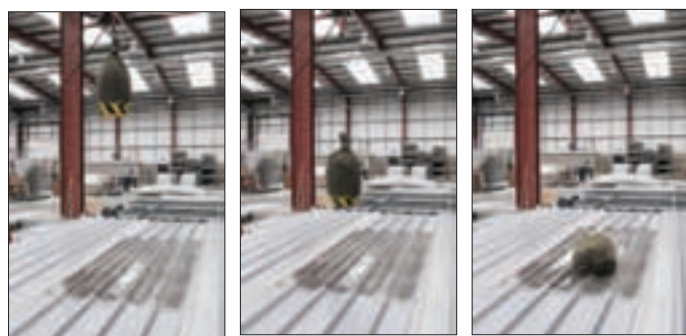


Defining non-fragility

Before the HSE introduced the CDM Regulations, they had already done some preliminary work on roof fragility. A simple 'drop' test onto a roof assembly was proposed, and if the impactor was retained, then the roof was deemed to be non-fragile. This testing, defined in "Special Inspectors Report No.30", was then adopted as being the authoritative definition of non-fragility compliance.

The HSE subsequently recognised that SIR 30 test didn't cover the full roof assembly or the interface between different components. It was open to variations in the interpretation of the results by those carrying out the testing. To improve the test, HSE carried out work to simulate the effect of a human falling on to a roof assembly, recording the impact loads applied. From this they determined that a 45kg sand bag, dropped from a height of 1.2m on to the assembly was typical of a human tripping and falling on a roof.

After several meetings involving all relevant roofing trade associations, the Advisory Committee for Roofsafety was formed and the first definitive guidance document produced; ACR(M)001:2000 Test for Fragility of Roofing Assemblies.



The industry is currently guided by ACR[M]001:2014 "Test for Non-Fragility of Large Element Roofing Assemblies" [fifth edition], known as the 'Red Book'. It prescribes how a roof assembly should be tested to resist the impact of a person falling onto it, and then supporting their weight, clarifying how the assembly is then defined as 'fragile' or 'non-fragile', classified A to C. It is important to understand that the test is not of any single product, but all of the elements required of a correctly installed roof.

The impact testing is a 'soft-body' test specifically defined to concentrate a destructive load over a small area, at the most critical, worst case scenario locations of that assembly. Only by extensive testing for all failure modes can the tester gain a clear understanding of how and where the assembly will fail.

The application of this test and classification for in-plane rooflights is further defined in the National Association of Rooflight Manufacturers (NARM) Technical Document NTD03, Application of ACR[M]001 'Test for Non-Fragility of Large Element Roofing Assemblies' to GRP Profiled Rooflight Sheetting.

Non-fragile rooflights

Two factors impact on the period of non-fragility of roof assemblies:

- quality and durability of the individual components.
- quality of installation of the entire roof.

Manufacturers can only indicate the expected period of non-fragility based on extensive testing, and cannot offer performance guarantees on products not manufactured or installed by them. Further guidance is available from NARM and The Metal Cladding and Roofing Manufacturers Association (MCRMA).

Imported GRP rooflight sheets claiming to be manufactured to UK recognised weights and specifications cannot be assumed to carry the same level of surface protection or achieve the same non-fragility ratings for the same periods if not compliant with the UK Annex to BS EN1013.

'Walkable' and 'Walk-On' Rooflights

Some built-up cladding systems incorporate a 0.70mm thick steel liner sheet in a profile depth usually exceeding 30mm. This liner assembly should be tested to achieve a non-fragile classification as a single skin only, to allow installers to safely traverse it while installing the cladding system – often referred to as a 'walkable liner'.

It should be noted that profiled rooflight sheets in such an assembly, even though tested and demonstrated to achieve the required non-fragile rating, are still not 'walkable' and should never be subjected to foot traffic, regardless of specification.

Rooflights should never be walked on unless specifically designed and approved for this purpose. Irrespective of the strength of a rooflight and the non-fragility classification, foot traffic could damage the structural integrity or surface protection and consequently impact upon the long term performance of the product.

Rooflights designed to be walked on, and for use where they will be deliberately walked on, should be designed for much greater loads – the only suitable material is glass, subject to specific specifications for each application.

Polycarbonate and GRP should never be considered suitable materials for 'walkable' applications.

www.hambleside-danelaw.co.uk

enq.184





ZENON

ARC

MODULAR BARREL VAULT ROOFLIGHT

Hambleside Danelaw are pleased to introduce their innovative low carbon barrel vault rooflight system - **Zenon Arc**.

Suitable for flat roofs, low pitch, curved, standing seam and secret-fix roof installations. This unique, cost effective, robust and shatter-resistant Glass Reinforced Polyester (GRP) barrel vault system can be constructed from Zenon Pro and Zenon Evolution rooflight sheets depending upon the performance specification.

Zenon Arc delivers a range of benefits;

- Fast, simple, labour-saving installation.
- Diffused light transmission to reduce glare.
- Improved thermal performance.
- Lower embodied carbon levels.
- Enhanced protection and durability.
- Two width spanning options - 1000 and 1200mm
- Long term non-fragile to ACR Classification B.

**Hambleside Danelaw
Rooflights**



reader
enquiry
185

For more information please contact our Sales Department:
by email sales@hambleside-danelaw.co.uk or call +44 (0)1327 701 920

namm

The Building Envelope Authority

Take the inside out with the new BAL external tiling and balcony system for natural stone

With space at home a premium these days, more and more people are expanding their living areas outwards to create much needed freedom.

This trend for outdoor living has led to a growing domestic market in balconies, roof/ground terraces and patios with variations in design, and larger installations no longer reserved for commercial/public buildings such as hotels and sporting venues.

While wooden decking may seem the popular choice of coverings, being cheap to install, without ongoing treatment and maintenance may become susceptible to damage, making natural stone, ceramic or porcelain tiles a great alternative. Tiled coverings and the right system also allow a seamless transition to be made from inside to out.

To cater for this growth, BAL has launched an exclusive new range of external tiling systems, using proven technology from its sister company Gutjahr, which protects outdoor coverings against the unpredictable British weather and diverse extremities such as rain, frost and heat.

Gutjahr System Technology from BAL offers designers and contractors innovative drainage, ventilating and uncoupling solutions for cantilevered balconies, roof terraces and ground-floor terraces/patios.

Gutjahr are the inventors of the passive capillary surface drainage system. Complete with edge profiles, drain grates and guttering, the patented systems are simple to install and provides rapid, immediate and high volume drainage of water.

By removing the water, you are taking away the biggest threat to the tiled assembly and protecting the long term integrity of the floor assembly and covering. Problems such as cracking due to the freeze/thaw cycle, staining, warping, efflorescence and even weed growth on loosely laid tiles or slabs is inevitable if surface water is able to penetrate below the tiled surface and is unable to be drained effectively.

As well as protecting against frost damage, staining and water damage, the BAL external tiling systems can also help reduce static weight loading on balconies by utilising thinner assemblies, lighter materials and limiting water absorption and retention, which in turn reduces standing water



and subsequently water loading.

The system is so effective it has even become standard in Germany since 2002, being incorporated into the ZDB leaflets (generally acknowledged rules of technology) for external floor coverings of the German Construction Industry Association (ZDB).

With a collective 80 years of commercial tiling experience, incorporation of the Gutjahr range within the BAL portfolio ensures a guaranteed, full-system solution for external installations from the UK market-leader.

BAL is introducing a number of Gutjahr products to its portfolio including waterproofing, drainage matting, mortar, drain grates, edging profiles and guttering, which combined with its full range of tiles adhesives, grouts and sealants, makes BAL the only full system provider in the UK.

All of the products on offer help ensure that specifiers, contractors and installers conform to British Standard BS 5385-3: 2014 – 6.8.1.4 Balconies and Roof Terraces, which states:

“Balconies and terraces should be checked for anticipated static/dynamic loading demands. All materials selected for use in balcony and terrace construction should be checked for suitability prior to their installation. The tile selected for installation should be sufficiently slip resistant and be suitable for the anticipated traffic. Consideration to the environmental surroundings of the balcony or terrace should be given and only suitable materials selected for construction based on the impact posed by the location i.e. marine environments.”

Among the systems on offer from BAL include Thin Drainage Assembly for direct point adhesion for break-proof coverings, Standard Drainage Screed Assembly for the solid bed fixing of ceramic, porcelain and natural stone and concrete paving, and a Thin, Lighter Weight Drainage Screed with an epoxy drainage screed for a strong but comparatively lightweight build-up compared to conventional systems.

With the Thin Drainage Assembly, break proof coverings are fixed at points to the AquaDrain® T+ surface drainage mat. Seepage water is then rapidly shed through the drainage channels in the AquaDrain® T+. Using self-supporting tiles this system provides the same benefits as screed based drainage systems but is significantly lighter than conventional assemblies, and a complete build-up above the waterproofing can be achieved from only 29mm.

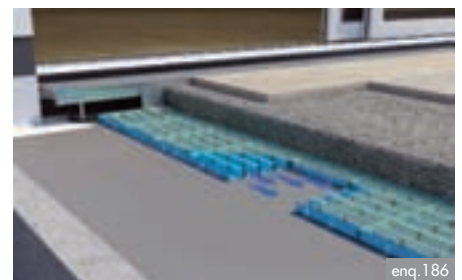
Both the Standard Drainage and Thin, Lighter Weight assemblies include the AquaDrain® passive capillary drainage mat which has a unique mesh, raising the complete surface and offering a high drainage volume, the entire system provides a rapid and immediate drainage solution.

The Gutjahr system also includes a range of drainage grates and gullies, trims and profiles which are available in a number of interchangeable sizes and designs for varying assembly heights or individual project requirements.

Now available to order or specify, Gutjahr System Technology represents new, innovative ideas – a vision shared by BAL.

To find out more about BAL's new external tiling system visit the website or contact the company directly.

01782 591120 www.bal-adhesives.com



Uplifting Architecture

The new Maggie's Cancer Centre in the grounds of The Christie Hospital in Manchester is roofed in Nordic Bronze, one of a palette of materials giving Foster + Partners' design its essential sense of warmth.

Welcoming and full of light and open space, Maggie's Centres are designed by leading architects to be uplifting places for people with cancer, their families and friends. Each architect offers a unique interpretation of the same brief, based on the needs of a person living with cancer, to create the calm environments so important to the people who visit and work there.

The new Manchester centre occupies a sunny site and its low profile reflects the residential scale of the surrounding streets. Its Nordic Bronze clad roof rises in the centre to create a mezzanine level, naturally illuminated by triangular roof lights, and is supported by lightweight timber lattice beams. The beams act as natural partitions between different internal areas, visually dissolving the architecture into the surrounding gardens.

Darron Haylock, Partner, Foster + Partners,



said: 'In keeping with the domestic character of the building, the entire palette of materials at Maggie's exudes a sense of warmth, not just inside the building, but throughout the exterior as well – this is one of the primary reasons we chose bronze as a roofing material. A long-term roofing solution that requires little maintenance, it has a durability that few other roof materials can match.

'It is a material that ages beautifully, complementing perfectly the timber frame of the building. Its malleability makes it easy to form a

pitched roof with expressed battens and scrolls to emphasise the building grid, requiring the deft skill of a craftsman to realise the true potential of the material – it encapsulates the spirit of the building in its totality.'

Nordic Bronze is produced by Aurubis, part of the world's leading integrated copper group and largest copper recycler. Other copper alloys from Aurubis include Nordic Brass, also available pre-weathered, and Nordic Royal an innovative alloy of copper giving a rich golden through-colour that is very stable. In addition to Nordic Standard copper, Aurubis architectural surfaces include Nordic Green and Nordic Blue factory-applied patinas – developed with properties and colours based on the same brochantite mineralogy found in natural patinas. Nordic Brown pre-oxidised copper gives either light or dark brown oxidation that otherwise takes time to develop in the environment.

01875 812 144

www.aurubis.com/finland/architectural

enq.187

Metal Technology in award-winning project



Girdwood Community Hub in North Belfast brings together physical regeneration and eco-design principles in the creation of a state-of-the-art, socially inclusive centres. Part of the overall regeneration of the former Girdwood Barracks site, the Michael Whitley Architects design achieves high levels of

thermal performance without compromising aesthetics using an integrated range of products from leading aluminium systems manufacturer **Metal Technology**. Both System 17 SP (silicone pointed) curtain walling with concealed vents and System 17 capped curtain walling were specified for the project, complemented with System 5-20D Hi+ doors and System 4-20D Hi+ windows.

028 9448 7777 www.metaltechnology.com

enq.188

VMZINC answers lead theft problem



Traditional VMZINC batten cap roofing has provided the perfect finish for Basingstoke's War Memorial bandstand. At least ten council-owned buildings have been the subject of repeated lead theft over the past five years or so, the bandstand having been targeted within a day of installation. To eradicate further cost of replacement and address

the issue of increased insurance premiums the favoured refurbishment options had included single ply, tiles and slates. However, specification of zinc ultimately enabled the structure's design integrity and appearance to be maintained at far lower cost than lead. The threat of the theft has also been removed.

01992 822288 www.vmzinc.co.uk

enq.189

Replacement aluminium windows for period and new homes



The Conservation Range

- Single or dual RAL colours
- A-rated* energy efficiency
- Fit into timber or direct to stone
- UK manufactured

THE HERITAGE
WINDOW COMPANY

For expert advice call **0800 731 4294**
www.thwc.co.uk

Showrooms at: Sevenoaks Dorking Beaconsfield Loughton



*An "A" rated product or certain "U" value is subject to DGU performance and type of specialist sealant or glass and gas used.

enq.190

Flat roof manufacturer Bauder launches Solar PV Design Guide



Solar photovoltaic (PV) is currently the most popular renewable energy in the UK and its deployment is rising rapidly across the globe, particularly because climate change and resource scarcity are on the agenda of every government and major corporation worldwide. Despite recent UK Government policy changes, the number of large, flat roof installations should still rise as local authorities and businesses look to reduce their carbon footprint and gain energy security for the future. All too often within the construction industry, photovoltaic specifications focus on energy efficiencies and outputs of the solar panels, omitting to give the same focus to ensuring the rooftop array is installed with methods that have as little impact on the building and its waterproofing as possible and that the array works to its maximum potential for its entire lifespan rather than just becoming a 'tick box' exercise to achieve sustainability credits. To help combat this issue flat roof manufacturer **Bauder** has launched a new design guide aimed at designers considering the inclusion of a PV array on new build flat roof construction projects, which outlines the key elements to be mindful of to ensure your design is sustainable, protects the building and meets lifespan expectations.

01473 257671 www.bauder.co.uk

enq.191

Eagle Brae Log Cabins have NorDan windows



NorDan windows were used to complete the building envelope of Eagle Brae, with their precision manufacture and flexibility of specification. Eagle Brae cabins have side swing timber windows and outward opening double doors, with some fixed lights, from NorDan all finished with an aluminium cladding to extend

their life in use. The log cabins specified black handles, which were a special order for this project. "There was a desire to have the windows as traditional as possible, with no modern sliding hinge mechanisms visible. So we recommended our side swing window," says Calum Sinclair from NorDan's Aberdeen office.

01452 883131 www.nordan.co.uk

enq.192

Kingspan Koolduct streamlines space



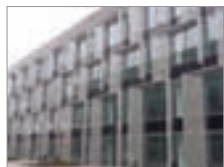
A state-of-the-art manufacturing site near Belfast has been upgraded and expanded as part of a £35 million investment programme. The work on the facility included the installation of oval ductwork fabricated from **Kingspan KoolDuct** Panels which provided a lightweight, fast track HVAC solution for the project. The panels comprise a

non-fibrous rigid thermoset modified resin insulation core which are faced with silver aluminium foil on one side and either silver or black coated aluminium foil on the other. The panels can achieve thermal conductivities as low as 0.022 W/m.K, and have been assigned a BRE Green Guide Summary Rating of A.

01544 387 384 www.kingspaninsulation.co.uk

enq.193

Bright space for bright sparks



UK glass manufacturer, **GLASSOLUTIONS**, has played a key role in creating an optimal learning environment for students at Alford Academy's new Community Campus in Aberdeenshire. Main contractor Morrison Construction approached GLASSOLUTIONS to manufacture and install an attractive curtain walling system for the develop-

ment, choosing glazing products carefully to create a space with excellent temperature control, effective ventilation and plentiful natural light. The wide range of purposes that the new campus was intended to fulfil meant that versatility was a particularly important aspect of the glazing specification.

0247 654 7400 www.glassolutions.co.uk

enq.194

Architects Datafile website



The Architects Datafile (ADF) website is an online provider of past and present products and news items for the architect or specifier. architectsdatafile.co.uk is a one-stop source for all the latest press releases providing any visitor with access to information about products and services that they may require. From the website, you can find links to digital issues that have live links to advertisers' sites, as well as daily email alerts to keep you as informed as possible.

www.architectsdatafile.co.uk

ICYNENE

THE EVOLUTION OF INSULATION

tel: 01229716039
mob: 07851854860
info@uksprayfoam.co.uk
www.uksprayfoam.co.uk

THE FIRST NAME IN SPRAY FOAM INSULATION



The Icynene Insulation System is a series of soft, flexible spray foam insulation products that delivers up to 50% greater energy savings when compared to other insulation products. Icynene is perfect for loft insulation, cavity wall insulation, drylining insulation, sound insulation and more.

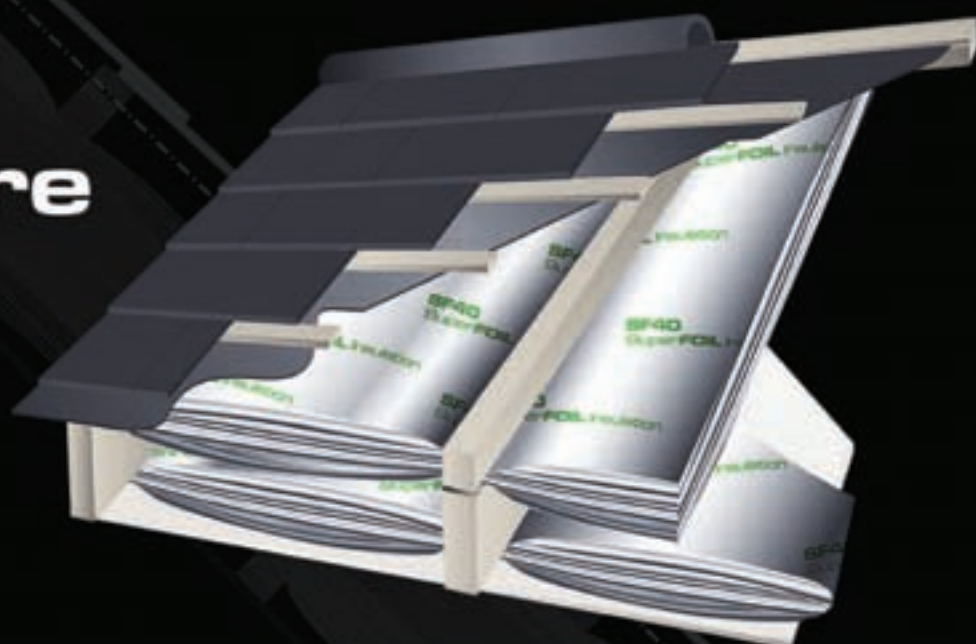
Icynene has been successfully tested and certified for applications directly to the underside of breathable and non breathable roof membranes and felts and recently received BBA certification for this application. Icynene absorbs the lowest amount of moisture and has the highest level of vapour resistivity of any soft foam on the market.



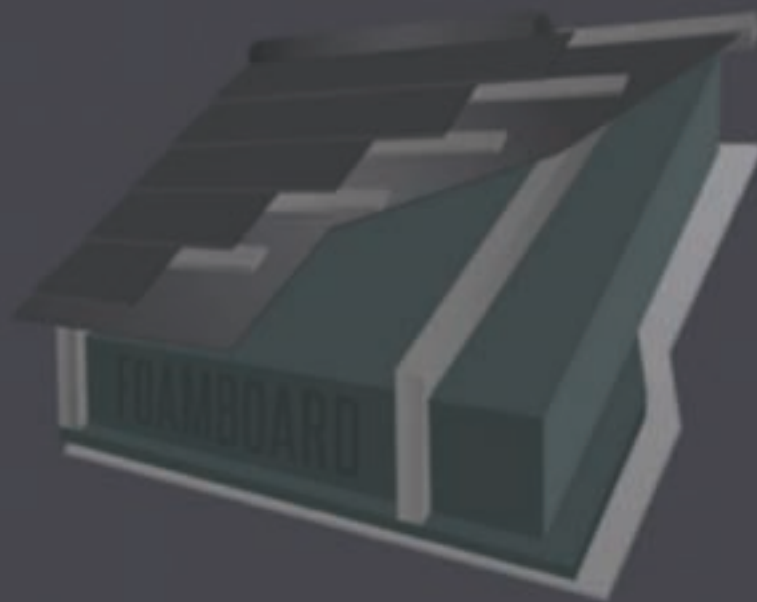
enq.195

Super**FOIL** Insulation

The Future
U - 0.13



The Past



WHICH WILL YOU CHOOSE?

Super**FOIL** **SF40**

reader
enquiry
196

01636 639900

www.superfoil.co.uk

Perfect acoustics for conferences



Hotel Koldingfjord enjoys a beautiful location near Kolding in Denmark. The attractive Baroque building, originally a sanatorium for children, has been extended and upgraded by Arkitema Architects. This includes the installation of **Troldtekt** acoustic ceilings in an existing space converted to accommodate up to 250 conference guests. The result is a stunning facility which makes Koldingfjord one of the best conference hotels in Denmark. The new facility has been designed to blend in with the existing Baroque buildings which are listed. The two identical rooms, both being extremely light and airy, have been designed and equipped to provide the very best facilities for conferences. Danish manufactured Troldtekt acoustic tiles are specified throughout the UK and Europe and can be delivered as either FSC® or PEFC certified panels. Manufactured using 100 per cent natural wood fibres, their benefits include high sound absorption, high durability, natural breathability, low cost life cycle performance and sustainability. The panels are widely used to improve acoustics in many different projects, such as meeting rooms, schools, leisure centres, pools, commercial and public buildings. Available in various sizes and in three grades from ultrafine to coarse, they can be left unpainted or painted in virtually any RAL colour. For samples and comprehensive technical information, please visit the website.

enq.197

Comfort Cooling at Tricorn House



Under Floor Air Conditioning has proved to be a flexible and modular approach for a phased refurbishment running over a 12 year period. The Tricorn House building, situated on the Hagley Road in Birmingham dominates the local skyline and features a highly unusual

floor plate. Floor based air conditioning was originally specified for the 8th floor as an option that would bring cooling to the inner areas of each deep space floor area; whilst maximising headroom in the building with a restrictive 2.8m slab to underside slab height. AET Flexible Space has continued to work with developers over twelve years to provide low energy air conditioning and a thermally comforting solution to the multi-tenanted, twelve storey building.

01342 310400 www.flexiblespace.com

enq.198

Vortice launches new heat recovery units



Vortice has announced the launch of the NRG EC and NRG ECR commercial heat recovery units. These energy efficient units offer a choice of thermal wheel or horizontal cross flow heat exchangers, are quick and easy to install and have low power consumption. With a flow rate from 0.028m³/s to 2.22m³/s, their backward curved

centrifugal impellers work hard to ensure fresh and efficient indoor air quality. There are EH versions of both ranges which come complete with wired control panels and LCD screen which allows for integration into Building Management Systems – free heating and night cooling functions are also provided.

01283 492949 www.vortice.ltd.uk

enq.199

Introducing the New P3 Hybrid Gas Fire



The Paragon P3 Hybrid fire from **Charlton & Jenrick** is a natural gas, manual control, convector gas fire combining the performance of a highly-efficient glass-fronted fire with the charm of an open-flame gas fire. The new Hybrid technology brings high-efficiency performance combined with the appeal of a

welcoming open-flame fire, which was first developed in the Paragon P7 hole-in-the-wall fire and now used for this 16x22" fire. The fire comes with a very realistic coal flame effect and offers a very impressive 4.9kW output from its 7kW input. This gives an extremely impressive 70.8 per cent Net efficiency to the most current British Standards BS 7977-1:2009+A1:2013.

enq.200

Trench heating and tubular radiators



Normally used in offices and large buildings **Gunning's** trench heating is now becoming very popular in domestic projects. Its unobtrusive design used mainly behind full glazed walls is the perfect solution for keeping warm those hard to heat areas and saving valuable wall space. The even distribution of heat along the glass perimeter prevents down draughts, cold spots and condensation. Gunning's specially designed tubular radiators are low level heating units which are very small in size but due to

the large surface area of the spiral fins give an excellent heat output. Gunning's Tubular radiators are available in five sizes.

enq.201

Reducing the cost of home heating

The Simple Biomass Heating Solution
From

ECCOSTOVE™
reduces your footprint in woodburn

- ➔ Heat through the home with 7-10kg of wood logs.
- ➔ No Ducting Plumbing or Electrics required.
- ➔ Retains heat for up to 12 hours after the fire has gone out.
- ➔ Payback on cost of stove can be as little as 4 years in fuel savings.

01527 857814
www.eccostove.com sales@eccostove.com

enq.202

Shedding light on innovation

Simon Shenton from lighting supplier Luceco describes how LED technology has permanently disrupted what was a stagnant market offering prescribed solutions for each sector, to provide the dominant solution for the future.

The global lighting market has seen more innovation in the last 10 years than the previous 100. It is unrecognisable in 2016 compared with the turn of the millennium, when I joined the lighting industry. Product ranges were a lot smaller, and different technology approaches divided the sector.

Low level commercial lighting was dominated by fluorescent technology, Cat 2 silver grill louvre was the only way to limit the glare on your computer screens, and retail lighting was CDM-T lamps. In the domestic sector, innovation never got past halogen and high level lighting for industrial applications or street lighting was High Intensity Discharge lamps in Son or Metal Halide.

Back then, product development was relatively slow; moving from T8 lamps to T5 was a big development but other than that innovation was few and far between.

A new leader

Although LEDs have been used as indicator lighting in a wide range of applications since the 1950s, it wasn't until the process of making 'white light' was discovered in the 1990s that LED could offer a potential general lighting solution. It then wasn't until circa 2005 when LEDs became efficient enough to consider using for general lighting.

Now LED dominates the commercial, retail, domestic and industrial sectors, and sales have seen a rapid rise in the last five years, so much so that by 2020 it is predicted that 90 per cent of all lighting sold will be LED. The technology has now settled down following its initial period of expansion, and consumer confidence is growing as prices fall.

There are several compelling reasons to choose LED. Product efficiency far exceeds any other technology. LEDs also offer instant light, which can be dimmed with a suitable driver, but also white, high quality light with low heat, no mercury and 50,000 hour lifetimes. Manufacturers are also offering five year warranties as standard.

Market evolution

The rapid growth of LED technology has also forced changes on the market, for the better. With LED's weakness being its internal heat output, lighting manufacturers have been forced to advance their knowledge in the area of thermal management. Product development now includes thermal



'It wasn't until the process of making 'white light' was discovered in the 1990s that LED could offer a potential general lighting solution'

Vodafone, Bracknell

simulations to ensure the LED junction temperature is kept at the right level.

Luminaire designers are now finally designing products to use LED technology to its best potential, rather than just retrofitting the technology into housings of historical fixtures. LED fixtures now use lenses to guide the directional light source, and diffusers to soften the glare. The overall footprint of luminaires is becoming smaller and thinner.

Light output ratio can now almost be removed from specifiers' list of lighting concerns. Historically typical 5 ft twin luminaires all had the same lumen output because they designed around the lamp's lumen rating; the light output ratio determined the amount of light emitted from the luminaire. With LED you cannot measure the source on its own accurately

as it requires the luminaire body for thermal management. Absolute photometry is used where the lumens output of the luminaire is measured, removing the requirement for the Light Output Ratio.

With increased lifetime and guarantees, the market is now seeing the introduction of on-site warranties as manufacturers put their name to their long-lasting products. Luminaires are typically now being quoted to clients based on their lumen output rather than their wattage, which is a big change for the end user who for years has purchased that 40, 60 or 100 Watt bulb.

Changing the parameters

A further change driven by LED innovation is that lifetime is no longer the period up to when the lamp fails – average life is now based on when half of the LED chips reach 70 per cent of their initial lumen output (L70). The product development time is more akin to computer technology with months between iterations of products rather than years.

Even some guides and standards are now being revised or questioned with LED, including LG7 maximum glare above 65 degrees having been doubled from 1500 to 3000 cd. In addition future iterations of Building Regulations and enhanced capital allowance criteria means that only LED products will comply.

CIE's colour rendering index system provides a single number (known as *ra*) to reflect a light source's ability to render



Currys PC World, Plymouth

colour. However, this has recently been brought in question when used with LED. A second method known as TM-30 that provides two numbers for a light source is being reviewed as it is more suitable for use with LED.

LED has certainly changed the lighting industry forever, but the jury is out on whether the technology will succeed in reducing power consumption or whether the energy savings will be cancelled out by all the new areas using LED for decorative lighting that would have had lighting installed previously. Partly to address this, increased integration of smart technology controls will further drive future innovation in the sector.

Simon Shenton MSL is product manager at Luceco Lighting

enq.203

New from Luceco: LuxBay



New from Luceco is the LuxBay, a high level LED luminaire. Suitable for mounting between 4 – 6 metres, the LuxBay is designed as an alternative to traditional HID and T5 lamp, high level luminaires. Applications include DIY and retail, industrial environments, sports halls and warehouses. The LuxBay boasts 105

Luminaire Lumens per watt, and variants include 100, 150 and 200 watts. Environmentally friendly, the LuxBay offers a cost effective alternative to traditional luminaires. Mounting positions include surface, trunking or suspended and attachments include flat wired guards and poly carbonate clear diffusers.

01952 238100 www.luceco.co.uk

enq.204

Vibrant casings installed at Kirkgate Market



Contour has recently undertaken the design, manufacture and installation of a series of vibrant aluminium column casings, at the historic Kirkgate Market in Leeds. The installation formed part of a £13.7m refurbishment of the market. A key element of the Market's transformation was the use of brightly coloured walls and fixtures in the '1976

Hall', including 4.5m high column casings encircling floor to roof I beams. Contour were commissioned to develop a bespoke system of attaching the casings to the I beams which did not entail drilling or affecting their structural integrity. A full case study is available on the website.

01952 290 498 www.contourcasings.co.uk

enq.205

Wall to wall inspiration with MATCH panels



Rarely can we say that a new product, changes the face of interior design for professionals in the commercial world. However with MATCH, that statement is entirely true. This new designer panel range from Vicaima removes the limitations experienced with more commonly used decorative finishes and allows limitless design possibilities with multiple applications ranging from wall panels to furniture. MATCH is a revolutionary decorative panel that uses innovative H2P technology and advanced production processes to create tailor-made graphic or pictorial solutions directly onto veneered and other base layers. In this way a collection of décor elements can be brought together to create synergy to a theme or chosen style. The combination between the composition of the product and the advanced manufacturing technology used with the surface materials, allows Vicaima to achieve unparalleled results. These new MATCH panels have been designed to provide a flexible answer to a broad scope of commercial project requirements. For specifiers needing a little steer to spark their imagination and who may not wish to create a totally bespoke design, MATCH also provides a wealth of stimulus with some truly creative collections.

01793 532333 www.vicaimamatch.com

enq.206

Luceco LED energy saving Lighting

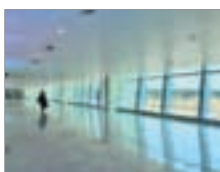


With the council amalgamation of Kensington with Chelsea during the 1970s the former town halls were replaced with Kensington Town Hall. The Theatre Lobby area at the Town Hall has recently been re-lamped with LED Mini Globes from Luceco. The LED Mini Globe offers a huge 85 per cent energy saving versus tungsten filament lamps with double the lifetime of CFL lamps. With no requirement to replace fittings, the Mini Globe can be easily installed and has the same appearance as traditional lamps but using a fraction of the energy. Luceco were pleased to have been selected as the lighting supplier of choice for this project at the Kensington Town Hall.

01952 238100 www.luceco.uk

enq.207

Brussels Airport features bespoke ceiling



A gloomy connection between two terminals at Brussels Airport in Belgium has been transformed, thanks to a new state-of-the-art building that features a **Hunter Douglas** customised ceiling. The perforated ceiling panels contain an acoustic membrane, which gives them a high degree of sound absorption, and they are also detachable,

allowing easy access to services and for maintenance. The bespoke 300C ceiling was designed to meet the demanding aesthetic and acoustic requirements of the airport. The ceiling areas are 15 metres wide, 50 metres long, and are also curved, which makes them fully integrated with the roof.

01604 766251 www.hunterdouglas.co.uk

enq.208

Safetytread - pioneers of anti-slip stairnosings

Safetytread products are a range of bespoke, premium, high quality anti-slip stair nosings manufactured in the UK.

Safetytread is environmentally friendly and provides a more economical solution than cheaper plastic materials. The treads will add excellent slip resistance to any staircase (internal or external); can be tailor-made to fit the exact dimensions of a stair tread and are available in a wide range of colours.

We will meet your stair nosing requirements with a tailor-made, bespoke solution, filled in your desired colour.

For more information please visit www.safety-tread.co.uk or call us on 01202 625596.



SAFETYTREAD
ANTI-SLIP STAIRNOSINGS

enq.209

bespoke STAIRS & BALUSTRADES



British engineered bespoke staircases, balustrades and architectural metalwork for commercial and residential buildings. Installed throughout the UK & abroad.

Clerkenwell Architectural Showroom
11-12 Great Sutton St. London
EC1V 0BX

100% Design | Stand E259



| By Canal Engineering Limited
+44 (0)115 986 6321
www.canal.gb.com

enq.210

A guiding hand at Barnsley Hospital



Yeoman Shield's new Guardian Twin Handrail was installed as part of the ward refurbishment project recently undertaken at Barnsley Hospital, South Yorkshire. A 350+ bed hospital built in the 1970s and serving a quarter of a million people in the Barnsley area, the hospital demands a constant regime of maintenance throughout its premises.

The twin handrail was supplied with a 50mm dia. PVCu upper handrail for support to those who need it and a lower 125mm deep protection rail which standing slightly forward of the handrail, offers protection to both the wall decor and the handrail itself, minimising on repair and replacement.

0113 279 5854 www.yeomanshield.com/handrails

enq.211

The sky's the limit for Polyflor flooring



High performance sheet flooring from vinyl flooring specialists Polyflor was recently used to create a statement design floor in The Armoury Cafe and Kitchen at the Imperial War Museum Duxford in Cambridgeshire. This refurbished restaurant area at Britain's largest aviation museum features a monochrome floor design which was

created using 300m² of Polyflor's Classic Mystique PUR vinyl flooring. The flooring design was produced with help from Polyflor's in-house Design Service team who used waterjet cutting technology to create perfect circles. The precision of waterjet allows Polyflor's team to create virtually any shape.

0161 767 1111 www.polyflor.com

enq.213

Hunter Douglas delivers aluminium ceiling



Hunter Douglas played its part in the creation of the new €204 million International Criminal Court (ICC), providing 29,000m² of ceiling panels. The 56,000m² complex, designed by architect Bjarne Hammer, of Denmark's renowned agency Schmidt, Hammer, Lassen Architects, had to express the essence of democratic architecture – something that

the Hunter Douglas ceiling clearly demonstrates. Hunter Douglas was commissioned to manufacture slim aluminium ceiling panels, perforated and inlaid with acoustic mats. These were selected for practical reasons because it enables fire safety and air quality installations to be tucked away neatly.

01604 766251 www.hunterdouglas.co.uk

enq.212

Refurbishment at Enfield Civic Centre



Hunter Douglas, has used its expertise in an ongoing £7 million refurbishment of Enfield Civic Centre. The company was commissioned by architectural consultancy Pellings LLP to create bespoke solid timber grill ceilings, totalling 480m², in break-out areas over eight floors as part of a four-year programme to update the civic centre. Using CAD

drawings, it created an Ayous grill ceiling in 7-40-15-55 module. The timber was impregnated with Hunter Douglas' standard fire treatment, which meets the European Fireclass B-s2-d0, and was complemented with an acoustic backing sprayed black to maintain a warm look.

01604 766251 www.hunterdouglas.co.uk

enq.214



The next generation of switchable LCD glass




- Potented* ESG controller
- LCD preservation mode
- LCD protection technology
- Controllable opacity
- Fully CE Certified

Toughened ■ Laminated ■ Heat Soaking ■ CNC Cutting ■ Heat Strengthening ■ Back Painting ■ Screen Printing ■ Full Digital Printing




www.esg.glass
01376 520061





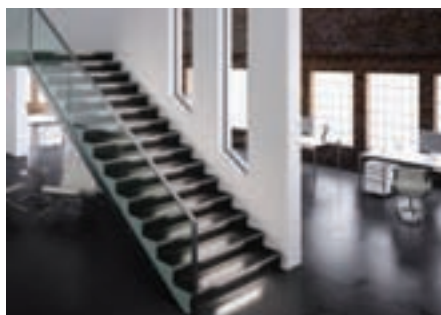

enq.215

Intelligent lighting from Schlüter Systems

The latest innovation from Schlüter-Systems, Schlüter®-LIPROTEC, adds a fourth dimension to architecture and plays an essential role when it comes to inspired design.

Schlüter®-LIPROTEC is an intelligent lighting concept that combines lighting and profiles within the tile and stone covering. A choice of indirect or direct light is available, with Schlüter profile technology, allowing you to emphasise curtain walls and illuminate stairways, foyers, bathrooms and more, all with an innovative, unique appearance.

Lighting also helps us to feel more energetic and lifts our mood; it is a known fact that lighting has a direct impact on our brain and our hormone balance via the retina in our eyes. Studies show that light enriched with blue of up to 17,000 Kelvin makes us feel particularly active and can even reduce eye strain and headaches.



Intelligent receivers control the LED strips with power supply units that convert the mains voltage to the 24 V required. Pre-programmed colour changes can be selected using the control system, where you decide the mood with the touch of a button. If your client is looking for a particular ambiance or to bring brand colours into the design, then the system can be programmed from 16

million colours.

Suitable for moisture-rich rooms, the LED strips are completely encapsulated and conform to IP65, allowing subtle detail to be incorporated into the smallest rooms in the house, hotel, or wherever your imagination takes you.

01530 813396 www.liprotec.co.uk

enq.216



BowlPhish
DOAMILLI
The Future of Presentation. But Better.

T: 01303 266200

E: sales@theglasswipeboardcompany.com

British. Bespoke. Sustainable.
You specify, we manufacture.

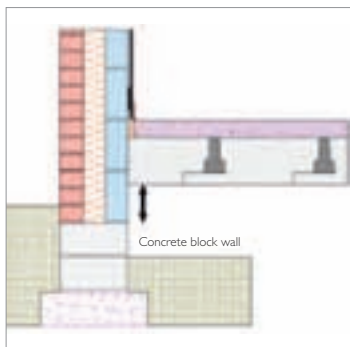
the Glass[®]
wipeboard
COMPANY

W: www.theglasswipeboardcompany.com



enq.217

Thermal Bridging - Is your SAP assessor making your design look as good as it is?



British Precast believes achieving required or desired energy performance arises from good design and construction in the following areas: U-values of elements, air tightness and thermal bridging at junctions. Thermal bridging (or cold-bridging) is not a new issue or concept, but as the U-values of walls and floors has improved and airtightness has increased, the percentage of lost energy that passes through thermal bridges has increased. Therefore it has become increasingly important for designers, product suppliers and builders to attend to thermal bridges. And for SAP assessors to sharpen their pencil and not use default values! For masonry construction design help is available through a suite of details for which psi values have been calculated (a psi value is the measure of energy lost at a junction). Clients and architects should require SAP assessors to use these more accurate psi values associated with the actual details rather than default values in SAP. Use of these details goes a long way to helping optimise fabric performance and is highly recommended. By having details with the associated psi values, compliance can be demonstrated without recourse to more expensive solutions. Their use can also help avoid the need for renewables.

0116 232 5170 www.modernmasonry.co.uk

enq.218

Newly launched Rogers Door



Reeve Wood have had a busy month creating floors and doors for Christie's, Kurt Geiger, Holkham Estate, The Jockey Club, Cath Kidson, Passiv House and Berkeley Homes in Oak Black Miel, Oiled Oak and Oiled Ash. Their newly launched Rogers Door, horizontally panelled with a shallow recessed line detail is proving to be a great hit especially when coloured to match the floor. The Rogers Door is available in Oak, Douglas Fir, Walnut, Ash & Cherry. For more information contact the company directly.

01553 776 835 www.reevewood.com

enq.219

Affinity255 creates dream floor



Luxury vinyl tiles from **Polyflor's** innovative Affinity255 PUR flooring collection were used to create a stunning herringbone design floor at Natural Bed Company's showroom in Sheffield. 290m² of Affinity255 PUR vinyl flooring was installed in the shop floor area. Available in 16 contemporary and traditional wood effect designs,

Polyflor's Affinity255 range of hardwearing luxury vinyl tiles for heavy commercial environments are ideal for use in the retail spaces where high levels of foot traffic are expected. The Affinity255 range also features a cross linked and UV cured polyurethane reinforcement (PUR).

0161 767 1111 www.polyflor.com

enq.220

SIMONSWERK at 100% DESIGN



In September architectural Ironmongery manufacturer **SIMONSWERK** will again be exhibiting at the UK's largest design trade fair, 100% Design at London's Olympia Exhibition Centre. The SIMONSWERK stand will have a feature display of their award winning

TECTUS® fully concealed hinge system. In the past year further innovative options have been added to the range and the series now covers load capacities from 40 to 300 kg with models for specific scopes of application including door fascias up to 8mm, rebated doors, recessed frame facings and power transfer. Also on display will be the stylish 25 year performance guaranteed TRITECH fire rated solid brass hinge with concealed bearings and new versions of the heavy duty VARIANT range with Finger Protection.

enq.221

Kingspan updates guidance for fire safety



To ensure purpose-built constructions adhere to complex fire safety regulations, **Kingspan Insulation** has released its second issue technical bulletin which focuses on buildings with habitable storeys 18 metres or more above ground level. The improved 'Routes to Compliance: Fire Safety' bulletin features a general overview of the linear, performance-based, and fire safety engineering routes; offering stakeholders an easy

place to check if their desired build-up follows the best route to compliance. The full technical bulletin is available to download from the website. The technical bulletin also includes recent case studies and project specific build-ups.

01544 387 384 www.kingspaninsulation.co.uk

enq.222

Polyflor help create geometric floor design



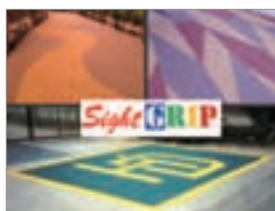
A combination of high performance flooring from **Polyflor's** luxury vinyl tile and sheet vinyl flooring ranges was recently used to create a dynamic, geometric flooring design at Solihull School's brand new Sixth Form centre. Pearlazzo PUR homogeneous sheet floor-

ing was used to produce a hexagonal patterned floor design in the centre's break-out and dining area whilst Expona Control PUR luxury vinyl tiles created a pathway through the common room area and into the adjoining corridors and staircases. Four shades from the popular Pearlazzo PUR collection were selected to create the geometric flooring design, with hexagon shapes created by Polyflor's in-house Design Service using precision waterjet cutting technology.

0161 767 1111 www.polyflor.com

enq.223

A world of colour at your feet



Long Rake Spar, UK leaders in the supply of dried aggregates for resin surfacing, recently acquired the SightGRIP business and brand. Suitable to be applied to most surface substrates, this collection provides a choice of colour coated aggregates which can be used to create unique and decorative floor coatings for both internal and external

projects. Now able to colour aggregates with high quality, long lasting and durable coatings, Long Rake also offer a colour matching service. All products are produced specifically to order, to fit with individual requirements, from their head offices in Derbyshire.

enq.224

Tennis on Tour with Judy Murray



The tennis world has sometimes been criticised for not making the sport available to children from all backgrounds. It's a situation that Andy Murray's mother is keen to change. Judy Murray decided that she wanted to do something about tennis at the grass root level in Scotland. 'Tennis on the Road' was 'born' and about

to bring tennis to a whole new generation of kids. The programme would need the very best playing surface. The choice would be PowerGame from Sport Court®, a Gerflor owned company. Saracen Primary School in Glasgow would benefit from playing on 11.4m x 6m of Sport Court® PowerGame outdoor tiles in 'Evergreen' and 'Purple', which is a perfect match to the Wimbledon colours.

01926 622 600 www.gerflor.co.uk

enq.225

Clark-Drain adds Road Gully



Clark-Drain, has added a choice of Road Gullies certified to the Highways Authority Product Approval Scheme (HAPAS) to strengthen its underground range. The Gullies are designed for quick and easy installation, in urban areas and on roads, for direct connection to PVC-U plastic pipe systems or with a suitable adaptor, also supplied, to

clay and twin wall drainage systems. The outlet is 160mm diameter as standard with 178mm diameter available when using the outlet adaptor. They have a clear opening of 450mm and will be offered in two depth sizes to 750mm and 900mm depth with water holding capacities of 83 litres and 107 litres volume respectively.

01733 765317 www.clark-drain.com

enq.226

LONG RAKE SPAR
Specialist Demolition & Aggregates
WWW.LONGRAKESPAR.CO.UK

CALL US TODAY FOR DESIGNER COLOUR OPTIONS

WE INSPIRE, YOU TAKE THE CREDIT.

COLOUR COATED AGGREGATES

For more information please contact a member of our sales team on **01629 636210**, email sales@sightgrip.com or visit www.sightgrip.com.

SightGRIP
A WORLD OF COLOUR AT YOUR FEET

INTERIOR & EXTERIOR FLOORING, PATHWAYS, LOGOS, CAR PARKS & MUCH MUCH MORE

Long Rake Spar Co. Ltd, Youlgrave, Nr. Bakewell, Derbyshire, DE45 1LW, Tel: 01629 636 210

enq.227

Working with nature

Sioo:x are leaders in wood protection using silicate technology.

We provide a highly effective proven system to protect wood of all types. It gives long life and a beautiful natural surface with even colouration and is friendly to people and the environment.

An example of a Sioo:x project is the larch house Lentran project in Scotland.

Sioo:x
WOOD PROTECTION

Environmentally friendly

Made in Sweden

Sioo Wood Protection AB | Tel: +44(0)7788 542859 | E: sioouk@icloud.com | www.sioo.co.uk

enq.228




Bespoke handcrafted fine cast stone for architectural projects

www.Chilstone.com
01892 740866
Victoria Park, Fordcombe Road, Langton Green,
Tonbridge Wells, Kent, TN3 0RD

enq.229



Silva branches out with yellow cedar

Silva Timber Products has expanded its product range by becoming the UK's first supplier of yellow cedar shingles and shakes. The firm has reached a deal to import the wood from British Columbia in Canada. Yellow cedar is one of the world's most durable woods and its consistent grain structure means it is a good species for carving, joinery and carpentry. Silva Timber's deal follows a similar agreement earlier this year which saw it become the sole UK supplier of mandioqueira, a South American tropical hardwood. The company already supplies western red cedar to the UK market. Yellow cedar is its 15th new product line in the past year aimed at consumer and commercial markets. Managing director Nick Taylor said: "We are committed to providing the highest quality and sustainably sourced speciality timbers for private and commercial projects. Yellow cedar has exceptional longevity, is economical and hardwearing. It's a beautiful species with excellent performance characteristics, and is highly-rated by those with specialist knowledge, such as architects. We like to lead where others follow, and we think there is every reason our customers will love it."

01514 953111 www.silvatimber.co.uk

enq.230



Replacement Balustrades

A great many character or period properties have stone balustrade incorporated into their design. These balustrades make a large visual impact, but they also have a practical purpose as barriers and screens.




As the stonework in a balustrade is exposed to the weather on all faces, it often ages and erodes at a faster rate than similar stonework which is built in to the relative protection of a property's wall.

With 250 replacement baluster profiles, Kent Balusters has the largest range in the country. In addition to a large online database of baluster profiles, Kent Balusters are also able to reproduce any balustrade component to match the original items.

Kent Balusters No. 1 Gravesend Road, Strood, Rochester, Kent ME2 3PH Tel: 01634 711617 Fax: 01634 714644 email: info@kentbalusters.co.uk web: www.kentbalusters.co.uk

enq.231

Casting the ideal contender for restoration roles

Conservation and architectural drivers are leading to an increased use of cast stone as a substitute for quarried stone. Simon Scott of Haddonstone compares the materials options for specifiers.

An appreciation of the past and the need to conserve historic buildings and architecture has led to an increased use of cast stone as a substitute to quarried stone. Looking at the two types of materials available, it is clear that cast stone is the preferred choice for architects.

There have been more imitations of stone than any other natural building material and the incredibly versatile cast stone is a prime example. The ability to mould cast stone to almost any shape means you can create new designs or faithfully reproduce replicas that are virtually indistinguishable from an original. The cast stone material matures and weathers like natural stone yet costs significantly less than quarried stone – making it an ideal solution for a restoration project.

Scarborough fair

A fine example of the use of cast stone for restoration is demonstrated on the restored Scarborough Spa, a Grade II listed building built in the 19th century. The architectural stonework detail of the building was subject to exposure of salt water from the North Sea. Therefore a robust material was required in order to restore the building to its former glory. Following strenuous salt crystallisation and water absorption tests conducted by the BRE laboratories, it was decided to commission a cast stone manufacturer for the restoration.



Production techniques: getting the mix right

The finest forms of cast limestone are manufactured using a semi-dry mix that creates a surface texture similar to Portland stone or natural limestone. The principal materials of semi-dry cast stone are limestone, white cement, sand and a very small amount of water, giving the mix a damp feel.

A reputable manufacturer will ensure that every single batch of raw material is quality checked to ensure complete control of the production process and enable a high quality end product. The semi-dry cast material is gradually packed into moulds using pneumatic hand tools. The material is usually left overnight to cure before the stone can be revealed in all its glory.

Again, reputable manufacturers will employ a curing system to prevent water loss and ensure that the product achieves optimum strength in excess of relevant British standards. This would ensure that architects, developers and private clients can have every confidence in the durability of the product for their restoration project.

There are alternatives to the dry cast mix in the form of wet-cast and fibre reinforced stonework production. The unique wet cast production technique produces a denser cast

Cast stonework restored to its former glory at Scarborough Spa





'There have been more imitations of stone than any other natural building material and the incredibly versatile cast stone is a prime example'

stone material with a smoother finish to meet demanding design and performance criteria specified in refurbishment or restoration projects. The innovative fibre-reinforced cast stone production benefits from drawn glass fibre which has a high strength to weight ratio. Its thin wall construction and GRC technology means the component weight is reduced by approximately two thirds when compared with alternative cast stone production methods. Fibre-reinforced cast stone is ideal for retro-fit, refurbishments, timber frame and new build projects where weight is an issue.

The choice of cast stone material depends on the constraints of the restoration project along with the client's individual requirements. Whether you are refurbishing an existing property or restoring an historic building, cast stone provides an economical solution for replica stonework and custom designs.

Simon Scott is a director of Haddonstone Ltd

Cast stonework was created specifically for this private Herefordshire property

enq.232



Ground Reinforcement Solutions & Products

The Professional Choice in Landscaping





PP40 Porous Paver





GR14 Grass Mesh

TruckGrid Max

Suregreen Ground Reinforcement range are all SuDS compliant and made from recycled materials. These products can be used for car parks, domestic driveways, access roads and can support anything from small cars to HGV Lorries.

Please contact us for more information

Call Today - 01376 503869
Web - www.sure-green.com
Technical Info - www.sure-ground.com

enq.233

Charcon introduces colour extensions



Charcon, has introduced five new colour options to its range of Granite Flag and Sett paving. The colour extensions – Silver Grey, Light Grey, Pink, Dark Pink and Silver Black Fleck – are available in a choice of three finishes. The extensions bring the colour options in the range to 12. The extensive choice of colours and finishes allows architects and specifiers ultimate design flexibility while the range of sizes available provides opportunities to create random patterns and area delineations. Charcon Granite is durable and hard-wearing for the most demanding traffic environments and is suitable for all pedestrian and vehicular areas.

Charcon, has introduced five new colour options to its range of Granite Flag and Sett paving. The colour extensions – Silver Grey, Light Grey, Pink, Dark Pink and Silver Black Fleck – are available in a choice of three finishes. The extensions bring the colour options in the range to 12. The extensive choice of colours and finishes allows architects and specifiers ultimate design flexibility while the range of sizes available provides opportunities to create random patterns and area delineations. Charcon Granite is durable and hard-wearing for the most demanding traffic environments and is suitable for all pedestrian and vehicular areas.

01335 372222 www.charcon.com

enq.234

Chilstone launches new website



Chilstone are delighted to reveal their new website and branding to showcase their expertise in bespoke architectural stonework. Chilstone are proud to have worked on a large number of building projects from renovations to innovative new builds for private clients and stately homes. They were honoured to supply the Temple for the RHS Chelsea Flower Show People's Choice Award winning Meningitis Now Artisan Garden, designed by John Everiss. Chilstone architectural stonework is perfect for detailing with excellent colour matching and a fine textured surface to look identical to carved stone. They produce a large range of products to match your existing stonework or we can create a whole new look.

Chilstone are delighted to reveal their new website and branding to showcase their expertise in bespoke architectural stonework. Chilstone are proud to have worked on a large number of building projects from renovations to innovative new builds for private clients and stately homes. They were honoured to supply the Temple for the RHS Chelsea Flower Show People's Choice Award winning Meningitis Now Artisan Garden, designed by John Everiss. Chilstone architectural stonework is perfect for detailing with excellent colour matching and a fine textured surface to look identical to carved stone. They produce a large range of products to match your existing stonework or we can create a whole new look.

enq.235

Homes that people want to live in. Homes that last.

Masonry homes provide superior performance benefits, both in construction and in use.

Energy saving

The thermal performance of concrete and masonry homes can provide homeowners with the lowest energy bills because of the superior insulation, airtightness and thermal mass.

Long life

Purchasing a home is a major investment and the inherent performance of concrete and masonry provides robust and secure homes that will last for many generations.

Low fire risk

Concrete and masonry are non-combustible protecting life and property safety for occupants. During construction, these properties also protect the developer and surrounding community from spread of flame.

Quiet

Masonry walls can support precast floors which do not squeak: 48% of homeowner noise issues raised with NHBC for detached homes were creaking floors (NHBC Foundation Report NF56).

Flood resilient

Homes built from concrete and masonry suffer less damage because they are robust, dimensionally stable and do not rot.

Contact the Modern Masonry Alliance to find out more about High Performance Housing.

www.modernmasonry.co.uk

 **@masonrymodern**

Modern Masonry Alliance is affiliated to MPA British Precast.

Project: Derwenthope, York

**modern
masonry**
ALLIANCE

reader
enquiry

236

'Roaring' success for AkzoNobel at ZSL London Zoo



When London Zoo was creating a new lion enclosure experience for visitors they needed suppliers and manufacturers that could provide the high levels of design and finishing for the ideas they had in mind. It would be a perfect project for leisure building designers Pinelog and coatings manufacturer AkzoNobel to highlight both their quality and innovation. The new venture would entail Pinelog manufacturing and supplying pre-manufactured timber frame en-suite bedroom lodges. They would be individually coloured and themed for visitor overnight accommodation alongside the Land of the Lions project. In a seamless nod towards their environment the lodges would be called the 'Gir Lion Lodge'. The Gir Lion Lodges would be a perfect fit for AkzoNobel's SIKKENS CETOL® WF 771 one-pot system coatings system. With SIKKENS CETOL® WF 771, Sikkens Wood Coatings provide a special product which is highly protective against the damaging effects of UV light and moisture. Its transparent film deluges and fills the pores in the wood with the Saturator-Effekt® and therefore increases its durability. Flaking of the coating does not occur. The Self Stratifying® binder used in CETOL® WF 771 is modularly based. The Land of the Lions exhibit, was officially opened by HM Queen and HRH The Duke of Edinburgh on 17th March 2016.

01254 687950 www.sikkens-wood-coatings.co.uk

enq.237

SPORTFIX® components installed at redeveloped UCC Mardyke Athletics Track



Excessive rain water has to be removed quickly and reliably from sports fields and competition areas. The SPORTFIX® drainage channels and other components offered by Hauraton comply with the latest standards and also meet IAAF requirements. It is essential sports facilities are designed and equipped to prevent serious injury to sports people if falls or accidents occur. The University College Cork (UCC) has redeveloped their Mardyke Athletics Track in Cork City, Republic of Ireland. The new facility is part of a €10 million budget included a new synthetic eight lane, fully floodlit, running track built to the IAAF standard with an additional 3720m² (40,000 ft²) added to the original arena. The arena now includes an indoor 60 metre running track, a performance analysis suite, two additional gym areas with over 140 additional pieces of the latest gym equipment and three additional fitness studios. Hauraton SPORTFIX® drainage channels with aluminium finishing edges were installed around the perimeter of the IAAF, 400 metre track and along its straight. A steeple chase water jump kit was also installed plus Hauraton SPORTFIX® Sand traps and soft edging were installed around the long jump pit. Specification information for the SPORTFIX® range, showing sizing and installation details, is available on the company website.

01582 501380 www.hauraton.co.uk

enq.238

Castlewood Composite Decking



Luxury Composite Decking Boards

Castle Composites are pleased to introduce our luxurious polymer capped composite decking.

Castlewood decking boards are backed by one of the most comprehensive guarantees in the industry. 25 year limited transferable warranty and a 2 year labour warranty for residential applications and a 10 year warranty for commercial applications.

Our composite decking boards are one of the most attractive and durable boards on the market. Combining the proven strength of high density polythene plastic and wood fibres with a unique outer shell of polymer that encapsulates the board in an impermeable layer of protection from scratches and fading. This unique polymer cap also makes the board easy to clean and maintain.

Our decking boards are doubled sided. Side A has a natural wood finish. Side B has a more subtle wood grain combined with surface grooves.

- Easy Cleaning
- Durable
- 25 Year Guarantee
- No Oiling or Staining
- Mould Resistant
- Stain Resistant
- Double Sided
- Easy Installation

Castle Composites Ltd
Call: 01555 870003
sales@castlecomposites.co.uk
www.castlecomposites.co.uk



enq.239

classified & directory

ADHESIVES

BAL
Tel: 01782 591100
www.bal-adhesives.co.uk

ADVICE & INFORMATION

NHBC
(National Housebuilding Council)
Tel: 0800 035 6422
www.nhbc.co.uk

BALCONIES

Balco Balcony Systems
Tel: 0203 687 1020
www.balcouk.com

BATHROOMS & WASHROOMS



www.heatedmirrors.co.uk

Satara Int Ltd (01935) 891888
we also design bespoke
Steam-Free Mirrors

Enq. 501

CAD & PRINTERS

Standing Stone
Tel: 01661 886653
www.standing-stone.co.uk

CURTAIN WALLING

Comar Architectural Aluminium Systems
Tel: 0208 685 9685
www.comar-alu.co.uk

DRAINAGE & VENTILATION

Sita Bauelemente
Tel: +49 2522 8340 0
www.sita-bauelemente.de


ENVIRONMENTAL REPORTS

GeoSmart Information
Tel: 01743 276 150
www.geosmartinfo.co.uk

FIRES & FIREPLACES

Charlton & Jenrick Ltd
Tel: 0845 519 5991
www.charltonandjenrick.co.uk

HEATING & VENTILATION



TA8AB15
Antique
Brass

AEL Radiator Valves

Tel: 01928 579068
e-mail sales@aelheating.com
www.aelheating.com

Enq. 502

INSULATION

Recticel Insulation Products
Tel: 01782 590470
www.recticelinsulation.co.uk

Greentherm Solutions Ltd
Tel: 01229 716039
www.uksprayfoam.co.uk

INSULATED PANELS



HPT HEMSEC PANEL TECHNOLOGIES

- Cold Stores
- External Roofing
- External Cladding
- Clean Rooms
- SIPs

Tel: 0151 426 7171
www.hpt-panels.com

Enq. 503

KITCHENS

Aga Twyford
(Trading as Twyford Cookers)
Tel: 01568 611124
www.twyford-cookers.com

PUMPING STATIONS

J T Pumps
Tel: 0844 414 5800
www.jtpumps.co.uk

RAINWATER SYSTEMS

Rainclear Systems Ltd
Tel: 0800 644 44 26
www.rainclear.co.uk

Yeoman Rainguard
Tel: 0113 279 5854
www.rainguard.co.uk

ROOFING

Liquid Roofing and Waterproofing Association (LRWA)
Tel: 0207 448 3859
www.lrwa.org.uk

Traditional Clay Roof Tiles
Tel: 08008 886 633
www.traditionalclayrooftiles.co.uk

SOLAR SHADING (BRISE SOLEIL)

Levolux Limited
Tel: 020 8863 9111
www.levolux.com

RENSON®
Tel: 01622 754 123
www.rensonuk.net

STAIRS & BALUSTRADES

Railing London Ltd
Tel: 0208 566 6750
www.railinglondon.com

Q-railing UK
Tel: 01782 711 676
www.q-railing.com

STREET FURNITURE

Contenur UK Ltd
Tel: 01282 604400
www.contenur.com

WINDOW CONTROLS



WP WINDOW OPERATORS

Manual • Electric
New • Repairs
Twin • Casement • others
For High Level & awkward
to reach situations

WP Window Controls
Tel: 01344 488438
www.wpproductions.co.uk

Enq. 504



Website

The ADF website is an online provider of past and present products and news items for the architect or specifier. www.architectsdatafile.co.uk is a one-stop source for all the latest press releases providing any visitor with access to information about products and services that they may require for their project as well as news relevant to architectural developments.



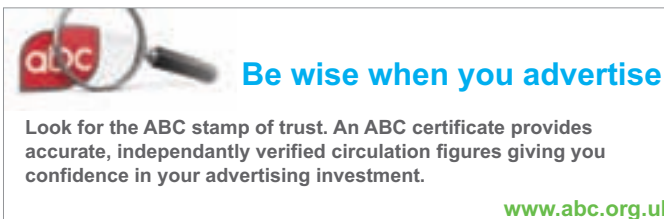
Newsletter

Emailed on a fortnightly basis, the ADF newsletter is designed to provide you with the latest information on products and services of interest, direct to your inbox. You can quickly gather a snapshot of information from up to 12 carefully selected companies and easily follow links through to further information on www.architectsdatafile.co.uk, or go directly to the company's own website. Brochures and videos are also regularly available. Go to the ADF website to subscribe.



Digital issue


The ADF digital issue provides all the same content as the print issue with the added advantage of being instantly available whenever and wherever you have access to the internet. In addition to its ease of access, the ADF digital issue gives direct links to advertisers, allowing you to visit a potential supplier's website with the click of a mouse. Go to the ADF website to subscribe.



Be wise when you advertise

Look for the ABC stamp of trust. An ABC certificate provides accurate, independently verified circulation figures giving you confidence in your advertising investment.

www.abc.org.uk



A picture of a finished wetroom would be lovely,
but our advice at this stage would be better.

Schlüter®-WETROOMS

Anyone can try to sell you a wetroom, however our integrated solution is one of a kind.
From advice to product, you can trust in Schlüter.

For product and technical support please call **01530 813396** or visit www.schluter.co.uk/architect.aspx

Schlüter-Systems Ltd
Units 3-5 Bardon 22 Industrial Estate
Beveridge Lane, Coalville
Leicestershire LE67 1TE

reader
enquiry
402

Schlüter
Systems

P R O F I L E O F I N N O V A T I O N

Tel: +44 (0) 1530 813396
Fax: +44 (0) 1530 813376
sales@schluter.co.uk
www.schluter.co.uk