



building construction design

www.buildingconstructiondesign.co.uk

August/September 2016

Appointments & News	02
Building Products	07
Structural Elements	14
Interiors	14
Exteriors	19

Glass Bending Excellence

www.firmanglass.com



Toughened Glass Bends

Firman Glass new toughening plant includes two bending chambers which work alongside the standard flat bed.

The smaller chamber will bend glass from 5mm to 12mm thick to a maximum size of 2850mm x 1000mm bent and with the following minimum radii.

5mm, 6mm = 450mm

8mm, 10mm = 1000mm

12mm = 1200mm

The large chamber will bend glass from 6mm to 19mm thick to a maximum size of 2850mm x 3600mm bent and with the following minimum radii.

6mm = 1500mm

8mm, 10mm = 1800mm

12mm, 15mm = 2000mm

19mm = 2500mm

To find out more visit www.firmanglass.com

Firman Glass, 19 Bates Road, Harold Wood, Romford, Essex RM3 0JH

Tel: 01708 374534 Fax: 01708 340511 Email: sales@firmanglass.com



Working in conjunction with the flat toughening facility to a maximum flat size of 2850mm wide x 5000mm long. Firman Glass can now offer the Architect, Designer and Contractor a complete service for multiple uses such as balustrades, partitions, shower screens, revolving door enclosures, full height barriers, partitions and shopfronts.

Curved Glass can be processed as with flat glass and can be decorated by sandblasting and back painting.



Colorfirm™

FIRMA TUFF™



Firman

www.firmanglass.com

Jackoboard awarded BBA Certificate for total system



TileBacker Limited is delighted to announce the award of a BBA (British Board of Agreement) Certificate for Jackoboard products and systems. British owned TileBacker Limited is the sole distributor of German manufactured Jackoboard products in the UK and Eire.

The Jackoboard BBA Certificate covers the full range of Jackoboard XPS (Extruded Polystyrene) cored products including construction boards, shower bases, and sealing systems – a rarity in this type of product. In addition, Jackoboard's Certificate covers usage of the construction boards to achieve high thermal insulation values – again almost unique for this type of product.

The British Board of Agreement, based at the Building Research Establishment, is a non-profit distributing organisation which has developed rigorous inspection and certification services to provide reassurance to the construction industry



that manufacturers' products are 'fit for purpose'. Only products that have passed a series of comprehensive assessments – including laboratory tests, on-site evaluations, quality management checks and production line inspection – are awarded an Agreement Certificate.

With XPS products a particular area of concern is that gases used in manufacture are legally compliant with environmental legislation related to ozone layer depletion. This is currently a major issue with recent tests showing that boards

manufactured in China are being produced incorporating banned and toxic substances.

For architects, specifiers, building control, construction companies and government departments the BBA Certificate is a mark of quality, safety, reliability and 'peace-of-mind' and, crucially, that the product is all a manufacturer claims it to be.

Colin Higham, Managing Director of TileBacker said "We are delighted to be awarded a BBA Certificate after only three years activity in the UK marketplace. Jackoboard's reputation for very high quality in both materials and processes is well-established throughout Europe and our BBA Certificate now confirms this position in the UK. The inclusion of thermal values in the Certificate opens up further exciting opportunities for Jackoboard in the insulation fields."

01204 221089 www.tile-backer.co.uk

CREATING TEMPERATURE CONTROLLED
HYGIENIC & FIRE RATED
ENVIRONMENTS SINCE 1946

- Coldrooms
- Walk-in chillers & freezers
- Food Production Areas
- Hygienic partitioning
- Firewalls

Get in touch with our team
for specialist advice and a competitive quotation

CALL: 0117 316 7000 OR EMAIL: [INFO@STANCOLD.CO.UK](mailto:info@stancold.co.uk)
WWW.STANCOLD.CO.UK

SE Controls helps keep 'Dragon's fire' under control

Dragon Mart 2, the recently completed 175,000 sq metre extension to Dubai's massive Dragon Mart Chinese trading hub, is using control solutions and more than 1,100 actuators from SE Controls as part of the fire safety and smoke ventilation system at the 1.2 kilometre long retail centre.

Designed by Dubai-based, Dar Al Handasah, the two-storey Dragon Mart 2 mall forms part of the International City development by master developers, Nakheel, and in addition to being the largest trading hub for Chinese products outside mainland China, housing more than 1,100 shops, it also includes a nine-screen cinema complex, two hotels and 1,120 apartments.

Throughout the mall, a series of openable skylight panels not only provide natural light into the shopping area, but also act as smoke vents to keep escape route clear of smoke should a fire occur.

The SE Controls' system includes; 1160 TGLA



24 65 linear actuators, which are used to open the skylight panels and 24 SECO N 24 40 chain actuators for opening vertical top hung windows, which are triggered by 44 OS2 30A controllers once they receive a signal from the mall's fire alarm system.

In normal operation the skylights remain closed until triggered and are then opened fully by the TGLA and SECO N 24 40 actuators, which have stroke lengths of 1000mm and 600mm respectively. Both types of actuator are 24 Volt DC units and are tested to EN12101-2. The fan cooled OS2 30 controllers also incorporate a battery backup to maintain operation in the event of a mains power failure.

SE Controls' Middle East Project Manager, Madhava Prasad, commented: "We have a tremendous amount of experience and expertise in retail smoke control and natural ventilation solutions in projects across the globe, so we can use this ability to support designers, fire consultants and engineers and ensure the systems are effective and help save lives by keeping escape routes clear of smoke."

01543 443060 www.secontrols.com

FIRE RETARDANT UK

FIRE retardant for WOOD

HR PROF

- Eco Friendly
- Clear & Odourless
- Water Based
- Non Toxic
- No Solvents
- Apply with Brush or Spray
- Euro-class B-s1-d0
- Internal or External Use
- HR Prof Also tested to BS 476-6 & BS 476 part 7

Classification Reports & Certificates Pine, Spruce, Scottish & Siberian Larch, Western Red Cedar, Oak

T: 0800 7833 228 E: sales@fireretardantuk.com W: www.fireretardantuk.com

New, improved and accessible on the move!

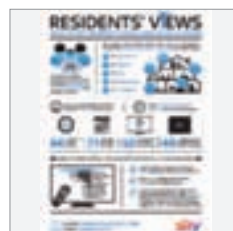


Remmers UK Ltd has given their website a fresh new look and the fluent, responsive design means that it can now also be viewed on both desktop and mobile devices easily. The new site enables all visitors access to a wide range of detailed information quickly and efficiently. Highlights include Remmers product catalogues, technical data

sheets, in-house and NBS specification guides, colour charts, literature and system specific project references along with a host of other helpful product and system information. The website also has an up-to-date news section and integrated social media links to Remmers Twitter, Facebook and Linked-In pages.

01293 594010 www.remmers.co.uk

High demand for modern touches



Almost 70 per cent of people would like new build properties to be better equipped for modern living, with people citing a desire for more storage, renewable energy, and pre-wired TV and broadband. The figure comes from a nationwide survey, commissioned by Sky to explore consumer expectations of new build property against a backdrop of changing

media consumption and rapidly advancing technology. Broadband and TV services ranked in the top five essential services, just behind more traditional utilities such as electricity, water, and gas.

08442 410 331 www.sky.com/communalTV

Fire safety, smoke control and compliance. Charting a path through the regulations

By Nelson Godinho – Fire Engineer with SE Controls



The legislative environment governing the smoke control and fire safety industry is, unsurprisingly, complex, far-reaching and absolutely vital to ensure that these systems not only operate faultlessly when they're needed, but also provide effective safety protection and allow people to escape.

Even so, you would probably be surprised by the number of construction companies that find that Building Control has rejected the structure due to the omission of a smoke ventilation system, which is required by law for any residential building of three storeys and above.

Clearly, there's no suggestion that designers, specifiers and building companies are brazenly flouting the regulations, but it is apparent that the main issue is ignorance of the complex and essential regulatory framework that governs this sector. But, as is often quoted, "Ignorance is no defence."



Navigating the maze

Building Regulations Approved Document B, The Machinery Directive and The Construction Product Regulations, via the various parts of the European EN12101 standard, provide a tight and far-reaching regulatory framework. Yet, this is only part of the story.

The Smoke Control Association's (SCA) 'Guidance on Smoke Control to common escape routes in apartment buildings' quickly became

the default reference document for many designers, installers and approving authorities throughout the UK.

Alongside this, BS 9991:2015, which covers 'Fire safety in the design, management and use of residential buildings – code of practice' is also a vital reference when addressing fire safety specification and requirements.

However, for an effective route to achieving compliance, the best starting point is the BS7346 – Part 8 Code of Practice. Prior to this, no single document existed that provided guidance for the industry from initial design, through installation to maintenance.

The core benefit of BS7346-8 is that by adhering to its guidelines; designers, installers and maintenance teams can create, install and operate a fully compliant smoke control system.

01543 443060 www.secontrols.com

Nationwide Windows & Doors continues to impress with CCS



Nationwide Windows & Doors is very pleased to once again represent the new build and public sector, in conjunction with Nottingham City Homes, with a Bronze award at the Considerate Constructors Scheme's National Site Awards. Daryl Cashmore explains: "The CCS's National Site Awards are presented to construction sites of all sizes which are recognized to have raised the bar in considerate construction. Together with Nottingham City Homes, we were incredibly proud to be rewarded by CCS. That this is the fifth time we have been commended by the scheme makes the achievement special to us. The site was proven to have shown the highest levels of consideration towards the public, its workforce and the environment through adhering to the Scheme's five-point Code of Considerate Practice: Care about Appearance, Respect the Community, Protect the Environment, Secure everyone's Safety, Value their Workforce, and it was commented within the report that the site 'was a credit to Nationwide Windows & Doors and to the site team'. We have worked closely with Nottingham City Homes for several years from our dedicated depot in the area, so for us, this award is a fantastic demonstration of our ability to seamlessly integrate within a customer's community."

01788 569 228 www.nationwidewindows.co.uk

THE SPECIFIER'S
GUIDE

to ceramic tiles
and calibrated
natural stone

www.specifiersguide.co.uk

Go online and subscribe to get your FREE copy

The Specifier's Guide to Ceramic Tiles and Calibrated Natural Stone offers architects, interior designers and other construction professionals a comprehensive guide to the technical and aesthetic properties of ceramic and natural stone tiles.



LEVATO MONO porcelain paver system

The Levato Mono porcelain paver system is the pinnacle of external raised flooring technology; enabling the specification of lightweight, slip resistant and attractive raised flooring solutions, combining incredible technical properties with uncompromising aesthetics; making them the ideal choice for commercial and domestic use alike.

- 20mm porcelain pavers 40x80 45x90 60x60 75x75 30x120 40x120 60x120
- 'Floating floor' - installation over single ply membranes
- Eternal product - zero maintenance required - offering massive over-life savings
- Highly abrasion and stain resistant
- Highly slip resistant ; R11 and achieved up to +65 wet in the BS pendulum test
- Lightweight - 45kgs per m²
- High load bearing and impact resistance
- Timber & stone effects; 40+ finishes available
- Ideal for balconies, roof terraces and piazzas, for both commercial and residential use
- Completely non porous
- Fire & frost proof
- Height-adjustable supports from 9mm up to 550mm

www.thedektileco.co.uk

t: 0845 2700 696 e: info@thedektileco.co.uk

Latham's range of FR products is second to none

James Latham offers one of the biggest ranges of high performance, fire retardant panel and timber products on the market, all directly available from stock through its nationwide network of depots.

Fire damage in buildings can be devastating and as a result, flame retardant products are being specified in construction to help reduce this impact. Latham's extensive collection of fire retardant products includes; CE marked Birch Plywood, Timber Cladding, Chipboard, MDF, MF/MDF, OSB, and Decorative Products for interiors including Valchromat, MFC, HI-MACS solid surface, Laminate and Fire door blanks.

All products are certified and independently tested to Euroclass B or Euroclass C and copies of these reports and the Field of Application are available to download from the website.

These fire tests are carried out for the manufacturer by an approved third party and measure readings such as; rate of fire propagation, lateral fire spread, total heat release and smoke production.

Andrew Wright, Director of Lathams Limited said,

"The number of projects where Fire Retardant products are being specified is increasing. When the correct fire retardant product is specified and installed in accordance with the Field of Application, they can provide the first line of defence in a fire, helping to protect lives in both commercial and residential properties."

Mr Wright added,

"We are continually reviewing our range to ensure we have the most



up-to-date offering available for all our customers and our team of knowledgeable and experienced staff can provide information and samples for all these products."

0116 257 3415 www.lathamtimber.co.uk

Marc Overson joins Panasonic UK



Panasonic is delighted to announce the appointment of Marc Overson to Panasonic Heating & Cooling, who joins the team as the Country Manager for the UK & Ireland. Marc Overson joins Panasonic from the European air conditioning division of Samsung Electronics, where undertaking the role of the European B2B & Distribution Sales Manager, he gained a

broad understanding of the European heating and air conditioning market. Marc succeeds in this position from Marc Diaz, who returns to the Panasonic operation in Spain. Marc will focus on building market share within the commercial air conditioning arena, a key growth target area for the company in the UK & Ireland. The reinforcement and development of Panasonic's sales distribution network and support services are of primary importance.

EVO-STIK expands its foam range



EVO-STIK has added to its range of foams with the launch of a Fire Retardant Gun Applied Expanding Foam Filler. Offering a more accurate and efficient application through the use of a gun, the foam can be used for gap filling and insulating to prevent the transmission of smoke and is fire rated to the latest European standard DIN EN 1366-4. It is

suitable for use on a wide variety of building substrates and offers excellent adhesion to wood, brick, stone, concrete, plaster, wallboard, hardboard and metal surfaces.

01785 272625 www.bostik.co.uk

Quik Drive First for DeckMark



Simpson Strong-Tie's Quik Drive collated screw system has become the first ever tool to be awarded DeckMark® Plus accreditation from the Timber Decking and Cladding Association. The leading construction connector manufacturer has previously also achieved DeckMark® Plus for its range of CE marked decking and cladding fixings.

DeckMark® Plus is a quality assurance and performance scheme run by the Timber Decking and Cladding Association, the recognised authority on all matters that relate to creating high performance, timber decking and cladding structures.

With a huge range of applications, from decking to drywall, modular homes to mezzanine floors the Quik Drive is the world's most advanced screw system. Built to last, all moving parts are coated with Teflon®, which is one of the reasons it comes with a lifetime warranty.

Sales Director Jon Head says, "We're proud to have achieved DeckMark® Plus accreditation and demonstrate our commitment to quality, as well as supporting the industry to help ensure good quality standards are met."

The Quik Drive brochure can be downloaded from the website.

01827 155600 www.strongtie.co.uk

Glass Excellence

www.firmanglass.com

Established in 1975 Firman Glass is one of the leading independent glass processors in the UK, manufacturing toughened glass, laminated glass and specialist sealed units.

Based in Harold Wood Essex within 5 minutes of junction 28 of the M25 and half an hour from Central London we are ideally situated to service our ever growing and diverse customer base.

Manufacturing all forms of processed toughened glass, with comprehensive stocks of clear float, low iron, satin, body tinted, mirrors, laminated glass, acoustic laminated and fire rated glass.

With some of the most advanced capabilities in place Firman Glass is able to manufacture high quality products for all markets sectors including architectural, retail, leisure and domestic.



Products

- Toughened glass
- Processing
- CNC shaping
- Laminated glass
- Toughened and laminated constructions
- EVA and Vanceva coloured interlays
- Fabric and decorative interlays
- Saflex DG41 structural interlay
- Specialist insulating glass units
- Anti-slip glass
- Fire rated glass
- UV bonding
- FIRMALITE electric switchable glass
- Heated glass
- Decorative glass
- Sandblasting
- Colorfirm™ back painted glass

Applications

- Structural glazing
- Glass floors
- Partitions
- Roof lights
- Balustrades
- Full height barriers
- Canopies
- Staircases
- Treads and stringers
- Shower screens
- Shelving
- Glass doors
- Acoustic reduction
- Fire rated
- Decoration
- Wall cladding
- Splashbacks
- Privacy
- Technical Support
- Nationwide Coverage



Further information is available from our sales and technical offices or visit www.firmanglass.com

Firman Glass, 19 Bates Road, Harold Wood, Romford, Essex RM3 OJH

Tel: 01708 374534 Fax: 01708 340511 Email: sales@firmanglass.com



Colorfirm™

FIRMA TUFF™



Firman

www.firmanglass.com

Glidevale presents ultra-low maintenance ventilation system

Glidevale, the specialist building products and ventilation solutions provider, has launched *iPSV*®, a humidity-sensitive, intelligent passive stack ventilation system which requires virtually no maintenance once installed. Designed to combat harmful condensation, the energy efficient system is ideally suited to new build social housing and refurbishment projects.

The system has no electrical connections making installation straightforward. Once fitted, it requires no further adjustments or commissioning. With 'intelligent' yet simple components containing very few moving parts this has the net effect of lower lifetime costs.

iPSV offers comparable and in some cases superior energy efficiency compared with other ventilation systems. Operating without the need for power, there are no direct CO₂ emissions as a result of ventilating a property.

A whole-house ventilation system, *iPSV* is controlled by responsive air inlets and extracts which react automatically to changes in relative humidity. When the condensation risk is high, the humidity-sensitive control provides an automatic boost effect to allow greater airflow. As the humidity levels fall, the airflow is reduced. Working silently 24 hours a day with no operating controls or electrical connections, the *iPSV* system is less likely to be tampered with by occupants, ensuring that the system runs at optimal performance.

"Efficient and effective ventilation is mandatory under building regulations for modern airtight dwellings and to meet the need for low energy consumption," says Senior Product Manager Laura Hughes. "Glidevale's *iPSV*

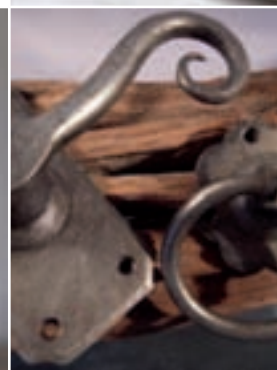
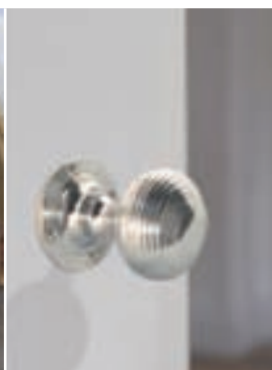


allows the most up-to-date ventilation requirements to be met with ease."

With over 30 years in operation, the *iPSV* system meets the requirements of Building Regulations and Standards in England, Wales, Scotland and Ireland, and is also BBA certified.

0161 905 5700 www.glidevale.com

Details THAT MAKE
THE *difference...*



A few well chosen fixtures and fittings can transform a run of the mill room into one that oozes *style*

FRELAN
HARDWARE

ALL FRELAN HARDWARE AVAILABLE ONLINE FROM WWW.MOREHANDLES.CO.UK

10% OFF
with code
NET10

more than just handles!
TEL: 01228 516 516 • www.morehandles.co.uk

more
HANDLES

Genuine team hits the road



To further support its customers, **Simpson Strong-Tie** has expanded the activities of its nationwide merchandising team, which includes Danny Cawthra, who is responsible for the Midlands.

The team has also been kitted out with all new vans, complete with Simpson Strong-Tie livery. Marketing Manager Chris Sanders explains: “we have the largest team of merchandisers in our sector and between them they cover over half a million miles each year, visiting our distributors to provide sales and promotional support. We saw this a great opportunity to push our “Genuine” promise, however it also means our guys on the road are even better equipped to help keep our customers stores ship shape”.

The move to outfit the merchandising fleet follows the launch of Simpson Strong-Tie’s “Genuine” campaign, the objective of which is to convey the fact that there is much more to manufacturing a steel connector – Chris continues: “we want to speak about customer service, quality and innovation”.

01827 155600 www.strongtie.co.uk

Perfect acoustics for conferences



Hotel Koldingfjord enjoys a beautiful location near Kolding in Denmark. The attractive Baroque building, originally a sanatorium for children, has been extended and upgraded by Arkitema Architects. This includes the installation of **Troldtekt** acoustic ceilings in an existing space converted to accommodate up to 250 conference guests. The result is a stunning facility which makes Koldingfjord one of the best conference hotels in Denmark. The new facility has been designed to blend in with the existing Baroque buildings which are listed. The two identical rooms, both being extremely light and airy, have been designed and equipped to provide the very best facilities for conferences. Danish manufactured Troldtekt acoustic tiles are specified throughout the UK and Europe and can be delivered as either FSC® or PEFC certified panels. Manufactured using 100 per cent natural wood fibres, their benefits include high sound absorption, high durability, natural breathability, low cost life cycle performance and sustainability. The panels are widely used to improve acoustics in many different projects, such as meeting rooms, schools, leisure centres, pools, commercial and public buildings. Available in various sizes and in three grades from ultrafine to coarse, they can be left unpainted or painted in virtually any RAL colour. For samples and comprehensive technical information, please visit the website.



Smooth finish for professionals

Leading construction connector manufacturer **Simpson Strong-Tie** has launched a new catalogue dedicated to its range of bead and mesh products for the professional plasterer. Covering a high quality range of galvanised, stainless steel and PVCu products, and fully tested CE marked items, the catalogue also features handy hints and tips for fixings and installation, for a smooth and professional finish whatever the environment.

Sales Director Jon Head says “Our new beads and mesh catalogue has been created exclusively to provide professional plasterers with suitable solutions for all indoor and outdoor applications and to provide advice on how to prevent issues such as premature rusting.”

The catalogue is available on request from Simpson Strong-Tie and can be downloaded via the website.

01827 255600 www.strongtie.co.uk



Resin Bound Surfaces

beautiful permeable paths
driveways and courtyards
from Clearstone®



Clearstone® manufacture and install their own system using high quality UV stable resins and give a 10 year guarantee

For surveys, quotes and technical advice, call
01273 358177 clearstonepaving.co.uk

Clearstone®
resin bound
permeable surfacing
specialists



The beauty of natural Cotswold stone
from **Veizey's**



Suppliers of Natural Building Stone, Sawn Ashlar,
Roof Tiles, Architectural & Ornamental Masonry,
Flooring & Fire Surrounds.
Veizey's quarry, Avering Rd, Tetbury, GL8 8JT
t: 01666 504689 e: info@stonesuppliescotswolds.co.uk

STONE SUPPLIES
COTSWOLDS LTD

PRO-RAILING®
The Stainless Steel Handrail Component System



- NO INCLUDES PRO-GLASS
- NO WELDING JUST GLUE & SCREW
- COMPETITIVELY PRICED
- PRE-ASSEMBLED POSTS
- STAINLESS STEEL TYPE 304 & 316
- FROM STOCK
- FAST NATIONWIDE DELIVERY

PRO
The Mark You Can Trust

01708 25 35 45 prorailing@brundle.com www.fhbrundle.co.uk

IronmongeryDirect
MASTERS OF OUR TRADE

**ORDER BY 8PM
GET IT NEXT DAY!**



**CALL 0808 168 28 28
OR GO ONLINE TO GET
YOUR FREE CATALOGUE**

**15,000
PRODUCTS
IN STOCK
FOR NEXT DAY
DELIVERY**




 **FREE DELIVERY
OVER £45***

 **FREE RETURNS
WITHIN 30 DAYS**

 **MINIMUM
5 YEAR GUARANTEE**

 **LOW
TRADE PRICES**

CALL 7am-8pm 7 days a week
0808 168 28 28

ONLINE Shop 24/7!
IronmongeryDirect.com

FOLLOW US ON  

*Ex VAT



Em-Glaze modular ridgelights bathe interiors with natural light

For more than 25 years our fully compliant, easy-install rooflights have helped designers and builders make interiors feel more luxurious and spacious.

The Em-Glaze ridelight's low-profile aluminium framework – in any standard RAL colour – is subtle enough to suit any residential building, while the increased glazing maximises daylight so rooms appear larger.

Options include double and triple glazing, thermally broken upstand, manual opening and electrically opening ventilation. Ordering is easy too, with six standard sizes available from stock for next-day delivery.

For expert technical advice or to place your order, contact our team.

Visit bit.ly/EGMRidgelight or contact us:
01483 271371 or sales@whitesales.co.uk



Whitesales®
Rooflights & more...



SCHIEDEL
Heating Venting Living

Introducing... Ignis Protect

The new wall pass thru' system for air tight & energy efficient timber framed buildings.

Ignis Protect is suitable for SW and DW connecting flue pipes passing through interior or exterior walls made of combustible materials.

FEATURES

- For flue gas temperature up to: 450°C for SW connecting flue pipes 600°C for DW connecting flue pipes
- Max. 100°C surface temperature
- Monolithic component made of mineral wool (building material class A1)
- Removable pipe sections
- No additional protection necessary
- Available in 90° and 45° versions

Full details at: www.schiedel.co.uk

Follow SchiedelUK on:   

WINNER OF BEST PRODUCT AWARD
HEARTH & HOME EXHIBITION 2015

Call us
01296 481220

osmo 

Learn more
osmouk.com

DECKING-OILS

Variety of colours and unsurpassed durability!



DECKING-OIL: Highest quality protection for wood decking

✓ MICROPOROUS | ✓ NATURAL | ✓ UV-RESISTANT | ✓ OIL-BASED | ✓ HIGH COVERAGE




SPLINTER-FREE DECKING – IDEAL FOR POOLS & SPAS

15 YEAR GUARANTEE

EASYCLICK is fixed from below, so no more visible screws and no risk of splinters

MOISTURE RESISTANT

WILL NOT SWELL OR ROT

Call us: 0208 916 2222
www.wallbarn.com sales@wallbarn.com



Triton supplies Type C waterproofing for landmark London scheme

The White Collar Factory will be a mixed-use area of workspace, residential and retail, designed by architects, AHMM. The development, sited on London's City Road, comprises a new 16-storey office tower, a new public square and refurbished existing buildings to the rear.

The new 2-storey basement has been waterproofed using a Type C system applied internally, to provide drained protection in accordance with BS 8102: 2009. The waterproofing system has been supplied by Triton Systems.

During demolition of the existing structure, the sub-contractor (Dunne Group) worked closely with Triton's CSSW qualified technical team, to design the most appropriate and cost effective waterproofing system that was subsequently approved by all relevant parties as the most suitable protection against potential ground water ingress. 2,000m² of Platon P20 cavity drain membrane was



subsequently specified for all earth retaining basement walls on both levels and the ground bearing slab at lower level. BBA certified Platon P20 membrane is a high capacity drainage membrane recommended for use where it is important to significantly reduce the risk of blockages behind the membrane caused by lime deposits.

Prior to the installation of the membrane, all fresh concrete at earth retaining elevations was

treated with Triton's Anti Lime solution. This treatment hardens and dust proofs the concrete as well as locks in free lime to further reduce the risk of blockages in the drainage elements of the system.

Any water entering the construction at upper and intermediate basement levels is gravity drained behind the studded P20 membrane down to a waterproof concrete bund/upstand which provides a 100mm cavity, onto which internal block walls can be built.

A series of 40mm holes at 900mm centres were drilled within the bund to allow any water to drain down behind the membrane installed to the walls at lower level. The bund was also waterproofed with Triton's cold liquid applied TT Vapour Membrane (TTVM) that will prevent potential damp patches being visible on the internal block wall faces.

01322 318830 www.tritonsystems.co.uk

ESP ENERGY

Renewable Energy Specialists

SURVEY → DESIGN → INSTALL → MAINTAIN

**Combined Heat & Power • Air Source Heat Pumps
Ground Source Heat Pumps • Biomass Boilers
Solar Thermal • Solar PV • Battery Storage**



t: 01743 718 803 e: info@espenergy.co.uk w: www.espenergy.co.uk

MODULAR SHOWERING SOLUTIONS



- PREFABRICATED BATHROOM PODS
- PREFABRICATED SHOWER CUBICLES
- ISO 9001 & 14001 ACCREDITED
- TOTALLY LEAK PROOF
- RELIABLE
- SUSTAINABLE
- FULLY RECYCLABLE
- SIMPLE TO INSTALL
- 25 YEAR GUARANTEE
- MADE IN YORKSHIRE

TAPLANES®
SHOWERING SOLUTIONS

t: 01423 771645
e: admin@taplanes.co.uk
www.taplanes.co.uk

THE SILENCE OF NATURAL VENTILATION

Passivent SoundScoop® - breathing fresh air into schools without the noise



SoundScoop from Passivent significantly reduces sound transmission while enabling low airflow resistance, essential in naturally ventilated buildings. With an optimised acoustic design for the transfer of air between noisy and noise sensitive spaces, Soundscoop allows fresh air through building walls whilst minimising the transfer of noise into quieter areas. Ideal for use in the education sector.

**To book your FREE CPD seminar
or a technical consultation,
email projects@passivent.com**

Passivent, North Frith Oasts, Ashes Lane, Hadlow, Kent, TN11 9QU.

T: 01732 850 770 E: projects@passivent.com www.passivent.com

A division of Building Product Design Ltd

passivent

Stannah lift products star in spectacular new entrance to Leeds Station

Opened on 3rd January 2016, the new southern entrance to Leeds Station features four Stannah escalators and two passenger lifts.

Following multiple escalator and lift installations at the Midlands hub of Birmingham New Street and Grand Central for Network Rail and Mace, Stannah were again the chosen supplier and installer of all vertical transport within the southern entrance building (known as the LSSE scheme), this time working with main contractor Carillion to fulfil the brief. The work was completed by the Stannah Escalator & Moving Walkway Department and Stannah Major Projects team in just twelve weeks.

Funded by the West Yorkshire Combined Authority, Leeds Council, the Department for Transport and Network Rail, the new extension provides an attractive new accessible entrance and additional concourse built in the River Aire. The building was created to diminish congestion at this busy commuter station into and out of West Yorkshire and the North of England, making it an

attractive route for tourists again. Up to 20,000 passengers (or 20 per cent of current footfall) are estimated to benefit from using the new entrance, shortening commute times and providing easy access from the south of Leeds.

The four escalators provide continuous vertical transportation for ambulant people. Those travellers with heavy luggage, child buggies or wheelchair-users are well provided for with two bespoke 13-person traction passenger lifts located just inside the entrance.

The tight restraints on the site meant some of the features of the lift equipment had to be modified to achieve the design and vision without compromising safety.

The escalators are to NR specification with some additional features bespoke to the Leeds station project. These features were based on the tight restraints of the site and the designers risk assessment required to mitigate those risks.

This included special software so that all the machines operate to a special design philosophy when stopped in an emergency situation, including



installing an additional stop button on each machine during mid travel. Bespoke manufacture of the machines at 35 degrees instead of the standard NR specification of 30 degrees, and the reduction of the speed of the machines from the standard NR .65m/s to .05m/s all result in safe, efficient travel within the constraints of an unusual and stunning building design. With no room for housing external controllers these became an integral part of the escalators.

The lifts had restricted space so machine room-less traction equipment was installed to enable the largest capacity possible within the tight footprint of the new building.

The new pedestrian entrance will be of great benefit to people living and working south of the river, and will open up new travel opportunities providing a further stimulus to redevelopment and expansion of the city centre, and will support the continued regeneration of the southern quarter of the city.

Stannah continues to add to their portfolio of high-profile rail projects, helping Network Rail achieve their target of 'Step-free access' across the rail network.

The North West England and North Wales Stannah service branch, part of Stannah's nationwide branch network, will be maintaining the lifts and escalators to ensure the safe flow of people and goods through this new entrance.

01264 339090 www.stannahlifts.co.uk





Washroom's one-of-a-kind changing rooms



Washroom has created a truly unique changing area at a new luxury central London health club. Washroom worked closely with both Third Space and main contractor Vincent Stokes to install all four new changing areas as well as additional joinery works around the poolside.

A stand-out feature is the bespoke diamond pattern design on Washroom's Luminoso glass shower cubicles. Manufactured from 10mm low iron toughened glass with obscured white screenprint to the reverse of each panel, the full height Luminoso cubicles offer a striking shower solution befitting of this luxury health club setting. Washroom installed a full glass panelled end wall as a feature at the poolside.

Connekt Flushfit Sink



Abode's Connekt Flushfit – an ultra slim flush fit or inset sink range that delivers a sleek contemporary look to any chosen worktop. Both 1.0 and 1.5 bowl sinks are produced in premium 18/10 grade stainless steel. Connekt Flushfit can be fitted perfectly flush by inseting or alternatively fitted conventionally as an inset. Either option creates a minimal look

which is easy to keep clean. Both sinks come with the unique Abode Orbit waste and all plumbing pipework plus a pre-fitted seal strip around the underside edge.

01226 283434 www.abode.eu

Combining natural ventilation with noise attenuation from Passivent SoundScoop®



SoundScoop is a range of innovative acoustic air transfer units from natural ventilation specialists **Passivent**. With an optimised acoustic design for the transfer of air between noisy and noise sensitive places, it provides natural ventilation airflow through a building, combining high levels of acoustic attenuation with very low airflow resistance.

Ideally suited to schools, SoundScoop is positioned at high level in the partition/wall between two internal spaces enabling natural air movement with minimal pressure drop. A patented sound absorbing design attenuates the mid frequency band of 500 – 2000Hz that speech and noise circulation fall into.

Developed in association with Arup, SoundScoop can be used to meet the acoustic and ventilation requirements of BB93 and Building Regulations (Parts F and E).

As James Hammick, Passivent design manager explains: "SoundScoop allows low resistance air movement around the building without the associated noise transmission, enabling natural ventilation to be effective in 'closed plan' environments such as classrooms as well as cellular offices and hotels."

01732 850 770 www.passivent.com

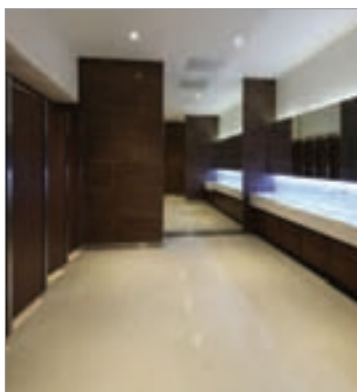
Dramatic Water Savings by Ambassador Theatre Group



Six famous London Theatres have now installed Falcon Waterless Urinals from **Relcross** in their gents' toilets. The Savoy Theatre, The Harold Pinter Theatre, The Playhouse Theatre, The Duke of York's, The Fortune and The Trafalgar Studios are now enjoying water savings of up to 150,000 litres of water per year, per urinal – a massive saving in water charges. They are soon to be joined by The Apollo Victoria. The Falcon Flax urinals are designed to optionally carry advertisements across the top of the urinal. This maximises the commercial opportunity presented by a captive audience while removing a hygiene problem of wall mounted advertisements. The urinal mounted ads are easily cleaned with the urinals and offer no nooks or crannies to harbour bacteria. Venues such as theatres, sports stadia and conference centres are enthusiastic users of waterless urinals as so much water is currently wasted by automatically flushing urinals all day, every day but with actual usage concentrated into short, busy periods followed by further inactivity. The Ambassador Theatre Group joins the Dolphin Stadium in Miami, the Nou Camp in Barcelona, the Riverside Stadium in Middlesbrough and many others who have installed Falcon Waterless Urinals.

01380 729600 www.waterlesscartridges.co.uk

Shopping centre washrooms sport new look



Washroom has played a key role in upgrading the washrooms at a busy shopping centre in Northampton. The Weston Favell shopping centre, which is home to one of the largest Tesco stores in the country as well as more than 70 shops and restaurants, attracts thousands of visitors each week. Originally built in the 1970s, the centre was in need of a full refurbishment and HFM Architects took on the project, giving the centre a vibrant new look with new brand style and signage throughout. Working closely with both HFM Architects and main contractor Base Build Services, Washroom delivered a modern washroom area, including disabled toilets and baby change facilities, all designed to match the new bright and contemporary centre. Key to the success of the washroom design is the installation of the new Alavo integrated consumable unit from Dolphin Dispensers which features subtle colour changing LEDs as well as concealed soap and hand dryers. Combined with bespoke sloping Corian troughs, the Alavo system adds to the high specification finish yet will withstand the rigours of a high traffic environment and significantly reduces the client's cleaning burden, making it ideal for a busy shopping centre. Washroom installed its Senza cubicles in solid grade laminate (SGL) finished with an attractive walnut veneer to complement the contemporary style.

pulse

INTRODUCE COLLABORATIVE SPACES

DESIGN



EDEN consists of 1 and 2 seater high back units, low back options and a modular range



01254 673400



sales@pulse-design.co.uk



www.pulse-design.co.uk



Home improvement ideas: Five remodelling tips



The latest home improvement report indicates that UK homeowners would choose to remodel their existing properties, rather than move to a new house. Hayley Fenn of **Granite Transformations** has five affordable tips for enhancing living space and adding value to property: add an ensuite; explore magical mosaics; go island style; transform a humble downstairs loo; modernise the shower. The best thing about these tips is that they can be mostly carried out within exist-

ing room layouts, without re-siting the plumbing and electrical connections, and by simply overlaying the worktops, tiles and bathroom surfaces.

0800 044 5393 www.granitetransformations.co.uk

Temperature and humidity Wi-Fi loggers



Monitoring building drying or laying of screed can take weeks or even months. Saveris 2 from **testo** is a cloud based measuring solution, enabling you to take control and monitor the whole drying process remotely. Data is accessible via any internet enabled smartphone, tablet, PC or laptop. Temperature and humidity values are monitored and

recorded continuously and alerts sent by email and SMS if critical values are exceeded, thus enabling early intervention and prevention of costly and time consuming remedial work.

01420 544433 www.testolimited.com



Flotex provides formula for fun

National pub-restaurant chain, Brewers Fayre is using **Forbo's** Flotex floor coverings to refurbish its indoor play areas. The family dining brand has commissioned a bespoke Flotex Vision design inspired by The Beano to create vibrant recreation spaces for younger guests. Flotex offers a unique flooring solution, combining the hardwearing, durable characteristics of a resilient floor with the warmth and comfort of a textile covering. The only truly washable textile flooring product, it is strong, hygienic and totally waterproof, making it ideal for children's activity areas. It carries the Allergy UK seal of approval and contains Sanitized® treatment to inhibit bacteria and prevent the development of stale odours. For more information on Flotex Vision and other products, please visit Forbo's website.

BLM British Lead launches new website



BLM British Lead (BLM) are inviting visitors to explore their new website. The new website has been designed with a fresh new look and user-friendly navigation, allowing visitors to access extensive product and technical support information with an option to share content across all major social network platforms. The new site

offers detailed information on Rolled Lead Sheet and a full range of Lead ancillary products, all incorporated to help visitors discover BLM's complete range of lead roofing solutions. The new website also allows users to learn more about BLM's history and 84 years of experience in Lead Sheet manufacturing. Technical support, fitting guides, H&S tips and project case studies are also available.

01707 324595 www.britishlead.co.uk

Advanced Manufacturing in Sheffield



Factory 2050, the latest development within the University of Sheffield's Advanced Manufacturing Research Centre (AMRC), has a striking, ultra-modern appearance, partly thanks to an external Solar Shading solution from **Levolux**.

The development comprises a main rotunda building and an adjoining rectangular building. Levolux was approached to develop a passive solar shading solution, to be applied to both buildings. The solution proposed by Levolux comprises oval-shaped aluminium louvres, arranged horizontally between vertical aluminium carriers. Each louvre measures 60mm wide by 50mm thick and is formed from extruded aluminium components. Based on Levolux's Infiniti Fin system, the oval-shaped louvres feature concealed fixings for a clean, uncompromised appearance.



Style and performance in Oaks washroom

PPHE Hotel Group is known for brands that offer quality with an individual style and that's definitely true of the washrooms attached to Oaks Restaurant and Bar in Nottingham. Reviews on Tripadvisor have likened them to a Butcher's cold storage room with "Freezer" style doors and Hadrian unpainted steel cubicles. Steel clad walls and stainless steel sink troughs complete the fittings along with bare industrial light bulbs. Hadrian toilet cubicles are supplied in the UK by **Relcross Ltd**. They can be supplied to match any RAL paint colour as well as in a number of special effect finishes including brushed or polished stainless steel. The 5 galvannealed steel "Elite" cubicles fitted at Oaks are floor mounted and head rail braced with privacy ensured by using continuous stop and hinge sight line fillers along the door edges. For more information please visit the company website, or contact them directly.

01380 729600 www.hadrian-cubicles.co.uk

Landmark Byker Wall estate recharged by solar

Constructed in the 1970's Byker Wall is regarded as one of the most significant pieces of architecture of its era in the UK. As part of a £26 million refurbishment scheme on the Grade II listed residential estate, which features a continuous block of over 600 properties, work was performed to not only repair the existing roof but to bring Byker Wall to the forefront of modern-day roofing technology with the installation of a state-of-the-art photovoltaic (PV) system.

Prior to undertaking any remedial work the project team had to first get permission from the local planning authority, due to the building's protected status. Once approved the first phase of work began to remove the original asphalt roofing, which had exceeded its serviceable life and been experiencing water ingress. As part of the required works the team had to convert the pitched metal roof back to its original flat roof status. All of the original waterproofing was replaced with 4,500m² of Bauder's top quality reinforced bitumen system,



BTRS, which has a life expectancy in excess of 40 years, and included a highly efficient 120mm PIR insulation to achieve the required U-value and satisfy building regulations.

One of the major challenges for this project resulted from the district heating pipe, which runs the

entire length of the roof but its exact path was unknown until the roof was removed. This meant that many design revisions were necessary for the PV layout and because the pipe penetrates the roof, the roofing contractor had to come up with innovative ways to temporarily support the pipe during the waterproofing installation. In addition, all residents remained in-situ throughout causing logistical challenges, however deliveries were timed as not to conflict with vehicles moving in and out of the facility and the team worked closely with residents to agree working hours. Creating sustainable employment was another important requirement of the project brief. In response, Hodgson Sayers created an apprenticeship programme that used Byker Wall as a starting point for employment, guaranteeing full time work at the end of the apprenticeship. As a result, four new recruits were accepted on to apprentice schemes.

01473 257671 www.bauder.co.uk

BUY **BRITISH**, BUY **QUALITY**,
BUY **Jeckells** SHADE SAILS

01603
782223

shadesails@
jeckells.co.uk

We design and manufacture Shade and Weatherproof Sails in commercial and domestic environments. Our forte is engineering solutions that not only look good but will also stand the test of time in unpredictable outdoor environments.

All our Shade Sails are individually designed with colour, shape and size to suit your particular requirements. Architecturally stunning. We use either Stainless Steel or Timber posts depending upon the environment. Our Shade Sails are easily fitted and removed. A full design and installation service is available.

For more details please call **01603 782223** or email shadesails@jeckells.co.uk



Jeckells 
THE SAILMAKERS

Comprehensive Schöck range meets Embassy Gardens demands

Stretching along the Thames from Battersea to Vauxhall, Nine Elms will see 20,000 homes built over the next ten years, along with schools, parks, a pedestrian bridge over the Thames and two new underground stations.

The heart of this huge development is Embassy Gardens, London's new diplomatic riverside precinct, which forms the backdrop to the new US Embassy. Blocks are arranged around raised courtyards, with differing building heights to minimise overshadowing and overlook. The first release of apartments is the Ambassador Building, comprising six distinct cores, which house residential apartments boasting high ceilings and abundant natural light. A key feature being the wide variety of balcony types. Each is governed by unit size and orientation – and the minimisation of any possible thermal bridging problems at these points is crucial.

Schöck has the ideal solutions to these differing demands with its comprehensive range of Isokorb load-bearing thermal insulation products. Each thermal break has totally verifiable performance standards, meets full

compliance with the relevant UK building regulations and offers BBA Certification and LABC Registration. Specifically, the thermal breaks used at the Ambassador Building involved firstly the Schöck Isokorb type K, for concrete-to-concrete connectivity. The type K units were incorporated into cast in-situ cantilever balconies on the road-facing external elevation; and where a shear force transfer element was required, also involving concrete-to-concrete loggia's or supported balconies, the Isokorb type Q was installed.

A further variation, Isokorb type K-WU units were also used as slab-to-wall thermal breaks. The Isokorb type KS for concrete-to-steel were used on the internal courtyard balconies; and to assist the structural engineer in keeping the transverse beam continuous between the external columns, Schöck SLD dowels were also used to support the propped cantilever walkway externally.

In addition to providing highly effective connectivity solutions for concrete-to-concrete and concrete-to-steel thermal bridging situations, the Schöck Isokorb range also offers



a modular product for steel-to-steel applications and even a maintenance free alternative to wrapped parapets.

For a free copy of the Schöck Thermal Bridging Guide and/or the Thermal Bridging Solutions brochure – contact the company or visit the website.

01865 290 890 www.schoeck.co.uk

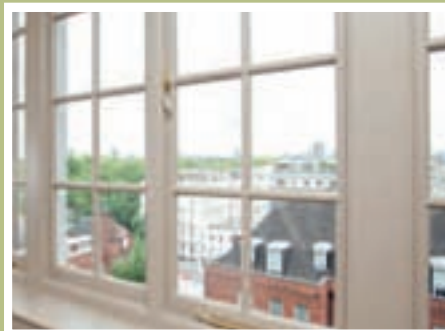
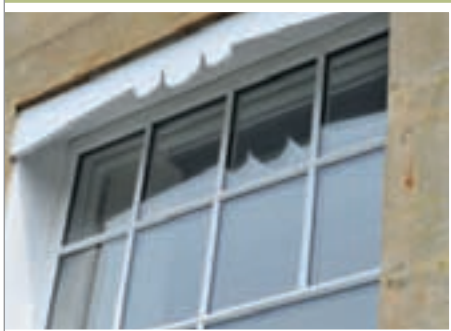


THE SASH
WINDOW
WORKSHOP

THE FINEST TIMBER WINDOWS AND DOORS

PROVIDING TAILOR MADE SOLUTIONS FOR YOUR PROJECT

- Suitable for Conservation Areas and Listed Buildings
- Supply Only, Supply and Install, Repair and Refurbish



We have worked on various prestigious projects, including: St James' Palace, The Admiralty Buildings, Clandon Park, The Grove Hotel, and Oxford Wildlife Trust.



01344 868 668

www.sashwindow.com



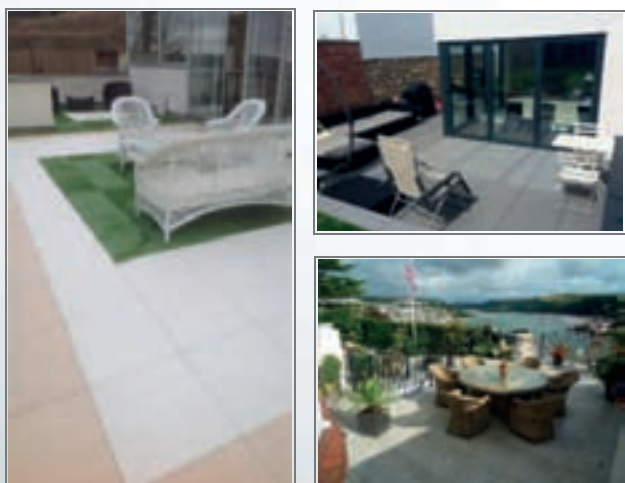


Nationwide makes Step change for charity

Leading public sector and new build door and window supplier **Nationwide Windows & Doors** is extremely proud to have been involved in the renovation work at specialist centre for children with motor disorders, Steps – work which has now been completed, to the benefit of both children and staff. Nationwide's journey with Steps began last year at the inaugural BCEMA Awards – hosted by Efficiency East Midlands (EEM) – where the company revealed its intention to supply and fit new windows worth £10,000. The old, single glazed, steel frame windows have now been completely replaced with fully efficient double glazed PVC-U models, with work completing just after Christmas, in time for a celebratory party, featuring children's favourite, Mr Tumble. Adrian Pavey, Commercial Director at Nationwide Windows concludes: "It's well documented that old windows can have a detrimental effect on the health and wellbeing of a building's occupants, even down to how they feel about themselves, so it was an easy decision to do our bit to help this remarkable local charity."

01788 569 228 www.nationwidewindows.co.uk

Extra 20 Porcelain Stoneware



Luxury Outdoor Paving Manufactured & Tested For Outdoor Applications

Low Maintenance – High Quality – Excellent Slip Resistance

Available in 600 x 600mm, 750 x 750mm & 600 x 1200mm

Free Samples Available On Request

Castle Composites Ltd
01555 870003
www.castleporcelain.co.uk



SIMONSWERK
HINGE TECHNOLOGY

TECTUS® THE COMPLETELY CONCEALED HINGE SYSTEM



TECTUS®

- › high load values up to 300 kg
- › maintenance-free slide bearing technology
- › three-dimensional adjustability
- › opening angle 180°
- › wide variety of finishes



t: +44 121 522 2848
e: sales@simonswerk.co.uk
www.simonswerk.co.uk

Visit us at
100%design®
Olympia London
21-24th September
Stand E664

UK Roofing Awards 2016 – Winners revealed

The winners of the UK Roofing Awards were announced at a ceremony hosted by BBC's Steph McGovern at the Hilton London Metropole on Friday 13th May 2016.

The CompetentRoofers Registered Contractor winners are:

- Roof Sheeting – KGM Roofing, Marshgate Drive, Hertford
- Solar on Roofs – Bauder Ltd (with Hodgson Sayers), Byker Wall, Newcastle Upon Tyne
- Reinforced Bitumen Membranes – Bauder Ltd (with Mitie Tilley Roofing Ltd), ROM Ltd, Sheffield
- Single-lap Tiling and Slating – Wienerberger (with Timby Traditional Roofing), Burgess, Wellingore
- Double-lap Slating – Timby Traditional Roofing, Tait Gazebo, Gainsborough
- Double-lap Tiling – Karl Terry Roofing Contractors Ltd, Shipley Farm, North Elham
- Heritage Roofing – Karl Terry Roofing Contractors Ltd, The Cloth Hall, Smarden

The UK Roofing Awards also reward the individuals and organisations that go above and beyond the call of duty.

The companies that scored highest within their roofing discipline in the NFRC Safety in Roofing Awards for 2015 were, in slating and tiling; Wensley Roofing Ltd, for flat roofing, CompetentRoofers Registered Contractors; Stormforce Roofing & Maintenance Ltd and for industrial roofing and cladding; Industrial Construction (Sussex) Limited.

The Lead Contractors Association presented the Murdoch Award and Murdoch Sponsor's Award for best leadwork. The former was won by



CompetentRoofers Registered Contractor Lead-Tech Roofing for Rygar House in London.

The Roofing Awards bring everyone within the industry together. Along with CompetentRoofers, the awards hosts were the Roof Tile Association (RTA), the Liquid Roofing and Waterproofing Association (LRWA), the Lead Contractors Association (LCA), the Lead Sheet Association (LSA), the Federation of Traditional Metal Roofing Contractors (FTMRC), Single Ply Roofing Association (SPRA), the Metal Cladding and Roofing Manufacturers Association (MCRMA), National Federation of Roofing Contractors (NFRC), and the Green Roof Centre.

You can view this year's winner's and finalists projects on the website.

For more information visit www.competentroofers.co.uk

020 7638 7663

www.roofingawards.co.uk

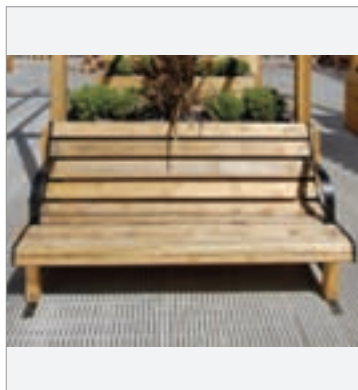
RENOLIT EXOFOL Smooth 2: Style with performance



RENOLIT has launched Smooth 2, a new architectural surface texture with improved scratch-resistance into its RENOLIT EXOFOL MX range of exterior films. A smooth emboss with increased scratch-resistance opens up new perspectives as well. It offers a pleasant feel while being resistant against contact. The surface geometry has been developed so that the raised areas are slightly rounded, which improves performance whilst maintaining the uniform surface structure. The new emboss is available ex-stock in seven shades and can also be produced in any other RENOLIT EXOFOL colour on request. Year on year foiled window installations are growing and within that growth the percentage of installations which are solid colours has also increased. As demand for solid colour continues and so does the trend towards smooth surface solid colours which create modern architectural statements on new builds or refresh older buildings with a modern facade. This new trend is reflected in the UK where sales of the RENOLIT EXOFOL MX solid colours with smooth surfaces have grown by 35 per cent in 2016 compared to the same period in 2015. The many colours reflects the requests from increasingly design-led consumers. It is no longer enough to only offer one or two shades, this new generation of discerning customers want far more choice.

01670 718222 www.renolit.com

Aluminium grilles become a decking favourite



neaco's patented aluminium open grilles have attracted widespread demand as a more practical alternative to traditional timber decking. The company's Techdek system has become a popular choice for garden decking, sun terraces, external walkways. Architects have been quick to appreciate Techdek's advantages: the product is non-toxic, non-combustible, corrosive-free, extremely durable and easy to install without requiring hot works such as welding. A patented swage-locked construction between bars enables high structural efficiency and load-bearing capacity.

neaco's National Sales Manager, Peter Melia, comments: "We have been attracting a lot of specifications from projects which require low-maintenance decking and terraces – Techdek is virtually maintenance-free, which gives it a clear advantage over wood, which can be vulnerable to the elements and requires regular surface treatment is required to protect the grain. Our grilles are available with a ribbed surface for anti-slip performance." Techdek is similarly suited to balcony flooring with grille profiles that provide a generous 74 per cent contact area yet drain water efficiently. The system can be specified as part of neaco's all-in-one modular balconies.

Double success for Bauder

Flat roofing specialist Bauder was recognised at this year's UK Roofing Awards, winning two of the prizes on offer for its work on Byker Wall in Newcastle and ROM's manufacturing facility in Sheffield. The award winners were announced on May 13th at the Hilton Metropole in London, an event hosted by TV presenter Steph McGovern and overseen by the voice of the National Lottery Alan Dedicoat.

Now in its eleventh year, the Roofing Awards are an industry-wide competition that celebrates outstanding standards of workmanship and safety within the roofing industry. This year the level of competition was particularly high with almost 300 project entries being submitted for the fourteen award categories available. A wide range of criteria are taken into consideration by the judging panel when determining category winners including: degree of difficulty, aesthetics, problem-solving and environmental qualities.

Bauder's first win of the night came for its photovoltaic (PV) installation at the landmark, Grade II listed Byker Wall estate, which won the



'Solar on Roofs' category. As part of the £26 million refurbishment of the residential properties, work was required to not only repair the failing roof but to also bring Byker Wall to the forefront of modern-day roofing technology with the addition of a photovoltaic system. The works included converting the pitched metal roof back to its original flat roof status and replacing the waterproofing with Bauder's high quality reinforced bitumen system.

Following on from this success, ROM Ltd was then chosen as the winning project for the 'Reinforced Bitumen Membranes' category from a group of four finalists that included two other

Bauder projects. The phased roof refurbishment at the manufacturing facility involved replacing the failing waterproofing with Bauder's premium bituminous system, BTRS, which was installed by Mitie Tilley Roofing. The project had various health and safety implications, with the main-substructure proving unstable due to corrosion and the facility remaining operational throughout the works, however all remedial work was completed on time and to budget much to the delight of the client.

Bauder's Managing Director, Andrew Mackenzie, expressed delight with the company's success, "Bauder is always delighted to be recognised by the Roofing Awards, which serve as an industry benchmark for quality. Byker Wall and ROM's manufacturing facility illustrate the exceptional levels of workmanship that our approved contractors deliver and we are extremely proud of the work performed by everyone involved with these projects."

01473 257671 www.bauder.co.uk

UK Roofing Awards 2016 – Winners revealed



The winners of the UK Roofing Awards were announced at a ceremony hosted by BBC's Steph McGovern at the Hilton London Metropole on Friday 13 May. The UK Roofing Awards also reward the individuals and organisations that go above and beyond the call of duty. To see this year's list of winners and finalist please visit the NFRC website. The Roofing Awards bring everyone within the industry together. Along with NFRC, the awards hosts were the Roof Tile Association (RTA), the Liquid Roofing and Waterproofing Association (LRWA), the Lead Contractors Association (LCA), the Lead Sheet Association (LSA), the Federation of Traditional Metal Roofing Contractors (FTMRC), Single Ply Roofing Association (SPRA), the Metal Cladding and Roofing Manufacturers Association (MCRMA), CompetentRoofers, and the Green Roof Centre. Key partners were B&CE Benefit Schemes and The People's Pension, CITB, Electrical Contractors Insurance Company (ECIC) and Quality Assured National Warranties (QANW). Of course the awards would not take place without the continued support by the sponsors, in particular SIG Roofing who also assists in the continued development of the event. To all the sponsors the NFRC thank them for their continued contributions.

0207 638 7663 www.roofingawards.co.uk

SMART Door from NorDan – at the forefront of technology



NorDan, a manufacturer of high quality Scandinavian timber windows and doors, unveiled its SMART door technology for the first time in the UK at Scotland's Homebuilding and Renovation Show in Glasgow on 21st May. SMART Door is a completely new product. Developed from NorDan's top of the range composite door range, with first class thermal properties, stability second to none, and security to keep you feeling safe at nights. The robust security layers of rust proof steel sheets also contribute to the stability of the door, ensuring it doesn't warp or bend in hot weather or in a damp Scottish winter. These external doorsets protect against driving rain and winter winds, and we have test certificates to prove it! New for 2016, is the additional of a high tech locking system which enables you to open the door from a distance using mobile telephony. This door of the future has no key, but has every other security aspect you would expect. It can be locked using a key fob, or from your mobile phone app. The new SMART technology in the door will also help you turn on and off the burglar alarm system. A camera with a wide angle lens and high resolution can record who was at the door, log any entry calls that you have allowed, and let you talk to whoever is at the door.

01786 406380 www.nordan.co.uk

Trespa® Meteon® chosen for unique private dwelling



A startlingly modern private dwelling in Steeple Morden, Cambridgeshire, has been designed and constructed by its owner using Trespa® Meteon® architectural cladding panels over the entire external, non-glazed surface.

The two-storey dwelling totalling some 10,000 sq feet is of steel frame construction set on concrete pads enclosed in SIPP wrapping. 635 square metres of Trespa® cladding in Loft Brown matt finish and a further 243 square metres of Nordic Black, also in matt finish, were used on the external elevations, installed by means of the TS200 invisible fixing system.

The form of the building was created by owner/developer David Grainger with Trespa® in mind. He says: "Having seen this material used for offices in and around London and major apartment buildings I decided to use the product on the house." He adds: "It was well worth doing, particularly in respect of the low-maintenance requirements of the product."

The property is designed with energy-saving very much to the fore. It features triple-glazed window and door units, an air source heat pump, under floor heating and solar tiles for lighting which produce 15KVA output.

The building also boasts a water reclaim system by which all rainwater is captured for re-use within the home.

Trespa® specialises in decorative, high-pressure compact laminates with an integral surface manufactured using Trespa's unique in-house technologies that utilise Dry-Forming and Electron Beam Curing. The panels perform exceptionally well outdoors with neither sun nor rain having any significant effect on the surface.

Trespa® offers a 10 year conditional product warranty on the entire range and with a broad



range of colours, finishes and tactile effects available, Trespa® Meteon® brings compelling aesthetic and nearly limitless design possibilities to next-generation architectural claddings.

0808 2340268
www.trespa.com

adf architects datafile



REGISTER ONLINE FOR... In-print magazine • Digital magazine • Newsletter • Daily digests

www.architectsdatafile.co.uk

Long-standing construction firm Sisk nominates Hueck UK as preferred supplier

The UK arm of international construction contractor John Sisk & Son, part of the family-run SISK Group, has chosen aluminium building systems specialist, Hueck UK, as preferred supplier for future projects.

The development follows a very successful collaboration between the two companies at the recently completed Rathbone Market regeneration scheme, which has seen the creation of more than 650 new homes, alongside community areas and retail spaces.

Ange Francis, Facade Manager at John Sisk & Son, said: "We were involved in the Rathbone Market project right from the early stages and worked with Hueck to deliver the high performances and look that the client and architect wanted, while firmly controlling the costs.

"Hueck's design capabilities, their extremely wide and versatile collection of products, and their



expert approach to the architect's design and contractor's implementation have all contributed to the successful completion of Rathbone Market, and the subsequent announcement of an even closer collaboration with John Sisk & Son on future projects," added Ange.

A preferred supplier status is becoming increasingly important, as an earlier and tighter project collaboration between architects,

contractors and building envelope specialists is now deemed necessary in order to ensure effective cost control while meeting the desired performances and requirements.

Leon Friend, Hueck UK Project Development Director, said: "There were strict requirements for effective noise reduction as the project is situated close to the busy A13 road. We used our Lambda 77 L inward and outward opening windows and doors, boasting a sound insulation level of 46 dB, to deliver excellent comfort for the end-user."

With similar trading histories, John Sisk & Son and Hueck UK have been supplying high levels of construction and engineering expertise for over 155 years and 200 years respectively, driven by the same objectives – quality, innovation and professionalism.

0121 7671344 www.hueck.com

selfbuilder & homemaker



REGISTER ONLINE FOR... In-print magazine • Digital magazine • Newsletter • Daily digests
www.sbhonline.co.uk

Guernsey flats go thoroughly modern with Trespa

A landmark high-rise apartment block that was once thought to have outlived its usefulness has been given a new lease of life and a fresh appearance, thanks to Trespa® Meteon® cladding panels.

Built in 1963, Cour du Parc is 11 storeys high and the tallest building on the Channel Island of Guernsey. Only five years ago it stood empty of tenants and was considered to have reached the end of its useful life. Then an imaginative refurbishment and upgrade was given the go ahead by the States of Guernsey planners.

The result is an eye-catching structure where it's previously uninspiring dun-coloured brick-work has given way to vibrant Trespa® Meteon® cladding panels in two shades of light green.

"Visually the improvement to the building and

the ability to detail openings and vary colour to enhance vertical features were key to choosing Trespa," says Phil Roussel, Development Manager of Guernsey Housing Association, which carried out the transformation in partnership with the States of Guernsey Housing Department.

"The new panels have rejuvenated a tired old building and brought it up to date for the 21st century," says architect Ricky Mahy whose practice, Create, masterminded the new design.

Of crucial importance was protection against the elements. By using a ventilated facade system, the continuous air flow draws air through the cavity between the cladding and the inner layer of the exterior wall aiding in the removal of heat and moisture from rain or condensation.

"On the subject of environmental impact, using a ventilated rainscreen cladding system allowed us to increase the amount of insulation, thereby improving the energy efficiency of the building," says Mr Roussel. "There were less expensive options we first looked at but, with knowledge of other use of Trespa® on the island both at Sir Charles Frossard House and Oakvale School, we were satisfied that the product was capable of withstanding the harsh coastal environment to provide a long-term solution

without high maintenance costs," he adds.

The refurbishment project reconfigured space internally to provide 50 flats where previously there had been 42 and also made provision for an additional lift. The end result has been a welcome increase in social housing units for the island.

Says Mr Roussel: "GHA is a long term owner of this property so we wanted something without a high maintenance requirement. Trespa® Meteon® panels have good resistance to dirt, so we are confident the building will look good for many years."

Trespa® Meteon® is a decorative high-pressure compact laminate (HPL) with an integral surface manufactured using the company's unique in-house technologies; Electron Beam Curing (EBC) and Dry Forming (DF). It is the company's leading family of architectural panels for facades and exterior applications, created – as with all Trespa products – in close collaboration with architects, designers, installers, distributors and end-users.



0808 234 0268
www.trespa.co.uk

HbD

Housebuilder & Developer



REGISTER ONLINE FOR...

In-print magazine • Digital magazine • Newsletter • Daily digests

www.hbdonline.co.uk

Lift



Way out

