

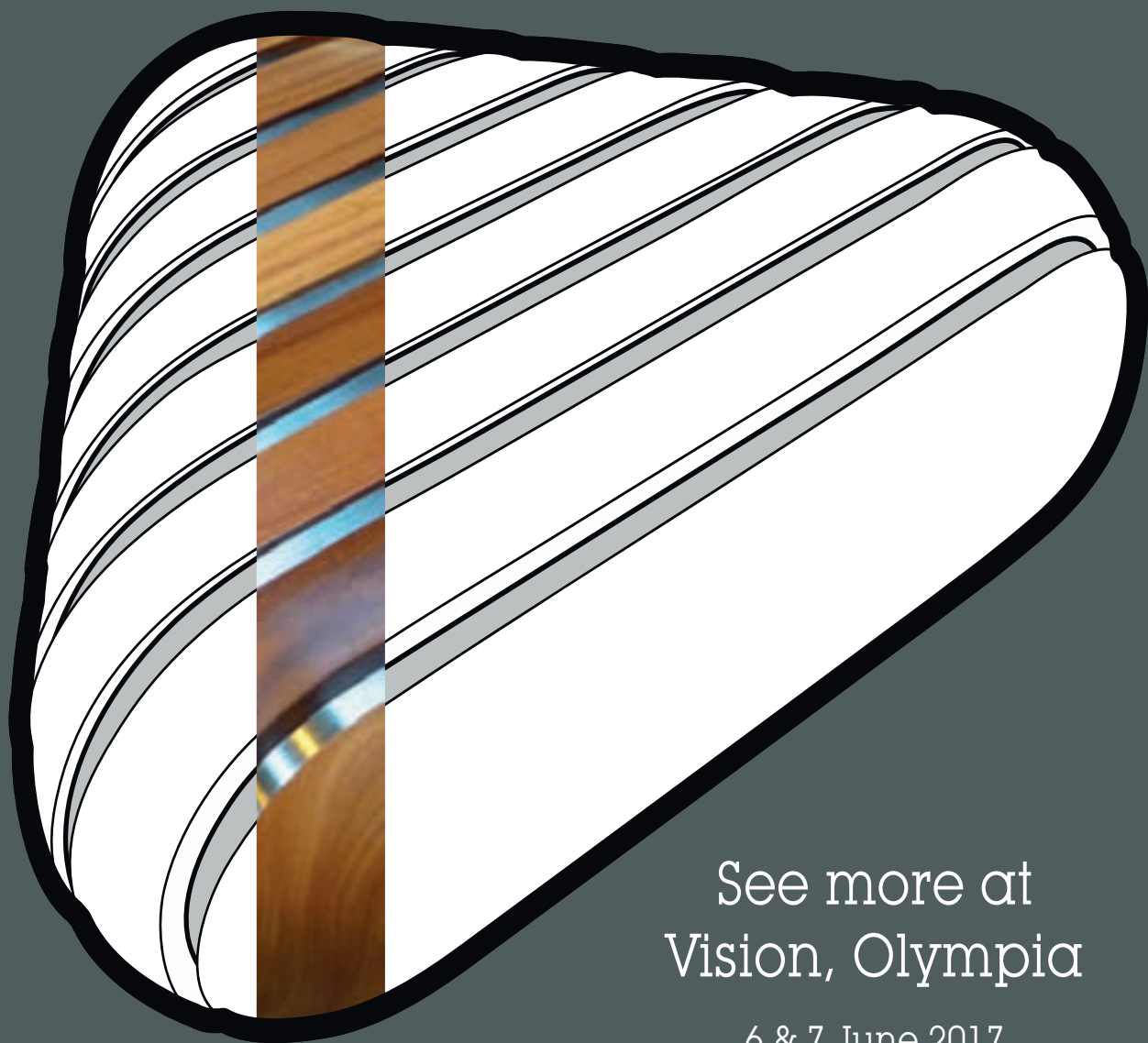
building construction design

www.buildingconstructiondesign.co.uk

June/July 2017

Appointments & News	02
Building Products	07
Structural Elements	12
Interiors	13
Exteriors	17

Cover image: © Levolux
See page 23 for details



See more at
Vision, Olympia

6 & 7 June 2017

Stand 32

woodscape.co.uk/strata

01254 685 185
sales@woodscape.co.uk

woodscape.co.uk
#designthenation



Woodscape.



Specifying the right life safety system to ensure compliance

The issue of poor and unplanned maintenance for vital life safety fire and smoke control systems is a key concern, which also has potentially fatal consequences. In particular, there have been a number of recent reports where smoke control systems in some housing association (HA) properties have been poorly maintained or neglected completely, placing tenants at risk.

Recognising the need to raise the standards when it comes to maintenance, SE Controls has launched SECloudlink™, an innovative 'remote services' solution, which provides detailed, around-the-clock system status interrogation. This comprehensive system enables SE Controls' maintenance team to provide planned and corrective maintenance when needed, driven by regulatory demands or by notifications direct from the smoke control system.

Using integrated 4G communications technology, it enables the system to be constantly monitored, as well as allowing any adjustments and tuning to ensure it matches the needs of the building and occupants, whether it is for smoke control only, environmental ventilation or a hybrid of both systems.

This approach not only provides an effective solution for buildings where ongoing maintenance might be an issue, but is also applicable to all buildings where smoke control systems are installed and demand regular maintenance to the standards demanded by BS9991, BS9999 and BS7346 Part 8, together with Building Regulations ADB; European EN12101, and others.

The key benefits of SECloudlink™ remote services include:

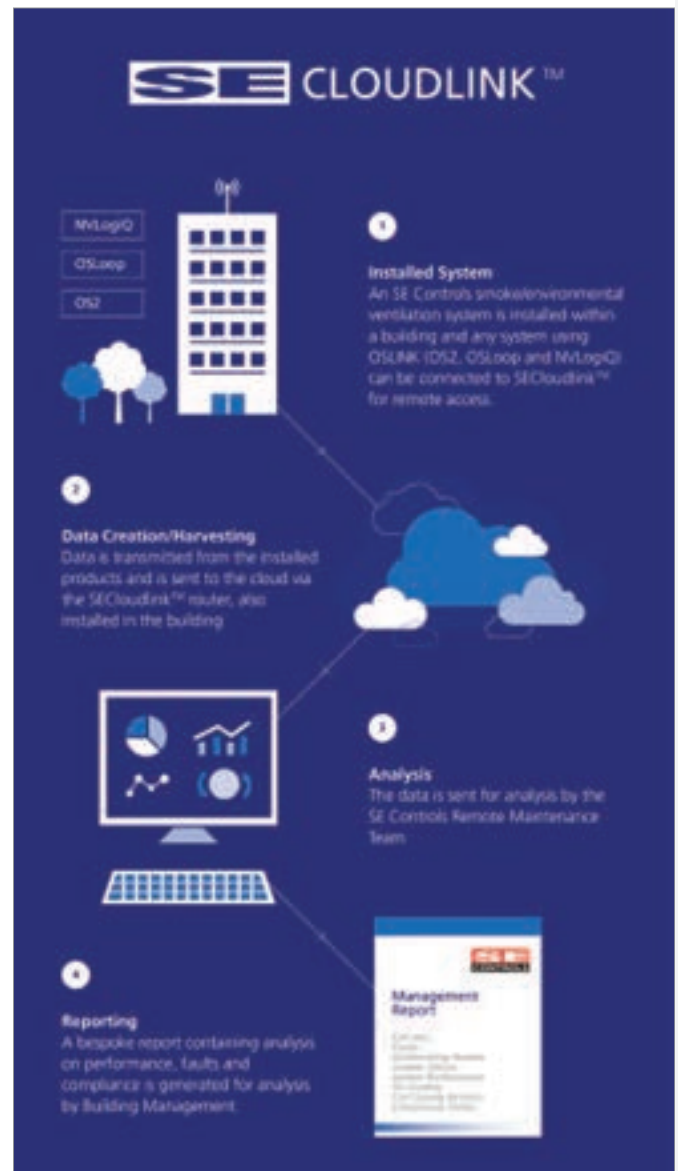
- Proactive management of life safety systems to ensure building compliance
- Improved efficiency and budget control, minimising disruption and reducing costs associated with expensive site visits
- System performance, including historical data, for individual sites or a portfolio of buildings
- Highlight faults and service requirements with fast problem resolution
- On-going support with advice and assistance when needed
- Management reporting

Simon North, Service and Maintenance Division Manager with SE Controls, explained: "The priority to install a legally compliant smoke and fire safety solution, means the onus of maintenance and servicing that system is often neglected, however, the potential costs associated with reactive maintenance e.g. sending out an engineer to site, as and when there is an issue, or when the system needs servicing, begs the question - why wouldn't you want to engage an SECloudlink™ solution?"

He added: "One of the key values of SECloudlink™ is that once the data is captured, a much more proactive and cost effective maintenance regime can be implemented. This includes the production of management information reports, system performance reports and early warnings, such as battery life, together with documentation to demonstrate compliance with the relevant regulations, which are a legal requirement."

The system can also provide significant benefits to contractors, particularly where they are responsible for maintenance on multiple sites. Due to the efficiencies of SECloudlink™ software, every installation can be monitored remotely where an SE Controls solution has been installed.

Individual rooms can be monitored on a floor-by-floor basis and using the system's graphical interface, which can be configured to notify SE Controls, or the appointed maintenance contractor, when an issue appears. Any alert or notification can be immediately interrogated on



screen with data logs to show details of the reported event to speed up corrective actions.

The SECloudlink™ solution is already in place on several sites where life safety systems are installed and the resulting benefits to landlords have also been significant. However, the most important benefit is for the building's residents; if a fire should occur, then the system will operate flawlessly and escape routes will be kept clear of smoke, as the alternative doesn't bear thinking about.

Further information on SE Controls' products, solutions and projects can be obtained online.

01543 443060

www.secontrols.com





Kemperol®

Liquid roofing and waterproofing at its very best

- Ideal for roof refurbishment, repair and new build roofing projects.
- Complete solvent free and odourless waterproofing systems available that can be laid whilst the building is operational - Ideal for schools, colleges and universities. Have the work done when you want it or need it without disruption.
- Kemperol® is a cold liquid application removing the fire risk of hot works.
- Laid in a single wet-on-wet process to form a totally seamless, durable, fleece reinforced, UV stable, elastomeric waterproofing membrane that cannot delaminate.
- With BBA Approval and a life expectancy in excess of 25 years your roofing budget will never be better spent.
- For more information visit www.kempersystem.co.uk



KEMPER SYSTEM LTD.
Tel: 01925 445532
enquiries@kempersystem.co.uk

 **KEMPER**
SYSTEM
Kemperol Liquid Waterproofing



Schöck and Marble Mosaic team up for 345 precast balconies

Horizons is a recent addition to the skyline on the north bank of the Thames adjacent to Poplar Dock. It offers 190 private apartments with one, two and three-bedrooms, plus six penthouses. There are a considerable number of balconies involved on the development, so minimising any possible thermal bridging problems was crucial. The Schöck Isokorb structural thermal break comfortably met the necessary specifications and precast balcony specialists Marble Mosaic had a big part to play as well.

Marble Mosaic specialise in precast concrete cladding panels and structural units for new buildings. Joint MD Dennis Vittle comments: "We have been associated with Schöck projects for many years and Horizons required the balcony units to be integral with the main structure, insulated and fire-stopped from it. The Schöck Isokorb type K was the natural solution. There are 345 pre-cast balconies on the project which posed a number of challenges. There were standard



insulated balcony-to-slab connections and a number of downstand and upstand connections required. Also the precast columns were supported off the balcony slab at one end only, so there was a heavy eccentric shear load transfer. The agreed

design called for a combination of Schöck Isokorb types K and Q to ensure structural integrity with the frame, whilst avoiding any clashes with the concrete frame reinforcement".

The Isokorb type K is a load-bearing thermal insulation element for concrete-to-concrete cantilever balconies, which transfers bending moment, stress and shear forces. The Isokorb type Q serves as a shear force transfer element for loggia's or column supported balconies with relatively low load expectations.

The range of Schöck Isokorb solutions guarantees totally verifiable performance standards and meets full compliance with the relevant UK building regulations.

For a free copy of the Schöck Thermal Bridging Guide and/or the Thermal Bridging Solutions brochure – contact the company or visit the website.

01865 290 890 www.schoeck.co.uk

Secure Parking | Innovative Answers | Stylish Designs



Velo-Safe Lockers



Lock2Me Stand



Higher Kennet Shelter

High Capacity Racks • Lockers • Shelters & Compounds • Racks & Stands
Pump & Tool Kit • Wheeling Channels

cycle-works

cycle-works.com • info@cycle-works.com • 02392 518 555



JDP celebrates 45 years

Water management specialists JDP is celebrating its 45th anniversary with a period of significant expansion, growth and investment. The company is driving major investment in new branch openings, continuous branch improvement and upgrades, expansion of sales teams, sales office support, technical services and marketing and trade counter staff. Having grown over 45 years to become one of the UK's leading and most respected distributors of water management systems, JDP has dedicated manufacturing capabilities through its partners in Tesserlo Group and close partnerships with the world's leading manufacturers of drainage, civil engineering and building products. JDP provides a one-stop shop for residential, commercial, public and industrial building as well as civil engineering, utilities and agricultural projects. In this milestone year, managing director Steve McLellan invited local MP Rory Stewart and Val Tarbitt for a guided tour of JDP's head office.

01228 791503 www.jdpipes.co.uk

Sweet taste of success for SE Controls at former Terry's chocolate factory

The £38 million conversion of the former Terry's chocolate factory in York into 'The Residence', a development of 173 luxury apartments, is using a SHEVTEC® smoke control system from leading smoke and environmental ventilation specialist, SE Controls, to help keep residents safe in the event of a fire.

The original 27-acre (109,000 sq.mtr) site opened in 1926, but following its closure in 2005 it was subsequently acquired by Henry Boot Developments in 2013. This included the Grade II listed Art Deco style main chocolate factory that has now been transformed in partnership with specialist heritage developers and contractors, PJ Livesey.

As the one, two and three bedroom apartments, together with penthouses, are located over five storeys, it was essential that a smoke ventilation system was installed to comply with building regulations and other key legislation, including BS7346, BS9991.



The system uses staircase ventilation and four smoke shafts to ensure smoke can be vented effectively from escape routes, including corridors, the main lobby and communal spaces, allowing residents to evacuate safely.

At the head of each smoke shaft, a SHEVTEC automatic opening vent (AOV) louvre allows smoke to escape when triggered by the smoke and fire system sensors. A similar approach is used in each stairwell where the end staircases use AOV windows,

and central staircases are vented using roof access doors fitted with automatic actuators.

Designed to operate on a floor-by-floor basis, the detection of smoke within any of the protected corridors or lobbies directly triggers the system, which automatically opens smoke doors and AOVs to allow smoke to be removed from the affected area and keep escape routes clear. The system is controlled by a series of SE Controls OSLoop smoke vent zone controllers together with OSLoop Co-ordinators and alarm monitoring modules, dedicated to each smoke shaft.

Tamper proof manual control points (MCPs) on every floor allow the system to remain active with the head of shaft and head of stair vents staying open until fire service personnel reset the activated floor via the MCP. A full back up battery system is also incorporated to ensure that it can operate, even in the event of a power failure.

01543 443060 www.secontrols.com



GlasSpace are at the cutting edge of the structural glass market and the choice of many top Architects.

We pride ourselves in offering a range of structural glazing solutions that create a contemporary living environment for both residential and commercial projects.

We offer a wide range of leading bespoke glass products including frameless installations and our **infiniti sliding doors**.

Our pure glass structures enable a blend of timeless ease with the built environment.

info@glasspace.com
www.glasspace.com



www.glasspace.com
London - 0207 118 0448
Bristol - 0117 259 1122



Top marks for Encasement at ManorLodge School in Hertfordshire

Structural steelwork around the perimeter of a new sports hall and theatre at Manor Lodge School in Shenley, Hertfordshire is being concealed using 70 semi-circular 'Circa' decorative column casings from Encasement interior to provide a durable, attractive and safe environment.

Manor Lodge is an independent coeducational school for early years to year 6 students and occupies a 10 acre site near the M25, which the new sports hall and theatre complex shares with the school's original grade II listed building and modern teaching blocks.

The £2 million project was constructed by T&B Contractors and designed by Aedifice Architects, which features a steel frame construction to provide the large, open interior space, while the exterior uses brick and wood cladding together with a planted 'green eco-roof'.



Image Courtesy T&B (Contractors) Ltd

Inside the sports hall, Encasement's column casings, which range in height from 5.0 metres up to 7.7 metres, are used to conceal vertical steel supports around the building's perimeter to create aesthetic finish to the interior that integrates with the colour scheme while reflecting the school's own colours.

Manufactured from pre-formed plywood and finished with a highly durable Formica laminate in a Beaujolais K2046 colour, both 300mm and 500mm diameter casings were used to meet the needs of the installation and ensure the steelwork was concealed effectively.

As 'Circa' casings are normally supplied in 3.0 metre lengths, the column casings were stacked to achieve the necessary heights and also incorporated an aluminium feature joint as an additional design feature.

01733 266 889 www.encasement.co.uk



New clarity given for air admittance valves

Drainage ventilation expert **Studor** has responded to market confusion about Air Admittance Valves (AAVs) and whether they can be used externally. "There does seem to be confusion in the market and we're frequently asked whether AAVs are suitable for exterior use," comments Studor's Technical Director Steve White. "Both our own Studor Maxi-Vent, as well as the Wavin branded OsmaVent 110, can all be used externally. The latest BBA Agrément Certificates clarify this and specifically refer to their external use." The BBA certificates verify that the A rated valves perform in extreme temperatures, from -20°C to +60°C in accordance with EN12380. However, it should be noted that the independent testing actually carried out exceeded the requirements of the standard and proved that the valves operate in temperatures down to -40°C without the insulating cap. In addition, the ABS plastic which the valves are made from includes a UV stabiliser to protect against any degradation effects from ultraviolet radiation.

Howarth gets cooking for Cancer Research UK



Howarth Timber and Building Supplies recently cooked up a treat for customers across the country – all in the name of charity. Between 20 and 24 March, each of the company's 30 branches hosted a breakfast morning and raised hundreds of pounds in aid of Howarth's 2017/18 charity partner,

Cancer Research UK. As well as filling up on a tasty cooked breakfast, customers were able to take part in competitions and meet Howarth Timber's suppliers, with extra fundraising events taking place at selected throughout the week. The funds raised will support the life-saving work that Cancer Research UK carries out.

Howarth Timber celebrates reopening



Howarth Timber and Building Supplies marked the grand reopening of its Doncaster branch with a three-day celebration complete with offers, competitions and giveaways. The store, which is located on Churchill Business Park on Churchill Road, has

been extensively refurbished and regular customers and newcomers were invited to take a look at the bigger and better branch. The store's new look includes a specialist plumbing and heating department and an impressive kitchen showroom displaying a range of modern and traditional kitchen combinations. As well as browsing the store, customers were able to take advantage of exclusive deals, meet the suppliers, enter an array of competitions and even enjoy a free breakfast.

BIM Level 2 – Are you in the 90 per cent that believes the industry is not ready?

Back in April last year the UK government's BIM mandate came into force, requiring all centrally procured public sector building projects to be BIM Level 2 compliant, which represents a significant milestone on the journey towards the digitalisation of the built environment. However, despite BIM being very much the industry 'buzzword' many people still do not fully understand BIM, its capabilities or where we are on the roadmap towards Level 3.

Bauder and bespoke BIM

At Bauder we fully acknowledge these challenges, which is why we actively support our clients and suppliers with the development of their own BIM knowledge and objects, as we realise that this can only be beneficial for everyone involved.

Last year we extended our BIM offering with the launch of 19 new generic waterproofing system objects and we can now also provide totally bespoke objects, which incor-



porate full model data in COBie format and can be accessed in many of the other popular software programmes, such as Vectorworks and Bentley, via a plug in. In fact, our ever-evolving BIM object library now includes well over 100 models for our single ply waterproofing systems alone, covering every possible build-up permutation. In order to receive a bespoke object and the associated guarantee you will need to register your

project with us so that we can in turn provide you with the required technical support to ensure that the object is most suitable to meet the exact requirements of your building. An example of this is providing project specific wind uplift calculations, as they can obviously differ significantly based on a building's location and surrounding environment.

Future of BIM

Realising all of the benefits of BIM may not quite be on the horizon, but with the way that the industry is now wanting its data BIM clearly represents the future of how people will be constructing buildings, and it may well get to a point where if you cannot provide data in the required format you simply will not be able to trade.

For more information on BIM and to download your free objects now visit the website.

01473 257671 www.bauder.co.uk



GRP door & window canopies from Canopies UK

We have supplied more than 30,000 canopies throughout the UK to housing associations, contractors, house builders and local authorities.

With a standard range of popular canopy designs, a bespoke manufacturing facility and installation service if required, Canopies UK offer the complete solution.

- | | | |
|---|---|--|
| <input checked="" type="checkbox"/> Free site visit | <input checked="" type="checkbox"/> Full fixing kits | <input checked="" type="checkbox"/> Specification sheets |
| <input checked="" type="checkbox"/> CAD drawings | <input checked="" type="checkbox"/> Delivery nationwide | <input checked="" type="checkbox"/> Installation if required |

For a quote call Greg now on:

T: 01254 777002

M: 07846 423812

www.canopiesuk.co.uk

Email: greg@canopiesuk.co.uk



Sunspaces enhance living standards



A brownfield site on a main road into Ayr is now home to 22 new flats and terraces. Designed by John Gilbert Architects, the residences incorporate Windoor System 1000 Light balcony enclosures with frameless glazing. In addition to energy saving benefits gained through passive solar energy, enclosing a balcony on such an arterial route in a highly populated area, means that residents can enjoy noise reduction of around 17db when closed, increasing their enjoyment of home.

By choosing a Windoor balcony enclosure it means that when the weather allows, it can be opened up fully and enjoyed as a traditional open balcony.

Windoor, a member of the WinGroup, is one of Europe's leading balcony manufacturers. Our ethos is that all products are manufactured, supplied and installed with design, functionality, quality and budget in mind. We work hand in hand with our clients to provide the perfect solution.

www.wingroup.ch

cpd provider



Windoor UK Limited,
12 Newmarket Business Centre,
341 Exning Road,
Newmarket, Suffolk CB8 0AT
Phone: 0870 067 8810
Email: windoor@windooruk.co.uk www.windooruk.co.uk



Stand C4

windoor[®]
Creating living space



Cost efficiency never looked so good

Calor gas gives developers a low-cost, hassle-free energy solution that provides rural homes with all the benefits of mains gas:

- Average installation costs of £500 per plot
- Underground tanks improve site aesthetics
- LPG boilers fit easily within standard house designs

Call us today on 0345 6038095 to find out more about the benefits of Calor gas for housing developments without mains gas.

"Gas has a proven track record of providing heating and hot water to homes, so we had no doubts that LPG would be a trustworthy option that was hassle-free to install."

**- EMMA ALLEN, PROJECT MANAGER AT
BIMINSTER HOMES**





Studor has a million on its mind

Drainage ventilation expert Studor is on target to supply more than one million of its products worldwide this year.

Studor is the market leader for Air Admittance Valves (AAVs) and other specialist drainage ventilation products. It supplies customers through its own ByStudor brand, as well as OsmaVent through Wavin Plastics, and the Pleura range through Terrain.

"The other one million figure which caught our eye is the Government's target to build one million new homes by 2020," says Studor's UK Managing Director Stephen Taylor. "This should open up huge opportunities as our knowledge and expertise in drainage ventilation technology, acquired over 40 years, should make our products particularly relevant."

Founded in 1975, Studor's development and growth has been driven by its innovative approach to product and system development. The company has consistently focussed on 'inventive technology' and has numerous patented designs with patent protection in over 50 countries.

Studor's expertise in drainage ventilation is supported by its close association with Heriot-Watt University research teams, which has led to new product developments.



Studor also has an active presence within the international specifiers and construction communities and plays a part in many standards and building code committees.

"We place huge emphasis on the technical support and assistance we offer our customers to ensure we provide the right product for their drainage needs," comments Taylor. "This support extends to providing free in-house technical advice on drainage system design."

Studor has numerous installations across six continents, and its worldwide subsidiary and distributor network extends to more than 50 countries. Its products are found in some of the

most challenging buildings in the world such as the O2 Arena, Unite Stratford 1, Ford Field Stadium (Detroit, USA) and Ferrari World (Abu Dhabi, UAE).

While the Studor name might not yet be well known in the UK, its rich history and specialist knowledge makes it well placed to help architects, engineers, specifiers, plumbers, and end-users solve their drainage ventilation issues.

For more information call, email or visit the website.

0845 601 32 92
www.studor.net



**YOUR
NO. 1 TREE PIT
SOLUTION PROVIDER**

- ArborFlow - an environmentally robust means to manage stormwater run off.
- Prevents flooding as it absorbs and contains water in the tree pit.
- Filters out harmful pollutants and contaminants
- Increase chances of newly planted trees to reach their full potential

enquiries@greenblueurban.com
+44 (0)1580 830 800
greenblue.com









Looking for a **Reliable** Sign Supplier?

For over 35 years Glendining Signs has reliably and competitively supplied sign solutions to some of the biggest names in the Construction Industry.

Having now moved into our new bespoke premises and utilising state-of-the-art printing equipment, we continue to offer great quality signage products with the speed of service you need.

- Site Safety Signs
- Sales & Marketing Signs
- Hoarding Signs
- Signage Installation

Shop now at
glendining.co.uk

Tel: 0118 932 3788

Fax: 0118 932 3804

Email: sales@glendining.co.uk



Architects Datafile website



The Architects Datafile (ADF) website is an online provider of past and present products and news items for the architect or specifier. architectsdatafile.co.uk is a one-stop source for all the latest press releases providing any visitor with access to information about products and services that they may require. From the website, you can find links to digital issues that have live links to advertisers' sites, as well as daily email alerts to keep you as informed as possible.

www.architectsdatafile.co.uk

Connect with Selfbuilder & Homemaker online

The Selfbuilder & Homemaker website is an online provider of past and present products and news items for selfbuilders.

Regularly updated with hundreds of press releases, sbhonline.co.uk is a one-stop source for all the latest self build information.

It is also a gateway to our other online assets, from our archives of digital issues and newsletters to our social media outlet on Twitter.

[Visit www.sbhonline.co.uk to find out more!]



Kytun™
DRY ROOFING PRODUCTS



SLATE DRY VERGE

- Provides full wind uplift and rain protection.
- Patented integral rainwater 'Drip System'.
- Extremely easy and quick to install.
- Huge labour saving costs.
- Meets BS 5534 requirements & NHBC guidelines.
- Requires no maintenance once installed.
- Creates continuous clean verge appearance.

T. +44 (0)1684 293702 www.kytun.com



Fordingbridge transforming Garden Centre retail space

Almondsbury Garden Centre recently improved their external sales space with the addition of a large walkway installed by specialist design and build contractors Fordingbridge.

The brief was to provide a structure, with wow factor that had to maximise the potential from the multi-level site. Covering 102 linear meters with a span of 3.7m, the barrel-vaulted walkway at Almondsbury, was covered using Opal 60 Fabric. Exclusively developed for Fordingbridge in response to customer requests for a canopy fabric that is both UV stable and fire retardant whilst allowing 60 per cent light transmission. The high performance cloth allows optimal flexibility and strength providing freedom of shape and size, with minimal maintenance due to a smooth finish and an innovative self-cleaning surface treatment.

Fordingbridge is presently working with Hillier on several of their sites. Hillier Eastbourne is currently undergoing a major extension with a Fordingbridge portal frame structure, creating an additional 20,000

square feet, due to be opening Easter 2017. The extra retail space will allow room for five additional concessions, as well as giving even more room to offer a great range of plants, garden accessories and home items.

Fordingbridge has more than 50 years' experience in the design and build of canopies, walkways and inspiring building solutions to the Garden Centre sector, and have earned an excellent reputation for creating aesthetically pleasing, affordable solutions.

Other recent projects showcasing Fordingbridge's innovative approach include the installation of a hybrid canopy at Longacre's Bybrook Barn. Using steel stanchions and glulam timber arches for an 8m span and 60m length, the aesthetic keeps the wow factor of the timber arches coupled with a contemporary feel with the use of steel. The steel stanchions can be galvanised or finished using powder coating, which can be applied using any RAL colour. This lends itself well for the structure to remain in-keeping with any branding guidelines.



The hybrid is more about client preference, as the structure guarantee of 25 years remains true for all options. It has more to do with how our canopy and walkways blend in with the chosen environment, creating a seamless outdoor retail space.

Architects and specifiers wishing to find out how we can collaborate on projects may contact Fordingbridge via phone or email to arrange a free site visit to discuss solutions.

03333 318 502 info@fordingbridge.co.uk
www.fordingbridge.co.uk



Ideal Standard adds to Concept Freedom range with new bath

Ideal Standard, a leading provider of innovative and design-driven bathroom solutions, has extended its successful 'accessible bathroom range', Concept Freedom, with the addition of a new, multi-functional, accessible bath that is suitable for the whole family.

Concept Freedom's new inclusive bath tub has been designed to make bathing anxiety free for users with mobility issues, while still delivering a beautifully designed aesthetic and a tranquil space in which to bathe.

It also aims to offer an alternative to the somewhat stigmatised requirement to replace a bath with a shower in the hope, just because a user has mobility issues.

The intelligent and versatile design of the bath combines luxury with multi-functionality, meaning its features are relevant for the different needs of the different types of users in the bathroom – with many of its features, such as the lower ledge, also making bath time simpler for those bathing children and pets, for example.



Other key features of the bath include a reinforced ledge for stability, a lowered height controlled entry and exit, an inside step ledge to aid movability, a gel headrest to support the neck and support rails for manoeuvrability.

Ideal Standard teamed up with experts in design and care for older people. Led by Ideal Standard designer Robin Levien, the team comprised Design Council member, Colum Lowe, from specialist healthcare organisation, Red and Yellow Care, and well-respected occupational therapist, Anava Baruch, from Design for Independence.

Developed with accessibility in mind, the Concept Freedom range aims to include those of limited mobility through a collection of ceramics, brassware and showers that are well-designed, elegant and functional to meet a range of access needs.

Bathrooms can be adapted to users' changing needs, whilst still looking modern and stylish – ensuring that the space deals with the demands of modern households and the diversity of occupants, including less able and older generations.

Concept Freedom's collection includes raised height WCs for easier, more comfortable access, accessible basins with wide side rims, wet-room panels with extended brackets and easy to use shower valves and kits.

01482 346 461
www.ideal-standard.co.uk

Forbo's new Flotex Planks: a choice not a compromise



Forbo Flooring Systems has developed a new Flotex Plank collection, allowing users to create stunning, contemporary floor designs for areas where safety, hygiene and well-being are priorities. Combining the comfort of carpet, the durability of a resilient floor covering and the design versatility of a plank format, the new design collection lends itself perfectly to contemporary workspaces.

Offering six new designs: Triad, Box-cross, Lava, Seagrass, Concrete and Wood, in a 100x25cm plank, the collection provides endless design possibilities, from colourful and complex layouts to minimal, sophisticated aesthetics, which use shape and pile direction to create a stimulating floor pattern.

Flotex has the prestigious "Seal of Approval" from Allergy UK, as with the correct cleaning regime, it will not harbour dust mites. This makes the collection ideal for office spaces where people are likely to spend a prolonged period of time, especially at a time when work place conditions are understood to be responsible for 11 per cent of asthma cases worldwide.

0844 822 3928 www.forbo-flooring.co.uk/flotexplanks

Stanley Dura-Care doors for Spire Hartwood Hospital



Five Stanley Dura-Care 7500 telescopic sliding doors have been installed by **Axis Automatic Entrance Systems** at the Spire Hartwood Private Hospital in Brentwood Essex. Halliday Meecham Architects were looking to replace timber doors on the five patient 'pods' used in the recovery area for day-case procedures. The previous doors restricted access for moving beds in and out of the rooms and also created a very closed and detached environment. While researching alternatives they found the Stanley Dura-Care door range featured on the Axis Automatic Entrance Systems website. The fully glazed doors create a much brighter and attractive ambience in the recovery rooms and the breakout facility makes moving beds around much easier. The Stanley Dura-Care range is designed to meet the specific needs of hospital intensive and cardiac care units (ICU/CCU). They offer a selection of sliding, swing, folding and bi-folding door configurations and have all been designed to maximise clear space openings. Project Manager Kevin Hill of M&O Building Contractors was also impressed with the service provided by Axis, particularly the way problems were overcome.

01604 212500 www.axisautomatic.com



Designed For All

House builders and developers reputations rely on building quality homes that exceed expectations. Whilst maintaining a long term quality reputation. Exceptional design, engineering and overall quality make the Terrier perfect for all your new build developments.



Terrier
The Only
Choice

- Ergonomic design
- Chrome accent ring for décor style appeal
- Enclosed and efficient design
- Terrier performance compliance to Building regulations and proven energy saving
- Dynamic colour visual settings
- Smooth operation – intuitive settings
- 33% Hysteresis reduction



Pegler Yorkshire

For more detailed information:

FREE PHONE 0800 156 0010

email: uksales@pegler-yorkshire.co.uk

www.pegler-yorkshire.co.uk



Let it shine with new Vicaima High Gloss

The characteristics of a High Gloss finish have long been valued by interior designers. Its ability to reflect light, the perception of luminosity and the illusion of space, all present a comfortable feeling of openness and elegance. The latest Vicaima finish, "High Gloss", is now available as an option across many of their popular veneered and painted door, frame and wall panel products, allowing specifiers to achieve a premium finish for interior decoration without the burden of premium cost. Luxurious appeal is a term that best describes the new Vicaima High Gloss finish. Enhancing the natural beauty of real wood veneer or taking lacquered paint finishes to new levels of quality, are the hallmarks of this latest innovation from the Vicaima brand. Once the preserve of a select few, this new high gloss finish enables a touch of refinement to be attainable for many more applications, and all with the superior quality you would expect from a Vicaima product. The new High Gloss finish can be applied to the wide range of Vicaima product components, including door and frame solutions, wardrobes and wall panels, creating sophisticated elements that connect with each other to fashion environments with character and personality.

01793 532333 www.vicaima.com



Omnie heating in offices-to-flats conversion

The conversion of a former office property into half a dozen high specification apartments in the sought after Tooting district of South-West London has featured the specification of a low profile underfloor heating system from the range of OMNIE, as part of a space-saving building services strategy. The development in Althorp Road, SW17 Has been focused on a three storey commercial unit which the contractors have successfully reconfigured to form six similar sized flats. While OMNIE's design department provide detailed layout drawings for the project, along with other comprehensive technical guidance, all of the installation work has been carried out by Locksbury Services Limited from Biggin Hill in Kent. Locksbury Services' operatives installed the 35mm deep FoilBOARD panels across the building's existing sub-floor. Then 400 metres or more of the 16mm diameter heating pipes were pressed into the unique OMNIE multi-directional channel designs, which simplified the onsite installation eliminating the need of assemble loop and straight panels, prior to being connected back to the OMNIE manifolds, which distribute the flow from the home's boiler. While the slightly more complex Flat three required a six-port manifold, the rest of the dwellings feature five-port versions supplying primary water at 55°C to the different zones.

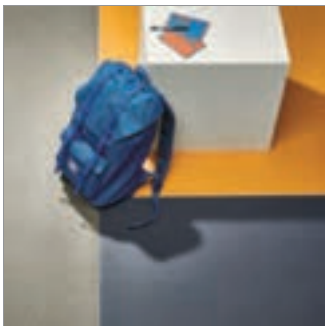
New anti-ligature radiator guard offers extra practicality and safety



A new anti-ligature radiator guard that allows easy internal access while overcoming the safety issues raised by installation on uneven walls, has just been launched by **Contour**, a leading anti-ligature radiators and guards manufacturer. The DeepClean Extra IP3x anti-ligature radiator guard has been specifically developed for the needs of mental health service providers, and delivers both extra practicality and safety. Gaps between a radiator guard and wall can provide potential ligature fixture points. Traditionally these are filled using an anti-pick mastic however this can stop access to inside the guards for cleaning, unless the mastic is cut away. By using an extra frame that sits between the wall and guard door, the DeepClean Extra's door can be unlocked and opened easily. Gaps between the guard frame and a wall can still be eliminated with anti-pick mastic, but without impeding operation of the door. The DeepClean Extra comes as standard with a grille design using 2mm holes punched directly into the guard case. The grille is compliant with the requirements set out in a Home Office design guide, making it ideal for both secure mental health and custodial facilities.

01952 290498 www.contourcasings.co.uk

Forbo's new Sphera Energetic adds colour to the curriculum



Forbo Flooring Systems has launched Sphera Energetic, its second homogeneous vinyl collection range produced in a new state-of-the-art production facility. Reflecting the latest education trend colours, and with low emissions and high LRVs, the new phthalate-free collection will contribute towards a stimulating, yet healthy indoor environment for any educational establishment. Forbo's Sphera Energetic is a bold, exciting new range that challenges traditional flooring design in the education sector. End users are presented with a fresh and playful colour proposition consisting of 52 shades: 41 'flecked' colours alongside 11 complementary 'vivid' hues, which feature corresponding highlight chips to create an integrated flooring solution. Ideal for zoning and way-finding through corridors, the colour palette has been designed with tint combinations that will create standout, inspiring flooring schemes. Janet Lowe, Head of Marketing UK and Ireland commented: "The new Sphera Energetic range delivers an exciting proposition for educational design: a stylish and contemporary yet wholly practical flooring solution."

www.forbo-flooring.co.uk/sphaenergetic

HiB

MAKING
BATHROOMS
BEAUTIFUL



The difference between an ordinary bathroom &
an extraordinary bathroom
 Bathroom Mirrors & Cabinets

hib.co.uk | sales@hib.co.uk | +44 (0)20 8441 0352



Unicorn Windows Ltd

01525 854272
 sales@unicornwindows.co.uk
 www.unicornwindows.co.uk

Housebuilder & Developer newsletter



Emailed on a fortnightly basis, the Housebuilder & Developer newsletter is designed to provide housebuilders and developers with the latest information on products and services of interest, direct to their inbox. The reader can quickly gather a snapshot of information from up to 12 carefully selected companies and easy-to-follow links through to further

information. Visit Housebuilder & Developer's website, or go direct to the company's own website for more details. Newsletter and magazine subscriptions are also available.

www.hbdonline.co.uk

Housing Management & Maintenance

Emailed on a monthly basis, the Housing Management & Maintenance newsletter is designed to provide professionals in social and private rented sectors with the latest information on products and services of interest, direct to their inbox.



The reader can quickly gather a snapshot of information from up to 12 carefully selected companies and easily follow links through to further information.

Information is available on the Housing Management & Maintenance website on www.housingmmonline.co.uk. The reader can also access further information directly from the company's own website.

Subscribe by visiting www.housingmmonline.co.uk

ahmarra
 EDUCATION RANGE

A range of made-to-order doorsets for schools, colleges, academies and universities.

Type 17 Type 13 Type 07

Download the brochure from:
www.ahmarra.co.uk

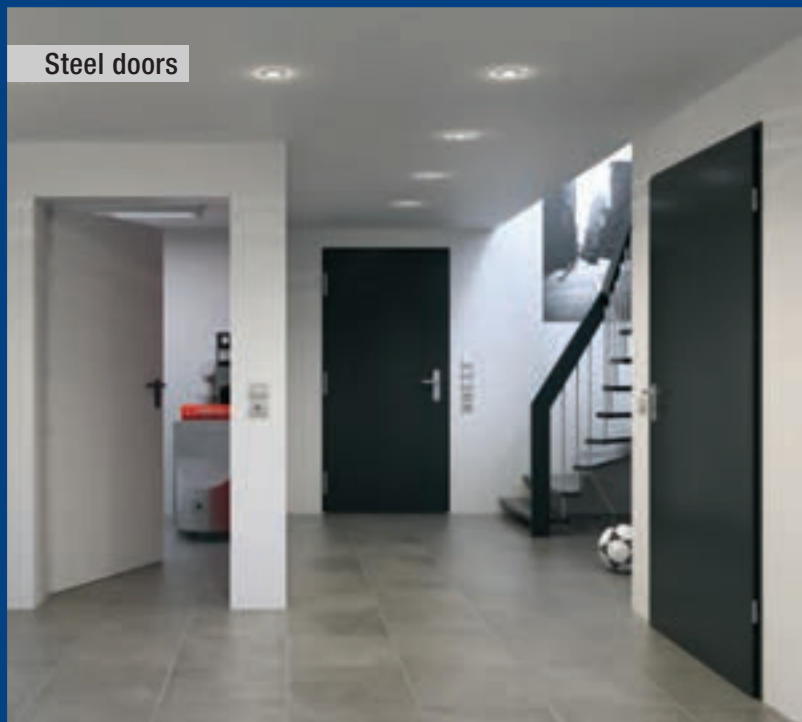
Garage doors and operators



Aluminium entrance door



Steel doors



When the Build Matters the Doors are Hörmann

- Widest range of garage and entrance doors in the UK
- Precision German engineering
- Excellent security and outstanding reliability
- Large selection of designs to match every home

HÖRMANN
Garage and Industrial Doors



Tobermore Aid Macfarlane's Concept Design at £30m QEII Hospital

The stunning new Queen Elizabeth II (QEII) Hospital in Welwyn Garden City, Hertfordshire, has opened its doors to the public. London based landscape architecture practice, Macfarlane & Associates, was provided with the task of designing an attractive landscape for the £30 million facility which was designed by Penoyre & Prasad and the construction was managed by Balfour Beatty. Tobermore was on hand with a block paving solution for Macfarlane & Associates that would enhance the aesthetics of the new hospital and provide sustainability.

The sourcing of suitable hard landscaping materials was a hugely important task in meeting the schemes objectives.

The Tobermore South East Sales team presented Macfarlane & Associates with a variety of paving options that could complement the project. Founding Principal at Macfarlane & Associates, Glen Macfarlane, noted that the contemporary granite aggre-



gate finish of Sienna block paving and Mayfair Flags were perfect for the modern QEII building.

Glen explained more on the landscape architects decision to specify Tobermore products: "Sienna and Mayfair Flags were both reliable and cost effective. We knew the products would work on front of the QEII building to create a visible attractive entrance to the hospital, as well as simultaneously being a hard-wearing material capable of withstanding a large amount of footfall and

occasional vehicular overrun."

The Tobermore products also suited Macfarlane & Associates concept design for the grounds.

Macfarlane & Associates additionally praised the service provided by the Tobermore South East Sales force: "Working with the team is a great experience, as you are knowledgeably guided through the product range from specification to installation."

Now in full operation, the QEII hospital benefits the local district immensely with the latest technologies and treatment facilities available. The hospital offers an Urgent Care Centre which is open 24 hours a day, general outpatient services, a purpose-built area for children's outpatient services, diagnostic tests, day treatments procedures, GP out of hour's services, physiotherapy and rehabilitation units, as well as cancer and ante-natal care services.

0844 800 5736 www.tobermore.co.uk



Abet shelters the rescuers

Abet Laminati's MEG exterior grade laminate has been used to clad the exterior of the new offices and crew rooms of the RNLI Station in Brighton Marina. Designed and supplied by Aliva UK, MEG 414 was chosen to match the ceramic facades of the surrounding buildings and was face fixed with colour coded rivets. The cladding envelopes the Station, keeping staff and crew warm and dry in the harshest of weathers. This scheme is a perfect example of high performance MEG in action where the need for incredibly high performance and durability is married up with low life-cycle costs and aesthetic design. Carrying a BBA Agrément Certificate, MEG is a self-supporting high pressure laminate (HPL) for cladding the exterior of buildings, balconies and other applications. It features high resistance to temperature, climate shock, weathering, UV light and impact.

www.uk.abetlaminati.com



Photo: Alastair Carew-Cox

Copper in the Park

Distinctive Nordic Brown Light pre-oxidised copper cladding from Aurubis plays a unifying role in Glancy Nicholls Architects' competition-winning design of the Chamberlain Hall complex for the University of Birmingham. Set in a 'listed' historic park, the new complex replaces 20th century buildings that proved unsuitable for modern, sustainable student accommodation and unfeasible to improve. Conceived as a landmark tower with three adjacent, linear 'finger' wings, the complex provides 726 student rooms, split into five and six en-suite bedroomed clusters and one bedroom studios. Communal facilities including a bar, restaurant and conference space are provided in the ground floor of the tower. The footprint of the new complex sits within the perimeter of the previous buildings, minimising impact on the surrounding parkland. The architects' ambition was to create a cohesive concept using materials and building forms to tie together the development as a whole. On the three 'finger' wings, brickwork matching local buildings acts as a 'grounding' material at low level with Nordic Brown Light pre-oxidised copper cladding as a striking, robust and high-quality finish above. The ends of the wings overlooking the park are highlighted by copper frames projecting out to add solar shading.

01875 812144 www.aurubis.com/finland/architectural

EQUITONE facade materials provide perfect solution for two educational facilities



Designed by architects for architects, EQUITONE fibre cement facade materials from Marley Eternit have been specified on two school constructions for their design flexibility, durability and creativity.

The EQUITONE materials were chosen as part of two separate developments located in Manchester and Burton upon Trent to add an individual and effective element to their exteriors.

The newly constructed primary school, located in New Islington, Manchester, has been completed with EQUITONE [tectiva] fibre cement facade material, while Burton and South Derbyshire University Technical College (UTC) has been transformed with the use of EQUITONE [natura].

The £4.3 million development of the New Islington School, led by Cassidy + Ashton Architects and Conlon Construction Ltd, was funded entirely by the Department of Education to provide primary school pupils with a permanent place to learn following the increase in students throughout the area. EQUITONE [tectiva] was specified for the project due to its low maintenance properties and to help meet the requirements of a modular build.

Speaking of the build, Frank McCabe, Associate at Cassidy + Ashton Architects, said: "As the construction period we had available was shorter than normal, this meant we needed resilient materials which could be installed within this time frame. This led us to the decision of adopting a modular build.

"Our brief was to create an aesthetic that represented a natural concrete panel, but we also needed a durable material with installation methods to match our chosen method of building. EQUITONE was the perfect material to help us achieve this."

EQUITONE [natura] has been specified as part of a remodel, refurbishment and new build extension project that places Burton and South Derbyshire University Technical College at the forefront of teaching for Systems and Production Engineering and Health Science.



The £8.6 million development was built by BAM Construct and designed by Bond Bryan Architects.

Gonzalo Carmona, Project Architect at Bond Bryan Architects, commented: "The renovation and extension of the project has created an elegant and sophisticated development that flatters and complements the proportion and style of the existing building.

"As a listed property, one of our key challenges was centered upon creating a new construction that added to and complemented the natural character of the original brick and stone structure. The red tone of EQUITONE [natura] complemented the brick of the existing building as well as the surrounding properties, creating a crisp, cohesive and contemporary construction.

"Another main part of the specification was to use materials that were low maintenance, whilst still in keeping with the style of a listed building. EQUITONE [natura] cladding was the perfect building solution due to its smooth texture and composition which reflects the brick tones of the property."

The architects chose EQUITONE to add a contemporary feel to the renovation, with the red hues marrying modern and traditional

aesthetics together. Bruce Raw, Director at Bond Bryan Architects, added: "The Burton and South Derbyshire UTC renovation is a fantastic example of how fibre cement materials can add a practical yet visually appealing element to a construction. The combination of old and new has really helped to make the UTC a fantastic development."

EQUITONE [tectiva] is a through coloured fibre cement material that offers elegant shades of natural colour providing a unique aesthetic effect. Characterised by the fine sanded lines and naturally occurring hues within the material, these enhance the natural matt appearance which comes to life with the effects of light and shade.

EQUITONE [natura] fibre cement material is available in a range of through colours. Offering a tactile, smooth surface that allows the textures of the fibre cement to show through.

All EQUITONE materials provide architects with the ability to bring inspirational designs to life through a range of colours, finishes and fixing options giving full creative scope.

www.equitone.com

Powder coatings continue to evolve

Interest in creating natural effects on metal continues to grow and Powdertech Corby has just launched a brand new range of seventy-two shades to keep abreast of this trend. The new coatings, aptly named Evolution, form part of the company's unique Collections range of high performance powder coatings. In the natural environment, oxidation occurs on the surface of metals such as copper and bronze, creating beautiful patinas. Attractive though the patinas are, the metal itself is not protected; it is being oxidized and therefore its strength and other inherent properties are compromised. Evolution offers the best of both worlds - stunningly unusual, natural looking surfaces produced by high performance polyester resin powder coatings which give excellent weather and abrasion protection to the metal.

Evolution finishes are tactile with a thickness in excess of 80 microns and have gloss levels of 10 to 40 per cent (dependent on the finish) which show excellent retention. Colour retention tests demonstrate high UV light stability with a Delta E change of



between 2 and 8 units after two years natural exposure conditions. After rain, there is no staining of surrounding materials unlike natural oxidation products which leach from the oxidized metal.

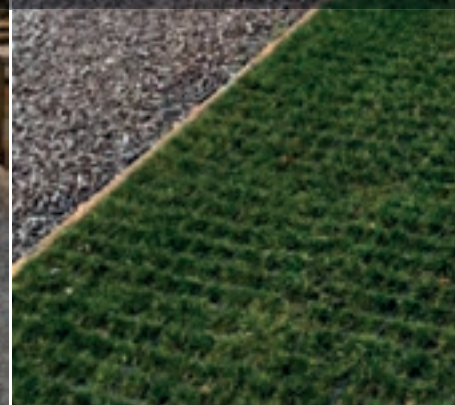
Evolution can be applied to most metal substrates including aluminium, mild steel and galvanized steel. The powders are all Qualicoat class 1 approved and a twenty-five year guarantee is offered in conjunction with



Powdertech standard terms. The versatility of Evolution makes it suitable for external and internal fabrications, ranging from large facade panels, to small decorative elements. All seventy-two shades can be viewed on Powdertech Corby's website and swatches may be ordered.

01536 400890
www.powdertechcorby.co.uk

The UK's leading supplier of SuDS compliant surfaces



GROUNDTRAX
Ground Protection and Reinforcement

www.groundtrax.com

E-Mail: info@groundtrax.com | Telephone: 08456 800008

Hotter shoes start off on the right foot with moisture mapping

The waterproofing on the roof of footwear manufacturer Hotter Shoes' head office and manufacturing facility in Skelmersdale, West Lancashire had exceeded its serviceable life and begun experiencing significant water ingress, requiring urgent remedial work.

Prior to any work commencing on site, Bauder undertook a comprehensive condition and moisture mapping survey of the roof area to help identify the exact extent and locations of water ingress, so that a fully informed decision could then be made to best suit the client's needs. As a result, the optimal solution was for approved contractor BBR Roofing to strip off the existing deteriorated and delaminating, oxidised bituminous capping sheet and overlay the underlayer with 12,500m² of Bauder's high quality, two layer bituminous system Bauderflex. This partial strip allowed for a quick and undistruptive installation, which was important to the client as they wanted the factory below to



remain fully operational throughout.

One of the major challenges for this project was the quantity of intricate detailing requirements, which is understandable given the sheer scale of the roof. As part of the necessary works redundant vents and associated frameworks also needed to be removed and replaced prior to new cladding being added to the perimeter and 69 of Bauder's

structural glazed units being expertly fitted to give essential daylight to the building's interior. Moreover, asbestos was found within the redundant vent apertures and therefore required specialist disposal.

Because the factory workers have variable shift patterns it meant that the roofing works programme had to be regularly changed and all deliveries needed to be timed as not to conflict with vehicles moving in and out of the facility. However, despite the logistical challenges encountered all works were completed on time and to budget much to the delight of the client. Upon completion an additional moisture mapping survey was performed to confirm to the client that the overlay was performing as specified and the roof was now completely watertight.

To learn more about Bauder's flat roof technical diagnostic methods visit the website.

01473 257671 www.bauder.co.uk



Glass balconies provide high-end aesthetics

Neaco's range of glass balconies has secured a specification at another prestigious apartment development. Located near York and surrounded by stunning scenery, the complex of 37 luxury properties features Juliet balconies and walk-on balconies with bespoke graphics on the glass panels. A combination of minimalist design and durability has made them a popular choice to enhance the kerb appeal of high-end residential developments throughout the UK. Neaco's National Sales Manager, Peter Melia, said: "Neaco has established an excellent presence in the residential market with many housebuilders repeatedly specifying our glass balconies. Their smoked or clear glass panels maximise the benefits of sunlight and provide a more visually appealing alternative to the cage-like appearance of meshed or railed balcony infills." Comprising modular components precision manufactured off site, Neaco's balconies provide fast installation using an internal connection system that requires no welding for assembly.

Neaco products featured at care home



Neaco supplied contemporary balustrade for Parkview Gardens, a new 60-bed residential care home in Barrow. Alston Murphy Associates specified powder coated aluminium balustrade with glass infill panels at an extended height for additional safety on first floor terraces which also include Neaco's aluminium decking. Iain Murphy of Alston Murphy said: "Neaco provide a one-stop shop for design consultation, measuring, manufacturing and fitting, so working with them removes a lot of the agony that can occur on some projects. We're very pleased with the result."

sales@neaco.co.uk

Connect with Selfbuilder & Homemaker online

Emailed on a monthly basis, the Selfbuilder & Homemaker newsletter is designed to provide you with the latest information on products and services of interest, direct to your inbox.

You can quickly gather a snapshot of information from up to 12 carefully selected companies and easily follow links through to further information, or go direct to the company's own website.

Online subscription to the newsletter is also available.

[Visit www.sbhonline.co.uk to subscribe & find out more!]



Kalwall® brings light and security to Gatwick Airport

Good lighting is always essential but sometimes a well-lit interior also needs to be discreet when viewed from outside. This is the case with the very long Pier 1 which runs alongside the baggage system and gates at Gatwick Airport's South Terminal Building. The two stringent requirements of privacy and security have been neatly solved using Kalwall®, with the added benefit of enhancing the long walkway by creating a pleasant interior ambience.

Kalwall offers complete line-of-sight protection, maintaining privacy for building occupants while bathing the interior with diffused daylighting regardless of the weather. It can also be manufactured for blast resistant applications such as in airports and other sensitive public environments, or to protect workers in areas at risk from explosions, such as in refineries or industrial complexes. Kalwall is also key to overcoming security concerns. Apart from providing visual protection, its inherent strength makes it ideal



for secure locations. With heavy duty impact resistance properties, access through wall or rooflights can be denied while fire and most chemicals will not affect its surface

Aesthetically, Kalwall will eliminate shadows and glare and the stark contrasts of light and shade. The system also enhances simplicity by doing away with the need for blinds, curtains or solar control. Even on cloudy days, the interior is flooded with

natural daylight, which means less artificial lighting and, because Kalwall is highly insulating, energy costs are reduced. The standard Kalwall 70mm thick panel offers insulation up to 0.28W/m²K – equivalent to a cavity filled solid wall.

Apart from being specified for all types of new build project, Kalwall is increasingly used for the refurbishment of cladding or rooflights on aged buildings. Case studies and technical information are available from Structura UK Ltd please call or visit the website.

Structura UK is the exclusive distributor for Kalwall translucent daylight building systems for England, Wales and Northern Ireland and a leading supplier, fabricator and installer of glass curtain walling, rainscreens, glass atria, windows and other architectural glass building products.

01233 501 504

www.structura-uk.com/kalwall



MDM

GLASS & GLAZING



- BALUSTRADES ■ GLASS DOORS ■ WORK TOPS
- SHOWER SCREENS ■ MIRRORS ■ SPLASH BACKS
- ROOF LIGHTS ■ WINDOWS & DOORS

020 867 36868 | sales@mdmglass.co.uk

260 Cavendish Road, London SW12 0BT

Trojan Manufacturing Group introduce Document Q compliant letterplate

A leading hardware manufacturer, the Trojan Group have introduced one of the industry's very few Document Q compliant letterplates. The new TS008 Unicorn letterplate was unveiled at the FIT Show 2017 at the NEC from 23rd – 25th May, 2017.

Manufactured from Stainless Steel for ultimate corrosion resistance, the TS008 Unicorn Letterplate meets the requirements of TS008 which means it can be used on doorsets that need to comply with the requirements of PAS24: 2016 or Document Q of Building Regulations. Tony Chadwick, Group Managing Director, comments: "Trojan is renowned for delivering the products that the market needs and the TS008 Unicorn Letterplate is another example of this."

The features of the TS008 Unicorn Letterplate reflect the skills and ingenuity of Trojan's product designers. The inner protective housing has a unique concealed



hinge mechanism to prevent attack. The inner flap has a positive stop feature for maximum protection from 'fishing' while the inner flap projection is below door handle height for added protection.

The TS008 Unicorn Letterplate has simple but elegant styling that will complement any doorface and is suitable for both composite and PVC-U doors. It is available in a full choice of external finishes including Polished,

Brushed and Satin Stainless Steel, PVD Gold, Black and White. The internal letterplate can be colour coded to match the door colour.

The external flap is manufactured from 304 Stainless Steel for ultimate corrosion resistance (galvanised mild steel is used for painted finishes). The letterplate has a 25 year anti-corrosion guarantee on all Stainless Steel product finishes and there is a 10 year mechanical guarantee on all versions.

Tony concludes: "We have our finger on the pulse when it comes to the latest legislation in window and door hardware and our TS008 Unicorn letterplate is another example of this commitment. The product is suitable for all market sectors and early indication from customers is extremely positive."

For more information on the new TS008 Unicorn letterplate call the Trojan Group or visit the website.

01922 713 933 www.trojangroup.com

Levolux measures up in Mississauga



Residents of The City of Mississauga, near Toronto in Canada, were pleased when the Meadowvale Community Centre and Library re-opened in 2016, featuring a bright new solar shading solution from Levolux. Costing \$37 million and designed by architects from Perkins+Will Canada, the re-worked facility accommodates a host of new features, including a 25 metre pool, gymnasium and the relocated Meadowvale Library. In order to satisfy LEED Silver specifications, the development capitalised on state-of-the-art technologies, including the use of low-VOC materials, rainwater harvesting and the incorporation of external solar shading on east and west-facing elevations. As a world-leading solar shading specialist, Levolux was approached to develop a custom solar shading solution, combining its innovative Infiniti® Fin system and Triniti® bracket. The solution comprised a series of rectangular-shaped aluminium louvres, fixed vertically in front of full-height glazed openings. In total, Levolux supplied 350 vertical louvres, each measuring 400mm wide by 50mm thick and extending up to six metres in height.

info@levolux.com

RENOLIT EXOFOL PX Ulti-Matt – The ultimate exterior surface



For an architectural matt surface discover the new RENOLIT EXOFOL PX Ulti-Matt solid colour surfaces which give windows an extremely desirable finish. The new Ulti-Matt with its low gloss and fine structure gives a painted/powder coated look to your profiles but with all the additional advantages associated with a RENOLIT exterior film. The Ulti-Matt surface is available in four colours. White, Cream White and Anthracite Grey plus the addition of the recently introduced true Black. Ulti-Matt solid colours are all produced as a RENOLIT EXOFOL PX grade material, a patented advanced exterior film which also benefits from the addition of SST (RENOLIT's Solar Shield Technology) to reduce heat build-up. RENOLIT EXOFOL PX films offer improved performance with the latest modern designs, colours and textures and was developed to enhance weatherability and extend guarantee periods for up to 15 years in the UK. To request a handy RENOLIT EXOFOL PX Ulti-Matt swatch or an A4 sample of any of the four colours individually, please visit the website. Alternatively please contact RENOLIT Cramlington Ltd by phone.

01670 718222 www.renolit.com/exterior/en/sample-ordering



Introducing the METROPOLIS grating

Ductile iron gratings on surface water drainage channels don't necessarily need to be utilitarian in appearance with geometric slots or meshes.

Inspired by the patterns made by water flowing down a stream, the surface design of the Hauraton METROPOLIS grating is reminiscent of the ART NOUVEAU style and later ART DECO period. Planners and landscape architects can now choose this



grating to add a touch of class to their schemes in historic and pre-modern townscapes or any surface drainage project where an aesthetic, more decorative look is desired.

The METROPOLIS grating is sold separately to fit FASERFIX® KS channels or factory fitted to RECYFIX® PRO channels. Gratings are available in nominal widths of 100mm and 200 mm. Sizing details for FASERFIX® KS 100 and FASERFIX® KS 200, with METROPOLIS gratings can be found in the Hauraton CIVILS catalogue. Sizing details for RECYFIX® PRO 100 and RECYFIX® PRO 200, with METROPOLIS gratings can be found in the Hauraton LANDSCAPE catalogue. The channels provide a loading capacity up to Class D400. All METROPOLIS grating are finished in anti-corrosion, Black KTL finish.

01582 501380
www.drainage-projects.co.uk



Westbury products sound & secure

Westbury Windows & Joinery has recently published its latest in a string of successful test results.

Following on from its energy and security (PAS24) achievements in 2016 Westbury's products have now also had acoustic assessment too. The products, including casement and sliding sash windows, and French doors, were independently tested at a UKAS-accredited laboratory and performed well across the board; particularly in the reduction of traffic noise. However, the unexpected star of the show was the French doorset; a product that is notorious, industry-wide, for poor sound insulation. To our knowledge, no other timber door manufacturer has published an acoustic test result for a French doorset, yet Westbury's has proved to be as effective as a casement window, scoring 38Rw on the Weighted Sound Reduction Index (meaning it reduces sound by approximately 38 decibels!). Westbury's combination of classic, heritage design with high tech performance, makes its windows and doors the ideal solution for any new build or renovation project located near to a busy road, railway, flight path or factory.

Videos of the testing in action can be found on the website.

01245 326510 www.westburyjoinery.com/performance/acoustic



Grey is the new white!

There is an undeniable trend within the housebuilding market from white towards colour when choosing replacement windows, doors and roofline products. Grey is rapidly becoming the new white! At **Freefoam** we are seeing these market forces converting into sales and have seen a significant increase in orders for Anthracite Grey fascia and soffit during the last year. Architects, specifiers, builders and developers can now create a fully coordinated roofline for their clients by offering Freefoam's new Anthracite Gutter. Introduced last year, the Anthracite Grey rainwater range is an exact match (RAL No.7016) to the already popular fascia and soffit products and coordinates with many popular shades of window frames and door finishes. With a 77mm depth and a 116mm width, the Deep gutter is designed to manage the increasing levels of rainfall that are being experienced throughout the UK. Available with the full range of matching fittings including Union Brackets, Running Outlets and Hoppers, and manufactured using co-extruded PVC-U, the Freefoam Freeflow range offers a long lasting, leak free, no fade, low maintenance solution all with a ten year guarantee. The new Anthracite Grey rainwater range is manufactured using Freefoam's patented Colormax™ technology.

01604 591110 www.freefoam.com

