

building construction design

www.buildingconstructiondesign.co.uk

October/November 2017

Appointments & News	02
Building Products	04
Structural Elements	07
Interiors	07
Exteriors	16



Cover image: © Encasement
See page 13 for details



Canopies, walkways and inspiring buildings designed around you

Fordingbridge are a specialist design and build contractor offering inspiring building solutions. Consistently delivering successful projects collaborating with Architects and specifiers. With over 50 years experience, Fordingbridge have the knowledge, in-house expertise and understanding to know what works to enable inspiring and durable designs.

Our specialist design and build team can translate your ideas into reality.

Contact us today to discuss how we can work together

01243 55 44 55

www.fordingbridge.co.uk

info@fordingbridge.co.uk

FORDINGBRIDGE
inspiring design + build



Impressive development chooses SE Controls

One of Manchester's latest high rise residential developments, Cambridge Street, is using smoke control systems from SE Controls to provide a safe environment for residents, by ensuring escape routes are kept clear of smoke in the event of a fire.

Designed by Hodder & Partners and constructed by developer-contractor, Renaker Build Ltd, the new building stands on a previously derelict 0.35 hectare site and now provides 282 private rental apartments

With such a large number of apartments at Cambridge Street, fire safety is an essential consideration of the building's design with the smoke control system being an integral part of the solution.

Each tower has its own escape staircase at the centre of the structure, which is protected by SE Controls smoke ventilation and control systems. These systems are code compliant to Building Regulations Approved Document B, as the travel distance

from each apartment is less than 7.5 metres.

Every floor of each tower is fitted with an automatically opening smoke vent door, leading to a dedicated smoke shaft, which includes a SHEVTEC automatically opening louvre at roof level. This allows smoke and hot air to be vented and ensures corridors and escape routes are kept clear. On the top floor of each block, an additional corridor roof vent is also incorporated as part of the design, which is controlled by a dedicated SHEVTEC control panel.

The smoke vent doors use SE Controls actuators, which are compliant with BS EN 12101, and these are controlled by a series of OSLoop controllers that provide instant response in the event of a fire to ensure the appropriate doors are opened, allowing smoke to escape.

Cambridge Street, is also installed with SECloudlinkTM, a remote services solution from SE Controls that uses 4G communications technology to constantly provide system



status information, allowing data to be displayed remotely to enable facilities and building managers to monitor the building's smoke control system.

01543 44 30 60 www.secontrols.com

Protek Structural Warranty

FREE
Registration



New Build | Permitted Development | Commercial

Structural Warranty solutions
that enable residential and
commercial development



www.protekwaranty.co.uk | 0333 456 5040

Viessmann named as "Best Buy" boiler brand



Viessmann has been named as a Best Buy gas boiler brand by Which?, one of the UK's largest consumer organisation. As one of only two gas boiler manufacturers to be recommended in this way, Viessmann is praised as

"the most reliable" of all brands and "well-liked by owners and respected by the professionals too". This glowing assessment is the result of a survey conducted earlier this year which questioned 9,610 boiler owners and 219 Which? Trusted Traders heating engineers throughout the UK. The survey sought the views and experiences of consumers who actually own the boilers and obtained from engineers an in-depth picture of build-quality, availability of parts and spares, ease of repairing and servicing.

info-uk@viessmann.com

Making lives safer with innovative PPE

JSP will be showing a brand new product to market at London Build on Stand E99. JSP is committed to improving safety, health and well-being in the workplace. Celebrating over 50 years of 'Manufacturing for a Safer Future', JSP are excited to launch their latest innovative PPE protection: The new Powercap®

Infinity® PAPR is a fully integrated TH3 powered air respirator offering four of the highest levels of protection in one compact intuitive head mounted unit. The JSP design team have developed the ultimate integrated product available in today's marketplace which provides eye, face, hearing and respiratory protection all in one unit.



uksales@jsp.co.uk



CALOR

Cost efficiency never looked so good

Calor gas gives developers a low-cost, hassle-free energy solution that provides rural homes with all the benefits of mains gas:

- Average installation costs of £500 per plot
- Underground tanks improve site aesthetics
- LPG boilers fit easily within standard house designs

Call us today on 0345 6038095 to find out more about the benefits of Calor gas for housing developments without mains gas.

"Gas has a proven track record of providing heating and hot water to homes, so we had no doubts that LPG would be a trustworthy option that was hassle-free to install."

**- EMMA ALLEN, PROJECT MANAGER AT
BIMINSTER HOMES**





Looking for a **Reliable** Sign Supplier?

For over 35 years Glendining Signs has reliably and competitively supplied sign solutions to some of the biggest names in the Construction Industry.

Having now moved into our new bespoke premises and utilising state-of-the-art printing equipment, we continue to offer great quality signage products with the speed of service you need.

- Site Safety Signs
- Sales & Marketing Signs
- Hoarding Signs
- Signage Installation

Shop now at
glendining.co.uk

Tel: 0118 932 3788

Fax: 0118 932 3804

Email: sales@glendining.co.uk



Manual & Automatic Healthcare Doors

Axis Automatic Entrance Systems supply and install a wide range of specialist sliding and swing doors for the healthcare industry.

- Award winning Flo-Motion® manual sliding, bi-parting and telescopic doors
- Clean Room Doors
- ICU/CCU Doors
- Hermetically Sealed Doors
- Comprehensive range of automatic doors
- Sole UK distributor of Stanley automatic door equipment
- Nationwide installation and maintenance service

Axis, the automatic choice for manual and automatic doors

AXIS AUTOMATIC ENTRANCE SYSTEMS LTD
Unit 6, Queens Park Industrial Estate, Studland Road,
Northampton NN2 6NA
sales@axisautomatic.com www.axisautomatic.com

01604 212500



Call us
01296 481220



Learn more
osmouk.com

CREATE YOUR OWN TRULY BESPOKE FLOOR



ESCO FLOORING: Highest quality european oak flooring

✓ CUSTOM-MADE | ✓ NATURAL | ✓ POLYX-OIL TREATMENT | ✓ DURABLE | ✓ YOUR STYLE



GRP door & window canopies from Canopies UK

We have supplied more than 30,000 canopies throughout the UK to housing associations, contractors, house builders and local authorities.

With a standard range of popular canopy designs, a bespoke manufacturing facility and installation service if required, Canopies UK offer the complete solution.

- | | | |
|-----------------------------------------------------|---------------------------------------------------------|--------------------------------------------------------------|
| <input checked="" type="checkbox"/> Free site visit | <input checked="" type="checkbox"/> Full fixing kits | <input checked="" type="checkbox"/> Specification sheets |
| <input checked="" type="checkbox"/> CAD drawings | <input checked="" type="checkbox"/> Delivery nationwide | <input checked="" type="checkbox"/> Installation if required |

For a quote call Greg now on:

T: 01254 777002

M: 07846 423812

www.canopiesuk.co.uk

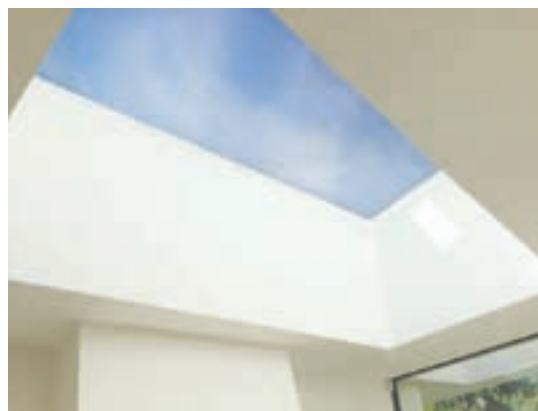
Email: **greg@canopiesuk.co.uk**



Roofglaze



Flatglass Rooflights & Roof Glazing Systems



Roofglaze is a leading designer, manufacturer, supplier and installer of rooflights.

You will find our rooflights on a wide range of commercial and residential buildings - from retail and leisure centres, to offices, schools, hospitals and private homes.

Our friendly and experienced team are on hand to discuss your project requirements and recommend the best solution for you.

01480 474797 | sales@roofglaze.co.uk
www.roofglaze.co.uk



AXIS Automatic Entrance Systems



Axis has over 30 years experience as a manufacturer in the automatic door industry. Custom-designed by Axis for the new Liverpool Alder Hey Children's Hospital, the multi award winning AXIS Flo-Motion® manual sliding door employs a special low-resistance

track system that can be operated with minimal effort using finger-tip control. Visit the website to find out for more information.

www.axisautomatic.com

Manufacturer on target for record year



Offsite Solutions, one of the UK's leading bathroom pod manufacturer, has secured £30m of orders in the last six months – a record order intake in the history of the business. Offsite Solutions has seen a significant increase in orders and enquiries for residential schemes, particularly mixed-use developments and

in the build-to-rent sector which is performing strongly in urban centres across the UK. For information on products please email Offsite Solutions or visit their website.

info@offsitesolutions.com

Feeling better in Manchester



The £65 million Spire Manchester Hospital, located in Didsbury, is a new flagship hospital which is equipped with cutting-edge building technology, including a **Levolux** solar shading and screening solution. Arranged across four floors, the hospital incorporates some of the most up-to-date medical facilities available, including an endoscopy unit, six operating theatres and a conference suite. A key consideration for the design team was the sustainability of the scheme. It was important to minimise energy consumption and the CO2 emissions generated by the building. As a world-leading solar shading and screening specialist, Levolux was invited to develop a custom solution. The solar shading solution comprises a combination of horizontal and vertical Timber Fins and the Infiniti Fin system, applied externally on the outer elevations and within the building's courtyard area. Timber Fins, engineered from Western Red Cedar, have been used on the project with variations in size, profile and orientation. This type of timber is highly recommended for external applications as the timber is relatively stable and gives a clean and consistent appearance.

info@levolux.com

Studor stokes up interest in Tec-Vent



Studor, a world leader in drainage ventilation and only specialist manufacturer of Air Admittance Valves (AAVs), has updated the Tec-Vent fire retardant AAV. The original version, launched in 2003, was the first of its kind in the world. Manufactured from flame retardant material, the Tec-Vent is specifically designed for buildings such as schools, airports, hospitals, high-rise structures and other public areas, as well as in oil and gas, aviation and other industrial settings where flame retardance is a priority. The Tec-Vent can also be used domestically where fire retardance is important for residents' safety. The Tec-Vent is UL Classified in the United States and has active approvals worldwide. It is sold across Europe, Asia and Australia, with installations including Doha International Airport and the Denver Convention Centre. Protecting the trap seals in the drainage system, the Tec-Vent allows fresh air to enter and ensures that the pressure within the drainage system is properly balanced. When the flow stops the Tec-Vent closes by gravity and prevents any foul air and dangerous gases escaping and entering habitable space. Studor has more than one million products installed each year across six continents, and its worldwide distribution network extends to more than 50 countries.

info@studor.net

Designed For All

House builders and developers reputations rely on building quality homes that exceed expectations. Whilst maintaining a long term quality reputation. Exceptional design, engineering and overall quality make the Terrier perfect for all your new build developments.



Terrier
The Only Choice

- Ergonomic design
- Chrome accent ring for décor style appeal
- Enclosed and efficient design
- Terrier performance compliance to Building regulations and proven energy saving
- Dynamic colour visual settings
- Smooth operation – intuitive settings
- 33% Hysteresis reduction

For more detailed information:

FREE PHONE 0800 156 0010

email: uksales@pegler.yorkshire.co.uk

www.pegler.yorkshire.co.uk



Pegler Yorkshire



Exit Door Alarms



Emergency Key Boxes



Indicator Panels



Interlocking Solutions



Talking Voice Module



Multi-Purpose Relays



Disabled Toilet Alarms



Fire Alarms



Alarmed Call Point

Follow us:

[@HoylesElecDev](https://twitter.com/HoylesElecDev)

Like us:

[HoylesElecDev](https://www.facebook.com/HoylesElecDev)

UK Manufacturers of
High Quality Security, Fire and
Safety Equipment

www.hoyles.com
Tel: +44 (0)1744 886600



Concealing boiler pipework – simple, quick & cost effective

As heating system refurbishment and upgrade programmes, particularly in social housing, aim to reduce emissions and energy consumption while improving efficiency, it is also important that the updated systems look good and are cost effective

Local authorities and housing associations have the potential to save thousands of pounds on annual repair, maintenance and improvement budgets, purely by choosing pre-formed boiler pipework casings over time consuming site made fabrications.

CUTTING COST, CUTTING TIME AND SAVING BUDGET

Essentially, savings can be made in each of the following four sections:

- Manufacture – How are the boiler casings made?
- Materials – What materials are used in their manufacture?
- Methods – How are they fitted and secured?
- Maintenance – Can the boiler casing be removed & replaced easily without damage?

Obviously, if cost or time can be removed from these areas, then they will help reduce the budget required to achieve the end result. To get a better understanding of these elements, let's explore each in a little more detail.

MANUFACTURE

The traditional and still widely used approach for concealing pipework, is for boxing to be fabricated on site using wood or MDF with nails, screws or adhesive, followed with painting. Inevitably, this is a time intensive and costly solution.

The Encasement solution is much simpler, quicker and cost effective. Manufactured from pre-formed plywood to exact boiler dimensions and pre-finished with durable melamine or laminate, there's no fabrication or painting required, which provides a consistent finish and saves even more time.

As a result, typical cost savings of around £20 can be made on every casing installed, which equates to a budget reduction of £10,000 on every 500 properties.

MATERIALS

Often the materials used to manufacture pipe boxing and boiler casings aren't a major consideration, yet they should be, as there is a need to comply with the sustainable procurement policies that many local authorities now have in place.

Encasement has already addressed the issue. Only FSC® certified timber is used in the manufacture of our boxing and boiler casings. Also, we are the UK's only manufacturer and supplier of pre-formed plywood boxing and casings that holds a Forest Stewardship Council FSC® 'Chain of Custody' certification.

So, if you're using similar products from Pendock, you're probably not compliant. If in doubt, check your specifications, as they're likely to require FSC® compliance or certification.



METHODS

Typically, where site made casings are used, the heating engineer will move on to the next flat once the boiler installation is done, leaving the fabrication and fitting of site made pipe casings to a joiner. As two trades and different skills are required, this inevitably adds time and cost.

By using a pre-formed boiler casing, which has already been supplied to the correct dimensions, there's no need for fabrication and the freestanding casing just slides into place underneath the boiler, which can be done by a heating engineer.

MAINTENANCE

The 'whole life' cost for site made casings escalates significantly, when routine maintenance visits are factored in to the equation, as they're usually damaged or destroyed during their removal. This necessitates their replacement or re-manufacture, as well as re-fitting, all of which, increases budget.

In contrast, pre-formed casings are self-supporting, allowing them to be easily removed and replaced in seconds, dramatically reducing the time maintenance engineers need to be on site, and the corresponding cost.

CASE CLOSED!

When evaluating pre-formed boiler pipe casings against site made alternatives, the comparative fitting costs alone should ensure that the decision to use pre-formed casings is an easy one to make. Yet, when the FSC® compliance and maintenance aspects are also factored in, it becomes, to quote one of our customers, "...a no-brainer."

01733 266 889 www.encasement.co.uk





Creative thinking

ARRAY-PART OF THE CREATIVE RANGE

The Creative Range from Heckmondwike provides an eclectic mix of designs and colours, making your carpets a stunning design feature in any building

H
HECKMONDWIKE

www.heckmondwike-fb.co.uk



PREMIER
LOFT=LADDERS

Airtight seal (class 4)

Counter-balanced for easy operation (less than 3 kg operating load)

Thermally insulated hatch (U value 0.58 W/m²K)

High strength & robust concertina ladder (load rating of 200 kg/tread)

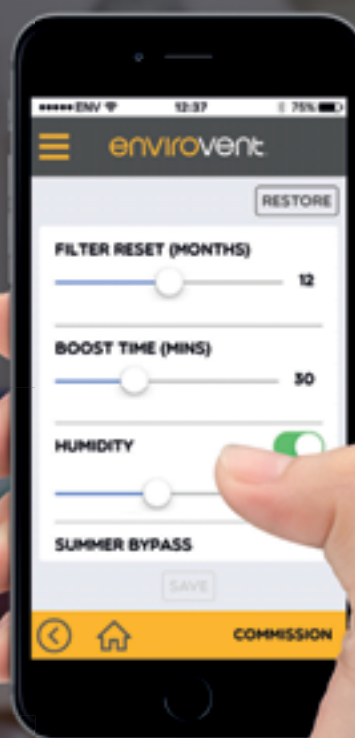
The difference is in the detail

Learn more about what makes our products different...
www.premierloftladders.co.uk/difference
+44 (0)845 9000 195 | +44 (0)1394 214 413



Revolutionise the way you control your ventilation system.

Connect to the next generation of whole house ventilation systems at the touch of a button with **myenvirovent**. Designed to give you total control of your ventilation system from anywhere in your home and perfect for self build projects.



Available for Apple and Android devices

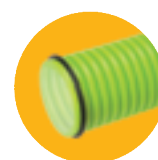
Key Features

- Greater control of your home ventilation requirements
- Flexibility to amend ventilation settings
- Boost ventilation rates from anywhere in your home
- Multiple user access.
- Filter change notifications
- Instant access to current unit status
- Secure connection through your router
- Reduce installation time by commissioning from your mobile device
- Available on Apple and Android devices
- Works with the energiSava® 200, 250 and 380 units

Fast Track Ducting Range

EnviroVent believes that quality ductwork should not be dependent upon highly qualified installers and regulatory measures. Therefore, we introduced ventilation ductwork, which can be installed very easily and quickly, even by less qualified and experienced installers.

The Fast Track Range is a comprehensive portfolio of semi-rigid ductwork and connectors to make a complete, airtight and easy to install ventilation system. The semi-rigid ducting is available in various circular and semi-circular dimensions and all ductwork types can connect to one universal distribution box by using adapters. This eliminates the need to keep stock of numerous box types and limits costs.



envirovent.com

For your **FREE** design and quotation call
or email projects@envirovent.com



0330 1193 558



TAPLANES®

MODULAR SHOWER PODS

SUSTAINABLE SHOWER SOLUTIONS FOR HIGH USE ENVIRONMENTS



- Free site survey & CAD design service
- Refurbishment specialists
- Pre-fabricated for quality & long-term value
- Re-usable & relocatable
- Sectional design
- Quick & easy installation
- Solid construction
- 100% watertight
- Bacteria free
- Minimal maintenance
- 100% recyclable polypropylene
- UK Manufactured
- 25 year guarantee

Station Court Nidd Harrogate North Yorkshire HG3 3BN
telephone 01423 771645 www.taplanes.co.uk



ZERO DOOR THRESHOLDS



CHOOSE FROM A WIDE VARIETY SUITABLE FOR ANY APPLICATION...



FULL BODY STRENGTH OPTION

NON-SLIP OPTION




6.4MM LOW FLAT MODULAR RABBETED



STAINLESS STEEL LATCHTRACK THERMAL BREAK

Zero Seal Systems Ltd
Units 43 - 45 Ladford Covert, Seighford, Stafford, ST18 9QG, United Kingdom
Tel : +44 (0)1785 282910 E-mail : sales@zeroplus.co.uk
WWW.ZEROPLUS.CO.UK



ARTISAN

PANEL DOOR COLLECTION

MADE TO ORDER BY

ahmarra

View our new brochure online at:
www.ahmarra.co.uk



Hull's C4DI gets innovative with Encasement

Hull's landmark Centre for Digital Innovation (C4DI) is using 'Polyma' GRP column casings from Encasement to conceal external structural steelwork at the building, which forms the centrepiece of the 2017 European City of Culture's £15 million @TheDock development.

Designed by Leeds based architects, Enjoy Design, and owned by Hull-based regeneration company Wykeland Group, the C4DI building houses one of the UK's leading digital tech hubs, as well as 70,000 sq.ft of office space and an external public performance space in the former dry dock.

Below the striking bronze PPC coated aluminium exterior, which also incorporates a range of sustainable and energy saving technologies, each of the building's nine structural steel supports are concealed by a 450mm diameter Polyma glass reinforced polymer column casing.

Manufactured by Encasement to the precise specifications using hand laid GRP moulding techniques, the Polyma

casings are finished in gloss RAL 7004 Signal Grey and range in height from 3,600mm up to 4,000mm to meet the building's design parameters.

As the column casings are used externally and close to sea water, the Polyma casings are an ideal choice for this application as they are highly durable, as well as being resistant to corrosion, weathering and damage.

Encasement's Managing Director, Martin Taylor, commented: "The regeneration around the dock area including C4DI has given a significant boost to the area and helped Hull become a key centre for tech innovation. We're delighted to have played a part in this project, where the quality of the building design and energy saving technologies it incorporates has set the scene for the innovation centred businesses it accommodates." For more information please visit Encasement's website or contact them by calling.

01733 266 889 www.encasement.co.uk



Mighton partner Anker Stuy gives seating a great finish in Abbey renovation



Mighton Products partner Anker Stuy Verven (ASV) has been selected as supplier of the colour stains and lacquers for the new seating as part of a prestigious yearlong renovation of Westminster Abbey that was finally completed in June of this year. As part of the interior maintenance works that took place at the iconic London landmark 2,200 wooden chairs, with the Westminster Abbey Arms embossed in to each of the backrests, were commissioned and have now become the new primary form of seating distributed throughout the building. The finish for these chairs carries a series of heavy demands and therefore required an exemplary quality lacquer capable of providing long lasting protection against candle wax, as well as tough resistance against scratches and abrasions. The 2-component ASV lacquer that was eventually specified complies with the EN 71-3 standard, certifying it free from heavy metals and even suitable for use on children's toys, as well as complying with both DIN 4102 B1 and DIN 68861 B1 standards, which demonstrates its chemical resistance. Mighton distributes Anker Stuy products to its specialist joinery customers throughout the UK.

01223 902 455 www.mightonproducts.com

Well-travelled staircases gain the Mighton finish



A striking cladding design was created for a pair of staircases at York University with installation being completed within the students' three-week spring break, despite having to be constructed on site before being dismantled and removed for painting then brought back for reassembly. The unusual design incorporated 10mm shadow gaps, which required finishing in-situ to ensure the accuracy of the gaps before the MDF panels could be factory painted. Specialist paint supplier Mighton Products worked closely with Bailey-Hague Joinery in not only in choosing the right materials but also in producing a colour match for the non-standard grey that was specified. The company had been using Mighton's exterior products so had no hesitation in putting its interior range to work. A team of five joiners and one spray-painter worked on the project, with the panels making the 30 mile-plus round trip to Bayley-Hague's spray-shop in Sherburn-in-Elmet. The moisture resistant MDF was treated with Mighton Ultra high-build MDF Internal Primer and Internal Opaque Topcoat.

0845 0945 215 www.mightonproducts.com



ONE OF THE LEADING UK SUPPLIERS OF FIREPLACES, FIRES AND STOVES

Locate your nearest Capital stockist at www.capitalfireplaces.co.uk

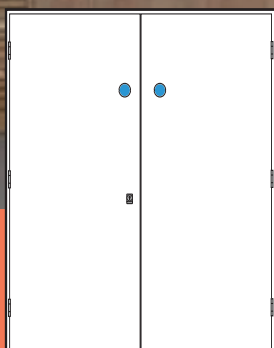
CAPITAL
STOVES

ahmarra

EDUCATION RANGE



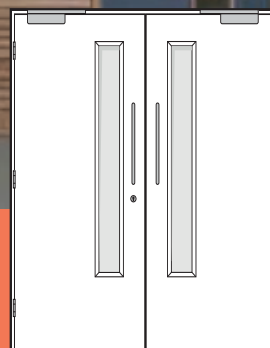
A range of made-to-order doorsets for schools, colleges, academies and universities.



Type 17



Type 13



Type 07

Download the brochure from:
www.ahmarra.co.uk

Impressive Manchester residential development chooses SE Controls

One of Manchester's latest high rise residential developments, Cambridge Street, is using smoke control systems from SE Controls to provide a safe environment for residents, by ensuring escape routes are kept clear of smoke in the event of a fire.

Designed by Hodder & Partners and constructed by developer-contractor, Renaker Build Ltd, the new building stands on a previously derelict 0.35 hectare site and now provides 282 private rental apartments within two towers, which stand 19 and 28 storeys above ground level.

With such a large number of apartments at Cambridge Street, fire safety is an essential consideration of the building's design with the smoke control system being an integral part of the solution.

Each tower has its own escape staircase at the centre of the structure, which is protected by SE Controls smoke ventilation and control systems. These systems are code compliant to Building Regulations Approved Document B, as the travel distance from each apartment is less than 7.5 metres.

Every floor of each tower is fitted with an automatically opening smoke vent door, leading to a dedicated smoke shaft, which includes a

SHEVTEC automatically opening louvre at roof level. This allows smoke and hot air to be vented and ensures corridors and escape routes are kept clear. On the top floor of each block, an additional corridor roof vent is also incorporated as part of the design, which is controlled by a dedicated SHEVTEC control panel.

The smoke vent doors use SE Controls actuators, which are compliant with BS EN 12101, and these are controlled by a series of OSLoop controllers that provide instant response in the event of a fire to ensure the appropriate doors are opened, allowing smoke to escape.

Cambridge Street, is also installed with SECloudlink™, a remote services solution from SE Controls that uses 4G communications technology to constantly provide system status information, allowing data to be displayed remotely to enable facilities and building managers to monitor the building's smoke control system.

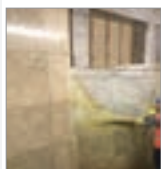
Michael Scrimshaw, Business Development Manager for SE Controls said: "Cambridge Street has rapidly become an iconic landmark on Manchester's skyline with its white tile cladding contrasting with the red brick of adjacent listed buildings. We're delighted to have been involved



with the project, as Renaker Build has delivered a high quality apartment building, which is an attractive proposition in the growing private rental sector."

01543 443060 www.secontrols.com

Hanover Building unveiled by Remmers



The Grade II Listed building located in Manchester is being refurbished by Quadriga Contracts Ltd as part of the NOMA regeneration scheme to provide Grade A office space, retail and leisure facilities. The interior walls have accumulated a thick build-up of dust, dirt, polish and even nicotine residue, all of which needed to be removed. Remmers Arte Mundit Eco was selected as it is a self-vulcanising cleaning paste designed for thorough, water-free removal of residues and soiling on a wide range of substrates. The Arte Mundit Eco was applied using a 4" brush and left to 'set' overnight.

01293 594010 www.remmers.co.uk

Polyflor helps create modern apartments



Luxury vinyl sheet flooring and Polysafe safety flooring from **Polyflor**, was recently installed throughout apartments on the Belle View social housing development, Stow Park Avenue, Newport. Approximately 1400m² of Designatex PUR sheet vinyl flooring,

Polysafe Wood fx PUR and Polysafe Arena PUR safety flooring was installed during the interior fit out phase by Evabuild Interiors Ltd. The Platinum Oak grey wood effect design from Polyflor's Designatex collection of luxury vinyl sheet flooring for residential interiors was used throughout bedroom, living room and kitchen areas in each apartment.

0161 767 1111 www.polyflor.com

Add value to your property with demista™ and Cosyfloor™

Magazines and newspapers, estate agents and interior designers, emphasise the added value additions to a property, and what better examples of these can you find, than demista™ and Cosyfloor™.

The demista™ heated mirror pads, available in a choice of sizes as well as bespoke requirements, are an easy option to add that touch of luxury to the bathroom. No more steamed up mirrors, an inexpensive way to add that value to your property. Leading hotel groups, Marriott, Hilton, Renaissance, to name but a few, have selected these heated mirror pads for their new developments and for refurbishment projects.

The Cosyfloor™ underfloor heating system is ideal for any room surface. Choose from Cosyfloor, Ecofloor or Ecomats, depending upon the area to be covered, and kitchens, bathrooms, wetrooms, conservatories and all the living areas can benefit from the overall warmth of underfloor heating.

All the heated mirror pads and the underfloor products meet International standards for safety and have an established reputation for reliability as well as being maintenance free. Please contact demista to find out more information about demista™ and Cosyfloor™.

sales@demista.co.uk



Trojan Group's fenestration hardware is ahead of the game

Document Q, the latest addition to building regulations that covers security, came into force on 1 October 2015 and left many hardware products non-compliant. But Trojan's core product range already met the requirements and put them ahead of the game in the supply of Document Q compliant window and door hardware.

Currently, all windows and doors installed in new dwellings (that means new builds and conversions) need to conform to PAS 24:2016. Letterplates on doors need to meet the standards set out in TS008:2015 (a Door and Hardware Federation specification that represents best practice for the industry) and all main entrance doors will need to be fitted with a door viewer unless a measure such as clear glass is in place and have a door restrictor.

As you can probably tell, the new standards will have a big impact as architects, contractors and specifiers start to consider the impact the new requirements will have on their choice of architecture.

As a door and window hardware designer and manufacturer, one of our core missions has to be to develop products that meet exacting security standards. It therefore means that many of our core products already meet the standards set out in the new legislation.

In terms of windows locks, both our Mustang and Pegasus Window Locks conform to the new requirements as well as having a wealth of other attractive features. The Pegasus Window Lock is unique and offers the twin advantages of one price for all sizes and one size fits all, significantly reducing purchasing costs, making budgeting simple and dramatically reducing product inventory.

The new PAS 24 door hinge requirements are met by the all new Athena PVC-U and Composite Door Hinges, as part of a door set. As well as being PAS 24 compliant, the Athena hinges have easy, accurate, independent 3D and 2D adjustments and are supplied



pre-assembled ready to fit, dramatically speeding up the fitting process compared to similar double knuckle hinges. The hinge is easily adjusted in all planes, either in the factory or on-site by one person, ensuring perfect door alignment for years of trouble-free operation.

Our Sparta Stainless Steel TS007 2 star high security Door Handle is also PAS 24 compliant. Manufactured from stainless steel for ultimate corrosion resistance the handle comes with a 25 year surface finish guarantee and is one of the most popular products in our extensive hardware range.

Finally, we have introduced one of the industry's very few Document Q compliant letterplates. The new TS008 Unicorn letterplate is manufactured from Stainless Steel for ultimate corrosion resistance and meets the requirements of TS008 which means it can be used on doorsets that need to comply with the requirements of PAS 24:2016 or Document Q of Building Regulations.

The TS008 Unicorn Letterplate's inner protective housing has a unique concealed hinge mechanism to prevent attack. The inner flap has a positive stop feature for maximum protection from 'fishing' while the inner

flap projection is below door handle height for added protection. The simple but elegant styling will complement any doorface and is suitable for both composite and PVC-U doors and is available in a range of colours to match the door colour too.

The external flap is manufactured from 304 Stainless Steel for ultimate corrosion resistance (galvanised mild steel is used for painted finishes). The letterplate has a 25 year anti-corrosion guarantee on all Stainless Steel product finishes and there is a 10 year mechanical guarantee on all versions.

Legislation change almost invariably creates a great deal of upheaval. For architects, specifiers and contractors the new requirements will cause short term headaches as they reassess their go-to products. So if you are looking to partner with a hardware supplier that has their finger on the pulse when it comes to legislation conforming products then contact us today.

To find out more information, please visit Trojan's website or contact by calling.

01922 713 933
www.trojangroup.com





RECYFIX® MONOTEC drains outdoor surfaces at school

The Ysgol Gynradd Lôn Las Primary School, Swansea, has currently 535 pupils from Year one to six as well as Reception and Nursery Classes. The school site is split into four main areas. Having a large gymnasium and a separate school canteen there are plenty of outdoor playing areas including a hard surface yard, an enclosed area for Nursery and expansive areas of grassland.

Hauraton Limited introduced the RECYFIX® MONOTEC, surface drainage system in January 2016. The Lôn Las school, joins numerous installations successfully completed in the United Kingdom.

The RECYFIX® MONOTEC system was installed to provide surface drainage in the paved entrance/play areas and the car park's asphalt surface. Having a grating width of 100mm (Channel internal dimension) with an overall height of 280mm and a cross-section of 245.5cm², the 176 metres of channel supplied provide



a total water capacity of just over 4329 litres.

The MONOTEC one metre long channel component is of a sturdy monolithic design where the HEELSAFE grating and the tongue and groove linking system are integral to the channel moulding. The whole unit is made of tough, virtually unbreakable polypropylene (PP) formulated to be very resistant to

daily temperature fluctuations from frost conditions to strong sunlight, including the Ultra Violet (UV) spectrum. PP is naturally resistant to de-icing salt. Complying with the requirements of EN 1433, the PP is given its UV resistance by adding just sufficient stabiliser so that the structural strength of the material is unaffected and a consistent appearance is maintained.

Shaun Davies the Site Agent for the Contractor also observed, "I was very impressed with the durability of the MONOTEC channels. Not a single unit was damaged by site traffic or whilst laying the asphalt. Any queries or information required was easily and quickly obtained from Hauraton's technical support team".

All Hauraton surface water drainage systems' comply with European Standards (hENs) and carries the CE mark".

01582 501380 www.hauraton.co.uk

nwa
KytunTM
DRY ROOFING



ALUMINIUM
RIDGE CAPPING



Ridge

T. +44 (0)1684 293702 | www.kytun.com

nwa GROUP
NORTH WEST ALUMINIUM



Blast resistant, ventilation is possible

Windows from Crittall-Fendor that can be left open for natural ventilation but which slam shut automatically in the event of a blast can enhance the working environment in hazardous sites without compromising safety. The company's BlastLine SlamShut window has a restricted opening that allows natural ventilation and also features as standard thermally enhanced glass that contributes towards energy efficiency. In the event of an explosion the opening vent is slammed closed by blast pressure. The window is designed to be low maintenance, is finished in an anti-corrosive paint system, and features an integrated water drainage system. It is fitted with the SlamShut latch and locking system for security and can be supplied with an energy efficient coating. Different fire rated options are available and glazing can be single, double, triple, security or acoustic.

01914 170170 www.crittall-fendor.co.uk

Powdertech Corby celebrates the beauty of metal

Over recent years Powdertech Corby has developed unique ranges of powder coating materials that follow trends in style and developments in technology. Two of the company's 'Collections' range make a point of using powder coatings to reflect the natural aesthetic appeal of metal itself, in addition to protecting it from corrosion and abrasion.

Metal, in its natural state, can offer a variety of 'looks' to the designer and architect. Stainless steel evokes a clinical, modern, technological feeling. Lead-dull or spangled zinc can look minimalist or rustic. Copper and brass have a warm and homely appearance. Oxidised copper and rusted iron look vintage, or stylishly 'grungy'.

Evolution™, launched in March 2017, addresses the last of those 'looks' - stylishly and colourfully 'aged'. In the natural environment, oxidation occurs on the surface of metals such as copper and bronze, resulting in beautiful patinas, but the metal itself is



compromised, its strength and inherent properties weakened. Using Evolution powders, designers can achieve stunning effects on metal which is intact and protected. These polyester resin powder coatings create the effect of patination on the surface of the metal and provide excellent weather protection and durability.

Another specialist powder coating range, Anomatch™, enhances the metal with a lustrous sheen, creating an alternative finish



to anodising. Anodised aluminium has a reputation for its 'living' quality, with natural metallic radiance. Anomatch creates the same effect, on aluminium and galvanized steel and the metal has high protection from corrosion and abrasion. Anomatch achieves a homogenous appearance within and between batches of material which is difficult to achieve with anodising, and across different materials which is impossible for anodising.

Where once, powder coatings, in their primary role as metal protectors, firmly hid the underlying metal from sight, the ability to protect and at the same time celebrate the natural beauty of metal has made many more design choices available to architects, designers and fabricators.

Visit the website for more information.

01536 400890

www.powdertechcorby.co.uk

Kalwall® puts on a show



Kalwall® translucent cladding has been extensively used to clad the multi-million pound Exeter Road leisure development in Bournemouth, designed by architects Broadway Malyan. Almost 1,000 square metres of Kalwall have been used in this bold scheme which has transformed a former bus station into a 10 screen multiplex cinema, café, restaurant and retail complex. Recognised as a key material in this project, the translucent cladding encapsulates the building across all nine elevations and encloses the external fire escapes. At night the cladding creates a warm, inviting and ethereal glow proving a beacon for visitors while mitigating any issues with light pollution to the surrounding residential and commercial buildings. Kalwall is frequently specified for this type of prestige project where high-end performance and quality need to be coupled with aesthetics, practicality and a long life-cycle. Not only does Kalwall provide a neat and cost effective solution but it also offers complete line-of-sight protection, maintaining privacy for building occupants while bathing the interior with diffused daylighting regardless of the weather.

www.structura-uk.com/kalwall

Everyone's going grey!



Freefoam Building Products are delighted to showcase this recent installation using their complete range of grey PVC roofline and cladding products. The property in Leicestershire originally featured a render finish to the entire upper level. It had become patchy and discoloured and either needed replacing or covering. Likewise the white fascia and black guttering were also in need of updating. The homeowner was introduced to the Freefoam range by local supplier Tru Plastics Ltd. Fitting PVC cladding to the exterior gave the property an instant facelift.

The homeowner chose Fortex Pro, a Double Shiplap style board, in Slate Grey. Adding a woodgrain foil finish fascia and soffit in Anthracite Grey and a gutter system in the same shade created an attractive co-ordinated look. Russell Skellett from Tru Plastics explained "Being able to offer homeowners a complete suite of products in coordinating and matching colours is a major USP for our company. Our customers are asking more and more for colour and the Freefoam range gives us the perfect solution." Freefoam is the colour specialist. Manufacturing fascia and soffit in eight stunning shades and eight woodgrain finishes alongside cladding products in ten beautiful contemporary shades gives customers a really wide choice.

01604 591110 www.freefoam.com



Schöck and cross-laminated timber feature at Hoxton cinema

The neglected Hoxton Cinema in East London is undergoing a transformation, with plans for a replica of the original 1914 Gaumont facade to be reconstructed. Behind it will be a development of black-brick one, two and three bedroom apartments – and in the basement a new three-screen arthouse cinema.

The design consists of two distinct elements. A concrete ground level to accommodate the cinema and an acoustically insulated cross-laminated timber (CLT) upper residential element. The balconies on the western elevation are of steel construction; and unusually the requirement here is to connect the balconies to the CLT. Cross-laminated timber performs well thermally, but the steel cantilever penetrates the insulation layer and it is important to minimise the risk of any thermal bridging problems at this point.

One of the leading solutions for preventing thermal bridging involving practically any cantilever connectivity, is the Schöck Isokorb range. It is the type KST – usually for steel-to-steel connections – which has been cleverly integrated here. A right angle steel retaining plate has been fixed to the CLT outer wall and floor using heavy duty screws. The inner face of the Isokorb is then bolted to the retaining plate and the steel balcony connected to the outer face of the module. The result is a more rigid structure and the prevention of increased heat loss or, just as importantly, condensation. Particularly where it might occur under the steel retaining plates at the connectivity points with the CLT.

The Schöck Isokorb range meets full compliance with all relevant UK building regulations, the highest standards of BBA Certification and offers LABC Registration.

01865 290 890 www.schoeck.co.uk



MAIN PROJECT TEAM:

Architects: Waugh Thistleton
Cross-laminated panel fabricators: KLH UK Ltd
Principal Contractor: Simply UK
Structural Thermal Breaks: Schöck Ltd



Machinery upgrade for Garador

One of Britain's leading garage door manufacturers **Garador** has recently invested heavily in new production machinery and equipment.

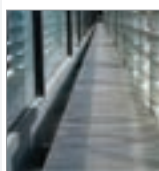
Garador offers a full range of garage doors, including Up & Over, Sectional, Roller and Side Hinged garage doors. Expertly engineered and available in a selection of designs and colours, as well as being easy to fit and maintain, it is no wonder Garador's garage doors are one of the UK's market leader.

In the last three years the company has invested over £2 million in production technology together with other enhancements for its Chevron, Salisbury and Sutton steel Up and Over doors. These developments will help to ensure a long-lasting garage door delivered at a reasonable price.

The new machinery and equipment has been fully tested and is now fully in operation at Garador's state of the art factory in Somerset. For more information please contact Garador.

01935 443795 www.garador.co.uk

Neaco specified at science facility



The University of Liverpool's Materials Innovation Factory, an award-winning new build science research facility, features an extensive specification of Neaco's aluminium grille flooring. A unique public/private partnership between the University and Unilever, 11,600sqm building was designed by the Fairhurst Design Group.

Neaco's Techdek walkways provide external maintenance access. Techdek is suitable for a wide range of other applications including balcony and bridge decking, screening, ventilation, cladding and staging. The system is strong, maintenance-free and fireproof.

www.neaco.co.uk

Social space for students

Providing the perfect combination of practicality and aesthetics, **Norbord's** SterlingOSB stands pride of place in new modular student accommodation in Plymouth. The site includes a number of common areas, where SterlingOSB panels have been used to dress the walls and furniture, as well as to create seating. Complemented by modern furnishings, the panels create a comfortable, industrial look that provides a great social space for the students.

Elements Europe supplied the modular solution to the scheme, and has used SterlingOSB in all of its Room Module. The precision engineered panels and the interlaced real wood strands create a consistently sturdy product great for load bearing situations.



www.norbord.co.uk

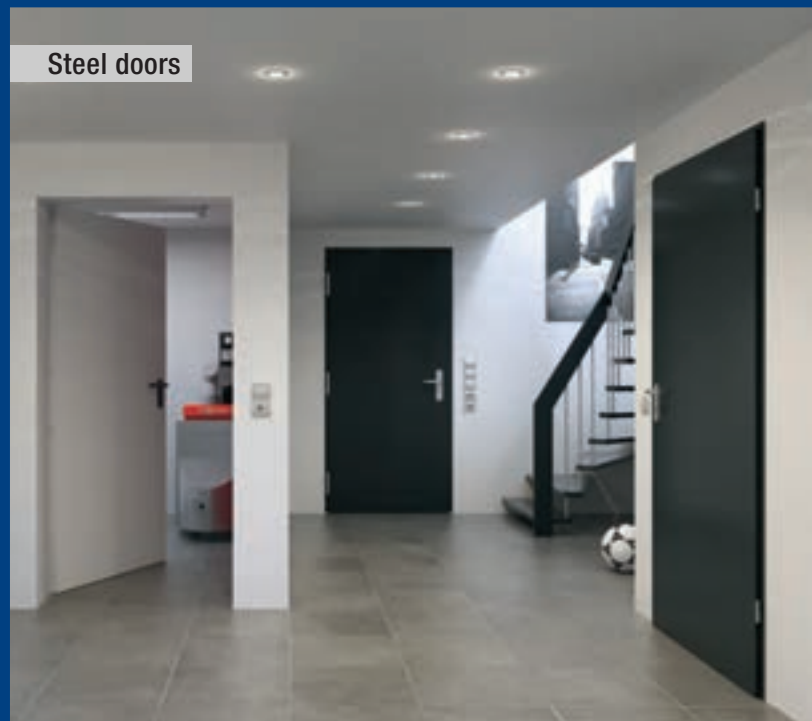
Garage doors and operators



Aluminium entrance door



Steel doors



When the Build Matters the Doors are Hörmann

- Widest range of garage and entrance doors in the UK
- Precision German engineering
- Excellent security and outstanding reliability
- Large selection of designs to match every home

HÖRMANN
Garage and Industrial Doors



High capacity channel system drains car park at McArthur Glen, Designer Outlets

McArthur Glen, the leasing, management and marketing company has twenty one Designer Outlets in eight countries across Europe and is still expanding its business. The new Designer Outlets indoor mall at Fulford, York features over 120 designer brands including clothing, foot ware, eyewear, home wares, restaurants and cafés. The mall is set in 60 acres of landscaped grounds, including an extensive free car park available for customers.

Hauraton Limited introduced the RECYFIX® MONOTEC, surface drainage system in January 2016. The McArthur Glen Designer Outlets mall, York, joins numerous installations successfully completed in the United Kingdom.

The RECYFIX® MONOTEC system was installed to provide surface drainage in a section of the car park's asphalt surface. Having a grating width of 100mm (Channel internal dimension) with an overall height of 230mm and a cross-section of 190.5cm², the



66 metres of channel supplied provide a total water capacity of just over 1260 litres.

The MONOTEC one metre long channel component is of a sturdy monolithic design where the HEELSAFE grating and the tongue and groove linking system are integral to the channel moulding. The whole unit is made of tough, virtually unbreakable polypropylene (PP) formulated to be very resistant to daily temperature fluctuations from frost conditions to strong sunlight, including the

Ultra Violet (UV) spectrum. PP is naturally resistant to de-icing salt. Complying with the requirements of EN 1433, the PP is given its UV resistance by adding just sufficient stabiliser so that the structural strength of the material is unaffected and a consistent appearance is maintained. The MONOTEC channels have a loading category of up to Class D400.

Tim Connolly, Hauraton's Managing Director comments; "The tongue and groove features on the MONOTEC channels provides easy assembly of the moulded components and facilitates the alignment of the channel run so cutting installation time for the groundwork contractor.

All Hauraton surface water drainage systems' comply with European Standards (hENs) and carries the CE mark".

For RECYFIX® MONOTEC product specifications visit the website.

01582 501380 www.hauraton.co.uk

Three is the magic number



Senior Architectural Systems has widened the appeal of its popular PURE® SLIDE aluminium doors even further with the launch of a new triple track option. Senior's PURE® SLIDE aluminium doors are both easy to manufacture using existing tools and cleverly designed to be simple to adjust and install. Available in a full range of standard RAL colours, with many pre-powder coated profiles for the single and double track options now available in stock for even faster delivery, Senior's PURE® aluminium door portfolio also includes the PURE® FOLD range of single swing, double swing and folding sliding doors.

www.seniorarchitectural.co.uk/puredoor

Architects Datafile website



The Architects Datafile (ADF) website is an online provider of past and present products and news items for the architect or specifier. architectsdatafile.co.uk is a one-stop source for all the latest press releases providing any visitor with access to information about products and services that they may require. From the website, you can find links to digital issues that have live links to advertisers' sites, as well as daily email alerts to keep you as informed as possible.

www.architectsdatafile.co.uk

The future of wood

One of the UK's largest independent timber and panel products distributor **James Latham**, now offers the next generation of timber and panel products through all nine of its nationwide panel depots with both Accoya® and Medite®Tricoya® Extreme. Sourced from fast growing sustainable forests, Accoya® wood, which spans eight decades of research, is a certified softwood which uses Accsys' proprietary wood acetylation technology to deliver exceptionally high levels of performance, stability and durability. Boasting a 50-year guarantee for exterior use and 25-years when used in the ground, Accoya® wood offers all kinds of new possibilities and solutions for outdoor projects which may involve challenging and demanding applications. The design and application possibilities offered by Medite®Tricoya® Extreme – a high technology wood – sees the marriage of acetylated wood fibre with the manufacturing technology of Medite MDF – has already excited and stimulated composite product manufacturers, designers, architects and the construction industry alike. Characterised by its durability, dimensional stability and reliability, and offering Medite®Tricoya® Extreme inspires creativity and discovery in environments where humidity and weather are usually concerns. The potential applications for Medite®Tricoya® Extreme are far ranging and are particularly well suited in areas where wood would not traditionally have been considered.

www.lathamtimber.co.uk



Bennett Homes named 'Housebuilder of the Year' following transformational Norfolk project

Bennett Homes launched Abbotts Grange, an award-winning development in the attractive Norfolk village of Fornsett St. Peter, for new homebuyers and families seeking rural living. The family-owned developer, which celebrated its 70th anniversary in 2017, creatively transformed an industrial brownfield site into a contemporary development of 17 detached homes designed with a superior specification, using the finest materials both internally and externally. Tobermore provided the developer with Roma block paving as a hard landscaping solution – the rustic appearance, quality finish and unique three-sized block design of Roma complemented the traditional homes beautifully, ensuring an ideal environment throughout.

The developer demonstrated outstanding care and consideration for the local community and commitment to minimising the impact of the construction on the environment. This was achieved by undertaking pre-construction ecology surveys, choosing materials to reflect local Norfolk vernacular style and drawing up a Landscape Maintenance Plan to secure a high standard of landscape management in



the future.

With a wide-ranging product selection, Tobermore, was well-equipped to provide Bennett Homes with a hard landscaping solution that would surpass expectation on an aesthetic level and achieve that all-important Norfolk country charm for the development.

Tobermore's Roma block paving was specified in the softly blended colours of Bracken and Slate – the ideal choice to work with the surrounding natural colour tones on site. Roma creates an ancient courtyard look

that evokes timeless style and elegance. Andrew Higgon commented: "Our decision was based primarily on the appearance of the product. We felt that it suited a more 'up market' development and this was one of our goals for Abbotts Grange.

"We were very pleased with the visual result on site – so much so that we've since specified Roma on subsequent higher end schemes."

The success of Abbotts Grange resulted in Bennett Homes being named 'Housebuilder of the Year' for the fourth time by the National Federation of Builders, one of the UK's most prestigious construction industry awards. Abbotts Grange offers traditionally-built, bespoke house types, ranging from four and five bedroom houses to three and four bedroom bungalows, all set in generous gardens. Edward Parker commented: "Abbotts Grange is an excellent example of a development which greatly improved the environment in which it is located."

0844 800 5736

www.tobermore.co.uk/professional/case-studies



RMIG City Emotion

we make ideas come to life



CITY-EMOTION.COM
More than just buildings

RMIG City Emotion captures the true passion for creative urban design. We offer you the most innovative technologies and materials in order to promote new solutions to a wide variety of challenges when it comes to design and architecture. We invite you to use RMIG City Emotion as an intelligent way to realise your visions and shape the cityscape of

tomorrow. There are virtually no limits to your possibilities and creative freedom. Consult RMIG early in the process and let us advise you in the use of perforated and expanded metal. For a head start in the world of RMIG City Emotion, visit city-emotion.com for inspiration and case studies.

RMIG Ltd | 1-7 Adlington Court | Risley Road | Warrington | WA3 6PL | Tel: +44 1925 839610 | cityemotion@rmig.uk | www.city-emotion.com



HOUSEBUILDER & DEVELOPER



@Housebuilderdev

REGISTER ONLINE FOR...

In-print magazine • Digital magazine
Newsletter • Daily digests

www.hbdonline.co.uk

selfbuilder + homemaker



REGISTER ONLINE FOR...

In-print magazine • Digital magazine
Newsletter • Digests



@SelfbuilderHome

WWW.SBHONLINE.CO.UK

Over
405,000 trees
flourishing
globally.

25 years of experience
allows GreenBlue Urban
to provide you with tree
pit solutions to establish
and increase leaf canopy
in the urban area.



greenblue.com

GreenBlue
URBAN

Establishing the future urban landscape



Low
Running
Costs

FIREX

Saving Lives & Energy

Smoke & Heat Alarms

The latest generation of Firex hard-wired, interconnectable smoke and heat alarms offers substantial energy savings and outstanding reliability

- Cost efficiency - our lowest ever running costs!
- Product reliability - with dust compensation and bug screen on all optical alarms, minimising nuisance alarms and call-backs.
- Alarm Memory Function - Identifies which alarm has triggered.
- Greater choice - with Standard, Long-life and Rechargeable battery back-up versions in each sensing technology - nine alarms in all.
- Range of Accessories - including wired Remote Test and Hush switch, and relay pattress to operate other devices.



serious about
safety passionate
about **protection**

Contact: +44 (0) 3337 722 227 sales@kiddesafety.co.uk kiddesafetyeurope.co.uk

*Firex is manufactured and supplied exclusively by Kidde,
a subsidiary of United Technologies Corporation.*



