

building construction design

www.buildingconstructiondesign.co.uk

December/January 2018

| | |
|---------------------|----|
| Appointments & News | 02 |
| Building Products | 06 |
| Structural Elements | 10 |
| Interiors | 11 |
| Exteriors | 15 |



THE UK'S NO.1 ESTIMATING SOFTWARE

- ✓ Easy, Fast, Accurate
- ✓ Free Tutorial
- ✓ Lifetime License
- ✓ Free Live Prices
- ✓ Free Support
- ✓ No Training Required



DO YOU OWN ONE OF THE MOST IMPORTANT TOOLS FOR YOUR BUSINESS?

“Most important piece of kit outside of the van, if you get the price wrong then you are off to a bad start before you have even put a shovel in the ground, with Easy Price Pro it helps you remember everything! As well as looking professional to the client. Wouldn't be without it.”

Call to book your free demonstration today.

☎ 03333 321502 @ info@easypricepro.com 🌐 www.easypricepro.com

Or try our estimating service first, from just £73! Email plans to info@pes.ltd for a free quotation.



Read more reviews on Facebook,
Yell, Google, Trust Pilot
& Software Advice



**20% OFF ALL
ESTIMATING SOFTWARE**

Quote NMM20 when
booking your **FREE**
demonstration!



Magical Result as SFS Fasteners Deliver for MediaCity UK's Iconic New Building

SFS has played a key role in enabling Artez, the main contractor, and leading roofing and cladding contractor Longworth to deliver an iconic new building on Manchester's vibrant MediaCity waterfront for upmarket bar and restaurant chain The Alchemist.

The company's powder-coated, high performance A4 (grade 316) stainless steel fasteners were key to creating a stunning gold building envelope for 'The Bund', a unique structure located on the land bridge crossing Dock 9 at Salford Quays, between The Lowry and the BBC.

Designed by Reid Architects, The Bund is an iconic new bar and restaurant on the waterfront next to the world famous Lowry Centre for Living Ventures and the company's 11th Alchemist venue. The design brief provided scope for originality and creativity in meeting the key requirements to deliver a building that would be different and special, and draw together the diverse areas of Salford Quays in a single new building.

The Bund provides a revolutionary hybrid landscape in creating what is a unique and futuristic venue. The new building's gold roof and walls, and stunning terrace that cantilevers out over the canal, are designed to match the aesthetic and style ambitions of Living Ventures and of the high class cocktail bar's clientele.

Longworth, who are renowned for their expertise in metal roofing, were commissioned to construct the building envelope and to realise Reid Architects' golden vision. The company's Business Development Manager, Ben Parker, says, "We are immensely proud of our work on The Alchemist, an incredibly complex building envelope project that only a handful of companies in the UK could have successfully implemented. To hear that the building was shortlisted for a Building of the Year Award with Greater Manchester Chamber of Commerce makes it an especially memorable project for us.

"Colour coordinating the gold zinc panels and the fasteners was critical, which is why we worked with SFS to ensure complete colour consistency on the fastener heads. We can rely on the excellent quality of SFS products, with their range



of A4 (grade 316) fasteners enabling us to offer an extended life cycle on the building envelope, a requirement which is now generally specified by all the leading architects."

Graeme McIlroy, Regional Sales Manager at SFS, adds, "Fasteners hold the key to maintaining the visual appeal of the building envelope, with our powder coated A4 stainless steel fasteners best for ensuring a facade retains its integrity over a long service life. We are

delighted to have been part of The Bund development working with Longworth and we hope to supply fasteners for more projects as this exciting development rivals London at the heart of the media world."

To find out more about high performance fasteners for the building envelope visit the SFS website:

0113 2085 500 www.sfsintec.co.uk

Delta ground gas barrier system

Brownfield land is a word specifically used to describe land which has previously been used for commercial or industrial purposes with suspected or known contamination (such as pollution or soil contamination) or land which has been in close proximity to pollution, hazardous waste or soil contamination.

The Government pledged in April 2017 to unlock Brownfield land to accommodate our housing shortage. Local authorities across the United Kingdom under new legislation now have to produce and maintain up-to-date, publicly available registers of Brownfield sites available for housing locally. These new registers will help house builders identify suitable Brownfield sites instantly, therefore unlocking land for thousands of new homes.

MemTech Gas Membranes

Delta Membrane Systems Limited is delighted to launched a new range of Gas Membranes, the MemTech Gas Protection range are BBA Approved and work in compliance with Building Standards (BS8485:2015, BRE 211:2015, CIRIA 665, CIRIA 735, CIRIA 748 and NHBC Standards) suitable for the protection against dangerous gases and chemicals when building on Brownfield and contaminated sites.

The MemTech Gas Membranes work in harmony with our waterproofing/damp proofing membranes offering complete reassurance.

MemTech M1

MemTech M1 is a flexible, loose laid proprietary gas barrier for use on sites with Radon (RN), Carbon Dioxide (Co2) and Methane (CH4) ground gas. M1 will also protect against the ingress of Hydrocarbon Vapours where it is separated from the



ground e.g. above a block and beam floor. The barrier is manufactured by an extrusion/coating process which incorporates a two layer low density polyethylene membrane with a polypropylene reinforcement grid and an aluminium foil core. The membrane is extremely flexible for ease of installation and is robust enough to cope with site conditions.

MemTech M1 meets requirements of BS8485:2015 and BRE 211: 2015 Radon: Guidance on Protective Measures for New Buildings and Code of Practice for the Design of Protective Measures for Methane and Carbon Dioxide Ground Gases for New Buildings.

MemTech R1

MemTech R1 is a flexible, loose laid proprietary gas barrier for use on sites with Radon (RN) ground gas. The barrier is manufactured by an extrusion/coating process which incorporates a three layer, low density polyethylene membrane which is reinforced with a polypropylene reinforcement grid. The membrane is extremely flexible for ease of installation and is robust enough to cope with site conditions. R1 meets the requirements of BRE 211: 2015, Radon: Guidance on protective measures for new buildings.

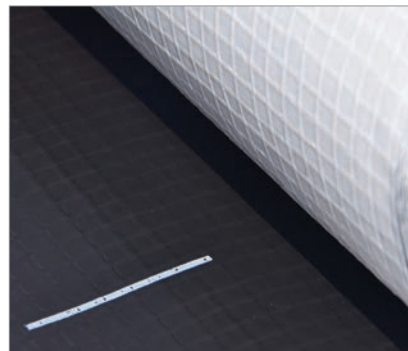
R1 Gas Barrier will also protect against damp and therefore will act as a DPM in accordance with CP: 102:1973, section 2 and BS: 8000-4:1989, and National Building Regulation Approved document C.

MemTech LGB

MemTech LGB (Liquid Gas Barrier) is a ready for use specialist styrene butadiene latex based liquid applied gas membrane. It offers a simple, continuous passive gas prevention barrier against the ingress of Methane, Carbon Dioxide, Radon, Ground Gas, VOC, air & Moisture into buildings. LGB also acts as a waterproofing membrane complying with C2 and C4 schedule 1 of the Building Regulations 1991 for England and Wales. MemTech LGB meets the requirements of BS8485:2015.

MemTech Void Vent

MemTech Void Vent is a cusped HDPE core with a geotextile filter/seperator bonded to a single side, in either 25mm or 40mm depth. MemTech Void Vent provides a means of ventilation when used in conjunction with an



approved Gas Protection Barrier, in accordance with the recommendation(s) contained within NHBC Guidance and BS8485:2015.

MemTech Void Vent 25 is optimised for maximum strength and performance. MemTech Void Vent 25 is independently tested and verified by UKAS accredited bodies.

MemTech Titan

Titan is a multi-layer flexible polyethylene membrane (a Gas and Hydrocarbon Barrier), with a unique core component which is designed and manufactured to provide a barrier to the most aggressive chemicals and to comply with current guidance on Hydrocarbons. Manufactured using the latest extrusion technology, this membrane is suitable in applications that are affected by Hydrocarbons. There is a common misconception that monolithic polyethylene barriers, such as HDPE and LLDPE are effective barriers to resist Hydrocarbons. This is an incorrect assumption, as Hydrocarbons will readily permeate through monolithic polyethylene barriers. Titan is specifically designed and manufactured to perform as a Methane, Carbon Dioxide, Radon, Ground Gas, VOC, air & Moisture and Hydrocarbon protection system. Titan complies with the latest codes of practice as published by BRE, CIRIA (C748) and BSI (BS 8485:2015). Suitable for use as Ground Gas/Hydrocarbon protection for NHBC GREEN, AMBER 1, AMBER 2, and RED site characterisations.

For help on the MemTech range of Ground Gas Protection, please contact Delta Membranes' Technical Team or visit the website.

01992 523 523 www.deltamembranes.com



Copper celebrates the Bronze Age

Set in the deserts of Sharjah, United Arab Emirates, a new multi-award winning visitor centre features Nordic Standard copper from Aurubis as part of a restrained palette of enduring materials.

The Mleiha Archaeological Centre is at the heart of an eco-tourism project to protect the rich archaeology, environment and wildlife in the region, creating a coherent setting suitable for potential World Heritage Site status. Focused on and wrapping around the circular Bronze Age Umm an-Nar tomb – considered the most impressive grave building of the many ancient funeral sites in the area – the new building was designed by Dabbagh Architects and conceived as a double curve mirroring the spectacular Fossil Rock mountains nearby.

The sinuous plan form terminates in a copper-roofed reception and exhibition area, fragmenting into copper-clad folded elements spanning the café, with glazing opening out to the landscape. Copper proved to be the ideal material for the complex geometry, with careful detailing and fabrication by cladding specialists Arabian Profile, working closely



The Centre wraps around the circular Bronze Age Umm an-Nar tomb

with the architects.

Given the historic importance and eco aspirations of the project, durability and sustainability were paramount in material selection. Principal architect Sumaya Dabbagh explained: “Alongside the regionally-sourced sandstone, we chose contrasting Nordic Standard copper which is recyclable and will weather organically over time, thus enhancing its natural beauty. Apart from its obvious contextual relevance to the Bronze Age site, copper is exceptionally

durable with low maintenance – essential in this harsh desert environment”.

Nordic Standard is produced by Aurubis, part of the world’s leading integrated copper group and largest copper recycler. In addition to Nordic Standard, other Aurubis architectural surfaces include Nordic Brown pre-oxidised copper with either light or dark brown oxidation that otherwise takes time to develop in the environment.

Various Nordic Green and Nordic Blue factory-applied patinas have also been developed with properties and colours based on the same brochantite mineralogy found in natural patinas all over the world. Aurubis copper alloys include Nordic Brass – now also available pre-weathered – Nordic Bronze and the innovative Nordic Royal with a long-lasting golden colour.

Aurubis is part of the world’s leading integrated copper group and largest copper recycler. For more information visit the website.

01875 812 144

www.aurubis.com/finland/architectural

Small changes, massive savings: heating secrets explained by Sentinel

Social housing organisations that join Sentinel’s CPD learning seminar at the Homes Show, Olympia will be in for a revelation about the significant potential savings they could be achieving with regard to heating provisions. The boiler manufacturer endorsed water treatment specialist will explain how a few small changes to heating system care can save registered landlords hundreds of thousands of pounds for every 1,000 boilers – and improve tenant satisfaction to boot.

Sentinel’s mission has been the same for 30 years: to protect boiler and heating system components from the damaging effects of corrosion, which is the inevitable consequence of poor water quality. Corrosion can lead to a multitude of devastating problems within heating systems including complete boiler failure, breakdowns, premature repairs and parts replacements, cold spots in radiators (or radiators that fail to provide almost any warmth at all), higher heating bills, and lower energy efficiency.

The prevalence of the problem has been highlighted by research and testing conducted by major boiler manufacturers: 87 per cent of call outs are to systems without correct water treatment. This means registered landlords are

currently missing an opportunity to maximise boiler longevity in their housing stock. Feedback from providers and contractors suggests that a significant percentage of boilers last around 10 years, not reaching their projected lifespan. Since heating provision cannot cease, the cost of getting these systems back on their feet simply has to be absorbed.

Carefully administered water treatment can protect heating systems from the effects of corrosion for life for a surprisingly low cost. This true Value for Money solution benefits both registered landlords and tenants by extending system longevity, preventing premature repairs and breakdowns, lowering heating costs, optimising heat transfer and energy efficiency, and ensuring that homes are warmer.

Sentinel’s unmissable session, titled ‘Delivering Value for Money in heating provision: how small changes can deliver large savings’, will be presented by the company’s UK Sales Director, Craig Mitchell, on Wednesday 22nd November at 11.45am. At the show, Sentinel will also be discussing their revolutionary upcoming innovation on stand H143.

01928 704330

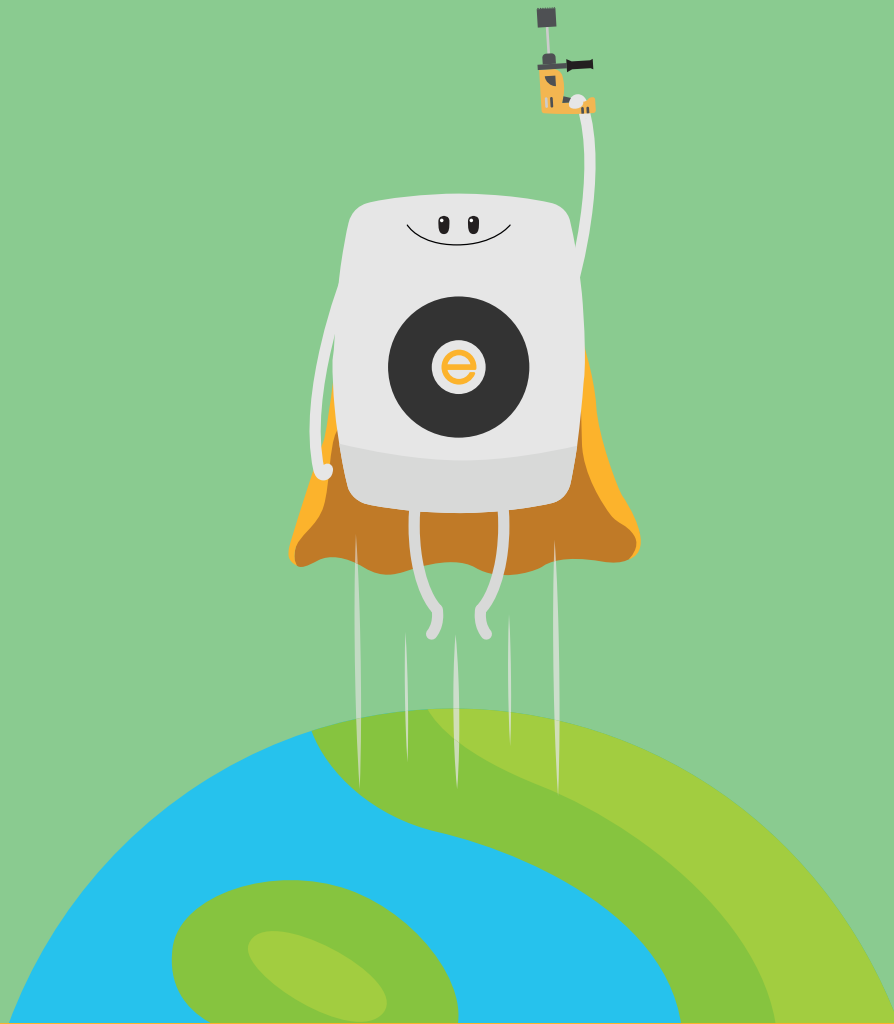
www.sentinelprotects.com



Sentinel UK Sales Director, Craig Mitchell



WHETHER IT'S REACTIVE MAINTENANCE...



With our unique Rapid service we guarantee to find and install the right solution to **solve condensation and mould within 10 days.**

Be a hero and see for yourself! To learn more and arrange a **free trial**, simply visit thefanhero.com to sign up or call us on **0330 1193 544**

envirovent
"more than just a fan"

TheFan**HERO**



Bloor Homes teams with npa24:7

With 65 per cent of the new homes market, ten of the top 15 house builders now take advantage of npa24:7's home emergency expert service. The most recent addition is major housebuilder Bloor Homes.

Bloor Homes required a robust and professional out of hours process. The key requisite was to alleviate some of the pressure on its own customer care team.

Previously Bloor was using an 'Out of Hours' call centre which worked on systems and information that was supplied. This was time-intensive and difficult to maintain. Bloor was outsourcing its calls until the services provided by npa24:7 offered a more effective solution.

Andrew Pickering, Group Category Executive, Bloor Homes said: "npa24:7 are market leaders in providing 'Out of Hours' home emergency services in this sector. We are confident that any problem a customer has will be dealt with efficiently.

"We receive valuable insights because of the reporting activity, which assists us in achieving targets and KPIs.

"The npa24:7 management team is extremely knowledgeable and approachable, they gave us



peace of mind before setting up the service. Their support and the amount of work invested beforehand enabled a seamless transition.

"I would recommend npa24:7 to other house builders. To my knowledge there is no one else in the market doing what they do. They have an excellent business model, which exceeds our requirements and expectations."

Nick Haycock, Managing Director, npa24:7 said: "Improving customer service is always a win, win situation and this strategic and collaborative partnership will see Bloor Homes offer enhanced customer care to its customers across the group.

"As specialists in providing home emergency repair management services, our expert call handling team always answer the call, they are always there when the Customer Care teams aren't available."

Andrew Pickering, Group Category Executive, Bloor Homes added, "We have also used the ad-hoc call cover facility which provided us with a solution for continued customer service.

"We look forward to continuing to work with npa24:7."

0333 323 0260 www.npa247corporate.co.uk



GRP door & window canopies from Canopies UK

We have supplied more than 30,000 canopies throughout the UK to housing associations, contractors, house builders and local authorities.

With a standard range of popular canopy designs, a bespoke manufacturing facility and installation service if required, Canopies UK offer the complete solution.

- | | | |
|---|---|--|
| <input checked="" type="checkbox"/> Free site visit | <input checked="" type="checkbox"/> Full fixing kits | <input checked="" type="checkbox"/> Specification sheets |
| <input checked="" type="checkbox"/> CAD drawings | <input checked="" type="checkbox"/> Delivery nationwide | <input checked="" type="checkbox"/> Installation if required |

For a quote call Greg now on:

T: 01254 777002

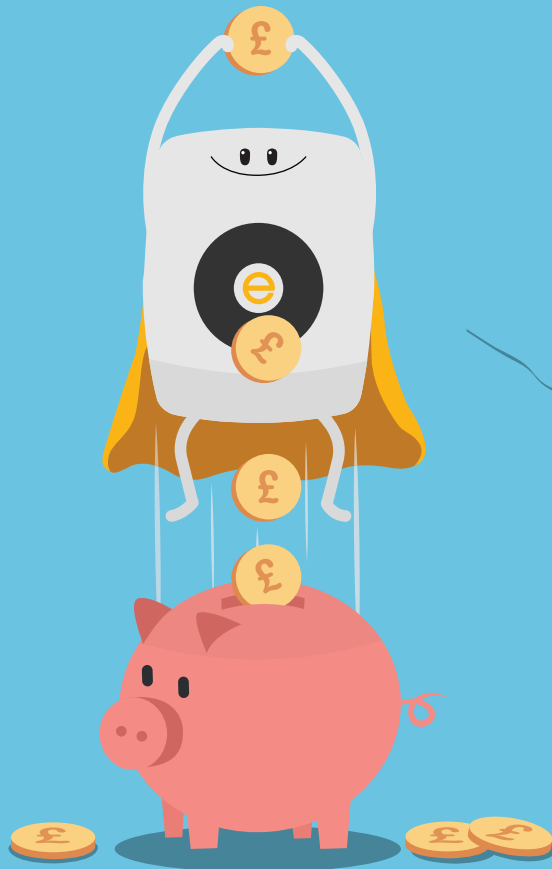
M: 07846 423812

www.canopiesuk.co.uk

Email: **greg@canopiesuk.co.uk**



...OR PLANNED WORKS



Our ventilation products are built to last and to save you money. Providing permanent solutions with up to 7 year parts and labour warranties, they will outperform your asset plan.

Be a hero and find out how much your organisation could save in long-term maintenance costs. Request a bespoke lifetime cost analysis by visiting **thefanhero.com** or calling us on **0330 1193 544**

envirovent
"more than just a fan"

TheFan**HERO**



Wells MP visits Offsite Solutions



MP James Heappey recently paid a visit to the Offsite Solutions factory in Highbridge, Somerset, which makes bathroom pods for the construction industry. On his tour of the factory, the Wells MP viewed cutting edge offsite technology and the company's expanded

production facilities where complete bathrooms are manufactured for apartments, student accommodation, healthcare, hotel and care home schemes – faster and to consistently higher quality standards than is achievable on a building site.

info@offsitesolutions.com

Architects Datafile website



The Architects Datafile (ADF) website is an online provider of past and present products and news items for the architect or specifier. architectsdatafile.co.uk is a one-stop source for all the latest press releases providing any visitor with access to information about products and services that they may require. From the website, you can find links to digital

issues that have live links to advertisers' sites, as well as daily email alerts to keep you as informed as possible.

www.architectsdatafile.co.uk

McAvoy wins major industry award



The McAvoy Group was presented with the award for Best Virtual Reality BIM at the third annual RICS BIM4SME Awards. This is for the design and delivery of a two-storey primary school building for children with special educational needs at West Hill School for Surrey County Council. The RICS has identified BIM as the critical development affecting organisations

of every size across the construction industry. The BIM4SME awards showcase excellence, promote best practice, and the tremendous opportunities that BIM presents for the whole of construction.

info@mcavoygroup.com

EnviroVent celebrates lucky 13

EnviroVent, has reached a milestone by selling 1,300 ventilation units to Tees Valley-based Thirteen in just 13 months! This latest milestone coincides with Thirteen confirming that EnviroVent has successfully secured a five year agreement to provide both Positive Input Ventilation (PIV) systems and its Filterless Infinity

Fans for its homes. Thirteen carried out an in-depth ventilation review where it tested out a number of different ventilation systems and EnviroVent's products were found to be the most effective. The landlord and developer also recognised that contracting with EnviroVent meant longer warranties, technical support and surveys all as part of the package.



innovation@envirovent.com



Looking for a **Reliable** Sign Supplier?

For over 35 years Glendining Signs has reliably and competitively supplied sign solutions to some of the biggest names in the Construction Industry.

Having now moved into our new bespoke premises and utilising state-of-the-art printing equipment, we continue to offer great quality signage products with the speed of service you need.

- Site Safety Signs
- Sales & Marketing Signs
- Hoarding Signs
- Signage Installation

Shop now at
glendining.co.uk

Tel: 0118 932 3788

Fax: 0118 932 3804

Email: sales@glendining.co.uk



Prolong balcony living



©Tom Manley

Windoor's balcony enclosures have been integrated into the development of three flatted blocks at Eriboll Street, Glasgow. The blocks, designed by Collective Architecture, include attractive elevated outdoor spaces often referred to as sunspaces or winter gardens. These balconies provide an additional living space suitable for a variety of uses.

The glazing can be fully enclosed, fully or partially open making a versatile balcony space. Residents can enjoy up to 100 days per year more than an open only balcony, particularly in the seasons of Spring and Autumn.

Windoor, a member of the WinGroup, is one of Europe's leading balcony manufacturers. Our ethos is that all products are manufactured, supplied and installed with design, functionality, quality and budget in mind. We work hand in hand with our clients to provide the perfect solution.

www.wingroup.ch

cpd provider



Windoor UK Limited,
12 Newmarket Business Centre,
341 Exning Road,
Newmarket, Suffolk CB8 0AT
Phone: 0870 067 8810
Email: windoor@windooruk.co.uk www.windooruk.co.uk

windoor[®]
Creating living space



Flood Resilience – Flooding is at a new time high in the United Kingdom

Between 2015/2016 flooding was ever present in the news, which saw families left homeless and homes destroyed. An estimated 5.2 million homes are at risk from surface, river and coastal flooding; over 400,000 of these homes are classed as 'extreme high risk'.

The Property Flood Resilience Action Plan, headed by Dr Peter Bonfield OBE, sought to explore avenues readily available to assist these requirements. Various experts joined the task force allowing for a cross section of knowledge. The focus set, to join forces to find ways to prevent flood damage and ways to combat the devastation caused by flooding.

David J Symes, Technical Director of Delta Membrane Systems Limited attended these focus group meetings. It was during these focus group meetings that Stephen Garvin of the British Research Establishment ("BRE") suggested use of a Victorian Terrace house which currently sits on site at the BRE



Innovation Park. Stephen envisaged using the Victorian Terrace house to demonstrate how flood prevention can be incorporated into our homes, meaning flood damage is a thing of the past and families can get back into their homes sooner.

The Flood Resilient House whilst in the planning stage was desired to be both 'Resilient' and offer 'Resistance' and these approaches were incorporated into the project from the onset, the BRE has referred to this as 'Property Flood Resilient Repair'. The project had a clear objective, to ensure

limited damage to a property in the event of flooding, meaning a vast reduction in time needed for reoccupation.

The specification for resilience was simple, using tried and tested technology Delta Membrane Systems Limited have used for many years, historically in Basement or below ground structures/situations with consideration as to how we could adapt these products to work in flood situations.

In order to significantly reduce downtime, a Delta membrane system can be installed to a property/structure as demonstrated within the BRE test house. Delta Membrane Systems Limited was awarded the Property Care Association, Property Care Innovation and Sustainability Award 2017 for their entry on the Flood Resilient House project. The Innovation and Sustainability Award is a great achievement for Delta Membrane Systems Limited.

01992 523 523 www.deltamembranes.com



Em-Glaze modular ridgelights bathe interiors with natural light

For more than 25 years our fully compliant, easy-install rooflights have helped make interiors feel more luxurious and spacious.

The Em-Glaze ridelight's low-profile aluminium framework is subtle enough to suit any residential building, while the increased glazing maximises daylight.

Additional framework colours, glazing, ventilation and sizing options are available. Ordering is easy, with six standard sizes in stock for next-day delivery.

For advice on sizing, specification and fitting or to place your order, contact our team.

Visit bit.ly/EGMRidgelight or contact us: 01483 271371 or sales@whitesales.co.uk



Whitesales®
Rooflights & more...

Red Grandis™ lands at Latham's

One of the UK's biggest independent timber and panel products distributor, James Latham, is now offering Red Grandis™ directly from stock through all eight of its nationwide timber depots.

Ethically sourced and plantation grown in Uruguay by forestry and logging giant Urufor, Red Grandis is one hundred percent FSC® certified and fully compliant with EUTR legislation.

Offering exceptional durability and stability, this high-performing, versatile hardwood timber - which comes from the Eucalyptus family - is also easy to machine and stain, plus, because it is plantation grown, it offers continuity of supply.

James Latham's Technical Timber Sales Development Manager, Justin Hayward explained, "We are really excited to be able to offer this product and I am confident that it will quickly become a popular choice with our customers. Red Grandis is ethically sourced; environmentally friendly and readily available and this, coupled with outstanding levels of performance in stability and durability, ensures that it ticks all of the boxes not only for us, but for our customers."

Typical uses for Red Grandis include all types



of joinery such as windows, doors, conservatories, mouldings and cladding. It is particularly well suited to large projects such as door frames as it is supplied in long engineered lengths so it is less likely to bow and warp, this in turn reduces the need to overlap and finger joint frames.

Mr Hayward added, "James Latham has a long history and expertise in bringing new and innovative products to market and Red Grandis fits perfectly within our extensive timber portfolio which boasts one of the largest and most varied ranges of joinery quality hardwoods and softwoods available in the UK."

Red Grandis is available in the following thicknesses as sawn timber; 25mm, 32mm, 38mm and 50mm and in widths of 150mm and



wider as well as long lengths (mainly 3.7m to 4.9m). It is also offered as WoodEx®, Latham's own premium quality, engineered hardwood and softwood timber product in all core sizes for joinery applications as clear faced and finger jointed for long lengths.

0116 257 3415 www.lathamtimber.co.uk



redGRANDIS™

A photograph of a modern interior space, likely a hotel room, featuring a white door and a window with shutters. The room is decorated with a bed, pillows, and a small table with a vase of flowers.

THE HOTEL AND HOSPITALITY
DOOR COLLECTION

MADE TO ORDER BY
ahmarra



Bathroom pods for new £69m hospital

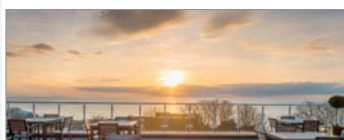


Offsite Solutions, one of the UK's leading bathroom pod manufacturer, has been awarded the contract to supply bathroom pods for the new £69 million, state-of-the-art East Lothian Community Hospital. Offsite Solutions will provide bathroom pods for the project.

The large 2.6m x 2.2m pods will easily accommodate a patient and a carer, and will have a wider pre-prepared aperture for two door leaves for easy access. The wash basins, toilets and showers will be pre-installed in the Offsite Solutions' factory and the easy-to-clean, hygienic walls will be finished in white with a feature wall.

info@offsitesolutions.com

Balustrade adds to stunning horizons



Neaco's balustrade is adding a stylish contemporary touch to a stunning outlook at a prestigious development of luxury apartments in Huntingdon.

Extensive terraces feature

Neaco's powder coated balustrade with glass infill panels to maximise the panoramic coastal views. In contrast to painted finishes, which are prone to flaking, the hard-wearing durability of the powder coating ensures that the balustrade retains its aesthetic quality. It also provides low thermal conductivity to prevent handrails from becoming extremely cold to the touch in winter conditions.

www.neaco.co.uk



New student accommodation

Manchester design studio Jasper Sanders + Partners has used variety of Forbo's products in a combination of bright colours to create an energetic and enriching environment at New Bridewell, Bristol's latest student accommodation development. Jasper Sanders, Design Director fitted out communal areas with Tessera Layout carpet tiles which he specified for their modularity, contemporary colour palette and robust durability. Anthracite grey provides a unifying backdrop, connecting different activity spaces highlighted with bright colour pops, yellow being the dominant colour in study areas and a various blue shades in more social areas. The 'pixellated' layout reflects the long history of the University's Department of Computer Science. Jasper also specified Sarlon Acoustic Vinyl to reduce impact sound in the studio flats and in turn, to improve the health and well-being of the tenants.

www.forbo-flooring.co.uk/education

Built to last

Reliable heating solutions are a primary requirement for Housing Associations and Local Authorities. As the most specified TRV in the UK, Terrier is the only choice - built to last.



Terrier
The Only
Choice

- Built to last – minimise maintenance cost for HA LA
- Heating guidance to reduce HA resource
- Technical suitability for all residential systems
- Dynamic colour visual settings
- Smooth operation – intuitive settings
- 33% Hysteresis reduction



For more detailed information:

FREE PHONE 0800 156 0010

email: uksales@pegler-yorkshire.co.uk

www.pegler-yorkshire.co.uk



Pegler Yorkshire

Decorative casing solutions – the big cover up



Porsche West London

The interiors of many buildings, as well as some exteriors, would be considerably less attractive and practical, if it wasn't for column casings and interior wall lining solutions.

A bold statement perhaps, but column casings are an essential part of contemporary building design and perform a vital function by providing an effective, stylish and immensely versatile method of concealing structural steelwork, concrete columns and in some cases, building services.

While there may be very few people who will stand back to admire laminated plywood column casings in schools, hospitals and retail outlets or brushed stainless steel wall cladding in a prestige office building or hotel, they play a key role in the aesthetics of countless building environments.

The use of column casings has grown dramatically since the early 1980s where their primary role was purely to cover structural supports with comparatively little consideration as a method of adding visual

decoration to a building.

Since then, the demand for wider choice and increased aesthetics from design conscious architects, interior designers and specifiers has been a key influence on Peterborough based decorative casing specialist, Encasement, whose range has expanded and diversified considerably over the past ten years to become the most comprehensive available in the UK.

The company's complete range includes 'Circa' and 'Quadra' which are manufactured from pre-formed plywood, alongside its 'Forma' metal casings, 'Polyma' GRP and 'Gypira' GRG product ranges. 'Metza', a specialised solution that provides mezzanine floor columns with up to 2 hours fire protection is also available.

Versatility is a key feature behind a diverse range of projects where the column casing's design has been used to accent an interior or provide a unique aspect to a building. This high degree of freedom enables major brands, particularly in the retail sector,

to specify colours that not only adhere to their brand guidelines but also add to the customer experience.

Encasement's 'Forma' metal casings, for example, provide specifiers with a diverse range of options and can be specified with diameters from 250mm up to 1000mm or as square, rectangular and hexagonal forms, as well as unique custom profiles.

While all of Encasement's column casings are suitable for interior use, its 'Polyma' GRP products and 'Forma' range, which can be manufactured from aluminium or stainless steel, are also widely used on exterior projects due to their inherent weather resistance.

Recent projects, such as Tetrosyl's new head office reception, Birmingham Dental Hospital and Winchester College, together with Porsche West London's prestige showroom, Kia's recently opened flagship premises on London's Great West Road and Debenhams' major store at Cheshire Oaks, all perfectly illustrate the versatility of 'Forma' column casing solutions.

At Tetrosyl, the casings are a unique aerofoil section, Birmingham's Dental Hospital uses a 2.5 metre high semi-elliptical design, whilst at Porsche, Kia and Winchester College, the casings are circular, but use



Tetrosyl



distinctly different finishes to meet individual project specifications. In addition, the Winchester casings are used both on the building's exterior, as well as its interior.

Alongside 'Forma', Encasement's 'Circa' and 'Quadra' pre-formed plywood column casings ranges were the first to be introduced by the company and are still arguably the most popular, as they provide specifiers and contractors with an unrivalled selection of finishes, which includes plain, laminated or real wood veneers.

While 'Circa' is available from Encasement as a plain casings for on site painting and decoration, by far the most popular casings are those finished with decorative laminates, which not only resist damage, scuffs and scratches, but also provides the specifier with a diverse palette of finishes including plain colours, wood grain and metallic, as well as textured and real wood veneers, to name but a few.



Dame Kelly Holmes Centre

Both 'Circa' and 'Quadra' are manufactured from FSC® certified plywood and Encasement is the UK's only supplier and manufacturer of pre-formed plywood pipe boxing and decorative casing products that holds an FSC® 'Chain of Custody Certification' from the Forest Stewardship Council. This makes the products compliant with sustainability codes and environmental procurement policies.



Winchester College

Designed solely for interior applications, 'Circa' and 'Quadra' are used in almost every building type from education, retail, hotel, sports and leisure to health sector and commercial office buildings. As a result, the choice of sizes available is also wide, allowing specifiers to choose not only circular and square, but also extended circles and rectangular profiles, which use additional infill panels to give greater flexibility while ensuring they are still easy to install.

Recent Quadra projects include Farnborough's 6th Form Centre and the Dame Kelly Holmes Sports Centre, while among the many 'Circa' installations, Gatwick Airport's South Terminal, Liverpool University and Gateshead International Stadium are major installations.

Alongside the company's column casings, its 'Vecta' system provides a high quality solution for interior wall linings, bulkheads and reveals. Launched just a few years ago, the system has been widely used in retail, education and commercial buildings, such as Tesco, South Bank University and Prêt à Manger, as well as prestigious office developments, including Wellington House and the Carmine building in Paddington, London.

Encasement's Managing Director, Martin Taylor, commented: "Column casings provide a perfect mix of practicality and

aesthetics and we've taken a lot of care to ensure our range meets both of these key criteria while also ensuring that we always remain competitive and deliver high quality products. Our entire range has been configured to provide the widest possible choice as well as being easy to specify."

He added: "The Vecta interior cladding system enhances our building interiors offer and allows specifiers to source a range of specialised interior finish products from a single company with high levels of expertise and experience in this sector. We also have our own contracting arm, which enables us to offer a full supply and install service to support contractors."

Encasement's latest 'column casing solutions' e-brochure is available for download from the company's website and covers every product in the range as well as providing details on materials, sizes and finishes available alongside an extensive technical information section.

01733 266889 www.encasement.co.uk



Birmingham Dental Hospital

Encasement helps HAs save time and money boxing in boiler pipework

As housing association heating system refurbishment and upgrade programmes aim to reduce emissions and energy consumption while improving efficiency, it is also important that the updated systems look good and are cost effective.

To help achieve this, Encasement's pre-formed boiler pipe casings are manufactured to the required boiler dimensions and pre-finished with durable melamine or laminate, so there is no need for on-site fabrication or painting, allowing them to be fitted in less than half the time of site made alternatives, which saves time and money.

By using and Encasement pre-formed boiler casing, which are supplied to the correct dimensions, the freestanding casing just slides into place underneath the boiler, which can be done by the heating engineer at the time of the boiler installation.

Also, as each casing is manufactured to the same high quality, using only FSC® 'Chain of custody' certified and sustainably sourced timber; they provide a consistent finish, as well as being compliant with housing association sustainable procurement policies.

Every boiler pipe casing order is accompanied with a copy of Encasement's FSC® certification, which takes care of compliance and traceability.



Also, as the company supplies so much FSC® boxing, it can purchase cost effectively, so there's no price premium for using FSC® compliant products.

Routine maintenance and boiler servicing is simplified too. With site made boiler casings they're usually damaged or destroyed during removal, which requires their replacement or re-manufacture, as well as re-fitting, all of which adds labour and materials costs. As Encasement's



pre-formed boiler casings are self-supporting, they can be easily removed and replaced in seconds, dramatically reducing the time maintenance engineers need to be on site along with the associated cost.

01733 266 889
www.encasement.co.uk



X-Wood cladding creates superb refurbishment

Freefoam Building Products are proud to release a new case study featuring the PVC foiled X-Wood cladding range. This beautiful property in rural Leicestershire originally featured white wood windows and a wood clad annex. The present homeowners decided to update the windows and refurbish the annex area to create an easy to maintain, long lasting facade that met the same high standards as their home. After receiving samples of several colour options the Anthracite Grey finish was selected to tone in with the brick work and roof. It's easy wipe clean surface and high quality performance qualities matched the homeowner's selection criteria exactly. The X-Wood cladding range is an innovative PVC-U exterior cladding that looks and handles like wood but without all the usual maintenance issues associated with timber with a subtle woodgrain finish designed to bring a refreshing new look to the exterior of any refurbishment or new build project. Freefoam have used their manufacturing expertise to design and produce an attractive high performance cladding comprised of three different layers – a heavy duty through coloured plastic foam core, covered with a durable plastic skin and then coated with market leading Renolit film which creates a hard wearing, stable material with a beautiful subtle woodgrain effect finish.

01604 591110 www.freefoam.com

Relcross door closers keep brewery warm



When Hillside Brewery in Gloucestershire realised that the doors to their upstairs patio weren't closing properly, with consequent loss of heat and escape of noise into the local area, something had to be done. The doors are exposed to the elements and, on windy days, the door closers originally fitted just weren't good enough for the job. The doors open outwards and the prevailing wind is inclined to keep them open rather than blow them shut. As it turned out, the solution was simple. They contacted Relcross and subsequently fitted a couple of LCN 4040XP. This is LCN's most durable heavy duty closer designed for the most demanding, high use and abuse applications. The body is made from cast iron and is fitted with an Extra Duty forged steel 'Cush-N-Stop' arm to help prevent the doors and frames being damaged by the wind action blowing them too far open. The load capacity of the bearing has been increased by 44 per cent and the extra power and robustness of the LCN 4040XP means the wind affected doors now close properly and securely eliminating the previous problems. For further information on LCN door closers contact Relcross or visit the website.

01380 729600 www.relcross.co.uk



RECYFIX MONOTEC® drains car park at Crompton Retail Park, Doncaster

A 930m² (10,000ft²) Farmfood store opened its doors to customers this Spring (2017) on the Crompton Retail Park, Doncaster, West Yorkshire. For this new section of the Retail Park's car park the 150 spaces, was drained by some 73 metres of RECYFIX® MONOTEC, Hauraton's high capacity channel drainage system. The store joins a Dunelm outlet at 3720m² (40,000 ft²) a Marston's Public House, a Goals Soccer Centre and other retail and leisure facilities on the 13 acre site located just off the Wheatley Hall Road (A630).

Hauraton Limited introduced the RECYFIX® MONOTEC, system in January 2016. The new Home Bargains store joins the numerous installations successfully completed in the United Kingdom.

Two RECYFIX® MONOTEC 100 models were installed in the car park's asphalt surface, both channels having a grating width of 100mm (Channel internal dimension). The



larger channel has an overall height of 380mm and provides a cross-section of 355.5cm². The smaller channel has an overall height of 280mm and provides a cross-section of 245.5cm². The 73 metres of channel installed has a total water capacity of just over 2444 litres.

The MONOTEC one metre long channel

component is of a sturdy monolithic design where the HEELSAFE grating and the tongue and groove linking system are integral to the channel moulding. The whole unit is made of tough, virtually unbreakable polypropylene (PP) formulated to be very resistant to daily temperature fluctuations from frost conditions to strong sunlight, including the Ultra Violet (UV) spectrum. PP is naturally resistant to de-icing salt. Complying with the requirements of EN 1433, the PP is given its UV resistance by adding just sufficient stabiliser so that the structural strength of the material is unaffected and a consistent appearance is maintained. The MONOTEC channels have a loading category of up to Class D400.

All Hauraton surface water drainage systems' comply with European Standards (hENs) and carries the CE mark.

For RECYFIX® MONOTEC product specifications go to the website.

01582 501380 www.hauraton.co.uk

nwa
Kytun™
DRY ROOFING

ARCHITECTURAL
ALUMINIUM
DRY VERGE



T. +44 (0)1684 293702 | www.kytun.com

nwa GROUP
NORTH WEST ALUMINIUM

Neaco products featured at waterside



Neaco's semi-structural glass balustrade and aluminium decking systems have been extensively specified at The Slate, the University of Warwick's impressive conference centre occupying a waterside setting in the heart of the campus near Coventry. The

aluminium powder coated balustrade lines a front terrace overlooking a lake and accommodates the view with clear glass panel infills. Neaco's decking is enjoying a major surge in demand for terraces and balconies due to its efficient drainage, fire resistance, anti-slip surfaces and maintenance-free durability.

www.neaco.co.uk

Connect with Selfbuilder & Homemaker online

The Selfbuilder & Homemaker website is an online provider of past and present products and news items for selfbuilders.

Regularly updated with hundreds of press releases, sbhonline.co.uk is a one-stop source for all the latest self build information.

It is also a gateway to our other online assets, from our archives of digital issues and newsletters to our social media outlet on Twitter.



[Visit www.sbhonline.co.uk to find out more!]

Tobermore hard landscaping specified at Airways i360

The Terra Firma Consultancy provided an informal landscape design advisory service to Marks Barfield Architects, sourcing the most appropriate hard landscaping solution at British Airways i360, the new landmark attraction on Brighton beach. The Terra Firma Consultancy presented Marks Barfield Architects with Tobermore's Sienna Duo - a block paving product with a striking granite aggregate finish that offered the contemporary look desired for the iconic structure.

Robyn Butcher, Landscape Architect at The Terra Firma Consultancy, explained the objectives of the high-profile project and her role within it: "The design vision for the external landscape was to provide an attractive landscape to accompany the highly anticipated British Airways i360 building and enhance the experience for visitors."

Built at the landward end of Brighton's historic West Pier, British Airways i360 is a modern-day 'vertical pier' that offers a new

perspective on Brighton and the south coast. Visitors are gently lifted from ground level to a height of 138m in a giant glass observation pod. The modern design, engineering and method of construction are innovative, just as the West Pier was in its time.

Robyn noted that due to the contemporary style of the design and build, paving products were the most suitable hard landscaping material for the project. "The aesthetics of paving was ideal for the envisioned design and, as other areas on the beachfront close to the project were due to be refurbished with new paving in the near future, we knew that paving around the British Airways i360 building would create continuity with these existing elements."

Robyn was involved in the process of sourcing and assessing paving products for Marks Barfield Architects and she was highly impressed with the quality, aesthetics and performance offered by Tobermore's Sienna Duo block paving.



The attraction was completed in August 2016 and was officially opened by His Royal Highness The Duke of Edinburgh during a special ceremony in October 2016.

British Airways i360 has also achieved the Guinness World Record for the World's Most Slender Tower, with a diameter of just 3.9m at its widest point.

0844 800 5736 www.tobermore.co.uk

RECYFIX® MONOTEC drains outdoor surfaces at Ysgol Gynradd Lôn Las School

The Ysgol Gynradd Lôn Las Primary School, Swansea, has currently 535 pupils from Year 1 to 6 as well as Reception and Nursery Classes. The school site is split into four main areas. Having a large gymnasium and a separate school canteen there are plenty of outdoor playing areas including a hard surface yard, an enclosed area for Nursery and expansive areas of grassland.

Hauraton Limited introduced the RECYFIX® MONOTEC, surface drainage system in January 2016. The Lôn Las school, joins numerous installations successfully completed in the United Kingdom.

The RECYFIX® MONOTEC system was installed to provide surface drainage in the paved entrance/play areas and the car park's asphalt surface. Having a grating width of 100mm (Channel internal dimension) with an overall height of 280mm and a cross-section of 245.5cm², the 176 metres of channel supplied provide a



total water capacity of just over 4329 litres.

The MONOTEC one metre long channel component is of a sturdy monolithic design where the HEELSAFE grating and the tongue and groove linking system are integral to the channel moulding. The whole unit is made of tough, virtually unbreakable polypropylene

(PP) formulated to be very resistant to daily temperature fluctuations from frost conditions to strong sunlight, including the Ultra Violet (UV) spectrum. PP is naturally resistant to de-icing salt. Complying with the requirements of EN 1433, the PP is given its UV resistance by adding just sufficient stabiliser so that the structural strength of the material is unaffected and a consistent appearance is maintained.

Shaun Davies the Site Agent for the Contractor also observed, "I was very impressed with the durability of the MONOTEC channels. Not a single unit was damaged by site traffic or whilst laying the asphalt. Any queries or information required was easily and quickly obtained from Hauraton's technical support team".

"All Hauraton surface water drainage systems' comply with European Standards (hENs) and carries the CE mark".

01582 501380 www.hauraton.co.uk

Schöck for all three phases of Manchester's Adelphi Wharf

Manchester is a city rich in architectural styles and proud of its industrial heritage. Something that is reflected in the design at Adelphi Wharf. A high-end development by Fortis, being delivered over three stages in Salford, alongside the River Irwell. It is within easy reach of both the city centre and MediaCityUK at Salford Quays. When complete it will offer a mix of over 500 townhouses, studios, one, two and three bedroom apartments.

To reflect its heritage and Salford's expansion as a contemporary academic and creative centre, the architectural approach to Adelphi Wharf combines solidarity and playfulness. The lower levels feature stout blue engineering brick, contrasting with the reactive colour-change panels of the upper levels. As the observer's position changes, these vary visually in tone and colour, accentuating the many recessed balconies on the development. In addition, there are also steel balconies connected to the concrete frame.

Any risk of thermal bridging must be minimised and to counter this, the widely used Schöck Isokorb types K and KS structural thermal breaks are incorporated. The type K with compression module HTE-Compact and 80



mm insulation thickness, is a load bearing thermal break element for free cantilevered balcony construction. Whereas the type KS is suitable for cantilevered steel balconies and canopies. Both types transfer negative moments and positive shear forces and block the outflow of heat by means of a high-quality polystyrene insulation core.

The Schöck Isokorb types K and KS units guarantee totally verifiable performance standards, meet full compliance with

the relevant UK building regulations and offer BBA Certification and LABC Registration.

In addition, the Schöck Isokorb range also offers a modular product for steel-to-steel applications – and there is even a maintenance free alternative to wrapped parapets. For a free copy of the Schöck Thermal Bridging Guide or the Thermal Bridging Solutions brochure, contact Schöck by calling.

01865 290 890 www.schoeck.co.uk

HOUSEBUILDER & DEVELOPER



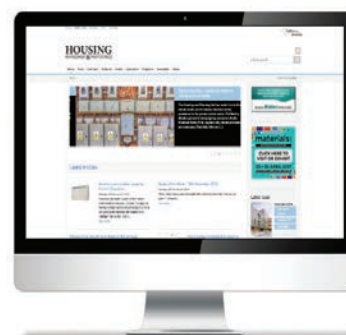
 @Housebuilderdev

REGISTER ONLINE FOR...

In-print magazine • Digital magazine
Newsletter • Daily digests

www.hbdonline.co.uk

HOUSING MANAGEMENT & MAINTENANCE



Register online for...

In-print magazine
Digital magazine
Newsletter
Digests

www.housingmmonline.co.uk

Two new designs
arriving in Autumn.



Pilkington **Everglade™** Privacy level 5

CHOSEN FOR PRIVACY

Pilkington Texture Glass

Protecting privacy doesn't mean compromising on style or elegance. The Pilkington range of texture glass allows maximum light in, yet keeps interiors discreet with a wide variety of traditional and contemporary patterns suitable for multiple applications. Look out for two new designs coming this Autumn, inspired by latest trends to further enhance a range that offers the optimum blend of form and function.

Because when you want glass you can trust, there can only be Pilkington.

To find out more, visit
www.pilkington.co.uk/textureglass



PILKINGTON

