

building construction design

www.buildingconstructiondesign.co.uk

February/March 2018

Appointments & News	02
Building Products	07
Structural Elements	10
Interiors	10
Exteriors	13



Cover image: © Structura
See page 18 for details

Building or Renovating?

Learn how to create your dream home in just one day



THE HOME RENOVATION WORKSHOPS

12 MAY 2018

Radisson Blu, London Stansted

This one day interactive bootcamp provides you with the knowledge and expertise to tackle your project with confidence.

The average self-builder wastes £50,000 due to a lack of expertise

- ✓ 12 in-depth subjects to choose from
- ✓ Learn from the UK's top specialists

PLUS FREE ENTRY TO GRAND DESIGN LIVE LONDON



Limited spaces, book your full or half-day today!

www.selfbuildbootcamp.com | **020 3225 5204**

Partner Events



UK CONSTRUCTION WEEK | 2018



Media Partners



GoodHomes

selfbuilder
+homemaker

Supporting Association



Certified by



Organised by





A sound solution from SE Controls for The Recording Rooms student accommodation

The Recording Rooms, one of Birmingham University's newest student accommodation blocks, is using an integrated smoke and heat exhaust ventilation system from SE Controls to provide smoke free escape routes for more than 250 students.

Located in the Selly Oak area of Birmingham near the university campus, the £12.5 million building was designed by Glancy Nicholls Architects and incorporates 267 bed spaces in five different room styles including cluster en-suite, studio apartments and even a penthouse, as well as a gym and communal lounge.

Within the Recording Rooms, which takes its name from the recording studio that was originally located on the site, there are three individual zones, ranging from three to seven storeys high, with each having a dedicated smoke control system linked to the building's master BMS and fire protection system.

The SE Controls system is designed to



protect the building's four stairwells and corridors on each floor, by keeping them free of smoke and enabling clear escape routes to be maintained in the event of a fire.

Two of the zones, which are three and four storeys high, each has an escape stair core protected by automatically operated side hung windows on each floor and automatic opening vents (AOV) at the head of the stairs. The systems in each zone are operated by SE

Controls OS2 SHEVTEC Controllers linked to the OSLoop Control System.

The seven-storey zone incorporates two escape stairs, which combine a mechanically ventilated smoke shaft with natural smoke ventilation, incorporating automatically operated smoke doors, and side hung windows, as well as AOVs at the head of stairs and tamper proof MCPs.

Michael Scrimshaw, Business Development Manager for SE Controls explained: "The design of the building meant that it was essential to provide effective smoke control in each of the different multi-storey zones. We have a significant amount of experience in code compliant and fire engineered solutions for student accommodation. By combining both mechanical and natural smoke ventilation, we were able to deliver a solution that fully utilises the advantages of both technologies to provide a safe environment for students."

01543 443060 www.secontrols.com

A·L·C

ANGLIA LIME COMPANY

TRADITIONAL & INNOVATIVE LIME BUILDING PRODUCTS



READY MIXED LIME MORTARS AND PLASTERS
FOR TRADITIONAL AND MODERN BUILDS

LIMEWASH • LIME BINDERS • LATHS • REINFORCEMENT • TOOLS

anglialime.com info@anglialime.com 01787 313 974

OFF WINDHAM ROAD, CHILTON INDUSTRIAL ESTATE,
SUDBURY, SUFFOLK CO10 2XD

CPD FOCUS

The latest CPD courses, seminars and documents for architects

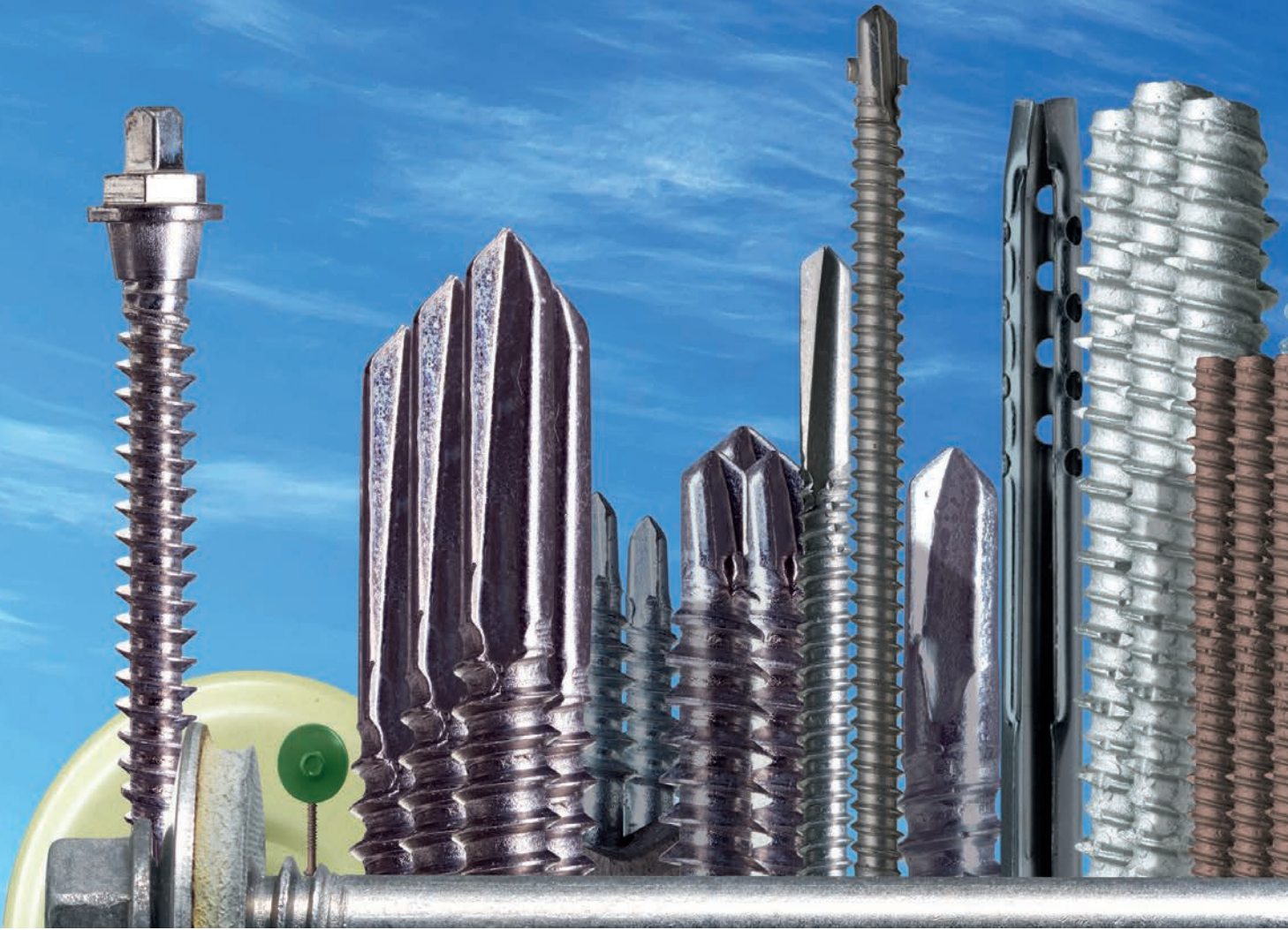
STRUCTURA UK IS THE EXCLUSIVE DISTRIBUTOR FOR KALWALL



Structura UK is the exclusive distributor for Kalwall translucent daylight building systems for England, Wales and Northern Ireland and a leading supplier, fabricator and installer of glass curtain walling. This CPD module revolves around daylighting using wall or roof glazing. The use of creative daylighting radically changes building envelope design and enhances the ambience of interiors. It positively influences people, affects how they behave in their environment and improves wellbeing. One of the main solutions for diffused

daylighting is Kalwall, the most insulating light transmitting cladding (and skylighting) system available casting 'museum quality' light evenly into an interior without glare or harsh contrasts of light and shade. Its shatterproof and safety features are often considered for sensitive applications such as military or transport projects while its lightweight structure make it perfect for remedial projects looking for refurb. The standard Kalwall 70mm thick panel offers insulation up to 0.28W/m²K - equivalent to a cavity filled solid wall. To arrange a seminar, or to find out more about Kalwall's CPD material, please contact Structura or visit the website. 01233 501 504 www.kalwall.com

SFS fixings shape



Great architecture creates our skyline but

Architects may shape how buildings are designed, built and refurbished but it's the humble fastener that ensures the structural strength and aesthetic beauty of the building's original design intent.

To extend the building envelope's lifespan, SFS, world leader in the design and manufacture of fastening systems, recommends its range of A4 stainless steel fasteners.

T: 0113 2085 500

W: www.sfsintec.co.uk

E: gb_technical@sfsintec.biz

our landscape



it's our fasteners that keep it standing

A4 fasteners provide better corrosion resistance, durability and longer warranties than carbon or A2 stainless steel fasteners. And with the option to powder-coat heads to match any profile, colour longevity is far better than for fasteners with moulded heads.

The combined performance and aesthetics of our A4 fasteners give you the confidence to create sustainable buildings that will shape our landscape long into the future.

SFS

Cistermiser-Keraflo appoints building products specialist to drive its marketing



Cistermiser-Keraflo, a leading intelligent washroom controls and water efficiency specialist, has appointed Mark Schlötel as Marketing Manager. Mark has 34 years' experience, directing strategic B2B and B2C communications for a range of businesses operating predominantly in building products and associated technologies. Having worked for UK industrial groups such as Norcros, Novar (now Honeywell) and IMI plc, Mark is adept at delivering successful launches for new products. Employing a mix of traditional and digital marketing techniques, he has devised and driven integrated campaigns for a well-known shower manufacturer, for differing window system companies and for a global beverage dispense and cooling equipment supplier. He has also overseen the market positioning of a major fire detection and alarm business, which led to an expansive multi-branded role marketing a highly diverse 'intelligent building systems' group. He said: "I just love getting to know technical products in detail, to fully understand their engineering advantages; I'm passionate about it. Then working out the best ways to gain as much visibility as possible across target market sectors".

0118 969 1611 www.cistermiser.co.uk

Framework Directive for energy-related products



In October 2009, the European Commission published a framework Directive for energy-related products, thereby extending the scope of application to products that use, generate, transfer and measure energy. The energy-related products directive has already been implemented for washing machines, TVs, kettles, gas boilers and a number of other products and the new regulations will be applying to warm air heaters from January 2018. To enable the heaters to be placed on the market they must be fully compliant with the regulation. Appliances in the supply chain after the implementation date, can still be sold but they must be covered by an order, written or verbal. Orders would need placing for the non-condensing ranges of warm air heaters, the Hi-Spec and Economaire, by the end of December 2017 to comply with the new regulation. Providing these orders are in place, **Johnson & Starley** are able to sell these two models of heaters up until 26th September 2018. The company is so confident in its products that it is extending the guarantee period for the Economaire and Hi-Spec heaters from 1 to 3 years.

01604 762881 www.johnsonandstarley.co.uk



Greek in origin,
Kallisto means most beautiful...

As the UK's leading designer and manufacturer of precast concrete products, Milbank Concrete Products would like to introduce you to **Kallisto Stairs** – a new concept in curved stair design.



Image - Kings Chase, Orshott - Aspire Luxury Properties - aspirelp.com



Image - Kings Chase, Orshott - Aspire Luxury Properties - aspirelp.com

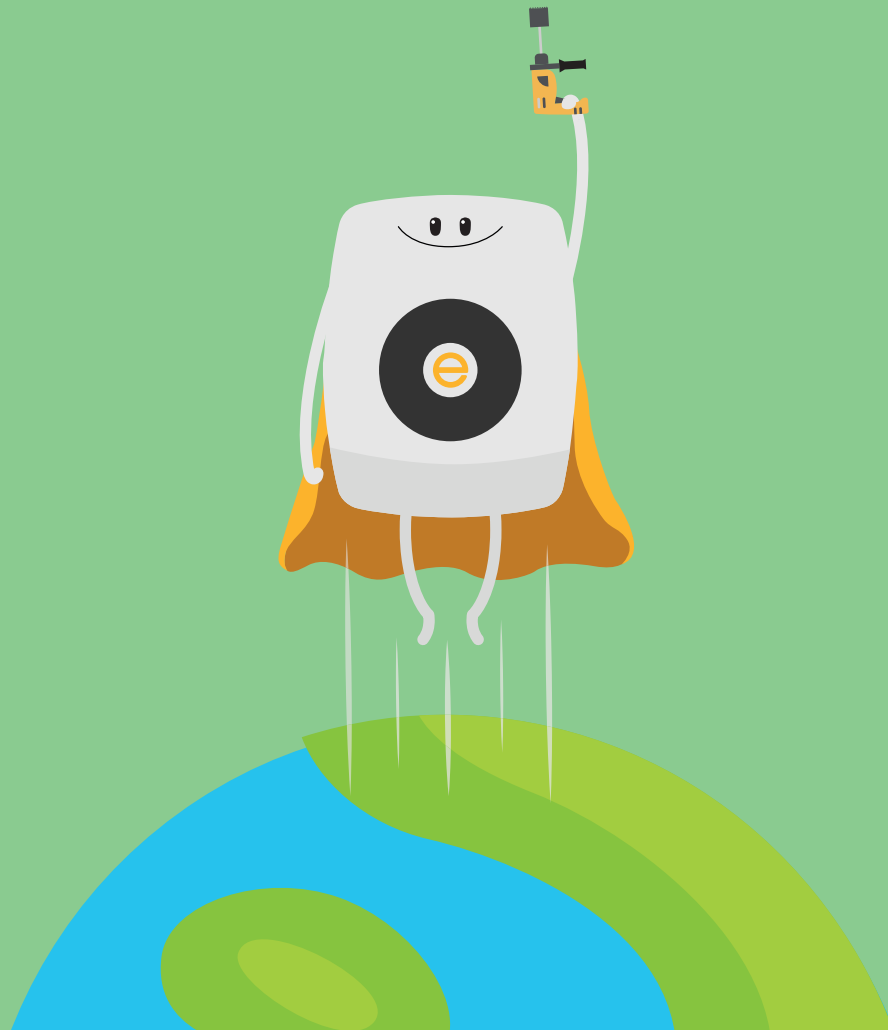


Image - Kings Chase, Orshott - Aspire Luxury Properties - aspirelp.com

We work with a large selection of clientele ranging from luxury property consultants to high profile construction groups and have been commissioned for staircase installations in some of the most prestigious venues in the UK. Every single one of our stairs are custom made and bespoke to suit your project. **To find out more, book a factory tour or request a brochure, please contact us on:**

T: 01787 220 564 **E:** info@kallistostairs.co.uk **W:** www.kallistostairs.co.uk

WHETHER IT'S REACTIVE MAINTENANCE...



With our unique Rapid service we guarantee to find and install the right solution to **solve condensation and mould within 10 days.**

Be a hero and see for yourself! To learn more and arrange a **free trial**, simply visit **thefanhero.com** to sign up or call us on **0330 1193 544**

Anyone for Half a Million Mugs of Tea?

Launched in 2017, the Newton Membrane Recycling Service is the first recycling scheme in UK waterproofing. Now, with the release of Newton's first annual recycling report we can see just how much HDPE plastic was recycled in 2017, and how Newton saved enough energy to make 519,690 mugs of tea...

Why Recycle Waterproofing Membrane?

One of the primary forms of structural waterproofing, cavity drainage membranes are manufactured from HDPE and designed to last for the lifetime of a building. However



each year the waterproofing industry sends hundreds of tonnes of off-cuts to landfill, as there was previously no service available for collecting and recycling the material.

With the environmental credentials of many new projects coming under increased scrutiny by assessments such as BREEAM, the ability for any company to trace their waste is therefore a valuable asset when undergoing sustainability assessments.

How Does It Work?

Available through Newton's Specialist Contractors, the service collects the waste membrane on delivery backloads from across the UK and processes it at Newton's Kent headquarters. From Newton, it is recycled by a third-party and manufactured into new construction products, therefore achieving a fully 'closed-loop' process.

Most important however, is that the service is transparent and traceable, making it possible to see where the waste is generated and produce reports for participating companies on how much they are recycling and how much energy they are saving.

What Have Been The Results?

As a result of Newton's efforts to ensure the sustainability of their operations, in 2017 a total of 3.255 tonnes of membrane was collected for recycling. There are also several other measurements that we can convert this into to make it a bit more quantifiable:

- Newton have avoided the release of 3.74 tonnes of Carbon Dioxide equivalent (CO2e) into the atmosphere
- This is the equivalent of burning 1,702 litres (1.24 metric tonnes) of petrol
- These are both equal to generating 14,616 Kilowatt Hours (kWh) of energy
- Enough energy to make 519,690 cups of tea!

Finally, it is also hoped that this innovative new service will motivate other construction suppliers to consider their own processes and how they too can improve their environmental credentials.

01732 806 963
www.newtonwaterproofing.co.uk

adf

architectsdatafile.co.uk



incorporating **Building Projects** magazine  @architectsDF

REGISTER ONLINE FOR...

In-print magazine • Digital magazine
Newsletter • Daily digests

www.architectsdatafile.co.uk

HOUSEBUILDER & DEVELOPER



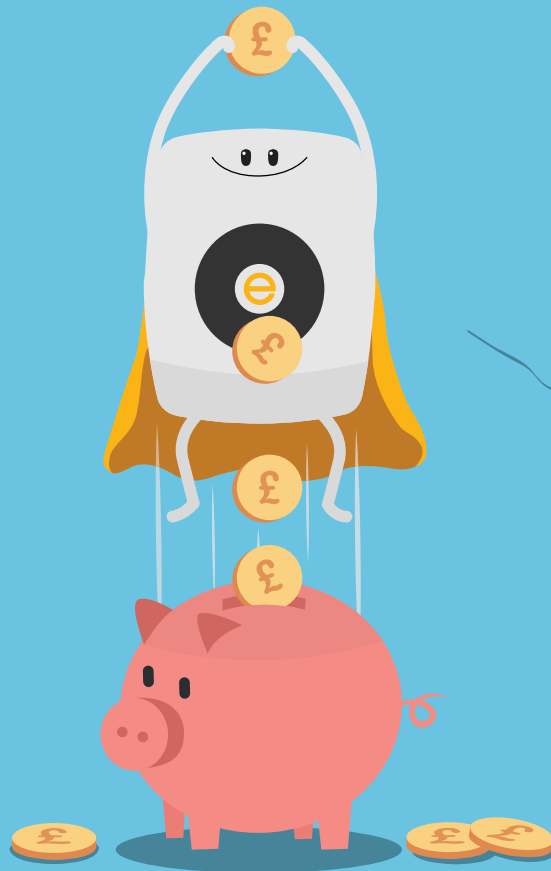
 @Housebuilderdev

REGISTER ONLINE FOR...

In-print magazine • Digital magazine
Newsletter • Daily digests

www.hbdonline.co.uk

...OR PLANNED WORKS



Our ventilation products are built to last and to save you money. Providing permanent solutions with up to 7 year parts and labour warranties, they will outperform your asset plan.

Be a hero and find out how much your organisation could save in long-term maintenance costs. Request a bespoke lifetime cost analysis by visiting **thefanhero.com** or calling us on **0330 1193 544**

envirovent
"more than just a fan"

TheFan**HERO**

Red Grandis™ lands at Lathams

One of the UK's biggest independent timber and panel products distributor, James Latham, is now offering Red Grandis™ directly from stock through all eight of its nationwide timber depots.

Ethically sourced and plantation grown in Uruguay by forestry and logging giant Urufor, Red Grandis is one hundred percent FSC® certified and fully compliant with EUTR legislation.

Offering exceptional durability and stability, this high-performing, versatile hardwood timber - which comes from the Eucalyptus family - is also easy to machine and stain, plus, because it is plantation grown, it offers continuity of supply.

James Latham's Technical Timber Sales Development Manager, Justin Hayward explained, "We are really excited to be able to offer this product and I am confident that it will quickly become a popular choice with our customers. Red Grandis is ethically sourced; environmentally friendly and readily available and this, coupled with outstanding levels of performance in stability and



durability, ensures that it ticks all of the boxes not only for us, but for our customers."

Typical uses for Red Grandis include all types of joinery such as windows, doors, conservatories, mouldings and cladding. It is particularly well suited to large projects such as door frames as it is supplied in long engineered lengths so it is less likely to bow and warp, this in turn reduces the need to overlap and finger joint frames.

Mr Hayward added, "James Latham has a long history and expertise in bringing new and innovative products to market and Red Grandis fits perfectly within our extensive timber portfolio which boasts one

of the largest and most varied ranges of joinery quality hardwoods and softwoods available in the UK."

Red Grandis is available in the following thicknesses as sawn timber; 25mm, 32mm, 38mm and 50mm and in widths of 150mm and wider as well as long lengths (mainly 3.7m to 4.9m). It is also offered as WoodEx®, Latham's own premium quality, engineered hardwood and softwood timber product in all core sizes for joinery applications as clear faced and finger jointed for long lengths.

0116 257 3415 www.lathamtimber.co.uk



Offsite education projects handed over



The McAvoy Group handed over the £20m Lynch Hill Enterprise Academy in Slough 17 weeks ahead of programme, allowing the school to benefit from earlier occupation. The project is one of the UK's largest ever modular

schools. It demonstrates a number of new innovations which contributed to its early completion and reduced the programme by around six months compared to site-based construction. Gillian Coffey, Executive Head Teacher at the Lynch Hill Enterprise Academy said, "The facilities are terrific and the children are enjoying a fantastic new learning environment and the benefits of cutting edge design."

info@mcavoygroup.com

'1000 Companies to inspire Europe'



Offsite Solutions, has been recognised as one of the London Stock Exchange Group's 1000 Companies to Inspire Europe. The report is a celebration of the most dynamic, high-growth businesses across Europe. To be included in this prestigious

listing, companies need to show consistently strong revenue growth over a minimum of three years, significantly outperforming their UK peers. Earlier this year, the company announced a record order intake in the history of the business. This unprecedented performance is a 50 per cent increase on the same period last year.

www.offsitesolutions.com

HOUSING MANAGEMENT & MAINTENANCE



Register online for...



In-print magazine

Digital magazine

Newsletter

Digests

www.housingmmonline.co.uk



RENOLIT extends offer with four muted greys

RENOLIT Cramlington Ltd offers 19 RENOLIT ALKOREN Suedette Matt colours with the addition of four new distinctly different greys to their stock range of 3D thermoformable films.

- Clay Grey Suedette Matt
- Onyx Grey Suedette Matt
- Pearl Grey Suedette Matt
- White Grey Suedette Matt

Within the grey colour zone the four new colours include both light and dark shades to complement the existing range of commercially attractive colours combined with a desirable high performing superior matt surface finish. All 19 Suedette Matt

colours have matching Egger MFC boards.

RENOLIT ALKOREN Clay Grey Suedette Matt

Clay Grey Suedette Matt creates a sophisticated muted tone which works well with White Craft Oak 1. MFC Co-ordination: EGGER U201 ST9 Pebble Grey.

RENOLIT ALKOREN Onyx Grey Suedette Matt

Onyx Grey Suedette Matt is a versatile colour which creates a sultry atmosphere with its darker character. Add rich tones with Dried Date Suedette Matt, add urban chic with Chicago Concrete 1 or add a modern design element and depth with Fleetwood Lava. MFC Co-ordination: EGGER U960 ST9 Onyx Grey.

RENOLIT ALKOREN Pearl Grey Suedette Matt

Pearl Grey Suedette Matt is a modern light grey. For a trendy fresh look combine with Peak Yellow Supermatt or mix with Silver Liberty Elm 19 to add an imaginative



style statement. MFC Co-ordination: EGGER U763 ST9 Pearl Grey.

RENOLIT ALKOREN White Grey Suedette Matt

White Grey Suedette Matt is a light only just grey. To create a fresh and bright interior mix with Fern, and combine with the latest EIR (emboss in register) designs such as ENDgrain Delight or ENDgrain White. MFC Co-ordination: EGGER U775 ST9 White Grey.

01670 718222 www.renolit.com/design



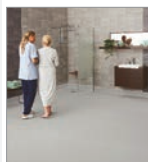
Offsite solutions expands range



Offsite Solutions, one of the UK's leading bathroom pod manufacturer, has expanded its range of GRP composite pods with the development of a hybrid design to offer an enhanced level of finish for higher specification student accommodation, hotels, and apartments for market sale or build-to-rent. GRP pods can now be fabricated to incorporate ceramic tiles with options for completely tiled walls, inset feature walls or bands of tiles. These hybrid bathroom pods allow even more aesthetic flexibility for GRP units – with all the time and quality benefits of offsite construction.

01278 780807 www.offsitesolutions.com/GRP-hybrids

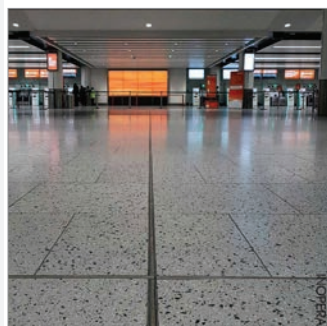
Polyflor launches Polysafe Quattro PUR



Polyflor, has just announced the launch of their new Polysafe Quattro collection. This innovative safety flooring range offers barefoot and shod sustainable wet slip resistance with a stud-free finish for enhanced comfort underfoot. Polysafe Quattro has been specifically designed to provide a high degree of slip resistance in continually wet areas within the healthcare, residential care, housing and leisure sectors. Polysafe Quattro is available in a carefully developed colour palette of 12 shades, that will complement any interior design scheme in a commercial or residential setting.

0161 767 1111 www.polyflor.com

New Conglomerate tile flooring at Gatwick Airport is plane sailing



A major project to lay around 7500m² of new conglomerate flooring and screeding at Gatwick North Terminal has been completed by National Federation of Terrazzo, Marble and Mosaic Specialists (NFTMMS) members DMC Contracts and In Opera Group. According to Federation spokesperson Brian James, this is a perfect example of NFTMMS members successfully completing a project in a high profile, high footfall area. To ensure both the quality of the installation and that testing was undertaken at all stages, DMC Contracts introduced Inspection and Test Plans which were administered for each bay of work that was completed. The tile chosen for the flooring by the client, Gatwick Airports Ltd, was manufactured by fellow NFTMMS member, In Opera Group, and has been used at Gatwick for more than 15 years. The installation processes involved screeding, incorporating movement joints, applying adhesive and laying the tiles. Throughout the installation the floor was thoroughly checked to ensure that there were no sudden irregularities, undulations, steps, ridges, bumps, ripples, rocking or lipping. The main contractor for the project was Balfour Beatty.

www.nftmms.co.uk

Encasement's simple solution to conceal fire sprinkler system pipework

Where fire sprinkler systems are being installed or retro-fitted in tower blocks and flats, Encasement's 'Versa' pipe boxing range provides the perfect cost effective solution for concealing sprinkler pipework.

Manufactured from pre-formed FSC® certified plywood and pre-finished in a durable white melamine, Versa 'L' shaped boxing is available in either 5mm or 8mm thicknesses for use within flats and communal areas, such as stairs and lift lobbies where sprinklers are required. Versa boxing can be used with standard sprinkler heads or concealed 'pop-out' units with cover caps.

Available in a wide range of sizes, Versa sprinkler pipe boxing helps save on installation time, as there's no need for fabrication or painting on site. All that's required is for the boxing to be cut to length and holes drilled for the sprinkler heads before securing to the wall or ceiling.

Encasement's Managing Director, Martin Taylor, commented "Our fire sprinkler boxing has already been installed on a large number of number of high rise refurbishment projects, where pipework and sprinklers need to be



concealed for both aesthetic and practical reasons. Not only are they cost effective and easy to install, but Encasement also holds a full FSC® 'Chain of Custody' certification, which certifies that our products are manufactured from sustainable timbers. This means that

local authorities can meet their compliance obligations under UK government procurement guidance."

01733 266 889 www.encasement.co.uk



THE SASH
WINDOW
WORKSHOP

THE FINEST TIMBER WINDOWS AND DOORS

PROVIDING TAILOR MADE SOLUTIONS FOR YOUR PROJECT

- Suitable for Conservation Areas and Listed Buildings
- Supply Only, Supply and Install, Repair and Refurbish



We have worked on various prestigious projects, including: St James' Palace, The Admiralty Buildings, Clandon Park, The Grove Hotel, and Oxford Wildlife Trust.



01344 868 668

www.sashwindow.com





Eclisse Pocket Door Systems are chosen by builders and architects worldwide

We believe the success of the Eclisse Pocket Door System is a result of a combination of factors including the comprehensively tested, robust easy-to-install frames, our 15 year guarantee, our dedicated customer service staff and the wide variety of Eclisse pocket door products we have on offer.

Unlike other pocket door systems, the Eclisse quick-click frame is quick and easy to assemble. It comprises of a pocket, track and metal door post that combine together to create a frame that is installed into wood or metal studwork as a complete unit. This means the installer does not have to worry about the alignment of components installed separately.

The fact the Eclisse Pocket Door System assembles into a frame with a robust pocket is key because it replaces studwork in the wall. Many aspects of the Eclisse pocket door systems have been comprehensively tested, and the strength of the pocket is no



exception. The pocket of the Eclisse frame is constructed from specially formed galvanised steel sections and it has been independently dynamic impact tested to European standard UNI EN 1629.

Surprisingly many pocket door kits on



sale in the market today do not come with a proper 'pocket', but simply consist of just a track and some fixings, or a track and two thin wooden vertical slats to represent the pocket, so it is important to be clear what you are getting when you make your purchasing decision.

For more information about the Eclisse range of products visit the website or call our friendly customer service team.

0845 4811977 www.eclisse.co.uk



Garador's insulated sectional garage doors beat the cold

The Great British Winter with temperatures well below freezing can have real implications for homes and garages. Heating bills tend to go up, but savings that could be made from heat loss from the garage are often overlooked. Garador's premium sectional garage doors help to reduce the amount of heat lost through the garage, with U-Values down to 1.30 W/m²K. They are also a great choice for garages where the contents need to be kept warm and dry or the garage is used as a home office or gym. Each door is constructed from sections which are 42mm thick and filled with highly insulating PU foam, as well as rubber seals around the door. They have also been designed to look great, in a choice of 4 designs and over 18 colours.

01935 443709 www.garador.co.uk

Balustrade in service at new fire station



Improving accessibility is a recurring theme in the specification of Neaco's products and so it proved again when the company's balustrade was called into service for entrance ramps at the new cutting-edge Hull Central Fire Station, designed by Jefferson Sheard Architects. Jefferson Sheard Architects' Project Lead, Mark Fannon commented: "Health and safety and accessibility are always key drivers on all of our designs. Neaco's balance of form and function enabled us to fulfill our brief with a cost effective solution, whilst achieving the desired aesthetic."

www.neaco.co.uk

Hambleside launches new roofing underlays



Roofing ventilation and accessories specialist Hambleside Danelaw has launched two new vapour permeable underlays for slate and tile roofs, the middleweight Danelaw LR135 and the premium Danelaw LR180. Both can be used for warm and cold roof applications, either unsupported, draped over timber rafters or counter battens or fully

supported over timber sarking and rigid insulation. LR135 and LR180 have been independently tested by the BRE for wind zone suitability and come with full BBA approval.

01327 701900 www.hambleside-danelaw.co.uk

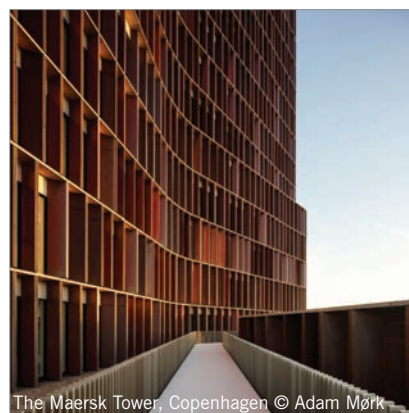
Architectural Copper Awards Winners Announced

The results of the 2017 European Copper in Architecture Awards 18 have been announced. The Maersk Tower research complex in Copenhagen, designed by C.F. Møller Architects and characterised by its grid of copper fins, was the outright winner. Two infrastructure projects were Commended and the Hydropolis water sculpture pavilion in Wrocław, received the Public Choice prize.

The eighteenth iteration of these biennial architectural awards recognises the growing influence of copper and its alloys in modern design. But it also exposes to a wider international audience inspirational projects, some of which might otherwise go unrecognised. The 2017 judging panel consisted of four architects, all recipients of previous Copper in Architecture Awards: Ebbe Waehrens (BBP ARKITEKTER, Copenhagen), Maxime Enrico, (LAN, Paris), Ville Hara (Avanto Architects, Helsinki) and Craig Casci (GRID Architects, London).

The Award winning projects were assessed from 35 entries from photographs, drawings and architects' descriptions. Overall architectural design, response to programme and context, importance of copper to the scheme and copper treatment were all considerations. The judges initially selected a shortlist of 8 projects that stood out from the rest and then went on to choose the overall Winner and two Commendations. In addition, registered copperconcept.org visitors voted on-line for their favourite shortlisted entry, resulting in a clear Public Choice Winner.

A unanimous judges' choice, the Maersk Tower research complex in Copenhagen, designed by C.F. Møller Architects, was the clear Winner. A major landmark building prominent on Copenhagen's skyline, it nonetheless delivers on many other levels as well. The conceptual development of its complex programme offers a fresh, more openly interactive research building typology



The Maersk Tower, Copenhagen © Adam Mørk

enabling interdisciplinary functions to work across and between floors and departments. Its response to urban context is impressive with a gentle curved form making it slim, elegant and sympathetic to its surroundings. And its qualities extend to exceptional detailing throughout with an innovative use of gently animated copper fin facades that moves in response to the solar gain and defines the building.

info@copperalliance.org.uk
www.copperconcept.org

IT'S NOT JUST A TREE

Properly cared for, trees are **valuable** and **growing assets** worth **three** times the investment.

GreenBlue
 URBAN
 Establishing the future urban landscape



Contact us today to discover how our uncompacted soil solutions enable trees to **thrive.**

[greenblue.com](https://www.greenblue.com) | 0800 018 7797



All types of projects deserve Schueco

Unbeatable quality and real value for money make Schueco aluminium façades, windows and doors the first choice for any project. Offices and shop fronts, schools and colleges, housing association new-builds and refurbishments will all benefit from Schueco's precision engineering. Add in the enhanced comfort and reduced running costs created by great design, an unrivalled choice of profiles and excellent thermal and sound insulation and you have a total, cost-effective solution. For German engineering made in Britain, there's only one name.

www.schueco.co.uk

SCHÜCO

Don't risk your reputation Trust Seamsil® from Delvemade

Other cut edge corrosion treatments are available. They come and they go. The original, 'Delvemade Seamsil', is the only one you need and it's here to stay. Seamsil is the UK's leading Cut Edge Corrosion Treatment. More professionals specify Seamsil for good reasons. It's the product they trust, it works and It has stood the test of time. Today, Seamsil and Delvemade's other protective coatings are actively maintaining hundreds of roofs, right across the country, many for decades after application.

Invented by Delvemade, Seamsil has a proven, unbeatable reputation for quality that stretches back a generation. This fact enables Delvemade to provide a long and meaningful product guarantee.

Itac Limited, Delvemade's parent company, exclusively manufactures all Delvemade products. Both businesses operate closely, working together, from Itac's new, 'state of the art' production facility, in Manchester.

Established over 100 years, Itac has a wealth of adhesives and coatings manufacturing experience.

An Investor in People, with ISO 9001 and ISO 140001 accreditations, Itac is the perfect manufacturing partner for Delvemade, ensuring the highest quality plus rapid supply on demand, and interim warehousing for all Delvemade products. The current Delvemade range includes all the well-known names. Seamsil, Delcote, Delcote HPG and Delglaze.



**Seamsil®
because
it works**

Itac's Research and Development team are actively working with Delvemade as it invests and expands, to bring further new and exciting building and roofing surface coatings to market.



Delcote/Seamsil Project 32,500m² roof Spade Lane, Sittingbourne

Delvemade offer a free two hour CPD Cut Edge Corrosion Seminar at your premises. For full Delvemade product and CPD information contact by calling or visit Delvemade's website.

01204 868604 delvemade.co.uk

The original - tried, tested, proven

Call us now on

01204 868604

Seamsil®



Specify Delvemade brand leading products by name :
• Seamsil • Delcote • Delcote HPG • Delglaze

**The UK's leading
Cut Edge Corrosion Treatment**



Delvemade Limited

www.delvemade.co.uk Telephone: 01204 868604
Email: contact@delvemade.com Fax: 01204 862332



The right surface drainage channels for the job at T2 Trafford Point

Situated near to the M60 and M62 motorways, T2 Trafford Point is a newly developed distribution facility on the edge of Trafford Park, Manchester. The 7712m² warehouse has upwards of 1440m² associated office space including an under-croft and reception area. The facility features cycle parking, a 91 space, 3500m² office car park/access road and a 7400m² service yard for manoeuvring, parking, loading and unloading Heavy Good Vehicles' (HGVs).

Surface drainage required at T2 Trafford Point office car park access road and service yard required the specification of high capacity and very robust channel systems capable of withstanding the daily passage of cars as well as the massive twisting forces exerted by the tyres of manoeuvring HGVs.

Hauraton RECYFIX® MONOTEC 200/450 channels were installed in the asphalt car park. With a nominal grating width of 200mm (Channel internal



dimension) and an overall height of 450mm a channel provides a cross-section of 746.1cm², so the 134 metres of channel installed in the car park has a total water capacity of just over 9996 litres and a loading category of up to Class D400. The MONOTEC one metre long channel component is of a sturdy monolithic design where the HEELSAFE grating and the tongue and groove linking system are integral to the tough, virtually unbreakable polypropylene (PP) moulding.

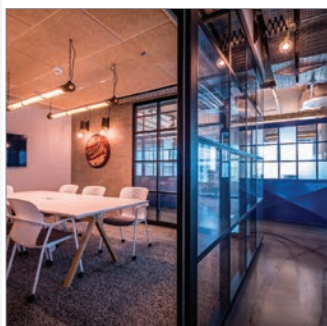
In addition to the car park drainage, two

sizes of RECYFIX® HICAP® channels were also installed in the concreted service yard; 78 metres of HICAP 150 and 120 metres of HICAP 300. Both PP moulded channel sizes were supplied with factory fitted 28mm wide slotted ductile iron gratings for Class F900 loading category. The 198 metres of channel installed in the service yard has a total water capacity of just over 24156 litres.

With a maximum channel weight of 23,4kg per unit, both the RECYFIX® MONOTEC and HICAP channels were well within the weight limitation for manual lifting so made the contractors job on site just that little bit easier. For a given area to be drained, these ranges of high capacity channels also mean fewer channel runs, less excavation work, reduced foundation concrete needed and substantially less after care; benefits appreciated by the groundwork contractor, PP O'Connor and site manager.

01582 501380 www.hauraton.co.uk

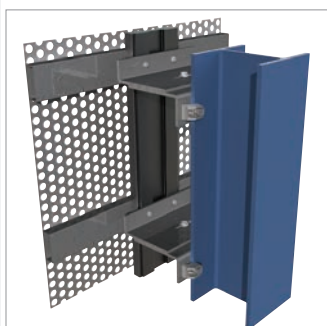
The silence of international design



Setter Architects have designed stunning new offices for several international companies, including Palo Alto Networks. The link between these projects is the way their interiors all benefit from high performance acoustic ceilings manufactured by Trolldtekt in Denmark. Palo Alto Networks is a company involved in developing cyber defence solutions. Located on the 24th floor of a complex of multi-storey office towers in a colourful and historical part of Tel Aviv, the design inspiration is the introduction of eclectic low-tech external elements to the interior. These include steel window profiles and garage doors, exposed bricks, old textured glass to divide public spaces and historic artefacts. Palo Alto benefits from stunning aesthetics and controlled environments which absorb the sounds and reverberations from hard surfaces and the natural echoes. The superior acoustic performance of the ceilings is combined with different forms of lighting, air-conditioning and amplifiers. Apart from high sound absorption, other benefits include durability and natural breathability coupled with low cost performance and sustainability as documented by Cradle to Cradle certification at silver level.

www.trolldtekt.co.uk

Lindapter's extended product range is now CE Approved



Lindapter has gained CE Mark approvals for its latest range of steel connection systems, further demonstrating its commitment to high quality manufacturing and transparency of product performance. In addition to the longstanding CE Mark approvals for Lindapter's Girder Clamp, Hollo-Bolt and LindiBolt, the following products are now CE Marked: High Slip Resistant Clamps (Types AF and AAF); Adjustable Clamps (Types CF, D2, F9, LR, LS, & Flush Clamp); and Floor Fixings (Grate-Fast, FloorFast & Type 1055). This latest announcement follows multiple CE accreditations achieved by Lindapter since 2011 and offers Engineers an extensive range of options for designing CE approved steelwork connections to Eurocode 3. Almost every conceivable steel connection can be quickly accomplished without on-site drilling or welding by using Lindapter's clamping systems. CE Marking provides specifiers and contractors with the assurance that the product will perform as declared in the published Declaration of Performance (DoP).

01274 521 444 www.lindapter.com/about/CE

A true reflection of Neaco quality



Reflections in Chesterton, by HC Moss (Builders) Ltd, won Best Small Development in the Cambridge News Property Awards to become the latest in a long list of award-winning projects to feature Neaco products. Paul Ursell of HC Moss (Builders) Ltd explained the benefits of using Neaco's structural glass: "We incorporated frameless bi-fold doors and needed to match this with frameless glass balustrade affording a seamless outlook over the river. Every detail needed to be very high-end so we specified a stainless steel top rail to cap the structural glass."

sales@neaco.co.uk

Architects Datafile website



The Architects Datafile (ADF) website is an online provider of past and present products and news items for the architect or specifier. architectsdatafile.co.uk is a one-stop source for all the latest press releases providing any visitor with access to information about products and services that they may require. From the website, you can find links to digital issues that have live links to advertisers' sites, as well as daily email alerts to keep you as informed as possible.

www.architectsdatafile.co.uk

Kalwall® creates a flight of fancy



Kalwall® translucent cladding from Structura has been used in a stunning project at Rayleigh Durham Airport in North Carolina designed by architects Clark Nexsen. The brief was to transform/refurbish the aging 1981 Terminal 1. Nicknamed the 'blue box', the original rectangular building was constructed using blue corrugated metal making it dark and uninviting while the inside was haphazard with a poor passenger flow. In a £50m scheme, a stunning new terminal has emerged from a complete redesign with everything from the curbside to the interior space. On landside arrival, a Kalwall canopy system provides shelter and links access points while a Kalwall translucent facade is utilised to clad the main terminal building. Its unique ability to diffuse natural daylight into the interior means the new TSA screening facility now has complete privacy for the sensitive areas while bathing the interior with natural, glare-free light. Kalwall is frequently specified for this type of prestige project where high-end performance and quality need to be coupled with aesthetics, practicality and a long life-cycle.

www.structura-uk.com/kalwall

red

The best choice for your build



SEEING IS BELIEVING

Red is the place to come for high performance contemporary roof lights, windows, doors and stairs. But we don't expect you to take our word for it - visit red-gs.co.uk and see for yourself. Then give us a call to see how we can help you realise **your** commercial project or domestic dream.

red-gs.co.uk | hello@red-gs.co.uk | 0203 478 9610





High capacity channel system drains main car park at Castlegate Business Park

The 107 space car park at the new Costa, KFC outlets, Castlegate Business Park, Dudley, West Midlands is drained with 44 metres of Hauraton's RECYFIX® MONOTEC high capacity channel drainage system. The Castlegate Business Park is already home to restaurants including Frankie and Benny's and Pizza Hut, as well as a Showcase Cinema and offices.

Hauraton Limited introduced the MONOTEC system in January 2016. The Castlegate development joins numerous installations successfully completed in the United Kingdom.

The RECYFIX® MONOTEC channels installed in the car park's red block / asphalt surfaces have a nominal grating width of 100mm, an overall height of 380mm and a cross-section of 355.5cm². Having total water capacity of just over 1566 litres the channel runs drained an area of over 1233m².

All RECYFIX® MONOTEC one metre long channel component is of a sturdy



monolithic design where the HEELSAFE grating and the tongue and groove linking system are integral to the channel moulding. The whole unit is made of tough, virtually unbreakable polypropylene (PP) formulated to be very resistant to daily temperature fluctuations from frost conditions to strong sunlight, including the Ultra Violet (UV)

spectrum. PP is naturally resistant to de-icing salt. Complying with the requirements of EN 1433, the PP is given its UV resistance by adding just sufficient stabiliser so that the structural strength of the material is unaffected and a consistent appearance is maintained. The MONOTEC channels have a loading category of up to Class D400.

Peter Dicken, Hauraton's Project Manager for the Midlands comments; "With a maximum weight of 10.4kg the groundwork contractor, E.Terry, found the MONOTEC channels supplied easy to handle and install with no breakages reported during the installation process. Matching Trash Boxes and End Caps were also supplied. All Hauraton surface water drainage systems' comply with European Standards (hENs) and carries the CE mark".

For RECYFIX® MONOTEC product specifications visit Hauraton's website.

01582 501380 www.hauraton.co.uk



Cladding makes a difference in Caerphilly

Freefoam Fortex Double Shiplap PVC-U Cladding has been utilised to great effect on homes on the Lansbury Park estate in Caerphilly. Installed as part of a £2 million investment package to improve energy efficiency and transform the appearance of the estate the extensive refurbishment programme was commissioned by Caerphilly County Borough Council and fitted by contractor Eon Energy. The works were undertaken through the Energy Company Obligation (ECO) initiative, which is a government energy efficiency scheme to help reduce carbon emissions and tackle fuel poverty. Under the scheme, larger energy suppliers deliver energy efficiency measures to homes and are given targets based on their share of the domestic gas and electricity market. The development previously featured white PVC cladding but the refurbishment gave the opportunity to bring colour to the properties. Eon Energy chose a variety of subtle shades from the Fortex range including Cappuccino, Colonial Blue, Misty Grey and Argyll Brown to compliment the new exterior finish. PVC cladding is a cost effective option saving expensive and time consuming ongoing maintenance. With Freefoam's ten year guarantee on the majority of the colour range Caerphilly Borough Council will still be seeing the benefits in many years to come.

01604 591110 www.freefoam.com

selfbuilder
+homemaker



REGISTER ONLINE FOR...

In-print magazine

Digital magazine

Newsletter

Digests

WWW.SBHONLINE.CO.UK





RETURNING TO **LONDON**
WITH EVEN MORE **INNOVATION**
WED 25 - THU 26 APRIL 2018
ILEC CONFERENCE CENTRE

■ CONFERENCE ■ EXHIBITION ■ CPD SEMINARS ■ INNOVATION

DISCOVER THE CUTTING EDGE
OF MATERIAL SPECIFICATION

🌐 materialsforarchitecture.com

🐦 #MfA2018

📘 /materialsConfEx

REGISTER FREE AT **MATERIALSFORARCHITECTURE.COM**

INDUSTRY PARTNERS

