

# building construction design

[www.buildingconstructiondesign.co.uk](http://www.buildingconstructiondesign.co.uk)

April/May 2019

|                     |    |
|---------------------|----|
| Appointments & News | 03 |
| Building Products   | 06 |
| Interiors           | 08 |
| Exteriors           | 12 |

Cover image: Evinox  
See page 11 for details



# We're the No.1 choice for new builds.



We work with the  
top homebuilders to  
provide warmth  
throughout the UK



## Not just any rad. **Stelrad.**



Find out more at **Stelrad.com**



From designer styles right through to energy saving radiators, our extensive No.1 ranges will add extra appeal to all new homes. We're not just any rad. We're Stelrad.



QUALITY PRODUCTS | EXTENSIVE RANGE | VALUE FOR MONEY | EASY INSTALLATION



# Reliable BBA Approved Waterproofing products from Delta Membrane Systems Ltd

We are delighted to announce the achievement of the British Board of Agrément (BBA) certification for NB 1 (19/5619i1). Koster NB 1 is a mineral coated waterproofing slurry containing crystallising and capillary-plugging agents. It can be used for waterproofing against ground moisture and for non-pressurized and pressurized water. NB 1 Grey is characterized by its excellent resistance to pressure and abrasion as well as chemical and sulphate resistance.

"The BBA's certification of Koster NB 1 is a significant milestone for this excellent product, the symbol of quality and reassurances in our structural waterproofing solutions. We believe that this will provide Specifiers, Architects, Engineers and Contractors alike with even greater confidence when specifying Koster NB 1 into their structural waterproofing projects.

We shall continue to lead the field in structural waterproofing and hope to continue our progress by having more products certified

by the British Board of Agrément".

Christopher Burbridge, Delta's Managing Director.

## Who is the BBA and what is BBA Approval?

The British Board of Agrément (BBA), is the UK's major authority for the evaluation and certification of construction products. For manufacturers (such as Delta) to achieve BBA Approval for a product, the product must go through rigorous laboratory tests, on-site evaluations and thorough manufacturing assessments. If the product successfully meets all the criteria it is awarded BBA Approval and Agrément Certificate.

## Why is BBA product Approval so important?

BBA Approval is an independent assurance that a product will perform as the manufacturer claims it will. The BBA's reputation for robust testing gives the NHBC,



builders, specifiers, local authorities, and others within the industry reassurance that a product is of a consistent quality, will perform and will last. As the British Board of Agrément say "BBA products won't let you down!"

Our current BBA Certificates (00-3742 and 18/5509) covers Approvals for Delta MS 20, MS 500, FM, PT and Koster Deuxan 2C. Also Delta's Memtech M1 Gas Barrier and Memtech R1 Gas Barrier Certificate number 16/5367.

01992 523523 [www.deltamembranes.com](http://www.deltamembranes.com)

# Encasement provides stylish cover up at Twickenham Catholic College

Saint Richard Reynolds Catholic College in Twickenham is using Encasement's 'Forma' and 'Vecta' decorative metal casings to conceal structural steelwork around a new courtyard walkway, as part of its recently opened £14 million teaching block.

Designed by DHP Building Design Consultants and built by main contractor, Graham Construction the project involved the refurbishment of the existing Edwardian structure, alongside the construction of The Elizabeth Building to create a modern learning environment for pupils. In addition to primary and secondary classrooms, the Elizabeth Building also includes a hall, library and sixth form centre.

An integral part of the new facilities was the creation of a covered walkway along two sides of the college's main 'quad' courtyard that also incorporates 14 structural support columns, which are concealed by Encasement's rectangular 'Forma' decorative

metal column casings and matching ceiling soffits and fascias.

Each 650mm x 990mm weatherproof column casing stands 3.74 metres high and is manufactured from 1.5mm thick aluminium, which incorporates a Rimex 'Black Pearl' finish that combines a highly polished surface with a pattern of small circular indentations, making the casings both durable and aesthetic.

In addition to the column casings, the walkway also includes almost 70 metres of aluminium fascias and soffits at ceiling level, which use the same Rimex Black Pearl finish to conceal building services and drainage pipework. All casings solutions were not only manufactured and supplied by Encasement, but were also installed by the company's specialist installation team.

Encasement's Managing Director, Martin Taylor, commented: "The Black Pearl finish was an excellent decision for this project as it helps provide interest by breaking up the



large surface areas of the column casings. Also, the pattern helps provide some additional rigidity to the aluminium, making it even more durable and ideal for high traffic use. The same applies to the ceiling soffits and fascia, but the main advantage of using the same material is the it integrates with the column casings and provides a uniform finish to this excellent project."

01733 266 889 [www.encasement.co.uk](http://www.encasement.co.uk)

# Celebrating the great, the good and the simply outstanding

This year the Offsite Awards has seen fierce competition with over 200 entries across 22 categories from high profile names, all competing to be crowned as industry leaders of the offsite manufacturing and construction sector.

Steel framing innovators EOS, are celebrating success at the Offsite Awards and have announced that they have reached the finals in no less than five categories this year including:

- Best Use of Steel Technology – The Ram Quarter



- Housing Project of the Year – The Ram Quarter
- Leisure Project of the Year – The Travelodge, Middlesex Street, London
- Education Project of the Year – Sarah Swift Building, University of Lincoln
- Healthcare Project of the Year – Sarah Swift Building, University of Lincoln

Steve Thompson, Managing Director of EOS said of the awards success: “We are really chuffed – it’s fantastic to be nominated in five categories of these prestigious awards – especially taking into consideration the calibre of the competition and variety of projects. This is testament to a progressive approach, the dedication of the EOS team and the partnerships we have formed with some of the most forward-thinking companies in the construction industry.”

## Bespoke Steel Framing Systems

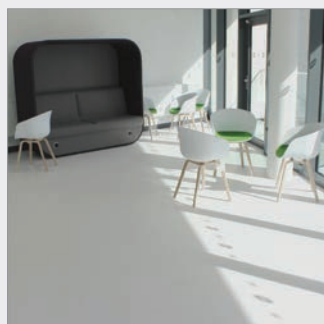
With over 14 years’ expertise across all



construction sectors – EOS specialise in the design, manufacture and supply of a wide range of bespoke steel framing systems for the offsite residential markets.

01325 303030 [www.eos-facades.co.uk](http://www.eos-facades.co.uk)

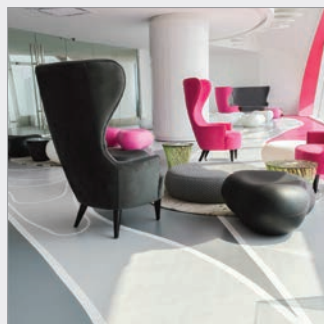
## A Modern Finish from Flowcrete UK for Menai Science Park



Anglesey’s new Menai Science Park required an iconic and modern flooring solution and consulted Flowcrete UK to help. Menai Science Park, or M-SParc as it’s known, is a facility where collaborations are encouraged and ignited by chance encounters in the shared spaces, and the client was eager for this energy to be reflected in the building’s interior. M-SParc delivers space, support services and outstanding facilities to businesses of all sizes. To achieve the aesthetic, two different materials were used to provide the ideal amount of contrast for the design to pop. Peran Comfort from Flowcrete UK was chosen in Light Grey and Signal White for the stairs, landing and foyer areas of the Open Innovation Space. The noise reduction and durability properties of this flooring system are ideally suited to these areas, where heavy footfall and the accompanying noise is expected. In contrast to the matt, self-smoothing polyurethane-based Peran Comfort floor coating, Flowcrete UK’s Rustik Natural Stone was utilised in the entrance way. Its noise reduction, slip resistance and durability properties make it ideal for use in entranceways where heavy footfall is expected on a regular basis.

01270 753000 [www.flowcrete.co.uk/contact-us](http://www.flowcrete.co.uk/contact-us)

## How artistic flooring is reflecting architecture



Flowcrete is contributing to the latest interior design trend by providing artistic flooring that reflects the architecture of the host building. With the rippling exterior design and unique glass-fronted PODs set into the construction, the Arte S buildings (pictured) surely stand out and provide a talking point all on their own. What makes these buildings even more impressive is the designer’s choice to continue the ripple aesthetic within the interior as well. With the aim of replacing reality with fantasy, curves and ripples can be seen everywhere in the lobby from the rounded chairs and stools to the demarcation used in the flooring. As well as looking visually attractive, the line markings, created using Deckshield UV Linemarker from Flowcrete also work to separate the light and dark grey hues. For the flooring, 382m<sup>2</sup> of Flowtex PT, a heavy duty, epoxy screed with high impact resistance was used, coated with the self-smoothing epoxy resin Flowshield SL 1000 in Steel Grey and striking pink hues. As well as being aesthetically pleasing and complementing the lobby furniture beautifully, this floor finish is suitable for areas of high footfall, trolley and rubber wheeled traffic.

01270 753000 [www.flowcrete.co.uk](http://www.flowcrete.co.uk)





# Fire sprinkler systems – Cover your investment

By Martin Taylor, Managing Director with decorative casings specialist, Encasement

**R**esidential fire safety, particularly in multi-storey buildings and tower blocks is a key focus for housing associations and local authorities as the retro-fitting of fire sprinkler systems now an essential part of a multi-million pound investment in fire protection upgrades.

With many HAs and LAs making significant contributions to the cost of this package of improvements, questions regarding 'best value' and 'cost effectiveness' must be considered while ensuring that quality and safety are not compromised.

As sprinkler system pipework needs to be surface mounted in flats and communal areas for most retro-fit projects within existing residential blocks, it is important that pipework and sprinkler heads are concealed to provide a more aesthetic finish and avoid tenant complaints, as well as containing the system components and acting as a visible barrier to potential tampering.

## THE COVER UP

Versa fire sprinkler boxing is manufactured from preformed 5mm thick, FSC® 'Chain of Custody' certified material and are available in a range of sizes to meet specific project requirements and pipework configurations.

An 8mm thick FSC® option is also available in the range along with Versa FR flame retardant

sprinkler boxing, which also FSC® certified and manufactured from Euroclass B compliant material, which has Declaration of Performance certificate following its testing to the appropriate harmonised European Standard (hEN) technical specification.

The Encasement fire sprinkler boxing system also includes accessories, such as internal and external corners to help create an integrated finish to the sprinkler installation. Also, as they're pre-finished with durable white melamine, there's no painting required on site, which also saves time and cost.

## SAVING TIME AND COST

From our experience of working with contractors on countless social housing projects where pipework needs to be concealed, Versa can typically be fitted in less than half the time of site made alternatives.

Potentially the most important advantage is that costs can be reduced, not by 'cutting corners', but by cutting the time spent during the installation without compromising the quality or integrity of the installation.

The focus is rightfully on improving fire safety in high-rise residential buildings, and Versa can make a contribution to that process in terms of effectiveness, ease of installation and



economics by helping conceal sprinkler pipework and 'covering' the significant investment in sprinkler systems.

01733 266 889 [www.encasement.co.uk](http://www.encasement.co.uk)

## Vortice welcomes two new team members



Carl Freeman and Kim Ellis have recently been welcomed to the Vortice team. Carl has joined as Sales Manager for the London and South East area and brings a wealth of experience from working in both the electrical wholesaler and ventilation industry for many years. Kim joins as Technical CAD Manager from a building services consultancy where she was Senior AutoCad and Revit Technician. Kim is a key addition to the technical team, the role will include designing and quoting for various ventilation schemes including heat recovery designs for customers. Vortice supplies energy efficient ventilation systems for the domestic and commercial markets.

01283 492949 [www.vortice.ltd.uk](http://www.vortice.ltd.uk)

## Convenient and paper-free



Enjoy reading ADF but find it's not always convenient to have the printed magazine? Or has your workplace turned paper-free? The Digital Issue offers you the same content, delivered straight to your inbox and accessible via smartphone, tablet and desktop computers. Be among the first to read all the latest features, comment, interviews, and more, before the print issue has even been delivered! What's more, the Digital Issue includes interactive links to featured companies. Subscribe for free now.

[www.subscribepage.com/adf](http://www.subscribepage.com/adf)

## Creating space with style

Specialist folding partition manufacturers & contract installers of folding doors, partitions and movable walls.



Building Additions have an established reputation for the manufacture, supply and installation of room partitions and movable walls throughout the UK. The skill, knowledge & experience we offer guarantees the right solution to meet the requirement of interior design professionals.



Tel: 01373 454577

Email: [sales@buildingadditions.co.uk](mailto:sales@buildingadditions.co.uk)

[www.buildingadditions.co.uk](http://www.buildingadditions.co.uk)





Val-U-ThermPLUS® achieves low U values, is exceptionally thermally efficient and virtually airtight thereby dramatically reducing your space heating energy costs.

- Fully design flexible
- Quicker build & less labour costs
- Quality controlled factory production
- Lower space heating costs
- Unequalled energy efficiency
- Advanced thermal performance

#### AIRTIGHTNESS



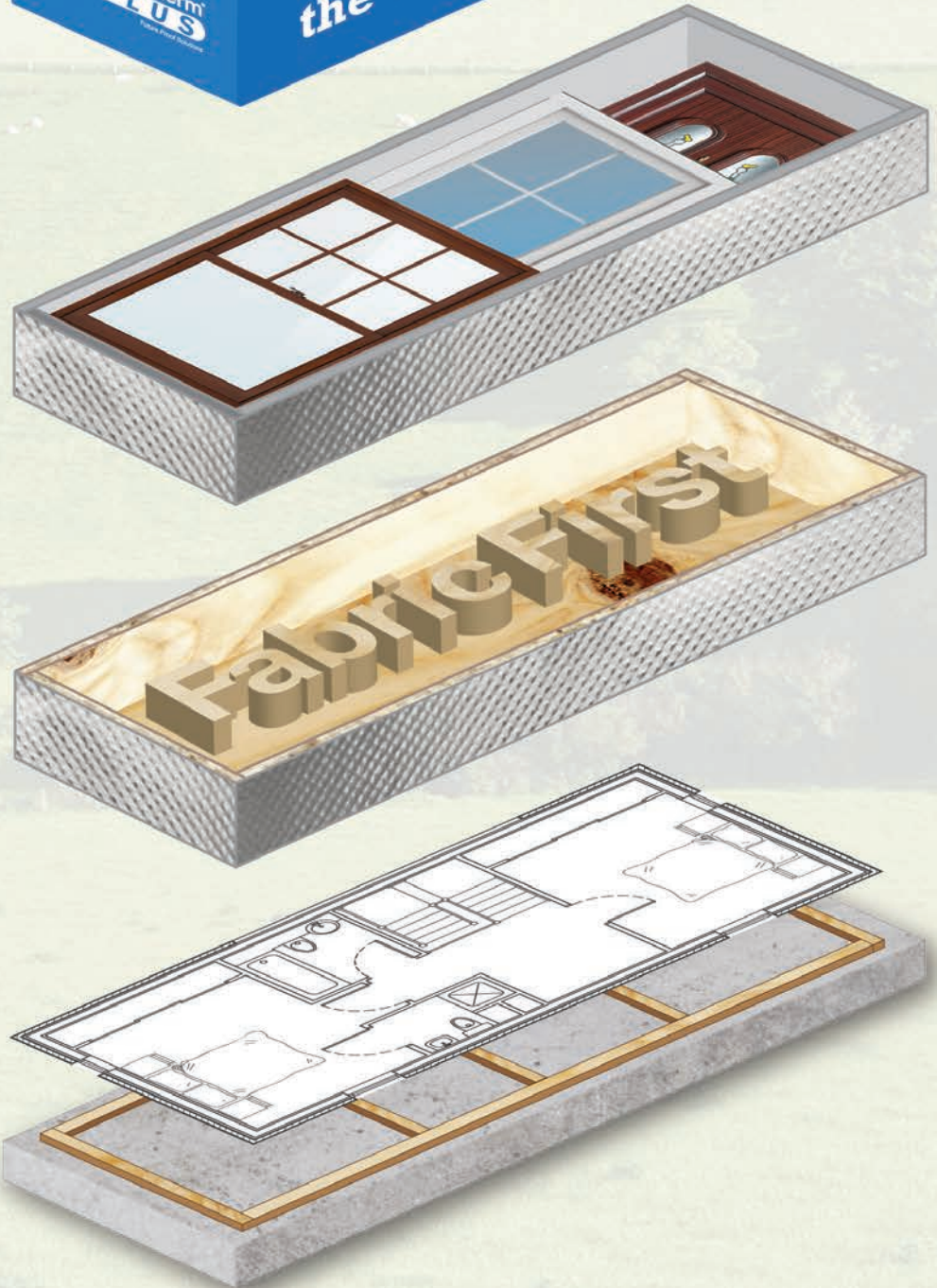
#### THERMAL PERFORMANCE



#### ENERGY EFFICIENCY



#### SPEED OF CONSTRUCTION







# Hauraton drainage systems installed at Plant

The Margam Green Energy Biomass Plant is a 40MW electricity power station utilising chipped wood waste as fuel otherwise destined for landfill. When fully operational the project will use around 300,000 tonnes of waste wood from nearby regions. The plant is located on land off Harbour Way (A4241), near Margam in South Wales, in an area designated for commercial and industrial development. Built on a 3.98 hectares site the buildings are surrounded by a 6209m<sup>2</sup> (66,834ft<sup>2</sup>) concreted yard plus asphalt access roads and car park.

Hauraton supplied three types of channel to meet the rigorous specifications for surface drainage of the main concreted yard surrounding the plant, weighbridges and car park.

Three sizes of RECYFIX® HICAP® high capacity channels were installed in the yard. 3 metres of HICAP® 1000, 303 metres of HICAP® 2000 and 255 metre of HICAP® 3000. The total water capacity of the HICAP® channels was just over 20,390 litres. By installing this system, the channel runs were kept to a minimum so saving on installation



costs and future maintenance.

42 metres of FASERFIX® SUPER 150 channels with Class F900 ductile iron 20mm gratings were installed around the two weighbridges. The FASERFIX® channel component is made from the company's Fibre Reinforced Concrete with galvanised steel angle housings moulded into the top edges of the channel during production. This

specification is highly resistant to extreme loads and constant dynamic forces and was found to be ideal for the weighbridge application. The FASERFIX® gratings are secured by SIDE-LOCK® patented boltless system. The system allows gratings to be installed and later, removed quickly. Once a grating is positioned over the channel, foot pressure is simply applied. A loud click is then heard which confirms it is securely locked onto the channel. The grating is removed using a large screwdriver inserted into a discreet leverage point. This feature is particularly useful where channels need to be cleaned out at regularly.

Finally, 39 metres of RECYFIX® PRO 100 Type 75mm factory fitted with FIBRETEC® heel-safe gratings were installed in the car park. The FIBRETEC® grating, moulded from a fibre strengthened Polyamide (PA-GF) and allows loadings up to Class C250 (BSEN 1433)

All the RECYFIX® channel components specified for the project are made from 100 per cent recycled Polypropylene (PP) derived from post consumer and post industrial sources.

01582 501380 [www.hauraton.com](http://www.hauraton.com)



## ecodek®



## SUSTAINABLE OUTDOOR LIVING.

The durable and sustainable  
**alternative** to hardwood  
and hollow decking



For your opportunity to use ecodek®  
on your next project, contact  
[enquiries@ecodek.co.uk](mailto:enquiries@ecodek.co.uk) or  
call 01978 667 840  
[www.ecodek.co.uk](http://www.ecodek.co.uk)



# Hauraton high capacity drainage systems installed at Port Sunderland

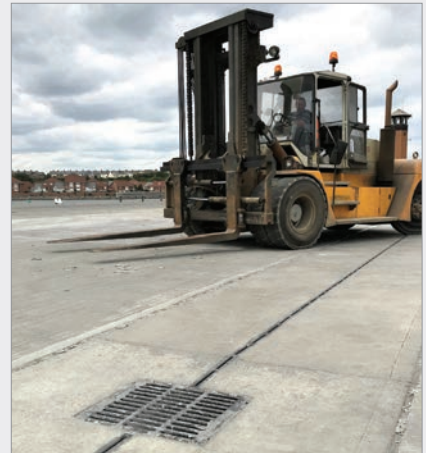
The Port of Sunderland now boasts some impressive infrastructure and associated services. Municipally owned and situated on the south side of the River Wear, the latest wharf facilities now



allow for multi materials handling. A fleet of fork lift trucks, from four tonne to 29 tonne capacity have a wide range of attachments to meet all cargo handling requirements. Additionally, a drop-sided HGV, an articulated tractor unit and two 40-tonne low-loaders are also available for transportation of cargoes within the port estate.

Designed to resist the rigours of site work, 180 metres of Hauraton RECYFIX® HICAP® 8000 high capacity channels were installed to drain the wharf area. Factory fitted with 14mm wide slotted ductile iron inlets, the channels comply with a loading class of F900 so can easily take the weight of the fully laden vehicles employed. Importantly, once installed the complete channel system is highly resilient to the twisting forces imposed by their wheels.

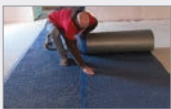
The RECYFIX® HICAP® one metre channels used each have a water capacity of 171.4 litres so the 180 metre channel system



installed is able to accept a water volume of 30852 litres. Trash boxes to match the channels were also supplied.

01582 501380 [www.drainage-projects.co.uk](http://www.drainage-projects.co.uk)

## Cost savings with BAL Flexbone 2Easy



Preparation time was reduced dramatically with the use of BAL's new floating uncoupling mat – Flexbone 2Easy – on a prime redevelopment in County Durham. The 200m<sup>2</sup> problem screed to be tiled had two days of preparatory work scheduled before installation could even begin, but this was reduced to just half a day using BAL Flexbone 2Easy. The use of BAL Flexbone 2Easy floating uncoupling mat alleviated the need to abrade and prime the screed, as the only preparation required was a quick sweep of the surface. BAL Flexbone 2Easy is a unique mat to the UK market which is truly uncoupled, protecting floor tiles from lateral movement.

01782 591100 [www.bal-adhesives.com](http://www.bal-adhesives.com)

## Deanestor awarded furniture contracts



Deanestor, one of the UK's leading contract furniture manufacturers, has been specified by the development arm of Mace for two new student housing schemes in Exeter and Cardiff which will provide over 1200 student beds. The contracts for the manufacture of the kitchen and bedroom furniture are worth £4m to Deanestor. Oliver Gardiner, Development Director at Mace commented on Deanestor: "Their team has been responsive and professional, working with us to develop a range of furniture options which combine longevity, value and a high standard of aesthetics to create a fresh and modern appearance."

[enquiries@deanestor.com](mailto:enquiries@deanestor.com)

## New Stratos-MAXO launched



Wilo has launched its new Stratos-MAXO pump. It's the pump offering the highest system efficiency on the market, thanks to the optimised and innovative energy efficiency functions such as 'Multi-Flow Adaptation' and 'No-Flow Stop' along with an outstanding EEI

≤ 0.17. It can automatically adapt its output to the varying system requirements via 'Dynamic Adapt Plus' without setting a target value.

01283 523000 [www.wilo.co.uk](http://www.wilo.co.uk)

## Deanestor expands into high end kitchens



Deanestor has announced its expansion into kitchens for the premium build-to-rent and market sale housing sectors. Following its success in the manufacture and installation of high-quality kitchen furniture across a range of sectors for the last two decades, Deanestor has launched a new service to provide bespoke contemporary kitchens to developers and main contractors for studio and apartment projects for both rent and market sale. Deanestor has been awarded contracts for the supply of PRS kitchens which include a project worth in excess of £4m to manufacture and install around 700 kitchens for a private residential scheme in central Manchester and 700 studio kitchens in Canary Wharf.

[www.deanestor.co.uk/kitchens](http://www.deanestor.co.uk/kitchens)



# DRU announces updates to Spartherm wood fire inserts range

**D**RU is the official UK distributor for the German designed and made Spartherm range of wood stoves and wood fire inserts.

To support the marketing and distribution of the Spartherm brand in the UK, DRU has announced a streamlining of the inserts range, to be followed by a new UK brochure and promotional campaign from April 2019.

Spartherm wood fire inserts are available in front view, 2-sided, 3-sided and tunnel versions. They are all Eco Design ready, with high energy efficiency and many sophisticated functions that make them suitable for traditional or contemporary homes. They are of particular interest to architects and interior designers, who are looking for high end, high specification fires and stoves.

One of the principle distinguishing features of Spartherm wood fires is their manual or automatic vertically sliding door mechanisms, which provide easy access to the interiors of the fires in order to replace the logs and for cleaning and maintenance.

The new wood fire inserts range is now divided into the Linear series, which has door handles that are an integral part of the frame and the Design series, in which the handle is a separate, detachable component for a more seamless finish.

Another unique feature of the Spartherm inserts range is the exclusive S-Thermatik NEO app for smartphones and tablets. When combined with the fire's operating system, the app enables the user to remotely control the air flow in the fire and the temperature in the home using a simple graphic display.

Other features of the range include an air wash system to keep the glass clean, a soft-close concealed door-locking mechanism, a user-friendly air slide and a simple hinged ash tray.

The new Spartherm inserts brochure will be available in both printed and interactive digital versions, along with informative videos to use in dealer showrooms.

In addition, selected Spartherm wood stoves and fires will be displayed on the DRU stand C35 at Hearth & Home, the UK's premier fireplace trade show in Harrogate, 9 – 11 June 2019.

0161 793 8700  
www.drufire.com





# EnCORE RIGID LOC

ACOUSTIC LUXURY VINYL FLOORING

EXPONA®

## LESS TIME FITTING MORE TIME ENJOYING

When it comes to designing the ideal home interior scheme, aesthetics are just as important as practicality. Expona EnCore Rigid Loc offers a flooring solution that caters for both. The rigid construction, acoustic layer and use of 5Gi click-locking technology provides superior performance in a quick to install floor covering all in a stunning collection of 12 faithfully replicated wood designs.

Find your new floor at [polyflorathome.com](https://polyflorathome.com)

## QUICK & EASY TO INSTALL

Due to its rigid construction, Expona EnCore Rigid Loc lays beautifully over most even subfloors, this means less subfloor preparation, less disruption in your home and even more time enjoying your new floor.

### Faster Installation







# Evinox Energy Supply Canary Wharf's New District, Wood Wharf



A new urban district is being created in London's Canary Wharf, which when complete will feature up to 3,600 new homes, a GP's surgery, a two form primary school for 420 children, 490,000sq ft of retail space and eight acres of public spaces squares and parks. The development, called Wood Wharf, has been designed to provide a new residential led, mixed use, waterside community and is expected to be completed by 2023.

The scheme was approved by Tower Hamlets Council in 2014, which described its design as "innovative". In recognition of this innovation, Wood Wharf won the Tall Buildings category of the MIPIM Architectural Review Future Project Awards in 2014.

Working with the developer, Canary Wharf Group (CWG), in combination with SES Engineering Services, Emico and Haydon Mechanical & Electrical contractors, Evinox Energy supplied heating and cooling interface units for 1330 apartments for the first phases of this development, with more to follow for the remaining phases.

Homes are all connected to a district heating network, with each apartment featuring a ModuSat XR-ECO Twin Plate heat interface unit for the supply of heating and hot water and a ModuSat Single Plate interface unit to provide cooling.

## TESTED BY BSRIA TO PROJECT DESIGN PARAMETERS

Interface units were tested by BSRIA as a requirement of this project, something Evinox were happy to undertake, confident their first-class product manufacturing and performance would exceed the required results.

Peter Linehan, Evinox Technical Sales Manager comments, "The main objective of the testing was to confirm the performance of the heating and cooling units under the specific design parameters of Wood Wharf phases A2/A3, E1/E2. The method statement was based upon three different sources; BESA UK Standard for Heat Interface Units Technical Specification, BSRIA BTS 2/2015 Test Method for Heat Interface Units and recommendations from the clients commissioning company."

Peter continued, "Evinox's ModuSat XR-ECO TP HIU's and ModuSat SP CIU's were submitted, with a total of 8 units tested at the BSRIA Test House. These included each building's most common HIU/CIU model and high load units. The interface units achieved excellent results, performing to the project requirements, which culminated in an order for the first 5 phases of the Wood Wharf development."

## FLEXIBLE MANUFACTURING CAPABILITIES

In addition to the efficient performance of the ModuSat units, Evinox equipment was also chosen due to the flexibility of manufacturing and short delivery timescales. "On-time" delivery schedules were critical for this project, as some of the equipment was being built into prefabricated pods by a third party prior to delivery to site.

Their range of heat interface units are designed and developed internally by technical engineers to UK standards, and built in Evinox's own production facility in Brasov Romania by partner Romradiatoare, using lean manufacturing principles. Working closely with component suppliers enables them to deliver bespoke



units, built to project specific requirements, in a timely manner.

## WORLD-LEADING COMPONENTS

One of the key components used in every ModuSat HIU, is the high efficiency plate heat exchanger from SWEP, who are a world-leading supplier of brazed plate heat exchangers for HVAC and industrial applications. Evinox's ModuSat XR-ECO HIU delivers impressive, ultra-low DHW return temperatures to the primary network by incorporating SWEP high efficiency domestic hot water plate heat exchangers with volumetrics that encourage turbulent flow. This contributes to excellent annual Volume Weighted Return Temperatures and system operating efficiency.

01372 722277 [www.evinoxenergy.co.uk](http://www.evinoxenergy.co.uk)



## Omnie UFH warms Cotswold stone homes



A development of six new five-bedroom detached properties, close to Cirencester town centre, whose construction features the area's distinctive natural Cotswold Limestone, is making full use of the benefits to the ClipPlate system and other products form the range of **OMNIE** Limited. ClipPlate is amongst the most popular options to OMNIE's LayFast brands: being compact and suitable for in-screed applications. Pipe runs are simply pressed into the profiles without the need for joints

and resist being disturbed as the screed is laid. OMNIE offers a full range of solutions for rapid completion and restricted construction depths, as well as its TileOver range.

01392 363605 [www.omnie.co.uk](http://www.omnie.co.uk)

## Polyflor adds EnCore Rigid Loc to the family

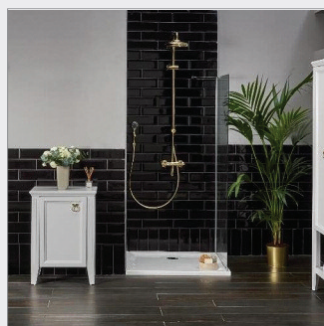


Commercial and residential vinyl flooring specialist, **Polyflor**, is pleased to announce the launch of a brand new product format, the Expona EnCore Rigid Loc collection. This exciting new hybrid product has an expertly engineered premium rigid SPC (Stone Polymer Composite) construction with exceptional stability making it ideal for installation over existing subfloors. Expona EnCore's technically sophisticated specification combines: A premium rigid SPC core; 0.55mm heavy commercial wear

layer; high clarity decoration layer; 1mm IXPE Acoustic Backing Layer; 5G-i locking technology. Expona EnCore Rigid Loc offers a flooring solution that caters for both commercial and residential interiors.

0161 767 1111 [www.polyflor.com](http://www.polyflor.com)

## New Valarte Makes Classic Current



Vitra has announced details of a new bathroom range joining its Signature Collection during in March. A perfect complement to the contemporary designs associated with Vitra, Valarte introduces the popular Shaker design which combines simplicity with fine craftsmanship and functionality. Valarte is a modern take on a proven classic style that can be used in a traditional or a modern interior. The design, produced by Vitra's in-house team, takes its inspiration from Shaker and is available in three soft, nostalgic and on trend shades with circular metal ring handles. The comprehensive furniture range includes vanities, a statement towel cupboard and variety of dresser pieces in matte white, matt ivory and matte grey. The washbasin is also available with chrome legs bringing it bang up to date for today's bathroom styles. The vanity basins have an attractive double rim design with an upstand at the back and are available in one and three tap hole formats. The range also includes mirrors and illuminated mirror cabinets. The back-to-wall, wall-hung, and close-coupled WC pans complete the range.

[www.Vitra.co.uk](http://www.Vitra.co.uk)

## Vintage Cast Iron Radiators

*specialists in cast iron radiator renovation and sales*

Based in the heart of Yorkshire, Vintage Cast Iron Radiators specialise in the nationwide sale, refurbishment and renovation of new and original cast iron radiators.

With a proven track record working on small and large projects Vintage Cast Iron Radiators' passion for classic and contemporary design can help you add warmth and perfection to any project.



For an informal chat call Andrew on:

07908 971657

[www.castironradiatorrenovation.co.uk](http://www.castironradiatorrenovation.co.uk)

## Profile 22 at the heart of major renovation



Optima Casement Windows were a central part of a £1.3 million renovation project at Woldgate School and Sixth Form College in Pocklington near York. Optima from Profile 22 is one of the most widely specified commercial systems thanks to its impressive list of benefits that help specifiers meet even the most demanding of requirements. Optima delivers optimal thermal performance, achieving a 1.2 W/m<sup>2</sup>K U-value as standard, with U-values as low as 0.8 W/m<sup>2</sup>K possible. It is PAS24 compliant as standard, with Secured by Design options available as well. In its aesthetics and versatility, it sits comfortably in any architectural style.

[www.profile22.co.uk](http://www.profile22.co.uk)

## Spectus delivers heritage authenticity



**Spectus** Vertical Sliders have been used in the refurbishment of University of Sussex student accommodation in Brighton. The University of Sussex Kings Road student accommodation in Brighton has a prominent position in a conservation area on the seafront. As part of a wider programme of refurbishment of the building, which houses 124 students, new windows were specified. Spectus Vertical Sliders were identified as the windows that would deliver the aesthetics

required for a building in a conservation area as well as provide more thermally efficient and secure accommodation.

[info@spectus.co.uk](mailto:info@spectus.co.uk)





## Dresser adds precision

**D**resser Mouldings, one of the UK's largest bespoke timber manufacturers specialising in quality, bespoke timber mouldings, is now offering Sansin Precision Coat factory finishes.

Sansin's Precision Coat products have been developed to meet the demand for coatings that balance wood protection and performance along with stunning colour and aesthetics.

Backed by over 30 years of proven experience protecting large commercial, residential and mass timber wood buildings and structures, Sansin's factory finishes deliver high performance and durability in low-VOC, water-borne formulas for modified, engineered and specialty woods.

Bill Gunn, Managing Director of Dresser Mouldings commented, "This is a great fit for us and one which will add real value to our customers. Here at Dresser Mouldings we pride ourselves in having the largest selection of bespoke manufacturing for exterior timber substrates, backed by state-of-the-art technology, machinery and

expertise. The addition of Sansin's Precision Coat factory finishes combines both the beauty and protection of a class-leading product with the commitment to quality manufacturing and attention to detail for which Dresser Mouldings is known."

Offered in a variety of stunning colours, Sansin's Precision Coat factory finishes include; Precision Coat SDF for wood siding, cladding and decking; Precision Coat Foundation, a penetrating base coat that offers up to six months protection against weathering and UV during construction; Precision Coat ENS, a self-priming and tough, durable satin two-coat finish that can be applied to virtually any surface – from millwork to cladding and decks and Precision Coat Woodforce: A durable, water repellent wood treatment for exterior wood surfaces, Woodforce is designed to bring dimensional stability to wood by reducing moisture absorption up to 74 per cent during wetting periods.

01706 658900 [www.dressermouldings.com](http://www.dressermouldings.com)



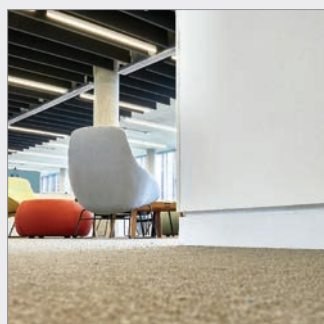
## DAF Trucks choose Hadrian for quality and environmental performance



Hadrian Elite steel toilet cubicles have been installed in all the washrooms at the DAF Trucks UK headquarters at Haddenham in Buckinghamshire. It wasn't just the superb durability and practicality of Hadrian cubicles that DAF found attractive, but also their green credentials. Hadrian's products feature a high recycled content with the powder coated cubicles made from 50 per cent recycled material. For stainless steel that figure rises to 91 per cent. Thirty Hadrian Elite powder coated, floor mounted, steel toilet cubicles and six matching urinal screens were installed across the six washrooms. These serve the DAF headquarters that were officially opened in September 2018. Packed with design features, the Hadrian Elite range includes an ingenious honeycomb core, laminated under pressure to a sheet-steel envelope. This envelope is coated with a dry powder coating which is cured at high temperature to provide a smooth, continuous finish that is attractive, durable and easy to clean and maintain. At DAF Trucks a light grey finish was chosen (RAL 7035). For further information on Hadrian Toilet Cubicles and Lockers, contact Relcros.

01380 729600 [www.hadrian-cubicles.co.uk](http://www.hadrian-cubicles.co.uk)

## Renderplas PVC beads contribute to the sweet smell of success for British Sugar HQ



Early in 2018 work started on the construction of a new multi million pound Head Office for British Sugar in Peterborough, based on the Architect's simple concept of a white box. To complement the contemporary glass exterior, 368 linear meters of Renderplas PVC shadow gap profiles have been installed. The shadow gaps are an integral design element of the building; sleek minimalist shadow gaps between the walls, skirting boards and door frames create clean, internal lines unimpeded by the traditional use of skirting boards, architraves and cornicing. Renderplas PVC profiles are the perfect choice for any commercial building as they are impact resistant, an essential feature at skirting level where there is a large amount of footfall and cleaning equipment may be in regular contact with the profiles. Renderplas Managing Director Daniel Leedham-Green said: "Renderplas have stocked two different shadow gap profiles for many years, they are still a relatively under-utilised profile which is why it is great to see them being specified for installation on such a large scale throughout this building. I can't think of a better way to complement the Architect's concept."

01299 888333 [www.renderplas.co.uk](http://www.renderplas.co.uk)



## Hauraton drainage systems at Bonus Arena - Hull Venue

Built on brown-field land located on the edge of the main shopping district in Hull and adjacent to Princes Quay, the Bonus Arena – Hull Venue and its associated multi storey car park were opened in August 2018. The £36 million development progresses the legacy of the social and economic impact generated by Hull's 2017 UK City of Culture status.

The Arena, designed by AFL Architects, is a state-of-the-art music and events complex with a flexible capacity of up to 3,500 people. The facility can provide a venue for concerts or corporate conferences in an 800 seat auditorium. A 2000m<sup>2</sup> adaptable space can be utilised for sporting events or exhibitions and trade shows.

Surrounding the Bonus Arena is a public realm laid with grey stone paving and landscaped by re-form Landscape Architecture Limited with trees, lawns, flowerbeds and permanent stone seating.

An effective surface water drainage system

was essential to ensure all weather access to the venue. 140 metres of Hauraton RECYFIX® PRO 100 channels with FIBRETEC® heel-safe gratings were chosen for the job which blended well with the stone paving and would resist damage from applied grit rock salt in freezing weather.

The material, PA-GF used to make the FIBRETEC® grating, was especially developed by Hauraton; the tough, UV resistant, fibre reinforced moulding offers high stability and huge strength for its weight. Complying with loading category Class C250 (BSEN 1433) the grating can easily take the weight of commercial delivery vehicles. The design is a real innovation as its non-corrosive material provides a visually appealing surface finish that retains its colour. The slots are super smooth, elliptical openings with the moulded bars having slightly raised triangular bosses along their outside edges. As well as providing an elegant appearance, the feature ensures surface water



is directed into the slots.

The RECYFIX® channel component is made from 100 per cent recycled PP. The PRO 100 model is factory fitted with the FIBRETEC® grating and only weighs 4.6kg, so the unit was easy to handle and quickly installed on site.

01582 501380 [www.hauraton.com](http://www.hauraton.com)

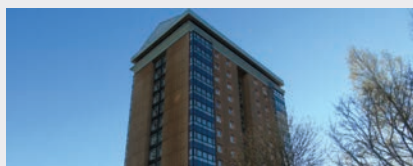
## Glass Act for High Rise Refurbishment Project

The first tower block to be built in Paisley, West Scotland, has undergone partial refurbishment, using ultra lightweight external cladding from Chromatics Glass Ltd.

The 15-storey, 40 metre high building, comprising 56 flats is a brick-based structure that underwent major refurbishment in the late 1990s, when external balconies were incorporated into interior space, external cladding was applied, new windows installed and a low-pitched roof added.

An examination of the structure identified an issue affecting the curtain walling running the full height of the building at each of the four corners where there are open vents into each living room with spandrel panels below. It was decided to replace the existing aluminium panels using Chromatics Safety Glass. Concrete Repair Ltd was the Main Contractor for the refurbishment of the project.

Not a toughened glass, Chromatics Safety Glass is a unique safety glass that achieves exceptional performance. Its extraordinary resilience is as a result of bonding together, at



a molecular level, glass, a colour layer and metal, transforming them into a laminate that is both light weight and shatterproof, as well as being visually stunning and having a completely smooth surface. An unrivalled depth of colour is achieved with 100 per cent opacity, no pin-holes and no risk of show through or colour variation often inherent with ceramic coatings. At George Court a graphite grey colour scheme was selected. Because the colour is encapsulated between the layers of the laminated product, it is UV stable for at least 25 years and will neither fade nor discolour.

Replacing one cladding system with another can have implications in terms of load bearing but one of the principal advantages of Chromatics Safety Glass is its lightweight quality. The 6mm thick panels

specified for the George Court contract weigh just 15.32kg per square metre, making them easier to handle, transport and install, thereby offering huge savings on installation costs. By using Chromatics Safety Glass, the weight of the cladding it replaced was reduced by more than half. The contract also involved replacing existing Styrofoam insulation with a non-combustible Rockwool product

Chromatics Safety Glass is highly versatile allowing architects and designers complete creative freedom to bring style and resilience to a host of applications. Available in the full range of RAL colours for use either externally as rainscreen, architectural cladding, curtain walling, or signage, as well as a range of internal uses that include feature walls, counter tops, balustrading and partitioning. It is also possible to replicate any traditional finishes, for example natural stone, wood, terracotta, porcelain, marble, ceramic, brick and metal surfaces.

Chromatics Safety Glass achieves A2-s1,d0 fire certification.

01904 439187 [www.chromaticsglass.com](http://www.chromaticsglass.com)



# A fast finish for Godiva Place with Eurobrick



As universities compete with each other to win new students, one area that has been given more attention over recent years is the quality of student accommodation. For some, the days of old fashioned accommodation blocks are gone, with the rise of stylish new hotel and apartment style schemes set to win new students.

Eurobrick Systems has been leading the brick cladding sector for 30 years and has recently been involved in one of these new developments for Coventry University. Godiva Place is a huge hotel style accommodation scheme by Galliford Try, and for Eurobrick, this is their biggest cladding project to date.

The £47.5m scheme is a 24,500m<sup>2</sup> project designed to provide student accommodation with a social hub, sports facility and parking as part of the university campus in Coventry city centre. Architects Lewis and Hickey designed the scheme for developer Regents Godiva, and were restricted by height limitations due to affecting views of historic buildings and daylight for adjacent residential properties. This means that the 5 block project varies in height between 4-9 storeys.

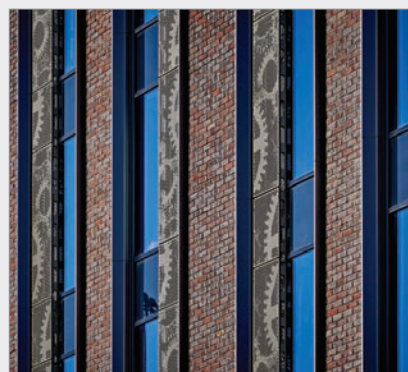
With a mix of studios, 'twudios' and cluster accommodation units, the student accommodation block provides a total of 772 bedrooms. Designed with a perimeter block to create a defined edge and shield from the noise

and pollution of the nearby dual carriageway, the building also has a number of finger blocks that maximise daylight penetration to the interior spaces.

As this was a fast-build project, with many parts of the building being constructed off-site, a quick and effective brick finish that is flexible enough to be installed on-site was required. P-Clad is an external wall cladding system that was developed for use as a sheathing on structures where there is no requirement for insulation and it is also suitable for use on some high rise installations.

Godiva Place was constructed using a rapid erect, light-gauged, steel framed wall system with concrete floor slabs. The building was then sheathed in cement particle boards and Eurobrick's P-Clad system was installed onto horizontal rails. These rails were attached to the Nvelope helping hand bracket and vertical rail support system, which also incorporates an insulation element in the air gap behind.

Circa 5350m<sup>2</sup> of Eurobrick's P-Clad was supplied to the installing contractor Select Facades, along with Michelmersh First Quality Facings brick slips that were specially cut to 25mm thick, including corner slips and special angles. These were sent in staged deliveries over the course of 18 months to tie in with



project timelines.

Eurobrick stock a wide range of brick and stone slips and can also source other finishes and specially cut bricks from a number of specialised manufacturer partners in the UK and Europe, including non-standard sizes, glazed bricks and bespoke products and colours.

A number of cladding materials were used to create the overall innovative design and eye catching exterior of Godiva Place, which now offers an aesthetically pleasing and unique style of living to the students of Coventry University.

01179 717 117 [www.eurobrick.co.uk](http://www.eurobrick.co.uk)



# School achieves aesthetic fire performance with MEDITE PREMIER FR

A state-of-the-art sports and learning-centre in Cambridge features a dramatic space-defining acoustic system on the use of MEDITE PREMIER FR fire rated panels from MEDITE SMARTPLY. The product was specified by architects Chadwick Dryer Clarke Studio (CDC) for acoustic panelling in the new sports hall for the prestigious Stephen Perse Foundation senior school.

The sports hall is part of a complete new building designed by CDC, combining sports facilities with new classrooms and social learning spaces – this mixed use made careful consideration of acoustic performance essential. The decision to use acoustic panelling as a solution then provided the opportunity to create an opulent interior that would not only be functional but inspiring.

Within the sports hall, approximately 530 MEDITE PREMIER FR panels were installed at high level above a storey-high 'plinth' of concrete blockwork. They were finished



in RAL 7044, a silk grey tone, which complemented the treated cross-laminated timber (CLT) finish in other areas. The same product was also used around the building for the creation of architraves, skirtings and window linings.

Within England, Building Bulletin 93 sets out performance standards for acoustics in

schools. As building regulations also state that within schools or similar public buildings a Euroclass B or C fire rated panel must be used and MEDITE PREMIER FR offers the perfect solution.

A social working environment and a sense of community was central to the project: an important internal space that would become one of the main hubs of activity in the school. The whole school community, including governors, teachers and pupils, was consulted as part of the design development to ensure the right performance and aesthetic could be achieved.

The result is a functional, beautiful building, which uses calming colour and modern shapes to break up and add intriguing interest to the expanse of space within the immense, four-court sports hall.

[info@mdfosb.com](mailto:info@mdfosb.com)

[mdfosb.com/en/medite/products/medite-premier-fr](http://mdfosb.com/en/medite/products/medite-premier-fr)

## Over 30 years of Glidevale profile and colour matching for tile and slate ventilators

Glidevale, one of the specialist building products and ventilation solutions providers, offers a comprehensive range of slate and tile ventilators, with over 450 choices of tile or slate profile available. As one of the market leaders in tile vent manufacture in the UK, Glidevale's range has been collated for over 30 years and includes hundreds of dedicated profiled tile ventilators matching almost any tile available on the market. In addition to current and newly introduced tiles, the company can create vents for tiles which are no longer made by tile manufacturers, making Glidevale tile vents suitable for new build and retrofit schemes.

Alongside its profile matching service, Glidevale can colour match to the exact blend of colours required. When profile matched and colour blended with neighbouring slates, tiles and ridges, the ventilators are almost indiscernible once installed.

In addition to profile matched tile and slate ventilators, Glidevale offers a range of universal ventilators which fit a large number of tile profiles. Where tile matching is unnecessary and a single solution is required for a number of roofs, the compact universal range can be



utilised. This includes the Glidevale Versa-Tile G5, providing a guaranteed ventilation area of 20,000mm<sup>2</sup> and purpose made to match virtually all interlocking single lap tiles. Also suitable is the Universal Flat Interlocking In-Line® Tile, which has a guaranteed ventilation area of 10,000mm<sup>2</sup> and can be used with a range of tile profiles including Marley Modern, Redland Mini Stonewold, Sandtoft Calderdale and Russell Grampian, amongst many others. Tile vents are

offered in seven UV-stable colours and can be easily installed as part of the normal tiling process.

The compact universal tile and slate vents range is typically available ex stock. Profile and colour matched tile and slate ventilators are made to order and can be on site within a few days from manufacture. For more information, please email [sales@glidevale.com](mailto:sales@glidevale.com).

0161 905 5700 [www.glidevale.com](http://www.glidevale.com)



## Glidevale ground gas solution with Protect GDB10 Plus

Providing a continuous, impermeable protective barrier against ground gases including methane, radon, carbon dioxide and hydrocarbons, Protect GDB10 Plus membrane is suitable for Amber 1 and 2 applications as defined by NHBC. The product is compliant with BS 8485:2015 and has also been independently assessed and certified by BM TRADA.

As required by BS 8485, both the membrane and the joint integrity have been tested for methane resistance. Furthermore, Protect GDB10 Plus is one of the only products on the market that has been independently methane permeability tested to BS ISO 15105-1 for joints. This provides peace of mind to contractors and



The Protect GDB10 Plus membrane has been methane permeability tested to BS ISO 15105-1 for joints.

Glidevale offers a range of purpose designed, pre-formed accessories to ensure reliable and continuous protection.



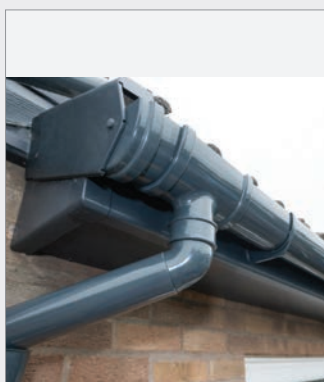
housebuilders that the product will create a fully sealed system.

Using the membrane on site has clear benefits including high tensile strength which means there will be no damage to the membrane when being installed. In addition, the membrane is not supplied folded, therefore will not have creases when laid out. This ensures the concrete can be poured easily and effectively on site.

The company supplies a range of purpose designed, pre-formed accessories to maintain

protection at wall cavities, corners, and services to remove the need to form difficult shapes on site. A range of underfloor and cavity wall ventilation accessories removes gases and moisture vapour where required, enabling regulatory requirements for ventilation to be met. 150mm wide gas jointing tape is needed to seal the overlaps, providing a simpler fixing solution to save time on site. For more information, please email [sales@glidevale.com](mailto:sales@glidevale.com).

0161 905 5700 [www.glidevale.com](http://www.glidevale.com)



## We'll be working our Grey back to you!

2019 has got off to a good start for Freefoam Building Products' customers, with the addition of Square and Ogee gutter in the popular Anthracite Grey colour option, to help them gain market share in a growing sector. Designed to complement the existing Round and Deep gutter systems and manufactured to Ral No. 2016 the ranges offer an exact match to door and window systems, giving customers the range to satisfy the growing demands of homeowners and developers. The choice of colour for windows, doors and roofline is now on average nearly 30 per cent of sales, with some window companies seeing sales of over 50 per cent in colour - and growing. Homeowners buying high end grey windows and doors do not want the standard white roofline - they want everything to match. Which is why Freefoam made a strategic move into manufacturing the complete roofline range in Anthracite Grey. Freefoam's approach is to help every company in the supply chain sell more and grow faster than the competition. Freefoam customer, Alan Sutherland of General Building Plastics explains: "There's been an increasing demand for colour, but the biggest growth has been in the last three to four years. Greys are the most popular now, particularly anthracite grey. Most customers want a full suite of colour matched products, which Freefoam does very well!"

01604 591110 [www.freefoam.com](http://www.freefoam.com)

## Neaco's balconies are fully compliant



McCarthy & Stone's development of luxury retirement apartments is demonstrating how Neaco's modular balconies are ready-made to modern standards in every respect, from aesthetic style to compliance with the new Building Regulations. Designed by Stephen George + Partners (SGP), Scholars Place features Neaco's

Clearview balconies including aluminium decking which is Euroclass A1 rated. Kiran Parmar, Principal Architectural Technician at SGP, said: "Neaco offer really good, cost-effective products. They are also very helpful with technical support - they responded quickly in providing key information and design detailing, which was a definite plus point."

[sales@neaco.co.uk](mailto:sales@neaco.co.uk)

## Housebuilder & Developer website



links to advertisers' sites, as well as daily email alerts to keep you as informed as possible.

[www.hbdonline.co.uk](http://www.hbdonline.co.uk)

The Housebuilder & Developer (HBD) website is an online provider of past and present products and news items for the housebuilder and developer. [hbdonline.co.uk](http://hbdonline.co.uk) is a one-stop source for all the latest press releases providing any visitor with access to information about products and services that they may require. From the website, you can find links to digital issues that have live





Cover image: Evinox  
See page 11 for details