

# building construction design

[www.buildingconstructiondesign.co.uk](http://www.buildingconstructiondesign.co.uk)



**AUDIBLE  
EDITION**

**DECEMBER/JANUARY 2021**

Appointments & news	02
Interiors	08
Exteriors	10

Cover image: EOS Framing  
See page 15 for details





Hallmark Doors  
& Panels Ltd

✓ GLAZED



DUAL CERTIFIED



FD30SA COMPOSITE FIRE DOORS

FIRE & SECURITY RESISTANT DOOR SETS



Independent 3rd party accreditation / audit. Laminated glass on pyrobelite.



54%+

Hallmark solid & glazed composite fire doors average a minimum of 54% over the 30 minute requirement.

Test Requirement



Why choose a Hallmark FD30Sa composite fire door?

- ✓ Burn tested on both sides
- ✓ Winkhaus fire frame
- ✓ 2000+ Colour options
- ✓ Width - 810mm - 1082mm
- ✓ Height - 1965mm - 2742mm
- ✓ Fire & smoke tested
- ✓ Internal or external use
- ✓ MHCLG compliant
- ✓ Manual & electronic locks

[www.hallmarkpanels.com](http://www.hallmarkpanels.com) | 01482 781 111 | [enquiries@hallmarkpanels.com](mailto:enquiries@hallmarkpanels.com)

## Krol Corlett appoints new Head of Construction

**N**orth West construction contractor, Krol Corlett, has appointed Peter Dunn as the company's new Head of Construction, as part of a targeted growth strategy.

An experienced construction director who joins Krol Corlett from a national construction company, Peter brings 35 years' construction sector experience to the Krol Corlett team, including a wide range of £multi-million projects. His track record and industry contacts across the North West will support Krol Corlett's continuing growth, which has seen the company take on bigger projects and expand across Merseyside, Greater Manchester, Cheshire, Lancashire and West Yorkshire over the past three years.

"This is a critical period in our development as a business," explains Simon Krol, Director at Krol Corlett. "Over the past few years we have successfully taken on larger projects while continuing to offer a flexible, agile service for projects of all sizes.

We have also grown geographically and opened new offices in Manchester and Preston to enable us to offer high levels of reliable and expert service to clients across the region for a varied array of projects.

"Now is the time for us to build on those successes and Peter's experience will be instrumental in enabling us to scale up without losing sight of our values, our heritage or our commitment to quality."

Peter's impressive track record includes residential, education and healthcare projects, with his experience in live hospital refurbishments dovetailing with Krol Corlett's strength in the healthcare sector. His new role involves engaging with the existing supply chain and developing new supplier relationships, mentoring the team and developing Krol Corlett's systems and health & safety best practice, along with direct involvement in tenders and live projects.

Peter adds: "Krol Corlett is a very dynamic business that has grown by showing ambition



and embedding quality and collaboration in everything it does. The company's willingness to invest in training, nurture its people and foster excellent relationships across both upstream and downstream delivery partners provides an excellent foundation for sustainable growth. Taking an active role in delivering on that potential is a very exciting prospect."

0151 546 1031 [www.krolcorlett.com](http://www.krolcorlett.com)



## Clean Air Series: UVC lighting that actively reduces the bacterial and viral charge

**h**umanlumen, the lighting brand with a uniquely human-centric approach, introduces the Clean Air Series, a range of UVC Air Sterilisation Units, providing a safe, reliable and sustainable solution for a safe 'Return to Work' for many employers and employees.



The Clean Air Series is a range of efficient UVC lighting devices that actively reduce the bacterial and viral charge of the air in closed environments.

This truly innovative design can provide fast sterilisation for offices, classrooms, hotel rooms and healthcare environments.

The International Ultraviolet Association (IUVA) believes that UV disinfection technologies can play a role in a multiple barrier approach to reducing the transmission of the virus causing COVID-19 and SARS-CoV-2, based on current disinfection data and empirical evidence.

### UVC Air Purification Unit

The powerful UVC radiation is totally isolated inside the Air Filtration System (AFS) as exposure of UV light, of any type, in high dosage to the naked eye will cause potential long-term health issues.

The system draws in contaminated air and removes all bacteria through a series of

integral filters and then delivers clean air back into the space. Each unit cleanses up to 3000 cubic square metres of open office space and is a simple plug and play system with no integration into the existing mechanical systems.

The clean air units work like an air purifier, but instead of filters it uses the UVC technology to eliminate the viruses. The fan located in the bottom of the fitting sucks in the air of the room and channels it through a series of UVC light canals that have the UVC lights. The UVC kills the viruses and the clean air is released in the room through a carbon filter.

The carbon filter's main purpose is to clean the odours from the air, with an additional dust filter at the entrance of the fan, neither is essential to kill bacteria, this is the role of the UVC light.

0203 961 4500  
[www.human-lumen.com](http://www.human-lumen.com)



## Vicaima launches new website strengthening the user's experience

Always aiming to build the perfect online experience for its customers and partners, Vicaima, one of the largest European players in the production of sophisticated solutions for interior doors, wardrobes and panels, has just launched a new website, which aims to improve the ease of navigation for its users, providing spontaneous and differentiating interaction with all features and tools. Yet another innovation, from a company which is continuously investing in a close, modern and intuitive digital footprint.



Among the new features, Vicaima highlights the speed of the platform and the contemporary, functional and responsive redesign, strategically created to facilitate the search process for users, in line with their intentions, needs and desires.

Thus, the new website is characterized by dynamism, accompanied by carefully selected content, as well as a wide range of products, performance and solutions, with a view to boosting the digital presence of the brand in the national and international arena.

This redesign includes aesthetic improvements allowing for more immersive experimentation and improved navigation, which allows visitors to easily find the information they need.

The new Vicaima page thus highlights the company's willingness to invest in a digital sphere that provides the best user experience for its customer. The renewal follows, precisely, the thought provoking attitude of the brand towards the different markets in



which it operates. This is also related to an integrated multichannel strategy, which reconciles the company's multiple digital tools, placing it, once again, at the forefront of the sector.

01793 532 333 [www.vicaima.com](http://www.vicaima.com)



## Encasement conceals 4.5km of fire sprinkler pipework in South Tyneside tower blocks

More than 4.5 kilometres of 'Versa' fire sprinkler boxing from Encasement is being used to conceal surface mounted fire sprinkler pipework, which has been retro-fitted at four South Tyneside Council tower blocks in Hebburn and Jarrow to help protect more than 280 residents.

Even though an independent fire inspection and level four fire risk assessment declared the high rise residential blocks to be safe, the council chose to continue with the £1.4 million automatic sprinkler installation programme as part of its commitment to tenant safety and fire protection.

The 18 storey Durham Court block in Hebburn is home to 127 residents and was the first to have sprinklers installed, which was carried out by Compco Fire Systems and South Tyneside Homes Property Services, followed by the 12 storey Ellen Court, Monastery Court and Wilkinson Court in Jarrow.

As sprinklers had been installed in every flat, it was important that the work was undertaken quickly and with the minimum disruption to tenants, so Encasement's Versa pipe boxing not only had to be quick and easy and to fit, to speed the installation process, but also provide an attractive finish.

Encasement's 5mm thick Versa 5 'L' shaped pre-formed plywood sprinkler boxing was used



to conceal the majority of the pipework in each tower block. Supplied in two different sizes and in 3 metre lengths for easy cutting to size on-site, the boxing's pre-finished white melamine surface and soft radius edge provided a consistent and 'wipe clean' finish in every flat.

In addition, Encasement manufactured

bespoke 8 mm thick 'L' shaped Versa 8 and 'U' shaped Versa 8D sprinkler boxing to meet the project's dimensions and specifications, which were supplied in 2.20 metre and 1.30 metre lengths.

01733 266 889 [www.encasement.co.uk](http://www.encasement.co.uk)





## Retail Therapy – Decorative casing solutions for retail

Decorative casings solutions, such as column casings and wall linings, are a fundamental part of contemporary retail design. In addition to providing a practical method of concealing interior and exterior structural steelwork they also add to a building's aesthetics, style and shopping experience.

This combination of practicality, versatility and decorative design has been at the centre of the wide range of retail projects that have been undertaken by Peterborough based casing solutions specialist, Encasement Ltd.

For almost 15 years, the company has been manufacturing and supplying column casing and wall lining solutions to a diverse range of retailers covering the grocery sector, home-ware, clothing, furniture stores, restaurants and automotive dealerships

As Encasement's range provides architects, specifiers and designers with a wide choice of materials and finishes to choose from, as well as bespoke shapes and dimensions, it's unsurprising that its products are used by many well known brands, including Debenhams, Porsche, Kia Motors, Tesco, ASDA, Oak Furnitureland and Greggs, as well as major retail parks and shopping centres across the UK.

Encasement's column casings range includes 'Circa' and 'Quadra', which are manufactured from pre-formed plywood, together with the metal 'Forma' range, 'Polyma' and 'Gypira' casings, which are moulded respectively from glass reinforced plastic (GRP) and glass reinforced gypsum (GRG).

In addition, the 'Metza' range is a specialised solution that provides up to 2



Tesco - Forma column casings and Vecta bulkhead

hours fire protection. Originally designed for mezzanine support columns, Metza is also used in food retail fitted with corner protectors to resist scuffing and damage caused by shopping trolleys.

While every Encasement column casing is suitable for interior use, its 'Polyma' and 'Forma' ranges are also widely used for exterior retail projects, due to their inherent weather resistance and durability.

Available in aluminium or stainless steel, 'Forma' casings offer a diverse range of options and can be specified as circles with diameters from 250mm up to 1000mm and in square, rectangular or hexagonal forms, as well as unique custom profiles. The choice of finishes is also very wide and in addition to PPC coating options in any RAL colour, various brushed, anodised, embossed and textured finishes are also available, including Rimex.

Strength, durability and colour choice are also features of the 'Polyma' GRP range. This manufacturing process allows a high degree of design flexibility with shape; size and colour options all open to specification to meet bespoke project requirements, as well as standard profile options.

The versatility of 'Forma' and 'Polyma' makes them a common choice for retail projects and the high degree of freedom they offer enables major brands to specify colours that not only adhere to their brand guidelines, but also add to the customer experience.

However, where casings are needed for

interior use only, the company's 'Circa' and 'Quadra' casings allow circular, square and rectangular profiles to be specified while also providing a wide range of finish options with the most popular being decorative laminated finishes. In addition to resisting damage, scuffs and scratches, they also provide the specifier with a diverse palette of finishes including plain colours, wood grains and metallics, as well as textured and real wood veneers.

Alongside the company's column casings, its 'Vecta' system provides a high quality solution for interior wall linings, bulkheads and reveals and is widely used in supermarkets, automotive retail, restaurant and food brands including Tesco, Prêt à Manger, Mini and Greggs.

Encasement's Managing Director, Martin Taylor, explained: "By offering six different column casing ranges and the 'Vecta' decorative wall linings system, specifiers are able to source a range of specialised interior finish products from a single company, supported by high levels of experience in this sector."

He added: "Column casings provide a perfect mix of practicality and aesthetics and we've taken a lot of care to ensure our range meets both of these key criteria. We also have our own contracting arm, which enables us to offer a full supply and install service to support contractors"

01733 266 889 [www.encasement.co.uk](http://www.encasement.co.uk)



Debenhams - Forma column casing with display screen



## URSA storey's high with new Whitechapel development



Global insulation manufacturer, URSA, has seen some 25,000 m<sup>2</sup> of its specialist insulation materials specified and installed at one of the capital's largest residential development projects in recent years. Ian Claydon, Technical Manager for URSA UK, describes the specification through to installation journey:

"The Silk District is a new development located close to Whitechapel Station and within walking distance to the City of London. The Whitechapel based scheme comprises three residential blocks set around a piazza with private landscaped gardens.

"Our work with the client, Mount Anvil, began in November 2018. We provided advice and guidance on making the correct choice of materials, achieving compliance with Building Regulations (thermal

performance, fire resistance requirements and resistance to rain penetration) and compliance with the NHBC Standards. We also provided numerous thermal models, U-value calculations and associated condensation risk analysis. The Mount Anvil team were undoubtedly impressed with the speed and quality of URSA Technical Services.

"We were involved with external wall construction as well as the design of a brick clad rainscreen system and continued to work extensively on the scheme throughout 2019 as the design developed further. Work was delayed at the beginning of 2020 due to Covid and re-started in July 2020.

"Collaborating with the client in these very early phases ensured that they were able to select a product that is entirely right for each and every one of their primary and secondary needs. Planning was critical within the design and roll out and meticulous attention to detail was applied during these initial phases and throughout.

Key products installed included URSA's Cavity Batt 32 & Walltec 32 – 12,000m<sup>2</sup> and URSA Acoustic Roll - 13,000m<sup>2</sup>.

URSA Walltec 32 is a lightweight, non-combustible, semi-rigid glass mineral wool slab treated with silicon based water repellent. It is faced with a black glass tissue on one side and are ideal for use behind rainscreen cladding systems in both new build and refurbishment projects.

URSA Cavity Batt is a lightweight, semi rigid glass mineral wool slab treated with silicon based water repellent. It is suitable for use in both fully and partially layed masonry



cavity walls up to 25m high.

Ian continued: "URSA Walltec proved to be the ideal choice due to its outstanding fire performance qualities, with a Euroclass rating of 'A1' making it totally non-combustible and the ultimate in safety specification for behind cladding systems. URSA glass mineral wool is manufactured from an abundant, sustainable resource and utilises at least 50% glass waste. From an installation perspective, the black glass fleece tissue facing means that the product could be used behind open joint cladding without being seen.

"The Cavity Batt is available in a wide range of thicknesses, ensuring the client was able to meet all appropriate Building Regulations and standards. Our new generation URSA TERRA mineral wool has a 'soft touch' feel making it easier to handle and install whilst still maintaining its excellent mechanical properties.

"There were several other over-arching factors to consider within this scheme and those included the sheer size and scale of the site and its location in a packed city centre. The lightweight nature of both products meant that they could be compressed therefore saving time and money on transport, effectively halving the number of journeys needed. This meant that more products could be delivered to site and stored in an area where space was at a premium.

Our distributor partner, Encon Insulation in Dagenham, worked closely alongside us during the project".

uktechnical@ursa.com [www.ursa-uk.co.uk](http://www.ursa-uk.co.uk)





# Schöck Isokorb for seafront Passive House Award Winner

Seaton is a traditional Devon seaside resort town, but the eye-catching new development on the seafront is anything but traditional. Seaton Beach Apartments offers innovative, award-winning luxury beachfront apartments, complete with a penthouse – and is the first multi-residential development in the UK to be certified as passive house plus. The ground floor is concrete, with monolithic clay block construction used from the first to third floors and timber frame for the penthouse. Combined with high-performance external render and internal plaster, the result is an entirely mineral hygroscopic wall build-up, which helps regulate humidity and provide a comfortable internal environment.

## Uses 90 per cent less energy

Other features include low electromagnetic field wiring and a highly efficient mechanical ventilation system with heat recovery and exhaust air heat pump for hot water supply. There is constant filtered air within the triple glazed, airtight construction and PV roof panels generate more energy than the building uses – which is 90 per cent less energy usage than a typical new build. Because passive house standard is easier to achieve with simpler, box-like forms, buildings can be considered aesthetically limited. However, design ingenuity and the use of Schöck Isokorb thermally broken balcony connectors defies that notion. The potentially unexciting building now features



Dug Wilders Photography

large sea-facing balconies with generous curves. The detailing of these balconies is critical though, if thermal bridging is to be minimised and the energy performance not compromised.

## A technically advanced solution

Schöck Isokorb thermal breaks are installed where the balconies meet the clay block structure. Ineffectual insulation at these cantilever connectivity points will result in local heat loss, requiring more energy to maintain the building's internal temperature. Low internal surface temperatures around the thermal bridge can also cause condensation, leading to structural integrity problems with absorbent insulation products

and the potentially serious occurrence of mould growth. The Schöck Isokorb is one of the most technically advanced countermeasures against thermal bridging. It thermally separates components from one another and also acts in a structural design capacity. The product type used has an innovative HTE Compact compression module and transfers both negative moments and positive shear forces with cantilever balconies.

## Enormous freedom of design

As the leading international supplier of structural thermal breaks, Schöck is able to offer planners complete construction dependability and almost limitless freedom of design with the options available. There are solutions for concrete-to-concrete, concrete-to-steel, steel-to-steel, a thermally insulating connection for reinforced concrete walls – and even a maintenance free alternative to wrapped parapets. The temperature factor used to indicate condensation risk (fRSI) which must be greater than, or equal to, 0.75 for residential buildings, is easily met by incorporating the Isokorb. All products meet full compliance with the relevant UK building regulations and the NHBC. They also offer LABC Registration and have independent BBA Certification.



Dug Wilders Photography

01865 290 890  
[www.schoeck.co.uk](http://www.schoeck.co.uk)



## TT Pumps gains ISO 14001:2015 during lockdown

The environment has always been important to T-T as much of its business is involved with pumping drainage and effluents, so the environment is of paramount importance. The company is very fortunate in being located in a rural location at Woore, South Cheshire on a 6-acre site with more than half the site being green natural space, having a small lake, woodland which being expanded by annual planting of British tree species, a further 250 trees were planted in early 2020.

To endorse the company's environmental ambitions the directors felt that it was appropriate to gain ISO14001.

The initial plan of getting full ISO14001 for early 2020 was put into total disarray by the Coronavirus epidemic, so much of the work had already been done during 2019 it was disappointing that completion would be delayed.

After some discussion with LRQA it was realised that not all was lost and that



much of the final qualification could be done remotely. During early 2020 much of the detailed work was completed, only necessitating one surveillance visit to complete the process allowing T-T to gain the valued accreditation in the summer of 2020.

The accreditation will allow the company to continue with its environmental policy

while helping meet environmental regulations, improve efficiency and environmental performance.

Big thanks to LRQA for their positive attitude in helping T-T gaining this important accreditation.

01630-647200 [www.ttpumps.com](http://www.ttpumps.com)



## Greener to greenest with Green Homes Grant

Insulation and waterproofing specialist, Soprema, is urging specifiers to consider the sustainability of the materials they select for housing upgrade projects carried out under the Government's Green Homes Grant scheme.

The scheme allows home owners and landlords to apply for a grant of up to £5,000 per property to cover up to two thirds of the cost of home improvements that reduce energy consumption and carbon emissions. Those on certain benefits can claim up to £10,000 to cover the entire cost of improvements.

The scheme, which applies to home improvements completed by the end of March 2021, is expected to lead to a significant surge in uptake of internal wall insulation (IWI), roof insulation and external wall insulation (EWI) for solid wall properties. However, Soprema has raised concerns about the possibility that less green solutions will reduce the

benefits of the initiative and result in additional environmental issues in the long term.

Roland Jackson, commercial director of Soprema explains: "Any insulation installation will provide environmental benefits by improving thermal performance but the reality is that some of the materials commonly used are made from non-renewable and non-recyclable materials that continue a cycle of CO<sub>2</sub> emissions and waste.

"While these products are acceptable for use under the scheme, both specifiers and home owners need to consider the goals of the Green Homes Grant and choose renewable, recycled and recyclable insulation materials. These solutions provide all the environmental benefits of improved thermal performance, without any of the negative environmental side-effects."

Soprema advises that a woodfibre



insulation system, such as the company's Pavatex range, provides the ideal solution for IWI and roof void insulation upgrades. Manufactured from renewable timber and completely recyclable, Pavatex provides excellent thermal performance, with options for plasterboarding or rendering, and is also naturally breathable for a comfortable indoor environment all year round.

0330 058 0668 [www.soprema.co.uk](http://www.soprema.co.uk)





## The timeless elegance of white doors

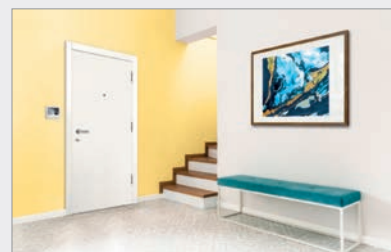
Simplicity in design is often thought to be the secret to creating timeless fashions and one way to achieve that desired blank canvas, is by using flush white doors. This opportunity to rejuvenate and add a fresh clean look to interiors has now been given new impetus and inspiration with the introduction of the White Collection from Vicaima, a selection of quality interior doors for home, hospitality and commercial projects.

Bringing together some truly distinctive finish options in white, the collection demonstrates that this fundamental hue is not actually a single colour, but has in fact a myriad of sheens, surfaces and shades to

suit every application. In addition, doors can be customised to allow even greater decorative freedom, with the inclusion of face grooves and inlays, together with many glazed patterns.

The White Collection includes Lacdor in White and Pure White shades, with its ultra-smooth lacquered paint finish; Dekordor SD in White Smooth and Woodgrain finished foils; Dekordor HD White, a continuous pressure laminate for demanding areas and for those who still prefer to paint their own doors, Primed 2 Go, with its revolutionary surface that requires no face sanding or priming and which will accept paint straight onto its smooth face to achieve an excellent end result.

Where performance criteria is demanded, The White Collection is also available in fire, acoustic and security solutions. And as care for the environment is paramount in our minds, everything is covered by FSC® certification. Products can be supplied as door only, door and matching frame assemblies or even as corresponding wardrobes.



Vicaima White Collection Brochure



For a copy of the new White Collection brochure or for further inspiration and trend-setting ideas, visit the Vicaima website.

07584 392770 [www.vicaima.com](http://www.vicaima.com)



## HOUSING MANAGEMENT & MAINTENANCE

Enjoy reading Housing Management & Maintenance but find it's not always convenient to have the printed magazine? Or has your workplace turned paper-free? The digital issue offers you the same content, delivered straight to your inbox and accessible via smartphone, tablet or desktop computers. Housing Management & Maintenance also offers regular updates with the monthly newsletter, offering news on products, services and events.



Available online at [www.housingmmonline.co.uk](http://www.housingmmonline.co.uk)

## Style and simplicity key



A new streamlined Prima® worktop Collection from **Formica Group** promises offers the ultimate in fresh, modern kitchens. Product and design experts at Formica Group have opted for a quality-over-quantity approach, simplifying the Prima Collection from 52 to 34 core and on-trend designs, including 16 new worktop decors and 10 feature splashbacks. Light woods, warm stones and solid colours are at the heart of the selection, which draws upon intensive design research, complemented by detailed customer research and of course knowledge and expertise from its own in-house design team.

0191 622 0106 [www.formica.com](http://www.formica.com)



## The Axiom® Worktop Collection

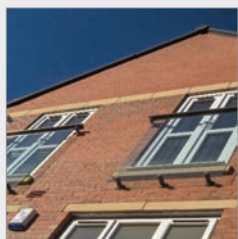


Twenty new and exclusive decors, 13 new feature splashbacks and three new textures are among the exciting highlights of **Formica Group's** cutting edge Axiom® by Formica Group worktop Collection launched in October 2020. The details have been revealed as Formica Group prepares to unveil an ultra-premium, refreshed and refined collection for one of the market's most recognisable worktop brands. A selection of lighter woods, stones and slates have been added to meet growing demand for enriched yet timeless designs.

0191 622 0106 [www.formica.com](http://www.formica.com)



## Neaco launches easy-order balcony packages



**Neaco** has launched a range of Juliet balcony packages providing easy specification and fast turnaround from order. They are ideal for renovations, refurbishments and projects which are subject to restricted timescales. Comprising a range of precision-engineered modular components, the glass-fronted Juliet designs feature a top rail in a powder coated aluminium finish which is non-chip and rust-free, providing permanent aesthetic quality and maintenance-free use. Their toughened

glass panels maximise sunlight penetration and provide an unobstructed view out. Each panel is subtly secured in place by circular support brackets (with no stanchions needed) providing attractively minimalist looks.

[www.neaco.co.uk](http://www.neaco.co.uk)



## Convenient and paper-free



Enjoy reading ADF but find it's not always convenient to have the printed magazine? Or has your workplace turned paper-free? The Digital Issue offers you the same content, delivered straight to your inbox and accessible via smartphone, tablet and desktop computers. Be among the first to read all the latest features, comment, interviews, and more, before the print issue has even been delivered! What's more, the Digital Issue includes interactive links to featured companies. Subscribe for free now.

[www.subscribe.com/adf](http://www.subscribe.com/adf)



## Modular skylights to maximise the positive effects of daylight upon patient welfare



140 modules of the **VELUX** Modular Skylight system have been installed at the new Wicklow Hospice at Magheramore, Ireland, providing ventilation, thermal comfort and natural light.

Wicklow Hospice Foundation appointed Martin Noone Architects, from Dún Laoghaire, to undertake the design of this section 38 facility, which was completed in January 2020 and accommodates 15 in-patient bedrooms, a number of treatment rooms, café, shop and an oratory, plus management and office suites. Critical to the design of this healthcare facility was the need to harness the positive benefits of natural daylight and create an environment that would be sensitive to the needs of patients, nursing staff and visitors alike.

To find out more about the importance of daylight in the healthcare sector, please read the full case study at: [commercial.velux.co.uk/inspiration/case-study/wicklow-hospice](http://commercial.velux.co.uk/inspiration/case-study/wicklow-hospice)

01592 778916 [commercial.velux.co.uk/en](http://commercial.velux.co.uk/en)



# selfbuilder +homemaker

SUBSCRIBE TO THE DIGITAL MAGAZINE  
[subscribe.com/sbh](http://subscribe.com/sbh)





## Colour and texture expand the use of metal in architecture

Powdertech Corby specializes in developing and applying unique ranges of powder coating materials that follow trends in design and developments in technology. Metals are rightly prized for their striking appearance and can offer a wide variety of styles to the designer and architect. Clinical, modern, technological steel, warm and homely copper and bronze, vintage or industrial rusted steel and verdigris copper. Powdertech's Evolution™ and Anomatch™ ranges of finishes reflect the beautiful shades



and textures of patination on metal and smooth mesmeric anodised aluminium, at the same time as protecting the metal from corrosion and weathering. New shades in both these ranges will be available in 2021.

Aluminium and steel can also be transformed to appear as other materials, especially useful when, for instance, the look of stone, wood or terracotta is required, but without the weight or expense of these materials. Powdertech has a Landscape™ range of finishes that includes over 30 different colours resembling the shades and textures of Terracotta and of Stone; all can be used on aluminium and steel. The warmth and comfort of terracotta has become very popular over the past year, perhaps reminiscent of the holidays we are missing. Powdertech Wood Finish, in 35 shades, smooth and texture finish, has been popular for many years and is A2 fire rated.

There are many exciting developments in texture for architectural metals and



these work particularly well with Powdertech's Collections, where the colours can achieve an even richer more vibrant hue across the textured surface offering exciting alternatives for interior designers and landscape architects.

Where once, powder coatings simply fulfilled their primary role as metal protectors, they are now a design element in their own right, celebrating the natural beauty of metal or transforming that metal into another material entirely. Follow Powdertech Corby on Linked In and Instagram to stay in touch with our latest additions to Powdertech Collections.

01536 400890  
[www.powdertechcorby.co.uk](http://www.powdertechcorby.co.uk)



## HOUSEBUILDER & DEVELOPER

Subscribe for free today to  
 Housebuilder & Developer  
 magazine

AVAILABLE ONLINE AT  
[WWW.HBDONLINE.CO.UK](http://WWW.HBDONLINE.CO.UK)



# Carlsberg Group Headquarters

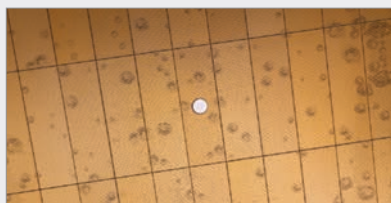
Office building, Copenhagen, Denmark  
Architects: C.F. Møller Architects

A “bubbly” facade is part of a major development project.

A massive transformation of what is (probably) the most famous brewery site in the world, has resulted in a stunning and vibrant new city district in the heart of Copenhagen. With a combination of both modern and historic architecture, the extraordinary Carlsberg City District will provide both office and residential buildings, as well as cafes, shops, hotels and schools.

The Carlsberg brand is synonymous with thirst-quenching drinks, so it is fitting that the facade design for the entrance of their new headquarters depicts refreshing golden bubbles, leaving you to imagine your favourite Carlsberg tippie. The facade was manufactured and supplied by RMIG using RMIG ImagePerf to create the pattern of the bubbles.

01925 839 600 [www.rmig.com](http://www.rmig.com)



## TECHNICAL CHARACTERISTICS

Raw material: Aluminium  
Pattern: RMIG ImagePerf  
Thickness: 3.0 mm  
Finishing operation: Bending  
Surface treatment: Anodising  
D1(AC-Gold)20 MY



# adf

## SUBSCRIBE TO THE FREE DIGITAL ISSUE



[ARCHITECTSDATAFILE.CO.UK/ADF-DIGI](http://ARCHITECTSDATAFILE.CO.UK/ADF-DIGI)

# BUILDING PROJECTS

The latest information  
and innovations  
for the design,  
specification,  
and construction of  
building projects  
across the UK and  
internationally



[subscribepage.com/bp](http://subscribepage.com/bp)



# UK manufacturer supports replacement of unsafe cladding systems

Three years after the Grenfell Tower fire disaster there are still many high-risk residential buildings with some form of dangerous cladding. The government has also revealed that local authorities are taking or have taken enforcement action against the owners of at least 30 buildings with Aluminium Composite Material (ACM) cladding.

In response to the tragedy, the government brought into force new Building Regulations with further amendments coming into effect in November 2020. Reference is made to BS 8414 the British Standard describing test methods to assess fire safety of cladding applied to the external face of a building. Within the regulations however it clearly stipulates that with building of 18 metres or more in height, any insulation product, filler material (such as the core materials of metal composite panels, sandwich panels and window spandrel panels but not including gaskets, sealants and similar products) used in the construction of an external wall should be class A2-s1, d0 or Class A1 or better.

In 2017 the Ministry of Housing, Communities & Local Government set up a Building Safety Programme Fund to repair unsafe residential buildings over 18 metres – this fund now stands at £1.6 billion. In a recent report the National Audit Office (NAO) revealed that tower blocks housing students are having dangerous cladding removed faster than those of owner-occupiers or private tenants. The NAO claims that only 149 of the 456-buildings identified have had unsafe cladding removed. But they have identified vast differences across sectors with 66.7 per cent of student blocks and 46.8 per cent of social housing buildings having had

cladding replaced when compared to 13.5 per cent of all private residential accommodation.

There are numerous supply-chain-related challenges facing the construction industry today. The COVID-19 pandemic has further delayed some retrofit cladding programmes due to global manufacturing and supply chain issues which has also impeded new high-rise residential build programmes. These problems can further jeopardise construction recladding schedules.

At the forefront of quality technical building envelope solutions, all PSP Group's manufacturing processes take place in the UK within precision-controlled advanced factories in Shildon, County Durham. The company offers a range of A1 and A2 rated non-combustible cladding systems and has the technical ability to manufacture bespoke solutions to competently replace unsafe cladding.

Heath Hindmarch, chairman of PSP Group said: "Many developers do have good intentions and are keen to complete the replacement cladding work but are struggling to find the right compliant systems and trusted manufacturing partners. As the leading manufacturer in our field, we work closely with our clients to build long-lasting working relationships. We invest in the latest technology and have tried and tested cladding systems to meet the latest regulations and we are keen to help making these buildings safe."

The new Building Regulations state that all materials which become part of an external wall or specified attachment in a building which is more than 18m or more in height, must achieve European Classification A2-s1, d0 or Class A1, classified in accordance with BS EN 13501-1:2007+A1:2009 entitled 'Fire classification of construction products and building elements.' The British Standard classification is not included in the new regulation, and therefore terms such as 'class 0' and 'limited combustibility' will no longer be applicable to buildings which fall within the identified categories.

## PSP – Panel Options and Support

PSP design and manufacture a comprehensive range of integrated metal rainscreen facade systems that can be adapted to suit specific client needs to provide a visually stylish solution for almost any building.



- Matrix SF rainscreen systems are high tolerance fabricated panels supplied in thicknesses up to 4mm and up to 6m long but this is dictated by the material type and panel size.
- Matrix SFC rainscreen systems are available in a range of finishes and thicknesses, with fire rated cores and are ideal for providing a flat panel in large format modular grids.
- Matrix IP rainscreen systems were developed to provide a single skin panel solution based on narrow face widths that can be laid vertically or horizontally. The panels can be roll formed or CNC folded.

Matrix SF, Matrix SFC and Matrix IP are CWCT tested systems that can be manufactured from numerous non-combustible materials and finishes including:

- Solid aluminium classified as non-combustible
- Pre-coated classified as A1 fire rated
- Composite materials classified A2 fire rated
- Post powder coated classified A2 fire rated
- Solid Zinc classified as non-combustible
- Anodised steel classified as non-combustible

PSP Group manufactures all products using state-of-the-art fabrication equipment and a range of metals that are suited to an array of customer requirements. With a safety-driven strategy at the company's core, each system is tailored to individual customer specifications.

info@pspuk.com www.pspuk.com



## F.H. Brundle balcony products complete luxury spa development

Quality F.H. Brundle hardware products have provided the finishing touch to a stunning multimillion-pound development.

A luxury spa was added to the existing buildings of The Olde Belle hotel and restaurant in Retford, Nottinghamshire, including a unique and impressive indoor-to-outdoor vitality pool.

The project's managers called on Brundle's decades of expertise to provide an array of quality glass spigots and glass stiffeners.

"This was a challenging but extremely rewarding project for us," comments Brundle National Field Sales Manager Trevor Wines.

"We loved working on such a fantastic, modern building, and seeing our input have a real impact on the finished design.

"We were first approached quite late in the process, when the project managers encountered an issue with the building's glass balconies – specifically concerning how they'd install glass or railing systems.



"We were quickly able to visit the site, advise the client on the best course of action, and deliver a complete solution in a very short period – supplying 25m of stainless steel tube and 30 square metres of toughened laminated glass alongside the spigots, stiffeners and fixings."

F.H. Brundle supplies an extensive range of glass spigots for balconies and balustrades

for walkways. The company's user-friendly Tilt-Loc™ Spigot system can be quickly hand-adjusted from one side, levelled by hand, then secured into position by just one person.

It also offers Spig-Lite Pro, which, with only 2 spigots per metre, is one of the fastest to install on the market.

"The customer really appreciated the fact that our products were so easy to work with, and that we were on hand to provide backup via the phone whenever they needed it," Trevor continues.

"All in all, it was a great project to work on, and an excellent demonstration of the kind of comprehensive, start-to-finish service that F.H. Brundle can provide!

"If you'd like to learn more about what we do, and how we can help you, don't hesitate to get in touch".

01708 253545  
www.fhbrundle.co.uk

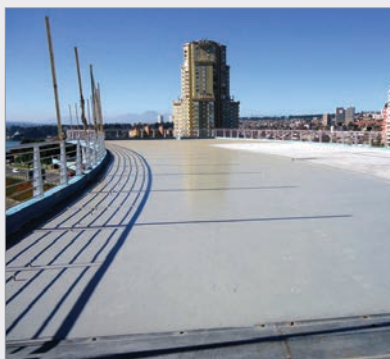


## Soprema UK adds to Roofing Range with Alsan 601 Wet-on-wet Membrane

Soprema UK, the specialist in roofing, waterproofing and insulation solutions, has added to its wide-ranging roofing systems with the launch of Alsan 601; a wet-on-wet polyurethane cold-applied liquid roofing system.

Developed to enhance the choice and variety available to specifiers and contractors from the trusted Soprema brand, Alsan 601 builds on the versatility of the company's roofing range, which includes PMMA liquid-applied systems, bituminous membranes, hot melt and single ply. The new system will be available through Soprema's UK-wide distributor network, enabling contractors to benefit from local supply chains, while specifiers can benefit from Soprema's usual high levels of technical support and advice.

With a BBA-accredited service life of at least 25 years, Alsan 601 will carry a 20-year Soprema warranty and cures to form a durable, seamless, waterproof roof covering that eliminates any risk of water tracking



below the surface.

The Alsan 601 system has been developed with ease, speed and convenience of installation in mind, with smaller 10 litre tins available for minor works, along with standard 15 and 25 litre sizes. The liquid membrane provides flexibility of cure rate to suit installation conditions, with use of an

accelerator reducing cure time to 2-4 hours. The accelerator also allows the system to be installed at temperatures as low as 00C, making it ideal for projects delivered during the winter months.

Alsan 601's viscosity can also be adjusted in response to application requirements, with an additive available within the range to enable installation on vertical surfaces and upstands.

Available in a choice of two shades of grey, the liquid membrane is used in combination with a glass fibre reinforcement fleece, which breaks down as a homogenous component of the system during installation for a smooth roof finish.

Like all Soprema roofing systems, Alsan 601 will be supported with a full installation training and approved contractor programme, along with technical support and warranties.

0330 058 0668 [www.soprema.co.uk/en](http://www.soprema.co.uk/en)





# Adding longevity to the sustainability debate

**I**t is a fundamental of good design that buildings and structures should be safe and that measures to enhance their environmental performance should not compromise this essential requirement. Steve Thompson, Managing Director for specialist steel framing manufacturer EOS, adds longevity and building performance to the safety versus sustainability debate.

Buildings should not only be inherently safe but should also be constructed to last a long time and therefore be inherently sustainable. Buildings are responsible for almost half of the UK's carbon emissions and around a third of its landfill waste. This means that the UK's sustainable development targets cannot be met without a major change to the way in which buildings are designed, constructed, and operated. National targets for carbon emission reductions and the drive for buildings that are 'low carbon' in operation present a huge challenge to the construction industry – a challenge which the steel construction sector is playing a major part in overcoming.

Steel can be recycled or reused endlessly without detriment to its properties. This unique characteristic gives steel a high value at all stages of its life cycle. The recovery infrastructure for steel recycling is highly developed and extremely efficient and has



been in place for decades. Current recovery rates from demolition sites in the UK are 99 per cent for structural steelwork and 96 per cent for all steel construction products – figures that far exceed those for any other construction material.

Steel's superior strength-to-weight ratio means a little steel goes a long way, giving architects complete flexibility to innovate and create new and exciting buildings. Low and zero carbon buildings as well as buildings with high BREEAM ratings are readily achievable using steel construction.

When the cost of operating a building for 30 years can be four times greater than that of designing and constructing it, it is no surprise that those who own and maintain buildings are keen to find in-use savings. Now we have more sophisticated research available, the equation of 'build them high build them cheap' – simply does not stack up from an owner operator's perspective. And this is why steel framing systems are favoured by the build-to-rent, education, healthcare and other public sector bodies.

Safety, quality, and sustainability are at the very core of our organisation. We have the capability to meet the exacting demands of the construction industry and have invested in developing a range of tested and warranted systems that are manufactured to stand the test of time and offer the highest safety and energy performance throughout the long lifecycle of the building.

[eozenquiries@etexgroup.com](mailto:eozenquiries@etexgroup.com)  
[www.eosframing.co.uk](http://www.eosframing.co.uk)







Cover image: EOS Framing  
See page 15 for details