



**AUDIBLE  
EDITION**

# **building construction design**

[www.buildingconstructiondesign.co.uk](http://www.buildingconstructiondesign.co.uk)

**SUMMER 2021**

<b>Appointments &amp; News</b>	<b>02</b>
<b>Interiors</b>	<b>06</b>
<b>Exteriors</b>	<b>10</b>



Cover image: Troldekt  
See page 08 for details



# Aico | HomeLINK host virtual event, What Makes a Healthy Home?



Steve Trafford, Sales Director for Aico opening the 'What Makes a Healthy Home' virtual event

Wednesday 9th June saw the success of the virtual event, 'What Makes a Healthy Home?' powered by Aico | HomeLINK. The event aimed to create thought-provoking discussion regarding the current standards and legislation that contribute to creating safe homes for residents and the resulting impact on the social housing sector.

In attendance were close to 300 professionals, thought-leaders and decision-makers from across the industry to hear from keynote speakers, Dr Stephen Battersby, Vice President at the Chartered Institute of Environmental Health and Dorota Pawlowski, Managing Associate at Trowers and Hamlins LLP. With interactive polls, dedicated question and answer sessions with keynote speakers and networking opportunities, the conference empowered the discussion of prevalent issues within the UK housing sector.

The event began with keynote speaker, Dr Stephen Battersby, who was part of the team from Warwick University that developed the Housing Health and Safety Rating System (HHSRS). Stephen provided a comprehensive overview of the system's background and history and gave a unique insight into its implementation. The interactive poll conducted during the session demonstrated that 96.7% of delegates thought HHSRS is applicable to social housing.

Session Two was delivered by Aico's Regional Specification Manager for the South, Andrew Sturgess, who delivered a CPD certified

presentation on the Homes (Fitness for Human Habitation) Act 2018. The presentation examined the legislation, practical applications and what it means for the housing sector while looking to innovative solutions.

Keynote speaker, Dorota Pawlowski, conducted Session Three, discussing the legal impact of the Homes Act. As a specialist in all aspects of issues that may face a residential landlord, the session expanded into an insightful discussion surrounding the mitigation of risk and disrepair claims. Through the poll, 64% of delegates expressed they had seen an increase in disrepair claims in recent times.

Dorota Pawlowski comments: "It was a pleasure to participate in Aico's virtual conference on what makes a healthy home and to be able to share my experiences from a legal perspective on the Homes (Fitness for Human Habitation) Act 2018. It was an honour to share the stage with Dr Stephen Battersby, giving delegates an invaluable insight into how to tackle potential health issues in homes."

Aico's Relationships Manager, Tina Mistry, concluded the event by examining the connection between The Decent Homes Standard and the Housing Health and Safety Rating System. With both of the aforementioned currently under review, the session demonstrated how they are connected and what the potential updates could mean for the social housing sector. The poll results displayed that 97% of delegates recognised the connection between the importance of resident engagement and disrepair.

Tina Mistry says of the event: "This event was a great success, and we were pleased to see the vast range of professionals from the housing sector join us for the event. Through polls and question and answer sessions, we saw high levels of engagement with our attendees, and it was good to be able to facilitate thought-provoking discussion with our keynote speakers on what really makes a healthy home. We are looking forward to Part 2 that will take place in November and explore true resident engagement and how we sustain behaviour change."

The event marked Part One of a two-part conference exploring healthy homes and how technology can support this. Part Two of the conference will take place on Tuesday 2nd November and will examine how empowering and engaging residents to take pride in their home safety and wellbeing can create and sustain behaviour change. Register here: [www.eventbrite.co.uk/e/what-does-your-home-mean-to-you-tickets-158599388039](http://www.eventbrite.co.uk/e/what-does-your-home-mean-to-you-tickets-158599388039)

01691 664100  
[www.aico.co.uk](http://www.aico.co.uk)



LISTEN HERE

# The next generation of composite fire doors



**T**he Guardsman Fire Door from ODL Europe is a gamechanger for the fire door sector and gives architects and specifiers the fire safety credentials they require. ODL Europe's managing director Nathan Barr explains.

For architects and specifiers specifying a fire door for a project, the requirement on the face of it is simple: it must deliver the required level of fire protection. But beneath that headline requirement, there are a wealth of other factors at play. For example, the door should show consistency over a range of test results and across a range of fabricators. Only then can there be the confidence that the door that has been specified truly has the necessary credentials.

Our mission at ODL Europe is to build value into building products. So when we started to develop a 30-minute fire door two years ago, our aim was simple: a door that eliminated the unknown elements of a composite fire door's performance and delivered tried and tested, consistent test results. In other words, a fire door that was a gamechanger.

We partnered with the engineers at our partners Capstone, the world-leading supplier of composite door slabs, and a select number of experienced fire door fabricators who shared our ambitions. And we set the bar high.

Any 30-minute fire door we brought to the market would need to pass the European fire test standard of EN 1634, which is the more onerous test standard required by Part B of Building Regulations. We could have relied on British Standard test evidence, but while this ticks all the boxes legally, we knew it doesn't take a door out of its comfort zone so wouldn't meet the standards we had set for ourselves.

We also needed to eliminate the phenolic foam that forms the core of an industry-standard 30-minute composite fire door. We knew a solid core was the way forward and the material we are using is Agrifiber. It is a board material made from resin-bonded agricultural fibres and is a renewable source so has good environmental credentials. Unlike a foam, it is capable of delivering very consistent material densities and at the right density it has both superb structural properties and excellent fire resistance.

The result of our six-figure development investment is the Guardsman Fire Door.

It has been tested in glazed and unglazed versions. It has also been tested across multiple manufacturers. And in the most recent tests to EN 1634, we have achieved an average of 100 per cent overrun past the 30-minute mark. At the extreme, our 30-minute Guardsman fire door achieved over 70 minutes.



The doors have been tested as part of a doorset including our TriSYS glazing cassette and a TS008 letterplate. They have reached test ratings they have never achieved before, which demonstrates the importance of the solid core in the construction.

Of course, while safety is rightly the first priority for a fire door, day-to-day practicalities also matter.

As a Capstone door it has hardwood stiles and rails and a 2 mm GRP skin. It means it has all the pedigree you would expect from a composite door developed by a manufacturer with Capstone's credentials. It is a durable and robust door that is virtually maintenance-free and more than capable of withstanding the realities of everyday use while still maintaining a good-looking appearance.

We believe the Guardsman Fire Door is the first in the next generation of composite fire doors, a generation that delivers better, more reliable protection in the event of fire.

0151 933 0299 [www.odleurope.com](http://www.odleurope.com)





## TEMPOMATIC technology supports sustainable washrooms at St. Peter's

Electronic technology is not the first thing that springs to mind when refurbishing a place of worship, but at St Peter's church in Burnley, it proved the ideal solution.

St Peter's normally hosts a wide range of community groups, including a well-attended Sunday School, a local music society and various choirs, plus an over 55s lunch club. The design brief for refurbishing their washrooms therefore had to cater for this broad spectrum of users, reflecting all age groups and differing mobility levels. Sustainability was another key element of the specification, to minimise environmental impact and future-proof the facilities. The Parochial Parish Council of St. Peter's opted for DELABIE's sensor controls for the taps

and urinals as they met, and surpassed, the design brief.

### Waste prevention

As Treasurer of St Peter's, David Smith was very aware of the sizeable utility bills. When presented with a solution to reduce water consumption, he immediately recognised the benefits of self-closing taps. Unlike the original cross-head taps, TEMPOMATIC 4 electronic taps are sensor activated, meaning water flows only when movement is detected. The water delivery (pre-set at 3 litres/minute) is split into wetting, soaping and rinsing, so while the user is soaping their hands, there is no flow. This fractional delivery will also pay dividends post-lockdown, as hand hygiene continues its vital role in public health.

### Improved efficiency

The intelligent technology of the TEMPOMATIC 4 urinal valve also appealed to St Peter's specification team, given the usage patterns i.e., periods of intense activity followed by lulls. The electronic unit detects busy periods and adapts its rinse accordingly to ensure the most hygienic flush whilst optimising water consumption. During busy periods, the bowl is rinsed between users and at the end of the busy period, a complementary rinse occurs, cleaning the bowl and preventing crystallisation of uric acid in the pipes.

### Future-proofing

Originally, Overton architects of Ilkley – specialists in heritage projects – specified a



**“We all at Burnley St Peter are very happy to have been transported into the 21st century. The toilets will be appreciated by all users.”**

David Smith, Treasurer of St Peter's

non-concussive push-button tap. However, as the pandemic took hold, the hygiene aspects of the TEMPOMATIC 4 technology proved very persuasive. The non-touch sensor controls require no physical contact, providing a significant barrier to the spread of germs. They are also easy to operate regardless of age or mobility levels. Part of their appeal is a hygienic duty flush (on both taps and urinals) which occurs every 24 hours after the last use to prevent stagnation and urine crystallisation in the pipework, avoiding conditions where bacteria can develop. This has practical benefits in a church facing varying activity levels; and even more so for washrooms that are temporarily moth-balled. Benefits that no specifier could have foreseen even 12 months ago.

### Minimal maintenance

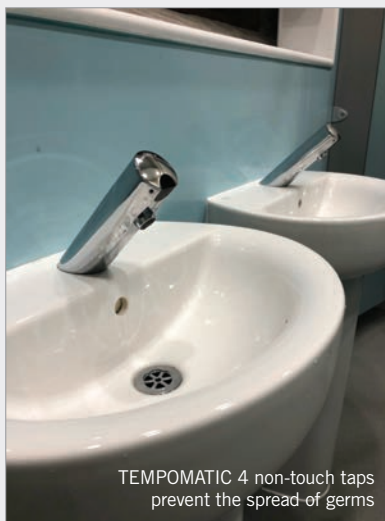
The final aspect of the design brief was to reduce an onerous maintenance regime. The previous domestic style taps were not designed for intensive use over long periods and required frequent repairs to keep them in service. With no full-time maintenance staff, David was keen to install hard-wearing taps. Again, TEMPOMATIC controls proved ideal, with solid brass bodies, durable mechanisms and standardised components, all designed for commercial applications. Both the urinals and taps are battery-operated, with the electronic unit integrated within the body, making them easy to install and easy to access if maintenance is required. The battery life of three to six years (350,000) operations also appealed.

Refurbishing the washroom facilities at St Peter's was a major undertaking, especially during a national pandemic. TEMPOMATIC 4 technology offered the ideal solution for the complex needs of a community-based facility that demands reliable, hygienic and sustainable washrooms for its users.

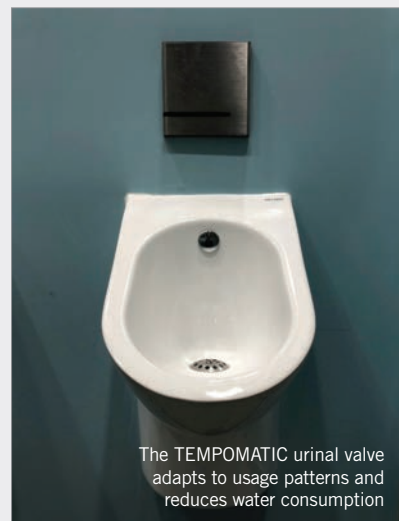
01491 824449  
www.delabie.co.uk



St Peter's church Burnley adopted DELABIE's sensor technology for its recent washroom refurbishment



TEMPOMATIC 4 non-touch taps prevent the spread of germs



The TEMPOMATIC urinal valve adapts to usage patterns and reduces water consumption





### New colours to sectional garage door range

Garador are launching four exciting new colours for their sectional garage doors range. These new colours will be available, as part of the standard colour range, across their Georgian and Linear door models. There are currently 16 colours to choose from in the standard colour range, including four new colours which have now been added: Basalt Grey (RAL 7012), Quartz Grey (RAL 7039), Slate Grey (RAL 7015) and Titan Metallic (CH 703). These new shades of grey are ideal for contemporary residential architecture and designs. The Titan Metallic (CH 703) colour has minute pearlescent looking flecks which are blended into the paint, adding another dimension to the look and feel of the door. On top of these four new colours, Anthracite Metallic (Noir 2100 Sable) has also been added as non-standard colour on sectional garage doors too. If you would like a colour not in the standard range, then the door can be painted in almost any RAL colour, giving customers plenty of options.

01935 443700 [www.garador.co.uk/garador-range/sectional-doors.aspx](http://www.garador.co.uk/garador-range/sectional-doors.aspx)



### The impact of good acoustics

Light, air, acoustics and spatial organisation are recognised as essential elements when designers work on medical and healing facilities. This is because they have an impact on the treatment of body and mind. Now a wealth of information is available from Troldekt, a leading developer and manufacturer of acoustic ceiling and wall solutions. This is available in an online series of articles which focuses on visions and practices opportunities and pitfalls within healing architecture. Troldekt's natural and inherently sustainable panels are available in a variety of different surfaces and colours and contribute positively to a building's BREEAM, DGNB and LEED ratings. Available in various sizes and in four grades from extreme fine to coarse, the panels can be left untreated or painted in virtually any RAL colour. Samples, case studies and technical guidance are available from Troldekt.

[www.troldekt.com/news/themes/healing-architecture](http://www.troldekt.com/news/themes/healing-architecture)



## WELCOME TO ARMATHERM™ STRUCTURAL THERMAL BRIDGING SOLUTIONS

Minimising energy loss and improving building envelope performance



Armatherm™ is one of the leading suppliers of structural thermal break materials for the construction industry. Our goal is to provide architects, structural engineers and building design professionals with effective solutions to prevent thermal bridging.

### Typical Thermal Bridging Locations



Balcony/Canopy Connection



Masonry Shelf Angle Connection



Wall Cladding Attachments



Foundation to Wall Transition



Column Base Connection

01274 591115

[sales@armadillonv.com](mailto:sales@armadillonv.com)

[www.armatherm.co.uk](http://www.armatherm.co.uk)



## SIG Zinc & Copper becomes GB distributor for VMZINC



SIG Zinc & Copper is pleased to announce that they have entered into an agreement to become major GB distributors of the VMZINC range of rolled zinc roofing and cladding products. Zinc is among the most sustainable metals used in construction today and the VMZINC systems have been designed to complement a wide range of building materials and styles. Chosen for their sustainability and low maintenance requirements the VMZINC products offer exceptional quality and a choice of patinas and finishes suitable for almost any project. The range includes: Natural VMZINC which has a shiny metallic appearance when new and develops a patina over time; QUARTZ-ZINC offers an appearance and texture that does not change over time; ANTHRA-ZINC with its visible grain matches the colour of slate and can blend in well with photovoltaic panels; AZENGAR an engraved zinc which gives the product a matt heterogeneous and light aspect; PIGMENTO finishes offer a unique range of colours – blue, green, brown, red and grey plus two new additional colours- Storm Grey and Charcoal Blue – that enhance any building.

0330 123 1820 [www.sigzincandcopper.co.uk](http://www.sigzincandcopper.co.uk)



## HiB Solstice mirror now available in eye-catching brushed brass finish

Leading bathroom supplier HiB has introduced a new brushed brass finish to the Solstice mirror range. Offering a sleek and luxurious feel, the brushed brass finish is now available to complement the growing collection brassware and furniture released earlier this year and is perfect for those seeking to create a lavish style for their project. Customers can now choose between a black or brushed brass finish option in the 60cm and 80cm widths, ensuring there is an option to suit bathroom of all sizes and styles.

The round shape with hanging strap is complemented by a halo of ambient backlight which creates a stunning focal point in the room, while the illuminated ring of colour temperature changing LED lighting make it ideal for everyday tasks such as applying cosmetics and cleaning teeth. The Solstice mirror also benefits from internal heated pads which reduce condensation, for a flawless and functional bathroom centrepiece. For more information about the Solstice mirrors or HiB's dedicated contracts department visit [hib.co.uk](http://hib.co.uk) where you can also download the Projects and Specifications Guide.

020 8441 0352 [www.hib.co.uk](http://www.hib.co.uk)



## Contracts awarded to Offsite Solutions



Willmott Dixon has awarded two contracts totalling £3.5m to **Offsite Solutions** to supply bathroom pods for a £78m regeneration scheme in Birmingham. This use of offsite manufacturing will increase time efficiency by 30 per cent as well as maximise the cost, quality, and sustainability benefits. Offsite

Solutions is manufacturing 692 steel-framed bathroom and ensuite shower pods for the two apartment buildings. Each pod features contemporary grey floor and wall tiles, a wall-mounted D-shaped hand basin, and heated towel rail. The bath has a hand-held shower on a sliding rail. The shower rooms are fitted out with a hand-held rain shower, a large shower tray and sliding glass door. There is also a single bar towel rail adjacent to the shower or bath.

[www.offsitesolutions.com](http://www.offsitesolutions.com)



## Selfbuilder & Homemaker website



The Selfbuilder & Homemaker website is an online provider of past and present products and news items for all those involved in and working on a self-build project. [www.sbhonline.co.uk](http://www.sbhonline.co.uk) is a one-stop source for all the latest press releases, providing visitors with access to information about products and services that they may require. From the website, you can find links to digital issues that have live links to advertisers' sites, as well as daily email alerts to keep you as informed as possible. You

can also subscribe to receive regular copies of the printed and digital versions of the magazine, or sign up to the monthly Selfbuilder & Homemaker newsletter.

[www.sbhonline.co.uk](http://www.sbhonline.co.uk)

## The new inspired workplace



Arstiderne architects has transformed a large industrial building into a stunning open plan office to house the 180 Sweco employees at a location near Aarhus in Denmark. While the majority of staff work in large open plan spaces they benefit from several smaller self-contained rooms in the centre of the building. These box-like structures, bathed in daylight from the skylights and facade windows, are used for a variety of purposes from a quiet workspace to meetings and socialising. Their design on the original concrete floor contrasts well with the precise finish on their walls. These are clad with **Troldtekt** acoustic panels in an ultrafine finish creating a high performance and aesthetically pleasing appearance. The ceilings and some walls are clad with standard acoustic panels, while specific areas have been decorated with Troldtekt® line which forms part of the award-winning design solutions collection. The lengthwise surface grooves form a continuous pattern across the partitions and reception areas adding interesting texture and depth. Troldtekt was specified across the scheme for its sustainable characteristics coupled with superior acoustics to provide a comfortable working environment.

[Troldtekt.co.uk](http://Troldtekt.co.uk)



## Guiding the future of swimming pools

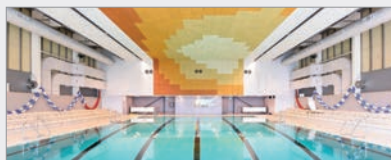
**A**cross Europe there has been a surge in the swimming pool sector. With many more people staying at home and foreign travel restricted both domestic and commercial pool manufacturers have seen a rise in new builds and renovation of existing pools. Trends indicate that 2021 will see a further rise in local markets as more people cocoon and less people travel abroad.

In a new feature on their website, acoustic panel manufacturer Troldekt summarises the knowledge, trends and examples which will help influence the design of swimming centres today and in the future.

The feature includes 16 trends compiled by the International Association for Sports and Leisure Facilities. These cover everything from economics and digital features to new uses and products which influence the architecture of pools and their construction.

Pools can be used for different purposes and by quite different groups of people. This places demand on designers and developers to provide perfect layout and solutions to create the best atmosphere.

One interesting aspect is how modern



swimming centres need to satisfy many expectations from different types of user. For example one pool needs to accommodate the needs of elite swimmers with those people wanting to exercise, young families and wellness enthusiasts. Each group is looking for a different type of experience and unless planned, there is a risk of friction between them. Architects such as GPP Arkitekter and Bay Arch have succeeded in this balancing act as shown in the newly built Frederikssund Swimming Centre.

One of the most important aspects and one universally agreed across all types of user is the control of noise. For example, absorption of the loud sounds from splashing, shouting and playing is essential. This is why Troldekt's acoustic wood wool panels are often specified because of their durability,

appearance and are natural breathable meaning they will absorb and release moisture making them perfect for wet area installations. Manufactured from certified wood, a 100 per cent natural material, and cement extracted from Danish mineral resources, they achieve high levels of technical and acoustical performance and can be disposed of harmlessly, breaking down in the soil.

Founded on the Cradle-to-Cradle design concept, the natural and inherently sustainable panels are available in a variety of different surfaces and colours and contribute to a building's BREEAM, DGNB and LEED ratings. In addition to their high sound absorption and tactile surface, they offer high durability and low cost lifecycle performance. Available in various sizes and in four grades from extreme to coarse, the panels can be left untreated or painted in virtually any RAL colour.

For samples, case studies and technical guidance, telephone Troldekt.

01978 664255 [bit.ly/2LJjiGU](http://bit.ly/2LJjiGU)



### Multiboard finds its calling for Kettering convent conversion

The ease of installation and all round performance characteristics offered by **Marmox** Multiboard have led to a leading dry-lining contractor recommending the versatile tile-backer boards to a client engaged in the redevelopment of a former convent near Kettering. Conroy Dry Lining originally learnt about Multiboard through the trade press, but the directors of the family run business became converts after purchasing a pack for a trial installation and now they are making rapid progress employing large quantities of the 12.5mm x 1200mm x 2400mm boards, plus metal washers, for the bathrooms within the 60, three-storey town houses as well as the apartments being created in the old listed building. Director Leo Conroy, who runs Conroy Dry Lining with his brother Martin, commented: "We had used different tile-backer boards on projects in the past, but having seen an advert for the Marmox product we bought 40 sheets to try them out and were really impressed with how easy they are to install: our lads love them as they just cut with a knife. On the Kettering project we're doing all the internal plaster-boarding and skimming, but in the bathrooms – for which we proposed the Multiboard to the developer – the boards are being fixed to the timber frame for the tilers to follow on. We're really impressed with the product and have recommended it for some other prestige work."

01634 835290 [www.marmox.co.uk](http://www.marmox.co.uk)



### Temple Meads roof refurbishment work protected by FIREFLY™ fire barrier



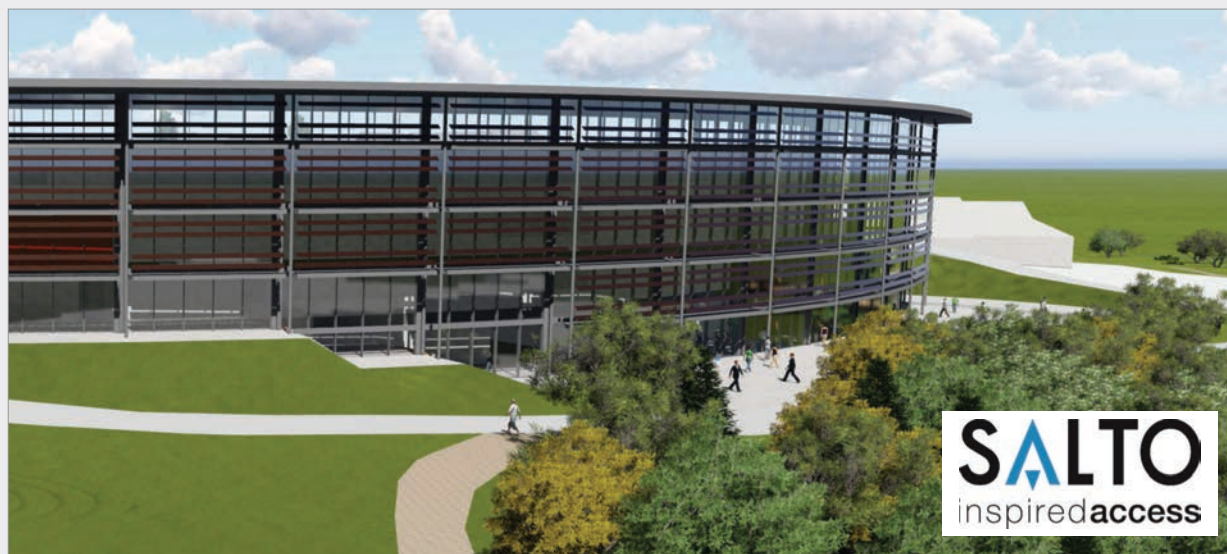
A three year £24 million programme of works to repair and repaint the roof structure to Bristol Temple Meads railway station is featuring the use of the ZEUS Horizontal fire barrier system from **TBA FIREFLY™**: employed to enclose a series of shallow arch scaffold beams or 'cassettes' that span the tracks, thereby protecting the workforce from any potential train fire as they use the access deck above. These cassettes were assembled and installed by Network Scaffolding, a specialist division of main contractor, Taziker, before being wrapped and fire-protected using the ZEUS Horizontal: offering significant logistical as well as cost advantages over alternative solutions. FIREFLY™ ZEUS Horizontal 60:30 is able to offer 30 minutes' insulation and a full one hour's integrity in a variety of applications. Third Party certified by IFCC (certificate No 1532) Zeus Horizontal comprises a flexible fabric which is chemically treated to optimise its thermal properties and prevent the spread of fire. While it was actually developed to create compartmentation within hidden areas of buildings, such as roof spaces and floor voids, the system is also ideally suited for protecting the underside and vertical sides to the scaffold cassettes.

01706 758817 [www.tbafirefly.com](http://www.tbafirefly.com)





# Irish college selects SALTO to secure its new campus



**S**outh West College, the largest Further Education College in Northern Ireland, has selected SALTO and its partner company Doorways Architectural to provide the access control solution for its new multi-million-pound Erne Campus.

Located in the communities of Tyrone and Fermanagh in Northern Ireland, the College is physically represented at campuses in Cooks town, Dungannon, Enniskillen and Omagh. It employs over 900 full-time and part-time staff servicing around 18,000 enrolments and, with a turnover of £41m, makes a major contribution to the local and regional economy.

The new campus, which is situated on the site of the former Erne hospital in Enniskillen will open its doors to students and staff later this year having been delayed due to Covid-19, and will deliver additional first class facilities and accommodation for students and staff at South West College.

It will see the delivery of the first educational building worldwide to achieve the highest international standard in environmental construction – Passive House Premium. The application of the passive house standard is still quite new in the UK and in particular Northern Ireland ranking it alongside prestigious buildings such as the Apple Campus 2 in terms of sustainable innovation and design, and it

is also designed to achieve a BREEAM outstanding rating, confirming the college's commitment towards sustainability.

## What did they need?

To ensure the safety and security of its students, staff and visitors the college needed a modern access wire free control solution that was future proof to allow for any future expansion and provide full control over who could access what, where and when. In addition, any proposed solution had to be easy to install, simple to operate, be able to grant access rights instantly and revoke them in real-time if and when required and provide full audit trail functionality.

To meet this brief Tracey brothers Ltd, the main contractors constructing the new campus, commissioned SALTO partner Doorways to supply and install the new access control system.

## Solution and benefits

Robert McNeill, Doorways Sales Manager, comments: "Having made the decision to standardise access control on the SALTO solution, installation got underway with some 100 plus doors being secured. Product fitted includes SALTO XS4 One handle sets, mortise locks with projecting latches, strike plates, and simple to use SALTO BLUEnet software.

This provides high level real-time access control throughout the campus allowing system administrators to manage doors and user keys in just a few easy steps, and in real-time. A SALTO Virtual Network (SVN) was also installed which provides the flexibility for the campus's access control system to grow as required."

Controlling access plays an important role in the security of any educational building and SALTO's innovative, wire-free technology allows stand-alone electronic locks to read, receive and write information via their operating smart cards. And, at a later date if the client chooses, they can also incorporate the use of JustIN Mobile technology making it easy and secure to incorporate smart phones as a part of their on-campus access control solution.

A spokesperson for South West College said: "Security is of paramount importance for all our students and staff. Doorways and SALTO understood our requirements to be successful – secure and safe. We needed a system where our new campus buildings felt safe but where our students have a sense of freedom – and our new SALTO technology provides that."

01926 811979  
[www.saltosystems.com/en-gb](http://www.saltosystems.com/en-gb)



## Driving security forward with the complete package

If you were selecting a car for security reasons, would you be looking for one that just had four wheels, an engine and a door you could lock? No, of course not! You would rightly be interested in its overall performance, verified roadworthy tests, the quality of its components, not to mention other safety features and naturally its appearance and stylish kerb appeal.

Selecting the right Secured By Design (SBD) Doorkit is not dissimilar. After all there is so much more to consider in the modern build environment, from fire rating to life cycle expectations and installation to design flexibility. Portaro SBD Interior timber Entrance Doorkits from Vicaima provides just that scope, with ease of assembly, quality materials, outstanding performance and design appeal as standard, all encased in one of the most comprehensively certificated products on the market.

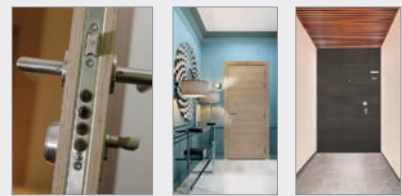
Of course, one of the first considerations for any project or development is how will it look and will it fit in with the project design theme.

Here the Portaro SBD system provides a rarity in today's somewhat limited market. With matching door, frame and architrave in a myriad of veneered, foil, laminate, paint lacquered and even special finishes, the Portaro system offers complete design freedom, so that performance does not equate to compromising aesthetics.

Beyond the finish itself, design configuration also offers flexibility, with a choice of either a conventional architrave or for a seamless face the Inverse system, where door sits flush with its surroundings. All door systems incorporate a 3-Point locking system, handle and security escutcheon, together with an automatic dropseal.

The doors themselves are constructed with heavy duty and high-density cores, surrounded by double timber rails on all sides, complete with hardwood lippings. Furthermore, the frames are made from hardwood and come pre-fitted with fire, smoke and acoustic seals.

From the installers perspective, the Portaro SBD System really is the complete package.



Supplied as doorkits for ease of fitting on site, the carefully and separately wrapped doors come pre-machined with all primary components, alongside the boxed and matching frame/architrave sections with simply connecting parts and screws.

There are so many reasons why Portaro SBD Doorkits offer the ideal entrance security solution, of which these are just a few:

- Certified Secured by Design with dual scope Fire and Security certification
- Sound reduction performance with Acoustic AC35 and AC36 options
- Completely matching door and frame surround
- Ease and speed of assembly on site
- Quality components and construction
- FD30 to FD60 Fire Rating
- SBD Inverse Model

01793 532333 [www.vicaima.com](http://www.vicaima.com)



### Marmox Tilebacker board used for five bathroom fit-out

'The Tilebacker' board manufactured by **Marmox Limited**, has been chosen by a specialist sub-contractor working on a very large residential property in Maidstone, to help create a total of five bathrooms and en-suite shower rooms. J. Jupp Tiling works across Kent and into the capital, mainly on domestic contracts, and has been a long time user of Marmox products including the manufacturer's widely specified Multiboards. With some 130m<sup>2</sup> of wall area to address and 22mm thick structural ply already fixed in place as the substrate, it made practical and economic sense to switch to the new value-for-money alternative. Director Josh Jupp comments: "I have been using Marmox products including Multiboard, along with the tapes and fixings, for a good while and always found them very dependable for the high-end residential projects we are involved on. I like the new Tilebacker which is relatively lighter and even simpler to cut than the Multiboard and it seemed perfect for the house in Maidstone where we are working for a private developer. The Tilebacker boards will soon be covered with 1200 x 1200 x 6mm Italian tiles, which will create really striking interiors. This has been a successful first try out with the new boards and I am planning to use them again for our next job which features more than 300m<sup>2</sup> of tiling, including three very large bathrooms."

01634 835290 [www.marmox.co.uk](http://www.marmox.co.uk)



### StormCrate55 controls surface water at caravan showground



When it came to the management and control of surface water run-off at a caravan showground in Hull, StormCrate55, an engineered Sustainable Drainage System from **Brett Martin** was up for the challenge. Having previously used StormCrate55 to successfully manage stormwater on a number of other projects, installer Catalogue Engineering undertook the installation for groundworks contractor Evabuild in order to reduce the risk of flooding on this trafficked site during periods of heavy rainfall.

Manufactured from 100% recycled plastic, 523 m<sup>3</sup> of the StormCrate55 modular units were clipped together in a brick bond pattern to create a three tiered underground attenuation tank. With a loading capability of 562kN per m<sup>3</sup>, their high strength provided more than enough vertical strength for this tarmacked area at the showground. The use of StormCrate55 has ensured this showground will have a proven rainwater attenuation solution for the long term.

028 9084 9999 [www.brettmartin.com](http://www.brettmartin.com)







# The Protector.

Vicaima Security Entrance Door Kits.  
The first line of defence for every project.

Follow us:



[vicaima.com](https://vicaima.com)

## Illuminating Nordic Copper

A bespoke perforated solar screen, formed from Nordic Blue Living 3 pre-patinated copper, defines the new Senior Learning Centre building at Ravenswood School for Girls in Gordon on Sydney's North Shore, creating a fresh landmark along the Pacific Highway.

Architects BVN's design optimises a 6.5m level difference across the site, with extensive glazing to the lower two floors. The upper two floors are differentiated by Nordic Blue Living 3 copper screens, creating a transparent skin enwrapping the building and jettied out over the lower levels. To create the screens, a distinctive repeat pattern of perforations, inspired by the shape of gum tree seedlings found on site, were laser-cut into the copper.

Large window openings with deep, copper-clad reveals 'punch' through the copper screen to break up the elevations, enable clear uninterrupted views across the grounds and introduce coloured light via glass bricks. Being set in front of the thermal envelope of the building, the copper screens mediate light



and thermal penetration, reducing cooling load whilst allowing the interiors to feel light and airy.

BVN senior associate Phillip Rowden commented: "Nordic Blue Living 3 pre-patinated copper was selected for the perforated screens because of its striking colour contrast with the predominantly masonry surroundings on Campus. Our material palette required high proportions of recycled content and low embodied energy. High quality materials, such as copper, were selected for the exterior with longevity a key



consideration – materials that are robust, beautiful and will stand the test of time."

Nordic Blue is a factory-applied patina developed with properties and colours based on the same brochantite mineralogy found in natural patinas all over the world. The Nordic Copper range of architectural copper products is available from Aurubis, part of the world's leading integrated copper group and largest copper recycler.

[g.bell@aurubis.com](mailto:g.bell@aurubis.com) 01875 812 144  
[www.nordiccopper.com](http://www.nordiccopper.com)



### Magply for new-build thatched property

Widely specified for its fire resistance and all round stability in the cladding build-up to apartment blocks as well as a render backer and sheathing board, IPP's highly versatile Magply boards have been employed by a regional developer as a fireproof sarking board beneath traditional thatched roofing for a development in a Dorset village. The 12mm thick version of the high performance MgO material was selected by Poole based Charlew Developments, to comply with the project architect's performance specification for the solitary thatched roof building. The site agent for Charlew Developments, Jules Peach, commented: "We have found the boards very straightforward to cut and fix before covering them with the breather membrane and battens." Magply MgO boards present a fire-safe and environmentally friendly alternative to conventional plywood or OSB products.

01621 776252 [www.magply.co.uk](http://www.magply.co.uk)



### Wireless optical sensor for GaraGlide

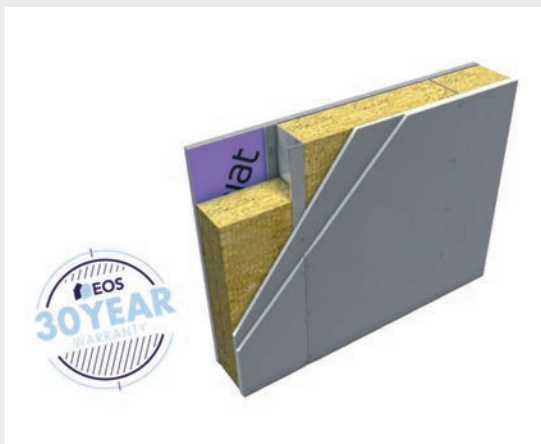
Garador's new electrically operated roller garage door, the GaraGlide, is now available with a wireless optical sensor as an option. You can therefore now choose between a wired or wireless optical sensor for this roller door. The wireless optical sensor is built into the floor seal and utilises light beam technology, so if there is an obstruction in the way of the door curtain's downward path, when the light beam is broken the door curtain will stop. The new wireless optical sensor means there is no spiral cable required to connect the safety edge to the separate control panel housing. Batteries are required for this new device. This new feature provides the same reliable level of protection as the wired version and recognises when there is an obstacle in the door's path. The GaraGlide is powered by a tubular drive motor and is supplied with two remote hand transmitters as standard, with either a standard (433 MHz) or bisecur (868 MHz) hand transmitter design. It has been designed so that it is quick to fit and easy to transport to site; the entire garage door fits neatly into just two double-wall cardboard boxes. Choose from 16 colours and two timber-effect finishes.

01935 443700  
[www.garador.co.uk/garador-range/roller-garage-doors.aspx](http://www.garador.co.uk/garador-range/roller-garage-doors.aspx)





## EOS mitigating risks in residential buildings



Damage to a structure during construction through moisture or fire leads to potential delays to contract, expensive remediation works or even complete loss of the structure. A key advantage of light steel frame is increased fire performance and protection from weather during the construction process.

### REDUCING THE FIRE LOAD

The amount of combustible material in a light steel framed building is much lower, therefore the fire risk during construction and when in use is reduced. Steel is non-combustible and does not add to the fire load of a building – reducing the 'fuel for the fire' and limiting risk of damage and injury.

### SAFETY-FIRST APPROACH

Developed by EOS in collaboration with Etex group companies – Siniat, a leading expert in plasterboard and drylining systems, together with fire protection specialists Promat and FSi – the Thruwall® complete load-bearing walling and flooring systems combine the technical and manufacturing expertise of the group to provide a comprehensive range of tested and certified solutions for light steel frame construction – all from one supplier.

All components and products are rigorously tested together to ensure compatibility and system performance, enabling EOS to warrant the technical performance of their Thruwall® range of solutions. Fire resistance periods of 60, 90 and 120 minutes are readily achievable. When walling and flooring systems are built entirely with Etex Building Performance components and materials in line with their latest standards — Etex award a Thruwall® 30-year warranty.

This approach mitigates risk for housing developers because these integrated systems have been tested and assessed for compliance with the latest regulations and standards, to ensure robust and reliable performance. Design performance is achieved using combinations of boarding and insulation and only tested configurations are available for selection.

To download the Thruwall® loadbearing systems and Thruwall® non-loadbearing systems brochures go to [www.eosframing.co.uk/information-centre-downloads/brochure-company-literature](http://www.eosframing.co.uk/information-centre-downloads/brochure-company-literature)

To view the EOS video case studies and client testimonials go to [www.eosframing.co.uk/information-centre/video-vault](http://www.eosframing.co.uk/information-centre/video-vault)

01325 303030  
[www.eosframing.co.uk](http://www.eosframing.co.uk)








### A safety first system approach - providing the optimum offsite solution

Developed by Etex brands EOS, Siniat, Promat and FSi – our range of Thruwall® and Thrubuild® systems deliver steel frame structures faster with assured performance built in:


- › Fully tested systems range with 30-year warranty
- › 'All in one' loadbearing and non-loadbearing walling and flooring solutions
- › Meets Building Regulations and performance requirements
- › 60, 90 and 120 minute fire resistance options
- › Rapid installation process delivers cost and programme certainty
- › Predictable outcomes enhancing occupant safety and build quality
- › Meets requirements of External Wall Fire Review - EWS1 form


To learn more about our systems contact the team today:

 01325 303 030

 [thruwall@etexgroup.com](mailto:thruwall@etexgroup.com)

[www.eosframing.co.uk](http://www.eosframing.co.uk)



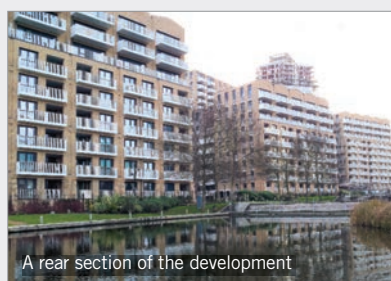



# Schöck product solution is just dandy at Regency Heights

The Old Oak and Park Royal areas of West London are undergoing a massive transformation. A £26 billion masterplan to create a new district is taking shape in this part of London and it will see around 25,000 new homes built over the next 20 years. An already advanced scheme is the First Central development, part of which is the imposing Regency Heights. Built on the former site of the Sir Giles Gilbert Scott designed Guinness Brewery, it is a residential-led, mixed use scheme providing 807 residential units in three courtyard blocks with a public plaza. The buildings range from five to twenty-seven storeys and the design is reminiscent of the Brewery's early modern industrial brick architecture. The southern block is anchored by a brick-clad residential tower, which when complete, will create a new 90m high local landmark. The majority of apartments are fitted with steel balconies. So it is vital that with the design detailing any risk of thermal bridging is minimised and a key consideration throughout is the use of effective structural thermal breaks.

## Consequences of thermal bridging

Local heat loss is a major factor, resulting in more energy being required to maintain the internal temperature of the building. Also, low internal surface temperatures in the area of the thermal bridge can cause condensation. This can result in structural integrity problems with absorbent materials, such as insulation products or plasterboard. Mould growth is also a possible risk, which in a residential situation can cause asthma and allergies. The proven solution to any such problems is the Schöck Isokorb structural thermal break. In the case of Regency Heights, over 2500 units of the Isokorb T type SK are installed. This is a load-bearing thermal insulation element with an 80 mm insulation thickness for connecting cantilevered steel balconies to a reinforced concrete slab. The innovative fastening of the support beams makes any steel structure durable, safe and visually attractive, permits a high degree of prefabrication and minimises installation time on site. The T type SK transfers positive or negative moments and shear forces. And since it can bear heavy loads, it is ideal for resolving the



technical and structural issues of designing modern balconies.

## Guaranteed performance

The Schöck Isokorb T type SK units guarantee totally verifiable performance standards, meet full compliance with all relevant UK building regulations and offer BBA Certification and LABC Registration. When incorporated into residential buildings, the required fRsi value, the temperature factor used to indicate

The Isokorb T type SK



condensation risk (that must be equal to or greater than 0.75) is always comfortably met. The range complies with the Government Standard Assessment Procedure, SAP 2012, concerning CO<sub>2</sub> emissions from buildings and respectively heat losses through non-repeating thermal bridges. The lambda values of the Isokorb also enables energy loss to be reduced by as much as 84 per cent to 91 per cent.

01865 290 890 [www.schoeck.com](http://www.schoeck.com)



LISTEN HERE



# adf

## SUBSCRIBE TO THE

## FREE DIGITAL ISSUE



[ARCHITECTSDATAFILE.CO.UK/ADF-DIGI](http://ARCHITECTSDATAFILE.CO.UK/ADF-DIGI)





Cover image: Troldekt  
See page 08 for details