



AUDIBLE
EDITION

SPRING 2022

building construction design

www.buildingconstructiondesign.co.uk

Appointments & news	02
Building products	05
Structural elements	11
Interiors	12
Exteriors	28

Cover image: British Harlequin
See page 14 for details



NEC BIRMINGHAM
10-12 MAY 2022
FITSHOW.CO.UK

A TRIP TO FIT COULD MAKE YOU MORE
PROFIT
A DAY OUT BUT NOT A DAY OFF

UK'S BIGGEST AND BEST TRADE SHOW
FOR THE WINDOWS, DOORS, GLAZING & COMPONENTS INDUSTRY



FIT SHOW
2022
WILL BE THE
FIRST
EUROPEAN SHOW
FOR THREE YEARS



OVER 200
INDUSTRY
LEADING
BRANDS.

FIT IS NOT JUST A SHOWROOM,
IT'S A SHOWCASE OF PRODUCTS,
FEATURING EVERY LINK IN THE
SUPPLY CHAIN.



NOWHERE ELSE CAN YOU
SEE, TOUCH AND PLAY WITH
THE LATEST PRODUCTS ON
THE MARKET, COMPARE
THEM SIDE-BY-SIDE, UNDER
ONE ROOF.

NEC BIRMINGHAM, 10-12 MAY 2022

Register early and beat the queues at the
NEC. Scan the QR to book you FREE place
at **FIT Show 2022**.

#FITShow22



Yeoman Shield Fire Door Services offer assurance to clients

Yeoman Shield Fire Door Services division continues to go from strength to strength with the addition of a new team member and new personnel accreditations.

Technical Advisor, Richard Bingley and Technical Supervisor, Shaun Stevenson, already have the Diploma in Fire Doors. Both have now increased their portfolio of certification, having recently sat for, and to their credit, achieved the FDIS Fire Door Inspection qualification.

"The FDIS Fire Door Inspection qualification assures our clients that our Fire Door Services supervisors have the essential skills to carry out fire door inspections with the knowledge

to identify non-compliant issues," commented Contracts Director, Richard Good.

With an in-depth understanding of the regulations, components, compartmentation, and function, Richard and Shaun can also advise on remedial work required to bring damaged fire doors back to an acceptable standard under best practice guidance.

Offering accepted repair techniques can help reduce the cost of remedial work to non-conforming fire doors whilst a regular Fire Door inspection and maintenance routine will ensure that problematic issues can be dealt with before they get to the point of total fire door replacement.

Yeoman Shield Fire Door Services has been further enhanced by the internal promotion of Gemma Batley to the team.

Richard Good explained: "Gemma has worked within the company for many years as a Senior Sales Coordinator and has great understanding of our fire rated door protection products and will certainly be an asset to the division."

Gemma has been appointed as a Fire Door Supervisor and will undertake training to achieve both the FDIS Fire Door Diploma and Fire Door Inspection qualifications as she progresses.

For more information on Yeoman Shield Fire Door Services as well as Yeoman Shield's range of Wall & Door Protection products please contact the company or visit the website.

0113 279 5854 www.yeomanshield.com



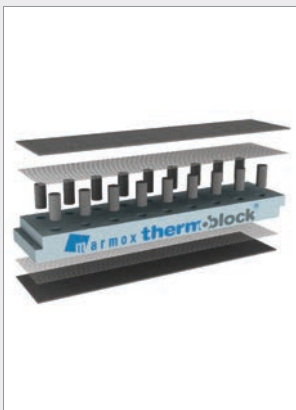
Titon Ventilations Systems gets social

Titon's Ventilation Systems division continues its planned growth with the timely appointment of a dedicated sales person responsible for the social housing sector.

Titon Ventilation Systems identified the greater need for understanding and support in this key area, and has appointed Roy Byom as Area Sales Manager for Social Housing. Roy's background is in Building products and he has been in the industry for nearly 15 years selling into the social housing market, previously as a sales manager at Envirovent. Lee Caulfield, Director, UK Sales (Ventilation Systems) said: "I worked with Roy for 8 years at my previous company and I'm absolutely delighted he's joined us to spearhead our sales drive into the Social Housing sector. His knowledge of the client base and the unique demands of this environment will be a real asset to Titon."

Roy is looking forward to the challenge his new role offers, and to sharing and expanding his knowledge and experience of the social housing sector alongside Titon's excellent range of ventilation solutions. If you would like to find out more about Titon's Social Housing Products, please contact Roy Byom.

07984 239805 roy.byom@titon.co.uk



Marmox Thermoblock to fight cold-bridging at Futurebuild 2022

Fully in step with the sustainable construction goals of Futurebuild, Marmox will be exhibiting its well proven and versatile Thermoblocks on stand K10 from March 1st to the 3rd. The easy to install product is widely used to tackle the issue of cold-bridging around the floor/wall junction at the base of perimeter and internal walls, beneath both masonry and timber frame constructions, while it also finds applications at intermediate floor levels, beneath parapet walls and even in the construction of swimming pool surrounds. Thermoblocks are available in widths of 100, 140 or 215 mm and are formed from sections of XPS (extruded polystyrene) encapsulating two rows of high strength, epoxy concrete mini-columns. These are attached at either end to the top and bottom layers of glass-fibre reinforced polymer concrete, to ensure a good bond with the rest of the structure. Marmox's technical sales team will be on hand to explain how specifying Thermoblocks can avoid having to adopt the punishing default value under SAP and therefore help achieve Part L compliance in a practical and economic manner. Visitors can also gain an insight into the performance benefits of Marmox 360 multipurpose adhesive – used to seal the stepped end joints to the Thermoblocks – and other products in the manufacturer's extensive range.

01634 835290 www.marmox.co.uk



CERTIFIRE approval for TECTUS Hinges

SIMONSWERK UK is proud to announce that the TECTUS range of concealed hinges has been approved for the Warrington fire CERTIFIRE certification scheme.

CERTIFIRE is an independent third-party certification scheme that assures fire protection products' performance, quality, reliability, and traceability. The scheme is recognised by regulatory authorities worldwide, it is an internationally respected mark of fire safety and one of the most authoritative in the industry.

Following stringent tests and further assessments, the TECTUS is the only CERTIFIRE approved multi-axis concealed hinge on the market.

Robin Guy, managing director says: "The certification is a fantastic asset to the range; it gives both our customer and the end-user the confidence and reassurance that the products carry the mark of a reputable third-party certification body. It gives assurance as to the performance of the products, particularly following the understandable



stringent requirements on products to meet additional fire test standards due to recent tragic events. The certification underlines SIMONSWERK'S commitment to the highest quality standards and the products performance reliability".

SIMONSWERK are one of Europe's leading Hinge Manufacturers with a history spanning more than 130 years in the manufacture of brass, aluminium and stainless-steel hinges for doors and windows. The range includes the renowned fully concealed TECTUS hinges and the popular TRITECH solid brass hinge with concealed bearings.

0121 522 2848

www.simonswerk.co.uk

certifire



LISTEN HERE

With over 30 years experience, we offer bespoke solutions for the domestic market across the South East.
Feasibility of a project can usually be determined with a site postcode.

COVID-19 SAFE WORKING

AWARD WINNING RENEWABLE HEAT INSTALLATIONS

Open-Loop Ground Source Heat Pumps could meet all hot water and heating needs by utilising ground water as a heat source.
Ideal for installation in new or self-builds.



WINNER
SMALL SCALE PROJECT



SPECIAL COMMENDATION
RENEWABLE HEAT PROJECT



WINNER
RENEWABLE HEAT INSTALLER & CONTRACTOR



WATER SUPPLY & SOAKAWAY BOREHOLES & DRAINAGE SOLUTIONS

Independent water supply for irrigation or consumption*

Soakaway drainage fields and other drainage solutions

*subject to analysis and suitable filtration

SEWAGE TREATMENT SYSTEMS

We can provide package plant or bespoke systems
All systems are designed to meet the needs of individual clients and comply with strict discharge legislation.

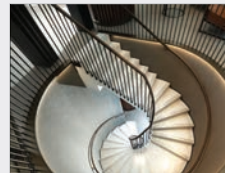
Servicing contracts are offered on all installations.



HD
services
LTD

enquiries@thehdgroup.co.uk | 01494 792000 | www.hdservicesltd.co.uk

Spiral and helical staircase CPD



Staircase experts, Spiral UK, offer architects a live bespoke staircase CPD presentation on Microsoft Teams or Zoom free of charge at a time that suits them. The session covers: staircase design, stair regulations ADK, ADB, ADM and specifically BS5395 Part II (which relates to spiral and helical staircases), the design, manufacture and install process, materials and finishes and case study examples. The session is 30-40 minutes depending on questions and can be tailored to the interests of the practice. Certificates of attendance can also be issued.

0330 123 2447 www.spiral.uk.com



LISTEN HERE

Latest news, views and more



If you like to be kept informed of all the latest news, views, and promotions for the architectural community, the ADF email newsletters can offer you regular updates straight to your inbox. The weekly Editor's Choice newsletter includes top news stories curated by the ADF editorial team, while the monthly CPD Focus and fortnightly ADF Newsletter offer updates

on products, services, events, and learning opportunities available from a wide variety of manufacturers and suppliers.

www.subscribe.com/adf

Building Regulations Update – England



England 2021 Regulations have been released and Scotland & Wales are currently under review. It is the intention that the updates ensure adequate ventilation of all types whilst the energy efficiency of housing is improved at the same time. As the saying goes, 'Ventilate when you Insulate'. This is all part of the Government's proposals for the Future Homes Standard, which provides a pathway for highly efficient buildings that are zero carbon ready, better for the environments and fit for the future. Implementation of a full technical specification is scheduled for 2025. There are also proposals being discussed to mitigate against overheating in residential buildings.

Titon welcomes the increased emphasis that has been put on ventilation in both new and existing buildings as per the Building Regulations update, particularly in the current climate. Titon has a user guide section to help explain this.

www.titon.com/regulations www.gov.uk/government/publications/ventilation-approved-document-f



LISTEN HERE

TBA Firefly system sub-divides supermarket roofspace



During the recent pandemic supermarket chains have had to continue with property maintenance and improvement programmes to ensure the safety of their premises, including a store in Staffordshire where the APOLLO Lite 30:30 barrier, manufactured by TBA FIREFLY™, was installed within the roof-space as part of a major refurbishment project. All of the APOLLO Lite 30:30, together with the heavy duty stainless steel staples and other ancillary Firefly products, have been supplied by distributor, CCF. The APOLLO Lite 30:30 has been developed for use in vertical separation or compartmentation situations, offering 30 minutes integrity and insulation thereby exceeding the minimum requirements of the Building Regulations. It is widely specified to form fire barriers within roof voids and floor voids in many different property types, including tower blocks and other HMOs. The flexible woven and non woven glass fibre material is easy to cut and fix and is treated with a proprietary coating to improve its fire performance properties and therefore prevent temperatures rising in adjoining areas. The system has been fully tested to BS 476 Parts 20 & 22 and is third party certified by IFCC.

01706 758817 www.tbafirefly.com



LISTEN HERE

Magply features in fire-fighting role at Sky Studios Elstree



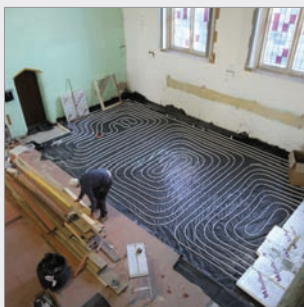
Magply boards are being used as part of Sky's efforts to create the world's most sustainable film and TV Studios, Sky Studios Elstree. Currently under construction by main contractor BAM and set to open in 2022, the build has recently included the use of 9 mm thick Magply boards as part of a flat roof build up specified for the product's proven fire-protection capabilities and all-round performance benefits. The work on the new production buildings is being carried out by London based Waterproofing specialist, Guaranteed Asphalt Ltd, which is installing their BBA Agreement certified hot melt flat roofing system over a reinforced concrete deck with the Magply boards being used to protect the mineral wool insulation. A total of 900 m² of 9 mm Magply boards was supplied by Shield Membranes Ltd, a leading stockist of the IPP range. Tyler Ellis, the business procurement manager for Guaranteed Asphalt, explained: "We chose to use the Magply boards due to its non-combustible nature and installed the product as part of a non-combustible, Tapered Mineral Wool System called Stonewool by Tapered Roofing Systems."

01621 776252 www.magply.co.uk



LISTEN HERE

OMNIE UFH systems selected for Porthcawl Church renaissance



A well-attended and progressive church at the heart of a Welsh town is nearing the end of the first phase of an ambitious refurbishment project with improved facilities and as part of the work, a new underfloor heating system featuring the use of two different OMNIE systems will provide a warming welcome for all. Gilgal Baptist Church began planning a three year programme of alterations to transform the main building – the Sanctuary – and then rebuild the adjoining hall. The changes within the Sanctuary include the creation of a function area with kitchen and new toilets, plus various adaptations for those with mobility issues. A modern main entrance will give access to an enlarged reception area, while a new steel mezzanine structure creates additional space for various activities. OMNIE Staple and TorFloor systems, along with a new 50 kW gas boiler will be installed to improve the efficiency of the church's heating and hot water delivery. Improved lighting and sound systems have also been included to make the interiors a better place for both worship and recreation. A spokesperson for the Gilgal Baptist Church said: "The changes are intended to ensure our buildings are fit for purpose".

01392 363605 www.omnie.co.uk



LISTEN HERE

Advanced fire panels selected for site-wide system upgrade at major UK hospital

130 Advanced fire alarm control panels have been chosen to protect one of the UK's largest acute teaching hospitals.

Selected for their performance, quality and ease of use, 96 intelligent addressable MxPro 5 fire alarm control panels and 34 custom AdSpecials panels have been installed at Wythenshawe Hospital, Manchester, as part of a comprehensive upgrade.

As a centre of clinical excellence, Wythenshawe Hospital, part of Manchester University NHS Foundation Trust, has over 5,500 staff providing district general hospital and specialist tertiary services to the local community and the wider population of the North West of England, so fire system reliability was a critical part of the specification.

Manchester-based Grainger Fire & Security, responsible for the 18-month project, chose Advanced's industry-leading fire protection for its robustness, versatility and ease of installation in complex and critical sites.

The system changeover to Advanced involved the installation of new network cable across a live hospital environment as well as BMS integration, and the introduction of a graphics package to provide visual representation of the fire system to end users. The 34 custom-engineered, 6-loop panels with 600 zonal LEDs included in the installation were designed and manufactured by Advanced's AdSpecials department. The network of Advanced panels work with over 20,000 devices using Apollo and Hochiki protocol.



In addition, a full design review of the hospital's existing false alarm management strategy has taken place to ensure that the new system is programmed to effectively reduce unwanted alarms.

Will Taylor, Service & Small Works Manager at Grainger Fire & Security, said: "As our preferred panel choice, we have recommended Advanced for a number of years. Its MxPro 5 panels are both easy to use and install and offer the features required to competently protect the hospital and its multiple buildings that each have individual cause and effect programming."

The upgrade to the system also sees the introduction of ipGateway, Advanced's fully interactive internet portal that presents the user with a detailed description of the current status of the fire system. The ability to remotely interrogate the fire system is a valuable benefit for both the end user and Grainger Fire and Security, who are able to pre-empt problems. Not only does this provide additional peace of mind for hospital users, it also saves time, money and inconvenience by reducing unnecessary service visits to site.

Neil Parkin, Advanced's Regional Sales Manager for the North, said: "The cause and effect programming capabilities of our panels provide tangible benefits to customers when protecting large-scale sites such as hospitals, university campuses or airport terminals."

"With the system at Wythenshawe Hospital up and running, features such as AlarmCalm, our built-in false alarm management and reduction software, work to radically reduce the number of unwanted alarms and the impact they have on patients and staff. It's a pleasure to be able to support Grainger Fire & Security on this project, and I have complete confidence that our products will provide the dependable solution required."

0345 894 7000 www.advancedco.com



Legislation is set to change in Wales to ensure rented properties are fit for human habitation



It has recently been announced that the legislation, Renting Homes (Wales) Act 2016 will change, effective from 15th July 2022. The new regulations are designed to ensure that social and private rented properties in Wales are fit for human habitation, including the provision of an adequate Fire and Carbon Monoxide alarm system.

Section 91 of the Act places an obligation on the landlord to ensure that their property is fit for human habitation from the beginning of the tenancy and throughout. The requirements of the legislation are within The Renting Homes (Fitness for Human Habitation) (Wales) Regulations 2022.

The updates significantly affect the requirements for Fire and Carbon Monoxide alarms within rental properties. Under The Renting Homes (Fitness for Human Habitation) (Wales) Regulations 2022, landlords in Wales must ensure that there is a working Smoke alarm on every storey of a property, e.g. hallway and landing; in addition, all Smoke alarms must be mains powered and interconnected with other Smoke alarms in the

property. Landlords should refer to BS 5839-6:2013 for the recommended installation of the required Smoke alarms, however Aico would encourage landlords to reference BS 5839-6:2019+A1:2020. The manufacturer's replacement date should also be noted to ensure the alarms remain fully operational.

Additional Smoke alarms can be installed in the property at the landlord's discretion, for example, a larger property would benefit from additional Smoke alarms for greater protection and coverage. A landlord may also consider installing a Heat alarm in the kitchen.

The Renting Homes (Fitness for Human Habitation) (Wales) Regulations 2022 also requires landlords to ensure that a Carbon Monoxide alarm is present in any room which has a gas, oil or solid fuel burning appliance installed.

Aico's National Technical Manager, Andy Speake, comments: "The updated legislation is a great step towards ensuring there is adequate fire safety in rented properties. The enforcement of The Renting Homes (Fitness for Human Habitation) (Wales)

Regulations 2022 is a positive move in the right direction and will ensure greater levels of protection for tenants in Wales."

In total, there are 29 matters and circumstances set out in the Act which determine whether a rental property is fit for human habitation, examples including damp and mould growth, fire, Carbon Monoxide, excess cold and heat and electrical hazards.

For more information on the legislation, visit: <https://gov.wales/fitness-homes-human-habitation-guidance-landlords-html#section-86350>

01691 664100 www.aico.co.uk



University of Edinburgh installs first-class fire protection

The University of Edinburgh, one of the UK's most prestigious educational establishments with a history stretching back to 1582, is now protected by industry-leading intelligent fire panels from Advanced.

Edinburgh is the sixth oldest university in the English-speaking world, with the Old College building being opened in the early 19th century as a school for anatomy and surgery. The original campus was expanded in the 1880s with the addition of the New College, and the university now occupies six sites throughout Edinburgh.

The new fire system installed at the main campus by long-term Advanced partner FMS Fire and Security Limited, covers the entire university campus. It comprises of multi-loop Advanced MxPro 4 and MxPro 5 panels, connected using fault-tolerant network cards.

Dominic Rea, Director for FMS Fire and Security, said: "The new panels installed at the University of Edinburgh are the latest in a long line of installations we have undertaken throughout the university Campus, all using MxPro components. The Advanced panels installed are not only flexible and reliable but are also compatible with the existing systems already installed."

MxPro is the industry's leading multiprotocol panel and offers customers a choice of two panel ranges, four detector protocols and a completely open installer network that enjoys free training and support.

Ronald Kerr, spokesperson for the University of Edinburgh, commented: "The safety of our staff and students is paramount



Copyright of LWYang

and they are now protected by the best fire panels on the market. The university has been shaping history since it welcomed its first students in 1583 and has played a large part in the scientific and literary development of Scotland. Our buildings are a big part of that history and, thanks to Advanced, they will be protected for many years to come."

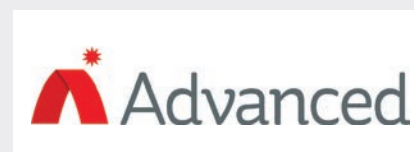
MxPro 5 offers high performance fire detection and alarm control across multi-panel networks and multiple sites. MxPro 5 panels are EN54 parts 2, 4 and 13 approved. They can be used in single loop, single panel format or easily configured into high speed, 200-panel networks covering huge areas. Advanced's legendary ease of installation and configuration make MxPro customisable to almost any application and the panel is fully compatible with MxPro 4.

Neil Parkin, Advanced Sales Manager for the North, said: "The University of Edinburgh is the latest in a long line of educational establishments protected by Advanced panels, including Sheffield University, Herriot Watt University and a number of leading independent schools. Our MxPro range offers

the performance and reliability required by a site such as the University campus and the system is flexible enough to be expanded and upgraded as technology evolves."

Advanced is a world leader in the development and manufacture of intelligent fire systems. The legendary performance, quality and ease-of-use of its products sees Advanced specified in locations all over the world, from single panel installations to large multi-site networks. Advanced's products include complete fire detection systems, multi-protocol fire panels, extinguishing control, fire paging and false alarm management systems. More details can be found on the website.

0345 894 7000
www.advancedco.com



Bricking the gap between traditional construction and MMC

James Mead, project director at Saint-Gobain Weber, discusses why a move towards MMC doesn't mean the end of brick

With around 70% of the UK's new homes being built with a brick facade, we need to find a way to construct buildings that are traditional in appearance but modern in construction.

The cost of bricks (in terms of freight, emissions, weight, space, and storage), the availability of bricklayers, and Net Zero targets all present their own challenges, which is leading the construction industry to look for alternative methods to build faster, more cost effectively and most importantly, more sustainably. Cue Modern Methods of Construction.

Integrating modern and traditional construction

As we transition from traditional building methods to offsite manufacturing, products within Category 6 (product-led labour reduction/productivity improvement) are set to play a huge part in bridging that gap.

This Category includes "traditional single building products", that are "manufactured in large format, pre-cut configurations or with easy jointing features to reduce extent of site labour required to install", and can contribute to a projects Pre-Manufactured Value (PMV).

Builds will become quicker thanks to the ease and speed of installation. Such systemised products will also help to ensure adherence to the forthcoming uplifts in Building Regulations Part L, which will place

additional requirements on the fabric and air tightness of new-builds, as they can be constructed with this in mind.

And there are already products on the market, usable on new build and refurbishment projects today, such as weberwall brick.

Product innovations

Saint-Gobain Weber's weberwall brick has been developed as a cladding alternative that gives the appearance of brick but can be fitted without the need for specialist labour on site. Once applied, it feels and looks just like the real thing.

It can be fixed more than three-times faster than traditional brick slips and is lightweight, with one sheet of 20 bricks being equal to the weight of one house brick.

As a Category 6 product it can also be combined with MMC builds, so that when panelised and volumetric construction is the norm, the time from project inception to handover is even further reduced.

Futurebuild

There will be live weberwall brick installation demonstrations on Weber's stand (J20) twice per day – at 10:45 and 14:00 – on each day of Futurebuild.

Examples of the different applications that weberwall brick can be used for will be on display, including new build, refurbishment and internal design. The stand will also showcase MMC solutions, using steel and timber frame builds supplied by Saint-Gobain Off-Site Solutions.

Futurebuild attendees will also get an exclusive look at the new photographs of 24-32 Stephenson Way, a recently completed office refurbishment project in King's Cross, London. The client wanted to achieve an exposed brick finish to complement the existing colour scheme, so used weberwall brick in Antique Red Multi with pointing mortar in Buff. It was combined with exposed pipework at ceiling level to create a contemporary industrial look.

For more information on weberwall brick or to discuss a project, please contact Saint-Gobain Weber.

01525 718 877 www.uk.weber-specifications@netweber.co.uk



BENEFITS OF WEBERWALL BRICK AT A GLANCE

- 12 colours, feels and looks like real brick
- One sheet of 20 bricks equal to the weight of one house brick
- Three times faster to apply than brick slips
- Technical support available
- Increases energy efficiency if used as part of an external wall insulation system
- Ideal for sites where storage and access is limited
- Speed of application makes buildings watertight quicker
- Aids planning, scheduling and programming



Acoustic panels can embrace the extreme

Recent tests have shown that Troldekt acoustic panels withstand moisture levels up to 98%, even when combined with high temperatures up to 40°C. These latest tests were carried out by the accredited Danish Technological Institute to the European product standard for suspended ceilings (EN 13964).

While the composition of the panels has remained unchanged, this new round of stringent testing reinforces the fact that the panels are suitable for the most demanding of wet, warm and humid environments such as swimming pools, changing rooms and shower rooms.

In these environments, it was found that the panels are dimensionally stable and retain their flatness. This means they do not warp over time, giving them a life span in excess of 50 years.

The panels are inherently robust and durable because the combined strength of the cement coupled with the breathability of wood means the structure does not rot and acts as an anti-microbial surface resisting fungal growth and other microorganisms.



For very humid environments where chlorine is also present, Troldekt offers special structure screws in the highest corrosion protection category. This means it is now possible to have a complete C60 profile system in steel where both the profiles and screws are C5 rated. The screws are also available in all colours to match the panels when installed on ceilings and walls.

Founded on the Cradle-to-Cradle design concept, Troldekt's natural and inherently sustainable panels are available in a variety

of different surfaces and colours and contribute positively to a building's BREEAM, DGNB and LEED ratings. In addition to their high sound absorption and tactile surface, they offer high durability and low-cost lifecycle performance. Available in various sizes and in four grades, from extreme fine to coarse, the panels can be left untreated or painted in virtually any RAL colour.

01978 664255
Troldekt.co.uk



£92 million student accommodation project receives Advanced protection

Five new towers at the University of Brighton's Moulsecoomb Campus are now protected by a fault-tolerant network of MxPro 5 fire panels from global fire systems leader, Advanced.

The 13 networked MxPro 5 panels have been installed to protect the five student accommodation towers varying between eight and 18 storeys, which will provide more than 800 student bedrooms as well as ground-floor fitness facilities and amenities for the students' union.

Responsible for the fire system design, supply and commissioning were West Sussex-based Southern Fire Alarms (SFA) Ltd, who also installed the equipment alongside mechanical and electrical engineers, J&B Hopkins. The fire system is integrated with multiple third-party interfaces, including automatic opening vents (AOVs), sprinklers and access control.

Careful consideration was given to the complex cause and effect programming that needed to be applied across the site. Each building is configured with a six-minute investigation period, with sounders on the floor of origin initiated after a single device activation. A single subsequent device activation will escalate into full evacuation of the specific tower. A master key switch has also been introduced, to allow for full evacuation of all towers if required.



MxPro 5 is the fire industry's leading multiprotocol fire system solution, certified by FM Approvals to the EN 54 standard. It offers customers a choice of four detector protocols and a completely open installer network, backed up by free training and support. MxPro 5 panels can be used in single-loop, single-panel format, or easily configured into high-speed networks of up to 200 panels covering huge areas. Ease of installation and configuration, as well as a wide range of peripheral, make MxPro 5 suitable for almost any application.

Advanced, owned by FTSE 100 company Halma PLC, protects a wide range of prestigious and high-profile educational facilities across the globe – from Scotland's University of Edinburgh



and Serbia's University of Belgrade to Myanmar's British International School.

Advanced is a world leader in the development and manufacture of fire protection solutions. Advanced's reputation for performance, quality and ease of use sees its products specified in locations around the world, from single-panel installations to large, multi-site networks. Advanced's products include complete fire detection systems, multiprotocol fire panels, extinguishing control, fire paging, false alarm management and reduction solutions as well as emergency lighting.

0345 894 7000
www.advancedco.com



Triton launches pre-applied waterproofing system for concrete structures

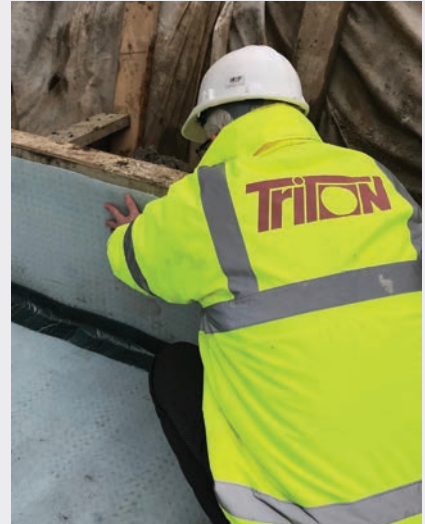
The new Triton Shield System is a reliable form of pre-applied, Type A barrier waterproofing, which provides a flexible approach to specifying a system requiring two different types of waterproofing protection – as defined in BS 8102 (2009). Use the new Triton Shield System in conjunction with concrete made waterproof by the addition of Triton TT Admix (Type B integral waterproofing) or, alternatively, in conjunction with a sealed cavity drain membrane system (Type C drained waterproofing).

Triton's new Shield System comprises a pre-applied, fully bonded, waterproofing (Type A) barrier membrane for use on the outside of a poured concrete structure – such as a basement slab and retaining walls – and a Stretch Tape that makes easy work of sealing around curved or irregular profiles due to its unique stretchability and flexibility. A key benefit when specifying the new Triton

Shield System is the Triton team's technical knowledge of all three types of waterproofing system and their extensive practical experience of choosing the right combination of systems for the expected usage of any basement or below ground structure.

The mesh-faced, HDPE Triton Shield Membrane offers a tenacious grip to the concrete poured on top of it. The 2 m x 20 m membrane rolls are light enough to be carried by two people but are still larger than many competitive product rolls. This means fewer side lap or end to end joints will be required with a resulting reduction in the risk of defects occurring.

New Triton Shield System offers a cost effective, fast to install, very lightweight and durable solution for concrete waterproofing – contact the Triton team for further advice and project-specific details drawings, or download the data sheet found on Triton's website.



01322 318830 info@tritonsystems.co.uk
www.tritonsystems.co.uk



Simpson Strong-Tie launches new catalogue

Introducing the 2022 Connectors for Timber & Masonry Construction Catalogue from Simpson Strong-Tie, a leader in engineered structural connectors and building solutions. Alongside the UK's widest range of construction connectors for new build, refurbishment, renovation, and extension of buildings, sit brand new product innovations, including: The versatile universal Engineered Wood Hanger (EWH), designed to fulfil a wide variety of joist to joist/panel configurations. The innovative Engineered Post Base (PWBS): a single-piece, non-welded post base for connecting timber to concrete. The high strength HTT Hold Down tension tie provides a timber to concrete, or timber to masonry, tension connection. The SSH Structural Connector Screw for installing connectors where high load capability is required, coated with Impreg*+ for suitability to exterior applications. "Our new catalogue brings together our full collection connectors and connector fastenings, complete with technical information and installation guidance to help you to make informed choices for your building project," says Jon Head, Sales Director, Connectors. The new catalogue is available to view or download now.

01827 255 646 www.strongtie.co.uk



HOUSEBUILDER & DEVELOPER



@Housebuilderdev

REGISTER ONLINE FOR...

In-print magazine • Digital magazine
Newsletter • Daily digests

www.hbdonline.co.uk

VitrA launches exciting Root brassware range



Root Square deck mounted mixer in brushed nickel.



Root Round medium monobloc basin mixer shown in chrome.



Root Round, built-in basin mixer shown in copper.

International Bathroom brand VitrA has launched Root, a striking and wide-ranging bathroom brassware range.

Created by Design Studio VitrA, Root is a comprehensive collection of brassware with over 130 skus including basin, shower, and bath mixers, all in four different finishes.

The range offers two design choices – Root Round and Root Square. Root Round has smooth, rounded curves for a softer look, while Root Square has defined geometric edges for a bolder look.

Every product within the range is available in chrome, gold, copper, and brushed nickel, which means all elements of the bathroom can be co-ordinated for maximum impact. The hardwearing colour is applied using an advanced VitrA process that gives a

resilient and beautiful finish.

The range is enormously versatile, with basin mixers available as deck-mounted or built-in, and in a range of sizes including compact, standard, and tall. The range also includes several bath and shower mixer options, including deck-mounted and floor-standing bath mixers and a range of built-in shower mixers, diverters, and spouts – complemented by wastes and bottle-traps as required.

The bath and shower mixers in the range are compatible with VitrA's V-Box concealed thermostatic valve.

Root brassware features an exclusively designed flow regulator and the collection's Unified Water Label certified mixers reduce water usage by 60% even in the lowest consumption category (5 litres/minute water flow). The basin

mixer cartridge with heat regulator and flow rate control provides extra savings in both energy and water consumption. Being able to control the amount of water and energy used helps to conserve natural resources and reduce heating bills.

"We believe that Root brassware will be a great success in the UK market, says Margaret Talbot, VitrA Marketing Manager for UK and Europe. "The Root range is elegant and stylish, and the sheer breadth affords retailers maximum design potential. The Root collection will be joined by new bathroom furniture later in the year – a range like the brassware that will be comprehensive, striking, and hardwearing."

01235 750990
www.VitrA.co.uk



DRU Polo gas stoves bring warmth and comfort to Cornish hotel suites

DRU Fires, in partnership with leading Cornwall fireplace dealer Kernow Fires, has supplied five DRU Polo balanced flue gas stoves for the new beach lofts at one of Cornwall's leading hotels.

Watergate Bay Hotel on the north coast of Cornwall, originally designed to be a railway terminus hotel, has been developed into an inclusive year-round destination. Its spectacular clifftop setting and location just a short hop from Cornwall Airport Newquay makes it a primary choice for travellers from all corners of the UK and beyond.

The recent closure of Jamie Oliver's Fifteen restaurant on the site paved the way for the £1.4 million development of the seven new beach lofts by contractors GSI and interior designers Dynargh Design, right above the beach.

Described as 'surf-in surf-out' accommodation, the lofts have floor-to-ceiling windows with panoramic sea views. All have been designed to feel like modern city lofts, with warm textures and sustainable materials.

High energy efficiency

The DRU Polo gas stoves were chosen by Dynargh Design for their contemporary design, fitting in with the overall design and aesthetic of the beach lofts. In addition, they were selected for their A energy rating, 92% efficiency and the convenience of gas with



easy remote-control operation. They have all-year-round use and are suitable for chilly autumn days and cool summer evenings.

Their balanced flue system offers flexibility of installation, as they require no chimney and only need proximity to an outside facing wall. This enables them to be installed in the living space, bedroom or bathroom subject to the design of each individual suite.

The beach lofts were completed in time for Cornwall's peak 2021 tourist season, which

has been hugely successful due to many more people taking their holidays in the UK during the Covid 19 pandemic.

Impressive outlooks and sustainability

Kernow Fires owner Simon Breckon commented: "We're pleased to have contributed to the success of the beach lofts and have seen strong growth in Cornwall's domestic and commercial fireplace markets this year."

Watergate Bay Hotel CEO Will Ashworth said: "The beach lofts are our best rooms. They are sized very generously and the interior design represents our new approach to contemporary Cornish beach living."

Dynargh Design director Matt Hulme said: "The lofts have some of the most impressive outlooks of any hotel in Cornwall. But the interiors also needed to have enough appeal in the winter, when it's dark at 5pm, that it feels warm, natural and enticing."

Sustainability was also an important factor in the design. "Getting active in the beautiful natural environment is at the heart of the Watergate Bay experience, and we're committed to minimising the environmental impact of our design choices," adds Will Ashworth.



drufire.com
kernowfires.co.uk watergatebay.co.uk



The world performs on Harlequin floors

Harlequin is the world leader in advanced technology floors for the performing arts. Established in the UK over 40 years ago, Harlequin remains the industry choice for the world's most prestigious dance and performing arts companies, theatres, venues and schools, production companies and global events.

Harlequin's experience and reputation are founded on the manufacture and supply of a range of high quality portable and permanent sprung and vinyl floors chosen by the world's leading venues – from the Royal Opera House to the Bolshoi Theatre, the Paris Opera Ballet to the Royal New Zealand Ballet.

With a growing interest in the provision of spaces suitable for dance, for professional performance and rehearsal, for private dance schools and throughout the education sector, there is increasing focus towards specifying dance floors that meet both performance aspirations and conform to increasingly stringent health and safety requirements.

Harlequin has led the way in developing and evolving the modern dance floor and has been involved with extensive research into reducing dancer injury. We place innovation at the heart of everything we do which is why Harlequin has become a brand that dancers and performers depend on.

A recent example of this is our new Harlequin Cascade dance floor with BioCote Antimicrobial Protection, which has helped



to ensure that dancers can perform safely through the recent pandemic.

Bob Dagger, founder and chairman of the Harlequin Group says: "When I launched my company over 40 years ago, I aimed at designing floors for theatre and dance using new, advanced materials. I am pleased to note that today, nearly all of the world's most prestigious dance companies, along with many of the world's largest venues, recognise the advantages of Harlequin floors."

Harlequin work collaboratively with principal contractors and architects in the government, commercial and education sectors to design and specify the optimum performance environment, from the new headquarters of the English National Ballet in London finished at the end of 2019, to the Thomas Dixon Centre in Brisbane, Australia, the new home of the Queensland Ballet which will be completed in 2021.

We offer a turn-key one-stop solution for all performance spaces, from initial design and build through to completion, offering advice and guidance every step of the way. All enquiries are handled on a one-to-one basis by our expert technical team and with over four decades of experience of working across a wide range of projects and venues across the world, Harlequin's in-house project management and installation teams can be relied upon to deliver on time and on budget.

Harlequin operates globally from offices in Europe, the Americas and Asia Pacific delivering the same high-quality products and personal service anywhere in the world.

For more information and advice visit Harlequin's website or contact the UK technical team.

01892 514 888 www.harlequinfloors.com



HARLEQUIN
FLOORS



A renewed resilient surface – at half the cost of replacement!



Images: Biddle Sport Ltd

Flooring specialists, Biddle Sport Ltd, renovated an old vinyl sports floor at Bishops Walsh Catholic School, Sutton Coldfield, using the new Bona Resilient Floor Solution. The renovation represented a saving of around 50% against the cost of a new floor.

After working through the program of deep cleaning, wet sanding with Bona Diamond abrasives, removing the sanded slurry from the floor and then neutralising with clean water, the surface was ready for the first coat of Bona Pure Colour. Two coats were applied, followed by sports line markings and a final transparent coat of Bona Pure to seal the surface.

A particular challenge was how to replace a floor in such a busy school environment with minimal downtime for the facility. The floor was worn and had already been repaired

on numerous occasions. Using the new Bona Resilient Program, Biddle Sport team totally renewed and transformed the look of the surface in just 5 days, using environmentally friendly products – and at around half the cost of replacing the old floor with a new one.

The Bona Resilient Floor Solution uses safe, waterborne formulations to seal and protect the surface. The result is a hygienic, hard wearing surface that avoids the need to remove and dispose of the old floor.

John Carroll, the facilities manager at the school, said: “The flooring system installed at Bishop Walsh Catholic School has transformed the whole look of the facility. The building that was nearly 25 years old now looks brand new and has had a positive effect on the users of this school facility.

For the pupils of the school it has had a positive effect on their behaviour and attitude

to look after the facility. To the outside hirers of the school they have done nothing but praise it and I am sure this will increase the popularity of the hire of the facility over the next 12 months.”

When renovating a resilient surface using the Bona Resilient Floor Solution, clients can also use the opportunity to totally transform the look of their floor using new colours (the coatings are available in any RAL colour) and textured effects using the Bona Creative Chips. Logos, graphics and sports lines can also be applied below the final protective coats. The Bona Resilient Floor System includes a full range of cleaning and maintenance products for ongoing care of the surface and is ideal to treat LVT, Linoleum, Rubber, Vinyl and Marmoleum floors.

01908 525150 bona.com



VitrA expands Origin with new countertops and vanity units



Origin patterned black oak vanity unit from £711 (90cm), shown with Calacatta silk Neolith from £809 (90cm). Water Jewel vanity basin in pearl white and black £465 (40cms).

VitrA has extended the design possibilities of the elegant Origin brassware and accessories range with a new versatile collection of modular vanity and side units along with complementing countertops. The new Origin furniture range, created by Studio Design VitrA, has a graceful, minimal style designed to be highly flexible, stylish, and practical.

Counters and countertops are available in black or white glass, flat oak and patterned black oak. Notably, the range also includes a Calacatta silk Neolith® porcelain, a hard-wearing, man-made stone, a fusion of ceramic and porcelain, combined with a mix of quartz, glass, and silica. The countertop is versatile and easy to clean - ideal for the bathroom. The durable surface is liquid-resistant with low water absorption - much more practical and easier to look after than natural marble. 90cm, 120cm and 150cm vanity units are available as well as 60cm

or 90cm side units to meet individual needs.

"The countertops have been carefully chosen so that designers can create interesting combinations, says Margaret Talbot, marketing manager for VitrA Bathrooms (UK and Europe). "The Calacatta silk Neolith® is a luxury choice and looks particularly effective with darker finishes. The whole collection works together seamlessly for complete customisation."

Wooden vanity units are available in flat oak, patterned black oak and elm and can be combined with countertops available in flat oak, patterned black oak, elm, black glass, white glass, or Calacatta silk Neolith® porcelain. Origin vanity units are compatible with a wide variety of VitrA washbasins, including those from the Equal, Plural and Outline ranges, and are designed to work perfectly with the VitrA Origin brassware.

01235 750990 www.VitrA.co.uk



Origin vanity unit 90cm shown in flat oak £711 with White glass countertop with left basin £170 Tall Origin basin mixer in chrome £225. Water Jewels countertop bowl £306. Deluxe circular illuminated mirror £318 (80cm).



LISTEN HERE

The ultimate Fire Safety Door from Astraseal.

Safe. Reliable. Quality Assured.

Fire Doors by Astraseal give
peace of mind as standard.

- ✓ Fully third party certified
- ✓ Industry leading prices
- ✓ Fast turnaround solution



Our Fire Doors are third party dual certified for both fire and security rating.



We manufacture everything in-house so we can offer competitive prices and fast lead times.



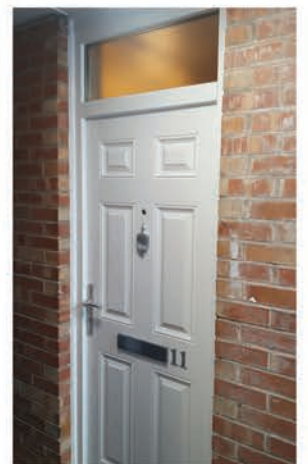
Our Fire Doors come in several glazed designs as well as different solid designs.



Available with glazed top lights and glazed side panels.



A variety of colour finishes are available.



Leading the way for higher Fire Door safety standards...

Astraseal is the first UK Manufacturer to be awarded third party certification under the new BM Trada Scheme STD 170. We have also been awarded certification for Installation (STD052) and Maintenance (STD058). Our Fire Doors have been fire tested from both inside and outside to BSEN1634-1.

Now available with glazed side panels... Fully third party certified and bi-directionally tested to BS EN1634-1.

Scan here to discover more about Fire Doors from Astraseal...



Vicaima at the forefront of decor trends for 2022

Vicaima unveils the trends that will shape the interior design sector in 2022, reinforcing the importance of the personalisation factor in each project.

The beginning of another year symbolises the closing of cycles and the beginning of others, making room for growth, change and progress. 2022 invites us to open doors and appreciate the light and Nature that surrounds us, bringing fragments of these elements into the interior, without neglecting the importance of imagination and resilience that characterised last year's trends. Vicaima shares the innovations that will dominate the interior design sector throughout 2022, demonstrating that it is possible to follow trends and integrate them into different projects in a customised way.

Nature is transported into the interior

A trend originating in 2021, the incorporation of natural elements in decoration will gain even more prominence this year, being present in colour palettes, textures and decorative elements. Nature-inspired materials and textures create holistic and relaxing environments that promote well-being.

For those that love the visual effect of wood and want to break free from the limitations of the species or shade, the Naturdor® Vision range of finishes is an excellent option, as it brings together wood veneer and the use of technology, allowing you to explore new dimensions of tone and design. Vicaima's Naturdor® Stained Extra finishes also present innovative possibilities for interior projects, through the use of natural wood veneer with striped veining, available in various tones. Wooden panels will also be protagonists as they bring the warmth and comfort of Nature into interior spaces, being particularly trendy in Hospitality projects, where the creation of cosy environments is a must.



Multifunctional and minimalist spaces

In these past couple of years, society was forced to rediscover spaces, making them multi-purpose. In 2022, professionals in the sector will be challenged to design multifunctional rooms, not out of necessity, but because there has been an adaptation of lifestyles. Minimalism has never been so present, showing that little can become much. For the new generation that favours simplicity without neglecting the design component, the "EX70" door collection from Vicaima's Exclusive line may be the ideal choice. This collection stands out for its elegant design and geometric patterns and is available in 5 contemporary models that create a dramatic and luxurious style in any environment.

Very Peri is Pantone's Colour of the Year

Pantone's colour of the year for 2022 is Very Peri, a violet shade that combines the constancy of blue with the energy of red. The shade chosen for next year also symbolises a new stage, as for the first time Pantone created a brand-new colour instead of choosing an existing one. The tone integrates in perfect harmony within the huge palette of Vicaima's Naturdor, Dekordor and Laccador range of finishes, capable of giving subtlety to the spaces that include this new fashionable tone.

Conscious Sustainability is essential

The theme of Sustainability remains firmly on the media's agenda, due to the fact that it is increasingly relevant for the current generation of consumers. The responsible use of raw materials is a growing concern, especially with increased exposure to climate change, influencing the way in which we buy and produce.

In 2022, the production and use of raw materials obtained in an environmentally responsible way will be in the spotlight. This together with product durability being another major customer concern.

Vicaima, as an environmentally conscious manufacturer, promotes the use of technologies and raw materials that minimise environmental impact. All of Vicaima's products are available with FSC® certification, an entity which ensures that the raw materials come from responsibly managed forests. Vicaima also makes sure that wood waste resulting from production is reused and recycled.

Vicaima, national leader and one of the biggest European players in the production of avant-garde solutions for interior and technical doors, wardrobes, panels and furniture pieces, works continuously to bring innovation and respond to the 2022 trends and market demands with distinctive, modern and elegant solutions. The mission to be constantly at the forefront of design remains, along with the search for increasingly sustainable solutions that mirror a robust environmental responsibility.

01793 532 333
www.vicaima.com



Very Peri, Pantone's Colour of the Year 2022



LISTEN HERE

Four Good Design Awards 2021 for Vitra



VitraA's receives four Good Design Awards including one for its innovative Vitra V-Care Smart Panel and V-Care Prime – the digital flush plate and multifunctional shower toilet.

Established in 1950, Good Design is one of the world's best established and prestigious design competitions. The Good Design Awards is organised jointly by The Chicago Athenaeum: Museum of Architecture and Design and The European Centre for Architecture Art Design and Urban Studies. With these four new awards, Vitra now has a total of 44 Good Design Awards.

Vitra's winning designs for 2021 included Vitra V-Care Prime and V-Care Smart Panel. Vitra also won an award for its Atelier 01 tile collection and Archiplan bathroom collection, launching later this year.

Vitra V-Care Prime shower toilet is the highly specified showering toilet in Vitra's comprehensive showering toilet collection.

V-Care Prime, designed by Arik Levy, is available in both wall-hung and back-to-wall models. It is sleek and compact and can be controlled via an app or through the handheld remote-control unit. Additional intelligent features include sensor ambient lighting, adjustable drying, multi-washing function and auto air purification.



Vitra V-Care Smart Panel uses digital sensor technology for the most hygienic and efficient WC flush available. The black glass flush plate with anti-fingerprint finish is easy to wipe clean. The panel has a Smart Flush feature which tracks WC contamination and then flushes using the appropriate amount of water which saves water. Vitra V-Care Smart Panel uses learning algorithms to find the optimum flush cycle. A useful eco mode also allows the user to select the volume of flushing water.

Margaret Talbot, marketing manager for the UK and Europe said: "The Good Design Award is terrific recognition of the work of Design Studio Vitra and the international designers we collaborate with to create products that consumers and specifiers really understand and appreciate."

01235 750990
www.Vitra.co.uk



Polyflor expands luxury vinyl sheet portfolio with launch of new Architex collection



Polyflor, a leading UK manufacturer of commercial and residential vinyl flooring, is delighted to announce the launch of their new Architex collection. The Architex collection is a UK manufactured premium textile backed Luxury Vinyl Sheet floor covering containing 18 stunning wood, cement, and abstract designs, ideal for residential settings in private & public housing.

Polyflor has become a leading provider of residential vinyl sheet flooring delivering high quality designs that are available in multi-widths with reliable stock availability. Designed to sit perfectly alongside existing Luxury Vinyl Sheet collections, Designatex and Secura, the Architex collection has been developed to include a unique hybrid backing that combines the comfort of Secura with the



textile backing of Designatex. The primary aim of the range is to offer the highest standard of vinyl sheet flooring as an alternative to other felt-backed ranges.

Architex includes features such as R10 slip resistance, 19dB sound impact reduction and a

Polyurethane Reinforcement for eased cleaning and maintenance. Architex can also be loose laid in most residential interiors up to 20m², making it quick to install as no adhesives are required and the addition of the textile backing mean the floor can be installed over damp subfloors where a Relative Humidity (Rh) of 90% is not exceeded.

Tom Rollo, Marketing Director commented, "Ideal for both public & private housing projects, our new Architex collection offers an impressive collection of beautiful trend lead designs as well as an outstanding set of performance benefits designed to enhance residential spaces."

"With the launch of Architex we also took the opportunity to refresh the look and feel of our UK manufactured Luxury Vinyl Sheet offering and align the collections with an extensive sampling package, including a brand new retail display presence."

The new Architex collection is beautifully presented within a sampling package which includes a brand new Luxury Vinyl Sheet brochure and retail display unit which combine all three of the Luxury Vinyl Sheet collections, Secura, Designatex and Architex, in addition to Architex specific shade cards and presenters. Sampling can be ordered free of charge on the Polyflor website or by calling the Polyflor Samples Direct Hotline on 0161 767 2551.

info@polyflor.com www.polyflor.com



LISTEN HERE



UK MANUFACTURED
**IN STOCK
AVAILABLE
NOW**

**NEW
COLLECTION**

ARCHITEX

Textile backed luxury vinyl sheet flooring



UltraComfort™
SOFT UNDERFOOT



SureTread™
R10 SLIP RESISTANCE



CleanShield™
EASY CLEAN SURFACE

2 | 3 | 4 | METRE WIDTHS

Free of charge samples from
samples»»»direct
»»» 0161 767 2551

www.polyflor.com

POLYFLOR™
COVERING THE WORLD

Eventim Apollo's stage refurbishment by Harlequin Floors



Last year the Eventim Apollo in Hammersmith went through a complete stage refurbishment plus additional custom stage building with Harlequin Floors.

The Eventim Apollo, formerly the Hammersmith Apollo, is one of the UK's largest original theatres. Designed in the Art Deco style by architect Robert Cromie, it first opened in 1932 and remains one of London's major live entertainment venues.

The Apollo has seen some of the finest live entertainers on stage including The Beatles, Queen, Sir Elton John and Kylie Minogue.

Harlequin started the full stage refurbishment by removing the old vinyl, plywood and original hardwood stage surface. Then the old electrical wiring, and Victorian water pipes that were no longer in use had to be taken out before the installation could commence.

A liquid damp proof membrane was applied and layers of fire-retardant ply were

placed around the metal conduits that could not be removed. The battens were laid to a laser level to ensure a flat surface and had acoustic isolation pads attached at predetermined centres.

The stairs to both sides of the stage were custom-made to keep the tread distance the same and to make sure the height matched.

The stage surface was finished with Harlequin Standfast heavy-duty performance floor. With its slip-resistant surface, Standfast is particularly suitable for permanent installation on multi-purpose stages.

Harlequin also installed a 50 mm strip of white vinyl along the downstage edge of the stage. This is not visible to the audience but helps ensure the safety of the performers by ensuring that they can see the stage edge.

Josh Clague, production manager at Eventim Apollo, said: "With such a busy and varied schedule, it was vital for us that we upgraded our stage to the best industry standard. It's great to know that we now have

a stage protected and prepared for the next generation of shows and events here at the Eventim Apollo."

Harlequin Standfast is suitable for ballet, contemporary, modern, percussive dance including flamenco, Irish and tap, multi-purpose use, hip-hop, jazz, street, aerobics, television, theatre and for operatic performances.

The Harlequin teams work on a wide range of stage builds and refurbishments, from installing a new top surface to brand-new stage constructions. When an existing stage floor requires refurbishment, Harlequin offers a selection of services including sanding and repainting, replacement of a 'sacrificial' hardboard top layer and stage rebuilding, repair or reconfiguration.

Each stage is different, so Harlequin's bespoke stage building and refurbishment service provides a unique solution every time.

01892 514 888



Doors open for office to home conversion in Woking

Vicaima doors have been selected by a Surrey based contractor for new apartments in central Woking town location, converting former office space into smart contemporary living.

The trend for re-imagining unwanted commercial and workspaces into modern homes offering flexible rental opportunities, has seen substantial growth over the past few years. One such example is the newly refurbished Conerstone development in the heart of Woking town centre, where 94 new apartments from compact studio design to 3 bed living have been created.

The adaptive reuse in such developments often present both functionality and safety considerations which must be addressed. This is one of the reasons why the extended scope and certification compliance offered by the Vicaima range, provides so much appeal to contractors and developers looking to address design and technical challenges.

Surrey based specialist contractors Buxton,

chose Vicaima Easi-Fit interior doorkits for apartment entrances, internal room division and corridor areas, offering as it does a rapid installation with easily assembled door and frame. In compliance with leading regulatory standards, apartment entrance doors supplied by Vicaima, not only provided third party fire certificated assurance, but were approved to Secured by Design, for added peace of mind. To enable a flexible colour scheme to be accommodated throughout the project, all doors were supplied in Vicaima's revolutionary Primed 2 Go finish. With their ultra-smooth polymer faces that don't require either face sanding or priming, excellent surface decoration can be consistently achieved.

Easi-Fit door kits and Primed 2 Go finish are just two examples from an extensive selection of imaginative ideas from the Vicaima Collections, with performance and decorative solutions for a multitude of project types.



marketing@vicaima.com
www.vicaima.com



Shelforce looking to increase fire door manufacturing capacity

Birmingham window and door manufacturer Shelforce is looking to increase its capacity to cope with the demand for its Fireshel 30-minute fire resistant door.

After launching the Fireshel into the market in 2020, sales of the door exceeded expectations last year for local authority projects in Birmingham.

From a standing start, Shelforce was manufacturing 70 fire doors a week from its headquarters in Erdington – and projections for 2022 mean the company is set to be even busier this year.

Howard Trotter, Business Manager at Shelforce, proud winners of four awards last year including the 2021 Greater Birmingham Chambers of Commerce (GBCC) Business of the Year, said: “With the projects we have booked in this year, plus the enquiries we are getting, we will have to increase our production capacity to cope.

“With almost 35,000 fire doors to replace in Birmingham, demand is set to remain both high and constant for local authority projects both this year and into the future.”

The Fireshel provides the perfect solution for local authorities who need fully EN tested 3rd Party Accredited, replacement Fire Door sets, which are compliant with the latest 2020 MHCLG Annex A recommendations.

Fire and smoke tested from both the inside and outside and PAS 024 Security tested, the door set, complete with fanlight glazing panel, achieved 49 minutes fire resistance when EN1634-1 tested.



The Fireshel offers the end user assurance that all the components used in its manufacture have been tested and approved against the new 2020 Q Mark Fire and Security Composite door Set requirements.

“The reason we launched the Fireshel was to set the standard for local authorities when it comes to fire doors as it ticks every single fire, smoke and security box,” added Howard. “We have always prided ourselves on providing products that allow

our citizens and communities to enjoy a safe and comfortable environment.”

Shelforce specialises in providing high-quality PVCu and aluminium products to local authority building projects such as Birmingham City Council. For more information, please contact the company.

0121 603 5262
www.shelforce.com



New Healthcare Sector Guide published by Quantum Flooring Solutions

Quantum Flooring Solutions has published a new Healthcare Sector Guide to showcase its products which are suitable to be fitted in healthcare environments. This digital document highlights the stair nosings and flooring accessories which can help keep healthcare environments as clean and safe as possible.

Quantum products have been fitted in healthcare projects around the country such

as hospitals, care homes and dental surgeries. Many Quantum products are ideal for these environments, as they have been designed to adhere to best practice standards in Building Regulations, BS8300-2:2018 and The Equality Act.

Colour can be a vital part of flooring accessories. For staircases, stair nosings should be as clear as possible in order to assist people with visual impairments. Meanwhile, it may be necessary to have flooring transitions which match the floorcoverings very closely to create a dementia friendly environment. Quantum's wide range of colour choices facilitates these options.

Quantum's capping strips and cove formers offer the opportunity for safe, easily cleaned joints between resilient floorcoverings and wall junctions. Inside and outside corner floormitres help to create a uniform, well fitted flooring, helping to protect both floorcovering and wall from industrial



cleaning machines. They are also ideal for wet room application.

To find out about these products and more, please download Quantum Flooring Solutions' Healthcare Sector Guide, or contact the company.

info@quantumflooring.co.uk
quantumflooring.co.uk



LISTEN HERE

Norcros Adhesives helps get latest Maggie's centre up and running

Norcros Adhesives has been involved in an impressive new-build project at Maggie's Wirral, part of the national network of Maggie's cancer support centres across the UK and online. Maggie's Wirral is located next to the Clatterbridge Cancer Centre NHS Foundation Trust. Maggie's aims to provide calming and relaxing spaces, as well as therapy for those receiving treatment for cancer, and for their relatives and carers.

As such, the physical design and appearance of their buildings is of key importance to create a welcoming and comforting environment for users of the Centre.

The main contractor on the project was James Carroll Builders Ltd. of Ruthin, North Wales. Norcros Adhesives were able to assist because of the company's experience of supplying products and expertise for similar projects many times in the past. The technical back-up that Norcros offers, the lifetime



guarantee on all its products, and the support available from the sales team on-site really make the difference when it comes to the

installation of large format floor tiles.

Tiling started in October 2020. The project featured a 70-80 mm sand and cement screed with underfloor heating, which was broken up into 40 m² bays in line with the relevant British Standard on heated screeds.

Vacuuming preceded the laying of the screed, and the surface was primed with Norcros Prime Bond, a multipurpose water-based synthetic SBR polymer, applied by roller. The screed was allowed to dry, and was then buttered using a 4.5 mm trowel and a heat mat was laid, fully embedded in Norcros Porcelain Grey Rapid, using a 20 kg roller.

Large format 1200 x 1200 x 11 mm tiles were laid using Norcros S1 Fibre Reinforced Tile Adhesive in grey, which is a proven adhesive for use especially for large format tiles. Colour-matched grouts and silicone for the seamless expansion joints were specified in accordance with the architect's request.

01782 524140 www.norcros-adhesives.com



LISTEN HERE

New hygienic, waterproof epoxy grout wows the crowd at SPATEX 2022

When tiling swimming pools, wet areas or installations that require hygiene protection, an epoxy grout is often the best solution.

ARDEX EG 18 Plus is a new, improved formula three-part epoxy grout that provides a hygienic, durable and impervious finish.

Launched first with great acclaim and interest from architects and contractors at SPATEX 2022 – the UK's dedicated international pool, spa and wellness show which took place last week, ARDEX EG 18 Plus locks the colour within the filler, ensuring improved, longer lasting colour-tones. It also provides for easier mixing and easier application with an epoxy grout float.

Improved rheology ensures the grout holds well in the joints – even on walls. What's more, ARDEX EG 18 Plus cleans off far easier than other epoxys: emulsifying pads are not required (but can be used if preferred). Installers can just clean off with a good quality sponge – even on heavily



textured, anti-slip tiles.

The easy clean-off can begin from just 15 minutes after application, but with a long clean off time of 45 minutes there is no need for installers to panic or rush as the grout is

removed simply by sponge up to 60 minutes after application.

Ideal for swimming pools, bathrooms, hydrotherapy spas, hospitals, domestic and food preparation areas, ARDEX EG 18 Plus can withstand full loads after two days of curing.

After seven days it is resistant to aqueous salts, chlorine water, commercial cleaning agents, dilute mineral acids.

Available in White, Bahama Beige, Silver Grey, Grey and Anthracite it can be used from 2 mm to 12 mm joints – perfect for any installation or design where a hygienic or water impervious grout is required.

Want to find out more about how ARDEX can support swimming pool projects? Why not book onto our Online CPD – Specify Tiling to Swimming Pools – taking place at 11am on 24th February. Book your place via <https://ardex.eventbrite.co.uk>.

01440 714939 ardex.co.uk



LISTEN HERE

Liquid, the recently launched collaboration with Tom Dixon, receives Best Fluid Form accolade

Soft, flowing forms, generous shapes, and a radical departure from the current trend for sharp-edged geometric pieces have won prestigious design community recognition for Vitra and leading British designer Tom Dixon.

The annual Wallpaper* Magazine design awards select the best and most innovative new products, and the Best Fluid Forms award was presented to the new Liquid bathroom collection. Liquid was launched at the end of 2021 and is on display at Vitra's new flagship showroom in Clerkenwell, London.

Contemporary without being of the moment, Liquid is a complete bathroom collection that includes basins, taps, showers, tiles, accessories, and furniture. Inspired by the way water flows, Liquid has soft, curved edges. Pieces can be used together, or single items can be selected as a focal point. Recognising the current consumer interest with slim, reduced



designs, Vitra and Tom Dixon have created the opposite, incorporating fatter, softer lines inspired by elements of pop art. While the overall design is reduced, the functionality is intuitive, so users instinctively understand how to operate products such as taps and showers. The curved shapes reduce the number of hidden spaces, so cleaning is quick and easy – vital in a post-pandemic world.

Vitra's world-renowned manufacturing expertise enabled the design to come to life. "Ceramic can change shape and size when it is fired – especially with large, chunky pieces," explains Vitra's marketing manager for the UK and Europe, Margaret Talbot. "Our expertise and top-level production facilities allowed us to bring Tom Dixon's unique concept to life." Visit the website to explore the Liquid collection.

01235 750990

www.Vitra.co.uk/explore/liquid



LISTEN HERE

Concealed door closers assure fire safety

British designed and manufactured, Powermatic controlled, concealed door closers deliver many benefits over surface-mounted door closers and are ideal for use on fire doors in high-rise flats and apartments.

The door closers carry the UKCA mark and have been independently tested and proved to meet the requirements for 60-minute and 30-minute fire doors under BS EN 1634-1. They also benefit from full third-party certification and are the only Certifire jamb-mounted door closer.

Fitting neatly between the door and frame, Powermatic is totally concealed when the door is closed, whereas overhead, surface-mounted door closers have highly visible and unsightly control arms and mechanical boxes protruding from the door's surface.

This concealment assures a clean appearance to the door and interior, enhancing aesthetics and creating a more homely and comfortable environment.

Unlike other jamb-mounted devices, Powermatic door closers facilitate a door's compliance with the accessibility



requirements of Approved Document M and do not have to be removed from the door to be adjusted.

Adding to Powermatic's performance credentials is the fact that the door closers have been fitted to door sets which have successfully completed security tests to PAS 24.

Powermatic door closers come with a

10-year warranty and, of course, there is the comfort of knowing that they are manufactured in the UK by Samuel Heath, which, with more than 50 years' experience, is the foremost authority when it comes to concealed door closers.

0121 766 4200

www.concealeddoorclosers.com



BAL Waterproof 1C – the new one-coat solution

All the features, none of the faff

BAL, market-leaders in full-tiling solutions, have launched a new one-coat waterproofing solution, perfect for protecting domestic bathrooms, wetrooms and showers prior to tiling.

BAL Waterproof 1C is a ready-mixed tanking solution that can be used without priming on most common substrates* and is ready to tile after only two hours – perfect to fast track project completion and protecting backgrounds from water ingress and damage that can occur.

Formulated with fibre-strand technology for improved strength, it can be applied in one-coat on walls and floors with a brush, roller or 4mm

notched trowel.

No additional tapes or matting is needed as it is crack-bridging from 2-3mm.

This innovative new product is lightweight with easy-to-apply rheology and provides excellent coverage of up to 6m² – making it suitable for domestic shower rooms, bathrooms or wetrooms.

BAL Waterproof 1C also has sustainable benefits with Low VOC and using 40% recycled materials.

As part of the launch, BAL is streamlining its current waterproofing solution by deleting BAL WP1 / BAL Waterproofing Kit – and old technology that will be replaced by the higher performing Waterproof 1C.

Continuing in the product range will be BAL Tank-it – a quicker setting 2-part powder and liquid product that can be tiled in only 90 minutes.

BAL Tank-it can also be used for large scale commercial projects and external waterproofing such as fountains, balconies and terraces.

Alex Underwood, Head of Marketing said: "BAL Waterproof 1C is a significant waterproofing innovation, greatly improving the performance of our former ready-mixed



tanking solutions.

"With no tapes required, no priming in most instances, and a one-coat solution, BAL Waterproof 1C provides an easy waterproofing solution to ensure tiled wet areas are compliant with BS 5385-1:2018: a new regulation that any wet areas, whether domestic or commercial, must be fitted with a suitable tanking system.

"BAL Waterproof 1C applied at one coat thick – minimum 0.8mm – provides complete protection against water ingress, protecting backgrounds from water damage and erosion."

01782 591120 www.bal-adhesives.com



Explore the beauty of imperfection with IVC Commercial

Inspired by the ancient Japanese aesthetic of wabi-sabi and acceptance of the imperfect and transient, Imperfection is the new sustainable carpet tile collection designed and made in Belgium by IVC Commercial.

Imperfection explores the idea that beauty is found in the impermanent and incomplete and that by being more accepting of flaws, defects and marks; we can achieve a mindset that finds beauty in the imperfect. A response to demanding and complex times, the collection counters the continual pressure to achieve perfection. And by doing so, Imperfection creates a mood of open-mindedness and relaxation in offices.

The Imperfection carpet tile collection is available in three designs – Grit, Bruut and Rupture. Grit is an all-over grain and Bruut is a surprisingly raw textured design. Rupture's golden crack is a homage to the ancient Japanese craft of Kintsugi. The designs can be used together in a way that

is free of abrupt transitions from one to the next. Through any combination of pattern, workplaces can have a floor covering that is individual and that remains true to the ideal of discovering beauty in the imperfect.

As the first premium sustainable carpet tile from IVC Commercial, Imperfection uses ECONYL® yarn, a performance nylon that's made from fishing nets, ghost nets, old carpets and fabric scraps. Rescued from all over the world, this waste is regenerated through a depolymerisation process that ensures the same purity and performance features of virgin nylon.

All Imperfection carpet tiles also feature IVC Commercial's EcoFlex™ Echo acoustic backing that reduces impact sound by 25% and improves sound absorption by up to 100%. Insulating against the sounds of footsteps and the background noise of busy offices, EcoFlex™ Echo ensures optimal acoustic performance.

Presenting inspired design in combination



with physical comfort, acoustic performance and sustainable materials, The Imperfection carpet tile collection is now available.

01332 851 500 www.ivc-commercial.com



East Midlands heating company winning new work with CIRCOFLOPRO

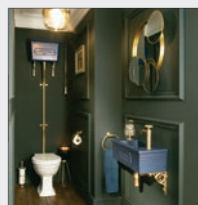


Northampton based JD Plumbing and Heating has been growing its business in recent years after discovering the multiple benefits of buying the ready-to-install underfloor heating systems offered by CIRCOFLOPRO, part of the Ridgespear Group. Founder and Director, John Drew explained: "I have been using CIRCOFLOPRO for all of my underfloor heating installations for the past three years, after a builder I do some work for was using it on a job and I was just really impressed with the flexibility of the approach. It appeals because you can't always put pumps or manifolds where they should be ideally and CIRCOFLOPRO makes things easier in a lot of circumstances." The most recent project where JD Plumbing and Heating has chosen to employ CIRCOFLOPRO is an old farmhouse at Brigstock in Northants that had been substantially refurbished following a flood, where another underfloor heating system was installed, but hadn't performed well. With a new 40 kW gas boiler already in-situ, John measured up for laying CIRCOFLOPRO ClipRail across the whole of the reconfigured ground floor. "The client is very happy with the way it is all working and we're hoping to do a lot more jobs with CIRCOFLOPRO in the future."

01392 360457 www.circoflopro.co.uk



Closet fascination



Now that homeowners can enjoy socialising indoors once again, the downstairs cloakroom will be taking centre stage in terms of a Spring spruce up. It is the one intimate space in which guests spend time – and judge! Thomas Crapper has launched a new range of beautiful closet suites to answer the demand for imagination in this special place. Pictured is the Bentham basin and high-level 814 cistern

WC set to whet your appetite. For further information on Thomas Crapper, please visit the website.

www.thomas-crapper.com



A solution for all applications



When considering flooring products for new-build or refurbishment projects, the housebuilder and specifier can be sure that West Fraser's CaberFloor range includes the perfect solution. Just as sound foundations are essential for any building, the right flooring system lays a good foundation for a quality flooring finish, saving problems and costs later. The West Fraser website contains a handy flowchart to help builders, specifiers and architects choose the right flooring system for every project, coupled with handy installation guides and videos for the individual CaberFloor products.

uk.westfraser.com/resources/help-advice/installation-instructions



Illuminating Springhills



Luceco has recently supplied interior and exterior amenity lighting to Springhills Independent Living Scheme at Outwood, provided by Wakefield and District Housing Limited. WDH is one of the UK's largest social housing providers, with over 32,000 homes across the Wakefield district and the north of England. Atlas circular bulkhead fittings were used throughout the interior with the perimeter of the building lit with Atlas with metal eyelid cover decors. Standard, emergency, and integral microwave sensor versions were used to reduce energy consumption in circulation areas. LuxPanel luminaires were also installed, in particular LuxPanel Circular which is available in 120, 150, 180, and 240 mm diameter options with high performance PMMA light guide. LuxPanel Circular is designed to be recessed mounted in exposed grid or plasterboard ceilings and secured with springs. The fittings were used in communal areas and corridors along with Tempest emergency downlighters with area optic, providing 3 hours non maintained emergency lighting which is an essential element to the lighting of a communal space.

01952 238 100 www.luceco.com



LISTEN HERE

Gilberts helps protect twin towers



An "iconic" site that has been transformed into high rise, high specification living for young professionals is a showcase for the latest in modern methods of construction – including its fire protection. The Coventry development – named Elliotts Yard after the automotive business that occupied the city centre site since the 1920s – comprises two separate buildings including a 17-storey tower containing a total 200 apartments. Modular construction techniques were chosen as far as possible to deliver a sustainable solution that simultaneously provided robust acoustic and fire safety performance, including precast concrete sandwich panels and the latest in smoke evacuation – Gilberts Blackpool's Series 60 dampers. Smoke control specialist Baicair recommended installation of a Gilberts Series 60 smoke damper into the fire shafts on each floor (30 in total), with fan skids on the roof of each building to accelerate smoke evacuation. Gilberts' Series 60 is believed to be the only vent of its kind designed and manufactured in the UK. It has been tested to – and passed – all relevant tests ((EN1263-1, EN1363-2). Delivering up to two hours' fire integrity.

01253 766911 info@gilbertsblackpool.com

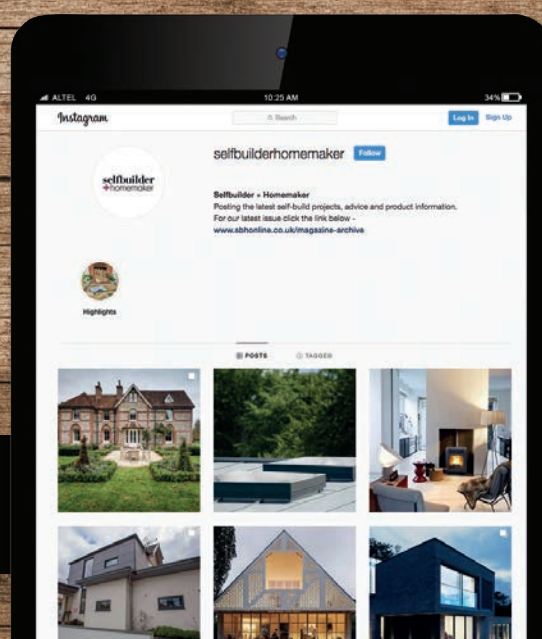


LISTEN HERE

selfbuilder + homemaker

Now on Instagram

FOLLOW US AT:
@SELFUILDERHOMEMAKER



Yeoman Rainguard crowning glory on high end development

Property developers Golden Eye Group, augmented their latest residential development with a high-end exterior finish incorporating a rainwater system from Yeoman Rainguard.

With a mantra of “a quality finish that will stand the test of time” Golden Eye ensured that quality was reflected not only internally but for all parts of the external building envelope too.

As part of the function and design criteria of the house facade, Yeoman Rainguard

were able to provide a sophisticated, quality rainwater system to fulfil technical and aesthetic requirements.

To dovetail into the contemporary look, Yeoman Rainguard SL Aluminium gutters and downpipes were chosen. The 75 x 75 mm flush-fit SL Aluminium downpipes provided a modern clean line coupled with 125 x 100 mm MOG gutter.

Aluminium Fascia and Soffits from Yeoman Rainguard’s new Squareline range were fitted to complement the sleek lines. All were finished in a smooth RAL 7022 Grey colour to perfectly match the shade of the windows and doors.

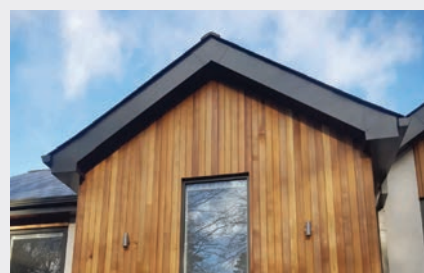
The aluminium products give a hardwearing, maintenance free lifecycle of 30 years or more, making this recyclable material both an ecologically and economically sound choice.

The rainwater system was installed by Yeoman Rainguard’s experienced installer, ensuring the perfect finish.



For more information on Yeoman Rainguard’s gutters, downpipes, fascia & soffits go to the website.

0113 279 5854 www.rainguard.co.uk



Sapphire Balconies bring urban village design to life

The architectural vision for Acton Gardens, an award-winning urban village in West London, has been brought to life with 87 bespoke balconies designed, manufactured and installed by Sapphire’s team of experts. The project’s key design challenges were to improve privacy for residents and reduce the effect of wind felt on balconies to higher floors. Since specifying laminate glass balustrades to address these concerns was not an option due to the combustible cladding ban, Sapphire worked with the project architects to devise a solution that would maintain both compliance and aesthetics. Sapphire’s designers created a unique balcony solution featuring vertical bar balustrades with an internal and external mesh panel to the bottom, together with matching privacy screens. A bronze metallic powder coating to balcony guarding, top rail and fascia trim adds a unique finish that complements the warm tones of the façade and gives the whole building a golden glow.

Balconies for Acton Gardens were produced using Sapphire’s Glide-On™ aluminium Cassette® system utilising the latest offsite manufacturing techniques. Having tested the balconies against the highest specifications and quality standards, Sapphire’s logistics team ensured smooth delivery of the preassembled Cassettes® to site, ready for installation. Upon arrival, balconies were lifted out of the lorries and installed directly onto the pre-erected support arms, reducing time and effort on site.



Using Sapphire’s innovative Glide-On™ balcony Cassette® system at Acton Gardens had numerous benefits for the project contractors. It helped reduce time on site as balconies arrived on site fully assembled, cutting down on installation time. Delivering the balconies just before installation also minimised the need for on-site storage. Additionally, producing Cassettes® in a factory environment ensured a high level of quality control during manufacturing and assembly.

Offsite manufacturing also helped reduce costs while increasing the quality of the finished balconies. As a further benefit, Sapphire’s Glide-On™ method of balcony installation reduced the duration of scaffolding on-site, resulting in a direct cost saving to the contractor. The easy installation process also eliminated the need for workers on-site, minimising the risks involved while working at height.

0344 88 00 553 www.sapphire.eu.com



Resapol at the King James project

Resapol recently worked with longstanding customer Bondcote, supplying material for the first stage of repair work at the King James project; repairing two of the overhead rail archways and bridges. The repair was deemed essential as several sites on the project featured exposed rebar, which needed immediate protection to ensure the safety and longevity of the project.

Members of the Bondcote team attended training at a Resapol Training Academy; the session involved in depth presentations and hands on demonstrations of Sika

Monotop®-4012. This was a key influence in their decision to trial the product for the first stage of repair work.

Sika Monotop®-4012 is a cementitious, fibre reinforced, low shrinkage repair mortar that notably contains recycled waste materials which reduces the carbon footprint, making it a more sustainable product option. It is also easy to apply by either hand or wet spray application and is perfect for overhead applications as it features very low shrinkage and does not require a bonding primer, making it the perfect material for this project.

Tom Brown, Resapol's regional sales manager for Concrete Repair, was on hand throughout the process in order to offer technical advice, as well as to arrange delivery of the materials direct to site. The repair work was completed September 2021 and deemed a complete success. Bondcote representatives were extremely impressed by the robust and effective nature of Sika Monotop®-4012, as well as the great service provided by Resapol. Pete Box the project manager at Bondcote had this to say: "Thanks again to everyone at Resapol for all of your kind help with the



project, the materials and training that you have supplied for us to carry out this first stage of work. As you can see from the photographs, these were huge structural repairs undertaken by Bondcote and the new material worked incredibly well!"

0800 083 1942 www.resapol.com

resapol



Elephant Park balcony order provides 'jumbo' logistics challenge

Sapphire is bringing residents of two major apartment buildings in a new London development their own bit of 'open space' with offsite-manufactured balconies. Part of Lendlease's massive Elephant Park redevelopment at Walworth, south of the Thames, buildings H4 and H5 were built to designs by architects Alford Hall Monaghan Morris.

Designs for H4 and H5 included balconies – 235 and 184 respectively – to be manufactured offsite. The chosen specialist manufacturer was Reading-based Sapphire Balconies, whose products incorporate the best in materials and technology with minimal environmental impact. The project brought interesting challenges that sparked fresh thinking and led to new solutions.

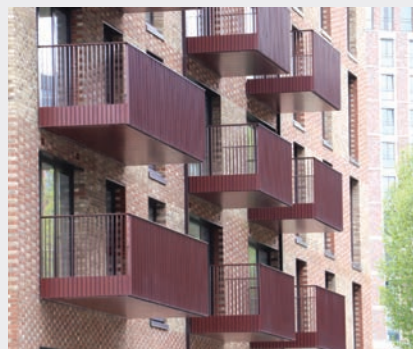
Delivering more than 400 balconies – mostly to a standard specification, but some with variations – to two installation subcontractors working on the adjacent buildings, meant Sapphire had to adapt its

usual central London delivery strategies.

To comply with the site's traffic management plan – and to minimise difficulties on congested local roads – Sapphire prioritised manoeuvrability over capacity and switched from articulated lorries to smaller rigid vehicles. This had the added advantage of reducing pressure on site space for holding the balconies ahead of being craned into position.

For these two buildings, Sapphire manufactured a total of 419 Glide-On™ aluminium Cassette® balconies, all featuring a new extruded handrail profile and vertical bar balustrades to the architects' specification.

Most of the balconies had controlled drainage, with rainwater channelled down 400 mm soffit trays to discharge on the outer edge – preventing staining of the facade or flooding of balconies beneath. However, some of the balconies had gutters along the front to avoid splashing passers by. They were all designed originally without soffits,



but some of these were added later where necessary to ensure compliance with updated fire safety regulations. Some balconies were also provided with privacy screens. Inset balconies were provided for a single stack on one of the buildings.

sales@balconies.global
www.sapphire.eu.com



Concrete Channel with Basalt Fibres – New Era Begins for Hauraton

Hauraton makes concrete material even more efficient for modern drainage technology by enhancing the formulation with natural basalt fibres.

The addition of mineral or textile fibres increases maximum stability, strength, and impact resistance. By amplifying the impact resistance, the more robust and durable the product. This is particularly important for components that are exposed to considerable dynamic stresses, in this case, drainage channels subject to vehicles at high speeds or regularly trafficked by heavy loads.

Basalt Fibres: Natural and Sustainable

Hauraton's new era in concrete production by utilising basalt fibres has not only created a durable building material, but also one that is 100 percent natural. The basis of basalt rock is available all over the world in large quantities which is formed naturally on the earth's surface. By combining basalt fibres with the well-known material concrete,



both the structure and the service life of the product is increased.

Mineral Mixture: Easy to Recycle

Since the end product is a purely mineral mixture, there is no need for material separation during disposal. This protects the environment as it is simply fully-recyclable at the end of the product's life cycle.

Convincing Strong Properties

Basalt fibres have outstanding properties. They can withstand temperatures of up to

800°C and are highly resistant to alkalis, acids, salts, oxidation and radiation.

The effects of adding basalt fibres to precast concrete elements gives even more of a dimensionally stable, resistant and durable structure. Drainage systems made of basalt-reinforced concrete will assure longer performance.

Basalt Fibres are Versatile and Climate-Friendly

Basalt fibres are mineral fibres that have a higher melting temperature, better resistance to water, acids and alkalis, and more positive flexural strength. All this makes basalt fibres attractive in drainage technology, but also numerous other applications in construction.

Given the stricter climate targets, the energy consumption during production also clearly speaks in favour of basalt fibres, as basalt it has the lowest CO₂ footprint.

01582 501380 global.hauraton.com/en



LISTEN HERE

Roto's Innovative Inowa from Carl F Groupco

Carl F Groupco, the major stockist of Roto hardware, reports increasing demand from fabricators for the innovative Patio Inowa sliding door hardware system. Launched in the hardware distributors range in 2020, the sliding door system has gathered momentum thanks to its enhanced functionality and security options.

Commenting on the trend Julie Warner, Carl F Groupco's Roto Product Manager said:

"There has been a significant increase in interest from fabricators for the Roto Patio Inowa range in the last 6 months partly due to Aluplast launching their Smart-Slide door which features the hardware. Inowa is particularly popular for new build installations as the system meets many stringent regulations, namely the rain and air impermeability test to BS EN 13126-17 and the ability to achieve PAS 24 security.

"As with all Roto hardware, the Inowa is also supplied with Grade 5 corrosion resistance as standard which assists with its suitability for coastal and high-rise installations."

Innovating sliding door hardware with the Patio Inowa system, Roto ensured users

could comfortably slide sash weights up to 250kg for timber, PVCu and aluminium profiles. Minimum effort is required to move sashes as the closing movement is perpendicular to the frame profile and roller bearings mean that it is not necessary to lift the sash. Soft functionality also gently brakes the sash when coming to a stop in the open or closed position, ensuring safe opening, every time.

Equally suited for low- and high-rise applications, including coastal or penthouse living, Patio Inowa hardware keeps the sash tightly sealed in bad weather conditions thanks to the circumferential gasket and active control of locking points. The system is also capable of achieving PAS 24 compliance by securing locking points in the mullion and V locking cams. The handle is also lockable with drilling protection.

Carl F Groupco has a strong reputation for hardware expertise and the company prides itself on supplying it's UK fabricator partners large and small.

01733 393 330 www.carlfgroupco.co.uk

Roto's Patio Inowa sliding door hardware system is suitable for PVC, timber and aluminium profiles



LISTEN HERE

Crittall on the curriculum

School and college authorities that need to improve the learning environment while enhancing their green credentials are turning to leading steel window manufacturer Crittall which has a suite of products to upgrade both external appearance and interior comfort.

The education sector has a massive investment in its built environment and, despite the temporary dislocation caused by the pandemic, remains eager to find ways to keep control of costs and bear down on excessive energy consumption as things eventually return to normal.

Crittall offers a range of windows that are finding favour with the most prestigious educational establishments, in some cases presenting a fresh, modern aesthetic, in others replacing worn out fenestration that replicates a heritage appearance while greatly enhancing thermal performance.

And moving to the inside of the building a range of internal screens can provide for a lighter, more welcoming interior with no compromise to acoustic, security and safety requirements.

Popular among school and college authorities is the highly successful Corporate W20 window with its slender but strong frames. For example, a programme of maintenance and energy efficiency improvement at the University of Sussex has involved the installation of W20 profiles throughout the Falmer campus, outside Brighton. The windows have been installed in four buildings across the site, replacing the Crittall originals dating from when the university was first created in the early 1960s. Two of the refurbished buildings were Grade 2* listed.

At Corpus Christi College, Cambridge, Corporate W20 windows were installed in a modernist, concrete-framed accommodation block, also Grade 2 listed. Meanwhile at the Levine Building at Trinity College, Oxford, the T60 advanced thermally-broken windows have been specified. This profile can mount double or triple glazing to deal with harsher weather conditions and is suited to either new-build or replacement in listed buildings or conservation areas to meet the exacting requirements of local planning authorities.

Greatly improved thermal performance but with a like-for-like appearance was demanded by planners in the north London borough of Enfield when a special school, Durants, decided to expand into an existing classroom block on a nearby site. Original



1950s single glazed steel windows were replaced with new double-glazed thermally-broken steel windows that exactly mimicked the appearance of the originals. Overall U value for the completed project is 1.8 W/m²K based on a glass centre pane value of 1.0 W/m²K. The double glazing incorporates toughened low E glass and an 18 mm argon filled cavity.

Alternatively, the MW40 profile can be specified where superior air, wind or water resistance and greater sound attenuation are required. Offering the same high quality appearance as the W20 range the MW40 profile can accept glass up to twice the thickness as its stable mate. Either double, or even triple, glazing up to 32 mm thick can be installed with a consequent higher level of thermal or sound insulation.

Yet this is achieved while retaining the same slender steel profile for which Crittall products are renowned thereby ensuring maximum light ingress.

In addition to exterior steel windows and doors with their slim profiles Crittall's InnerVision glazed interior screens ensure a seamless transfer of increased levels of natural daylight throughout the building reaching even the most remote working areas.

Solid partitions dividing workspaces can be replaced with glass and the performance of

glazed interior screens can be further tailored to fine-tune levels of acoustic insulation, light transmission, thermal insulation and natural ventilation control to suit individual client's requirements.

Crittall's InnerVision range of glazed internal fixed screens and doors can now be specified for fire rated applications. The steel framed system is compliant with BS476 Part 22 providing 30 minutes (FD30) integrity fire resistance. The profiles match the Corporate W20 exterior window range in appearance and can be supplied as fixed screens, with single or double leaf-hinged doors.

"Steel windows will out-perform other window materials in terms of longevity - evidenced by many that can still be seen in iconic buildings today" states Russell Ager, Crittall managing director.

"The low life cycle cost compared with other window materials, combined with the robustness and material selection to further reduce the burden of maintenance, properly maintained steel windows are expected to last the lifetime of a building.

He continued: "maintenance is very straightforward with just periodic inspection and cleaning required"xs.

01376 530800
www.crittall-windows.co.uk



LISTEN HERE

Carl F Groupco Successful in Tai Tarian Tender

Leading hardware distributor, Carl F Groupco has successfully secured a tender to continue hardware supply to one of the largest social housing providers in Wales, Tai Tarian. Having supplied window and door hardware for the past five years, the contract has recently been awarded for another three to five years.

Servicing over 9000 properties in the Neath Port Talbot County Borough, Tai Tarian is one of the only housing associations in Wales that manufacture PVC windows and doors for its own properties, leaseholders, and external clients. Doors and windows supplied by Tai Tarian are fabricated to Secured by Design and PAS 24 security standards and provide Energy Rating Scheme certification.

With a proven history supplying large scale projects, Carl F Groupco are well placed to continue hardware supply to Tai Tarian. As one of the only major independently owned distributors in the UK, Carl F Groupco's access to leading hardware brands including Cotswold, FUHR, Hoppe, Kenrick, Rapier Star, Roto and Yale has been key in securing the tender.

Commenting, Steve Meredith, Production Manager for Tai Tarian said: "Aside from the product range and delivery service, a big reason for Carl F Groupco being awarded the tender is down to their customer service levels. Especially Andrew Price, Nathalie McKee, Lyn Richards,

Carlia Corras and Lorraine Robinson. They've all been exceptional, all period."

With a trading history dating back over 70 years, Carl F Groupco has a strong reputation for hardware expertise and the company prides itself on supplying its UK fabricator partners

large and small. The team are always on hand to provide advice on the most appropriate hardware solutions for all projects.

01733 393 330
www.carlfgroupco.co.uk



Non-combustible adjustable pedestal for roof terrace and decking areas

Bauder has expanded their pedestal support system range by launching a non-combustible pedestal to complement the other non-combustible roofing products. There is also a new adjustable pedestal system available for an extensive variety of terrace and decking options.

The Bauder Non-Combustible (NC) Pedestal is manufactured from aluminium. It is a light weight, non-combustible pedestal designed for use on a wide range of flat roofs to support paving, decking and grating. There is great demand for solutions on balconies and roof terraces where a non-combustible build up is required. This adjustable pedestal system can be laid at a variety of depths from 42 mm to 77 mm on a slope of up to 5°. The pedestal has an integrated slope corrector which enables paving and decking to be laid where there is an uneven substrate or where ramps are required. The unit is also capable of absorbing 3 tonnes of load. The large

spreader base plate feature ensures the product will not compromise the roof insulation or waterproofing membrane whilst spreading the load across the roof surface.

The non-combustible pedestal is the most advanced Class A1 fire-related pedestal on the market, meeting the current requirements for the roofing industry. Furthermore, the system has been tested with Bauder waterproofing systems to achieve B_{ROOF}(t4). Additionally, the NC range has a suite of Class A fire-related accessories including spacer tabs, edge restraints and joist supports.

Alongside the Bauder NC Pedestal, the Bauder pedestal support system range offers the Slope Correcting Pedestal, and the new Bauder Adjustable Pedestal. Bauder's pedestal range is designed to meet the exacting standards of finishing levels demanded by architects and clients when specifying open-jointed paving and decking finishes.

Find out more: bauder.co.uk



EASY MEG – designed to make life... easier!

EASY MEG is the latest addition to Abet Laminati's exterior cladding range and designed for use by everyone from professional builders to the DIY and self-build market.

Based on the widely used MEG (Material External Grade) High Pressure Laminate, it is quick and easy to install and is maintenance-free, impact-resistant and designed to withstand rain, salt, wind, humidity and UV Light.

EASY MEG is supplied as a complete system and packs include all the fixings required to install in the three fixing designs: Closed Joint, Open Joint and Overlapping. Traditionally, Overlapping was previously most commonly used in the UK but more recently Closed Joint is more popular as its clean-cut lines are more modern and visually more aesthetic. Another advantage of the Closed Joint System is that wastage is minimal compared to overlapping where up to 25% is wasted due to the top and bottom overlap.

EASY MEG is currently available in 6 colours and 10 woodgrains in 2080 x 3050 mm



Camp Cohen designed by Parkhill Architects
Photography: Keith Talley, Talley Photography

planks manufactured using sustainable FSC certified high-pressure laminate. The 8 mm thick boards are certified to a fire rating of B-s1-d0 and come with a comprehensive 10-year warranty.

Abet has significant UK stock available for immediate supply in selected colours in

the Closed Joint variation available from its London warehouse and distribution network.

Samples and technical literature are available from Abet Ltd.

020 7473 6910

uk.abetlaminati.com



Revisiting Kings Cross – 20 years after installation

Over 20 years ago in July of 2001, plans came to fruition as work began on the Channel Tunnel Rail Link and the restoration and extension of St Pancras Station. What followed was a large redevelopment of the Kings Cross area. The regeneration of the surrounding buildings became a catalyst for further development and in changing the overall perception of Kings Cross.

It was in 2001 when the first area to begin development was the Regents Quarter. This is when George Barnsdale entered the scene, installing approximately 350 sliding sash windows and 40 doors to remain in keeping with the history of the area.

Now 18 years later, the outstanding quality of George Barnsdale's products is evident in how well the windows and doors have stood the test of time. Though some are in need of a good clean, it is evident to see that the timber and the paint finish is still perfectly intact despite no recoating having taken place in that time.

"They have very good thermal and acoustic performance even by today's



standards, with exceptional coating performance. We don't know of any glazing unit failures. In the late 90's we developed a drained and vented glazing system which allows the double-glazed units to perform very well." Commented Stephen Wright, George Barnsdale.

Exceptional long-term performance doesn't only rely on our 4 coat painting process but with good design and paying particular attention to all the smaller details that enhance the life of the coating

One of the main reasons the products are performing so well after such a prolonged period is the paint process which is an



advanced four stage coating system. Superior to most companies' three stage process, the Barnsdale process provides extra protection to the timber and a superior finish.

While our previous case study with the Lincolnshire Gatehouse showing us that George Barnsdale Timber Windows and Doors can look as good as new 10 years after installation in a rural countryside setting, Kings Cross also demonstrates how well George Barnsdale products can look after 18 years in a bustling capital city.

01775 823000

www.georgebarnsdale.co.uk



Fire Compliance on Flat Roofing Systems

Bauder has delivered roofing system solutions on Boston Road, London W7, a new residential development with numerous terraces and inset balconies. The site comprises 333 dwellings, of which 117 are of affordable tenure with the remaining 216 for private sale, and 1200 m² of commercial space throughout three blocks.

The development required a waterproofing system that met the design requirements of the balconies and terraces whilst ensuring that it fully complied with the conditions under the Government's Fire Safety: Approved Document B, as well as making sure the detailing and interfaces with other key trades could be achieved without compromising the system's performance.

Bauder specified BauderGLAS insulation and Bauderflex bituminous waterproofing system. Bauderflex is a heavy duty and robust membrane which can withstand impact, tearing and is resistant to European climatic condition. This bitumen system is suited to new build and refurbishment applications



and has up to 30 years life expectancy, as stated in BBA certificate 10/4744. A significant benefit is the torch-free and safe to torch installation on combustible details which reduces the risk for contractors and clients. Additionally, BauderGLAS insulation is manufactured from specially graded recycled glass (≥60%) and natural raw materials (which are available in abundant supply), has time-tested thermal performance, high compressive strength and most

importantly, is also non-combustible, accompanying the Bauderflex waterproofing system to achieve a non-combustible build-up for this project.

By working closely with Bauder on the specific project requirements set down by their client, Higgins Partnerships were able to provide peace of mind that the products installed met the conditions placed on them by the client's insurers, to fully comply with the strict stipulations under Fire Safety: Approved Document B and achieve B_{ROOF(t4)} certification.

Bauder is a leading international manufacturer of building construction materials providing clients with waterproofing membranes and insulation to make buildings watertight and thermally efficient. The extensive portfolio of Bauder waterproofing, green roofs and photovoltaics ensures the right solution is specified for each project from a single source.

01473 257671
bauder.co.uk



ITPL relies on Steril Dock Products to support 24/7 operation

One of the UK's leading logistics companies, Integrated Third Party Logistics (ITPL), relies on an installation of 32 loading bays from Steril Dock Products to ensure the efficient loading and unloading of 160 vehicles every day.

Vehicles arriving at the ITPL complex, which include 40 foot curtain sided and box containers, deliver and collect palletised loads with an average weight of one tonne per pallet.

When originally constructed, the ITPL warehouse incorporated 16 loading bays featuring Steril loading bay equipment. This original installation performed well in a demanding application over many years which led to the decision to install similar equipment to support a recent 14 bay extension to cope with increasing throughputs. The Steril equipment installed within the new extension includes the latest generation of S-series swing-lip dock levellers. Providing a dynamic load capacity of six



tonnes, these levellers automatically adjust to the changing floor height of the vehicle during loading and unloading operations, even if the vehicle is unevenly loaded.

Steril also supplied and fitted its W-series curtain dock shelters to ensure exceptional performance of the loading bays. These shelters combine sturdy aluminium frames and strong reinforced curtains to provide optimal sealing between vehicles and the warehouse building.

To complement the energy saving properties of the dock shelters, Steril also



installed insulated doors from its Thermadoor range. These doors offer a choice of insulation levels including higher value insulation for applications where temperature control is critical.

Completing the range of Steril dock products installed at the ITPL warehouse are L-shaped rubber bumpers which effectively prevent damage to the loading bay caused by reversing vehicles.

08707 700471
www.steril-dockproducts.co.uk



A fusion of modernism and traditional design



Eighty Grosvenor Street is set in the heart of the art district in London's prestigious Mayfair not far from Bond Street. Developed by Frelene Ltd, it is an excellent example of how an existing historic building can be reimagined for modern use. Behind the traditional facade, sits a contemporary structure that belies the age of the original buildings on the site.

Originally three individual period townhouses, the building has been transformed into a single, mixed use structure spanning five upper storeys complete with private terraces on the 4th and 5th floors. The new Steel Frame Structure (SFS) has been

created to overcome the challenges of delivering modern day open plan spaces flooded with light in a traditional historic building. The use of reclaimed Suffolk white brickwork and sensitive replacement timber windows to the front ensure the building remains in keeping with the Georgian aesthetic of the street.

Working with Orms Architects, Kier Construction set out to retain part of the original facade at the front of the building as per planning. Due to the company's extensive experience working on retained facade projects, George Barnsdale was appointed to manufacture and install the timber windows

to the front of the building where the Georgian aesthetic needed to be retained. George Barnsdale invested a great deal of time at tender stage to ensure the designs met the requirements of the Grosvenor Estates team. Having worked on a number of properties in the area, the company's experience and knowledge proved invaluable to the design process.

Commenting on the design process, Kathryn Knowles, Architect, Orms said: "We were looking to achieve a bespoke framing element to make sure that we captured the existing window profiles which were originally on the retained facade. Barnsdale were very accommodating and assisted to make sure that we achieved the retained facade replication."

Back on site in Lincolnshire, the windows were designed to incorporate an overall frame thickness of 128 mm which is not a standard product. Taking one of the company's standard frame profiles as a base, two versions of decorative frame add on were developed. This ensured the performance data for the whole window was accurate whilst at the same time incorporating a sympathetic bespoke design. A simple pencil round profile was used with a more ornate profile for the two arched openings.

"The windows are elegant and contextually sit well within the retained facade. They look as per the vision we had for the building," Kathryn continued.

01775 823000 www.georgebarnsdale.co.uk



New Schöck thermally insulating wall connection in a class of its own

Minimising linear thermal bridges at the wall connection to the floor, or floor slab, has been a perennial problem with reinforced concrete construction. However, a dedicated new solution – the Sconnex type W – has now been introduced by Schöck. A high-profile project involving the new Schöck thermally insulating wall connection is Haberdashers' Aske's Boys' School, at Elstree in Hertfordshire. Recognised as being one of the leading independent boys' schools in the country, it sets exemplary standards, not just in educational terms, but in its facilities as well. As demonstrated by the new extension to the Preparatory School.

A two-storey contemporary extension

This is a standalone building within the campus and Hampshire based cube_design architects were commissioned to produce a concept design for three additional classrooms, along with the relocation of changing facilities. Jane Lock-Smith, the founder of cube_design and RIBA Client Design Advisor within the BSF programme, takes up the story: "The design is respectful to the style of the existing building, but offers a contemporary twist through the use of full height glazing and charred timber cladding. The use of a colonnade minimises the buildings footprint. In our detailing we took into account that around 40% of all thermal bridges in a building are caused by walls and supports. The Schöck solution offers an application-friendly, high-quality solution that contributes to a permanently sustainable building concept".



A serious source of linear thermal bridges

The construction of the Preparatory School extension is of reinforced concrete; and traditionally wall connections to the floor, or floor slab, have been a major source of linear thermal bridges. The result being not just serious energy loss, but also the high risk of condensation. This can easily lead to mould growth, resulting in possible structural damage and worse, posing a health risk to the occupants. As the market leaders in the development of Isokorb structural thermal breaks for balconies and other cantilever constructions, Schöck has now used this expertise to produce a thermally insulating wall connection that

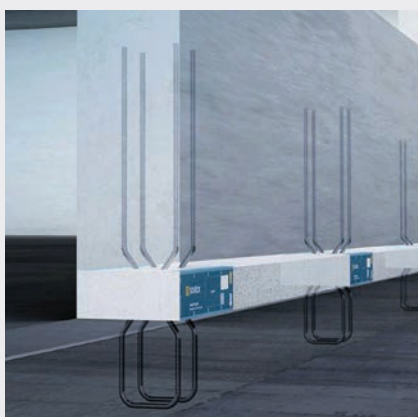
combines outstanding insulation performance with dependable load-bearing capacity.

Sconnex is a unique solution

This new thermally insulating connection for reinforced concrete walls is unique in a number of ways. It minimises the thermal bridge between the exterior wall insulation and the insulation above the floor slab, increasing the energy efficiency of the entire building. Thermal losses are greatly reduced and the surface temperature in the room increases to considerably more than the critical dew point temperature. Heating costs are lower and the PSI of the connected reinforced concrete wall is reduced by up to 90 percent. The outstanding insulation performance is combined with an excellent load bearing capacity, which transmits very high pressure, tensile and shear forces, both in the longitudinal and transverse direction. Made possible by the use of a pressure buffer consisting of ultra-high performance fibre reinforced concrete which achieves compressive strength levels in excess of 175 N/mm². A further important benefit is the significant cost reduction achieved when compared to installing insulation beneath the floor slab.

For further information on the new Sconnex type W product; contact Schöck.

01865 290 890
www.schoeck.com



Schöck connectors for heavy walkways at new Santander UK HQ

Work on the landmark new £150m headquarters for Santander UK, in the business district of central Milton Keynes, is well under way. The development of this exciting, futuristic 44,000 m² project, known as Unity Place, is led by a collaboration between developer Osborne+Co, LOM architecture and design and contractor John Sisk & Son. Scheduled to complete in 2022, LOM's design for the eight-storey building comprises four blocks connected by three atria. It offers generous employee amenities, including a rooftop bar and running track, garden terrace, restaurant, and a health and fitness centre.

An urban workplace ecosystem

Unusually, it also integrates publicly accessible retail outlets, an urban market, community hall and conference and events centre. This invites the wider community to enjoy the space as much as Santander's employees, making it an urban workplace ecosystem. The building is designed to achieve a BREEAM 'Excellent' rating for its environmental sustainability performance and will exceed Building Regulation requirements with a further 20% reduction in CO₂ emissions.

15 tonne walkways demand substantial thermal breaks

One of the many interesting features of the new Santander UK HQ are the green garden bridges, where landscaped walkways link the



Image courtesy of LOM architecture and design

light-filled atria spaces to provide meeting, break out and relaxation areas. There are six of these walkways. Each essentially being an outside bridge which is thermally broken, as it connects to an enveloped, or warm structure. The prevention of thermal bridging is therefore critical at the connectivity points of these structures and with each walkway weighing around 15 tonnes, a substantial structural thermal break connectivity solution was required.

Unique and versatile

The answer was the versatile Schöck Isokorb T type S structural thermal break,

which is the ideal connectivity solution for project applications involving steel-to-steel applications. There are two variants, the T type S-N for tensile force and the T type S-V for transferring compression and shear forces. It is the only approved thermal break product for steel construction that satisfies the load-bearing and thermal insulation requirements of steel design.

Also, being a modular unit, it can be adapted to all profile sizes and load bearing capacity requirements – plus it can be used in both new construction and renovation projects.

All Isokorb products are fully compliant

In addition to its comprehensive range of Isokorb solutions for concrete-to-steel, concrete-to-concrete and steel-to-steel – Schöck also offers a maintenance free alternative to wrapped parapets. All products meet full compliance with the relevant UK building regulations and have the security of independent BBA Certification, which provides NHBC approval. The temperature factor requirement (f_{RSI}) used to indicate condensation risk, which for residential buildings must be equal to, or greater than, 0.75 is also easily met by incorporating the Isokorb.

01865 290 890
www.schoeck.com



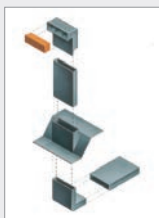
One of the walkways in position



The Schöck Isokorb T type S offers a heavyweight solution



Cavibrick challenge



The Cavibrick is a moulded ventilator from Cavity Trays of Yeovil. Cavibricks have integral louvres, deflectors and an internal back upstand to guard against water ingress. Whilst traditional airbricks generally have two rows of 9 square 8 mm x 8 mm apertures, (Total airflow rating 1,152 mm²) the Cavibrick has louvres promoting an airflow rating of 7,500 mm² – over 600% greater. Meet ventilation requirements

easily and at less cost. Plus there's a supporting range of duct and extension attachments.

01935 474769 www.cavitytrays.co.uk



LISTEN HERE

Resin Bound Forecourt at Museum



Two blends of natural stone resin bound paving were chosen to give an effective contrast to each other and blend beautifully within the surrounding greenery and other natural materials at Brooklands Museum, Weybridge. SureSet worked closely with the museum to ensure the project installation would cause as

little disruption to their opening times as possible. A Mechanical installation method was used to give the highest quality finish to the large areas. Overall, a strong and durable surface was carried out by SureSet Teams and therefore covered by a 21 year guarantee.

01985 841 180 www.sureset.co.uk



LISTEN HERE

Earthborn's new Bonding Primer



Silicate Masonry Paint for all surfaces

A newly formulated Bonding Primer from Earthborn can now be used alongside Silicate Masonry Paint for exterior masonry surfaces that do not need to breathe. Bonding Primer provides a mechanical bond between a 'sealed' wall and the paint, allowing Silicate Masonry Paint to 'stick' to the pre painted surface.

And in places where there is a mix of painted and unpainted masonry, you can now spot prime the patches where the previous paint cannot be removed with Bonding Primer and prime the rest of the unpainted area with Silicate Primer.

The updated Earthborn product range means that Silicate Primer used on uncoated masonry with Silicate Masonry Paint will create a highly breathable and permanent chemical bond.

This new primer means the 48 beautiful shades can be used on an even wider range of buildings, including those with a mix of previously painted and bare masonry.

01928 734 171 www.earthbornpaints.co.uk

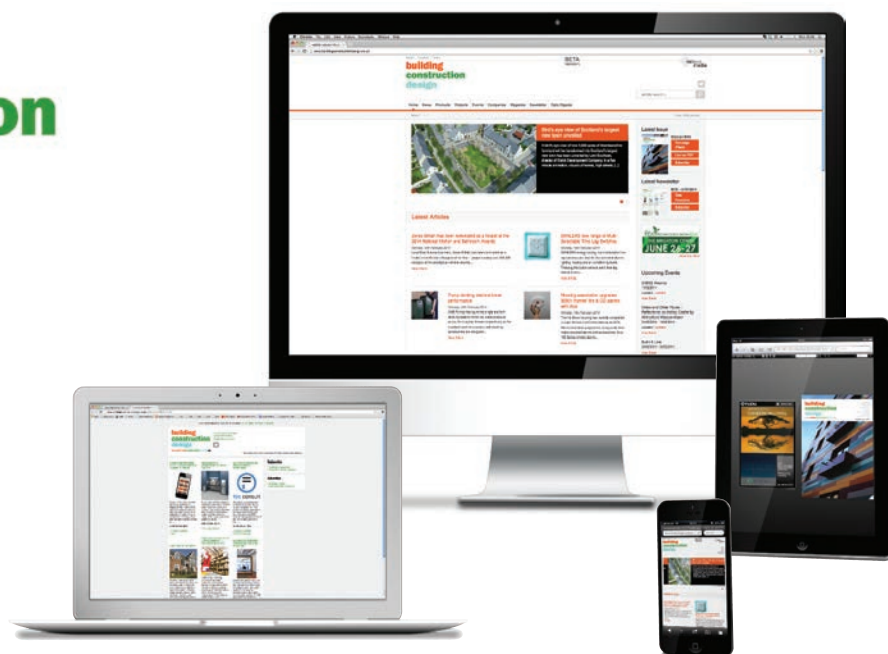


LISTEN HERE

**building
construction
design**



@BuildConstDes



REGISTER ONLINE FOR...

Digital magazine • Newsletter • Daily digests

www.buildingconstructiondesign.co.uk



Cover image: British Harlequin
See page 14 for details