



AUDIBLE
EDITION

building construction design

www.buildingconstructiondesign.co.uk

WINTER 2023

Appointments & news	02
Building products	08
Interiors	09
Exteriors	19



Cover image: TAC Projects
See page 30 for details

SALTO launches Homelok, an all-in-one smart access solution for residential living

SALTO Systems, a global leader in smart electronic access control solutions in the hospitality and commercial industries, is launching a groundbreaking new platform aimed at the residential market.

SALTO Homelok is set to revolutionize residential living with its all-in-one solution that integrates smart access control technology, hardware, cloud software, digital keys, a smart living ecosystem, and global service support.

“Smart home living is becoming increasingly more popular,” says Inigo Unanue – global residential lead, at SALTO Systems. “Residents want seamless access, without managing multiple keys – and property managers want a solution that is easy to manage and provides seamless resident onboarding. All want physical security and protection for assets as well as a smarter living experience. Homelok, SALTO’s residential solution, delivers all this and more, providing convenient,



secure, and technology-enabled living.” SALTO Homelok will provide smart access control solutions across the residential market, from multi-family to single-family housing, vacation rentals, and home care/assisted living establishments. SALTO Systems’ electronic locking solution is modern and easy to install and maintain, without the cost and complexity of traditional access control solutions.

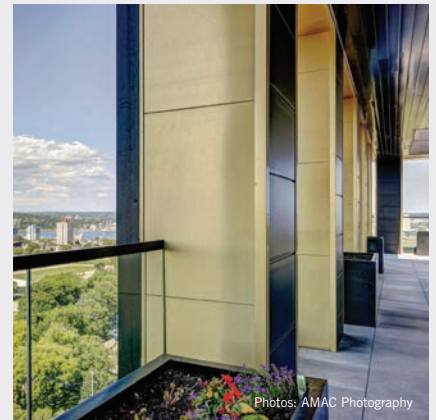
SALTO Systems brings a wealth of smart building expertise, groundbreaking innovation, a unique combination of flexibility and control, and a market-leading portfolio to its residential solution, with a specific focus on the following five value propositions: Operational efficiency; An elevated experience; Future-proof SVN access-driven technology in the cloud; Enabling the Smart Living Ecosystem; Guaranteed safety, privacy and security.

“We are very excited to launch SALTO Homelok to the residential and multifamily market. The platform is set to revolutionize the way we live, access our home, and go about our everyday lives. And, while security has always been a concern, data protection, privacy and secure home access are vital – now, more than ever. Homelok is the solution,” says Aznar Sethna, CSMO of SALTO Systems.

01926 811979 saltosystems.com



Nordic Royal in Nova Scotia



Photos: AMAC Photography

Nordic Royal golden copper alloy detailing accentuates the art-deco inspired, subtle opulence of a new, award-winning luxury development in Halifax, Nova Scotia.

Designed by Dixel Architecture in collaboration with Fathom Studios and built by Dixel Developments, for developer Lawen Group, the George Residence combines commercial and residential uses including 164 suites and seven townhouses. The sleek, contemporary design utilises a restrained palette of high-quality materials in neutral

colours – accentuated by elegant, crisply detailed and executed Nordic Royal golden copper alloy highlights.

External copper alloy details include impressive portals announcing individual entrances, full height margins inset within the dark brickwork, oversailing soffits to the cantilevered corner tower and reveals to openings around the roof terrace. Thematically, Nordic Royal elements continue internally including elevator doors and surrounds, panels accentuating glazed lobby doors and even the smallest details

– such as wall corner guards and curved skirtings to columns.

Nordic Royal is an innovative alloy of copper with aluminium and zinc, giving a rich golden through-colour that is very stable. The surface retains its golden colour and simply loses some of its sheen as the oxide layer thickens with exposure to the atmosphere, resulting in a protective matt finish.

NordicCopper@aurubis.com
www.nordiccopper.com



Innovation of multi-sensor alarms continues with new product range

Innovation continues for Aico, the European Market Leader in Home Life Safety, as they launch two new products, the Ei660i and Ei660iRF multi-sensor fire alarms. These brand-new additions to Aico's 600 Series, boast all of the benefits of their award-winning multi-sensor fire alarm in a self-contained battery-powered unit.

With Aico striving to deliver products that align with their customers' requirements, the Ei660i and Ei660iRF were developed to fulfil the need of a battery-powered multi-sensor fire alarm within their product range.

The products are a complementary addition to the multi-sensors within Aico's mains-powered 3000 Series, and include the same technologically advanced heat and optical smoke sensors to offer total fire protection, with an increased resistance to false alarms.

Michael Wright, Product Development Manager at Aico comments: "Our new Ei660i and Ei660iRF models continue our innovation of multi-sensor alarms across our product range. The lithium battery-powered alarms complement our existing 3000 Series mains-powered multi-sensor alarms and provide users with improved



fire response and reduced risk of false alarms. We're delighted to be able to launch the products as part of our new 600 Series and provide users with our proven and award-winning multi-sensor technology across both mains and battery-powered alarm series."

The Ei660i is a stand-alone device, while the Ei660iRF includes built-in RadioLINK+ technology, offering wireless interconnection with compatible Aico alarms via radio frequency.

The new products have a range of additional benefits, including built-in dust compensation technology. The unique self-monitoring dust compensation mechanism allows the alarm to tolerate up to twice as much dust contamination than a conventional optical alarm. The optical sensor chamber continually self-monitors minute changes in dust levels, automatically recalibrating the alarm's trigger point when necessary to reduce false alarms.

Both the Ei660i and Ei660iRF also include Aico's award-winning AudioLINK+ technology, making it simple to get real-time data directly from the alarm head via a mobile app, reporting on information such as activations, sensor status and record of testing. To find out more about the Ei660i and Ei660iRF, please visit the website.

www.aico.co.uk/series/600-series



JACKON UK and JABLITE combine after corporate merger of JACKON and BEWI

JABLITE and JACKON UK are set to form a new, united force in the UK insulation and construction products sector. The two brands combined will become the first UK manufacturer to offer both EPS (expanded polystyrene) and imported XPS (extruded polystyrene) solutions.

This follows the completion of the merger between JACKON and BEWI on 12th October 2022.

BEWI is the owner of JABLITE, one of the UK's largest producers of EPS products for the construction industry. It is a leading manufacturer of insulation and civils products, which include the JABLITE thermal floor system, JABLITE ground heave protection and the leading brands Fillmaster, Claymaster and Jabfloor.

Meanwhile JACKON owns the JACKOBOARD® brand of backerboards, as well as THERMOMUR® ICF and JACKODUR® ATLAS building systems.

These brands are amongst the market leaders in the UK.

Both businesses are excited about the improvements and the innovations they will be able to deliver together. As well as shared customers and new routes to market, JABLITE's manufacturing sites provide new opportunities for JACKON UK in terms of production and warehousing with the potential of transport synergies.

Colin Higham, managing director, JACKON UK, says: "This development is very exciting for us. It provides increased scale and resource in the UK market to underpin future growth, as well as the ability to serve customers better right across the group."

John Cooper, managing director of JABLITE, adds: "There are many opportunities for collaboration. JACKON has some great products that our customers have already expressed an interest in buying from the new BEWI UK business that we will become."



"Our product portfolios are complementary, and we look forward to working with the JACKON team to identify opportunities for new product development," he says.

01204 221089
www.jackon.co.uk



ARDEX Group UK returns to SPATEX 2023

ARDEX Group UK is returning to SPATEX 2023 with new products and systems for swimming pools and wet leisure.

Taking place from Tuesday 31st January, to Thursday 2nd February 2023 at the Coventry Building Society Arena in Coventry, SPATEX is the UK's leading pool, spa and wellness exhibition.

ARDEX will be introducing AM 50 OCR – a new render system for internal pool surrounds, shower rooms and changing facilities, plus our specialist systems to ensure perfect wet leisure and pool tiling.

Visitors to their stand can also find out about ARDEX's sustainability and energy saving initiatives. Sustainability is a core corporate focus of the ARDEX Group UK is a critical launch factor in new product development. Several initiatives have been introduced to reduce carbon emissions and save energy in construction including:

- Lower life cycle costs through high-performance products with extended project warranties.

- Innovations to ensure less waste on site with extended product working times but rapid-hardening for fast-track completion, saving energy through less mixing and working with larger batches.
- Pool systems that require less products for projects as well as high-yield products.
- New products providing increased performance with recyclable content.
- Localised raw material sourcing and more environmentally friendly packaging.
- Products tested to LEED protocol. Working to achieve EN standard within BREAM (legislation still to be confirmed).
- EMICODE Approval: core products approved with remaining products in the process of EMICODE approval.
- EPD (Environmental Product Declaration) for all products.

With a Carbon Neutral (scope 1 & 2) target of 2030, the ARDEX Group UK recently worked with Achilles (Recognised Certified Body) to accurately reduce and measure their Carbon Footprints endorsed by verifiable commitment to



reduce emissions and to continually improve environmental performance.

Achilles' Carbon Reduce (powered by Toitu) scheme highlights the necessary data from all activities which is critiqued under the ISO 14064:1 scheme.

Measuring carbon output under ISO 14064-1 includes company vehicles, business travel, fuel and electricity, water and waste, to name a few. In return, this assists ARDEX Group UK to accurately identify areas of the business where they can reduce their emissions and consequent impacts on the environment.

01440 714939 www.ardex.co.uk



New MOY CPD “Achieving Zero Leaks”



MOY are pleased to announce the new RIBA approved CPD entitled “Achieving Zero Leaks.” This CPD presentation aims to support specifiers and designers on achieving long lasting, compliant and sustainable roofs, with problem free, zero leak solutions. Achieving Zero Leaks CPD covers the following topics: Flat roof design principles – building standards & legislation compliance; Flat roofing systems – roof waterproofing technology types and typical applications, accessories and components; Achieving Zero Leaks – outlining the importance of ‘quality system supplier’ selection to help ensure successful development & delivery of the correct specification. Duration: 1 hour. Format of delivery: At Practices & Digital delivery. MOY are one of the UK and Ireland's leading full system providers for high performance flat roof waterproofing systems. We work closely with clients and design teams to provide and deliver high quality systems to integral roofs and our innovative, long-lasting waterproofing solutions are backed by industry accreditation's and award-winning technical support.

01245 373411 moymaterials.com/cpd-training



South London loft conversion specialist finds multiple uses for West Fraser's SterlingOSB Zero



A family-run firm from Surrey, which specialises in loft conversions and the creation of bespoke garden rooms, is making extensive use of SterlingOSB Zero from panel product manufacturer, West Fraser, based on the board's value, performance and ease of installation. MB Loft Conversions, based in Caterham, was established eight years ago by Mark Bell. Typically, the company completes up to a dozen loft conversions and other projects each year. Mark purchases his SterlingOSB Zero from Selhurst Timber and other builders merchants' local to clients' properties. While he mainly prefers to use 18 mm tongue and groove boards for their strength and excellent alignment when laid, some of MB Loft Conversions' builds also use quantities of 11 mm (square edge) SterlingOSB Zero. Mark Bell commented: “There is a number of reasons why we prefer to use both West Fraser's 8x4 and 8x2 T&G Sterling OSB Zero, apart from it being a product I'm very familiar with. We know we can rely on the quality, while the 18 mm T&G boards are like gold when it comes to doing flat roofs and make a really good deck.

Uk.westfraser.com





OMNIE new guide for developers

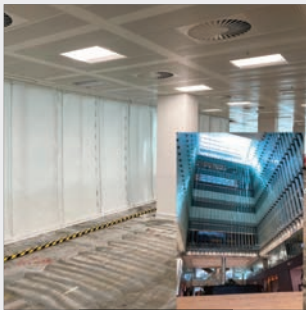
OMNIE has published a Developers' Guide aimed at helping housebuilders and property companies differentiate their projects in a crowded market place: ensuring their buyers enjoy the most comfortable and healthy indoor environments. The manufacturer has over 30 years of accumulated experience in the marketplace, evolving an integrated 'Whole house system' which has facilitated the creation of its 'One Environment' concept based around five key technologies. These five are ventilation & heat recovery, underfloor heating, hot & cold water distribution, heat pumps and – fundamental to all these technologies working effectively and efficiently – sophisticated yet user-friendly controls. OMNIE's offering means developers can be sure they can access the appropriate solutions to help them achieve the perfect levels of comfort: from the early design stage. Its technical experts will provide a free design service along with the support of a dedicated project manager. Expert guidance throughout the contract stages will avoid costly clashes or delays, before user manuals are provided to ensure the end-user understands how to operate the whole system. With all OMNIE's products designed and manufactured in the UK, supply chain issues can be avoided – plus, of course, by buying British, the developer can be assured they won't be subjected to the vagaries of fluctuating international currencies.

01392 363605 omnie.co.uk



LISTEN HERE

Firefly™ phoenix offers temporary fire protection for Fenchurch Street offices

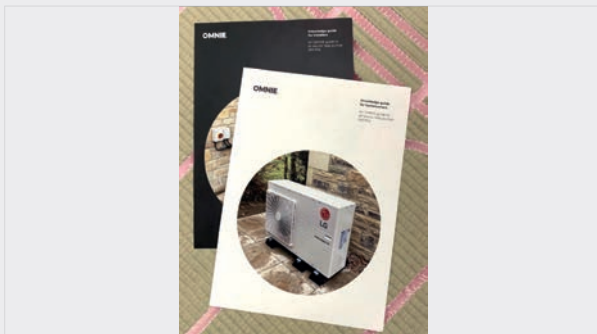


The refurbishment of two complete floors to one of the City's largest office buildings is making use of the well proven and versatile TBA FIREFLY™ Phoenix smoke & flame barriers, to create temporary fire barriers while the work is being carried out: protecting people and property across the rest of the five storey structure where business continues as normal. The project at 30 Fenchurch Street, EC3 is being led by Overbury – one of the capital's most experienced fit-out contractors, while the London office of HLW Architects is leading the design team. T&R Fire Protection meanwhile is the specialist sub-contractor carrying out the installation of the Phoenix around the atrium, as well as other passive fire protection measures as the scheme evolves. In total T&R has fixed 22 rolls of the lightweight Phoenix material to create the two hour integrity smoke and flame barriers around the glazed edge of the floor plates at levels Three and Four of 30 Fenchurch Street. The lightweight barrier has been fixed to the bulkhead and at intervals down all of the existing columns, before finally being secured across steel angle sections bolted to the floor slab.

01706 758817 www.tbafirefly.com



LISTEN HERE



OMNIE launches ASHP guide for installers

OMNIE has launched a new Knowledge Guide for installers, which offers a comprehensive overview of air source heat pumps (ASHPs), and the help that is available in obtaining a BUS – or Boiler Upgrade Scheme – voucher. This downloadable, seven-page publication starts by explaining about the company's 'Experience on tap' before reassuring installers regarding the 'tried, tested and trusted' nature of OMNIE's product ranges. This is followed by a page outlining key points such as stressing that performance is a top priority for the company's technical experts, while dedicated project managers are on hand to offer guidance from the planning stages to installation and handover. Impressively, OMNIE boasts three decades' experience in the field which has resulted in its industry leading Whole House System philosophy, which seeks to constantly improve indoor air quality as well as delivering optimum efficiency. Other key points include OMNIE's products being award winning, while its free design service not only sizes the heat pump, but covers heat delivery, controls and DHW provision, while commissioning is taken care of by its partner company. The remainder of the guide concentrates on the all-important, Government funded Boiler Upgrade Scheme – and it is here where the installer is assured how the OMNIE team takes care of the application for the £5,000 grant as well as how their customers qualify.

01392 363605 www.omnie.co.uk



LISTEN HERE

With over 30 years experience, we offer bespoke solutions for the domestic market across the South East.
Feasibility of a project can usually be determined with a site postcode.

COVID-19 SAFE WORKING

AWARD WINNING RENEWABLE HEAT INSTALLATIONS
Open-Loop Ground Source Heat Pumps could meet all hot water and heating needs by utilising ground water as a heat source.
Ideal for installation in new or self-builds.

British Renewable Energy Awards 2022 Winner "Domestic"

ENERGY EFFICIENCY 2022 COMMENDED SMALL PROJECT OF THE YEAR

ENERGY EFFICIENCY 2022 WINNER RENEWABLE HEAT INSTALLATION & CONSTRUCTION

ENERGY EFFICIENCY 2022 COMMENDED RENEWABLE HEAT INSTALLATION & CONSTRUCTION

WATER SUPPLY & SOAKAWAY BOREHOLES DRAINAGE SOLUTIONS
Independent water supply for irrigation or consumption*
Soakaway drainage fields and other drainage solutions
*subject to analysis and suitable filtration

SEWAGE TREATMENT SYSTEMS
We can provide package plant or bespoke systems
All systems are designed to meet the needs of individual clients and comply with strict discharge legislation.
Servicing contracts are offered on all installations.

HD services LTD

enquiries@thehdgroup.co.uk | 01494 792000 | www.hdservicesltd.co.uk

Has the construction industry got it wrong about spray foam insulation?

A new generation of breathable, spray foam insulation that lets buildings breathe and doesn't trap moisture, could keep buildings warm and reduce energy bills drastically.

With energy costs going through the roof, high performance spray foam insulation solutions should be at the forefront of the battle against climate change, so why has it taken so long to win the hearts and minds of construction industry specifiers?

For years the industry has been reluctant to accept spray applied insulation as spray foam is usually associated with poor installation practices under the roof. Situations such as encased roofing timbers, dry rot and, in some cases, complete roof collapse. As a consequence, many builders and architects have avoided it and some surveyors and mortgage lenders have blacklisted this type of insulation.

Unfortunately, a combination of bad practice, inappropriate use and rogue installers has given a good product a bad name. Paddy Leighton, who was the original UK distributor of spray foam insulation, Icynene, now manufactured by Huntsman Building Solutions (HBS) under the name of H2 Foam Lite, explains.

"H2 Foam Lite was first developed in the mid-1980s in Canada, where they endure famously long and harsh winters. It came over to Europe in the 2000s and has been used in the UK since 2008. It is BBA certified so that when used correctly, it is building regulations-compliant and it compares very well with more familiar insulation products."

Open cell spray foam is applied as a two-component mixture forming a foam that expands 100 times its original size within seconds of application, adhering to almost all substrates and sealing gaps, service holes and hard to reach spaces, virtually eliminating cold bridging and air leakage.

Unlike the polyurethane foams of 20 years ago, modern spray foams such as H2 Foam Lite use water as the blowing agent. This means that the reaction between the two components produces CO₂ which causes the foam to expand. As H2 Foam Lite expands, the cells of the foam burst and the CO₂ is replaced by air.

Flexible and breathable composition

Throughout its working life, the foam remains soft and elastic, retaining its air tightness characteristics and accommodating any slight movements in the roof structure.

The breathability of the foam helps dissipate air-borne moisture, so condensation and any risk of decay or damage to timber joists is prevented.

This flexibility and breathability is particularly advantageous in historic buildings, where the building fabric often has a tendency to move. Furthermore, the fact that spray foam can be injected means that inaccessible voids can be filled without removing large areas of wall or ceiling coverings. Authorised installers simply make a small hole and, once the foam has been installed, they can check it with infra-red tools to ensure that all areas have adequate coverage.

From an environmental perspective, HBS H2 Foam Lite has a Global Warming Potential of 1 and an Ozone Depletion Potential of Zero. Nor does H2 Foam Lite or any other HBS spray foam insulation emit harmful gases once cured.

Real world performance

Although there is often a discrepancy between manufacturer performance-claims and actual results in real-life building environments, in Aberdeenshire, conservationists working with Robert Gordon University on a historic



Spray foam insulation contributed to a conservation project on this historic farmhouse in Aberdeenshire



Heat loss was reduced by 56% after installing only very thin layers of injected foam behind lath and plaster wall facings

A report from the official advisors the Climate Change Committee says the UK government must drive down energy bills and reduce climate-warming emissions by insulating more homes. They say that the government's current insulation programme is "shocking".

farm-house restoration, found that heat loss was reduced by 56% after installing only very thin layers of injected foam.

According to Leighton, "The effect of the soft and elastic, open-cell spray foam insulation on a draughty roof is similar to a person wearing a down-filled jacket. The jacket is light and relatively thin but the feathers inside trap tiny particles of warm air and protect the body from cold".

In Liverpool, Stephen Finnegan, director of the Zero Carbon Research Initiative and associate professor in sustainable architecture at the University of Liverpool's School of Architecture, was similarly nervous about spray foam insulation when he embarked on a major refurbishment of a large and run-down Victorian house.

Like many people who live in period houses, he didn't want to spoil its appearance inside and out with insulation panels, but he knew that he had to insulate the property to make it liveable. He investigated a number of interventions including spray foam insulation for the cellar and attic ceilings.



In Liverpool, Stephen Finnegan, Director of the Zero Carbon Research Initiative turned to spray foam insulation for the refurbishment of this large Victorian house

Although the results of installation of the foam insulation have yet to be finely assessed, Finnegan says that the effect of using it in the cellar ceiling and roof space has been remarkable. "The house has kept a really comfortable temperature during winter. We installed a wet underfloor heating system downstairs and conventional radiators upstairs. We're running the boiler at a low temperature and it's working well. I can sit in the attic rooms in a t-shirt with the heating



"The effect of using spray foam insulation in the cellar ceiling and roof space has been remarkable" Cellar under-floor area shown

off and it's not a problem," he says. "There's no way that I could have done that before."

According to Finnegan, performance of the house will be monitored over a 12-month period. He then aims to convert to a 100% electrically powered home by installing an air source heat pump (ASHP). "If we can run the boiler at 55°C then we know that it could potentially be replaced by an ASHP. We will then support this using solar PV panels and battery storage to minimise the amount of electricity purchased from the grid." Said Finnegan.

Cost competitive system

Paddy Leighton estimates that the cost of installing HBS H2 Foam Lite averages out at about £25/m² (for 100 mm thick insulation) and is far quicker and less intrusive to fit than conventional insulation methods – a 100 m² roof could be covered in a morning.

As heating costs and concerns about carbon emissions soar, any product that can mitigate these problems has to be considered. "I've overseen more than 40,000 successful domestic, commercial and industrial installations" Leighton says. "There are hundreds of thousands of houses in this country that could be retrofitted. We just need to convince the industry."

For more information about HBS H2Foam Lite products please visit: huntsmanshipbuildingsolutions.com/en-GB/products/open-cell-insulation

0485 500 668

www.huntsmanshipbuildingsolutions.co.uk



Under eaves area prior to spraying



FoamLite expands 100-fold in seconds



LISTEN HERE

Making a splash without noise – wedi Nonstep® ProS



Greener homes and a lower environmental impact is now sitting near the very top of our property priorities. A modern building now has to perform better than it ever has — reducing its environmental impact, being more energy efficient, looking the part and meeting the requirements of the ever-more critical end user. Sustainable building practices must be embedded into every aspect of the design process. The end user demands it and so does the planet.

With noise being one of the most common causes of dissent amongst neighbours, of bad hotel reviews and complaints in hospitals, it is an understatement to say that whether we speak of an apartment building, a hotel or

a hospital, sound insulation is an extremely important criteria.

The bathroom is one of the most complex rooms in buildings and even tiny errors in planning and execution can cause unwanted acoustic problems. Especially during showering, the impact of water on the floor causes high degrees of sound development (air & structure borne sound) which leads to noise transmission into neighbouring rooms. Additionally, particularly in the health care sector or in hotels and public buildings, bathrooms are often accessed by people wearing shoes which generate additional noise.

All disturbing sound transmission possibilities have to be taken into account during construction or renovation and appropriate sound insulation has to be provided. Answering the demand for an all-round system solution for bathrooms, as a complement to its waterproofing system, wedi has developed the perfect solution to guarantee soundproof showering.

The latest generation of wedi sound insulation, the wedi Nonstep ProS is a high-quality sound insulation fleece which complements wedi Fundo shower elements by significantly reducing water impact and footstep noises around the bathroom. The soft and flexible 9 mm thick material easily covers any unevenness in the floor, is tension reducing, moisture and rot-resistant, prevents mould growth and is fully recyclable.

When installed together as a system, wedi system solutions do not only comply with the minimum requirements on sound

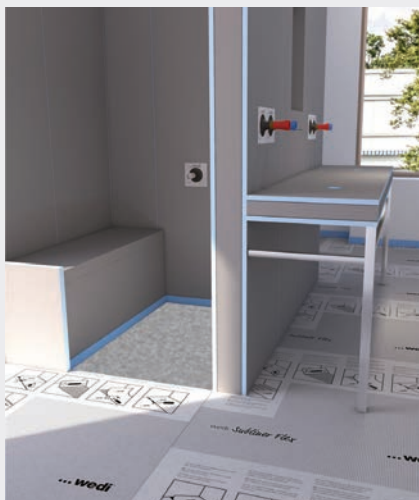


insulation for water impact noise (DIN 4109) but also with sound insulation levels I to III (according to VDI 4100) depending on the system components.

Construction heights (including a Fundo shower element with horizontal drainage and the Nonstep ProS acoustic solution) range from 74 mm to 138 mm to suit site requirements, providing 28dB sound reduction thus enhancing water impact sound measurements to as low as 13dB.

From manufacturing with renewable energy through using recycled materials to the comprehensive insulation its sealing systems offer – the foundation of the brand lies in innovation, technology and sustainability. Thanks to the excellent thermal properties of wedi subconstruction elements, the end-user is provided with significant savings on energy bills in the long term. For example, wedi is five times more energy efficient than plasterboard, improving underfloor heating systems' response time by up to 70%! Choose wedi to build for the future.

0161 864 2336 www.wedi.de/uk



LISTEN HERE

Residential roofs being upgraded using FIREFLY's Zeus Lite 90/30



A specialist fire contractor is employing the Zeus Lite 90/30 flexible fire barrier and Collaroll wrap from the range of TBA FIREFLY™ in undertaking a major fire protection programme in Sittingbourne. A phased scheme set to continue till its entire stock is upgraded. Established in the 1990s, DC Fire Protection Ltd. works right across the country covering multiple sectors of the construction industry, installing active as well as passive fire protection systems. It is currently engaged in lining the roofspaces to dozens of terraced houses on an estate in Sittingbourne, Kent. Director of DC Fire Protection Ltd, Daniel Mabbott, commented: "We have a good working relationship with FIREFLY™ whose technical team are always ready to come to site to offer advice on issues which arise, or to provide a bespoke detail. We also rely on them to give our operatives the hands-on training required. In this case the installation work is fairly straightforward also using the Collaroll to wrap beams and the project, which is set to continue for several years, is progressing well."

01706 647422 www.tba-pt.com



LISTEN HERE

Flexible Space achieves recognition in multiple disciplines



AET Flexible Space, has further enhanced its UK reputation by being shortlisted for three industry awards. Amplifying the achievement, the nominations cover diverse operational disciplines. For this years H&V News Awards, AET Flexible Space is one of just five companies short-listed for the HVAC Project of the Year (over £0.5m), for its work at Technique. The project involved a combination of refurbishment and new build to deliver five floors of flexible, agile use "best in class" modern workspace, offices and retail. AET Flexible Space has also been shortlisted for the Small Company Achievement of the Year, for its L&D ethos Learn to Win. The focus is to invest in a team that is inspired, engaged and supported. Although in its infancy, the programme is already yielding results. The team is motivated, winning new clients and relationships built for work beyond the initial contract. Projects on which the company has collaborated have been short-listed or won six industry awards during 2021/22. Completing the trilogy, AET Flexible Space is one of five companies shortlisted for the Training Initiative of the Year, for its learning and development strategy.

01342 310400 www.flexiblespace.com



LISTEN HERE

The bottom line? Get the low-down on how to improve project profitability



However much we all want to do the right thing, there is always a shadow over our shoulder – what's the cost? Good news: going against the conventional, getting below the skin of your new build, refurbishment, or refit project, WILL tick all the boxes in terms of ethics and morals – AND deliver savings on construction costs – and beyond. What is this miracle? Underfloor air conditioning – or UfAC. The clue is in the name – underfloor. Using a 200m+ raised access floors eliminates the need for a ceiling based ventilation zone – typically twice the depth which helps to maximise floor to ceiling heights. The process in new build means the overall building height is reduced, by up to 10%, with all the associated savings in construction material and labour costs. The building is completed – and therefore occupied – more quickly. That delivers an accelerated revenue stream/ ROI, potentially providing income three months before an office block offering the same lettable floor space is even finished! Because UfAC uses the floor as a plenum, there is no ductwork, delivering further cost savings in terms of materials and labour. Please contact AET Flexible Space for more information.

01342 310400 www.flexiblespace.com



LISTEN HERE

Bedfordshire industrial building fire-lined with A1 Magply boards



A family owned fishing and holiday business in the heart of the Bedfordshire countryside is currently seeing a variety of new leisure and commercial facilities being created, with high performance Magply boards from the range of IPP Ltd. having been chosen for lining a large new caravan maintenance workshop. Dave Curson, whose drive and ideas have shaped Henlow Bridge Lakes, commented: "We decided to utilise the 12 mm Magply boards to line the structure on the recommendation of the main contractor, who has past experience of working with them where there is a fire protection requirement. All of the boards are being installed using self-tapping screws by just two men, working from a cherry picker and I think it is all going to look really quite good when it is finished." Magply boards offer a range of performance benefits relevant to the application. In fact Magply boards carry Euroclass A1 and other internationally recognised certifications, confirming their suitability as a fire mitigating sheathing for timber or steel frame systems, as well as in rainscreen cladding, SIPs and other modular/offsite constructions.

01621 776252 www.magply.co.uk



LISTEN HERE

XL-ent floor tiling with new BAL XL Floor One

BAL – market-leaders in full tiling solutions – have launched a new and improved flexible thick-bed tile adhesive for large format floor tiles.

Replacing BAL Pourable One on its range, BAL XL Floor One is a significant upgrade with XL-ent extended open time and XL-ent working time – taking some of the stress out of large format floor tiling.

Extended open and working times of the gel rheology of XL Floor One mean the adhesive remains wetter, smoother and creamier for longer – making for XL-ent workability.

BAL XL Floor One is easy to work with and apply and with an extended pot life of 90 minutes and open time of 60 minutes, fixers can confidently spread over larger areas for ease – have plenty of time to adjust tiles as they work – and ensure they have no product wasted by going off.

A true “overnighter”, BAL XL Floor One can be grouted in 6 hours, ensuring fast track project completion the next day.

Mixed with a reduced water content of just 4 litres per 25 kg bag, BAL XL Floor One



holds its high-gel shape when trowelled with ribs sitting proud even up to 25 mm without any slumping – yet ribs will collapse easily when tiles are vibrated or twisted for solid bed coverage.

Crucially this means that back-buttering is not always required with flat backgrounds and tiles!

If needed, BAL XL Floor One can be built up to 25 mm bed depth for levelling small areas or patch repair – while also making it perfect for uncalibrated natural stone where consistent bed depths can't always be achieved. With a flexible and strong bond,



BAL XL Floor One is also suitable for laying BAL Rapid-Mat or BAL Flexbone VARied uncoupling mat when spread with a 4 mm notched trowel.

Water and frost resistant, and with large bed-depths, BAL XL Floor One is BAL's recommended tile adhesive for laying porcelain, ceramic or natural stone on external concrete beds.

Even on tamped concrete, BAL XL Floor One provides excellent coverage for 20 mm porcelain pavers and other external tiles.

01782 591100 www.bal-adhesives.com



LISTEN HERE

Quantum Flooring a Winner in CFJ/CFA Awards



The CFJ/CFA Awards are always a highlight of the Flooring Industry calendar, giving those in the industry a chance to meet with, and celebrate, colleagues from across the UK.

This year, it was held on the 9th of September at Coombe Abbey, and as ever it was a great show. Even better for Quantum Flooring Solutions, they were judged the winner of one of the major categories. Everyone at Quantum is delighted to win

in the Profiles and Trims Manufacturer/Supplier of the Year category at the 2022 CFJ/CFA Awards. As an independent flooring accessories manufacturer, it really does represent a fantastic team effort from all at the company, and they are very proud of the achievement.

Quantum would like to thank everyone who voted for their nomination in the category, the independent industry experts who judged them the winner among stiff

competition, and the event sponsors. Congratulations to the other companies and individuals who won awards, and indeed to all of those nominated in every category.

And thank you of course to the CFJ and the CFA for putting on this brilliant event year after year. Quantum will see you all there in 2023!

0161 627 4222
www.quantumprofilesystems.com



LISTEN HERE

Mapei creates industrial-style at Everlast Gyms – with more to follow

Mapei's Ultratop Loft floor finish has been installed at Everlast Gyms – Shirebrook in Mansfield. The installation, by Rossington Contracts, is part of an extensive refurbishment and 'elevation' programme which will include installations at up to 60 sites throughout the UK. Mapei's industrial-style floor finish was chosen to complement the gym's urban design, whilst providing high performance and abrasion resistance.

Located at the Frasers Group complex, the relaunched Everlast Gyms – Shirebrook features new equipment and elevated group training, along with new changing facilities, a new reception area and Smoothie Bar. Throughout the site, the Mapei Ultratop Loft installation totals over 300 m² and spans the reception and retail area, corridors and stairs, and training areas.

Ultratop Loft was specified throughout the venue. Following installation of the cement-based system, Rossington Contracts applied



a finishing coat of clear matt polyurethane, Mapefloor Finish 58W.

Available in over 120 colours, including a variety of popular grey shades, Mapei Ultratop Loft is a rapid-drying, micro-cement system that combines two separate components: coarse grained Ultratop Loft F and finer grained Ultratop Loft W which are mixed with water to create a trowellable cementitious paste that is applied in layers

at 1 mm thick. Both components were used at Everlast Gyms – Shirebrook, creating a surface that was set to foot traffic within three hours. Mapefloor Finish 58W – which can be applied six to 24 hours after application of Ultratop Loft – provides additional resistance to wear, abrasion and chemicals, creating an easy care, highly-durable surface.

info@mapei.co.uk www.mapei.co.uk



The power of healing architecture

The Sct. Hans Hospital in the Danish city Roskilde is a psychiatric facility specifically designed to provide the healthiest of environments for staff and patients and which has just won the prestigious Danish 'Health Building of the year' award.

Forming a larger extension to the original hospital, the new 21,000 m² complex, designed by KHR Architects, includes a new 126-bed psychiatric ward and therapy facilities built into the side of a hill and nestled within carefully landscaped grounds to provide privacy while maximising the views. The use of nature and light along with modern and effective design and building materials makes for a calm, tranquil and light environment.

As part of the design, Troldekt wood wool acoustic panels in different colours have been used for the ceilings to link various zones in the communal areas and activity rooms. In the therapy baths, the panels are a muted grey colour to exude a sense of calm. This choice of materials plays a key role as materials like wood adds warmth and naturalness. The



materials, together with the good acoustics, contribute positively to the healing process.

Research from the Swedish Chalmers University of Technology proves that the right interior design, including perfect acoustics, can reduce both the use of physical restraint on psychiatric wards as well as the number of sick days among employees.

Founded on the Cradle-to-Cradle design concept and recently attaining Gold certification, Troldekt's natural and inherently sustainable panels are available

in a variety of different surfaces and colours and contribute positively to a building's BREEAM, DGNB and LEED ratings. In addition to their high sound absorption and tactile surface, they offer high durability and low-cost lifecycle performance. Available in various sizes and in four grades, from extreme fine to coarse, the panels can be left untreated or painted in virtually any RAL colour.

01978 664255
Troldekt.co.uk



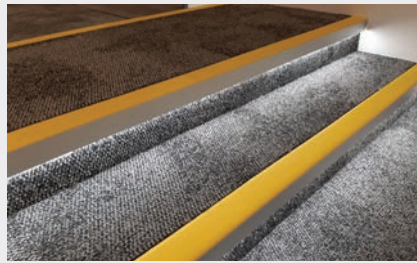
Q-Range Stair Nosings Sample Box

Quantum Flooring is proud to announce the launch of the new Q-Range Stair Nosings sample box. This box showcases the most highly engineered stair nosings range, which is designed specifically to adhere to all Building Regulations, BS 8300-2:2018 and Equality Act guidelines.

The new sample box contains a small length of each of Quantum's Q-Range Stair Nosings, along with a swatch of all 25 colours which can be specified with the profiles. It also contains a longer sample of Q-Range DUO, the most specifiable stair nosing on the market.

The idea behind Q-Range is to adhere to all regulatory guidelines. The profiles have an all-over tread to prevent slips, trips and falls, along with a colour range to provide LRV compliance with any floorcovering. Plus, the range has a satin-etched finish as standard, ensuring that they are scratch-resistant and inhibit glare.

Q-Range DUO takes it one step further: it follows all Building Regs, BS 8300 and Equality Act guidelines to the letter, meeting



all Best Practice recommendations. The unique DUO design has both a tread and riser in all 25 Q-Range colours, offering a solid colour on both surfaces. This makes the step edges clearly visible, while also offering great design options. Plus, DUO has a 55mm by 55mm all-over slip resistant material, ensuring overstep is not a problem.

Quantum's unique Q-Range Stair Nosings offer the perfect solution to any project. They are suitable for installation in all categories of public, private and commercial buildings. These profiles provide great aesthetic possibilities, while ensuring longevity and durability for step edges. When



it comes to superior stair nosings, Q-Range ticks all the boxes.

- ✓ Quality
- ✓ Compliance
- ✓ Safety
- ✓ Design
- ✓ Sustainability
- ✓ Colour

To order your Q-Range Sample Box, please email Quantum Flooring.

0161 627 4222
info@quantumflooring.co.uk



The Root of Easy Bathroom Design from Vitra

Vitra's Root collection offers a wide range of product sizes and styles in mix-and-match colour and wood unit combinations with complementing handle styles, Root brassware and the choice of three washbasins to suit.

Root brassware and furniture combine to create one of the market's most flexible and customisable bathroom collections. The range comprises three key furniture designs: flat, groove and classic. Flat – a simple style for those with a minimalist taste; Groove – a contemporary option with a panelled style; and Classic – a modern take on shaker design. The furniture joins the recently launched brassware collections Root Round and Root Square, available in five colours (chrome, brushed nickel, copper, matt black and gold) across the array of basin, bath, and shower mixers.

The Root furniture units are available in seventeen assorted colours with three types of finish – gloss, matt, or wood. Colours include white, anthracite, Sahara beige, pearl grey, dark blue, fjord green, etc. Handle options include matt black, chrome and matt white,



with two distinct styles to suit the different furniture designs. The wood options include walnut and natural oak finishes.

Straight-forward design, soft lines and smooth surfaces keep cabinet surfaces dirt-free and easy to clean. To help designers, Vitra has developed the Root Configurator. This online tool allows users to experiment with various styles, colour finishes and



sizes to find the perfect bathroom design. In addition to the washbasin units, the tool includes the taps and additional storage units available to enable users to design their whole bathroom space. The Root Configurator can be accessed here [Vitra Root Configurator](https://rootconfigurator.vitra.co.uk/uk).

01235 750990
rootconfigurator.vitra.co.uk/uk



Troldtekt v-line is cutting edge

Troldtekt's award-winning 'design solutions' range has been extended with the addition of the new v-line variant.

v-line 1way and v-line 2way both comprise panels with either 6 or 10 longitudinal grooves milled into the surface of standard 25 mm Troldtekt panels. The v-line 2 has the addition of transverse grooves every 1,200 mm where the ends of the panels meet

giving an added character to the pattern on the ceiling and the ability to create more intricate designs.

Cut into a V shape, the grooves in the panels have a more discreet look than that of the traditional deeper-cut offerings in the 'design solutions' range which are more pronounced and distinctive and use a thicker 35 mm panel.

The ability to have milled lines in a classic, thinner Troldtekt panel means they are easy to handle and competitively priced but still have the same aesthetic and visual appeal. They are a perfect accompaniment for retail, office and residential environments where acoustics need to be controlled.

Certified Cradle-to-Cradle at Gold level, Troldtekt's natural and inherently sustainable panels offer high sound absorption and tactile surface, coupled with high durability and low-cost lifecycle performance. Available in various sizes and in four grades from extreme fine to coarse, the panels can be left untreated or painted in virtually any RAL colour.

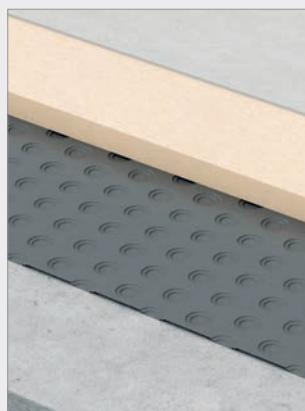
Panels can be supplied in the FSC® 100% category (FSC®C115450) contributing to



a building's BREEAM, DGNB and LEED rating. In addition, because the panels are a natural, breathable material that can absorb and release moisture they are allergy friendly and have been awarded an Allergy Friendly Product Award by Allergy UK.

Samples, case studies and technical guidance are available from Troldtekt.

01978 664255
Troldtekt.co.uk



Platon Comfort combats damp and sound for wooden flooring

The Platon Comfort membrane, from Triton Systems, offers a range of benefits in new-build or retrofit situations when installing timber or laminate flooring over concrete as well as screeded surfaces, giving lasting protection. Recently re-launched by the Kent based company to emphasise the cushioning effect of the dynamic studs on the underside of the ultra-slim cavity membrane, Platon Comfort is simply loose laid direct onto the substrate to prevent moisture transmission when the relative humidity remains as high as 95%. In fact it can be installed as soon as fresh concrete is dry enough to walk on and avoids the need to include a foam undelay. As well as delivering three times the water vapour resistance of conventional film products, Platon Comfort achieves an impact sound reduction of 17-19 dB as the specially profiled studs absorb load. The underlayer is also compatible with electric as well as conventional underfloor heating systems. Significantly, the studs create an air gap beneath the 0.5 mm continuous polypropylene membrane which facilitates the natural drying process for concrete, while weighing just 450 g/m² and increasing the total build height by only 2.5 mm. Supplied in rolls of 1.0 x 20 metres, Platon Comfort is easy to lay, needing just scissors or a knife to cut, along with a roll of Triton's Platon Comfort Tape to complete the joints before installing insulation, timber flooring or a low-voltage UFH system.

01322 318830 www.tritonsystems.co.uk



BLANCO UNIT optimises space – & peace

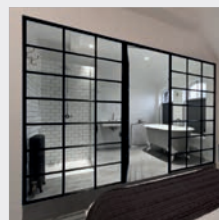


Customers can choose items from the BLANCO range to suit their kitchen style and budget. Drinking water systems – anything from the FONTAS-S II filter tap to the clever EVOL-S Pro 4-in-1 smart tap having this addition will prove not only eco-friendly but will add that extra high-tech element to the kitchen. Hygiene – everything is in one area. When chopping up chicken or vegetables, the risk of spillage is removed when carrying the chopping board from A to B as the bin is right there. Multi-functional – with these clever combinations, everything above the work surface becomes a multi-functional sink area that works beautifully, is easy to use and keep clean.

blanco.co.uk/unit



Steel windows and doors in the bathroom



Steel in the home continues to dominate in the home fashion stakes. And, with advice from the **Steel Window Association**, homeowners can enjoy plenty of options if they want the look! The most common use of steel windows in bathrooms is to create shower screens; not only are they an excellent replacement for shower curtains, the stylish design also allows plenty of light to enter the shower space. Another great way to bring steel into the bathroom is to use them as an internal partition between bedrooms and ensembles. They offer a

stunning yet simple way to establish a seamless transition between the bedroom and bathroom, which lets plenty of light between the two rooms and can open up the bedroom to give the appearance of more space.

www.steel-window-association.co.uk



Electrorad's new single feed ThermaStore High Heat Retention Storage Heater

Electrorad's newest edition to its family of electric heating has launched!

Richard Brown, Managing Director at Electrorad says "the R&D team have worked tirelessly to ensure the BRE, BSRIA and LOT20 boxes are firmly ticked and that we are recognised on the SAP database within the high heat retention category. Our ThermaStore HHR Storage System really does bring all the great advantages of storage heating without any of the negatives".

The ThermaStore HHR has high quality internal insulation around its core, enabling longevity of heat retention which ensures you have heat whenever you want it throughout the whole of the day, unlike the more traditional heaters that can often only provide enough heat for start of the day then run out toward the end. The ThermaStore also has optional app control too which is compatible with Alexa and Google Home giving you voice control of your heating!

With built in digital controls and clever thermostat the ThermaStore HHR has the ability to learn what charge is required to heat your rooms day to day, which means it really makes your Economy 7 tariff work hard for you and is



proven to be up to 27% cheaper to run than a standard storage heaters!

The ThermaStore HHR is an exciting development within the High Heat Retention

marketplace and is available from all wholesalers nationally NOW!

0113 2746799
electrorad.co.uk/thermastore-hhr-storage-heater



ThermaStore HHR By Electrorad

- High Heat Retention Storage Heater
- Single connection for storage and boost elements
- Up to 27% cheaper to run than a standard storage heater*
- Simple TFT screen with optional app control
- Improved EPC rating**
- SAP approved

*Calculated using SAP 2012, Claims verification:
www.electrorad.co.uk/thermastore-hhr-storage-heater

** When replacing other types of electric heating

OPEN WINDOW FUNCTION

100% ENERGY EFFICIENT

NO MAINTENANCE REQUIRED

HIGHLY ACCURATE THERMOSTATS

APP CONTROL AVAILABLE

LOT 20 COMPLIANT

ADAPTIVE START FUNCTION

For more information

T: 0113 2746799 E: SALES@ELECTRORAD.CO.UK W: WWW.ELECTRORAD.CO.UK

Flexing it with ARDEX uncoupling solutions

Two ARDEX Group uncoupling solutions have been launched to the market to provide contractors and architects with a full ARDEX floor tiling system.

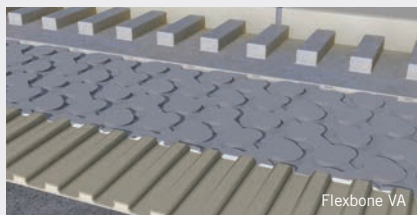
ARDEX IndorTec Flexbone VA and ARDEX IndorTec Flexbone 2E are two innovative uncoupling systems to ensure floor tiling projects are protected from lateral movements caused by expansion and contraction on substrates.

ARDEX IndorTec Flexbone VA is a high load-bearing cavity mat system – ideal for large format tiling in high traffic areas such as shopping malls, airports and office buildings.

The unique bone-shaped pattern with GripLock technology delivers outstanding tensile bond strength – higher than comparative cavity mat systems.

Its unique bone-shaped cavities, mean you can prefill with just one pass – saving you time and money on your adhesives. What's more it is suitable for use as a waterproof membrane with appropriate waterproof taping.

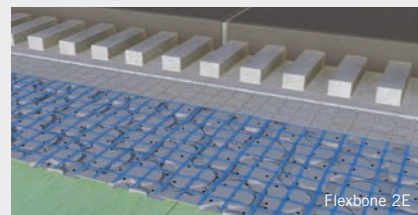
ARDEX IndorTec Flexbone VA can be used with any porcelain, ceramic and



Flexbone VA

natural stone tiles with a minimum edge length of 100 mm.

Also available on the ARDEX range is ARDEX IndorTec Flexbone 2E – a unique floating uncoupling mat for problematic substrates which can't be tiled using a bonded system. Protecting floors from lateral movement, ARDEX IndorTec Flexbone 2E is 100% uncoupled – meaning that substrates require minimal preparation. That means it can be used over substrates such as bitumen, adhesive residue, and laitance. Perforations in the mat ensure that rising moisture is dissipated through covering joints, meaning that ARDEX IndorTec Flexbone 2E can be laid over un-cured anhydrite screeds at 1.5% CM and walkable sand:cement screed, saving



Flexbone 2E

project time and costs. Further time and cost saving can be made by cutting out the need to prime before laying the mat.

ARDEX IndorTec Flexbone 2E also includes GripLock technology, and the bone-shaped cavities make for 50% faster spreading.

Flexbone 2E is also ideal for frequently-changed floor coverings and sensitive heritage substrates.

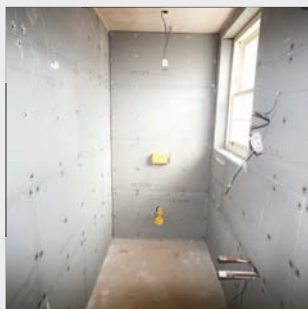
ARDEX IndorTec Flexbone 2E can be used with porcelain (8 mm minimum), ceramic (10 mm minimum) and natural stone tiles (15mm minimum) with a minimum edge length of 200 mm.

01440 714939 ARDEX.co.uk



LISTEN HERE

Award winning luxury house developer relies on Multiboard to build its bathrooms



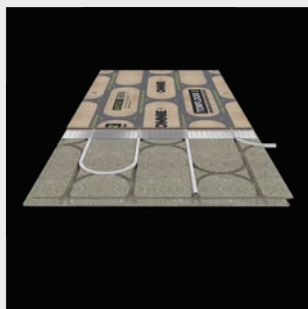
The latest development by one of the country's leading luxury housebuilders is making full use of Marmox Multiboard's benefits in converting a series of former agricultural buildings into half a dozen high specification homes. Maybanks Manor, Cox Green, close to Horsham in Surrey, is being built by Surrey based Rockwood Homes; a past winner of both Silver and Bronze awards in the annual Daily Telegraph 'What House' competition. With one property already being marketed and another close to completion, the site is expected to be finished by the end of this year, with the Multiboards featuring in the bathrooms and en-suites throughout. In total, 400 of the 12.5 mm thick 1250 x 600 mm Multiboards are being supplied by Marmox stockist, Travis Perkins; along with the special fixing plugs, waterproof tape and Marmox 360 adhesive. Marmox Multiboards are manufactured from extruded polystyrene or XPS and offer a range of positive physical characteristics, including good thermal insulation and being fully waterproof, with the polymer modified concrete coating to both faces providing an ideal key for tiling or rendering.

01634 835290 www.marmox.co.uk



LISTEN HERE

TorFloor 2® takes integrated underfloor heating to a new level



While many in the industry believed that the original TorFloor panel represented the optimum in terms of integrating underfloor heating pipes into a quick-to-install structural flooring panel, UK based manufacturer OMNIE has taken both the practicality and the performance to a new level with the introduction of TorFloor 2®. The new generation TorFloor 2® evolves from the market-leading TorFloor® predecessor by adding a 6 mm thick chipboard upper panel with pre-foiled aluminium heat diffuser. Crucially both panels feature matching routed channels to perfectly align around the 12 mm water pipe, while the printed upper face clearly indicates the pipe's position and the points where screws can be safely fixed. Not only does this arrangement greatly reduce the risk of the pipe runs being accidentally damaged when floor coverings are installed or replaced, but the location of the routed channels places the warm water pipes closer to the surface: delivering faster warm-up times. This design means that an output of 50 W/m² can be achieved with a flow temperature of 41° Centigrade.

01392 363605 www.omnie.co.uk



LISTEN HERE

The perfect interplay of quality, function & style



Finding green products that protect the building structure as well as the environment over their whole life cycle can be quite challenging. As net-zero and compliance with sustainable building emerges in the construction industry, XPS solutions with verifiable environmental footprint become all the more relevant.

Directly tileable wedi elements not only come with their own Environmental Product Declaration (EPD certificates) but are also renowned for their BBA accredited excellent thermal (0.036 W/mK) and loadbearing (133kg/m²) capabilities setting them apart from other foam tilebackers on the current market. All products are characterised by the ease of their customisation and being extremely lightweight that means less transportation weight and lower carbon footprint as a result.

Behind every product there is mindfulness & craftsmanship. Due to its close collaboration with industry professionals since 1983, having

invented countless bathroom solutions, wedi have become the pioneer of the XPS industry. Practical and secure wedi XPS product solutions don't only offer peace of mind for the installer, reduce labour and dust, but speed up the project completion and improve health & safety conditions on site.

wedi is the only XPS manufacturing company whose products have received the European Technical Approval for 'sealing of floors and walls in wet rooms' and as a result no additional tanking or special elements outside the system are needed. Complemented by its new product line of seamless surface finishes, wedi's floor-to-ceiling system solution now offers protection not only at substrate but also at surface level. Thanks to their modular design, perfectly coordinated wedi components allow for unlimited freedom in design whilst providing all-round protection against mould & fungi.

From manufacturing with 100% green energy through using recycled materials

for both its XPS substructure elements and seamless design surfaces to the comprehensive insulation its sealing systems offer – the foundation of the brand lies in innovation, technology and sustainability.

Equally suited for refurbishment and new build projects, wedi products deliver environmental and cost-saving benefits, giving enhanced performance and functionality for the user.

High-quality installations however depend not only on great products but also on knowledge and experience using them and so, in order to deliver the systemised sealing solution, the brand is renowned for, wedi offers training sessions and even on-site training for qualifying projects. Bespoke flat-packed bathroom PODs are also available on request – get in touch to discuss your project by emailing enquiries@wedi.co.uk.

0161 864 2336 www.wedi.net/uk



LISTEN HERE

Vicaima IDS changing trends and possibilities

As the construction industry gets ready to welcome a new year with a fresh set of challenges and opportunities, 2023 heralds the dawn of changing trends and possibilities in the world of interior timber doors and door sets. Ever one to embrace innovation and seen as a true manufacturing trailblazer, Vicaima bring design, performance and quality solutions to the interiors arena. With this in mind, the launch their latest incarnation of the perennially popular Interior Door Selector (IDS) has been much anticipated.

In recognition of changing specifier preferences, Vicaima is largely moving away from conventional paper-based brochures, towards digital catalogues. This is not only environmentally friendly, but also enables a more dynamic user experience. New products and useful information can be updated instantly and at the same time enabling links to other resources such as technical data, so that specifiers can be fully equipped to make an informed decision about their next project.

Bigger than ever! This latest brochure contains over 150 pages to inspire professionals who are looking to transform modern living space. From economy options which are ideal for affordable homes in the current cost of living crises, to ground-breaking quality designs that create an instant wow factor and set the standard for twenty twenties living!

Although best known for fresh ideas in veneer, foil, laminates and paint lacquered finishes, Vicaima are also opening a window to the future with their new Infinity Range, where digital and precision imagery can re-imagine stone, metal and other surface features, in a way that hitherto was the stuff of dreams!

Of course, innovative doors from Vicaima are not confined to aesthetics alone. With



fire safety, security, acoustics, and thermal efficiency very much in the minds of specifiers and regulators. Vicaima Door kit and set solutions build on a framework of rigorous testing and superior constructional cores. Among recent additions to what is already a comprehensive performance range, comes VCP 60 from Vicaima. This in-house developed core, which is third-party accredited under the BM TRADA Q-Mark scheme; provides a one-hour FD60S rated door, but with a considerable cost saving over conventional products, thereby improving safety while keeping budgets on track.

What to look out for in the latest Vicaima IDS

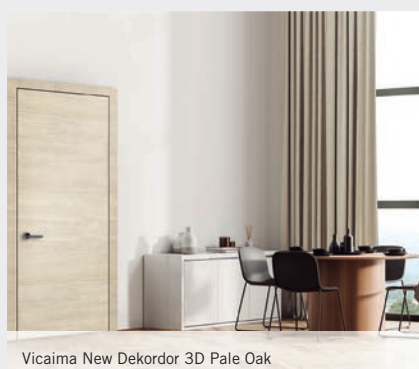
There are a great many new products to be found in this latest issue, among which look out for:

- **Naturdoor Vision** – A new range where real wood veneers are taken to new heights, with tones such as Rich Mocha and Fresh Bamboo

- **New Economy Veneer Range** – Cost effective options such as Red Oak and Walnut Crown EV give that luxury look for less
- **Dekordor 3D** – Two new colour tones are added to this highly tactile and durable finish range, with Cloud White and Pale Oak
- **Visual Sensations** – A touch of Scotland comes to this popular foil collection, with the introduction of Highland.
- **Vicaima Wardrobes** – Flexible configurations to match Vicaima's many door finish options.
- **Infinity** – Endless Possibilities to be explored. Pushing the boundaries of interior design

To download a copy of the Vicaima Interior Door Selector or for further inspiration, please visit the Vicaima website or email info@vicaima.com

01793 532333
www.vicaima.com



Vicaima New Dekordor 3D Pale Oak



Vicaima Dekordor SD Highland



Vicaima Vision



The ultimate Fire Safety Door from Astraseal.

Safe. Reliable. Quality Assured.

Fire Doors by Astraseal give
peace of mind as standard.

- ✓ Fully third party certified
- ✓ Industry leading prices
- ✓ Fast turnaround solution



Our Fire Doors are third party
dual certified for both fire and
security rating.



We manufacture everything
in-house so we can offer
competitive prices and fast
lead times.



Our Fire Doors come in several
glazed designs as well as
different solid designs.



Available with glazed top lights
and glazed side panels.



A variety of colour finishes are
available.



Leading the way for higher Fire Door safety standards...

Astraseal is the first UK Manufacturer to be awarded third party
certification under the new BM Trada Scheme STD 170. We have also
been awarded certification for Installation (STD052) and Maintenance
(STD058). Our Fire Doors have been fire tested from both inside and
outside to BSEN1634-1.

Now available with glazed side panels... Fully third party certified
and bi-directionally tested to BS EN1634-1.

Scan here to discover more about Fire Doors from Astraseal...



Educational Nordic Copper

The architectural clarity of a new teaching facility at Gresham's School in Norfolk – incorporating panels of Nordic Brown Light pre-oxidised copper alongside full-height glazing – typifies an innovative approach to education.

Enabled by Sir James Dyson, a former pupil at the school, the centre for Science, Technology, Engineering, Arts and Mathematics (STEAM) education is a state-of-the-art structure at the heart of the School campus. WilkinsonEyre's design develops and refines the evolving STEAM building typology, and follows a modern aesthetic integrating industrial components with landscaping and low energy systems.

The two-storey exposed steel frame envelopes a mixture of large panels: some glass and others Nordic Brown Light pre-oxidised copper – either opaque or with square perforations adding transparency whilst screening glazing behind. Some of the panels are set back within the structure, introducing landscaped open areas which can be used for outside teaching. Integrated planting blurs the

boundaries between outside and in. The thoroughly modern building remains sympathetic to its historic context and its scale reflects that of the 1916 school chapel across the lawn. Meanwhile, the patterns in the oxidised copper panels mirror the decorative flint details on the chapel elevation.

Yasmin Al-Ani Spence, Director at WilkinsonEyre, said: "This building will provide contemporary teaching spaces for the investigation of the sciences and the arts simultaneously, enhancing critical thinking and promoting innovation. The building itself – through the clarity and honesty of design and construction – becomes a teaching tool in its own right."

With an area totalling 4,000 m², teaching spaces are generous and filled with light. They include classrooms, laboratories, workshops, an auditorium and open-plan common spaces able to host a variety of teaching and learning uses. An inviting and interactive internal courtyard, doubling up as circulation, features an arts hub, seating area, and IT point and facilities, further reinforcing the integration of art, design, and science.



Photo: Peter Landers

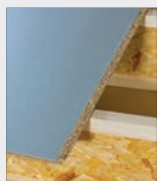
The building is equipped with the latest technology to ensure the highest levels of teaching, from robotics and Artificial Intelligence to programming and machine learning. The building will also provide greatly improved opportunities for the outreach programme which Gresham's runs with local schools.

A growing series of building studies exemplify the best in contemporary architecture with Nordic Copper today.

www.nordiccopper.com
NordicCopper@aurubis.com



Safe and sustainable working platform



CaberShieldPlus, from West Fraser (Trading as Norbord Europe Ltd), is a durable, P5 flooring which features a permanent, waterproof coating on both sides. Almost exclusively preferred now to P4 boards – for both new-build and refurbishment applications, the P5 particleboard panels are able to withstand the unpredictable British climate without deterioration. In fact,

if installed using CaberFix D4 adhesive, the boards have BBA approval for 60 days exposure to the weather while, for safety, the upper face is non-slip and colour-coded to distinguish this.

uk.westfraser.com



Housing Management & Maintenance

The Housing Management & Maintenance (HMM) website is an online provider of past and present news items dedicated to keep professionals within this sector updated with a wide range of topics including legislation, projects, products and more. housingmmonline.co.uk is a one-stop source for all the latest press releases providing any visitor with access to information about products and services that they may require. From the website, you can find links to digital issues that have live links to advertisers' sites, as well as email alerts to keep you as informed as possible.



www.housingmmonline.co.uk

Thermoblocks maintain continuity to 'wrap' for bespoke Bristol house build



Already well accepted across the UK construction industry as a quick and effective means of addressing cold-bridging around the perimeter of building oversites, or beneath parapet walls, Bristol based architects Marshall & Kendon have sought technical advice from manufacturer Marmox, regarding the integration of its Thermoblocks into the exterior insulation 'wrap' of a bespoke, near-to-zero timber frame construction. The founding partner of Marshall & Kendon, Jeremy Marshall, confirmed: "It is our habit as a practice to always run insulation across the outside of the structure, wrapping them rather than putting it within the timber frame. In this instance, Thermoblock enables us to make the layer of insulation continuous as it passes through the loadbearing structure, while the airtightness membrane is continued up the outside of the sheathing boards. Our structural engineers were satisfied that Thermoblock offers more than adequate compressive strength and our main contractor, who is very innovative in their approach to timber frame construction, agreed to trial them."

sales@marmox.co.uk www.marmox.co.uk



Approved Document B-compliant glass balustrade brings views at retirement home



Retirement living has never looked so appealing! Quantock House is an iconic building in the heart of Taunton, Somerset offering its homeowners aged 55 and over a safe, contemporary environment in which they can live life to the full. The complex features 1 and 2 bedroom apartments with balconies that maximise the stunning views of the Quantock Hills. Set in secluded gardens, residents can enjoy the luxury of an owners lounge, bistro and treatment room, all within

close proximity to the centre of Taunton.

The balconies on the development feature the A2-s1,d0 fire-rated Easy Glass Prime balustrade system by Q-railing, providing the highest safety standards. For the project, Q-railing UK teamed up with Architectural Metalwork Installations (AMI) and the architects at the Affordable Housing & Healthcare Group.

With offices all around the world, including here in the UK, Q-railing are known as the benchmark and market leaders in their sector. This innovation and forward thinking was extremely beneficial when the changes were made to Approved Document B in December 2018. Architects and developers were facing a major issue and the industry had to find alternatives to glass balustrades on residential buildings above 18M. This problem was solved when Q-railing introduced a fully tested and compliant laminated glass balustrade system.

According to Darryl Holloway, Architectural Sales Manager at Q-railing UK, "Not being able to work with glass barriers for residential high-rise caused much heartache." Darryl went on to say, "Following the changes to Approved Document B in December 2018 that saw all materials on residential buildings of 18M and above require a classification of A2-s1,d0, in accordance with BS EN13501 – Q-railing needed to pioneer systems that would be compliant with this new regulation. Following very quickly after our A2-s1,d0 laminated glass solution, came our revolutionary aluminium vertical bar system. This can achieve both 0.74kN/m residential loads and the more onerous 1.5kN/m load for areas where people may congregate. It can be top or fascia mounted and has the ability

to be powder coated in any colour the client wishes. This, along with the glass option, now makes for a full suite of products that architects/ designers and specifiers as always can rely on Q-railing to deliver"

The beauty of the aluminium vertical bar system is that it is fully customisable- colours and finishes can be chosen to compliment any design. The vertical bar system, along with the laminated glass option, is currently being installed on main contractor projects all around the UK. So now there are multiple fire-rated options for you to choose from, without compromising on the safety of your project.

0800 781 42 45
q-railing.com



LISTEN HERE



Q-RAILING – DESIGN EXCELLENCE FOR 20 YEARS

Let the team at Q-railing make your renovation journey a little easier. Would you like to add a frameless glass balcony or Juliet, or glazing to your terrace? Then head over to [q-railing.com/homebuilding](https://www.q-railing.com/homebuilding), complete the form and we'll be in touch to guide you with the design. We will then link you with an experienced installer who will complete the fitting to the standard we expect. Simply scan the QR code to discover our wide range of certified glass balustrade systems.

Q-railing UK T. +44 (0) 1782 711 676



www.q-railing.com/homebuilding

Perforated panels combine safety, functionality and aesthetics

Overlooking the Manchester City Canal, a total of 500 apartments are being built in Manchester Waters. The location, quality and facilities are unique, and the selection ranges from studios to 3-bedroom apartments. The first blocks are finished and stand as a symbol of the new Manchester.

Premium waterfront living on this level must offer all amenities, including the ability to park near the residence. Therefore, car park facilities have been established on the lower level. In this connection, RMIG Solutions has supplied facade panels for covering the car park.

Challenges and wins

The facade panels presented several challenges. Aesthetically, the panels should be decorative and match the architecture. Functionally, they should have an extraordinarily large open area, as the rest of the basement is surrounded by solid walls.



Finally, the panels should appear in a raw finish, directly from the mill.

The task was solved thanks to a close and trusting collaboration with the architect. Aesthetically, the choice fell on a botanical pattern with a closed surface at the top that hides the concrete deck.

An open area of 50% is difficult to achieve in this thickness (3 mm), particularly in an



aesthetic finish, but with precision tools, our sales and development departments at RMIG Solutions managed to increase this. The architect proposed displacing some of the panels to provide extra ventilation, and this ultimately resulted in an open area of approximately 75%.

01925 839610 www.rmig.com/en



Insight Magazine

Insight Magazine is a residential construction magazine bringing you industry news, focused features, and on-site spotlights every quarter. Edited and published by Resibuild, our aim for Insight is to keep you informed of the latest industry trends in an educational, entertaining way with a stylistic flourish.

Focused features

Every issue of Insight Magazine has a new quarterly focal point. In the past, it has focused on fire safety across residential construction, sustainability and environmental, social and governance strategies for your projects and even on innovation in the technological sphere. Insight features several articles in each issue from key partnered authors that concern the issue's focal topic. In the most recent Q3 2022 issue, global residential construction was focused and featured articles on the global housing crisis, how concrete balconies have been beneficial in the Dutch market and on simplicity in your residential project. You can find a copy of the Q3 2022 issue at: www.resi.build/post/insight-magazine-q3-2022

Ask the Expert

One of the defining features for every issue is the 'Ask the Expert' column. Every quarter, Resibuild gets in touch with an industry expert to ask them questions about their field of expertise in the hopes that it gives you a better understanding of the topic being discussed. Most recently, Lee Goodenough, sales & commercial director at Sapphire Balconies, spoke candidly about depending on your supply chain and whether supply chains are ready for an influx of mass regulation. Staying in touch with these experts is crucial to keeping our industry informed, so keep an eye out for which topics are covered every quarter.

On-site Spotlight

Insight isn't just articles and interviews – it takes the opportunity every issue to highlight some interesting residential construction projects from both the UK and globally. Insight has featured fascinating balcony projects, astounding facade details and even large-scale projects such as the upmarket Southbank Place. Insight features case studies



of prominent projects too, explaining some of the challenges each one faced, and the solutions created to overcome them.

Insight Magazine is an informative, involving, and insightful quarterly publication that endeavours to keep you up to date on the latest industry trends. From focused features to expert analysis to on-site spotlights, Insight is the residential construction journal that helps you to learn at every opportunity.

0344 88 00 553
balconies.global



Operator in hiding

An automatic swing door operator that is completely hidden from view has been introduced by GEZE UK.

The UFO NT is the new underfloor automatic swing door drive. It boasts a much wider range of capabilities and features than its predecessor including manual use via the Smart swing function.

Providing maximum transparency and meeting aesthetic and access demands the UFO NT is hidden in the floor and so overcomes the problem of a limited area at the top of the door frame, perfect for use with glass facades or listed or historical buildings with structural limitations, or where automatic doors are required but with an operator that is not visible.

The UFO NT can be used on any type of door – glass, wood or metal and is especially suitable for use where vandalism could be a problem as the operator is fully concealed. It is also suitable for retrofitting.

It provides compliance with the demands of the Equality Act and the building standard BS EN 8300. Developed from the robust and efficient GEZE Powerturn operator the UFO

NT has a higher IP rating (IP 67) making it suitable for external doors, and a higher closing force than its predecessor size EN1 – EN4. In addition, it can operate leaf widths up to 1,250 mm on external doors and 1,600 mm on internal doors, and leaf weights up to 125 kg, surpassing the older unit in all areas of performance.

The Smart swing function enables large doors to be operated manually with ease, though if the door is manually opened at high speed the operator will apply motor resistance to slow it down. Using a redundant spring system, the Smart swing function allows the operator to be fully motor-controlled until power failure or fire alarm activation.

The versatile UFO NT underfloor operator is suitable for use with GEZE Cockpit and building management systems.

Andy Howland, sales and marketing director of GEZE UK, said: “The aesthetically pleasing UFO NT is perfect for use in all types of buildings. Its versatility as an automatic swing door provides safe, efficient and convenient means of opening and closing a door yet the Smart swing allows it to be



used manually with ease, its location in the floor makes for an attractive, unhindered door set.”

To find out more about the UFO NT email GEZE UK, or for more information about the company’s comprehensive range of automatic and manual door closers visit the website.

info.uk@geze.com
www.geze.co.uk



LISTEN HERE

Senior's tall order in Bristol



Senior Architectural Systems, the UK's largest privately owned aluminium fenestration solutions manufacturer, has supplied the fenestration package for use on the tallest residential building in Bristol.

At 26 storeys high, the residential tower block forms part of the wider Castle Park View scheme, which is the largest Urban Green Space in the city. The development also features a main block and a 10-storey tower, creating in total 375 new one and two bedroom apartments. Senior has supplied its slimline SF52 aluminium curtain wall system and patented low U-value PRe® aluminium windows and doors for use across the scheme, working alongside specialist installers Denval, architects Chapman Taylor, contractors Bouygues UK.

Created following the extensive regeneration of a brownfield area and built on the former site of an ambulance station, sustainability is a key part of the design of the Castle Park View and the residential scheme has achieved a level



four standard in the Code for Sustainable Homes certification.

Both Senior's thermally-efficient SF52 aluminium curtain wall system and Part L compliant PRe® aluminium windows and doors are highly durable and fully recyclable, making them the ideal choice for a modern development that is also striving to help reduce the energy bills of its residents. The

thermal performance of the aluminium fenestration system complements the other sustainable features including the use of the UK's largest water source heat pump, the nearby Castle Park Energy Centre, as the development's main heat source.

01709 772600
www.seniorarchitectural.co.uk



LISTEN HERE

Sika donates green roof to facility aimed at tackling social isolation

Leading roofing manufacturer, Sika, has donated over £7,000 worth of materials to a social enterprise in Salford which is creating a safe, indoor space to host events and activities aimed at tackling social isolation.

Created from two disused shipping containers, the new building is located at the Cleavley Community Forest Garden in Winton, which is run by Incredible Education CIC, a social enterprise providing nature-based services for local communities through horticulture and forest school activities.

Prior to the arrival of the shipping containers, the garden and its activities were at the mercy of the weather, having no covered area large enough to protect groups or events from the elements.

Having access to the new covered space will enable the garden to host music events, health activities, parent and toddler groups and workshops all-year round; all with the aim of improving community connection.



The building will primarily provide a secure indoor workshop to Salford community group, Working in Wood, which runs woodwork projects for anyone over the age of 18 looking to gain skills or meet new people. The group, which helps to tackle social isolation, has also been involved with the construction of the new building, having erected the timber frame surrounding the containers.

The two shipping containers were combined to form a 20 ft x 30 ft room topped with a Sika Green Roof, which blends in with

the natural surroundings and nods to the land's former use as a plant nursery.

The system build-up included SikaBit VB-724 Air and Vapour Control Layer (AVCL) VCL, 100 mm Foil-faced AL Sikatherm insulation and the new, sustainable roof membrane Sarnafil Advanced Technology (AT) – the UK's only Cradle to Cradle Silver certified single ply membrane. The membrane is not only independently certified in sustainability performance but as it contains no plasticisers, oils, chlorine or heavy metals it is ideal for sustainable construction. Topping this, the aluminium edge trim, SikaRoof drainage layer, SikaRoof Biodiverse substrate and a SikaRoof Wildflower Blanket, created a natural habitat for flora, fauna and wildlife. The wildflower blanket was laid in such a way to encourage the roof to self-germinate with local seeds blown by the wind onto the roof.

01707 394444 www.sika.co.uk/roofing



Titon's FireSafe® Air brick is the perfect fit for Hayes village



Titon's FireSafe® Air Brick has recently been installed at the new Hayes Village development in West London.

Hayes Village, situated at Nestles Avenue, Hayes in Middlesex, is a brand new development from Barratt London offering 1,473 new homes. Built on the former Nestle Factory, the area is undergoing significant regeneration.

SIG Distribution, priding itself on delivering expert knowledge and service across the construction industry, supported the development with key products including the Titon FireSafe® Air Brick.



The Titon FireSafe® Air Brick is a specialist product developed and manufactured by offering low resistance to airflow, but high resistance to fire as set out in Approved Document B (fire safety) volume 1: Dwellings, 2019 edition.

Commenting on the partnership with Titon and SIG Distribution, Laura French, Area Sales Manager stated "It was a pleasure working with SIG Distribution, they have a vast range of product knowledge and knew early on that the Titon FireSafe® Air Brick was perfect for the Hayes Village scheme. By supporting SIG Distribution with their product specification,

Titon were able to meet and exceed all their requirements.

The Titon FireSafe® Air Brick is designed and tested to BS EN13141-2:2010 specifically for mechanical ventilation systems. Made from 1mm electrogalvanized sheet steel, fire class A1 'no contribution to fire' and polyester powder coating meeting EN13501-1 classification A2-s1,d0. The Titon FireSafe® Air Brick is ideal for fire safety applications.

01206 713800
www.titon.com/uk



Solar Street Lighting for any kind of development



Vivid Solar Street lighting provide high quality environmentally friendly, off grid, zero carbon, solar street lighting systems.

In a world where global energy prices are soaring, there has never been a better time to change to solar street lights.

We have been supplying solar street light systems for many years and have seen the technology and reliability improve to the point that our new light technology has been designed and thoroughly tested in the UK, for the UK market. The units are designed to withstand all weather conditions and to also work when there has been limited day light.

Our knowledge and understanding enables us to design solar systems for any kind of residential development, whether it be a single street or a major multi housing development. Our units require no ducting or mains power, they can also be retro fitted on existing developments if extra lighting is required.

Vivid Solar Street light currently supply and fit to many UK house developers, local governments and the ministry of defence.

We offer a full design service tailored for the installation required.

For more information please call or email enquiries@vivid solar street lighting.co.uk.

02393593000

www.vividsolarstreetlighting.com



**We provide environmentally friendly and cost-effective
SOLAR LIGHTING TECHNOLOGY**



- Lighting the way all year round
- Designed and tested in the UK
- Carbon Neutral
- Zero running costs
- Can be easily installed in any environment
- Domestic, commercial, and industrial applications

vividsolarstreetlighting.com

enquiries@vividsolarstreetlighting.com

02394 004786

Swifix innovative fixings for use with EWI and MMC systems

The SWIFIX fixing solution has been designed and developed specifically for refitting and installing both lightweight and heavy items through External Wall Insulation (ETICS) systems.

The fixings can be used during or after the EWI system installation, providing the most cost effective and maintenance-free solution for the market, whilst also ensuring the integrity and protection of the EWI system, protecting guarantees and warranties.



The solution is suitable for all system finishes from brick slip, textured and rough-cast/dashing and through all types of insulation types and thicknesses of 50 mm to 300 mm.

Tested by the BRE for strength, compression, wind, load and thermal loss the fixings ensure the thermal efficiency of the building is maintained and provide an aesthetically pleasing appearance to enhance newly installed external wall insulation. The fixings are approved by the NHBC and Sky (for satellite dishes), as well as being recommended by numerous EWI system designers and installers across the UK for securing any item from bird netting, external lights and rainwater goods to air source heat pumps and canopies.

Considering the environmental impact, all products are manufactured in the UK using recycled materials and are available in black and white as standard; however bespoke colours are available to compliment



the finished render if required. Fixings are available direct from SWIFIX Ltd via their on-line store and from various distributors and builders' merchants throughout the UK, with design and technical guidance available.

For more information about specifying Swifix fixings, please visit the website.

01884 560477
www.swifix.co.uk



LISTEN HERE

SWIFIX Fixings



ROBUST



INNOVATIVE



EASY TO INSTALL



SWIFIX fixings – the complete fixing solution for fitting items through EWI and MMC systems.

- ✓ Technically proven fixing system
- ✓ Aesthetically pleasing finish
- ✓ Ensures continuous insulation
- ✓ Maintains warranties and guarantees



Made in the UK



Ideal for new build and retrofit projects

To find out more about specification go to www.swifix.co.uk

✉ info@swifix.co.uk

☎ 01884 560477

#FollowTheBear



Crittall T60 is a Camden Classic

Crittall Window's T60 Thermal Break System features as part of the £40 million renovation of the KOKO iconic music venue in Camden, London.

Known as Camden Palace from 1982 until its 2004 purchase and extensive restoration when its name changed to KOKO, it serves as one of the premier live music venues in London.

Severely damaged by fire in 2020 KOKO reopened in April of this year following a multimillion-pound refurbishment.

Style and performance

The decision to incorporate T60 into the Koko project reflects the system's ability to offer the same aesthetic as Crittall's well-known steel-framed windows but with an enhanced thermal performance.

Crittall's T60 is able to meet the most exacting thermal credentials. The window features an advanced high density glass fibre reinforced polyurethane isolator as a thermal barrier. This, together with housing high performance double or triple glazing up to 32mm wide, ensures the system surpasses the

requirements of current regulations while at the same time providing contemporary levels of comfort, particularly in harsher weather conditions where traditional steel windows may not have previously been sufficient. T60 can provide a thermal rating of U_w 0.8 W/m²/K or 0.14 BTU.

All this is achieved within the same slender profile for which Crittall steel windows are duly celebrated, ensuring the maximum amount of daylight entering the building, which in itself is a contributor to sustainability and reduces energy consumption. And steel, of course, is itself a 100% recyclable material.

"More and more people are considering the thermally broken T60 as their first choice when planning a new build or a refurbishment," says Crittall managing director Russell Ager. And if there is a heritage element to a development the window because it offers the same sightlines as traditional rolled steel products, is finding favour with planning authorities.

01376 530800
www.crittall-windows.co.uk



Hidden benefits

Health and beauty retailer Boots UK is well known for offering beauty products to enhance the stylish good looks of its customers, so the entrance to their brand new store in Kensington High Street in London, just had to step up to the mark.

The busy store needed an entrance to complement its glass and bronze-anodised facade and GEZE UK had just the answer – the UFO NT.

The UFO NT is an underfloor operator that is completely hidden from view, so perfect when installed with glass doors.

Extremely quiet in operation and complying with the demands of the Equality Act and BS EN 8300 ensuring access for all, the UFO NT can be used on any type of doors – glass, metal or wood, and can operate doors with leaf widths up to 1250 mm on external doors and 1600 mm on internal doors and up to 125 kg in weight.

GEZE UK worked with facade solutions specialists Colorminium to design and install double doors with two UFO NT automatic operators to the store entrance.



The Boots store is part of a mixed use building on the corner of High Street and Wrights Lane, the 1970's building was remodelled and extended, to completely transform it and includes office space, a new retail arcade and connection to the London Underground.

Said Andy Iredale, GEZE UK's national sales manager for automatics and window technology: "The UFO NT was the perfect solution for this busy store, the operator is concealed beneath the floor giving designers the freedom to create aesthetically pleasing entrances yet still provide automatic access."



Said Mihai Ciobanu, project manager at Colorminium: "We have worked with GEZE many times and we were delighted with this solution from them. This new product is mounted below the finished floor level and so gave us the clean stylish entrance we wanted."

01543 443000 www.geze.co.uk



Iconic Chesterfield refurb is engineered to perfection

When the iconic property in Chesterfield went on the market, couple James and Rebecca knew it was the right project for them. Built in 1927 by the inventor of stainless steel, Harry Brearley, the house was in need of some love. Brearley purchased the site at the end of the First World War, and the six bedroom home now sits on more than an acre of spectacular gardens. The couple, having always lived in Chesterfield, were aware of the house and its famous previous occupant, so they jumped at the chance when they discovered it was up for sale. James said "We've always liked projects, this was the most unloved property on the street that needed some well-deserved TLC!"

They initially thought the project would take 7-8 months to complete, "there isn't a square inch of the property or grounds that haven't been refurbished or modified in some way, therefore 8 months went into two years! It cost twice as much as we thought and took twice as long, but we wanted it done a certain way to ensure we achieved the perfect result."

James and Rebecca knew that it would've been far simpler and cost-effective to knock the house down and start again, but didn't want to add to the 'throwaway' society we



Project by



unfortunately now live in. "We love old buildings, classic cars, antiques etc. This house was built in an era where quality mattered and there were no time or cost constraints. It's a solid property, built by a world-famous engineer, so I'm sure no corners were cut. It's nice to be able to bring a property back to life and restore it. We've ended up with something unique, well-built and has history to it."

The couple wanted to maximize the garden without blocking any of the

incredible view, so they decided on a glass balustrade system from Q-railing. By utilising the existing terraces, seating and dining areas were created and framed in glass. "We've used the Q-Railing brand for over 10 years as they are the Rolls Royce of balustrade systems" said James. "Backed up with a fantastic technical support team, along with a professional service throughout the design and installation process."

Taking on a renovation project of this size can be daunting, and James had the following advice "Have a Plan, but keep this updated each week. The project will evolve as the works progress, and you'll have new ideas on designs etc. Live and breathe it, early mornings, late nights, weekends, every spare hour you have – take the time to have a coffee and walk round the property, you might have another idea. Look as far forward as you possibly can – remember, if we can predict the future, it helps us to take the right steps now. And whatever your budget it, double it. We've learnt, buy cheap – buy twice! And finally, "Always keep positive; some days are better than others. When it's complete though, you'll feel a huge sense of accomplishment and you'll be battled hardened ready for the next one!"

Product by

Q-railing



0800 781 42 45
www.q-railing.co.uk





Q-RAILING – DESIGN EXCELLENCE FOR 20 YEARS

Let the team at Q-railing make your renovation journey a little easier. Would you like to add a frameless glass balcony or Juliet, or glazing to your terrace? Then head over to [q-railing.com/homebuilding](https://www.q-railing.com/homebuilding), complete the form and we'll be in touch to guide you with the design. We will then link you with an experienced installer who will complete the fitting to the standard we expect. Simply scan the QR code to discover our wide range of certified glass balustrade systems.

Q-railing UK T. +44 (0) 1782 711 676



www.q-railing.com/homebuilding

THE PREMIUM BRAND IN RAILING SYSTEMS | [WWW.Q-RAILING.COM](https://www.q-railing.com)

Q-railing

Downer offers a new 'digital' HELPING HAND® with a dedicated website

Rainscreen systems manufacturer aims to get architects framing with a new website – www.downerframing.com



Leading UK rainscreen framing systems manufacturer Downer is giving architects a digital HELPING HAND® with the launch of a new website.

Designed to give super-easy access to technical guides, case studies and brochures, and even an online appointment booking system, the new website also enables specifiers and designers to get static and thermal calculations, including guidance and cost advice online, in real-time.

In addition, architects can book CPDs and a personalised tour of the Downer framing factory in Hastings, East Sussex which qualifies it for Made in Britain membership. The first 50 visitors to the new site will also get a special gift.

Downer's new website explains how the ever-evolving face of architecture demands a supporting cast of rainscreen framing systems that can deliver on energy, versatility, building protection and budgetary requirements, without inhibiting design.

It details how Downer's portfolio of fully engineered and BBA-certified aluminium rainscreen framing solutions delivers on these challenges and meets the differing needs

of the most diverse range of projects, from residential, healthcare and education, to transportation, leisure and retail.

This solutions portfolio includes the original Downer DCS031 HELPING HAND® bracket framing system which is designed to provide vertical support to most rainscreen panels using the principle of a ventilated facade. HELPING HAND® brackets, combined with extruded aluminium L and T profiles, provide the installer with an adjustable system that allows for thermal and structural movement and variation in cavity depth to suit project specific requirements.

As part of the Architectural Panel Solution family, Downer has provided comprehensive, non-combustible rainscreen solutions for more than 50 years. Working both directly and via a respected and robust distribution network, the manufacturer offers a reliable and highly cost-effective portfolio of facade products which can be used in conjunction with APS' rainscreen panels, or independently with an architect's chosen facade.

As well as the original DCS031 HELPING HAND® system, the website also provides information on Downer's

other framing systems – DCS041 floor to floor framing system, DCS004 secret-fix cladding system and DCS021 Omega and Zed rainscreen framing system, as well as fixings and accessories. Downer framing's extensive UK stocks of standard items are typically available for despatch within one to two days.

Additionally, the new website offers 10 reasons why architects should specify Downer rainscreen framing systems:

1. As they are engineered to perform and manufactured from extruded 6000 series aluminium (Grade 6005A and 6063), Downer systems deliver on all fronts - energy efficiency, versatility, strength, durability and protection
2. BBA approved for complete assurance, Downer systems have been tested to extremes
3. As Made in Britain members, Downer delivers strong lead times, with systems manufactured in their UK factory
4. Easy to install and maintain, Downer framing systems are also cost effective
5. Value engineered from the moment

go, Downer solutions are project specific and can be combined with a strong portfolio of rainscreen panels. The Downer team supports customers throughout the lifespan of their project, maximising value at every stage with high-performance products that feature as strong a focus on safety as they do aesthetics

6. Fixings are specified, and stocked, for each system
7. In-house static and thermal calculations are available
8. Anodising and powder coating are available
9. Cutting service is available
10. Extensive UK stocks of standard items are available for despatch in one to two days

In quick succession, following the release of the new website, Downer will shortly be launching Downer Designer – a next-generation, dedicated, free-to-use platform for the real-time development, creation and costing of Downer framing project designs. Watch this space!

Awards. In the frame...

APS' Downer framing is also in the running in this year's Facade Awards 2022, in conjunction with premium quality facade solutions, including Swisspearl fibre-cement cladding panels and Petrarch reconstituted stone rainscreen facade.

The Filmworks actually features an APS trilogy – Petrarch and two of Downer's framing systems.

The Filmworks, in the London Borough of Ealing, which has been shortlisted in the Best Refurbishment Project category, features Downer's DCS031 HELPING HAND® framing system and DCS004 secret fix system, alongside parent company Architectural Panel Systems' Petrarch engineered stone rainscreen facade.



Set behind the retained historic art deco facade of Ealing's former Empire Cinema, the £100 million mixed-use regeneration scheme comprises more than 200 new homes overlooking a central square, lined with bars and restaurants, and featuring a double-height entrance foyer to the eight-screen Picturehouse Cinema, the biggest outside London's West End.

The Petrarch panels and Downer framing systems were specified by architects TP Bennett, predominantly for their recyclability, sustainability and high durability, and they were installed by specialist sub-contractor Richardson Roofing.

Richardson Roofing's contracts coordinator Krissy Dawson said: "The team really do know their products well and were very helpful. Despite this being a somewhat difficult site with delivery booking requirements, they worked with us to optimise logistics for just-in-time deliveries."

Website testimonials

"The Downer framing team, from sales and

order through to customer support, offer a dependable and friendly service and are always a pleasure to deal with. As for the product, Downer framing itself is so easy to install and if we ever need any technical support or optimisation calculations, the team is on hand to advise."

Lee Staniland, Procurement Manager, Intex Facades

"We can't praise the team enough for their hassle-free, fast service in dealing with our orders and delivering the system to site. The system itself is easy to install and the team carry out all necessary structural calculations for us."

Ted Walker, Operations Director, KDD Construction

If anyone would like to know more about Downer, or to book a CPD:

01424 852 641
info@downerframing.com
www.downerframing.com



OUR NEW
DOWNER FRAMING
WEBSITE IS LIVE



Book a CPD and get
a personalised tour.
Plus a special gift for
the first 50 visitors.

DOWNER
ORIGINAL HELPING HAND SYSTEM



Green Windows for a Green House – River House is a lesson in sustainability



Situated on the edge of the River Glen in Lincolnshire, River house is a unique self-build property that oozes contemporary style. Built using sustainable materials with a keen eye on thermal and weather performance, the A rated building is situated on a 1920s plot of timber houses traditionally used by local business people as summertime beach houses. Over the

years the old properties have been demolished and new ones developed to create an eclectic mix of traditional and contemporary properties, each with their own unique style.

The River House's contemporary feel is enhanced by its open plan living area with high ceilings, large sliding patio doors offering uninterrupted views of the river and lots of plants to create

a calming space.

The house faces south and enjoys beautiful sunrises during the winter, the big sliding doors allow a nice reflection of the ripples on the water into the main living space. Concern for the environment featured strongly in Chris' discussions with his architect and the property has been built to incorporate solar panels, pv panels, water panels,



underfloor heating, extra thick insulation and George Barnsdale high performance timber windows and doors.

Asked why he chose timber rather than uPVC or aluminium, Chris reiterated his commitment to the environment.

"It made sense to go for timber with it being a timber framed eco building. Timber windows last well and can always be fixed in years to come and George Barnsdale offered a really wide range of furniture options and colours. In the end, I went for pale green which really makes the house stand out along the river bank."

Chris chose to make his main entrance door a Grandis hardwood sliding patio door with stormproof casement top lights. A further two sets of sliding doors were chosen for the dining and kitchen areas creating a vast expanse of glass across the riverside elevation of the property. Pale green paint and satin chrome hardware complete the modern aesthetic. High performance double glazing ensures the home stays warm in winter and cool in the summer.

Chris says he chose George Barnsdale because he knew how great the products were from his previous project next door. He also cited friendly local staff and an installation service highlighting the



fact that "timber windows are very different to uPVC and aluminium and require a different technique when fitting. Not everyone is trained to do that and I didn't want to risk undermining performance."

The property received the highest energy performance certificate which makes it great for low energy consumption but also means it

emits zero carbon compared with average properties that are estimated to produce 6 tonnes CO₂. Alongside the other measures like wall and roof insulation, George Barnsdale's timber windows and doors contributed to the excellent rating.

01775 823000
www.georgebarnsdale.co.uk



LISTEN HERE

Schöck expertise for semicircular balcony detailing

The Triptych Bankside development at 185 Park Street, in Southwark, adjacent to the Tate Modern and the Globe Theatre is nearing completion. This three tower, mixed-use development, will provide creative workspace in a ten-storey building sitting alongside two residential blocks. These are fifteen and nineteen storeys respectively, offering 170 new luxury homes. The striking design by architects Squire & Partners features unusual semicircular balconies throughout to maximise amenity space and sweeping panoramic views. The balcony specification is demanding though and the adaptable Schöck Isokorb T type SK is incorporated to meet the various challenges.

A complete system thermal break

The special demands of the Triptych Bankside semicircular balcony profiling required bespoke Isokorb T type SK units designed with specific postional load capacities, using built-in steel reinforcement. The T type SK is a complete system structural thermal break for concrete-to-steel connectivity. At present, no other UK product for concrete-to-steel applications satisfies the necessary load-bearing requirements, or meets the current and future thermal performance required by building standards (Part L).

The entire project is built very much with sustainability in mind and minimising any risk of thermal bridging at the balcony detailing is critical for a number of reasons. Any local heat loss will result in more energy being required to maintain the internal temperature of the building. Also, low internal surface temperatures in the area of any thermal bridge can cause condensation and this in turn is likely to result in structural



integrity problems. Mould growth too is a possible risk, which in a residential situation can cause asthma and allergies.

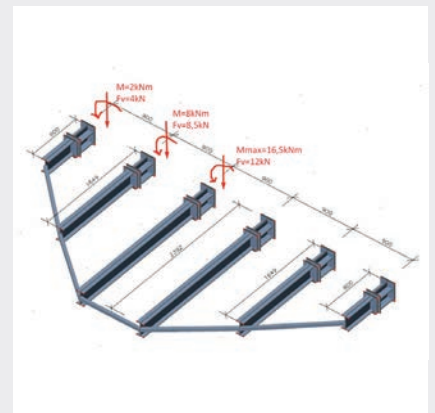
A dependable and fully compliant product range

The Schöck Isokorb range of structural thermal break solutions is the largest in Europe and in the UK helps projects meet full compliance with the necessary Building Regulations (and the impending Future Homes Standard criteria where relevant). In addition to the Isokorb type used on this project, there are also solutions for concrete-

to-concrete, steel-to-steel, renovation projects – and even a maintenance free alternative to wrapped parapets. All products have the security of independent BBA Certification, which provides NHBC approval. The temperature factor requirement (fRSI) used to indicate condensation risk, which must be equal to, or greater than 0.75 for residential buildings, is also easily met by incorporating the Isokorb.

Please contact Schöck or visit the website for full details of the Isokorb range.

01865 290 890 www.schoeck.com





BUILDING INSIGHTS

**A PODCAST FOR THE CONSTRUCTION INDUSTRY
LISTEN AT HBDONLINE.CO.UK/PODCASTS**





Cover image: TAC Projects
See page 30 for details