

building construction design

www.buildingconstructiondesign.co.uk

SPRING 2023

Appointments & news	02
Building products	06
Interiors	12
Exteriors	27

Cover image: Sapphire
See page 35 for details

Cool Kampus project cottons on to timber windows & doors – Minto & Turner Building

Part of the Kampus project to regenerate Manchester's Canal Street and surrounding areas, the Minto & Turner Building, a former cotton warehouse, is a well known local landmark situated on the Rochdale canal in the centre of the city.

A red brick grade II listed

A red brick grade II listed warehouse building, it is an award winning scheme converted under the watchful eye of ShedKM Architects into trendy apartments by Mount Anvil on behalf of Capital & Centric and HBD.

Insta paradise

This Instagramers paradise has a real contemporary feel that manages to retain its past strong industrial heritage whilst making it suitable for today's modern lifestyle. Inside is exposed brickwork and cast iron columns with large open plan cloister living areas providing dual aspect views through the black/grey timber casement windows. Outside, cast iron fire staircases and hoists have been restored and retained.

Grey/black windows and red cast iron staircase

The building also features matching smaller square pivot windows and simple timber doors providing residents with great views and access to the street scene and canalside bars below.

Having worked with George Barnsdale on its Nottingham Axis project, a conversion of the old co-operative building, Henry



Boot Development was no stranger to the Lincolnshire joinery manufacturer, which is one of the oldest surviving family companies still manufacturing high performance timber fenestration in the UK.

A mix of timber flush casement windows, pivot windows and timber doorsets were designed to incorporate high acoustic and thermal performance to ensure the perfect living conditions inside the building. Part of the aesthetic on the canal side elevation includes the use of louvres for privacy and to maintain the industrial feel.

There is also some nice arched work at the

courtyard end of the building.

In addition to the manufacture of the bespoke timber windows, doors and louvres, George Barnsdale also provided ongoing site surveying and project management as well as full installation using detailed interface drawings to ensure the perfect fit, taking into account the wonky openings typical of a project like this.

01775 823000
georgebarnsdale.co.uk



Glidevale Protect collaborates with Bellway Homes and The University of Salford at Energy House 2.0



Glidevale Protect is putting its specialist range of energy efficient building solutions to the test by providing a range of products for use at the new Energy House 2.0 development and embarking on a collaborative research partnership with the University of Salford and national housebuilder Bellway Homes.

Energy House 2.0 is a unique £16 million research facility, part-funded by the European Regional Development Fund (ERDF), enabling SMEs to innovate and develop low carbon technologies for the built environment. Energy House 2.0 is a collaborative project between partners including the University of Salford, Bellway Homes, Barratt Developments and Saint-Gobain. Together, partners will drive innovation and solutions to address global and domestic energy efficiency challenges.

Glidevale Protect is working alongside Bellway Homes by supplying its specialist construction membranes for use on The Future Home@The University of Salford, one of the two detached timber frame houses that are currently being constructed within the Energy House 2.0 energy performance test facility, with the structure having been manufactured offsite.

Glidevale Protect's reflective, low emissivity Protect TF200 Thermo breather membrane and Protect BarriAir air and vapour control layer have been used on the innovative eco home. To provide high levels of thermal efficiency, the Protect TF200 Thermo breather membrane has been installed to the external walls, while the Protect BarriAir membrane has been fitted to the internal walls with the company's universal reinforced sealing tape to eliminate air leakage



and energy loss. Also installed is the Protect FCM 750 floor cassette membrane to maintain the integrity of the airtightness system at the floor junction and to provide condensation control at the edges of the floor cassette.

Once complete, The Future Home@The University of Salford will be subjected to various weather conditions within the Energy House 2.0 environmental chambers, which utilise state-of-the-art technology to test how well the specified building products and systems perform even under the harshest of environments. The research from the Energy House 2.0 project will provide a greater understanding of how energy efficient and low carbon building techniques can reduce the environmental impact of housebuilding and the wider construction industry.

Commenting, Jamie Bursnell, group technical and innovation manager at Bellway Homes said: "Collaboration with product manufacturers and suppliers is a key part of The Future Home@The University of Salford and the lessons learnt

from this experience will help shape the future of housebuilding for years to come. There is also real need to improve the efficiency of the building fabric in new homes and the work we have done with Glidevale Protect has highlighted their products which will be under test to help contribute to better performance."

Glidevale Protect's involvement in the unique Energy House 2.0 project continues the manufacturer's positive relationship with The University of Salford, which is an established leading innovator of low carbon technologies thanks to its work as part of its Energy House Laboratories programme.

Having previously provided reflective membrane products for use at Zed House, a collaborative project between The University of Salford and Barratt Developments plc, which was built to exceed the planned Future Homes Standard, Glidevale Protect has recently become an official research partner to facilitate a greater understanding of the benefits and energy performance of specialist construction membranes in housebuilding. The research programme, which is at the development stage, will see Glidevale Protect work closely with the teams at The University of Salford and Bellway Homes. With the Glidevale Protect head office based in Sale, Greater Manchester near to The University of Salford, this will allow the teams to work closely on site at Energy House 2.0 as the research project is commissioned.

For more information on Glidevale Protect, please visit the website or email info@glidevaleprotect.com

0161 905 5700 glidevaleprotect.com

Delta Membrane Systems launches new Basement Drainage Distribution Hub

The new warehouse in Harlow, Essex will serve the firm's customers in more than 40 counties across England, Wales, Scotland, and Ireland.

Delta Membrane Systems Limited has invested in a new Pump Distribution Hub close to its Epping Headquarters to enhance the company's ability to serve their nationwide customer base.

Delta Membrane Systems Limited has grown rapidly over the last five years and launching the new Pump Distribution Hub will transform key elements of its business to consistently deliver on the businesses' values in being customer-centric and constantly moving forward, innovating, and adapting.

Having explored plans to create a new, dedicated pump and drainage warehouse, the company has now unveiled the new facilities, which is now stocked full of pumps, package pump stations, bespoke foul, surface, and groundwater chambers along with associated fixings and pipework, offices, and bespoke training facilities.

The warehouse comprises 3,500 ft² of space dedicated to basement drainage related products, from package pump stations, high water level alarms, control panels, battery backups to pipework and fittings, supporting the team's ability to meet the growing demand for quality basement drainage items. In addition to the increased space, the



warehouse features modern staff facilities, and a dedicated training and breakout space.

Kevin Dodds, managing director, said: "The investment will create new opportunities for Delta, our customers, and the local area."

He said: "Our UK head office has been based

in the area for 25 years and we are delighted to find the perfect space to accommodate our basement drainage division, just around the corner. Delta is committed to helping customers and we're thrilled to be able to take the lead on increasing our customer services in all things below ground related."

"In addition, moving our basement drainage section to its own dedicated hub allows us the ability to closely monitor deliveries and improved logistics. There is also space to further expand our training facilities to meet current and future demand and to ensure our commitment for encouraging best practice in the industry is being met."

"The new basement drainage distribution hub gives us better visibility of stock and truly represents the scale of the business to both staff and customers."

Whatever the needs of your project, you can rely on Delta's Technical Team to ensure you get the right advice, support, and practical help at exactly the right time its required.

01992 523 523
info@deltamembranes.com



Evacuation alert system from Advanced helps protect residents in Merseyside social housing

Fire protection solutions manufacturer, Advanced, has supplied its EvacGo evacuation alert system to two high-rise residential tower blocks in Huyton, Merseyside following a series of fire safety improvements to the buildings.

Following a significant programme of compartmentation works undertaken in 2018, the 11-storey Knowsley Heights buildings have benefitted from a refit that includes installation of Advanced's EvacGo system, which is compliant with the BS 8629 Code of Practice, for the design, installation, commissioning, and maintenance of evacuation alert systems for use by fire and rescue services in England and Wales.

Knowsley Heights is owned by Livv Housing Group, an independent housing association, with the two buildings partially managed by an onsite manager. ABM Fire and Security Ltd undertook the complete, supply, installation and commissioning of the EvacGo systems. A 4-loop, 16-zone evacuation alert panel was installed in each building.

Each EvacGo panel is housed inside a STS 205 security-rated enclosure with patented BS EN 1303-compliant lock and key mechanism for exclusive access by the fire and rescue service – ensuring minimal risk of unauthorised use and full compliance with BS 8629. Argus Vega

Sounder VADS audible and visual devices and interfaces were installed in the hallways of each of the 128 flats to ensure all residents, including people who are deaf or have hearing loss are kept safe and informed.

Tony Cahill, executive director – property from Livv Housing Group said: "EvacGo from Advanced was selected for the Knowsley Heights refit as it was essential that the evacuation alert system met the criteria for BS 8629. While it may not be mandatory for an 11-storey existing building, meeting with best practice is essential for us as a housing association to protect our customers in the event of a fire."

All Advanced evacuation alert systems are custom-manufactured to reflect each individual building's evacuation zones and have been developed to provide a bespoke solution that allows the fire services to control evacuation floor by floor according to the severity and location of the fire. BS 8629 guidance states that the evacuation alert control system should be installed where a 'stay put' policy is in force, such as with Knowsley Heights, so that it can be used to facilitate a timely and ordered evacuation for all residents. An evacuation alert system is vital to help fire and rescue services inform residents of a change in evacuation strategy during an incident. This gives fire and rescue services an additional



tool to use on the ground, alongside existing methods of evacuation. It must be standalone, with its only function being to assist fire and rescue services in the evacuation of the building.

As a world leader in the development and manufacture of intelligent fire systems, Advanced is committed to creating a safer future. A reputation for performance, quality and ease of use see Advanced products specified in locations around the world, from single-panel installations to large, multi-site networks.

0345 894 7000 uk.advancedco.com

Domus Ventilation expands HRXE MVHR range with ZEUS

Domus Ventilation, manufacturer of market-leading ventilation systems that save energy and improve indoor air quality, has expanded its HRXE range of Mechanical Ventilation with Heat Recovery (MVHR) units with the launch of HRXE-ZEUS. HRXE-ZEUS has been introduced to meet ventilation requirements for large residential properties, which require a more powerful system to deliver the airflow required to meet Building Regulations Part F.

HRXE-ZEUS high performance MVHR system combines supply and extract ventilation in one system. Using an advanced heat exchanger, up to 95% of the heat typically lost in waste, stale air is efficiently recovered and used to temper the fresh air drawn into the building. The filtered, pre-warmed air is distributed to areas of the home such as living rooms and bedrooms, effectively meeting part of the heating load in energy efficient dwellings. The system features two independent fans which have full-speed control for background and boost ventilation rates.

HRXE-ZEUS comes with 100% thermal bypass which automatically activates when the air temperature reaches a pre-set level, allowing in cooler, fresh, filtered air without warming it through the heat exchanger – ideal for increasingly air tight properties that are prone to overheating in summer. The smart design of HRXE-ZEUS means there is no reduction in airflow when operating in bypass mode.



There are four HRXE-ZEUS models to choose from, available to meet different specifications and different on-site requirements, including opposite handed units and units with integral humidistat. Optimal ventilation performance is achieved when choosing models with the latter, as the sensors accurately measure air humidity and the HRXE-ZEUS's extract speed automatically changes from background to boost as the level of humidity increases.

HRXE-ZEUS accessories include an Anti-Vibration tray which isolates the unit from the wall to reduce any low levels of vibration induced noise, condensation drain kit and, of course, replacement filters. The filters are easily

replaced via the front access panel, for quick and easy maintenance.

HRXE-ZEUS joins Domus Ventilation's existing range of MVHR systems, including HRXE-HERA which is suited to use in smaller properties of up to two/three bedrooms, and HRXE-AURA designed for homes of up to four/five bedrooms. All units are listed on the SAP Product Characteristics Database (PCDB) and come with a warranty of five years, with the first year covering parts and labour.

The HRXE range has been designed to work most efficiently when used with Domus duct systems, providing a total solution to whole house ventilation solutions for residential properties. Domus duct systems offer improved system performance through the exacting tolerances and engineered fit of the system, whereby pressure drops are minimised and air leakage virtually eliminated. Domus duct systems feature a range of unique products, including the award-winning Greenline Bend which reduces duct bend resistance by up to 60%.

Domus Ventilation has a well-deserved reputation for quality, supported by excellent technical support, from a market leading manufacturer and designer. It is well placed to offer immediate, practical solutions to Building Regulations Parts F & L.

vent.info@domusventilation.co.uk
www.domusventilation.co.uk

BG's SyncEV Chargers at Lace Fields



BG's SyncEV Chargers have been installed at Lace Fields, one of the latest housing developments by William Davis Homes. Lace Fields when completed, will enjoy around 800-character homes nestled in the historic village of Ruddington, offering the best of both town and country living. BG SyncEV (part of the **Luceco PLC Group**) offers a range of EV charging products for the home or the workplace that are smart, powerful, and packed with technology and a three year warranty for complete peace of mind. The EVS7G charger was selected for Lace Fields, a Type 2 socketed dynamic 7.4 kW wall charger with WiFi and Smart! Functionality – OCPP 1.6J connectivity. The charger has integrated earth fault protection (RCD) + PEN protection system so an earth rod is not required. As part of the WiFi connectivity, free lifetime software updates over-the-air are available and the SyncEV easy to use app shows usage and cost, the Smart technology optimising home EV charging selecting the cheapest, greenest energy possible. BG SyncEV chargers are fully compliant with current standards and 3rd party approved by DEKRA.

01952 238 100 www.luceco.com

Design show success for enhanced Marmox range



Already widely regarded as a lead player in the creation of stylish bathrooms, wetrooms and spa facilities, manufacturer **Marmox** was able to unveil extensions to its widely specified range at this year's Surface Design Show in London, earning particular interest in its new Slicedstone – Large Format Veneer Sheets. The Sales and Marketing team were on hand throughout the three days at The Business Design Centre, showcasing the new large format version of mosaic style product introduced in 2020. Still displaying the beautiful colour variations of natural Indian sandstone, the new Slicedstone – Large Format Veneer Sheets are available in two sizes – 1,220 x 610 mm or 2,100 x 1,050 mm - rather than 50 x 50 mm mosaics on a mesh roll. However, the new product's slimline form – at just 4 (±1.5) mm thick and supplied on a specially formulated decoupling layer – means they can still be applied to curved surfaces both indoors and out. The Marketing Manager for Marmox, Grant Terry, commented: "Our customers have shown great creativity in their use of the original Slicedstone offering and we are certain that the new large format sheets will prove equally popular."

01634 835290 www.marmox.co.uk

BAL Micromax3 ECO: performance, control, sustainability

With all the qualities of BAL Micromax2, the new BAL Micromax3 ECO grout delivers enhanced product performance, improved useability and added eco-benefits.

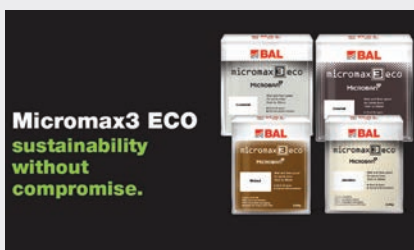
Available from 6 March, BAL Micromax3 ECO grout provides everything an architect or specifier needs for a perfect tiled finish.

Available in 36 colours, with a range of matching silicone sealants it contains longer-lasting and improved Microban® antimicrobial protection providing non-hazardous protection against black mould and mildew, as well as an efflorescence-free formulation and locked-in colour consistency.

Sustainability without compromise

The world is changing and that means we must reduce our environmental impact.

Produced in recyclable packaging, Micromax3 ECO is manufactured with over 25% recycled materials with no loss of performance. With an EC1 Plus EMICODE



designation, Micromax3 ECO achieves the best classification under the EMICODE system. BAL Micromax3 is also non-hazardous, whilst also providing excellent anti-microbial protection.

OPC-free for a reduced carbon footprint, BAL Micromax3 ECO also has a two year shelf life in 2.5 kg and 5 kg sizes (with all packaging 100% recyclable) and grouts can be part mixed for multiple use. This ensures less waste on-site for the fixer, while being better for the environment.

Setting in two to three hours for fast-track project completion, the new grout is now also suitable for swimming pools and can be used up to 30 mm joints widths with no shrinking or cracking.

Alex Underwood, head of marketing at BAL said: "The next generation of grouts, BAL Micromax3 ECO provides the leading technology to ensure a new benchmark in grout performance, with guaranteed long-lasting results and added eco-benefits.

"Micromax3 ECO delivers market-leading solutions, with all the benefits of Micromax2 including the use of >25% recycled raw materials; a superior smooth finish, high flexibility and durability time and time again."

"Tilers demanded and we listened, delivering advanced technology with greater useability including easier clean-off and less haze."

01782 591100
www.bal-adhesives.com

HOUSEBUILDER & DEVELOPER



Subscribe for free today to
Housebuilder & Developer
magazine

AVAILABLE ONLINE AT
WWW.HBDONLINE.CO.UK

PUMPING SOLUTIONS



Below Ground
Pumping Stations



3D BIM LIBRARY Floor Mounted Lifting Stations

0118 9821 555

- Wastewater and sewage pumping
- In-house consultant engineer
- Rapid response & advice
- Call our experienced team



PUMP[®]
TECHNOLOGY LTD

POWERED BY **JUNG PUMPEN**
Pentair Water

www.pumptechnology.co.uk

56 Youngs Industrial Estate
Aldermaston, Berks, RG7 4PW

Delta Membrane Systems launches new Groundwater Sump Pump Stations

Delta Membrane Systems Limited, an innovator within the waterproofing industry is proud to be launching the new 695 Sump Pump Chambers, pushing the boundaries of what's possible in sump pump applications.

With a unique design, impressive storage capacity, and exceptional durability, the 695 is the new generation of sump pump chambers suitable for ground and surface water collection.

Advantages of the 695 Sump Pump Chambers

- New unique design
- Finite Element Analysis (FEA)
- Channel locators for ease of installation
- Cable duct height option
- Sealing lip
- Compatible with the Delta V3, V4 and V6 sump pumps
- Enables interchanging of V3, V4 & V6 pumps when site situations change from those planned
- Simple internal pipe work arrangement for ease of installation & servicing
- New slim lid able to withstand pedestrian traffic

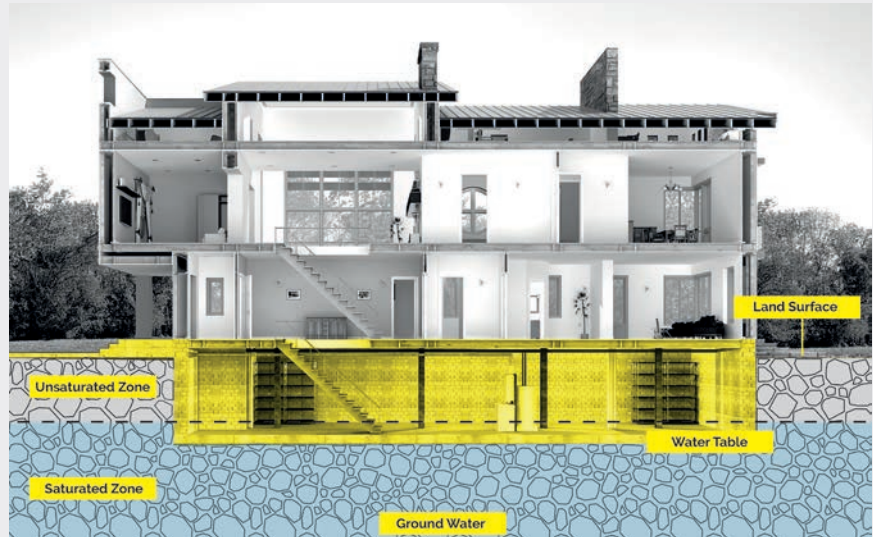
New unique design

The Delta 695 chamber's compact new size doesn't compromise of capacity or durability. This specially designed sump chamber has many advantages over previous models. The versatility of the Delta 695 chamber is unmatched, it's compatible with all Delta V3, V4 and V6 sump pumps.

Not forgetting the all-important cost savings, the Delta 695 chamber may be smaller in size, but has big benefits – less excavation costs, less labour costs, less waste disposal costs, less requirement for concrete/steel (when housed).

Delta understands the need for project specifics which is why the Delta 695 chambers are supplied with a preformed choice of height for cable duct/vent pipe.

Reducing Risk – Delta has added an external sealing lip to the 695 chambers. This sealing lip will allow installers to apply Delta AKTI-VO 201 (swellable mastic) to the entire external lip locator of chamber. Once the sump chamber is



backfilled this seal will offer a continuous waterproofing approach.

If you need consistent, reliable performance the Delta 695 chamber will not disappoint. The Delta 695 chamber is fully compatible with the Delta V3, V4 and V6 submersible pumps. Saving on storage, handling costs and packaging whilst enabling installers to maximise on installation depths – as there is one standard size required for all.

The Delta 695 chamber has been designed to accommodate all varying pump heights of the Delta V3, V4 and V6 sump pumps. It is common for basements to be lower than mains drainage pipes and sewers serving the structure. Any drainage from a basement or below ground structure will need to be

pumped up. The term “pumping height” “lift” is used to indicate the vertical height the pump is required to pump up.

The new Delta 695 chamber not only has a slimmer lid to previous models, it's also able to withstand pedestrian traffic, mitigating any follow-on trade accidents.

To explore the new range of Delta Pumps, visit www.deltamembranes.com

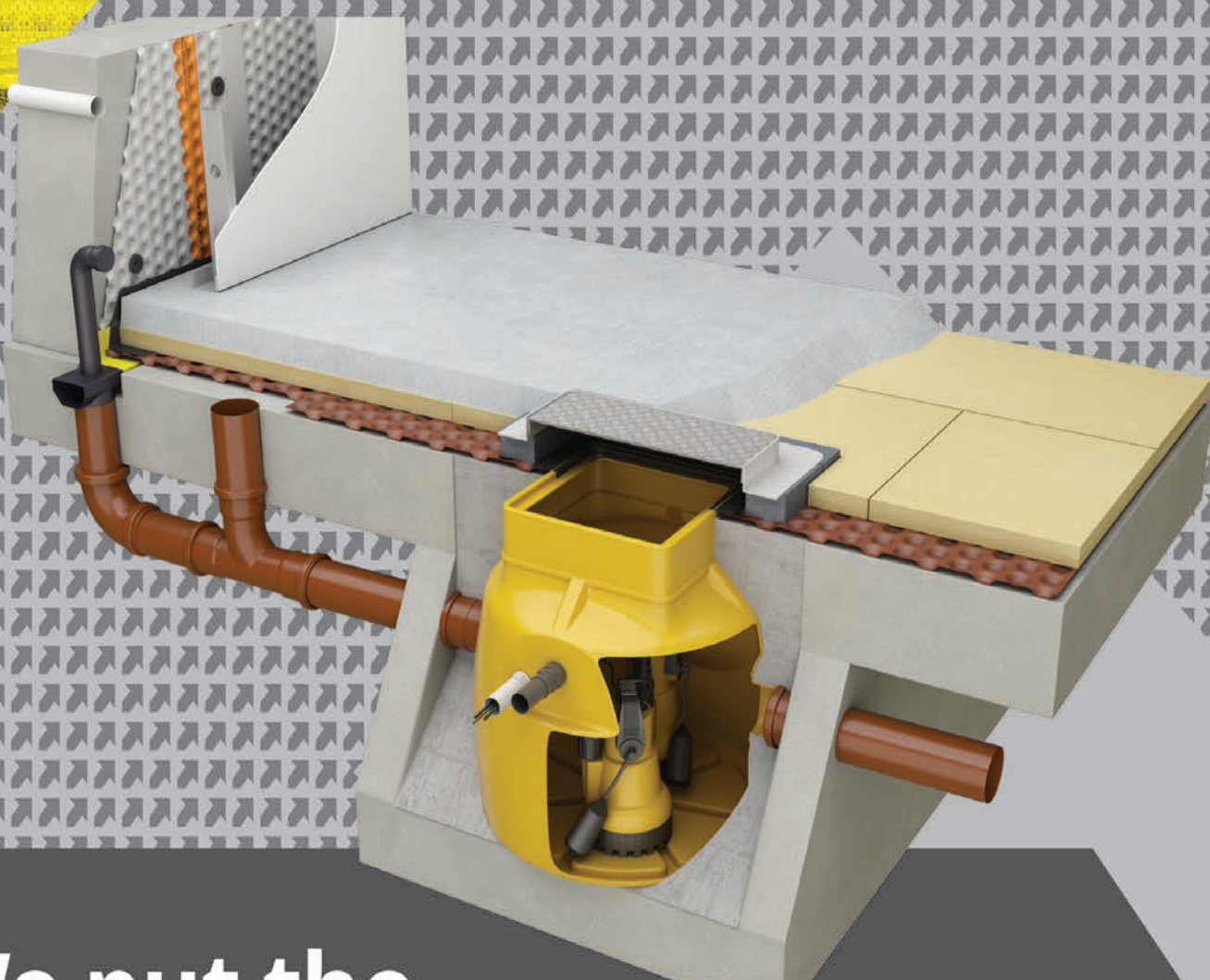
Whatever the needs of your project, you can rely on Delta's Technical Team to ensure you get the right advice, support, and practical help at exactly the right time its required. Contact Delta today.

01992 523 523
info@deltamembranes.com



DELTA

PUMPS & DRAINAGE



We put the Innovation in Structural Waterproofing



What makes Delta's 895 Foul Sump Pump Chamber a great product?

As Delta Membrane Systems Limited launches their new 895 Chamber for foul and grey water collection, Delta's MD, Kevin Dodds reflects on the journey from product concept to production.

"We bring an unwavering commitment to help our customers succeed, promote best practice and to continually offer product which meet the need of the industry. It's that sense of purpose and opportunity that drives us".

"Basement drainage products are an unseen, humdrum, characterless aspect to structural waterproofing. To us, basement drainage systems are a marvel and one not to be underestimated".

"Using our experience and industry knowledge we saw an opportunity in creating and manufacturing basement drainage systems to complement our Type C waterproofing membranes – investing in single-source responsibility. The main advantage of Delta manufacturing both Type C waterproofing systems and basement drainage systems is one which benefits all from developers to contractors and most importantly end users".

The redesigned Delta V3, V4, V6 (695 chambers) and V3 foul (895 chamber) delivers core performance expected from the Delta brand, whilst streamlining installation by reducing excavation and backfill costs.

"We haven't just reinvented a product or two, we have reinvented our product range to meet industry needs. The wheel has been reinvented thousands of times to serve thousands of different purposes. It had to be reinvented because it was being used for

different purposes. The world changes from technologies to expectations. As the world changes, we need new and various kinds of wheels to help us solve the same problems."

Submersible Pumps/Packaged Pump Stations

As you may have guessed from the name, a submersible pump is one that is designed to be immersed in a substance (from groundwater to foul water). Whilst foul pumps are focused on pumping away foul and grey water, a groundwater sump pump will usually be installed as part of a Type C waterproofing solution for the evacuation of groundwater or surface water from a basement.

Packaged Pump Stations are a complete unit. Comprising of chamber, pumps, pipework kit, valves, etc which are pre-assembled as a complete unit.

The Delta V3 Foul Packaged Pump Stations are suitable for collecting wastewater from kitchens, bathrooms and/or utility rooms and discharging this into the mains drainage system.

The Delta Foul V3 is an effective way of moving foul/grey water to where it needs to be.

Advantages of the 895 Sump Pump Chambers

- New unique design
- Finite Element Analysis (FEA)
- Increased storage capacity
- Preformed Base Plate for pump location and installation stability
- Preformed float bracket for Delta HLA
- Sealing lip



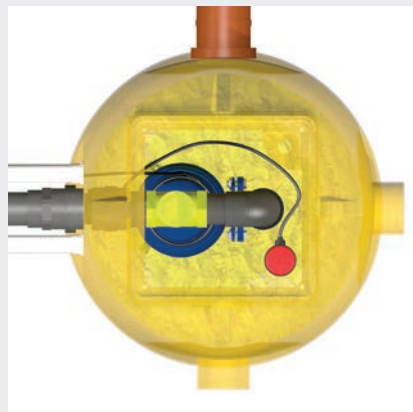
- Compatible with Delta V3 Foul sump pumps
- New slim lid able to withstand pedestrian traffic

Delta Pumps are proud to be manufacturing and fabricating all their sump pump chambers from their new warehouse facilities in a new dedicated Pump Distribution Hub close to its Epping Headquarters to enhance the company's ability to serve their nationwide customer base.

To explore the new range of Delta Pumps visit Package Pumps and Basement Drainage Systems – Delta Membranes.

Whatever the needs of your project, you can rely on Delta's Technical Team to ensure you get the right advice, support, and practical help at exactly the right time its required.

01992 523 523 info@deltamembranes.com



BG's SyncEV Chargers at Lace Fields



BG's SyncEV Chargers have been installed at Lace Fields, one of the latest housing developments by William Davis Homes. Lace Fields when completed, will enjoy around 800-character homes nestled in the historic village of Ruddington, offering the best of both town and country living.

BG SyncEV (part of the Luceco PLC Group) offers a range of EV charging products for the home or the workplace that are smart, powerful, and packed with technology and a 3 year warranty for complete peace of mind.

The EVS7G charger was selected for Lace Fields, a type 2 socketed dynamic 7.4 kW wall

charger with WiFi and Smart! Functionality – OCPP 1.6J connectivity. The charger has integrated earth fault protection (RCD) + PEN protection system so an earth rod is not required. As part of the WiFi connectivity, free lifetime software updates over-the-air are available and the SyncEV easy to use app shows usage and cost, the Smart technology optimising home EV charging selecting the cheapest, greenest energy possible. After installation and commissioning, homeowners are given supporting literature as part of their welcome pack, BG SyncEV chargers are fully compliant with current standards and 3rd party approved by DEKRA.

William Davis Homes have been building houses for more than 85 years, their ethos underpinned by strong family values and understanding what makes each house a home. As well as craftsmanship, comfort and security, William Davis Homes look to futureproof their homes with technology, meeting the expectations of prospective homeowners, electric vehicle charging facilities from BG's SyncEV being an element of their continued success.

01952 238 100
www.luceco.com

Eco-conscious housebuilder adopts Thermoblock for its high spec developments



A housebuilder undertaking high specification developments in the Stockport and Tameside areas of Greater Manchester has incorporated Marmox Thermoblocks into its designs, to target improved energy performance and all-round higher build quality for its customers. Romiley based D. Woodman Developments' latest project is creating a total of nine dwellings at School Brow in Stockport where the former Cow & Calf pub is being converted to form three new homes, while a further four semi-detached dwellings and two detached homes are being built on the land adjoining what is a 'Non-designated Heritage Asset.' The new houses are being raised on conventional strip foundations using Eco Prime concrete and blockwork footings which then carry beam and block floors, along with the 100 mm x 600 mm x 65 mm Thermoblocks, 100 mm thick Celcon Solar aerated blocks then form the inner leaf to the insulated cavity exterior walls. Thermoblocks are available in widths of 100, 140 and 215mm and feature a unique design where two rows of high strength epoxy concrete mini-columns are encapsulated in sections of XPS (Extruded Polystyrene).

01634 835290 www.marmox.co.uk

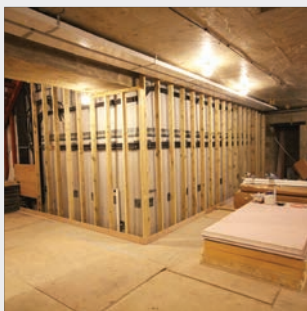
FIREFLY's ZEUS 90:30 protects new Dorset industrial units



The specialist sub-contractor undertaking much of the fit out for 26 new industrial units at Ferndown, near Poole in Dorset, put forward the use of the ZEUS Lite 90:30 high performance fire barrier, from the range of TBA FIREFLY™, in order to protect all of the suspended ceilings within offices and other ancillary areas. Vitec Ceilings & Partitions is carrying out all of the dry lining, ceiling installations and plastering as well as being responsible for the specialist fire protection work. The new units at Bedrock Park are expected to be completed later this autumn and will offer flexible workshop and administration space for a variety of businesses. FIREFLY™ ZEUS Lite is ideally suited to this type of application, comprising a flexible woven fabric fire barrier that has been specifically developed for the vertical separation and compartmentation of extensive concealed spaces within buildings. By offering 90 minutes integrity and 30 minutes insulation, FIREFLY™ ZEUS Lite 90:30 exceeds the minimum requirements regarding fire barriers under the Building Regulations' Approved Document B (Fire Safety).

01706 758817 www.tbafirefly.com

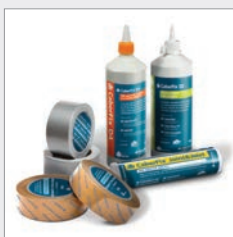
Triton Waterproofing range looking good for 'beautiful basements'



A Leicester based company which specialises in waterproofing and the construction of high specification basements, as well as the upgrade of existing sub-structures, has made extensive use of products from the range of **Triton Systems** in creating a complex new extension to an old farmhouse in Northamptonshire for a private client. Careful consideration of the water-proofing and damp-proofing detailing is always essential when constructing a basement, but in the case of the Northamptonshire project the situation was made even more challenging due to a very high water table and persistent bad weather during the work. As an approved installer of the Triton Systems, Beautiful Basements employed half a dozen of the well-proven products to create a large-scale, fully waterproof sub-structure that offers a ten year guarantee along with insurance backed guarantee. The products include TT admix incorporated into all of the waterproof concrete mix at the batching plant, Tri- Cream for the injected DPCs, three variants of the Platon drainage membranes, a pair of sump pumps and one of Triton's high level alarms.

01322 318830 www.tritonsystems.co.uk

Never come unstuck with CaberFix

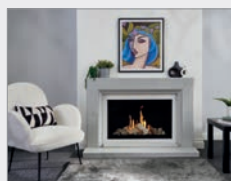


The CaberFix range, which can be used with many of **West Fraser's** panel products, comprises three glue types and two choices of adhesive tape: CaberFix D3; Solvent-free CaberFix D4; CaberFix Joint & Joist; CaberFix Tape; and CaberFix X-treme tape. The CaberFix range having been developed for a wide variety of applications and performance requirements. As is always the case, West Fraser's experienced technical

team is available to provide assistance with product specification, while downloadable data sheets are available on the website.

uk.westfraser.com

Introducing the Infinity 780FL



The Infinity 780FL, from **Charlton & Jenrick**, makes a luxurious addition to any room with its contemporary mixed log set, regardless of whether you choose the Herringbone Brick or Black Glass Liners. Packing a mighty punch, this fire produces 7.8kW of heat and 82% efficiency keeping you warm whatever the weather.

Charlton & Jenrick's new Micro Marble surround is the star of the show and is a must have for anyone looking for the ultimate in modern fireplaces.

From £2,324.00 Inc VAT. Please visit the website for more information: charltonandjenrick.co.uk/products/infinity-780fl-conventional-flue-gas-fire

01952 200 444 www.charltonandjenrick.co.uk

ThermaStore HHR – The single feed high heat retention storage heater by Electrorad

Richard Brown, Managing Director at Electrorad says, "Our ThermaStore HHR Storage System really does have all the great advantages of storage heating without any of the negatives, including a single power cable connection for storage and boost element, making for easier installation and control."

With a high quality internal insulation around its core enabling high heat retention, the ThermaStore ensures you get heat whenever you want it throughout the entire day, unlike more traditional storage heaters that can often only provide enough heat for the morning.

The ThermaStore works from single power cable connection for storage and boost elements – but what does that mean?

It means it's designed for use with the Economy 7 but can be used with any other overnight economy tariffs such as Economy 10 and only one meter is required!

Historically Economy 7 tariffs have two separate meters, the ThermaStore HHR needs a more modern dual rate meter that provides 24hr electricity but switches to reduced rate during the E7 hours, therefore the E7 meter must be a dual tariff rate switching meter or smart meter.

With this in place the ThermaStore HHR requires just one fused spur connection. The E7 charge and the daily heating is provided from this one connection. On installation it is programmed with the correct Economy tariff



times for charging and at these times the storage elements will put heat into the storage core at the cheaper rate.

The amount of charge taken will be determined by the built in charge algorithm, and only the charge needed will be taken, thereby minimising the electricity use. On installation the ThermaStore is also programmed to know what room temperatures are needed and at what times. The ThermaStore will then use minimal amounts of electricity, as required, during the day, to run the low noise fan and will extract the heat from the storage core to achieve the desired room temperature. If ever extra heat is required then the built-in



direct acting element can be used to boost the room temperature if necessary.

Its built in digital controls and clever thermostat mean the ThermaStore HHR has the ability to learn what charge is required to heat your rooms day to day, meaning it makes your E7 tariff really work hard for you and it is proven to be up to 27% cheaper to run than standard storage heaters.

The ThermaStore also has optional app control, compatible with Alexa and Google Home giving you voice control of your heating!

0113 2746799
sales@electrorad.co.uk



BUILDING INSIGHTS

A PODCAST FOR THE CONSTRUCTION INDUSTRY
LISTEN AT HBDONLINE.CO.UK/PODCASTS



Why do the world's leading dance universities and schools choose Harlequin floors?

Dance students can spend hours working in a dance studio, it is their place of work and should offer a safe environment fit for purpose. The floor is a dancer's most important work tool and dancers need reassurance they are not going to slip and fall, that lifts can be performed safely and on landing from jumps the response of the floor consistently returns the right amount of energy absorption.

It is a common assumption that a well-designed sports floor will suit the needs of dancers, but this is not the case.

There are some critical factors that distinguish the requirements of dance from those of sports played on a sports floor. Unlike sportsmen who wear increasingly high-tech air-cushioned shoes to give grip and protect against impact injuries, the modest ballet shoe has barely changed in design since the mid-18th century. Made from soft leather, canvas or satin, the ballet shoe is very flexible, has a thin sole and offers little protection for the wearer.

But not all dance floors are the same, only a floor developed specifically for dance will do. There may be a temptation to specify floors for aesthetic or budget reasons, or to specify sports floors in the mistaken belief they will be suitable for dance but there have been some high-profile examples where floors have had to be replaced by a dance company after the building is complete and dancers have their first experience of dancing on the floors.

Harlequin is widely recognised as the world's leading authority on dance floors. As an enlightened manufacturer Harlequin has always worked closely with the dance community to develop floors that dancers



© The Royal Ballet School 2018. Photographed by Rachel Cherry

want to dance on. There is no doubt, the choice of flooring is critical. For over 40 years Harlequin has been the performance floor of choice for the world's most prestigious dance and performing arts companies, theatres, venues and schools.

Harlequin offer free advice to ensure dance companies, schools and venues install dance floors best suited to their particular use.

All Harlequin sprung and vinyl floor products and ballet barres are easily found and specified through RIBA Source.

Please visit www.harlequinfloors.com for more information, or contact Harlequin.

01892 514 888
architects@harlequinfloors.com



DRU announces new Spartherm Lean series of compact wood fires and stoves



Spartherm Lean Triple 68x28x48 RLA

DRU is the exclusive UK distributor for Spartherm, one of Germany's largest manufacturers of wood burning fires and stoves.

January 2023 sees the UK launch of the Spartherm Lean series of built-in and freestanding wood fires and stoves with compact dimensions suitable for homes with limited space. The first model to be released is the built-in Lean Triple 68x28x48

RLA. It is Ecodesign ready with external air connection, a vertically sliding glass door for easy maintenance, 81% energy efficiency and manual or remote controls. The freestanding Lean Saphir RLU wood fire and the larger Trico S and L RLA wood stoves will follow later in 2023.

Commenting on the launch, DRU UK general manager Niall Deiraniya said: "We are responding to the huge current demand

for wood burning appliances with this new, slimline selection of fires and stoves that are tailor-made for British homes, where superior design, compact dimensions and high energy efficiency are major priorities."

To find out more about the range of DRU Fires visit the company's website.

info@drufire.co.uk
www.drufire.com



Spartherm Lean Saphir RLU



Spartherm Trico S White RLA

Dik Geurts stoves for chimney or freestanding installation.



Dik Geurts Ivar 5 Low model



Dik Geurts Aste 5 Low model

Established in the Netherlands in 1981, Dik Geurts stoves and fires are now produced by DRU, one of Europe's leading fireplace companies.

Soaring energy prices have provided a welcome boost to wood stove sales. Consumers are looking for cheaper and greener sources of home heating that can be supplied and installed rapidly to alleviate punitive home heating bills.

INCREASED PRODUCTION AND DISTRIBUTION

This market uplift has led to DRU increasing production and distribution of its Dik Geurts Ivar selection of classic and contemporary stoves, which align with British and European emissions

and efficiency standards. They are a popular choice to replace older, inefficient stoves or open fires.

The Dik Geurts Ivar series also includes the Aste, Soren and Modivar models. These stoves are based on classic designs, making them ideal for traditional or modern homes. They are easily installed into Class 1 chimneys, with their dark anthracite colour finishes blending perfectly with any style of décor.

A+ ENERGY LABELS AND HIGH EFFICIENCY

Each model in the range has an A+ energy label, with an efficiency rating of over 80%. And for added air quality, there are external air and room-sealed

options available.

All stoves in the range are Ecodesign ready, so they comply with European standards for low emissions and clean burning. In addition, they have HETAS, DEFRA and clearSkies approvals.

FREESTANDING AND WATER HEATING OPTIONS

For homes with no chimney, customers can choose from a range of freestanding models, which are available in a selection of sizes and capacities with built-in wood storage.

In addition, The Ivar 10 H2O Store model is an Ecodesign 'boiler stove' with a substantial 4.7 kW room heating output and 5.5 kW of water heating power. It provides supplementary water heating for radiators, showers and general domestic hot water.

Commenting on the success of the Dik Geurts range, DRU UK general manager Niall Deiraniya said:

"The Dik Geurts Ivar series and its associated models are among the best performing and best value wood stoves in Europe. That is why we are committed to increasing their production and distribution throughout the UK.

"In return, we offer high profitability, regular stocks, prompt deliveries, nationwide technical and marketing support, friendly customer service and expert account management."



Dik Geurts Modivar Front model with wood storage

info@drufire.co.uk
www.dikgeurts.co.uk

JACKOBOARD® promotes cost and time-saving benefits of waterproof XPS construction board



JACKOBOARD® from JACKON by BEWI offers many benefits for installers of wetrooms and bathrooms. JACKOBOARD® is a waterproof, weight-loading and thermally insulating construction board for use in all types of tiling jobs.

Critically, because it is manufactured from 100% waterproof XPS, there is no need to tank wetrooms constructed using JACKOBOARD®, either with a waterproof membrane or a paint-on solution. This saves the installer both time and money, since a separate tanking system is not required and only the joints where the boards meet need to be taped.

The NHBC Standard states that “backing surfaces may require protection from a suitable tanking system”.

“This guidance is completely correct,” says Martin Harragan from JACKON by BEWI, “but it should not be interpreted to mean that if you are using an XPS backerboard, such as JACKOBOARD®, you have to tank the entire substrate of your wetroom. The closed structure of an XPS board means that it is totally impossible for water to pass through it, in the way that it would through a fibre cement board for instance.”

JACKOBOARD® is keen to communicate this message to the many different trades who get involved in the installation of wetroom systems, from the shower tray upwards. Although there



are wetroom specialists, this job is often down to plumbers, M&E contractors, tilers, dryliners and flooring contractors. So, as wetrooms continue to increase in popularity, there are different trades who need to be aware of the benefits of XPS backerboards.

While offering the benefits of XPS, JACKOBOARD® can also offer a price advantage in the marketplace, due to the fact that the company manufactures its own foam, giving it complete control over cost, product quality and sustainability of manufacturing processes. These factors have enabled JACKOBOARD® to become the UK market leader in XPS construction boards.

jackoboard@jackson.co.uk www.jackson.co.uk

DuSo®
Shower Column

HORNE

stylish good looks
eco-friendly
easy installation
simple maintenance

b.link/DusoSport

Mapei joins specification at aquatic centre

Mapei systems have been used to complete an extensive waterproofing and tiling project at The Sandwell Aquatic Centre in Smethwick, near Birmingham – venue of one of the largest international sporting events in 2022. The installation throughout the three pool areas, changing rooms and atrium was completed by P. Plunkett Tiling Contractors Ltd for main contractor, The Wates Group. The Mapei specification will also be continued for legacy phase works, before the centre opens as a community facility this summer.

Mapei's specification spanned the main pool, diving pool, studio pool, changing rooms and atrium area. Over 35 tiles designs were installed, totalling in excess of 9,000 m², with over 6,500 m² of screed specified. Throughout the project, Mapei attended the site on a fortnightly basis to provide technical support.

Three preparation products were used throughout the centre's pool areas: fast drying Topcem special hydraulic binder was applied to pool bases and Nivoplan smoothing mortar, with the addition of Planicrete



Synthetic rubber latex admixture, was used to render the pool walls. Mapelastic Turbo – a two-component, quick-drying elastic cementitious mortar incorporating Mapenet 150 alkali-resistant glass fibre reinforcing mesh – was used on the pool and surrounding floors to reduce installation waiting times. To tank pool walls, the specification included Mapelastic Smart – a highly flexible, cementitious waterproof membrane, also incorporating Mapenet 150.

Throughout the pools and surrounds, floor tiles were installed with Keraquick S1 – a quick-setting, deformable cementitious adhesive which features a very low VOC

formulation – and Kerapoxy two-component, acid resistant epoxy grout. All wall tiles were installed using Adesilex P9 cementitious adhesive and Kerapoxy grout.

Topcem, Nivoplan and Planicrete were also used to prepare floors and walls throughout changing areas. Surfaces were then tanked with Mapeguard WP 200 alkali-resistant waterproofing and anti-fracture membrane, Mapelastic AquaDefense ready to use, flexible, ultra-rapid drying waterproofing membrane and Mapeband alkali-resistant rubber tape. Floor tiles were installed with Keraquick S1 adhesive and walls tiles with Adesilex P9 adhesive. The changing room installation was completed with Ultracolor Plus grout – an anti-efflorescence, quick-setting and drying polymer-modified formulation, featuring water-repellent DropEffect® and mould-resistant BioBlock® – and Kerapoxy grout was used in the shower areas. Tiles throughout the centre's Atrium were also installed with Keraquick S1 adhesive and Ultracolor Plus grout.

info@mapei.co.uk www.mapei.co.uk

Riverside apartments feature a-rated Magply boards for kitchen fit out



An acclaimed new residential development in a Thameside location is currently being fitted out, with four of the apartment buildings featuring the use of 18 mm Magply boards, manufactured by IPP Ltd., being used in all the kitchens due to their unique range of physical benefits. With the design of the structure prioritising the use of non-combustible materials in response to recent changes to the Building Regulations, the A1 rated Magply boards were chosen to form pattresses within the external walls on the basis of the material's unique combination of strength and fire resistance as well as the product's past performance in similar applications. Riverscape is a joint development involving international redevelopment specialists, Ballymore and Oxley, with Reddy Architecture + Urbanism leading the design team. The first four blocks, which rise to eight, 10 and 14 storeys, will create a total of 249 dwellings of different sizes and specifications, for social housing tenants and shared equity ownership. Meanwhile S & R London Ltd – responsible for all of the internal partitioning – is using the 18 mm Magply boards to form pattress boards across the outer walls.

01621 776252 www.magply.co.uk

Marmox Multiboards line new Morpeth Leisure Centre



The construction of a stylish and sensitively designed riverside leisure centre in Northumberland is making full use of high performance tilebacker boards from the range of Marmox Ltd. throughout all of its wet areas: selected as a lining to blockwork walls in place of traditional render. A total area of 2,600 m² of Multiboards are being installed using 10,000 of the special Marmox dowels and Marmox waterproofing tape, ready for the installation of mainly white ceramic tiles to complete a fully waterproof lining to the poolside walls and other wet areas. Marmox Multiboards are manufactured from extruded polystyrene (XPS) covered in a layer of polymer concrete which offers an ideal surface across which to fix tiles, while they can be combined with the manufacturer's special tapes and multipurpose sealant to create fully waterproof wetroom installations. This includes Multiboards use across the floor and upstand areas to create a tanked interior which also offers excellent loadbearing capacity, and whose thermal performance is even recognised by The Energy Saving Trust.

01634 835290 www.marmox.co.uk

Välinge supplies flooring for fashionable London bar venue

Välinge Innovation has been causing a stir for the past year in the UK commercial flooring market with its unique hardened wood flooring range. Now it has been specified on a stunning refurb job in Central London, which highlights both the functionality and the outstanding aesthetic qualities of the Välinge range.

Modelled on the vibe of a popular street market, Market Halls Canary Wharf features two bars and seven creative kitchens. It is easy



therefore to see where the priorities of this venue lie and also appreciate the nature of the clientele – and why the recently completed refurb had to be implemented with only the best materials.

Working with Wood and Beyond, the specialist London-based importers and suppliers of hardwood products, Välinge were able to supply 450 m² of hardened wood flooring, which fully meets the requirements of this most discerning of customers. They were looking for maximum durability, in view of the high footfall through Market Halls, a strong position on sustainability and the most aesthetic stylish flooring available.

With its patented technologies of Woodura® and 5G® Dry™, the Välinge Flooring brand is fully able to meet all these requirements. Woodura® technology involves the fusing of a thin sheet of real wood with a wood fibre core through a powder mix layer. Compared to traditional wood flooring, the durability of the wood wear layer is massively increased.



The new hardened wood floors on this project comprised: Oak Nature Earth Grey Lacquered, Oak Nature Misty White Lacquered and Walnut Nature Terra Brown Lacquered – all in XL sizes. The timber comes from sustainable sources with FSC certification, while the unique Woodura® technology makes the manufacturing process much more efficient and environmentally friendly in terms of timber usage than traditional processes.

The 5G® Dry™ technology incorporated into the products means that the flooring is impervious to the kind of spills and splashes which are inevitable in a venue such as this.

www.hardenedwood.valingeflooring.com
markethalls.co.uk/venue/canary-wharf

Banking on Acoustics

The Business Garden Wrocław is a remarkable 17,000 m² development in the heart of Wrocław, Poland. Comprising nine offices and service buildings along with retail units, this LEED Platinum development includes the new headquarters of Santander Bank, designed by architects Workplace Solutions.

The headquarters is a remarkable bright, lively and inviting environment for both staff and visitors, a world away from the stuffy banks of old. With large open spaces, break-out areas and conference rooms, the designers needed to find a way to control the acoustics. As a result, they specified over 600 m² of Troldekt's acoustic panels across large parts of the building from Modern Classic, Troldekt's local partners in Poland.

Troldekt is the perfect choice for this kind of application because it provides the twin benefits of superior acoustic performance and sustainability. Here, Troldekt ultrafine panels are used in both natural wood and white to break up the ceilings and create an interesting mosaic effect.



Founded on the Cradle-to-Cradle design concept and recently attaining Gold certification, Troldekt's natural and inherently sustainable panels are available in a variety of different surfaces and colours and contribute positively to a building's BREEAM, DGNB and LEED ratings. In addition, panels which incorporate Futurecem™, the patented new cement from Aalborg Portland, have a significantly reduced CO₂ footprint. Overall, over the entire product life cycle, the CO₂ footprint is 26.4% lower than for Troldekt

based on gray cement and a whopping 37.7% lower than for Troldekt based on white cement.

In addition to their high sound absorption and attractive tactile surface, Troldekt acoustic panels offer high durability and low-cost lifecycle performance. Available in various sizes and in four grades, from extreme fine to coarse, the panels can be left untreated or painted in virtually any RAL colour.

01978 664255 Troldekt.co.uk

Castell Allen High School protects extension with Yeoman Shield

Castell High School in Flintshire supplies co-education to 1300+ students promoting strong levels of well-being. The original school building was established in 1958 and as the student intake grew extensions were built in 1974 and 1992 to accommodate.

2021 saw the latest extension, Y Celtec building, completed. Problems soon became apparent with the walls within the new area being clean and damage free.

The school's Site supervisor, Paul Muncey explained: "Keeping the white painted walls clean was becoming a nightmare for our cleaning team and within 12 months of the building coming into use the walls along the corridors required repainting."

Business Manager Emma Manning had come across Yeoman Shield wall protection solutions in a previous position and got in touch with regards to protecting the new building's wall before the impact damage became too great.



Yeoman Shield directly employed fixing operatives installed Mid-Grey FalmouthEx, 2,500 x 1,250 mm wall protection panels along the corridor walls.

The panels once in place not only protect from damage but are easy to clean down and will prove over the years to reduce repair and maintenance costs. They also look good sustaining a bright, clean, and welcoming



environment for staff and pupils at all times. Paul Muncey concluded: "I was very pleased with the quality of work provided by the Yeoman Shield installers who showed consideration to the environment that they were working in."

0113 2795854
www.yeomanshield.com

Bath Archway

In the centre of the UNESCO World Heritage Site of the city of Bath, The Roman Baths and Pump Room is a site of international historical and archaeological significance and attracts over one million visitors each year.

As part of an impressive refurbishment, Bath & North East Somerset Council appointed architects Feilden Clegg Bradley Studios for the new Archway Project comprising a new World Heritage Centre and Roman Baths Learning Centre. The Learning Centre features three state-of-the-art learning rooms, break out space and a hands-on Investigation Zone set among real Roman remains.

For a learning space – created from the shell of a former warehouse – with its historic roof structure newly revealed, the architects specified Trolldtekt's acoustic wood wool panelling in a natural finish to complement the surrounding wood, minimise the sound reverberation and dampen the noise from large groups of excited school children. Trolldtekt is a perfect choice for this kind of application



where its sustainable characteristics coupled with superior acoustic qualities provide a comfortable interior environment.

Founded on the Cradle-to-Cradle design concept and certified to Gold level, Trolldtekt's natural and inherently sustainable panels are available in a variety of different surfaces and colours and contribute positively to a building's BREEAM, DGNB and LEED ratings. In addition to their high sound absorption and tactile surface, they

offer high durability and low-cost lifecycle performance. Available in various sizes and in four grades, from extreme fine to coarse, the panels can be left untreated or painted in virtually any RAL colour. Trolldtekt® panels with FUTURECEM™ absorb more CO₂ than they emit during production.

Samples, case studies and technical guidance are available from Trolldtekt.

01978 664255 Trolldtekt.co.uk

Concealed door closers assure fire safety

British designed and manufactured, Powermatic controlled, concealed door closers deliver many benefits over surface-mounted door closers and are ideal for use on fire doors in high-rise flats and apartments.

The door closers carry the UKCA mark and have been independently tested and proved to meet the requirements for 60-minute and 30-minute fire doors under BS EN 1634-1. They also benefit from full third-party certification and are the only Certifire jamb-mounted door closer.

Fitting neatly between the door and frame, Powermatic is totally concealed when the door is closed, whereas overhead, surface-mounted door closers have highly visible and unsightly control arms and mechanical boxes protruding from the door's surface.

This concealment assures a clean appearance to the door and interior, enhancing aesthetics and creating a more homely and comfortable environment.

Unlike other jamb-mounted devices, Powermatic door closers facilitate a



door's compliance with the accessibility requirements of Approved Document M and do not have to be removed from the door to be adjusted.

Adding to Powermatic's performance credentials is the fact that the door closers have been fitted to door sets which have successfully completed security tests to PAS 24. Powermatic door closers come with

a 10-year warranty and, of course, there is the comfort of knowing that they are manufactured in the UK by Samuel Heath, which, with more than 50 years' experience, is the foremost authority when it comes to concealed door closers.

0121 766 4200
www.concealeddoorclosers.com

Bjelin supplies flooring for elegant Modernity London showroom in Belgravia's Pimlico Road

Bjelin has continued to expand in the UK commercial flooring market over the past year, with its distinctive hardened wood flooring range. Now it has been featured on an elegant 250 square metre renovation project for design gallery Modernity in Belgravia, London, which highlights the functionality and outstanding aesthetic qualities of the Bjelin range.

Modernity specialises in the collection and sale of rare and high-grade furniture, ceramics, glass, lighting and jewellery by the most renowned Nordic designers of the 20th century.

In January 2023, Modernity opened a new permanent London showroom located in Newson's Yard – a newly developed design destination on the Pimlico Road in Belgravia. With thanks to Wood and Beyond, the specialist London importers and suppliers of hardwood products, Bjelin were able to supply an area of 250m² of hardened wood flooring. They were looking for flooring that



could create a feel of luxury, whilst being durable enough to perform well in a high traffic destination.

The Bjelin hardened wood flooring on this project looks absolutely superb and is a credit to the location. The product used was XXL Oak Nature – Natural – Brushed Lacquer, which showcases the technology behind the manufacture of a Bjelin hardened

wood floor. This involves the pressing of a thin wooden veneer layer together with a wood fibre core, coated with a powder under high heat and pressure.

Woodura® the patented surface technology from Bjelin's sister company Vålinge, enhances the unique character of solid wood, by combining different wood veneer qualities with a powder mix in different colours and finishes. Additionally, the 5G® Dry™ technology gives the floor enhanced water resistance by preventing water from penetrating into the joints of the floor panels.

The Woodura® technology also maximises the floor surface available from every log. By using sliced wood instead of solid wood, ten times more flooring can be produced from the same amount of timber, whilst the 5G® Dry™ technology makes floors both easy to install and easy to live with.

www.bjelin.com
www.modernity.se

VitrA launch new shower toilet training module following research findings

VitrA Bathrooms has launched an online training module for retailers and specifiers of its comprehensive range of shower toilets – V-Care and Aquacare.

Margaret Talbot, marketing manager for VitrA, explains: “In Japan and much of the East, shower toilets are an everyday, popular product. Yet market sales and awareness are both low here in the UK.”

VitrA offers visually aesthetic and cost-effective shower toilets and was keen to understand consumer hesitation. Working with Trend Monitor, VitrA Bathrooms, based in Oxfordshire, commissioned a comprehensive piece of research to understand the drivers and hurdles for the sales of shower toilets in the UK.

The research showed that, out of 16,740 people, only 0.01% had a shower toilet in their home – clearly illustrating that there is little awareness of the product in the market.

“96% of bathroom purchasers were not offered a shower toilet as part of their bathroom design. Yet 77% of respondents who had used a shower toilet said they would consider one for a bathroom or cloakroom. These findings indicate there is enormous potential for shower toilet sales,” Margaret explains.

Secondary research, which targeted consumers within the AB socio-economic groups who had bought and installed a new bathroom or cloakroom within the past three years, showed that 38% of homeowners



VitrA V-Care Prime: This top-of-the-range shower toilet offers many personal hygiene benefits – yet it is still one of the most cost-effective intelligent shower toilets on the market

hadn't heard the term 'shower toilet'. A further 74% had never used one. This demonstrates the opportunities available to educate, with consumers having little idea of a shower toilet, how it works, or the vast range of benefits.

VitrA's research also showed that there are two primary buying personas. Firstly, those aged 50+ with limited mobility who have been alerted to the benefits of shower toilets by a hospital therapist. Secondly, those aged 30-50 who are more affluent and well-travelled and have used a shower toilet before and appreciated the health and well-being benefits. Both groups showed that promoting the benefits of a shower toilet instead of the features is more effective. Price point was a common barrier in the research, particularly when factoring in installation costs. Many only suggest a shower toilet to those with a renovation budget of over £10,000.

Nonetheless, with increasing consumer interest in hygiene, sustainability, wellness and smart products, there is enormous potential for the shower toilets market. Globally it is expected to reach USD 6.78 Billion by 2027, an increase of 1.85 billion (Source: Blue Weave Consulting).

To help its retailers communicate the numerous benefits of shower toilets and washing with water, VitrA has launched an online training tool. The tool educates retailers on using the product and its myriad benefits and features. The training module is hosted on the VitrA Academy, VitrA's platform for different training modules.

Margaret Talbot explains: “Shower toilets offer a huge growth potential for retailers in the UK. Just like with dishwashers in the kitchen 30 years ago, consumers feel shower toilets are a costly, unessential luxury. Today, many households would not consider a home without a dishwasher – it's no longer a luxury but a hygienic, environmentally-sound decision. Similarly, over time the shower toilet will become a UK bathroom must-have as it has in many countries worldwide. This research has added to our understanding of opportunities and challenges. Our shower toilets are feature-rich and price-competitive; our training academy is designed to support our retailers in understanding and communicating the benefits.”

www.VitrA.co.uk
review.cortexa.co.uk/Live/VitrA/VIT06M



VitrA Aquacare offers a built-in bidet function for added comfort and hygiene without needing an electrical connection

Vicaima unveils the main decor trends for 2023

Comfort, exquisite details and technology lead the world of architecture and decoration in the transition to a new year of potential challenges and possibilities.

Forecasting what 2023 holds for the world of architecture, construction and interior design is a demanding challenge, but history proves that in a period of metamorphosis corresponding opportunities present themselves for growth and renewal. Faced with a multitude of possibilities, in times that evoke beginnings, comfort and energy, Vicaima outlines the main trends that could be incorporated and inspire new projects in the year ahead.

Well-being, above all

Following a remarkable pandemic period, the desire for large spaces and open decor settings, in which natural light and innovative elements flourish, has become increasingly popular. Today, the aim is not merely to conceive a unique design, but to blend the aesthetic focus with maximum functionality and adaptation to different daily needs, in which the rooms are suited to the recovery and rejuvenation demanded by daily life.

As one of the largest European players in the design and production of cutting-edge solutions for interior doors, technical doors, frames, wardrobes, panels, and furniture items, Vicaima provides models that improve the accessibility of spaces and functional design, such as the Portaro® Sliding Door solution, which integrates door, frame and accessories in a single piece. The company also features complements that promote the perfect harmony between the aesthetics of interiors and a welcoming environment, as demonstrated by the glazing options, reflecting the physical comfort in the emotional wellbeing of each resident.

Bold details ruling spaces

In a highly globalised and interconnected world, interiors now incorporate increasingly unique and customised accessories and



identity traits, in an organic approach, with the addition of details that define the personality of projects, appealing to different audiences. Through a wide selection of models, coatings, and finishes, the Vicaima solutions are the ideal match for balanced and contemporary spaces.

Viva Magenta: A fusion between this new Pantone colour and the identity of Vicaima

A symbol of the increasing presence of bold and exquisite details, which put in evidence the freedom of self-expression and nonconformism with restrictions, is summarised by Pantone. The colour elected by Pantone as the “colour of the year” and the visual identity of Vicaima, evident in its logo, meet in their similarity as the summary of everything that 2023 anticipates.

Vicaima options allow the achievement of a distinctive personality through finishes such as Naturdor®, Dekordor® and Lacdor, whose palette of tones allow a synergy with the Pantone colour of the year for an ideal blend. Viva Magenta, in all its grandeur, reveals the optimism and vigour that drive a unified demonstration of strength.

Alongside these attributes, Viva Magenta is a shade rooted in nature, capable of driving a design that portrays a better future, a key feature in a period of growing environmental awareness. For the sustainable conservation of ecosystems, all Vicaima products are FSC® (Forest Stewardship Council®) certified.

The symbiosis of tangible reality with the virtual universe

With the development of home automation and technological innovations, 2023 promises

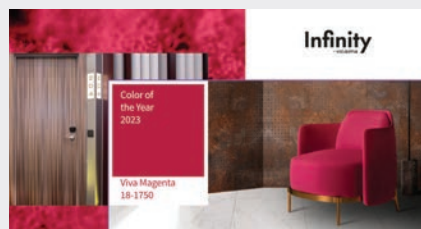
a greater incorporation of digital elements in interiors, adapted to the current lifestyle pace and the frequent use of mobile devices. A trend proven by the choice of Pantone, which explores the dynamic between Artificial Intelligence and human creativity, by creating a hybrid colour that portrays a balance between warm and cold, reminiscent of our multi-dimensional world.

Mindful of the latest developments in the sector, Vicaima offers the Infinity concept, that shapes the virtual into the tangible through an avant-garde style, employing high-end technology and a mix of innovative production processes that allow the creation of customised designs and coatings in essential elements such as doors, panels, wardrobes, and furniture pieces. Characterised by enabling infinite possibilities in any project, Vicaima Infinity defines creativity as its only boundary, aimed at sectors such as hospitality, housing, health, offices or commercial spaces.

As 2022 shaped architecture and design through Nature, minimalism and sustainability, 2023 heralds new dynamics and methodologies. Faced with volatile periods, Vicaima reaffirms its continuous renewal of styles and its firm commitment to quality, displaying this avant-garde attitude on its international presence in projects of excellence and in a close involvement with construction industry professionals everywhere.

For further inspiration, visit the Vicaima website at www.vicaima.com

01793 532333
info@vicaima.com



Riverside Apartments Integrate Vicaima stained doors



© Richard Gooding

Set in the beautiful surroundings of historic Chiswick, in London and positioned with excellent views over the river Thames, sit a group of select and classic new apartments created by modern living specialists Fruition Properties.

These stylish open-plan apartments have been complemented by their choice of interior doors, where Vicaima Crown Cut Ash Stained from the Vicaima Naturdor Range were selected. The finish specified in this instance was the

tasteful Marina Grey option. This finish not only depicts a contemporary tone, but also permits the attractive and natural grain configuration to shine through. Doors for the project were supplied in a mixture of both flush and glazed options, blending seamlessly with their surroundings and adding to the tasteful décor which a hallmark of Fruition Properties exemplary living space.

Marina Grey is just one of six attractive tonal options from the Naturdor Original

Stained Range and is available in an extensive array of performance options, including FD30 third-party accredited fire doors.

For other inspirational finish ideas, download a copy of the Vicaima Interior Door Selector: www.vicaima.com/files/files/catalog/vicaima-interior-door-selector-2022-2023.pdf

Visit the Vicaima website or email for more information info@vicaima.com

01793 532333 www.vicaima.com



© Richard Gooding



© Richard Gooding



FD30
APPROVED

ULTRA FLUSH DOORS

- One kit fits four ways
- Supplied with a magnetic latch
- Supplied with a 44mm Door
- Site visits available



DIRECT
SALES



LIFE TIME
WARRANTY



NEXT DAY
DELIVERY

 **Rocket Door Frames**

info@rocketdoorframes.co.uk
www.rocketdoorframes.co.uk
0330 9980 617

New Compact Range from Vitra - ArchiPlan



ArchiPlan 60cm mid-height wall unit in matt black showing the plywood edge complemented by practical and stylish display shelves, and mirror shelf combination unit, all in black metal framing. Countertop basin shown projects just 28cm to make maximum use of space.

Vitra Bathrooms, a global bathroom brand, has launched a striking range that provides plenty of options for designers and specifiers, particularly those working with small spaces. Designed by Design Studio Vitra, the new ArchiPlan collection is also perfect for bathrooms in the hospitality and commercial sectors.

ArchiPlan is modern and minimalist. The range offers a variety of sizes, including narrow cabinet widths and reduced projections (from just 28cm). Storage options include shelves in two sizes (45 and 60cm) and open shelving in the mirrors and mid-units. The contemporary

design also has black metal framing detailing. Elegant cut-out holes instead of door handles keep the design simple and add to the feeling of space.

The furniture is made from plywood, an eco-friendly material option. As well as requiring little energy to produce and being highly recyclable, plywood is incredibly hard-wearing and durable. The finish is water and moisture-resistant, offering a solid solution without compromising aesthetics or functionality.

With contemporary, clean lines, the furniture is available in a choice of neutral and timeless

matt colours - white, black, and taupe.

Wall-hung furniture units with washbasins are available in 45cm, 60cm and 90cm. A 52cm wide mid-unit provides valuable storage and open shelving.

ArchiPlan basins can be wall-mounted (with the option of chrome legs on 38cm x 90cm basins) or mounted in cabinetry. Each is available in 45cm, 60cm, 90cm and 120cm formats and is ideal for tight spaces in both 28 and 38cm projections.

01235 750990
www.vitra.co.uk

Yeoman Shield highlighting dementia-friendly wards

Wall & Door Protection Specialists, Yeoman Shield recently collaborated with a Yorkshire hospital to provide Door Protection for a ward refurbishment that would be in line with the dementia-friendly environment brief.



The work required the doors along the ward corridor to be protected using different coloured Yeoman Shield Protection Panels which had to be compatible with a pre-accepted palette of shades found to be conducive to wayfinding benefits for people with dementia.

Yeoman Shield was able to meet the colour brief drawing from their wide range of 58+ colours available in the protection panel range.

The Door Protection panels were installed, along with matching door frame protection, by Yeoman Shield's directly employed fixing operatives, in Royal Blue, Aubergine, Raspberry Red, Tangerine, Lilac, Yellow, and Pastel Green shades, providing an attractive, protective, and hygienic surface finish.

With the ward experiencing constant, heavy footfall, the door protection panels will play an important role in guarding against detrimental impact damage caused by the movement of beds, trolleys, people,



and equipment. This can help to reduce the amount of time and money spent on the repair and redecoration of doors.

For more information on how the use of Yeoman Shield wall & door protection products not only protects from impact damage but can assist in wayfinding and decoration go to the website.

0113 279 5854
www.yeomanshield.com

New from Hörmann: ThermoSafe Decoral aluminium entrance doors



Hörmann UK have launched a new addition to their range of aluminium entrance doors, the ThermoSafe Decoral, a range developed to provide discerning customers and specifiers with the combination of a high quality, secure aluminium door together with a selection of new modern decor finishes and door styles. Manufactured to the highest quality standards, the Hörmann ThermoSafe range of aluminium doors feature a solid 73 mm door leaf within an aluminium frame. The door is robust yet elegant, providing high levels of security, long life, good acoustic insulation, and excellent thermal properties with a U-value of 0.87 W/m²K being achievable. The addition of the Decoral version further enhances the ThermoSafe range and adds to an already extensive selection of door styles, finishes and colour options. The Decoral finish is applied to the powder coated surfaces of the ThermoSafe door using a patented coating method which results in a beautiful, colour fast and detailed appearance. The range offers five new innovative finishes – Cement, Rusty Pantina, Wild Oak, Barnwood and Barnwood Grey, together with eighteen exclusive door styles.

01530 516868 www.hormann.co.uk/home-owners-and-renovators/doors/front-doors

Yeoman Rainguard launches new Aluminium & Heritage Rainwater Systems brochures



Yeoman Rainguard, renowned throughout the industry for the manufacturer, supply, and installation of quality rainwater products, has launched two new product brochures. The aluminium brochure showcases the highly commended XL and SL range of Aluminium gutters and downpipes and introduces, new to the market, Yeoman Rainguard Aluminium Flush Fit Downpipes and Aluminium Security Downpipes. Another new addition is the Squareline range of Aluminium Fascia Soffits, Copings, and Cills, already proving popular in the commercial market. Yeoman Rainguard's Heritage brochure contains a wide choice of systems and materials that perfectly suit heritage and listed building renovation projects and those that prefer the more traditional feel. A printed version of the new brochures are available on request or can be downloaded from the website, www.rainguard.co.uk. As always Yeoman Rainguard takes great pride in the expertise gained over 40 years in the market and customer services provided, such as free site surveys and samples, help clients make the right choice of rainwater systems for their construction projects.

0113 279 5854 www.rainguard.co.uk

Timeless Nordic Brass Weathered



A new commercial building in Stockholm is defined by its carefully detailed facades of Nordic Brass Weathered pre-oxidised copper alloy from Aurubis.

In the Nattugglan neighbourhood on the island of Södermalm, developer Vasakronan has replaced an inefficient and outdated office block with a new, 'LEED Platinum' certified modern building. The new Folkungagatan 44 project provides 22,000 m² of space, largely for offices but also including conference spaces, plus retail outlets and a restaurant on the open, street-facing ground floor. Equator Stockholm Architects' design for the new building reinvigorates

its pivotal location. Its massing comprises a five-storey block with two further storeys, each stepping back to generate 'living roof' gardens. The building's strong presence in the city is defined by its almost classically structured facades of fenestration and Nordic Brass Weathered cladding with a natural colour that complements its surroundings. Carefully detailed and executed flat panels, 'fluted' mullions and horizontal mouldings between windows, copings and other details align clearly expressed vertical joints throughout.

The Nordic Brass Weathered copper alloy provides a rich, naturally varied brown surface with a high quality,

timeless character. The surface is created by burnishing at the Aurubis copper mill, providing straightaway the same oxidised brown surface that otherwise develops over time in the environment.

The Nordic Copper alloy cladding also adds to the building's 'LEED Platinum' certified sustainability agenda. Nordic Copper architectural products and alloys are manufactured using 100% recycled raw-material, and copper's ability to be recycled repeatedly – without any loss in performance – is an important sustainability benefit.

NordicCopper@aurubis.com
www.nordiccopper.com

Innovative subframe solutions by CLAD-LINE

CLAD-LINE has positioned itself at the forefront of innovative design, to become one of the UK's leading manufacturers of extruded aluminium non-combustible subframe systems, developing a complete set of facade framing solutions for the cladding market.

CLAD-LINE aim to simplify the design process, reduce installation time, and provide products which make everybody's life that little bit easier. What better way is there to do this than to work in conjunction with our valued customers and draw upon their first-hand industry knowledge to develop a structurally efficient and fully compliant subframe offering.

Servicing the new build and reclad/refurb markets, the key ethos of CLAD-LINE is innovation. Their team of qualified Design Engineers help to develop innovative solutions to overcome any challenges presented by the most complicated construction projects.

With the aid of CLAD-LINE's state-of-the-art and free to use Facade Engine specification software, CLAD-LINE can help any customer overcome project-specific challenges and

provide a comprehensive static calculation for their project requirements. A full Finite Element Analysis is also available to verify the performance of the more bespoke systems and ensure that framing designs are fully optimised.

From the most simplistic but effective rail and bracket system to the unique Floor 2 Floor framing technology, the CLAD-LINE range offers framing solutions for all design requirements and can accommodate a diverse range of cladding materials.

CLAD-LINE proudly supported the 2022 RCI Facade Awards as a category sponsor for 'Best rainscreen system using aluminium'. The awards celebrate the achievements of facade contractors, manufacturers and suppliers who demonstrate an outstanding level of technical ability, excellent quality of work, and showcase the superstars of the industry who have gone unnoticed.

Last year's event also saw Clad-Line's own Managing Director, Darron Brough being presented with the prestigious 'Outstanding Contribution of the year' award. His award-winning achievements within the industry



include the invention of a wireless fire detection and alert system that is integrated within the external facade of high-risk buildings where combustible materials are present, known as Intelliclad, pioneering a new level of building safety.

To find out more about Clad-Line please visit the website or contact the team to discuss your requirements.

01543 222500
www.clad-line.com

Cheers! Crittall boosts Brewery transformation

Described as Dorchester's most iconic building, the Brewery – once the source of the much-quoted Eldridge Pope ales – has been transformed into a high-end residential setting with Crittall windows playing a central role in retaining the heritage aesthetic of this historic structure.

For nearly a century and a half the building, with its tall chimney, towered above the Dorset town as a symbol of local industry and prosperity. Designed by architect WR Crickmay the brick building was completed in 1880. At a staggering 13% the brewery's Thomas Hardy Ale once featured in the Guinness Book of Records as the strongest commercially brewed beer in the country.

The brewery eventually closed in 2003 and the site remained unused until, in 2007, planning permission was granted for a new public square overlooked by the impressive building, restored to its former glory containing 29 one, two and three-bedroom apartments.

LMA Architecture of Bournemouth has retained many of the unique features of



the original building including riveted steel beams, cast iron columns and exposed brickwork. Crittall Corporate W20 steel windows and doors were a natural choice,

glazed in small panes to replicate the original configuration of the tall brewery windows.

01376 530800 www.crittall-windows.co.uk

Senior expands its work in the capital

By increasing its UK manufacturing capacity and building on its strong partnerships within the supply chain, Senior Architectural Systems has seen an increase in work secured across London and the South East.

The UK's largest privately owned aluminium fenestration systems manufacturer has recently invested in both its manufacturing and storage facilities to increase production and better meet demand for its thermally-efficient and Part L compliant aluminium windows, doors and curtain walling. As a nationwide supplier, Senior is taking on larger and more complex jobs, including several mixed-use developments in London.



One recent project that Senior provided the full aluminium fenestration package for is the Royal Arsenal Riverside residential development in Woolwich, with the manufacturer working alongside supply chain partner Soundcraft for Berkeley Homes. Senior's products were also installed by Soundcraft on Berkeley Homes' large scale mixed use Kidbrooke Village scheme in Greenwich.

Senior's growing presence in the London market has seen the manufacturer supply its aluminium fenestration products for both large contracts and smaller bespoke applications, such as the new Lidl store at The Waterline development, formerly known as Minavil House, in Alperton. Here Senior's thermally-enhanced SF52 aluminium curtain wall system has been used to create the stylish facade design which incorporates feature fins and sloped glazing elements.

Working on a bigger scale, Senior is currently involved in a new mixed-used regeneration scheme which is being developed on the former Homebase and B & Q retail site on Swanton Way in Wandsworth. This complex contract for Vistry Partnerships, which is currently on site, has required Senior to provide detailed technical support to ensure that the specified products can successfully meet the required U-values and acoustic requirements. Senior is also working closely with the glazing supplier to conduct the necessary tests and meet the strict G-values to reduce overheating and solar gain across the multi-storey, residential led



mixed use development.

As part of Senior's commitment to providing specification support to its customers on a regional level, the company's team of architectural advisors is on hand to provide assistance both on and off site.

For more information about Senior's work in London and the South East, or to discuss your individual project's fenestration requirements, please contact Jon Molton on 07843817490 or via email at jonm@sasmail.co.uk

01709 772600 www.seniorarchitectural.co.uk

Pioneering facades for the future...

Looking back at 2022 Metalline's presence within the Facade industry continued to grow Metalline revealed their latest technological investment; The TruBend Center 7030. It is the benchmark when it comes to flexibility and productivity during panel bending. Due to the success of this investment, Metalline has also taken delivery of the TruBend 5170 press brake.

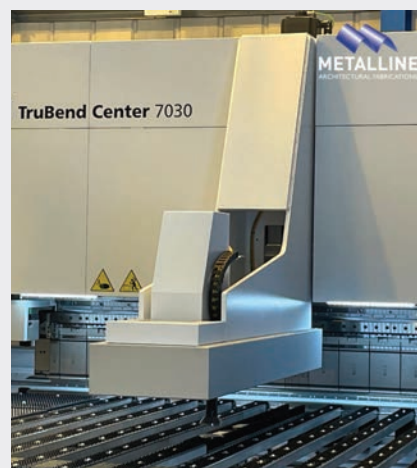
Incorporating a flexible 6-axis back gauge, the TruBend 5170 enables greater accuracy and speed during production. The scale of this investment is aimed at taking Metalline's expertise in the field of facade fabrication and amplifying it to work with specifiers, architects and designers on more bespoke and detailed projects whilst increasing capacity to service the facade industry.

Metalline has developed their product ranges without compromise and has now has a range of products certified and tested which perfectly align with the reclad market as well as new build.

Metalline's Managing Director, Darron Brough was also honoured with a hat-trick



of awards during 2022, including the National Building Construction Awards for Innovation of the year Intelliclad, The London Construction Awards for Smart Technology of the year Intelliclad, and Facade Awards For 'Outstanding Contribution of the Year' Metalline.



Metalline continues to pave the way within the Facade industry offering customers the latest finishes, fabrication expertise and technical support.

01543 456 930
sales@metalline.co.uk

Hörmann high speed sectional doors keep things moving at Audi

Helping to accelerate the movement of vehicles through a busy handover bay, six high speed sectional doors from Hörmann UK have been installed at Audi in Bradford. The installation was carried out by Hörmann partner Crucial Engineering and formed part of a retrofit programme, with the new doors being chosen specifically as they provide high speed operation, security, and excellent thermal efficiency.

Replacing a previous complex installation of a sectional door plus a high-speed door fitted to each entrance and exit, the installation of the Hörmann doors solved the operational issues created by this set up and provided Audi with a simple, fast solution.

Three ALR F42 aluminium glazed doors were installed at the entrance to the handover bay, with three SPU F42 sectional doors being fitted to the exits. Constructed from a lightweight, yet strong, aluminium framework the ALR F42 glazed doors consist of large,



clear glazing panels bringing maximum light into the working environment and creating an unimpeded view. The glazing panels include the unique Hörmann DURATEC coating which protects the panes from scratching and damage caused by cleaning over the long-term, providing a permanently clear view.

The SPU F42 sectional doors have a hardwearing Stucco textured interior finish, with a micro grain exterior creating an elegant surface finish to complement the

buildings modern facade. The doors are all coated with RAL 9006 White aluminium. All six doors are fitted with the new Hörmann WA500 operator which enables the doors to operate at an impressive, market leading door travel speeds of up to 1 m/s, helping to speed up operations and retain heat within the building. Optimised track radii and enlarged rollers result in quieter door operation together with improved stability leading to low wear and smoother door travel.

Paul Van Heeswyk, managing director at Crucial Engineering comments: "A key factor for the specification of the Hörmann sectional doors for this project was speed. There is no other sectional door on the market that operates at these speeds, so it was the obvious door of choice. For Audi being able to have clear vision panels was also a factor as natural light in the handover bays is a must."

01530 516868 www.hormann.co.uk

Launch of world's first solution for post tensioned balcony connectors

Leading global lifting, connecting and anchoring company Leviat has launched the world's first insulated balcony connector element for post tensioning applications, which can be used alongside its industry renowned range of Halfen HIT Structural Thermal Breaks.

Hervé Poveda, Leviat's head of product excellence, reinforcement & building physics – Europe & APAC, said: "The development of this innovative solution was as a result of our customers looking to include balconies in the post tensioning process. Our new Halfen HIT Insulated Balcony Connector System allows balconies to be cast together with the main slab and then simultaneously stressed – something which has never been possible before with conventionally reinforced concrete balconies. Furthermore, formwork installation and removal on balconies and the main slab can take place all at the same time, driving significant efficiencies on construction sites,

enabling users to build better and faster which reduces costs."

Our range of balcony connectors provide continuity to both the concrete reinforcement and the thermal insulation of the building envelope, protecting against the effects of cold bridging, eliminating the risk of condensation and mould growth, and guaranteeing the comfort of the building's occupants.

Specifiers can be confident that the new Halfen HIT Insulated Balcony Connector system complies with the UK's latest guidance and building regulations, with particular reference to fire resistance. The innovative Halfen HIT Transition Piece is filled with mineral wool insulation for optimum thermal efficiency and fire resistance. The mineral wool specification is identical to that used for standard HIT insulated connection elements, which have an REI 120 fire resistance rating.

The Halfen HIT Insulated Connection system has recently been granted a UKTA by the British Board of Agrément, covering



compressive design resistance as required for post tensioning applications. Halfen HIT Transition Pieces are designed for use with all types and configurations of post tensioning cables currently available on the market, using either bonded or unbonded strands.

info.uk@leviat.com www.leviat.com/gb-en

Yeoman Rainguard launches new Aluminium Rainwater Systems Brochure



Yeoman Rainguard, renowned throughout the industry for the manufacture, supply, and installation of quality rainwater products, has launched its new Aluminium Product Brochure. Showcasing the highly commended XL and SL range of Aluminium gutters and downpipes the brochure introduces, new to the market, Yeoman Rainguard Aluminium Flush Fit Downpipes and Aluminium Security Downpipes. Another new addition is the Squareline range of Aluminium Fascia, Soffits, Copings, and Cills, already proving popular in the commercial market. With a recently expanded colour range, which can accommodate options from RAL and BS ranges along with contemporary shades from Farrow & Ball and Little Greene for example, Yeoman Rainguard's comprehensive Aluminium range can offer that perfect finishing touch for all styles of buildings. A printed version of the new Yeoman Rainguard Aluminium brochure is available on request or can be downloaded from the website. As always Yeoman Rainguard takes great pride in the expertise gained over 40 years in the market and customer services provided.

0113 279 5854 www.rainguard.co.uk

FOLLOW HMM ON TWITTER: @HMM_ONLINE

HOUSING
MANAGEMENT
& MAINTENANCE

Kemper System prescribed for multi-million-pound hospital building

Kemper System's cold-applied liquid waterproofing solution has been specified for a multi-million-pound extension at St John's and St Elizabeth (HJE) Hospital in London. The £35m new build development has created six, hi-tech theatres and a day case suite which is one of the most modern in the UK.

A total of 9,060 sqm of Kemper System's Kemperol 2K-PUR solvent-free and odourless waterproofing membrane has been applied beneath the building's green roof, onto a pedestrian trafficked walkway, the lower roof area and a plant roof area. The cold-applied solution was installed by London-based Ridgewell Flat Roofing Ltd.

Because of the location of the new build extension, adjacent to an occupied hospital building at HJE, the solvent-free and odourless qualities of the Kemperol system meant minimum disruption at the hospital throughout the application process. No hot works were required as part of the project,



further reducing potential health and safety risks, and meaning no wait times were needed between applications of resin.

Once cured, the system forms a seamless, elastomeric waterproof membrane that cannot delaminate, is UV stable, and creates a sturdy bond directly to the substrate.

Additionally, the plant roof area had a number of complexities with many ventilation outlets and air conditioning units, and because Kemper's waterproofing system

is roller-applied, operatives could easily install the resin underneath the units and around the complex roof structure.

Ben Ridgewell, managing director of Ridgewell Flat Roofing, said: "We have used Kemper System for many years, and the cold-applied solution was perfect for this prestigious project because it is so versatile. We could apply the system to each of the different roof and walkway areas with ease without having to switch roofing materials. Kemper System once again delivered on such a complex project, which presented winter working challenges, specifically with high winds at times. Large expanses of sheeting material would have not have been practical or safe on site, so a roller-applied liquid waterproofing solution was the best for this project. We were extremely happy with the results, and so is the end client."

enquiries@kempersystem.co.uk
www.kemperol.com

selfbuilder + homemaker

Now on LinkedIn

WWW.LINKEDIN.COM/SHOWCASE/SELFBUILDER-HOMEMAKER

Selfbuilder + Homemaker
Publishing
Heathfield, East Sussex
Providing self-builders with a range of content, from in-depth case studies to the latest product information.

About us

The self-build market is an aspirational one, with many media titles targeted towards those people who are merely dreaming about building their own house. Unlike some newstand magazines, Selfbuilder + Homemaker has a focused readership of genuine self-builders, renovators and agents, reaching only the people who already own their land or property, have planning permission and are ready to start work.

The brand has something to offer every self-builder, whether they're looking for advice on what build method to use, guidance on specific products or simply inspiration on final finishes. The mix of content in Selfbuilder + Homemaker allied to its strong circulation means now is an exciting time to be involved with the magazine.

Website <https://www.sbhonline.co.uk/>

Euroform's Versaroc® MPA1 panel is part of Europe's largest living wall

Euroform Product's Versaroc® MPA1 sheathing board has been used in the construction of Europe's largest living wall at Eden, Salford, which is set to be one of the UK's most sustainable office buildings.

Eden is a £36 million, 115,000 ft², 12-storey office building at New Bailey in Salford, being developed by The English Cities Fund (ECF) – a strategic joint venture between nationwide placemaker, Muse, Legal & General and Homes England. The main contractor is Bowmer + Kirkland.

The jewel in Eden's crown will be a living facade, which at 43,000 ft² will be the second largest in the world and the biggest in Europe. The facade is designed to remove air pollutants including carbon, reduce urban temperatures offering thermal benefits to occupiers, and deliver a 174% net gain in the biodiversity of the area, while providing a high-quality green space.

Euroform's Versaroc® MPA1 is part of the living wall structure, which involves



Image courtesy of The English Cities Fund

a steel frame. A fibre cement board comprising ordinary Portland cement with inorganic reinforcing fibres, Versaroc® MPA1 is intended for exterior sheathing of SFS frames due to its high durability and non-combustibility.

Versaroc® MPA1 achieves EuroClass A1 Reaction to Fire according to EN 13501-1:2018 and has third party Agrément

from Kiwa BDA for steel frame sheathing application – certificate number BAW-20-154-P-A-UK. Versaroc® MPA1 is also highly moisture tolerant and has achieved category A performance to EN 12467:2012 + A2:2018. As indicated, category A is the highest level of performance that fibre cement sheets can achieve in terms of resistance to the destructive effects of varying climatic conditions including severe frost, a critical consideration for the requirements of the board used within the Eden facade.

A wide range of systems may be applied over Versaroc® MPA1 such as approved ETICS systems, terracotta cladding systems, high performance cladding systems and traditional brick coursing.

Ordered and installed by Lester Cladding, Euroform has supplied nearly 50,000 ft² of Versaroc® MPA1 to site.

www.euroform.co.uk
www.musedevelopments.com

Dymchurch coastal repairs

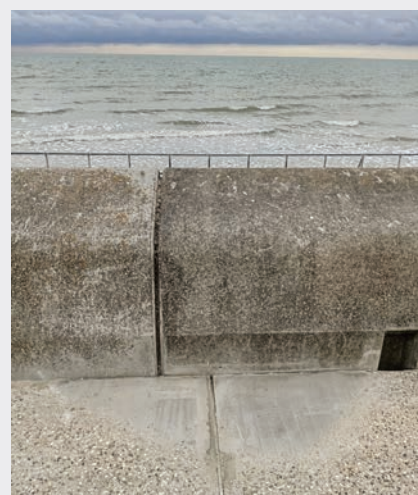
Resapol's Concrete Repair specialist Tom Brown was contacted by Invictacut in early May 2022 in order to recommend a suitable repair material for coastal repairs situated within Dymchurch, Kent. The project site featured several walkways that had become increasingly damaged, causing potential trip hazards for pedestrians.



Invictacut sought product advice and recommendations from Resapol in order to quickly and reliably fill several areas of damaged concrete, with the view of opening the walkways the very same day of applying the repair work.

Tom recommended rbs Rapid Concrete due to its high strength and rapid setting nature. rbs Rapid Concrete is a repair concrete that consists of a dry blend of modified Portland Cement and limestone aggregate. Its high performance exhibits a fast development of physical properties allowing early return to service making it especially suitable for this specific project. The material is diverse and has a multitude of applications, including concrete pavement thin bed and full depth, bridge deck repairs as it complies to the Department of Transport Standard BD27/86.

The project began on 10th June and was completed the very same day allowing early return to traffic. Invictacut were extremely happy with the product, alongside Resapol's quick delivery and technical support, which allowed the project to be



completed on time and within budget. Marc Walker, contracts manager at Invictacut, had this to say on Resapol's service: "rbs Rapid Concrete is a great product that we use regularly and is great for the price and very user friendly, we're always happy with the service Resapol provides and Tom in particular has been great."

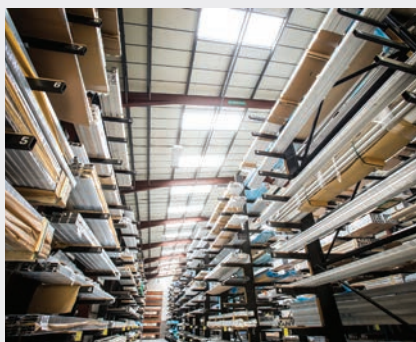
0800 083 1942 www.resapol.com

A core range that always meets your needs

Kestrel Aluminium Systems has been supplying aluminium fenestration products for more than 30 years, and prides itself on its excellent customer service and reputation for high-quality, reliable products. Kestrel's core range of window and door systems sit at the heart of the UK fenestration industry, and their customers trust them to provide exactly what they need, when they need it.

Kestrel's window systems are designed to create a contemporary look for any building, with stylish options to suit any window configuration. The 60 mm and 70 mm systems are thermally efficient and will complement both residential and light commercial buildings such as homes, schools, offices and leisure facilities. Each system is available as either side or top hung, with parallel opening options available on 60 mm systems.

They can also be used in conjunction with Kestrel's Curtain Walling and Thermal Framing Systems to create a complete glazing solution for newbuild and refurbishment properties. All the windows in the range can



be either single or dual-colour powder coated to match any building style, and customers can rest assured that the systems are secure and energy efficient, complying with all relevant Building Regulations.

Kestrel also offers a comprehensive range of door suites for both commercial and residential properties. The established shopfront system has sections available to create both flush and bead glazed frames to suit all applications. The main framing sections are 100 x 45 mm to ensure

straightforward and robust fabrication that can be easily glazed on site, making it easier for installers and fabricators to complete their projects quickly. There are a wide choice of sections available to form any style of door leaf, including auto swing, manual and automatic sliding, folding and rebated.

Kestrel's residential door systems lends a touch of luxury to any newbuild or property extension, bringing much-needed light into people's homes. The popular Sliding Patio Door is supplied with narrow profile faces to provide uninterrupted views to the outdoors through an impressive removable wall. The Folding Sliding Door product completes Kestrel's core range, enabling the doors to fold flush back against each other for maximum visibility into any garden or outside space.

Also available from Kestrel are Glazing Bars, Rooflight Systems and Curtain Walling products, with a wide range of profiles and complementary products to enhance any commercial space.

0121 333 3575 kestrelaluminium.co.uk

Historic building turns green with Kemper System

Kemper System has helped to refurbish the metal roof of an historic London building, manufacturing a uniquely coloured waterproofing system.

Located at 77 Chancery Lane, the property is owned by The Honourable Society of Lincoln's Inn – an organisation with an 11-acre estate in London comprising historic buildings, commercial space, residential properties, a law library and chapel.

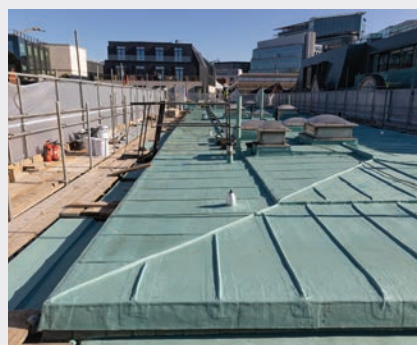
Property and construction consultancy, Ingleton Wood, specified Kemperol V210M as part of the wider refurbishment of 77 Chancery Lane, which is being transformed into Grade A office space. To emulate the appearance of the existing copper roof, the cold-applied liquid was specially manufactured in copper green.

The Kemperol V210M was installed by Ridgewell Flat Roofing over an area spanning 350 sqm. As the same liquid already featured on the roof, it was overlaid with the V210M to refresh the copper green colour. The V210M was also used to waterproof new roof areas and where plant had been removed, providing a consistent covering.



To ensure a consistent depth and coverage, the V210M was applied until the fleece was no longer visible which indicated it was fully saturated. Once cured, the liquid resin formed a seamless and elastomeric membrane.

Victoria Ramwell from Kemper System said: "The green colour is the natural shade of the patina that forms on the copper surface of a roof over time. By adjusting our manufacturing process with different pigments, we were able to



create the exact RAL 6034 colour code specified for this project. The V210M has provided a new and robust waterproofing solution with a very traditional appearance which will ensure this historic building remains watertight for decades. The ease of application also meant that it could be quickly and effectively installed around the multiple seams of the metal roof."

enquiries@kempersystem.co.uk
www.kemperol.co.uk

Sapphire's innovative solutions ensure rapidly installed, rigid balconies for development

As industry leaders in prefabricated balconies backed by the brand promise to be rigid, ready and right, Sapphire has overcome challenges posed by a new residential project in one of London's most notable suburbs. Phase 1 of the White City M&S development by leading property developer, St James, part of the Berkeley Group, features 342 balconies designed and manufactured using Sapphire's innovative offsite-manufactured Glide-On™ aluminium Cassette® system.

To complement the new apartment buildings' intricate façade detailing Sapphire created a bespoke balcony package with Crystal® frameless, structural glass balustrades. As well as meeting the project's design challenges, Sapphire's team maintained clear and frequent communication with the supply chain throughout. Additionally, the use of Sapphire's Balcony Passport System, a quality control app, provided a complete traceable history of each balcony, from assembly to final



quality acceptance, delivery and installation, thereby reducing the potential for snagging at the point of client handover.

The prestigious White City project specified Sapphire's Glide-On™ Cassette® balconies with clear toughened laminated structural glass, polyester powder coated aluminium fascia trim to conceal glass fixings/edge of the balcony frame, controlled draining soffits, and composite decking fixed with hidden clips. While the balcony units were preassembled offsite, cast-in anchors and incorporated

thermal break connections offering superior rigidity to the balconies, were cast into the building slab. Contractors working on site reported that the anchors were on a par with the best in the industry.

Sapphire's offsite manufacture and storage package, which meant balconies could be kept in storage for an extra six months due to project delays, was seen as a huge positive to the project. When they were required on site, the preassembled balconies, including balustrades, decking and soffits, were transported with balconies 'nested' onto each pallet, making transportation both cost-effective and safe. Balconies were pre-slung offsite and ready for fast and easy installation upon arrival. Once lifted into position, the Cassettes® simply Glide-On™ to the pre-erected galvanised steel support arms before completing the simple mechanical fixings.

sales@sapphire.eu.com
www.balconies.global.com

Perforated panels combine safety, functionality and aesthetics

Overlooking the Manchester City Canal, a total of 500 apartments are being built in Manchester Waters. The location, quality and facilities are unique, and the selection ranges from studios to 3-bedroom apartments. The first blocks are finished and stand as a symbol of the new Manchester.

Premium waterfront living on this level must offer all amenities, including the ability to park near the residence. Therefore, car park facilities have been established on the lower level. In this connection, RMIG Solutions has supplied facade panels for covering the car park.

Challenges and wins

The facade panels presented several challenges. Aesthetically, the panels should be decorative and match the architecture. Functionally, they should have an extraordinarily large open area, as the rest of the basement is surrounded by solid walls.



Finally, the panels should appear in a raw finish, directly from the mill.

The task was solved thanks to a close and trusting collaboration with the architect. Aesthetically, the choice fell on a botanical pattern with a closed surface at the top that hides the concrete deck.

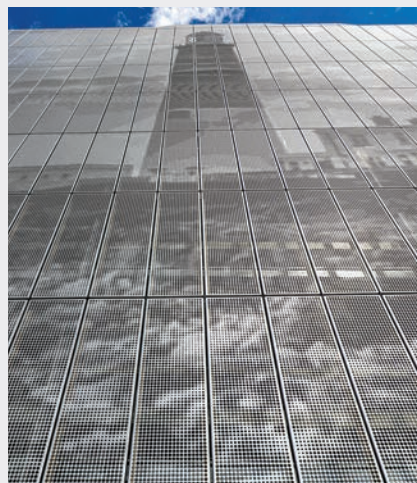
An open area of 50% is difficult to achieve in this thickness (3 mm), particularly in an



aesthetic finish, but with precision tools, our sales and development departments at RMIG Solutions managed to increase this. The architect proposed displacing some of the panels to provide extra ventilation, and this ultimately resulted in an open area of approximately 75%.

01925 839610 www.rmig.com/en

Meeting the challenge of combining aesthetics and regulations at Dorset County Hospital MSCP



Dorset County Hospital is located just outside Dorchester town centre. This modern hospital provides a full range of district general services, including an accident and emergency department, and links with satellite units in five community hospitals. As the main provider of acute hospital services to a population of around 300,000, ample parking space is required at all times.

It was decided that a multi-storey car park (MSCP) should be built to keep pace with demand. Due to new and stricter public regulations combined with the desire for aesthetic freedom, the task presented several

challenges that required extensive teamwork within our organisation.

Challenges and wins

The design and construction of multi-storey car parks are receiving a lot of attention in the UK. It gives status to develop aesthetic garages and prizes are awarded every year for the best MSCP architecture – RMIG Solutions has contributed to many significant projects within this field.

At the same time, the regulations and legislation for MSCPs are being tightened all the time in the UK. This applies to the guidelines for light and ventilation, and to a large extent to the rules for fire safety. In connection with the Dorset County Hospital project, this presented RMIG Solutions with various challenges.

For instance, the traditional coating for facade panels proved too thick in relation to the latest UK fire regulations. In the event of a fire, it could cause smoke that reduces visibility. RMIG Solutions joined the project at an early stage and was able to scan the market and offer a new compliant raw material. At RMDE-R, the possibilities were explored, and Novelis ff3® aluminium, which is coil-coated from the factory, was recommended. This material could be perforated without losing its beneficial properties and its compliance with the regulations.

Next, it was time to process the images for the facade. After a public vote, three images

from the beautiful Dorset countryside had been selected for illustration, but they were in portrait format and also had to be processed so that they could meet the requirements for open areas for light and ventilation.

We succeeded in processing the images and the results were remarkable! Through a bit of wizardry we managed to change the photos to landscape format and at the same time let in light and air for the users. This made it possible to merge the creative wishes of the architects with what was technically possible. It is always a compromise when it comes to MSCPs, but even though ventilation requirements reduce the contrast in the images, they still stand out and give residents a great impression of the Dorset landscapes.

Finally, numbers could be stamped directly on each element in the production line so there was never any doubt as to where and in what order they should be installed. This made the on-site mounting process much easier for the customer.

01925 839610 www.rmig.com/en

TECHNICAL CHARACTERISTICS

Size of the project: 3,400 m²

Material: Novelis ff3® coil-coated aluminium

Pattern: RMIG ImagePerf

Thickness: 3.0 mm

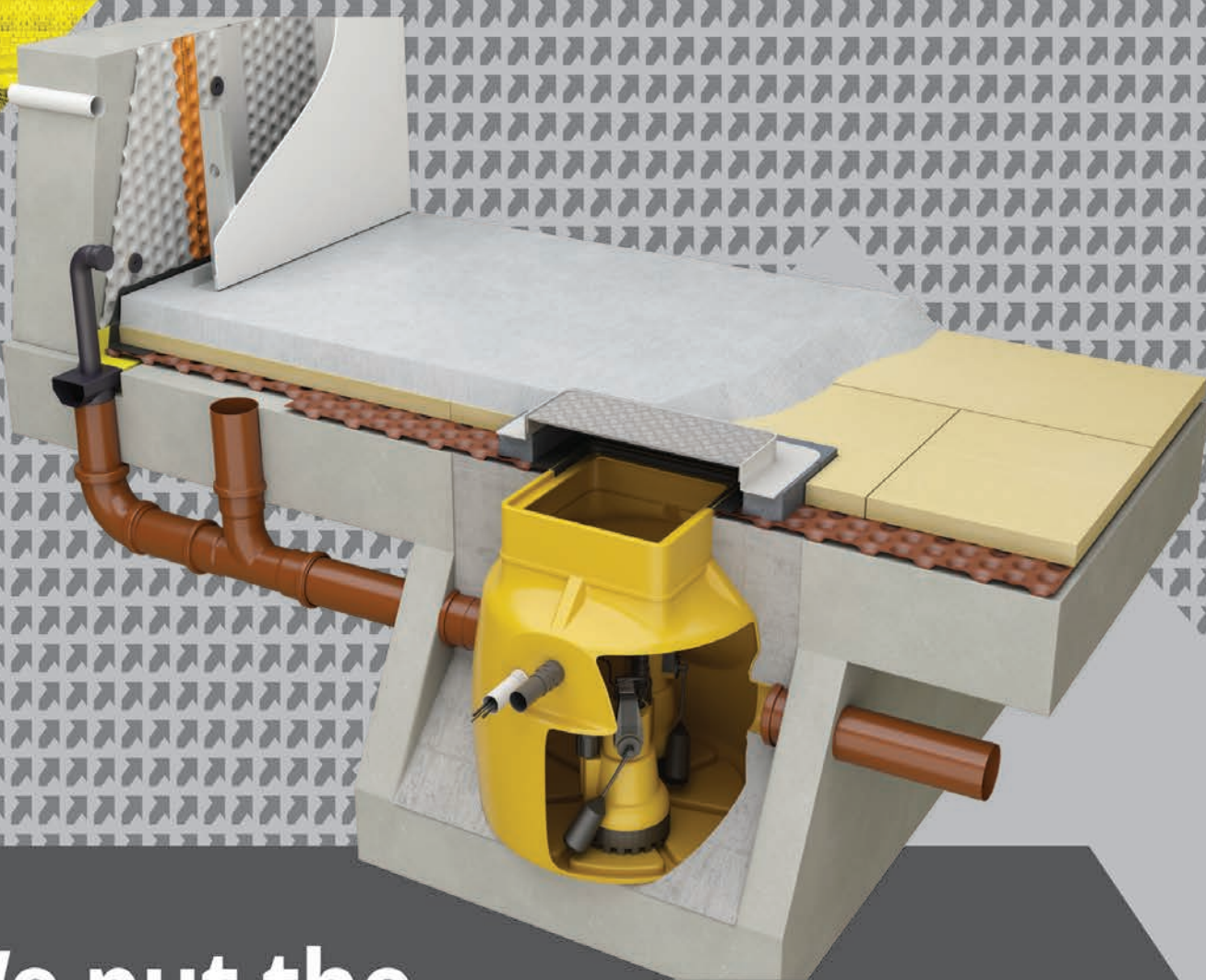
Finishing operation: Bending





DELTA

PUMPS & DRAINAGE



We put the Innovation in Structural Waterproofing





Cover image: Sapphire
See page 35 for details