

# building construction design

[www.buildingconstructiondesign.co.uk](http://www.buildingconstructiondesign.co.uk)

SUMMER 2023

Appointments & news	02
Building products	07
Interiors	14
Exteriors	23



Cover image: Trolldtekt  
See page 19 for details



# Aico host webinar on 'A Spotlight on Damp and Mould' with The Housing Ombudsman



Aico has recently welcomed the Housing Ombudsman Service to an online event focusing on damp and mould in the housing sector and best practices to keep residents safe.

"A Spotlight on Damp and Mould: It's not lifestyle" report, published in October 2021 placed the responsibility for resolving poor quality housing in the hands of social landlords. The report provided 26 recommendations for landlords to assess their approach to resolving cases of damp and mould. In February 2023, The Housing Ombudsman published a follow up report to provide insight into landlords' responses to the 2021 report. This new report included a number of actions that landlords have taken as a result, including improving surveying equipment, the use of sensor technology, resident facing apps and the use of an online dashboard, such as the HomeLINK Connected Solution.

Following the reports, HomeLINK's Sustainability & Ethics Lead, Sam Collier, welcomed Victoria King, sector learning and development lead for the Housing Ombudsman Service and Mark England, head of innovation, sustainability and procurement for Coastline Housing. The panel also welcomed Alan Park, compliance and systemic investigations manager at the Housing Ombudsman Service

for an engaging and thought-provoking Q&A session.

With over 500 attendees, Sam Collier opened the event giving an overview and timeline of the increased efforts to prevent damp and mould cases by the sector as a whole and highlighted the work yet to be done. Victoria King presented on the "It's not lifestyle" report one year on, highlighting a need for a change in culture and The Housing Ombudsman's recommendations. Victoria was followed by Mark England, who shared Coastline Housing's approach to the report, highlighting the use of data and a proactive approach.

HomeLINK's Sustainability & Ethics Lead, Sam Collier who hosted the session commented: "Aico decided to host the Housing Ombudsman Service (HOS) on this webinar as we believe we all have a part to play in tackling damp and mould in the sector. We know our customers are facing a huge uphill task to improve the condition of their housing stock, and this event provided some excellent insight into what steps they can take to make progress in this area. It's great to see the HOS providing recommendations around innovative tools such as sensors, dashboards and resident apps to enhance the data landlords have about the condition of their properties, so they can make better informed decisions, and improve the health of their homes and the wellbeing of their residents.

The example provided by Coastline Housing showed the impact these approaches are already having, and hopefully one other landlords can follow."

Victoria King, sector learning and development lead for the Housing Ombudsman added: "In our damp and mould report, we said that landlords need to have a sustained focus on culture and behaviours to ensure issues are not dismissed. This event helps the sector to do that, and we highlighted our recommendations again, including the need for landlords to develop a damp and mould strategy and for landlords to implement a proactive communications strategy. Whilst we know this is now a priority for many landlords, especially for those attending events such as this, we urge senior leaders to go faster and further in their efforts to do what is right by their residents."

This event was the first in a miniseries being hosted by the market leader on damp and mould. In the next webinar on May 10th, HomeLINK's Product Manager, Jordan Toulson, will take an in depth look at a case study surrounding damp and mould, what approach the landlord has taken and how technology can support. To register for the next event, please visit: [bit.ly/3TCPCzB](https://bit.ly/3TCPCzB)

To watch this full webinar on demand, please subscribe to Aico TV: [www.youtube.com/@aico-tv](https://www.youtube.com/@aico-tv)

[www.aico.co.uk](https://www.aico.co.uk)

# Luceco's Sigma at the Liver Building



**L**uceco has recently supplied their Sigma luminaires to the Royal Liver Building. The building overlooks the River Mersey from its waterfront location on the Pier Head and forms one of the 'Three Graces' along with the Port of Liverpool Building and the Cunard Building.

CBRE, a global leader in commercial real estate services, has managed the refurbishment of the iconic Grade I Liver Building to create a 'best in Class' office and leisure destination. The 8th floor is home to The Bank of New York Mellon who now benefits from a significantly improved, energy efficient lit environment. Tom Francis, Luceco project manager said: "We worked alongside CorEnergy, part of the SureServe Group, based in Manchester, a renewables specialist in the sustainability and low-carbon sector. Sigma was selected for this impressive office environment due to its advanced technical performance, a direct/indirect recessed luminaire for low glare applications designed to assist with LG7 compliant settings."

Backlit LED technology and a central Tp(a) microprism optic ensured suitability for this office environment offering UGR 19 compliance and less than 3,000 cdm<sup>2</sup> at 65°. Platinum Mini downlighters were also used to light circulation spaces alongside Sigma. A recessed luminaire offering an efficacy

up to 117 Llm/cW, Platinum Mini features a unique swing tab design for quick and easy installation.

Sigma is engineered to be installed in the traditional lay in method or pulled up to the ceiling using specially designed swing tabs. The luminaire has a range of mounting accessories for solid or plasterboard ceilings and is also suitable for non-standard ceilings in commercial applications. As well as offering an efficacy of 130 Llm/cW and excellent photometric performance, Sigma delivers over 100,000 hours of maintenance

free, operational life.

James Burton from CorEnergy, part of the SureServe Group, said: "The successful completion of this lighting improvement project at the Liver Building is a great example of CorEnergy working in partnership with Luceco to provide an enhanced lighting solution within a prestigious building. In a time where all businesses are striving for carbon neutrality whilst also facing the impact of rising energy costs, our lighting solution will result in a significant return on investment for the client and deliver ongoing carbon savings."

Opened in 1911 as the headquarters to the Royal Liver Group, the Royal Liver Building holds historical and cultural importance to the city of Liverpool, including Bertie and Bella, the mythical Liver Birds adorning its towers. The Liver Building was a pioneer of its time, being one of the first buildings in the world to be built using reinforced concrete. Today this iconic structure has been carefully managed by maintaining the building's Grade I status as well as offering the facilities to service modern commercial users, cost effective, energy efficient lighting being of significant importance to the environmental operations of the building.



01952 238 100 [luceco.com/uk](http://luceco.com/uk)

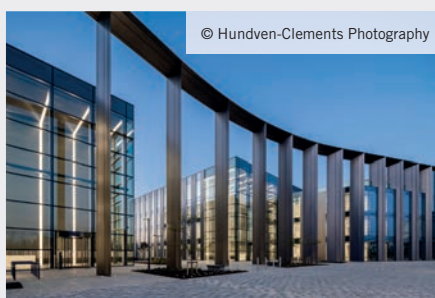
## Cambridge Science Park

When architects Scott Brownrigg were given a brief to create a new gateway to Cambridge Science Park they knew the building had to be impressive to attract the desired high tech and Research and Development companies.

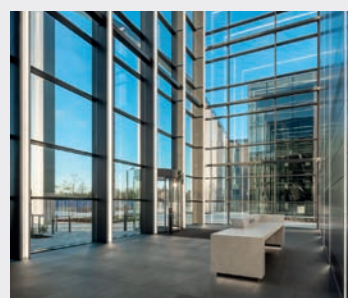
The design features a colonnade sweeping across the front of the building echoing the curve of the spine road and a new public space. The column spacing guides occupants and visitors to the entrance – a GEZE Slimdrive SCR curved automatic sliding door.

The building has a BREEAM Excellent rating for its design so the Slimdrive SCR was the perfect complement. The circular entrance features two sets of automatic bi-parting curved glass sliding doors, creating a lobby that minimises heat loss or gain and so helps to contribute to the building's environmental credentials

In addition the Slimdrive SCR automatic curved sliding door provides a light and airy all-glass lobby entrance which blends



© Hundven-Clements Photography



seamlessly into the façade and the large glass atrium, it combines high performance with unobtrusive operation.

Inside the operator's deep canopy an integrated air curtain was installed to further minimise any heat loss and maintain the aesthetics of the building.

The Slimdrive SCR automatic operator also provides uninhibited access and so meets the demands of Part M, BS 8300 and EN 16005, while the access control system ensures security.

Recognising the outstanding design of the building, the Cambridge Science Park has been shortlisted for the 2023 British Council for Offices (BCO) Awards. The BCO's

primary objective is to define excellence in office space.

Ross Mcwatt, associate architect at Scott Brownrigg said: "We have worked with GEZE several times, they have the same focus as we do in terms combining sustainability, accessibility and aesthetics."

Richard Richardson-Derry, national specification manager at GEZE UK added: "This is an outstanding building, that meets many demands, we were delighted to play a part in creating an entrance and achieving the criteria of the brief."

01543 443000

[www.geze.co.uk](http://www.geze.co.uk)

## Beko plc Appliance Partners welcome new Head of Customer Care

Beko plc Appliance Partners, the specialist division of Beko plc which offers bespoke home appliance solutions to housebuilders, build-to-rent providers, developers and contractors, have announced the appointment of Sharif-Paul Anton as their new Head of Customer Care, strengthening their operations and customer care team.

With a 20-year career in this field, including roles working with a number of major global brands, Sharif-Paul brings to Beko plc a wealth of experience in delivering the highest levels of customer care.

Focusing on diligent and speedy service, Sharif-Paul and his team will continue to provide hassle-free and effective support for housebuilders and developers throughout the appliance purchase process, continuing to offer advice and guidance to their partners' customers as end consumers of their products.

Sharif-Paul comments, "I am thrilled to be joining Beko plc, heading up the customer care team and supporting Beko plc Appliance Partners contract division. I am extremely passionate about delivering a world-class level of customer experience, having dedicated my career to this field.

"The Beko plc Appliance Partners team are already providing a fantastic service to both our partners and their customers. I will build



on these excellent foundations and help us become even more renowned in the industry for delivering the very highest levels of customer care."

Beko plc Appliance Partners provide freestanding and integrated appliances with solutions tailored specifically for the residential property sector, offering a choice of leading brands featuring a vast range of technology-rich, energy efficient products. Their flexible end-to-end service, overseen by a dedicated Specification Manager, is tailored to each project's unique requirements,

with a strong emphasis on providing effective ongoing support.

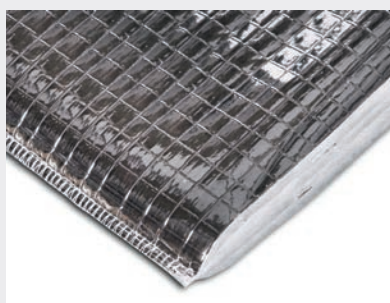
Sharif-Paul's appointment demonstrates the company's commitment to continuous investment in colleague development to enhance product knowledge across the business, ensuring their highly trained customer care team continue to provide an industry-leading level of support to all partners and their customers.

[appliancepartners@beko.co.uk](mailto:appliancepartners@beko.co.uk)

[appliance-partners.bekopl.com](http://appliance-partners.bekopl.com)



## Transform Your Home with ThermaQuilt - The Ultimate Solution for ECO+ Housing



In an era of increasing environmental consciousness, the demand for energy-efficient homes is on the rise. As homeowners strive to reduce their carbon footprint and achieve cost savings, the importance of effective insulation cannot be overstated. YBS Insulation is at the forefront of innovation in this field, and its ThermaQuilt product is revolutionising the insulation market.

The introduction of the government's new ECO+ (Energy Company Obligation) Homes Scheme provides funding to help households become more thermally efficient through grant-funded insulation measures and home improvements. With this in mind, it's time to shed light on the incredible benefits of ThermaQuilt and its potential to transform homes across the nation.

### EFFICIENCY AND AFFORDABILITY

ThermaQuilt, a flexible and easy-to-install multilayer insulation product, is the ideal solution for homeowners seeking to enhance the energy efficiency of their homes. Unlike other multilayer insulation products on the market, ThermaQuilt offers a more affordable alternative without compromising on quality. Its unique composition effectively deals with all forms of energy transfer, ensuring maximum performance at a lower cost.

One of the standout features of ThermaQuilt is its versatility. Suitable for roofs, walls and

floors, this two-in-one insulation and vapour control membrane simplifies the insulation process for homeowners. By combining insulation and vapour control in a single product, ThermaQuilt not only saves time but also reduces the risk of condensation, providing a comfortable and healthy living environment.

### DURABILITY AND SUSTAINABILITY

YBS Insulation takes pride in delivering products that stand the test of time, and ThermaQuilt is no exception. Unlike other insulation materials, ThermaQuilt is non-degradable, maintaining its thermal performance and product integrity over the years. This durability ensures homeowners can enjoy the benefits of insulation for an extended period, saving both energy and money in the long term. Moreover, ThermaQuilt has been independently tested and certified to the latest industry standards, including the prestigious BDA Kiwa certificate of Agrément, guaranteeing its quality and reliability.

### THE DIY ADVANTAGE

For homeowners who prefer a hands-on approach to home improvement, ThermaQuilt is the perfect choice. Its user-friendly design and easy installation process make it accessible to DIY enthusiasts, empowering them to take charge of their home insulation projects. By choosing ThermaQuilt, homeowners can take pride in their own craftsmanship.

While ThermaQuilt is an excellent choice for roofs, walls, and floors, YBS Insulation also offers complementary products for conservatories and garages. These additions ensure that every part of the home benefits from enhanced insulation, creating a consistent and comfortable environment throughout. By integrating these products into the ECO+ Homes scheme, homeowners can achieve a comprehensive and cohesive insulation solution.

### A GREENER FUTURE

As we embark on a journey towards a more sustainable future, YBS Insulation's ThermaQuilt product emerges as a game-changer in the insulation market. The new ECO+ Homes scheme presents an opportunity for homeowners to transform their properties, benefiting from cost savings, a more comfortable living environment and reduced environmental impact. With its affordability, versatility, durability, and DIY-friendly nature, ThermaQuilt stands as the ultimate choice for those seeking a comprehensive insulation solution. Embrace this innovative product to make your home more energy-efficient, comfortable and eco-friendly and together, we can build a brighter future, one installation at a time.

01909 726 025  
[www.ybsinsulation.com](http://www.ybsinsulation.com)

## Magply makes its mark at Futurebuild



The 5 ft high flame billowing from a fan unit on the corner of IPP's stand at Futurebuild ensured the 16,000 specifiers who toured the exhibition (ExCeL London, 5-7 March) were left in little doubt regarding one of the key benefits to its high performance board brand, **Magply**. The BBA approved magnesium oxide based alternative to plywood and other panel products is increasingly being specified as an external sheathing for steel and timber frames as well as to form pattresses for the internal fixtures in high rise construction. In fact Magply's excellent weather resistance, pull-out strength and all round robustness are seeing it used in multiple applications including as a render substrate in the most exposed locations. Also on show were the manufacturer's Durawall and Cemgold products, both of which provide consultants and contractors with key performance benefits over the competition. The latter is a multipurpose board produced using Portland cement, high purity silica and cellulose reinforcing fibres. With a Class 0 rating for fire, the 10 and 12 mm thick Cemgold sheets typically feature in rainscreen and other cladding build-ups where robustness and fire resistance are paramount.

01621 776252 [www.magply.co.uk](http://www.magply.co.uk)



## JACKOBOARD® embraces flower power!

**JACKOBOARD®** has helped notch up a major win at this year's Chelsea Flower Show.

Working with the multi-award winning G.K. Wilson Landscape Services led by Company Director Gareth Wilson, **JACKOBOARD®** products have been a key element in the RBC Brewin Dolphin Garden, which has won a Silver Gilt Medal at the Show.

**JACKOBOARD®** XPS Construction Board provided the ideal backing for the tiling work, due to its high bond strength, high weight supporting, lightweight and waterproof characteristics and the fact that it is very easy to cut and shape on site creating no dust or other mess.

"We went with **JACKOBOARD®** following an industry recommendation," says Gareth Wilson, company director of G. K. Wilson Landscape Services. "We were advised that the company was reliable and good to work with. That has certainly turned out to be the case – and that is at least as important as the quality of the products, which cannot be faulted in our experience. I would like to thank **JACKOBOARD®** very much for their support in sponsoring us and also congratulate them for being a part of our success."

01204 221089 [www.jackon.co.uk](http://www.jackon.co.uk)

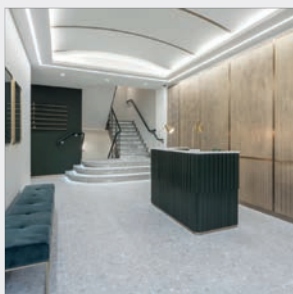
## JB Kind launches innovative new PAS 24 compliant door leaf



Derbyshire-based door distributor **JB Kind** is launching its new PAS 24 door leaf to doorset manufacturers, and its PAS 24 fire resistant security doorsets service to developers, architects and specifiers, after investing in an innovative new door core which has met the stringent set of standards required to be awarded the PAS 24 accreditation. Forming the basis of the company's new PAS 24 fire resistant, security doorsets, the new PAS 24 door leaf enables manufacturers to use it within their current offering, or for residential developers to purchase fully assembled PAS 24 compliant entrance doorsets. Doorset fabricators are able to integrate JB Kind's innovative new door leaf into their current product ranges whereas developers are able to specify PAS 24 compliant doorsets, in both standard and bespoke sizes, and in a wide range of alternative finishes. Architects and specifiers now have the option to request the new JB Kind fire resistant PAS 24 doorsets, as well as its matching internal doorset counterparts. For more technical details about the PAS 24 security doorsets, JB Kind has produced a factsheet, which can be downloaded at [www.jbkind.com](http://www.jbkind.com)

01283 554 197 [sales@jbkind.com](mailto:sales@jbkind.com)

## TTA Awards recognise achievement in the tiling sector



TTA Awards are all about celebrating success in the tiling industry. This year's Awards took place in May and were hosted by BBC presenter Mike Bushell. TTA is grateful to all this year's Gold sponsors: Amber Underfloor Heating, Banks & Lloyd Ltd, BIHUI, Genesis Global Systems Ltd, **JACKOBOARD®**, Mapei (UK) Ltd, Palace Chemicals Ltd, Polyfab Coatings & Systems Ltd (PCS), Shackerley (Holdings) Group Ltd, STS Ltd, Tile Mountain Ltd, Topps Tiles Plc, UltraTile (Instarmac Group Plc), Verona Stone Group, W.B. Simpson & Sons Ltd and Weber. The Best Commercial Project (Small) was won by W.B. Simpson & Sons Ltd for their work at Babmaes Street, London. This was an office refurbishment, where the company completed the installation of grey resin terrazzo to the main reception and ground floor staircase, finished beautifully with faceted risers and bronze studs to all treads. The results of this project are stunning, with the offices being transformed with the elegance and glamor that would be expected of a building in the heart of London. There was also a trophy for Highly Commended in this category, which was won by Schlüter Systems Ltd for East Quay, Watchet, Somerset.

0300 365 8453 [www.ttaawards.com](http://www.ttaawards.com)

## Advanced protects unique listed home of timber craftsman

An intelligent fire alarm control panel from fire protection solutions manufacturer, Advanced, has been installed in The Steading, the home of sculptor and furniture maker, Tim Stead MBE.

The Steading is an A-Listed building, located in Blainslie near Lauder in the Scottish Borders, and was both the creative centre and home to the Stead family across several decades. It was purchased by the Tim Stead Trust in 2021 and a programme of restoration work has included the addition of an Advanced Go new-generation, single-loop fire alarm control panel to protect this historic home.

Fire and security service providers, Safe Services, installed the Advanced Go fire alarm panel in The Steading and were involved from the design stage through to installation and commissioning. The Advanced Go panel is integrated with EMS Firecell radio equipment for a complete cable-free fire system - which was an essential requirement to preserve and

protect the unique interior of the building.

Go is the ideal solution for a wide range of single-panel sites - from restaurants, bars and guesthouses to small offices, shops, salons and surgeries. On straightforward jobs, Go's fuss-free installation and configuration save time and money. However, the new panel also makes light work of more complex sites requiring sophisticated cause and effect programming options as well as false alarm management and reduction solutions.

Go has been developed with the needs of installers, engineers, and end users firmly in mind. A host of features make Go a breeze to set up. An easy-fit chassis with unique door design enables fast fitting, while familiar controls and menus mean there's no lengthy learning curve. Intuitive new configuration software makes programming quicker and easier than ever, and a powerful design checker proves the system will work even before visiting site. In addition, enhanced diagnostics mean fewer faults, faster fixes,



and better long-term performance.

Cost-efficiencies for customers have also been central to Go's development, delivering maximum functionality on a small-site budget. The panel has 15 zonal LEDs as standard for clearer visual indication and BS 5839 compliance without the need to buy a separate LED zone card. Compatibility with three leading detector protocols provides wired and wireless options, as well as greater freedom over design and maintenance provider costs. Further cost savings as well as greater flexibility for site-specific installations are available thanks to a choice of two performance options with different maximum numbers of configurable addresses.

0345 894 7000 [www.advancedco.com](http://www.advancedco.com)

### EnviroVent expands its ventilation range



EnviroVent has launched a new MVHR range, which is Passivhaus certified. The Sabik 350 & 500 series has been designed to provide balanced and sustainable ventilation for new and refurbished homes, incorporating modular features, with user-friendly controllability. The Sabik 350 and 500 systems have significant airflow capacity of up to 414 m<sup>3</sup>/hr and 601 m<sup>3</sup>/hr respectively, and are suitable for handling airflow directions and drain on site to offer flexibility when it comes to ducting configurations. These modular units incorporate a range of features as standard, including integrated relative humidity sensor, touchscreen controller and frost protection.

0845 27 27 810 [www.envirovent.com](http://www.envirovent.com)

### Leviat CPD Series



Leviat offers a comprehensive range of CPD seminars covering some of our most popular products across our brands Ancon, Helifix & Halfen, including Support & Restraint of Masonry Cladding, Wall Ties & Head Restraints, Windposts and Structural Concrete Connections.

Available in person or online, our Leviat team have considerable technical experience of applying seminar content in practice and answering questions from both specifiers and contractors. To book a seminar or to find out more, please visit the website.

[cpd.uk@leviat.com](mailto:cpd.uk@leviat.com) [www.ancon.co.uk/resources/cpds-webinars](http://www.ancon.co.uk/resources/cpds-webinars)

### FIREFLY's Titan Lite selected to protect Lewisham roof spaces



Fully compatible products from the range of TBA FIREFLY™ have been chosen to compartmentalise roof voids between apartments and communal lobbies of a large apartment building in the London Borough of Lewisham, providing 120 minutes fire integrity protection as part of a wide ranging refurbishment programme carried out earlier this year. The contract on Lewisham Homes' Commodore Court in Albyn Road has been led by the sector specialist construction company, Mulalley & Co. with London/Sevenoaks based CLM Fireproofing carrying out the installation of the TITAN Lite™ 120:60 barrier system, in combination with Collaroll and the use of ancillary products from the FIREFLY™ range. TITAN Lite™ 120:60 has been developed for use in vertical separation or compartmentation situations, offering 120 minutes integrity and 60 minutes insulation and is able to be sealed around penetrations. It is widely specified to form fire barriers within roof voids and floor voids in many different property types, including tower blocks and other HMOs. To find more information about the full range of products available from TBA FIREFLY™ visit the website.

01706 758817 [www.tbafirefly.com](http://www.tbafirefly.com)



## Boxing clever with spray foam insulation

**H**igh performance spray foam insulation has been used in an innovative shipping container repurposing project in central Manchester.

The project – The OGS Container Scheme – has been built at the Old Granada TV Studios site and uses an array of 20 ft long metal shipping containers to create low cost office space for start-up's and other small businesses.

The £3m development uses 42 containers to form a four-story integrated block comprising three rows of 14 containers over a ground floor podium of steelwork. A blockwork core houses lifts to all floors and each level has WC and kitchen facilities and a floating walkway with staircases at both ends.

Main contractors for the project were Artez Interiors LTD of Bolton. Artez QS, Jeff Greenwood explains: "Overall construction was straightforward with each container being craned into position and locked in place. We used brand new containers rather than recycled so we knew everything would fit together perfectly."

He continued: "One of our biggest challenges however, was thermal insulation. Metal boxes are notoriously difficult to insulate effectively and reaching the required thermal values meant we had to think out of the box."

### High performance closed cell insulation

To solve this issue, Artez brought in Stockport based insulation specialists Green Horizon Energy Solutions Ltd, who recommended a high-performance



Containers were craned into position and locked in place

closed cell insulation system from Huntsman Building Solutions (HBS).

Matt Lawford of Green Horizon specified HBS Heatlok HFO, a polyurethane-based product which is spray applied directly to the internal walls of each container.

Heatlok HFO is a premium closed-cell foam that expands 100-fold on application, completely filling difficult to reach construction voids and creating a continuous, uninterrupted thermal barrier.

### Steel studwork lining

Before spraying, each container was lined with 75 mm deep galvanised steel studwork to the walls and ceiling and electrical and related services installed. After application, a vapour barrier and conventional plasterboard were applied creating an effective self-contained fire compartment and at the same time, providing a decorative internal finish.

The spray foam insulation completely encapsulates the studwork and adheres to the contours of the metal container shell, eliminating the risk of condensation.

HBS Heatlok HFO is one of a new breed of high-performance, polyurethane spray foam insulation systems, developed in

Canada to cope with their notoriously harsh winter condition.

### Zero ozone depletion

According to Huntsman, Heatlok HFO uses recycled plastic materials and renewable soy oils in its composition. Its hydrofluoroolefin (HFO) blowing agent is the most environmentally conscious blowing agent produced to date, with zero ozone depleting potential (ODP) and a global warming



Heatlok spray foam insulation completely encapsulates the studwork and adheres to the contours of the metal container shell, eliminating the risk of condensation



Heatlok expands 100-fold on application, completely filling difficult to reach construction voids and creating a continuous, uninterrupted thermal barrier





Nearing completion. The OGS container scheme provides low cost office space for start-up's and other small businesses in Manchester

potential (GWP) of 1, making Heatlok HFO one of the most durable and environmentally friendly insulation.

Huntsman also confirm that HFO PRO complies with the intent of the International Code Council's residential and commercial building codes and is commonly used as a thermal insulation, air barrier, vapor retarder and water resistive barrier in above ground, below ground, interior and exterior applications.

The Old Granada Studios redevelopment area is rapidly establishing itself as a vibrant urban creative hub and events centre for Manchester and the OGS Container Scheme will form an integral part of the new cluster.

#### Quick to install and excellent thermal values

Construction work on the OGS scheme began in August 2022 and was scheduled for completion in February 2023. According

to Jeff Greenwood of contractors Artez Interiors: "Insulating the container units with Heatlok spray foam was the most logical solution. It was extremely quick to install, it gave us the thermal values we needed and it maximised internal work-space – a great solution all around."

[www.huntsmanbuildingsolutions.co.uk](http://www.huntsmanbuildingsolutions.co.uk)

[www.artezinteriors.co.uk](http://www.artezinteriors.co.uk)

[www.greenhorizonenergy.co.uk](http://www.greenhorizonenergy.co.uk)



Units prepared on the ground before installation

# Introducing the Ei3030 – the next evolution in Home Life Safety



Introducing the newest innovation in Multi-Sensor alarms from Aico, the Ei3030 Multi-Sensor Fire and Carbon Monoxide (CO) alarm. The flagship alarm in Aico's technologically advanced 3000 Series, the Ei3030 combines individual Optical, Heat and CO sensors, for the ultimate fire and CO response.

Aico continues to evolve its offering to provide products that align with its customers' requirements while maintaining the simplicity that Installers love.

The Ei3030 multi-sensor Fire and CO specifications include:

- Fire Response – The device contains a Thermistor Heat Sensor and high-performance Optical Sensor that intelligently work together, but will also operate independently.
- CO Response – The proven electrochemical CO Sensor provides an accurate CO response. The CO response is in line with BS EN 50291-1:2018.
- Visual Indicators – The Ei3030 has visual Fire and CO indicators. The relevant indicator flashes depending on what has triggered the alarm.
- Kitemarks – This device holds Kitemarks for British Standards BS EN 14604:2005, BS 5446-2:2003 and BS EN 50291-1:2018.

Michael Wright, product development manager at Aico comments: "The Ei3030 continues Aico's pioneering development of Multi-Sensor Fire and CO alarms for domestic properties by offering both Multi-Sensor fire detection and CO detection from one alarm. This maximises coverage whilst making installation simpler and easier. The alarm sits alongside the Ei3028 Multi-Sensor Heat and CO alarm, meaning users can achieve combined fire and CO coverage for all areas of the home from our flagship 3000 Series."

The Ei3030 also has a range of additional benefits, including built-in dust compensation technology. The unique self-monitoring dust compensation mechanism reduces the risk of false alarms. The optical sensor chamber continually self-monitors minute changes in dust levels, automatically recalibrating the alarm's trigger point when necessary to reduce false alarms. The

Ei3030 can also be fitted in any room where both Fire and CO protection is required (excluding the kitchen) meaning coverage can be provided with fewer alarms.

Like all alarms in the 3000 series, the Ei3030 utilises an easi-fit base, is mains powered, has a 10-year rechargeable lithium cell backup, and is compatible with other Aico mains-powered units. The device is also compatible with the Ei3000MRF Module for wireless interconnection and data extraction via the Ei1000G Gateway.

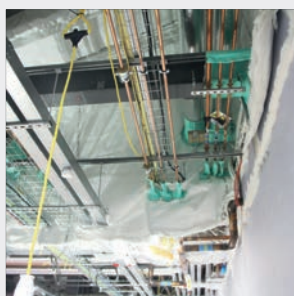
The Ei3030 also includes Aico's award-winning AudioLINK+ technology, making it simple to gain data directly from the alarm head via the AudioLINK+ app, reporting on information such as alarm activations, sensor status and record of testing.

To learn more about the Ei3030, please visit [www.aico.co.uk/product/ei3030-multi-sensor-fire-and-carbon-monoxide-alarm](http://www.aico.co.uk/product/ei3030-multi-sensor-fire-and-carbon-monoxide-alarm)

[enquiries@aico.co.uk](mailto:enquiries@aico.co.uk)  
[www.aico.co.uk](http://www.aico.co.uk)



## FIREFLY™ APOLLO Lite specified for Royal Stoke refurbishment



A passive fire protection contractor has been involved in the installation of fully compatible products from the range of TBA FIREFLY™ for the creation of half hour fire barriers within ceiling voids to a major general hospital undergoing extensive refurbishment work in the north of England. Birmingham based Cubic FM is the specialist sub-contractor carrying out all of the passive fire protection work at the Royal Stoke University Hospital in the city's Newcastle Road. The work is making use of FIREFLY's well proven APOLLO Lite™ 30:30 barrier system in combination with the equally widely specified Collaroll across areas featuring cable trays, water pipes and other building services. All of the barrier and ancillary products are being supplied by the Birmingham branch of Encon, one of FIREFLY's main distributors. APOLLO Lite™ 30:30 has been developed for use in vertical separation or compartmentation situations, offering 30 minutes integrity and insulation and is able to be sealed around penetrations. It is widely specified to form fire barriers within roof voids and floor voids in many different property types, including tower blocks and other HMOs.

info@tba-pt.com www.tbafirefly.com

## Triton Systems shields showroom basement conversion



The renovation and conversion of a former workshop and car storage facility, into a stylish basement space as part of a high-spec residential property, is making extensive use of fully compatible products from the range of Triton Systems. The work to remodel the one-time purpose-built motor garage and independent car dealership at Lytham St. Annes in Lancashire is being led by Elite Basements Ltd., whose highly experienced team of ground-workers, joiners and other tradespeople are reconfiguring the upper floors as well as transforming half the old undercroft into habitable space. In doing so the Preston-based specialist is employing Triton's anti-lime coating to treat the newly laid basement slab, followed by a layer of the manufacturer's TM20 profiled membrane to remove water to the floor perimeter, where it is conducted to a sump using Aqua Channel. Elite Basement's founder and technical expert, Aidan Vallely, explained: "I've always found the Triton range to be very good to work with and gives us confidence in passing on the guarantees to our customers. We have a very good working relationship with the manufacturer."

info@tritonsystems.co.uk www.tritonsystems.co.uk

## Brighton based specialist tanking old school basement using Triton technology



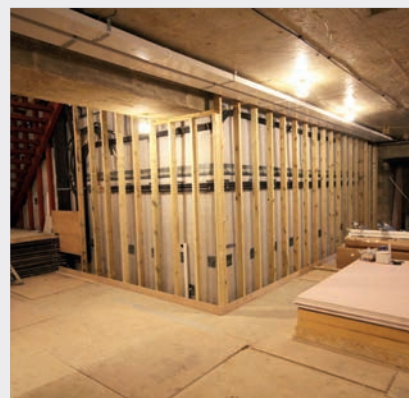
A damp-proofing and timber treatment specialist, whose business has expanded and developed in parallel to that of Triton Systems over the past 40 years, is currently employing two of the manufacturer's well proven products for the tanking of a large basement beneath an old school in Ovingdean, Sussex. Bensleys was established in the mid-eighties and immediately struck up a beneficial working relationship with Triton as an emerging force in the development of drainage membranes, waterproofing systems, additives and other products suited to the challenges of working below ground. Lee Browne is supervising the site in Ovingdean and has experience of working closely with Triton. He said: "In the case of this school, where three walls of the basement are below ground due to the sloping site, the capillary damp was quite bad, but I was confident it could be treated using the TT55 tanking slurry and Triton's Tri-Cream DPC treatment which we inject. Triton has always been brilliant with us and any time a technical issue arises, I will always get in touch with Steve West at Triton or one of his colleagues, for advice or the supply or a special detail."

01322 318830 www.tritonsystems.co.uk

## Triton waterproofing range looking good for basements

A Leicester based company which specialises in waterproofing and the construction of high specification basements, as well as the upgrade of existing sub-structures, has made extensive use of products from the range of Triton Systems in creating a complex new extension to an old farmhouse in Northamptonshire for a private client. Careful consideration of the water-proofing and damp-proofing detailing is always essential when constructing a basement, but in the case of the Northamptonshire project the situation was made even more challenging due to a very high water table and persistent bad weather during the work. As an approved installer of the Triton Systems, Beautiful Basements employed half a dozen of the well-proven products to create a large-scale, fully waterproof sub-structure that offers a ten year guarantee along with insurance backed guarantee. The products include TT admix incorporated into all of the waterproof concrete mix at the batching plant, Tri-Cream for the injected DPCs, three variants of the Platon drainage membranes, a pair of sump pumps and one of Triton's high level alarms. The Operations Manager for Beautiful Basements, Mike Connelly, comments: "Importantly for us, the products are very reliable and feature innovative technologies as well as being easy to use, while Triton Services provide very good customer service."

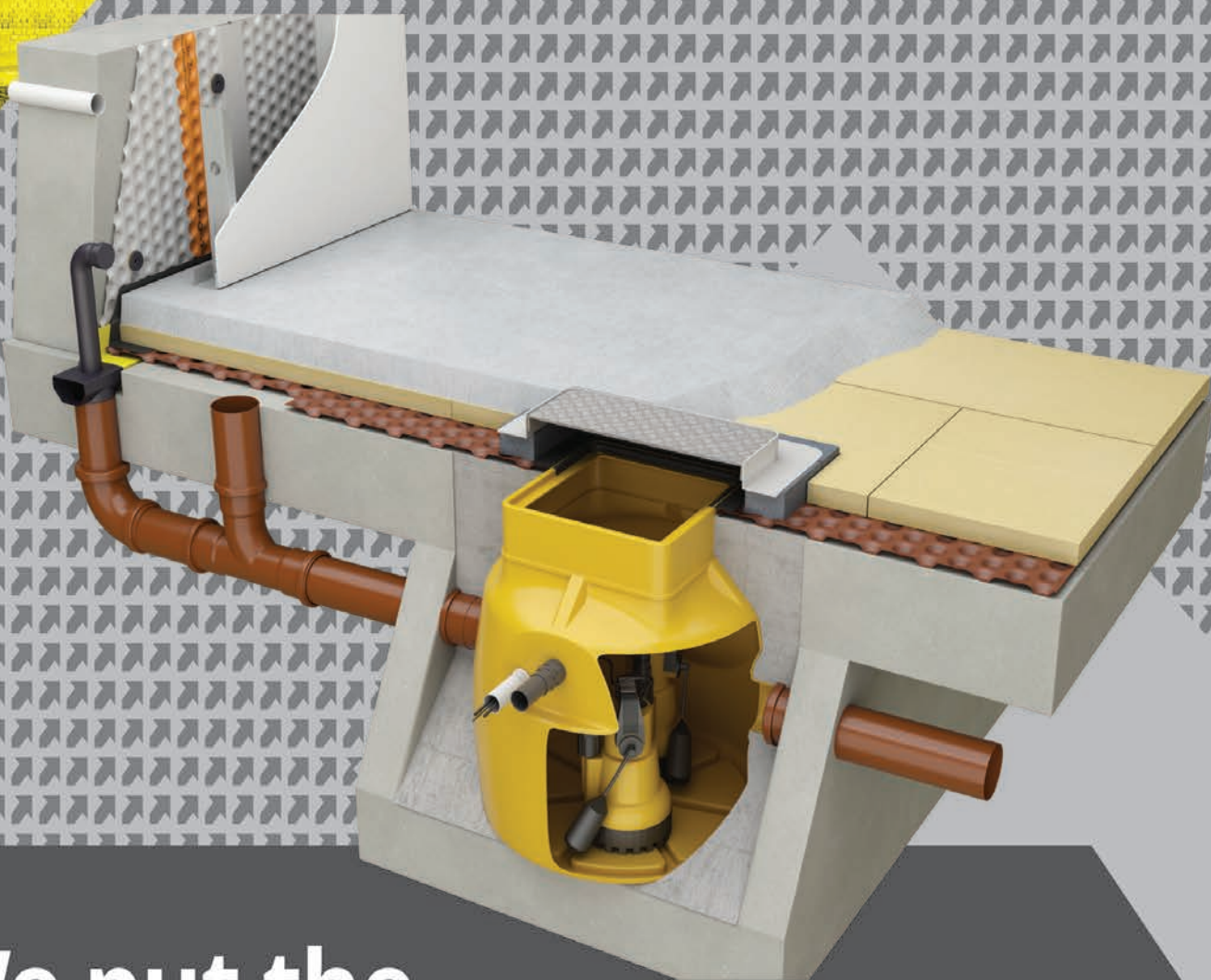
01322 318830 www.tritonsystems.co.uk





# DELTA

## PUMPS & DRAINAGE



# We put the Innovation in Structural Waterproofing





# Delta Membrane Systems launches new 800 Series of Packaged Pump Stations

**D**elta Membrane Systems Limited, recently launched “Delta Pumps” a customised department in all things basement pumps and drainage. The newly formed department offers a wide range of standard and bespoke submersible pumps and pumping stations.

The Delta Bespoke 800 Series is suited for larger domestic and commercial projects due to its higher chamber capacity.

The Delta 800 Series of Package Pumping Station are available in depths from 1,250 mm to 2,000 mm and with varying pumping capabilities from the Delta Single V3 Foul to powerful Delta Dual V6 pump. Designed for pumping groundwater, surface water and foul water depending on specific project requirements.

As the name implies, a submersible pump is one that is designed to be immersed in a substance (from groundwater to foul water). While foul pumps are focused on pumping away foul and grey water. Subject to specification, groundwater sump pumps are used in conjunction with a Type C waterproofing solution to protect structures against groundwater. The purpose of a sump chamber is to collect and discharge (to a suitable evacuation point) any water ingress which has collected in the cavity drain membrane system and to discharge groundwater to a suitable external discharge point such as the mains drainage system.

Delta Membrane Systems Limited have substantially invested in their new range of packaged pump stations, with further investments planned for 2023.



Delta’s Packaged Pump Stations are a complete unit. Comprising of chamber, pumps, pipework kit, valves, Control Panels, etc which are pre-assembled at their Pump Distribution Hub.

The new 800 series of package pump stations compliments, Delta’s upgraded 695 and 895 chambers.

All of Delta’s sump pump stations are built for durability, longevity and designed to withstand the most demanding of below ground environments. Whether it be a multi-level commercial, social facilities, or larger residential project, Delta Pumps have the solution to meet the specific needs of the contractor/architect/specifier.

Commenting on the announcement, Christopher Burbridge, co-founder of Delta Membrane Systems Limited said: “I’m incredibly proud of our continued success and delighted to see the company expanding operations with the opening of our Pump Distribution Hub. Delta continues to receive strong support from the waterproofing community, helping us to drive product development and future growth plans.”

“The investment in ‘Delta Pumps’ signifies our business and team’s strengths. With Kevin Dodds (managing director) overseeing our product development, I believe Delta will continue to add exciting new technology and

products to our already impressive portfolio.”

“We recognise that every project has different requirements and therefore our Technical Teams work together as one, to provide tailored solutions that meet specific site and project needs. We manufacture all our package pump stations in-house from design, through to assembly and testing.”

“We tailor the project scope to the client’s requirements, providing basement drainage designs for developments of all sizes.”

Delta Pumps are proud to be manufacturing and fabricating all their sump pump chambers from their new warehouse facilities in a new dedicated Pump Distribution Hub close to its Epping Headquarters to enhance the company’s ability to serve their nationwide customer base.

To explore the new range of Delta Pumps visit the Package Pumps and Basement Drainage Systems section at Delta Membranes’ website.

Whatever the needs of your project, you can rely on Delta’s Technical Team to ensure you get the right advice, support, and practical help at exactly the right time its required. Call Delta today on 01992 523 523.

info@deltamembranes.com  
www.deltamembranes.com

## Why do the world's leading dance universities and schools choose Harlequin floors?

Dance students can spend hours working in a dance studio, it is their place of work and should offer a safe environment fit for purpose. The floor is a dancer's most important tool and dancers need reassurance they are not going to slip and fall, that lifts can be performed safely and on landing from jumps the response of the floor consistently returns the right amount of energy absorption.

It is a common assumption that a well-designed sports floor will suit the needs of dancers, but this is not the case.

There are some critical factors that distinguish the requirements of dance from those of sports played on a sports floor. Unlike sportsmen who wear increasingly high-tech air-cushioned shoes to give grip and protect against impact injuries, the modest ballet shoe has barely changed in design since the mid-18th century. Made from soft leather, canvas or satin, the ballet shoe is very flexible, has a thin sole and offers little protection for the wearer.

But not all dance floors are the same, only a floor developed specifically for dance will do. There may be a temptation to specify floors for aesthetic or budget reasons, or to specify sports floors in the mistaken belief they will be suitable for dance but there have been some high-profile examples where floors have had to be replaced by a dance company after the building is complete and dancers have their first experience of dancing on the floors.

Harlequin is widely recognised as the world's leading authority on dance floors. As an enlightened manufacturer Harlequin has always worked closely with the dance



community to develop floors that dancers want to dance on. There is no doubt, the choice of flooring is critical. For over 40 years Harlequin has been the performance floor of choice for the world's most prestigious dance and performing arts companies, theatres, venues and schools.

Harlequin offer free advice to ensure dance companies, schools and venues install dance floors best suited to their particular use.

All Harlequin sprung and vinyl floor products and ballet barres are easily

found and specified through RIBA Source. Please visit [www.harlequinfloors.com](http://www.harlequinfloors.com) for more information, or contact Harlequin.

01892 514 888  
architects@harlequinfloors.com





# DRU expands the Dik Geurts Vidar Triple range of wood stoves with six new models



**D**ik Geurts is a name that has been synonymous with wood fires and stoves for over 40 years. Founded in the Netherlands in 1981, the Dik Geurts range is now produced by DRU, established in 1754 and one of Europe's leading fireplace companies.

The Vidar Triple, with a panoramic, 3-sided fire view, is one of the most popular stoves in the Dik Geurts range. It is Ecodesign compliant with an A

rated energy label and easy manual air slide control.

The Vidar Triple series now includes small, medium and large models, each with a freestanding or wall-mounted option. The freestanding models have ample wood storage capacity and all models have optional external air connection for clean burning and high efficiency. All versions also have infrared side windows, which enable high flames

and comfortable heating.

In addition, the small Vidar Triple models have an average 4.9 kW heat output, which means, under UK regulations, there is no need to install extra ventilation points in the room.

Dik Geurts wood fires and stoves are available from a national UK network of fireplace dealers.

[info@drufire.co.uk](mailto:info@drufire.co.uk) [www.drufire.com](http://www.drufire.com)



## Modern Convenience

It is a great convenience of Horne shower panels that half of any installation is complete, even before arrival on site. Pre-plumbed in controlled conditions at Horne's factory, for consistent quality and robustness, every shower is also fully pressure tested. Installation, therefore, is a quick and simple affair - hang the panel at the chosen location, affix to the wall (four screws), connect the supply pipework and commission into service. Voila!

Designed specifically to withstand challenging environments, the aluminium extrusion casing, anodised and epoxy-coated, is stable and robust for a maximised lifespan. Shower head and control materials are also highly durable; chromium-plated stamped brass, die-cast zinc and stainless steel are tolerant of accidental, or intentional abuse.

Three, healthcare approved (Type 3), shower mixing valves feature across the range, and offer a few flow and temperature control combinations. Designs can also be optimised for secure facilities (ligature resistant) or healthcare, elderly or cognitively impaired, and accessible

installations (lever controls).

Easily mix and match fittings to make a shower for any application, niche or otherwise. Choose from four shower head options; fixed vandal and ligature resistant, fixed swivel, or riser/grab rail, hose and handset (single or three function). Integral flow regulators provide optimised flow rates, whilst limiting wastage of pre-heated water. Timed flow control models give additional water and energy savings, and these are particularly suited to the prison estate, but also for recreation, leisure and school sports where showers may be left, inadvertently or intentionally, running. T4 or T9 type showers (as pictured), feature an integral In-Line Thermal Disinfection Unit plus key-holed pipe cover. This patented device easily addresses retrograde contamination of the shower and water supply by pathogens. For the protection of vulnerable users, especially in care settings, this proven safety feature facilitates routine thermal disinfection of the shower's internal pipework, valve, and shower head, utilising the available hot water supply.



The pipe cover, with same profile as the shower panel, can also be specified as an accessory for -A type shower models. Available in two lengths, these accommodate for difference ceiling heights. Primarily removing the ligature risk presented by the exposed supply pipework, it also offers a hygiene cover for easy cleaning and improved aesthetics.

01505 321455 [b.link/ConvenienceShower](http://b.link/ConvenienceShower)

# HORNE®

<http://b.link/SafeHands> | 01505 321455

*The award-winning\* Optitherm - its reliable hands-free lever operation, controlled comfortable temperature, optimised flow rate and conditioned, splash-free delivery, ensures patients are always in the safest hands.*

*Surgical Precision  
Engineering*

\* Building Better Healthcare Awards, Best Interiors Product

**OPTITHERM®**  
The optimum in safety and control

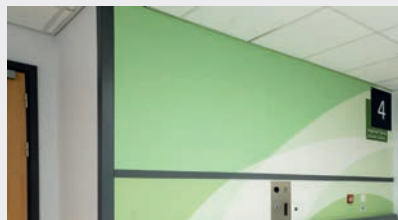


## Yeoman Shield extend lifecycle of walls at Pinderfields Hospital

**Y**eoman Shield engaged with Equans and The Mid Yorkshire NHS Trust to continue to improve the lifecycle of wall coverings in key areas of Pinderfields Hospital.

Previously Yeoman Shield Imagery wall protection panels had been installed on the lower section of walls in the gate areas of the hospital. These panels perfectly replicated the design of the wallpaper which was becoming damaged and starting to look unkempt.

Showing to be successful in fending off impact damage, scratching, and marking the



decision was taken to repeat the same process to the upper part of the wallpapered walls.

Yeoman Shield's team copied images and dimensions from the printed pattern on the original wall covering taking care to align the top and bottom graphics.

The designs were programmed into Yeoman Shield's in-house CNC machine then cut from Yeoman Shield's 2.0 mm Falmouthex protection panels and fitted together to emulate the design and colourways.

The panels were installed by Yeoman Shield's fixing operatives to provide a decorative, hygienic, and impact-resistant covering that remains true to the original design brief. Minimising future redecoration and repair requirements, the panels will assist in reducing maintenance budgets providing a long-lasting, durable solution to impact damage.

Richard Bebb, Equans Lifecycle manager commented: "The Yeoman Shield fixing team were great and worked well and with respect



in live areas and we are very pleased with the product and finished installation."

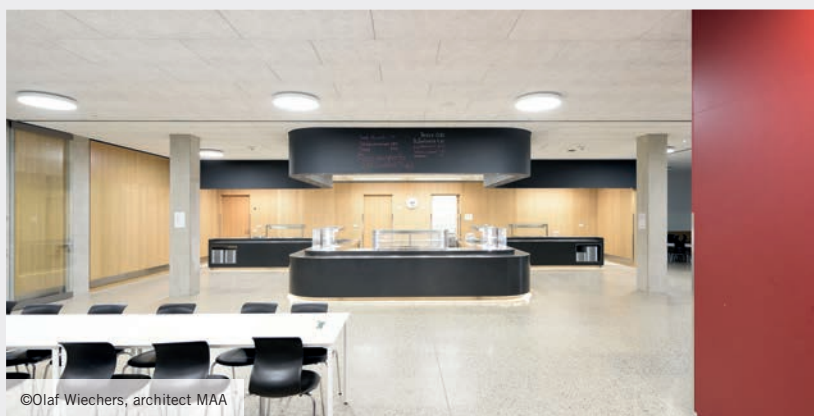
0113 2795854 [www.yeomanshield.com](http://www.yeomanshield.com)

## Modern materials for modern schools

**A** new €74 million 23,500 m<sup>2</sup> school has been built in Freising, Germany, as a showcase of how modern design and educational requirements can be designed in harmony to create a lively and vibrant learning space filled with space and light.

Designed by architects Fuchs and Rudolph Architecture, the combined primary and secondary SteinPark-Schulen school comprises 44 classrooms and ten specialist learning centres along with triple-field sports hall, auditorium, outdoor classrooms and playing fields.

Linked via a central atrium, daylight floods through large windows. To control the acoustics and the problems of reverberated sound from the large windows and hard floors, Troldekt's wood wool acoustic panels were specified across the ceilings in the classrooms, open spaces and dining halls to ensure optimal acoustic performance and to create a pleasant, relaxed learning environment for staff and students. Finished in a white 101 colour, the ultrafine panels complement the window frames and furniture of pale wood and the light-coloured floors.



©Olaf Wiechers, architect MAA

Founded on the Cradle-to-Cradle design concept and recently attaining Gold certification, Troldekt's natural and inherently sustainable panels are available in a variety of different surfaces and colours and contribute positively to a building's BREEAM, DGNB and LEED ratings. In addition to their high sound absorption and tactile surface, they offer high durability and

low-cost lifecycle performance. Available in various sizes and in four grades, from extreme fine to coarse, the panels can be left untreated or painted in almost any RAL colour.

Samples, case studies and technical guidance are available from the website.

01978 664255

[Troldekt.co.uk](http://Troldekt.co.uk)

## The Root of Easy Bathroom Design from Vitra

**V**itra's Root collection offers a wide range of product sizes and styles in mix-and-match colour and wood unit combinations with complementing handle styles, Root brassware and the choice of three washbasins to suit.

Root brassware and furniture combine to create one of the market's most flexible and customisable bathroom collections. The range comprises three key furniture designs: flat, groove and classic. Flat – a simple style for those with a minimalist taste; Groove – a contemporary option with a panelled style; and



Classic – a modern take on shaker design. The furniture joins the recently launched brassware collections Root Round and Root Square, available in five colours (chrome, brushed nickel, copper, matt black and gold) across the array of basin, bath, and shower mixers.

The Root furniture units are available in seventeen assorted colours with three types of finish – gloss, matt, or wood. Colours include white, anthracite, Sahara beige, pearl grey, dark blue, fjord green, etc. Handle options include matt black, chrome and matt white, with two distinct styles to suit the different furniture designs. The wood options include walnut and natural oak finishes.

Straight-forward design, soft lines and smooth surfaces keep cabinet surfaces dirt-free and easy to clean. To help designers, Vitra has developed the Root Configurator. This online tool allows users to experiment with various styles, colour finishes and sizes to find the perfect bathroom design. In addition to the washbasin units, the tool includes the taps and additional storage units available to enable users to design their whole bathroom space. The Root Configurator can be accessed here [Vitra Root Configurator](https://www.vitra.co.uk/rootconfigurator).

01235 750990  
[rootconfigurator.vitra.co.uk/uk](https://rootconfigurator.vitra.co.uk/uk)

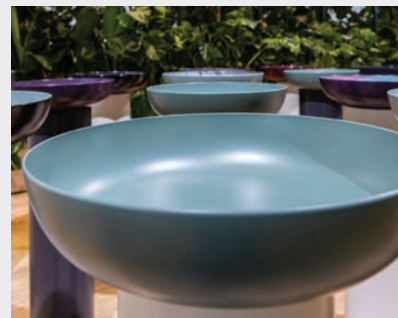
## LUXSTAINABILITY® brought to you by Kaldewei

**“S**ustainable developments start with design and the choice of materials – at this point it is decided how recyclable a product will be at the end of its life cycle,” says Franz Kaldewei, CEO of Kaldewei. For more than 100 years, Kaldewei has been making high-quality bathroom objects from sophisticated steel enamel. As steel enamel is 100% circular it makes it one of the most recyclable materials in the bathroom. The fusion of glass and steel creates a stunning high gloss enamel finish that is both durable and hygienic. As part of their commitment to the environment Kaldewei has started to manufacture their products using Bluemint® steel, which reduces their carbon output by 70%.

Their latest free-standing bathtub to emerge from Kaldewei's LUXSTAINABILITY® world is the OYO DUO, a MEISTERSTÜCK bathtub has been specifically created for small and large bathrooms and designed by Stefan Diez. Demonstrating how luxury and sustainability can go hand in hand, even in smaller bathrooms the OYO DUO can turn a bathroom into a private spa.



The elegant double-walled bathtub has been inspired by Japanese porcelain and is comprised of 100% recyclable and sustainable steel enamel. It has been created to look as if it is almost floating across the bathroom floor. The MEISTERSTÜCK OYO DUO has been designed to hold less water, further benefiting the environment, it is also extremely comfortable, the perfect size to immerse your body and relax. It is available in two sizes in addition to alpine white the bathtub is available in a range of colours from



Kaldewei's Coordinated Colours Collection. The OYO DUO joins other stylish Kaldewei designer series including the bold and beautiful coloured Miena washbowls and the super flat Superplan zero shower surface, and as all these products are recyclable at some distant point in their circular life, they will be helping to forge the next generation of Kaldewei bathrooms.

01480 498053  
[www.kaldewei.co.uk](https://www.kaldewei.co.uk)



## Circular construction requires effort every step of the way

*The construction industry cannot minimise its way out of the climate crisis. There is a need for buildings with a low carbon footprint – and for healthy, durable materials which can create value in new cycles. Troldekt A/S has interviewed frontrunners of the circular economy for an online feature*

It will take more than just efficiency enhancements and process optimisation for us to achieve our goal of sustainable building. This is the message from the well-known Dutch architect Thomas Rau, who established RAU Architects, and in 2013 was named Architect of the Year in the Netherlands. The transformation he is calling for fundamentally changes our role as humans on Planet Earth.

“The biggest misconception is that we think we have to build buildings. In future, buildings will be a product of a logistics process,” he says. “In the same way, raw materials will not be raw materials either,

but nature’s works of art or limited editions, and in future we will need to regard buildings as repositories of such ‘limited editions,’” he says.

The interview with Thomas Rau is part of a new online feature from Troldekt A/S which produces acoustic wall and ceiling solutions. In the feature, leading players in architecture and property development share their views on the path to circular construction. It is a path that requires effort at every stage of the life cycle of buildings – from the production of materials, through the construction process, the operational phase and right up until the recycling or reutilisation of materials.

The new online feature describes how Troldekt works with a range of sustainability initiatives in the production of acoustic panels – and environmental product declarations (EPDs) are a key tool here.

“Transparency and thoroughness have been keywords for us in working with our EPDs. Among other things, we have chosen



to have separate EPDs for our various products rather than just working with average values,” says Vibeke Pedersen, head of engineering department at Troldekt A/S.

In an interview with the cement manufacturer Aalborg Portland’s CEO Michael Lundgaard Thomsen, the feature also looks behind the scenes at the development of the new FUTURECEM™ cement type, which has a 30% lower carbon footprint than conventional cement.

Finally, the feature includes reports from a number of inspiring buildings that have been certified according to leading sustainable building standards.

01978 664255 [Troldekt.co.uk](http://Troldekt.co.uk)

## Save time and money by using JACKOBOARD®

JACKOBOARD® from JACKON by BEWI offers many benefits for self-builders who are installing wetrooms or bathrooms. JACKOBOARD® is a waterproof, weight-loading and thermally insulating construction board for use in all types of tiling jobs.

Critically, because it is manufactured from 100% waterproof XPS, there is no need to tank wetrooms constructed using JACKOBOARD®, either with a waterproof membrane or a paint-on solution. This will save you both time and money on your project, since a separate tanking system is not required and only the joints where the boards meet need to be taped.

The NHBC Standard states that “backing surfaces may require protection from a suitable tanking system”.

“This guidance is completely

correct,” says Martin Harragan from JACKON by BEWI, “but it should not be interpreted to mean that if you are using an XPS backerboard, such as JACKOBOARD®, you have to tank the entire substrate of your wetroom. The closed structure of an XPS board means that it is totally impossible for water to pass through it, in the way that it would through a fibre cement board for instance.”

This is useful information for self-builders and the various trades who get involved in the installation of wetroom systems, from the shower tray upwards. Although there are wetroom specialists, this job is often down to plumbers, M&E contractors, tilers, dryliners and flooring contractors. So, as wetrooms continue to increase in popularity, there are different trades who need to be aware of the benefits of XPS backerboards.



While offering the benefits of XPS, JACKOBOARD® can also offer a price advantage in the marketplace, due to the fact that the company manufactures its own foam, giving it complete control over cost, product quality and sustainability of manufacturing processes. These factors have enabled JACKOBOARD® to become the UK market leader in XPS construction boards.

01204 221089 [www.jackon.co.uk](http://www.jackon.co.uk)

## School uses time wisely to protect interiors with Yeoman Shield

Cardinal Wiseman Catholic School, which caters for 700 pupils aged 11-16, has corridors and break-out areas throughout the school where walls and corners especially are exposed to marking and impact damage caused by the everyday movement of pupils, staff and equipment.

The damage not only detracts from the smart image the school strives to up hold in all areas, but also becomes a strain on the maintenance budget with constant requirements of repair and redecoration.

With the aim to reduce such damage and expenditure, after research and receiving samples, Head Teacher, Robert Swanwick, contacted Yeoman Shield to supply and carry out the installation of a complete wall protection system.

Yeoman Shield's directly employed fixing operatives installed Yeoman Shield FalmouthEx Wall Protection Panels, (after boarding-out some of the brickwork to provide an even finish), at 1,250 mm high to corridor and dining areas in a Dusty Grey colour to complement artwork decoration applied to the upper walls.

Staircase walls were also fitted with the wall protection panels with the addition of Yeoman Shield 50 mm Dia. Guardian Handrail in Timber with attractive Stainless Steel accessories.

Vulnerable wall corners were protected with 75 x 75 mm corner protection in a matching colour and Yeoman Shield 110 mm White PVCu cover over a solid timber core skirting was added.



This full Yeoman Shield wall protection system will abolish the future need for repainting walls and skirting with cleaning being the only maintenance required, reducing budgets spends.

The rigid PVCu material that Yeoman Shield products are manufactured from are easy to clean, do not promote the growth of bacteria or mould and are not affected by the use of commercial cleaners, assisting in the up keep of high hygiene standards.

Mr Swanwick commented: "The quality of the product is exceptional. It has been installed for six months in some places

and shows no signs of wear or tear yet. I also cannot speak highly enough of the professionalism of the installation teams, who understand the challenges of working in a school environment and get on with things quietly and efficiently. I am a very happy customer."

For more information on how installing wall & door protection products can help save on building maintenance and help keep interiors looking smart and clean get in contact on 0113 279 5854.

info@yeomanshield.com  
www.yeomanshield.com





## Hidden gems – New easy-fit Vitra frames

**D**esigned to make installing wall-hung and back-to-wall WCs simple, Vitra has introduced its new range of versatile frames and concealed cisterns, including models for floor fixing, floor and wall fixing, reduced height and back-to-wall installations, with 3/6 litre and 2.5/4 litre cisterns.

The new frames have clever features to make installation easy, quick, and fault-free; these include spring-loaded feet to bear the weight and an adjustable clamp to secure the waste pipe in place – both allowing a one-person installation. Water and electrical connections to allow the installation of shower toilets and electrical flush plates, are included. The conduits can be accessed through the flush plate opening, meaning they can be connected in the future retrospectively without causing damage to the wall.

The new frames include a host of technical USPs. Each comes with a wall connection fixing kit, including fully adjustable fixation brackets and front adjustment mounting bolts. There are three water inlet options – left, top and back – for extra flexibility. Spring-loaded feet for perfect positioning make it easy for one-person installation, as well as the adjustable clamp which holds the waste pipe in position, with 50mm of adjustment. Clean water and wastewater pipes are also fixed together with load-bearing clamps.

The thickness of the frames is 30mm x 40mm for perfect rigidity, and the V stopper and flush



plate area have reference points that can leave an imprint on the plasterboard to show where to cut the holes. The frames and cisterns are all subject to rigorous reliability and performance testing, and the 3/6 litre cistern option has WRAS approval.

Margaret Talbot, Vitra Marketing Manager, explains, "Our new concealed cisterns and frames have been produced to be especially trouble-free and super easy to install in various

settings – exactly what installers have been asking for. Ease of installation, quiet in operation and a fast first-fix option."

Vitra offers a range of mechanical and electronic flush plates for use with the frames. For helpful online advice on installation, Vitra has collaborated with Plumberparts on a series of how-to videos.

01235 750990 [www.vitra.co.uk](http://www.vitra.co.uk)



## Vinyl floors for good quality social homes

**Beauflor** vinyl floors are a cost-effective and lasting finish for today's social and affordable homes. Social and affordable housing providers can look towards Beauflor for a floor that contributes to a supportive and good quality interior for tenants, while fulfilling the need for a solution that's cost-effective to purchase and install, durable and low maintenance. Combined with added benefits, such as slip-resistance for use in bathrooms or sound reducing floors for multi-occupancy homes; providers are assured of a floor that comforts tenants with a design that's attractive and homely and with function that supports wellbeing. As a multi-layer design floor that's supplied on roll, Beauflor sheet vinyl floors are an affordable entry into natural look flooring. The sheet format means quick installation and in smaller rooms such as bathrooms, often without the need for adhesive. Beauflor's textile back floors such as Blacktex can also be loose laid in rooms up to 35m<sup>2</sup> over certain existing floors, making them particularly suitable for refurbishment. Durability is also an advantage of specifying Beauflor: the hardwearing Xtreme range achieves a Class 34 wear rating that makes it suitable for heavy commercial use, while still providing a welcoming and homely natural look.

[info@beauflor.com](mailto:info@beauflor.com) [www.beauflor.com/global/en](http://www.beauflor.com/global/en)

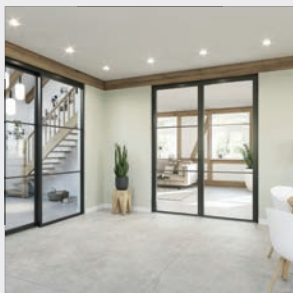


## Luceco at Meadow Mill

**Luceco** has recently supplied luminaires to a residential renovation in Stockport. Meadow Mill is a stunning 19th century industrial building that has been transformed into 213 luxury apartments over seven floors. Andy Whalley, Project Manager at Luceco said: "we worked with Hurstwood Environmental Consulting, based in Bolton, regarding the electrical services within this Grade II listed building. The mill's original features have been sensitively retained with the original brickwork along with the steel beams and large windows, therefore the lighting design had to be carefully considered to compliment the surrounding environment. We lit the communal and circulation areas, plant rooms and car park facilities for around 175 vehicles. We also supplied luminaires for elements of the living spaces." J.E.M Electrical (Widnes) installed the lighting along with other electrical services. LED luminaires installed included Celeste and Climate both with dimmable microwave sensors, Atlas bulkheads and Tempus emergency downlighters. Celeste is an attractive circular LED luminaire featuring a 'corona' backlight effect with a direct / indirect light distribution. The fitting is ideal for many commercial and residential lighting applications offering up to 100,000 hours working life and available as standard output, digital dimming and with microwave sensor as used at Meadow Mill.

01952 238 100 [luceco.com/uk](http://luceco.com/uk)

## Industrial loft doors from Hörmann UK Glass and steel in perfect harmony



Combining large, glazed panels with high quality slim steel profiles, industrial loft style doors from Hörmann UK offer specifiers and consumers endless opportunities to create modern doors and room screening for a feeling of space and light. The loft door range is an internal glazed door system which has been developed in response to the growing trend for slimline, heritage-style doors and screening in the interior design market. The loft doors can be designed as single or double leaf options and can be either hinged or sliding. The addition of side elements and transoms means that large opening spaces can be created to provide an unobstructive view between living areas. Two slim glazing bead options are available. An angled version with exposed screw heads creates a traditional industrial look, while a narrow, angled 15 mm bead without exposed screw heads provides a more modern, sleek and elegant appearance. Glazing is available in either Clear or Clear white, with the steel profiles supplied in RAL 9005 Jet black matt as standard, five preferred colours including Traffic white and Anthracite grey or RAL colours of choice.

01530 516868 [www.hormann.co.uk/home-owners-and-renovators/doors/loft-doors](http://www.hormann.co.uk/home-owners-and-renovators/doors/loft-doors)



## Housebuilder specifying Marmox Showerlay<sup>360</sup> across its developments

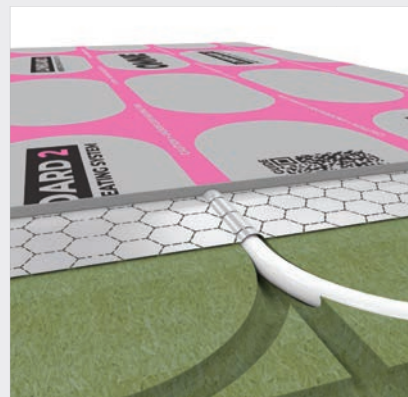
A Kent based housebuilder has specified the versatile Showerlay<sup>360</sup> trays for its latest development, located near Tunbridge Wells in the Weald, continuing to employ a design solution which has featured across many of its timber framed and traditionally built properties in recent years. Maidstone based Clarendon Homes is currently nearing completion on nine high specification private homes – together with five affordable homes for a major social housing provider – on a site in the town of Cranbrook. The work is making use of both the 1,500 x 800 mm and 1,850 x 900 mm Showerlay bases, together with the manufacturer's infinitely adjustable, 360 degree outlets, as the housebuilder's own plumbers fit out the master en-suites and main bathrooms; with the design of the trays creating the necessary falls within the shower enclosures. The 3600 swivelling outlets can be aligned at any angle for total flexibility in the positioning of the waste connection, simplifying the installation for both new-build and refurbishment applications, while being compliant with all relevant standards. Showerlay can be installed over timber or concrete sub-floors and, as with other trays in the Marmox range, are often used in combination with the company's widely specified Multiboard panels.

01634 835290 [www.marmox.co.uk](http://www.marmox.co.uk)

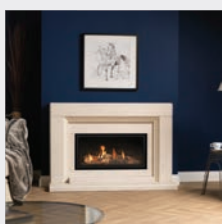
## New LowBoard 2 underfloor heating overlay

OMNIE, the award-winning UK underfloor heating specialist, has launched a new, low profile, overlay panel, LowBoard 2, the latest upgrade to its industry-leading LowBoard panel which transformed the overlay market when it was launched in 2012. LowBoard 2 consists of routed lower and upper panels with a combined profile of just 18 mm, making it the thinnest overlay system on the market. Its predecessor, LowBoard, had a lower panel profile of 15 mm but, like other overlays, LowBoard also required a ply upper layer which can add at least 6 mm to its overall depth. LowBoard 2 is quick and easy to install and offers outstanding heat performance thanks to its innovative design. It has a 15% higher heat output than its predecessor and a 40% higher heat output than other unfoiled low build-up systems or alternative overlay solutions. Its lower and 'over' panels have pipe channels that tightly sandwich and encapsulate the warm water pipe. The routing follows OMNIE's patented multi-directional pipe channel pattern, eliminating the need for separate straight and loop panels while also ensuring the warm water pipe can be easily laid around any planned room layouts. The channels are spaced 150 mm apart for optimal heat output and transfer. "We're very excited by how LowBoard 2 could help transform home heating and the requirement for low-carbon energy systems in the future," says Brendan Hourican, managing director at OMNIE.

01392 363605 [www.omnie.co.uk](http://www.omnie.co.uk)



## The Panache 8040 is a versatile, elegant fire



A different take on the highly successful **Charlton and Jenrick** large format gas range, the Panache 8040 is a versatile, elegant fire that will compliment any modern interior. Installation can be executed in a trim, our limestone slips, or into our Coalport limestone suite. Ultra-realistic ceramic woodland logs add to the cosy real fire atmosphere created by this fire and black glass liners reflect the flames within, creating a comfortable and inviting living space.

Warmth is guaranteed all year round with a nominal heat output of 4.5kW, and an efficiency of 78%. This combination of efficiency, heat and looks provides the best of all worlds. This fire starts at £1,699 Inc VAT.

01952 200 444 [www.charltonandjenrick.co.uk](http://www.charltonandjenrick.co.uk)

## Selfbuilder & Homemaker website



The Selfbuilder & Homemaker website is an online provider of past and present products and news items for all those involved in and working on a self-build project. [www.sbhonline.co.uk](http://www.sbhonline.co.uk) is a one-stop source for all the latest press releases, providing visitors with access to information about products and services that they may require. From the website, you can find links to digital issues that have live links to advertisers' sites, as well as daily email alerts to keep you as informed as possible. You

can also subscribe to receive regular copies of the printed and digital versions of the magazine, or sign up to the monthly Selfbuilder & Homemaker newsletter.

[www.sbhonline.co.uk](http://www.sbhonline.co.uk)



## Wraptite® partners with Hadley Frame for an airtight performance

The Wraptite external air barrier system from the A. Proctor Group has enhanced the performance of considerate inner city development of retirement living apartments working in partnership with the market leading Hadley Group.

The Lichfield's Bonds retirement living development for Pegasus Life consists of three apartment blocks in the heart of the cathedral city. Constructing on a compact site and nestled against local residents and businesses required a sensitive building approach and a considerate program design. An essential requirement for the client was ensuring that traffic was not disrupted and that the project positively contributed to the city.

The Wraptite external air barrier system from A. Proctor Group was installed in combination with the innovative, unique pre-panelised and fully load-bearing Hadley Frame offsite system, which is ideal for developments of low to medium

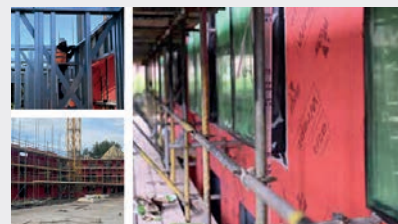
rise structures.

The Hadley Frame system is designed to be installed off a structural concrete slab or transfer structure and provides a high strength-to-weight ratio and relative weight saving. In some cases, savings of 20-25% in weight can be achieved compared to traditional methods of construction.

Adam Salt, business development manager of the A. Proctor Group explained: "One of the key benefits of installing the Wraptite air barrier system in the factory for the Hadley Group was minimal on-site disruption."

"Minimising disruption on site provides significant benefits to local residents, particularly in the case of compact inner city sites like the one at Lichfield."

"The Wraptite air barrier system offers a safer and simplified membrane system. It provides a fully self-adhered vapour permeable air barrier certified by the BBA and combines the critical properties of vapour permeability and airtightness in



one self-adhering membrane. The self-adhesive membrane is easily applied in the factory, bonded externally to the substrate, positioning the airtightness line away from the internal service penetrations ensuring a superior performance on the project."

Joseph Sargeantson, technical director of the Hadley Group, explained: "The efficiency of the Hadley Frame system is significantly enhanced by the use of the Wraptite membrane from the A. Proctor Group. Combining Wraptite with Hadley Frame has enabled us to improve the air tightness and building performance and to achieve test results of 1.24 m³/hr/m²."

01250 872 261 [www.proctorgroup.com](http://www.proctorgroup.com)

## Rare Le Corbusier £1k lithograph poster to be won with Crittall

Steel windows and doors manufacturer Crittall Windows is offering architects a unique chance to win a rare original lithograph poster that celebrates the work of the famous Swiss architect Le Corbusier, one of the pioneers of modern architecture and design.

Valued at £1000, "Tapisseries en L'église de Chateau Fellentin Creuse" is a rich and beautiful traditional stone lithograph exhibition poster printed in 1963 by Atelier Mourlot.

"We wanted an idea that engaged the architectural community after what has seen a pretty traumatic couple of years for the profession," commented Russell Ager, Crittall managing director.

"The Crittall aesthetic was favoured by the originators of the Bauhaus Movement to which Le Corbusier's name is indelibly linked, so offering as a prize an original lithographic poster celebrating the iconic designer seemed to fit the bill."



"We are all very proud of our unique Crittall heritage, its links to some of the 20th Century's notable architects and designers, and how that continues to be reflected in the products we offer to meet 21st Century demands."

The free, simple-to-enter competition, which closes on 20 June 2023, is open to all UK registered architects.

The entry form and full terms and conditions can be found at:

[www.crittall-windows.co.uk/win-a-rare-le-corbusier-original-lithograph-poster-competition](http://www.crittall-windows.co.uk/win-a-rare-le-corbusier-original-lithograph-poster-competition)

01376 530800 [www.crittall-windows.co.uk](http://www.crittall-windows.co.uk)



## Resapol supply Mapei Purtop Easy for roof renovation

In August 2022 Steve Harrison, Resapol's northern divisional sales manager, visited a site to recommend products for an extensive roof renovation in Leigh, Greater Manchester. It was identified during the initial site visit that a number of criteria needed to be met; a high performance, fast-track system that offered excellent adhesion and easy application was required.



The Resapol Leigh depot technical team immediately thought of Mapei as the ideal manufacturer. Their range of waterproofing membranes stand out as really versatile and typically come as 'ready-to-use'. They are also rigorously tested and backed up by extensive research and development, so they provide a guarantee of durability, quality and environmental sustainability for the construction's themselves.

After conducting a further site visit with Mapei's Phil Graham, the client chose to go ahead with Mapei's Purtop Easy roofing system. Purtop Easy is a one-component, elastic polyurethane membrane with a coloured finish typically utilised for waterproofing both new and existing balconies, terraces, roofs and areas with pedestrian access. It can be applied on concrete, cementitious screeds, ceramic, fibre-cement boards, old bituminous membranes and metal. Highly elastic and exceptionally durable, the membrane is



equally easy to apply either horizontally or vertically using a brush, roller or trowel. Once applied, it guarantees substrates are fully impermeable and resistant to standing water, root penetration, foot traffic and temperatures from -40°C to +80°C.

Once specified Resapol arranged fast delivery, direct to site where Elite Construction & Property Services Group successfully completed the project within just three days.

0800 083 194 [www.resapol.com](http://www.resapol.com)

## Sto products selected for 165,000 m<sup>2</sup> new children's hospital in Dublin

External wall insulation specialist, Sto, has been selected to provide a suite of products for a new 165,000 m<sup>2</sup> hospital in Dublin, Ireland. Scheduled for completion in 2024, the New Children's Hospital will comprise more than 6,000 rooms spread across seven storeys.

Main contractor, BAM, which was responsible for designing, engineering and managing the facade packages, chose Sto products to meet performance requirements set by BDP, a multi-disciplinary practice of architects.

To maximise thermal efficiency and fire protection, the StoTherm Mineral external wall insulation system is being used. The project will also feature the StoSilco silicone resin render and a specialist Sto facade paint to create a colourful and highly durable exterior that won't fade.

With work still being completed on site, the Sto products are being applied by Dublin-based SF Plastering. Featuring



non-combustible mineral fibre boards, the StoTherm Mineral system has been installed onto a light steel frame using Sto-Rotofix Plus mechanical fixings. Uniquely, these enable the insulation boards to be adjusted after installation to accommodate surface irregularities, ensuring a smooth surface prior to rendering.

To create multiple colours across the exterior, the Sto render was selected in shades of mauve, yellow, orange, green and aqua. Once applied, this will provide a high

level of water repellence and water vapour permeability, making the façade resistant to the build-up of dirt and reducing the growth of algae and fungus. StoSilco X Black facade paint was applied to the darker colours to ensure these won't fade over time.

The New Children's Hospital is being brought forward by the National Paediatric Hospital Development Board and will combine services currently provided at three children's hospitals in Dublin. When complete, it will offer a world-class facility for Ireland's sickest children and young people, and be the country's primary centre for paediatric education, training, and research.

The hospital's design evolved following extensive dialogue with stakeholders, including staff, families, young people and children who are former or current users of the service.

0330 024 2666 [www.sto.co.uk](http://www.sto.co.uk)



## A. Proctor Group introduces new U-value calculator and members area

The A. Proctor Group, synonymous with technically advanced thermal, airtightness and condensation control membrane solutions for the construction industry, has introduced a new online U-value calculator, Condensation Risk Analysis and members area with an impressive range of technical support available to architects, contractors, and customers.

The changes to 'Conservation of fuel and power: Approved Document L', which came into effect in June 2022, are intended to increase further the standards for the energy performance of new and existing buildings. In addition to the focus on the target of reducing carbon emissions, further performance improvements impact the approach to airtightness, thermal bridging, and insulation.

### New U-Value Assessment Tool

To assist architects, designers, developers, and contractors to accurately carry out



assessments to ensure compliance with the latest requirements of the Part L building regulations the A. Proctor Group has introduced dedicated U-value and Condensation Risk Analysis software that will help. The software is an essential online tool for meeting the new standards and

improving the energy performance of new and existing buildings.

U-value calculations are carried out in accordance with BRE443:Conventions for U-value Calculations and can be submitted with your building control applications to demonstrate compliance.

### New Members Area

In addition to this new assessment tool, a new Members Area has been introduced to the A. Proctor Group website that enables architects, designers, contractors, and clients to access a comprehensive range of technical resources. Registered members will have access to high quality webinars on critical topics, with personalised CPD certification for each. A full suite of brochures and product documents including technical properties and characteristics is available for download from the Members Area.

01250 872261 [www.proctorgroup.com](http://www.proctorgroup.com)

## Remember Me

The Remember Me memorial portico at St Paul's Cathedral is a physical memorial to all those that died as a result of the Covid-19 pandemic. Entered via the cathedral's North Transept entrance it is home to the online book of remembrance.

Designed by Caroe Architecture with Connolly Wellingham, the portico is a beautiful, elliptical structure crafted in the UK and featuring several GEZE doors.

As a visitor enters the cathedral from the North Transept they pass through a pair of swing doors powered by GEZE Powerturn automatic swing door operators. These doors take the visitor into the memorial and were chosen as they can open large or heavy doors and offer the flexibility of allowing the doors to be used both manually and automatically due to GEZE's Smart swing function.

Above the doors, etched in to the structure in gold are the words 'Remembering all who died as a result of the coronavirus pandemic'.

Once inside the portico, visitors can view the online Remember Me memorial, search for and view the tribute to their loved one, light a candle and take a moment to pause

and reflect in this tranquil space. The online book is open to all people, whatever their faith or none.

From the memorial portico the main entrance into the cathedral is through GEZE's TSA 325 NT, a manual revolving door with 4 leaves. The revolving door was chosen as it minimises air flow into the cathedral as only one quadrant is open at a time.

To ensure access for all a GEZE Slimdrive SCR curved automatic sliding doors was installed opposite the revolving door enabling those who are less able, or people with children in buggies, can still visit the memorial and access the cathedral. The Slimdrive SCR is controlled by wave sensors to ensure the doors only open when requested. This is part of the portico's design to minimise air flow.

Across all the glass in the doors are beautiful phrases such as 'we will always remember' and 'never forget'.

The Remember Me memorial portico is a poignant tribute to those who died as a result of the Covid-19 pandemic and is the most significant change to St Paul's Cathedral in 300 years.



Following the public response to the online memorial, and in partnership with the Daily Mail, over £2million was raised to give the Remember Me memorial a physical home within the Cathedral.

01543 443000 [www.geze.co.uk](http://www.geze.co.uk)

## A Nordic Royal Beacon

Ireland's first Tibetan Buddhist Temple takes a step towards completion with installation of distinctive tiered roofs covered in Nordic Royal golden copper alloy from Aurubis. Overlooking the Atlantic Ocean in West Cork, the new building was designed in the style of a traditional Tibetan temple and built over three floors, each defined by a Nordic Royal clad roof with a curved-profile and deep overhanging eaves. Dragon heads and other sacred ornaments, hand-crafted from copper in northern India then gilded with gold leaf by members of the

© Leon Rossiter



Dzogchen Beara community, adorn projecting corners and the top roof ridge.

Leon Rossiter, one of the directors and heading up the Temple project, explained: "We trialled different styles of copper facing our harsh marine environment for 18 months. Only the Nordic Royal delivered just what we were looking for. We couldn't have achieved the look of the temple's roofs if we had used any other material." The stunning new copper roofs will be seen for miles along the coastline and from boats at sea.

The innovative Nordic Royal is an alloy of copper with aluminium and zinc, giving it a rich golden through-colour and making it very stable. It has a thin protective oxide layer containing all three alloy elements when produced. As a result, the surface retains its colour and simply loses some of its sheen over time to give a matt finish.

For more information, please visit the website or alternatively you can email.

NordicCopper@aurubis.com  
www.nordiccopper.com

© Derek Corr



## Sapphire Balconies solve design and logistical challenges for Berkeley Homes project

Bespoke Glide-On™ Cassette® balconies by Sapphire have provided the perfect solution to the design and logistical challenges of Phase 2 of Woodberry Down, a housing development by Berkeley Homes in the vibrant, multicultural area of Finsbury Park, North London.

The residential project presented various challenges from the design stage. A slight design variance was required to accommodate a section of the development allocated to affordable housing. The floor build-up in this section meant a difference in decking height, which would have created a visual inconsistency to the fascia element. In addition, one elevation of the building posed a particular challenge because of the close proximity of a large tree which could not be cut down due to planning regulations.

To solve these challenges, Sapphire incorporated several elements from both design and installation perspectives. To address the differences in fascia elements, a



screen-printed design feature was included on the balcony fascia to keep the design visually consistent across the building. Secondly, to avoid the elevation where a substantial tree was an obstacle, Sapphire's innovative Glide-On™ Cassette® balconies were used which, when lifted, could avoid the tree

completely. Preassembled offsite, including balustrades, decking and soffits, the Cassette® balconies are lifted into position and simply Glide-On™ to the building's pre-erected support arms, before completing the mechanical fixings. While the balcony units were being preassembled offsite, cast-in anchors and incorporated thermal break connections were cast into the building slab, offering superior rigidity to the balconies.

A total of 228 balconies featuring Sapphire's Crystal® frameless, structural glass have been installed to luxury apartments in this second phase of Woodberry Down. Having specified Sapphire Glide-On™ balconies for a number of its prestigious residential projects, a spokesman for Berkeley Homes, Woodberry Down Phase 2, commented: "We've always valued the quality of Sapphire's end product and communication."

sales@sapphire.eu.com  
www.balconies.global.com



## Crittall windows hit thermal targets at World Heritage Site

Crittall Corporate W20 windows are an important component in the refurbishment and upgrade of a prominent industrial site in historic Bath.

Newark Works is recognised as a masterclass in the retrofitting of heritage buildings that has transformed a former riverside heavy engineering factory into 21st century workspace.

The buildings, dating from 1857 to 1905, are Grade II listed and sit within Bath's designated World Heritage Site. They were formerly the home of world-renowned crane makers Stothert & Pitt but had fallen into serious disrepair. Their location as part of a larger Bath Quays redevelopment spurred their re-use, underpinned by sensitive treatment, to create 40,000 ft<sup>2</sup> of modern workspace.

"We specified the Crittall W20 system to replace the existing, single-glazed, cast-iron framed windows that were at the end of their life and deemed beyond



repair," said Nick Brown, director of Ferguson Mann Architects.

He explained: "The Crittall W20 system was chosen due to the need to use a window system that could sympathetically reproduce the fenestration of the large industrial windows—many of which were 3.6 m tall—but also provide a huge thermal improvement."

It was recognised that retaining the original cast iron windows and introducing secondary glazing was neither economically viable nor appropriate aesthetically.

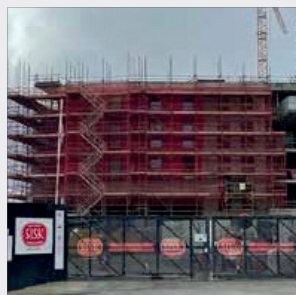
"The slim profiles of the Crittall W20 system meant we didn't have to compromise on the amazing amount of natural light coming into the interior whilst improving the air tightness and reducing the overall heat loss of the building through the windows," said Brown.

He added: "Crittall were also able to recreate the opening vent arrangement of the existing windows, meaning we could also improve the natural ventilation provision to the new workspaces."

Consulting engineers Buro Happold calculated that just replacing the existing single-glazed windows with new double-glazed alternatives with a U-value of 1.8 W/m<sup>2</sup>K would result in a 16% annual energy saving. That translated to 21.4 tonnes of CO<sub>2</sub>. Over the building's lifespan of, say, 25 years, that equated to a 535-tonne reduction in CO<sub>2</sub> emissions.

01376 530800 [www.crittall-windows.co.uk](http://www.crittall-windows.co.uk)

## Airtightness simplified for residential development in Dublin new town



Wraptite® the only self-adhering vapour permeable air barrier certified by the BBA is at the heart of an innovative mixed-use town centre development in south Dublin. The Cherrywood project is a Strategic Development Zone that will create a new town including over 7,700 new homes, six schools, three major parks, and retail and leisure facilities. Partition and ceiling specialist contractor Platt Reilly installed the Wraptite System, from the A. Proctor Group, as an external air barrier and alternative to a traditional standard breather membrane. The use of conventional membranes require mechanical fixing and add to the overall installation time. In this case, the Wraptite self-adhesive membrane was applied externally, quickly and easily to the external steel frame in continuous pieces. The self-adhered nature of Wraptite and its high level of water resistance and simplified detailing made it an ideal choice. Wraptite is designed as an effective vapour permeable air barrier to maximise the energy efficiency of buildings, combining the critical properties of vapour permeability and airtightness in one self-adhering membrane.

01250 872261 [www.proctorgroup.com](http://www.proctorgroup.com)

## Double Magply deck supports sedum roof in Bishop's Stortford



Goodsyards is a brownfield site in the South Side Locks area of the popular Hertfordshire market town, offering buyers paying from £257,500 up to £400K, excellent access to local amenities and a convenient 40-minute commute into London Liverpool Street. With sustainability and the environment being a central theme to the design along with high build standards, the specification for the sedum roofs which cover three of the buildings includes a layer of 18 mm Magply boards to provide a resilient and fire-resistant deck. Bellway Homes is leading the build of the four to five storey properties using a mix of direct labour and specialist package contractors, with LJ Carpentry being the joinery company responsible for installing the high performance Magply boards over a 300 mm depth of fire resisting rigid insulation as part of a low energy roof construction. The final covering of sedum and well graded soil over a single layer waterproofing membrane has been formulated to encourage local wildlife and also assist in attenuating rainwater run-off.

01621 776252 [www.magply.co.uk](http://www.magply.co.uk)



