

# building construction design

[www.buildingconstructiondesign.co.uk](http://www.buildingconstructiondesign.co.uk)

AUTUMN 2023

Appointments & news	02
Building products	14
Interiors	18
Exteriors	30



Cover image: SFS  
See page 40 for details



## Advanced Fire Protection flips the script for iconic former film studio

A shared use office and retail space at the landmark former home of British Pathé is now being protected by Advanced. 360Fire designed and commissioned a new Advanced fire alarm system with phased evacuation as part of a wider restoration and refurbishment project which will see the creation of a number of workspaces, including private offices, office suites and full floors, alongside social areas and retail units.

Located at 142 Wardour Street, Soho, Film House was once at the heart of London's 'film row'. By the late 1940s it's estimated that up to 100 film companies occupied the street, including Warner Brothers and 20th Century Fox.

Taking design responsibility for the project, 360Fire worked with Mechanical Services Ltd (MSL) who installed four, four-loop Advanced MxPro 5 panels and one repeater panel alongside Hochiki detectors, covering all six tenanted floors of the building.



Selected for their open-protocol nature, the panels are integrated with a voice alarm system allowing for phased evacuation, with lifts operating on a dual signal to the ground or alternative floor, depending on fire location. An out of hours override activated via the panel's function button cancels the phased evacuation and enables the system to revert to a 'one out all out' system with no delays. Further integration with the building's BMS enables control over sprinklers, door access, lifts, and smoke vents.

The system also makes use of MxPro 5's stand-out false alarm management capabilities. Available as standard on MxPro 5 panels, AlarmCalm delivers unprecedented control of verification and investigation delays. By dividing sites up into virtual false alarm 'building areas' independent of fire zones, much more precise control of false alarm management and reduction strategies can be achieved, that exactly fit the needs of each part of a building. An optional AlarmCalm button allows trained occupants to verify if they believe a local fire signal is a false alarm too – a highly effective way of eliminating unwanted alarms.

MxPro 5 is the fire industry's leading multiprotocol fire system solution, approved to EN54 Parts 2, 4 and 13. It offers customers a choice of four detector protocols and a completely open installer network, backed up by free training and support.

0345 894 7000 [www.advancedco.com](http://www.advancedco.com)

## Levelling, Fixing, Kerching! Turn purchases into pounds!

GivBax Rewards from ARDEX and BAL is the simplest, most rewarding loyalty App for professional floor layers and tile fixers.

Just download GivBax Rewards from on either the App Store or Google Play.

Then simply buy your ARDEX or BAL products and scan your receipt in the App to earn points. Redeem points on great rewards – including cash! – which is available to withdraw from over 18,000 ATMs across the UK!

You can earn points on all ARDEX and BAL branded products, anything from levelling compounds to tile adhesives – and everything in between – and it couldn't be easier; you just scan your receipts or invoices in the App.

There's no need to print off forms or fill in complex paperwork. It's as easy as taking a picture!



You can also see what points are gained for each product in the App and instantly see how many points you have gained. So when you've earned enough, you can convert directly into cash by hitting the "redeem" button.

Once you've redeemed your cash reward in the App, you'll receive a unique code by text which can be used to withdraw your cash.

What's more, by turning on notifications, you'll get the latest offers and promotions to make sure you never miss out on bonus points and special offers. You'll even get the chance to earn awards and badges, as well as getting other exclusive merchandise

and rewards.

We've kept things simple; every point is worth 10p. So, 100 points equals £10.

Each product has a set point value ranging from 1pt to 50pts with the average reward equating to 2.5% cashback per product.

BAL and ARDEX already offer lots of free, market-leading services and support, from unrivalled technical advice, site visits, moisture testing and training courses.

However, this loyalty programme rewards installers for purchases meaning that installers now also get a direct reward when they purchase our products.

It's so easy to use – so why not download it now!

01782 591100 [bal-adhesives.com](http://bal-adhesives.com)

# Grand Union Housing Group turns to smart home tech to gather real-time information



Milton-Keynes based Grand Union Housing Group has introduced smart home technologies across its housing portfolio of 12,500 properties to improve resident safety, reduce damp and mould concerns, and ensure compliance with shifting regulations on social housing.

Aico's HomeLINK Connected Home Solution Internet of Things (IoT) sensors were selected to monitor real-time indoor environmental conditions such as humidity and temperature, which are the main causes of damp and can lead to mould; and fire and carbon monoxide events. Access to this data has saved Grand Union's team of 400 precious time and resources while freeing them up to better support their customers.

Martyn Cheeseman, electrical delivery manager (responsive) at Grand Union, explains: "Within days of utilising the HomeLINK Environmental Sensors and Gateway, we can already validate the effectiveness of new ventilation systems we are installing to resolve condensation, damp and mould issues. Real-time data insights provided via the HomeLINK Portal make it very simple for us to make informed decisions on the future specification of fans that are proven to be effective in the treatment of humid and damp living conditions." The properties within Grand Union's housing portfolio include general needs

housing, supported housing accommodation, shared ownership, leasehold and market rental properties. Following the Grenfell disaster, Grand Union changed its corporate strategy to prioritise accountability and transparency in all dealings with its 27,000 residents across Bedfordshire, Buckinghamshire, Northamptonshire and Hertfordshire.

Grand Union wanted to deliver cost-effective, efficient, relevant and quality services to ensure resident safety and comfort. So, it introduced digital technologies, including Aico's advanced 3000 Series of Smoke, Heat and Carbon Monoxide alarms, as part of its corporate strategy. By implementing Aico's solution, Grand Union is quickly able to identify and implement urgent building repairs and maintenance, while also ensuring properties remain legally compliant and fit for human habitation.

Aico's HomeLINK IoT sensors provide accurate automated data collection, which eradicates human error, and gives Grand Union actionable insights to strengthen residential safety, health and wellbeing. The housing provider has also developed an environmental sustainability strategy focused on the thermal efficiency of its entire housing portfolio. This new strategy ensures all its homes are well insulated, as well as offering a range of heating options to increase efficiency.

Grand Union's data strategy from its use of HomeLINK includes enhanced decision-making across the business, making the shift from responsive to planned maintenance seamless. It also ensures data governance and security, an efficient data architecture including "single version of the truth" data exchange insights, and a real-time view of property compliance.

"It's great to be working so closely with housing and asset management teams across Grand Union Housing Group," said Ben Malton, regional specification manager at Aico. "They recognise that the links between health and housing are long established and well known, and that housing can be a significant determinant to health and resident wellbeing. Utilising our HomeLINK sensors, data, alerts and insights, we are already providing value to the numerous teams across the organisation ensuring housing compliance, safer homes, enhanced resident wellbeing and communication. With 12,000 homes, housing 27,000 people, our sensor technology provides a scalable and cost effective solution to deliver services to residents efficiently for Grand Union."

To find out more about Aico's HomeLINK Connected Home Solution, please visit the website.

[enquiries@aico.co.uk](mailto:enquiries@aico.co.uk)  
[www.aico.co.uk/homelink](http://www.aico.co.uk/homelink)

## Barry tops 25 years

As GEZE UK celebrate 35 years in business, one of the company's longest serving members of staff, Area Sales Manager, Barry Topham, celebrates 25 years with the company.

In this time, Barry has seen the company grow hugely; back when he started there was just 23 staff and turnover of £3m, today the company employs over 250 people and turnover is over £35m.

Barry has also witnessed many changes in the industry, he says: "The growth of automated doors and the windows sector is astounding, yet there have also been negative changes. There has been a deterioration of quality on site, such as the use of chipboard doors, and the influx of low quality, inferior finished products at lowest price is not good - it means the expected product life is far too short. However, the GEZE brand is still recognised in the market place as a reliable, quality supplier of door and window control products – and one of the reasons I have stayed."

"Another, is my customers – I always do what is best for both GEZE and the



customer and my relationships with the vast majority of them is excellent and akin to friendship, which makes doing business more pleasurable."

Barry runs his sales area as if it was his own company, his extensive knowledge of the market and the GEZE products enables him to ensure his customers get the advice they need and the best solution for their project.

Andy Howland, GEZE UK's sales and marketing director said: "I have worked with Barry for many years, his knowledge of GEZE and the industry is second to none, he is dedicated and passionate about what he does and is a real asset to the company."

Previous to joining GEZE Barry worked as an Architectural Ironmonger and was a GEZE customer so he knows the business from both sides. Originally, he was employed at GEZE as a specification manager working with architects and planners but as soon as an area sales manager role became available he snapped it up. Barry now covers central England and south Wales.

To find out more about GEZE UK and the comprehensive range of automatic and manual door closers, and window technology products, send an email or visit the website.

[info.uk@geze.com](mailto:info.uk@geze.com) [www.geze.co.uk](http://www.geze.co.uk)

## Glidevale Protect turns up the heat with DiscreteHeat

Leading building materials manufacturer Glidevale Protect is continuing to help create energy efficient homes of the future by having its reflective membrane technology used as part of an innovative new heated skirting board system by Manchester based manufacturer DiscreteHeat Co. Ltd, maximising the product's thermal performance.

DiscreteHeat's patented product, ThermaSkirt™, is set to change the way we heat our homes by removing the need for traditional wall-mounted radiators. ThermaSkirt is a compact aluminium skirting board system which is connected to the home's heating system. It then radiates heat evenly and efficiently around a room. The DiscreteHeat system has been developed with both new build and refurbishments in mind and tests have shown that when combined with Glidevale Protect's VC Foil Ultra reflective membrane, its energy efficient benefits are further enhanced.

One of the leading air and vapour control layers (AVCLs) on the market, Protect VC Foil Ultra has a high-quality aluminium



foil surface, giving it a superior thermal resistance, which in turn increases the radiated temperature performance of DiscreteHeat's ThermaSkirt. To achieve these results the membrane is installed directly onto the wall substrate with the foil surface facing into the room. DiscreteHeat's skirting board system then fits over the top, using clips to maintain the airspace and enhance radiant heat.

Ethan Wadsworth, sales and marketing director at DiscreteHeat commented: "We're really proud of our ThermaSkirt

heated skirting board system and see it as playing a key part in making the UK's homes more energy efficient for the future. When we saw the potential of combining ThermaSkirt with a specialist reflective membrane such as Protect VC Foil Ultra, we immediately began testing and were impressed with the significant difference it made – increasing temperature levels by at least three degrees centigrade."

[info@glidevaleprotect.com](mailto:info@glidevaleprotect.com)  
[www.glidevaleprotect.com](http://www.glidevaleprotect.com)



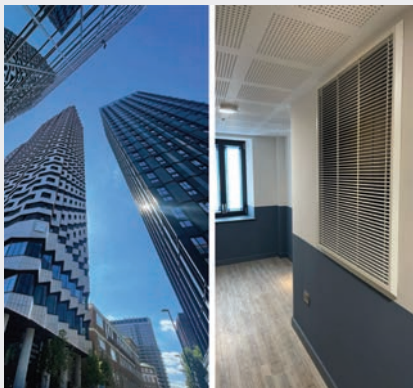
## Rising to the challenge of protecting the world's tallest modular building

**B**elieved to be the world's tallest modular building Tide Construction's Enclave residential development at College Road Croydon has needed to put fire safety as a top priority.

The interconnecting twin towers, reaching 35 and 50 storeys which top out at 158 m high, constitute one of the world's largest co-living schemes providing over 900 residences. The volumetric construction has focussed around central columns to which the modular units have been connected to deliver 817 co-living and 120 affordable homes.

Keeping the residents safe is a smoke ventilation system designed and installed by Orion Contract Services, which centres on 200+ S60 smoke evacuation dampers designed and manufactured by Gilberts Blackpool.

The smoke shafts make use of the central columns to efficiently remove noxious fumes from the building should a fire break out. Gilberts' EN12101-8 and EN1366-10



compliant S60 units have been strategically fitted on every floor to contain and channel the smoke, delivering up to 120 minutes' fire integrity.

In the event of a fire, a powered motor triggers the units on the fire floor to open, and the S60 units on all other floors to failsafe

close to contain the smoke within the riser and protect the other storeys.

"In such a tall residential building, fire safety is paramount," explains Orion Contract Services managing director Craig Edwards. "Gilberts dampers are my product of choice. They are fully certified, easy to install and well priced. They tick all the boxes for me."

The S60 and its counterpart S61 range of smoke evacuation dampers builds on Gilberts' 60+ years' heritage of bringing to market advanced technology that enhances the design, installation, energy efficiency and occupier comfort of non-domestic buildings.

All Gilberts' products- standard lines and bespoke solutions- are designed, developed, manufactured and tested in accordance with BS EN ISO 9001:2015 quality standard in the company's state of the art 140,000 ft<sup>2</sup> facility in Blackpool.

01253 766911 [info@gilbertsblackpool.com](mailto:info@gilbertsblackpool.com)

## BEWI showcases the future of housebuilding at UK Construction Week

**C**ome on to BEWI's stand at UK Construction Week and find out how sustainable houses of the future will be built.

BEWI building systems include the ICF system THERMOMUR® and the insulated concrete raft system JACKODUR® ATLAS. They enable the rapid construction of highly thermally efficient buildings, with market leading air tightness and excellent acoustic insulation.

These systems are revolutionising sustainable house construction in the UK. The JACKODUR® ATLAS Extruded Polystyrene (XPS) insulation and formwork system is for floor slabs, while THERMOMUR® is a robust pre-formed wall block with a hollow core manufactured with Expanded Polystyrene (EPS). The empty core is filled with a concrete pour during construction.

When planning a new bathroom or modernising old bathrooms, ideas can be implemented easily and safely with the

JACKOBOARD® construction boards, which are the ideal substrate for all types of ceramic, porcelain, or natural stone tiles. Thanks to their extruded polystyrene foam core and the special coating on both sides, the JACKOBOARD® construction boards are the ideal base for plaster and tile. The surfaces of the JACKOBOARD® system provide a strong primer and can be used on virtually any substrate. At the same time, they are water repellent, thermally insulating, light and sturdy.

BEWI designs its product range to help its customers move towards zero energy construction, whether they are building a house from scratch or just fitting out a new wetroom. We are experts in the manufacture of building systems, insulation, packaging and other specialist products made from expanded (EPS) and extruded (XPS) polystyrene, produced for the construction and other industries.

At BEWI all surplus materials are recycled



from production to new raw materials and new products.

Guided by the vision of leading the change towards a circular economy, we strive to offer you the sustainable, low energy future of construction.

0870 600 3666 [www.bewi.com](http://www.bewi.com)

## Marmox showing off at UK Construction Week

Marmox, a leading British manufacturer of waterproofing and insulation solutions, will be attending this year's UK Construction Week show (NEC 3-5 October), where it will be previewing its versatile new Fireboard product alongside the company's well-established Multiboards on stand B620.

Marmox will be concentrating on the exterior applications for both these products, with Marmox Multiboards being presented as render boards, external tile backer boards and for their use in applications such as external garden furniture.

Scheduled for launch early in the new year, the equally versatile Marmox Fireboard will be exhibited as an exterior render board, where it can be used effectively for external wall insulation (EWI) applications. The 600 x 1,200 mm Fireboards, which range in thickness from 20 mm up to 200 mm can be supplied with a polymer modified mortar honeycomb coating on one or both faces.



The new substrate board carries the coveted A1 accreditation of being non-combustible while offering both thermal and acoustic properties. Multiboards are also certified to be used externally to cover outer walls to improve a building's energy efficiency.

In addition to their ease of installation across parapet walls and even within

swimming pools, Multiboards also offer good loadbearing and often get installed across promenade decks to take floor tiles.

The annual event at Birmingham's NEC has attracted over 300 exhibitors who will gather under the umbrellas of Build, Net Zero, Digital Construction and Offsite, along with the co-located Timber Expo. Delegates will also be able to attend a wide range of seminars and CPD sessions, as well as visiting Marmox's stand to speak to its highly experienced technical team.

For further information please contact Marmox or visit the company's website.

01634 835290  
www.marmox.co.uk



## Senior doubles production thanks to its new thermal improvement facility

Following the opening of a second UK manufacturing site in South Yorkshire, leading aluminium fenestration solutions provider Senior Architectural Systems has increased production and reduced lead times on its popular PURE® range of thermally-efficient windows and doors.

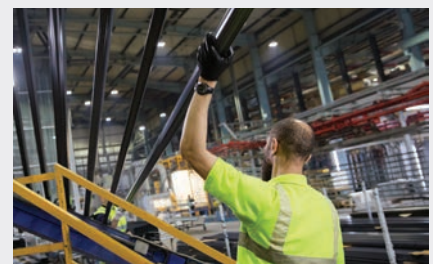
Senior is the UK's largest privately owned aluminium systems house and recently opened a dedicated thermal improvement manufacturing facility in Rotherham to support its main manufacturing facility in Denaby, near Doncaster, and its distribution site in Livingston, Scotland. The new site has seen production of Senior's patented PURE® range of low U-value aluminium doors and windows double, helping to bring down lead times and deliver the award-winning Part L compliant solution to more of Senior's fabrication and specification customers.

The unique range, for which Senior recently won a King's Award for Enterprise

in innovation, is the first on the UK market to benefit from an enhanced thermal barrier manufactured from expanded polyurethane foam (PUR). Traditionally used in cladding and insulation products, the innovative use of PUR as a thermal barrier gives the PURE® range the potential to achieve U-values as low as 0.71W/m<sup>2</sup> K when calculated as a commercial CEN standard window and 0.93W/m<sup>2</sup> K when calculated as a CEN standard door.

Senior is planning further investment in the new site and has already expanded its local workforce with the recruitment of four new operatives. The speed and efficiency of Senior's production is set to increase further with the addition of a second high pressure polyurethane injection system later in the year, as well as a new double grooving machine and spiral wrapping machine.

As Senior's dedicated Thermal Improvement Centre, production of other Part L compliant and low U-value aluminium



windows and doors within Senior's extensive range will also be moved to the Rotherham site in due course. This will support the work that is set to continue at Senior's main manufacturing and national distribution centre in Denaby. Together with Senior's established sites in South Yorkshire and Scotland, the new facility has increased the company's overall UK manufacturing capacity to 220,000 square feet.

01709 772600 www.seniorarchitectural.co.uk

## Remagin to drive significant lifecycle and sustainability benefits



On the back of the major news announcement that EOS Framing will be joining forces with Etex Group partners Sigmat and Horizon, under the new Remagin brand – Scott Bibby, Country Manager for UK and Ireland at Etex New Ways, discusses how this move can accelerate sector growth.

Bringing together three major steel framing specialists is not without its challenges but the rewards for past, present and potential customers are immense. These businesses have been established in the sector for a considerable time and have developed leading positions in their respective markets. Each has individual strengths and specialisms, and by combining the 'sum of the parts' we are creating an offsite focused brand that has vast in-house skills to enhance our services to all customers and provide greater synergy across our extensive product portfolio – all based on sustainable light steel framing (LSF).

This move offers assurances to customers through a powerful combination of financial security, comprehensive services and market leading products, delivered by those at the forefront of design, engineering, manufacturing and installation of complete and compliant light steel systems. And this is all backed by

the €3.7 billion turnover Etex Group with its significant investments in innovation, system testing capacity through five global R&D centres and its building materials expertise.

This is an exciting time in the development of not just our own business but the wider offsite construction community. Due to the proven benefits of panelised building systems, things are really taking off and by combining our joint strengths we are confident we can accelerate and maximise sector growth.

### CIRCULAR ECONOMY CREDENTIALS

As the industry addresses the challenges inherent to building a more sustainable world, offsite construction and light steel frame can have an important role to play. There is growing pressure on the construction industry to reduce waste and to achieve this we have to move towards resource efficiency. The circular economy is rising up the political and construction agenda. At its simplest, it prioritises the reuse of materials, preventing the over-extraction of natural resources and the amount of usable construction components that end up in landfill.

Steel has excellent circular economy credentials both as a material which is strong and durable and as a structural framing system

which is lightweight, adaptable, recyclable and reusable. Steel is responsible for technological advancements across the globe and continues to drive innovation today. Topping the list for the most recycled material by weight, steel can be continuously recycled without any damage or degradation to its properties. Our steel is made up of 59% recycled content and is 100% recyclable.

As the world moves towards circular construction protocols, Remagin will be leading the charge in enhancing the sustainability credentials of light steel framed buildings.

Construction can be a complex business but as we evolve more advanced offsite technologies, Remagin can help developers reduce risk and operate with more certainty and confidence. Remagin is building on the solid foundations established by Sigmat, EOS and Horizon and is backed by Etex Group with its significant R&D, testing capacity and materials expertise. We are in a strong position to add significant lifecycle value and sustainability benefits to our customers.

Remagin is well placed to accelerate the scale and impact of offsite construction, for more information go to the website.

01756 701522 [www.remagin.world](http://www.remagin.world)





## UKCA Approval for the TECTUS HINGE SYSTEM

**S**IMONSWERK, Europe's leading hinge manufacturer is pleased to announce it has received UKCA (United Kingdom Conformity Assessed) approval for the TECTUS concealed hinge system.

The TECTUS range is the only UKCA approved multi-axis concealed hinge currently on the market.

The UKCA mark is the new UK product marking that covers goods which previously needed EU CE marking. The new mark applies in England, Scotland and Wales (Great Britain), while CE marking will continue to be recognised in Northern Ireland. This latest certification will allow SIMONSWERK to remain a market leader and be at the forefront of compliance and quality.

Robin Guy Managing Director commented: "We reacted quickly to the changes in the market when the initial deadline was January 2023. Although this has now been extended to June 2025, for us it is such good news to have a fully-compliant product ahead of the UKCA deadline. We now offer our Brass range and TECTUS range of hinges which are both tested to CE and UKCA standards."



SIMONSWERK is one of Europe's leading hinge manufacturers with a history spanning more than 130 years in the production of brass, aluminum and stainless-steel hinges for doors and windows. The range includes the

renowned fully concealed TECTUS hinges and the popular TRITECH solid brass hinge with concealed bearings.

0121 522 2848 [www.simonswerk.co.uk](http://www.simonswerk.co.uk)

## Key appointments announced by Vitra

**A**manda Raine has been announced as the new Marketing Director for Vitra Bathrooms UK, taking over from Margaret Talbot, who retired after 8 years with the business at the end of May. Sam Cooke has also joined Vitra as Retail Sales Director, taking over from Darren Paxford, who headed sales for 27 years.

Amanda joins Vitra Bathrooms in Oxfordshire from her role as Head of Brand and Communications at the Bristan Group, bringing over ten years of experience in the bathroom and construction industries. Amanda has also held product and marketing roles with Travis Perkins and Wolseley. She will lead Vitra's strategic marketing initiatives, drive brand growth, and develop customer relationships across all customer groups, including architects, designers, and the specifying communities."

Amanda says, "Vitra is an innovative bathroom brand with impressive design and manufacturing expertise. The award-winning experiential London showroom in Clerkenwell is a compelling resource for Vitra and its customers - I am thrilled to be



Amanda Raine

part of the next chapter."

Sam joins Vitra from distributor Davroc, where he was Director of Sales, representing some of the biggest bathroom brands as well as Davroc's own brands. Sam's experience is comprehensive, covering many routes to market, having also worked with Triton Showers, Irsap, Vokera and Wolseley.

Sam says, "Joining Vitra is a terrific opportunity to build on years of industry experience. I've collaborated with the team at Vitra for many years through Davroc, so I



Sam Cooke

am delighted to be part of the brand's future."

Managing Director Steve Breen said, "I would like to acknowledge the hard work and years of dedication both Margaret and Darren have given Vitra - we all wish them well in their new adventures. The Vitra story now continues in the capable hands of Amanda and Sam - both bring unique experiences and understanding of bathrooms in the UK. Welcome to the team."

01235 750990 [www.vitra.co.uk](http://www.vitra.co.uk)



## Marmox showing off at the London Build Show

**M**armox, a leading British manufacturer of waterproofing and insulation solutions, will be attending this year's London Build Show at London Olympia on 15th & 16th November, where it will be previewing its versatile new Fireboard product alongside the company's well-established Multiboards on stand H52. The Marmox Stone Wool based product shares the unique Marmox honeycomb surface structure with its XPS forerunner, Multiboard, to create an A1 non-combustible certified render-backer which is fully waterproof. It can further be used internally across walls or ceilings to take a plaster finish, while providing sound decoupling and acoustic absorption



properties, as well as thermal insulation. The 600 x 1200mm Fireboards are available in thicknesses from 20mm up to 200 mm and with the polymer modified mortar honeycomb coating on one or both faces. With a nominal density of 150 kg/m<sup>3</sup> the boards' core material offers a compressive strength of 90 kN/m<sup>2</sup>, making it three times stronger than standard mineral wool, which significantly enhances their offer to the construction industry. The A1 non-combustible backer board for internal or external use can safely be used across masonry as well as timber or steel framing systems. The range has been tested to prove compliance with BS EN 1350-1 along with other testing completed by the BRE. Fireboard is lightweight and easy to cut. The range of the Marmox Multiboards will also be on display.

The event at Olympia has attracted over 300 exhibitors who will gather under the umbrella of the Festival of Construction. Visitors will be able to attend a wide range of seminars and CPD sessions, as well as visiting Marmox's stand to speak to its highly experienced technical team on the full range of Marmox's products and they will also have chance of winning a prize if they wish to enter a draw which will take place after the exhibition by having their photograph taken with the team and/or a Marmox product.

01634 835290  
www.marmox.co.uk



## New Mapei Polyglass roof for Enfield Council Civic Centre

**A** Mapei Polyglass waterproofing roof system has been used to complete an extensive renovation at Enfield Council Civic Centre.

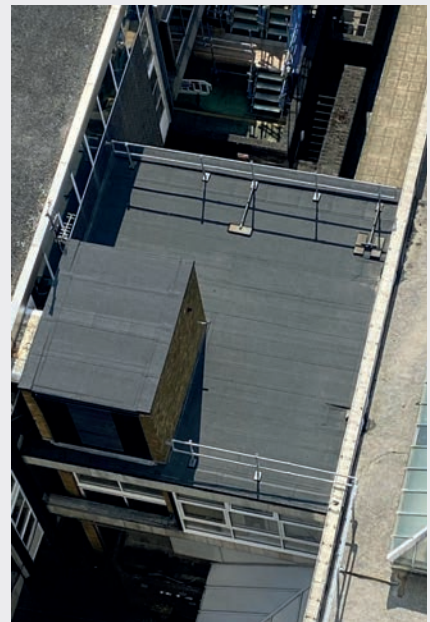
The project, completed by Alex Bennett Precision Roofing, spanned the link roof at the Centre and provided ungraded insulation, along with a host of high-performance features that were much-needed to improve the safety and efficiency of the building.

Constructed in 1961, in postmodern style, Enfield Civic Centre has expanded over the

years and was refurbished in 2017 to provide an open plan working environment and incorporate new timber grill ceilings.

During the recent roof refurbishment, limestone was carefully removed from the asphalt surface and the existing waterproofing system was cleaned and prepared. Mapei's fast-drying Bituminous primer, Polyprimer HP45 Professional, was then applied to the surface to eliminate dusting and the roof was treated with germicidal foam.

The new roof system included three Mapei Polyglass membranes which provided strength, stability, water resistance, cold flexibility and puncture resistance. They included: Polyvap SA P-AL prefabricated self-adhesive bitumen membrane, featuring ADESO® technology; Bitulight P – prefabricated elastomeric-plastomeric membrane featuring REOXTHENE® Ultralight Technology compound and Polyshield prefabricated waterproof plastomeric membrane. The system was installed with Adepur insulation adhesive.



For more information about Mapei products and applications, please contact by email or visit the Mapei website.

info@mapei.co.uk www.mapei.co.uk

## Glidevale Protect provides new solutions for solar roofs

With the recent update of the Building Regulations Part L and the use of solar photovoltaic panel (PV) systems on the rise, there is an ongoing need to reduce carbon emissions within new and existing homes. To meet demand, UK building materials producer Glidevale Protect has developed a comprehensive collection of membrane and ventilation products for use on all cold and warm pitched roofs where in-roof solar PV panels are being installed.

One new addition to the range is Protect A1 Solar, a heavy duty, type HR impermeable roofing underlay. The 145gsm membrane offers unrestricted use in wind uplift zones 1-5 at the maximum batten gauge of 345mm to BS 5534, suitable for use throughout the UK & Ireland. Together with Glidevale Protect's extensive choice of high and low level ventilation options, Protect A1 Solar offers one of a number of trusted solutions to reduce risk of condensation forming on the underside of in-roof solar PV panels. This can ensure that the correct ventilation strategy is in place, avoiding risk of rotting roof timbers. Due to its impermeable design and high resistance to water vapour transfer, Protect A1 Solar eliminates the need for a ventilated counter batten space above the membrane, saving labour time and material cost.

Other Glidevale Protect pitched roofing membranes such as vapour permeable, type LR underlays can also be used in conjunction with in-roof solar PV panels. The Glidevale Protect



Technical team offers complete guidance to aid specification via a full roof ventilation strategy and house type take off.

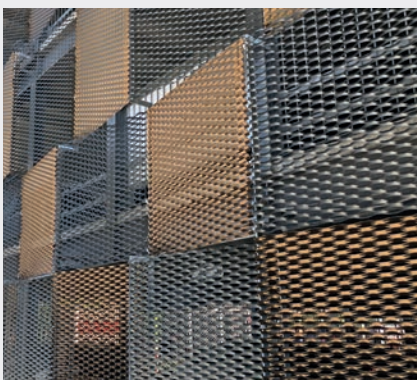
Matt Neary, Product Manager at Glidevale Protect said: "We are pleased to offer a complete range of membrane options which, when used in conjunction with our ventilation products,

gives our customers a tried and tested product package where in-roof solar PV panels are used."

More information can be found on the website or follow Glidevale Protect on LinkedIn.

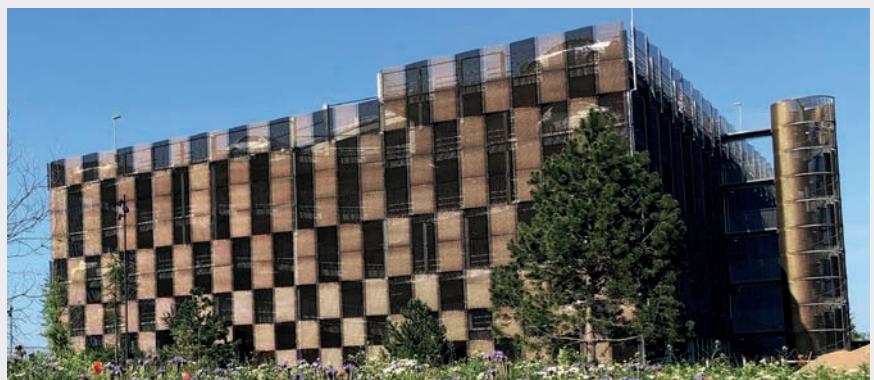
[info@glidevaleprotect.com](mailto:info@glidevaleprotect.com)  
[glidevaleprotect.com](http://glidevaleprotect.com)

## A functional and aesthetic facade for a multi-storey car park



To alleviate the traffic problems at Herlev Hospital in Denmark, a multi-storey car park has been constructed with more than 500 parking spaces, primarily for hospital staff.

The facade of the car park has been constructed from more than 3000 m<sup>2</sup> of expanded metal, manufactured and supplied



by RMIG. The expanded metal has been anodised and with its dark bronze nuance, fits in well with the surrounding hospital buildings. The panels have been staggered to create a variation on the facade.

01925 839 610  
[www.city-emotion.com](http://www.city-emotion.com)

### TECHNICAL CHARACTERISTICS

**Raw material:** ALU EN 1050 H14/H24

**Pattern:** LTH150x56x21.5x2

**Thickness:** 2.0 mm

**Surface treatment:** Anodising



## Passing on the BAL and ARDEX baton

After more than 20 years with ARDEX and over 10 years with BAL, Peter Bell, managing director, is passing on the baton to his deputy, David Hackett. Peter has enjoyed a stellar career with the ARDEX Group underpinned by his leadership of ARDEX and BAL, two highly successful, market-leading UK businesses. Testament to his commitment and legacy, Peter also holds a group steering position as an ARDEX Global Management Committee member as well as roles on various group boards, including India, Ireland, and the Middle East. He will retain these roles until the end of 2023. As commented by Peter Bell: "David's promotion to UK managing director is a great example of how the ARDEX group opens development pathways for its key people. It also demonstrates how we promote from within, and how we encourage people to take on international assignments to open up career progression opportunities. As part of passing the baton to David, we expect our UK businesses to continue to thrive under his leadership. His commitment to our people, our customers and our strategic vision make him a great choice to lead our talented team into the future. I am confident that ARDEX & BAL will continue to succeed and achieve new milestones under his leadership." David said: "I am excited and honoured to be stepping into the role of Managing Director and look forward to building on Peter's impressive legacy."

01782 591100 [www.bal-adhesives.com](http://www.bal-adhesives.com)



## Words can paint a thousand pictures



Maud Milton and her talented team of artists, known as Artyface Community Art, work out of studios at Trinity Buoys Wharf in East London. They have become well known across the capital and beyond for helping community groups assemble totally unique mosaics. In particular, Artyface Community Art has been instrumental in fashioning striking interpretations of the ubiquitous London Underground roundel, using hundreds of handmade tiles which carry individual words relating to the locality. Maud and her colleagues have worked closely with school pupils and local residents to design tiles for mosaics for new buildings and walls in the public realm: all mounted on Marmox Multiboards in metal frames. Aside from railway and underground station signs, Maud utilizes Marmox Multiboards for any project which is going to be set in a metal frame, including house names or numbers. A spokesperson for Marmox, Grant Terry, Marketing Manager, added: "We have been delighted to provide Maud and her team with quantities of our Multiboard to help facilitate these very important local projects, involving many different members of the community."

01634 835290 [www.marmox.co.uk](http://www.marmox.co.uk)

## FIREFLY™ Phoenix picked to protect pharma giant's new Macclesfield plant



A Manchester based passive fire protection specialist has utilised products from the range of TBA FIREFLY™ – including the versatile Phoenix Smoke & Flame barriers – to achieve the compartmentation of concealed spaces within the new Macclesfield manufacturing facility of a world-leading pharmaceutical giant. Firetech UK Ltd is a key sub-contractor to DES for the construction of the extensive new laboratories and production plant for AstraZeneca, part of the FTSE 100 company's continuing investment at its East Cheshire site for the distribution of drugs to markets around the world. The Contracts Manager for Firetech UK on the Macclesfield Project, Josh Dodds comments: "We have been using FIREFLY™ products for the past five years, including here on this very large new plant. Early on in the contract we installed a large quantity of TITAN Lite™ 120:60 fire barriers in the 'Amenities Area' of the building and then when we were tasked with installing a series of smoke and flame barriers in the ceiling voids over the laboratories, we proposed the Phoenix product as being the most cost-effective solution."

01706 758817 [www.tbafirefly.com](http://www.tbafirefly.com)

## Prevent costly water damage by tanking

Since 2018 it has been a requirement under British Standards BS5385-Part 1 that all wet areas – domestic and commercial – should be protected with an adequate tanking membrane prior to tiling. A tanking system (waterproof coating) – such as BAL Waterproof 1C – should be installed onto backgrounds before tiling commences.

This is because tiles, adhesives and grouts themselves are not inherently waterproof and will allow water to pass through – potentially causing water damage, damp and foul odours to occur on the background or substrate.

BAL Waterproof 1C is a ready-mixed waterproof coating that can be applied easily with a brush or trowel in only one coat.

Crack-bridging up to 3 mm, it is a fast-track solution, with tiling possible in 2 hours.

Priming isn't needed on most substrates – including plasterboard. Where priming is needed – use BAL Primer 1C, quick drying one-coat primer.

Easy to apply straight out of the bucket, it provides coverage of up to 6 m<sup>2</sup> – perfect for any domestic shower, bathroom or wetroom.

It also includes Fibre Strand Technology for improved strength.

01782 591100 [www.bal-adhesives.com](http://www.bal-adhesives.com)



# Houlton School, Rugby



© James Brittain / vHH

A unique and innovative Soprema insulation specification provided a durable and robust solution to bring a historic landmark to life and create a state-of-the-art secondary school for pupils in Rugby, Warwickshire.

## The project

Soprema has helped to restore a Grade II Listed former radio station building in Rugby and transform it into a sustainable, distinctive and state-of-the-art secondary school.

Houlton School, located within the former Rugby Radio Station, has emerged as a critical component in the establishment of a thriving new community. It is part of the Houlton development, which will see developer Urban & Civic (U&C) deliver 6,200 homes alongside neighbourhood and community facilities.

The Grade II-listed transmitter building, formerly known as C Station, sits at the heart of a developing mini-town, named Houlton

to commemorate the first transatlantic call made from the radio station, which was to a receiver site in Houlton, Maine, in 1927.

With a vision to address the shortage of secondary school places and revitalise the listed building at the heart of Houlton, U&C undertook the monumental task of restoring the former radio station building, which dates back to 1925, and create a state-of-the-art secondary school on its site.

The new educational campus at Houlton School includes a main teaching block with a grand entrance and dining hall within the listed former power hall, capable of accommodating more than 1,000 students. In addition, two separate blocks were constructed for STEM and Humanities subjects, along with a Sport England compliant sports hall with dance, acting and fitness studios. It also features a new communications centre, fully resourced with a library and professional radio and television broadcasting station in homage to the legacy of the site.

## Challenges and objectives

The initial plan was to demolish the historic Rugby Radio Station to make way for the residential development. However, recognising the need for a secondary school in the area, developer U&C approached the Department for Education (DfE) to secure funding and repurpose the radio station

as a school. This bold proposal required overcoming several challenges, including the preservation of the listed building, industrial space constraints, contamination issues and insulation challenges.

## Innovative solutions and collaboration

U&C and the design team, led by architects van Heyningen and Haward (vHH), worked closely with Morgan Sindall Construction, appointed under an PCSA from RIBA Stage 2, and their specialist supply chain to address the project's complexity. By involving the supply chain, which included Soprema, during the design phase, all parties were able to mitigate risks and engage in value engineering exercises. Careful pre-application negotiations and intrusive examinations before the listed building consent applications were submitted ensured compliance with the DfE's standard output specification, balancing the preservation of the historic fabric with the requirements of a modern educational facility.

The design of Houlton School prioritised a fabric-first approach, focusing on the building envelope's quality and energy efficiency. The integration of Passivhaus software and thermal modelling enabled optimised insulation and improved performance.

vHH specified Soprema's PAVADRY insulation solution - a natural and ecological,



© vHH



innovative thermal insulation board based on wood fibre, bonded with hardboard and a lime-plaster parge coat.

The integrated air barrier provided by the moisture-open parge coat, together with the hygroscopic properties of the wood fibre and careful repair of the historic brickwork, ensured a controlled moisture transport which prevents the formation of damaging moisture. This characteristic makes PAVADRY the ideal insulation board to prevent the trapping of moisture within the historic fabric and was crucially important for the project to protect the original features of the building, and future-proof the structure for years to come.

### Successful outcomes

Despite facing the challenges posed by the global pandemic, the Houlton School project was delivered on time, within the £39m budget, and achieved a perfect 10/10 client satisfaction rating.

The innovative funding arrangement with the DfE enabled the school to commence operations years ahead of schedule, addressing the urgent need for secondary school places in the community.

Houlton School is an inspiring example of an elegant and creative retrofit, proving that almost any kind of repurposing is possible with a historic structure. It serves as a vibrant, bustling educational facility, is a centrepiece for the community and celebrates the historical significance of Rugby Radio, retaining a legacy for a globally significant heritage asset.

The insulation specification and installation, backed by Soprema's team of technical experts and guided by hands-on expertise from design stage onwards, exemplifies a successful synergy between historic preservation and modern development.



In the construction phase of the project, architects vHH were novated to Morgan Sindall Construction, de-risking the inevitable discoveries in the fabric of the old building by using the strong working relationships established with the supply chain and suppliers. Working closely with DCL, the drylining and plastering subcontractor, individual solutions were examined and finalised to accommodate tricky details within the building, especially around the historic steel frame members that are half enclosed within the masonry.

Through effective collaboration, careful planning, and meticulous attention to detail, Morgan Sindall Construction and its partners and suppliers, including vHH, DCL and Soprema, have delivered an inspirational, aesthetically beautiful, sensitively restored modern facility that caters to the educational

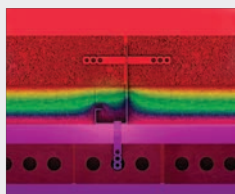
needs of a burgeoning community. The restoration and repurposing of the radio station into Houlton School stands as a testament to the dedication of the entire supply chain and delivery partners, resulting in a project that has received widespread acclaim including wins at the Construction News Awards, Planning Awards, RICS Awards, Spaces Awards and Developer Magazine and Festival of Place Pineapples Awards 2022.

Josh McCosh, partner at van Heyningen and Haward Architects, said: "Transforming the thermal envelope of C Station was a fundamental requirement of the Houlton School project. By using the Pavatex suite of products from Soprema, and with their technical support, we were able to deliver hugely improved air tightness and insulation to the building without damaging its solid brickwork facades, and thus secure the DfE and Historic England's support for the retrofit. The school is delighted with the facilities, and the heritage of the Radio Station is now preserved for all at the heart of Houlton."

info@soprema.co.uk  
www.soprema.co.uk

**Architect:** van Heyningen and Haward (vHH)  
**Main Contractor:** Morgan Sindall Construction  
**Sector:** Education  
**Product:** PAVADRY insulation



**NEW CPD SEMINAR: WINDPOSTS FOR CONSTRUCTION**

Leviat's new CPD seminar explores how using a Thermal Windpost in place of a traditional Windpost results in up to 70% reduction in thermal transmission through the span of the section, as well as improving the consistency and repeatability of fitting insulation in and around the post, ensuring that the intended thermal design is met. To book

a seminar or to find out more, please get in touch by emailing Leviat.

[cpd.uk@leviat.com](mailto:cpd.uk@leviat.com) [www.leviat.com](http://www.leviat.com)

**Housing Management & Maintenance**

The Housing Management & Maintenance (HMM) website is an online provider of past and present news items dedicated to keep professionals within this sector updated with a wide range of topics including legislation, projects, products and more. [housingmmonline.co.uk](http://housingmmonline.co.uk) is a one-stop source for all the latest press releases providing any visitor with access to information about products and services that they may require. From the website, you can find links to digital issues that have live links to advertisers' sites, as well as email alerts to keep you as informed as possible.



[www.housingmmonline.co.uk](http://www.housingmmonline.co.uk)

**Brighton apartments accessing the versatile performance benefits of Magply**

The task of adding an extra floor to an apartment building in the heart of Brighton has seen the 12 mm version of IPP Ltd.'s Magply boards employed in a variety of applications, both internally and externally: highlighting the well proven MOS product's fire performance, weather resistance and overall economic benefits. The local branch of Jewson, located in Portslade, has supplied Godfrey Investments with 295 sheets of the 12 mm boards for use in the construction of a parapet around the new roof terraces being created atop the three-storey structure. Then more of the boards are being used inside the quartet of luxury apartments. Site manager, Hassam Yesilada said: "Internally the Magply MOS boards being covered in two layers of plasterboard while around the terraces the liquid rubber membrane is being dressed up the face of the parapet walls and covered by a capping. Definitely, this is a unique project for central Brighton with every property having a scenic roof terrace and the work has gone well." Magply MOS boards present a fire-safe and environmentally friendly alternative to conventional plywood or OSB products.

01621 776252 [www.magply.co.uk](http://www.magply.co.uk)

**OMNIE adds AL HEX heat diffuser technology to UFH systems**

OMNIE will be incorporating the advanced AL HEX aluminium diffuser technology on all its foiled underfloor heating systems, as standard, with immediate effect. The patented AL HEX foil, with its trademark hexagonal pattern, increases the in-channel foiled surface area that is in contact with the warm water pipe. The result is greater heat output, faster heat transfer and a more even heat distribution across a floor area, plus it avoids the risk of damage due to heat 'striping'. Striping is caused when heat in the warm water pipe doesn't diffuse into the floor panel effectively and, instead, creates hot spots and hot lines on the floor surface finish. Prolonged exposure to striping can damage both the floor finish and the subfloor, particularly if the installer raises the temperature of the water to try and improve the diffusion. "AL HEX is a real step forward for underfloor heating particularly when the industry is moving away from gas boilers and towards renewable heat sources," says Brendan Hourican, OMNIE's Managing Director. "Because it is so efficient at transferring heat, AL HEX works very well with lower water temperatures. This means it improves the performance of the underfloor heating."

01392 363605 [omnie.co.uk](http://omnie.co.uk)

**FIREFLY™ APOLLO Lite™ helping protect Hertfordshire homes**

A leading passive fire protection contractor is employing fully tested and trusted products from the range of TBA's FIREFLY™ for the creation of half hour fire barriers within roofspaces of low rise sheltered housing in the St. Albans district of Hertfordshire: with the manufacturer providing on-site assistance in respect of regular inspections and the provision of recommended fixing details to ensure the work is fully compliant with current regulations. Manchester based JPS Projects Ltd. is a fully accredited, FIRAS approved family run company working across the country in a number of sectors, including care homes and hospitals, as well as housing and commercial buildings. The Contracts Manager for JPS Projects, Matt Tucker, commented: "Although we have been employing FIREFLY™ systems for some eight years and I had a lot of experience of the range from working with other specialists in the past, the APOLLO Lite™ 30:30 was specified here by the client's own fire consultant." APOLLO Lite™ 30:30 has been developed for use in vertical separation or compartmentation situations, offering 30 minutes integrity and insulation and is able to be sealed around penetrations. It is widely specified to form fire barriers within roof voids and floor voids in many different property types, including tower blocks and other HMOs.

[info@tba-pt.com](mailto:info@tba-pt.com) [www.tbafirefly.com](http://www.tbafirefly.com)





## Triton Systems waterproofs ICF sub-structure for listed farmhouse extension



Products from the range of Triton Systems have been used to waterproof a semi-buried single storey extension to an old listed farmhouse near Uckfield in Essex, with the specialist sub-contractor involved being a long-term customer of the manufacturer for its work across the South-East. The current contract, which is being project managed by the property owner, features the use of Insulated Concrete Formwork (ICF) to construct the 30 metre long curving walls which have then been protected by Archer Specialist Treatments, using Triton's EX100 membrane and Double Drain barrier to direct groundwater into a land drain around the base. Triton fillet was also used at the floor/wall junction to prevent moisture penetrating the joint. As a long-established manufacturer with a very successful track record, Triton Systems offers a wide range of well proven products to cover damp-proofing problems, timber protection, structural repairs, condensation control and the penetration of gases such as radon and methane. Its technical advisory service is also able to offer advice on specific project requirements as well as guidance on relevant product compliances.

01322 318830 [www.tritonsystems.co.uk](http://www.tritonsystems.co.uk)

## Triton Systems speed waterproofing of wedding venue cellar



A National Trust property in Surrey, popular for both weddings and with visitors wanting to explore the listed farm buildings and extensive grounds, is currently undergoing a refurbishment programme, with waterproofing and other products from the range of Triton Systems having been employed by a specialist sub-contractor to complete some very rapid remedial work. Archer Specialist Treatments is a long term customer of Triton Systems and has used both its timber treatment and tanking products for its work on Hookhouse Farm at Outwood in Surrey, where a 17th century barn featuring an imposing 'queen-post' timber truss roof offers a stylish setting for couples to exchange their vows. The main challenge for Archer Treatments' experienced team was to tank the cellar beneath the farmhouse in just six days. Suffering regular flooding to a depth of half a metre, the 30 m<sup>2</sup> cellar in the original farm house required the installation of both Triton's P20 and P8 drainage membranes to waterproof the floor and the walls to the subterranean space, while one of Triton's automatic pumps was also fitted to remove any water collecting in the sump created.

01322 318830 [www.tritonsystems.co.uk](http://www.tritonsystems.co.uk)

## Basement specialist specifies Triton Systems for vintage project

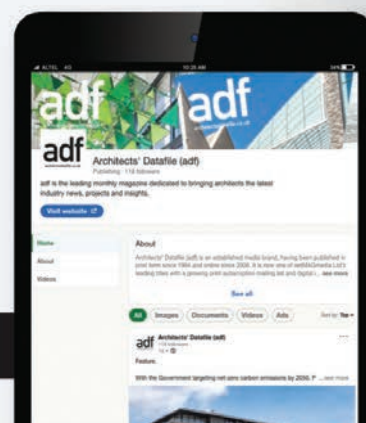


One of Triton Systems approved installers has made use of the manufacturer's waterproofing and sealant products in constructing a large wine cellar as the semi-buried basement structure beneath a new five-bedroom property in North London. Harkmac Construction Limited undertook the new build in the Stanmore area on behalf of Inspired Designs, a Residential Design and Build company and recommended the use of Triton's TT admixture to the project structural engineer along with Swell Seal mastic to address the day joints. Harkmac's Contract Manager on the Stanmore job, Anthony Anderson, comments: "We work right across the country from Cardiff, down to Portsmouth and up to Coventry and have utilised the Triton range on a variety of domestic and commercial projects, including several of the David Lloyd gymnasium extensions. The products are very easy to use and we get good technical back up from Triton, including site visits and the supply of drawings or special details when needed." Triton Systems offers a wide range of well proven products to cover damp-proofing problems, timber protection, structural repairs, condensation control and the penetration of gases such as radon and methane.

01322 318830 [www.tritonsystems.co.uk](http://www.tritonsystems.co.uk)

**ADF is now on LinkedIn**

**LINKEDIN.COM/SHOWCASE/ARCHITECTS-DATAFILE-ADF**



## Delta Membrane Systems launches new 800 Series of Packaged Pump Stations

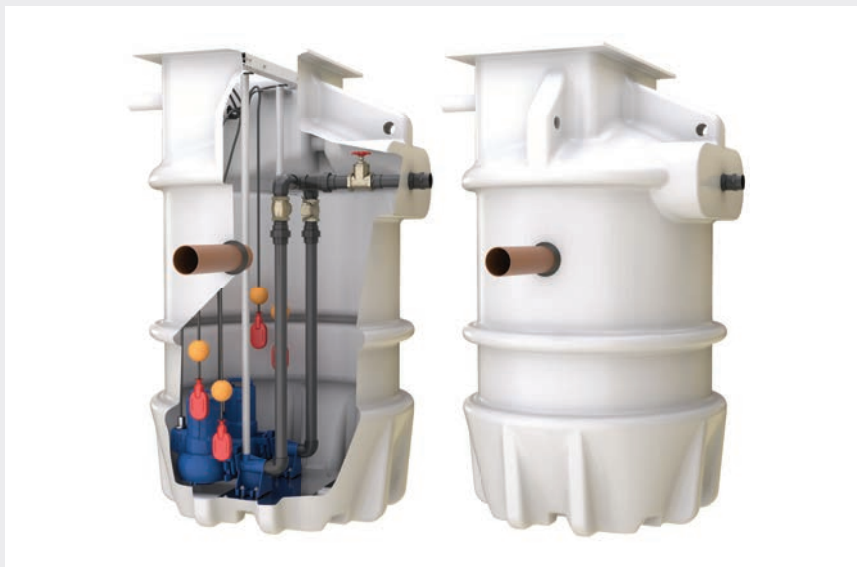
Delta Membrane Systems Limited, recently launched “Delta Pumps” a customised department in all things basement pumps and drainage. The newly formed department offers a wide range of standard and bespoke submersible pumps and pumping stations.

The Delta Bespoke 800 Series is suited for larger domestic and commercial projects due to its higher chamber capacity.

The Delta 800 Series of Package Pumping Station are available in depths from 1,250 mm to 2,000 mm and with varying pumping capabilities from the Delta Single V3 Foul to powerful Delta Dual V6 pump. Designed for pumping groundwater, surface water and foul water depending on specific project requirements.

As the name implies, a submersible pump is one that is designed to be immersed in a substance (from groundwater to foul water). While foul pumps are focused on pumping away foul and grey water. Subject to specification, groundwater sump pumps are used in conjunction with a Type C waterproofing solution to protect structures against groundwater. The purpose of a sump chamber is to collect and discharge (to a suitable evacuation point) any water ingress which has collected in the cavity drain membrane system and to discharge groundwater to a suitable external discharge point such as the mains drainage system.

Delta Membrane Systems Limited have substantially invested in their new range of packaged pump stations, with further investments planned for 2023.



Delta’s Packaged Pump Stations are a complete unit. Comprising of chamber, pumps, pipework kit, valves, Control Panels, etc which are pre-assembled at their Pump Distribution Hub.

The new 800 series of package pump stations compliments, Delta’s upgraded 695 and 895 chambers.

All of Delta’s sump pump stations are built for durability, longevity and designed to withstand the most demanding of below ground environments. Whether it be a multi-level commercial, social facilities, or larger residential project, Delta Pumps have the solution to meet the specific needs of the contractor/architect/specifier.

Commenting on the announcement, Christopher Burbridge, co-founder of Delta Membrane Systems Limited said: “I’m incredibly proud of our continued success and delighted to see the company expanding operations with the opening of our Pump Distribution Hub. Delta continues to receive strong support from the waterproofing community, helping us to drive product development and future growth plans.”

“The investment in ‘Delta Pumps’ signifies our business and team’s strengths. With Kevin Dodds (managing director) overseeing our product development, I believe Delta will continue to add exciting new technology and

products to our already impressive portfolio.”

“We recognise that every project has different requirements and therefore our Technical Teams work together as one, to provide tailored solutions that meet specific site and project needs. We manufacture all our package pump stations in-house from design, through to assembly and testing.”

“We tailor the project scope to the client’s requirements, providing basement drainage designs for developments of all sizes.”

Delta Pumps are proud to be manufacturing and fabricating all their sump pump chambers from their new warehouse facilities in a new dedicated Pump Distribution Hub close to its Epping Headquarters to enhance the company’s ability to serve their nationwide customer base.

To explore the new range of Delta Pumps visit the Package Pumps and Basement Drainage Systems section at Delta Membranes’ website.

Whatever the needs of your project, you can rely on Delta’s Technical Team to ensure you get the right advice, support, and practical help at exactly the right time its required. Call Delta today on 01992 523 523.

[info@deltamembranes.com](mailto:info@deltamembranes.com)  
[www.deltamembranes.com](http://www.deltamembranes.com)

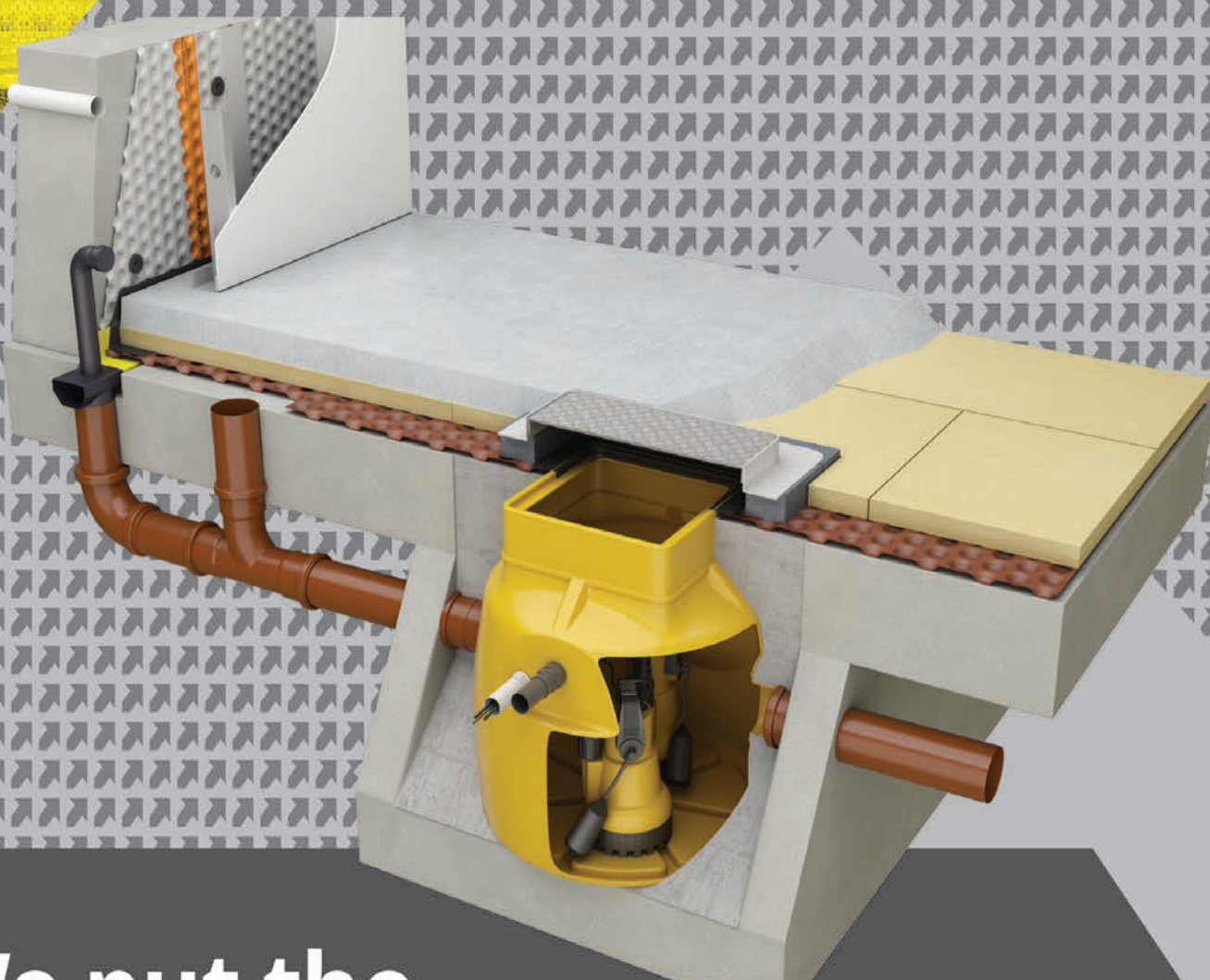






# DELTA

## PUMPS & DRAINAGE



# We put the Innovation in Structural Waterproofing



## New Troldekt panels with reduced carbon footprint

Since 2012, Danish acoustic panel manufacturer Troldekt has led the way with its sustainable practices and leadership. An early adopter of the Cradle-to-Cradle design concept, the company has focused on its material health, reutilisation, energy, water and social responsibility winning recognition and numerous green awards over the years.

The inclusion of FUTURECEM™ within its wood wool panels has further enhanced the manufacturing process, helping Troldekt further solidify their Cradle-to-Cradle Gold Certification. FUTURECEM sourced from Aalborg Portland exploits the synergies between calcined clay and limestone filler. With this process, much of the burnt clinker in the cement can be replaced resulting in a bonding agent with a much lower carbon footprint. The result means that now, over their product life cycle, the carbon footprint of Troldekt acoustic panels based on FUTURECEM are 26% lower than



that of Troldekt based on grey cement and 38% lower than that of Troldekt based on white cement.

This innovation, coupled with the company's sole use of wood from FSC® and PEFC™ managed forests has helped Troldekt

get one step closer to its strict environmental targets. It also further enhances a building's contributions towards BREEAM, WELL, LEED and DGNB-Certifications.

Troldekt acoustic panels are available in a variety of different structures and colours combining superior sound absorption with award-winning design. The Troldekt range has a minimum expected life cycle of 50 years coupled with excellent resistance to humidity and tested to meet ball impact standards. The range is available in various sizes and structures, from extreme fine to coarse. They can be supplied as natural wood or finished in almost any RAL or NCS colour. Depending on the panel specified, reaction to fire is classed in accordance with EN 13501 as B-s1,d0 or A2-s1,d0 respectively.

Samples, case studies, EPD's and technical guidance are available from the website.

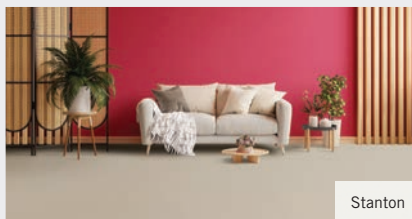
sales@troldekt.dk  
www.troldekt.com

## Furlong Flooring unveils exciting products and innovations at the Harrogate Flooring Show 2023

Furlong Flooring, the renowned UK-based family business specialising in flooring solutions, is thrilled to announce its participation in the highly anticipated Harrogate Flooring Show, taking place on the 17-19 September 2023 at the Harrogate Convention Centre.

With an impressive display of must-see flooring innovations and market-leading features, Furlong's stands A22 & A36, promise to be hubs of excitement for visiting retailers and industry professionals.

Furlong Flooring is introducing two new ranges to their esteemed Beyond Wool 100% recycled yarn collection: Stanton and Callanish, available in both pattern and plain designs. These ranges feature the revolutionary Combi-bac, an award-winning backing material that offers a flexible yet robust alternative to traditional carpet backings in the market. Adding to the excitement, Furlong Flooring proudly launches its new EcoSense range, featuring



the Enchantment collection made with 100% recycled Polyester yarn. Enchantment currently comprises two qualities: Elite, and Luxe, each designed to exude elegance and sophistication. These carpets also boast Combi-bac backing, ensuring they are sturdy yet adaptable. Like the other ranges, Enchantment comes in widths of 4 and 5 metres, is moth-proof, bleach cleanable, and serves as an eco-friendly flooring option.

In keeping with their commitment to sustainability, Furlong Flooring introduces Avondale, an EcoSense range crafted from 100% recycled Polypropylene. Available

in both Plain and Heathers variations, Avondale features a 2-Ply yarn construction, comes in widths of 4 and 5 meters, and offers the same advantages of being moth-proof, bleach cleanable, and backed by a seven year warranty. This range showcases Furlong Flooring's dedication to providing eco-conscious flooring solutions without compromising on quality or performance.

Additionally, the company's latest innovation in hard flooring technology manifests as Endura, an engineered vinyl floor. This revolutionary product stands at the forefront of next-generation rigid vinyl flooring solutions. Notably, Endura boasts 100% waterproof capability and exceptional stability, surpassing SPC equivalents by an impressive 25%. Furlong Flooring is delighted to bring this cutting-edge product to the market, providing its customers with unmatched quality and performance.

01322 628 700 [www.furlongflooring.com](http://www.furlongflooring.com)



## Introducing Beko's award-winning AeroPerfect™ range of built-in ovens

With energy prices and the cost of living continuing to rise, housebuilders and providers of new homes are continuing to search for durable and energy-efficient products which not only complement the designs of their interiors, but also provide both short and long-term reassurance for buyers and renters.

Winner of 10 Which? Best Built-in Oven Awards, Beko's range of AeroPerfect™ ovens, which all come with an 'A' rating for energy usage, have been designed with simplicity and energy-efficiency in mind to help save users time and money. In their AeroPerfect™ built-in ovens, Beko, the UK's number one best-selling large home appliance brand, have developed and improved upon the all too familiar fan oven, creating the ultimate easy-to-use appliance to enhance any kitchen design and add value to homes on any new build development. This innovative technology takes built-in ovens to new heights of performance whilst retaining the competitive pricing synonymous with the Beko brand.

The technology allows a constant stream of airflow to be created within the oven, minimising temperature fluctuations to ensure food cooks quickly and evenly every time. When tested against models from a number of the brand's key competitors, Beko's AeroPerfect™ ovens achieved the most even and consistent grilling performance by a significant margin.

The range offers 35% faster cooking and 40% more even cooking than previous fan ovens, with a 25% larger grill making it the ideal solution for larger families. The brand have also updated their aesthetic styling across the range, creating beautiful ovens to complement any modern kitchen design.

Beko's AeroPerfect™ ovens sit within the customer-favourite brand's RecycledNet® range, featuring parts made from recycled fishing nets and industrial thread waste which have been transformed into high performance, thermally resistant materials. Beko's RecycledNet® ovens



reduce the embedded carbon footprint of the product, as well as the use of virgin plastic, demonstrating one of the ways in which the company are continually working to reduce their impact on the environment.

Beko's AeroPerfect™ technology features in all single built-in ovens within the brand's contract range of appliances, from their entry level model through to the highest specification versions, meaning this innovative technology is accessible to all, whatever the project budget. Higher specification models within the range boast additional features for added functionality and flexibility, such as Beko's 2-in-1 Split&Cook® technology which allows two different dishes to be cooked at the same time at different temperatures, and a built-in air fryer feature, new for 2023, which negates the need for additional countertop-cluttering appliances.

Beko's simple-to-install ovens further benefit from an easily removable glass door and the brand's SimplySteam™ technology,

both designed to enable the appliance to be easily cleaned.

An extended 10-year parts guarantee, available on selected products within Beko's contract range, demonstrates the company's confidence in the longevity of its appliances. In addition to an extended 5-year labour guarantee, the parts guarantee enables registered products to be repaired for up to 10 years, prolonging the life span of the appliance. With sustainability being front of mind for housebuilders, developers and build-to-rent operators, as well as homeowners and renters increasingly aspiring to lead more sustainable lifestyles, encouraging the repair rather than replacement of products aligns with these ambitions, helping to minimise wastage and support the circular economy.

Beko's range of AeroPerfect™ ovens form part of a carefully selected contract range of appliances available specifically for new housing projects through Beko plc Appliance Partners, the company's dedicated contract supply division. Beko plc Appliance Partners provide a flexible end-to-end service, partnering with housebuilders, developers and build-to-rent operators to offer tailored solutions to suit a project's individual requirements. A dedicated Specification Manager is able to recommend the most suitable appliances for each project, offering expert advice and support throughout the purchase process.

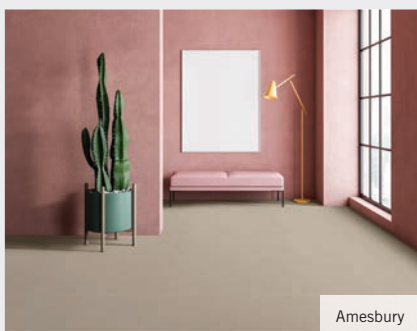
Mike Beech, Specification Manager at Beko plc Appliance Partners said: "Beko's AeroPerfect™ range of ovens continue to prove popular with our partners. Aesthetically the appliances complement any modern, sleek kitchen design, and we know users love the technology which consistently provides perfect, quick and even cooking results. We are delighted to be able to offer a selection of affordable Beko ovens featuring this market-leading technology, with options available to suit all project budgets."

[appliancepartners@beko.co.uk](mailto:appliancepartners@beko.co.uk)  
[appliance-partners.bekopl.com](https://www.appliance-partners.bekopl.com)



## Furlong Flooring launch Beyond Wool® collection

Poised to deliver excellence beyond expectation, the new British-made Beyond Wool® collection from Furlong Flooring will give customers the wool-like look they want, with the finish they need. This treat for the feet is sure to create the very best interiors and includes a great new addition with a 100% recycled yarn range to give customers a sustainable, durable and easy-to-clean carpet.



Amesbury

The luxury Beyond Wool® collection consists of five ranges with a choice of luxury twist and loop pile carpets that give customers the natural wool-like look combined with the practical benefits of stain and moth resistance. Featuring the twist pile ranges of Renaissance, Elegance & Serenity along with the loop piles of Henley & Marlow, the Beyond Wool® collection will also include the 100% recycled yarn loop pile range of Amesbury & Castlerigg from June 2023.

Made from recycled polypropylene yarn, the Amesbury & Castlerigg range features 100% bleach cleanable fibres, that keep a carpet looking great while being easy to clean. With a choice of six natural hues and two on-trend loop designs, the range is made in a two-ply construction with Furlong's award-winning Combi-bac® backing to ensure a trouble free-fitting and a stunning finish. These Class 33 carpets are also suitable for heavy domestic and commercial applications.

Offering outstanding value and choice,



Castlerigg

without compromising on contemporary style, the Beyond Wool® collection will give customers a hard-wearing and stylish carpet suitable for use across the home.

These visually appealing and easy to fit carpets are available in a variety of warm and cool tones that have been professionally designed to suit both residential and commercial environments, allowing you to keep up-to-date on current flooring trends, no matter the space. This innovative collection is supported by Furlong Flooring's market leading wear and stain warranty ranging between seven to ten-years.

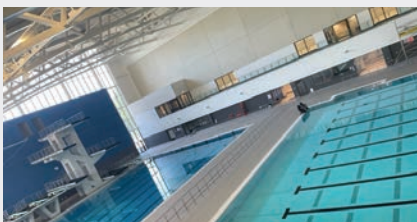
01322 628 700 [www.furlongflooring.com](http://www.furlongflooring.com)

## Gilberts delivers at Sandwell Aquatics Centre

Gilberts has dived into the challenge of delivering a sports venue fit for international competition and evolving it to a state-of-the-art community facility to engage local residents.

Sandwell Aquatics Centre was conceived for the 2022 Commonwealth Games with the intention of its evolution into an inclusive centre of excellence for the community. It set the pace for programmes of this type: consultants Arup achieved design to completion in just three years – half the typical duration.

With three pools including a 50 m Olympic sized one, 100+ gym stations, a sports hall, dry diving area, sauna, indoor cycling studio and a cafe, one of the major challenges for



Arup was designing the building services, for installation by Shepherd Building Services (part of Wates Group).

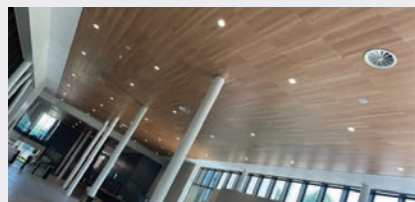
As the UK's leading air movement specialist Gilberts was chosen to support Arup and Wates to address the diverse and potentially aggressive environments. Components needed to deliver the indoor air quality, adequate extraction of moisture and CO<sub>2</sub> and supply of conditioned air appropriate for each area.

Gilberts worked closely with the team from outset to completion providing advice and technical support for the design.

It has produced more than 270 different types and configurations of grilles and diffusers for the facility, including its popular GSJA swirl diffusers, vision-proof transfer grilles, linear bar grilles and air valves.

Gilberts added various finishes - suitable for the diverse environments- included brush finish, matt black and gloss to RAL9010 pure white, in line with the specification.

"The concept was to create a long-lasting legacy that will make the centre a 'go to' place to inspire people to be active,"



says Martin Malyon, Gilberts Midlands area sales manager. Chris Finch of, SES Engineering Services said: "Behind that is the holistic endeavour that everyone who works in or uses the Centre needs to be comfortable whether they are working at a desk or working out in the gym, relaxing in the café or swimming. Getting the delivery and quality of air right is critical. It was a complex challenge, a challenge we have delivered."

Sandwell Aquatics Centre is the latest in a line of prestige sporting venues for which Gilberts has provided key building services components, including the London Stadium, Anfield, and Wimbledon.

01253 766911 [gilbertsblackpool.com](http://gilbertsblackpool.com)



# Harlequin Liberty Switch wins three prestigious awards, including ABTT Engineering Product of the Year 2023

**H**arlequin, a global leader in flooring systems for dance and the performing arts, is proud to announce that its revolutionary new product, Harlequin Liberty Switch, has received three prestigious awards, including, at the recent ABTT Theatre Show, the highly coveted ABTT Engineering Product of the Year 2023. This recognition reaffirms Harlequin's commitment to providing the performing arts community with the highest quality cutting-edge products available.

Harlequin Liberty Switch, introduced at the end of 2022, is a groundbreaking modular, multi-use flooring system that seamlessly transitions between a sprung dance floor and a rigid theatre floor at the touch of a button. Using pioneering technology this multifunctional floor enables performers to adapt their space according to their specific needs while providing the highest standards of safety and comfort.

The engineering behind Harlequin Liberty Switch enables carriages running on low-friction rails to engage or disengage stop blocks on the underside of the Liberty panels, transforming the floor effortlessly from rigid to fully sprung in less than a minute. Harlequin Liberty sprung panels, renowned worldwide for their excellence, make up the upper part of the floor, sitting above base units housing the actuators and the mechanical components. The system is linked to a master control unit located off-stage and is controlled using an intuitive touch screen display.

The advantages of Harlequin Liberty Switch are far-reaching. The system optimises



space utilisation, saving both time and money by offering a flexible multi-use floor within the same area. With significant reductions in the manpower required for changing from a heavy-duty stage floor to a sprung dance floor, Harlequin Liberty Switch streamlines operations and eliminates the need for expensive ballet wagons or floor storage. The speed of transformation also ensures less 'down time' between performances.

The system can also be fully customised to specific customer requirements. For example, areas of the floor can be isolated to create rigid zones for the placement of pianos or scenery while maintaining a uniform and consistent shock-dampened sprung dance floor across the rest of the stage. Features such as traps and lifts can easily be accommodated if required.

Harlequin Liberty Switch has won awards for its innovative design across the world,

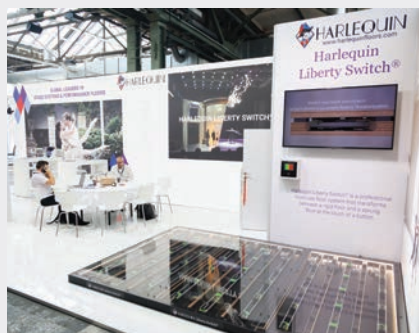
including the Best Debuting Product Award at LDI Las Vegas in 2022 and the DTHG Technology Product Award at Showtech Berlin earlier this year. The triple award recognition for Harlequin Liberty Switch speaks volumes about its exceptional design, functionality, and impact on the performing arts industry.

"We are thrilled to receive these prestigious awards, including the ABTT Engineering Product of the Year 2023," said Guy Dagger, Group CEO at Harlequin. "Harlequin Liberty Switch represents our commitment to providing innovative solutions that enhance the performance experience while addressing the practical needs of our customers. This recognition serves as a testament to our team's dedication and expertise in developing cutting-edge products for the performing arts community."

Harlequin continues to work with industry professionals, researching and developing products that are practical and cost effective whilst putting the needs and safety of performers first. The company remains committed to pushing the boundaries of what is possible in flooring technology and supporting artists and performers worldwide in achieving their creative vision.

See Harlequin Liberty Switch in motion at [youtu.be/FEMitk1K-A](https://youtu.be/FEMitk1K-A)

01892 514 888  
[www.harlequinfloors.com](http://www.harlequinfloors.com)



## HiB unveils its largest and most exciting launch yet

**H**iB, a leading bathroom brand, is thrilled to announce its most significant product launch to date. Introducing a wide range of stunning new products to their already impressive lineup, HiB's latest collection includes the new Veles modular furniture range, stunning basins, the latest elegant mirrors and cabinets and quality brassware.

The cornerstone of HiB's latest launch is the Veles modular furniture range, which has been meticulously crafted to offer ample storage, useful sizing and beautiful finishes to suit a variety of bathrooms. For small spaces, the Veles Compact range offers stunning quality and finish in a reduced depth, whilst the Veles Standard range offers more storage and larger dimensions that are ideal for family bathrooms. This stunning new range pairs perfectly with the new Terra basins and countertops. Created from high quality mineral marble in four finishes, this tactile, durable and stunning basin and countertop combination enhances the complete look, offering an exceptional level of finish.

Along with the introduction of the Terra basin range, HiB has expanded its Basin category offering to include a whole host of new options, including the Opia and Dexter vessel basins and Cerys corner wall mounted basin, allowing customers to choose from a wider variety of designs to suit their desired look. Each basin seamlessly integrates with HiB Novum furniture ranges and other units to provide style and function, transforming daily routines into



moments of indulgence.

But that's not all, as HiB has also launched a selection of mirrors and cabinets, offering the latest bathroom technology, that blends contemporary style with practical solutions. The new Rubin and Alba illuminated mirrors include the latest heat pad technology, covering more than 75% of the mirror's surface, the feature reduces a greater area of condensation, further enhancing visibility.

HiB has been a pioneer in the bathroom

products for more than 30 years. With an unwavering commitment to innovation, quality and design, HiB has consistently pushed the boundaries of bathroom aesthetics and functionality. This latest launch is HiB's biggest yet, demonstrating the company's desire to bring new and exciting products to the market for customers across the UK, Ireland and the Middle East.

020 8441 0352 [www.hib.co.uk/brochure](http://www.hib.co.uk/brochure)

## Acoustics help eating in comfort

**B**y their very nature of being large, open spaces with many hard surfaces, ambient noise levels in bars and restaurants tends to be high. This inevitably leads to customers talking louder to be heard and so begins a perpetual cycle of increased noise levels as everyone starts to have increasingly louder conversations. This, coupled with noise from music, kitchen machinery and HVAC services, can easily ruin the experience.

To help combat the problems of reverberating sound, designers frequently specify acoustic ceilings to help to strike a balance between a lively and welcoming environment and an experience where

the space is uncomfortably loud. This is important because customers' comfort and a willingness to spend time and money is decreased in a noisy environment.

A good example of this is the Chamberlain Hotel in London where sustainable and ethical designers Sibley Grove have used Troldekt acoustic panels to counterpoint the reverberating noise reflecting from the stripped-back architecture with its exposed structural columns, ductwork and concrete surfaces.

Troldekt acoustic panels are a perfect solution for this type of venue either as part of a suspended ceiling or individual 'acoustic clouds'. They are available in a variety of different surfaces and colours and combine sound absorption with a tactile surface. With an expected life cycle of at least 50 years and resistance to humidity and impact, they are available in various sizes and four grades, from extreme fine to coarse. The panels can be left untreated or painted in almost any RAL colour. Depending on the panel specified, reaction to fire is classed in accordance with EN 13501 as B-s1,d0 or



Sibley Grove Project: The Chamberlain Hotel

A2-s1,d0 respectively.

Founded on the Cradle-to-Cradle design concept and having attained Gold certification, Troldekt wood wool acoustic panels are manufactured using wood from certified forests (PEFC™ and FSC®C115450) and can contribute positively to a building's BREEAM, DGNB or LEED points.

More information on how acoustics can provide solutions for hospitality areas can be found at [www.troldekt.com/references/hotel-restaurant](http://www.troldekt.com/references/hotel-restaurant) while samples and technical guidance is available from [www.troldekt.com](http://www.troldekt.com).

[info@troldekt.dk](mailto:info@troldekt.dk) [www.troldekt.com](http://www.troldekt.com)





## Vicaima adds to spectacular views at premier Cornish resort



Vicaima Easi-Fit Doorkit with Heritage Oak door



Tregenna Castle Village Development



Heritage Oak finish with PG4H 'V' Groove in light brown.



Aerial view of the Tregenna Castle Resort

Commanding elevated and breathtaking views of the idyllic St Ives harbour, the Tregenna Castle Hotel and Resort covers 72 acres and presents a go to location for tourists and families wishing to experience the delights of sea and countryside from within an attractive mix of traditional and contemporary settings.

The hotel complex itself is renowned throughout the area and beyond UK shores, having been the location where US president Joe Biden stayed during the G7 summit in 2021. Now the resort looks to the future by expanding its portfolio with the help of Tregenna Homes, in the building of a group of select properties for private sale.

Castle Village, as the development is

known, provides a selection of 2 and 3 bed homes built to the highest design and environmental standards. With an emphasis on natural affinity and sustainability, Vicaima were approached by leading merchant partners Jewson of Hayle, to provide doorsets that did justice to this ethos and embodied natural design excellence.

The Vicaima Easi-Fit door kit system was selected, which consisted of FD30 and third-party accredited fire performance options and included over height door dimensions in many areas. The kits included a striking door design with the use of Heritage Oak horizontal veneer, combining decorative grooves and contrasting black ironmongery. FSC certified Heritage Oak from Vicaima's Essential range

presents figurative knots and distinctive woodgrain configurations that reflect all the much-loved characteristics and charm of natural wood veneers.

Taking full advantage of Vicaima's design flexibility, door faces were further enhanced by the inclusion of 4 horizontal 'V' shaped grooves in a tasteful light brown stain and contrasted by the specification of black ironmongery to complete the ensemble.

Easi-Fit doorkits and the Heritage Oak finish are just two examples of fresh and imaginative design and performance options offered by Vicaima.

01793 532333  
www.vicaima.com

## VitrA at the Installer Show 2023

**V**itrA Bathrooms UK is one of the fastest-growing bathroom brands in the UK. The company exhibited at The Installer Show, NEC Birmingham with a stand jam-packed with industry experts, product innovation and fun!

Bathroom installers who visited the stand not only got hands-on with the new VitrA frames and concealed cisterns, which are arguably one of the easiest to install on the market but also learnt more about VitrA's award-winning V-Care Smart shower toilets as well as VitrA Aquacare WCs that provides toileting with the convenience of a built-in bidet. Additional product highlights include the Vitrus frame, which provides the perfect retrofit solution for wall-hanging WCs, and the striking Origin brassware collection.

Complementing the product launches, VitrA included a basketball court on the stand, with a toilet seat basketball hoop! Anyone shooting three hoops could try and crack a safe containing a pizza oven from Ooni – the Fyra 12, with basketballs on offer whether the safe is cracked or not!

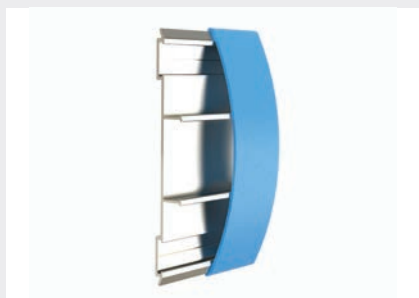


Plumbing influencer James Lawrence, the lead reviewer and advice guru from Plumberparts, was on the stand on Tuesday and Wednesday. At the show, he participated in VitrA's industry survey, where every participant received an extra mini gift.

Senior Channel Marketing Executive Lucy Holland said: "We have a solution for all things bathroom, designed beautifully, tested thoroughly, and certified appropriately."

01235 750990 [www.vitra.co.uk](http://www.vitra.co.uk)

## Yeoman Shield launch new protection rail



**Y**eoman Shield launch the new Ellipse Protection Rail to complement their range of renowned wall and door protection products.

Designed with a curved contour the Ellipse Protection Rail offers an aesthetically pleasing and ultimately durable bump rail which protects interior walls from impact damage caused by the movement of people, wheeled equipment, trolleys, and beds.

The profile of the rail, coupled with a PVCu finish, is the perfect option when it comes to maintaining high hygiene standards which is sustained throughout the product by

way of an Aluminium core. The Aluminium core, though lightweight, offers strengthened resilience, fending off impact damage whilst the PVCu cover is quick and easy to clean with the use of everyday cleaning products.

Ellipse Protection Rail is 200 mm wide providing generous coverage to spare the wall above and below the rail from marking, denting, and scratching. Fitting at a height that receives the most impact will give optimum protection benefits.

An ideal product for communal areas and zones which receive a high quantity of traffic in environments such as healthcare,

education, leisure, retail, and manufacturing facilities.

Dovetailing into décor or establishing a contrast to interiors the Ellipse Rail is available in standard colours – Light Grey, Mid Grey, Dark Grey, Graphite, Royal Blue, White – with other colours available from the Yeoman Shield range, subject to quantity.

The Yeoman Shield Ellipse Rail will prove to be a competitive rail in the market offering a simple yet effective solution to stopping impact damage to walls.

0113 279 5854 [www.yeomanshield.com](http://www.yeomanshield.com)



## Yeoman Shield improves patient welfare



**Y**eoman Shield, a leading provider of wall and door protection products, has recently completed a project to install wall protection, including decorative imagery wall panels, in a newly appointed hospital department.

The project not only aimed to enhance the aesthetics and hygiene of the ward, as well as to protect the walls from damage caused by trolleys, beds and other equipment but to aid in client way finding and department differentiation.

Yeoman Shield's FalmouthEx wall protection panels were chosen for their durability, easy maintenance and hygienic finish. These were fitted to the lower half of the walls in the corridor and waiting areas to protect from impact damage that can be caused by the everyday use of the department.

The Guardian Handrail from Yeoman Shield was also installed with the protection panels along walls, serving as an additional defence barrier whilst offering a supportive handrail for those services users that may require it.

To mark out different waiting areas and to make the environment more welcoming and less sterile, Yeoman Shield Imagery Panels were installed full length to one of the walls. Using chosen images of the Yorkshire Countryside to contrast with the interior design colour scheme the decorative panels offer a calming influence.

The materials were installed by Yeoman Shield's directly employed fixing operatives providing a quick and considerate service.

Yeoman Shield's project manager said: "We are very proud of this project, as it

demonstrates how our wall protection products can benefit not only the appearance and functionality of a building, but also the well-being of its occupants. We believe that our wall protection panels can make a positive difference in any healthcare setting, as they create a more attractive and sanitary environment for patients and staff."

With over 55 years of experience Yeoman Shield provide wall and door protection system for various sectors, including healthcare, education, hospitality and retail.

Please contact Yeoman Shield for more information about the company and its products.

0113 279 5854  
[www.yeomanshield.com](http://www.yeomanshield.com)



## Dušo – the long life eco shower

**S**uitable for a wide range of sports, leisure, campsite and holiday-park settings, the Dušo from Horne Engineering is a stylish pre-plumbed shower that is slimline and lightweight, yet robust, practical, and cost-effective (whole lifetime).

It's got oodles of visual appeal; four colour options for shower spray-plate and push-paddle timed flow control – aqua blue, bright yellow, grey or black – to complement many interior design palettes.

Combined with its brushed aluminium column and polished chromium head, the Dušo is a simple but elegant alternative to recessed or exposed pipework, head and button installations.

Pre-plumbed for quick and efficient installation, it's perfect for small groups of showers fed with pre-blended warm water from a single upstream thermostatic mixing valve (TMV).

The top entry pipework keeps pipe runs to a minimum for better Legionella control, and time can be saved as fewer TMVs require maintenance.



The Dušo stands tall at 1,176 mm and, at its recommended mounting height of 1,950 mm, easily accommodates users taller than 6', while also allowing smaller children

to reach and operate the simple push-paddle (875 mm from FFL).

Increasingly important in the road toward net zero, the Dušo sports strong eco-credentials, from minimal, but recyclable, material content to water and energy-saving features. The timed flow control – standard duration 60 seconds (or 30 seconds) – ensures there is no excess wastage of pre-heated water, and the integral flow regulator delivers a steady 8 Litres per minute. This combined flow rate and duration offers the optimal balance for an effective shower, a happy user, and savings for the facility operator.

For facilities management personnel, the Dušo is also simple to clean and maintain with easy access to active components for cleaning or replacement.

Join Places Leisure, Better Leisure, Everyone Active, Freedom Leisure, Fusion Lifestyle and many more leisure operators in selecting the Dušo for its long and easy life.

01505 321455  
b.link/DusoSport

# HORNE

Delivering Safe Hot Water since 1909

## Shower Assist



Kiwa United Kingdom  
Type 3  
TMV


Careful - inclusive-design features for easy use and enhanced user independence

Safe - integral healthcare-approved thermostatic shower valve, and flushing and thermal disinfection facility for pathogen control

Useful - manual operation flow diverter directs flow to fixed head, or to hose and handset for assisted showering

Optimised for Accessible ± Assisted Showering





<http://b.link/Included>
01505 321455





## Bjelin has a platform for future growth

**B**jelin has continued to rewrite the rules on hardened wood flooring during 2023. The company's range of hardened wood flooring products features the technologies of Woodura® and 5G® Dry™ from Välinge Innovation. These represent the next generation of technologies for highly innovative engineered wood floors.

Woodura® is a patented surface technology which gives outstanding durability and is also highly sustainable. 5G® Dry™ is a premium water-resistant fold-down system which is unique among hardened wood flooring products on account of its ease of installation and its water resistance.

The secret of the products' sustainability lies in their method of manufacture. This involves the fusing of a thin sheet of real wood veneer with a Composite™ wood fibre core through a powder mix layer. The powder mix completely fills the natural gaps within the wood, while also enhancing the wood's appearance. It eliminates the need for a wood-filler and creates a significantly stronger surface with a hardness three times greater than a traditional solid wood floor – more



solid than a plank! It also means ten times more flooring can be produced from the same amount of timber, compared to traditional engineered wood flooring and 30 times more flooring compared to solid wood flooring.

Furthermore, the aesthetics speak for themselves – just like solid wood, every single sheet is unique, and the products allow ample opportunities for designers to create stunning effects on their projects, especially when using the 5G® Climb™ variant, which uses innovative technology

for wall mounting, to ensure a perfect match between floor and wall.

A successful participation in Clerkenwell Design Week in May led to further interest in the Bjelin product ranges, which are now expanded with a number of new sizes launched during the year. These now range from XXL at 271 mm x 2,378 mm down to S at 151 mm x 1,170 mm.

[richard.banham@valinge.co.uk](mailto:richard.banham@valinge.co.uk)  
[www.bjelin.com](http://www.bjelin.com)

## Modern materials house classic vehicles

**'A**utobarn' is an unusual build comprising an elegant five-bay garage and accompanying workshop sitting within the grounds of a Grade-II listed 18th-century home in Somerset.

Designed by Bindloss Dawes Architects, the brief was to create a garage with an adjoining workshop to house the client's classic car collection. The finished result is an aesthetically beautiful building with its deceptively simple wooden barn-themed styling using agricultural materials such as concrete and recycled wood under a zinc roof.

With surfaces comprising steel, timber and polished concrete floor, the architects incorporated Troldekt acoustic panels to clad both the walls and ceilings between the steel frames for sound absorption and to combat the issue of reverberating noise.

The added advantage of having services hidden behind the white panelling means

the final result is a stunning simplistic and minimalist design allowing the classic cars to be the focus of attention and transforming the space into more of a gallery than a traditional garage.

Troldekt acoustic panels are available in a variety of different surfaces and colours and combine sound absorption with a tactile surface. With an expected life cycle of at least 50 years and resistance to humidity and impact, they are available in various sizes and four grades, from extreme fine to coarse. The panels can be left untreated or painted in almost any RAL colour. Depending on the panel specified, reaction to fire is classed in accordance with EN 13501 as B-s1,d0 or A2-s1,d0 respectively.

Founded on the Cradle-to-Cradle design concept and having attained Gold certification, Troldekt wood wool acoustic panels are manufactured using wood from certified forests (PEFC™ and FSC®C115450)



and can contribute positively to a building's BREEAM, DGNB or LEED points.

Samples, case studies and technical guidance is available by visiting the website.

01978 664255  
[www.troldekt.com](http://www.troldekt.com)

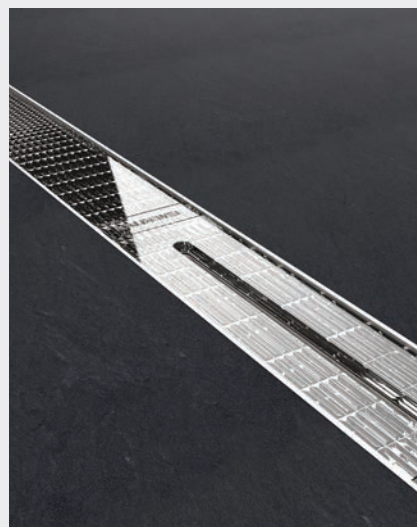
## It's all about space for the shower

When creating a showering area, the focus falls on the shower tray or the drain channel if it is a wet room style shower. Kaldewei now offer both solutions. Known for their stylish steel enamel products Kaldewei have recently re-vamped their classic Superplan. With over a million sold it is one of Kaldewei's most popular floor level shower trays; and it now has an up-to-the-minute look with sharper edges, tight angles, and clean lines, plus the installation depth has been optimised to max. 25 millimetres. It is manufactured from recyclable steel enamel and is available in 41 sizes, standard colours plus the Coordinated Colours Collection, which creates a huge scope when it comes to design.

However, if the project requires a channel solution, Kaldewei has their own designed by Studio Aisslinger, it has patented handling and a unique Kaldewei system, that will make cleaning and maintenance easier than ever. The patented Click'n clean® mechanism of the new Kaldewei shower channel, has a cover that is easy to open and close making for – fast, hygienic cleaning.



The flexibility of the channel positioning offers lengths of up to 150 centimetres and thanks to sophisticated technology, the new shower channel suits almost any floor material in the bathroom.



FlowLine Zero is available in five surfaces including brushed stainless steel, champagne, gunmetal, matt white and matt black.

01480 498053 [www.kaldewei.co.uk](http://www.kaldewei.co.uk)

## SuperPhon provides reverberation control at Coventry's TWO FRIARGATE

CMS Danskin Acoustics' SuperPhon panel is to contribute to reverberation control in the full height reception area of Coventry's prestigious new, Grade A office address TWO FRIARGATE.

TWO FRIARGATE is part of Coventry's first dedicated business district, Friargate, adjacent to Coventry Railway Station. When complete in the coming months, it will be the city's most sustainable building and premier office address. TWO FRIARGATE has achieved BREEAM Excellent accreditation and is targeting A AirScore rating and EPC A.

Specified by the architects for the reception, which incorporates a business lounge, the SuperPhon panels have been installed by Bespoke Building & Joinery Projects.

SuperPhon is an acoustically absorbent ceiling and wall panel of composite construction for reducing sound reverberation, providing up to Class 'A' acoustic performance. Acoustic insulation experts CMS Danskin Acoustics provide a

free reverberation calculation service along with technical and on-site support.

Manufactured by CMS Danskin Acoustics in Warrington, SuperPhon is designed for use in many applications, including recording/rehearsal studios, audiology rooms, cinemas and theatres, schools, call centres and conference rooms. The panel has been installed at the British Science Museum and at Jodrell Bank, for example.

The TWO FRIARGATE project involved a tight order-to-delivery timescale of just nine days and a number of different sized panels all with a Cara Glass finish.

Commenting Joe Bradder of Bespoke Building & Joinery Projects said: "SuperPhon is a good product, easy to install and of good quality. We have used it in a number of projects now."

SuperPhon is available in a range of standard sizes and thicknesses. Bespoke panels and absorbers size, thickness, shape or fabric facing and high impact performance



options can be readily manufactured. A flexible solution, SuperPhon can provide complete or partial wall coverage. Its wide range of colour finishes, including 63 colours and others available on special order, provides aesthetically pleasing reverberation control.

01925 577711  
[www.cmsdanskin.co.uk](http://www.cmsdanskin.co.uk)



## Wraptite® works with Comfort Frame IWI to achieve energy efficiency

The Wraptite® external air barrier system from A. Proctor Group has been installed in combination with the innovative and unique Comfort Frame Internal Wall Insulation system to deliver impressive energy efficiency savings to a housing retrofit project. Comfort Frame's IWI system is the only Fabric First solution that is isolated from the existing wall, which eliminates the risk of thermal bridging and condensation. Designed to improve the performance of solid walled properties, this transition to a lower carbon-built environment delivers 50% savings on tenant energy bills. Wraptite is the only self-adhering vapour-permeable air barrier certified by the BBA and combines the critical properties of vapour permeability and airtightness in one self-adhering membrane. This approach saves on both the labour and material costs associated with achieving the energy efficiency demands in buildings. Graham Harrison, managing director of Motion Frame Limited, explained: "The Wraptite breather membrane was applied to the inside face of the existing fabric of the building enabling us to create a highly efficient airtight finish." Also specified alongside Wraptite was Spacetherm® from the A. Proctor Group. The Spacetherm insulation range comprises high-performance aerogel insulation that can be bonded to various boards to suit specific applications.

01250 872261 [www.proctorgroup.com](http://www.proctorgroup.com)

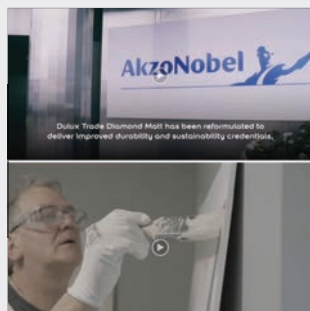


## Altecnic announce the launch of the CALEFFI XS® magnetic filter

Altecnic have released a new under boiler magnetic filter, the CALEFFI XS®. The CALEFFI XS® is a compact and versatile magnetic filter that is designed to protect heating and cooling systems from the harmful effects of impurities. With a filtration system that uses a mesh filter, a neodymium magnet, and a collection chamber, the CALEFFI XS® helps to remove impurities from systems. The mesh filter captures large particles, such as dirt and sand, while the magnet attracts and traps metal particles. The collection chamber captures the heaviest particles, such as rust and scale. With the installer in mind, the CALEFFI XS® is easy to install and maintain. It can be installed underneath any type of boiler, and the transparent glass windows make it easy to see when the filter needs to be cleaned. The internal isolation valve also ensures that only water in the collection chamber is drained before cleaning the mesh, for quick and easy servicing. Gary Perry, Managing Director at Altecnic, commented: "With homes being stretched for space, creating solutions that are compact whilst still being able to effectively protect the system is important. The CALEFFI XS® provides a compact, versatile, and easy to install and maintain solution for installers and homeowners. It is the perfect choice for keeping domestic systems running smoothly and efficiently."

[sales@altecnico.co.uk](mailto:sales@altecnico.co.uk) [www.altecnico.co.uk](http://www.altecnico.co.uk)

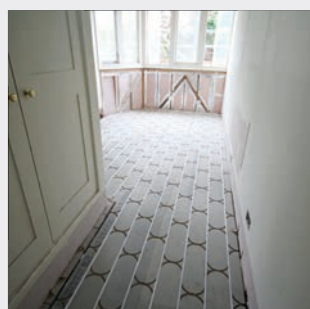
## Dulux Trade videos help further explain the upgrade and benefits of Diamond Matt



Following the recent news that Dulux Trade has reformulated its popular Diamond Matt product, the company has shared two exciting videos that will further explain the upgrade and the benefits. The first is a 'Behind The Scenes' interview with Hannah Beeke, R&D team leader at AkzoNobel. She explains more about the product's durability and improved sustainability credentials, as well as the Tested & Approved process and what it means for the industry. You can find the video here: [www.youtube.com/watch?v=8AW4gMn\\_MOw](http://www.youtube.com/watch?v=8AW4gMn_MOw). In the second video, AkzoNobel's Duncan Lochhead (commercial sustainability manager at Dulux Decorator Centre) and Peter Howard (sustainability & CSR lead) discuss what the new Diamond Matt will mean for architects and specifiers. They talk about why Dulux Trade Diamond Matt has been upgraded and the benefits it offers, including the importance of sustainability and why it was placed front and centre when updating the Diamond Matt formula. They also delve in deeper to explain what sets the new Diamond Matt apart. You can find the video here: [www.youtube.com/watch?v=D9EI9cFycrE](http://www.youtube.com/watch?v=D9EI9cFycrE)

0333 222 7070 [www.duluxtrade.co.uk/diamondmatt](http://www.duluxtrade.co.uk/diamondmatt)

## OMNIE UFH chosen for Cambridge College decarbonisation programme



A renewable heating specialist is employing OMNIE's latest generation underfloor heating systems and controllers for the radical energy upgrade of an extensive multiple occupancy building in Cambridge, as part of a long term decarbonisation programme for one of the historic colleges. Infinite Heating and Energy is undertaking a range of work on behalf of the main contractor and is close to completing the installation of OMNIE's TorFloor 2®, plus a small area of Ultimate 2, across most of the three floors of the 15-bedroom property. The new generation TorFloor 2® evolves from the market-leading TorFloor® predecessor by adding a 6 mm thick chipboard upper panel with pre-foiled aluminium heat diffuser. Crucially, both panels feature matching routed channels to perfectly align around the 12 mm water pipe, while the printed upper face clearly indicates the pipe's position and the points where screws can be safely fixed. Not only does this arrangement greatly reduce the risk of the pipe runs being accidentally damaged when floor coverings are installed or replaced, but the location of the routed channels places the warm water pipes closer to the surface: delivering faster warm-up times.

01392 363605 [omnie.co.uk](http://omnie.co.uk)

## Dulux unveils its Colour of the Year 2024



Dulux has announced its Colour of the Year for 2024, Sweet Embrace™. The colour is a delicate, optimistic and modern tone that is understated and comforting and brings a sense of stability and softness to a space. To complement Sweet

Embrace™, Dulux is also launching three versatile colour palettes to provide architects, specifiers and designers with a wealth of colour inspiration when creating beautiful spaces in any sector.

0333 222 70 70 [www.duluxtrade.co.uk](http://www.duluxtrade.co.uk)

## An impressive sustainability milestone

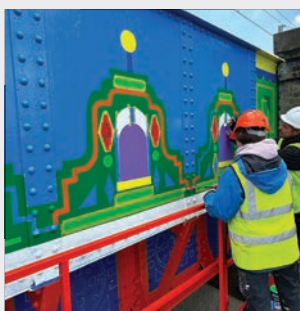


Kitchen manufacturer, Keller Kitchens, is well known for its pioneering approach to sustainability and is delighted to announce that parent company, DKG, has been awarded level 5 on the CO<sub>2</sub> Performance Ladder; the highest possible.

The CO<sub>2</sub> Performance Ladder is the measuring instrument for governments and large companies – the higher the level, the more sustainable the company! By achieving level 5, DKG demonstrates that the company has not only taken the necessary steps to massively reduce its own CO<sub>2</sub> emissions, but also for the entire supply chain.

[www.kellerkitchens.com/en/csr](http://www.kellerkitchens.com/en/csr)

## One Can helps Many Hands make light work of bridge



When design studio Many Hands were commissioned to brighten up a railway bridge in South London, a conversation with Bradite provided the solution – One Can. Working with Greenwich London Borough Council to improve the appearance of the public space, Many Hands painted a multi-coloured design for the Plumstead railway bridge. The design was created by Make:Good who work with local communities to improve the environment. In need of a high-performance coating that would provide superior protection, Many Hands turned to the Bradite technical specialists, whose suggestions had proved invaluable for previous projects, including the HQ of cycling lifestyle brand RAPHA. On this occasion, the chosen finish had to satisfy the technical requirements of the Network Rail M24 certified paint system. “They have strict guidelines about what paints to use on their structures, so they were given the details about Bradite One Can and they approved it,” explains Many Hands Director, Luke James. The job took 10 days, with One Can’s extensive palette of RAL colours supplying everything required for the job.

01248 600315 [bradite.com](http://bradite.com)

## Hörmann entrance and garage doors – the perfect match with new Duragrain Décor colours



Hörmann have introduced five new Duragrain Décor colours to their LPU 42 L-ribbed sectional garage door range which provide a perfect match to their ThermoSafe Decoral aluminium entrance doors. Developed to provide discerning consumers with the ability to create a real point of difference for any home, five modern finishes are available – Cement, Rusty Pantina, Wild Oak, Barnwood and Barnwood Grey. Hörmann’s market leading sectional doors offer a winning combination of high-quality materials, safe operation, and good thermal insulation properties. For added peace of mind all automated Hörmann sectional doors are supplied with Secured by Design as standard (subject to fitting criteria and door style selection). The five new Décor colours are available with the company’s Duragrain finish which is extremely hardwearing and scratch resistant. An innovative, UV-resistant digital print is applied onto the primed sections of the door with the Duragrain protective coating added to safeguard against environmental effects and keep the door looking beautiful for years to come.

01530 516868 [www.hoermann.de/en/innovations/detail/show/doors-with-a-matching-look](http://www.hoermann.de/en/innovations/detail/show/doors-with-a-matching-look)

## Cemgold features in rainscreen specification for new medical school project



A specialist rendering, plastering and drylining contractor has made use of IPP Ltd.’s Cemgold cement particleboard as part of the rainscreen build-up covering a four storey medical teaching facility in Ipswich, following rigorous evaluation in conjunction with the main contractor and system supplier K-Rend. The extension to a site in the heart of Ipswich is being built by T.J. Evers, with O’Hara Drylining East – a sister company of Essex based O’Hara Plastering – being responsible for installing all of the sheathing boards across the Metsec framing on all four floors. Then in order to ensure a well-insulated as well as fire and weather resistant performance for the facade the Cemgold boards are being covered with Rockwool and the proprietary silicon render system. Cemgold is a 100% asbestos free board produced using Portland cement and high purity silica sand, reinforced with selected fibres, employing advanced pressing and autoclaving technology. The resulting boards offer high impact strength as well as excellent racking and pull-out strength, making them ideal for a range of applications. Contact Magply for more information.

01621 776252 [www.magply.co.uk](http://www.magply.co.uk)



## Built-in panic function adds competitive advantage from Carl F Groupco

Leading independent hardware supplier Carl F Groupco is highlighting the benefits of its popular SmartSecure FUHR autotronic 834P Hybrid Automatic Door Lock for multiple occupancy buildings or dwellings within the social housing sector. One of the product's key differentiators is its built-in panic function that provides an effective emergency escape.

John Crittenden, Managing Director of Carl F Groupco, explains: "The 834P offers a practical hybrid solution for multiple occupancy buildings or dwellings that need the security and convenience of an automatic locking system with access control options. But what sets this product apart from other market offerings is its emergency exit or panic function, which is a critical safety feature for use in such settings. It's a step change in intelligent hardware design that is proving popular with our customers."

The emergency exit and panic door function of the 834P is compatible with the CISA FAST Touch Panic Exit Push Bar, allowing unimpeded escape from the inside of the building at any time on either the active or inactive door leaf. The hardware set is BS EN 1125 and BS EN 179 accredited for panic and emergency exit doors and is also UKCA approved.



The 834P lock is suitable for aluminium, composite, PVC-U and timber doors and is available for single and double doors. The lock is fitted into the eurogroove, which unlike face fit alternatives, make it particularly suitable for

multiple occupancy dwellings where the risks of tampering may be higher.

On closing, two latching deadbolts simultaneously extend and lock in place, providing instant security compared to a standard mechanical door lock. Unlocking is motorised, allowing access control to be added or integration into existing building management systems. A PAS 24 and Secured by Design option is available too.

The CISA Push Bar is also suitable for installations that need to comply with Scottish Building Regulations, because at just 75 mm from the door, it is well under the requirement that hardware on panic exit doors should protrude no further than 150 mm for Category 1 doors and 100 mm for Category 2 doors.

John concluded: "We're committed to offering products with added value benefits to support our customers, and the SmartSecure FUHR autotronic 834P is the perfect example of this. It offers an intelligent, practical solution that meets the needs of multiple occupancy buildings and dwellings."

sales@carlfgroupco.co.uk  
www.carlfgroupco.co.uk

## Crittall in the swim with England's finest

An openair swimming pool of a design described as the finest in England is being restored to its former elegance with Crittall windows playing a significant role.

Saltdean Lido, some five miles east of Brighton, is a Grade II\* listed Art Deco masterpiece built in 1938 utilising an innovative reinforced concrete structure designed by architect Richard Jones. It is one of only three Grade II\* listed lidos in the country and has been on Historic England's Heritage at Risk register for many years.

The structure epitomises the essence of the modernist movement with sweeping lines designed to elevate Saltdean's status as a resort. In its heyday, immediately before the Second World War, holidaymakers and local residents would flock to it paying sixpence to swim and to sunbathe on the adjacent lawns.

After the war, during which it was used for Fire Service training, it lay derelict until restored by Brighton Borough Council and stayed in use until the late 1990s when local people banded together to defeat a developer's plan to demolish the lido and build apartments on the site.



A Community Interest Company campaigned successfully to have the pool brought back into use which was achieved in 2017. Now it was the turn of the buildings currently being restored by Buxton Building Contractors of Surrey.

Once completed the building will house an Art Deco event space, suitable for weddings, an exercise studio, library, community hub, cafe and heritage learning zone plus workspace.

A key element of the design is the generous area of glazing facing the pool.

Here will be installed Crittall Homelight Plus steel windows that replicate the original fenestration and, because of the slender frames, maximise the benefits of natural light on this bright coastal location. The windows are also hot dipped galvanised to prevent corrosion and Duralife coated with marine grade polyester powder which will offer the highest level of protection against the aggressive wind-borne sea salts that caused damage to the original building.

01376 530800 [www.crittall-windows.co.uk](http://www.crittall-windows.co.uk)

## Titon vent range grows to meet market demand



**T**iton's recent investment in new tooling and assembly machinery is now coming to fruition with a wider choice of options in its mainline plastic vent ranges.

Changes in customer demand since the revision to the Building Regulations last year have meant the need for a broader range of colours in both ventilators and external canopies. Window and door profiles are now offered in a standard palette of colours, so ventilator manufacturers are expected to keep the majority of these in stock to cope with demand and shorter lead times. Titon's newest machinery will enable

more flexibility in replenishing those stocks and bring efficiencies to production.

In addition three plastic vent sizes, 2000mm2EA, 4000mm2EA and 5000mm2EA mean most applications can be covered in England, Wales, Scotland and Northern Ireland, with a choice of grilles for use in overhead sections or canopies for use externally.

The increase in demand following on from the revision to the Ventilation Regulations proved difficult for vent manufacturers, fabricators and specifiers last year but Titon is in a great position to supply according to demand with

stock on the shelf in the majority of options.

Titon is a leading provider of innovative ventilation solutions, with over 50 years of experience in the industry. The company offers a wide range of ventilation products, including mechanical ventilation with heat recovery, whole-house ventilation, and passive ventilation solutions. Titon is committed to providing its customers with innovative products and exceptional service.

01206 713800  
[www.titon.com/uk](http://www.titon.com/uk)

## Sika launches new Building Finishing Training Centre in Scotland

**L**eading building chemicals manufacturer Sika has pledged further investment in its customer service offering with the launch of a new dedicated training centre at its plant in Wishaw, North Lanarkshire.

The Wishaw site, which underwent redevelopment in 2022, is one of Sika's four UK manufacturing facilities alongside Welwyn Garden City, Leeds, and Preston. Here, Sika produces an extensive range of render and Building Finishing products including mineral and lime renders, topcoats, pointing mortars and External Wall Insulation. The new training facility has been created to offer a combination of both classroom-based and practical product training from Sika industry experts and is available to applicators, distributors, architects, and contractors. Offering much more than just specialist product training, the new facility will also provide opportunity to support and showcase best practice and help raise the bar for setting industry standards.

Tom Forsyth, General Manager at Sika Ltd, officially opened the Training Centre on Tuesday 18th April, cutting the ribbon in front of over 30 Building Finishing customers and 20 representatives from the Sika global team. This event showcased the training centre's outstanding facilities, highlighting the progression made within the business and the possibilities available for customers.



Commenting, Matt Allen, Head of Sales for Building Finishing at Sika said: "Wishaw is our newest manufacturing facility, and the launch of the new Training Centre is a key part of our ongoing development plans. We want our customers to be able to get a real feel for our Building Finishing and render solutions, which is why we are providing in-depth and hands-on training at the same site where these products are made."

"We are committed to supporting our customers at every stage of their project, from

the initial specification of the products to their installation on site. By providing technical expertise alongside high-performance products, offering training at our new dedicated facility allows us to hear first-hand the requirements our customers have and identify the solutions they need."

Sika is offering its dedicated training sessions to customers across the UK.

[ukd-business-support@uk.sika.com](mailto:ukd-business-support@uk.sika.com)  
[sika.co.uk/buildingfinishing](http://sika.co.uk/buildingfinishing)



## Heavy trench covers are history

Once in a while, a product will come along whose performance will drive a change in standards across entire industries. Like stainless steel. Or concrete. Or a trench cover which is over 80% lighter than the cast iron traditionally used, eliminating the need for costly specialised lifting equipment and the accompanying health and safety hazards. And, unlike metal and concrete infill covers, it's engineered from a GRP composite material which is inert and impervious to corrosion from water and salt, as well as many other corrosive constituents.



Fibrelite's GRP composite trench and manhole covers are fast usurping metal and concrete covers to become the standard for high-performance industries like airports, commercial ports, leisure cruise terminals, military and defence, power generation (both traditional and renewables), and data centres, with companies like Magnox, The National Grid, all branches of the UK armed forces, and the world's largest technology brands specifying Fibrelite covers for new build and retrofit projects.

### Port Cruise Terminal upgrade, UK

As part of this Southern English Port's cruise terminal upgrade project, Fibrelite was approached by the end-user, who was providing the Onshore Power Supply (OPS) systems. The port had previously considered installing cast iron trench covers to cover the 500 metres of trench housing the high-voltage power cables, but due to their weight (approximately 350 kg) and the additional associated overheads, they approached Fibrelite for a lighter alternative.



### Major southern UK Airport off-apron lighting pit upgrade

At one of the UK's busiest airports, Fibrelite designed and manufactured a retrofit replacement for manhole covers over off-apron runway lighting pits where onsite staff have a window of approximately two minutes to effect maintenance and/or repair works between take-offs and landings, including removing and replacing the F900 load rated access cover. The new lightweight GRP composite Fibrelite covers now allow safe, fast access to the lighting pits, maximising time for maintenance and minimising the risk of injury.

For more information, please visit the website below:

[fibrelite.com/Fibrelite\\_Global\\_Projects](http://fibrelite.com/Fibrelite_Global_Projects)

## Turn a new leaf

GEZE has launched Revo.PRIME a new premium solution for revolving doors. The new operator boasts an exceptionally low canopy height, narrow profile systems and an improved running performance.

Providing maximum transparency the Revo.PRIME is perfect for creating beautiful entrances and is especially suited for hotels and offices or any building where a statement entrance is required. With its class leading canopy height of just 75 mm which houses the automation it ensures the minimal aesthetic whilst achieving excellent technical

functionality. In addition the narrow profiles of just 60 mm on the door leaf and side panel create a visually appealing entrance and increased transparency creating a light and airy entrance.

The Revo.PRIME is environmentally friendly as well, the operator saves up to 30% in energy compared with its predecessor models which is achieved through the drive unit's reduced power consumption.

Another benefit of the Revo.PRIME is its improved running performance. The brushless direct current motor (BLDC) with 1,000 Nm torque and the enlarged diameter of the door system, up to 3,800 mm, ensures ease of access and meets the demands of today's architects and designers.

Available in three or four leaf versions and in a choice of gold, silver and black the Revo.PRIME can be networked to building automation systems via BACnet.

Andy Howland, sales and marketing director of GEZE UK, said: "The Revo.PRIME is an impressive edition to our range of automatic operators and one that is sure to delight architects and specifiers giving them the freedom to design stunning entrances."

See the Revo.PRIME in action on youtube at [youtu.be/3KPxrcNnnZk](https://youtu.be/3KPxrcNnnZk) or to find out more please visit the dedicated Revo.PRIME microsite or email.

[uk@geze.com](mailto:uk@geze.com)  
[revoprime.geze.com/en](http://revoprime.geze.com/en)



# Nordic Copper Inspiration

**N**ordic Copper from Aurubis offers an extensive range of natural surfaces and alloys that can be applied in numerous ways for architectural cladding and roofing on any building typologies.

Copper's unique architectural qualities are defined by its naturally developing patina – which cannot be replicated successfully using other materials using surface coatings. The patina film provides impressive protection against corrosion and can repair itself if damaged, giving exceptional longevity.

With exposure to the atmosphere a copper surface begins to oxidise, changing from the bright 'mill finish' to a chestnut brown, gradually darkening over several years to a chocolate brown. Continued weathering can eventually result in the distinctive green or blue patinas seen on older roofs.

## Natural Living Surfaces

With the 'Nordic Copper' range all these surfaces are available straightaway. The factory processes involved are similar to those taking place over time in the environment, utilising copper mineral compounds, not alien chemical processes.

So, all these surfaces form an integral part of the copper, generally continuing to change over time, and are not lifeless coatings or paint.

The Nordic Copper range includes Nordic Standard 'mill finish' and Nordic Brown pre-oxidised copper offering lighter or darker



shades of brown. The extensive Nordic Blue, Nordic Green and Nordic Turquoise ranges have been developed with properties and colours based on the same brochantite mineralogy found in natural patinas all over the world. As well as the solid patina colours, 'Living' surfaces are available for each with variable intensities of patina flecks revealing some of the dark oxidised background material.

## Copper Alloys

Copper alloys are also growing in popularity, including Nordic Bronze and Nordic Brass – which can also be supplied pre-weathered. In addition, the innovative Nordic Royal, an alloy of copper with aluminium and zinc, provides a rich golden through-colour that is very stable.

All Nordic Copper products are suitable for internal applications, as well as exteriors. Apart from traditionally-jointed, rolled material supported by a substrate, various other forms of copper for architecture are increasingly being explored by designers. For example, Nordic Copper can be supplied in profiled sheets or extremely flat honeycomb panels, pressed to provide surface textures and modulation – or perforated, expanded or woven as mesh for transparency.

## Fire-safe Cladding

With an 'A1 (non-combustible material)' fire classification to EN 13501-1, Nordic Copper is suitable for cladding tall buildings, using appropriate constructions. Low thermal movement makes it appropriate for any climates and locations, and it is non-toxic and safe to handle, as well as non-brittle and safe to work. Importantly today, its inherent antimicrobial qualities make it ideal for touch surfaces internally as well.

In addition, Nordic Copper requires no maintenance or decoration. As a lightweight and flexible covering, structural support demands are reduced, resulting in lower carbon and 'whole of life' costs. Copper is also fully recyclable utilising long-established practices – 97% of copper in construction comes from recycling – and has other impressive sustainability and environmental credentials. And, of course, copper retains a high scrap value at eventual demolition, ensuring recycling.

An expanding series of building studies showcase the diversity of surfaces, forms and applications available with Nordic Copper today.

NordicCopper@aurubis.com  
www.nordiccopper.com





## Iconic Stonehaven lido gets Mapei waterproofing treatment

A Mapei polyurea waterproofing system has been used to restore the historic Stonehaven Open Air Pool in Aberdeenshire. Applied by Anderson Specialist Contracting, the project forms part of renovation works carried out by Aberdeenshire Council. A polyurea waterproofing membrane with excellent chemical resistance, exceptional flexibility and tear strength, Mapei Purtop 1000 N is designed to waterproof structures above and below ground, including roofs, podiums, pools and storage tanks.

Opened in 1934, Stonehaven Open Air Pool is the UK's only art deco Olympic-sized heated sea water lido. Threat of closure in the 1990's prompted the founding of a community group – The Friends of Stonehaven Open Air Pool – which is now a Scottish Charitable Incorporated Organisation (SCIO) that works in close partnership with Aberdeenshire Council. Although regularly maintained and repaired,

the lido's multi-layered concrete and paint surface was in need of renovation. With its extensive expertise in pool waterproofing, Mapei was first approached in 2015 and recommended its Mapelastic Smart system overlaid with a finish. Last summer, Mapei was asked for further advice, as the client was now seeking a seamless solution. With an in depth understanding of previous works carried out, Mapei recommended specification of Purtop 1000 N – a two-component pure polyurea membrane which forms a completely waterproof coating, with high chemical resistance, exceptional flexibility and tear strength.

Mapei's proposal covered all aspects of the pool refurbishment, from repairs of the defective concrete using products from the Mapei concrete repair range, through to the Purtop 1000 N system build-up required for the lido.

Existing coats of paint were removed, and the concrete substrate was inspected and



tested, with the proposal amended to take into account the test results. Defects were repaired and cracks were filled and injected with water-stopping resin. All joints and cracks were then bandaged with Mapeband Flex Roll tape. The substrate was then primed with Mapecoat I 600 W epoxy-resin based sealer and two layers of Triblock P epoxy-cement which created a damp proof membrane to hold back any moisture within the concrete. Following a further coat of epoxy primer, Primer SN, the surface was cast with aggregate. Purtop 1000 N was then spray applied across the 1200 m<sup>2</sup> pool surface, followed by two coats of Mapecoat PU 20 N coloured aliphatic polyurethane topcoat and pool lines were painted.

info@mapei.co.uk [www.mapei.co.uk](http://www.mapei.co.uk)

## Resapol supplies Steintec products for Old Portsmouth paving jointing project

In April the Resapol Southampton Depot was contacted by Reds Builders for a project involving the jointing of Yorkstone paving slabs situated in Old Portsmouth. They sought a product that would meet their requirements of ease of use & quick application; the project needed to be completed by the King's Coronation weekend on 6 May. The project site is situated on the seafront and adjacent to the seawall; meaning during volatile weather conditions waves crash into the wall and subsequently puddle on the paving. Barney Wotman, Technical Advisor at Resapol Southampton, recommended Steintec's tufftop, alongside Weiss Install Protect and the rental of a Pergo 880 Grout Cleaner.

Steintec tufftop is a high performance, highly elastic, free flowing bonding mortar that contains no polymer or resin additives and requires only the addition of water. It is renowned for its durability, strength, and flexibility, making it an ideal choice for



jointing the Yorkstone paving slabs. It offers excellent bond strength, crack resistance, and weather resistance, ensuring long-lasting results. The material comes in a range of colour options, the beige version of tufftop was selected for this project to achieve an

aesthetically pleasing result. Weiss Install Protect is a pre-construction protection impregnator for paving elements and the Pergo 880 Grout Cleaner is a sponge belted grout cleaning machine.

The materials were promptly delivered to the project site in Old Portsmouth, allowing Reds Builders to start the project as soon as possible; the ease of application facilitated efficient completion in time for the Coronation. Paul Lewis, business development manager & senior estimator at Reds Builders, expressed his satisfaction with Resapol Southampton and the chosen materials: "Resapol Southampton's service was second to none, they always come up with a solution that works great! The products and equipment were easy to use, so much so that we are planning to use the same materials for an upcoming project in July."

0800 083 1942  
[www.resapol.com](http://www.resapol.com)

## AIM's cavity barriers selected for 'path-breaking' university accommodation

**A**IM (Acoustic & Insulation Manufacturing) has supplied Wall Cavity Barriers and open state cavity barriers (OSCBs), along with technical support, for a 'path-breaking', 900-room student accommodation development at the University of West England Bristol's Frenchay Campus.

The new-build, low-carbon design development, which includes three buildings, six stories high, is to help meet demand from students for high-quality on-campus accommodation. The first rooms will be available from this September. Designed by Stride Treglown, the project's main contractor is Vinci Construction.

AIM worked with Maple Sunscreening on the rainscreen facade system assembly from the ground floor upwards, which is mainly cassette panels with AIM's OSCBs incorporated horizontally and AIM's Wall Cavity Barriers installed vertically. AIM also supplied and supported installers



Image courtesy of University of West England

Sandford Building Contractors during the construction of the extruded polystyrene (XPS) filled sub-floor cavity, which included a layer of AIM's Wall Cavity Barriers directly above the XPS, and all two masonry storeys.

Designed for use within ventilated rainscreen facades and timber frame cladding

systems, AIM's OSCBs allow free airflow and drainage and improve fire safety, providing fire resistance of up to two hours insulation and integrity in suitably supporting structures. In the event of a fire, heat activates an intumescent strip which expands quickly to fully close the cavity.

Manufactured from high density Rockwool stone wool and faced with the higher performance intumescent strip, AIM's OSCB range provides either a 60 or 120-minute rating for both integrity and insulation. The OSCBs are an effective barrier to the passage of hot smoke as well as fire. The AIM range has been tested to TGD 19 and the general principles of BS EN 1363-1. They have been exposed to BS 8414 Fire performance of external cladding systems fire tests and assessed to BR135 to achieve pass results with a variety of third-party cladding systems.

01293 582400 [www.aimlimited.co.uk](http://www.aimlimited.co.uk)

## Titon expands product range with the addition of Roto Al Designo

**L**eading window and door hardware manufacturer, Titon, has recently announced the addition of the highly acclaimed Roto Al Designo product to its extensive range. The move comes as part of Titon's ongoing commitment to providing customers with innovative and high-quality solutions for their window and door needs.

The Roto Al Designo, developed by Roto Frank, is a cutting-edge window system that combines functionality, aesthetics, and energy efficiency. Designed with a focus on modern architecture, the Roto Al Designo features sleek lines, slim profiles and a range of customisable options to complement any building style.

Robin Gardiner, Titon's Head of Product Development, expressed his enthusiasm for the new addition to the company's portfolio, stating, "We are thrilled to introduce the

Roto Al Designo to our range. It perfectly aligns with Titon's mission to offer our customers state-of-the-art products that deliver exceptional performance and elevate the aesthetics of any building."

Gardiner added, "The Roto Al Designo sets a new benchmark in window technology. Its advanced features not only enhance the overall performance of windows but also contribute to sustainable and energy-efficient buildings. We are confident that our customers will appreciate the added value and quality this product brings."

Additionally, Titon has created an extensive Technical Support team for the new range and can offer to customers the use of its sophisticated ordering and rod calculation software, free expert advice and technical support along with a ten year manufacturer's warranty as standard. A PAS 24 high security option is also available.



For more information about the Al Designo range and Titon's partnership with Roto, please visit the website.

0800 970 4190  
[www.titon.com/roto](http://www.titon.com/roto)



## High quality performance and reliability with fully tested louvre system

When specifying for architectural projects, it's imperative that the products selected are of the highest quality.

It's why ventilation louvre specialist Renson UK has developed Integrated Ventilation Solutions (IVS), custom-made tested louvre designs that offer a one-unit solution to guarantee both performance and premium aesthetics.

IVS is made to interface with the external face of the window or curtain wall and mechanical connections, and with these systems, the rear of the louvre is just as important as the front – hidden behind is the thermal protection, the plenums and the duct connections for mechanical installations.

Not only is IVS a unique one-unit solution, but one that has been fully tested, ensuring high-quality performance and reliability at all times.

Renson UK National Sales Manager Martin Daniels comments: "Our customers



can trust that all our louvres offer outstanding weathertightness and have been fully tested to the highest standards, having been tested for airflow in two directions, and having undergone rigorous rainwater penetration and pressure drop versus airflow curve testing by the Building Services Research and Information Association (BSRIA).

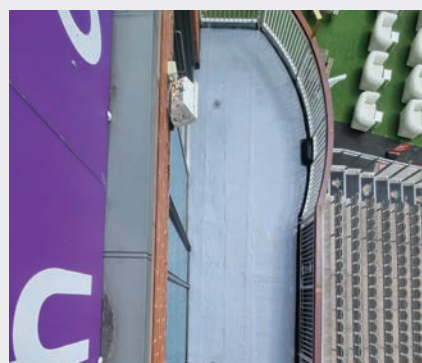
"In addition, our test reports are freely and easily downloadable from our website, offering complete transparency to our customers at all times.

"By recognising that the louvre can be used as a component rather than just a product, we were able to create IVS, a unique one-unit, combined solution with outstanding performance and reliability. Match that with honest, transparent testing, and we're ensuring our customers always have access to the best performing and most reliable products in today's louvre market."

[info@rensonuk.net](mailto:info@rensonuk.net) [www.renson.net/en-gb](http://www.renson.net/en-gb)

## Resapol supplies Mapei Purtop for Old Trafford Cricket Ground

In early 2023, Steven Smethurst from Owens Builders & Contractors, contacted the Resapol Leigh branch seeking assistance for a balcony waterproofing project at the Emirates Old Trafford Cricket Ground. They needed a waterproofing solution to protect the balconies located at the pavilion stand, as standing water had been collecting and seeping into the function rooms below.



This water infiltration was causing damage to the ceiling and had the potential to cause even greater harm if not addressed promptly. They therefore required a quick and user-friendly waterproofing system.

Resapol Leigh depot's technical team considered Mapei Purtop Easy as a potential solution. Purtop Easy is a ready-to-use, one-component elastic polyurethane membrane commonly used for waterproofing balconies, terraces, roofs, and areas with pedestrian access, both for new construction and renovations. Its high elasticity and durability make it suitable for application on both horizontal and vertical surfaces using brushes, rollers, or trowels. Once applied, Purtop Easy ensures complete waterproofing even at low temperatures and in the presence of standing water, making it the ideal choice for this particular project.

Once the project was approved, the delivery of Purtop Easy system was swiftly arranged from Resapol Leigh, direct to



the project site. Work commenced on 11th April 2023; time constraints were crucial as the project needed to be completed within two days of applying the new screed to the balconies. The full Purtop Easy system, consisting of Mapei Polyprimer HB 45, Purtop Easy, and Mapetex FG, was required. The primer played a key role as Purtop Easy could only be applied to substrates with a moisture content of less than 6%. Applying the primer allowed Owens Builders to begin application of the Purtop Easy system earlier, saving them time. Thanks to the ease of application of the Purtop Easy system, the project was successfully completed on 14th April 2023.

0800 083 1942 [www.resapol.com](http://www.resapol.com)

## Yale Expede Window Bracket reduces site times

**Y**ale has launched an innovative new window bracket which can reduce housebuilding programmes dramatically.

The patented Yale Expede Window Bracket allows fabricators to fit fully glazed windows straight into the external timber wall panels at the factory during the production process, and then be delivered flat to the building site. This saves time and money, provides a consistent factory finish and creates significant savings for housebuilders.



### TIME SAVINGS AND INCREASED SALES REVENUE

The bracket offers increased productivity and a faster installation once the timber panels have been erected on site as the window is simply pushed out to the required distance and the final fix inserted to permanently hold in this position. Both internal and external trades can start immediately, as the build will be watertight within one day. This can reduce the overall programme by approximately three weeks, as well as reducing site costs.

### INCREASED SAFETY

Paul Atkinson, Managing Director at Yale, comments: "For housebuilders, time is money, and our bracket speeds up the entire build programme and of course window installation. With the fully glazed window in place, wet trades can get onsite earlier, and buildings are more secure from the outset. It also reduces the risk of accidents linked to manual handling and working at heights. It's no wonder housebuilders are eagerly awaiting this new product."

### SUSTAINABILITY

Timber can dramatically reduce the carbon footprint of a new build. Of all the main building materials, it is the most environmentally friendly, as it has the lowest energy consumption and the lowest carbon dioxide emissions.

Manufactured and tested in the UK, the Yale Expede window bracket has been subjected to loading in excess of 200kg in the



open position for over 72 hours and corrosion testing up to 240 hours. It is available in 50mm and 75mm variants and is covered by Yale's Lifetime Guarantee.

01902 366800 [www.yaledws.co.uk](http://www.yaledws.co.uk)

## Growing hardware sales demonstrate strength of commercial and social housing markets

**C**arl F Groupco is commending an upturn in sales of its tilt & turn and reversible hardware ranges because of what it reveals about the industry more widely.

Julie Warner, Product Manager at Carl F Groupco, said: "Tilt & turn and reversible windows are popular in commercial and social housing settings. Increased sales of hardware for these types of windows mean more contracts are rolling out, which can only be good news for the industry."

Volume sales of Carl F Groupco's Roto ranges are particularly strong, in some cases up by over 60% year on year. Julie commented: "Many of our customers insist on only fitting Roto products because of the intelligent functionality their products offer."

The Roto NT Tilt and Turn Hardware system, for example, is suitable for timber, PVC-U and aluminium profiles of up to 150kg sash weight. The system can be used to achieve the most demanding security, operating convenience, durability and design requirements. A wide range of components and accessories makes custom window solutions possible, including additional security features to achieve PAS 24 accreditation and even the option for automation.

Roto's FRH UNI range of reversible window hardware has been designed with multi-storey

public, commercial and domestic buildings in mind. The sash and frame details are the same for all window variants, allowing styles to be fitted without changing profile routing and ensuring a uniform aesthetic appearance on all window styles. With additional security features the system can achieve PAS 24 and can also provide an emergency egress escape opening (providing building regulations are met).

Alongside the quality of the products, Carl F Groupco customers also benefit from the strength of the company's relationship with Roto. Carl F Groupco collaborates with the manufacturer on continuous product development, helping to give UK fabricators and installers the hardware features they need. The Roto and Carl F Groupco teams support fabricators through their hardware transition as well as specification, testing, software set up and production optimisation.

As Julie highlights, increased sales of hardware for commercial and social housing projects are a good reason to be encouraged. But it's clear that fabricators and installers choose Carl F Groupco as their hardware supplier because of the value-added benefits on offer.

01733 393 330  
[www.carlfgroupco.co.uk](http://www.carlfgroupco.co.uk)





# Sika becomes early adopter of the Code for Construction Product Information

Global building product manufacturer Sika has become an early adopter of the Code for Construction Product Information (CCPI) which has been published to drive higher standards in the presentation of construction product information within the manufacturing industry.

A response to Dame Judith Hackitt's independent review into Building Regulations and Fire Safety, the Code was developed by the Construction Product Association's Marketing Integrity Group following two years' engagement with industry. It has been created to promote an urgent and positive culture and behaviour change in the way the construction product manufacturing industry manages and provides information on its products.

Globally renowned for high quality construction solutions and with a commitment to raising industry standards, Sika is one of the first product manufacturers to have achieved CCPI verification of its first product



(L-R): Alex Coward, Head of Technical – Roofing, Gavin White, Head of Product Management – Roofing, Dame Judith Hackitt

set for Single Ply Roof systems. The company maintains a strong focus on transparency and by committing to the code it will provide further independent assurance and greater confidence in the information associated to its CCPI-verified product-set.

There are 11 Clauses within the CCPI assessment which cover a wide range of matters from responsibility for product information, to transparency of performance,

proof of stated claims, general information and competency. The CCPI is built around five 'acid tests' – product information must be 'Clear, Accurate, Up-to-date, Accessible and Unambiguous'. The 11 clauses are underpinned by a requirement to demonstrate the highest levels of integrity, ethics, leadership and culture.

"We are delighted that Sika is an early adopter of the code," said Mark Gatrell – Head of Business Unit Roofing for Sika in the UK. "The Code is aiming to drive the highest standards in product information, setting a level playing field for all construction manufacturers to ensure that the information they provide is clear, accurate, up-to-date and unambiguous. We're proud to be working proactively with the CCPI to raise standards in product information management."

For more information visit the CCPI at [www.cpicode.org.uk](http://www.cpicode.org.uk)

01707 394444 [www.sika.co.uk](http://www.sika.co.uk)

## Double-leaf Aluminium Entrance doors now available from Hörmann UK



Hörmann UK have announced the addition of a double-leaf option to their range of aluminium entrance doors. The TopComfort Portal, offers the combination of a modern, high quality, secure door together with the opportunity to create a truly imposing entrance for any style of home. Constructed using high quality materials featuring a PU foam core within an aluminium skin and an aluminium frame as standard, TopComfort Portal provides long-term, operational stability. It also features RC3 security as standard, good acoustic insulation, and excellent thermal performance with a U value of 1.2 W/M<sup>2</sup>K being achievable. A good-looking door is guaranteed with the solid door leaf being fully flush on both the exterior and interior of the door, together with flush fitting between the traffic and fixed leaf. Doors can be manufactured in widths up to 2,600 mm and heights up to 2,500 mm, with seven different door styles being available. An extensive choice of handles and accessories are available, together with 23 preferred colour options.

01530 516868

[www.hoermann.de/en/innovations/detail/show/topcomfort-portal-double-leaf-aluminium-entrance-door](http://www.hoermann.de/en/innovations/detail/show/topcomfort-portal-double-leaf-aluminium-entrance-door)

## Hörmann garage and entrance doors selected for exclusive Lichfield development



Set in an idyllic rural location near Lichfield, Packington Hall is a Grade II listed manor house which has been lovingly restored and converted into luxury apartments, with the surrounding grounds being redeveloped to provide an impressive development of 22 new homes. A total of 45 fully automated Hörmann M-ribbed Silkgrain sectional garage doors have been installed throughout the development by Birmingham based Doorfit, together with high performance Hörmann steel entrance doors. The Hörmann LPU42 sectional garage doors provide clean lines and a sophisticated, high-quality aesthetic. Their double-skinned construction provides good thermal insulation, a particularly important aspect for the integrated garages in the overgarage apartments. All the garage doors have been supplied in Anthracite Grey (RAL 7016), with a smooth Silkgrain surface providing a hardwearing, easy to clean and modern finish. With security in mind Hörmann automated sectional garage doors are supplied with Secured by Design as standard. All 45 doors have been fitted with Hörmann SupraMatic operators.

01530 516868 [www.hormann.co.uk/home-owners-and-renovators](http://www.hormann.co.uk/home-owners-and-renovators)

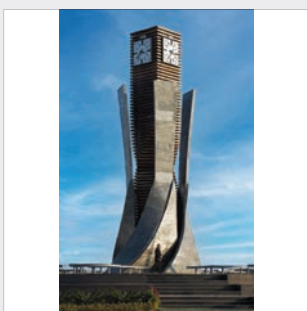
## Words can paint a thousand pictures



Maud Milton and her talented team of artists, known as Artyface Community Art, work out of studios at Trinity Buoys Wharf in East London. They have become well known across the capital and beyond for helping community groups assemble totally unique mosaics. In particular, Artyface Community Art has been instrumental in fashioning striking interpretations of the ubiquitous London Underground roundel, using hundreds of handmade tiles which carry individual words relating to the locality. Maud and her colleagues have worked closely with school pupils and local residents to design tiles for mosaics for new buildings and walls in the public realm: all mounted on Marmox Multiboards in metal frames. Aside from railway and underground station signs, Maud utilizes Marmox Multiboards for any project which is going to be set in a metal frame, including house names or numbers. A spokesperson for Marmox, Grant Terry, Marketing Manager, added: "We have been delighted to provide Maud and her team with quantities of our Multiboard to help facilitate these very important local projects, involving many different members of the community."

01634 835290 [www.marmox.co.uk](http://www.marmox.co.uk)

## Port Said Lighthouse dances with Slicedstone



Slicedstone, from bathroom specialist Marmox, has been used extensively to clad a new lighthouse in Port Said, replacing the deactivated original, which stood sentinel over the city at the northern end of the Suez Canal since its opening in 1869. The old lighthouse – now a historical monument – is unusual and considered architecturally important as it was the first in the world to be constructed from reinforced concrete, which architect Karim Gabr took into consideration when designing the visually stunning replacement. Slicedstone was specified by Karim Gabr's practice to enhance the lighthouse and its environs, being that it is a natural material produced from large stone slabs, with each veneer being unique in appearance. The lightweight sheets are backed with a 100% waterproof decoupling membrane, allowing them to be secured using cement based tile adhesive. Incorporating the latest technology, the re-engineered veneers of Indian sandstone, along with their stabilised backing are treated with a clear polycarbonate solution to offer a flexible surface that is both durable and waterproof, as well as stain resistant.

01634 835290 [www.marmox.co.uk](http://www.marmox.co.uk)

## More than just a helping hand



With a need for multi-functionality, industry specialist SFS has developed its offering on rainscreen cladding support systems to enable architects, design engineers and cladding contractors to achieve an installation which delivers the required thermal, structural, fire and other performance targets in a safe and economic manner. The manufacturer's NVELOPE range supports concealed and visible fastened systems to meet most project's aims while SFS Thermal Solutions ensures that the crucial challenge of closing the 'Performance Gap' can be adequately addressed.

[uk.sfs.com](http://uk.sfs.com)

## Raise the bar on worker safety



Despite the huge progress which has been made in health and safety standards and practice across the UK construction industry over recent decades, falls from height continue to pose the biggest risk in terms of injury or worse. The ongoing risk has prompted SFS, one of the largest manufacturers of safety equipment, to launch a new initiative intended to maximise the protection of contractors. The SFS Fall Protection Installer Network has been created to provide a platform dedicated to advancing competency and awareness for companies and their individual operatives.

[uk.sfs.com/fallprotection-installernetwork](http://uk.sfs.com/fallprotection-installernetwork)

## Haddonstone digs into archives

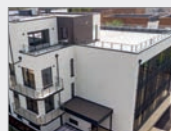


Haddonstone has undertaken many contracts where its workshops have been called upon to replicate architectural enrichments to many different ages of building. On one recent project, a client who Haddonstone helped to construct a Georgian style home 15 years ago required the company's expertise when it came to extending the property. Sean Rafter, director of Longdendale Construction, said: "Haddonstone was very responsive to requests and all of the deliveries arrived

on time; right through to the end of the job when we found we needed two extra units which were produced in very quick order. This was a very intricate job, and the client was as pleased with the end result as we were."

[www.haddonstone.com/en-gb](http://www.haddonstone.com/en-gb)

## Neaco supplies total solution



Neaco has supplied an extensive specification of modular walk-on balconies and sun terrace balustrade at Broadwater Road, a prestigious development of luxury apartments. The project was built by main contractor, Total Construction Ltd. The stylish contemporary design of the three-storey complex includes a predominantly glazed facade maximising the use of natural light to one elevation. Neaco's modular systems are independently tested to confirm full compliance with all relevant building regulations including a Euroclass A1 or A2 fire safety rating required for external wall elements on buildings above 18 m in height. The products are designed for quick installation, enabling contractors to minimise time spent on site.

01653 695 721 [neaco.co.uk](http://neaco.co.uk)





# BUILDING INSIGHTS

A PODCAST FOR THE CONSTRUCTION INDUSTRY  
[LISTEN AT HBDONLINE.CO.UK](https://hbdonline.co.uk)







Cover image: SFS  
See page 40 for details