

building construction design

www.buildingconstructiondesign.co.uk

SUMMER 2024

Appointments & news	02
Building products	16
Interiors	20
Exteriors	31



Cover image: Trolldtekt / © Billy Bolton
See page 30 for details

Putting fire safety in the frame

protect FrameSafe^{FR}

High performance, Class A2 external
flame retardant breather membrane

Fire protection in the design and construction of buildings is paramount. That's why we've used our 40 year industry experience to meticulously develop a new fire rated wall membrane, exceeding Building Regulations Part B requirements.

Protect FrameSafe FR is independently fire tested and achieves Class A2 reaction to fire, both free hanging and as part of a system with sealing tape.

Providing up to six months' UV exposure to suit all building heights, it's time to choose the hidden protector you can trust.



Class
A2-s1, d0

free hanging or
onto substrate*

*For technical fixing details, fire classification test reports and substrate information for Protect FrameSafe FR, contact us on +44 (0)161 905 5700 or e-mail info@glidevaleprotect.com

www.glidevaleprotect.com/framesafe

glidevale
protect

building
product design

Advanced's Fire Protection installed in the heart of Birmingham

Fire protection solutions manufacturer, Advanced, has supplied intelligent fire panels and evacuation alert systems to a mixed-use development at the prestigious One Victoria Square, and adjoining One Swallow Street, as part of a major refurbishment to grade A specification.

One Victoria Square fronts onto one of Birmingham's most high profile and iconic squares and the gateway to the Central Business District. A mixed-use development, it has multiple levels containing mainly office space, with a retail unit on the ground floor. Meanwhile the adjoining One Swallow Street also has multiple levels but offers residential apartments.

Advanced's high-performance, fault-tolerant MxPro 5 analogue addressable panels were chosen to provide industry-leading protection to all levels at One Victoria Square and the linked building One Swallow Street. In addition, One Swallow Street also benefits from BS 8629-compliant EvacGo

evacuation alert systems which were installed to help keep residents safe.

Fire safety specialists, Gem Fire Solutions was involved in the project from design through to commissioning. They installed eight networked MxPro 5 fire panels along with an Advanced graphics system and Apollo devices across both buildings. In One Swallow Street three EvacGo evacuation alert systems were also installed along with Hyfire sounders.

Jamie Dyer, Gem Fire Solutions, said: "As a mixed-used development it was important to find a solution that would meet the requirements of both the commercial and residential buildings. Advanced's ability to provide a full package of fire panels, graphics and evacuation alert systems made the choice simple. The MxPro 5 panels were the ideal solution providing a powerful platform, comprehensive cause and effect options, fast network and user-friendly controls. While the BS 8629-compliant EvacGo evacuation



alert system gives peace of mind that Swallow Street residents can be evacuated safely in an emergency."

Shaun Scott, Emergency Evacuation Systems Application Engineer at Advanced, said: "We offer our customers an extensive range of fire protection solutions to meet the demands of a wide variety of commercial and high-rise residential settings. Our MxPro 5 panels are designed to make life as easy as possible, delivering robust protection that offers real peace of mind, all backed up by our highly rated technical support."

0345 894 7000 www.advancedco.com

Sika becomes early adopter of the Code for Construction Product Information

Global building product manufacturer Sika has become an early adopter of the Code for Construction Product Information (CCPI) which has been published to drive higher standards in the presentation of construction product information within the manufacturing industry.

A response to Dame Judith Hackitt's independent review into Building Regulations and Fire Safety, the Code was developed by the Construction Product Association's Marketing Integrity Group following two years' engagement with industry. It has been created to promote an urgent and positive culture and behaviour change in the way the construction product manufacturing industry manages and provides information on its products.

Globally renowned for high quality construction solutions and with a commitment to raising industry standards, Sika is one of the first product manufacturers to have achieved CCPI verification of its

first four product sets for Single Ply Roof systems (gained in September), Hot Melt Structural Waterproofing, Liquid-applied and Reinforced Bituminous Roof Systems. The company maintains a strong focus on transparency and by committing to the code, it will provide further independent assurance and greater confidence in the information associated to its CCPI-verified product sets.

There are 11 Clauses within the CCPI assessment which cover a wide range of matters from responsibility for product information, to transparency of performance, proof of stated claims, general information and competency. The CCPI is built around five 'acid tests' – product information must be 'Clear, Accurate, Up-to-date, Accessible and Unambiguous'. The 11 clauses are underpinned by a requirement to demonstrate the highest levels of integrity, ethics, leadership and culture.

"We are delighted that Sika is an early adopter of the code," said Mark Gatrell –



head of business unit roofing for Sika in the UK. "In September we announced product set verification for our Single Ply Roof Systems, and now we have the pleasure of announcing that our Hot Melt Structural Waterproofing, Liquid-applied and Reinforced Bituminous Roof Systems have now achieved verification status."

"The Code is aiming to drive the highest standards in product information, setting a level playing field for all construction manufacturers to ensure that the information they provide is clear, accurate, up-to-date and unambiguous. We're proud to be working proactively with the CCPI to raise standards in product information management."

gbr.sika.com/roofing www.cpicode.org.uk

GEZE UK – a Living Wage company



GEZE UK is delighted to announce that the company has been accredited as a Living Wage Employer.

The real Living Wage is the only UK wage rate based on the cost of living. It is voluntarily paid by over 14,000 UK businesses who believe their staff deserve a wage which meets everyday needs.

To achieve the accreditation GEZE UK had to confirm that the company pays the real Living Wage to all directly employed staff and have a plan in place to pay all contractors a Living wage – both of which the company has done.

Paying the real Living Wage is not only a benefit to staff but to the company too – it improves the employer brand and boosts staff productivity and motivation at work. It also helps employers to remain competitive, retain existing staff and attract new staff.

Rachel Boxall, finance director of GEZE UK, said: “We decided to go for the Living Wage accreditation as we think it

is an excellent way to demonstrate our commitment to being a responsible employer. By paying the real Living Wage (as opposed to the national living wage set by Government) we are voluntarily taking a stand to ensure employees can earn a wage which is enough to live on.”

“There is also growing evidence of the business benefits of becoming a Living Wage employer. This is demonstrated by the number of well-known and diverse companies already accredited such as Liverpool FC, Aviva, Oxfam and Ikea.”

Andrew Gordon, programme officer, Living Wage Foundation added: “We are delighted to welcome GEZE UK as an accredited member of the foundation. Basic fairness is at the heart of what the Living Wage campaign is trying to achieve and why great businesses and organisations chose to go further than the government minimum.”

For more information on the Living Wage Foundation go to www.livingwage.org.uk.



info.uk@geze.com
www.geze.co.uk

Altecnic release new 2024/25 general product guide

Altecnic Ltd, one of the UK's leading suppliers of hydronic solutions, has launched its 2024/25 General Product Guide, debuting 100 new products, and an expanded heat pump section showcasing a range of new products designed and manufactured in support of the energy transition.

The 2024/25 General Product Guide introduces the new Apartment Control Assembly Plus™ valve assembly. The valve assembly offers a combination of functionality and efficiency to allow the easy monitoring and control of water supply to a range of residential and commercial multi-occupancy developments.

Among the new products featured in the guide is an evolution of the Caleffi Series 116 Thermal Balancing Valve, newly equipped with a check valve and thermal disinfection function. Providing 3 functions in a single valve, the 116 Series increases system energy efficiency by automatically maintaining set temperatures, the thermal disinfection function allows for system temperatures to be raised above 55-60°C, while the check valve built into the body helps to avoid unwanted medium return.

The expanded heat pump section features new products to assist in the energy transition to incorporate renewables into existing systems such as the Caleffi Series 548 Wall Mounted Buffer Tanks for Hybrid Systems. Ensuring optimal performance and efficiency of heat pump systems the multi-award winning



Caleffi XF semi-automatic self-cleaning magnetic dirt separator is now available with pre-formed insulation.

The new brochure also showcases notable product releases from 2023 for the first time, including the innovative CALEFFI XS® under boiler filter and Altecnic Dry Trap Tundish. The Caleffi XS® is a compact and versatile magnetic filter with built-in isolation that is designed to protect heating and cooling systems. The building regulations compliant Altecnic Dry Trap Tundish features an anti-splash design and prevents the need to install both a tundish and dry trap as the internal spring-loaded disc mechanism prevents odours escaping.

Available in both digital* and print formats,

the new product guide has been proudly produced in the United Kingdom by a certified Carbon Balanced print partner, under the World Land Trust Organisation. This means the production process, transport & all material used is fully carbon balanced.

Gary Perry, managing director at Altecnic, commented: “At Altecnic, we are dedicated to innovation and customer satisfaction. Our 2024/25 General Product Guide reflects our ongoing commitment to providing cutting-edge solutions that address the dynamic needs of our industry to provide sustainable comfort in support of the energy transition. With the addition of over 100 new products designed to meet the needs of our customers coupled with our industry leading product support and knowledge sharing, Altecnic continues to be the partner of choice for hydronic solutions.”

To order a hard-copy version of the 2024 General Product Guide, please email or contact your local ASM.

Altecnic's mission statement is to deliver the highest quality products and services to its customers, through manufacturing excellence, innovation and education. Their extensive range of products and services are chosen by trade merchants, original equipment manufacturers, plumbing and heating engineers and specifiers.

sales@altecnic.co.uk
www.altecnic.co.uk

Burmatex® builds on success to launch major new range at Clerkenwell Design Week

Following a very successful participation in CDW in 2023, and a year of exciting growth for the brand in the UK and international carpet tile sector, Burmatex® is delighted to be back once again this year.

Based in Yorkshire, Burmatex® puts sustainability at the top of its agenda. Its eco-friendly product portfolio focuses on the design and creation of innovative products to meet the needs of architects, specifiers and contractors, with a continuously expanding range of carpet tiles and plans to suit the commercial office, education and residential sectors.

The company's big launch at CDW this year is the balance collection®. Featuring three compatible designs: grid®, ratio® and scale®. Offering high performance at an accessible price point, the designs work seamlessly together across a spectrum of cohesive colours. Enabling a multitude of flooring layouts, the classic and contemporary nature of the balance collection® allows a harmonious

pairing with current interior finishes. Inspired by the need for a connection to nature, in bustling metropolitan environments. The designs in the balance collection are taken from flowing water, crisp air, green spaces; the balance of your work/life rhythm.

balance grid® is inspired by the strong lines seen in high rise skyscrapers, man-made elements of a modern city. It is a classic design which can work alone or paired with the other two designs in the balance collection®.

balance ratio® provides a soft and organic effect. Its pattern is almost opposite to grid®, and they complement one another throughout a scheme.

balance scale® offers structure and tactile markings. Allowing breathing room in your space, it is grounding and pure.

With 48 options it takes you from core greys and neutrals, through to warm browns and tans. Invigorated by pops of bright primary colour and softer pastel hues, it is a rainbow collection that can suit any flooring



brief. The balance collection® designs are 620g, manufactured with Universal Fibers' ground-breaking Thrive matter yarn which is C2C Certified Material Health Certificate™ Silver, the world's first carbon negative yarn. This, combined with our unique BioBase recycled backing – make the balance collection carbon neutral.

01924 262 525 www.burmatex.co.uk

Physical security for healthcare facilities

The government's Health Building Note gives best practice guidance on the design and planning of new healthcare buildings and on the adaptation/extension of existing facilities. It states that "security measures should be incorporated into the design of all healthcare buildings to help protect the safety of patients, staff and visitors and the security of the premises".

Charter Global have worked on a wide range of healthcare projects providing door and window security shutters to ensure the physical security needs of doctor's surgeries, hospitals and medical centres are met.

The Blue Bell Health Centre is a £5.7m new build, green project in Merseyside to house four GP practices, a pharmacy, and many other health services using expensive medical equipment.

The building was built around a structural framing system (SFS), with a striking timber clad and render design externally, so an aesthetically sensitive security solution was essential to ensure the intricate design was not compromised.



The Integr8 Non-Structural Built-In Shutter system from Charter Global was specified for the exclusive design of the building, as it is especially suitable for fast track build styles, such as SFS, or timber frame.

Engineered to integrate within the very fabric of an architectural structure, the lintel shutters remove the need for an unsightly head-box, with built-in shutters sitting within the load bearing lintel of an aperture. This causes minimal disruption



to the architecture and gives an attractive solution that doesn't detract from the building design.

With the external shutters finished in an appropriate Blue Bell colour, Charter Global provided a complete turnkey security shutter package to this project – even designing and installing the Integr8 security shutter system to the reception desks internally.

0845 050 8705 www.charter-global.com



A digital approach to life safety systems

The duty of the Accountable Person, outlined in the Building Safety Act, is to take all reasonable steps to prevent building safety risks. Here, Nelson Godinho of SE Controls, outlines what is required and how a truly digitised approach helps to achieve compliance

The required technologies to achieve a digitalised approach to life safety are now commonplace so it is a choice, not a limitation of technology that is preventing improved building safety, despite the introduction of the Building Safety Act in April 2022.

The Building Safety Act imposes specific requirements for higher risk buildings (HRB), defined as those at least 18 metres tall or with at least seven storeys and a minimum of two residential units. Like properties managed by many social housing and facilities management professionals as well as those involved in buy-to-let and student accommodation.

WHAT INFORMATION IS REQUIRED

There are three building safety 'gateways' intended to ensure that building safety has been incorporated from design through to occupancy. Each one acts as a hard stop on the project with work unable to continue to the next phase without approval from the appointed Building Safety Regulator.

The first comes at the end of the planning stage and requires those responsible for the project to demonstrate that building safety has been considered as part of the outline planning application. A fire statement needs to be submitted as part of passing this gateway to detail how fire safety has been incorporated.

At the end of the design phase, before construction can begin, the duty holders must submit detailed information about the building 'as designed' as well as the competence of the principal designer and principal contractor. This must include details of how building safety will be maintained throughout construction as well as while occupied. In particular, the fire strategy will need to be approved at this stage. Having a detailed design of life safety systems, typically specifying the essential product characteristics at asset/device level referenced both in the Building Regulations and the harmonised standards, is critical to achieving the desired outcomes. The duty holders must also outline the strategy for the management of the digital golden thread information.



There are three building safety 'gateways' intended to ensure that building safety has been incorporated from design through to occupancy

The information must be structured to allow it to be retained, accessed and transferred effectively.

Before the building can be occupied it must be certified as safe with a completion certificate issued by the Building Safety Regulator. To receive this certificate, the duty holders must provide details of the as-built building along with key information about the building and declarations from the principal designer and principal contractor that it complies with the Building Regulations. Completion of this stage also requires confirmation that the digital golden thread information has been handed over to the 'accountable person'.

DRIVERS FOR CHANGE

Smoke control systems are rarely activated unless in an emergency. Those who are responsible for a building must ensure that the systems will perform as intended when called upon.

Manual, periodic inspections coupled with decentralised record-keeping may result in outdated data, potential human errors, and the risk of missing or misplaced records. Consequently, the opportunities for proactive maintenance and timely remediation are limited, which may jeopardise system performance during emergencies.

HOW A DIGITALISED APPROACH HELPS TO ACHIEVE COMPLIANCE

With the right systems and innovations in place, every asset that makes up the life safety system in a building can be combined into a digitalised system or 'ecosystem'. This will change how systems are managed in key areas:

An actuator on an automatically opening vent (AOV) can have its parameters, settings and performance tracked in real-time from the moment it is manufactured, right through its lifetime. This means that in the event of a fire, it can be proven digitally that the product was safe and compliant at any point in its history, including in the event of a fire.

Configurable technology allows parameters of the products within a life safety system to be tailored using technologies such as Bluetooth and

mobile applications, removing the requirement for laptop or specialist equipment on site.

A digitalised approach also provides total transparency detailing exactly who has interacted with the products in a life safety system, what they did, why they did it and when.

Also, with the installation of a 4G-enabled router in every building, remote product validation is also possible whereby products can potentially be tested, and the weekly test results recorded, validating its performance against the fire strategy available in the cloud. Communication of all the data on the life safety systems can be securely and automatically transmitted and stored in the cloud, where it can be accessed by everyone responsible for the building.

Creating and managing data and content in a structured way via a common data environment will enable it to be consumed and accessed by a wide range of stakeholders using an ever-increasing number of asset management platforms.

Moreover, maintenance processes can be streamlined with remote diagnostics and support. The local or in-house maintenance team in some cases can resolve the issue, removing the requirement for costly engineer callouts, minimising response times and ensuring prompt action in case of faults or maintenance requirements.

The Building Safety Act, as with most legislation, is complex in places. However, if disciplined approaches are taken in software and technology selection, content management and data strategy, satisfying the requirements of this and future similar legislation will become simpler to achieve. Most importantly, it prioritises the life safety of residents in social housing communities.

To download SE Controls' whitepaper 'Understanding the Building Safety Act: Driving safety with a holistic technology-driven approach', please scan the QR Code.

Nelson Godinho is Fire Engineer at SE Controls



SFS White Paper sheds fresh light on window position

Callum Thornton, the fenestration product manager for SFS UK, explains why social housing specifiers and housing managers should consider continuity of insulation around window openings as a priority for tackling thermal-bridging and mould growth.

The tragic death of a young boy whose family lived in unacceptably sub-standard conditions led to the Social Housing Regulation Bill being amended in 2023 to include 'Awaab's Law' compelling landlords across the country to investigate and rectify damp and mould within a strict timeframe. These all-too-common problems also serve to underline the need to understand the key causes of mould growth, including the crucial positioning of windows within the outer walls.

This is a highly complex technical challenge, that is just as important to address during refurbishment and improvement contracts, as it is when trying to comply with the latest requirements of Approved Document L for new build projects. And this April saw the New Build Heat Standard implemented in England (and Wales) while Scotland is tightening requirements ready for the enactment of its own PassivHaus standard in two years' time; with windows having to achieve a U-value of 0.80 W/m²k.

A CHEQUERED HISTORY

The size, shape and location of window openings have been a key feature in architectural styles down the ages, but current day concerns over energy performance mean that the actual position of fenestration units within the wall section has now taken on a far greater significance. Getting it wrong will not only be reflected in higher heating costs but will almost inevitably impact on occupants' health, as well as their comfort.

In order to assist building professionals, including social housing providers, to better understand the conundrum of maintaining continuity of thermal performance across the building envelope, SFS has added to its library of White Papers with the latest entitled: "Optimising window placement."

Windows are an essential component of the building envelope, serving multiple functions such as allowing natural light to enter, providing security, offering panoramic views, and facilitating ventilation while minimizing heat loss. Because of this, windows are unfortunately usually the weakest point in the thermal envelope.

However, with the introduction of revisions to Approved Document Part L in 2022 and new SAP software, the maximum permitted U-values for a window unit were lowered and, as we look ahead to the Future Homes Standard 2025, it is evident that compliance requirements will become even

more demanding. With this in mind, it is crucial to carefully consider the impact of window position on the overall efficiency of the glazed unit.

It is more than three decades since the BRE first identified that the floor/wall and other junctions across the building envelope were just as important as the elevations themselves. We waited until 2008 for the guidance on cold bridging to be introduced into Building Regulations, but the subject is comprehensively addressed in the current Approved Document L, Volume 1 section on 'Continuity of Insulation,' which emphasises how windows should be "contiguous with the insulation layer of the external wall."

The approach taken towards compliance with Approved Document L, Volume 1 can vary depending on the design of the overall wall build-up chosen. Typical approaches in the UK vary from cavity wall construction, solid masonry wrapped with an insulated render or an EWI system or, for existing properties – especially in conservation areas – Internal Wall Insulation (IWI) is often preferred.

The principle of continuity is important in all cases, but the SFS White Paper on 'Optimising Window Placement' explains the challenges, technical requirements, and potential pitfalls of falling short.

One part of the document utilises thermal modelling – in the form of software generated heat flux section drawings – to illustrate how the different window positions can have a marked effect on the thermal performance of the overall element.

The examples include a solid wall construction where an equal thickness of insulation has been affixed to the external face, but contrasts locating the window frame within the masonry, and shifted forward so it is fully aligned with the insulation zone, which reduces heat transfer through the frame itself. Other examples show how the PSI values, or thermal bridging heat losses, can also vary between the top and bottom of a window frame.

While window cills, heads or jambs are only some of the thermal bridges occurring around a building, their high frequency across the envelope mean their significance is magnified, particularly for high-rise and HMOs.

In addition, as with any thermal bridge, the loss of heat around window perimeters will lead to condensation as moist air cools rapidly as the dew point is exceeded. At best, the surface condensation is a nuisance and can stain plasterwork; at worst it causes mould growth, allowing spores to be released into the atmosphere, precipitating or exacerbating respiratory problems.

PLANNING FOR THERMAL IMPROVEMENT

The question of timing, as well as alignment, also regularly arises in retrofit and refurbishment



Photo by Hydra 4x on Unsplash

situations where EWI (a favourite recourse for both high-rise and low-rise improvements) is counted as the former, and window replacement as the latter with property owners, particularly social housing landlords, generally wishing to maximise the service life of existing fenestration. Inevitably, though, many contracts constitute urgent upgrades and 'quick fixes', often involving complications such as having to decant tenants. Accordingly, at the FutureBuild event in March, Savills reported that evaluating initial waves of the SHDF showed that joined up thinking for such interventions was essential to minimise visits and avoid 'tenant fatigue'.

In fact, social housing providers frequently find themselves aiming to invoke measures attracting defined funding, such as ECO schemes, rather than striving to achieve best outcomes. Unfortunately, fitting new windows some years after EWI rarely sees the frames aligned contiguously with the wall insulation, and problems of thermal bridging are simply exacerbated, storing up problems for the future. Such failures can lead to higher heating bills, degradation of the building fabric and poorer health outcomes for residents.

Ideally, coordinated and comprehensive upgrades across our building stock will save lives and a key strategy for avoiding such issues should see building managers and other specifiers seeking to have high performance windows installed on special cantilever brackets, beyond the building structure, including supporting much heavier, triple-glazed windows. Inevitably, aligning these higher performing window frames with wider insulation zones, outside the main structure, demands longer cantilevers and the sustaining of greater lever-arm forces in order to achieve the ultimate goal of thermal continuity.

As well as manufacturing appropriately designed and tested brackets and offering holistic technical support to all parties seeking to optimise the benefits of energy upgrades in our buildings, SFS has published a series of White Papers on the subject of external wall insulation, rainscreen systems and fenestration.

0330 0555888 uk.sfs.com



Download the brochure...

Tackling difficulties in thick insulation layers

Optimise Window Installation with JB-D Plus

Maximise window performance with the JB-D Plus: Simplify, speed up and enhance thermal efficiency by installing windows within the insulation layer.

Visit uk.sfs.com for more information.

Advanced scores fire safety system upgrade at Stamford Bridge

Stamford Bridge, home to Chelsea Football Club, now boasts an upgraded fire safety system thanks to TP Fire & Security Ltd's installation of Advanced equipment, ensuring protection and peace of mind for fans and staff. The project at the iconic London stadium involved replacing 14 existing fire alarm panels with a network of 17 Advanced MxPro 5s and three repeater panels, while ensuring uninterrupted functionality throughout the transition.

The systematic decommissioning of the old system and installation of the new MxPro 5 network throughout the stadium, plus the integration of two new PC-Net graphics system, demanded careful planning and efficiency. Despite the complexity of the task, the work was successfully completed in just six days, meeting the client's stringent requirements for continuous protection and performance.

Stamford Bridge, situated in Fulham, West London, has been the proud home of Chelsea



Football Club since 1905. With a capacity of 40,343, it stands as one of England's most historic football venues.

Simon Fiddy, project manager at TP Fire & Security Ltd, stated: "The successful upgrade at Stamford Bridge is testament to our team's expertise and dedication and the ease of use of Advanced products. Despite the challenges posed by the scale and complexity of the installation, the exacting

schedule and the need for continuous operation, we delivered a seamless transition to the new Advanced system. Chelsea FC's satisfaction with the completed project underscores our commitment to excellence in fire safety solutions."

Robert Ives, fire safety officer for Chelsea Football Club, added: "Ensuring the safety of Stamford Bridge and its occupants is our top priority, and the successful upgrade to our fire safety system plays a significant part in that goal. I'm relieved to have implemented a reliable and adaptable solution, ensuring continuous protection for Chelsea Football Club and its loyal supporters. I extend my thanks to all parties involved, whose expertise and dedication made this project a resounding success."

MxPro 5 is the fire industry's leading multiprotocol fire panel and is certified by FM Approvals to EN 54 Parts 2 and 4.

0345 894 7000 www.advancedco.com

Aico host Community Awards 2024 to celebrate local excellence

Aico's bi-annual Community Awards celebrates excellence within the social housing industry and local community. On Thursday the 18th of April, 400 guests and finalists took to Birmingham's International Convention Centre to honour the outstanding work of individuals and organisations across the UK.

In support of the Electrical Industries Charity (EIC), this year, Aico curated 13 categories providing entrants with the opportunity to showcase inspirational colleagues, projects, and innovations. The categories were judged by Neal Hooper, Managing Director of Aico, Lesley Baird, Participation Expert, James Prestwich, Director of Policy for the Chartered Institute of Housing, and Khadra Ibrahim, Careers and Community Development Lead for RBKC Housing Management.

The evening saw entertainment from 2022 Britain's Got Talent Winner and Comedian, Axel Blake, who filled the room with laughter.

The new award for 2024, Aico's Apprentice of the Year was presented to Cole Galligan from Loughborough College and Raylec Electrical, for his professionalism and dedication towards his apprenticeship.

Once all the winners had been announced, attendees danced into the night alongside



Top Collective, a spectacular nine piece ensemble band.

Host of the night, Carl Jones, commented "It is heart-warming to see how much these awards mean to all the inspirational individuals and groups who have been shortlisted for such fantastic work in their local communities. Congratulations to Aico for launching such a brilliant initiative, shining a light on these unsung heroes at a tremendous night of celebration."

The Aico Community Awards achieved great success by honouring inspirational individuals and organisations who innovate, excel, and prioritise others. The event raised over £9,000 for the EIC with Aico matching the donation, resulting in a total contribution of £18,000.

01691 664100
www.aico.co.uk/in-the-community

Altecnic launch new compact anti-freeze valve, iStop® PLUS

With a compact design and the ability to install the valves vertically in parallel providing a solution for the most restricted spaces.

Altecnic, one of the UK's leading suppliers in hydronic solutions and part of the Caleffi Group, has launched the new compact anti-freeze valve, the iStop® PLUS into the UK market.

Setting the standard in efficiency and convenience, the iStop® PLUS boasts a compact size, as well as a sensor on the side, differing to traditional anti-freeze valves, offering remarkably small dimensions without compromising performance.

Key features of the iStop® PLUS include:

- Compact size.
- Installation in restricted spaces.
- Ability to vertically install the valves in parallel.
- Extreme sensitivity to water temperature.
- Ability to work with high temperatures.

Its innovative design, featuring an off-axis sensor configuration, enables installation even in the most restricted spaces, catering to the diverse needs of modern installations. Furthermore, the iStop® PLUS has been designed to allow for a pair of valves to be installed vertically in parallel, meaning that installers can seamlessly install valve pairs



without the need for minimum spacing. This flexibility not only streamlines installation processes but also optimises space utilisation. Less space is also required for drainage

underneath the valve, making it suitable for connection to self-contained heat pumps with connections for pipes at the bottom of the casing.

Equipped with an exceptional sensitivity to water temperature, the iStop® Plus boasts heightened responsiveness to ensure prompt and precise performance, enhancing system reliability and user confidence. With this, the new anti-freeze valve is engineered to withstand high water temperatures of up to 90°C. This durability allows the valve to operate with any heat pump and underscores Altecnic's commitment to delivering products of high quality and performance.

Gary Perry, managing director at Altecnic, commented: "With the iStop® Plus, we are introducing a solution that addresses the evolving needs of modern installations that installers are faced with. Its compact size, coupled with its ability to function in restricted spaces, offers flexibility and ease of use."

"At Altecnic, we strive to innovate, quality solutions that meet and exceed the expectations of our customers so that they can remain ahead in our industry as the shift towards Net-Zero solutions continues."

01785 218200
www.altecnic.co.uk/istop%2%AEplus-compact-antifreeze-valve-series108

HORNE

<https://b.link/SafeHands> | 01505 321455

The award-winning Optitherm - its reliable hands-free lever operation, controlled comfortable temperature, optimised flow rate and conditioned, splash-free delivery, ensures patients are always in the safest hands.*

*Surgical Precision
Engineering*

Building Better Healthcare Awards
Best Interiors Product



Create without compromise – great products, huge choice, and fast deliveries from F.H.Brundle

As architects, you know better than anyone that structural components are vital – no structure, no building.

But you also know that it's the non-structural elements – the balustrades, handrails, fencing, decking and more – that make the space stylish, comfortable, and somewhere people want to be.

At F.H.Brundle, we've been supplying quality products and exceptional service for over 135 years. We understand the challenges you face in sourcing reliable, high-quality non-structural systems for your commercial projects.

That's why we offer a comprehensive range of products that don't compromise on style, function, or add weeks to your project times – regardless of size and volume.

Vast choice of balustrades and handrailing

Balustrades have boomed in popularity in recent years. At F.H.Brundle, we've responded by offering the UK's biggest selection of metal and glass balustrade systems, letting us cater to virtually any vision.

Products like our sleek and minimalistic Pro-Railing® range, available in stainless steel and marine-grade Duplex 2205, offer a wide variety of components for quick and easy installation.

Architects can choose from glass panels, round tubes, perforated metal, or wire mesh infill solutions to create balustrades that are both functional and aesthetically pleasing.



What's more, we're one of the UK's biggest distributors of handrail solutions, meaning that no matter the setting, we'll have a product that will excel on your next project.

Security with style

Perimeter security is a crucial aspect of many commercial projects. We provide robust, highly secure products that don't make you compromise on aesthetics.

Our stylish made-to-measure steel gates come with a rapid turnaround, meaning no frustrating hold-ups, helping your project finish on schedule.

Versatile decking

For gardens, walkways, balconies, or rooftop terraces, our aluminium decking systems are the perfect choice. Exceeding the highest European safety standards (EN 13823, EN 13501, and EN ISO 1716), they deliver exceptional strength and durability.

Additionally, the Synergised system achieves Euroclass Classifications of A1 and A2fl-s1, making them ideal for high-traffic areas and compliant for installation in high-rise buildings.

Expert support

However, products are only the start of what makes F.H.Brundle an outstanding supplier.

What truly sets us apart is our unwavering commitment to expert support.

Our team of specialists is here to assist you throughout the entire process, from product selection to technical guidance, and even providing readily-available CAD files for all our systems. This eliminates the need for time-consuming technical drawings, and ensures our products fit in seamlessly with your plans.

Next-day delivery

In construction, time is money – and that's why our products have been meticulously selected for low maintenance and quick, simple installation.

What's more, we offer free delivery across the UK, eliminating logistical headaches and further streamlining the process.

Over the years, we've built up a network of



depots, which means we can quickly dispatch products and have them with you in no time.

We have branches in East London, Ilkeston, Southampton, Newton, Birmingham, Glasgow and Cardiff – plus, in Burton, our state-of-the-art 270,000 ft² distribution centre.

Our huge stockholding means we can get you the products you need, when you need them.

An extension of your team

At F.H.Brundle, we see ourselves as an extension of your team. We provide the tools and expertise you need to bring your architectural vision to life.

With our extensive product range, dedicated customer support, and focus on time-saving solutions, we give you what you need to create outstanding commercial and domestic spaces.

Interested in learning more? Don't hesitate to get in touch today.

0808 134 20 86 www.fhbrundle.co.uk

Family metal merchants since 1889



Putting our customers front and centre.

It runs in our family.

F.H.Brundle has been operated as an independent family business since 1889.

Family means a great deal to us, which is why the F.H.Brundle brand has been built on traditional family values. With over 100,000 customers, we consider them part of the Brundle family. Our family means the world to us. And, like a family, we're here whenever you need us. Your metal needs taken care of.

Like our family, our ever-growing product range is vast, stocking over 10,000 products.

Steel Sections | Welded Mesh | Handrailing | Glass Balustrade |
Steel Fencing & Gates | Crash Barrier | Aluminium Decking |
Glass Panels | Steel Flooring and *much, much more!*

Rated Excellent by our family

4.8 ★★★★★

★ Trustpilot

fhbrundle.co.uk | 0808 134 20 86



EXTRA, EXTRA! Introducing new ARDEX X 7 R S1

ARDEX are delighted to introduce X 7 R S1, a new improved version of their favourite X 7 R rapid-setting flexible tile adhesive. Advancements developed by ARDEX UK R&D specialists has allowed the company to further improve a trusted technology making it more suitable for the modern demands of tiling. Superseding X 7 R, ARDEX X 7 R S1 provides a great upgrade for fixers at no extra cost rather than adding more products to the range. ARDEX X 7 R S1 comes in grey and white (X 7 R S1 W) and the new formula has: EX7RA flexibility and strength with fibre technology; EX7RA Improved consistency with a smooth formulation; and EX7RA 50% pot life – now with now with 60 minutes in the bucket. This means there is more time to use the product in the bucket before it goes off. This allows for bigger, less frequent mixes, giving longer to spread the adhesive, saving on time and wastage. X 7 R S1 is suitable for internal and external areas, without the need for any additional additives. It is classified as C2FES1 with new S1 deformability. This is in addition to current properties including the ability to mix to a semi-pourable consistency for solid bed fixing large format floor tiles, and adjustable water content for the ability to produce a slump-free mix for wall tiles. Alex Underwood, Head of Marketing at ARDEX said: "If you're already using ARDEX X 7 R, then it's time to switch to X 7 R S1 today. If you love X 7 R, then you'll love X 7 R S1 even more with its improved characteristics at no extra cost."

01440 714939 ardex.co.uk/product/ardex-x-7-r/



A1 rated Cemgold boards protect care home patients' memories



A new care home complex has made use of IPP's A1 non-combustible Cemgold boards to create Memory Boxes that will help patients find their rooms and orientate themselves by storing photographs or other memorabilia. Prominently positioned in the corridor wall outside each of the rooms is one of the 600 x 400 mm boxes with a lockable door, which were fabricated on site by Highwood's own carpenters, with the room number featured in large, high contrast numerals. On the room side of the boxes, however, a similarly sized panel of 12.5 mm thick Cemgold replaces the plasterboard lining to offer half-hour fire resistance. The Project Architect for Harris Irwin, Michael Bond, recounts: "Because the Memory Boxes are made up using standard blockboard, they required separate fire protection for which we specified a material meeting the requirements of Euro Class A2 should be utilised. The main contractor, Highwood then proposed Cemgold which met all of the criteria." Available in thicknesses of 6, 10, 12.5, 16 and 18 mm, the 1,200 x 2,400 mm sheets of Cemgold are widely specified across the construction industry for interior and exterior applications including in combination with IPP's Magply boards.

01621 776252 www.magply.co.uk

Marmox appoints Finance Director



Marmox Ltd. has strengthened its board by promoting its current finance manager to the newly created post of finance director with immediate effect. The move follows founding family member, Jonathan Parsons, having been appointed as business development director as his parents, Harry and Anne, prepare to take a less active role in running the company. Having been at the company since 2014, Richard Kent-Smith previously worked for a firm of chartered accountants where he was involved for some years in preparing VAT returns and management accounts on behalf of Marmox, before the company created the position of finance manager in order to recruit him as a member of staff: a position where he has successfully applied his people skills as well as his aptitude for numbers. Sarah Viney, managing director commented: "I am absolutely delighted to have Richard as a fellow director. His skills and knowledge have helped us to grow the company over the last few years and it is great to be able to recognise his invaluable contribution by appointing him as a company director."

sales@marmox.co.uk www.marmox.co.uk

Marmox 'goes round the houses' at Futurebuild



Visitors to this spring's FutureBuild exhibition were drawn to the Marmox stand D26 by a diverse mix of products. The knowledgeable sales team were on hand to explain the merits of its debutant fire-rated insulation panel. Fireboard is the new high performance internal and external wall insulation (XPS) board which shares Marmox's honeycomb surface structure with Multiboard to create an A1 non-combustible certified render-backer which is weatherproof. Importantly, it can be used internally across walls or ceilings to take a plaster finish, while providing sound absorption as well as thermal insulation. Fireboard is 'Resistant to Fire' with the following accreditation: BS EN 1182, EN 1716 and EN13823. Marmox's Marketing Manager, Grant Terry, comments: "We saw a very positive response from contractors, consultants and other specifiers to the new Fireboard which offers a practical and economic answer to multiple challenges in both new build and refurbishment situations and there was similar enthusiasm for our recently extended Slicedstone range, which presents thin veneers of natural sandstone on a stabilised backing, which makes it simple to install either internally or externally as a very versatile finish."

sales@marmox.co.uk www.marmox.co.uk

Free RIBA approved CPD for architects, planners and developers

The Police Crime Prevention Academy are running free RIBA Approved CPD sessions on Secured by Design in May and June. The sessions, delivered via Microsoft Teams, will run between 12.30pm and 1.30pm.

These sessions will take place on Friday 31st May and Friday 28th June. To book a place on any of these sessions, please contact info@crimepreventionacademy.com

This CPD will explore the Police Secured by Design initiative, which operates across a wide range of building sectors including residential, education, health, transport, commercial, retail, sport and leisure, as well as promotes security standards for a wide range of applications and products. These principles have been proven to reduce crime risk by up to 87%, by combining standards of physical security and principles of crime prevention through environmental design.

Topics covered include how the scheme is implemented and successes in previous



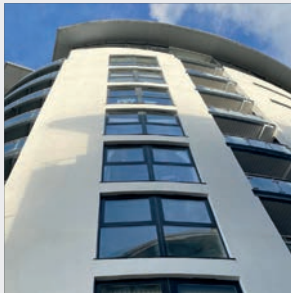
development projects, terminology and how to find secured products that have achieved police preferred specification. By the end of the CPD you should have a greater understanding of:

- Secured by Design as a proven police scheme which reduces crime and creates safer communities
- Relevant legislation, policy & guidance

- Secured by Design as more current than ADQ and other documents referencing security and safer communities
- An overview of property crime trends
- An evaluation of why crime occurs
- How the Secured by Design scheme is implemented
- How an open, welcoming and safe environment can be achieved by incorporating crime prevention design into the layout and landscaping of the immediate surroundings in subtle ways that will be barely noticeable to residents
- Successes in previous development projects & how developments that meet the Secured by Design award are more sustainable
- How SBD keeps parallel with current crime trends and methods

www.crimepreventionacademy.com
www.securedbydesign.com/services/cpd

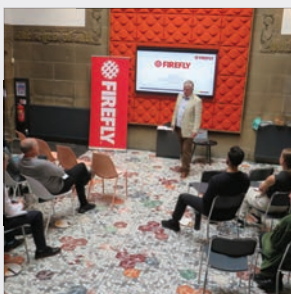
Sto creates fire compliant facades across multiple residential buildings



An external wall insulation system manufactured by Sto has optimised fire protection for a multi-block residential development. The project's first phase comprised two buildings which had the StoTherm Mineral K EWI system specified to meet the required fire rating while maximising thermal performance. BBA-certified, StoTherm Mineral K features A1 mineral fibre insulation boards and the system is classified with an A2-s1, d0 reaction to fire in accordance with BS EN 13501. Specialist surface finishers, One & Maike was responsible for installing StoTherm Mineral K on behalf of principal contractor Osprey, a facade remediation specialist. The insulation boards were fixed directly to the existing concrete substrate avoiding the need for a cavity. StoLevell Duo Plus, a strong mineral adhesive, was applied to the back of the insulation boards, and additional fixings were also used to secure the insulation boards to the substrate to suit wind load conditions. Sto-Glass Fibre Mesh was then embedded into the outer surface of the reinforcing coat providing crack resistance to the system. The system was finished with StoSilco K1.5, a silicone resin render ensuring high levels of water repellence and protection from harsh weather conditions.

0330 024 2666 www.sto.co.uk

Spreading the word on compliant compartmentation



Changes to the fire regulations across the UK and the challenge of showing compliance with them, is motivating a growing number of construction professionals to book a place on FIREFLY®'s highly informative CPD seminar. Entitled 'The Design and Understanding of Passive Fire Protection and Compartmentation', the 60 minute presentation provides an introduction to the behaviour of fire and the distinctions between active and passive protection measures, before moving on to explain the various ways in which fully compliant compartmentation can be achieved to prevent the spread of fire within a building. Daniel Gordon, the specification sales manager for Scotland and Ireland, comments: "Architects and fire assessors are joining to us to learn more about compartmentation and flexible fire barriers in particular and generally wanting us to update their conceptual knowledge of the subject as standards, compliance requirements and indeed solutions available all continue to evolve. As a result, myself and my colleagues in the technical sales team are delivering the training module – both online and direct to architects in their offices – on a weekly basis."

01706 758817 www.tbafirefly.com

Vortex Shutters protect vandalised restaurant against attack



Located in a popular street in central London, the Mangio Pasta restaurant is favoured by both tourists and locals. However, the large glass windows at the front of the premises were frequently being targeted by vandals. Repairs were expensive for such a large expanse of glass so the owners contacted CGT Security to see what could be done. Managing Director, Roger Humphreys explains: "The glass was being continually broken after closing hours, and security shutters were the most obvious solution. However, as the building is located in the shadow of St. Paul's Cathedral, City of London Corporation were concerned about the visual impact of shutters". The Vortex+ shutters were presented as the patented lath design allows the security shutter to roll more compactly, creating significantly smaller roll zones and hood box. The Council requested detailed drawings to support the planning application, with the discreet box size being pivotal in the decision. Vortex+ shutters reduce the roll size by 50% compared to a standard shutter and have a self-locking capability, as well as LPS 1175 certification from the independent Loss Prevention Certification Board (LPCB).

0330 024 9409 www.cgtsecurity.com

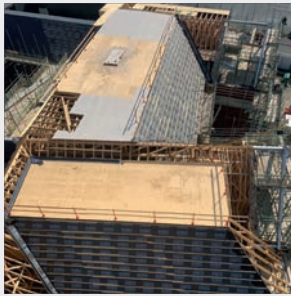
FIREFLY® products protecting Britain's premier glasshouse business



Thanet Earth is the UK's leading producer of salad vegetables, where an estimated 400 million tomatoes and 30 million cucumbers are grown every year: with the initial processing and packaging being carried out in a facility whose 900 m² roof structure has had its fire protection upgraded using products from the range of FIREFLY®. The specialist contractor involved, London based CA Fire Protection, is a regular user of FIREFLY® and called in the manufacturer's local Technical Sales Manager for advice when it was invited to tender for the challenging retrofit project. Following a detailed site inspection and discussions, FIREFLY® Zeus Horizontal was specified in combination with FIREFLY® Collaroll and FIREFLY® Penowrap to offer continuous 60-minute protection across the soffit, which features numerous down-stands and building services installations. The FIREFLY® Penowrap and FIREFLY® Collaroll were employed to ensure continuity around roof beams as well as the hangers for the cable trays and other services. The lightweight and flexible FIREFLY® Penowrap has been developed to complement other FIREFLY® fire barrier systems.

01706 758817 www.tbafirefly.com

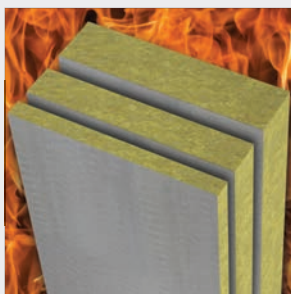
Southampton care home roof fire protected using A1 rated Cemgold



IPP Ltd.'s A1 rated high density cement board, Cemgold has been used as part of the flat roof build-up on a new care home complex in Southampton, due for completion later this year, in compliance with both Building Regulations and UK building insurance guidelines. Adanac Park is being built for Hamberley Developments by Highwood Construction with North Yorkshire based sector specialist, Harris Irwin Architects tailoring the design to meet the needs of those with dementia or different neurological conditions. The 95,000 ft² facility comprises two U-shaped buildings either side of a shared service block, with the neurological clinic containing a gym as well as treatment and consulting rooms, while the residential wing has 80 high specification en-suite bedrooms offering long term accommodation. The project manager for Highwood Construction, Paul Davies, commented: "We have used various cement boards the past but the Cemgold has proved very robust and straightforward to cut and fix – provided you have the right blades, as well as complying with the fire requirements. We would certainly consider using it again."

www.intpetro.com www.magply.co.uk

New Marmox Fireboard offers ideal EWI and IWI substrate



Building on the broad benefits of its widely specified Multiboard, insulation manufacturer Marmox introduced in January a highly versatile Fireboard into its range for both internal and external wall insulation (IWI/EWI) applications. The Marmox Stone Wool based product shares the unique Marmox honeycomb surface structure with its XPS forerunner, Multiboard, to create an A1 non-combustible certified render-backer which is weatherproof. It can further be used internally across walls or ceilings to take a plaster finish, while providing sound absorption properties, as well as thermal insulation. The 600 x 1,200 mm Fireboards are available in thicknesses from 20 mm, 50 mm and 100 mm and with the polymer modified mortar honeycomb coating applied to both faces. With a nominal density of 150 kg/m³ the boards' core material offers a compressive strength of 90 tonnes/m². The 20 mm Fireboard is ideally suited for external window and door reveals, ready for renering. The Marketing Manager for Marmox, Grant Terry, commented: "The introduction of Fireboard into our range significantly enhances our offer to the construction industry."

sales@marmox.co.uk www.marmox.co.uk

marmox fireboard

Fire Protection • Sound Absorption • Thermal Insulation

A1 Certified
Render/Plaster Board

- **A1 Fire Protection**
- **Sound & Thermal Insulation**
- **Thin & Lightweight**
- **Easy to Cut & Install**

NEW PRODUCT

Available in 20, 50 & 100mm.
Use on masonry, wooden
or metal structures!

marmox
Waterproofing & Insulation Solutions

W: www.marmox.co.uk

T: 01634 835290

T: sales@marmox.co.uk

HIGH PERFORMANCE IN THE FRAME WITH OSB

With the need for more sustainable building materials currently critical, Rebecca Goldsmith of MEDITE SMARTPLY explains why OSB structural panels can streamline the fabric-first approach for high performance building envelopes



The updated Part F and Part L requirements of the Building Regulations are considered a crucial stepping-stone to the Future Homes Standard in 2025, which will see a new build house have 75% lower CO₂ emissions than one built to today's standards. To meet these requirements, timber frame construction provides distinct sustainability benefits. Timber is a natural, renewable and low carbon material which along with its versatility, flexibility, and rapid build times make it a highly attractive option for new residential projects.

A key area will be addressing the thermal performance and the design of a building's envelope. This heightened focus on the building fabric presents both challenges and opportunities. As a route to more thermally-efficient building

envelopes, it will become critical to ensure buildings are airtight. Timber frame manufacturers that can provide high-performance, airtight envelope solutions will be well-positioned to meet these changing regulations and capitalise on the move towards low-energy construction.

A THERMAL ENVELOPE SOLUTION

To meet the evolving energy efficiency standards, there is an innovative solution to simplify the path to airtight building envelopes. The increasing demand for double sheathed timber frames in both structural applications and the development of offsite closed panels, led to innovation for producing two certified airtight OSB/3 panels with airtightness engineered into the panel substrate.

As a solution for walls and ceilings, an airtight panel with integrated vapour control and air barrier can be used as the airtight layer on the warm side of the insulation in timber frame construction systems, helping to create an airtight building envelope. Each panel features alternating layers of wood strands coated with a formaldehyde-free resin and wax binder system to deliver outstanding levels of airtightness. A specialist coating is then applied to ensure vapour resistance and provide a high performance OSB solution for super-insulated and passive buildings, and thereby enabling the elimination of a traditional additional vapour control membrane from the construction.

By seamlessly integrating air and vapour barriers into high-performance OSB panels, this streamlines the

installation process, minimising the risk of air leakage that often plagues traditional timber frame structures.

For flooring and roofing, a tongue and groove, load bearing OSB/3 panel can provide improved durability and slip resistance in all site conditions. Similar to airtight panels, it can be used as an airtight layer, contributing to sustainable building practices as well as reducing the energy consumption for heating.

These cutting-edge solutions not only simplify construction but also ensure a certified, proven approach to creating airtight building envelopes that will pave the way for low-carbon, energy-efficient homes of the future.

A HOME FOR THE FUTURE

Testament to the benefits of OSB with built-in vapour and air barrier properties is an exciting regeneration project in Cardiff. Lowfield Timber Frames specified SMARTPLY AIRTIGHT panels alongside a their timber kits for a development of 12, two-bedroom houses in the Heath district of Cardiff.

Built to demanding Passivhaus standards, the homes offer improved health and wellbeing conditions for occupants whilst requiring very low levels of energy for space heating or cooling. Additionally, using timber frame for the



A KEY AREA WILL BE ADDRESSING THE THERMAL PERFORMANCE AND THE DESIGN OF A BUILDING'S ENVELOPE

construction lowers the carbon footprint of the development.

One of the principal benefits of a Passivhaus build is the significant reduction in energy consumption during the operating life of the structure. This will ultimately lead to reduced energy costs, heating bills, and even lower carbon emissions for the planet.

Showcasing an impressive level of airtightness, the average air test result for the 12 homes in this development came in at below 0.5 ACH. Furthermore, a Larsen truss panel (a lightweight wall extension which creates extra wall space to house insulation) was also used in the project. It was 330 mm deep with the finished wall make-up being closer to 500 mm, allowing for thicker insulation.

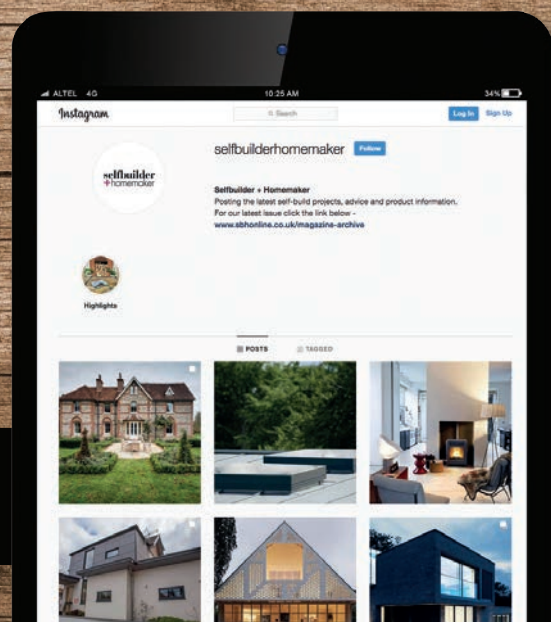
Timber frame construction offers housebuilders a clear advantage in meeting the stringent airtightness levels and energy efficiency requirements of the Future Homes Standard. By utilising OSB that features integrated air barrier properties, timber frame manufacturers can deliver airtight, energy-efficient building envelopes needed to comply with these new regulations and put us on a path to net zero.

Rebecca Goldsmith is product manager at MEDITE SMARTPLY

selfbuilder + homemaker

Now on Instagram

FOLLOW US AT:
@SELFBUILDERHOMEMAKER



Altecnic launches Apartment Control Assembly Plus™

Altecnic, a leading supplier in hydronic solutions and part of the Caleffi Group, has launched the brand new 'Apartment Control Assembly Plus™'. The valve assembly offers a combination of functionality and efficiency to allow the easy monitoring and control of water supply to a range of residential and commercial multi-occupancy developments.

The Apartment Control Assembly Plus™ has been designed to ensure seamless water management with three interconnected monoblocs:

- **Pressure Control & Isolation:** Featuring an isolating ball valve, a high-performance pressure reducing valve (PRV) with a tamper-proof cover, a gauge port, and a strainer, this monobloc provides robust isolation and pressure regulation.
- **Water Meter & Carrier:** Equipped with a water meter carrier and isolation capabilities, this monobloc facilitates accurate monitoring and measurement of water usage.
- **Backflow Prevention & Isolation:** Incorporating a double check valve with a test port, a high-quality isolation valve, and a rotatable 360° drain cock on two axes, this monobloc ensures efficient water flow and maintenance.

Available in six configurations, including various options of water meter with wireless MBUS



connectivity, the Apartment Control Assembly Plus™ can seamlessly integrate into a wide range of residential and commercial developments. The use of wireless MBUS connectivity opens the potential for remote communications from the water meter adding another layer of flexibility for installers and contractors.

The Apartment Control Assembly Plus™ streamlines installation and servicing with built-in mounting brackets and user-friendly features,

making it a preferred choice for installers and contractors alike. By consolidating multiple functions into a single assembly, it reduces the number of connections required during installation, thereby saving time, money, and mitigating the risk of leaks.

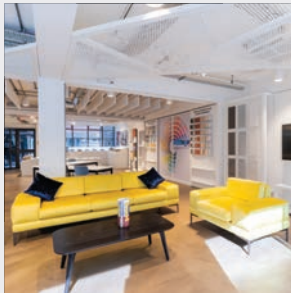
In addition, the pressure & backflow monoblocs are made from a dezincification resistant low lead brass alloy to BS EN 12165 CW724R, which is 4MS compliant, ensuring installations are futureproofed against regulation changes.

With WRAS and KIWA Reg 4 approval on the Series 539H monobloc, customers can trust in the quality and safety of the Apartment Control Assembly Plus™. Additionally, the new valve assembly comes with a five-year warranty, providing customers with peace of mind and assurance. The warranty underscores Altecnic's commitment to delivering products of the highest quality and reliability, backed by industry-leading support.

Gary Perry, managing director at Altecnic, commented: "The Apartment Control Assembly Plus™ offers a comprehensive solution that simplifies water management for multi-occupancy buildings. Each component of the assembly has been designed to put flexibility into the hands of installers, whether in new-build or retrofit, and whether installing or performing maintenance."

sales@altecnic.co.uk
altecnic.co.uk/altecnicapartmentcontrolassemblyplus

Mapei embraces creativity in Clerkenwell Design Week 2024 programme



Design and creativity will take centre stage throughout Mapei's Clerkenwell Design Week programme next month. During the three-day event – from Tuesday 21 to Thursday 23 May – Mapei will host a variety of hands-on activities and experiences at the Mapei World London City Specification Centre, in Great Sutton Street, supported by product displays and demonstrations. Mapei's range includes 23 product lines covering every field of building application, including ceramic, stone, resilient and wood installation; protective coatings; floor finishes, thermal-sound insulation systems; structural reinforcement; structural waterproofing systems and many more. In a variety of presentations and creative activities, Mapei will be showcasing products including design-led grouts and sealants, Ultratop Loft and resin floor finishes, waterproofing, decorative coatings and Profilpas accessories. Activities running throughout will include the Profilpas Maze Runner – putting co-ordination skills to the test – and Hook-a-Mapei-duck, utilising Mapei waterproofing products. Visitors can also embrace nature with ceramic pot painting and seed sowing sessions and a Botanical creations workshop.

info@mapei.co.uk www.mapei.co.uk

Stocksigns shows the way to signage compliance for high-rise development



Following the introduction of the Fire Safety (England) Regulations 2022, property maintenance company, General Maintenance, needed to source new wayfinding signage for a London apartment complex. Stocksigns was the ideal provider, able to supply compliant signs with a premium finish that aligned with the prestigious aesthetic of the building. Under the Fire Safety (England) Regulations 2022, high-rise residential buildings with a roof height of over eleven metres or more must be fitted with clear wayfinding signage that can be read easily in all conditions. This was introduced as a response to the Grenfell Tower Inquiry, which concluded that poor wayfinding signage had hindered rescue attempts by the emergency services. Tim Green, managing director of general maintenance, was commissioned by the managing agent to survey, supply and install the new signage. In doing so, he contacted Stocksigns to supply the signage. Account manager, Neil Jones from Stocksigns suggested a bespoke acrylic signage design that complied with the graphic and wayfinding requirements of the legislation but also offered personalised branding and detailing that complemented the luxury style of the buildings. Tim said: "Neil and the Stocksigns team were very knowledgeable and excelled at thinking creatively about how to deliver compliant and appealing signage."

01737 774072 www.stocksigns.co.uk

Vicaima present another dimension for interiors with Dekordor® 3D

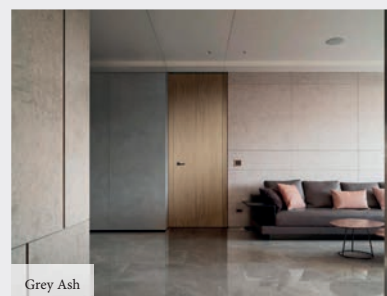


Arctic Oak

Popular for over a decade, the Dekordor® 3D range from Vicaima has long been a first choice with specifiers of living and working spaces. With its attractive textural and hard wearing surface, ideal for contemporary surroundings as well as demanding locations; this competitively priced interior timber door or door kit has much to commend it for both modern private dwellings and social environments. Now, with innovation and inspiration firmly in mind, the range has been re-imagined for a new generation of specifiers, with no less than 15 tonal and textural options, making flexible design and performance, available to suit a wider range of project budgets.

While colours like the original horizontal Grey remain as popular today as it always was, a fresh palette has been introduced to satisfy modern trends and encompassing both vertical and horizontal textured faces. For those who seek the neutrality of crisp and light colours, Arctic and Silver Oak blend perfectly with busy surroundings and make excellent use of light in small spaces. Conversely, where rich warm tones would be ideal and needed to emulate otherwise expensive alternatives, Chocolate, Urban and light Walnut provide the perfect solution. However, if the desire is to embrace a more monochrome look, new Carbon Black, Grey Oak or Cloud White could provide the answer.

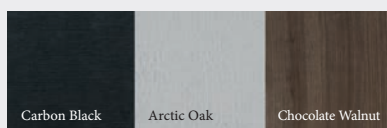
Dekordor® 3D is not just about door appearance either. It can be provided in the full gambit of performance solutions from Vicaima. Manufactured with fire (whether FD30 or FD60), security (including dual scope and SBD accreditation) and acoustic certification (ranging



Grey Ash

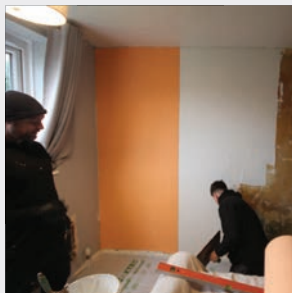
from 34 to 45 dB) the range can be supplied as part of a matching door assembly and with associated joinery such as skirting and wall panels. Furthermore, with flexible design options such as factory glazing, decorative grooves and inlays are also possible. In short tailored to your project needs, whatever they may be.

For more information about the Vicaima Dekordor® 3D Range take a closer look now by downloading the brochure or request a colour sample of your chosen finish by request.



marketing@vicaima.com
www.vicaima.com/files/files/catalog/vicaima-dekordor-3d-quadrilingue.pdf

Manchester housing provider picks ISO-THERM insulation to upgrade older stock



One of the leading providers of affordable housing in the North-West has begun utilising slimline and waterproof ISO-THERM insulation, recently introduced to the Wykamol range, to help address issues of condensation and mould growth in some of its older properties, with the manufacturer present at the first installation to help train the customer's staff. Wythenshawe Community Housing Group manages some 14,000 homes across Manchester and prides itself on offering residents high quality accommodation, meeting the needs of a diverse population, including those with complex health challenges. Wykamol's Technical Manager, Kevin Topping was invited to give a presentation to a cross-section of WCHG's staff, including surveyors and housing managers, together with some of the potential applicators. This meeting allowed the housing provider to understand some of ISO-THERM's technical benefits including its ability to create an isolation layer to keep damp out of dwellings, while offering an uplift in thermal performance approximately equivalent to installing up to a 25 mm thick layer of polystyrene.

01282 473100 www.wykamol.com

Creak-free flooring from West Fraser



West Fraser's CaberFloor P5 is a high-performance particleboard which is widely specified by developers, architects and self-builders due to its stability, durability and ease of installation. The high-density panels come in thicknesses of 18 or 22 mm, in both square-edged or tongue and grooved

profiles; the latter features profiles on all four sides to offer maximum flexibility. The precision-engineered edges ensure smooth and speedy installation while the tight-fitting joints eliminate creaking. Choosing T&G CaberFloor P5 removes the need for intermediate noggins, while 'secret' or hidden nailing or screws can be employed within the joints.

uk.westfraser.com

Keller Kitchens' new contract partners



Ocean Breeze kitchen

Keller Kitchens has announced a new strategic partnership for the company's kitchen contract channel in the UK. Arcos Interiors of Bristol has been appointed as Keller's exclusive contract partner for the South West of England. Headed up by Christian Ford, Arcos Interiors boasts 30 years' experience in the industry and the new partnership offers a full turnkey service for developers in the region encompassing experienced project management – from design to handover – and excellent customer care thereafter.

www.kellerkitchens.com

Horne partners with NBS

Horne Engineering is delighted to announce its Manufacturer Partnership with NBS, the leading platform that is revolutionising the way construction products are selected and specified. This collaboration aims to provide architects, engineers, and other specifiers with easy access to detailed, standardised information on Horne Engineering products.

Now listed on NBS Source (nbs.fyi/gEWcCy) it's easy to add them into AutoDesk Revit and ArchiCAD projects, and cloud-based specification writing platforms like NBS Chorus.

Horne products are specifically designed for a range of niche applications within healthcare, accessible/inclusive and dementia/aged/rehabilitation care, learning disability, mental health and secure environments, education, sport and leisure.

The NBS team has authored the Horne product data to NBS Specification standards and assigned its relevant classifications under both the CAWS and Uniclass systems. The extensive suite of Horne products available on NBS Source



includes the award-winning Optitherm thermostatic tap for clinical handwashing and surgical scrub, Type 3 thermostatic mixing valves (DN15 and DN20), the patented ILTDU, In-line Thermal Disinfection Unit for effective management of retrograde contamination by pathogens, the stylish Dušo sport shower column, and the complete range (incorporating 130+ models!) of robust and durable pre-plumbed shower panels, for quick and easy installation and maintenance. Associated shower accessories

like supportive grab rails and shower risers complement the accessible range of shower models. Options within each BIM file allow the specifier to select various features such as connection size, basin pairing, ligature-resistant or inclusive design features, and colour variants. Each NBS Horne shower range, determined by its shower head/s and control valve pairing, is offered in two BIM Data files; with or without the ILTDU, In-Line Thermal Disinfection Unit, as an integral component.

Users can now explore and easily select Horne Engineering's diverse range of products and associated assets on NBS Source. It boasts a wealth of up-to-date content; enhanced product data, BIM models, company and product literature, useful drawings and instructions, case studies and third party certifications, all available for download to better aid sharing of information and collaboration to support specifier project requirements.

01505 321455
www.horne.co.uk

Gaia install underfloor heating for high-profile developments

Part of the wider regeneration of Watford, The Eight Gardens is a residential and commercial development from Berkeley Homes, featuring studio, one and two-bedroom apartments surrounded by landscaped gardens and art installations.

Due to Gaia's long-standing relationship as a trusted supplier for Berkeley Homes, they were asked to provide pricing for The Eight Gardens project (Block S3 and S6).

The original design involved wet underfloor heating through Heat Interface Units with a gas energy plant room or air-source heat pumps.

However, Gaia proposed using exclusively electric underfloor heating for the scheme.

This would reduce the need for heat pumps and energy plant rooms, therefore lowering capital costs for the developer. Also, it would minimise maintenance costs for homeowners,



and provide quicker heat-up times.

Following their proposal, Gaia managed the entire electric underfloor heating design and installation process. Their team levelled the structural slab with latex before installing thermal insulation boards and electric underfloor heating systems, finished with a latex screed on top to achieve an SR1 finish.

By delivering their services from design to completion, Gaia provided a single point of accountability and streamlined the process for the client.

This is just one case study within an extensive portfolio of underfloor heating projects Gaia has completed across London and the surrounding areas.

The underfloor heating experts worked with Telford Homes to deliver a customised

underfloor heating specification for the former Elizabeth Arden factory site - which is being transformed into a new mixed-use development, with the majority of space allocated to residential properties.

Gaia provided the complete design, installation and commissioning of wet underfloor heating systems throughout the 374 apartments.

Also, as part of a long-standing partnership with Woodford Heating, Gaia provided full design, supply, installation and commissioning of Polypipe wet underfloor heating systems for High Street Quarter in Hounslow - a £210 million scheme featuring 528 residential properties.

01359 242400
gaia.co.uk

Fire door safety maintained at West Lothian schools with Yeoman Shield

West Lothian Council schools, Deans Community High School and Armadale Academy, are maintained by Bellrock Group under a contractual PPP3 project agreement. Taking on this maintenance management for the two school buildings places the Bellrock management team as the Responsible Person when it comes to compliance to fire safety maintenance which incorporates fire rated doors.

With this in mind, Martin Igoe, Senior FM for Bellrock, engaged with Yeoman Shield Fire Door Services when it came to assessing and protecting the condition of the schools' fire doors with an impact protection system.

As a brand name of Harrison Thompson & Co. Ltd. who are a registered FIRAS Warringtonfire (a UKAS accredited scheme for fire door and passive fire resisting products installation) company, Yeoman Shield Fire Door Team were able to undertake a conformity survey of the doors in both schools.

This consisted of an assessment of the



condition of the fire doors, noting remedial work required to improve the doors functionality, replacement of doors where required as well as noting advisory door protection products that could improve the look, condition and extend the life cycle of the doors by solving impact damage problems.

After an itemised quotation for the work had been raised and accepted, Yeoman Shield directly employed fixing operatives carried out the work simultaneously at both school sites simultaneously in accordance to

Bellrock's programme.

Remedial work to both frame and fire doors, replacement doors as well as Yeoman Shield Fire Rated Protection products which were Door Protection Panels, Door Edge Protectors and PVCu clad Glazing Beads were fitted by the accredited teams following best practice guidance.

Martin Igoe commented "Having previously used Yeoman Shield on school projects in Aberdeenshire I was more than happy to again collaborate with Yeoman Shield for the Deans Community High School and Armadale Academy."

"Their door protection products are great; not only have Yeoman shield re-certified the old fire doors for conformity, they have also extended the life of the doors by fitting a hard-wearing cladding to each. This makes them more durable for the rigours of school life, they look amazing and are so easy to clean."

0113 279 5854 www.yeomanshield.com

Quantum Flooring Accessories unveils NEW comprehensive product guide

Quantum is the largest independent flooring accessories manufacturer in the UK, offering a complete range of products including stair nosings, entrance matting, capping strips and cove formers, flooring transitions, trims, and all types of flexible skirtings.

The guide showcases the company's extensive range of high-quality flooring accessories designed to enhance safety, durability, and aesthetics on your projects in healthcare, education, hotels and leisure, office, retail and residential environments. Key features of the guide include:

- **Detailed Product Information:** Gain insights into the features, and applications of all products.
- **Fitting Guidelines:** Clear and concise guidelines on the application of Quantum products.
- **Technical Specifications:** In-depth technical information is included, offering the details you need to choose

the right products for your projects.

- **Inspiration and Design Ideas:** Explore inspiring case studies and design ideas that showcase Quantum Flooring products in various applications, providing a source of inspiration for architects and designers.

"We are excited to launch our new product guide, which is a testament to our commitment to providing comprehensive solutions for the contract flooring industry," said Tim Hayes, specification & marketing manager at Quantum Flooring Accessories. "With this guide, we aim to simplify the product selection process for our valued customers."

The Quantum Flooring Accessories Product Guide is available for download on the official website or can be requested through Quantum Flooring's customer service by emailing info@quantumflooring.co.uk or calling.



0161 627 4222
tinyurl.com/quantumflooring

Vicaima Fire Doors: Safety and Innovation in harmony

In the realm of fire safety, Vicaima has established itself as a leading manufacturer of fire doors, setting new standards in the industry. With a commitment to quality and performance, Vicaima has consistently demonstrated its ability to produce fire doors that not only meet but exceed industry norms.

Vicaima's fire doors form a significant part of the 2 million doors produced annually in their factory. The company's unique approach to construction sets it apart from the competition. Instead of using door blanks, Vicaima focuses on traditional construction with the Vicaima Solid Core, providing a more secure base for the fitting of essential ironmongery and a key reason why installers and post-installation inspectors have greater confidence when assessing a Vicaima fire door or doorset product.

The company's dedication to innovation is evident in its extensive range of doorset and kit solutions. These products, under the Easi-Fit and Portaro brands, are designed to create a complete, fully tested assembly, not only encompassing fire performance, but with security and acoustics where required. This approach is increasingly advocated by government and industry as the way to ensure the whole system is safe and compliant.

Golden Thread

Vicaima applies the principles of the Golden Thread through its commitment to quality, innovation, and sustainability. The Golden Thread is a concept that refers to maintaining a consistent approach to quality and performance throughout a product's lifecycle, from design to delivery and beyond.

Innovation is another key aspect of the Golden Thread, and Vicaima is a leader in this area. The company's unique approach to door construction, a focus on trend-



setting design, and its extensive range of fire performance solutions, all demonstrate its dedication to future market needs.

Ai Innovation

In an era where flexible working is increasingly the norm and technological advancement moves at an ever-increasing pace, this year sees the launch of Vicaima24/7. This Ai driven chatbot is on hand 24 hours a day, 7 days a week, guiding users to a wealth of information spread across installation instructions, maintenance advice, technical datasheets, and many other resources, thus ensuring queries are handled efficiently and effectively.

Traceability

Traceability is a key feature of Vicaima fire doors. This is achieved through unique ink-jet markings on the top edge of the door. These markings help to identify the Vicaima Door model/range, performance, finish, dimensions, and core. Additional data relating to its SKU or product code, manufacturing batch number, and year of manufacture code are also included.

Furthermore, Vicaima fire doors carry tamper-evident labels and/or BM TRADA

Q-Mark plugs, depending on the performance specification. These labels and plugs, along with the Vicaima manufacturing codes, provide complete visibility to important information both at the time of installation and throughout the product's lifecycle.

Sustainability / ESG

The Vicaima Group is committed, within the framework of the ESG (Environment, Social and Corporate Governance) criteria, to making its contribution towards achieving the Sustainable Development Goals (SDGs) defined by the United Nations.

Vicaima acts with the responsibility of providing the market with solutions that have a reduced impact on the environment, are accessible to all and ensure people's safety and well-being and contributing to a more inclusive way of living.

As we look to the future, Vicaima continues to lead the way in fire safety. Regardless of what regulatory changes may come, Vicaima is committed to providing appropriate solutions and being the first choice for a safer tomorrow.

technical@vicaima.com
www.vicaima.com

Making acoustics work at the office

Tintagel House, located on the Albert Embankment in Vauxhall has had a dramatic makeover thanks to the interior design by Universal Design Studio and architects Stanton Williams. A former Police station for over 50 years and home to the flying squad, the 12-storey block with its austere facade now comprises 8,800 m² of flexible shared offices, together with a members' bar, cafe, gym, workshop and events space. The block is now a thriving hub for entrepreneurs and independent businesses run by The Office Group.

As part of the transformation, the design brief was to generate opportunities for people



to meet and connect. By overlaying references from hospitality, culture, commerce and workspace all under one roof, Universal Design Studio has created rich and varied spaces that push the boundaries of what a workspace can and should be.

To help reduce waste, many of the original finishes from the existing building were reused, including timber, concrete and parquet flooring, as well as concrete and terrazzo finishes to the walls. With many hard surfaces, Troldekt wood wool acoustic panels were specified throughout the ground floor lounge and multi-use spaces to solve the problems of acoustics and reverberating sound.

Troldekt acoustic panels are available in a variety of different structures and colours, combining superior sound absorption with an award-winning design. The Troldekt range has a minimum expected life cycle of 50 years coupled with excellent resistance to humidity and tested to meet ball impact standards. The range is available in various sizes and structures, from extreme fine to fine. They can be supplied as natural wood



or finished in almost any RAL or NCS colour.

Depending on the panel specified, reaction to fire is classed in accordance with EN 13501 as B-s1,d0 or A2-s1,d0 respectively. Cradle to Cradle Certified® at Gold level, Troldekt wood wool acoustic panels are manufactured using wood from certified forests (PEFC™ and FSC®C115450) and can contribute positively to a building's BREEAM, WELL or LEED points.

Samples, case studies and technical guidance are available from the website or see the Troldekt product listings on NBS.

sales@troldekt.dk www.troldekt.co.uk

Delivering safe and sustainable hot water

As spring unfolds into summer, it presents the perfect opportunity for architects to get outside to explore practical and eco-friendly shower solutions tailored for healthcare, accessible and aged care, mental health and secure, and leisure and education facilities. Horne's Display Van or Roadshow, currently making its way across the UK, offers a personalised, hands-on experience with Horne's tried and trusted thermostatic showers and Optitherm clinical taps, and including the game-changing ILTDU, and TMV ranges.

Horne products are meticulously designed to meet the stringent demands of both public and private healthcare, mental health and secure facilities, to institutional



accommodations and recreational, wet leisure and sport environments. For settings such as mental health and learning disability facilities, Horne provides safe, robust, hygienic, ligature-resistant shower designs. Each unit features an internal healthcare-approved thermostatic shower valve, for consistent and reliable warm water delivery, housed in a durable extruded aluminium panel, with precision engineering head and hand controls for longevity and reliability.

A highlight for architects prioritising net zero design is our water (and energy) saving features. Timed-flow controls, flow regulators and optimised spray plate designs, minimise the wastage of pre-heated water, while still ensuring an effective shower experience. Enhance the eco-credentials of any project and contribute to water and energy efficiencies for improved BREEAM ratings.

The Horne Roadshow is more than just a mobile showroom; it's an integral resource for architects and project collaborators to evaluate Horne products first hand, engage in detailed discussions about specific project needs, and receive tailored advice from our



experts. Our scheduling can be flexible to easily fit into your project timelines.

Don't wait for the usual exhibition circuits – the Roadshow is ready now to visit your office or site. Discover how Horne's advanced integrated thermostatic solutions can elevate your next healthcare, secure, or leisure project conveniently and efficiently.

Contact Horne to schedule your personalised Roadshow, and take a significant step towards integrating sustainable, durable, high-performance shower, tap and TMV systems into your designs.

01505 321455 b.link/RoadShow



Beat the heat

Jason Bennett of Zehnder Group UK discusses ways to address the risk of overheating in homes, as summer temperatures begin to rise

The way we build our homes has changed. Allowing more natural light to enter the home – along with better insulation for energy efficiency – are both high on self-builders' wish lists. Yet this combination, coupled with solar gains from south-facing aspects, makes a property high risk for overheating – a modern-day issue that is often overlooked.

Climate change has led to increasing summer temperatures, and the Met Office's future climate projections suggest the temperature of hot summer days could increase again by between 3.8°C and 6.8°C.

Recent summers have already been characterised by extremes in the UK's climate. Temperature records soared beyond 40°C for the first time, and large parts of the country experienced

unprecedented discomfort through overheating, causing many to leave their homes in search of cooler and safer dwellings.

High temperatures in homes negatively impact people's lives. It can cause serious problems with sleep as well as heat stress, and present other major health risks such as heat stroke, impaired sleep and in some cases, even premature death.

Building design often contributes to overheating in new buildings and yet the majority of self-builders are unaware of the dangers and don't factor these into their plans.

DON'T BE A VICTIM OF OVERHEATING

The UK Building Regulations provides guidance on mitigating overheating in residential buildings, and reducing

these effects. Its prescriptive approach to optimising glazing, solar shading and natural ventilation clearly outlines preferred solutions to keeping a property cool.

However, problems occur when external factors dictate that these passive means can't be used to control internal temperatures and ventilate effectively. For example, if planning dictates that windows cannot be opened because of risk of noise, security, or pollution, then the regulations list alternative options. These could be acoustic facade ventilators and mechanical ventilation to mechanical cooling.

HOW DO YOU KNOW IF YOUR PROJECT IS AT RISK, AND WHAT SHOULD YOU DO ABOUT IT?

The first step is to seek an energy assessment or Standard Assessment



Adopting a 'ventilation-first' approach to overheating not only provides a solution to overheating issues, but also protects the indoor air quality within the home

Procedure (SAP) for the build along with an Overheating Assessment. This must be done by a qualified assessor to gauge the risk of overheating in the property and is a process that all new builds must adhere to for compliance with Building Regulations Approved Document O.

This thermal modelling will determine which spaces in the house could be prone to overheating and recommendations can be made for effective solutions – either in specific rooms or the whole living space.

When it comes to solutions, an effective cooling hierarchy consists of stages or options that mitigate overheating issues – some of which are complete standalone solutions and others that are combined, to deliver the required level of cooling capacity.

The predicted effectiveness of these solutions must be modelled in accordance with the guidelines (TM59) in order to demonstrate compliance with the building regulations (Part O), so it is best to consult an expert before finalising plans.

Traditional methods of combating overheating often rely on air conditioning units, but this approach

can have negative effects on indoor air quality. By merely recirculating air, these systems can reintroduce potentially harmful particulates such as dust and allergens, compromising occupants' health and comfort.

These systems use a lot of energy and therefore cost more to run. They also sit dormant through the winter months, resulting in large equipment taking up space that could be better used.

It's time for a different approach.

USING VENTILATION AS A STRATEGY AND SOLUTION TO MITIGATE OVERHEATING

Combining ventilation with a tempered air system can offer a better solution to overheating issues in residential properties and can be designed in conjunction with dynamic thermal modelling.

Adopting a ventilation-first approach to overheating, not only provides a solution to overheating issues but also protects the indoor air quality within the home. Optimising the overall climate within a home to create a comfortable and healthy living environment all year round is essential to the wellbeing of

those living in it.

People wrongly assume that inside the air is clean and safe but indoor air is typically two to five times more polluted than outdoor air due to airborne chemicals and particulate matter. Without effective ventilation, harmful gases and particles can become trapped polluting the air. Ventilation extracts this dirty air providing a constant supply of clean refreshed air into the living spaces.

In most instances, a mechanical ventilation system such as mechanical ventilation with heat recovery (MVHR) forms the base of the strategy for overheating. This can then be adapted accordingly to ensure compliance with best practice overheating guidance – providing two benefits in one.

To determine the best approach to take for your self-build, you should consult with an MVHR designer. They can specify what type of ventilation and air temperation system is needed, as well as offering sized plans to allow for sufficient ducting space.

Jason Bennett is indoor air quality expert and national business development manager at Zehnder Group UK

Bristan refreshes bathroom offering with brand-new taps for Spring 2024

Bristan, the UK's largest supplier of taps and showers, has expanded its portfolio of bathroom products with the introduction of two new tap ranges this Spring.

The two new tap ranges, Molida and Cruzar, have been designed with housebuilders in mind and crafted to the highest standards – in true Bristan fashion.

As Bristan expands its trend-driven offering, the new ranges will provide housebuilders with more choice for their development projects – demonstrated through the unique knurling pattern on the handles of both ranges, the Molida's European-inspired design and the Cruzar's timeless, industrial feel.



Both ranges include a basin mixer, bath shower mixer and bath filler and will include matching showers which will be introduced to the market later this year.

The Molida basin mixer also features Bristan's Eco Start technology. This technology ensures that hot water is only activated when the tap lever is moved from the central position, therefore reducing demand on hot water heating systems.

Taps featuring Bristan's Eco Start technology are estimated to save approximately £80 per year on energy bills, helping homeowners to save up to 10% on energy usage.

Both designs are available in a range of trend-led finishes, including matte black, brushed brass and Bristan's signature hard-wearing ceramic chrome. They also come with long-life ceramic cartridges and Bristan's 10-year guarantee – meaning housebuilders can buy with confidence knowing these ranges have been built to last.

Bristan's finishes have been developed and rigorously tested to meet the highest standards – as a result, they are corrosion and chemical resistant and can withstand everyday life in a modern home.

Jonty Cook, product manager for Taps at Bristan, says: "At Bristan we're committed to maintaining our reputation as the go-to product choice for housebuilders. So, we're excited to



introduce the new Molida and Cruzar ranges to our product offering."

"We value the feedback and opinions of our customers, and this forms a key part of our new product development. With Molida and Cruzar, we're delighted to have designed two ranges that offer housebuilders a wider choice of well-priced products and enable them to cater to the evolving tastes of homeowners."

"As with all of our products, these designs have been rigorously tested, are supported by our exceptional guarantees and award-winning customer service."

0330 0266 273

www.bristan.com/products/bathroom-taps

Quiet transformation for iconic Boys' School

Architects Hawkins Brown have completed a transformative redevelopment at the Central Foundation Boys' School, the 150-year-old top performing comprehensive school in central London. The vision was to rationalise and consolidate the school's several buildings into a cohesive design to allow more efficient use of the campus.

Works included providing a new, purpose-built science building equipped with state-of-the-art facilities along with a new three-court, multi-use sports hall with changing facilities. The tight nature of the site meant that the sports hall was sunken under the courtyard



with rooflights bringing in natural light. It has been designed to comply with Sport England guidance, providing the school with a flexible multi-purpose space that can be used for out-of-hours community activity.

To help combat the problems of poor acoustics and sound reverberation in the sports hall, music and drama rooms, Hawkins Brown specified Troldekt acoustic panels across all the ceilings. Panels were chosen in both grey and natural finishes to provide a discreet look whilst complementing the interior design. Troldekt solutions excel at providing acoustic comfort with a visually attractive, aesthetic tactile surface along with high durability and low-cost lifecycle performance.

Troldekt acoustic panels are available in a variety of different structures and colours, combining superior sound absorption with an award-winning design. The Troldekt range has a minimum expected life cycle of 50 years coupled with excellent resistance to humidity and tested to meet ball impact standards. The range is available in various sizes and structures, from extreme fine to fine.

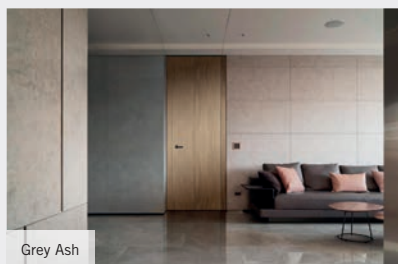


They can be supplied as natural wood, and in the carbon-reduced FUTURECEM™ finished in almost any RAL or NCS colour.

Depending on the panel specified, reaction to fire is classed in accordance with EN 13501 as B-s1,d0 or A2-s1,d0 respectively. Cradle to Cradle Certified® at Gold level, Troldekt wood wool acoustic panels are manufactured using wood from certified forests (PEFC™ and FSC®C115450) and can contribute positively to a building's BREEAM, WELL or LEED points.

bit.ly/3vxoTfq www.troldekt.co.uk

Vicaima present another dimension for interiors with Dekordor® 3D



Grey Ash



Grey Oak



Arctic Oak

Popular for over a decade, the Dekordor® 3D range from Vicaima has long been a first choice with specifiers of living and working spaces. With its attractive textural and hard wearing surface, ideal for contemporary surroundings as well as demanding locations; this competitively priced interior timber door or door kit has much to commend it for both modern private dwellings and social environments. Now, with innovation and inspiration firmly in mind, the range has been re-imagined for a new generation of specifiers, with no less than 15 tonal and textural options, making flexible design and performance, available to suit a wider range of project budgets.

While colours like the original horizontal Grey remain as popular today as it always

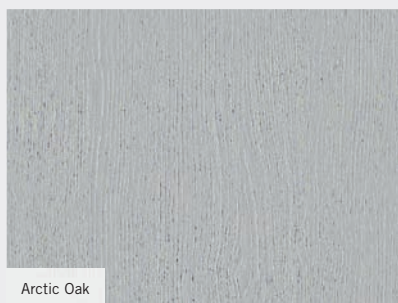
was, a fresh palette has been introduced to satisfy modern trends and encompassing both vertical and horizontal textured faces. For those who seek the neutrality of crisp and light colours, Arctic and Silver Oak blend perfectly with busy surroundings and make excellent use of light in small spaces. Conversely, where rich warm tones would be ideal and needed to emulate otherwise expensive alternatives, Chocolate, Urban and light Walnut provide the perfect solution. However, if the desire is to embrace a more monochrome look, new Carbon Black, Grey Oak or Cloud White could provide the answer.

Dekordor® 3D is not just about door appearance either. It can be provided in the full gambit of performance solutions from Vicaima. Manufactured with fire (whether

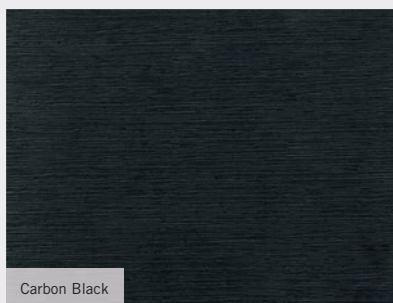
FD30 or FD60), security (including dual scope and SBD accreditation) and acoustic certification (ranging from 34 to 45dB) the range can be supplied as part of a matching door assembly and with associated joinery such as skirting and wall panels. Furthermore, with flexible design options such as factory glazing, decorative grooves and inlays are also possible. In short tailored to your project needs, whatever they may be.

For more information about the Vicaima Dekordor® 3D Range take a closer look now by downloading the brochure or request a colour sample of your chosen finish by emailing.

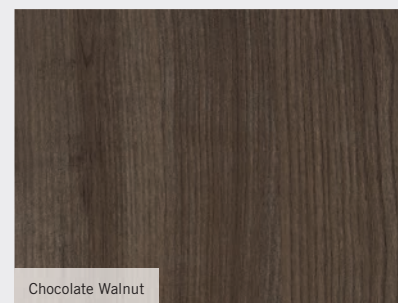
marketing@vicaima.com
www.vicaima.com/files/files/catalog/vicaima-dekordor-3d-quadrilingue.pdf



Arctic Oak



Carbon Black



Chocolate Walnut

The latest in designer bathroom cabinets from KEUCO

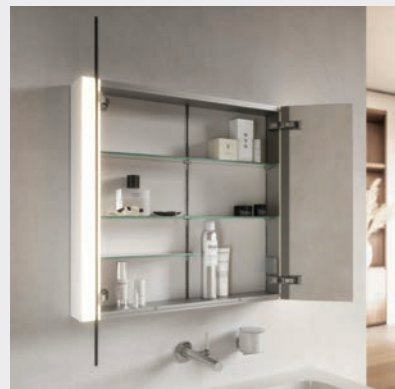
Whether refurbishing or creating a new bathroom the SOMARIS mirror cabinet is a sleek and stylish addition. The appearance is minimal and precise, with no decorative handles, additional trims, or finishes. The sides of the cabinet are available in four different finishes, mirrored, white, black and an oak



wood style surface. The cabinet can be either wall mounted or recessed depending on the available space.

The doors are mirrored on both sides and can be configured as either a classic symmetrical cabinet or as an asymmetrical version. As the cabinet is not split down the middle there is a door that can be opened without disturbing the full mirror image on the other side.

The main body of the cabinet is made from long lasting and sustainable aluminium, which is not affected by the moisture in a bathroom. It has technological advantages too, all the controls easily located underneath the cabinet, and it can be operated whether the doors are open or closed and the icons on the mirrored surface indicate which buttons are situated below. The LED lights at the sides provide perfect illumination for washing, shaving and the application of cosmetics, but can be dimmed if needed. The optional mirror heater ensures a clear reflection after



showering, and automatically switches off after 20 minutes.

The interior of the cabinet is storage heaven, the glass shelves can easily be adapted to accommodate the different heights of a variety of bottles and jars and the electrical socket at the side enables a toothbrush to be re-charged inside the cabinet. Protected by a hinged cover the port can be accessed as needed then hidden safely away when finished.

01442 200050 www.keuco.com

The science behind good acoustics

The new workspace at AstraZeneca UK's head office in Kings Cross, London has been designed by Ekho Studio and spans over 21,000 ft² across two floors. The company wanted to use its new King's Cross HQ to drive collaboration and innovation further with its relocation to London's new 'Knowledge Quarter' bringing them closer to their broad network of healthcare partners to enable them to work in ambitious, purpose-led partnerships.



As part of the stunning design, Ekho Studio used Troldekt's acoustic wood wool panelling as part of the specification to combat issues around acoustics and reverberating sound. The design embraced a lot of hard surfaces – from break-out areas and open plan offices stretching around meeting rooms. This, coupled with the full-height windows to maximise natural light all have an impact on acoustic performance.

Troldekt acoustic panels are available in a variety of different surfaces and colours and combine sound absorption with a tactile surface. With an expected life cycle of at least 50 years and resistance to humidity and impact, they are available in various sizes and four grades, from extreme fine to coarse. The panels can be left untreated or painted in almost any RAL colour. Depending on the panel specified, reaction to fire is classed in accordance with EN 13501 as B-s1,d0 or A2-s1,d0 respectively.

Cradle to Cradle Certified® at Gold level, Troldekt wood wool acoustic panels are manufactured using wood from certified forests (PEFC™ and FSC®C115450) and



Photos: Billy Bolton

can contribute positively to a building's BREEAM, WELL or LEED points.

Samples, case studies and technical guidance is available from the website.

sales@troldekt.dk
www.troldekt.com

Elegant floors from Bjelin grace a London home

Bjelin has made possible a tasteful renovation of a 1920s London home, using 90 m² of VEJBY 3.0 XL flooring. The transformation of the house allowed the owners to realise their dream of bringing their love of Scandinavian design to the heart of England.

Bjelin hardened wood floors are made with oak, ash or walnut from sustainable sources of timber with FSC® certification. The unique Woodura® technology makes the manufacturing process much more efficient and environmentally friendly in terms of timber usage than traditional processes. Indeed only a tenth of the material normally used in hardwood flooring is required in the manufacture of Bjelin products.

From an aesthetic point of view, every Woodura Plank 3.0 is different, and the beauty of the natural woodgrain is maximised. It also creates a stronger and more durable surface with a hardness three times greater than a traditional solid wood floor.

On this project the flooring was chosen late in the process after the building plans had taken shape and the wall colours had been decided.

"We knew we wanted wooden floors," explains Sandra, the owner. Following a visit to distributor V4's showroom in Woking, she and her husband settled on Woodura Planks 3.0, because of their aesthetic and functional appeal, ease of installation and durability.

"My husband laid the floor himself, with the help of a friend who's a carpenter, and



they found it easy to install," says Sandra. "Only the house's age, with few straight lines, provided some challenges."

VEJBY 3.0 XL in the Misty White colour offered the perfect combination of light wood beauty and practical maintenance, complementing the owners' desire for a bright and airy atmosphere.

They find that the light-coloured, brushed surface is both attractive and also comfortable to walk on, creating a welcoming atmosphere in their home.

Bjelin Hardened Wood floors are customised for both the residential and the commercial sectors. The products are available in a full range of sizes, including Small panels, measuring 1170 x 151 x 9.2 mm to fit easily into cars and vans, along with Medium panels of 2000 x 151 x 9.2 mm, complementing the wide XL (2200 x 206 mm) and XXL (2378 x 271 mm) floor planks.

uk-sales@bjelin.com
www.bjelin.com

Drill-free niches and shelves from Schlüter



Schlüter Systems offers a portfolio of shelves and niches which eliminate the need for drilling; while providing valuable, stylish storage. The Schlüter-SHELF collection includes several shapes to fit in a corner as well as an option that

can be installed anywhere within the wall area if it is in line with the grout joint. Installation is easy as no drilling is required, and the shelf simply integrates into the grout joint with the use of a sealant. A benefit of choosing the corner options is the versatility that comes with it – the shelves can be retrofitted, creating an effortless update without having to make big changes to the bathroom.

www.schluter.co.uk

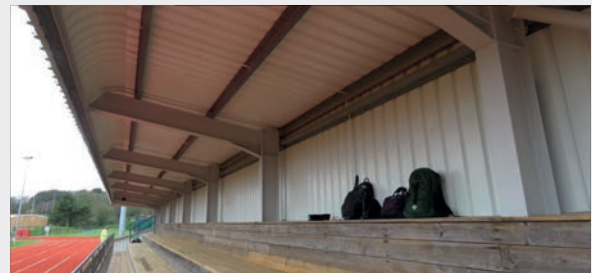
FlameOut Breathe used for project



ITP's FlameOut Breathe flame-retardant breather membrane was specified for the redevelopment of the Stephenson building at Newcastle University. FlameOut Breathe was supplied via builders' merchant, M Markovitz, and installed by leading facade specialists, Keyclad. Providing high

breathability to facilitate the release of water vapour and protect the condition of the building envelope, its advanced membrane technology combines W1-rated water tightness with a B-s1,d0 fire safety rating which is independently tested to EN 13501-1.

01347 825200 www.itpltd.com



Athletic stadium win for HMG Paints

HMG Paints deserves a lap of honour after a suite of its products were used to refurbish a rusting spectators stand at Plymouth athletic stadium. Rabart Decorators Centres worked with HMG Paints to provide the detailed specification needed to tackle the corroded structural steel beams of the stand. Once the area was prepared with a thorough clean to remove all loose material Ferrozinc Rust Converter was used to tackle any remaining rust. This was followed by a coat of HMG's BDX Synthetic Primer, a high-build, anti-corrosive alkyd primer and then two coats of C71 Speedline, a high quality, single pack synthetic alkyd topcoat enamel. "We've worked with HMG Paints for about three years," explained Peter Bird, Area Sales Manager for Rabart in Devon. "Everyone using it loves the products. It's my go-to system for jobs involving metal and offers good protection against the local environment." The products were brush and roller applied for this job although spray is also possible dependent on the situation.

0161 205 7631 shop.hmgpaint.com

Sound reducing membrane part of roof system at scheme

CMS Danskin Acoustics has supplied an innovative sound reducing underlayment, designed specifically for external use, as part of the roof systems at the prestigious new 38 Berkeley Square development in Mayfair, London.

When complete in September 2024, 38 Berkeley Square will provide 7,897 m² of office space over nine upper storeys plus retail space at ground and lower ground floors and terrace gardens. The new build scheme is being developed by Berkeley Estate Asset Management, the main contractor is the Mace Group and the architects are Piercy & Company.

1,425 m² of 'REGUPOL sound and drain 22' have been incorporated to counter vibration and noise from rooftop plant, rain and footfall. This acoustic product achieves sound insulation levels of 28 to 37 dB. Developed for use on rooftops, terraces and balconies, it has a dimpled profile underside to give good drainage and water flow capacity

and is rot-proof.

'REGUPOL sound and drain 22' was selected for the project, satisfying the acoustic performance specification developed by acoustics consultants Clarke Saunders, which took into account the location of two air source heat pumps and an air conditioning unit on the roof deck and the demanding requirements for limitation on sound transfer into the offices below. CMS Danskin Acoustic's technical team advised on materials to meet the criteria set.

Supplied to the scheme's roofing system provider Radmat, 'REGUPOL sound and drain 22' was incorporated as part of both the porcelain tiled roof terrace build-up above the cross laminated timber (CLT) deck and the planted green roof. Installation was undertaken by All Metal Roofing.

Made from recyclate, 'REGUPOL sound and drain 22' is 15 mm thick and has a load bearing capacity up to 50 kN/m².

It has also been used in schemes such as:



The Marienturm in Frankfurt am Main – a 38-storey building primarily occupied by offices; Ikea West Station in Vienna; the Lindley Lindenberg – a boutique hotel in Frankfurt; and the Volkstheater in Munich.

'REGUPOL sound and drain 22' is a Bronze level Cradle to Cradle Certified® product. Cradle to Cradle is a multi-attribute standard for designing and making products that enable a healthy, equitable and sustainable future. Cradle to Cradle Certified® is a registered trademark of the Cradle to Cradle Products Innovation Institute.

CMS Danskin Acoustics is the UK distributor for REGUPOL noise and vibration reduction products.

01925 577711 www.cmsdanskin.co.uk

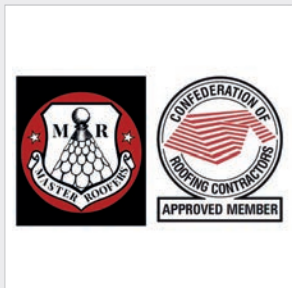
Sto maximises thermal efficiency and aesthetics for retrofitted homes



In partnership with E.ON and Green Homes Solutions, Sto has enhanced energy efficiency for Cheshire residents while maintaining the traditional appearance of their homes. All the properties have been upgraded with Sto's external wall insulation (EWI) system. Installed by Green Homes Solutions, the EWI system is improving the homes' thermal performance by reducing heat loss and energy consumption while protecting the properties from weather damage. The risk of condensation, damp and mould has also been minimised. To meet the needs of residents, who did not want the look or feel of their homes to change, Sto's solution included a range of products designed to replicate the homes' traditional brick appearance and complement architectural details. This saw StoCleyer B brick slips, StoDeco profiles and StoFentra Duo windowsills installed on each property. The StoCleyer B brick slips offer a realistic brick appearance with a durable, weather-resistant finish. The StoDeco Profiles replicate stone architectural detailing on the window heads and are manufactured using a lightweight material that is easy to install.

0330 024 2666 www.sto.co.uk

A. Proctor Group joins the CORC and the Association of Master Roofers



The A. Proctor Group has become a member of both the Confederation of Roofing Contractors (CORC) and the Association of Master Roofers. For nearly 50 years, the Group has provided the construction industry with technically advanced thermal, acoustic and membrane products. A history of technical innovation and promoting good practice has led to close links with industry, allowing the Group to keep pace with the evolving requirements of the construction industry. Being members of the two organisations will further develop those links. As a 4th generation family business, the A. Proctor Group recognises the importance of respecting tradition and preparing for the future, and wants to be involved in educating the next generation of roofing professionals. "Good communication is essential to a healthy and sustainable construction industry," said Keira Proctor, managing director of the A. Proctor Group. "Joining the CORC and the Association of Master Roofers gives us the opportunity to better understand the requirements of roofing contractors. Accordingly, we can explain the benefits of our existing products, and new solutions we develop in future."

01250 872 261 proctorgroup.com

Senior makes window ventilation a breeze

Meeting the individual ventilation requirements of different buildings can be a challenge, which is why leading aluminium fenestration solutions manufacturer Senior Architectural Systems has developed a range of specialist products including a Louvre Guard system and automatic opening ventilation (AOV) aluminium windows.

Senior's Louvre Guard system is a stylish aluminium louvre which is compatible with the inward opening designs of the company's popular SPW600 and PURE® windows. It is ideal for high-rise buildings where ventilation



strategies must address the need to reduce the risk of occupants falling from windows. Easy to install, Senior's Louvre Guard comprises an external adaptor and oval shaped blades which are fixed to the outside of an inward opening window. The system can be fixed through the face of the window or through a bespoke coupling mullion to maintain the thermal barrier.

Available either in anodised silver or bronze, or in any standard RAL colour, Senior's Louvre Guard system adds an extra design element to give any building a distinctive look. The blades can be positioned horizontally or at any angle up to 45° in either direction, and has been tested to 3 kN for barrier loading at a maximum blade span of 1,000 mm.

Senior can also offer a high performance aluminium window system with automatic opening ventilation (AOV). Based on the same aesthetic design as the manufacturer's popular SPW600 aluminium window system, Senior's AOV version is fitted with a smart actuator which allows for quick and automatic ventilation in the event of a fire to



help to remove smoke from the air.

The three chamber 75 mm polyamide window system has been designed to achieve impressive thermal performance and is available in a wide range of colours and can be top, side or bottom hung.

For more information on Senior's extensive range of aluminium fenestration solutions, please visit the website or download Senior's Specification Guide from the resources section.

01709 772600
www.seniorarchitectural.co.uk

Proctor Air® provides peace of mind for apartment residents during essential reroofing works

A significant challenge when working on the roof of any existing, occupied building is protecting the people inside the building without the full roof system in place. That challenge is multiplied when the building in question is large and work has to be carried out in sections over a longer period of time.

At Hatchmeadow apartments in Northumberland, a key performance characteristic of Proctor Air that helped to address these challenges was its water holdout. That, combined with its vapour and air permeability, offered long-term peace of mind for the building owners, as well as apartment residents.

The roof included an area of solar PV panels, so the new roofing system had to be capable of providing weathertightness and condensation control in several different circumstances across the single building – all while residents remained in occupancy during the work.

USING PROCTOR AIR AS PART OF A 'BELT AND BRACES' SOLUTION

James Roy, senior quantity surveyor at Wensley Roofing, describes the replacement roof system as a "belt and braces" approach.

"The specification used Proctor Air over the rafters, followed by counter battens, tile battens, and a new pantile finish," he explained. "We even



used butyl tape over the nail holes to provide a complete seal against rainwater."

At the time of writing, Wensley Roofing are about halfway through the reroofing work. "Some of the residents were having to use buckets to catch leaking water," said James. "Since installing this new system the leaks have now stopped, and there has been some bad weather."

HOW HAS PROCTOR AIR HELPED THE REROOFING PROCESS?

The attention to detail required to deliver the thorough specification, coupled with the size of the Hatchmeadow apartments roof, has naturally restricted the pace at which the work can be delivered. As a premium roofing membrane, Proctor Air has helped to alleviate any concerns

about leaving the underlay exposed for short periods of time.

"The belt and braces approach has made labour a challenge on this project," said James. "But with the Proctor Air membrane in place, we've been comfortable leaving it exposed for a couple of days if necessary, knowing that residents in the apartments below are still protected."

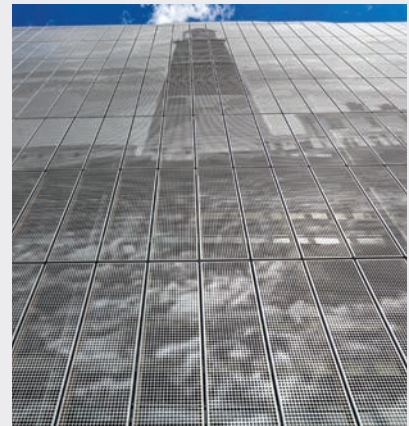
This reassurance is possible because Proctor Air is rated W1 under EN 13859-1, with over 1m Head of Water, and has hydrophobic additive in all three of its layers. Its water resistance meets the guidance of NFRC's Technical Bulletin 6. Additionally, the membrane can be left exposed to UV for up to three months.

Proctor Air allows the underlay to be used on roofs featuring solar PV, as long as a ventilated batten space is provided. This is in addition to tightly-jointed slates, tiles and metal sheet, all of which would also normally be considered vapour impermeable.

Because the Hatchmeadow apartments specification featured a counterbatten layer, Proctor Air could be used with confidence across the entire roof, including under the existing area of PV panels.

01250 872 261
proctorgroup.com/products/proctor-air

Meeting the challenge of combining aesthetics and regulations at Dorset County Hospital MSCP



Dorset County Hospital is located just outside Dorchester town centre. This modern hospital provides a full range of district general services, including an accident and emergency department, and links with satellite units in five community hospitals. As the main provider of acute hospital services to a population of around 300,000, ample parking space is required at all times. It was decided that a multi-storey car park (MSCP) should be built to keep pace with demand. Due to new and stricter public regulations combined with the desire for aesthetic freedom, the task presented several challenges.

The design and construction of multi-storey car parks are receiving a lot of

attention in the UK. It gives status to develop aesthetic garages and prizes are awarded every year for the best MSCP architecture – RMIG Solutions has contributed to many significant projects within this field.

At the same time, the regulations and legislation for MSCPs are being tightened all the time in the UK. This applies to the guidelines for light and ventilation, and to a large extent to the rules for fire safety.

RMIG Solutions joined the project at an early stage and their experience and expertise within this field was a great advantage, enabling those involved to find the best possible solution.

After a public vote, three images from the beautiful Dorset countryside had been

selected for illustration on the facade, and had to be processed so that the perforated pattern creating the images could meet the requirements for open areas for light and ventilation.

The images were successfully processed and the results were remarkable! Through a bit of wizardry, it was possible to change the photos to landscape format and at the same time let in light and air for the users. This made it possible to merge the creative wishes of the architects with what was technically possible. It is always a compromise when it comes to MSCPs, but even though ventilation requirements reduce the contrast in the images, they still stand out and give residents a great impression of the Dorset landscapes.

Finally, numbers could be stamped directly on each element in the production line so there was never any doubt as to where and in what order they should be installed. This made the on-site mounting process much easier.

01925 839610 www.city-emotion.com



TECHNICAL CHARACTERISTICS

Size of the project: 3,400 m²
Material: Novelis ff3® coil-coated aluminium
Pattern: RMIG ImagePerf
Thickness: 3.0 mm
Finishing operation: Bending

EJOT Colorfast chosen for Kingspan's highly sustainable new Asian factory

More than 120,000 EJOT Colorfast self-drilling fasteners have helped Kingspan to create a thermally superior, visually-appealing building envelope for its first purpose-built manufacturing plant in South East Asia. The 16,000 sq. m factory at Phu My Town in Ba Ria-Vung Tau Province, Vietnam, will enable Kingspan to grow its presence in the wider Asian region by providing a state-of-the-art plant to manufacture its market-leading Quadcore and mineral fibre insulated panels.

As a 'greenfield manufacturing facility', architects IntES and Kingspan were able to take advantage of a 'blank canvas' to design and build a facility with exceptional eco-credentials.

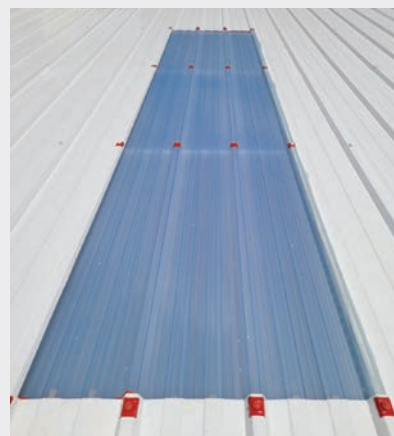
How Colorfast supports zero carbon goals

Installed by main contractor TUAN LE Construction, the building envelope features a total roof area of 14,500 sq. m, formed using Kingspan Quadcore KS1000RW insulated panels and KS1000DLTR (Day-Lite Trapezoidal Rooflight) polycarbonate rooflights. All of the fasteners used to create the envelope were EJOT products, mainly Colorfast over-moulded fasteners which utilise EJOT's JT3 bi-metallic self-drilling screw. These were coloured in White for the main roof fix and Poppy Red with storm washers for the rooflight detail.

Colorfast was able to make a positive contribution to the long term performance of the building envelope and, hence, the sustainability of the factory as a whole.

As an FM Approved fastener, Colorfast has been independently assessed and its performance verified under a globally-recognised certification scheme. The stringent testing undertaken by FM Approvals considers fasteners within a complete assembly, rather than in isolation, which was extremely important to the architects on this project.

Key to Colorfast's performance is its ability to provide a consistent seal above the sheet, maximising insulation and airtightness as well as reducing the risk of water ingress. The fastener's head is formed by over-moulding a nylon compound which is precisely formulated to offer reliable UV stability for lasting visual aesthetics. The head



can be matched to around 400 colours in line with recognised colour matching system such as RAL, NCS and Pantone, as well as the British Standards (BS) colour palette – the colour system on which Colorfast was first developed.

Thermal insulation optimised

The JT3 Colorfast fasteners were specified in bi-metallic stainless steel as this material is more suitable for the hot, humid Vietnamese climate than carbon steel fasteners. Stainless steel has the obvious longevity benefit in that it is more resistant to corrosion, but this material choice also offers lower thermal transmission values, meaning heat transfer from the outside to in and vice versa is reduced. Colorfast's nylon moulded head provides further resistance to thermal transmission, which would not have been the case if powder coated or painted screws were used. The small gains achieved at individual fixing locations added up to a significant benefit over the thousands of penetrations across the roof's surface.

The end result was the creation of a building which will benefit from a stable internal environment with the lowest levels of energy consumption. This is not only important to the Vietnamese government, which has pledged to achieve net-zero carbon emissions by 2050, but also to Kingspan as it creates the infrastructure and production facilities required to meet its Planet Passionate goals.

In addition to strategies for reducing water consumption, cutting landfill waste and utilising only renewable energy to power its operations, the specification of Kingspan's existing facilities and new buildings will be enhanced. One of the ways this will be achieved is through the use of advanced building materials and components as the new Phu My Town factory demonstrates.

Supporting the expanding SE Asian market

EJOT Group is one of the European companies responding to serve this growing market, not only in Vietnam but across South East Asia. The Group has already recently invested in opening an office in Singapore and it will shortly be creating a presence in Vietnam to offer local support backed with global technical expertise.

This model has been instrumental in Colorfast's evolution from its initial purpose as a UK market-focused product when it launched over 30 years ago, into a fastener with appeal in construction markets around the world. One of the reasons for this is the increased adoption of European building performance standards, which have traditionally been regarded as the world's most demanding, in other continents, particularly Australasia.

info@ejot.co.uk
www.ejot.co.uk/Colorfast_Kingspan_Vietnam_Case_Study

What lies beneath?

Julian Thurbin of Wallbarn explores the key factors to consider when specifying the infrastructure beneath decking or paving that may be hidden, but is essential

A well-designed, specified and installed decking or paving area can form the crowning glory of an outdoor space. But what lies beneath these new-build or retrofitted spaces is key to ensuring their safety and long-term performance.

Many decked, paved or tiled areas are supported by a hidden substructure of pedestals or rails which must be robust enough to withstand loads placed upon them as well as being weatherproof, rot-proof, durable and long-lasting. This is especially important for public areas and if designers expect heavy traffic and/or planters, street art or heavy furniture on the suspended surface. Substructures must also offer flexibility to deal with deck falls, interruptions in the deck surface, and different surface finishes.

Therefore, understanding how the space is going to be used (domestic or commercial; public or private; fire-rated; multiple levels?) lays the groundwork for selecting the most appropriate and cost-effective substructure to support the decking or paving selected.

Paved hard landscaped areas supported by pedestals have slim gaps – millimetres wide – between pavers. These are formed when slabs are clicked into place on special lugs attached to pedestal headpieces. Lugs hold the floor elements in position and the gaps facilitate drainage, with rainfall directed into channels beneath the hard landscaping, either at street or roof level. This system also creates an opportunity to collect rainwater for recycling, on blue roofs for example. Decking will have a joist beneath the boards connected using mechanical fixings/clips. Often the joists will be laid onto adjustable plastic pedestals

Floating floor

Entry level fixed-height solutions to self-levelling, adjustable height, heavyweight and Class A fire-rated pedestals all provide a 'floating floor' with uniform flat surfaces separating paving/decking from the base structure, improving drainage and



protecting the surface beneath.

Pedestals require no penetrations of roof membranes (there are no mechanical fixings), protect the roof finish, are lighter than bedding into mortar, and provide a quick and cost-effective way to transform areas into usable spaces. Paving can be lifted to allow access to the roof deck if required.

Specifiers and contractors have a wide choice of pedestals, substructure systems and paving/decking finishes. But there are pitfalls to be avoided and key decisions to be made to ensure the required finish and performance is achieved.

Class A?

Is the project at height, and within scope of Approved Document B, and BS 8579, BS 8579:2020 Guide to the Design of Balconies and Terraces? If so, only Class A non-combustible metal pedestals, substructures and fixings, and Class A paving can be specified in order to comply with relevant Building Regulations.

There are a number of solutions marketed as 'fire-safe' but it's worth making sure that the system manufacturer/supplier can demonstrate compliance and that the pedestals do not have flammable elements such as rubber 'gaskets.'

Understanding how the space is going to be used lays the groundwork for selecting the most appropriate and cost-effective substructure





Expect pedestal weight tolerances of up to two tonnes and height ranges from 26 mm to 675 mm via threaded stems. Good Class A pedestal systems will be compatible with a range of height-adjustable profiled aluminium joists and rails to form a strong substructure frame to create Class A decking or terrace.

The retrospective ban on combustible materials in the external walls of high rise buildings above 18 metres (11 metres in Scotland) has compelled building owners to remove such materials from at-height balconies and replace them with Class A non-combustible products in order to certify buildings safe via the EWS1 Form. For these projects consider speaking with a supplier who can assist in creating a pedestal layout, as it can be difficult to ascertain exactly what lies beneath a wooden or PVC deck until strip-out begins. Having a supply partner that's able to quickly and accurately estimate and lay out the height and position of pedestals is extremely useful to specifiers.

Usage

Will the newly-created or refurbished space be open to the public, subject to high footfall, vehicular movements, and will it be supporting heavy furniture, planters etc? Understanding the usage is important to ensuring that the pedestal system can withstand the required weight tolerance long-term.

Failures can happen when an unsuitable product is installed. We were called in following the partial collapse of raised paving on a public roof area. Lifting slabs around the affected area revealed that the architect's specification for quality pedestals with independent laboratory certification had been disregarded in favour of a cheaper alternative – injection moulded plastic pedestals with a large proportion

of chemical fillers. The pedestals became brittle in cold temperatures and shattered. The original specification was not met, therefore the contractor was held liable for the claim.

What to look for? For standard plastic pedestals, a weight tolerance of 680 kg and temperature tolerance of -40°C to +75°C is more than achievable. Heavy duty plastic pedestals can offer a weight tolerance of over 1.5 tonnes each with a breaking point of two tonnes. Standard metal pedestals can withstand two tonnes.

Both plastic and metal pedestals are available in self-balancing systems, allowing installers to deliver super flat finishes even when deck surfaces are uneven (for example felt overlaps, blemishes, ridges etc) or when paving slab thickness varies.

Leading pedestal systems include all this plus self-levelling headpieces, positioning lugs, the ability to change pedestal height post-installation and a variety of heights (from 10 mm to 1 metre plus) to accommodate changes in deck heights, thresholds etc and work around deck obstructions. The substructure system of a platform of aluminium rails fitted to adjustable pedestals, then the tiles or decking fixed to them creates a laterally stable and ultra hard-wearing raft, improving the performance of the paving or decking system and allowing a greater degree of finishing and furnishing options as well as being able to accommodate more foot traffic.

Suppliers who offer a full and compatible substructure (a rail system connected to pedestals for tiles and decking) means that clients know all the individual elements connect effectively and they can source the entire system – pedestals, substructure and tiles/paving/decking – from one source.

Julian Thurbin is director of Wallbarn

A. Proctor Group's new Proctor Air® membrane awarded BBA certificate

Following its successful launch in 2024, Proctor Air has now been issued with a BBA certificate.

Specifiers, Housebuilders and Roofing Contractors therefore have the all important verification from an independent third-party that the membrane performs as claimed.

As a 4th generation family business with a history of technical innovation and promoting good practice, the A. Proctor Group Ltd advocates working with certification bodies like the British Board of Agrément to bring new product technologies to the market.

Proctor Air fits that category, being a roofing membrane designed for the future. It simplifies pitched roof constructions thanks to being both air permeable and vapour permeable. In addition, its water holdout performance and wind uplift resistance ensure it is able to cope with the more frequent extreme weather driven by climate change.

"An Agrément certificate assesses a construction product's fitness for purpose,"

said Iain Fairnington, technical director at A. Proctor Group.

"Having a BBA certificate for Proctor Air shows we have had the product tested and assessed in relation to its intended use."

A. Proctor Group enjoyed a collaborative relationship with the BBA while getting Proctor Air certified. Monthly meetings with the designated BBA project manager ensured both parties could update each other on progress, and maintain ongoing dialogue with regard to testing schedules and product sample needs.

Certification showing that a third-party has tested and verified the performance of a product gives the construction industry confidence that a manufacturer's claims are genuine and accurate.

Proctor Air has an Sd value of 0.015 m and a vapour resistance of 0.075 MNs/g, making it one of the highest performing vapour and air permeable membranes on the market.

It is an air permeable low resistance (APLR)



underlay, which provides a more uniform flow of air through the roof space than normal vents.

A unique feature within Proctor Air's BBA is the inclusion of the use of Proctor Air below PV panels. These would be treated similarly to a tight fitting outer covering.

For more information visit the website.

01250 872 261

proctorgroup.com/products/proctor-air

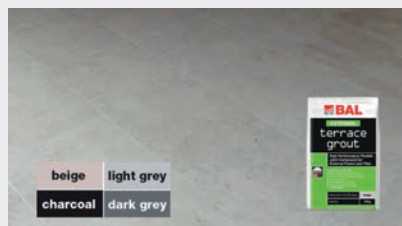
Safe and long-lasting external tiling installations with BAL

The last few years has seen a massive increase in the popularity of external tiling installations using a range of materials, but primarily external self-supported porcelain (typically 20 mm porcelain), slabs, pavers and natural stone.

On method of fixing is on existing or new concrete bases.

This direct fixing method is essentially the same as internal tiling and can be used for patios, terraces or driveways.

The caveat being that expansion joints need to be incorporated into the subfloor,



and falls will need to be added to ensure rainwater drains away fully.

An effective DPM should also be incorporated into any direct-to-earth subfloors – this is essential to protect the tiles from any subfloor moisture.

Where necessary, you can level the fully cured surface with an external leveller, such as BAL Level Out. BAL Level Out can mixed whereby the water content can be reduced slightly if gradient levelling has to be carried.

If a leveller is used, then protect this from adverse climatic conditions until hardened.

Once the leveller is cured, external tiles, porcelain, slabs, pavers or natural stone can be fixed using a suitable external tile adhesive – such as BAL XL Floor One.

Some external tile adhesives – such as XL Floor One – can be used directly onto tamped concrete without the use of a leveller – this may be an option if there are time or budget constraints.

Backbuttering of the tiles should always



be considered – particularly on heavily keyed tiles to ensure 100% coverage.

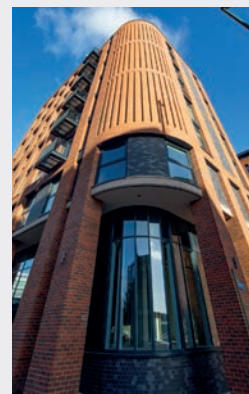
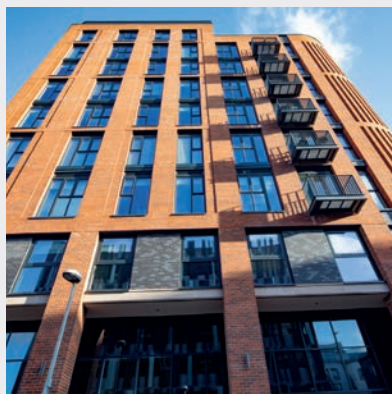
A full contact bed of adhesive is required – as spot fixing is against British standards and leads to failures and staining.

Once the adhesive is dry, grouting can commence with an appropriate cementitious tile grout which is approved for external use.

BAL has a special high-performance Terrace Grout which has been designed to protect against the elements and high foot traffic. It is available in Dark Grey, Light Grey, Beige, and Black.

01782 591100 www.bal-adhesives.com

Trio of Senior products used in new Nottingham residential scheme



Three is the magic number for Senior Architectural Systems as solutions from the manufacturer's extensive range of aluminium windows, doors and curtain walling help complete The Barnum – a new residential development on Nottingham's Queen's Road.

Designed by Franklin Ellis Architects, and built by main contractor Graham Construction, the new nine storey building has been developed by Blockworks, a joint venture between Bloc Group and Network Rail. The project, which is one of the largest recent developments in the city, has been built on

what was a vacant site next to Nottingham's railway station, helping to regenerate the wider area and provide a boost to the local rental market.

Senior collaborated with specialist installer Duplus Architectural Systems to specify three of its most popular products, including its award-winning PURE® window system which has been installed throughout the 345 individual apartments. Producing exceptionally low U-values thanks to its patented thermal design, both tilt/turn and casement window styles have been used.

Safety and security throughout the development has also been enhanced through the use of Senior's SPW501 aluminium commercial door. This high performance, thermally broken polyamide aluminium framing system is ideal for busy environments and is available in multiple configurations and designs. On the ground floor communal areas, the facade design has benefitted from Senior's slimline SF52 aluminium curtain wall system.

01709 772600
www.seniorarchitectural.co.uk

Ventilated aluminium wall cladding for data centres

More and more companies are turning to external computing power for their business. Instead of in-house servers, they rent from data centres, large buildings with lots of servers. The computing capacity of the numerous servers results in a large amount of heat generation. To protect the servers from overheating and maintaining the architectural integrity of the building, ventilated aluminium wall cladding is the perfect solution to finish of these critical buildings.

Prevent overheating

No well-functioning data centre without enough air conditioning. To conceal the essential AC's while ensuring a sufficient supply of fresh air to enable cooling, a louvred aluminium facade is a smart choice. Renson's Linius system combines quality and aesthetics in a sustainable wall cladding system.



The horizontal aluminium Linius slats form a new facade, around the outer shell of the data centre. This solution has been an established feature of Renson's range for many years and has been used in a wide variety of industrial and commercial projects. Throughout the years, Renson optimized and further developed the louvres, according to feedback from the field.

Demountable facades are the future

Server technology is evolving at lightning speed. When building data centres, companies are already thinking about how to replace servers quickly and efficiently in the short term. A fully demountable facade makes this complex process much faster, simpler and safer. From a deep-rooted sense of innovation, Renson's CSI department develops and tests new Linius concepts to provide a ready-made answer to this challenge. Meanwhile, the Linius cassettes already proved to be a good solution for building this kind of demountable facade. The wide range of blades ensures that there is always a suitable type available. Thanks to the extensive range, large spans, for example, pose no problem at all. A combination of blades (including acoustic or water-repellent types), supports, and integrated doors consistently provides a customized solution. With a RAL colour of your choice as the finishing touch.

www.renson.net

FabSpeed launches CMS40, the lightweight brick facade system.



Introducing the CMS40 Facade System by FabSpeed, a Michelmersh Group brand, in collaboration with fellow industry leaders, Cladmate Facade Systems.

The CMS40 is a lightweight, easy-to-install, cost-effective system that integrates mechanically fixed, non-combustible brick slips to offer the beautiful clay aesthetic that we all know and love. It is suitable for multiple construction projects, ranging from volume high or low-rise projects to new builds or retrofit applications and can be applied to both indoor and outdoor facades. By seamlessly blending traditional brickwork aesthetics with advanced rain screen cladding solutions, CMS40 sets a new standard in architectural versatility and performance.

CMS40 offers numerous benefits, including reduced on-site labour meaning shorter project durations, installation cost savings, improved production safety and quality procedures, enhanced precision and environmental advantages through waste reduction, system recyclability and re-use.

Pairing the innovative CMS40 system with the durability and longevity advantages of clay bricks, in an easy-to-install system, reinforces its appeal in the wider construction industry. Renowned for their strength, fire

resistance, thermal and acoustic performance and beauty, clay bricks provide enduring quality alongside their famed long-life expectancy. With a variety of colours and textures, clay brick slips offer unparalleled design flexibility and adaptability which can evolve over generations whilst also complementing change in architectural vision. With confidence in CMS40's versatility, why not choose a less standard brick bond or even projecting brickwork patterns to give your facade more depth?

Furthermore, the CMS40 support system incorporates 70% recycled aluminium as its primary component and as such is fully recyclable, promoting circular principles, similar to its clay brick counterpart. Its dismantlable and reusable nature coupled with clay brick slips, can ensure a full aesthetic revision with only mortar replacement, ensuring it aligns with sustainable building practices and makes it an ideal choice for secondary applications.

CMS40 stands ready to be adorned with a wide selection of clay brick slip products from Michelmersh's core range. Additionally, FabSpeed's team of skilled craftspeople can customise slips from various manufacturers' clay products, providing tailored solutions to

meet every project's challenges.

Certified for fire safety and environmental standards, CMS40 has undergone rigorous testing, including BS 8414-2:2020 and CWCT standards, with BBA certification covering both Parex lime-based and Instamac cement-based mortars. This lightweight framework system not only reduces structural load but also boasts an A1 non-combustible rating, ensuring safety throughout its lifecycle.

CMS40 is available through FabSpeed with components which can be supplied directly from Cladmate to offer an efficient and reliable supply chain. FabSpeed's integration within the Michelmersh Group and its decades of readily available expertise on brick finishes and design aspects will ensure that designers looking for a lightweight and innovative prefabricated facade system will be in safe hands.

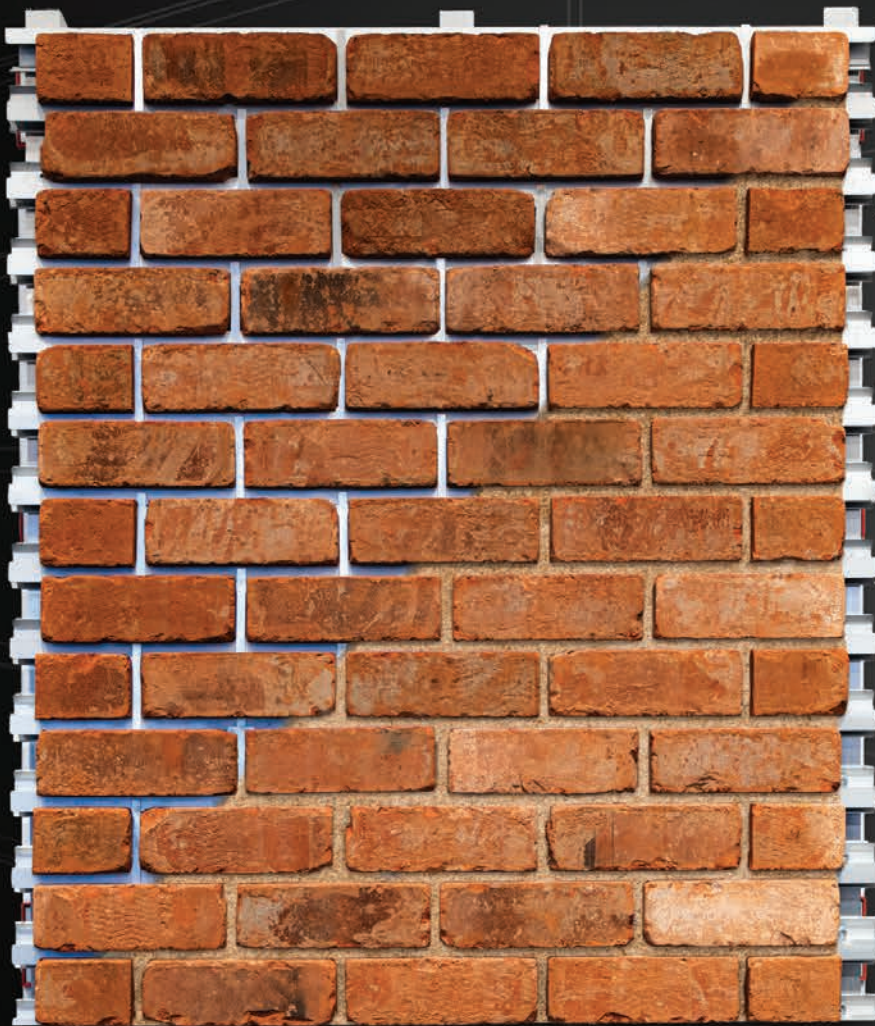
If you would like to discuss your desired aesthetics or further details on our CMS40 facade system, please contact FabSpeed.



0844 931 0022

www.mbhplc.co.uk/cms40-facade-system

Making brickwork lightweight



CMS40

The clay brick façade and aluminum bracket system offer an A1 non-combustible rating.

Tested to the Centre for Window and Cladding Technology (CWCT) standards and BS 8414-2 tested in accordance with BR135.

BBA certification of the CMS40 system, covers both Parex lime based mortar and Instamac cement based mortars.

Easier and quicker, non-weather dependent on-site installation.

Accuracy of installation when using pre-spaced mortar joints and mechanically fixed slips.

Lightweight framework system reduces structural load.

Slim system allows for reduced wall thickness for external retrofit applications or increased floor space.

The system components and facing brick slips can be re-used and recycled.

A wide selection of clay bricks of varying textures, styles, sizes and colours can be cut into slips by FabSpeed and used on CMS40.

The advanced brick façade system

In conjunction with industry leaders Cladmate, FabSpeed has co-produced the CMS40 Façade System. CMS40 uses mechanically fixed non-combustible brick slips, in a lightweight, easy-to-install, cost-effective product. Suitable for volume high or low-rise applications, newbuilds or retrofit projects, internal and external use, CMS40 fuses traditional brickwork façade aesthetics with the latest advanced rainscreen cladding systems. Speak to FabSpeed today.



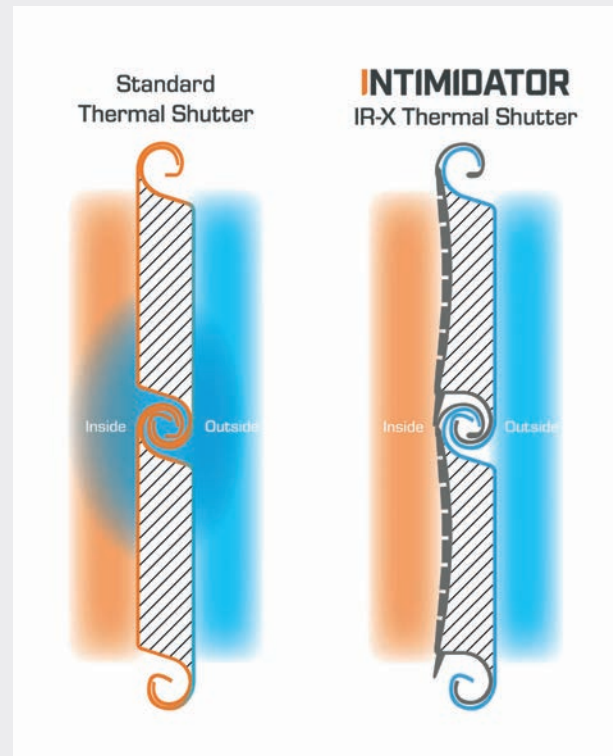
Blockleys™ Carlton™ FabSpeed™ Floren.be™ Freshfield Lane™ Hathern Terra Cotta™ Michelmersh™

Website: www.mbhplc.co.uk/cms40-facade-system
Email: sales@fabspeed.uk
Telephone: 0330 1222 123
Socials: @mbhplc



 **MICHELMERSH**
Britain's Brick Specialists

CGT Security launches a new industrial door with amazing thermal performance



As an industry-leading manufacturer of innovative security shutters, CGT Security are known for delivering quality solutions that are beyond the traditional shutter door.

Following on from the launch of the Intimidator Industrial door range at the end of 2023, CGT Security are now launching the Intimidator IR-X thermal industrial door with amazing insulation properties due to a combination of innovative product features.

Patented thermal break technology used on the Intimidator IR-X removes the cold bridge through the joints between the laths, giving a higher thermal performance than standard insulated shutters. The U value is traditionally stated as a through-lath metric, but on a standard shutter much of the heat transfer is actually through the joint between the laths, so the thermal break technology of the IR-X reduces the overall temperature

transfer by removing the cold bridge through the joint, as well as having a soft, PVC lip between the laths for even greater insulation.

In addition to this, the curtain of the shutter has an integral rubber top seal for a reduction in air flow between the frame and door, and the guide rails have internal brush seals to give even greater insulation. This gives an overall U value for the whole curtain as 2.8 W/m²K compared to a typical insulated shutter U value of 4.3 W/m²K.

These two part guide rails also give extra reinforcement for high wind-loading as well as giving additional strength on the attack face of the shutter.

The Intimidator IR-X has been independently certified by the Loss Prevention Certification Board (LPCB) to LPS 1175 Issue 8 standard up to a B3 (SR2) rating and has Secured By Design Police Preferred Accreditation.

Each lath of the Intimidator IR-X is made from a twin material; an aluminium outer and a soft PVC finish on the curtain wall that gives quieter rolling of the door, even at high speeds, and the curved shape of the laths ensures a more intelligent shutter roll, reducing the space required in the head box area.

The combination of these smart product features, produces a secure, high speed industrial door with superb acoustic performance as well as thermal excellence, making it especially suitable for production facilities, utilities buildings, logistics depots and warehouses where low noise levels and good insulation are important.

You can find out more about Intimidator IR-X and the rest of the Intimidator range on our website.

0330 024 9409 cgsecurity.com

Hydro International incorporates future-proof design as standard for its Hydro-Brake® Optimum vortex flow controls

Hydro International, an industry leader in water management products and services, is redefining the standard for hydraulic efficiency and adjustability with an upgrade to their most popular and highest performing flow control. From today their Hydro-Brake® Optimum Hydraulic Efficient vortex flow controls will now incorporate an adjustable inlet as standard.

The adjustable inlet will enable engineers to future proof their drainage design with up to plus or minus 20% change in design flow should additional developments or urban creep cause an increase in flows, saving the cost of a replacement flow control.

When using our free Online Design Tool (hydro-int.design), the adjustable intake will be automatically included on units designed with the default 'Hydraulic Efficient' objective. The tool will output a unique triple head / discharge curve showing the maximum and minimum flow rate range. The initial setting of the designed unit will be the centre line, shown in blue. Post-installation, the unit can be adjusted to any flow rate within the minimum / maximum range.

Using the Online Design Tool, engineers designing in a Hydro-Brake® Optimum are able to select from a range of different objectives to meet their design requirements. These objectives include:

- **Hydraulic Efficient** – this design passes forwards as much flow as possible early in a storm event, enabling engineers to reduce the amount of upstream storage volume required. Now with the adjustable inlet as standard.
- **Linear Discharge Profile** – this design generates a discharge as close to linear as possible, providing similar hydraulic performance to an orifice plate, but with

internal clearances approximately two to four times larger.

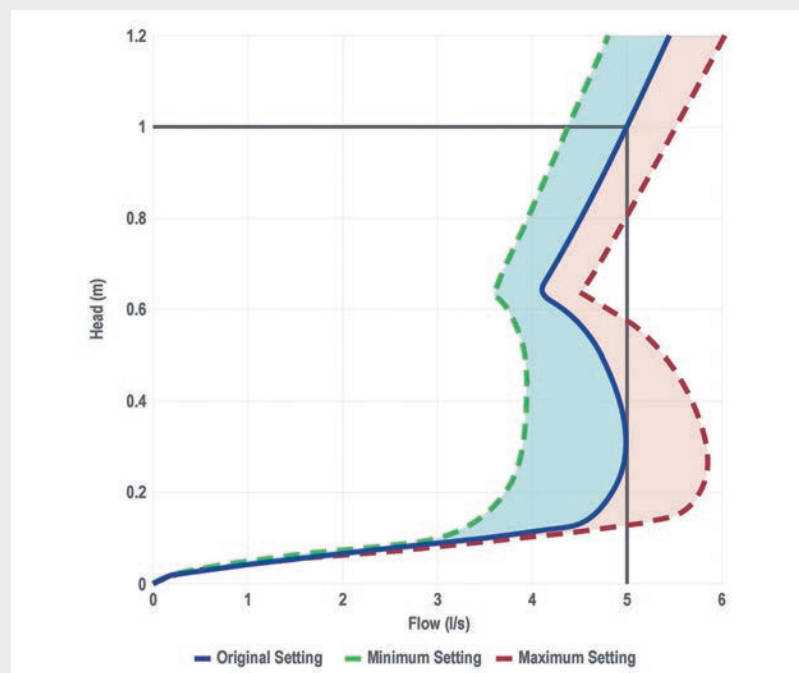
Engineers designing Hydro-Brake® Optimum units in modelling software such as Autodesk, Site3D and Causeway Flow, should contact Hydro International for the triple head / discharge curve and design outputs.

Ben Puddy, Product Manager for Hydro International, comments, "With the ability to adjust flows post-installation as standard, Hydro-Brake® Optimum can help designers be prepared for the effects of climate change, urban creep, or changes in regulations. In addition, saving money with the ability to adjust to future flow rates, without the expense of fully refitting the system and ensuring projects can be delivered on time, every time. At Hydro International, we have 40 years' worth of expertise which has gone into development of this feature, ensuring risk is mitigated."

With over 40 years of research and development into developing Hydro-Brake® vortex flow controls and other water management products and services, Hydro International leverages its expertise to deliver exceptional flood protection and sustainable drainage systems, ensuring it is at the forefront of industry development, time and time again.

To find out more about this forward-looking vortex flow control, visit the website or try some designs on the Online Design Tool: hydro-int.design.

www.hydro-int.com/optimum-fp



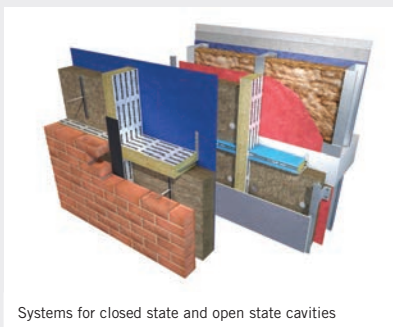
Knauf Insulation launches 'gateway-ready' rainscreen cavity systems

Knauf Insulation has launched Rocksilk® RainScreen Cavity Systems, a range of complete tested systems designed to simplify specification and support compliance in cladding and masonry facades. The systems consist of sheathing insulation, fixings, and cavity barriers.

"The Building Safety Act places much more scrutiny on everyone working on high-risk buildings," said Luke Davies, Rock Mineral Wool product manager at Knauf Insulation. "The 'gateways' it introduces, plus the ever-stricter compliance criteria of the Building Regulations, mean it's never been more important to get your specification right. That's why we've launched these systems – to make it easier for specifiers to meet these challenging requirements with a single system, backed up by rigorous test data."

The Rocksilk® RainScreen Cavity Systems combine existing Knauf Insulation rainscreen products with a series of new cavity barrier solutions, including open state cavity barriers with an intumescent strip, a closed state cavity barrier, and further additions to Knauf Insulation's innovative face-fixed masonry cavity barrier range launched last year. The full range of cavity barriers enables specifiers to choose the system that best meets their fire performance needs, confident it has been tested to the relevant standards. Rocksilk® RainScreen Cavity Systems can be used with the major substrate types, including blockwork, steel, and timber. The full range of cavity barriers consists of:

Rocksilk® RainScreen FireStop Slab is a cavity barrier manufactured from rock mineral wool, suitable for use as a vertical cavity barrier in buildings with a ventilated cavity, and vertically and horizontally in buildings with masonry facades.



Systems for closed state and open state cavities



Rocksilk® RainScreen OSCB and OSCB Plus are horizontal cavity barriers manufactured from rock mineral wool, shrink wrapped with a reactive intumescent strip, for use in ventilated cavities up to 450 mm.

Rocksilk® RainScreen FFCB is a patented cavity barrier made from rock mineral wool, that is designed to be face-fixed to Rocksilk® RainScreen Slab as the masonry facade is constructed. It is non-combustible with the best possible Euroclass A1 reaction to fire classification and is manufactured using our unique bio-based binder, ECOSE® Technology. It is the only cavity barrier that can be fixed to the face of the sheathing insulation without needing to cut into it, which reduces waste, saves time and protects performance.

Each cavity barrier has been tested as part of a system with Rocksilk® RainScreen Slab sheathing insulation to provide fire resistance in the appropriate rainscreen facade applications. Rocksilk® RainScreen Slab sheathing insulation is non-combustible rock

mineral wool and suitable for use in higher-risk buildings, and at any height. Rocksilk® RainScreen Slab has Agrément certificates from the BBA for the broadest range of build-ups and the widest range of thicknesses of any rainscreen solution on the market.

For more information about Knauf Insulation Rocksilk® RainScreen Cavity Systems, please visit knaufinsulation.co.uk/rainscreen-cavity-systems

01744 766 600 www.knaufinsulation.co.uk



The systems consist of sheathing insulation, fixings, and cavity barriers



BUILDING INSIGHTS

A PODCAST FOR THE CONSTRUCTION INDUSTRY
LISTEN AT SBHONLINE.CO.UK





Cover image: Troldekt / © Billy Bolton
See page 30 for details