

building construction design

SPRING 2025

Appointments & news	02
Building products	11
Interiors	12
Exteriors	17

www.buildingconstructiondesign.co.uk



Matten Hall, Northumberland
See page 03 for details

Reducing Risk with the Delta HLA Plus

In a fast-paced, competitive industry, it's crucial to stay accountable and be proactive in reducing risk. Delta Membrane Systems Limited introduces the HLA Plus, an innovative solution for the future of construction.

Delta's new HLA Plus is a smart high-water level alarm that offers real-time remote monitoring and notifications for pumping stations.

The Delta HLA Plus is a dependable high-water level alarm that provides real-time notifications for pumping stations. It detects critical alarm conditions right away, allowing for immediate action. Designed to keep buildings safe, it offers live performance data on all pumping activities. This promotes responsibility and reduces risk. The Delta HLA Plus works for groundwater, surface, and foul water pumping stations.

The HLA Plus offers smart technology with proactive and preventive functions, empowering property owners and facilities managers. Delta HLA Plus-equipped pumping stations enjoy peak performance and maximum protection.

Key Features of the Delta HLA Plus

- Smart protection for pumping stations
- Real time notifications – any device, anywhere, any time
- Instant access to pump station activity via the Delta Pumps App
- Indicates changes in pump activity (frequency and duration)
- Service due reminders
- Linked pumping stations
- WiFi or LAN/Ethernet connection
- Monitors pump station activities
- Tracks and records
- All Registered keyholders receive alerts via email and push notifications
- Subscription-free Delta Pumps App



Delta Pumps App

The Delta Pumps App is a command center for all Delta HLA Plus devices.

Whether you're a Delta Customer, Servicing Partner, or Property Owner, once your Delta HLA Plus device is set up in your App, you can control who accesses to receiving real-time analysis of your pumping station(s). Plus, you can see live data on [your] pump station activity. The App works on all your devices like smartphones, computers, and tablets, making it easy to stay connected.

When you open the Delta Pumps App, the Dashboard is the first thing you'll see. It has Six main sections that help you navigate the App with ease. With the tiles at the top of the screen showing important information clearly and directly. Green means all is well, while amber and red signal attention is required.

Delta's MD, Kevin Dodds shares the real story of turning an idea into a product available for everyone: "Understanding your market and audience is crucial for successful product development. Stay informed and ahead of the competition by knowing what your customers need and want."

Embrace new technologies that can transform the way we live and work. These innovations are not just trends, but real solutions improving our lives daily.

"In product development, wrong decisions are part of the journey and can lead you to the right choices. Mistakes are expected and valuable for progress".

He continues: "There were sleepless nights and endless searches for the 25th hour in day. At Delta, we believe in our mission to make the waterproofing industry safer. Our team is genuinely motivated and inspired by this goal. Both Chris (Christopher Burbridge, Delta's founder and director) and I feel a real sense of achievement with the Delta HLA Plus.

"Customer feedback has truly amazed me. It's both a pat on the back and a seal of approval. We must sincerely thank the Delta Team for their help in getting our product into production. Their support was invaluable".

Kevin stays focused despite having countless tasks every week by prioritising what's important and staying dedicated.

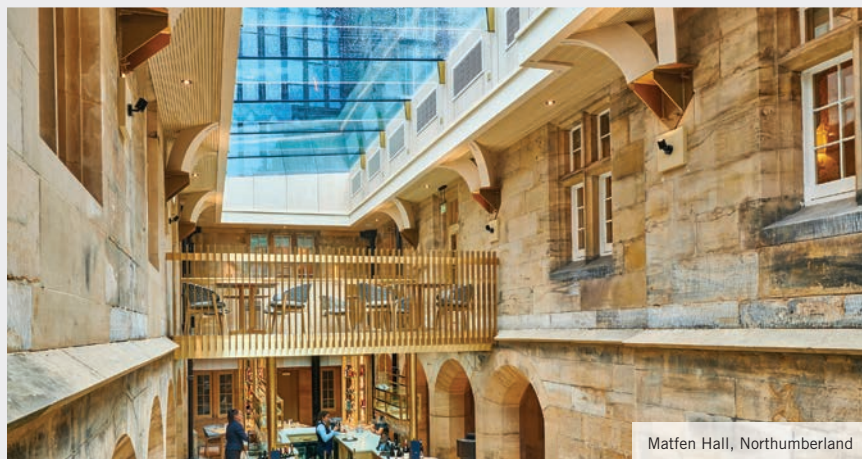
"We're passionate about solving problems to help our customers. It's impossible not to admire big brand inventors who think ahead, aiming to solve customer problems before they even arise. It's not just an invention; it's building a trusted global brand. While others may try to imitate products, they can't replicate an inventors' unique vision and innovation."

Always Happy to Help

Whatever the needs of your project, you can rely on Delta's Technical Team to ensure you get the right advice, support, and practical help at exactly the right time its required. Call us today or email.

01992 523 523 info@deltamembranes.com

Passivent – a fresh take on ventilation solutions



Matfen Hall, Northumberland



passivent

 **wienerberger**

Passivent has been providing natural and hybrid ventilation solutions for over 40 years. Its product range can help deliver many benefits, including improved energy efficiency and air quality, natural daylight and moisture removal in order to create healthier, more comfortable environments. This is in line with modern specification requirements which favour natural ventilation over more energy-intensive mechanical systems to meet stricter sustainability targets.

Natural ventilation strategy for refurbishment project

Matfen Hall, a stunning Grade II listed hotel, golf and wedding venue in Northumberland, has undergone an extensive refurbishment programme designed by Doonan Architects, with a striking new covered external courtyard area providing a focal point. This space can now be used all year-round, thanks in part to the natural ventilation strategy delivered by Passivent and the installation of ten Passivent Aircool® wall ventilators beneath the new glass rooflight, to maintain a fresh air supply to the enclosed area. Aircools are fully controllable and perfect for night-

time cooling strategies where daytime heat build-up is purged from the structure during the night. A two-zone iC8000 intelligent controller was also installed to monitor the internal and external temperature and carbon dioxide level.

Solutions for educational and leisure environments

For Sunningdale SEND School in Sunderland, which specialises in teaching children aged between 2 and 11 years with severe and multiple learning difficulties, Passivent provided an energy efficient natural ventilation strategy which minimises noise pollution during operation. Its unique thermal acoustic Aircool window ventilators, Litevent Airstract® rooflight/ventilators and Aircscoop® roof ventilation terminals were used in classrooms, corridors and halls.

Passivent's Aircscoop roof terminals were also specified to naturally ventilate a 70m indoor shooting range at the new performance archery facility at Lilleshall National Sports Centre in Shropshire, home to Archery GB. Ideally suited to large buildings and deep plan spaces, the energy-saving design of the

Aircscoop terminals requires no power to move the air, instead harnessing the natural power of displacement ventilation.

To read more about these projects as well as other Passivent case studies, please visit www.passivent.com/case-studies, email projects@passivent.com or follow Passivent on LinkedIn.

01732 850 770

www.passivent.com

A partnership with IES

Passivent has partnered with Integrated Environmental Solutions (IES) to make a selection of its products available to model within the Virtual Environment (VE) platform IESVE, starting with the Aircscoop roof ventilation terminal. Passivent's in-house technical team can also provide a full range of technical support and advice on natural ventilation strategies as part of the specification process.



Sunningdale SEND School, Sunderland



Performance Archery Centre, Lilleshall, © Speller Metcalfe

Marmox the first twentyfive years



Born just a couple of years after The Battle of Britain, when Harry Parsons left school at the age of 16 to begin a course for aspiring site managers at the Brixton School of Building in South London, the country's priorities were still focused on replacing the housing and infrastructure destroyed during the war and although he has always been a very practical person, the maths and science he learnt in the late fifties made this young man's mind very receptive to new technologies, while he also harboured ambitions for adventure and foreign travel.

I was with Costain when a story in their house magazine about the projects overseas took my interest: which he chose to accept.

That unexpected opportunity, led to him spending the next 14 years in Nigeria, initially running the 'small contracts department' though the euphemistic title covered anything which could be supervised by one Ex-Pat. Harry reflected: "It was the broadest and best education I could have had. I realised I wasn't equipped for UK building sites but he then spotted a vacancy being advertised by a coatings company for a Middle East manager.

My patch, covered during a series of three-week jaunts, stretched from Turkey in the North down to Yemen and as far east as Bangladesh this gave me the confidence to start my own business. That step came when I flew into Cairo one night and was asked by my local agent to meet one Dr. Kamal the next morning. It turned out the learned doctor owned multiple businesses and showed me a number of products including a polyester resin and the coated XPS insulation which has come to be known as Multiboard"

Harry started Marmox from his garage in the spring of 2000. 2005 saw him move from the first small Rochester office into the 4,000 sq. ft. Laker Road premises before, in 2010, the company took over its current Caxton House HQ offering quadruple the storage for pallets and now accommodating 16 staff. The early years saw Showerlay and Soundboard added to the range, then Thermoblock proved a landmark in 2010 by tackling cold-bridging. Innovation continues apace with the A1 rated Fireboard introduced two years ago and a fireproof version of the floor-wall Thermoblock now awaiting BBA approval.

Harry Parsons



Marmox maintains a positive outlook

Managing Director Sarah Viney, reflects on the manufacturer's future within the construction industry.

As an innovator, Marmox is continuing to develop new products which meet the requirements of both industry regulators and our growing client base, though we have come to accept that it can take time for markets to understand the full benefits of what are novel solutions.

It was a decade ago that we introduced Thermoblock to tackle cold-bridging at places like the floor/wall junction, with their concrete mini-columns ensuring structural continuity. It took a long time for specifiers to realise the advantages under SAP etc., but now we are seeing sales into housebuilding booming. Not just in the social housing sector, but also private development and for extensions and now the range is ready to welcome a fire rated version; only awaiting final award of its BBA certification.

The uptake of our recently developed Fireboards has been most encouraging, there has been plenty of visitors on the stand at exhibitions keen to hear about what is a unique Class 1 non-combustible product. It's about communicating the potential applications: there

clearly being a need for a fireproof tile-backer and also a substrate which is perfect for taking render finishes in EWL build-ups. Crucially Fireboard offers ways of satisfying the new Building Safety Act as well as addressing the concerns of building insurers.

Staying on the subject of fire safety, we are in the process of introducing another product with the same core and coating as Fireboard. It is a special brick slip panel we've developed with a slip manufacturer, that is basically a Fireboard 'receiver' with a recess sculpted to take the slips and likely to be a game changer: easy to handle and fix in place and, of course, our original launch product – Multiboard – sustains excellent market share in tiling and wet room applications: along with a diverse range of shower trays, drains and related products.

Looking beyond our domestic progress, Marmox has not had any problems with the international supply chain, despite the headlines about global conflicts and disruption to shipping in the Red Sea. We ship direct from Alexandria and our lead times as well as our costs have remained stable. So, as well as maintaining our stock levels in Kent, lead times on new orders continue to be three to four days

maximum while most are met next day. Beyond this the company also still prides itself on having excellent customer relations including support from our technical team and trade training section.

While Marmox is a family business, most important is the fact that across the company, we have the right people in the right jobs and we've been so fortunate we have enjoyed very good retention: the majority of our staff having been with us from the very early days in one role or another: Our current finance director, for instance, worked with our accountants when the business was first set up.

Overall, I'm really excited about the future, we're going from strength to strength, with a good team who really enjoy their work within a stable company. Parts of the construction industry are growing strongly again and, in time, we expect a greater shift towards off-site fabrication, which our boards are absolutely ideally suited to.

You will be able to discuss our range of products including a new and exciting range of Multiboard Showerlays, at the Installer Show at the NEC 24th-26th June on Stand 4D27.

01634 835290 www.marmox.co.uk



Big ideas, small solutions: Why getting print right still matters in the AEC industry

The Architecture, Engineering and Construction (AEC) industry relies on print. From sharing schedules, to keeping reports, to showcasing the newest concept sketches – print is the backbone that keeps the industry running smoothly.

For many organisations, the importance of producing physical, business-quality collateral to share with their customers can even be a differentiating factor to set them apart from competitors within an increasingly crowded market. And modern printers have evolved to respond to new needs. Now, they aren't solely used for their primary purpose, but also to scan and securely save sensitive documents, or share them between devices with ease.

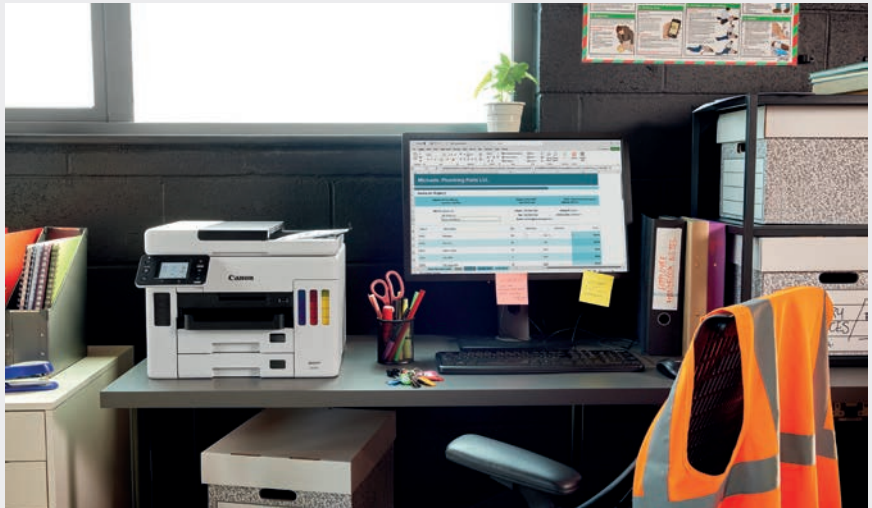
Choosing the right printing solution can therefore have a huge impact on an organisation – where, no matter how big or small the business itself, the quality and efficiency of a solution can have a huge impact on both productivity and reputation.

Delivering maximum impact, in small spaces

In space-strapped offices, there's often no room for industrial-sized printers. But that doesn't mean that architects, engineers and other AEC professionals don't require the same high-quality results on a smaller scale.

Marrying the need for business quality with the challenge of preserving workspace can mean some businesses struggle to source printing solutions that can 'do it all' – either settling for lower quality prints, or larger machines which limit their ability to maximise space within the office environment.

As a longtime partner of AEC businesses, Canon understands the industry's priorities. The MAXIFY GX6050 solution, for example, offers a compact footprint (only 399 x 410 x 254 mm) without compromising on print quality. For AEC businesses that require high-resolution scans and speedy deliverables, high-performance devices such as this can offer scans of 1,200 x 1,200 dots per inch (dpi) and can print pages in as little as seven seconds. Compact, undeniably cost-effective and providing business-critical quality, modern devices are now being designed with AEC professionals in mind.



Performing reliably, and cost-effectively

It's no secret that the AEC industry has weathered some tough times in recent years. From the supply chain disruption surrounding the Covid-19 pandemic, to the labour shortages predicted to increasingly affect a large number of firms in the coming years.

It's no surprise, then, that cost-conscious solutions are rising to the front of the pack, as AEC organisations seek to protect their bottom lines from further disruption.

This was a key factor behind the development of Canon's MAXIFY GX6050 device, which delivers a 90% average savings on the total cost of ownership when compared to the top 10 laser and inkjet printers. Providing print, copy, scan and cloud link functions, multi-function devices allow businesses to scan and share across multiple devices securely. Plus, refillable ink helps AEC offices print all the contracts and documents they need in the most cost-effective and efficient way.

Understanding the industry

The fluctuating nature of both the print and AEC industries means that new solutions, and new needs, surface regularly. Choosing the correct solution can therefore feel tricky, as organisations are left to sift through a huge number of options in search of their

'perfect fit'. That's why most organisations opt for a trusted name. Print solution companies with a reputation for producing high quality, durable machines, which require little maintenance to continually operate at a high level and save the business money in the long term. And a trusted name is exactly what Canon provides.

Canon is proud to have fostered strong partnerships within the AEC industry. With a reputation for producing high-quality and trustworthy solutions that match all needs, Canon has partnered alongside the likes of RIBA and The Architect's Journal – showcasing our commitment to delivering for industry professionals.

Getting print right

Misconceptions around the AEC industry – such as that organisations no longer rely on print, that they have experienced a boom of liquid cash flow, or that they're all occupying huge offices – still abound. It's one reason why it's so vital to find partnerships built on equal understanding. Only then can you find a solution that truly meets your office needs.

It's time for the AEC industry to embrace the benefits of better print and improve experience and output for professionals and customers alike.

www.canon.co.uk

Passivent plays its part in new Passivhaus school

Natural and hybrid ventilation solutions manufacturer Passivent has supplied its patented SoundScoop® acoustic cross-talk attenuators for use in a new purpose-built primary school in Wales that has been designed and constructed to meet Passivhaus standards and also achieve a BREEAM Excellent rating.

With a focus on sustainability and wellbeing, Ysgol Penbre (Pembrey School) near Llanelli was designed by Carmarthenshire County Council as part of its multi-million pound Modernising Education Programme in collaboration with the Welsh Government's Sustainable Communities for Learning Programme. The school's ventilation strategy has been enhanced through the use of Passivent's versatile SoundScoop units, which have been installed within the classroom areas to contribute to the creation of a comfortable interior learning environment, both in terms of air quality and noise reduction.

At just 320 mm high, the discrete design of Passivent's SoundScoop allowed it to be easily accommodated within the bulkheads that supply the rooms with fresh air, which can also be heated or cooled, via a centralised air-handling plant. The SoundScoop units then passively exhaust air back out into the central circulation space for it to be extracted, tempered and redistributed back into the classrooms by the main air-handling plant.

As the SoundScoop system is passive in operation, it requires no mains power supply or maintenance, making it a cost-effective solution for a busy school environment. It combines exceptional acoustic attenuation with very low airflow resistance enabling cross-flow ventilation between internal



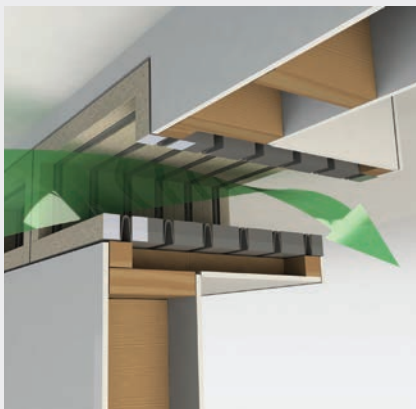
spaces of a building and, in the case of schools, compliance with both Building Bulletin 93 (acoustic design of schools) and Building Bulletin 101 (ventilation, thermal comfort and indoor air quality in schools). SoundScoops can also be fitted with a fire damper (by others) in fire walls to satisfy fire regulations.

Providing technical support both at the design and installation stages, the Passivent team worked closely with project partners Bullock Consulting Ltd (Mechanical and Electrical Consultants), specialist contractor Narbeths Mechanical Services Ltd, and local contractor TRJ (Betws) Ltd.

Sian James from Bullock Consulting commented: "The unique design of the SoundScoop cross-talk attenuator made it the perfect choice for attenuating noise between the classrooms and circulation spaces. As the SoundScoop is passive in operation and requires no energy to operate, this contributed greatly to the sustainability goals for the school."

To find out more, visit the website, call or email projects@passivent.com. Follow Passivent on LinkedIn to be kept up to date with the latest news.

01732 850 770 www.passivent.com



Bell wins retrofit contractor of the year at The Retrofit Academy Awards 2025

Bell has been awarded Retrofit Contractor of the Year at the 2025 Retrofit Academy CIC Awards ceremony in London. The panel, made up of industry leaders from businesses and academic institutions, recognised that Bell's excellent record of customer satisfaction and its consideration of all aspects of the retrofit journey has set it apart from other contractors.

Run by the UK's leading retrofit training and membership organisation, the awards are designed to recognise the best the retrofit industry has to offer and celebrate those blazing the trail



for retrofit in the UK.

In this category, the judges were looking for evidence that entrants were consistently delivering high-quality, large-scale PAS 2035 compliant projects, responding to challenging timescales while maintaining excellent levels of customer service and embracing innovation to help raise standards and increase delivery.

The judges commented that Bell's entry "shows the desire to push boundaries and takes into consideration every part of a retrofit journey for all stakeholders". They also commended Bell's high performance KPIs for customer satisfaction and the repeat business they receive. Investment that allows the company to carry out all the work for retrofit projects in-house was also noted, combined with the necessary internal upskilling to get the best out of employees. All of these factors helped ensure Bell was able to differentiate its strategy from competitors and secure this prestigious prize.

Steven Tucker, Executive Director of Operations (East) at Bell received the award on behalf of the company and commented "We are delighted to have won this award as it represents the culmination of a lot of hard work across the business. We have set ourselves ambitious objectives to ensure we are delivering the best possible service and exceeding environmental



targets to bring residents and clients retrofitted properties that will stand the test of time. It's wonderful to have all that hard work and ambition recognised and it puts us in a great position to build on our success in the coming years."

To find out more about the retrofit services offered by Bell, go to the website.

01236 766878
www.bellgroup.co.uk

Senior takes the lead on sustainability with new appointment

Senior Architectural Systems, one of the UK's largest privately-owned manufacturers of aluminium windows, doors, and curtain walling, has appointed Luke Osborne to the newly created role of UK sustainability lead.

Luke brings with him a wealth of industry experience, having worked with a number of major building products manufacturers to help establish and develop environmental initiatives, sustainability policies, and reliable carbon data sources.

In his new role, Luke will advance the existing work Senior has been doing to reduce the environmental impact of its business operations, and provide its customers with accurate calculations relating to embodied and operational carbon. Key to this will be the development of environmental product declaration (EPD) documents across Senior's extensive range of aluminium windows, doors, and curtain wall systems, as well as a robust roadmap to support Senior's net zero, biodiversity, and waste reduction targets.

Luke will work closely with Senior's architectural advisory team to support the company's main contractors and specification partners, as well as ensuring that its network of fabricators and installers can also benefit from the company's investment in sustainability.

Commenting, Senior's new UK sustainability lead, Luke Osborne, said: "My role here at Senior



Architectural Systems will be focused on driving sustainability across the whole business and building on what is already a strong foundation. Senior has made significant advances in recent years, particularly in developing its product range and using lower-carbon aluminium. I am looking forward to working with both colleagues and customers to ensure that the work we are doing really makes a difference in terms of reducing our own carbon footprint,

supporting supply-chain targets, and improving the standards for sustainability across the fenestration sector."

Mark Wadsworth, Senior's managing director, added: "Sustainability has always been an important part of our ethos here at Senior, and I am delighted to have Luke on board to help us continue our journey and take us to the next level. We are proud to be UK-owned and UK-based, which gives us means that our sustainability policies and procedures directly align with the specific needs of our UK customers. Luke will take the lead on this next chapter of our sustainability strategy, supporting our customers to achieve compliance with the relevant regulations, targets, and the proposed UK Net Zero Carbon Building Standard."

For more information, please visit the website or search for Senior Architectural Systems on LinkedIn and Facebook.



01709 772600
www.seniorarchitectural.co.uk

Marmox Thermoblocks and Fireboard on show at Futurebuild

With both an energy and a housing crisis looming large across the UK, it is appropriate that Marmox has opted to dedicate its stand F42 at this year's Futurebuild – taking place at the Excel from March 04-06 to showcase their Multiboard range together with the A1 non-combustible certified Fireboard.

The A1 non-combustible certified Fireboard can serve as a weatherproof render-backer or be used internally across walls and ceilings to take a plaster finish, while providing sound absorption properties, along with thermal insulation. The 600 x 1,200 mm Fireboards are available in thicknesses of 20 mm, 50 mm and 100 mm and with the polymer modified mortar honeycomb coating applied to both faces. With a nominal density of 150 kg/m³ the boards' core material offers a compressive strength of 90 kPa (9 tonnes/m²), while its high insulation performance will help combat thermal-bridging and the formation of surface

condensation, as well as having the potential to cut energy bills.

Marmox Multiboard, a lightweight tile backer board option, used for waterproofing, dry-lining and to provide thermal insulation has a unique patented surface, which allows heavier tiles to be safely and securely fixed to walls.

Being completely impermeable to water, it is doubly useful in areas prone to moisture, making it a good option for anyone looking for a kitchen or bathroom tile board. Multiboard can be used to insulate and waterproof walls, floors and ceilings. Even the thinnest boards will be useful when used with underfloor heating wire to reduce heating costs.

The marketing manager for Marmox, Grant Terry says: "The most important thing is that unlike everyone else, we're specified to be used externally."

"For an alternative insulated, waterproof render board, this is a great product to use".



Grant Terry also commented: "As a regular exhibitor at Futurebuild and other major trade shows, we endeavour to ensure the products we showcase are as relevant as possible to both specifiers and installation specialists and this year will include a preview of the New Fireproof Thermoblocks."

sales@marmox.co.uk www.marmox.co.uk

Reducing carbon in steel construction

With increasing pressure from central government and local authorities to minimise the carbon emissions and environmental impact of construction projects, voestalpine Metsec has introduced a reduced carbon steel option for its renowned light gauge steel construction solutions, including the pre-panellised loadbearing solution, Metframe, SFS, Purlins and its range of internal non-loadbearing stud, track and MF ceilings.

Branded Metsec Decarb, the steel is produced in new, state of the art electric arc furnaces and is a true move towards a reduced carbon future for the construction industry, containing less than half the amount of carbon dioxide per tonne for the same quality of steel.

Andy Hackett, General Manager of voestalpine Metsec's Dry Lining Division, states, "Together with our commitment to Net Zero Carbon operations by 2035, Metsec Decarb underlines our commitment to providing specifiers, developers and clients with a very real opportunity to reduce a project's carbon footprint and enhance its



sustainability credentials.

"Metsec Decarb is a bona fide lower embodied carbon steel. It does not rely on greenwashing, carbon offsetting, allocation of green energy or mass balance approach to achieve this, providing real peace of mind for the designer."

voestalpine Metsec construction systems

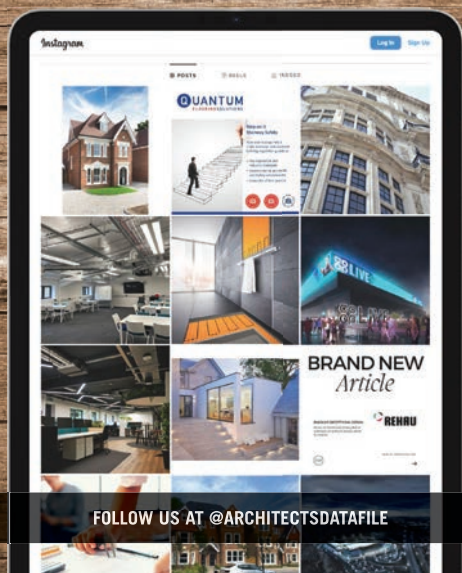
and products are backed by comprehensive verified manufacturer statements and Environmental Product Declarations, which can be included in the final project's carbon assessments.

metsec.SFS@voestalpine.com
www.metsec.com

adf

architectsdatafile.co.uk

adf is on Instagram



NEWS FEATURE

Enjoying the benefits of anhydrite screeds

Nick Bratt, national technical sales manager for tile adhesive manufacturer Palace Chemicals, says that the single issue which he comes across most frequently in queries from architects is the topic of tiling on to anhydrite screeds.

Anhydrite (or calcium sulphate) screeds have been available for almost 40 years, and are popular with specifiers because of the speed with which they can be poured and their sustainability credentials. However they do involve much extended curing times compared to sand:cement screeds. These will have a knock-on effect on project times and budgets. Clearly these are considerations which architects need to be aware of at the building design stage.

To achieve the required maximum relative humidity of 75% prior to tiling, the relevant British Standard (BS8204-7:2003) states that the minimum required drying time for anhydrite screeds is one day for each millimetre up to 40 mm thickness, with an additional two days per mm thickness above 40 mm.

In ideal drying conditions therefore, a 40 mm thick screed should be allowed to dry for a minimum of 40 days. At 50 mm thick, the minimum drying time would be 60 days and at 60 mm thick, a minimum of 80 days drying time would be required before the screed was sufficiently dry to receive a tiled finish. Failure to follow these recommendations and tiling before the screed is sufficiently dry will generally result in adhesion failure at the screed/adhesive interface. This compares with a minimum of 21 days for sand:cement screeds, according to BS5385-3:2003.

So why use them? The main advantage is that they can be laid more quickly and easily and are more cost-effective especially for larger areas. They will self-level and offer minimal shrinkage, making them especially suitable for use with underfloor heating systems, where they will fully encapsulate all pipework. Up to 2,000 m² of anhydrite screed can be laid in a single day – compared to 100-150 m² for conventional sand:cement screeds, making them particularly suitable for use on large commercial contracts.

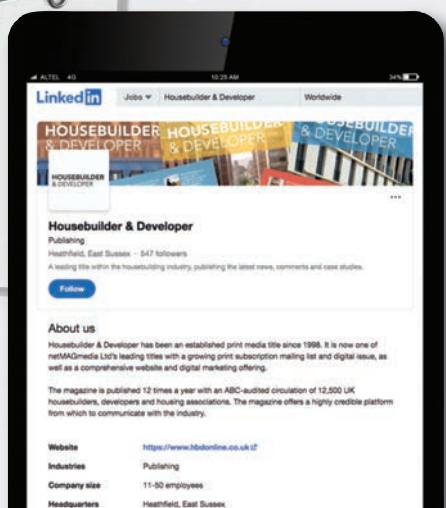
Furthermore the latest fast-track systems such as Palace's own Pro Gyp-Base, are a game changer, since they make it possible to tile with a cement-based adhesive on to anhydrite screeds, which have a relative humidity as high as 95%. This can normally be achieved in just seven days, at which point tiling can commence. This reduces the time required for the overall completion of the floor surface by up to ten weeks, which clearly has a very significant impact on timescales and costs on-site. The adoption of one of these new systems will allow contractors to derive all the benefits of rapid and easy pouring of an anhydrite screed, without involving delays on the job caused by having to wait for an extended drying period.

Supplied by Nick Bratt, national technical sales manager for Palace Chemicals

Now on LinkedIn

WWW.LINKEDIN.COM/SHOWCASE/HOUSEBUILDER-DEVELOPER

HOUSEBUILDER & DEVELOPER



Hi-spec deployment of EJOT Colorfast at new Birmingham logistics park

EJOT Colorfast fasteners have been used in the construction of eight new high-specification warehousing and logistics buildings at the Urban 8 Logistics Park in King's Norton, Birmingham.

The £32.9m development by St Francis Group in partnership with Tristan Capital Partners and Canmoor, has transformed a redundant brownfield site which was once the Triplex Safety Glass factory.

The development's eight new buildings are designed to be highly environmentally sustainable, as demonstrated by their BREEAM Excellent and EPC A ratings. The units, which provide warehousing space of between 26,000 sq. ft and 70,000 sq. ft., benefit from roof-mounted solar PV panels, SuDS drainage and air source heat pumps for renewable heating and cooling.

With an estimated roofing area of 36,000 sq. m, this extensive building envelope project required a system and component specification capable of delivering on the



client's demanding aesthetic, performance and longevity objectives. The envelope was designed to achieve a high level of air-tightness – just 1.5 cubic metres per hour – and thermal performance beyond compliance levels to make day-to-day operations by future occupiers as energy-efficient as possible.

Meeting the brief was the Tata Platinum Plus roof and wall system, specified to offer a guaranteed 25-year lifespan, in

conjunction with FM Approved EJOT Colorfast self-drilling fasteners. These over-moulded colour-matched fasteners are approved for use with Tata building systems given their proven ability to provide an effective and secure seal that minimises the potential for water ingress and air leakage, whilst also maximising corrosion-resistance and visual appeal.

EJOT's A2 grade stainless steel bi-metallic JT3 Colorfast fasteners were used extensively in the project, with the integral nylon heads coloured in Sirius, Anthracite and Goosewing Grey to colour match the roofing and wall panels.

Industrial roofing and cladding specialist Roofdec was tasked with delivering the building envelopes, supported by EJOT UK throughout, including regular site visits by EJOT sales engineer Michael Swain.

01977 687040

www.ejot.co.uk/colorfast_hub

Boosting housebuilding with innovation: using offsite for social homes

The UK is in a housing crisis with more than one million waiting for a social home.

The government has set a target to build 1.5 million homes in five years, but to deliver this we must innovate.

PILOTING A NEW SOCIAL HOUSING SOLUTION

Midland Heart is one of the largest housing associations in the Midlands, with a remit to build 3,750 new social homes by 2025.

Tony Hopkin, head of development at Midland Heart, said "We want to play our part in reducing the housing shortage by building the quality, affordable homes that our region desperately needs."

Midland Heart worked with contractor TR

Partnership Homes to pilot EnveoVent, an innovative new offsite through-wall solution combining five Saint-Gobain brands, in a development of 12 two and three-bedroom homes at Barnesville Close, Birmingham.

SPEED, FLEXIBILITY AND SAFETY

EnveoVent was the only solution that allowed the organisation to meet the deadline for the Homes England Affordable Housing Grant.

Lauren Arthur, solutions manager at Saint-Gobain Off-Site Solutions, said: "While traditional builds take 12-plus weeks to construct a weatherproof shell, with EnveoVent the walls, floors and roof can be erected in as little as six days.

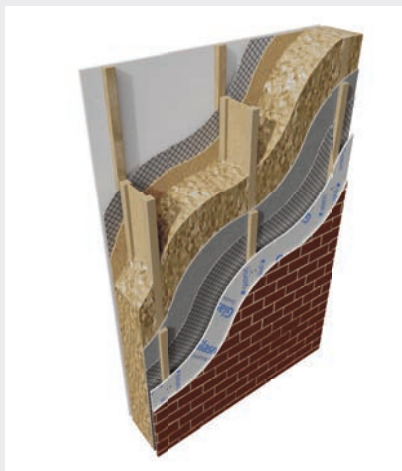
"Barnesville is a tightly pocketed site in a residential area with narrow access roads and a limited construction footprint. Offsite solutions are ideal for smaller parcels of land like this."

Using an MMC Category 2 panelised system such as EnveoVent also delivers safety benefits, cutting time spent working at height and the number of trades working in one location.

LOW-ENERGY, AFFORDABLE HOMES

Energy efficient homes are particularly important for Midland Heart, to support residents on low-incomes.

EnveoVent has excellent thermal performance with U-values of 0.16 to 0.13



W/m²K, exceeding the upcoming Future Homes Standard. Trials show homes built with EnveoVent can be heated via air-source heat pump for just £1.84 per day.

Gemma Davey, Midland Heart development manager, added: "Affordability is about more than just rent—it's about ensuring homes are energy-efficient and cheaper to run."

0800 225 225

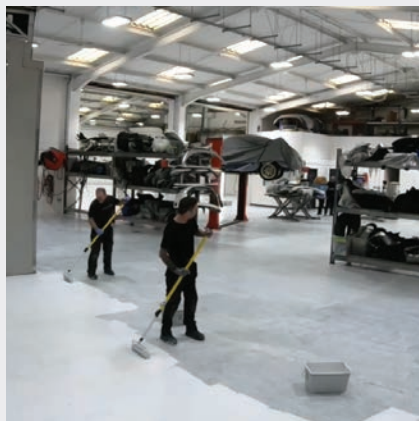
www.saint-gobain.co.uk/enveovent



Bradite's busy bodyshop boost

A busy East of England vehicle repair specialist has a tough, bright new bodyshop floor, thanks to discovering one of Bradite's top coatings.

The Bodycentre is a major automotive repair shop in Norwich, handling an average of 60 vehicles weekly for bodywork and structural repairs, paintwork refinishing and a wide range of other treatments.



"After some trouble with other floor products in the past we decided to speak to a local paint supplier, called PaintWell," says Jake Masters, The Bodycentre's digital marketing executive. "After much discussion about our previous attempts at doing the floor with no great success, they advised that we use Bradite Floor-it."

The job was undertaken by a team made up of The Bodycentre's own staff, including technicians, the general manager and one of the directors. "The application was very straightforward," says Jake, adding, "recoat time was exceptional. It took us about a day to prep the floor ready for the product to be applied, but once this was done and all necessary objects were masked up, it took us just under ten hours to apply three coats."

And the verdict? "It makes the workshop look so much brighter and cleaner. We are over the moon with the final finish."

Bradite Floor-it is a single-pack, high performance coating ideal for general shopfloor usage. The water-based acrylic floor paint has no odour and is suitable for use on suitably prepared concrete, as well



as wood, metal or asphalt surfaces. The semi-gloss finish is extremely durable with excellent adhesion.

info@bradite.com www.bradite.com

Harmonious colour in the bathroom with KEUCO EDITION 11 ART

KEUCO has launched their new EDITION 11 ART series with its tone-on-tone colour concept that creates stunning bathroom furniture: delicate in design yet solid in structure. Colour options are bold and distinctive all the products are available in White, Sand, Manhattan, Blue Satin, and Smoke, ensuring consistency across all surfaces, and materials.



The focus is placed on the centrepiece of every bathroom, the washbasin and vanity, the delicate and exceptionally thin edges of the washbasin visually blend into the vanity to make it look as if it is a single unit. This is available as a single or double washbasin solution, in two widths and a choice of one or two drawers. The interior of the EDITION 11 ART drawers are completed in elegant carbon black, and additional carbon black storage boxes blend in seamlessly, while veneer versions echo the look of the veneered body. These storage solutions can be used for both vanity units and side units.

Additional storage options, include tall units, with transparent glass shelving and long mirrors which discretely disguise two handy shelves. An illuminated circular mirror can be placed above the vanity, or if additional storage is needed the SOMARIS mirror cabinet, is ideal as the side panels of the SOMARIS cabinets are available in the x216 RAL Classic



colours and can be matched to the EDITION 11 ART furniture.

The colour concept of EDITION 11 ART continues as the furniture's side handle is available in the same finishes as other KEUCO fittings and accessories: brushed red gold, brushed brass, brushed titanium black, aluminium finish, and stainless-steel finish, as well as deep black matt or chrome.

01442 865 220 www.keuco.com

Bjelin assists in the creation of modern workspace

In the picturesque Cheshire countryside, Park View Business Centre is a meticulously converted hub of modern offices and retail spaces, blending contemporary design with historic charm.

Rather than allow the previous agricultural buildings to fall into disrepair, the owner, Peter Beckett, saw an opportunity to keep working professionals in the countryside. "We went from milking parlours and cow sheds to high-tech offices with character," he says.

A key element of the transformation was the flooring, selected to withstand the rigours of daily office life while maintaining the aesthetic appeal of the historic estate. In total, 154 m² of flooring was installed, with 143 m² being Bjelin's hardened wood flooring Woodura® Planks, known for their robustness and timeless appeal.

Bjelin's UK offices are located within the centre, and feature sqm of the Contrast Collection in the colour Vapor. This perfectly complements the solid oak stairs, creating a seamless and clean aesthetic. The main public areas, including the entrance



hall and kitchen feature wide XXL oak planks with a natural wood feel, which was a fitting choice for a building that, despite its modern function, remains deeply rooted in its agricultural past. For the more practical areas, like the bathrooms, Rigid Core Planks in a light and natural shade were selected, as they are waterproof and easy to maintain.

Peter Beckett is impressed with the choice

of Bjelin flooring throughout the business centre. "When we bring visitors to the offices, they always say it looks nice and modern and clean," he says. "It feels like a new office. Our builders liked working with the product, and we've even installed it in our new aesthetics clinic."

richard.banham@valinge.co.uk
www.bjelin.co.uk

School offers a lesson in modern building practices

The new Junior School for the Girls Day School Trust Notting Hill & Ealing High School designed by Architects Hawkins\Brown is a true lesson in sustainability. Rated BREEAM Excellent, the school serves as a model of combining best modern building practices with academic excellence.

The school worked closely with Hawkins\Brown and were keen the building represented an opportunity to empower the students with knowledge and skills to contribute positively towards the green transition and instil optimism through actionable change. Targeting net zero in operation, the site includes 14 new junior school classrooms, additional sixth form classrooms, library and specialist teaching spaces for music, art, science and computing. The addition of a science garden and forest school area add to the inside-outside learning experience.

Anderson Acoustics were appointed to provide acoustic advice for the redevelopment

of the site which included large, pitched roofs and large expanses of windows and hard surfaces. Part of their solution was to specify Troldekt's wood wool panelling across many areas to control the acoustics in the building and provide a quiet environment for learning. The result is so effective that the spaces are now used during exams.

This is a perfect example of how Troldekt's wood wool acoustic panels can help transform educational spaces. The panels are available in a variety of different structures and colours, combining optimal sound absorption with an award-winning design. The Troldekt range has a minimum expected life cycle of 50 years coupled with excellent resistance to humidity and tested to meet ball impact standards. The range is available in various sizes and structures, from extreme fine to fine. They can be supplied as natural wood, unpainted FUTURECEM™ offering a reduced carbon footprint and finished in almost any RAL or NCS colour.



Depending on the panel specified, reaction to fire is classed in accordance with EN 13501 as B-s1,d0 or A2-s1,d0 respectively. Cradle to Cradle Certified® at Gold level, Troldekt wood wool acoustic panels are manufactured using wood from certified forests (PEFC/09-31-030 and FSC®C115450) and can contribute positively to a building's BREEAM, WELL or LEED points.

Samples, case studies and technical guidance are available from the Troldekt website or see our product listings on NBS (bit.ly/3vx0Tfq) or the Material Bank website.

sales@troldekt.co.uk www.troldekt.co.uk

2025 Vicaima Interactive Interior Door Selector

Flicking through outdated static printed or digital brochures is for yesterday. In 2025 expectations are higher, the desire to seek out product possibilities in the quickest and most inspiring way, is not just desirable but essential. Now all this is possible in the world of Vicaima interior doors. Experience a journey of discovery, with the new Vicaima Interactive Interior Door Selector (IDS 25). Navigate easily from design, through performance, then pricing to availability and back again. Constantly enhanced, dynamic and relevant. Ever changing for our fast-moving construction market.

As a company celebrating 65 years of innovation in 2025, the new Interactive IDS marks another significant step forward in progressing the interface between visionary ideas and realization. Blending a communication tool that speaks on multiple levels, from intricate design concepts to practical and everyday ordering information. With at-a-glance door finishes, models, technical data, price list and even general availability guides, all readily accessible.

Suitable for a myriad of applications, the new interactive IDS 25 truly offers something for everyone and from all walks of the construction sector, whether the focus is on new build residential housing, social and affordable homes, student accommodation, Senior Living, hotels, education or even medical buildings, Vicaima has the expertise and the product solutions to suit.

For those familiar with the traditional Vicaima IDS, this new incarnation sees a change in direction, not only due to its

modern and more dynamic format. Although of course your journey could begin wherever you wish to start, for interior designers, aesthetics often plays an integral part in the specification process for interior doors and door sets. Here the vast array of Vicaima products have now been arranged by type of finish material, taking you from real wood veneers; natural or stained, finished foils, hard wearing laminates, through whites and solid colours to embossed skins and paintable finishes. And for those in need of inspiration a series of mood boards helps to view intended décor from a different perspective.

Where users want to look a little deeper, the new interactive IDS 25 explains everything from regulatory performance to environmental credentials, with in-range guides, technical data sheets and specific certification details. These encompass doors and door kits with third party accredited fire assemblies, Secured by Design (SBD) and acoustic solutions. And not just for complex issues either. Simply by clicking the link provided, you can even jump straight to handy help such as Painting Recommendations for clear instructions on everyday doors.

The all-new interactive IDS 25 also includes a number of new, extended or reimagined door designs for this year. For those projects where budgets remain tight, Vicaima have introduced two new paintable models to the catalogue. MDF Lite, a cost-effective unplipped primed flush door and the Classic S Range, with its paneled styling in both hollow and solid core options. However, if the desire is to embellish the chosen door design or avoid wasting time on site; through ironmongery



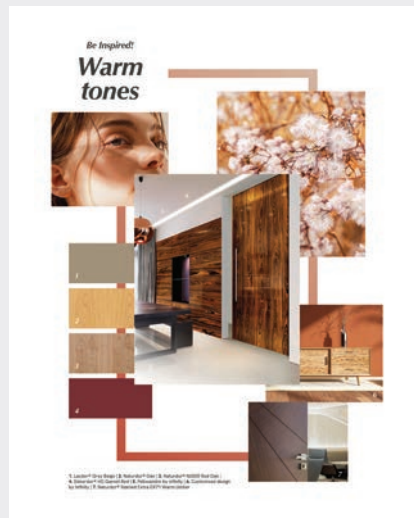
factory pre-machining, the opportunity to select from the Vicaima Modify your Door options presents an ideal solution, and again, due to this interactive tool, can be accessed from all relevant door ranges inside the IDS. As part of this Modify your Door service, 2025 sees the introduction of a new groove model PG2PT, with its unique dual groove design emulating a traditional paneled door to realistic effect.

Trends are something Vicaima pays close attention to and the popularity of the Vicaima Embossed Range with its classic and linear skin designs is one that has seen a substantial increase over recent times. So much so that from 2025, the MD55 model, with its 5 panel vertical effect, will now take its place as a stocked line, among the tens of thousands of doors held in Vicaima's Swindon facility. The interactive IDS 25 has a built in Price List so this and many other door models can be checked for price and availability to aid the decision-making process.

Embrace the future now, by taking a journey of discovery with the new Interactive Interior Door Selector for 2025. A constantly evolving resource making product information relevant for today and tomorrow. Helping the market stay in touch, with the very best interior doors and door sets from Vicaima.

01793 532 333

www.vicaima.com/files/files/catalog/vicaima-interior-door-selector-2025.pdf



Protect Your Interiors with Yeoman Shield

In high-traffic environments, preserving the integrity of your interiors is crucial for both appearance and functionality. Yeoman Shield offers a comprehensive range of wall and door protection solutions tailored to industries such as hospitality, healthcare, education, retail, and more. Their products – such as wall protection panels, fire-rated door protection panels, corner protection, and handrails – are designed to safeguard surfaces from damage while enhancing the look of your spaces.



Ideal for busy corridors, stairwells, waiting rooms, back-of-house areas, and customer-facing spaces, their solutions reduce maintenance costs, extend the lifespan of interiors, and improve safety and efficiency for staff, guests, and customers. Yeoman Shield also specializes in Fire Door Services, offering installation, maintenance, inspections, and door protection that meet strict safety standards, ensuring compliance and structural integrity.

Yeoman Shield provides both expert installation and supply-only options. Their installation service ensures everything is fitted to the highest standards with minimal disruption, including flexible out-of-hours installation. For those who prefer to install themselves, their supply-only option delivers premium products directly to you.

With tailored solutions to meet specific needs, Yeoman Shield guarantees quality protection without compromising on aesthetics. Explore the full range of products and services on their website, or email them for a consultation.

info@yeomanshield.com yeomanshield.com



COST EFFECTIVE dual-purpose hand/crash rail

Our new **Contour Hand/Crash Rail** provides the perfect solution for busy everyday traffic areas, including corridors, walkways, and lift lobbies.

Designed as both a functional handrail and robust crash rail, all in one stylish design, it's easy to install and maintain.

Available as two independent sections, each offered in a variety of colour options that can be mixed and matched. The Contour blends seamlessly into any interior designs, providing support for those in need, while also fending off impact damage from heavy wheeled equipment and people usage.



For more information call **0113 279 5854** or email info@yeomanshield.com

www.yeomanshield.com



New acoustic liner ensures great acoustics and easy handling

Both a building's users and its developers have a good reason to get excited about the new Trolldtekt Plus 25 panels. This specially developed acoustic panel sets a high standard for both sound absorption and building efficiency. Danish manufacturer Trolldtekt A/S introduces yet another innovative solution for the construction industry: Trolldtekt Plus 25 is an acoustic panel that combines high sound absorption with significant practical advantages such as low weight, space-saving design and low overall costs.



In practice, Trolldtekt Plus 25 is a two-layer panel but only 25 mm thick, just like Trolldtekt's traditional single-layer panels. A special acoustic liner made of non-woven acoustic fleece is applied to the back of the panel and ensures high sound absorption.

As a suspended ceiling, Trolldtekt Plus 25 has a so-called alpha value of 0.9 ($\alpha_w = 0.90$), which means that it can achieve Class A sound absorption at a suspension depth of 200 mm. The fact that the panel excels in the low frequencies (125-250 Hz) makes it perfect for applications such as classrooms and meeting rooms.

The acoustic fleece itself is so thin that the panel measures and weighs the same as a traditional 25 mm Trolldtekt acoustic panel – without a backing layer. This makes it significantly easier to stack, cut, lift and assemble on site. With a thickness of only 25 mm and a weight of 11.5 kg, Trolldtekt Plus 25 offers significant logistical and practical advantages including



transportation, storage and installation.

Depending on the panel specified, reaction to fire is classed in accordance with EN 13501 as B-s1,d0 or A2-s1,d0 respectively. Cradle to Cradle Certified® at Gold level, Trolldtekt wood wool acoustic panels are manufactured using wood from certified forests (PEFC/09-31-030 and FSC®C115450) and can contribute positively to a building's BREEAM, WELL or LEED points. Samples, case studies and technical guidance are available from Trolldtekt's website. See product listings on NBS (bit.ly/3vxoTfq) or Material Bank (www.materialbank.eu)

sales@trolldtekt.co.uk www.trolldtekt.co.uk

Taking acoustics to new heights

Malmaison York is a stunning boutique hotel comprising 150 bedrooms, F&B venues, the brand's signature Work + Play meeting and event spaces, spa and gym. With interiors designed by Studio Moren and sited in the iconic former Aviva building in central York, the 1960s brutalist office building has been re-configured to create a bespoke venue befitting its unique location and heritage.



The redesign includes restoring eight floors of concrete floorplates as well as facades and walls. Two new bars and restaurants were incorporated into the scheme including the Sora Sky Bar with a large terrace overlooking York Minster.

With so many hard surfaces in the design, Studio Moren needed to find a solution to control acoustics within the spaces from the restaurants and decided to use Trolldtekt's wood wool acoustic panels as part of the ceiling designs. Specified in an innovative two-tone design, the destination restaurant complements the wider 1960s inspiration and the brand's playful image.

Trolldtekt's wood wool acoustic panels are frequently specified in schools, restaurants, leisure spaces and commercial properties where noise levels can be uncomfortably loud. Panels are available in a variety of different structures and colours, combining optimal sound absorption with an award-winning design. The Trolldtekt range has a minimum expected life cycle of 50 years coupled with excellent resistance to humidity and tested



to meet ball impact standards. The range is available in various sizes and structures, from extreme fine to fine. They can be supplied as natural wood, natural unpainted FUTURECEM™ offering a reduced carbon footprint and finished in almost any RAL or NCS colour.

info@trolldtekt.co.uk
www.trolldtekt.com

Stackdoor Corner shutter protects Flagship Chanel Store

Having seen a video online of the Stackdoor Corner security shutter, luxury retailer, Chanel, were impressed by the quality and styling of the product and keen to see if it could be installed into their flagship store in Seattle, USA.

The store is in a large shopping mall with different opening hours, so it was crucial to secure the concession while keeping promotional displays visible to passers-by.

Chanel was directed to Charter Global in the UK, who supply a Stackdoor Corner

as part of their revolutionary Stackdoor system range.

One main factor in the decision-making process is that the store frontage is a large, 'L' shaped opening, with each side being over 6 m, making many physical security options difficult to install without having a central corner post in position either permanently, or without needing an inconvenient floor fixing.

Chanel also needed the shutter to disappear into the ceiling void completely, so when open, there is no sign of the Stackdoor and the opening has a seamless finish.

Stackdoor is a lightweight system designed for maximum visibility without compromising security. The stack-and-pin technology allows up to 80% free visibility and airflow, with no unsightly head box as the stacking mechanism requires minimal space at the top and bottom of the curtain.

Unlike other standard security shutters on the market, Stackdoor is capable of spanning large widths without intermediate



guide rails and is able to follow profiles in plan. This makes the design ideal for retail environments, securing revolving door systems using the Stackdoor Curved version, and car parks where airflow is required.

Chanel was delighted with the outcome as the quality and aesthetics of the product is in keeping with their high-level brand, as well as giving them secure protection.

0845 050 8705
enquiries@charter-global.com



Hörmann industrial doors installed at British Army Vehicle storage depot

Hörmann are working with Skanska UK on a £259 million Ministry of Defence contract to deliver the Vehicle Storage Support Programme (VSSP) at Ashchurch in Tewkesbury, which will provide modern, sustainable and effective storage and maintenance for the British Army's land equipment fleet.

The overall project consists of the construction, mechanical and electrical engineering for a complex programme that will see the demolition of 58 buildings, the construction of 12 new buildings and refurbishment of one existing facility, plus renewal of the site's wide infrastructure. On completion it will provide a centralised facility which will ensure the operational readiness of the Army's vehicles by minimising the need for maintenance.

The updated facilities will provide Controlled Humidity Environment (CHE) storage, aimed at reducing maintenance costs and any unnecessary deterioration caused



by extreme drops or rises in temperature, ensuring that the vehicles are operationally ready at all times. As part of this key requirement Hörmann UK are supplying a total of 226 of their SPU F42 fully automated Industrial Sectional Doors which are split between the 12 new warehouse units and represents one of the largest 'door only' projects that the company has undertaken.

Hörmann SPU F42 double-skinned industrial sectional doors are well known

within the marketplace, recognised for their good thermal efficiency and air tightness properties – key factors in this major project. The doors specified can achieve an impressive U-value of 1.2 W/m²k for doors including vision panels and a value of 0.9 W/m²k for solid doors. All of the doors supplied provide Class 3 air permeability. This has been achieved with enhanced sealing of the door, with an improved bottom seal, corner seals which improve the tightness between the door frame and lintel, together with infill seals between the ribbing in each section.

All doors are finished in RAL 7016 Anthracite grey externally and Hörmann's standard RAL 9002 Grey white internally and provide a minimum clear opening of 5,000 mm x 5,000 mm.

Installation of the first doors began in October 2023, with the project expected to be completed by June 2026.

01530 516868 www.hormann.co.uk

Michelmersh Group unveils new additions to its Carlton Capital Collection

With over 130 years' experience, Carlton has fine-tuned the production of a broad spectrum of high-quality, durable bricks from its manufacturing base in Yorkshire. Carlton boasts the ability to manufacture monotone colour blends in rustic, dragwire, smooth and sand faced textures, which are widely used for contemporary brickwork detailing in commercial, retail and residential developments.

The Michelmersh Group is delighted to unveil three stunning additions to its Carlton Capital Collection: Ripley Thatch, Golden Thatch, and Golden Sandfaced. These new bricks offer an exciting palette of warm, earthy tones, perfect for architects and housebuilders looking to create striking facades with plenty of depth and memorable character. Each brick within this collection has been crafted to provide both

aesthetic charm and outstanding technical performance, ensuring they meet the highest industry standards while maintaining the timeless appeal associated with Carlton bricks.

RIPLEY THATCH

Measuring 215mm x 102.5mm x 65mm, Ripley Thatch is a red multi-brick with dark buff, brown, and purple hues. Its rustic textured thatch finish enhances its traditional aesthetic, making it ideal for projects seeking a blend of heritage and contemporary style. This extruded wirecut brick boasts T2, R1, F2, S2 classifications and a compressive strength of 40N/mm².

GOLDEN THATCH

Also 215mm x 102.5mm x 65mm, Golden Thatch is a buff-brown extruded wirecut brick with a rustic thatch texture, balancing heritage and innovation. It seamlessly integrates into restoration projects and contemporary builds, offering exceptional durability and technical specifications identical to Ripley Thatch.

GOLDEN SANDFACED

For a smoother aesthetic, Golden Sandfaced features a sandfaced texture while retaining the rich buff-brown tones of its counterpart. With the same dimensions, durability, and strength as the others, it is a versatile choice for restoration and new-build projects.



Ripley Thatch



Golden Sandfaced

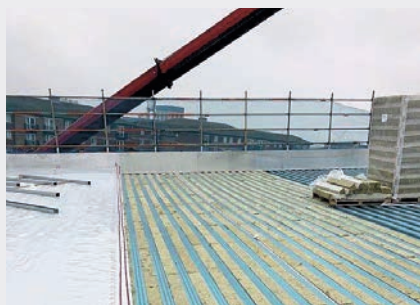
Golden Thatch

With these additions, Carlton continues its legacy of crafting high-quality bricks that blend durability, character, and versatility. Whether used individually or blended together, Ripley Thatch, Golden Thatch, and Golden Sandfaced offer a multitude of creative possibilities for architects and developers seeking to make a lasting impression.

0844 931 0022
www.mbhplc.co.uk/carlton

AIM's Acoustic infills to reduce reverberation at Hartlepool Active Wellbeing Hub

AIM – Acoustic & Insulation Manufacturing's cut to fit Acoustic Trough Infills have been incorporated into roof areas at Hartlepool's new £34.65m 'Highlight' Active Wellbeing Hub. Designed to reduce reverberation in buildings with a high proportion of hard internal surfaces, especially where noise is generated within the building such as sports facilities, the infills fit into the troughs of perforated metal profiles used in structural steel roof decks.



The new facility will open at The Waterfront, Hartlepool, in autumn 2025, replacing the town's ageing 1970s leisure centre. The development for Hartlepool Borough Council is being delivered in partnership with main contractor Wates, a leader in the sport and leisure sector, while the striking design has been created by GT3 Architects.

Via SIG Tyneside, AIM has supplied the Acoustic Trough Infills for two large roof areas to Wates' contractor Chemplas, the North East-based roofing, cladding and glazing company.

"The roof design specified acoustic trough infills," explains Chris Dale, AIM's business development manager (north). "Having received profile details from Chemplas, AIM cut the easy to fit infills to suit the deck. Though a small part of the roof system and a simple product, our Acoustic Trough Infills are a very effective and cost-efficient way to reduce reverberation in a building."



AIM Acoustic Trough Infills are available in a range of densities and are factory cut to suit any trapezoidal profile or perforated standing seam decking. The infills are stone wool, which is recognised as a good sound absorbing material. Acoustic performance is dependent on the structure of the deck and the open area within it.

01293 582400
www.aimlimited.co.uk

Sapphire Balconies Delivers Fire-Safe, Elegant Solutions for Phase 3

Sapphire Balconies played a key role in transforming the Green Man Lane Estate in West Ealing. The estate has been undergoing major redevelopment since 2011 as part of Ealing's initiative to improve the borough's housing stock. Phase 3 of the Green Man Lane project continued the estate's development but introduced new challenges that required innovative solutions to meet evolving safety regulations.

This phase required significant adjustments due to the updated 'Part B' fire regulations implemented after the Grenfell tragedy. These regulations placed stricter requirements on materials used in balcony construction, particularly excluding laminate glass from the exemption list for facades. This posed a significant challenge in maintaining the aesthetic continuity with previous phases, where glass balustrades were prominently featured.

Having contributed to the earlier phases, Sapphire Balconies was once again engaged to develop a compliant solution that adhered to the new fire safety standards while preserving the development's design integrity. The primary challenge was achieving the A2-s1, d0 fire rating mandated by the updated regulations without compromising the project's visual and functional continuity.

Leveraging their expertise and innovative

design approach, Sapphire adapted the balcony specification from the initially planned glass balustrades to a railing system meeting stringent fire rating requirements. This critical adjustment ensured full compliance with the new safety standards. Despite the material shift, Sapphire maintained their signature Cassette balcony design, incorporating the same drainage trays and decking used in previous phases. This consistency preserved the visual harmony across the entire development.

Sapphire Balconies' solution not only met the technical requirements but also seamlessly aligned with the architectural vision. Their close collaboration with the project's architects and contractors exemplified their commitment to innovation, safety, and design excellence. The successful integration of the A2-s1, d0 fire-rated railing system in Phase 3 stands as a testament to Sapphire's ability to overcome regulatory challenges while enhancing safety and design continuity.



0344 88 00 553
shorturl.at/KZwDA



Senior celebrates a decade of PRe® innovation!

Senior Architectural Systems, one of the UK's largest privately owned manufacturers of aluminium windows, doors and curtain walling, is marking another major milestone – 10 years of its patented, award-winning PRe® system!

Back in February 2015, Senior set new standards for low U-value aluminium windows and doors by creating a system that was the first to the UK market to feature an enhanced thermal barrier made from expanded polyurethane foam (PUR). The innovative use of this material, which is traditionally used in cladding and insulation, gives PRe® the potential to achieve U-values as low as 0.71 W/m²K for windows and 0.93 W/m²K for doors, significantly improving energy efficiency and reducing heat loss.

Senior went on to be awarded a UK patent (GB252363.8) for its PRe® system and soon extended the range to cater to both commercial and residential markets.

Over the past decade, the PRe® range has evolved to offer a variety of configurations, including casement, tilt and turn, and parallel push windows, as well as folding sliding, inline sliding, lift and slide, single, and double doors. Senior added further strength to the range in 2019 with the launch of the PRe® Commercial Door – the manufacturer's largest, strongest and most flexible aluminium door system to date. Most recently, in 2023, Senior collaborated with supply chain partner and composite door supplier Hallmark Doors and Panels Ltd to develop a new residential entrance door that combines the patented PRe® thermal efficiency with PAS 24 security.

Senior has also won a number of prestigious awards for the design and development of its PRe® range over the last decade, including in 2023, the King's Award for Enterprise in Innovation. Prior to this, Senior was recognised at the 2020 Made in Yorkshire business awards for its work on the PRe®



system and for its commitment to investing in the manufacturing sector on both a regional and national level.

As the popularity of PRe® has grown over the last ten years and with demand increasing significantly following the introduction of new lower U-value targets per the recent updates to Part L of the Building Regulations, Senior has also made significant investments in its manufacturing capabilities. In late 2022, Senior opened its new Thermal Improvement Facility in Rotherham – this has taken the company's overall UK manufacturing capacity to 220,000 ft² and significantly boosted production of its PRe® windows and doors.

01709 772600 seniorarchitectural.co.uk

Peace of mind for a luxury West London home

Charter Global have been pleased to design, supply and install security shutters to a luxury property based in one of the most prestigious residential areas of West London.

The new owner was looking for a home his family could stay in whilst they were in the UK, but had concerns about the number of high profile break-ins the neighbouring properties had experienced.

The existing house was being completely refurbished, giving Charter Global the opportunity to provide an unobtrusive security measure that could be seamlessly integrated into the interior design; including hidden boxes and guides, and connection into the home automation system.

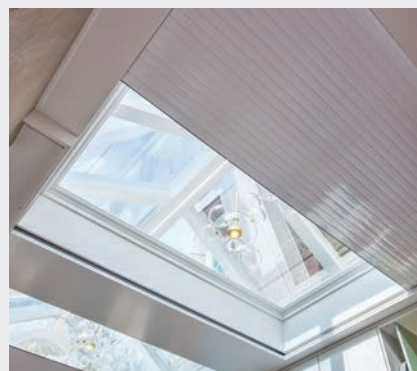
Charter Global's signature prime residential shutter range, Equilux, matched the client's requirements for a security solution that could protect the property whilst the client was abroad, and in the evenings/overnight.

When deployed, the security shutters provide a visual deterrent to any would-be intruders, as well as a physical barrier to any attempted to break in.



31 Equilux security shutters were manufactured and installed across the property. This included internal shutters behind the doors and windows on the ground and first floors. These shutters featured a concealed hood box that was installed above the ceiling, causing minimal impact to the luxury aesthetics.

Interior blockwork was amended to allow the guides to sit clear of the window opening, giving better design aesthetics, and the ceiling



beneath the shutter boxes incorporated a removable panel providing access for service and maintenance.

A clever, bespoke solution using a horizontal security shutter was installed to protect intruders looking to enter through the top of the ground floor conservatory as well as external shutters for the conservatory.

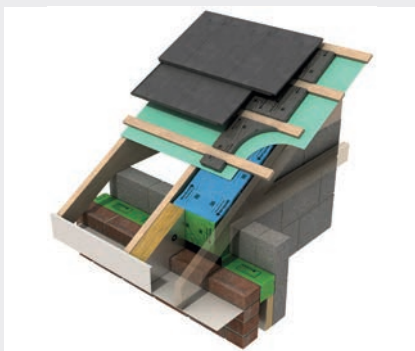
0845 050 8705
enquiries@charter-global.com

Mayplas adds new passive fire, acoustic and thermal products to housebuilder range

Mayplas, a specialist in passive fire protection, acoustic and thermal insulation for the housebuilding industry, has introduced three new products. The new Thermal Eaves Batt, Party Wall Head Cap System and Therma Soffit add to Mayplas' comprehensive portfolio of products for timber and masonry frame applications.

The new Mayplas Thermal Eaves Batt provides a thermal barrier at the interface between the ceiling loft space and the external wall of new build homes. Comprising two main components, an eaves tray and a stone mineral wool insulation batt, the batt prevents cold spots and reduces heat loss while providing a clear air path between the roofing membrane and insulation to avoid condensation. The batt is suitable for roof pitches up to 45°.

The new Party Wall Head System provides fire protection compartmentation at the party wall junction. Installed together as



per Mayplas' Installation Guide, the two-component system - a party wall head cap and a tile batten barrier, achieves 60 minutes fire integrity and insulation tested to the principles of EN 1363-1:2012 and EOTA TR31:2008 and independently assessed in accordance with BS 476-20:1987 and BS 476-22:1987. The system addresses Building Regulations requirements to maintain the

continuity of fire resistance between a compartment party wall and the underside of the roof covering, so preventing the spread of fire and smoke.

Mayplas' third new product also works at the party wall junction. The Therma Soffit provides thermal insulation within the soffit. It is available in two thicknesses, 100 mm and 150 mm, facilitating required thermal resistance values (Approved Document L) and providing resistance to the passage of sound synonymous with stone mineral wool insulation (Approved Document E).

These new products join Mayplas' MP552 Cavity Stop Socks, MP556 Fire Stop Slab, MP551 Timber Frame Cavity Barriers and MP557 Acoustic Party Wall DPC cavity barrier, all recently tested to BS EN 1366-4:2021, to meet a wide range of housebuilders' specialist insulation needs.

0161 447 8320
www.mayplas.co.uk/housebuilding-solutions

A. Proctor Group supports collaborative approach to new Passivhaus-standard campus

Two primary schools, an Early Learning and Childcare Centre, and other community facilities will all be housed in the new £34m Faifley Community Campus in Clydebank. Due to be completed in 2026, the project is being delivered in compliance with the Net Zero Public Sector Buildings Standard (NZPSBS), as part of funding through the Learning Estate Investment Programme (LEIP2).

As such, the new campus will be certified to the Passivhaus standard, which requires thermally efficient, airtight building fabric. The campus' external wall build-up features A. Proctor Group's Wraptite® UV external airtightness membrane.

Architects Holmes Miller have embedded the Passivhaus standard into their work. Their track record in delivering Passivhaus-standard buildings includes East End Community Campus, which features A. Proctor Group's standard Wraptite membrane.

Like its counterpart membrane, Wraptite,

the specified Wraptite UV membrane allows the campus buildings to benefit from moving the airtight line to the exterior face of the external wall. Doing so avoids a lot of complex detailing (such as around services and other penetrations) that often occurs at the internal face.

The composition of Wraptite UV makes it more resilient to the effects of UV exposure. It is typically used behind open-jointed cladding, though this wasn't a consideration at Faifley Community Campus with its masonry and sinusoidal cladding facing materials. A benefit of Wraptite UV's resilience is that it can be left exposed for longer if required, which may have benefited the construction programme in this particular case.

Wraptite UV is fully-adhered and doesn't require a primer, saving on labour and material costs. It's also vapour permeable, so can achieve a high level of airtightness without increasing condensation risk within the structure.



01250 872 261

proctorgroup.com/products/wraptite-uv

Michelmersh introduces two new clay bricks for bold vibrant design

Materials for architects seeking products that merge timeless elegance with enduring reliability. Renowned for exceptional craftsmanship and outstanding dependability, Michelmersh leads the brick industry with bespoke services and a steadfast commitment to quality assurance. Our dedication to personal service, combined with our adaptable approach, has contributed to a legacy of award-winning developments across the UK.

Now, we're proud to unveil two exciting additions to our range: the Hampshire Stock Red and Hampshire Stock Orange.

Crafted from our manufacturing base in Michelmersh, near Romsey, these new bricks embody the perfect balance of tradition and modernity. The Hampshire Stock Red represents timeless elegance with its warm red hues and earthy undertones, complimented by a smooth sand faced finish. Whether restoring a heritage property or designing a modern masterpiece, this brick offers the



perfect combination of charm and durability. Equally striking, the Hampshire Stock Orange adds bold vibrancy to any project. Its rich orange tones and smooth texture make it an adaptable choice for both contemporary spaces and historic settings. Together, these products offer architects a versatile palette to create designs that stand out while blending harmoniously with their surroundings.

Michelmersh's dedication to craftsmanship, enables every brick to have character. Clay products made to the highest standards exert numerous sustainable benefits such



as longevity and durability. Each product is carefully manufactured to meet precise specifications, guaranteeing a flawless finish that unites traditional strength with modern performance.

Discover how the Hampshire Stock Red and Hampshire Stock Orange can elevate your next design. For further details or to enquire about these exceptional products, visit the website or contact the team today.

0844 931 0022

www.mbhplc.co.uk

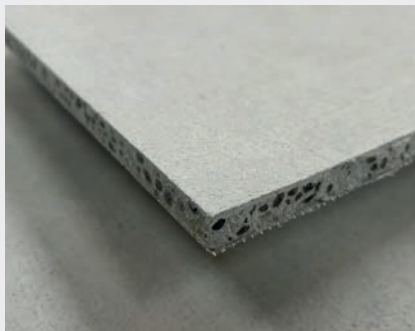
A. Proctor Group launches A1-rated, Wraptite®-compatible sheathing board

The A. Proctor Group is introducing a score and snap sheathing board to its range of facade solutions.

Used in conjunction with the highly regarded and well-established Wraptite® external air barrier, the Proctor A1 Cement Board can help specifiers and contractors move more towards a system solution.

While suitable for all buildings, the through-wall fire testing carried out featuring Proctor A1 Cement Board means it can be used with Wraptite to support compliance with fire safety requirements for relevant buildings.

“As a cementitious product, Proctor A1 Cement Board is automatically classified as non-combustible,” said Will Jones, head of business development at the A. Proctor Group. “Through-wall testing has confirmed the sheathing board’s compatibility with our Wraptite membrane, delivering a result of 120 minutes without integrity failure. Customers can therefore feel assured when



choosing a fully-adhered external air barrier and vapour permeable membrane.”

There are further benefits from the compatibility with Wraptite. As the membrane offers a W1 classification for water hold out, there is no need to use tapes and sealants on the Proctor A1 Cement Board to provide airtightness and temporary weather protection.

Key to the development of Proctor A1 Cement Board was the desire to offer the best possible all-round solution. As a result, it combines the benefits of traditional fibre cement boards with desirable qualities of newer gypsum sheathing boards that have gained acceptance in the marketplace.

“Fibre cement boards tend to be heavy and difficult to cut on site,” explained Lewis Stanley, business development manager (High Rise & Facades). “Proctor A1 Cement Board is a lightweight board for easier handling, and it is score and snap to make cutting and installation easier.”

As with all products offered by the A. Proctor Group, Proctor A1 Cement Board is backed up by comprehensive technical support, plus on-site support including all complementary fixings and accessories.

To find out more, please visit the website.

01250 872 261

www.proctorgroup.com

the selfbuilder

DESIGN. RENOVATE. REVIVE.

**REGISTER TO
RECEIVE OUR FREE
DIGITAL ISSUE**

Featuring...

- Case Studies
- Selfbuilder Diaries
- Ask The Expert
- Interior Inspiration
- Home Styling
- Product Features

And more!

sbhonline.co.uk/subscribe



Delta HLA Plus

An advanced high-water level alarm system, specifically designed for real-time tracking and monitoring of pumping stations, providing a reliable tool in your hands.



Discover peace of mind today

Call 01992 523 523 or email info@deltamembranes.com for details

www.deltamembranes.com

The Benefits of Automatic Revolving Doors: A Modern Solution for Today's Architecture

By Andy Iredale, National Sales Manager (Automatics) at GEZE UK

In an age where efficiency, sustainability, and user experience are paramount in building design, automatic revolving doors emerge as a compelling choice. These architectural features do more than just add a touch of elegance to a building's entrance; they offer a range of benefits that enhance both functionality and aesthetic appeal. Let's now explore those benefits in more detail.

Energy Efficiency

One of the most significant benefits of automatic revolving doors is their energy efficiency. Unlike traditional swinging doors, revolving doors create a barrier that minimises the exchange of indoor and outdoor air. This design prevents drafts and helps maintain a consistent indoor climate, reducing the reliance on heating and cooling systems. In a world grappling with climate change and rising energy costs, utilising revolving doors can lead to significant savings on energy bills.

Improved Traffic Flow

Automatic revolving doors are designed to facilitate the seamless movement of people in and out of a building. In high-traffic areas, such as hotels and shopping centres, they allow for a continuous flow of foot traffic without the need for manual operation. This not only speeds up entry and exit but also reduces congestion at the entrance, creating a more pleasant visitor experience.



Aesthetic Appeal

From an architectural standpoint, automatic revolving doors are undeniably striking. They provide a sleek and contemporary look that enhances a building's facade. With various design options available – ranging from glass finishes to custom sizes – these doors can be tailored to match the specific aesthetic of any building. A well-designed entrance can set the tone for a positive first impression, making automatic revolving doors an attractive choice for businesses looking to make an impact.

Noise Reduction

In urban environments, noise pollution is an ever-present challenge. Automatic revolving doors can help mitigate this issue by creating a sound barrier between the bustling outside world and the tranquillity within. This reduction in noise enhances the overall comfort of occupants, making spaces more enjoyable for both visitors and employees.

Enhanced Hygiene

Hygiene can be enhanced by reducing the need for people to touch door handles or push doors, helping to limit the spread of germs and bacteria. Motion sensors that detect movement and automatically open and close doors can achieve this. This is especially important in high-traffic areas like hospitals,

shopping centres and restaurants, where maintaining hygiene is essential.

GEZE UK: Automatic Revolving Door Solutions

GEZE UK is a world leading provider of state-of-the-art door and window control systems, offering an extensive range of automatic revolving door systems suitable for a range of buildings.

Revo.PRIME

This door system takes centre stage, offering unmatched creative flexibility for your building's entrance. With a minimal canopy height of only 75 mm and a discreet drive unit, it achieves a sleek, modern look. The system's slim 60 mm profile further enhances its appeal, making a bold statement.

TSA 355 Automatic

The TSA 355 Automatic revolving door system is the ideal drive technology for doors with diameters up to 4,000 mm. Suitable for both three- or four-leaf internal and exterior doors, the TSA 355 Automatic excels in environments with high foot traffic.

To find out more about GEZE's Automatic Revolving Door range, scan the QR code. For any general enquiries, please contact us via our website or email.

info.uk@geze.com www.geze.co.uk/en

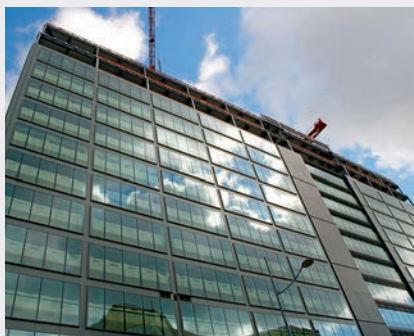
Why should windows breathe?

The provision of a weather and airtight seal around the perimeter of windows and doors in a facade is typically achieved by correctly specifying and installing a suitable membrane before the final cladding is attached. There has been considerable focus on the specification and use of these membranes on construction sites since the recent updates to Approved Document B (ADB). Approved Document B requires that any membrane used in an external wall construction has a minimum reaction to fire Class B-s3, d0 in accordance with EN 13501-1. As well as achieving the requisite fire performance, it is critical that the appropriate level of weather protection is also provided, as this is the most common cause of warranty claims within the construction industry.

Perimeter sealing membranes should always be assessed for both water resistance and weathertightness. Both properties sound very similar but are measured in different ways. The water resistance of sealing membranes is tested in accordance with EN 1928 where the membrane is subject to a static head of water at a pressure of 2 kPa over an extended 24 hour period. The requirement is that no water penetrates the membrane over this test duration in order to achieve a Class W1+ performance. Weathertightness is determined in accordance with EN 1027, which although originally intended as a means of testing assembled windows and doorsets, is now commonly used to test the performance of perimeter seals. Using this method, the perimeter seal is applied around a window before being subjected to water sprayed under a pulsating pressure to simulate wind driven rain, where a minimum performance of 600 Pa is required.

In addition to the fire and water/weather resistance performance of the sealing membrane, there is a further critical factor which should not be overlooked, relating to vapour and moisture control through the external wall and joint.

With a UK climate, the transmission of warm, moist air will be prominently from the inside to the outside of a building and therefore window and door interfaces should be designed to allow the escape of unwanted moisture or condensation to the external environment. The basic principle of the inside of the joint being 'tighter' than the outside should always be considered and appropriate membranes specified to satisfy this approach. When two membranes are used in the wall or around the window, the internal



membrane must be more vapour tight than the external one. The recommended ratio is that the external membrane should be at least ten times more vapour open than the internal one. This will create a positive pressure gradient which in turn ensures that moisture movement is always from the inside to the outside of the wall construction. If this orientation is reversed or the ratio not observed, for example by installing a vapour tight membrane as the external seal, interstitial condensation could occur within the joint, causing mould growth and potential structural damage. This principle applies to the whole facade design and is not just specific to the window interfaces, as the potential for damage is relevant to both and the principle is based on basic building physics and endorsed by CWCT in their technical publications, it is also the most recognised approach followed widely throughout Europe.

Traditionally, EPDM membrane has been specified for this type of sealing application, but with a surge in the availability of fire classified membranes to the market, specifiers, main contractors and warranty providers are now favouring these new membrane products especially for use on 'relevant' or Higher Risk Buildings (HRB's).

EPDM continues to be used as a generic term for any window sealing membrane, which unfortunately often leads to confusion and poorly specified solutions. A membrane which has a fire performance of Class B or better is not by definition an 'EPDM' because true EPDM is actually a particular grade of rubber which has a fire performance of Class E and has a relatively high vapour resistance. Therefore EPDM or so-called EPDM alternatives do not typically comply with the 'inside tighter than outside' principle as outlined above nor reaction to fire and therefore can compromise the performance of the window interface.

In conducting 'due diligence' when considering the specification of window sealing membranes, the following criteria should provide the focus:

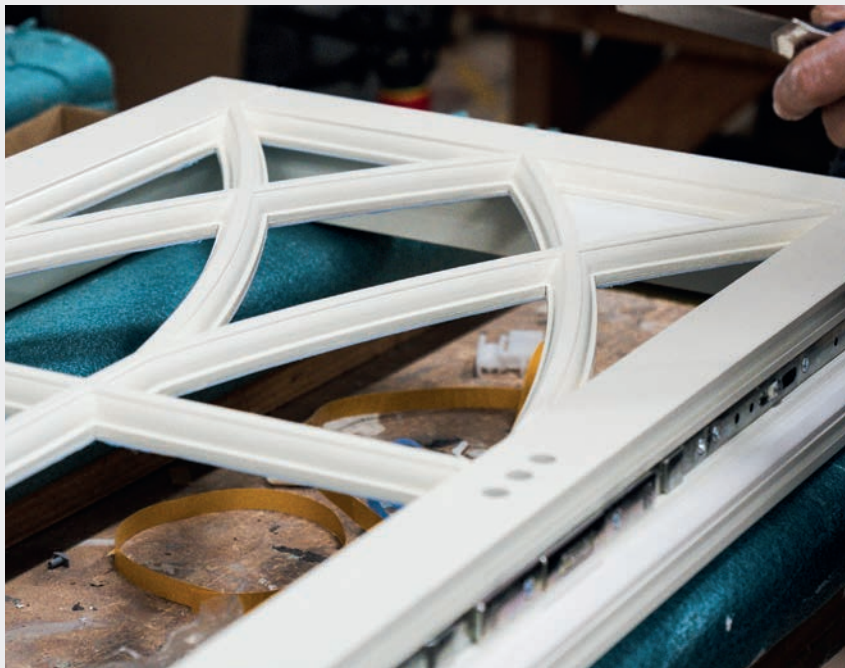
- Be subject of recognised third party accreditation.
- For 'relevant' or 'HRB's' be a minimum Class B-s3, d0 or better to EN 13501-1.
- Be tested as a system, including when tested to EN 13501-1, with the relevant specified adhesive if required.
- Should be as vapour tight as necessary but as breathable as possible.
- Follow the 10:1 inside to out rule for vapour transmission.
- Water resistance to Class W1+ when tested for 24 hours.
- Weathertight to minimum 600 Pa.
- Permanently UV resistant when used in open rainscreen cladding applications.
- Airtight where the air control layer is required on the external side of a building.
- Compatibility confirmed with all relevant substrate types and associated facade membranes.

Tremco CPG UK have been supplying a wide range of facade and window sealing membranes and associated products for over 75 years. Our philosophy for best practice in specifying and applying window membranes is in line with the above guidance and our illbruck FR Window & Door Sealing Membrane (Black) – ME010 meets all the listed criteria. The product's performance is proven by its success since its introduction to the market, with current sales to-date of over 3 million linear metres! This has now been complemented by ME007 FR Window & Door Sealing Membrane HD, which provides enhanced strength.

Approved Document B has created a huge demand for appropriately fire classified facade and window membranes and whilst the basic performance characteristics for the former are well defined, the same basic principles can be applied to window sealing membranes, such as reaction to fire, weathertightness/water resistance and vapour transmission. illbruck FR Window & Door Sealing Membrane (Black) – ME010 and FR Window & Door Sealing HD – ME007 Membranes are the products of choice to satisfy all of these requirements.

hello@cpg-europe.com
www.tremco-europe.com/en-gb

Modernising Timber Manufacturing



Mark Osborne, Managing Director of Country Hardwood, reveals how technological innovation is enabling timber manufacturers to challenge the efficiency of uPVC and aluminium fabrication while maintaining their reputation for quality.

The timber fenestration sector stands at a crucial crossroads. While the demand for premium timber products remains, manufacturers must evolve to compete with the efficiency of mass-produced alternatives. As Managing Director of Country Hardwood, I believe the answer lies not in choosing between traditional craftsmanship and modern technology, but in harnessing both.

When we established Country Hardwood in 2007, we began with a simple mission: to craft superior timber products that would stand the test of time. Today, that mission remains unchanged, but our methods have transformed. Our recent £700,000 investment in advanced CNC machinery demonstrates our commitment to embracing new technologies and innovation, while remaining true to time-honoured traditional joinery.

CNC MACHINERY: CONSISTENCY & QUALITY CONTROL

For trade professionals, consistency is paramount. Every variable in installation adds time, costs, and potential complications. Our approach to manufacturing addresses these challenges head-on.

Through precision CNC engineering, we ensure exact specifications are met on every product, every time. Our automated processes guarantee consistent quality within large volume orders, while advanced machinery enables complex designs without compromising efficiency. Quality control systems monitor every stage of production, ensuring excellence from start to finish.

The result? Products that arrive on-site ready for trouble-free installation, reducing time on site and minimising callbacks.

However, our investment over the past few years in new machinery wasn't about replacing craftsmen with computers. Instead, it was about reinforcing the capabilities of our skilled team - many of whom have been with us since day one. We've always kept the tradition of woodworking at the centre of our work; our team continues to oversee the entire operation, bringing decades of skill, expertise and knowledge to the table and ensuring the perfect finished product.

The result is a manufacturing process that delivers consistent quality while meeting the demanding schedules of modern construction projects.

Our commitment to forward-thinking extends beyond machinery. Take our unique wrap-around locking system - a perfect example of how technical innovation can improve traditional products. This system locks at five separate points around the edges of larger window frames, ensuring optimal security without compromising aesthetics.

We've also developed practical solutions for common market challenges. Our oak-effect hardwood, for instance, offers the prestigious appearance of oak at a more cost-effective price - ideal for larger developments where budgets are tight but quality standards remain high.

Bringing technology into timber window and door manufacturing requires a balance - it's crucial to maintain consistency and quality without losing the tradition of hand-built elements that makes timber so sought-after, even today.

The reason people continue to prize timber windows and doors is the same reason people continue to prize hand-made pottery over mass-produced products - expertise, built up over years of experience, simply

can't be replaced by machinery. Instead, if timber manufacturing is to compete with uPVC fabrication, it must work alongside advancements in technology.

It's also crucial for timber manufacturers to recognise the importance of supporting trade partners where needed. Our comprehensive design support includes full CAD capability for bespoke projects, backed by detailed technical specifications and documentation. Our nationwide delivery service also ensures timely arrival at sites nationwide, while our emphasis on sourcing materials and making our products here in the UK means we can offer competitive pricing to our customers.

LOOKING AHEAD TO THE FUTURE

The market for premium timber products continues to grow, driven by increasing appreciation for sustainable, high-quality materials. However, success in this market requires manufacturers to deliver these products efficiently and consistently.

Our investment in technology has enabled us to maintain consistent 12-week lead times across our product range. We can handle complex bespoke projects with confidence, delivering exceptional quality every time while our efficient processes allow us to offer competitive pricing.

I firmly believe that the future of timber manufacturing lies in this balanced approach - combining the irreplaceable skills of experienced craftsmen with the precision and efficiency of modern technology. At Country Hardwood, we're committed to continuing this evolution, investing in both our people and our capabilities to ensure we remain at the forefront of the industry.

sales@countryhardwood.co.uk
www.countryhardwood.com



BUILDING INSIGHTS

A PODCAST FOR THE CONSTRUCTION INDUSTRY
[LISTEN AT INSIGHTS.NETMAGMEDIA.CO.UK/PODCASTS](https://insights.netmagmedia.co.uk/podcasts)





Matfen Hall, Northumberland
See page 03 for details